

Appendix 3A
Filtrexx Siltsoxx (Durasoxx) Specifications

PROPOSED DURASOXX
MESH TO BE USED.
LOCATIONS ARE DETAILED
ON STANDARD WORKSHEET
#1.

Table 1.1. Filtrexx® Soxx™ Material Specifications.

Material Type	Cotton BioSoxx™	5 mil High Density Polyethylene (HDPE)	5 mil High Density Polyethylene (HDPE)	Multi-Filament Polypropylene (MFPP, previously HDPP)	Multi-Filament Polypropylene SafteySoxx™	Multi-Filament Polypropylene DuraSoxx®	Multi-Filament Polypropylene DuraSoxx® (Heavy Duty)
Material Characteristic	Biodegradable	Oxo-degradable	Photodegradable	Photodegradable	Photodegradable	Photodegradable	Photodegradable
Design Diameters	8 in (200mm), 12 in (300mm)	8 in (200mm), 12 in (300mm), 18 in (400mm)	5 in (125mm), 8 in (200mm), 12 in (300mm), 18 in (400mm)	8 in (200mm), 12 in (300mm), 18 in (400mm), 24 in (600mm), 32 in (800mm)	8 in (200mm), 12 in (300mm), 18 in (400mm)	8 in (200mm), 12 in (300mm), 18 in (400mm), 24 in (600mm), 32 in (800mm)	5 in (125mm), 8 in (200mm), 12 in (300mm), 18 in (400mm)
Mesh Opening	1/8 in (3mm)	3/8 in (10mm)	3/8 in (10mm)	3/8 in (10mm)	1/8 in (3mm)	1/8 in (3mm)	1/8 in (3mm)
Tensile Strength	ND	26 psi (1.83 kg/cm²)	26 psi (1.83 kg/cm²)	44 psi (3.09 kg/cm²)	202 psi (14.2 kg/cm²)*	202 psi (14.2 kg/cm²)	242 psi (16.99 kg/cm²)
% Original Strength from Ultraviolet Exposure (ASTM G-155)	ND	ND	23% at 1000 hr	100% at 1000 hr	100% at 1000 hr	100% at 1000 hr	100% at 1000 hr
Functional Longevity/ Project Duration***	up to 12 months**	6 mo-3.5 yr	9 mo-4 yr	1-4 yr	2-5 yr	2-5 yr	2-5 yr

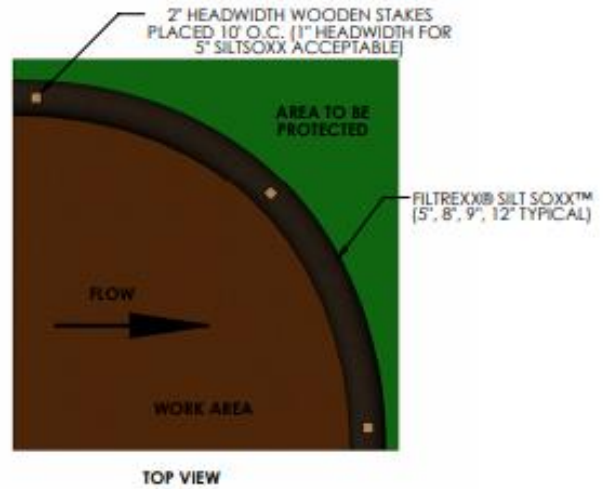
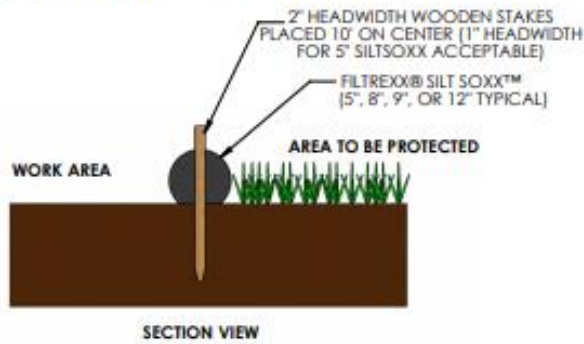
* Tested at Texas Transportation Institute/Texas A&M University (ASTM 5035-95).

** Data based on Caltrans research and specifications

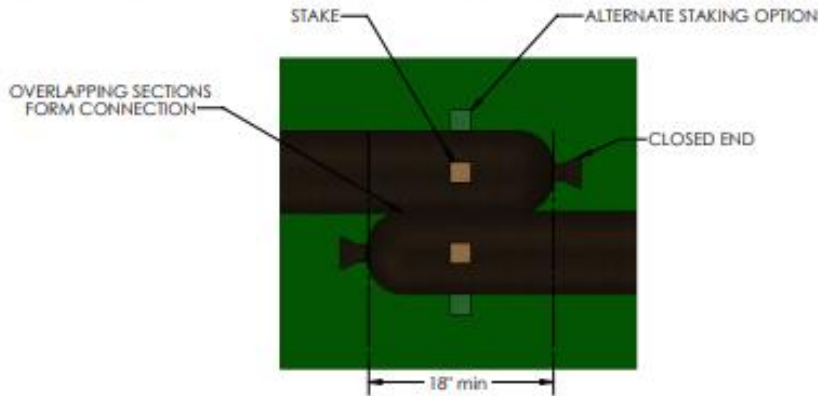
*** Functional longevity ranges are estimates only. Site specific environmental conditions may result in significantly shorter or longer time periods.

Figure 1.1. Engineering Design Drawing for Perimeter Control

FILTREXX® SILT SOXX™



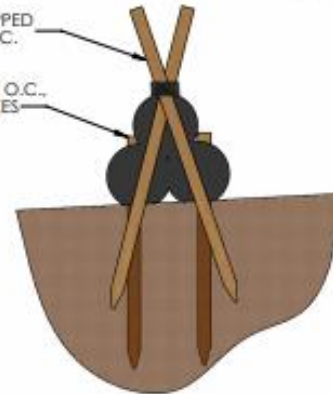
COMPOST SOCK CONNECTION/ATTACHMENT DETAIL



FILTREXX® PYRAMID STAKING DETAIL

(2) 2"x2"x48+" HARDWOOD STAKES, WRAPPED TOGETHER WITH 16 GAUGE WIRE, 10' O.C.

2"x2"x36" HARDWOOD STAKE, 10' O.C., STARTING 5' FROM ANGLED STAKES



NOTES:

1. ALL MATERIAL TO MEET FILTREXX® SPECIFICATIONS.
2. SILT SOXX™ FILL TO MEET APPLICATION REQUIREMENTS.
3. COMPOST MATERIAL TO BE DISPERSED ON SITE, AS DETERMINED BY ENGINEER.