



DRBC:

Balancing Water Supply and Flood Mitigation



October 23, 2024
NJAFM Conference



Who We Are:

- Founded in 1949, the Watershed is central New Jersey's first environmental group and one of the nation's first watershed organizations.
- We are headquartered at our LEED-Platinum-rated Watershed Center for Environmental Advocacy, Science & Education on the 950-acre Watershed Reserve in Hopewell, NJ.

Our Mission

Keeping water clean, safe and healthy is the heart of the Watershed's mission.

We work to protect and restore our water and natural environment in central New Jersey through conservation, advocacy, science and education.



Conservation



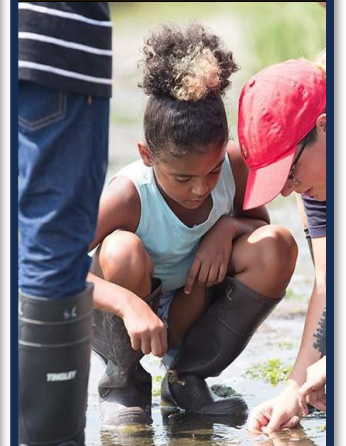
Advocacy



Science



Education



Advocacy

We are a **statewide leader** on issues relating to **watershed health** and **building climate resiliency to flooding and water quality issues**.

- 💧 **Our intensive work** at the local and regional level informs the development of **statewide policy solutions** to the climate-related challenges of flooding and water quality.
- 💧 Our expertise with state water law, regulations and policies makes us an **effective and appreciated advocate for strong municipal ordinances, planning and policies**.
- 💧 We provide advocacy training in Hightstown, Manville and the greater Trenton areas to **support community members** in advocating for **environmental justice**.



The
Watershed
Institute



Science & Stewardship

We are a **leading source of data, information and best practices** for regional watershed restoration and management techniques for stormwater management, watershed health, biodiversity, and climate resiliency.

- 💧 **Watershed restoration strategies** are tested in our communities and on our reserve by our own scientists and research partners and inform the development of regional watershed plans.
- 💧 We **build on the strong foundation of our statewide programs** such as **NJ Watershed Watch Network** and the **River-Friendly program** by improving awareness of, access to and engagement with these initiatives.
- 💧 We **share our StreamWatch data** in ways that make it easy to access, understand and interpret.
- 💧 We **prioritize work in environmentally overburdened communities**, ensuring we are responsive to residents' needs and intentional about engaging them in our work.





Education

We are a **statewide leader in teaching people** of all ages about **watershed health, threats to clean water** and the **water-related impacts of climate change**.

- 💧 We **develop, pilot, evaluate and disseminate innovative educational curriculum for students of all ages** and effective strategies for teaching about water, forests, watersheds and climate change that build knowledge, change attitudes and result in action.
- 💧 We **connect people to the "joy of nature"** through public programming for people of all ages on our reserve.
- 💧 We are a **physical presence in Trenton** through partnerships and offer educational programming to this community where they are. We will **build a pipeline of people from the community** to teach the community.



Conservation

Our Watershed Center and reserve will be:

- 💧 Exemplars of **environmental stewardship**.
- 💧 **Teaching platforms** that advance our mission and goals.
- 💧 A place of wonder that **connects people** to the joy of **nature**.
- 💧 An **educational model** of a **carbon negative campus**.
- 💧 **Welcoming to all**.



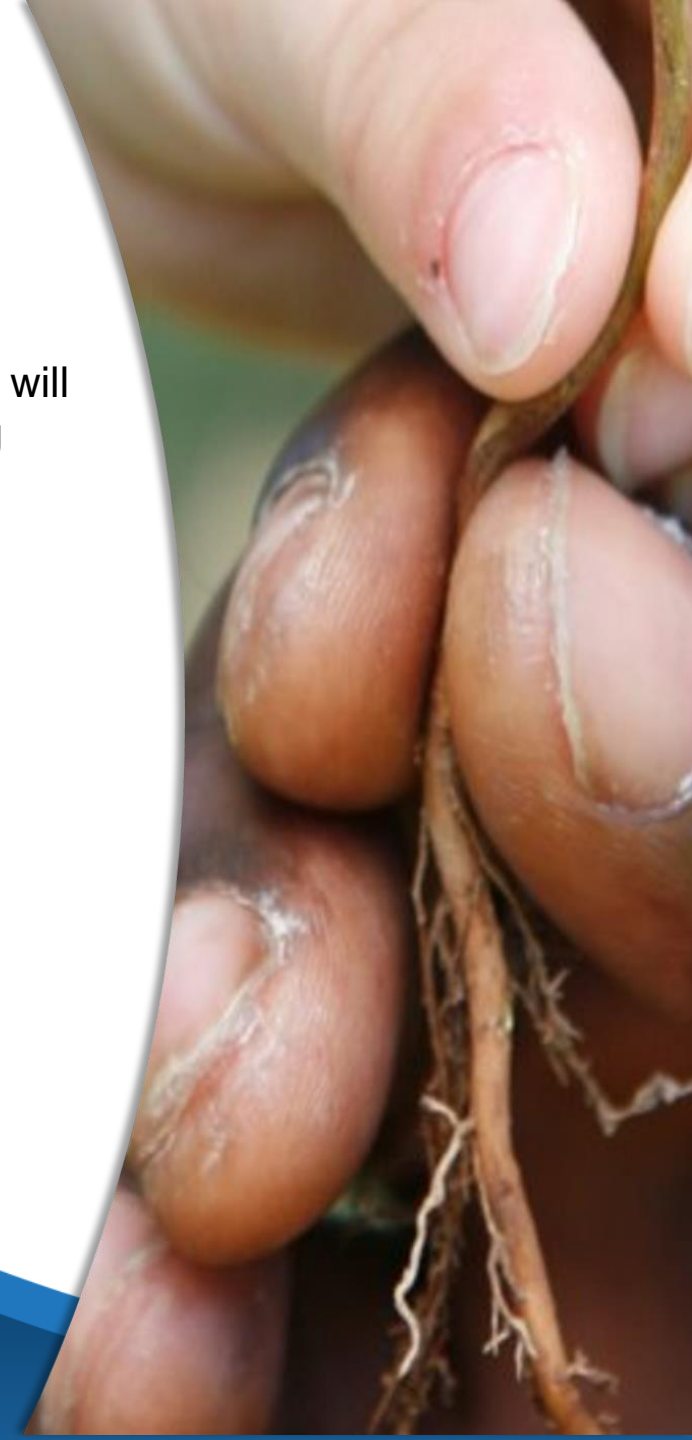
JUSTICE EQUITY DIVERSITY INCLUSION REPORT

2017 - 2023

Environmental Justice

We **work for environmental justice** which will be achieved when **all people enjoy strong and effective protection from environmental hazards**, access to **green spaces**, and **equal access to the decision-making processes** for creating healthy environments in which to live, learn and work.

To learn more about how **we embed the issues of justice, equity, diversity and inclusion into our work**, please read our [JEDI Report](#).



Flooding

- Better planning, stricter protection of flood plains, increased efforts to restore disturbed and developed floodplain area, and more rational rebuilding standards can significantly reduce economic loss to New Jersey from flooding when it occurs.
- Engineering controls and small-scale structural controls with significant benefits in specific tributaries or river segments should be identified. Nonstructural strategies should be given a priority during consideration of flood protection solutions.

Report on Delaware River Flood
Mitigation- Aug. 22, 2006

Flooding Past, Present, Future

	2	10	100
NOAA	3.31	5.01	8.33
Current	3.34	5.11	8.66
2100	3.84	5.86	11.33



MS4 WIP Objectives

A plan describing what municipalities will do to:



1. Improve water quality of water bodies that have TMDLs.
2. Improve water quality of water bodies that are listed as impaired.
3. Reduce or eliminate flooding

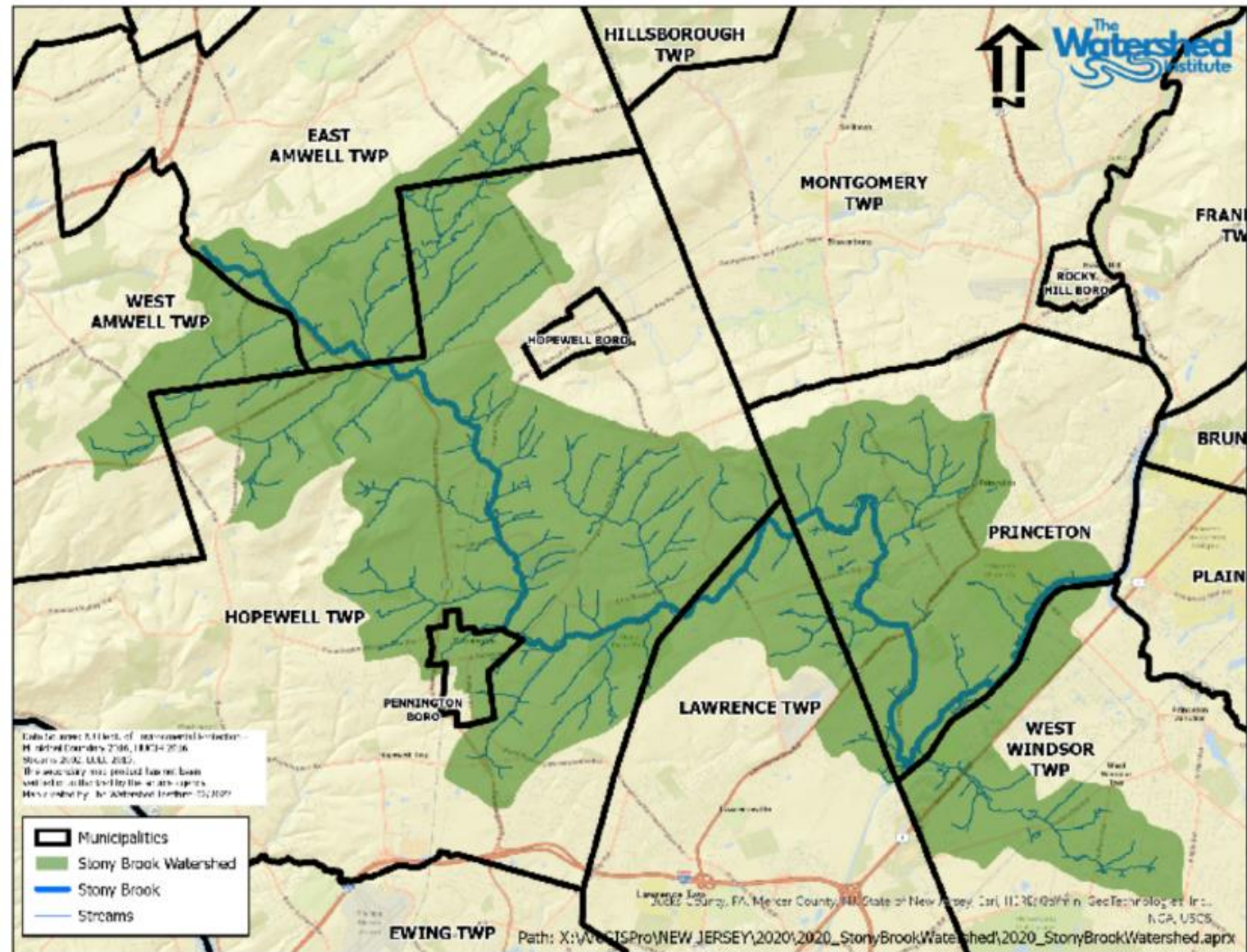
Benefits of a Regional Watershed-Based Approach

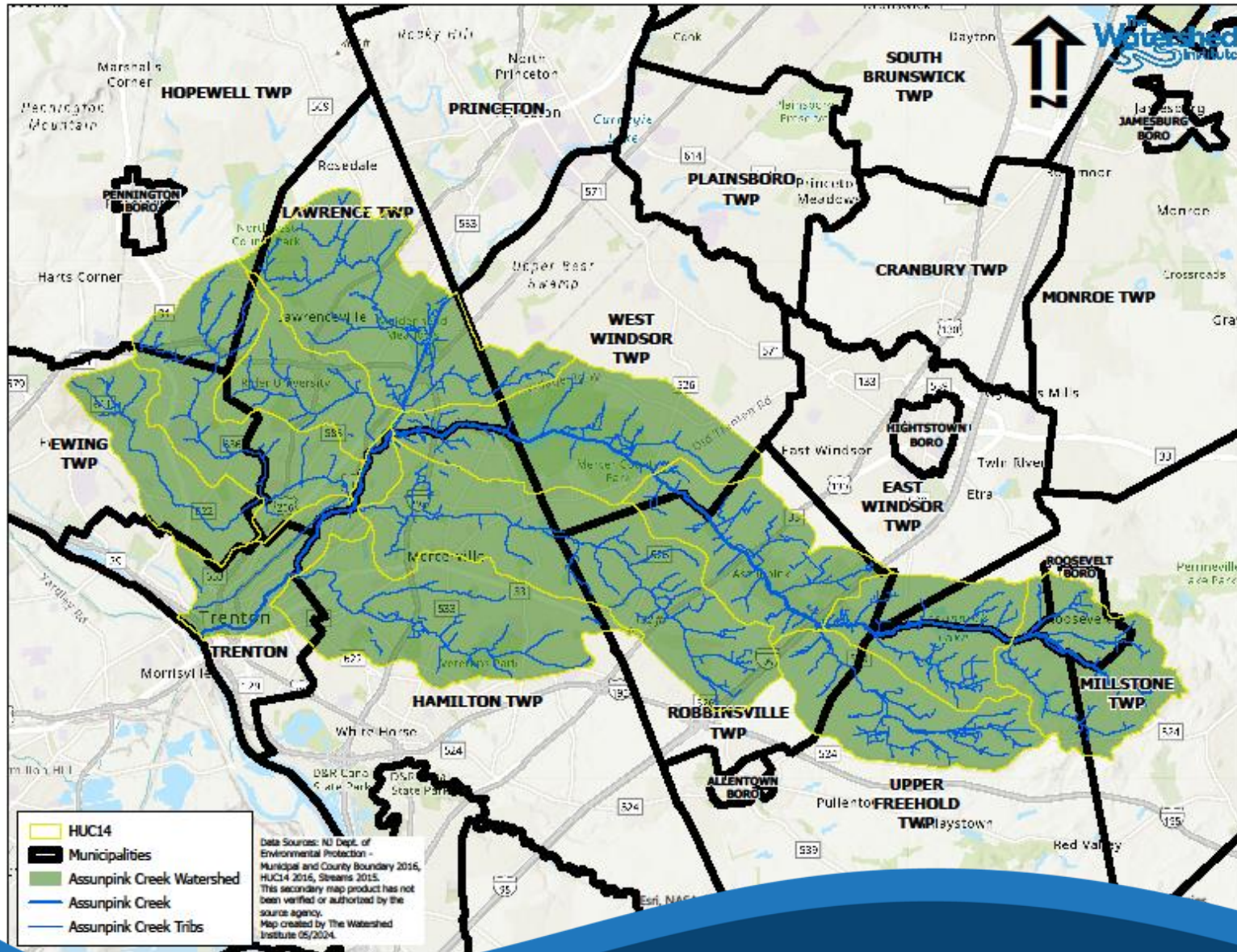
- Identify issues across municipal boundaries
- More efficient to study entire watershed (less \$, less time, better solutions)
- Identify regional solutions
- More effectively address EJ issues
- Coordinated efforts = **less repeated and inconsistent work**

The Stony Brook Watershed

Regional Working Group

7 Towns
2 Counties





The Assunpink Creek Watershed

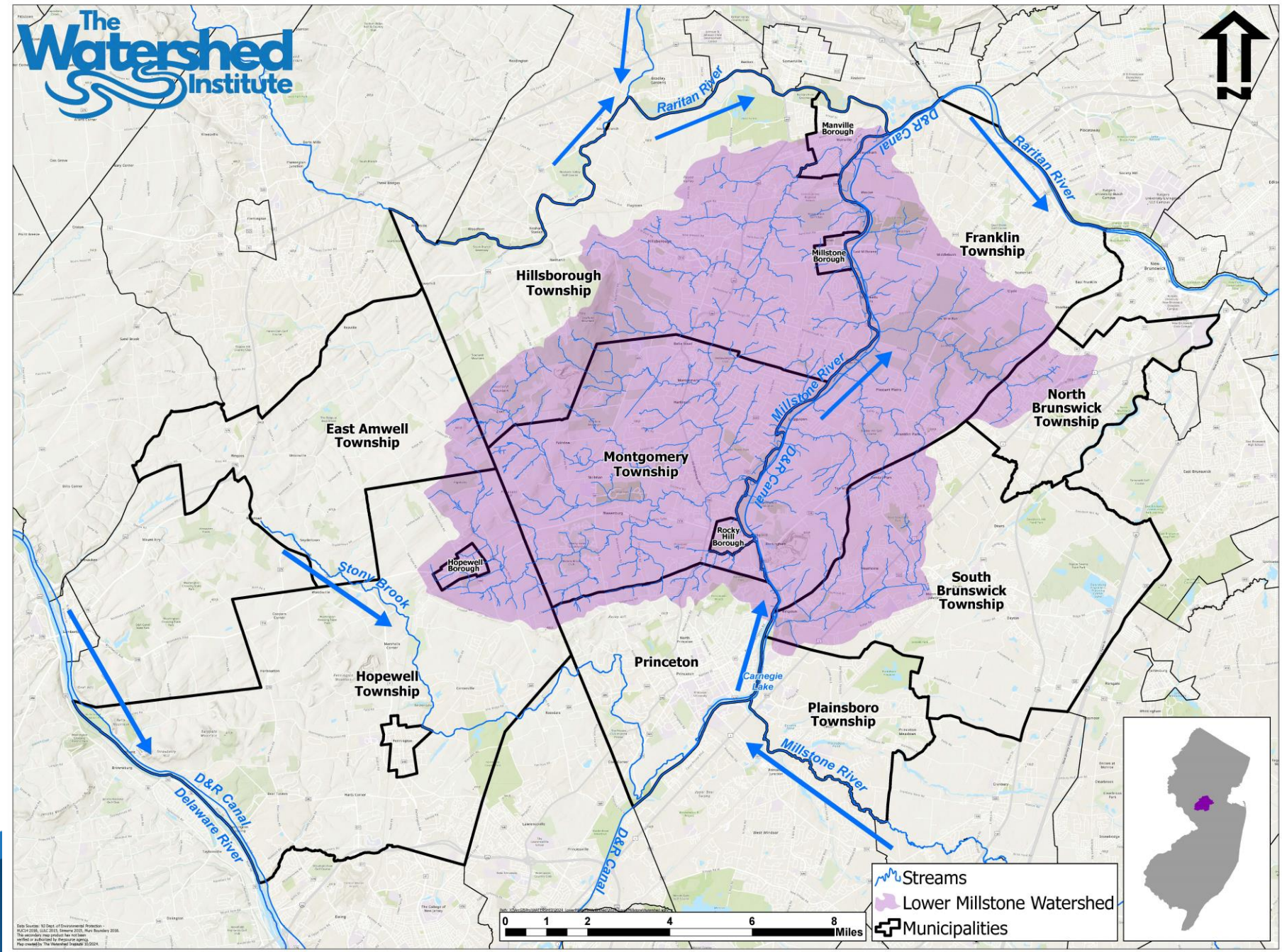
Regional Working Group

11 Towns
2 Counties

The Lower Millstone Watershed

Regional Working Group

13 Towns
4 Counties



DRBC: Balancing Water Supply and Flood Mitigation

Learn more at thewatershed.org

Stay in touch: 609-737 3735 | mpisauro@thewatershed.org



theH2Oshed



theh2oshed



TheWatershedInstitute

