

# Delaware River Basin Commission

## Overview of Basin Water Resource Management and Water Use

**Steve Tambini**  
**Executive Director**

September 25, 2018

Coalition for the Delaware River Watershed Forum



Photo: David B. Soete



**Delaware River Basin Commission**

DELAWARE • NEW JERSEY  
PENNSYLVANIA • NEW YORK  
UNITED STATES OF AMERICA

**The Inquirer**  
 DAILY NEWS philly.com Tuesday, August 21, 2018

NEWS SPORTS BUSINESS OPINION POLITICS ENTERTAINMENT LIFE FOOD HEALTH REAL ESTATE OBITS JOBS

Advertisement

**Entertainment**

# I tried, and enjoyed, Philly paddleboard yoga over the dirty Delaware River

Updated: JUNE 22, 2018 — 10:27 AM EDT

<http://www2.philly.com/philly/entertainment/paddle-board-yoga-aqua-vida-philadelphia-delaware-river-20180622.html>

Autos | Real Estate | Jobs | Classifieds September 20, 2018

Newton, NJ 66°

**New Jersey Herald**

NEWS SPORTS OPINION OBITUARIES YOUR LIFE PHOTOS & VIDEOS WEATHER

**News**

# Sojourners paddle down the Delaware



[https://www.njherald.com/20180620/paddling-down-the-delaware#//](https://www.njherald.com/20180620/paddling-down-the-delaware#/)

SECTIONS SEARCH THE MORNING CALL

THURSDAY SEP. 20, 2018 BREAKING SPORTS VARSITY THINGS TO DO INSIDER GUIDE OBITS E-NEWSPAPER REVIEWS

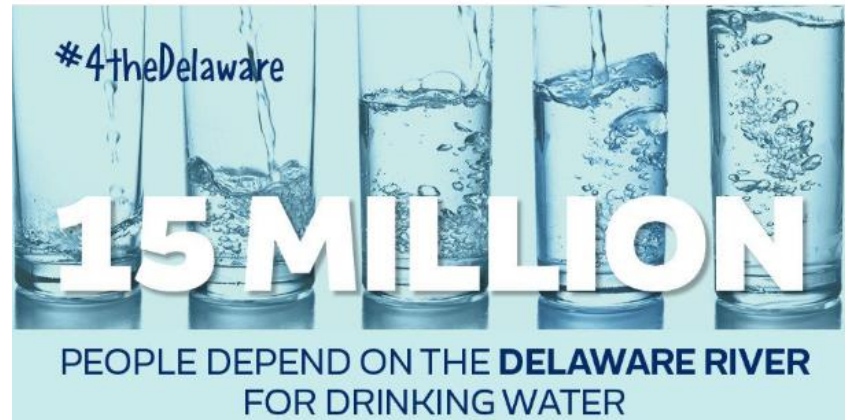
f t e Sports

# Shad fishing on the Delaware right around the corner

<http://www.mcall.com/sports/mc-spt-outdoors-shad-fishing-20180226-story.html>

# 4theDelaware Campaign

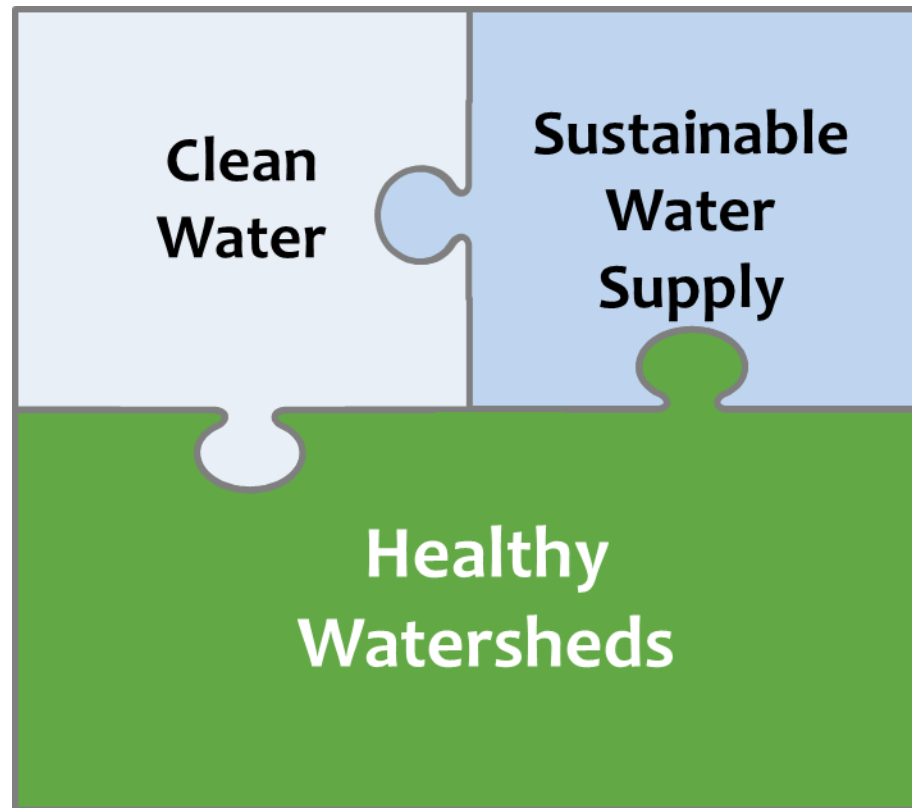
<https://4thedelaware.nwf.org/>



## 15 MILLION REASONS TO STAND UP FOR CLEAN WATER

A CAMPAIGN TO PROTECT THE REGION'S WATER, WILDLIFE, AND JOBS

# Five Questions



# #1 What type of water user withdraws the most water in the Basin?

- a) Public water suppliers
- b) Farmers
- c) Power generators
- d) Large Industry

# #1 What type of water user withdraws the most water in the Basin?



a) Public water suppliers

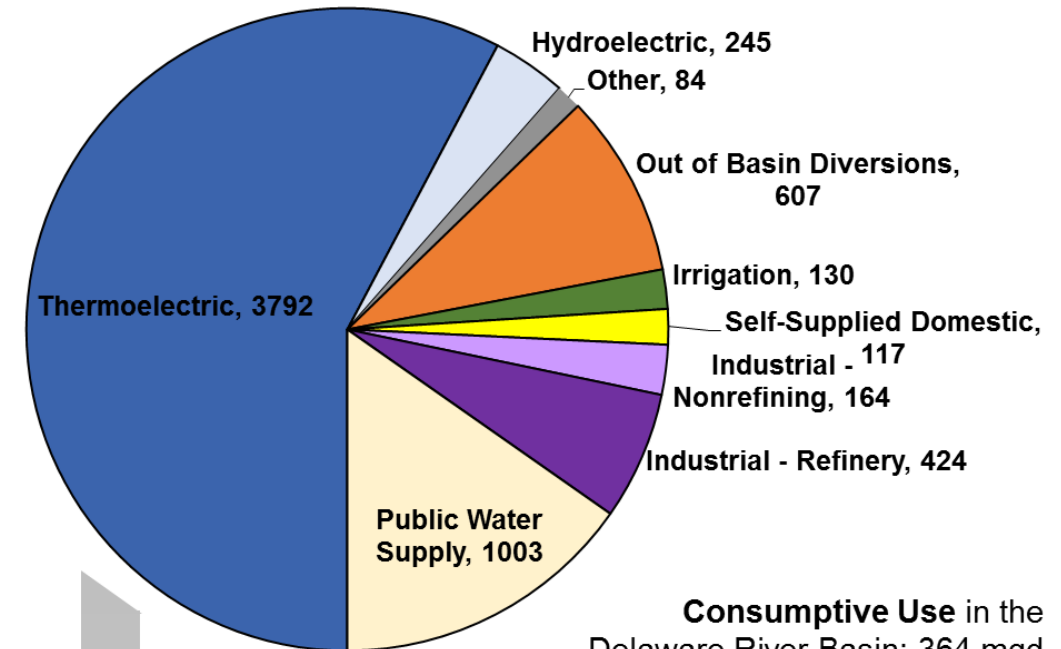
b) Farmers

c) Power generators

d) Large Industry

**Total Water Withdrawals** (ground and surface) from the Delaware River Basin: 6,565 mgd

- Thermoelectric
- Hydroelectric
- Other
- Out of Basin Diversions
- Irrigation
- Self-Supplied Domestic
- Industrial - Nonrefining
- Industrial - Refinery
- Public Water Supply



In 2016: 6.565 billion gallons per day (BGD) withdrawn. 4.037 BGD withdrawn by power generators.

There are 46 power generators with DRBC approvals: PA-27; NJ-14; DE-4; NY-1

## #2 What is “consumptive” water use?

- a) Water consumed in our bodies.
- b) Water withdrawn and not returned to the Basin.
- c) Public water supply use.
- d) All water used.

## #2 What is “consumptive” water use?

a) Water consumed in our bodies.

b) Water withdrawn and not returned to the Basin.

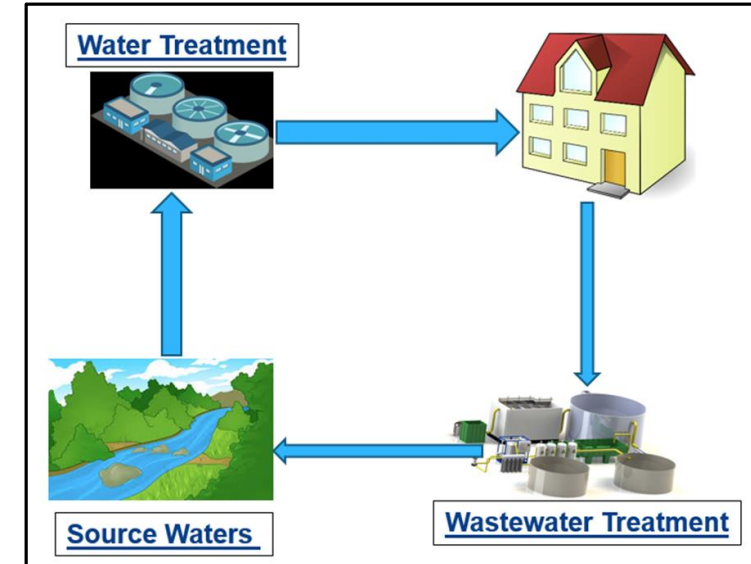
c) Public water supply use.

d) All water used.



Consumptive use

<https://www.nukeworker.com/pictures/displayimage-4415.html>



Non-consumptive use



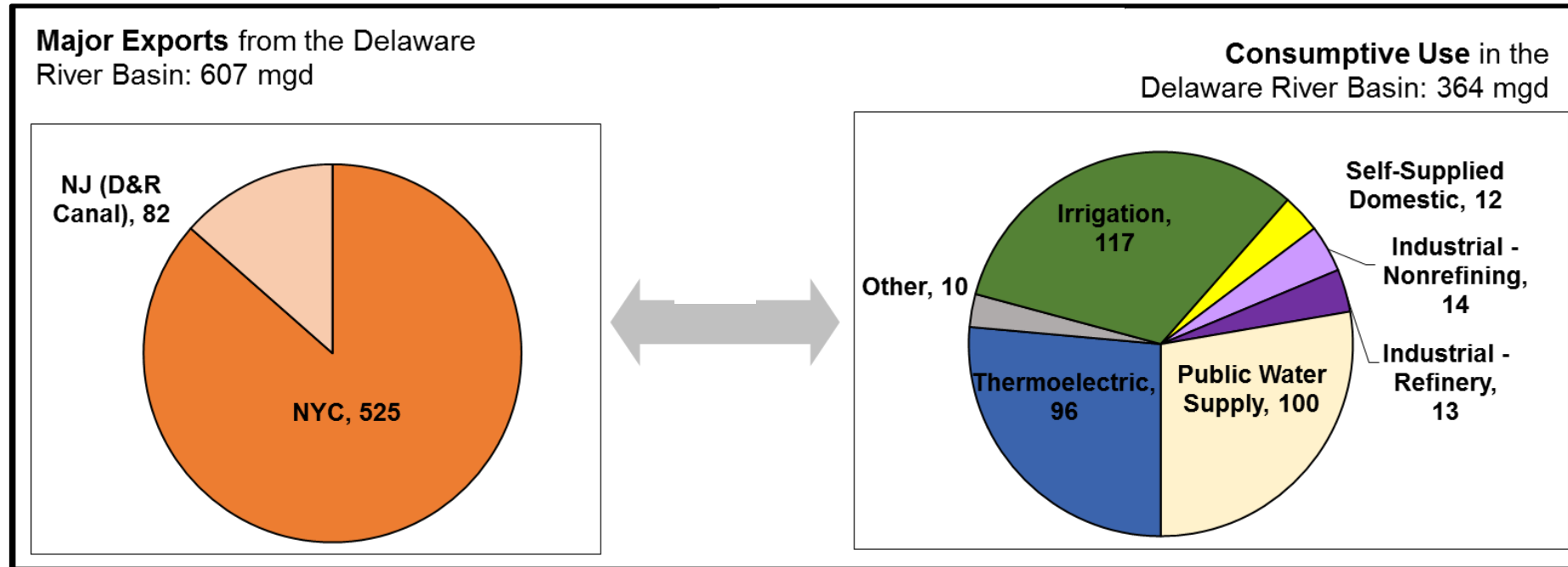
# #3 What is the largest consumptive use from the Delaware River Basin?

- a) Public water suppliers
- b) Farmers
- c) Power generators
- d) Exported water

# #3 What is the largest consumptive use from the Delaware River Basin?

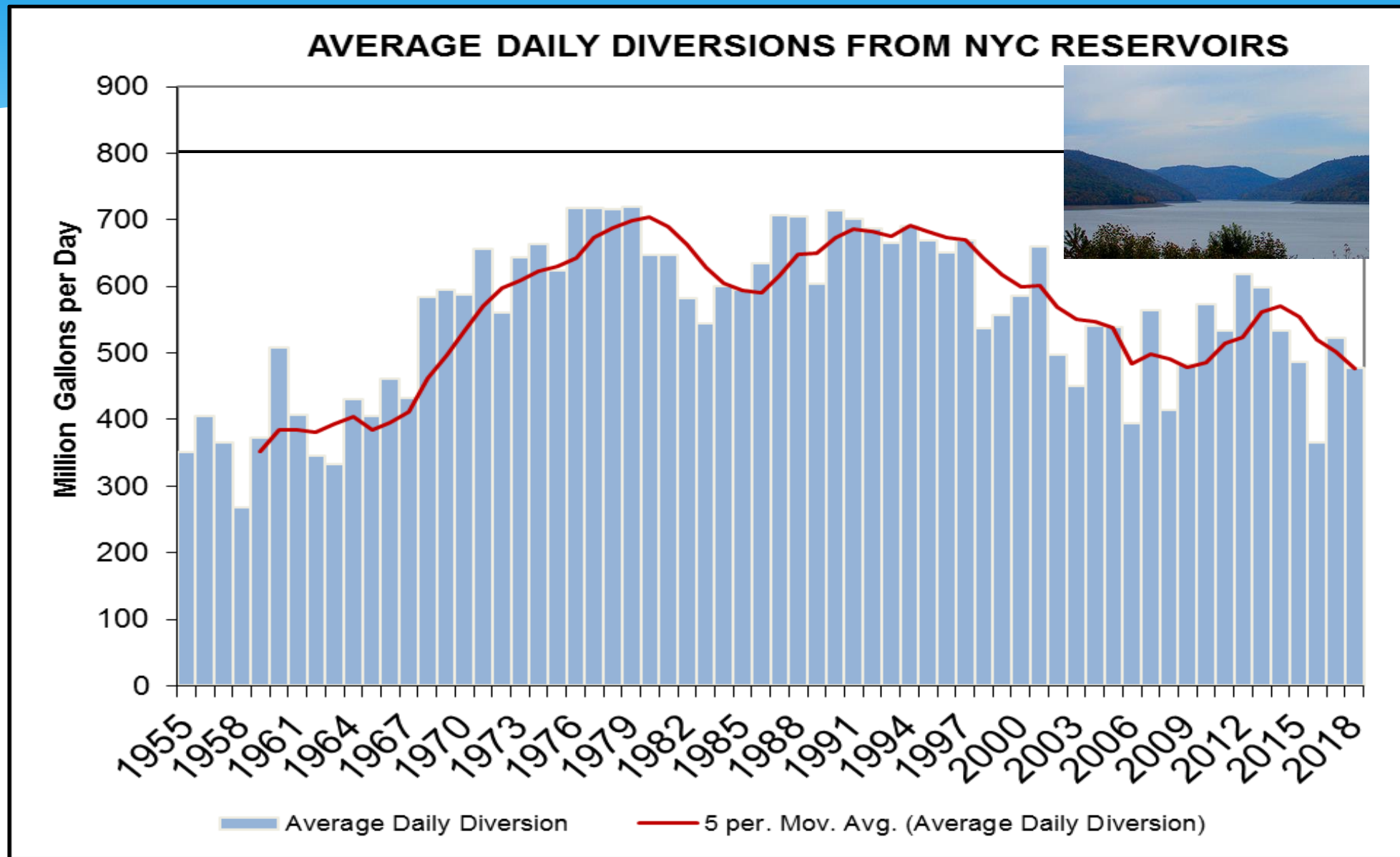


- a) Public water suppliers
- b) Farmers
- c) Power generators
- d) Exported water**



**In 2016: NYC Exported 525 million gallons per day (MGD); NJ Exported 82 MGD.**

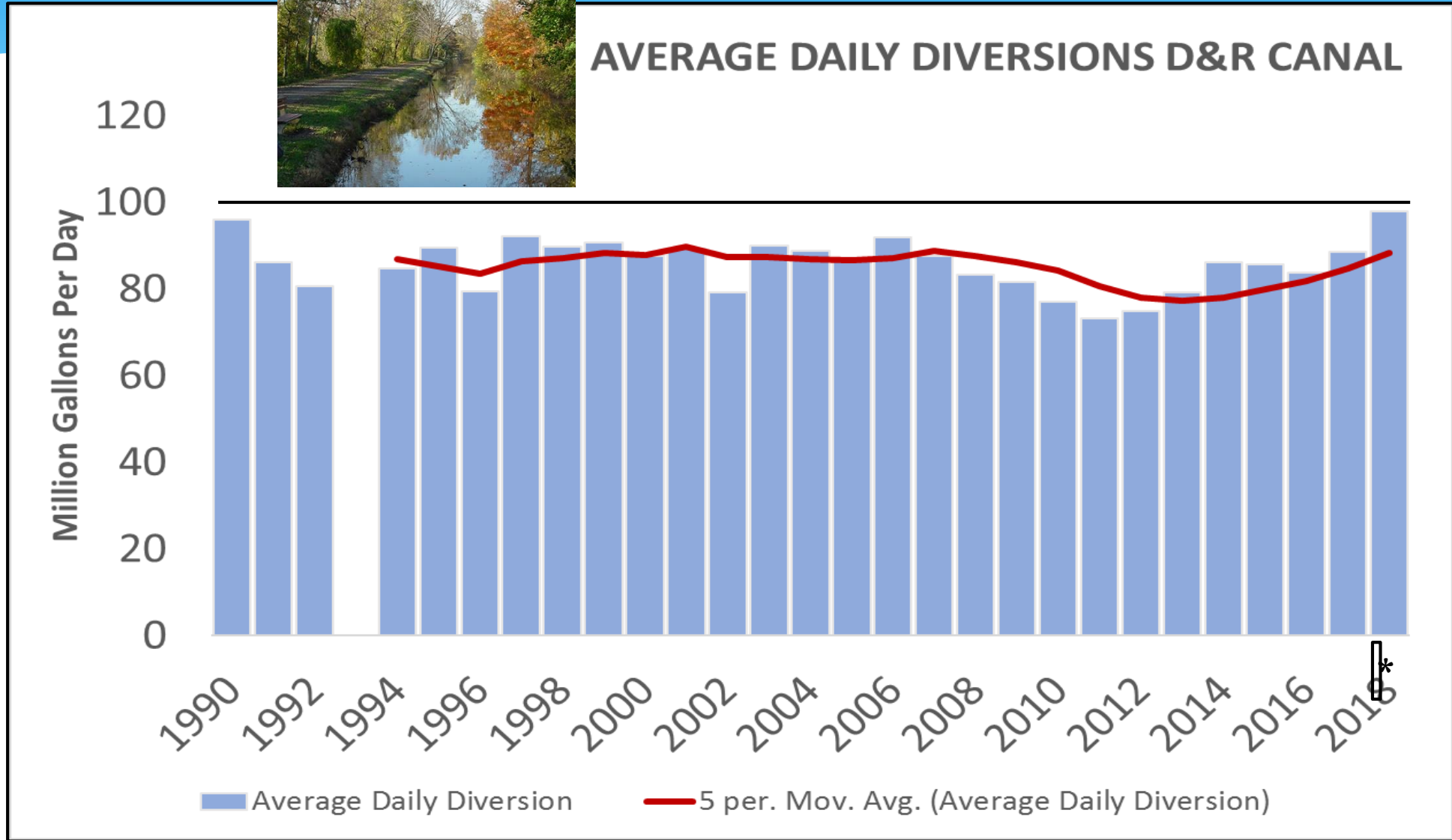
# Water Exported to New York City from Delaware River Basin 1955 - 2018



# Water Exported to NJ via D & R Canal from Delaware River Basin 1990 - 2018



## AVERAGE DAILY DIVERSIONS D&R CANAL

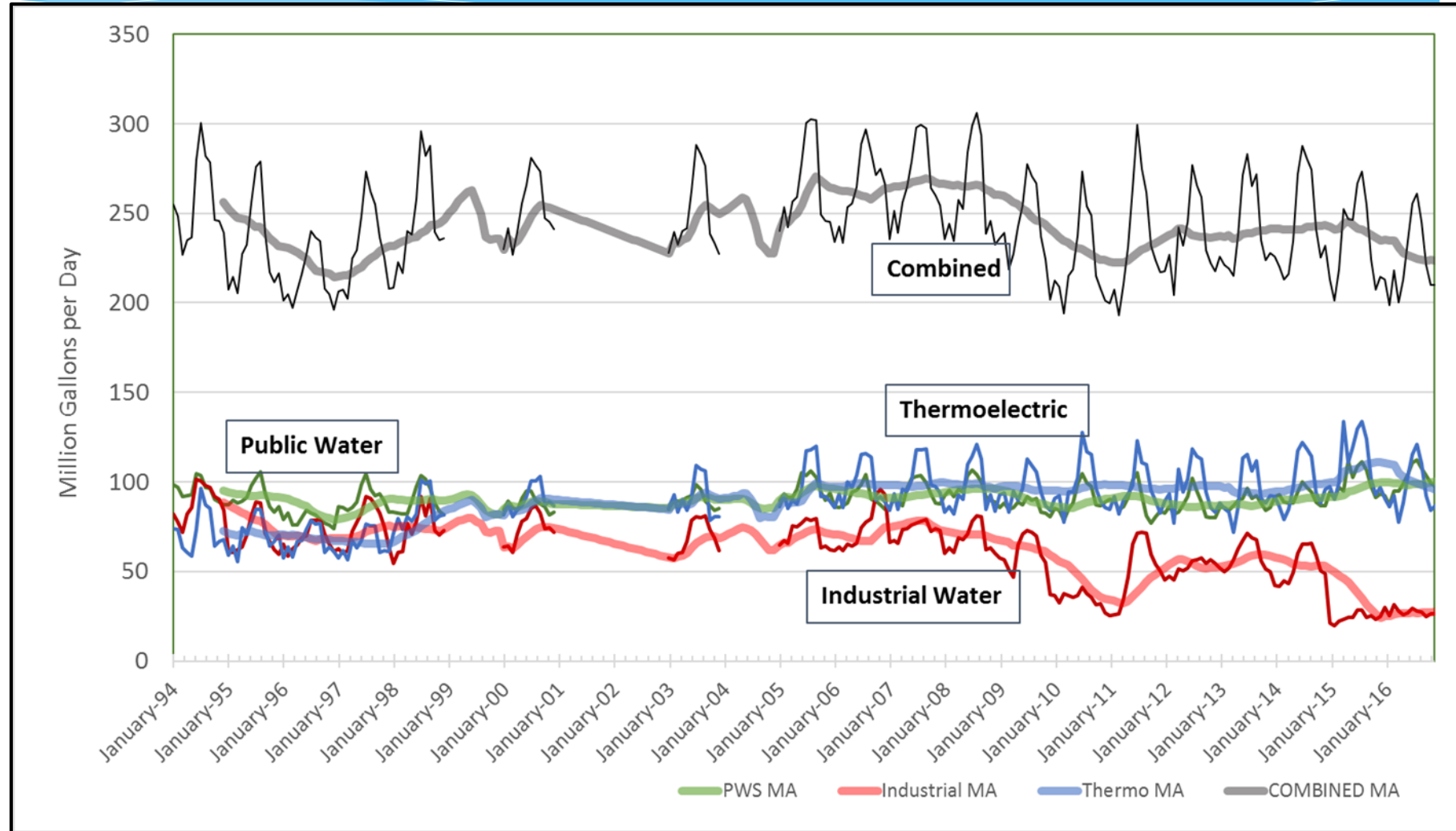


## #4 Consumptive Water Use over the past 25 years is...

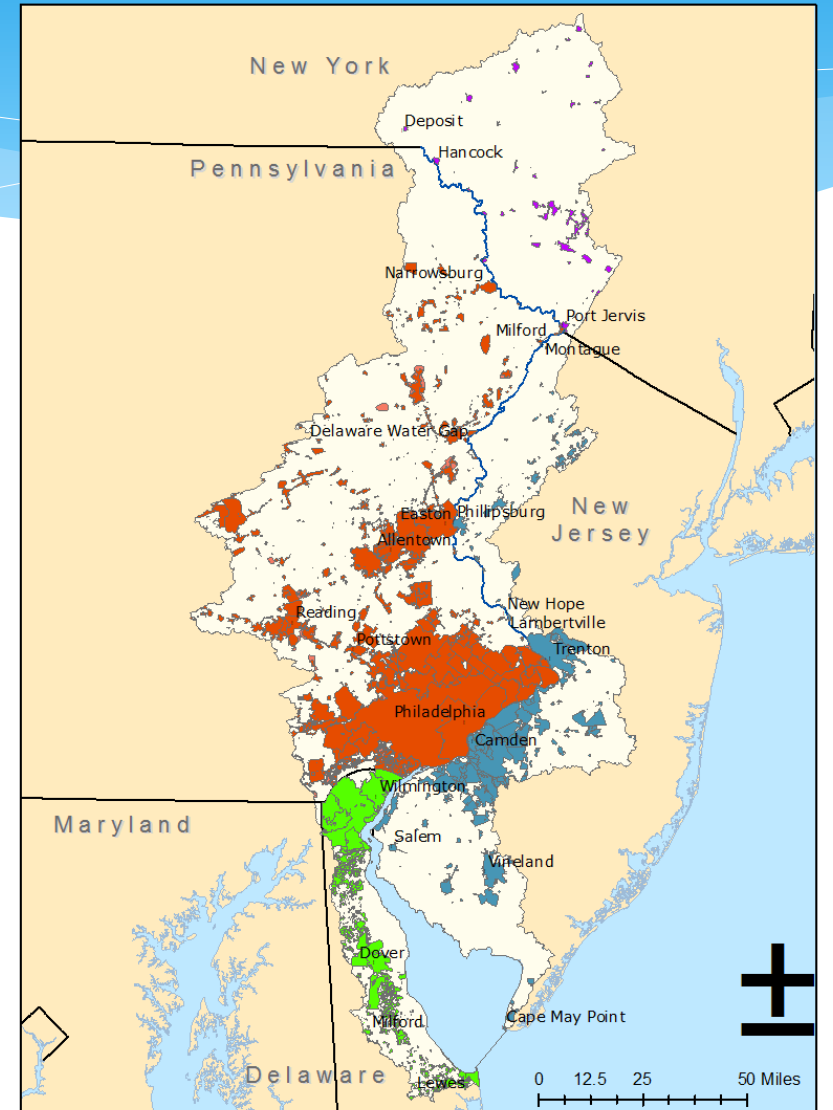
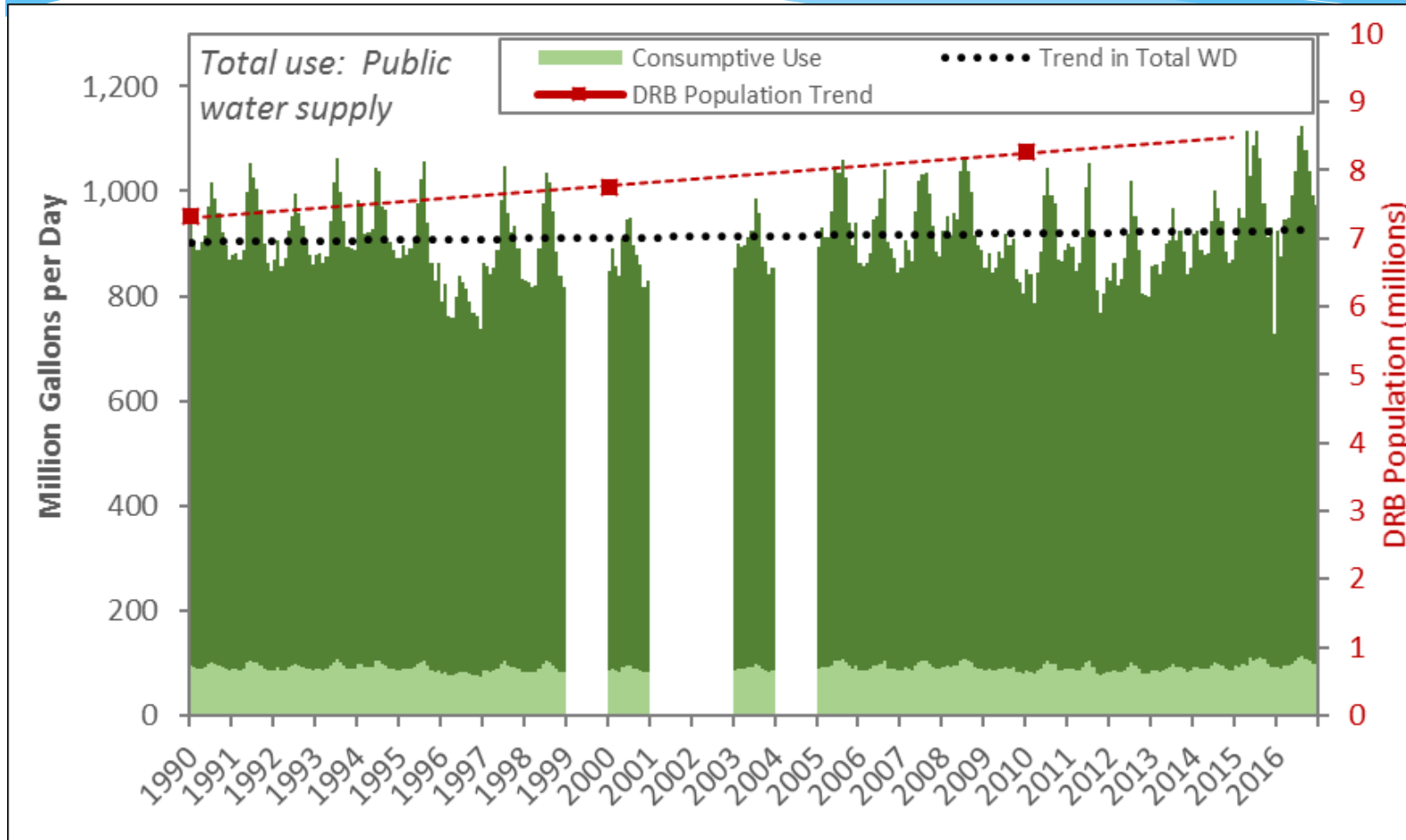
- a) Increasing
- b) Decreasing
- c) About the same
- d) It depends upon  
the use

# #4 Consumptive Water Use over the past 25 years is...

- a) Increasing
- b) Decreasing
- c) About the same**
- d) It depends upon the use



# Public Water Supply Consumptive Use vs Population Growth in the Basin



# #5 The Delaware River is...

- a) Wild and Scenic
- b) Engineered and Managed
- c) Clean and Protected
- d) Polluted and threatened
- e) All of the above








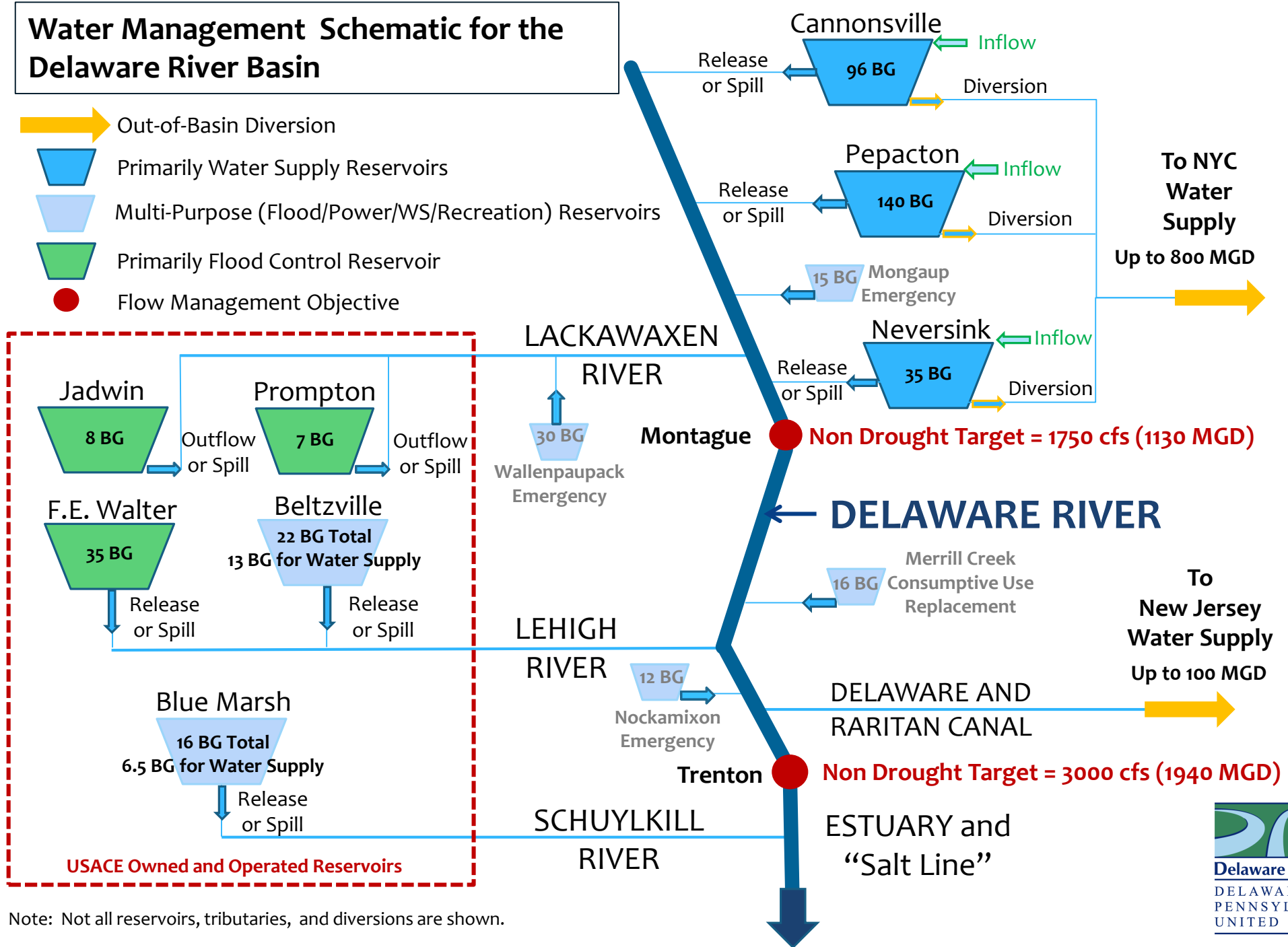
# #5 The Delaware River is...

- a) Wild and Scenic
- b) Engineered and Managed
- c) Clean and Protected
- d) Polluted and threatened
- e) All of the above



# Water Management Schematic for the Delaware River Basin

-  Out-of-Basin Diversion
-  Primarily Water Supply Reservoirs
-  Multi-Purpose (Flood/Power/WS/Recreation) Reservoirs
-  Primarily Flood Control Reservoirs
-  Flow Management Objective



Note: Not all reservoirs, tributaries, and diversions are shown.



# What do water users care about?



Fish Consumption Advisories

## NUTRIENTS

### Dissolved Oxygen

Contaminants of Emerging Concern

**Bacteria**

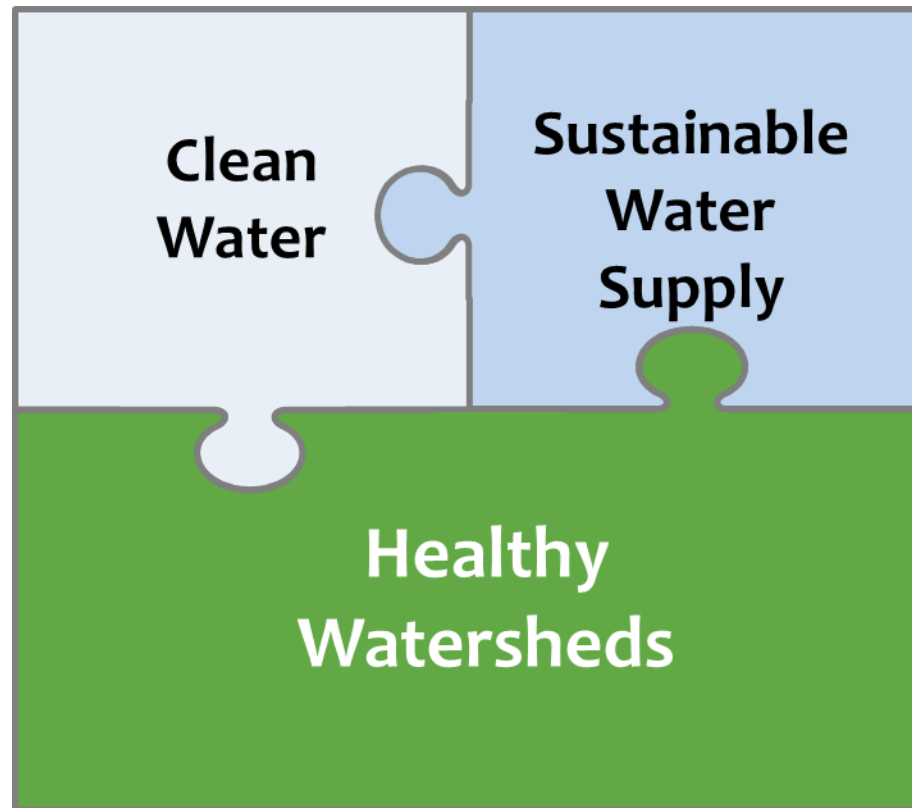
*Toxics*

**Antidegradation of waters**

**Perflourinated Compounds**

*Non-point source pollution*

**Legacy Pollutants / PCBs**



**Salinity Control**

**Drought Management**

**Water Budgets**

Fair allocation and interference

**Climate Change**

**Flood Loss Reduction**

**Reservoir Storage**

**Water Efficiency**

# Steve Tambini, Executive Director

*Steve.Tambini@drbc.nj.gov*

*www.drbc.net*



**Delaware River Basin Commission**

DELAWARE • NEW JERSEY  
PENNSYLVANIA • NEW YORK  
UNITED STATES OF AMERICA

*Managing Our Shared Water  
Resources since 1961*