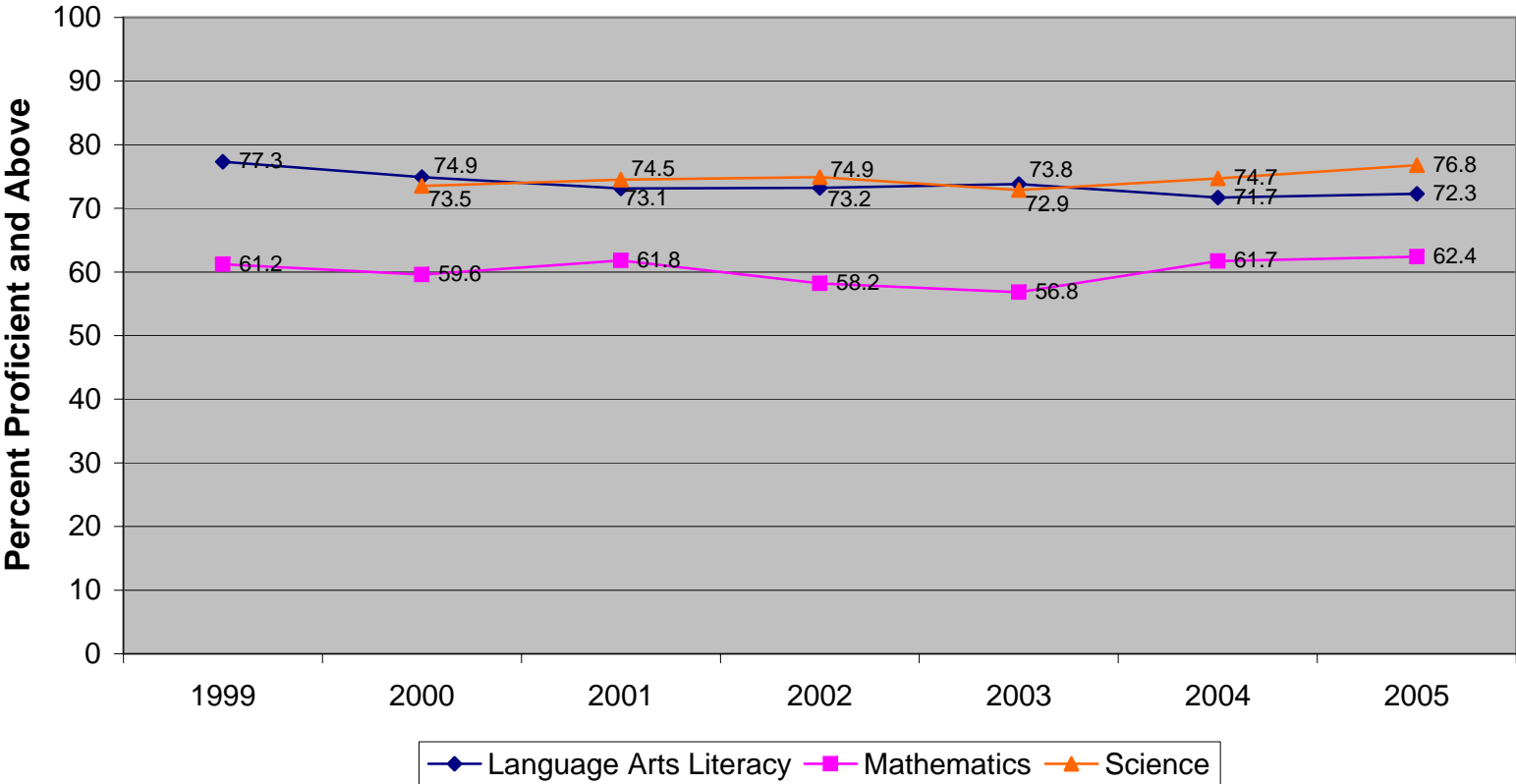
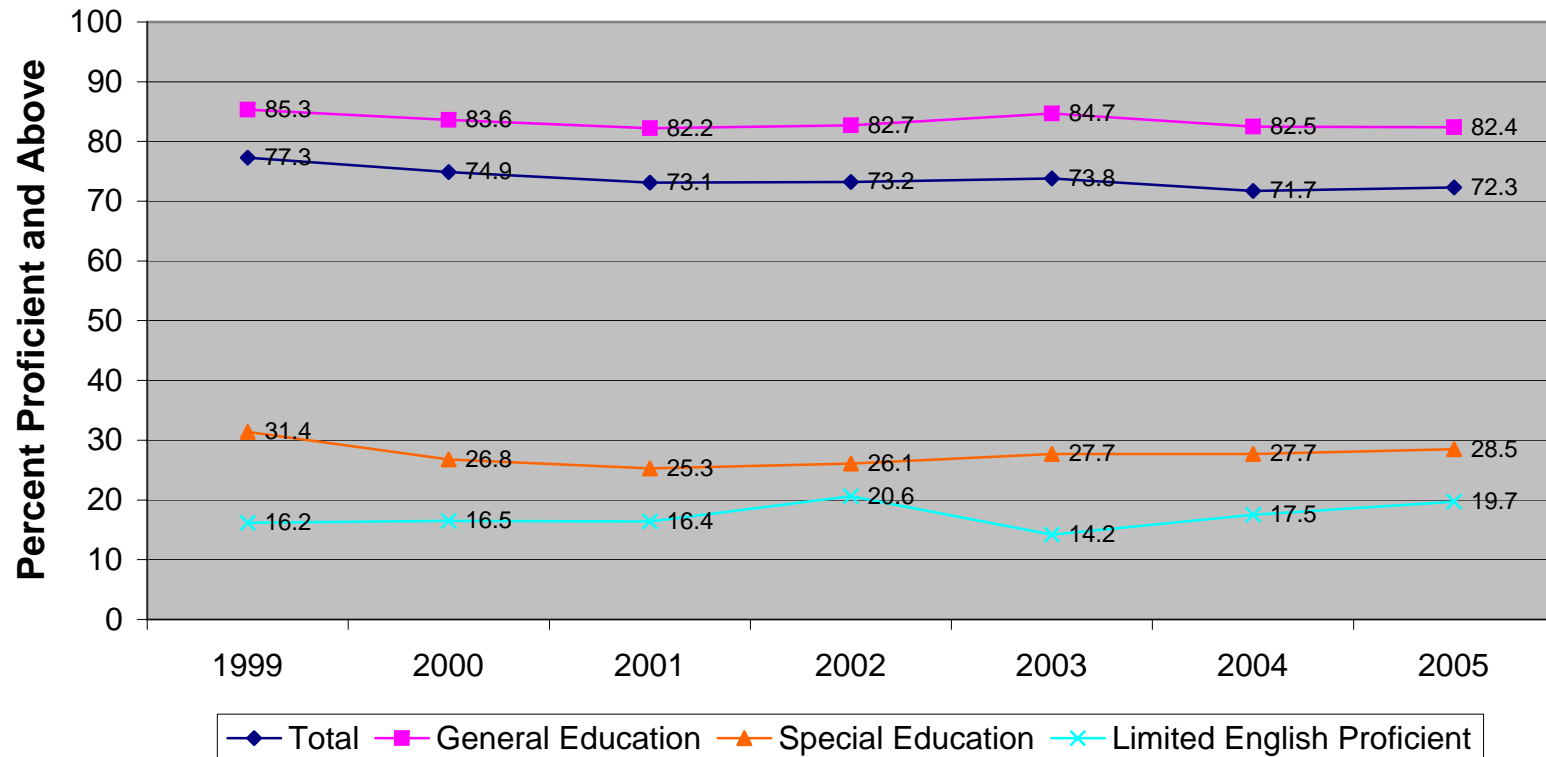


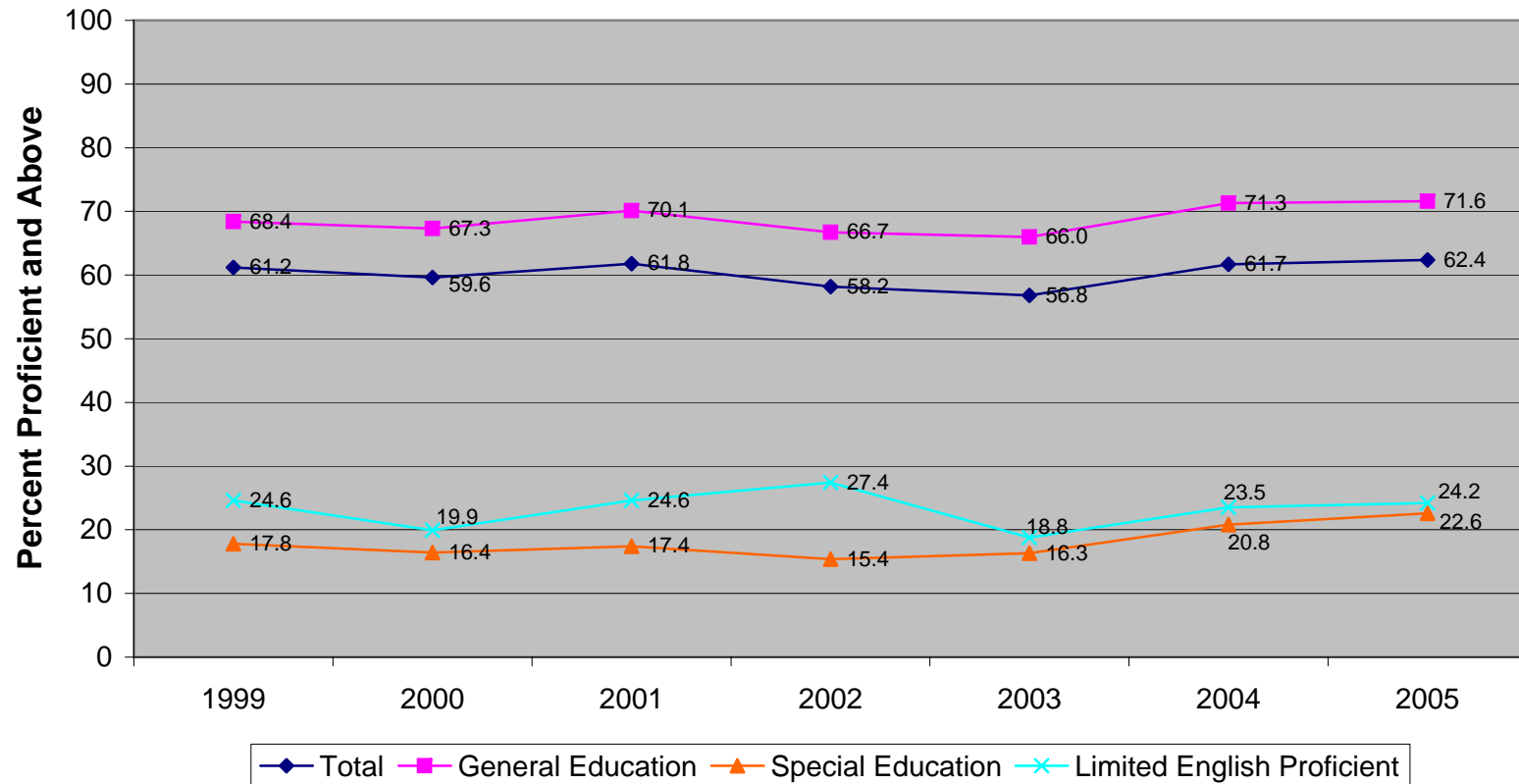
**New Jersey Grade Eight Proficiency Assessment  
Percent Proficient and Above for All Students by Content Areas (1999-2005)**



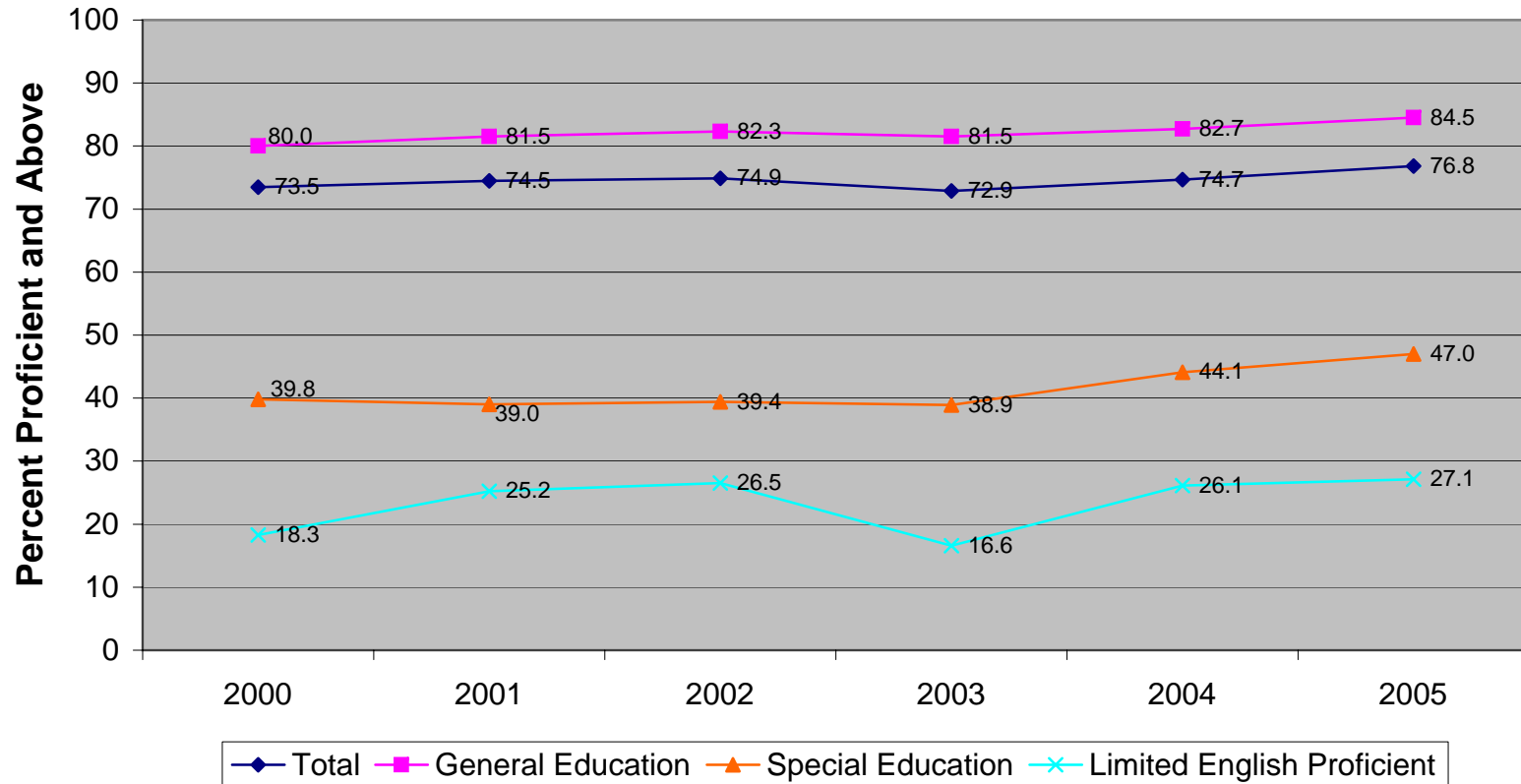
**New Jersey Grade Eight Proficiency Assessment  
Language Arts Literacy Percent Proficient and Above by Subgroups  
(1999-2005)**



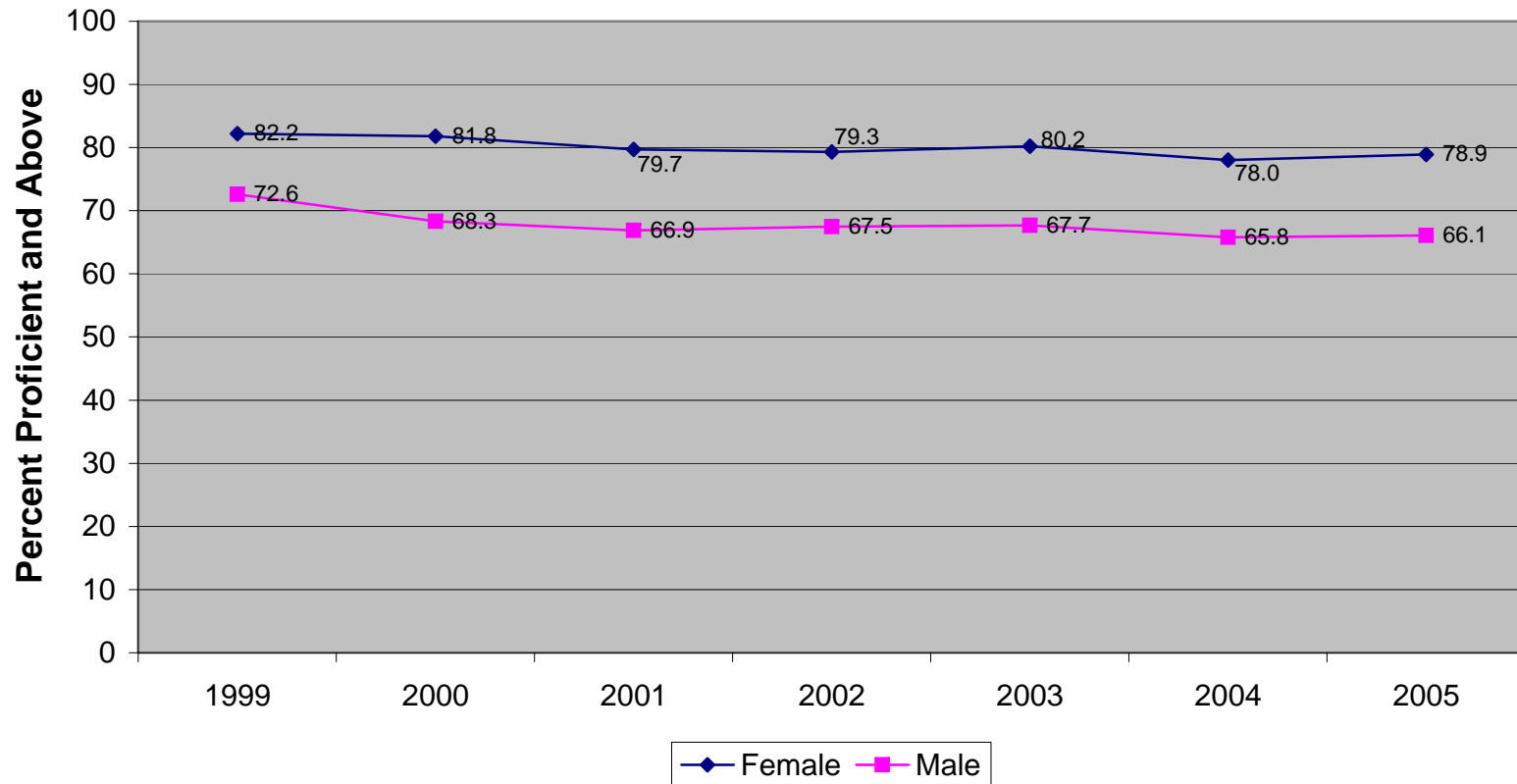
**New Jersey Grade Eight Proficiency Assessment  
Mathematics Percent Proficient and Above by Subgroups (1999-2005)**



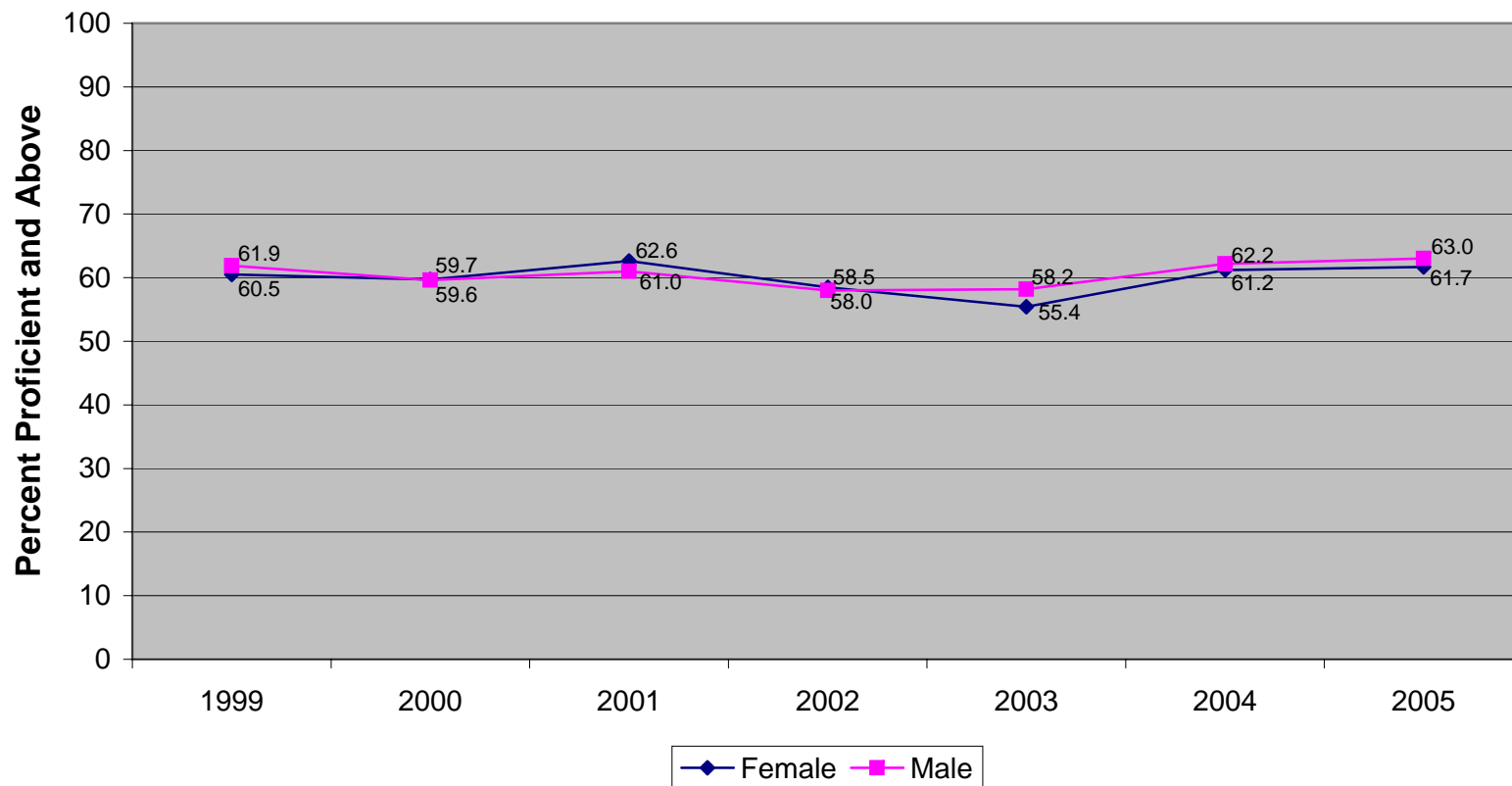
**New Jersey Grade Eight Proficiency Assessment  
Science Percent Proficient and Above by Subgroups (2000-2005)**



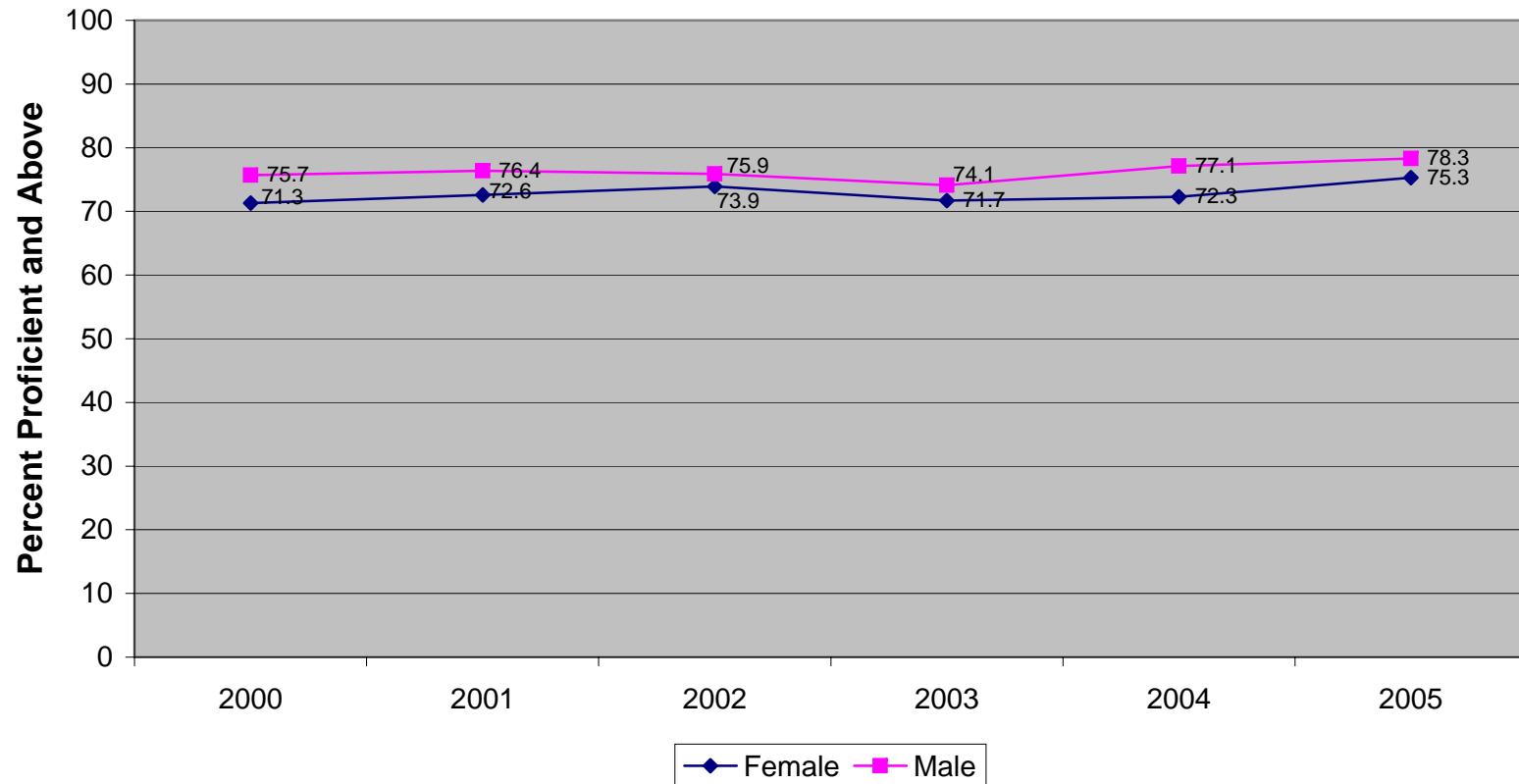
**New Jersey Grade Eight Proficiency Assessment  
Language Arts Literacy Percent Proficient and Above by Gender (1999-2005)**



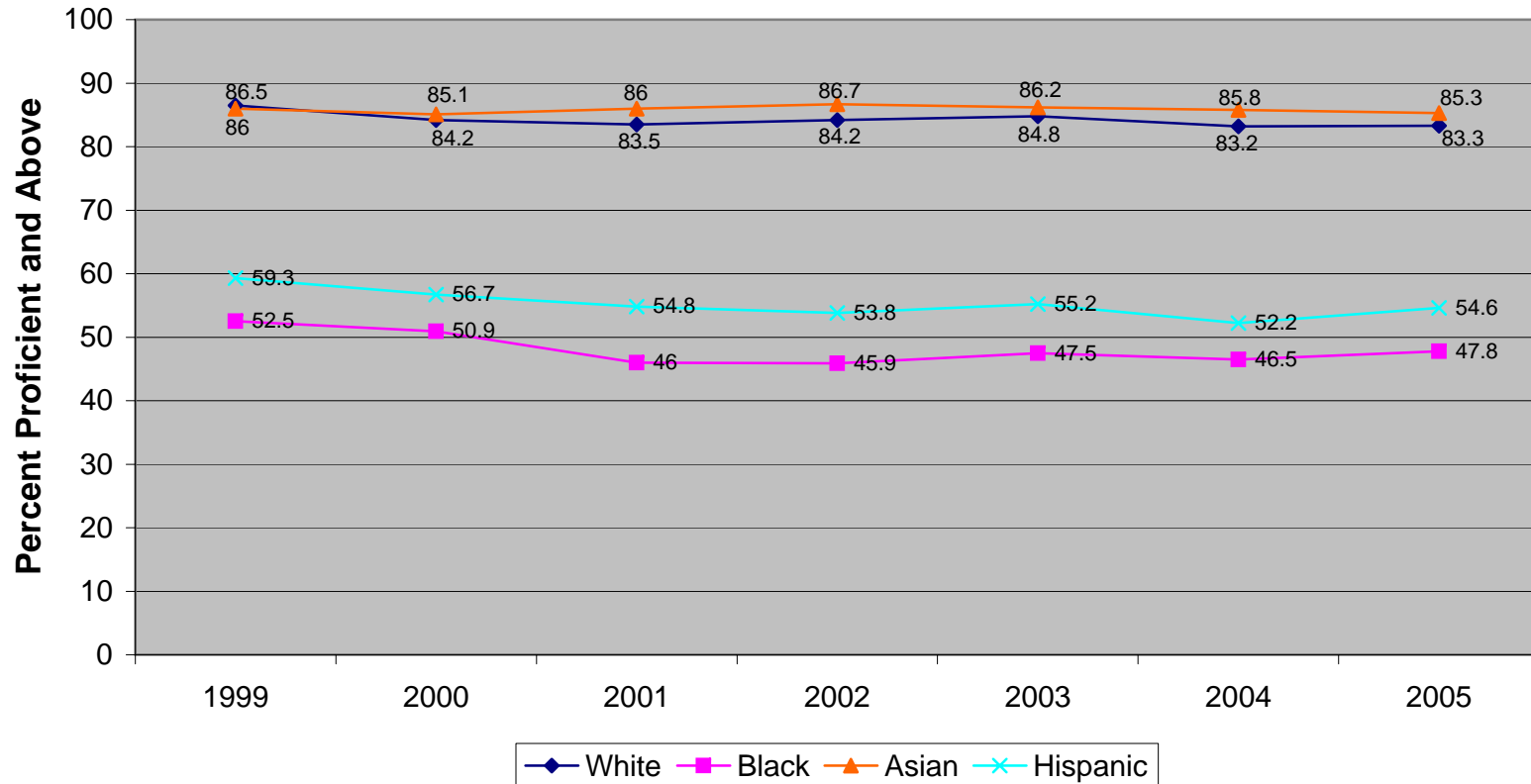
### New Jersey Grade Eight Proficiency Assessment Mathematics Percent Proficient and Above by Gender (1999-2005)



### New Jersey Grade Eight Proficiency Assessment Science Percent Proficient and Above by Gender (2000-2005)



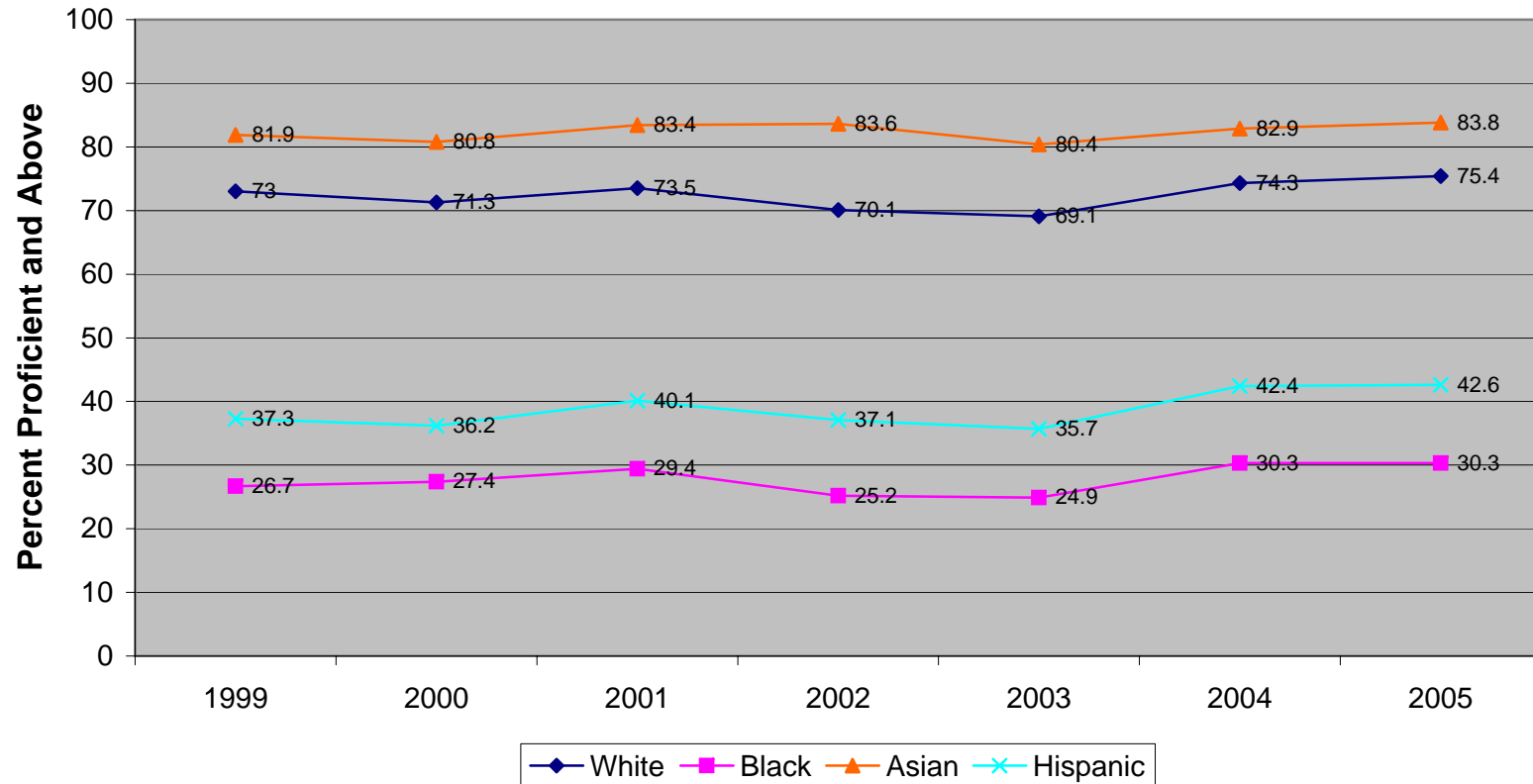
**New Jersey Grade Eight Proficiency Assessment  
Language Arts Literacy Percent Proficient and Above by Ethnicity (1999-2005)<sup>1</sup>**



<sup>1</sup> In 2005, ethnic groups do not include students who identified themselves as multiple ethnicities.

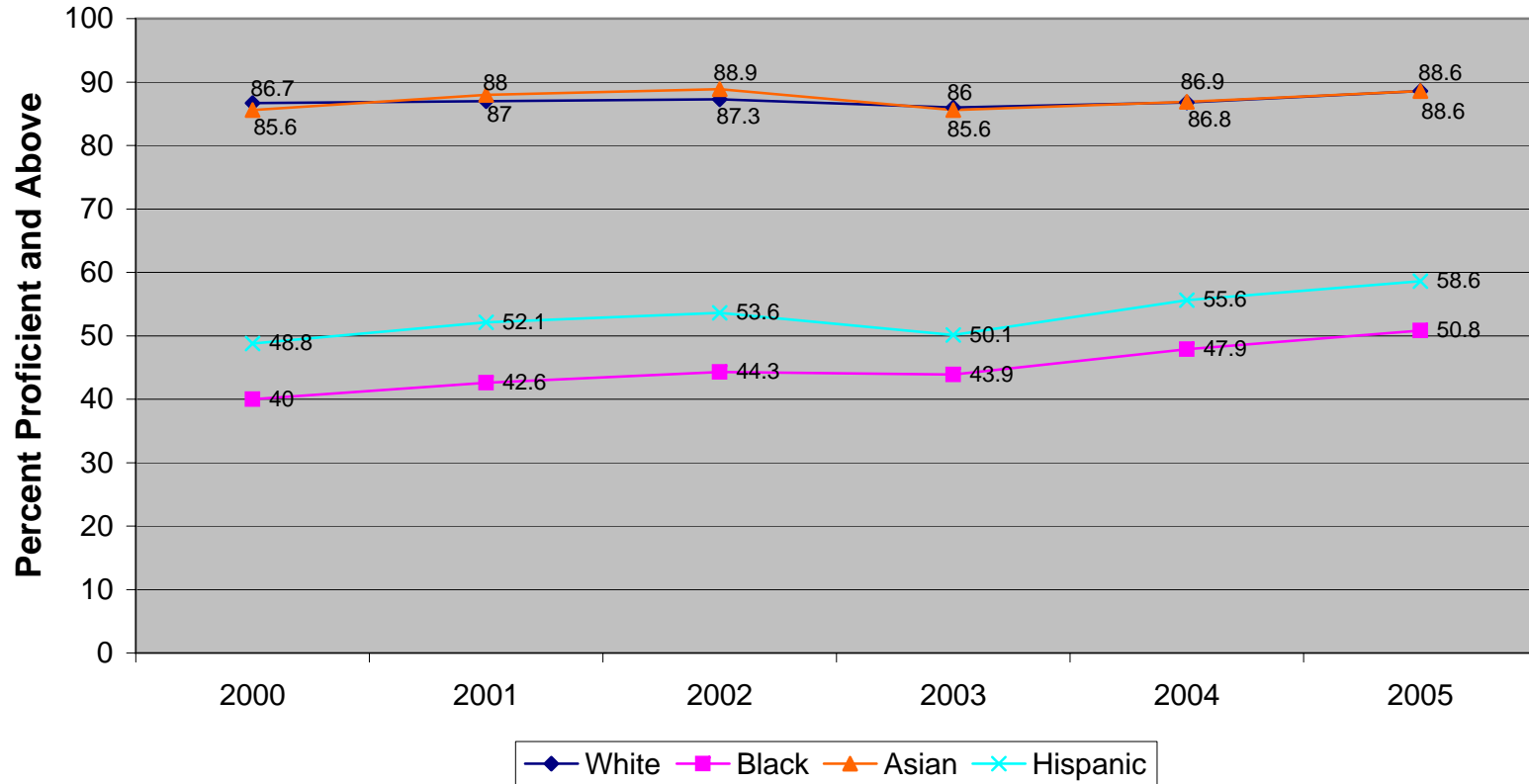


### New Jersey Grade Eight Proficiency Assessment Mathematics Percent Proficient and Above by Ethnicity (1999-2005)<sup>1</sup>



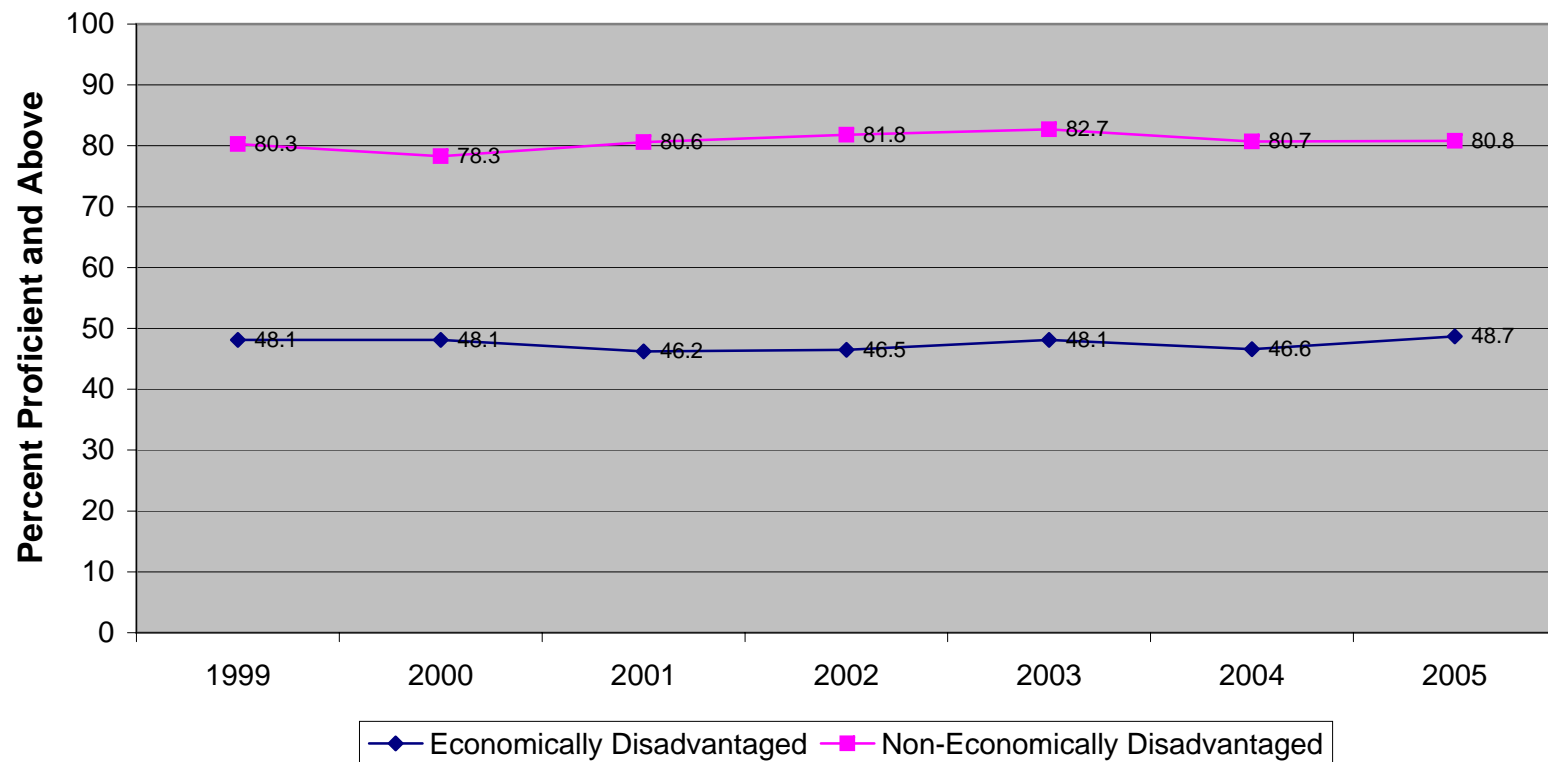
<sup>1</sup> In 2005, ethnic groups do not include students who identified themselves as multiple ethnicities.

### New Jersey Grade Eight Proficiency Assessment Science Percent Proficient and Above by Ethnicity (2000-2005)<sup>1</sup>

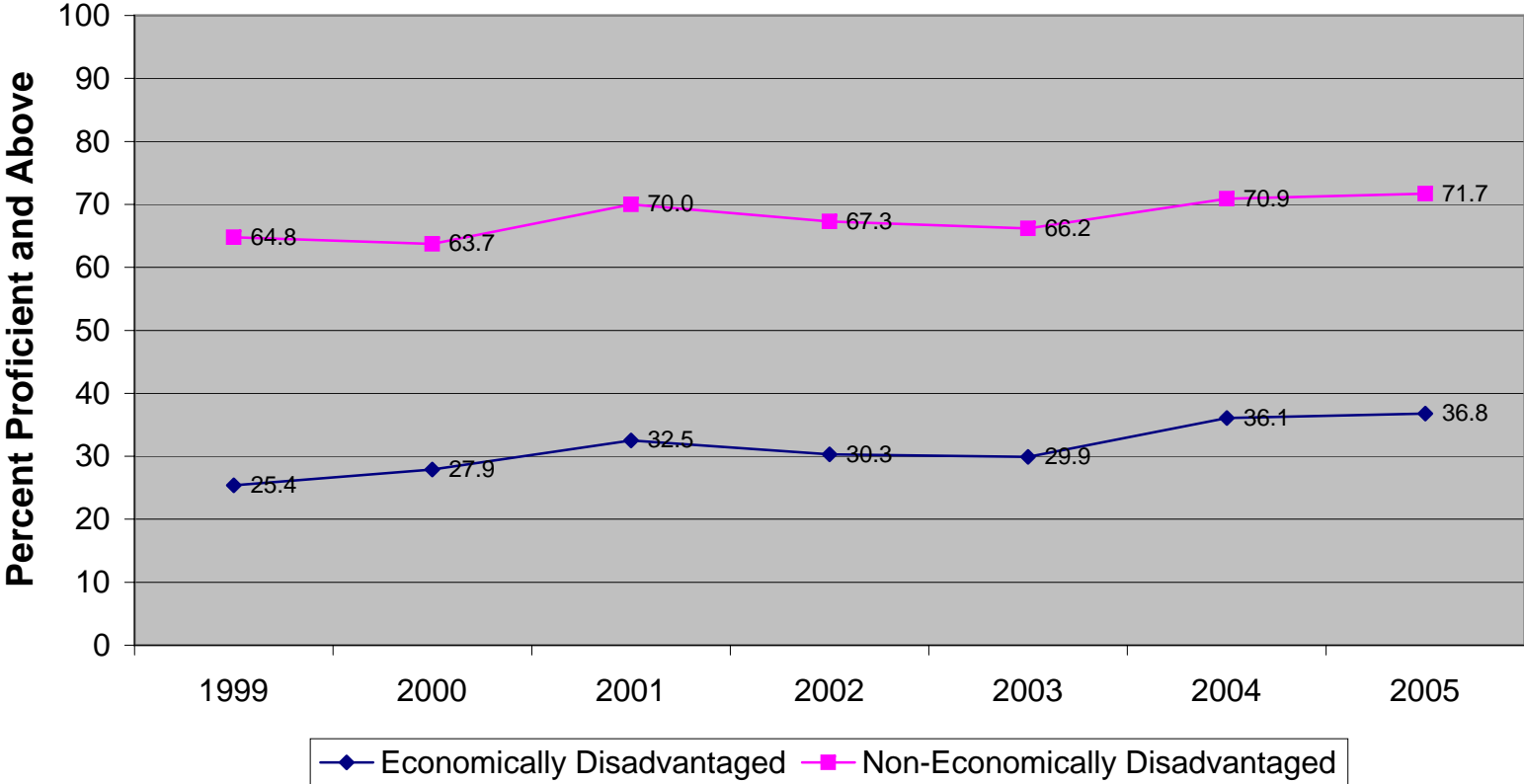


<sup>1</sup> In 2005, ethnic groups do not include students who identified themselves as multiple ethnicities.

**New Jersey Grade Eight Proficiency Assessment  
Language Arts Literacy Percent Proficient and Above by Economic Status (1999-  
2005)**



**New Jersey Grade Eight Proficiency Assessment  
Mathematics Percent Proficient and Above by Economic Status (1999-2005)**



### New Jersey Grade Eight Proficiency Assessment Science Percent Proficient and Above by Economics Status (2000-2005)

