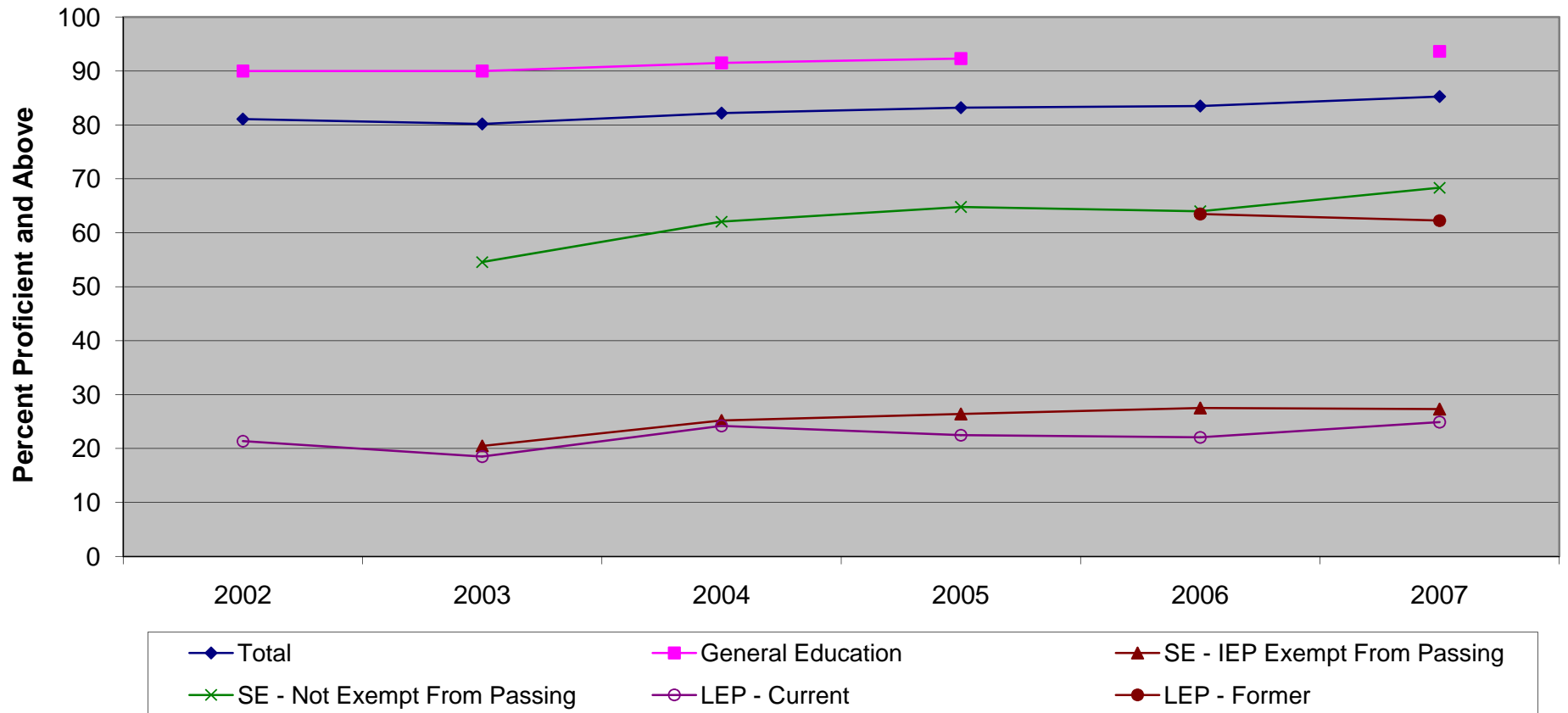


**New Jersey High School Proficiency Assessment  
Language Arts Literacy Percent Proficient and Above by Instructional Group  
(2002 - 2007)**



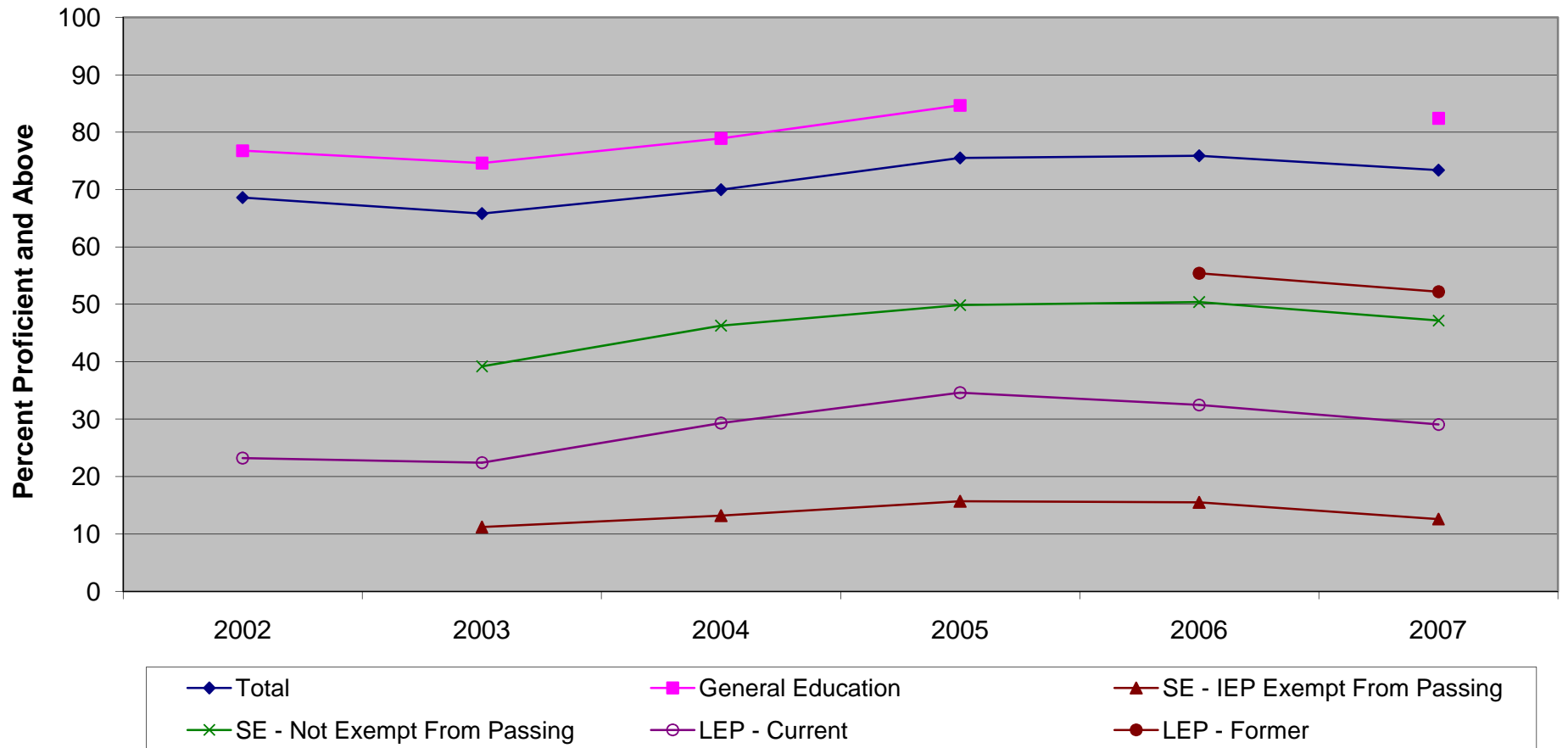
The General Education category was not reported in 2006.

In 2002, Special Education could not be disaggregated into the categories of SE Not Exempt From Passing and SE IEP Exempt From Passing and thus those categories are not plotted on this graph.

**New Jersey High School Proficiency Assessment  
Language Arts Literacy Percent Proficient and Above by Instructional Group  
(2002 - 2007)**

	<b>2002</b>	<b>2003</b>	<b>2004</b>	<b>2005</b>	<b>2006</b>	<b>2007</b>
<b>Total</b>	81.1	80.2	82.2	83.2	83.5	85.3
<b>General Education</b>	90.0	90.0	91.5	92.3		93.7
<b>SE - IEP Exempt From Passing</b>		20.5	25.2	26.4	27.5	27.3
<b>SE - Not Exempt From Passing</b>		54.6	62.1	64.8	64	68.4
<b>LEP - Current</b>	21.4	18.5	24.2	22.5	22.1	24.9
<b>LEP - Former</b>					63.5	62.3

# **New Jersey High School Proficiency Assessment Mathematics Proficient and Above by Instructional Group (2002 - 2007)**



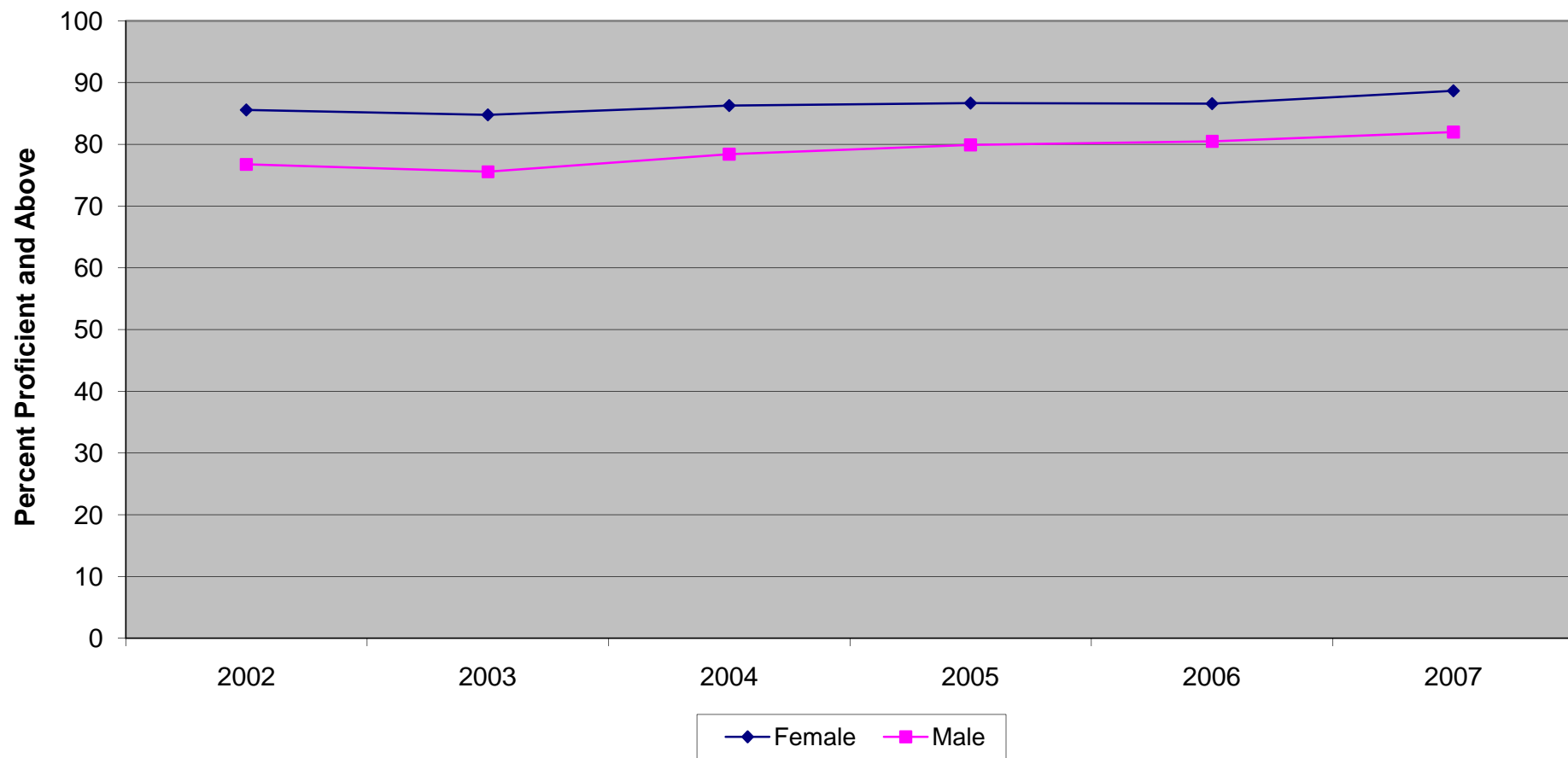
The General Education category was not reported in 2006.

In 2002, Special Education could not be disaggregated into the categories of SE Not Exempt From Passing and SE IEP Exempt From Passing and thus those categories are not plotted on this graph.

**New Jersey High School Proficiency Assessment  
Mathematics Proficient and Above by Instructional Group (2002 - 2007)**

	<b>2002</b>	<b>2003</b>	<b>2004</b>	<b>2005</b>	<b>2006</b>	<b>2007</b>
<b>Total</b>	68.6	65.8	70.0	75.5	75.9	73.4
<b>General Education</b>	76.8	74.6	78.9	84.7		82.4
<b>SE - IEP Exempt From Passing</b>		11.2	13.2	15.7	15.5	12.6
<b>SE - Not Exempt From Passing</b>		39.2	46.3	49.9	50.4	47.2
<b>LEP - Current</b>	23.2	22.4	29.3	34.6	32.5	29.1
<b>LEP - Former</b>					55.4	52.2

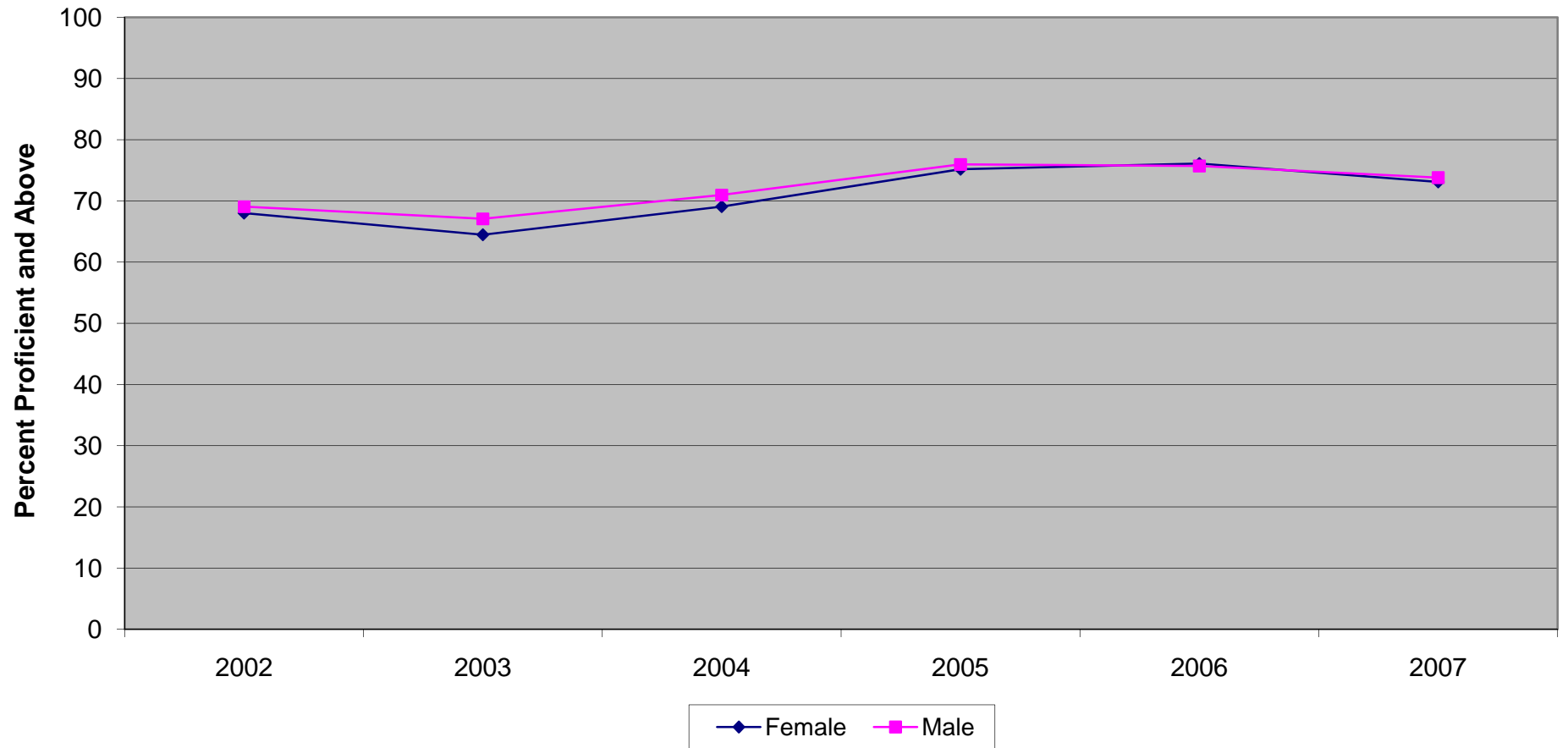
**New Jersey High School Proficiency Assessment  
Language Arts Literacy Proficient and Above by Gender (2002 - 2007)**



**New Jersey High School Proficiency Assessment  
Language Arts Literacy Proficient and Above by Gender (2002 - 2007)**

	2002	2003	2004	2005	2006	2007
<b>Female</b>	85.6	84.8	86.3	86.7	86.6	88.7
<b>Male</b>	76.8	75.6	78.4	79.9	80.5	82.0

**New Jersey High School Proficiency Assessment  
Mathematics Proficient and Above by Gender (2002 - 2007)**

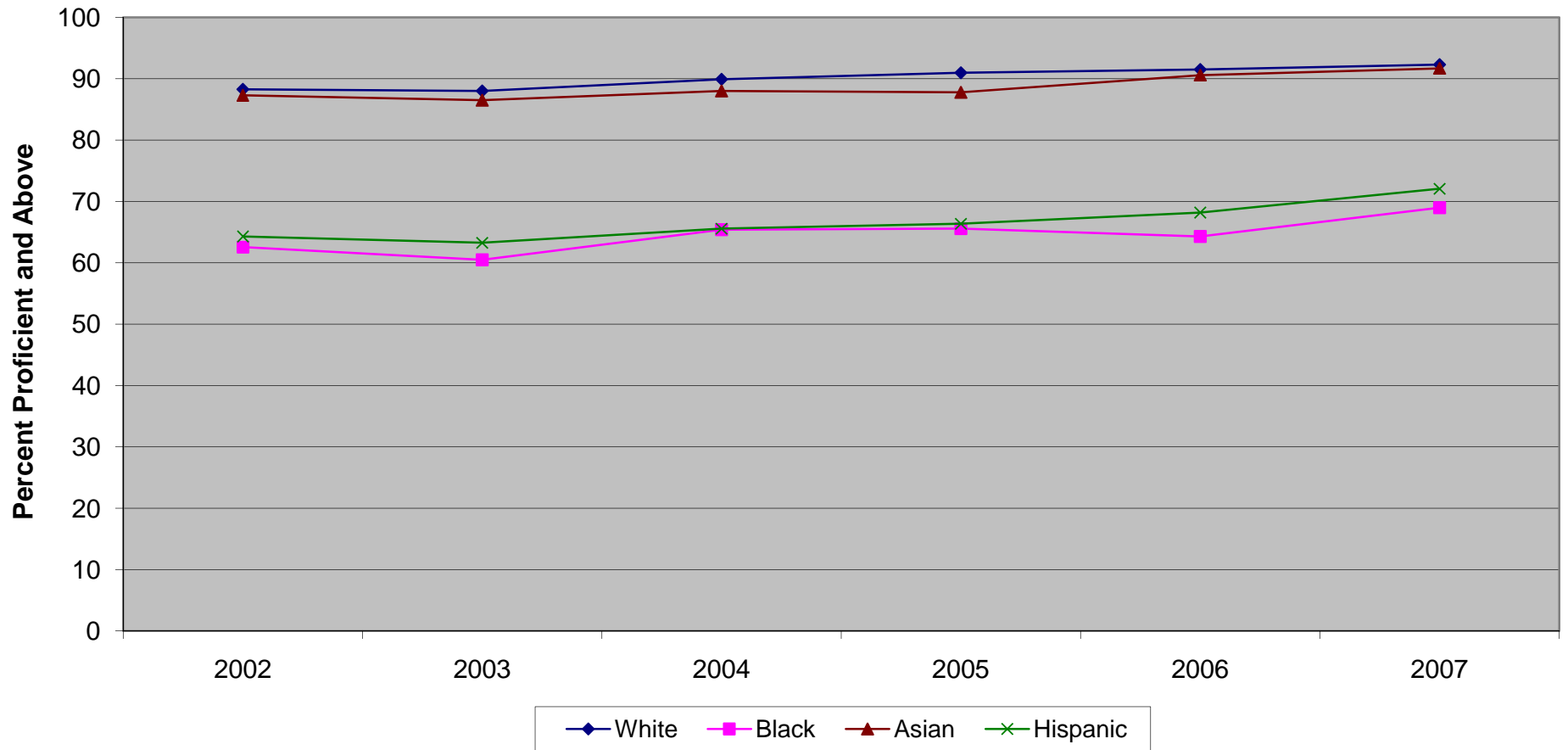


**New Jersey High School Proficiency Assessment  
Mathematics Proficient and Above by Gender (2002 - 2007)**

	<b>2002</b>	<b>2003</b>	<b>2004</b>	<b>2005</b>	<b>2006</b>	<b>2007</b>
<b>Female</b>	68.0	64.5	69.1	75.2	76.1	73.1
<b>Male</b>	69.1	67.1	71.0	76.0	75.7	73.8



**New Jersey High School Proficiency Assessment  
Language Arts Literacy Proficient and Above by Ethnicity (2002 - 2007)**

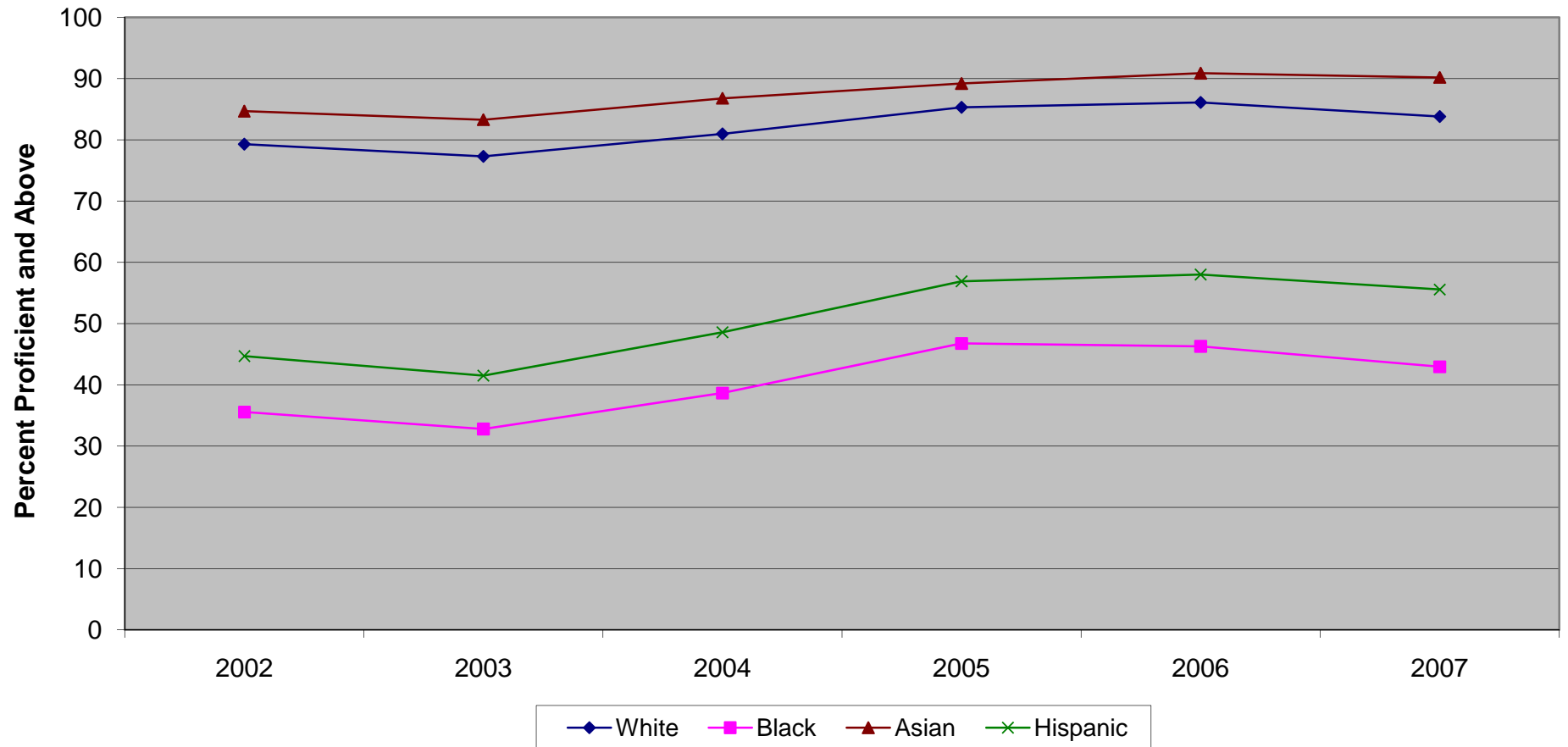


Ethnic codes Pacific Islander, American Indian/Alaskan Native and Other are not shown due to the small number of students in these categories. In 2004 only, students with multiple ethnicities are counted in all ethnic categories that apply, but are excluded completely in all other years.

**New Jersey High School Proficiency Assessment  
Language Arts Literacy Proficient and Above by Ethnicity (2002 - 2007)**

	<b>2002</b>	<b>2003</b>	<b>2004</b>	<b>2005</b>	<b>2006</b>	<b>2007</b>
<b>White</b>	88.3	88.0	89.9	91.0	91.5	92.3
<b>Black</b>	62.6	60.5	65.4	65.6	64.3	69.0
<b>Asian</b>	87.3	86.5	88.0	87.8	90.6	91.7
<b>Hispanic</b>	64.3	63.3	65.6	66.4	68.2	72.1

**New Jersey High School Proficiency Assessment  
Mathematics Proficient and Above by Ethnicity (2002 - 2007)**



Ethnic codes Pacific Islander, American Indian/Alaskan Native and Other are not shown due to the small number of students in these categories. In 2004 only, students with multiple ethnicities are counted in all ethnic categories that apply, but are excluded completely in all other years.

**New Jersey High School Proficiency Assessment  
Mathematics Proficient and Above by Ethnicity (2002 - 2007)**

	<b>2002</b>	<b>2003</b>	<b>2004</b>	<b>2005</b>	<b>2006</b>	<b>2007</b>
<b>White</b>	79.3	77.3	81.0	85.3	86.1	83.8
<b>Black</b>	35.6	32.8	38.7	46.8	46.3	43.0
<b>Asian</b>	84.7	83.3	86.8	89.2	90.9	90.2
<b>Hispanic</b>	44.7	41.5	48.6	56.9	58	55.6