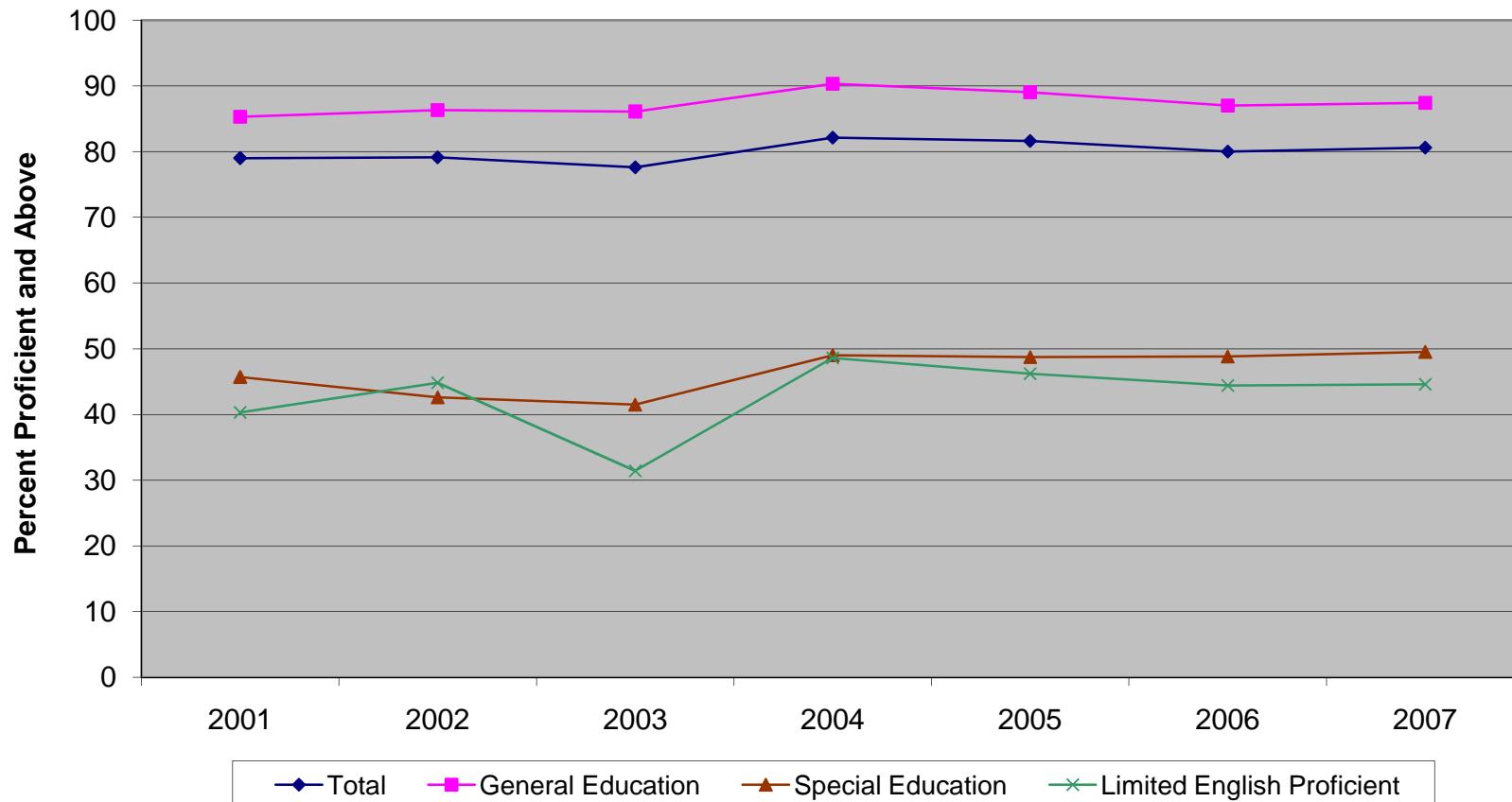


**New Jersey Assessment of Fourth Grade Students  
Language Arts Literacy Percent Proficient and Above by Subgroups (2001-2007)<sup>1,2</sup>**



<sup>1</sup>Elementary School Proficiency Assessment (ESPA), 2001-2002; New Jersey Assessment of Skills and Knowledge (NJ ASK4), 2003-2007. For Language Arts Literacy, 2001 was the standard setting year for the ESPA and NJ ASK4.

<sup>2</sup>For 2006 and 2007, LEP is reported in three categories: LEP (current + former), LEP current and LEP former.

---

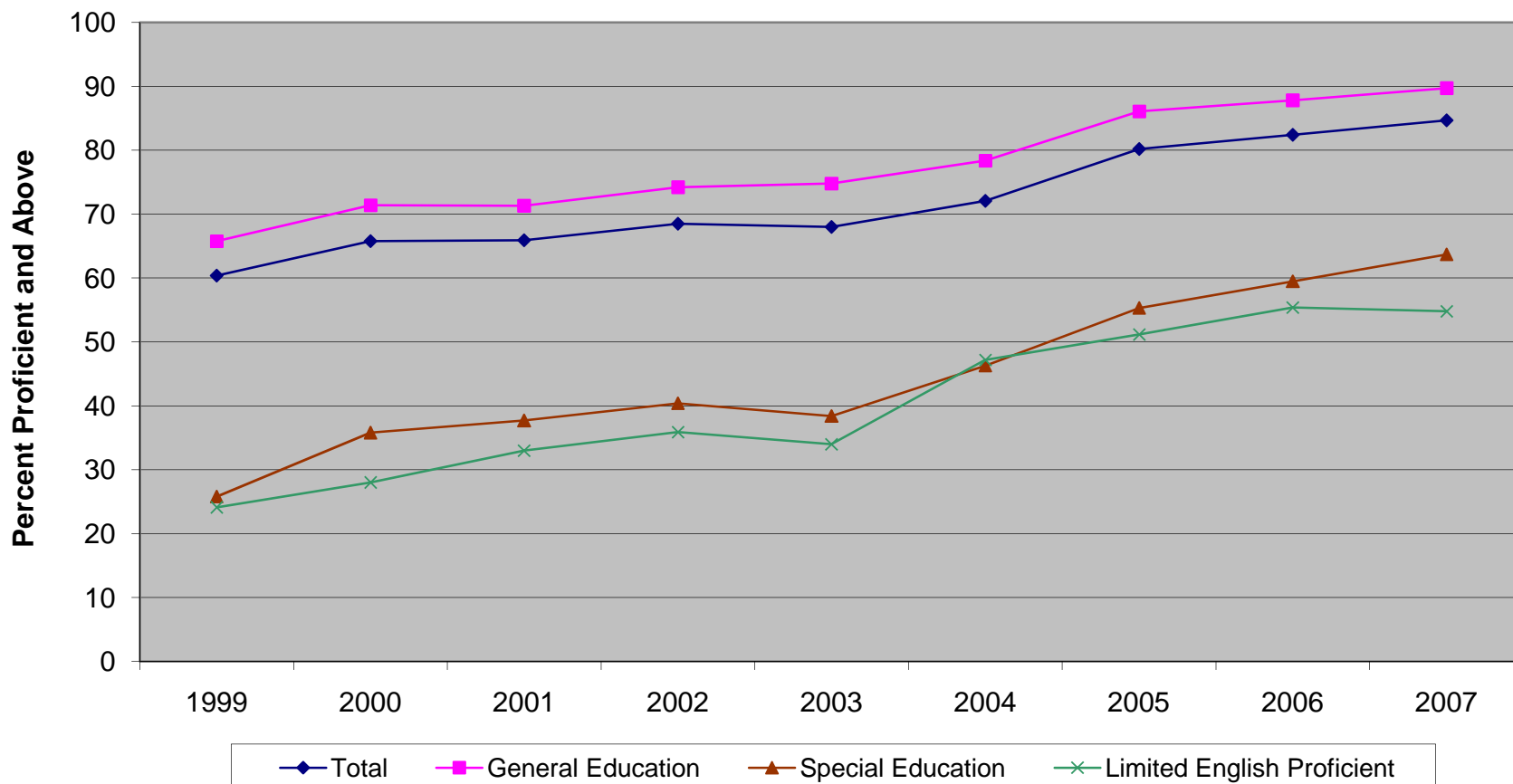
Grade Four Longitudinal Data

Percent Proficient and Above for Subgroups and Total Students Over Time by Subject

Language Arts Literacy

|      | Total | Gen Ed | SE   | LEP  |
|------|-------|--------|------|------|
| 2001 | 79.0  | 85.3   | 45.7 | 40.3 |
| 2002 | 79.1  | 86.3   | 42.6 | 44.8 |
| 2003 | 77.6  | 86.1   | 41.5 | 31.4 |
| 2004 | 82.1  | 90.3   | 49.0 | 48.6 |
| 2005 | 81.6  | 89.0   | 48.7 | 46.2 |
| 2006 | 80.0  | 87.0   | 48.8 | 44.4 |
| 2007 | 80.6  | 87.4   | 49.5 | 44.6 |

**New Jersey Assessment of Fourth Grade Students  
Mathematics Percent Proficient and Above by Subgroups (1999-2007)<sup>1,2</sup>**



<sup>1</sup>Elementary School Proficiency Assessment (ESPA), 1999-2002; New Jersey Assessment of Skills and Knowledge (NJ ASK4), 2003-2007. For Mathematics, 1999 was the standard setting year for the ESPA and NJ ASK4.

<sup>2</sup>For 2006 and 2007, LEP is reported in three categories: LEP (current + former), LEP current and LEP former.

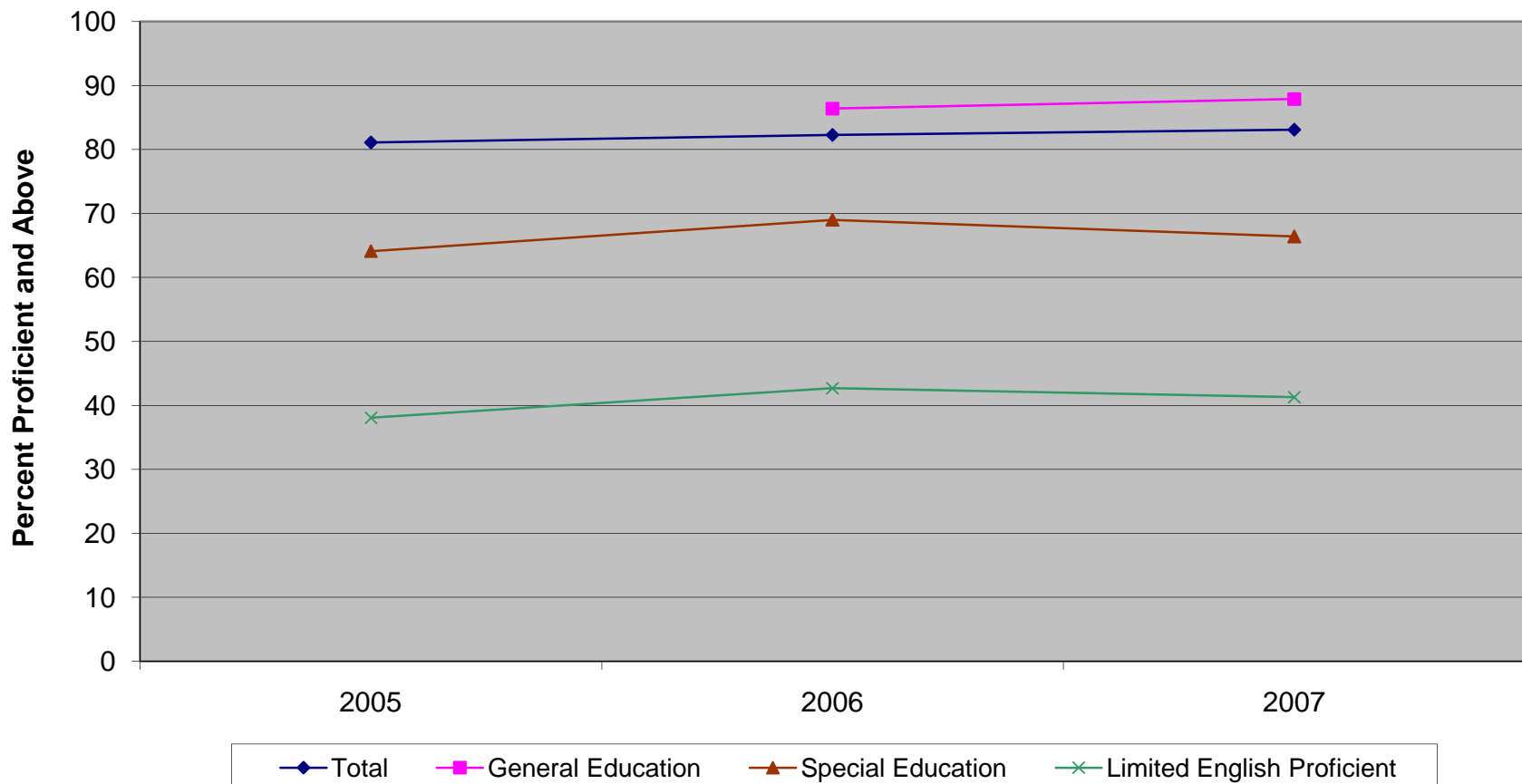
# Grade Four Longitudinal Data

## Percent Proficient and Above for Subgroups and Total Students Over Time by Subject

### Mathematics

|      | Total | Gen Ed | SE   | LEP  |
|------|-------|--------|------|------|
| 1999 | 60.4  | 65.8   | 25.8 | 24.1 |
| 2000 | 65.8  | 71.4   | 35.8 | 28   |
| 2001 | 65.9  | 71.3   | 37.7 | 33   |
| 2002 | 68.5  | 74.2   | 40.4 | 35.9 |
| 2003 | 68.0  | 74.8   | 38.4 | 34.0 |
| 2004 | 72.1  | 78.4   | 46.3 | 47.2 |
| 2005 | 80.2  | 86.1   | 55.3 | 51.2 |
| 2006 | 82.4  | 87.8   | 59.5 | 55.4 |
| 2007 | 84.7  | 89.7   | 63.7 | 54.8 |

**New Jersey Assessment of Fourth Grade Students  
Science Percent Proficient and Above by Subgroups (2005-2007)<sup>1,2</sup>**



<sup>1</sup>New Jersey Assessment of Skills and Knowledge (NJ ASK4), 2005-2007. For Science, 2005 was the standard setting year for the NJ ASK4.

<sup>2</sup>For 2006 and 2007, LEP is reported in three categories: LEP (current + former), LEP current and LEP former.

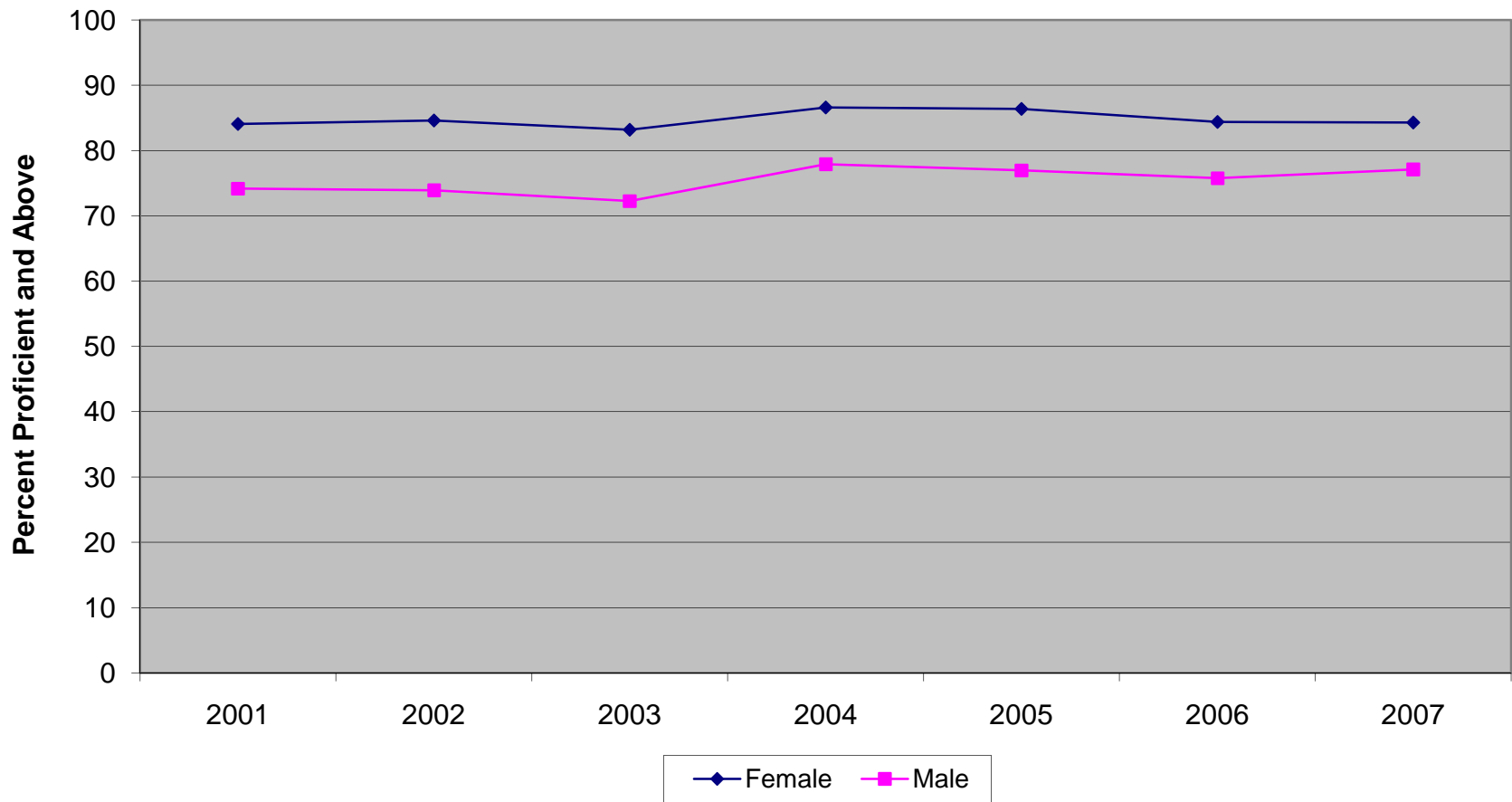
# Grade Four Longitudinal Data

## Percent Proficient and Above for Subgroups and Total Students Over Time by Subject

### Science

|      | Total | Gen Ed | SE   | LEP  |
|------|-------|--------|------|------|
| 2005 | 81.1  |        | 64.1 | 38.1 |
| 2006 | 82.3  | 86.4   | 69.0 | 42.7 |
| 2007 | 83.1  | 87.9   | 66.4 | 41.3 |

**New Jersey Assessment of Fourth Grade Students  
Language Arts Literacy Percent Proficient and Above by Gender (2001-2007)<sup>1</sup>**



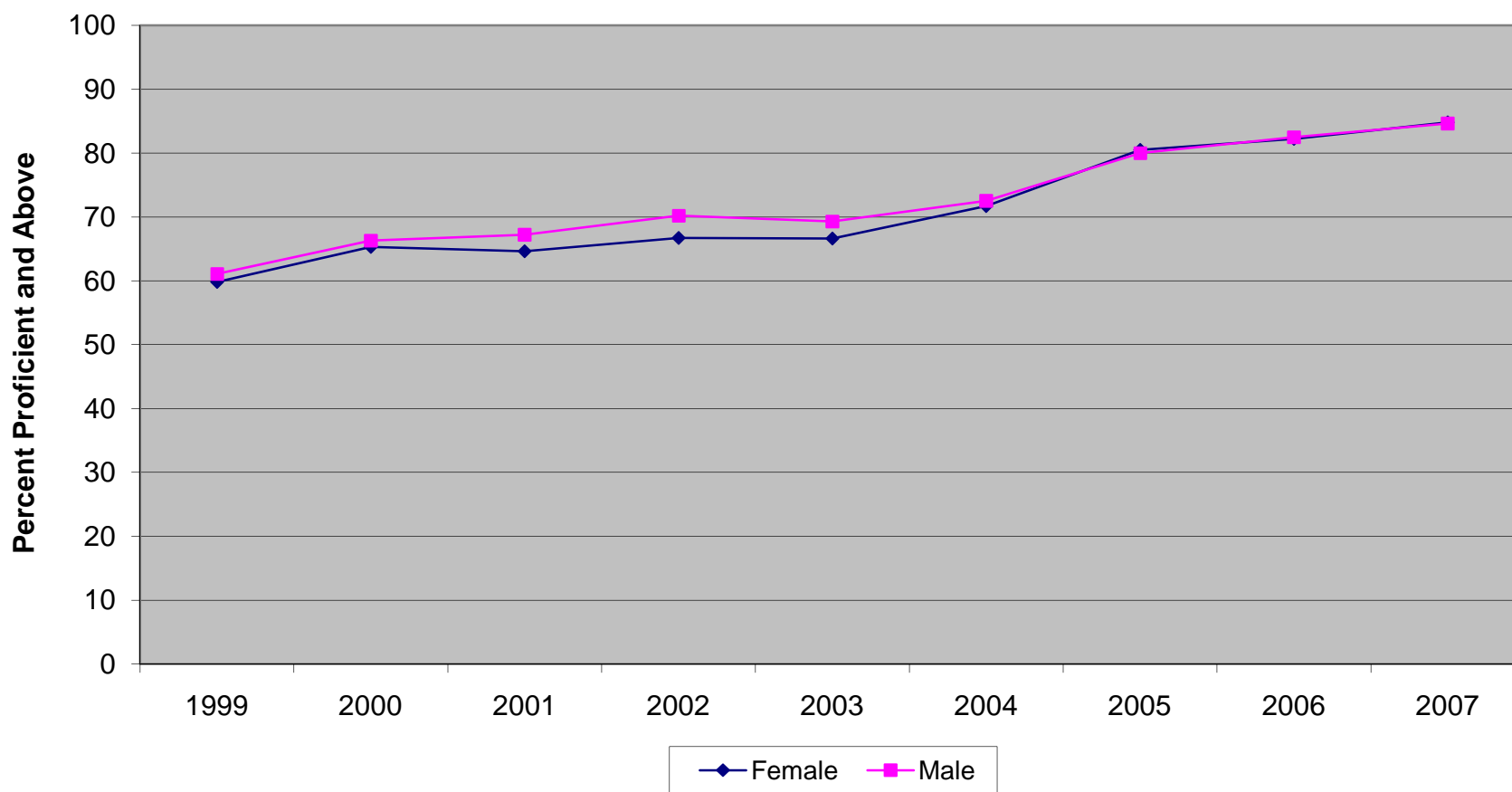
<sup>1</sup>Elementary School Proficiency Assessment (ESPA), 2001-2002; New Jersey Assessment of Skills and Knowledge (NJ ASK4), 2003-2007. For Language Arts Literacy, 2001 was the standard setting year for the ESPA and NJ ASK4.

Grade Four Longitudinal Data  
Percent Proficient and Above by Gender Over Time by Subject

Language Arts Literacy

|      | Female | Male |
|------|--------|------|
| 2001 | 84.1   | 74.2 |
| 2002 | 84.6   | 73.9 |
| 2003 | 83.2   | 72.3 |
| 2004 | 86.6   | 77.9 |
| 2005 | 86.4   | 77.0 |
| 2006 | 84.4   | 75.8 |
| 2007 | 84.3   | 77.1 |

**New Jersey Assessment of Fourth Grade Students  
Mathematics Percent Proficient and Above by Gender (1999-2007)<sup>1</sup>**



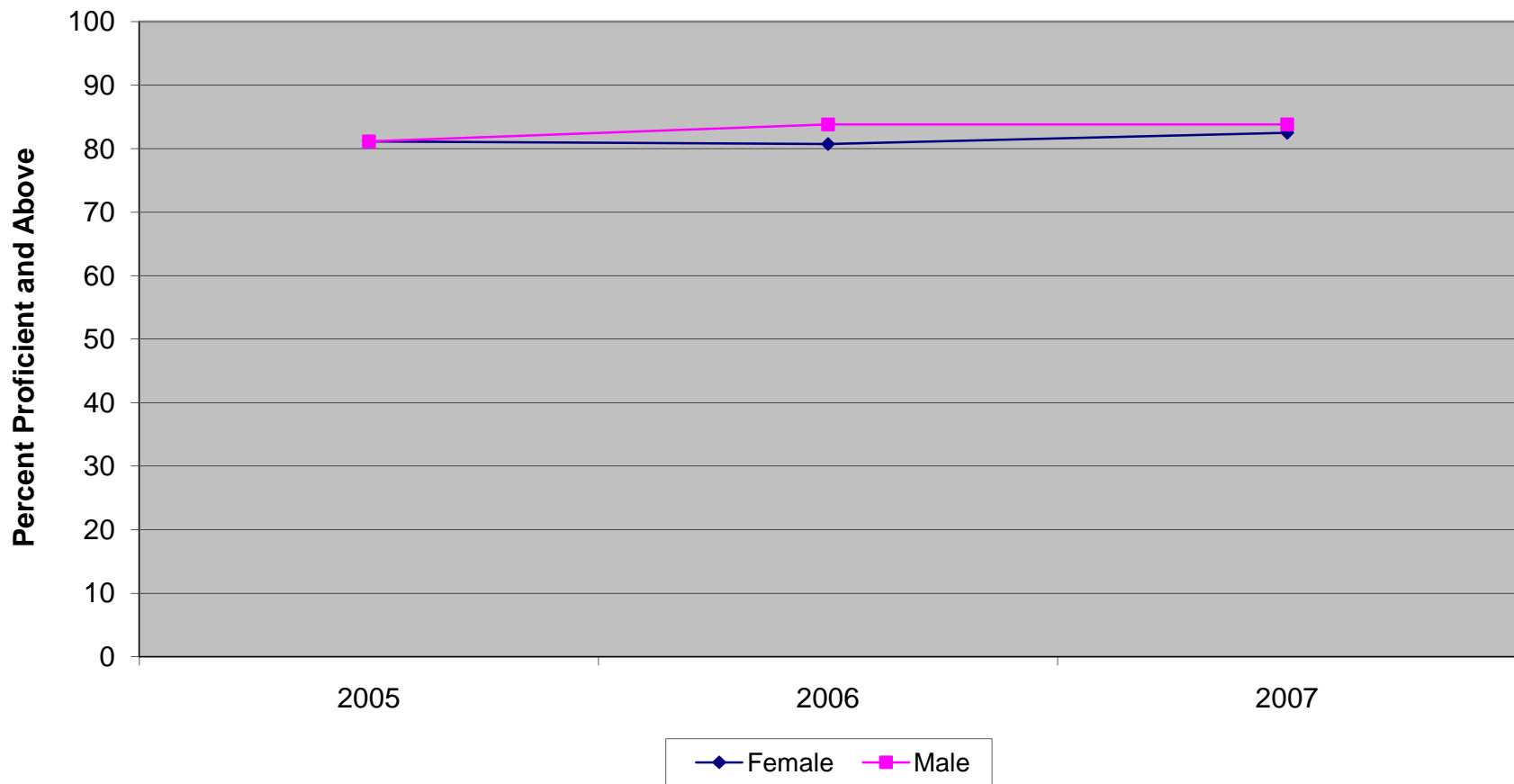
<sup>1</sup>Elementary School Proficiency Assessment (ESPA), 1999-2002; New Jersey Assessment of Skills and Knowledge (NJ ASK4), 2003-2007. For Mathematics, 1999 was the standard setting year for the ESPA and NJ ASK4.

Grade Four Longitudinal Data  
Percent Proficient and Above by Gender Over Time by Subject

Mathematics

|      | Female | Male |
|------|--------|------|
| 1999 | 59.8   | 61.1 |
| 2000 | 65.3   | 66.3 |
| 2001 | 64.6   | 67.2 |
| 2002 | 66.7   | 70.2 |
| 2003 | 66.6   | 69.3 |
| 2004 | 71.7   | 72.5 |
| 2005 | 80.5   | 80.0 |
| 2006 | 82.2   | 82.5 |
| 2007 | 84.8   | 84.6 |

**New Jersey Assessment of Fourth Grade Students  
Science Percent Proficient and Above by Gender (2005-2007)<sup>1</sup>**



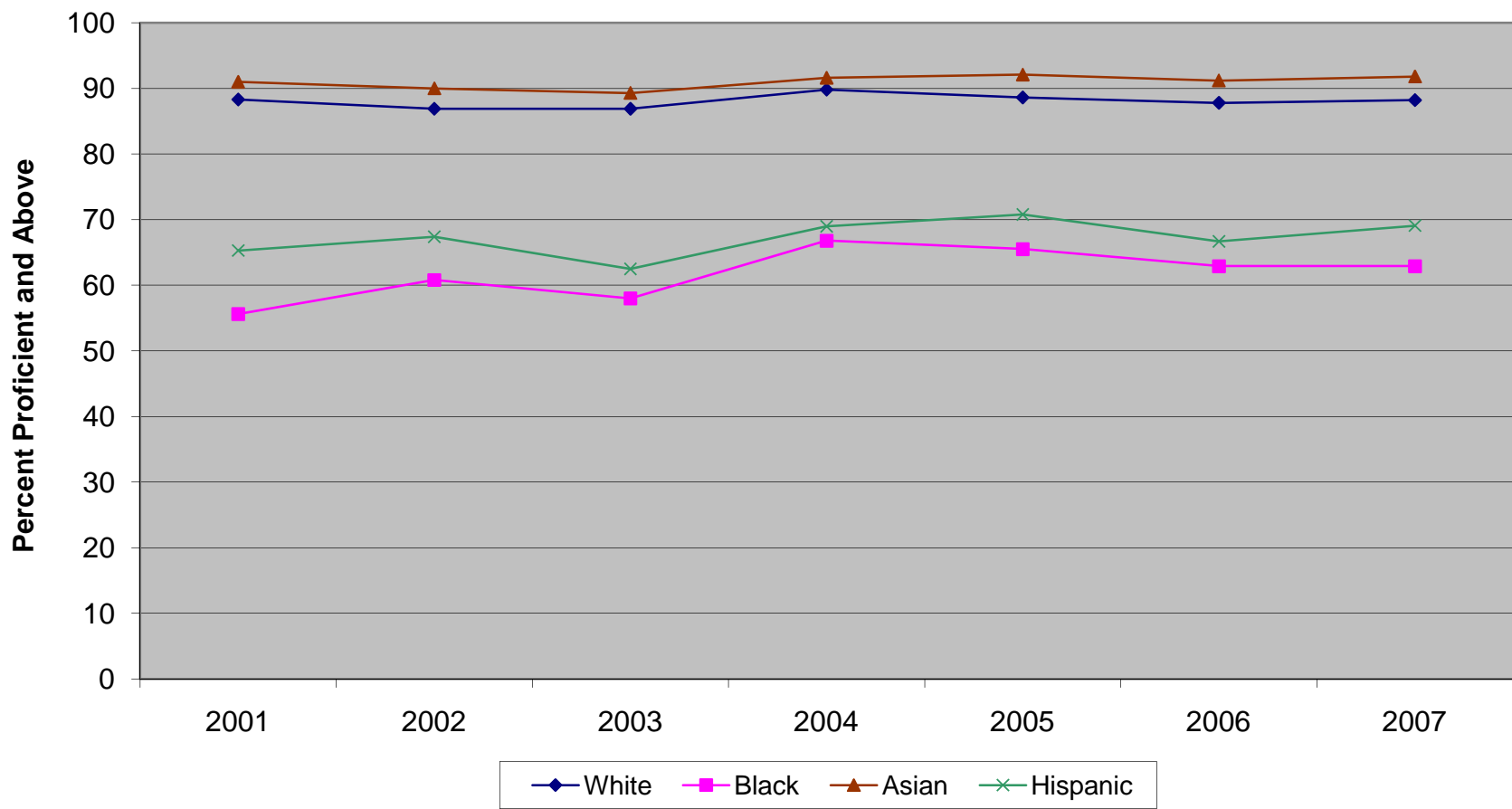
<sup>1</sup>New Jersey Assessment of Skills and Knowledge (NJ ASK4), 2005-2007. For Science, 2005 was the standard setting year for the NJ ASK4.

Grade Four Longitudinal Data  
Percent Proficient and Above by Gender Over Time by Subject

Science

|      | Female | Male |
|------|--------|------|
| 2005 | 81.1   | 81.1 |
| 2006 | 80.7   | 83.8 |
| 2007 | 82.5   | 83.8 |

**New Jersey Assessment of Fourth Grade Students  
Language Arts Literacy Percent Proficient and Above by Ethnicity (2001-2007)<sup>1,2</sup>**



<sup>1</sup>Elementary School Proficiency Assessment (ESPA), 2001-2002; New Jersey Assessment of Skills and Knowledge (NJ ASK4), 2003-2007. For Language Arts Literacy, 2001 was the standard setting year for the ESPA and NJ ASK4.

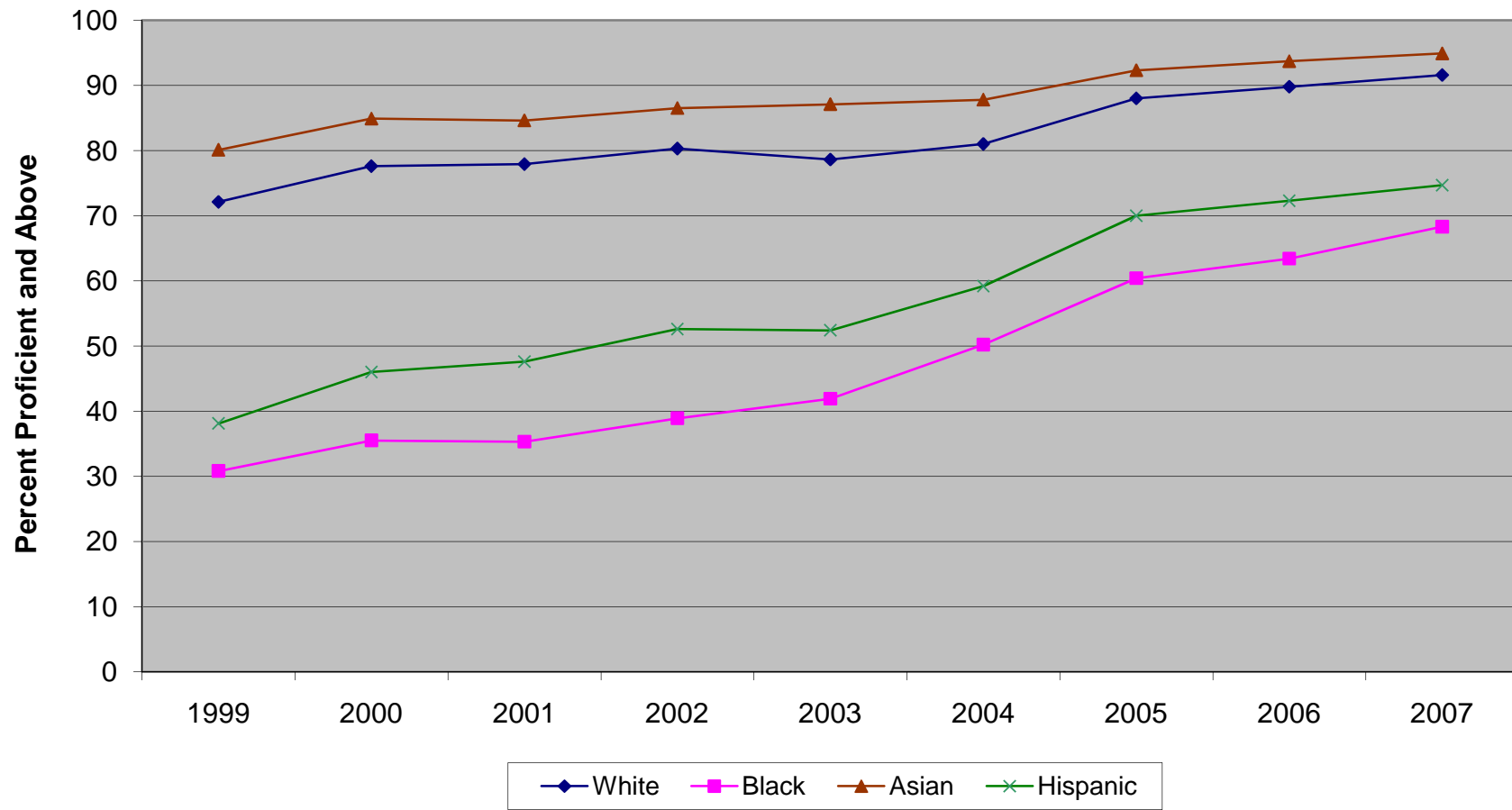
<sup>2</sup>In 2005, 2006, and 2007, ethnic groups do not include students who identified themselves as multiple ethnicities.

Grade Four Longitudinal Data  
Percent Proficient and Above by Ethnicity Over Time by Subject

Language Arts Literacy

|      | White | Black | Asian | Hispanic |
|------|-------|-------|-------|----------|
| 2001 | 88.3  | 55.6  | 91.0  | 65.3     |
| 2002 | 86.9  | 60.8  | 90.0  | 67.4     |
| 2003 | 86.9  | 58.0  | 89.3  | 62.5     |
| 2004 | 89.8  | 66.8  | 91.6  | 69.0     |
| 2005 | 88.6  | 65.5  | 92.1  | 70.8     |
| 2006 | 87.8  | 62.9  | 91.2  | 66.7     |
| 2007 | 88.2  | 62.9  | 91.8  | 69.1     |

**New Jersey Assessment of Fourth Grade Students  
Mathematics Percent Proficient and Above by Ethnicity (1999-2007)<sup>1,2</sup>**



<sup>1</sup>Elementary School Proficiency Assessment (ESPA), 1999-2002; New Jersey Assessment of Skills and Knowledge (NJ ASK4), 2003-2007. For Mathematics, 1999 was the standard setting year for the ESPA and NJ ASK4.

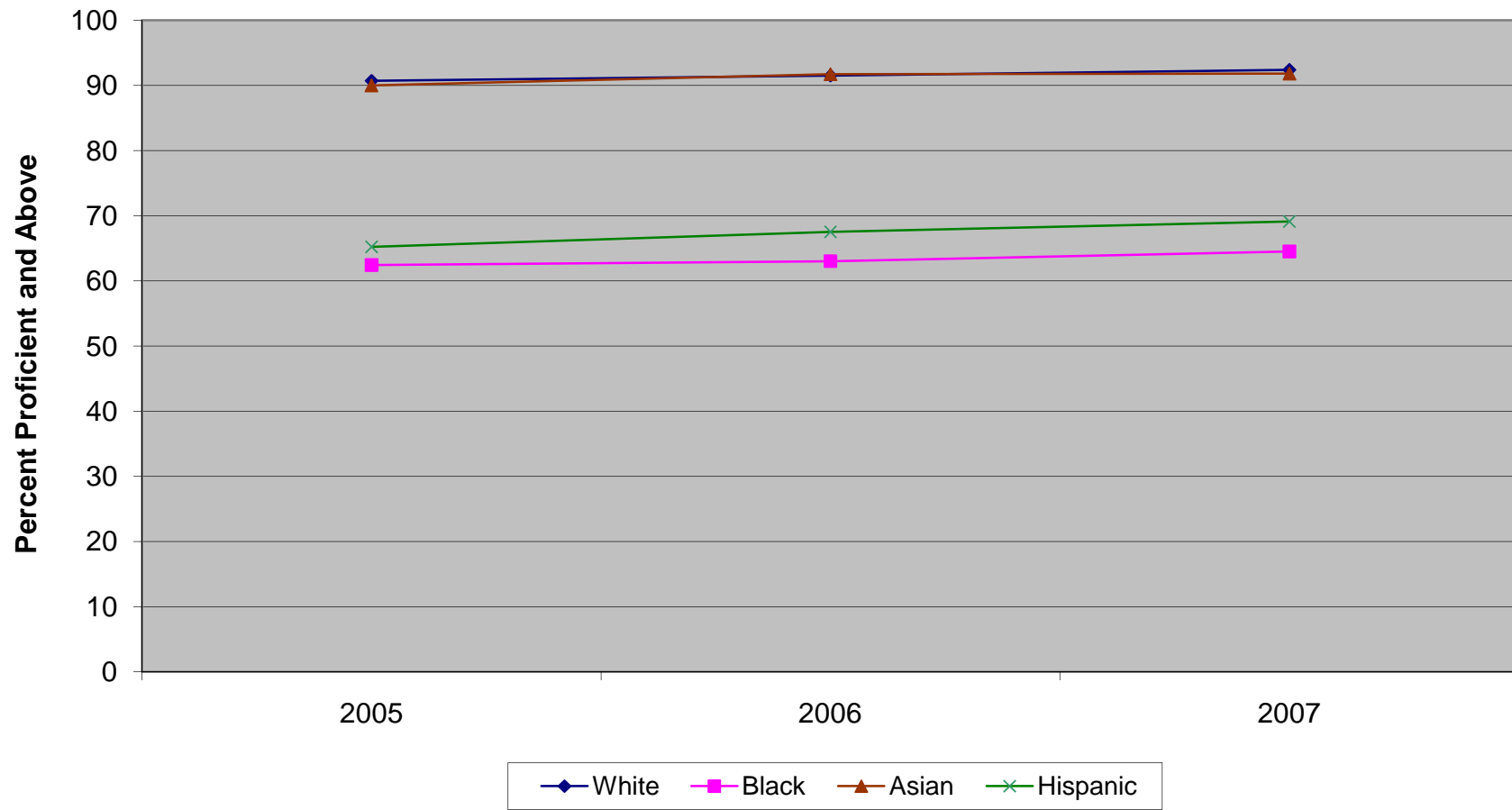
<sup>2</sup>In 2005, 2006, and 2007, ethnic groups do not include students who identified themselves as multiple ethnicities.

Grade Four Longitudinal Data  
Percent Proficient and Above by Ethnicity Over Time by Subject

Mathematics

|      | White | Black | Asian | Hispanic |
|------|-------|-------|-------|----------|
| 1999 | 72.1  | 30.8  | 80.1  | 38.1     |
| 2000 | 77.6  | 35.5  | 84.9  | 46.0     |
| 2001 | 77.9  | 35.3  | 84.6  | 47.6     |
| 2002 | 80.3  | 38.9  | 86.5  | 52.6     |
| 2003 | 78.6  | 41.9  | 87.1  | 52.4     |
| 2004 | 81.0  | 50.2  | 87.8  | 59.2     |
| 2005 | 88.0  | 60.4  | 92.3  | 70.0     |
| 2006 | 89.8  | 63.4  | 93.7  | 72.3     |
| 2007 | 91.6  | 68.3  | 94.9  | 74.7     |

**New Jersey Assessment of Fourth Grade Students  
Science Percent Proficient and Above by Ethnicity (2005-2007)<sup>1,2</sup>**



<sup>1</sup>New Jersey Assessment of Skills and Knowledge (NJ ASK4), 2005-2007. For Science, 2005 was the standard setting year for the NJ ASK4.

<sup>2</sup>In 2005, 2006, and 2007, ethnic groups do not include students who identified themselves as multiple ethnicities.

Grade Four Longitudinal Data  
Percent Proficient and Above by Ethnicity Over Time by Subject

Science

|      | White | Black | Asian | Hispanic |
|------|-------|-------|-------|----------|
| 2005 | 90.7  | 62.4  | 90.0  | 65.2     |
| 2006 | 91.5  | 63.0  | 91.7  | 67.5     |
| 2007 | 92.4  | 64.5  | 91.8  | 69.1     |