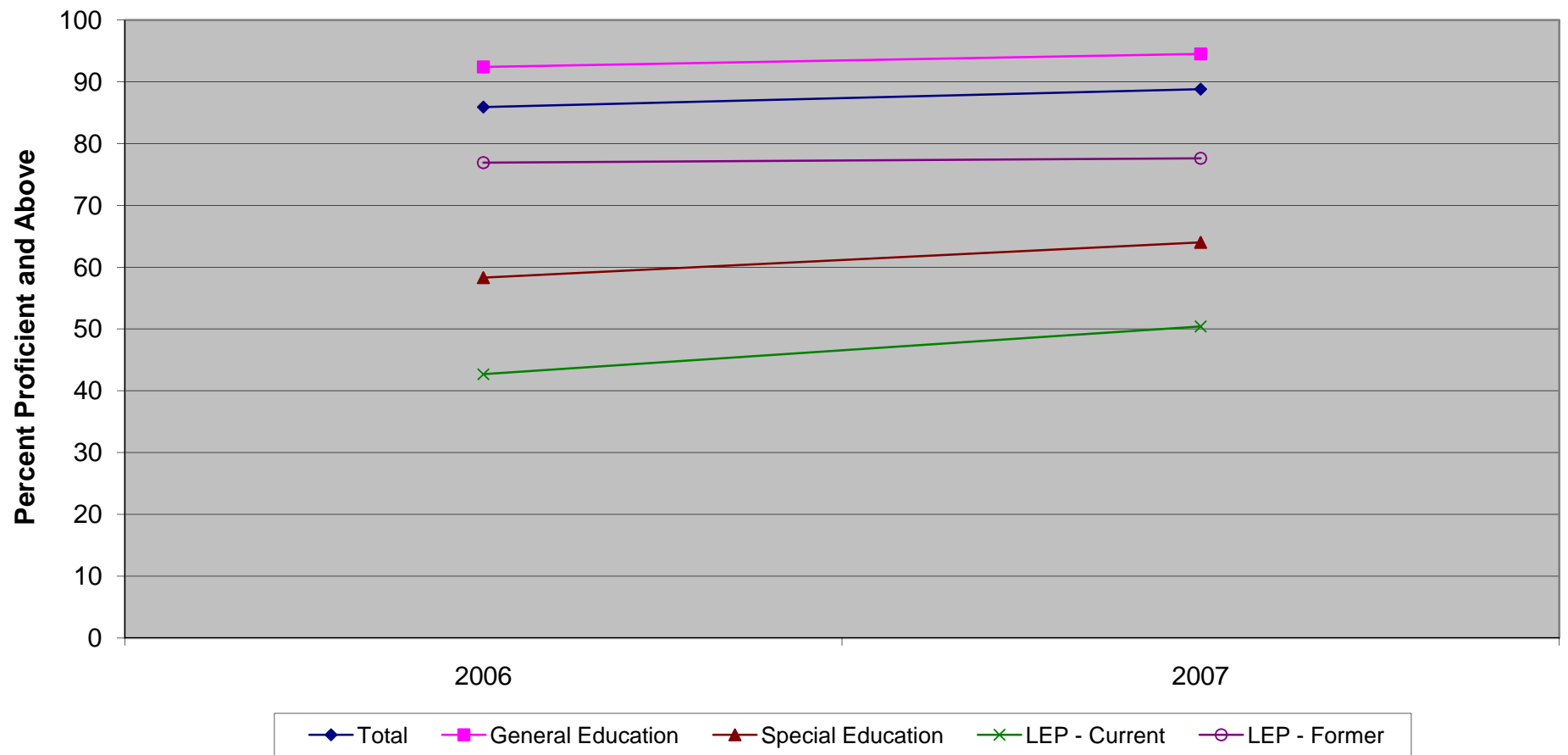


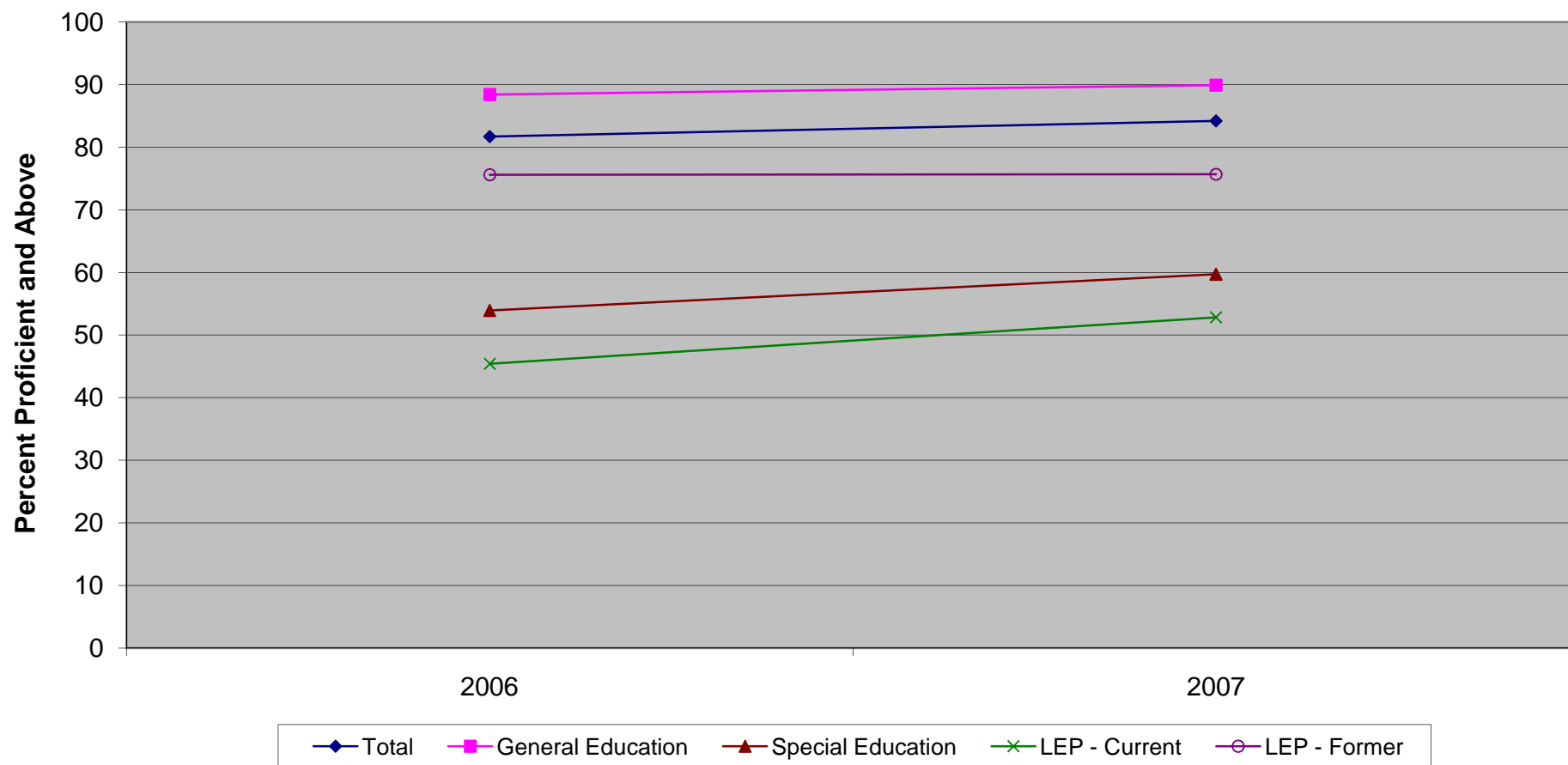
**New Jersey Assessment of Skills and Knowledge
Grade 5 Language Arts Literacy Percent Proficient and Above by Instructional Group (2006 - 2007)**



New Jersey Assessment of Skills and Knowledge
Grade 5 Language Arts Literacy Percent Proficient and Above by Instructional Group (2006 - 2007)

	2006	2007
Total	85.9	88.8
General Education	92.4	94.5
Special Education	58.3	64.0
LEP - Current	42.7	50.4
LEP - Former	76.9	77.6

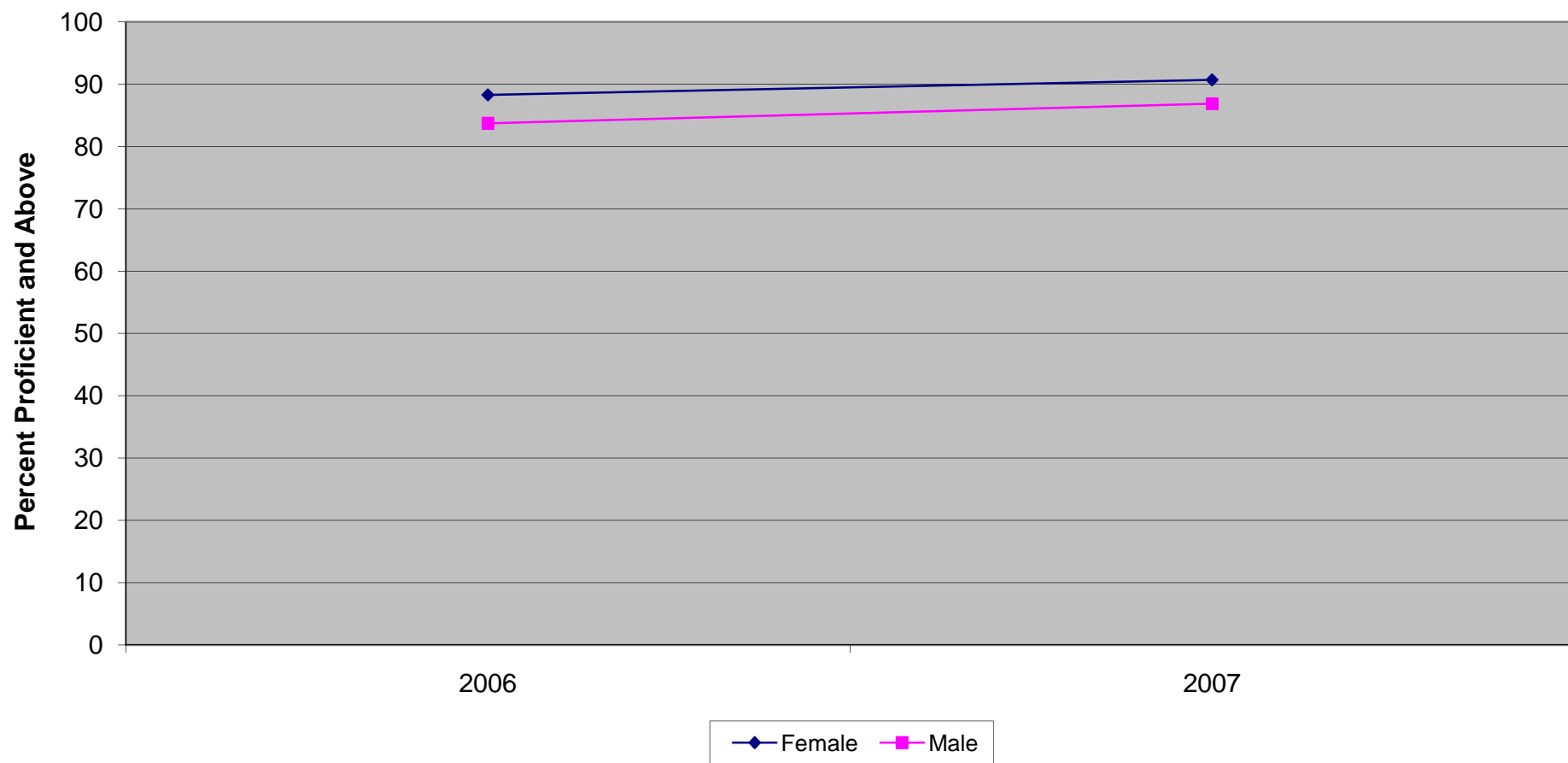
**New Jersey Assessment of Skills and Knowledge
Grade 5 Mathematics Proficient and Above by Instructional Group (2006 - 2007)**



New Jersey Assessment of Skills and Knowledge
Grade 5 Mathematics Proficient and Above by Instructional Group (2006 - 2007)

	2006	2007
Total	81.7	84.2
General Education	88.4	89.9
Special Education	53.9	59.7
LEP - Current	45.4	52.8
LEP - Former	75.6	75.7

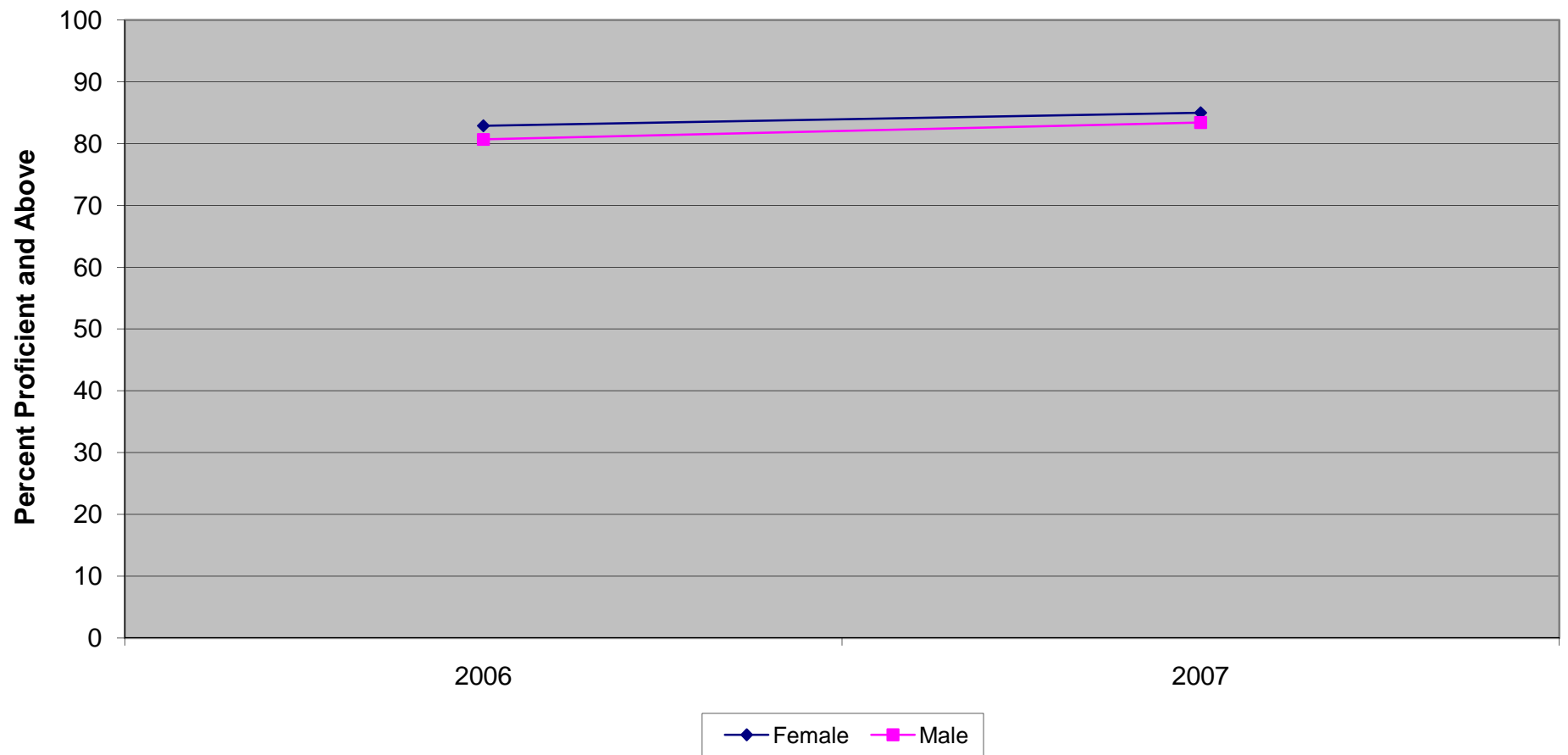
New Jersey Assessment of Skills and Knowledge
Grade 5 Language Arts Literacy Proficient and Above by Gender (2006 - 2007)



**New Jersey Assessment of Skills and Knowledge
Grade 5 Language Arts Literacy Proficient and Above by Gender (2006 - 2007)**

	2006	2007
Female	88.3	90.7
Male	83.7	86.9

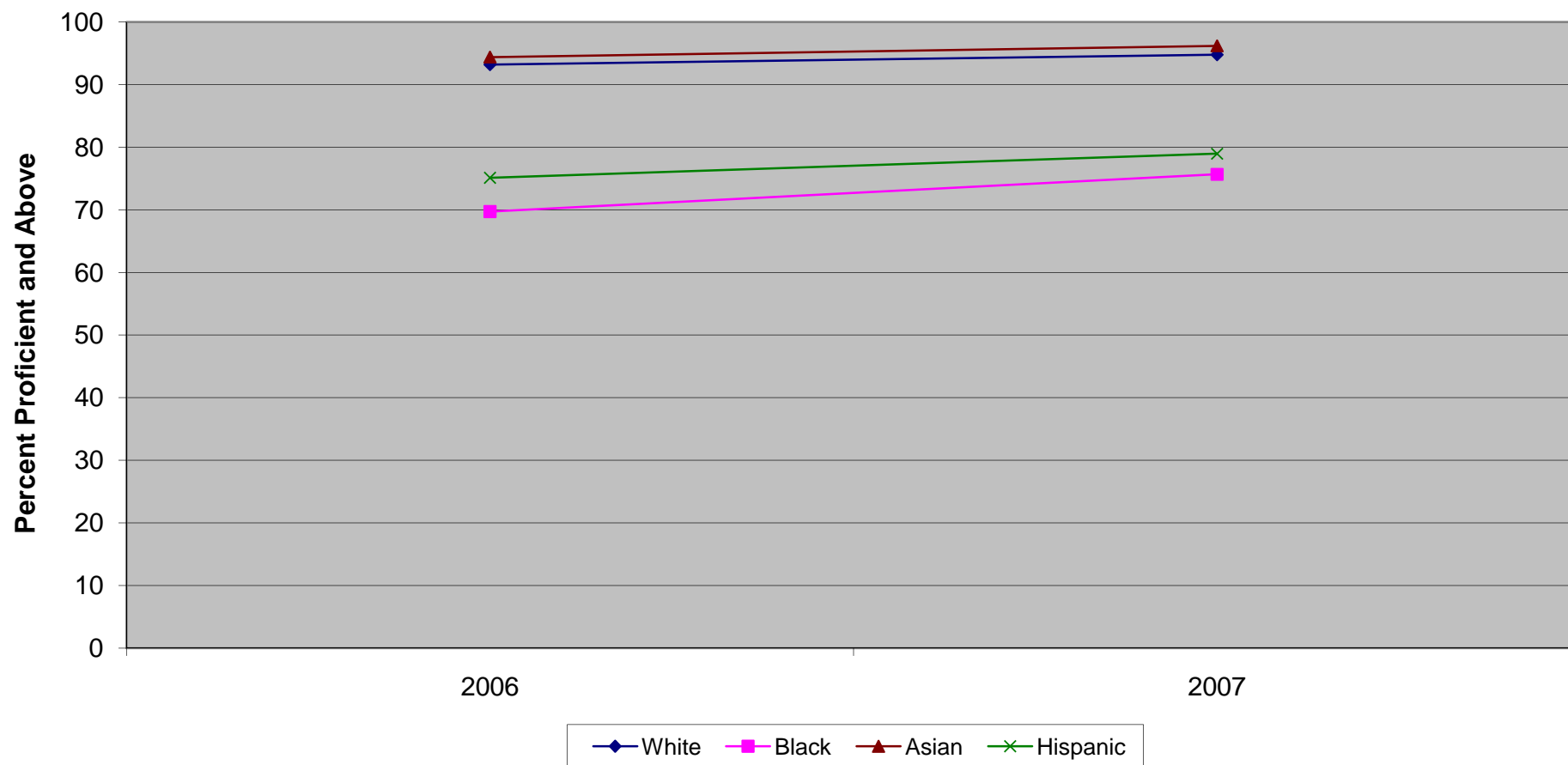
**New Jersey Assessment of Skills and Knowledge
Grade 5 Mathematics Proficient and Above by Gender (2006 - 2007)**



**New Jersey Assessment of Skills and Knowledge
Grade 5 Mathematics Proficient and Above by Gender (2006 - 2007)**

	2006	2007
Female	82.9	85.0
Male	80.7	83.4

**New Jersey Assessment of Skills and Knowledge
Grade 5 Language Arts Literacy Proficient and Above by Ethnicity (2006 - 2007)**

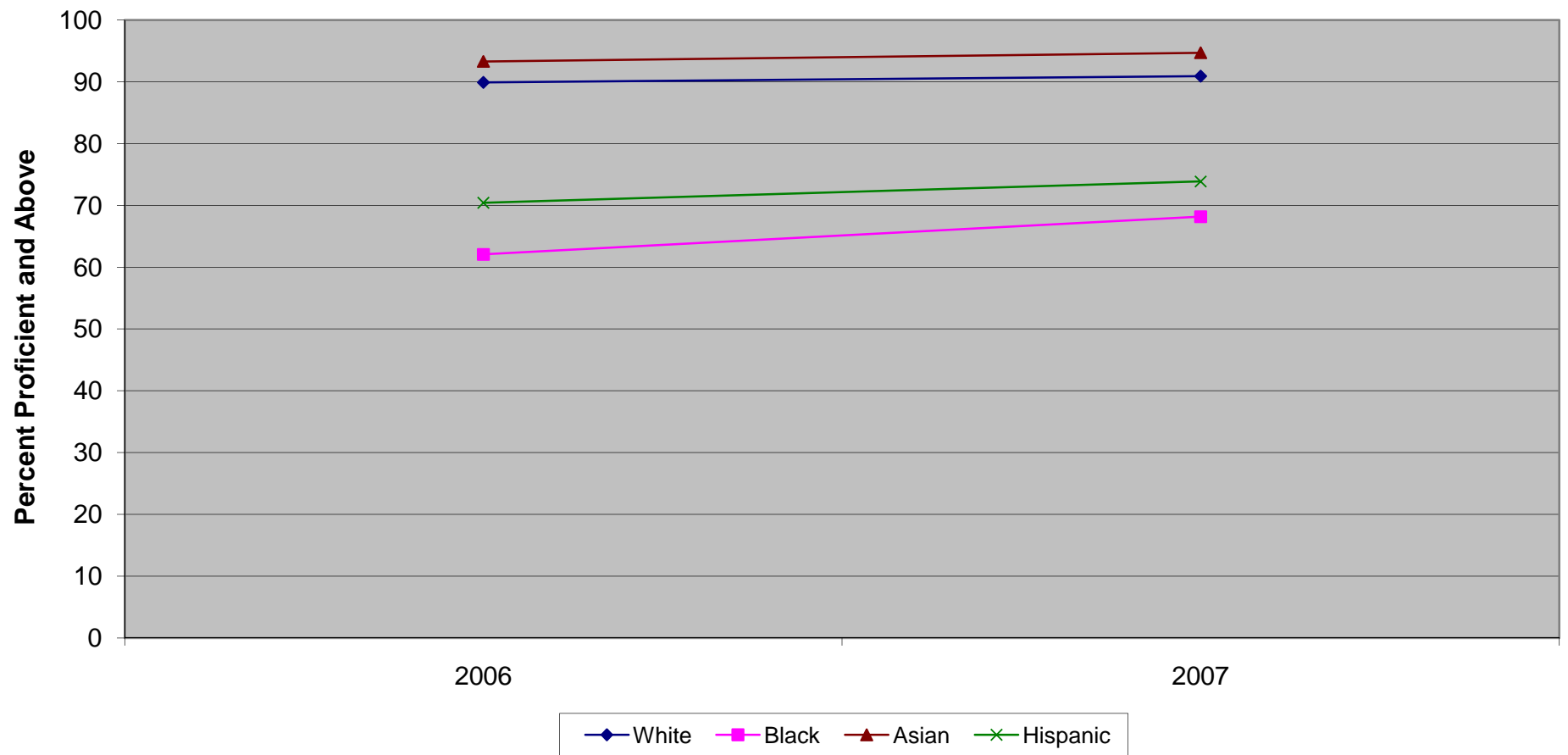


Ethnic codes Pacific Islander, American Indian/Alaskan Native and Other are not shown due to the small number of students in these categories.

**New Jersey Assessment of Skills and Knowledge
Grade 5 Language Arts Literacy Proficient and Above by Ethnicity (2006 - 2007)**

	2006	2007
White	93.2	94.8
Black	69.7	75.7
Asian	94.4	96.2
Hispanic	75.1	79.0

**New Jersey Assessment of Skills and Knowledge
Grade 5 Mathematics Proficient and Above by Ethnicity (2006 - 2007)**



Ethnic codes Pacific Islander, American Indian/Alaskan Native and Other are not shown due to the small number of students in these categories.

**New Jersey Assessment of Skills and Knowledge
Grade 5 Mathematics Proficient and Above by Ethnicity (2006 - 2007)**

	2006	2007
White	89.9	90.9
Black	62.1	68.2
Asian	93.3	94.7
Hispanic	70.4	73.9