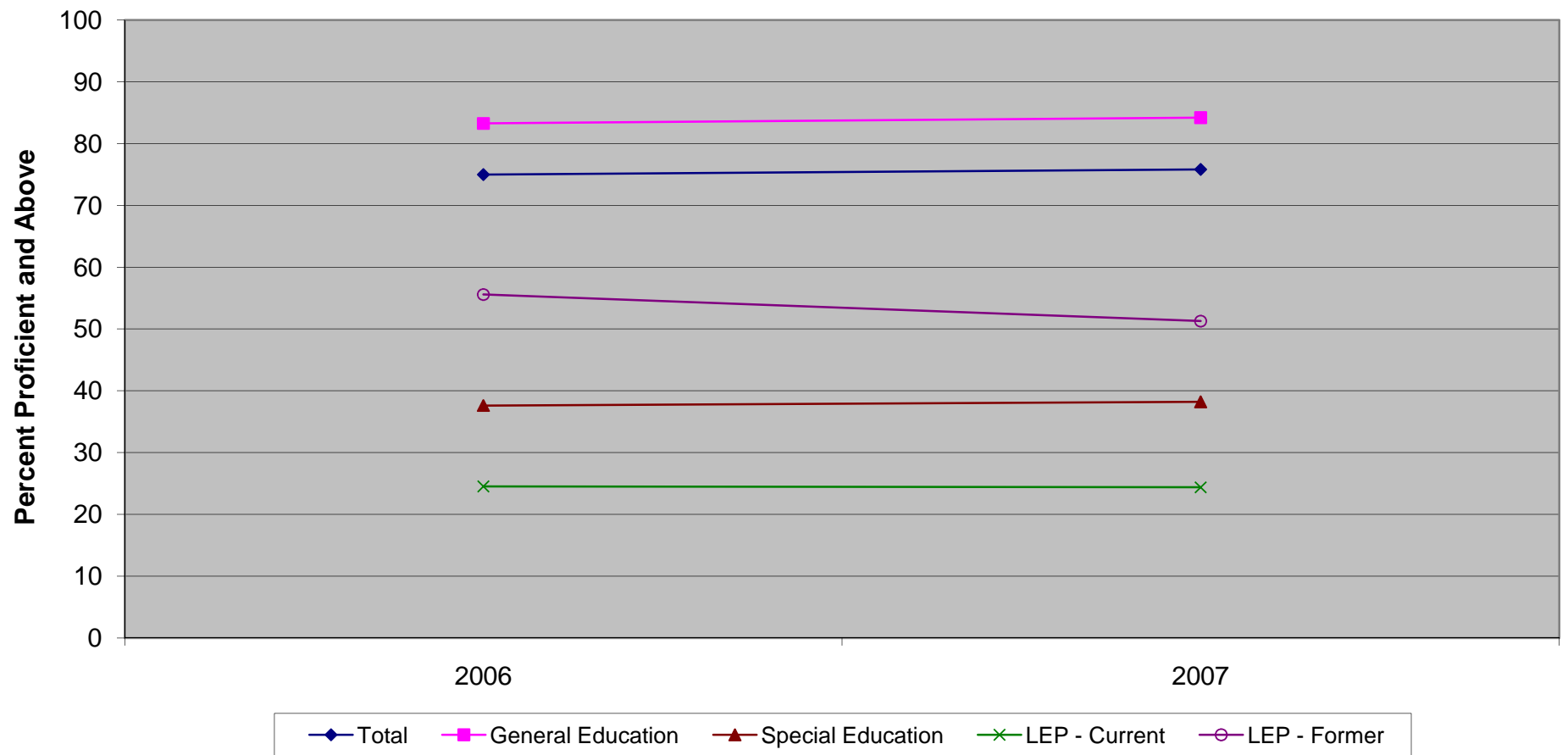


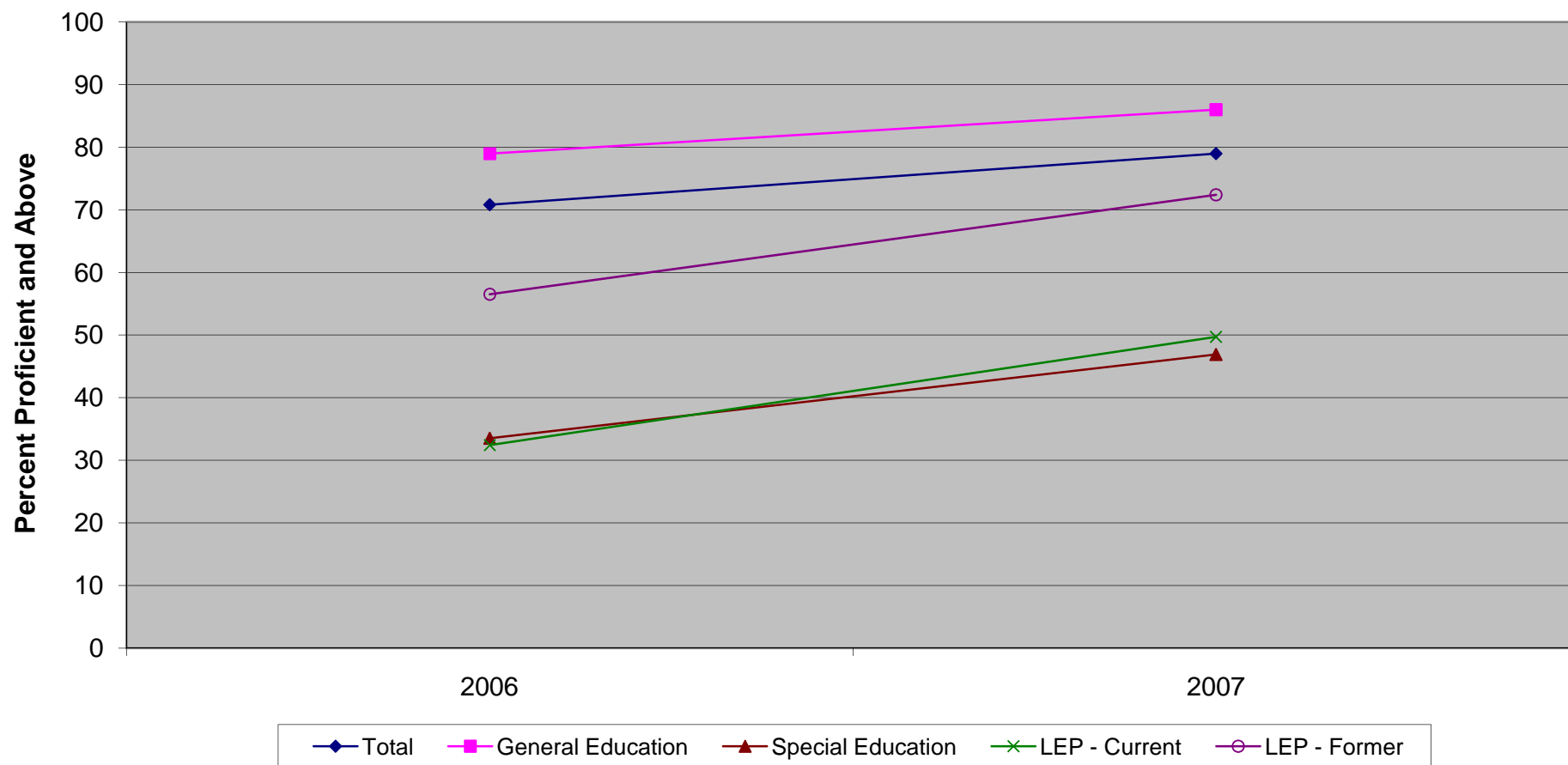
**New Jersey Assessment of Skills and Knowledge
Grade 6 Language Arts Literacy Percent Proficient and Above by Instructional Group (2006 - 2007)**



New Jersey Assessment of Skills and Knowledge
Grade 6 Language Arts Literacy Percent Proficient and Above by Instructional Group (2006 - 2007)

	2006	2007
Total	75.0	75.8
General Education	83.3	84.2
Special Education	37.6	38.2
LEP - Current	24.5	24.4
LEP - Former	55.6	51.3

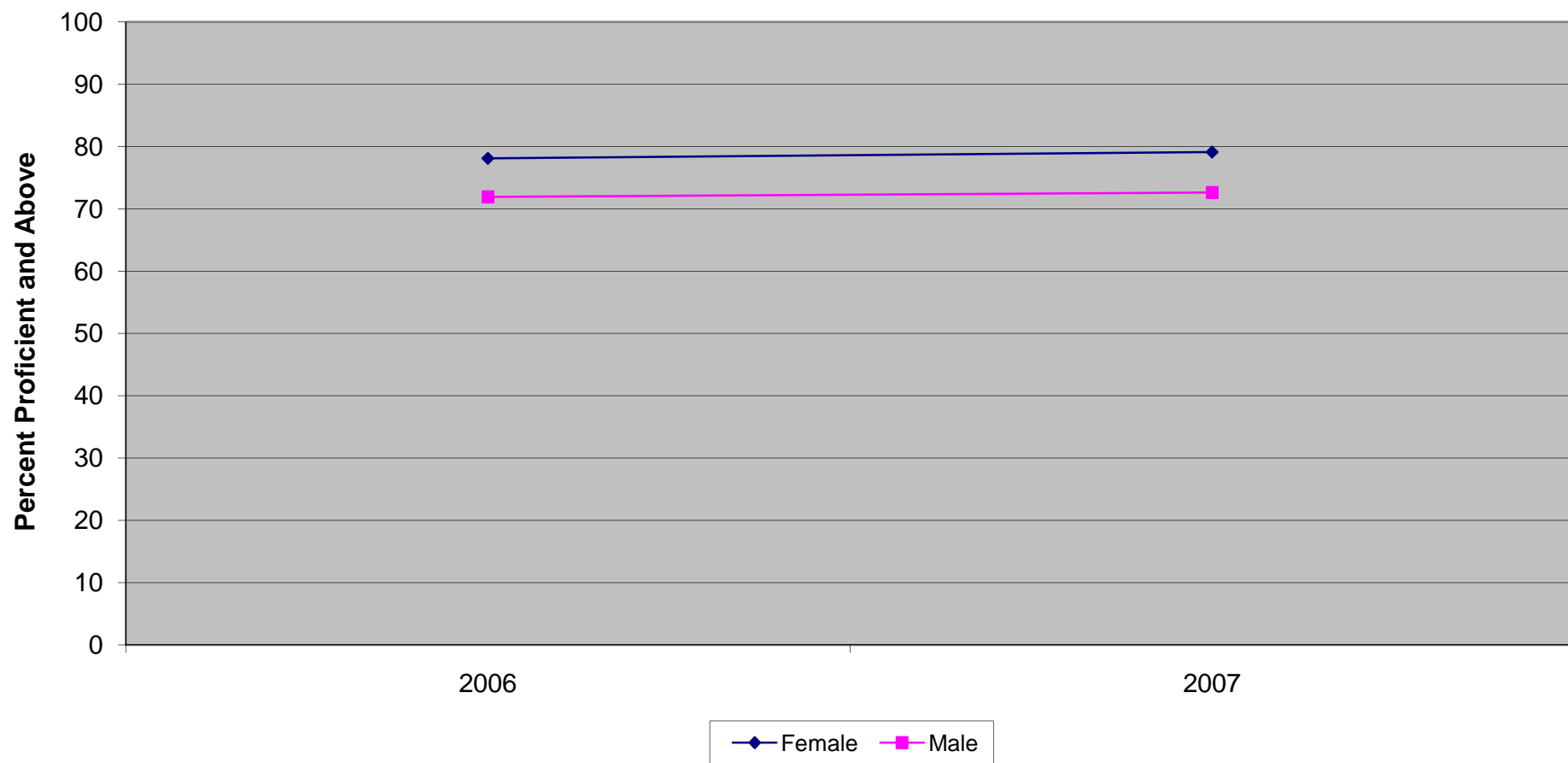
**New Jersey Assessment of Skills and Knowledge
Grade 6 Mathematics Proficient and Above by Instructional Group (2006 - 2007)**



New Jersey Assessment of Skills and Knowledge
Grade 6 Mathematics Proficient and Above by Instructional Group (2006 - 2007)

	2006	2007
Total	70.8	79.0
General Education	79.0	86.0
Special Education	33.5	46.9
LEP - Current	32.4	49.7
LEP - Former	56.5	72.4

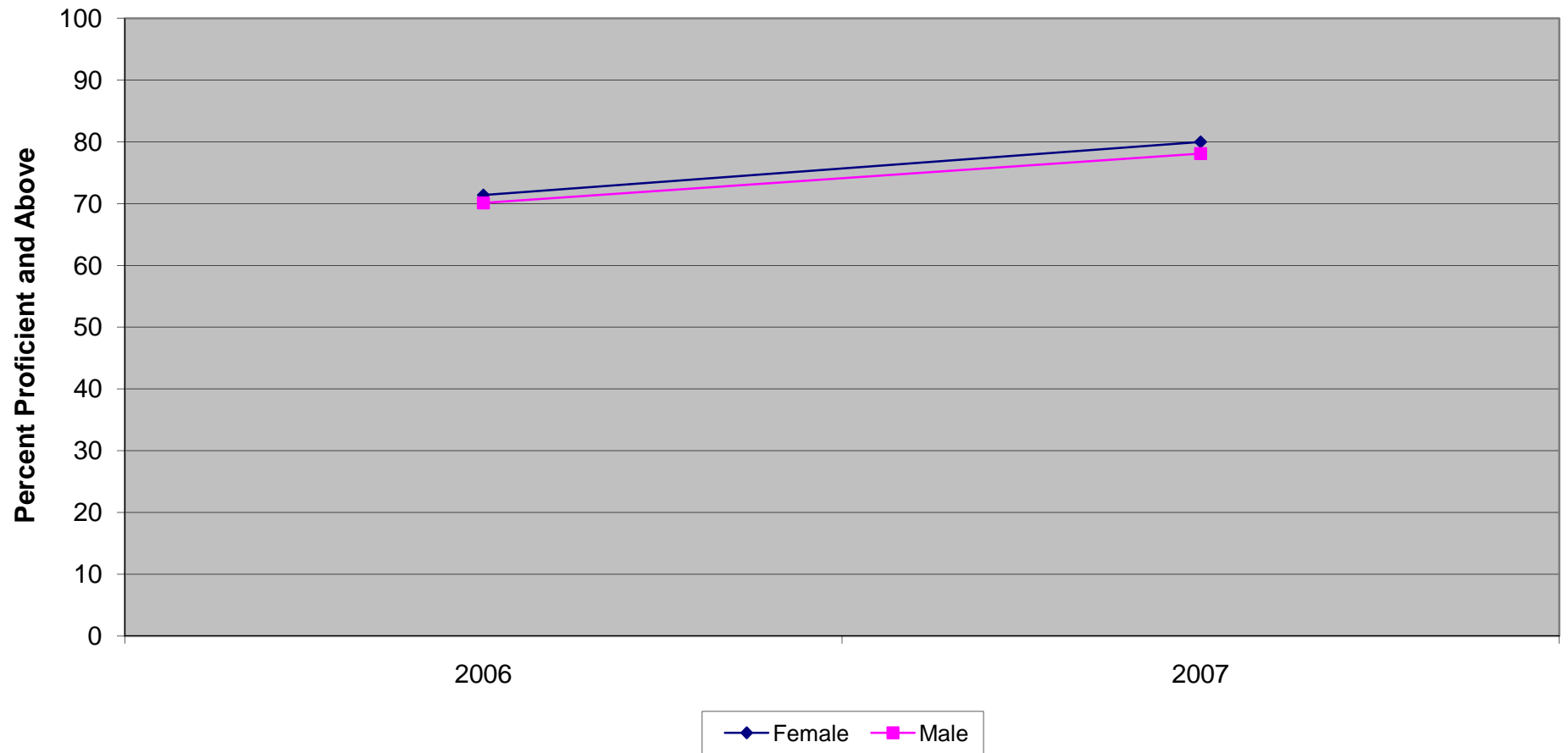
New Jersey Assessment of Skills and Knowledge
Grade 6 Language Arts Literacy Proficient and Above by Gender (2006 - 2007)



**New Jersey Assessment of Skills and Knowledge
Grade 6 Language Arts Literacy Proficient and Above by Gender (2006 - 2007)**

	2006	2007
Female	78.1	79.1
Male	71.9	72.6

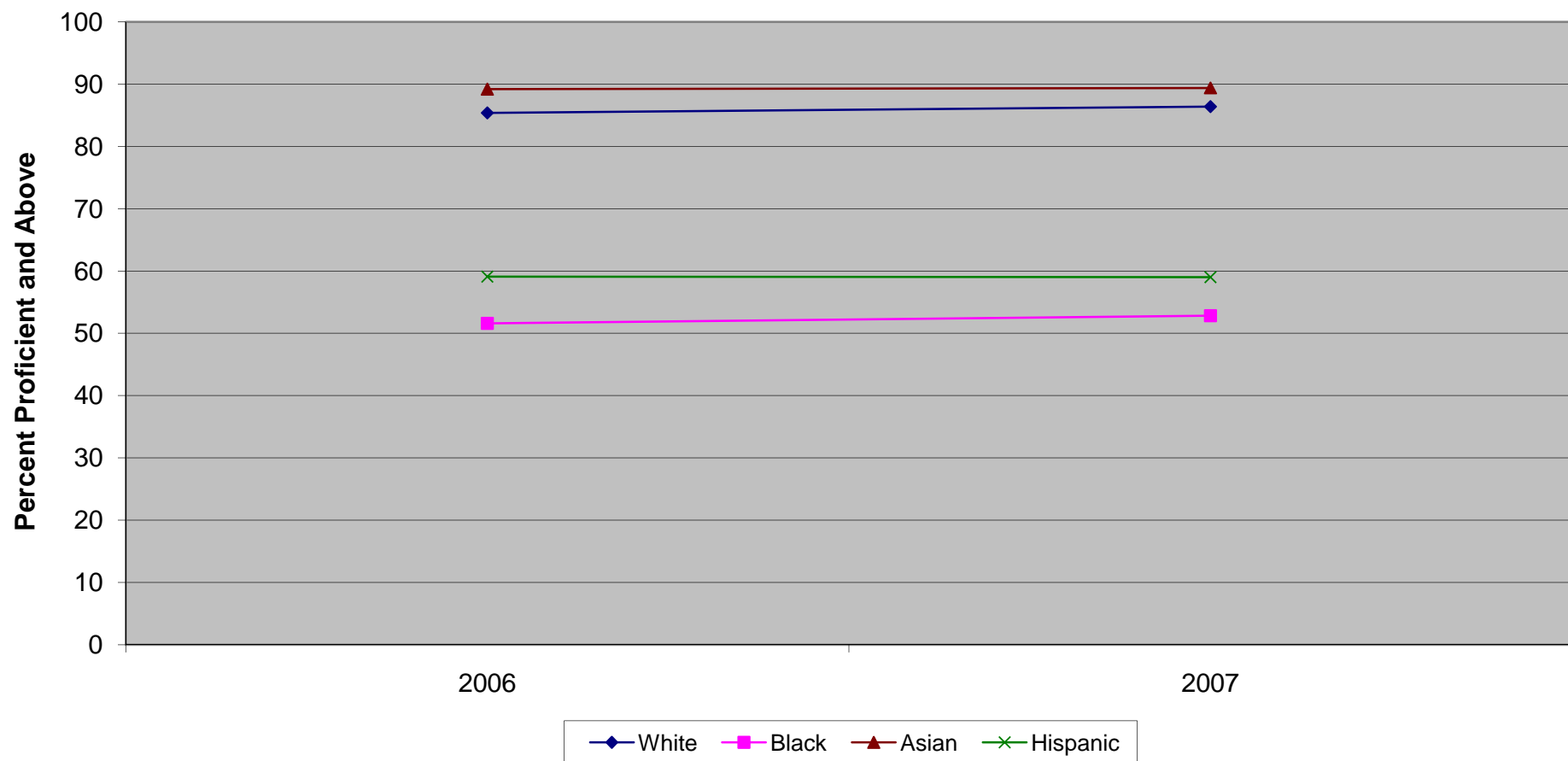
**New Jersey Assessment of Skills and Knowledge
Grade 6 Mathematics Proficient and Above by Gender (2006 - 2007)**



**New Jersey Assessment of Skills and Knowledge
Grade 6 Mathematics Proficient and Above by Gender (2006 - 2007)**

	2006	2007
Female	71.4	80.0
Male	70.1	78.1

**New Jersey Assessment of Skills and Knowledge
Grade 6 Language Arts Literacy Proficient and Above by Ethnicity (2006 - 2007)**

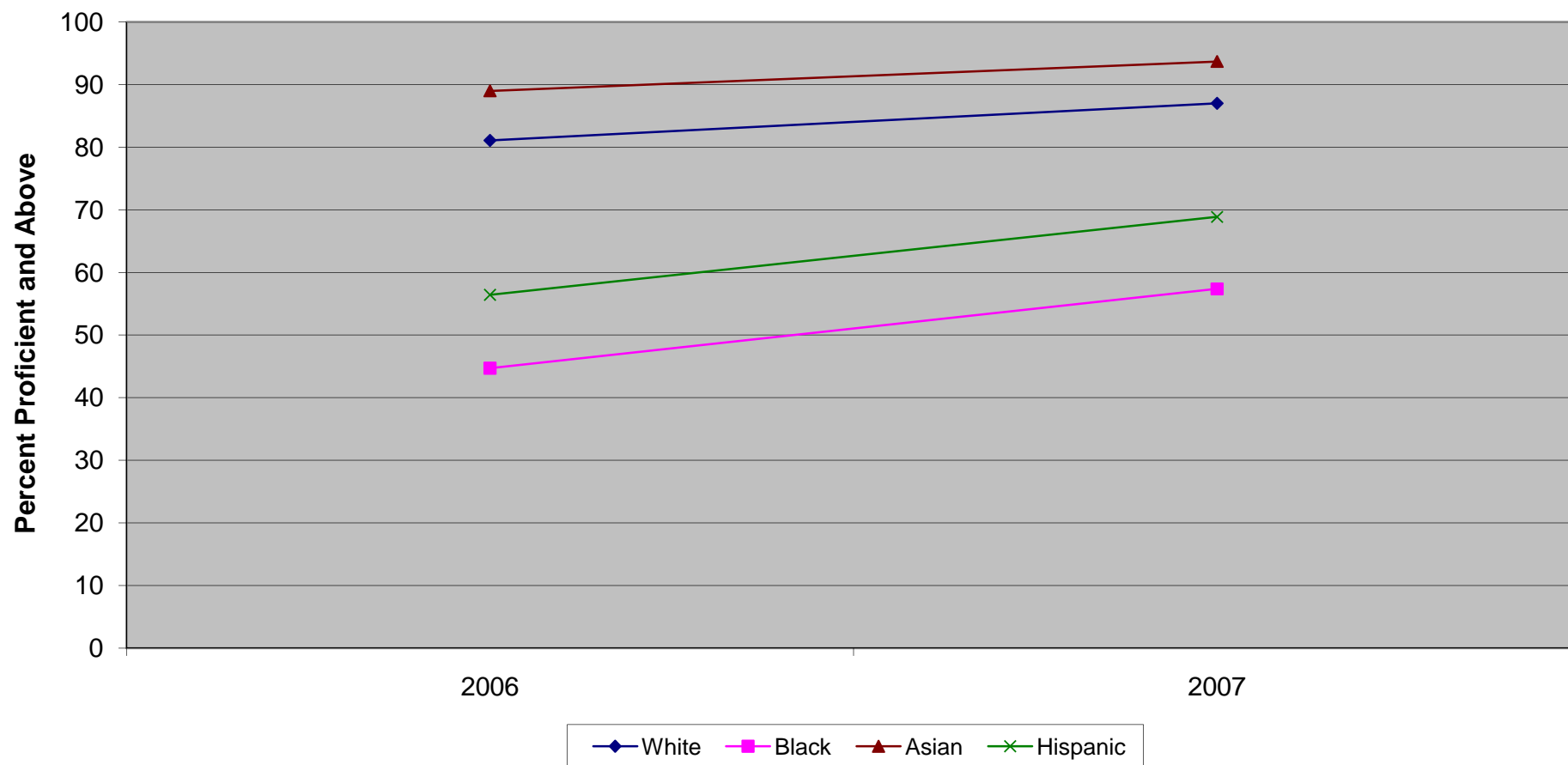


Ethnic codes Pacific Islander, American Indian/Alaskan Native and Other are not shown due to the small number of students in these categories.

**New Jersey Assessment of Skills and Knowledge
Grade 6 Language Arts Literacy Proficient and Above by Ethnicity (2006 - 2007)**

	2006	2007
White	85.4	86.4
Black	51.6	52.8
Asian	89.2	89.4
Hispanic	59.1	59.0

**New Jersey Assessment of Skills and Knowledge
Grade 6 Mathematics Proficient and Above by Ethnicity (2006 - 2007)**



Ethnic codes Pacific Islander, American Indian/Alaskan Native and Other are not shown due to the small number of students in these categories.

**New Jersey Assessment of Skills and Knowledge
Grade 6 Mathematics Proficient and Above by Ethnicity (2006 - 2007)**

	2006	2007
White	81.1	87.0
Black	44.7	57.4
Asian	89.0	93.7
Hispanic	56.4	68.9