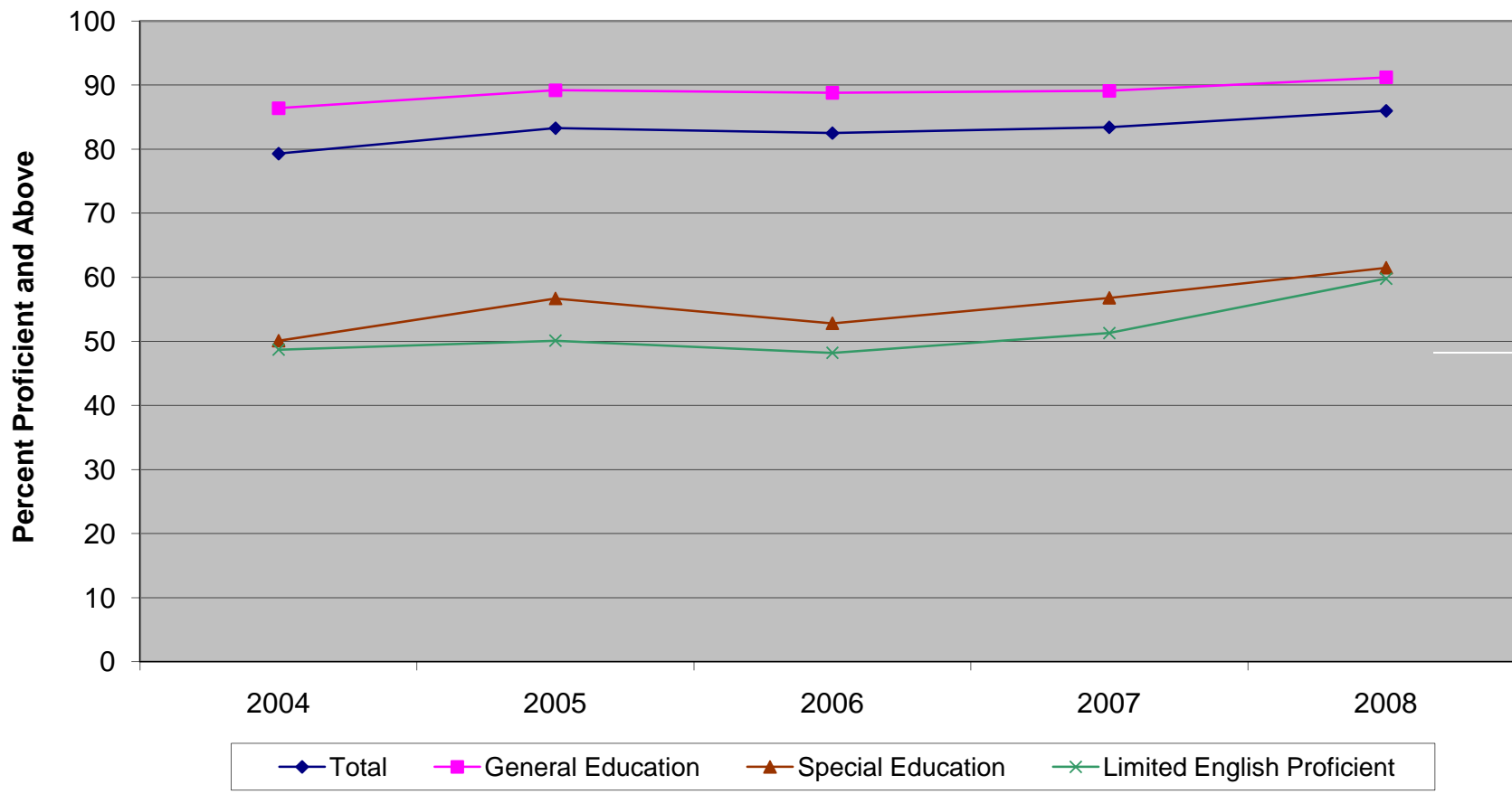


**New Jersey Assessment of Third Grade Students
Language Arts Literacy Percent Proficient and Above by Subgroups (2004-2008)^{1,2}**



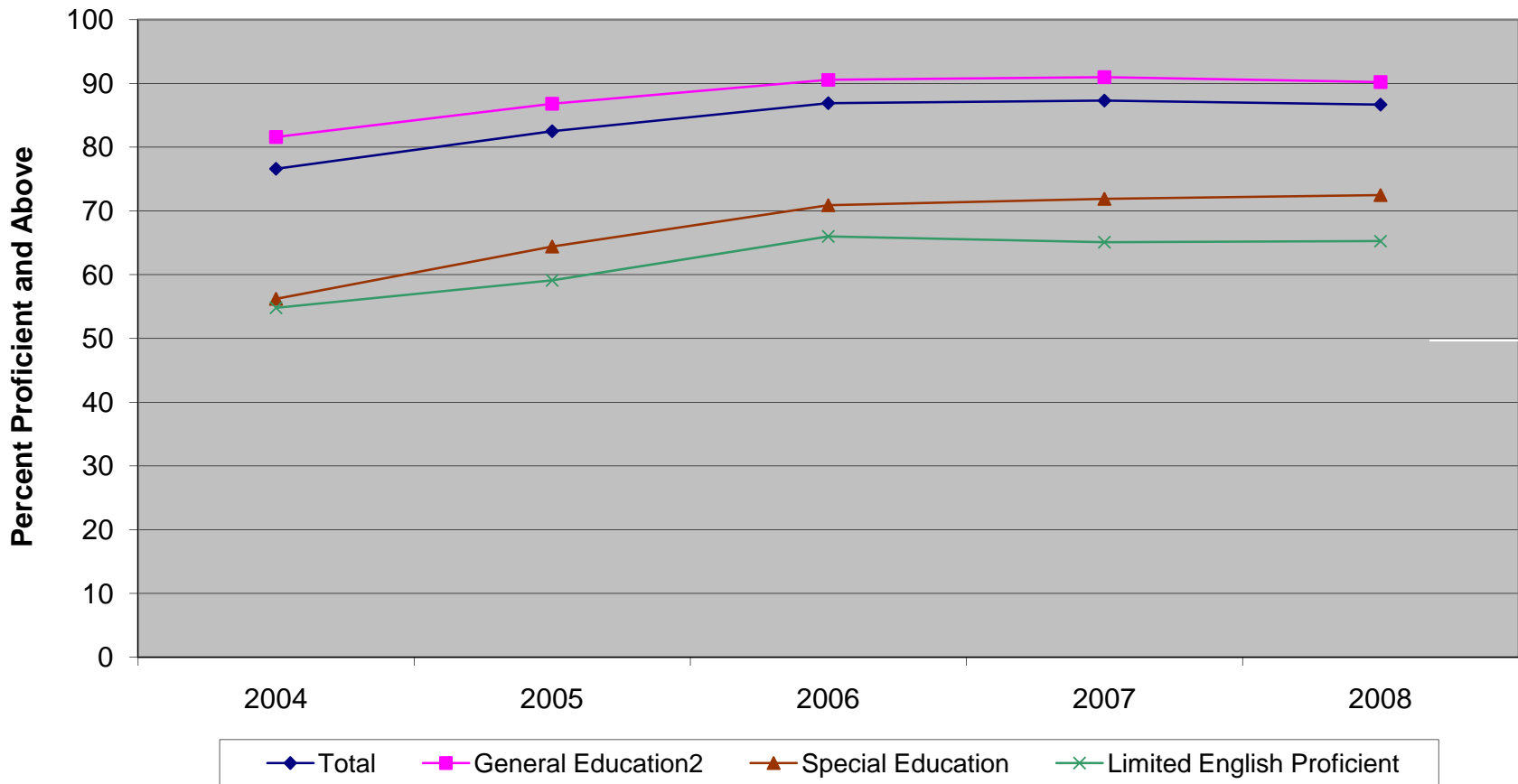
¹New Jersey Assessment of Skills and Knowledge (NJ ASK3), 2004-2008. For Language Arts Literacy, 2004 was the standard setting year for the NJ ASK3.

²For 2006, 2007, and 2008 LEP is reported in three categories: LEP (current + former), LEP current and LEP former.

Grade Three Longitudinal Data
Percent Proficient and Above for Subgroups and Total Students Over Time by Subject

Language Arts Literacy				
	Total	Gen Ed	SE	LEP
2004	79.3	86.4	50.1	48.7
2005	83.3	89.2	56.7	50.1
2006	82.5	88.8	52.8	48.2
2007	83.4	89.1	56.8	51.3
2008	86.0	91.2	61.5	59.8

**New Jersey Assessment of Third Grade Students
Mathematics Percent Proficient and Above by Subgroups (2004-2008)^{1,2}**



¹New Jersey Assessment of Skills and Knowledge (NJ ASK3), 2004-2008. For Mathematics, 2004 was the standard setting year for the NJ ASK3.

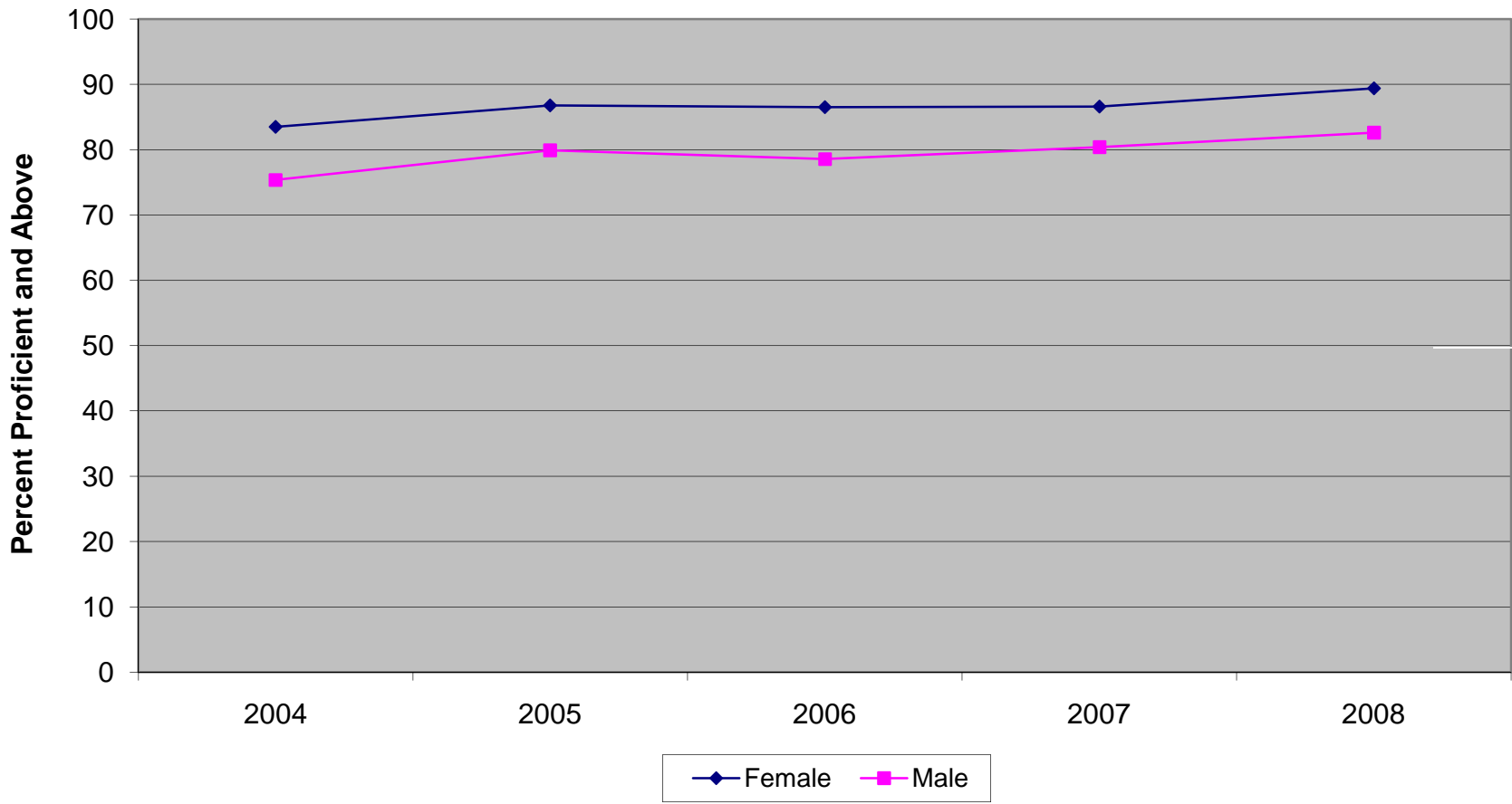
²For 2006, 2007, and 2008 LEP is reported in three categories: LEP (current + former), LEP current and LEP former.

Grade Three Longitudinal Data
Percent Proficient and Above for Subgroups and Total Students Over Time by Subject

Mathematics

	Total	Gen Ed	SE	LEP
2004	76.6	81.6	56.2	54.8
2005	82.5	86.8	64.4	59.1
2006	86.9	90.6	70.9	66.0
2007	87.3	91.0	71.9	65.1
2008	86.7	90.2	72.5	65.3

**New Jersey Assessment of Third Grade Students
Language Arts Literacy Percent Proficient and Above by Gender (2004-2008)¹**



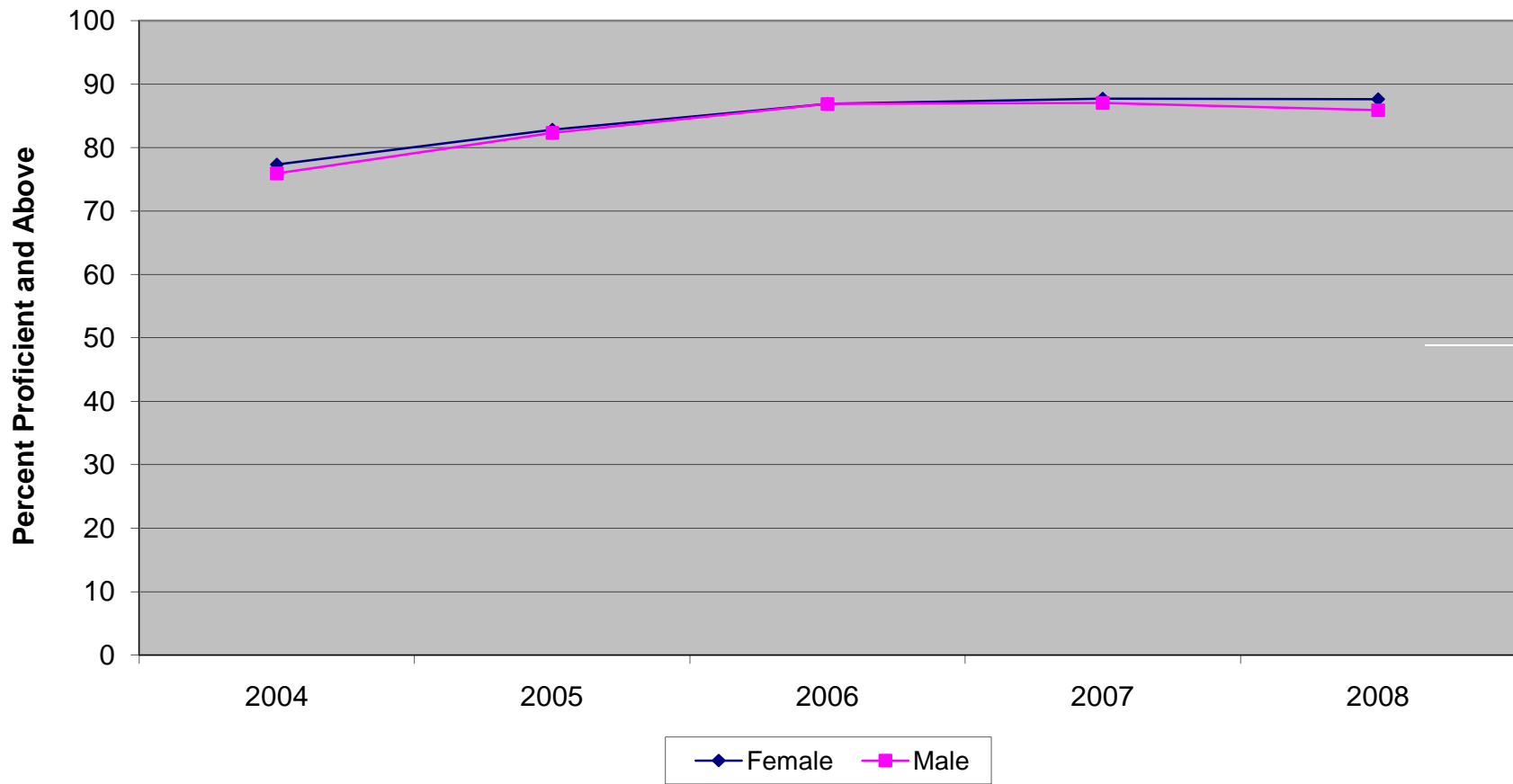
¹New Jersey Assessment of Skills and Knowledge (NJ ASK3), 2004-2008. For Language Arts Literacy, 2004 was the standard setting year for the NJ ASK3.

Grade Three Longitudinal Data
Percent Proficient and Above by Gender Over Time by Subject

Language Arts Literacy

	Female	Male
2004	83.5	75.4
2005	86.8	79.9
2006	86.5	78.6
2007	86.6	80.4
2008	89.4	82.6

**New Jersey Assessment of Third Grade Students
Mathematics Percent Proficient and Above by Gender (2004-2008)¹**



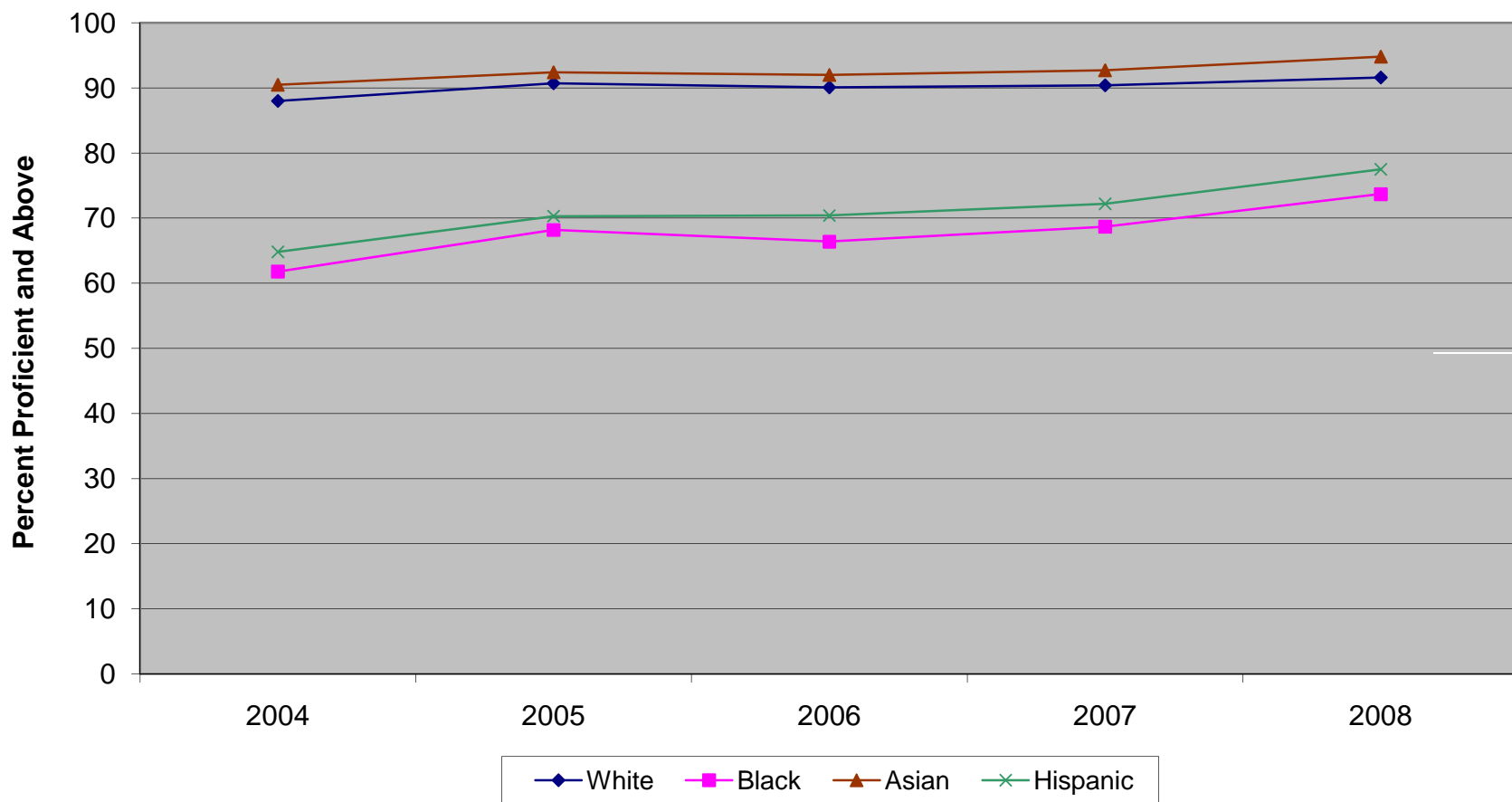
¹New Jersey Assessment of Skills and Knowledge (NJ ASK3), 2004-2008. For Mathematics, 2004 was the standard setting year for the NJ ASK3.

Grade Three Longitudinal Data
Percent Proficient and Above by Gender Over Time by Subject

Mathematics

	Female	Male
2004	77.3	75.9
2005	82.8	82.3
2006	86.9	86.9
2007	87.7	87.0
2008	87.6	85.9

**New Jersey Assessment of Third Grade Students
Language Arts Literacy Percent Proficient and Above by Ethnicity (2004-2008)^{1,2}**



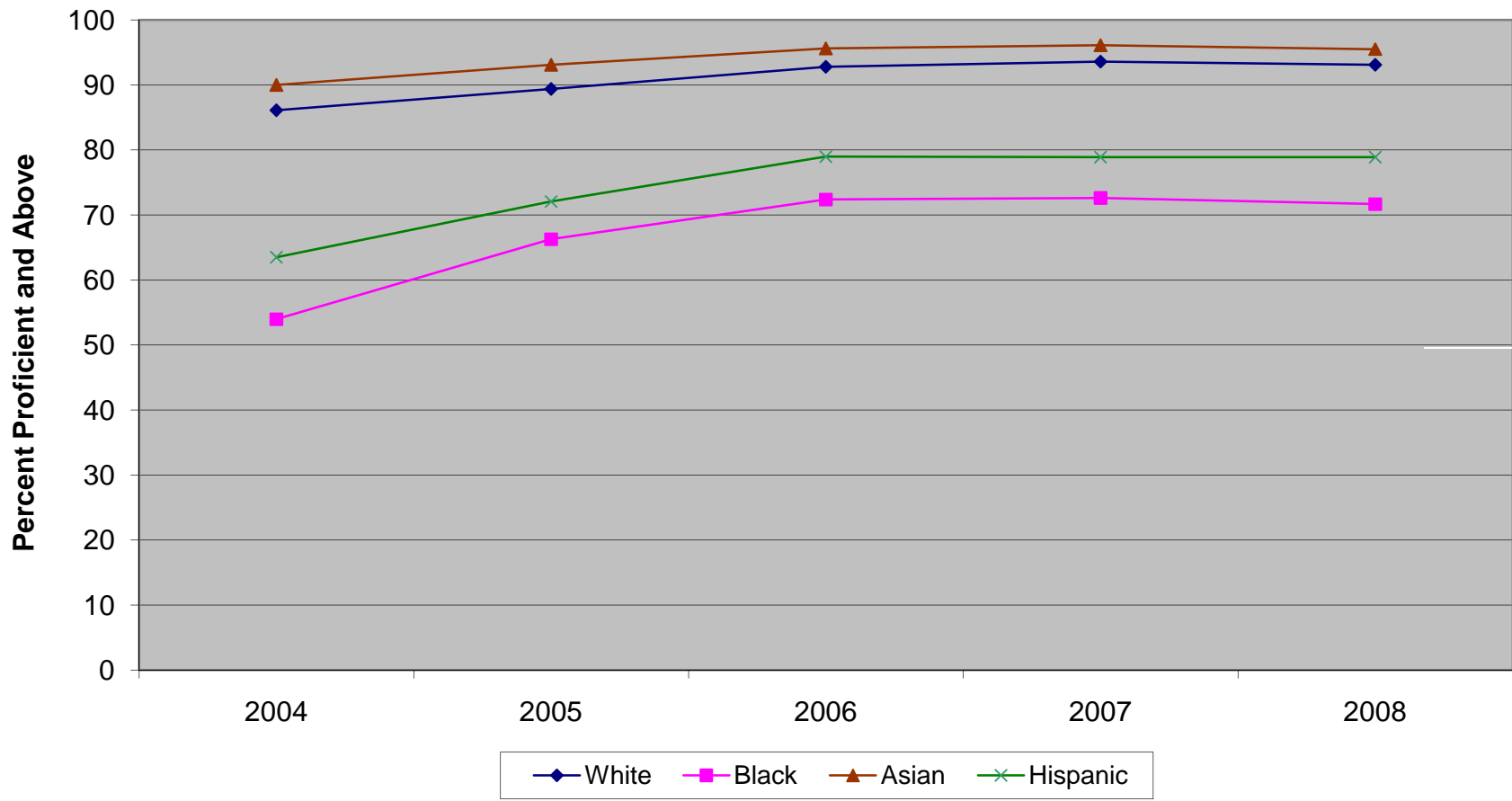
¹New Jersey Assessment of Skills and Knowledge (NJ ASK3), 2004-2008. For Language Arts Literacy, 2004 was the standard setting year for the NJ ASK3.

²In 2005, 2006, 2007, and 2008 ethnic groups do not include students who identified themselves as multiple ethnicities.

Grade Three Longitudinal Data
Percent Proficient and Above by Ethnicity Over Time by Subject

Language Arts Literacy	White	Black	Asian	Hispanic
2004	88.0	61.8	90.5	64.8
2005	90.7	68.2	92.4	70.3
2006	90.1	66.4	92.0	70.4
2007	90.4	68.7	92.7	72.2
2008	91.6	73.7	94.8	77.5

**New Jersey Assessment of Third Grade Students
Mathematics Percent Proficient and Above by Ethnicity (2004-2008)^{1,2}**



¹New Jersey Assessment of Skills and Knowledge (NJ ASK3), 2004-2008. For Mathematics, 2004 was the standard setting year for the NJ ASK3.

²In 2005, 2006, 2007, and 2008 ethnic groups do not include students who identified themselves as multiple ethnicities.

Grade Three Longitudinal Data
Percent Proficient and Above by Ethnicity Over Time by Subject

Mathematics

	White	Black	Asian	Hispanic
2004	86.1	54.0	90.0	63.5
2005	89.4	66.3	93.1	72.1
2006	92.8	72.4	95.6	79.0
2007	93.6	72.6	96.1	78.9
2008	93.1	71.7	95.5	78.9