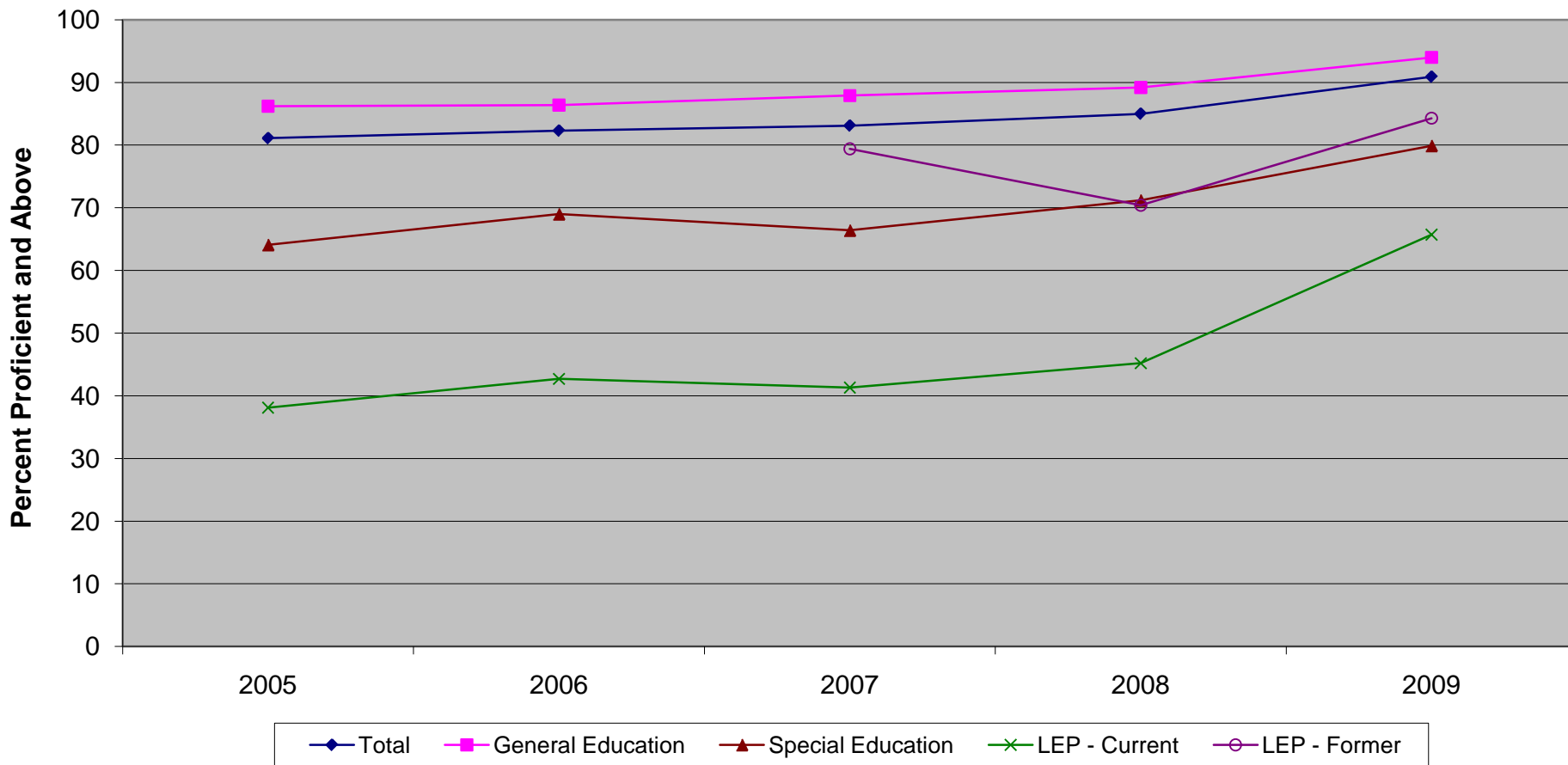


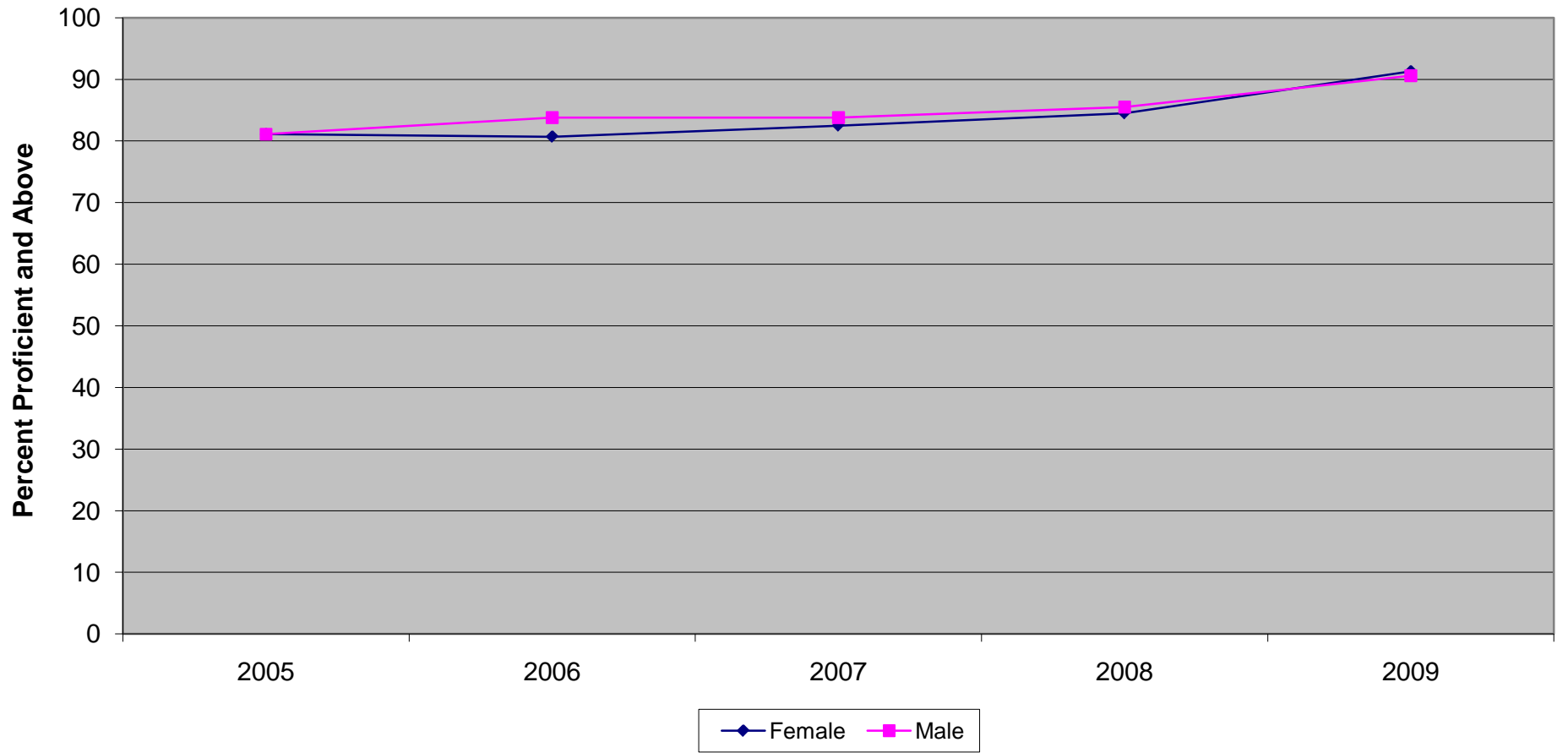
New Jersey Assessment of Skills and Knowledge  
Grade 4 Science Proficient and Above by Instructional Group (2005-2009)



**New Jersey Assessment of Skills and Knowledge  
Grade 4 Science Proficient and Above by Instructional Group (2005-2009)**

	<b>2005</b>	<b>2006</b>	<b>2007</b>	<b>2008</b>	<b>2009</b>
Total	81.1	82.3	83.1	85.0	90.9
General Education	86.2	86.4	87.9	89.2	94.0
Special Education	64.1	69.0	66.4	71.2	79.9
LEP - Current	38.1	42.7	41.3	45.2	65.7
LEP - Former			79.4	70.4	84.3

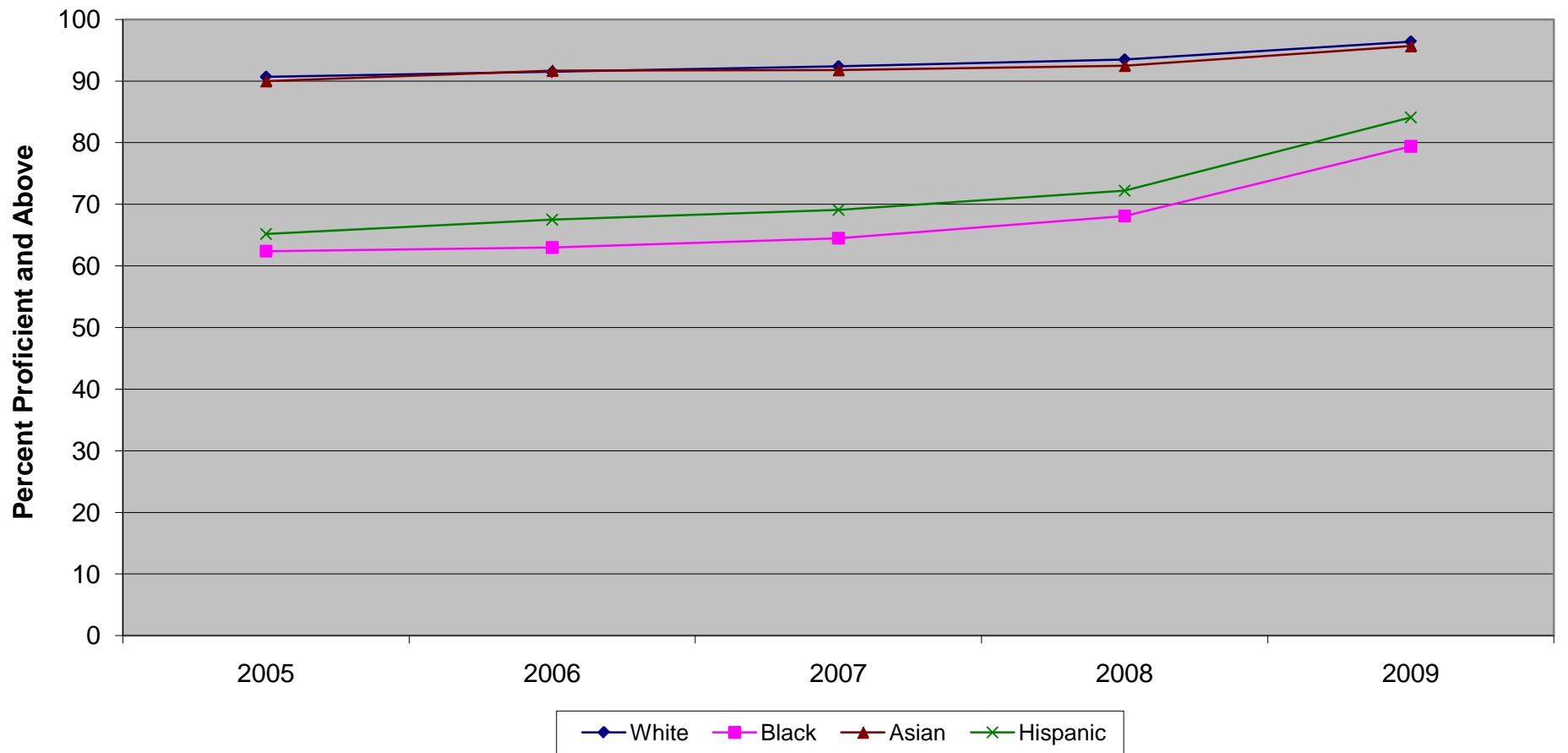
New Jersey Assessment of Skills and Knowledge  
Grade 4 Science Proficient and Above by Gender (2005-2009)



**New Jersey Assessment of Skills and Knowledge  
Grade 4 Science Proficient and Above by Gender (2005-2009)**

	<b>2005</b>	<b>2006</b>	<b>2007</b>	<b>2008</b>	<b>2009</b>
Female	81.1	80.7	82.5	84.5	91.3
Male	81.1	83.8	83.8	85.5	90.6

New Jersey Assessment of Skills and Knowledge  
Grade 4 Science Proficient and Above by Ethnicity (2005-2009)



Ethnic codes Pacific Islander, American Indian/Alaskan Native and Other are not shown due to the small number of students in these categories.

**New Jersey Assessment of Skills and Knowledge  
Grade 4 Science Proficient and Above by Ethnicity (2005-2009)**

	<b>2005</b>	<b>2006</b>	<b>2007</b>	<b>2008</b>	<b>2009</b>
White	90.7	91.5	92.4	93.5	96.4
Black	62.4	63.0	64.5	68.1	79.4
Asian	90.0	91.7	91.8	92.5	95.7
Hispanic	65.2	67.5	69.1	72.2	84.1