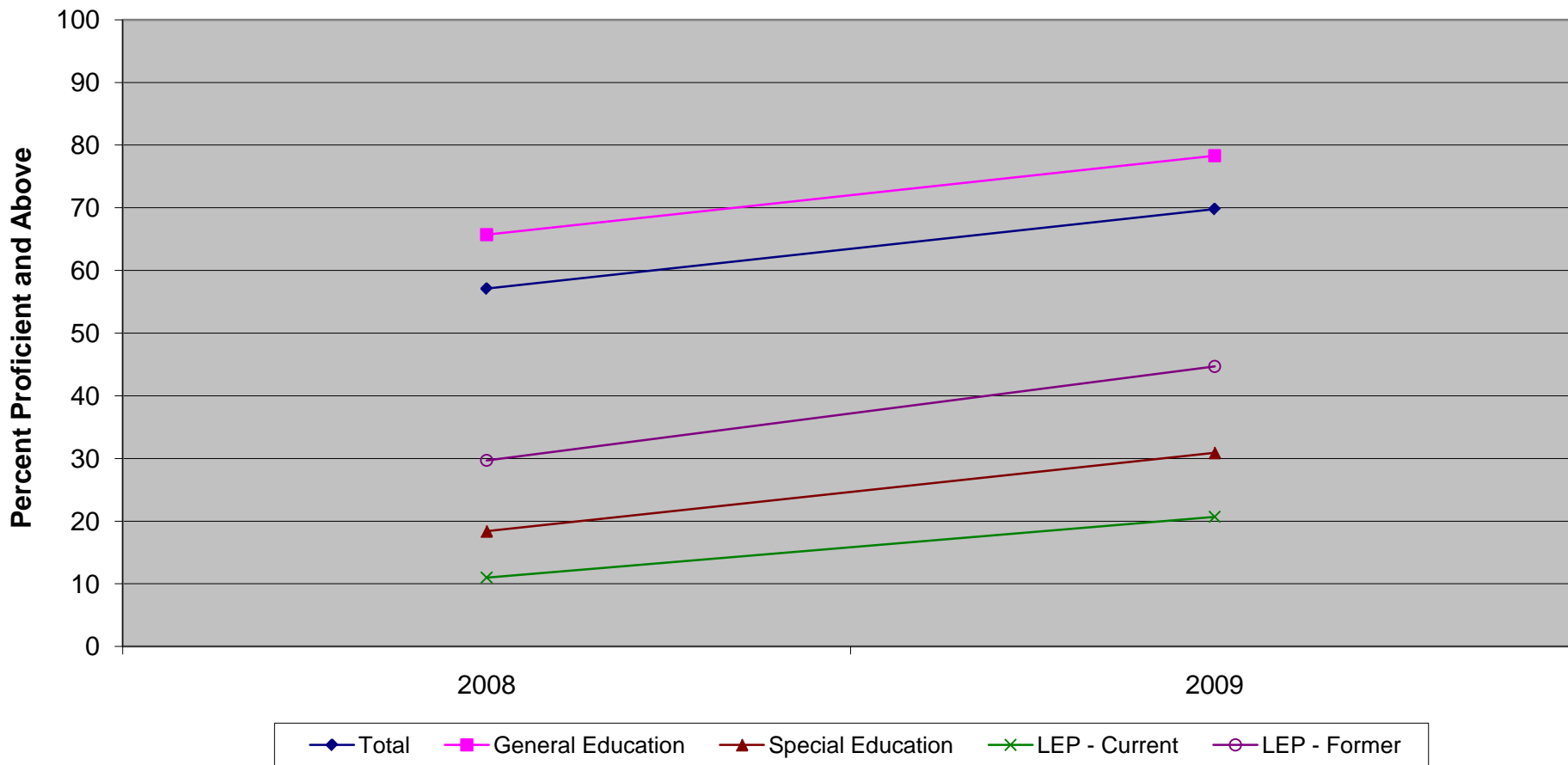


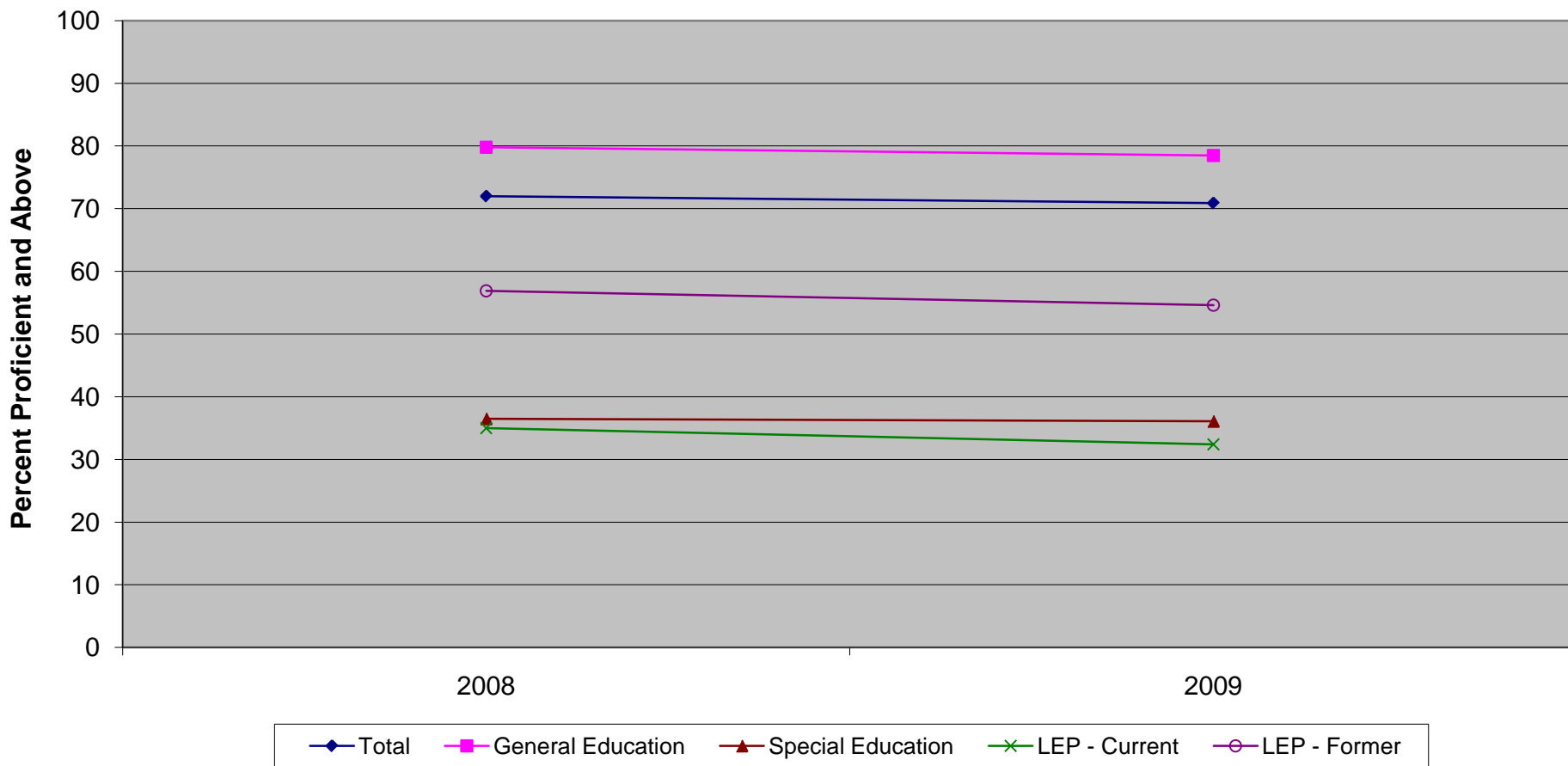
**New Jersey Assessment of Skills and Knowledge  
Grade 6 Language Arts Literacy Percent Proficient and Above by Instructional Group (2008 - 2009)**



**New Jersey Assessment of Skills and Knowledge  
Grade 6 Language Arts Literacy Percent Proficient and Above by Instructional Group (2008 - 2009)**

	<b>2008</b>	<b>2009</b>
Total	57.1	69.8
General Education	65.7	78.3
Special Education	18.4	30.9
LEP - Current	11.0	20.7
LEP - Former	29.7	44.7

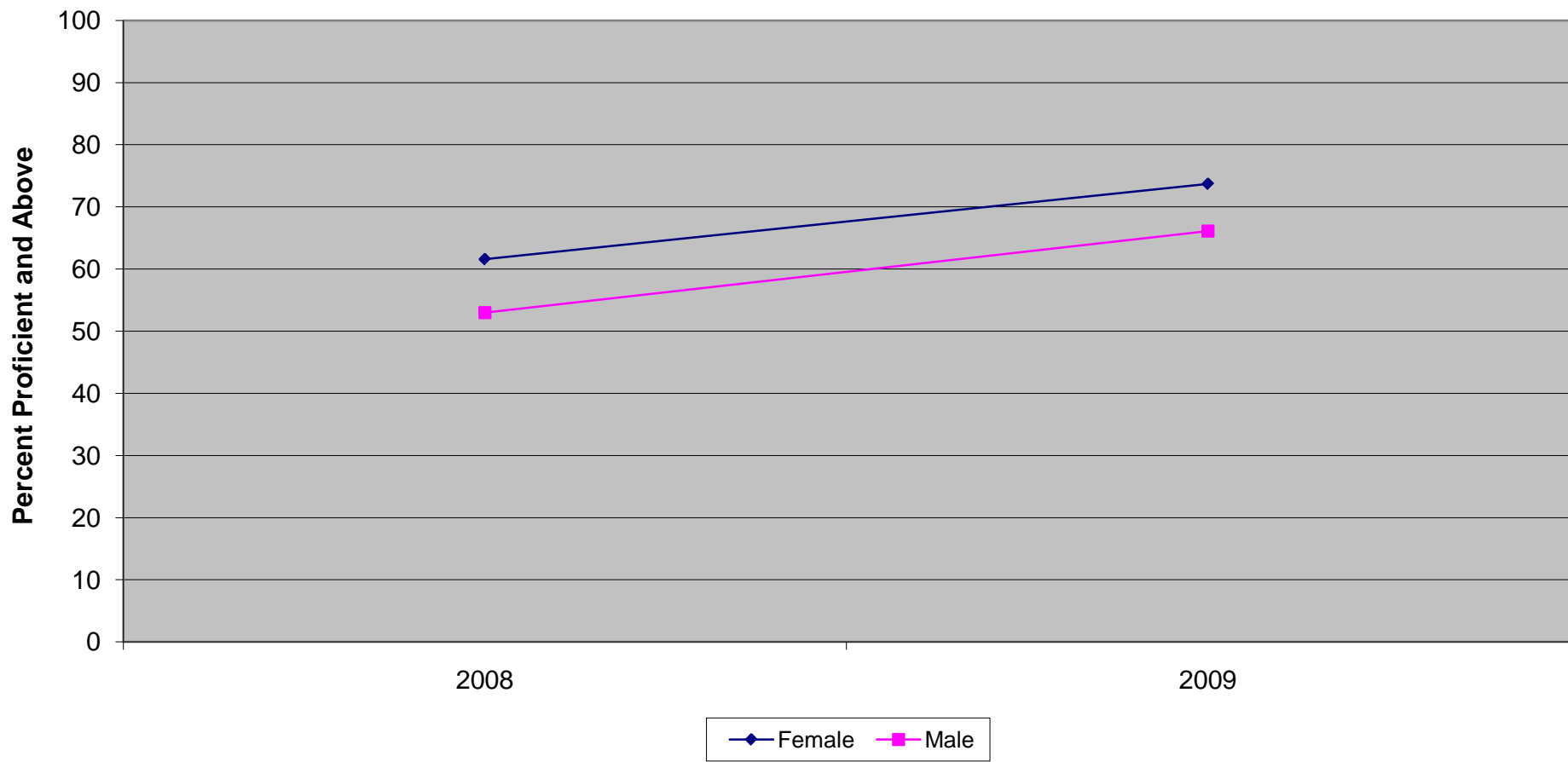
**New Jersey Assessment of Skills and Knowledge  
Grade 6 Mathematics Proficient and Above by Instructional Group (2008 - 2009)**



**New Jersey Assessment of Skills and Knowledge  
Grade 6 Mathematics Proficient and Above by Instructional Group (2008 - 2009)**

	<b>2008</b>	<b>2009</b>
Total	72.0	70.9
General Education	79.8	78.5
Special Education	36.5	36.1
LEP - Current	35.0	32.4
LEP - Former	56.9	54.6

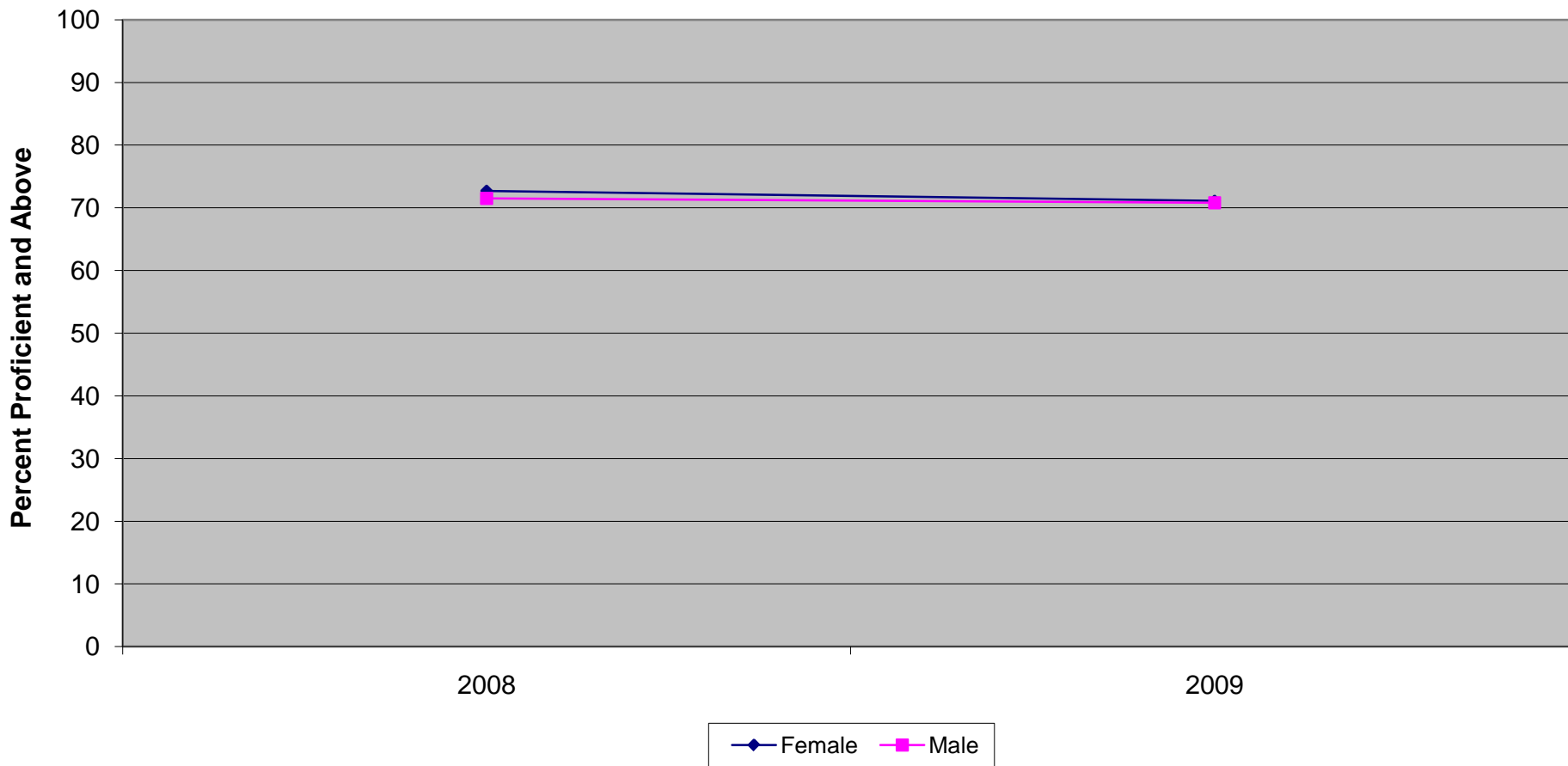
**New Jersey Assessment of Skills and Knowledge  
Grade 6 Language Arts Literacy Proficient and Above by Gender (2008 - 2009)**



**New Jersey Assessment of Skills and Knowledge  
Grade 6 Language Arts Literacy Proficient and Above by Gender (2008 - 2009)**

	<b>2008</b>	<b>2009</b>
Female	61.6	73.7
Male	53.0	66.1

**New Jersey Assessment of Skills and Knowledge  
Grade 6 Mathematics Proficient and Above by Gender (2008 - 2009)**

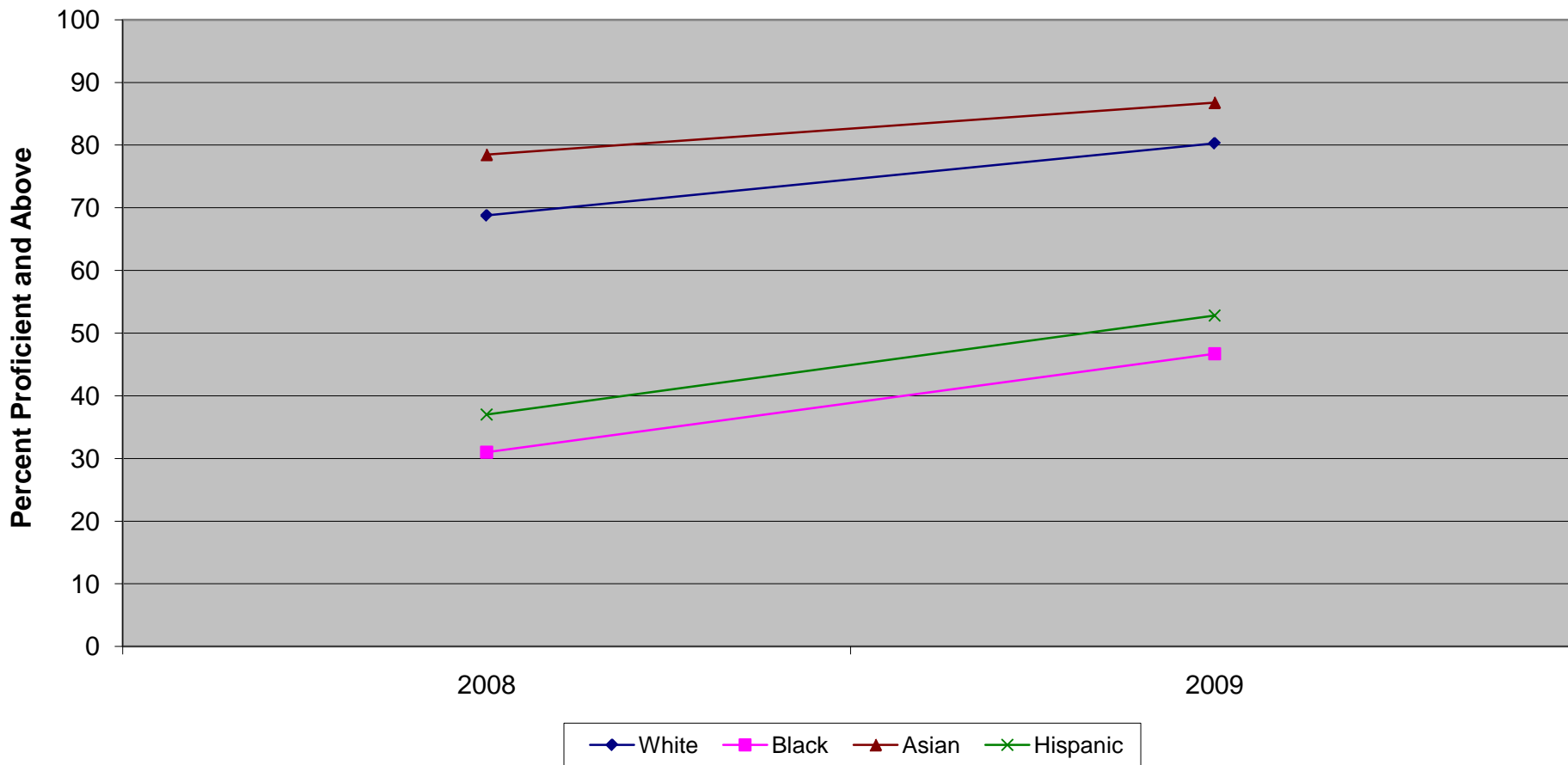


**New Jersey Assessment of Skills and Knowledge  
Grade 6 Mathematics Proficient and Above by Gender (2008 - 2009)**

	<b>2008</b>	<b>2009</b>
Female	72.7	71.1
Male	71.5	70.8



New Jersey Assessment of Skills and Knowledge  
Grade 6 Language Arts Literacy Proficient and Above by Ethnicity (2008 - 2009)

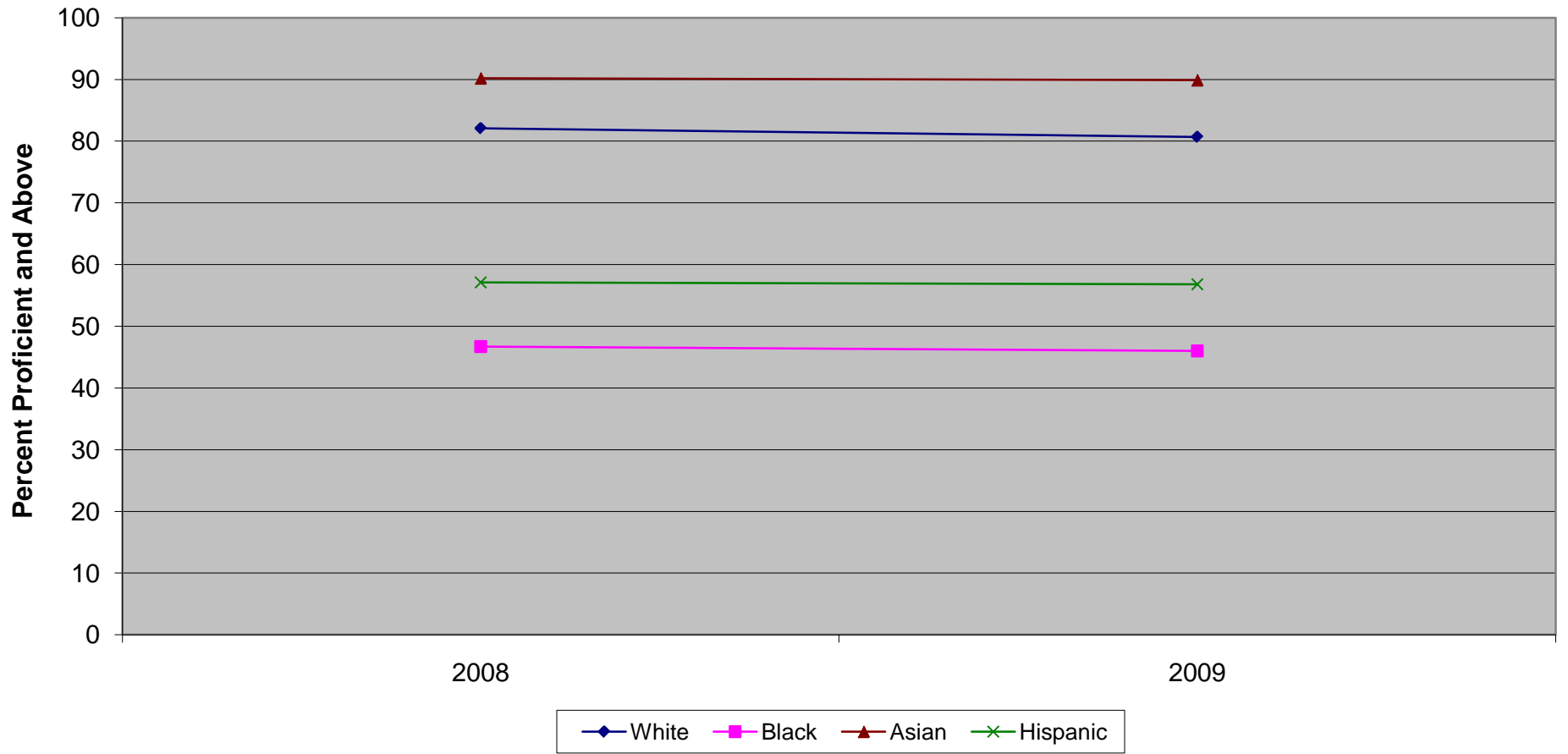


Ethnic codes Pacific Islander, American Indian/Alaskan Native and Other are not shown due to the small number of students in these categories.

**New Jersey Assessment of Skills and Knowledge  
Grade 6 Language Arts Literacy Proficient and Above by Ethnicity (2008 - 2009)**

	<b>2008</b>	<b>2009</b>
White	68.8	80.3
Black	31.0	46.7
Asian	78.5	86.8
Hispanic	37.0	52.8

New Jersey Assessment of Skills and Knowledge  
Grade 6 Mathematics Proficient and Above by Ethnicity (2008 - 2009)



Ethnic codes Pacific Islander, American Indian/Alaskan Native and Other are not shown due to the small number of students in these categories.

**New Jersey Assessment of Skills and Knowledge  
Grade 6 Mathematics Proficient and Above by Ethnicity (2008 - 2009)**

	<b>2008</b>	<b>2009</b>
White	82.1	80.7
Black	46.7	46.0
Asian	90.2	89.9
Hispanic	57.1	56.8