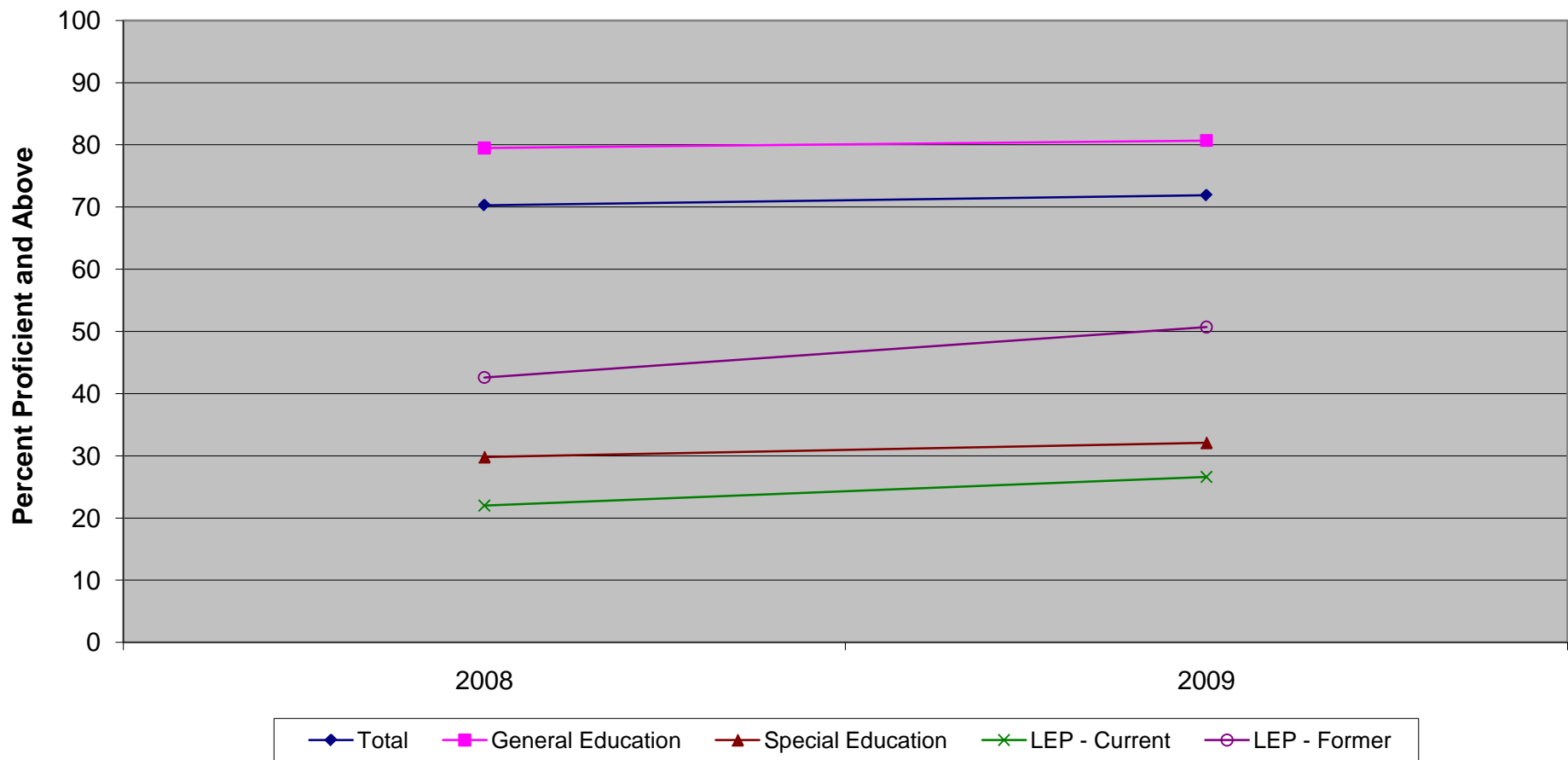


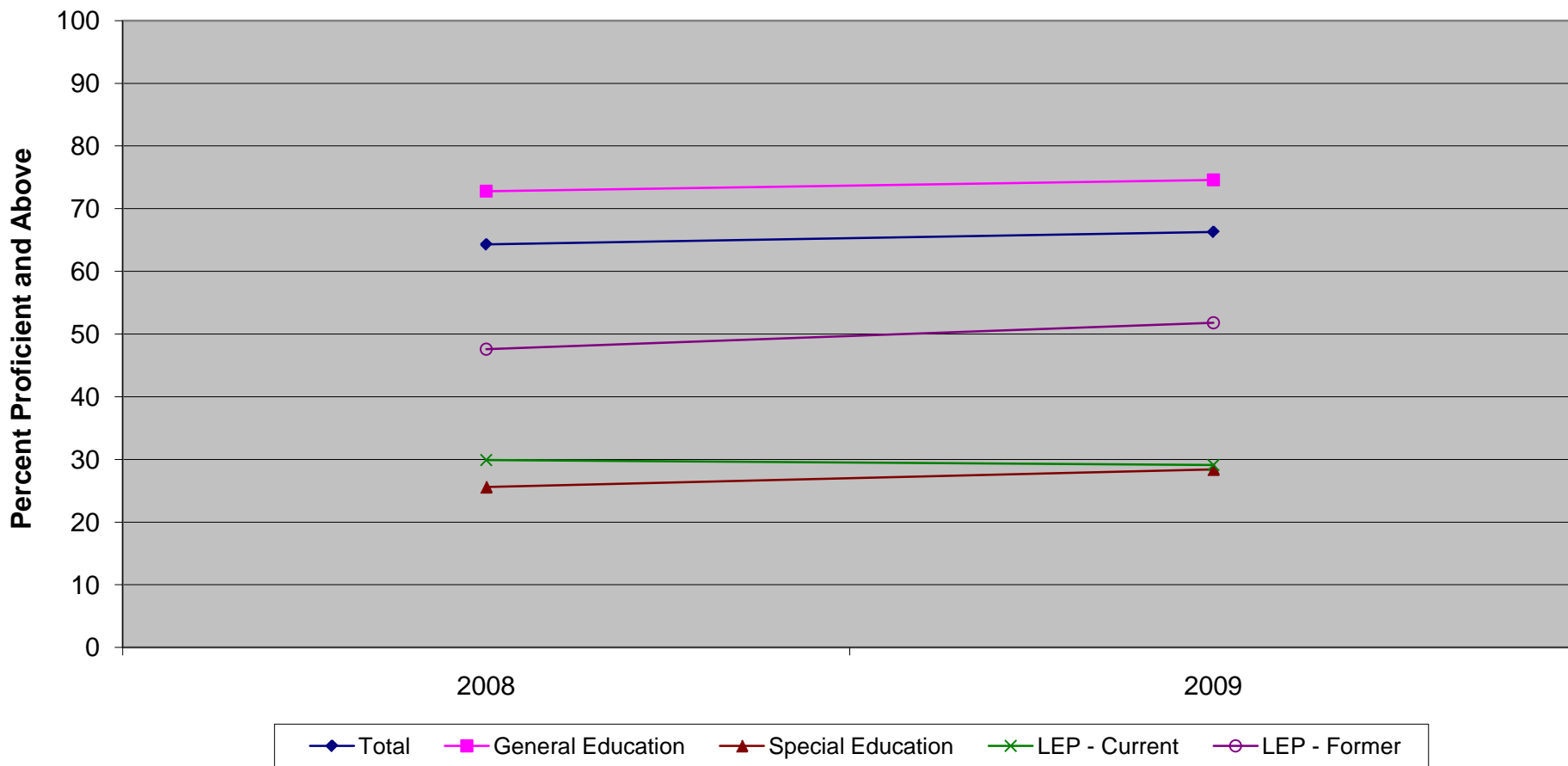
**New Jersey Assessment of Skills and Knowledge  
Grade 7 Language Arts Literacy Percent Proficient and Above by Instructional Group (2008 - 2009)**



**New Jersey Assessment of Skills and Knowledge  
Grade 7 Language Arts Literacy Percent Proficient and Above by Instructional Group (2008 - 2009)**

	<b>2008</b>	<b>2009</b>
Total	70.3	71.9
General Education	79.5	80.7
Special Education	29.8	32.1
LEP - Current	22.0	26.6
LEP - Former	42.6	50.7

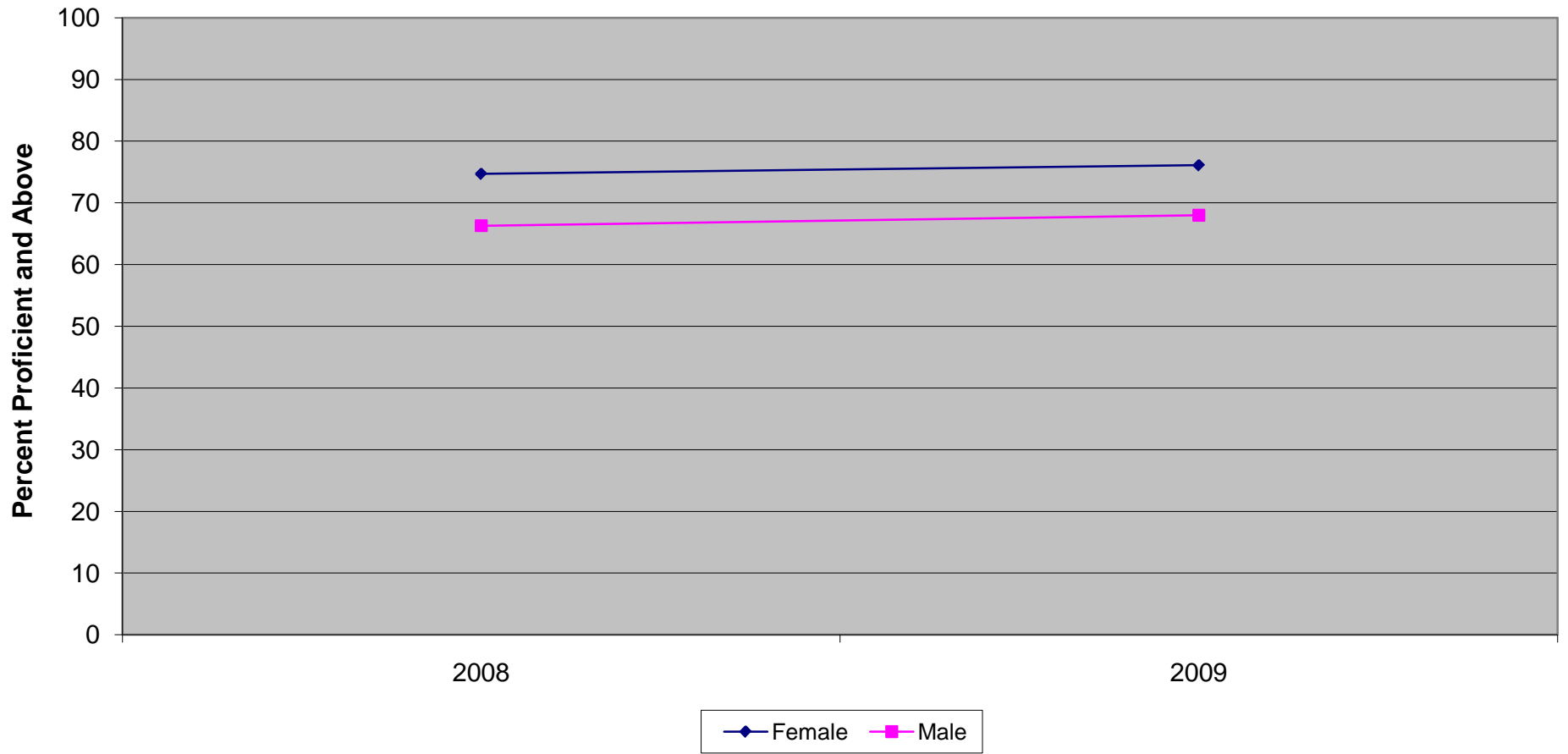
New Jersey Assessment of Skills and Knowledge  
Grade 7 Mathematics Proficient and Above by Instructional Group (2008 - 2009)



New Jersey Assessment of Skills and Knowledge  
Grade 7 Mathematics Proficient and Above by Instructional Group (2008 - 2009)

	<b>2008</b>	<b>2009</b>
Total	64.3	66.3
General Education	72.8	74.6
Special Education	25.6	28.4
LEP - Current	29.9	29.1
LEP - Former	47.6	51.8

**New Jersey Assessment of Skills and Knowledge  
Grade 7 Language Arts Literacy Proficient and Above by Gender (2008 - 2009)**

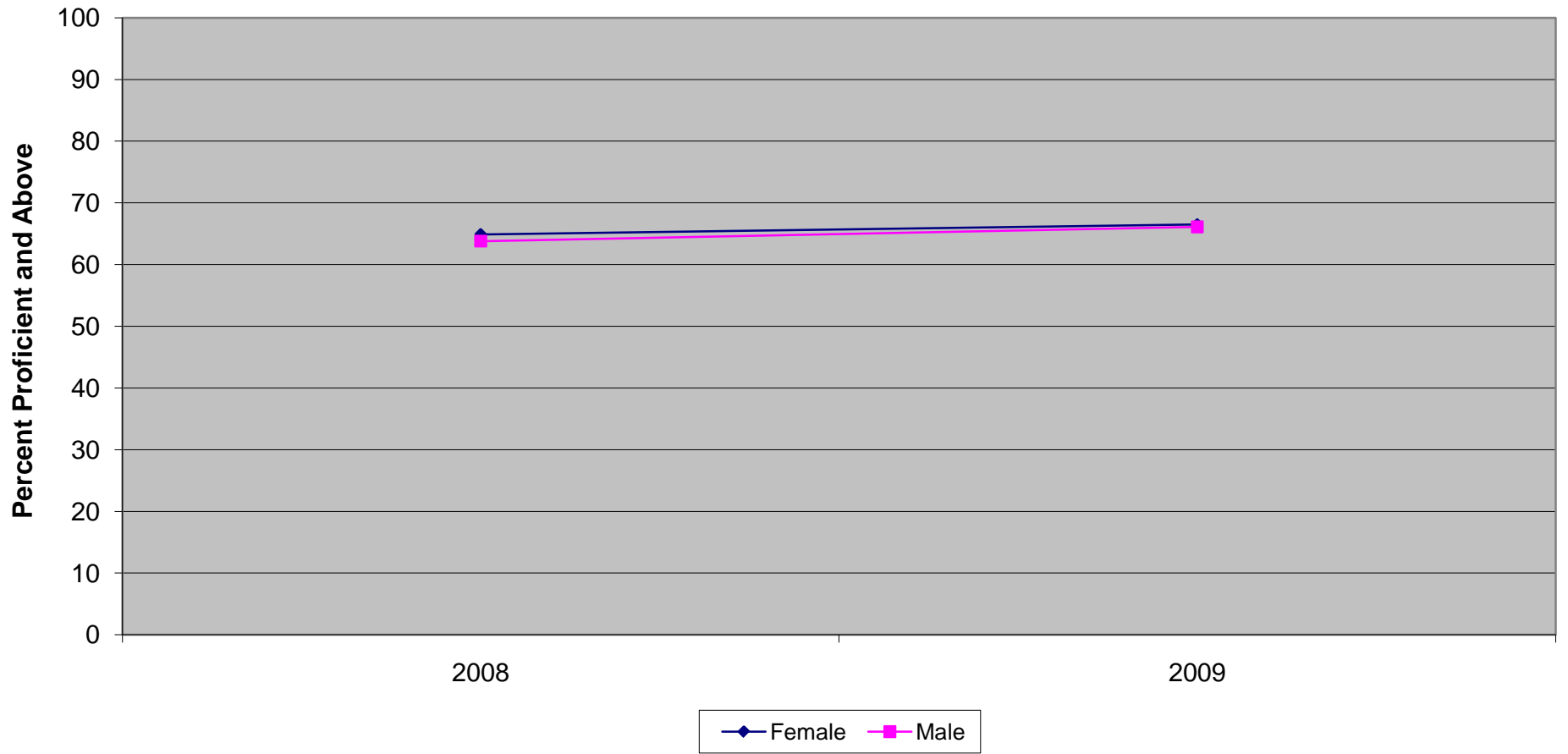


**New Jersey Assessment of Skills and Knowledge**

**Grade 7 Language Arts Literacy Proficient and Above by Gender (2008 - 2009)**

	<b>2008</b>	<b>2009</b>
Female	74.7	76.1
Male	66.3	68.0

**New Jersey Assessment of Skills and Knowledge  
Grade 7 Mathematics Proficient and Above by Gender (2008 - 2009)**



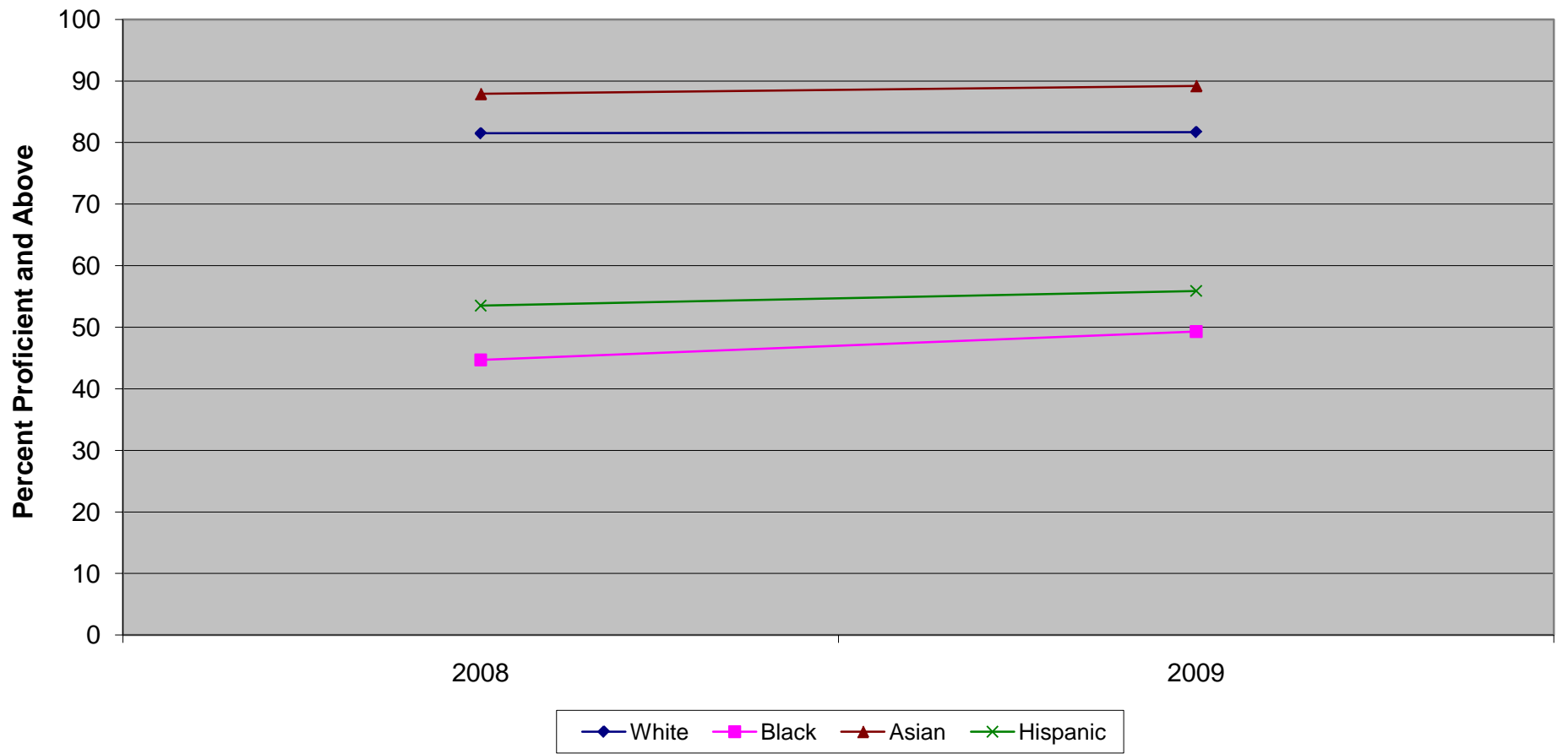
**New Jersey Assessment of Skills and Knowledge**

**Grade 7 Mathematics Proficient and Above by Gender (2008 - 2009)**

	<b>2008</b>	<b>2009</b>
Female	64.9	66.5
Male	63.8	66.1



New Jersey Assessment of Skills and Knowledge  
Grade 7 Language Arts Literacy Proficient and Above by Ethnicity (2008 - 2009)

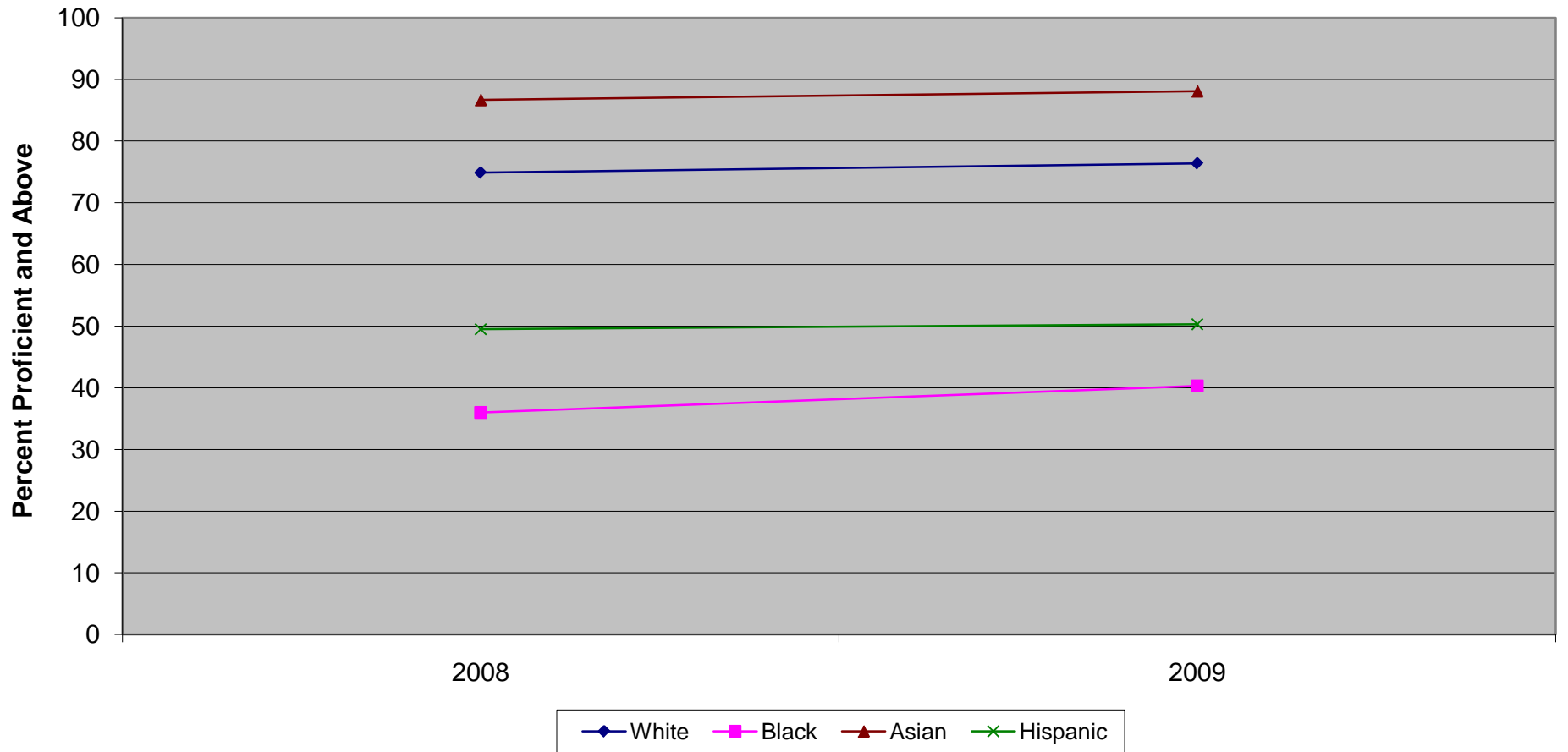


Ethnic codes Pacific Islander, American Indian/Alaskan Native and Other are not shown due to the small number of students in these categories.

**New Jersey Assessment of Skills and Knowledge  
Grade 7 Language Arts Literacy Proficient and Above by Ethnicity (2008 - 2009)**

	<b>2008</b>	<b>2009</b>
White	81.5	81.7
Black	44.7	49.3
Asian	87.9	89.2
Hispanic	53.5	55.9

New Jersey Assessment of Skills and Knowledge  
Grade 7 Mathematics Proficient and Above by Ethnicity (2008 - 2009)



Ethnic codes Pacific Islander, American Indian/Alaskan Native and Other are not shown due to the small number of students in these categories.

**New Jersey Assessment of Skills and Knowledge  
Grade 7 Mathematics Proficient and Above by Ethnicity (2008 - 2009)**

	<b>2008</b>	<b>2009</b>
White	74.9	76.4
Black	36.0	40.3
Asian	86.7	88.1
Hispanic	49.5	50.3