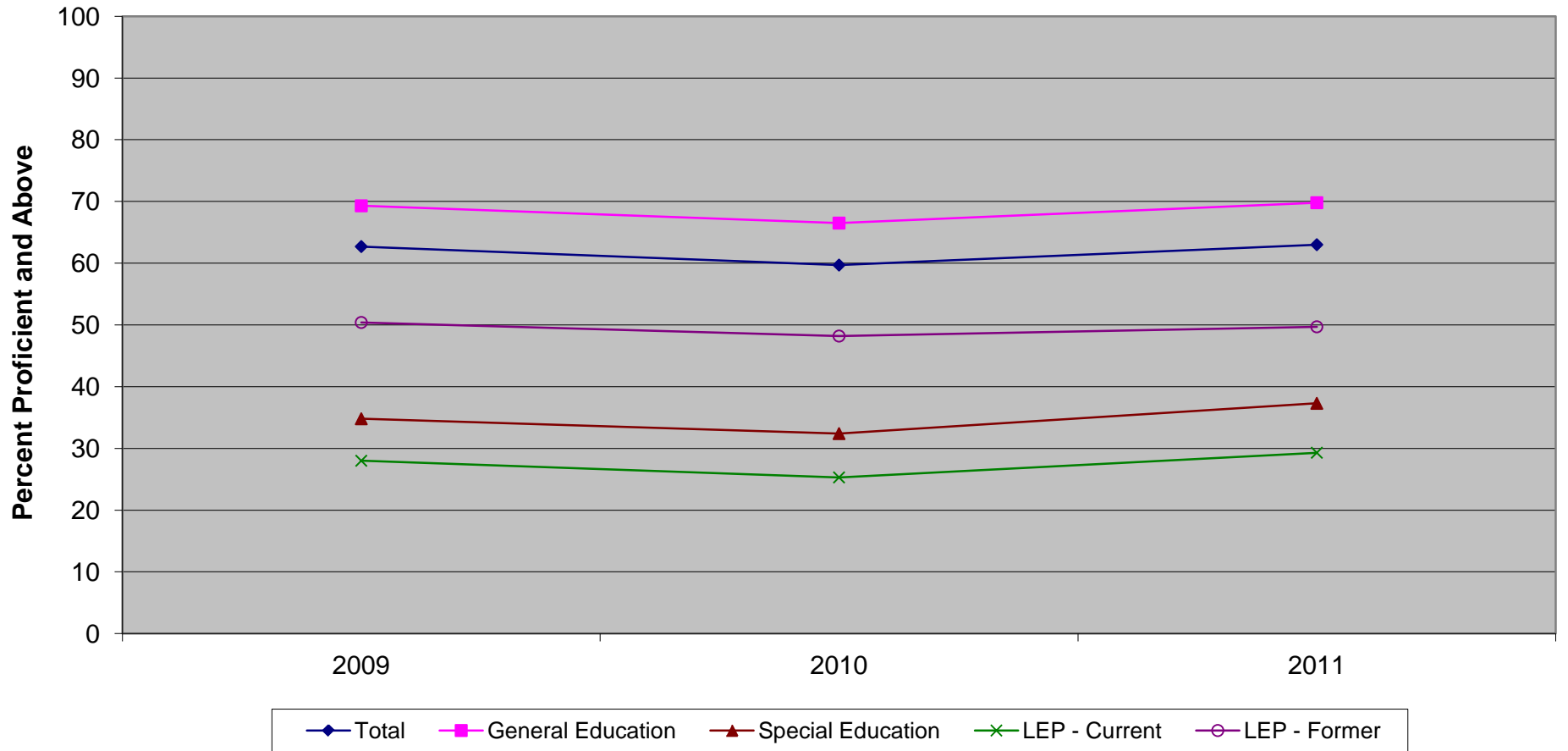


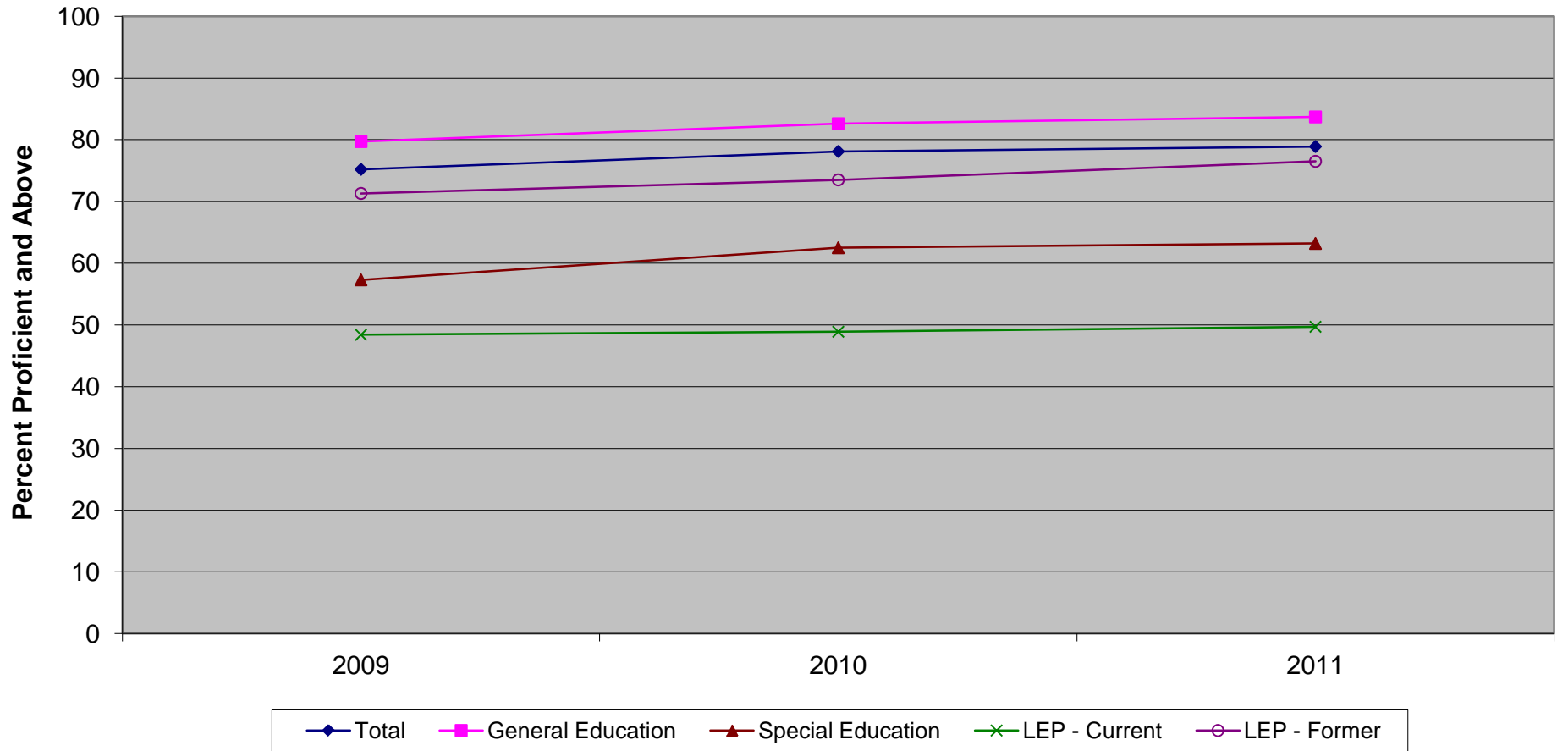
New Jersey Assessment of Skills and Knowledge  
Grade 3 Language Arts Literacy Percent Proficient and Above by Instructional Group (2009-2011)



**New Jersey Assessment of Skills and Knowledge  
Grade 3 Language Arts Literacy Percent Proficient and Above by Instructional Group (2009-2011)**

	<b>2009</b>	<b>2010</b>	<b>2011</b>
Total	62.7	59.7	63.0
General Education	69.3	66.5	69.8
Special Education	34.8	32.4	37.3
LEP - Current	28.0	25.3	29.3
LEP - Former	50.4	48.2	49.7

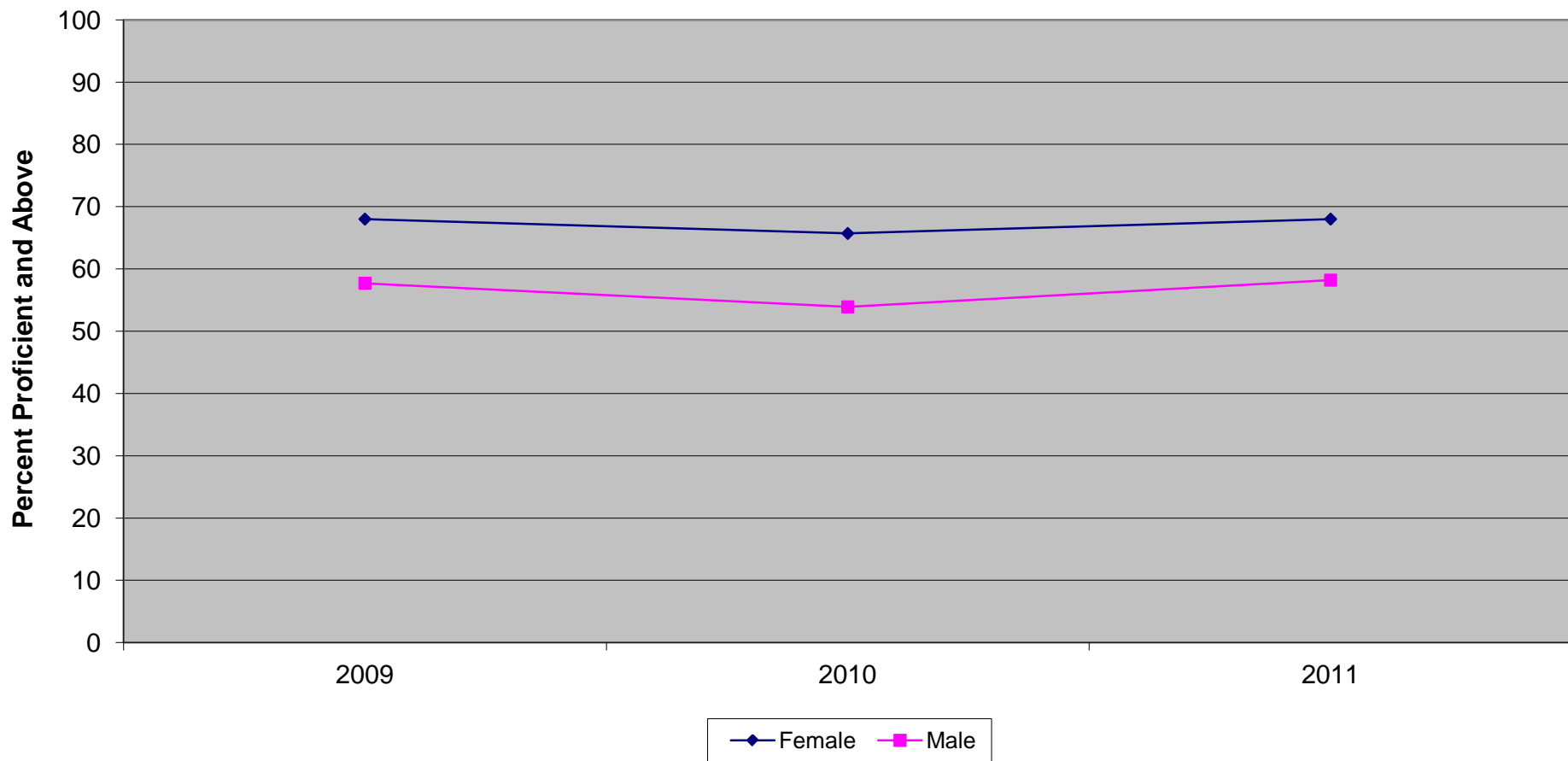
New Jersey Assessment of Skills and Knowledge  
Grade 3 Mathematics Proficient and Above by Instructional Group (2009-2011)



**New Jersey Assessment of Skills and Knowledge  
Grade 3 Mathematics Proficient and Above by Instructional Group (2009-2011)**

	<b>2009</b>	<b>2010</b>	<b>2011</b>
Total	75.2	78.1	78.9
General Education	79.7	82.6	83.7
Special Education	57.3	62.5	63.2
LEP - Current	48.4	48.9	49.7
LEP - Former	71.3	73.5	76.5

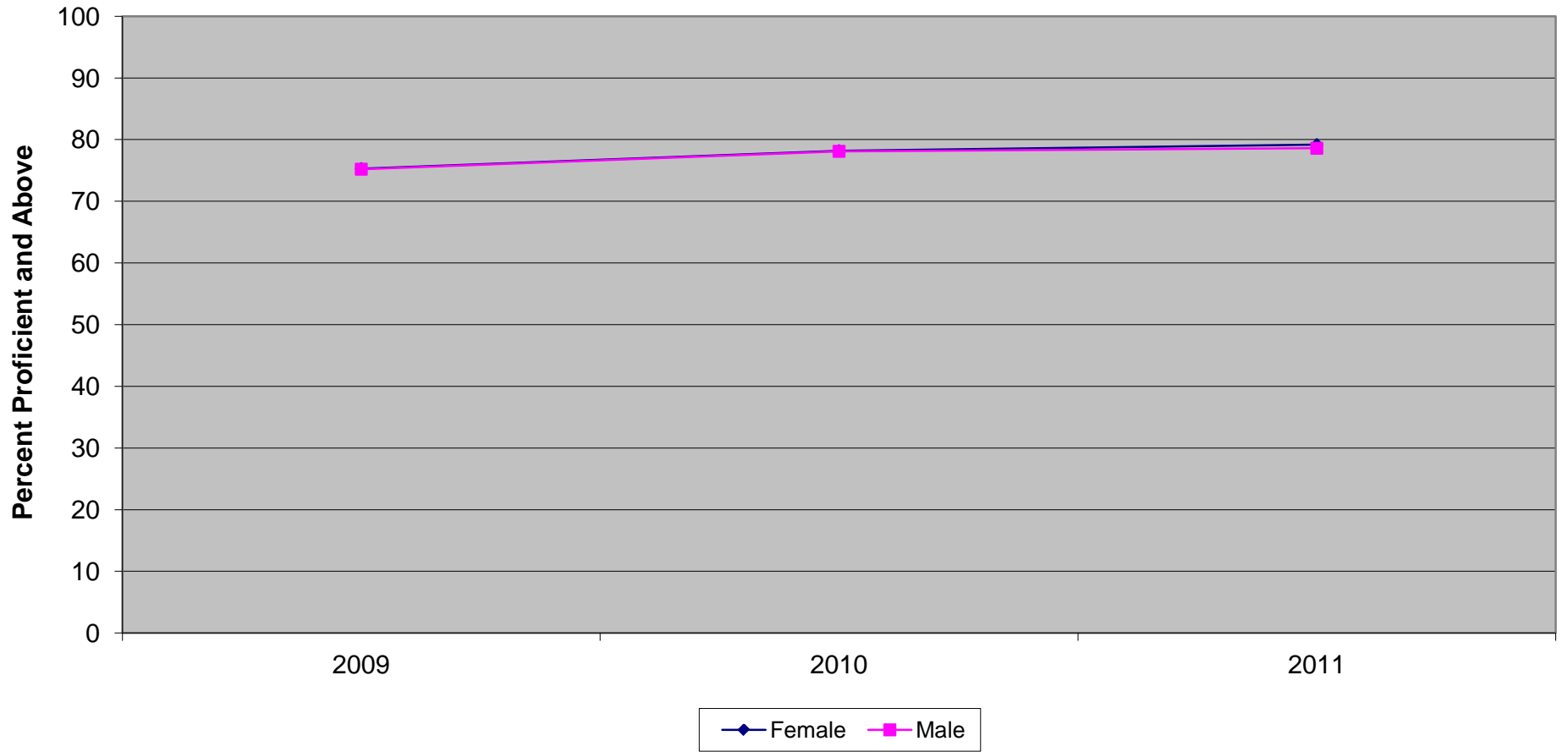
New Jersey Assessment of Skills and Knowledge  
Grade 3 Language Arts Literacy Proficient and Above by Gender (2009-2011)



**New Jersey Assessment of Skills and Knowledge  
Grade 3 Language Arts Literacy Proficient and Above by Gender (2009-2011)**

	<b>2009</b>	<b>2010</b>	<b>2011</b>
Female	68.0	65.7	68.0
Male	57.7	53.9	58.2

New Jersey Assessment of Skills and Knowledge  
Grade 3 Mathematics Proficient and Above by Gender (2009-2011)

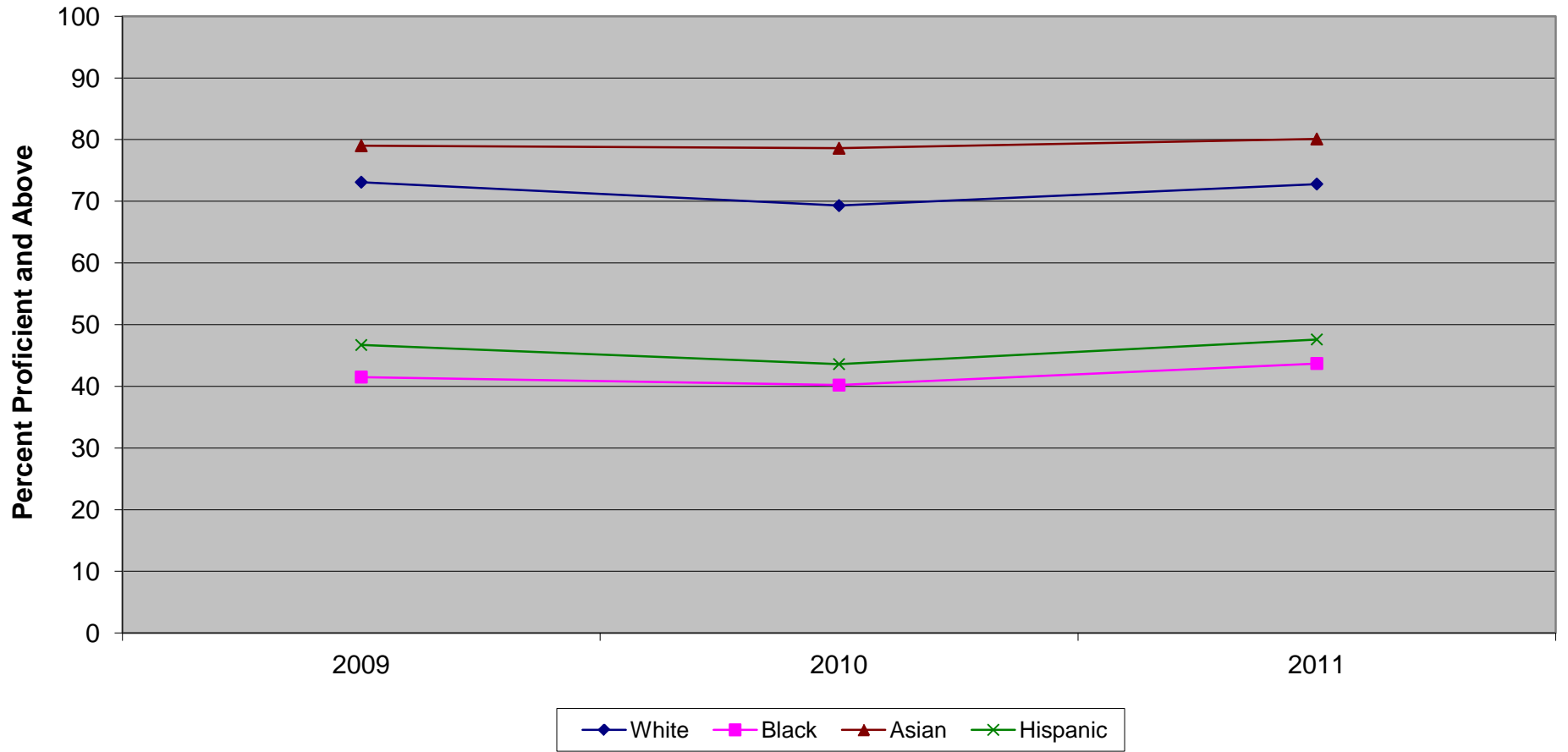


**New Jersey Assessment of Skills and Knowledge  
Grade 3 Mathematics Proficient and Above by Gender (2009-2011)**

	<b>2009</b>	<b>2010</b>	<b>2011</b>
Female	75.3	78.2	79.2
Male	75.2	78.1	78.6



New Jersey Assessment of Skills and Knowledge  
Grade 3 Language Arts Literacy Proficient and Above by Ethnicity (2009-2011)

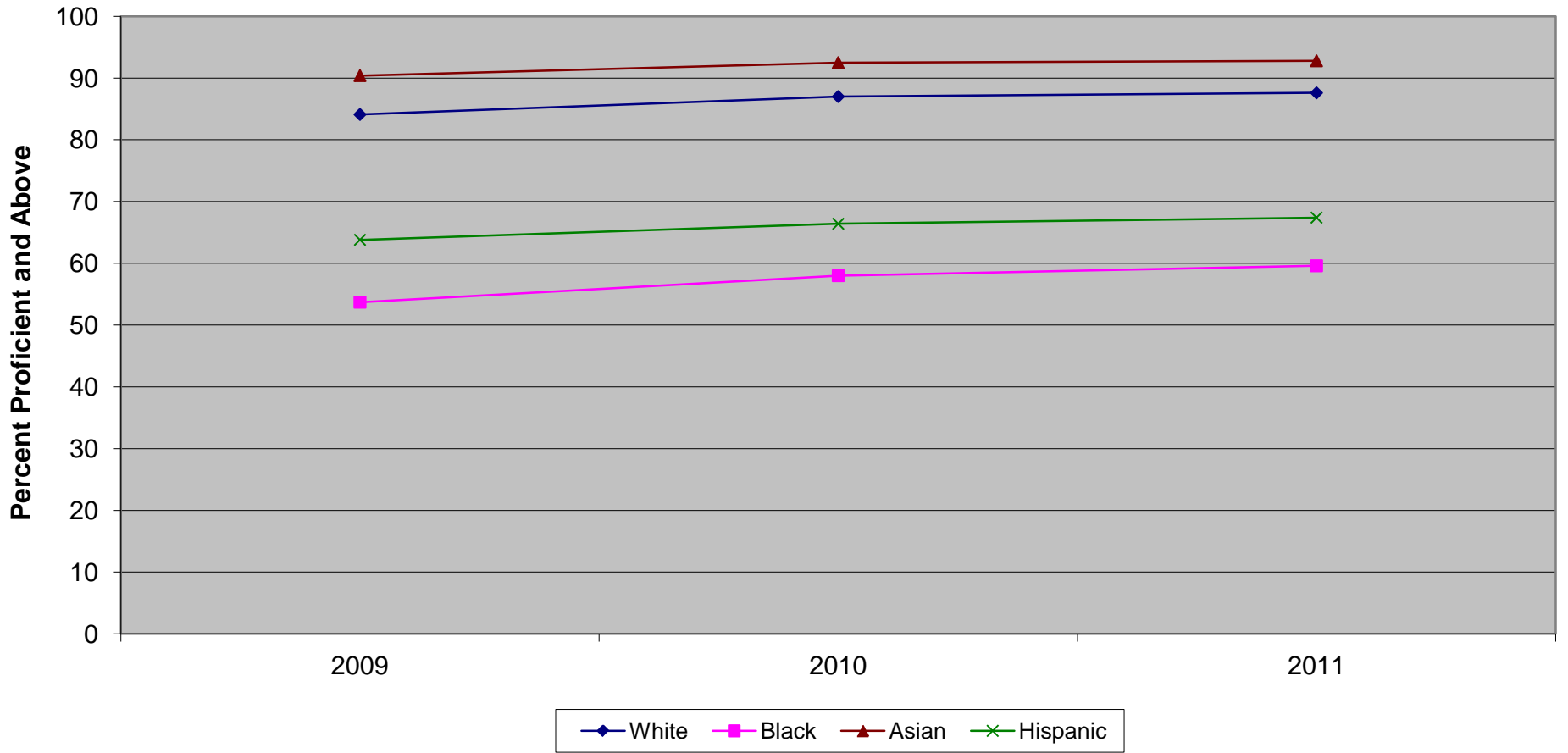


Ethnic codes Pacific Islander, American Indian/Alaskan Native and Other are not shown due to the small number of students in these categories.

**New Jersey Assessment of Skills and Knowledge  
Grade 3 Language Arts Literacy Proficient and Above by Ethnicity (2009-2011)**

	<b>2009</b>	<b>2010</b>	<b>2011</b>
White	73.1	69.3	72.8
Black	41.5	40.2	43.7
Asian	79.0	78.6	80.1
Hispanic	46.7	43.6	47.6

New Jersey Assessment of Skills and Knowledge  
Grade 3 Mathematics Proficient and Above by Ethnicity (2009-2011)

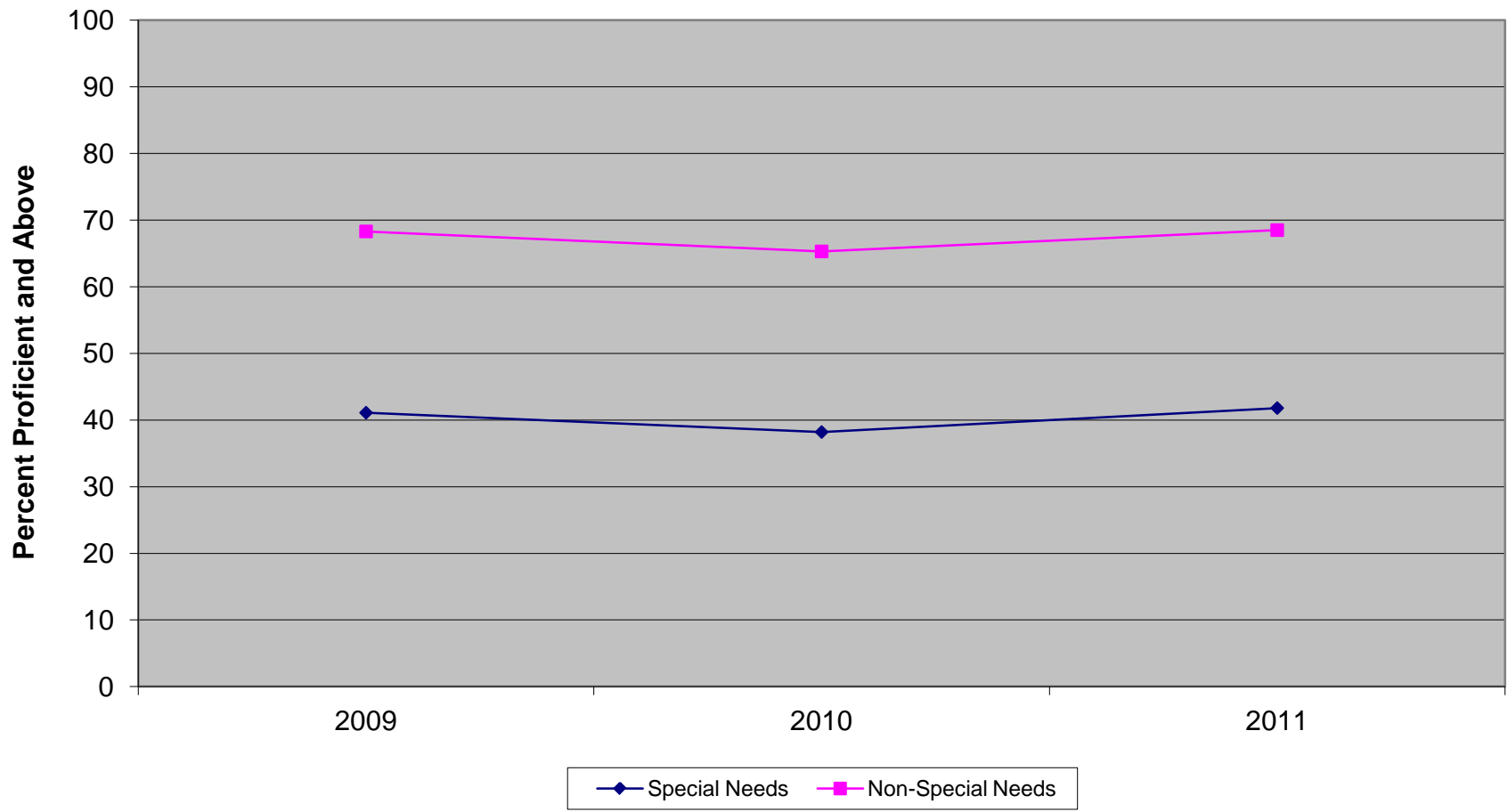


Ethnic codes Pacific Islander, American Indian/Alaskan Native and Other are not shown due to the small number of students in these categories.

**New Jersey Assessment of Skills and Knowledge  
Grade 3 Mathematics Proficient and Above by Ethnicity (2009-2011)**

	<b>2009</b>	<b>2010</b>	<b>2011</b>
White	84.1	87.0	87.6
Black	53.7	58.0	59.6
Asian	90.4	92.5	92.8
Hispanic	63.8	66.4	67.4

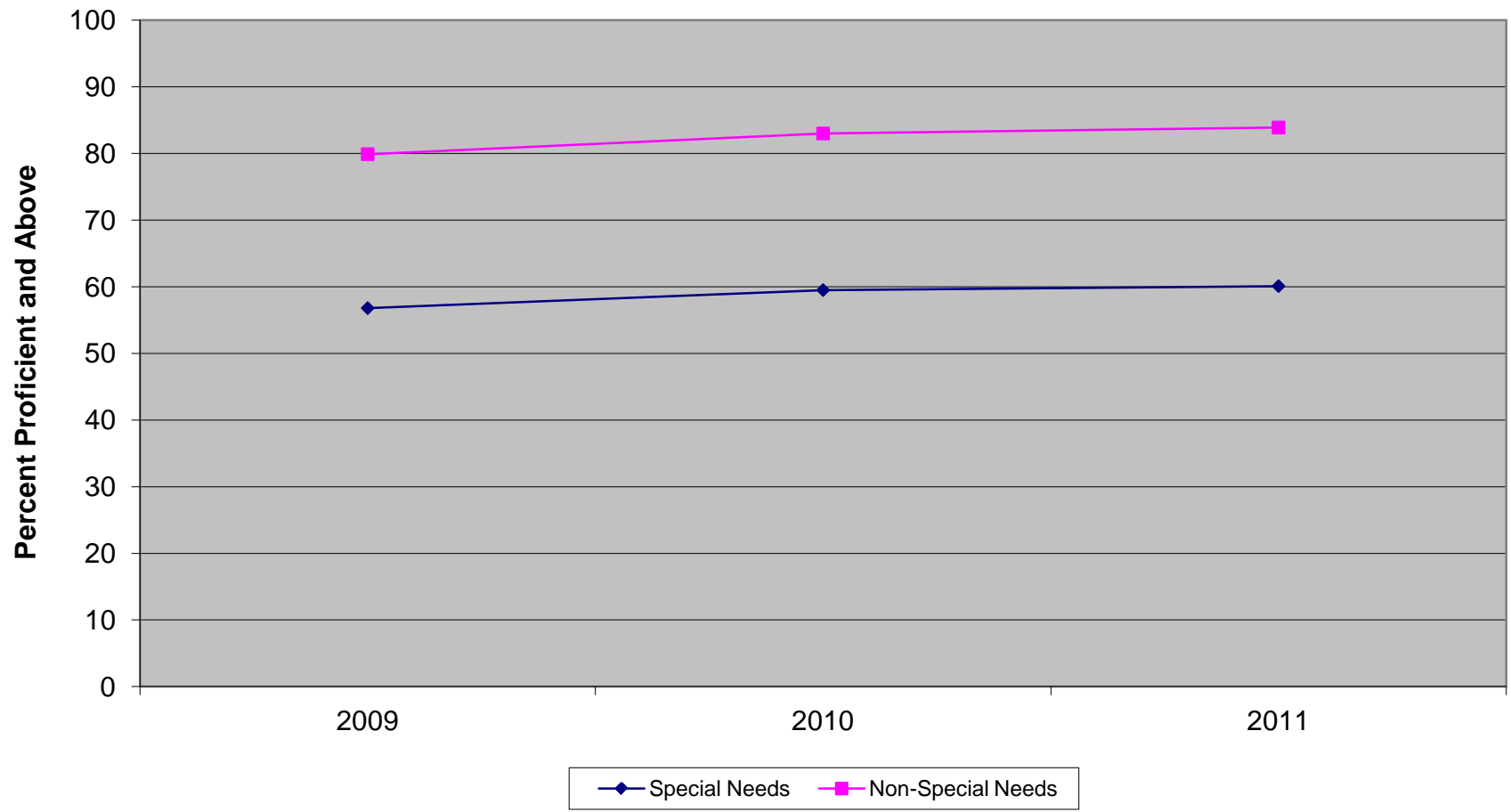
New Jersey Assessment of Skills and Knowledge  
Grade 3 Language Arts Literacy Proficient and Above  
Special Needs vs Non-Special Needs (2009-2011)



**New Jersey Assessment of Skills and Knowledge  
Grade 3 Language Arts Literacy Proficient and Above  
Special Needs vs Non-Special Needs (2009-2011)**

	<b>2009</b>	<b>2010</b>	<b>2011</b>
Special Needs	41.1	38.2	41.8
Non-Special Needs	68.3	65.3	68.5

New Jersey Assessment of Skills and Knowledge  
Grade 3 Mathematics Proficient and Above  
Special Needs vs Non-Special Needs (2009-2011)

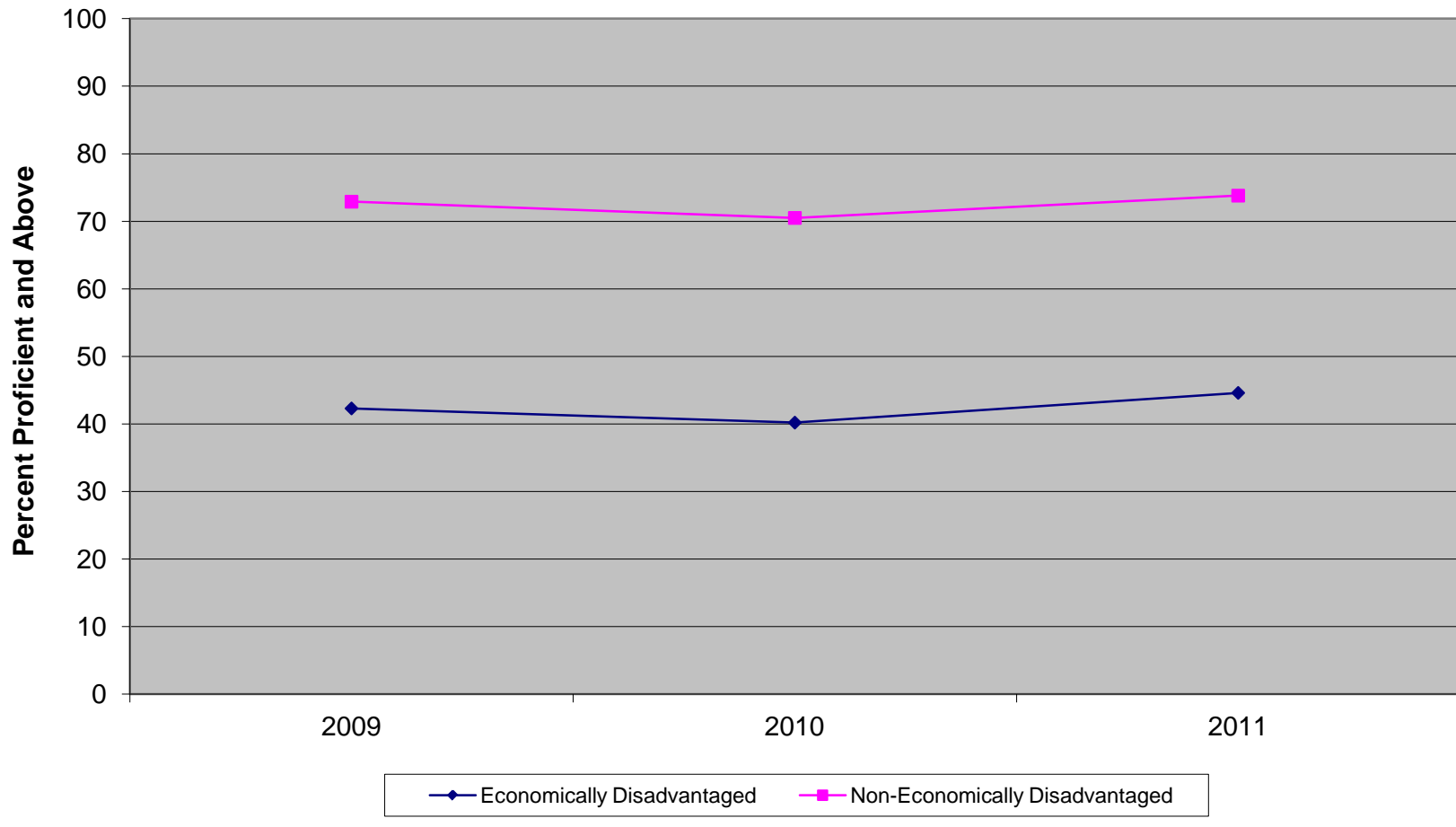


**New Jersey Assessment of Skills and Knowledge  
Grade 3 Mathematics Proficient and Above  
Special Needs vs Non-Special Needs (2009-2011)**

	<b>2009</b>	<b>2010</b>	<b>2011</b>
Special Needs	56.8	59.5	60.1
Non-Special Needs	79.9	83.0	83.9



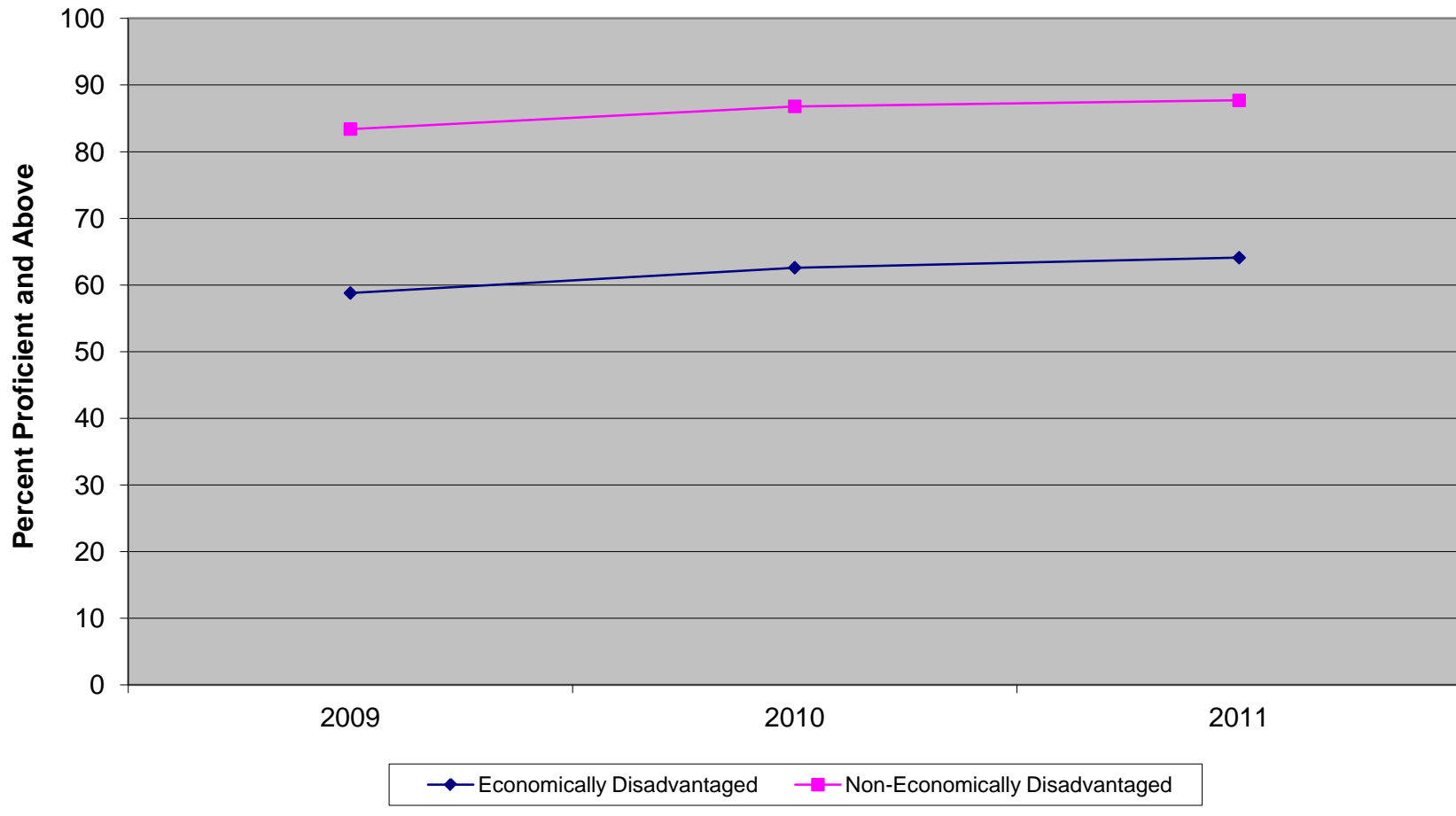
New Jersey Assessment of Skills and Knowledge  
Grade 3 Language Arts Literacy Proficient and Above  
Economically Disadvantaged vs Non-Economically Disadvantaged (2009-2011)



**New Jersey Assessment of Skills and Knowledge  
Grade 3 Language Arts Literacy Proficient and Above  
Economically Disadvantaged vs Non-Economically Disadvantaged (2009-2011)**

	<b>2009</b>	<b>2010</b>	<b>2011</b>
Economically Disadvantaged	42.3	40.2	44.6
Non-Economically Disadvantaged	72.9	70.5	73.8

New Jersey Assessment of Skills and Knowledge  
Grade 3 Mathematics Proficient and Above  
Economically Disadvantaged vs Non-Economically Disadvantaged (2009-2011)



**New Jersey Assessment of Skills and Knowledge  
Grade 3 Mathematics Proficient and Above  
Economically Disadvantaged vs Non-Economically Disadvantaged (2009-2011)**

	<b>2009</b>	<b>2010</b>	<b>2011</b>
Economically Disadvantaged	58.8	62.6	64.1
Non-Economically Disadvantaged	83.4	86.8	87.7