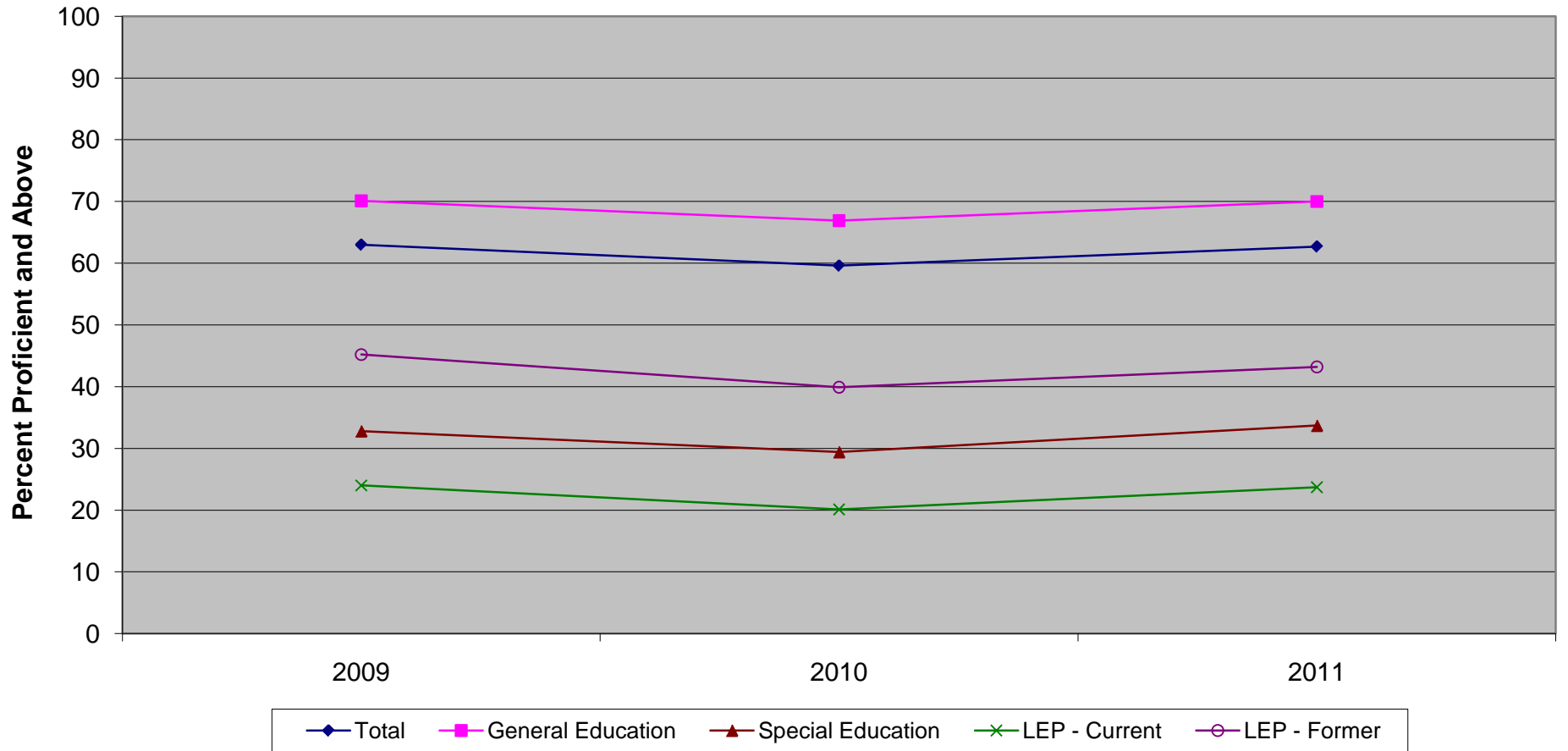


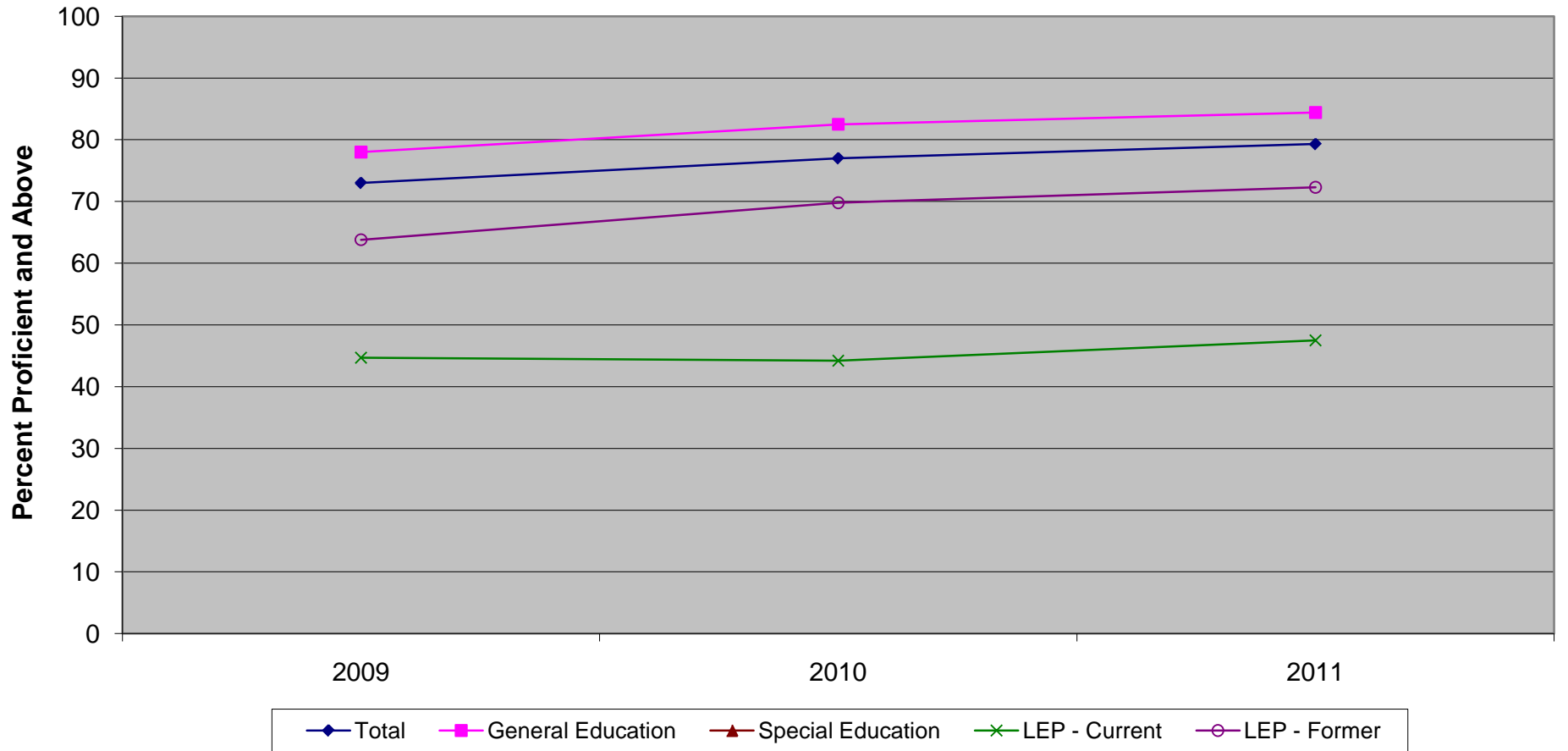
New Jersey Assessment of Skills and Knowledge  
Grade 4 Language Arts Literacy Percent Proficient and Above by Instructional Group (2009-2011)



**New Jersey Assessment of Skills and Knowledge  
Grade 4 Language Arts Literacy Percent Proficient and Above by Instructional Group (2009-2011)**

	<b>2009</b>	<b>2010</b>	<b>2011</b>
Total	63.0	59.6	62.7
General Education	70.1	66.9	70.0
Special Education	32.8	29.4	33.7
LEP - Current	24.0	20.1	23.7
LEP - Former	45.2	39.9	43.2

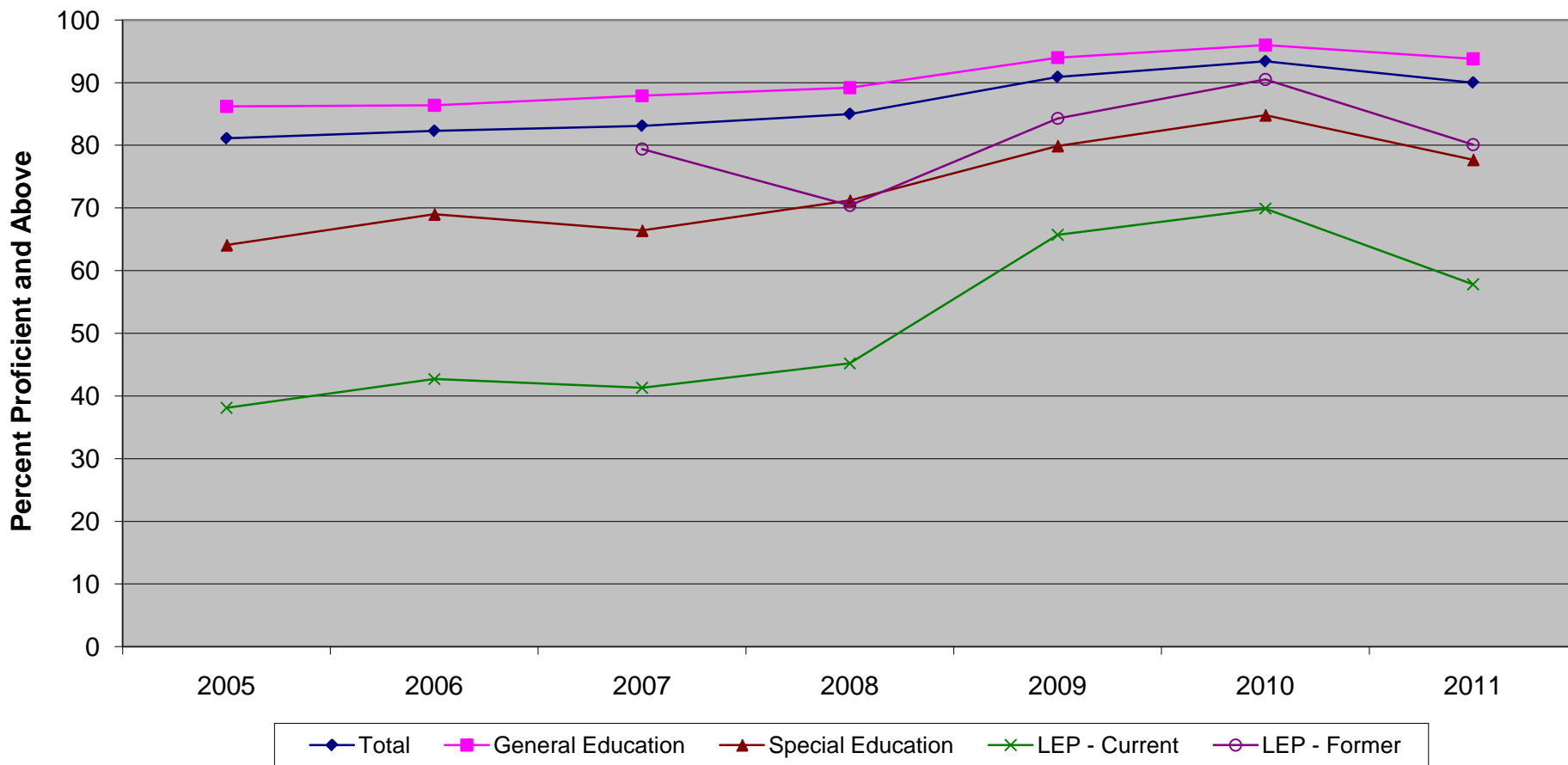
New Jersey Assessment of Skills and Knowledge  
Grade 4 Mathematics Proficient and Above by Instructional Group (2009-2011)



**New Jersey Assessment of Skills and Knowledge  
Grade 4 Mathematics Proficient and Above by Instructional Group (2009-2011)**

	<b>2009</b>	<b>2010</b>	<b>2011</b>
Total	73.0	77.0	79.3
General Education	78.0	82.5	84.4
Special Education	52.4	55.5	60.9
LEP - Current	44.7	44.2	47.5
LEP - Former	63.8	69.8	72.3

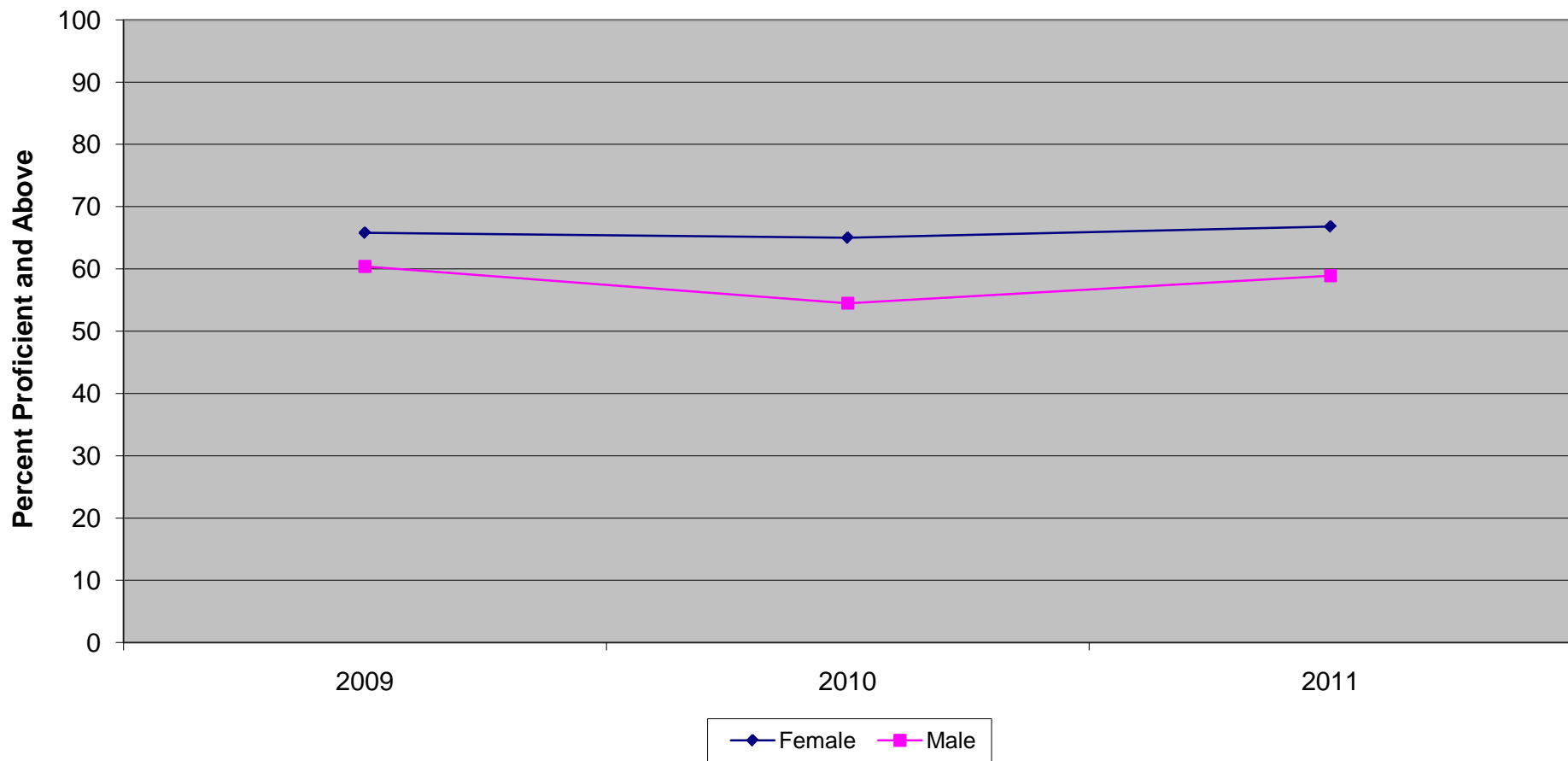
New Jersey Assessment of Skills and Knowledge  
Grade 4 Science Proficient and Above by Instructional Group (2005-2011)



**New Jersey Assessment of Skills and Knowledge  
Grade 4 Science Proficient and Above by Instructional Group (2005-2011)**

	<b>2005</b>	<b>2006</b>	<b>2007</b>	<b>2008</b>	<b>2009</b>	<b>2010</b>	<b>2011</b>
Total	81.1	82.3	83.1	85.0	90.9	93.4	90.0
General Education	86.2	86.4	87.9	89.2	94.0	96.0	93.8
Special Education	64.1	69.0	66.4	71.2	79.9	84.8	77.7
LEP - Current	38.1	42.7	41.3	45.2	65.7	69.9	57.8
LEP - Former			79.4	70.4	84.3	90.5	80.1

New Jersey Assessment of Skills and Knowledge  
Grade 4 Language Arts Literacy Proficient and Above by Gender (2009-2011)

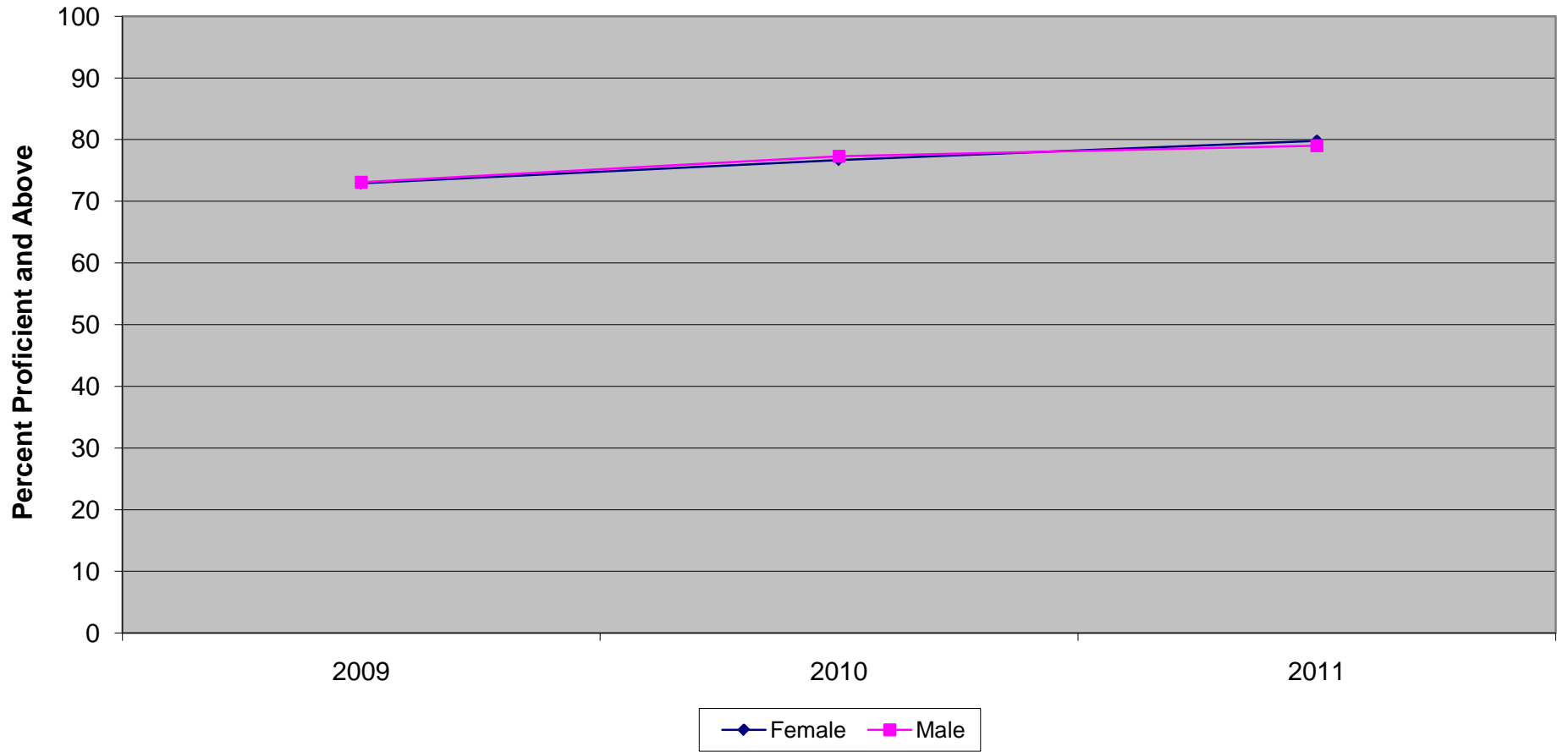


**New Jersey Assessment of Skills and Knowledge  
Grade 4 Language Arts Literacy Proficient and Above by Gender (2009-2011)**

	<b>2009</b>	<b>2010</b>	<b>2011</b>
Female	65.8	65.0	66.8
Male	60.4	54.5	58.9



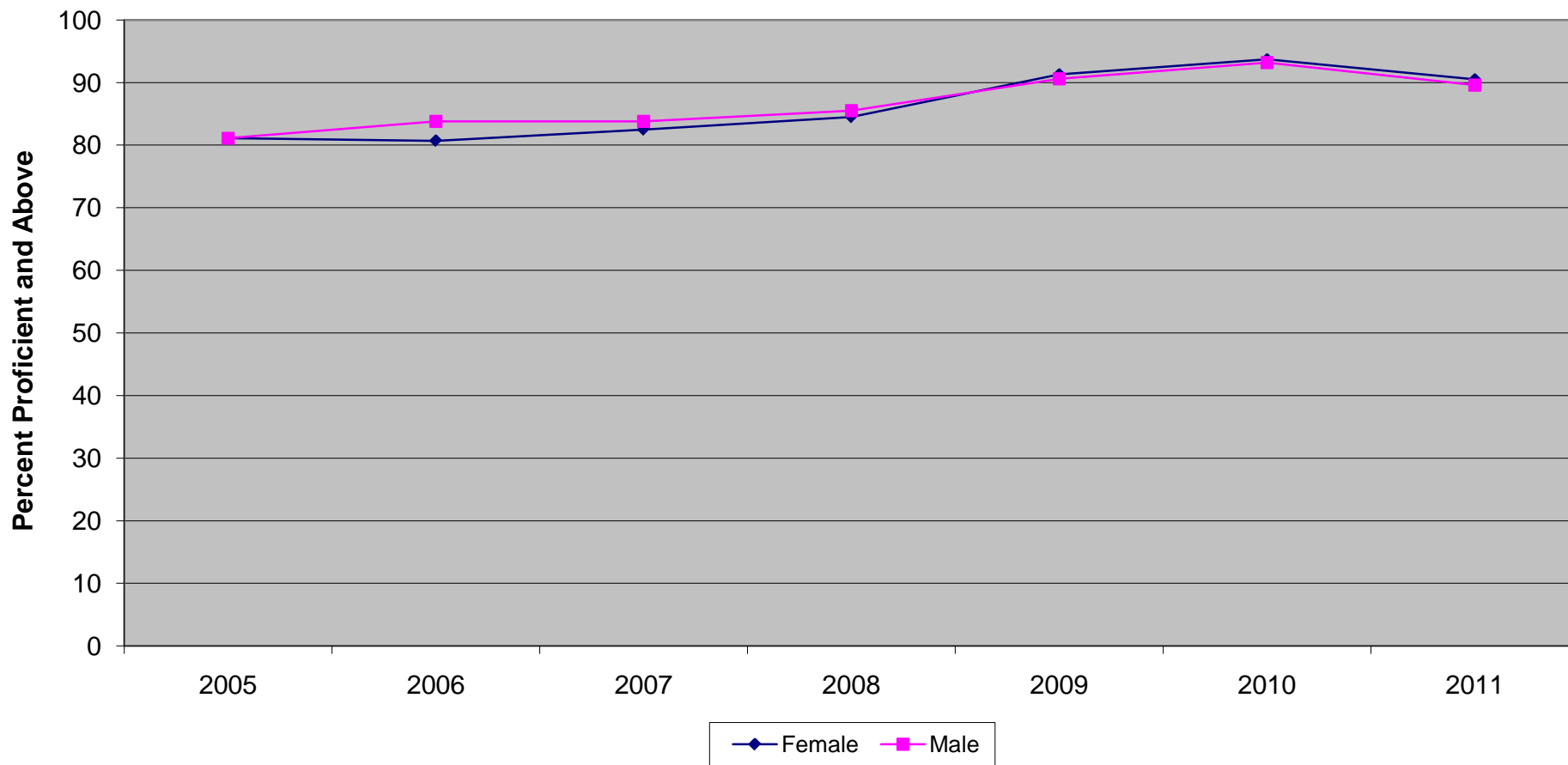
New Jersey Assessment of Skills and Knowledge  
Grade 4 Mathematics Proficient and Above by Gender (2009-2011)



**New Jersey Assessment of Skills and Knowledge  
Grade 4 Mathematics Proficient and Above by Gender (2009-2011)**

	<b>2009</b>	<b>2010</b>	<b>2011</b>
Female	72.9	76.7	79.8
Male	73.1	77.3	79.0

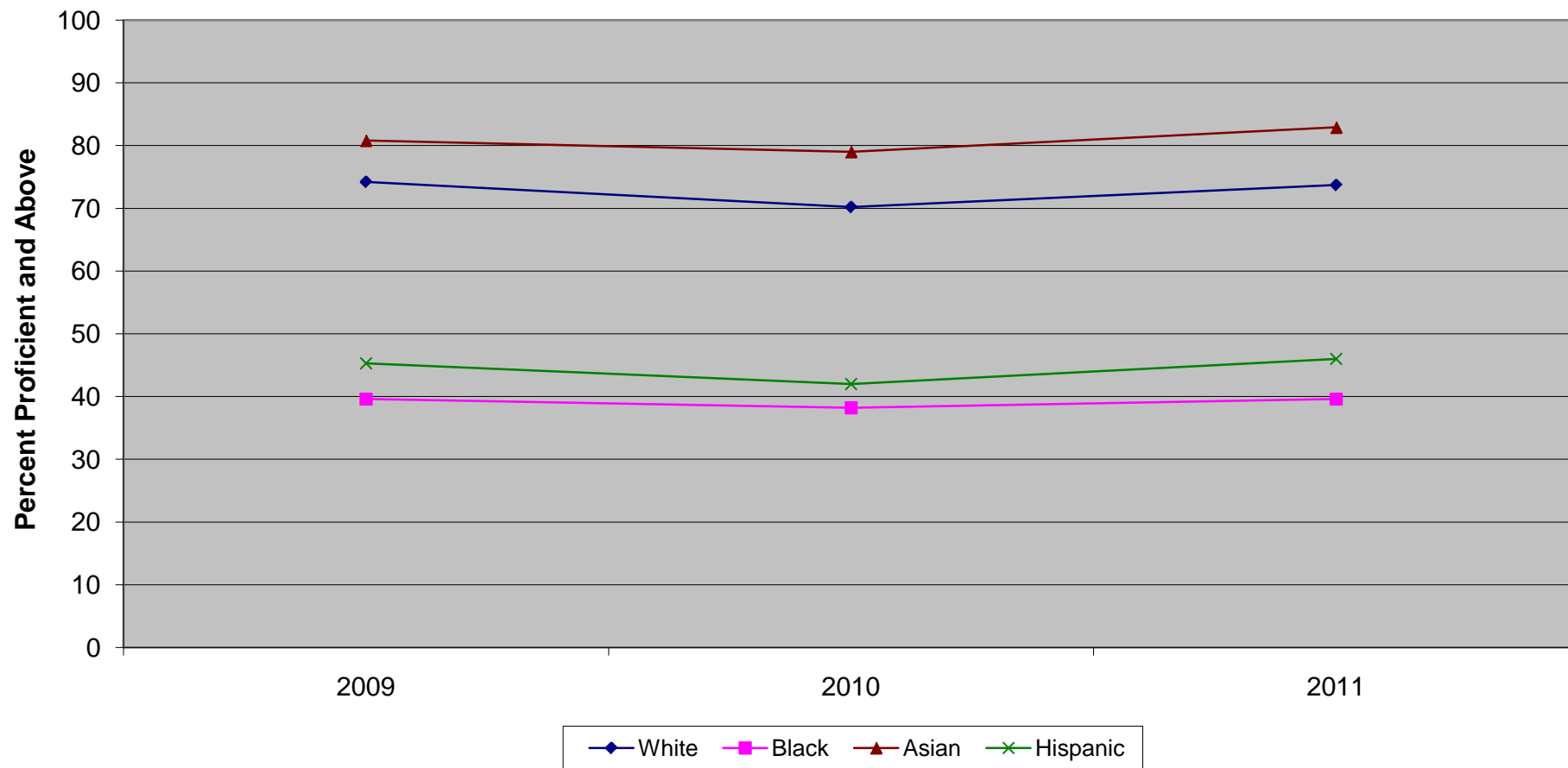
New Jersey Assessment of Skills and Knowledge  
Grade 4 Science Proficient and Above by Gender (2005-2011)



**New Jersey Assessment of Skills and Knowledge  
Grade 4 Science Proficient and Above by Gender (2005-2011)**

	<b>2005</b>	<b>2006</b>	<b>2007</b>	<b>2008</b>	<b>2009</b>	<b>2010</b>	<b>2011</b>
Female	81.1	80.7	82.5	84.5	91.3	93.7	90.5
Male	81.1	83.8	83.8	85.5	90.6	93.2	89.6

New Jersey Assessment of Skills and Knowledge  
Grade 4 Language Arts Literacy Proficient and Above by Ethnicity (2009-2011)

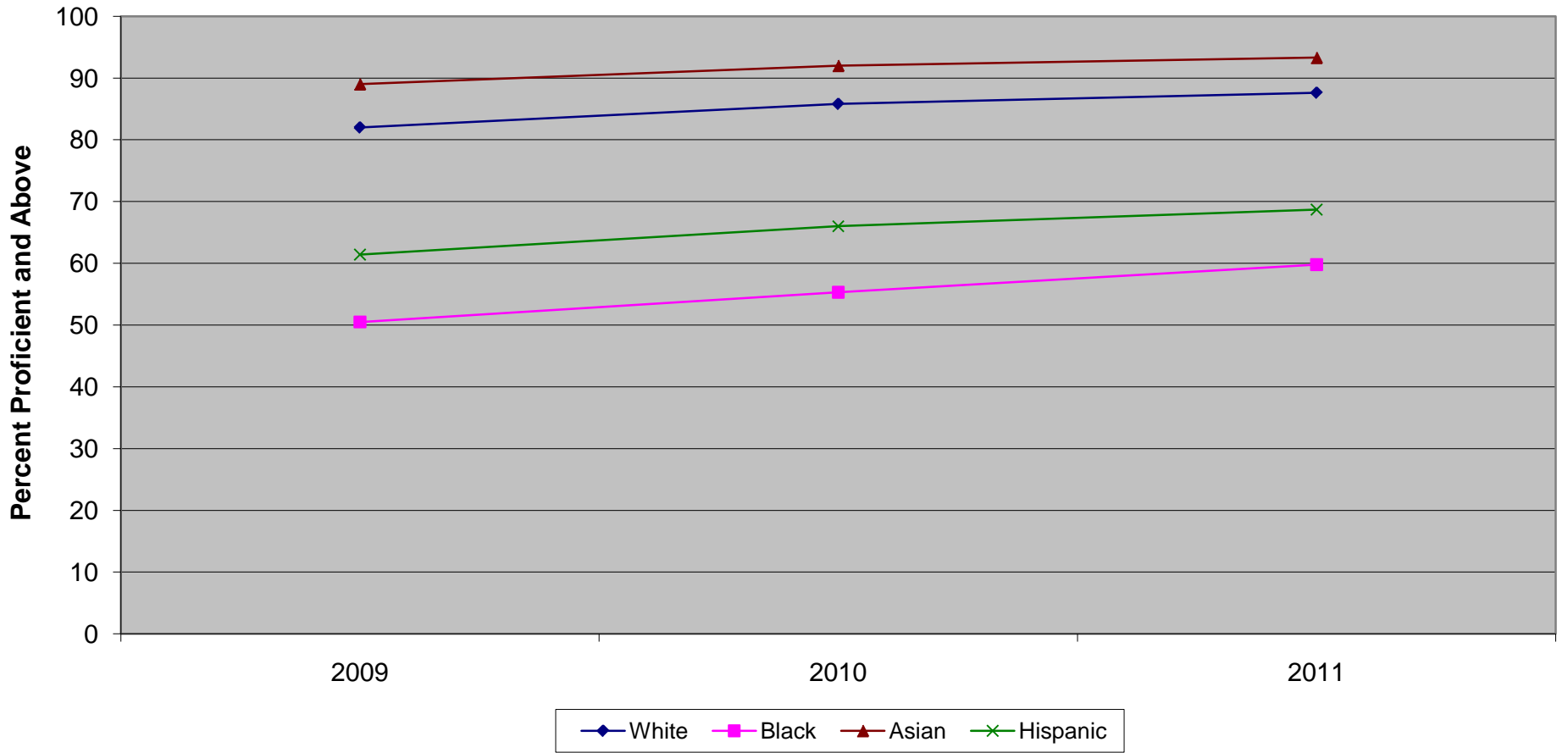


Ethnic codes Pacific Islander, American Indian/Alaskan Native and Other are not shown due to the small number of students in these categories.

**New Jersey Assessment of Skills and Knowledge  
Grade 4 Language Arts Literacy Proficient and Above by Ethnicity (2009-2011)**

	<b>2009</b>	<b>2010</b>	<b>2011</b>
White	74.2	70.2	73.7
Black	39.6	38.2	39.6
Asian	80.8	79.0	82.9
Hispanic	45.3	42.0	46.0

New Jersey Assessment of Skills and Knowledge  
Grade 4 Mathematics Proficient and Above by Ethnicity (2009-2011)



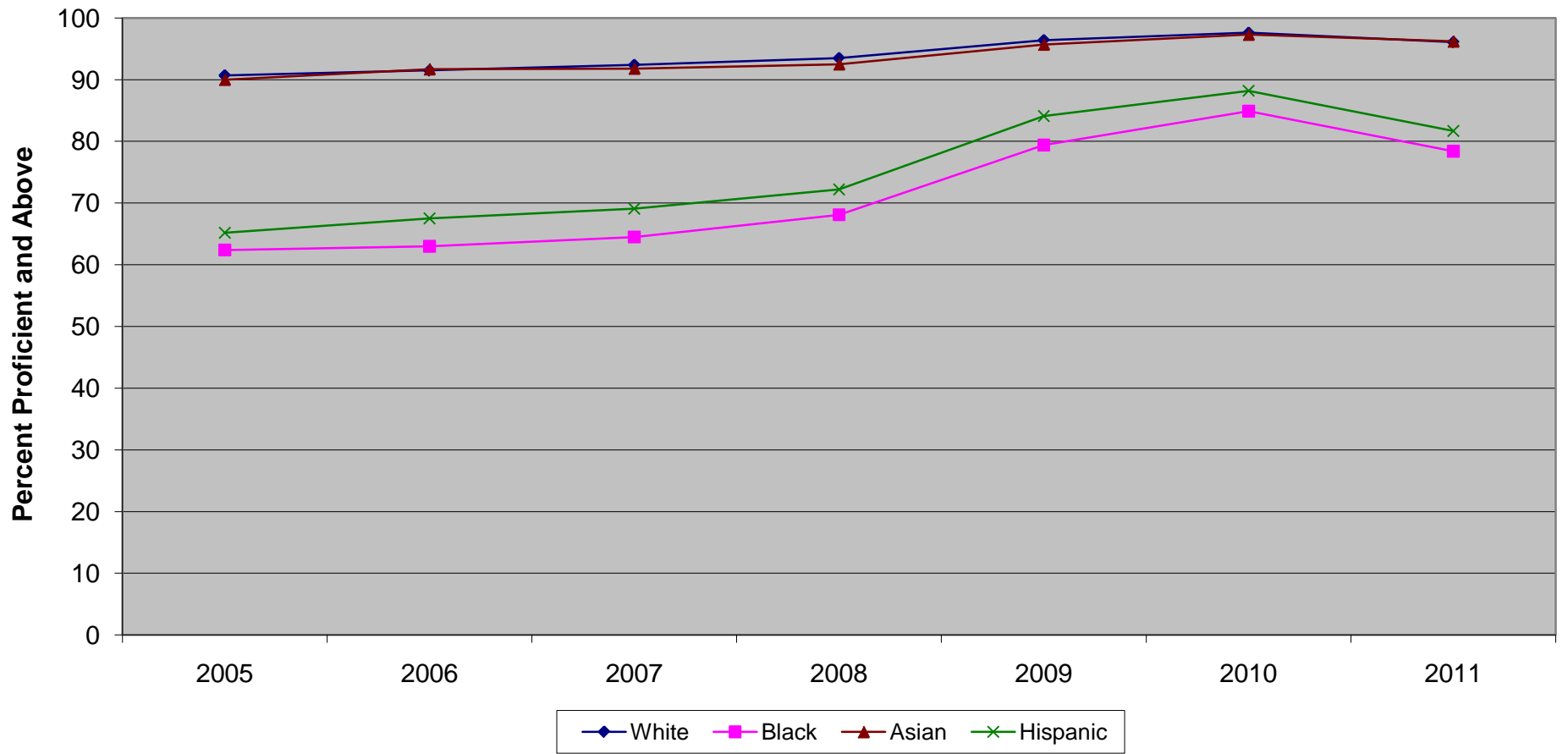
Ethnic codes Pacific Islander, American Indian/Alaskan Native and Other are not shown due to the small number of students in these categories.

**New Jersey Assessment of Skills and Knowledge  
Grade 4 Mathematics Proficient and Above by Ethnicity (2009-2011)**

	<b>2009</b>	<b>2010</b>	<b>2011</b>
White	82.0	85.8	87.6
Black	50.5	55.3	59.8
Asian	89.0	92.0	93.3
Hispanic	61.4	66.0	68.7



New Jersey Assessment of Skills and Knowledge  
Grade 4 Science Proficient and Above by Ethnicity (2005-2011)

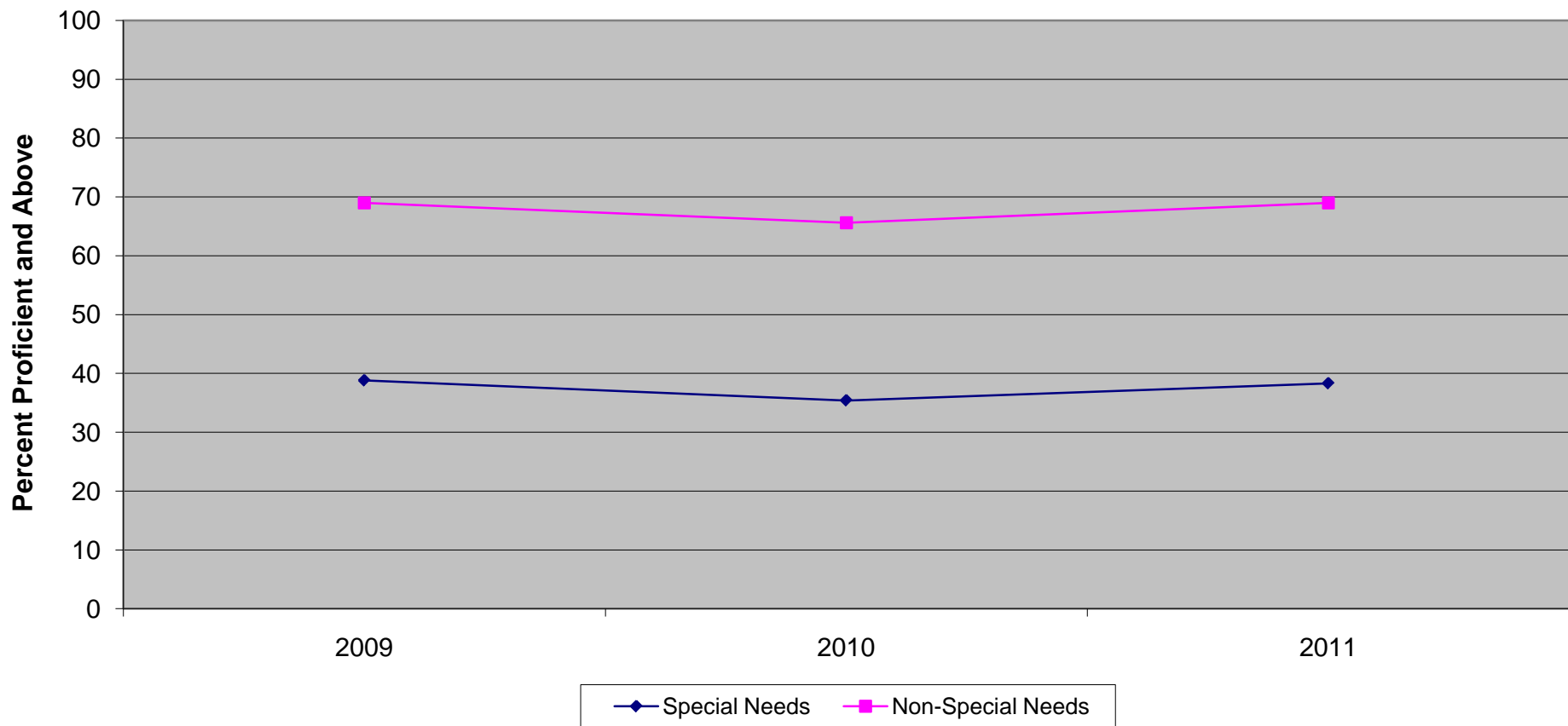


Ethnic codes Pacific Islander, American Indian/Alaskan Native and Other are not shown due to the small number of students in these categories.

**New Jersey Assessment of Skills and Knowledge  
Grade 4 Science Proficient and Above by Ethnicity (2005-2011)**

	<b>2005</b>	<b>2006</b>	<b>2007</b>	<b>2008</b>	<b>2009</b>	<b>2010</b>	<b>2011</b>
White	90.7	91.5	92.4	93.5	96.4	97.6	96.1
Black	62.4	63.0	64.5	68.1	79.4	84.9	78.4
Asian	90.0	91.7	91.8	92.5	95.7	97.3	96.2
Hispanic	65.2	67.5	69.1	72.2	84.1	88.2	81.7

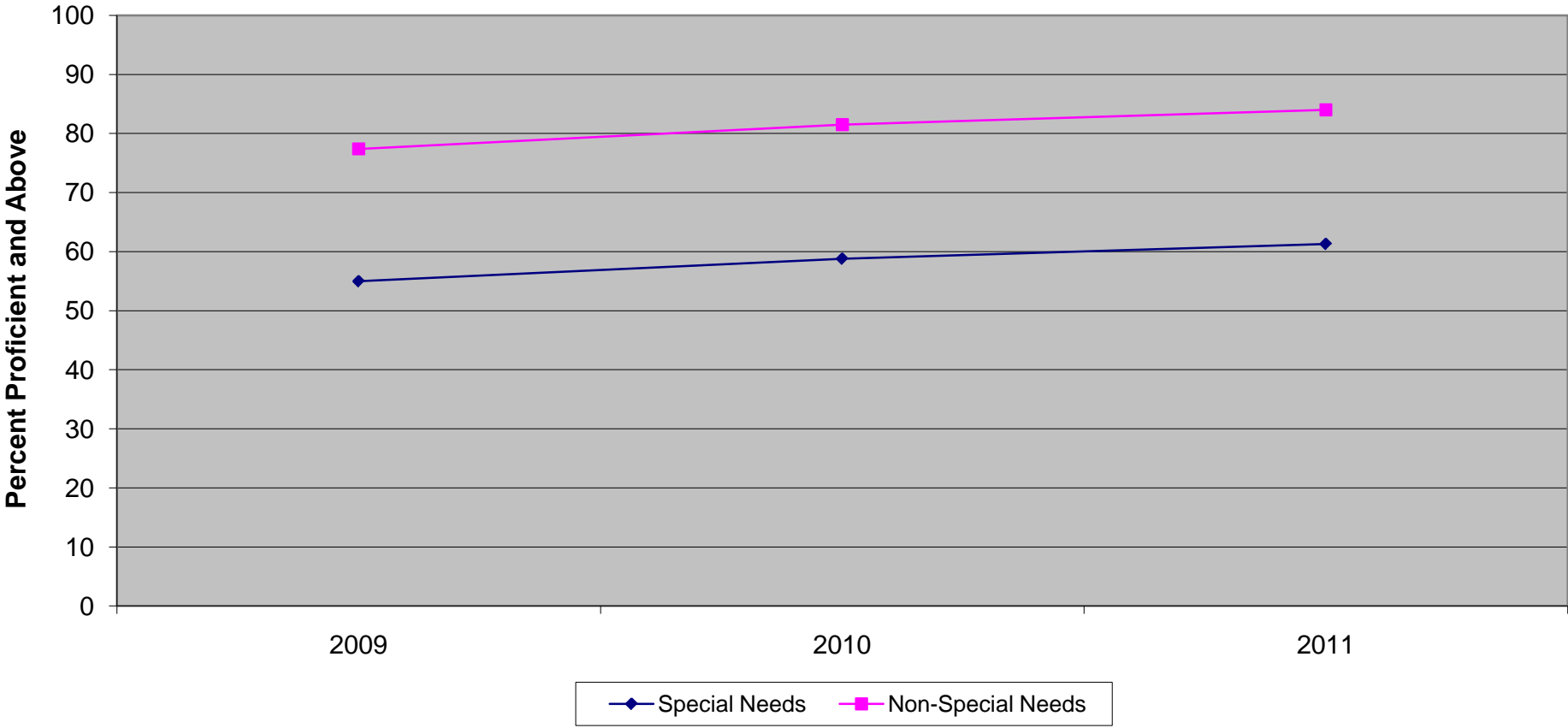
**New Jersey Assessment of Skills and Knowledge  
Grade 4 Language Arts Literacy Proficient and Above  
Special Needs vs Non-Special Needs (2009-2011)**



**New Jersey Assessment of Skills and Knowledge  
Grade 4 Language Arts Literacy Proficient and Above  
Special Needs vs Non-Special Needs (2009-2011)**

	<b>2009</b>	<b>2010</b>	<b>2011</b>
Special Needs	38.8	35.4	38.3
Non-Special Needs	69.0	65.6	69.0

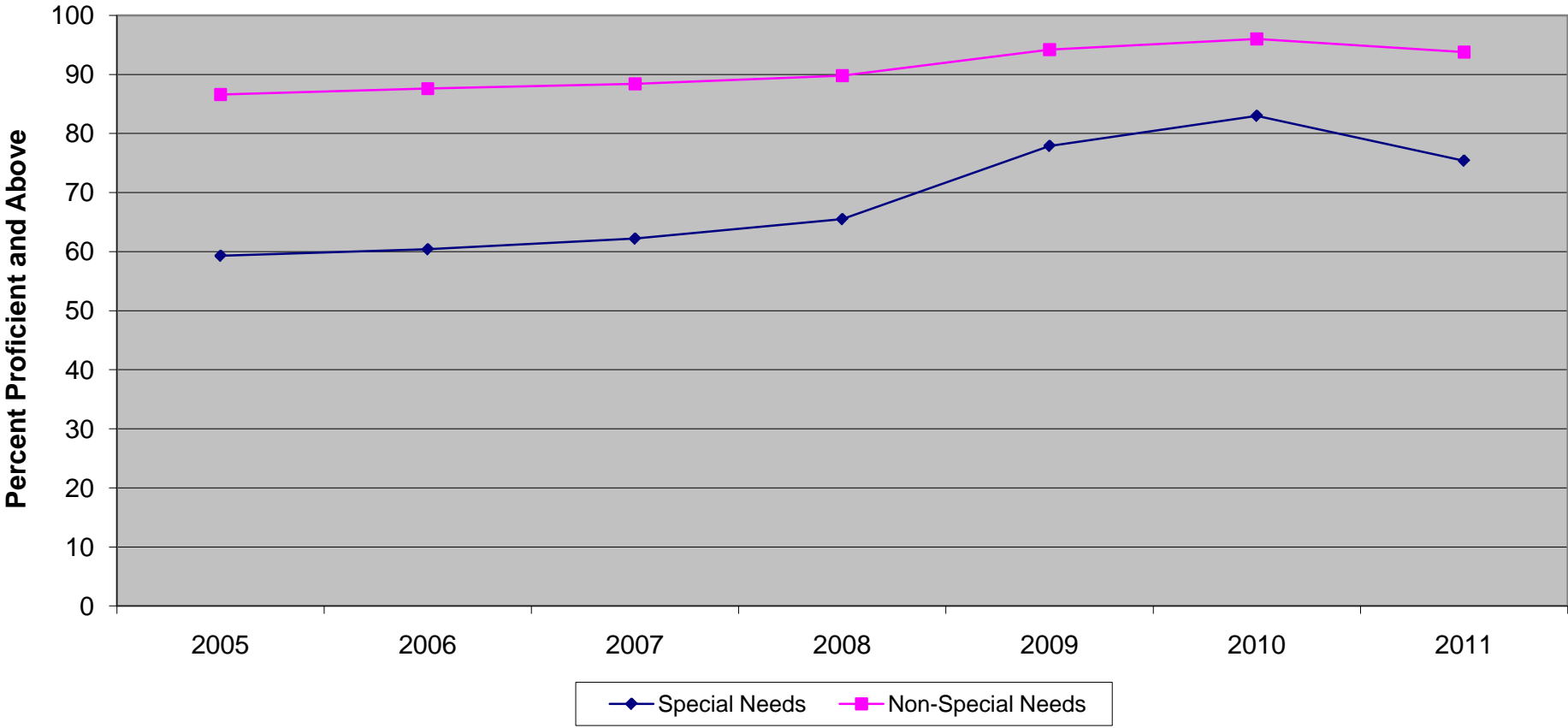
New Jersey Assessment of Skills and Knowledge  
Grade 4 Mathematics Proficient and Above  
Special Needs vs Non-Special Needs (2009-2011)



**New Jersey Assessment of Skills and Knowledge  
Grade 4 Mathematics Proficient and Above  
Special Needs vs Non-Special Needs (2009-2011)**

	<b>2009</b>	<b>2010</b>	<b>2011</b>
Special Needs	55.0	58.8	61.3
Non-Special Needs	77.4	81.5	84.0

New Jersey Assessment of Skills and Knowledge  
Grade 4 Science Proficient and Above  
Special Needs vs Non-Special Needs (2005-2011)

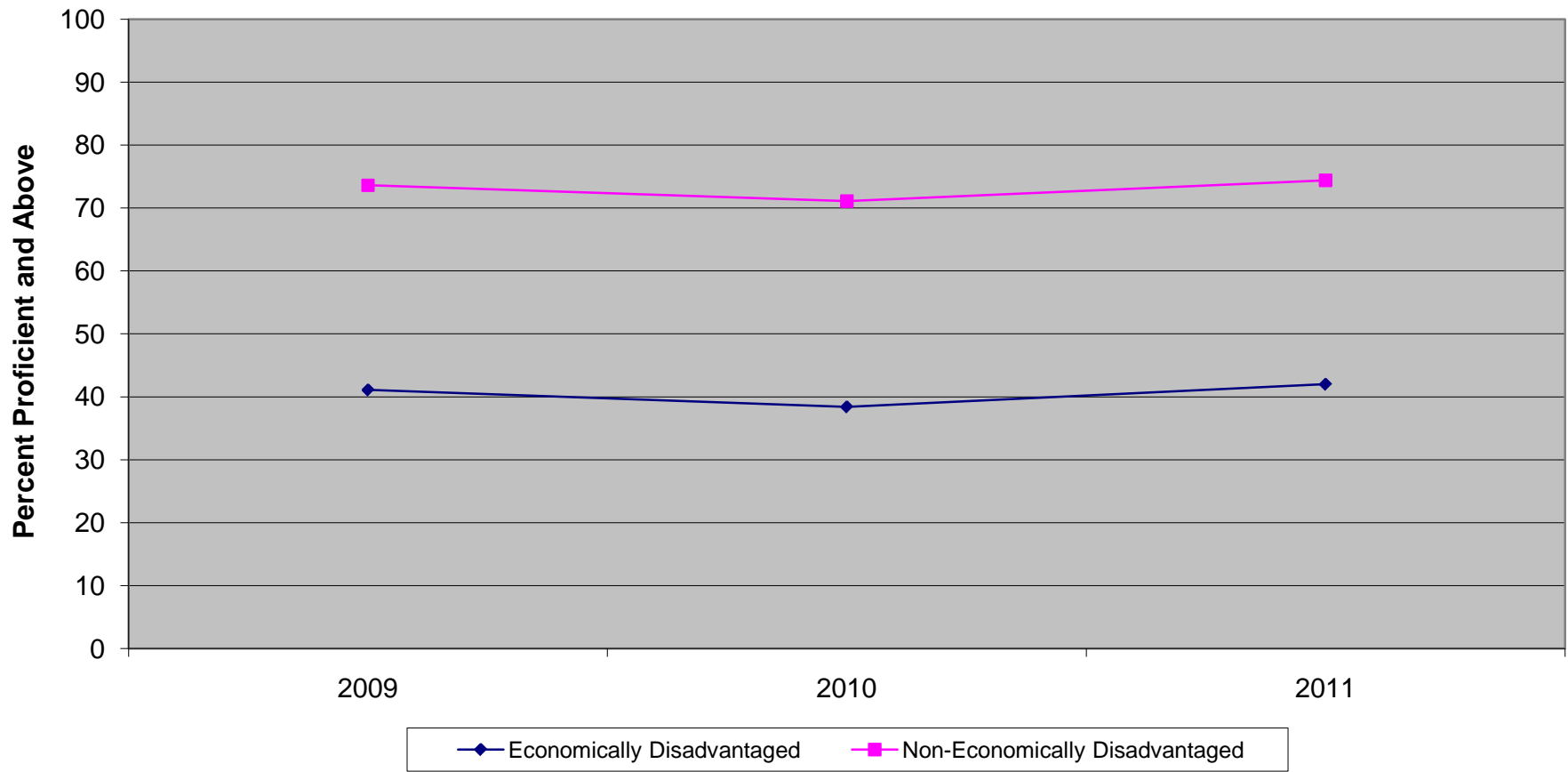


**New Jersey Assessment of Skills and Knowledge  
Grade 4 Science Proficient and Above  
Special Needs vs Non-Special Needs (2005-2011)**

	<b>2005</b>	<b>2006</b>	<b>2007</b>	<b>2008</b>	<b>2009</b>	<b>2010</b>	<b>2011</b>
Special Needs	59.3	60.4	62.2	65.5	77.9	83.0	75.4
Non-Special Needs	86.6	87.6	88.4	89.8	94.2	96.0	93.8



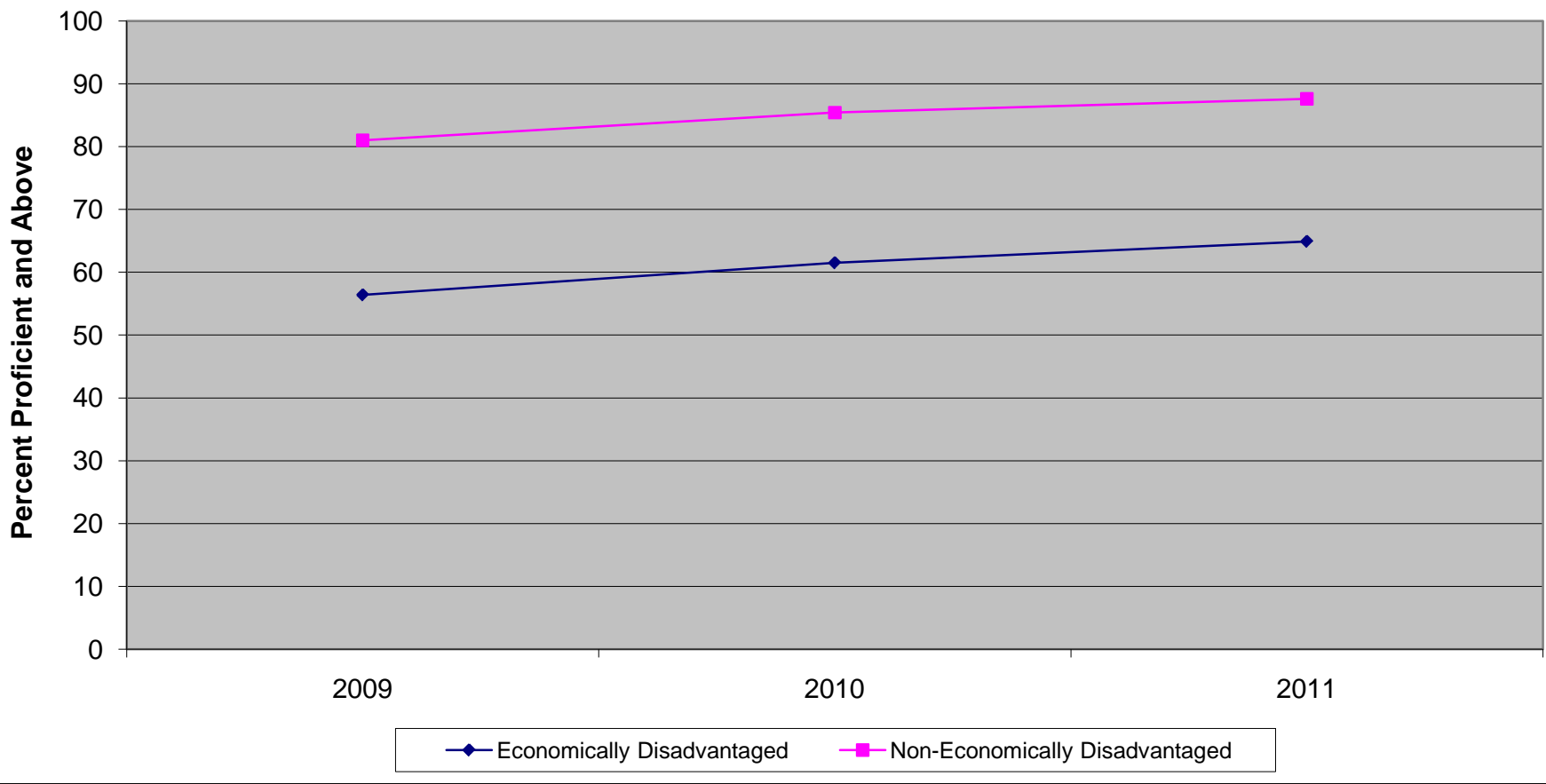
New Jersey Assessment of Skills and Knowledge  
Grade 4 Language Arts Literacy Proficient and Above  
Economically Disadvantaged vs Non-Economically Disadvantaged (2009-2011)



**New Jersey Assessment of Skills and Knowledge  
Grade 4 Language Arts Literacy Proficient and Above  
Economically Disadvantaged vs Non-Economically Disadvantaged (2009-2011)**

	<b>2009</b>	<b>2010</b>	<b>2011</b>
Economically Disadvantaged	41.1	38.4	42.0
Non-Economically Disadvantaged	73.6	71.1	74.4

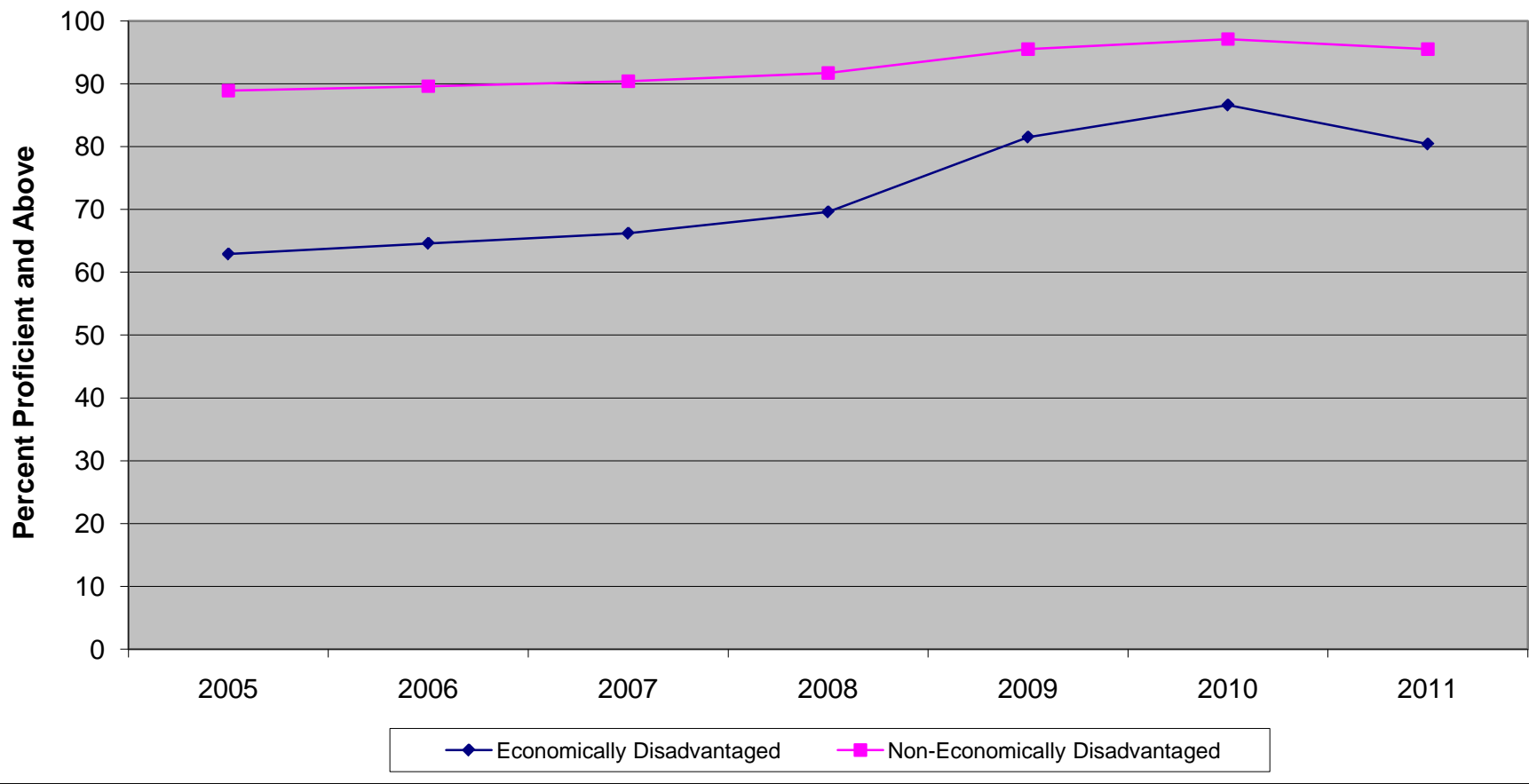
New Jersey Assessment of Skills and Knowledge  
Grade 4 Mathematics Proficient and Above  
Economically Disadvantaged vs Non-Economically Disadvantaged (2009-2011)



**New Jersey Assessment of Skills and Knowledge  
Grade 4 Mathematics Proficient and Above  
Economically Disadvantaged vs Non-Economically Disadvantaged (2009-2011)**

	<b>2009</b>	<b>2010</b>	<b>2011</b>
Economically Disadvantaged	56.4	61.5	64.9
Non-Economically Disadvantaged	81.0	85.4	87.6

New Jersey Assessment of Skills and Knowledge  
Grade 4 Science Proficient and Above  
Economically Disadvantaged vs Non-Economically Disadvantaged (2005-2011)



**New Jersey Assessment of Skills and Knowledge  
Grade 4 Science Proficient and Above  
Economically Disadvantaged vs Non-Economically Disadvantaged (2005-2011)**

	<b>2005</b>	<b>2006</b>	<b>2007</b>	<b>2008</b>	<b>2009</b>	<b>2010</b>	<b>2011</b>
Economically Disadvantaged	62.9	64.6	66.2	69.6	81.5	86.6	80.4
Non-Economically Disadvantaged	88.9	89.6	90.4	91.7	95.5	97.1	95.5