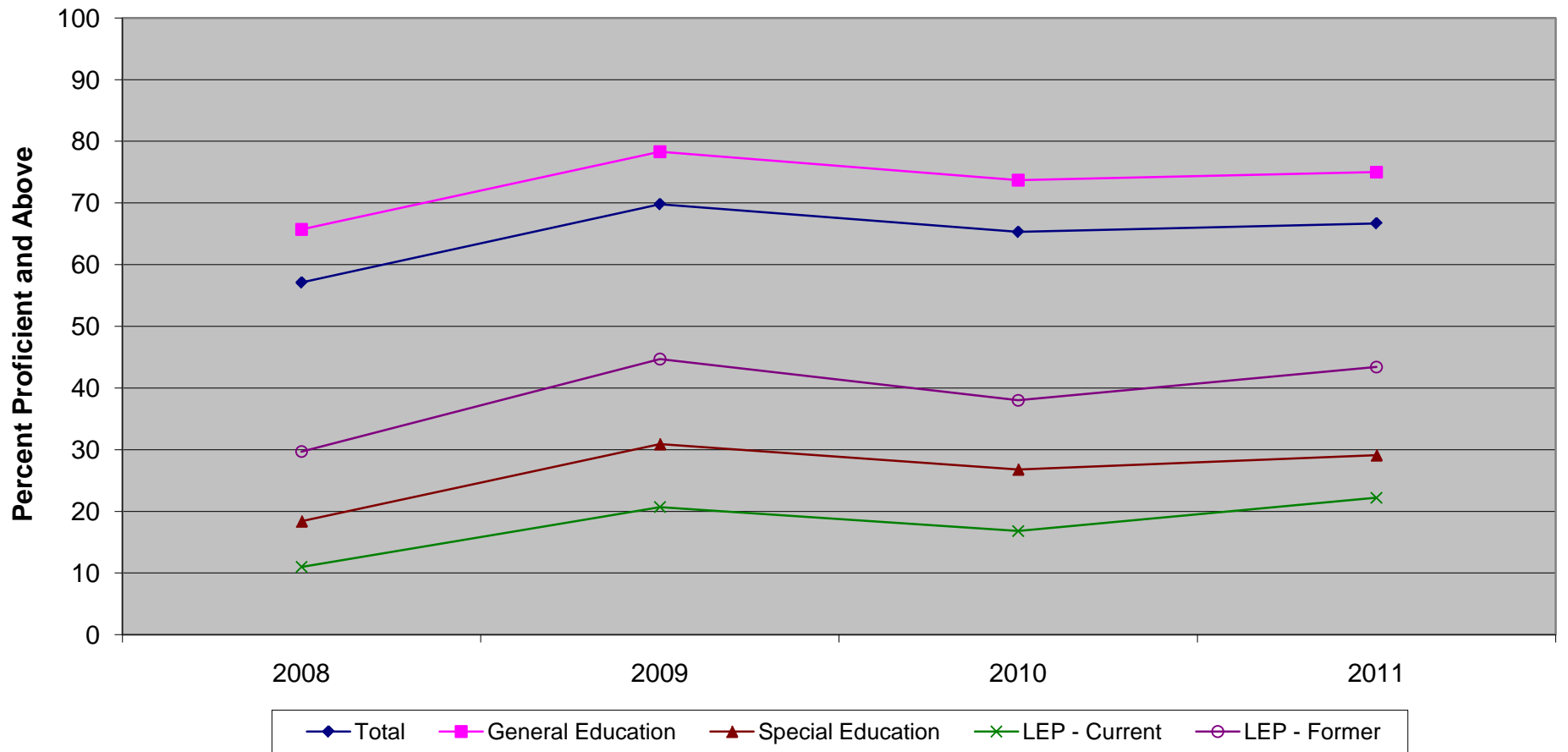


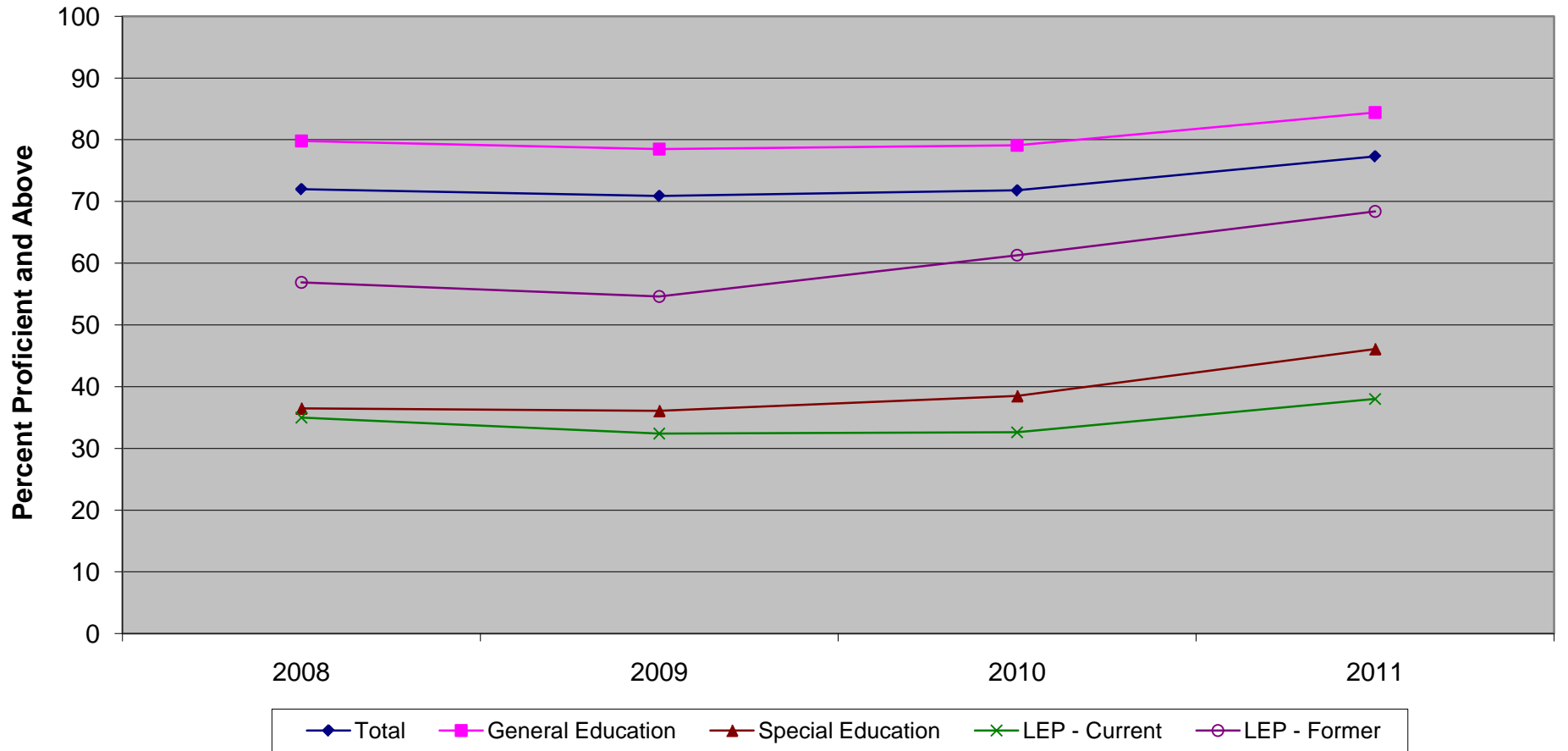
New Jersey Assessment of Skills and Knowledge  
Grade 6 Language Arts Literacy Percent Proficient and Above by Instructional Group (2008 - 2011)



**New Jersey Assessment of Skills and Knowledge  
Grade 6 Language Arts Literacy Percent Proficient and Above by Instructional Group (2008 - 2011)**

	<b>2008</b>	<b>2009</b>	<b>2010</b>	<b>2011</b>
Total	57.1	69.8	65.3	66.7
General Education	65.7	78.3	73.7	75.0
Special Education	18.4	30.9	26.8	29.1
LEP - Current	11.0	20.7	16.8	22.2
LEP - Former	29.7	44.7	38.0	43.4

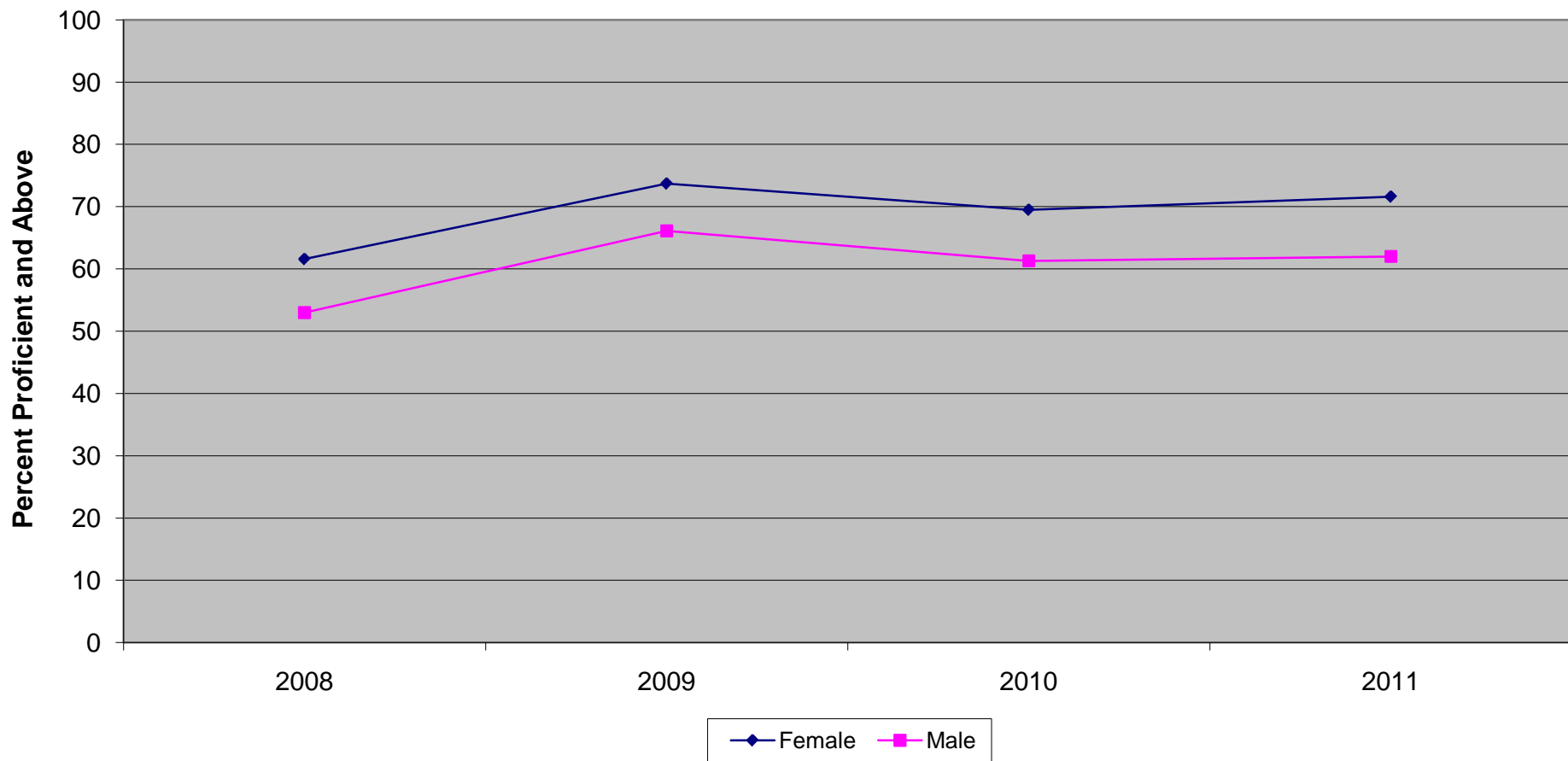
New Jersey Assessment of Skills and Knowledge  
Grade 6 Mathematics Proficient and Above by Instructional Group (2008 - 2011)



**New Jersey Assessment of Skills and Knowledge  
Grade 6 Mathematics Proficient and Above by Instructional Group (2008 - 2011)**

	<b>2008</b>	<b>2009</b>	<b>2010</b>	<b>2011</b>
Total	72.0	70.9	71.8	77.3
General Education	79.8	78.5	79.1	84.4
Special Education	36.5	36.1	38.5	46.1
LEP - Current	35.0	32.4	32.6	38.0
LEP - Former	56.9	54.6	61.3	68.4

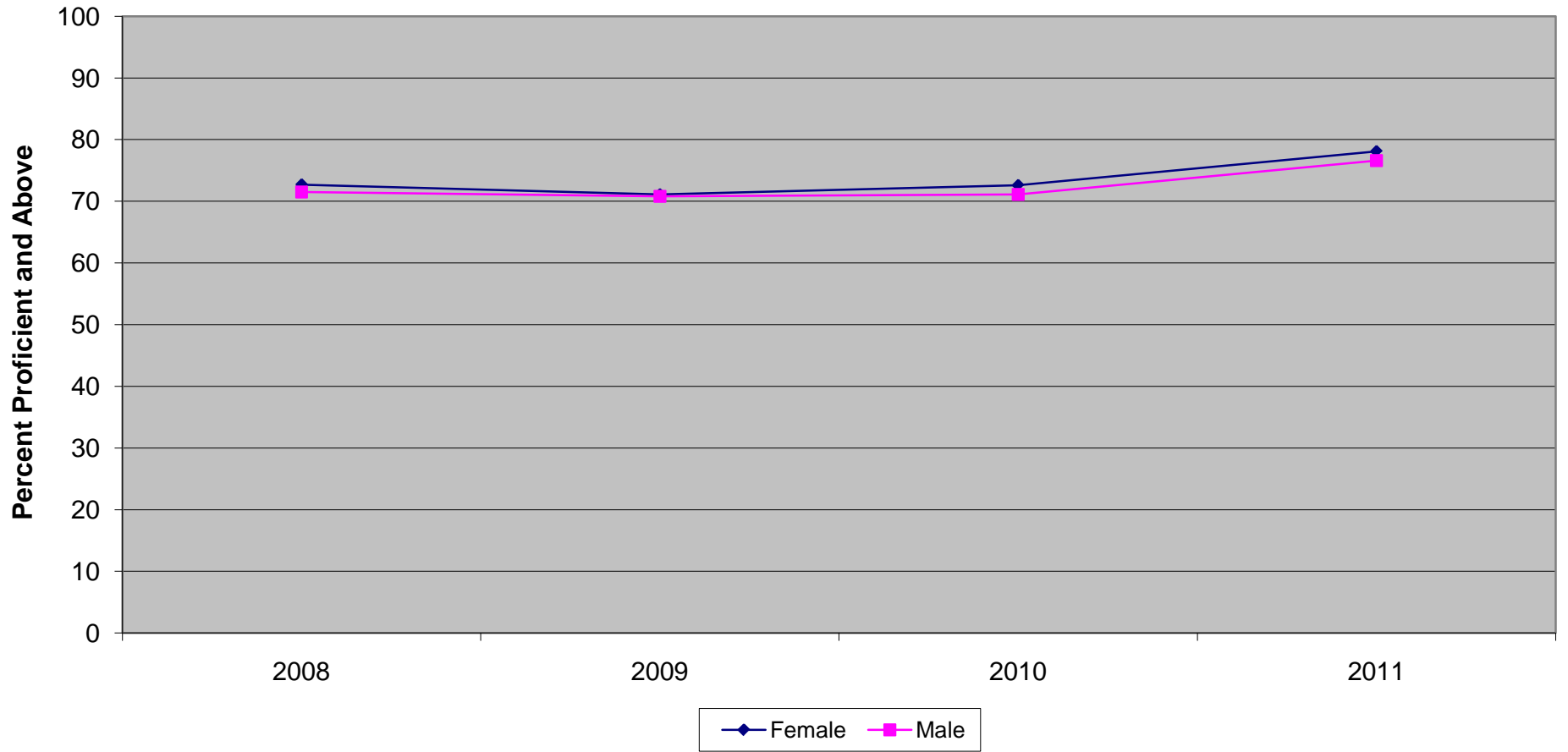
New Jersey Assessment of Skills and Knowledge  
Grade 6 Language Arts Literacy Proficient and Above by Gender (2008 - 2011)



**New Jersey Assessment of Skills and Knowledge  
Grade 6 Language Arts Literacy Proficient and Above by Gender (2008 - 2011)**

	<b>2008</b>	<b>2009</b>	<b>2010</b>	<b>2011</b>
Female	61.6	73.7	69.5	71.6
Male	53.0	66.1	61.3	62.0

New Jersey Assessment of Skills and Knowledge  
Grade 6 Mathematics Proficient and Above by Gender (2008 - 2011)

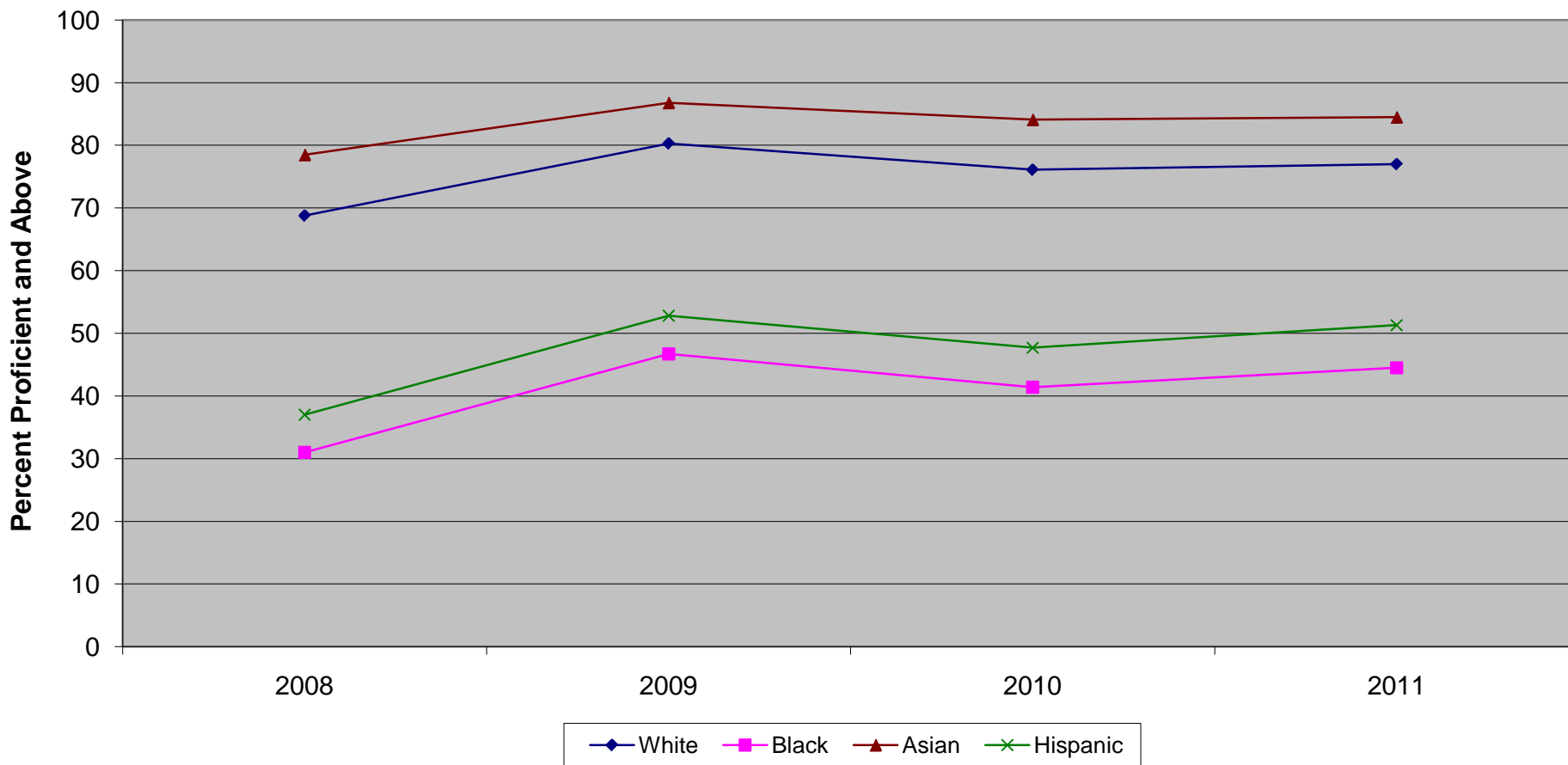


**New Jersey Assessment of Skills and Knowledge  
Grade 6 Mathematics Proficient and Above by Gender (2008 - 2011)**

	<b>2008</b>	<b>2009</b>	<b>2010</b>	<b>2011</b>
Female	72.7	71.1	72.6	78.1
Male	71.5	70.8	71.1	76.6



New Jersey Assessment of Skills and Knowledge  
Grade 6 Language Arts Literacy Proficient and Above by Ethnicity (2008 - 2011)

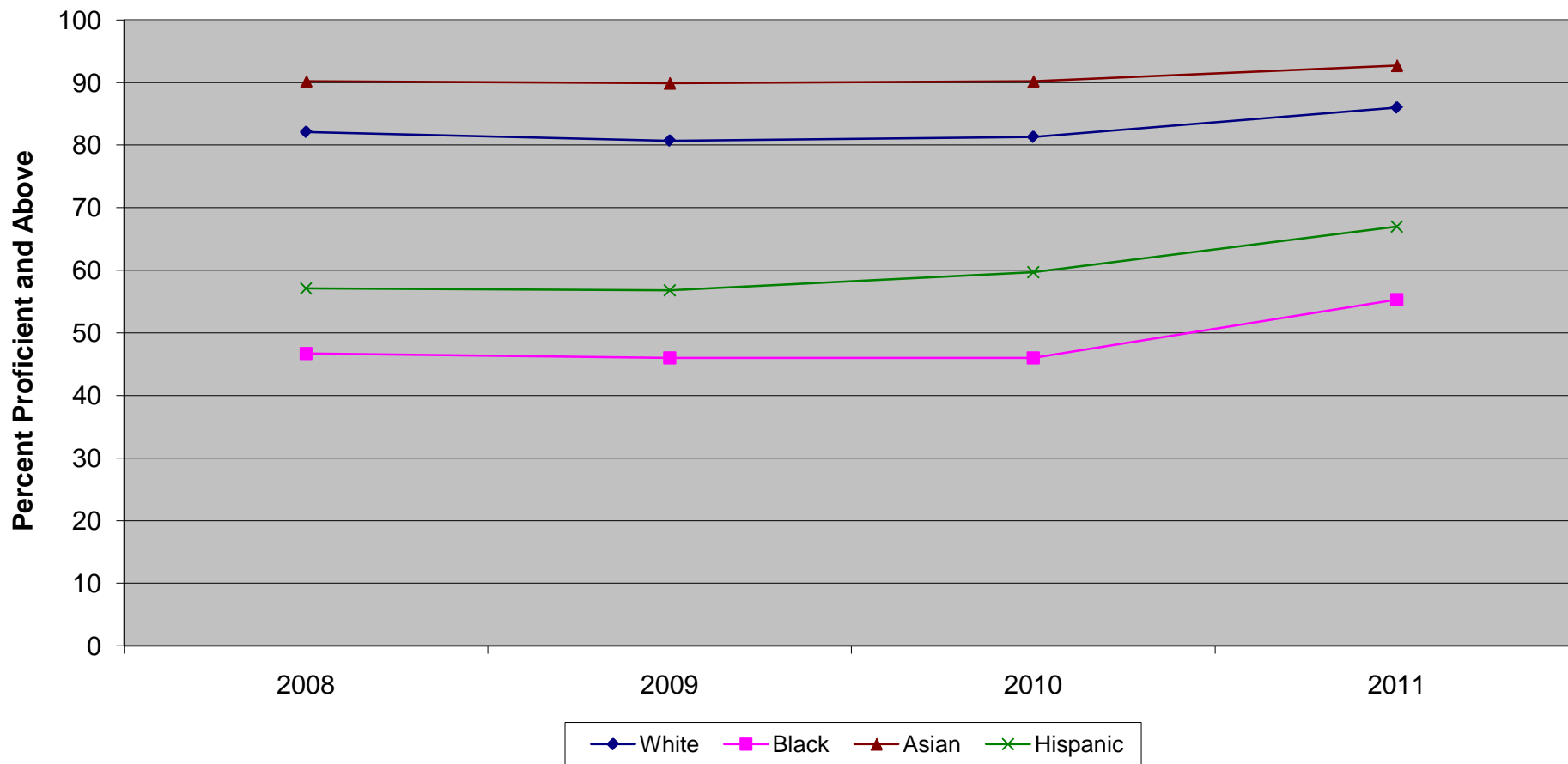


Ethnic codes Pacific Islander, American Indian/Alaskan Native and Other are not shown due to the small number of students in these categories.

**New Jersey Assessment of Skills and Knowledge  
Grade 6 Language Arts Literacy Proficient and Above by Ethnicity (2008 - 2011)**

	<b>2008</b>	<b>2009</b>	<b>2010</b>	<b>2011</b>
White	68.8	80.3	76.1	77.0
Black	31.0	46.7	41.4	44.5
Asian	78.5	86.8	84.1	84.5
Hispanic	37.0	52.8	47.7	51.3

New Jersey Assessment of Skills and Knowledge  
Grade 6 Mathematics Proficient and Above by Ethnicity (2008 - 2011)

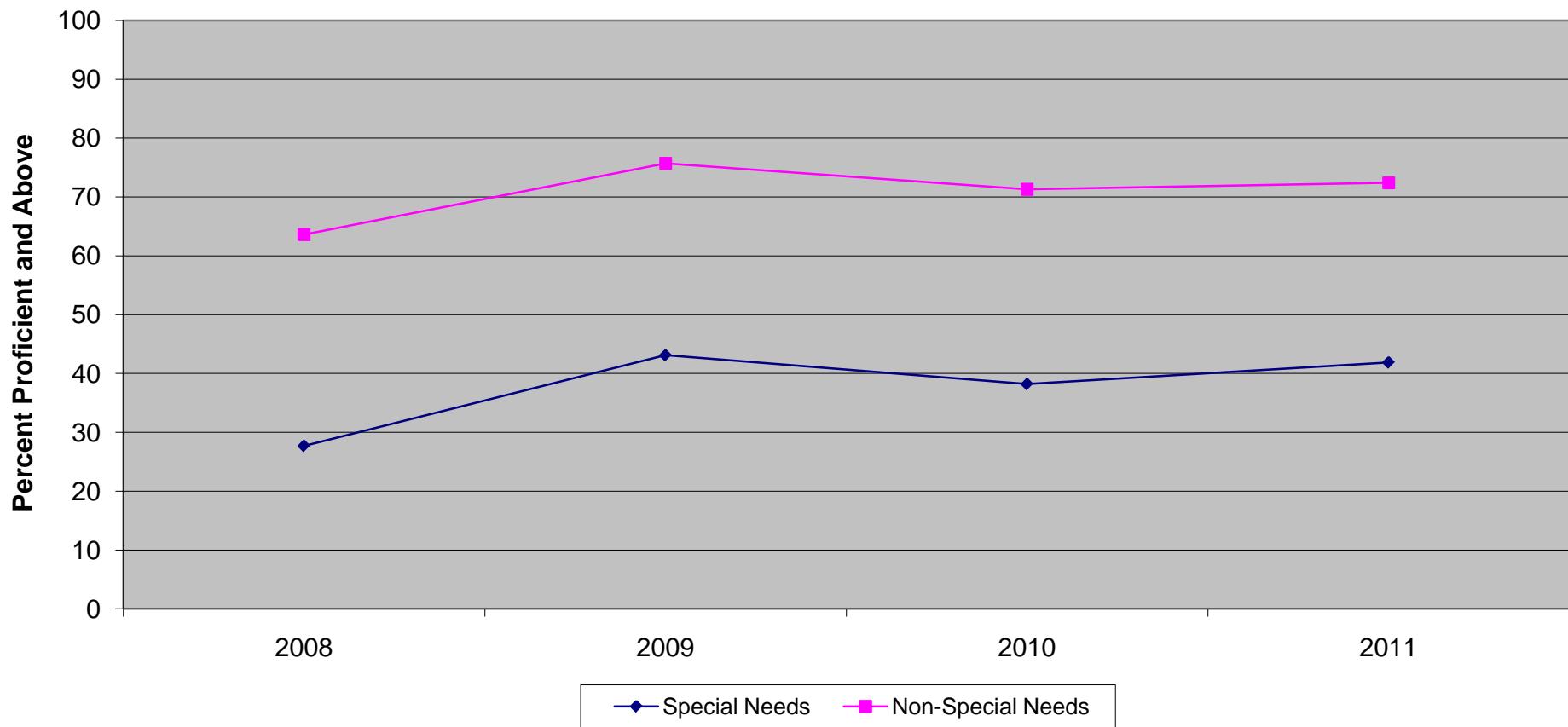


Ethnic codes Pacific Islander, American Indian/Alaskan Native and Other are not shown due to the small number of students in these categories.

**New Jersey Assessment of Skills and Knowledge  
Grade 6 Mathematics Proficient and Above by Ethnicity (2008 - 2011)**

	<b>2008</b>	<b>2009</b>	<b>2010</b>	<b>2011</b>
White	82.1	80.7	81.3	86.0
Black	46.7	46.0	46.0	55.3
Asian	90.2	89.9	90.2	92.7
Hispanic	57.1	56.8	59.7	67.0

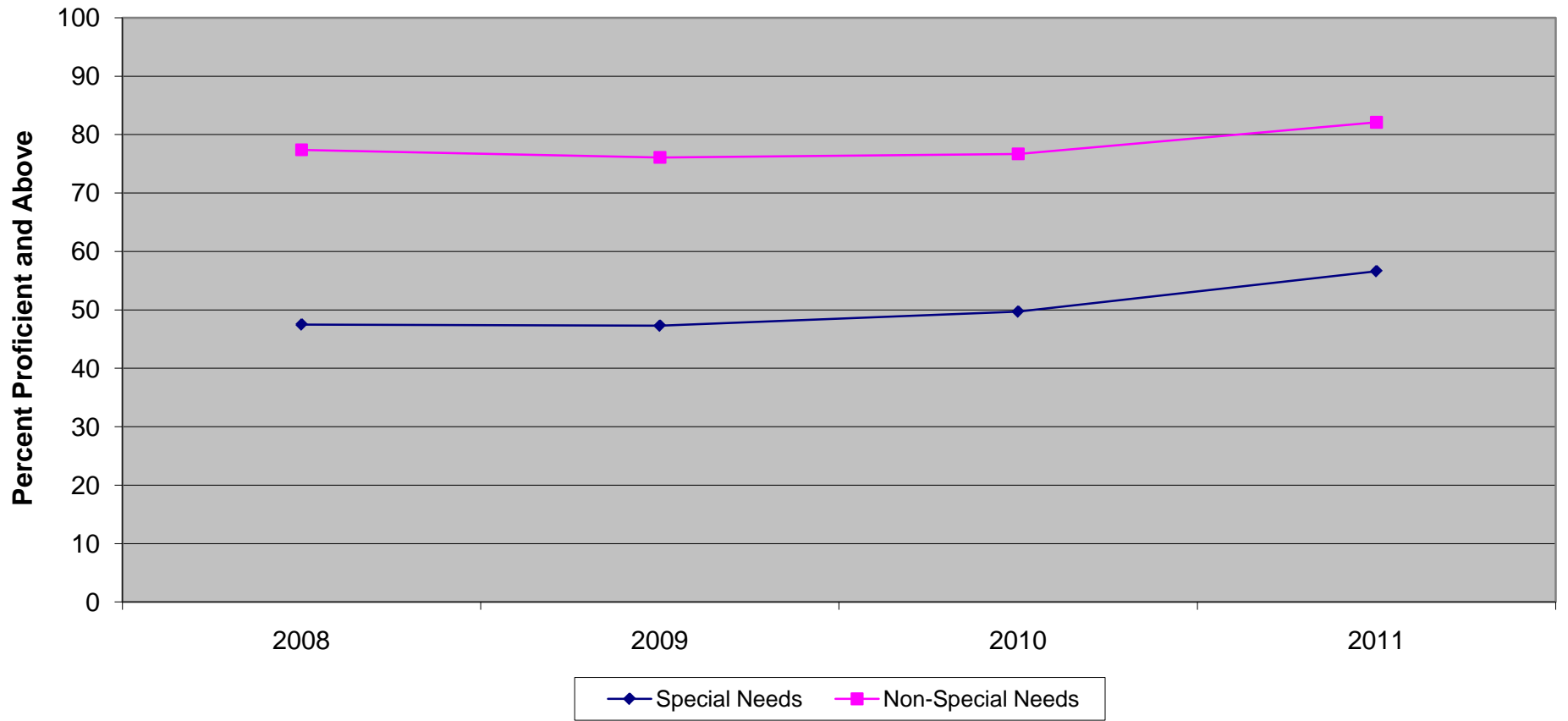
**New Jersey Assessment of Skills and Knowledge  
Grade 6 Language Arts Literacy Proficient and Above  
Special Needs vs Non-Special Needs (2008 - 2011)**



**New Jersey Assessment of Skills and Knowledge  
Grade 6 Language Arts Literacy Proficient and Above  
Special Needs vs Non-Special Needs (2008 - 2011)**

	<b>2008</b>	<b>2009</b>	<b>2010</b>	<b>2011</b>
Female	27.7	43.1	38.2	41.9
Male	63.6	75.7	71.3	72.4

New Jersey Assessment of Skills and Knowledge  
Grade 6 Mathematics Proficient and Above  
Special Needs vs Non-Special Needs (2008 - 2011)

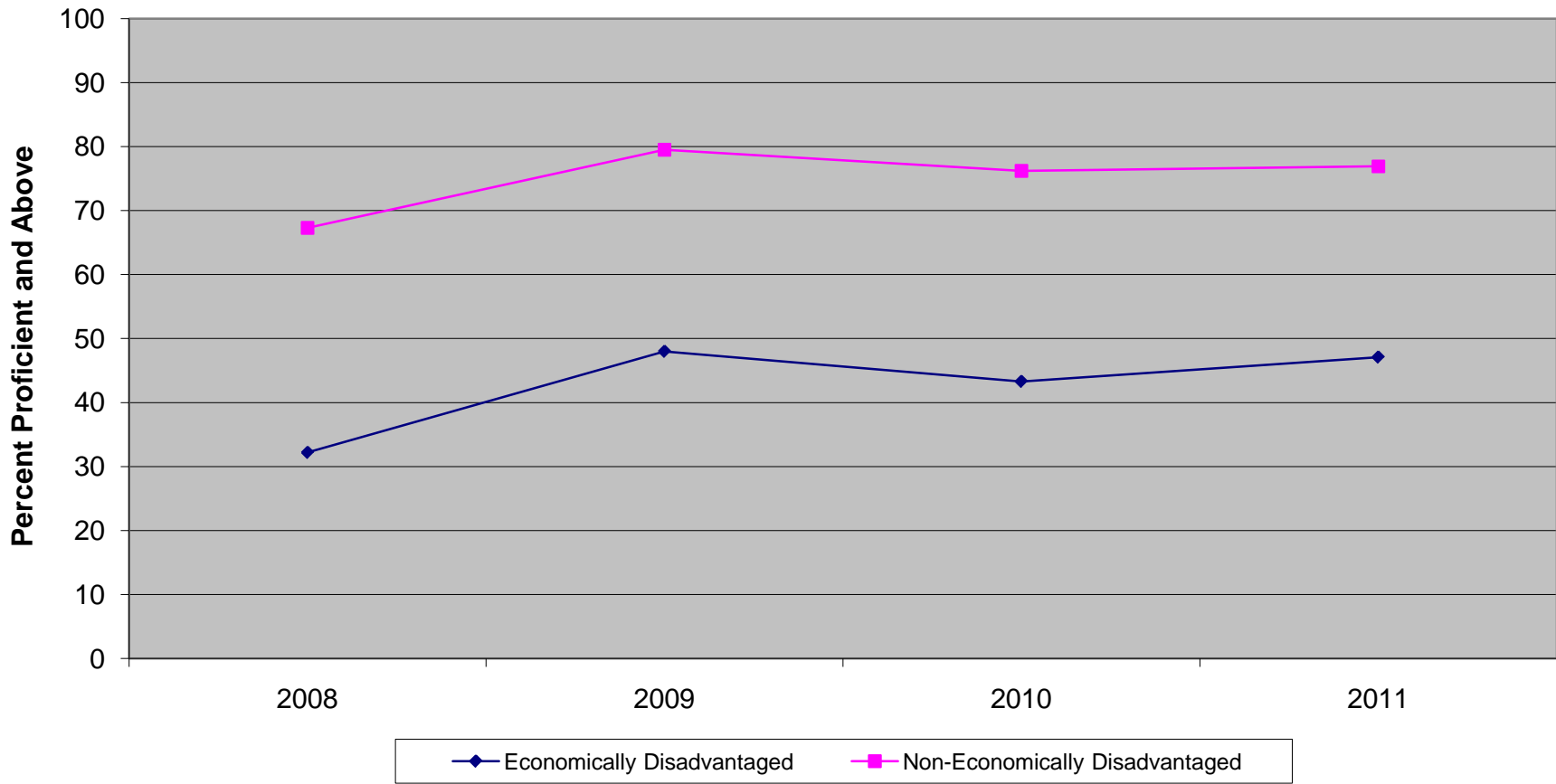


**New Jersey Assessment of Skills and Knowledge  
Grade 6 Mathematics Proficient and Above  
Special Needs vs Non-Special Needs (2008 - 2011)**

	<b>2008</b>	<b>2009</b>	<b>2010</b>	<b>2011</b>
Female	47.5	47.3	49.7	56.6
Male	77.4	76.1	76.7	82.1



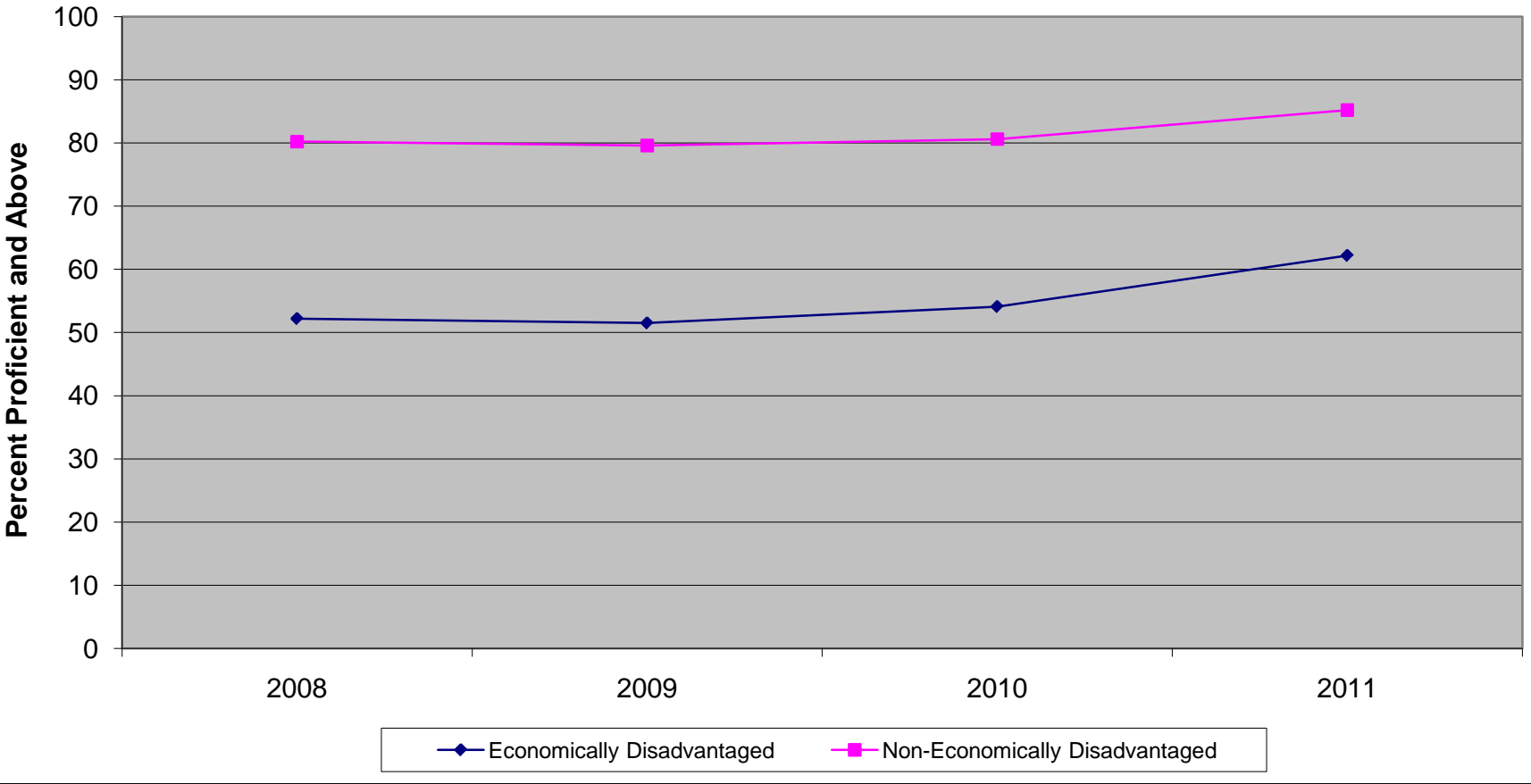
New Jersey Assessment of Skills and Knowledge  
Grade 6 Language Arts Literacy Proficient and Above  
Economically Disadvantaged vs Non-Economically Disadvantaged (2008 - 2011)



**New Jersey Assessment of Skills and Knowledge  
Grade 6 Language Arts Literacy Proficient and Above  
Economically Disadvantaged vs Non-Economically Disadvantaged (2008 - 2011)**

	<b>2008</b>	<b>2009</b>	<b>2010</b>	<b>2011</b>
Economically Disadvantaged	32.2	48.0	43.3	47.1
Non-Economically Disadvantaged	67.3	79.5	76.2	76.9

New Jersey Assessment of Skills and Knowledge  
Grade 6 Mathematics Proficient and Above  
Economically Disadvantaged vs Non-Economically Disadvantaged (2008 - 2011)



**New Jersey Assessment of Skills and Knowledge  
Grade 6 Mathematics Proficient and Above  
Economically Disadvantaged vs Non-Economically Disadvantaged (2008 - 2011)**

	<b>2008</b>	<b>2009</b>	<b>2010</b>	<b>2011</b>
Economically Disadvantaged	52.2	51.5	54.1	62.2
Non-Economically Disadvantaged	80.2	79.6	80.6	85.2