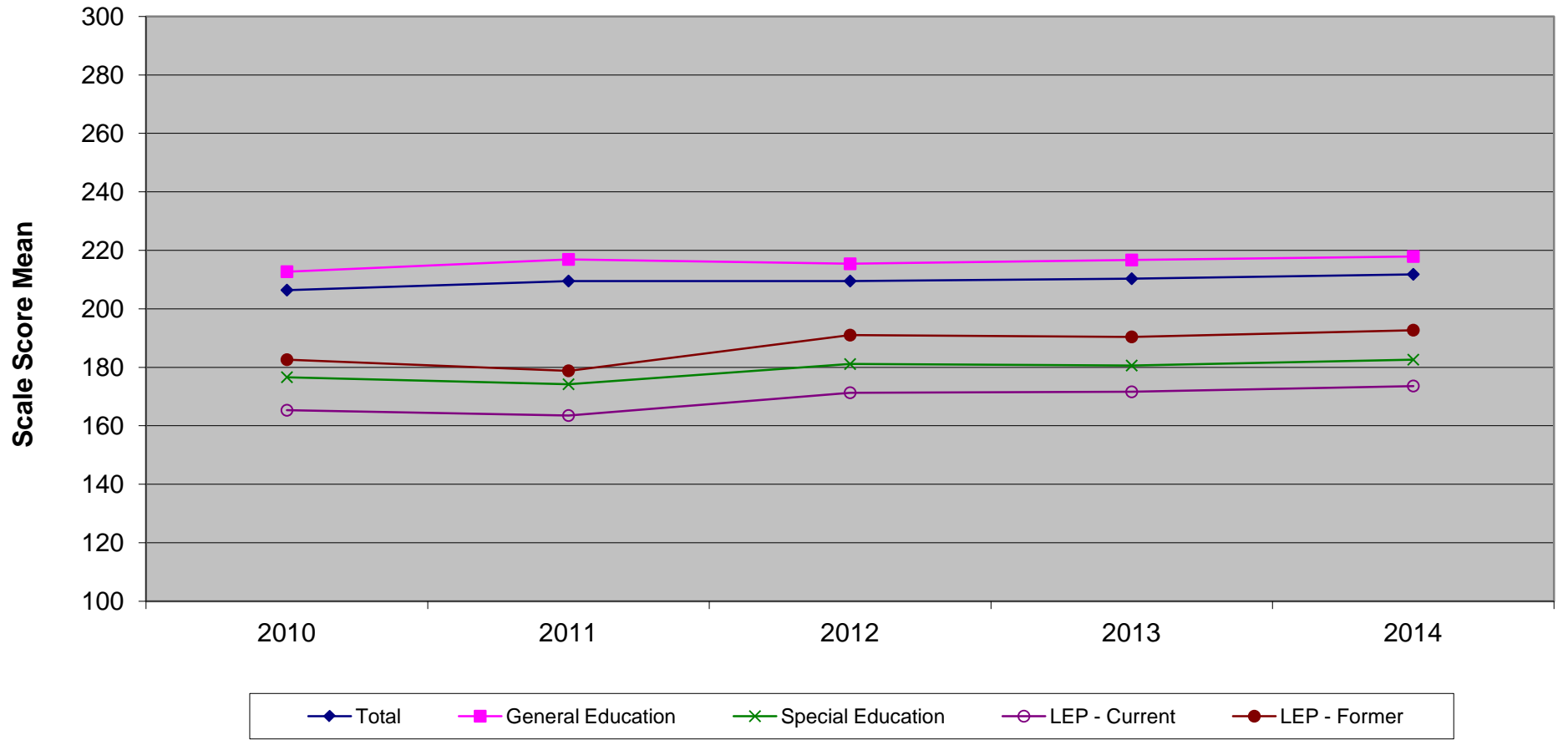


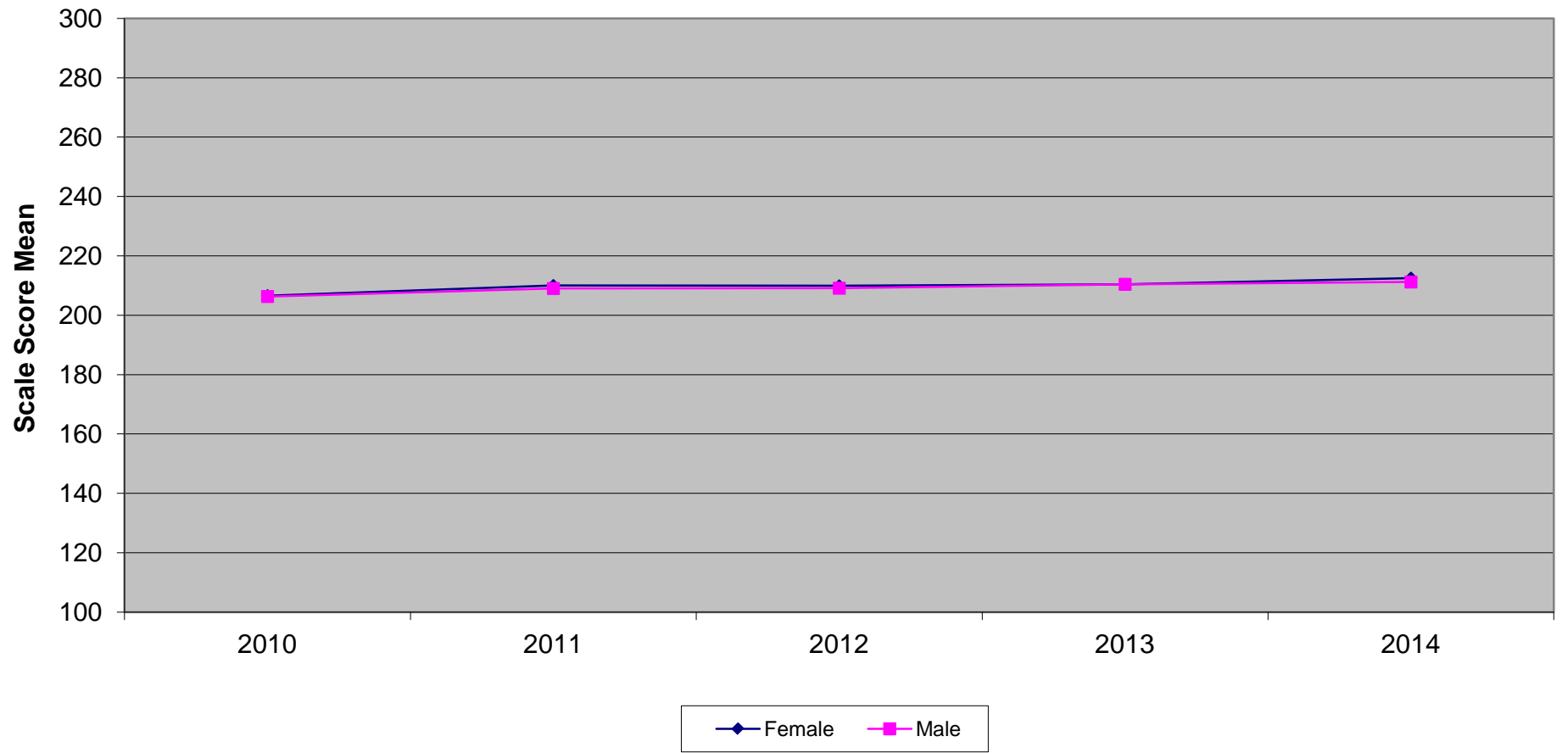
New Jersey Biology Competency Test  
Scale Score Mean by Instructional Group (2010-2014)



**New Jersey Biology Competency Test  
Scale Score Mean by Instructional Group  
(2010-2014)**

	<b>2010</b>	<b>2011</b>	<b>2012</b>	<b>2013</b>	<b>2014</b>
<b>Total</b>	206.4	209.5	209.5	210.3	211.8
<b>General Education</b>	212.7	216.9	215.4	216.7	217.9
<b>Special Education</b>	176.6	174.2	181.1	180.6	182.6
<b>LEP - Current</b>	165.3	163.5	171.3	171.6	173.6
<b>LEP - Former</b>	182.6	178.8	191.0	190.4	192.7

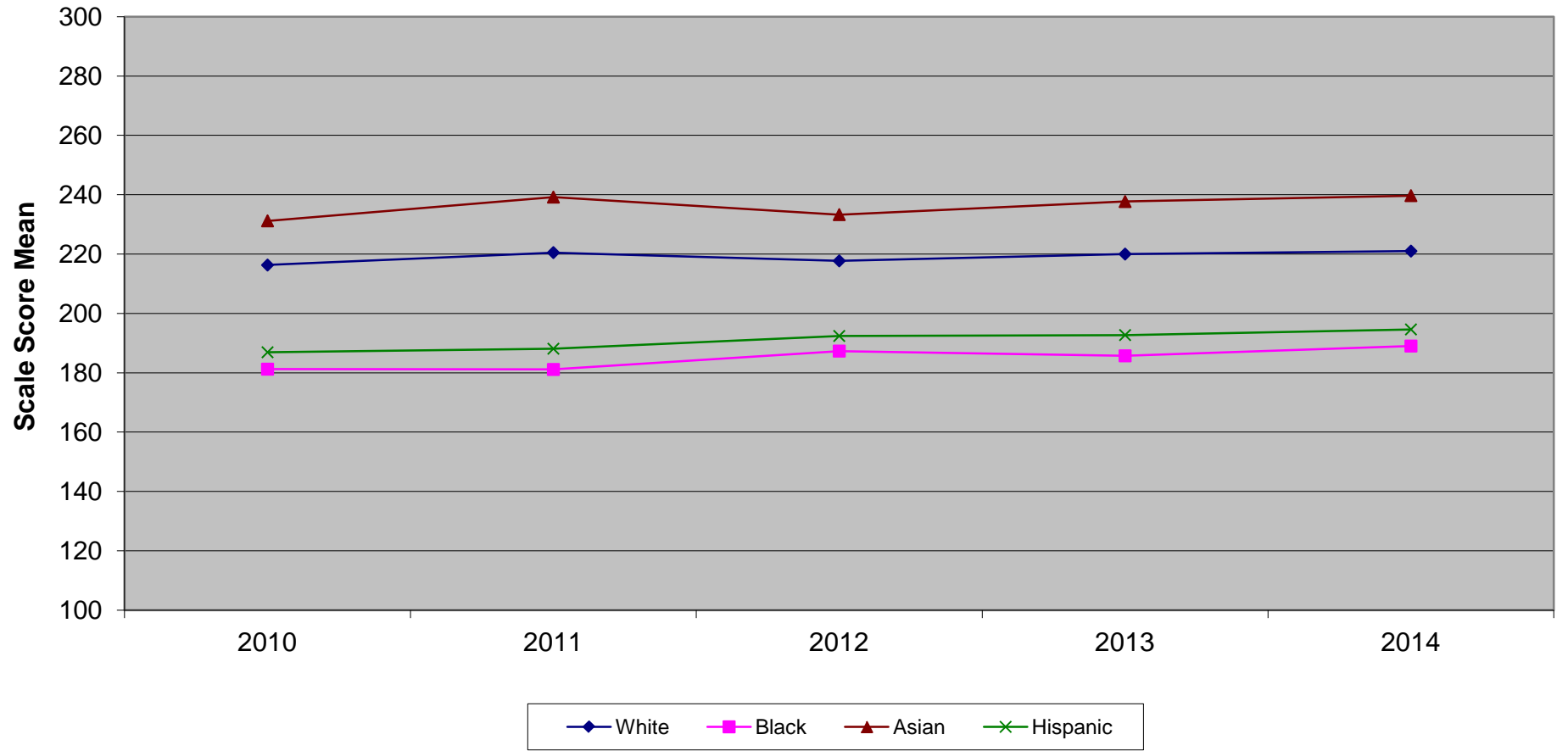
New Jersey Biology Competency Test  
Scale Score Mean by Gender (2010-2014)



**New Jersey Biology Competency Test  
Scale Score Mean by Gender (2010-2014)**

	<b>2010</b>	<b>2011</b>	<b>2012</b>	<b>2013</b>	<b>2014</b>
<b>Female</b>	206.6	210.0	209.9	210.4	212.5
<b>Male</b>	206.3	209.0	209.1	210.4	211.2

New Jersey Biology Competency Test  
Scale Score Mean by Ethnicity (2010-2014)

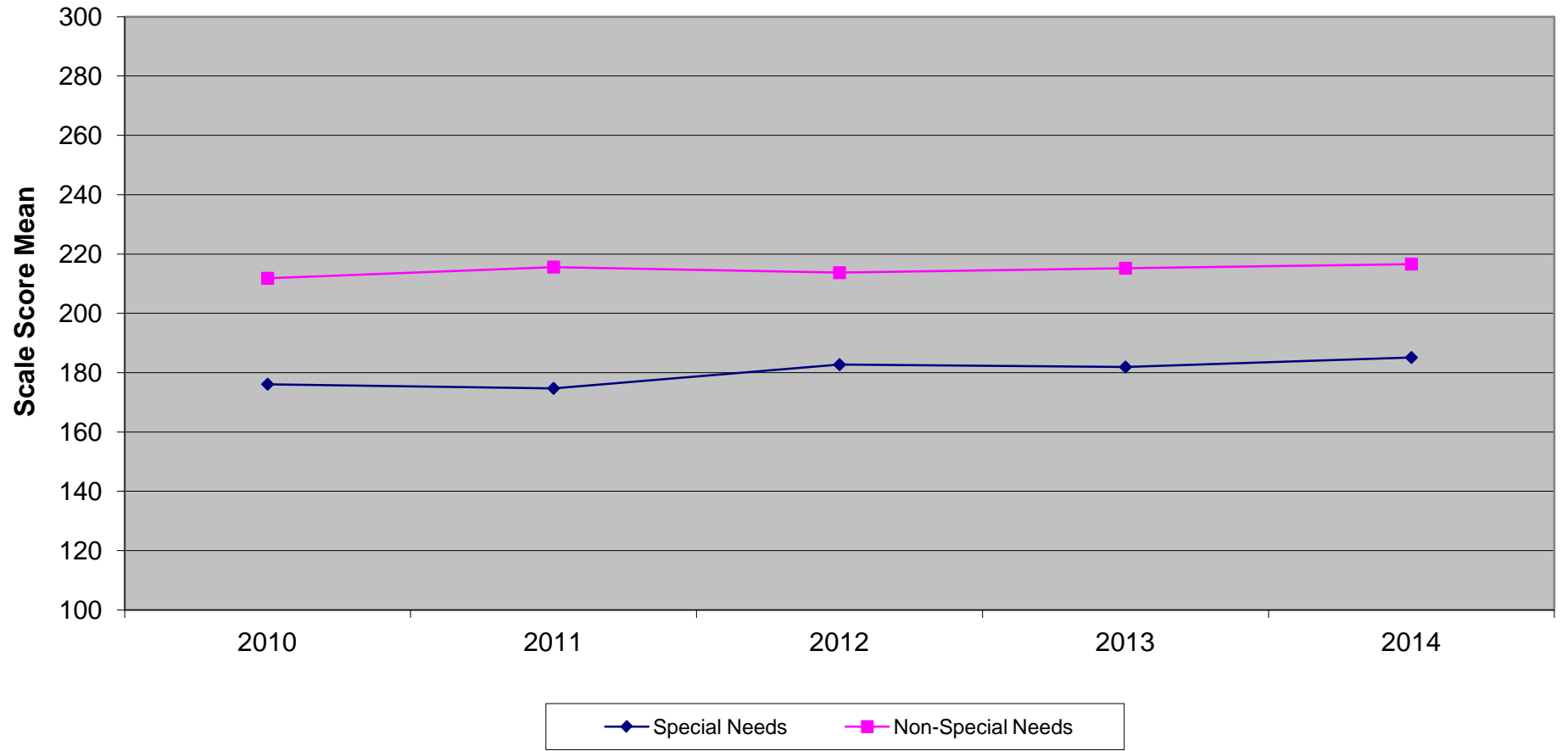


Ethnic codes Pacific Islander, American Indian/Alaskan Native and Other are not shown due to the small number of students in these categories.

**New Jersey Biology Competency Test  
Scale Score Mean by Ethnicity (2010-2014)**

	<b>2010</b>	<b>2011</b>	<b>2012</b>	<b>2013</b>	<b>2014</b>
<b>White</b>	216.3	220.5	217.7	220.0	221.0
<b>Black</b>	181.2	181.1	187.3	185.7	189.0
<b>Asian</b>	231.2	239.2	233.3	237.7	239.7
<b>Hispanic</b>	186.9	188.1	192.4	192.7	194.6

New Jersey Biology Competency Test  
Scale Score Mean  
Special Needs vs Non-Special Needs (2010-2014)

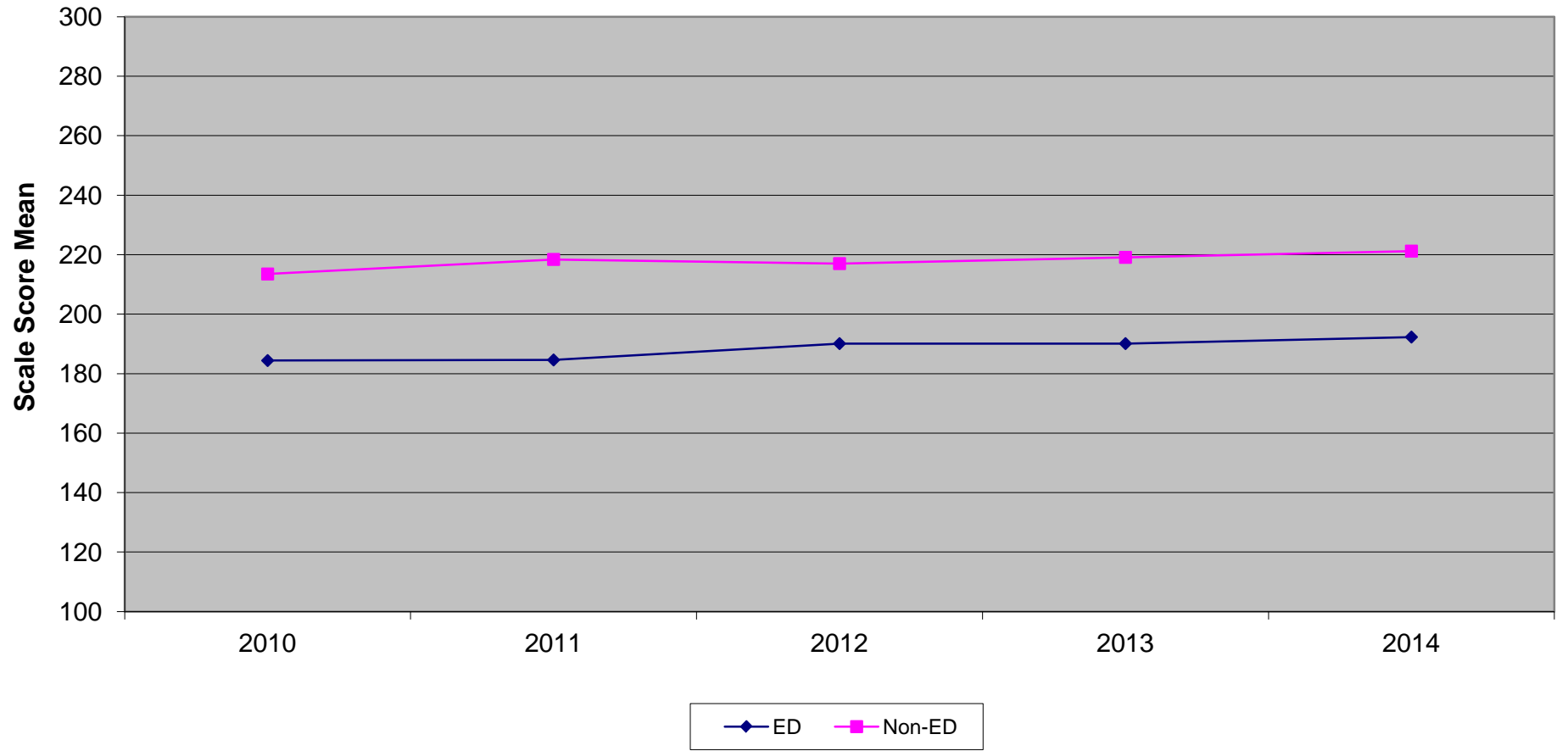


**New Jersey Biology Competency Test  
Special Needs vs Non-Special Needs (2010-2014)**

	<b>2010</b>	<b>2011</b>	<b>2012</b>	<b>2013</b>	<b>2014</b>
<b>Special Needs</b>	176.1	174.7	182.7	181.9	185.1
<b>Non-Special Needs</b>	211.8	215.6	213.7	215.2	216.6



New Jersey Biology Competency Test  
Scale Score Mean  
Economically Disadvantaged vs Non-Economically Disadvantaged (2010-2014)



**New Jersey Biology Competency Test  
Economically Disadvantaged vs Non-Economically Disadvantaged (2010-2014)**

	<b>2010</b>	<b>2011</b>	<b>2012</b>	<b>2013</b>	<b>2014</b>
<b>ED</b>	184.4	184.6	190.1	190.1	192.3
<b>Non-ED</b>	213.5	218.4	217.0	219.1	221.2