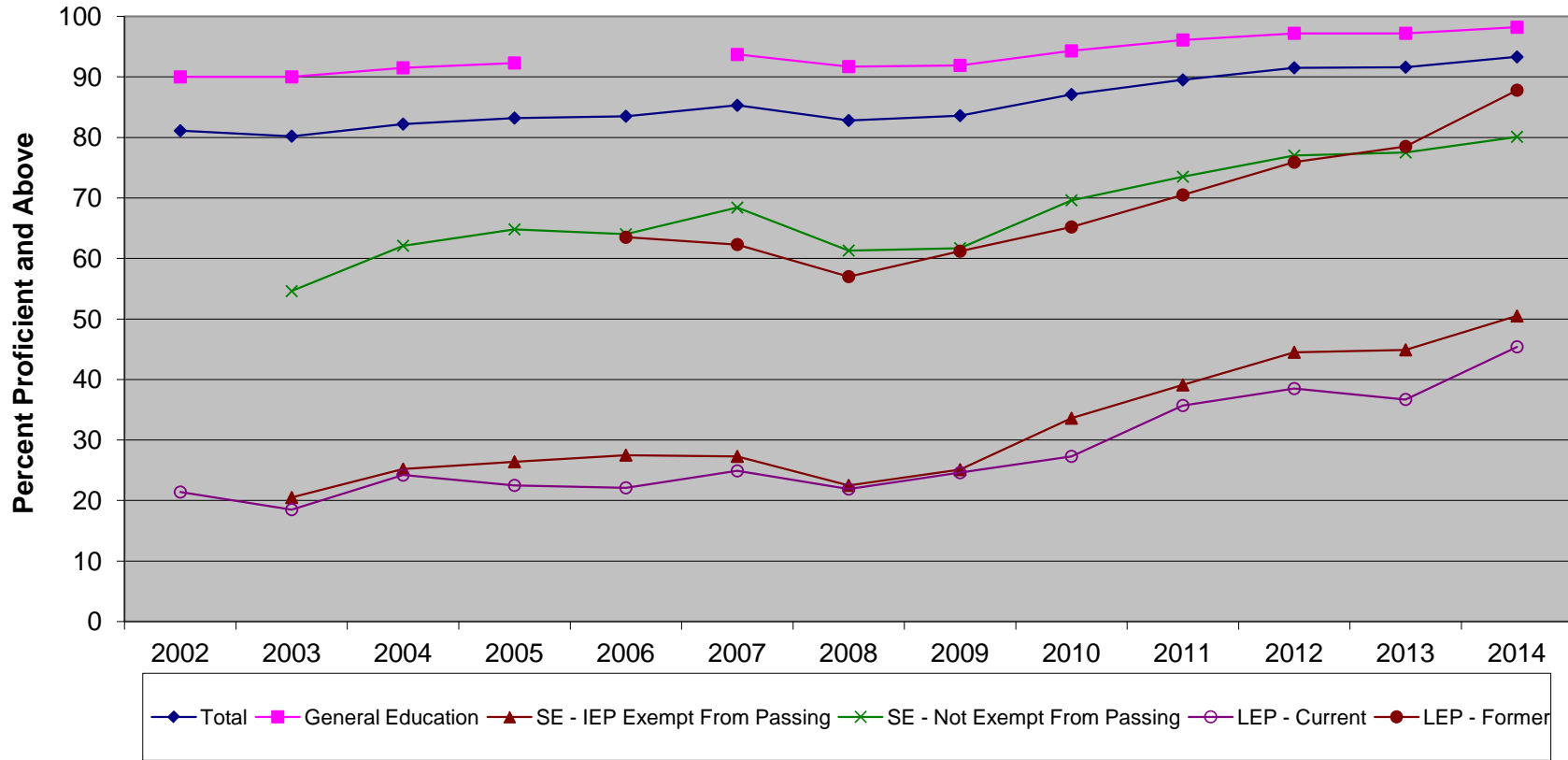


**New Jersey High School Proficiency Assessment
Language Arts Literacy Percent Proficient and Above by Instructional Group
(2002-2014)**



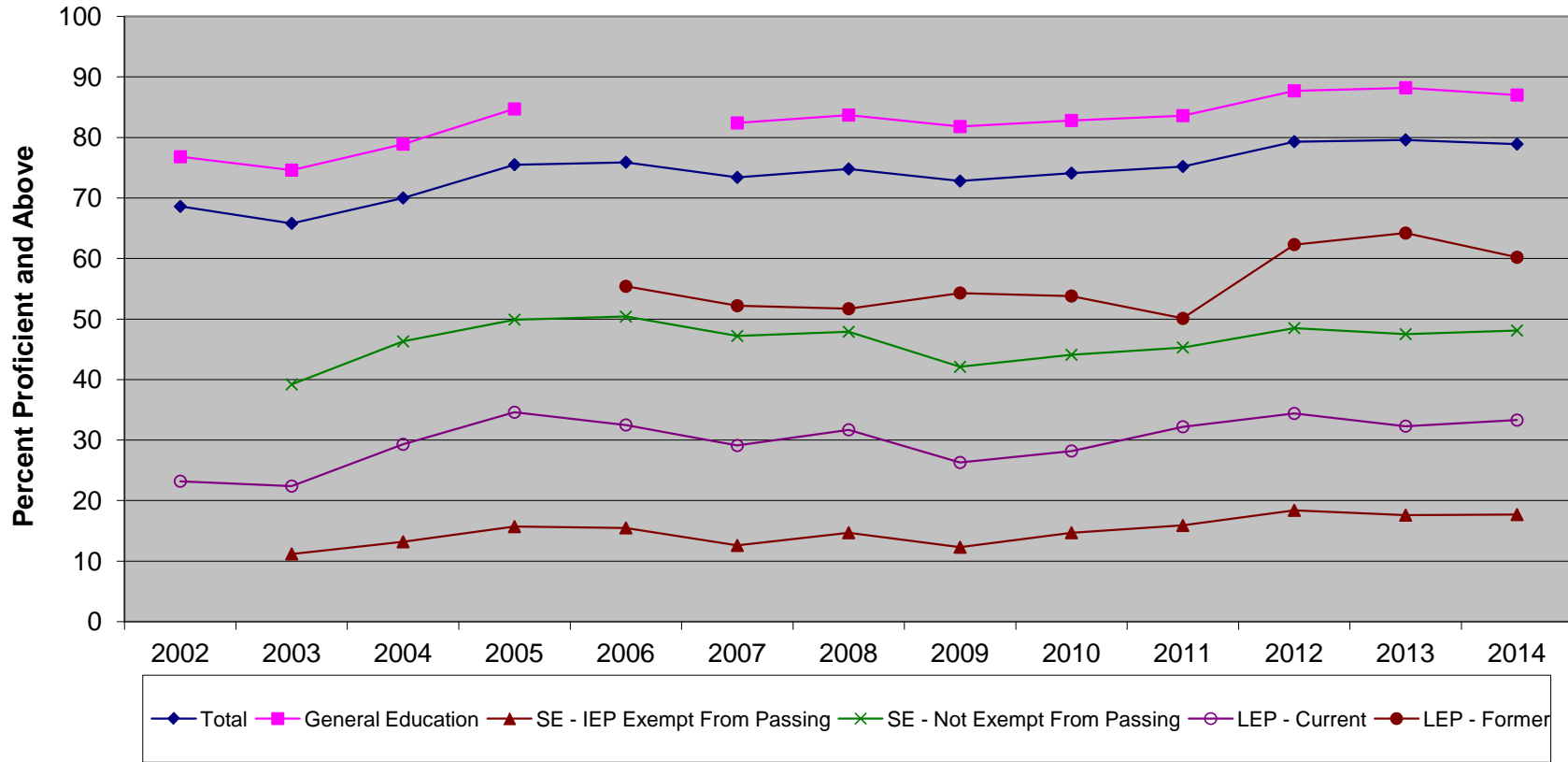
The General Education category was not reported in 2006.

In 2002, Special Education could not be disaggregated into the categories of SE Not Exempt From Passing and SE IEP Exempt From Passing and thus those categories are not plotted on this graph.

**New Jersey High School Proficiency Assessment
Language Arts Literacy Percent Proficient and Above by Instructional Group
(2002-2014)**

	2002	2003	2004	2005	2006	2007	2008	2009	2010	2011	2012	2013	2014
Total	81.1	80.2	82.2	83.2	83.5	85.3	82.8	83.6	87.1	89.5	91.5	91.6	93.3
General Education	90.0	90.0	91.5	92.3		93.7	91.7	91.9	94.3	96.1	97.2	97.2	98.2
SE - IEP Exempt From Passing		20.5	25.2	26.4	27.5	27.3	22.5	25.1	33.6	39.1	44.5	44.9	50.5
SE - Not Exempt From Passing		54.6	62.1	64.8	64	68.4	61.3	61.7	69.6	73.5	77.0	77.5	80.1
LEP - Current	21.4	18.5	24.2	22.5	22.1	24.9	21.9	24.6	27.3	35.7	38.5	36.7	45.4
LEP - Former					63.5	62.3	57.0	61.2	65.2	70.5	75.9	78.5	87.8

**New Jersey High School Proficiency Assessment
Mathematics Proficient and Above by Instructional Group (2002-2014)**



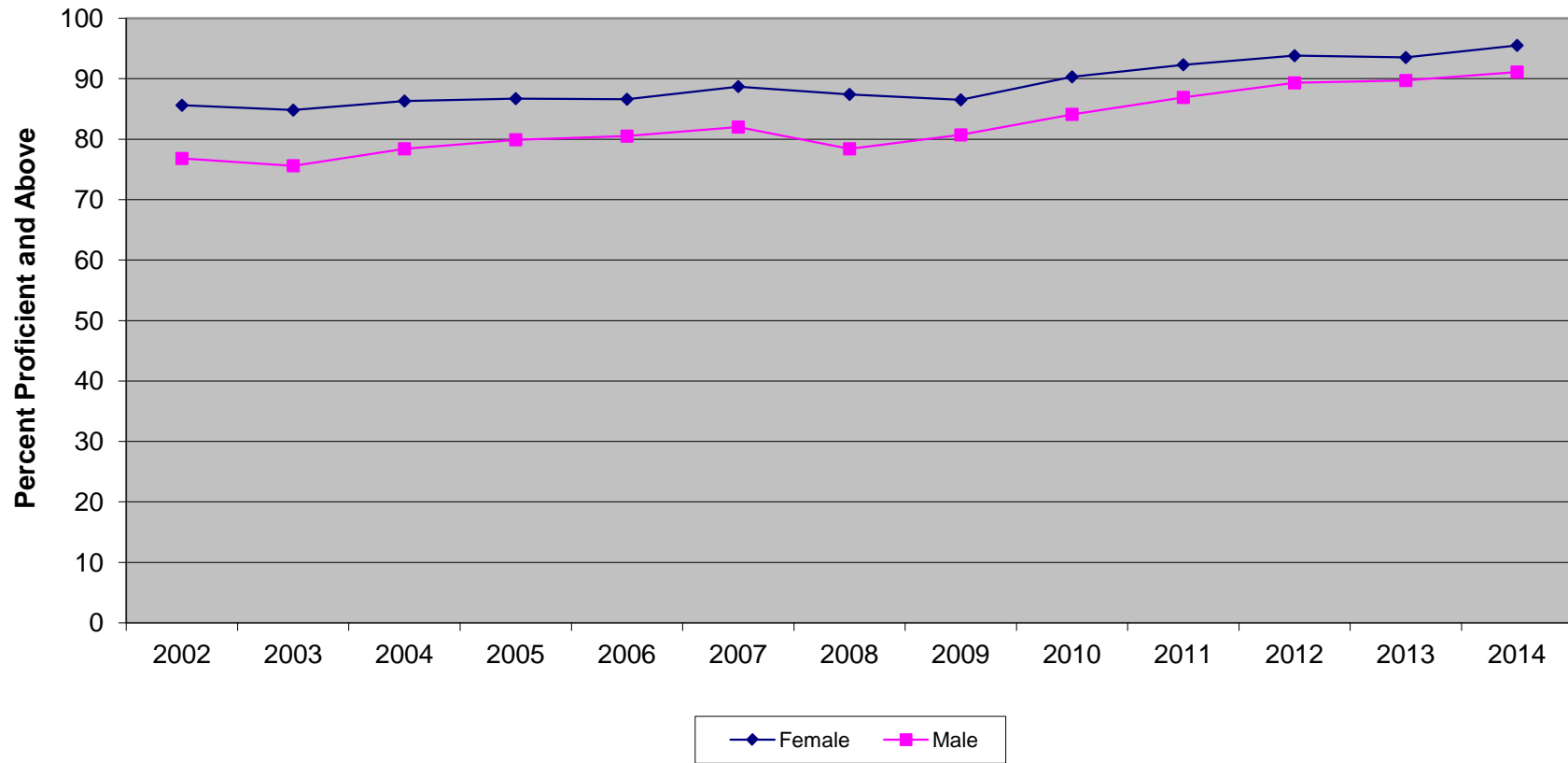
The General Education category was not reported in 2006.

In 2002, Special Education could not be disaggregated into the categories of SE Not Exempt From Passing and SE IEP Exempt From Passing and thus those categories are not plotted on this graph.

**New Jersey High School Proficiency Assessment
Mathematics Proficient and Above by Instructional Group (2002-2014)**

	2002	2003	2004	2005	2006	2007	2008	2009	2010	2011	2012	2013	2014
Total	68.6	65.8	70.0	75.5	75.9	73.4	74.8	72.8	74.1	75.2	79.3	79.6	78.9
General Education	76.8	74.6	78.9	84.7		82.4	83.7	81.8	82.8	83.6	87.7	88.2	87.0
SE - IEP Exempt From Passing		11.2	13.2	15.7	15.5	12.6	14.7	12.3	14.7	15.9	18.4	17.6	17.7
SE - Not Exempt From Passing		39.2	46.3	49.9	50.4	47.2	47.9	42.1	44.1	45.3	48.5	47.5	48.1
LEP - Current	23.2	22.4	29.3	34.6	32.5	29.1	31.7	26.3	28.2	32.2	34.4	32.3	33.3
LEP - Former					55.4	52.2	51.7	54.3	53.8	50.1	62.3	64.2	60.2

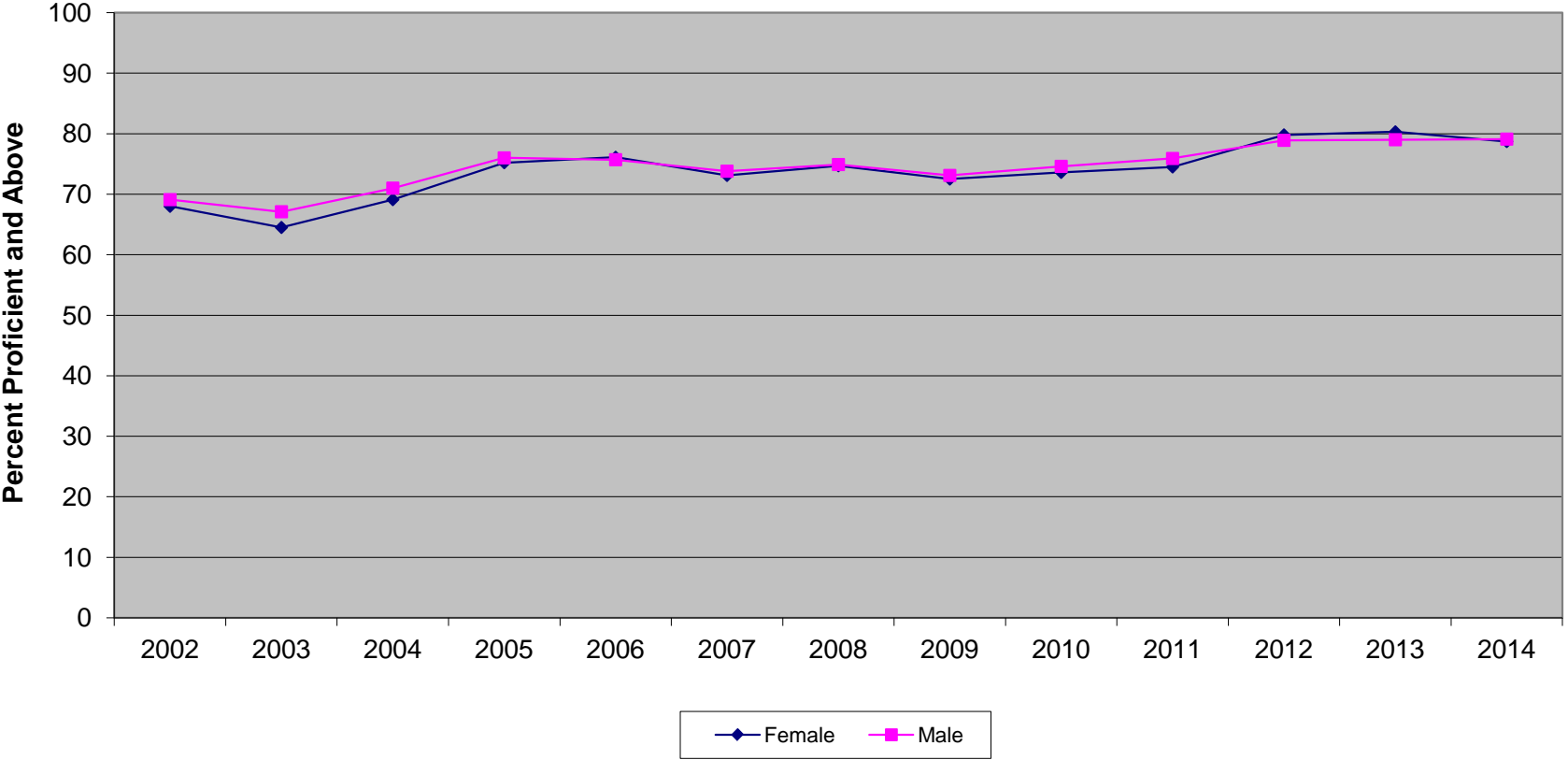
New Jersey High School Proficiency Assessment
Language Arts Literacy Proficient and Above by Gender (2002-2014)



**New Jersey High School Proficiency Assessment
Language Arts Literacy Proficient and Above by Gender (2002-2014)**

	2002	2003	2004	2005	2006	2007	2008	2009	2010	2011	2012	2013	2014
Female	85.6	84.8	86.3	86.7	86.6	88.7	87.4	86.5	90.3	92.3	93.8	93.5	95.5
Male	76.8	75.6	78.4	79.9	80.5	82.0	78.4	80.7	84.1	86.9	89.3	89.7	91.1

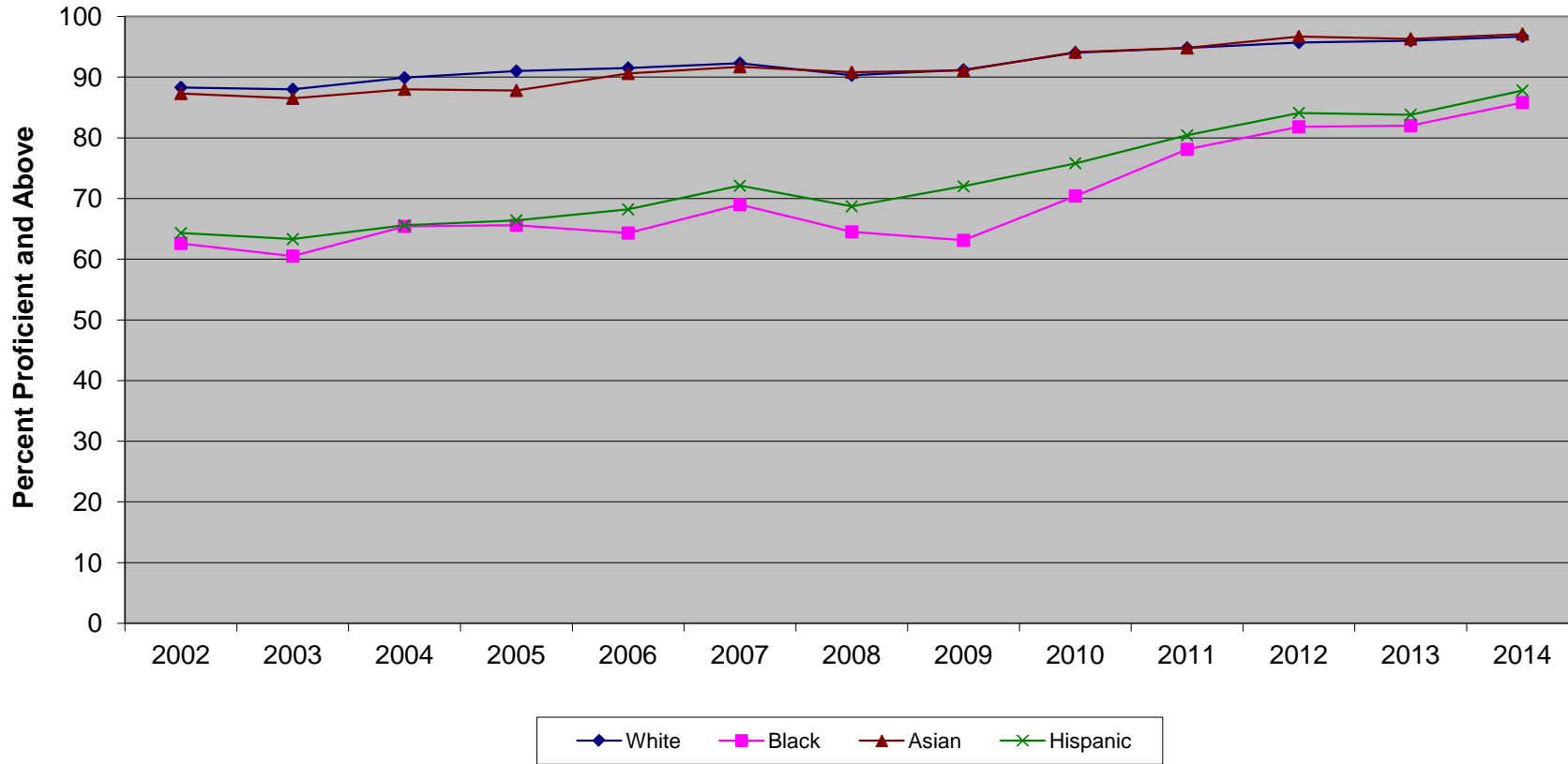
New Jersey High School Proficiency Assessment
Mathematics Proficient and Above by Gender (2002-2014)



**New Jersey High School Proficiency Assessment
Mathematics Proficient and Above by Gender (2002-2014)**

	2002	2003	2004	2005	2006	2007	2008	2009	2010	2011	2012	2013	2014
Female	68.0	64.5	69.1	75.2	76.1	73.1	74.7	72.5	73.6	74.5	79.8	80.3	78.7
Male	69.1	67.1	71.0	76.0	75.7	73.8	74.9	73.1	74.6	75.9	78.9	79.0	79.1

New Jersey High School Proficiency Assessment
Language Arts Literacy Proficient and Above by Ethnicity (2002-2014)

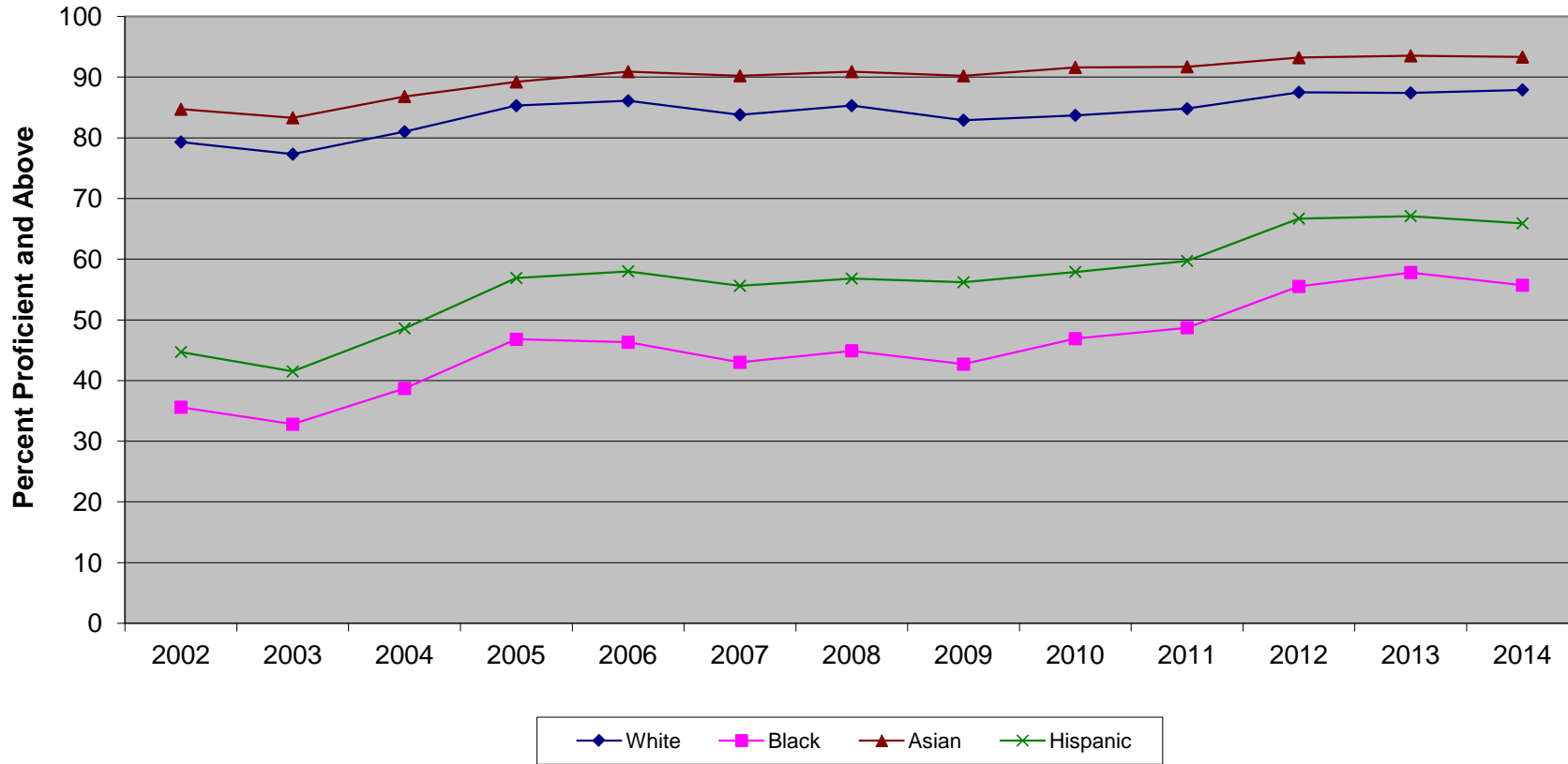


Ethnic codes Pacific Islander, American Indian/Alaskan Native and Other are not shown due to the small number of students in these categories. In 2004 only, students with multiple ethnicities are counted in all ethnic categories that apply, but are excluded completely in all other years.

**New Jersey High School Proficiency Assessment
Language Arts Literacy Proficient and Above by Ethnicity (2002-2014)**

	2002	2003	2004	2005	2006	2007	2008	2009	2010	2011	2012	2013	2014
White	88.3	88.0	89.9	91.0	91.5	92.3	90.3	91.2	94.0	94.8	95.7	96.0	96.7
Black	62.6	60.5	65.4	65.6	64.3	69.0	64.5	63.1	70.4	78.1	81.8	82.0	85.8
Asian	87.3	86.5	88.0	87.8	90.6	91.7	90.8	91.1	94.1	94.8	96.7	96.3	97.1
Hispanic	64.3	63.3	65.6	66.4	68.2	72.1	68.7	72.0	75.8	80.4	84.1	83.8	87.8

New Jersey High School Proficiency Assessment
Mathematics Proficient and Above by Ethnicity (2002-2014)

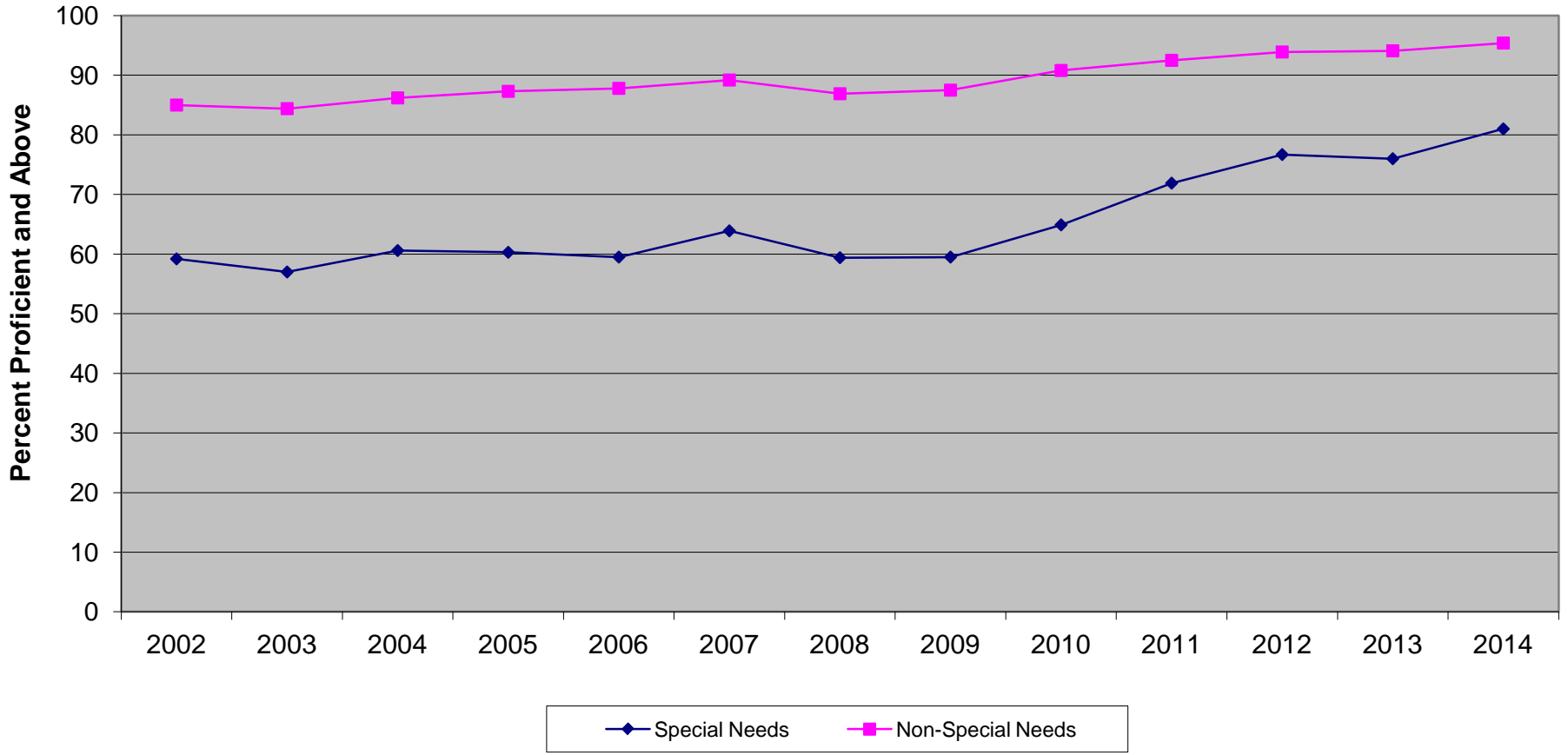


Ethnic codes Pacific Islander, American Indian/Alaskan Native and Other are not shown due to the small number of students in these categories. In 2004 only, students with multiple ethnicities are counted in all ethnic categories that apply, but are excluded completely in all other years.

**New Jersey High School Proficiency Assessment
Mathematics Proficient and Above by Ethnicity (2002-2014)**

	2002	2003	2004	2005	2006	2007	2008	2009	2010	2011	2012	2013	2014
White	79.3	77.3	81.0	85.3	86.1	83.8	85.3	82.9	83.7	84.8	87.5	87.4	87.9
Black	35.6	32.8	38.7	46.8	46.3	43.0	44.9	42.7	46.9	48.7	55.5	57.8	55.7
Asian	84.7	83.3	86.8	89.2	90.9	90.2	90.9	90.2	91.6	91.7	93.2	93.5	93.3
Hispanic	44.7	41.5	48.6	56.9	58	55.6	56.8	56.2	57.9	59.7	66.7	67.1	65.9

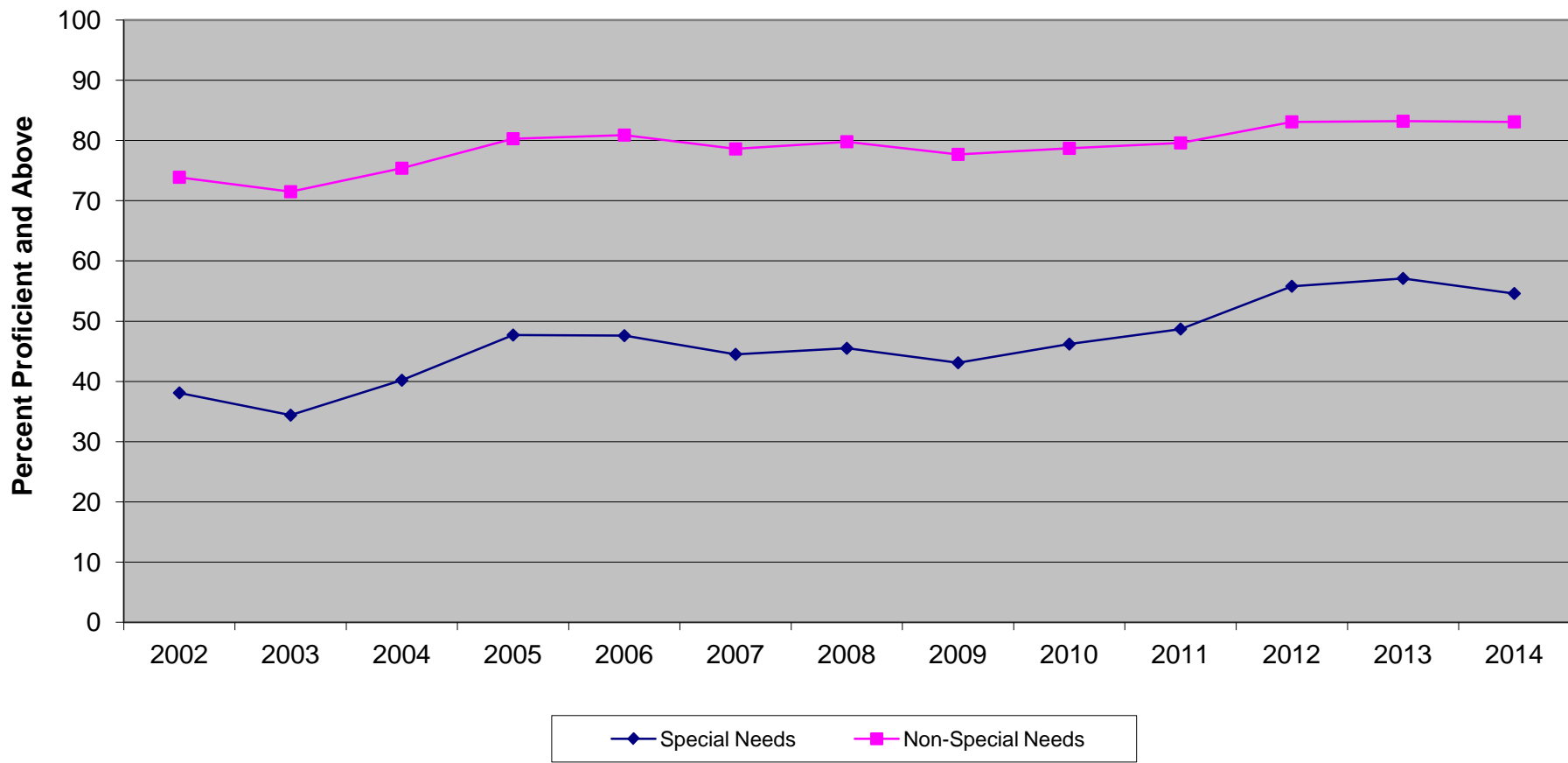
New Jersey High School Proficiency Assessment
Language Arts Literacy Proficient and Above
Special Needs vs Non-Special Needs (2002-2014)



**New Jersey High School Proficiency Assessment
Language Arts Literacy Special Needs vs Non-Special Needs (2002-2014)**

	2002	2003	2004	2005	2006	2007	2008	2009	2010	2011	2012	2013	2014
Special Needs	59.2	57.0	60.6	60.3	59.5	63.9	59.4	59.5	64.9	71.9	76.7	76.0	81.0
Non-Special Needs	85.0	84.4	86.2	87.3	87.8	89.2	86.9	87.5	90.8	92.5	93.9	94.1	95.4

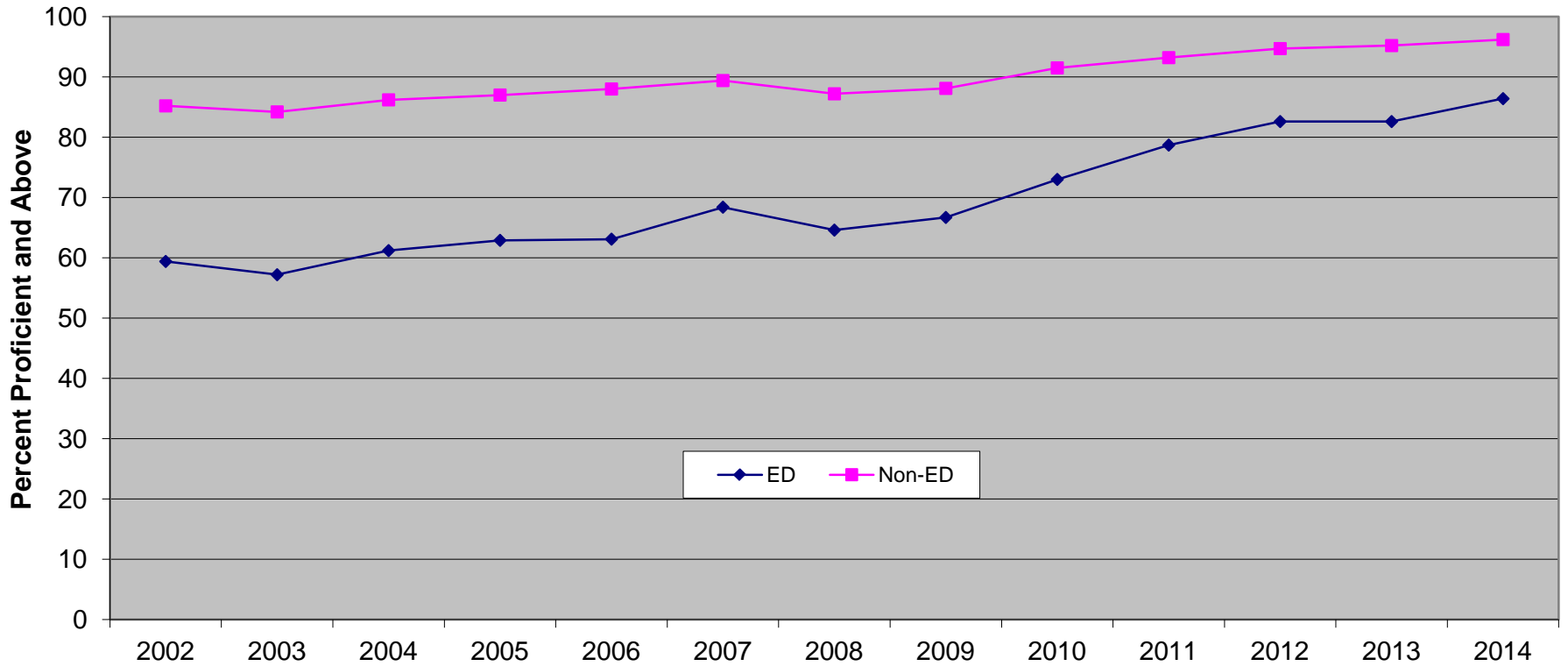
**New Jersey High School Proficiency Assessment
Mathematics Proficient and Above
Special Needs vs Non-Special Needs (2002-2014)**



**New Jersey High School Proficiency Assessment
Mathematics Special Needs vs Non-Special Needs (2002-2014)**

	2002	2003	2004	2005	2006	2007	2008	2009	2010	2011	2012	2013	2014
Special Needs	38.1	34.4	40.2	47.7	47.6	44.5	45.5	43.1	46.2	48.7	55.8	57.1	54.6
Non-Special Needs	73.9	71.5	75.4	80.3	80.9	78.6	79.8	77.7	78.7	79.6	83.1	83.2	83.1

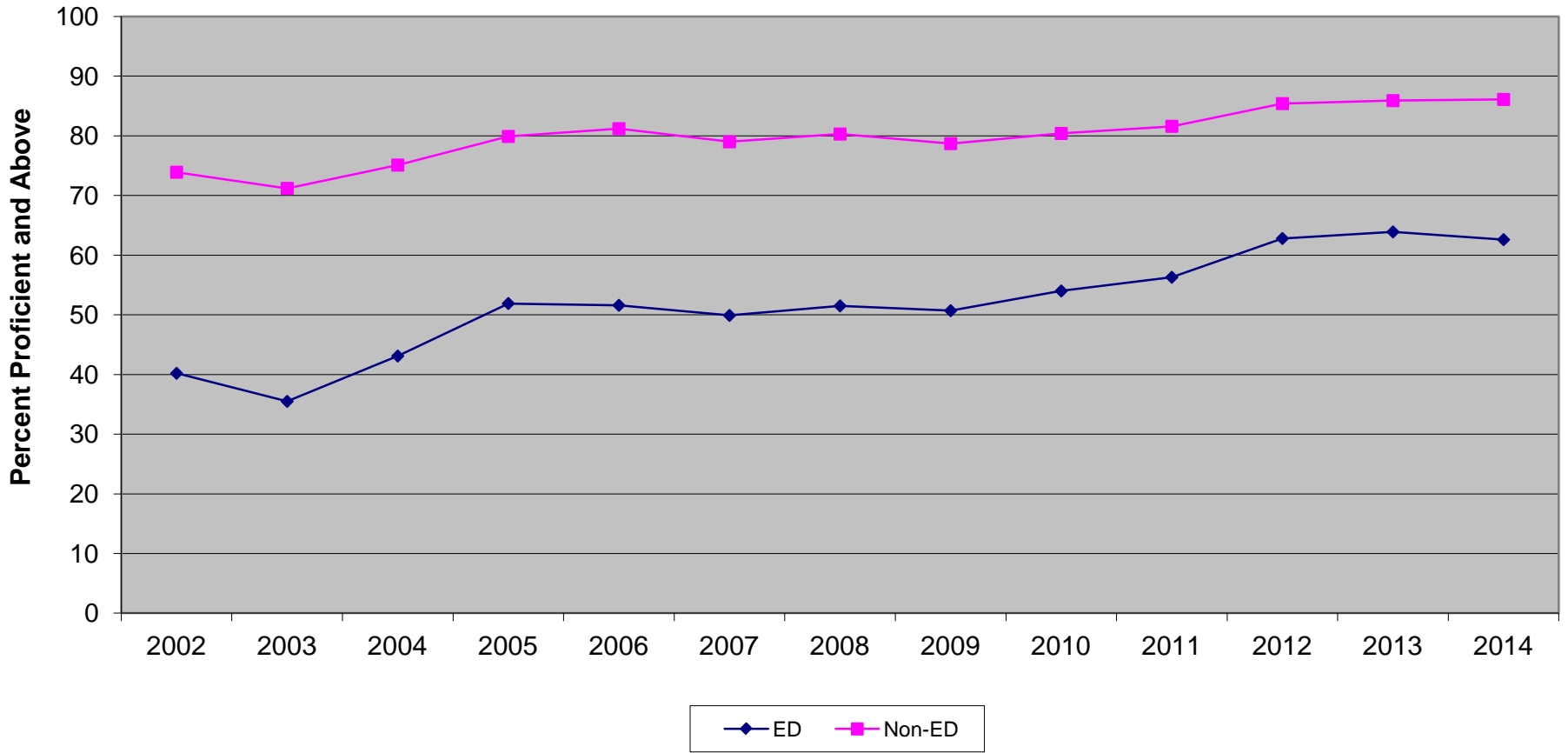
New Jersey High School Proficiency Assessment
Language Arts Literacy Proficient and Above
Economically Disadvantaged vs Non-Economically Disadvantaged (2002-2014)



**New Jersey High School Proficiency Assessment
Language Arts Literacy Economically Disadvantaged vs Non-Economically Disadvantaged (2002-2014)**

	2002	2003	2004	2005	2006	2007	2008	2009	2010	2011	2012	2013	2014
ED	59.4	57.2	61.2	62.9	63.1	68.4	64.6	66.7	73.0	78.7	82.6	82.6	86.4
Non-ED	85.2	84.2	86.2	87.0	88	89.4	87.2	88.1	91.5	93.2	94.7	95.2	96.2

**New Jersey High School Proficiency Assessment
Mathematics Proficient and Above
Economically Disadvantaged vs Non-Economically Disadvantaged (2002-2014)**



**New Jersey High School Proficiency Assessment
Mathematics Economically Disadvantaged vs Non-Economically Disadvantaged (2002-2014)**

	2002	2003	2004	2005	2006	2007	2008	2009	2010	2011	2012	2013	2014
ED	40.2	35.5	43.1	51.9	51.6	49.9	51.5	50.7	54.0	56.3	62.8	63.9	62.6
Non-ED	73.9	71.2	75.1	79.9	81.2	79.0	80.3	78.7	80.4	81.6	85.4	85.9	86.1