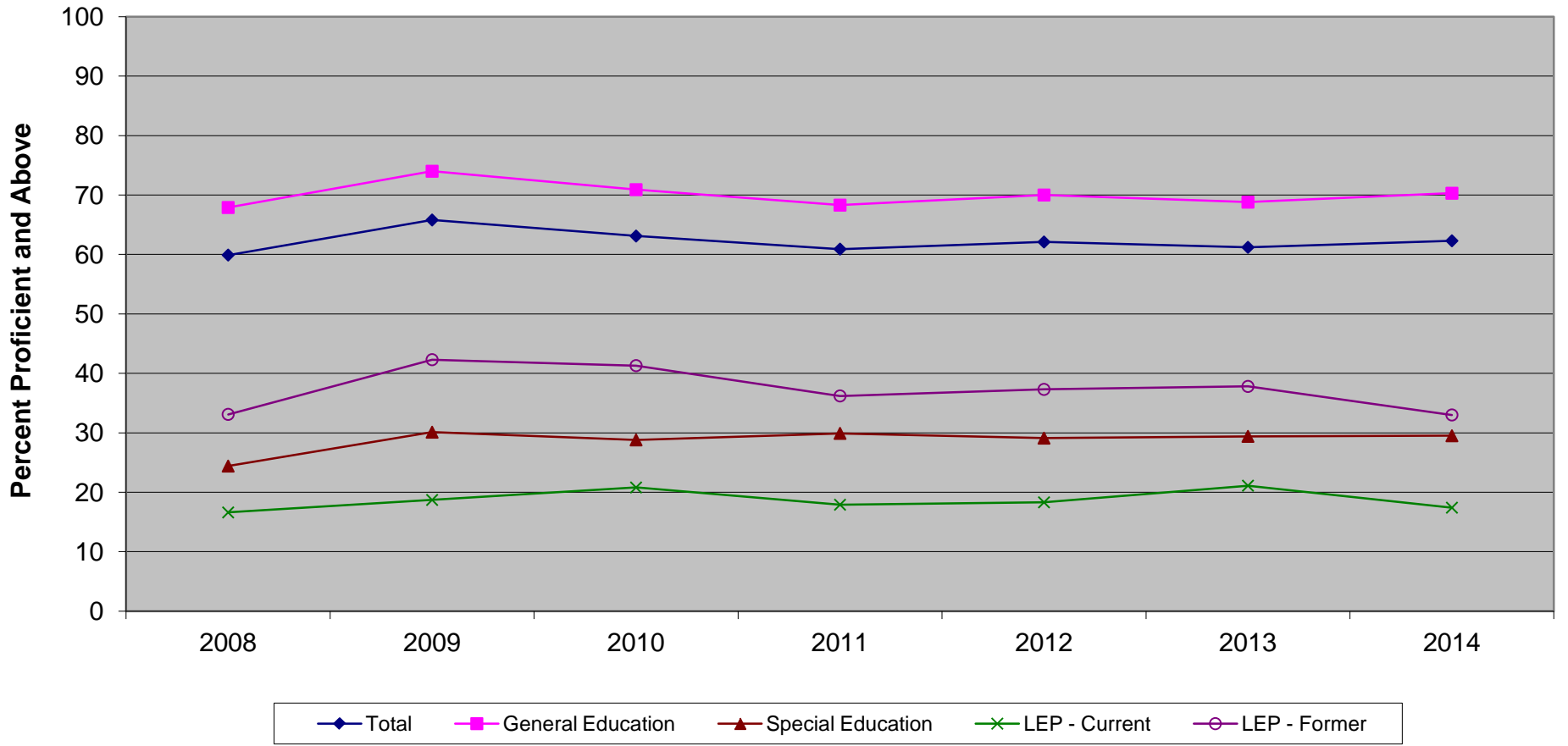


New Jersey Assessment of Skills and Knowledge
Grade 5 English Language Arts* Proficient and Above
by Instructional Groups (2008 - 2014)



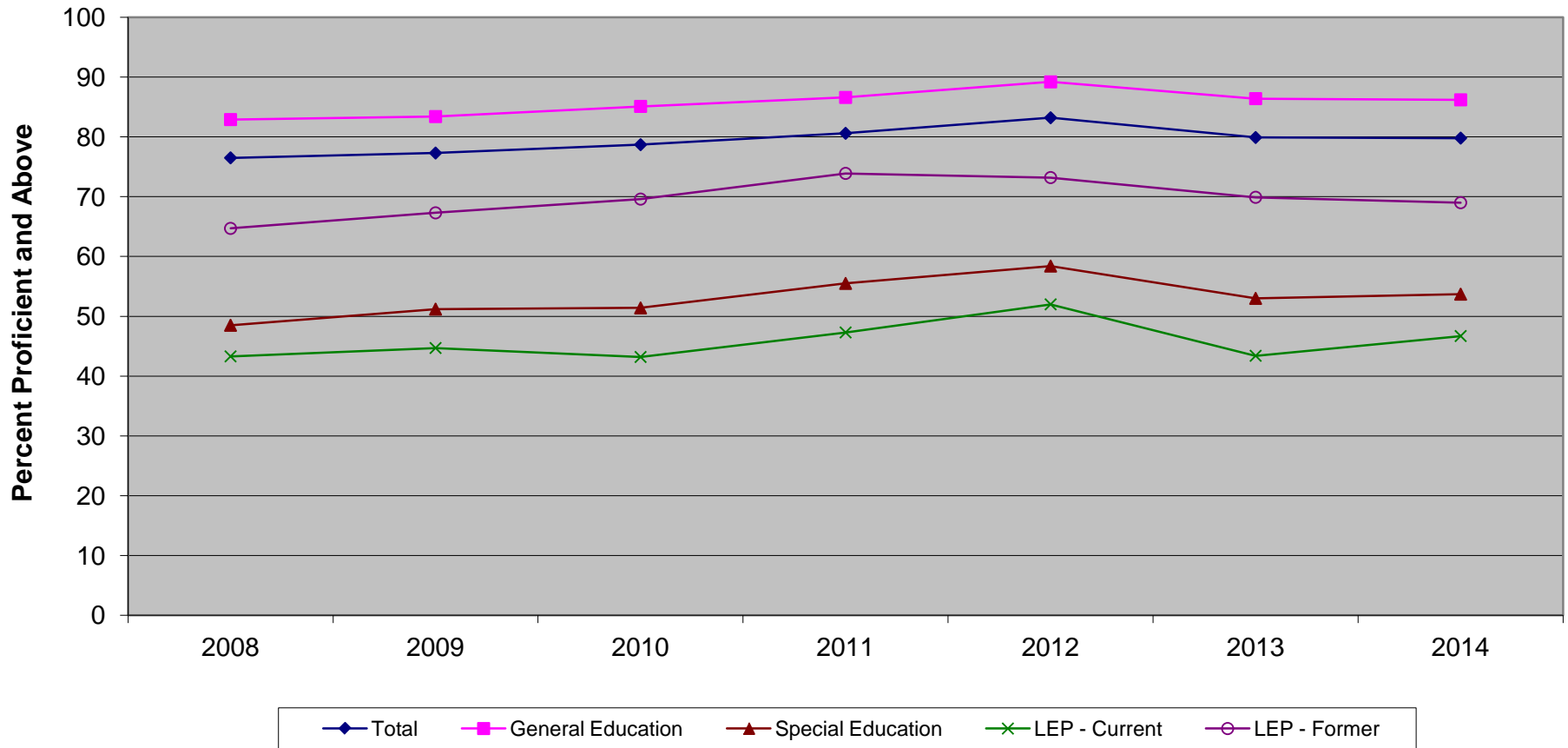
* formerly Language Arts Literacy

**New Jersey Assessment of Skills and Knowledge
Grade 5 English Language Arts* Proficient and Above
by Instructional Groups (2008 - 2014)**

| | 2008 | 2009 | 2010 | 2011 | 2012 | 2013 | 2014 |
|-------------------|-------------|-------------|-------------|-------------|-------------|-------------|-------------|
| Total | 59.9 | 65.8 | 63.1 | 60.9 | 62.1 | 61.2 | 62.3 |
| General Education | 67.9 | 74.0 | 70.9 | 68.3 | 70.0 | 68.8 | 70.3 |
| Special Education | 24.4 | 30.1 | 28.8 | 29.9 | 29.1 | 29.4 | 29.5 |
| LEP - Current | 16.6 | 18.7 | 20.8 | 17.9 | 18.3 | 21.1 | 17.4 |
| LEP - Former | 33.1 | 42.3 | 41.3 | 36.2 | 37.3 | 37.8 | 33.0 |

* formerly Language Arts Literacy

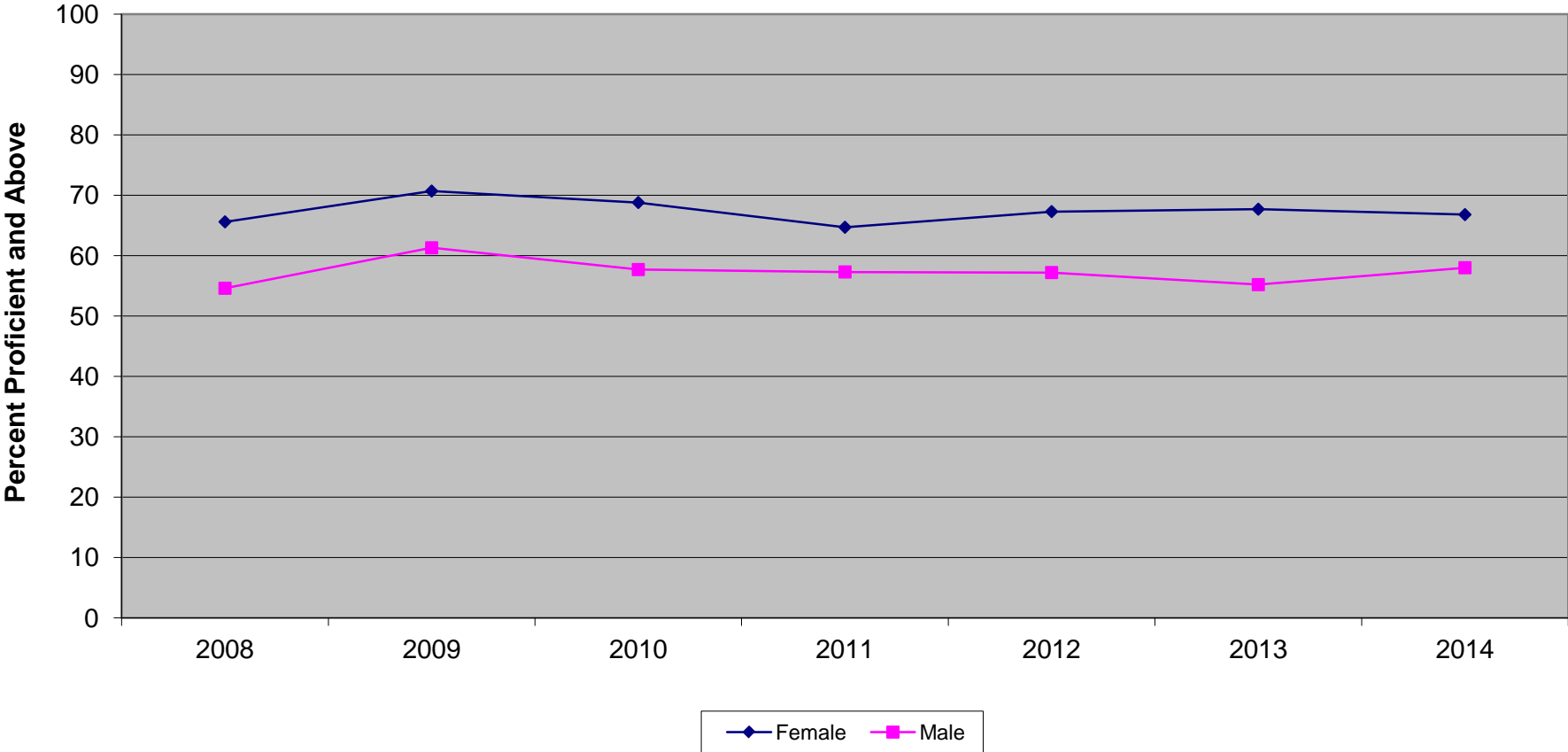
New Jersey Assessment of Skills and Knowledge
Grade 5 Mathematics Proficient and Above
by Instructional Groups (2008 - 2014)



**New Jersey Assessment of Skills and Knowledge
Grade 5 Mathematics Proficient and Above
by Instructional Groups (2008 - 2014)**

| | 2008 | 2009 | 2010 | 2011 | 2012 | 2013 | 2014 |
|-------------------|-------------|-------------|-------------|-------------|-------------|-------------|-------------|
| Total | 76.5 | 77.3 | 78.7 | 80.6 | 83.2 | 79.9 | 79.8 |
| General Education | 82.9 | 83.4 | 85.1 | 86.6 | 89.2 | 86.4 | 86.2 |
| Special Education | 48.5 | 51.2 | 51.4 | 55.5 | 58.4 | 53.0 | 53.7 |
| LEP - Current | 43.3 | 44.7 | 43.2 | 47.3 | 52.0 | 43.4 | 46.7 |
| LEP - Former | 64.7 | 67.3 | 69.6 | 73.9 | 73.2 | 69.9 | 69.0 |

New Jersey Assessment of Skills and Knowledge
Grade 5 English Language Arts* Proficient and Above
by Gender (2008 - 2014)



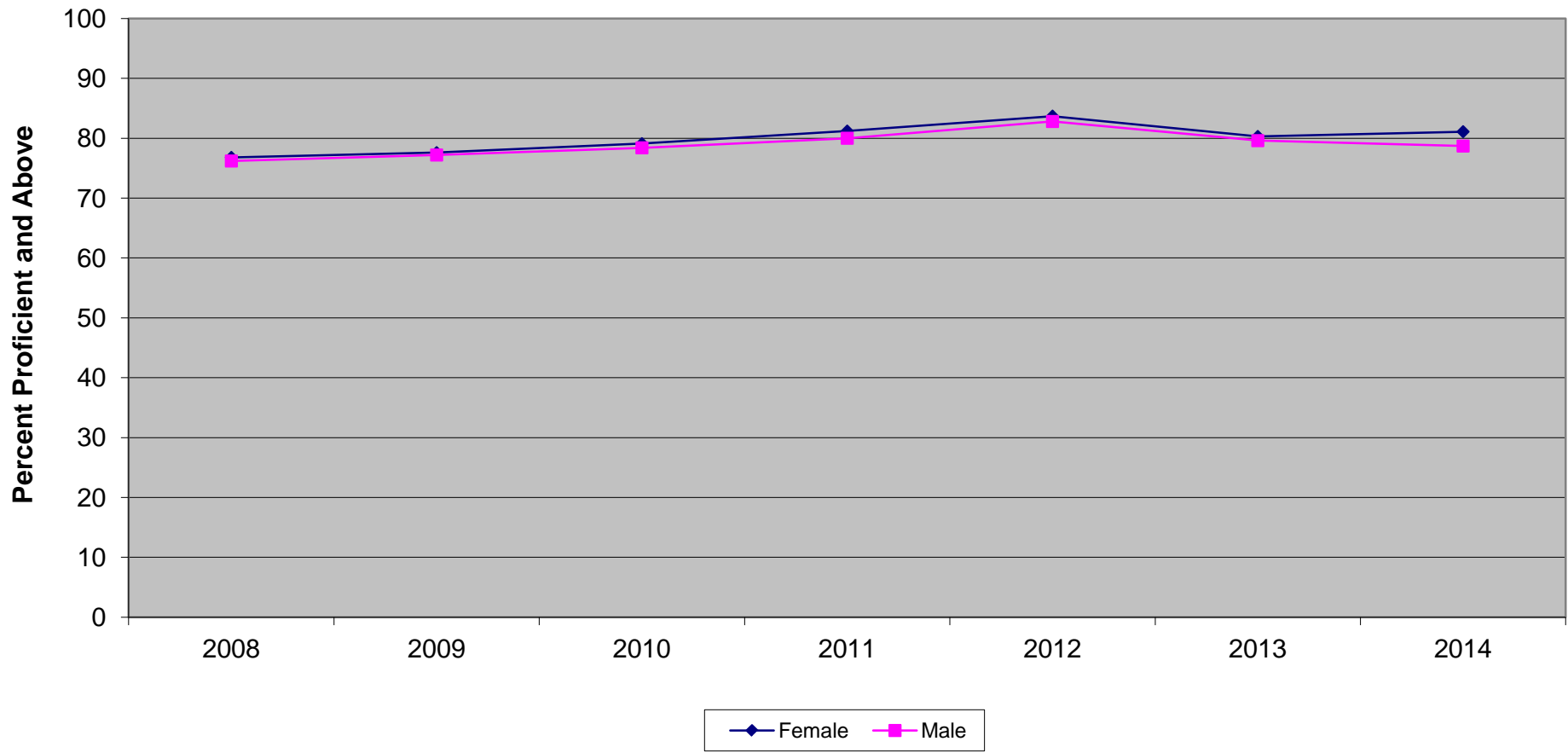
* formerly Language Arts Literacy

**New Jersey Assessment of Skills and Knowledge
Grade 5 English Language Arts* Proficient and Above
by Gender (2008 - 2014)**

| | 2008 | 2009 | 2010 | 2011 | 2012 | 2013 | 2014 |
|--------|-------------|-------------|-------------|-------------|-------------|-------------|-------------|
| Female | 65.6 | 70.7 | 68.8 | 64.7 | 67.3 | 67.7 | 66.8 |
| Male | 54.6 | 61.3 | 57.7 | 57.3 | 57.2 | 55.2 | 58.0 |

* formerly Language Arts Literacy

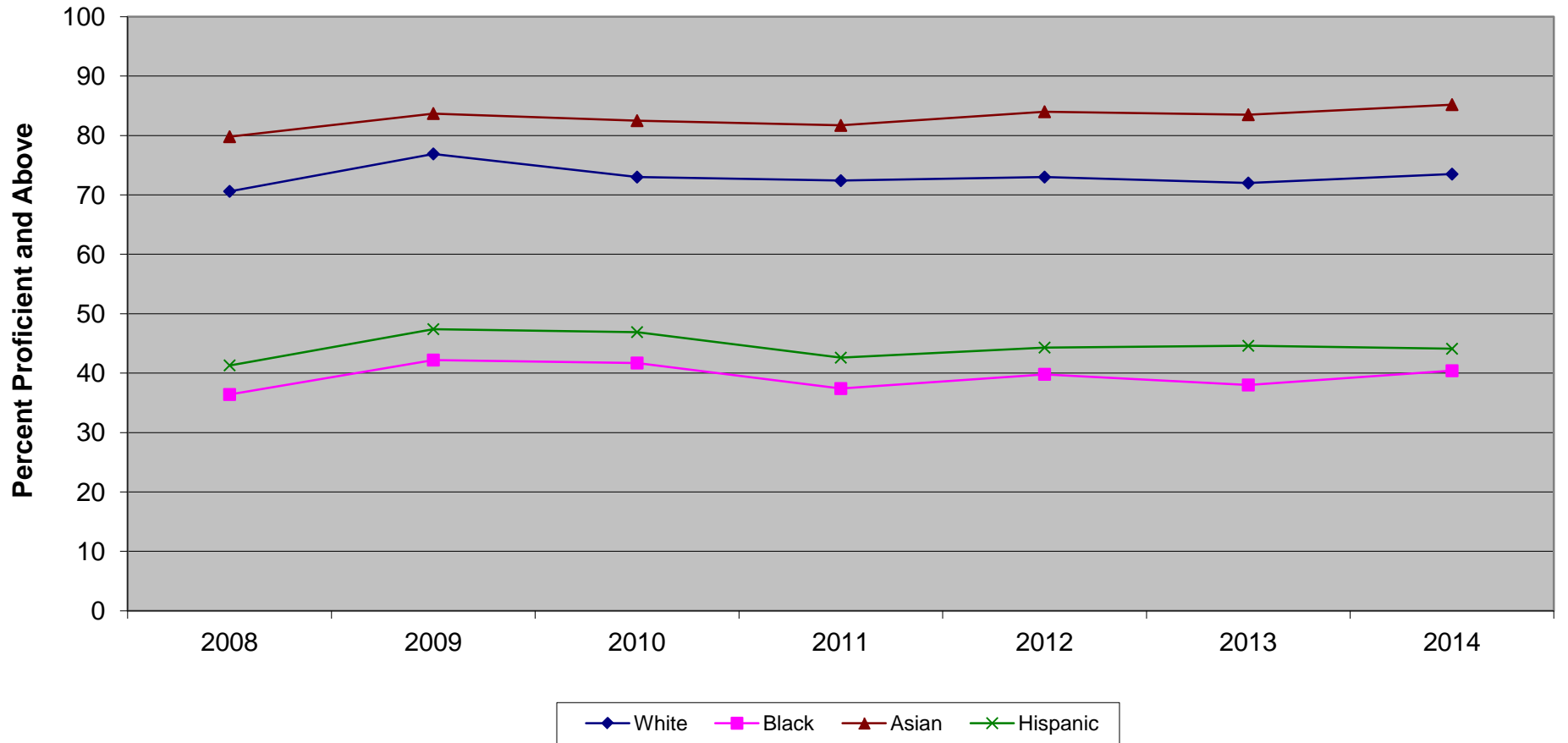
New Jersey Assessment of Skills and Knowledge
Grade 5 Mathematics Proficient and Above
by Gender (2008 - 2014)



**New Jersey Assessment of Skills and Knowledge
Grade 5 Mathematics Proficient and Above
by Gender (2008 - 2014)**

| | 2008 | 2009 | 2010 | 2011 | 2012 | 2013 | 2014 |
|--------|-------------|-------------|-------------|-------------|-------------|-------------|-------------|
| Female | 76.8 | 77.6 | 79.1 | 81.2 | 83.7 | 80.3 | 81.1 |
| Male | 76.2 | 77.2 | 78.4 | 80.0 | 82.8 | 79.6 | 78.7 |

New Jersey Assessment of Skills and Knowledge
Grade 5 English Language Arts* Proficient and Above
by Ethnicity (2008 - 2014)



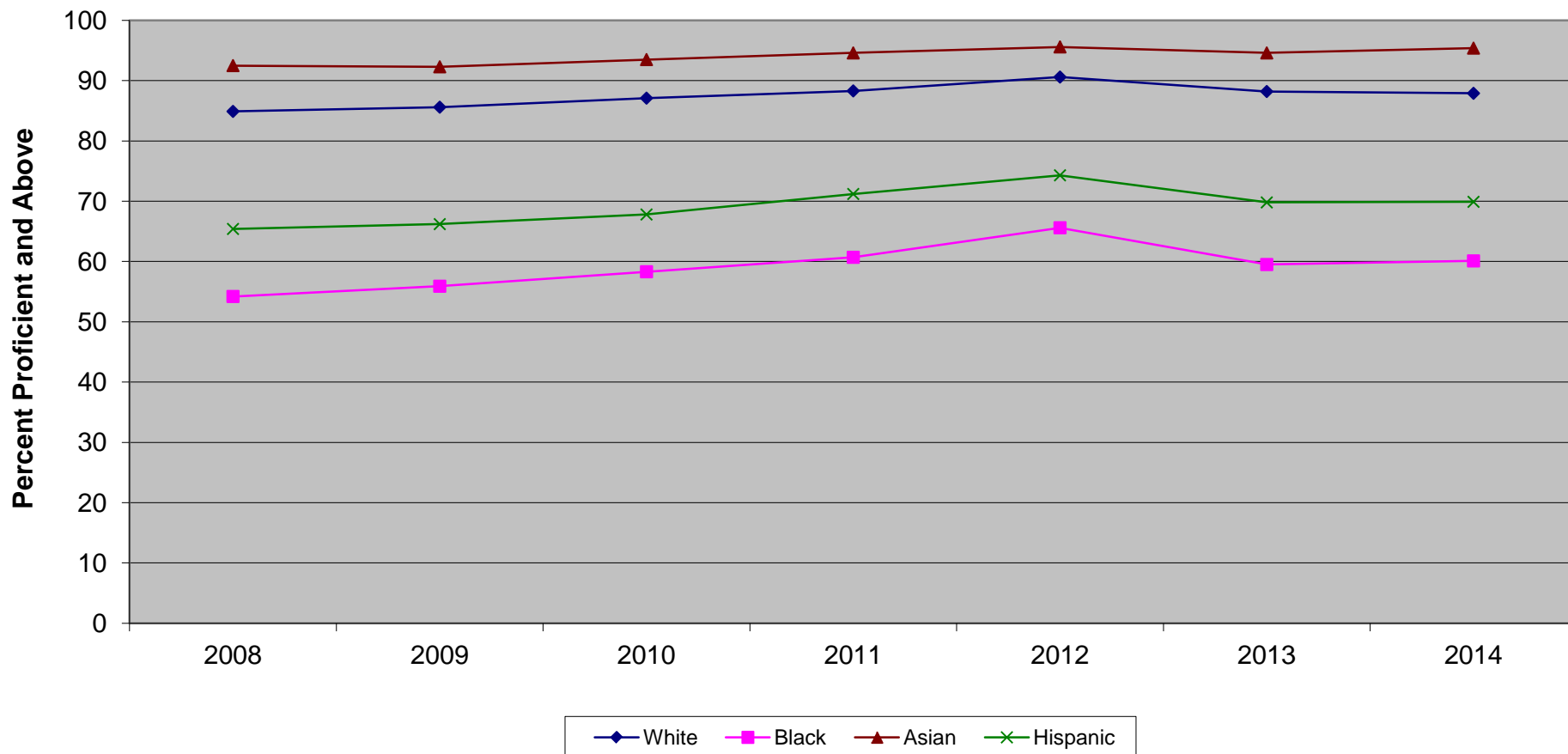
* formerly Language Arts Literacy

**New Jersey Assessment of Skills and Knowledge
Grade 5 English Language Arts* Proficient and Above
by Ethnicity (2008 - 2014)**

| | 2008 | 2009 | 2010 | 2011 | 2012 | 2013 | 2014 |
|----------|-------------|-------------|-------------|-------------|-------------|-------------|-------------|
| White | 70.6 | 76.9 | 73.0 | 72.4 | 73.0 | 72.0 | 73.5 |
| Black | 36.4 | 42.2 | 41.7 | 37.4 | 39.8 | 38.0 | 40.4 |
| Asian | 79.8 | 83.7 | 82.5 | 81.7 | 84.0 | 83.5 | 85.2 |
| Hispanic | 41.3 | 47.4 | 46.9 | 42.6 | 44.3 | 44.6 | 44.1 |

* formerly Language Arts Literacy

New Jersey Assessment of Skills and Knowledge
Grade 5 Mathematics Proficient and Above
by Ethnicity (2008 - 2014)

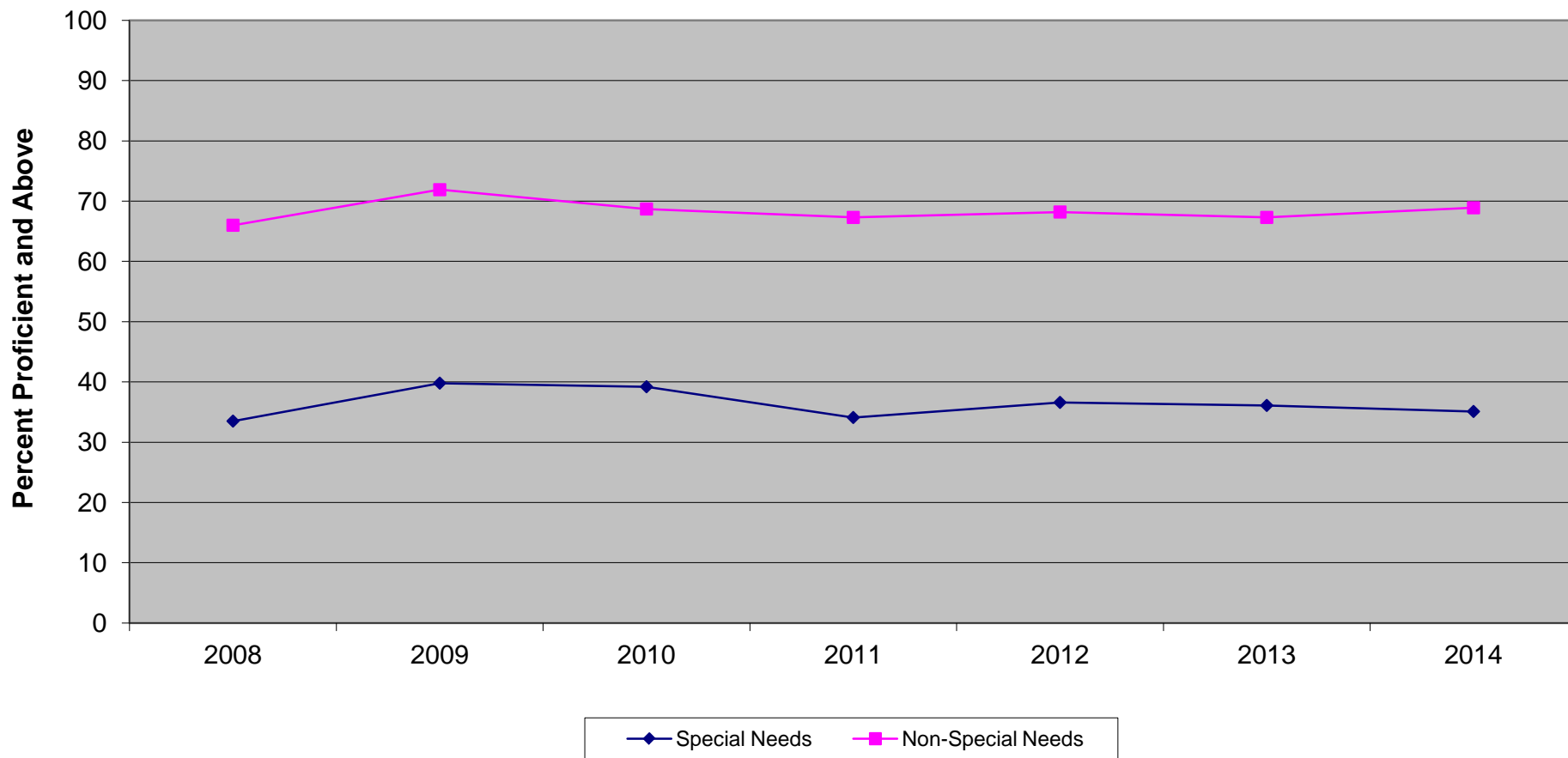


Ethnic codes Pacific Islander, American Indian/Alaskan Native and Other are not shown due to the small number of students in these categories.

**New Jersey Assessment of Skills and Knowledge
Grade 5 Mathematics Proficient and Above
by Ethnicity (2008 - 2014)**

| | 2008 | 2009 | 2010 | 2011 | 2012 | 2013 | 2014 |
|----------|-------------|-------------|-------------|-------------|-------------|-------------|-------------|
| White | 84.9 | 85.6 | 87.1 | 88.3 | 90.6 | 88.2 | 87.9 |
| Black | 54.2 | 55.9 | 58.3 | 60.7 | 65.6 | 59.5 | 60.1 |
| Asian | 92.5 | 92.3 | 93.5 | 94.6 | 95.6 | 94.6 | 95.4 |
| Hispanic | 65.4 | 66.2 | 67.8 | 71.2 | 74.3 | 69.8 | 69.9 |

**New Jersey Assessment of Skills and Knowledge
Grade 5 English Language Arts* Proficient and Above
Special Needs vs Non-Special Needs (2008-2014)**



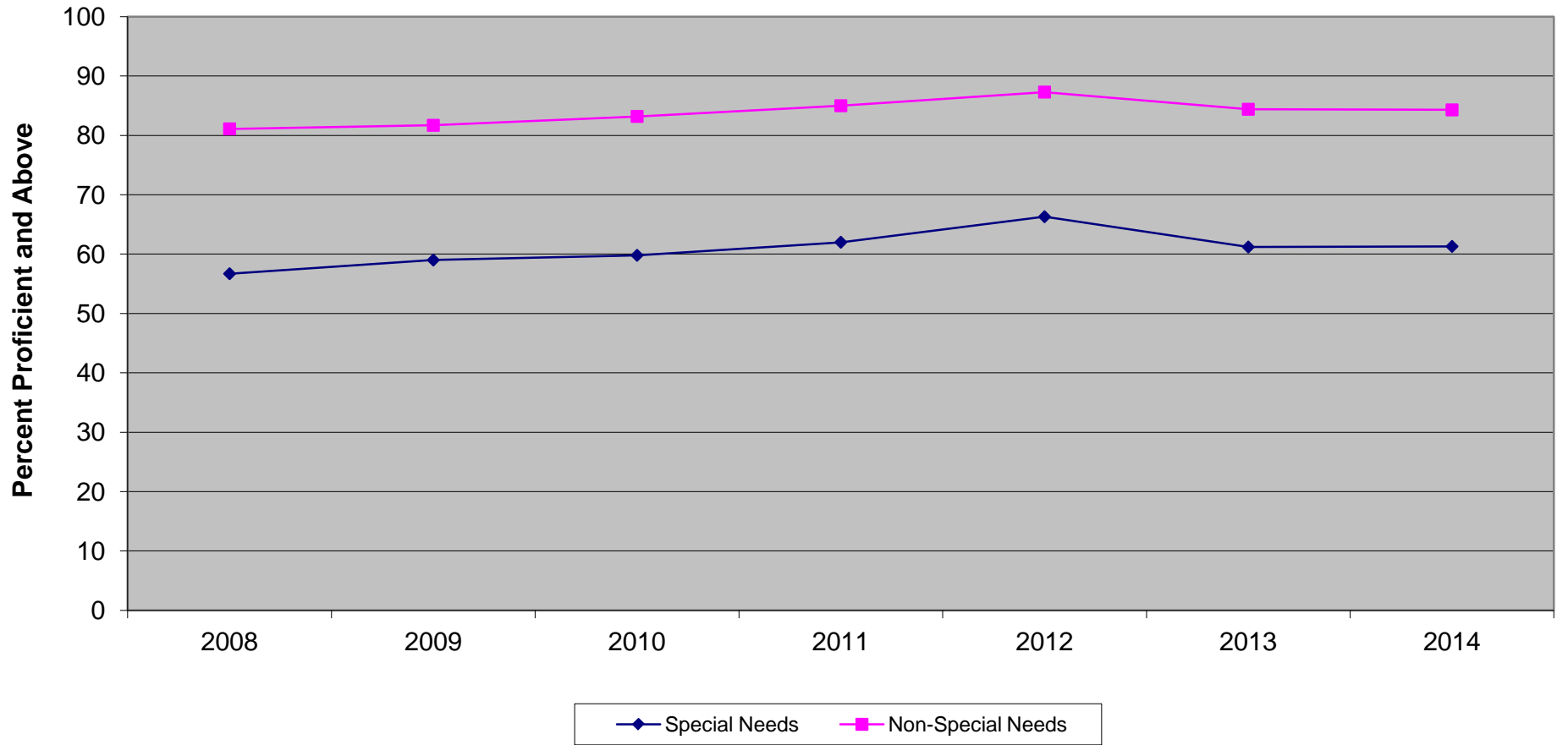
* formerly Language Arts Literacy

**New Jersey Assessment of Skills and Knowledge
Grade 5 English Language Arts* Proficient and Above
Special Needs vs Non-Special Needs (2008-2014)**

| | 2008 | 2009 | 2010 | 2011 | 2012 | 2013 | 2014 |
|-------------------|-------------|-------------|-------------|-------------|-------------|-------------|-------------|
| Special Needs | 33.5 | 39.8 | 39.2 | 34.1 | 36.6 | 36.1 | 35.1 |
| Non-Special Needs | 66.0 | 71.9 | 68.7 | 67.3 | 68.2 | 67.3 | 68.9 |

* formerly Language Arts Literacy

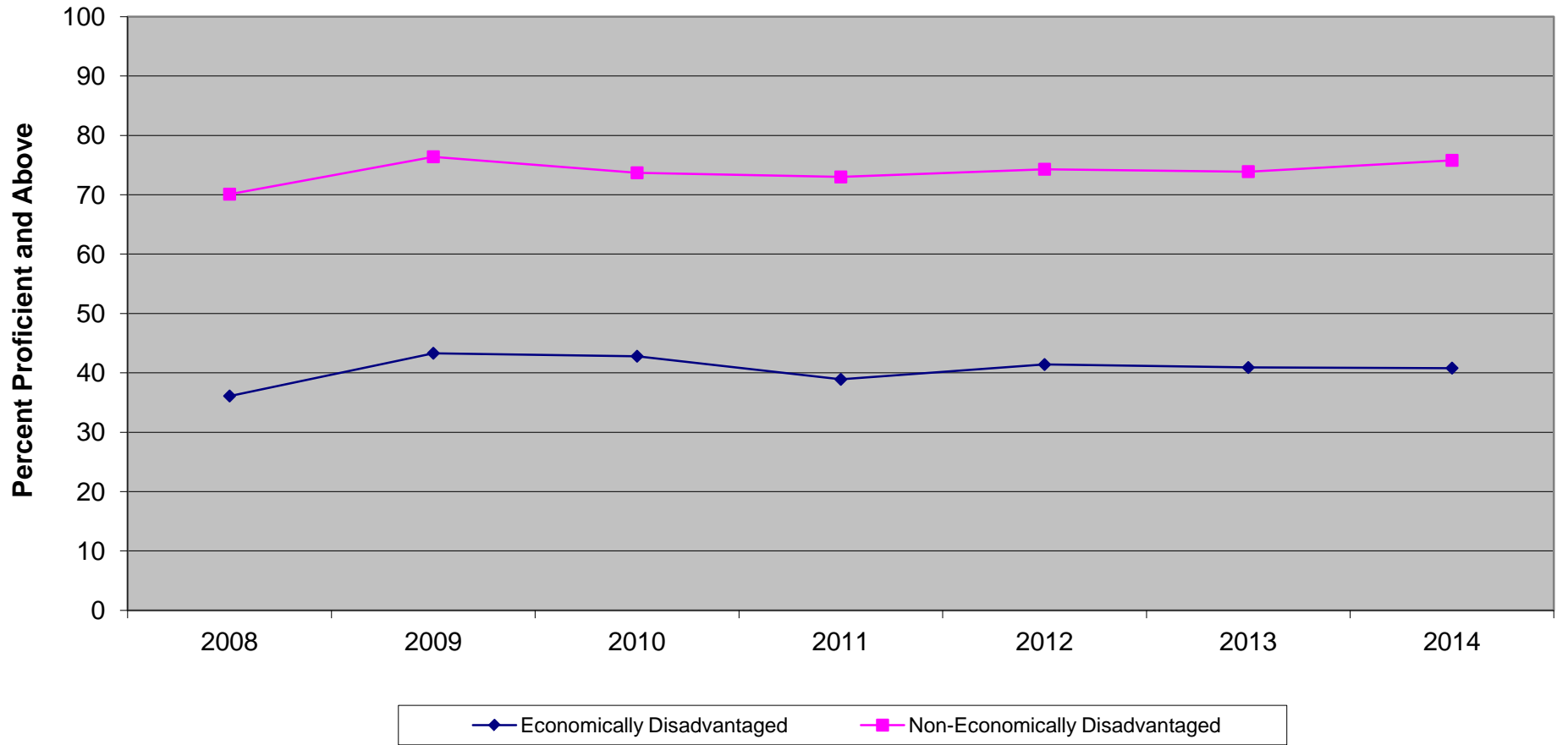
New Jersey Assessment of Skills and Knowledge
Grade 5 Mathematics Proficient and Above
Special Needs vs Non-Special Needs (2008 - 2014)



**New Jersey Assessment of Skills and Knowledge
Grade 5 Mathematics Proficient and Above
Special Needs vs Non-Special Needs (2008 - 2014)**

| | 2008 | 2009 | 2010 | 2011 | 2012 | 2013 | 2014 |
|-------------------|-------------|-------------|-------------|-------------|-------------|-------------|-------------|
| Special Needs | 56.7 | 59.0 | 59.8 | 62.0 | 66.3 | 61.2 | 61.3 |
| Non-Special Needs | 81.1 | 81.7 | 83.2 | 85.0 | 87.3 | 84.4 | 84.3 |

New Jersey Assessment of Skills and Knowledge
Grade 5 English Language Arts* Proficient and Above
Economically Disadvantaged vs Non-Economically Disadvantaged (2008 - 2014)



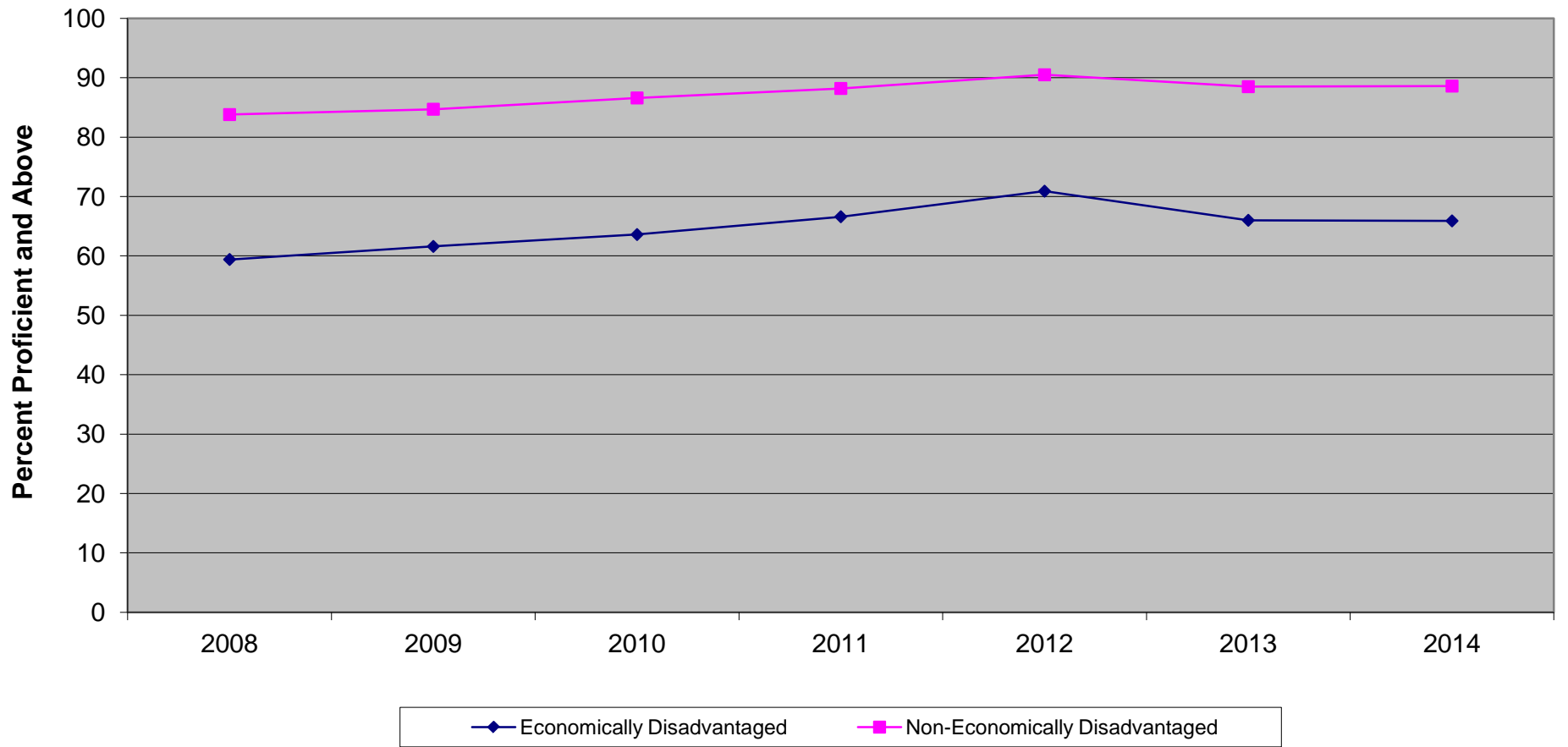
* formerly Language Arts Literacy

**New Jersey Assessment of Skills and Knowledge
Grade 5 English Language Arts* Proficient and Above
Economically Disadvantaged vs Non-Economically Disadvantaged (2008 - 2014)**

| | 2008 | 2009 | 2010 | 2011 | 2012 | 2013 | 2014 |
|--------------------------------|-------------|-------------|-------------|-------------|-------------|-------------|-------------|
| Economically Disadvantaged | 36.1 | 43.3 | 42.8 | 38.9 | 41.4 | 40.9 | 40.8 |
| Non-Economically Disadvantaged | 70.1 | 76.4 | 73.7 | 73.0 | 74.3 | 73.9 | 75.8 |

* formerly Language Arts Literacy

New Jersey Assessment of Skills and Knowledge
Grade 5 Mathematics Proficient and Above
Economically Disadvantaged vs Non-Economically Disadvantaged (2008 - 2014)



**New Jersey Assessment of Skills and Knowledge
Grade 5 Mathematics Proficient and Above
Economically Disadvantaged vs Non-Economically Disadvantaged (2008 - 2014)**

| | 2008 | 2009 | 2010 | 2011 | 2012 | 2013 | 2014 |
|--------------------------------|-------------|-------------|-------------|-------------|-------------|-------------|-------------|
| Economically Disadvantaged | 59.4 | 61.6 | 63.6 | 66.6 | 70.9 | 66.0 | 65.9 |
| Non-Economically Disadvantaged | 83.8 | 84.7 | 86.6 | 88.2 | 90.5 | 88.5 | 88.6 |