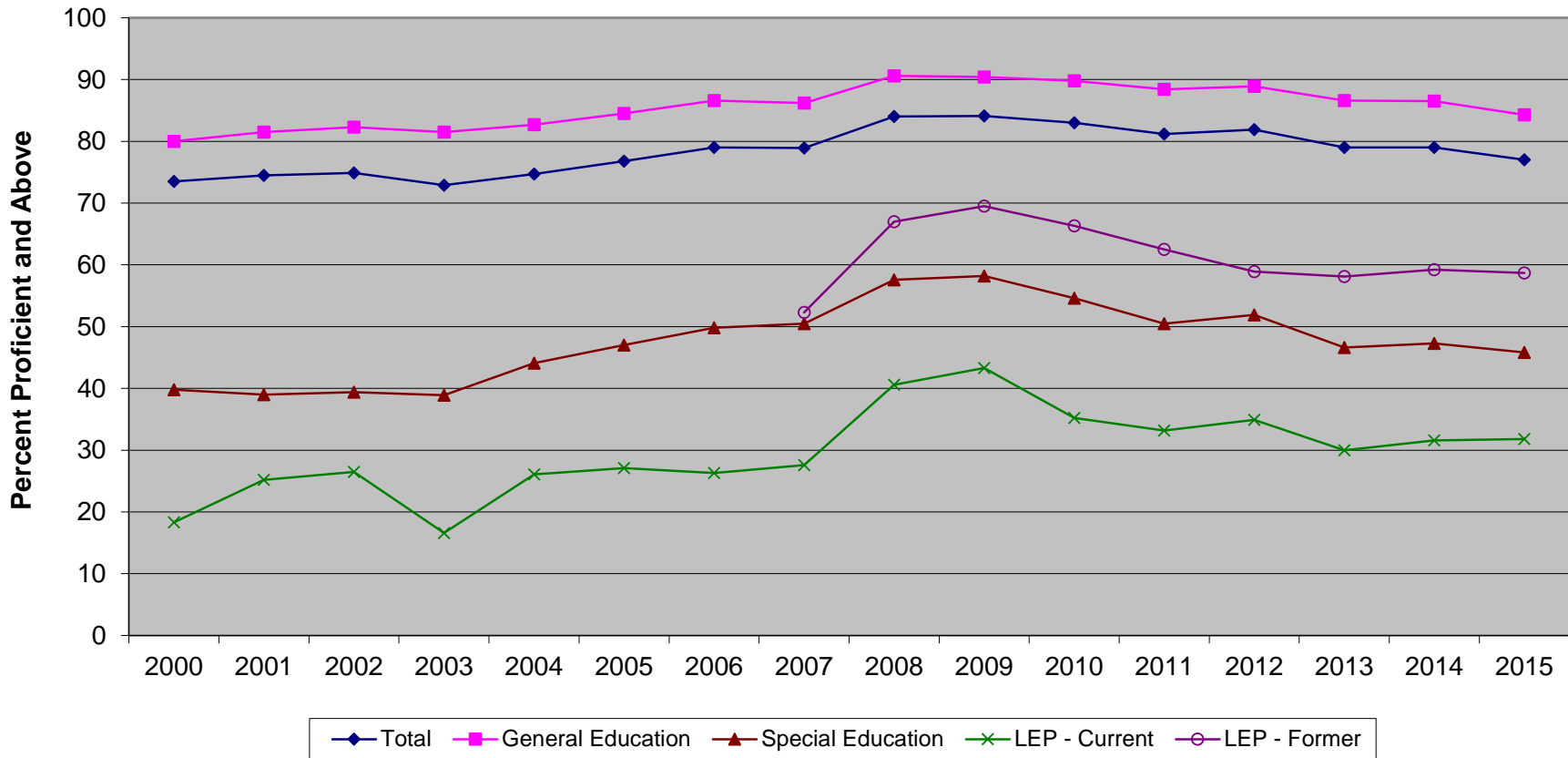


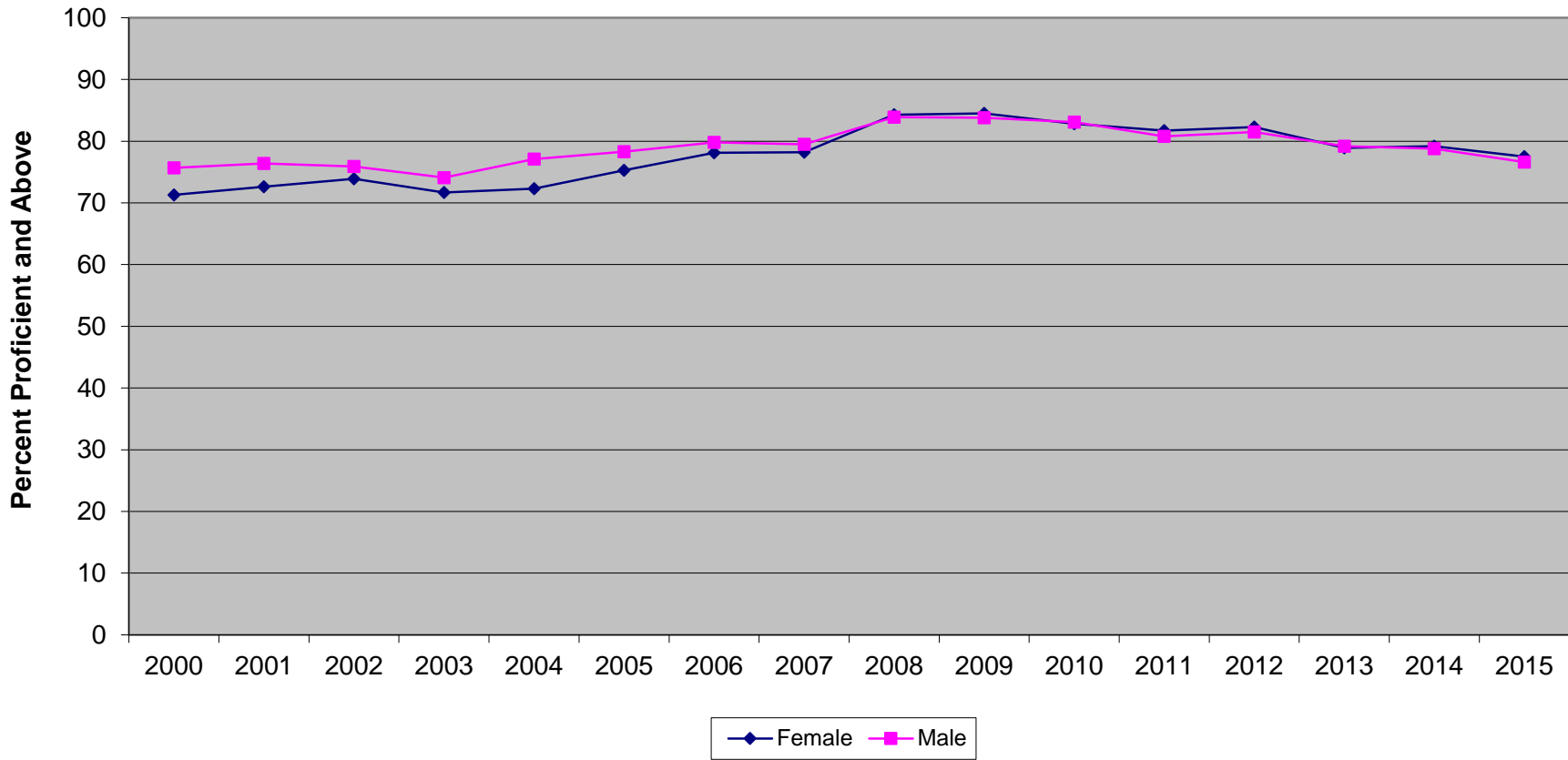
New Jersey Assessment of Skills and Knowledge  
Grade 8 Science Proficient and Above  
by Instructional Groups (2000-2015)



**New Jersey Assessment of Skills and Knowledge  
Grade 8 Science Proficient and Above  
by Instructional Groups (2000-2015)**

|                   | 2000 | 2001 | 2002 | 2003 | 2004 | 2005 | 2006 | 2007 | 2008 | 2009 | 2010 | 2011 | 2012 | 2013 |
|-------------------|------|------|------|------|------|------|------|------|------|------|------|------|------|------|
| Total             | 73.5 | 74.5 | 74.9 | 72.9 | 74.7 | 76.8 | 79.0 | 78.9 | 84.0 | 84.1 | 83.0 | 81.2 | 81.9 | 79.0 |
| General Education | 80.0 | 81.5 | 82.3 | 81.5 | 82.7 | 84.5 | 86.6 | 86.2 | 90.6 | 90.4 | 89.8 | 88.4 | 88.9 | 86.6 |
| Special Education | 39.8 | 39.0 | 39.4 | 38.9 | 44.1 | 47.0 | 49.8 | 50.5 | 57.6 | 58.2 | 54.6 | 50.5 | 51.9 | 46.6 |
| LEP - Current     | 18.3 | 25.2 | 26.5 | 16.6 | 26.1 | 27.1 | 26.3 | 27.6 | 40.6 | 43.3 | 35.2 | 33.2 | 34.9 | 30.0 |
| LEP - Former      |      |      |      |      |      |      |      | 52.3 | 67.0 | 69.5 | 66.3 | 62.5 | 58.9 | 58.1 |

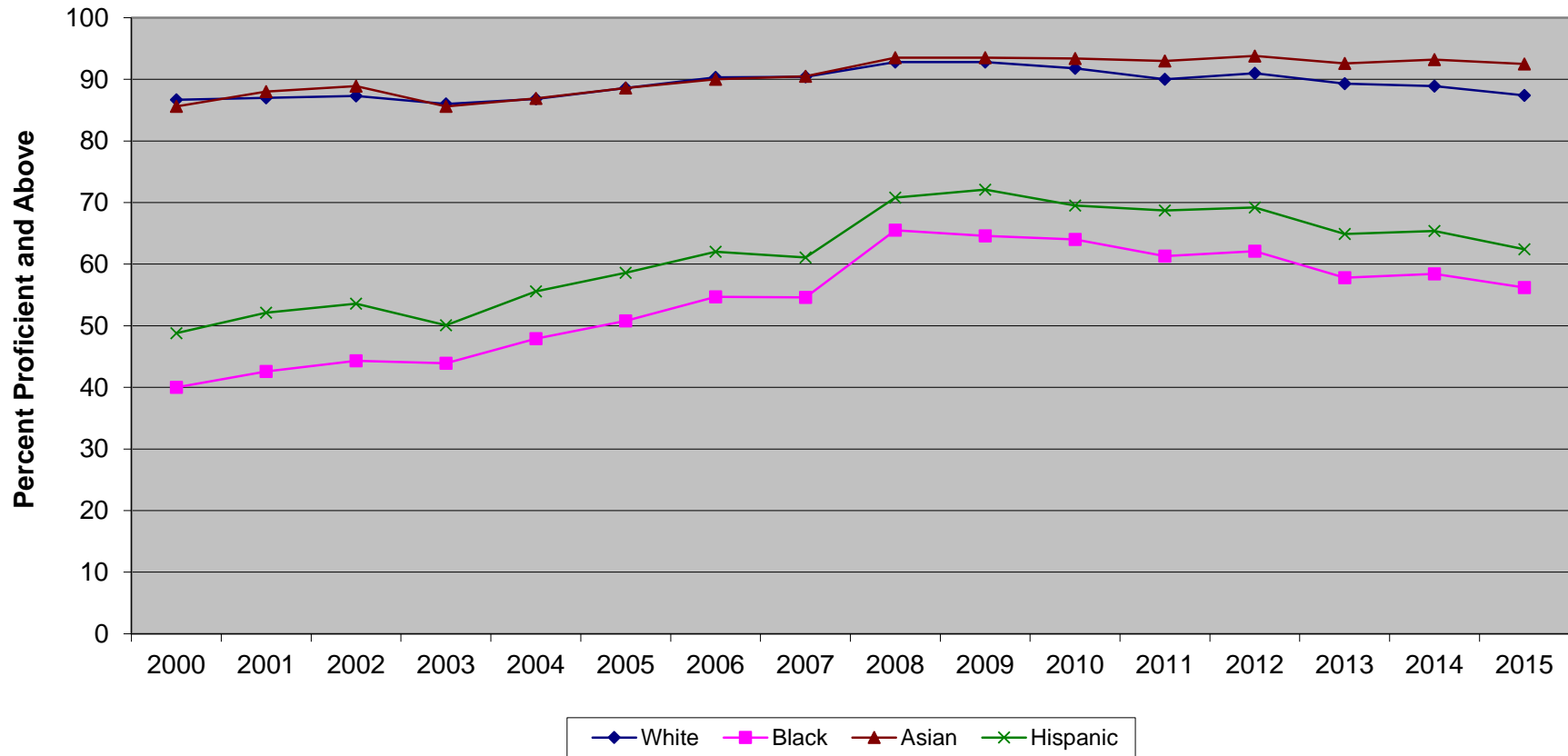
New Jersey Assessment of Skills and Knowledge  
Grade 8 Science Proficient and Above  
by Gender (2000-2015)



**New Jersey Assessment of Skills and Knowledge  
Grade 8 Science Proficient and Above  
by Gender (2000-2015)**

|        | 2000 | 2001 | 2002 | 2003 | 2004 | 2005 | 2006 | 2007 | 2008 | 2009 | 2010 | 2011 | 2012 | 2013 |
|--------|------|------|------|------|------|------|------|------|------|------|------|------|------|------|
| Female | 71.3 | 72.6 | 73.9 | 71.7 | 72.3 | 75.3 | 78.1 | 78.2 | 84.3 | 84.5 | 82.8 | 81.7 | 82.3 | 78.9 |
| Male   | 75.7 | 76.4 | 75.9 | 74.1 | 77.1 | 78.3 | 79.8 | 79.5 | 83.9 | 83.8 | 83.1 | 80.8 | 81.5 | 79.2 |

New Jersey Assessment of Skills and Knowledge  
Grade 8 Science Proficient and Above by Ethnicity (2000-2015)

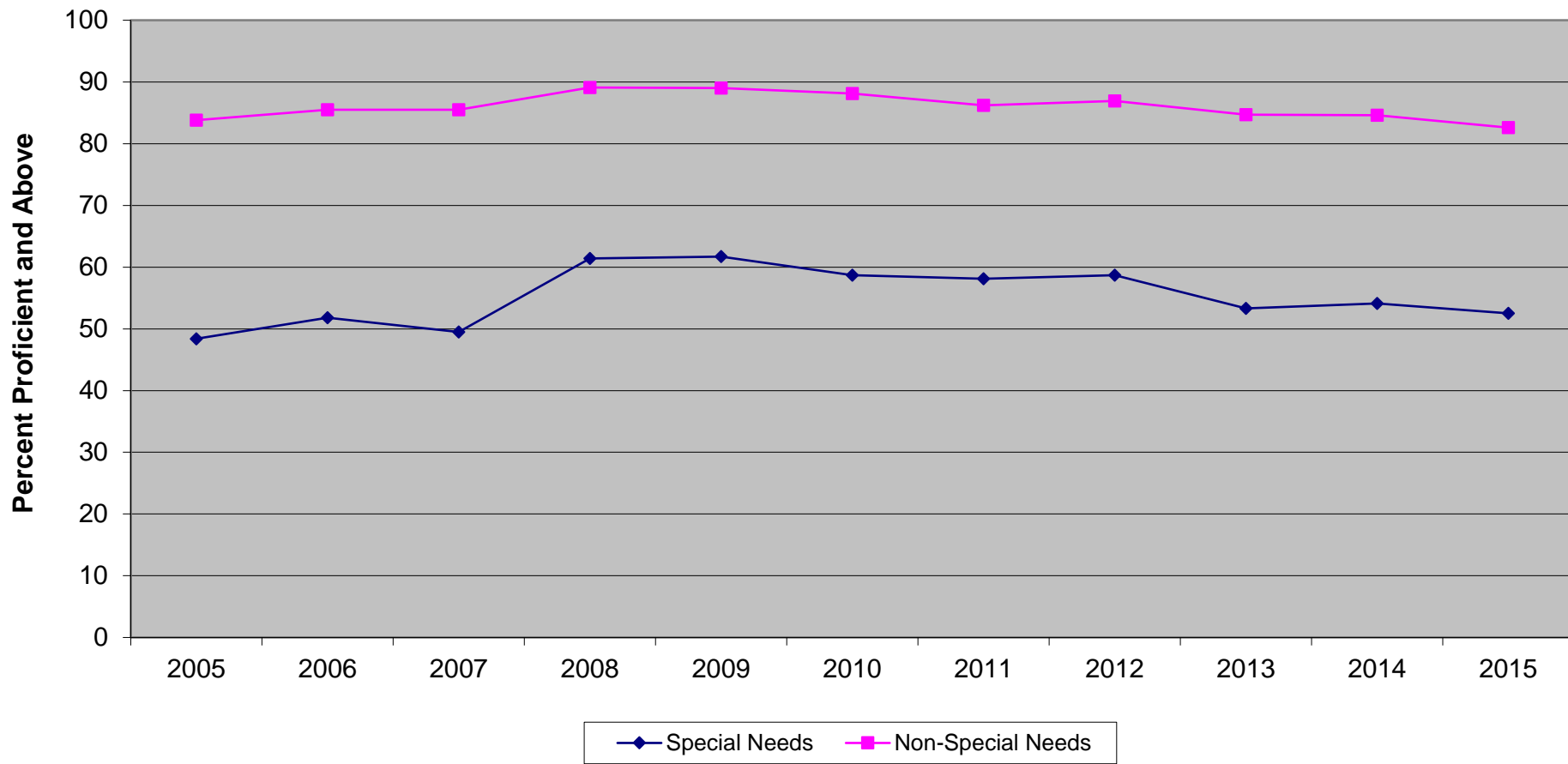


Ethnic codes Pacific Islander, American Indian/Alaskan Native and Other are not shown due to the small number of students in these categories.

**New Jersey Assessment of Skills and Knowledge  
Grade 8 Science Proficient and Above  
by Ethnicity (2000-2015)**

|          | 2000 | 2001 | 2002 | 2003 | 2004 | 2005 | 2006 | 2007 | 2008 | 2009 | 2010 | 2011 | 2012 | 2013 |
|----------|------|------|------|------|------|------|------|------|------|------|------|------|------|------|
| White    | 86.7 | 87.0 | 87.3 | 86.0 | 86.8 | 88.6 | 90.3 | 90.4 | 92.8 | 92.8 | 91.8 | 90.0 | 91.0 | 89.3 |
| Black    | 40.0 | 42.6 | 44.3 | 43.9 | 47.9 | 50.8 | 54.7 | 54.6 | 65.5 | 64.6 | 64.0 | 61.3 | 62.1 | 57.8 |
| Asian    | 85.6 | 88.0 | 88.9 | 85.6 | 86.9 | 88.6 | 90.0 | 90.5 | 93.5 | 93.5 | 93.4 | 93.0 | 93.8 | 92.6 |
| Hispanic | 48.8 | 52.1 | 53.6 | 50.1 | 55.6 | 58.6 | 62.0 | 61.1 | 70.8 | 72.1 | 69.5 | 68.7 | 69.2 | 64.9 |

New Jersey Assessment of Skills and Knowledge  
Grade 8 Science Proficient and Above  
Special Needs vs Non-Special Needs (2005-2015)

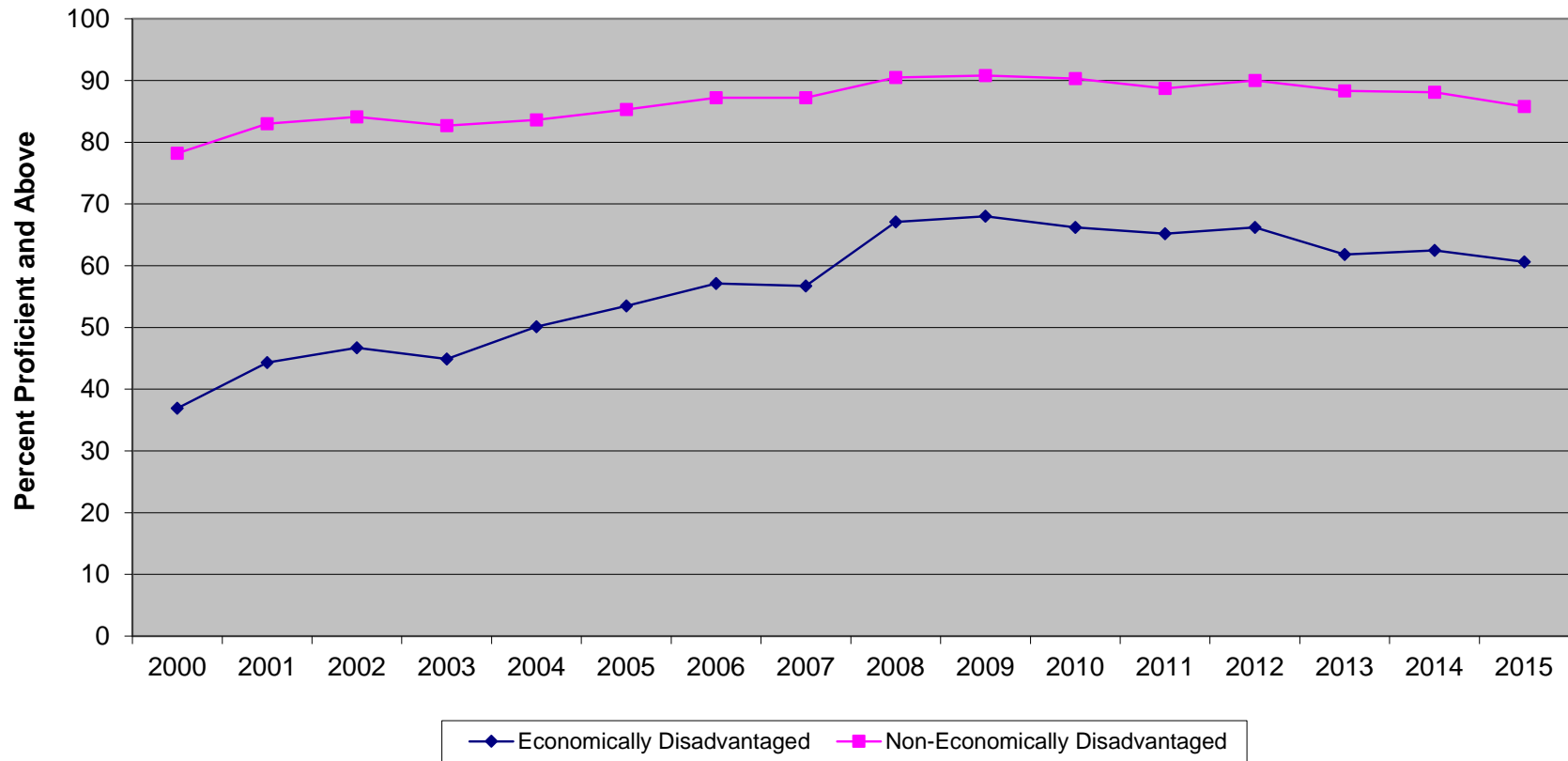


**New Jersey Assessment of Skills and Knowledge  
Grade 8 Science Proficient and Above  
Special Needs vs Non-Special Needs (2005-2015)**

|                   | <b>2005</b> | <b>2006</b> | <b>2007</b> | <b>2008</b> | <b>2009</b> | <b>2010</b> | <b>2011</b> | <b>2012</b> | <b>2013</b> | <b>2014</b> | <b>2015</b> |
|-------------------|-------------|-------------|-------------|-------------|-------------|-------------|-------------|-------------|-------------|-------------|-------------|
| Special Needs     | 48.4        | 51.8        | 49.5        | 61.4        | 61.7        | 58.7        | 58.1        | 58.7        | 53.3        | 54.1        | 52.5        |
| Non-Special Needs | 83.8        | 85.5        | 85.5        | 89.1        | 89.0        | 88.1        | 86.2        | 86.9        | 84.7        | 84.6        | 82.6        |



New Jersey Assessment of Skills and Knowledge  
Grade 8 Science Proficient and Above  
Economically Disadvantaged vs Non-Economically Disadvantaged (2000-2015)



**New Jersey Assessment of Skills and Knowledge  
Grade 8 Science Proficient and Above  
Economically Disadvantaged vs Non-Economically Disadvantaged (2000-2015)**

|                                | <b>2000</b> | <b>2001</b> | <b>2002</b> | <b>2003</b> | <b>2004</b> | <b>2005</b> | <b>2006</b> | <b>2007</b> | <b>2008</b> | <b>2009</b> | <b>2010</b> | <b>2011</b> | <b>2012</b> | <b>2013</b> |
|--------------------------------|-------------|-------------|-------------|-------------|-------------|-------------|-------------|-------------|-------------|-------------|-------------|-------------|-------------|-------------|
| Economically Disadvantaged     | 36.9        | 44.3        | 46.7        | 44.9        | 50.1        | 53.5        | 57.1        | 56.7        | 67.1        | 68.0        | 66.2        | 65.2        | 66.2        | 61.8        |
| Non-Economically Disadvantaged | 78.2        | 83.0        | 84.1        | 82.7        | 83.6        | 85.3        | 87.2        | 87.2        | 90.5        | 90.8        | 90.3        | 88.7        | 90.0        | 88.3        |