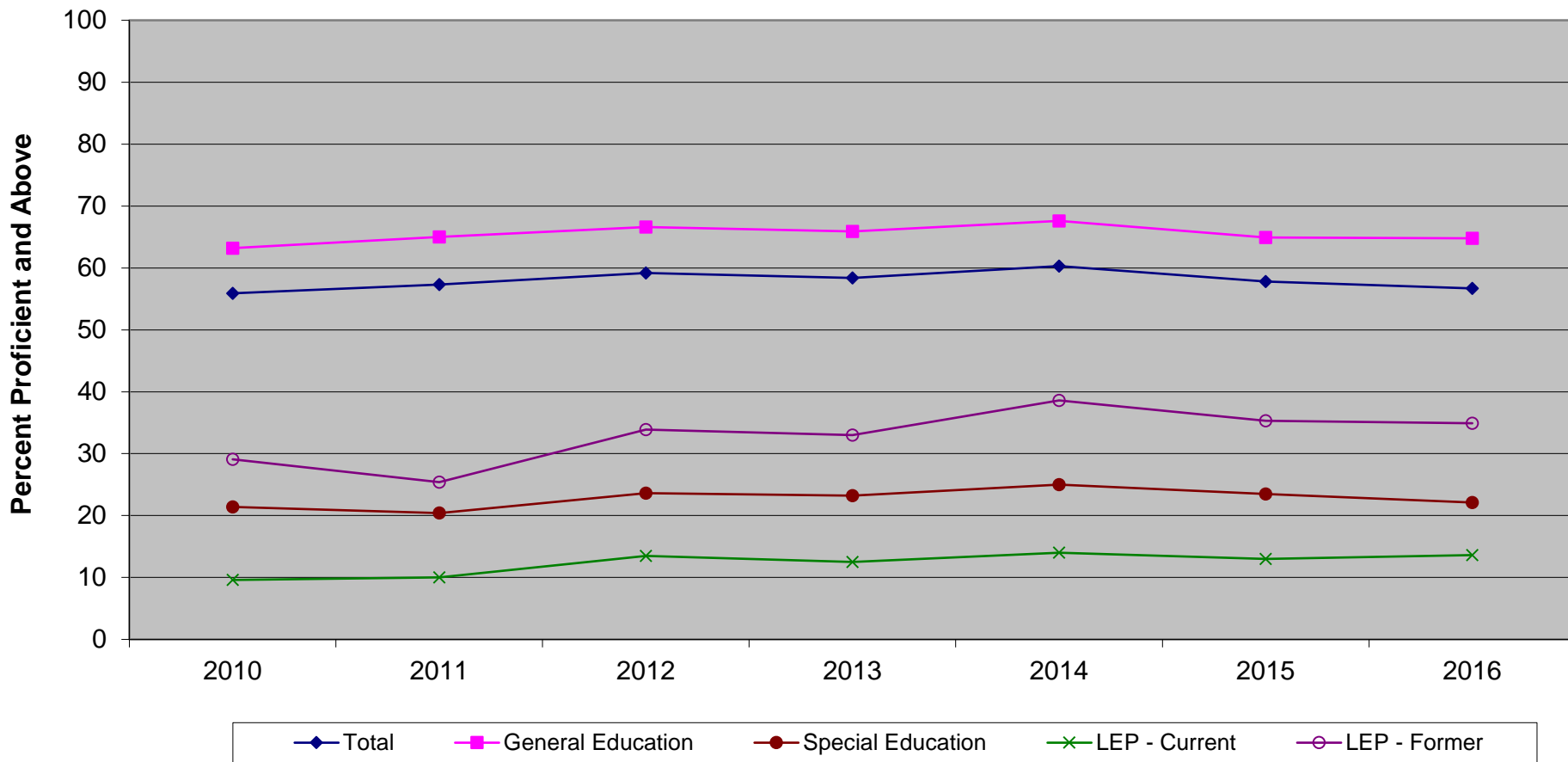


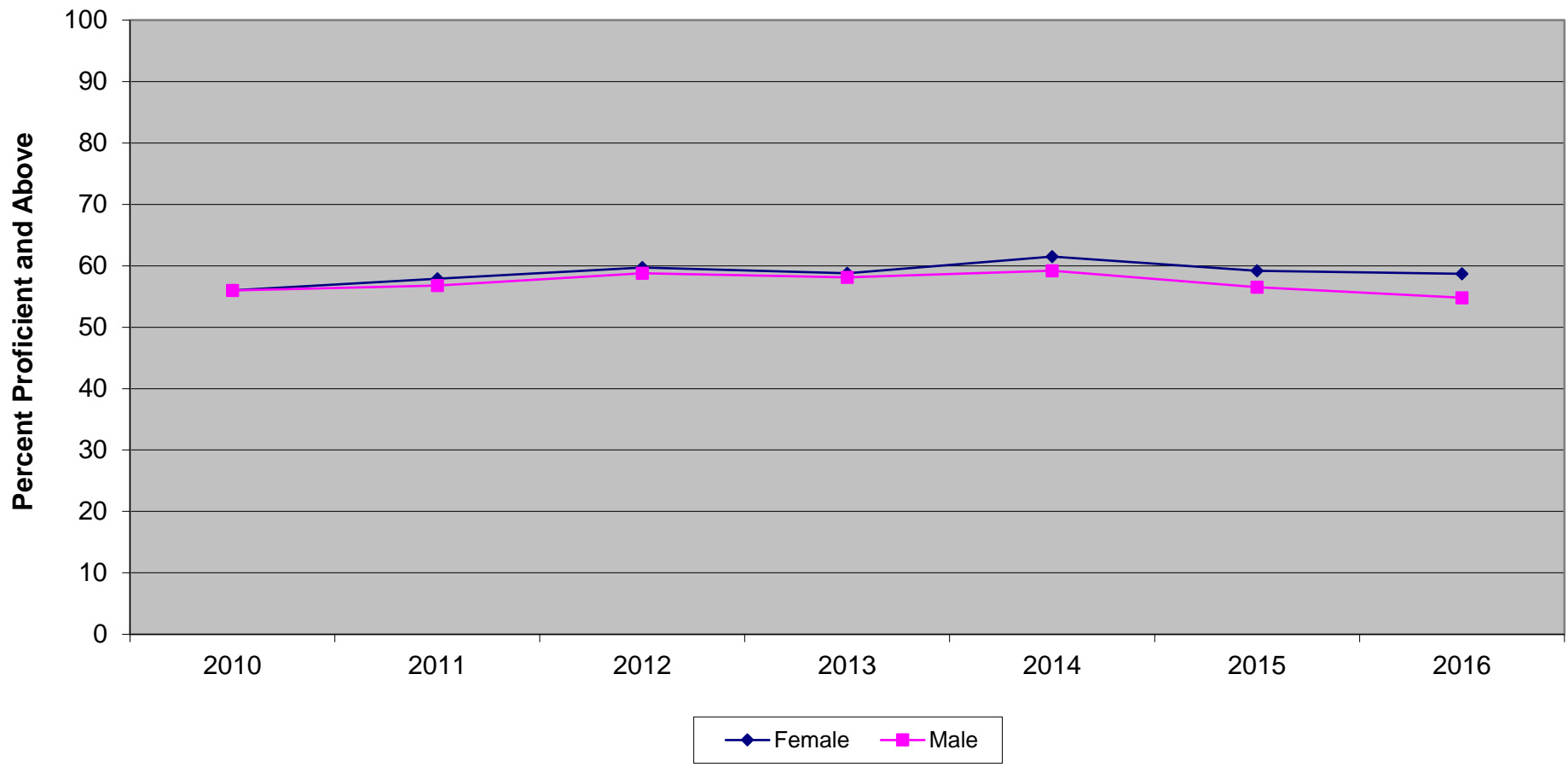
New Jersey Biology Competency Test
Proficient and Above by Instructional Group (2010-2016)



**New Jersey Biology Competency Test
Proficient and Above by Instructional Group (2010-2016)**

| | 2010 | 2011 | 2012 | 2013 | 2014 | 2015 | 2016 |
|--------------------------|-------------|-------------|-------------|-------------|-------------|-------------|-------------|
| Total | 55.9 | 57.3 | 59.2 | 58.4 | 60.3 | 57.8 | 56.7 |
| General Education | 63.2 | 65.0 | 66.6 | 65.9 | 67.6 | 64.9 | 64.8 |
| Special Education | 21.4 | 20.4 | 23.6 | 23.2 | 25.0 | 23.5 | 22.1 |
| LEP - Current | 9.6 | 10.0 | 13.5 | 12.5 | 14.0 | 13.0 | 13.6 |
| LEP - Former | 29.1 | 25.4 | 33.9 | 33.0 | 38.6 | 35.3 | 34.9 |

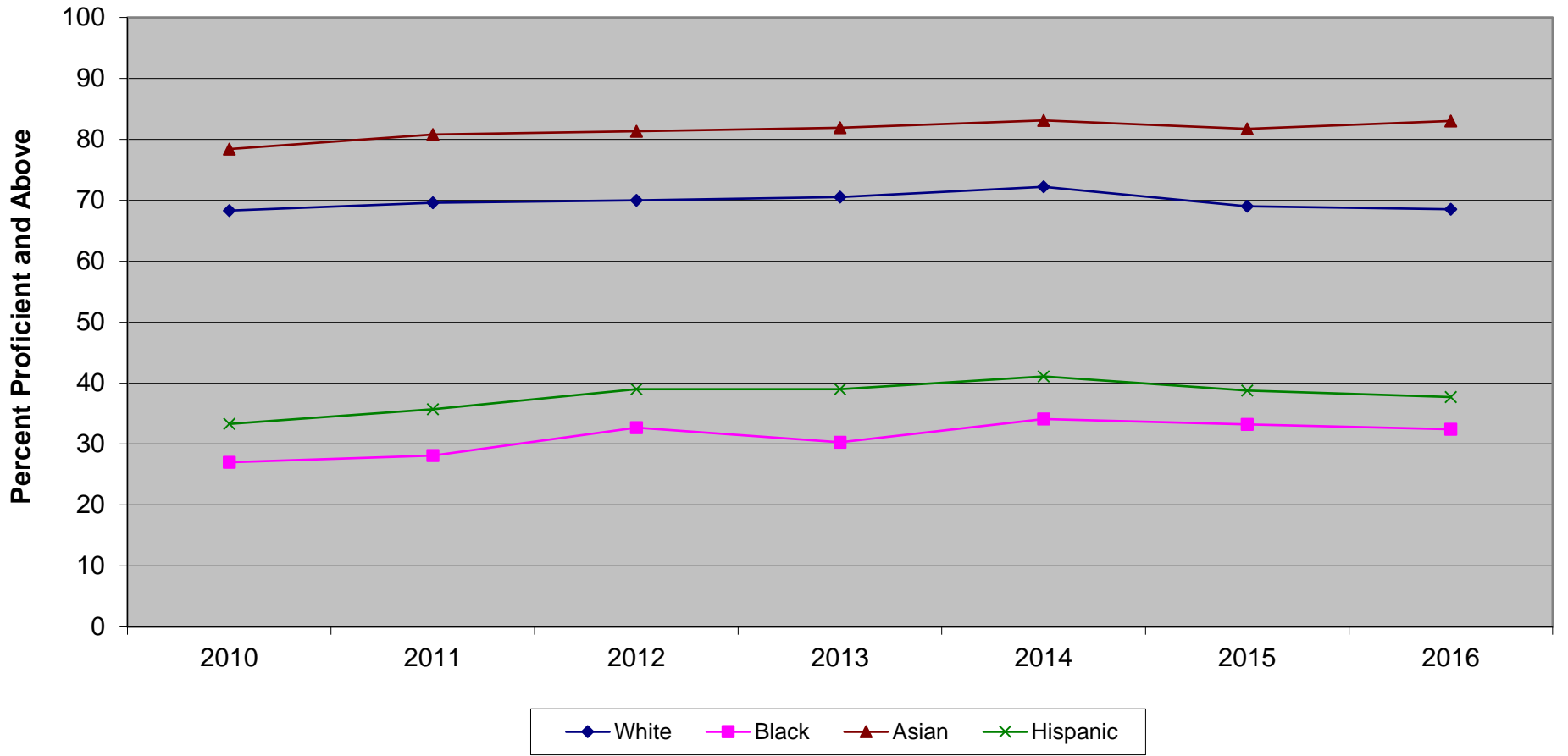
New Jersey Biology Competency Test
Proficient and Above by Gender (2010-2016)



**New Jersey Biology Competency Test
Proficient and Above by Gender (2010-2016)**

| | 2010 | 2011 | 2012 | 2013 | 2014 | 2015 | 2016 |
|---------------|-------------|-------------|-------------|-------------|-------------|-------------|-------------|
| Female | 56.0 | 57.9 | 59.7 | 58.8 | 61.5 | 59.2 | 58.7 |
| Male | 56.0 | 56.8 | 58.8 | 58.1 | 59.2 | 56.5 | 54.8 |

New Jersey Biology Competency Test
Proficient and Above by Ethnicity (2010-2016)

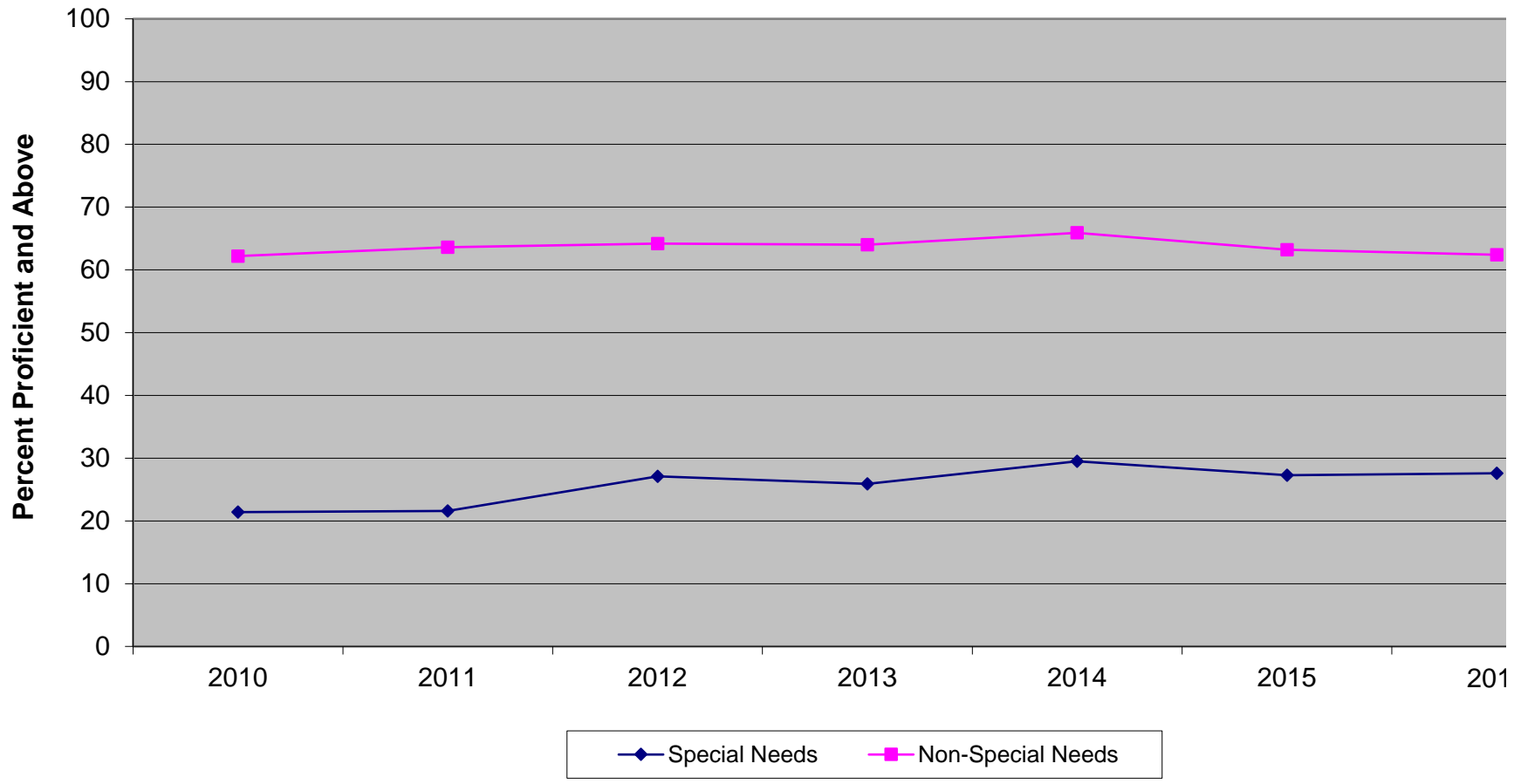


Ethnic codes Pacific Islander, American Indian/Alaskan Native and Other are not shown due to the small number of students in these categories.

**New Jersey Biology Competency Test
Proficient and Above by Ethnicity (2010-2016)**

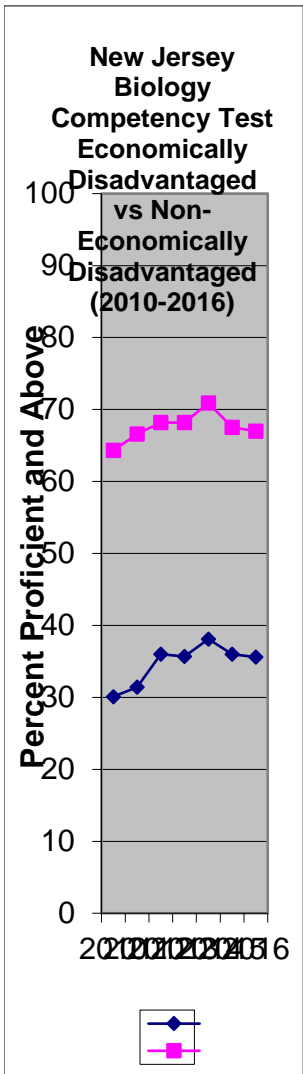
| | 2010 | 2011 | 2012 | 2013 | 2014 | 2015 | 2016 |
|-----------------|-------------|-------------|-------------|-------------|-------------|-------------|-------------|
| White | 68.3 | 69.6 | 70.0 | 70.5 | 72.2 | 69.0 | 68.5 |
| Black | 27.0 | 28.1 | 32.7 | 30.3 | 34.1 | 33.2 | 32.4 |
| Asian | 78.4 | 80.8 | 81.3 | 81.9 | 83.1 | 81.7 | 83.0 |
| Hispanic | 33.3 | 35.7 | 39.0 | 39.0 | 41.1 | 38.8 | 37.7 |

**New Jersey Biology Competency Test
Special Needs vs Non-Special Needs (2010-2016)**



**New Jersey Biology Competency Test
Special Needs vs Non-Special Needs (2010-2016)**

| | 2010 | 2011 | 2012 | 2013 | 2014 | 2015 | 2016 |
|--------------------------|-------------|-------------|-------------|-------------|-------------|-------------|-------------|
| Special Needs | 21.4 | 21.6 | 27.1 | 25.9 | 29.5 | 27.3 | 27.6 |
| Non-Special Needs | 62.2 | 63.6 | 64.2 | 64.0 | 65.9 | 63.2 | 62.4 |



**New Jersey Biology Competency Test
Economically Disadvantaged vs Non-Economically Disadvantaged (2010-2016)**

| | 2010 | 2011 | 2012 | 2013 | 2014 | 2015 | 2016 |
|---------------|-------------|-------------|-------------|-------------|-------------|-------------|-------------|
| ED | 30.1 | 31.4 | 36.0 | 35.7 | 38.1 | 36.0 | 35.6 |
| Non-ED | 64.3 | 66.6 | 68.2 | 68.2 | 70.9 | 67.5 | 67.0 |