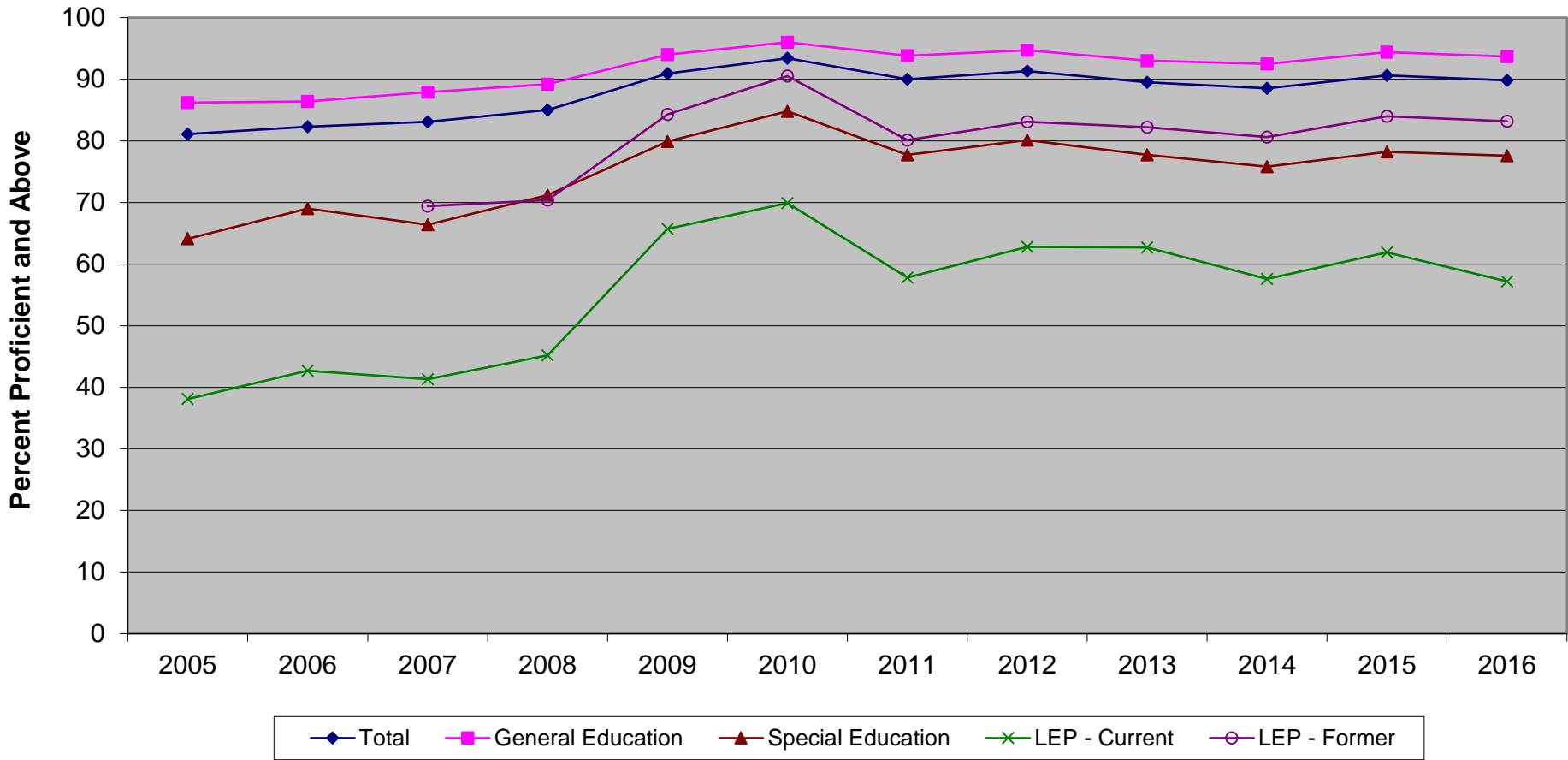


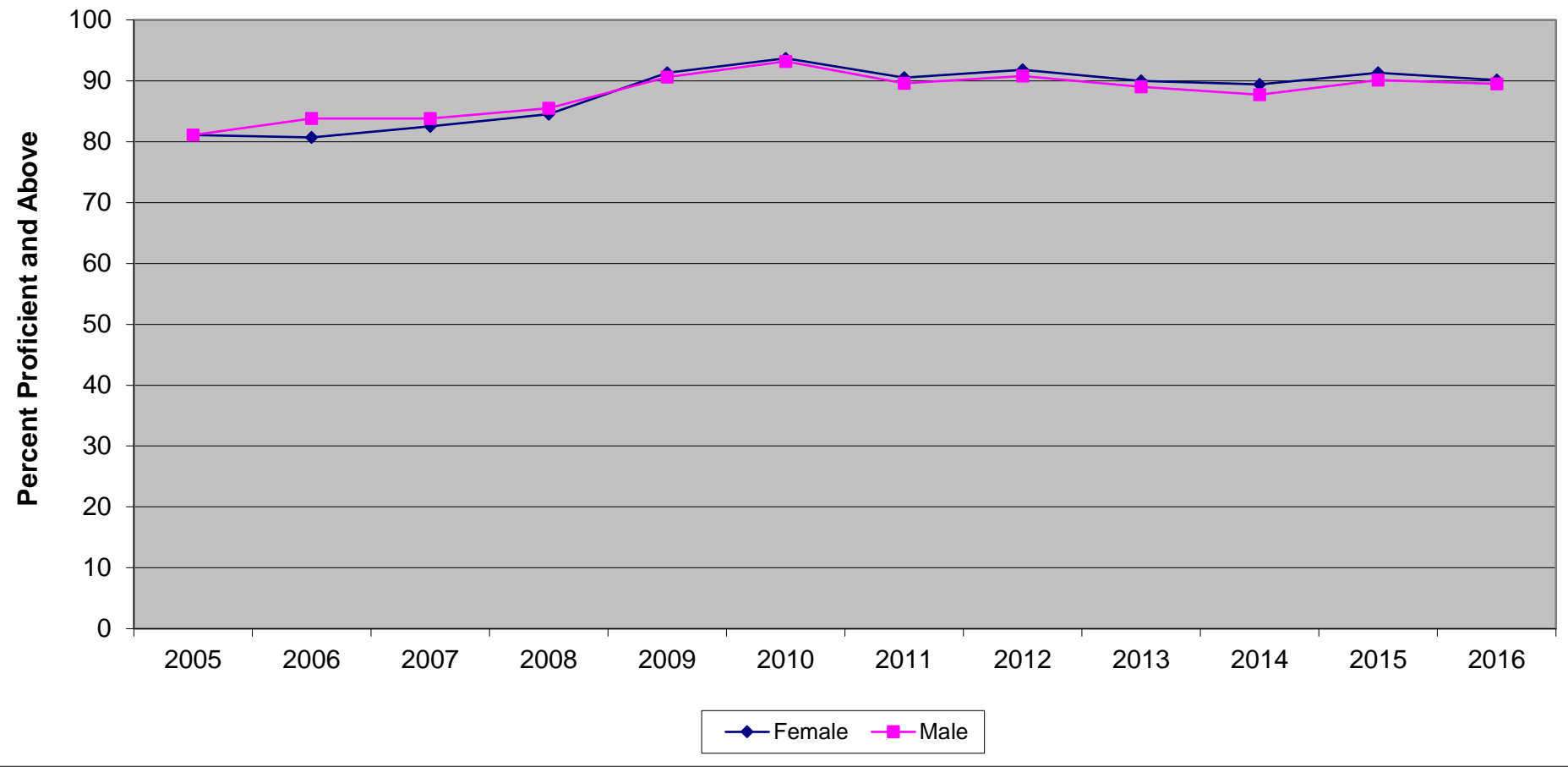
New Jersey Assessment of Skills and Knowledge  
Grade 4 Science Proficient and Above  
by Instructional Groups (2005-2016)



**New Jersey Assessment of Skills and Knowledge  
Grade 4 Science Proficient and Above  
by Instructional Groups (2005-2016)**

	<b>2005</b>	<b>2006</b>	<b>2007</b>	<b>2008</b>	<b>2009</b>	<b>2010</b>	<b>2011</b>	<b>2012</b>	<b>2013</b>	<b>2014</b>	<b>2015</b>	<b>2016</b>
Total	81.1	82.3	83.1	85.0	90.9	93.4	90.0	91.3	89.5	88.5	90.6	89.8
General Education	86.2	86.4	87.9	89.2	94.0	96.0	93.8	94.7	93.0	92.5	94.4	93.7
Special Education	64.1	69.0	66.4	71.2	79.9	84.8	77.7	80.1	77.7	75.8	78.2	77.6
LEP - Current	38.1	42.7	41.3	45.2	65.7	69.9	57.8	62.8	62.7	57.6	61.9	57.2
LEP - Former			69.4	70.4	84.3	90.5	80.1	83.1	82.2	80.6	84.0	83.2

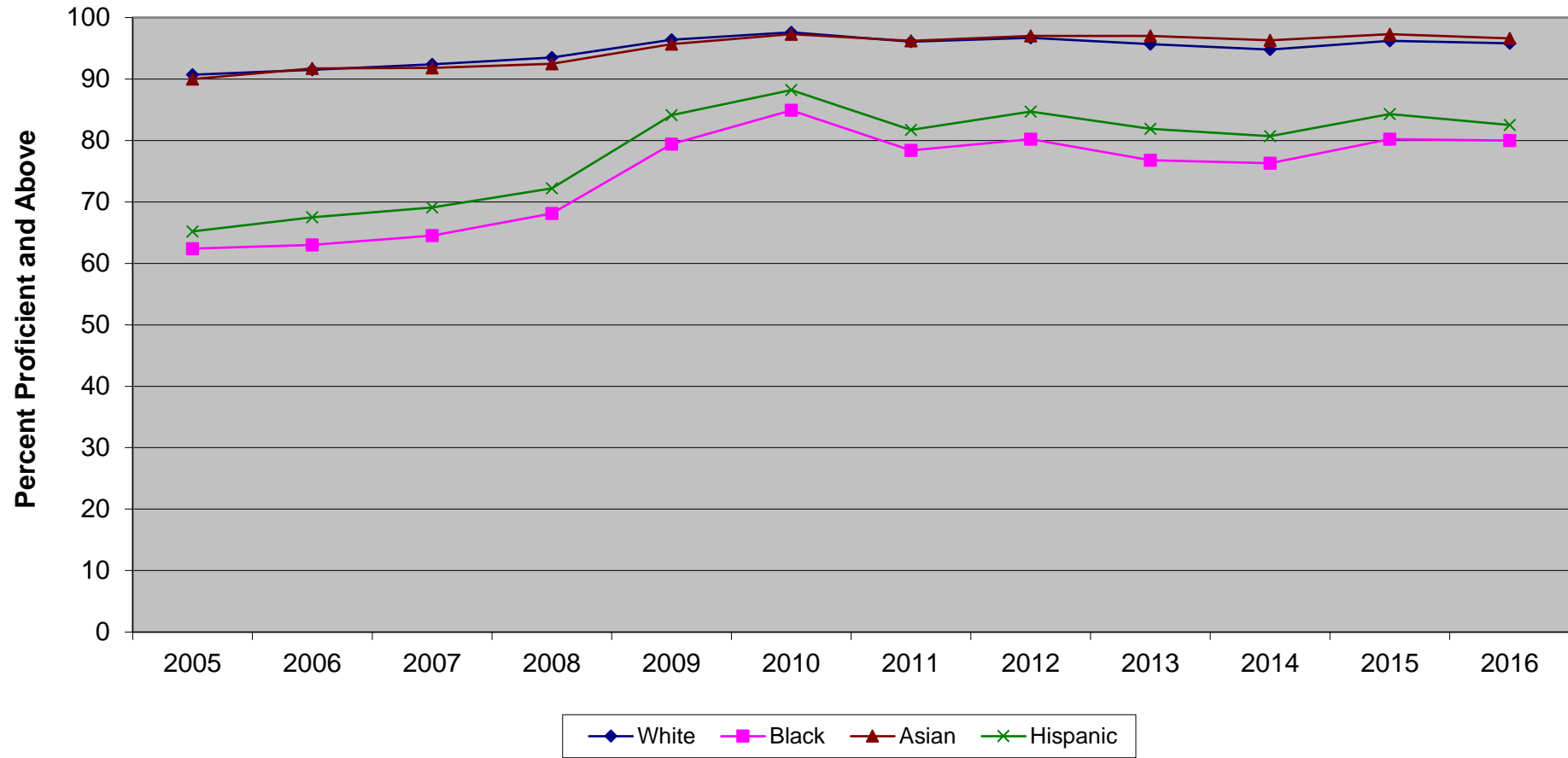
New Jersey Assessment of Skills and Knowledge  
Grade 4 Science Proficient and Above  
by Gender (2005-2016)



**New Jersey Assessment of Skills and Knowledge  
Grade 4 Science Proficient and Above  
by Gender (2005-2016)**

	<b>2005</b>	<b>2006</b>	<b>2007</b>	<b>2008</b>	<b>2009</b>	<b>2010</b>	<b>2011</b>	<b>2012</b>	<b>2013</b>	<b>2014</b>	<b>2015</b>	<b>2016</b>
Female	81.1	80.7	82.5	84.5	91.3	93.7	90.5	91.8	90.0	89.4	91.3	90.1
Male	81.1	83.8	83.8	85.5	90.6	93.2	89.6	90.8	89.0	87.7	90.1	89.5

New Jersey Assessment of Skills and Knowledge  
Grade 4 Science Proficient and Above  
by Ethnicity (2005-2016)

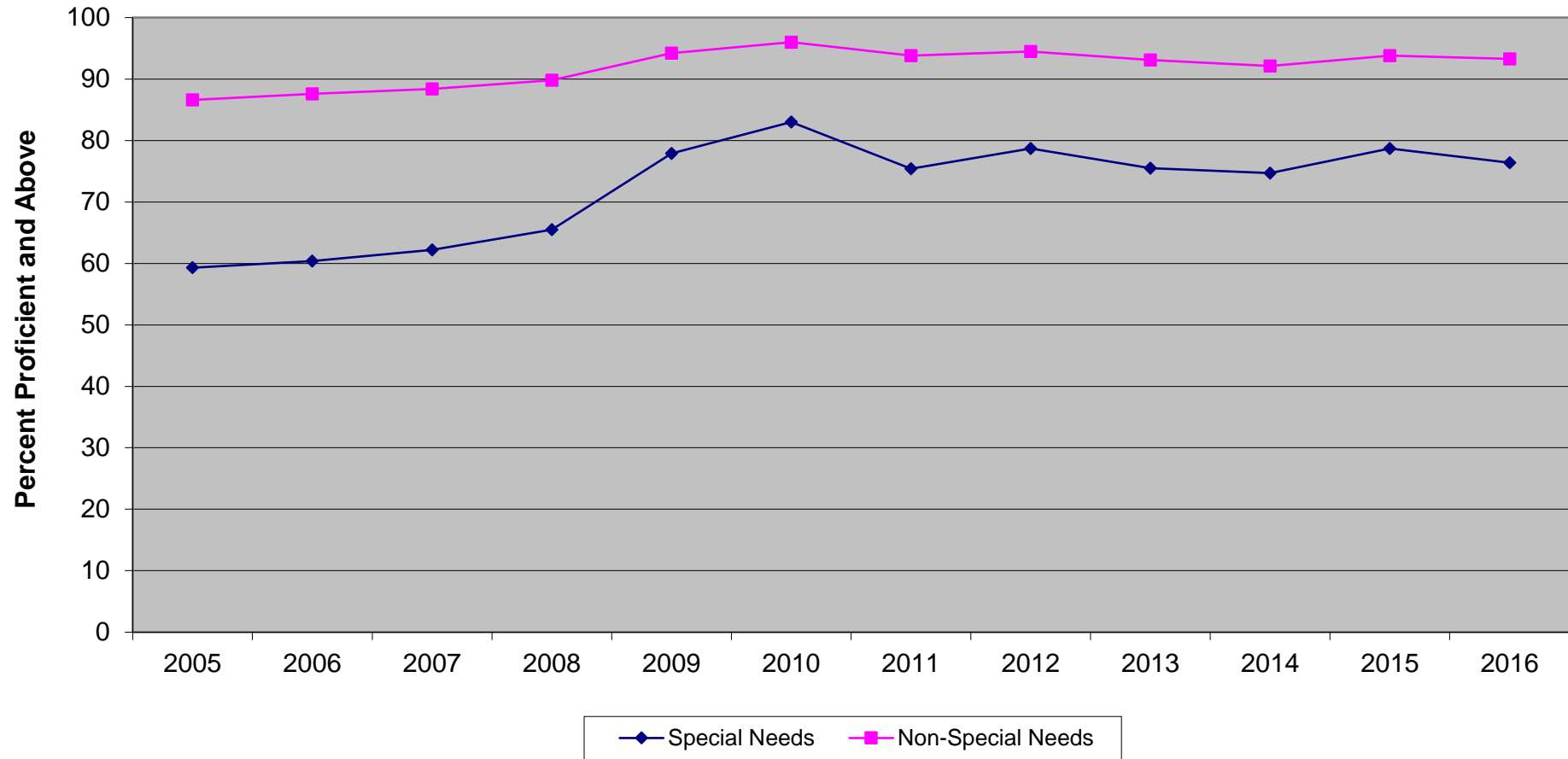


Ethnic codes Pacific Islander, American Indian/Alaskan Native and Other are not shown due to the small number of students in these categories.

**New Jersey Assessment of Skills and Knowledge  
Grade 4 Science Proficient and Above  
by Ethnicity (2005-2016)**

	<b>2005</b>	<b>2006</b>	<b>2007</b>	<b>2008</b>	<b>2009</b>	<b>2010</b>	<b>2011</b>	<b>2012</b>	<b>2013</b>	<b>2014</b>	<b>2015</b>	<b>2016</b>
White	90.7	91.5	92.4	93.5	96.4	97.6	96.1	96.7	95.7	94.8	96.2	95.8
Black	62.4	63.0	64.5	68.1	79.4	84.9	78.4	80.2	76.8	76.3	80.2	80.0
Asian	90.0	91.7	91.8	92.5	95.7	97.3	96.2	97.0	97.0	96.3	97.3	96.6
Hispanic	65.2	67.5	69.1	72.2	84.1	88.2	81.7	84.7	81.9	80.7	84.3	82.5

New Jersey Assessment of Skills and Knowledge  
Grade 4 Science Proficient and Above  
Special Needs vs Non-Special Needs (2005-2016)

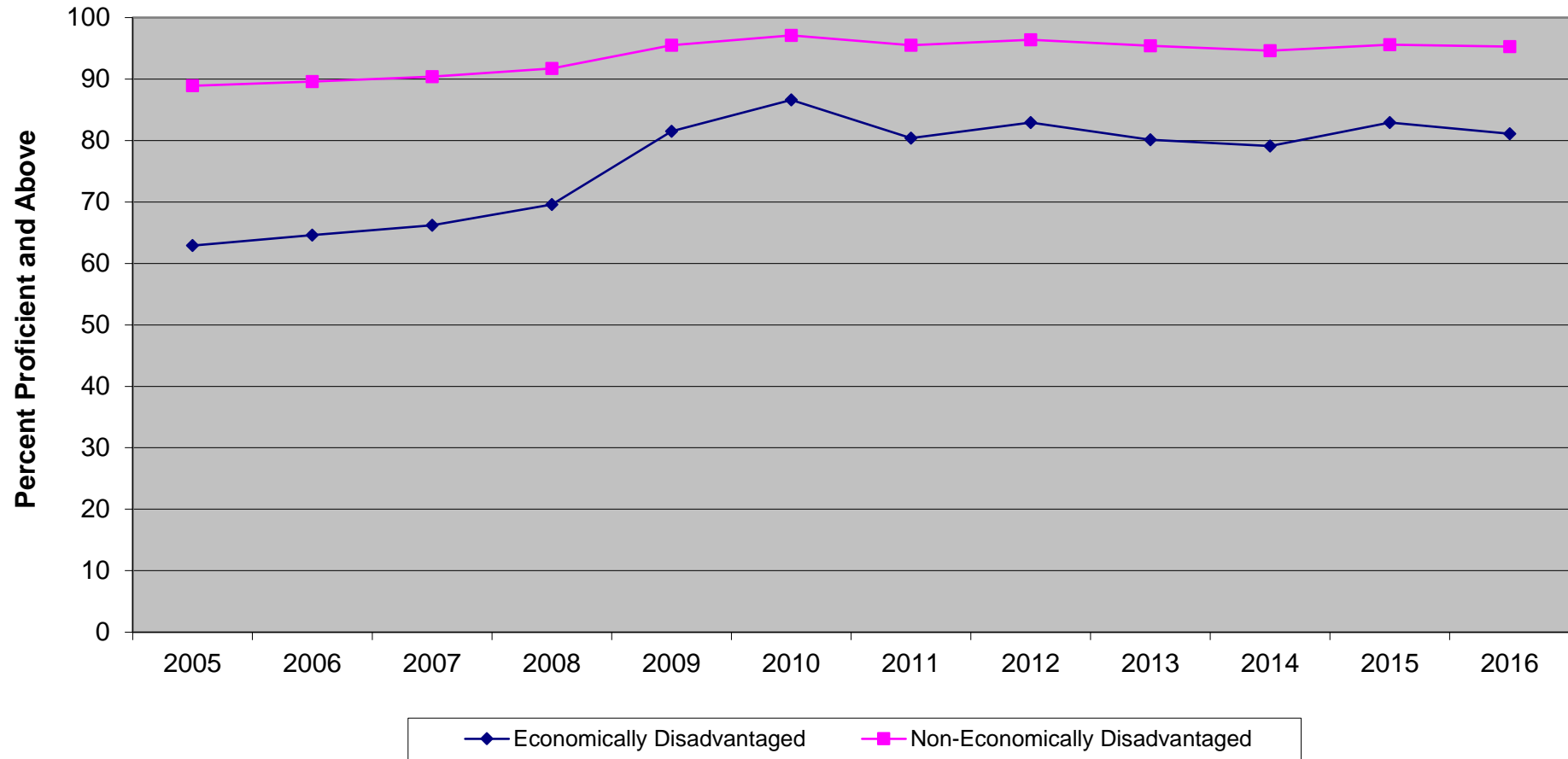


**New Jersey Assessment of Skills and Knowledge  
Grade 4 Science Proficient and Above  
Special Needs vs Non-Special Needs (2005-2016)**

	<b>2005</b>	<b>2006</b>	<b>2007</b>	<b>2008</b>	<b>2009</b>	<b>2010</b>	<b>2011</b>	<b>2012</b>	<b>2013</b>	<b>2014</b>	<b>2015</b>	<b>2016</b>
Special Needs	59.3	60.4	62.2	65.5	77.9	83.0	75.4	78.7	75.5	74.7	78.7	76.4
Non-Special Needs	86.6	87.6	88.4	89.8	94.2	96.0	93.8	94.5	93.1	92.1	93.8	93.3



New Jersey Assessment of Skills and Knowledge  
Grade 4 Science Proficient and Above  
Economically Disadvantaged vs Non-Economically Disadvantaged (2005-2016)



**New Jersey Assessment of Skills and Knowledge  
Grade 4 Science Proficient and Above  
Economically Disadvantaged vs Non-Economically Disadvantaged (2005-2016)**

	<b>2005</b>	<b>2006</b>	<b>2007</b>	<b>2008</b>	<b>2009</b>	<b>2010</b>	<b>2011</b>	<b>2012</b>	<b>2013</b>	<b>2014</b>	<b>2015</b>	<b>2016</b>
Economically Disadvantaged	62.9	64.6	66.2	69.6	81.5	86.6	80.4	82.9	80.1	79.1	82.9	81.1
Non-Economically Disadvantaged	88.9	89.6	90.4	91.7	95.5	97.1	95.5	96.4	95.4	94.6	95.6	95.3