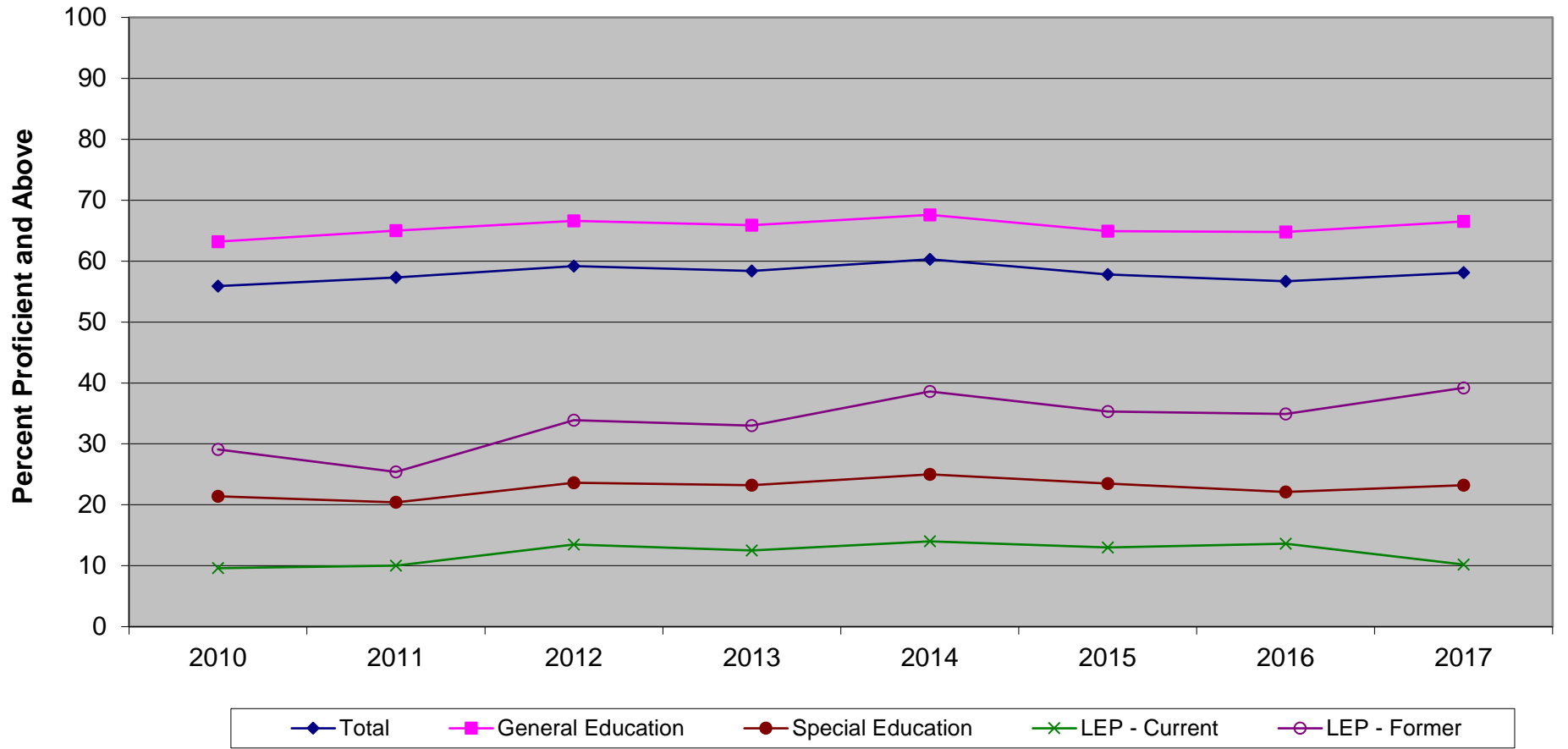


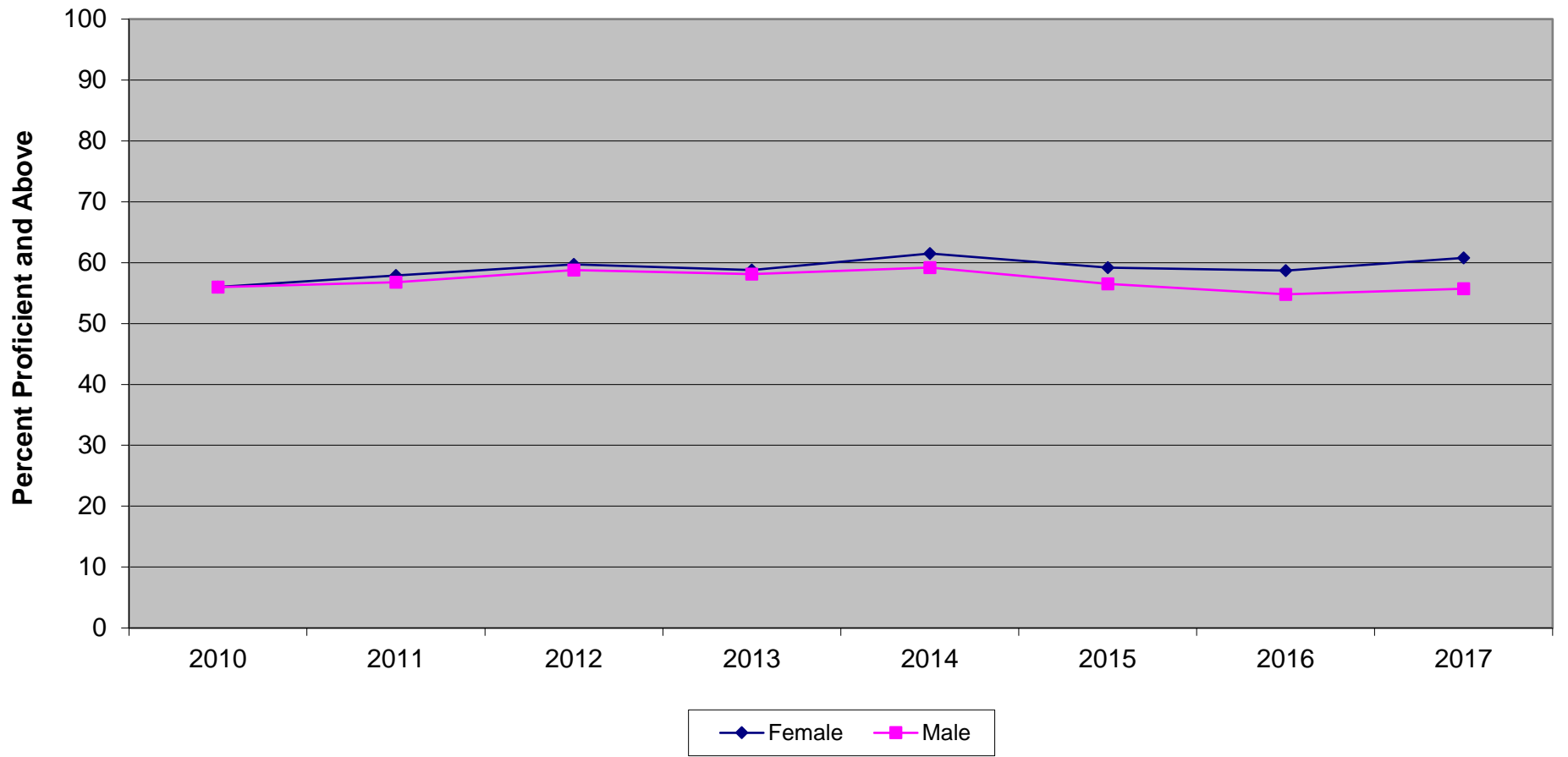
New Jersey Biology Competency Test
Proficient and Above by Instructional Group (2010-2017)



**New Jersey Biology Competency Test
Proficient and Above by Instructional Group (2010-2017)**

	2010	2011	2012	2013	2014	2015	2016	2017
Total	55.9	57.3	59.2	58.4	60.3	57.8	56.7	58.1
General Education	63.2	65.0	66.6	65.9	67.6	64.9	64.8	66.5
Special Education	21.4	20.4	23.6	23.2	25.0	23.5	22.1	23.2
LEP - Current	9.6	10.0	13.5	12.5	14.0	13.0	13.6	10.2
LEP - Former	29.1	25.4	33.9	33.0	38.6	35.3	34.9	39.2

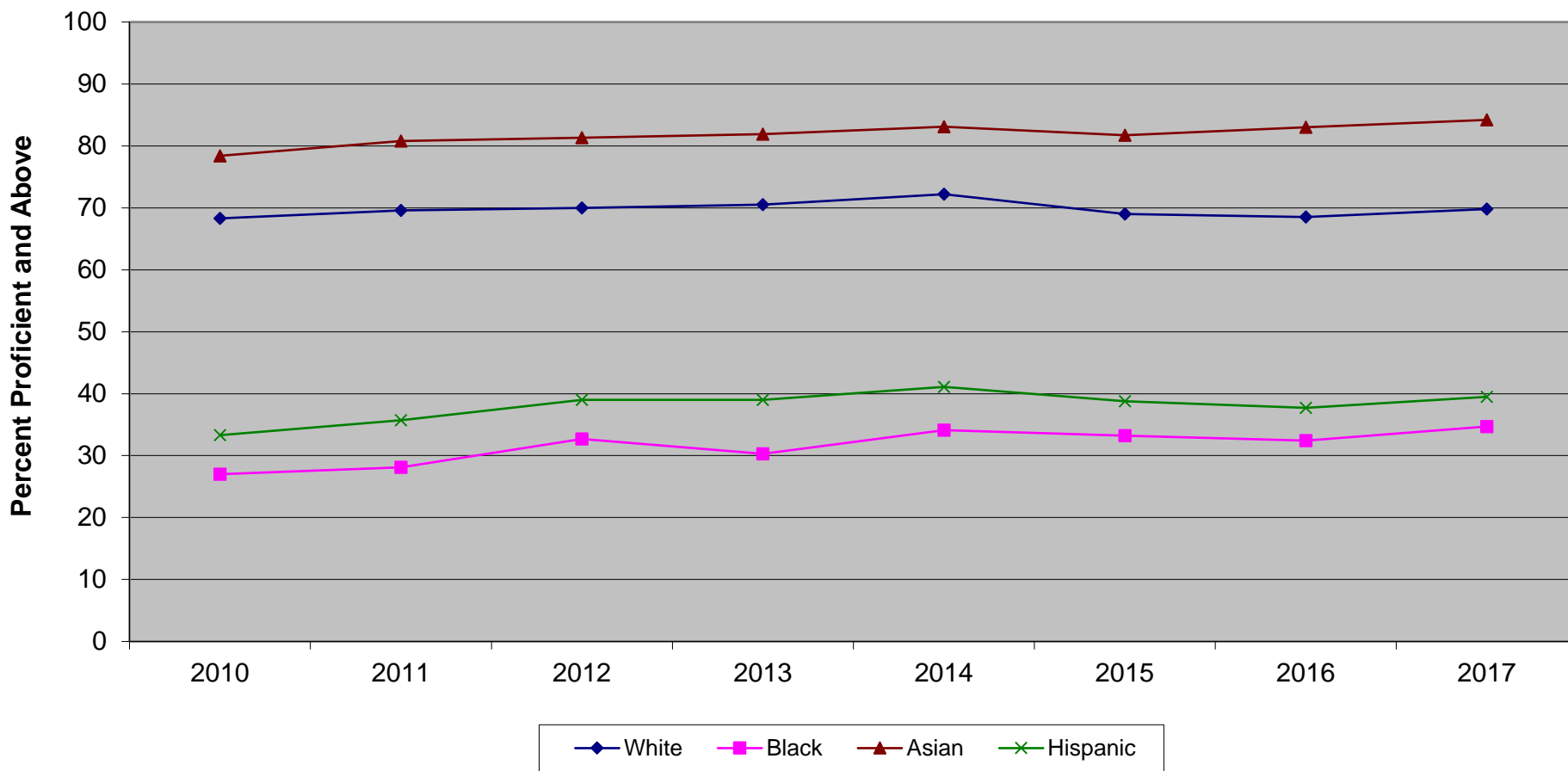
New Jersey Biology Competency Test
Proficient and Above by Gender (2010-2017)



**New Jersey Biology Competency Test
Proficient and Above by Gender (2010-2017)**

	2010	2011	2012	2013	2014	2015	2016	2017
Female	56.0	57.9	59.7	58.8	61.5	59.2	58.7	60.8
Male	56.0	56.8	58.8	58.1	59.2	56.5	54.8	55.7

New Jersey Biology Competency Test
Proficient and Above by Ethnicity (2010-2017)

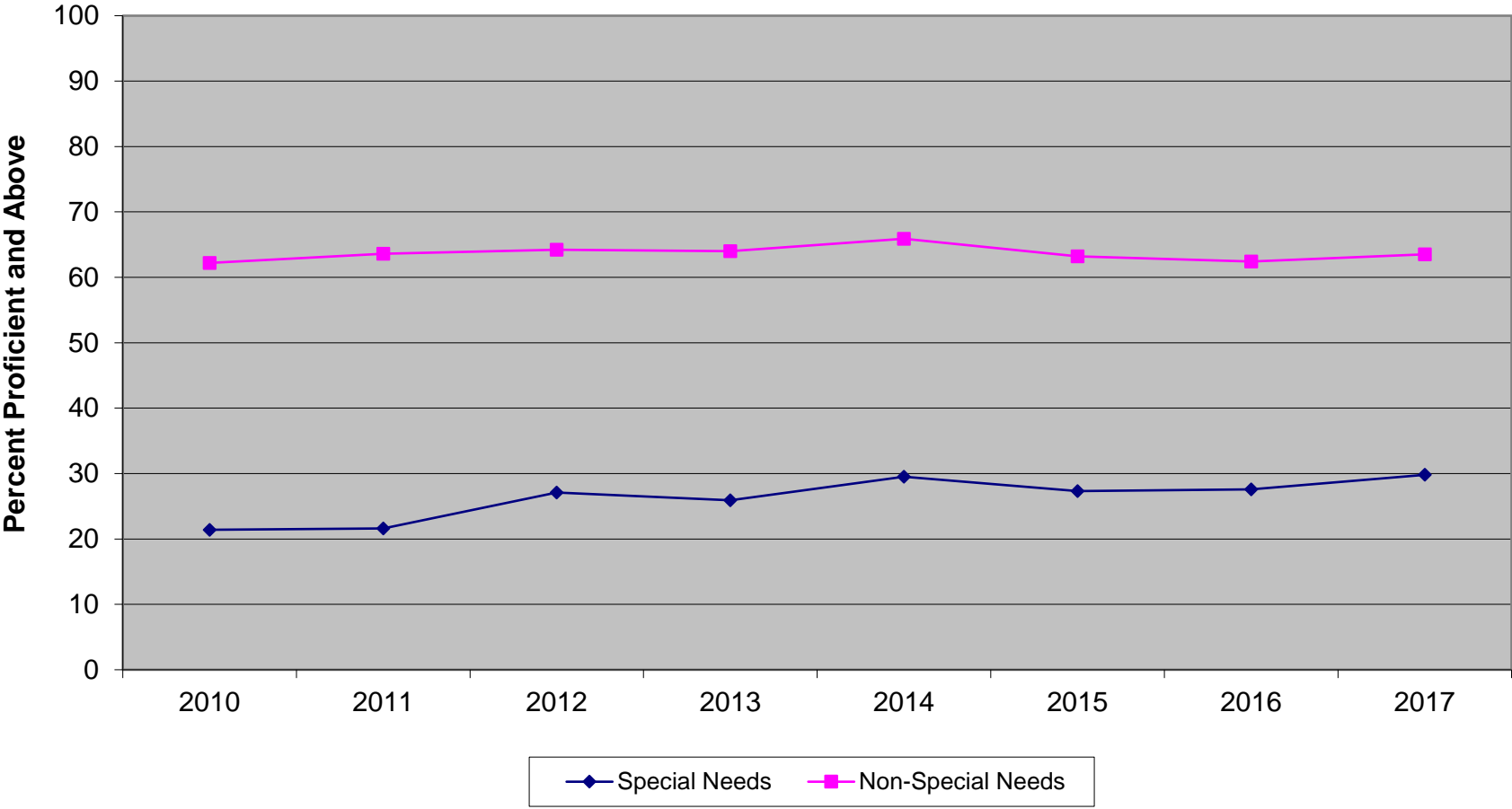


Ethnic codes Pacific Islander, American Indian/Alaskan Native and Other are not shown due to the small number of students in these categories.

**New Jersey Biology Competency Test
Proficient and Above by Ethnicity (2010-2017)**

	2010	2011	2012	2013	2014	2015	2016	2017
White	68.3	69.6	70.0	70.5	72.2	69.0	68.5	69.8
Black	27.0	28.1	32.7	30.3	34.1	33.2	32.4	34.7
Asian	78.4	80.8	81.3	81.9	83.1	81.7	83.0	84.2
Hispanic	33.3	35.7	39.0	39.0	41.1	38.8	37.7	39.5

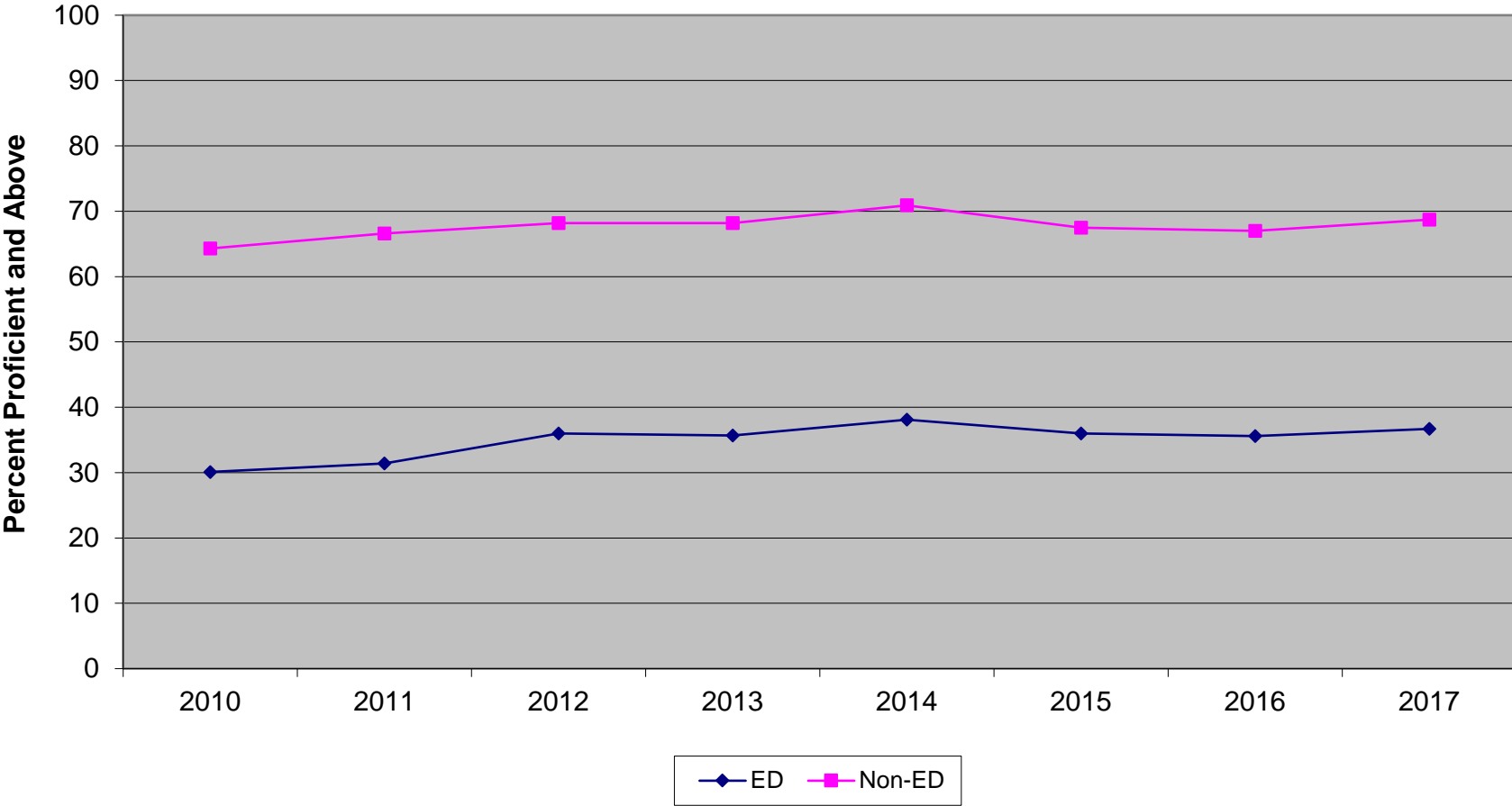
New Jersey Biology Competency Test
Special Needs vs Non-Special Needs (2010-2017)



**New Jersey Biology Competency Test
Special Needs vs Non-Special Needs (2010-2017)**

	2010	2011	2012	2013	2014	2015	2016	2017
Special Needs	21.4	21.6	27.1	25.9	29.5	27.3	27.6	29.8
Non-Special Needs	62.2	63.6	64.2	64.0	65.9	63.2	62.4	63.5

New Jersey Biology Competency Test
Economically Disadvantaged vs Non-Economically Disadvantaged (2010-2017)



**New Jersey Biology Competency Test
Economically Disadvantaged vs Non-Economically Disadvantaged (2010-2017)**

	2010	2011	2012	2013	2014	2015	2016	2017
ED	30.1	31.4	36.0	35.7	38.1	36.0	35.6	36.7
Non-ED	64.3	66.6	68.2	68.2	70.9	67.5	67.0	68.7