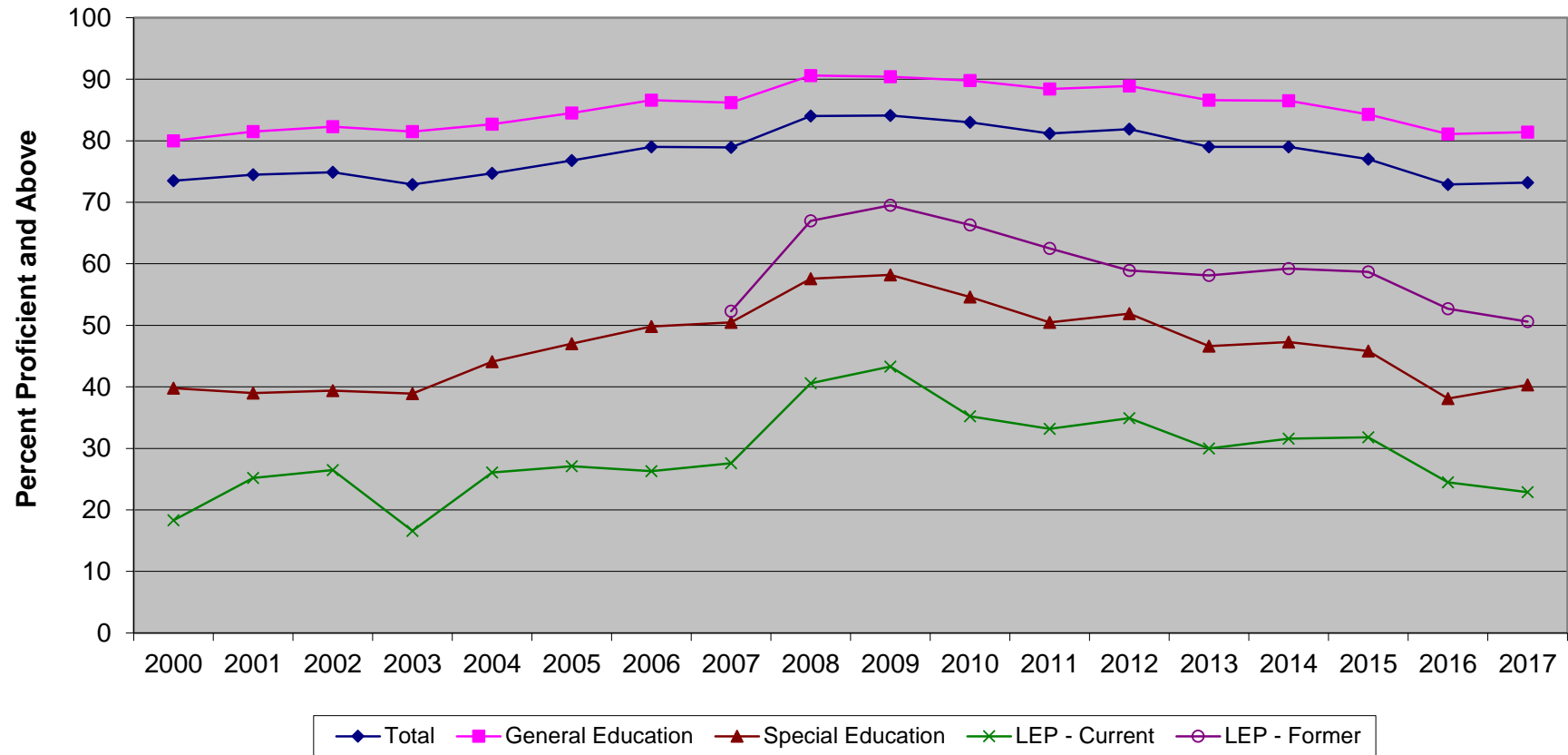


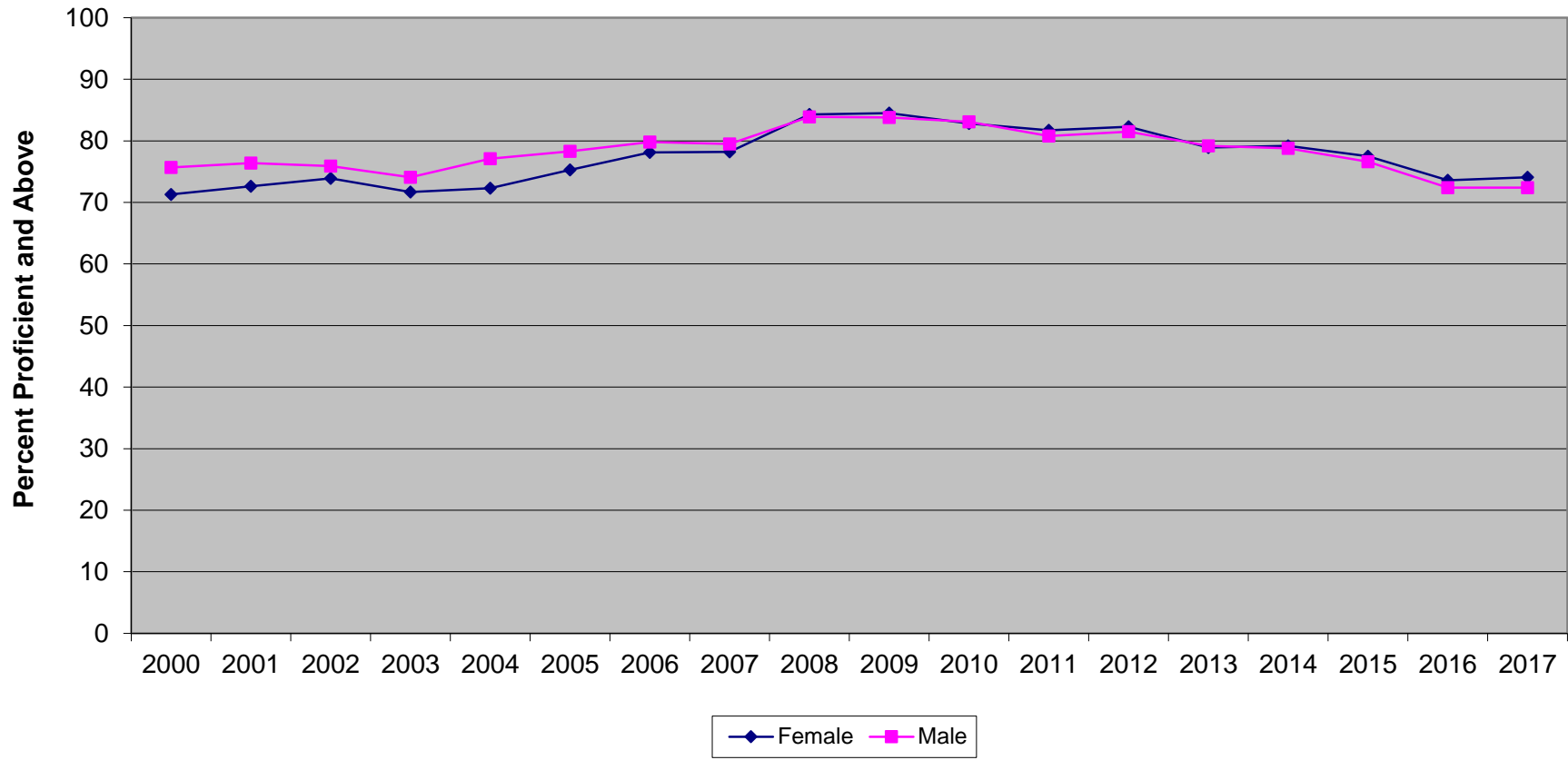
New Jersey Assessment of Skills and Knowledge
 Grade 8 Science Proficient and Above
 by Instructional Groups (2000-2017)



**New Jersey Assessment of Skills and Knowledge
Grade 8 Science Proficient and Above
by Instructional Groups (2000-2017)**

	2000	2001	2002	2003	2004	2005	2006	2007	2008	2009	2010	2011	2012	2013	2014	2015	2016	2017
Total	73.5	74.5	74.9	72.9	74.7	76.8	79.0	78.9	84.0	84.1	83.0	81.2	81.9	79.0	79.0	77.0	72.9	73.2
General Education	80.0	81.5	82.3	81.5	82.7	84.5	86.6	86.2	90.6	90.4	89.8	88.4	88.9	86.6	86.5	84.3	81.1	81.4
Special Education	39.8	39.0	39.4	38.9	44.1	47.0	49.8	50.5	57.6	58.2	54.6	50.5	51.9	46.6	47.3	45.8	38.1	40.3
LEP - Current	18.3	25.2	26.5	16.6	26.1	27.1	26.3	27.6	40.6	43.3	35.2	33.2	34.9	30.0	31.6	31.8	24.5	22.9
LEP - Former								52.3	67.0	69.5	66.3	62.5	58.9	58.1	59.2	58.7	52.7	50.6

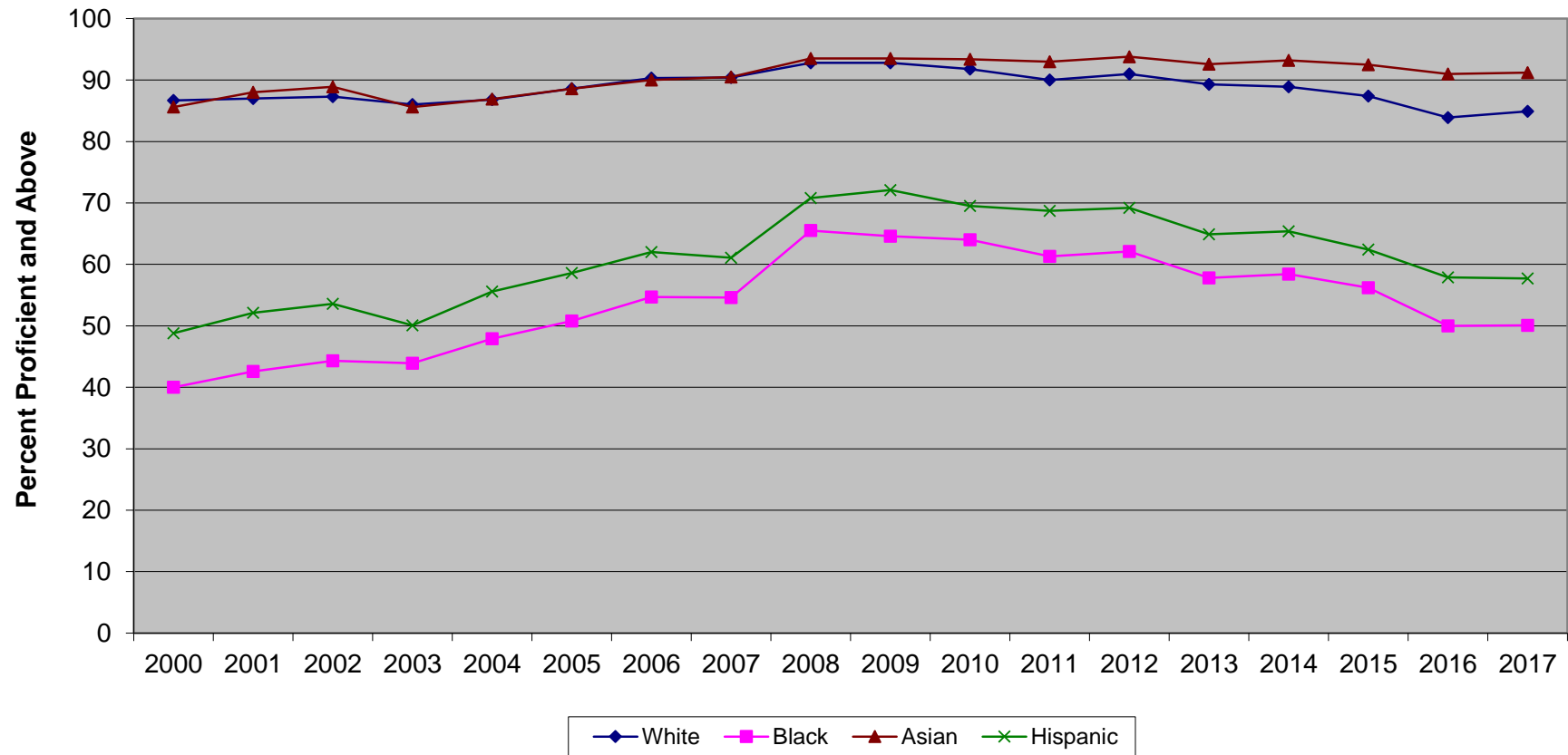
New Jersey Assessment of Skills and Knowledge
Grade 8 Science Proficient and Above
by Gender (2000-2017)



**New Jersey Assessment of Skills and Knowledge
Grade 8 Science Proficient and Above
by Gender (2000-2017)**

	2000	2001	2002	2003	2004	2005	2006	2007	2008	2009	2010	2011	2012	2013	2014	2015	2016	2017
Female	71.3	72.6	73.9	71.7	72.3	75.3	78.1	78.2	84.3	84.5	82.8	81.7	82.3	78.9	79.2	77.5	73.6	74.1
Male	75.7	76.4	75.9	74.1	77.1	78.3	79.8	79.5	83.9	83.8	83.1	80.8	81.5	79.2	78.8	76.6	72.4	72.4

New Jersey Assessment of Skills and Knowledge
Grade 8 Science Proficient and Above by Ethnicity (2000-2017)

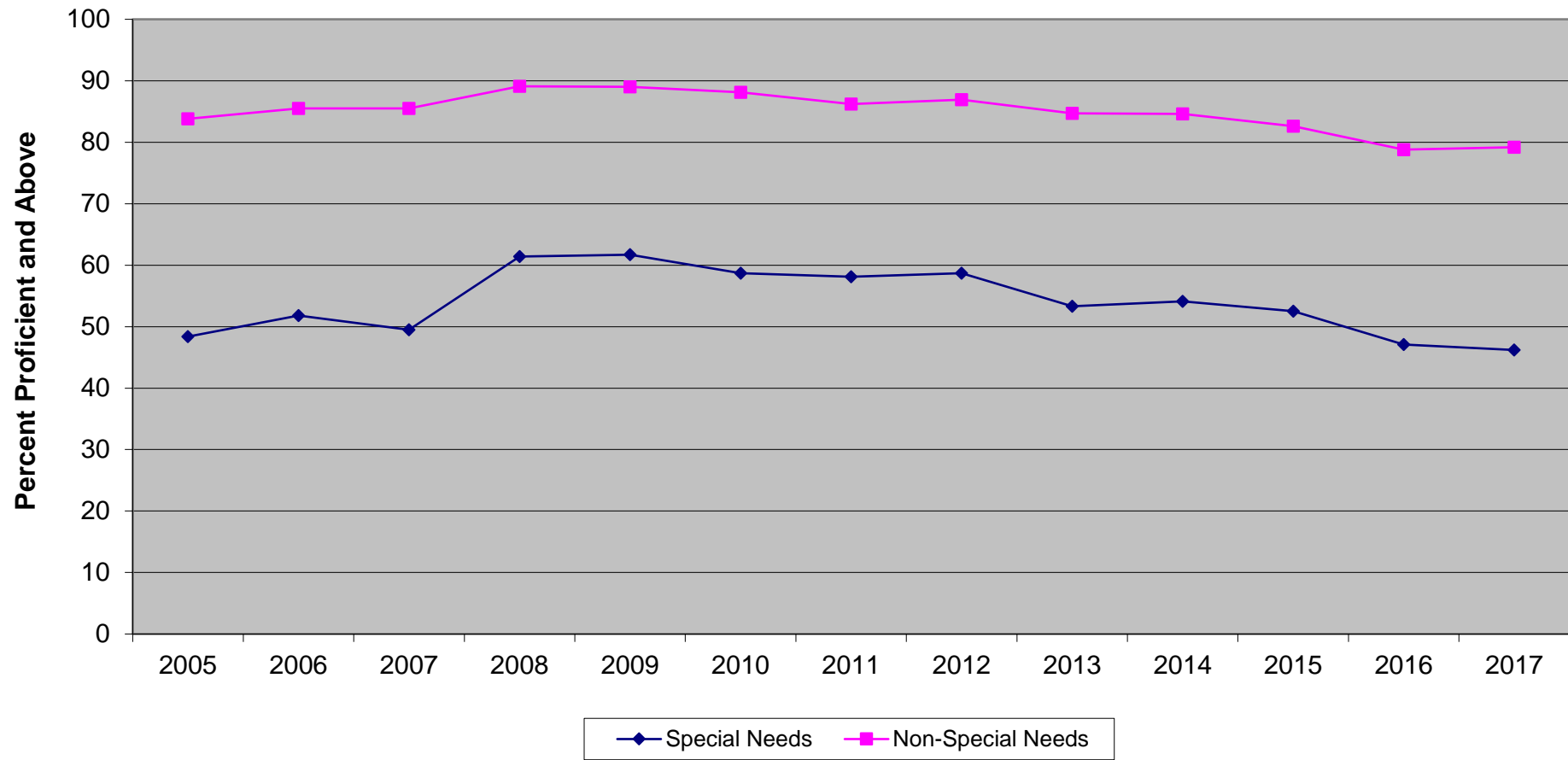


Ethnic codes Pacific Islander, American Indian/Alaskan Native and Other are not shown due to the small number of students in these categories.

**New Jersey Assessment of Skills and Knowledge
Grade 8 Science Proficient and Above
by Ethnicity (2000-2017)**

	2000	2001	2002	2003	2004	2005	2006	2007	2008	2009	2010	2011	2012	2013	2014	2015	2016	2017
White	86.7	87.0	87.3	86.0	86.8	88.6	90.3	90.4	92.8	92.8	91.8	90.0	91.0	89.3	88.9	87.4	83.9	84.9
Black	40.0	42.6	44.3	43.9	47.9	50.8	54.7	54.6	65.5	64.6	64.0	61.3	62.1	57.8	58.4	56.2	50.0	50.1
Asian	85.6	88.0	88.9	85.6	86.9	88.6	90.0	90.5	93.5	93.5	93.4	93.0	93.8	92.6	93.2	92.5	91.0	91.2
Hispanic	48.8	52.1	53.6	50.1	55.6	58.6	62.0	61.1	70.8	72.1	69.5	68.7	69.2	64.9	65.4	62.4	57.9	57.7

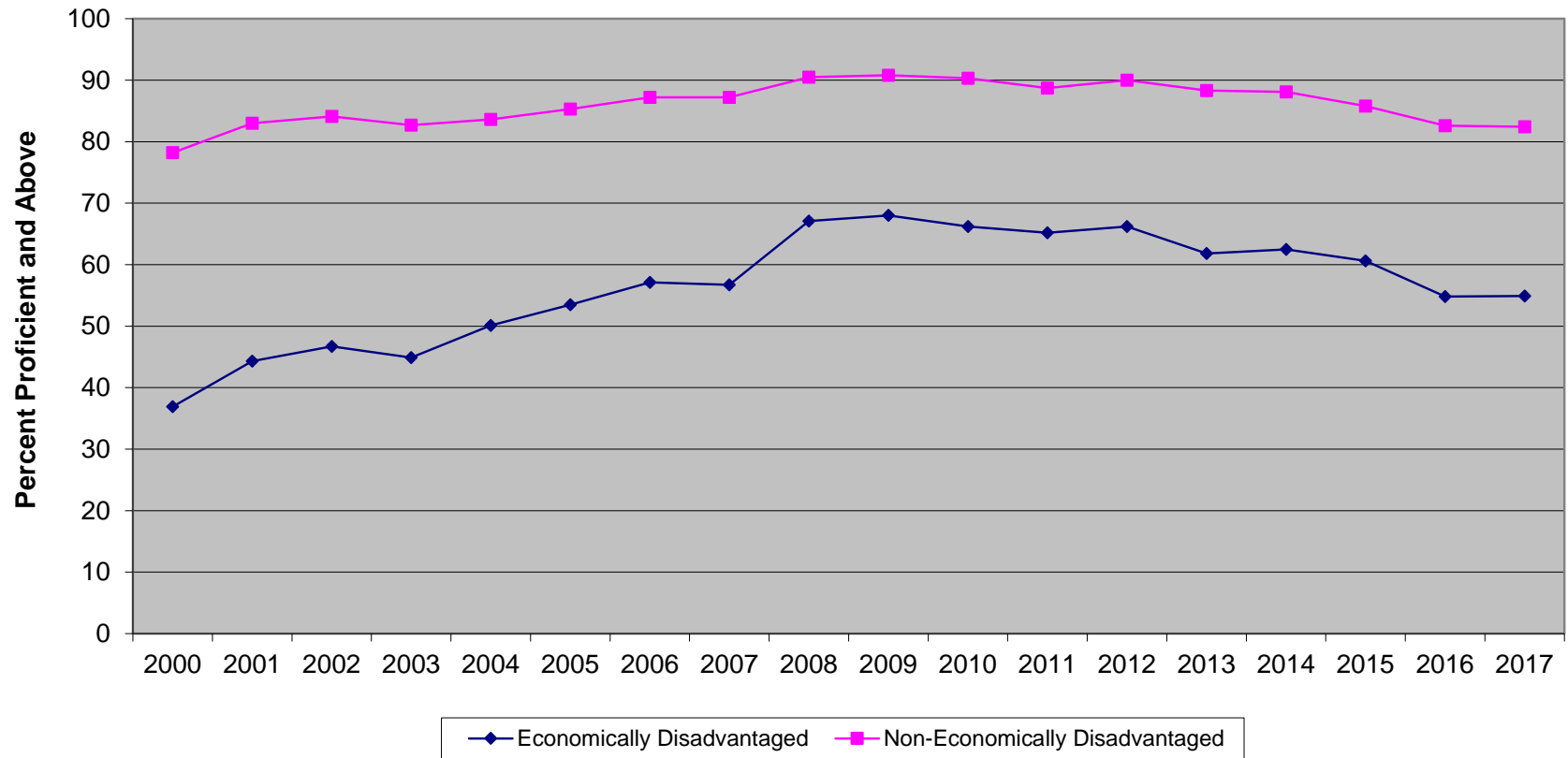
New Jersey Assessment of Skills and Knowledge
Grade 8 Science Proficient and Above
Special Needs vs Non-Special Needs (2005-2017)



**New Jersey Assessment of Skills and Knowledge
Grade 8 Science Proficient and Above
Special Needs vs Non-Special Needs (2005-2017)**

	2005	2006	2007	2008	2009	2010	2011	2012	2013	2014	2015	2016	2017
Special Needs	48.4	51.8	49.5	61.4	61.7	58.7	58.1	58.7	53.3	54.1	52.5	47.1	46.2
Non-Special Needs	83.8	85.5	85.5	89.1	89.0	88.1	86.2	86.9	84.7	84.6	82.6	78.8	79.2

New Jersey Assessment of Skills and Knowledge
Grade 8 Science Proficient and Above
Economically Disadvantaged vs Non-Economically Disadvantaged (2000-2017)



**New Jersey Assessment of Skills and Knowledge
Grade 8 Science Proficient and Above
Economically Disadvantaged vs Non-Economically Disadvantaged (2000-2017)**

	2000	2001	2002	2003	2004	2005	2006	2007	2008	2009	2010	2011	2012	2013	2014	2015	2016	2017
Economically Disadvantaged	36.9	44.3	46.7	44.9	50.1	53.5	57.1	56.7	67.1	68.0	66.2	65.2	66.2	61.8	62.5	60.6	54.8	54.9
Non-Economically Disadvantaged	78.2	83.0	84.1	82.7	83.6	85.3	87.2	87.2	90.5	90.8	90.3	88.7	90.0	88.3	88.1	85.8	82.6	82.4