

TEANECK COMMUNITY CHARTER SCHOOL

TEANECK, NEW JERSEY

COMPREHENSIVE ANNUAL FINANCIAL REPORT

FOR THE FISCAL YEAR ENDED JUNE 30, 2015

COMPREHENSIVE ANNUAL FINANCIAL REPORT
OF THE

TEANECK COMMUNITY CHARTER SCHOOL
TEANECK, NEW JERSEY

FOR THE FISCAL YEAR ENDED JUNE 30, 2015

PREPARED BY

TEANECK COMMUNITY CHARTER SCHOOL
FINANCE DEPARTMENT

**TEANECK COMMUNITY CHARTER SCHOOL
OUTLINE OF COMPREHENSIVE ANNUAL FINANCIAL REPORT**

	<u>Page No.</u>
INTRODUCTORY SECTION	
Letter of Transmittal	2
Organizational Chart	7
Roster of Officials	8
Consultants and Advisors	9
FINANCIAL SECTION	
Independent Auditor's Report	10
Required Supplementary Information - Part I Management's Discussion and Analysis	13
Basic Financial Statements	
A. Charter School - Wide Financial Statements	
A-1 Statement of Net Position	20
A-2 Statement of Activities	21
B. Fund Financial Statements:	
Governmental Funds:	
B-1 Balance Sheet	22
B-2 Statement of Revenues, Expenditures, and Changes in Fund Balances	23
B-3 Reconciliation of the Statement of Revenues, Expenditures, and Changes in Fund Balances of Governmental Funds to the Statement of Activities	24
Proprietary Funds:	
B-4 Statement of Net Position	25
B-5 Statement of Revenues, Expenses, and Changes in Fund Net Assets	26
B-6 Statement of Cash Flows	27
Fiduciary Funds:	
B-7 Statement of Fiduciary Net Position	28
B-8 Statement of Changes in Fiduciary Net Position	29

**TEANECK COMMUNITY CHARTER SCHOOL
OUTLINE OF COMPREHENSIVE ANNUAL FINANCIAL REPORT**

	<u>Page No.</u>
Notes to the Financial Statements	30
 Required Supplementary Information - Part II	
C. Budgetary Comparison Schedules	
C-1 Budgetary Comparison Schedule - General Fund	49
C-2 Budgetary Comparison Schedule - Special Revenue Fund	60
 Notes to the Required Supplementary Information - Part II	
C-3 Budgetary Comparison Schedule	61
 Required Supplementary Information - Part III	
L. Schedules Related to Accounting and Reporting for Pensions (GASB 68)	
L-1 Schedule of the District's Proportionate Share of the Net Pension Liability - PERS	62
L-2 Schedule of District Contributions - PERS	63
L-3 Schedule of the District's Proportionate Share of the Net Pension Liability - TPAF	64
Notes to the Required Supplementary Information - Part III	65
 Other Supplementary Information	
E. Special Revenue Fund:	
E-1 Combining Schedule of Revenue and Expenditures Special Revenue Fund - Budgetary Basis	66
F. Capital Projects Fund:	
F-1 Summary Schedule of Project Expenditures	70
G. Proprietary Funds:	
Enterprise Fund:	
G-1 Combining Statement of Net Position	71
G-2 Combining Statement of Revenues, Expenses and Changes in Fund Net Position	72
G-3 Combining Statement of Cash Flows	73

**TEANECK COMMUNITY CHARTER SCHOOL
OUTLINE OF COMPREHENSIVE ANNUAL FINANCIAL REPORT**

Page No.

Internal Service Fund (Not Applicable)

H.	Fiduciary Funds:	
	H-1 Combining Statement of Fiduciary Net Position	74
	H-2 Combining Statement of Changes in Fiduciary Net Position	75
	H-3 Student Activity Agency Fund Schedule of Receipts and Disbursements	76
	H-4 Payroll Agency Fund Schedule of Receipts and Disbursements	77
I.	Long-Term Debt:	
	I-1 Schedule of Serial Bonds	78
	I-2 Schedule of Obligations under Capital Leases	79
	I-3 Debt Service Fund Budgetary Comparison Schedule	80

STATISTICAL SECTION (Unaudited)

J.	J-1 Net Assets By Component	81
	J-2 Changes in Net Assets	82
	J-3 Fund Balances - Governmental Funds	85
	J-4 Changes in Fund Balances - Governmental Funds	86
	J-5 General Fund, Other Local Revenue by Source	88
	J-10 Ratios of Outstanding Debt by Type	89
	J-14 Demographic and Economic Statistics	90
	J-16 Full Time Equivalent Charter School Employees by Function/Program	91
	J-17 Operating Statistics	92
	J-18 School Building Information	93
	J-19 Schedule of Required Maintenance	94
	J-20 Insurance Schedule	95
	J-21 Performance Framework Charter School Indicators	96

SINGLE AUDIT SECTION

K.	K-1 Report on Internal Control over Financial Reporting and on Compliance and Other Matters Based on an Audit of Financial Statements Performed in Accordance with Government Auditing Standards	97
	K-2 Report on Compliance with Requirements Applicable to Each Major Program and On Internal Control Over Compliance in Accordance with OMB Circular A-133 and New Jersey OMB Circular Letter 04-04 and/or 15-08	99
	K-3 Schedule of Expenditures of Federal Awards, Schedule A	102
	K-4 Schedule of Expenditures of State Financial Assistance, Schedule B	103
	K-5 Notes to the Schedules of Awards and Financial Assistance	104
	K-6 Schedule of Findings and Questioned Costs	106
	K-7 Summary Schedule of Prior Audit Findings	108

INTRODUCTORY SECTION

TEANECK COMMUNITY CHARTER SCHOOL

563 CHESTNUT AVENUE
TEANECK, NEW JERSEY 07666

September 18, 2015

Honorable President and
Members of the Board of Education
Teaneck Community Charter School.
County of Bergen, New Jersey

Dear Board Members:

The comprehensive annual financial report of the Teaneck Community Charter School for the fiscal year ended June 30, 2015, is hereby submitted. Responsibility for both the accuracy of the data and completeness and fairness of the presentation, including all disclosures, rests with the management of the Board of Education (Board). To the best of our knowledge and belief, the data presented in this report is accurate in all material respects and is reported in a manner designed to present fairly the financial position and results of operations of the various funds and account groups of the District. All disclosures necessary to enable the reader to gain an understanding of the District's financial activities have been included.

The comprehensive annual financial report is presented in four sections; introductory, financial, statistical and single audit. The introductory section includes this transmittal letter, the District's organizational chart and a list of principal officials. The financial section includes the general-purpose financial statements and schedules, as well as the auditor's report thereon. The statistical section includes selected financial and demographic information, generally presented on a multi-year basis. The District is required to undergo an annual single audit in conformity with the provisions of the Single Audit Act of 1984 and amendments of 1996 and the U.S. Office of Management and Budget Circular A-133, *Audits of States, Local Governments and Non-Profit Organizations*; and New Jersey OMB's Circular Letter 04-04 and/or 15-08, *Single Audit Policy for Recipients of Federal Grants, State Grants and State Aid*, and are not a required part of the general-purpose financial statements. Information related to this single audit, including the auditor's report on the internal control structure and compliance with applicable laws, regulations, findings and recommendations, are included in the single audit section of this report.

1.) REPORTING ENTITY AND ITS SERVICES: The Teaneck Community Charter School is an independent reporting entity within the criteria adopted by the GASB as established by NCGA ST. No. 3. All funds and account groups of the District are included in this report. The Teaneck Community Charter School and all its schools constitute the School's reporting entity. The School provides a full range of educational services appropriate to grade levels K through 8. These include regular and vocational, as well as special education for handicapped youngsters. The District completed the 2014-2015 fiscal year with an enrollment of 306 students, which is the same number of students as the previous year's enrollment. The following details the changes in the student enrollment of the District over the last ten years.

Fiscal Year	AVERAGE DAILY ENROLLMENT	
	Student Enrollment	Percent Change
2014 - 2015	306	0.00%
2013 - 2014	306	0.00%
2012 - 2013	306	0.00%
2011 - 2012	306	0.33%
2010 - 2011	305	0.99%
2009 - 2010	302	5.23%
2008 - 2009	287	5.90%
2007 - 2008	271	13.39%
2006 - 2007	239	1.70%
2005 - 2006	235	-0.01%

2.) MAJOR INITIATIVES: Teaneck Community Charter School plans to deliver learning along three broad themes:

Student-centered learning: teaching children in accordance with their development and interests rather than age groupings;

Expeditionary learning beyond the school walls: learning that takes place through extended classroom experiences, hands-on projects and community service; and

Nurturing of diverse populations: promoting academic and personal growth through cooperation, compassion and enthusiasm for fellow students and members of the community.

Partnerships with community-based organizations are planned to help the school provide students with access to mentors, career education, support and experiential "extended classroom" activities.

3.) INTERNAL ACCOUNTING CONTROLS: Management of the School is responsible for establishing and maintaining an internal control structure designed to ensure that the assets of the School are protected from loss, theft or misuse and to ensure that adequate accounting data are compiled to allow for the preparation of financial statements in conformity with generally accepted accounting principles (GAAP). The internal control structure is designed to provide reasonable, but not absolute assurance that these objectives are met. The concept of reasonable assurance recognizes that: (1) the cost of a control should not exceed the benefits likely to be derived; and (2) the valuation of costs and benefits requires estimates and judgements by management.

As a recipient of federal and state financial assistance, the School also is responsible for ensuring that an adequate internal control structure is in place to ensure compliance with applicable laws and regulations related to those programs. This internal control structure is also subject to periodic evaluation by the District management.

As part of the School's single audit described earlier, tests are made to determine the adequacy of the internal control structure, including that portion related to federal and state financial assistance programs, as well as to determine that the School has complied with applicable laws and regulations.

4.) BUDGETARY CONTROLS: In addition to internal accounting controls, the School maintains budgetary controls. The objective of these budgetary controls is to ensure compliance with legal provisions embodied in the annual appropriated budget approved by the Board. Annual appropriated budgets are adopted for the general fund, the special revenue fund, and the debt service fund. Project-length budgets are approved for the capital improvements accounted for in the capital projects fund. The final budget amount as amended for the fiscal year is reflected in the financial section.

An encumbrance accounting system is used to record outstanding purchase commitments on a line item basis. Open encumbrances at year-end are either cancelled or are included as re-appropriations of fund balance in the subsequent year. Those amounts to be re-appropriated are reported as reservations of fund balance at June 30, 2015.

5.) ACCOUNTING SYSTEMS AND REPORTS: The School's accounting records reflect generally accepted accounting principles, as promulgated by the Governmental Accounting Standards Board (GASB). The accounting system of the District is organized on the basis of funds and account groups. These funds and account groups are explained in "Notes to the Financial Statements", Note 1.

6.) FINANCIAL INFORMATION AT FISCAL YEAR-END: As demonstrated by the various statements and schedules included in the financial section of this report, the District continues to meet its responsibility for sound financial management. The following schedule presents a summary of the general fund, special revenue fund and debt service fund revenues for the fiscal year ended June 30, 2015 and the amount and percentage of increases in relation to prior year revenues.

<u>Revenue</u>	<u>Amount</u>	<u>Percentage of Total</u>	<u>Increase (Decrease) from 2014</u>	<u>Percent of Increase (Decrease)</u>
Local Sources	\$ 4,270,813	83.03%	\$ (41,582)	-0.96%
State Sources	781,473	15.19%	61,890	8.60%
Federal Sources	91,440	1.78%	9,467	11.55%
TOTALS	\$ 5,143,726	100.00%	\$ 29,775	0.58%

The decrease in local sources is attributed to a decrease from the local tax levy of \$40,257 and in miscellaneous revenues of \$1,325.

The increase in State sources is due to an increase in mandate aid and other aid.

The increase in Federal sources is due to an increase in federal grants.

The following schedule presents a summary of general fund, special revenue fund and debt service fund expenditures for the fiscal year ended June 30, 2015 and the percentage of increases and decreases in relation to prior year amounts.

<u>Expenditures</u>	<u>Amount</u>	<u>Percentage of Total</u>	<u>Increase (Decrease) from 2014</u>	<u>Percent of Increase (Decrease)</u>
Current Expense:				
Instruction	\$ 2,570,317	46.85%	\$ 331,734	14.82%
Undistributed expenditures	2,897,095	52.81%	136,222	4.93%
Capital Outlay	18,893	0.34%	13,529	252.22%
Special Schools	<u>0</u>	<u>0.00%</u>	<u>0</u>	0.00%
 TOTALS	 \$ <u>5,486,305</u>	 <u>100.00%</u>	 \$ <u>481,485</u>	 9.62%

The increase in current expenditures is attributed to an increase in salaries of \$398,333 offset by a decrease in general supplies and other costs of \$66,599.

The increase in undistributed expenditures is attributed to an increase in salaries of \$66,671, in employee benefits of \$68,772, and in general supplies and other costs of \$38,427, offset by a decrease in rent of \$37,648.

The increase in capital outlay is attributed to an increase in instructional equipment of \$13,888 offset by a decrease in facilities acquisition and construction services of \$359.

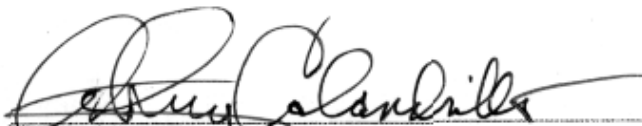
7.) **CASH MANAGEMENT:** The investment policy of the School is guided in large part by state statute as detailed in "Notes to the Financial Statements", Note 2. The School has adopted a cash management plan which requires it to deposit public funds in public depositories protected from loss under the provisions of the Governmental Unit Deposit Protection Act (GUDPA). GUDPA was enacted in 1970 to protect Governmental Units for a loss of funds on deposit with a failed banking institution in New Jersey. The law requires governmental units to deposit public funds only in public depositories located in New Jersey, where the funds are secured in accordance with the Act.

8.) **RISK MANAGEMENT:** The Board carries various forms of insurance, including but not limited to general liability, automobile liability and comprehensive/collision, hazard and theft insurance on property and contents, and fidelity bonds.

9.) **OTHER INFORMATION:** Independent Audit - State statutes require an annual audit by independent certified public accountants or registered municipal accountants. The accounting firm of Cullari Carrico, LLC was selected by the Board. In addition to meeting the requirements set forth in state statutes, the audit also was designed to meet the requirements of the Single Audit Act of 1984 and amendments of 1996 and the related OMB Circular A-133 and state Treasury Circular Letter 04-04 OMB. The auditor's report on the general purpose financial statements and combining and individual fund statements and schedules is included in the financial section of this report. The auditor's reports related specifically to the single audit are included in the single audit section of this report.

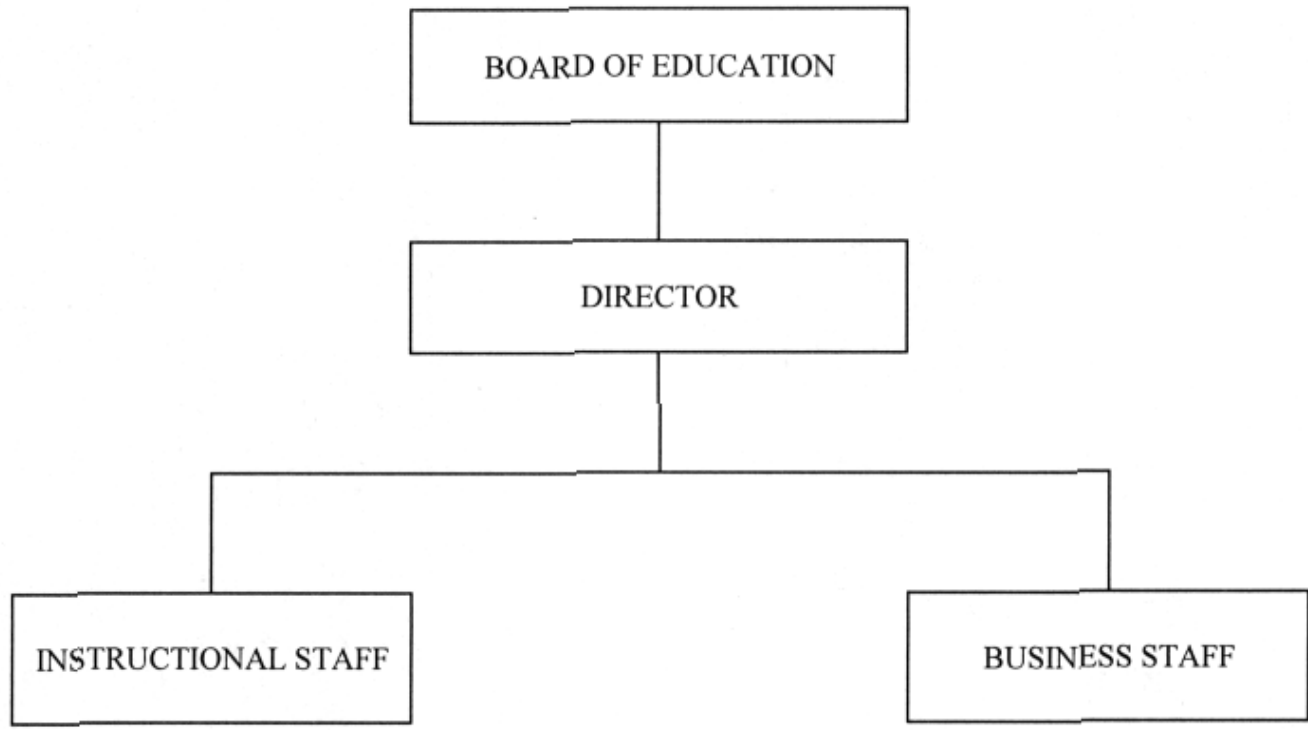
10.) **ACKNOWLEDGMENTS:** We would like to express our appreciation to the members of the Teaneck Community Charter School for their concern in providing fiscal accountability to the citizens and taxpayers of the school district and thereby contributing their full support to the development and maintenance of our financial operation. The preparation of this report could not have been accomplished without the efficient and dedicated services of the financial and accounting staff.

Respectfully submitted,



Mr. Anthony Calandrillo
Lead Person and Director of Academics

TEANECK COMMUNITY CHARTER SCHOOL
Organizational Chart
(Unit Control)



TEANECK COMMUNITY CHARTER SCHOOL
TEANECK, NEW JERSEY

ROSTER OF OFFICIALS
JUNE 30, 2015

<u>Members of the Board of Education</u>	<u>Term Expires</u>
Kristin Freda-Wells, President	2015
Alexandra Soriano-Taveras, Vice President	2015
Yoel Piney, Treasurer	2017
Kathleen Wicklund, Secretary	2016
Ann Rivet, Assistant Secretary	2016
Jeffrey Hietkko-Parsons	2016
Themba Johnson	2017
Danielle Rowe-Jackson	2017
Renee Karibi-Whyte	2015

Other Officials

Anthony Calandrillo, Lead Person and Director of Academics
Ralph Gallo, Director of Technology and Operations
Sonia Torres, Vice Principal
Thomas Jazwinski, Business Administrator
Bruce Cerra, CPA, Treasurer of School Monies

TEANECK COMMUNITY CHARTER SCHOOL
CONSULTANTS AND ADVISORS

AUDIT FIRM

Cullari Carrico LLC
55 Lane Road, Suite 300
Fairfield, NJ 07004

ATTORNEY

McElroy, Deutsch, Mulvaney & Carpenter, LLP
1300 Mount Kemble Avenue
P O Box 2075
Morristown, NJ 07962-2075

OFFICIAL DEPOSITORY

Lakeland Bank
250 Oak Ridge Road
Oak Ridge, New Jersey 07438

FINANCIAL SECTION

Independent Auditor's Report

Honorable President and
Members of the Board of Trustees
Teaneck Community Charter School
County of Bergen
Teaneck, New Jersey

Report on the Financial Statements

We have audited the accompanying financial statements of the governmental activities, the business type activities, the aggregate discretely presented component units, each major fund and the aggregate remaining fund information of the Board of Trustees of the Teaneck Community Charter School, in the County of Bergen, State of New Jersey, as of and for the fiscal year ended June 30, 2015, and the related notes to the financial statements, which collectively comprise the Charter School's basic financial statements as listed in the table of contents.

Management's Responsibility for the Financial Statements

Management is responsible for the preparation and fair presentation of these financial statements in accordance with accounting principles generally accepted in the United State of America; this includes the design, implementation, and maintenance of internal control relevant to the preparation and fair presentation of financial statements that are free from material misstatement, whether due to fraud or error.

Auditor's Responsibility

Our responsibility is to express opinions on these financial statements based on our audit. We conducted our audit in accordance with auditing standards generally accepted in the United States of America; the standards applicable to financial audits contained in *Government Auditing Standards*, issued by the Comptroller General of the United States; and audit requirements as prescribed by the Division of Finance, Department of Education, State of New Jersey. Those standards require that we plan and perform the audit to obtain reasonable assurance about whether the financial statements are free of material misstatement.

An audit involves performing procedures to obtain audit evidence about the amounts and disclosures in the financial statements. The procedures selected depend on the auditor's judgment, including the assessment of the risks of material misstatement of the financial statements, whether due to fraud or error. In making those risk assessments, the auditor considers internal control relevant to the entity's preparation and fair presentation of the financial statements in order to design audit procedures that are appropriate in the circumstances, but not for the purpose of expressing an opinion on the effectiveness of the entity's internal control. Accordingly, we express no such opinion. An audit also includes evaluating the appropriateness of accounting policies used and the reasonableness of significant accounting estimates made by management, as well as evaluating the overall presentation of the financial statements.

We believe that the audit evidence we have obtained is sufficient and appropriate to provide a basis for our audit opinions.

Opinions

In our opinion, the financial statements referred to above present fairly, in all material respects, the respective financial position of the governmental activities, business type activities, the aggregate discretely presented component units, each major fund and the aggregate remaining fund information of the Teaneck Community Charter School, in the County of Bergen, State of New Jersey, as of June 30, 2015, and the respective changes in financial position and, where applicable, cash flows thereof for the year then ended in accordance with accounting principles generally accepted in the United States of America.

Other Matters


Accounting principles generally accepted in the United States of America require that the Management Discussion and Analysis and Budgetary Comparison Information on pages 13 through 19 be presented to supplement the basic financial statements. Such information, although not a part of the basic financial statements, is required by the Governmental Accounting Standards Board who considers it to be an essential part of financial reporting for placing the basic financial statements in an appropriate operational, economic, or historical context. We have applied certain limited procedures to the required supplementary information in accordance with auditing standards generally accepted in the United States of America, which consisted of inquiries of management about the methods of preparing the information and comparing the information for consistency with management's responses to our inquiries, the basic financial statements, and other knowledge we obtained during our audit of the basic financial statements. We do not express an opinion or provide any assurance on the information because the limited procedures do not provide us with the sufficient evidence to express an opinion or provide any assurance.

Our audit was conducted for the purpose of forming opinions on the financial statements that collectively comprise the Teaneck Community Charter School's basic financial statements. The accompanying introductory section, combining and individual fund financial statements, long-term debt schedules, and the Schedule of Expenditures of Federal Awards and State Financial Assistance as required by U.S. Office of Management and Budget Circular A-133, *Audits of States, Local Governments, and Non-Profit Organizations*; and New Jersey OMB's Circular 04-04 and/or 15-08, *Single Audit Policy for Recipients of Federal Grants, State Grants and State Aid*, respectively, are presented for purposes of additional analysis and are not a required part of the basic financial statements.

The information and statements described above are the responsibility of management and was derived from and relates directly to the underlying accounting and other records used to prepare the basic financial statements. Such information has been subjected to the auditing procedures applied in the audit of the basic financial statements and certain additional procedures, including comparing and reconciling such information directly to the underlying accounting and other records used to prepare the basic financial statements or the basic financial statements themselves, and other additional procedures in accordance with auditing standards generally accepted in the United States of America. In our opinion, the introductory section, combining and individual fund financial statements, long-term debt schedules and the Schedules of Expenditures of Federal Awards and State Financial Assistance are fairly stated, in all material respects, in relation to the basic financial statements taken as a whole.

Other Reporting Required by Government Auditing Standards

In accordance with Government Auditing Standards, we have also issued our report dated September 18, 2015, on our consideration of the Teaneck Community Charter School's internal control over financial reporting and our test of its compliance with certain provision of laws, regulations, contracts and grant agreements and other matters. The purpose of that report is to describe the scope of our testing of internal control over financial reporting and compliance and the results of that testing, and not to provide an opinion on the internal control over financial reporting or on compliance. That report is an integral part of an audit performed in accordance with Government Auditing Standards in considering the Teaneck Community Charter School's internal control over financial reporting and compliance.


Raymond P. Burke, CPA, PSA
CS 00225900
Certified Public Accountant
Public School Accountant



Fairfield, New Jersey
September 18, 2015

REQUIRED SUPPLEMENTARY INFORMATION

PART I

TEANECK COMMUNITY CHARTER SCHOOL
MANAGEMENT'S DISCUSSION AND ANALYSIS
FOR THE FISCAL YEAR ENDED JUNE 30, 2015
UNAUDITED

The discussion and analysis of Teaneck Community Charter School's financial performance provides an overall review of the School District's financial activities for the fiscal year ended June 30, 2015. The intent of this discussion and analysis is to look at the School District's financial performance as a whole; readers should also review the basic financial statements and notes to enhance their understanding of the School District's financial performance.

Financial Highlights

Key financial highlights for fiscal year 2015 are as follows:

- In total, net assets decreased \$415,957. Net assets of governmental activities decreased \$420,791. That represents a 29 percent decrease from fiscal year 2014. Net assets of the business-type activity increased \$4,834 or 9 percent from fiscal year 2014.
- General revenues accounted for \$5,040,683 in revenue or 94 percent of all revenues. Program specific revenues in the form of charges for services and sales, grants, and contributions, accounted for \$326,683 or 6 percent of total revenues of \$5,367,366.
- Total assets of governmental activities decreased \$512,971 primarily from decreases in cash and accounts receivable.
- The School District had \$5,564,517 in expenses related to governmental activities. General revenues (primarily income taxes, property taxes, and grants and entitlements) of \$5,040,683 were substantially adequate to provide for these programs.

Using the Basic Financial Statements

This annual report consists of a series of financial statements and notes to those statements. These statements are organized so the reader can understand Teaneck Community Charter School as a financial whole, or as an entire operating entity.

The statement of net assets and statement of activities provide information about the activities of the whole School District, presenting both an aggregate view of the School District's finances and longer-term view of those finances. Fund financial statements provide the next level of detail. For governmental funds, these statements tell how services were financed in the short-term as well as what remains for future spending. The fund financial statements also look at the School District's most significant funds with all other non-major funds presented in total in a single column. For Teaneck Community Charter School, the General Fund is the most significant fund.

Reporting the School District as a Whole

Statement of Net Assets and Statement of Activities

While this report contains the large number of funds used by the School District to provide programs and activities, the view of the School District as a whole looks at all financial transactions and asks the question, "How did we do financially during fiscal year 2015?" The statement of net assets and the statement of activities answer this question.

TEANECK COMMUNITY CHARTER SCHOOL
MANAGEMENT'S DISCUSSION AND ANALYSIS
FOR THE FISCAL YEAR ENDED JUNE 30, 2015
UNAUDITED

These statements include all assets and liabilities using the accrual basis of accounting similar to the accounting system used by most private sector companies. This basis of accounting takes into account all of the current year's revenues and expenses regardless of when cash was received or paid.

These two statements report the School District's net assets and changes in those assets. This change in net assets is important because it identifies whether the financial position of the School District has improved or diminished for the School District as a whole. The cause of this change may be the result of many factors, some financial, some not. Non-financial factors include the School District's enrollment, current property tax laws in New Jersey restricting revenue growth, facility conditions, required educational programs, and other factors.

In the statement of net assets and the statement of activities, the School District is divided into two distinct kinds of activities:

Governmental Activities – Most of the School District's programs and services are reported here including instruction, support services, operation and maintenance of plant, pupil transportation.

Business-Type Activity – This service is provided on a charge for goods or services basis to recover all of the expenses of the goods or services provided. The lunch and after school programs are reported as a business activity.

Reporting the School District's Most Significant Funds

Fund Financial Statements

Fund financial reports provide detailed information about the School District's major funds. The School District uses many funds to account for a multitude of financial transactions. However, these fund financial statements focus on the School District's most significant funds. The School District's only major governmental fund is the General Fund.

Governmental Funds

Most of the School District's activities are reported in governmental funds, which focus on how monies flow into and out of those funds and the balances left at fiscal year end for spending in future periods. These funds are reported using an accounting method called modified accrual accounting, which measures cash and all other financial assets that can readily be converted to cash. The governmental fund statements provide a detailed short-term view of the School District's general government operations and the basic services it provides. Governmental fund information helps determine whether there are more or less financial resources that can be spent in the near future to finance educational programs. The relationship, or differences, between governmental activities reported in the statement of net assets and the statement of activities and the governmental funds is reconciled in the financial statements.

TEANECK COMMUNITY CHARTER SCHOOL
MANAGEMENT'S DISCUSSION AND ANALYSIS
FOR THE FISCAL YEAR ENDED JUNE 30, 2015
UNAUDITED

Enterprise Fund

The enterprise fund uses the same basis of accounting as business-type activities: therefore, these statements are essentially the same.

The School District as a Whole

The perspective of the statement of net assets is of the School District as a whole. Table 1 provides a summary of the School District's net assets for 2015 compared to 2014:

Table 1
Net Assets

	Governmental Activities		Business-Type Activity		Total	
	2015	2014	2015	2014	2015	2014
<u>Assets:</u>						
Current and Other Assets	\$ 577,320	\$ 1,040,685	\$ 58,090	\$ 53,256	\$ 635,410	\$ 1,093,941
Capital Assets, Net	548,717	598,323	0	0	548,717	598,323
Total Assets	<u>1,126,037</u>	<u>1,639,008</u>	<u>58,090</u>	<u>53,256</u>	<u>1,184,127</u>	<u>1,692,264</u>
<u>Liabilities:</u>						
Current and Other Liabilities	19,954	140,740	0	0	19,954	140,740
Long-Term Liabilities	76,175	47,569	0	0	76,175	47,569
Total Liabilities	<u>96,129</u>	<u>188,309</u>	<u>0</u>	<u>0</u>	<u>96,129</u>	<u>188,309</u>
<u>Net Assets</u>						
Invested in Capital Assets						
Net of Related Debt	471,904	550,116	0	0	471,904	550,116
Restricted	75,000	353,982	0	0	75,000	353,982
Unrestricted (Deficit)	483,004	546,601	58,090	53,256	541,094	599,857
Total Net Assets	<u>\$ 1,029,908</u>	<u>\$ 1,450,699</u>	<u>\$ 58,090</u>	<u>\$ 53,256</u>	<u>\$ 1,087,998</u>	<u>\$ 1,503,955</u>

Total assets decreased \$512,971. Equity in pooled cash and cash equivalents decreased \$371,093. Receivables decreased \$58,111, prepaid expenses decreased \$34,161 and fixed assets decreased \$49,606.

Net assets of the School District's governmental activities decreased \$420,791. The net assets of the School District's business-type activity increased \$4,834.

TEANECK COMMUNITY CHARTER SCHOOL
MANAGEMENT'S DISCUSSION AND ANALYSIS
FOR THE FISCAL YEAR ENDED JUNE 30, 2015
UNAUDITED

Table 2 reflects the change in net assets for fiscal year 2015.

Table 2
Change in Net Assets

	Governmental Activities		Business-Type Activity		Total	
	2015	2014	2015	2014	2015	2014
Revenues:						
General Revenues:						
Property Taxes	\$ 4,256,268	\$ 4,296,525	\$ 0	\$ 0	\$ 4,256,268	\$ 4,296,525
Grants and Entitlements	872,913	801,556	0	0	872,913	801,556
Interest	0	0	0	0	0	0
Miscellaneous	14,545	15,870	0	0	14,545	15,870
Enterprise Fund	<u>0</u>	<u>0</u>	<u>223,640</u>	<u>424,574</u>	<u>223,640</u>	<u>424,574</u>
Total Revenues	5,143,726	5,113,951	223,640	424,574	5,367,366	5,538,525
Transfers	<u>0</u>	<u>0</u>	<u>0</u>	<u>0</u>	<u>0</u>	<u>0</u>
Total Revenues & Transfers	<u>5,143,726</u>	<u>5,113,951</u>	<u>223,640</u>	<u>424,574</u>	<u>5,367,366</u>	<u>5,538,525</u>
Program Expenses:						
Instruction	2,570,317	2,238,583	0	0	2,570,317	2,238,583
Support Services:						
Pupils and Instruct. Staff	70,163	61,973	0	0	70,163	61,973
Board of Education, Admin. and Fiscal	608,412	558,910	0	0	608,412	558,910
Oper. & Maint. Of Plant	1,280,083	1,267,904	0	0	1,280,083	1,267,904
Pupil Transportation	29,529	32,195	0	0	29,529	32,195
Extracurricular Activities	0	0	0	0	0	0
Interest and Fiscal Charges	1,006,013	894,778	0	0	1,006,013	894,778
Loss on Disp. of Capital Assets	0	0	0	0	0	0
Enterprise Fund	<u>0</u>	<u>0</u>	<u>218,806</u>	<u>440,819</u>	<u>218,806</u>	<u>440,819</u>
Total Expenses	<u>5,564,517</u>	<u>5,054,343</u>	<u>218,806</u>	<u>440,819</u>	<u>5,783,323</u>	<u>5,495,162</u>
Increase in Net Assets	<u>\$ (420,791)</u>	<u>\$ 59,608</u>	<u>\$ 4,834</u>	<u>\$ (16,245)</u>	<u>\$ (415,957)</u>	<u>\$ 43,363</u>

TEANECK COMMUNITY CHARTER SCHOOL
MANAGEMENT'S DISCUSSION AND ANALYSIS
FOR THE FISCAL YEAR ENDED JUNE 30, 2015
UNAUDITED

Governmental Activities

The statement of activities reflects the cost of program services and the charges for services and sales, grants, and contributions offsetting those services. Table 3, for governmental activities, indicates the total cost of services and the net cost of services. It identifies the cost of these services supported by tax revenues and unrestricted state entitlements.

Table 3
Governmental Activities

	Total Cost of Services		Net Cost of Services	
	2015	2014	2015	2014
Instruction	\$ 2,570,317	\$ 2,238,583	\$ 2,538,386	\$ 2,218,583
Support Services:				
Pupils and Instructional Staff	70,163	61,973	0	0
Board of Ed., Adminis., and Fiscal	608,412	558,910	607,708	558,910
Operation and Maintenance of Plant	1,280,083	1,267,904	1,280,083	1,267,904
Pupil Transportation	29,529	32,195	29,529	32,195
Extracurricular Activities	0	0	0	0
Interest and Fiscal Charges	1,006,013	894,778	1,005,768	894,778
Loss on Disposal of Capital Assets	0	0	0	0
Total Expenses	\$ 5,564,517	\$ 5,054,343	\$ 5,461,474	\$ 4,972,370

The dependence upon tax revenues for governmental activities is apparent. Over 99 percent of instruction activities are supported through taxes and other general revenues. For all governmental activities general revenues support is 99 percent. The community, as a whole, is the primary support for Teaneck Community Charter School students.

Business-Type Activity

The business-type activities of the School District are the food and after school programs. These programs had revenues and transfers of \$223,640 and expenses of \$218,806 for fiscal year 2015. Total revenues decreased \$200,934 and expenses decreased \$222,013 from the prior fiscal year.

The School District continues to operate the enterprise fund in a self-operating manner without assistance from the General Fund. The business activities receive no support from tax revenues.

The School District's Funds

The School District's governmental funds are accounted for using the modified accrual basis of accounting. Total governmental funds had revenues and other financing sources of \$5,143,726 and expenditures and other financing used of \$5,416,305. The decrease in fund balance for the year reflects that the School District was able to meet current costs only with the use of its prior net assets.

TEANECK COMMUNITY CHARTER SCHOOL
MANAGEMENT'S DISCUSSION AND ANALYSIS
FOR THE FISCAL YEAR ENDED JUNE 30, 2015
UNAUDITED

General Fund Budgeting Highlights

The School District's budget is prepared according to New Jersey law and is based on accounting for certain transactions on a basis of cash receipts, disbursements, and encumbrances. The most significant budgeted fund is the General Fund.

During the course of fiscal 2015, the School District amended its General Fund budget as needed. The budgeting systems are designed to tightly control total budgets, but provide flexibility for individual line items.

For the General Fund, final budgeted revenues and other financing sources, in the amount of \$5,046,567, was more than the original budgeted revenues and other financing sources, in the amount of \$5,043,625. Of this \$2,942 difference, most was due an increase in miscellaneous revenues.

Expenditures and other financing uses were originally budgeted at \$5,501,445 while final budget expenditures were \$5,383,262. The major difference comes from decreased instructional costs throughout the year.

General Fund revenues and other financing sources were less than expenditures and other financing uses by \$342,579. These expenditures exceeded revenues, the School Board feels the financial position of the School District is stable and that there will be a need for additional tax dollars in the future as enrollment rises.

Capital Assets and Debt Administration

Capital Assets

At the end of fiscal year 2015, the School District had \$548,079 invested in capital assets, \$548,079 in governmental activities.

Table 4 reflects fiscal year 2015 balances compared to fiscal year 2014:

Table 4
Capital Assets at June 30
(Net of Depreciation)

	Governmental Activities		Business-Type Activity		Total	
	2015	2014	2015	2014	2015	2014
Land	\$ 0	\$ 0	\$ 0	\$ 0	\$ 0	\$ 0
Land Improvements	0	0	0	0	0	0
Buildings and Bldg. Improve	516,211	556,093	0	0	516,211	556,093
Furniture and Fixtures	0	0	0	0	0	0
Vehicles	0	0	0	0	0	0
Equipment	31,868	41,592	0	0	31,868	41,592
Totals	\$ 548,079	\$ 597,685	\$ 0	\$ 0	\$ 548,079	\$ 597,685

TEANECK COMMUNITY CHARTER SCHOOL
MANAGEMENT'S DISCUSSION AND ANALYSIS
FOR THE FISCAL YEAR ENDED JUNE 30, 2015
UNAUDITED

The primary decrease in capital assets for governmental activities is a result of depreciation of assets.

Debt

At June 30, 2015 the School District had no outstanding bonds or long-term debt.

Current Issues

Teaneck Community Charter School currently has no issues.

Contacting the School District's Financial Management

This financial report is designed to provide our citizens, taxpayers, investors, and creditors with a general overview of the School District's finances and to reflect the School District's accountability for the monies it receives. Questions about this report or additional financial information needs should be directed to Teaneck Community Charter School, 563 Chestnut Avenue, Teaneck, New Jersey.

BASIC FINANCIAL STATEMENTS

DISTRICT-WIDE FINANCIAL STATEMENTS

FUND FINANCIAL STATEMENTS

GOVERNMENT FUNDS

TEANECK COMMUNITY CHARTER SCHOOL
Statement of Net Position
June 30, 2015

	Governmental Activities	Business-type Activities	Total
ASSETS			
Cash and cash equivalents	\$ 445,650	\$ 58,090	\$ 503,740
Investments	0	0	0
Receivables, net	56,670	0	56,670
Inventory	0	0	0
Prepaid expenses	0	0	0
Restricted assets:			
Cash and cash equivalents	75,000	0	75,000
Capital reserve account - cash	0	0	0
Organization Costs	638	0	638
Capital assets, net (Note 6):	548,079	0	548,079
Total Assets	<u>1,126,037</u>	<u>58,090</u>	<u>1,184,127</u>
LIABILITIES			
Accounts payable	3,688	0	3,688
Contracts payable	0	0	0
Deposit payable	0	0	0
Payable to federal government	0	0	0
Payable to state government	0	0	0
Deferred revenue	16,266	0	16,266
Noncurrent liabilities (Note 8):			
Due within one year	0	0	0
Due beyond one year	76,175	0	76,175
Net pension liability - PERS	1,006,807	0	1,006,807
Total liabilities	<u>1,102,936</u>	<u>0</u>	<u>1,102,936</u>
NET ASSETS			
Invested in capital assets, net of related debt	471,904	0	471,904
Debt for net pension liability - PERS	(1,006,807)	0	(1,006,807)
Restricted for:			
Debt service	0	0	0
Capital projects	0	0	0
Permanent endowment - nonexpendable	0	0	0
Other purposes	75,000	0	75,000
Unrestricted	483,004	58,090	541,094
Total net assets	<u>\$ 23,101</u>	<u>\$ 58,090</u>	<u>\$ 81,191</u>

TEANECK COMMUNITY CHARTER SCHOOL
Statement of Activities
For the Year Ended June 30, 2015

Functions/Programs	Expenses	Program Revenues			Net (Expense) Revenue and Changes in Net Assets		
		Charges for Services	Operating Grants and Contributions	Capital Grants and Contributions	Governmental Activities	Business-type Activities	Total
Governmental activities:							
Instruction:							
Regular	\$ 2,570,317	\$ 0	\$ 31,931	\$ 0	\$ (2,538,386)	\$ 0	\$ (2,538,386)
Special education	0	0	0	0	0	0	0
Other special instruction	0	0	0	0	0	0	0
Vocational	0	0	0	0	0	0	0
Other instruction	0	0	0	0	0	0	0
Nonpublic school programs	0	0	0	0	0	0	0
Adult/continuing education program	0	0	0	0	0	0	0
Support services:							
Tuition	0	0	0	0	0	0	0
Student and instruction related services	70,163	0	70,163	0	0	0	0
School administrative services	583,773	0	0	0	(583,773)	0	(583,773)
General and business administrative services	24,639	0	704	0	(23,935)	0	(23,935)
Plant operations and maintenance	1,280,083	0	0	0	(1,280,083)	0	(1,280,083)
Pupil transportation	29,529	0	0	0	(29,529)	0	(29,529)
Business and other support services	937,514	0	245	0	(937,269)	0	(937,269)
Special schools	0	0	0	0	0	0	0
Charter Schools	0	0	0	0	0	0	0
Interest on long-term debt	0	0	0	0	0	0	0
Unallocated depreciation	68,499	0	0	0	(68,499)	0	(68,499)
Total governmental activities	5,564,517	0	103,043	0	(5,461,474)	0	(5,461,474)
Business-type activities:							
Food service	50,162	50,849	0	0	0	687	687
After School Program	168,644	172,791	0	0	0	4,147	4,147
Total business-type activities	218,806	223,640	0	0	0	4,834	4,834
Total primary government	\$ 5,783,323	\$ 223,640	\$ 103,043	\$ 0	\$ (5,461,474)	\$ 4,834	\$ (5,456,640)
General Revenues							
Taxes:							
Property taxes, levied for general purposes, net					4,256,268	0	4,256,268
Taxes levied for debt service					0	0	0
Federal and State aid not restricted					769,870	0	769,870
Tuition received					0	0	0
Investment earnings					0	0	0
Miscellaneous income					14,545	0	14,545
Transfers					0	0	0
Total general revenues, special items, extraordinary items and transfers					5,040,683	0	5,040,683
Change in Net Assets					(420,791)	4,834	(415,957)
Net Assets - beginning					1,450,699	53,256	1,503,955
Net Assets - ending					\$ 1,029,908	\$ 58,090	\$ 1,087,998

The accompanying Notes to Financial Statements are an integral part of this statement

PROPRIETARY FUNDS

TEANECK COMMUNITY CHARTER SCHOOL
Balance Sheet
Governmental Funds
June 30, 2015

	General Fund	Special Revenue Fund	Capital Projects Fund	Debt Service Fund	Total Governmental Funds
ASSETS					
Cash and cash equivalents	\$ 457,971	\$ (12,321)	\$ 0	\$ 0	\$ 445,650
Investments	0	0	0	0	0
Receivables, net	20,660	28,587	0	0	49,247
Due from other funds	0	0	0	0	0
Receivables from other gov.	7,423	0	0	0	7,423
Prepaid Expenses	0	0	0	0	0
Interest receivable on investments	0	0	0	0	0
Inventory	0	0	0	0	0
Organization costs	638	0	0	0	638
Restricted cash and cash equivalents	75,000	0	0	0	75,000
Total assets	<u>\$ 561,692</u>	<u>\$ 16,266</u>	<u>\$ 0</u>	<u>\$ 0</u>	<u>\$ 577,958</u>
LIABILITIES AND FUND BALANCES					
Liabilities:					
Accounts payable	3,688	0	0	0	3,688
Contracts payable	0	0	0	0	0
Interfund payable	0	0	0	0	0
Payable to federal government	0	0	0	0	0
Payable to state government	0	0	0	0	0
Deferred revenue	0	16,266	0	0	16,266
Total liabilities	<u>3,688</u>	<u>16,266</u>	<u>0</u>	<u>0</u>	<u>19,954</u>
Fund Balances:					
Reserved for:					
Encumbrances	0	0	0	0	0
Legally restricted - unexpended additional spending proposal	0	0	0	0	0
Legally restricted - designated for subsequent year's expenditures	0	0	0	0	0
Maintenance reserve	0	0	0	0	0
Capital reserve account	0	0	0	0	0
Excess surplus	0	0	0	0	0
Excess surplus - designated for subsequent year's expenditures	0	0	0	0	0
Other purposes	75,000	0	0	0	75,000
Unreserved, reported in:					
General fund	483,004	0	0	0	483,004
Special revenue fund	0	0	0	0	0
Debt service fund	0	0	0	0	0
Capital projects fund	0	0	0	0	0
Permanent fund	0	0	0	0	0
Total Fund Balances	<u>558,004</u>	<u>0</u>	<u>0</u>	<u>0</u>	<u>558,004</u>
Total liabilities and fund balances	<u>\$ 561,692</u>	<u>\$ 16,266</u>	<u>\$ 0</u>	<u>\$ 0</u>	

Amounts reported for *governmental activities* in this statement of net assets (A-1) are different because:

Capital assets used in governmental activities are not financial resources and therefore are not reported in the funds. The cost of the assets is \$1,241,508 and the accumulated depreciation is \$693,429. (Note 6) 548,079

Decreases / (increases) in the net pension liability - PERS are not due and payable in the current period and therefore are not reported as liabilities in the funds. (Note 8) (1,006,807)

Long-term liabilities, including bonds payable, are not due and payable in the current period and therefore are not reported as liabilities in the funds. (Note 8) (76,175)

Net assets of governmental activities \$ 23,101

TEANECK COMMUNITY CHARTER SCHOOL
Statement of Revenues, Expenditures, and Changes in Fund Balances
Governmental Funds
June 30, 2015

	General Fund	Special Revenue Fund	Capital Projects Fund	Debt Service Fund	Total Governmental Funds
REVENUES					
Local sources:					
"Local tax levy"	\$ 4,256,268	\$ 0	\$ 0	\$ 0	\$ 4,256,268
Tuition charges	0	0	0	0	0
Interest earned on Capital Reserve Funds	0	0	0	0	0
Miscellaneous	2,942	11,603	0	0	14,545
Total - local sources	<u>4,259,210</u>	<u>11,603</u>	<u>0</u>	<u>0</u>	<u>4,270,813</u>
State sources	781,473	0	0	0	781,473
Federal sources	0	91,440	0	0	91,440
Total revenues	<u>\$ 5,040,683</u>	<u>\$ 103,043</u>	<u>\$ 0</u>	<u>\$ 0</u>	<u>\$ 5,143,726</u>
EXPENDITURES					
Current:					
Regular instruction	2,538,386	31,931	0	0	2,570,317
Special education instruction	0	0	0	0	0
Other special instruction	0	0	0	0	0
Vocational education	0	0	0	0	0
Other instruction	0	0	0	0	0
Nonpublic school programs	0	0	0	0	0
Adult/continuing education programs	0	0	0	0	0
Support services:					
Tuition	0	0	0	0	0
Student & instruction related services	0	70,163	0	0	70,163
School administrative services	583,773	0	0	0	583,773
Other administrative services	23,935	704	0	0	24,639
Plant operations and maintenance	1,280,083	0	0	0	1,280,083
Pupil transportation	29,529	0	0	0	29,529
Employee benefits	908,663	245	0	0	908,908
Debt service:					
Principal	0	0	0	0	0
Interest and other charges	0	0	0	0	0
Capital outlay	18,893	0	0	0	18,893
Total expenditures	<u>5,383,262</u>	<u>103,043</u>	<u>0</u>	<u>0</u>	<u>5,486,305</u>
Excess (deficiency) of revenues over expenditures	<u>(342,579)</u>	<u>0</u>	<u>0</u>	<u>0</u>	<u>(342,579)</u>
OTHER FINANCING SOURCES					
Bond proceeds	0	0	0	0	0
Capital leases (non-budgeted)	0	0	0	0	0
Transfer Contribution to Whole School Reform	0	0	0	0	0
Transfer to Special Revenue Fund - ECPA	0	0	0	0	0
Transfers in	0	0	0	0	0
Transfers out	0	0	0	0	0
Total other financing sources and uses	<u>0</u>	<u>0</u>	<u>0</u>	<u>0</u>	<u>0</u>
SPECIAL ITEM					
Proceed from sale of land	0	0	0	0	0
Net change in fund balances	(342,579)	0	0	0	(342,579)
Fund balance - July 1	900,583	0	0	0	900,583
Fund balance - June 30	<u>\$ 558,004</u>	<u>\$ 0</u>	<u>\$ 0</u>	<u>\$ 0</u>	<u>\$ 558,004</u>

TEANECK COMMUNITY CHARTER SCHOOL
Statement of Net Position
Proprietary Funds
June 30, 2015

	Business-type Activities - Enterprise Funds		
	Food Service	After-School Program	Total
ASSETS			
Current assets:			
Cash and cash equivalents	\$ 3,020	\$ 55,070	\$ 58,090
Investments	0	0	0
Accounts receivable	0	0	0
Other receivables	0	0	0
Inventories	0	0	0
Total current assets	3,020	55,070	58,090
Noncurrent assets:			
Restricted cash and cash equivalents	0	0	0
Furniture, machinery & equipment	0	0	0
Less accumulated depreciation	0	0	0
Total noncurrent assets	0	0	0
Total Assets	\$ 3,020	\$ 55,070	\$ 58,090
LIABILITIES			
Current liabilities:			
Accounts payable	0	0	0
Deposits payable	0	0	0
Compensated absences	0	0	0
Total current liabilities	0	0	0
Noncurrent Liabilities:			
Compensated absences	0	0	0
Total noncurrent liabilities	0	0	0
Total liabilities	0	0	0
NET ASSETS			
Invested in capital assets net of related debt	0	0	0
Restricted for:			
Capital projects	0	0	0
Unrestricted	3,020	55,070	58,090
Total net assets	\$ 3,020	\$ 55,070	\$ 58,090

TEANECK COMMUNITY CHARTER SCHOOL
Statement of Revenues, Expenses, and Changes in Fund Net Assets
Proprietary Funds
June 30, 2015

	Business-type Activities - Enterprise Funds		
	Food Service	After-School Program	Total Enterprise
Operating revenues:			
Charges for services:			
Daily sales - reimbursable programs	\$ 0	\$ 0	\$ 0
Daily sales - non-reimbursable programs	50,849	0	50,849
Special functions	0	0	0
Community service activities	0	172,791	172,791
Transportation fees from other LEA's within the state	0	0	0
Deductions from employee's salaries	0	0	0
Miscellaneous	0	0	0
Total operating revenues	50,849	172,791	223,640
Operating expenses:			
Cost of sales	50,162	82,503	132,665
Salaries	0	86,141	86,141
Employee benefits	0	0	0
Purchased property service	0	0	0
Other purchased professional services	0	0	0
Cleaning, repair and maintenance services	0	0	0
Rentals	0	0	0
Other purchased services:			
Contracted services (between home and school)	0	0	0
Contracted services (other than between home and school)	0	0	0
Contracted services (special education students) - vendors	0	0	0
Contracted services (special education students) - joint agreements	0	0	0
Insurance	0	0	0
General supplies	0	0	0
Depreciation	0	0	0
Total Operating Expenses	50,162	168,644	218,806
Operating income (loss)	687	4,147	4,834
Nonoperating revenues (expenses):			
State sources:			
State school lunch program	0	0	0
Federal sources:			
National school lunch program	0	0	0
Special milk program	0	0	0
Food distribution program	0	0	0
Interest and investment revenue	0	0	0
Miscellaneous expense	0	0	0
Total nonoperating revenues (expenses)	0	0	0
Income (loss) before contributions & transfers			
Capital contributions	0	0	0
Transfers in (out)	(48,386)	48,386	0
Change in net assets	(47,699)	52,533	4,834
Total net assets - beginning	50,719	2,537	53,256
Total net assets - ending	\$ 3,020	\$ 55,070	\$ 58,090

The accompanying Notes to Financial Statements are an integral part of this statement

TEANECK COMMUNITY CHARTER SCHOOL
Statement of Cash Flows
Proprietary Funds
June 30, 2015

	Business-type Activities - Enterprise Funds			Governmental Activities - Internal Service Fund
	Food Service	After-School Program	Total Enterprise	
CASH FLOWS FROM OPERATING ACTIVITIES				
Receipts from customers	\$ 50,849	\$ 172,791	\$ 223,640	\$ 0
Payments to employees	0	(86,141)	(86,141)	0
Payments for employee benefits	0	0	0	0
Payments to suppliers	(50,162)	(82,503)	(132,665)	0
Net cash provided by (used for) operating activities	<u>687</u>	<u>4,147</u>	<u>4,834</u>	<u>0</u>
CASH FLOWS FROM NON CAPITAL FINANCING ACTIVITIES				
State Sources	0	0	0	0
Federal Sources	0	0	0	0
Operating subsidies and transfers to other funds	(48,386)	48,386	0	0
Net cash provided by (used for) non-capital financing activities	<u>(48,386)</u>	<u>48,386</u>	<u>0</u>	<u>0</u>
CASH FLOWS FROM CAPITAL AND RELATED FINANCING ACTIVITIES				
Change in capital contributions	0	0	0	0
Purchases of capital assets	0	0	0	0
Gain/Loss on sale of fixed assets (proceeds)	0	0	0	0
Net cash provided by (used for) capital and related financing activities	<u>0</u>	<u>0</u>	<u>0</u>	<u>0</u>
CASH FLOWS FROM INVESTING ACTIVITIES				
Interest and dividends	0	0	0	0
Proceeds from safe/maturities of investments	0	0	0	0
Net cash provided by (used for) investing activities	<u>0</u>	<u>0</u>	<u>0</u>	<u>0</u>
Net increase (decrease) in cash and cash equivalents	(47,699)	52,533	4,834	0
Balances - beginning of year	50,719	2,537	53,256	0
Balances - end of year	<u>\$ 3,020</u>	<u>\$ 55,070</u>	<u>\$ 58,090</u>	<u>\$ 0</u>
Reconciliation of operating income (loss) to net cash provided (used) by operating activities:				
Operating income (loss)	687	4,147	4,834	0
Adjustments to reconcile operating income (loss) to net cash provided by (used for) operating activities				
Depreciation and net amortization	0	0	0	0
(Increase) decrease in accounts receivable, net	0	0	0	0
(Increase) decrease in inventories	0	0	0	0
(Increase) decrease in other current assets	0	0	0	0
Increase (decrease) in accounts payable	0	0	0	0
Increase (decrease) in accrued salaries benefits	0	0	0	0
Total adjustments	<u>0</u>	<u>0</u>	<u>0</u>	<u>0</u>
Net cash provided by (used for) operating activities	<u>\$ 687</u>	<u>\$ 4,147</u>	<u>\$ 4,834</u>	<u>\$ 0</u>

FIDUCIARY FUNDS

TEANECK COMMUNITY CHARTER SCHOOL
Statement of Fiduciary Net Position
Fiduciary Funds
June 30, 2015

	<u>Unemployment Compensation Trust</u>	<u>Private Purpose Scholarship Fund</u>	<u>Agency Fund</u>
ASSETS			
Cash and cash equivalents	\$ 0	\$ 0	\$ 136,118
Interfund receivable	0	0	0
Investments, at fair value:			
U.S. government obligations	0	0	0
NJ municipal bonds	0	0	0
Total investments	<u>0</u>	<u>0</u>	<u>0</u>
Total assets	<u>\$ 0</u>	<u>\$ 0</u>	<u>\$ 136,118</u>
LIABILITIES			
Accounts payable	0	0	0
Payable to district	0	0	0
Payable to student groups	0	0	24,821
Payroll deductions and withholdings	0	0	111,297
Total liabilities	<u>0</u>	<u>0</u>	<u>\$ 136,118</u>
NET ASSETS			
Held in trust for unemployment claims and other purposes	<u>\$ 0</u>		
Reserved for scholarships		<u>\$ 0</u>	

TEANECK COMMUNITY CHARTER SCHOOL
Statement of Changes in Fiduciary Net Position
Fiduciary Funds
June 30, 2015

	<u>Unemployment Compensation Trust</u>	<u>Private Purpose Scholarship Fund</u>	
ADDITIONS			
Contributions:			
Plan member	\$ 0	\$ 0	
Other	<u>0</u>	<u>0</u>	
Total contributions	<u>0</u>	<u>0</u>	
Investment earnings:			
Net increase (decrease) in fair value of investments	0	0	
Interest	0	0	
Dividends	0	0	
Less investment expense	<u>0</u>	<u>0</u>	
Net investment earnings	<u>0</u>	<u>0</u>	
Total additions	<u>0</u>	<u>0</u>	
DEDUCTIONS			
Quarterly contribution reports	0	0	
Unemployment claims	0	0	
Scholarships awarded	0	0	
Refunds of contributions	0	0	
Administrative expenses	<u>0</u>	<u>0</u>	
Total deductions	<u>0</u>	<u>0</u>	
Changes in net assets	0	0	
Net assets - beginning of the year	<u>0</u>	<u>0</u>	
Net assets - end of the year	<u>\$ 0</u>	<u>\$ 0</u>	

Teaneck Community Charter School
Notes to the Basic Financial Statements
June 30, 2015

1. DESCRIPTION OF THE SCHOOL DISTRICT AND REPORTING ENTITY

Teaneck Community Charter School (the "School District") is organized under the laws of the State of New Jersey. The School District operates under an elected Board form of government consisting of nine members elected for staggered terms. The School District provides educational services as authorized by state and federal guidelines.

The School District was established in 1998. It is located in Bergen County and includes all of Teaneck Borough. The School District currently operates one instructional/support facility.

A. Reporting Entity

A reporting entity is composed of the primary government, component units, and other organizations that are included to ensure the financial statements are not misleading. The primary government of the School District consists of all funds, departments, boards, and agencies that are not legally separate from the School District. For Teaneck Community Charter School, this includes general operations, food service, and student related activities of the School District.

Component units are legally separate organizations for which the School District is financially accountable. The School District is financially accountable for an organization if the School District appoints a voting majority of the Organization's governing board and (1) the School District is able to significantly influence the programs or services performed or provided by the Organization; or (2) the School District is legally entitled to or can otherwise access the Organization's resources; the School District is legally obligated or has otherwise assumed the responsibility to finance the deficits of, or provide financial support to, the Organization; or the School District is obligated for the debt of the Organization. Component units may also include organizations that are fiscally dependent on the School District in that the School District approves the budget, the issuance of debt, or the levying of taxes. There are no component units of the Teaneck Community Charter School.

2. SUMMARY OF SIGNIFICANT ACCOUNTING POLICIES

The financial statements of Teaneck Community Charter School have been prepared in conformity with generally accepted accounting principles (GAAP) as applied to governmental units. The Governmental Accounting Standards Board (GASB) is the accepted standard-setting body for establishing governmental accounting and financial reporting principles. Following are the more significant of the School District's accounting policies.

Teaneck Community Charter School
Notes to the Basic Financial Statements
June 30, 2015

A. Basis of Presentation

The School District's basic financial statements consist of government-wide statements, including a statement of net assets and a statement of activities, and fund financial statements which provide a more detailed level of financial information.

1. Government-Wide Financial Statements

The statement of net assets and the statement of activities display information about the School District as a whole. These statements include the financial activities of the primary government, except for fiduciary funds. The statements distinguish between those activities of the School District that are governmental in nature and those that are considered business-type activities.

The statement of net assets presents the financial condition of the government and business-type activities of the School District at fiscal year end. The statement of activities presents a comparison between direct expenses and program revenues for each program or function of the School District's governmental activities and business-type activity. Direct expenses are those that are specifically associated with a service, program, or department and, therefore, clearly identifiable to a particular function. Program revenues include charges paid by the recipient of the goods or services offered by the program and grants and contributions that are restricted to meeting the operational or capital requirements of a particular program. Revenues which are not classified as program revenues are presented as general revenues of the School District, with certain limited exceptions. The comparison of direct expenses with program revenues identifies the extent to which each governmental function or business segment is self-financing or draws from the general revenues of the School District.

2. Fund Financial Statements

During the fiscal year, the School District segregates transactions related to certain School District functions or activities in separate funds in order to aid financial management and to demonstrate legal compliance. Fund financial statements are designed to present financial information of the School District at this more detailed level. The focus of governmental and enterprise fund financial statements is on major funds. Each major fund is presented in a separate column. Non-major funds are aggregated and presented in a single column. Fiduciary funds are reported by type.

B. Fund Accounting

The School District uses funds to maintain its financial records during the fiscal year. A fund is defined as a fiscal and accounting entity with a self-balancing set of accounts. There are three categories of funds; governmental, proprietary, and fiduciary.

Teaneck Community Charter School
Notes to the Basic Financial Statements
June 30, 2015

1. Governmental Funds

Governmental funds are those through which most governmental functions of the School District are financed. Governmental fund reporting focuses on the sources, uses, and balances of current financial resources. Expendable assets are assigned to the various governmental funds according to the purposes for which they may or must be used. Current liabilities are assigned to the fund from which they will be paid. The difference between governmental fund assets and liabilities is reported as fund balance. The General Fund is the School District's only major governmental fund:

General Fund

The General Fund is used to account for all financial resources, except those required to be accounted for in another fund. The General Fund balance is available to the School District for any purpose provided it is expended or transferred according to the general laws of New Jersey.

The other governmental funds of the School District account for grants and other resources, debt service, and capital projects of the School District whose use are restricted to a particular purpose.

2. Proprietary Fund

Proprietary fund reporting focuses on the determination of operating income, changes in net assets, financial position, and cash flows. The following is the School District's proprietary fund:

Enterprise Fund

The enterprise fund may be used to account for any activity for which a fee is charged to external users for goods or services.

Food Service

The Food Service enterprise fund accounts for the financial transactions related to the food service operations of the School District.

Childcare

The childcare or latchkey program enterprise fund accounts for the financial transactions related to the latchkey program operations of the School District.

Teaneck Community Charter School
Notes to the Basic Financial Statements
June 30, 2015

3. Fiduciary Funds

Fiduciary fund reporting focuses on net assets and changes in net assets. The fiduciary fund category is split into two classifications: non-expendable trust funds and agency funds. Trust funds are used to account for assets held by the School District under a trust agreement for scholarships and are not available to support the School District's own programs. The School District's only trust fund is a scholarship trust which accounts for a program that provides assistance to needy students. Agency funds are custodial in nature (assets equal liabilities) and do not involve measurement of results of operations. The School District's agency fund accounts for various student-managed activities and salary related funds (tax withholdings).

C. Measurement Focus

1. Government-Wide Financial Statements

The government-wide financial statements are prepared used a flow of economic resources measurement focus. All assets and all liabilities associated with the operation of the School District are included on the statement of net assets.

2. Fund Financial Statements

All governmental funds are accounted for used a flow of current financial resources measurement focus. With the measurement focus, only current assets and current liabilities are generally included on the balance sheet. The statement of revenues, expenditures, and changes in fund balances reflects the sources (i.e., revenues and other financing sources) and uses (i.e., expenditures and other financing uses) of current financial resources. This approach differs from the manner in which the governmental activities of the government-wide financial statements are prepared. Governmental fund financial statements, therefore, include a reconciliation with brief explanations to better identify the relationship between the government-wide statements and the fund financial statements for governmental funds.

Like the government-wide financial statements, the enterprise fund is accounted for using a flow of economic resources measurement focus. All assets and all liabilities associated with the operation of this fund are included on the statement of net assets. The statement of changes in revenues, expenses, and changes in net assets presents increases (e.g., revenues) and decreases (e.g., expenses) in total net assets. The statement of cash flows reflects how the School District finances and meets the cash flow need of its enterprise fund.

The private purpose trust fund is accounted for using a flow of economic resources measurement focus.

Teaneck Community Charter School
Notes to the Basic Financial Statements
June 30, 2015

D. Basis of Accounting

Basis of accounting determines when transactions are recorded in the financial records and reported on the financial statements. Government-wide financial statements are prepared using the accrual basis of accounting. Governmental funds use the modified accrual basis of accounting; the Enterprise Fund and fiduciary funds use the accrual basis of accounting. Differences in the accrual and modified accrual bases of accounting arise in the recognition of revenue, the recording of deferred revenue, and in the presentation of expenses versus expenditures.

1. Revenues – Exchange and Non-exchange Transactions

Revenue resulting from exchange transactions, in which each party gives and receives essentially equal value, is recorded on the accrual basis when the exchange takes place. On the modified accrual basis, revenue is recorded in the fiscal year in which the resources are measurable and become available. Available means the resources will be collected within the current fiscal year or are expected to be collected soon enough thereafter to be used to pay liabilities of the current fiscal year. For the School District, available means expected to be received within sixty days of fiscal year end.

Non-exchange transactions, in which the School District receives value without directly giving equal value in return, include property taxes, income taxes, grants, entitlements, and donations. On the accrual basis, revenue from property taxes is recognized in the fiscal year for which the taxes are levied. Revenue from income taxes is recognized in the period in which the income is earned. Revenue from grants, entitlements, and donations is recognized in the fiscal year in which all eligibility requirements have been satisfied. Eligibility requirements include timing requirements, which specify the year when the resources are required to be used or the fiscal year when use is first permitted; matching requirements, in which the School District must provide local resources to be used for a specified purpose; and expenditure requirements, in which the resources are provided to the School District on a reimbursement basis. On the modified accrual basis, revenue from non-exchange transactions must also be available before it can be recognized.

Under the modified accrual basis, the following revenue sources are considered both measurable and available at fiscal year end: property taxes available as an advance, income taxes, grants, interest, tuition, and student fees.

2. Deferred Revenues

Deferred revenues arise when assets are recognized before revenue recognition criteria has been satisfied.

Teaneck Community Charter School
Notes to the Basic Financial Statements
June 30, 2015

Property taxes for which there is an enforceable legal claim as of June 30, 2015, but which were levied to finance fiscal year 2015 operations, are recorded as deferred revenue. Grants and entitlements received before the eligibility requirements are met are also recorded as deferred revenue.

On governmental fund financial statements, receivables that will not be collected within the available period are reported as deferred revenue.

3. Expenses/Expenditures

On the accrual basis of accounting, expenses are recognized at the time they are incurred.

The measurement focus of governmental fund accounting is on decreases in net financial resources (expenditures) rather than expenses. Expenditures are generally recognized in the accounting period in which the related fund *liability is incurred, if measurable*. Allocations of cost, such as depreciation and amortization, are not recognized in governmental funds.

E. Budgetary Process

All funds, except agency funds, are legally required to be budgeted and appropriated. The major documents prepared are the tax budget, the certificate of estimated resources, and the appropriations resolution, all of which are prepared on the budgetary basis of accounting. The tax budget demonstrates a need for existing or increased tax rates. The certificate of estimated resources establishes a limit on the amount the Board of Education may appropriate. The appropriations resolution is the Board's authorization to spend resources and sets annual limits on expenditures plus encumbrances at the level of control selected by the Board. The legal level of control has been established by the Board at the object level within each fund and function. Any budgetary modifications at this level may only be made by resolution of the Board of Education.

The certificate of estimated resources may be amended during the year if projected increases or decreases in revenue are identified by the Treasurer. The amounts reported as the original budgeted amounts on the budgetary statements reflect the amounts on the certificate of estimated resources when the original appropriations were adopted. The amounts reported as the final budgeted amounts on the budgetary statements reflect the amounts on the final amended certificate of estimated resources issued during the fiscal year 2015.

The appropriation resolution is subject to amendment throughout the year with the restriction that appropriations cannot exceed estimated resources. The amounts reported as the original budgeted amounts reflect the first appropriation resolution for that fund that covered the entire fiscal year, including amounts automatically

Teaneck Community Charter School
Notes to the Basic Financial Statements
June 30, 2015

carried forward from prior fiscal years. The amounts reported as the final budgeted amounts represent the final appropriation amounts passed by the Board during the fiscal year.

F. Prepaid Items

Payments made to vendors for services that will benefit periods beyond June 30, 2015, are recorded as prepaid items using the consumption method. Current assets *for the prepaid amount* are recorded at the time of purchase and an expenditure/expense is reported in the year which services are consumed.

G. Restricted Assets

Assets are reported as restricted when limitations on their use change the nature or normal understanding of the availability of the asset. Such constraints are either imposed by creditors, contributors, grantors, laws or other governments, or imposed by enabling legislation. Restricted assets in the General Fund include amounts required by State statute to be set aside to create a reserve for budget stabilization as well as unexpected revenues restricted for the purchase of school buses.

H. Inventory

On government-wide financial statements and in the enterprise fund, inventory is presented at the lower of cost or market. Cost is determined on a first-in, first-out basis and is expensed when used. Inventory consists of donated and purchased food.

I. Capital Assets

General capital assets are those assets not specifically related to activities reported in the Enterprise Fund. These assets generally result from expenditures in the governmental funds. These assets are reported in the governmental activities column on the government-wide statement of net assets but are not reported on the fund financial statements. Capital assets used by the Enterprise Fund are reported in both the business-type activities column on the government-wide statement of net assets and in the fund.

All capital assets are capitalized at cost (or estimated historical cost) and updated for additions and reductions during the year. Donated fixed assets are recorded at their fair market value on the date donated. The School District maintains a capitalization threshold of two thousand dollars. The School District does not have any infrastructure. Improvements are capitalized. Interest incurred during the construction of capital assets by the Enterprise Fund is also capitalized.

Teaneck Community Charter School
Notes to the Basic Financial Statements
June 30, 2015

All capital assets, except land, are depreciated. Improvements are depreciated over the remaining useful lives of the related capital assets. Depreciation is computed using the straight-line method over the following useful lives:

<u>Description</u>	<u>Estimated Lives</u>
Land Improvements	15 – 50 years
Buildings and Building Improve.	15 – 50 years
Furniture and Fixtures	5 – 20 years
Vehicles	5 – 15 years
Equipment	5 – 20 years

J. Inter-fund Assets/Liabilities

On fund financial statements, receivables and payables resulting from short-term inter-fund loans are classified as “Inter-fund Receivables/Payables”. Inter-fund balances within governmental activities and within business-type activities are eliminated on the government-wide statement of net assets.

K. Compensated Absences

Vacation benefits are accrued as a liability as the benefits are earned if the employees’ right to receive compensation are attributable to services already rendered and it is probable the School District will compensate the employees for the benefits through paid time off or some other means. The School District records a liability for accumulated unused vacation time when earned for all employees with more than ten years of service.

Sick leave benefits are accrued as a liability using the vesting method. The liability includes the employees who are currently eligible to receive termination benefits and those the School District has identified as probable of receiving payment in the future. The amount is based on accumulated sick leave and employees’ wage rates at fiscal year end, taking into consideration any limits specified in the School District’s termination policy. The School District records a liability for accumulated unused sick leave for all employees after ten years of service.

The entire compensated absence liability is reported on the government-wide financial statements. On governmental fund financial statements, compensated absences are recognized as liabilities and expenditures to the extent payments come due each period upon the occurrence of employee resignations and retirements.

Teaneck Community Charter School
Notes to the Basic Financial Statements
June 30, 2015

These amounts are recorded in the account "Matured Compensated Absences Payable" in the fund from which the employees who have accumulated unpaid leave are paid. For the Enterprise Fund, the entire amount of compensated absences is reported as a fund liability.

L. Accrued Liabilities and Long-Term Obligations

All payables, accrued liabilities, and long-term obligations are reported on the government-wide financial statements. All payables, accrued liabilities, and long-term obligations payable from the Enterprise Fund are reported on the Enterprise Fund financial statements. In general, Governmental Fund payables and accrued liabilities that, once incurred, are paid in a timely manner and in full from current financial resources, are reported as obligations of the funds. However, contractually required pension contributions and compensated absences that are paid from governmental funds are reported as liabilities on the fund financial statements only to the extent that they are due for payment during the current year. Bonds are recognized as a liability on the fund financial statements when due.

M. Net Assets

Net assets represent the difference between assets and liabilities. Net assets invested in capital assets, net of related debt consists of capital assets, net of accumulated depreciation, reduced by the outstanding balance of any borrowing used for the acquisition, construction, or improvement of those assets. Net assets are reported as restricted when there are limitations imposed on their use either through the enabling legislation adopted by the School District or through external restrictions imposed by creditors, grantors, or laws or regulations or other governments. The School District's policy is to first apply restricted resources when an expense is incurred for purposes for which both restricted and unrestricted net assets are available.

N. Fund Balance Reserves

The School District reserves those portions of fund balance which are legally segregated for a specific future use or which do not represent available expendable resources and, therefore, are not available for appropriation or expenditure. *Unreserved fund balance* indicates that portion which is available for appropriation in future periods.

O. Operating Revenues and Expenses

Operating revenues are those revenues that are generated directly from the primary activity of the Enterprise Fund. For the School District, these revenues are sales for food service and fees for the latchkey program. Operating expenses are necessary costs incurred to provide the services are the primary activity of the Enterprise Fund.

Teaneck Community Charter School
Notes to the Basic Financial Statements
June 30, 2015

P. Capital Contributions

Contributions of capital on Enterprise Fund financial statements arise from outside contributions of capital assets, contributions from other funds, or from grants or outside contributions or resources restricted to capital acquisition and construction.

Q. Inter-fund Transactions

Transfers between governmental and business-type activities on the government-wide statements are reported in the same manner as general revenues.

Exchange transactions between funds are reported as revenues in the seller funds and as expenditures/expenses in the purchaser funds. *Flows of cash or goods from one fund to another without a requirement for repayment* are reported as inter-fund transfers. Inter-fund transfers are reported as other financing sources/uses in Governmental Fund and after non-operating revenues/expenses in the Enterprise Fund. Repayments from funds responsible for particular expenditures/expenses to the funds that initially paid for them not presented on the financial statements.

R. Extraordinary and Special Items

Extraordinary items are transactions or events that are both unusual in nature and infrequent in occurrence. Special items are transactions or events that are within the control of management and are either unusual in nature or infrequent in occurrence. *Neither of these types of transactions occurred during the fiscal year.*

S. Estimates

The preparation of financial statements in conformity with generally accepted accounting principles requires management to make estimates and assumptions that affect the amounts reported in the financial statements and accompanying notes. Actual results may differ from those estimates.

3. CHANGE IN ACCOUNTING PRINCIPLES

For fiscal year 2014, the School District has implemented Governmental Accounting Standards Board Statement No. 37, "Basic Financial Statements and Management's Discussion and Analysis for State and Local Governments: *Omnibus*" and Statement No. 38, "Certain Financial Statement Note Disclosures". The implementation of these statements had no effect on equity balances as previously reported for the fiscal year ended June 30, 2015.

Teaneck Community Charter School
Notes to the Financial Statements
June 30, 2015

4. CASH AND CASH EQUIVALENTS AND INVESTMENTS

Cash and cash equivalents includes petty cash, change funds, amounts in deposits, and short term investments with original maturities of three months or less.

Investments are stated at cost, which approximate market. The Board classifies certificates of deposit which have original maturity dates of more than three months or less than twelve months from the date of purchase, as investments.

DEPOSITS

New Jersey statutes require that school districts deposit public funds in public depositories located in New Jersey which are insured by the Federal Deposit Insurance Corporation, the Federal Savings and Loan Insurance Corporation, or by any other agency of the United States that insures deposits made in public depositories. School districts are also permitted to deposit public funds in the State of New Jersey Cash Management Fund.

New Jersey statutes require public depositories to maintain collateral for deposits of public funds that exceed depository insurance limits as follows:

The market value of the collateral must equal at least 5% of the average daily balance of collected public funds on deposit.

In addition to the above collateral requirement, if the public funds deposited exceed 75% of the capital funds of the depository, the depository must provide collateral having a market value of at least equal to 100% of the amount exceeding 75%.

All collateral must be deposited with the Federal Reserve Bank of New York, the Federal Reserve Bank of Philadelphia, the Federal Home Loan Bank of New York, or a banking institution that is a member of the Federal Reserve System and has capital funds of not less than \$25,000,000.

Teaneck Community Charter School
Notes to the Financial Statements
June 30, 2015

INVESTMENTS

New Jersey statutes permit the Board to purchase the following types of securities:

- a. *Bonds or other obligations of the United States or obligations guaranteed by the United States.*
- b. Bonds of any Federal Intermediate Credit Bank, Federal Home Loan Bank, Federal National Mortgage or of any United States Bank for Cooperatives, which have a maturity date not greater than twelve months from the date of purchase.
- c. Bonds or other obligations of the School District.

As of June 30, 2015, cash and cash equivalents and investments of the School District consisted of the following:

	Cash and Cash Equivalents	Investments	Capital Reserve Acct.	Total
Checking accounts	\$ 714,858	0	\$ 0	\$ 714,858
Passbook savings	0	0	0	0
	\$ 714,858	\$ 0	\$ 0	\$ 714,858

During the period ended June 30, 2015 the District did not hold any investments. The carrying amount of the Board's cash and cash equivalents and investments at June 30, 2015 was \$714,858 and the bank balance was \$762,597. Of the bank balance \$422,464 was covered by federal depository insurance and \$292,394 was covered by a collateral pool maintained by the banks as required by New Jersey statutes.

5. CAPITAL RESERVE ACCOUNT

Capital reserve accounts may be established by New Jersey school districts for the accumulation of funds for use as capital outlay expenditures in subsequent fiscal years. A capital reserve account is maintained in the general fund and its activity is included in the general fund annual budget.

Teaneck Community Charter School
Notes to the Financial Statements
June 30, 2015

Funds placed in the Capital Reserve account are restricted to capital outlay expenditures and transfers of such funds for other uses are prohibited pursuant to N.J.S.A. 18A:22-8.2. Funds withdrawn from the account must be included in the annual budget certified for taxes as a revenue labeled withdrawal from Capital Reserve account.

Increases in the account from sources other than investment income cannot exceed the amount appropriated in the annual budget certified for taxes as an increase in the capital reserve account.

6. FIXED ASSETS

The following schedule is a summarization of the changes in general fixed assets by source for the fiscal year ended June 30, 2015.

	Balance as of June 30, 2014	Expenditure from			Less: Accumulated Depreciation	Net Book Value at June 30, 2015
		General Fund	Special Revenue	Capital Projects		
Sites	\$ 0	\$ 0	\$ 0	\$ 0	\$ 0	0
Site improvements	0	0	0	0	0	0
Building improvements	864,686	0	0	0	(348,475)	516,211
Machinery and equipment	357,929	18,893	0	0	(344,954)	31,868
Construction in progress	0	0	0	0	0	0
Total	\$ 1,222,615	\$ 18,893	\$ 0	\$ 0	\$ (693,429)	\$ 548,079

The following is a summary of proprietary fund type fixed assets at June 30, 2015.

Machinery and equipment	\$ 0
Less: accumulated depreciation	<u>0</u>
Net fixed assets	<u>\$ 0</u>

7. OPERATING LEASES

As of June 30, 2015, the School District does not have any operating leases for equipment.

Teaneck Community Charter School
Notes to the Financial Statements
June 30, 2015

8. GENERAL LONG-TERM DEBT

During the fiscal year ended June 30, 2015 the following changes occurred in liabilities reported in the general long-term debt account group:

	<u>Balance</u> <u>June 30, 2014</u>	<u>Issued</u>	<u>Retired</u>	<u>Balance</u> <u>June 30, 2015</u>
Compensated absences payable	\$ 47,569	\$ 28,606	\$ 0	\$ 76,175
Bonds payable	0	0	0	0
Capital leases payable	<u>0</u>	<u>0</u>	<u>0</u>	<u>0</u>
Totals	<u>\$ 47,569</u>	<u>\$ 28,606</u>	<u>\$ 0</u>	<u>\$ 76,175</u>

BONDS PAYABLE

There were no bonds issued and payable for the year ended June 30, 2015.

BONDS AUTHORIZED BUT NOT ISSUED

As of June 30, 2015 the Teaneck Community Charter School had no bonds or notes authorized but not issued.

CAPITAL LEASE PAYABLE

As of June 30, 2015 the Board had no capital leases payable.

9. PENSION PLANS

DESCRIPTION OF PLANS

All required employees of the District are covered by either the Public Employees' Retirement System or the Teachers' Pension and Annuity Fund which have been established by state statute and are administered by the New Jersey Division of Pension and Benefits (Division). According to the State of New Jersey Administrative Code, all obligations of both Systems will be assumed by the State of New Jersey should the Systems terminate. The Division issues a publicly available financial report that includes the financial statements and required supplementary information for the Public Employees Retirement System and the Teachers' Pension and Annuity Fund. These reports may be obtained by writing to the Division of Pension and Benefits, P.O. Box 295, Trenton, New Jersey 08625 or on the internet at <http://www.state.nj.us/treasury/pensions/annrpts.shtml>.

Teaneck Community Charter School
Notes to the Financial Statements
June 30, 2015

TEACHERS' PENSION AND ANNUITY FUND (TPAF)

The Teachers' Pension and Annuity Fund was established as of January 1, 1955, under the provisions of N.J.S.A. 18A:66 to provide retirement benefits, death, disability and medical benefits to certain qualified members. The TPAF is considered a cost-sharing multiple-employer plan with a special funding situation, as under current statute, 100% of employer contributions are made by the State of New Jersey on behalf of the District and the system's other related non-contributing employers. Membership is mandatory for substantially all teachers or members of the professional staff certified by the State Board of Examiners, and employees of the Department of Education who have titles that are unclassified, professional and certified.

Summary of Significant Accounting Policies – For purposes of measuring the net pension liability, deferred outflows of resources and deferred inflows of resources related to pension, and pension expense, information about the fiduciary net position of the TPAF and additions to / deductions from the TPAF's fiduciary net position have been determined on the same basis as they are reported by the TPAF. For this purpose, benefit payments (including refunds of employee contributions) are recognized when due and payable in accordance with the benefit terms. Investments are reported at fair value.

The employer contributions for the District are legally required to be funded by the State in accordance with N.J.S.A. 18:66-33. Therefore, the District (employer) is considered to be in a special funding situation as defined by GASB Statement No. 68 and the State is treated as a non-employer contributing entity. Since the District (employer) does not contribute directly to the plan (except for employer specific financed amounts), there is no net pension liability or deferred outflows or inflows to report in the financial statements of the District. However, the State's portion of the net pension liability that was associated with the District was \$4,193,694 as measured on June 30, 2014 and \$3,503,058 as measured on June 30, 2013.

For the year ended June 30, 2015, the District recognized pension expense of \$257,010 and revenues of \$257,010 for support provided by the State. The measurement period for the pension expense and revenue reported in the District's financial statements (A-2) at June 30, 2015 is based on changes in the collective net pension liability with a measurement period of June 30, 2013 through June 30, 2014. Accordingly, the pension expense and the related revenue associated with the support provided by the State is based upon the changes in the collective net pension liability between July 1, 2013 and June 30, 2014.

Although the District does not report net pension liability or deferred outflows or inflows related to the TPAF, the following schedule illustrates the collective net pension liability and deferred items and the State's portion of the net pension liability associated with the District. The collective amounts are the total of all New Jersey local governments participating in the TPAF plan.

Teaneck Community Charter School
Notes to the Financial Statements
June 30, 2015

	6/30/2013	6/30/2014
Collective deferred outflows of resources	\$ -	\$ 2,306,623,861
Collective deferred inflows of resources	\$ -	\$ 1,763,205,593
Collective net pension liability (Non-employer-State of NJ)	\$50,539,213,484	\$53,446,745,367
State's portion of the net pension liability that was associated with the District	\$ 10,193,764	\$ 10,752,544
State's portion of the net pension liability that was associated with the District as a percentage of the collective net pension liability	0.020170%	0.020118%

PUBLIC EMPLOYEES' RETIREMENT SYSTEM (PERS)

The Public Employees' Retirement System (PERS) was established as of January 1, 1955, under the provisions of N.J.S.A. 43:15A to provide retirement, death, disability and medical benefits to certain qualified members. The PERS is a cost-sharing multiple-employer plan. Membership is mandatory for substantially all full-time employees of the State of New Jersey or any county, municipality, school district, or public agency, provided the employee is not required to be a member of another state administered retirement system or other state or local jurisdiction.

Summary of Significant Accounting Policies – For purposes of measuring the net pension liability, deferred outflows of resources and deferred inflows of resources related to pension, and pension expense, information about the fiduciary net position of the PERS and additions to / deductions from the PERS's fiduciary net position have been determined on the same basis as they are reported by the PERS. For this purpose, benefit payments (including refunds of employee contributions) are recognized when due and payable in accordance with the benefit terms. Investments are reported at fair value.

At June 30, 2015, the District reported a liability of \$1,006,807 for its proportionate share of the net pension liability. The net pension liability was measured as of June 30, 2014, and the total pension liability to calculate the net pension liability was determined by an actuarial valuation as of July 1, 2013, which was rolled forward to June 30, 2014. The total pension liability for the June 30, 2013 measurement date was determined by an actuarial valuation as of July 1, 2013. The District's proportion of the net pension liability is based on the ratio of the contributions as an individual employer to total contributions to the PERS during the years ended June 30, 2014 and 2013. At June 30, 2014, the District's proportion was 0.13351% which was a decrease of 0.00223% from its proportion measured as of June 30, 2013.

Teaneck Community Charter School
Notes to the Financial Statements
June 30, 2015

For the year ended June 30, 2015, the District recognized pension expense of \$35,532. At June 30, 2015, the District reported deferred outflows of resources and deferred inflows of resources related to PERS from the following sources:

	<u>Deferred Outflows of Resources</u>	<u>Deferred Inflows of Resources</u>
Differences between expected and actual experience	\$ -	\$ -
Changes of assumptions	\$ 31,659	
Net difference between projected and actual earnings on pension plan investments		\$ 60,000
Changes in proportion and difference between District contributions and proportionate share of contributions	\$ -	
District contributions subsequent to the measurement date	\$ 44,331.00	
Total	<u>\$ 75,990</u>	<u>\$ 60,000</u>

\$1,378,678 reported as deferred outflows of resources related to pension resulting from school district, charter school, or renaissance school project contributions subsequent to the measurement date (i.e. for the school year ending June 30, 2015, the plan measurement date is June 30, 2014) will be recognized as a reduction of the net pension liability in the year ended June 30, 2015. Other amounts reported as deferred outflows of resources and deferred inflows of resources related to pensions will be recognized in pension expense as follows:

	<u>Year Ended June 30:</u>
2015	\$ (227,931)
2016	\$ (227,931)
2017	\$ (227,931)
2018	\$ (227,931)
2019	\$ 144,494
Thereafter	\$ 63,577
Total	<u>\$ (703,653)</u>

	<u>6/30/2014</u>	<u>6/30/2013</u>
Collective deferred outflows of resources	\$ 1,032,618,058	\$ -
Collective deferred inflows of resources	\$ 1,726,631,532	\$ -
Collective net pension liability (Non-State - Local Group)	\$18,722,735,003	\$19,111,986,911
District's portion of net pension liability	\$ 1,006,807	\$ 1,132,267
District's proportion %	0.5380%	0.5920%

Teaneck Community Charter School
Notes to the Financial Statements
June 30, 2015

10. POST-RETIREMENT BENEFITS

Chapter 384 of Public Laws 1987 and Chapter 6 of Public Laws 1990 required TPAF and PERS, respectively, to fund post-retirement medical benefits for those State employees who retire after accumulating 25 years of credited service or on a disability. As of June 30, 2014 there were 103,432 retirees receiving post-retirement medical benefits, and the State contributed \$1.04 billion on their behalf. The cost of these benefits is funded through contributions by the State in accordance with Chapter 62, P.L. 1994. Funding of post-retirement medical benefits changed from a pre-funding basis to a pay-as-you-go basis beginning in fiscal year 1994.

The State is also responsible for the cost attributable to Chapter 126, P.L. 1992, which provides employer paid health benefits to members of PERS and the Alternate Benefit Program who retired from a board of education or county college with 25 years of service. The State paid \$165.8 million toward Chapter 126 benefits for 18,122 eligible retired members in fiscal year 2014.

11. INTERFUND RECEIVABLES AND PAYABLES

New Jersey statute requires that interest earned on the investments in capital projects fund be credited to the general fund or debt service based on Board resolution. In accordance with Board resolution, accrued interest as of June 30, 2015 in the amount of \$0 was transferred to debt service fund and \$0 was transferred to general fund to offset future interest payment to bondholders.

12. CONTINGENT LIABILITIES

The Board is involved in several claims and lawsuits incidental to its operations. In the opinion of the administration and legal counsel, the ultimate resolution of these matters will not have a material adverse effect on the financial position of the District.

13. DEFERRED COMPENSATION

The Board offers its employees a choice of the following deferred compensation plans created in accordance with Internal Revenue Code Section 403(b). The plans, which are administered by the entities listed below, permits participants to defer a portion of their salary until future years. Amounts deferred under the plans are not available to employees until termination, retirement, death or unforeseeable emergency.

14. RISK MANAGEMENT

The District is exposed to various risks of loss related to torts; theft of, damage to, and destruction of assets; errors and omissions; injuries to employees; and natural disasters.

Property and Liability Insurance

The District maintains commercial insurance coverage for property, liability, student accident and surety bonds. A complete schedule of insurance coverage can be found in the Statistical Section of this Comprehensive Annual Financial Report.

Teaneck Community Charter School
Notes to the Financial Statements
June 30, 2015

15. FUND BALANCE APPROPRIATED

General Fund

The General Fund, fund balance of \$558,004 at June 30, 2015, of which \$483,004 was unreserved and undesignated and \$75,000 is reserved for a school closing escrow.

Debt Service Fund

The Debt Service Fund, fund balance at June 30, 2015 of \$0 is unreserved and undesignated.

16. CALCULATION OF EXCESS SURPLUS

In accordance with N.J.S.A. 18A:7-F-7, the designation for Reserved Fund Balance – Excess Surplus is a required calculation pursuant to the New Jersey Comprehensive Educational Improvement and Financing Act of 1996 (CEIFA). New Jersey school districts are required to reserve General Fund, fund balance at the fiscal year end of June 30 if they did not appropriate a required minimum amount as budgeted fund balance in their subsequent years' budget. The excess fund balance at June 30, 2015 is \$0.

17. CURRENT VULNERABILITY DUE TO CERTAIN CONCENTRATIONS

The Board operates in a heavily regulated environment. The operations of the Board are subject to the administrative directives, rules and regulations of federal, state and local regulatory agencies, including but not limited to, The New Jersey State Board of Education. Such administrative directives, rules and regulations are subject to change by an act of congress or an administrative change mandated by The New Jersey State Board of Education. Such changes may occur with little notice or inadequate funding to pay for the related cost, including the additional administrative burden, to comply with a change.

REQUIRED SUPPLEMENTARY INFORMATION

PART II

BUDGETARY COMPARISON SCHEDULE

TEANECK COMMUNITY CHARTER SCHOOL
 BUDGETARY COMPARISON SCHEDULE
 GENERAL FUND
 FISCAL YEAR ENDED JUNE 30, 2015

	Original Budget	Budget Transfers	Final Budget	Actual	Variance Final to Actual Favorable (Unfavorable)
REVENUES:					
Local Sources:					
"Local Tax Levy"	\$ 4,256,268	\$ 0	\$ 4,256,268	\$ 4,256,268	\$ 0
Tuition	0	0	0	0	0
Interest Earned on Capital Reserve Funds	0	0	0	0	0
Miscellaneous	0	0	0	2,942	2,942
Total - Local Sources	4,256,268	0	4,256,268	4,259,210	2,942
State Sources:					
Local Mandate Charter School Aid	191,017	0	191,017	191,017	0
Instructional Aid	0	0	0	0	0
Special Education Aid	136,933	0	136,933	136,933	0
Consolidated Aid	0	0	0	0	0
Security Aid	29,416	0	29,416	29,416	0
TPAF on Behalf Payments (Non-Budgeted)	257,010	0	257,010	257,010	0
TPAF Social Security (Reimbursed - Non-Budgeted)	167,097	0	167,097	167,097	0
Total State Sources	781,473	0	781,473	781,473	0
Federal Sources:					
Impact Aid	0	0	0	0	0
Medical Assistance Program	0	0	0	0	0
Total - Federal Sources	0	0	0	0	0
Total Revenues	\$ 5,037,741	\$ 0	\$ 5,037,741	\$ 5,040,683	\$ 2,942

TEANECK COMMUNITY CHARTER SCHOOL
 BUDGETARY COMPARISON SCHEDULE
 GENERAL FUND
 FISCAL YEAR ENDED JUNE 30, 2015

	Original Budget	Budget Transfers	Final Budget	Actual	Variance Final to Actual Favorable (Unfavorable)
EXPENDITURES:					
Current Expense:					
Regular Programs - Instruction					
Preschool/Kindergarten - Salaries of Teachers	\$ 175,100	\$ 11,961	\$ 187,061	\$ 187,061	\$ 0
Grades 1-5 - Salaries of Teachers	692,828	47,406	740,234	740,234	0
Grades 6-8 - Salaries of Teachers	1,053,924	72,136	1,126,060	1,126,060	0
Grades 9-12 - Salaries of Teachers	0	0	0	0	0
Regular Programs - Home Instruction:					
Salaries of Teachers	0	0	0	0	0
Other Salaries for Instruction	0	0	0	0	0
Purchased Professional-Educational Services	0	0	0	0	0
Purchased Technical Services	0	0	0	0	0
Other Purchased Services (400-500 series)	0	0	0	0	0
General Supplies	0	0	0	0	0
Textbooks	0	0	0	0	0
Other Objects	0	0	0	0	0
Regular Programs - Undistributed Instruction					
Other Salaries for Instruction	305,323	77,861	383,184	383,184	0
Purchased Professional-Educational Services	0	0	0	0	0
Purchased Technical Services	3,000	8,630	11,630	11,130	500
Other Purchased Services (400-500 series)	0	0	0	0	0
General Supplies	30,000	0	30,000	25,109	4,891
Textbooks	30,000	(11,523)	18,477	17,575	902
Other Objects	55,000	(3,500)	51,500	48,033	3,467
TOTAL REGULAR PROGRAMS - INSTRUCTION	2,345,175	202,971	2,548,146	2,538,386	9,760

TEANECK COMMUNITY CHARTER SCHOOL
 BUDGETARY COMPARISON SCHEDULE
 GENERAL FUND
 FISCAL YEAR ENDED JUNE 30, 2015

Exhibit C-1

	Original Budget	Budget Transfers	Final Budget	Actual	Variance Final to Actual Favorable (Unfavorable)
SPECIAL EDUCATION - INSTRUCTION					
Learning and/or Language Disabilities:					
Salaries of Teachers	0	0	0	0	0
Other Salaries for Instruction	0	0	0	0	0
Purchased Professional-Educational Services	0	0	0	0	0
Purchased Technical Services	0	0	0	0	0
Other Purchased Services (400-500 series)	0	0	0	0	0
General Supplies	0	0	0	0	0
Textbooks	0	0	0	0	0
Other Objects	0	0	0	0	0
Total Learning and/or Language Disabilities	<u>0</u>	<u>0</u>	<u>0</u>	<u>0</u>	<u>0</u>
Behavioral Disabilities:					
Salaries of Teachers	0	0	0	0	0
Other Salaries for Instruction	0	0	0	0	0
Purchased Professional-Educational Services	0	0	0	0	0
Purchased Technical Services	0	0	0	0	0
Other Purchased Services (400-500 series)	0	0	0	0	0
General Supplies	0	0	0	0	0
Textbooks	0	0	0	0	0
Other Objects	0	0	0	0	0
Total Behavioral Disabilities	<u>0</u>	<u>0</u>	<u>0</u>	<u>0</u>	<u>0</u>
Resource Room/Resource Center:					
Salaries of Teachers	0	0	0	0	0
Other Salaries for Instruction	0	0	0	0	0
Purchased Professional-Educational Services	0	0	0	0	0
Purchased Technical Services	0	0	0	0	0
Other Purchased Services (400-500 series)	0	0	0	0	0
General Supplies	0	0	0	0	0
Textbooks	0	0	0	0	0
Other Objects	0	0	0	0	0
Total Resource Room/Resource Center	<u>0</u>	<u>0</u>	<u>0</u>	<u>0</u>	<u>0</u>
TOTAL SPECIAL EDUCATION - INSTRUCTION	<u>0</u>	<u>0</u>	<u>0</u>	<u>0</u>	<u>0</u>

TEANECK COMMUNITY CHARTER SCHOOL
 BUDGETARY COMPARISON SCHEDULE
 GENERAL FUND
 FISCAL YEAR ENDED JUNE 30, 2015

Exhibit C-1

	Original Budget	Budget Transfers	Final Budget	Actual	Variance Final to Actual Favorable (Unfavorable)
Basic Skills/Remedial - Instruction					
Salaries of Teachers	0	0	0	0	0
Other Salaries for Instruction	0	0	0	0	0
Purchased Professional-Educational Services	0	0	0	0	0
Purchased Technical Services	0	0	0	0	0
Other Purchased Services (400-500 series)	0	0	0	0	0
General Supplies	0	0	0	0	0
Textbooks	0	0	0	0	0
Other Objects	0	0	0	0	0
Total Basic Skills/Remedial - Instruction	<u>0</u>	<u>0</u>	<u>0</u>	<u>0</u>	<u>0</u>
Bilingual Education - Instruction					
Salaries of Teachers	0	0	0	0	0
Other Salaries for Instruction	0	0	0	0	0
Purchased Professional-Educational Services	0	0	0	0	0
Purchased Technical Services	0	0	0	0	0
Other Purchased Services (400-500 series)	0	0	0	0	0
General Supplies	0	0	0	0	0
Textbooks	0	0	0	0	0
Other Objects	0	0	0	0	0
Total Bilingual Education - Instruction	<u>0</u>	<u>0</u>	<u>0</u>	<u>0</u>	<u>0</u>
School-Spon. Cocurricular Actvts. - Inst.					
Salaries	0	0	0	0	0
Purchased Services (300-500 series)	0	0	0	0	0
Supplies and Materials	0	0	0	0	0
Other Objects	0	0	0	0	0
Transfers to Cover Deficit (Agency Funds)	0	0	0	0	0
Total School-Spon. Cocurricular Actvts. - Inst.	<u>0</u>	<u>0</u>	<u>0</u>	<u>0</u>	<u>0</u>
School-Spon. Cocurricular Athletics - Inst.					
Salaries	0	0	0	0	0
Purchased Services (300-500 series)	0	0	0	0	0
Supplies and Materials	0	0	0	0	0
Other Objects	0	0	0	0	0
Transfers to Cover Deficit (Agency Funds)	0	0	0	0	0
Total School-Spon. Cocurricular Athletics - Inst.	<u>0</u>	<u>0</u>	<u>0</u>	<u>0</u>	<u>0</u>
TOTAL INSTRUCTION	<u>2,345,175</u>	<u>202,971</u>	<u>2,548,146</u>	<u>2,538,386</u>	<u>9,760</u>

TEANECK COMMUNITY CHARTER SCHOOL
 BUDGETARY COMPARISON SCHEDULE
 GENERAL FUND
 FISCAL YEAR ENDED JUNE 30, 2015

Exhibit C-1

	Original Budget	Budget Transfers	Final Budget	Actual	Variance Final to Actual Favorable (Unfavorable)
Undistributed Expenditures - Instruction:					
Tuition to Other LEAs Within the State - Regular	0	0	0	0	0
Tuition to Other LEAs Within the State - Special	0	0	0	0	0
Tuition to County Voc. School Dist. - Regular	0	0	0	0	0
Tuition to County Voc. School Dist. - Special	0	0	0	0	0
Tuition to CSSD & Regional Day Schools	0	0	0	0	0
Tuition to Private Schools for the Disabled - Within State	0	0	0	0	0
Tuition to Private Schools for the Disabled & Other LEA - Spl/O/S St	0	0	0	0	0
Tuition - State Facilities	0	0	0	0	0
Tuition - Other	0	0	0	0	0
Total Undistributed Expenditures - Instruction:	0	0	0	0	0
Undist. Expend. - Health Services					
Salaries	0	0	0	0	0
Purchased Professional and Technical Services	0	0	0	0	0
Other Purchased Services (400-500 series)	0	0	0	0	0
Supplies and Materials	0	0	0	0	0
Other Objects	0	0	0	0	0
Total Undistributed Expenditures - Health Services	0	0	0	0	0
Undist. Expend. - Other Supp. Serv. Students - Related Serv.					
Salaries of Other Professional Staff	0	0	0	0	0
Purchased Professional - Educational Services	0	0	0	0	0
Supplies and Materials	0	0	0	0	0
Total Undist. Expend.-Other Supp. Serv. Students-Related Serv.	0	0	0	0	0
Undist. Expend. - Other Supp - Serv. Students-Reg.					
Salaries of Other Professional Staff	0	0	0	0	0
Salaries of Secretarial and Clerical Assistants	0	0	0	0	0
Other Salaries	0	0	0	0	0
Purchased Professional - Educational Services	0	0	0	0	0
Other Purchased Prof. and Tech. Services	0	0	0	0	0
Other Purchased Services (400-500 series)	0	0	0	0	0
Supplies and Materials	0	0	0	0	0
Other Objects	0	0	0	0	0
Total Undist. Expend.-Other Supp. Serv. Students-Reg.	0	0	0	0	0

TEANECK COMMUNITY CHARTER SCHOOL
 BUDGETARY COMPARISON SCHEDULE
 GENERAL FUND
 FISCAL YEAR ENDED JUNE 30, 2015

Exhibit C-1

	Original Budget	Budget Transfers	Final Budget	Actual	Variance Final to Actual Favorable (Unfavorable)
Undist. Expend. - Other Supp. Serv. Students - Spl.					
Salaries of Other Professional Staff	0	0	0	0	0
Salaries of Secretarial and Clerical Assistants	0	0	0	0	0
Other Salaries	0	0	0	0	0
Purchased Professional - Educational Services	0	0	0	0	0
Other Purchased Prof. and Tech. Services	0	0	0	0	0
Residential Costs	0	0	0	0	0
Mis. Purchase Serv. (400-500 series other than Residential Costs)	0	0	0	0	0
Supplies and Materials	0	0	0	0	0
Other Objects	0	0	0	0	0
Total Undist. Expend. - Other Supp. Serv. Students - Spl	<u>0</u>	<u>0</u>	<u>0</u>	<u>0</u>	<u>0</u>
Undist. Expend. - Improvement of Inst. Serv.					
Salaries of Supervisor of Instruction	0	0	0	0	0
Salaries of Other Professional Staff	0	0	0	0	0
Salaries of Secr and Clerical Assist.	0	0	0	0	0
Other Salaries	0	0	0	0	0
Purchased Prof- Educational Services	0	0	0	0	0
Other Purch Prof. and Tech. Services	0	0	0	0	0
Other Purch Services (400-500)	0	0	0	0	0
Supplies and Materials	0	0	0	0	0
Other Objects	0	0	0	0	0
Total Undist. Expend. - Improvement of Inst. Serv.	<u>0</u>	<u>0</u>	<u>0</u>	<u>0</u>	<u>0</u>
Undist. Expend. - Edu. Media Serv./Sch. Library					
Salaries	0	0	0	0	0
Purchased Professional and Technical Services	0	0	0	0	0
Other Purchased Services (400-500 series)	0	0	0	0	0
Supplies and Materials	0	0	0	0	0
Other Objects	0	0	0	0	0
Total Undist. Expend. - Edu. Media Serv./Sch. Library	<u>0</u>	<u>0</u>	<u>0</u>	<u>0</u>	<u>0</u>

TEANECK COMMUNITY CHARTER SCHOOL
 BUDGETARY COMPARISON SCHEDULE
 GENERAL FUND
 FISCAL YEAR ENDED JUNE 30, 2015

	Original Budget	Budget Transfers	Final Budget	Actual	Variance Final to Actual Favorable (Unfavorable)
Undist. Expend. - Instructional Staff Training Serv.					
Salaries of Supervisors of Instruction	0	0	0	0	0
Salaries of Other Professional Staff	0	0	0	0	0
Salaries of Secretarial and Clerical Assist	0	0	0	0	0
Other Salaries	0	0	0	0	0
Purchased Professional - Educational Serv	0	0	0	0	0
Other Purchased Prof. and Tech. Services	0	0	0	0	0
Other Purchased Services (400-500 series)	0	0	0	0	0
Supplies and Materials	0	0	0	0	0
Other Objects	0	0	0	0	0
Total Undist. Expend. - Instructional Staff Training Serv.	0	0	0	0	0
Undist. Expend. - Supp. Serv. - General Admin.					
Salaries	0	0	0	0	0
Legal Services	0	0	0	0	0
Other Purchased Professional Services	0	0	0	0	0
Communications/Telephone	15,000	(700)	14,300	13,512	788
Other Purchased Services (400-500 series)	0	0	0	0	0
Miscellaneous Expenditures	0	10,423	10,423	10,423	0
Total Undist. Expend. - Supp. Serv. - General Admin.	15,000	9,723	24,723	23,935	788
Undist. Expend. - Support Serv. - School Admin.					
Salaries of Principals/Assistant Principals	275,771	152,000	427,771	427,684	87
Salaries of Other Professional Staff	0	0	0	0	0
Salaries of Secretarial and Clerical Assistants	119,261	(8,000)	111,261	111,034	227
Other Salaries	0	0	0	0	0
Purchased Professional and Technical Services	30,000	(740)	29,260	27,180	2,080
Other Purchased Services (400-500 series)	10,000	(2,500)	7,500	6,919	581
Supplies and Materials	10,000	956	10,956	10,956	0
Other Objects	0	0	0	0	0
Total Undist. Expend. - Support Serv. - School Admin.	445,032	141,716	586,748	583,773	2,975

TEANECK COMMUNITY CHARTER SCHOOL
 BUDGETARY COMPARISON SCHEDULE
 GENERAL FUND
 FISCAL YEAR ENDED JUNE 30, 2015

Exhibit C-1

	Original Budget	Budget Transfers	Final Budget	Actual	Variance Final to Actual Favorable (Unfavorable)
Undist. Expend. -Allowable Maintenance for School Facilities					
Salaries	0	0	0	0	0
Cleaning, Repair, and Maintenance Services	0	0	0	0	0
General Supplies	0	0	0	0	0
Other Objects	0	0	0	0	0
Total Undist. Expend. -Allowable Maintenance for School Facilities	0	0	0	0	0
Undist. Expend. - Oth. Oper. & Maint. of Plant					
Salaries	287,334	(16,521)	270,813	210,851	59,962
Purchased Professional and Technical Services	33,000	(12,034)	20,966	16,385	4,581
Cleaning, Repair and Maintenance Services	77,000	(5,650)	71,350	69,386	1,964
Rental of Land, Building & Other than Lease Purchases	872,000	(45,923)	826,077	824,168	1,909
Other Purchased Property Services	0	0	0	0	0
Insurance	25,000	34,447	59,447	57,973	1,474
Miscellaneous Purchased Services	0	0	0	0	0
General Supplies	25,000	22,224	47,224	47,075	149
Energy (Energy and Electricity)	60,000	0	60,000	54,245	5,755
Other Objects	0	0	0	0	0
Total Undist. Expend. - Other Oper. & Maint. Of Plant	1,379,334	(23,457)	1,355,877	1,280,083	75,794
Total Undist. Expend. - Oper. & Maint. Of Plant	1,379,334	(23,457)	1,355,877	1,280,083	75,794
Undist. Expend. - Student Transportation Serv.					
Sal. For Pup.Trans. (Bet. Home and School) - Regular	0	0	0	0	0
Sal. For Pup.Trans. (Bet. Home and School) - Special	0	0	0	0	0
Sal. For Pup. Trans. (Other than Bet. Home and School)	0	0	0	0	0
Management Fees - ESC & CTSA Transportation Programs	0	0	0	0	0
Other Purchased Professional and Technical Services	0	0	0	0	0
Cleaning, Repair and Maintenance Services	0	0	0	0	0
Rental Payments - School Buses	0	0	0	0	0
Lease Purchase Payments - School Buses	0	0	0	0	0
Contract Services - (Between Home and School) - Vendors	38,000	(2,890)	35,110	29,529	5,581
Contract Services (Other than Between Home & School)-Vendors	0	0	0	0	0
Contract Services - (Between Home and Sch) - Joint Agrmts	0	0	0	0	0
Contr Serv (Spl. Ed. Students) - Vendors	0	0	0	0	0
Contr Serv (Spl. Ed. Students) - Joint Agrmt	0	0	0	0	0
Contr Serv (Regular Students) - ESCs & CTSA	0	0	0	0	0
Contr Serv (Spl. Ed. Students) - ESCs & CTSA	0	0	0	0	0
Contr Serv. - Aid in Lieu Payments	0	0	0	0	0
Misc. Purchased Serv. - Transportation	0	0	0	0	0
Supplies and Materials	0	0	0	0	0
Miscellaneous Expenditures	0	0	0	0	0
Total Undist. Expend. - Student Transportation Serv.	38,000	(2,890)	35,110	29,529	5,581

TEANECK COMMUNITY CHARTER SCHOOL
 BUDGETARY COMPARISON SCHEDULE
 GENERAL FUND
 FISCAL YEAR ENDED JUNE 30, 2015

Exhibit C-1

	Original Budget	Budget Transfers	Final Budget	Actual	Variance Final to Actual Favorable (Unfavorable)
Undist. Expend. - Business and Other Support Serv.					
Increase in Sale/Lease-back Reserve	0	0	0	0	0
Salaries	0	0	0	0	0
Purchased Professional Services	0	0	0	0	0
Purchased Technical Services	0	0	0	0	0
Other Purchased Services (400-500 series)	0	0	0	0	0
Sale/Lease-back Payments	0	0	0	0	0
Supplies and Materials	0	0	0	0	0
Interest on Current Loan	0	0	0	0	0
Interest on Lease Purchase Agreements	0	0	0	0	0
Miscellaneous Expenditures	0	0	0	0	0
Total Undist. Expend. - Business and Other Support Serv.	<u>0</u>	<u>0</u>	<u>0</u>	<u>0</u>	<u>0</u>
UNALLOCATED BENEFITS					
Group Insurance	0	0	0	0	0
Social Security Contributions	0	0	0	0	0
T.P.A.F. Contributions - ERIP	0	0	0	0	0
Other Retirement Contributions - Regular	0	0	0	0	0
Other Retirement Contributions - ERIP	0	0	0	0	0
Unemployment Compensation	0	0	0	0	0
Workmen's Compensation	0	0	0	0	0
Health Benefits	0	0	0	0	0
Tuition Reimbursement	0	0	0	0	0
Other Employee Benefits	481,815	26,026	507,841	484,556	23,285
TOTAL UNALLOCATED BENEFITS	<u>481,815</u>	<u>26,026</u>	<u>507,841</u>	<u>484,556</u>	<u>23,285</u>
TOTAL ON-BEHALF CONTRIBUTIONS					
On-Behalf (non-budgeted)	257,010	0	257,010	257,010	0
Reimbursed TPAF Social Security Contributions (non-budgeted)	167,097	0	167,097	167,097	0
TOTAL ON-BEHALF CONTRIBUTIONS	<u>424,107</u>	<u>0</u>	<u>424,107</u>	<u>424,107</u>	<u>0</u>
TOTAL PERSONAL SERVICES - EMPLOYEE BENEFITS	<u>905,922</u>	<u>26,026</u>	<u>931,948</u>	<u>908,663</u>	<u>23,285</u>
TOTAL UNDISTRIBUTED EXPENDITURES	<u>2,783,288</u>	<u>151,118</u>	<u>2,934,406</u>	<u>2,825,983</u>	<u>108,423</u>
TOTAL GENERAL CURRENT EXPENSE	<u>5,128,463</u>	<u>354,089</u>	<u>5,482,552</u>	<u>5,364,369</u>	<u>118,183</u>

TEANECK COMMUNITY CHARTER SCHOOL
 BUDGETARY COMPARISON SCHEDULE
 GENERAL FUND
 FISCAL YEAR ENDED JUNE 30, 2015

	Original Budget	Budget Transfers	Final Budget	Actual	Variance Final to Actual Favorable (Unfavorable)
Undistributed Expenditures:					
General Administration	0	0	0	0	0
School Administration	0	0	0	0	0
Assets Acquired Under Capital Leases (non-budgeted)					
TOTAL CAPITAL OUTLAY	19,000	(107)	18,893	18,893	0
Transfer of Funds to Charter Schools	0	0	0	0	0
TOTAL EXPENDITURES	5,147,463	353,982	5,501,445	5,383,262	118,183
Excess (Deficiency) of Revenues Over (Under) Expenditures	(109,722)	(353,982)	(463,704)	(342,579)	121,125
Other Financing Sources:					
Operating Transfer In:					
Contribution to Whole School Reform	0	0	0	0	0
Operating Transfer Out:					
Transfer to Special Revenue Fund - ECPA	0	0	0	0	0
Transfer to Food Service Fund	0	0	0	0	0
Transfer to Internal Service Fund	0	0	0	0	0
Capital Reserve - Transfer to Debt Service Fd	0	0	0	0	0
Capital Reserve - Transfer to Capital Projects Fd	0	0	0	0	0
Capital Leases (non-budgeted)	0	0	0	0	0
Total Other Financing Sources:	0	0	0	0	0
Excess (Deficiency) of Revenues and Other Financing Sources Over (Under) Expend. and Other Fin. Sources (Uses)	(109,722)	(353,982)	(463,704)	(342,579)	121,125
Fund Balance, July 1	900,583	0	900,583	900,583	0
Fund Balance, June 30	\$ 790,861	\$ (353,982)	\$ 436,879	\$ 558,004	\$ 121,125
Recapitulation:					
Reserve for Encumbrances				0	
School Closing Escrow				75,000	
Maintenance Reserve				0	
Reserve for Excess Surplus				0	
Capital Reserve				0	
Unrestricted Fund Balance				483,004	
				558,004	
Reconciliation to Governmental Funds Statements (GAAP):					
Last State Aid Payment not recognized on GAAP basis				0	
Fund Balance per Governmental Funds (GAAP)				\$ 558,004	

TEANECK COMMUNITY CHARTER SCHOOL
 Budgetary Comparison Schedule
 Special Revenue Fund
 For the fiscal Year Ended June 30, 2015

	Original Budget	Budget Transfers	Final Budget	Actual	Variance Final to Actual
REVENUES:					
Local Sources	\$ 22,869	\$ 0	\$ 22,869	\$ 11,603	\$ 11,266
State Sources	0	0	0	0	0
Federal Sources	91,440	0	91,440	91,440	0
Total revenues	114,309	0	114,309	103,043	11,266
EXPENDITURES:					
Instruction:					
Salaries of teachers	0	0	0	0	0
Other salaries for instruction	0	0	0	0	0
Purchased Professional-Educational Services	0	0	0	0	0
Purchased Professional and Technical Services	0	0	0	0	0
Tuition	0	0	0	0	0
Other purchased services (400-500 series)	0	0	0	0	0
General Supplies	43,197	0	43,197	31,931	11,266
Textbooks	0	0	0	0	0
Other objects	0	0	0	0	0
Total instruction	43,197	0	43,197	31,931	11,266
Support services					
Salaries of Supervisors of Instruction	0	0	0	0	0
Salaries of Program Directors	0	0	0	0	0
Salaries of Other Professional Staff	3,200	0	3,200	3,200	0
Salaries of Secretaries & Clerical Assistants	0	0	0	0	0
Other Salaries	0	0	0	0	0
Personal Services - Employee Benefits	245	0	245	245	0
Purchased Educational Services - Contracted Pre-K	0	0	0	0	0
Purchased Professional - Educational Services	65,248	0	65,248	65,248	0
Other Purchased Professional Services	0	0	0	0	0
Purchased Technical Services	1,715	0	1,715	1,715	0
Rentals	0	0	0	0	0
Contr. Serv. Trans. (Bet. Home & Sch.)	0	0	0	0	0
Contr. Serv. Trans. (Wrap Around Services)	0	0	0	0	0
Contr. Serv. Trans. (Field Trips)	0	0	0	0	0
Tuition	0	0	0	0	0
Travel	0	0	0	0	0
Other purchased Services (400-500 series)	0	0	0	0	0
Supplies & Materials	704	0	704	704	0
Other Objects	0	0	0	0	0
Total support services	71,112	0	71,112	71,112	0
Facilities Acquisition and Construction Services:					
Buildings	0	0	0	0	0
Instructional Equipment	0	0	0	0	0
Noninstructional Equipment	0	0	0	0	0
Total Facilities Acquisition and Construction Services	0	0	0	0	0
Transfer to Charter School	0	0	0	0	0
Total Expenditures	114,309	0	114,309	103,043	11,266
Other Financing Sources (Uses)					
Transfer in from General Fund	0	0	0	0	0
Transfer out to Whole School Reform (General Fund)	0	0	0	0	0
Total Other Financing Sources (Uses)	0	0	0	0	0
Total Outflows	114,309	0	114,309	103,043	11,266
Excess (Deficiency) of Revenues Over (Under) Expenditures and Other Financing Sources	\$ 0	\$ 0	\$ 0	\$ 0	\$ 0

NOTES TO REQUIRED SUPPLEMENTARY INFORMATION

PART II

TEANECK COMMUNITY CHARTER SCHOOL
 Required Supplementary Information
 Budgetary Comparison Schedule
 Note to Required Supplementary Information
 for the Fiscal Year ended June 30, 2015

Note A - Explanation of Differences between Budgetary Inflows and Outflows and GAAP Revenues and Expenditures

	<u>General Fund</u>	<u>Special Revenue Fund</u>
Sources/inflows of resources		
Actual amounts (budgetary basis) "revenue" from the budgetary comparison schedule	(C-1) \$ 5,040,683	(C-2) \$ 103,043
Difference - budget to GAAP: State aid payment recognized for budgetary purposes, not recognized for GAAP statements	0	0
Total revenues as reported on the statement of revenues, expenditures and changes in the fund balances - governmental funds	(B-2) \$ <u>5,040,683</u>	(B-2) \$ <u>103,043</u>
Uses/outflows of resources		
Actual amounts (budgetary basis) "total outflows" from the budgetary comparison schedule	(C-1) \$ 5,364,369	(C-2) \$ 103,043
Differences - budget to GAAP: Encumbrances for supplies and equipment ordered but not received are reported in the year the order is placed for <i>budgetary</i> purposes, but in the year the supplies are received for <i>financial reporting</i> purposes.	0	0
Net transfer (outflows) to general fund	<u>0</u>	<u>0</u>
Total expenditures as reported on the statement of revenues, expenditures, and changes in fund balances - governmental funds	(B-2) \$ <u>5,364,369</u>	(B-2) \$ <u>103,043</u>

REQUIRED SUPPLEMENTARY INFORMATION

PART III

SCHEDULES RELATED TO ACCOUNTING AND
REPORTING FOR PENSIONS (GASB 68)

TEANECK COMMUNITY CHARTER SCHOOL
 Schedule of the District's Proportionate Share of the
 Net Pension Liability - PERS
 For the Fiscal Year Ended June 30, 2015

	JUNE 30,	
	2014	2013
District's proportion of the net pension liability (asset)	0.00538%	0.00592%
District's proportionate share of the net pension liability (asset)	\$ 1,006,807	\$ 1,132,267
District's covered employee payroll	\$ 661,940	\$ 617,154
District's proportionate share of the net pension liability (asset) as a percentage of its covered employee payroll	152%	183%
Plan fiduciary net position as a percentage of the total pension liability	52.08%	48.72%

The amounts presented for each fiscal year were determined as of the calendar year-end that occurred within the fiscal year.

GASB 68 requires a presentation of the last 10 years, however the information is only available for the last 2.

TEANECK COMMUNITY CHARTER SCHOOL
 Schedule of District Contributions - PERS
 For the Fiscal Year Ended June 30, 2015

	JUNE 30,	
	2014	2013
Contractually required contribution	\$ 44,639	\$ 49,652
Contributions in relation to the contractually required contribution	<u>(44,639)</u>	<u>(49,652)</u>
Contribution deficiency (excess)	<u>\$ 0</u>	<u>\$ 0</u>
District's covered employee payroll	\$ 661,940	\$ 617,154
Contributions as a percentage of covered employee payroll	6.74%	8.05%

GASB 68 requires a presentation of the last 10 years, however the information is only available for the last 2.

TEANECK COMMUNITY CHARTER SCHOOL
 Schedule of the District's Proportionate Share of the
 Net Pension Liability - TPAF
 For the Fiscal Year Ended June 30, 2015

	JUNE 30,	
	2014	2013
District's proportion of the net pension liability (asset)	N/A	N/A
District's proportionate share of the net pension liability (asset)	\$ N/A	\$ N/A
District's covered employee payroll	\$ 2,179,886	\$ 2,019,386
District's proportionate share of the net pension liability (asset) as a percentage of its covered employee payroll	N/A	N/A
Plan fiduciary net position as a percentage of the total pension liability	33.64%	33.76%

The amounts presented for each fiscal year were determined as of the calendar year-end that occurred within the fiscal year.

GASB 68 requires a presentation of the last 10 years, however the information is only available for the last 2.

Note - TPAF is a special funding situation as defined by GASB 68 in which the State of New Jersey is 100% responsible for contributions to the plan. Since the district (employer) does not contribute directly to the plan there is no net pension liability to report in these financial statements.

NOTES TO REQUIRED SUPPLEMENTARY INFORMATION

PART III

TEANECK COMMUNITY CHARTER SCHOOL
NOTES TO REQUIRED SUPPLEMENTARY INFORMATION - PART III
JUNE 30, 2015

PUBLIC EMPLOYEES' RETIREMENT SYSTEM (PERS)

Changes of benefit terms:

The vesting and benefit provisions are set by N.J.S.A. 43:15A, PERS provides retirement, death and disability benefits. All benefits vest after ten years of service, except for medical benefits, which vest after 25 years of service or under the disability provisions of PERS.

Changes of assumptions:

Mortality rates were based on the RP-2000 Combined Healthy Male and Female Mortality Tables (setback 1 year for females) with adjustments for mortality improvements from the base year of 2012 based on projection Scale AA.

TEACHERS' PENSION AND ANNUITY FUND (TPAF)

Changes of benefit terms:

The vesting and benefit provisions are set by N.J.S.A. 18A:66. TPAF provides retirement, death and disability benefits. All benefits vest after ten years of service, except for medical benefits, which vest after 25 years of service or under the disability provisions of TPAF. Members are always fully vested for their own contributions and, after three years of service credit, become vested for 2% of related interest earned on the contributions. In cas of death before retirement, members' beneficiaries are entitled to full interest credited to the members' account.

Changes of assumptions:

Mortality reates were based on the RP-2000 Health Annuitant Mortality Table for Males or Females, as appropriate, with adjustments for mortality improvements based on Scale AA. Pre-retirement mortality improvements for active members are projected using Scale AA from the base year of 2000 until the valuation date plus 15 years to account for future mortality improvement. Post-retirement mortality improvements for non-disabled annuitants are projected using Scale AA from the base year of 2000 for males and 2003 for females until the valuation date plus 7 years to account for future mortality improvements.

OTHER SUPPLEMENTARY INFORMATION

SPECIAL REVENUE FUND

TEANECK COMMUNITY CHARTER SCHOOL
 Special Revenue Fund
 Combining Schedule of Program Revenues and Expenditures - Budgetary Basis
 For the Fiscal Year Ended June 30, 2015

	Total Brought Forward (Ex. E-1a)	Title I	I.D.E.A. Part B		Totals 2015
			BASIC	PRESCHOOL	
REVENUES					
Local Sources	\$ 11,603	\$ 0	\$ 0	\$ 0	\$ 11,603
State Sources	0	0	0	0	0
Federal Sources	8,063	22,328	59,334	1,715	91,440
Total revenues	19,666	22,328	59,334	1,715	103,043
EXPENDITURES:					
Instruction:					
Salaries of Teachers	0	0	0	0	0
Other Salaries for Instruction	0	0	0	0	0
Purchased Professional - Educational Services	0	0	0	0	0
Purchased Professional and Technical Services	0	0	0	0	0
Other Purchased Services (400-500 series)	0	0	0	0	0
General Supplies	11,603	20,328	0	0	31,931
Textbooks	0	0	0	0	0
Other Objects	0	0	0	0	0
Total instruction	11,603	20,328	0	0	31,931
Support services:					
Salaries of Other Professional Staff	3,200	0	0	0	3,200
Other Salaries	0	0	0	0	0
Personal Services - Employee Benefits	245	0	0	0	245
Purchased Educational Services - Contracted Pre-K	0	0	0	0	0
Purchased Professional - Educational Services	3,914	2,000	59,334	0	65,248
Other Purchased Professional Services	0	0	0	0	0
Purchased Technical Services	0	0	0	1,715	1,715
Rentals	0	0	0	0	0
Contr. Serv.-Trans. (Bet. Home & Sch.)	0	0	0	0	0
Contr. Serv.-Trans. (Wrap Around Services)	0	0	0	0	0
Contr. Serv.-Trans. (Field Trips)	0	0	0	0	0
Travel	0	0	0	0	0
Other Purchased Services (400-500 series)	0	0	0	0	0
Supplies & Materials	704	0	0	0	704
Other Objects	0	0	0	0	0
Total support services	8,063	2,000	59,334	1,715	71,112

TEANECK COMMUNITY CHARTER SCHOOL
 Special Revenue Fund
 Combining Schedule of Program Revenues and Expenditures - Budgetary Basis
 For the Fiscal Year Ended June 30, 2015

	Total Brought Forward (Ex. E-1a)	Title I	I.D.E.A. Part B		Totals 2015
			BASIC	PRE-SCHOOL	
EXPENDITURES (CONT'D):					
Facilities acquisition and const. serv.:					
Buildings	0	0	0	0	0
Instructional Equipment	0	0	0	0	0
Noninstructional Equipment	0	0	0	0	0
Total facilities acquisition and const. serv.	0	0	0	0	0
Transfer to Charter Schools	0	0	0	0	0
Total Expenditures	19,666	22,328	59,334	1,715	103,043
Other Financing Sources (Uses)					
Transfer In from General Fund	0	0	0	0	0
Contribution to Whole School Reform	0	0	0	0	0
Total Outflows	19,666	22,328	59,334	1,715	103,043
Excess (Deficiency) of Revenues Over (Under) Expenditures and Other Financing Sources (Uses)	\$ 0	\$ 0	\$ 0	\$ 0	\$ 0

TEANECK COMMUNITY CHARTER S COOL
 Special Revenue Fund
 Combining Schedule of Program Revenues and Expenditures - Budgetary Basis
 For the Fiscal Year Ended June 30, 2015

	NJSBAIG Grant	Katz Library	TCSO Grant	Title II	Music Suite	Total Carried Forward
REVENUES						
Local Sources	\$ 0	\$ 2,869	\$ 0	\$ 0	\$ 8,734	\$ 11,603
State Sources	0	0	0	0	0	0
Federal Sources	0	0	0	8,063	0	8,063
Total Revenues	0	2,869	0	8,063	8,734	19,666
EXPENDITURES:						
Instruction:						
Salaries of Teachers	0	0	0	0	0	0
Other Salaries for Instruction	0	0	0	0	0	0
Purchased Professional - Educational Services	0	0	0	0	0	0
Purchased Professional and Technical Services	0	0	0	0	0	0
Other Purchased Services (400-500 series)	0	0	0	0	0	0
General Supplies	0	2,869	0	0	8,734	11,603
Textbooks	0	0	0	0	0	0
Other Objects	0	0	0	0	0	0
Total instruction	0	2,869	0	0	8,734	11,603
Support services:						
Salaries of Other Professional Staff	0	0	0	3,200	0	3,200
Other Salaries	0	0	0	0	0	0
Personal Services - Employee Benefits	0	0	0	245	0	245
Purchased Educational Services - Contracted Pre-K	0	0	0	0	0	0
Purchased Professional - Educational Services	0	0	0	3,914	0	3,914
Other Purchased Professional Services	0	0	0	0	0	0
Purchased Technical Services	0	0	0	0	0	0
Rentals	0	0	0	0	0	0
Contr. Serv.-Trans. (Bet. Home & Sch.)	0	0	0	0	0	0
Contr. Serv.-Trans. (Wrap Around Services)	0	0	0	0	0	0
Contr. Serv.-Trans. (Field Trips)	0	0	0	0	0	0
Travel	0	0	0	0	0	0
Other Purchased Services (400-500 series)	0	0	0	0	0	0
Supplies & Materials	0	0	0	704	0	704
Other Objects	0	0	0	0	0	0
Total support services	0	0	0	8,063	0	8,063

TEANECK COMMUNITY CHARTER S COOL
 Special Revenue Fund
 Combining Schedule of Program Revenues and Expenditures - Budgetary Basis
 For the Fiscal Year Ended June 30, 2015

	NJ SBAIG Grant	Katz Library	TCSCO Grant	Title II	Music Suite	Total Carried Forward
EXPENDITURES (CONT'D):						
Facilities acquisition and const. serv.:						
Buildings	0	0	0	0	0	0
Instructional Equipment	0	0	0	0	0	0
Noninstructional Equipment	0	0	0	0	0	0
Total facilities acquisition and const. serv.	0	0	0	0	0	0
Transfer to Charter Schools						
Total Expenditures	0	2,869	0	8,063	8,734	19,666
Other Financing Sources						
Transfer in from General Fund	0	0	0	0	0	0
Contribution to Whole School Reform	0	0	0	0	0	0
Total Outflows	0	2,869	0	8,063	8,734	19,666
Excess (Deficiency) of Rev. Over (Under) Expen.	\$ 0	\$ 0	\$ 0	\$ 0	\$ 0	\$ 0

CAPITAL PROJECTS FUND

TEANECK COMMUNITY CHARTER SCHOOL
 Capital Projects Fund
 Summary Statement of Project Expenditures
 For the Fiscal Year Ended June 30, 2015

Project Title/Issue	Original Date	Appropriations	Expenditures to Date		Unexpended Balance June 30, 2015
			Prior Years	Current Year	
		\$ 0	\$ 0	\$ 0	\$ 0
		<u>0</u>	<u>0</u>	<u>0</u>	<u>0</u>
		<u>\$ 0</u>	<u>\$ 0</u>	<u>\$ 0</u>	<u>\$ 0</u>

PROPRIETARY FUNDS

TEANECK COMMUNITY CHARTER SCHOOL
Enterprise Fund
Combining Statement of Net Position
June 30, 2015

	<u>Food Services</u>	<u>After-School Program</u>	<u>2015</u>
ASSETS:			
Current assets:			
Cash and cash equivalents	\$ 3,020	\$ 55,070	\$ 58,090
Accounts receivable:			
State	0	0	0
Federal	0	0	0
Other	0	0	0
Interfund receivable	0	0	0
Inventories	0	0	0
Total current assets	<u>3,020</u>	<u>55,070</u>	<u>58,090</u>
Fixed assets:			
Equipment	0	0	0
Accumulated depreciation	0	0	0
Total fixed assets	<u>0</u>	<u>0</u>	<u>0</u>
Total assets	<u>\$ 3,020</u>	<u>\$ 55,070</u>	<u>\$ 58,090</u>
LIABILITIES			
AND FUND EQUITY:			
Current liabilities:			
Accounts payable	\$ 0	\$ 0	\$ 0
Interfund payable	0	0	0
Total current liabilities	<u>0</u>	<u>0</u>	<u>0</u>
Fund equity:			
Contributed capital	0	0	0
Unreserved retained earnings	3,020	55,070	58,090
Total fund equity	<u>3,020</u>	<u>55,070</u>	<u>58,090</u>
Total liabilities and fund equity	<u>\$ 3,020</u>	<u>\$ 55,070</u>	<u>\$ 58,090</u>

TEANECK COMMUNITY CHARTER SCHOOL
 Enterprise Fund
 Combining Statement of Revenues, Expenses,
 and Changes in Fund Net Position
 for the Fiscal Year ended June 30, 2015

	2015
OPERATING REVENUES:	
Local Sources:	
Daily sales - reimbursable programs:	
School lunch program	\$ 0
School breakfast program	0
Total daily sales - reimbursable programs	0
After-school Revenues	172,791
Daily sales nonreimbursable programs	50,849
Special functions	0
Total operating revenues	223,640
OPERATING EXPENSES:	
Salaries	86,141
Employee benefits	0
Purchased property services	0
Supplies and materials	0
Depreciation	0
Cost of sales	50,162
After-school Expenses	82,503
Total operating expenses	218,806
Operating income	4,834
Nonoperating revenues:	
State sources:	
State school lunch program	0
Federal sources:	
NSDA commodities	0
National school lunch program	0
Board contribution	0
Total nonoperating revenues	0
Transfer to Childcare Program	0
Net income / (Loss)	4,834
Fund Net Position - Beginning	53,256
Fund Net Position - Ending	\$ 58,090

TEANECK COMMUNITY CHARTER SCHOOL
Enterprise Fund
Combining Statement of Cash Flows
for the Fiscal Year ended June 30, 2015

	2015
Cash flows from operating activities:	
Operating income (loss)	\$ 4,834
Adjustment to reconcile operating income (loss) to cash provided (used) by operating activities:	
Depreciation	0
Change in <i>assets and liabilities</i> :	
Decrease/(increase) in interfund receivable	0
Decrease/(increase) in accounts receivable	0
Decrease/(increase) in inventory	0
Increase/(decrease) in accounts payable	0
Prior year adjustments	0
	4,834
Net cash provided/(used) by operating activities	4,834
Cash flows from noncapital financing activities:	
Cash received from state and federal reimbursements	0
Transfer to Childcare Program	0
	0
Net cash provided by noncapital financing activities	0
Cash flows from capital and related financing activities:	
Acquisition and construction of capital assets	0
	0
Net cash used for capital and related financing activities	0
Cash flows from investing activities:	
Interest on investments	0
	0
Net cash provided by investing activities	0
Net increase/(decrease) in cash and cash equivalents	4,834
Cash and cash equivalents, July 1	53,256
Cash and cash equivalents, June 30	\$ 58,090

INTERNAL SERVICE FUND

NOT APPLICABLE FOR THE YEAR ENDED JUNE 30, 2015

FIDUCIARY FUND

TEANECK COMMUNITY CHARTER SCHOOL
Fiduciary Fund
Statement of Fiduciary Net Position
JUNE 30, 2015

	Non-expendable Trust		Agency		Unemployment Insurance Trust Fund	Total 2015
	Scholarship	Student Activity	Payroll			
ASSETS:						
Cash and cash equivalents	\$ 0	\$ 24,821	\$ 111,297	\$ 0	\$ 0	\$ 136,118
Due from general fund	0	0	0	0	0	0
Total assets	\$ 0	\$ 24,821	\$ 111,297	\$ 0	\$ 0	\$ 136,118
LIABILITIES AND FUND BALANCES:						
Liabilities:						
Accounts payable	\$ 0	\$ 0	\$ 0	\$ 0	\$ 0	\$ 0
Payroll deductions and withholdings	0	0	111,297	0	0	111,297
Accrued salaries and wages	0	0	0	0	0	0
Due to other funds	0	24,821	0	0	0	24,821
Total liabilities	0	24,821	111,297	0	0	136,118
Fund balances:						
Reserved - principal portion nonexpendable trust	0	0	0	0	0	0
Unreserved	0	0	0	0	0	0
Total fund balances	0	0	0	0	0	0
Total liabilities and fund balances	\$ 0	\$ 24,821	\$ 111,297	\$ 0	\$ 0	\$ 136,118

TEANECK COMMUNITY CHARTER SCHOOL
 Fiduciary Fund
 Combining Statement of Changes in Fiduciary Net Position
 for the Fiscal Year ended June 30, 2015

	2015
OPERATING REVENUES:	
Local sources:	
Interest on investments	\$ 0
Donations	0
Total operating revenues	0
OPERATING EXPENSES:	
Bank charges	0
Scholarship payments	0
Total operating expenses	0
Operating income (loss)	0
Net income (loss)	0
Fund balances, July 1	0
Fund balances, June 30	\$ 0

TEANECK COMMUNITY CHARTER SCHOOL
 Student Activity Agency Fund
 Schedule of Receipts and Disbursements
 for the Fiscal Year ended June 30, 2015

	<u>Balance</u> <u>July 1, 2014</u>	<u>Cash</u> <u>Receipts</u>	<u>Cash</u> <u>Disbursements</u>	<u>June 30, 2015</u>
ASSETS:				
Cash and cash equivalents	\$ <u>0</u>	\$ <u>28,056</u>	\$ <u>3,235</u>	\$ <u>24,821</u>
Total assets	\$ <u>0</u>	\$ <u>28,056</u>	\$ <u>3,235</u>	\$ <u>24,821</u>
LIABILITIES:				
Accounts payable	\$ 0	\$ 0	\$ 0	\$ 0
Due to student groups	<u>0</u>	<u>28,056</u>	<u>3,235</u>	<u>24,821</u>
Total liabilities	\$ <u>0</u>	\$ <u>28,056</u>	\$ <u>3,235</u>	\$ <u>24,821</u>

TEANECK COMMUNITY CHARTER SCHOOL
 Payroll Agency Fund
 Schedule of Receipts and Disbursements
 for the Fiscal Year ended June 30, 2015

	<u>Balance</u> <u>July 1, 2014</u>	<u>Cash</u> <u>Receipts</u>	<u>Cash</u> <u>Disbursements</u>	<u>Balance</u> <u>June 30, 2015</u>
ASSETS:				
Cash and cash equivalents	\$ 113,957	\$ 3,687,467	\$ 3,690,127	\$ 111,297
Due from General Fund	<u>0</u>	<u>0</u>	<u>0</u>	<u>0</u>
Total assets	<u>\$ 113,957</u>	<u>\$ 3,687,467</u>	<u>\$ 3,690,127</u>	<u>\$ 111,297</u>
LIABILITIES:				
Payroll deductions and withholdings	\$ 113,957	\$ 3,687,467	\$ 3,690,127	\$ 111,297
Due to other funds	0	0	0	0
Accrued salaries and wages	<u>0</u>	<u>0</u>	<u>0</u>	<u>0</u>
Total liabilities	<u>\$ 113,957</u>	<u>\$ 3,687,467</u>	<u>\$ 3,690,127</u>	<u>\$ 111,297</u>

LONG-TERM DEBT ACCOUNT GROUP

TEANECK COMMUNITY CHARTER SCHOOL
Long-Term Debt Account Group
Schedule of Serial Bonds
JUNE 30, 2015

<u>ISSUE</u>	<u>DATE OF ISSUE</u>	<u>AMOUNT OF ISSUE</u>	<u>ANNUAL MATURITIES DATE</u>	<u>AMOUNT</u>	<u>INTEREST RATE</u>	<u>BALANCE JULY 1, 2014</u>	<u>ISSUED</u>	<u>RETIRED</u>	<u>BALANCE JUNE 30, 2015</u>
--------------	--------------------------	----------------------------	-----------------------------------	---------------	--------------------------	---------------------------------	---------------	----------------	----------------------------------

"NOT APPLICABLE FOR JUNE 30, 2015"

TEANECK COMMUNITY CHARTER SCHOOL
Long-Term Debt Account Group
Schedule of Obligations Under Capital Leases
JUNE 30, 2015

<u>SERIES</u>	<u>INTEREST RATE PAYABLE</u>	<u>AMOUNT OF ORIGINAL ISSUE</u>	<u>AMOUNT OUTSTANDING JUNE 30, 2014</u>	<u>ISSUED CURRENT YEAR</u>	<u>RETIRED CURRENT YEAR</u>	<u>AMOUNT OUTSTANDING JUNE 30, 2015</u>
---------------	----------------------------------	-------------------------------------	---	------------------------------------	---------------------------------	---

"NOT APPLICABLE FOR JUNE 30, 2015"

TEANECK COMMUNITY CHARTER SCHOOL
 Budgetary Comparison Schedule
 Debt Service Fund
 For the Fiscal Year Ended June 30, 2015

	Original Budget	Budget Transfers	Final Budget	Actual	Variance Positive (Negative) Final to Actual
REVENUES:					
Local Sources:					
Local Tax Levy	\$ 0	\$ 0	\$ 0	\$ 0	\$ 0
State Sources:					
Debt Service Aid Type II	0	0	0	0	0
Total - State Sources	0	0	0	0	0
Total revenues	0	0	0	0	0
EXPENDITURES:					
Regular Debt Service:					
Interest	0	0	0	0	0
Redemption of Principal	0	0	0	0	0
Total Regular Debt Service	0	0	0	0	0
Total expenditures	0	0	0	0	0
Excess (deficiency) of revenues over (under) expenditures	0	0	0	0	0
Other Financing Sources:					
Operating transfers in:					
Interest earned in capital projects fund	0	0	0	0	0
Excess (deficiency) of revenues and other Financing sources over (under) expenditures	0	0	0	0	0
Fund Balance, July 1	0	0	0	0	0
Fund Balance, June 30	<u>0</u>	<u>0</u>	<u>0</u>	<u>0</u>	<u>0</u>
Recapitulation of Excess (Deficiency) of Revenues Over (Under) Expenditures					
Budgeted Fund Balance	\$ <u>0</u>	\$ <u>0</u>	\$ <u>0</u>	\$ <u>0</u>	\$ <u>0</u>

STATISTICAL SECTION

TEANECK COMMUNITY CHARTER SCHOOL
NET ASSETS BY COMPONENT
LAST FIVE FISCAL YEARS

	<u>2011</u>	<u>2012</u>	<u>2013</u>	<u>2014</u>	<u>2015</u>
Governmental activities:					
Invested in capital assets, net of related debt	\$ 684,994	\$ 682,813	\$ 599,639	\$ 550,116	\$ 471,904
Restricted	18,075	139,415	252,500	353,982	75,000
Unrestricted	<u>146,920</u>	<u>274,262</u>	<u>538,952</u>	<u>546,601</u>	<u>483,004</u>
Total governmental activities net assets	<u><u>849,989</u></u>	<u><u>1,096,490</u></u>	<u><u>1,391,091</u></u>	<u><u>1,450,699</u></u>	<u><u>1,029,908</u></u>
Business-type activities:					
Invested in capital assets, net of related debt	0	0	0	0	0
Restricted	0	0	0	0	0
Unrestricted	<u>32,410</u>	<u>12,521</u>	<u>69,501</u>	<u>53,256</u>	<u>58,090</u>
Total business-type activities net assets	<u><u>32,410</u></u>	<u><u>12,521</u></u>	<u><u>69,501</u></u>	<u><u>53,256</u></u>	<u><u>58,090</u></u>
District-wide:					
Invested in capital assets, net of related debt	684,994	682,813	599,639	550,116	471,904
Restricted	18,075	139,415	252,500	353,982	75,000
Unrestricted	<u>179,330</u>	<u>286,783</u>	<u>608,453</u>	<u>599,857</u>	<u>541,094</u>
Total district net assets	<u><u>\$ 882,399</u></u>	<u><u>\$ 1,109,011</u></u>	<u><u>\$ 1,460,592</u></u>	<u><u>\$ 1,503,955</u></u>	<u><u>\$ 1,087,998</u></u>

TEANECK COMMUNITY CHARTER SCHOOL
CHANGES IN NET ASSETS
LAST FIVE FISCAL YEARS

	<u>2011</u>	<u>2012</u>	<u>2013</u>	<u>2014</u>	<u>2015</u>
Business-type activities:					
Food service	108,008	106,789	80,766	215,770	50,162
Child care	79,378	109,330	87,328	225,049	168,644
Total business-type activities expense	<u>187,386</u>	<u>216,119</u>	<u>168,094</u>	<u>440,819</u>	<u>218,806</u>
Total district expenses	<u>\$ 4,979,743</u>	<u>\$ 4,992,518</u>	<u>\$ 4,929,729</u>	<u>\$ 5,495,162</u>	<u>\$ 5,783,323</u>
 Program Revenues					
Governmental activities:					
Charges for services:					
Instruction (tuition)	\$ 0	\$ 0	\$ 0	\$ 0	\$ 0
Pupil transportation	0	0	0	0	0
Central and other support services	0	0	0	0	0
Operating grants and contributions	91,125	82,757	80,358	81,973	103,043
Capital grants and contributions	<u>0</u>	<u>0</u>	<u>0</u>	<u>0</u>	<u>0</u>
Total governmental activities program revenues	<u>91,125</u>	<u>82,757</u>	<u>80,358</u>	<u>81,973</u>	<u>103,043</u>
 Business-type activities:					
Charges for services					
Food service	109,563	99,879	127,522	208,678	50,849
Child care	90,015	96,351	97,552	215,896	172,791
Operating grants and contributions	0	0	0	0	0
Capital grants and contributions	<u>0</u>	<u>0</u>	<u>0</u>	<u>0</u>	<u>0</u>
Total business type activities program revenues	<u>199,578</u>	<u>196,230</u>	<u>225,074</u>	<u>424,574</u>	<u>223,640</u>
Total district program revenues	<u>\$ 290,703</u>	<u>\$ 278,987</u>	<u>\$ 305,432</u>	<u>\$ 506,547</u>	<u>\$ 326,683</u>

TEANECK COMMUNITY CHARTER SCHOOL
CHANGES IN NET ASSETS
LAST FIVE FISCAL YEARS

	<u>2011</u>	<u>2012</u>	<u>2013</u>	<u>2014</u>	<u>2015</u>
Net (Expense)/Revenue					
Governmental activities	(4,701,232)	(4,693,642)	(4,681,277)	(4,972,370)	(5,461,474)
Business-type activities	12,192	(19,889)	56,980	(16,245)	4,834
Total district-wide net expense	\$ <u>(4,689,040)</u>	\$ <u>(4,713,531)</u>	\$ <u>(4,624,297)</u>	\$ <u>(4,988,615)</u>	\$ <u>(5,456,640)</u>
General Revenues and Other Changes in Net Assets					
Governmental activities:					
Property taxes levied for general purposes, net	3,980,901	4,018,208	4,289,111	4,296,525	4,256,268
Taxes levied for debt service	0	0	0	0	0
Unrestricted grants and contributions	647,260	920,471	655,838	719,583	769,870
Payments in lieu of taxes	0	0	0	0	0
Tuition received	0	0	0	0	0
Investment earnings	0	0	0	0	0
Miscellaneous income	6,914	1,464	30,929	15,870	14,545
Transfers	0	0	0	0	0
Total governmental activities	<u>4,635,075</u>	<u>4,940,143</u>	<u>4,975,878</u>	<u>5,031,978</u>	<u>5,040,683</u>
Business-type activities:					
Investment earnings	0	0	0	0	0
Transfers	0	0	0	0	0
Total business-type activities	<u>0</u>	<u>0</u>	<u>0</u>	<u>0</u>	<u>0</u>
Total district-wide	\$ <u>4,635,075</u>	\$ <u>4,940,143</u>	\$ <u>4,975,878</u>	\$ <u>5,031,978</u>	\$ <u>5,040,683</u>
Change in Net Assets					
Governmental activities	(66,157)	246,501	294,601	59,608	(420,791)
Business-type activities	12,192	(19,889)	56,980	(16,245)	4,834
Total district	\$ <u>(53,965)</u>	\$ <u>226,612</u>	\$ <u>351,581</u>	\$ <u>43,363</u>	\$ <u>(415,957)</u>

TEANECK COMMUNITY CHARTER SCHOOL
 FUND BALANCES, GOVERNMENTAL FUNDS
 LAST FIVE FISCAL YEARS

	<u>2011</u>	<u>2012</u>	<u>2013</u>	<u>2014</u>	<u>2015</u>
General Fund					
Reserved	\$ 18,075	\$ 139,415	\$ 252,500	\$ 353,982	\$ 75,000
Unreserved	146,920	274,262	538,952	546,601	483,004
Total general fund	<u>164,995</u>	<u>413,677</u>	<u>791,452</u>	<u>900,583</u>	<u>558,004</u>
All Other Governmental Funds					
Reserved	0	0	0	0	0
Unreserved, reported in:					
Special revenue fund	0	0	0	0	0
Capital projects fund	0	0	0	0	0
Debt service fund	0	0	0	0	0
Permanent fund	0	0	0	0	0
Total all other governmental funds	<u>\$ 0</u>	<u>\$ 0</u>	<u>\$ 0</u>	<u>\$ 0</u>	<u>\$ 0</u>

TEANECK COMMUNITY CHARTER SCHOOL
 CHANGES IN FUND BALANCES - GOVERNMENTAL FUNDS
 LAST FIVE FISCAL YEARS

	2011	2012	2013	2014	2015
Revenues					
Tax levy	\$ 3,980,901	4,018,208	4,289,111	4,296,525	4,256,268
Tuition charges	0	0	0	0	0
Interest earnings	0	0	0	0	0
Miscellaneous	15,520	8,673	30,929	15,870	14,545
State sources	647,260	913,787	655,838	719,583	781,473
Federal sources	82,519	82,232	80,358	81,973	91,440
Total revenue	<u>4,726,200</u>	<u>5,022,900</u>	<u>5,056,236</u>	<u>5,113,951</u>	<u>5,143,726</u>
Expenditures					
Instruction					
Regular Instruction	2,149,781	2,147,885	2,100,968	2,238,583	2,570,317
Special education instruction	0	0	0	0	0
Other special instruction	0	0	0	0	0
Vocational education	0	0	0	0	0
Other instruction	0	0	0	0	0
Nonpublic school programs	0	0	0	0	0
Adult/continuing education	0	0	0	0	0
Support Services:					
Tuition	0	0	0	0	0
Student & inst. related services	66,330	65,499	65,555	61,973	70,163
General administration	14,864	15,861	15,412	12,717	24,639
School administrative services	428,257	417,355	479,595	546,193	583,773
Central services	0	0	0	0	0
Admin. information technology	0	0	0	0	0
Plant operations and maintenance	1,333,172	1,267,578	1,280,273	1,267,904	1,280,083
Pupil transportation	24,052	37,521	20,545	32,195	29,529
Other support services	684,559	752,181	702,228	839,891	908,908
Employee benefits	0	0	0	0	0

TEANECK COMMUNITY CHARTER SCHOOL
CHANGES IN FUND BALANCES - GOVERNMENTAL FUNDS
LAST FIVE FISCAL YEARS

	2011	2012	2013	2014	2015
Special schools	0	0	0	0	0
Charter schools	0	0	0	0	0
Capital outlay	11,147	70,338	13,885	5,364	18,893
Debt service:					
Principal	0	0	0	0	0
Interest and other charges	0	0	0	0	0
Total expenditures	<u>4,712,162</u>	<u>4,774,218</u>	<u>4,678,461</u>	<u>5,004,820</u>	<u>5,486,305</u>
Excess (deficiency) of revenues over (under) expenditures	14,038	248,682	377,775	109,131	(342,579)
Other Financing sources (uses)					
Proceeds from borrowing	0	0	0	0	0
Capital leases (non-budgeted)	0	0	0	0	0
Proceeds from refunding	0	0	0	0	0
Payments to escrow agent	0	0	0	0	0
Transfers in	0	0	0	0	0
Transfers out	0	0	0	0	0
Total other financing sources (uses)	<u>0</u>	<u>0</u>	<u>0</u>	<u>0</u>	<u>0</u>
Net change in fund balances	<u>\$ 14,038</u>	<u>\$ 248,682</u>	<u>\$ 377,775</u>	<u>\$ 109,131</u>	<u>\$ (342,579)</u>
Debt service as a percentage of noncapital expenditures	0	0	0	0	0

Source: District records

TEANECK COMMUNITY CHARTER SCHOOL
 GENERAL FUND - OTHER LOCAL REVENUE BY SOURCE
 LAST NINE FISCAL YEARS

Fiscal Year Ending June 30,	<u>Sale of Capital Assets</u>	<u>Donations</u>	<u>Rentals</u>	<u>Prior Year Refunds</u>	<u>Sale and Leaseback of Textbooks</u>	<u>Miscellaneous</u>	<u>Annual Totals</u>
2007	\$ 0	\$ 0	\$ 0	\$ 0	\$ 0	\$ 85,237	\$ 85,237
2008	0	0	0	0	0	2,440	2,440
2009	0	0	0	0	0	28,289	28,289
2010	0	0	0	0	0	3,830	3,830
2011	0	0	0	0	0	2,839	2,839
2012	0	0	0	0	0	1,464	1,464
2013	0	0	0	0	0	30,329	30,329
2014	0	0	0	0	0	15,870	15,870
2015	0	0	0	0	0	14,545	14,545

Source: District records

TEANECK COMMUNITY CHARTER SCHOOL
 RATIOS OF OUTSTANDING DEBT BY TYPE
 LAST TEN FISCAL YEARS

Fiscal Year Ended June 30,	Governmental Activities				Business- Type	Total District	Percentage of Personal Income	Per Capita
	General Obligation Bonds	Certificates of Participation	Capital Leases	Bond Anticipation Notes (BANs)	Capital Leases			
2006 \$	0 \$	0 \$	0 \$	0 \$	0 \$	0 \$	0 \$	0
2007	0	0	0	0	0	0	0	0
2008	0	0	0	0	0	0	0	0
2009	0	0	0	0	0	0	0	0
2010	0	0	0	0	0	0	0	0
2011	0	0	0	0	0	0	0	0
2012	0	0	0	0	0	0	0	0
2013	0	0	0	0	0	0	0	0
2014	0	0	0	0	0	0	0	0
2015	0	0	0	0	0	0	0	0

TEANECK COMMUNITY CHARTER SCHOOL
 DEMOGRAPHIC AND ECONOMIC STATISTICS
 LAST TEN FISCAL YEARS

<u>Year</u>	<u>Population</u>	<u>Personal Income</u>	<u>Per Capita Personal Income</u>	<u>Unemployment Rate</u>
2006	198,175	10,529,235,925	53,131	3.50%
2007	106,293	6,029,470,425	56,725	3.70%
2008	124,049	7,599,737,936	61,264	3.20%
2009	124,346	8,346,725,250	67,125	4.43%
2010	124,695	8,441,352,720	67,696	7.50%
2011	124,695	8,028,861,660	64,388	7.40%
2012	99,825	6,573,076,950	65,486	7.00%
2013	92,998	6,146,795,808	66,096	9.30%
2014	100,586	7,032,872,534	69,919	6.50%
2015	101,164	7,030,392,180	69,495	5.20%

TEANECK COMMUNITY CHARTER SCHOOL
 FULL-TIME EQUIVALENT DISTRICT EMPLOYEES
 BY FUNCTION / PROGRAM
 LAST FIVE FISCAL YEARS

<u>Function/Program</u>	<u>2011</u>	<u>2012</u>	<u>2013</u>	<u>2014</u>	<u>2015</u>
Instruction					
Regular	35	35	34	34	34
Special education	1	2	2	2	2
Other special education	0	0	0	0	0
Vocational	0	0	0	0	0
Other instruction	0	0	0	0	0
Nonpublic school programs	0	0	0	0	0
Adult/continuing education programs	0	0	0	0	0
Support Services:					
Student & instruction related services	0	0	0	0	0
General administration	3	3	4	4	4
School administrative services	2	2	2	2	2
Other administrative services	1	1	1	1	1
Central services	0	0	0	0	0
Administrative information technology	0	0	0	0	0
Plant operations and maintenance	2.5	2	2	2	2
Pupil transportation	0	0	0	0	0
Other support services	0	0	0	0	0
Special schools	0	0	0	0	0
Food service	1	1	1	1	1
Child care	0	0	0	0	0
Total	<u>45.5</u>	<u>46</u>	<u>46</u>	<u>46</u>	<u>46</u>

Source: District Personnel Records

TEANECK COMMUNITY CHARTER SCHOOL
OPERATING STATISTICS
LAST TEN FISCAL YEARS

Pupil/Teacher Ratio

Fiscal Year	Enrollment	Operating Expenditures	Cost Per Pupil	Percentage Change	Teaching Staff	Pupil/Teacher Ratio			Average Daily Enrollment (ADE)	Average Daily Attendance (ADA)	% Change in Average Daily Enrollment	Student Attendance Percentage
						Elementary	Middle School	Senior High School				
2006	235	3,379,847	14,382	21.57%	29	8.1	0	0	231.9	222.5	4.08%	95.95%
2007	239	3,694,800	15,459	7.49%	32	7.47	0	0	238.8	227.2	2.97%	95.14%
2008	271	4,011,425	14,802	-4.25%	36	7.53	0	0	266.8	256.7	11.72%	96.21%
2009	287	4,354,529	15,173	2.51%	36	7.97	0	0	287.1	275.1	7.61%	95.82%
2010	302	4,968,183	16,451	8.42%	36	8.39	0	0	304.0	293.0	5.89%	96.38%
2011	305	4,712,162	15,450	-6.08%	36	8.47	0	0	306.5	296.4	0.82%	96.70%
2012	306	4,774,218	15,602	0.98%	37	8.27	0	0	305.9	293.6	-0.20%	95.99%
2013	306	4,598,103	15,026	0.98%	36	8.5	0	0	305.1	293.8	-0.26%	96.30%
2014	306	4,922,847	16,088	7.07%	36	8.5	0	0	306.0	306.0	0.29%	100.00%
2015	306	5,486,305	17,929	11.44%	36	8.5	0	0	306.0	306.0	0.00%	100.00%

Sources: District records

TEANECK COMMUNITY CHARTER SCHOOL
 SCHOOL BUILDING INFORMATION
 LAST FIVE FISCAL YEARS

	<u>2011</u>	<u>2012</u>	<u>2013</u>	<u>2014</u>	<u>2015</u>
<u>District Building</u>					
<u>Elementary</u>					
Backman Elementary (2009)					
Square feet	29,089	29,089	29,089	29,089	29,089
Capacity (students)	320	320	320	320	320
Enrollment	305	306	306	306	306
 <u>Middle School</u>					
None					
 <u>High School</u>					
None					
 <u>Other</u>					
None					
 Number of schools at June 30, 2015					
Elementary = 1					
Middle School = 0					
Senior High School = 0					
Other = 0					

Source: District Facilities Office

TEANECK COMMUNITY CHARTER SCHOOL
 SCHEDULE OF REQUIRED MAINTENANCE
 LAST TEN FISCAL YEARS

UNDISTRIBUTED EXPENDITURES - REQUIRED
 MAINTENANCE FOR SCHOOL FACILITIES

11-000-261-xxx

School Facilities Project # (s)	Elementary	Other	Total
2006	0	0	0
2007	0	0	0
2008	0	0	0
2009	0	0	0
2010	0	0	0
2011	0	0	0
2012	0	0	0
2013	0	0	0
2014	0	0	0
2015	0	0	0
Total School Facilities	<u>0</u>	<u>0</u>	<u>0</u>

Source: District records

TEANECK COMMUNITY CHARTER SCHOOL
 INSURANCE SCHEDULE
 JUNE 30, 2015

	<u>Coverage</u>	<u>Deductible</u>
School Package Policy (N.J.S.B.A.I.G.)		
Contents / Theft / Boiler & Machinery	1,000,000	1,000
Employee Dishonesty	100,000	1,000
Money & Securities - Inside	5,000	500
Money & Securities - Outside	5,000	500
General Aggregate	2,000,000	1,000
Products / Completed Operations Aggregate	11,000,000	1,000
Personal & Advertising Injury	11,000,000	1,000
Fire Legal Liability		
Medical Expense	10,000	1,000
Automobile Non-Ownership & Hired Car	115,000	1,000
Educator's Legal Liability	1,000,000	5,000
Umbrella Liability (N.J.S.B.A.I.G.)	1,000,000	1,000
Workers Compensation (Wausau Insurance Co.)		
Each accident	2,000,000	
Each employee	2,000,000	
Policy limit	2,000,000	
Directors & Officers (U.S. Specialty Insurance)	2,000,000	

Source: District records

**Charter School Performance Framework
Financial Performance
Fiscal Ratios**

Name: TEANECK COMMUNITY CHARTER SCHOOL

	2013 Audit	2014 Audit	2015 Audit	Source
Cash	844,499	944,999	445,650	Audit: Exhibit A-1
Current Assets	898,009	1,093,941	1,001,427	Audit: Exhibit A-1
Total Assets	1,572,821	1,692,264	1,126,037	Audit: Exhibit A-1
Current Liabilities	37,056	140,740	19,954	Audit: Exhibit A-1
Total Liabilities	112,229	188,309	96,129	Audit: Exhibit A-1
Net Assets	1,460,592	1,503,955	1,029,908	Audit: Exhibit A-1
Total Revenue	4,975,878	5,031,978	5,367,366	Audit: Exhibit A-2
Total Expenses	4,624,297	4,988,615	5,783,323	Audit: Exhibit A-2
Change in Net Assets	351,581	43,363	(415,957)	Audit: Exhibit A-2
Depreciation Expense	82,792	82,491	68,499	Financial Statements/Audit Workpapers
Interest Expense	0	0	0	Financial Statements/Audit Workpapers
Principal Payments	0	0	0	Financial Statements/Audit Workpapers
Interest Payments	0	0	0	Financial Statements/Audit Workpapers
Final Average Daily Enrollment	305.10	306.00	306.00	DOE Enrollment Reports
March 30th Budgeted Enrollment	305	306	306	Charter School Budget

RATIOS ANALYSIS...					
Near Term Indicators	2013	2014	2015	3 YR CUM	Source:
1a. Current Ratio	24.23	7.77	50.19		Current Assets/Current Liabilities
1b. Unrestricted Days Cash	66.66	69.14	28.13		Cash/(Total Expenses/365)
1c. Enrollment Variance	100%	100%	100%		Average Daily Enrollment/Budgeted Enrollment
1d.* Default	No	No	No		Audit
Sustainability Indicators					
2a. Total Margin	7%	1%	-8%	-0.14%	Change in Net Assets/Total Revenue
2b. Debt to Asset	0.07	0.11	0.09		Total Liabilities/Total Assets
2c.** Cash Flow	406,117	100,500	(499,349)		Net change in cash flow from prior years (Change in Net Assets+Depreciation+Interest Expense)/(Principal & Interest Payments)
2d. Debt Service Coverage Ratio	N/A	N/A	N/A		

* Is school in default of loan covenant(s) and/or is delinquent with debt service payments? Yes or No
 ** 2015=2015 Cash -2014 Cash; 2014=2014 Cash - 2013 Cash; 2013 =2013 Cash-2012 Cash

Refer questions to charterfinance@doe.state.nj.us

SINGLE AUDIT SECTION

Report on Internal Control Over Financial
Reporting and on Compliance and Other Matters
Based on an Audit of Financial Statements Performed
in Accordance with *Government Auditing Standards*

Independent Auditor's Report

Honorable President and
Members of the Board of Education
Teaneck Community Charter School
County of Bergen, New Jersey

We have audited, in accordance with the auditing standards generally accepted in the United States of America and the standards applicable to financial audits contained in *Government Auditing Standards*, issued by the Comptroller General of the United States; and audit requirements as prescribed by the Division of Finance, Department of Education, State of New Jersey, the financial statements of the governmental activities, the business-type activities, the aggregate discretely presented component units, each major fund, and the aggregate remaining fund information of the Board of Trustees of the Teaneck Community Charter School District in the County of Bergen, State of New Jersey, as of and for the fiscal year ended June 30, 2015, and the related notes to the financial statements, which collectively comprise the Teaneck Community Charter School's basic financial statements, and have issued our report thereon dated September 18, 2015.

Internal Control Over Financial Reporting

In planning and performing our audit of the financial statements, we considered the Teaneck Community Charter School's internal control over financial reporting (internal control) to determine the audit procedures that are appropriate in the circumstances for the purpose of expressing our opinions on the financial statements, but not for the purpose of expressing an opinion on the effectiveness of the Teaneck Community Charter School's internal control. Accordingly, we do not express an opinion of the effectiveness of the Teaneck Community Charter School District's internal control.

A deficiency in internal control exists when the design or operation of a control does not allow management or employees in the normal course of performing their assigned functions, to prevent or detect and correct misstatements on a timely basis. A material weakness is a deficiency or combination of deficiencies in internal control, such that there is a reasonable possibility that a material misstatement of the entity's financial statements will not be prevented or detected and corrected on a timely basis. A significant deficiency is a deficiency, or a combination of deficiencies, in internal control that is less severe than a material weakness, yet important enough to merit attention by those charged with governance.

Our consideration of internal control was for the limited purpose described in the first paragraph of this section and was not designed to identify all deficiencies in internal control that *might be material* weaknesses or significant deficiencies. Given these limitations, during our audit we did not identify any deficiencies in internal control that we consider to be material weaknesses. However, material weaknesses may exist that have not been identified.

Compliance and Other Matters

As part of obtaining reasonable assurance about whether the Teaneck Community Charter School's financial statements are free from material misstatement, we performed tests of its compliance with certain provisions of laws, regulations, contracts, and grant agreements, noncompliance with which could have a direct and material effect on the determination of financial statement amounts. However, providing an opinion on compliance with those provisions was not an objective of our audit and accordingly, we do not express such an opinion. The results of our tests disclosed no instances of noncompliance or other matters that are required to be reported under *Government Auditing Standards* and audit requirements as prescribed by the Division of Finance, Department of Education, State of New Jersey.

Purpose of this Report


The purpose of this report is solely to describe the scope of our testing of internal control and compliance and the results of that testing, and not to provide an opinion on the effectiveness of the entity's internal control or on compliance. This report is an integral part of an audit performed in accordance with *Government Auditing Standards* and audit requirements as prescribed by the Division of Finance, Department of Education, State of New Jersey, in considering the entity's internal control and compliance. Accordingly, this communication is not suitable for any other purpose.

This report is intended for the information and use of the audit committee, management, the Teaneck Community Charter School Board of Education, the New Jersey State Department of Education, and other State and Federal awarding agencies and pass-through entities and is not intended to be and should not be used by anyone other than these specified parties.



Raymond P. Burke, CPA, PSA
No. CS 00225900
Certified Public Account
Public School Accountant

Fairfield, New Jersey
September 18, 2015



Report on Compliance for Each Major Federal Program;
Report on Internal Control Over Compliance;
and Report on the Schedule of Expenditures of Federal and
State Awards Required by OMB Circular A-133 and
New Jersey OMB Circular 04-04 and/or 15-08

Independent Auditor's Report

Honorable President and
Members of the Board of Education
Teaneck Community Charter School
County of Bergen, New Jersey

Report on Compliance for Each Major Federal and State Program

We have audited the Teaneck Community Charter School's compliance with the types of compliance requirements described in the *U.S. Office of Management and Budget (OMB) Circular A-133 Compliance Supplement* and the *New Jersey State Aid/Grant Compliance Supplement* that could have a direct and material effect on each of its major federal and state programs for the fiscal year ended June 30, 2015. Teaneck Community Charter School's major federal and state programs are identified in the *Summary of Auditor's Results Section* of the accompanying schedule of findings and questioned costs.

Management's Responsibility

Management is responsible for compliance with the requirements of laws, regulations, contracts, and grants applicable to its federal and state programs.

Auditor's Responsibility

Our responsibility is to express an opinion on compliance for each of the Teaneck Community Charter School's major federal and state programs based on our audit of the types of compliance requirements referred to above. We conducted our audit of compliance in accordance with auditing standards generally accepted in the United States of America; the standards applicable to financial audits contained in *Government Auditing Standards*, issued by the Comptroller General of the United States; the audit requirements as prescribed by the Division of Finance, Department of Education, State of New Jersey; OMB Circular A-133 *Audits of States, Local Governments, and Non-Profit Organizations*; and New Jersey OMB's Circular 04-0 and/or 15-08, *Single Audit Policy for Recipients of Federal Grants, State Grants and State Aid*. Those standards, OMB Circular A-133 and New Jersey OMB's Circular 04-04 and/or 15-08, require that we plan and perform the audit to obtain reasonable assurance about whether noncompliance with the types of compliance requirements referred to above that could have a direct and material effect on a major federal or state program occurred. An audit includes examining, on a test basis, evidence about the Teaneck Community Charter School's compliance with those requirements and performing such other procedures as we considered necessary in the circumstances.

We believe that our audit provides a reasonable basis for our opinion on compliance for each major federal and state program. However, our audit does not provide a legal determination of the Teaneck Community Charter School's compliance.

Opinion on Each Major Federal and State Program

In our opinion, the Board of Trustees of Teaneck Community Charter School District, in the County of Bergen, State of New Jersey, complied, in all material respects, with the types of compliance requirements referred to above that could have a direct and material effect on each of its major federal and state programs for the year ended June 30, 2015.

Report on Internal Control Over Compliance

Management of the Board of Trustees of the Teaneck Community Charter School District is responsible for establishing and maintaining effective internal control over compliance with the types of compliance requirements referred to above. In planning and performing our audit of compliance, we considered Teaneck Community Charter School's internal control over compliance with the types of requirements that could have a *direct and material effect on each major federal or state program* to determine the auditing procedures that are appropriate in the circumstances for the purpose of expressing an opinion on compliance for each major federal and state program and to test and report on internal control over compliance in accordance with OMB Circular A-133, but not for the purpose of expressing an opinion on the effectiveness of internal control over compliance. Accordingly, we do not express an opinion on the effectiveness of Teaneck Community Charter School's internal control over compliance.

A deficiency in internal control over compliance exists when the design or operation of a control over compliance does not allow management or employees, in the normal course of performing their assigned functions to prevent or detect and correct noncompliance with a type of compliance requirement of a federal or state program on a timely basis. A material weakness in internal control over compliance is a deficiency, or combination of deficiencies in internal control over compliance such that there is a reasonable possibility that material noncompliance with a type of compliance requirement of a federal or state program will not be prevented or detected and corrected, *on a timely basis*. A *significant deficiency* in internal control over compliance is a deficiency, or a combination of deficiencies, in internal control over compliance with a type of compliance requirement of a federal or state program that is less severe than a material weakness in internal control over compliance, yet important enough to merit attention by those charged with governance.

Our consideration of the internal control over compliance was for the limited purpose described in the first paragraph of this section and was not designed to identify all deficiencies in internal control over compliance that might be material weaknesses or significant deficiencies. We did not identify any deficiencies in internal control over compliance that we consider to be material weaknesses. However, material weaknesses may exist that have not been identified.

The purpose of this report on internal control over compliance is solely to describe the scope of our testing of internal control over compliance and the results of that testing based on the requirements of OMB Circular A-133. Accordingly, this report is not suitable for any other purpose.

Report on Schedule of Expenditures of Federal and State Awards Required by OMB Circular A-133 and by New Jersey OMB's Circular 04-04

We have audited the financial statements of the Board of Trustees of the Teaneck Community Charter School District as of and for the year ended June 30, 2015, and have issued our report thereon dated September 18, 2015, which contained an unmodified opinion on those financial statements. Our audit was conducted for the purpose of forming an opinion on the financial statements as a whole. The accompanying schedule of expenditures of federal awards and of state financial assistance are presented for purposes of additional analysis as required by OMB Circular A-133 and by New Jersey OMB's Circular 04-04 and/or 15-08 and are not a required part of the financial statements. Such information is the responsibility of management and was derived from and relates directly to the underlying accounting and other records used to prepare the financial statements. The information has been subjected to the auditing procedures applied in the audit of the financial statements and certain additional procedures, including comparing and reconciling such information directly to the underlying accounting and other records used to prepare the financial statements or to the financial statements themselves, and other additional procedures in accordance with auditing standards generally accepted in the United States of America. In our opinion, the Schedule of Expenditures of Federal Awards and the Schedule of State Financial Assistance are fairly stated in all material respects in relation to the financial statements as a whole.

This report is intended for the information and use of the management of the Teaneck Community Charter School Board of Trustees, the New Jersey State Department of Education and other state awarding agencies and pass-through entities and is not intended to be and should not be used by anyone other than these specified parties.



Raymond P. Burke, CPA, PSA
No. CS 00225900
Certified Public Accountant
Public School Accountant



Fairfield, New Jersey
September 18, 2015

K-3 SCHEDULE A

TEANECK COMMUNITY CHARTER SCHOOL
 Schedule of Expenditures of Federal Awards
 for the Fiscal Year Ended June 30, 2015

Federal Grantor/Pass-Through Grantor/ Program Title	Federal CFDA Number	Grant Period	Award Amount	Balance June 30, 2014	Carryover Amount	Cash Received	Budgetary Expenditures	Repayment of Prior Years Balances	Balance June 30, 2015			
									Deferred Revenue	Accounts Receivable	Due to Grantor at	
U.S. Department of Education												
Passed-through State Department of Education:												
Title I	84.010	9/1/13 - 8/31/14	\$ 23,528	\$ (23,528)	\$ 0	\$ 23,528	\$ 0	\$ 0	\$ 0	\$ 0	\$ 0	\$ 0
Title II	84.281	9/1/13 - 8/31/14	3,914	3,914	0	0	3,914	0	0	0	0	0
Title II	84.281	9/1/13 - 8/31/14	3,914	(3,914)	0	3,914	0	0	0	0	0	0
I.D.E.A. Part B, Basic Regular	84.027	9/1/13 - 8/31/14	56,726	(56,726)	0	56,726	0	0	0	0	0	0
I.D.E.A. Part B, Preschool	84.027	9/1/13 - 8/31/14	1,719	(1,719)	0	1,719	0	0	0	0	0	0
Title I	84.010	9/1/14 - 8/31/15	22,328	0	0	22,328	22,328	0	0	0	0	0
Title II	84.281	9/1/14 - 8/31/15	4,149	0	0	4,149	4,149	0	0	0	0	0
I.D.E.A. Part B, Basic Regular	84.027	9/1/14 - 8/31/15	59,334	0	0	32,462	59,334	0	0	26,872	0	0
I.D.E.A. Part B, Preschool	84.027	9/1/14 - 8/31/15	1,715	0	0	0	1,715	0	0	1,715	0	0
Total Federal Financial Assistance						\$ 91,440	\$ 0	\$ 0	\$ 28,587	\$ 0	\$ 0	\$ 0

K-4 SCHEDULE B

TEANECK COMMUNITY CHARTER SCHOOL
 Schedule of Expenditures of State Financial Assistance
 for the Fiscal Year ended June 30, 2015

State Grantor/Program Title	Grant Period	Award Amount	Balance at June 30, 2014	Carryover Amount	Cash Received	Budgetary Expenditures	Repayment of Prior Years Balances	Balance June 30, 2015		
								Deferred Revenue	Accounts Receivable	Due to Grantor at
State Department of Education:										
Local Mandate Aid	7/1/14 - 6/30/15	\$ 191,017	\$ 0	\$ 0	\$ 191,017	\$ 191,017	\$ 0	\$ 0	\$ 0	
Security Aid	7/1/14 - 6/30/15	29,416	0	0	29,416	29,416	0	0	0	
TPAF Social Security (On Behalf)	7/1/14 - 6/30/15	257,010	0	0	257,010	257,010	0	0	0	
TPAF Social Security (Reimbursed)	7/1/13 - 6/30/14	142,844	(9,506)	0	9,506	0	0	0	0	
TPAF Social Security (Reimbursed)	7/1/14 - 6/30/15	167,097	0	0	159,674	167,097	0	7,423	0	
Special Education Aid	7/1/14 - 6/30/15	136,933	0	0	136,933	136,933	0	0	0	
								<u>\$ 781,473</u>	<u>\$ 7,423</u>	<u>\$ 0</u>
Total State Financial Assistance										

TEANECK COMMUNITY CHARTER SCHOOL
Notes for Schedules of Expenditures of Awards and Financial Assistance
JUNE 30, 2015

NOTE 1 - GENERAL

The accompanying Schedules of Expenditures of Federal Awards and State Financial Assistance include federal and state activity of the Board of Education, Teaneck Community Charter School. The Board of Trustees is defined in Note 1 to the Board's basic financial statements. All federal and state awards received directly from federal and state agencies, as well as federal awards and state financial assistance passed through other government agencies is included on the Schedule of Expenditures of Federal Awards and State Financial Assistance.

NOTE 2 - BASIS OF ACCOUNTING

The accompanying Schedules of Expenditures of Awards and Financial Assistance are presented using the budgetary basis of accounting with the exception of programs recorded in the Food Service Fund, which are presented using the accrual basis of accounting. These bases of accounting are described in Note 1 to the Board's basic financial statements. The information in this Schedule is presented in accordance with the requirements of OMB Circular A-133, Audits of State, Local Governments, a Non-Profit Organizations. Therefore, some amounts presented in this Schedule may differ from amounts presented in, or used in the preparation of, the basic financial statement.

NOTE 3 - RELATIONSHIP TO BASIC FINANCIAL STATEMENTS

The basic financial statements present the General Fund and Special Revenue Fund on a GAAP basis. Budgetary comparison statements or schedules (RSI) are presented for the General Fund and Special Revenue Fund to demonstrate finance-related legal compliance in which certain revenue is permitted by law or grant agreement to be recognized in the audit year, whereas for GAAP reporting, revenue is not recognized until the subsequent year or when expenditures have been made.

The General Fund is presented in the accompanying schedules on the modified accrual basis.

The Special Revenue Fund is presented in the accompanying schedules on the grant accounting budgetary basis which recognizes encumbrances as expenditures and also recognizes the related revenues, whereas the GAAP basis does not.

The net adjustment to reconcile from the budgetary basis to the GAAP basis is \$0 for the General Fund and \$0 for the Special Revenue Fund. See Note 1 for a reconciliation of the budgetary basis to the modified accrual basis of accounting for the General and Special Revenue Funds. Awards and financial assistance revenues are reported in the Board's basic financial statements on a GAAP basis as follows:

TEANECK COMMUNITY CHARTER SCHOOL
Notes for Schedules of Expenditures of Awards and Financial Assistance
JUNE 30, 2015

	<u>Federal</u>	<u>State</u>	<u>Total</u>
General Fund	\$ 0	\$ 781,473	\$ 781,473
Special Revenue Fund	91,440	0	91,440
Debt Service Fund	0	0	0
Food Service Fund	<u>0</u>	<u>0</u>	<u>0</u>
Total Financial Assistance	<u>\$ 91,440</u>	<u>\$ 781,473</u>	<u>\$ 872,913</u>

NOTE 4 - RELATIONSHIP TO FEDERAL AND STATE FINANCIAL REPORTS

Amounts reported in the accompanying schedules agree with the amounts reported in the related federal and state financial reports.

NOTE 5 - OTHER

Revenues and expenditures reported under the Food Distribution Program represent current year value received and current year distributions respectively. The amount reported as TPAF Pension Contributions represents the amount paid by the state on behalf of the district for the year ended June 30, 2015. TPAF Social Security Contributions represents the amount reimbursed by the State for the employer's share of social security contributions for TPAF members for the year ended June 30, 2015.

TEANECK COMMUNITY CHARTER SCHOOL
Schedule of Findings and Questioned Costs
June 30, 2015

Section II - Financial Statement Findings

This section identifies the reportable conditions, material weaknesses, and instances of noncompliance related to the general-purpose financial statement that are required to be reported in accordance with paragraphs 5.18 through 5.20 of "Government Auditing Standards".

None

Section III - Federal Awards and State Financial Assistance Findings and Questioned Costs

This section identifies audit findings required to be reported by section .510(a) of Circular A-133 and NJOMB Circular Letter 04-04 and/or 15-08.

FEDERAL AWARDS

None

STATE AWARDS

None

TEANECK COMMUNITY CHARTER SCHOOL
Summary Schedule of Prior-Year Audit Findings
and Questioned Costs as Prepared by Management
for the Fiscal Year Ended June 30, 2015

Federal Financial Assistance / Grant Activity:

None

State Aid and State Aid Activity:

None

Debt Service / Capital Projects:

None

Board Secretary Records:

None