

HOPE ACADEMY CHARTER SCHOOL
ASBURY PARK, NEW JERSEY

COMPREHESIVE ANNUAL
FINANCIAL REPORT

FOR THE FISCAL YEAR ENDED JUNE 30, 2017

HOPE ACADEMY CHARTER SCHOOL

***COMPREHENSIVE ANNUAL
FINANCIAL REPORT***

FISCAL YEAR ENDED JUNE 30, 2017

HOPE ACADEMY CHARTER SCHOOL

***Hope Academy Charter School
Board of Trustees
Asbury Park, New Jersey***

***Comprehensive Annual Financial Report
For The Fiscal Year Ended June 30, 2017***

**COMPREHENSIVE ANNUAL
FINANCIAL REPORT
OF THE
HOPE ACADEMY CHARTER SCHOOL
ASBURY PARK, NEW JERSEY
FOR THE FISCAL YEAR ENDED JUNE 30, 2017**

Prepared by

***Hope Academy Charter School
Finance Department***

And

Meshinsky & Associates LLC, CPAs

STATE BOARD OF EDUCATION

ARCELIO APONTEMiddlesex
President

ANDREW J. MULVIHILLSussex
Vice President

MARY BETH BERRY.....Hunterdon

KATHY GOLDENBERG.....Burlington

RONALD K. BUTCHERGloucester

JACK FORNAROWarren

EDITHE FULTONOcean

ERNEST P. LEPOREHudson

JOSEPH RICCA, JRMorris

MARY ELIZABETH GAZISomerset

NEDD JAMES JOHNSON.....Salem

SYLVIA SYLVIA-CIOFFI.....Monmouth

**Kimberly Harrington Commissioner of Education
Secretary, State Board of Education**

**HOPE ACADEMY CHARTER SCHOOL
TABLE OF CONTENTS**

Page

INTRODUCTORY SECTION	1
November 15, 2017	2
Organizational Chart.....	6
Roster of Officials	7
Consultants and Advisors	8
FINANCIAL SECTION	9
Independent Auditor's Report.....	10
REQUIRED SUPPLEMENTARY INFORMATION – PART I	13
Management's Discussion and Analysis	14
BASIC FINANCIAL STATEMENTS	20
SECTION A – CHARTER SCHOOL-WIDE FINANCIAL STATEMENTS	21
A-1 Statement of Net Position	22
A-2 Statement of Activities	23
SECTION B – FUND FINANCIAL STATEMENTS	24
GOVERNMENTAL FUNDS	25
B-1 Balance Sheet	26
B-2 Statement of Revenues, Expenditures, and Changes in Fund Balance	27
B-3 Reconciliation of the Statements of Revenues, Expenditures, and Changes in Fund Balances of Governmental Funds to the Statement of Activities.....	28
PROPRIETARY FUNDS	29
B-4 Statement of Fund Net Position	30
B-5 Statement of Revenues, Expenses, and Changes in Net Position	31
B-6 Statement of Cash Flows.....	32
FIDUCIARY FUNDS	33
B-7 Statement of Fiduciary Net Position.....	34
NOTES TO THE FINANCIAL STATEMENTS	35
REQUIRED SUPPLEMENTARY INFORMATION – PART II	65
SECTION C – BUDGETARY COMPARISON SCHEDULES	66
C-1 Budgetary Comparison Schedule – General Fund	67
C-2 Budgetary Comparison Schedule – Special Revenue Fund	69
NOTES TO THE REQUIRED SUPPLEMENTARY INFORMATION	70
C-3 Budget-To-GAAP Reconciliation.....	71

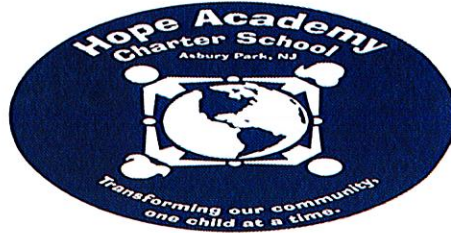
**HOPE ACADEMY CHARTER SCHOOL
TABLE OF CONTENTS**

	Page
REQUIRED SUPPLEMENTARY INFORMATION – PART III	72
SCHEDULE L - SCHEDULES RELATED TO ACCOUNTING AND REPORTING FOR PENSIONS (GASB 68)	73
L-1 Schedules of the District’s Proportionate Share of the Net Pension Liability - PERS.....	74
L-2 Schedules of District Contributions - PERS.....	75
L-3 Schedules of the District’s Proportionate Share of the Net Pension Liability - TPAF.....	76
NOTES TO REQUIRED SUPPLEMENTARY INFORMATION III	77
OTHER SUPPLEMENTARY INFORMATION	80
SECTION E – SPECIAL REVENUE FUND	81
E-1 Combining Schedule of Revenues and Expenditures – Budgetary Basis.....	82
SECTION G – PROPRIETARY FUNDS	83
SECTION H – FIDUCIARY FUNDS	84
H-1 Combining Statement of Fiduciary Net Position.....	85
H-3 Student Activity Agency Fund Schedule of Receipts and Disbursements.....	86
H-4 Payroll Agency Fund Schedule of Receipts and Disbursements	87
STATISTICAL SECTION (UNAUDITED)	88
INTRODUCTION TO THE STATISTICAL SECTION	89
FINANCIAL TRENDS	90
J-1 Net Assets/Position by Component.....	91
J-2 Changes in Net Assets/Position.....	92
J-3 Fund Balances – Governmental Funds.....	93
J-4 Changes in Fund Balances – Governmental Funds	94
J-5 General Fund Other Local Revenue by Source (NJ)	95
DEMOGRAPHIC AND ECONOMIC INFORMATION	96
J-14 Demographic and Economic Statistics.....	97
J-15 Principal Employers, Current and Ten Years Ago	98
OPERATING INFORMATION	99
J-16 Full-Time Equivalent Charter School Employees by Function/Program.....	100
J-17 Operating Statistics.....	101
J-18 School Building Information	102
J-20 Insurance Schedule	103
J-21 Charter School Performance Framework, Financial Performance, Fiscal Ratios.....	104

**HOPE ACADEMY CHARTER SCHOOL
TABLE OF CONTENTS**

		Page
SINGLE AUDIT SECTION.....		105
K-1	Independent Auditor's Report on Internal Control Over Financial Reporting and On Compliance and Other Matters Based On an Audit of Financial Statements Performed In Accordance With <i>Government Auditing Standards</i>	106
K-2	Independent Auditor's Report on Compliance For Each Major State Program; Report on Internal Over Compliance; And Report on Schedule of Expenditures of State Finance required by OMB New Jersey OMB Circular 04-04.....	108
K-4	Schedule of Expenditures of State Financial Assistance – Schedule B.....	111
K-5	Notes to Schedules of Expenditures of Awards and Financial Assistance.....	112
K-6	Schedule of Findings and Questioned Costs	115
K-7	Summary Schedule of Prior Audit Findings and Questioned Costs as Prepared by Management	118

INTRODUCTORY SECTION



**HOPE ACADEMY CHARTER SCHOOL
601 GRAND AVENUE
ASBURY PARK, NEW JERSEY 07712
(732) 988-4227**

November 15, 2017

Honorable President and
Members of the Board of Trustees
Hope Academy Charter School
601 Grand Avenue
Asbury Park, New Jersey 07712

Dear Board Members:

We are pleased to present to you the Comprehensive Annual Financial Report (CAFR) of the Hope Academy Charter School (Charter School) for the fiscal year ended June 30, 2017. This CAFR includes the Charter School's Basic Financial Statements prepared in accordance with Governmental Accounting Standards Board Statement 34.

The Charter School has elected to adopt this new financial reporting model which we believe will provide all users of this document with much more useful financial and statistical information than ever before. Responsibility for both the accuracy of the data and completeness and fairness of the presentation, including all disclosures, rests with the management of the Board of Trustees (Board).

To the best of our knowledge and belief, the data presented in this report is accurate in all material respects and is reported in a manner designed to present fairly the financial position and results of operations of the Charter School. This report will provide the taxpayers of the Hope Academy Charter School with comprehensive financial data in a format enabling them to gain an understanding of the Charter School's financial affairs.

The Comprehensive Annual Financial Report is presented in four sections as follows:

- The Introductory Section contains a table of contents, Letter of Transmittal, List of Principal Officials, and an Organizational Chart of the Charter School;
- The Financial Section begins with the Independent Auditors' Report and includes the Management's Discussion and Analysis, the Basic Financial Statements and Notes providing an overview of the Charter School's financial position and operating results, and other schedules providing detailed budgetary information;
- The Statistical Section includes selected economic and demographic information, financial trends, and the fiscal capacity of the Charter School, generally presented on a multi-year basis;
- The Single Audit Section — The Charter School is required to undergo an annual single audit in conformity with the provisions of the Single Audit Act Amendments of 1996, the U.S. Office

of Management and Budget (OMB) Circular A-133, "Audits of States, Local Governments and Non-Profit Organizations", and the New Jersey State Office of Management and Budget (OMB) Circular 04-04, "Single Audit Policy for Recipients of Federal Grants, State Grants and State Aid". Information related to this single audit, including the independent auditor's report on the internal control and compliance with applicable laws, regulations, contracts and grants, along with findings and questioned costs, are included in the single audit section of this report.

Charter School Organization

An elected five-member Board of Trustees (the "Board") serves as the policy maker for the Charter School. The Board adopts an annual budget and directly approves all expenditures which serve as the basis for control over and authorization for all expenditures of Charter School tax money.

The Chief School Administrator (CSA) is the chief executive officer of the Charter School, responsible to the Board for total educational and support operations. The School Business Administrator is the chief financial officer of the Charter School, responsible to the Board for maintaining all financial records, issuing warrants in payment of liabilities incurred by the Charter School, acting as custodian of all Charter School funds, and investing idle funds as permitted by New Jersey law.

1. **REPORTING ENTITY AND ITS SERVICES:** Hope Academy Charter School is an independent reporting entity within the criteria adopted by the Government Auditing Standards Board (GASB) as established by GASB Statement No. 14. All funds and account groups of the Charter School are included in this report. The Charter School's Board of Trustees, constitutes the Charter School's reporting entity.

The Hope Academy Charter School provides a full range of educational services appropriate to grade levels Kindergarten through Grade 8. These services include regular, as well as special education, ELL and basic skills instruction. The Charter School completed the 2016-2017 school year with an enrollment of 207 students. The following details the student enrollment of the Charter School:

REPORTING ENTITY AND ITS SERVICES (CONTINUED):

Average Daily Enrollment		
Fiscal Year	Student Enrollment	Percentage Change
2016-2017	206.9	+0.24%
2015-2016	206.4	+1.43%
2014-2015	203.5	-0.54%
2013-2014	204.6	-0.92%
2012-2013	206.5	+5.79%
2011-2012	195.2	+4.71%

2. **ECONOMIC CONDITION AND OUTLOOK:** Asbury Park continues to experience a period of development and expansion that is expected to continue through the Twenty-First Century. The increasing number of businesses within the community results in an increase in the employment level which results in an increased tax base, both residential and industrial. This expansion is evident on the east side of town and the planning grant received by the Asbury Park Housing Authority in 2016 will result in similar growth on the west side as well. The expansion is expected to continue which suggests Asbury Park will continue to prosper.

3. In February 28, 2017, Hope Academy was approved for enrollment expansion that will result in an increased enrollment of 46 students in grades Kindergarten through Second, for a total of 253 students by the 2019-20 school year.

4. Hope Academy Charter School purchased its building on November 29, 2016, resulting in an annual savings of \$174,000 over the lease agreement. The school plans to renovate unused space to create three additional classrooms over the following two years to accommodate the increase in students.

5. **INTERNAL ACCOUNTING CONTROLS:** Management of the Board of Trustees is responsible for establishing and maintaining an internal control structure designed to ensure that the assets of the Charter School are protected from loss, theft or misuse and to ensure that adequate accounting data are compiled to allow for the preparation of financial statements in conformity with generally accepted accounting principles (GAAP). The internal control structure is designed to provide reasonable, but not absolute, assurance that these objectives are met. The concept of reasonable assurance recognizes that: (1) the cost of a control should not exceed the benefits likely to be derived; and (2) the valuation of costs and benefits require estimates and judgments by management.

As a recipient of Federal and State financial assistance, the Charter School is also responsible for ensuring that an adequate internal control structure is in place to ensure compliance with applicable laws and regulations related to those programs. This internal control structure is subject to periodic evaluation by the Charter School management.

As part of the Charter School's single audit described earlier, tests are made to determine the adequacy of the internal control structure, including that portion related to Federal and State financial assistance programs, as well as to determine that the Charter School has complied with applicable laws, regulations, contracts, and grants.

6. **BUDGETARY CONTROLS:** In addition to internal accounting controls, the Charter School maintains budgetary controls. The objective of these budgetary controls is to ensure compliance with legal provisions embodied in the annual appropriated budget approved by the voters of the municipality. Annual appropriated budgets are adopted for the general fund and the special revenue fund. The final budget amount, as amended for the fiscal year, is reflected in the financial section.

An encumbrance accounting system is used to record outstanding purchase commitments on a line item basis. Open encumbrances at year-end are either canceled or are included as re-appropriations of fund balance in the subsequent year. Those amounts to be re-appropriated are reported as reservations of fund balance at June 30, 2016.

7. **CASH MANAGEMENT:** The investment policy of the Charter School is guided in large part by state statute as detailed in "Notes to the Financial Statement" Note 3. The Charter School had adopted a cash management plan which requires it to deposit funds in public depositories protected from loss under the provisions of the Governmental Unit Deposit Protection Act ("GUDPA"). GUDPA was enacted in 1970

to protect Government Units from a loss of funds on deposit with a failed banking institution in New Jersey. The law requires governmental units to deposit public funds only in public depositories located in New Jersey, where the funds are secured in accordance with the Act.

8. **RISK MANAGEMENT:** The Charter School carries various forms of insurance, including but not limited to general liability, automobile liability and comprehensive collision, hazard and theft insurance on property and contents.

9. **OTHER INFORMATION:**

Independent Audit - State statutes require an annual audit by independent certified public accountants or registered municipal accountants. The accounting firm of Meshinsky & Associates LLC, CPA's, was appointed by the Board. In addition to meeting the requirements set forth in State statutes, the audit also was designed to meet the requirements of the Single Audit Act of 1984 and the Single Audit Act Amendment of 1996 and the related OMB Circular A-133, "Audits of State, Local Governments and Non-Profits Organizations" and New Jersey Circular Letter 04-04 OMB, "Single Audit Policy for Recipients of Federal Grants, State Grants, and State Aid." The auditor's report on the basic financial statements and specific required supplemental information is included in the financial section of this report. The auditors' reports, related specifically to the single audit, are included in the single audit section of this report.

10. **ANTI-BULLYING:** On January 5, 2011, Governor Chris Christie signed into law P.L. 2010, Chapter 122, known as the Anti-Bullying Bill of Rights. The Anti-Bullying Bill of Rights Act ("Act") requires initial and on-going training for all staff members, Anti-Bullying Specialists, Anti-Bullying Coordinators, administrative staff and Board members. N.J.S.A. 18A:37-22(d) requires every teacher to complete at least two hours of instruction on harassment, intimidation, and bullying prevention in each professional development period. In 2016-2017 training was provided for harassment, intimidation and bullying prevention to comply with the training requirements of the Act.

11. **ACKNOWLEDGEMENTS:** We would like to express our appreciation to the members of the Hope Academy Charter School Board of Trustees for their concern in providing fiscal accountability to the citizens and taxpayers of the Charter School and thereby contributing their full support to the development and maintenance of our financial operation. The preparation of this report could not have been accomplished without the efficient and dedicated services of our staff.

Respectfully submitted,

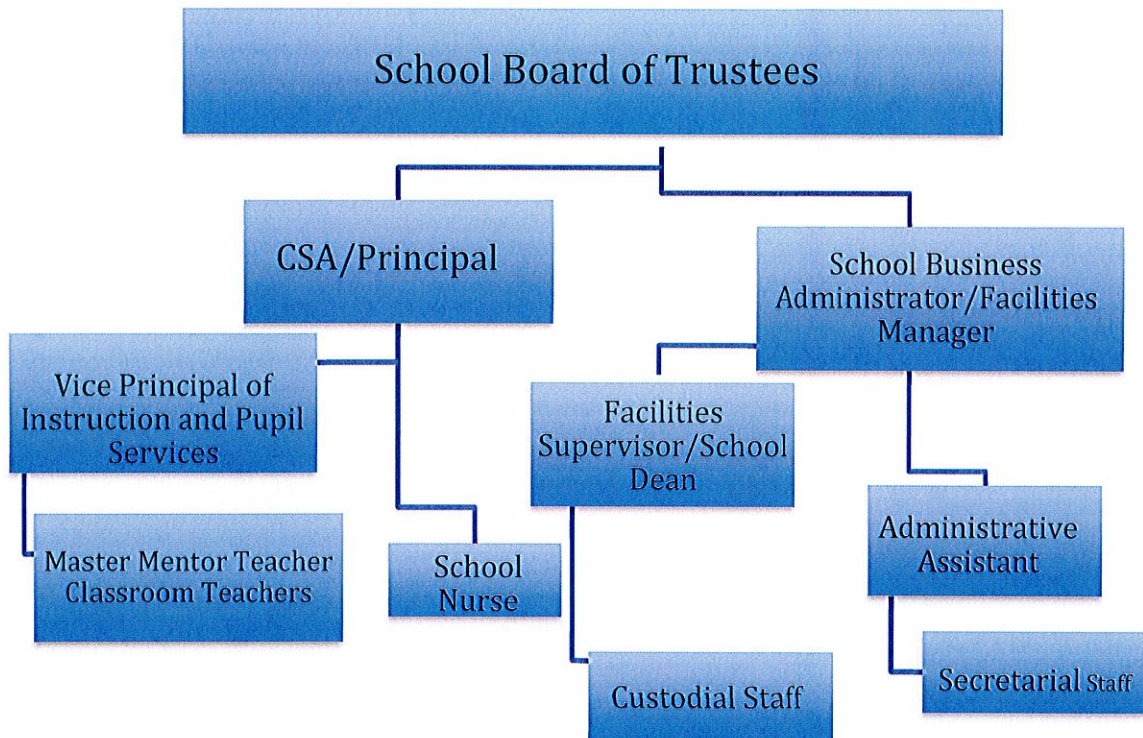


DaVisha T. Pratt
Principal / CSA



Donna Torres
Business Administrator/Board Secretary

Hope Academy Charter School Organizational Chart



**ROSTER OF OFFICIALS
JUNE 30, 2017**

MEMBERS OF THE BOARD OF TRUSTEES

Claudia Morgan, President

Frankie Winrow, Vice President

Sheree Jones, Trustee

Dennis Carroll, Trustee

Kevin Elam, Trustee

OTHER OFFICIALS

Donna Torres, Board Secretary/Business Administrator

DaVisha Pratt, Principal/Chief School Administrator

CONSULTANTS AND ADVISORS

Audit Firm

Meshinsky & Associates LLC
Certified Public Accountants
1155 W. Chestnut Street, Suite 2D
Union, New Jersey 07083

Attorney

Frederick Neimann, P.C.
3499 Route 9 North
Suite 1-F
Freehold, New Jersey 07728

Official Depository

TD Bank
2200 Highway 66
Neptune, New Jersey 07753

FINANCIAL SECTION



MESHINSKY & ASSOCIATES LLC

CERTIFIED PUBLIC ACCOUNTANTS,
CONSULTANTS & INDEPENDENT TRUSTEES

Independent Auditor's Report

Honorable President
Members of the Board of Trustees
Hope Academy Charter School
County of Monmouth
Asbury Park, New Jersey

Report on the Financial Statements

We have audited the accompanying financial statements of the governmental activities, the business-type activities, each major fund, and the aggregate remaining fund information of the Hope Academy Charter School (Charter School), in the County of Monmouth, State of New Jersey, as of and for the fiscal year ended June 30, 2017, and the related notes to the financial statements, which collectively comprise the Charter School's basic financial statements as listed in the table of contents.

Management's Responsibility for the Financial Statements

The Charter School's management is responsible for the preparation and fair presentation of these financial statements in accordance with accounting principles generally accepted in the United States of America; this includes the design, implementation, and maintenance of internal control relevant to the preparation and fair presentation of financial statements that are free from material misstatement, whether due to fraud or error.

Auditor's Responsibility

Our responsibility is to express opinions on these financial statements based on our audit. We conducted our audit in accordance with auditing standards generally accepted in the United States of America and the standards applicable to financial audit contained in *Government Auditing Standards*, issued by the Comptroller General of the United States; and audit requirements as prescribed by the Office of Finance, Department of Education, State of New Jersey. Those standards require that we plan and perform the audit to obtain reasonable assurance about whether the financial statements are free from material misstatement.

An audit involves performing procedures to obtain audit evidence about the amounts and disclosures in the financial statements. The procedures selected depend on the auditor's judgment, including the assessment of the risks of material misstatement of the financial statements, whether due to fraud or error. In making those risk assessments, the auditor considers internal control relevant to the entity's preparation and fair presentation of the financial statements in order to design audit procedures that are appropriate in the circumstances, but not for the purpose of expressing an opinion on the effectiveness of the entity's internal control. Accordingly, we express no such opinion. An audit also includes

evaluating the appropriateness of accounting policies used and the reasonableness of significant accounting estimates made by management, as well as evaluating the overall presentation of the financial statements.

We believe that the audit evidence we have obtained is sufficient and appropriate to provide a basis for our audit opinions.

Opinions

In our opinion, the financial statements referred to above present fairly, in all material respects, the respective financial position of the governmental activities, the business-type activities, each major fund, and the aggregate remaining fund information of the Hope Academy Charter School, in the County of Monmouth, State of New Jersey, as of June 30, 2017, and the respective changes in the financial position and, where applicable, cash flows thereof for the year then ended in accordance with accounting principles generally accepted in the United States of America.

Other Matters

Required Supplementary Information

Accounting principles generally accepted in the United States of America require that the Management's Discussion and Analysis and Budgetary Comparison Information starting on pages 14 and 66, respectively, be presented to supplement the basic financial statements. Such information, although not a part of the basic financial statements, is required by the Governmental Accounting Standards Board who considers it to be an essential part of financial reporting for placing the basic financial statements in an appropriate operational, economic, or historical context. We have applied certain limited procedures to the required supplementary information in accordance with auditing standards generally accepted in the United States of America, which consisted of inquiries of management about the methods of preparing the information and comparing the information for consistency with management's response to our inquiries, the basic financial statements, and other knowledge we obtained during our audit of the basic financial statements. We do not express an opinion or provide any assurance on the information because the limited procedures do not provide us with sufficient evidence to express an opinion or provide any assurance.

Supplementary and Other Information

Our audit was conducted for the purpose of forming opinions on the financial statements that collectively comprise the Charter School's basic financial statements. The accompanying supplementary information such as the combining and individual fund financial statements and schedules of expenditures of federal awards and state financial assistance, as required by in the U.S. *Office of Management and Budget (OMB) Compliance Supplement* and the *New Jersey Circular 15-08 OMB State Aid/Grant Compliance Supplement* respectively; and the other information, such as the introductory and statistical sections are presented for purposes of additional analysis and are not a required part of the basic financial statements.

The combining and individual nonmajor fund financial statements and schedules of expenditures of federal awards and state financial assistance are the responsibility of management and were derived from and relate directly to the underlying accounting and other records use to prepare the basic financial statements. Such information has been subjected to the auditing procedures applied in the audit of the basic financial statements and certain additional procedures, including comparing and reconciling such information directly to the underlying accounting and other records used to prepare the basic financial statements or to

the basic financial statements themselves, and other additional procedures in accordance with auditing standards generally accepted in the United States of America. In our opinion, the combining and individual non-major fund financial statements and schedules of expenditures of federal awards and state financial assistance are fairly stated, in all material respects, in relation to the basic financial statements as a whole.

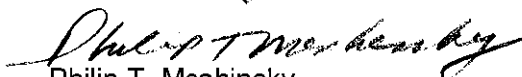
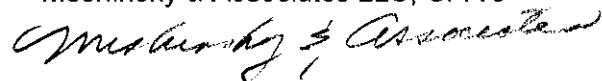
The introductory and statistical sections have not been subjected to the auditing procedures applied in the audit of the basic financial statements, and accordingly, we do not express an opinion or provide any assurance on it.

Other Reporting Required by *Government Auditing Standards and the Division of Finance, Department of Education, State of New Jersey*

In accordance with *Government Auditing Standards*, we have also issued our report dated November 30, 2017 on our consideration of the Hope Academy Charter School's internal control over financial reporting and our tests of its compliance with certain provisions of laws, regulations, contracts, and grant agreements and other matters.

The purpose of that report is to describe the scope of our testing of internal control over financial reporting and compliance and the results of that testing, and not to provide an opinion on internal control over financial reporting or on compliance. That report is an integral part of an audit performed in accordance with *Government Auditing Standards and the Division of Finance, Department of Education, State of New Jersey* in considering the Charter School's internal control over financial reporting and compliance.

Meshinsky & Associates LLC, CPA's



Philip T. Meshinsky
Licensed Public School Accountant
No. CS00233400
Meshinsky & Associates LLC, CPA's
Union, New Jersey

November 30, 2017

REQUIRED SUPPLEMENTARY INFORMATION – PART I

**HOPE ACADEMY CHARTER SCHOOL
ASBURY PARK, NEW JERSEY**

**MANAGEMENT'S DISCUSSION AND ANALYSIS
FOR THE FISCAL YEAR ENDED JUNE 30, 2017
UNAUDITED**

The discussion and analysis of Hope Academy Charter School's financial performance provides an overall review of the Charter School's financial activities for the fiscal year ended June 30, 2017. The intent of this discussion and analysis is to look at the Charter School's financial performance as a whole; readers should also review the basic financial statements and notes to enhance their understanding of the Charter School's financial performance. Certain comparative information between the current year (2016 to 2017) and the prior year (2015 to 2016) is required to be presented in the MD & A.

Financial Highlights

Key financial highlights for 2017 are as follows:

- ❖ General revenues accounted for \$3,707,326 in revenue or 95% percent of all revenues. Program specific revenues in the form of charges for services and operating grants and contributions accounted for \$206,086 or 5% percent of total revenues of \$3,913,412.
- ❖ The Charter School had 3,656,326 in expenses; only \$206,086 of these expenses were offset by program specific charges for services, grants or contributions. General revenues of \$3,707,326 were adequate to provide for these programs.
- ❖ Among governmental funds, the General Fund had 3,389,802 in revenues and \$3,039,246 in expenditures. The General Fund's fund balance increased \$350,556 from 2016. This increase was anticipated by the Board of Trustees.

Using this Comprehensive Annual Financial Report (CAFR)

This annual report consists of a series of financial statements and notes to those statements. These statements are organized so the reader can understand Hope Academy Charter School as a financial whole, an entire operating entity. The statements then proceed to provide an increasingly detailed look at specific financial activities.

The *Statement of Net Position* and *Statement of Activities* provide information about the activities of the whole Charter School, presenting both an aggregate view of the Charter School's finances and a longer-term view of those finances. Fund financial statements provide the next level of detail. For governmental funds, these statements tell how services were financed in the short-term as well as what remains for future spending. The fund financial statements also look at the Charter School's most significant funds with all other non-major funds presented in total in one column. In the case of Hope Academy Charter School, the General Fund is by far the most significant fund.

HOPE ACADEMY CHARTER SCHOOL
ASBURY PARK, NEW JERSEY

MANAGEMENT'S DISCUSSION AND ANALYSIS
FOR THE FISCAL YEAR ENDED JUNE 30, 2017
UNAUDITED
(CONTINUED)

Reporting the Charter School as a Whole

Statement of Net Position and the Statement of Activities

While this document contains the large number of funds used by the Charter School to provide programs and activities, the view of the Charter School as a whole looks at all financial transactions and ask the question, "How did we do financially during 2016?" The *Statement of Net Position* and the *Statement of Activities* answer this question. These statements include all assets and liabilities using the accrual basis of accounting similar to the accounting used by most private-sector businesses. This basis of accounting takes into account all of the current year's revenues and expenses regardless of when cash is received or paid.

Statement of Net Position and the Statement of Activities

These two statements report the Charter School's net position and changes in that position. This change in net position is important because it tells the reader that, for the Charter School as a whole, the financial position of the Charter School have improved or diminished. The causes of this change may be the result of many factors, some financial and some not. Non- financial factors include current laws in New Jersey restricting revenue growth, facility condition, required educational programs and other factors.

In the *Statement of Net Position* and the *Statement of Activities*, the Charter School is divided into two kinds of activities:

- ❖ Governmental Activities — All of the Charter School's programs and services are reported here including instruction, administration, support services and capital outlay.
- ❖ Business-Type Activities — These services are provided on a charge for goods or services basis to recover all the expenses of the goods or services provided. The Food Service enterprise fund is reported as a business activity.

Reporting the Charter School's Most Significant Funds

Fund Financial Statements

Fund financial reports provide detailed information about the Charter School's funds. The Charter School uses many funds to account for a multitude of financial transactions. The Charter School's governmental funds are the General Fund and Special Revenue Fund.

**HOPE ACADEMY CHARTER SCHOOL
ASBURY PARK, NEW JERSEY**

**MANAGEMENT'S DISCUSSION AND ANALYSIS
FOR THE FISCAL YEAR ENDED JUNE 30, 2017
UNAUDITED
(CONTINUED)**

Governmental Funds

The Charter School's activities are reported in governmental funds, which focus on how money flows into and out of those funds and the balances left at year-end available for spending in the future years. These funds are reported using an accounting method called modified accrual accounting, which measures cash and all other financial assets that can readily be converted to cash. The governmental fund statements provide a detailed short-term view of the Charter School's general government operations and the basic services it provides. Governmental fund information helps the reader determine whether there are more or fewer financial resources that can be spent in the near future to finance educational programs. The relationship (or differences) between governmental activities (reported in the *Statement of Net Position* and the *Statement of Activities*) and governmental funds are reconciled in the financial statements.

Enterprise Fund

The enterprise fund uses the same basis of accounting as business-type activities; therefore, these statements are essentially the same.

Notes to the Basic Financial Statements

The notes provide additional information that is essential to a full understanding of the data provided in the Charter School-wide and fund financial statements. The notes to the basic financial statements can be found starting on page 35 of this report.

The Charter School as a Whole

Recall that the *Statement of Net Position* provides the perspective of the Charter School as a whole. Net position may serve over time as a useful indicator of a government's financial position.

The Charter School's financial position is the product of several financial transactions including the net results of activities.

The Charter School's combined net position were \$1,426,756 for 2017 and 1,110,282 for 2016.

Governmental Activities

The Charter School's total revenues were \$3,746,822 for 2017 and \$3,712,580 for 2016, this includes \$362,421 for 2017 and \$351,675 for 2016 of state reimbursed TPAF social security and pension contributions.

The total cost of all program and services was \$3,466,197 for 2017 and \$3,340,169 for 2016. Instruction comprises 48% for 2017 and 50% for 2016 of Charter School expenditures.

**HOPE ACADEMY CHARTER SCHOOL
ASBURY PARK, NEW JERSEY**

**MANAGEMENT'S DISCUSSION AND ANALYSIS
FOR THE FISCAL YEAR ENDED JUNE 30, 2017
UNAUDITED
(CONTINUED)**

Business-Type Activities

Revenues for the Charter School's business-type activities (food service program) were comprised of charges for services and federal and state reimbursements.

- ❖ Food service expenditures exceeded revenues by \$23,589 for 2017 and revenues exceeded expenditures by \$10,605 for 2016.
- ❖ Charges for services represent \$2,915 for 2017 and \$2,494 for 2016 of revenue. This represents amounts paid by patrons for daily food.
- ❖ Federal and state reimbursements for meals, including payments for free and reduced lunches and breakfast, and state snack program were \$163,625 for 2017 and \$154,784 for 2016.

Governmental Activities

The *Statement of Activities* shows the cost of program services and the charges for services and grants offsetting those services. Instruction expenses include activities directly dealing with the teaching of pupils and the interaction between teacher and student, including extracurricular activities.

Administration includes expenses associated with administrative and financial supervision of the Charter School.

Support services include the activities involved with assisting staff with the content and process of teaching to students, including curriculum and staff development and the costs associated with operating the facility.

Capital Outlay represents instructional and/or non-instructional equipment purchased and is capitalized when such equipment is over the \$2,000 threshold.

The Charter School's Funds

All governmental funds (i.e., general fund and special revenue fund presented in the fund-based statements) are accounted for using the modified accrual basis of accounting. Total revenues amounted to \$3,746,822 for 2017 and \$3,712,580 for 2016 and expenditures were \$3,396,266 for 2017 and \$3,297,110 for 2016. The net change in fund balance was most significant in the general fund, an increase of \$350,556 for 2017 and an increase of \$415,470 for 2016.

**HOPE ACADEMY CHARTER SCHOOL
ASBURY PARK, NEW JERSEY**

**MANAGEMENT'S DISCUSSION AND ANALYSIS
FOR THE FISCAL YEAR ENDED JUNE 30, 2017
UNAUDITED
(CONTINUED)**

The Charter School's Funds (Continued)

As demonstrated by the various statements and schedules included in the financial section of this report, the Charter School continues to meet its responsibility for sound financial management. The following schedules present a summary of the revenues of the governmental funds for the fiscal year ended June 30, 2017, and the amount and percentage of increases and decreases in relation to prior year revenues.

<u>Revenues</u>	<u>Amount</u>	<u>Percent of Total</u>	<u>Increase/ (Decrease) From 2016</u>	<u>Percent of Increase/ (Decrease)</u>
Local Sources	\$ 693,945	18.52%	\$ 9,082	1.33%
State Sources	2,822,145	75.32%	31,709	1.12%
Federal Sources	<u>230,732</u>	<u>6.16%</u>	<u>(6,549)</u>	<u>(2.84%)</u>
Total	<u>\$ 3,746,822</u>	<u>100.00%</u>	<u>\$ 34,242</u>	

The following schedule represents a summary of general fund and special revenue fund expenditures for the fiscal year ended June 30, 2017, and the percentage of decreases and increases in relation to prior year amounts.

<u>Expenditures</u>	<u>Amount</u>	<u>Percent of Total</u>	<u>Increase/ (Decrease) From 2016</u>	<u>Percent of Increase/ (Decrease)</u>
Instruction	\$ 1,279,558	37.68%	\$ (64,780)	(4.82%)
Administration	1,232,993	36.30%	170,091	16.00%
Support Services	640,505	18.86%	(225,066)	26.00%
Capital Outlay	<u>243,210</u>	<u>7.16%</u>	<u>218,911</u>	<u>900.91%</u>
Total	<u>\$ 3,396,266</u>	<u>100.00%</u>	<u>\$ 99,156</u>	

Changes in expenditures were the results of varying factors. Current expense decreased due to reductions in staff and medical costs.

General Fund Budgeting Highlights

The Charter School's budget is prepared according to New Jersey law, and is based on accounting for certain transactions on a basis of cash receipts, disbursements, and encumbrances. The most significant budgeted fund is the General Fund.

**HOPE ACADEMY CHARTER SCHOOL
ASBURY PARK, NEW JERSEY**

**MANAGEMENT'S DISCUSSION AND ANALYSIS
FOR THE FISCAL YEAR ENDED JUNE 30, 2017
UNAUDITED
(CONTINUED)**

Over the course of the year, the Charter School revised the annual operating budget in accordance with state regulations. Revisions in the budget were made to recognize revenues that were not anticipated and to prevent over-expenditures in specific line item accounts.

Capital Assets (Net of Depreciation)

At the end of the fiscal year 2017, the Charter School had \$4,454,783 invested in capital assets and \$161,671 for 2016.

For the Future

The Hope Academy Charter School is in good financial condition presently. The Charter School is proud of its community support. A major concern is the continued enrollment growth of the Charter School with the increased reliance on federal and state funding.

In conclusion, the Hope Academy Charter School has committed itself to financial excellence for many years. In addition, the Charter School's system for financial planning, budgeting, and internal financial controls are well regarded. The Charter School plans to continue its sound fiscal management to meet the challenge of the future.

Contacting the Charter School's Financial Management

This financial report is designed to provide our citizens, taxpayers, investors, and creditors with a general overview of the Charter School's finances and to show the Charter School's accountability for the money it receives. If you have questions about this report or need additional information, contact the School Business Administrator/Board Secretary at Hope Academy Charter School, 601 Grand Avenue, Asbury Park, New Jersey 07712.

BASIC FINANCIAL STATEMENTS

SECTION A – CHARTER SCHOOL-WIDE FINANCIAL STATEMENTS

The statement of net position and the statement of activities display information about the Charter School. These statements include the financial activities of the overall Charter School, except for fiduciary activities. Eliminations have been made to minimize the double-counting of internal activities. These statements distinguish between the governmental and business-type activities of the Charter School.

HOPE ACADEMY CHARTER SCHOOL
Statement of Net Position
June 30, 2017

	Governmental Activities	Business-Type Activities	Total
ASSETS:			
Cash and Cash Equivalents	\$ 1,670,222	\$ 29,845	\$ 1,700,067
Interfund Receivables	209,725	-	209,725
Receivables	79,231	8,891	88,122
Prepaid Expenses and Other Assets	34,007	-	34,007
Capital Assets, Net	4,454,783	-	4,454,783
Total Assets	6,447,968	38,736	6,486,704
DEFERRED OUTFLOWS OF RESOURCES:			
Pensions	247,617	-	247,617
Deferred Outflows of Resources	247,617	-	247,617
LIABILITIES:			
Interfund Payable	207,965	-	207,965
Payable to Governments	35,905	-	35,905
Accounts Payable	72,848	-	72,848
Deferred Revenue	7,115	-	7,115
Noncurrent Liabilities			
Long-Term Liabilities	4,014,678	-	4,014,678
Pensions	909,631	-	909,631
Total Liabilities	5,248,142	-	5,248,142
DEFERRED INFLOWS OF RESOURCES:			
Pensions	59,423	-	59,423
Deferred Inflows of Resources	59,423	-	59,423
NET POSITION:			
Invested in Capital Assets, Net of Related Debt	440,105	-	440,105
Unassigned	947,915	38,736	986,651
Total Net Position	\$ 1,388,020	\$ 38,736	\$ 1,426,756

HOPE ACADEMY CHARTER SCHOOL
 Statement of Activities
 For The Fiscal Year Ended June 30, 2017

Functions/Programs	Program Revenues					Net (Expense) Revenue and Changes in Net Position		
	Expenses	Indirect Expenses Allocation	Charges for Services	Operating Grants and Contributions	Capital Grants and Contributions	Governmental Activities	Business-Type Activities	Total
GOVERNMENTAL ACTIVITIES:								
Instruction	\$ 1,279,558	\$ 397,961	\$ -	\$ 39,496	\$ -	\$ (1,638,023)	\$ -	\$ (1,638,023)
Administration	686,683	187,276				(873,959)		(873,959)
Support Services	640,505					(640,505)		(640,505)
Capital Outlay	178,482	-				(178,482)		(178,482)
Unallocated Depreciation	95,732					(95,732)		(95,732)
Total Governmental Activities	2,880,960	\$ 585,237	-	39,496	-	(3,426,701)	-	(3,426,701)
BUSINESS-TYPE ACTIVITIES:								
Food Service	190,129		2,915	163,625	-	-	(23,589)	(23,589)
Total Business-Type Activities	190,129		2,915	163,625	-	-	(23,589)	(23,589)
Total Primary Government	\$ 3,071,089		\$ 2,915	\$ 203,121	\$ -	\$ (3,426,701)	\$ -	\$ (3,450,290)
GENERAL REVENUES								
General Purposes						\$ 535,785	\$ -	\$ 535,785
Federal and State Aid Not Restricted						3,013,381		3,013,381
Investment Earnings						1,410		1,410
Miscellaneous Revenue						156,750		156,750
Total General Revenues						<u>3,707,326</u>	<u>-</u>	<u>3,707,326</u>
Change in Net Position						280,625	(23,589)	257,036
Net Position (Deficit) - Beginning of Year						1,107,395	62,325	1,169,720
Net Position (Deficit) - Ending						<u>\$ 1,388,020</u>	<u>\$ 38,736</u>	<u>\$ 1,426,756</u>

The accompanying Notes to Basic Financial Statements are an integral part of this statement.

SECTION B – FUND FINANCIAL STATEMENTS

The individual Fund statements and schedules present more detailed information for the individual fund in a format that segregates information by fund type.

**GOVERNMENTAL
FUNDS**

HOPE ACADEMY CHARTER SCHOOL
 Governmental Funds
 Balance Sheet
 June 30, 2017

	General Fund	Special Revenue Fund	Total
ASSETS:			
Cash	\$ 1,395,738	\$ 199,484	\$ 1,595,222
Cash-Escrow	75,000	-	75,000
Interfund Receivables	209,725	-	209,725
Receivables From Other Governments	5,227	15,596	20,823
Other Receivables	9,764	-	9,764
Tax Levy Receivable	48,644	-	48,644
Prepaid Expenses	34,007	-	34,007
Total Assets	1,778,105	215,080	1,993,185
LIABILITIES AND FUND BALANCES:			
Liabilities:			
Interfund Payable	\$ -	\$ 207,965	\$ 207,965
Payable to State Government	35,905	-	35,905
Accounts Payable	72,848	-	72,848
Deferred Revenue	-	7,115	7,115
Total Liabilities	108,753	215,080	323,833
Fund Balances:			
Unassigned:			
General Fund	1,669,352	-	1,669,352
Total Fund Balances	1,669,352	-	1,669,352
Total Liabilities and Fund Balances	\$ 1,778,105	\$ 215,080	

Amounts reported for governmental activities in the statement of net position (A-1) are different because:

Capital assets used in governmental activities are not financial resources and therefore are not reported in governmental funds. The cost of the assets is \$4,769,234 and the accumulated depreciation is \$314,451. 4,454,783

Net pension liability of \$909,631, deferred inflows of resources of \$59,423 less deferred outflows of resources of \$247,617 related to pensions are not reported in the governmental funds. (721,437)

Long-term liabilities are not due and payable in the current period and therefore are not reported as liabilities in the funds. (4,014,678)

Net Position of Governmental Activities **\$ 1,388,020**

The accompanying Notes to Basic Financial Statements are an integral part of this statement.

HOPE ACADEMY CHARTER SCHOOL
 Governmental Funds
 Statement of Revenues, Expenditures, and
 Changes in Fund Balance
 For The Fiscal Year Ended June 30, 2017

	General Fund	Special Revenue Fund	Total
REVENUES:			
Local Sources:			
Local Tax Levy	\$ 535,785	\$ -	\$ 535,785
Interest on Investments	1,410		1,410
Miscellaneous	30,462	126,288	156,750
Total Local Sources	567,657	126,288	693,945
State Sources	2,822,145		2,822,145
Federal Sources		230,732	230,732
Total Revenues	3,389,802	357,020	3,746,822
EXPENDITURES:			
Current:			
Instruction	986,958	292,600	1,279,558
Administration	1,232,993		1,232,993
Support Services	576,085	64,420	640,505
Capital Outlay	243,210	-	243,210
Total Expenditures	3,039,246	357,020	3,396,266
NET CHANGE IN FUND BALANCE	350,556	-	350,556
FUND BALANCE, JULY 1	1,568,796	-	1,568,796
TRANSFERS OUT - BUILDING PURCHASE	(250,000)	-	(250,000)
FUND BALANCE, JUNE 30	\$ 1,669,352	\$ -	\$ 1,669,352

The accompanying Notes to Basic Financial Statements are an integral part of this statement.

HOPE ACADEMY CHARTER SCHOOL
 Reconciliation of the Statement of Revenues, Expenditures
 and Changes in Fund Balances of Governmental Funds
 to the Statement of Activities
 For The Fiscal Year Ended June 30, 2017

Total net change in fund balances - governmental fund (from B-2)	\$	350,556
Amounts reported for governmental activities in the statement of activities (A-2) are different because:		
<p>Capital outlays are reported in governmental funds as expenditures. However, on the statement of activities, the cost of those assets if capitalized is allocated over their estimated useful lives as depreciation expense. This is the amount by which depreciation exceeded capital outlays in the current fiscal year.</p>		
Capital Asset Additions	\$ 64,728	
Depreciation Expense	<u>(95,732)</u>	(31,004)
<p>Pension costs associated with the PERS pension plan are reported in the governmental funds as expenditures in the year the school pension contribution is paid. However, on the statement of activities, the net difference between the current and prior year net pension liability is recognized</p>		
		<u>(38,927)</u>
Change in net position of governmental activities	\$	<u>280,625</u>

The accompanying Notes to Basic Financial Statements are an integral part of this statement.

PROPRIETARY FUNDS

HOPE ACADEMY CHARTER SCHOOL
 Proprietary Funds
 Combining Statement of Fund Net Position
 June 30, 2017

	Business-Type Activities
	Food Service
ASSETS:	
Current Assets:	
Cash and Cash Equivalents	\$ 29,845
Intergovernmental Accounts Receivable:	
Federal	8,775
State	116
	38,736
Total Current Assets	38,736
Total Assets	\$ 38,736
 LIABILITIES AND NET POSITION:	
Liabilities:	
	\$ -
Total Liabilities	-
 NET POSITION:	
Unassigned	38,736
Total Liabilities and Net Position	\$ 38,736

The accompanying Notes to Basic Financial Statements are an integral part of this statement.

HOPE ACADEMY CHARTER SCHOOL
 Proprietary Funds
 Combining Statement of Revenues, Expenses, and Changes in Net Position
 For The Fiscal Year Ended June 30, 2017

	Business-Type Activities
	Food Service
OPERATING REVENUES:	
Charges for Services:	
Daily Sales Reimbursable Program	\$ 2,915
Total Operating Revenues	2,915
OPERATING EXPENSES:	
Salaries	41,972
Rent Expense	10,000
Cost of Sales	138,157
Total Operating Expenses	190,129
OPERATING (LOSS)	(187,214)
NONOPERATING REVENUES:	
State Sources:	
State School Lunch Program	1,958
Federal Sources:	
National School Breakfast Program	45,574
National School Lunch Program	112,729
National School Snack Program	3,364
Total Nonoperating Revenues	163,625
CHANGE IN NET POSITION	(23,589)
TOTAL NET POSITION, JULY 1	62,325
TOTAL NET POSITION, JUNE 30	\$ 38,736

The accompanying Notes to Basic Financial Statements are an integral part of this statement.

HOPE ACADEMY CHARTER SCHOOL
 Proprietary Fund
 Combining Statement of Cash Flows
 For The Fiscal Year Ended June 30, 2017

	Business-Type Activities
	Food Service
CASH FLOWS FROM OPERATING ACTIVITIES:	
Cash Received from Customers	\$ 2,915
Cash Payments to Suppliers and Employees	(186,541)
Net Cash Used In Operating Activities	(183,626)
CASH FLOWS FROM NONCAPITAL FINANCING ACTIVITIES:	
Cash Received from State and Federal Reimbursements	163,625
Net Cash Provided by Noncapital Financing Activities	163,625
Net Decrease in Cash and Cash Equivalents	(20,001)
Cash and Cash Equivalents, Beginning of the Year	49,846
Cash and Cash Equivalents, End of the Year	\$ 29,845
Reconciliation of Operating Loss to Net Cash Used in:	
Operating Activities:	
Operating Loss Used for Operating Activities	\$ (187,214)
Changes in Assets and Liabilities:	
Decrease in Intergovernmental Accounts Receivable	3,588
Net Cash Used in Operating Activities	\$ (183,626)

The accompanying Notes to Basic Financial Statements are an integral part of this statement.

***FIDUCIARY
FUNDS***

HOPE ACADEMY CHARTER SCHOOL
 Fiduciary Funds
 Statement of Fiduciary Net Position
 June 30, 2017

	Total Agency Fund
ASSETS:	
Cash and Cash Equivalents	\$ 35,810
Total Assets	\$ 35,810
LIABILITIES:	
Liabilities:	
Interfund Accounts Payable	\$ 1,760
Payroll Deductions and Withholdings	31,995
Due to Student Groups	2,055
Total Liabilities	\$ 35,810

NOTES TO THE FINANCIAL STATEMENTS

**HOPE ACADEMY CHARTER SCHOOL
NOTES TO THE FINANCIAL STATEMENTS
JUNE 30, 2017**

NOTE 1: SUMMARY OF SIGNIFICANT ACCOUNTING POLICIES

The financial statements of the Hope Academy Charter School have been prepared in conformity with generally accepted accounting principles (GAAP) as prescribed by the Governmental Accounting Standards Board (GASB). The GASB is the accounting standard-setting body responsible for establishing governmental accounting and financial reporting principles. The more significant accounting policies of the Charter School are described below.

For fiscal year 2016, the Charter School implemented the Governmental Accounting Standards Board (GASB) Statement No. 68, "Accounting and Financial Reporting for Pensions" and GASB Statement No. 71, "Pension Transition for Contributions Made Subsequent to the Measurement Date – an amendment of GASB Statement No. 68." GASB 68 established standards for measuring and recognizing pension liabilities, deferred outflows of resources and expense/expenditure.

A. Reporting Entity

The Charter School is an instrument of the State of New Jersey, established to function as an educational institution. Its mission is to establish a character school to serve as a neighborhood resource and as a model for other similar schools. The Hope Academy Charter School is committed to achieving the New Jersey Core Curriculum Content Standards and producing high academic achievement by all students. The Charter School will integrate a holistic curriculum, utilize learner center techniques, family and care giver centered approaches, comprehensive community involvement, cutting edge technology and an intimate nurturing environment that will enhance positive self-images.

The primary criterion for including activities within the Charter School's reporting entity, as set forth in Section 2100 of the GASB's Codification of Governmental Accounting and Financial Reporting Standards, is the degree of oversight responsibility maintained by the Charter School management. Oversight responsibility includes financial interdependency, selection of governing authority, designation of management, and ability to significantly influence operations and accountability for fiscal matters. The combined financial statements include all funds and account groups of the Charter School.

**HOPE ACADEMY CHARTER SCHOOL
NOTES TO THE FINANCIAL STATEMENTS
JUNE 30, 2017**

NOTE 1: SUMMARY OF SIGNIFICANT ACCOUNTING POLICIES (CONTINUED)

B. Basis of Presentation, Basis of Accounting

The Charter School's basic financial statements consist of Charter School-wide statements, including a statement of net position and a statement of activities, and fund financial statements which provide a more detailed level of financial information.

Charter school-wide Statements: The statement of net position and the statement of activities display information about the Charter School as a whole. These statements include the financial activities of the overall Charter School, except for fiduciary activities. Eliminations have been made to minimize the double-counting of internal activities. These statements distinguish between the governmental and business-type activity of the Charter School. Governmental activities generally are financed through intergovernmental revenues, and other non-exchange transactions. Business-type activities are financed in whole or in part by fees charged to external parties.

The statement of net position presents the financial condition of the governmental and business-type activity of the Charter School at fiscal year end. The statement of activities presents a comparison between direct expenses and program revenues for the business-type activity of the Charter School and for each function of the Charter School's governmental activities. Direct expenses are those that are specifically associated with a program or function and, therefore, are clearly identifiable to a particular function.

Program revenues include (a) fees and charges paid by the recipients of goods or services offered by the programs and (b) grants and contributions that are restricted to meeting the operational or capital requirements of a particular program. Revenues that are not classified as program revenues are presented as general revenues. The comparison of direct expenses with program revenues identifies the extent to which each governmental function or business segment is self-financing or draws from the general revenues of the Charter School. *Fund Financial Statements:* During the fiscal year, the Charter School segregates transactions related to certain Charter School functions or activities in separate funds in order to aid financial management and to demonstrate legal compliance. The fund financial statements provide information about the Charter School's funds, including its fiduciary funds. Separate statements for each fund category — *governmental, proprietary, and fiduciary* — are presented. The New Jersey Department of Education (NJDOE) has elected to require New Jersey Charter Schools to treat each governmental fund as a major fund in accordance with the option noted in GASB No. 34, paragraph 76. The NJDOE believes that the presentation of all funds as major is important for public interest and to promote consistency among Charter School financial reporting models.

**HOPE ACADEMY CHARTER SCHOOL
NOTES TO THE FINANCIAL STATEMENTS
JUNE 30, 2017**

NOTE 1: SUMMARY OF SIGNIFICANT ACCOUNTING POLICIES (CONTINUED)

Basis of Presentation, Basis of Accounting (Continued)

The Charter School reports the following governmental funds:

General Fund: The general fund is the general operating fund of the Charter School and is used to account for all expendable financial resources except those required to be accounted for in another fund. Included are certain expenditures for vehicles and movable instructional or non-instructional equipment which are classified in the capital outlay subfund.

As required by the New Jersey State Department of Education, the Charter School includes budgeted capital outlay in this fund. Generally accepted accounting principles as they pertain to governmental entities state that general fund resources may be used to directly finance capital outlays for long-lived improvements as long as the resources in such cases are derived exclusively from unrestricted revenues. Resources for budgeted capital outlay purposes are normally derived from State of New Jersey Aid and appropriated fund balance. Expenditures are those that result in the acquisition of or additions to fixed assets for land, existing buildings, improvements of grounds, construction of buildings, additions to or remodeling of buildings and the purchase of built-in equipment. These resources can be transferred from and to Current Expense by Board resolution.

Special Revenue Fund: The special revenue fund is used to account for the proceeds of specific revenue from State and Federal Government, (other than major capital projects, debt service or the enterprise funds) and local appropriations that are legally restricted to expenditures for specified purposes.

Capital Projects Fund: The capital projects fund is used to account for all financial resources to be used for the acquisition or construction of major capital facilities (other than those financed by proprietary funds).

Debt Service Fund: Not applicable.

The Charter School reports the following proprietary fund:

Enterprise (Food Service) Fund: The enterprise fund accounts for all revenues and expenses pertaining to the cafeteria operations. The food service fund is utilized to account for operations that are financed and operated in a manner similar to private business enterprises. The stated intent is that the cost (i.e. expenses including depreciation and indirect costs) of providing goods or services to the students on a continuing basis are financed or recovered primarily through user charges.

**HOPE ACADEMY CHARTER SCHOOL
NOTES TO THE FINANCIAL STATEMENTS
JUNE 30, 2017**

NOTE 1: SUMMARY OF SIGNIFICANT ACCOUNTING POLICIES (CONTINUED)

Basis of Presentation. Basis of Accounting (Continued)

Additionally, the Charter School reports the following fund type:

Fiduciary Funds: The Fiduciary Funds are used to account for assets held by the Charter School on behalf of others and includes Student Activities Fund, Payroll and Payroll Agency Funds.

Basis of Accounting

Basis of accounting determines when transactions are recorded in the financial records and reported on the financial statements.

Charter School-wide, Proprietary, and Fiduciary Fund Financial Statements: The financial statements are prepared using the accrual basis of accounting. Governmental funds use the modified accrual basis of accounting; the enterprise fund and fiduciary funds use the accrual basis of accounting. Differences in the accrual and modified accrual basis of accounting arise in the recognition of revenue, the recording of deferred revenue, and in the presentation of expenses versus expenditures. The Charter School is entitled to receive monies under the established payment schedule and the unpaid amount is considered to be an "accounts receivable". Revenue from grants, entitlements, and donations is recognized in the fiscal year in which all eligibility requirements have been satisfied.

Governmental Fund Financial Statements: Governmental funds are reported using the current financial resources measurement focus and the modified accrual basis of accounting. Under this method, revenues are recognized when measurable and available. "Measurable" means the amount of the transaction can be determined and "available" means collectible within the current period or soon enough thereafter to be used to pay liabilities of the current period. Expenditures are recorded when the related fund liability is incurred, except for principal and interest on general long-term debt, claims and judgments, and compensated absences, which are recognized as expenditures to the extent they have matured. General capital asset acquisitions are reported as expenditures in governmental funds. Proceeds of general long-term debt and acquisitions under capital leases are reported as other financing sources.

All governmental and business-type activities and enterprise funds of the Charter School follow FASB Statements and Interpretations issued on or before November 30, 1989, Accounting Principles Board Opinions, and Accounting Research Bulletins, unless those pronouncements conflict with GASB pronouncements.

**HOPE ACADEMY CHARTER SCHOOL
NOTES TO THE FINANCIAL STATEMENTS
JUNE 30, 2017**

NOTE 1: SUMMARY OF SIGNIFICANT ACCOUNTING POLICIES (CONTINUED)

C. Budgets/Budgetary Control

Annual appropriated budgets are prepared in the spring of each year for the general and special revenue funds. Budgets are prepared using the modified accrual basis of accounting except for special revenue funds. The legal level of budgetary control is established at line item accounts within each fund. Line item accounts are defined as the lowest (most specific) level of detail as established pursuant to the minimum chart of accounts referenced in N.J.A.C. 6:20-2A.2(m)1. All budget amendments/transfers must be approved by School Board resolution. All budget amounts presented in the accompanying supplementary information reflect the original budget and the amended budget (which have been adjusted for legally authorized revisions of the annual budgets during the year).

Appropriations, except remaining project appropriations, encumbrances, and unexpended grant appropriations, lapse at the end of each fiscal year. The capital projects fund presents the remaining project appropriations compared to current year expenditures.

Formal budgetary integration into the accounting system is employed as a management control device during the fiscal year. For governmental funds, there are no substantial differences between the budgetary basis of accounting and generally accepted accounting principles (GAAP) with the exception of the special revenue fund as noted below. Encumbrance accounting is also employed as an extension of formal budgetary integration in the governmental fund types. Unencumbered appropriations lapse at fiscal year end.

The accounting records of the special revenue fund are maintained on the grant accounting budgetary basis. The grant accounting budgetary basis differs from GAAP in that the grant accounting budgetary basis recognizes encumbrances as expenditures and also recognizes the related revenues, whereas the GAAP basis does not. Sufficient supplemental records are maintained to allow for the presentation of GAAP basis financial reports.

The following presents a reconciliation of the Special Revenue Funds from the budgetary basis of accounting to the GAAP basis of accounting:

Total Revenues & Expenditures (Budgetary Basis)	\$ 357,020
Adjustments:	
Less Encumbrances at June 30,2017	-
Plus Encumbrances at June 30,2016	
Total Revenues and Expenditures (GAAP Basis)	\$ 357,020

**HOPE ACADEMY CHARTER SCHOOL
NOTES TO THE FINANCIAL STATEMENTS
JUNE 30, 2017**

NOTE 1: SUMMARY OF SIGNIFICANT ACCOUNTING POLICIES (CONTINUED)

D. Encumbrances Accounting

Under encumbrance accounting purchase orders, contracts and other commitments for the expenditure of resources are recorded to reserve a portion of the applicable appropriation. Open encumbrances in governmental funds other than the special revenues fund are reported as reservations of fund balances at fiscal year end as they do not constitute expenditures or liabilities but rather commitments related to unperformed contracts for goods and services.

Open encumbrances in the special revenue fund for which the Charter School has received advances are reflected in the balance sheet as deferred revenues at fiscal year end.

The encumbered appropriation authority carries over into the next fiscal year. An entry will be made at the beginning of the next fiscal year to increase the appropriation reflected in the certified budget by the outstanding encumbrance amount as of the current fiscal year end.

E. Assets, Liabilities, and Equity

Interfund Transactions:

Transfers between governmental and business-type activities on the Charter School – wide statements are reported in the same manner as general revenues.

Exchange transactions between funds are reported as revenues in the seller funds and as expenditures/expenses in the purchaser funds. Flows of cash or goods from one fund to another without a requirement for repayment are reported as Interfund transfers. Interfund transfers are reported as other financing sources/uses in governmental funds and after non-operating revenues/expenses in the enterprise fund. Repayments from funds responsible for particular expenditures/expenses to the funds that initially paid for them are not presented on the financial statements.

Inventories:

Inventory purchases, other than those recorded in the enterprise fund, are recorded as expenditures during the year of purchase. Enterprise fund inventories are valued at cost, which approximates market, using the first-in/first-out (FIFO) method.

Allowance for Uncollectible Accounts:

No allowance for uncollectible accounts has been recorded as all amounts are considered collectible.

**HOPE ACADEMY CHARTER SCHOOL
NOTES TO THE FINANCIAL STATEMENTS
JUNE 30, 2017**

NOTE 1: SUMMARY OF SIGNIFICANT ACCOUNTING POLICIES (CONTINUED)

Assets, Liabilities, and Equity (Continued)

Capital Assets:

The Charter School has established a formal system of accounting for its capital assets. Purchased or constructed capital assets are reported at cost. Donated capital assets are valued at their estimated fair market value on the date received. The cost of normal maintenance and repairs that do not add to the value of the asset or materially extend assets' lives are not capitalized. The Charter School does not possess any infrastructure. The capitalization threshold used by Charter Schools in the State of New Jersey is \$2,000.

All reported capital assets except for land and construction in progress are depreciated. Depreciation is computed using the straight-line method under the half-year convention over the following estimated useful lives:

<u>Asset Class</u>	<u>Estimated Useful Lives</u>
School Buildings	50
Building Improvements	20
Electrical/Plumbing	30
Office & Computer Equipment	5-10

In the fund financial statements, fixed assets used in governmental fund operations are accounted for as capital outlay expenditures of the governmental fund upon acquisition. Fixed assets are not capitalized and related depreciation is not reported in the fund financial statements.

Deferred Revenue:

Deferred revenue arises when assets are recognized before revenue recognition criteria have been satisfied. Grants and entitlement received before the eligibility requirements are met are recorded as deferred revenue.

Accrued Liabilities and Long-term Obligations:

All payables, accrued liabilities, and long-term obligations are reported on the Charter School – wide financial statements. In general, governmental fund payables and accrued liabilities that, once incurred, are paid in a timely manner and in full from current financial resources are reported as obligations of the funds.

**HOPE ACADEMY CHARTER SCHOOL
NOTES TO THE FINANCIAL STATEMENTS
JUNE 30, 2017**

NOTE 1: SUMMARY OF SIGNIFICANT ACCOUNTING POLICIES (CONTINUED)

Assets, Liabilities, and Equity (Continued)

Net Position:

Net position represents the difference between assets and liabilities. Net investment in capital assets consists of capital assets, net of accumulated depreciation, reduced by the outstanding balance of any borrowing used for the acquisition, construction, or improvement of those assets. Net position are reported as restricted when there are limitations imposed on their use either through the enabling legislation adopted by the Charter School or through external restrictions imposed by creditors, grantors, or laws or regulations of other governments. The Charter School's policy is to first apply restricted resources when an expense is incurred for purposes for which both restricted and unrestricted net position is available.

Fund Balance Reserves:

The Charter School reserves those portions of fund balance which are legally segregated for a specific future use or which do not represent available expendable resources and, therefore, are not available for appropriation or expenditure. Unreserved fund balance indicates that portion which is available for appropriation in future periods. There is no fund balance reserve for the current year.

Revenues — Exchange and Nonexchange Transactions:

Revenue resulting from exchange transactions, in which each party gives and receives essentially equal value, is recorded on the accrual basis when the exchange takes place. On the modified accrual basis, revenue is recorded in the fiscal year in which the resources are measurable and become available. Available means the resources will be collected within the current fiscal year or are expected to be collected soon enough thereafter to be used to pay liabilities of the current fiscal year. For the Charter School, available means within sixty days of the fiscal year end.

Nonexchange transactions, in which the Charter School receives value without directly giving equal value in return, include grants, entitlements, and donations. Revenue from grants, entitlements, and donations are recognized in the fiscal year in which all eligibility requirements have been satisfied. Eligibility requirements include timing requirements, which specify the year when the resources are required to be used or the fiscal year when use is first permitted; matching requirements, in which the Charter School must provide local resources to be used for a specified purpose; and expenditure requirements, in which the resources are provided to the Charter School on a reimbursement basis. On the modified accrual basis, revenue from non-exchange transactions must also be available before it can be recognized.

Under the modified accrual basis, the following revenue sources are considered to be both measurable and available at fiscal year-end: state and local revenues available as an advance, interest, and tuition.

**HOPE ACADEMY CHARTER SCHOOL
NOTES TO THE FINANCIAL STATEMENTS
JUNE 30, 2017**

NOTE 1: SUMMARY OF SIGNIFICANT ACCOUNTING POLICIES (CONTINUED)

Assets, Liabilities, and Equity (Continued)

Operating Revenues and Expenses:

Operating revenues are those revenues that are generated directly from the primary activity of the enterprise fund. For the Charter School, these revenues are sales for food service. Operating expenses are necessary costs incurred to provide the service that is the primary activity of the enterprise fund.

Allocation of Indirect Expenses:

The Charter School reports all direct expenses by function in the Statement of Activities. Direct expenses are those that are clearly identifiable with a function. Indirect expenses are allocated to functions but are reported separately in the Statement of Activities. Employee benefits, including the employer's share of social security, workers compensation, and medical and dental benefits, were allocated based on salaries of that program. Depreciation expense, where practicable, is specifically identified by function and is included in the indirect expense column of the Statement of Activities. Depreciation expense that could not be attributed to a specific function is considered an indirect expense and is reported separately on the Statement of Activities. Interest on long-term debt is considered an indirect expense and is reported separately on the Statement of Activities.

Extraordinary and Special Items:

Extraordinary items are transactions or events that are unusual in nature and infrequent in occurrence. Special items are transactions or events that are within the control of management and are either unusual in nature or infrequent in occurrence. Neither of these types of transactions occurred during the fiscal year.

Management Estimates:

The preparation of financial statements in conformity with generally accepted accounting principles requires management to make estimates and assumptions that affect the reported amounts of revenues and expenditures/expenses during the reporting period. Actual results could differ from those estimates.

Accrued Salaries and Wages:

Certain Charter School employees who provide services to the Charter School over the ten-month academic year have the option to have their salaries evenly disbursed during the entire twelve-month year. New Jersey statutes require that these earned but undisbursed amounts be retained in a separate bank account.

**HOPE ACADEMY CHARTER SCHOOL
NOTES TO THE FINANCIAL STATEMENTS
JUNE 30, 2017**

NOTE 1: SUMMARY OF SIGNIFICANT ACCOUNTING POLICIES (CONTINUED)

A. Pensions

For purposes of measuring the net pension liability, deferred outflows of resources and deferred inflows of resources related to pensions, and pension expense, information about the fiduciary net pension for the State of New Jersey Public Employees' Retirement System (PERS) and the State of New Jersey Teachers' Pension and Annuity Fund (TPAF) and additions to/deductions from the PERS's and TPAF's net position have been determined on the same basis as they are reported by the PERS and the TPAF. For this purpose, benefit payments (including refunds of employee contributions) are recognized when due and payable in accordance with the benefit terms. Pension Plan investments are reported at fair value.

B. Impact of Recently Issued Accounting Principles

Adopted Accounting Pronouncements

For the year ended June 30, 2017, the Charter School implemented GASB Statement No. 72, *Fair Value Measurement and Application*. As a result of implementing this statement, the Charter School is required to measure certain investments at fair value for financial reporting purposes. In addition, the Charter School is required to measure donated capital assets at acquisition value (an entry price); these assets were previously required to be measured at fair value. Statement No. 72 requires disclosures to be made about fair value measurements, the level of fair value hierarchy, and valuation techniques. Implementation of this Statement did not impact the Charter School's financial statements.

The Charter School implemented GASB Statement No. 73, *Accounting and Financial Reporting for Pensions and Related Assets that are Not Within the Scope of GASB Statement 68, and Amendments to Certain Provisions of GASB Statements 67 and 68*. Implementation of this Statement did not impact the Charter School's financial statements.

The Charter School implemented GASB Statement No. 76, *The Hierarchy of Generally Accepted Accounting Principles for State and Local Governments*. Implementation of this Statement did not impact the Charter School's financial statements.

**HOPE ACADEMY CHARTER SCHOOL
NOTES TO THE FINANCIAL STATEMENTS
JUNE 30, 2017**

NOTE 1: SUMMARY OF SIGNIFICANT ACCOUNTING POLICIES (CONTINUED)

Impact of Recently Issued Accounting Principles (Continued)

Recently Issued and Adopted Accounting Pronouncements

The GASB has issued the following Statements which will become effective in future years as shown below:

Statement No. 74, *Financial Reporting for Postemployment Benefit Plans Other Than Pension Plans*. The objective of this Statement is to improve the usefulness of information about postemployment benefits other than pensions (other postemployment benefits or OPEB) included in the general purpose external financial reports of state and local governmental OPEB plans for making decisions and assessing accountability. This Statement results from a comprehensive review of the effectiveness of existing standards of accounting and financial reporting for all postemployment benefits (pensions and OPEB) with regard to providing decision-useful information, supporting assessments of accountability and interperiod equity, and creating additional transparency. This Statement will be effective for the year ended June 30, 2017. Management does not expect this Statement to impact the Charter School's financial statements.

Statement No. 75, *Accounting and Financial Reporting for Post-Employment Benefits Other Than Pensions*. This Statement replaces the requirements of Statement No. 45, *Accounting and Financial Reporting by Employers for Post-Employment Benefits Other Than Pensions*, as amended, and No. 57, *OPEB Measurements by Agency Employers and Agent Multi-Employer Plans*, for OPEB Statement No. 74, *Financial Reporting for Post-Employment Benefit Plans Other Than Pension Plans*, establishes new accounting and financial reporting requirements for OPEB Plans. This Statement will be effective for the year ended June 30, 2018. Management has not yet determined the potential impact on the Charter School's financial statements.

Statement No. 77, *Tax Abatement Disclosures*. This Statement requires governments that enter into tax abatement agreements to disclose information about those agreements. This Statement will be effective for the year ended June 30, 2017. Management does not expect this Statement to impact the Charter School's financial statements.

Statement No. 78, *Pensions Provided Through Certain Multiple-Employer Defined Benefit Pension Plans*. The objective of this Statement is to address a practice issue regarding the scope and applicability of Statement No. 68,

Accounting and Financial Reporting for Pensions. This Statement will be effective for the year ended June 30, 2017. Management does not expect this Statement to impact the Charter School's financial statements.

**HOPE ACADEMY CHARTER SCHOOL
NOTES TO THE FINANCIAL STATEMENTS
JUNE 30, 2017**

NOTE 1: SUMMARY OF SIGNIFICANT ACCOUNTING POLICIES (CONTINUED)

Impact of Recently Issued Accounting Principles (Continued)

Recently Issued and Adopted Accounting Pronouncements (Continued)

Statement No. 79, *Certain External Investment Pools and Pool Participants*. This Statement addresses accounting and financial reporting for certain external investment pools and pool participants. This Statement will be effective for the year ended June 30, 2017. Management does not expect this Statement to impact the Charter School's financial statements.

Statement No. 80, *Blending Requirements for Certain Component Units – an amendment of GASB Statement No. 14*. The objective of this Statement is to improve financial reporting by clarifying the financial statement presentation requirements for certain component units. This Statement amends the blending requirements established in paragraph 53 of Statement No. 14, *The Financial Reporting Entity, as amended*. This Statement will be effective for the year ended June 30, 2018.

Management does not expect this Statement to impact the Charter School's financial statements.

Statement No. 81, *Irrevocable Split-Interest Agreements*. The objective of this Statement is to improve accounting and financial reporting for irrevocable split-interest agreements by providing recognition and measurement guidance for situations in which a government is a beneficiary of the agreement. This Statement will be effective for the year ended June 30, 2018. Management does not expect this Statement to impact the Charter School's financial statements.

Statement No. 82, *Pension Issues – an amendment of GASB Statements No. 67, 68 and 73*. The objective of this Statement is to address certain issues that have been raised with respect to Statements No. 67, *Financial Reporting for Pension Plans*, No. 68, *Accounting and Financial Reporting for Pensions*, and No. 73, *Accounting and Financial Reporting for Pensions and Related Assets That Are Not Within The Scope of GASB Statement 68, and Amendments to Certain Provisions of GASB Statements 67 and 68*. This Statement will be effective for the year ended June 30, 2018. Management has not yet determined the potential impact on the Charter School's financial statements.

NOTE 2: CASH AND CASH EQUIVALENTS

Cash and cash equivalents includes amounts in deposits, money market accounts and short-term investments with original maturities of three months or less.

Investments are stated at cost, or amortized cost, which approximates market. The amortized cost method involves valuing a security at its cost on the date of purchase and thereafter assuming a constant amortization to maturity of any discount or premium. The Board classifies certificates of deposit which have

**HOPE ACADEMY CHARTER SCHOOL
NOTES TO THE FINANCIAL STATEMENTS
JUNE 30, 2017**

NOTE 2: CASH AND CASH EQUIVALENTS

original maturity dates of more than three months but less than twelve months from the date of purchase, as investments.

GASB Statement No. 3 requires disclosure of the level of custodial credit risk assumed by the Board in its cash, cash equivalents and investments. Category 1 includes deposits/investments held by the Board's custodial bank trust department or agent in the Board's name. Category 2 includes uninsured and unregistered deposits/investments held by the Board's custodial bank trust department or agent in the Board's name. Category 3 includes uninsured or unregistered deposits/investments held by a broker or dealer, or held by the Board's custodial bank trust department or agent but not in the Board's name. These categories are not broad representations that deposits or investments are "safe" or "unsafe".

Deposits

New Jersey statutes require that charter schools deposit public funds in public depositories located in New Jersey which are insured by the Federal Deposit Insurance Corporation, the Federal Savings and Loan Insurance Corporation, or by any other agency of the United States that insures deposits made in public depositories. Charter schools are also permitted to deposit public funds in the State of New Jersey Cash Management Fund.

New Jersey statutes require public depositories to maintain collateral for deposits of public funds that exceed depository insurance limits as follows:

The market value of the collateral must equal at least five percent of the average daily balance of collected public funds on deposit.

In addition to the above collateral requirement, if the public funds deposited exceed 75% of the capital funds of the depository, the depository must provide collateral having a market value at least equal to 100% of the amount exceeding 75%.

All collateral must be deposited with the Federal Reserve Bank of New York, the Federal Reserve Bank of Philadelphia, the Federal Home Loan Bank of New York, or a banking institution that is a member of the Federal Reserve System and has capital funds of not less than \$25,000,000.

Investments

New Jersey statutes permit the Board to purchase the following types of securities:

- a. Bonds or other obligations of the United States or obligations guaranteed by the United States.
- b. Bonds of any Federal Intermediate Credit Bank, Federal Home Loan Bank, Federal National Mortgage Agency or of any United States Bank for Cooperatives which have a maturity date not greater than twelve months from the date of purchase

**HOPE ACADEMY CHARTER SCHOOL
NOTES TO THE FINANCIAL STATEMENTS
JUNE 30, 2017**

NOTE 2: CASH AND CASH EQUIVALENTS (CONTINUED)

Investments (Continued)

c. Bonds or other obligations of the charter school.

The Charter School had no investments as of June 30, 2017. Cash and cash equivalents of the Charter School consisted of the following:

	General Fund	Special Revenue	Proprietary Fund	Fiduciary Funds	Total
Operating Account	\$ 1,470,738	\$ 199,484	\$ 29,845	\$ 35,810	\$ 1,735,877

The carrying amount of the Board’s cash and cash equivalents at June 30, 2017 was \$1,735,877 and the bank balance was \$1,853,355. All bank balances were covered by federal depository insurance and/or covered by a collateral pool maintained by the banks as required by New Jersey statutes.

Risk Category

All bank deposits, as of the balance sheet date, are entirely insured or collateralized by a collateral pool maintained by public depositories as required by the Governmental Unit Deposit Protection Act. In general, bank deposits are classified as to credit risk by three categories described below:

Category 1 — Insured or collateralized with securities held by the Board or by its agent in the Board’s name.

Category 2 — Collateralized with securities held by the pledging public depository’s trust department or agent in the Board’s name.

Category 3 — Uncollateralized, including any deposits that are collateralized with securities held by the pledging public depository, or by its trust department or agent, but not in the Board’s name.

As of June 30, 2017, the Board had funds invested and on deposit in checking accounts. These funds constitute “deposits with financial institutions” as defined by GASB Statement No. 3 and are classified as Category 1, both at year-end and throughout the year.

New Jersey Cash Management Fund

All investments in the Fund are governed by the regulations of the Investment Council, which prescribe specific standards designed to insure the quality of investments and to minimize the risks related to investments. In all the years of the Division of Investment’s existence, the Division has never suffered a default of principal or interest on any short-term security held by it due to the bankruptcy of a

**HOPE ACADEMY CHARTER SCHOOL
NOTES TO THE FINANCIAL STATEMENTS
JUNE 30, 2017**

NOTE 2: CASH AND CASH EQUIVALENTS (CONTINUED)

Risk Category (Continued)

New Jersey Cash Management Fund (Continued)

securities issuer; nevertheless, the possibility always exists, and for this reason a reserve is being accumulated as additional protection for the "Other-than-State" participants. In addition to the Council regulations, the Division sets further standards for specific investments and monitors the credit of all eligible securities issuers on a regular basis.

As of June 30, 2017, the Charter school had no funds on deposit with the New Jersey Cash Management Fund.

NOTE 3: RECEIVABLES

Receivables at June 30, 2017 consisted of accounts, intergovernmental, grants, and miscellaneous.

All receivables are considered collectible in full. A summary of the principal items of intergovernmental receivables follows:

	Governmental Fund Financial Statements	Governmental Wide Financial Statements
State Aid	\$ 53,871	\$ 53,987
Federal Aid	15,596	24,371
Other	9,764	9,764
Total Receivables, Net	\$ 79,231	\$ 88,122

NOTE 4: INTERFUND TRANSFERS AND BALANCES

Transfers between funds are used to repay expenses paid by another fund.

The following interfund balances remained on the fund financial statements at June 30, 2017:

Fund	Interfund Receivable	Interfund Payable
General Fund	\$ 209,725	\$ -
Special Revenue Fund		207,965
Fiduciary Fund		1,760
Total	\$ 209,725	\$ 209,725

**HOPE ACADEMY CHARTER SCHOOL
NOTES TO THE FINANCIAL STATEMENTS
JUNE 30, 2017**

NOTE 5: CAPITAL ASSETS

Capital asset activity for the fiscal year ended June 30, 2017, was as follows:

	<u>Beginning Balance</u>	<u>Additions</u>	<u>Retirements</u>	<u>Ending Balance</u>
Land				
Capital Assets Being Depreciated:		542,946		542,946
Building and Building Improvements	\$ 380,390	\$ 3,845,898	\$ -	\$ 4,226,288
Totals at Historical Cost	<u>380,390</u>	<u>4,388,844</u>	<u>-</u>	<u>4,769,234</u>
Less Accumulated Depreciation For:				
Building and Building Improvements	218,719	95,732	-	314,451
Total Accumulated Depreciation	<u>218,719</u>	<u>95,732</u>	<u>-</u>	<u>314,451</u>
Total Capital Assets Being Depreciated Net of Accumulated Depreciation	161,671	4,293,112	-	4,454,783
Government Activity Capital Assets, Net	<u>\$ 161,671</u>	<u>\$ 4,293,112</u>	<u>-</u>	<u>\$ 4,454,783</u>

On January 11, 2001, the NJ State Department of Education announced that effective July 1, 2001, the capitalization threshold used by school districts in the State of New Jersey is increased to \$2,000. The previous threshold was \$500. Applying the higher capitalization threshold retroactively (removal of old assets from the General Fixed Assets Account Group) will be permitted by the State regulations in situations where (1) the assets have been fully depreciated, or (2) the assets have exceeded their useful lives. The retirement of machinery and equipment is due to the retroactive application of the higher threshold of equipment capitalization. That is, the School has removed from their records assets with a historical cost greater than \$500 but not greater than \$2,000 that were fully depreciated or had exceeded their useful lives.

Depreciation expense of \$95,732 was charged to an unallocated function.

NOTE 6: RENTAL LEASES

In April 2008, the school entered into a lease for five (5) years requiring a minimum base rent plus a portion of the operating costs of the building commencing on July 1, 2008 and ending June 30, 2013. In July 2011, the school entered into a new lease after the building was sold. The lease is for ten (10) years commencing on November 1, 2012 and ending October 31, 2021. The base rent is \$34,583 per month (\$415,000 annual). On November 29, 2016, the school purchased the building for \$4,312,500 cancelling the building lease. Total rental payments amounted to \$171,764 for this year.

NOTE 7: OBLIGATIONS UNDER EQUIPMENT LEASES

The Charter School is leasing two (2) copiers for a period of 48 months with monthly payments in the amount of \$758 commencing May 2017 and expiring April 2021. The following is a schedule of the future minimum lease payments under the capital leases at June 30, 2017:

**HOPE ACADEMY CHARTER SCHOOL
NOTES TO THE FINANCIAL STATEMENTS
JUNE 30, 2017**

NOTE 7: OBLIGATIONS UNDER EQUIPMENT LEASES (CONTINUED)

<u>Year</u>	<u>Amount</u>
2018	\$ 9,101
2019	9,101
2020	9,101
2021	<u>7,584</u>
Total minimum lease payments	<u>\$ 34,887</u>

NOTE 8: PENSION PLANS

Substantially all the Board's employees participate in one of the two contributory, defined benefit public employee systems: the Teachers' Pension and Annuity Fund (TPAF) or the Public Employee's Retirement System (PERS) of New Jersey; or the Defined Contribution Retirement Program (DCRP).

A. Public Employees' Retirement System (PERS)

Plan Description

The State of New Jersey, Public Employees; Retirement System (PERS) is a cost-sharing multiple-employer defined benefit pension plan administered by the State of New Jersey, Division of Pensions and Benefits (the Division). For additional information about the PERS, please refer to the Division's Comprehensive Annual Financial Report (CAFR) which can be found at www.state.nj.us/treasury/pensions/annrpts.shtml.

Benefits Provided

The vesting and benefit provisions are set by N.J.S.A. 43:15A. PERS provides retirement, death and disability benefits. All benefits vest after ten years of service, except for medical benefits, which vest after 25 years of service or under the disability provisions of PERS. The following represents the membership tiers for PERS:

Tier	Descriptions
1	Members who were enrolled prior to July 1, 2007
2	Members who were eligible to enroll on or after July 1, 2007 and prior to November 2, 2008
3	Members who were eligible to enroll on or after November 2, 2008, 2010 and prior to May 22, 2010
4	Members who were eligible to enroll on or after May 22, 2010 and prior to June 28, 2011
5	Members who were eligible to enroll on or after June 28, 2011

Service retirement benefits of 1/55th of final average salary for each year of service credit is available to Tiers 1 and 2 members upon reaching age 60 and to Tier 3 members upon reaching 62. Service retirement benefits of 1/60th of final average salary for each year of service credit is available to Tier 4 members upon reaching age 62 and to tier 5 members upon 65. Early retirement benefits are available to Tiers 1 and 2 members before reaching age 60, to Tiers 3 and 4 before age 62 with

**HOPE ACADEMY CHARTER SCHOOL
NOTES TO THE FINANCIAL STATEMENTS
JUNE 30, 2017**

NOTE 8: PENSION PLANS (CONTINUED)

Public Employees' Retirement System (PERS) (CONTINUED)

Benefits Provided (Continued)

25 or more years of service credit and Tier 5 with 30 more years of service credit before age 65. Benefits are reduced by a fraction of a percent for each month that a members retires prior to the age of which a member can receive full early retirement benefits in accordance with their respective tier. Tier 1 members can receive an unreduced benefit from age 50 to age 60 if they have at least 25 years of service. Deferred retirement is available to members who have at least 10 years of service credit and have not reached the service retirement age for the respective tier.

Contributions

The contribution policy for PERS is set by N.J.S.A. 15A and required contributions by active members and contributing members. The local employers' contribution amounts are based on an actuarially determined rate which includes the normal cost and unfunded accrued liability. Chapter 19, P.L. 2009 provided an option for local employers of PERS to contribute 50% of normal and accrued liability contribution amounts certified for payments due in State fiscal year 2009. Such employers will be credited with the full payment and any such amounts will not be included in their unfunded liability.

The actuaries will determine the unfunded liability of those retirement systems, by employer, for the reduced normal and accrued liability contributions provided under this law. This unfunded liability will be paid by the employer in level annual payments over a period of 15 years beginning with the payments due in the fiscal year ended June 30, 2012 and will be adjusted by the rate of return on the actuarial value of assets. Charter School contributions to PERS amounted to \$ 26,819 for fiscal year 2015.

Pension Liabilities Pension Expense, and Deferred Outflows of Resources and Deferred Inflows of Resources Related to Pensions

At June 30, 2017, the Charter School reported a liability of \$ 909,631 for its proportionate share of the net pension liability. The net pension liability was measured as of June 30, 2015 which was rolled forward to June 30, 2016. The Charter School's proportion of the net pension liability was based on a projection of the Charter School's long-term share of contributions to the pension plan relative to the projected contributions of all participating members, actuarially determined. At June 30, 2015, the Charter School's proportion was 0.00331150%, which was a decrease of 0.00016200% from its proportion measured as of June 30, 2014.

For the fiscal year ended June 30, 2016, the Charter School recognized pension expense of \$ 38,927. At June 30, 2015, the Charter School reported deferred outflows of resources and deferred related to pensions from the following sources.

**HOPE ACADEMY CHARTER SCHOOL
NOTES TO THE FINANCIAL STATEMENTS
JUNE 30, 2017**

NOTE 8: PENSION PLANS (CONTINUED)

Pension Liabilities Pension Expense, and Deferred Outflows of Resources and Deferred Inflows of Resources Related to Pensions (Continued)

	Deferred Outflows of Resources	Deferred Inflows of Resources
Changes in Assumptions	\$ 188,421	\$ -
Difference Between Expected and Actual Experience	16,916	-
Net Difference Between Projected and Actual Investment Earnings on Pension Plan Investments	-	59,423
	\$ 205,343	\$ 59,423

Amounts reported as deferred outflows of resources and deferred inflows resources (excluding employer specific amounts including changes in proportion) related to pensions will be recognized in pension expense as follows:

Fiscal Year Ending June 30,	Total
2016	\$ 15,586
2017	15,586
2018	15,586
2019	24,823
2020	14,032
	\$ 85,614

Actuarial Assumptions

The total pension liability for the June 30, 2016 measurement date was determined by an actuarial valuation as of July 1, 2015 which was rolled forward to June 30, 2016. The total pension liability for the June 30, 2016 measurement date was determined by an actuarial valuations as of July 1, 2015. This actuarial valuations used the following actuarial assumptions, applied to all periods in the measurement.

Inflation Rate	3.04%
Salary Increases:	
2012-2021	2.15-4.40% based on age
Thereafter	3.15-5.40% based on age
Investment Rate of Return	7.90%

**HOPE ACADEMY CHARTER SCHOOL
NOTES TO THE FINANCIAL STATEMENTS
JUNE 30, 2017**

NOTE 8: PENSION PLANS (CONTINUED)

Actuarial Assumptions (Continued)

Mortality rates were based on the RP-2000 Combined Healthy Male and Female Tables (setback 1 year for females) with adjustments for mortality improvements from the base year of 2012 based on Projection Scale AA.

The actuarial assumptions used in the July 1, 2016 valuation were based on the results of an actuarial experience study for the period July 1, 2008 to June 30, 2011. It is likely that future experience will not exactly conform to these assumptions. To the extent that actual experience deviates from these assumptions, the emerging liabilities may be higher or lower than anticipated. The more the experience deviates, the larger the impact on future financial statements.

Long Term Expected Rate of Return

In accordance with State statute, the long-term expected rate of return on pension plan investments is determined by the State Treasurer, after consultation with the Directors of the Division of Investments and Division of Pension and Benefits, the Board of Trustees and the actuaries. Best estimates of arithmetic real rates of return for each major asset class included in PERS' target asset allocation as of June 30, 2016 are summarized in the following table:

<u>Asset Class</u>	<u>Target Allocation</u>	<u>Long Term Expected Real Rate of Return</u>
Cash	5.00%	1.04%
Core Bonds	1.75%	1.64%
Intermediate-Term Bonds	10.00%	1.79%
Mortgage	2.10%	1.62%
High Yield Bonds	2.00%	4.03%
Inflation-Indexed Bonds	1.50%	3.25%
Broad U.S. Equities	27.25%	8.52%
Developed Foreign Equities	12.00%	6.88%
Emerging Market Equities	6.40%	10.00%
Private Equity	9.25%	12.41%
Hedge Funds/Absolute Return	12.00%	4.72%
Real Estate (Property)	2.00%	6.83%
Commodities	1.00%	5.32%
Global Debt ex US	3.50%	-0.40%
REIT	4.25%	5.12%

**HOPE ACADEMY CHARTER SCHOOL
NOTES TO THE FINANCIAL STATEMENTS
JUNE 30, 2017**

NOTE 8: PENSION PLANS (CONTINUED)

Discount Rate

The discount rate used to measure the total pension liability was 4.90% as of June 30, 2016. This single blended discount rate was based on the long-term expected rate of return on pension plan investments of 7.90%, and a municipal bond rate of 3.80% as of June 30, 2015, based on the Bond Buyer Go 20-Bond Municipal Bond Index which includes tax-exempt general obligation municipal bonds with an average rating of AA/Aa or higher. The projection of cash flows used to determine the discount rate assumed that contributions from plan members will be made at the current member contribution rates and that contributions from employers will be made based on the average of the last five years of contributions made in relation to the last five years of actuarially determined contributions. Based on those assumptions, the plan's fiduciary net position was projected to be available to make projected future benefit payments of current plan members through 2033. Therefore, the long-term expected rate of return on plan investments was applied to projected benefit payments through 2033, and the municipal bond rate was applied to projected benefit payments after that date in determining the total pension liability.

Sensitivity of the Charter School's Proportionate Share of the Net Pension Liability to Changes in the Discount Rate

The following presents the Charter School's proportionate share of the collective net pension liability as of June 30, 2015 calculated using the discount rate as disclosed below, as well as what the Charter School's proportionate share of the net pension liability would be if it were calculated using a discount rate that is 1-percentage-point lower or 1-percentage-point higher than the current rate:

Fiscal Year Ended June 30, 2016			
	1% Decrease (3.90%)	Current Discount Rate (4.90%)	1% Increase (5.90%)
Charter School's proportionate share of the Net Pension Liability	\$ 923,912	\$ 909,631	\$ 591,996

Fiscal Year Ended June 30, 2015			
	1% Decrease (3.90%)	Current Discount Rate (4.90%)	1% Increase (5.90%)
Charter School's proportionate share of the Net Pension Liability	\$ 923,912	\$ 743,365	\$ 591,996

Pension Plan Fiduciary Net Position

Detailed information about the pension plan's fiduciary net position is available in the separately issued PERS financial statements.

**HOPE ACADEMY CHARTER SCHOOL
NOTES TO THE FINANCIAL STATEMENTS
JUNE 30, 2017**

NOTE 8: PENSION PLANS (CONTINUED)

A. Teacher's Pension Annuity Fund (TPAF)

Pension Description

The State of New Jersey, Teacher's Pension and Annuity Fund (TPAF), is a cost-sharing multiple-employer defined benefit pension plan with a special funding situation, by which the State of New Jersey (the State) is responsible fund 100% of the employer contributions, excluding any local employer early retirement incentive (ERI) contributions. The TPAF is administered by the State of New Jersey Division of Pensions and Benefits (the Division). For additional information about the TPAF, please refer to the Division's Comprehensive Annual Financial Report (CAFR) which can be found at www.state.nj.us/treasury/pensions/annrpts.shtml.

Benefit Provided

The vesting and benefit provision are set by N.J.S.A. 18A:66. TPAF provides retirement, death and disability benefits. All benefits vest after ten years of service, except for medical benefits, which vest after 25 years of service or under the disability provisions of TPAF. Members are always fully vested for their own contributions and, after three years of service credit, become vested of 2% of related interest earned on the contributions. In the case of death before retirement, member's beneficiaries are entitled to full interest credited to the member's accounts. The following represents the membership tiers for TPAF:

Tier	Descriptions
1	M Members who were enrolled prior to July 1, 2007
2	M Members who were eligible to enroll on or after July 1, 2007 and prior to November 2, 2008
3	M Members who were eligible to enroll on or after November 2, 2008, 2010 and prior to May 22, 2010
4	M Members who were eligible to enroll on or after May 22, 2010 and prior to June 28, 2011
5	M Members who were eligible to enroll on or after June 28, 2011

Service retirement benefits of 1/55th of final average salary for each year of service credit is available to Tiers 1 and 2 members upon reaching age 60 and to Tier 3 members upon reaching 62. Service retirement benefits of 1/60th of final average salary for each year of service credit is available to Tier 4 members upon reaching age 62 and to tier 5 members upon 65. Early retirement benefits are available to Tiers 1 and 2 members before reaching age 60, to Tiers 3 and 4 before age 62 with 25 or more years of service credit and Tier 5 with 30 more years of service credit before age 65. Benefits are reduced by a fraction of a percent for each month that a members retires prior to the age of which a member can receive full early retirement benefits in accordance with their respective tier.

Deferred retirement is available to members who have at least 10 years of service credit and have not reached the service retirement age for the respective tier.

**HOPE ACADEMY CHARTER SCHOOL
NOTES TO THE FINANCIAL STATEMENTS
JUNE 30, 2017**

NOTE 8: PENSION PLANS (CONTINUED)

Contributions

The contribution policy for TPAF is set by N.J.S.A 18A:66 and requires contributions by active members and contributing members. State legislation has modified the amount that is contributed by the State. The State's pension contribution is based on an actuarially determined amount which included the employer portion of the normal cost and an amortization of the unfunded accrued liability. Funding for noncontributory group insurance benefits is based on actual claims paid. For Fiscal year 2015, the State's pension contribution was less than the actuarially determined amount.

Special Funding Situation

The Employer contributions for local participating employers are legally required to be funded by the State in accordance with N.J.S.A. 18:66-33. Therefore, these local participating employers are considered to be in a special funding situation as defined by GASB Statement No. 68 and the State is treated as a non-employer contributing entity. Since the local participating employers do not contribute directly to the plan (except for employer specific financed amounts), there is no net pension liability or deferred outflows or inflows to report in the financial statements of the local participating employers, such as the Charter School.

This note discloses the portion of the Charter School's total proportionate share of the net pension liability that is associated with the Charter School. During the fiscal years ended 2016, the State of New Jersey contributed \$ 13,009 to the TPAF for normal pension benefits on behalf of the Charter School, which is less than the contractually required contribution of \$ 70,185 .

Pension Liabilities, Pension Expense, and Deferred Outflows of Resources and Deferred Inflows of Resources Related to Pensions

As June 30, 2017, the State's proportionate share of the net pension liability associated with the Charter School was \$ 8,254,111 . The net pension liability was measured as of June 30, 2015, and the total pension liability used to calculate the net pension liability was determined by an actuarial valuation as of June 30, 2014 which was rolled forward to June 30, 2015.

The Charter School's proportion of the net pension liability was based on a projection of the Charter School's long-term share of contributions to the pension plan relative to the projected contributions of all participating members, actuarially determined. At June 30, 2016, Charter School's proportion was 0.0130594%, which was a decrease of 0.0004247% from its proportion measured as of June 30, 2015

Charter School's Proportionate Share of the Net Pension Liability	\$ -
State's Proportionate Share of the Net Pension Liability Associated with the Charter School	<u>8,254,111</u>
Total	<u>\$ 8,254,111</u>

**HOPE ACADEMY CHARTER SCHOOL
NOTES TO THE FINANCIAL STATEMENTS
JUNE 30, 2017**

NOTE 8: PENSION PLANS (CONTINUED)

Pension Liabilities, Pension Expense, and Deferred Outflows of Resources and Deferred Inflows of Resources Related to Pensions (Continued)

For the fiscal year ended June 30, 2015, the State recognized pension expense on behalf of the Charter School in the amount of \$ 70,185 and the Charter School recognized pension expense and revenue for that same amount in the fiscal year ended June 30, 2017 financial statements.

The State reported collective deferred outflows of resources and deferred inflows of resources related to pensions from the following sources:

	Deferred Outflows of Resources	Deferred Inflows of Resources
Changes in Assumptions	\$ 7,200,153,386	\$ -
Difference Between Expected and Actual Experience	321,224,871	19,039,817
Net Difference Between Projected and Actual Investment Earnings on Pension Plan Investments		535,359,188
	\$ 7,521,378,257	\$ 554,399,005

The \$ 7,521,378,257 reported as deferred outflows of resources related to pensions resulting from changes in assumptions will be amortized over a period of 8.5 years. The \$ 554,399,005 reported as a deferred inflow of resources resulting from the difference between projected and actual.

Fiscal Year Ending June 30,	Total
2016	\$ 818,433,596
2017	818,433,596
2018	818,433,598
2019	1,253,742,742
2020	1,061,100,680
Thereafter	2,196,835,040
	\$ 6,966,979,252

**HOPE ACADEMY CHARTER SCHOOL
NOTES TO THE FINANCIAL STATEMENTS
JUNE 30, 2017**

NOTE 8: PENSION PLANS (CONTINUED)

Actuarial Assumptions

The total pension liability for the June 30, 2015 measurement date was determined by an actuarial valuation as of June 30, 2014 which was rolled forward to June 30, 2015. This actuarial valuation used the following actuarial assumptions, applied to all periods in the measurement.

Inflation Rate	2.50%
Salary Increases:	
2012-2021	Varies based on experience
Thereafter	Varies based on experience
Investment Rate of Return	7.90%

Mortality rates were based on the RP-2000 Health Annuitant Mortality Tables for Males or Females, as appropriate, with adjustments for mortality improvements based on Scale AA. Pre-retirement mortality improvements for active members are projected using Scale AA from the base year of 200 until the valuation date plus 15 years to account for future mortality improvement. Post-retirement mortality improvements for non-disabled annuitants are projected using Scale AA from the base year of 2000 for males and 2003 for females until the valuation date plus 7 years to account for future mortality improvement.

The actuarial assumptions used in the July 1, 2015 valuation were based on the results of an actuarial experience study for the period July 1, 2009 to June 30, 2012.

Long Term Expected Rate of Return

In accordance with State statute, the long-term expected rate of return on plan investments (7.90% at June 30, 2015) is determined by the State Treasurer, after consultation with the Directors of the Division of Investments and Division of Pensions and Benefits, the board of trustees and the actuaries. The long-term expected rate of return was determined using a building block method in which best-estimate ranges of expected future real rates of return (expected returns, net of pension plan investment expense and inflation) are developed for each major asset class. These ranges are combined to produce the long-term expected rate of return by weighting the expected future real rates of return by the target asset allocation percentage and by adding expected inflation. Best estimates of arithmetic real rates of return for each major asset class included in TPAF's target asset allocation as of June 30, 2015 are summarized in the following table:

**HOPE ACADEMY CHARTER SCHOOL
NOTES TO THE FINANCIAL STATEMENTS
JUNE 30, 2017**

NOTE 8: PENSION PLANS (CONTINUED)

Long Term Expected Rate of Return (Continued)

<u>Asset Class</u>	<u>Target Allocation</u>	<u>Long-Term Expected Real Rate of Return</u>
US Cash	5.00%	0.53%
US Government Bonds	1.75%	1.39%
US Credit Bonds	13.50%	2.72%
US Mortgages	2.10%	2.54%
US Inflation-Indexed Bonds	1.50%	1.47%
US High Yield Bonds	2.00%	4.57%
U.S. Equity Markets	27.25%	5.63%
Foreign Developed Equity	12.00%	6.22%
Emerging Market Equities	6.40%	8.46%
Private Real Estate Property	4.25%	3.97%
Timber	1.00%	4.09%
Farmland	1.00%	4.61%
Private Equity	9.25%	9.15%
Commodities	1.00%	3.58%
Hedge Funds- Multi Strategy	4.00%	4.59%
Hedge Funds- Equity Hedge	4.00%	5.68%
Hedge Funds- Distressed	4.00%	4.30%

Discount Rate – TPAF

The discount rate used to measure the total pension liability was 4.13% as of June 30, 2015. This single blended discount rate was based on the long-term expected rate of return on pension plan investments of 7.90%, and a municipal bond rate of 3.80% as of June 30, 2015, based on the Bond Buyer Go 20-Bond Municipal Bond Index which includes tax-exempt general obligation municipal bonds with an average rating of AA/Aa or higher. The projection of cash flows used to determine the discount rate assumed that contributions from plan members will be made at the current member contribution rates and that contributions from employers will be made based on the average of the last five years of employers' contributions. Based on those assumptions, the plan's fiduciary net position was projected to be available to make projected future benefit payments of current plan members through 2027. Therefore, the long-term expected rate of return on plan investments was applied to projected benefit payments through 2027, and the municipal bond rate was applied to projected benefit payments after that date in determining the total pension liability.

**HOPE ACADEMY CHARTER SCHOOL
NOTES TO THE FINANCIAL STATEMENTS
JUNE 30, 2017**

NOTE 8: PENSION PLANS (CONTINUED)

Sensitivity of the Charter School's Proportionate Share of the Net Pension Liability to Changes in the Discount Rate

The following presents the net pension liability of the State as of June 30, 2015 calculated using the discount rate as disclosed above, as well as what the State's net pension liability would be if it were calculated using a discount rate that is 1-percentage-point lower or 1-percentage-point higher than the current rate:

Fiscal Year Ended June 30, 2014			
	1% Decrease (3.13%)	Current Discount Rate (4.13%)	1% Increase (5.13%)
Charter School's proportionate share of the Net Pension Liability	\$ 9,867,686	\$ 8,254,111	\$ 6,954,743

Fiscal Year Ended June 30, 2013			
	1% Decrease (3.68%)	Current Discount Rate (4.68%)	1% Increase (5.68%)
Charter School's proportionate share of the Net Pension Liability	\$ 8,727,323	\$ 7,256,217	\$ 6,032,642

Pension Plan Fiduciary Net Position – TPAF

Detailed information about the TPAF's fiduciary net position is available in the separately issued TPAF financial statements.

C. Defined Contribution Retirement Program (DCRP)

Prudential Financial jointly administers the DCRP investments with the NJ Division of Pensions and Benefits. If an employee is ineligible to enroll in the PERS or TPAF, the employee may be eligible to enroll in the DCRP. DCRP provides eligible members with a tax-sheltered, defined contribution retirement benefit, along with life insurance and disability coverage. Vesting is immediate upon enrollment for members of the DCRP.

The State of New Jersey, Department of the Treasury, Division of Pensions and Benefits, issues publicly available financial reports that include the financial statements and required supplementary information of the DCRP. The financial reports may be obtained by writing to the State of New Jersey, Department of the Treasury, Division of Pensions and Benefits, PO Box 295, Trenton, New Jersey 08625-0295.

**HOPE ACADEMY CHARTER SCHOOL
NOTES TO THE FINANCIAL STATEMENTS
JUNE 30, 2017**

NOTE 8: PENSION PLANS (CONTINUED)

Defined Contribution Retirement Program (DCRP) (Continued)

The contribution policy is set by the New Jersey Statutes and, in most retirement systems, contributions are required by active members and contributing employers. Plan member and employer contributions may be amended by the State of New Jersey regulation. Employers are required to contribute at an actuarially determined rate. Employee contributions are based on percentages of 5.50% for DCRP of employees' annual compensation, as defined. The expanded under the provisions of Chapter 89, P.L. 2008. Employee contributions for DCRP are matched by a 3% employer contribution.

The actuarially determined employer contribution includes funding for cost-of-living adjustments and noncontributory death benefits, and post-retirement medical premiums.

For DCRP, the Charter School recognized \$428 of pension expense or the fiscal year ended June 30, 2017. Employee contributions to DCRP amounted to \$785 for the fiscal year ended June 30, 2017.

NOTE 9: POST-RETIREMENT BENEFITS

P.L. 1987, c.384 and P.L. 1990, c.6 required Teachers' Pensions and Annuity Fund (TPAF) and the Public Employees' Retirement System (PERS), respectively, to fund post-retirement medical benefits for those state employees who retire after accumulating 25 years of credited service or on a disability retirement. P.L. 2007, c.103 amended the law to eliminate the funding of post-retirement medical benefits through the TPAF and PERS. It created separate funds outside of the pension plans for the funding and payment of post-retirement medical benefits for retired state employees and retired educational employees. As of June 30, 2015 there were 107,314 retirees receiving post-retirement medical benefits, and the State contributed \$1.25 billion on their behalf. The cost of these benefits is funded through contributions by the state in accordance with P.L. 1994, c.62. Funding of post-retirement medical benefits changed from a pre-funding basis to a pay-as-you-go basis beginning in Fiscal Year 1994.

The State is also responsible for the cost attributable to P.L. 1992 c.126, which provides free health benefits to members of PERS and the Alternate Benefit Program who retired from a board of education or county college with 25 years of service. The state paid \$214.1 million toward Chapter 126 benefits for 19,056 eligible retired members in Fiscal Year 2015.

**HOPE ACADEMY CHARTER SCHOOL
NOTES TO THE FINANCIAL STATEMENTS
JUNE 30, 2017**

NOTE 10: RISK MANAGEMENT

The charter school is exposed to various risks of loss related to torts; theft of, damage to, and destruction of assets; errors and omissions; injuries to employees; and natural disasters.

Property and Liability Insurance

The charter school maintains commercial insurance coverage for property, liability, student accident and surety bonds. A complete schedule of insurance coverage can be found in the Statistical Section of this Comprehensive Annual Financial Report.

NOTE 11: FUND BALANCE APPROPRIATED

General Fund

The General Fund fund balance in the fund financial statements at June 30, 2017, in the amount of \$1,669,352, is unassigned and undesignated.

NOTE 12: LONG TERM LIABILITIES

On November 29, 2016 the school purchased the building in the amount of \$4,312,500. The school obtained a first mortgage from TD Bank in the amount of \$3,056,250 with interest of 3.04% due November 1, 2041 requiring monthly principle and interest payments of \$14,662. The mortgage is collateralized by the land, building and equipment. In addition, the school obtained a second mortgage from NJEDA in the amount of \$1,018,750 with the interest at 2.50% due December 1, 2021 requiring monthly principle and interest payments of \$5,516. This mortgage is subject to a first mortgage held by TD Bank.

	Balance 07-01-2017	Current Portion	Long-Term 06-30-2018
TD Bank	\$ 3,015,511	\$ 84,177	\$ 2,931,334
NJEDA	999,167	40,279	958,888
	<u>\$ 4,014,678</u>	<u>\$ 124,456</u>	<u>\$ 3,890,222</u>

NOTE 13: SUBSEQUENT EVENTS

Subsequent events have been evaluated through November 30, 2017, which is the date the financial statements were available to be issued. Events occurring after that date have not been evaluated to determine whether a change in the financial statements would be required.

REQUIRED SUPPLEMENTARY INFORMATION – PART II

SECTION C – BUDGETARY COMPARISON SCHEDULES

HOPE ACADEMY CHARTER SCHOOL
General Fund
Budgetary Comparison Schedule
For The Fiscal Year Ended June 30, 2017

	Original Budget	Budget Transfers	Final Budget	Actual	Variance Final to Actual
REVENUES:					
Local Sources:					
Equalization Aid-Local Share	\$ 535,785	\$ -	\$ 535,785	\$ 535,785	\$ -
Total Local Sources	535,785	-	\$ 535,785	535,785	\$ -
Categorical Aid:					
Equalization Aid-State Share	1,983,534	-	1,983,534	1,983,534	-
Security Aid	87,962	-	87,962	87,962	-
State Adjustment	348,732	-	348,732	348,732	-
Non-Public Aid	-	-	-	-	-
Special Education Categorical Aid	39,496	-	39,496	39,496	-
Total Categorical Aid	2,459,724	-	2,459,724	2,459,724	-
Other Sources:					
Interest Income	-	-	-	1,410	1,410
Miscellaneous Revenue	-	-	-	30,462	30,462
On-Behalf TPAF Pension Contributions (Non-Budgeted)	-	-	-	250,883	250,883
Reimbursed TPAF Social Security Contributions (Non-Budgeted)	-	-	-	111,538	111,538
Total other Sources	-	-	-	394,293	394,293
Total Revenues	2,995,509	-	2,995,509	3,389,802	394,293
EXPENDITURES:					
Administration:					
Salaries of Teachers	690,948	-	690,948	686,273	4,675
Other Salaries for Instruction	215,745	-	215,745	215,745	-
Other Purchased Services	44,430	-	44,430	34,707	9,723
General Supplies	39,625	-	39,625	38,709	916
Textbooks	14,166	-	14,166	7,270	6,896
Miscellaneous	9,000	-	9,000	4,254	4,746
Total Instruction	1,013,914	-	1,013,914	986,958	26,956
Administration					
Salaries - General Administration	174,379	-	174,379	172,884	1,495
Salaries of Principals	205,750	-	205,750	202,798	2,952
Salaries of Secretarial/Clerical Assistants	116,295	-	116,295	112,856	3,439
Total Benefits Cost	259,006	-	259,006	183,889	75,117
Purchases Prof/Tech Services	23,000	-	23,000	17,055	5,945
Other Purchased Professional Services	70,908	-	70,908	50,456	20,452
Other Purchased Services	34,100	-	34,100	29,259	4,841
Communications/Telephone	34,130	-	34,130	10,168	23,962
Supplies and Materials	21,000	-	21,000	16,908	4,092
Interest Expense	69,727	-	69,727	69,727	-
Miscellaneous Expenses	4,600	-	4,600	4,572	28
Total Administration	1,012,895	-	1,012,895	870,572	142,323

See Management's Discussion and Analysis section of this report for explanation of significant budget variances, original and final.

HOPE ACADEMY CHARTER SCHOOL
General Fund
Budgetary Comparison Schedule
For The Fiscal Year Ended June 30, 2017

	Original Budget	Budget Transfers	Final Budget	Actual	Variance Final to Actual
(Continued From Prior Page)					
Support Services:					
Salaries	\$ 166,302	\$ -	\$ 166,302	\$ 155,521	\$ 10,781
Purchased Prof/Ed Services	90,150	-	90,150	50,090	40,060
Cleaning, Repair, and Maintenance Services	54,632	-	54,632	38,146	16,486
Rental of Land and Buildings	171,864	-	171,864	171,764	100
Insurance for Property, Liability and Fidelity	66,160	-	66,160	62,180	3,980
Supplies and Materials	27,000	-	27,000	13,790	13,210
Energy Costs (Heat and Electricity)	55,001	-	55,001	43,425	11,576
Miscellaneous Expenses	45,725	-	45,725	41,169	4,556
Total Support Services	676,834	-	676,834	576,085	100,749
Capital Outlay:					
Building and Repairs	200,453	-	200,453	169,663	30,790
Instructional Equipment	15,000	-	15,000	12,404	2,596
Non-Instructional Equipment	7,000	-	7,000	680	6,320
Mortgage Principle	60,500	-	60,500	60,463	37
Total Capital Outlay	282,953	-	282,953	243,210	39,743
On-Behalf TPAF Pension Contributions (Non-Budgeted)				250,883	(250,883)
Reimbursed TPAF Social Security Contributions (Non-Budgeted)				111,538	(111,538)
Total Expenditures	2,986,596	-	2,986,596	3,039,246	(52,650)
Excess (Deficiency) of Revenues Over (Under) Expenditures	8,913	-	8,913	350,556	341,643
Other Financing Uses:					
Transfers Out	-	-	-	(250,000)	(250,000)
Total Other Financing Uses	-	-	-	(250,000)	(250,000)
Excess (Deficiency) of Revenues Over (Under) Expenditures and other Financing Uses	8,913	-	8,913	100,556	91,643
FUND BALANCE, JULY 1	1,568,796	-	1,568,796	1,568,796	-
FUND BALANCE, JUNE 30	\$ 1,577,709	\$ -	\$ 1,577,709	\$ 1,669,352	\$ 91,643
Recapitulation of Excess (Deficiency) of Revenues Over (Under) Expenditures:					
Budgeted Fund Balance	\$ 1,577,709	\$ -	\$ 1,577,709	\$ 1,669,352	\$ 91,643
Total	\$ 1,577,709	\$ -	\$ 1,577,709	\$ 1,669,352	\$ 91,643

See Management's Discussion and Analysis section of this report for explanation of significant budget variances, original and final.

HOPE ACADEMY CHARTER SCHOOL
Special Revenue Fund
Budgetary Comparison Schedule
For The Fiscal Year Ended June 30, 2017

	Original Budget	Budget Transfers	Final Budget	Actual	Variance Final to Actual
REVENUE SOURCES:					
Local	\$ 126,288	\$ -	\$ 126,288	\$ 126,288	\$ -
Federal	230,732	-	230,732	230,732	-
Total Revenues	357,020	-	\$ 357,020	357,020	\$ -
EXPENDITURES:					
Instruction:					
Salaries	272,302	-	272,302	272,302	-
Other Purchased Services	10,621	-	10,621	10,621	-
General Supplies	7,382	-	7,382	7,382	-
Other Objects	2,295	-	2,295	2,295	-
Total Instruction	292,600	-	292,600	292,600	-
Support Services:					
Personal Services - Employee Benefits	54,289	-	54,289	54,289	-
Purchased Professional Services	8,292	-	8,292	8,292	-
Supplies and Materials	1,839	-	1,839	1,839	-
Total Support Services	64,420	-	64,420	64,420	-
Total Expenditures	357,020	-	357,020	357,020	-
Total Outflows	357,020	-	357,020	357,020	-
Excess (Deficiency) of Revenues Over (Under) Expenditures	\$ -	\$ -	\$ -	\$ -	\$ -

NOTES TO THE REQUIRED SUPPLEMENTARY INFORMATION

HOPE ACADEMY CHARTER SCHOOL
 Required Supplementary Information
 Budgetary Comparison Schedule
 Note to RSI
 Fiscal Year Ended June 30, 2017

Note A - Explanation of Differences between Budgetary Inflows and Outflows and GAAP Revenues and Expenditures

	General Fund	Special Revenue Fund
Sources/Inflows of Resources		
Actual amounts (budgetary) "revenues" from the budgetary comparison schedules	[C-1] \$ 3,389,802	[C-2] \$ 357,020
Difference - Budget to GAAP		
Grant accounting budgetary basis differs from GAAP in that encumbrances are recognized as expenditures, and the related revenue is recognized		-
Total revenues as reports on the statement of revenues, expenditures and changes in fund balance - governmental funds.	[B-2] \$ 3,389,802	[B-2] \$ 357,020
Uses/Outflows of resources		
Actual amounts (budgetary basis) "total outflows" from the budgetary comparison schedule	[C-1] \$ 3,039,246	[C-2] \$ 357,020
Differences - Budget to GAAP:		
Encumbrances for supplies and equipment ordered but not received are reported in the year the order is placed for budgetary purposes, but in the year the supplies are received for financial accounting purposes		-
Total expenditures as reported on the statement of revenues, expenditures and changes in fund balances - governmental funds.	[B-2] \$ 3,039,246	[B-2] \$ 357,020

REQUIRED SUPPLEMENTARY INFORMATION – PART III

**SCHEDULE L - SCHEDULES RELATED TO ACCOUNTING AND REPORTING FOR
PENSIONS (GASB 68)**

HOPE ACADEMY CHARTER SCHOOL
 REQUIRED SUPPLEMENTARY INFORMATION SCHEDULES
 SCHEDULE OF THE CHARTER SCHOOL'S PROPORTIONATE SHARE OF THE NET PENSION LIABILITY
 PUBLIC EMPLOYEES RETIREMENT SYSTEM
 LAST 3 FISCAL YEARS
 UNAUDITED

	Fiscal Year Ending June 30,		
	2014	2015	2016
Charter School's proportion of the net pension liability	0.00339992%	0.003473796%	0.003311498%
Charter School's proportionate share of the net pension liability	\$ 649,648	\$ 650,333	\$ 909,631
Charter School's covered employees payroll	\$ 405,142	\$ 342,584	\$ 265,696
Charter School's proportionate share of the net pension liability as a percentage of it's covered employee payroll	160%	190%	342%
Plan fiduciary net position as a percentage of the total pension liability	48.72%	52.08%	38.21%

Note: This schedule does not contain ten years of information as GASB No. 68 was implemented during the fiscal year ended June 30, 2015.

HOPE ACADEMY CHARTER SCHOOL
 REQUIRED SUPPLEMENTARY INFORMATION SCHEDULES
 SCHEDULE OF THE CHARTER SCHOOL CONTRIBUTIONS
 PUBLIC EMPLOYEES RETIREMENT SYSTEM
 LAST 3 FISCAL YEARS
 UNAUDITED

	Fiscal Year Ending June 30,		
	2014	2015	2016
Contractually required contribution	\$ 25,612	\$ 26,819	\$ 27,023
Contributions in relation to the contractually required contribution	<u>(33,244)</u>	<u>(26,819)</u>	<u>(27,023)</u>
Contribution deficiency/(excess)	<u>\$ (7,632)</u>	<u>\$ -</u>	<u>\$ -</u>
Charter School's covered employee payroll	\$ 405,142	\$ 342,574	\$ 265,696
Contributions as a percentage of covered employee payroll	6.32%	7.83%	10.17%

Note: This schedule does not contain ten years of information as GASB No. 68 was implemented during the fiscal year ended June 30, 2015.

HOPE ACADEMY CHARTER SCHOOL
REQUIRED SUPPLEMENTARY INFORMATION SCHEDULES
SCHEDULE OF THE CHARTER SCHOOL'S PROPORTIONATE SHARE OF THE NET PENSION LIABILITY
TEACHER'S PENSION AND ANNUITY FUND
LAST 3 FISCAL YEARS
UNAUDITED

	Fiscal Year Ending June 30,		
	2014	2015	2016
State's proportion of the net pension liability attributable of the Charter School	0.01289420%	0.0134841%	0.01305942%
State's proportionate share of the net pension liability attributable to the charter School	\$ 6,516,614	\$ 7,206,822	\$ 8,254,111
CS / District's covered employees payroll	898,449	991,299	1,333,934
Charter School's proportionate share of the net pension liability as a percentage of it's covered employee payroll	725.32%	727.01%	618.78%
Plan fiduciary net position as a percentage of the total pension liability	33.76%	33.64%	28.71%

Note: This schedule does not contain ten years of information as GASB No. 68 was implemented during the fiscal year ended June 30, 2015.

NOTES TO REQUIRED SUPPLEMENTARY INFORMATION III

HOPE ACADEMY CHARTER SCHOOL
NOTES TO REQUIRED SUPPLEMENTARY INFORMATION
PUBLIC EMPLOYEES RETIREMENT SYSTEM
FOR FISCAL YEAR ENDED JUNE 30, 2017

A. Benefit Changes

There were none.

B. Changes in Assumptions

The discount rate changed from 4.90% as of June 30, 2015 to 5.05% as of June 30, 2016.
The inflation rate changed from 3.04% as of June 30, 2015 to 3.10% as of June 30, 2016.

HOPE ACADEMY CHARTER SCHOOL
NOTES TO REQUIRED SUPPLEMENTARY INFORMATION
TEACHER'S PENSION AND ANNUITY FUND
FOR FISCAL YEAR ENDED JUNE 30, 2017

A. Benefit Changes

There were none.

B. Changes in Assumptions

The discount rate changed from 4.13% as of June 30, 2015 to 4.18% as of June 30, 2016.

OTHER SUPPLEMENTARY INFORMATION

**SECTION E – SPECIAL REVENUE FUND
DETAIL STATEMENTS**

The Special Revenue Fund is used to account for the proceeds of specific sources (other than expandable trusts or major capital projects) that are legally restricted to expenditures for specific purposes.

HOPE ACADEMY CHARTER SCHOOL
Special Revenue Fund
Combining Schedule of Program Revenues and Expenditures - Budgetary Basis
For the Fiscal Year Ended June 30, 2017

	NCLB Title I	I.D.E.A. Basic	Title II Part A	Local Grants	Grand Total
REVENUE SOURCES:					
Local	\$ -	\$ -	\$ -	\$ 126,288	\$ 126,288
Federal	167,642	54,798	8,292	-	230,732
Total Revenues	167,642	54,798	8,292	126,288	357,020
EXPENDITURES:					
Instruction:					
Salaries	133,408	42,031	-	96,863	272,302
Other Purchased Services	-	-	-	10,621	10,621
General Supplies	3,017	-	-	4,365	7,382
Other Objects	-	-	-	2,295	2,295
Total Instruction	136,425	42,031	-	114,144	292,600
Support Services:					
Personal Services - Employee Benefits	31,217	10,928	-	12,144	54,289
Purchased Professional Services	-	-	8,292	-	8,292
Supplies and Materials	-	1,839	-	-	1,839
Total Support Services	31,217	12,767	8,292	12,144	64,420
Total Expenditures	167,642	54,798	8,292	126,288	357,020
Total Outflows	167,642	54,798	8,292	126,288	357,020
Excess (Deficiency) of Revenues Over (Under) Expenditures	\$ -	\$ -	\$ -	\$ -	\$ -

**SECTION G – PROPRIETARY FUNDS
DETAIL STATEMENTS**

Proprietary Funds are used to account for operations that are financed and operated in a manner similar to private business enterprises – where the intent of the charter school’s board is that the costs of providing goods or services be financed through user charges.

Food Services Fund – This fund provides for the operation of food services in all schools within the school district.

**THIS SECTION HAS ALREADY BEEN INCLUDED IN STATEMENTS B-4, B-5, AND
B-6.**

**SECTION H – FIDUCIARY FUNDS
DETAIL STATEMENTS**

Fiduciary Funds are used to account for funds received by the school for a specific purpose.

Agency Funds are used to account for assets held by the school as an agent for individuals, private organizations, other governments and/or other funds.

Payroll Fund – This agency fund is used to account for the payroll transactions of the school

HOPE ACADEMY CHARTER SCHOOL
 Fiduciary Funds
 Combining Statement of Fiduciary Net Position
 June 30, 2017

	Agency			
	Payroll Agency	Net Payroll	Student Activities	Total Agency Funds
ASSETS:				
Cash and Cash Equivalents	\$ 32,039	\$ 1,716	\$ 2,055	\$ 35,810
Total Assets	\$ 32,039	\$ 1,716	\$ 2,055	\$ 35,810
LIABILITIES:				
Interfund Accounts Payable	\$ 55	\$ 1,705	\$ -	\$ 1,760
Payroll Deductions and Withholdings	31,984	11	-	31,995
Due to Student Groups	-	-	2,055	2,055
Total Liabilities	\$ 32,039	\$ 1,716	\$ 2,055	\$ 35,810

HOPE ACADEMY CHARTER SCHOOL
 Fiduciary Funds
 Combining Statement of Fiduciary Net Position
 June 30, 2017

	<u>Balance July 1, 2016</u>	<u>Cash Receipts</u>	<u>Cash Disbursements</u>	<u>Balance June 30, 2017</u>
Students Groups	\$ 3,054	\$ 8,511	\$ 9,510	\$ 2,055
Total	<u>\$ 3,054</u>	<u>\$ 8,511</u>	<u>\$ 9,510</u>	<u>\$ 2,055</u>

HOPE ACADEMY CHARTER SCHOOL
 Fiduciary Funds
 Payroll Agency Fund
 Schedule of Receipts and Disbursements
 For The Fiscal Year Ended June 30, 2017

	Balance July 1, 2016	Cash Receipts	Cash Disbursements	Balance June 30, 2017
ASSETS:				
Cash	\$ 50,053	\$ 732,848	\$ 750,862	\$ 32,039
Total Assets	\$ 50,053	\$ 732,848	\$ 750,862	\$ 32,039
LIABILITIES:				
Interfund Accounts Payable	\$ 34,592	\$ -	\$ 34,537	\$ 55
Payroll Deductions and Withholdings	15,461	732,848	716,325	31,984
Total Liabilities	\$ 50,053	\$ 732,848	\$ 750,862	\$ 32,039

**STATISTICAL SECTION
(UNAUDITED)**

GASB requires that ten years of statistical data be presented. The following information is presented utilizing information available. Each year thereafter, an additional year's data will be included until ten years of data is presented.

Contents

Financial Trends

These schedules contain trend information to help the reader understand how the charter school's financial performance and well-being have changed over time.

Revenue Capacity (Not Applicable To Charter School)

These schedules contain information to help the reader assess the district's most significant local revenue source, the property tax.

Debt Capacity

These schedules present information to help the reader assess the affordability of the charter school's current levels of outstanding debt and the charter school's ability to issue additional debt in the future.

Demographic and Economic Information

These schedules offer demographic and economic indicators to help the reader understand the environment within which the charter school's financial activities take place.

Operating Information

These schedules contain service and infrastructure data to help the reader understand how the information in the charter school's financial report relates to the services the district provides and the activities it performs.

Sources: *Unless otherwise noted, the information in these schedules is derived from the comprehensive annual financial reports (CAFR) for the relevant year. The charter school implemented GASB Statement 34 in the fiscal year ending June 30, 2004; schedules presenting charter school-wide information include information beginning in that year.*

FINANCIAL TRENDS

HOPE ACADEMY CHARTER SCHOOL
 Net Position by Component
 Last Ten Fiscal Years
(accrual basis of accounting)
 Unaudited

	Fiscal Year Ending June 30,									
	2017	2016	2015	2014	2013	2012	2011	2010	2009	2008
Governmental Activities										
Invested in Capital Assets, Net or Related Debt	\$ 440,105	\$ 161,671	\$ 180,690	\$ 199,709	\$ 218,728	\$ 237,747	\$ 256,766	\$ 275,785	\$ 294,804	\$ 313,823
Restricted	-	-	-	-	-	-	-	-	-	-
Unassigned	947,915	886,286	494,856	910,038	724,420	556,829	460,529	500,973	204,868	147,204
Total Governmental Activities Net Assets/Position (Deficit)	\$ 1,388,020	\$ 1,047,957	\$ 675,546	\$ 1,109,747	\$ 943,148	\$ 794,376	\$ 717,295	\$ 776,758	\$ 499,672	\$ 461,027
Business-Type Activities										
Unassigned	\$ 38,736	\$ 62,325	\$ 51,720	\$ 39,463	\$ 36,411	\$ 22,458	\$ 20,673	\$ 18,741	\$ 17,617	\$ 19,755
Total Business-Type Activities Net Position	\$ 38,736	\$ 62,325	\$ 51,720	\$ 39,463	\$ 36,411	\$ 22,458	\$ 20,673	\$ 18,741	\$ 17,617	\$ 19,755
Charter School-wide										
Invested in Capital Assets, Net or Related Debt	\$ 440,105	\$ 161,671	\$ 180,690	\$ 199,709	\$ 218,728	\$ 237,747	\$ 256,766	\$ 275,785	\$ 294,804	\$ 313,823
Restricted	-	-	-	-	-	-	-	-	-	-
Unassigned	986,551	948,611	546,576	949,501	760,831	579,087	481,202	519,714	222,485	166,959
Total Charter School Net Position (Deficit)	\$ 1,426,756	\$ 1,110,282	\$ 727,266	\$ 1,149,210	\$ 979,559	\$ 816,834	\$ 737,968	\$ 795,499	\$ 517,289	\$ 480,782

Source: Comprehensive Annual Financial Report

HOPE ACADEMY CHARTER SCHOOL
 Changes in Net Position
 Last Ten Fiscal Years
 Unaudited

	Fiscal Year Ending June 30,									
	2017	2016	2015	2014	2013	2012	2011	2010	2009	2008
Expenses										
Governmental Activities:										
Instruction	\$ 1,677,519	\$ 1,668,512	\$ 1,695,594	\$ 1,695,261	\$ 1,703,768	\$ 1,781,206	\$ 1,647,919	\$ 1,688,085	\$ 1,226,422	\$ 1,313,265
Administration	873,959	720,048	649,632	715,776	699,182	678,559	709,133	408,142	376,961	438,530
Support Services	640,505	908,291	1,017,742	1,316,623	1,407,137	1,192,613	1,140,525	758,776	573,750	555,417
Capital Outlay	178,482	24,299	53,708	-	-	2,599	-	-	-	-
Unallocated Depreciation	95,732	19,019	19,019	19,019	19,019	19,019	19,019	19,019	19,019	19,019
Total Governmental Activities Net Assets/Position	<u>3,466,197</u>	<u>3,340,169</u>	<u>3,435,695</u>	<u>3,746,679</u>	<u>3,829,106</u>	<u>3,673,996</u>	<u>3,516,598</u>	<u>2,874,022</u>	<u>2,186,152</u>	<u>2,326,231</u>
Business-Type Activities:										
Food Service	190,129	146,673	132,874	143,122	122,817	95,369	87,515	86,477	64,670	65,337
Total Business-Type Activities Expenses	<u>190,129</u>	<u>146,673</u>	<u>132,874</u>	<u>143,122</u>	<u>122,817</u>	<u>95,369</u>	<u>87,515</u>	<u>86,477</u>	<u>64,670</u>	<u>65,337</u>
Total Charter School Expenses	<u>\$ 3,656,326</u>	<u>\$ 3,486,842</u>	<u>\$ 3,568,569</u>	<u>\$ 3,889,801</u>	<u>\$ 3,951,923</u>	<u>\$ 3,769,365</u>	<u>\$ 3,604,111</u>	<u>\$ 2,960,491</u>	<u>\$ 2,250,822</u>	<u>\$ 2,391,568</u>
Program Revenues										
Governmental Activities:										
Operating Grants and Contributions	39,496	71,166	78,028	71,401	74,893	60,465	45,047	19,477	20,318	31,048
Total Governmental Activities Expenses	<u>39,496</u>	<u>71,166</u>	<u>78,028</u>	<u>71,401</u>	<u>74,893</u>	<u>60,465</u>	<u>45,047</u>	<u>19,477</u>	<u>20,318</u>	<u>31,048</u>
Business-Type Activities:										
Charges for Services	2,915	2,494	3,302	3,696	4,859	6,045	9,815	7,027	6,352	5,576
Operating Grants and Contributions	163,675	154,784	141,777	142,440	131,871	91,068	79,570	80,505	56,073	60,368
Total Business-Type Activities Expenses	<u>166,590</u>	<u>157,278</u>	<u>145,079</u>	<u>146,136</u>	<u>136,730</u>	<u>97,113</u>	<u>89,385</u>	<u>87,532</u>	<u>62,425</u>	<u>65,944</u>
Total Charter School Program Revenues	<u>\$ 206,086</u>	<u>\$ 228,444</u>	<u>\$ 223,107</u>	<u>\$ 217,537</u>	<u>\$ 211,623</u>	<u>\$ 157,578</u>	<u>\$ 134,432</u>	<u>\$ 107,009</u>	<u>\$ 82,743</u>	<u>\$ 96,992</u>
Net (Expense)/Revenue										
Governmental Activities	\$ (3,426,701)	\$ (3,269,003)	\$ (3,357,667)	\$ (3,675,278)	\$ (3,754,213)	\$ (3,613,531)	\$ (3,471,549)	\$ (2,854,545)	\$ (2,175,834)	\$ (2,295,183)
Business-Type Activities	(23,589)	10,605	12,205	3,014	13,913	1,744	1,870	1,055	(2,245)	607
Total Charter School-wide Net Expense	<u>\$ (3,450,290)</u>	<u>\$ (3,258,398)</u>	<u>\$ (3,345,462)</u>	<u>\$ (3,672,264)</u>	<u>\$ (3,740,300)</u>	<u>\$ (3,611,787)</u>	<u>\$ (3,469,679)</u>	<u>\$ (2,853,490)</u>	<u>\$ (2,178,079)</u>	<u>\$ (2,294,576)</u>
General Revenues and Other Changes in Net Position										
Governmental Activities:										
General Purposes	\$ 535,785	\$ 539,439	\$ 574,921	\$ 590,882	\$ 563,194	\$ 548,462	\$ 503,303	\$ 462,972	\$ 324,798	\$ 396,749
Federal and State Aid Not Restricted	3,013,381	3,059,255	2,986,983	3,207,009	3,276,761	3,129,914	2,890,121	2,626,269	1,883,359	1,780,246
Miscellaneous Income	158,160	42,720	34,391	43,986	63,030	12,236	28,662	42,390	6,322	124,281
Total Governmental Activities	<u>3,707,326</u>	<u>3,641,414</u>	<u>3,546,295</u>	<u>3,841,877</u>	<u>3,902,985</u>	<u>3,690,612</u>	<u>3,412,086</u>	<u>3,131,631</u>	<u>2,214,479</u>	<u>2,301,276</u>
Business-Type Activities:										
Investment Earnings	-	-	52	38	40	41	62	69	107	619
Total Business-Type Activities	<u>-</u>	<u>-</u>	<u>52</u>	<u>38</u>	<u>40</u>	<u>41</u>	<u>62</u>	<u>69</u>	<u>107</u>	<u>619</u>
Total Charter School-wide	<u>\$ 3,707,326</u>	<u>\$ 3,641,414</u>	<u>\$ 3,546,347</u>	<u>\$ 3,841,915</u>	<u>\$ 3,903,025</u>	<u>\$ 3,690,653</u>	<u>\$ 3,412,148</u>	<u>\$ 3,131,700</u>	<u>\$ 2,214,586</u>	<u>\$ 2,301,895</u>
Change in Net Assets/Position										
Governmental Activities	\$ 280,625	\$ 372,411	\$ 188,628	\$ 166,599	\$ 148,772	\$ 77,081	\$ (59,463)	\$ 277,086	\$ 38,645	\$ 6,093
Business-Type Activities	(23,589)	10,605	12,257	3,052	13,953	1,785	1,932	1,124	(2,138)	1,226
Total Charter School	<u>\$ 257,036</u>	<u>\$ 383,016</u>	<u>\$ 200,885</u>	<u>\$ 169,651</u>	<u>\$ 162,725</u>	<u>\$ 78,866</u>	<u>\$ (57,531)</u>	<u>\$ 278,210</u>	<u>\$ 36,507</u>	<u>\$ 7,319</u>

Source: Comprehensive Annual Financial Report

HOPE ACADEMY CHARTER SCHOOL
 Fund Balances - Governmental Funds
 Last Ten Fiscal Years
(modified accrual basis of accounting)
 Unaudited

	Fiscal Year Ending June 30,									
	2017	2016	2015	2014	2013	2012	2011	2010	2009	2008
General Fund										
Unassigned	\$ 1,669,352	1,568,796	1,153,326	910,038	724,420	556,629	460,529	500,973	204,868	147,204
Total General Fund	\$ 1,669,352	\$ 1,568,796	\$ 1,153,326	\$ 910,038	\$ 724,420	\$ 556,629	\$ 460,529	\$ 500,973	\$ 204,868	\$ 147,204

HOPE ACADEMY CHARTER SCHOOL
 Changes in Fund Balances - Governmental Funds
 Last Ten Fiscal Years
 (modified accrual basis of accounting)
 Unaudited

	Fiscal Year Ending June 30,									
	2017	2016	2015	2014	2013	2012	2011	2010	2009	2008
Revenues:										
Local Sources:										
Local Tax Levy	\$ 535,785	\$ 539,439	\$ 574,921	\$ 590,882	\$ 563,194	\$ 548,462	\$ 527,443	\$ 462,972	\$ 324,798	\$ 396,749
Interest in Investments	1,410	1,153	744	-	-	-	-	-	-	-
Miscellaneous	156,750	144,271	41,147	46,802	63,030	12,236	4,522	66,530	6,322	124,281
State Sources	2,822,145	2,790,436	2,637,767	2,603,485	2,699,332	2,543,673	2,197,274	2,047,343	1,702,719	1,629,410
Federal Sources	230,732	237,281	369,744	672,109	652,322	646,706	727,894	574,263	200,958	181,884
Total Revenues	3,746,822	3,712,580	3,624,323	3,913,278	3,977,878	3,751,077	3,457,133	3,151,108	2,234,797	2,332,324
Expenditures:										
Instruction	1,279,558	1,344,338	1,356,919	1,347,742	1,342,266	1,418,329	1,380,032	1,315,608	1,005,787	1,099,278
Administration	1,232,993	1,062,902	1,011,428	1,151,952	1,164,775	1,115,352	1,030,218	737,094	637,044	688,080
Support Services	640,505	865,571	956,980	1,227,966	1,303,046	1,118,697	1,087,327	802,301	594,302	519,854
Capital Outlay	243,210	24,299	53,708	-	-	2,599	-	-	-	-
Total Expenditures	3,396,266	3,297,110	3,381,035	3,727,660	3,810,087	3,654,977	3,497,577	2,855,003	2,177,133	2,307,212
Net Change in Fund Balance	\$ 350,556	\$ 415,470	\$ 243,288	\$ 185,618	\$ 167,791	\$ 96,100	\$ (40,444)	\$ 296,105	\$ 57,664	\$ 25,112

Source: Comprehensive Annual Financial Report

HOPE ACADEMY CHARTER SCHOOL
 General Fund - Other Local Revenue by Source
 Last Ten Fiscal Years
(modified accrual basis of accounting)
 Unaudited

Fiscal Year Ending June 30,	Donations	Miscellaneous Revenue	Total
2017	\$ -	\$ 156,750	\$ 156,750
2016	-	23,405	23,405
2015	-	17,925	17,925
2014	4,969	10,380	15,349
2013	3,812	33,662	37,474
2012	0	5,075	5,075
2011	0	1,378	1,378
2010	12,240	30,150	42,390
2009	0	6,322	6,322
2008	12,500	84,581	97,081

Source: Charter School records

DEMOGRAPHIC AND ECONOMIC INFORMATION

HOPE ACADEMY CHARTER SCHOOL
Demographic and Economic Statistics
Last Ten Fiscal Years

Year	Population*	Personal Income**	Per Capita Personal Income***	Unemployment Rate ****
2017	N/A	N/A	N/A	N/A
2016	N/A	N/A	N/A	N/A
2015	N/A	N/A	N/A	N/A
2014	16,116	26,370	13,516	7.4
2013	N/A	N/A	N/A	N/A
2012	16,132	N/A	N/A	N/A
2011	16,116	N/A	20,368	N/A
2010	16,862	N/A	N/A	9.8
2009	16,894	N/A	N/A	10.7
2008	16,923	N/A	N/A	10.5

Source:

* Population information provided by the NJ Dept of Labor and Workforce Development.

** Personal income has been estimated based upon the municipal population and per capita personal income presented.

*** Per capita personal income by municipality estimated based upon the 2010 Census published by the US Bureau of Economic Analysis.

**** Unemployment data provided by the NJ Dept of Labor and Workforce Development.

HOPE ACADEMY CHARTER SCHOOL
Principal Employers
Last Year and Fifteen Years Ago

Employer	2012			1997		
	Employees	Rank	Percentage of Total Municipal Employment	Employees	Rank	Percentage of Total Municipal Employment
Asbury Park School District	732	1	7.91%	500	1	6.14%
Townco Consultants, Inc.	400	2	4.32%	0		0.00%
City of Asbury Park	280	3	3.03%	292	2	3.58%
Keystone Laundries	100	4	1.08%	100	3	1.23%
Asbury Park Post Office	85	5	0.92%	89	4	1.09%
Jersey Central Power & Light	0		0.00%	81	5	0.99%
Jersey Shore Addiction Services	55	6	0.59%	67	6	0.82%
Malo & Weste Corp	0		0.00%	53	7	0.65%
Asbury Park Housing Authority	52	7	0.56%	52	8	0.64%
Monmouth County Probation Dept.	50	8	0.54%	0		0.00%
Grand Union	0		0.00%	50	9	0.61%
Interfaith Neighbors	39	9	0.42%	50	10	0.61%
Our Lady of Mount Carmel School	21	10	0.23%	0		0.00%
	<u>1,814</u>		<u>19.60%</u>	<u>1,334</u>		<u>16.36%</u>

HOPE ACADEMY CHARTER SCHOOL
 Full-Time Equivalent Charter School Employees by Function
 Last Ten Fiscal Years
Unaudited

Function	Fiscal Year Ending June 30,									
	2017	2016	2015	2014	2013	2012	2011	2010	2009	2008
Instruction	23	22	18	19	20.7	21	21	22	18	22
Administrative	4	6	6	3.8	4.8	4.5	4	4	3	3
Support Services	3	4	7.5	1.7	8.6	4.5	10.5	3.5	4.5	4
Food Service	2	0	0	0	0.5	0.5	0.5	0.5	0.5	0
Total	32.0	32.0	31.5	24.5	34.6	30.5	36.0	30.0	26.0	29.0

Source: Charter School Personnel Records

HOPE ACADEMY CHARTER SCHOOL
 Operating Statistics
 Last Ten Fiscal Years
Unaudited

Fiscal Year Ended June 30,	Enrollment	Operating Expenditures*	Cost Per Pupil	Percentage Change	Teaching Staff**	Pupil / Teacher Ratio	Average Daily Enrollment (ADE)**	Average Daily Attendance (ADA)***	Percent Change in Average Daily Enrollment	Student Attendance Percentage
2017	207	3,153,056	15,232	-3.66%	22	9:4:1	206.9	197.2	0.00%	95.95%
2016	207	3,272,811	15,811	-3.06%	22	9:4:1	206.4	197.2	1.39%	95.94%
2015	204	3,327,327	16,310	-8.55%	18	11:1	203.53	195.3	-0.53%	95.16%
2014	209	3,727,660	17,836	-3.57%	19	11:1	204.6	194.7	-0.93%	94.87%
2013	206	3,810,087	18,496	0.77%	21	10:1	206.5	195.9	5.47%	96.52%
2012	199	3,652,378	18,354	-2.40%	20	9:1	195.2	188.4	4.71%	98.06%
2011	186	3,497,577	18,804	16.58%	21	8:1	186	182.4	4.41%	95.39%
2010	177	2,855,003	16,130	0.02%	22	8:1	177.8	169.6	24.07%	94.81%
2009	135	2,177,133	16,127	-5.64%	18	7:1	135	128.0	0.00%	94.81%
2008	135	2,307,212	17,090	28.81%	22	7:1	135	128.0	0.74%	93.28%

Sources: Charter School records.

Note: Enrollment based on annual final Charter School count.

* Operating expenditures equal total expenditures less debt service and capital outlay.

** Teaching staff includes only full-time equivalents of certified staff.

*** Average daily enrollment and average daily attendance are obtained from School Register Summary (SRS).

HOPE ACADEMY CHARTER SCHOOL
 School Building Information
 Last Ten Fiscal Years
 Unaudited

	Fiscal Year Ending June 30,									
	2017	2016	2015	2014	2013	2012	2011	2010	2009	2008
<u>Charter School Building</u>										
601 Grand Avenue										
Square Feet	25,000	25,000	25,000	25,000	25,000	25,000	19,500	19,500		
Capacity (students)										
Enrollment	207	207	206	209	206	199	186	177		
<u>Lower School</u>										
700 Grand Avenue										
Square Feet									13,087	13,087
Capacity (students)										
Enrollment									90	90
<u>Middle School</u>										
610 Asbury Avenue										
Square Feet										
Capacity (students)										
Enrollment										
503 Asbury Avenue										
Square Feet									13,776	13,776
Capacity (students)										
Enrollment									45	43
Number of Schools at June 30, 2016										
	1									

Source: Charter School Facilities Office

Note: Increased in square footage and capacity are the result of an additions.

Enrollment is based on the annual October Charter School count.

Commercial General Liability Coverage

Named Insured: Hope Academy Charter School

Policy Term: 7/1/2016 to 7/1/2017

Coverage Form Used

Occurrence Form

Claims Made Form

Retroactive Date:

Limits of Liability

General Liability	
Per Occurrence Limit	5,000,000
Fund Aggregate	100,000,000
Employee Benefits Liability Limit	5,000,000
Deductible	2,500
School Leaders Professional Liability	5,000,000
Per Occurrence	5,000,000
Aggregate	5,000,000
Deductible	5,000
Sexual Abuse and Molestation	10,000,000
Fund Aggregate	30,000,000
Boiler Machinery	100,000,000
Employee Dishonesty	500,000 per loss
Money and Securities	2,500,000
Environmental Impairment Liability	1,000,000
Fund Aggregate	25,000,000
Critical Incident Management	25,000
School Leaders Professional deductible	5,000,000 5,000

HOPE ACADEMY CHARTER SCHOOL
 Charter School Performance Framework Financial Indicators
 Fiscal Ratios
 Last Three Fiscal Years

	2015	2016	2017	Source
	Audit	Audit	Audit	
Cash	\$ 785,298	\$ 1,456,154	\$ 1,700,067	Audit: Exhibit A-1
Current Assets (Includes CASH)	1,529,835	1,924,594	2,031,921	Audit: Exhibit A-1
Total Assets	17,10,525	2,086,265	6,486,704	Audit: Exhibit A-1
Current Liabilities	324,789	293,473	323,833	Audit: Exhibit A-1
Total liabilities	975,122	1,036,838	5,248,142	Audit: Exhibit A-1
Net Assets	727,266	1,110,282	1,426,756	Audit: Exhibit A-1
Total Revenue	3,769,454	3,869,858	3,913,412	Audit: Exhibit A-2
Total Expenses	3,568,569	3,486,842	3,656,326	Audit: Exhibit A-2
Change in Net Assets	200,885	383,016	316,474	Audit: Exhibit A-2
Depreciation Expense	19,019	19,019	95,732	Financial Statements/Audit Workpapers
Interest Expense	-	-	-	Financial Statements/Audit Workpapers
Principal Payments	-	-	-	Financial Statements/Audit Workpapers
Interest Payments	-	-	-	Financial Statements/Audit Workpapers

Final Average Daily Enrollment	203.5	206.4	206.9	DOE Enrollment Reports
March 30th Budgeted Enrollment	0	0	0	Charter School Budget

Near Term Indicators	RATIOS ANALYSIS ...			3 Yr CUM	Source:	Changes
	2015	2016	2017			
1a. Current Ratio	4.71	6.56	6.27		Current Assets/Current Liabilities	Target >1.1
1b. Unrestricted Days Cash	80.32	153.48	159.72		Cash/(Total Expenses/365)	30-60
1c. Enrollment Variance	0%	0%	0%		Average Daily Enrollment/Budgeted Enrollment	>95%
1d.* Default	N/A	N/A	N/A		Audit	not in default
Sustainability Indicators						
2a. Total Margin	5%	10%	8%		Change in Net Assets/Total Revenue	positive
2b. Debt to Asset	0.57	0.50	0.81		Total Liabilities/Total Assets	<9
2c.** Cash Flow	50,856	680,856	233,913		Net change in cash flow from prior years (Change in Net Assets+Depreciation+Interest Expense)/(Principal & Interest Payments)	3 yr cum. positive
2d. Debt Service Coverage Ratio	N/A	N/A	N/A			>1.0

* Is school in default of loan covenant(s) and/or is delinquent with debt service payments? Yes or No
 ** 2017 = 2017 Cash - 2016 Cash

Refer questions to charterfinance@doe.state.nj.us

SINGLE AUDIT SECTION



**MESHINSKY &
ASSOCIATES LLC**

CERTIFIED PUBLIC ACCOUNTANTS,
CONSULTANTS & INDEPENDENT TRUSTEES

K-1
Page 1

**INDEPENDENT AUDITOR'S REPORT ON INTERNAL CONTROL OVER FINANCIAL
REPORTING AND ON COMPLIANCE AND OTHER MATTERS BASED ON AN
AUDIT OF FINANCIAL STATEMENTS PERFORMED IN ACCORDANCE WITH
"GOVERNMENT AUDITING STANDARDS"**

Honorable President and
Members of the Board of Trustees
Hope Academy Charter School
County of Monmouth
Asbury Park, New Jersey

We have audited, in accordance with the auditing standards generally accepted in the United States of America; the standards applicable to financial audits contained in *Government Auditing Standards* issued by the Comptroller General of the United States; and in compliance with audit requirements as prescribed by the Office of School Finance, Department of Education, State of New Jersey, the financial statements of the governmental activities, the business-type activities, each major fund, and the aggregate remaining fund information of Hope Academy Charter School (Charter School), in the County of Monmouth, State of New Jersey, as of and for the fiscal year ended June 30, 2017, and the related notes to the financial statements, which collectively comprise the Charter School's basic financial statements, as listed in the table of contents, and have issued our report thereon dated November 30, 2017.

Internal Control over Financial Reporting

In planning and performing our audit of the financial statements, we considered the Charter School's internal control over financial reporting (internal control) to determine the audit procedures that are appropriate in the circumstances for the purpose of expressing our opinions on the financial statements, but not for the purpose of expressing an opinion on the effectiveness of the Charter School's internal control. Accordingly, we do not express an opinion on the effectiveness of the Charter School's internal control.

A deficiency in internal control exists when the design or operation of a control does not allow management or employees, in the normal course of performing their assigned functions, to prevent, or detect and correct, misstatements on a timely basis. A material weakness is a deficiency, or a combination of deficiencies, in internal control, such that there is reasonable possibility that a material misstatement of the entity's financial statements will not be prevented, or detected and corrected on a timely basis.

A *significant deficiency* is a deficiency, or a combination of deficiencies, in internal control that is less severe than a material weakness, yet important enough to merit attention by those charged with governance.

Our consideration of internal control was for the limited purpose described in the first paragraph of this section and was not designed to identify all deficiencies in internal control that might be material weakness or significant deficiencies. Given these limitations, during our audit we did not identify any deficiencies in internal control that we consider to be material weakness. However, material weakness may exist that have not been identified.

Compliance and Other Matters

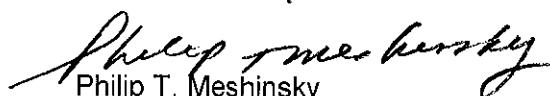
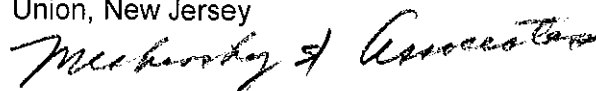
As part of obtaining reasonable assurance about whether the Charter School's financial statements are free from material misstatement, we performed tests of its compliance with certain provisions of laws, regulations, contracts, and grant agreements, noncompliance with which could have a direct and material effect on the determination of financial statement amounts. However, providing an opinion on compliance with those provisions was not an objective of our audit, and accordingly, we do not express such an opinion. The results of our tests disclosed no instances of noncompliance or other matter that are required to be reported under audit requirements as prescribed by the Office of School Finance, Department of Education, State of New Jersey.

We also noted other matters that we reported to the Board of Trustees of the Hope Academy Charter School in a separate report entitled, Auditor's Management Report on Administrative Findings dated November 30, 2017.

Purpose of this Report

The purpose of this report is solely to describe the scope of our testing of internal control and compliance and the results of that testing, and not to provide an opinion on the effectiveness of the entity's internal control or on compliance. This report is an integral part of an audit performed in accordance with the Office of School Finance, Department of Education, State of New Jersey in considering the entity's internal control and compliance. Accordingly, this communication is not suitable for any other purpose.

Meshinsky & Associates, LLC CPA's
Union, New Jersey



Philip T. Meshinsky
Licensed Public School Accountant
No. CS00233400
Meshinsky & Associates LLC, CPA's

November 30, 2017



MESHINSKY & ASSOCIATES LLC

CERTIFIED PUBLIC ACCOUNTANTS,
CONSULTANTS & INDEPENDENT TRUSTEES

K-2
Page 1

REPORT ON COMPLIANCE FOR EACH MAJOR STATE PROGRAM AND REPORT ON INTERNAL CONTROL OVER COMPLIANCE IN ACCORDANCE WITH UNIFORM GUIDANCE AND NEW JERSEY CIRCULAR 15-08-OMB

Honorable President and
Members of the Board of Trustees
Hope Academy Charter School
County of Monmouth
Asbury Park, New Jersey

Report on Compliance for Each Major State Program

We have audited the Hope Academy Charter School's compliance with the types of compliance requirements described in the New Jersey Compliance Manual "State Grant Compliance Supplement" that could have a direct and material effect on each of its major federal and state programs for the fiscal year ended June 30, 2017. The Hope Academy Charter School's major state programs are identified in the Summary of Auditor's Results Section of the accompanying schedule of findings and questioned costs.

Management's Responsibility

The Charter School's management is responsible for compliance with the requirements of laws, regulations, contracts, and grants applicable to its state programs.

Auditor's Responsibility

Our responsibility is to express an opinion on compliance for each of the Charter School's major federal and state programs based on our audit of the types of compliance requirements referred to above. We conducted our audit of compliance in accordance with auditing standards generally accepted in the United States of America; the standards applicable to financial audits as prescribed by the *Office of School Finance, Department of Education, State of New Jersey*; New Jersey Circular 15-08-OMB, *Single Audit Policy for Recipients of Federal Grants, State Grants and State Aid*. Those standards, Uniform Guidance and New Jersey Circular 15-08-OMB require that we plan and perform the audit to obtain reasonable assurance about whether noncompliance with the types of compliance requirements referred to above that could have a direct and material effect on a major state program occurred. An audit includes examining, on a test basis, evidence about the Charter School's compliance with those requirements and performing such other procedures as we considered necessary in the circumstances.

We believe that our audit provides a reasonable basis for our opinion on compliance for each major state program. However, our audit does not provide a legal determination of the Charter School's compliance.

Opinion on Each Major State Program

In our opinion, the Hope Academy Charter School, in the County of Monmouth, State of New Jersey, complied, in all material respects, with the types of compliance requirements referred to above that could have a direct and material effect on each of its major state programs for the year ended June 30, 2017.

Report on Internal Control over Compliance

Management of the Hope Academy Charter School is responsible for establishing and maintaining effective internal control over compliance with the types of compliance requirements referred to above. In planning and performing our audit of compliance, we considered the Charter School's internal control over compliance with the types of requirements that could have a direct and material effect on each major state program to determine the auditing procedures that are appropriate in the circumstances for the purpose of expressing an opinion on compliance for each major state program and to test and report on internal control over compliance in accordance with Uniform Guidance and New Jersey Circular 15-08-OMB, but not for the purpose of expressing an opinion on the effectiveness of internal control over compliance. Accordingly, we do not express an opinion on the effectiveness of the Charter School's internal control over compliance.

A deficiency in internal control over compliance exists when the design or operation of a control over compliance does not allow management or employees, in the normal course of performing their assigned functions, to prevent, or detect and correct, noncompliance with a type of compliance requirement of a state program on a timely basis. A *material weakness in internal control over compliance* is a deficiency, or combination of deficiencies, in internal control over compliance, such that there is a reasonable possibility that material noncompliance with a type of compliance requirement of a state program will not be prevented, or detected and corrected, on a timely basis. A *significant deficiency in internal control over compliance* is a deficiency, or a combination of deficiencies, in internal control over compliance with a type of compliance requirement of a state program that is less severe than a material weakness in internal control over compliance, yet important enough to merit attention by those charged with governance.

Our consideration of internal control over compliance was for the limited purpose described in the first paragraph of this section and was not designed to identify all deficiencies in internal control over compliance that might be material weaknesses or significant deficiencies. We did not identify any deficiencies in internal control over compliance that we consider to be material weaknesses. However, material weaknesses may exist that have not been identified.

Report on Schedule of Expenditures of State Financial Assistance Required by New Jersey Circular 15-08-OMB


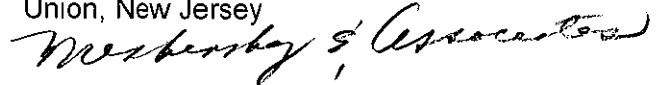
We have audited the financial statements of the governmental activities, the business-type activities, each major fund, and the aggregate remaining fund information of the Hope Academy Charter School, as of and for the fiscal year ended June 30, 2017 and the related notes to the financial statements, which collectively comprise the Charter School's basic financial

statements. We issued our report thereon dated November 30, 2017, which contained unmodified opinion on those financial statements. Our audit was conducted for the purpose of forming opinions on the financial statements that collectively comprise the basic financial statements. The accompanying schedule of expenditures of state financial assistance as required by New Jersey Circular 15-08- OMB are presented for purposes of additional analysis and are not a required part of the basic financial statements. Such information is the responsibilities of management and was derived from and relates directly to the underlying accounting and other records used to prepare basic financial statements. The information has been subjected to the auditing procedures applied in the audit of the financial statements and certain additional procedures, including comparing and reconciling such information directly to the underlying accounting and other records used to prepare the basic financial statements or to the basic financial statements themselves, and other additional procedures in accordance with auditing standards generally accepted in the United States of America. In our opinion, the schedule of expenditures and schedule of relation to the basic financial statements as a whole.

Purpose of this Report

The purpose of this report on internal control over compliance is solely to describe the scope of our testing of internal control over compliance and the results that the testing based on the requirements of NJ Circular 15-08-OMB. Accordingly, this report is not suitable for any other purpose.

Meshinsky & Associates, LLC CPA's
Union, New Jersey



Philip T. Meshinsky
Licensed Public School Accountant No.
CS00233400
Meshinsky & Associates LLC, CPA's

November 30, 2017

HOPE ACADEMY CHARTER SCHOOL
Schedule of Expenditures of State Financial Assistance
For The Fiscal Year Ended June 30, 2017

State Grantor/Program Title	Grant or State Project Number	Program or Award Amount	Grant Period		Carryover/ (Walkover) Amount	Cash Received	Budgetary Expenditures	Repayment of Prior Years' Balances	Balance at June 30, 2017			MEMO	
			From	To					Deferred Revenue (Accounts Receivable)	Due to Grantor	Accounts Receivable		Deferred Revenue/ Interfund Payable
State Department of Education													
General Fund:													
State Aid - Public Cluster													
Equalization Aid - State Share	17-495-034-5120-078	\$ 1,983,534	7/1/16	6/30/17	\$ -	\$ 1,937,525	\$ (1,983,534)	\$ -	\$ (46,009)	\$ -	\$ -	\$ 46,009	\$ 1,983,534
Equalization Aid - State Share	16-495-034-5120-078	2,101,606	7/1/15	6/30/16		29,106							
Special Education Categorical Aid	17-495-034-5120-089	39,496	7/1/16	6/30/17		39,496	(39,496)						39,496
State Adjustment	17-495-034-5120-085	348,732	7/1/16	6/30/17		348,067	(348,732)		(2,635)			\$ 2,635	348,732
Security Aid	17-495-034-5120-084	87,962	7/1/16	6/30/17		87,962	(87,962)						87,962
Total State Aid - Public Cluster						2,440,198	(2,459,724)	-	(46,644)			46,644	2,459,724
On-Behalf TPAF Pension Contribution	17-495-034-5095-006	250,883	7/1/16	6/30/17		250,883	(250,883)						250,883
Reimburse TPAF - Social Security	17-495-034-5095-002	111,538	7/1/15	6/30/17		106,311	(111,538)		(5,227)			5,227	111,538
Reimburse TPAF - Social Security	16-495-034-5095-002	98589	7/1/15	6/30/16		5,122							
Total General Fund						(34,228)	(2,822,145)	-	(53,871)			53,871	2,822,145
State Department of Agriculture													
Enterprise Fund:													
National School Lunch Program (State S17-100-010-3350-023)		2,411	7/1/16	6/30/17		1,842	(1,958)		(116)			116	1,958
National School Lunch Program (State S16-100-010-3350-023)		1,909	7/1/15	6/30/16		134							
Total Enterprise Fund						(134)	(1,958)	-	(116)			116	1,958
Total All Funds						(34,362)	(2,824,103)	-	(63,987)			53,987	2,824,103
State Financial Assistance Not Subject to Major Program Determination:													
General Funds:													
On-Behalf TPAF Pension Contribution	17-495-034-5095-006	152	7/1/16	6/30/17		(250,883)	250,883						(250,883)
Total General Fund							250,883	-					(250,883)
Total State Financial Assistance						(34,362)	(2,573,220)	-	(63,987)			53,987	2,573,220

The accompanying Notes to Schedules of Expenditures of Awards and Financial Assistance are an integral part of this schedule.

HOPE ACADEMY CHARTER SCHOOL
Notes to Schedules of Expenditures of Awards and Financial Assistance
June 30, 2017

NOTE 1. GENERAL

The accompanying schedules of expenditures of federal awards and state financial assistance include federal and state award activity of the Board of Trustees, Hope Academy Charter School. The Board of Trustees is defined in Note 1 to the board's basic financial statements. All federal and state awards received directly from federal and state agencies, as well as federal awards and state financial assistance passed through other government agencies is included on the schedule of expenditures of federal awards and state financial assistance.

NOTE 2. BASIS OF ACCOUNTING

The accompanying schedules of expenditures of awards and financial assistance are presented on the budgetary basis of accounting with the exception of programs recorded in the food service fund, which are presented using the accrual basis of accounting. These bases of accounting are described in Note 1 to the board's basic financial statements. The information in this schedule is presented in accordance with the requirements of 2 (CFR) Part 200 -Uniform Guidance Administrative Requirements, Cost Principles, and Audit Requirements for Federal Awards (Uniform Guidance) and the audit requirements as prescribed by the Office of School Finance, Department of Education, State of New Jersey; New Jersey Circular 15-08 OMB, Single Audit Policy for Recipients of Federal Grants, State Grants and State Aid. Therefore, some amounts presented in this schedule may differ from amounts presented in, or used in the presentation of, the basic financial statements. This does not apply to charter schools as districts are not permitted to defer the June payments to charter schools.

NOTE 3. RELATIONSHIP TO BASIC FINANCIAL STATEMENTS

The basic financial statements present the general fund and special revenue fund on a GAAP basis. Budgetary comparison statements or schedules (RSI) are presented for the general fund and special revenue fund to demonstrate finance-related legal compliance in which certain revenue is permitted by law or grant agreement to be recognized in the audit year, whereas for GAAP reporting, revenue is not recognized until the subsequent year or when expenditures have been made.

The general fund is presented in the accompanying schedules on the modified accrual basis with the exception of the revenue recognition of the one or more deferred June state aid payments in the current budget year, which is mandated pursuant to *N.J.S.A. 18A:22-44.2*. For GAAP purposes payments are not recognized until the subsequent budget year due to the state deferral and recording of the one or more June state aid payments in the subsequent year. The special revenue fund is presented in the accompanying schedules on the grant accounting budgetary basis which recognizes encumbrances as expenditures and also recognizes the related revenues, whereas the GAAP basis does not. The special revenue fund also recognizes the one or more June state aid payment in the current budget year, consistent with *N.J.S.A. 18A:22-4.2*.

HOPE ACADEMY CHARTER SCHOOL
Notes to Schedules of Expenditures of Awards and Financial Assistance
June 30, 2017

NOTE 3. RELATIONSHIP TO BASIC FINANCIAL STATEMENTS (CONTINUED)

The net adjustment to reconcile from the budgetary basis to the GAAP basis is none for the general fund and none for the special revenue fund. See Notes to the Required Supplementary Information for a reconciliation of the budgetary basis to the modified accrual basis of accounting for the general and special revenue funds. Awards and financial assistance revenues are reported in the board's basic financial statements on a GAAP basis as presented below:

	<u>Federal</u>	<u>State</u>	<u>Total</u>
General Fund	\$ -	\$ 2,822,145	\$ 2,822,145
Special Revenue Fund	230,732	-	230,732
Food Service Fund	161,667	1,958	163,625
Total Awards & Financial Assistance	<u>\$ 392,399</u>	<u>\$ 2,824,103</u>	<u>\$ 3,216,502</u>

NOTE 4. RELATIONSHIP TO FEDERAL AND STATE FINANCIAL REPORTS

Amounts reported in the accompanying schedules agree with the amounts reported in the related federal and state financial reports.

NOTE 5. FEDERAL AND STATE LOANS OUTSTANDING

Hope Academy Charter School has no loan balances outstanding at June 30, 2017.

NOTE 6. OTHER

Revenues and expenditures reported under the Food Distribution Program represent current year value received and current year distributions respectively. The amount reported as TPAF Pension Contributions represents the amount paid by the state on behalf of the charter school for the year ended June 30, 2017. TPAF Social Security Contributions represents the amount reimbursed by the state for the employer's share of social security contributions for TPAF members for the year ended June 30, 2017.

NOTE 7. ON-BEHALF PROGRAMS NOT SUBJECT TO STATE SINGLE AUDIT

On-behalf State Programs for TPAF Pension and Post-Retirement Medical Benefits Contributions payments are not subject to a State single audit and, therefore, are excluded from major program determination. The Schedule of State Financial Assistance provides a reconciliation of State financial assistance reported in the Charter School's basic financial statements and the amount subject to State single audit and major program determination.

HOPE ACADEMY CHARTER SCHOOL
Notes to Schedules of Expenditures of Awards and Financial Assistance
June 30, 2017

NOTE 8. SCHOOLWIDE PROGRAM FUNDS

Schoolwide programs are not separate federal programs as defined in Uniform Guidance; amounts used in schoolwide programs are included in the total expenditures of the program contributing the funds in the Schedule of Expenditures of Federal Awards. There are no funds by program included in schoolwide programs in the charter school.

HOPE ACADEMY CHARTER SCHOOL
Schedule of Findings and Questioned Costs
For the Fiscal Year Ended June 30, 2017

Section I – Summary of Auditor’s Results

Financial Statements

Type of auditors’ report issued on financial statements Unmodified

Internal control over financial reporting:

1) Material weakness(es) identified? Yes X No

2) Significant deficiencies identified that are not considered to be material weaknesses? Yes X None Reported

Noncompliance material to basic financial statements noted? Yes X No

State Awards

Dollar threshold used to distinguish between Type A and Type B programs: \$750,000

Auditee qualified as low-risk auditee? X Yes No

Internal control over major programs:

1) Material weakness(es) identified? Yes X No

2) Significant deficiencies identified that are not considered to be material weaknesses? Yes X None Reported

Type of auditors’ report issued on compliance for major programs Unmodified

Any audit findings disclosed that are required to be reported in accordance with NJ Circular 15-08-OMB? Yes X No

Identification of major state programs:

GMIS Number(s)	Name of State Program
<u>17-495-034-5120-071</u>	<u>STATE AID-PUBLIC CLUSTER</u>
<u>17-495-034-5120-089</u>	<u>EQUALIZATION AID</u>
<u>17-495-034-5120-084</u>	<u>SPECIAL EDUCATION CATEGORICAL AID</u>
	<u>SECURITY AID</u>

HOPE ACADEMY CHARTER SCHOOL
Schedule of Findings and Questioned Costs
For the Fiscal Year Ended June 30, 2017

Section II –Financial Statement Findings

This section identifies the significant deficiencies, material weaknesses, fraud, illegal acts, violations of provisions of contracts and grant agreements, and abuse related to the financial statements for which *Government Auditing Standards* requires reporting in a NJ Circular 15-08-OMB. See paragraphs 13.15 and 13.35.

Finding

There were no matters reported.

HOPE ACADEMY CHARTER SCHOOL
Schedule of Findings and Questioned Costs
For the Fiscal Year Ended June 30, 2017

Section III – State Financial Assistance
Findings and Questioned Costs

This section identifies audit findings required to be reported by NJ Circular 15-08-OMB.

STATE AWARDS

Findings

There were no matters reported.

HOPE ACADEMY CHARTER SCHOOL
Summary Schedule of Prior Year Audit Findings
And Questioned Costs As Prepared by Management
For the Fiscal Year Ended June 30, 2017

STATUS OF PRIOR YEAR FINDINGS

This section identifies the status of prior-year findings related to the basic financial statements and federal and state awards that are required to be reported in accordance with Chapter 6.12 of *Government Auditing Standards*, NJ Circular 04-04-OMB or 15-08-OMB as applicable.

Findings

There were no matters reported.