

THE ELYSIAN CHARTER SCHOOL OF HOBOKEN
COMPREHENSIVE ANNUAL FINANCIAL REPORT
FISCAL YEAR ENDED JUNE 30, 2018

THE ELYSIAN CHARTER SCHOOL OF HOBOKEN

***The Elysian Charter School of Hoboken
Board of Trustees
Hoboken, New Jersey***

***Comprehensive Annual Financial Report
For The Fiscal Year Ended June 30, 2018***

COMPREHENSIVE ANNUAL FINANCIAL REPORT
OF THE
THE ELYSIAN CHARTER SCHOOL OF HOBOKEN
HOBOKEN, NEW JERSEY
FOR THE FISCAL YEAR ENDED JUNE 30, 2018

Prepared by
The Elysian Charter School of Hoboken
Finance Department

And
Meshinsky & Associates LLC, CPAs

STATE BOARD OF EDUCATION

ARCELIO APONTEMiddlesex
President

KATHY A. GOLDENBERGBurlington
Vice President

MARY BETH BERRY.....Hunterdon

ELAINE BOBROVE.....Camden

FATIMAH BURNAM-WATKINS.....Union

RONALD K. BUTCHERGloucester

JACK FORNAROWarren

ANDREW J. MULVIHILLSussex

ERNEST P. LEPOREHudson

JOSEPH RICCA, JRMorris

MARY ELIZABETH GAZISomerset

NEDD JAMES JOHNSON.....Salem

SYLVIA SYLVIA-CIOFFI.....Monmouth

**Dr. Lamont Repollet, Commissioner of Education
Secretary, State Board of Education**

**THE ELYSIAN CHARTER SCHOOL OF HOBOKEN
TABLE OF CONTENTS**

Page

INTRODUCTORY SECTION	1
Letter of Transmittal	2
Organizational Chart	6
Roster of Officials	7
Consultants and Advisors	8
FINANCIAL SECTION	9
Independent Auditor's Report	10
REQUIRED SUPPLEMENTARY INFORMATION – PART I	13
Management's Discussion and Analysis	14
BASIC FINANCIAL STATEMENTS.....	20
SECTION A – CHARTER SCHOOL-WIDE FINANCIAL STATEMENTS	21
A-1 Statement of Net Position.....	22
A-2 Statement of Activities.....	23
SECTION B – FUND FINANCIAL STATEMENTS	24
GOVERNMENTAL FUNDS	25
B-1 Balance Sheet.....	26
B-2 Statement of Revenues, Expenditures, and Changes in Fund Balance	27
B-3 Reconciliation of the Statements of Revenues, Expenditures, and Changes in Fund Balances of Governmental Funds to the Statement of Activities	28
PROPRIETARY FUNDS	29
B-4 Statement of Fund Net Position	30
B-5 Statement of Revenues, Expenses, and Changes in Net Position	31
B-6 Statement of Cash Flows	32
FIDUCIARY FUNDS	33
B-7 Statement of Fiduciary Net Position	34
NOTES TO THE FINANCIAL STATEMENTS	35
REQUIRED SUPPLEMENTARY INFORMATION – PART II	67
SECTION C – BUDGETARY COMPARISON SCHEDULES	68
C-1 Budgetary Comparison Schedule – General Fund	69
C-2 Budgetary Comparison Schedule – Special Revenue Fund.....	71
NOTES TO THE REQUIRED SUPPLEMENTARY INFORMATION.....	72
C-3 Budget-To-GAAP Reconciliation	73

**THE ELYSIAN CHARTER SCHOOL OF HOBOKEN
TABLE OF CONTENTS**

	Page
REQUIRED SUPPLEMENTARY INFORMATION – PART III	74
SCHEDULE L - SCHEDULES RELATED TO ACCOUNTING AND REPORTING FOR PENSIONS (GASB 68)	75
L-1 Schedules of the District’s Proportionate Share of the Net Pension Liability - PERS	76
L-2 Schedules of District Contributions - PERS.....	77
L-3 Schedules of the District’s Proportionate Share of the Net Pension Liability - TPAF.....	N/A
NOTES TO REQUIRED SUPPLEMENTARY INFORMATION III.....	78
OTHER SUPPLEMENTARY INFORMATION	80
SECTION E – SPECIAL REVENUE FUND	81
E-1 Combining Schedule of Revenues and Expenditures – Budgetary Basis	82
SECTION G – PROPRIETARY FUNDS	83
SECTION H – FIDUCIARY FUNDS	84
H-1 Combining Statement of Fiduciary Net Position	85
H-3 Student Activity Agency Fund Schedule of Receipts and Disbursements	86
H-4 Payroll Agency Fund Schedule of Receipts and Disbursements.....	87
STATISTICAL SECTION (UNAUDITED).....	88
INTRODUCTION TO THE STATISTICAL SECTION.....	89
FINANCIAL TRENDS	90
J-1 Net Assets/Position by Component.....	91
J-2 Changes in Net Assets/Position	92
J-3 Fund Balances – Governmental Funds	93
J-4 Changes in Fund Balances – Governmental Funds	94
J-5 General Fund Other Local Revenue by Source (NJ).....	95
DEMOGRAPHIC AND ECONOMIC INFORMATION	N/A
J-14 Demographic and Economic Statistics	N/A
J-15 Principal Employers, Current and Ten Years Ago	N/A
OPERATING INFORMATION.....	97
J-16 Full-Time Equivalent Charter School Employees by Function/Program	98
J-17 Operating Statistics	99
J-18 School Building Information.....	N/A
J-20 Insurance Schedule.....	100
J-21 Charter School Performance Framework, Financial Performance, Fiscal Ratios	101

**THE ELYSIAN CHARTER SCHOOL OF HOBOKEN
TABLE OF CONTENTS**

		Page
SINGLE AUDIT SECTION.....		102
K-1	Independent Auditor’s Report on Internal Control Over Financial Reporting and On Compliance and Other Matters Based On an Audit of Financial Statements Performed In Accordance With Government Auditing Standards.....	103
K-2	Independent Auditor’s Report on Compliance For Each Major State Program; Report on Internal Over Compliance; And Report on Schedule of Expenditures of State Finance required by OMB New Jersey OMB Circular 04-04.....	105
K-3	Schedule of Expenditures of Federal Awards.....	108
K-4	Schedule of Expenditures of State Financial Assistance – Schedule B	109
K-5	Notes to Schedules of Expenditures of Awards and Financial Assistance	110
K-6	Schedule of Findings and Questioned Costs	113
K-7	Summary Schedule of Prior Audit Findings and Questioned Costs as Prepared by Management.....	116

INTRODUCTORY SECTION

Elysian
Charter School of Hoboken
"A Positively Different Public School"

1460 Garden Street - Hoboken, NJ 07030

201-876-0102 – Fax 201-876-9576 – www.ecsnj.org – Susan Grierson, Director

October 29, 2018

The Honorable President and Members
Of the Board of Trustees
The Elysian Charter School of Hoboken
Hoboken, New Jersey

Dear Board Members:

The comprehensive annual financial report of The Elysian Charter School of Hoboken (the "Charter School") for the fiscal year ended June 30, 2018, is hereby submitted. Responsibility for both the accuracy of the data and completeness and fairness of the presentation, including all disclosures, rests with the management and Board of Trustees (the "Board"). To the best of our knowledge and belief, the data presented in this report is accurate in all material respects and is reported in a manner designed to present fairly the basic financial statements and results of operations of Elysian Charter School. All disclosures necessary to enable the reader to gain an understanding of the Charter School's financial activities have been included.

The comprehensive annual financial report is presented in four sections: introductory, financial, statistical and single audit. The introductory section includes this transmittal letter, the Charter School's organizational Charter, roster of officials and a list of consultants and advisors. The financial section includes the Independent Auditors' Report, management's discussion and analysis, the basic financial statements and notes providing an overview of the Charter School's financial position and operating results, and supplementary schedules providing detailed budgetary information. The statistical section includes selected economic and demographic information, financial trends and the fiscal capacity of the Charter School, generally presented on a multi-year basis. The Charter School is required to undergo an annual single audit in conformity with the provision of Title 2 U.S. Code of Federal Regulations Part 200, *Uniform Administrative Requirements, Cost Principles, and Audit Requirements for Federal Awards*, and the New Jersey's OMB Circular 15-08, *Single Audit Policy for Recipients of Federal Grants, State Grants and State Aid*. Information related to this single audit, including the auditors' reports on the internal control and compliance with applicable laws, regulations, contracts and grants along with findings and questioned costs, are included in the single audit section of this report.

1) REPORTING ENTITY AND ITS SERVICES:

The Elysian Charter School of Hoboken is an independent reporting entity within the criteria adopted by the Governmental Accounting Standards Board ("GASB") in codification section 2100. All funds of the Charter School are included in this report. The Elysian Charter School of Hoboken constitutes the Charter school's reporting entity.

The Elysian Charter School of Hoboken operates a comprehensive ten-month school. Students attend classes 8:30 am to 2:55 pm. In addition, programs are available from 7:30 am to 6:00 pm. There is an average of 16 students in a class. Parents are heavily involved in school activities and governance. Students learn to use computers as part of the ongoing instruction.

The Honorable President and Members
Of the Board of Trustees
The Elysian Charter School of Hoboken
Page 2
October 29, 2018

2) MAJOR INITIATIVES:

The Elysian Charter School of Hoboken's approach to learning, teaching and community is based on a progressive philosophy that is taught in the tradition of hands-on and cooperative learning. Our philosophy leads us to teach in a manner that is child-centered, holistic, progressive and academically rigorous.

Our Charter School provides for 288 students with two classes for each grade from kindergarten to eighth graded (16 students per class), permitting us to live the adage "It takes a community to raise a child". We are involved at every level.

The teachers and administrators at the Charter School are open to new ideas, to create new curricula and to having children become active and responsible for their own learning. In our learning environment, language, conversation and discussion are seen as very important parts of the learning process that lead to the development of critical thinking skills.

The Elysian Charter School of Hoboken's curriculum meets the required New Jersey State Standards and grows directly out of the work created by teachers who collaborate on a regular basis. We always keep our focus on the whole child who always has strengths on which he or she can learn and grow.

Our goal is to educate children to become curious, lifelong learners with an appreciation of the arts, the diversity of all peoples in the world, and the self-confidence to fulfill his or her life's dreams.

Since its inception in 1997 The Elysian Charter School of Hoboken has been looking for a permanent home that would bring the entire school under one roof and provide the stability of knowing that there is a long-term lease. This goal was realized in the summer of 2015, when the Charter School signed a 30-year lease and moved to its new home at 1460 Garden Street.

3) INTERNAL ACCOUNTING CONTROLS:

Management of the Charter School is responsible for establishing and maintaining an internal control system designed to ensure that the assets of the Charter School are protected from loss, theft or misuse and to ensure that adequate accounting data is compiled to allow for the preparation of financial statements in conformity with generally accepted accounting principles (GAAP). The internal control system is designed to provide reasonable, but not absolute, assurance that these objectives are met. The concept of reasonable assurance recognizes that (1) the cost of a control should not exceed the benefits likely to be derived; and (2) the valuation of costs and benefits requires estimates and judgments by management.

As a recipient of federal and state awards, the Charter School also is responsible for ensuring that an adequate internal control system is in place to ensure compliance with applicable laws and regulation related to those programs. This internal control system is also subject to periodic evaluation by the Charter School's management.

As part of the Charter School's single audit described earlier, tests are made to determine the adequacy of the internal control system, including that portion related to major federal and state award programs, as well as to determine that the Charter School has complied with applicable laws, regulations, contracts and grants.

The Honorable President and Members
Of the Board of Trustees
The Elysian Charter School of Hoboken
Page 3
October 29, 2018

4) BUDGETARY CONTROLS:

In addition to internal accounting controls, the Charter School maintains budgetary controls. The objective of these budgetary controls is to ensure compliance with legal provisions embodied in the annual appropriated budget. Annual appropriated budgets are adopted for the general fund and the special revenue fund.

An encumbrance accounting system is used to record outstanding purchase commitments on a line item basis. Open encumbrances at year-end are either canceled or are included as re-appropriations of fund balance in the subsequent year. Those amounts to be re-appropriated are reported as restrictions, commitments and/or assignments of fund balance at June 30, 2018.

5) ACCOUNTING SYSTEM AND REPORTS:

The Charter School's accounting records reflect generally accepted accounting principles, as promulgated by the GASB. The accounting system of the Charter School is organized on the basis of funds. These funds are explained in "Notes to the Basic Financial Statements", Note 1.

6) CASH MANAGEMENT:

The investment policy of the Charter School is guided in large part by state statute as detailed in "Notes to the Basic Financial Statements", Note 2. The School has adopted a cash management plan which requires it to deposit public funds in public depositories protected from loss under the provisions of the Governmental Unit Deposit Protection Act ("GUDPA"). GUDPA was enacted in 1970 to protect governmental units from a loss of funds on deposit with a failed banking institution in New Jersey. The requires governmental units to deposit public funds only in public depositories located in New Jersey, where the funds are secured in accordance with the Act.

7) RISK MANAGEMENT:

The Board carries various forms of insurance, including but not limited to, general liability, automobile liability and comprehensive/collision, hazard and theft insurance on property and contents, and fidelity bonds. A schedule of insurance coverage is found on Exhibit J-20.

8) OTHER INFORMATION:

Independent Audit – State statutes require an annual audit by independent certified public accountants or registered municipal accountants. The accounting firm of Meshinsky & Associates was selected by the Board of Trustees at its meeting of June 18, 2018. In addition to meeting the requirements set forth in state statutes, the audit also was designed to meet the requirement of Title 2 U.S. Code of Federal Regulations Part 200, *Uniform Administrative Requirements, Cost Principles, and Audit Requirements for Federal Awards*, and New Jersey's OMB Circular 15-08, *Single Audit Policy for Recipients of Federal Grants, State Grants and State Aid*. The auditors' report on the basic financial statements and specific required supplementary information is included in the financial section of this report. The auditors' reports related specifically to the single audit and Government Auditing Standards are included in the single audit section of this report.

The Honorable President and Members
Of the Board of Trustees
The Elysian Charter School of Hoboken
Page 4
October 29, 2018

9) ACKNOWLEDGEMENTS:

We would like to express our appreciation to the members of the Board of Trustees of The Elysian Charter School of Hoboken for their concern in providing fiscal accountability to the citizens and participating districts of the Charter School and thereby contributing their full support to the development and maintenance of our financial operation. The preparation of this report could not have been accomplished without the efficient and dedicated services of the financial and accounting staff.

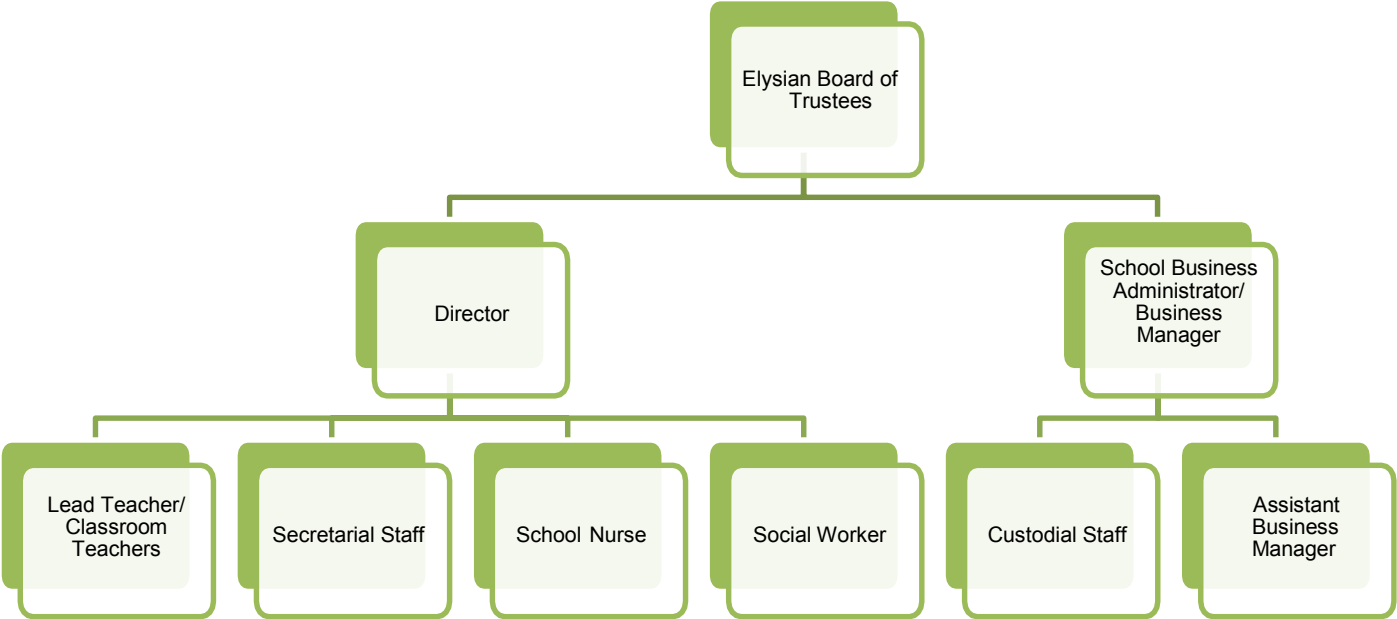


Susan Grierson, Director



Kathleen P. Mone, Business Administrator

THE ELYSIAN CHARTER SCHOOL OF HOBOKEN
Organizational Chart
2017-2018



**THE ELYSIAN CHARTER SCHOOL OF HOBOKEN
 ROSTER OF OFFICIALS
 JUNE 30, 2018**

<u>Member of the Board of Trustees:</u>	<u>Expiration of Term</u>
Eduardo Gonzalez, President	03/19
Jennifer O'Callaghan, Vice President	03/20
Alison Ziegler, Treasurer	03/20
Andrea O'Connor	03/21
Paul Ballantyne	03/19
Maria Badali	03/19
Diane Sasso	03/21
Brian Blake	03/21
Ken Nilsen	03/20

<u>Other Officials:</u>	<u>Title</u>	
Dr. Harry Laub, Ph.D.	Director (left 06/30/18)	06/18
Susan Grierson	Director (commence 07/01/18)	07/18
Kathleen Mone	Business Administrator	
Diane Macon	Assistant Business Administrator/Business Manager	
Melissa Landera	Staff Representative	
Hillary Quist	Staff Representative	

CONSULTANTS AND ADVISORS

Audit Firm

Meshinsky & Associates LLC
Certified Public Accountants
1155 W. Chestnut Street, Suite 2D
Union, New Jersey 07083

Attorney

Cleary, Giacobbe, Alfieri, Jacobs, LLC
5 Ravine Dr.
P.O. Box 553
Matawan, NJ 07747

Official Depository

Csbk
1470 Garden Street
Hoboken, NJ 07030-4934

FINANCIAL SECTION



MESHINSKY & ASSOCIATES LLC

CERTIFIED PUBLIC ACCOUNTANTS,
CONSULTANTS & INDEPENDENT TRUSTEES

Independent Auditor's Report

Honorable President
Members of the Board of Trustees
The Elysian Charter School of Hoboken
County of Hudson
Hoboken, New Jersey

Report on the Financial Statements

We have audited the accompanying financial statements of the governmental activities, the business-type activities, each major fund, and the aggregate remaining fund information of The Elysian Charter School of Hoboken (Charter School), in the County of Hudson, State of New Jersey, as of and for the fiscal year ended June 30, 2018, and the related notes to the financial statements, which collectively comprise the Charter School's basic financial statements as listed in the table of contents.

Management's Responsibility for the Financial Statements

The Charter School's management is responsible for the preparation and fair presentation of these financial statements in accordance with accounting principles generally accepted in the United States of America; this includes the design, implementation, and maintenance of internal control relevant to the preparation and fair presentation of financial statements that are free from material misstatement, whether due to fraud or error.

Auditor's Responsibility

Our responsibility is to express opinions on these financial statements based on our audit. We conducted our audit in accordance with auditing standards generally accepted in the United States of America and the standards applicable to financial audit contained in *Government Auditing Standards*, issued by the Comptroller General of the United States; and audit requirements as prescribed by the Office of Finance, Department of Education, State of New Jersey. Those standards require that we plan and perform the audit to obtain reasonable assurance about whether the financial statements are free from material misstatement.

An audit involves performing procedures to obtain audit evidence about the amounts and disclosures in the financial statements. The procedures selected depend on the auditor's judgment, including the assessment of the risks of material misstatement of the financial statements, whether due to fraud or error. In making those risk assessments, the auditor considers internal control relevant to the entity's preparation and fair presentation of the financial statements in order to design audit procedures that are appropriate in the circumstances, but not for the purpose of expressing an opinion on the effectiveness of the entity's internal control. Accordingly, we express no such opinion. An audit also includes

evaluating the appropriateness of accounting policies used and the reasonableness of significant accounting estimates made by management, as well as evaluating the overall presentation of the financial statements.

We believe that the audit evidence we have obtained is sufficient and appropriate to provide a basis for our audit opinions.

Opinions

In our opinion, the financial statements referred to above present fairly, in all material respects, the respective financial position of the governmental activities, the business-type activities, each major fund, and the aggregate remaining fund information of The Elysian Charter School of Hoboken Academy Charter School, in the County of Hudson, State of New Jersey, as of June 30, 2018, and the respective changes in the financial position and, where applicable, cash flows thereof for the year then ended in accordance with accounting principles generally accepted in the United States of America.

Other Matters

Required Supplementary Information

Accounting principles generally accepted in the United States of America require that the Management's Discussion and Analysis and Budgetary Comparison Information starting on pages 14 and 68, respectively, be presented to supplement the basic financial statements. Such information, although not a part of the basic financial statements, is required by the Governmental Accounting Standards Board who considers it to be an essential part of financial reporting for placing the basic financial statements in an appropriate operational, economic, or historical context. We have applied certain limited procedures to the required supplementary information in accordance with auditing standards generally accepted in the United States of America, which consisted of inquiries of management about the methods of preparing the information and comparing the information for consistency with management's response to our inquiries, the basic financial statements, and other knowledge we obtained during our audit of the basic financial statements. We do not express an opinion or provide any assurance on the information because the limited procedures do not provide us with sufficient evidence to express an opinion or provide any assurance.

Supplementary and Other Information

Our audit was conducted for the purpose of forming opinions on the financial statements that collectively comprise the Charter School's basic financial statements. The accompanying supplementary information such as the combining and individual fund financial statements and schedules of expenditures of federal awards and state financial assistance, as required by in the U.S. *Office of Management and Budget (OMB) Compliance Supplement* and the *New Jersey Circular 15-08 OMB State Aid/Grant Compliance Supplement* respectively; and the other information, such as the introductory and statistical sections are presented for purposes of additional analysis and are not a required part of the basic financial statements.

The combining and individual nonmajor fund financial statements and schedules of expenditures of federal awards and state financial assistance are the responsibility of management and were derived from and relate directly to the underlying accounting and other records use to prepare the basic financial statements. Such information has been subjected to the auditing procedures applied in the audit of the basic financial statements and certain additional procedures, including comparing and reconciling such information directly to the underlying accounting and other records used to prepare the basic financial statements or to

the basic financial statements themselves, and other additional procedures in accordance with auditing standards generally accepted in the United States of America. In our opinion, the combining and individual non-major fund financial statements and schedules of expenditures of federal awards and state financial assistance are fairly stated, in all material respects, in relation to the basic financial statements as a whole.

The introductory and statistical sections have not been subjected to the auditing procedures applied in the audit of the basic financial statements, and accordingly, we do not express an opinion or provide any assurance on it.

Other Reporting Required by *Government Auditing Standards and the Division of Finance, Department of Education, State of New Jersey*

In accordance with *Government Auditing Standards*, we have also issued our report dated February 25, 2019 on our consideration of The Elysian Charter School of Hoboken's internal control over financial reporting and our tests of its compliance with certain provisions of laws, regulations, contracts, and grant agreements and other matters.

The purpose of that report is to describe the scope of our testing of internal control over financial reporting and compliance and the results of that testing, and not to provide an opinion on internal control over financial reporting or on compliance. That report is an integral part of an audit performed in accordance with *Government Auditing Standards and the Division of Finance, Department of Education, State of New Jersey* in considering the Charter School's internal control over financial reporting and compliance.

Meshinsky & Associates LLC, CPA's



Philip T. Meshinsky
Licensed Public-School Accountant
No. CS00233400
Meshinsky & Associates LLC, CPA's
Union, New Jersey

February 25, 2019

REQUIRED SUPPLEMENTARY INFORMATION – PART I

**THE ELYSIAN CHARTER SCHOOL OF HOBOKEN
HOBOKEN, NEW JERSEY**

**MANAGEMENT'S DISCUSSION AND ANALYSIS
FOR THE FISCAL YEAR ENDED JUNE 30, 2018
UNAUDITED**

The discussion and analysis of The Elysian Charter School of Hoboken's financial performance provides an overall review of the Charter School's financial activities for the fiscal year ended June 30, 2018. The intent of this discussion and analysis is to look at the Charter School's financial performance as a whole; readers should also review the basic financial statements and notes to enhance their understanding of the Charter School's financial performance. Certain comparative information between the current year (2017 to 2018) and the prior year (2016 to 2017) is required to be presented in the MD & A.

Financial Highlights

Key financial highlights for 2018 are as follows:

- ❖ General revenues accounted for \$4,987,088 in revenue or 82% percent of all revenues. Program specific revenues in the form of charges for services and operating grants and contributions accounted for \$1,098,428 or 18% percent of total revenues of \$6,085,516.
- ❖ The Charter School had \$6,480,792 in expenses; only \$1,098,428 of these expenses were offset by program specific charges for services, grants or contributions. General revenues of \$4,987,088 were not adequate to provide for these programs.
- ❖ Among governmental funds, the General Fund had \$4,955,029 in revenues and \$5,159,358 in expenditures. The General Fund's fund balance decreased \$204,329 from 2017. This decrease was anticipated by the Board of Trustees.

Using this Comprehensive Annual Financial Report (CAFR)

This annual report consists of a series of financial statements and notes to those statements. These statements are organized so the reader can understand The Elysian Charter School of Hoboken as a financial whole, an entire operating entity. The statements then proceed to provide an increasingly detailed look at specific financial activities.

The *Statement of Net Position* and *Statement of Activities* provide information about the activities of the whole Charter School, presenting both an aggregate view of the Charter School's finances and a longer-term view of those finances. Fund financial statements provide the next level of detail. For governmental funds, these statements tell how services were financed in the short-term as well as what remains for future spending. The fund financial statements also look at the Charter School's most significant funds with all other non-major funds presented in total in one column. In the case of The Elysian Charter School of Hoboken, the General Fund is by far the most significant fund.

**THE ELYSIAN CHARTER SCHOOL OF HOBOKEN
HOBOKEN, NEW JERSEY**

**MANAGEMENT'S DISCUSSION AND ANALYSIS
FOR THE FISCAL YEAR ENDED JUNE 30, 2018
UNAUDITED
(CONTINUED)**

Reporting the Charter School as a Whole

Statement of Net Position and the Statement of Activities

While this document contains the large number of funds used by the Charter School to provide programs and activities, the view of the Charter School as a whole looks at all financial transactions and ask the question, "How did we do financially during 2018?" The *Statement of Net Position* and the *Statement of Activities* answer this question. These statements include all assets and liabilities using the accrual basis of accounting similar to the accounting used by most private-sector businesses. This basis of accounting takes into account all of the current year's revenues and expenses regardless of when cash is received or paid.

Statement of Net Position and the Statement of Activities

These two statements report the Charter School's net position and changes in that position. This change in net position is important because it tells the reader that, for the Charter School as a whole, the financial position of the Charter School have improved or diminished. The causes of this change may be the result of many factors, some financial and some not. Non-financial factors include current laws in New Jersey restricting revenue growth, facility condition, required educational programs and other factors.

In the *Statement of Net Position* and the *Statement of Activities*, the Charter School is divided into two kinds of activities:

- ❖ Governmental Activities — All of the Charter School's programs and services are reported here including instruction, administration, support services and capital outlay.
- ❖ Business-Type Activities — These services are provided on a charge for goods or services basis to recover all the expenses of the goods or services provided. The enterprise funds are reported as a business activity.

Reporting the Charter School's Most Significant Funds

Fund Financial Statements

Fund financial reports provide detailed information about the Charter School's funds. The Charter School uses many funds to account for a multitude of financial transactions. The Charter School's governmental funds are the General Fund and Special Revenue Fund.

**THE ELYSIAN CHARTER SCHOOL OF HOBOKEN
HOBOKEN, NEW JERSEY**

**MANAGEMENT'S DISCUSSION AND ANALYSIS
FOR THE FISCAL YEAR ENDED JUNE 30, 2018
UNAUDITED
(CONTINUED)**

Governmental Funds

The Charter School's activities are reported in governmental funds, which focus on how money flows into and out of those funds and the balances left at year-end available for spending in the future years. These funds are reported using an accounting method called modified accrual accounting, which measures cash and all other financial assets that can readily be converted to cash. The governmental fund statements provide a detailed short-term view of the Charter School's general government operations and the basic services it provides. Governmental fund information helps the reader determine whether there are more or fewer financial resources that can be spent in the near future to finance educational programs. The relationship (or differences) between governmental activities (reported in the *Statement of Net Position* and the *Statement of Activities*) and governmental funds are reconciled in the financial statements.

Enterprise Fund

The enterprise fund uses the same basis of accounting as business-type activities; therefore, these statements are essentially the same.

Notes to the Basic Financial Statements

The notes provide additional information that is essential to a full understanding of the data provided in the Charter School-wide and fund financial statements. The notes to the basic financial statements can be found starting on page 35 of this report.

The Charter School as a Whole

Recall that the *Statement of Net Position* provides the perspective of the Charter School as a whole. Net position may serve over time as a useful indicator of a government's financial position.

The Charter School's financial position is the product of several financial transactions including the net results of activities.

The Charter School's combined net position were (\$889,693) for 2018 and (\$494,417) for 2017.

Governmental Activities

The Charter School's total revenues were \$5,117,237 for 2018 this includes \$765,216 for 2018 state reimbursed TPAF social security, pension contributions and post retirement medical benefits.

The total cost of all program and services was \$5,526,840 for 2018. Instruction comprises 67% for 2018.

**THE ELYSIAN CHARTER SCHOOL OF HOBOKEN
HOBOKEN, NEW JERSEY**

**MANAGEMENT'S DISCUSSION AND ANALYSIS
FOR THE FISCAL YEAR ENDED JUNE 30, 2018
UNAUDITED
(CONTINUED)**

Business-Type Activities

Revenues for the Charter School's business-type activities (food service and before and after care school programs) were comprised of charges for services and federal and state reimbursements.

- ❖ Expenditures exceeded revenues by \$25,673 for 2018 and \$34,227 for 2017.
- ❖ Charges for services represent \$256,503 for 2018 and \$155,480 for 2017 of revenue. This represents amounts paid by patrons.
- ❖ Federal and state reimbursements for meals, including payments for free and reduced lunches and breakfast were \$19,991 for 2018 and \$23,951 for 2017.

Governmental Activities

The *Statement of Activities* shows the cost of program services and the charges for services and grants offsetting those services. Instruction expenses include activities directly dealing with the teaching of pupils and the interaction between teacher and student, including extracurricular activities.

Administration includes expenses associated with administrative and financial supervision of the Charter School.

Support services include the activities involved with assisting staff with the content and process of teaching to students, including curriculum and staff development and the costs associated with operating the facility.

Capital Outlay represents instructional and/or non-instructional equipment purchased and is capitalized when such equipment is over the \$2,000 threshold.

The Charter School's Funds

All governmental funds (i.e., general fund and special revenue fund presented in the fund- based statements) are accounted for using the modified accrual basis of accounting. Total revenues amounted to \$5,117,237 for 2018 and expenditures were \$5,321,566 for 2018. The net change in fund balance was most significant in the general fund, a decrease of \$204,329 for 2018.

**THE ELYSIAN CHARTER SCHOOL OF HOBOKEN
HOBOKEN, NEW JERSEY**

**MANAGEMENT'S DISCUSSION AND ANALYSIS
FOR THE FISCAL YEAR ENDED JUNE 30, 2018
UNAUDITED
(CONTINUED)**

The Charter School's Funds (Continued)

As demonstrated by the various statements and schedules included in the financial section of this report, the Charter School continues to meet its responsibility for sound financial management. The following schedules present a summary of the revenues of the governmental funds for the fiscal year ended June 30, 2018.

Revenues	Amount	Percent of Total
Local Sources	\$ 3,062,260	59.84%
State Sources	1,901,211	37.15%
Federal Sources	153,766	3.01%
Total	\$ 5,117,237	100.00%

The following schedule represents a summary of general fund and special revenue fund expenditures for the fiscal year ended June 30, 2018.

Expenditures	Amount	Percent of Total
Instruction	\$ 2,459,968	46.23%
Administration	2,015,818	37.88%
Support Services	845,780	15.89%
Total	\$ 5,321,566	100.00%

Changes in expenditures were the results of varying factors. Current expense decreased due to reductions in staff and medical costs.

General Fund Budgeting Highlights

The Charter School's budget is prepared according to New Jersey law, and is based on accounting for certain transactions on a basis of cash receipts, disbursements, and encumbrances. The most significant budgeted fund is the General Fund.

**THE ELYSIAN CHARTER SCHOOL OF HOBOKEN
HOBOKEN, NEW JERSEY**

**MANAGEMENT'S DISCUSSION AND ANALYSIS
FOR THE FISCAL YEAR ENDED JUNE 30, 2018
UNAUDITED
(CONTINUED)**

Over the course of the year, the Charter School revised the annual operating budget in accordance with state regulations. Revisions in the budget were made to recognize revenues that were not anticipated and to prevent over-expenditures in specific line item accounts.

Capital Assets (Net of Depreciation)

At the end of the fiscal year 2018, the Charter School had \$0 invested in capital assets and \$69,323 for 2017.

For the Future

The Elysian Charter School of Hoboken is in good financial condition presently. The Charter School is proud of its community support. A major concern is the continued enrollment growth of the Charter School with the increased reliance on federal and state funding.

In conclusion, The Elysian Charter School of Hoboken has committed itself to financial excellence for many years. In addition, the Charter School's system for financial planning, budgeting, and internal financial controls are well regarded. The Charter School plans to continue its sound fiscal management to meet the challenge of the future.

Contacting the Charter School's Financial Management

This financial report is designed to provide our citizens, taxpayers, investors, and creditors with a general overview of the Charter School's finances and to show the Charter School's accountability for the money it receives. If you have questions about this report or need additional information, contact the School Business Administrator/Board Secretary at The Elysian Charter School of Hoboken, 1460 Garden Street, Hoboken, New Jersey 07030.

BASIC FINANCIAL STATEMENTS

SECTION A – CHARTER SCHOOL–WIDE FINANCIAL STATEMENTS

The statement of net position and the statement of activities display information about the Charter School. These statements include the financial activities of the overall Charter School, except for fiduciary activities. Eliminations have been made to minimize the double-counting of internal activities. These statements distinguish between the governmental and business-type activities of the Charter School.

THE ELYSIAN CHARTER SCHOOL OF HOBOKEN

Statement of Net Position

June 30, 2018

	Governmental Activities	Business-Type Activities	Total
ASSETS:			
Cash and Cash Equivalents	\$ 555,906	\$ 170,449	\$ 726,355
Interfund Receivables	177,582	-	177,582
Receivables	49,452	1,987	51,439
	<u>782,940</u>	<u>172,436</u>	<u>955,376</u>
DEFERRED OUTFLOWS OF RESOURCES:			
Pensions	769,142	-	769,142
	<u>769,142</u>	<u>-</u>	<u>769,142</u>
LIABILITIES:			
Interfund Payable	-	112,504	112,504
Payable to Governments	21,940	-	21,940
Accounts Payable	72,661	-	72,661
Unearned Revenue	33,930	-	33,930
Noncurrent Liabilities			
Pensions	1,946,841	-	1,946,841
	<u>2,075,372</u>	<u>112,504</u>	<u>2,187,876</u>
DEFERRED INFLOWS OF RESOURCES:			
Pensions	426,335	-	426,335
	<u>426,335</u>	<u>-</u>	<u>426,335</u>
NET POSITION:			
Unassigned	(949,625)	59,932	(889,693)
	<u>(949,625)</u>	<u>59,932</u>	<u>(889,693)</u>
Total Net Position	<u>\$ (949,625)</u>	<u>\$ 59,932</u>	<u>\$ (889,693)</u>

The accompanying Notes to Basic Financial Statements are an integral part of this statement.

THE ELYSIAN CHARTER SCHOOL OF HOBOKEN
Statement of Activities
For The Fiscal Year Ended June 30, 2018

Functions/Programs	Expenses	Indirect Expenses Allocation	Program Revenues			Net (Expense) Revenue and Changes in Net Position		
			Charges for Services	Operating Grants and Contributions	Capital Grants and Contributions	Governmental Activities	Business-Type Activities	Total
GOVERNMENTAL ACTIVITIES:								
Instruction	\$ 2,459,968	\$ 1,268,460	\$ -	\$ 170,149	\$ -	\$ (3,558,279)	\$ -	\$ (3,558,279)
Administration	512,203	220,767	-	-	-	(732,970)	-	(732,970)
Support Services	829,177	166,942	-	-	-	(996,119)	-	(996,119)
Unallocated								
Depreciation	69,323	-	-	-	-	(69,323)	-	(69,323)
Employee Benefits	651,785	-	-	651,785	-	-	-	-
Total Governmental Activities	4,522,456	\$ 1,656,169	-	821,934	-	(5,356,691)	-	(5,356,691)
BUSINESS-TYPE ACTIVITIES:								
Food Service	302,167		256,503	19,991	-	-	(25,673)	(25,673)
Total Business-Type Activities	302,167		256,503	19,991	-	-	(25,673)	(25,673)
Total Primary Government	\$ 4,824,623		\$ 256,503	\$ 841,925	\$ -	\$ (5,356,691)	\$ (25,673)	\$ (5,382,364)
GENERAL REVENUES								
						\$ 3,002,039	\$ -	\$ 3,002,039
						1,884,828	-	1,884,828
						65	-	65
						60,156	40,000	100,156
						<u>4,947,088</u>	<u>40,000</u>	<u>4,987,088</u>
						(409,603)	14,327	(395,276)
						(540,022)	45,605	(494,417)
						<u>\$ (949,625)</u>	<u>\$ 59,932</u>	<u>\$ (889,693)</u>

The accompanying Notes to Basic Financial Statements are an integral part of this statement.

SECTION B – FUND FINANCIAL STATEMENTS

The individual Fund statements and schedules present more detailed information for the individual fund in a format that segregates information by fund type.

**GOVERNMENTAL
FUNDS**

THE ELYSIAN CHARTER SCHOOL OF HOBOKEN

Governmental Funds

Balance Sheet

June 30, 2018

	General Fund	Special Revenue Fund	Total
ASSETS:			
Cash	\$ 466,545	\$ 14,306	\$ 480,851
Cash-Escrow	75,055	-	75,055
Interfund Receivables	177,582	-	177,582
Receivables From Other Governments	34,124	-	34,124
Other Receivables	15,328	-	15,328
 Total Assets	768,634	14,306	782,940
 LIABILITIES AND FUND BALANCES:			
Liabilities:			
Payable to State Government	\$ 21,940	\$ -	\$ 21,940
Accounts Payable	58,485	14,176	72,661
Unearned Revenue	33,800	130	33,930
 Total Liabilities	114,225	14,306	128,531
 Fund Balances:			
Unassigned:			
General Fund	654,409	-	654,409
 Total Fund Balances	654,409	-	654,409
 Total Liabilities and Fund Balances	\$ 768,634	\$ 14,306	

Amounts reported for governmental activities in the statement of net position (A-1) are different because:

Capital assets used in governmental activities are not financial resources and therefore are not reported in governmental funds. The cost of the assets is \$289,088 and the accumulated depreciation is \$289,088.

-

Net pension liability of \$1,946,841, deferred inflows of resources of \$426,335 less deferred outflows of resources of \$769,142 related to pensions are not reported in the governmental funds

(1,604,034)

Net Position of Governmental Activities

\$ (949,625)

The accompanying Notes to Basic Financial Statements are an integral part of this statement.

THE ELYSIAN CHARTER SCHOOL OF HOBOKEN

Governmental Funds
Statement of Revenues, Expenditures, and
Changes in Fund Balance
For The Fiscal Year Ended June 30, 2018

	General Fund	Special Revenue Fund	Total
REVENUES:			
Local Sources:			
Local Tax Levy	\$ 2,993,597	\$ -	\$ 2,993,597
Interest on Investments	65		65
Miscellaneous	60,156	8,442	68,598
Total Local Sources	3,053,818	8,442	3,062,260
State Sources	1,901,211	-	1,901,211
Federal Sources	-	153,766	153,766
Total Revenues	4,955,029	162,208	5,117,237
EXPENDITURES:			
Current:			
Instruction	2,327,945	132,023	2,459,968
Administration	2,015,818	-	2,015,818
Support Services	815,595	30,185	845,780
Total Expenditures	5,159,358	162,208	5,321,566
NET CHANGE IN FUND BALANCE	(204,329)	-	(204,329)
FUND BALANCE, JULY 1	858,738	-	858,738
FUND BALANCE, JUNE 30	\$ 654,409	\$ -	\$ 654,409

The accompanying Notes to Basic Financial Statements are an integral part of this statement.

THE ELYSIAN CHARTER SCHOOL OF HOBOKEN
 Reconciliation of the Statement of Revenues, Expenditures
 and Changes in Fund Balances of Governmental Funds
 to the Statement of Activities
 For The Fiscal Year Ended June 30, 2018

Total net change in fund balances - governmental fund (from B-2)	\$	(204,329)
Amounts reported for governmental activities in the statement of activities (A-2) are different because:		
<p>Capital outlays are reported in governmental funds as expenditures. However, on the statement of activities, the cost of those assets if capitalized is allocated over their estimated useful lives as depreciation expense. This is the amount by which depreciation exceeded capital outlays in the current fiscal year.</p>		
Depreciation Expense	\$ (69,323)	(69,323)
<p>Pension costs associated with the PERS pension plan are reported in the governmental funds as expenditures in the year the school pension contribution is paid. However, on the statement of activities, the net difference between the current and prior year net pension liability is recognized</p>		
		(135,951)
Change in net position of governmental activities	\$	(409,603)

The accompanying Notes to Basic Financial Statements are an integral part of this statement.

PROPRIETARY FUNDS

THE ELYSIAN CHARTER SCHOOL OF HOBOKEN

Proprietary Funds
Statement of Fund Net Position
June 30, 2018

	Business-Type Activities
	Enterprise Funds
ASSETS:	
Current Assets:	
Cash and Cash Equivalents	\$ 170,449
Accounts Receivable:	
Federal	1,866
State	90
Other	31
Total Current Assets	172,436
 Total Assets	 \$ 172,436
 LIABILITIES AND NET POSITION:	
Current Liabilities:	
Interfund Payable	\$ 112,504
Total Current Liabilities	112,504
 NET POSITION:	
Unassigned	59,932
 Total Liabilities and Net Position	 \$ 172,436

The accompanying Notes to Basic Financial Statements are an integral part of this statement.

THE ELYSIAN CHARTER SCHOOL OF HOBOKEN
 Proprietary Funds
 Statement of Revenues, Expenses, and Changes in Net Position
 For The Fiscal Year Ended June 30, 2018

	Business-Type Activities
	Enterprise Funds
OPERATING REVENUES:	
Charges for Services:	
Daily Sales Reimbursable Program	\$ 57,531
Before and After School Revenue	198,972
Total Operating Revenues	256,503
OPERATING EXPENSES:	
Salaries and Benefits	213,294
Supplies and Materials	8,113
Cost of Sales	54,432
Processing Fees	7,971
Rent	17,500
Miscellaneous Expense	857
Total Operating Expenses	302,167
OPERATING (LOSS)	(45,664)
NONOPERATING REVENUES:	
State Sources:	
State School Lunch Program	921
Federal Sources:	
National School Breakfast Program	1,870
National School Lunch Program	17,200
Total Nonoperating Revenues	19,991
CHANGE IN NET POSITION	(25,673)
TRANSFER FROM GENERAL FUND	40,000
CHANGE IN NET POSITION AFTER TRANSFER	14,327
TOTAL NET POSITION, JULY 1	45,605
TOTAL NET POSITION, JUNE 30	\$ 59,932

The accompanying Notes to Basic Financial Statements are an integral part of this statement.

THE ELYSIAN CHARTER SCHOOL OF HOBOKEN

Proprietary Fund

Statement of Cash Flows

For The Fiscal Year Ended June 30, 2018

	<u>Business-Type Activities</u>
	<u>Enterprise Funds</u>
CASH FLOWS FROM OPERATING ACTIVITIES:	
Cash Received from Customers	\$ 256,503
Cash Payments to Suppliers and Employees	<u>(325,100)</u>
Net Cash Used For Operating Activities	<u>(68,597)</u>
CASH FLOWS FROM NONCAPITAL FINANCING ACTIVITIES:	
Cash Received from State and Federal Reimbursements	19,991
Transfer - General Fund	<u>40,000</u>
Net Cash Provided by Noncapital Financing Activities	<u>59,991</u>
Net Decrease in Cash and Cash Equivalents	(8,606)
Cash and Cash Equivalents, Beginning of the Year	<u>179,055</u>
Cash and Cash Equivalents, End of the Year	<u>\$ 170,449</u>
Reconciliation of Operating Loss to Net Cash Used For Operating Activities:	
Operating Loss Used for Operating Activities	\$ (45,664)
Changes in Assets and Liabilities:	
Decrease in Accounts Receivable	2,283
Decrease in Accounts Payable	(5,455)
Decrease in Interfund Payable	<u>(19,761)</u>
Net Cash Used For Operating Activities	<u>\$ (68,597)</u>

The accompanying Notes to Basic Financial Statements are an integral part of this statement.

***FIDUCIARY
FUNDS***

THE ELYSIAN CHARTER SCHOOL OF HOBOKEN

Fiduciary Funds
Statement of Fiduciary Net Position
June 30, 2018

	Total
ASSETS:	
Cash and Cash Equivalents	\$ 120,759
Total Assets	\$ 120,759
LIABILITIES:	
Liabilities:	
Accounts Payable	\$ 600
Interfund Accounts Payable	65,079
Payroll Deductions and Withholdings	36,088
Due to Student Groups	18,992
Total Liabilities	\$ 120,759

The accompanying Notes to Basic Financial Statements are an integral part of this statement.

NOTES TO THE FINANCIAL STATEMENTS

THE ELYSIAN CHARTER SCHOOL OF HOBOKEN
NOTES TO THE FINANCIAL STATEMENTS
JUNE 30, 2018

NOTE 1: SUMMARY OF SIGNIFICANT ACCOUNTING POLICIES

The financial statements of The Elysian Charter School of Hoboken have been prepared in conformity with generally accepted accounting principles (GAAP) as prescribed by the Governmental Accounting Standards Board (GASB). The GASB is the accounting standard-setting body responsible for establishing governmental accounting and financial reporting principles. The more significant accounting policies of the Charter School are described below.

For fiscal year 2016, the Charter School implemented the Governmental Accounting Standards Board (GASB) Statement No. 68, "Accounting and Financial Reporting for Pensions" and GASB Statement No. 71, "Pension Transition for Contributions Made Subsequent to the Measurement Date – an amendment of GASB Statement No. 68." GASB 68 established standards for measuring and recognizing pension liabilities, deferred outflows of resources and expense/expenditure.

A. Reporting Entity

The Charter School is an instrument of the State of New Jersey, established to function as an educational institution. Its mission is to establish a character school to serve as a neighborhood resource and as a model for other similar schools. The Elysian Charter School of Hoboken is committed to achieving the New Jersey Core Curriculum Content Standards and producing high academic achievement by all students. The Charter School will integrate a holistic curriculum, utilize learner center techniques, family and care giver centered approaches, comprehensive community involvement, cutting edge technology and an intimate nurturing environment that will enhance positive self-images.

The primary criterion for including activities within the Charter School's reporting entity, as set forth in Section 2100 of the GASB's Codification of Governmental Accounting and Financial Reporting Standards, is the degree of oversight responsibility maintained by the Charter School management. Oversight responsibility includes financial interdependency, selection of governing authority, designation of management, and ability to significantly influence operations and accountability for fiscal matters. The combined financial statements include all funds and account groups of the Charter School.

THE ELYSIAN CHARTER SCHOOL OF HOBOKEN
NOTES TO THE FINANCIAL STATEMENTS
JUNE 30, 2018

NOTE 1: SUMMARY OF SIGNIFICANT ACCOUNTING POLICIES (CONTINUED)

B. Basis of Presentation. Basis of Accounting

The Charter School's basic financial statements consist of Charter School-wide statements, including a statement of net position and a statement of activities, and fund financial statements which provide a more detailed level of financial information.

Charter school-wide Statements: The statement of net position and the statement of activities display information about the Charter School as a whole. These statements include the financial activities of the overall Charter School, except for fiduciary activities. Eliminations have been made to minimize the double-counting of internal activities. These statements distinguish between the governmental and business-type activity of the Charter School. Governmental activities generally are financed through intergovernmental revenues, and other non-exchange transactions. Business-type activities are financed in whole or in part by fees charged to external parties.

The statement of net position presents the financial condition of the governmental and business-type activity of the Charter School at fiscal year-end. The statement of activities presents a comparison between direct expenses and program revenues for the business-type activity of the Charter School and for each function of the Charter School's governmental activities. Direct expenses are those that are specifically associated with a program or function and, therefore, are clearly identifiable to a particular function.

Program revenues include (a) fees and charges paid by the recipients of goods or services offered by the programs and (b) grants and contributions that are restricted to meeting the operational or capital requirements of a particular program. Revenues that are not classified as program revenues are presented as general revenues. The comparison of direct expenses with program revenues identifies the extent to which each governmental function or business segment is self-financing or draws from the general revenues of the Charter School. *Fund Financial Statements:* During the fiscal year, the Charter School segregates transactions related to certain Charter School functions or activities in separate funds in order to aid financial management and to demonstrate legal compliance. The fund financial statements provide information about the Charter School's funds, including its fiduciary funds. Separate statements for each fund category — *governmental, proprietary, and fiduciary* — are presented. The New Jersey Department of Education (NJDOE) has elected to require New Jersey Charter Schools to treat each governmental fund as a major fund in accordance with the option noted in GASB No. 34, paragraph 76. The NJDOE believes that the presentation of all funds as major is important for public interest and to promote consistency among Charter School financial reporting models.

THE ELYSIAN CHARTER SCHOOL OF HOBOKEN
NOTES TO THE FINANCIAL STATEMENTS
JUNE 30, 2018

NOTE 1: SUMMARY OF SIGNIFICANT ACCOUNTING POLICIES (CONTINUED)

Basis of Presentation. Basis of Accounting (Continued)

The Charter School reports the following governmental funds:

General Fund: The general fund is the general operating fund of the Charter School and is used to account for all expendable financial resources except those required to be accounted for in another fund. Included are certain expenditures for vehicles and movable instructional or non- instructional equipment which are classified in the capital outlay subfund.

As required by the New Jersey State Department of Education, the Charter School includes budgeted capital outlay in this fund. Generally accepted accounting principles as they pertain to governmental entities state that general fund resources may be used to directly finance capital outlays for long-lived improvements as long as the resources in such cases are derived exclusively from unrestricted revenues. Resources for budgeted capital outlay purposes are normally derived from State of New Jersey Aid and appropriated fund balance. Expenditures are those that result in the acquisition of or additions to fixed assets for land, existing buildings, improvements of grounds, construction of buildings, additions to or remodeling of buildings and the purchase of built-in equipment. These resources can be transferred from and to Current Expense by Board resolution.

Special Revenue Fund: The special revenue fund is used to account for the proceeds of specific revenue from State and Federal Government, (other than major capital projects, debt service or the enterprise funds) and local appropriations that are legally restricted to expenditures for specified purposes.

Capital Projects Fund: The capital projects fund is used to account for all financial resources to be used for the acquisition or construction of major capital facilities (other than those financed by proprietary funds).

Debt Service Fund: Not applicable.

The Charter School reports the following proprietary fund:

Enterprise (Food Service and Before and After Care School Program) Funds: The enterprise fund accounts for all revenues and expenses pertaining to the cafeteria operations and child care operations. The food service fund and before and after school program fund are utilized to account for operations that are financed and operated in a manner similar to private business enterprises. The stated intent is that the cost (i.e. expenses including depreciation and indirect costs) of providing goods or services to the students on a continuing basis are financed or recovered primarily through user charges.

THE ELYSIAN CHARTER SCHOOL OF HOBOKEN
NOTES TO THE FINANCIAL STATEMENTS
JUNE 30, 2018

NOTE 1: SUMMARY OF SIGNIFICANT ACCOUNTING POLICIES (CONTINUED)

Basis of Presentation. Basis of Accounting (Continued)

Additionally, the Charter School reports the following fund type:

Fiduciary Funds: The Fiduciary Funds are used to account for assets held by the Charter School on behalf of others and includes Student Activities Fund and Payroll Agency Funds.

Basis of Accounting

Basis of accounting determines when transactions are recorded in the financial records and reported on the financial statements.

Charter School-wide, Proprietary, and Fiduciary Fund Financial Statements: The financial statements are prepared using the accrual basis of accounting. Governmental funds use the modified accrual basis of accounting; the enterprise fund and fiduciary funds use the accrual basis of accounting. Differences in the accrual and modified accrual basis of accounting arise in the recognition of revenue, the recording of deferred revenue, and in the presentation of expenses versus expenditures. The Charter School is entitled to receive monies under the established payment schedule and the unpaid amount is considered to be an “accounts receivable”. Revenue from grants, entitlements, and donations is recognized in the fiscal year in which all eligibility requirements have been satisfied.

Governmental Fund Financial Statements: Governmental funds are reported using the current financial resources measurement focus and the modified accrual basis of accounting. Under this method, revenues are recognized when measurable and available. “Measurable” means the amount of the transaction can be determined and “available” means collectible within the current period or soon enough thereafter to be used to pay liabilities of the current period. Expenditures are recorded when the related fund liability is incurred, except for principal and interest on general long-term debt, claims and judgments, and compensated absences, which are recognized as expenditures to the extent they have matured. General capital asset acquisitions are reported as expenditures in governmental funds. Proceeds of general long-term debt and acquisitions under capital leases are reported as other financing sources.

All governmental and business-type activities and enterprise funds of the Charter School follow FASB Statements and Interpretations issued on or before November 30, 1989, Accounting Principles Board Opinions, and Accounting Research Bulletins, unless those pronouncements conflict with GASB pronouncements.

**THE ELYSIAN CHARTER SCHOOL OF HOBOKEN
NOTES TO THE FINANCIAL STATEMENTS
JUNE 30, 2018**

NOTE 1: SUMMARY OF SIGNIFICANT ACCOUNTING POLICIES (CONTINUED)

C. Budgets/Budgetary Control

Annual appropriated budgets are prepared in the spring of each year for the general and special revenue funds. Budgets are prepared using the modified accrual basis of accounting except for special revenue funds. The legal level of budgetary control is established at line item accounts within each fund. Line item accounts are defined as the lowest (most specific) level of detail as established pursuant to the minimum chart of accounts referenced in N.J.A.C. 6:20-2A.2(m)1. All budget amendments/transfers must be approved by School Board resolution. All budget amounts presented in the accompanying supplementary information reflect the original budget and the amended budget (which have been adjusted for legally authorized revisions of the annual budgets during the year).

Appropriations, except remaining project appropriations, encumbrances, and unexpended grant appropriations, lapse at the end of each fiscal year. The capital projects fund presents the remaining project appropriations compared to current year expenditures.

Formal budgetary integration into the accounting system is employed as a management control device during the fiscal year. For governmental funds, there are no substantial differences between the budgetary basis of accounting and generally accepted accounting principles (GAAP) with the exception of the special revenue fund as noted below. Encumbrance accounting is also employed as an extension of formal budgetary integration in the governmental fund types. Unencumbered appropriations lapse at fiscal year-end.

The accounting records of the special revenue fund are maintained on the grant accounting budgetary basis. The grant accounting budgetary basis differs from GAAP in that the grant accounting budgetary basis recognizes encumbrances as expenditures and also recognizes the related revenues, whereas the GAAP basis does not. Sufficient supplemental records are maintained to allow for the presentation of GAAP basis financial reports.

The following presents a reconciliation of the Special Revenue Funds from the budgetary basis of accounting to the GAAP basis of accounting:

Total Revenues & Expenditures (Budgetary Basis)	\$ 162,208
Adjustments:	
Less Encumbrances at June 30,2018	-
Plus Encumbrances at June 30,2017	-
Total Revenues and Expenditures (GAAP Basis)	<u>\$ 162,208</u>

THE ELYSIAN CHARTER SCHOOL OF HOBOKEN
NOTES TO THE FINANCIAL STATEMENTS
JUNE 30, 2018

NOTE 1: SUMMARY OF SIGNIFICANT ACCOUNTING POLICIES (CONTINUED)

D. Encumbrances Accounting

Under encumbrance accounting purchase orders, contracts and other commitments for the expenditure of resources are recorded to reserve a portion of the applicable appropriation. Open encumbrances in governmental funds other than the special revenues fund are reported as reservations of fund balances at fiscal year-end as they do not constitute expenditures or liabilities but rather commitments related to unperformed contracts for goods and services.

Open encumbrances in the special revenue fund for which the Charter School has received advances are reflected in the balance sheet as deferred revenues at fiscal year-end.

The encumbered appropriation authority carries over into the next fiscal year. An entry will be made at the beginning of the next fiscal year to increase the appropriation reflected in the certified budget by the outstanding encumbrance amount as of the current fiscal year end.

E. Assets, Liabilities, and Equity

Interfund Transactions:

Transfers between governmental and business-type activities on the Charter School – wide statements are reported in the same manner as general revenues.

Exchange transactions between funds are reported as revenues in the seller funds and as expenditures/expenses in the purchaser funds. Flows of cash or goods from one fund to another without a requirement for repayment are reported as Interfund transfers. Interfund transfers are reported as other financing sources/uses in governmental funds and after non-operating revenues/expenses in the enterprise fund. Repayments from funds responsible for particular expenditures/expenses to the funds that initially paid for them are not presented on the financial statements.

Inventories:

Inventory purchases, other than those recorded in the enterprise fund, are recorded as expenditures during the year of purchase. Enterprise fund inventories are valued at cost, which approximates market, using the first-in/first-out (FIFO) method.

Allowance for Uncollectible Accounts:

No allowance for uncollectible accounts has been recorded as all amounts are considered collectible.

**THE ELYSIAN CHARTER SCHOOL OF HOBOKEN
NOTES TO THE FINANCIAL STATEMENTS
JUNE 30, 2018**

NOTE 1: SUMMARY OF SIGNIFICANT ACCOUNTING POLICIES (CONTINUED)

Assets, Liabilities, and Equity (Continued)

Capital Assets:

The Charter School has established a formal system of accounting for its capital assets. Purchased or constructed capital assets are reported at cost. Donated capital assets are valued at their estimated fair market value on the date received. The cost of normal maintenance and repairs that do not add to the value of the asset or materially extend assets' lives are not capitalized. The Charter School does not possess any infrastructure. The capitalization threshold used by Charter Schools in the State of New Jersey is \$2,000.

All reported capital assets except for land and construction in progress are depreciated. Depreciation is computed using the straight-line method under the half-year convention over the following estimated useful lives:

<u>Asset Class</u>	<u>Estimated Useful Lives</u>
School Buildings	50
Building Improvements	20
Electrical/Plumbing	30
Office & Computer Equipment	5-10

In the fund financial statements, fixed assets used in governmental fund operations are accounted for as capital outlay expenditures of the governmental fund upon acquisition. Fixed assets are not capitalized and related depreciation is not reported in the fund financial statements.

Unearned Revenue:

Unearned revenue arises when assets are recognized before revenue recognition criteria have been satisfied. Grants and entitlement received before the eligibility requirements are met are recorded as deferred revenue.

Accrued Liabilities and Long-term Obligations:

All payables, accrued liabilities, and long-term obligations are reported on the Charter School – wide financial statements. In general, governmental fund payables and accrued liabilities that, once incurred, are paid in a timely manner and in full from current financial resources are reported as obligations of the funds.

THE ELYSIAN CHARTER SCHOOL OF HOBOKEN
NOTES TO THE FINANCIAL STATEMENTS
JUNE 30, 2018

NOTE 1: SUMMARY OF SIGNIFICANT ACCOUNTING POLICIES (CONTINUED)

Assets, Liabilities, and Equity (Continued)

Net Position:

Net position represents the difference between assets and liabilities. Net investment in capital assets consists of capital assets, net of accumulated depreciation, reduced by the outstanding balance of any borrowing used for the acquisition, construction, or improvement of those assets. Net position are reported as restricted when there are limitations imposed on their use either through the enabling legislation adopted by the Charter School or through external restrictions imposed by creditors, grantors, or laws or regulations of other governments. The Charter School's policy is to first apply restricted resources when an expense is incurred for purposes for which both restricted and unrestricted net position is available.

Fund Balance Reserves:

The Charter School reserves those portions of fund balance which are legally segregated for a specific future use or which do not represent available expendable resources and, therefore, are not available for appropriation or expenditure. Unreserved fund balance indicates that portion which is available for appropriation in future periods. There is no fund balance reserve for the current year.

Revenues — Exchange and Nonexchange Transactions:

Revenue resulting from exchange transactions, in which each party gives and receives essentially equal value, is recorded on the accrual basis when the exchange takes place. On the modified accrual basis, revenue is recorded in the fiscal year in which the resources are measurable and become available. Available means the resources will be collected within the current fiscal year or are expected to be collected soon enough thereafter to be used to pay liabilities of the current fiscal year. For the Charter School, available means within sixty days of the fiscal year end.

Nonexchange transactions, in which the Charter School receives value without directly giving equal value in return, include grants, entitlements, and donations. Revenue from grants, entitlements, and donations are recognized in the fiscal year in which all eligibility requirements have been satisfied. Eligibility requirements include timing requirements, which specify the year when the resources are required to be used or the fiscal year when use is first permitted; matching requirements, in which the Charter School must provide local resources to be used for a specified purpose; and expenditure requirements, in which the resources are provided to the Charter School on a reimbursement basis. On the modified accrual basis, revenue from non-exchange transactions must also be available before it can be recognized.

Under the modified accrual basis, the following revenue sources are considered to be both measurable and available at fiscal year-end: state and local revenues available as an advance, interest, and tuition.

THE ELYSIAN CHARTER SCHOOL OF HOBOKEN
NOTES TO THE FINANCIAL STATEMENTS
JUNE 30, 2018

NOTE 1: SUMMARY OF SIGNIFICANT ACCOUNTING POLICIES (CONTINUED)

Assets, Liabilities, and Equity (Continued)

Operating Revenues and Expenses:

Operating revenues are those revenues that are generated directly from the primary activity of the enterprise fund. For the Charter School, these revenues are sales for food service. Operating expenses are necessary costs incurred to provide the service that is the primary activity of the enterprise fund.

Allocation of Indirect Expenses:

The Charter School reports all direct expenses by function in the Statement of Activities. Direct expenses are those that are clearly identifiable with a function. Indirect expenses are allocated to functions but are reported separately in the Statement of Activities. Employee benefits, including the employer's share of social security, workers compensation, and medical and dental benefits, were allocated based on salaries of that program. Depreciation expense, where practicable, is specifically identified by function and is included in the indirect expense column of the Statement of Activities. Depreciation expense that could not be attributed to a specific function is considered an indirect expense and is reported separately on the Statement of Activities. Interest on long-term debt is considered an indirect expense and is reported separately on the Statement of Activities.

Extraordinary and Special Items:

Extraordinary items are transactions or events that are unusual in nature and infrequent in occurrence. Special items are transactions or events that are within the control of management and are either unusual in nature or infrequent in occurrence. Neither of these types of transactions occurred during the fiscal year.

Management Estimates:

The preparation of financial statements in conformity with generally accepted accounting principles requires management to make estimates and assumptions that affect the reported amounts of revenues and expenditures/expenses during the reporting period. Actual results could differ from those estimates.

Accrued Salaries and Wages:

Certain Charter School employees who provide services to the Charter School over the ten-month academic year have the option to have their salaries evenly disbursed during the entire twelve-month year. New Jersey statutes require that these earned but undisbursed amounts be retained in a separate bank account.

**THE ELYSIAN CHARTER SCHOOL OF HOBOKEN NOTES
TO THE FINANCIAL STATEMENTS
JUNE 30, 2018**

NOTE 1: SUMMARY OF SIGNIFICANT ACCOUNTING POLICIES (CONTINUED)

A. Pensions

For purposes of measuring the net pension liability, deferred outflows of resources and deferred inflows of resources related to pensions, and pension expense, information about the fiduciary net pension for the State of New Jersey Public Employees' Retirement System (PERS) and the State of New Jersey Teachers' Pension and Annuity Fund (TPAF) and additions to/deductions from the PERS's and TPAF's net position have been determined on the same basis as they are reported by the PERS and the TPAF. For this purpose, benefit payments (including refunds of employee contributions) are recognized when due and payable in accordance with the benefit terms. Pension Plan investments are reported at fair value.

B. Impact of Recently Issued Accounting Principles

Adopted Accounting Pronouncements

For the year ended June 30, 2018, the Charter School implemented GASB Statement No. 72, *Fair Value Measurement and Application*. As a result of implementing this statement, the Charter School is required to measure certain investments at fair value for financial reporting purposes. In addition, the Charter School is required to measure donated capital assets at acquisition value (an entry price); these assets were previously required to be measured at fair value. Statement No. 72 requires disclosures to be made about fair value measurements, the level of fair value hierarchy, and valuation techniques. Implementation of this Statement did not impact the Charter School's financial statements.

The Charter School implemented GASB Statement No. 73, *Accounting and Financial Reporting for Pensions and Related Assets that are Not Within the Scope of GASB Statement 68, and Amendments to Certain Provisions of GASB Statements 67 and 68*. Implementation of this Statement did not impact the Charter School's financial statements.

The Charter School implemented GASB Statement No. 76, *The Hierarchy of Generally Accepted Accounting Principles for State and Local Governments*. Implementation of this Statement did not impact the Charter School's financial statements.

THE ELYSIAN CHARTER SCHOOL OF HOBOKEN
NOTES TO THE FINANCIAL STATEMENTS
JUNE 30, 2018

NOTE 1: SUMMARY OF SIGNIFICANT ACCOUNTING POLICIES (CONTINUED)

Impact of Recently Issued Accounting Principles (Continued)

Recently Issued and Adopted Accounting Pronouncements

The GASB has issued the following Statements which will become effective in future years as shown below:

Statement No. 74, *Financial Reporting for Postemployment Benefit Plans Other Than Pension Plans*. The objective of this Statement is to improve the usefulness of information about postemployment benefits other than pensions (other postemployment benefits or OPEB) included in the general purpose external financial reports of state and local governmental OPEB plans for making decisions and assessing accountability. This Statement results from a comprehensive review of the effectiveness of existing standards of accounting and financial reporting for all postemployment benefits (pensions and OPEB) with regard to providing decision-useful information, supporting assessments of accountability and interperiod equity, and creating additional transparency. This Statement will be effective for the year ended June 30, 2018. Management does not expect this Statement to impact the Charter School's financial statements.

Statement No. 75, *Accounting and Financial Reporting for Post-Employment Benefits Other Than Pensions*. This Statement replaces the requirements of Statement No. 45, *Accounting and Financial Reporting by Employers for Post-Employment Benefits Other Than Pensions*, as amended, and No. 57, *OPEB Measurements by Agency Employers and Agent Multi-Employer Plans*, for OPEB Statement No. 74, *Financial Reporting for Post-Employment Benefit Plans Other Than Pension Plans*, establishes new accounting and financial reporting requirements for OPEB Plans. This Statement will be effective for the year ended June 30, 2018. Management has not yet determined the potential impact on the Charter School's financial statements.

Statement No. 77, *Tax Abatement Disclosures*. This Statement requires governments that enter into tax abatement agreements to disclose information about those agreements. This Statement will be effective for the year ended June 30, 2018. Management does not expect this Statement to impact the Charter School's financial statements.

Statement No. 78, *Pensions Provided Through Certain Multiple-Employer Defined Benefit Pension Plans*. The objective of this Statement is to address a practice issue regarding the scope and applicability of Statement No. 68,

Accounting and Financial Reporting for Pensions. This Statement will be effective for the year ended June 30, 2018. Management does not expect this Statement to impact the Charter School's financial statements.

**THE ELYSIAN CHARTER SCHOOL OF HOBOKEN
NOTES TO THE FINANCIAL STATEMENTS
JUNE 30, 2018**

NOTE 1: SUMMARY OF SIGNIFICANT ACCOUNTING POLICIES (CONTINUED)

Impact of Recently Issued Accounting Principles (Continued)

Recently Issued and Adopted Accounting Pronouncements (Continued)

Statement No. 79, *Certain External Investment Pools and Pool Participants*. This Statement addresses accounting and financial reporting for certain external investment pools and pool participants. This Statement will be effective for the year ended June 30, 2018. Management does not expect this Statement to impact the Charter School's financial statements.

Statement No. 80, *Blending Requirements for Certain Component Units – an amendment of GASB Statement No. 14*. The objective of this Statement is to improve financial reporting by clarifying the financial statement presentation requirements for certain component units. This Statement amends the blending requirements established in paragraph 53 of Statement No. 14, *The Financial Reporting Entity, as amended*. This Statement will be effective for the year ended June 30, 2018.

Management does not expect this Statement to impact the Charter School's financial statements.

Statement No. 81, *Irrevocable Split-Interest Agreements*. The objective of this Statement is to improve accounting and financial reporting for irrevocable split-interest agreements by providing recognition and measurement guidance for situations in which a government is a beneficiary of the agreement. This Statement will be effective for the year ended June 30, 2018. Management does not expect this Statement to impact the Charter School's financial statements.

Statement No. 82, *Pension Issues – an amendment of GASB Statements No. 67, 68 and 73*. The objective of this Statement is to address certain issues that have been raised with respect to Statements No. 67, *Financial Reporting for Pension Plans*, No. 68, *Accounting and Financial Reporting for Pensions*, and No. 73, *Accounting and Financial Reporting for Pensions and Related Assets That Are Not Within The Scope of GASB Statement 68, and Amendments to Certain Provisions of GASB Statements 67 and 68*. This Statement will be effective for the year ended June 30, 2018. Management has not yet determined the potential impact on the Charter School's financial statements.

NOTE 2: CASH AND CASH EQUIVALENTS

Cash and cash equivalents includes amounts in deposits, money market accounts and short-term investments with original maturities of three months or less.

Investments are stated at cost, or amortized cost, which approximates market. The amortized cost method involves valuing a security at its cost on the date of purchase and thereafter assuming a constant amortization to maturity of any discount or premium. The Board classifies certificates of deposit which have

THE ELYSIAN CHARTER SCHOOL OF HOBOKEN
NOTES TO THE FINANCIAL STATEMENTS
JUNE 30, 2018

NOTE 2: CASH AND CASH EQUIVALENTS (CONTINUED)

original maturity dates of more than three months but less than twelve months from the date of purchase, as investments.

GASB Statement No. 3 requires disclosure of the level of custodial credit risk assumed by the Board in its cash, cash equivalents and investments. Category 1 includes deposits/investments held by the Board's custodial bank trust department or agent in the Board's name. Category 2 includes uninsured and unregistered deposits/investments held by the Board's custodial bank trust department or agent in the Board's name. Category 3 includes uninsured or unregistered deposits/investments held by a broker or dealer, or held by the Board's custodial bank trust department or agent but not in the Board's name. These categories are not broad representations that deposits or investments are "safe" or "unsafe".

Deposits

New Jersey statutes require that charter schools deposit public funds in public depositories located in New Jersey which are insured by the Federal Deposit Insurance Corporation, the Federal Savings and Loan Insurance Corporation, or by any other agency of the United States that insures deposits made in public depositories. Charter schools are also permitted to deposit public funds in the State of New Jersey Cash Management Fund.

New Jersey statutes require public depositories to maintain collateral for deposits of public funds that exceed depository insurance limits as follows:

The market value of the collateral must equal at least five percent of the average daily balance of collected public funds on deposit.

In addition to the above collateral requirement, if the public funds deposited exceed 75% of the capital funds of the depository, the depository must provide collateral having a market value at least equal to 100% of the amount exceeding 75%.

All collateral must be deposited with the Federal Reserve Bank of New York, the Federal Reserve Bank of Philadelphia, the Federal Home Loan Bank of New York, or a banking institution that is a member of the Federal Reserve System and has capital funds of not less than \$25,000,000.

Investments

New Jersey statutes permit the Board to purchase the following types of securities:

- a. Bonds or other obligations of the United States or obligations guaranteed by the United States.
- b. Bonds of any Federal Intermediate Credit Bank, Federal Home Loan Bank, Federal National Mortgage Agency or of any United States Bank for Cooperatives which have a maturity date not greater than twelve months from the date of purchase

**THE ELYSIAN CHARTER SCHOOL OF HOBOKEN
NOTES TO THE FINANCIAL STATEMENTS
JUNE 30, 2018**

NOTE 2: CASH AND CASH EQUIVALENTS (CONTINUED)

Investments (Continued)

c. Bonds or other obligations of the charter school.

The Charter School had no investments as of June 30, 2018. Cash and cash equivalents of the Charter School consisted of the following:

	General Fund	Special Revenue	Proprietary Fund	Fiduciary Funds	Total
Operating					
Account	\$ 541,600	\$ 14,306	\$ 170,449	\$ 120,759	\$ 847,114

The carrying amount of the Board’s cash and cash equivalents at June 30, 2018 was \$847,114 and the bank balance was \$945,044. All bank balances were covered by federal depository insurance and/or covered by a collateral pool maintained by the banks as required by New Jersey statutes.

Risk Category

All bank deposits, as of the balance sheet date, are entirely insured or collateralized by a collateral pool maintained by public depositories as required by the Governmental Unit Deposit Protection Act. In general, bank deposits are classified as to credit risk by three categories described below:

Category 1 — Insured or collateralized with securities held by the Board or by its agent in the Board’s name.

Category 2 — Collateralized with securities held by the pledging public depository’s trust department or agent in the Board’s name.

Category 3 — Uncollateralized, including any deposits that are collateralized with securities held by the pledging public depository, or by its trust department or agent, but not in the Board’s name.

As of June 30, 2018, the Board had funds invested and on deposit in checking accounts. These funds constitute “deposits with financial institutions” as defined by GASB Statement No. 3 and are classified as Category 1, both at year-end and throughout the year.

New Jersey Cash Management Fund

All investments in the Fund are governed by the regulations of the Investment Council, which prescribe specific standards designed to insure the quality of investments and to minimize the risks related to investments. In all the years of the Division of Investment’s existence, the Division has never suffered a default of principal or interest on any short-term security held by it due to the bankruptcy of a

**THE ELYSIAN CHARTER SCHOOL OF HOBOKEN
NOTES TO THE FINANCIAL STATEMENTS
JUNE 30, 2018**

NOTE 2: CASH AND CASH EQUIVALENTS (CONTINUED)

Risk Category (Continued)

New Jersey Cash Management Fund (Continued)

securities issuer; nevertheless, the possibility always exists, and for this reason a reserve is being accumulated as additional protection for the “Other-than-State” participants. In addition to the Council regulations, the Division sets further standards for specific investments and monitors the credit of all eligible securities issuers on a regular basis.

As of June 30, 2018, the Charter school had no funds on deposit with the New Jersey Cash Management Fund.

NOTE 3: RECEIVABLES

Receivables at June 30, 2018 consisted of accounts, intergovernmental, grants, and miscellaneous.

All receivables are considered collectible in full. A summary of the principal items of intergovernmental receivables follows:

	Governmental Fund Financial Statements	Governmental Wide Financial Statements
State Aid	\$ 34,124	\$ 34,214
Federal Aid	-	1,897
Other	15,328	15,328
Total Receivables, Net	\$ 49,452	\$ 51,439

NOTE 4: INTERFUND TRANSFERS AND BALANCES

Transfers between funds are used to repay expenses paid by another fund.

The following interfund balances on the fund financial statements at June 30, 2018:

Fund	Interfund Receivable	Interfund Payable
General Fund	\$ 177,582	\$ -
Proprietary Funds	-	112,504
Fiduciary Fund	-	65,078
Total	\$ 177,582	\$ 177,582

**THE ELYSIAN CHARTER SCHOOL OF HOBOKEN
NOTES TO THE FINANCIAL STATEMENTS
JUNE 30, 2018**

NOTE 5: CAPITAL ASSETS

Capital asset balances and activity for the fiscal year ended June 30, 2018 were as follows:

	Balance June 30, 2017	Increases	Decreases / Adjustments	Balance June 30, 2018
Government Activities:				
Capital Assets Being Depreciated:				
Building and Building Improvements	\$ 10,044	\$ -	\$ -	\$ 10,044
Machinery and Equipment	279,044	-	-	279,044
Total Capital Assets Being Depreciated	289,088	-	-	289,088
Government Activity Capital Assets	289,088	-	-	289,088
Less Accumulated Depreciation For:				
Building and Building Improvements	(9,276)	(768)	-	(10,044)
Machinery and Equipment	(210,489)	(68,555)	-	(279,044)
Total Accumulated Depreciation	(219,765)	(69,323)	-	(289,088)
Government Activity Capital Assets, Net of Accumulated Depreciation	\$ 69,323	\$ (69,323)	\$ -	\$ -
Depreciation expense was charged to governmental functions as follows:				
Unallocated				\$ 69,323

NOTE 6: LEASE OF FACILITIES

On February 25, 2015, Elysian Charter School of Hoboken entered into a lease with BIT Investment Sixty-One LLC for the schools new location at 1460 Garden Street, Hoboken, NJ, 07030. The term of the lease begins September 1, 2015 and will continue through June 30, 2045 unless the Charter School is no longer in existence. Under the terms of the lease the rent will be set at \$350,000 with a 10% increase every ten years. Rent expense for the year amounted to \$339,760.

**THE ELYSIAN CHARTER SCHOOL OF HOBOKEN
NOTES TO THE FINANCIAL STATEMENTS
JUNE 30, 2018**

NOTE 7: OBLIGATIONS UNDER EQUIPMENT LEASES

The Charter School is leasing two (2) copiers for a period of 63 months with monthly payments in the amount of \$1,190 commencing February 11, 2018 and expiring April 2023. The following is a schedule of the future minimum lease payments under the capital leases at June 30, 2018:

<u>Year</u>	<u>Amount</u>
2019	\$ 14,280
2020	14,280
2021	14,280
2022	14,280
2023	<u>11,900</u>
Total minimum lease payments	<u>\$ 69,020</u>

THE ELYSIAN CHARTER SCHOOL OF HOBOKEN
NOTES TO THE FINANCIAL STATEMENTS
JUNE 30, 2018

NOTE 8: PENSION PLANS

A substantial number of the Charter School's employees participate in one of the following defined benefit pension plans: the Teachers' Pension and Annuity Fund ("TPAF") and the Public Employees' Retirement System ("PERS"), which are administered by the New Jersey Division of Pensions and Benefits (the "Division"). In addition, employees may participate in the Defined Contribution Retirement Program, which is a defined contribution pension plan. This plan is administered by Prudential Financial for the Division. Each plan has a Board of Trustees that is primarily responsible for its administration. The Division issues a publicly available financial report that includes financial statements and required supplementary information. That report may be obtained by writing to:

State of New Jersey
Division of Pensions and Benefits
P.O. Box 295
Trenton, New Jersey 08625-0295
<http://www.nj.gov/treasury/pensions>

General Information about the Pension Plans

Plan Descriptions

Teachers' Pension and Annuity Fund - The Teachers' Pension and Annuity Fund is a cost-sharing multiple-employer defined benefit pension plan, with a special funding situation, which was established as of January 1, 1955, under the provisions of N.J.S.A. 18A:66. The State of New Jersey (the "State") is responsible to fund 100% of the employer contributions, excluding any local employer early retirement incentive (ERI) contributions. The TPAF's designated purpose is to provide retirement benefits, death, disability and medical benefits to certain qualified members. Membership in the TPAF is mandatory for substantially all teachers or members of the professional staff certified by the State Board of Examiners, who have titles that are unclassified, professional and certified. The TPAF's Board of Trustees is primarily responsible for the administration of the TPAF.

Public Employees' Retirement System - The Public Employees' Retirement System is a cost-sharing multiple-employer defined benefit pension plan which was established as of January 1, 1955, under the provisions of N.J.S.A. 43:15A. The PERS's designated purpose is to provide retirement, death, disability and medical benefits to certain qualified members. Membership in the PERS is mandatory for substantially all full-time employees of the Charter School, provided the employee is not required to be a member of another state-administered retirement system or other state pensions fund or local jurisdiction's pension fund. The PERS's Board of Trustees is primarily responsible for the administration of the PERS.

THE ELYSIAN CHARTER SCHOOL OF HOBOKEN
NOTES TO THE FINANCIAL STATEMENTS
JUNE 30, 2018

NOTE 8: PENSION PLANS (CONTINUED)

Defined Contribution Retirement Program - The Defined Contribution Retirement Program is a multiple-employer defined contribution pension fund established on July 1, 2007 under the provisions of Chapter 92, P.L. 2007, and Chapter 103, P.L. 2007 (N.J.S.A. 43:15C-1 et. seq.). The DCRP is a tax-qualified defined contribution money purchase pension plan under Internal Revenue Code (IRC) § 401(a) et seq., and is a “governmental plan” within the meaning of IRC § 414(d). The DCRP provides retirement benefits for eligible employees and their beneficiaries. Individuals covered under DCRP are employees enrolled in TPAF or PERS on or after July 1, 2007, who earn salary in excess of established “maximum compensation” limits; employees enrolled in New Jersey State Police Retirement System (SPRS) or the Police and Firemen’s Retirement System (PFRS) after May 21, 2010, who earn salary in excess of established “maximum compensation” limits; employees otherwise eligible to enroll in TPAF or PERS on or after November 2, 2008, who do not earn the minimum annual salary for tier 3 enrollment but who earn salary of at least \$5,000.00 annually; and employees otherwise eligible to enroll in TPAF or PERS after May 21, 2010 who do not work the minimum number of hours per week required for tiers 4 or 5 enrollment, but who earn salary of at least \$5,000.00 annually.

General Information about the Pension Plans (Cont’d)

Vesting and Benefit Provisions

Teachers' Pension and Annuity Fund - The vesting and benefit provisions are set by N.J.S.A. 18A:66. TPAF provides retirement, death and disability benefits. All benefits vest after ten years of service, except for medical benefits, which vest after 25 years of service or under the disability provisions of TPAF. Members are always fully vested for their own contributions and, after three years of service credit, become vested for 2% of related interest earned on the contributions. In the case of death before retirement, members' beneficiaries are entitled to full interest credited to the members' accounts.

The following represents the membership tiers for TPAF:

<u>Tier</u>	<u>Definition</u>
1	Members who were enrolled prior to July 1, 2007
2	Members who were eligible to enroll on or after July 1, 2007 and prior to November 2, 2008
3	Members who were eligible to enroll on or after November 2, 2008 and prior to May 21, 2010
4	Members who were eligible to enroll after May 21, 2010 and prior to June 28, 2011
5	Members who were eligible to enroll on or after June 28, 2011

Service retirement benefits of 1/55th of final average salary for each year of service credit is available to tiers 1 and 2 members upon reaching age 60 and to tier 3 members upon reaching age 62. Service retirement benefits of 1/60th of final average salary for each year of service credit is available to tier 4 members upon reaching age 62 and tier 5 members upon reaching age 65. Early retirement benefits are available to tiers 1 and 2 members before reaching age

THE ELYSIAN CHARTER SCHOOL OF HOBOKEN
NOTES TO THE FINANCIAL STATEMENTS
JUNE 30, 2018

NOTE 8: PENSION PLANS (CONTINUED)

General Information about the Pension Plans (Cont'd)

Vesting and Benefit Provisions (Cont'd)

60, tiers 3 and 4 before age 62 with 25 or more years of service credit, and tier 5 before age 65 with 30 or more years of service credit. Benefits are reduced by a fraction of a percent for each month that a member retires prior to the retirement age for his/her respective tier. Deferred retirement is available to members who have at least 10 years of service credit and have not reached the service retirement age for the respective tier.

Public Employees' Retirement System - The vesting and benefit provisions are set by N.J.S.A. 43:15A and 43:3B. The PERS provides retirement, death and disability benefits. All benefits vest after ten years of service, except for medical benefits, which vest after 25 years of service or under the disability provisions of the PERS.

The membership tiers for PERS are the same as previously noted for TPAF.

Service retirement benefits of 1/55th of final average salary for each year of service credit is available to tiers 1 and 2 members upon reaching age 60 and to tier 3 members upon reaching age 62. Service retirement benefits of 1/60th of final average salary for each year of service credit is available to tier 4 members upon reaching age 62 and tier 5 members upon reaching age 65. Early retirement benefits are available to tiers 1 and 2 members before reaching age 60, tiers 3 and 4 before age 62 with 25 or more years of service credit and tier 5 with 30 or more years of service credit before age 65. Benefits are reduced by a fraction of a percent for each month that a member retires prior to the age at which a member can receive full early retirement benefits in accordance with their respective tier. Tier 1 members can receive an unreduced benefit from age 55 to age 60 if they have at least 25 years of service. Deferred retirement is available to members who have at least 10 years of service credit and have not reached the service retirement age for the respective tier.

Defined Contribution Retirement Program - Eligible members are provided with a defined contribution retirement plan intended to qualify for favorable Federal income tax treatment under IRC Section 401(a), a noncontributory group life insurance plan and a noncontributory group disability benefit plan. A participant's interest in that portion of his or her defined contribution retirement plan account attributable to employee contributions shall immediately become and shall at all times remain fully vested and nonforfeitable. A participant's interest in that portion of his or her defined contribution retirement plan account attributable to employer contributions shall be vested and nonforfeitable on the date the participant commences the second year of employment or upon his or her attainment of age 65, while employed by an employer, whichever occurs first.

Contributions

Teachers' Pension and Annuity Fund - The contribution policy is set by N.J.S.A. 18A:66 and requires contributions by active members and contributing

THE ELYSIAN CHARTER SCHOOL OF HOBOKEN
NOTES TO THE FINANCIAL STATEMENTS
JUNE 30, 2018

NOTE 8: PENSION PLANS (CONTINUED)

Contributions (Cont'd)

employers. Pursuant to the provisions of Chapter 78, P.L. 2011, the active member contribution rate increased from 5.5% of annual compensation to 6.5% plus an additional 1% phased-in over 7 years beginning in July 2012. The member contribution rate was 7.20% in State fiscal year 2017. The phase-in of the additional incremental member contribution rate takes place in July of each subsequent State fiscal year. The State's contribution is based on an actuarially determined amount, which includes the employer portion of the normal cost and unfunded accrued liability. Funding for noncontributory group insurance benefits is based on actual claims paid. For fiscal year 2017, the State's pension contribution was less than the actuarial determined amount.

Under current statute, all employer contributions are made by the State of New Jersey on-behalf of the Charter School and all other related non-contributing employers. No normal or accrued liability contribution by the Charter School has been required over the preceding fiscal years. These on-behalf contributions by the State of New Jersey are considered a special funding situation, under the definition of GASB 68, *Accounting and Financial Reporting for Pensions*. The Charter School commenced operations on January 1, 2013 and the enrollment process of Charter School employees in the TPAF began upon hiring of applicable personnel. As a result of the timing of participation in the pension plan, at June 30, 2017 there are no contractual requirements to contribute. Timing of participation aside, the Charter School would not have been required to make any contributions to the pension plan during the fiscal year ended June 30, 2018 because of the 100% special funding situation with the State of New Jersey.

Based on the most recent TPAF measurement date of June 30, 2017 and the timing of the Charter School's participation in the pension plan, there was no State contractually required contribution, on-behalf of the Charter School, to the pension plan for the fiscal year ended June 30, 2018. Charter School employee contributions to the pension plan during the fiscal year ended June 30, 2018 were \$275,606.

Public Employees' Retirement System - The contribution policy is set by N.J.S.A. 43:15A and requires contributions by active members and contributing employers. Members contribute at a uniform rate. Pursuant to the provisions of Chapter 78, P.L. 2011, the active member contribution rate increased from 5.5% of annual compensation to 6.5% plus an additional 1% phased-in over seven years beginning in July 2012. The member contribution rate was 7.20% in State fiscal year 2017. The phase-in of the additional incremental member contribution rate takes place in July of each subsequent State fiscal year. The rate for members who are eligible for the Prosecutors Part of PERS (Chapter 366, P.L. 2001) increased from 8.5% of base salary to 10%. Employers' contribution amounts are based on an actuarially determined rate. The Charter School's contribution amounts are based on an actuarially determined amount, which includes the normal cost and unfunded accrued liability. The Charter School's contractually required contribution rate for the fiscal year ended June 30, 2018

THE ELYSIAN CHARTER SCHOOL OF HOBOKEN
NOTES TO THE FINANCIAL STATEMENTS
JUNE 30, 2018

NOTE 8: PENSION PLANS (CONTINUED)

General Information about the Pension Plans (Cont'd)

Vesting and Benefit Provisions (Cont'd)

was 15.73% of the Charter School's covered payroll. This amount was actuarially determined as the amount that, when combined with employee contributions, is expected to finance the costs of benefits earned by employees during the year, including an additional amount to finance any unfunded accrued liability.

Based on the most recent PERS measurement date of June 30, 2017, the Charter School's contractually required contribution to the pension plan for the fiscal year ended June 30, 2018 was \$73,701 and was paid by April 1, 2018. Charter School employee contributions to the pension plan during the fiscal year ended June 30, 2018 were \$214,895.

Defined Contribution Retirement Program - The contribution policy is set by N.J.S.A. 43:15C-3 and requires contributions by active members and contributing employers. In accordance with Chapter 92, P.L. 2007 and Chapter 103, P.L. 2007, plan members are required to contribute 5.5% of their annual covered salary. In addition to the employee contributions, the Charter School contributes 3% of the employees' base salary, for each pay period, to Prudential Financial not later than the fifth business day after the date on which the employee is paid for that pay period.

At June 30, 2018, the Charter School had no employees participating in this program.

Pension Liabilities, Pension Expense, and Deferred Outflows of Resources and Deferred Inflows of Resources Related to Pensions

Public Employees' Retirement System - At June 30, 2018, the Charter School reported a liability of \$1,946,841 for its proportionate share of the net pension liability. The net pension liability was measured as of June 30, 2017, and the total pension liability used to calculate the net pension liability was determined by an actuarial valuation as of July 1, 2016. The total pension liability was calculated through the use of updated procedures to roll forward from the actuarial valuation date to the measurement date of June 30, 2016. The Charter School's proportion of the net pension liability was based on a projection of the Charter School's long-term share of contributions to the pension plan relative to the projected contributions of all participating employers, actuarially determined. For the June 30, 2017 measurement date, the Charter School's proportion was .0042162442%, which was an increase of .0083632954% from its proportion measured as of June 30, 2016.

For the fiscal year ended June 30, 2018, the Charter School recognized pension expense of \$84,569, in the government-wide financial statements. This pension expense was based on the pension plan's June 30, 2017 measurement date.

**THE ELYSIAN CHARTER SCHOOL OF HOBOKEN
NOTES TO THE FINANCIAL STATEMENTS
JUNE 30, 2018**

NOTE 8: PENSION PLANS (CONTINUED)

Public Employees' Retirement System (Cont'd) - At June 30, 2018, the Charter School reported deferred outflows of resources and deferred inflows of resources related to PERS from the following sources:

Deferred Outflows of Resources	Deferred Inflows of Resources
\$ 769,142	\$ 426,335

Actuarial Assumptions

The net pension liability was measured as of June 30, 2017, and the total pension liability used to calculate the net pension liability was determined by an actuarial valuation as of July 1, 2016. The total pension liability was calculated through the use of updated procedures to roll forward from the actuarial valuation date to the measurement date of June 30, 2017. This actuarial valuation used the following actuarial assumptions, applied to all periods included in the measurement:

Inflation	2.25%
Salary Increases:	
2012-2021	
Through 2026	1.65% - 4.15% Based on Age
Thereafter	2.65% - 5.15% Based on Age
Investment Rate of Return	7.00%
Mortality Rate Table	RP-2000
Period of Actuarial Experience	
Study upon which Actuarial Assumptions were Based	July 1, 2011 - June 30, 2014

For PERS, pre-retirement mortality rates were based on the RP-2000 Employee Preretirement Mortality Table for male and female active participants. Mortality tables are set back 2 years for males and 7 years for females. In addition, the tables provide for future improvements in mortality from the base year of 2013 using a generational approach based on the plan actuary's modified MP-2014 projection scale. Post-retirement mortality rates were based on the RP-2000 Combined Healthy Male and Female Mortality Tables (setback 1 year for males

**THE ELYSIAN CHARTER SCHOOL OF HOBOKEN
NOTES TO THE FINANCIAL STATEMENTS
JUNE 30, 2018**

**NOTE 8: PENSION PLANS (CONTINUED)
Actuarial Assumptions (Cont'd)**

and females) for service retirements and beneficiaries of former members and a one-year static projection based on mortality improvement Scale AA. In addition, the tables for service retirements and beneficiaries of former members provide for future improvements in mortality from the base year of 2013 using a generational approach based on the plan actuary's modified MP-2014 projection scale. Disability retirement rates used to value disabled retirees were based on the RP-2000 Disabled Mortality Table (set back 3 years for males and set forward 1 year for females).

For PERS, in accordance with State statute, the long-term expected rate of return on plan investments (7.00% at June 30, 2017) is determined by the State Treasurer, after consultation with the Directors of the Division of Investments and Division of Pensions and Benefits, the board of trustees and the actuaries. The long-term expected rate of return was determined using a building block method in which best-estimate ranges of expected future real rates of return (expected returns, net of pension plan investment expense and inflation) are developed for each major asset class. These ranges are combined to produce the long-term expected rate of return by weighting the expected future real rates of return by the target asset allocation percentage and by adding expected inflation. Best estimates of arithmetic rates of return for each major asset class included in PERS's target asset allocation as of June 30, 2017 are summarized in the following tables:

<u>Asset Class</u>	<u>Target Allocation</u>	<u>Long-Term Expected Real Rate of Return</u>
Absolute return/risk mitigation	5.00%	5.51%
Cash equivalents	5.50%	1.00%
U.S. Treasuries	3.00%	1.87%
Investment grade credit	10.00%	3.78%
Public high yield	2.50%	6.82%
Global diversified credit	5.00%	7.10%
Credit oriented hedge funds	1.00%	6.60%
Debt related private equity	2.00%	10.63%
Debt related real estate	1.00%	6.61%
Private real asset	2.50%	11.83%
Equity related real estate	6.25%	9.23%
U.S. equity	30.00%	8.19%
Non-U.S. developed markets equity	11.50%	9.00%
Emerging markets equity	6.50%	11.64%
Buyouts/venture capital	8.25%	13.08%

Discount Rate - The discount rate used to measure the total pension liability at June 30, 2017 was 5.00% for PERS. For PERS, the respective single blended discount rates were based on the long-term expected rate of return on pension plan investments of 7.00%, and a municipal bond rate of 3.58% as of June 30, 2017, based on the Bond Buyer Go 20-Bond Municipal Bond Index which

**THE ELYSIAN CHARTER SCHOOL OF HOBOKEN
NOTES TO THE FINANCIAL STATEMENTS
JUNE 30, 2018**

**NOTE 8: PENSION PLANS (CONTINUED)
Actuarial Assumptions (Cont'd)**

includes tax-exempt general obligation municipal bonds with an average rating of AA/Aa or higher. The projection of cash flows used to determine the discount rates for PERS assumed that contributions from plan members will be made at the current member contribution rates and that contributions from employers will be made based on the contribution rate in the most recent fiscal year. Based on those assumptions, the plan's fiduciary net position was projected to be available to make projected future benefit payments of current plan members through 2040 for PERS. Therefore, the long-term expected rate of return on plan investments was applied to projected benefit payments through 2040 for PERS, and the municipal bond rate was applied to projected benefit payments after that date in determining the total pension liability.

Sensitivity of Charter School's Proportionate Share of Net Pension Liability to Changes in the Discount Rate

Public Employees' Retirement System (PERS) - The following presents the Charter School's proportionate share of the net pension liability at June 30, 2017, the plans measurement date, calculated using a discount rate of 5.00%, as well as what the Charter School's proportionate share of the net pension liability would be if it were calculated using a discount rate that is 1% lower or 1% higher than the current rates used:

	PERS		
	1% Decrease (4.00%)	Current Discount Rate (5.00%)	1% Increase (6.00%)
Charter School's Proportionate Share of the Net Pension Liability	\$ 2,384,345	\$ 1,946,841	\$ 1,584,586

Pension Plan Fiduciary Net Position

For purposes of measuring the net pension liability, deferred outflows of resources and deferred inflows of resources related to pensions, and pension expense, information about the respective fiduciary net position of the PERS and additions to/deductions from PERS's respective fiduciary net position have been determined on the same basis as they are reported by PERS. Accordingly, benefit payments (including refunds of employee contributions) are recognized when due and payable in accordance with the benefit terms. Investments are reported at fair value. For additional information about PERS, please refer to the plan's Comprehensive Annual Financial Report (CAFR) which can be found at www.nj.gov/treasury/pensions.

THE ELYSIAN CHARTER SCHOOL OF HOBOKEN
NOTES TO THE FINANCIAL STATEMENTS
JUNE 30, 2018

NOTE 9: STATE POST-RETIREMENT MEDICAL BENEFITS

P.L. 1987, c.384 of P.L. 1990, c.6 required Teachers' Pensions and Annuity Fund ("TPAF") and the Public Employees' Retirement System ("PERS"), respectively, to fund post-retirement medical benefits for those State employees who retire after accumulating 25 years of credited service or on a disability retirement. P.L. 2007, c.103 amended the law to eliminate the funding of postemployment medical benefits through the TPAF and PERS. It created separate funds outside of the pension plans for the funding and payment of postemployment medical benefits for retired State employees and retired educational employees. As of June 30, 2015, there were 107,314 retirees receiving postemployment medical benefits, and the State contributed \$1.25 billion on their behalf. The cost of these benefits is funded through contributions by the State in accordance with P.L. 1994, c.62. Funding of post-retirement medical premiums changed from a pre-funding basis to a pay-as-you-go basis beginning in fiscal year 1994.

The State is also responsible for the cost attributable to P.L. 1992 c.126, which provides free health benefits to members of PERS and the Alternate Benefit Program who retire from a Board of Education, Charter School or county college with 25 years of service. The State paid \$214.1 million toward Chapter 126 benefits for 19,056 eligible retired members in fiscal year 2015.

NOTE 10: POSTEMPLOYMENT BENEFITS OTHER THAN PENSIONS (OPEB)

General Information about the OPEB Plan

The State of New Jersey reports a liability as a result of its statutory requirements to pay other postemployment (health) benefits for State Health Benefit Local Education Retired Employees Plan. The State Health Benefit Local Education Retired Employees Plan is a multiple-employer defined benefit OPEB plan that is administered on a pay-as-you-go basis. Accordingly, no assets are accumulated in a qualifying trust that meets the criteria in paragraph 4 of GASB Statement No. 75, Accounting and Financial Reporting for the Postemployment Benefits Other Than Pensions. The State Health Benefit Local Education Retired Employees Plan provides medical, prescription drug, and Medicare Part B reimbursement to retirees and their covered dependents of local education employers.

The employer contributions for the participating local education employers are legally required to be funded by the State of New Jersey in accordance with N.J.S.A 52:14-17.32f. According to N.J.S.A 52:14- 17.32f, the State provides employer-paid coverage to employees who retire from a board of education or county college with 25 years or more of service credit in, or retires on a disability pension from, one or more of the following plans: the Teachers' Pension and Annuity Fund (TPAF), the Public Employees' Retirement System (PERS), the Police and Firemen Retirement System (PFRS), or the Alternate Benefit Program (ABP). Pursuant to Chapter 78, P.L. 2011, future retirees eligible for postretirement

**THE ELYSIAN CHARTER SCHOOL OF HOBOKEN
NOTES TO THE FINANCIAL STATEMENTS
JUNE 30, 2018**

NOTE 10: POSTEMPLOYMENT BENEFITS OTHER THAN PENSIONS (OPEB) (CONT'D)

medical coverage who have less than 20 years of creditable service on June 28, 2011 will be required to pay a percentage of the cost of their health care coverage in retirement provided they retire with 25 or more years of pension service credit. The percentage of the premium for which the retiree will be responsible will be determined based on the retiree's annual retirement benefit and level of coverage.

General Information about the OPEB Plan

The total nonemployer OPEB liability does not include certain other postemployment benefit obligations that are provided by the local education employers. The reporting of these benefits are the responsibility of the individual local education employers.

At June 30, 2018, the following employees were covered by the benefit terms:

TPAF participant retirees

As of June 30, 2017, there were 112,966 retirees receiving post retirement medical benefits and the State contributed \$1.39 billion on their behalf.

PERS participant retirees

The state paid \$238.9 million toward Chapter 126 benefits for 20,913 eligible retired members in Fiscal Year 2017.

Basis of Presentation

The Schedule presents the State of New Jersey's obligation under NJSA 52:14-17.32f. The Schedule does not purport to be a complete presentation of the financial position or changes in financial position of the State Health Benefit Local Education Retired Employees Plan or the State of New Jersey. The accompanying Schedule was prepared in accordance with U.S. generally accepted accounting principles. Such preparation requires management of the State of New Jersey to make a number of estimates and assumptions relating to the reported amounts. Due to the inherent nature of these estimates, actual results could differ from those estimates.

Total OPEB Liability

The State of New Jersey's total OPEB liability, as of the measurement date of June 30, 2017, was \$53,639,841,858. Of this amount, the total OPEB liability attributable to the Charter School was \$912,778. The State of New Jersey's proportionate share of the total OPEB liability is 100%, including the proportion attributable to the Charter School of 0.00170%. The total OPEB liability for the Charter School measured as of June 30, 2017 is zero as a result of the Special Funding Situation with the State of New Jersey. The Charter School's proportionate share of the total OPEB liability measured as of June 30, 2017 is 0.00%. Accordingly, the Charter School did not recognize any portion of the collective net OPEB liability on the

**THE ELYSIAN CHARTER SCHOOL OF HOBOKEN
NOTES TO THE FINANCIAL STATEMENTS
JUNE 30, 2018**

NOTE 10: POSTEMPLOYMENT BENEFITS OTHER THAN PENSIONS (OPEB) (CONT'D)

Statement of Net Position.

Total Nonemployer OPEB Liability

The total nonemployer OPEB liability as of June 30, 2017 was determined by an actuarial valuation as of June 30, 2016, which was rolled forward to June 30, 2017. The total nonemployer OPEB liability as of June 30, 2016 was determined by an actuarial valuation as of June 30, 2016. The actuarial assumptions vary for each plan member depending on the pension plan the member is enrolled in. This actuarial valuation used the following actuarial assumptions, applied to all periods in the measurement:

	TPAF/ABP	PERS
Inflation Rate	2.50%	2.50%
	Based on	Based on
	Years of Service	Age
Salary Increases:		
Through 2026	1.55% - 4.55%	2.15% - 4.15%
Thereafter	2.00% - 5.45%	3.15% - 5.15%

Preretirement mortality rates were based on the RP-2014 Headcount-Weighted Healthy Employee Male/Female mortality table with fully generational mortality improvement projections from the central year using the MP-2017 scale. Postretirement mortality rates were based on the RP-2014 Headcount- Weighted Healthy Annuitant Male/Female mortality table with fully generational improvement projections from the central year using the MP-2017 scale. Disability mortality was based on the RP-2014 Headcount- Weighted Disabled Male/Female mortality table with fully generational improvement projections from the central year using the MP-2017 scale.

The actuarial assumptions used in the June 30, 2016 valuation were based on the results of actuarial experience studies for the periods July 1, 2012 - June 30, 2015, July 1, 2010 - June 30, 2013, and July 1, 2011 - June 30, 2014 for TPAF and PERS, respectively.

Health Care Trend Assumptions

For pre-Medicare preferred provider organization (PPO) medical benefits, this amount initially is 5.9% and decreases to a 5.0% long-term trend rate after nine years. For self-insured post-65 PPO medical benefits, the trend rate is 4.5%. For health maintenance organization (HMO) medical benefits, the trend rate is initially 5.9% and decreases to a 5.0% long-term trend rate after nine years. For prescription drug benefits, the initial trend rate is 10.5% decreasing to a 5.0% long-term trend rate after eight years. For the Medicare Part B reimbursement, the trend rate is 5.0%. The Medicare Advantage trend rate is 4.5% and will continue in all future years.

**THE ELYSIAN CHARTER SCHOOL OF HOBOKEN
NOTES TO THE FINANCIAL STATEMENTS
JUNE 30, 2018**

NOTE 10: POSTEMPLOYMENT BENEFITS OTHER THAN PENSIONS (OPEB) (CONT'D)

Discount rate

The discount rate for June 30, 2017 was 3.58%. This represents the municipal bond return rate as chosen by the Division. The source is the Bond Buyer Go 20-Bond Municipal Bond Index, which includes tax-exempt general obligation municipal bonds with an average rating of AA/Aa or higher.

Changes in the Total OPEB Liability

	Total OPEB Liability
Balance as of June 30, 2016 Measurement Date	\$ 5,980,285
Changes for the Year:	
Service Cost	533,425
Interest Cost	183,838
Changes of Benefit Terms	-
Differences Between Expected and Actual Experience	-
Changes in Assumptions or Other Inputs	(858,007)
Member Contributions	4,872
Gross Benefit Payments	(132,305)
Net Changes	(268,177)
Balance as of June 30, 2017 Measurement Date	\$ 5,712,108

Sensitivity of Total Nonemployer OPEB Liability to changes in the discount rate:

The following presents the total nonemployer OPEB liability as of June 30, 2017, respectively, calculated using the discount rate as disclosed above as well as what the total nonemployer OPEB liability would be if it was calculated using a discount rate that is 1-percentage point lower or 1-percentage point higher than the current rate:

June 30, 2017		
At 1.00% Decrease	At Discount Rate	At 1.00% Increase
2.58%	3.58%	4.58%
\$ 63,674,362,200	53,639,841,858	45,680,364,953

Sensitivity of Total Nonemployer OPEB Liability to changes in the healthcare trend rate:

The following presents the total nonemployer OPEB liability as of June 30, 2017, calculated using the healthcare trend rate as disclosed above as well as what the total nonemployer OPEB liability would be if it was calculated using a healthcare

**THE ELYSIAN CHARTER SCHOOL OF HOBOKEN
NOTES TO THE FINANCIAL STATEMENTS
JUNE 30, 2018**

NOTE 10: POSTEMPLOYMENT BENEFITS OTHER THAN PENSIONS (OPEB) (CONT'D)

trend rate that is 1- percentage point lower or 1-percentage point higher than the current rate:

June 30, 2017		
	Healthcare Cost Trend Rate	
1.00% Decrease		At 1.00% Increase
\$ 44,113,584,560	53,639,841,858	66,290,599,457

OPEB Expense, Deferred Outflows of Resources and Deferred Inflows of Resources Related to OPEB.

For the year ended June 30, 2018, the Charter School recognized OPEB expense of \$651,785. The Charter School reported deferred outflows of resources and deferred inflows of resources from the following sources:

	Deferred Outflows of Resources	Deferred Inflows of Resources
Differences Between Expected and Actual Experience	\$ -	\$ -
Changes of Assumptions	-	675,548
Net Difference Between Projected and Actual Earnings On OPEB Plan Investments	-	-
Changes in Proportion	140,828	-
Contributions Subsequent To the Measurement Date	-	-
Total	\$ 140,828	\$ 675,548

Special Funding Situation

The participating local education employer allocations included in the supplemental Schedule of special funding amounts by employer are provided as each local education employer is required to record in their financial statements, as an expense and corresponding revenue, their respective amount of total OPEB expense attributable to the State of New Jersey under the special funding situation and to include their respective amount of total OPEB liability in their notes to their financial statements. The total OPEB liability and service cost for each employer was determined separately based on actual data for each employer's participants.

**THE ELYSIAN CHARTER SCHOOL OF HOBOKEN
NOTES TO THE FINANCIAL STATEMENTS
JUNE 30, 2018**

NOTE 11: RISK MANAGEMENT

The charter school is exposed to various risks of loss related to torts; theft of, damage to, and destruction of assets; errors and omissions; injuries to employees; and natural disasters.

Property and Liability Insurance

The charter school maintains commercial insurance coverage for property, liability, student accident and surety bonds. A complete schedule of insurance coverage can be found in the Statistical Section of this Comprehensive Annual Financial Report.

NOTE 12: FUND BALANCE APPROPRIATED

General Fund

The General Fund fund balance in the fund financial statements at June 30, 2018, in the amount of \$654,409, is unassigned and undesignated.

NOTE 13: SUBSEQUENT EVENTS

Subsequent events have been evaluated through February 25, 2019 which is the date the financial statements were available to be issued. Events occurring after that date have not been evaluated to determine whether a change in the financial statements would be required.

REQUIRED SUPPLEMENTARY INFORMATION – PART II

SECTION C – BUDGETARY COMPARISON SCHEDULES

THE ELYSIAN CHARTER SCHOOL OF HOBOKEN
General Fund
Budgetary Comparison Schedule
For The Fiscal Year Ended June 30, 2018

	Original Budget	Budget Transfers	Final Budget	Actual	Variance Final to Actual
REVENUES:					
Local Sources:					
Equalization Aid-Local Share	\$ 2,993,597	\$ -	\$ 2,993,597	\$ 2,993,597	\$ -
Total Local Sources	\$ 2,993,597	\$ -	\$ 2,993,597	\$ 2,993,597	\$ -
Categorical Aid:					
Equalization Aid-State Share	358,846	-	358,846	358,846	-
Security Aid	32,052	-	32,052	32,052	-
State Adjustment	574,948	-	574,948	574,948	-
Special Education Categorical Aid	170,149	-	170,149	170,149	-
Total Categorical Aid	\$ 1,135,995	\$ -	\$ 1,135,995	\$ 1,135,995	\$ -
Other Sources:					
Interest Income	-	-	-	65	65
Miscellaneous Revenue	-	-	-	60,156	60,156
On-Behalf TPAF Pension Contributions (Non-Budgeted)	-	-	-	454,017	454,017
On-Behalf TPAF Post Retirement Medical Benefits (Non-Budgeted)	-	-	-	178,008	178,008
Reimbursed TPAF Social Security Contributions (Non-Budgeted)	-	-	-	133,191	133,191
Total other Sources	-	-	-	825,437	825,437
Total Revenues	\$ 4,129,592	\$ -	\$ 4,129,592	\$ 4,955,029	\$ 825,437
EXPENDITURES:					
Instruction:					
Kindergarten - Salaries of Teachers	175,392	-	175,392	171,720	3,672
Grades 1-5 - Salaries of Teachers	804,560	-	804,560	799,112	5,448
Grades 6-8 - Salaries of Teachers	514,560	-	514,560	514,363	197
Other Salaries for Instruction	665,651	-	665,651	660,271	5,380
Other Purchased Services	137,120	-	137,120	137,120	-
General Supplies	43,908	-	43,908	38,517	5,391
Textbooks	2,003	-	2,003	2,003	-
Miscellaneous	4,839	-	4,839	4,839	-
Total Instruction	\$ 2,348,033	\$ -	\$ 2,348,033	\$ 2,327,945	\$ 20,088
Administration					
Salaries - General Administration	272,156	-	272,156	263,619	8,537
Salaries of Secretarial/Clerical Assistants	131,064	-	131,064	131,064	-
Total Benefits Cost	801,398	-	801,398	738,399	62,999
Purchases Prof/Tech Services	49,923	-	49,923	45,210	4,713
Other Purchased Professional Services	23,731	-	23,731	22,415	1,316
Other Purchased Services	79,698	-	79,698	5,625	74,073
Communications/Telephone	28,450	-	28,450	26,362	2,088
Supplies and Materials	15,000	-	15,000	14,983	17
Miscellaneous Expenses	3,000	-	3,000	2,925	75
Total Administration	\$ 1,404,420	\$ -	\$ 1,404,420	\$ 1,250,602	\$ 153,818

See Management's Discussion and Analysis section of this report for explanation of significant budget variances, original and final.

THE ELYSIAN CHARTER SCHOOL OF HOBOKEN
General Fund
Budgetary Comparison Schedule
For The Fiscal Year Ended June 30, 2018

	Original Budget	Budget Transfers	Final Budget	Actual	Variance Final to Actual
(Continued From Prior Page)					
Support Services:					
Salaries	\$ 304,510	\$ -	\$ 304,510	\$ 298,567	\$ 5,943
Cleaning, Repair, and Maintenance Services	46,600	-	46,600	42,028	4,572
Rental of Land and Buildings	340,000	-	340,000	339,760	240
Insurance for Property, Liability and Fidelity	56,911	-	56,911	52,379	4,532
Supplies and Materials	21,313	-	21,313	19,633	1,680
Energy Costs (Heat and Electricity)	65,000	-	65,000	60,718	4,282
Miscellaneous Expenses	3,000	-	3,000	2,510	490
Total Support Services	837,334	-	837,334	815,595	21,739
On-Behalf TPAF Pension Contributions (Non-Budgeted)	-	-	-	454,017	(454,017)
On-Behalf TPAF Post Retirement Medical Benefits (Non-Budgeted)	-	-	-	178,008	(178,008)
Reimbursed TPAF Social Security Contributions (Non-Budgeted)	-	-	-	133,191	(133,191)
Total Expenditures	4,589,787	-	4,589,787	5,159,358	(569,571)
Excess (Deficiency) of Revenues Over (Under) Expenditures	(460,195)	-	(460,195)	(204,329)	255,866
FUND BALANCE, JULY 1	858,738	-	858,738	858,738	-
FUND BALANCE, JUNE 30	<u>\$ 398,543</u>	<u>\$ -</u>	<u>\$ 398,543</u>	<u>\$ 654,409</u>	<u>\$ 255,866</u>
Recapitulation of Excess (Deficiency) of Revenues Over (Under) Expenditures:					
Budgeted Fund Balance	\$ 398,543	\$ -	\$ 398,543	\$ 654,409	\$ 255,866
Total	<u>\$ 398,543</u>	<u>\$ -</u>	<u>\$ 398,543</u>	<u>\$ 654,409</u>	<u>\$ 255,866</u>

See Management's Discussion and Analysis section of this report for explanation of significant budget variances, original and final.

THE ELYSIAN CHARTER SCHOOL OF HOBOKEN
Special Revenue Fund
Budgetary Comparison Schedule
For The Fiscal Year Ended June 30, 2018

	Original Budget	Budget Transfers	Final Budget	Actual	Variance Final to Actual
REVENUE SOURCES:					
Local	\$ 8,442	\$ -	\$ 8,442	\$ 8,442	\$ -
Federal	153,766	-	153,766	153,766	-
Total Revenues	162,208	-	\$ 162,208	162,208	\$ -
EXPENDITURES:					
Instruction:					
Salaries	122,756	-	122,756	122,756	-
General Supplies	1,897	-	1,897	1,897	-
Other Objects	7,370	-	7,370	7,370	-
Total Instruction	132,023	-	132,023	132,023	-
Support Services:					
Personal Services - Employee Benefits	16,603	-	16,603	16,603	-
Purchased Professional Services	13,582	-	13,582	13,582	-
Total Support Services	30,185	-	30,185	30,185	-
Total Expenditures	162,208	-	162,208	162,208	-
Excess (Deficiency) of Revenues Over (Under) Expenditures	\$ -	\$ -	\$ -	\$ -	\$ -

NOTES TO THE REQUIRED SUPPLEMENTARY INFORMATION

THE ELYSIAN CHARTER SCHOOL OF HOBOKEN

Required Supplementary Information

Budgetary Comparison Schedule

Note to RSI

Fiscal Year Ended June 30, 2018

Note A - Explanation of Differences between Budgetary Inflows and Outflows and GAAP Revenues and Expenditures

	<u>General Fund</u>		<u>Special Revenue Fund</u>
Sources/Inflows of Resources			
Actual amounts (budgetary) "revenues" from the budgetary comparison schedules	[C-1] \$ 4,955,029		[C-2] \$ 162,208
Difference - Budget to GAAP			
Grant accounting budgetary basis differs from GAAP in that encumbrances are recognized as expenditures, and the related revenue is recognized			-
Total revenues as reports on the statement of revenues, expenditures and changes in fund balance - governmental funds.	[B-2] \$ <u>4,955,029</u>		[B-2] \$ <u>162,208</u>
Uses/Outflows of resources			
Actual amounts (budgetary basis) "total outflows" from the budgetary comparison schedule	[C-1] \$ 5,159,358		[C-2] \$ 162,208
Differences - Budget to GAAP:			
Encumbrances for supplies and equipment ordered but not received are reported in the year the order is placed for budgetary purposes, but in the year the supplies are received for financial accounting purposes			-
Total expenditures as reported on the statement of revenues, expenditures and changes in fund balances - governmental funds.	[B-2] \$ <u>5,159,358</u>		[B-2] \$ <u>162,208</u>

REQUIRED SUPPLEMENTARY INFORMATION – PART III

SCHEDULE L - SCHEDULES RELATED TO ACCOUNTING AND REPORTING FOR PENSIONS (GASB 68)

THE ELYSIAN CHARTER SCHOOL OF HOBOKEN
REQUIRED SUPPLEMENTARY INFORMATION SCHEDULES
SCHEDULE OF THE CHARTER SCHOOL'S PROPORTIONATE SHARE OF THE NET PENSION LIABILITY
PUBLIC EMPLOYEES RETIREMENT SYSTEM (PERS)
LAST ONE PLAN YEAR
UNAUDITED

	Date Ending June 30,
	<u>2017</u>
Charter School's proportionate share of the net pension liability	\$ 1,946,841
Charter School's covered employees payroll	N/A
Charter School's proportionate share of the net pension liability As a percentage of it's covered employee payroll	N/A
Plan fiduciary net position as a percentage of the total Pension Liability	N/A

Note: This schedule does not contain ten years of information as GASB No. 68 was implemented during the fiscal year ended June 30, 2015.

THE ELYSIAN CHARTER SCHOOL OF HOBOKEN
REQUIRED SUPPLEMENTARY INFORMATION SCHEDULES
SCHEDULE OF THE CHARTER SCHOOL CONTRIBUTIONS
PUBLIC EMPLOYEES RETIREMENT SYSTEM (PERS)
LAST FISCAL YEAR
UNAUDITED

	Fiscal Year Ending June 30, 2018 <hr style="border: 0.5px solid black;"/>
Contractually required contribution	\$ 73,701
Contributions in relation to the contractually required contribution	<hr style="border: 0.5px solid black;"/> 73,701
Contribution Deficient (Excess)	<hr style="border: 0.5px solid black;"/> \$ - <hr style="border: 0.5px solid black;"/>

e: This schedule does not contain ten years of information as GASB No. 68 was implemented during the fiscal year ended June 30, 20

NOTES TO REQUIRED SUPPLEMENTARY INFORMATION III

THE ELYSIAN CHARTER SCHOOL OF HOBOKEN
NOTES TO REQUIRED SUPPLEMENTARY INFORMATION
TEACHER'S PENSION AND ANNUITY FUND
FOR FISCAL YEAR ENDED JUNE 30, 2018

A. Benefit Changes

There were none.

B. Changes in Assumptions

The discount rate changed from 3.98% as of June 30, 2016 to 5.00% as of June 30, 2017.

OTHER SUPPLEMENTARY INFORMATION

**SECTION E – SPECIAL REVENUE FUND
DETAIL STATEMENTS**

The Special Revenue Fund is used to account for the proceeds of specific sources (other than expandable trusts or major capital projects) that are legally restricted to expenditures for specific purposes.

THE ELYSIAN CHARTER SCHOOL OF HOBOKEN
 Special Revenue Fund
 Combining Schedule of Program Revenues and Expenditures - Budgetary Basis
 For the Fiscal Year Ended June 30, 2018

	Local Grants	ESEA Consolidated Title I	I.D.E.A. Basic	I.D.E.A. Preschool	ESEA Consolidated Title II	ESEA Consolidated Title III	Grand Total
REVENUE SOURCES:							
Local	\$ 8,442	\$ -	\$ -	\$ -	\$ -	\$ -	\$ 8,442
Federal	-	72,361	56,965	930	10,071	13,439	153,766
Total Revenues	8,442	72,361	56,965	930	10,071	13,439	162,208
EXPENDITURES:							
Instruction:							
Salaries	-	66,537	44,504	715	-	11,000	122,756
General Supplies	-	1,882	-	15	-	-	1,897
Other Objects	7,370	-	-	-	-	-	7,370
Total Instruction	7,370	68,419	44,504	730	-	11,000	132,023
Support Services:							
Personal Services - Employee Benefits	-	3,942	12,461	200	-	-	16,603
Purchased Professional Services	1,072	-	-	-	10,071	2,439	13,582
Total Support Services	1,072	3,942	12,461	200	10,071	2,439	30,185
Total Expenditures	8,442	72,361	56,965	930	10,071	13,439	162,208
Excess (Deficiency) of Revenues Over (Under)							
Expenditures	\$ -	\$ -	\$ -	\$ -	\$ -	\$ -	\$ -

**SECTION G – PROPRIETARY FUNDS
DETAIL STATEMENTS**

Proprietary Funds are used to account for operations that are financed and operated in a manner similar to private business enterprises – where the intent of the charter school’s board is that the costs of providing goods or services be financed through user charges.

Food Services Fund – This fund provides for the operation of food services in all schools within the school district.

**THIS SECTION HAS ALREADY BEEN INCLUDED IN STATEMENTS B-4, B-5,
AND B-6.**

**SECTION H – FIDUCIARY FUNDS
DETAIL STATEMENTS**

Fiduciary Funds are used to account for funds received by the school for a specific purpose.

Agency Funds are used to account for assets held by the school as an agent for individuals, private organizations, other governments and/or other funds.

Payroll Fund – This agency fund is used to account for the payroll transactions of the school

THE ELYSIAN CHARTER SCHOOL OF HOBOKEN

Fiduciary Funds

Combining Statement of Fiduciary Net Position

June 30, 2018

	<u>Payroll Agency</u>	<u>Student Activities</u>	<u>Total</u>
ASSETS:			
Cash and Cash Equivalents	\$ 101,167	\$ 19,592	\$ 120,759
Total Assets	\$ 101,167	\$ 19,592	\$ 120,759
LIABILITIES:			
Accounts Payable	\$ -	\$ 600	\$ 600
Interfund Accounts Payable	65,079	-	65,079
Payroll Deductions and Withholdings	36,088	-	36,088
Due to Student Groups	-	18,992	18,992
Total Liabilities	\$ 101,167	\$ 19,592	\$ 120,759

THE ELYSIAN CHARTER SCHOOL OF HOBOKEN

Fiduciary Funds

Statement of Fiduciary Net Position

June 30, 2018

	<u>Balance</u> <u>July 1, 2017</u>	<u>Cash</u> <u>Receipts</u>	<u>Cash</u> <u>Disbursements</u>	<u>Balance</u> <u>June 30, 2018</u>
Students Groups	\$ 16,410	\$ 76,609	\$ 74,027	\$ 18,992
Total	<u>\$ 16,410</u>	<u>\$ 76,609</u>	<u>\$ 74,027</u>	<u>\$ 18,992</u>

THE ELYSIAN CHARTER SCHOOL OF HOBOKEN

Fiduciary Funds

Payroll Agency Fund

Schedule of Receipts and Disbursements

For The Fiscal Year Ended June 30, 2018

	<u>Balance July 1, 2017</u>	<u>Cash Receipts</u>	<u>Cash Disbursements</u>	<u>Balance June 30, 2018</u>
ASSETS:				
Cash	\$ 75,669	\$ 5,904,842	\$ 5,879,344	\$ 101,167
Total Assets	<u>\$ 75,669</u>	<u>\$ 5,904,842</u>	<u>\$ 5,879,344</u>	<u>\$ 101,167</u>
LIABILITIES:				
Interfund Accounts Payable	\$ 40,658	\$ 46,094	\$ 21,673	\$ 65,079
Payroll Deductions and Withholdings	<u>35,011</u>	<u>5,858,748</u>	<u>5,857,671</u>	<u>36,088</u>
Total Liabilities	<u>\$ 75,669</u>	<u>\$ 5,904,842</u>	<u>\$ 5,879,344</u>	<u>\$ 101,167</u>

**STATISTICAL SECTION
(UNAUDITED)**

GASB requires that ten years of statistical data be presented. The following information is presented utilizing information available. Each year thereafter, an additional year's data will be included until ten years of data is presented.

Contents

Financial Trends

These schedules contain trend information to help the reader understand how the charter school's financial performance and well-being have changed over time.

Revenue Capacity (Not Applicable To Charter School)

These schedules contain information to help the reader assess the district's most significant local revenue source, the property tax.

Debt Capacity

These schedules present information to help the reader assess the affordability of the charter school's current levels of outstanding debt and the charter school's ability to issue additional debt in the future.

Demographic and Economic Information

These schedules offer demographic and economic indicators to help the reader understand the environment within which the charter school's financial activities take place.

Operating Information

These schedules contain service and infrastructure data to help the reader understand how the information in the charter school's financial report relates to the services the district provides and the activities it performs.

Sources: *Unless otherwise noted, the information in these schedules is derived from the comprehensive annual financial reports (CAFR) for the relevant year. The charter school implemented GASB Statement 34 in the fiscal year ending June 30, 2004; schedules presenting charter school-wide information include information beginning in that year.*

FINANCIAL TRENDS

THE ELYSIAN CHARTER SCHOOL OF HOBOKEN
 Net Position by Component
 Last Ten Fiscal Years
(accrual basis of accounting)
 Unaudited

	Fiscal Year Ending June 30,									
	2018	2017	2016	2015	2014	2013	2012	2011	2010	2009
Governmental Activities										
Invested in Capital Assets, Net or Related Debt	\$ -	\$ 69,323	\$ 21,734	\$ 33,643	\$ 43,257	\$ 70,534	\$ 82,608	\$ 73,534	\$ 866,907	\$ 894,556
Restricted	-	60,000	45,000	30,000	15,000	-	-	-	-	-
Unassigned	(949,625) *	(669,345) *	(485,633) *	(721,830) *	(743,670)	370,531	258,685	75,498	59,814	120,717
Total Governmental Activities Net Assets/Position (Deficit)	\$ (949,625)	\$ (540,022)	\$ (418,899)	\$ (658,187)	\$ (685,413)	\$ 441,065	\$ 341,293	\$ 149,032	\$ 926,721	\$ 1,015,273
Business-Type Activities										
Unassigned	\$ 59,932	\$ 45,605	\$ 134,832	\$ 103,342	\$ 58,185	\$ 14,814	\$ 10,100	\$ 17,892	\$ 4,250	\$ 2,057
Total Business-Type Activities Net Position	\$ 59,932	\$ 45,605	\$ 134,832	\$ 103,342	\$ 58,185	\$ 14,814	\$ 10,100	\$ 17,892	\$ 4,250	\$ 2,057
Charter School-wide										
Invested in Capital Assets, Net or Related Debt	\$ -	\$ 69,323	\$ 21,734	\$ 33,643	\$ 43,257	\$ 70,534	\$ 82,608	\$ 73,534	\$ 866,907	\$ 894,556
Restricted	-	60,000	45,000	30,000	15,000	-	-	-	-	-
Unassigned	(889,693)	(623,740)	(350,801)	(618,488)	(685,485)	385,345	268,785	93,390	64,064	122,774
Total Charter School Net Position (Deficit)	\$ (889,693)	\$ (494,417)	\$ (284,067)	\$ (554,845)	\$ (627,228)	\$ 455,879	\$ 351,393	\$ 166,924	\$ 930,971	\$ 1,017,330

* Note in the deficit reflected in the Net Position is a direct result of the implementation of GASB Standard #68

Source: Comprehensive Annual Financial Report

THE ELYSIAN CHARTER SCHOOL OF HOBOKEN
Changes in Net Position
Last Ten Fiscal Years
Unaudited

	Fiscal Year Ending June 30,									
	2018	2017	2016	2015	2014	2013	2012	2011	2010	2009
Expenses										
Governmental Activities:										
Instruction	\$ 3,728,428	\$ 4,255,755	\$ 4,079,626	\$ 3,694,262	\$ 3,176,722	\$ 3,125,661	\$ 2,401,274	\$ 2,314,878	\$ 2,195,343	\$ 2,223,785
Administration	732,970	947,491	1,125,440	1,309,837	1,271,805	1,383,482	1,917,460	1,775,531	2,136,784	1,776,930
Support Services	996,119	693,756	-	-	-	-	-	-	-	-
Capital Outlay	-	-	-	9,614	5,280	36,644	-	-	5,435	186,917
Unallocated										
Depreciation	69,323	81,507	11,909	25,642	27,277	12,074	12,745	27,649	27,649	26,210
Employee Benefits	651,785	-	-	-	-	-	-	-	-	-
Total Governmental Activities Net Assets/Position	<u>6,178,625</u>	<u>5,978,509</u>	<u>5,216,975</u>	<u>5,039,355</u>	<u>4,481,084</u>	<u>4,557,861</u>	<u>4,331,479</u>	<u>4,118,058</u>	<u>4,365,211</u>	<u>4,213,842</u>
Business-Type Activities:										
Enterprise Service	302,167	213,658	183,072	106,480	111,545	151,107	177,666	127,431	165,316	159,218
Total Business-Type Activities Expenses	<u>302,167</u>	<u>213,658</u>	<u>183,072</u>	<u>106,480</u>	<u>111,545</u>	<u>151,107</u>	<u>177,666</u>	<u>127,431</u>	<u>165,316</u>	<u>159,218</u>
Total Charter School Expenses	<u>\$ 6,480,792</u>	<u>\$ 6,192,167</u>	<u>\$ 5,400,047</u>	<u>\$ 5,145,835</u>	<u>\$ 4,592,629</u>	<u>\$ 4,708,968</u>	<u>\$ 4,509,145</u>	<u>\$ 4,245,489</u>	<u>\$ 4,530,527</u>	<u>\$ 4,373,060</u>
Program Revenues										
Governmental Activities:										
Operating Grants and Contributions	821,934	832,478	778,553	671,677	600,078	727,015	519,479	390,233	179,685	-
Total Governmental Activities Expenses	<u>821,934</u>	<u>832,478</u>	<u>778,553</u>	<u>671,677</u>	<u>600,078</u>	<u>727,015</u>	<u>519,479</u>	<u>390,233</u>	<u>179,685</u>	<u>-</u>
Business-Type Activities:										
Charges for Services	256,503	155,480	161,455	127,658	129,592	124,740	141,671	113,270	130,309	167,509
Operating Grants and Contributions	19,991	23,951	53,107	23,979	25,324	26,559	28,179	27,745	37,200	-
Total Business-Type Activities Expenses	<u>276,494</u>	<u>179,431</u>	<u>214,562</u>	<u>151,637</u>	<u>154,916</u>	<u>151,299</u>	<u>169,850</u>	<u>141,015</u>	<u>167,509</u>	<u>167,509</u>
Total Charter School Program Revenues	<u>1,098,428</u>	<u>1,011,909</u>	<u>993,115</u>	<u>823,314</u>	<u>754,994</u>	<u>878,314</u>	<u>689,329</u>	<u>531,248</u>	<u>347,194</u>	<u>167,509</u>
Net (Expense)/Revenue										
Governmental Activities	\$ (5,356,691)	\$ (5,146,031)	\$ (4,438,422)	\$ (4,367,678)	\$ (3,881,006)	\$ (3,830,846)	\$ (3,812,000)	\$ (3,727,825)	\$ (4,185,526)	\$ (4,213,842)
Business-Type Activities	(25,673)	(34,227)	31,490	45,157	43,371	192	(7,816)	13,584	2,193	8,291
Total Charter School-wide Net Expense	<u>\$ (5,382,364)</u>	<u>\$ (5,180,258)</u>	<u>\$ (4,406,932)</u>	<u>\$ (4,322,521)</u>	<u>\$ (3,837,635)</u>	<u>\$ (3,830,654)</u>	<u>\$ (3,819,816)</u>	<u>\$ (3,714,241)</u>	<u>\$ (4,183,333)</u>	<u>\$ (4,205,551)</u>
General Revenues and Other Changes in Net Position										
Governmental Activities:										
General Purposes	\$ 3,002,039	\$ 3,008,308	\$ 2,907,594	\$ 2,994,522	\$ 2,882,079	\$ 2,841,095	\$ 2,517,975	\$ 2,289,186	\$ 3,189,583	\$ 2,017,123
Federal and State Aid Not Restricted	1,884,828	1,929,772	1,737,707	1,391,416	1,098,351	1,114,905	1,478,394	1,424,153	735,510	2,102,519
Miscellaneous Income	60,221	86,828	32,409	8,966	7,368	(25,382)	7,892	(155,607)	171,881	202,619
Total Governmental Activities	<u>4,947,088</u>	<u>5,024,908</u>	<u>4,677,710</u>	<u>4,394,904</u>	<u>3,987,798</u>	<u>3,930,618</u>	<u>4,004,261</u>	<u>3,557,732</u>	<u>4,096,974</u>	<u>4,322,261</u>
Business-Type Activities:										
Miscellaneous Income	\$ 40,000	\$ (55,000)	\$ -	\$ -	\$ -	\$ 4,522	\$ 24	\$ 58	\$ -	\$ -
Total Business-Type Activities	<u>40,000</u>	<u>(55,000)</u>	<u>-</u>	<u>-</u>	<u>-</u>	<u>4,522</u>	<u>24</u>	<u>58</u>	<u>-</u>	<u>-</u>
Total Charter School-wide	<u>\$ 4,987,088</u>	<u>\$ 4,969,908</u>	<u>\$ 4,677,710</u>	<u>\$ 4,394,904</u>	<u>\$ 3,987,798</u>	<u>\$ 3,935,140</u>	<u>\$ 4,004,285</u>	<u>\$ 3,557,790</u>	<u>\$ 4,096,974</u>	<u>\$ 4,322,261</u>
Change in Net Assets/Position										
Governmental Activities	\$ (409,603)	\$ (121,123)	\$ 239,288	\$ 27,226	\$ 106,792	\$ 99,772	\$ 192,261	\$ (170,093)	\$ (88,552)	\$ 108,419
Business-Type Activities	14,327	(89,227)	31,490	45,157	43,371	4,714	(7,792)	13,642	2,193	8,291
Total Charter School	<u>\$ (395,276)</u>	<u>\$ (210,350)</u>	<u>\$ 270,778</u>	<u>\$ 72,383</u>	<u>\$ 150,163</u>	<u>\$ 104,486</u>	<u>\$ 184,469</u>	<u>\$ (156,451)</u>	<u>\$ (86,359)</u>	<u>\$ 116,710</u>

Source: Comprehensive Annual Financial Report

THE ELYSIAN CHARTER SCHOOL OF HOBOKEN
 Fund Balances - Governmental Funds
 Last Ten Fiscal Years
(modified accrual basis of accounting)
 Unaudited

	Fiscal Year Ending June 30,									
	2018	2017	2016	2015	2014	2013	2012	2011	2010	2009
General Fund										
Reserved/Restricted	\$ -	\$ 60,000	\$ 45,000	\$ 30,000	\$ 15,000	\$ -	\$ -	\$ -	\$ 59,814	\$ 120,717
Unreserved	-	-	-	-	-	-	-	-	-	-
Assigned	-	-	-	-	11,187	-	-	-	-	-
Unassigned	654,409	798,738	806,152	505,084	478,413	370,531	258,685	75,498	-	-
Total General Fund	\$ 654,409	\$ 858,738	\$ 851,152	\$ 535,084	\$ 504,600	\$ 370,531	\$ 258,685	\$ 75,498	\$ 59,814	\$ 120,717

THE ELYSIAN CHARTER SCHOOL OF HOBOKEN
 Changes in Fund Balances - Governmental Funds
 Last Ten Fiscal Years
(modified accrual basis of accounting)
 Unaudited

	Fiscal Year Ending June 30,									
	2018	2017	2016	2015	2014	2013	2012	2011	2010	2009
Revenues:										
Local Sources:										
Local Tax Levy	\$2,993,597	\$3,008,308	\$2,907,594	\$2,994,522	\$2,882,079	\$2,841,095	\$2,517,975	\$2,289,186	\$3,189,583	\$2,017,123
Interest In Investments	65	-	-	-	-	-	-	-	-	-
Miscellaneous	68,598	86,828	32,409	8,966	7,895	23,881	13,946	5,058	186,766	15,702
State Sources	1,901,211	1,633,423	1,710,948	1,553,141	1,605,113	1,723,302	1,891,566	1,724,901	735,510	1,997,548
Federal Sources	153,766	138,637	144,537	97,961	92,789	96,645	100,253	86,948	165,100	104,961
Total Revenues	<u>5,117,237</u>	<u>4,867,196</u>	<u>4,795,488</u>	<u>4,654,590</u>	<u>4,587,876</u>	<u>4,684,923</u>	<u>4,523,740</u>	<u>4,106,093</u>	<u>4,276,959</u>	<u>4,135,334</u>
Expenditures:										
Instruction	2,459,968	2,425,669	2,264,772	2,257,237	2,251,655	2,250,588	2,116,969	2,058,963	2,030,964	2,004,765
Administration	2,015,818	1,672,024	1,724,339	1,903,976	1,842,282	1,817,986	1,917,460	1,775,531	1,996,189	1,773,598
Support Services	845,780	761,917	490,309	437,251	354,590	467,859	284,305	255,915	125,289	117,391
Capital Outlay	-	-	-	25,642	5,280	36,644	21,819	-	185,420	291,878
Total Expenditures	<u>5,321,566</u>	<u>4,859,610</u>	<u>4,479,420</u>	<u>4,624,106</u>	<u>4,453,807</u>	<u>4,573,077</u>	<u>4,340,553</u>	<u>4,090,409</u>	<u>4,337,862</u>	<u>4,187,632</u>
Net Change in Fund Balance	<u>\$ (204,329)</u>	<u>\$ 7,586</u>	<u>\$ 316,068</u>	<u>\$ 30,484</u>	<u>\$ 134,069</u>	<u>\$ 111,846</u>	<u>\$ 183,187</u>	<u>\$ 15,684</u>	<u>\$ (60,903)</u>	<u>\$ (52,298)</u>

Source: Comprehensive Annual Financial Report

THE ELYSIAN CHARTER SCHOOL OF HOBOKEN
 General Fund - Other Local Revenue by Source
 Last Ten Fiscal Years
(modified accrual basis of accounting)
 Unaudited

Fiscal Year Ending June 30,	Local Levy - Charter School Aid	Other	Total
2018	\$ 2,993,597	\$ 68,663	\$ 3,062,260
2017	3,008,308	31,828	3,040,136
2016	2,907,594	32,409	2,940,003
2015	2,994,522	8,966	3,003,488
2014	2,882,079	7,368	2,889,447
2013	2,841,095	1,908	2,843,003
2012	2,517,975	7,892	2,525,867
2011	2,289,186	2,521	2,291,707
2010	3,189,583	186,766	3,376,349
2009	2,017,123	15,702	2,032,825

Source: Charter School records

DEMOGRAPHIC AND ECONOMIC INFORMATION

OPERATING INFORMATION

THE ELYSIAN CHARTER SCHOOL OF HOBOKEN
 Full-Time Equivalent Charter School Employees by Function
 Last Ten Fiscal Years
Unaudited

Function	Fiscal Year Ending June 30,									
	2018	2017	2016	2015	2014	2013	2012	2011	2010	2009
Instruction	28.4	27.7	26.5	26.5	25.1	25.1	25.1	25.2	26.4	27.0
Administrative	2.3	5.3	4.5	4.5	2.0	2.0	2.0	2.0	2.0	3.0
Support Services	20.1	16.5	10.0	10.0	9.5	9.5	9.5	9.0	14.0	14.0
Food Service	2.5	3.5	3.5	3.5	2.0	2.0	2.0	2.5	2.5	4.0
Child Care	5.0	5.0	4.0	4.0	2.0	2.0	2.0	2.0	2.0	2.0
Total	58.3	58.0	48.5	48.5	40.6	40.6	40.6	40.7	46.9	50.0

Source: Charter School Personnel Records

THE ELYSIAN CHARTER SCHOOL OF HOBOKEN
 Operating Statistics
 Last Ten Fiscal Years
Unaudited

Fiscal Year Ended June 30,	Enrollment	Operating Expenditures*	Cost Per Pupil	Percentage Change	Teaching Staff**	Pupil / Teacher Ratio	Average Daily Enrollment (ADE)***	Average Daily Attendance (ADA)***	Percent Change in Average Daily Enrollment	Student Attendance Percentage
2018	288.0	5,321,566	18,478	9.51%	28.4	10:1	288.0	278.1	0.00%	96.53%
2017	288.0	4,859,610	16,874	8.49%	25.1	16:1	288.0	278.1	0.00%	96.56%
2016	288.0	4,479,420	15,554	-2.59%	25.1	16:1	288.0	278.1	0.00%	96.56%
2015	288.0	4,598,464	15,967	3.37%	25.1	16:1	288.0	282.1	0.00%	97.65%
2014	288.0	4,448,527	15,446	-1.34%	25.1	16:1	288.0	272.2	0.00%	94.51%
2013	288.0	4,509,143	15,657	4.41%	25.1	16:1	288.0	269.7	0.00%	93.65%
2012	288.0	4,318,734	14,996	5.58%	25.1	16:1	288.0	265.2	0.00%	92.08%
2011	288.0	4,090,409	14,203	-6.36%	26	16:1	288.0	279.9	0.70%	97.19%
2010	286.0	4,337,862	15,167	3.94%	22	12:1	286.0	276.0	4.76%	96.50%
2009	273.0	3,983,801	14,593	-1.85%	22	12:1	273.0	268.9	1.11%	98.50%

Sources: Charter School records.

Note: Enrollment based on annual final Charter School count.

* Operating expenditures equal total expenditures less debt service and capital outlay.

** Teaching staff includes only full-time equivalents of certified staff.

*** Average daily enrollment and average daily attendance are obtained from School Register Summary (SRS).

Commercial General Liability Coverage

Named Insured: Elysian Charter School of Hoboken

Policy Term: 7/1/2017 to 7/31/2018

Coverage Form Used

Occurrence Form Claims Made Form Retroactive Date:

Limits of Liability

General Liability	
Per Occurrence Limit	16,000,000
Employee Benefits Liability Limit	16,000,000
Deductible	1,000
School Leaders Professional Liability	16,000,000
Per Occurrence	16,000,000
Aggregate	16,000,000
Deductible	5,000
Sexual Abuse and Molestation	16,000,000
Fund Aggregate	17,000,000
Boiler Machinery	100,000,000
Employee Dishonesty	250,000
Money and Securities	50,000
Environmental Impairment Liability	1,000,000
Critical Incident Management	1,000,000
School Leaders Professional	5,000,000
deductible	5,000

THE ELYSIAN CHARTER SCHOOL OF HOBOKEN
 Charter School Performance Framework Financial Indicators
 Fiscal Ratios
 Last Three Fiscal Years

	2016 Audit	2017 Audit	2018 Audit	Source
Cash	\$ 857,584	\$ 861,989	\$ 726,355	Audit: Exhibit A-1
Current Assets (Includes CASH)	1,109,356	949,766	955,376	Audit: Exhibit A-1
Total Assets	1,131,090	1,019,089	955,376	Audit: Exhibit A-1
Current Liabilities	188,829	120,423	241,035	Audit: Exhibit A-1
Total liabilities	1,769,243	2,302,638	2,187,876	Audit: Exhibit A-1
Net Assets	(638,153)	(1,283,549)	(1,232,500)	Audit: Exhibit A-1
Total Revenue	5,670,825	5,981,817	6,085,516	Audit: Exhibit A-2
Total Expenses	5,400,047	6,192,167	6,480,792	Audit: Exhibit A-2
Change in Net Assets	270,778	(210,350)	(395,276)	Audit: Exhibit A-2
Depreciation Expense	11,908	81,507	69,323	Financial Statements/Audit Workpapers
Interest Expense	-	-	-	Financial Statements/Audit Workpapers
Principal Payments	-	-	-	Financial Statements/Audit Workpapers
Interest Payments	-	-	-	Financial Statements/Audit Workpapers
Final Average Daily Enrollment	288.0	288.0	288.0	DOE Enrollment Reports
March 30th Budgeted Enrollment	288	288	288	Charter School Budget

Changes

RATIOS ANALYSIS...						Changes	
Near Term Indicators		2016	2017	2018	3 YR CUM	Source:	Target
1a.	Current Ratio	0.16	0.04	3.96		Current Assets/Current Liabilities	>1,1
1b.	Unrestricted Days Cash	276.74	308.73	46.11		Cash/(Total Expenses/365)	30-60
1c.	Enrollment Variance	100%	100%	100%		Average Daily Enrollment/Budgeted Enrollment	>95%
1d.*	Default	N/A	N/A	N/A		Audit	not in default
Sustainability Indicators							
2a.	Total Margin	5%	-4%	-0.073%	-1%	Change in Net Assets/Total Revenue	positive
2b.	Debt to Asset	1.56	2.26	2.29		Total Liabilities/Total Assets	<9
2c.**	Cash Flow	281,665	4,405	(135,634)		Net change in cash flow from prior years	3 yr cum positive
2d.	Debt Service Coverage Ratio	N/A	N/A	N/A		(Change in Net Assets+Depreciation+Interest Expense)/(Principal & Interest Payments)	>1.10

* Is school in default of loan covenant(s) and/or is delinquent with debt service payments? Yes or No

** 2018 = 2018 Cash - 2017 Cash

Refer questions to charterfinance@doe.state.nj.us

SINGLE AUDIT SECTION



MESHINSKY & ASSOCIATES LLC

CERTIFIED PUBLIC ACCOUNTANTS,
CONSULTANTS & INDEPENDENT TRUSTEES

K-1
Page 1

INDEPENDENT AUDITOR'S REPORT ON INTERNAL CONTROL OVER FINANCIAL REPORTING AND ON COMPLIANCE AND OTHER MATTERS BASED ON AN AUDIT OF FINANCIAL STATEMENTS PERFORMED IN ACCORDANCE WITH "GOVERNMENT AUDITING STANDARDS"

Honorable President and Members
of the Board of Trustees
The Elysian Charter School of Hoboken
County of Hudson
Hoboken, New Jersey

We have audited, in accordance with the auditing standards generally accepted in the United States of America; the standards applicable to financial audits contained in *Government Auditing Standards* issued by the Comptroller General of the United States; and in compliance with audit requirements as prescribed by the Office of School Finance, Department of Education, State of New Jersey, the financial statements of the governmental activities, the business-type activities, each major fund, and the aggregate remaining fund information of The Elysian Charter School of Hoboken (Charter School), in the County of Hudson, State of New Jersey, as of and for the fiscal year ended June 30, 2018, and the related notes to the financial statements, which collectively comprise the Charter School's basic financial statements, as listed in the table of contents, and have issued our report thereon dated February 25, 2019.

Internal Control over Financial Reporting

In planning and performing our audit of the financial statements, we considered the Charter School's internal control over financial reporting (internal control) to determine the audit procedures that are appropriate in the circumstances for the purpose of expressing our opinions on the financial statements, but not for the purpose of expressing an opinion on the effectiveness of the Charter School's internal control. Accordingly, we do not express an opinion on the effectiveness of the Charter School's internal control.

A *deficiency in internal control* exists when the design or operation of a control does not allow management or employees, in the normal course of performing their assigned functions, to prevent, or detect and correct, misstatements on a timely basis. A material weakness is a deficiency, or a combination of deficiencies, in internal control, such that there is reasonable possibility that a material misstatement of the entity's financial statements will not be prevented, or detected and corrected on a timely basis.

A *significant deficiency* is a deficiency, or a combination of deficiencies, in internal control that is less severe than a material weakness, yet important enough to merit attention by those charged with governance.

Our consideration of internal control was for the limited purpose described in the first paragraph of this section and was not designed to identify all deficiencies in internal control that might be material weakness or significant deficiencies. Given these limitations, during our audit we did not identify any deficiencies in internal control that we consider to be material weakness. However, material weakness may exist that have not been identified.

Compliance and Other Matters

As part of obtaining reasonable assurance about whether the Charter School's financial statements are free from material misstatement, we performed tests of its compliance with certain provisions of laws, regulations, contracts, and grant agreements, noncompliance with which could have a direct and material effect on the determination of financial statement amounts. However, providing an opinion on compliance with those provisions was not an objective of our audit, and accordingly, we do not express such an opinion. The results of our tests disclosed no instances of noncompliance or other matter that are required to be reported under audit requirements as prescribed by the Office of School Finance, Department of Education, State of New Jersey.

We also noted other matters that we reported to the Board of Trustees of The Elysian Charter School of Hoboken in a separate report entitled, Auditor's Management Report on Administrative Findings dated February 25, 2019.

Purpose of this Report

The purpose of this report is solely to describe the scope of our testing of internal control and compliance and the results of that testing, and not to provide an opinion on the effectiveness of the entity's internal control or on compliance. This report is an integral part of an audit performed in accordance with the Office of School Finance, Department of Education, State of New Jersey in considering the entity's internal control and compliance. Accordingly, this communication is not suitable for any other purpose.

Meshinsky & Associates, LLC CPA's
Union, New Jersey



Philip T. Meshinsky
Licensed Public School Accountant
No. CS00233400
Meshinsky & Associates LLC, CPA's

February 25, 2019



**REPORT ON COMPLIANCE FOR EACH MAJOR STATE PROGRAM
AND REPORT ON INTERNAL CONTROL OVER COMPLIANCE IN ACCORDANCE WITH
UNIFORM GUIDANCE AND NEW JERSEY CIRCULAR 15-08-OMB**

Honorable President and Members
of the Board of Trustees
The Elysian Charter School of Hoboken
County of Hudson
Hoboken, New Jersey

Report on Compliance for Each Major State Program

We have audited The Elysian Charter School of Hoboken's compliance with the types of compliance requirements described in the New Jersey Compliance Manual "State Grant Compliance Supplement" that could have a direct and material effect on each of its major federal and state programs for the fiscal year ended June 30, 2018. The Elysian Charter School of Hoboken's major state programs are identified in the Summary of Auditor's Results Section of the accompanying schedule of findings and questioned costs.

Management's Responsibility

The Charter School's management is responsible for compliance with the requirements of laws, regulations, contracts, and grants applicable to its state programs.

Auditor's Responsibility

Our responsibility is to express an opinion on compliance for each of the Charter School's major federal and state programs based on our audit of the types of compliance requirements referred to above. We conducted our audit of compliance in accordance with auditing standards generally accepted in the United States of America; the standards applicable to financial audits as prescribed by the *Office of School Finance, Department of Education, State of New Jersey*; New Jersey Circular 15-08-OMB, *Single Audit Policy for Recipients of Federal Grants, State Grants and State Aid*. Those standards, Uniform Guidance and New Jersey Circular 15-08-OMB require that we plan and perform the audit to obtain reasonable assurance about whether noncompliance with the types of compliance requirements referred to above that could have a direct and material effect on a major state program occurred. An audit includes examining, on a test basis, evidence about the Charter School's compliance with those requirements and performing such other procedures as we considered necessary in the circumstances.

We believe that our audit provides a reasonable basis for our opinion on compliance for each major state program. However, our audit does not provide a legal determination of the Charter School's compliance.

Opinion on Each Major State Program

In our opinion, The Elysian Charter School of Hoboken, in the County of Hudson, State of New Jersey, complied, in all material respects, with the types of compliance requirements referred to above that could have a direct and material effect on each of its major state programs for the year ended June 30, 2018.

Report on Internal Control over Compliance

Management of The Elysian Charter School of Hoboken is responsible for establishing and maintaining effective internal control over compliance with the types of compliance requirements referred to above. In planning and performing our audit of compliance, we considered the Charter School's internal control over compliance with the types of requirements that could have a direct and material effect on each major state program to determine the auditing procedures that are appropriate in the circumstances for the purpose of expressing an opinion on compliance for each major state program and to test and report on internal control over compliance in accordance with Uniform Guidance and New Jersey Circular 15-08-OMB, but not for the purpose of expressing an opinion on the effectiveness of internal control over compliance. Accordingly, we do not express an opinion on the effectiveness of the Charter School's internal control over compliance.

A deficiency in internal control over compliance exists when the design or operation of a control over compliance does not allow management or employees, in the normal course of performing their assigned functions, to prevent, or detect and correct, noncompliance with a type of compliance requirement of a state program on a timely basis. *A material weakness in internal control over compliance* is a deficiency, or combination of deficiencies, in internal control over compliance, such that there is a reasonable possibility that material noncompliance with a type of compliance requirement of a state program will not be prevented, or detected and corrected, on a timely basis. *A significant deficiency in internal control over compliance* is a deficiency, or a combination of deficiencies, in internal control over compliance with a type of compliance requirement of a state program that is less severe than a material weakness in internal control over compliance, yet important enough to merit attention by those charged with governance.

Our consideration of internal control over compliance was for the limited purpose described in the first paragraph of this section and was not designed to identify all deficiencies in internal control over compliance that might be material weaknesses or significant deficiencies. We did not identify any deficiencies in internal control over compliance that we consider to be material weaknesses. However, material weaknesses may exist that have not been identified.

Report on Schedule of Expenditures of State Financial Assistance Required by New Jersey Circular 15-08-OMB

We have audited the financial statements of the governmental activities, the business-type activities, each major fund, and the aggregate remaining fund information of The Elysian Charter School of Hoboken, as of and for the fiscal year ended June 30, 2018 and the related notes to the financial statements, which collectively comprise the Charter School's basic financial

statements. We issued our report thereon dated February 25, 2019, which contained unmodified opinion on those financial statements. Our audit was conducted for the purpose of forming opinions on the financial statements that collectively comprise the basic financial statements. The accompanying schedule of expenditures of state financial assistance as required by New Jersey Circular 15-08- OMB are presented for purposes of additional analysis and are not a required part of the basic financial statements. Such information is the responsibilities of management and was derived from and relates directly to the underlying accounting and other records used to prepare basic financial statements. The information has been subjected to the auditing procedures applied in the audit of the financial statements and certain additional procedures, including comparing and reconciling such information directly to the underlying accounting and other records used to prepare the basic financial statements or to the basic financial statements themselves, and other additional procedures in accordance with auditing standards generally accepted in the United States of America. In our opinion, the schedule of expenditures and schedule of relation to the basic financial statements as a whole.

Purpose of this Report

The purpose of this report on internal control over compliance is solely to describe the scope of our testing of internal control over compliance and the results that the testing based on the requirements of NJ Circular 15-08-OMB. Accordingly, this report is not suitable for any other purpose.

Meshinsky & Associates, LLC CPA's
Union, New Jersey



Philip T. Meshinsky
Licensed Public School Accountant
No. CS00233400
Meshinsky & Associates LLC, CPA's

February 25, 2019

THE ELYSIAN CHARTER SCHOOL OF HOBOKEN
Schedule of Expenditures of Federal Awards
For The Fiscal Year Ended June 30, 2018

Federal Grantor/Pass-through Grantor/ Program Title	Federal CFDA Number	Grant or State Project Number	Program or Award Amount	Grant Period		Balance at June 30, 2017	Cash Received	Budgetary Expenditure s	Balance at June 30, 2018		
				From	To				Accounts Receivable	Deferred Revenue	Due to Grantor
U.S. Department of Education											
Passed through State Department of Education											
Special Revenue Fund:											
<u>ESEA Consolidated</u>											
Title 1 Part A	84.010A	ESEA - 8010- 18	\$ -	7/1/17	6/30/18	\$ -	\$ 72,361	\$ (72,361)	\$ -	\$ -	\$ -
Title II A	84.376A	ESEA - 8010- 18	-	7/1/17	6/30/18	-	13,439	(13,439)	-	-	-
Title III	84.365A	ESEA - 8010- 18	-	7/1/17	6/30/18	-	10,071	(10,071)	-	-	-
ESEA Consolidated						-	95,871	(95,871)	-	-	-
<u>Individuals with Disabilities Cluster</u>											
I.D.E.A. Part B Basic	84.027	ESEA - 8010- 18	-	7/1/17	6/30/18	-	56,965	(56,965)	-	-	-
I.D.E.A. Part B Preschool	84.173	ESEA - 8010- 18	-	7/1/17	6/30/18	-	930	(930)	-	-	-
Total Individuals with Disabilities Cluster						-	57,895	(57,895)	-	-	-
Total Special Revenue Fund						-	153,766	(153,766)	-	-	-
U.S. Department of Agriculture											
Passed through State Department of Agriculture											
Enterprise Fund:											
School Breakfast Program	10.553	N/A	-	7/1/17	6/30/18	-	1,665	(1,870)	(205)	-	-
School Breakfast Program Carryover	10.553	N/A	-	7/1/16	6/30/17	(216)	216	-	-	-	-
National School Lunch Program	10.555	N/A	-	7/1/17	6/30/18	-	15,539	(17,200)	(1,661)	-	-
National School Lunch Program Carryover	10.555	N/A	-	7/1/16	6/30/17	(1,603)	1,603	-	-	-	-
Total Enterprise Fund						(1,819)	19,023	(19,070)	(1,866)	-	-
Total Federal Financial Award.						\$ (1,819)	\$ 172,789	\$ (172,836)	\$ (1,866)	\$ -	\$ -

The accompanying Notes to Schedules of Expenditures of Awards and Financial Assistance are an integral part of this schedule.

THE ELYSIAN CHARTER SCHOOL OF HOBOKEN
Schedule of Expenditures of State Financial Assistance
For The Fiscal Year Ended June 30, 2018

State Grantor/Program Title	Grant or State Project Number	Program or Award Amount	Grant Period		Balance at June 30, 2017			Balance at June 30, 2018			MEMO	Cumulative Total Expenditures
			From	To	Deferred Revenue (Accounts Receivable)	Cash Received	Budgetary Expenditures	Accounts Receivable	Deferred Revenue/ Interfund Payable	Budgetary Receivable		
State Department of Education												
General Fund:												
<i>State Aid-Public Cluster</i>												
Equalization Aid- State Share	18-495-034-5120-078	\$ 358,846	7/1/17	6/30/18	\$ -	\$ 338,539	\$ (358,846)	\$ (20,307)	\$ -	\$ -	\$ -	\$ 358,846
Special Education Categorical Aid	18-495-034-5120-089	170,149	7/1/17	6/30/18	-	170,149	(170,149)	-	-	-	-	170,149
State Adjustment	18-495-034-5120-089	574,948	7/1/17	6/30/18	-	574,948	(574,948)	-	-	-	-	574,948
Security Aid	18-495-034-5120-084	32,052	7/1/17	6/30/18		<u>32,052</u>	<u>(32,052)</u>					<u>32,052</u>
Total State Aid- Public Cluster					-	1,115,688	(1,135,995)	(20,307)	-	-	-	1,135,995
On-Behalf TPAF Pension Contributions	18-495-034-5095-006	454,017	7/1/17	6/30/18	-	454,017	(454,017)	-	-	-	-	454,017
Reimburse TPAF - Social Security	18-495-034-5095-002	133,191	7/1/17	6/30/18	-	119,374	(133,191)	(13,817)	-	-	-	133,191
Reimburse TPAF - Social Security	17-495-034-5095-002	137,584	7/1/16	6/30/17	(6,537)	6,537	-	-	-	-	-	-
On-Behalf TPAF Post Retirement Contributions	18-495-034-5094-001	178,008	7/1/17	6/30/18	-	<u>178,008</u>	<u>(178,008)</u>	-	-	-	-	<u>178,008</u>
Total General Fund					(6,537)	<u>1,873,624</u>	<u>(1,901,211)</u>	<u>(34,124)</u>	-	-	-	<u>1,901,211</u>
State Department of Agriculture												
Enterprise Fund:												
National School Lunch Program (State Share)	18-100-010-3350-023	921	7/1/17	6/30/18	-	831	(921)	(90)	-	-	-	921
National School Lunch Program (State Share)	17-100-010-3350-023	880	7/1/16	6/30/17	(76)	<u>76</u>	-	-	-	-	-	-
Total Enterprise Fund					(76)	<u>907</u>	<u>(921)</u>	<u>(90)</u>	-	-	-	<u>921</u>
Total All Funds					(6,613)	<u>1,874,531</u>	<u>(1,902,132)</u>	<u>(34,214)</u>	-	-	-	<u>1,902,132</u>
State Financial Assistance Not Subject to Major Program Determination:												
General Funds:												
On-Behalf TPAF Post Retirement Contributions	18-495-034-5094-001		7/1/17	6/30/18	-	(178,008)	178,008	-	-	-	-	(178,008)
On-Behalf TPAF Pension Contributions	18-495-034-5095-006	152	7/1/17	6/30/18	-	(454,017)	454,017	-	-	-	-	(454,017)
Total General Fund					-	<u>(632,025)</u>	<u>632,025</u>	-	-	-	-	<u>(632,025)</u>
Total State Financial Assistance					\$ (6,613)	\$ <u>1,242,506</u>	\$ <u>(1,270,107)</u>	\$ <u>(34,214)</u>	\$ -	\$ -	\$ -	\$ <u>1,270,107</u>

THE ELYSIAN CHARTER SCHOOL OF HOBOKEN
Notes to Schedules of Expenditures of Awards and Financial Assistance
June 30, 2018

NOTE 1. GENERAL

The accompanying schedules of expenditures of federal awards and state financial assistance include federal and state award activity of the Board of Trustees, The Elysian Charter School of Hoboken. The Board of Trustees is defined in Note 1 to the board's basic financial statements. All federal and state awards received directly from federal and state agencies, as well as federal awards and state financial assistance passed through other government agencies is included on the schedule of expenditures of federal awards and state financial assistance.

NOTE 2. BASIS OF ACCOUNTING

The accompanying schedules of expenditures of awards and financial assistance are presented on the budgetary basis of accounting with the exception of programs recorded in the food service fund, which are presented using the accrual basis of accounting. These bases of accounting are described in Note 1 to the board's basic financial statements. The information in this schedule is presented in accordance with the requirements of 2 (CFR) Part 200 -Uniform Guidance Administrative Requirements, Cost Principles, and Audit Requirements for Federal Awards (Uniform Guidance) and the audit requirements as prescribed by the Office of School Finance, Department of Education, State of New Jersey; New Jersey Circular 15-08 OMB, Single Audit Policy for Recipients of Federal Grants, State Grants and State Aid. Therefore, some amounts presented in this schedule may differ from amounts presented in, or used in the presentation of, the basic financial statements. This does not apply to charter schools as districts are not permitted to defer the June payments to charter schools.

NOTE 3. RELATIONSHIP TO BASIC FINANCIAL STATEMENTS

The basic financial statements present the general fund and special revenue fund on a GAAP basis. Budgetary comparison statements or schedules (RSI) are presented for the general fund and special revenue fund to demonstrate finance-related legal compliance in which certain revenue is permitted by law or grant agreement to be recognized in the audit year, whereas for GAAP reporting, revenue is not recognized until the subsequent year or when expenditures have been made.

The general fund is presented in the accompanying schedules on the modified accrual basis with the exception of the revenue recognition of the one or more deferred June state aid payments in the current budget year, which is mandated pursuant to *N.J.S.A. 18A:22-44.2*. For GAAP purposes payments are not recognized until the subsequent budget year due to the state deferral and recording of the one or more June state aid payments in the subsequent year. The special revenue fund is presented in the accompanying schedules on the grant accounting budgetary basis which recognizes encumbrances as expenditures and also recognizes the related revenues, whereas the GAAP basis does not. The special revenue fund also recognizes the one or more June state aid payment in the current budget year, consistent with *N.J.S.A. 18A:22-4.2*.

THE ELYSIAN CHARTER SCHOOL OF HOBOKEN
Notes to Schedules of Expenditures of Awards and Financial Assistance
June 30, 2018

NOTE 3. RELATIONSHIP TO BASIC FINANCIAL STATEMENTS (CONTINUED)

The net adjustment to reconcile from the budgetary basis to the GAAP basis is none for the general fund and none for the special revenue fund. See Notes to the Required Supplementary Information for a reconciliation of the budgetary basis to the modified accrual basis of accounting for the general and special revenue funds. Awards and financial assistance revenues are reported in the board's basic financial statements on a GAAP basis as presented below:

	Federal	State	Total
General Fund	\$ -	\$ 1,901,211	\$ 1,901,211
Special Revenue Fund	153,766	-	153,766
Food Service Fund	19,070	921	19,991
Total Awards & Financial Assistance	<u>\$ 172,836</u>	<u>\$ 1,902,132</u>	<u>\$ 2,074,968</u>

NOTE 4. RELATIONSHIP TO FEDERAL STATE FINANCIAL REPORTS

Amounts reported in the accompanying schedules agree with the amounts reported in the related federal and state financial reports.

NOTE 5. FEDERAL AND STATE LOANS OUTSTANDING

The Elysian Charter School of Hoboken has no loan balances outstanding at June 30, 2018.

NOTE 6. OTHER

Revenues and expenditures reported under the Food Distribution Program represent current year value received and current year distributions respectively. The amount reported as TPAF Pension Contributions represents the amount paid by the state on behalf of the charter school for the year ended June 30, 2018. TPAF Social Security Contributions represents the amount reimbursed by the state for the employer's share of social security contributions for TPAF members for the year ended June 30, 2018.

NOTE 7. ON-BEHALF PROGRAMS NOT SUBJECT TO STATE SINGLE AUDIT

On-behalf State Programs for TPAF Pension and Post-Retirement Medical Benefits Contributions payments are not subject to a State single audit and, therefore, are excluded from major program determination. The Schedule of State Financial Assistance provides a reconciliation of State financial assistance reported in the Charter School's basic financial statements and the amount subject to State single audit and major program determination.

THE ELYSIAN CHARTER SCHOOL OF HOBOKEN
Notes to Schedules of Expenditures of Awards and Financial Assistance
June 30, 2018

NOTE 8. SCHOOLWIDE PROGRAM FUNDS

Schoolwide programs are not separate federal programs as defined in Uniform Guidance; amounts used in schoolwide programs are included in the total expenditures of the program contributing the funds in the Schedule of Expenditures of Federal Awards. There are no funds by program included in schoolwide programs in the charter school.

THE ELYSIAN CHARTER SCHOOL OF
HOBOKEN
Schedule of Findings and Questioned Costs
For the Fiscal Year Ended June 30, 2018

Section I – Summary of Auditor’s Results

Financial Statements

Type of auditors’ report issued on financial statements Unmodified

Internal control over financial reporting:

1) Material weakness(es) identified? Yes X No

2) Significant deficiencies identified that are not considered to be material weaknesses? Yes X None Reported

Noncompliance material to basic financial statements noted? Yes X No

State Awards

Dollar threshold used to distinguish between Type A and Type B programs: \$750,000

Auditee qualified as low-risk auditee? X Yes No

Internal control over major programs:

1) Material weakness(es) identified? Yes X No

2) Significant deficiencies identified that are not considered to be material weaknesses? Yes X None Reported

Type of auditors’ report issued on compliance for major programs Unmodified

Any audit findings disclosed that are required to be reported in accordance with NJ Circular 15-08-OMB? Yes X No

Identification of major state programs:

GMIS Number(s)	Name of State Program
<u>18-495-034-5120-071</u>	<u>STATE-AID-PUBLIC CLUSTER</u>
<u>18-495-034-5120-071</u>	<u>EQUALIZATION AID</u>
<u>18-495-034-5120-089</u>	<u>SPECIAL EDUCATION CATEGORICAL AID</u>
<u>18-495-034-5120-084</u>	<u>SECURITY AID</u>

THE ELYSIAN CHARTER SCHOOL OF HOBOKEN
Schedule of Findings and Questioned Costs For the
Fiscal Year Ended June 30, 2018

Section II –Financial Statement Findings

This section identifies the significant deficiencies, material weaknesses, fraud, illegal acts, violations of provisions of contracts and grant agreements, and abuse related to the financial statements for which *Government Auditing Standards* requires reporting in a NJ Circular 15-08-OMB. See paragraphs 13.15 and 13.35.

Finding

There were no matters reported.

THE ELYSIAN CHARTER SCHOOL OF HOBOKEN
Schedule of Findings and Questioned Costs For the Fiscal
Year Ended June 30, 2018

***Section III – State Financial Assistance
Findings and Questioned Costs***

This section identifies audit findings required to be reported by NJ Circular 15-08-OMB.

STATE AWARDS

Findings

There were no matters reported.

**THE ELYSIAN CHARTER SCHOOL OF
HOBOKEN**

Summary Schedule of Prior Year Audit Findings
And Questioned Costs As Prepared by Management
For the Fiscal Year Ended June 30, 2018

STATUS OF PRIOR YEAR FINDINGS

This section identifies the status of prior-year findings related to the basic financial statements and federal and state awards that are required to be reported in accordance with Chapter 6.12 of *Government Auditing Standards*, NJ Circular 04-04-OMB or 15-08-OMB as applicable.

Findings

There were no matters reported.