



*Lady Liberty Academy Charter
School*

**COMPREHENSIVE ANNUAL
FINANCIAL REPORT
FOR THE FISCAL YEAR ENDED
JUNE 30, 2018**

**PREPARED BY
LADY LIBERTY ACADEMY CHARTER SCHOOL**

LADY LIBERTY ACADEMY CHARTER SCHOOL

Table of Contents

Introductory Section

Letter of Transmittal	1-10
Organizational Chart.....	11
Roster of Officials.....	13
Consultants and Advisors	14

Financial Section

Report of Independent Auditors.....	16-18
-------------------------------------	-------

Required Supplementary Information – Part I

Management’s Discussion and Analysis	19-26
--	-------

Basic Financial Statements

A Charter School-wide Financial Statements:

A-1 Statement of Net Position	29
A-2 Statement of Activities	30

B Fund Financial Statements:

Governmental Funds:

B-1 Balance Sheet.....	33
B-2 Statement of Revenues, Expenditures, and Changes in Fund Balances	34
B-3 Reconciliation of the Statement of Revenues, Expenditures and Changes in Fund Balances of Governmental Funds to the Statement of Activities	35

Proprietary Funds:

B-4 Statement of Net Position	37
B-5 Statement of Revenues, Expenses, and Changes in Fund Net Position.....	38
B-6 Statement of Cash Flows	39

LADY LIBERTY ACADEMY CHARTER SCHOOL

Table of Contents

Fiduciary Funds:

B-7 Statement of Fiduciary Net Position41
B-8 Statement of Changes in Fiduciary Net Position42

Notes to the Basic Financial Statements 44-83

Required Supplementary Information – Part II

C. Budgetary Comparison Schedules:

C-1 Budgetary Comparison Schedule – General Fund85
C-2 Budgetary Comparison Schedule – Special Revenue Fund86

Notes to the Required Supplementary Information

C-3 Budget-to-GAAP Reconciliation88

Required Supplementary Information – Part III

L. Schedules Related to Accounting and Reporting for Pensions (GASB 68):

L-1 Schedule of the Charter School Proportionate Share
of the Net Pension Liability - PERS89
L-2 Schedule of Charter School Contributions - PERS90
L-3 Schedule of the Charter School Proportionate Share
of the Net Pension Liability - TPAF91
M. Schedule Related to Accounting and Reporting for OPEB (GASB 75)

M-1 Schedule of the State’s Proportionate Share of the Net OPEB Liability
Associated with the Charter School and Changes in the Total OPEB Liability
Related Ratios - (PERS and TPAF)92

Notes to Required Supplementary Information – Pension Schedules92a

Other Supplementary Information

D. Schedule of Charter School Contributions - PERS..... Not Applicable

LADY LIBERTY ACADEMY CHARTER SCHOOL

Table of Contents

E.	Special Revenue Fund:	
E-1	Combining Schedule of Program Revenues and Expenditures Budgetary Basis	96
F.	Capital Projects Fund.....	Not Applicable
G.	Proprietary Funds:	
	Enterprise Fund:	
G-1	Combining Statement of Net Position	99
G-2	Combining Statement of Revenues, Expenses and Changes in Fund Net Position.....	100
G-3	Combining Statement of Cash Flows	101
H.	Fiduciary Fund:	
H-1	Combining Statement of Fiduciary Net Position.....	103
H-2	Combining Statement of Revenues, Expenses and Combining Statement of Changes in Fiduciary Net Position	104
H-3	Student Activity Agency Fund Schedule of Receipts and Disbursements	105
H-4	Payroll Agency Fund Schedule of Receipts and Disbursements.....	106
I.	Long - Term Debt:	
I-1	Schedule of Mortgage Obligations.....	108
I-2	Schedule of Obligations Under Capital Leases.....	Not Applicable
I-3	Debt Service Fund Budgetary Comparison Schedule	Not Applicable
J.	Introduction to the Statistical Section (Unaudited)	
	Financial Trends	
J-1	Net Position by Component	110
J-2	Changes in Net Position.....	111
J-3	Fund Balances – Governmental Funds	112
J-4	Changes in Fund Balances – Governmental Funds	113
J-5	General Fund Other Local Revenue by Source	114
	Revenue Capacity	
J-6 to J-9	Not Applicable

LADY LIBERTY ACADEMY CHARTER SCHOOL

Table of Contents

J. Introduction to the Statistical Section (Unaudited) - *continued*

Debt Capacity

J-10 Ratios of Outstanding Debts by Type115
J-11 to J-13..... **Not Applicable**

Demographic and Economic Information

J-14 Demographics and Economic Statistics116
J-15 Principal Employers117

Operating Information

J-16 Full-time Equivalent Charter School Employees by Function/Program118
J-17 Operating Statistics119
J-18 School Building Information120
J-19 Schedule of Required Maintenance Expenditures by School Facility121
J-20 Insurance Schedule122

Charter School Performance Framework Financial Indicators

J-21 Near Term Indicators123
J-22 Sustainability Indicators.....124

K. Single Audit Section

K-1 Independent Auditor’s Report on Internal Control over Financial Reporting and on Compliance and Other Matters Based on an Audit of Financial Statements Performed in Accordance with *Government Auditing Standards*..... 126-127
K-2 Independent Auditor’s Report on Compliance for Each Major State Program; Required by the State of New Jersey OMB’s Circular Letter 15-08..... 128-130
K-3 Schedule of Expenditures of Federal Awards, Schedule A.....131
K-4 Schedule of Expenditures of State Financial Assistance, Schedule B.....132
K-5 Notes to the Schedules of Expenditures of Federal Awards and State Financial Assistance..... 133-134
K-6 Schedule of Findings and Questioned Costs 135-139
K-7 Summary Schedule of Prior Audit Findings.....140



Lady Liberty Academy Charter School

746 Sandford Avenue, Newark, NJ 07106

Tel: 973-623-9005 * Fax: 973-485-0807

July 31, 2019

The Commissioner
New Jersey Department of Education
Riverview Executive Plaza – Bldg. 100
P. O. Box 500
Trenton, New Jersey 08625-0500

Dear Commissioner:

The Comprehensive Annual Financial Report of the Lady Liberty Academy Charter School (the “Charter School”) for the fiscal year ended June 30, 2018, is hereby submitted. Responsibility for both the accuracy of the data and completeness and fairness of the presentation, including all disclosures, rests with the management of the Board of Trustees (the “Board”). To the best of our knowledge and belief, the data presented in this report is accurate in all material respects and is reported in a manner designed to present fairly the basic financial statements and results of operations of the Charter School. All disclosures necessary to enable the reader to gain an understanding of the Charter School’s financial activities have been included.

The comprehensive annual financial report is presented in four sections: introductory, financial, statistical and single audit. The introductory section includes this transmittal letter, the Charter School’s organizational Chart, a roster of officials and a list of consultants and advisors. The financial section includes the Independent Auditors’ Report, management’s discussion and analysis, the basic financial statements and notes providing an overview of the Charter School’s financial position and operating results, and supplementary schedules providing detailed budgetary information. The statistical section includes selected financial trends and the fiscal capacity of the Charter School, generally presented on a multi-year basis. The Charter School is required to undergo an annual single audit in conformity with the provisions of the *Title 2 U.S. Code of Federal Regulations (CFR) Part 200, Uniform Administrative Requirements, Cost Principles, and Audit Requirements for Federal Awards* (Uniform Guidance), and the New Jersey OMB’s Circular 15-08, “*Single Audit Policy for Recipients of Federal Grants, State Grants, and State Aid*.” Information related to this single audit, including the auditor’s report on internal control and compliance with applicable *laws and regulations* and findings and recommendations are included in the single audit section of this report.

Information related to this single audit, including the auditors' reports on the internal control and compliance with applicable laws, regulations, contracts and grants along with findings and questioned costs, are included in the single audit section of this report.

1) Reporting Entity and Its Services

Lady Liberty Academy Charter School is an independent reporting entity within the criteria adopted by the Governmental Accounting Standards Board ("GASB") in codification section 2100. All funds of the Charter School are included in this report. Lady Liberty Academy Charter School constitutes the Charter School's reporting entity.

Lady Liberty Academy is a ten month/190-day school and our school day is 8am – 4pm. Our students are dismissed at 3pm on Tuesdays and our teachers participate in 1 hour of Professional Development. We have an average of 18 students per classroom in grades K-3 and we average 27 students per class in grades 4-8. Lady Liberty provides a comprehensive education program in order to meet the needs of all learners. In order to serve students with IEPs, Lady Liberty provides inclusion special education support in grades K-8, as well as a self-contained special education classroom serving students in grades 5-8. An I&RS team is in place to manage the referral process and provide intervention to students who do not have IEPs, but who are struggling to meet grade level goals.

Lady Liberty Academy teachers provide support to all levels of learners each day through our three-tiered instructional model. Tier one provides all learners with grade level instruction, while tier two provides guided practice targeted to the current skill level of the students. Tier three then provides a specific intervention in small groups of no more than three students to students who continue to struggle with the given topic.

In addition to the daily differentiated instruction and support in the classroom, Lady Liberty provides Saturday academy to students below grade level and small group tutoring to students approaching grade level during the school day.

In addition to support for our struggling learners, Lady Liberty has begun piloting advanced and enrichment programs for our top performing students, in order to address their needs and increase the academic capacity of our student body. Programs that we have initiated in the prior years (and continued in the current year) include advanced pre-algebra and algebra classes, an enrichment book study group and the implementation of the National Junior Honor Society in our Middle School.

It should be noted that by its letter dated January 12, 2018, NJDOE revoked the school's charter and directed the Charter School to cease operations as of June 30, 2018.

2) Enrollment Outlook

The Charter School's charter authorized a maximum enrollment of 468 students in 2017-2018 in grades K-8. The enrollment at the beginning of the school year was 459 students. The enrollment at the end of the school year was 445 students. There are three classes in each grades K, 1, 2, 3 and 4. There are two classes in grades 5, 6, 7, and 8.

3) Major Initiatives

The staff of LLACS continued to be provided with professional development that provided long-term support to improve their practice, identify problems with teaching and learning, analyze student performance and integrate theory into practice, while using data to drive the instruction. We provided follow up, enhancement, and extension to the existing PD that was introduced to ensure teacher and administrator efficiency that resulted in a significant academic growth. Teachers consistently remained involved in collaborative planning for grade levels and subjects. The school continued to develop its curricular goals that were aligned to the New Jersey Common Core Curriculum standards. Teachers developed the mastery objectives for English Language Arts and Mathematics and gained a thorough understanding of the standards. On-site professional development activities were evaluated at the onset, during and upon completion of activities.

The following are specific innovations that were introduced in the prior year and continued in the current school year:

On line Lesson Planning

Teachers received extensive training in creating Lesson plans on line that reflect the Charter School's philosophy for the understanding and implementation of learning objectives, anticipatory set, teacher model, guided practice, independent work, checking for understanding, and the assessment of lessons. All lesson plans were electronically posted on the On-Course website where the administrative team critiqued them on a bi-weekly basis.

Common Planning

Weekly collaborative meetings were scheduled for grades K-4 and content level meetings were held for grades 5-8 to provide opportunities to exchange ideas and plan units of study. Teachers worked collaboratively in analyzing student work across all content areas. Curriculum maps and instructional frameworks were discussed and revised in these meetings.

Trainers

Trainers provided support for transforming teachers' practice, defining problems in teaching and learning, analyzing student performance and integrating theory into practice. Teachers were coached to provide rigorous, standards-based lessons and give motivational feedback to unmotivated students in order to engage them on a greater level.

3) **Major Initiatives** (Cont'd)

Study Groups

Study groups and inquiry teams were formed to investigate, reflect and dialogue about collective thinking for professional growth. Professional development needs were gleaned from these groups to plan for the upcoming school year.

Co-Teaching

All middle school teachers received extensive training in the co-teaching model, which was implemented in the upper grades (5-8). Co-Teachers met with administration to address any concerns or difficulties in order to provide high-level, standards-based, rigorous instruction to all students.

Language Arts Curriculum

The leadership team set clear guidelines for the implementation of a new philosophy for teaching reading, writing, and vocabulary skills. All teachers received a full two weeks of professional development to learn the components of Balanced Literacy. The workshop model was introduced so that teachers could differentiate and tier their instruction to meet the diverse needs of learners. The professional development to provide follow up support for a comprehensive Balanced Literacy program continued throughout the school year. A guided level book room was outfitted in the school to allow teachers to enhance their Balanced Literacy program to include small group guided reading instruction.

Math Curriculum

The school implemented the workshop model as an approach to math instruction. During the summer teachers received professional development on identifying mastery objectives for each grade level.

Standards-based activities that foster critical thinking in mathematics was used in all instruction and curriculum maps were developed throughout the year for each grade.

Teachers were also engaged in reflective practice and peer review through the analysis of our benchmark assessments. They were led into discussions that highlighted strengths of lessons and suggested ideas for improving aspects of the lessons that did not go well based on the data and formulated re-teaching strategies. The emphasis was placed on creating a professional learning community in which teachers shared and learned from each other, while reflecting on their own practices with a critical lens for improvement.

3) Major Initiatives (Cont'd)

Data on student performance was used to drive professional development for math teachers. Teachers will continue to participate in data meetings to understand and disaggregate data in multiple ways to identify trends; areas for re-teaching; individual students' areas of challenges; whole class challenges; item analyses; and error analyses. Information gleaned from these exercises will be used to create action plans and intervention strategies.

Social Studies Curriculum

As part of the emphasis for infusing literacy across the content areas, the social classes received instructional materials for teaching multiple genres used for shared reading and read-aloud experiences. Thematic units will continue to be created by the social studies team that aligns with the recently updated NJCCCS in Social Studies.

Science and Technology Curriculum

This year the LLACS science curriculum was expanded to include a curriculum map and pacing guide that is more effective and comprehensive. The revised curriculum map and pacing guide is in direct alignment with the NJCCCS. A Technology Plan was created the previous year and more resources were needed here as well to fully equip the building with internet and technology labs. We are now currently equipped with internet and technology in all science labs. We also piloted the iPad initiative in the 8th grade, where each 8th grade student was given an iPad to use in their classes throughout the school day. This allowed students to use engaging, updated technology for research, reading, and projects.

School-wide Performances

School-wide events included: The Winter Arts Festival, The PTO sponsored fashion show, Movie nights, The African-American History Celebration, the 8th Grade Dance Jam, Fun Day and the Spring Arts Festival. All of these events were highly-attended and helped us to continuously share special moments with our parent population.

3) Major Initiatives (Cont'd)

Public Relations/Engagement and Partnerships

Lady Liberty Academy has continued to build relationships with local groups and community organizations that work throughout the year to support our school community. Some examples are:

- Leukemia & Lymphoma Society – partnered with our school to run the Pennies for Patients program, where our school raised a modest amount for the cause.
- NJPAC – partnered with our school to run an in-house ballroom dancing program for our 8th grade students.
- NewarkWORKS/Youth One Stop Career Center – partnered with our school to help provide summer work experiences for students.
- CAP (Child Assault Prevention) Program – partnered with our school to provide child assault prevention workshops for our K-4 population.
- UMDNJ (University of Medicine & Dentistry of New Jersey) – provided free dental screenings and follow up services to LLACS students.
- Healthy Smile Program – performed dental screenings for our 6th grade population for early detection and prevention of gum disease.
- The Department of Child and Family Well-being – assisted LLACS families that were in need of quality free or low-cost health coverage.
- Weight Watchers – partnered with us to create the Weight Watchers at Work program this year, where staff members participated in a health and wellness program.

4) Internal Accounting Controls

Management of the Charter School is responsible for establishing and maintaining an internal control system designed to ensure that the assets of the Charter School are protected from loss, theft or misuse and to ensure that adequate accounting data is compiled to allow for the preparation of financial statements in conformity with generally accepted accounting principles (GAAP). The internal control system is designed to provide reasonable, but not absolute, assurance that these objectives are met. The concept of reasonable assurance recognizes that: (1) the cost of a control should not exceed the benefits likely to be derived; and (2) the valuation of costs and benefits requires estimates and judgments by management.

As a recipient of federal and state awards, the Charter School also is responsible for ensuring that an adequate internal control system is in place to ensure compliance with applicable laws and regulations related to those programs. This internal control system is also subject to periodic evaluation by the Charter School's management.

As part of the Charter School's single audit described earlier, tests are made to determine the adequacy of the internal control system, including that portion related to major federal and state award programs, as well as to determine that the Charter School has complied with applicable laws, regulations, contracts and grants.

5) Budgetary Controls

In addition to internal accounting controls, the Charter School maintains budgetary controls. The objective of these budgetary controls is to ensure compliance with legal provisions embodied in the annual appropriated budget. Annual appropriated budgets are adopted for the General and Special Revenue Funds.

An encumbrance accounting system is used to record outstanding purchase commitments on a line item basis. Open encumbrances at year-end are either canceled or are included as re-appropriations of fund balance in the subsequent year. Those amounts to be re-appropriated are reported as restrictions, commitments and/or assignments of fund balance at June 30, 2018.

6) Accounting System and Reports

The Charter School's accounting records reflect generally accepted accounting principles, as promulgated by the GASB. The accounting system of the Charter School is organized on the basis of funds. These funds are explained in "Notes to the Basic Financial Statements", Note 1.

7) Financial Statement Information

As demonstrated by the various statements and schedules included in the financial section of this report, the Charter School continues to meet its responsibility for sound financial management. The following schedule presents a summary of the General Fund, and Special Revenue Funds for the fiscal year ended June 30, 2018 fiscal year:

**Summary of the General Fund
and Special Revenue Fund Revenues**

Revenue	2018	2017	Increase/ (decrease)	% Change
Local sources	\$ 813,365	\$ 922,111	\$ (108,746)	-11.79%
State sources	7,269,987	7,120,040	149,947	2.11%
Federal sources	304,256	531,582	(227,326)	-42.76%
	<u>\$ 8,387,608</u>	<u>\$ 8,573,733</u>	<u>\$ (186,125)</u>	<u>-2.17%</u>

The Charter School experienced a slight decrease in revenue of about 2.17%. This was partly due to an insignificant change in enrollment from 2017 to 2018. However, it should be noted that the school's charter was revoked during the year ended June 30, 2018.

The following schedule presents a summary of general fund and special revenue expenditures for the fiscal year ended June 30, 2018:

**Summary of the General Fund
and Special Revenue Fund Expenditures**

Expenditures	2018	2017	Increase/ (decrease)	% Change
Instruction	\$ 3,378,808	\$ 3,221,325	\$ 157,483	4.89%
Administrative	3,086,066	3,313,857	(227,791)	-6.87%
Support	2,078,183	2,263,180	(184,997)	-8.17%
Capital outlay	-	-	-	0.00%
	<u>\$ 8,543,057</u>	<u>\$ 8,798,362</u>	<u>\$ (255,305)</u>	<u>-2.90%</u>

The Charter School's expenditures slightly decreased by about 2.9% over last year's partly because enrollment did not change significantly from last year's. However, it should be noted that the school's charter was revoked during the year ended June 30, 2018.

8) Cash Management

The investment policy of the Charter School is guided in large part by state statute as detailed in “Notes to the Basic Financial Statements”, Note 3. The School has adopted a cash management plan which requires it to deposit public funds in public depositories protected from loss under the provisions of the Governmental Unit Deposit Protection Act (“GUDPA”). GUDPA was enacted in 1970 to protect governmental unites from a loss of funds on deposit with a failed banking institution in New Jersey. The law requires governmental unites to deposit public funds only in public depositories located in New Jersey, where the funds are secured in accordance with the Act.

9) Risk Management

The school carries various forms of insurance, including but not limited to general liability, automobile liability and comprehensive/collision, and hazard and theft insurance on property and contents. A schedule of insurance coverage is found on Exhibit J-20.

10) Other Information

Independent Audit – State statutes require an annual audit by independent certified public accountants or registered municipal accountants. The accounting firm of Olugbenga Olabintan, Certified Public Accountants/Consultants, was selected by the Board of Trustees

In addition to meeting the requirements set forth in state statutes, the audit also was designed to meet the requirements of *Title 2 U.S. Code of Federal Regulations (CFR) Part 200, Uniform Administrative Requirements, Cost Principles, and Audit Requirements for Federal Awards* (Uniform Guidance) and New Jersey OMB Circular Letter 15-08 “*Single Audit Policy for Recipients of Federal Grants, State Grants, and State Aid*”. The auditors’ report on the basic financial statements and specific required supplementary information is included in the financial section of this report. The auditors’ reports related specifically to the single audit and *Government Auditing Standards* are included in the single audit section of this report.

11) Acknowledgements

We would like to express our appreciation to the members of the Board of Trustees of the Lady Liberty Academy Charter School for their concern in providing fiscal accountability to the citizens and participating districts of the Charter School and thereby contributing their full support to the development and maintenance of our financial operation. The preparation of this report could not have been accomplished without the efficient and dedicated services of the financial and accounting staff.

We recognize and appreciate all of the factors that led to the revocation of our charter during the fiscal year ended June 30, 2018. I take this opportunity to wish everybody the very best in the future.

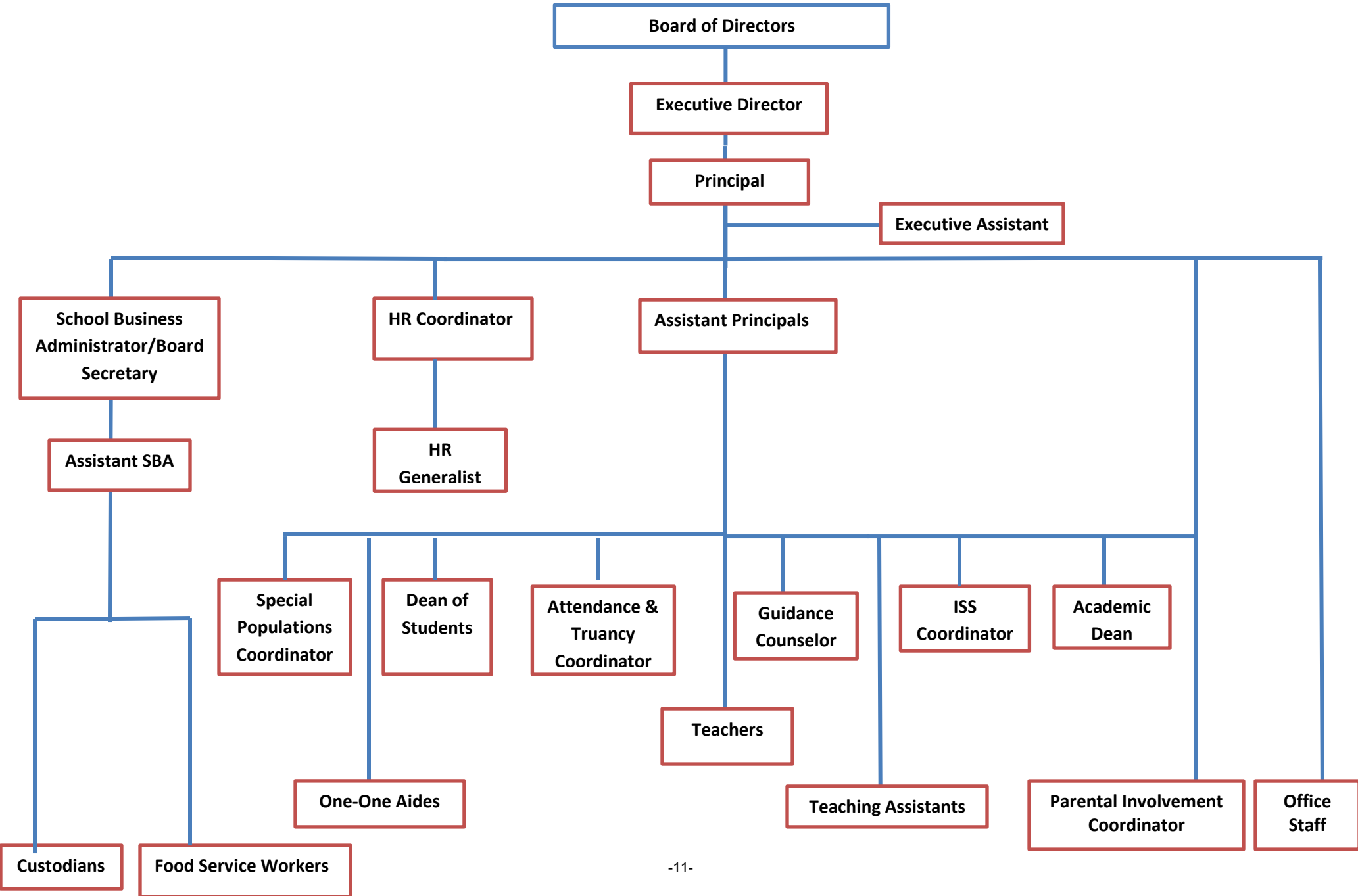
Respectively submitted,

Michael Falkowski

Michael Falkowski
Board Secretary/School Business Administrator



Lady Liberty Academy Charter School 2017-2018 SY Organizational Chart



Page 12 Intentionally Left Blank

LADY LIBERTY ACADEMY CHARTER SCHOOL

Roster of Trustees and Officers

June 30, 2018

Members of Board of Trustees

Monique L. Mitchell, Board President

Dr. Sandy Lizaire Duff, Vice President

Joshlyn Adams, Board Member

K. Anthony Thomas, Board Member

David Eisenberg, Board Member

Jessica Henderson, Board Member

Faheem Ellis, Board Member

Administration

Ms. Ashaki E. Goodall, Executive Director

Dr. James Catalano, Principal

Michael Falkowski, School Business Administrator/Board Secretary

LADY LIBERTY ACADEMY CHARTER SCHOOL

Consultants and Advisor

Independent Auditors

Olugbenga Olabintan
Certified Public Accountant/Consultant
137 Camden Street
Newark, New Jersey 07103

Attorney

Saiber, LLC
Attorneys At Law
18 Columbia Turnpike
Florham Park, New Jersey 07932

Official Depository

Chase Bank
475 Bloomfield Avenue
1st Floor
Montclair, New Jersey 07042

Dissolution Trustee

Scott J. Loeffler, CPA
Dissolution Trustee
P. O. Box 553
East Hanover, New Jersey 07936
(973) 296-7829
E-Mail: sloef@aol.com

Financial Section

Olugbenga Olabintan

Certified Public Accountant/Consultant

137 Camden Street, Suite #3
Newark, NJ 07103

Tel: (201) 230-7518
Fax: (973) 368-8268
E-mail: oolabintan@aol.com

Independent Auditors' Report

The Honorable President and
Members of the Board of Trustees
Lady Liberty Academy Charter School
County of Essex
Newark, New Jersey

Report on the Financial Statements

We have audited the accompanying financial statements of the governmental activities, the business-type activities, each major fund and the aggregate remaining fund information of the Board of Trustees Lady Liberty Academy Charter School, (the "Charter School") in the County of Essex, State of New Jersey as of and for the fiscal year ended June 30, 2018, and the related notes to the financial statements, which collectively comprise the Charter School's basic financial statements as listed in the table of contents.

Management's Responsibility for the Financial Statements

Management is responsible for the preparation and fair presentation of these financial statements in accordance with accounting principles generally accepted in the United States of America; this includes the design, implementation, and maintenance of internal control relevant to the preparation and fair presentation of financial statements that are free from material misstatement, whether due to fraud or error.

Auditors' Responsibility

Our responsibility is to express an opinion on these financial statements based on our audit. We conducted our audit in accordance with auditing standards generally accepted in the United States of America and the standards applicable to financial audits contained in *Government Auditing Standards*, issued by the Comptroller General of the United States *and audit requirements as prescribed by the Office of School Finance, Department of Education, State of New Jersey*. Those standards require that we plan and perform the audit to obtain reasonable assurance about whether the financial statements are free from material misstatement.

An audit involves performing procedures to obtain audit evidence about the amounts and disclosures in the financial statements. The procedures selected depend on the auditor's judgment, including the assessment of the risks of material misstatement of the financial statements, whether due to fraud or error. In making those risk assessments, the auditor considers internal control relevant to the entity's preparation and fair presentation of the financial statements in order to design audit procedures that are appropriate in the circumstances, but not for the purpose of expressing an opinion on the effectiveness of the entity's internal control. Accordingly, we express no such opinion. An audit also includes evaluating the appropriateness of accounting policies used and the reasonableness of significant accounting estimates made by management, as well as evaluating the overall presentation of the financial statements.

We believe that the audit evidence we have obtained is sufficient and appropriate to provide a basis for our audit opinions.

Opinion

In our opinion, the financial statements referred to above present fairly, in all material respects, the respective financial position of the governmental activities, the business-type activities, the aggregate discretely presented component units, each major fund, and the aggregate remaining fund information of the Charter School as of June 30, 2018, and the respective changes in financial position and, where applicable, cash flows, thereof for the fiscal year then ended in accordance with accounting principles generally accepted in the United States of America.

Revocation of Charter

The accompanying financial statements have been prepared on the basis that the Charter School ceased academic operations effective June 30, 2018, and will no longer continue as a going concern. Pursuant to State of New Jersey Statutes (N.J.S.A.18A:36A-17 and N.J.A.C 6A:11-2.3(b)) the charter for Lady Liberty Charter School was revoked by the New Jersey Commissioner of Education effective June 30, 2018. The factors leading to the charter revocation are fully discussed in Note 19 to this Comprehensive Annual Financial Report. As a consequence of the revocation, the charter school was directed to cease operations.

Other Matters

Required Supplementary Information

Accounting principles generally accepted in the United States of America require that the *Management's Discussion and Analysis and Budgetary Comparison Information, and Pension Information* as listed in the table of contents be presented to supplement the basic financial statements. Such information, although not a part of the basic financial statements, is required by the Governmental Accounting Standards Board, who considers it to be an essential part of the financial reporting for placing the basic financial statements in an appropriate operational, economic, or historical context. We have applied certain limited procedures to the required supplementary information in accordance with auditing standards generally accepted in the United States of America, which consisted of inquiries of management about the methods of preparing the information and comparing the information for consistency with management's responses to our inquiries, the basic financial statements, and other knowledge we obtained during our audit of the basic financial statements. We do not express an opinion or provide any assurance on the information because the limited procedures do not provide us with sufficient evidence to express an opinion or provide any assurance.

Supplementary and Other Information

Our audit was conducted for the purpose of forming opinions on the financial statements that collectively comprise the Charter School's basic financial statements. The accompanying supplementary information, which consists of the introductory section, combining and individual nonmajor fund financial statements, financial schedules and statistical tables are presented for purposes of additional analysis and are not required part of the basic financial statements. The accompanying schedules of expenditures of federal awards and state financial assistance are presented for purposes of additional analysis as required by the *Title 2 U.S. Code of Federal Regulations (CFR) Part 200, Uniform Administrative Requirements, Cost Principles, and Audit Requirements for Federal Awards* (Uniform Guidance) and the provisions of New Jersey Department of the Treasury Circular Letter 15-08 OMB, *Single Audit Policy for Recipients of*

Federal Grants, State Grants and State Aid, respectively, and are not a required part of the basic financial statements.

The combining and individual nonmajor fund financial statement, schedule of expenditures of federal awards and schedule of state financial assistance are the responsibility of management and were derived from and relates directly to the underlying accounting and other records used to prepare the basic financial statements. Such information has been subjected to the auditing procedures applied in the audit of the basic financial statements and certain additional procedures, including comparing and reconciling such information directly to the underlying accounting and other records used to prepare the basic financial statements or to the basic financial statements themselves, and other additional procedures in accordance with auditing standards generally accepted in the United States of America. In our opinion, the information is fairly presented, in all material respects, in relation to the basic financial statements as a whole.

The introductory section, financial schedules and statistical sections have not been subjected to the auditing procedures applied in the audit of the basic financial statements, and accordingly, we do not express an opinion or provide any assurance on them.

Other Reporting Required by Government Auditing Standards

In accordance with *Government Auditing Standards*, we have also issued our report dated July 31, 2019 on our consideration of the Charter School's internal control over financial reporting and on our tests of its compliance with certain provisions of laws, regulations, contracts and grant agreements and other matters. The purpose of that report is to describe the scope of our testing of internal control over financial reporting and compliance and the results of that testing, and not to provide an opinion on the internal control over financial reporting or on compliance. That report is an integral part of an audit performed in accordance with *Government Auditing Standards* in considering the Charter School's internal control over financial reporting and compliance.

Olugbenga Olabintan, CPA

July 31, 2019
Newark, New Jersey

OLUGBENGA OLABINTAN
Certified Public Accountant/Consultant



Olugbenga Olabintan, CPA
Licensed Public School Accountant
No. 20CS00230200

Required Supplementary Information

Part I

Management's Discussion and Analysis

The Management's Discussion and Analysis (MD&A) provides an analysis of the Charter School's overall financial position and results of operations.

LADY LIBERTY ACADEMY CHARTER SCHOOL
Management's Discussion and Analysis
Year Ended June 30, 2018
(Unaudited)

Introduction

This section of the Lady Liberty Academy Charter School's annual financial report presents our discussion and analysis of the Charter School's financial performance and provides an overview of the Charter School's financial activities for the fiscal year ended June 30, 2018. It should be read in conjunction with the transmittal letter at the front of this report and the Charter School's financial statements, which follow this section.

Management's Discussion and Analysis (MD&A) is an element of Required Supplementary Information specified in the Governmental Accounting Standard Board's (GASB) Statement No. 34, *Basic Financial Statement – and Management's Discussion and Analysis- for State and Local Governments*. Certain comparative information between the current fiscal year and the prior fiscal year is required to be presented in the MD&A.

Financial Highlights

Key financial highlights for fiscal year 2018 are as follows:

- It is pertinent to note that the Charter School's charter was revoked by the New Jersey Commissioner of Education effective June 30, 2018. The factors leading to the charter revocation are fully discussed in Note 19 to this Comprehensive Annual Financial Report. As a consequence of the revocation, the charter school was directed to cease operations as of that date.
- Net position of governmental activities ended the fiscal year with a deficit of \$(1,592,124). Net position of business-type activities, which represent food service and before/after school operations ended the fiscal year with \$-0-.
- General revenues accounted for \$8,083,352 in revenue or 93 percent of total revenues of \$8,894,688. Program specific revenues, in the form of charges for services, grants, and contributions accounted for \$654,961 or 7 percent of total revenues.
- The Charter School had \$9,704,312 in expenses related to governmental activities; \$304,256 of these expenses is offset by operating grants and contributions. General revenues (primarily State aid) of \$8,063,329 helped to provide for the balance of these programs.
- The General Fund reported fund surplus at June 30, 2018, of \$1,188,469.

LADY LIBERTY ACADEMY CHARTER SCHOOL
Management's Discussion and Analysis
Year Ended June 30, 2018
(Unaudited)

Using the Basic Financial Statements

This annual report consists of a series of basic financial statements, required supplementary information, other supplementary information and notes to those statements and information.

The report is organized so the reader can understand the Lady Liberty Academy Charter School as a financial whole, or as an entire operating entity. The first two basic financial Statements, the Statement of Net Position and the Statement of Activities, are governmental-wide financial statements and provide overall information about the activities of the entire Charter School, presenting both an aggregate view of the Charter School's finances and a long-term view of those finances. The remaining basic financial statements are fund financial statements that focus on the individual parts of the government, reporting the Charter School's operation in more detail than the government-wide statements. The fund financial statements also look at the Charter School's most significant funds with all other non-major funds presented in total in a single column. For the Lady Liberty Academy Charter School, the General Fund is the most significant fund.

The governmental funds statements tell how general government services were financed in the short-term as well as what remains for future spending.

Proprietary fund statements offer short and long-term financial information about the activities, the government operates like a business, such as food service.

Fiduciary fund statements provide information about financial relationship in which the Charter School acts solely as a trustee or agent for the benefits of others, to whom the resources in question belong.

The financial statements also include notes that explain some of the information in the financial statements and provide more detailed data. The statements are followed by a section of Required Supplementary Information that further explains and supports the information in the financial statements.

Reporting the Charter School as a Whole

Statement of Net Position and Statements of Activities

While this report contains the fund used by the Charter School to provide programs and activities, the view of the Charter School as a whole looks at all financial transactions and asks the question, "how did we do financially during fiscal year 2018?" The statements of Net Position and the Statement of Activities answer this question. These Statements include all the Charter School's assets and liabilities using the accrual basis of accounting similar to the accounting system used by most private sector companies. This basis of accounting takes into account all of the current year's revenues and expenses regardless of when cash was received or paid.

LADY LIBERTY ACADEMY CHARTER SCHOOL
Management's Discussion and Analysis
Year Ended June 30, 2018
(Unaudited)

Statement of Net Position and Statement of Activities-continued

These two statements report the Charter School's net position and changes in those assets. This change in net position is important because it identifies whether the financial position of the Charter School has improved or diminished for the Charter School as a whole. The cause of this change may be the result of many factors some financial, some not. Non-financial factors include the property tax base of the School District where the Charter School is located, current educational funding laws in New Jersey, facilities conditions, required educational programs, and other factors. In the Statements of Net Position and the Statements of Activities, the Charter School is divided into two distinct kinds of activities:

Governmental Activities – Most of the Charter School's programs and services are reported here including instructions, extracurricular activities, curriculum, staff development, special education and other support services, operation and maintenance of plant, pupil transportation, health services and general administration.

Business-Type Activity – Services are provided on a charge for goods or services or reimbursement basis to recover the expenses of the goods or services provided. The food service operations/after care programs enterprise fund is reported as a business activity.

Reporting the Charter School's Most Significant Funds

Fund Financial Statements

Fund financial reports provide detailed information about the Charter School's major funds-not the Charter School as a whole. Funds are accounting devices that the Charter School uses to keep track of a multitude of financial transactions. The Charter School's only major governmental fund is the General Fund.

Governmental Funds

Most of the Charter School's activities are reported in governmental funds, which focus on how monies flow into and out of those funds and the balances left at fiscal year-end for spending in future periods. These funds are reported using an accounting method called modified accrual accounting. Which measures cash and all other financial assets that can readily be converted to cash. The governmental fund statement provides a detailed short-term view of the Charter School's general government operations and the basic services it provides. Governmental fund information helps determine whether there are more or less financial resources that can be spent in the near future to finance educational programs. The relationship, or differences, between governmental activities reported in the Statement of Net Position and the Statement of Activities and the governmental funds are reconciled in the financial statements.

LADY LIBERTY ACADEMY CHARTER SCHOOL
Management's Discussion and Analysis
Year Ended June 30, 2018
(Unaudited)

Enterprise Fund

The enterprise fund uses the same basis of accounting as business-type activities; therefore, these statements are essentially the same.

The Charter School as a Whole

The perspective of the Statement of Net Position is of the Charter School as a whole. Net position may serve over time as useful indicator of a government's financial position. In the case of the Charter School, liabilities exceeded assets by \$1,592,124 at the close of 2018. The following table provides a summary of net position relating to the Charter School's governmental and business type activities:

	Governmental Activities		Business Type Acvtivities		Total	
	2018	2017	2018	2017	2018	2017
Assets						
Current assets	\$ 1,367,825	\$ 1,773,960	\$ 172,332	\$ 80,679	\$ 1,540,157	\$ 1,854,639
Capital assets, net	-	796,016	-	-	-	796,016
Deferred outflows of resources	1,975,839	1,264,007	-	-	1,975,839	1,264,007
Total assets	3,343,664	3,833,983	172,332	80,679	3,515,996	3,914,662
Liabilities						
Current liabilities	179,356	410,019	172,332	88,955	351,688	498,974
Long term liabilities	3,843,804	3,498,772	-	-	3,843,804	3,498,772
Deferred inflows of resources	912,628	180,589	-	-	912,628	180,589
Total liabilities	4,935,788	4,089,380	172,332	88,955	5,108,120	4,178,335
Net position:						
Invested in						
Capital assets	-	796,016	-	-	-	796,016
Designated for acquisition of new facilities	-	-	-	-	-	-
Unrestricted	(1,592,124)	(1,051,413)	-	(8,276)	(1,592,124)	(1,059,689)
Total net position	\$ (1,592,124)	\$ (255,397)	\$ -	\$ (8,276)	\$ (1,592,124)	\$ (263,673)

LADY LIBERTY ACADEMY CHARTER SCHOOL
Management's Discussion and Analysis
Year Ended June 30, 2018
(Unaudited)

The largest portion of the Charter School's net position is its current assets. The Charter School uses these current assets to provide services.

The total net position of the Charter School decreased by \$1,328,451 during the current fiscal year ended June 30, 2018. All of the decreases are attributable to a decrease in the net position in governmental activities. Operating grants and contributions decreased by about 23percent largely due to a decrease in federal grants revenue.

The table that follows reflects the change in net position for fiscal year 2018.

	Governmental Activities		Business Type Activities		Total	
	2018	2017	2018	2017	2018	2017
Revenues						
Program revenues:						
Charge for services	\$ -	\$ -	\$ -	\$ 35	\$ -	\$ 35
Operating grants and contributions	-	-	-	-	-	-
Total program revenues	304,256	531,582	350,705	320,920	654,961	852,502
General revenues:						
Local aid	765,207	727,969	-	-	765,207	727,969
Federal and state aid	7,269,987	7,120,040	-	-	7,269,987	7,120,040
Miscellaneous	48,158	194,142	-	-	48,158	194,142
Transfers	(20,023)	-	20,023	-	-	-
Total general revenues	8,063,329	8,042,151	20,023	-	8,083,352	8,042,151
Total revenues	8,367,585	8,573,733	370,728	320,955	8,738,313	8,894,688
Expenses:						
Instructions	3,378,808	3,221,325	-	-	3,378,808	3,221,325
Administrative & support services	-	-	-	-	-	-
Unallocated depreciation	5,529,488	5,860,142	-	-	5,529,488	5,860,142
Food service	796,016	265,339	-	-	796,016	265,339
Before and after school program	-	-	362,452	329,231	362,452	329,231
Total expenses	9,704,312	9,346,806	362,452	329,231	10,066,764	9,676,037
Change in net position	\$ (1,336,727)	\$ (773,073)	\$ 8,276	\$ (8,276)	\$ (1,328,451)	\$ (781,349)

Governmental Activities

The Statement of Activities reflects the cost of program services and the charges for services and operating grants and contributions offsetting those services. The table below, for government activities, indicates the total cost of services and the net cost of services. It identifies the cost of these services supported by unrestricted state entitlements for the fiscal year ended June 30, 2018.

LADY LIBERTY ACADEMY CHARTER SCHOOL
Management's Discussion and Analysis
Year Ended June 30, 2018
(Unaudited)

Governmental Activities - *continued*

	Total Cost of Services	Net Cost of Services
Instruction	\$ 3,378,808	\$ 3,189,007
Administrative & Support Services	5,529,488	5,415,033
Unallocated Depreciation	796,016	796,016
Total Expenses	\$ 9,704,312	\$ 9,400,056

Business-Type Activity

The business-type activity of the Charter School consists of the food service operations. These programs had revenues of \$362,452 (\$20,023 of which was Board Contributions) and operating expenses of \$362,452 for fiscal year 2018. The General Fund helped fund an operating deficit of \$11,747 in the food service program.

The Charter School's Funds

The Charter School's governmental funds are accounted for using the modified accrual basis of accounting. All governmental funds had revenues of \$8,387,608 and expenditures of \$8,543,057. The Charter School had a current year deficit of \$175,472. However, the cumulative positive fund balance of \$1,363,941 from the prior years enabled the Charter School to meet its current costs.

The Charter School's budget is prepared according to New Jersey law and is based on accounting for certain transactions on a basis of cash receipts, disbursements, and encumbrances. The most significant budgeted fund is the general fund.

During the course of fiscal 2018, the Charter School amended its General Fund budget as needed. The Charter School uses state-aid and other revenue-based budget. The budgeting systems are designed to tightly control total budget, but provide flexibility for Charter School's management teams.

LADY LIBERTY ACADEMY CHARTER SCHOOL
Management's Discussion and Analysis
Year Ended June 30, 2018
(Unaudited)

The State of New Jersey reimbursed the Charter School \$187,048 during the year ended June 30, 2018 for the employer's share of social security contributions for TPAF members, as calculated on their base salaries. The State also paid \$492,720 into the TPAF pension representing on-behalf employer's portion of the Pension System Contributions, Post-Retirement Medical Benefits Contributions and Long-Term Disability Insurance Premium Contributions. These unbudgeted amounts were included in both revenues and expenditures.

Capital Assets

At the end of fiscal year 2018, the Charter School had \$-0- balance invested in capital assets in its governmental activities.

Long-term debt

The Charter School had \$3,843,804 and \$3,498,772 at June 30, 2018 and 2017, respectively, in net pension liability regarding the Public Employees Retirement System. More detailed information about the Charter School's long-term obligations is presented in the notes to the financial statements.

Dissolution Plan

Pursuant to State of New Jersey Statutes (N.J.S.A.18A:36A-17 and N.J.A.C 6A:11-2.3(b)) the charter for Lady Liberty Charter School was revoked by the New Jersey Commissioner of Education effective June 30, 2018. The factors leading to the charter revocation are fully discussed in Note 19 to this Comprehensive Annual Financial Report. As a consequence of the revocation, the charter school was directed to cease operations. In June 2018, the board of Trustees approved a Dissolution Plan as prescribed by the New Jersey Department of Education. The terms of the Plan call for the complete cessation of all academic activities and the disposition of all capital assets owned by the Charter School including the remaining unexpired term of equipment leases.

In addition, an independent trustee Scott J. Loeffler, CPA was appointed by the Board to oversee the dissolution including but not limited to, the collection of amounts due the Charter School, payment of outstanding liabilities and expenses owed by the Charter School, assistance with the final audit of the fiscal year ended June 30, 2018 and to issue a report to the Charter School's post June 30, 2018 dissolution activities.

LADY LIBERTY ACADEMY CHARTER SCHOOL
Management's Discussion and Analysis
Year Ended June 30, 2018
(Unaudited)

The financial statements reflect all known adjustments to reflect the cessation of operations effective June 30, 2018. There may be adjustments that could result from the actual outcome of the dissolution that could affect the reported amounts of assets, liabilities, revenue and expenses.

Furniture, Equipment and Textbooks

According to the Plan, an inventory of all useable furniture, equipment and textbooks was taken and valued. The Dissolution Trustee sold the furniture, equipment and textbooks which generated revenue of approximately \$128,261 and the entire amount was collected after June 30, 2018.

Contacting the Charter School's Financial Management

This financial report is designed to provide our citizens, taxpayers, investors, and creditors with a general overview of the Charter School's finances and to reflect the Charter School's accountability for the monies it receives. Questions about this report or additional financial information needs should be directed to:

LADY LIBERTY ACADEMY CHARTER SCHOOL
Dissolution Trustee
Scott J. Loeffler, CPA
P. O. Box 553
East Hanover, New Jersey 07936
(973) 296-7829
E-Mail: sloef@aol.com

School Business Administrator
Michael Falkowski
School Business Office
158 South Main Street
Hightstown, New Jersey, 08520
Tel: (732) 631-4009
E-Mail: mfalkowski@sboffice.com

Basic Financial Statements

Government-wide Financial Statements

The government-wide financial statements provide a financial overview of the Charter School's operations. These financial statements present the financial position and operating results of all governmental activities and business-type activities as of and for the Year Ended June 30, 2018.

Statement of Net Position

June 30, 2018

	<u>Governmental Activities</u>	<u>Business-type Activities</u>	<u>Total</u>
Assets			
Cash and cash equivalents	\$ 1,089,527	\$ 155,007	\$ 1,244,534
Accounts receivable	105,966	17,325	123,291
Deposit for the acquisition of new facilities	-	-	-
Security deposits	-	-	-
Interfund receivables	172,332	-	172,332
Capital assets (net of accum deprec of \$1,550,597)	-	-	-
Total assets	<u>1,367,825</u>	<u>172,332</u>	<u>1,540,157</u>
Deferred outflows of resources			
Pension deferred outflows	<u>1,975,839</u>	<u>-</u>	<u>1,975,839</u>
Total assets and deferred outflows of resources	<u>\$ 3,343,664</u>	<u>\$ 172,332</u>	<u>\$ 3,515,996</u>
Liabilities			
Accounts payable	\$ 88,246	\$ -	\$ 88,246
Intergovernmental payables - state	91,110	-	91,110
Interfunds payables	-	172,332	172,332
Deferred revenue	-	-	-
Net pension liability	<u>3,843,804</u>	<u>-</u>	<u>3,843,804</u>
Total liabilities	<u>4,023,160</u>	<u>172,332</u>	<u>4,195,492</u>
Deferred inflows of resources			
Pension deferred inflows	<u>912,628</u>	<u>-</u>	<u>912,628</u>
Total liabilities and deferred inflows of resources	<u>4,935,788</u>	<u>172,332</u>	<u>5,108,120</u>
Net position			
Invested in capital assets	-	-	-
Designated for acquisition of new facilities	-	-	-
Unrestricted, undesignated	<u>(1,592,124)</u>	<u>-</u>	<u>(1,592,124)</u>
Total net position	<u>(1,592,124)</u>	<u>-</u>	<u>(1,592,124)</u>
Total liabilities, deferred inflows of resources & net position	<u>\$ 3,343,664</u>	<u>\$ 172,332</u>	<u>\$ 3,515,996</u>

See independent auditor's report and accompanying notes to basic financial statements.

LADY LIBERTY ACADEMY CHARTER SCHOOL

A-2

Statement of Activities

Year ended June 30, 2018

Functions/Programs	Expenses	Program Revenues		Net (Expense) Revenue and Changes in Net Position		Total
		Charges for Services	Operating Grants and Contributions	Governmental Activities	Business-type Activities	
Governmental activities:						
Instruction:						
Regular	\$ 3,378,808	\$ -	\$ 189,801	\$ (3,189,007)	\$ -	\$ (3,189,007)
Administrative & Support services:						
General administration	3,451,305	-	-	(3,451,305)	-	(3,451,305)
Support services	2,078,183	-	114,455	(1,963,728)	-	(1,963,728)
Capital outlay	-	-	-	-	-	-
Unallocated depreciation	796,016	-	-	(796,016)	-	(796,016)
Total governmental activities	<u>9,704,312</u>	<u>-</u>	<u>304,256</u>	<u>(9,400,056)</u>	<u>-</u>	<u>(9,400,056)</u>
Business-type activities:						
Food service	362,452	-	350,705	-	(11,747)	(11,747)
Before and after school program	-	-	-	-	-	-
Total business-type activities	<u>362,452</u>	<u>-</u>	<u>350,705</u>	<u>-</u>	<u>(11,747)</u>	<u>(11,747)</u>
Total primary government	<u>\$ 10,066,764</u>	<u>\$ -</u>	<u>\$ 654,961</u>	<u>(9,400,056)</u>	<u>(11,747)</u>	<u>(9,411,803)</u>
General revenues and transfers:						
Local sources				765,207	-	765,207
Federal and state sources				7,269,987	-	7,269,987
Miscellaneous				48,158	-	48,158
Transfers				(20,023)	20,023	-
Total general revenues and transfers				<u>8,063,329</u>	<u>20,023</u>	<u>8,083,352</u>
Change in net position				(1,336,727)	8,276	(1,328,451)
Net position - beginning				(255,397)	(8,276)	(263,673)
Net position - ending				<u>\$ (1,592,124)</u>	<u>\$ -</u>	<u>\$ (1,592,124)</u>

See independent auditor's report and accompanying notes to basic financial statements.

Funds Financial Statements

Governmental Funds

LADY LIBERTY ACADEMY CHARTER SCHOOL
Governmental Funds

B-1

Balance Sheet

June 30, 2018

	General Fund	Special Revenue Fund	Totals Governmental Funds
Assets			
Cash and cash equivalents	\$ 1,038,450	\$ 51,077	\$ 1,089,527
Accounts receivable:	-	-	-
State	94,385	-	94,385
Other	11,581	-	11,581
Security deposits	-	-	-
Deposits for acquisition of new facilities	-	-	-
Interfund receivable	223,409	-	223,409
Total assets	\$ 1,367,825	\$ 51,077	\$ 1,418,902
Liabilities and Fund Balances			
Interfund accounts payables	\$ -	\$ 51,077	\$ 51,077
Accounts payable	88,246	-	88,246
Intergovernmental payables - federal	-	-	-
Intergovernmental payables - state	91,110	-	91,110
Deferred revenue	-	-	-
Total liabilities	179,356	51,077	230,433
Fund balances:			
Designated for acquisition of new facilities	-	-	-
Unreserved, undesignated	1,188,469	-	1,188,469
Total fund balances	1,188,469	-	1,188,469
Total liabilities and fund balances	\$ 1,367,825	\$ 51,077	-
<p>Amounts reported for governmental activities in the statement of net position (A-1) are different because:</p>			
<p>Capital assets used in governmental activities are not financial resources and therefore are not reported in the funds.</p>			
Cost of capital assets	1,550,597		
Accumulated depreciation	(1,550,597)		
	-		
<p>Deferred Outflows related to pension contributions subsequent to the Net Pension Liability measurement date and other deferred items are not current financial resources and therefore are not reported in the fund statements. (See Note 7)</p>			
			1,975,839
<p>Deferred Inflows related to pension actuarial gains from experience and differences in actual return and assumed returns and other deferred items are not reported as liabilities in the fund statements. (See Note 7)</p>			
			(912,628)
<p>Long-term liabilities, including Net Pension Liability, are not due and payable in the current period and therefore are not reported as liabilities in the funds (see Note 7)</p>			
			(3,843,804)
Net position of governmental activities - A-1			\$ (1,592,124)

See independent auditor's report and accompanying notes to basic financial statements.

LADY LIBERTY ACADEMY CHARTER SCHOOL
Governmental Funds

B-2

Statement of Revenues, Expenditures and Changes in Fund Balances
Year ended June 30, 2018

	General Fund	Special Revenue Fund	Total
Revenues:			
Local sources:			
Local tax levy	\$ 765,207	\$ -	\$ 765,207
Miscellaneous	48,158	-	48,158
Total revenues - local sources	<u>813,365</u>	<u>-</u>	<u>813,365</u>
Federal sources	-	304,256	304,256
State sources	6,590,219	-	6,590,219
Reimbursed TPAF-Social Security (non-budgeted)	187,048	-	187,048
TPAF pension, post retirement medical and long term disability insurance benefits on-behalf payments (non-budgeted)	492,720	-	492,720
Total revenues	<u>8,083,352</u>	<u>304,256</u>	<u>8,387,608</u>
Current expense:			
Instruction	3,189,007	189,801	3,378,808
Administrative	2,406,298	-	2,406,298
Support services	1,963,728	114,455	2,078,183
Capital outlay	-	-	-
Reimbursed and on-behalf payments:	-	-	-
Reimbursed TPAF-Social Security (non-budgeted)	187,048	-	187,048
TPAF pension, post retirement medical and long term disability insurance benefits on-behalf payments (non-budgeted)	492,720	-	492,720
Total expenditures	<u>8,238,801</u>	<u>304,256</u>	<u>8,543,057</u>
Excess (deficiency) of revenues over (under) expenditures	(155,449)	-	(155,449)
Other financing sources:			
Transfer to cover food deficit	(20,023)	-	(20,023)
Change in fund balances	(175,472)	-	(175,472)
Fund balances, beginning of year	1,363,941	-	1,363,941
	<u>-</u>	<u>-</u>	<u>-</u>
Fund balances, end of year	<u>\$ 1,188,469</u>	<u>\$ -</u>	<u>\$ 1,188,469</u>

See independent auditor's report and accompanying notes to basic financial statements.

LADY LIBERTY ACADEMY CHARTER SCHOOL
Reconciliation of the Statement of Revenues, Expenditures
And Changes in Fund Balances of Governmental Funds
to the Statement of Activities
Year ended June 30, 2018

B-3

Total net change in fund balances - governmental funds (B-2) \$ (175,472)

Amounts reported for governmental activities in the statement of activities (A-2) are different because: -

Capital outlays are reported in governmental funds as expenditures. However, in the Statement of Activities, the cost of those assets is allocated over their estimated useful lives as depreciation expense. This is the amount by which capital outlays exceeded depreciation expenses in the period. Additionally, in the Statement of Activities gains or (losses) are recognized upon disposition.

	Depreciation expense	\$ (796,016)	
	Capital outlays	-	
		(796,016)	

Pension contributions are reported in governmental funds as expenditures. However, in the statement of activities, the contributions are adjusted for actuarial valuation adjustments, including service and interest costs, administrative costs, investment returns, and experience/assumption. This is the amount by which net pension liability and deferred inflows/outflows related to pension changed during the period (365,239)

Change in net position of governmental activities (A-2) \$ (1,336,727)

See independent auditor's report and accompanying notes to basic financial statements.

Proprietary Funds

LADY LIBERTY ACADEMY CHARTER SCHOOL
Proprietary Funds

B-4

Statement of Net Position

June 30, 2018

Assets	
Current assets:	
Cash and cash equivalents	\$ 155,007
Accounts receivable:	-
Federal	17,131
State	194
Other	-
Interfund receivable	-
Total current assets	<u>\$ 172,332</u>
Liabilities	
Current liabilities:	
Interfund payable - general fund	\$ 172,332
Accounts payable	-
Total current liabilities	<u>\$ 172,332</u>
Net position	
Unrestricted	-
Total net position	<u><u>\$ -</u></u>

See independent auditor's report and accompanying notes to basic financial statements.

**LADY LIBERTY ACADEMY CHARTER SCHOOL
Proprietary Funds**

B-5

Statement of Revenues, Expenditures and Changes in Net Assets

Year ended June 30, 2018

Operating revenues:	
Charges for services:	
Daily sales - reimbursable program	\$ -
Daily sales - non-reimbursable program	-
Miscellaneous revenue	-
Total Operating revenues	<u>-</u>
Operating expenses:	
Cost of sales - reimbursable program	258,823
Cost of sales - non-reimbursable program	-
Salaries	103,399
Employee benefits	-
Other purchased services	-
Supplies and materials	230
Depreciation	-
Miscellaneous	-
Total operating expenses	<u>362,452</u>
Operating income/(loss)	<u>(362,452)</u>
Nonoperating revenues:	
State sources:	
State school lunch program	3,897
Federal sources:	
National school lunch program	230,086
National school breakfast program	116,722
Total nonoperating revenues	<u>350,705</u>
Net income/(loss) before contributions & transfers	(11,747)
Other financing sources:	
Transfer in/(out) - board contribution	20,023
	<u>20,023</u>
Change in net position	8,276
Total net position-beginning of year	<u>(8,276)</u>
Total net position-end of year	<u>\$ -</u>

See independent auditor's report and accompanying notes to basic financial statements.

LADY LIBERTY ACADEMY CHARTER SCHOOL
Proprietary Fund

B-6

Statement of Cash Flows

Year ended June 30, 2018

Cash flows from operating activities

Operating loss	\$ (362,452)
Adjustment to reconcile operating loss to net cash used in operating activities:	
Changes in assets and liabilities:	
Accounts receivable	38,469
Due from general fund	-
Due to general fund	83,377
Accounts payable	-
Net cash used in operating activities	<u>(240,606)</u>

Cash flows from noncapital financing activities:

Cash received from state reimbursements	3,897
Cash received from federal reimbursements	346,808
Operating subsidies and transfers from other funds	20,023
Net cash provided by noncapital financing activities	<u>370,728</u>

Cash flows from investing activities

	-
Net change in cash and cash equivalents	130,122
Cash and cash equivalents, beginning	24,885
Cash and cash equivalents, ending	<u>\$ 155,007</u>

See independent auditor's report and accompanying notes to basic financial statements.

Fiduciary Funds

LADY LIBERTY ACADEMY CHARTER SCHOOL
Fiduciary Funds

B-7

Statement of Fiduciary Net Position

June 30, 2018

	Unemployment Compensation	Student Activity Fund	Agency Fund Payroll	Total
Assets				
Cash and cash equivalents	\$ 32,759	\$ 3,978	\$ 75,455	\$ 112,192
Total assets	\$ 32,759	\$ 3,978	\$ 75,455	\$ 112,192
Liabilities				
Payroll deductions and withholdings	\$ -	\$ -	\$ 75,455	\$ 75,455
Interfund payables	-	-	-	-
Due to students group	-	3,978	-	3,978
Total liabilities	-	\$ 3,978	\$ 75,455	79,433
Net position	32,759			32,759
Total liabilities and net position	\$ 32,759			\$ 112,192

See independent auditor's report and accompanying notes to basic financial statements.

LADY LIBERTY ACADEMY CHARTER SCHOOL
Fiduciary Funds

B-8

Statement of Changes in Fiduciary Net Position

Year ended June 30, 2018

	<u>Unemployment Compensation</u>
Revenues:	
General fund appropriation	\$ 115,459
Employee's contributions	<u>93,175</u>
Total revenues	<u>208,634</u>
Expenditures:	
Payments to NJ Unemployment Compensation Fund	<u>208,621</u>
Total expenditures	<u>208,621</u>
Excess(deficiency) of revenue over(under) expenditures	13
Net position, beginning	<u>32,746</u>
Net position, ending	<u><u>\$ 32,759</u></u>

See independent auditor's report and accompanying notes to basic financial statements.

Notes to Basic Financial Statements

LADY LIBERTY ACADEMY CHARTER SCHOOL
(County of Essex)
Notes to the Basic Financial Statements
Year Ended June 30, 2018

1 Description of the Charter School District and Reporting Entity

Lady Liberty Academy Charter School (the “Charter School” was incorporated in the State of New Jersey in April 2000 as a non-for-profit corporation for the purpose of operating and maintaining a public school under a charter granted by the State of New Jersey, which promotes comprehensive educational reform by infusing innovation into the public education system. It is an instrumentality of the State of New Jersey, established to function as an education institution. The Charter School’s Board of Trustees (the Board) is responsible for the fiscal control of the Charter School. A Principal/Chief School Administrator is appointed by Board and is responsible for the administrative control of the Charter School. Under the existing the statutes, the Charter School’s duties and powers include, but not limited to the development and adoption of a school program; the establishment, organization and operation of schools; and the acquisition, maintenance and disposition of school property.

A reporting entity is comprised of the primary government, component units and other organizations that are included to ensure that the financial statements of the Charter School are not misleading. The primary government consists of all funds, departments, boards and agencies that are not legally separate from the Charter School. For the Charter School, this includes general operations, food service and student related activities of the Charter School.

The primary criterion for including activities within the Charter School’s reporting entity, as set forth in Section 2100 of the GASB Codification of Governmental Accounting and Financial Reporting Standards, is the degree of oversight responsibility maintained by the Charter School. Oversight responsibility includes financial interdependency, selection of governing authority, designation of management, and ability to significantly influence operations and accountability for fiscal matters. The combined financial statements include all funds of the Charter School over which the Board exercises operating control. Based on the aforementioned criteria, the Charter School has no component units to be included in the reporting entity. Further, the Charter School is not includable in any other reporting entity on the basis of such criteria.

The Lady Liberty Academy Charter School Board of Trustees also has broad financial responsibilities, including the approval of the annual budget and the establishment of a system of accounting and budgetary controls.

Its mission is to establish a character school to serve as a neighborhood resource and as a model for other similar schools. The Lady Liberty Academy Charter School is committed to achieving the New Jersey Core Curriculum Content Standards and producing high academic achievement by all students. The Charter School will integrate a holistic curriculum, utilize learner center techniques, family and care giver centered approaches, comprehensive community involvement, cutting edge technology and an intimate nurturing environment that will enhance positive self-images.

LADY LIBERTY ACADEMY CHARTER SCHOOL
(County of Essex)
Notes to the Basic Financial Statements
Year Ended June 30, 2018

2 Summary of Significant Accounting Policies

This summary of significant accounting policies of Lady Liberty Academy Charter School is presented to assist in understanding the Charter School's financial statements and notes are a representation of the Charter School's management, who is responsible for their integrity and objectivity. These accounting policies conform to generally accepted accounting principles in the United States as applied to governmental units and have been consistently applied in the preparation of these financial statements.

The financial statements of the Lady Liberty Academy Charter School (the "Charter School") have been prepared in conformity with generally accepted accounting principles (GAAP) as applied to governmental units. GASB is the accepted standard-setting body for establishing governmental accounting and financial reporting principles.

The Charter School also applies Financial Accounting Standards Board (FASB) pronouncements issued on or before November 30, 1989, to its governmental and business-type activities and to its enterprise fund unless they conflict with or contradict GASB pronouncements. The most significant of the Charter School's accounting policies are described below:

A Basis of Presentation

The Charter School's basic financial statements consist of government-wide statements, including a statement of net position and a statement of activities, and fund financial statements that provide a more detailed level of financial information.

Charter School Government-wide Financial Statements

The statement of net position and the statement of activities display information about the Charter School as a whole. These statements include the financial activities of the Charter School, except for fiduciary funds.

The statement of net position presents the financial condition of the governmental and business-type activities of the Charter School at year-end. The statement of activities presents a comparison between direct expenses and program revenues for each program or function of the Charter School's governmental and business-type activities. Direct expenses are those that are specifically associated with a service, program or department and are therefore clearly identifiable to a particular function. Program revenues include charges paid by the recipient of the goods or services offered by the program and grants and contributions that are restricted to meeting the operational or capital requirements of a particular program. Revenues that are not classified as program revenues are presented as general revenues of the Charter School, with certain limited exceptions. The comparison of direct expenses with program revenues identifies the extent to which each governmental function is self-financing or draws from the general revenues of the Charter School.

LADY LIBERTY ACADEMY CHARTER SCHOOL
(County of Essex)
Notes to the Basic Financial Statements
Year Ended June 30, 2018

2 Summary of Significant Accounting Policies - *continued*

The governmental activities generally are financed through federal and state awards, taxes and other non-exchange revenues. Business-type activities are financed in whole or in part by fees charged to external parties for goods or services.

Fund Financial Statements

Fund financial statements of the Charter School are organized into funds, each of which is considered to be separate accounting entities. Each fund is accounted for by providing a separate set of self-balancing accounts that constitute its assets, liabilities, fund equity, revenues, and expenditure/expenses. Funds are organized into three major categories: governmental, proprietary, and fiduciary. An emphasis is placed on major funds within the governmental and proprietary categories. A fund is considered major if it is the primary operating fund of the Charter School. The New Jersey Department of Education (NJDOE) requires that all funds be reported as major, as it is considered important for public interest and to promote consistency among Charter Schools financial reporting in the State of New Jersey.

B Fund Accounting

The Charter School segregates transactions related to certain Charter School functions or activities in separate funds in order to aid financial management and to demonstrate legal compliance. Fund financial statements are designed to present financial information of the Charter School at a more detailed level.

Governmental Funds

Governmental funds are those funds through which most governmental functions typically are financed. Governmental fund reporting focuses on the sources, uses and balances of current financial resources. Expendable assets are assigned to the various governmental funds according to the purposes for which they will be paid. The difference between governmental fund assets and liabilities is reported as fund balance. The following are the Charter Schools' major governmental funds:

General Fund - The General Fund is the primary operating fund of the Charter School. It is used to account for all financial resources except those that are legally or administratively required to be accounted for in another fund. Included are certain expenditures for vehicles and movable instructional or non-instructional equipment which are classified in the Capital Outlay sub-fund.

LADY LIBERTY ACADEMY CHARTER SCHOOL
(County of Essex)
Notes to the Basic Financial Statements
Year Ended June 30, 2018

2 Summary of Significant Accounting Policies - *continued*

As required by the New Jersey Department of Education, the Charter School included budgeted capital outlay in this fund. Generally accepted accounting principles as they pertain to governmental entities state that General Fund resources may be used to directly finance capital outlays for long-lived improvements as long as the resources in such cases are derived exclusively from unrestricted revenues.

Resources for budgeted capital outlay purposes are normally derived from State of New Jersey aid and appropriated fund balance. Expenditures are those that result in the acquisition of or additions to fixed assets for land, existing buildings, improvements of ground, construction of buildings, additions to or remodeling of buildings and the purchase of built-in equipment. These resources can be transferred from and to current expense by board resolution.

Special Revenue Fund - The Special Revenue Fund is used to account for the proceeds of specific revenue from State and Federal Government, (other than major Capital Projects, Debt Service or the Enterprise Funds) and local appropriations that legally restricted to expenditures for specified purposes.

Capital Projects Fund - The Capital Projects Fund is used to account for all financial resources to be used for the acquisition or construction of major capital facilities (other than those financed by proprietary funds). The financial resources are derived from temporary notes or serial bonds that are specifically authorized by the voters as a separate question on the ballot either during the annual election or at a special election. As of June 30, 2018 there was no Capital Projects Fund.

Proprietary Funds

The focus of Proprietary Funds' measurement is upon determination of net income, changes in net position, financial position and cash flows. The generally accepted accounting principles applicable are those to similar to business in the private sector. The following is a description of the Proprietary Funds of the Charter School:

Enterprise Funds - The Enterprise Fund is utilized to account for operations that are financed and operated in a manner similar to private business enterprises where the intent of the Charter School is that the cost (i.e. expenses including depreciation and indirect costs) of providing goods and services to the students on a continuing basis be financed or recovered primarily through user charges; or where the Charter School has decided that periodic determination of revenues earned, expenses incurred, and/or net income is appropriated for capital maintenance, public policy, management control, accountability or other purposes.

LADY LIBERTY ACADEMY CHARTER SCHOOL
(County of Essex)
Notes to the Basic Financial Statements
Year Ended June 30, 2018

2 Summary of Significant Accounting Policies - *continued*

All proprietary funds are accounted for on a cost of services or “capital maintenance” measurement focus. This means that all assets and all liabilities, whether current or non-current, associated with their activity are included on their balance sheets. Their reported fund equity (net total assets) is segregated into contributed capital and unreserved retained earnings, if applicable. Proprietary fund type operating statements present increases (revenue) and decreases (expenses) in net total assets.

Fiduciary Funds

Fiduciary or trust and Agency Funds are used to account for assets held by the Charter School in a trustee capacity or as an agent for individuals, private organizations, other governments and/or other funds. This fund category includes:

Trust Funds - Expendable Trust Funds (unemployment compensation) are accounted for in essentially the same manner as the governmental funds. The unemployment compensation trust fund is used to account for contributions from employees and the employer (the Charter School) and interest earned on the balance as well as payments to the State for reimbursements of unemployment claims.

Agency Funds – Agency funds (*Payroll, Health Benefits and Student Activity Fund*) are used to account for the assets that the Charter School holds on behalf of others as their agent. Agency funds are custodial in nature and do not involved measurement of results of operations.

C Measurement Focus and Basis of Accounting

Measurement focus is a term used to describe “which” transactions are recorded within the various financial statements. ***Basis of accounting*** refers to “when” transactions are recorded regardless of the measurement focus applied.

Measurement Focus

On the government-wide statements of net position and the statement of activities, both governmental and business-like activities are presented using the economic resources measurement focus. The accounting and financial reporting treatment applied to a fund is determined by its measurement focus. All governmental funds and expendable trust funds are accounted for using a current financial resources measurement focus. With this measurement focus, only current assets and current liabilities generally are included on the balance sheet. Operating statement of these funds present increases (i.e., revenues and other financing sources), and decreases (i.e. Expenditures and other finances uses) during a given period. These funds use fund balance as their measure of available spendable financial resources at the end of the period.

LADY LIBERTY ACADEMY CHARTER SCHOOL
(County of Essex)
Notes to the Basic Financial Statements
Year Ended June 30, 2018

2 Summary of Significant Accounting Policies - *continued*

All proprietary funds are accounted for on a flow economic resources measurement focus. With this measurement focus, the accounting adjectives are the determination of operating income, changes in net position (or cost recovery), financial position, and cash flow. All assets and all liabilities, whether current or non-current, associated with their activities are included on the balance sheet. Fund equity (i.e., net total assets) is classified as net position.

Basis of Accounting

In the government wide statement of net position and statements of activities, both governmental and business like activities are presented using the accrual basis of accounting. Under the accrual basis of accounting revenues are recognized when earned and expenses are recognized when the liability, resulting from exchange and exchange like transactions, is incurred (i. e the exchange takes place).

In the fund financial statements, governmental fund and agency funds are presented on the modified accrual basis of accounting. Under the modified accrual basis of accounting, revenues are recognized when they become both measurable and available. “Measurable” means the amount of the transaction can be determine and “available” means collectible with the current period or soon enough thereafter to be used to pay liabilities of the current period. State equalization monies are recognized as revenue during the period in which they are appropriated. A one-year availability period is used for revenue recognition for all other governmental funds revenues.

D Budgets/Budgetary Control

Annual appropriated budgets are prepared in the spring of each year for the general and special revenue fund. The budgets are submitted to the County Office and the Education Commissioner for approval. Budgets except for the special revenue fund which is prepared using a non-GAAP budgetary basis, are prepared using the modified accrual basis of accounting. The legal level of budgetary control is established at line item accounts within each fund. Line item accounts are defined as the lowest (most specific) level of detail as established pursuant to the minimum chart of accounts referenced in N.J.A.C. 6:20-2A.2(m)1. Transfers of appropriations may be made by Charter School Board resolution at any time during the fiscal year subject to the limitation of P.L. 2004 c73 (S1701). The Board of Trustees did not make any material supplemental budgetary appropriations during the fiscal year.

Formal budgetary integration into the accounting system is employed as a management control device during the year. For governmental funds, there are no substantial differences between the budgetary basis of accounting and generally accepted accounting principles, with the exception of the Special Revenue Fund as noted below.

LADY LIBERTY ACADEMY CHARTER SCHOOL
(County of Essex)
Notes to the Basic Financial Statements
Year Ended June 30, 2018

2 Summary of Significant Accounting Policies - *continued*

Encumbrance accounting is also employed as an extension of formal budgetary integration in the governmental funds types. Unencumbered appropriations lapse at fiscal year-end.

The accounting records of the special revenue fund are maintained on the grant accounting budgetary basis. The grant accounting budgetary basis differs from GAAP in that the grant accounting budgetary basis recognized encumbrances as expenditures and also recognized the related revenues, whereas the GAAP basis does not. Sufficient supplemental records are maintained to allow of the presentation of GAAP basis financial reports.

E Cash, Cash Equivalent and Investments

Cash and cash equivalents include petty cash, change funds, cash in banks and all highly liquid investment with a maturity of three months or less at the time of purchases and are stated at cost plus accrued interest. US Treasury and agency obligations and certificates of deposit with maturities of one year or less when purchases are stated at cost. All other investments are stated at fair value.

New Jersey Charter Schools are limited as to the types of the investments and types of financial institution they may invest in. New Jersey statute 18A:20-37 provides a list of permissible investment that may be purchased by New Jersey Charter Schools.

Additionally, the Charter School has adopted a cash management plan that requires it to deposit public fund in public depositories protected from loss under the provisions of the Governmental Unit Deposit Protection Act (“GUDPA”). GUDPA was enacted in 1970 to protect Governmental Units from loss funds on deposit with a failed banking institution in New Jersey.

N.J.S.A. 17:9-41 et. seq. established the requirements for the security of deposits of governmental units. The statute requires that no governmental unit shall deposit public funds in a public depository unless such funds are secured in accordance with the Act. Public depositories include Savings and Loan Institutions, bank (both state and national banks) and saving bank the deposits of which are federally insured. All public depositories must pledge collateral, having a market value at least equal to five percent of the average daily balance of collected public funds, to secure the deposit of Governmental Units. If a public depository fails, the collateral it has pledged, plus the collateral of all other public depositories, is available to pay the full amount of their deposits to the Governmental Units.

LADY LIBERTY ACADEMY CHARTER SCHOOL
(County of Essex)
Notes to the Basic Financial Statements
Year Ended June 30, 2018

2 Summary of Significant Accounting Policies - *continued*

F Short-Term Interfund Receivables/Payables

On the fund financial statement, receivable and payables resulting from short-term (due within one year) interfund loans are classified as interfund receivables/payables. Interfund balances within governmental activities and within business-type activities are eliminated on the Government Wide Statements of Net Position.

G Inventories and Prepaid Expenses

Inventories and prepaid expenses, which benefit future periods, other than those recorded in the enterprise fund are recorded as expenditure during the year of purchase. Inventories in the proprietary funds are valued at cost, which approximates market, using the first-in-first-out (FIFO) method.

H Capital Assets

Capital assets, which include leasehold improvements, equipment, furniture & fixtures and vehicles are reported in the applicable governmental or business-type activities columns of the Government-wide financial statements. Capital assets are defined by the Charter School as assets with initial, individual cost of more than \$2,000 and an estimated useful life in excess of two years. Such assets are recorded at historical cost or through estimation procedures performed by an independent appraisal company.

The cost of normal repairs and maintenance that do not add to the value of the asset or materially extend the assets lives are not capitalized. Donated capital assets are capitalized at estimated fair market value on the date donated. Depreciation of capital assets is computed and recorded by the straight-line method. Leasehold improvements are depreciated based on 15 years or the term of the lease whichever is shorter.

LADY LIBERTY ACADEMY CHARTER SCHOOL
(County of Essex)
Notes to the Basic Financial Statements
Year Ended June 30, 2018

2 Summary of Significant Accounting Policies - *continued*

I Compensated Absences

Compensated absences are those absences for which employees will be paid, such as vacation, sick leave, and sabbatical leave. A liability for compensated absences that are attributable to services already rendered, and that are not contingent on specific event that is outside the control of the Charter School and its employees, is accrued as the employees earn the rights to the benefits. Compensated absences that relate to future services, or that are contingent on specific event that is outside the control of the Charter School and its employees, are accounted for in the period in which such services are rendered or in which such events take place.

For governmental fund financial statements, the current portion of unpaid compensated absences is in the amount expected to be paid using expendable available resources. These amounts are recorded in the account “compensated absences payable” in the fund from which the employees who have accumulated unpaid leave are paid. The noncurrent portion of the liability is not reported.

The entire sick leave and vacation leave liabilities are reported on the school-wide financial statements.

The Charter School had no compensated absences as of June 30, 2018.

J Accrued Liabilities and Long-Term Obligations

All payables, accrued liabilities, and long-term obligations are reported on the government-wide financial statements.

In general, governmental fund payables and accrued liabilities that, once incurred, are paid in a timely manner and in full from current financial resources are reported as obligations of the funds. However, the non-current portion of compensated absences and mortgage payable (if any) that will be paid from governmental funds are reported as liabilities on the fund financial statements only to the extent that they are normally expected to be paid with expendable, available financial resources.

K Deferred Revenue

Deferred revenue in special revenue fund represent cash that has been received but not yet earned.

LADY LIBERTY ACADEMY CHARTER SCHOOL
(County of Essex)
Notes to the Basic Financial Statements
Year Ended June 30, 2018

2 Summary of Significant Accounting Policies - *continued*

L Fund Balance and Equity

In February 2009, the GASB issued GASB Statement No. 54, Fund Balance Reporting and Governmental Fund Type Definitions (“GASB 54”). GASB 54 is effective for periods beginning after June 15, 2010 and establishes fund balance classifications that comprise a hierarchy based primarily on the extent to which government is bound to observe constraints imposed upon the use of resources reported in governmental funds. Under GASB 54, fund balances in the governmental funds financial statements are reported under the modified accrual basis of accounting and classified into the following five categories, as defined below:

1. Nonspendable – includes amounts that cannot be spent because they either (a) not in spendable form or (b) legally or contractually required to be maintained intact. Assets included in this fund balance category include prepaid assets, inventories, long-term receivables, and corpus of any permanent funds.
2. Restricted – includes amounts that can be spent only for the specific purposes stipulated by constitution, external resource providers, or through enabling legislation.
3. Committed – includes amounts that can be used only for the specific purposes determined by a formal action of the government’s highest level of decision-making authority.
4. Assigned – amounts intended to be used by the government for specific purposes but do not meet the criteria to be classified as restricted or committed.
5. Unassigned – includes all spendable amounts not contained in the other classifications.

When both restricted and unrestricted resources are available for use, it is the Charter School’s policy to use restricted resources first, then unrestricted resources as they are needed. For the unrestricted fund balance, the Charter School first spends committed funds, then assigned funds, and finally, unassigned funds.

LADY LIBERTY ACADEMY CHARTER SCHOOL
(County of Essex)
Notes to the Basic Financial Statements
Year Ended June 30, 2018

2 Summary of Significant Accounting Policies - *continued*

M Net Position

Net Position represent the difference between assets and liabilities in the Government-wide financial statements. Net position invested in capital assets, net of related debt consists of capital assets, net of accumulated depreciation, reduced by the outstanding balance of any long-term debt used to build or acquire the capital assets. Net position are reported as restricted in the Government-wide financial statements when there are limitations imposed on their use through external restrictions imposed by creditors, grantors, or laws or regulations of other governments.

N Management Estimates

The preparation of financial statements in conformity with generally accepted accounting principles requires management to make estimates that affect the recorded amount of assets and liabilities and disclosure of contingent assets and liabilities at the date of the financial statements and the reported amounts of revenues and expenditures during the reporting period. Actual results could differ from those estimates.

O On-Behalf Payments

Revenues and expenditures of the General Fund include payment made by the state of New Jersey for Pension and social security contributions for certified teacher members of the New Jersey Teachers Pension and Annuity Fund. The amounts are not required to be included in the Charter School's annual budget.

P New Accounting Standards

During the prior fiscal year ended June 30, 2015, the Charter School adopted the following GASB statements:

GASB 68, *Accounting and Financial Reporting for Pensions* The objective of this Statement is to improve accounting and financial reporting by state and local governments for pensions. It also improves information provided by state and local governmental employers about financial support for pensions that is provided by other entities. This Statement replaces the requirements of Statement No. 27, *Accounting for Pensions by State and Local Governmental Employers*, as well as the requirements of Statement No. 50, *Pension Disclosures*, as they relate to pensions that are provided through pension plans administered as trusts or equivalent arrangements that meet certain criteria.

LADY LIBERTY ACADEMY CHARTER SCHOOL
(County of Essex)
Notes to the Basic Financial Statements
Year Ended June 30, 2018

2 Summary of Significant Accounting Policies - *continued*

P New Accounting Standards - *continued*

GASBS Implemented in the 2018 Fiscal Year

The GASB issued Statement No. 75, *Accounting and Financial Reporting/or Postemployment Benefits Other Than Pensions*. This Statement replaces the requirements of Statement 45 and requires governments to report a liability on the face of the financial statements for the OPEB that they provide. Statement No. 75 requires governments in all types of OPEB plans to present more extensive note disclosures and required supplementary information (RSI) about their OPEB liabilities. The requirements of this Statement are effective for financial statements for reporting periods beginning after June 15, 2017. The District has adopted GASB Statement No. 75 during the year ended June 30, 2018, which resulted in the recording of full accrual revenues and expenses and additional financial statement disclosures.

In March 2017, GASB issued Statement No. 85, *Omnibus 2017*. This Statement establishes accounting and financial reporting requirements for blending component units, goodwill, fair value measurement and application, and postemployment benefits (pensions and other postemployment benefits). The requirements of this Statement are effective for periods beginning after June 15, 2017. The District has adopted GASB Statement No. 85 during the year ended June 30, 2018 and it did not have a significant impact on the financial statements.

3 Deposits and Investments

New Jersey statutes require that Charter Schools deposit public funds in public depositories located in New Jersey that are insured by the Federal Deposit Insurance Corporation, the Federal Savings and Loan Insurance Corporation, or by any other agency of the United States that insures deposits made in public depositories. Charter schools are also permitted to deposit public funds in the State of New Jersey Cash Management Fund (NJCMF), the New Jersey Arbitrage Rebate Management Fund (NJARM) and the M.B.I.A Class.

New Jersey statutes require public depositories to maintain collateral for deposits of public funds that exceed depository insurance limits as follows: The market value of the collateral must equal at least 5% of the average daily balance of collected funds on deposit.

In addition to the above collateral requirement, if the public funds deposited exceed 75% of the capital funds of the depository, the depository must provide collateral having a market value at least equal to 100% of the amount exceeding 75%.

LADY LIBERTY ACADEMY CHARTER SCHOOL
(County of Essex)
Notes to the Basic Financial Statements
Year Ended June 30, 2018

3 Deposits and Investments – continued

All collateral must be deposited with the Federal Reserve Bank of New York, the Federal Reserve Bank of Philadelphia, the Federal Home Loan Bank of New York, or a banking institution that is a member of the Federal Reserve System and has capital funds of not less than \$25,000,000.

The Charter School’s cash and cash equivalents are classified below to inform financial statement users about the extent to which the Charter School’s deposits and investments are exposed to custodial credit risk. As of June 30, 2018, the Charter School’s carrying amount of deposits and investments are as follows:

	General Fund	Special Revenue	Enterprise Funds	Agency Funds	Total
Cash balances	\$ 1,038,450	\$ 51,077	\$ 155,007	\$ 112,192	\$ 1,356,726

Operating cash accounts are held in the Charter School’s name by one banking institution. At June 30, 2018, the Charter School’s carrying amount of deposits was \$1,356,726 and the bank balance was \$1,513,590. Of the bank balance, up to a maximum of \$250,000 of the Charter School’s cash deposits on June 30, 2018 were secured by federal deposit insurance and \$1,263,590 was covered by a collateral pool maintained by the bank as required by New Jersey statutes in accordance with the New Jersey Governmental Unit Deposit Protection Act (“GUDPA”).

GASB Statement No. 40 requires that the Charter School disclose whether its deposits are exposed to custodial risk (risk that in the event of failure of the counterparty, the Charter School would not be able to recover the value of its deposit or investment). In general deposits are considered to be exposed to custodial risk by three categories described below:

Category 1 - Insured or collateralized with securities held by the Charter School or by its agent in the Charter School’s name. **Category 2** - Collateralized with securities held by the pledging public depository’s trust department or agent in the Charter School’s name.

Category 3 - Uncollateralized, including any deposits that are collateralized with securities held by the pledging public depository, or by its trust department or agent, but not in the Charter School’s name.

The Charter School does not have a policy for the management of the custodial risk, other than depositing all of its funds in banks covered by GUDPA.

LADY LIBERTY ACADEMY CHARTER SCHOOL
(County of Essex)
Notes to the Basic Financial Statements
Year Ended June 30, 2018

3 Deposits and Investments – continued

Investments

New Jersey statutes permit the Charter School to purchase the following types of securities:

1. Bonds or other obligations of the United States or obligations guaranteed by the United States.
2. Bonds of any Federal Intermediate Credit Bank, Federal Home Loan Bank, Federal national Mortgage Agency or of any United States Bank for Cooperatives which have a maturity date not greater than twelve months from the date of purchase.
3. Bonds or other obligations of the Charter School.
4. New Jersey Cash Management Fund, New Jersey Arbitrage Rebate Management Fund and MBIA CLASS.

As of June 30, 2018, the Charter School did not hold any investments.

4 Capital Assets

The following schedule is a summarization of the governmental activities changes in capital assets for the year ended June 30, 2018:

Governmental activities	Beginning Balance	Net Additions (Deletions)	Ending Balance
Capital assets, being depreciated:			
Leasehold improvements - Newark, NJ	\$ 1,550,597	\$ -	\$ 1,550,597
	<u>1,550,597</u>	<u>-</u>	<u>1,550,597</u>
Less accumulated depreciation	<u>754,581</u>	<u>796,016</u>	<u>1,550,597</u>
Total capital assets net	<u>\$ 796,016</u>	<u>\$ (796,016)</u>	<u>\$ -</u>

Depreciation expense of \$796,016 was charged to an unallocated function. The capital assets were fully depreciated during the year ended June 30, 2018 as a result of the charter revocation.

LADY LIBERTY ACADEMY CHARTER SCHOOL
(County of Essex)
Notes to the Basic Financial Statements
Year Ended June 30, 2018

5 Lease Obligations

Facilities Lease

The Charter School leased its permanent location at 746 Sandford Avenue, Newark, New Jersey. The Charter School was a sub-lessee under a partnership arrangement with Build With Purpose (BWP), (a nonprofit real estate development company). BWP secured financing through the New Jersey Economic Development Authority in the form of \$10,010,000 “Charter School Revenue Bonds” in February 2014 for the purchase and renovations of the building. The renovations were completed in July 2014 and the building occupied by the Charter School in August 2014. The agreement includes an option to purchase premises by the Charter School. The amounts paid under the lease were \$869,835 during the year ended June 30, 2018.

Parking spaces at 746 Sandford Avenue, Newark, New Jersey - the Charter School also leased several parking spaces (from St. John’s Ukrainian Catholic Church of Newark) under an operating lease agreement at a monthly payment of \$3,250. The parking spaces were for the use of its employees who were charged reasonable monthly fees. The amount paid under this lease for the year ended June 30, 2018 was \$49,424.

These leases were terminated as of June 30, 2018 because of the school’s charter revocation as discussed in Note 19.

Equipment Leases

The Charter School leases office equipment under several operating lease agreements. For the year ended June 30, 2018, the Charter School incurred \$52,972 in equipment lease expenditures.

There were no future minimum lease payments because all leases were terminated as of June 30, 2018 because of the school’s charter revocation as discussed in Note 19.

LADY LIBERTY ACADEMY CHARTER SCHOOL
(County of Essex)
Notes to the Basic Financial Statements
Year Ended June 30, 2018

6 Pension Plans

Description of Plans

Substantially all of the employees of the Charter School are covered by either the Public Employee's Retirement System or the Teacher's Pension and Annuity Fund (both of which are contributory defined benefits plans). Both were established by state statute and are administered by the New Jersey Division of Pension and Benefit (Division). According to the State of New Jersey Administrative Code, all obligations of both Systems will be assumed by the State of New Jersey should the Systems terminate. The Division issues a publicly available financial report that includes the financial statements and required supplementary information for the Public Employees Retirements System and the Teacher's Pension and Annuity Fund. These reports may be obtained by writing to the Division of Pensions and Benefits, PO Box 295, Trenton, New Jersey, 08625.

Teachers' Pension and Annuity Fund (TPAF)

The Teachers' Pension and Annuity Fund was established as of January 1, 1955, under the provisions of N.J.S.A. 18A:66 to provide coverage including post-retirements health care to substantially all full time certified teachers or professional staff of the public school systems in the State. The Teacher's Pension and Annuity Fund is considered a cost-sharing multiple-employer plan with a special funding situation, as under current statute, all employer contributions are made by the State of New Jersey on behalf of the Charter School and the systems other related non-contributing employers. Membership is mandatory for substantially all teachers or members of the professional staff certified by the State Board of Examiners, and employees of the Department of Education who have titles that are unclassified, professional and certified.

Public Employees' Retirement System (PERS)

The public Employees' Retirement Systems (PERS) was established as of January 1, 1955 under the provisions of N.J.S.A. 43:15A to provide coverage including post-retirement health care to substantially all full-time employees of the State or any county municipality, Charter School, or public agency provided the employee is not a member of another state-administered retirement system. The public Employees' Retirement System is a cost-sharing multiple-employer plan. Membership is mandatory for substantially all full-time employees of the State of New Jersey or any county, municipality, Charter School, or public agency, provided the employee is not required to be a member of another state administered retirement system or other state or local jurisdiction.

LADY LIBERTY ACADEMY CHARTER SCHOOL
(County of Essex)
Notes to the Basic Financial Statements
Year Ended June 30, 2018

6 Pension Plans - *continued*

Defined Contribution Retirement Program (DCRP)

The Defined Contribution Retirement Program (DCRP) was established under the provision of Chapter 92, P.L. 2007 and Chapter 103, P.L. 2007 to provide coverage to elected and certain appointed officials, effective July 1, 2007. Membership is mandatory for such individuals with vesting occurring after one year of membership.

Vesting and Benefit Provisions

The vesting and benefit provisions for PERS are set by N.J.S.A 43:15a and 4303B and N.J.S.A. 18A: for TPAF. All benefits vest after eight to ten years of service, except for medical benefits that vest after 25 years of service. Retirement benefits for age and service are available at age 55 and are generally determined to be 1/55 of the final average salary for each year of service credit as defined. Final average salary equals the average salary for the final three years of service prior to retirement (or highest three years' compensation if other than the final three years).

Members may seek early retirement after achieving 25 years of service credit or they may elect deferred retirement after achieving eight to ten years of service in which case benefits would begin the first day of the month after the member attains normal retirement age. The TPAF and PERS provides for specified medical benefits for member who retire after achieving 25 years of qualified service, as defined, or under the disability provisions of the System.

Members are always fully vested for their own contributions and, after three years of service credit, become vested for 2% of related interest earned on the contributions. In the case of death before retirement, members' beneficiaries are entitled to full interest credited to the member's accounts.

Significant Legislation

Effective June 28, 2011, P.L. 2011, c. 78 enacted certain changes in the operations and benefit provisions of the TPAF and the PERS systems.

Pension Plan Design Changes

Effective June 28, 2011, P.L. 2011, c. 78, new members of TPAF and PERS, hired on or after June 28, 2011, will need 30 years of creditable service and have attained the age of 65 for receipt of the early retirement benefit without a reduction of 1/4 of 1% for receipt of the early retirement benefit without a reduction of 1/4 of 1% for each month that the member is under age 65. New members will be eligible for a service retirement benefit at age 65.

LADY LIBERTY ACADEMY CHARTER SCHOOL
(County of Essex)
Notes to the Basic Financial Statements
Year Ended June 30, 2018

6 Pension Plans - *continued*

Funding Changes

Under the new legislation, the methodology for calculating the unfunded accrued liability payment portion of the employer's annual pension contribution to the PERS, and TPAF. The unfunded actuarial accrued liability (UAAL) will be amortized for each plan over an open-ended 30 year period and paid in level dollars. Beginning with the July 1, 2019 actuarial valuation (July 1, 2018 for PERS), the UAAL will be amortized over a closed 30 year period until the remaining period reaches 20, when the amortization period will revert to an open-ended 20 year period.

COLA Suspension

The payment of automatic cost-of-living adjustment to current and future retirees and beneficiaries are suspended until reactivated as permitted by this law.

Contribution Requirements

The contribution policy is set by N.J.S.A. 43:15A and N.J.S.A. 18:66, and requires contributions by active members and contributing employers. Plan member and employer contributions may be amended by State of New Jersey legislation.

Effective June 28, 2011, P.L. 2001, c. 78 provides for increases in the employee contribution rates: from 5.5% to 6.5% plus an additional 1% phased-in over 7 years beginning in the first year, meaning after 12 months, after the law's effective date for TPAF and PERS.

Employers are required to contribute at an actuarially determined rate in both TPAF and PERS. The actuarially determined contribution includes funding for cost-of-living adjustments, non-contributory death benefits, and post-retirement medical premiums. Under current statute the charter school is a non-contributing employer of TPAF (i.e., the State of New Jersey makes the employer contribution on behalf of public school districts and charter school).

Annual Pension Costs (APC)

Per the requirements of GASB Statement No. 27 for the year ended June 30, 2011 for TPAF, which is a cost sharing plan with special funding situations, annual pension cost differs from the annual required contribution. For PERS, which is a cost sharing multi-employer defined benefit pension plan, the annual pension cost equals contributions made. TPAF employer contributions are made annually by the State of New Jersey to the pension system on behalf of the Board.

LADY LIBERTY ACADEMY CHARTER SCHOOL
(County of Essex)
Notes to the Basic Financial Statements
Year Ended June 30, 2018

6 Pension Plans - *continued*

Annual Pension Costs (APC) - *continued*

PERS employer contributions are made annually by the Board to the pension system in accordance with Chapter 114, P.L. 1997. In the DCRP, which is a defined contribution plan, member contributions are matched by a 3% employer contribution.

The Charter School's contribution to PERS for the year ended June 30, 2018 was \$158,641.

In accordance with N.J.S.A 18A:66-66 the State of New Jersey reimbursed the Charter School \$187,048 during the year ended June 30, 2018 for the employer's share of social security contributions for TPAF members, as calculated on their base salaries. The State also paid \$492,720 into the TPAF pension representing on-behalf employer's portion of the TPAF Pension System Contributions, TPAF Post-Retirement Medical Benefits Contributions and TPAF Long Term Disability Insurance Premium Contributions for the Charter School. These amounts have been included in the school wide financial statements and the fund financial statements as a revenue and expenditure in accordance with GASB No. 24.

LADY LIBERTY ACADEMY CHARTER SCHOOL
(County of Essex)
Notes to the Basic Financial Statements
Year Ended June 30, 2018

7 Pension Plans – GASB 68 Disclosures

Teachers' Pension and Annuity Fund (TPAF)

Summary of Significant Accounting Policies

For purposes of measuring the net pension liability, deferred outflows of resources and deferred inflows of resources related to pensions, and pension expense, information about the fiduciary net position of the Teachers' Pension and Annuity Fund (TPAF) and additions to/deductions from the TPAF's fiduciary net position have been determined on the same basis as they are reported by the TPAF.

For this purpose, benefit payments (including refunds of employee contributions) are recognized when due and payable in accordance with the benefit terms. Investments are reported at fair value.

Pension Liabilities, Pension Expense, and Deferred Outflows of Resources and Deferred Inflows of Resources Related to Pension

The employer contributions for the Charter School are legally required to be funded by the State in accordance with N.J.S.A 18:66-33. Therefore, the Charter School (employer) is considered to be in a special funding situation as defined by GASB Statement No. 68 and the State is treated as a non-employer contributing entity. Since the Charter School (employer) does not contribute directly to the plan (except for employer specific financed amounts), there is no net pension liability or deferred outflows or inflows to report in the financial statements of the Charter School.

Pension Liabilities, Pension Expense, and Deferred Outflows of Resources and Deferred Inflows of Resources Related to Pension - continued

However, the state's portion of the net pension liability that was associated with the Charter School was \$17,297,995 as measured on June 30, 2017 and \$21,388,464 as measured on June 30, 2016.

For the year ended June 30, 2018, the Charter School recognized pension expense of \$1,198,317 and revenue of \$1,198,317 for support provided by the State. The measurement period for the pension expense and revenue reported in the Charter School's financial statements (A-2) at June 30, 2018 is based upon changes in the collective net pension liability with a measurement period of June 30, 2016 through June 30, 2017. Accordingly, the pension expense and the related revenue associated with the support provided by the State are based upon the changes in the collective net pension liability between July 1, 2016 and June 30, 2017.

LADY LIBERTY ACADEMY CHARTER SCHOOL
(County of Essex)
Notes to the Basic Financial Statements
Year Ended June 30, 2018

7 Pension Plans – GASB 68 Disclosures - *continued*

Teachers’ Pension and Annuity Fund (TPAF) - *continued*

Although the Charter School does not report net pension liability or deferred outflows or inflows related to the TPAF, the following schedule illustrates the collective net pension liability and deferred items and the State's portion of the net pension liability associated with the Charter School. The collective amounts are the total of all New Jersey local governments participating in the TPAF plan.

	<u>June 30, 2017</u>	<u>June 30, 2016</u>
Collective deferred outflows of resources	\$ 14,160,879,257	\$ 17,414,701,002
Collective deferred inflows of resources	\$ 11,800,239,661	\$ 134,532,594
Collective net pension liability (non-employer State of New Jersey)	\$ 67,423,605,859	\$ 78,666,367,052
State's portion of the net pension liability that was associated with the Charter School	\$ 17,297,995	\$ 21,388,464
State's portion of the net pension liability that was associated with the Charter School as a percentage of the collective net pension liability	0.025656%	0.027189%

Actuarial Assumptions

The total pension liability for the June 30, 2017 measurement date was determined by an actuarial valuation as of July 1, 2016, which was rolled forward to June 30, 2017. The total pension liability for the June 30, 2016 measurement date was determined by an actuarial valuation as of July 1, 2015. This actuarial valuation used the following actuarial assumptions, applied to all periods in the measurement:

Inflation rate	2.5%
Salary increases: 2012-2021	Varies based on experience
Salary increases: thereafter	Varies based on experience
Investment rate of return	7.00%

Pre-retirement, post retirement and disabled mortality rates were based on the experience of TPAF members reflecting mortality improvement on a generational basis based on a 60-year average of Social Security data from 1953 to 2013.

The actuarial assumptions used in the July 1, 2016 valuation were based on the results of an actuarial experience study for the period July 1, 2012 to June 30, 2015.

LADY LIBERTY ACADEMY CHARTER SCHOOL
(County of Essex)
Notes to the Basic Financial Statements
Year Ended June 30, 2018

7 Pension Plans – GASB 68 Disclosures - *continued*

Teachers’ Pension and Annuity Fund (TPAF) - *continued*

Long-Term Expected Rate of Return

In accordance with State statute, the long-term expected rate of return on plan investments (7.00% at June 30, 2017) is determined by the State Treasurer, after consultation with the Directors of the Division of Investments and Division of Pensions and Benefits, the board of trustees and the actuaries. The long-term expected rate of return was determined using a building block method in which best-estimate ranges of expected future real rates of return (expected returns, net of pension plan investment expense and inflation) are developed for each major asset class.

These ranges are combined to produce the long-term expected rate of return by weighting the expected future real rates of return by the target asset allocation percentage and by adding expected inflation. Best estimates of arithmetic real rates of return for each major asset class included in TPAF’s target asset allocation as of June 30, 2017 are summarized in the following table:

Asset Class	Target Allocation	Long Term Expected Real Rate of Return
Absolute Return/Risk Mitigation	5.00%	5.51%
Cash Equivalents	5.50%	1.00%
US Treasuries	3.00%	1.87%
Investment Grade Credit	10.00%	3.78%
Public High Yield	2.50%	6.82%
Global Diversified Credit	5.00%	7.10%
Credit Oriented Hedge Funds	1.00%	6.60%
Debt Related Private Equity	2.00%	10.63%
Debt Related Real Estate	1.00%	6.61%
Private Real Estate	2.50%	11.83%
Equity Related Real Estate	6.25%	9.23%
US Equity	30.00%	8.19%
Non-US Developed Markets Equity	11.50%	9.00%
Emerging Markets Equity	6.50%	11.64%
Buyouts/Venture Capital	8.25%	13.08%

LADY LIBERTY ACADEMY CHARTER SCHOOL
(County of Essex)
Notes to the Basic Financial Statements
Year Ended June 30, 2018

7 Pension Plans – GASB 68 Disclosures - *continued*

Teachers' Pension and Annuity Fund (TPAF) - *continued*

Discount Rate

The discount rate used to measure the State's total pension liability was 4.25% and 3.22% as of June 30, 2017 and 2016, respectively. This single blended discount rate was based on the long-term expected rate of return on pension plan investments of 7.00%, and a municipal bond rate of 3.58% and 2.85% as of June 30, 2017 and 2016, respectively, based on the Bond Buyer Go 20-Bond Municipal Bond Index which includes tax-exempt general obligation municipal bonds with an average rating of AA/Aa or higher. The projection of cash flows used to determine the discount rate assumed that contributions from plan members will be made at the current member contribution rates and that contributions from employers (State of New Jersey) will be made based on the average of the last five years. Based on those assumptions, the plan's fiduciary net position was projected to be available to make projected future benefit payments of current plan members through 2036. Therefore, the long-term expected rate of return on plan investments was applied to projected benefit payments through 2036, and the municipal bond rate was applied to projected benefit payments after that date in determining the total pension liability.

Sensitivity of the Charter School's Proportionate Share of the Net Pension Liability to Changes in the Discount Rate

Since the Charter School's has no proportionate share of the net pension liability because of the special funding situation, the Charter School would not be sensitive to any changes in the discount rate. Detailed information about the pension plan's sensitivity of the collective net pension liability to changes in the discount rate is available in the separately issued State of New Jersey Divisions of Pensions and Benefits financial report at: <https://www.nj.gov/treasury/pensions/documents/financial/gasb/gasb68-tpaf18.pdf>

Pension Plan Fiduciary Net Position

Detailed information about the pension plan's fiduciary net position is available in the separately issued State of New Jersey Divisions of Pensions and Benefits financial report at: <https://www.nj.gov/treasury/pensions/gasb-notices.shtml>

LADY LIBERTY ACADEMY CHARTER SCHOOL
(County of Essex)
Notes to the Basic Financial Statements
Year Ended June 30, 2018

7 Pension Plans – GASB 68 Disclosures - *continued*

Public Employees' Retirement System (PERS)

Summary of Significant Accounting Policies

For purposes of measuring the net pension liability, deferred outflows of resources and deferred inflows of resources related to pensions, and pension expense, information about the fiduciary net position of the PERS and additions to/deductions from PERS fiduciary net position have been determined on the same basis as they are reported by PERS. For this purpose, benefit payments (including refunds of employee contributions) are recognized when due and payable in accordance with the benefit terms. Investments are reported at fair value.

Pension Liabilities, Pension Expense, and Deferred Outflows of Resources and Deferred Inflows of Resources Related to Pension

At June 30, 2018, the Charter School reported a liability of \$3,843,804 for its proportionate share of the net pension liability. The net pension liability was measured as of June 30, 2017, and the total pension liability to calculate the net pension liability was determined by an actuarial valuation as of July 1, 2016, which was rolled forward to June 30, 2017. The total pension liability for the June 30, 2016 measurement date was determined by an actuarial valuation as of July 1, 2016. The Charter School's proportion of the net pension liability is based on the ratio of the contributions as an individual employer to total contributions to the PERS during the years ended June 30, 2017 and 2016. At June 30, 2017, the Charter School's proportion was 0.0165123189% which was an increase of 0.0046989817% from its proportion measured as of June 30, 2016 which was 0.0118133372%

For the year ended June 30, 2018, the Charter School recognized pension expense of \$518,206. At June 30, 2018, the Charter School reported deferred outflows of resources and deferred inflows of resources related to PERS from the following sources:

LADY LIBERTY ACADEMY CHARTER SCHOOL
(County of Essex)
Notes to the Basic Financial Statements
Year Ended June 30, 2018

7 Pension Plans – GASB 68 Disclosures - continued

Public Employees’ Retirement System (PERS) - continued

Pension Liabilities, Pension Expense, and Deferred Outflows of Resources and Deferred Inflows of Resources Related to Pension - continued

	Deferred Outflows of Resources	Deferred Inflows of Resources
Differences between expected and actual experience	\$ 90,508	\$ -
Changes in assumptions	774,394	771,555
Net difference between projected and actual earnings on pension plan investments	26,174	-
Changes in proportion and differences between Charter School's contributions and proportionate share of contributions	1,084,763	141,073
Subtotal	1,975,839	912,628
Charter School's contributions subsequent to the measurement date	158,641	-
Total	\$ 2,134,480	\$ 912,628

\$158,641 reported as deferred outflows of resources related to pensions resulting from school Charter School contributions subsequent to the measurement date (i.e. for the school year ending June 30, 2018, the plan measurement date is June 30, 2017) will be recognized as a reduction of the net pension liability measured as of June 30, 2018. Other amounts reported as deferred outflows of resources and deferred inflows of resources related to pensions will be recognized in pension expense as follows:

Year Ending June 30:	Pension Expense
2018	\$ 804,934
2019	1,214,665
2020	736,025
2021	(978,915)
2022	(713,499)
Thereafter	-
	\$ 1,063,211

LADY LIBERTY ACADEMY CHARTER SCHOOL
(County of Essex)
Notes to the Basic Financial Statements
Year Ended June 30, 2018

7 Pension Plans – GASB 68 Disclosures - *continued*

Public Employees’ Retirement System (PERS) - *continued*

Pension Liabilities, Pension Expense, and Deferred Outflows of Resources and Deferred Inflows of Resources Related to Pension - continued

	June 30, 2017	June 30, 2016
Collective deferred outflows of resources	\$ 6,424,455,842	\$ 8,685,338,380
Collective deferred inflows of resources	\$ 1,028,023,941	\$ 870,133,595
Collective net pension liability (Non-State Local Group)	\$ 23,278,401,588	\$ 29,617,131,759
Charter School's portion of the net pension liability	\$ 3,843,804	\$ 3,498,772
Charter School's proportion (percentage)	0.01651232%	0.01181334%

Actuarial Assumptions

The collective total pension liability for the June 30, 2017 measurement date was determined by an actuarial valuation as of July 1, 2016, which was rolled forward to June 30, 2017. This actuarial valuation used the following actuarial assumptions:

Inflation rate	2.25%
Salary increases: through 2026	1.65-4.15% based on age
Salary increases: thereafter	2.65-5.15% based on age
Investment rate of return	7.00%

Pre-retirement mortality rates were based on the RP-2000 Employee Preretirement Mortality Table for male and female active participants. For State employees, mortality tables are set back 4 years for males and females. For local employees, mortality tables are set back 2 years for males and 7 years for females. In addition, the tables provide for future improvements in mortality from the base year of 2013 using a generational approach based on the plan actuary’s modified MP-2014 projection scale. Post-retirement mortality rates were based on the RP-2000 Combined Healthy Male and Female Mortality Tables (set-back 1 year for males and females) for service retirements and beneficiaries of former members and a one-year static projection based on mortality improvement Scale AA. In addition, the tables for service retirements and beneficiaries of former members provide for future improvements in mortality from the base year of 2013 using a generational approach based on the plan actuary’s modified MP-2014 projection scale. Disability retirement rates used to value disabled retirees were based on the RP-2000 Disabled Mortality Table (set back 3 years for males and set forward 1 year for females).

LADY LIBERTY ACADEMY CHARTER SCHOOL
(County of Essex)
Notes to the Basic Financial Statements
Year Ended June 30, 2018

7 Pension Plans – GASB 68 Disclosures - *continued*

Public Employees’ Retirement System (PERS) - *continued*

Long-Term Expected Rate of Return

The actuarial assumptions used in the July 1, 2016 valuation were based on the results of an actuarial experience study for the period July 1, 2011 to June 30, 2014. It is likely that future experience will not exactly conform to these assumptions. To the extent that actual experience deviates from these assumptions, the emerging liabilities may be higher or lower than anticipated.

The more the experience deviates, the larger the impact on future financial statements. In accordance with State statute, the long-term expected rate of return on plan investments (7.00% at June 30, 2017) is determined by the State Treasurer, after consultation with the Directors of the Division of Investments and Division of Pensions and Benefits, the board of trustees and the actuaries. The long-term expected rate of return was determined using a building block method in which best-estimate ranges of expected future real rates of return (expected returns, net of pension plan investment expense and inflation) are developed for each major asset class. These ranges are combined to produce the long-term expected rate of return by weighting the expected future real rates of return by the target asset allocation percentage and by adding expected inflation. Best estimates of arithmetic real rates of return for each major asset class included in PERS’s target asset allocation as of June 30, 2017 are summarized in the following table:

LADY LIBERTY ACADEMY CHARTER SCHOOL
(County of Essex)
Notes to the Basic Financial Statements
Year Ended June 30, 2018

7 Pension Plans – GASB 68 Disclosures - *continued*

Public Employees’ Retirement System (PERS) – *continued*

Long-Term Expected Rate of Return– continued

Asset Class	Target Allocation	Long Term Expected Real Rate of Return
Absolute Return/Risk Mitigation	5.00%	5.51%
Cash Equivalents	5.50%	1.00%
US Treasuries	3.00%	1.87%
Investment Grade Credit	10.00%	3.78%
Public High Yield	2.50%	6.82%
Global Diversified Credit	5.00%	7.10%
Credit Oriented Hedge Funds	1.00%	6.60%
Debt Related Private Equity	2.00%	10.63%
Debt Related Real Estate	1.00%	6.61%
Private Real Estate	2.50%	11.83%
Equity Related Real Estate	6.25%	9.23%
US Equity	30.00%	8.19%
Non-US Developed Markets Equity	11.50%	9.00%
Emerging Markets Equity	6.50%	11.64%
Buyouts/Venture Capital	8.25%	13.08%

Discount Rate

The discount rate used to measure the total pension liability was 5.00% as of June 30, 2017. This single blended discount rate was based on the long-term expected rate of return on pension plan investments of 7.00% and a municipal bond rate of 3.58% as of June 30, 2017 based on the Bond Buyer Go 20-Bond Municipal Bond Index, which includes tax-exempt general obligation municipal bonds with an average rating of AA/Aa or higher. The projection of cash flows used to determine the discount rate assumed that contributions from plan members will be made at the current member contribution rates and that contributions from employers will be made based on the contribution rate in the most recent fiscal year. The State employer contributed 40% of the actuarially determined contributions and the local employers contributed 100% of their actuarially determined contributions. Based on those assumptions, the plan’s fiduciary net position was projected to be available to make projected future benefit payments of current plan members through 2040.

LADY LIBERTY ACADEMY CHARTER SCHOOL
(County of Essex)
Notes to the Basic Financial Statements
Year Ended June 30, 2018

7 Pension Plans – GASB 68 Disclosures - continued

Public Employees’ Retirement System (PERS) - continued

Discount Rate - continued

Therefore, the long-term expected rate of return on plan investments was applied to projected benefit payments through 2040 and the municipal bond rate was applied to projected benefit payments after that date in determining the total pension liability.

Sensitivity of the Charter School’s Proportionate Share of the Net Pension Liability to Changes in the Discount Rate

The following presents the Charter School’s proportionate share of the net pension liability measured as of June 30, 2017 and 2016, respectively, calculated using the discount rate of 5.00% and 3.98%, respectively, as well as what the Charter School’s proportionate share of the net pension liability would be if it were calculated using a discount rate that is 1-percentage-point lower or 1-percentage-point higher than the current rate:

	2017		
	1% Decrease (4.00%)	Current Discount Rate (5.00%)	1% Increase (6.00%)
Charter School's proportionate share of the pension liability	\$ 4,768,500	\$ 3,843,804	\$ 3,073,418
	2016		
	1% Decrease (2.98%)	Current Discount Rate (3.98%)	1% Increase (4.98%)
Charter School's proportionate share of the pension liability	\$ 4,287,336	\$ 3,498,772	\$ 2,847,743

Pension Plan Fiduciary Net Position

Detailed information about the pension plan’s fiduciary net position is available in the separately issued State of New Jersey Divisions of Pensions and Benefits financial report at: <http://www.nj.gov/treasury/pensions/financial-rprts-home.shtml>

LADY LIBERTY ACADEMY CHARTER SCHOOL
(County of Essex)
Notes to the Basic Financial Statements
Year Ended June 30, 2018

8 Post Retirement Benefits

Plan Description and Benefits Provided

The Charter School is in a "special funding situation", as described in GASB Statement No. 75, in that OPEB contributions and expenses are legally required to be made by and are the sole responsibility of the State of New Jersey, not the Charter School.

The State of New Jersey reports a liability as a result of its statutory requirements to pay other post-employment (health) benefits for the State Health Benefit Local Education Retired Education Plan. The State Health Benefit Local Education Retired Employees Plan is a multiple-employer defined benefit OPEB plan that is administered on a pay-as-you-go basis. Accordingly, no assets are accumulated in a qualifying trust that meets the criteria in paragraph 4 of GASB Statement 75, *Accounting and Financial Reporting for Postemployment Benefits Other Than Pensions*. The State Health Benefits Local Education Retired Employees Plan provides medical, prescription drug, and Medicare Part B reimbursement to retirees and their covered dependents of local education employers.

The employer contributions for the participating local education employers are legally required to be funded by the State of New Jersey in accordance with N.J.S.A. 52:14-17.32f. According to N.J.S.A. 52: 14-17.32f, the State provides employer-paid coverage to employees who retire from a board of education or county college with 25 years or more of service credit in, or retires on a disability pension from, one or more of the following plans: the Teachers' Pension and Annuity Fund (TPAF), the Public Employees' Retirement System (PERS), the Police and Firemen Retirement System (PFRS), or the Alternate Benefit Program (ABP). Pursuant to Chapter 78, P.L. 2011, future retirees eligible for postretirement medical coverage who have less than 20 years of creditable service on June 28, 2011 will be required to pay a percentage of the cost of their health care coverage in retirement provided they retire with 25 years or more of pension service credit. The percentage of the premium for which the retiree will be responsible will be determined based on the retiree's annual retirement benefit and level of coverage.

The total non-employer OPEB liability does not include certain other postemployment benefit obligations that are provided by the local education employers. The reporting of these benefits, if any, is the responsibility of the individual education employers.

Employees Covered by Benefit Terms.

At June 30, 2018, the following employees were covered by the benefit terms:

TPAF participant retirees: As of June 30, 2017, there were 112,966 retirees receiving post-retirement medical benefits, and the State contributed \$1.39 billion on their behalf.

PERS participant retirees: The State paid \$238.9 million toward Chapter 126 benefits for 20,913 eligible retired members in Fiscal Year 2017.

LADY LIBERTY ACADEMY CHARTER SCHOOL
(County of Essex)
Notes to the Basic Financial Statements
Year Ended June 30, 2018

8 Post Retirement Benefits – continued

Total Nonemployer OPEB Liability

The State, a nonemployer contributing entity, is the only entity that has a legal obligation to make employer contributions to OPEB for qualified retired PERS and TPAF participants. The Charter School’s proportionate share percentage determined under paragraphs 193 and 203 through 205 of GASBS No. 75 is zero percent. Accordingly, the Charter School did not recognize any portion of the collective net OPEB liability on the Statement of Net Position. Accordingly, the following OPEB liability note information is reported at the State’s level and is not specific to the board of education/board of trustees. Note that actual numbers will be published in the [NJ State’s CAFR \(https://www.nj.gov/treasury/omb/publications/archives.shtml\)](https://www.nj.gov/treasury/omb/publications/archives.shtml)

The total nonemployer OPEB liability as of June 30, 2017 was determined by an actuarial valuation as of June 30, 2016, which was rolled forward to June 30, 2017. The total nonemployer OPEB liability as of June 30, 2016 was determined by an actuarial valuation as of June 30, 2016.

Actuarial Assumptions and Other Inputs

The actuarial assumptions vary for each plan member depending on the pension plan the member is enrolled in. This actuarial valuation used the following actuarial assumptions, applied to all periods in the measurement.

Inflation Rate **2.50%**

	TPAF/ABP	PERS	PFRS
Salary increases:			
through 2026	1.55% to 4.55%	2.15% to 4.15%	2.10% to 8.98%
	based on years of service	based on age	based on age
Salary increases:			
thereafter	2.00% to 5.45%	3.15% to 5.15%	3.10% to 9.98%
	based on years of service	based on age	based on age

Preretirement mortality rates were based on the RP-2014 Headcount-Weighted Healthy Employee Male/Female Mortality Table with fully generational mortality improvement projections from the central year using MP-2017 scale. Postretirement mortality rates were based on the RP-2014 Headcount-Weighted Health Annuitant Male/Female mortality table with fully generational improvement projections from the central year using the MP-2017 scale.

LADY LIBERTY ACADEMY CHARTER SCHOOL
(County of Essex)
Notes to the Basic Financial Statements
Year Ended June 30, 2018

8 Post Retirement Benefits – *continued*

Actuarial Assumptions and Other Inputs - *continued*

Disability mortality was based on the RP-2014 Headcount-Weighted Disabled Male/Female mortality table with fully generational improvement projections from the central year using the MP-2017 scale.

The actuarial assumptions used in the June 30, 2016 valuation were based on the results of actuarial experience studies for the periods July 1, 2012 - June 30, 2015, July 1, 2010 - June 30, 2013, and July 1, 2011 - June 30, 2014 for TPAF, PFRS and PERS, respectively.

Health Care Trend Assumptions

For pre-Medicare preferred provider organization (PPO) medical benefits, this amount initially is 5.9% and decreases to a 5.0% long term trend rate after nine years. For self-insured post 65 PPO medical benefits, the trend rate is 4.5%. For health maintenance organization (HMO) medical benefits, the trend rate is initially 5.9% and decreases to a 5.0% long term rate after nine years. For prescription drug benefits, the initial trend rate is 10.5% and decreases to a 5.0% long term rate after eight years. For the Medicare Part B reimbursement, the trend rate is 5.0%. The Medicare Advantage trend rate is 4.5% and will continue in all future years.

Discount Rate

The discount rate for June 30, 2017 and 2016 was 3.58% and 2.85%, respectively. This represents the municipal bond rate as chosen by the State of New Jersey Division of Pensions and Benefits. The source is the Bond Buyer Go 20-Bond Municipal Bond Index, which includes tax-exempt general obligation municipal bonds with an average rating of AA/ Aa or higher.

LADY LIBERTY ACADEMY CHARTER SCHOOL
(County of Essex)
Notes to the Basic Financial Statements
Year Ended June 30, 2018

8 Post Retirement Benefits – continued

Changes in the Total OPEB Liability Reported by the State of New Jersey

	Increase/(Decrease)
	Total OPEB Liability
Balance at June 30, 2017 measurement date	\$ 57,831,784,184
Changes recognized for the fiscal year:	
Service Cost	2,391,878,884
Interest on total OPEB liability	1,699,441,736
Effect of changes of assumptions	(7,086,599,129)
Contributions from the members	45,748,749
Gross benefits paid by the State	(1,242,412,566)
Net changes	(4,191,942,326)
Balance at June 30, 2018 measurement date	\$ 53,639,841,858

Sensitivity of Total Nonemployer OPEB Liability to Changes in the Discount Rate

The following presents the total nonemployer OPEB Liability attributable to the Charter School as of June 30, 2017 and 2016, respectively, calculated using the discount rate as disclosed in this note, as well as what the total nonemployer OPEB liability attributable to the Charter School would be if it were calculated using a discount rate that is 1-percentage-point lower or 1-percentage-point higher than the current rate:

	June 30, 2017		
	At 1% Decrease (2.58%)	At 1% Discount Rate (3.58%)	At 1% Increase (4.58%)
Total OPEB liability attributable to the Charter School	\$ 6,815,664	\$ 5,741,575	\$ 4,889,598
	June 30, 2016		
	At 1% Decrease (1.85%)	At 1% Discount Rate (2.85%)	At 1% Increase (3.85%)
Total OPEB liability attributable to the Charter School	\$ 6,999,093	\$ 5,842,211	\$ 4,931,597

LADY LIBERTY ACADEMY CHARTER SCHOOL
(County of Essex)
Notes to the Basic Financial Statements
Year Ended June 30, 2018

8 Post Retirement Benefits – continued

Sensitivity of Total Nonemployer OPEB Liability to Changes in the Healthcare Trend Rate

The following presents the total nonemployer OPEB Liability attributable to the Charter School as of June 30, 2017 and 2016, respectively, calculated using the healthcare trend rate as disclosed in this note, as well as what the total nonemployer OPEB liability attributable to the Charter School would be if it were calculated using a healthcare trend rate that is 1-percentage-point lower or 1-percentage-point higher than the current rate:

	June 30, 2017		
	At 1% Decrease	Healthcare Cost Trend Rate	At 1% Increase
Total OPEB liability attributable to the Charter School	\$ 4,721,890	\$ 5,741,575	\$ 7,095,704
	June 30, 2016		
	At 1% Decrease	Healthcare Cost Trend Rate	At 1% Increase
Total OPEB liability attributable to the Charter School	\$ 4,793,697	\$ 5,842,211	\$ 7,243,975

OPEB Expense and Deferred Outflows of Resources and Deferred Inflows of Resources Related to OPEB

For the fiscal year ended June 30, 2018 the Charter School recognized OPEB expense of \$889,046 as determined by the State of New Jersey Division of Pensions and Benefits. This expense and the related offsetting revenue are for benefits provided by the State through a defined benefit OPEB plan that meets the criteria in GASB Statement 75, in which there is a special funding situation.

In accordance with GASB Statement 75, as the Charter School's proportionate share of the OPEB liability is \$-0, there is no recognition of the allocation of the proportionate share of the deferred inflows and outflows of resources. At June 30, 2017 the State had deferred outflows of resources and deferred inflows of resources related to OPEB from the following sources:

LADY LIBERTY ACADEMY CHARTER SCHOOL
(County of Essex)
Notes to the Basic Financial Statements
Year Ended June 30, 2018

8 Post Retirement Benefits – continued

OPEB Expense and Deferred Outflows of Resources and Deferred Inflows of Resources Related to OPEB - continued

	Deferred Outflows of Resources	Deferred Inflows of Resources
Difference between actual and expected Experience	\$ -	\$ -
Net difference between expected and actual earnings on OPEB plan investments	-	-
Assumption changes	-	(6,343,769,032)
Sub total	-	(6,343,769,032)
Contributions made in fiscal year 2018 after June 30, 2017 measurement date	1,190,373,242	N/A
Total	\$ 1,190,373,242	\$ (6,343,769,032)

Amounts reported as deferred outflows of resources and deferred inflows of resources related to OPEB will be recognized in OPEB expense as follows:

Measurement Period - Fiscal Year Ending June 30:	Total
2018	\$ (742,830,097)
2019	(743,830,097)
2020	(743,830,097)
2021	(743,830,097)
2022	(743,830,097)
Thereafter	(2,629,618,547)
	\$ (6,347,769,032)

9 Deferred Compensation

The Charter School offers its employees a deferred compensation plan created in accordance with the IRS code 403(b). The plan which is administered by Equitable Financial Companies permits participants to defer a portion of their salaries until future years.

10 Economic Dependency

The Charter School receives a substantial amount of its support from federal and state governments. A significant reduction in the level of support, if it were to occur, could have an effect on the Charter School's programs and activities.

LADY LIBERTY ACADEMY CHARTER SCHOOL
(County of Essex)
Notes to the Basic Financial Statements
Year Ended June 30, 2018

11 Compensated Absences

The Charter School accounts for compensated absences (e.g., unused vacation, sick leave) as directed by Governmental Accounting Standards Board Statement No. 16 (GASB 16), "Accounting for Compensated Absences". A liability for compensated absences attributable to services already rendered and not contingent on a specific event that is outside the control of the employer and employee is accrued as employees earn the rights to the benefits.

Charter School employees are granted varying amounts of vacation and sick leave in accordance with the Charter School's personnel policy. The Charter School's policy permits employees to accumulate unused sick and personal days and carry forward the full amount to subsequent years. Upon termination or upon retirement, employees are currently not paid for accrued vacation or unused sick and personal days. The Board of the Charter School is currently reviewing the exiting compensated absences policies with the intent of addressing the issues of accumulation and payments upon termination.

As of June 30, 2018, Charter School-wide compensated absences amounted to \$-0-.

12 Contingent Liabilities

The Charter School participates in a number of federal and state programs that are fully or partially funded by grants received from other governmental units. Expenditures financed by grants are subject to audit by the appropriate grantor government. If expenditures are disallowed due to noncompliance with grant program regulations, the Charter School may be required to reimburse the grantor government. As of June 30, 2018, significant amounts of grant expenditures have not been audited by the various grantor agencies but the Charter School believes that disallowed expenditures, if any, based on subsequent audits will not have a material effect on any of the individual governmental funds or the overall financial position of the Charter School.

The Charter School's attorney's letter advises that there were no litigations against the Charter School of July 23, 2019 the attorney's response date.

13 Risk Management

The Charter School is exposed to various risks of loss related to torts; theft of, damage to, and destruction of assets; errors and omissions; injuries to employees; and natural disasters.

LADY LIBERTY ACADEMY CHARTER SCHOOL
(County of Essex)
Notes to the Basic Financial Statements
Year Ended June 30, 2018

13 Risk Management - *continued*

New Jersey Unemployment Compensation - The Charter School has elected to fund its New Jersey Unemployment Compensation Insurance under the “Benefit Reimbursement Method”. Under this plan, the Charter School is required to reimburse the New Jersey Unemployment Trust Fund For benefits paid to its former employees and charged to its account with the State. The Charter School is billed quarterly for amounts due to the State. The following table is a summary of Charter School contributions, employee contributions, reimbursements to the State for benefits paid and ending balance of the Charter School’s expendable trust fund for the current and previous two years:

<u>Fiscal Year</u>	<u>Charter School Contributions/ Interest</u>	<u>Employee Contributions</u>	<u>Amount Reimbursed</u>	<u>Ending Balance</u>
2017-2018	\$ 115,459	\$ 93,175	\$ 206,335	\$ 32,759
2016-2017	98,574	13,449	109,737	32,746
2015-2016	73,295	-	73,283	30,460

14 Interfund Receivables, Payables and Transfers

The composition of interfund balances as of June 30, 2018 is as follows:

<u>Fund</u>	<u>Interfund Receivable</u>	<u>Interfund Payable</u>
General Fund	\$ 223,409	\$ -
Special Revenue Fund	-	51,077
Enterprise Fund		172,332
Trust and Agency Fund	-	-
	<u>\$ 223,409</u>	<u>\$ 223,409</u>

The above balances are the results of revenues earned or other financing sources received in one fund which are due to another fund and/or expenditures paid by one fund on behalf of another fund and/or to cover cash balances which were in negative position. Liquidation of this interfund balances is expected within the next fiscal year.

LADY LIBERTY ACADEMY CHARTER SCHOOL
(County of Essex)
Notes to the Basic Financial Statements
Year Ended June 30, 2018

15 Receivables

Receivables as of June 30, 2018 consisted of accounts, intergovernmental, grants and miscellaneous. All receivables are considered collectible in full. A summary of the principal items of receivables are as follows:

State aid	\$ 94,579
Federal aid	17,131
Other	11,581
Total receivables	\$ 123,291

16 Deposits for the Acquisition of New Facilities

The Charter School partnered with Build With Purpose (a nonprofit real estate development company) for its new facilities. Build With Purpose secured financing through the New Jersey Economic Development Authority in the form of \$10,010,000 “Charter School Revenue Bonds” in February 2014 for the purchase and renovations of the building in Newark (746 Sandford Avenue), New Jersey. The renovations were completed in July 2014 and the building was leased to the Charter School during the 2014-2015 school-year. As part of the arrangement, the Charter School contributed a total of \$1,255,090 (over a period of three years – July 1, 2011 through June 30, 2014) towards the renovations of the building. These payments were reported as assets in the Charter School’s financial statements as deposits for the acquisition of new facilities up through June 30, 2014. It was transferred to capital assets as leasehold improvements during the fiscal year 2014-2015 which was when the renovations were complete. The Charter School occupied the building in August 2014. The deposits were capitalized as leasehold improvements and depreciated straight-line. *However, all capital assets were fully depreciated during the year ended June 30, 2018 as a result of the charter revocation.*

17 Security Deposits

The Charter School paid \$131,667 to Build With Purpose under its sublease agreement for rental of the new facilities and \$1,000 to St. John’s Ukrainian Catholic Church of Newark under a parking space rental agreement as security deposits. These deposits are refundable to the Charter School upon termination of the lease agreements and the Charter School is not in default of its obligations or the conditions of the agreements.

Upon the charter revocation, the Dissolution Trustee followed up on requesting a refund of the security deposits. The Dissolution Trustee has confirmed that the respective lessors have retained the security deposits in lieu of certain repairs and maintenance.

LADY LIBERTY ACADEMY CHARTER SCHOOL
(County of Essex)
Notes to the Basic Financial Statements
Year Ended June 30, 2018

18 Subsequent Events

The Charter School has evaluated all subsequent events occurring through the date of the independent auditor's report which is the date the financial statements were available to be issued. Based on this evaluation, the Charter School has determined that no subsequent events require disclosure in the financial statements except the following:

Pursuant to New Jersey statutes and as a consequence of the charter revocation (discussed in Note 19), the Charter School appointed an independent Dissolution Trustee and the appointment was approved by the New Jersey Department of Education. Subsequent to year end, the Trustee has been working with the Board of the Charter School and the NJDOE in winding down the affairs of the Charter School including orderly liquidation of outstanding liabilities, collection of all receivables and sale of inventory of assets.

The Dissolution Trustee arranged for the auction sale of the Charter School's inventory of furniture, computers and other supplies. The proceeds were received after June 2018.

19 Revocation of Charter

Pursuant to N.J.S.A 18A:36A-17, the Charter School was placed on probation on June 23, 2014. On March 13, 2015, the charter for the Charter School was renewed and probation was extended to February 29, 2016. Probation was subsequently extended by NJDOE's letters dated March 8, 2016 and February 1, 2017. The Charter School submitted a revised remedial plan on March 23, 2017 and on March 24, 2017, representatives from the Charter School met with the NJDOE's representatives to discuss the remedial plan and probationary status.

In order to make a decision regarding the Charter School's status, NJDOE completed a comprehensive review of the Charter School including, but not limited to, implementation of the remedial plan, student performance on statewide assessments, annual reports, site visits, and interviews with school officials.

In addition to the Charter School's failure to meet its mission (to have all children be active learners who participate in constructing knowledge and understanding) as observed during the NJDOE's onsite visits, a review of the Charter School's academic performance on statewide assessments strongly suggests that despite being in its 17th year of operation, the Charter School is unable to provide its students with consistent, high quality education. The Charter School failed to make reasonable improvements to its PARCC performance, as discussed and agreed upon as part of the remedial plan.

Further, the Charter School continued to experience chronic staff turnover. Over the course of the probationary period, the Charter School "lost" a principal, school psychologist, assistant principal, data administrator, special education coordinator, School Business Administrator and several teaching staff members.

LADY LIBERTY ACADEMY CHARTER SCHOOL
(County of Essex)
Notes to the Basic Financial Statements
Year Ended June 30, 2018

19 Revocation of Charter - *continued*

Excessive absenteeism among staff members was also a consistent problem at the Charter School as well. Frequent staff turnover created a lack of continuity that could be devastating to the academic, social and emotional development of students.

As a consequence of the Charter School's failure, despite 17 years of operation, to provide a strong educational program and organizational stability, NJDOE concluded that the School's charter should be revoked. Therefore, by her letter dated January 12, 2018, the Commissioner of Education summarily revoked the charter for Lady Liberty Academy Charter School effective June 30, 2018 and directed the Charter School to cease operations effective as of that date.

20 Fund Balance Appropriated – General Fund (Exhibit B- 1)

Of the \$1,188,469 General Fund balance at June 30, 2018, the entire \$1,188,469 is unreserved and undesignated.

21 Reconciliation of Government-Wide and Fund Financial Statements

Explanation of Certain Differences Between the Governmental Fund Balance Sheet (B-1) and the Government-wide Statement of Net Position (A-1).

The governmental fund balance sheet includes reconciliation between fund balance – total governmental funds and net position - governmental activities as reported in the Government-wide statement of net position. One element of that reconciliation explains that long-term liabilities, including deferred pension liability are not due and payable in the current period and therefore are not reported in the funds. The reconciliation is as follows:

Explanation of Certain Differences Between the Governmental Fund Balance Sheet (B-1) and the Government-wide Statement of Net Position (A-1).

Fund balance per B-1	\$ 1,188,469
Cost of capital assets net accumulated depreciation	-
Pension deferred outflows	1,975,839
Pension deferred inflows	(912,628)
Deferred pension liability as of June 30, 2018	(3,843,804)
Net position (per A-1) as of June 30, 2018	<u>\$ (1,592,124)</u>

Required Supplementary Information

Part II

Budgetary Comparison

**LADY LIBERTY ACADEMY CHARTER SCHOOL
General Fund**

C-1

Budget Comparison Schedule

Year ended June 30, 2018

	Original Budget	Budget Transfers	Final Budget	Actual	Variance Final to Actual
Revenues					
Local Sources:					
Local tax levy	\$ 765,207	\$ -	\$ 765,207	\$ 765,207	\$ -
Miscellaneous	-	-	-	48,158	48,158
Total revenues -local sources	<u>765,207</u>	<u>-</u>	<u>765,207</u>	<u>813,365</u>	<u>48,158</u>
State sources:					
State sources	7,269,686	(676,467)	6,593,219	6,590,219	(3,000)
Reimbursed TPAF-Social Security (non-budgeted)	-	-	-	187,048	187,048
TPAF pension, post retirement medical and long term disability insurance benefits on-behalf payments (non-budgeted)	-	-	-	492,720	492,720
Total -state sources	<u>7,269,686</u>	<u>(676,467)</u>	<u>6,593,219</u>	<u>7,269,987</u>	<u>676,768</u>
Total revenues	<u>8,034,893</u>	<u>(676,467)</u>	<u>7,358,426</u>	<u>8,083,352</u>	<u>724,926</u>
Expenditures					
Current expense:					
Instruction					
Salaries of teachers	2,365,439	(39,976)	2,325,463	2,238,797	86,666
Other salaries for instruction	730,589	114,720	845,309	803,722	41,587
Purchased professional technical services	139,000	(42,997)	96,003	84,239	11,764
Other purchased services	-	-	-	-	-
General educational supplies	132,900	(3,370)	129,530	48,556	80,974
Textbooks	86,000	(42,604)	43,396	875	42,521
Miscellaneous expenses	28,000	650	28,650	12,818	15,832
	<u>3,481,928</u>	<u>(13,577)</u>	<u>3,468,351</u>	<u>3,189,007</u>	<u>279,344</u>

**LADY LIBERTY ACADEMY CHARTER SCHOOL
General Fund**

C-1

Budget Comparison Schedule

Year ended June 30, 2018

	<u>Original Budget</u>	<u>Budget Transfers</u>	<u>Final Budget</u>	<u>Actual</u>	<u>Variance Final to Actual</u>
Administrative cost:					
Salaries	860,761	72,000	932,761	935,225	(2,464)
Total benefit costs	1,363,107	16,221	1,379,328	912,371	466,957
Professional /Technical service	282,900	90,033	372,933	487,503	(114,570)
Other purchased services	22,500	-	22,500	2,301	20,199
Communications and Telephones	35,800	-	35,800	34,705	1,095
Supplies and materials	12,000	7,799	19,799	18,610	1,189
Settlements	-	4,000	4,000	4,000	-
Miscellaneous expenses	16,000	-	16,000	11,583	4,417
	<u>2,593,068</u>	<u>190,053</u>	<u>2,783,121</u>	<u>2,406,298</u>	<u>376,823</u>
Support services:					
Salaries	663,057	(172,288)	490,769	506,798	(16,029)
Purchased prof/tech service	66,410	(390)	66,020	99,249	(33,229)
Other purchased services	195,500	4,937	200,437	233,337	(32,900)
Rent on land and buildings	926,809	-	926,809	919,259	7,550
Insurance-fidelity, liability property	37,000	23,985	60,985	60,985	-
Supplies and materials	44,000	-	44,000	21,870	22,130
Energy & Utilities	90,000	-	90,000	100,979	(10,979)
Miscellaneous expenses	-	-	-	-	-
Transportation to/from school	-	-	-	-	-
Transportation other than to/from school	10,000	-	10,000	21,251	(11,251)
Total support services	<u>2,032,776</u>	<u>(143,756)</u>	<u>1,889,020</u>	<u>1,963,728</u>	<u>(74,708)</u>

**LADY LIBERTY ACADEMY CHARTER SCHOOL
General Fund**

C-1

Budget Comparison Schedule

Year ended June 30, 2018

	Original Budget	Budget Transfers	Final Budget	Actual	Variance Final to Actual
Capital outlay:					
Instructional equipment	-	-	-	-	-
Non-instructional equipment	-	-	-	-	-
Purchase land/improvements	15,000	-	15,000	-	15,000
Total capital outlay	<u>15,000</u>	<u>-</u>	<u>15,000</u>	<u>-</u>	<u>15,000</u>
Reimbursed TPAF-Social Security (non-budgeted)	-	-	-	187,048	(187,048)
TPAF pension, post retirement medical and long term disability insurance benefits on-behalf payments (non-budgeted)	-	-	-	492,720	(492,720)
Total expenditures	<u>8,122,772</u>	<u>32,720</u>	<u>8,155,492</u>	<u>8,238,801</u>	<u>(83,309)</u>
Excess (deficiency) of revenues over (under) expenditures	(87,879)	(709,187)	(797,066)	(155,449)	808,235
Other financing uses:					
Transfer to cover food deficit	(118,043)	-	(94,043)	(20,023)	(74,020)
Change in fund balance	(205,922)	(709,187)	(891,109)	(175,472)	734,215
Fund balances, beginning of year	1,363,941	-	1,363,941	1,363,941	-
Fund balances, end of year	<u>\$ 1,158,019</u>	<u>\$ (709,187)</u>	<u>\$ 472,832</u>	<u>\$ 1,188,469</u>	<u>\$ 734,215</u>

**LADY LIBERTY ACADEMY CHARTER SCHOOL
Special Revenue Fund**

C-2

Budget Comparison Schedule

Year ended June 30, 2018

	<u>Original Budget</u>	<u>Budget Transfers</u>	<u>Final Budget</u>	<u>Actual</u>	<u>Variance Final to Actual</u>
Revenues					
Federal sources	\$ 471,476	\$ -	\$ 471,476	\$ 304,256	\$ 167,220
Local sources	-	-	-	-	-
Total revenues -all sources	<u>\$ 471,476</u>	<u>\$ -</u>	<u>\$ 471,476</u>	<u>\$ 304,256</u>	<u>\$ 167,220</u>
Expenditures					
Current Expenditures:					
Instruction:					
Salaries of teachers	\$ 262,984	\$ -	\$ 262,984	\$ 131,192	\$ 131,792
Purchased Prof. and technical services	7,992	-	7,992	3,992	4,000
Other purchased services	-	-	-	-	-
General supplies	55,617	-	55,617	54,617	1,000
Miscellaneous expenditures	-	-	-	-	-
Total instruction	<u>326,593</u>	<u>-</u>	<u>326,593</u>	<u>189,801</u>	<u>136,792</u>
Support services					
Support services salaries	-	-	-	-	-
Employee benefits	60,856	-	60,856	30,428	30,428
Purchased professional services	84,027	-	84,027	84,027	-
Other purchased services	-	-	-	-	-
Supplies	-	-	-	-	-
Miscellaneous expenditures	-	-	-	-	-
Total support services	<u>144,883</u>	<u>-</u>	<u>144,883</u>	<u>114,455</u>	<u>30,428</u>
Capital Outlay:					
Facilities acquisition and construction services			-		-
Instructional equipment	-	-	-	-	-
Noninstructional equipment	-	-	-	-	-
Construction services	-	-	-	-	-
Total facilities acquisition and construction services	<u>-</u>	<u>-</u>	<u>-</u>	<u>-</u>	<u>-</u>
Total expenditures	<u>\$ 471,476</u>	<u>\$ -</u>	<u>\$ 471,476</u>	<u>\$ 304,256</u>	<u>\$ 167,220</u>

Notes to Required Supplementary Information

LADY LIBERTY ACADEMY CHARTER SCHOOL
Note to Required Supplementary Information
Budget to GAAP Reconciliation

C-3

Year ended June 30, 2018

		General Fund	Special Revenue Fund
Sources/inflows of resources			
Actual amounts (budgetary basis) "revenue" from the budgetary comparison schedule:	[C-1]	\$ 8,083,352	
	[C-2]		\$ 304,256
Difference - budget to GAAP: Grant accounting budgetary basis differs from GAAP in that encumbrances are recognized as expenditures, and the related revenue is recognized.		-	-
Total revenues as reported on the statement of revenues, expenditures and changes in fund balances - governmental funds	[B-2]	\$ 8,083,352	\$ 304,256
Uses/outflows of resources			
Actual amounts (budgetary basis) "total outflows" from the budgetary comparison schedule	[C-1]	\$ 8,238,801	
	[C-2]		\$ 304,256
Differences - budget to GAAP Encumbrances for supplies and equipment ordered but not received are reported in the year the order is placed for budgetary purposes, but in the year the supplies are received for financial reporting purposes.			-
Transfers to and from other funds are presented as outflows of budgetary resources but are not expenditures for financial reporting purposes. Net transfer (outflows) to general fund		-	-
Total expenditures as reported on the statement of revenues, expenditures, and changes in fund balances - governmental funds	[B-2]	\$ 8,238,801	\$ 304,256

Note 1) The general fund budget basis of the use/outflow of resources is GAAP, therefore no reconciliation is required.

LADY LIBERTY ACADEMY CHARTER SCHOOL

Schedule of the Charter School's Proportionate Share of the Net Pension Liability - PERS
Last Five Fiscal Years
(Unaudited)

	Fiscal Year Ended June 30,				
	2017	2016	2015	2014	2013
Charter School's proportion of the net pension liability (assets)	0.0165123189%	0.0118133372%	0.0129214715%	0.0109014522%	0.0100406172%
Charter School's proportionate share of the net pension liability (assets)	3,843,804	3,498,772	2,900,611	2,041,050	1,918,961
Charter School's covered employee payroll	\$ 1,164,657	\$ 781,555	\$ 766,230	\$ 783,019	\$ 731,830
Charter School's proportionate share of the net pension liability (assets) as a percentage of its covered employee payroll	330.04%	447.67%	378.56%	260.66%	262.21%
Plan fiduciary net position as a percentage of the total pension liability - local	48.10%	40.14%	47.93%	52.08%	48.72%

Note

Until a full ten year trend is compiled, information will be presented for those years for which information is available.

LADY LIBERTY ACADEMY CHARTER SCHOOL

Schedule of the Charter School's Contributions - PERS
 Last Five Fiscal Years
 (Unaudited)

	Fiscal Year Ended June 30,				
	2017	2016	2015	2014	2013
Contractually required contribution	\$ 158,641	\$ 106,202	\$ 111,090	\$ 89,870	\$ 75,654
Contribution in relation to the contractually required contribution	<u>(158,641)</u>	<u>(106,202)</u>	<u>(111,090)</u>	<u>(89,870)</u>	<u>(75,654)</u>
Contribution deficiency (excess)	<u>\$ -</u>	<u>\$ -</u>	<u>\$ -</u>	<u>\$ -</u>	<u>\$ -</u>
Charter School's covered employee payroll	\$ 1,164,657	\$ 781,555	\$ 766,230	\$ 783,019	\$ 731,830
Contributions as a percentage of covered employee payroll	13.62%	13.59%	14.50%	11.48%	10.34%

Note

Until a full ten year trend is compiled, information will be presented for those years for which information is available.

LADY LIBERTY ACADEMY CHARTER SCHOOL

Schedule of the Charter School's Proportionate Share of the Net Pension Liability - TPAF
Last Five Fiscal Years
(Unaudited)

	Fiscal Year Ended June 30,				
	<u>2017</u>	<u>2016</u>	<u>2015</u>	<u>2014</u>	<u>2013</u>
Charter School's proportion of the net pension liability (assets)**	N/A	N/A	N/A	N/A	N/A
Charter School's proportionate share of the net pension liability (assets)**	N/A	N/A	N/A	N/A	N/A
State's proportionate share of the net pension liability (assets) associated with the Charter School	\$ 17,297,995	\$ 21,388,464	\$ 19,023,127	\$ 16,100,884	\$ 15,824,235
Total	<u>\$ 17,297,995</u>	<u>\$ 21,388,464</u>	<u>\$ 19,023,127</u>	<u>\$ 16,100,884</u>	<u>\$ 15,824,235</u>
Charter School's covered employee payroll	\$ 1,896,092	\$ 2,581,932	\$ 2,531,306	\$ 2,621,456	\$ 2,988,385
Charter School's proportionate share of the net pension liability (assets) as a percentage of its covered employee payroll**	N/A	N/A	N/A	N/A	N/A
Plan fiduciary net position as a percentage of the total pension liability	25.41%	22.33%	28.71%	33.64%	33.76%

**Note

TPAF is a special funding situation as defined by GASB Statement No. 68 in which the State of New Jersey is 100% responsible for contributions to the plan. Since the Charter School (employer) does not contribute directly to the plan there is no net pension liability to report in the financial statements of the Charter School.

Note

Until a full ten year trend is compiled, information will be presented for those years for which information is available.
--

LADY LIBERTY ACADEMY CHARTER SCHOOL

L-4

Schedule of the State's Proportionate Share of the Net OPEB Liability Associated with the Charter School
and Changes in the Total OPEB Liability and Related Ratios
Public Employee's Retirement System and Teachers' Pension and Annuity Fund
Last Three Two Years

	<u>2017</u>	<u>2016</u>
Total OPEB Liability		
Service cost	\$ 754,445	**
Interest cost	186,192	**
Differences between expected and actual experiences	-	**
Changes of assumptions	(913,183)	**
Member contributions	4,897	**
Gross benefit payments	<u>(132,987)</u>	<u>**</u>
Net change in total OPEB liability	(100,636)	**
Total OPEB liability - beginning	<u>5,842,211</u>	<u>**</u>
Total OPEB liability, ending	<u>\$ 5,741,575</u>	<u>\$ 5,842,211</u>
Covered employee payroll - PERS and TPAF	\$ 1,444,325	**
Total OPEB liability as a percentage of covered employee payroll	398%	0.00%
State's proportionate share of the net OPEB liability (asset) associated with the Charter School	0.01%	0.00%
Charter School's contributions	\$ -	\$ -

** Information not available.

Until a full ten year trend is compiled, information will be presented for those years for which information is available.

LADY LIBERTY ACADEMY CHARTER
(County of Essex)
Notes to Required Supplementary Information
Year Ended June 30, 2018

1. Pension – Public Employees’ Retirement System (PERS)

Benefit Changes

There were none.

Changes of Assumptions

The discount rate changed from 3.98% as of June 30, 2016 to 5.00% as of June 30, 2017.

2. Pension – Teachers’ Pension and Annuity Fund (TPAF)

Benefit Changes

There were none.

Changes of Assumptions

The discount rate changed from 3.22% as of June 30, 2016 to 4.25% as of June 30, 2017.

3. Other Post-Retirement Benefit Plan – Public Employees’ Retirement System (PERS) and Teachers’ Pension and Annuity Fund (TPAF)

Benefit Changes

There were none.

Changes of Assumptions

The discount rate changed from 2.85% as of June 30, 2016 to 3.58% as of June 30, 2017.

Other Supplementary Information

School Level Schedules

Special Revenue Fund

**LADY LIBERTY ACADEMY CHARTER SCHOOL
Special Revenue Fund**

E-1

**Combining Schedule of Program, Revenue and Expenditures
Budgetary Basis**

Year ended June 30, 2018

	Title IA Current Year 2017-2018	Title IVA Current Year 2017-2018	I.D.E.A. Current Year 2017-2018	I.D.E.A. Preschool 2017-2018	Total
Revenues					
Federal sources	\$ 215,229	\$ 5,000	\$ 82,324	\$ 1,703	\$ 304,256
Local sources	-	-	-	-	-
Total revenues -all sources	<u>\$ 215,229</u>	<u>\$ 5,000</u>	<u>\$ 82,324</u>	<u>\$ 1,703</u>	<u>\$ 304,256</u>
Expenditures					
Instruction					
Salaries of teachers	\$ 131,192	\$ -	\$ -	\$ -	\$ 131,192
Purchased Prof. and technical services	-	3,992	-	-	3,992
Other purchased services	-	-	-	-	-
General supplies	53,609	1,008	-	-	54,617
Miscellaneous expenditures	-	-	-	-	-
Total instruction	<u>184,801</u>	<u>5,000</u>	<u>-</u>	<u>-</u>	<u>189,801</u>
Support services					
Support services salaries	-	-	-	-	-
Employee benefits	30,428	-	-	-	30,428
Purchased professional services	-	-	82,324	1,703	84,027
Other purchased services	-	-	-	-	-
Supplies	-	-	-	-	-
Miscellaneous expenditures	-	-	-	-	-
Total support services	<u>30,428</u>	<u>-</u>	<u>82,324</u>	<u>1,703</u>	<u>114,455</u>
Facilities acquisition and construction services					
Instructional equipment	-	-	-	-	-
Noninstructional equipment	-	-	-	-	-
Construction services	-	-	-	-	-
Total facilities acquisition and construction services	<u>-</u>	<u>-</u>	<u>-</u>	<u>-</u>	<u>-</u>
Total expenditures	<u>\$ 215,229</u>	<u>\$ 5,000</u>	<u>\$ 82,324</u>	<u>\$ 1,703</u>	<u>\$ 304,256</u>

Capital Projects Fund

At June 30, 2018, there was no capital project fund.

Enterprise Fund

LADY LIBERTY ACADEMY CHARTER SCHOOL
Enterprise Funds

G-1

Combining Statement of Net Position

June 30, 2018

	<u>Food Services</u>	<u>Before and After School Program</u>	<u>Total</u>
Assets			
Current assets:			
Cash and cash equivalents	\$ 155,007	\$ -	\$ 155,007
Accounts receivable:	-	-	-
Federal	17,131	-	17,131
State	194	-	194
Other	-	-	-
Interfund receivable	-	-	-
Total current assets	<u>\$ 172,332</u>	<u>\$ -</u>	<u>\$ 172,332</u>
Liabilities			
Current liabilities:			
Interfund payable - general fund	172,332	-	172,332
Accounts payable	-	-	-
Total current liabilities	<u>\$ 172,332</u>	<u>\$ -</u>	<u>\$ 172,332</u>
Net position			
Unrestricted	-	-	-
Total net position	<u>\$ -</u>	<u>\$ -</u>	<u>\$ -</u>

LADY LIBERTY ACADEMY CHARTER SCHOOL
Enterprise Fund

G-2

Combining Statement of Revenues, Expenditures and Changes in Net Position

Year ended June 30, 2018

	<u>Food Services</u>	<u>Before and After School Program</u>	<u>Total</u>
Operating revenues:			
Charges for services:			
Daily sales - reimbursable program	\$ -	\$ -	\$ -
Daily sales - non-reimbursable program	-	-	-
Miscellaneous revenue	-	-	-
Total Operating revenues	<u>-</u>	<u>-</u>	<u>-</u>
Operating expenses:			
Cost of sales - reimbursable program	258,823	-	258,823
Cost of sales - non-reimbursable program	-	-	-
Salaries	103,399	-	103,399
Employee benefits	-	-	-
Other purchased services	-	-	-
Supplies and materials	230	-	230
Depreciation	-	-	-
Miscellaneous	-	-	-
Total operating expenses	<u>362,452</u>	<u>-</u>	<u>362,452</u>
Operating income/(loss)	<u>(362,452)</u>	<u>-</u>	<u>(362,452)</u>
Nonoperating revenues:			
State sources:			
State school lunch program	3,897	-	3,897
Federal sources:			
National school lunch program	230,086	-	230,086
National school breakfast program	116,722	-	116,722
Total nonoperating revenues	<u>350,705</u>	<u>-</u>	<u>350,705</u>
Net income/(loss) before contributions & transfers	(11,747)	-	(11,747)
Other financing sources:			
Transfer in/(out) - board contribution	20,023	-	20,023
	<u>20,023</u>	<u>-</u>	<u>20,023</u>
Change in net position	8,276	-	8,276
Total net position-beginning of year	<u>(8,276)</u>	<u>-</u>	<u>(8,276)</u>
Total net position-end of year	<u>\$ -</u>	<u>\$ -</u>	<u>\$ -</u>

LADY LIBERTY ACADEMY CHARTER SCHOOL
Enterprise Fund

G-3

Statement of Cash Flows

Year ended June 30, 2018

	Food Services	Before and After School Program	Total
Cash flows from operating activities			
Operating loss	\$ (362,452)	\$ -	\$ (362,452)
Adjustment to reconcile operating loss to net cash used in operating activities:			-
Changes in assets and liabilities:			-
Accounts receivable	38,469	-	38,469
Due from general fund	-	-	-
Due to general fund	83,377	-	83,377
Accounts payable	-	-	-
Net cash used in operating activities	<u>(240,606)</u>	<u>-</u>	<u>(240,606)</u>
Cash flows from noncapital financing activities:			
Cash received from state reimbursements	3,897	-	3,897
Cash received from federal reimbursements	346,808	-	346,808
Operating subsidies and transfers from other funds	20,023	-	20,023
Net cash provided by noncapital financing activities	<u>370,728</u>	<u>-</u>	<u>370,728</u>
Cash flows from investing activities			
	-	-	-
Net change in cash and cash equivalents	130,122	-	130,122
Cash and cash equivalents, beginning	24,885	-	24,885
Cash and cash equivalents, ending	<u>\$ 155,007</u>	<u>\$ -</u>	<u>\$ 155,007</u>

Fiduciary Fund

LADY LIBERTY ACADEMY CHARTER SCHOOL
Fiduciary Funds

H-1

Combining Statement of Fiduciary Net Position

June 30, 2018

	<u>Unemployment Insurance Fund</u>	<u>Student Activity Fund</u>	<u>Agency Fund Payroll</u>	<u>Total</u>
Assets				
Cash and cash equivalents	\$ 32,759	\$ 3,978	\$ 75,455	\$ 112,192
Total assets	<u>\$ 32,759</u>	<u>\$ 3,978</u>	<u>\$ 75,455</u>	<u>\$ 112,192</u>
Liabilities and fund balances				
Liabilities:				
Payroll deductions and withholdings	\$ -	\$ -	\$ 75,455	\$ 75,455
Interfund payables	-	-	-	-
Account payable - due to students group	-	3,978	-	3,978
Total liabilities	<u>-</u>	<u>\$ 3,978</u>	<u>\$ 75,455</u>	<u>79,433</u>
Net position				
Total liabilities and net position	<u>32,759</u>			<u>32,759</u>
	<u>\$ 32,759</u>			<u>\$ 112,192</u>

LADY LIBERTY ACADEMY CHARTER SCHOOL
Fiduciary Funds

H-2

Combining Statement of Changes in Fiduciary Net Position
Unemployment Compensation Insurance Trust Fund

Year ended June 30, 2018

	<u>Unemployment Compensation</u>
Revenues:	
General fund appropriation	\$ 115,459
Employee's contributions	93,175
Total revenues	<u>208,634</u>
Expenditures:	
Payments to NJ Unemployment Compensation Fund	<u>208,621</u>
Total expenditures	<u>208,621</u>
Excess(deficiency) of revenue over(under) expenditures	13
Net position, beginning	<u>32,746</u>
Net position, ending	<u><u>\$ 32,759</u></u>

LADY LIBERTY ACADEMY CHARTER SCHOOL
Student Activity Agency Fund
Schedule of Receipts and Disbursements

H-3

Year ended June 30, 2018

	<u>Balance</u> <u>June 30, 2017</u>	<u>Cash</u> <u>Receipts</u>	<u>Cash</u> <u>Disbursements</u>	<u>Balance</u> <u>June 30, 2018</u>
Assets				
Parent council fund	\$ 3,422	\$ 4,103	\$ 3,547	\$ 3,978
Total assets	<u>\$ 3,422</u>	<u>\$ 4,103</u>	<u>\$ 3,547</u>	<u>\$ 3,978</u>

LADY LIBERTY ACADEMY CHARTER SCHOOL
Payroll Agency Fund
Schedule of Receipts and Disbursements

H-4

Year ended June 30, 2018

	<u>Balance June 30, 2017</u>	<u>Cash Receipts</u>	<u>Cash Disbursements</u>	<u>Balance June 30, 2018</u>
Assets				
Cash and cash equivalents	\$ 37,313	\$ 4,719,135	\$ 4,680,993	\$ 75,455
Interfund receivable	-	-	-	-
Total assets	<u>\$ 37,313</u>	<u>\$ 4,719,135</u>	<u>\$ 4,680,993</u>	<u>\$ 75,455</u>
Liabilities				
Payroll deductions and withholdings	\$ 37,313	\$ 4,719,135	\$ 4,680,993	\$ 75,455
Interfund payable	-	-	-	-
Total liabilities	<u>\$ 37,313</u>	<u>\$ 4,719,135</u>	<u>\$ 4,680,993</u>	<u>\$ 75,455</u>

Long Term Debt

LADY LIBERTY ACADEMY CHARTER SCHOOL
Long-Term Debt
Schedule of Obligations Under Renovation Loan

Year ended June 30, 2018

<u>Variable Interest Rate Payable</u>	<u>Amount of Original Issue</u>	<u>Amount Outstanding June 30, 2017</u>	<u>Acquired Current Year</u>	<u>Retired Current Year</u>	<u>Amount Outstanding June 30, 2018</u>
NONE		\$ -	\$ -	\$ -	\$ -

Statistical Section

LADY LIBERTY ACADEMY CHARTER SCHOOL
County of Essex New Jersey

J-1

NET POSITION BY COMPONENT
Last Ten Years
(accrual basis of accounting)
(Unaudited)

	Fiscal Year Ended June 30,									
	<u>2018</u>	<u>2017</u>	<u>2016</u>	<u>2015</u>	<u>2014</u>	<u>2013</u>	<u>2012</u>	<u>2011</u>	<u>2010</u>	<u>2009</u>
Governmental activities										
Invested in capital assets, net of related debt	\$ -	\$ 796,016	\$ 1,061,355	\$ 1,119,518	\$ -	\$ 75,118	\$ 150,237	\$ -	\$ 909,256	\$ 948,002
Restricted	-	-	-	-	1,255,090	-	-	-	-	-
Unrestricted	(1,592,124)	(1,051,413)	(543,679)	295,737	3,221,708	3,451,459	2,545,823	1,926,947	1,438,229	715,547
Total governmental activities net position	<u>\$ (1,592,124)</u>	<u>\$ (255,397)</u>	<u>\$ 517,676</u>	<u>\$ 1,415,255</u>	<u>\$ 4,476,798</u>	<u>\$ 3,526,577</u>	<u>\$ 2,696,060</u>	<u>\$ 1,926,947</u>	<u>\$ 2,347,485</u>	<u>\$ 1,663,549</u>
Business-type activities										
Invested in capital assets, net of related debt	\$ -	\$ -	\$ -	\$ -	\$ -	\$ -	\$ -	\$ -	\$ -	\$ -
Restricted	-	-	-	-	-	-	-	-	-	-
Unrestricted	-	(8,276)	-	-	-	-	8,389	7,266	-	-
Total business-type activities	<u>\$ -</u>	<u>\$ (8,276)</u>	<u>\$ -</u>	<u>\$ -</u>	<u>\$ -</u>	<u>\$ -</u>	<u>\$ 8,389</u>	<u>\$ 7,266</u>	<u>\$ -</u>	<u>\$ -</u>
School-wide										
Invested in capital assets, net of related debt	\$ -	\$ 796,016	\$ 1,061,355	\$ 1,119,518	\$ -	\$ 75,118	\$ 150,237	\$ -	\$ 909,256	\$ 948,002
Restricted	-	-	-	-	1,255,090	-	-	-	-	-
Unrestricted	(1,592,124)	(1,059,689)	(543,679)	295,737	3,221,708	3,451,459	2,554,212	1,934,213	1,438,229	715,547
Total charter school net position	<u>\$ (1,592,124)</u>	<u>\$ (263,673)</u>	<u>\$ 517,676</u>	<u>\$ 1,415,255</u>	<u>\$ 4,476,798</u>	<u>\$ 3,526,577</u>	<u>\$ 2,704,449</u>	<u>\$ 1,934,213</u>	<u>\$ 2,347,485</u>	<u>\$ 1,663,549</u>

LADY LIBERTY ACADEMY CHARTER SCHOOL
County of Essex New Jersey

J-2

CHANGES IN NET POSITION
Last Ten Years
(accrual basis of accounting)
(Unaudited)

	Fiscal Year Ended June 30,									
	2018	2017	2016	2015	2014	2013	2012	2011	2010	2009
Expenses										
Governmental activities										
Instruction										
Regular	\$ 3,378,808	\$ 3,221,325	\$ 3,327,564	\$ 3,050,845	\$ 3,400,848	\$ 3,745,031	\$ 3,474,342	\$ 3,448,517	\$ 3,050,717	\$ 2,897,262
Support services:										
General administration	3,264,257	3,376,944	2,627,195	3,367,263	2,490,588	1,375,810	1,364,160	1,893,979	2,016,949	1,702,169
Support Services	2,078,183	2,263,180	2,143,756	2,334,942	1,492,608	2,555,741	2,844,823	1,397,471	1,510,786	1,350,972
On-Behalf TPAF Social Security/Pension	187,048	220,018	232,034	197,071	253,190	-	-	422,176	232,414	203,732
Capital Outlay	-	-	-	-	-	-	-	40,449	38,818	79,239
Unallocated depreciation	796,016	265,339	223,904	265,339	75,118	75,119	75,119	61,613	77,564	76,951
Total governmental activities expenses	9,704,312	9,346,806	8,554,453	9,215,460	7,712,352	7,751,701	7,758,444	7,264,205	6,927,248	6,310,325
Business-type activities:										
Food service	362,452	329,231	283,425	301,848	306,926	311,187	274,471	249,940	239,907	211,340
Child Care	-	-	1,200	-	2,415	58,495	7,828	-	-	-
Total business-type activities expense	362,452	329,231	284,625	301,848	309,341	369,682	282,299	249,940	239,907	211,340
Total charter school expenses	\$ 10,066,764	\$ 9,676,037	\$ 8,839,078	\$ 9,517,308	\$ 8,021,693	\$ 8,121,383	\$ 8,040,743	\$ 7,514,145	\$ 7,167,155	\$ 6,521,665
Program revenues										
Governmental activities:										
Charges for services:										
Operating grants and contributions	\$ 304,256	\$ 531,582	\$ 494,354	\$ 510,066	\$ 528,358	\$ 1,660,255	\$ 1,624,817	\$ 585,929	\$ 1,047,435	\$ -
Capital grants and contributions	-	-	-	-	-	-	-	-	-	-
Total governmental activities program revenues	304,256	531,582	494,354	510,066	528,358	1,660,255	1,624,817	585,929	1,047,435	-
Business-type activities:										
Charges for services										
Food service	-	35	-	-	6,433	11,708	14,537	257,206	239,907	211,340
Child care	-	-	-	-	979	21,454	16,217	-	-	-
Operating grants and contributions	350,705	320,920	251,033	255,274	249,922	270,570	236,493	-	-	-
Capital grants and contributions	-	-	-	-	-	-	-	-	-	-
Total business type activities program revenues	350,705	320,955	251,033	255,274	257,334	303,732	267,247	257,206	239,907	211,340
Total charter school program revenues	\$ 654,961	\$ 852,537	\$ 745,387	\$ 765,340	\$ 785,692	\$ 1,963,987	\$ 1,892,064	\$ 843,135	\$ 1,287,342	\$ 211,340
Net (expense)/revenue										
Governmental activities	\$ (9,400,056)	\$ (8,815,224)	\$ (8,060,099)	\$ (8,705,394)	\$ (7,183,994)	\$ (6,091,446)	\$ (6,133,627)	\$ (6,678,276)	\$ (5,879,813)	\$ (6,310,325)
Business-type activities	(11,747)	(8,276)	(33,592)	(46,574)	(52,007)	(65,950)	(15,052)	7,266	-	-
Total charter school-wide net expense	\$ (9,411,803)	\$ (8,823,500)	\$ (8,093,691)	\$ (8,751,968)	\$ (7,236,001)	\$ (6,157,396)	\$ (6,148,679)	\$ (6,671,010)	\$ (5,879,813)	\$ (6,310,325)

LADY LIBERTY ACADEMY CHARTER SCHOOL
County of Essex New Jersey

J-2

CHANGES IN NET POSITION
Last Ten Years
(accrual basis of accounting)
(Unaudited)

	Fiscal Year Ended June 30,									
	2018	2017	2016	2015	2014	2013	2012	2011	2010	2009
General revenues and other changes in net position										
Governmental activities:										
Charter School Aid - Local Share	\$ 765,207	\$ 727,969	\$ 890,755	\$ 983,230	\$ 1,040,388	\$ 995,013	\$ 856,491	\$ 824,361	\$ 781,138	\$ 736,758
Charter School Aid - State Share	7,269,987	7,120,040	6,154,467	6,696,147	6,687,478	5,659,595	5,829,615	5,464,160	5,120,874	4,552,590
Unrestricted State and Federal Aid	-	-	-	-	-	-	-	782,425	574,757	1,145,270
Miscellaneous income	48,158	194,142	27,976	175,012	105,795	24,916	232,809	34,435	48,162	21,059
Increase (Decrease) in Net Capital Outlay	-	-	-	-	-	-	-	(451,526)	38,818	79,239
Cancellation of PY Accounts Payable	-	-	-	-	-	300,000	-	-	-	-
Transfers In/(Out)	(20,023)	-	(33,592)	(46,574)	(52,007)	(57,561)	(16,175)	-	-	-
Total governmental activities	8,063,329	8,042,151	7,039,606	7,807,815	7,781,654	6,921,963	6,902,740	6,653,855	6,563,749	6,534,916
Business-type activities:										
Transfers	20,023	-	33,592	46,574	52,007	57,561	16,175	-	-	-
Total business-type activities	20,023	-	33,592	46,574	52,007	57,561	16,175	-	-	-
Total charter school-wide	\$ 8,083,352	\$ 8,042,151	\$ 7,073,198	\$ 7,854,389	\$ 7,833,661	\$ 6,979,524	\$ 6,918,915	\$ 6,653,855	\$ 6,563,749	\$ 6,534,916
Change in net position										
Governmental activities	\$ (1,316,704)	\$ (773,073)	\$ (986,901)	\$ (851,005)	\$ 649,667	\$ 830,517	\$ 769,113	\$ (24,421)	\$ 683,936	\$ 224,591
Business-type activities	(11,747)	(8,276)	(33,592)	(46,574)	(52,007)	(65,950)	(15,052)	7,266	-	-
Total charter school	\$ (1,328,451)	\$ (781,349)	\$ (1,020,493)	\$ (897,579)	\$ 597,660	\$ 764,567	\$ 754,061	\$ (17,155)	\$ 683,936	\$ 224,591

LADY LIBERTY ACADEMY CHARTER SCHOOL
County of Essex New Jersey

J-3

Fund Balances - Governmental Funds
Last Ten Years
(modified accrual basis of accounting)
(Unaudited)

	Fiscal Year Ended June 30,									
	2018	2017	2016	2015	2014	2013	2012	2011	2010	2009
General Fund										
Unreserved	\$ -	\$ -	\$ -	\$ -	\$ -	\$ -	\$ -	\$ -	\$ 1,438,229	\$ 715,847
Assigned	-	-	-	-	1,255,090	404,621	42,414	-	-	-
Unassigned	(1,592,124)	(255,397)	517,676	1,415,255	3,221,708	3,046,838	2,503,409	1,926,947	-	-
Total General Fund	<u>\$ (1,592,124)</u>	<u>\$ (255,397)</u>	<u>\$ 517,676</u>	<u>\$ 1,415,255</u>	<u>\$ 4,476,798</u>	<u>\$ 3,451,459</u>	<u>\$ 2,545,823</u>	<u>\$ 1,926,947</u>	<u>\$ 1,438,229</u>	<u>\$ 715,847</u>
Total All Governmental Funds	<u>\$ (1,592,124)</u>	<u>\$ (255,397)</u>	<u>\$ 517,676</u>	<u>\$ 1,415,255</u>	<u>\$ 4,476,798</u>	<u>\$ 3,451,459</u>	<u>\$ 2,545,823</u>	<u>\$ 1,926,947</u>	<u>\$ 1,438,229</u>	<u>\$ 715,847</u>

LADY LIBERTY ACADEMY CHARTER SCHOOL
County of Essex New Jersey

J-4

Changes in Fund Balances - Governmental Funds
Last Ten Years
(Unaudited)

Function	Fiscal Year Ended June 30,									
	2018	2017	2016	2015	2014	2013	2012	2011	2010	2009
Revenues										
Local tax levy	\$ 765,207	\$ 727,969	\$ 983,230	\$ 890,755	\$ 1,040,388	\$ 995,013	\$ 856,491	\$ 824,361	\$ 781,138	\$ 736,758
Other Local Revenue	48,158	194,142	175,012	27,976	105,795	24,916	238,442	125,854	48,162	21,059
State sources	7,269,987	7,120,040	6,696,147	6,154,467	6,687,478	6,726,645	6,733,668	6,246,585	5,695,631	4,996,891
Federal sources	304,256	531,582	438,764	494,354	528,358	593,204	715,130	494,510	1,047,435	700,969
Total revenue	8,387,608	8,573,733	8,293,153	7,567,552	8,362,019	8,339,778	8,543,731	7,691,310	7,572,366	6,455,677
Expenditures										
Regular Instruction	3,378,808	3,221,325	3,050,845	3,327,564	3,400,848	3,303,460	3,143,000	3,448,517	3,397,382	2,978,578
General Administration	2,406,298	2,563,277	2,627,788	2,377,548	2,145,922	1,237,168	1,261,673	1,893,979	1,670,284	1,620,853
Support Services	2,078,183	2,263,180	2,334,942	2,143,756	1,492,608	2,441,108	2,984,185	1,397,471	1,510,786	1,350,972
TPAF Social Security and Pension	679,768	750,580	673,955	653,074	597,856	694,845	517,814	422,176	232,414	203,732
Capital Outlay	-	-	207,175	88,332	-	-	2,008	40,449	38,818	79,239
Total expenditures	8,543,057	8,798,362	8,894,705	8,590,274	7,637,234	7,676,581	7,908,680	7,202,592	6,849,684	6,233,374
Excess/(Deficiency) of Revenues										
Over/(Under) Expenditures	(155,449)	(224,629)	(601,552)	(1,022,722)	724,785	663,197	635,051	488,718	722,682	222,303
Other financing sources/(uses):										
Cancellation of Prior Year Accounts Payable	-	-	-	-	-	300,000	-	-	-	-
Transfers In/(Out)	(20,023)	-	(46,574)	(33,592)	(52,007)	(57,561)	(16,175)	-	-	-
Total other financing sources/(uses)	(20,023)	-	(46,574)	(33,592)	(52,007)	242,439	(16,175)	-	-	-
Net change in fund balance	(175,472)	(224,629)	(648,126)	(1,056,314)	672,778	905,636	618,876	488,718	722,682	222,303
Debt service as a %	0.00%	0.00%	0.00%	0.00%	0.00%	0.00%	0.00%	0.00%	0.00%	0.00%

Source: Lady Liberty Academy Charter School Financial Reports.

LADY LIBERTY ACADEMY CHARTER SCHOOL
County of Essex New Jersey

J-5

General Fund Other Local Revenue by Source
Last Ten Years
(Unaudited)

Function	Fiscal Year Ended June 30,									
	2018	2017	2016	2015	2014	2013	2012	2011	2010	2009
Other local revenues										
Miscellaneous	\$ 48,158	\$ 194,142	\$ 175,012	\$ 27,976	\$ 105,795	\$ 22,048	\$ 3,583	\$ 34,435	\$ 48,162	\$ 21,059
Total other local revenue	<u>\$ 48,158</u>	<u>\$ 194,142</u>	<u>\$ 175,012</u>	<u>\$ 27,976</u>	<u>\$ 105,795</u>	<u>\$ 22,048</u>	<u>\$ 3,583</u>	<u>\$ 34,435</u>	<u>\$ 48,162</u>	<u>\$ 21,059</u>

Source: Lady Liberty Academy Charter School Financial Reports.

LADY LIBERTY ACADEMY CHARTER SCHOOL
County of Essex New Jersey

J-10

Ratio of Outstanding Debt By Type
Last Ten Years

Fiscal Year Ended June 30,	Governmental Activities				Business-Type Activities	Total Charter School	Percentage of Personal Income ^a	Per Capita ^a
	General Obligation Bonds ^b	Certificates of Participation	Capital Leases	Anticipation Notes (BANs)	Capital Leases			
NONE	\$ -	\$ -	\$ -	\$ -	\$ -	\$ -	0.00%	\$ -

Note: Details regarding the Charter School's outstanding debt can be found in the notes to the financial statements.

LADY LIBERTY ACADEMY CHARTER SCHOOL
County of Essex New Jersey

J-14

Demographic and Economic Statistics
Last Ten Years
(Unaudited)

<u>Year</u>	<u>Population ^a</u>	<u>Personal Income ^b</u>	<u>County Per Capita Personal Income ^c</u>	<u>Unemployment Rate ^d</u>
2009	\$ 278,154	\$ 14,265,962,352	\$ 51,288	9.50%
2010	277,347	14,511,904,428	52,324	14.10%
2011	377,984	20,794,411,776	55,014	15.00%
2012	278,414	15,425,249,256	55,404	15.00%
2013	279,499	15,565,858,308	55,692	15.00%
2014	280,980	16,386,472,620	58,319	15.00%
2015	281,944	16,925,098,320	60,030	15.00%
2016	281,764	16,914,292,920	60,030	7.90%
2017	281,764	16,914,292,920	60,030	7.90%
2018	281,764	16,914,292,920	60,030	7.90%

Source:

^a Population information provided by the NJ Dept of Labor and Workforce Development

^b Personal income has been estimated based upon the municipal population and per capita personal income presented

^c Personal capital income by municipality estimated based upon the 2000 Cesus published by the US Bureau of Economic Analysis.

^d Unemployment data provided by the NJ Dept of Labor and Workforce Development

LADY LIBERTY ACADEMY CHARTER SCHOOL
County of Essex New Jersey

J-15

Principal Employers
Current Year
(Unaudited)

<u>Employer</u>	2018		
	Employees	Rank	Percentage of
	Employees	[Optional]	Total Municipal
	a	a	Employment
Newark Liberty International Airport	24,000	1	17.14%
Verizon Communications	17,100	2	12.21%
Prudential Financial, Inc.	16,850	3	12.04%
Continental Airline	11,000	4	7.86%
University of Medicines/Dentistry	11,000	5	7.86%
Public Service Enterprise Group	10,800	6	7.71%
Prudential Insurance	4,492	7	3.21%
City of Newark	3,984	8	2.85%
Horizon Blue Cross & Blue Shield	3,900	9	2.79%
	103,126		73.67%

Source: Web Site: <http://www.city-data.com/us-cities/The-Northeast/Newark-Economy.html>

LADY LIBERTY ACADEMY CHARTER SCHOOL
County of Essex New Jersey

J-16

Full-Time Equivalent Charter School Employees by Function/Program
Last Ten Years
(Unaudited)

<u>Function/Program</u>	Fiscal Year Ended June 30,									
	<u>2018</u>	<u>2017</u>	<u>2016</u>	<u>2015</u>	<u>2014</u>	<u>2013</u>	<u>2012</u>	<u>2011</u>	<u>2010</u>	<u>2009</u>
Instruction										
Regular	38	38	38	38	38	45	47	46	34	-
Special education	5	5	3	3	3	3	3	11	9	-
Other Special Education	3	3	3	3	3	3	3	-	-	-
Other instruction	-	-	-	-	-	-	-	-	2	-
Support Services:										
Student & instruction related services	5	5	5	5	5	6	4	11	13	-
School administrative services	6	6	6	6	6	6	6	4	4	-
Other administrative services	5	5	5	5	5	5	5	3	4	-
Central services	3	3	4	4	4	4	6	-	1	-
Plant operations and maintenance	6	6	6	6	6	6	6	5	5	-
Other support services	7	7	7	7	7	7	6	10	7	-
Special Schools	2	2	2	2	2	2	3	-	-	-
Food Service	3	3	3	3	3	3	3	4	3	-
Total	<u>83</u>	<u>83</u>	<u>82</u>	<u>82</u>	<u>82</u>	<u>90</u>	<u>89</u>	<u>94</u>	<u>82</u>	<u>-</u>

Source: Lady Liberty Academy Charter School Financial Reports.

LADY LIBERTY ACADEMY CHARTER SCHOOL
County of Essex New Jersey

J-17

Operating Statistics

**Last Ten Years
(Unaudited)**

Fiscal Year	Enrollment	Operating Expenditures ^a	Cost Per Pupil	Percentage Change	Teaching Staff ^b	Pupil/Teacher Ratio (c)	Average Daily Enrollment (ADE) ^d	Average Daily Attendance (ADA) ^d	% Change in Average Daily Enrollment	Student Attendance Percentage
2009	443	6,233,374	14,071	32.24%	45	N/A	433.0	402	N/A	92.84%
2010	443	6,233,374	14,071	0.00%	45	N/A	433.0	402	0.00%	92.84%
2011	451	6,900,763	15,301	8.74%	57	N/A	454.0	425	4.85%	93.61%
2012	456	7,906,672	17,339	13.32%	53	1:12	460.5	426	1.43%	92.42%
2013	461	7,734,142	16,777	-3.24%	51	1:12	456.0	427	-0.98%	93.62%
2014	454	7,637,234	16,822	0.27%	41	1:12	456.0	427	0.00%	93.62%
2015	404	8,501,942	21,044	25.10%	41	1:12	450.0	421	-1.32%	93.56%
2016	438	8,687,530	19,835	-5.75%	41	1:12	438.0	421	-2.67%	96.12%
2017	428	8,798,362	20,557	3.64%	43	1:12	428.0	421	-2.28%	98.36%
2018	445	8,543,057	19,198	-6.61%	43	1:12	445.0	436	3.97%	98.00%

Note: Enrollment is based on annual October Student count.

a Operating expenditures esual total expenditures less debt service and capital outlay.

b Cost per pupil is calculated based upon enrollment and operating expenditures presented and may not be the same as other cost per pupil calculations.

c Teaching staff includes only full-time equivalents of certificated staff.

d Average daily enrollment and average daily attendance are obtained from the School Register Summary (SRS).

N/A Information is not available.

Source: Lady Liberty Academy Charter School Financial Reports.

LADY LIBERTY ACADEMY CHARTER SCHOOL
County of Essex New Jersey

J-18

School Building Information
Last Ten Years
(Unaudited)

	Fiscal Year Ended June 30,									
	<u>2018</u>	<u>2017</u>	<u>2016</u>	<u>2015</u>	<u>2014</u>	<u>2013</u>	<u>2012</u>	<u>2011</u>	<u>2010</u>	<u>2009</u>
Square Feet	80,000	80,000	80,000	80,000	N/A	N/A	N/A	N/A	N/A	N/A
Capacity (students)	500	500	500	500	500	500	500	500	500	500
Enrollment	445	438	404	404	460	456	451	443	443	443

Source: Lady Liberty Academy Charter School Office.

LADY LIBERTY ACADEMY CHARTER SCHOOL
County of Essex New Jersey

J-19

Schedule of Required Maintenance Expenditures
By School Facility
Last Ten Years
(Unaudited)

Not Available

LADY LIBERTY ACADEMY CHARTER SCHOOL
County of Essex New Jersey

J-20

Insurance Schedule

June 30, 2018
(Unaudited)

	Coverage
School Package Policy	
New Jersey School Board Association Insurance Group (NJSBAIG)	
Package Policy:	
Blanket Real and Personal Property	\$ 550,000
Comprehensive General Liability	6,000,000
Computer Equipment	250,000
Equipment Breakdown	100,000,000
Crime Coverage:	
Faithful Performance	250,000
Money and Securities	10,000
Automobile	6,000,000
School Board Legal Liability	6,000,000
Employers Liability	2,000,000
Flood	
Board Secretary/Business Administrator	175,000
Treasurer of School Moneys	175,000
Workers Compensation	Statutory Limits
 Chubb Insurance Company	
Supplemental Indemnity	50,000,000

LADY LIBERTY ACADEMY CHARTER SCHOOL
County of Essex New Jersey

J-21

Charter School Performance Framework Financial Indicators
New Term Indicators

June 30, 2018
(Unaudited)

	<u>2018</u>	<u>2017</u>	<u>2016</u>
Cash	\$ 1,244,534	\$ 1,318,784	\$ 1,485,922
Current assets	1,540,157	1,854,639	1,943,170
Capital assets, net	-	796,016	1,061,355
Total assets	<u>1,540,157</u>	<u>2,650,655</u>	<u>3,004,525</u>
Current liabilities	<u>4,195,492</u>	<u>3,997,746</u>	<u>3,255,211</u>
Total liabilities	<u>4,195,492</u>	<u>3,997,746</u>	<u>3,255,211</u>
Net position	<u>\$ (2,655,335)</u>	<u>\$ (1,347,091)</u>	<u>\$ (250,686)</u>
Total revenue	\$ 8,083,352	\$ 8,042,151	\$ 7,854,389
Total expenses	<u>(9,411,803)</u>	<u>(8,823,500)</u>	<u>(8,887,893)</u>
Change in net position	<u>\$ (1,328,451)</u>	<u>\$ (781,349)</u>	<u>\$ (1,033,504)</u>
Depreciation expense	\$ 796,016	\$ 265,339	\$ -
Interest expense	-	-	-
Principal payments	-	-	-
Interest payments	-	-	-
Final average daily enrollment	445	428	438
March 30th budgeted enrollment	454	454	454

	<u>2018</u>	<u>2017</u>	<u>2016</u>	Three Year Cumulative
NEAR TERM INDICATORS:				
Current ratio	0.66	0.79	1.05	3.73
Unrestricted days cash	48.26	54.55	61.02	121.67
Enrollment variance	98%	94%	96%	101%
Default	None	None	None	None

LADY LIBERTY ACADEMY CHARTER SCHOOL
County of Essex New Jersey

J-22

Charter School Performance Framework Financial Indicators
Sustainability Indicators

June 30, 2018
(Unaudited)

	2018	2017	2016
Cash	\$ 1,244,534	\$ 1,318,784	\$ 1,485,922
Current assets	1,540,157	1,854,639	1,943,170
Capital assets, net	-	796,016	1,061,355
Total assets	<u>1,540,157</u>	<u>2,650,655</u>	<u>3,004,525</u>
Current liabilities	<u>351,688</u>	<u>3,997,746</u>	<u>3,255,211</u>
Total liabilities	<u>351,688</u>	<u>3,997,746</u>	<u>3,255,211</u>
Net position	<u>\$ 1,188,469</u>	<u>\$ (1,347,091)</u>	<u>\$ (250,686)</u>
Total revenue	\$ 8,738,313	\$ 8,042,151	\$ 7,854,389
Total expenses	(10,066,764)	(8,823,500)	(8,887,893)
Change in net position	<u>\$ (1,328,451)</u>	<u>\$ (781,349)</u>	<u>\$ (1,033,504)</u>
Depreciation expense	\$ 796,016	\$ 265,339	\$ -
Interest expense	-	-	-
Principal payments	-	-	-
Interest payments	-	-	-
Final average daily enrollment	445	428	438
March 30th budgeted enrollment	454	454	454

	2018	2017	2016	Three Year Cumulative
SUSTAINABILITY INDICATORS:				
Total margin	-15.2%	-9.7%	-13.2%	-12.8%
Debt to asset	N/A	N/A	N/A	N/A
Cash flow	\$ (74,250)	\$ (167,138)	\$ (485,493)	\$ (726,881)
Debt service coverage ratio	No Debt	No Debt	No Debt	No Debt

Source: Charter School Records

Single Audit Section

Olugbenga Olabintan

Certified Public Accountant/Consultant

137 Camden Street, Suite #3
Newark, NJ 07103

Tel: (201) 230-7518
Fax: (973) 368-8268
E-mail: oolabintan@aol.com

K-1

Independent Auditor's Report on Internal Control over Financial Reporting and on Compliance and Other Matters Based on an Audit of Financial Statements Performed in Accordance with *Government Auditing Standards*

The Honorable Chairperson and
Members of the Board of Trustees
Lady Liberty Academy Charter School
County of Essex
Newark, New Jersey

We have audited, in accordance with auditing standards generally accepted in the United States of America and the standards applicable to financial audits contained in *Government Auditing Standards*, issued by the Comptroller General of the United States and *audit requirements as prescribed by the Office of School Finance, Department of Education, State of New Jersey*, the financial statements of the governmental activities, the aggregate discretely presented component units, each major fund, and the aggregate remaining fund information of the Lady Liberty Academy Charter School ("the Charter School"), in the County of Essex, State of New Jersey, as of and for the year ended June 30, 2018, and the related notes to the financial statements, which collectively comprise the Charter School's basic financial statements, and have issued our report thereon, dated July 31, 2019.

Internal Control over Financial Reporting

In planning and performing our audit of the financial statements, we considered the Charter School's internal control over financial reporting (internal control) to determine the audit procedures that are appropriate in the circumstances for the purpose of expressing our opinions on the financial statements, but not for the purpose of expressing an opinion on the effectiveness of the Charter School's internal control. Accordingly, we do not express an opinion on the effectiveness of the Charter School's internal control.

A *deficiency in internal control* exists when the design or operation of a control does not allow management or employees, in the normal course of performing their assigned functions, to prevent, or detect and correct, misstatements on a timely basis. A *material weakness* is a deficiency, or a combination of deficiencies, in internal control, such that there is a reasonable possibility that a material misstatement of the entity's financial statements will not be prevented, or detected and corrected on a timely basis. A *significant deficiency* is a deficiency, or a combination of deficiencies, in internal control that is less severe than a material weakness, yet important enough to merit attention by those charged with governance.

Our consideration of internal control was for the limited purpose described in the first paragraph of this section and was not designed to identify all deficiencies in internal control that might be material weaknesses or significant deficiencies. Given these limitations, during our audit we did not identify any deficiencies in internal control that we consider to be material weaknesses. However, material weaknesses may exist that have not been identified.

Compliance and Other Matters

As part of obtaining reasonable assurance about whether the Charter School's financial statements are free of material misstatement, we performed tests of its compliance with certain provisions of laws, regulations, contracts, and grant agreements, noncompliance with which could have a direct and material effect on the determination of financial statement amounts. However, providing an opinion on compliance with those provisions was not an objective of our audit, and accordingly, we do not express such an opinion. The results of our tests disclosed no instances of noncompliance or other matters that are required to be reported under *Government Auditing Standards and audit requirements as prescribed by the Office of School Finance, Department of Education, State of New Jersey*.

Purpose of this Report

The purpose of this report is solely to describe the scope of our testing of internal control and compliance and the results of that testing, and not to provide an opinion on the effectiveness of the Charter School's internal control or on compliance. This report is an integral part of an audit performed in accordance with *Government Auditing Standards and audit requirements as prescribed by the Office of School Finance, Department of Education, State of New Jersey* in considering the Charter School's internal control and compliance. Accordingly, this communication is not suitable for any other purpose.

Olugbenga Olabintan, CPA

July 31, 2019
Newark, New Jersey

OLUGBENGA OLABINTAN
Certified Public Accountant/Consultant



Olugbenga Olabintan, CPA
Licensed Public School Accountant
No. 20CS00230200

Olugbenga Olabintan

Certified Public Accountant/Consultant

137 Camden Street, Suite #3
Newark, NJ 07103

Tel: (201) 230-7518
Fax: (973) 368-8268
E-mail: oolabintan@aol.com

K-2

Independent Auditors' Report on Compliance for Each Major State Program and Report on Internal Control over Compliance Required by the *State of New Jersey Department of Treasury Circular 15-08-OMB*

The Honorable Chairperson and
Members of the Board of Trustees
Lady Liberty Academy Charter School
County of Essex,
Newark, New Jersey

Compliance

We have audited the Lady Liberty Academy Charter School's in the County of Essex, State of New Jersey ("the Charter School") compliance with the types of compliance requirements described in the *State of New Jersey Department of Treasury Circular 15-08-OMB Compliance Supplement* that could have a direct and material effect on each of the Charter School's major state programs for the year ended June 30, 2017. The Charter School's major state programs are identified in the summary of auditor's results section of the accompanying schedule of findings and questioned costs.

Management's Responsibility

Management is responsible for compliance with the requirements of laws, regulations, contracts, and grants applicable to its state programs.

Auditors' Responsibility

Our responsibility is to express an opinion on compliance for each of the Charter School's major state programs based on our audit of the types of compliance requirements referred to above. We conducted our audit of compliance in accordance with auditing standards generally accepted in the United States of America; the standards applicable to financial audits contained in *Government Auditing Standards*, issued by the Comptroller General of the United States; the audit requirements of New Jersey Department of the Treasury Circular Letter 15-08 OMB *Single Audit Policy for Recipients of Federal Grants, State Grants and State Aid*; and *audit requirements as prescribed by the Office of School Finance, Department of Education, State of New Jersey*.

Those standards, State of New Jersey Department of Treasury Circular 15-08-OMB and *audit requirements as prescribed by the Office of School Finance, Department of Education, State of New Jersey* require that we plan and perform the audit to obtain reasonable assurance about whether noncompliance with the types of compliance requirements referred to above that could have a direct and material effect on a major state program occurred. An audit includes examining, on a test basis, evidence about the Charter School's compliance with those requirements and performing such other procedures as we considered necessary in the circumstances.

We believe that our audit provides a reasonable basis for our opinion on compliance for each major federal and state program. However, our audit does not provide a legal determination of the Charter School's compliance.

Opinion on Each Major State Program

In our opinion, the Charter School complied, in all material respects, with the types of compliance requirements referred to above that could have a direct and material effect on each of its major state programs for the year ended June 30, 2018.

Report on Internal Control over Compliance

Management of the Charter School is responsible for establishing and maintaining effective internal control over compliance with the types of compliance requirements referred to above. In planning and performing our audit of compliance, we considered the Charter School's internal control over compliance with the types of requirements that could have a direct and material effect on each major state program to determine the auditing procedures that are appropriate in the circumstances for the purpose of expressing an opinion on compliance for each major state program and to test and report on internal control over compliance in accordance with the State of New Jersey Department of Treasury Circular 15-08-OMB, but not for the purpose of expressing an opinion on the effectiveness of internal control over compliance. Accordingly, we do not express an opinion on the effectiveness of the Charter School's internal control over compliance.

A deficiency in internal control over compliance exists when the design or operation of a control over compliance does not allow management or employees, in the normal course of performing their assigned functions, to prevent, or detect and correct, noncompliance with a type of compliance requirement of a state program on a timely basis.

A material weakness in internal control over compliance is a deficiency, or combination of deficiencies, in internal control over compliance, such that there is a reasonable possibility that material noncompliance with a type of compliance requirement of a state program will not be prevented, or detected and corrected, on a timely basis.

A significant deficiency in internal control over compliance is a deficiency, or a combination of deficiencies, in internal control over compliance with a type of compliance requirement of a state program that is less severe than a material weakness in internal control over compliance, yet important enough to merit attention by those charged with governance. We consider the

deficiencies in internal control over compliance described in the accompanying schedule of findings and questioned costs as items 2018-001 to be significant deficiencies.

Our consideration of internal control over compliance was for the limited purpose described in the first paragraph of this section and was not designed to identify all deficiencies in internal control over compliance that might be material weaknesses or significant deficiencies. We did not identify any deficiencies in internal control over compliance that we consider to be material weaknesses. However, material weaknesses may exist that have not been identified.

The purpose of this report on internal control over compliance is solely to describe the scope of our testing of internal control over compliance and the results of that testing based on the requirements of the State of New Jersey Department of Treasury Circular 15-08-OMB and *audit requirements as prescribed by the Office of School Finance, Department of Education, State of New Jersey*. Accordingly, this report is not suitable for any other purpose.

Olugbenga Olabintan, CPA

July 31, 2019
Newark, New Jersey

OLUGBENGA OLABINTAN
Certified Public Accountant/Consultant

A handwritten signature in black ink, appearing to read 'Olugbenga Olabintan', written over a horizontal line.

Olugbenga Olabintan, CPA
Licensed Public School Accountant
No. 20CS00230200

LADY LIBERTY ACADEMY CHARTER SCHOOL

Schedule of Expenditures of Federal Awards

Year ended June 30, 2018

Federal Grant/ Pass-Through Grant/ Program Title	Federal C.F.D.A No.	Federal Award Identification Number	Grant Period	Award Amount	(Accounts Receivable) at June 30, 2017	Deferred Revenue at June 30, 2017	Due to Grantor at June 30, 2017	Adjustments	Carryover (Walkover) Amount	Cash Received	Budgetary Expenditures	Repayment of Prior Years' Balances	(Accounts Receivable) at June 30, 2018	Deferred Revenue at June 30, 2018	Due to Grantor at June 30, 2018
Special Revenue Fund:															
U.S. Department of Education:															
Passed-Through State Department of Education															
Title I Part A - FY 2017-2018	84.010A	S010A180030	7/1/17-6/30/18	\$ 377,449	\$ -	\$ -	\$ -	\$ -	\$ -	\$ 215,229	\$ (215,229)	\$ -	\$ -	\$ -	\$ -
IDEA Part B - FY 2017-2018	84.027	H027A180100	7/1/17-6/30/18	82,324	-	-	-	-	-	82,324	(82,324)	-	-	-	-
IDEA Preschool - FY 2017-2018	84.173	H173A180114	7/1/17-6/30/18	1,703	-	-	-	-	-	1,703	(1,703)	-	-	-	-
Title IV A - FY 2017-2018	84.369	S369A180031	7/1/17-6/30/18	10,000	-	-	-	-	-	5,000	(5,000)	-	-	-	-
Total Special Revenue/U.S. Department of Education										<u>304,256</u>	<u>(304,256)</u>				
Enterprise Fund:															
U.S. Department of Agriculture															
Passed-Through New Jersey Dept of Agriculture															
National School Lunch Program	10.555	181NJ304N1099	7/1/17-6/30/18	230,086	-	-	-	-	-	218,641	(230,086)	-	(11,445)	-	-
National School Lunch Program	10.555	171NJ304N1099	7/1/16-6/30/17	207,726	(34,901)	-	-	-	-	34,901	-	-	-	-	-
School Breakfast Program	10.553	181NJ304N1099	7/1/17-6/30/18	116,722	-	-	-	-	-	111,036	(116,722)	-	(5,686)	-	-
School Breakfast Program	10.553	171NJ304N1099	7/1/16-6/30/17	109,740	(20,287)	-	-	-	-	20,287	-	-	-	-	-
Total Enterprise Fund/U.S. Department of Agriculture					<u>(55,188)</u>					<u>384,865</u>	<u>(346,808)</u>		<u>(17,131)</u>		
Total Expenditures of Federal Awards					<u>\$ (55,188)</u>	<u>\$ -</u>	<u>\$ -</u>	<u>\$ -</u>	<u>\$ -</u>	<u>\$ 689,121</u>	<u>\$ (651,064)</u>	<u>\$ -</u>	<u>\$ (17,131)</u>	<u>\$ -</u>	<u>\$ -</u>

The accompanying Notes to Schedules of Expenditures of Awards and Financial Assistance are an integral part of this schedule.

LADY LIBERTY ACADEMY CHARTER SCHOOL

Schedule of Expenditures of State Financial Assistance

Year ended June 30, 2018

State Grantor/Program Title	Grant or State Project Number	Grant Period	Award Amount	(Accounts Receivable) at June 30, 2017	Deferred Revenue at June 30, 2017	Due to Grantor at June 30, 2017	Adjustments	Carryover (Walkover) Amount	Cash Received	Budgetary Expenditures	Repayment of Prior Years' Balances	(Accounts Receivable) at June 30, 2018	Deferred Revenue at June 30, 2018	Due to Grantor at June 30, 2018
State Department of Education														
General Fund:														
Equalization Aid	18-495-034-5120-078	7/1/17-6/30/18	\$4,848,181	\$ -	\$ -	\$ -	\$ -	\$ -	\$ 4,950,872	\$ (4,848,181)	-	\$ (11,581)	\$ -	\$ 91,110
Equalization Aid	17-495-034-5120-078	7/1/16-6/30/17	4,915,713	(187,034)	-	110,133	-	-	187,034	-	(110,133)	-	-	-
Special Education Aid	18-495-034-5120-089	7/1/17-6/30/18	146,857	-	-	-	-	-	146,857	(146,857)	-	-	-	-
Security Aid	18-495-034-5120-084	7/1/17-6/30/18	65,149	-	-	-	-	-	65,149	(65,149)	-	-	-	-
State Adjustment Aid	18-495-034-5120-085	7/1/17-6/30/18	2,295,239	-	-	-	-	-	2,295,239	(2,295,239)	-	-	-	\$ -
State Adjustment Aid	18-495-034-5120-085	7/1/16-6/30/17	1,959,144	(49,609)	-	-	-	-	49,609	-	-	-	-	-
TPAF/FICA Reimbursements	18-495-034-5094-003	7/1/17-6/30/18	187,048	-	-	-	-	-	92,663	(187,048)	-	(94,385)	-	-
TPAF/FICA Reimbursements	17-495-034-5094-003	7/1/16-6/30/17	220,018	(21,796)	-	-	-	-	21,796	-	-	-	-	-
TPAF Post Retirement Medical Contribution	18-495-034-5094-001	7/1/17-6/30/18	192,912	-	-	-	-	-	192,912	(192,912)	-	-	-	-
TPAF Pension Contribution - Normal & NCGI	18-495-034-5094-002	7/1/17-6/30/18	298,682	-	-	-	-	-	298,682	(298,682)	-	-	-	-
TPAF Pension Contribution - Long-Term Disability Insurance	18-495-034-5094-004	7/1/17-6/30/18	1,126	-	-	-	-	-	1,126	(1,126)	-	-	-	-
Total Special Revenue Fund/State Department of Education				<u>(258,439)</u>	<u>-</u>	<u>110,133</u>	<u>-</u>	<u>-</u>	<u>8,301,939</u>	<u>(8,035,194)</u>	<u>(110,133)</u>	<u>(105,966)</u>	<u>-</u>	<u>91,110</u>
State Department of Agriculture														
Enterprise Fund:														
State school lunch program	18-100-010-3350-023	7/1/17-6/30/18	3,897	-	-	-	-	-	3,703	(3,897)	-	(194)	-	-
State school lunch program	17-100-010-3350-023	7/1/16-6/30/17	3,454	(606)	-	-	-	-	606	-	-	-	-	-
Total Enterprise Fund/State Department of Agriculture				<u>(606)</u>	<u>-</u>	<u>-</u>	<u>-</u>	<u>-</u>	<u>4,309</u>	<u>(3,897)</u>	<u>-</u>	<u>(194)</u>	<u>-</u>	<u>-</u>
Total State Financial Assistance				<u>\$ (259,045)</u>	<u>\$ -</u>	<u>\$ 110,133</u>	<u>\$ -</u>	<u>\$ -</u>	<u>\$ 8,306,248</u>	<u>(8,039,091)</u>	<u>\$ (110,133)</u>	<u>\$ (106,160)</u>	<u>\$ -</u>	<u>\$ 91,110</u>
Less Amounts Not Subject to Single Audit:														
TPAF Post Retirement Medical Contribution										192,912				
TPAF Pension Contribution - Normal & NCGI										298,682				
TPAF Pension Contribution - Long-Term Disability Insurance										1,126				
Total Expenditures of State Financial Assistance Subject to Single Audit										<u>\$ (7,546,371)</u>				

The accompanying Notes to Schedules of Expenditures of Awards and Financial Assistance are an integral part of this schedule.

LADY LIBERTY ACADEMY CHARTER SCHOOL
(County of Essex)

Notes to Schedules of Expenditures of Federal Awards and State Financial Assistance
Year Ended June 30, 2018

1. General

The accompanying schedules of expenditures of federal awards and state financial assistance present the activity of all expenditures of federal awards and state financial assistance of the Charter School. All federal and state awards received directly from federal and state agencies, as well as federal awards and state financial assistance passed through other government agencies is included on the schedule of expenditures of federal awards and state financial assistance.

2. Basis of Accounting

The accompanying schedules of expenditures of federal awards and state financial assistance are presented on the budgetary basis of accounting with the exception of programs recorded in the enterprise fund, which are presented using the accrual basis of accounting. These bases of accounting are described in Note 1 to the Charter School's basic financial statements. The information in these schedules is presented in accordance with the requirements of *Title 2 U.S. Code of Federal Regulations (CFR) Part 200, Uniform Administrative Requirements, Cost Principles, and Audit Requirements for Federal Awards* (Uniform Guidance) and the provisions of New Jersey Department of the Treasury Circular Letter 15-08 OMB, *Single Audit Policy for Recipients of Federal Grants, State Grants and State Aid*. Therefore, some amounts presented in the schedules may differ from amounts presented in, or used in the preparation of, the basic financial statements.

3. Relationship to Basic Financial Statements

Amounts reported in the accompanying schedules agree with amounts reported in the Charter School's basic financial statements. The basic financial statements present the general fund and special revenue fund on a GAAP basis. Budgetary comparison statements and schedules (RSI) are presented for the general fund and special revenue fund to demonstrate finance-related legal compliance in which certain revenue is permitted by law or grant agreement to be recognized in the fiscal year, whereas for GAAP reporting, revenue is not recognized until the subsequent year or expenditures have been made. The general fund is presented in the accompanying schedules on the modified accrual basis. The special revenue fund is presented in the accompanying schedules on the grant accounting budgetary basis, which recognizes encumbrances as expenditures and also recognizes the related revenues, whereas the GAAP basis does not. The net adjustment to reconcile from the budgetary basis to GAAP basis is \$-0- for the general fund and \$-0- for the special revenue fund. See Note 1 (the Notes to Required Supplementary Information) for a reconciliation of the budgetary basis to the modified accrual basis of accounting for the general and special revenue funds (C-3).

LADY LIBERTY ACADEMY CHARTER SCHOOL
(County of Essex)
Notes to Schedules of Expenditures of Federal Awards and State Financial Assistance
Year Ended June 30, 2018

3. Relationship to Basic Financial Statements - *continued*

Federal awards and state financial assistance revenues are reported in the Charter School's basic financial statements on a GAAP basis as follows:

	<u>Federal</u>	<u>State</u>	<u>Total</u>
General Fund	\$ -	\$ 8,035,194	\$ 8,035,194
Special Revenue Fund	304,256	-	304,256
Enterprise Fund	346,808	3,897	350,705
Total	<u>\$ 651,064</u>	<u>\$ 8,039,091</u>	<u>\$ 8,690,155</u>

4. Relationship to Federal and State Financial Reports

Amounts reported in the accompanying schedules agree with the amounts reported in the related federal and state financial reports.

5. Other Information

TPAF Social Security contribution in the amount of \$187,048 represents the amount reimbursed by the State for the employer's share of social security contributions for TPAF members for the fiscal year ended June 30, 2018. The amount reported as TPAF pension representing on-behalf employer's portion of the Pension System Contributions, Post-Retirement Medical Benefits Contributions and Long-Term Disability Insurance Premium Contributions in the amount of \$492,720 represents the amount paid by the State on behalf of the Charter School for the fiscal year ended June 30, 2018.

6. On Behalf Programs Not Subject to State Single Audit

On-behalf State Programs for TPAF Pension and Post-Retirement Medical Benefits Contributions are not subject to a State single audit and, therefore, are excluded from major program determination. The Schedule of State Financial Assistance provides a reconciliation of State financial assistance reported in the Charter School's financial statements and the amount subject to State single audit and major program determination.

7. De Minimis Indirect Cost

The Charter School has not elected to use the ten percent de minimis indirect cost rate allowed under the Uniform Guidance.

LADY LIBERTY ACADEMY CHARTER SCHOOL
(County of Essex)
Schedule of Findings and Questioned Costs
Year Ended June 30, 2018

Part I - Summary of Auditors' Results

Financial Statements Section

Type of auditor's report issued: Unmodified

Internal control over financial reporting:

Material weaknesses identified? _____ Yes No

Significant deficiencies identified _____ Yes None reported

Noncompliance material to financial statements noted? _____ Yes No

Federal Awards:

In accordance with the new requirements of Title 2 U.S. Code of Federal Regulations Part 200, Uniform Administrative Requirements, Cost Principles, and Audit Requirements for Federal Awards (Uniform Guidance), the audit threshold was raised from \$500,000 to \$750,000. Thus, for fiscal years ending after December 26, 2015, organizations that expend less than \$750,000 in federal awards during a year are exempt from the single audit requirement for that year.

For the fiscal year ended June 30, 2018, the Charter School was determined to expend less than \$750,000 in federal awards and was therefore exempt from the federal single audit requirements for 2018.

LADY LIBERTY ACADEMY CHARTER SCHOOL
(County of Essex)
Schedule of Findings and Questioned Costs
Year Ended June 30, 2018

Part I Summary of Auditors' Results

State Financial Assistance Section

Dollar threshold used to distinguish between Type A and B programs: \$750,000

Auditee qualifies as low-risk auditee? Yes No

Type of auditor's report on compliance for major programs: Unmodified

Internal control over major programs:

Material weakness(es) identified? Yes No

Significant deficiency(cies) identified?
reported Yes None

Any audit findings disclosed that are required to be reported
in accordance with NJ OMB Circulars 15-08 as applicable? Yes No

Identification of Major Programs:

State Grant/Program Number(s)

Name of State Program or Cluster

18-495-034-5120-078

Equalization Aid

18-495-034-5120-089

Special Education Aid

18-495-034-5120-084

Security Aid

18-495-034-5120-085

State Adjustment Aid

LADY LIBERTY ACADEMY CHARTER SCHOOL
(County of Essex)
Schedule of Findings and Questioned Costs
Year Ended June 30, 2018

Part II – Schedule of Financial Statement Findings

NONE

LADY LIBERTY ACADEMY CHARTER SCHOOL
(County of Essex)
Schedule of Findings and Questioned Costs
Year Ended June 30, 2018

Part III – Schedule of Expenditures of State Financial Assistance

2018-001 – Non-Compliance with Special Education Services

Information on State Financial Assistance

New Jersey Department of Education

Special Education Categorical Aid State Grant #: 18-495-034-5120-089

Compliance Requirement –Eligibility

Significant Non-Compliance

Significant Deficiencies in Internal Control over Compliance

Criteria:

New Jersey Administrative Code, Title 6A, Chapter 14 establishes the compliance requirements relating to special education. N.J.A.C. 6A:14-4.1 (a) requires that the Charter School provide special educational services as stated in the student’s Individualized Education Program (IEP).

Condition:

As part of our audit we were required to conduct an audit of the two enrollment counts – October 15, 2017 and the last day of the school year in June 2018. The enrollment counts audit also included a determination of the accuracy of the reporting of special education students and their respective IEPs. Our audit revealed that IEP services files could not be located by the Charter School for some students identified on the New Jersey DOENET reports as special education students.

Questioned Costs:

None

Context:

The Charter School had been on probation since 2014 and was grappling with addressing all the issues identified in the 2014 probation letter. The School’s charter was revoked effective June 30, 2018.

Effect:

New Jersey laws relating to special education students are very strictly applied in ensuring the welfare of those students. However, it should be noted that it appears the special education non-compliance issues were NOT prevalent at the Charter School.

LADY LIBERTY ACADEMY CHARTER SCHOOL
(County of Essex)
Schedule of Findings and Questioned Costs
Year Ended June 30, 2018

Part III – Schedule of Expenditures of State Financial Assistance

2018-001 – Non-Compliance with Special Education Services - *continued*

Cause:

The cause of the special education non-compliance is attributable to the apparent difficulties experienced by the Charter School as it was addressing the issues identified in the 2014 probation letter.

Recommendation:

None. The School's charter was revoked effective June 30, 2018.

View of Responsible Officials and Planned Corrective Actions:

The school developed IEPs for the students who were eligible for services as a result of evaluations. In addition, reevaluations were completed and new IEPs were generated. Typically, IEPs do not include documentation of services rendered. Attendance records were kept for those students who had active IEPs. For those students who were newly evaluated, IEPs were developed and appropriate meetings were held up until the last day of school and were forwarded to the receiving school districts. Corrective action no longer required.

LADY LIBERTY ACADEMY CHARTER SCHOOL
(County of Essex)
Summary Schedule of Prior Year Audit Findings
Year Ended June 30, 2018

NONE