

SCHOOL DISTRICT

OF

AVON-BY-THE-SEA

Avon-By-The-Sea Board of Education
Avon-By-The-Sea, New Jersey

Comprehensive Annual Financial Report
For the Fiscal Year Ended June 30, 2019

AVON-BY-THE-SEA SCHOOL DISTRICT

TABLE OF CONTENTS

INTRODUCTORY SECTION		Page
Letter of Transmittal		1
Organizational Chart		2
Roster of Officials		3
Consultants and Advisors		4
FINANCIAL SECTION		
Independent Auditor's Report		5 to 6
Required Supplementary Information - Part I Management's Discussion and Analysis		7 to 13
Basic Financial Statements		
A. District-Wide Financial Statements:		
A-1 Statement of Net Position		14
A-2 Statement of Activities		15
B. Fund Financial Statements:		
Governmental Funds:		
B-1 Balance Sheet		16
B-2 Statement of Revenues, Expenditures, and Changes in Fund Balances		17
B-3 Reconciliation of the Statement of Revenues, Expenditures, and Changes in Fund Balances of Governmental Funds to the Statement of Activities		18
Proprietary Funds:		
B-4 Statement of Net Position		19
B-5 Statement of Revenues, Expenses, and Changes in Fund Net Position		20
B-6 Statement of Cash Flows		21
Fiduciary Funds:		
B-7 Statement of Fiduciary Net Position		22
B-8 Statement of Changes in Fiduciary Net Position		23
Notes to the Financial Statements		24 to 50
Required Supplementary Information - Part II		
C. Budgetary Comparison Schedules:		
C-1 Budgetary Comparison Schedule - General Fund		51 to 55
C-2 Budgetary Comparison Schedule - Special Revenue Fund		56
Notes to the Required Supplementary Information - Part II		
C-3 Budget-to-GAAP Reconciliation		57

Required Supplementary Information - Part III

L.	Schedules Related to Accounting and Reporting for Pensions (GASB 68)	
L-1	Schedule of the District's Proportionate Share of the Net Pension Liability - PERS	58
L-2	Schedule of District's Contributions - PERS	59
L-3	Schedule of the District's Proportionate Share of the Net Pension Liability - TPAF	60
M.	Schedules Related to Accounting and Reporting for OPEB (GASB 75)	
M-1	Schedule of Changes in District's Proportionate Share of State Total OPEB Liability and Related Ratios	61
	Notes to the Required Supplementary Information - Part III	62

Other Supplementary Information

D.	School Based Budget Schedules:	
D-1	Combining Balance Sheet	N/A
D-2	Blended Resource Fund - Schedule of Expenditures Allocated by Resource Type - Actual	N/A
D-3	Blended Resource Fund - Schedule of Blended Expenditures - Budget and Actual	N/A
E.	Special Revenue Fund:	
E-1	Combining Schedule of Program Revenues and Expenditures - Budgetary Basis	63
E-2	Preschool Education Aid Schedule(s) of Expenditures - Budgetary Basis	N/A
F.	Capital Projects Fund:	
F-1	Summary Schedule of Project Expenditures	N/A
F-2	Summary Schedule of Revenues, Expenditures, and Changes in Fund Balance - Budgetary Basis	N/A
F-2a	Schedule of Project Revenues, Expenditures, Project Balance, and Project Status - Budgetary Basis	N/A
F-2b	Schedule of Project Revenues, Expenditures, Project Balance, and Project Status - Budgetary Basis	N/A
G.	Proprietary Funds:	
	Enterprise Fund:	
G-1	Combining Schedule of Net Position	N/A
G-2	Combining Schedule of Revenues, Expenses, and Changes in Fund Net Position	N/A
G-3	Combining Schedule of Cash Flows	N/A
	Internal Service Fund:	
G-4	Combining Schedule of Net Position	N/A
G-5	Combining Schedule of Revenues, Expenses, and Changes in Fund Net Position	N/A
G-6	Combining Schedule of Cash Flows	N/A

	Page
H. Fiduciary Funds:	
H-1 Combining Statement of Fiduciary Net Position	64
H-2 Combining Statement of Changes in Fiduciary Net Position	65
H-3 Student Activity Agency Fund Schedule of Receipts and Disbursements	N/A
H-4 Payroll Agency Fund Schedule of Receipts and Disbursements	66
I. Long-Term Debt:	
I-1 Schedule of Serial Bonds	67
I-2 Schedule of Obligations under Capital Leases	N/A
I-3 Debt Service Fund Budgetary Comparison Schedule	68

STATISTICAL SECTION (Unaudited)

Introduction to the Statistical Section

Financial Trends

J-1 Net Assets by Component	69
J-2 Changes in Net Assets/Net Position	70 to 71
J-3 Fund Balances - Governmental Funds	72
J-4 Changes in Fund Balances - Governmental Funds	73
J-5 General Fund Other Local Revenue by Source	74

Revenue Capacity

J-6 Assessed Value and Estimated Actual Value of Taxable Property	75
J-7 Direct and Overlapping Property Tax Rates	76
J-8 Principal Property Taxpayers	77
J-9 Property Tax Levies and Collections	78

Debt Capacity

J-10 Ratios of Outstanding Debt by Type	79
J-11 Ratios of General Bonded Debt Outstanding	80
J-12 Direct and Overlapping Governmental Activities Debt	81
J-13 Legal Debt Margin Information	82

Demographic and Economic Information

J-14 Demographic and Economic Statistics	83
J-15 Principal Employers	84

Operating Information

J-16 Full-time Equivalent District Employees by Function/Program	85
J-17 Operating Statistics	86
J-18 School Building Information	87
J-19 Schedule of Required Maintenance Expenditures by School Facility	88
J-20 Insurance Schedule	89

SINGLE AUDIT SECTION

K-1 Report on Internal Control Over Financial Reporting and on Compliance and Other Matters Based on an Audit of Financial Statements Performed in Accordance with Government Auditing Standards	90 to 91
K-2 Report on Compliance for Each Major State Program and Report on Internal Control Over Compliance Required by Uniform Guidance and New Jersey OMB Circular 15-08	92 to 93
K-3 Schedule of Expenditures of Federal Awards, Schedule A	94
K-4 Schedule of Expenditures of State Financial Assistance, Schedule B	95
K-5 Notes to the Schedules of Expenditures of Awards and Financial Assistance	96 to 97
K-6 Schedule of Findings and Questioned Costs	98
K-7 Summary Schedule of Prior Audit Findings	99

INTRODUCTORY SECTION

Avon Board of Education

505 Lincoln Avenue
Avon-by-the-Sea, New Jersey 07717

Amy S. Lerner, Board Secretary
School Business Administrator

(732) 775-4310, ext. 201

Fax (732) 775-0761

amy_lerner@avonschool.com

November 30, 2019

Honorable President and
Members of the Board of Education
Avon-By-The-Sea School District
Lincoln & 5th Avenues
Avon-By-The-Sea, NJ 07717

Dear Board Members:

The Comprehensive Annual Financial Report (CAFR) of the Avon-By-The-Sea School District ("District") for the fiscal year ended June 30, 2019, is hereby submitted. Responsibility for both the accuracy of the data and completeness and fairness of the presentation, including all disclosures, rests with the management of the Avon-By-The-Sea Board of Education ("Board"). To the best of our knowledge and belief, the data presented in this report is accurate in all material respects and is reported in a manner designed to present fairly the financial position and results of operations of the various funds and account groups of the District. All disclosures necessary to enable the reader to gain an understanding of the District's financial activities have been included.

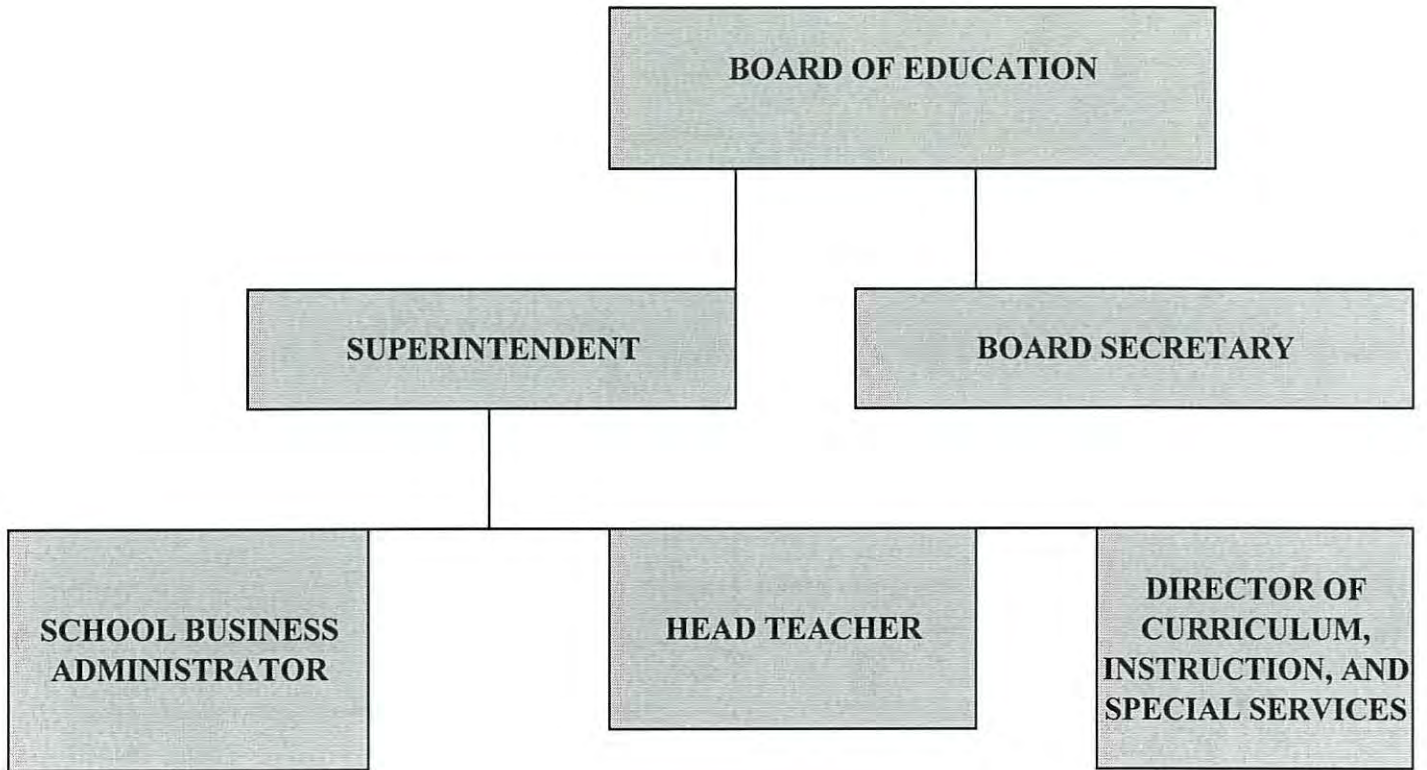
The Comprehensive Annual Financial Report is presented in four sections: introductory, financial, statistical and single audit. The introductory section includes this transmittal letter, the District's organizational chart, a roster of principal officials and a list of consultants and advisors. The financial section includes the district-wide and fund financial statements and schedules, as well as the auditor's report and the Management's Discussion and Analysis. The statistical section includes selected financial statements and schedules as well as information generally presented on a multi-year basis. The District is required to undergo an annual single audit in conformity with the provisions of the Single Audit Act Amendments, OMB Circular Uniform Guidance and the New Jersey OMB Circular 15-08, "*Single Audit Policy for Recipients of Federal Grants, State Grants, and State Aid*". Information related to this audit, including the auditor's report on the internal control structure and compliance with applicable laws and regulations and findings and recommendations, are included in the single audit section of this report.

Respectfully submitted,



Amy S. Lerner
School Business Administrator/Board Secretary

**AVON BOARD OF EDUCATION
ORGANIZATIONAL CHART**



**AVON-BY-THE-SEA BOARD OF EDUCATION
AVON-BY-THE-SEA, NEW JERSEY**

ROSTER OF OFFICIALS

JUNE 30, 2019

<u>Members of the Board of Education</u>	<u>Term Expires</u>
Robert Shafer, President	2019
Andrea Magovern, Vice President	2020
Laura Davey	2021
Jane Losinger	2019
William Bing	2021
William Looney	2020
Kristen Scrabis-Fletcher	2020

Other Officials

Christopher Albrizio, Superintendent of Schools

Amy S. Lerner, Board Secretary/School Business Administrator

Christopher Mullins, Treasurer of School Funds

Adams, Gutierrez & Lattiboudere, LLC, Attorney

AVON-BY-THE-SEA BOARD OF EDUCATION

CONSULTANTS AND ADVISORS

JUNE 30, 2019

AUDIT FIRM

Allen B. Shechter, CPA, RMA, PSA
Alvino & Shechter, L.L.C.
110 Fortunato Place
Neptune, NJ 07753

ATTORNEY

Adams, Gutierrez & Lattiboudere, L.L.C.
1037 Raymond Blvd.
Suite 900
Newark, NJ 07102

CONSULTING ENGINEER

P. W. Moss & Associates
7 Plumridge Drive
Doylestown, PA 18902

OFFICIAL DEPOSITORY

Kearny Bank
611 Main Street
Belmar, NJ 07719

FINANCIAL SECTION

ALVINO & SHECHTER, L.L.C.

CERTIFIED PUBLIC ACCOUNTANTS

110 Fortunato Place

Neptune, New Jersey 07753-3767

VINCENT J. ALVINO, CPA, PSA
ALLEN B. SHECHTER, CPA, RMA, PSA

Phone: (732) 922-4222
Fax: (732) 922-4533

Member

American Institute of Certified Public Accountants
New Jersey Society of Certified Public Accountants
PCPS of the AICPA Division of CPA Firms

INDEPENDENT AUDITOR'S REPORT

The Honorable President and
Members of the Board of Education
Avon-By-The-Sea Board of Education
County of Monmouth, New Jersey

Report on the Financial Statements

We have audited the accompanying financial statements of the governmental activities, the business-type activities, each major fund, and the aggregate remaining fund information of the Board of Education of the Avon-By-The-Sea School District (the "District") in the County of Monmouth, as of and for the fiscal year ended June 30, 2019, and the related notes to the financial statements, which collectively comprise the District's basic financial statements as listed in the table of contents.

Management's Responsibility for the Financial Statements

Management is responsible for the preparation and fair presentation of these financial statements in accordance with accounting principles generally accepted in the United States of America; this includes the design, implementation, and maintenance of internal control relevant to the preparation and fair presentation of financial statements that are free from material misstatement, whether due to fraud or error.

Auditor's Responsibility

Our responsibility is to express opinions on these financial statements based on our audit. We conducted our audit in accordance with auditing standards generally accepted in the United States of America, the standards applicable to financial audits contained in *Government Auditing Standards*, issued by the Comptroller General of the United States, and audit requirements as prescribed by the Office of School Finance, Department of Education, State of New Jersey. Those standards require that we plan and perform the audit to obtain reasonable assurance about whether the financial statements are free from material misstatement.

An audit involves performing procedures to obtain audit evidence about the amounts and disclosures in the financial statements. The procedures selected depend on the auditor's judgment, including the assessment of the risks of material misstatement of the financial statements, whether due to fraud or error. In making those risk assessments, the auditor considers internal control relevant to the District's preparation and fair presentation of the financial statements in order to design audit procedures that are appropriate in the circumstances, but not for the purpose of expressing an opinion on the effectiveness of the District's internal control. Accordingly, we express no such opinion. An audit also includes evaluating the appropriateness of accounting policies used and the reasonableness of significant accounting estimates made by management, as well as evaluating the overall presentation of the financial statements.

We believe that the audit evidence we have obtained is sufficient and appropriate to provide a basis for our audit opinions.

Opinions

In our opinion, the financial statements referred to above present fairly, in all material respects, the respective financial position of the governmental activities, the business-type activities, each major fund, and the aggregate remaining fund information of the Board of Education of the Avon-By-The-Sea School District, in the County of Monmouth, as of June 30, 2019, and the respective changes in financial position and, where applicable, cash flows thereof for the fiscal year then ended in accordance with accounting principles generally accepted in the United States of America.

Other Matters

Required Supplementary Information

Accounting principles generally accepted in the United States of America require that the management's discussion and analysis, budgetary comparison information, pension and other post-employment benefit information as listed in the table of contents be presented to supplement the basic financial statements. Such information, although not a part of the basic financial statements, is required by the Governmental Accounting Standards Board who considers it to be an essential part of financial reporting for placing the basic financial statements in an appropriate operational, economic, or historical context. We have applied certain limited procedures to the required supplementary information in accordance with auditing standards generally accepted in the United States of America, which consisted of inquires of management about the methods of preparing the information and comparing the information for consistency with management's responses to our inquiries, the basic financial statements, and other knowledge we obtained during our audit of the basic financial statements. We do not express an opinion or provide any assurance on the information because the limited procedures do not provide us with sufficient evidence to express an opinion or provide any assurance.

Other Information

Our audit was conducted for the purpose of forming opinions on the financial statements that collectively comprise the District's basic financial statements. The accompanying supplementary information such as the combining and individual non-major fund financial statements and the accompanying schedules of expenditures of federal awards, as required by Title 2 *U.S. Code of Federal Regulations Part 200, Uniform Administrative Requirements, Cost Principles, and Audit Requirements for Federal Awards* (Uniform Guidance), and the schedule of expenditures of state financial assistance as required by New Jersey OMB Circular 15-08, "*Single Audit Policy for Recipients of Federal Grants, State Grants and State Aid*", are presented for purposes of additional analysis and are not a required part of the basic financial statements.

The accompanying supplementary schedules such as the combining and individual non-major fund financial statements and the schedules of expenditures of federal awards and state financial assistance are the responsibility of management and were derived from and relates directly to the underlying accounting and other records used to prepare the basic financial statements. Such information has been subjected to the auditing procedures applied in the audit of the basic financial statements and certain additional procedures, including comparing and reconciling such information directly to the underlying accounting and other records used to prepare the basic financial statements or to the basic financial statements themselves, and other additional procedures in accordance with auditing standards generally accepted in the United States of America. In our opinion, the supplementary schedules and the schedules of expenditures of federal awards and state financial assistance are fairly stated, in all material respects, in relation to the basic financial statements as a whole.

The introductory and statistical sections listed in the table of contents have not been subjected to the auditing procedures applied in the audit of the basic financial statements, and accordingly, we do not express an opinion or provide any assurance on it.

Other Reporting Required by Government Auditing Standards

In accordance with *Government Auditing Standards*, we have also issued our report dated November 30, 2019 on our consideration of the District's internal control over financial reporting and on our tests of its compliance with certain provisions of laws, regulations, contracts, and grant agreements and other matters. The purpose of that report is to describe the scope of our testing of internal control over financial reporting and compliance and the results of that testing, and not to provide an opinion on internal control over financial reporting or on compliance. That report is an integral part of an audit performed in accordance with *Government Auditing Standards* in considering the District's internal control over financial reporting and compliance.



Allen B. Shechter
Licensed Public School Accountant No. 2183
Certified Public Accountant

November 30, 2019
Neptune, New Jersey

REQUIRED SUPPLEMENTARY INFORMATION - PART I

**AVON-BY-THE-SEA SCHOOL DISTRICT
AVON-BY-THE-SEA, NEW JERSEY**

**MANAGEMENT'S DISCUSSION AND ANALYSIS
FOR THE FISCAL YEAR ENDED JUNE 30, 2019**

(Unaudited)

The discussion and analysis of the Avon-By-The-Sea School District's financial performance provides an overall review of the School District's financial activities for the fiscal year ended June 30, 2019. The intent of this discussion and analysis is to look at the School District's financial performance as a whole; readers should also review the notes to the basic financial statements and financial statements to enhance their understanding of the School District's financial performance.

Financial Highlights

Key financial highlights for 2019 are as follows:

- * General revenues accounted for \$5,150,755.42 in revenue or 96.23% of all revenues. Program specific revenues in the form of charges for services, operating grants and contributions, and capital grants and contributions accounted for \$201,907.88 or 3.77% of total revenues of \$5,352,663.30.
- * Total net position of governmental activities decreased by \$292,713.14.
- * The School District had \$5,645,376.44 in expenses; only \$201,907.88 of these expenses were offset by program specific charges for services, grants or contributions. General revenues (primarily property taxes) of \$5,150,755.42 were adequate to provide for these programs.
- * The General Fund had \$4,344,029.12 in revenues and \$4,724,837.57 in expenditures and transfers. The General Fund's balance decreased \$380,808.45 over 2018.

Using this Comprehensive Annual Financial Report (CAFR)

This annual report consists of a series of financial statements and notes to those statements. These statements are organized so the reader can understand the Avon-By-The-Sea School District as a financial whole, an entire operating entity. The statements then proceed to provide an increasingly detailed look at the specific financial activities.

The *Statement of Net Position* and the *Statement of Activities* provide information about the activities of the whole School District, presenting both an aggregate view of the School District's finances and a longer-term view of those finances. Fund financial statements provide the next level of detail. For governmental funds, these statements tell how services were financed in the short-term as well as what remains for future spending. In the case of Avon-By-The-Sea School District, the General Fund is by far the most significant fund.

Reporting the School District as a Whole

Statement of Net Position and the Statement of Activities

While this document contains the large number of funds by the School District to provide programs and activities, the view of the School District as a whole looks at all financial transactions and asks the question, "How did we do financially during 2019?" The *Statement of Net Position* and the *Statement of Activities* helps answer this question. These statements include all assets and liabilities using the accrual basis of accounting similar to the accounting used by most private-sector companies. This basis of accounting takes into account all of the current year's revenues and expenses regardless of when cash is received or paid.

These two statements report the School District's net position and changes in those positions. This change in net position is important because it tells the reader that, for the School District as a whole, the financial positions of the School District has improved or diminished. The causes of this change may be the result of many factors, some financial, and some not. Non-financial factors include the School District's property tax base, current laws in New Jersey restricting revenue growth, facility condition, required educational programs and other factors.

In the *Statement of Net Position* and the *Statement of Activities*, the School District is divided into two distinct kinds of activities:

Governmental Activities - All of the School District's programs and services are reported here including, but not limited to, instruction, support services, operation and maintenance of plant facilities, pupil transportation and extracurricular activities.

Business-Type Activities - This service is provided on a charge for goods or services basis to recover all the expense of the goods or services provided. The Food Service enterprise fund is reported as a business activity.

Reporting the School District's Most Significant Funds

Fund Financial Statements

The analysis of the School District's major (all) funds is included in the 2018-19 Comprehensive Annual Financial Report as presented by the School District. Fund financial reports provide detailed information about the School District's major funds. The School District uses many funds to account for a multitude of financial transactions. However, these fund financial statements focus on the School District's most significant funds. The School District's major governmental funds are the General Fund, Special Revenue Fund and Capital Projects Fund.

Governmental Funds

The School District's activities are reported in governmental funds, which focus on how money flows into and out of those funds and the balances left at year-end available for spending in the future years. These funds are reported using an accounting method called modified accrual accounting, which measures cash and all other financial assets that can readily be converted to cash. The governmental fund statements provide a detailed short-term view of the School District's general government operations and the basic services it provides. Governmental fund information helps you determine whether there are more or fewer financial resources that can be spent in the near future to finance educational programs. The relationship (or differences) between governmental activities (reported in the *Statement of Net Position* and the *Statement of Activities*) and governmental funds is reconciled in the financial statements.

Enterprise Fund

The Enterprise Fund uses the same basis of accounting as business-type activities; therefore, these statements are essentially the same.

The School District as a Whole

The *Statement of Net Position* provides the perspective of the School District as a whole. Table 1 provides a summary of the School District's net position as of June 30, 2019 compared to June 30, 2018.

Table 1
Net Position

	<u>2019</u>	<u>2018</u>
Assets		
Current and Other Assets	1,622,042.19	1,983,821.24
Capital Assets	<u>6,670,038.44</u>	<u>6,791,375.30</u>
Total Assets	<u>\$8,292,080.63</u>	<u>\$8,775,196.54</u>
Deferred Outflows of Resources	<u>\$ 361,205.25</u>	<u>\$ 438,608.32</u>
Liabilities		
Current Liabilities	357,523.07	333,938.08
Long-Term Liabilities	<u>5,691,193.51</u>	<u>6,007,678.34</u>
Total Liabilities	<u>\$6,048,716.58</u>	<u>\$6,341,616.42</u>
Deferred Inflows of Resources	<u>\$ 223,181.00</u>	<u>\$ 198,087.00</u>
Net Position		
Invested in Capital Assets, Net of Related Debt	1,436,507.38	1,346,780.76
Restricted	1,187,530.19	1,575,507.92
Unrestricted	<u>(242,649.27)</u>	<u>(248,187.24)</u>
Total Net Position	<u>\$2,381,388.30</u>	<u>\$2,674,101.44</u>

Table 2 provides a comparison analysis of District-Wide changes in net position from fiscal years 2019 and 2018.

Table 2
Changes in Net Position

	<u>2019</u>	<u>2018</u>
Revenues		
Program Revenues:		
Charge for Services	114,896.77	113,963.00
Operating Grants and Contributions	87,011.11	80,411.50
General Revenues:		
Property Taxes	3,852,504.00	3,737,261.00
State Aid not Restricted	1,280,321.60	1,278,662.34
Other	<u>17,929.82</u>	<u>18,432.16</u>
Total Revenues	<u>\$5,352,663.30</u>	<u>\$5,228,730.00</u>
Program Expenses		
Instruction	2,422,544.96	2,494,966.08
Support Services:		
Pupils and Instructional Staff	2,032,173.06	1,745,443.31
General Administration, School		
Administration, Central Services	314,397.07	311,225.16
Operations and Maintenance of Facilities	238,848.40	254,543.97
Pupil Transportation	244,208.93	246,052.27
Interest on Long-Term Debt and Other Charges	198,030.19	206,194.41
Unallocated Depreciation	170,578.99	173,319.96
Food Service	<u>24,594.84</u>	<u>32,857.94</u>
Total Expenses	<u>\$5,645,376.44</u>	<u>\$5,464,603.10</u>
Increase/(Decrease) in Net Position	<u>\$ (292,713.14)</u>	<u>\$ (235,873.10)</u>

Governmental Activities

Property taxes made up 66.29% of revenues for governmental activities for the Avon-By-The-Sea School District for the fiscal year 2019. The School District’s total revenues were \$5,336,161.19 for the fiscal year ended June 30, 2019. Federal, state and local grants accounted for another 17.38% of revenues.

The total cost of all program and services was \$5,620,781.60. Instruction comprises 31.80% of School District expenses.

Revenues for the School District’s business-type activities (food service program) were comprised of charges for services and federal and state reimbursements. This deficit was made up by transfers from the General Fund.

- * Food service expenses exceeded revenues by \$8,092.73.
- * Charges for services represent \$9,156.77 of revenue. This represents amounts paid by patrons for daily food services.
- * Federal and state reimbursements for meals, including payments for free and reduced lunches was \$7,068.04.

The *Statement of Activities* reflects the cost of program services and program revenues, consisting of the charges for services and sales and grants and contributions, offsetting those services. Table 3, indicates the total cost of services and the net cost of services. It identifies the cost of these services supported by tax revenues and unrestricted state entitlements.

Table 3

Governmental Activities

	<u>2019</u>		<u>2018</u>	
	<u>Total Cost of Services</u>	<u>Net Cost of Services</u>	<u>Total Cost of Services</u>	<u>Net Cost of Services</u>
Instruction	2,422,544.96	2,259,079.39	2,494,966.08	2,328,197.62
Support Services:				
Pupil and Instructional Staff	2,032,173.06	2,009,955.56	1,745,443.31	1,733,423.31
General Administration, School Administration, Central Services	314,397.07	314,397.07	311,225.16	311,225.16
Operation and Maintenance of Facilities	238,848.40	238,848.40	254,543.97	254,543.97
Pupil Transportation	244,208.93	244,208.93	246,052.27	246,052.27
Interest on Long-Term Debt	198,030.19	198,030.19	206,194.41	206,194.41
Unallocated Depreciation	<u>170,578.99</u>	<u>170,578.99</u>	<u>173,319.96</u>	<u>173,319.96</u>
Total Expenses	<u>\$5,620,781.60</u>	<u>\$5,435,098.53</u>	<u>\$5,431,745.16</u>	<u>\$5,252,956.70</u>

Instruction expenses include activities directly dealing with the teaching of pupils and the interaction between teacher and student, including extracurricular activities.

Pupils and instructional staff include the activities involved with assisting staff with the content and process of teaching to students, including curriculum and staff development.

General administration, school administration and central services include expenses associated with administrative and financial supervision of the School District.

Operation and maintenance of facilities activities involve keeping the school grounds, buildings and equipment in an effective working condition.

Curriculum and staff development includes expenses related to planning, research, development and evaluation of support services, as well as the reporting of this information internally and to the public.

Pupil transportation includes activities involved with the conveyance of students to and from school, as well as to and from school activities, as provided by state law.

Extracurricular activities includes expenses related to student activities provided by the School District which are designed to provide opportunities for students to participate in school events, public events, or a combination of these for the purposes of motivation, enjoyment and skill improvement.

Interest and other charges involve the transactions associated with the payment of interest and other related charges to debt of the School District including the costs associated with the issuance of bonds.

The School District’s Funds

Information about the School District’s major funds is included in the 2018-19 Comprehensive Annual Financial Report as presented by the School District. These funds are accounted for using the modified accrual basis of accounting. All governmental funds (i.e. General Fund, Special Revenue Fund, Capital Projects Fund and Debt Service Fund presented in the fund-based statements) had total revenues of \$4,834,047.19 and expenditures of \$5,206,756.98 and net other financing uses of \$8,092.73. The net negative change in fund balance for the year in the General Fund, was a decrease of \$(380,802.52). The School District is able to meet current operating costs with no urgent need for additional funds.

As demonstrated by the various statements and schedules included in the financial section of this report, the School District continues to meet its responsibility for sound financial management. The following schedule presents a summary of the revenues of the governmental funds (excluding capital projects) for the fiscal year ended June 30, 2019, and the amount and percentage of increases and decreases in relation to prior-year revenues.

<u>Revenue</u>	<u>Amount</u>	<u>Percent of Total</u>	<u>Increase/ (Decrease) from 2017/18</u>	<u>Percent of Increase/ (Decrease)</u>
Local Sources	3,975,896.52	82.25%	113,658.14	2.94%
State Sources	778,207.60	16.10%	93,871.26	13.72%
Federal Sources	<u>79,943.07</u>	<u>1.65%</u>	<u>7,779.61</u>	<u>10.78%</u>
Total	<u>\$4,834,047.19</u>	<u>100.00%</u>	<u>215,309.01</u>	<u>4.66%</u>

The increase in Local Sources is attributed to an increase in the local tax levy.

The increase in State Sources is attributed to an increase in on-behalf payments.

The increase in Federal Sources is due to an increase in the Federal Aid.

The following schedule presents a summary of General Fund, Special Revenue Fund and Debt Service Fund expenditures for the fiscal year ended June 30, 2019.

<u>Expenditures</u>	<u>Amount</u>	<u>Percent of Total</u>	<u>Increase/ (Decrease) from 2017/18</u>	<u>Percent of Increase/ (Decrease)</u>
Current:				
Instruction	1,655,942.29	31.80%	(5,362.89)	(.32%)
Undistributed Expenditures	3,081,617.84	59.18%	305,217.35	10.99%
Debt Service	410,069.07	7.88%	(3,205.87)	(.78%)
Capital Outlay	<u>59,127.78</u>	<u>1.14%</u>	<u>55,138.78</u>	<u>1,382.27%</u>
Total	<u>\$5,206,756.98</u>	<u>100.00%</u>	<u>351,787.37</u>	<u>7.25%</u>

The decrease in Current - Instruction is attributed to a decrease in supplies.

The increase in Current - Undistributed Expenditures is attributed to an increase in tuition and other student and instruction related services.

The decrease in debt service is attributed to the decrease interest expense.

The increase in Capital Outlay is attributed to additional capital purchases.

General Fund Budgeting Highlights

The School District’s budget is prepared according to the New Jersey law, and is based on accounting for certain transactions on a basis of modified accrual and encumbrance accounting. The most significant budgeted fund is the General Fund.

During the course of the fiscal 2019 year, the School District amended its General Fund budget as needed. The School District uses program-based budgeting and the budgeting systems designed to tightly control total program budgets but provide flexibility for program management.

- * Staffing changes based on student needs.
- * Additional costs for student transportation both in regular education and special education.
- * Accounting changes in maintenance and operations.
- * Changes in appropriations to prevent budget overruns.

While the School District’s final budget for the General Fund anticipated that revenues and expenditures would roughly equal, the actual results for the year show a \$380,244.45 decrease in surplus funds for a total unassigned free balance of \$271,782.00 at June 30, 2019.

Capital Assets

At the end of the fiscal 2019 year, the School District had \$6,652,707.39 invested in land, site improvements, building and building improvements, and machinery and equipment, net of depreciation.

Table 4
Capital Assets (Net of Depreciation) at June 30, 2019 and 2018

	<u>2019</u>	<u>2018</u>
Land	8,800.00	8,800.00
Site Improvements	72,012.02	76,302.02
Buildings and Improvements	6,461,310.26	6,571,405.97
Licensed Vehicles	.00	.00
Machinery and Equipment	<u>119,385.10</u>	<u>125,272.77</u>
Totals	<u>\$6,661,507.38</u>	<u>\$6,781,780.76</u>

Debt Administration

At June 30, 2019, the School District had \$5,911,193.51 as outstanding debt. Of this amount, \$54,331.41 is for Compensated Absences and \$5,225,000.00 is for general obligation bonds, \$152,846.10 is for unamortized bond premiums and \$479,016.00 is for net pension liability.

At June 30, 2019, the School District's overall legal debt margin was \$25,056,030.00.

For the Future

The goal of the Avon-By-The-Sea School District is to provide a comprehensive educational program that meets the needs of all students. Inherent in this goal is the District's determination to provide safe and adequate facilities that contribute to the District's ability to meet its educational goals.

There is concern for the future as rising special education costs, new funding formulas, technology needs, and New Jersey Common Core Curricular State Standards place increasing demands on limited financial resources.

The uncertainty of state aid and levy cap restrictions continue to present new challenges for the Avon-By-The-Sea School District as the budget for the 2020/21 school year is developed. The Avon-By-The-Sea School District will continue to maintain sound fiscal management, while continuously improving the existing program and addressing safety, security and facility needs.

Contacting the School District's Financial Management

This financial report is designed to provide our citizens, taxpayers, investors and creditors with a general overview of the School District's finances and to show the School District's accountability for the money it receives. If you have any questions about this report or need additional information, please contact the School Business Administrator/Board Secretary at Avon-By-The-Sea Board of Education, Lincoln & 5th Avenues, Avon-By-The-Sea, NJ 07717.

BASIC FINANCIAL STATEMENTS

DISTRICT-WIDE FINANCIAL STATEMENTS

The statement of net position and the statement of activities display information about the District. These statements include the financial activities of the overall District, except for fiduciary activities. Eliminations have been made to minimize the doubling-counting of internal activities. These statements distinguish between the governmental and business-type activities of the District.

AVON-BY-THE-SEA SCHOOL DISTRICT
Statement of Net Position
June 30, 2019

	<u>Governmental Activities</u>	<u>Business-Type Activities</u>	<u>Total</u>
ASSETS:			
Cash and Cash Equivalents	720,927.25	34,577.00	755,504.25
Receivables, Net	409,193.74	495.22	409,688.96
Restricted Assets:			
Capital Reserve Account - Cash	456,848.98	.00	456,848.98
Capital Assets, Net (Note 5)	<u>6,661,507.38</u>	<u>8,531.06</u>	<u>6,670,038.44</u>
Total Assets	<u>8,248,477.35</u>	<u>43,603.28</u>	<u>8,292,080.63</u>
DEFERRED OUTFLOWS OF RESOURCES:			
Deferred Loss on Refunding of Debt	192,560.25	.00	192,560.25
Deferred Outflows Related to Pensions (Note 11)	<u>168,645.00</u>	<u>.00</u>	<u>168,645.00</u>
Total Deferred Outflows of Resources	<u>361,205.25</u>	<u>.00</u>	<u>361,205.25</u>
LIABILITIES:			
Accounts Payable	11,169.66	.00	11,169.66
Other Payable	.00	43,595.42	43,595.42
Accrued Interest	78,989.60	.00	78,989.60
Unearned Revenue	3,768.39	.00	3,768.39
Noncurrent Liabilities (Note 6):			
Due Within One Year	220,000.00	.00	220,000.00
Due Beyond One Year	<u>5,691,193.51</u>	<u>.00</u>	<u>5,691,193.51</u>
Total Liabilities	<u>6,005,121.16</u>	<u>43,595.42</u>	<u>6,048,716.58</u>
DEFERRED INFLOWS OF RESOURCES:			
Deferred Inflows Related to Pensions (Note 11)	<u>223,181.00</u>	<u>.00</u>	<u>223,181.00</u>
NET POSITION:			
Invested in Capital Assets, Net of Related Debt	1,436,507.38	.00	1,436,507.38
Restricted for:			
Debt Service	6.06	.00	6.06
Capital Projects	7,014.50	.00	7,014.50
Other Purposes	1,180,509.63	.00	1,180,509.63
Unrestricted (Deficit)	<u>(242,657.13)</u>	<u>7.86</u>	<u>(242,649.27)</u>
Total Net Position	<u>\$2,381,380.44</u>	<u>7.86</u>	<u>2,381,388.30</u>

The accompanying Notes to Basic Financial Statements are an integral part of this statement.

AVON-BY-THE-SEA SCHOOL DISTRICT
Statement of Activities
For the Fiscal Year Ended June 30, 2019

Functions/Programs	Expenses	Indirect Expense Allocation	Program Revenues			Net (Expense) Revenue and Changes In Net Position		
			Charges for Services	Operating Grants & Contributions	Capital Grants & Contributions	Governmental Activities	Business-Type Activities	Total
GOVERNMENTAL ACTIVITIES:								
Instruction:								
Regular Instruction	1,538,610.59	737,292.57	105,740.00	57,725.57	.00	(2,112,437.59)	.00	(2,112,437.59)
Other Instruction	124,581.70	22,060.10	.00	.00	.00	(146,641.80)	.00	(146,641.80)
Support Services:								
Tuition	1,200,140.36	.00	.00	.00	.00	(1,200,140.36)	.00	(1,200,140.36)
Student & Instruction Related Services	597,325.59	234,707.11	.00	22,217.50	.00	(809,815.20)	.00	(809,815.20)
General Administration	203,128.05	47,221.72	.00	.00	.00	(250,349.77)	.00	(250,349.77)
School Administrative Services	17,002.12	499.63	.00	.00	.00	(17,501.75)	.00	(17,501.75)
Central Services	45,065.03	1,480.52	.00	.00	.00	(46,545.55)	.00	(46,545.55)
Plant Operations and Maintenance	230,247.91	8,600.49	.00	.00	.00	(238,848.40)	.00	(238,848.40)
Pupil Transportation	242,102.64	2,106.29	.00	.00	.00	(244,208.93)	.00	(244,208.93)
Unallocated Employee Benefits	1,049,626.93	(1,049,626.93)	.00	.00	.00	(.00)	.00	(.00)
Interest on Long-Term Debt and Other Charges	198,030.19	.00	.00	.00	.00	(198,030.19)	.00	(198,030.19)
Unallocated Depreciation	174,920.49	(4,341.50)	.00	.00	.00	(170,578.99)	.00	(170,578.99)
Total Governmental Activities	<u>\$5,620,781.60</u>	<u>.00</u>	<u>105,740.00</u>	<u>79,943.07</u>	<u>.00</u>	<u>(5,435,098.53)</u>	<u>.00</u>	<u>(5,435,098.53)</u>
BUSINESS-TYPE ACTIVITIES:								
Food Service	24,594.84	.00	9,156.77	7,068.04	.00	.00	(8,370.03)	(8,370.03)
Total Business-Type Activities	<u>24,594.84</u>	<u>.00</u>	<u>9,156.77</u>	<u>7,068.04</u>	<u>.00</u>	<u>.00</u>	<u>(8,370.03)</u>	<u>(8,370.03)</u>
Total Primary Government	<u>\$5,645,376.44</u>	<u>.00</u>	<u>114,896.77</u>	<u>87,011.11</u>	<u>.00</u>	<u>(5,435,098.53)</u>	<u>(8,370.03)</u>	<u>(5,443,468.56)</u>
GENERAL REVENUES:								
Taxes:								
Property Taxes Levied for General Purposes, Net						3,537,142.00	.00	3,537,142.00
Taxes Levied for Debt Service						315,362.00	.00	315,362.00
State Aid Not Restricted						1,280,321.60	.00	1,280,321.60
Investment Earnings						13,702.95	277.30	13,980.25
Miscellaneous Income						3,949.57	.00	3,949.57
Transfers						(8,092.73)	8,092.73	.00
Total General Revenues, Special Items, Extraordinary Items and Transfers						<u>5,142,385.39</u>	<u>8,370.03</u>	<u>5,150,755.42</u>
Change in Net Position						(292,713.14)	.00	(292,713.14)
Net Position - Beginning of Year						2,674,093.58	7.86	2,674,101.44
Net Position - End of Year						<u>\$2,381,380.44</u>	<u>7.86</u>	<u>2,381,388.30</u>

The accompanying Notes to Basic Financial Statements are an integral part of this statement.

FUND FINANCIAL STATEMENTS

The Individual Fund statements and schedules present more detailed information for the individual fund in a format that segregates information fund type.

AVON-BY-THE-SEA SCHOOL DISTRICT**Balance Sheet****Governmental Funds****June 30, 2019**

	<u>General Fund</u>	<u>Special Revenue Fund</u>	<u>Capital Projects Fund</u>	<u>Debt Service Fund</u>	<u>Total Governmental Funds</u>
ASSETS:					
Cash and Cash Equivalents	713,484.82	427.93	7,014.50	.00	720,927.25
Due from Other Funds	84,280.10	.00	.00	.00	84,280.10
Receivables from Other Governments	321,567.12	11,779.76	.00	26,280.09	359,626.97
Restricted Cash and Cash Equivalents	<u>456,848.98</u>	<u>.00</u>	<u>.00</u>	<u>.00</u>	<u>456,848.98</u>
Total Assets	<u>\$1,576,181.02</u>	<u>12,207.69</u>	<u>7,014.50</u>	<u>26,280.09</u>	<u>1,621,683.30</u>
LIABILITIES AND FUND BALANCES:					
Liabilities:					
Accounts Payable	11,169.66	.00	.00	.00	11,169.66
Interfund Payable	.00	8,439.30	.00	26,274.03	34,713.33
Unearned Revenue	<u>.00</u>	<u>3,768.39</u>	<u>.00</u>	<u>.00</u>	<u>3,768.39</u>
Total Liabilities	<u>11,169.66</u>	<u>12,207.69</u>	<u>.00</u>	<u>26,274.03</u>	<u>49,651.38</u>
Fund Balances:					
Restricted For:					
Excess Surplus - Current Year	231,903.74	.00	.00	.00	231,903.74
Excess Surplus Designated for Subsequent Year's Expenditures	399,514.91	.00	.00	.00	399,514.91
Capital Reserve	456,848.98	.00	.00	.00	456,848.98
Tuition Reserve	92,242.00	.00	.00	.00	92,242.00
Debt Service	.00	.00	.00	6.06	6.06
Capital Projects	.00	.00	7,014.50	.00	7,014.50
Assigned To:					
Encumbrances	15,300.64	.00	.00	.00	15,300.64
Designated by the BOE for Subsequent Year's Expenditures	116,227.09	.00	.00	.00	116,227.09
Unassigned:					
General Fund	<u>252,974.00</u>	<u>.00</u>	<u>.00</u>	<u>.00</u>	<u>252,974.00</u>
Total Fund Balances	<u>1,565,011.36</u>	<u>.00</u>	<u>7,014.50</u>	<u>6.06</u>	<u>1,572,031.92</u>
Total Liabilities and Fund Balances	<u>\$1,576,181.02</u>	<u>12,207.69</u>	<u>7,014.50</u>	<u>26,280.09</u>	

Amounts reported for *governmental activities* in the statement of net position (A-1) are different because:

Capital assets used in governmental activities are not financial resources and therefore are not reported in the governmental funds. The cost of the assets is \$8,514,105.38 and the accumulated depreciation is \$(1,852,598.00) (See Note 5).

6,661,507.38

Deferred outflows and inflows of resources are applicable to future periods and therefore not reported in the funds.

Deferred Outflows Related to Pensions (See Note 11)	168,645.00	
Loss on Refunding Bonds (See Note 6)	192,560.25	
Deferred Inflows Related to Pensions (See Note 11)	<u>(223,181.00)</u>	138,024.25

Long-term liabilities, including bonds payable, are not due and payable in the current period and therefore are not reported as liabilities in the funds. (See Note 6)

(5,911,193.51)

Interest is accrued on outstanding debt in the government-wide financial statements, whereas in the governmental fund financial statements, an interest expenditure is reported when due.

(78,989.60)

Net Position of Government Funds

\$2,381,380.44

The accompanying Notes to Basic Financial Statements are an integral part of this statement.

AVON-BY-THE-SEA SCHOOL DISTRICT
Statement of Revenues, Expenditures, and Changes in Fund Balances
Governmental Funds
For the Fiscal Year Ended June 30, 2019

	<u>General Fund</u>	<u>Special Revenue Fund</u>	<u>Capital Projects Fund</u>	<u>Debt Service Fund</u>	<u>Total Governmental Funds</u>
REVENUES:					
Local Sources:					
Local Tax Levy	3,537,142.00	.00	.00	315,362.00	3,852,504.00
Tuition from Individuals	105,740.00	.00	.00	.00	105,740.00
Interest Earned on Capital Reserve	4,118.42	.00	.00	.00	4,118.42
Interest Earned on Investments	9,584.53	.00	.00	.00	9,584.53
Miscellaneous	<u>3,949.57</u>	<u>.00</u>	<u>.00</u>	<u>.00</u>	<u>3,949.57</u>
Total - Local Sources	3,660,534.52	.00	.00	315,362.00	3,975,896.52
State Sources	683,494.60	.00	.00	94,713.00	778,207.60
Federal Sources	.00	<u>79,943.07</u>	<u>.00</u>	<u>.00</u>	<u>79,943.07</u>
Total Revenues	<u>4,344,029.12</u>	<u>79,943.07</u>	<u>.00</u>	<u>410,075.00</u>	<u>4,834,047.19</u>
EXPENDITURES:					
Current:					
Regular Instruction	1,473,635.02	57,725.57	.00	.00	1,531,360.59
Other Instruction	124,581.70	.00	.00	.00	124,581.70
Support Services:					
Tuition	1,200,140.36	.00	.00	.00	1,200,140.36
Student & Instruction Related Services	575,108.09	22,217.50	.00	.00	597,325.59
General Administration	198,647.38	.00	.00	.00	198,647.38
School Administrative Services	14,929.00	.00	.00	.00	14,929.00
Central Services	45,065.03	.00	.00	.00	45,065.03
Plant Operations and Maintenance	230,247.91	.00	.00	.00	230,247.91
Pupil Transportation	242,102.64	.00	.00	.00	242,102.64
Unallocated Employee Benefits	553,159.93	.00	.00	.00	553,159.93
Debt Service:					
Principal	.00	.00	.00	210,000.00	210,000.00
Interest and Other Charges	.00	.00	.00	200,069.07	200,069.07
Capital Outlay	<u>59,127.78</u>	<u>.00</u>	<u>.00</u>	<u>.00</u>	<u>59,127.78</u>
Total Expenditures	<u>4,716,744.84</u>	<u>79,943.07</u>	<u>.00</u>	<u>410,069.07</u>	<u>5,206,756.98</u>
Excess (Deficiency) of Revenues					
Over Expenditures	<u>(372,715.72)</u>	<u>.00</u>	<u>.00</u>	<u>5.93</u>	<u>(372,709.79)</u>
OTHER FINANCING SOURCES (USES):					
Transfers Out	<u>(8,092.73)</u>	<u>(.00)</u>	<u>(.00)</u>	<u>(.00)</u>	<u>(8,092.73)</u>
Total Other Financing Sources and (Uses)	<u>(8,092.73)</u>	<u>(.00)</u>	<u>(.00)</u>	<u>(.00)</u>	<u>(8,092.73)</u>
Net Change in Fund Balances	(380,808.45)	.00	.00	5.93	(380,802.52)
Fund Balance - July 1	<u>1,945,819.81</u>	<u>.00</u>	<u>7,014.50</u>	<u>.13</u>	<u>1,952,834.44</u>
Fund Balance - June 30	<u>\$1,565,011.36</u>	<u>.00</u>	<u>7,014.50</u>	<u>6.06</u>	<u>1,572,031.92</u>

The accompanying Notes to Basic Financial Statements are an integral part of this statement.

AVON-BY-THE-SEA SCHOOL DISTRICT
Reconciliation of the Statement of Revenues, Expenditures
and Changes in Fund Balances of Governmental Funds
To the Statement of Activities
For the Fiscal Year Ended June 30, 2019

Total net change in fund balances - governmental funds (from B-2)		(380,802.52)
Amounts reported for governmental activities in the statement of activities (A-2) are different because:		
Capital outlays are reported in governmental funds as expenditures. However, on the statement of activities, the cost of those assets is allocated over their estimated useful lives as depreciation expense. This is the amount by which capital outlays exceeded depreciation in the current fiscal year.		
Depreciation Expense	(174,920.49)	
Capital Outlay	<u>54,647.11</u>	(120,273.38)
Repayment of bond principal is an expenditure in the governmental funds, but the repayment reduces long-term liabilities in the statement of net position and is not reported in the statement of activities.		210,000.00
In the statement of activities, certain operating expenses, e.g., compensated absences (vacation and sick pay) are measured by the amounts earned during the year. In the governmental funds, however, expenditures for these items are reported in the amount of financial resources used (paid). When the earned amount exceeds the paid amount, the difference is a reduction in the reconciliation; when the paid amount exceeds the earned amount, the difference is an addition to the reconciliation.		(9,323.12)
Governmental funds report the effect of premiums, discounts and similar items when debt is first issued, whereas these amounts are deferred and amortized in the statement of activities.		
Amortization of Original Issue Premium	8,990.95	
Amortization of Deferred Loss on Refunding of Debt	<u>(11,327.07)</u>	(2,336.12)
District pension contribution are reported as expenditures in the governmental funds when made. However, per GASB No. 68 they are reported as deferred outflows of resources in the Statement of Net Position because the reported net pension liability is measured a year before the District's report date. Pension expense, which is the change in the net pension liability adjusted for changes in deferred outflows and inflows of resources related to pensions, is reported in the Statement of Activities.		
District Pension Contribution - 2019	24,199.00	
Less: Pension Expense	<u>(18,552.00)</u>	5,647.00
Interest is accrued on outstanding debt in the government-wide financial statements, whereas in the fund financial statements an interest expenditure is reported when due.		4,375.00
Per GASB No. 68 Non-employer contributing entities are required to record an increase in revenue and expense for On-behalf TPAF pension payments paid by the State of New Jersey on the Statement of Activities that are in excess of those amounts reported in the fund financial statements.		
Increase in On-behalf State Aid TPAF Pension Revenue	187,182.00	
Increase in On-behalf TPAF Pension Expense	<u>(187,182.00)</u>	.00
Per GASB No. 75 Non-employer contributing entities are required to record an increase in revenue and expense for On-behalf TPAF & PERS post-retirement medical payments paid by the State of New Jersey on the Statement of Activities that are in excess of those amounts reported in the fund financial statements.		
Increase in On-behalf State Aid TPAF & PERS Post-Retirement Medical Revenue	314,932.00	
Increase in On-behalf State Aid TPAF & PERS Post-Retirement Medical Expense	<u>(314,932.00)</u>	.00
Change in net position of governmental activities		<u>\$(292,713.14)</u>

The accompanying Notes to Basic Financial Statements are an integral part of this statement.

AVON-BY-THE-SEA SCHOOL DISTRICT
Statement of Net Position
Proprietary Funds
June 30, 2019

Business-Type Activities-
Enterprise Funds

Food Service

ASSETS:

Current Assets:

Cash and Cash Equivalents	34,577.00
Accounts Receivable:	
State	11.86
Federal	<u>483.36</u>

Total Current Assets 35,072.22

Noncurrent Assets:

Equipment	21,353.13
Less Accumulated Depreciation	<u>(12,822.07)</u>

Total Noncurrent Assets 8,531.06

Total Assets 43,603.28

LIABILITIES:

Current Liabilities:

Interfund Payable	40,668.89
Students Charge Accounts	684.70
Other Payable - Neptune City School District	<u>2,241.83</u>

Total Current Liabilities 43,595.42

NET POSITION:

Invested in Capital Assets, Net of Related Debt	.00
Unrestricted	<u>7.86</u>

Total Net Position \$ 7.86

The accompanying Notes to Basic Financial Statements are an integral part of this statement.

AVON-BY-THE-SEA SCHOOL DISTRICT
Statement of Revenues, Expenses and Changes in Fund Net Position
Proprietary Funds
For the Fiscal Year Ended June 30, 2019

Business-Type Activities-
Enterprise Funds

Food Service

OPERATING REVENUES:	
Local Sources:	
Daily Sales - Reimbursable Programs	6,143.12
Daily Sales - Non-Reimbursable Programs	<u>3,013.65</u>
Total Operating Revenues	<u>9,156.77</u>
OPERATING EXPENSES:	
Cost of Sales - Reimbursable Programs	10,692.00
Cost of Sales - Non-Reimbursable Programs	2,004.93
Salaries	9,761.50
Employee Benefits	746.75
Depreciation	326.18
Miscellaneous Expenses	<u>1,063.48</u>
Total Operating Expenses	<u>24,594.84</u>
Operating Loss	<u>(15,438.07)</u>
NONOPERATING REVENUES:	
State Sources:	
State School Lunch Program	178.72
Federal Sources:	
National School Lunch Program	6,686.04
HHFKA - Performance Based	203.28
Interest Earnings	<u>277.30</u>
Total Nonoperating Revenues	<u>7,345.34</u>
Loss Before Contributions and Transfers	<u>(8,092.73)</u>
Operating Transfer In: Board Contribution	<u>8,092.73</u>
Change in Net Position	.00
Total Net Position - July 1	<u>7.86</u>
Total Net Position - June 30	<u><u>\$ 7.86</u></u>

The accompanying Notes to Basic Financial Statements are an integral part of this statement.

AVON-BY-THE-SEA SCHOOL DISTRICT
Statement of Cash Flows
Proprietary Funds
For the Fiscal Year Ended June 30, 2019

Business-Type Activities-
Enterprise Funds

	Food Service
CASH FLOWS FROM OPERATING ACTIVITIES:	
Cash Received from Daily Sales	9,156.77
Payments to Suppliers	(13,023.11)
Payments to Employees	(9,761.50)
Payments for Employee Benefits	<u>(746.75)</u>
Net Cash Used for Operating Activities	<u>(14,374.59)</u>
CASH FLOWS FROM NONCAPITAL FINANCING ACTIVITIES:	
State Sources	182.09
Federal Sources	7,112.64
Board Contribution	8,092.73
Interfunds	<u>7,895.20</u>
Net Cash Provided by Noncapital Financing Activities	<u>23,282.66</u>
CASH FLOWS FROM INVESTING ACTIVITIES:	
Interest on Investments	<u>277.30</u>
Net Cash Provided by Investing Activities	<u>277.30</u>
Net Increase in Cash and Cash Equivalents	9,185.37
Cash and Cash Equivalents - July 1	<u>25,391.63</u>
Cash and Cash Equivalents - June 30	<u>\$ 34,577.00</u>
Reconciliation of Operating Loss to Net Cash Used by Operating Activities:	
Operating Loss	<u>(15,438.07)</u>
Adjustments to Reconcile Operating Loss to Net Cash Used by Operating Activities	
Depreciation	<u>1,063.48</u>
Total Adjustments	<u>1,063.48</u>
Net Cash Used for Operating Activities	<u>\$(14,374.59)</u>

The accompanying Notes to Basic Financial Statements are an integral part of this statement.

AVON-BY-THE-SEA SCHOOL DISTRICT
Statement of Fiduciary Net Position
Fiduciary Funds
June 30, 2019

	<u>Unemployment Compensation Trust</u>	<u>Agency Fund</u>
ASSETS:		
Cash and Cash Equivalents	7,102.98	22,990.67
Accounts Receivable:		
Payroll Taxes	.00	302.96
Interfunds Receivable	<u>6,200.97</u>	<u>.00</u>
Total Assets	<u>13,303.95</u>	<u>23,293.63</u>
LIABILITIES:		
Payroll Deductions and Withholdings	.00	8,194.78
Interfund Payable	<u>.00</u>	<u>15,098.85</u>
Total Liabilities	<u>.00</u>	<u>\$23,293.63</u>
NET POSITION:		
Held in Trust for Unemployment Claims and Other Purposes	<u>13,303.95</u>	
Total Net Position	<u>\$13,303.95</u>	

The accompanying Notes to Basic Financial Statements are an integral part of this statement.

AVON-BY-THE-SEA SCHOOL DISTRICT
Statement of Changes in Fiduciary Net Position
Fiduciary Funds
For the Fiscal Year Ended June 30, 2019

	<u>Unemployment Compensation Trust</u>
ADDITIONS:	
Contributions:	
Plan Members	3,678.27
Board	<u>14,776.34</u>
Total Contributions	<u>18,454.61</u>
Investment Earnings:	
Interest	<u>63.66</u>
Net Investment Earnings	<u>63.66</u>
Total Additions	<u>18,518.27</u>
DEDUCTIONS:	
Unemployment Claims	<u>15,385.32</u>
Total Deductions	<u>15,385.32</u>
Change in Net Position	3,132.95
Net Position - July 1	<u>10,171.00</u>
Net Position - June 30	<u>\$13,303.95</u>

The accompanying Notes to Basic Financial Statements are an integral part of this statement.

NOTES TO THE FINANCIAL STATEMENTS

AVON-BY-THE-SEA SCHOOL DISTRICT
NOTES TO THE FINANCIAL STATEMENTS
JUNE 30, 2019

NOTE 1. SUMMARY OF SIGNIFICANT ACCOUNTING POLICIES

Introduction

The Avon-By-The-Sea School District is an instrumentality of the State of New Jersey, established to function as an educational institution. The Board consists of elected officials who are responsible for the fiscal control of the District. A Superintendent is appointed by the Board and is responsible for the administrative control of the District.

The financial statements of the Board of Education of Avon-By-The-Sea School District have been prepared in conformity with accounting principles generally accepted in the United States of America (GAAP) as applied to governmental units. The Governmental Accounting Standards Board (GASB) is the accepted standard-setting body for establishing governmental accounting and financial reporting principles.

A. Reporting Entity:

The Avon-By-The-Sea School District is a Type II district located in the County of Monmouth, State of New Jersey. As a Type II District, the School District functions independently through a Board of Education. The board is comprised of seven members elected to three year-terms. The purpose of the District is to educate students in grades K-8.

The primary criterion for including activities within the District's reporting entity, as set forth in Section 2100 of the GASB Codification of Governmental Accounting and Financial Reporting Standards, is whether:

- the organization is legally separate (can sue or be sued in their own name)
- the district holds the corporate powers of the organization
- the district appoints a voting majority of the organization's board
- the district is able to impose its will on the organization
- the organization has the potential to impose a financial benefit/burden on the district
- there is a fiscal dependency by the organization on the district

Based on the aforementioned criteria, the District has no component units.

B. New Accounting Standards:

During fiscal year 2019, the District adopted the following GASB statements:

- GASB Statement No. 88, *Certain Disclosures Related to Debt, Including Direct Borrowings and Direct Placements*. The primary objective of this Statement is to improve the information that is disclosed in notes to government financial statements related to debt, including direct borrowings and direct placements. It also clarifies which liabilities governments should include when disclosing information related to debt. Implementation of this statement did not impact the District's financial statements.

Other accounting standards that the District is currently reviewing for applicability and potential impact on the financial statements include:

- GASB Statement No. 84, *Fiduciary Activities*, will be effective for the year ended June 30, 2020. The objective of this Statement is to improve guidance regarding the identification of fiduciary activities for accounting and financial purposes and how those activities should be reported. Management does not expect this Statement to impact the District's financial statements.

AVON-BY-THE-SEA SCHOOL DISTRICT
NOTES TO THE FINANCIAL STATEMENTS (CONTINUED)
JUNE 30, 2019

NOTE 1. SUMMARY OF SIGNIFICANT ACCOUNTING POLICIES (CONT'D)

B. New Accounting Standards (Cont'd):

Other accounting standards that the District is currently reviewing for applicability and potential impact on the financial statements included (Cont'd):

- GASB Statement No. 87, *Leases*, will be effective for the year ended June 30, 2021. The objective of this Statement is to better meet the information needs of financial statement users by improving accounting and financial reporting for leases by governments. Management is currently evaluating the effects this Statement will have on future financial statements.
- GASB Statement No. 89, *Accounting for Interest Cost Incurred Before the End of a Construction Period*, will be effective for the year ended June 30, 2021. The objectives of this Statement are (1) to enhance the relevance and comparability of information about capital assets and the cost of borrowing for a reporting period and (2) to simplify accounting for interest cost incurred before the end of a construction period. Management does not expect this Statement to impact the District's financial statements.
- GASB Statement No. 90, *Majority Equity Interests - an amendment of GASB Statements No. 14 and No. 61*, will be effective for the year ended June 30, 2020. The primary objectives of this Statement are to improve the consistency and comparability of reporting a government's majority equity interest in a legally separate organization and to improve the relevance of financial statement information for certain component units. Management does not expect this Statement to impact the District's financial statements.
- GASB Statement No. 91, *Conduit Debt Obligations*, will be effective for the year ended June 30, 2022. The objective of this Statement is to provide a single method of reporting conduit debt obligations. Management does not expect this Statement to impact the District's financial statements.

C. Basis of Presentation, Basis of Accounting:

The School District's basic financial statements consist of District-Wide statements, including a statement of net position and a statement of activities, and fund financial statements which provide a more detailed level of financial information.

Basis of Presentation

District-Wide Statements: The statement of net position and the statement of activities display information about the District as a whole. These statements include the financial activities of the overall District, except for fiduciary activities. Eliminations have been made to minimize the double-counting of internal activities. These statements distinguish between the governmental and business-type activity of the District. Governmental activities generally are financed through taxes, intergovernmental revenues, and other nonexchange transactions. Business-type activities are financed in whole or in part by fees charged to external parties.

The statement of net position presents the financial condition of the governmental and business-type activity of the School District at fiscal year end. The statement of activities presents a comparison between direct expenses and program revenues for the business-type activity of the District and for each function of the District's governmental activities. Direct expenses are those that are specifically associated with a program or function and, therefore, are clearly identifiable to a particular function. Program revenues include (a) fees and charges paid by the recipients of goods or services offered by the programs and (b) grants and contributions that are restricted to meeting the operational or capital requirements of a particular program.

AVON-BY-THE-SEA SCHOOL DISTRICT
NOTES TO THE FINANCIAL STATEMENTS (CONTINUED)
JUNE 30, 2019

NOTE 1. SUMMARY OF SIGNIFICANT ACCOUNTING POLICIES (CONT'D)

C. Basis of Presentation, Basis of Accounting (Cont'd):

Basis of Presentation (Cont'd)

Revenues that are not classified as program revenues, including all taxes, are presented as general revenues. The comparison of direct expenses with program revenues identifies the extent to which each governmental function or business segment is self-financing or draws from the general revenues of the School District.

Fund Financial Statements: During the fiscal year, the School District segregates transactions related to certain School District functions or activities in separate funds in order to aid financial management and to demonstrate legal compliance. The fund financial statements provide information about the District's funds, including its fiduciary funds. Separate statements for each fund category - *governmental, proprietary, and fiduciary* - are presented. The New Jersey Department of Education (NJDOE) has elected to require New Jersey districts to treat each governmental fund as a major fund in accordance with the option noted in GASB Statement No. 34, paragraph 76. The NJDOE believes that the presentation of all funds as major is important for public interest and to promote consistency among district financial reporting models.

The District reports the following major governmental funds:

General Fund: The general fund is the general operating fund of the District and is used to account for all expendable financial resources except those required to be accounted for in another fund. Included are certain expenditures for vehicles and movable instructional or non-instructional equipment which are classified in the capital outlay subfund.

As required by the NJDOE, the District includes budgeted capital outlay in this fund. GAAP as it pertains to governmental entities states that general fund resources may be used to directly finance capital outlays for long-lived improvements as long as the resources in such cases are derived exclusively from unrestricted revenues. Resources for budgeted capital outlay purposes are normally derived from State of New Jersey Aid, district taxes, and appropriated fund balance. Expenditures are those that result in the acquisition of or additions to fixed assets for land, existing buildings, improvements of grounds, construction of buildings, additions to or remodeling of buildings and the purchase of built-in equipment. These resources can be transferred from and to Current Expense by Board resolution.

Special Revenue Fund: The special revenue fund is used to account for the proceeds of specific revenue from State and Federal Government, (other than major capital projects, debt service or the enterprise funds) and local appropriations that are legally restricted to expenditures for specified purposes.

Capital Projects Fund: The capital projects fund is used to account for all financial resources to be used for the acquisition or construction of major capital facilities (other than those financed by proprietary funds). The financial resources are derived from temporary notes or serial bonds that are specifically authorized by the voters as a separate question on the ballot either during the annual election or at a special election.

Debt Service Fund: The debt service fund is used to account for the accumulation of resources for and the payment of principal and interest on bonds issued to finance major property acquisition, construction and improvement programs.

AVON-BY-THE-SEA SCHOOL DISTRICT
NOTES TO THE FINANCIAL STATEMENTS (CONTINUED)
JUNE 30, 2019

NOTE 1. SUMMARY OF SIGNIFICANT ACCOUNTING POLICIES (CONT'D)

C. Basis of Presentation, Basis of Accounting (Cont'd):

Basis of Presentation (Cont'd)

The District reports the following major proprietary fund:

Enterprise Funds: The enterprise funds accounts for all revenues and expenses pertaining to the Board's cafeteria operations. The food service fund is utilized to account for operations that are financed and operated in a manner similar to private business enterprises. The stated intent is that the cost (ie. expenses including depreciation and indirect costs) of providing goods or services to the students on a continuing basis are financed or recovered primarily through user charges.

Additionally, the District reports the following fund type:

Fiduciary Funds: The fiduciary funds are used to account for assets held by the District on behalf of others and includes the Payroll Agency Fund and Unemployment Compensation Insurance Trust Fund.

Basis of Accounting:

Basis of accounting determines when transactions are recorded in the financial records and reported on the financial statements.

District-Wide, Proprietary, and Fiduciary Fund Financial Statements: The District-Wide financial statements are prepared using the economic resources measurement focus and the accrual basis of accounting. Governmental funds use the modified accrual basis of accounting; the enterprise fund and fiduciary funds use the accrual basis of accounting. Differences in the accrual and modified accrual basis of accounting arise in the recognition of revenue, the recording of deferred revenue, and in the presentation of expenses versus expenditures. Ad Valorem (Property) Taxes are susceptible to accrual as under New Jersey State Statute a municipality is required to remit to its school district the entire balance of taxes in the amount voted upon or certified, prior to the end of the school year. The District records the entire approved tax levy as revenue (accrued) at the start of the fiscal year, since the revenue is both measurable and available. The District is entitled to receive monies under the established payment schedule and the unpaid amount is considered to be an "accounts receivable". Revenue from grants, entitlements, and donations is recognized in the fiscal year in which all eligibility requirements have been satisfied.

Governmental Fund Financial Statements: Governmental funds are reported using the current financial resources measurement focus and the modified accrual basis of accounting. Under this method, revenues are recognized when measurable and available. "Measurable" means the amount of the transaction can be determined and "available" means collectible within the current period or soon enough thereafter to be used to pay liabilities of the current period. Expenditures are recorded when the related fund liability is incurred, except for principal and interest on general long-term debt, claims and judgments, and compensated absences, which are recognized as expenditures to the extent they have matured. General capital asset acquisitions are reported as expenditures in governmental funds. Proceeds of general long-term debt and acquisitions under capital leases are reported as other financing sources.

All governmental and business-type activities and enterprise funds of the District follow FASB Statements and Interpretations issued on or before November 30, 1989, Accounting Principles Board Opinions, and Accounting Research Bulletins, unless those pronouncements conflict with GASB pronouncements.

AVON-BY-THE-SEA SCHOOL DISTRICT
NOTES TO THE FINANCIAL STATEMENTS (CONTINUED)
JUNE 30, 2019

NOTE 1. SUMMARY OF SIGNIFICANT ACCOUNTING POLICIES (CONT'D)

D. Budgets/Budgetary Control:

Annual appropriated budgets are prepared in the spring of each year for the general, special revenue, and debt service funds. The budgets are submitted to the county office for approval and are voted upon at the annual school election on the third Tuesday in April. The Board voted to adopt P.L. 2011 c.202, effective January 17, 2012, which eliminated the annual voter referendum on budgets which meet the statutory tax levy cap limitations and the board of education members are elected at the November general elections. Budgets are prepared using the modified accrual basis of accounting except for the special revenue fund as described later. The legal level of budgetary control is established at line item accounts within each fund. Line item accounts are defined as the lowest (most specific) level of detail as established pursuant to the minimum chart of accounts referenced in N.J.A.C. 6:20-2A.2(m)1. All budget amendments/transfers must be approved by School Board resolution. All budget amounts presented in the accompanying supplementary information reflect the original budget and the amended budget (which have been adjusted for legally authorized revisions of the annual budgets during the year).

Formal budgetary integration into the accounting system is employed as a management control device during the year. For governmental funds, there are no substantial differences between the budgetary basis of accounting and GAAP with the exception of the legally mandated revenue recognition of the last state aid payment for budgetary purposes only and the special revenue fund as presented in the Notes to Required Supplementary Information. Encumbrance accounting is also employed as an extension of formal budgetary integration in the governmental fund types. Unencumbered appropriations lapse at year end.

The accounting records of the special revenue fund are maintained on the grant accounting budgetary basis. The grant accounting budgetary basis differs from GAAP in that the grant accounting budgetary basis recognizes encumbrances as expenditures and also recognizes the related revenues, whereas the GAAP basis does not. Sufficient supplemental records are maintained to allow for the presentation of GAAP basis financial reports.

E. Encumbrances:

Under encumbrance accounting, purchase orders, contracts, and other commitments for the expenditure of resources are recorded to reserve a portion of the applicable appropriation. Open encumbrances in Governmental Funds, other than the Special Revenue Fund, are reported as reservations of fund balances at fiscal year end as they do not constitute expenditures or liabilities but rather commitments related to unperformed contracts for goods and services.

Open encumbrances in the Special Revenue Fund, for which the District has received advances, are reflected in the balance sheet as unearned revenues at fiscal year end.

The encumbered appropriation authority carries over into the next fiscal year. An entry will be made at the beginning of the next fiscal year to increase the appropriation reflected in the certified budget by the outstanding encumbrance amount as of the current fiscal year end.

F. Assets, Liabilities, Deferred Outflows/Inflows of Resources, and Net Position/Fund Balance:

Cash, Cash Equivalents, and Investments:

Cash and cash equivalents include cash in banks and all highly liquid investments with a maturity of three months or less at the time of purchase and are stated at cost plus accrued interest.

AVON-BY-THE-SEA SCHOOL DISTRICT
NOTES TO THE FINANCIAL STATEMENTS (CONTINUED)
JUNE 30, 2019

NOTE 1. SUMMARY OF SIGNIFICANT ACCOUNTING POLICIES (CONT'D)

F. Assets, Liabilities, Deferred Outflows/Inflows of Resources, and Net Position/Fund Balance (Cont'd):

New Jersey school districts are limited as to the types of investments and types of financial institutions they may invest in. New Jersey Statute 18A:20-37 provides a list of permissible investments that may be purchased by New Jersey school districts. Investments are reported at fair value.

Additionally, the District has adopted a cash management plan that requires it to deposit public funds in public depositories protected from loss under the provisions of the Governmental Unit Deposit Protection Act (GUDPA). GUDPA was enacted in 1970 to protect Governmental Units from a loss of funds on deposit with a failed banking institution in New Jersey.

N.J.S.A. 17:9-41 et. seq. establishes the requirements for the security of deposits of governmental units. The statute requires that no governmental unit shall deposit public funds in a depository unless such funds are secured in accordance with the Act. Public depositories include Savings and Loan institutions, banks (both state and national banks) and savings banks the deposits of which are federally insured. All public depositories must pledge collateral, having a market value of at least equal to five percent of the average daily balance of collected public funds, to secure the deposits of Governmental Units. If a public depository fails, the collateral it has pledged, plus the collateral of all other public depositories, is available to pay the full amount of their deposits to the Governmental Units.

Interfund Transactions:

Transfers between governmental and business-type activities on the District-Wide statements are reported in the same manner as general revenues. Flows of cash or goods from one fund to another without a requirement for repayment are reported as Interfund transfers. Interfund transfers are reported as other financing sources/uses in governmental funds and as non-operating revenues/expenses in the enterprise fund. Repayments from funds responsible for particular expenditures/expenses to the funds that initially paid for them are not presented on the financial statements.

On fund financial statements, short-term interfund loans are classified as interfund receivables/payables. These amounts are eliminated in the statement of net assets, except for amounts due between governmental and business-type activities or governmental and agency funds, which are presented as internal balances.

Bond Premiums

Bond premiums arising from the issuance of long-term debt (bonds) are amortized over the life of the bonds, in systematic and rational method, as a component of interest expense. Bond premiums are presented as an adjustment of the face amount of the bonds on the government-wide statement of net position.

Allowance for Uncollectible Accounts:

No allowance for uncollectible accounts has been recorded as all amounts are considered collectible.

Inventories:

Inventory purchases, other than those recorded in the enterprise fund, are recorded as expenditures during the year of purchase. Enterprise fund inventories are valued at cost, which approximates market, using the first-in/first-out (FIFO) method.

Capital Assets:

The District has established a formal system of accounting for its capital assets. Purchased or constructed capital assets are reported at cost. Donated capital assets are valued at their estimated fair market value on the date received. The general fixed assets acquired or constructed prior to June 30, 1992 are valued at cost based on historical records or through estimation procedures performed by an independent appraisal company. The cost of normal maintenance and repairs is not capitalized. The School District does not possess any infrastructure. The capitalization threshold used by school districts in the State of New Jersey is \$2,000.00.

AVON-BY-THE-SEA SCHOOL DISTRICT
NOTES TO THE FINANCIAL STATEMENTS (CONTINUED)
JUNE 30, 2019

NOTE 1. SUMMARY OF SIGNIFICANT ACCOUNTING POLICIES (CONT'D)

F. Assets, Liabilities, Deferred Outflows/Inflows of Resources, and Net Position/Fund Balance (Cont'd):

Capital Assets (Cont'd):

All reported capital assets except for land and construction in progress are depreciated. Depreciation is computed using the straight-line method under the half-year convention over the following estimated useful lives:

<u>Asset Class</u>	<u>Estimated Useful Lives</u>
School Buildings	50
Building Improvements	20
Office & Computer Equipment	5-10
Instructional Equipment	10
Site Improvements	20
Licensed Vehicles	8

In the fund financial statements, fixed assets used in government fund operations are accounted for as capital outlay expenditures of the governmental fund upon acquisition. Fixed assets are not capitalized and related depreciation is not reported in the fund financial statements.

Unearned Revenue:

Unearned revenue arises when assets are recognized before revenue recognition criteria have been satisfied. Grants and entitlements received in the Special Revenue Fund before they have been earned are recorded as unearned revenue.

Accrued Liabilities and Long-Term Obligations:

All payables, accrued liabilities, and long-term obligations are reported on the District-Wide financial statements. In general, governmental fund payables and accrued liabilities that, once incurred, are paid in a timely manner and in full from current financial resources are reported as obligations of the funds. Bonds are recognized as a liability on the fund financial statements when due.

Deferred Loss on Refunding of Debt

Deferred loss on refunding arising from issuance of the refunding bonds is recorded as a deferred outflow of resources. It is amortized in a systematic and rational manner over the duration of the related debt as a component of interest expense. The amortization expense for the year ended June 30, 2019 amounted to \$11,327.07. As of June 30, 2019, the District has an unamortized balance of \$192,560.25 recorded as a deferred outflow of resources.

Net Position:

Net position represents the difference between the summation of assets and deferred outflows of resources, and the summation of liabilities and deferred inflows of resources. Net position invested in capital assets, net of related debt, consists of capital assets, net of accumulated depreciation, reduced by the outstanding balance of any borrowing used for the acquisition, construction, or improvement of those assets. Net positions are reported as restricted when there are limitations imposed on their use, either through the enabling legislation adopted by the School District, or through external restrictions imposed by creditors, grantors, or laws or regulations of other governments. The School District's policy is to first apply restricted resources when an expense is incurred for purposes for which both restricted and unrestricted net assets are available.

AVON-BY-THE-SEA SCHOOL DISTRICT
NOTES TO THE FINANCIAL STATEMENTS (CONTINUED)
JUNE 30, 2019

NOTE 1. SUMMARY OF SIGNIFICANT ACCOUNTING POLICIES (CONT'D)

F. Assets, Liabilities, Deferred Outflows/Inflows of Resources, and Net Position/Fund Balance (Cont'd):

Fund Balance:

Beginning with the fiscal year 2011, the District implemented GASB Statement 54 "Fund Balance Reporting and Governmental Fund Type Definition". The School District reports fund balance in classifications that comprise hierarchy based primarily on the extent to which the School District is bound to honor constraints on the specific purposes for which amounts in those funds can be spent. The School District's classifications, and policies for determining such classifications, are as follows:

Nonspendable - The nonspendable fund balance classification includes amounts that cannot be spent because they are either not in spendable form or are legally or contractually required to be maintained intact. The "not in spendable form" criterion includes items that are not expected to be converted to cash, such as inventories and prepaid amounts.

Restricted - The restricted fund balance classification includes amounts that are restricted to specific purposes. Such restrictions, or constraints, are placed on the use of resources either by being (1) externally imposed by creditors, grantors, contributors, or laws or regulations of other governments; or (2) imposed by law through constitutional provisions or enabling legislation.

Committed - The committed fund balance classification includes amounts that can only be used for specific purposes pursuant to constraints imposed by formal action of the School District's highest level of decision-making authority, which, for the School District, is the Board of Education. Such formal action consists of an affirmative vote by the Board of Education, memorialized by the adoption of a resolution. Once committed, amounts cannot be used for any other purpose unless the Board of Education removes, or changes, the specified use by taking the same type of action (resolution) it employed to previously commit those amounts.

Assigned - The assigned fund balance classification includes amounts that are constrained by the School District's intent to be used for specific purposes, but are neither restricted nor committed. Intent is expressed by either the Board of Education or by the business administrator, to which the Board of Education has delegated the authority to assign amounts to be used for specific purposes. Such authority of the business administrator is established by way of a formal job description for the position, approved by the Board of Education.

Unassigned - The unassigned fund balance classification is the residual classification for the general fund. This classification represents fund balance that has not been assigned to other funds and that has not been restricted, committed, or assigned to specific purposes within the general fund. The general fund is the only fund that reports a positive unassigned fund balance amount. In other governmental funds, if expenditures incurred for specific purposes exceed the amounts restricted, committed, or assigned to those purposes, it may be necessary to report a negative unassigned fund balance.

When an expenditure is incurred for purposes for which both restricted and unrestricted fund balances are available, it is the policy of the School District to spend restricted fund balances first. Moreover, when an expenditure is incurred for purposes for which amounts in any of the unrestricted fund balance classifications can be used, it is the policy of the School District to spend fund balances, if appropriate, in the following order: committed, assigned, then unassigned.

Deferred Outflows/Inflows of Resources:

In addition to assets, the statement of net position will sometimes report a separate section for deferred outflows of resources. This separate financial statement element, *deferred outflows of resources*, represents a consumption of net position that applies to a future period and so will not be recognized as an outflow of resources (expense/expenditure) until then. The District has two items that qualify for reporting in this category, deferred loss on refunding bond issuance and deferred outflows related to pensions.

AVON-BY-THE-SEA SCHOOL DISTRICT
NOTES TO THE FINANCIAL STATEMENTS (CONTINUED)
JUNE 30, 2019

NOTE 1. SUMMARY OF SIGNIFICANT ACCOUNTING POLICIES (CONT'D)

F. Assets, Liabilities, Deferred Outflows/Inflows of Resources, and Net Position/Fund Balance (Cont'd):

Deferred Outflows/Inflows of Resources (Cont'd):

In addition to liabilities, the statement of net position will sometimes report a separate section for deferred inflows of resources. This separate financial statement element, *deferred inflows of resources*, represents an acquisition of net position that applies to a future period and so will not be recognized as an inflow of resources (revenue) until that time. The District has one item that qualifies for reporting in this category, deferred inflows related to pensions.

Revenues - Exchange and Nonexchange Transactions:

Revenue resulting from exchange transactions, in which each party gives and receives essentially equal value, is recorded on the accrual basis when the exchange takes place. On the modified accrual basis, revenue is recorded in the fiscal year in which the resources are measurable and become available. Available means the resources will be collected within the current fiscal year or are expected to be collected soon enough thereafter to be used to pay liabilities of the current fiscal year. For the District, available means within sixty days of the fiscal year-end.

Nonexchange transactions, in which the School District receives value without directly giving equal value in return, include property taxes, income taxes, grants, entitlements, and donations. On the accrual basis, revenue from property taxes is recognized in the fiscal year for which the taxes are levied. Revenue from income taxes is recognized in the period in which the income is earned. Revenue from grants, entitlements, and donations is recognized in the fiscal year in which all eligibility requirements have been satisfied. Eligibility requirements include timing requirements, which specify the year when the resources are required to be used or the fiscal year when use is first permitted; matching requirements, in which the School District must provide local resources to be used for a specified purpose; and expenditure requirements, in which the resources are provided to the School District on a reimbursement basis. On the modified accrual basis, revenue from nonexchange transactions must also be available before it can be recognized.

Under the modified accrual basis, the following revenue sources are considered to be both measurable and available at fiscal year-end: property taxes available as an advance, interest, and tuition.

Operating Revenues and Expenses:

Operating revenues are those revenues that are generated directly from the primary activity of the enterprise fund. For the School District, these revenues are sales for food service. Operating expenses are necessary costs incurred to provide the service that is the primary activity of the enterprise fund.

Allocation of Indirect Expenses:

The District reports all direct expenses by function in the Statement of Activities. Direct expenses are those that are clearly identifiable with a function. Indirect expenses are allocated to functions but are reported separately in the Statement of Activities. Employee benefits, including the employer's share of social security, workers compensation and medical and pension benefits, were allocated based on salaries of that program. Depreciation expense, where practicable, is specifically identified by function and is included in the indirect expense allocation column of the Statement of Activities. Depreciation expense, that could not be attributed to a specific function is reported separately on the Statement of Activities.

Management Estimates:

The preparation of financial statements in conformity with GAAP requires management to make estimates and assumptions that affect the reported amounts of revenues and expenditures/expenses during the reporting period. Actual results could differ from those estimates.

AVON-BY-THE-SEA SCHOOL DISTRICT
NOTES TO THE FINANCIAL STATEMENTS (CONTINUED)
JUNE 30, 2019

NOTE 2. CASH AND CASH EQUIVALENTS AND INVESTMENTS

The District is governed by the deposit and investment limitations of New Jersey state law. The deposits and investments held at June 30, 2019, and reported at fair value, are as follows:

<u>Type</u>	<u>Rating</u>	<u>Maturities</u>	<u>Carrying Value</u>
Deposits:			
Demand deposits			1,212,353.23
Investments:			
None			.00
Total deposits and investments			\$1,212,353.23
Reconciliation of Statement of Net Position:			
Cash and cash equivalents			755,504.25
Capital Reserve Account			456,848.98
			\$1,212,353.23

Custodial Credit Risk - Deposits in financial institutions, reported as components of cash, cash equivalents, and investments had a bank balance of \$1,291,653.22 at June 30, 2019. Of the bank balance \$250,000.00 was fully insured by depository insurance and \$1,041,653.22 was secured by a collateral pool held by the bank, but not in the District's name, as required by New Jersey statutes.

Investment Interest Rate Risk - The District has no formal investment policy that limits investment maturities as a means of managing its exposure to fair value losses arising from increasing interest rates.

Investment Credit Risk - The District has no investment policy that limits its investment choices other than the limitation of state law as follows:

1. Bonds or other obligations of the United States of America or obligations guaranteed by the United States of America;
2. Government money market mutual funds;
3. Any obligation that a federal agency or federal instrumentality has issued in accordance with an act of Congress, which security has a maturity date not greater than 397 days from the date of purchase, provided that such obligations bear a fixed rate of interest not dependent on any index or other external factor.
4. Bonds or other obligations of the school district or bonds or other obligations of the local unit or units within which the school district is located;
5. Bonds or other obligations, having a maturity date of not more than 397 days from the date of purchase, approved by the Division of Investment in the Department of Treasury for investment by school district;
6. Local governments investment pools;
7. Deposits with the State of New Jersey Cash Management Fund established pursuant to section 1 of P.L. 1977, c.281; or
8. Agreements for the repurchase of fully collateralized securities.

Concentration of Investment Credit Risk - The District places no limit on the amount it may invest in any one issuer. At June 30, 2019, the District had no investments.

AVON-BY-THE-SEA SCHOOL DISTRICT
NOTES TO THE FINANCIAL STATEMENTS (CONTINUED)
JUNE 30, 2019

NOTE 3. CAPITAL RESERVE ACCOUNT

A capital reserve account was established by the Borough of Avon-By-The-Sea Board of Education in October 2000 for the accumulation of funds for use as capital outlay expenditures in subsequent fiscal years. The capital reserve account is maintained in the general fund and its activity is included in the general fund annual budget.

Funds placed in the capital reserve account are restricted to capital projects in the district's approved Long Range Facilities Plan (LRFP). Upon submission of the LRFP to the department, a district may increase the balance in the capital reserve by appropriating funds in the annual general fund budget certified for taxes or by board resolution at year end (June 1 to June 30) of any unanticipated revenue or unexpended line-item appropriation amounts or both. A district may also appropriate additional amounts when the express approval of the voters has been obtained either by a separate proposal at budget time or by a special question at one of the four special elections authorized pursuant to *N.J.S.A. 19:60-2*. Pursuant to *N.J.A.C. 6:23A-5.1(d) 7*, the balance in the account cannot at any time exceed the local support costs of uncompleted capital projects in its approved LRFP.

The activity of the capital reserve for the July 1, 2018 to June 30, 2019 fiscal year is as follows:

Beginning balance, July 1, 2018	\$452,730.56
Interest earnings	4,118.42
Withdrawals	
Approved by Board resolution	<u>(.00)</u>
Ending balance, June 30, 2019	<u>\$456,848.98</u>

The June 30, 2019 LRFP balance of local support costs of uncompleted capital projects at June 30, 2019 is \$0. There were no withdrawals this year from the capital reserve account for use in a DOE approved facilities project, consistent with the district's Long Range Facilities Plan.

NOTE 4. RECEIVABLES

Receivables at June 30, 2019, consisted of interfunds and intergovernmental accounts. All receivables are considered collectible in full. A summary of the principal items of receivables follows:

	<u>Governmental Fund Financial Statements</u>	<u>District-Wide Financial Statements</u>
State Aid	26,805.29	26,817.15
Federal Aid	11,779.76	12,263.12
Taxes	321,041.92	321,041.92
Interfunds	<u>84,280.10</u>	<u>49,566.77</u>
Gross Receivables	443,907.07	409,688.96
Less: Allowance for Uncollectibles	<u>.00</u>	<u>.00</u>
Total Receivables, Net	<u>\$443,907.07</u>	<u>409,688.96</u>

AVON-BY-THE-SEA SCHOOL DISTRICT
NOTES TO THE FINANCIAL STATEMENTS (CONTINUED)
JUNE 30, 2019

NOTE 5. CAPITAL ASSETS

Capital asset activity for the fiscal year ended June 30, 2019, was as follows:

	<u>Beginning Balance</u>	<u>Transfers or Additions</u>	<u>Transfers or Retirements</u>	<u>Ending Balance</u>
Governmental activities:				
Capital assets not being depreciated:				
Land	8,800.00	.00	.00	8,800.00
Total capital assets not being depreciated	<u>8,800.00</u>	<u>.00</u>	<u>.00</u>	<u>8,800.00</u>
Capital assets being depreciated:				
Site improvements	130,946.00	.00	.00	130,946.00
Building and building improvements	7,470,355.94	38,217.58	.00	7,508,573.52
Machinery and equipment	844,439.83	16,429.53	(10,583.50)	850,285.86
Licensed vehicles	15,500.00	.00	.00	15,500.00
Total capital assets being depreciated	<u>8,461,241.77</u>	<u>54,647.11</u>	<u>(10,583.50)</u>	<u>8,505,305.38</u>
Total at historical cost	<u>8,470,041.77</u>	<u>54,647.11</u>	<u>(10,583.50)</u>	<u>8,514,105.38</u>
Less accumulated depreciation for:				
Site Improvements	(54,643.98)	(4,290.00)	.00	(58,933.98)
Building and improvements	(898,949.97)	(148,313.29)	.00	(1,047,263.26)
Machinery and equipment	(719,167.06)	(22,317.20)	10,583.50	(730,900.76)
Licensed vehicles	(15,500.00)	.00	.00	(15,500.00)
Total accumulated depreciation	<u>(1,688,261.01)</u>	<u>(174,920.49)</u>	<u>10,583.50</u>	<u>(1,852,598.00)</u>
Governmental activity capital assets, net	<u>\$ 6,781,780.76</u>	<u>(120,273.38)</u>	<u>.00</u>	<u>6,661,507.38</u>
Business-Type activities:				
Capital assets being depreciated:				
Equipment	21,353.13	.00	.00	21,353.13
Less accumulated depreciation	<u>(11,758.59)</u>	<u>(1,063.48)</u>	<u>.00</u>	<u>(12,822.07)</u>
Enterprise fund capital assets, net	<u>\$ 9,594.54</u>	<u>(1,063.48)</u>	<u>.00</u>	<u>8,531.06</u>

Depreciation expense was charged to the following governmental programs:

Instruction - Regular	3,470.98
Support Services - Administration	338.80
Maintenance - Custodial	531.72
Unallocated	<u>170,578.99</u>
Total	<u>\$174,920.49</u>

AVON-BY-THE-SEA SCHOOL DISTRICT
NOTES TO THE FINANCIAL STATEMENTS (CONTINUED)
JUNE 30, 2019

NOTE 6. LONG-TERM OBLIGATIONS:

Bonds are authorized in accordance with State law by the voters of the District through referendums. All bonds are retired in serial installments within the statutory period of usefulness. Bonds issued by the District are general obligation bonds.

A. Long-term Obligation Activity:

Changes in long-term obligations for the year ended June 30, 2019, are as follows:

	<u>Balance</u> <u>July 1, 2018</u>	<u>Additions</u>	<u>Reductions</u>	<u>Balance</u> <u>June 30, 2019</u>	<u>Amounts</u> <u>Due Within</u> <u>One Year</u>
Bonds Payable	5,435,000.00	.00	(210,000.00)	5,225,000.00	220,000.00
Add: Unamortized Premium	<u>161,837.05</u>	<u>.00</u>	<u>(8,990.95)</u>	<u>152,846.10</u>	<u>.00</u>
	5,596,837.05	.00	(218,990.95)	5,377,846.10	220,000.00
Compensated Absences	45,008.29	9,735.62	(412.50)	54,331.41	.00
Net Pension Liability	<u>575,833.00</u>	<u>.00</u>	<u>(96,817.00)</u>	<u>479,016.00</u>	<u>.00</u>
	<u>\$6,217,678.34</u>	<u>9,735.62</u>	<u>(316,220.45)</u>	<u>5,911,193.51</u>	<u>220,000.00</u>

For governmental activities, the liability for compensated absences are generally liquidated by the general fund.

	<u>Government Activities</u>			<u>Principal</u> <u>Balance</u> <u>June 30, 2019</u>
	<u>Issue</u> <u>Dates</u>	<u>Interest</u> <u>Rates</u>	<u>Date of</u> <u>Maturity</u>	
2015 Refunding Bonds	06/25/2015	1.50%-5.00%	02/01/2036	<u>\$5,225,000.00</u>

B. Debt Service Requirements:

Principal and interest on bonds payable at June 30, 2019 are as follows:

<u>Fiscal Year Ending</u> <u>June 30</u>	<u>Principal</u>	<u>Interest</u>	<u>Total</u>
2020	220,000.00	189,575.00	409,575.00
2021	230,000.00	178,575.00	408,575.00
2022	240,000.00	169,375.00	409,375.00
2023	255,000.00	157,375.00	412,375.00
2024-2028	1,430,000.00	628,675.00	2,058,675.00
2029-2033	1,685,000.00	375,156.28	2,060,156.28
2034-2036	<u>1,165,000.00</u>	<u>82,600.00</u>	<u>1,247,600.00</u>
	<u>\$5,225,000.00</u>	<u>1,781,331.28</u>	<u>7,006,331.28</u>

C. Bonds Authorized But Not Issued: The District has no authorized but not issued bonds at June 30, 2019.

AVON-BY-THE-SEA SCHOOL DISTRICT
NOTES TO THE FINANCIAL STATEMENTS (CONTINUED)
JUNE 30, 2019

NOTE 6. LONG-TERM OBLIGATIONS (CONT'D):

D. Long-Term Debt Defeasance: On June 25, 2015, the District refunded \$5,730,000.00 of its March 1, 2006 School District Bonds and issued \$5,930,000.00 Refunding School Bonds. The reacquisition price exceeded the net carrying amount of the old debt by \$237,868.53 and this amount is being amortized over the remaining life of the new debt issued and reported as a Deferred Outflow of Resources on the Statement of Net Position. The refunding resulted in a savings of \$425,371.32, throughout the life of the bonds and a net present value savings of \$315,167.26 at the time the refunding bonds were issued.

NOTE 7. OPERATING LEASES

The District had two operating leases for Savin copiers, one expires September 28, 2019, the other expires March 28, 2021. The total operating lease payments made during the year ended June 30, 2019 were \$10,750.68. Future minimum lease payments are as follows:

<u>Years Ending June 30,</u>	<u>Principal</u>
2020	7,199.73
2021	<u>4,512.06</u>
Total minimum lease payments	<u>\$11,711.79</u>

NOTE 8. FUND BALANCE APPROPRIATED

General Fund - Of the \$1,565,011.36 General Fund fund balance at June 30, 2019, \$231,903.74 has been restricted for excess surplus; \$399,514.91 has been restricted for excess surplus at June 30, 2018 and has been appropriated and included as anticipated revenue for the year ending June 30, 2020; \$456,848.98 has been restricted for the Capital Reserve Account; \$92,242.00 has been restricted for tuition adjustment in accordance with N.J.A.C. 6A:23-3.1(f)(8); \$15,300.64 of encumbrances for outstanding purchase orders have been assigned for other purposes; \$116,227.09 has been assigned to be designated for subsequent year's expenditures and included as anticipated revenue for the year ending June 30, 2020; \$252,974.00 is unassigned.

NOTE 9. CALCULATION OF EXCESS SURPLUS

In accordance with N.J.S.A. 18A:7F-7, as amended by P.L. 2004, c.73 (S1701), the designation for Reserved Fund Balance - Excess Surplus is a required calculation pursuant to the New Jersey Comprehensive Educational Improvement and Financing Act of 1997 (CEIFA). New Jersey school districts are required to reserve General Fund fund balance at the fiscal year end of June 30, if they did not appropriate a required minimum amount as budgeted fund balance in their subsequent years' budget. The excess fund balance at June 30, 2019 is \$231,903.74.

NOTE 10. CONTINGENT LIABILITIES

Grant Programs:

The School District participates in federal awards and state financial assistance grant programs. These programs are subject to program compliance audits by the grantors or their representatives. The School District is potentially liable for expenditures which may be disallowed pursuant to the terms of these grant program. Management is not aware of any material items of noncompliance which would result in the disallowance of program expenditures.

AVON-BY-THE-SEA SCHOOL DISTRICT
NOTES TO THE FINANCIAL STATEMENTS (CONTINUED)
JUNE 30, 2019

NOTE 11. PENSION PLANS

Description of Plans - All required employees of the District are covered by either the Public Employees' Retirement System or the Teachers' Pension and Annuity Fund which have been established by state statute and are administered by the New Jersey Division of Pensions and Benefits (Division). According to the State of New Jersey Administrative Code, all obligations of both Systems will be assumed by the State of New Jersey should the Systems terminate. The Division issues a publicly available financial report that includes the financial statements and required supplementary information for the Public Employees' Retirement System and the Teachers' Pension and Annuity Fund. These reports may be obtained by writing to the Division of Pensions and Benefits, PO Box 295, Trenton, New Jersey, 08625 or on the internet at <http://www.state.nj.us/treasury/pensions/annrprts.shtml>.

Teachers' Pension and Annuity Fund (TPAF) - The Teachers' Pension and Annuity Fund (TPAF) was established as of January 1, 1955, under the provisions of N.J.S.A. 18A:66 to provide retirement benefits, death, disability and medical benefits to certain qualified members. The Teachers' Pension and Annuity Fund is considered a cost-sharing multiple-employer plan with a special funding situation, as under current statute, 100% of employer contributions are made by the State of New Jersey on behalf of the District and the system's other related non-contributing employers. Membership is mandatory for substantially all teachers or members of the professional staff certified by the State Board of Examiners, and employees of the Department of Education who have titles that are unclassified, professional and certified.

Summary of Significant Accounting Policies - For purpose of measuring the net pension liability, deferred outflows of resources and deferred inflows of resources related to pensions, and pension expense, information about the fiduciary net position of the Teachers' Pension and Annuity Fund (TPAF) and additions to/deductions from the TPAF's fiduciary net position have been determined on the same basis as they are reported by the TPAF. For this purpose, benefit payments (including refunds of employee contributions) are recognized when due and payable in accordance with the benefit terms. Investments are reported at fair value.

Pension Liabilities, Pension Expense, and Deferred Outflows of Resources and Deferred Inflows of Resources Related to Pensions

The employer contributions for the district are legally required to be funded by the State in accordance with N.J.S.A. 18:66-33. Therefore, the district (employer) is considered to be in a special funding situation as defined by GASB Statement No. 68 and the State is treated as a nonemployer contributing entity. Since the district (employer) does not contribute directly to the plan (except for employer specific financed amounts), there is no net pension liability or deferred outflows or inflows to report in the financial statements of the district. However, the state's portion of the net pension liability that was associated with the district was \$7,504,547 as measured on June 30, 2018 and \$6,706,100 as measured on June 30, 2017.

For the year ended June 30, 2019, the District recognized pension expense of \$437,489 and revenue of \$437,489 for support provided by the State. The measurement period for the pension expense and revenue reported in the district's financial statements (A-2) at June 30, 2019 is based upon changes in the collective net pension liability with a measurement period of June 30, 2017 through June 30, 2018. Accordingly, the pension expense and the related revenue associated with the support provided by the State is based upon the changes in the collective net pension liability between July 1, 2017 and June 30, 2018.

Although the district does not report net pension liability or deferred outflows or inflows related to the TPAF, the following schedule illustrates the collective net pension liability and deferred items and the State's portion of the net pension liability associated with the district. The collective amounts are the total of all New Jersey local governments participating in the TPAF plan.

	<u>06/30/2017</u>	<u>06/30/2018</u>
Collective deferred outflows of resources	\$14,251,854,934	\$12,599,296,329
Collective deferred inflows of resources	11,807,238,433	16,171,861,734
Collective net pension liability (Nonemployer-State of New Jersey)	\$67,423,605,859	63,617,852,031
State's portion of the net pension liability that was associated with the district	6,706,100	7,504,547
State's portion of the net pension liability that was associated with the district as a percentage of the collective net pension liability	0.0099462194%	0.0117962908%

AVON-BY-THE-SEA SCHOOL DISTRICT
NOTES TO THE FINANCIAL STATEMENTS (CONTINUED)
JUNE 30, 2019

NOTE 11. PENSION PLANS (CONT'D)

Teachers' Pension and Annuity Fund (TPAF) (Cont'd)

Actuarial assumptions - The total pension liability for the June 30, 2018 measurement date was determined by an actuarial valuation as of July 1, 2017, which was rolled forward to June 30, 2018. This actuarial valuation used the following actuarial assumptions, applied to all periods in the measurement:

Inflation Rate	2.25%
Salary Increases:	
2011-2026	1.55% - 4.55%
Thereafter	2.00% - 5.45%
Investment Rate of Return	7.00%

Pre-retirement, post-retirement and disabled mortality rates were based on the experience of TPAF members reflecting mortality improvement on a generational basis based on a 60-year average of Social Security data from 1953 to 2013.

The actuarial assumptions used in the July 1, 2017 valuation were based on the results of an actuarial experience study for the period July 1, 2012 to June 30, 2015.

Long-Term Expected Rate of Return - In accordance with State statute, the long-term expected rate of return on plan investments (7.00% at June 30, 2018) is determined by the State Treasurer, after consultation with the Directors of the Division of Investment and Division of Pensions and Benefits, the board of trustees and the actuaries. The long-term expected rate of return was determined using a building block method in which best-estimate ranges of expected future real rates of return (expected returns, net of pension plan investment expense and inflation) are developed for each major asset class. These ranges are combined to produce the long-term expected rate of return by weighting the expected future real rates of return by the target asset allocation percentage and by adding expected inflation. Best estimates of arithmetic real rates of return for each major asset class included in TPAF's target asset allocation as of June 30, 2018 are summarized in the following table:

<u>Asset Class</u>	<u>Target Allocation</u>	<u>Long-Term Expected Real Rate of Return</u>
Risk Mitigation Strategies	5.00%	5.51%
Cash Equivalents	5.50%	1.00%
U.S. Treasuries	3.00%	1.87%
Investment Grade Credit	10.00%	3.78%
High Yield	2.50%	6.82%
Global Diversified Credit	5.00%	7.10%
Credit Oriented Hedge Funds	1.00%	6.60%
Debt Related Private Equity	2.00%	10.63%
Debt Related Real Estate	1.00%	6.61%
Private Real Asset	2.50%	11.83%
Equity Related Real Estate	6.25%	9.23%
U.S. Equity	30.00%	8.19%
Non-U.S. Developed Markets Equity	11.50%	9.00%
Emerging Markets Equity	6.50%	11.64%
Buyouts/Venture Capital	8.25%	13.08%

AVON-BY-THE-SEA SCHOOL DISTRICT
NOTES TO THE FINANCIAL STATEMENTS (CONTINUED)
JUNE 30, 2019

NOTE 11. PENSION PLANS (CONT'D)

Teachers' Pension and Annuity Fund (TPAF) (Cont'd):

Discount rate. The discount rate used to measure the State's total pension liability was 4.86% as of June 30, 2018. This single blended discount rate was based on the long-term expected rate of return on pension plan investments of 7.00%, and a municipal bond rate of 3.87% as of June 30, 2018, based on the Bond Buyer Go 20-Bond Municipal Bond Index which includes tax-exempt general obligation municipal bonds with an average rating of AA/Aa or higher. The projection of cash flows used to determine the discount rate assumed that contributions from plan members will be made at the current member contribution rates and that contributions from employers will be made based on the contribution rate in the most recent fiscal year. The State contributed 50% of the actuarially determined contributions. Based on those assumptions, the plan's fiduciary net position was projected to be available to make projected future benefit payments of current plan members through 2040. Therefore, the long-term expected rate of return on plan investments was applied to projected benefit payments through 2040, and the municipal bond rate was applied to projected benefit payments after that date in determining the total pension liability.

Sensitivity of the District's proportionate share of the net pension liability to changes in the discount rate. Since the District has no proportionate share of the net pension liability because of the special funding situation, the district would not be sensitive to any changes in the discount rate. Detailed information about the pension plan's sensitivity of the collective net pension liability to changes in the discount rate is available in the separately issued State of New Jersey Division of Pensions and Benefits financial report at <http://www.nj.gov/treasury/pensions/annrpts.shtml>.

Pension plan fiduciary net position. Detailed information about the pension plan's fiduciary net position is available in the separately issued State of New Jersey Division of Pensions and Benefits financial report at <http://www.nj.gov/treasury/pensions/financial-rprts-home.shtml>.

Public Employees' Retirement System (PERS) - The Public Employees' Retirement System (PERS) was established as of January 1, 1955, under the provisions of N.J.S.A. 43:15A to provide retirement, death, disability and medical benefits to certain qualified members. The Public Employees' Retirement System is a cost-sharing multiple-employer plan. Membership is mandatory for substantially all full-time employees of the State of New Jersey or any county, municipality, school district, or public agency, provided the employee is not required to be a member of another state-administered retirement system or other state or local jurisdiction.

Summary of Significant Accounting Policies - For purposes of measuring the net pension liability, deferred outflows of resources and deferred inflows of resources related to pensions, and pension expense, information about the fiduciary net position of the PERS and additions to/deductions from PERS fiduciary net position have been determined on the same basis as they are reported by PERS. For this purpose, benefit payments (including refunds of employee contributions) are recognized when due and payable in accordance with the benefit terms. Investments are reported at fair value.

Pension Liabilities, Pension Expense, and Deferred Outflows of Resources and Deferred Inflows of Resources Related to Pensions

At June 30, 2019, the District reported a liability of \$479,016 for its proportionate share of the net pension liability. The net pension liability was measured as of June 30, 2018, and the total pension liability to calculate the net pension liability was determined by an actuarial valuation as of July 1, 2017, which was rolled forward to June 30, 2018. The District's proportion of the net pension liability is based on the ratio of the contributions as an individual employer to total contributions to the PERS during the year ended June 30, 2018. At June 30, 2018, the District's proportion was 0.0024328503% which was a decrease of 0.0000408293% from its proportion measured as of June 30, 2017.

AVON-BY-THE-SEA SCHOOL DISTRICT
NOTES TO THE FINANCIAL STATEMENTS (CONTINUED)
JUNE 30, 2019

NOTE 11. PENSION PLANS (CONT'D)

Public Employees' Retirement System (PERS) (Cont'd)

For the year ended June 30, 2019, the District recognized in the district-wide statement of activities (accrual basis) pension expense of \$18,552. At June 30, 2019, the District reported deferred outflows of resources and deferred inflows of resources related to PERS from the following sources:

	<u>Deferred Outflows of Resources</u>	<u>Deferred Inflows of Resources</u>
Differences between expected and actual experience	9,135	2,470
Changes of assumptions	78,934	153,164
Net difference between projected and actual earnings on pension plan investments	-	4,493
Changes in proportion and differences between District contributions and proportionate share of contributions	56,377	63,054
District contributions subsequent to the measurement date	<u>24,199</u>	<u>-</u>
Total	<u>\$168,645</u>	<u>\$223,181</u>

\$22,916 reported as deferred outflows of resources related to pensions resulting from school district contributions subsequent to the measurement date (ie. for the school year ending June 30, 2019, the plan measurement date is June 30, 2018) will be recognized as a reduction of the net pension liability measured as of June 30, 2019. Other amounts reported as deferred outflows of resources and deferred inflows of resources related to pensions will be recognized in pension expense as follows:

	<u>Year Ended June 30</u>
2020	\$(4,706)
2021	1,591
2022	(28,148)
2023	(37,371)
2024	<u>(10,101)</u>
Total	<u>\$(78,735)</u>

Additional Information:

Local Group Collective balances at June 30, 2017 and 2018 are as follows:

	<u>06/30/2017</u>	<u>06/30/2018</u>
Collective deferred outflows of resources	\$6,424,455,842	\$4,684,852,302
Collective deferred inflows of resources	5,700,625,981	7,646,736,226
Collective net pension liability (Non State - Local Group)	\$23,278,401,588	19,689,501,539
District's portion of net pension liability	575,833	479,016
District's portion %	0.0024736796%	0.0024328503%

Actuarial assumptions - The collective total pension liability for the June 30, 2018 measurement date was determined by an actuarial valuation as of July 1, 2017, which was rolled forward to June 30, 2018. This actuarial valuation used the following actuarial assumptions:

Inflation Rate	2.25%
Salary Increases:	
Through 2026	1.65%-4.15% based on age
Thereafter	2.65%-5.15% based on age
Investment Rate of Return	7.00%

Mortality rates were based on the RP-2000 Combined Healthy Male and Female Mortality Tables (setback 1 year for females) with adjustments for mortality improvements from the base year of 2013 based on Projection Scale AA.

The actuarial assumptions used in the July 1, 2017 valuation were based on the results of an actuarial experience study for the period July 1, 2011 to June 30, 2014.

AVON-BY-THE-SEA SCHOOL DISTRICT
NOTES TO THE FINANCIAL STATEMENTS (CONTINUED)
JUNE 30, 2019

NOTE 11. PENSION PLANS (CONT'D)

Public Employees' Retirement System (PERS) (Cont'd)

Long-Term Expected Rate of Return - In accordance with State statute, the long-term expected rate of return on plan investments is determined by the State Treasurer, after consultation with the Directors of the Division of Investments and Division of Pensions and Benefits, the board of trustees and the actuaries. Best estimates of arithmetic real rates of return for each major asset class included in PERS's target asset allocation as of June 30, 2018 are summarized in the following table:

<u>Asset Class</u>	<u>Target Allocation</u>	<u>Long-Term Expected Real Rate of Return</u>
Risk Mitigation Strategies	5.00%	5.51%
Cash Equivalents	5.50%	1.00%
US Treasuries	3.00%	1.87%
Investment Grade Credit	10.00%	3.78%
Public High Yield	2.50%	6.82%
Global Diversified Credit	5.00%	7.10%
Credit Oriented Hedge Funds	1.00%	6.60%
Debt Related Private Equity	2.00%	10.63%
Debt Related Real Estate	1.00%	6.61%
Private Real Asset	2.50%	11.83%
Equity Related Real Estate	6.25%	9.23%
U.S. Equity	30.00%	8.19%
Non-U.S. Developed Markets Equity	11.50%	9.00%
Emerging Markets Equity	6.50%	11.64%
Buyouts/Venture Capital	8.25%	13.08%

Discount rate. The discount rate used to measure the total pension liability was 5.66% as of June 30, 2018. This single blended discount rate was based on the long-term expected rate of return on pension plan investments of 7.00%, and a municipal bond rate of 3.87% as of June 30, 2018, based on the Bond Buyer Go 20-Bond Municipal Bond Index which includes tax-exempt general obligation municipal bonds with an average rating of AA/Aa or higher. The projection of cash flows used to determine the discount rate assumed that contributions from plan members will be made at the current member contribution rates and that contributions from employers will be made based on the contribution rate in the most recent fiscal year. The State employer contributed 50% of the actuarially determined contributions and the local employers contributed 100% of their actuarially determined contribution. Based on those assumptions, the plan's fiduciary net position was projected to be available to make projected future benefit payments of current plan members through 2046. Therefore, the long-term expected rate of return on plan investments was applied to projected benefit payments through 2046, and the municipal bond rate was applied to projected benefit payments after that date in determining the total pension liability.

Sensitivity of the District's proportionate share of the net pension liability to changes in the discount rate. The following presents the District's proportionate share of the net pension liability measured as of June 30, 2018, calculated using the discount rate of (5.66%), as well as what the District's proportionate share of the net pension liability would be if it were calculated using a discount rate that is 1-percentage-point lower (4.66%) or 1-percentage-point higher (6.66%) than the current rate:

	<u>1% Decrease (4.66%)</u>	<u>Current Discount Rate (5.66%)</u>	<u>1% Increase (6.66%)</u>
District's proportionate share of the net pension liability	\$574,704	\$479,016	\$399,400

AVON-BY-THE-SEA SCHOOL DISTRICT
NOTES TO THE FINANCIAL STATEMENTS (CONTINUED)
JUNE 30, 2019

NOTE 11. PENSION PLANS (CONT'D)

Public Employees' Retirement System (PERS) (Cont'd)

Pension plan fiduciary net position. Detailed information about the pension plan's fiduciary net position is available in the separately issued State of New Jersey Division of Pensions and Benefits financial report at <http://www.nj.gov/treasury/pensions/financial-rprts-home.shtml>.

Defined Contribution Retirement Plan (DCRP) - The Defined Contribution Retirement Program (DCRP) was established as of July 1, 2007 under the provisions of Chapter 92, P.L. 2007 and Chapter 103, P.L. 2007 (N.J.S.A. 43:15C-1 et. seq.). The DCRP is a cost-sharing multiple-employer defined contribution pension fund. The DCRP provides eligible members, and their beneficiaries with a tax-sheltered, defined contribution retirement benefit, along with life insurance and disability coverage. Vesting and benefit provisions are established by N.J.S.A. 43:15C-1 et. seq.

The contribution requirements of plan members are determined by state statute. In accordance with Chapter 92, P.L. 2007 and Chapter 103, P.L. 2007, plan members are required to contribute 5.5% of their annual covered salary. Member contributions are matched by a 3% employer contribution. For the year ended June 30, 2019, employee contributions total \$4,635.23 and the District recognized pension expense of \$3,332.04. The State Treasurer has the right under current law to make temporary reductions in member rates based on the existence of surplus plan assets in the retirement system; however statute also requires the return to the normal rate when such surplus pension assets no longer exist.

PERS and TPAF Vesting and Benefit Provisions - The vesting and benefit provisions for PERS are set by N.J.S.A. 43:15A and 43.3B, and N.J.S.A. 18A:6C for TPAF. All benefits vest after eight to ten years of service, except for medical benefits that vest after 25 years of service. Retirement benefits for age and service are available at age 60 and are generally determined to be 1/60 of the final average salary for each year of service credit, as defined. Final average salary equals the average salary for the final three years of service prior to retirement (or highest three years' compensation if other than the final three years). Members may seek early retirement after achieving 25 years of service credit or they may elect deferred retirement after achieving eight to ten years of service in which case benefits would begin the first day of the month after the member attains normal retirement age.

The TPAF and PERS provides for specified medical benefits for members who retire after achieving 25 years of qualified service, as defined, or under the disability provisions of the System. Members are always fully vested for their own contributions and, after three years of service credit, become vested for 2% of related interest earned on the contributions. In the case of death before retirement, members' beneficiaries are entitled to full interest credited to the members' accounts.

Significant Legislation - Chapter 78, P.L. 2011, effective June 28, 2011, made various changes to the manner in which the Public Employees' Retirement System (PERS) and the Police and Firemen's Retirement System (PFRS) operate and to the benefit provisions of those systems.

Chapter 78's provisions impacting employee pension and health benefits include:

- New members of the PERS hired on or after June 28, 2011, (Tier 5 members), will need 30 years of creditable service and age 65 for receipt of the early retirement benefit without a reduction of 1/4 of 1% for each month that the member is under age 65.
- The eligibility age to qualify for a service retirement in PERS is increased from age 63 to 65 for Tier 5 members.
- The annual benefit under special retirement for new PFRS members enrolled after June 28, 2011, (Tier 3 members), will be 60% instead of 65% of the member's final compensation plus 1% for each year of creditable service over 25 years but not to exceed 30 years.

AVON-BY-THE-SEA SCHOOL DISTRICT
NOTES TO THE FINANCIAL STATEMENTS (CONTINUED)
JUNE 30, 2019

NOTE 11. PENSION PLANS (CONT'D)

Significant Legislation (Cont'd)

- Increases in active member contribution rates. PERS active member rates increase from 5.5% of annual compensation to 6.5% plus an additional 1% phased-in over 7 years; PFRS active member rate increase from 8.5% to 10%. For fiscal year 2012, the member contribution rates increased in October 2011. The phase-in of the additional incremental member contribution rates for PES members will take place in July of each subsequent fiscal year.
- The payment of automatic cost-of-living adjustment (COLA) additional increases to current and future retirees and beneficiaries is suspended until reactivated as permitted by this law.
- New employee contribution requirements towards the cost of employer-provided health benefit coverage. Employees are required to contribute a certain percentage of the cost of coverage. The rate of contribution is determined based on the employee's annual salary and the selected level of coverage. The increased employee contributions will be phased in over a 4-year period for those employed prior to Chapter 78's effective date with a minimum contribution required to be at least 1.5% of salary.
- In addition, this new legislation changes the method for amortizing the pension systems' unfunded accrued liability (from a level percent of pay method to a level dollar of pay).

Contribution Requirements - The contribution policy is set by N.J.S.A. 43:15A, Chapter 62, P.L. of 1994, Chapter 115, P.L. of 1997 (PERS) and N.J.S.A. 18:66 (TPAF) requires contributions by active members and contributing employers. Plan member and employer contributions may be amended by State of New Jersey legislation. TPAF and PERS provide for employee contributions of 7.50% of employees' annual compensation, as defined. Employers are required to contribute at an actuarially determined rate in both TPAF and PERS. The current TPAF rate is 7.50% and the PERS rate is 7.50% of covered payroll.

The actuarially determined contribution includes funding for cost-of-living adjustments, noncontributory death benefits, and post-retirement medical premiums. Under current statute the District is a non-contributing employer of the TPAF.

Three-Year Trend Information for PERS

<u>Year</u> <u>Funding</u>	<u>Annual</u> <u>Pension</u> <u>Cost (APC)</u>	<u>Percentage</u> <u>of APC</u> <u>Contributed</u>	<u>Net</u> <u>Pension</u> <u>Liability</u>
6/30/19	24,199	100%	-
6/30/18	22,916	100%	-
6/30/17	23,941	100%	-

Three-Year Trend Information for TPAF (Paid on-behalf of the District)

<u>Year</u> <u>Funding</u>	<u>Annual</u> <u>Pension</u> <u>Cost (APC)</u>	<u>Percentage</u> <u>of APC</u> <u>Contributed</u>	<u>Net</u> <u>Pension</u> <u>Liability</u>
6/30/19	250,307	100%	-
6/30/18	177,933	100%	-
6/30/17	111,876	100%	-

During the fiscal year ended June 30, 2019, the State of New Jersey did contribute \$113,539.00 to the TPAF for post-retirement medical benefits and \$388.00 for long-term disability insurance on behalf of the District. Also, in accordance with N.J.S.A. 18A:66-66 the State of New Jersey reimbursed the District \$102,693.60 during the year ended June 30, 2019, for the employer's share of social security contributions for TPAF members, as calculated on their base salaries. The PERS amounts have been included in the fund-based statements as pension expense and the TPAF on-behalf amounts have been included in the fund-based statements as revenues and expenditures. The PERS and TPAF amounts have been modified and included in the District-wide financial statements in accordance with GASB Statement No. 68.

AVON-BY-THE-SEA SCHOOL DISTRICT
NOTES TO THE FINANCIAL STATEMENTS (CONTINUED)
JUNE 30, 2019

NOTE 12. OTHER POST-RETIREMENT BENEFITS

General Information about the OPEB Plan

Plan Description and Benefits Provided

The State provides post-retirement medical (PRM) benefits for certain State and other retired employees meeting the service credit eligibility requirements. In Fiscal Year 2018, the State paid PRM benefits for 148,401 State and local retirees.

The State funds post-retirement medical benefits on a “pay-as-you-go” basis, which means that the State does not pre-fund, or otherwise establish a reserve or other pool of assets against the PRM expenses that the State may incur in future years. For Fiscal Year 2018, the State contributed \$1.909 billion to pay for pay-as-you-go PRM benefit costs incurred by covered retirees. The increase in the State’s pay-as-you-go contribution between Fiscal Year 2017 and Fiscal Year 2018 is attributed to rising health care costs, an increase in the number of participants qualifying for State-paid PRM benefits at retirement and larger fund balance utilization in Fiscal Year 2017 than in Fiscal Year 2018. The Fiscal Year 2019 Appropriations Act includes \$1.921 billion as the State’s contribution to fund pay-as-you-go PRM costs.

In accordance with the provisions of GASB Statement No. 75, Accounting and Financial Reporting for Postemployment Benefits Other Than Pensions, the State is required to quantify and disclose its obligations to pay Other Postemployment Benefits (OPEB) to retired plan members. This new standard supersedes the previously issued guidance, GASB Statement No. 45, Accounting and Financial Reporting for Postemployment Benefits Other Than Pensions, effective for Fiscal Year 2018. The State is now required to accrue a liability in all instances where statutory language names the State as the legal obligor for benefit payments. As such, the Fiscal Year 2017 total State OPEB liability to provide these benefits has been re-measured to \$97.1 billion, an increase of \$60.6 billion or 166 percent from the previous year’s \$36.5 billion liability booked in accordance with GASB Statement No. 45. For Fiscal Year 2018, the total OPEB liability for the State is \$90.5 billion, a decrease of \$6.6 billion or 7 percent from the re-measured total OPEB liability in Fiscal Year 2017.

The School Employees Health Benefits Program (SEHBP) Act is found in New Jersey Statutes Annotated, Title 52, Article 17.25 et. seq. Rules governing the operation and administration of the program are found in Title 17, Chapter 9 of the New Jersey Administrative Code.

No assets are accumulated in a trust that meets the criteria in paragraph 4 of GASB Statement No. 75.

Employees covered by benefits terms

TPAF participant retirees:

As of June 30, 2018, there were 112,966 retirees receiving post-retirement medical benefits, and the State contributed \$1.39 billion on their behalf.

PERS participant retirees:

The State paid \$238.9 million toward Chapter 126 benefits for 20,913 eligible retired members in Fiscal Year 2018.

Total Nonemployer OPEB Liability

The State, a nonemployer contributing entity, is the only entity that has a legal obligation to make employer contributions to OPEB for qualified retired PERS and TPAF participants. The District’s proportionate share percentage determined under paragraphs 193 and 203 through 205 of GASB Statement No. 75 is zero percent. Accordingly, the District did not recognize any portion of the collective net OPEB liability on the Statement of Net Position. Accordingly, the following OPEB liability note information is reported at the State’s level and is not specific to the board of education.

AVON-BY-THE-SEA SCHOOL DISTRICT
NOTES TO THE FINANCIAL STATEMENTS (CONTINUED)
JUNE 30, 2019

NOTE 12. OTHER POST-RETIREMENT BENEFITS (CONT'D)

General Information about the OPEB Plan (Cont'd)

Total Nonemployer OPEB Liability (Cont'd)

Actuarial Assumptions and Other Inputs

The actuarial assumptions vary for each plan member depending on the pension plan the member is enrolled in. This actuarial valuation used the following actuarial assumptions, applied to all periods in the measurement.

Inflation Rate	2.50%		
	<u>TPAF/ABP</u>	<u>PERS</u>	<u>PFRS</u>
Salary increases:			
Through 2026	1.55 - 4.55% based on years of service	2.15 - 4.15% based on age	2.10 - 8.98% based on age
Thereafter	2.00 - 5.45% based on years of service	3.15 - 5.15% based on age	3.10 - 9.98% based on age

Pre-retirement mortality rates were based on the RP-2014 Headcount-Weighted Healthy Employee Male/Female Mortality Table with fully generational mortality improvement projections from the central year using MP-2017 scale. Post-retirement mortality rates were based on the RP-2014 Headcount-Weighted Health Annuitant Male/Female mortality table with fully generational improvement projections from the central year using the MP-2017 scale. Disability mortality was based on the RP-2014 Headcount-Weighted Disabled Male/Female mortality table with fully generational improvement projections from the central year using the MP-2017 scale.

The actuarial assumptions used in the June 30, 2017 valuations were based on the results of actuarial experience studies for the periods July 1, 2012 - June 30, 2015, July 1, 2011 - June 30, 2014, and July 1, 2010 - June 30, 2013 for TPAF, PFRS and PERS, respectively.

Health Care Trend Assumptions

For pre-Medicare preferred provider organization (PPO) and health maintenance organization (HMO) medical benefits, the trend rate is initially 5.8% and decreases to a 5.0% long-term trend rate after eight years. For self-insured post-65 PPO and HMO medical benefits, the trend rate is 4.5%. For prescription drug benefits, the initial trend rate is 8.0% decreasing to a 5.0% long-term trend rate after seven years. For the Medicare Part B reimbursement, the trend rate is 5.0%. The Medicare Advantage trend rate is 4.5% and will continue in all future years.

Discount Rate

The discount rate for June 30, 2018 was 3.87%. This represents the municipal bond rate as chosen by the State of New Jersey Division of Pensions and Benefits. The source is the Bond Buyer GO 20-Bond Municipal Bond Index, which includes tax-exempt general obligation municipal bonds with an average rating of AA/Aa or higher.

AVON-BY-THE-SEA SCHOOL DISTRICT
NOTES TO THE FINANCIAL STATEMENTS (CONTINUED)
JUNE 30, 2019

NOTE 12. OTHER POST-RETIREMENT BENEFITS (CONT'D)

General Information about the OPEB Plan (Cont'd)

Total Nonemployer OPEB Liability (Cont'd)

Changes in the State's Total OPEB Liability

	Total OPEB Liability
Balance at June 30, 2017	\$53,639,841,858
Changes for Year:	
Service Cost	1,984,642,729
Interest on the Total OPEB Liability	1,970,236,232
Differences Between Expected Actual Experience	(5,002,065,740)
Changes of Assumptions	(5,291,448,855)
Gross Benefit Payments by the State	(1,232,987,247)
Contributions from Members	42,614,005
Net Changes	(7,529,008,876)
Balance at June 30, 2018	\$46,110,832,982

Changes of assumptions reflect a change in the discount rate from 3.58 percent in 2017 to 3.87 percent in 2018.

Sensitivity of the total OPEB liability to changes in the discount rate

The following presents the total OPEB liability of the State for school board retirees, as well as what the State's total OPEB liability for school board would be if it were calculated using a discount rate that is 1-percentage-point lower or 1-percentage-point higher than the current discount rate:

	June 30, 2018		
	1% Decrease (2.87%)	Discount Rate (3.87%)	1% Increase (4.87%)
Total OPEB Liability (School Retirees)	\$54,512,391,175	\$46,110,832,982	\$39,432,461,316

Sensitivity of the total OPEB liability to changes in the healthcare cost trend rates

The following presents the total OPEB liability of the State, as well as what the State's total OPEB liability would be if it were calculated using healthcare cost trend rates that are 1-percentage-point lower or 1-percentage-point higher than the current healthcare cost trend rates:

	June 30, 2018		
	1% Decrease	Healthcare Cost Trend Rate	1% Increase
Total OPEB Liability (School Retirees)	\$38,113,289,045	\$46,110,832,982	\$56,687,891,003

OPEB Expense and Deferred Outflows of Resources and Deferred Inflows of Resources Related to OPEB

For the year ended June 30, 2018, the board of education recognized OPEB expense of \$428,471 determined by the State as the total OPEB liability for benefits provided through a defined benefit OPEB plan that is not administered through a trust that meets the criteria in paragraph 4 of GASB Statement No. 75 and in which there is a special funding situation.

AVON-BY-THE-SEA SCHOOL DISTRICT
NOTES TO THE FINANCIAL STATEMENTS (CONTINUED)
JUNE 30, 2019

NOTE 12. OTHER POST-RETIREMENT BENEFITS (CONT'D)

General Information about the OPEB Plan (Cont'd)

Total Nonemployer OPEB Liability (Cont'd)

OPEB Expense and Deferred Outflows of Resources and Deferred Inflows of Resources Related to OPEB (Cont'd)

In accordance with GASB Statement No. 75, the Avon-By-The-Sea Board of Education's proportionate share of school retirees OPEB is zero, there is no recognition of the allocation of proportionate share of deferred outflows of resources and deferred inflows of resources. At June 30, 2018, the State reported deferred outflows of resources and deferred inflows of resources related to retired school employee's OPEB from the following sources:

	Deferred Outflows of Resources	Deferred Inflows of Resources
Differences Between Actual and Expected Experience Assumption Changes	-	(4,476,086,167)
Contributions Made in Fiscal Year Ending 2019 After June 30, 2018 Measurement Date	TBD	-
	\$1,190,373,242	\$(14,812,065,034)

Amounts reported as deferred outflows of resources and deferred inflows of resources related to retired school employee's OPEB will be recognized in OPEB expense as follows:

Year ended June 30:	
2019	(\$1,825,218,593)
2020	(\$1,825,218,593)
2021	(\$1,825,218,593)
2022	(\$1,825,218,593)
2023	(\$1,825,218,593)
Thereafter	(\$5,685,972,069)

NOTE 13. COMPENSATED ABSENCES

The District accounts for Compensated Absences (e.g. unused vacation, sick leave) as directed by Governmental Accounting Standards Board Statement No. 16 (GASB 16), Accounting for Compensated Absences. A liability for Compensated Absences attributable to services already rendered and not contingent on a specific event that is outside the control of the employer and employee is accrued as employees earn the rights to the benefits.

District employees are granted varying amounts of vacation and sick leave in accordance with the District's personnel policy. Upon termination, employees are paid for accrued vacation. The District's policy permits employees to accumulate unused sick leave and carry forward the full amount to subsequent years. Upon retirement, employees shall be paid by the District for the unused sick leave in accordance with the District's agreements with the various employee unions.

The entire liability for compensated absences is reported in the District-Wide Statements of Net Position in two components - the amount due within one year and the amount due in more than one year.

NOTE 14. DEFERRED COMPENSATION

The Board offers its employees a choice of various deferred compensation plans created in accordance with Internal Revenue Code Section 403(b). The plans, which are administered by the entity listed below, permits participants to defer a portion of their salary until future years. Amounts deferred under the plans are not available to employees until termination, retirement, death or unforeseeable emergency. The plan administrators are as follows:

AXA Equitable
Met Life
Equi-Vest

AVON-BY-THE-SEA SCHOOL DISTRICT
NOTES TO THE FINANCIAL STATEMENTS (CONTINUED)
JUNE 30, 2019

NOTE 15. RISK MANAGEMENT

The District is exposed to various risks of loss related to torts; theft of, damage to, and destruction of assets; errors and omissions; injuries to employees; and natural disasters.

Property and Liability Insurance - The District maintains commercial insurance coverage for property, liability and surety bonds. A complete schedule of insurance coverage can be found in the Statistical Section of this Comprehensive Annual Financial Report.

New Jersey Unemployment Compensation Insurance - The District has elected to fund its New Jersey Unemployment Compensation Insurance under the "Benefit Reimbursement Method". Under this plan, the District is required to reimburse the New Jersey Unemployment Trust Fund for benefits paid to its former employees and charged to its account with the State. The District is billed quarterly for amounts due to the State. The following is a summary of District contributions, employee contributions, reimbursements to the State for benefits paid and the ending balance of the District's expendable trust fund for the current and previous two years:

<u>Fiscal Year</u>	<u>Interest Earnings/ District Contributions</u>	<u>Employee Contributions</u>	<u>Amount Reimbursed</u>	<u>Ending Balance</u>
2018-2019	\$14,840.00	3,678.27	15,385.32	13,303.95
2017-2018	9,504.04	3,902.42	16,926.67	10,171.00
2016-2017	2,744.90	3,816.64	2,714.20	13,691.21

NOTE 16. INTERFUND RECEIVABLES, PAYABLES AND TRANSFERS

Interfund balances at June 30, 2019 consisted of the following:

	<u>Due From Other Funds</u>	<u>Due To Other Funds</u>
General Fund:		
Food Service Fund	40,668.89*	.00
Payroll Agency Fund	8,897.88*	.00
Debt Service Fund	26,274.03	.00
Special Revenue Fund	8,439.30	.00
Special Revenue Fund:		
General Fund	.00	8,439.30
Food Service Fund:		
General Fund	.00	40,668.89
Debt Service Fund:		
General Fund	.00	26,274.03
Payroll Agency Fund:		
General Fund	.00	8,897.88
Unemployment Compensation Trust	.00	6,200.97
Unemployment Compensation Trust:		
Payroll Agency Fund	<u>6,200.97</u>	<u>.00</u>
	<u>90,481.07</u>	<u>90,481.07</u>

All of the above interfunds represent short-term loans.

*Reported as a receivable on the District-Wide statement of net position.

As of June 30, 2019, the District's operating transfers consisted of the following:

<u>\$8,092.73</u>	From the General Fund to the Enterprise Fund to cover the deficit in operations.
-------------------	---

AVON-BY-THE-SEA SCHOOL DISTRICT
NOTES TO THE FINANCIAL STATEMENTS (CONTINUED)
JUNE 30, 2019

NOTE 17. INVENTORY

The District had no inventory at June 30, 2019.

NOTE 18. DEFICIT UNRESTRICTED NET POSITION

As reflected on Exhibit A-1, Statement of Net Position, a deficit in unrestricted net position of (\$242,657.13) existed as of June 30, 2019 for governmental activities. The primary causes of this deficit is the District not recognizing the receivable for the last two state aid payments and the recording of the long-term liability for compensated absences and net pension. In accordance with full accrual accounting, which is the basis of accounting for Exhibit A-1, Statement of Net Position, such liabilities are required to be recorded in the period in which they are incurred. However, in accordance with the rules and regulations that govern the District in the formulation of their annual budget (see Note 1), compensated absences and pension liabilities that relate to future services, or that are contingent on a specific event outside the control of the District and its employees, are funded in the period in which such services are rendered or in which such events take place. Therefore, this deficit in unrestricted net position for governmental activities does not indicate that the District is facing financial difficulties.

NOTE 19. SUBSEQUENT EVENTS

Management has reviewed and evaluated all events and transactions that occurred between June 30, 2019 and November 30, 2019, the date that the financial statements were available to be issued for possible disclosure and recognition in the financial statements, and no items have come to the attention of the District that would require disclosure.

REQUIRED SUPPLEMENTARY INFORMATION - PART II

BUDGETARY COMPARISON SCHEDULES

AVON-BY-THE-SEA SCHOOL DISTRICT
Budgetary Comparison Schedule
General Fund
Fiscal Year Ended June 30, 2019
(Unaudited)

	Original Budget	Budget Transfers	Final Budget	Actual	Variance Final to Actual Favorable (Unfavorable)
REVENUES:					
Local Sources:					
Local Tax Levy	3,537,142.00	0.00	3,537,142.00	3,537,142.00	0.00
Tuition from Individuals	101,592.00	0.00	101,592.00	105,740.00	4,148.00
Interest Earned on Capital Reserve Funds	400.00	0.00	400.00	4,118.42	3,718.42
Miscellaneous	5,300.00	0.00	5,300.00	13,534.10	8,234.10
Total - Local Sources	<u>3,644,434.00</u>	<u>0.00</u>	<u>3,644,434.00</u>	<u>3,660,534.52</u>	<u>16,100.52</u>
State Sources:					
Transportation Aid	63,965.00	0.00	63,965.00	63,965.00	0.00
Special Education Categorical Aid	114,762.00	0.00	114,762.00	114,762.00	0.00
Security Aid	16,622.00	0.00	16,622.00	16,622.00	0.00
Extraordinary Special Education Costs Aid	10,000.00	9,570.00	19,570.00	19,570.00	0.00
Reimbursed Nonpublic School Transportation Costs Aid	0.00	2,212.00	2,212.00	2,212.00	0.00
TPAF - Pension Contributions (On-Behalf - Non-Budgeted)	0.00	0.00	0.00	250,307.00	250,307.00
TPAF - Post Retirement Medical Contrib. (On-Behalf - Non-Budgeted)	0.00	0.00	0.00	113,539.00	113,539.00
TPAF - LTD Insurance Contributions (On-Behalf - Non-Budgeted)	0.00	0.00	0.00	388.00	388.00
Reimbursed TPAF Social Security Contributions (Non-Budgeted)	0.00	0.00	0.00	102,693.60	102,693.60
Total State Sources	<u>205,349.00</u>	<u>11,782.00</u>	<u>217,131.00</u>	<u>684,058.60</u>	<u>466,927.60</u>
Total Revenues	<u>3,849,783.00</u>	<u>11,782.00</u>	<u>3,861,565.00</u>	<u>4,344,593.12</u>	<u>483,028.12</u>
EXPENDITURES:					
Current Expense:					
Regular Programs - Instruction:					
Kindergarten - Salaries of Teachers	99,119.00	1,559.90	100,678.90	100,453.90	225.00
Grades 1-5 - Salaries of Teachers	554,527.00	22,439.97	576,966.97	564,166.97	12,800.00
Grades 6-8 - Salaries of Teachers	434,119.00	36.40	434,155.40	433,050.40	1,105.00
Regular Programs - Home Instruction:					
Salaries of Teachers	2,500.00	(1,825.00)	675.00	675.00	0.00
Purchased Professional-Educational Services	0.00	1,953.95	1,953.95	1,055.57	898.38
Regular Programs - Undistributed Instruction:					
Other Salaries for Instruction	17,000.00	425.00	17,425.00	17,425.00	0.00
Purchased Technical Services	2,500.00	(1,531.14)	968.86	0.00	968.86
General Supplies	131,273.00	(42,869.91)	88,403.09	87,346.80	1,056.29
Other Objects	43,627.00	1,172.45	44,799.45	43,901.02	898.43
TOTAL REGULAR PROGRAMS - INSTRUCTION	<u>1,284,665.00</u>	<u>(18,638.38)</u>	<u>1,266,026.62</u>	<u>1,248,074.66</u>	<u>17,951.96</u>
Basic Skills/Remedial - Inst.					
Salaries of Teachers	43,450.00	0.00	43,450.00	29,025.00	14,425.00
General Supplies	0.00	186.18	186.18	184.68	1.50
Total Basic Skills/Remedial - Instr.	<u>43,450.00</u>	<u>186.18</u>	<u>43,636.18</u>	<u>29,209.68</u>	<u>14,426.50</u>
Bilingual Education - Inst.					
Salaries of Teachers	150.00	7.50	157.50	157.50	0.00
Total Bilingual Education - Inst.	<u>150.00</u>	<u>7.50</u>	<u>157.50</u>	<u>157.50</u>	<u>0.00</u>
School-Spon. Cocurricular Actvts. - Inst.					
Salaries	12,605.00	0.00	12,605.00	9,948.00	2,657.00
Other Objects	1,860.00	1,252.25	3,112.25	0.00	3,112.25
Total School-Spon. Cocurricular Actvts. - Inst.	<u>14,465.00</u>	<u>1,252.25</u>	<u>15,717.25</u>	<u>9,948.00</u>	<u>5,769.25</u>
School-Spon. Cocurricular Athletics - Inst.					
Salaries	22,000.00	364.00	22,364.00	22,364.00	0.00
Purchased Services (300-500 series)	7,941.00	0.00	7,941.00	4,598.00	3,343.00
Supplies and Materials	4,181.00	(364.00)	3,817.00	3,549.25	267.75
Other Objects	3,000.00	0.00	3,000.00	1,570.30	1,429.70
Total School-Spon. Cocurricular Athletics - Inst.	<u>37,122.00</u>	<u>0.00</u>	<u>37,122.00</u>	<u>32,081.55</u>	<u>5,040.45</u>

AVON-BY-THE-SEA SCHOOL DISTRICT

Budgetary Comparison Schedule

General Fund

Fiscal Year Ended June 30, 2019

(Unaudited)

	Original Budget	Budget Transfers	Final Budget	Actual	Variance Final to Actual Favorable (Unfavorable)
Expenditures (continued)					
Other Supplemental/At-Risk Programs - Instruction					
Salaries of Teachers	8,025.00	(3,776.98)	4,248.02	4,063.50	184.52
Salaries of Reading Specialists	43,160.00	524.99	43,684.99	43,684.99	0.00
General Supplies	500.00	2,921.77	3,421.77	1,846.76	1,575.01
Total Other Supplemental/At-Risk Programs - Instruction	51,685.00	(330.22)	51,354.78	49,595.25	1,759.53
TOTAL INSTRUCTION AND AT-RISK PROGRAMS	1,431,537.00	(17,522.67)	1,414,014.33	1,369,066.64	44,947.69
Undistributed Expenditures - Instruction:					
Tuition to Other LEAs Within the State - Regular	811,227.00	8,857.48	820,084.48	818,394.48	1,690.00
Tuition to Other LEAs Within the State - Special	229,935.00	17,605.31	247,540.31	199,731.11	47,809.20
Tuition to County Voc. School Dist. - Regular	13,850.00	12,970.00	26,820.00	26,820.00	0.00
Tuition to Private Schools for the Disabled - Within State	180,432.00	2,714.92	183,146.92	155,194.77	27,952.15
Total Undistributed Expenditures - Instruction:	1,235,444.00	42,147.71	1,277,591.71	1,200,140.36	77,451.35
Undistributed Expend. - Attend. & Social Work					
Salaries	34,155.00	0.00	34,155.00	32,031.29	2,123.71
Total Undistributed Expend. - Attend. & Social Work	34,155.00	0.00	34,155.00	32,031.29	2,123.71
Undist. Expend. - Health Services					
Salaries	73,072.00	(919.79)	72,152.21	69,775.00	2,377.21
Purchased Professional Services	3,500.00	1,568.00	5,068.00	4,900.00	168.00
Supplies and Materials	4,000.00	(668.00)	3,332.00	2,187.86	1,144.14
Other Objects	30.00	0.00	30.00	0.00	30.00
Total Undistributed Expenditures - Health Services	80,602.00	(19.79)	80,582.21	76,862.86	3,719.35
Undist. Expend. - Speech, OT, PT, & Related Services					
Salaries	44,994.00	0.00	44,994.00	44,352.00	642.00
Purchased Professional - Educational Services	0.00	1,442.00	1,442.00	1,442.00	0.00
Supplies and Materials	250.00	21.85	271.85	271.85	0.00
Total Undist. Exp. - Speech, OT, PT & Related Services	45,244.00	1,463.85	46,707.85	46,065.85	642.00
Undist. Expend. - Other Supp. Serv. Students - Extra. Serv.					
Salaries	17,425.00	0.00	17,425.00	2,137.50	15,287.50
Total Undist. Expend. - Other Supp. Serv. Students - Extra. Serv.	17,425.00	0.00	17,425.00	2,137.50	15,287.50
Undist. Expend. - Child Study Teams					
Salaries of Other Professional Staff	49,500.00	0.00	49,500.00	49,500.00	0.00
Salaries of Secretarial and Clerical Assistants	35,905.00	0.00	35,905.00	34,489.22	1,415.78
Other Salaries	89,213.00	(8,493.75)	80,719.25	55,718.25	25,001.00
Purchased Professional - Educational Services	25,000.00	10,743.75	35,743.75	35,743.75	0.00
Other Purchased Professional and Technical Services	2,500.00	0.00	2,500.00	107.14	2,392.86
Supplies and Materials	450.00	0.00	450.00	0.00	450.00
Other Objects	1,000.00	0.00	1,000.00	299.00	701.00
Total Undist. Expend. - Child Study Teams	203,568.00	2,250.00	205,818.00	175,857.36	29,960.64
Undist. Expend. - Improvement of Inst. Serv.					
Salaries of Supervisor of Instruction	49,500.00	0.00	49,500.00	49,500.00	0.00
Salaries of Other Professional Staff	2,500.00	0.00	2,500.00	0.00	2,500.00
Salaries of Secretarial and Clerical Assistants	9,758.00	0.00	9,758.00	7,758.39	1,999.61
Purchased Professional - Educational Services	16,000.00	(530.00)	15,470.00	5,500.00	9,970.00
Other Objects	1,700.00	530.00	2,230.00	2,230.00	0.00
Total Undist. Expend. - Improvement of Inst. Serv.	79,458.00	0.00	79,458.00	64,988.39	14,469.61
Undist. Expend. - Edu. Media Serv./Sch. Library					
Salaries	3,852.00	3,965.61	7,817.61	7,655.86	161.75
Salaries of Technology Coordinators	22,800.00	0.00	22,800.00	18,082.00	4,718.00
Purchased Professional and Technical Services	3,000.00	(1,000.00)	2,000.00	0.00	2,000.00
Supplies and Materials	3,500.00	(2,965.61)	534.39	430.01	104.38
Total Undist. Expend. - Edu. Media Serv./Sch. Library	33,152.00	0.00	33,152.00	26,167.87	6,984.13
Undist. Expend. - Instr. Staff Training Services					
Purchased Professional - Educational Services	0.00	2,000.00	2,000.00	2,000.00	0.00
Other Purchased Services (400-500 series)	5,000.00	0.00	5,000.00	3,087.10	1,912.90
Total Undist. Expend. - Instr. Staff Training Services	5,000.00	2,000.00	7,000.00	5,087.10	1,912.90

AVON-BY-THE-SEA SCHOOL DISTRICT
Budgetary Comparison Schedule
General Fund
Fiscal Year Ended June 30, 2019
(Unaudited)

	Original Budget	Budget Transfers	Final Budget	Actual	Variance Final to Actual Favorable (Unfavorable)
Expenditures (continued)					
Undist. Expend. - Supp. Serv. - General Admin.					
Salaries	141,950.00	0.00	141,950.00	141,950.00	0.00
General Admin. Salaries-Governance Staff (BOE Direct Reports Only)	2,200.00	0.00	2,200.00	2,200.00	0.00
Legal Services	4,500.00	1,329.50	5,829.50	5,829.50	0.00
Audit Fees	11,000.00	0.00	11,000.00	10,750.00	250.00
Purchased Technical Services	0.00	2,300.00	2,300.00	2,300.00	0.00
Communications/Telephone	8,000.00	(1,329.50)	6,670.50	5,921.07	749.43
Other Purchased Services (400-500 series)	3,500.00	0.00	3,500.00	1,980.98	1,519.02
General Supplies	750.00	0.00	750.00	42.88	707.12
Miscellaneous Expenditures	7,200.00	0.00	7,200.00	3,924.96	3,275.04
BOE Membership Dues and Fees	3,000.00	0.00	3,000.00	2,552.73	447.27
Total Undist. Expend. - Supp. Serv. - General Admin.	182,100.00	2,300.00	184,400.00	177,452.12	6,947.88
Undist. Expend.-Support Serv.-School Admin.					
Salaries of Other Professional Staff	14,929.00	0.00	14,929.00	14,929.00	0.00
Purchased Professional and Technical Services	250.00	0.00	250.00	0.00	250.00
Total Undist. Expend.-Support Serv.-School Adm.	15,179.00	0.00	15,179.00	14,929.00	250.00
Undistributed Expenditures - Central Services					
Salaries	44,238.00	0.00	44,238.00	44,238.00	0.00
Purchased Technical Services	250.00	(85.46)	164.54	0.00	164.54
Supplies and Materials	500.00	105.25	605.25	600.03	5.22
Miscellaneous Expenditures	500.00	0.00	500.00	227.00	273.00
Total Undistributed Expenditures - Central Services	45,488.00	19.79	45,507.79	45,065.03	442.76
Undist. Expend. -Required Maintenance for School Facilities					
Cleaning, Repair, and Maintenance Services	35,372.00	1,451.21	36,823.21	33,275.89	3,547.32
Other Objects	1,104.00	0.00	1,104.00	285.00	819.00
Total Undist. Expend. -Required Maintenance for School Facilities	36,476.00	1,451.21	37,927.21	33,560.89	4,366.32
Undist. Expend. - Custodial Services					
Salaries	77,197.00	822.25	78,019.25	75,882.74	2,136.51
Salaries of Non-Instructional Aides	11,593.00	0.00	11,593.00	7,748.33	3,844.67
Cleaning, Repair and Maintenance Services	16,500.00	(5,029.46)	11,470.54	4,855.42	6,615.12
Other Purchased Property Services	12,500.00	(4,354.30)	8,145.70	1,602.73	6,542.97
Insurance	28,291.00	0.00	28,291.00	24,869.73	3,421.27
General Supplies	18,000.00	0.00	18,000.00	14,434.66	3,565.34
Energy (Natural Gas)	30,000.00	0.00	30,000.00	14,296.62	15,703.38
Energy (Electricity)	40,000.00	0.00	40,000.00	33,749.15	6,250.85
Other Objects	3,000.00	0.00	3,000.00	258.00	2,742.00
Total Undist. Expend. - Custodial Services	237,081.00	(8,561.51)	228,519.49	177,697.38	50,822.11
Undist. Expend. - Care & Upkeep of Grounds					
Purchased Professional and Technical Services	3,000.00	0.00	3,000.00	1,402.06	1,597.94
Cleaning, Repair and Maintenance Services	1,250.00	0.00	1,250.00	1,045.00	205.00
Total Undist. Expend. - Care & Upkeep of Grounds	4,250.00	0.00	4,250.00	2,447.06	1,802.94
Undist. Expend. - Security					
Purchased Professional and Technical Services	1,000.00	2,756.00	3,756.00	3,756.00	0.00
Cleaning, Repair and Maintenance Services	500.00	0.00	500.00	0.00	500.00
General Supplies	500.00	0.00	500.00	0.00	500.00
Total Undist. Expend. - Security	2,000.00	2,756.00	4,756.00	3,756.00	1,000.00
Total Undist. Expend. - Oper. & Maint. Of Plant	279,807.00	(4,354.30)	275,452.70	217,461.33	57,991.37
Undist. Expend. - Student Transportation Serv.					
Sal. For Pup.Trans. (Bet. Home and School) - Regular	19,517.00	0.00	19,517.00	17,946.23	1,570.77
Contracted Services - Aid In Lieu of Payment for Non-Public Students	3,000.00	0.00	3,000.00	1,000.00	2,000.00
Contract Services (Other than Between Home & School)-Vendors	13,450.00	(113.19)	13,336.81	9,095.00	4,241.81
Contract Services - (Between Home and Sch.) - Joint Agrmts	14,697.00	0.00	14,697.00	13,137.33	1,559.67
Contr Serv (Regular Students) - ESCs & CTSAs	40,957.00	15,286.19	56,243.19	56,243.19	0.00
Contr Serv (Spl. Ed. Students) - ESCs & CTSAs	201,437.00	(54,747.94)	146,689.06	144,539.39	2,149.67
General Supplies	500.00	0.00	500.00	0.00	500.00
Transportation Supplies	1,500.00	0.00	1,500.00	0.00	1,500.00
Other Objects	3,500.00	(284.62)	3,215.38	141.50	3,073.88
Total Undist. Expend. - Student Transportation Serv.	298,558.00	(39,859.56)	258,698.44	242,102.64	16,595.80

AVON-BY-THE-SEA SCHOOL DISTRICT
Budgetary Comparison Schedule
General Fund
Fiscal Year Ended June 30, 2019
(Unaudited)

Exhibit C-1

	<u>Original Budget</u>	<u>Budget Transfers</u>	<u>Final Budget</u>	<u>Actual</u>	<u>Variance Final to Actual Favorable (Unfavorable)</u>
Expenditures (continued)					
Regular Programs - Instruction - Employee Benefits					
Other Retirement Contributions	3,000.00	666.54	3,666.54	3,332.04	334.50
Unemployment Benefits	12,500.00	2,276.34	14,776.34	14,776.34	0.00
Health Benefits	287,730.00	(23,245.50)	264,484.50	189,832.68	74,651.82
Tuition Reimbursement	19,000.00	0.00	19,000.00	15,441.80	3,558.20
Other Employee Benefits	400.00	1,902.50	2,302.50	2,177.50	125.00
Total Regular Programs - Instruction	322,630.00	(18,400.12)	304,229.88	225,560.36	78,669.52
Basic Skills/Remedial - Inst. - Employee Benefits					
Health Benefits	0.00	3,589.72	3,589.72	3,589.72	0.00
Total Basic Skills/Remedial - Instr.	0.00	3,589.72	3,589.72	3,589.72	0.00
Attendance and Social Work Services - Employee Benefits					
Health Benefits	26,940.00	0.00	26,940.00	13,902.28	13,037.72
Total Attendance and Social Work Services	26,940.00	0.00	26,940.00	13,902.28	13,037.72
Health Services - Employee Benefits					
Health Benefits	34,845.00	0.00	34,845.00	32,045.86	2,799.14
Total Health Services	34,845.00	0.00	34,845.00	32,045.86	2,799.14
Other Support Services - Students - Extraordinary Services -Employee Benefits					
Health Benefits	14,376.00	0.00	14,376.00	5,705.62	8,670.38
Total Support Services - Students - Extraordinary Services	14,376.00	0.00	14,376.00	5,705.62	8,670.38
Other Support Services - Child Study Team - Employee Benefits					
Health Benefits	72,384.00	0.00	72,384.00	64,259.21	8,124.79
Total Support Services - Child Study Team	72,384.00	0.00	72,384.00	64,259.21	8,124.79
Improvement of Instruction Services - Employee Benefits					
Health Benefits	30,736.00	0.00	30,736.00	29,996.90	739.10
Total Improvement of Instruction Services	30,736.00	0.00	30,736.00	29,996.90	739.10
Support Services - General Administration - Employee Benefits					
Health Benefits	27,506.00	0.00	27,506.00	19,737.40	7,768.60
Other Employee Benefits	2,500.00	488.04	2,988.04	1,457.86	1,530.18
Total Support Services - General Administration	30,006.00	488.04	30,494.04	21,195.26	9,298.78
Operation and Maintenance of Plant Services - Employee Benefits					
Health Benefits	13,794.00	0.00	13,794.00	12,786.58	1,007.42
Total Operation and Maintenance of Plant Services -	13,794.00	0.00	13,794.00	12,786.58	1,007.42
TOTAL ALLOCATED BENEFITS	545,711.00	(14,322.36)	531,388.64	409,041.79	122,346.85
UNALLOCATED BENEFITS					
Social Security Contributions	26,500.00	12,358.94	38,858.94	38,201.03	657.91
Other Retirement Contributions - PERS	25,062.00	0.00	25,062.00	24,468.00	594.00
Workmen's Compensation	21,000.00	2,918.00	23,918.00	23,563.30	354.70
TOTAL UNALLOCATED BENEFITS	72,562.00	15,276.94	87,838.94	86,232.33	1,606.61
On-Behalf TPAF Pension Contributions (Non-Budgeted)	0.00	0.00	0.00	250,307.00	(250,307.00)
On-Behalf TPAF Post Retirement Medical Contrib. (Non-Budgeted)	0.00	0.00	0.00	113,539.00	(113,539.00)
On-behalf TPAF LTD Insurance Contributions (Non-Budgeted)	0.00	0.00	0.00	388.00	(388.00)
Reimbursed TPAF Social Security Contributions (Non-Budgeted)	0.00	0.00	0.00	102,693.60	(102,693.60)
TOTAL ON-BEHALF CONTRIBUTIONS	0.00	0.00	0.00	466,927.60	(466,927.60)
TOTAL PERSONAL SERVICES - EMPLOYEE BENEFITS	618,273.00	954.58	619,227.58	962,201.72	(342,974.14)
TOTAL UNDISTRIBUTED EXPENDITURES	3,173,453.00	6,902.28	3,180,355.28	3,288,550.42	(108,195.14)
TOTAL GENERAL CURRENT EXPENSE	4,604,990.00	(10,620.39)	4,594,369.61	4,657,617.06	(63,247.45)

AVON-BY-THE-SEA SCHOOL DISTRICT
Budgetary Comparison Schedule
General Fund
Fiscal Year Ended June 30, 2019
(Unaudited)

	Original Budget	Budget Transfers	Final Budget	Actual	Variance Final to Actual Favorable (Unfavorable)
Expenditures (continued)					
CAPITAL OUTLAY					
Equipment:					
Grades 1-5	0.00	9,349.53	9,349.53	9,349.53	0.00
Undist. Expend. - Instruction	0.00	8,484.06	8,484.06	5,842.24	2,641.82
Undist. Expend. - Required Maint. for School Fac.	0.00	26,743.62	26,743.62	18,612.34	8,131.28
Undist. Expend. - Custodial Services	0.00	5,200.00	5,200.00	5,200.00	0.00
Undist. Expend. - Security	0.00	16,073.17	16,073.17	10,338.78	5,734.39
Total Equipment	<u>0.00</u>	<u>65,850.38</u>	<u>65,850.38</u>	<u>49,342.89</u>	<u>16,507.49</u>
Facilities Acquisition & Construction Services:					
Architectural/Engineering Services	20,000.00	(5,430.40)	14,569.60	3,000.00	11,569.60
Construction Services	155,000.00	(11,810.75)	143,189.25	6,730.89	136,458.36
Assessment for Debt Service on SDA Funding	54.00	4.00	58.00	54.00	4.00
Total Facilities & Construction Services	<u>175,054.00</u>	<u>(17,237.15)</u>	<u>157,816.85</u>	<u>9,784.89</u>	<u>148,031.96</u>
Interest Deposit to Capital Reserve	400.00	0.00	400.00	0.00	400.00
TOTAL CAPITAL OUTLAY	<u>175,454.00</u>	<u>48,613.23</u>	<u>224,067.23</u>	<u>59,127.78</u>	<u>164,939.45</u>
TOTAL EXPENDITURES	<u>4,780,444.00</u>	<u>37,992.84</u>	<u>4,818,436.84</u>	<u>4,716,744.84</u>	<u>101,692.00</u>
Excess (Deficiency) of Revenues Over (Under) Expenditures	<u>(930,661.00)</u>	<u>(26,210.84)</u>	<u>(956,871.84)</u>	<u>(372,151.72)</u>	<u>584,720.12</u>
Other Financing Sources (Uses):					
Operating Transfer In (Out):					
Transfer to Food Service Fund	(21,601.00)	(4,930.52)	(26,531.52)	(8,092.73)	18,438.79
Total Other Financing Sources (Uses):	<u>(21,601.00)</u>	<u>(4,930.52)</u>	<u>(26,531.52)</u>	<u>(8,092.73)</u>	<u>18,438.79</u>
Excess (Deficiency) of Revenues and Other Financing Sources Over (Under) Expenditures and Other Financing Uses	<u>(952,262.00)</u>	<u>(31,141.36)</u>	<u>(983,403.36)</u>	<u>(380,244.45)</u>	<u>603,158.91</u>
Fund Balance, July 1	1,964,063.81	0.00	1,964,063.81	1,964,063.81	0.00
Fund Balance, June 30	<u>1,011,801.81</u>	<u>(31,141.36)</u>	<u>980,660.45</u>	<u>1,583,819.36</u>	<u>603,158.91</u>
Recapitulation:					
Restricted Fund Balance:					
Excess Surplus - Designated for Subsequent Year's Expenditures				399,514.91	
Excess Surplus - Current Year				231,903.74	
Capital Reserve				456,848.98	
Tuition Reserve				92,242.00	
Assigned Fund Balance:					
Year-end Encumbrances				15,300.64	
Designated for Subsequent Year's Expenditures				116,227.09	
Unassigned Fund Balance				<u>271,782.00</u>	
				1,583,819.36	
Reconciliation to Governmental Funds Statements (GAAP):					
Last Two State Aid Payment not recognized on GAAP basis				(18,808.00)	
Fund Balance per Governmental Funds (GAAP)				<u>1,565,011.36</u>	

AVON-BY-THE-SEA SCHOOL DISTRICT
Budgetary Comparison Schedule
Special Revenue Fund
For the Fiscal Year Ended June 30, 2019
(Unaudited)

	<u>Original Budget</u>	<u>Budget Transfers</u>	<u>Final Budget</u>	<u>Actual</u>	<u>Variance Final to Actual</u>
REVENUES:					
Federal Sources	<u>62,671.00</u>	<u>20,901.00</u>	<u>83,572.00</u>	<u>79,937.76</u>	<u>3,634.24</u>
Total Revenues	<u>62,671.00</u>	<u>20,901.00</u>	<u>83,572.00</u>	<u>79,937.76</u>	<u>3,634.24</u>
EXPENDITURES:					
Instruction					
Salaries of Teachers	17,393.00	7,800.50	25,193.50	23,051.25	2,142.25
Other Purchased Services	32,689.00	(4,050.00)	28,639.00	28,639.00	.00
General Supplies	<u>4,089.00</u>	<u>2,520.00</u>	<u>6,609.00</u>	<u>6,030.01</u>	<u>578.99</u>
Total Instruction	<u>54,171.00</u>	<u>6,270.50</u>	<u>60,441.50</u>	<u>57,720.26</u>	<u>2,721.24</u>
Support Services					
Purchased Professional & Technical Services	8,500.00	13,972.50	22,472.50	21,667.50	805.00
Other Purchased Services	.00	643.00	643.00	550.00	93.00
Supplies and Materials	<u>.00</u>	<u>15.00</u>	<u>15.00</u>	<u>.00</u>	<u>15.00</u>
Total Support Services	<u>8,500.00</u>	<u>14,630.50</u>	<u>23,130.50</u>	<u>22,217.50</u>	<u>913.00</u>
Total Expenditures	<u>62,671.00</u>	<u>20,901.00</u>	<u>83,572.00</u>	<u>79,937.76</u>	<u>3,634.24</u>
Total Outflows	<u>62,671.00</u>	<u>20,901.00</u>	<u>83,572.00</u>	<u>79,937.76</u>	<u>3,634.24</u>
Excess (Deficiency) of Revenues Over (Under) Expenditures & Other Financing Sources (Uses)	<u>\$.00</u>	<u>.00</u>	<u>.00</u>	<u>.00</u>	<u>.00</u>

**NOTES TO THE REQUIRED SUPPLEMENTARY
INFORMATION - PART II**

AVON-BY-THE-SEA SCHOOL DISTRICT
Notes to Required Supplementary Information
Budget-to-GAAP Reconciliation
For the Fiscal Year Ended June 30, 2019
(Unaudited)

Note A - Explanation of Differences between Budgetary Inflows and Outflows and GAAP Revenues and Expenditures

	<u>General Fund</u>	<u>Special Revenue Fund</u>
Sources/inflows of resources		
Actual amounts (budgetary) "revenues" from the budgetary comparison schedules	4,344,593.12	79,937.76
Difference - budget to GAAP:		
Grant accounting budgetary basis differs from GAAP in that encumbrances are recognized as expenditures, and the related revenue is recognized.		
Encumbrances, June 30, 2018	.00	5.31
Encumbrances, June 30, 2019	(.00)	(.00)
State aid payments recognized for GAAP statements in the current year, previously recognized for budgetary purposes.	18,244.00	.00
State aid payment recognized for budgetary purposes, not recognized for GAAP statements until the subsequent year.	<u>(18,808.00)</u>	<u>(.00)</u>
Total revenues as reported on the statement of revenues, expenditures and changes in fund balances - governmental funds.	<u>4,344,029.12</u>	<u>79,943.07</u>
Uses/outflows of resources		
Actual amounts (budgetary basis) "total outflows" from the budgetary comparison schedule	4,716,744.84	79,937.76
Differences - budget to GAAP:		
Encumbrances for supplies and equipment ordered but not received are reported in the year the order is placed for budgetary purposes, but in the year the supplies are received for financial reporting purposes.		
Encumbrances, June 30, 2018	.00	5.31
Encumbrances, June 30, 2019	<u>(.00)</u>	<u>(.00)</u>
Total expenditures as reported on the statement of revenues, expenditures, and changes in fund balances - governmental funds.	<u>\$4,716,744.84</u>	<u>79,943.07</u>

**REQUIRED SUPPLEMENTARY
INFORMATION - PART III**

AVON-BY-THE-SEA SCHOOL DISTRICT
Schedule of the District's Proportionate Share of the Net Position Liability - PERS
Last Ten Fiscal Years*
(Unaudited)

Public Employees' Retirement System (PERS)

	<u>2019</u>	<u>2018</u>	<u>2017</u>	<u>2016</u>	<u>2015</u>	<u>2014</u>
District's proportionate share of the net pension liability (asset)	0.0024328503%	0.0024736796%	0.0026775532%	0.0020623874%	0.0020651744%	0.0026992105%
District's proportionate share of the net pension liability (asset)	\$ 479,016	\$ 575,833	\$ 793,014	\$ 462,965	\$ 386,657	\$ 515,873
District's covered-employee payroll	\$145,665	\$173,201	\$159,675	\$147,579	\$134,487	\$171,349
District's proportionate share of the net pension liability (asset) as a percentage of its covered-employee payroll	328.85%	332.47%	496.64%	313.71%	287.51%	301.07%
Plan fiduciary net position as a percentage of the total pension liability (local)	53.60%	48.10%	40.14%	47.93%	52.08%	48.72%

* Until a full ten year trend is compiled, information will be presented for those years for which information is available.

AVON-BY-THE-SEA SCHOOL DISTRICT
Schedule of District's Contribution - PERS
Last Ten Fiscal Years*
(Unaudited)

Public Employees' Retirement System (PERS)

	<u>2019</u>	<u>2018</u>	<u>2017</u>	<u>2016</u>	<u>2015</u>	<u>2014</u>
Contractually required contribution	\$ 24,199	\$ 22,916	\$ 23,941	\$ 17,731	\$ 17,025	\$ 20,338
Contribution in relation to the contractually required contribution	<u>(24,199)</u>	<u>(22,916)</u>	<u>(23,941)</u>	<u>(17,731)</u>	<u>(17,025)</u>	<u>(20,338)</u>
Contribution deficiency (excess)	<u>-</u>	<u>-</u>	<u>-</u>	<u>-</u>	<u>-</u>	<u>-</u>
District's covered-employee payroll	\$ 145,665	\$ 173,201	\$ 159,675	\$ 147,579	\$ 134,487	\$ 171,349
Contributions as a percentage of covered-employee payroll	16.61%	13.23%	14.99%	12.01%	12.66%	11.90%

* Until a full ten year trend is compiled, information will be presented for those years for which information is available.

AVON-BY-THE-SEA SCHOOL DISTRICT
Schedule of the District's Proportionate Share of the Net Pension Liability - TPAF
Last Ten Fiscal Years*
(Unaudited)

Teachers' Pension and Annuity Fund (TPAF)

	<u>2019</u>	<u>2018</u>	<u>2017</u>	<u>2016</u>	<u>2015</u>	<u>2014</u>
District's proportion of the net pension liability (asset) **	N/A	N/A	N/A	N/A	N/A	N/A
District's proportionate share of the net pension liability (asset) **	N/A	N/A	N/A	N/A	N/A	N/A
State's proportionate share of the net pension liability (asset) associated with the District	\$ 7,504,547	\$ 6,706,100	\$ 9,082,205	\$ 7,637,426	\$ 6,121,502	\$ 6,066,520
Total	<u>\$ 7,504,547</u>	<u>\$ 6,706,100</u>	<u>\$ 9,082,205</u>	<u>\$ 7,637,426</u>	<u>\$ 6,121,502</u>	<u>\$ 6,066,520</u>
District's covered-employee payroll	\$ 1,398,636	\$ 1,369,299	\$ 1,181,904	\$ 1,183,115	\$ 1,244,950	\$ 1,200,702
District's proportionate share of the net pension liability (asset) as a percentage of its covered-employee payroll	N/A	N/A	N/A	N/A	N/A	N/A
Plan fiduciary net position as a percentage of the total pension liability	26.49%	25.41%	22.33%	28.71%	33.64%	33.76%

* Until a full ten year trend is compiled, information will be presented for those years for which information is available.

** Note: TPAF is a special funding situation as defined by GASB Statement No. 68 in which the State of New Jersey is 100% responsible for contributions to the plan. Since the District (employer) does not contribute directly to the plan there is no net pension liability to report in the financial statements of the District.

AVON-BY-THE-SEA SCHOOL DISTRICT
Schedule of Changes in District's Proportionate Share of State Total OPEB Liability and Related Ratios
Last Ten Fiscal Years*
(Unaudited)

	<u>2019</u>	<u>2018</u>
State's proportion of the net OPEB liability (asset) associated with the District	0.01%	0.01%
District's proportionate share of the net OPEB liability (asset) **	N/A	N/A
State's proportionate share of the net OPEB liability (asset) associated with the District	<u>\$ 6,834,533</u>	<u>\$ 7,131,853</u>
Total	<u>\$ 6,834,533</u>	<u>\$ 7,131,853</u>
Plan fiduciary net position as a percentage of the total OPEB liability (local)	0.00%	0.00%
Total OPEB Liability		
Service Cost	\$250,410	\$301,466
Interest Cost	243,616	209,753
Differences Between Expected and Actual Experiences	659,302	-
Changes of Assumptions	(784,297)	(852,957)
Member Contributions	6,316	5,665
Gross Benefit Payments	<u>(182,753)</u>	<u>(153,841)</u>
Net Change in Total OPEB Liability	192,594	(489,914)
Total OPEB Liability - Beginning	<u>6,641,939</u>	<u>7,131,853</u>
Total OPEB Liability - Ending	<u>\$ 6,834,533</u>	<u>\$ 6,641,939</u>
District's Covered-Employee Payroll	\$ 1,544,301	\$ 1,542,500
District's Proportionate Share of the Total OPEB Liability as a Percentage of its Covered-Employee Payroll	0.00%	0.00%

* Until a full ten year trend is compiled, information will be presented for those years for which information is available.

** Note: OPEB is a special funding situation as defined by GASB Statement No. 75 in which the State of New Jersey is 100% responsible for contributions to the plan. Since the District (employer) does not contribute directly to the plan there is no net OPEB liability to report in the financial statements of the District.

**NOTES TO THE REQUIRED SUPPLEMENTARY
INFORMATION - PART III**

AVON-BY-THE-SEA SCHOOL DISTRICT
NOTES TO THE REQUIRED SUPPLEMENTARY INFORMATION - PART III
PENSION AND OTHER POST-EMPLOYMENT BENEFITS (OPEB) SCHEDULES
JUNE 30, 2019

Teachers' Pension and Annuity Fund (TPAF)

Pension Schedules:

Changes of benefit terms.

There were none.

Changes of assumptions.

The discount rate changed from 4.25% as of June 30, 2017 to 4.86% as of June 30, 2018.

Public Employees' Retirement System (PERS)

Pension Schedules:

Changes of benefit terms.

There were none.

Changes of assumptions.

The discount rate changed from 5.00% as of June 30, 2017 to 5.66% as of June 30, 2018.

Other Post-Employment Benefits

OPEB Schedules:

Changes of benefit terms.

There were none.

Changes of assumptions.

The discount rate changed from 3.58% as of June 30, 2017 to 3.87% as of June 30, 2018.

OTHER SUPPLEMENTARY INFORMATION

**SPECIAL REVENUE FUND
DETAIL STATEMENTS**

The Special Revenue Fund is used to account for the proceeds of specific revenue sources (other than expendable trusts or major capital projects) that are legally restricted to expenditures for specific purposes.

AVON-BY-THE-SEA SCHOOL DISTRICT
Special Revenue Fund
Combining Schedule of Program Revenues and Expenditures
Budgetary Basis
For the Fiscal Year Ended June 30, 2019

	<u>I.D.E.A. - Part B</u>		<u>No Child Left Behind</u>			
	<u>Basic</u>	<u>Preschool</u>	<u>Title I Part A</u>	<u>Title II Part A</u>	<u>Title IV Part A</u>	<u>Totals</u>
REVENUES:						
Federal Sources	<u>36,438.00</u>	<u>1,111.00</u>	<u>30,928.75</u>	<u>4,000.00</u>	<u>7,460.01</u>	<u>79,937.76</u>
Total Revenues	<u>36,438.00</u>	<u>1,111.00</u>	<u>30,928.75</u>	<u>4,000.00</u>	<u>7,460.01</u>	<u>79,937.76</u>
EXPENDITURES:						
Instruction:						
Salaries	7,537.50	.00	15,513.75	.00	.00	23,051.25
Other Purchased Services	27,528.00	1,111.00	.00	.00	.00	28,639.00
General Supplies	<u>.00</u>	<u>.00</u>	<u>2,120.00</u>	<u>.00</u>	<u>3,910.01</u>	<u>6,030.01</u>
Total Instruction	<u>35,065.50</u>	<u>1,111.00</u>	<u>17,633.75</u>	<u>.00</u>	<u>3,910.01</u>	<u>57,720.26</u>
Support Services:						
Purchased Professional and Technical Services	1,372.50	.00	13,295.00	4,000.00	3,000.00	21,667.50
Other Purchased Services	<u>.00</u>	<u>.00</u>	<u>.00</u>	<u>.00</u>	<u>550.00</u>	<u>550.00</u>
Total Support Services	<u>1,372.50</u>	<u>.00</u>	<u>13,295.00</u>	<u>4,000.00</u>	<u>3,550.00</u>	<u>22,217.50</u>
Total Expenditures	<u>36,438.00</u>	<u>1,111.00</u>	<u>30,928.75</u>	<u>4,000.00</u>	<u>7,460.01</u>	<u>79,937.76</u>
Excess (Deficiency) of Revenues Over (Under) Expenditures	<u>\$.00</u>	<u>.00</u>	<u>.00</u>	<u>.00</u>	<u>.00</u>	<u>.00</u>

FIDUCIARY FUNDS DETAIL STATEMENTS

Fiduciary Funds are used to account for funds received by the school district for a specific purpose.

Agency Funds are used to account for assets held by the school district as an agent for individuals, private organizations, other governments and/or other funds.

Payroll Fund - This agency fund is used to account for the payroll transactions of the school district.

AVON-BY-THE-SEA SCHOOL DISTRICT
Combining Statement of Fiduciary Net Position
Fiduciary Funds
June 30, 2019

	<u>Unemployment Compensation Trust</u>	<u>Agency Fund</u>	<u>Totals</u>
ASSETS:			
Cash and Cash Equivalents	7,102.98	22,990.67	30,093.65
Accounts Receivable:			
Payroll Taxes	.00	302.96	302.96
Interfunds Receivable	<u>6,200.97</u>	<u>.00</u>	<u>6,200.97</u>
Total Assets	<u>13,303.95</u>	<u>23,293.63</u>	<u>36,597.58</u>
LIABILITIES:			
Payroll Deductions and Withholdings	.00	8,194.78	8,194.78
Interfunds Payable	<u>.00</u>	<u>15,098.85</u>	<u>15,098.85</u>
Total Liabilities	<u>.00</u>	<u>23,293.63</u>	<u>23,293.63</u>
NET POSITION:			
Held in Trust for Unemployment Claims and Other Purposes	<u>13,303.95</u>		<u>13,303.95</u>
Total Net Position	<u>\$13,303.95</u>		<u>13,303.95</u>

AVON-BY-THE-SEA SCHOOL DISTRICT
Combining Statement of Changes in Fiduciary Net Position
Fiduciary Funds
For the Fiscal Year Ended June 30, 2019

	<u>Unemployment Compensation Trust</u>	<u>Totals</u>
ADDITIONS:		
Contribution:		
Plan Members	3,678.27	3,678.27
Board	<u>14,776.34</u>	<u>14,776.34</u>
Total Contributions	<u>18,454.61</u>	<u>18,454.61</u>
Investment Earnings:		
Interest	<u>63.66</u>	<u>63.66</u>
Net Investment Earnings	<u>63.66</u>	<u>63.66</u>
Total Additions	<u>18,518.27</u>	<u>18,518.27</u>
DEDUCTIONS:		
Unemployment Claims	<u>15,385.32</u>	<u>15,385.32</u>
Total Deductions	<u>15,385.32</u>	<u>15,385.32</u>
Change in Net Position	3,132.95	3,132.95
Net Position - Beginning of Year	<u>10,171.00</u>	<u>10,171.00</u>
Net Position - End of Year	<u>\$13,303.95</u>	<u>13,303.95</u>

AVON-BY-THE-SEA SCHOOL DISTRICT
Schedule of Receipts and Disbursements
Payroll Agency Fund
For the Fiscal Year Ended June 30, 2019

	<u>Balance</u> <u>July 1, 2018</u>	<u>Cash</u> <u>Receipts</u>	<u>Cash</u> <u>Disbursements</u>	<u>Balance</u> <u>June 30, 2019</u>
Payroll Deductions and Withholdings	7,942.13	811,060.85	811,111.16	7,891.82
Interfunds	<u>14,059.21</u>	<u>5,823.47</u>	<u>4,783.83</u>	<u>15,098.85</u>
Totals	<u>\$22,001.34</u>	<u>816,884.32</u>	<u>815,894.99</u>	<u>22,990.67</u>

LONG-TERM DEBT SCHEDULES

The Long-Term Debt Schedules are used to reflect the outstanding principal balances of the general long-term liabilities of the school district. This includes serial bonds outstanding.

AVON-BY-THE-SEA SCHOOL DISTRICT
Long-Term Debt
Schedule of Bonds Payable
Year Ended June 30, 2019

<u>Issue</u>	<u>Date of Issue</u>	<u>Amount of Issue</u>	<u>Annual Maturities</u>		<u>Interest Rate</u>	<u>Balance July 1, 2018</u>	<u>Issued</u>	<u>Retired</u>	<u>Balance June 30, 2019</u>
			<u>Date</u>	<u>Amount</u>					
Monmouth County Improvement Authority Governmental Pooled Loan Refunding Revenue Bonds, Series 2015	June 25, 2015	\$5,930,000.00	02/01/2020	220,000.00	5.000%	<u>\$5,435,000.00</u>	<u>.00</u>	<u>210,000.00</u>	<u>5,225,000.00</u>
			02/01/2021	230,000.00	4.000%				
			02/01/2022	240,000.00	5.000%				
			02/01/2023	255,000.00	4.000%				
			02/01/2024	265,000.00	4.000%				
			02/01/2025	275,000.00	4.000%				
			02/01/2026	285,000.00	4.000%				
			02/01/2027	300,000.00	3.000%				
			02/01/2028	305,000.00	3.000%				
			02/01/2029	315,000.00	3.125%				
			02/01/2030	330,000.00	3.250%				
			02/01/2031	335,000.00	3.250%				
			02/01/2032	345,000.00	3.375%				
			02/01/2033	360,000.00	3.375%				
			02/01/2034	375,000.00	3.500%				
			02/01/2035	385,000.00	3.500%				
			02/01/2036	405,000.00	3.500%				

AVON-BY-THE-SEA SCHOOL DISTRICT
Budgetary Comparison Schedule
Debt Service Fund
For the Fiscal Year Ended June 30, 2019

	<u>Original Budget</u>	<u>Budget Transfers</u>	<u>Final Budget</u>	<u>Actual</u>	<u>Variance Positive (Negative) Final to Actual</u>
REVENUES:					
Local Sources:					
Local Tax Levy	315,362.00	.00	315,362.00	315,362.00	.00
State Sources:					
Debt Service Aid	<u>94,713.00</u>	<u>.00</u>	<u>94,713.00</u>	<u>94,713.00</u>	<u>.00</u>
Total Revenues	<u>410,075.00</u>	<u>.00</u>	<u>410,075.00</u>	<u>410,075.00</u>	<u>.00</u>
EXPENDITURES:					
Regular Debt Service:					
Interest	200,075.00	.00	200,075.00	200,069.07	5.93
Redemption of Principal	<u>210,000.00</u>	<u>.00</u>	<u>210,000.00</u>	<u>210,000.00</u>	<u>.00</u>
Total Expenditures	<u>410,075.00</u>	<u>.00</u>	<u>410,075.00</u>	<u>410,069.07</u>	<u>5.93</u>
Excess (Deficiency) of Revenues Over (Under) Expenditures	<u>.00</u>	<u>.00</u>	<u>.00</u>	<u>5.93</u>	<u>5.93</u>
Fund Balance - July 1	<u>.13</u>	<u>.00</u>	<u>.13</u>	<u>.13</u>	<u>.00</u>
Fund Balance - June 30	<u>\$.13</u>	<u>.00</u>	<u>.13</u>	<u>6.06</u>	<u>5.93</u>

STATISTICAL SECTION (Unaudited)

AVON-BY-THE-SEA SCHOOL DISTRICT
 NET ASSETS BY COMPONENT
 LAST TEN FISCAL YEARS
 (accrual basis of accounting)

UNAUDITED

	2010	2011	2012	2013	2014	2015	2016	2017	2018	2019
Governmental Activities										
Invested in capital assets, net of related debt	\$ 779,897	\$ 928,016	\$ 980,521	\$ 1,160,276	\$ 1,131,517	\$ 937,097	\$ 1,244,324	\$ 1,316,739	1,346,781	\$ 1,436,507
Restricted	797,289	511,258	752,787	1,072,274	1,476,350	1,689,555	1,914,820	1,968,105	1,575,508	1,187,530
Unrestricted	3,643	183,078	165,515	140,993	122,684	(162,561)	(305,949)	(369,919)	(248,195)	(242,657)
Total Governmental Activities Net Assets	\$ 1,580,829	\$ 1,622,352	\$ 1,898,823	\$ 2,373,543	\$ 2,730,551	\$ 2,464,091	\$ 2,853,195	\$ 2,914,925	2,674,094	\$ 2,381,380
Business-Type Activities										
Invested in capital assets, net of related debt	\$ 0	\$ 0	\$ 0	\$ 0	\$ 0	\$ 0	\$ 0	\$ 0	0	\$ 0
Restricted	0	0	0	0	0	0	0	0	0	0
Unrestricted	0	0	0	0	0	7	7	7	7	8
Total Business-Type Activities Net Assets	\$ 0	\$ 0	\$ 0	\$ 0	\$ 0	\$ 7	\$ 7	\$ 7	7	\$ 8
District Wide										
Invested in capital assets, net of related debt	\$ 779,897	\$ 928,016	\$ 980,521	\$ 1,160,276	\$ 1,131,517	\$ 937,097	\$ 1,244,324	\$ 1,316,739	1,346,781	\$ 1,436,507
Restricted	797,289	511,258	752,787	1,072,274	1,476,350	1,689,555	1,914,820	1,968,105	1,575,508	1,187,530
Unrestricted	3,643	183,078	165,515	140,993	122,684	(162,554)	(305,942)	(369,912)	(248,188)	(242,649)
Total District Assets	\$ 1,580,829	\$ 1,622,352	\$ 1,898,823	\$ 2,373,543	\$ 2,730,551	\$ 2,464,098	\$ 2,853,202	\$ 2,914,932	2,674,101	\$ 2,381,388

AVON-BY-THE-SEA SCHOOL DISTRICT
 CHANGES IN NET ASSETS
 LAST TEN FISCAL YEARS
 (accrual basis of accounting)

UNAUDITED

	2010	2011	2012	2013	2014	2015	2016	2017	2018	2019
Expenses										
Governmental Activities										
Instruction										
Regular	\$ 1,179,248	\$ 1,203,417	\$ 1,248,911	\$ 1,267,002	\$ 1,410,255	\$ 1,648,277	\$ 1,845,799	\$ 2,180,792	\$ 2,310,701	\$ 2,275,903
Special Education	235,809	212,103	177,370	102,934	0	0	0	0	0	0
Other Special Education	58,364	0	0	0	0	0	0	0	0	0
Vocational	0	0	0	0	0	0	0	0	0	0
Other Instruction	52,896	58,803	77,692	111,499	100,780	80,042	104,749	108,249	184,266	146,642
Nonpublic School Programs	0	0	0	0	0	0	0	0	0	0
Adult/Continuing Education Programs	0	0	0	0	0	0	0	0	0	0
Support Services:										
Tuition	748,713	777,896	914,687	851,445	722,083	760,873	804,853	802,773	942,418	1,200,140
Student & Instruction Related Services	349,548	406,647	510,006	605,251	589,807	659,583	671,871	717,044	803,026	832,033
School Administrative Services	27,678	74,322	125,796	38,475	24,422	37,761	14,296	18,354	17,939	17,502
General and Business Administrative Services	274,397	249,803	148,247	190,689	215,801	245,513	294,315	314,666	293,286	296,895
Plant Operations and Maintenance	246,527	238,063	221,999	226,575	238,117	251,312	264,727	277,470	254,543	238,848
Pupil Transportation	168,851	156,089	143,806	129,225	132,273	143,455	153,960	166,738	246,052	244,209
Business and Other Support Services	0	0	0	0	0	0	0	0	0	0
Special Schools	0	0	0	0	0	0	0	0	0	0
Charter Schools	0	0	0	0	0	0	0	0	0	0
Interest on long-term debt	289,104	283,226	276,991	270,546	263,579	405,202	148,810	216,161	206,194	198,030
Unallocated Depreciation	26,742	33,205	23,867	61,119	174,817	175,121	174,748	177,470	173,320	170,579
Unallocated Amortization	2,261	2,261	2,261	0	0	0	0	0	0	0
Total Governmental Activities Expenses	3,660,138	3,695,835	3,871,633	3,854,760	3,871,934	4,407,139	4,478,128	4,979,714	5,431,745	5,620,781
Business-type Activities										
Food Service	34,397	32,367	29,771	27,246	27,642	26,564	24,150	26,913	32,858	24,595
Child Care	0	0	0	0	0	0	0	0	0	0
Total Business-Type Activities Expense	34,397	32,367	29,771	27,246	27,642	26,564	24,150	26,913	32,858	24,595
Total District Expenses	\$ 3,694,535	\$ 3,728,202	\$ 3,901,404	\$ 3,882,006	\$ 3,899,576	\$ 4,433,703	\$ 4,502,278	\$ 5,006,627	\$ 5,464,603	\$ 5,645,376
Program Revenues										
Governmental Activities										
Charges for Services										
Instruction (tuition)	\$ 55,511	\$ 76,666	\$ 93,088	\$ 142,255	\$ 115,675	\$ 127,150	\$ 135,722	\$ 138,663	\$ 106,625	\$ 105,740
Pupil Transportation	14,499	14,400	19,600	7,782	2,594	0	0	0	0	0
Business and Other Support Services	0	0	0	0	0	0	0	0	0	0
Operating Grants and Contributions	0	0	0	0	0	0	58,768	73,111	72,163	79,943
Capital Grants and Contributions	0	0	0	0	0	0	0	0	0	0
Total Governmental Activities Program Revenues	70,010	91,066	112,688	150,037	118,269	127,150	194,490	211,774	178,788	185,683
Business-type Activities										
Charges for Services										
Food Service	15,465	12,941	9,829	6,829	7,587	6,910	4,914	5,241	7,338	9,157
Child Care	0	0	0	0	0	0	0	0	0	0
Operating Grants and Contributions	6,029	7,079	6,000	4,763	7,106	7,256	5,180	7,942	8,248	7,068
Capital Grants and Contributions	0	0	0	0	0	0	0	0	0	0
Total Business-Type Activities Program Revenues	21,494	20,020	15,829	11,592	14,693	14,166	10,094	13,183	15,586	16,225
Total District Program Revenues	\$ 91,504	\$ 111,086	\$ 128,517	\$ 161,629	\$ 132,962	\$ 141,316	\$ 204,584	\$ 224,957	\$ 194,374	\$ 201,908
Net (Expense)/Revenue										
Governmental Activities	\$ (3,590,128)	\$ (3,604,769)	\$ (3,758,945)	\$ (3,704,723)	\$ (3,753,665)	\$ (4,279,989)	\$ (4,283,638)	\$ (4,767,940)	\$ (5,252,957)	\$ (5,435,098)
Business-type Activities	(12,903)	(12,347)	(13,942)	(15,654)	(12,949)	(12,398)	(14,056)	(13,730)	(17,272)	(8,370)
Total District-Wide Net Expense	\$ (3,603,031)	\$ (3,617,116)	\$ (3,772,887)	\$ (3,720,377)	\$ (3,766,614)	\$ (4,292,387)	\$ (4,297,694)	\$ (4,781,670)	\$ (5,270,229)	\$ (5,443,468)

AVON-BY-THE-SEA SCHOOL DISTRICT
CHANGES IN NET ASSETS
LAST TEN FISCAL YEARS
(accrual basis of accounting)

UNAUDITED

	2010	2011	2012	2013	2014	2015	2016	2017	2018	2019
General Revenues and Other Changes in Net Assets										
Governmental Activities										
Property taxes levied for general purposes, net	\$ 3,016,113	\$ 3,116,758	\$ 3,179,083	\$ 3,226,769	\$ 3,226,769	\$ 3,267,084	\$ 3,305,649	\$ 3,371,035	\$ 3,438,424	\$ 3,537,142
Taxes Levied for Debt Service	310,263	31,760	330,011	328,885	331,576	330,030	319,913	320,514	298,837	315,362
Unrestricted Grants and Contributions	609,887	500,206	577,268	614,632	549,543	867,024	1,030,473	1,138,501	1,278,662	1,280,322
Payments in Lieu of Taxes	0	0	0	0	0	0	0	0	0	0
Investment Earnings	4,262	3,185	3,993	4,948	6,220	8,058	8,437	8,403	8,251	13,703
Miscellaneous Income	13,537	6,692	12,472	19,851	9,488	49,228	22,310	4,911	10,102	3,949
Transfers	(12,869)	(12,309)	(13,904)	(15,643)	(12,930)	(12,352)	(14,040)	(13,694)	(17,192)	(8,093)
Total Governmental Activities	3,941,193	3,646,292	4,088,923	4,179,442	4,110,666	4,509,072	4,672,742	4,829,670	5,017,084	5,142,385
Business-Type Activities										
Investment earnings	34	38	38	18	19	46	16	36	80	277
Transfers	12,869	12,309	13,904	15,643	12,930	12,352	14,040	13,694	17,192	8,093
Total Business-type Activities	12,903	12,347	13,942	15,661	12,949	12,398	14,056	13,730	17,272	8,370
Total District Wide	\$ 3,954,096	\$ 3,658,639	\$ 4,102,865	\$ 4,195,103	\$ 4,123,615	\$ 4,521,470	\$ 4,686,798	\$ 4,843,400	\$ 5,034,356	\$ 5,150,755
Change in Net Assets										
Governmental Activities	\$ 351,065	\$ 41,523	\$ 329,978	\$ 474,719	\$ 357,001	\$ 229,083	\$ 389,104	\$ 61,730	\$ (235,873)	\$ (292,713)
Business-Type Activities	0	0	0	7	0	0	0	0	0	0
Total District	\$ 351,065	\$ 41,523	\$ 329,978	\$ 474,726	\$ 357,001	\$ 229,083	\$ 389,104	\$ 61,730	\$ (235,873)	\$ (292,713)

Source: Borough of Avon-by-the-Sea School District Financial Records

AVON-BY-THE-SEA SCHOOL DISTRICT
 CHANGES IN FUND BALANCE, GOVERNMENTAL FUNDS
 LAST TEN FISCAL YEARS
 (modified accrual basis of accounting)

UNAUDITED

	2010	2011	2012	2013	2014	2015	2016	2017	2018	2019
General Fund										
Reserved	\$ 386,877	\$ 0	\$ 0	\$ 0	\$ 0	\$ 0	\$ 0	\$ 0	\$ 0	\$ 0
Unreserved	229,973	0	0	0	0	0	0	0	0	0
Restricted	0	456,808	706,476	1,063,053	1,467,943	1,681,147	1,883,862	1,937,146	1,568,493	1,180,509
Committed	0	0	0	0	0	0	0	0	0	0
Assigned	0	42,662	34,670	32,874	25,086	38,108	29,130	7,911	136,284	131,528
Unassigned	0	323,765	303,182	259,041	252,798	260,088	240,177	235,200	241,043	252,974
Total General fund	<u>\$ 616,850</u>	<u>\$ 823,235</u>	<u>\$ 1,044,328</u>	<u>\$ 1,354,968</u>	<u>\$ 1,745,827</u>	<u>\$ 1,979,343</u>	<u>\$ 2,153,169</u>	<u>\$ 2,180,257</u>	<u>\$ 1,945,820</u>	<u>\$ 1,565,011</u>
All Other Governmental Funds										
Reserved	\$ 133,985	\$ 0	\$ 0	\$ 0	\$ 0	\$ 0	\$ 0	\$ 0	\$ 0	\$ 0
Unreserved	369,374	0	0	0	0	0	0	0	0	0
Restricted	0	52,451	9,761	8,405	8,407	8,407	30,959	30,959	7,014	7,021
Committed	0	0	0	0	0	119,684	0	0	0	0
Assigned	0	2,000	36,550	0	0	0	0	0	0	0
Unassigned	0	0	0	0	0	0	0	0	0	0
Total All Other Governmental Funds	<u>\$ 503,359</u>	<u>\$ 54,451</u>	<u>\$ 46,311</u>	<u>\$ 8,405</u>	<u>\$ 8,407</u>	<u>\$ 128,091</u>	<u>\$ 30,959</u>	<u>\$ 30,959</u>	<u>\$ 7,014</u>	<u>\$ 7,021</u>

AVON-BY-THE-SEA SCHOOL DISTRICT
 CHANGES IN FUND BALANCE, GOVERNMENTAL FUNDS
 LAST TEN FISCAL YEARS
 (modified accrual basis of accounting)
 (Continued)

UNAUDITED

	2010	2011	2012	2013	2014	2015	2016	2017	2018	2019
Revenues										
Tax Levy	\$ 3,326,376	\$ 3,148,518	\$ 3,509,094	\$ 3,555,654	\$ 3,558,345	\$ 3,597,114	\$ 3,625,562	\$ 3,691,549	\$ 3,737,261	\$ 3,852,504
Tuition Charges	55,511	76,665	93,088	142,256	115,675	127,150	135,722	138,664	105,625	105,740
Interest Earnings	4,262	3,185	3,993	4,946	6,219	8,058	8,655	8,403	8,251	13,703
Miscellaneous	28,036	21,092	32,072	27,533	12,082	49,228	22,092	4,910	10,102	3,949
State Sources	549,226	433,268	491,322	546,505	504,430	557,145	656,574	567,976	684,336	778,208
Federal Sources	60,661	66,939	85,946	68,127	45,113	45,814	58,768	73,111	72,163	79,943
Total Revenue	4,024,072	3,749,667	4,215,515	4,345,123	4,241,864	4,384,509	4,507,373	4,484,613	4,618,738	4,834,047
Expenditures										
Instruction										
Regular Instruction	873,723	865,818	909,533	859,090	1,195,347	1,253,561	1,307,906	1,483,907	1,545,013	1,531,361
Special Education Instruction	147,946	136,222	108,922	62,808	0	0	0	0	0	0
Other Special Instruction	58,364	0	0	0	0	0	0	0	0	0
Vocational Education	0	0	0	0	0	0	0	0	0	0
Other Instruction	52,896	48,243	65,403	75,739	68,822	77,806	92,646	104,994	116,293	124,582
Nonpublic School Programs	0	0	0	0	0	0	0	0	0	0
Adult/Continuing Education Programs	0	0	0	0	0	0	0	0	0	0
Support Services:										
Tuition	748,713	777,896	914,687	851,445	722,083	760,873	804,853	802,773	942,418	1,200,140
Student & Instruction Related Services	288,099	321,056	391,081	480,736	536,078	523,937	566,717	523,671	609,040	597,326
School Administrative Services	20,285	51,060	99,533	26,895	14,900	15,124	13,770	15,762	14,610	14,929
General and Business Administrative Services	221,713	200,117	122,831	161,728	199,971	221,452	225,057	218,634	242,864	243,712
Plant Operations and Maintenance	227,109	213,371	198,472	200,437	235,415	248,431	236,102	254,501	247,223	230,248
Pupil Transportation	165,547	152,053	139,676	127,068	131,677	142,811	153,518	165,312	245,012	242,102
Employee Benefits	552,916	558,885	589,062	691,496	282,667	323,143	359,273	381,488	475,233	553,160
Special Schools	0	0	0	0	0	0	0	0	0	0
Bond Issuance Cost	0	0	0	0	0	0	0	0	0	0
Capital Outlay	291,361	224,876	20,334	91,496	54	22,670	248,860	81,714	3,989	59,128
Debt Service:										
Principal	135,000	145,000	150,000	155,000	165,000	170,000	270,000	195,000	205,000	210,000
Interest and Other Charges	291,023	285,285	279,123	272,748	266,160	410,089	137,937	216,075	208,275	200,069
Total Expenditures	4,074,695	3,979,882	3,988,657	4,056,746	3,838,074	4,169,897	4,416,639	4,443,831	4,854,970	5,206,757
Excess (Deficiency) of Revenues over (under) expenditures	(50,623)	(230,215)	226,858	288,377	403,790	214,612	90,734	40,782	(236,232)	(372,710)
Other Financing Sources										
Proceeds from borrowing	0	0	0	0	0	0	0	0	0	0
Proceeds from refunding	0	0	0	0	0	150,941	0	0	0	0
Capital Leases	0	0	0	0	0	0	0	0	0	0
Transfers In	1,692	589	59	35	0	0	0	0	0	0
Transfers Out	(14,561)	(12,898)	(13,963)	(15,678)	(12,930)	(12,352)	(14,041)	(13,694)	(17,192)	(6,093)
Total Other Financing Sources (uses)	(12,869)	(12,309)	(13,904)	(15,643)	(12,930)	138,589	(14,041)	(13,694)	(17,192)	(6,093)
Net Change in Fund Balance	\$ (63,492)	\$ (242,524)	\$ 212,954	\$ 272,734	\$ 390,860	\$ 353,201	\$ 76,693	\$ 27,088	\$ (253,424)	\$ (380,803)
Debt Service as a percentage of noncapital expenditures	12.69%	12.94%	12.12%	12.09%	12.66%	16.26%	10.85%	10.40%	9.31%	8.66%

Source: Borough of Avon-by-the-Sea School District Financial Records

AVON-BY-THE-SEA SCHOOL DISTRICT
 GENERAL FUND - OTHER LOCAL REVENUE BY SOURCE
 LAST TEN FISCAL YEARS

UNAUDITED

<u>Fiscal Year Ending June 30,</u>	<u>Interest on Investments</u>	<u>Tuition</u>	<u>Rentals-Use of Facilities</u>	<u>Prior Year Refunds</u>	<u>Transportation Fees</u>	<u>Other</u>	<u>Total</u>
2010	4,417	55,511	2,824	0	14,499	4,410	81,660
2011	2,991	76,665	2,100	0	14,400	2,999	99,156
2012	4,111	94,850	2,030	3,065	19,600	7,437	131,093
2013	4,948	142,256	1,960	4,536	7,782	13,355	174,837
2014	6,217	115,675	1,050	0	2,594	7,038	132,574
2015	8,058	127,150	2,030	972	0	46,226	184,436
2016	8,437	135,722	2,170	0	0	14,976	161,305
2017	8,403	138,664	0	0	0	4,910	151,977
2018	8,250	106,625	2,170	1,118	0	6,814	124,977
2019	13,703	105,740	1,750	0	760	1,440	123,393
	<u>\$ 69,535</u>	<u>\$ 1,098,858</u>	<u>\$ 18,084</u>	<u>\$ 9,691</u>	<u>\$ 59,635</u>	<u>\$ 109,606</u>	<u>\$ 1,365,408</u>

74

Source: Borough of Avon-by-the-Sea School District Financial Records

AVON-BY-THE-SEA SCHOOL DISTRICT
 ASSESSED VALUE AND ACTUAL VALUE OF TAXABLE PROPERTY
 LAST TEN YEARS

UNAUDITED

Year Ended December 31,	Vacant Land	Residential	Farm Reg.	Qfarm	Commercial	Industrial	Apartment	Total Assessed Value	Tax- Exempt Property	Public Utilites	Net Valuation Taxable	Total Direct School Tax Rate	Estimated Actual (County Equalized Value)
2010	8,893,600	919,231,200	-0-	-0-	42,500,100	2,303,600	10,399,200	983,327,700		167,427	983,495,127	0.320	1,036,040,908
2011	10,117,500	921,299,500	-0-	-0-	42,180,100	2,303,600	8,680,900	984,581,600		156,960	984,738,560	0.356	1,003,913,304
2012	13,707,200	919,312,000	-0-	-0-	41,544,300	2,303,600	8,680,900	985,548,000		213,913	985,761,913	0.361	1,004,137,632
2013	15,292,000	904,021,200	-0-	-0-	41,014,500	2,303,600	8,680,900	971,312,200		0	971,312,200	0.366	1,003,919,731
2014	12,831,900	904,028,100	-0-	-0-	40,557,000	2,303,600	6,952,400	966,673,000		0	966,673,000	0.372	989,936,508
2015	15,582,400	871,218,800	-0-	-0-	39,198,000	2,253,200	6,766,200	935,018,600		0	935,018,600	0.388	982,675,771
2016	14,970,400	847,808,700	-0-	-0-	35,581,900	1,835,700	6,594,800	906,791,500		0	906,791,500	0.407	981,337,741
2017	12,762,400	856,721,200	-0-	-0-	35,581,900	1,835,700	6,594,800	913,496,000		0	913,496,000	0.409	982,652,254
2018	12,127,500	865,062,600	-0-	-0-	35,381,900	1,835,700	6,594,800	921,002,500		0	921,002,500	0.418	999,894,148
2019	14,588,900	872,305,100	-0-	-0-	32,816,100	1,835,700	6,594,800	928,140,600		0	928,140,600	0.434	1,045,556,607

AVON-BY-THE-SEA SCHOOL DISTRICT
 DIRECT AND OVERLAPPING PROPERTY TAX RATES
 LAST TEN YEARS
 (rate per \$100.00 of assessed valuation)

UNAUDITED

Year Ended December 31,	Avon-by-the-Sea School District Direct Rate			Overlapping Rates		Total Direct and Overlapping Tax Rate
	Basic Rate	General Obligation Debt Service	Total Direct	Borough of Avon-by-the-Sea	Monmouth County	
2010	0.338	-0.018	0.320	0.360	0.276	0.956
2011	0.342	0.014	0.356	0.374	0.277	1.007
2012	0.324	0.037	0.361	0.374	0.286	1.021
2013	0.335	0.037	0.366	0.374	0.293	1.033
2014	0.335	0.037	0.372	0.393	0.304	1.069
2015	0.335	0.053	0.388	0.413	0.308	1.109
2016	0.342	0.065	0.407	0.428	0.307	1.142
2017	0.349	0.060	0.409	0.428	0.300	1.137
2018	0.359	0.059	0.418	0.424	0.306	1.148
2019	0.377	0.057	0.434	0.425	0.306	1.165

Source: Municipal Tax Collector and School Business Administrator

AVON-BY-THE-SEA SCHOOL DISTRICT
PRINCIPAL PROPERTY TAXPAYERS
CURRENT YEAR AND FIVE YEARS AGO

UNAUDITED

Taxpayer	2019			2014		
	Taxable Assessed Value	Rank	As a Percentage of District's Net Assessed Valuation	Taxable Assessed Value	Rank	As a Percentage of District's Net Assessed Valuation
Avon Hotel Corp.	3,593,700	1	0.39%	3,578,900	1	0.37%
Individual Taxpayer #1	3,017,500	2	0.32%	3,347,600	2	0.31%
Individual Taxpayer #2	2,959,300	3	0.32%			
Individual Taxpayer #3	2,781,400	4	0.30%	2,958,500	5	0.30%
Individual Taxpayer #4	2,671,600	5	0.29%	2,600,000	8	0.26%
Individual Taxpayer #5	2,488,800	6	0.27%			
Individual Taxpayer #6	2,465,100	7	0.27%	2,497,300	10	0.26%
Individual Taxpayer #7	2,383,200	8	0.26%			
Individual Taxpayer #8	2,358,200	9	0.26%			
Individual Taxpayer #9	2,338,800	10	0.25%			
Total	\$27,057,600		2.94%	\$14,982,300		1.50%

Source: Municipal Tax Collector

AVON-BY-THE-SEA SCHOOL DISTRICT
 PROPERTY TAX LEVIES AND COLLECTIONS
 LAST TEN YEARS

UNAUDITED

Fiscal Year Ended June 30,	Taxes Levied for the Fiscal year	Collected within the Fiscal Year of the Levy		Collections in Subsequent Years
		Amount	Percentage of Tax Levy	
2010	3,016,113.00	3,016,113.00	100.00%	-0-
2011	3,116,758.00	3,116,758.00	100.00%	-0-
2012	3,179,083.00	3,179,083.00	100.00%	-0-
2013	3,226,769.00	3,226,769.00	100.00%	-0-
2014	3,226,769.00	3,226,769.00	100.00%	-0-
2015	3,597,114.00	3,597,114.00	100.00%	-0-
2016	3,625,562.00	3,625,562.00	100.00%	-0-
2017	3,691,549.00	3,691,549.00	100.00%	-0-
2018	3,737,261.00	3,425,822.51	91.67%	311,438
2019	3,877,407.16	3,556,365.16	91.72%	321,042

Source: Borough of Avon-by-the-Sea School District records including the Certificate and Report of School Taxes (A4F form)

AVON-BY-THE-SEA SCHOOL DISTRICT
 RATIOS OF OUTSTANDING DEBT BY TYPE
 LAST TEN FISCAL YEARS
 (dollars in thousands, except per capita)

UNAUDITED

Fiscal Year Ended June 30,	Governmental Activities				Business-Type Activities		Total District	Percentage of Personal Income	Per Capita
	General Obligation Bonds	Certificates of Participation	Capital Leases	Bond Anticipation Notes (BANs)	Capital Leases				
2010	6,690,000	-0-	-0-	-0-	-0-	6,690,000	0.86%	\$ 57,750	
2011	6,545,000	-0-	-0-	-0-	-0-	6,545,000	0.93%	60,789	
2012	6,395,000	-0-	-0-	-0-	-0-	6,395,000	0.99%	62,996	
2013	6,240,000	-0-	-0-	-0-	-0-	6,240,000	1.02%	63,662	
2014	6,075,000	-0-	-0-	-0-	-0-	6,075,000	1.10%	67,069	
2015	6,105,000	-0-	-0-	-0-	-0-	6,105,000	1.15%	70,231	
2016	5,835,000	-0-	-0-	-0-	-0-	5,835,000	1.24%	72,248	
2017	5,640,000	-0-	-0-	-0-	-0-	5,640,000	1.34%	75,395	
2018	5,435,000	-0-	-0-	-0-	-0-	5,435,000	Not Available	Not Available	
2019	5,225,000	-0-	-0-	-0-	-0-	5,225,000	Not Available	Not Available	

79

AVON-BY-THE-SEA SCHOOL DISTRICT
 RATIOS OF NET GENERAL BONDED DEBT OUTSTANDING
 LAST TEN FISCAL YEARS
 (dollars in thousands, except per capita)

UNAUDITED

<u>Fiscal Year Ended June 30,</u>	<u>General Obligation Bonds</u>	<u>Deductions</u>	<u>Net General Bonded Debt Outstanding</u>	<u>Percentage of Actual Taxable Value of Property</u>	<u>Per Capita</u>
2010	6,690,000		6,690,000		57,750
2011	6,545,000		6,545,000		60,789
2012	6,395,000		6,395,000		62,996
2013	6,240,000		6,240,000		63,662
2014	6,075,000		6,075,000		67,069
2015	6,105,000		6,105,000		70,231
2016	5,835,000		5,835,000		72,248
2017	5,640,000		5,640,000		75,395
2018	5,435,000		5,435,000		Not Available
2019	5,225,000		5,225,000		Not Available

Source: Borough of Avon-by-the-Sea School District records

AVON-BY-THE-SEA SCHOOL DISTRICT
 RATIOS OF OVERLAPPING GOVERNMENTAL ACTIVITIES DEBT
 AS OF JUNE 30, 2019

UNAUDITED

	<u>Debt Outstanding</u>	<u>Estimated Percentage Applicable</u>	<u>Estimated Share of Overlapping Debt</u>
<u>Governmental Unit</u>			
Debt repaid with property taxes			
Borough of Avon-by-the-Sea	\$ 4,010,400	100.000%	\$ 4,010,400
Monmouth County General Obligation Debt	557,986,966	0.800%	4,554,424
Other debt			<u>0</u>
Subtotal, overlapping debt			8,564,824
Avon-by-the-Sea School District Direct Debt			<u>5,225,000</u>
Total Direct and Overlapping Debt			<u>\$ 13,789,824.00</u>

Sources:

Assessed value data used to estimate applicable percentages provided by the Monmouth County Board of Taxation; debt outstanding data provided by each governmental unit.

AVON-BY-THE-SEA SCHOOL DISTRICT
 LEGAL DEBT MARGIN INFORMATION
 LAST TEN FISCAL YEARS

UNAUDITED

Legal Debt Margin Calculation for Fiscal year 2019

	Equalized Valuation Basis	
	2016	982,652,254
	2017	999,894,148
	2018	<u>1,045,556,607</u>
		<u>3,028,103,009</u>
	Average Equalized Valuation of Taxable Property	1,009,367,670
	Debt Limit (3% of Average Equalization Value)	30,281,030
	Net Bonded School Debt	<u>5,225,000</u>
	Legal Debt Margin	<u>25,056,030</u>

82

	2010	2011	2012	2013	2014	2015	2016	2017	2018	2019
Debt Limit	\$ 31,367,197	30,951,703	30,286,054	19,909,973	19,710,960	28,872,396	29,707,124	29,586,773	29,638,841	30,281,030
Total net debt applicable to limit	<u>6,690,000</u>	<u>6,545,000</u>	<u>6,395,000</u>	<u>6,240,000</u>	<u>6,075,000</u>	<u>6,293,810</u>	<u>5,835,000</u>	<u>5,640,000</u>	<u>5,435,000</u>	<u>5,225,000</u>
Legal debt margin	\$ <u>24,677,197</u>	<u>24,406,703</u>	<u>23,891,054</u>	<u>13,669,973</u>	<u>13,635,960</u>	<u>22,578,586</u>	<u>23,872,124</u>	<u>23,946,773</u>	<u>24,203,841</u>	<u>25,056,030</u>
Total net debt applicable to the limit as a percentage of debt limit	21.3%	21.1%	21.1%	31.3%	30.8%	21.8%	19.6%	19.1%	18.3%	17.3%

AVON-BY-THE-SEA SCHOOL DISTRICT
DEMOGRAPHIC AND ECONOMIC STATISTICS
LAST TEN FISCAL YEARS

UNAUDITED

Year	Population	Monmouth County Personal Income (thousands of dollars)	Monmouth County Per Capita Income	Unemployment Rate
2010	1,899	35,934,180	57,750	8.10
2011	1,918	36,823,110	60,789	8.30
2012	1,919	38,660,420	62,996	8.60
2013	1,911	39,607,080	63,662	9.40
2014	1,798	41,544,287	67,069	5.90
2015	1,790	43,773,134	70,231	4.30
2016	1,786	45,283,381	72,248	4.40
2017	1,782	47,223,653	75,395	4.10
2018	1780	Not Available	Not Available	3.60
2019	Not Available	Not Available	Not Available	Not Available

Sources:

Data regarding Unemployment Rate was given by the New Jersey Department of Labor.

Data regarding Personal Income was given by the New Jersey Department of Labor.

Data regarding Per Capita Income was given by the New Jersey Department of Labor.

Data regarding School District was given by United States Census Bureau, Census 2000.

AVON-BY-THE-SEA SCHOOL DISTRICT
PRINCIPAL EMPLOYERS
Current Year and Nine years Ago

UNAUDITED

<u>Employer</u>	<u>2019</u>			<u>2009</u>		
	<u>Employees</u>	<u>Rank</u>	<u>Percentage of Total Employment</u>	<u>Employees</u>	<u>Rank</u>	<u>Percentage of Total Employment</u>

This is not available within the community.

AVON-BY-THE-SEA SCHOOL DISTRICT
 FULL-TIME EQUIVALENT DISTRICT EMPLOYEES BY FUNCTION/PROGRAM
 LAST TEN FISCAL YEARS

UNAUDITED

Function/Program	2010	2011	2012	2013	2014	2015	2016	2017	2018	2019
Instruction										
Regular	9.5	9.6	9.4	10.2	8.7	10.0	10.0	10.0	10.0	10.0
Special Education	4.4	3.7	3.7	3.8	3.4	2.8	2.8	4.0	4.0	4.0
Other Special Education								2.0	1.0	1.0
Vocational										
Other Instruction	4.7	4.1	4.8	5.1	4.9	5.2	4.6	4.7	3.7	3.7
Nonpublic school programs										
Adult/continuing education programs										
Support Services:										
Student & instruction related services	1.5	0.9	1.4	1.4	1.4	3.3	3.4	4.0	4.0	4.3
School administrative services	1.0	1.0	1.4	1.4	1.6	1.6	1.6	1.6	1.6	1.6
General and business administrative services	1.0	1.0	1.0	1.0	1.0	1.0	1.0	1.0	1.0	1.0
Plant operations and maintenance	2.0	2.0	2.0	2.0	2.0	2.0	2.0	2.0	2.0	2.0
Pupil transportation	0.9	0.9	0.9	0.9	0.9	0.9	0.9	0.9	0.9	0.9
Business and other support services	1.6	1.6	1.6	1.6	1.6	1.6	1.6	1.6	1.6	1.6
Special Schools										
Food Service	0.5	0.5	0.5	0.5	0.5	0.5	0.5	0.5	0.5	0.5
Child Care										
Total	<u>27.1</u>	<u>25.3</u>	<u>26.7</u>	<u>27.9</u>	<u>26.0</u>	<u>28.9</u>	<u>28.4</u>	<u>32.3</u>	<u>30.3</u>	<u>30.6</u>

CS

Source: Borough of Avon-by-the-Sea School District Personnel records

AVON-BY-THE-SEA SCHOOL DISTRICT
 OPERATING STATISTICS
 LAST TEN FISCAL YEARS

UNAUDITED

Fiscal Year	Enrollment	Operating Expenditures	Cost Per Pupil	Percentage Change	Teaching Staff	Pupil/Teacher Ratio		Average Daily Enrollment (ADE)	Average Daily Attendance (ADA)	% Change in Average Daily Enrollment	Student Attendance Percentage
						Elementary	Middle				
2010	162	3,373,284	20,823	-7.43%	19	15:1	16:1	162.0	154.2	7.26%	95.19%
2011	164	3,324,721	20,273	-2.64%	18	17:1	18:1	161.1	154.2	0.00%	95.72%
2012	162	3,539,200	21,847	7.77%	18	17:1	18:1	155.9	150.6	-2.39%	96.60%
2013	165	3,537,502	21,439	-1.87%	18	18:1	20:1	162.5	155.2	2.96%	95.51%
2014	162	3,373,331	20,823	-2.87%	18	18:1	20:1	160.2	153.1	-1.37%	95.57%
2015	163	3,653,361	22,413	7.64%	18	21:1	20:1	155.0	150.0	-2.07%	96.77%
2016	161	3,759,842	23,353	4.19%	17	16:1	16:1	146.0	140.3	-6.89%	96.14%
2017	168	3,951,042	23,518	0.71%	19	16:1	17:1	145.8	139.5	-0.62%	95.63%
2018	168	4,437,706	26,494	12.65%	18	16:1	17:1	147.0	139.7	0.14%	95.00%
2019	163	4,737,560	29,065	9.70%	10	13:1	14:1	136.2	131.4	-6.27%	96.49%

86

Source: Borough of Avon-by-the-Sea School District records

AVON-BY-THE-SEA SCHOOL DISTRICT
 SCHOOL BUILDING INFORMATION
 LAST TEN FISCAL YEARS

UNAUDITED

<u>District Building</u>	<u>2010</u>	<u>2011</u>	<u>2012</u>	<u>2013</u>	<u>2014</u>	<u>2015</u>	<u>2016</u>	<u>2017</u>	<u>2018</u>	<u>2019</u>
Avon Elementary School (1904)										
Square Feet	27,393	27,393	27,393	27,393	27,393	27,393	27,393	27,393	27,393	27,393
Capacity (students)	250	250	250	250	250	250	250	250	250	250
Enrollment	162	164	162	165	162	163	161	168	168	163

Number of Schools at June 30, 2019

 Elementary/Middle School = 1

Source: Borough of Avon-by-the-Sea School District records

Note: Year of original construction is shown in parentheses. Increases in square footage and capacity are the result of additions. Enrollment is based on the annual October district count.

AVON-BY-THE-SEA SCHOOL DISTRICT
 SCHEDULE OF REQUIRED MAINTENANCE FOR SCHOOL FACILITIES
 LAST TEN FISCAL YEARS ENDING JUNE 30, 2019

UNAUDITED

UNDISTRIBUTED EXPENDITURES - REQUIRED
 MAINTENANCE FOR SCHOOL FACILITIES
 11-000-261-xxx

Fiscal Year Ended June 30,	Avon Elementary School	Total
2010	49,302	49,302
2011	50,326	50,326
2012	56,907	56,907
2013	58,328	58,328
2014	44,908	44,908
2015	62,423	62,423
2016	61,502	61,502
2017	45,127	45,127
2018	50,927	50,927
2019	33,561	33,561
	\$ 513,311	\$ 513,311

*School facilities as defined under EFCFA.
 (N.J.A.C. 6A:26-1.2 and N.J.A.C. 6:24-1.3)

Source: Borough of Avon-by-the-Sea School District records

AVON-BY-THE-SEA SCHOOL DISTRICT
 INSURANCE SCHEDULE
 JUNE 30, 2019

UNAUDITED

	<u>Coverage</u>	<u>Deductible</u>
School Package Policy - NJ School Board		
Property - Blanket Building and Contents	\$ 11,350,337,221	\$ 1,000
Extra Expense	50,000,000	1,000
Valuable Papers & Records	10,000,000	1,000
Non-Owned and Hired Business		
Auto Policy	1,000,000	1,000
Boiler and Machinery	100,000,000	1,000
Electronic Data Processing	405,000	1,000
General Liability	1,000,000	1,000
Umbrella Liability - NJ School Board	6,000,000	1,000
School District Legal Liability - NJ School Board	2,000,000	5,000
Employer Liability - NJ School Board	2,000,000	
Worker's Compensation - NJ School Board	Statutory	
Student Accident	1,000,000	
Public Employees' Faithful Performance Bond -		
Selective		
Treasurer	150,000	1,000
Public Official	2,000	500

Source: Borough of Avon-by-the-Sea School District records

SINGLE AUDIT SECTION

ALVINO & SHECHTER, L.L.C.

CERTIFIED PUBLIC ACCOUNTANTS

110 Fortunato Place

Neptune, New Jersey 07753-3767

VINCENT J. ALVINO, CPA, PSA
ALLEN B. SHECHTER, CPA, RMA, PSA

Phone: (732) 922-4222
Fax: (732) 922-4533

Member

American Institute of Certified Public Accountants
New Jersey Society of Certified Public Accountants
PCPS of the AICPA Division of CPA Firms

Exhibit K-1

**REPORT ON INTERNAL CONTROL OVER FINANCIAL REPORTING AND ON
COMPLIANCE AND OTHER MATTERS BASED ON AN AUDIT OF FINANCIAL STATEMENTS
PERFORMED IN ACCORDANCE WITH GOVERNMENT AUDITING STANDARDS**

INDEPENDENT AUDITOR'S REPORT

The Honorable President and
Members of the Board of Education
Avon-By-The-Sea Board of Education
County of Monmouth, New Jersey

We have audited, in accordance with the auditing standards generally accepted in the United States of America, the standards applicable to financial audits contained in *Government Auditing Standards* issued by the Comptroller General of the United States and the audit requirements prescribed by the Office of School Finance, Department of Education, State of New Jersey, the financial statements of the governmental activities, the business-type activities, each major fund, and the aggregate remaining fund information of the Board of Education of the Avon-By-The-Sea School District, in the County of Monmouth (the "District") as of and for the fiscal year ended June 30, 2019, and the related notes to the financial statements, which collectively comprise the District's basic financial statements, and have issued our report thereon dated November 30, 2019.

Internal Control Over Financial Reporting

In planning and performing our audit of the financial statements, we considered the District's internal control over financial reporting (internal control) to determine the audit procedures that are appropriate in the circumstances for the purpose of expressing our opinions on the financial statements, but not for the purpose of expressing an opinion on the effectiveness of the District's internal control. Accordingly, we do not express an opinion on the effectiveness of the District's internal control.

A deficiency in internal control exists when the design or operation of a control does not allow management or employees, in the normal course of performing their assigned functions, to prevent, or detect and correct, misstatements on a timely basis. *A material weakness* is a deficiency, or combination of deficiencies, in internal control such that there is a reasonable possibility that a material misstatement of the District's financial statements will not be prevented, or detected and corrected on a timely basis. *A significant deficiency* is a deficiency, or a combination of deficiencies, in internal control that is less severe than a material weakness, yet important enough to merit attention by those charged with governance.

Our consideration of internal control was for the limited purpose described in the first paragraph of this section and was not designed to identify all deficiencies in internal control that might be material weaknesses or significant deficiencies. Given these limitations, during our audit we did not identify any deficiencies in internal control that we consider to be material weaknesses. However, material weaknesses may exist that have not been identified.

Compliance and Other Matters

As part of obtaining reasonable assurance about whether the District's financial statements are free of material misstatement, we performed tests of its compliance with certain provisions of laws, regulations, contracts, and grant agreements, noncompliance with which could have a direct and material effect on the determination of financial statement amounts. However, providing an opinion on compliance with those provisions was not an objective of our audit, and accordingly, we do not express such an opinion. The results of our tests disclosed no instances of noncompliance or other matters that are required to be reported under *Government Auditing Standards* and audit requirements as prescribed by the Office of School Finance, Department of Education, State of New Jersey. We noted certain matters that we reported to the management of the Avon-By-The-Sea Board of Education in a separate report entitled Auditor's Management Report on Administrative Findings - Financial Compliance and Performance dated November 30, 2019.

Purpose of this Report

The purpose of this report is solely to describe the scope of our testing of internal control and compliance and the result of that testing, and for New Jersey Department of Education use, and not to provide an opinion on the effectiveness of the District's internal control or on compliance. This report is an integral part of an audit performed in accordance with *Government Auditing Standards* in considering the District's internal control and compliance. Accordingly, this communication is not suitable for any other purpose.



Allen B. Shechter
Licensed Public School Accountant No. 2183
Certified Public Accountant

November 30, 2019
Neptune, New Jersey

ALVINO & SHECHTER, L.L.C.

CERTIFIED PUBLIC ACCOUNTANTS

110 Fortunato Place

Neptune, New Jersey 07753-3767

VINCENT J. ALVINO, CPA, PSA
ALLEN B. SHECHTER, CPA, RMA, PSA

Phone: (732) 922-4222
Fax: (732) 922-4533

Member

American Institute of Certified Public Accountants
New Jersey Society of Certified Public Accountants
PCPS of the AICPA Division of CPA Firms

Exhibit K-2

REPORT ON COMPLIANCE FOR EACH MAJOR STATE PROGRAM AND REPORT ON INTERNAL CONTROL OVER COMPLIANCE REQUIRED BY THE UNIFORM GUIDANCE AND NEW JERSEY OMB CIRCULAR 15-08

INDEPENDENT AUDITOR'S REPORT

The Honorable President and
Members of the Board of Education
Avon-By-The-Sea Board of Education
County of Monmouth, New Jersey

Report on Compliance for Each Major State Program

We have audited the Board of Education of the Avon-By-The-Sea School District's (the "District") compliance with the types of compliance requirements described in the OMB *Compliance Supplement* and New Jersey *State Aid/Grant Compliance Supplement* that could have a direct and material effect on each of the District's major state programs for the fiscal year ended June 30, 2019. The District's major state programs are identified in the summary of auditor's results section of the accompanying schedule of findings and questioned costs.

Management's Responsibility

Management is responsible for compliance with the requirements of laws, regulations, contracts, and grants applicable to its state programs.

Auditor's Responsibility

Our responsibility is to express an opinion on compliance for each of the District's major state programs based on our audit of the types of compliance requirements referred to above. We conducted our audit of compliance in accordance with auditing standards generally accepted in the United States of America; the standards applicable to financial audits contained in *Government Auditing Standards*, issued by the Comptroller General of the United States; audit requirements prescribed by the Office of School Finance, Department of Education, State of New Jersey; the audit requirements of Title 2 U.S. *Code of Federal Regulations Part 200, Uniform Administrative Requirements, Cost Principles, and Audit Requirements for Federal Awards* (Uniform Guidance); and New Jersey OMB Circular 15-08, "Single Audit Policy for Recipients of Federal Grants, State Grants, and State Aid". Those standards, the Uniform Guidance and New Jersey OMB Circular 15-08 require that we plan and perform the audit to obtain reasonable assurance about whether noncompliance with the types of compliance requirements referred to above that could have a direct and material effect on a major state program occurred. An audit includes examining, on a test basis, evidence about the District's compliance with those requirements and performing such other procedures as we considered necessary in the circumstances.

We believe that our audit provides a reasonable basis for our opinion on compliance for each major state program. However, our audit does not provide a legal determination of the District's compliance.

Opinion on Each Major State Program

In our opinion, the District complied, in all material respects, with the types of compliance requirements referred to above that could have a direct and material effect on each of its major state programs for the fiscal year ended June 30, 2019.

Report on Internal Control Over Compliance

Management of the District is responsible for establishing and maintaining effective internal control over compliance with the types of compliance requirements referred to above. In planning and performing our audit of compliance, we considered the District's internal control over compliance with the types of requirements that could have a direct and material effect on a major state program to determine the auditing procedures that are appropriate in the circumstances for the purpose of expressing an opinion on compliance for each major state program and to test and report on internal control over compliance in accordance with the Uniform Guidance and New Jersey OMB Circular 15-08, but not for the purpose of expressing an opinion on the effectiveness of internal control over compliance. Accordingly, we do not express an opinion on the effectiveness of the District's internal control over compliance.

A deficiency in internal control over compliance exists when the design or operation of a control over compliance does not allow management or employees, in the normal course of performing their assigned functions, to prevent, or detect and correct, noncompliance with a type of compliance requirement of a state program on a timely basis. *A material weakness in internal control over compliance* is a deficiency, or combination of deficiencies, in internal control over compliance, such that there is a reasonable possibility that material noncompliance with a type of compliance requirement of a state program will not be prevented, or detected and corrected, on a timely basis. *A significant deficiency in internal control over compliance* is a deficiency, or a combination of deficiencies, in internal control over compliance with a type of compliance requirement of a state program that is less severe than a material weakness in internal control over compliance, yet important enough to merit attention by those charged with governance.

Our consideration of the internal control over compliance was for the limited purpose described in the first paragraph of this section and was not designed to identify all deficiencies in internal control over compliance that might be material weaknesses or significant deficiencies. We did not identify any deficiencies in internal control over compliance that we consider material weaknesses. However, material weaknesses may exist that have not been identified.

The purpose of this report on internal control over compliance is solely to describe the scope of our testing of internal control over compliance and the results that the testing based on the requirements of the Uniform Guidance and New Jersey OMB Circular 15-08. Accordingly, this report is not suitable for any other purpose.



Allen B. Shechter
Licensed Public School Accountant No. 2183
Certified Public Accountant

November 30, 2019
Neptune, New Jersey

AVON-BY-THE-SEA SCHOOL DISTRICT
 Schedule of Expenditures of Federal Awards
 for the Fiscal Year ended June 30, 2019

SCHEDULE A
 Exhibit K-3

Federal Grantor/Pass-Through Grantor/ Program Title	Federal CFDA Number	Federal FAIN Number	Grant or State Project Number	Program or Award Amount	Grant Period		Balance at June 30, 2018					Balance at June 30, 2019					
					From	To	Accounts Receivable	Unearned Revenue	Due to Grantor	Carryover/ (Walkover) Amount	Cash Received	Budgetary Expenditures	Adjustments	Repayment of Prior Years' Balances	Accounts Receivable	Unearned Revenue	Due to Grantor
U.S. Department of Education																	
Passed-through State Department of Education																	
Special Revenue Fund:																	
Special Education Cluster:																	
I.D.E.A. Part B, Basic	84.027	I027A180100	IDEA-0180-19	36,438.00	7/1/18	6/30/19					35,628.00	(36,438.00)			(810.00)		
I.D.E.A. Part B, Basic	84.027	I027A170100	IDEA-0180-18	39,014.00	7/1/17	6/30/18	(4,600.00)				4,600.00						
I.D.E.A. Part B, Preschool	84.027	I027A180100	IDEA-0180-19	1,111.00	7/1/18	6/30/19					1,111.00	(1,111.00)					
I.D.E.A. Part B, Preschool	84.027	I027A170100	IDEA-0180-18	1,663.00	7/1/17	6/30/18	(564.00)				564.00						
Total Special Education Cluster							(5,164.00)				41,903.00	(37,549.00)			(810.00)		
No Child Left Behind Consolidated Grant:																	
Title I, Part A	84.010	S010A180030	ESEA-0180-19	33,391.00	7/1/18	6/30/19					20,694.00	(30,928.75)			(10,234.75)		
Title I, Part A	84.010	S010A170030	ESEA-0180-18	28,503.00	7/1/17	6/30/18	(5,798.77)				5,798.77						
Title II, Part A	84.367A	S367A180029	ESEA-0180-19	4,000.00	7/1/18	6/30/19					4,000.00	(4,000.00)					
Title IV, Part A	84.424A	S424A180031	ESEA-0180-19	8,632.00	7/1/18	6/30/19					6,725.00	(7,460.01)			(735.01)		
Title IV, Part A	84.424A	S424A170031	ESEA-0180-18	14,218.00	7/1/17	6/30/18	(1,250.00)				1,250.00						
Total Special Revenue Fund							(12,212.77)				80,370.77	(79,937.76)			(11,779.76)		
U.S. Department of Agriculture																	
Passed-through State Department of Education																	
Enterprise Fund:																	
National School Lunch Program	10.555	191NJ304N1099	N/A	6,686.04	7/1/18	6/30/19					6,216.12	(6,686.04)			(469.92)		
National School Lunch Program	10.555	181NJ304N1099	N/A	7,835.61	7/1/17	6/30/18	(689.64)				689.64						
HHFKA - Performance Based	10.555	191NJ304N1099	N/A	203.28	7/1/18	6/30/19					189.84	(203.28)			(13.44)		
HHFKA - Performance Based	10.555	181NJ304N1099	N/A	218.70	7/1/17	6/30/18	(17.04)				17.04						
Total Enterprise Fund							(706.68)				7,112.64	(6,889.32)			(483.36)		
Total Federal Financial Awards							(\$12,919.45)				\$87,483.41	(\$86,827.08)			(\$12,263.12)		

Note: Federal Single Audit is not required

AVON-BY-THE-SEA SCHOOL DISTRICT
 Schedule of Expenditures of State Financial Assistance
 for the Fiscal Year ended June 30, 2019

SCHEDULE B
 Exhibit K-1

State Grantor/Program Title	Grant or State Project Number	Program or Award Amount	Grant Period		Balance at June 30, 2018				Adjustments/Repayment of Prior Years' Balances	Balance at June 30, 2019			MEMO		
			From	To	Unearned Revenue (Accts Receivable)	Due to Grantor	Carryover/ (Walkover) Amount	Cash Received		Budgetary Expenditures	(Accounts Receivable)	Unearned Revenue/ Interfund Payable	Due to Grantor	Budgetary Receivable	Cumulative Total Expenditures
State Department of Education															
General Fund:															
State Aid Public Cluster:															
Security Aid	19-495-034-5120-084	16,622.00	7/1/18	6/30/19				16,622.00	(16,622.00)				*	1,601.00	16,622.00
Special Education Categorical Aid	19-495-034-5120-089	114,762.00	7/1/18	6/30/19				114,762.00	(114,762.00)				*	11,049.60	114,762.00
Total State Aid - Public Cluster								131,384.00	(131,384.00)				*	12,650.00	131,384.00
Transportation Aid	19-495-034-5120-014	63,965.00	7/1/18	6/30/19				63,965.00	(63,965.00)				*	6,158.00	63,965.00
Extraordinary Special Education Costs Aid	19-495-034-5120-044	19,570.00	7/1/18	6/30/19					(19,570.00)	(19,570.00)			*		19,570.00
Extraordinary Special Education Costs Aid	18-495-034-5120-044	7,422.00	7/1/17	6/30/18	(7,422.00)			7,422.00					*		
Reimbursed Nonpublic School Transportation Costs Aid	19-495-034-5120-014	2,212.00	7/1/18	6/30/19					(2,212.00)	(2,212.00)			*		2,212.00
Reimbursed Nonpublic School Transportation Costs Aid	18-495-034-5120-014	1,865.00	7/1/17	6/30/18	(1,865.00)			1,865.00					*		
On Behalf TPAF Pension Contributions	19-495-034-5094-002	250,307.00	7/1/18	6/30/19				250,307.00	(250,307.00)				*		250,307.00
On Behalf TPAF Post Retirement Medical Contr.	19-495-034-5094-001	113,539.00	7/1/18	6/30/19				113,539.00	(113,539.00)				*		113,539.00
On Behalf TPAF Long-Term Disability Insurance	19-495-034-5094-004	388.00	7/1/18	6/30/19				388.00	(388.00)				*		388.00
Reimbursed TPAF Social Security Contributions	19-495-034-5094-003	102,693.60	7/1/18	6/30/19				97,668.31	(102,693.60)	(5,025.29)			*		102,693.60
Reimbursed TPAF Social Security Contributions	18-495-034-5094-003	102,862.84	7/1/17	6/30/18	(10,408.00)			10,408.00					*		
Total General Fund					(19,695.00)			676,946.31	(684,058.60)	(26,807.29)			*	18,808.00	684,058.60
Debt Service Fund:															
Debt Service Aid Type II	19-495-034-5120-017	94,713.00	7/1/18	6/30/19				94,713.00	(94,713.00)				*		94,713.00
State Department of Agriculture															
Enterprise Fund:															
National School Lunch Program (State Share)	19-100-010-3350-023	178.72	7/1/18	6/30/19				166.86	(178.72)	(11.86)			*		178.72
National School Lunch Program (State Share)	18-100-010-3350-023	193.73	7/1/17	6/30/18	(15.23)			15.23					*		
Total Enterprise Fund					(15.23)			182.09	(178.72)	(11.86)			*		178.72
Total State Financial Assistance					(519,710.23)			\$771,841.40	(\$778,950.32)	(\$26,819.15)			*	\$18,808.00	\$778,950.32
Less:															
On Behalf Assistance Not Included in State Single Audit - Major Program Determination															
On Behalf TPAF Pension Contributions															
On Behalf TPAF Post Retirement Medical Contr.															
On Behalf TPAF Long-Term Disability Insurance															
Total State Financial Assistance Subject to State Single Audit - Major Program Determination															
(\$414,716.32)															

56

AVON-BY-THE-SEA SCHOOL DISTRICT
Notes to the Schedules of Expenditures of Awards and Financial Assistance
June 30, 2019

NOTE 1. GENERAL

The accompanying schedules of expenditures of federal awards and state financial assistance include federal and state award activity of the Board of Education, Avon–By-The-Sea School District. The Board of Education is defined in Note 1 to the Board basic financial statements. All federal and state awards received directly from federal and state agencies, as well as federal awards and state financial assistance passed through other government agencies is included on the schedules of expenditures of federal awards and state financial assistance.

NOTE 2. BASIS OF ACCOUNTING

The accompanying schedules of expenditures of awards and financial assistance are presented on the budgetary basis of accounting with the exception of programs recorded in the food service fund, which is presented using the accrual basis of accounting. These bases of accounting are described in Notes 1 to the Board's basic financial statements. The accompanying schedules of expenditures of awards and financial assistance are presented on the budgetary basis of accounting with the exception of programs recorded in the food service fund, which are presented using the accrual basis of accounting. These bases of accounting are described in Note 1 to the Board's basic financial statements. The information in this schedule is presented in accordance with the requirements of Title 2 U.S. *Code of Federal Regulations Part 200 - Uniform Administrative Requirements, Cost Principles, and Audit Requirements of Federal Awards* (Uniform Guidance) and New Jersey OMB Circular 15-08, "Single Audit Policy for Recipients of Federal Grants, State Grants and State Aid". Therefore, some amounts presented in this schedule may differ from amounts presented in, or used in the preparation of, the basic financial statements.

NOTE 3. RELATIONSHIP TO GENERAL PURPOSE FINANCIAL STATEMENTS

The basic financial statements present the general fund and special revenue fund on a GAAP basis. Budgetary comparison statements or schedules (RSI) are presented for the general fund and special revenue fund to demonstrate finance-related legal compliance in which certain revenue is permitted by law or grant agreement to be recognized in the audit year, whereas for GAAP reporting, revenue is not recognized until the subsequent year or when expenditures have been made.

The general fund is presented in the accompanying schedules on the modified accrual basis with the exception of the revenue recognition of the last state aid payment in the current budget year, which is mandated pursuant to *N.J.S.A. 18A:22-44.2*. For GAAP purposes that payment is not recognized until the subsequent budget year due to the state deferral and recording of the last state aid payment in the subsequent year. The special revenue fund is presented in the accompanying schedules on the grant accounting budgetary basis which recognizes encumbrances as expenditures and also recognizes the related revenues, whereas the GAAP basis does not. The special revenue fund also recognizes the last two state aid payments in the current budget year, consistent with *N.J.S.A. 18A:22-4.2*.

The net adjustment to reconcile from the budgetary basis to the GAAP basis is (\$564.00) for the general fund and \$(5.31) for the special revenue fund. See Note A for a reconciliation of the budgetary basis to the modified accrual basis of accounting for the general and special revenue funds. Awards and financial assistance revenues are reported in the Board's basic financial statements on a GAAP basis as follows:

	<u>Federal</u>	<u>State</u>	<u>Total</u>
General Fund	.00	683,494.60	683,494.60
Special Revenue Fund	79,943.07	.00	79,943.07
Debt Service	.00	94,713.00	94,713.00
Food Service Fund	<u>6,889.32</u>	<u>178.72</u>	<u>7,068.04</u>
Total Awards & Financial Assistance	<u>\$86,832.39</u>	<u>778,386.32</u>	<u>865,218.71</u>

AVON-BY-THE-SEA SCHOOL DISTRICT
Notes to the Schedules of Expenditures of Awards and Financial Assistance
June 30, 2019

NOTE 4. RELATIONSHIP TO FEDERAL AND STATE FINANCIAL REPORTS

Amounts reported in the accompanying schedules agree with amounts reported in the related federal and state financial reports.

NOTE 5. OTHER INFORMATION

The amount reported as TPAF Pension, Post-Retirement Medical and LTD Insurance Contributions represents amount paid by the state of behalf of the District for the year ended June 30, 2019. TPAF Social Security Contributions represents the amount reimbursed by the state for the employer's share of social security contributions for TPAF members for the year ended June 30, 2019.

NOTE 6. ON-BEHALF PROGRAMS - STATE SINGLE AUDIT MAJOR PROGRAM DETERMINATION

On-behalf State Programs for TPAF Pension, Post-Retirement Medical and LTD Insurance Contributions payments are excluded from the calculation for State single audit major program determination. The Schedule of State Financial Assistance provides a reconciliation of State Financial assistance reported in the District's basic financial statements and the amount subject to State single audit major program determination.

NOTE 7. DE MINIMUS INDIRECT COST RATE

The District has not elected to use the 10 percent de minimus indirect cost rate allowed under the Uniform Guidance.

AVON-BY-THE-SEA SCHOOL DISTRICT
Schedule of Findings and Questioned Costs
For the Fiscal Year Ended June 30, 2019

Section I - Summary of Auditor's Report

Financial Statements

Type of auditor's report issued: Unmodified

Internal control over financial reporting:

1) Material weakness(es) identified? _____ yes X no

2) Were significant deficiencies identified that are not considered to be material weaknesses? _____ yes X none reported

Noncompliance material to basic financial statements noted? _____ yes X no

State Awards

Dollar threshold used to distinguish between type A and B programs: \$750,000.00

Auditee qualified as low-risk auditee? _____ yes X no

Type of auditor's report issued on compliance for major programs: Unmodified

Internal Control over major programs:

1) Material weakness(es) identified? _____ yes X no

2) Were significant deficiencies identified that are not considered to be material weaknesses? _____ yes X none reported

Any audit findings disclosed that are required to be reported in accordance with 2 CFR 200 Section .516(a) of the Uniform Guidance or New Jersey OMB Circular Letter 15.08 as applicable? _____ yes X no

Identification of major programs:

<u>State/Grant Project Number(s)</u>	<u>Name of State Program</u>
<u>19-495-034-5120-089</u>	<u>State Aid Public Cluster</u>
<u>19-495-034-5120-084</u>	<u>Special Education Categorical Aid</u>
<u>19-495-034-5120-017</u>	<u>Security Aid</u>
	<u>Debt Service Aid Type II</u>

Section II - Financial Statement Findings

NONE

Section III - State Financial Assistance Findings and Questioned Costs

NONE

AVON-BY-THE-SEA SCHOOL DISTRICT
Summary Schedule of Prior Audit Findings
For the Fiscal Year Ended June 30, 2019

Status of Prior Year Findings

None