

COMPASS ACADEMY CHARTER SCHOOL

***COMPREHENSIVE ANNUAL
FINANCIAL REPORT***

FISCAL YEAR ENDED JUNE 30, 2019

COMPASS ACADEMY CHARTER SCHOOL

***Compass Academy Charter School
Board of Trustees
Vineland, New Jersey***

***Comprehensive Annual Financial Report
For the Fiscal Year Ended June 30, 2019***

**COMPREHENSIVE ANNUAL
FINANCIAL REPORT
OF THE
COMPASS ACADEMY CHARTER SCHOOL
VINELAND, NEW JERSEY
FOR THE FISCAL YEAR ENDED JUNE 30, 2019**

**Prepared By
Compass Academy Charter School
Finance Department**

**And
Barre & Company LLC, CPA's**

STATE BOARD OF EDUCATION

KATHY A. GOLDENBERG..... Burlington
President

ANDREW J. MULVIHILL..... Sussex
Vice President

ARCELLO APONTE..... Middlesex

MARY BETH BERRY..... Hunterdon

ELAINE BOBROVE..... Camden

FATIMAH BURNAM-WATKINS..... Union

RONALD K. BUTCHER..... Gloucester

JACK FORNARO..... Warren

MARY ELIZABETH GAZI..... Somerset

EDITHE FULTON..... Ocean

NEDD JAMES JOHNSON, ED.D..... Salem

ERNEST P. LEPORE..... Hudson

JOSEPH RICCA, JR., ED.D..... Morris

SYLVIA SYLVIA-CIOFFI..... Monmouth

Dr. Lamont Repollet, Commissioner of Education
Secretary, State Board of Education

**COMPASS ACADEMY CHARTER SCHOOL
TABLE OF CONTENTS**

	Page
INTRODUCTORY SECTION	1
Transmittal Letter	2
Organizational Chart	6
Consultants and Advisors	8
FINANCIAL SECTION.....	9
Independent Auditor’s Report	10
REQUIRED SUPPLEMENTARY INFORMATION – PART I.....	13
Management’s Discussion and Analysis.....	14
BASIC FINANCIAL STATEMENTS.....	20
SECTION A – CHARTER SCHOOL-WIDE FINANCIAL STATEMENTS.....	21
A-1 Statement of Net Position	22
A-2 Statement of Activities	23
SECTION B – FUND FINANCIAL STATEMENTS.....	24
GOVERNMENTAL FUNDS	25
B-1 Balance Sheet	26
B-2 Statement of Revenues, Expenditures, and Changes in Fund Balances.....	27
B-3 Reconciliation of Statement of Revenues, Expenditures, and Changes in Fund Balances of Governmental Funds to the Statement of Activities	28
PROPRIETARY FUNDS.....	29
B-4 Statement of Net Position	30
B-5 Statement of Revenues, Expenses, and Changes in Fund Net Position	31
B-6 Statement of Cash Flows.....	32
FIDUCIARY FUNDS	33
B-7 Statement of Fiduciary Net Position	34
B-8 Statement of Changes in Fiduciary Net Position	35
NOTES TO THE FINANCIAL STATEMENTS.....	36
REQUIRED SUPPLEMENTARY INFORMATION – PART II.....	72

**COMPASS ACADEMY CHARTER SCHOOL
TABLE OF CONTENTS**

	Page
SECTION C – BUDGETARY COMPARISON SCHEDULE	73
C-1 Budgetary Comparison Schedule – General Fund	74
C-2 Budgetary Comparison Schedule – Special Revenue Fund	76
NOTES TO THE REQUIRED SUPPLEMENTARY INFORMATION	77
C-3 Budget-to-GAAP Reconciliation	78
REQUIRED SUPPLEMENTARY INFORMATION – PART III	79
SCHEDULE L - SCHEDULES RELATED TO ACCOUNTING AND REPORTING FOR PENSIONS (GASB 68).....	80
L-1 Schedules of the Charter School’s Proportionate Share of the Net Pension Liability - PERS.....	81
L-2 Schedules of Charter School Contributions - PERS.....	82
L-3 Schedules of Charter School’s Proportionate Share of the Net Pension Liability - TPAF	83
L-4 Schedules of Charter School Contributions - TPAF	84
SECTION M – SCHEDULES RELATED TO ACCOUNTING AND REPORTING FOR POSTEMPLOYMENT BENEFITS OTHER THAN PENSIONS	85
M-1 Schedule of Changes in the Total OPEB Liability and Related Ratios.....	86
NOTES TO REQUIRED SUPPLEMENTARY INFORMATION III.....	87
OTHER SUPPLEMENTARY INFORMATION.....	90
SECTION E – SPECIAL REVENUE FUND	91
E-1 Combining Schedule of Revenues and Expenditures – Budgetary Basis	92
SECTION G – PROPRIETARY FUNDS.....	93
SECTION H – FIDUCIARY FUNDS	94
H-1 Combining Statement of Fiduciary Net Position	95
H-2 Combining Statement of Changes in Fiduciary Net Position	96
H-3 Student Activities Fund – Schedule of Receipts and Disbursements.....	97
H-4 Payroll Agency Fund – Schedule of Receipts and Disbursements	98
STATISTICAL SECTION (UNAUDITED).....	99
INTRODUCTION TO THE STATISTICAL SECTION.....	100

**COMPASS ACADEMY CHARTER SCHOOL
TABLE OF CONTENTS**

	Page
FINANCIAL TRENDS	101
J-1 Net Assets/Position by Component.....	102
J-2 Changes in Net Assets/Position	103
J-3 Fund Balances – Governmental Funds.....	104
J-4 Changes in Fund Balances – Governmental Funds	105
J-5 General Fund Other Local Revenue by Source.....	106
 OPERATING INFORMATION.....	 107
J-16 Full-Time Equivalent Charter School Employees by Function/Program.....	108
J-17 Operating Statistics.....	109
J-18 School Building Information	110
J-20 Insurance Schedule	111
J-21 Charter School Performance Framework, Financial Performance, Fiscal Ratios.....	112
 SINGLE AUDIT SECTION	 113
K-1 Report on Internal Control over Financial Reporting and on Compliance and Other Matters Based On an Audit of Financial Statements Performed In Accordance With <i>Government Auditing Standards</i>	114
K-2 Independent Auditor's Report on Compliance with Requirements That Could Have a Direct and Material Effect on Each Major Program and On Internal Control over Compliance In Accordance With New Jersey OMB Circular 04-04	116
K-3 Schedule of Expenditures of Federal Awards – Schedule A.....	119
K-4 Schedule of Expenditures of State Financial Assistance – Schedule B.....	120
K-5 Notes to the Schedules of Expenditures of Awards and Financial Assistance.....	121
K-6 Schedule of Findings and Questioned Costs	124
K-7 Summary Schedule of Prior Year Audit Findings and Questioned Costs as Prepared by Management.....	125
K-8 Summary Schedule of Prior Year Audit Findings	126

INTRODUCTORY SECTION

Compass Academy Charter School

Where all children learn, lead, and become the future.



December 18, 2019

Honorable President and
Members of the Board of Trustees
Compass Academy Charter School
Vineland, New Jersey

Dear Board Members:

The comprehensive annual financial report of the Compass Academy Charter School (Charter School) for the fiscal year ended June 30, 2019, is hereby submitted. Responsibility for both the accuracy of the data and completeness and fairness of the presentation, including all disclosures, rests with the management of the Board of Trustees (the "Board"). To the best of our knowledge and belief, the data presented in this report is accurate in all material respects and is reported in a manner designed to present fairly the basic financial statements and results of operations of the various funds of the Charter School. All disclosures necessary to enable the reader to gain an understanding of the Charter School's financial activities have been included.

The Comprehensive Annual Financial Report is presented in four sections as follows:

- The Introductory Section contains a table of contents, Letter of Transmittal, List of Principal Officials, and an Organizational Chart of the Charter School;
- The Financial Section begins with the Independent Auditors' Report and includes the Management's Discussion and Analysis, the Basic Financial Statements and Notes providing an overview of the Charter School's financial position and operating results, and other schedules providing detailed budgetary information;
- The Statistical Section includes selected economic and demographic information, financial trends, and the fiscal capacity of the Charter School, generally presented on a multi-year basis;
- The Single Audit Section — The Charter School is required to undergo an annual single audit in conformity with the provisions of the *Uniform Administrative Requirements, Cost Principles, and Audit Requirements for Federal Awards* (U.S. Uniform Guidance) and New Jersey Circular 15-08-OMB, *Single Audit Policy for Recipients of Federal Grants, State Grants and State Aid*. Information related to this single audit, including the independent auditor's report on the internal control and compliance with applicable laws, regulations, contracts and grants, along with findings and questioned costs, are included in the single audit section of this report.

Charter School Organization

An elected nine-member Board of Trustees (the “Board”) serves as the policy maker for the Charter School. The Board adopts an annual budget and directly approves all expenditures which serve as the basis for control over and authorization for all expenditures of the Charter School funds.

The School Principal is responsible to the Board for total educational and support operations. The Business Administrator is the Chief Financial Officer of the Charter School, responsible to the Board for maintaining all financial records, issuing warrants in payment of liabilities incurred by the Charter School, acting as custodian of all Charter School funds, and investing idle funds as permitted by New Jersey law.

1. REPORTING ENTITY AND ITS SERVICES:

Compass Academy Charter School is an independent reporting entity within the criteria adopted by the Government Auditing Standards Board (GASB) as established by GASB Statement No. 14. All funds and account groups of the school are included in this report. Compass Academy Charter School’s Board of Trustees, constitutes the Charter School’s reporting entity.

During the fifth year of operation, the 2018-2019 school year, Compass Academy Charter School provided a full range of educational services to students in grades Kindergarten through Grade 5. These services included regular, as well as special education instruction. Compass Academy Charter School’s mission is to increase each child’s success in learning, and as a result, academic achievement. By utilizing and applying its innovative approach, the Charter School leadership and teachers help students develop a stronger sense of self-help as learners. The Charter School has demonstrated success in its early years, and there is much hope and great promise for the future. With a focus on leadership, civics, community service, and academics, the Charter School is armed with a strong Board, experience staff, a well-developed mission and accompanying core values.

Average Daily Enrollment

<u>Fiscal Year</u>	<u>Actual Student Enrollment</u>	<u>Percent Change-ADE</u>
2018-2019	210	-2.43%
2017-2018	214	9.48%
2016-2017	192	9.66%
2015-2016	175	23.24%
2014-2015	144	36.54%

2. ECONOMIC CONDITION AND OUTLOOK: Vineland is mainly a rural area with its economy somewhat tied to Philadelphia and Wilmington; however Vineland remains primarily self-sufficient and most people work locally. Glassmaking and agriculture are the primary industries. Some new investment is attracting business and visitors to its downtown areas. Recent job growth has increased, and is positive for the future. Its population has grown 11.02 percent since 2000. The city is strategically located between the Delaware Valley and the New Jersey beaches. The increasing number of businesses within the community results in an increase in the employment level which results in an increased tax base, both residential and industrial. This expansion is expected to continue which suggests Vineland will continue to prosper.

3. **MAJOR INITIATIVES:** The Charter School has developed a comprehensive strategic plan to support its mission and vision and serves as a blueprint for the achievement of its goals. The plan includes objectives, such as pupil achievement as measured by standardized tests and teacher assessment instruments; formal professional development for the certified and non-certified staff; and the implementation of a technology plan in all classrooms.

4. **INTERNAL ACCOUNTING CONTROLS:** Management of the Charter School is responsible for establishing and maintaining an internal control designed to ensure that the assets of the Charter School are protected from loss, theft or misuse and to ensure that adequate accounting data are compiled to allow for the preparation of financial statements in conformity with generally accepted accounting principles (GAAP). Internal control is designed to provide reasonable, but not absolute, assurance that these objectives are met. The concept of reasonable assurance recognizes that: (1) the cost of a control should not exceed the benefits likely to be derived; and (2) the valuation of costs and benefits requires estimates and judgments by management.

As a recipient of federal and state financial assistance, the Charter School is responsible for ensuring that adequate internal controls are in place to ensure compliance with applicable laws and regulations related to those programs. Internal control is also subject to periodic evaluation by the Charter School's management.

As part of the Charter School's single audit described earlier, tests are made to determine the adequacy of internal controls, including that portion related to federal and state financial assistance programs, as well as to determine that the Charter School has complied with applicable laws and regulations.

5. **BUDGETARY CONTROLS:** In addition to internal accounting controls, the Charter School maintains budgetary controls. The objective of these budgetary controls is to ensure compliance with legal provisions embodied in the annual appropriated budget approved by the voters of the municipality. Annual appropriated budgets are adopted for the general fund and the special revenue fund. The final budget amount, as amended for the fiscal year, is reflected in the financial section.

An encumbrance accounting system is used to record outstanding purchase commitments on a line item basis. Open encumbrances at year-end are either cancelled or are included as reappropriations of fund balance in the subsequent year. Those amounts to be reappropriated are reported as reservations of fund balance at June 30, 2019.

6. **CASH MANAGEMENT:** The investment policy of the Charter School is guided in large part by state statute as detailed in "Notes to the Basic Financial Statement" Note 3. The Charter School had adopted a cash management plan which requires it to deposit funds in public depositories protected from loss under the provisions of the Governmental Unit Deposit Protection Act ("GUDPA"). GUDPA was enacted in 1970 to protect Government Units from a loss of funds on deposit with a failed banking institution in New Jersey. The law requires governmental units to deposit public funds only in public depositories located in New Jersey, where the funds are secured in accordance with the Act.

7. **RISK MANAGEMENT:** The Board carries various forms of insurance, including but not limited to general liability, directors and officers insurance and workmen's compensation.

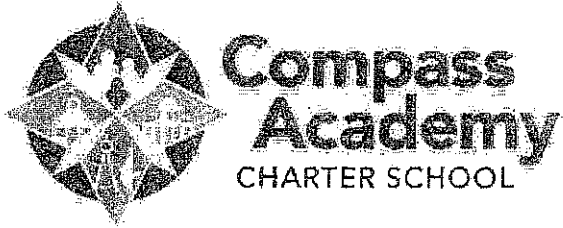
8. **OTHER INFORMATION:**

Independent Audit - State statutes require an annual audit by independent certified public accountants or registered municipal accountants. The accounting firm of Barre & Company, Certified Public Accountants, was selected by the Board of Trustees. In addition to meeting the requirements set forth in State statutes, the audit also was designed to meet the requirements of Title 2 U.S. Code of Federal Regulations Part 200, *Uniform Administrative Requirements, Cost Principles, and Audit Requirements for Federal Awards* ("Uniform Guidance") and New Jersey's Circular 15-08-OMB, *Single Audit Policy for Recipients of Federal Grants, State Grants, and State Aid*. The auditors' report on the basic financial statements and specific required supplemental information is included in the financial section of this report. The auditors' reports, related specifically to the single audit, are included in the single audit section of this report.

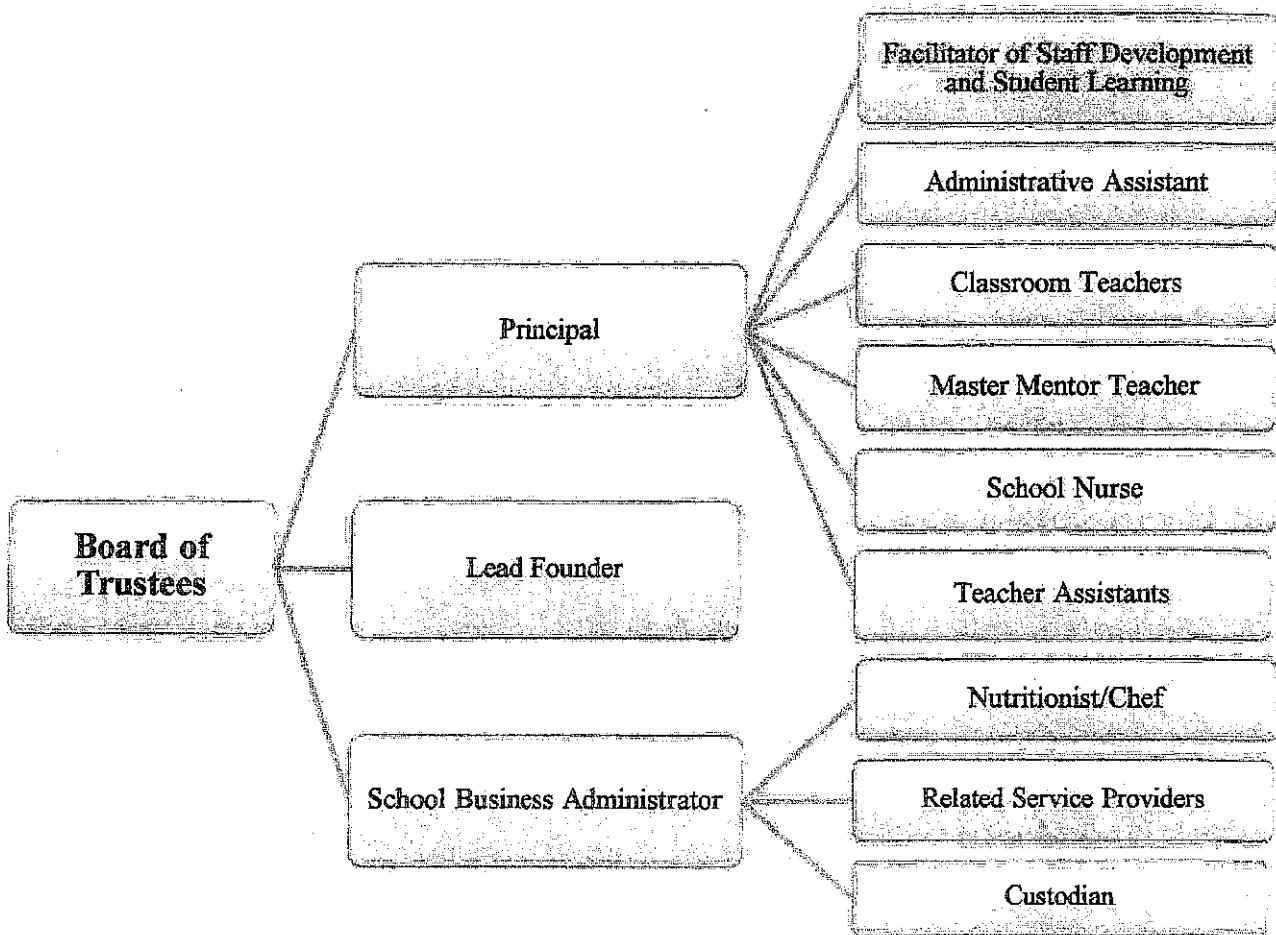
9. **ACKNOWLEDGEMENTS:** We would like to express our appreciation to the members of the Compass Academy Charter School Board of Trustees for their concern in providing fiscal accountability to the citizens and taxpayers of the Charter School and thereby contributing their full support to the development and maintenance of our financial operation. The preparation of this report could not have been accomplished without the efficient and dedicated services of our staff.

Respectfully submitted,


Glenn Richardson
School Business Administrator



Compass Academy Charter School Organization Chart



**COMPASS ACADEMY CHARTER SCHOOL
VINELAND, NEW JERSEY**

**ROSTER OF OFFICIALS
JUNE 30, 2019**

MEMBERS OF THE BOARD OF TRUSTEES

TERM EXPIRES

Art Horn, President	12/31/18
Patricia Bacon, Member	12/31/17
Joel Johnston, Ex-Officio	
Lynn Lichtenberger, Member	12/31/18
Suzanne Youngblood, Member	12/31/20
Dr. Gladwyn Baptist, Member	12/31/19
John Cortes, Member	12/31/21
Dion Colvin, Member	12/31/21
Jacquelin Galbiati, Member	12/31/21

OTHER OFFICIALS

Susan E. Little, Principal

Glenn Richardson, Board Secretary/Business Administrator

**COMPASS ACADEMY CHARTER SCHOOL
VINELAND, NEW JERSEY**

CONSULTANTS AND ADVISORS

Audit Firm

Barre & Company LLC
Certified Public Accountants
2204 Morris Avenue, Suite 206
Union, New Jersey 07083

Attorney

Cooper Levenson
1415 Route 70 East
Cherry Hill Plaza - Suite 205
Cherry Hill, New Jersey 08304

Official Depository

Century Savings Bank
1376 W. Sherman Avenue
Vineland, New Jersey 08360

FINANCIAL SECTION

BARRE & COMPANY LLC
CERTIFIED PUBLIC ACCOUNTANTS & CONSULTANTS

2204 Morris Avenue, Suite 206

Union, New Jersey 07083

(908) 686-3484

FAX – (908) 686-6055

www.cpa-bc.com ♦ info@cpa-bc.com

Independent Auditor's Report

Honorable President
Members of the Board of Trustees
Compass Academy Charter School
Vineland, New Jersey

Report on the Financial Statements

We have audited the accompanying financial statements of the governmental activities, the business-type activities, each major fund, and the aggregate remaining fund information of the Compass Academy Charter School (Charter School), in the , State of New Jersey, as of and for the fiscal year ended June 30, 2019, and the related notes to the financial statements, which collectively comprise the Charter School's basic financial statements as listed in the table of contents.

Management's Responsibility for the Financial Statements

The Charter School's management is responsible for the preparation and fair presentation of these financial statements in accordance with accounting principles generally accepted in the United States of America; this includes the design, implementation, and maintenance of internal control relevant to the preparation and fair presentation of financial statements that are free from material misstatement, whether due to fraud or error.

Auditor's Responsibility

Our responsibility is to express opinions on these financial statements based on our audit. We conducted our audit in accordance with auditing standards generally accepted in the United States of America and the standards applicable to financial audit contained in Government Auditing Standards, issued by the Comptroller General of the United States; and in compliance with audit requirements as prescribed by the Division of Finance, Department of Education, State of New Jersey. Those standards require that we plan and perform the audit to obtain reasonable assurance about whether the financial statements are free from material misstatement.

An audit involves performing procedures to obtain audit evidence about the amounts and disclosures in the financial statements. The procedures selected depend on the auditor's judgment, including the assessment of the risks of material misstatement of the financial statements, whether due to fraud or error. In making those risk assessments, the auditor considers internal control relevant to the entity's preparation and fair presentation of the financial statements in order to design audit procedures that are appropriate in the circumstances, but not for the purpose of expressing an opinion on the effectiveness of the

entity's internal control. Accordingly, we express no such opinion. An audit also includes evaluating the appropriateness of accounting policies used and the reasonableness of significant accounting estimates made by management, as well as evaluating the overall presentation of the financial statements.

We believe that the audit evidence we have obtained is sufficient and appropriate to provide a basis for our audit opinions.

Opinions

In our opinion, the financial statements referred to above present fairly, in all material respects, the respective financial position of the governmental activities, the business-type activities, each major fund, and the aggregate remaining fund information of the Compass Academy Charter School, in the , State of New Jersey, as of June 30, 2019, and the respective changes in the financial position and, where applicable, cash flows thereof for the year then ended in accordance with accounting principles generally accepted in the United States of America.

Other Matters

Required Supplementary Information

Accounting principles generally accepted in the United States of America require that the Management's Discussion and Analysis, following this report, and pension and post-employment benefit schedules in Exhibits L-1 through L-4, and M-1, and the related notes be presented to supplement the basic financial statements and budgetary comparison information in Exhibits C-1 through C-3. Such information, although not a part of the basic financial statements, is required by the Governmental Accounting Standards Board who considers it to be an essential part of financial reporting for placing the basic financial statements in an appropriate operational, economic, or historical context. We have applied certain limited procedures to the required supplementary information in accordance with auditing standards generally accepted in the United States of America, which consisted of inquiries of management about the methods of preparing the information and comparing the information for consistency with management's response to our inquiries, the basic financial statements, and other knowledge we obtained during our audit of the basic financial statements. We do not express an opinion or provide any assurance on the information because the limited procedures do not provide us with sufficient evidence to express an opinion or provide any assurance.

Other Information

Our audit was conducted for the purpose of forming opinions on the financial statements that collectively comprise the Compass Academy Charter School's basic financial statements. The introductory section, combining statements and related major fund supporting statements and schedules, and statistical section are presented for purposes of additional analysis, as required by the Office of School Finance, Department of Education, State of New Jersey, and are not a required part of the basic financial statements. The accompanying schedules of expenditures of federal awards and state financial assistance, as required by Title 2 U.S. Code of Federal Regulations Part 200, *Uniform Administrative Requirements, Cost Principles, and Audit Requirements for Federal Awards*; and New Jersey's OMB Circular 15-08, *Single Audit Policy for Recipients of Federal Grants, State Grants and State Aid*, respectively, are also presented for purposes of additional analysis and are not a required part of the basic financial statements.


The combining and individual fund financial statements and schedules of expenditures of federal awards and state financial assistance are the responsibility of management and were derived from and relate directly to the underlying accounting and other records use to prepare the basic financial statements. Such information has been subjected to the auditing procedures applied in the audit of the basic financial statements and certain additional procedures, including comparing and reconciling such information directly to the underlying accounting and other records used to prepare the basic financial statements or to the basic financial statements themselves, and other additional procedures in accordance with auditing standards generally accepted in the United States of America. In our opinion, the combining and individual fund financial statements and schedules of expenditures of federal awards and state financial assistance are fairly stated, in all material respects, in relation to the basic financial statements as a whole.

The introductory and statistical sections have not been subjected to the auditing procedures applied in the audit of the basic financial statements, and accordingly, we do not express an opinion or provide any assurance on it.

Other Reporting Required by *Government Auditing Standards*

In accordance with *Government Auditing Standards* and the Division of Finance, Department of Education, State of New Jersey, we have also issued our report dated December 18, 2019, on our consideration of the Compass Academy Charter School's internal control over financial reporting and our tests of its compliance with certain provisions of laws, regulations, contracts, and grant agreements and other matters. The purpose of that report is to describe the scope of our testing of internal controls over financial reporting and compliance and the results of that testing, and not to provide an opinion on internal control over financial reporting or on compliance. That report is an integral part of an audit performed in accordance with *Government Auditing Standards and the Division of Finance, Department of Education, State of New Jersey* in considering the Charter School's internal control over financial reporting and compliance.


BARRE & COMPANY LLC
Certified Public Accountants
Public School Accountants


Richard M. Barre
Public School Accountant
PSA Number CS-01181

Union, New Jersey
December 18, 2019

REQUIRED SUPPLEMENTARY INFORMATION – PART I

**COMPASS ACADEMY CHARTER SCHOOL
VINELAND, NEW JERSEY**

**MANAGEMENT'S DISCUSSION AND ANALYSIS
FOR FISCAL YEAR ENDED JUNE 30, 2019
UNAUDITED**

The discussion and analysis of Compass Academy Charter School's financial performance provides an overall review of the Charter School's financial activities for the fiscal year ended June 30, 2019. The intent of this discussion and analysis is to look at the Charter School's financial performance as a whole; readers should also review the basic financial statements and notes to enhance their understanding of the Charter School's financial performance.

Financial Highlights

Key financial highlights for 2019 are as follows:

- ❖ General revenues accounted for \$2,377,854 or 96% of all revenues. Program specific revenues in the form of charges for services and operating grants and contributions accounted for \$108,069 or 4% of total revenues of \$2,485,923.
- ❖ The Charter School had \$2,626,909 in expenses; only \$108,069 of these expenses were offset by program specific charges for services, grants or contributions. General revenues of \$2,377,854 were not adequate to provide for these programs.
- ❖ Among governmental funds, the General Fund had \$2,210,547 in revenues and \$2,263,154 in expenditures. The General Fund's fund balance decreased \$52,607 over 2018. This decrease was anticipated by the Board of Trustees.

Using this Comprehensive Annual Financial Report (CAFR)

This annual report consists of a series of financial statements and notes to those statements. These statements are organized so the reader can understand Compass Academy Charter School as a financial whole, an entire operating entity. The statements then proceed to provide an increasingly detailed look at specific financial activities.

The *Statement of Net Position* and *Statement of Activities* provide information about the activities of the whole Charter School, presenting both an aggregate view of the Charter School's finances and a longer-term view of those finances. Fund financial statements provide the next level of detail. For governmental funds, these statements tell how services were financed in the short-term as well as what remains for future spending. The fund financial statements also look at the Charter School's most significant funds with all other non-major funds presented in total in one column. In the case of Compass Academy Charter School, the General Fund is by far the most significant fund.

Reporting the Charter School as a Whole

Statement of Net Position and the Statement of Activities

While this document contains the large number of funds used by the Charter School to provide programs and activities, the view of the Charter School as a whole looks at all financial transactions and ask the question, "How did we do financially during 2019?" The *Statement of Net Position* and the *Statement of Activities* answer this question. These statements include all assets and liabilities using the accrual basis of accounting similar to the accounting used by

**COMPASS ACADEMY CHARTER SCHOOL
VINELAND, NEW JERSEY**

**MANAGEMENT'S DISCUSSION AND ANALYSIS
FOR FISCAL YEAR ENDED JUNE 30, 2019
UNAUDITED
(CONTINUED)**

Statement of Net Position and the Statement of Activities (Continued)

most private-sector businesses. This basis of accounting takes into account all of the current year's revenues and expenses regardless of when cash is received or paid.

These two statements report the Charter School's net position and changes in that position. This change in net position is important because it tells the reader that, for the Charter School as a whole, the financial position of the Charter School has improved or diminished. The causes of this change may be the result of many factors, some financial and some not. Non-financial factors include current laws in New Jersey restricting revenue growth, facility condition, required educational programs and other factors.

In the *Statement of Net Position* and the *Statement of Activities*, the Charter School is divided into two kinds of activities:

- ❖ Governmental activities — All of the Charter School's programs and services are reported here including instruction, administration, support services, and capital outlay.
- ❖ Business-Type Activity — This service is provided on a charge for goods or services basis to recover all the expenses of the goods or services provided. The Food Service enterprise fund is reported as a business activity.

Reporting the Charter School's Most Significant Funds

Fund Financial Statements

Fund financial reports provide detailed information about the Charter School's funds. The Charter School uses many funds to account for a multitude of financial transactions. The Charter School's governmental funds are the General Fund and Special Revenue Fund.

Governmental Funds

The Charter School's activities are reported in governmental funds, which focus on how money flows into and out of those funds and the balances left at year-end available for spending in the future years. These funds are reported using an accounting method called modified accrual accounting, which measures cash and all other financial assets that can readily be converted to cash. The governmental fund statements provide a detailed short-term view of the Charter School's general government operations and the basic services it provides. Governmental fund information helps the reader determine whether there are more or fewer financial resources that can be spent in the near future to finance educational programs. The relationship (or differences) between governmental activities (reported in the *Statement of Net Position* and the *Statement of Activities*) and governmental funds is reconciled in the financial statements.

**COMPASS ACADEMY CHARTER SCHOOL
VINELAND, NEW JERSEY**

**MANAGEMENT'S DISCUSSION AND ANALYSIS
FOR FISCAL YEAR ENDED JUNE 30, 2019
UNAUDITED
(CONTINUED)**

Enterprise Fund

The enterprise fund uses the same basis of accounting as business-type activities; therefore, these statements are essentially the same.

Notes to the Financial Statements

The notes provide additional information that is essential to a full understanding of the data provided in the Charter School-wide and fund financial statements. The notes to the financial statements can be found starting on page 36 of this report.

The Charter School as a Whole

Recall that the *Statement of Net Position* provides the perspective of the Charter School as a whole. Net position may serve over time as a useful indicator of a government's financial position.

The Charter School's financial position is the product of several financial transactions including the net results of activities.

The Charter School's combined Net Position were -\$144,423 for 2019 and -\$59,168 for 2018.

Governmental Activities

The Charter School's total revenues were \$2,352,551 for 2019 and \$4,310,755 for 2018, this includes \$77,350 for 2019 and \$69,303 for 2018 of state reimbursed TPAF social security contributions.

The total cost of all program and services were \$2,481,150 for 2019 and \$4,424,834 for 2018. Instruction comprises 58% for 2019 and 45% for 2018 of Charter School expenses.

The *Statement of Activities* shows the cost of program services and the charges for services and grants offsetting those services. Instruction expenses include activities directly dealing with the teaching of pupils and the interaction between teacher and student, including extracurricular activities.

Administration includes expenses associated with administrative and financial supervision of the Charter School.

Support services include the activities involved with assisting staff with the content and process of teaching to students, including curriculum and staff development and the costs associated with operating the facility.

Capital Outlay represents instructional and/or non-instructional equipment purchased and is capitalized when such equipment is over the \$2,000 threshold.

**COMPASS ACADEMY CHARTER SCHOOL
VINELAND, NEW JERSEY**

**MANAGEMENT'S DISCUSSION AND ANALYSIS
FOR FISCAL YEAR ENDED JUNE 30, 2019
UNAUDITED**

Business-Type Activities

Revenues for the Charter School's business-type activities (Food Service) were comprised of charges for services and federal and state reimbursements.

- ❖ Food service revenues exceeded expenses by -\$12,387 for 2019 and by \$39,002 for 2018.
- ❖ Charges for services represent \$20,668 for 2019 and \$47,917 for 2018 of revenue. This represents amounts paid by patrons for daily food.
- ❖ Federal and state reimbursements for meals, including payments for free and reduced lunches and breakfast were \$83,368 for 2019 and \$61,940 for 2018.

The Charter School's Funds

All governmental funds (i.e., general fund and special revenue fund presented in the fund-based statements) are accounted for using the modified accrual basis of accounting. Total revenues amounted to \$2,352,551 for 2019 and \$4,310,755 for 2018 and expenditures were \$2,405,158 for 2019 and \$1,918,290 for 2018. The net change in fund balance was most significant in the general fund, an increase of \$52,607 in 2019 and a decrease of -\$57,968 in 2018.

As demonstrated by the various statements and schedules included in the financial section of this report, the Charter School continues to meet its responsibility for sound financial management. The following schedules present a summary of the revenues of the governmental funds for the fiscal year ended June 30, 2019, and the amount and percentage of increases and decreases in relation to prior year revenues.

Revenues	Amount	Percent of Total	Increase/ (Decrease) From 2018	Percent of Increase/ (Decrease)
Local Sources	\$ 400,230	17.01%	\$ (370,160)	-48.05%
State Sources	1,810,317	76.95%	(1,170,521)	-39.27%
Federal Sources	142,004	6.04%	(142,428)	-50.07%
Total	\$ 2,352,551	100.00%	\$ (1,683,109)	

**COMPASS ACADEMY CHARTER SCHOOL
VINELAND, NEW JERSEY**

**MANAGEMENT'S DISCUSSION AND ANALYSIS
FOR FISCAL YEAR ENDED JUNE 30, 2019
UNAUDITED
(CONTINUED)**

The Charter School's Funds (Continued)

The following schedule represents a summary of general fund and special revenue fund expenditures for the fiscal year ended June 30, 2019, and the percentage of increases and decreases in relation to prior year amounts.

Expenditures	Amount	Percent of Total	Increase/ (Decrease) From 2018	Percent of Increase/ (Decrease)
Instruction	\$ 1,184,485	49.25%	\$ 15,043	1.29%
Administration	805,624	33.50%	347,748	75.95%
Support Services	413,573	17.20%	151,105	57.57%
Capital Outlay	1,476	0.05%	(27,028)	-94.82%
Total	\$ 2,405,158	100.00%	\$ 486,868	

General Fund Budgeting Highlights

The Charter School's budget is prepared according to New Jersey law, and is based on accounting for certain transactions on a basis of cash receipts, disbursements, and encumbrances. The most significant budgeted fund is the General Fund.

Over the course of the year, the Charter School revised the annual operating budget in accordance with state regulations. Revisions in the budget were made to recognize revenues that were not anticipated and to prevent over-expenditures in specific line item accounts.

Capital Assets (Net of Depreciation)

The Charter School had \$0 for 2019 and \$0 for 2018 invested in building improvements.

For the Future

The Compass Academy Charter School is in stable financial condition presently. The Charter School is proud of its community support. A major concern is the continued enrollment growth of the Charter School with the increased reliance on federal and state funding.

In conclusion, Compass Academy Charter School has committed itself to financial stability for many years. In addition, the Charter School's system for financial planning, budgeting, and internal financial controls are well regarded. The Charter School plans to continue its sound fiscal management to meet the challenge of the future.

**COMPASS ACADEMY CHARTER SCHOOL
VINELAND, NEW JERSEY**

**MANAGEMENT'S DISCUSSION AND ANALYSIS
FOR FISCAL YEAR ENDED JUNE 30, 2019
UNAUDITED
(CONTINUED)**

Contacting the Charter School's Financial Management

This financial report is designed to provide our citizens, taxpayers, investors, and creditors with a general overview of the Charter School's finances and to show the Charter School's accountability for the money it receives. If you have questions about this report or need additional information, contact Mr. Glenn Richardson, School Business Administrator at Compass Academy Charter School, 23 W. Chestnut Avenue, Vineland, New Jersey 08360.

BASIC FINANCIAL STATEMENTS

SECTION A – CHARTER SCHOOL-WIDE FINANCIAL STATEMENTS

The statement of net position and the statement of activities display information about the Charter School. These statements include the financial activities of the overall Charter School, except for fiduciary activities. Eliminations have been made to minimize the double-counting of internal activities. These statements distinguish between the governmental and business-type activities of the Charter School.

COMPASS ACADEMY CHARTER SCHOOL
Statement of Net Position
June 30, 2019

	Governmental Activities	Business-Type Activities	Total
ASSETS:			
Cash and Cash Equivalents:			
Cash and Cash Equivalents	\$ 76,761	\$ 2,242	\$ 79,003
Interfund Receivable	12,252		12,252
Other Receivables	99,201	29,013	128,214
Inventories		1,032	1,032
Total Assets	188,214	32,287	220,501
DEFERRED OUTFLOWS OF RESOURCES:			
Pensions	308,743		308,743
Total Deferred Outflows of Resources	308,743	-	308,743
LIABILITIES:			
Interfund Payable	7,734		7,734
Payable to State Government	47,410		47,410
Accounts Payable	18,437	747	19,184
Loans Payable	40,000		40,000
Deferred Revenue	1,573		1,573
Pensions	372,338		372,338
Total Liabilities	487,492	747	488,239
DEFERRED INFLOWS OF RESOURCES:			
Pensions	185,428		185,428
Total Deferred Inflows of Resources	185,428	-	185,428
NET POSITION:			
Unassigned	(175,963)	31,540	(144,423)
Total Net Position	\$ (175,963)	\$ 31,540	\$ (144,423)

The accompanying Notes to Basic Financial Statements are an integral part of this statement.

COMPASS ACADEMY CHARTER SCHOOL
 Statement of Activities
 For The Fiscal Year Ended June 30, 2019

Functions/Programs	Expenses	Indirect Expenses Allocation	Program Revenues			Net (Expense) Revenue and Changes In Net Position		
			Charges for Services	Operating Grants and Contributions	Capital Grants and Contributions	Governmental Activities	Business-Type Activities	Total
GOVERNMENTAL ACTIVITIES:								
Instruction	\$ 1,092,676	\$ 350,012	\$ -	\$ -	\$ -	\$ (1,442,688)	\$ -	\$ (1,442,688)
Administration	522,321	53,341				(575,662)		(575,662)
Support Services	422,743	38,581				(461,324)		(461,324)
Total Governmental Activities	2,039,216	\$ 441,934	-	-	-	(2,481,150)	-	(2,481,150)
BUSINESS-TYPE ACTIVITIES:								
Food Service	145,759		20,668	87,401			(37,690)	(37,690)
Total Business-Type Activities	145,759		20,668	87,401	-	-	(37,690)	(37,690)
Total Primary Government	\$ 2,184,975		\$ 20,668	\$ 87,401	\$ -	\$ (2,481,150)	\$ (37,690)	\$ (2,518,840)
GENERAL REVENUES								
Federal and State Aid Not Restricted						\$ 2,330,785		\$ 2,330,785
Miscellaneous Income						21,766	25,303	47,069
Total General Revenues						2,352,551	25,303	2,377,854
Change in Net Position						(128,599)	(12,387)	(140,986)
Net Position - Beginning of Year						(47,364)	43,927	(3,437)
Net Position - Ending						(175,963)	\$ 31,540	\$ (144,423)

SECTION B – FUND FINANCIAL STATEMENTS

The Individual Fund statements and schedules present more detailed information for the individual fund in a format that segregates information by fund type.

GOVERNMENTAL FUNDS

COMPASS ACADEMY CHARTER SCHOOL
 Governmental Funds
 Balance Sheet
 June 30, 2019

	General Fund	Special Revenue Fund	Total
ASSETS:			
Current Assets:			
Cash and Cash Equivalents	76,549	\$ 212	\$ 76,761
Receivables:			
Interfund Receivables	9,106	1,573	10,679
Receivables From Other Governments	100,774		100,774
Total Current Assets	186,429	1,785	188,214
Total Assets	\$ 186,429	\$ 1,785	\$ 188,214
LIABILITIES AND FUND BALANCES:			
Liabilities:			
Current Liabilities:			
Interfund Payables	\$ 7,522	\$ 212	\$ 7,734
Payable to State Government	47,410		47,410
Accounts Payable	58,437		58,437
Deferred Revenue		1,573	1,573
Total Liabilities	113,369	1,785	115,154
Fund Balances:			
Unassigned:			
General Fund	73,060		73,060
Total Fund Balances	73,060	-	73,060
Total Liabilities and Fund Balances	\$ 186,429	\$ 1,785	

Amounts reported for *governmental activities* in the statement of net position (A-1) are different because:

Net pension liability of \$372,338, deferred inflows of resources of \$185,428 less deferred outflows of resources of \$308,743 related to pensions are not reported in the governmental funds	(249,023)
Net Position of Governmental Activities	<u>\$ (175,963)</u>

The accompanying Notes to Basic Financial Statements are an integral part of this statement.

COMPASS ACADEMY CHARTER SCHOOL
 Governmental Funds
 Statement of Revenues, Expenditures and Changes in Fund Balance
 For the Fiscal Year Ended June 30, 2019

	General Fund	Special Revenue Fund	Total
REVENUES:			
Local Sources:			
Local Tax Levy	\$ 378,464	\$ -	\$ 378,464
Miscellaneous	21,766		21,766
Total Local Sources	400,230	-	400,230
Intermediate Sources			
State Sources	1,810,317		1,810,317
Federal Sources		142,004	142,004
Total Revenues	2,210,547	142,004	2,352,551
EXPENDITURES:			
Current:			
Instruction	1,092,676	91,809	1,184,485
Administration	805,624		805,624
Support Services	363,378	50,195	413,573
Capital Outlay	1,476		1,476
Total Expenditures	2,263,154	142,004	2,405,158
NET CHANGE IN FUND BALANCES	(52,607)	-	(52,607)
FUND BALANCES, JULY 1	125,667	-	125,667
FUND BALANCES, JUNE 30	\$ 73,060	\$ -	\$ 73,060

The accompanying Notes to Basic Financial Statements are an integral part of this statement.

COMPASS ACADEMY CHARTER SCHOOL
 Reconciliation of the Statement of Revenues, Expenditures
 And Changes in Fund Balances of Governmental Funds
 To the Statement of Activities
 For the Fiscal Year Ended June 30, 2019

Total net change in fund balances - governmental fund (from B-2)	\$ (52,607)
<p>Amounts reported for governmental activities in the statement of activities (A-2) are different because:</p>	
Pension costs associated with the PERS pension plan are reported in the governmental funds as expenditures in the year the school pension contribution is paid. However, on the statement of activities, the net difference between the current and prior year net pension liability is recognized.	<u>(75,992)</u>
Change in net position of governmental activities	<u>\$ (128,599)</u>

The accompanying Notes to Basic Financial Statements are integral part of this statement.

PROPRIETARY FUNDS

COMPASS ACADEMY CHARTER SCHOOL
 Proprietary Fund
 Statement of Net Position
 June 30, 2019

	Business-Type Activities
	<u>Food Service</u>
ASSETS:	
Cash and Cash Equivalents	\$ 2,242
Due From Other Funds	
Receivables From Other Governments	9,655
Other Receivables	19,358
Inventories	<u>1,032</u>
Total Assets	<u><u>\$ 32,287</u></u>
LIABILITIES AND NET POSITION:	
Current Liabilities:	
Interfund Accounts Payable	\$ -
Accounts Payable	<u>747</u>
Total Current Liabilities	<u>747</u>
Total Liabilities	<u>747</u>
NET POSITION:	
Unassigned	<u>31,540</u>
Total Net Position	<u>31,540</u>
Total Liabilities and Net Position	<u><u>\$ 32,287</u></u>

The accompanying Notes to Basic Financial Statements are an integral part of this statement.

COMPASS ACADEMY CHARTER SCHOOL
Proprietary Fund
Statement of Revenues, Expenses, and Changes in Net Position
For the Fiscal Year Ended June 30, 2019

	Business-Type Activities Enterprise Fund
	Food Service
OPERATING REVENUES:	
Charges for Services:	
Daily Sales Reimbursable Program	\$ 20,668
Total Operating Revenues	20,668
OPERATING EXPENSES:	
Salaries	94,631
Supplies and Materials	2,644
Cost of Sales	48,466
Miscellaneous Expenses	18
Total Operating Expenses	145,759
OPERATING LOSS	(125,091)
NONOPERATING REVENUES:	
Board Contributions	25,303
State Lunch Program	1,212
Federal Breakfast Program	22,245
Federal Lunch Program	59,911
Federal Snack Program	4,033
Total Nonoperating Revenues	112,704
CHANGE IN NET POSITION	(12,387)
TOTAL NET POSITION, JULY 1	43,927
TOTAL NET POSITION, JUNE 30	\$ 31,540

The accompanying Notes to Basic Financial Statements are an integral part of this statement.

COMPASS ACADEMY CHARTER SCHOOL
 Proprietary Funds
 Statement of Cash Flows
 For The Fiscal Year Ended June 30, 2019

	Business-Type Activities
	Food Service
CASH FLOWS FROM OPERATING ACTIVITIES:	
Cash Received from Customers	\$ 20,669
Cash Payments to Suppliers and Employees	(171,016)
Net Cash Used by Operating Activities	(150,347)
CASH FLOWS FROM NONCAPITAL FINANCING ACTIVITIES:	
Cash Received from State and Federal Reimbursements	112,704
Net Cash Provided by Noncapital Financing Activities	112,704
Net Decrease in Cash and Cash Equivalents	(37,643)
Cash and Cash Equivalents, July 1	39,886
Cash and Cash Equivalents, June 30	\$ 2,243
Reconciliation of Operating Loss to Net Cash Used by Operating Activities:	
Operating Loss Used for Operating Activities	\$ (125,091)
Changes in Assets and Liabilities:	
Increase in Intergovernmental Accounts Receivable	(17,528)
Increase in Interfund Accounts Payable	(7,729)
Increase in Accounts Payable	
Net Cash Used by Operating Activities	\$ (150,348)

The accompanying Notes to Basic Financial Statements are an integral part of this statement.

FIDUCIARY FUNDS

COMPASS ACADEMY CHARTER SCHOOL
 Fiduciary Funds
 Statement of Fiduciary Net Position
 June 30, 2019

	Trusts Flexible Spending Account	Total Agency Funds
ASSETS:		
Cash and Cash Equivalents	\$ 3,291	\$ 9,783
Total Assets	\$ 3,291	\$ 9,783
LIABILITIES:		
Interfund Payable	\$ 4,468	\$ 50
Due to Student Groups		9,733
Total Liabilities	4,468	\$ 9,783
NET POSITION:		
Held in Trust	(1,177)	
Total Net Position	(1,177)	
Total Liabilities and Net Position	\$ 3,291	

The accompanying Notes to Basic Financial Statements are an integral part of this statement.

COMPASS ACADEMY CHARTER SCHOOL
 Fiduciary Funds
 Statement of Changes in Fiduciary Net Position
 For Fiscal Year Ended June 30, 2019

	Trusts Flexible Spending Account
ADDITIONS:	
Contributions:	
Employees	\$ 11,000
Total Additions	11,000
DEDUCTIONS:	
Payments	12,177
Total Deductions	12,177
CHANGE IN NET POSITION	(1,177)
NET POSITION, JULY 1	-
NET POSITION, JUNE 30	\$ (1,177)

The accompanying Notes to Basic Financial Statements are an integral part of this statement.

NOTES TO THE FINANCIAL STATEMENTS

**COMPASS ACADEMY CHARTER SCHOOL
NOTES TO THE FINANCIAL STATEMENTS
JUNE 30, 2019**

NOTE 1: SUMMARY OF SIGNIFICANT ACCOUNTING POLICIES

A. Basis of Presentation

The financial statements of Compass Academy Charter School have been prepared in conformity with generally accepted accounting principles generally (GAAP) as applied to governmental units. The Governmental Accounting Standards Board (GASB) is the accepted standard-setting body responsible for establishing governmental accounting and financial reporting principles. In its accounting and financial reporting, the Charter School follows the pronouncements of the Governmental Accounting Standards Board (GASB). The more significant accounting policies of the Charter School are described below.

For fiscal year 2016, the Charter School implemented the Governmental Accounting Standards Board (GASB) Statement No. 68, "Accounting and Financial Reporting for Pensions" and GASB Statement No. 71, "Pension Transition for Contributions Made Subsequent to the Measurement Date – an amendment of GASB Statement No. 68." GASB 68 established standards for measuring and recognizing pension liabilities, deferred outflows of resources and expense/expenditure.

B. Reporting Entity

The Charter School is a non-profit corporation organized under the laws of the State of New Jersey, established in 2002 to operate and maintained a public school under a charter granted by the State of New Jersey. The Charter School consists of seven members and must comply with the Charter School Program Act of 1995 and regulations promulgated thereunder.

The primary criterion for including activities within the Charter School's reporting entity are set forth in Statement No. 14 of the Governmental Accounting Standards Board entitled "The Financial Reporting Entity" (GASB 14) as codified in Section 2100 of the GASB Codification of Governmental Accounting and Financial Reporting Standards. Under GASB Statement No. 14, the financial reporting entity is determined by the degree of oversight responsibility maintained by the Charter School. Oversight responsibility includes financial interdependency, selection of governing authority, designation of management, ability to significantly influence operations and accountability for fiscal matters. The combined financial statements include all funds and account groups of the Charter School over which it exercises operating control. The operations of the Compass Academy Charter School include two schools a Grade K-6 and a Grade 7-12 located in the City of Vineland. There are no additional entities required to be included in the reporting entity under the criteria as described above, in the current fiscal year. Furthermore, the Charter School is not includable in any other reporting entity on the basis of such criteria.

**COMPASS ACADEMY CHARTER SCHOOL
NOTES TO THE FINANCIAL STATEMENTS
JUNE 30, 2019**

NOTE 1: SUMMARY OF SIGNIFICANT ACCOUNTING POLICIES (CONTINUED)

C. Basic Financial Statements – Government-Wide Statements

The statement of net position and the statement of activities display information about the Charter School. These statements include the financial activities of the Charter School, except for fiduciary activities. Eliminations have been made to minimize the double counting of internal activities. These statements distinguish between the governmental and business-type activities of the Charter School. Governmental activities generally are financed through taxes, intergovernmental revenues, and other nonexchange transactions. Business-type activities are financed in whole or in part by fees charged to external parties.

The statement of activities presents a comparison between direct expenses and program revenues for each segment of the business-type activities of the Charter School and for each function of the Charter School's governmental activities. Direct expenses are those that are specifically associated with a program or function and, therefore, are clearly identifiable to a particular function. Indirect expenses are allocated to the functions using an appropriate allocation method or association with the specific function. Indirect expenses include health benefits, employer's share of payroll taxes, compensated absences and tuition reimbursements.

Program revenues include (a) charges paid by the recipients of goods or services offered by the programs and (b) grants and contributions that are restricted to meeting the operational or capital requirements of a particular program. Revenues that are not classified as program revenues, including all taxes, are presented as general revenues. The comparison of direct expenses with program revenues identifies the extent to which each government function or business segment is self-financing or draws from the general revenues of the Charter School.

D. Basic Financial Statements – Fund Financial Statements

The financial transactions of the Charter School are reported in individual funds in the fund financial statements. Each fund is accounted for by providing a separate set of self-balancing accounts that comprises its assets, liabilities, reserves, fund equity, revenues and expenditures/expenses. The various funds are reported by generic classification within the financial statements.

The following fund types are used by the Charter School:

Governmental Fund Types

The focus of the governmental funds' measurement (in the fund statements) is upon determination of financial position and changes in financial position (sources, uses, and balances of financial resources) rather than upon net income. The following is a description of the governmental funds of the Charter School.

**COMPASS ACADEMY CHARTER SCHOOL
NOTES TO THE FINANCIAL STATEMENTS
JUNE 30, 2019**

NOTE 1: SUMMARY OF SIGNIFICANT ACCOUNTING POLICIES (CONTINUED)

Basic Financial Statements – Fund Financial Statements (Continued)

General Fund – The general fund is the general operating fund of the Charter School. It is used to account for all financial resources except those required to be accounted for in another fund. Included are certain expenditures for vehicles and movable instructional or noninstructional equipment which are classified in the Capital Outlay subfund.

As required by the New Jersey State Department of Education, the Charter School includes budgeted Capital Outlay in this fund. Generally accepted accounting principles as they pertain to governmental entities state that General Fund resources may be used to directly finance capital outlays for long-lived improvements as long as the resources in such cases are derived exclusively from unrestricted revenues.

Resources for budgeted capital outlay purposes are normally derived from State of New Jersey Aid, charter school taxes and appropriated fund balance. Expenditures are those that result in the acquisition of or additions to fixed assets for land, existing buildings, improvements of grounds, construction of buildings, additions to or remodeling of buildings and the purchase of built-in equipment. These resources can be transferred from and to Current Expense by board resolution.

Special Revenue Fund – The Special Revenue Fund is used to account for the proceeds of specific revenue from State and Federal Government, (other than major capital projects, Debt Service or the Enterprise Funds) and local appropriations that are legally restricted to expenditures for specified purposes.

Capital Projects Fund – The Capital Projects Fund is used to account for all financial resources to be used for the acquisition or construction of major capital facilities (other than those financed by Proprietary Funds). The financial resources are derived from temporary notes or serial bonds that are specifically authorized by the voters as a separate question on the ballot either during the annual election or at a special election.

Debt Service Fund – The Debt Service Fund is used to account for the accumulation of resources for, and the payment of principal and interest on bonds issued to finance major property acquisition, construction and improvement programs.

Proprietary Fund Type - The focus of Proprietary Fund measurement is upon determination of net income, changes in net position, financial position and cash flows. The generally accepted accounting principles applicable are those similar to businesses in the private sector. The following is a description of the Proprietary Funds of the Charter School:

**COMPASS ACADEMY CHARTER SCHOOL
NOTES TO THE FINANCIAL STATEMENTS
JUNE 30, 2019**

NOTE 1: SUMMARY OF SIGNIFICANT ACCOUNTING POLICIES (CONTINUED)

Basic Financial Statements – Fund Financial Statements (Continued)

Enterprise Funds – The Enterprise Funds are utilized to account for operations that are financed and operated in a manner similar to private business enterprises – where the intent of the Charter School is that the costs (i.e. expenses including depreciation and indirect costs) of providing goods or services to the students on a continuing basis be financed or recovered primarily through user charges; or, where the Charter School has decided that the periodic determination of revenues earned, expenses incurred, and/or net income is appropriate for capital maintenance, public policy, management control, accountability or other purposes.

Governments should establish a policy that defines operating revenues and expenses that is appropriate to the nature of the activity being reported, and use it consistently from period to period. Transactions for which cash flows are reported as capital and related financing activities, non-capital financing activities, or investing activities normally would not be reported as components of operating income.

The Charter School's Enterprise Fund are comprised of the Food Service Fund operations.

Depreciation of all exhaustive fixed assets used by proprietary funds is charged as an expense against their operations. Accumulated depreciation is reported on proprietary fund balance sheets. Depreciation has been provided over the estimated useful lives using the straight-line method. The estimated useful lives are as follows:

Food Service Fund:	
Equipment	12 Years
Light Trucks and Vehicle	4 Years
Heavy Trucks and Vehicle	6 Years

In its accounting and financial reporting, the Charter School follows the pronouncements of the GASB and the pronouncements of the Financial Accounting Standards Board (FASB) and its predecessor organizations issued on or before November 30, 1989, unless they conflict with or contradict GASB pronouncements. The Charter School's business-type activities and enterprise funds have elected not to apply the standards issued by the FASB after November 30, 1989.

As a general rule the effect of interfund activity has been eliminated from the government-wide financial statements; however, interfund services provided and used are not eliminated in the process of consolidation.

Amounts reported as program revenues include (1) charges to customers or applicants for goods, services, or privileges provided, (2) operating grants and contributions, and (3) capital grants and contributions. Internally dedicated

**COMPASS ACADEMY CHARTER SCHOOL
NOTES TO THE FINANCIAL STATEMENTS
JUNE 30, 2019**

NOTE 1: SUMMARY OF SIGNIFICANT ACCOUNTING POLICIES (CONTINUED)

Basic Financial Statements – Fund Financial Statements (Continued)

resources are reported as general revenues rather than program revenues. Likewise, general revenues include all taxes.

Proprietary funds distinguish operating revenue and expenses from non-operating items. Operating revenues and expenses generally result from providing services and producing and delivering goods in connection with a proprietary fund's principal ongoing operations. The principal operating revenues of the Charter School enterprise funds are charges for daily sales of food, special functions and miscellaneous receipts. Operating expenses for proprietary funds include the cost of sales, administrative expenses, and depreciation on capital assets. All revenues and expenses not meeting this definition are reported as non-operating revenues and expenses.

Fiduciary Fund Types - Fiduciary Funds are used to report assets held in a trustee or agency capacity for others and therefore are not available to support Charter School programs. The reporting focus is on net position and changes in net position and are reported using accounting principles similar to proprietary funds.

The emphasis in fund financial statements is on the major funds in either the governmental or business-type activities categories. Nonmajor funds by category are summarized into a single column. GASBS No. 34 sets forth minimum criteria (percentage of the assets, liabilities, revenues or expenditures/expense of either fund category or the governmental and enterprise combined) for the determination of major funds. The nonmajor funds are combined in a column in the fund financial statements.

The District's fiduciary funds are presented in the fiduciary fund financial statements by type (Unemployment Compensation and Agency). Since by definition these assets are being held for the benefit of a third party (other local governments, private parties, pension participants, etc.) and cannot be sued to address activities or obligations of the government, these funds are not incorporated into the government-wide statements.

Trust Funds – The unemployment compensation fund is used to account for contributions from the Charter School and employees and interest earned on the balance as well as payments to the State for reimbursement of unemployment claims. Although there is no formal trust agreement, the State of New Jersey requires charter schools to include the unemployment compensation trust as a private-purpose trust fund in the fiduciary fund. The principal and income deposited into this fund are for the sole benefit of the specific individuals or former employees. The management of the Charter School is not involved in determining the amounts current employees contribute to the fund or amounts paid out by the fund. That determination is

**COMPASS ACADEMY CHARTER SCHOOL
NOTES TO THE FINANCIAL STATEMENTS
JUNE 30, 2019**

NOTE 1: SUMMARY OF SIGNIFICANT ACCOUNTING POLICIES (CONTINUED)

Basic Financial Statements – Fund Financial Statements (Continued)

made by the State of New Jersey. The Unemployment Compensation Fund is recorded as a trust fund because there is no debt issued related to unemployment compensation claims.

Agency Funds (Payroll, Payroll Agency, Student Activity and Athletic Funds): The agency funds are used to account for the assets that the Charter School holds on behalf of others as their agent. These are custodial in nature and do not involve measurement of results of operations.

In accordance with GASB Statement 34, fiduciary funds are not included in the government-wide financial statements.

E. Measurement Focus and Basis of Accounting

The government-wide proprietary and fiduciary fund financial statements are reported using the economic resources measurement focus and the accrual basis of accounting. Revenues are recorded when earned and expenses are recorded at the time liabilities are incurred, regardless of when the related cash flows take place. Nonexchange transactions, in which the Charter School gives (or receives) value without directly receiving (or giving) equal value in exchange, include state and federal aid, property taxes, grants, entitlements and donations.

Government funds are reported using the current financial resources measurement focus and the modified accrual basis of accounting. Under this method, revenues are recognized when measurable and available.

The Charter School considers all revenues reported in the governmental funds to be available if the revenues are collected within sixty days after year-end. Expenditures are recorded when the related fund liability is incurred, except for principal and interest on general long-term debt, claims and judgments and compensated absences which are recognized as expenditures to the extent they have matured. General capital asset acquisitions are reported as expenditures in governmental funds. Proceeds of general long-term debt and acquisitions under capital leases are reported as other financing sources.

F. Budgets/Budgetary Control

Formal budgetary integration into the accounting system is employed as a management control device during the year. For governmental funds there are no substantial differences between the budgetary basis of accounting and generally accepted accounting principles with the exception of legally mandated revenue recognition of the last state aid payment for budgetary purposes only and the special revenue fund as noted below. Encumbrance accounting is also employed as an extension of formal budgetary integration in the governmental

**COMPASS ACADEMY CHARTER SCHOOL
NOTES TO THE FINANCIAL STATEMENTS
JUNE 30, 2019**

NOTE 1: SUMMARY OF SIGNIFICANT ACCOUNTING POLICIES (CONTINUED)

Budgets/Budgetary Control (Continued)

fund types. Unencumbered appropriations lapse at fiscal year-end. The accounting records of the special revenue fund are maintained on the grant accounting budgetary basis. The grant accounting budgetary basis differs from GAAP in that the grant accounting budgetary basis recognizes encumbrances as expenditures and also recognizes the related revenues, whereas the GAAP basis does not. Sufficient supplemental records are maintained to allow for the presentation of GAAP basis financial reports.

The following presents a reconciliation of the special revenue funds from the budgetary basis of accounting to the GAAP basis of accounting:

Total Revenues & Expenditures (Budgetary Basis)		\$ 142,004
Adjustments:		
Less Encumbrances at June 30, 2019		-
Plus Encumbrances at June 30, 2018		-
Total Revenues and Expenditures (GAAP Basis)		\$ 142,004

The General Fund budgetary revenue differs from GAAP revenue due to a difference in recognition of the June state aid payments for the current year. Since the State is recording the June state aid payments in the subsequent fiscal year, the Charter School cannot recognize these payments on the GAAP financial statements.

The reconciliation of the general and special revenue funds from the budgetary basis of accounting to the GAAP basis of accounting is presented on Note A in the Required Supplementary Information Section.

The Capital Projects Fund budgetary revenue differs from GAAP revenue due to a difference in the recognition of SDA grants receivable. SDA grants are recognized on the budgetary basis in full when they are awarded but are recognized on the GAAP basis as they are expended and requested for reimbursement.

G. Assets, Liabilities, Deferred Outflow/Inflows of Resources, Net Position and Fund Equity

1. Deposits and Investments

Deposits are cash and cash equivalents including petty cash, change funds, cash in banks and all highly liquid investments with a maturity of three months or less at the time of purchase and are stated at cost plus accrued interest. Other than Certificates of Deposit, deposits with maturities of greater than three months are

**COMPASS ACADEMY CHARTER SCHOOL
NOTES TO THE FINANCIAL STATEMENTS
JUNE 30, 2019**

NOTE 1: SUMMARY OF SIGNIFICANT ACCOUNTING POLICIES (CONTINUED)

Assets, Liabilities, Deferred Outflow/Inflows of Resources, Net Position and Fund Equity (Continued)

considered to be Investments. U.S. Treasury and agency obligations and certificates of deposit with maturities of one year or less when purchased are stated at cost. All other investments are stated at fair value.

New Jersey charter schools are limited as to the types of investments and types of financial institutions they may invest in. New Jersey statute 18A:20-37 provides a list of permissible investments that may be purchased by New Jersey charter schools.

Additionally, the Charter School had adopted a cash management plan that requires it to deposit public funds in public depositories protected from loss under the provision of the Governmental Unit Deposit Protection Act (GUDPA). GUDPA was enacted in 1970 to protect Governmental Units from a loss of funds on deposit with a failed banking institution in New Jersey.

2. Short-term Interfund Receivables/Payables

Short-term interfund receivables/payables represents amounts that are owed, other than charges for goods or services rendered to/from a particular fund in the Charter School and that are due within one year.

3. Inventories

Inventories, which benefit future periods, other than those recorded in the enterprise fund are recorded as expenditure during the year of purchase.

4. Capital Assets

Capital assets purchased or acquired with an original cost of \$2,000 or more are reported at historical cost or estimated historical cost. Contributed assets are reported at fair market value as of the date received. Additions, improvements and other capital outlays that significantly extend the useful life of an asset are capitalized. Other costs incurred for repairs and maintenance are expensed as incurred. Depreciation on the following assets is provided on the straight-line basis over the following estimated useful lives:

Buildings	20-50 years
Machinery and Equipment	5-10 years
Land Improvements	10-20 years
Other Infrastructure	10-50 years

Land and Construction in Progress are not depreciated.

**COMPASS ACADEMY CHARTER SCHOOL
NOTES TO THE FINANCIAL STATEMENTS
JUNE 30, 2019**

NOTE 1: SUMMARY OF SIGNIFICANT ACCOUNTING POLICIES (CONTINUED)

Assets, Liabilities, Deferred Outflow/Inflows of Resources, Net Position and Fund Equity (Continued)

GASB No. 34 requires the Charter School to report and depreciate new infrastructure assets include roads, parking lots, underground pipe, etc. Neither their historical cost nor related depreciation has historically been reported in the financial statements. The Charter School has included all infrastructure assets in the current fiscal year.

5. Fund Equity

Reserves represent those portions of fund equity not appropriate for expenditure or legally segregated for a specific future use. Designated fund balances represent plans for future use of financial resources.

6. Use of Estimates

The preparation of financial statements in conformity with generally accepted accounting principles requires management to make estimates and assumptions that affect certain reports, amounts and disclosures. Accordingly, actual results could differ from those estimates.

7. Net Position/Fund Balance

The Charter School implemented GASB Statement No. 63, *Financial Reporting of Deferred Outflows of Resources, Deferred Inflows of Resources, and Net Position*, during the current fiscal year. This statement defines net position as the residual of all other elements presented in statement of financial position. It is the difference between (1) assets and deferred outflows of resources and (2) liabilities and deferred inflows of resources. This Statement provides guidance for reporting net position within a framework that includes deferred outflows of resources and deferred inflows of resources, in addition to assets and liabilities.

In the Government-Wide Statements, there are three classes of net position:

Net Investment in Capital Assets – consists of net capital assets (cost less accumulated depreciation) reduced by outstanding balances of related debt obligations from the acquisition, construction or improvement of those assets. Deferred outflows of resources and deferred inflows of resources attributable to the acquisition, construction, or improvement of those assets or related debt also should be included.

Restricted Net Position – reports net position when constraints placed on the residual amount of noncapital assets are either imposed by creditors (such as debt covenants), grantors, contributors, or laws or regulations of other governments, or imposed by law through constitutional provisions or enabling legislation.

**COMPASS ACADEMY CHARTER SCHOOL
NOTES TO THE FINANCIAL STATEMENTS
JUNE 30, 2019**

NOTE 1: SUMMARY OF SIGNIFICANT ACCOUNTING POLICIES (CONTINUED)

Assets, Liabilities, Deferred Outflow/Inflows of Resources, Net Position and Fund Equity (Continued)

Unrestricted Net Position – any portion of net position not already classified as either net investment in capital assets or net position-restricted.

H. Fund Balance Reserves

In the fund financial statements, governmental funds report the following classifications of fund balance:

Unassigned – Includes amounts that have not been assigned to other funds or restricted, committed, or assigned to a specific purpose within the General Fund. The Charter School reports all amounts that meet the unrestricted General Fund Balance Policy described below as unassigned:

When an expenditure is incurred for purposes for which both restricted and unrestricted fund balance is available, the Charter School considers restricted funds to have been spent first. When an expenditure is incurred for which committed, assigned, or unassigned fund balance are available, the Charter School considers amounts to have been spent first out of committed funds, then assigned funds, and finally unassigned funds, as needed.

I. Impact of Recently Issued Accounting Principles

During fiscal year 2019, the District adopted the following GASB statements as required:

Other accounting standards that the Charter School is currently reviewing for applicability and potential impact on the financial statements include:

There are no recently issued and adopted accounting pronouncements for fiscal year ended June 30, 2019.

The GASB has issued the following Statements that will become effective for the Charter School for fiscal years ending after June 30, 2019:

Statement No. 84, *Fiduciary Activities*. This Statement establishes criteria for identifying fiduciary activities of all state and local governments. The focus of the criteria generally is on (1) whether a government is controlling the assets of the fiduciary activity and (2) the beneficiaries with whom a fiduciary relationship exists. Separate criteria are included to identify fiduciary component units and postemployment benefit arrangements that are fiduciary activities. This Statement will be effective for the year ended December 15, 2018. Management does not expect this Statement to impact the Charter School's financial statements.

**COMPASS ACADEMY CHARTER SCHOOL
NOTES TO THE FINANCIAL STATEMENTS
JUNE 30, 2019**

NOTE 1: SUMMARY OF SIGNIFICANT ACCOUNTING POLICIES (CONTINUED)

Impact of Recently Issued Accounting Principles (Continued)

Statement No. 87, *Leases*. The objective of this Statement is to better meet the information needs of financial statement users by improving accounting and financial reporting for leases by governments. This Statement increases the usefulness of governments' financial statements by requiring recognition of certain lease assets and liabilities for leases that previously were classified as operating leases and recognized as inflows of resources or outflows of resources based on the payment provisions of the contract. This Statement will be effective for the year ended December 15, 2019. Management has not yet evaluated the impact of this Statement on the Charter School's financial statements.

J. PENSIONS

For purposes of measuring the net pension liability, deferred outflows of resources and deferred inflows of resources related to pensions, and pension expense, information about the fiduciary net pension of the State of New Jersey Public Employees' Retirement System (PERS) and the State of New Jersey Teachers' Pension and Annuity Fund (TPAF) and additions to/deductions from the PERS's and TPAF's net position have been determined on the same basis as they are reported by the PERS and the TPAF. For this purpose, benefit payments (including refunds of employee contributions) are recognized when due and payable in accordance with the benefit terms. Pension Plan investments are reported at fair value.

**COMPASS ACADEMY CHARTER SCHOOL
NOTES TO THE FINANCIAL STATEMENTS
JUNE 30, 2019**

NOTE 2: DETAILED DISCLOSURE REGARDING ASSETS AND REVENUES

A. Deposits and Investments

Deposits

New Jersey statutes permit the deposit of public funds in institutions located in New Jersey which are insured by the Federal Deposit Insurance Corporation (FDIC), the Savings Association Insurance Fund or by any other agencies of the United States that insure deposits or the State of New Jersey Cash Management Fund.

N.J.S.A. 17:9-41 et. Seq. establishes the requirements for the security of deposits of governmental units. The statute requires that no governmental unit shall deposit public funds in a public depository unless such funds are secured in accordance with the Governmental Unit Deposit Protection Act. Public depositories include savings and loan institutions, banks (both state and national banks) and savings banks of which the deposits are federally insured. All public depositories must pledge collateral, having a market value at least equal to five percent of the average daily balance of collected public funds, to secure the deposits of Governmental Units. If a public depository fails, the collateral it has pledged, plus the collateral of all other public depositories, is available to pay the full amount of their deposits to the Governmental Units.

As of June 30, 2019, cash and cash equivalents of the Charter School consisted of the following:

	General Fund	Special Revenue	Proprietary Fund	Fiduciary Funds	Total
Operating Account	\$ 76,549	\$ 212	\$ 2,242	\$ 13,074	\$ 92,077

The Charter School had no investments at June 30, 2019.

The carrying amount of the Board's cash and cash equivalents at June 30, 2019 was \$92,077 and the bank balance was \$156,010. All bank balances were covered by federal depository insurance (FDIC) and/or by a collateral pool maintained by the banks as required by GUDPA.

Pursuant to GASB Statement No. 40, *Deposit and Investment Risk Disclosures* ("GASB 40"), the Charter School's operating cash accounts are profiled in order to determine exposure, if any, to Custodial Credit Risk (risk that in the event of failure of the counterparty the Charter School would not be able to recover the value of its deposits and investments). Deposits are considered to be exposed to Custodial Credit Risk if they are: uncollateralized (securities not pledged to the depositor), collateralized with securities held by a pledging financial institution, or collateralized with securities held by the financial institution's trust department or agent but not in the government's name. As of June 30, 2019, none of the cash and cash equivalents for Compass Academy Charter School were exposed to custodial credit risk.

**COMPASS ACADEMY CHARTER SCHOOL
NOTES TO THE FINANCIAL STATEMENTS
JUNE 30, 2019**

**NOTE 2: DETAILED DISCLOSURE REGARDING ASSETS AND REVENUES
(CONTINUED)**

Deposits and Investments (Continued)

Deposits (Continued)

The Charter School does not have a policy for the management of custodial credit risk, except as noted above, other than depositing all of its funds in banks covered by GUDPA.

Investments

New Jersey statutes (N.J.S.A.18A:20-37) permit the Charter School to purchase the following types of securities:

- a. When authorized by resolution adopted by a majority vote of all its board members, the Charter School may use moneys which may be in hand for the purchase of the following types of securities, which, if suitable for registry, may be registered in the name of the Charter School;
 - (1) Bonds or other obligations of the United States of America or obligations guaranteed by the United States of America;
 - (2) Government money market mutual funds;
 - (3) Any obligation that a federal agency or a federal instrumentality has issued in accordance with an act of Congress, which security has a maturity date not greater than 397 days from the date of purchase, provided that such obligation bears a fixed rate of interest no dependent on any index or other external factor;
 - (4) Bonds or other obligations of the charter school or bonds or other obligations of local unit or units within which the charter school is located;
 - (5) Bonds or other obligations, having a maturity date not more than 397 days from the date of purchase, approved by the Division of Investment of the Department of the Treasury for investment by charter schools;
 - (6) Local government investment pools;
 - (7) Deposits with the State of New Jersey Cash Management Fund established pursuant to section 1 of P.L. 1977, c.281 (C.52:18A-90.4) or
 - (8) Agreements for the repurchase of fully collateralized securities, if:
 - a. the underlying securities are permitted investments pursuant to paragraphs (1) and (3) of this subsection a;
 - b. the custody of collateral is transferred to a third party;
 - c. the maturity of the agreement is not more than 30 days; and
 - d. the underlying securities are purchased through a public depository as defined in Section 1 of P.L. 1970, c.236 (C.17:9-41) and for which a master repurchase agreement providing for the custody and security of collateral is executed.

**COMPASS ACADEMY CHARTER SCHOOL
NOTES TO THE FINANCIAL STATEMENTS
JUNE 30, 2019**

**NOTE 2: DETAILED DISCLOSURE REGARDING ASSETS AND REVENUES
(CONTINUED)**

Investments (Continued)

Credit Risk: The Charter School does not have an investment policy regarding the management of credit risk. GASB 40 requires that disclosures be made as to the credit rating of all debt security investments except for obligations of the U.S. government or investments guaranteed by the U.S. government. The Charter School did not have any investments at June 30, 2019.

Interest Rate Risk: The Charter School does not have a formal policy that limits investment maturities as a means of managing its exposure to fair value losses arising from increasing interest rates. The Charter School did not have any investments at June 30, 2019.

Concentration of Credit Risk: The Charter School places no limit on the amount they may invest in any one issuer. The Charter School did not have any investments at June 30, 2019.

Receivables

Receivables at June 30, 2019, consisted of accounts, intergovernmental, grants, and miscellaneous.

All receivables are considered collectible in full. A summary of the principal items of intergovernmental receivables follows:

	Governmental Fund Financial Statements	Governmental Wide Financial Statements
State Aid	\$ 104,017	\$ 104,177
Federal Aid	-	9,495
Other	(1,670)	17,688
Gross Receivables	102,347	131,360
Less: Allowance for Uncollectibles	-	-
Total Receivables, Net	<u>\$ 102,347</u>	<u>\$ 131,360</u>

A. Interfund Receivables and Payables

Transfers between funds are used to repay expenses paid by another fund.

The following interfund balances remained on the fund financial statements at June 30, 2019:

**COMPASS ACADEMY CHARTER SCHOOL
NOTES TO THE FINANCIAL STATEMENTS
JUNE 30, 2019**

**NOTE 2: DETAILED DISCLOSURE REGARDING ASSETS AND REVENUES
(CONTINUED)**

Receivables (Continued)

Fund	Interfund Receivable	Interfund Payable
General Fund	\$ 9,106	\$ 7,522
Special Revenue Fund	3,146	212
Proprietary Fund		
Fiduciary Fund		4,518
Total	\$ 12,252	\$ 12,252

B. Capital Assets

The Charter School had no Capital asset activity for the fiscal year ended June 30, 2019.

On January 11, 2001, the NJ State Department of Education announced that effective July 1, 2001, the capitalization threshold used by charter schools in the State of New Jersey is increased to \$2,000. The previous threshold was \$500. Applying the higher capitalization threshold retroactively (removal of old assets from the General Fixed Assets Account Group) will be permitted by the State regulations in situations where (1) the assets have been fully depreciated, or (2) the assets have exceeded their useful lives. The retirement of machinery and equipment is due to the retroactive application of the higher threshold of equipment capitalization. That is, the Charter School has removed from their records assets with a historical cost greater than \$500 but not greater than \$2,000 that were fully depreciated or had exceeded their useful lives.

Rental Lease

In April, 2017, a new Lease was entered into between Divine Mercy Parish, of Vineland, New Jersey and Compass Academy Charter School, for the premises located at 23 West Chestnut Street, Vineland, New Jersey, for a term commencing on August 1, 2017 and ending on August 1, 2022. The lease requires future annual rental payments as follows:

Year Ended	Amount
June 30, 2020	96,000
June 30, 2021	96,000
June 30, 2022	96,000
Total future rental payments	\$ 288,000

**COMPASS ACADEMY CHARTER SCHOOL
NOTES TO THE FINANCIAL STATEMENTS
JUNE 30, 2019**

NOTE 3: PENSION PLANS

Substantially all the Board's employees participate in one of the two contributory, defined benefit public employee systems: the Teachers' Pension and Annuity Fund (TPAF) or the Public Employee's Retirement System (PERS) of New Jersey; or the Defined Contribution Retirement Program (DCRP).

A. Public Employees' Retirement System (PERS)

Plan Description

The State of New Jersey, Public Employees; Retirement System (PERS) is a cost-sharing multiple-employer defined benefit pension plan administered by the State of New Jersey, Division of Pensions and Benefits (the Division). For additional information about the PERS, please refer to the Division's Comprehensive Annual Financial Report (CAFR) which can be found at www.state.nj.us/treasury/pensions/annrpts.shtml.

Benefits Provided

The vesting and benefit provisions are set by N.J.S.A. 43:15A. PERS provides retirement, death and disability benefits. All benefits vest after ten years of service, except for medical benefits, which vest after 25 years of service or under the disability provisions of PERS. The following represents the membership tiers for PERS:

Tier	Descriptions
1	Members who were enrolled prior to July 1, 2007
2	Members who were eligible to enroll on or after July 1, 2007 and prior to November 2, 2008
3	Members who were eligible to enroll on or after November 2, 2008, 2010 and prior to May 22, 2010
4	Members who were eligible to enroll on or after May 22, 2010 and prior to June 28, 2011
5	Members who were eligible to enroll on or after June 28, 2011

Service retirement benefits of 1/55th of final average salary for each year of service credit is available to Tiers 1 and 2 members upon reaching age 60 and to Tier 3 members upon reaching 62. Service retirement benefits of 1/60th of final average salary for each year of service credit is available to Tier 4 members upon reaching age 62 and to tier 5 members upon 65. Early retirement benefits are available to Tiers 1 and 2 members before reaching age 60, to Tiers 3 and 4 before age 62 with 25 or more years of service credit and Tier 5 with 30 more years of service credit before age 65. Benefits are reduced by a fraction of a percent for each month that a members retires prior to the age of which a member can receive full early retirement benefits in accordance with their respective tier. Tier 1 members can receive an unreduced benefit from age 50 to

**COMPASS ACADEMY CHARTER SCHOOL
NOTES TO THE FINANCIAL STATEMENTS
JUNE 30, 2019**

NOTE 3: PENSION PLANS (CONTINUED)

Benefits Provided (Continued)

age 60 if they have at least 25 years of service. Deferred retirement is available to members who have at least 10 years of service credit and have not reached the service retirement age for the respective tier.

Basis of Presentation

The schedule of employer allocations and the schedule of pension amounts by employer (collectively, the Schedules) present amounts that are considered elements of the financial statements of PERS or its participating employers. Accordingly, they do not purport to be a complete presentation of the financial position or changes in financial position of PERS or the participating employers. The accompanying Schedules were prepared in accordance with U.S. generally accepted accounting principles. Such preparation requires management of PERS to make a number of estimates and assumptions relating to the reported amounts. Due to the inherent nature of these estimates, actual results could differ from those estimates.

Allocation Methodology and Reconciliation to Financial Statements

GASB Statement No. 68, *Accounting and Financial Reporting for Pensions*, requires participating employers in PERS to recognize their proportionate share of the collective net pension liability, collective deferred outflows of resources, collective deferred inflows of resources and collective pension expense. The employer allocation percentages presented in the schedule of employer allocations and applied to amounts presented in the schedule of pension amounts by employer are based on the ratio of the contributions of an individual employer to the total contributions to PERS during the measurement period July 1, 2015 through June 30, 2016. Employer allocation percentages have been rounded for presentation purposes, therefore amounts presented in the schedule of pension amounts by employer may result in immaterial differences.

Although the Division administers one cost-sharing multiple-employer defined benefit pension plan, separate (sub) actuarial valuations are prepared to determine the actuarially determined contribution rate by group. Following this method, the measurement of the collective net pension liability, deferred outflows of resources, deferred inflows of resources, and pension expense are determined separately for each individual employer of the State and local groups of the plan.

To facilitate the separate (sub) actuarial valuations, the Division maintains separate accounts to identify additions, deductions, and fiduciary net position applicable to each group. The allocation percentages presented for each group in the schedule of employer allocations are applied to amounts presented in the schedule of pension amounts by employer. The allocation percentages for each group as of June 30, 2017 are based on the ratio of each employer's contributions to total employer contributions of the group for the fiscal year ended June 30, 2016.

**COMPASS ACADEMY CHARTER SCHOOL
NOTES TO THE FINANCIAL STATEMENTS
JUNE 30, 2019**

NOTE 3: PENSION PLANS (CONTINUED)

Contributions

The contribution policy for PERS is set by N.J.S.A. 43:15A and requires contributions by active members and contributing members. State legislation has modified the amount that is contributed by the State. The State's pension contribution is based on an actuarially determined amount, which includes the employer portion of the normal cost and an amortization of the unfunded accrued liability. Funding for noncontributory group insurance benefits is based on actual claims paid. For fiscal year 2016, the State's pension contribution was less than the actuarially determined amount.

The local employers' contribution amounts are based on an actuarially determined rate which includes the normal cost and unfunded accrued liability. Chapter 19, P.L. 2009 provided an option for local employers of PERS to contribute 50% of normal and accrued liability contribution amounts certified for payments due in State fiscal year 2009. Such employers will be credited with the full payment and any such amounts will not be included in their unfunded liability.

The actuaries will determine the unfunded liability of those retirement systems, by employer, for the reduced normal and accrued liability contributions provided under this law. This unfunded liability will be paid by the employer in level annual payments over a period of 15 years beginning with the payments due in the fiscal year ended June 30, 2012 and will be adjusted by the rate of return on the actuarial value of assets. Charter School contributions to PERS amounted to \$ 18,598 for fiscal year 2018.

Pension Liabilities Pension Expense, and Deferred Outflows of Resources and Deferred Inflows of Resources Related to Pensions

At June 30, 2019, the Charter School reported a liability of \$ 368,145 for its proportionate share of the net pension liability. The net pension liability was measured as of June 30, 2017 which was rolled forward to June 30, 2018. The Charter School's proportion of the net pension liability was based on a projection of the Charter School's long-term share of contributions to the pension plan relative to the projected contributions of all participating members, actuarially determined. At June 30, 2018, the Charter School's proportion was 0.00186975%, which was a decrease of -0.00033622% from its proportion measured as of June 30, 2017, inasmuch as this was the first year of the Charter School's participation in the GASB 68 pension liability reporting.

For the fiscal year ended June 30, 2019, the Charter School recognized pension expense of \$ 18,598 . At June 30, 2018, the Charter School reported deferred outflows of resources and deferred related to pensions from the following sources.

**COMPASS ACADEMY CHARTER SCHOOL
NOTES TO THE FINANCIAL STATEMENTS
JUNE 30, 2019**

NOTE 3: PENSION PLANS (CONTINUED)

**Pension Liabilities Pension Expense, and Deferred Outflows of Resources
and Deferred Inflows of Resources Related to Pensions (Continued)**

	Deferred Outflows of Resources	Deferred Inflows of Resources
Changes in Assumptions	\$ 60,664	\$ 119,611
Changes in Proportion	\$ 235,694	\$ 65,817
Difference Between Expected and Actual Experience	7,021	-
Net Difference Between Projected and Actual Investment Earnings on Pension Plan Investments	-	-
	\$ 303,379	\$ 185,428

Changes In Proportion

The previous amounts do not include employer specific deferred outflows of resources and deferred inflows of resources related to changes in proportion. These amounts should be recognized (amortized) by each employer over the average of the expected remaining service lives of all plan members, which is 5.63, 5.48, 5.57, 5.72 and 6.44 years for the 2018, 2017, 2016, 2015 and 2014 amounts, respectively.

Amounts reported as deferred outflows of resources and deferred inflows resources (excluding employer specific amounts including changes in proportion) related to pensions will be recognized in pension expense as follows:

Fiscal Year Ending June 30,	Total
2019	\$ 2,555
2020	(3,538)
2021	(25,367)
2022	(21,989)
2023	(7,041)
	\$ (55,380)

**COMPASS ACADEMY CHARTER SCHOOL
NOTES TO THE FINANCIAL STATEMENTS
JUNE 30, 2019**

NOTE 3: PENSION PLANS (CONTINUED)

Actuarial Assumptions

The total pension liability for the June 30, 2018 measurement date was determined by an actuarial valuation as of July 1, 2017 which was rolled forward to June 30, 2018. The total pension liability for the June 30, 2017 measurement date was determined by an actuarial valuations as of July 1, 2017. This actuarial valuations used the following actuarial assumptions, applied to all periods in the measurement.

Inflation Rate	2.25%
Salary Increases:	
Through 2026	1.65-4.15% based on age
Thereafter	2.65-5.15% based on age
Investment Rate of Return	7.00%

Pre-retirement mortality rates were based on the RP-2000 Employees Preretirement Mortality Table for male and female active participants. For State employees, mortality tables are setback 2 years for males and females and in addition, the tables provide for future improvements in mortality from the base year of 2013 using a generational approach based on the plan actuary's modified MP-2014 projection scale. Post-retirement mortality rates were based on the RP-2000 Combined Health Male and Female Mortality Tables (setback 1 year for males and females) for service retirements and beneficiaries of former members and a one-year static projection based on mortality improvement Scale AA. In addition, the tables for service retirements and beneficiaries of former members provide for the future improvements in mortality from the base year of 2013 using a generational approach based the plan actuary's modified MP-2014 projection scale. Disability retirement rates used to value disabled retirees were based on the RP-2000 Disabled Mortality Table (set back 3 years for males and 1 year for females.).

The actuarial assumptions used in the June 30, 2017 valuation were based on the results of an actuarial experience study for the period July 1, 2011 to June 30, 2014. It is likely that future experience will not exactly conform to these assumptions. To the extent that actual experience deviates from these assumptions, the emerging liabilities may be higher or lower than anticipated. The more the experience deviates, the larger the impact on future financial statements.

Long Term Expected Rate of Return

In accordance with State statute, the long-term expected rate of return on pension plan investments (7.00%% at June 30, 2018) is determined by the State Treasurer, after consultation with the Directors of the Division of Investments and Division of Pension and Benefits, the Board of Trustees and the actuaries. The long-term expected rate of return was determined using a building block method in which best-estimate ranges of expected future real rates of return (expected

**COMPASS ACADEMY CHARTER SCHOOL
NOTES TO THE FINANCIAL STATEMENTS
JUNE 30, 2019**

NOTE 3: PENSION PLANS (CONTINUED)

Long Term Expected Rate of Return (Continued)

returns, net of pension plan investment expense and inflation) are developed for each major asset class. These ranges are combined to produce the long-term expected rate of return by weighting the expected future real rates of return by the target asset allocation percentage and by adding expected inflation. Best estimates of arithmetic real rates of return for each major asset class included in PERS' target asset allocation as of June 30, 2018 are summarized in the following table:

Risk mitigation	5.00%	5.51%
Cash equivalents	5.50%	1.00%
U.S. Treasuries	3.00%	1.87%
Investment Grade Credit	10.00%	3.78%
High Yield	2.50%	6.82%
Global Diversified Credit	5.00%	7.10%
Credit oriented hedge funds	1.00%	6.60%
Debt related private equity	2.00%	10.63%
Debt related real estate	1.00%	6.61%
Private real estate	2.50%	11.83%
Equity related real estate	6.25%	9.23%
U.S. Equity	30.00%	8.19%
Non-U.S. developed markets equity	11.50%	9.00%
Emerging markets equity	6.50%	11.64%
Buyouts/venture capital	8.25%	13.08%

Discount Rate

The discount rate used to measure the total pension liability was 5.66% as of June 30, 2018. This single blended discount rate was based on the long-term expected rate of return on pension plan investments of 7.00% and a municipal bond rate of 3.87% as of June 30, 2018 based on the Bond Buyer Go 20 Bond Municipal Bond Index which includes tax-exempt general obligation municipal bonds with an average rating of AA/Aa or higher. The projection of cash flows used to determine the discount rate assumed that contributions from plan members will be made at the current member rates and that contributions from employers will be made based on the contributions rate in the most recent fiscal year. The State employer contributed 40% of the actuarially determined contributions and the local employers contributed 100% of their actuarially determined contributions. Based on those assumptions, the pension plan's fiduciary net position was projected to be available to make projected future benefit payments of current plan members through June 30, 2046. Therefore, the long-term expected rate of return on plan investments was applied to projected benefit payments through June 30, 2046 and the municipal bond rate was applied to projected benefit payments after that date in determining the total pension liability.

**COMPASS ACADEMY CHARTER SCHOOL
NOTES TO THE FINANCIAL STATEMENTS
JUNE 30, 2019**

NOTE 3: PENSION PLANS (CONTINUED)

Sensitivity of the Charter School's Proportionate Share of the Net Pension Liability to Changes in the Discount Rate

The following presents the Charter School's proportionate share of the collective net pension liability as of June 30, 2018 calculated using the discount rate as disclosed below, as well as what the Charter School's proportionate share of the net pension liability would be if it were calculated using a discount rate that is 1-percentage-point lower or 1-percentage-point higher than the current rate:

Fiscal Year Ended June 30, 2018			
	1% Decrease (4.66%)	Current Discount Rate (5.66%)	1% Increase (6.66%)
Charter School's proportionate share of the Net Pension Liability	\$ 512,556	\$ 443,212	\$ 385,119

Fiscal Year Ended June 30, 2017			
	1% Decrease (4.00%)	Current Discount Rate (5.00%)	1% Increase (6.00%)
Charter School's proportionate share of the Net Pension Liability	\$ 539,955	\$ 435,249	\$ 348,015

Pension Plan Fiduciary Net Position

Detailed information about the pension plan's fiduciary net position is available in the separately issued PERS financial statements

B. Teacher's Pension Annuity Fund (TPAF)

Pension Description

The State of New Jersey, Teacher's Pension and Annuity Fund (TPAF), is a cost-sharing multiple-employer defined benefit pension plan with a special funding situation, by which the State of New Jersey (the State) is responsible fund 100% of the employer contributions, excluding any local employer early retirement incentive (ERI) contributions. The TPAF is administered by the State of New Jersey Division of Pensions and Benefits (the Division). For additional information about the TPAF, please refer to the Division's Comprehensive Annual Financial Report (CAFR) which can be found at www.state.nj.us/treasury/pensions/annrpts.shtml.

Benefit Provided

The vesting and benefit provision are set by N.J.S.A. 18A:66. TPAF provides retirement, death and disability benefits. All benefits vest after ten years of service, except for medical benefits, which vest after 25 years of service or under the disability provisions of TPAF. Members are always fully vested for their own

**COMPASS ACADEMY CHARTER SCHOOL
NOTES TO THE FINANCIAL STATEMENTS
JUNE 30, 2019**

NOTE 3: PENSION PLANS (CONTINUED)

Benefit Provided (Continued)

contributions and, after three years of service credit, become vested of 2% of related interest earned on the contributions. In the case of death before retirement, member's beneficiaries are entitled to full interest credited to the member's accounts. The following represents the membership tiers for TPAF:

Tier	Descriptions
1	Members who were enrolled prior to July 1, 2007
2	Members who were eligible to enroll on or after July 1, 2007 and prior to November 2, 2008
3	Members who were eligible to enroll on or after November 2, 2008, 2010 and prior to May 22, 2010
4	Members who were eligible to enroll on or after May 22, 2010 and prior to June 28, 2011
5	Members who were eligible to enroll on or after June 28, 2011

Service retirement benefits of 1/55th of final average salary for each year of service credit is available to Tiers 1 and 2 members upon reaching age 60 and to Tier 3 members upon reaching 62. Service retirement benefits of 1/60th of final average salary for each year of service credit is available to Tier 4 members upon reaching age 62 and to Tier 5 members upon 65. Early retirement benefits are available to Tiers 1 and 2 members before reaching age 60, to Tiers 3 and 4 before age 62 with 25 or more years of service credit and Tier 5 with 30 more years of service credit before age 65. Benefits are reduced by a fraction of a percent for each month that a member retires prior to the age of which a member can receive full early retirement benefits in accordance with their respective Tier. Deferred retirements is available to members who have at least 10 years of service credit and have not reached the service retirement age for the respective Tier.

Allocation Methodology

GASB Statement No. 68, *Accounting and Financial Reporting for Pensions*, requires participating employers in TPAF to recognize their proportionate share of the collective net pension liability, collective deferred outflows of resources, collective deferred inflows in resources and collective pension expense excluding that attributable to employer-paid member contributions. The employer and nonemployer allocation percentages presented in the schedule of employer and nonemployer allocations and applied to amounts presented in the schedule of pension amounts by employer and nonemployer are based on the ratio of the State's actual contributions made as an employer and nonemployer adjusted for unpaid early retirement incentives to total contributions to TPAF during the year ended June 30, 2018. Employer and nonemployer allocation percentages have been rounded for presentation purposes, therefore amounts presented in the schedule of pension amounts by employer and nonemployer may result in immaterial differences.

**COMPASS ACADEMY CHARTER SCHOOL
NOTES TO THE FINANCIAL STATEMENTS
JUNE 30, 2019**

NOTE 3: PENSION PLANS (CONTINUED)

Contributions

The contribution policy for TPAF is set by N.J.S.A 18A:66 and requires contributions by active members and contributing members. State legislation has modified the amount that is contributed by the State. The State's pension contribution is based on an actuarially determined amount which included the employer portion of the normal cost and an amortization of the unfunded accrued liability. Funding for noncontributory group insurance benefits is based on actual claims paid. For fiscal year 2018, the State's pension contribution was less than the actuarially determined amount.

Special Funding Situation

The Employer contributions for local participating employers are legally required to be funded by the State in accordance with N.J.S.A. 18:66-33. Therefore, these local participating employers are considered to be in a special funding situation as defined by GASB Statement No. 68 and the State is treated as a nonemployer contributing entity. Since the local participating employers do not contribute directly to the plan (except for employer specific financed amounts), there is no net pension liability or deferred outflows or inflows to report in the financial statements of the local participating employers, such as the Charter School. However, the notes to the financial statements of the local participating employers must disclose the portion of the nonemployer contribution was less than the actuarial determined amount.

This note discloses the portion of the Charter School's total proportionate share of the net pension liability that is associated with the Charter School. During the fiscal year ended 2019, the State of New Jersey contributed \$14,070 to the TPAF for normal pension benefits on behalf of the Charter School, which is less than the contractually required contribution of \$102,559 .

The employee contribution rate was 6.92% effective July 1, 2014. Subsequent increases after October 1, 2011 are being phased in over 7 years effective on each July 1st to bring the total pension contribution rate to 7.5% of base salary as of July 1, 2018.

As of June 30, 2018, the State's proportionate share of the net pension liability associated with the Charter School was \$ 4,316,177 . The net pension liability was measured as of June 30, 2018, and the total pension liability used to calculate the net pension liability was determined by an actuarial valuation as of July 1, 2017 which was rolled forward to June 30, 2018.

The Charter School's proportion of the net pension liability was based on a projection of the CS / District's long-term share of contributions to the pension plan relative to the projected contributions of all participating members, actuarially determined. At June 30, 2018, Charter School's proportion was 0.0067845%, which was an increase of 0.0015133% from its proportion measured as of June 30, 2017.

**COMPASS ACADEMY CHARTER SCHOOL
NOTES TO THE FINANCIAL STATEMENTS
JUNE 30, 2019**

NOTE 3: PENSION PLANS (CONTINUED)

Charter School's Proportionate Share of the Net Pension Liability	\$ -
State's Proportionate Share of the Net Pension Liability Associated with the Charter School	<u>4,316,177</u>
Total	<u><u>\$ 4,316,177</u></u>

For the fiscal year ended June 30, 2018, the State recognized pension expense on behalf of the Charter School in the amount of \$ 4,316,177 and the Charter School recognized pension expense and revenue for that same amount in the fiscal year ended June 30, 2019 financial statements.

The State reported collective deferred outflows of resources and deferred inflows of resources related to pensions from the following sources:

	Deferred Outflows of Resources	Deferred Inflows of Resources
Changes in Assumptions	\$ 11,053,759,853	\$ 16,078,750,001
Difference Between Expected and Actual Experience	1,420,239,017	96,229,812
Changes in Proportion and differences between employer contributions and proportionate share of contributions	201,038,241	201,038,241
Net Difference Between Projected and Actual Investment Earnings on Pension Plan Investments	-	5,793,830
	<u>\$ 12,675,037,111</u>	<u>\$ 16,381,811,884</u>

The \$12,675,037,111 reported as deferred outflows of resources related to pensions resulting from changes in assumptions will be amortized over a period of 8.5 years. The \$16,381,811,884 reported as a deferred inflow of resources resulting from the difference between projected and actual.

**COMPASS ACADEMY CHARTER SCHOOL
NOTES TO THE FINANCIAL STATEMENTS
JUNE 30, 2019**

NOTE 3: PENSION PLANS (CONTINUED)

**Pension Liabilities, Pension Expense, and Deferred Outflows of Resources
and Deferred Inflows of Resources Related to Pensions (Continued)**

Fiscal Year Ending June 30,	Total
2019	\$ 401,574,312
2020	208,932,249
2021	(222,922,941)
2022	(149,225,008)
2023	(735,040,983)
Thereafter	(3,210,092,402)
	\$ (3,706,774,773)

Actuarial Assumptions

The total pension liability for the June 30, 2018 measurement date was determined by an actuarial valuation as of June 30, 2017 which was rolled forward to June 30, 2018. This actuarial valuation used the following actuarial assumptions, applied to all periods in the measurement.

Inflation Rate	2.25%
Salary Increases:	
2011-2026	1.55-4.55%
Thereafter	2.00-5.45% based on age
Investment Rate of Return	7.00%

Pre-retirement mortality rates were based on the RP-2006 Employee White Collar Mortality Tables, set back 3 years for males and 5 years for females, projected on a generational basis from a base year of 2006 using a 60-year average of improvement rates based on Social Security data from 1953 to 2013. Post-retirement mortality rates were based on the RP-2006 Healthy Annuitant White Collar Mortality Tables, with adjustments as described in the latest experience study, projected on a generational basis from a base year of 2006, using a 60-year average of improvement rates based on Social Security data from 1953 to 2013. Disability mortality rates were based on the RP-2006 Disabled Retiree Mortality Tables with rates adjusted by 90%. No mortality improvement is assumed for disabled retiree mortality.

The actuarial assumptions used in the July 1, 2017 valuation were based on the results of an actuarial experience study for the period July 1, 2012 to June 30, 2015.

**COMPASS ACADEMY CHARTER SCHOOL
NOTES TO THE FINANCIAL STATEMENTS
JUNE 30, 2019**

NOTE 3: PENSION PLANS (CONTINUED)

Long Term Expected Rate of Return

In accordance with State statute, the long-term expected rate of return on pension investments (7.00% at June 30, 2018) is determined by the State Treasurer, after consultation with the Directors of the Division of Investments and Division of Pension and Benefits, the Board of Trustees and the actuaries. The long-term expected rate of return was determined using a building block method in which best-estimate ranges of expected future real rates of return (expected returns, net of pension plan investment expense and inflation) are developed for each major asset class. These ranges are combined to produce the long-term expected rate of return by weighing the expected future real rates of return by the target asset allocation percentage and by adding expected inflation. Best estimates of arithmetic real rates of return for each major asset class included in TPAF' target asset allocation as of June 30, 2018 is summarized in the following table:

<u>Asset Class</u>	<u>Target Allocation</u>	<u>Long-Term Expected Real Rate of Return</u>
Risk mitigation strategies	5.00%	5.51%
Cash equivalents	5.50%	1.00%
U.S. Treasuries	3.00%	1.87%
Investment Grade Credit	10.00%	3.78%
High Yield	2.50%	6.82%
Global Diversified Credit	5.00%	7.10%
Credit oriented hedge funds	1.00%	6.60%
Debt related private equity	2.00%	10.63%
Debt related real estate	1.00%	6.61%
Private real estate	2.50%	11.83%
Equity related real estate	6.25%	9.23%
U.S. Equity	30.00%	8.19%
Non-U.S. developed markets equity	11.50%	9.00%
Emerging markets equity	6.50%	11.64%
Buyouts/venture capital	8.25%	13.08%

Discount Rate

The discount rate used to measure the total pension liability was 4.86% as of June 30, 2018. This single blended discount rate was based on the long-term expected rate of return on pension plan investments of 7.00% and a municipal bond rate of 3.87% as of June 30, 2018 based on the Bond Buyer Go 20 Bond Municipal Bond Index which includes tax-exempt general obligation municipal bonds with an average rating of AA/Aa or higher. The projection of cash flows used to determine the discount rate assumed that contributions from plan

**COMPASS ACADEMY CHARTER SCHOOL
NOTES TO THE FINANCIAL STATEMENTS
JUNE 30, 2019**

NOTE 3: PENSION PLANS (CONTINUED)

Discount Rate (Continued)

members will be made at the current member rates and that contributions from employers will be made based on the contributions rate in the most recent fiscal year. The State employer contributed 50% of the actuarially determined contributions. Based on those assumptions, the pension plan's fiduciary net position was projected to be available to make projected future benefit payments of current plan members through 2036. Therefore, the long-term expected rate of return on plan investments was applied to projected benefit payments through 2036 and the municipal bond rate was applied to projected benefit payments after that date in determining the total pension liability.

Sensitivity of the Charter School's Proportionate Share of the Net Pension Liability to Changes in the Discount Rate

The following presents the net pension liability of the State as of June 30, 2018 calculated using the discount rate as disclosed above, as well as what the State's net pension liability would be if it were calculated using a discount rate that is 1-percentage-point lower or 1-percentage-point higher than the current rate:

Fiscal Year Ended June 30, 2018			
	1% Decrease (3.86%)	Current Discount Rate (4.86%)	1% Increase (5.86%)
Charter School's proportionate share of the Net Pension Liability	\$ 5,116,755	\$ 4,328,966	\$ 3,675,908

Fiscal Year Ended June 30, 2017			
	1% Decrease (3.25%)	Current Discount Rate (4.25%)	1% Increase (5.25%)
Charter School's proportionate share of the Net Pension Liability	\$ 4,237,772	\$ 3,567,054	\$ 3,014,513

Pension Plan Fiduciary Net Position – TPAF

Detailed information about the TPAF's fiduciary net position is available in the separately issued TPAF financial statements.

**COMPASS ACADEMY CHARTER SCHOOL
NOTES TO THE FINANCIAL STATEMENTS
JUNE 30, 2019**

NOTE 3: PENSION PLANS (CONTINUED)

C. Defined Contribution Retirement Program (DCRP)

Prudential Financial jointly administers the DCRP investments with the NJ Division of Pensions and Benefits. If an employee is ineligible to enroll in the PERS or TPAF, the employee may be eligible to enroll in the DCRP. DCRP provides eligible members with a tax-sheltered, defined contribution retirement benefit, along with life insurance and disability coverage. Vesting is immediate upon enrollment for members of the DCRP.

The State of New Jersey, Department of the Treasury, Division of Pensions and Benefits, issues publicly available financial reports that include the financial statements and required supplementary information of the DCRP. The financial reports may be obtained by writing to the State of New Jersey, Department of the Treasury, Division of Pensions and Benefits, PO Box 295, Trenton, New Jersey 08625-0295.

The contribution policy is set by the New Jersey Statutes and, in most retirement systems, contributions are required by active members and contributing employers. Plan member and employer contributions may be amended by the State of New Jersey regulation. Employers are required to contribute at an actuarially determined rate. Employee contributions are based on percentages of 5.50% for DCRP of employees' annual compensation, as defined. The expanded under the provisions of Chapter 89, P.L. 2008. Employee contributions for DCRP are matched by a 3% employer contribution.

The actuarially determined employer contribution includes funding for cost-of-living adjustments and noncontributory death benefits, and post-retirement medical premiums.

For DCRP, the Charter School recognized no pension expense for the fiscal year ended June 30, 2019. There were no employee contributions to DCRP for the fiscal year ended June 30, 2019.

**COMPASS ACADEMY CHARTER SCHOOL
NOTES TO THE FINANCIAL STATEMENTS
JUNE 30, 2019**

NOTE 4: POST-RETIREMENT BENEFITS

General Information about the OPEB Plan

Plan Description and Benefits Provided

The school is in a “special funding situation, as described in GASB Statement No. 75 in that OPEB contributions and expense are legally required to be made by and are the sole responsibility of the State of New Jersey.

The State of New Jersey reports a liability as a result of its statutory requirements to pay other postemployment (health) benefits for State Health Benefit Local Education Retired Employees Plan. The State Health Benefit Local Education Retired Employees Plan is a multiple-employer defined benefit OPEB plan that is administered on a pay-as-you-go basis. Accordingly, no assets are accumulated in a qualifying trust that meets the criteria in paragraph 4 of GASB Statement No. 75, *Accounting and Financial Reporting for the Postemployment Benefits Other Than Pensions*. The State Health Benefit Local Education Retired Employees Plan provides medical, prescription drug, and Medicare Part B reimbursement to retirees and their covered dependents of local education employers.

The employer contributions for the participating local education employers are legally required to be funded by the State of New Jersey in accordance with N.J.S.A 52:14-17.32f. According to N.J.S.A 52:14- 17.32f, the State provides employer-paid coverage to employees who retire from a board of education or county college with 25 years or more of service credit in, or retires on a disability pension from, one or more of the following plans: the Teachers' Pension and Annuity Fund (TPAF), the Public Employees' Retirement System (PERS), the Police and Firemen Retirement System (PFRS), or the Alternate Benefit Program (ABP). Pursuant to Chapter 78, P.L. 2011 , future retirees eligible for postretirement medical coverage who have less than 20 years of creditable service on June 28, 2011 will be required to pay a percentage of the cost of their health care coverage in retirement provided they retire with 25 or more years of pension service credit. The percentage of the premium for which the retiree will be responsible will be determined based on the retiree's annual retirement benefit and level of coverage.

The total nonemployer OPEB liability does not include certain other postemployment benefit obligations that are provided by the local education employers. The reporting of these benefits are the responsibility of the individual local education employers.

**COMPASS ACADEMY CHARTER SCHOOL
NOTES TO THE FINANCIAL STATEMENTS
JUNE 30, 2019**

NOTE 4: POST-RETIREMENT BENEFITS (CONTINUED)

Employees covered by benefit terms.

At June 30, 2018, the entire State Health Benefit Local Education Retired Employees OPEB Plan consisted for the following members:

Active plan member	217,131
Inactive plan members entitled to but not yet receiving benefits	145,050
Inactive plan members or beneficiaries currently receiving benefits	-
Total	362,181

Total Nonemployer OPEB Liability

The total nonemployer OPEB liability as of June 30, 2018 was determined by an actuarial valuation as of June 30, 2017, which was rolled forward to June 30, 2018.

Actuarial Assumptions and Other Inputs

The actuarial assumptions vary for each plan member depending on the pension plan the member is enrolled in. This actuarial valuation used the following actuarial assumptions, applied to all periods in the measurement:

Inflation Rate	2.50%			
		TPAF/ABP	PERS	PFRS
Salary Increases				
Through 2026		1.55% to 4.55% based on years of service	2.15% to 4.15% based on age	2.10% to 8.98% based on age
Rate thereafter		2.00% to 5.45% based on years of service	3.15% to 5.15% based on age	3.15% to 9.98% based on age

Preretirement mortality rates were based on the RP-2014 Headcount-Weighted Healthy Employee Male/Female mortality table with fully generational mortality improvement projections from the central year using the MP-2017 scale. Postretirement mortality rates were based on the RP-2014 Headcount-Weighted Healthy Annuitant Male/Female mortality table with fully generational improvement projections from the central year using the MP-2017 scale. Disability mortality was based on the RP-2014 Headcount-Weighted Disabled Male/Female mortality table with fully generational improvement projections from the central year using the MP-2017 scale.

The actuarial assumptions used in the June 30, 2016 valuation were based on the results of actuarial experience studies for the periods July 1, 2012 - June 30,

**COMPASS ACADEMY CHARTER SCHOOL
NOTES TO THE FINANCIAL STATEMENTS
JUNE 30, 2019**

NOTE 4: POST-RETIREMENT BENEFITS (CONTINUED)

2015, July 1, 2010 - June 30, 2013, and July 1, 2011 - June 30, 2014 for TPAF, PFRS and PERS, respectively.

100% of all retirees who currently have healthcare coverage are assumed to continue with that coverage. 100% of active members are considered to participate in the Plan upon retirement, having a coverage blend of 85% and 15% in PPO and HMO, respectively.

Health Care Trend Assumptions

For pre-Medicare preferred provider organization (PPO) medical benefits, this amount initially is 5.8% and decreases to a 5.0% long-term trend rate after nine years. For self-insured post-65 PPO medical benefits, the trend rate is 4.5%. For health maintenance organization (HMO) medical benefits, the trend rate is initially 5.9% and decreases to a 5.0% long-term trend rate after nine years. For prescription drug benefits, the initial trend rate is 10.5% decreasing to a 5.0% long-term trend rate after eight years. For the Medicare Part B reimbursement, the trend rate is 5.0%. The Medicare Advantage trend rate is 4.5% and will continue in all future years.

Discount rate

The discount rate for June 30, 2018 was 3.87%. This represents the municipal bond return rate as chosen by the Division. The source is the Bond Buyer Go 20-Bond Municipal Bond Index, which includes tax-exempt general obligation municipal bonds with an average rating of AA/Aa or higher.

Changes in the State's Total OPEB Liability

	<u>Total OPEB Liability</u>
Balance at June 30, 2016	\$ 6,822,303
Service cost	1,183,799
Interest on Total OPEB Liability	283,930
Difference between expected and actual experience	(1,595,457)
Effect of Changes of Assumptions	(673,554)
Contributions - Employee	5,424
Gross Benefits Paid by the State	<u>(156,948)</u>
Net Changes	<u>(952,806)</u>
Balance at June 30, 2017	<u>5,869,497</u>

**COMPASS ACADEMY CHARTER SCHOOL
NOTES TO THE FINANCIAL STATEMENTS
JUNE 30, 2019**

NOTE 4: POST-RETIREMENT BENEFITS (CONTINUED)

Sensitivity of Total Nonemployer OPEB Liability to Changes in the Discount Rate:

The following presents the total nonemployer OPEB liability as of June 30, 2018, calculated using the discount rate as disclosed above as well as what the total nonemployer OPEB liability would be if it was calculated using a discount rate that is 1-percentage point lower or 1-percentage point higher than the current rate:

	Fiscal Year Ended June 30, 2018		
	At 1%	At current	At 1%
	Decrease (2.87%)	discount rate (3.87%)	Increase (4.87%)
Total OPEB Liability	\$ 6,938,940	\$ 5,869,497	\$ 5,019,400

Sensitivity of Total Nonemployer OPEB Liability to Changes in the Healthcare Trend Rate:

The following presents the total nonemployer OPEB liability as of June 30, 2017 and 2016, respectively, calculated using the healthcare trend rate as disclosed above as well as what the total nonemployer OPEB liability would be if it was calculated using a healthcare trend rate that is 1- percentage point lower or 1- percentage point higher than the current rate:

	Fiscal Year Ended June 30, 2018		
	At 1%	Trend Rate	At 1%
	decrease		Increase
Total OPEB Liability	\$ 4,851,481	\$ 5,869,497	\$ 7,215,862

OPEB Expense and Deferred Outflows of Resources and Deferred Inflows of Resources Related to OPEB

For the fiscal year ended June 30, 2019 the Charter School recognized OPEB expense of \$1,269,970 as determined by the State of New Jersey Division of Pensions and Benefits. This expense and the related offsetting revenue are for benefits provided by the State through a defined benefit OPEB plan that meets the criteria in GASB Statement 75, in which there is a special funding situation.

In accordance with GASB Statement 75, as the Charter School's proportionate share of the OPEB liability is \$-0, there is no recognition of the allocation of the proportionate share of the deferred inflows and outflows of resources. At June 30, 2017 the State had deferred outflows of resources and deferred inflows of

**COMPASS ACADEMY CHARTER SCHOOL
NOTES TO THE FINANCIAL STATEMENTS
JUNE 30, 2019**

NOTE 4: POST-RETIREMENT BENEFITS (CONTINUED)

resources related to OPEB from the following sources:

	Deferred Outflows Of Resources	Deferred Inflows Of Resources
Difference between Actual and Expected Experience	\$ -	\$ 569,766.00
Net Difference between Expected and Actual Earnings on OPEB Plan Investments	-	-
Assumption Changes	-	(1,315,678)
Sub Total	-	(745,912)
Contributions Made in Fiscal Year 2018 after June 30, 2017 Measurement Date	N/A	N/A
Total	-	(745,912)

Amounts reported as deferred outflows of resources and deferred inflows of resources related OPEB will be recognized in OPEB expense as follows:

Fiscal Year ending June 30	
2019	\$ (232,334)
2020	\$ (232,334)
2021	\$ (232,334)
2022	\$ (232,334)
2023	\$ (232,334)
Total Thereafter	\$ (723,773)
	<u>\$ (1,885,443)</u>

NOTE 5: RISK MANAGEMENT

The Charter School is exposed to various risks of loss related to torts; theft of, damage to, and destruction of assets; errors and omissions; injuries to employees; and natural disasters.

Property and Liability Management

The Charter maintains commercial insurance coverage for property, liability, student accident, and surety bonds, as well as all other risks of loss, including health and accident insurance. Settled claims resulting from these risks have not exceeded commercial coverage in any of the past three fiscal years. A complete schedule of insurance coverage can be found in the Statistical Section of this Comprehensive Annual Financial Report.

**COMPASS ACADEMY CHARTER SCHOOL
NOTES TO THE FINANCIAL STATEMENTS
JUNE 30, 2019**

NOTE 5: RISK MANAGEMENT (CONTINUED)

New Jersey Unemployment Compensation Insurance

The Charter School has elected to fund its New Jersey Unemployment Compensation Insurance under the "Benefit Reimbursement Method." Under this plan, the Charter School is required to reimburse the New Jersey Unemployment Trust Fund for benefits paid to its former employees and charged to its account with the State. The Charter School is billed quarterly for amounts due to the State.

NOTE 6: DETAILED DISCLOSURE REGARDING FUND EQUITY

General Fund

The General Fund balance at June 30, 2019 is \$73,060 and is unassigned and undesignated.

NOTE 7: SUBSEQUENT EVENTS

Compass Academy Charter School's management has informed us that there are no significant events that need to be disclosed after the balance sheet date through the date of the audit.

REQUIRED SUPPLEMENTARY INFORMATION – PART II

SECTION C – BUDGETARY COMPARISON SCHEDULE

COMPASS ACADEMY CHARTER SCHOOL
General Fund
Budgetary Comparison Schedule
For the Fiscal Year Ended June 30, 2019

	Original Budget	Budget Transfers	Final Budget	Actual	Variance Final to Actual
REVENUES:					
Local Sources:					
"Local Levy" Local Share - Charter School Aid	\$ 378,454	\$ -	\$ 378,454	\$ 378,464	\$ 10
Total Local Sources	378,454	-	378,454	378,464	10
Categorical Aid:					
"Local Levy" State Share - Charter School Aid	1,417,482		1,417,482	1,417,482	-
Special Education	35,200		35,200	35,200	-
Security Aid	61,208		61,208	61,208	-
Total Categorical Aid	1,513,890	-	1,513,890	1,513,890	-
Revenues From Other Sources:					
On-Behalf TPAF Pension Aid (Non-Budgeted)				150,381	150,381
On-Behalf TPAF Post-Retirement Medical Aid (Non-Budgeted)				68,213	68,213
On-Behalf TPAF Long-Term Disability Aid (Non-Budgeted)				483	483
Reimbursed TPAF Social Security Aid (Non-Budgeted)				77,350	77,350
Other Local Sources				19,912	19,912
Total Revenues From Other Sources	-	-	-	318,193	318,193
Total Revenues	1,892,344	-	1,892,344	2,210,547	318,203
EXPENDITURES:					
Instruction:					
Salaries of Teachers	867,516	43,606	911,122	911,122	-
Other Salaries for Instruction	104,729	13,262	117,991	117,991	-
Purchased Prof/Tech Services					
Other Purchased Services	20,000	(15,589)	4,411	4,411	-
General Supplies	31,514	11,003	42,517	42,517	-
Textbooks	30,000	(18,221)	11,779	11,779	-
Miscellaneous	10,500	(5,091)	5,409	4,856	553
Total Instruction	1,064,259	28,970	1,093,229	1,092,676	553
Administration:					
Salaries - General Administration	118,386	(3,933)	114,453	114,453	-
Salaries of Secretarial/Clerical Assistants	39,527	2,861	42,388	42,388	-
Total Benefits Cost	194,465	(39,138)	155,327	138,459	16,868
Purchases Prof/Tech Services	108,100	6,597	114,697	114,697	-
Other Purchased Services	53,605	729	54,334	54,334	-
Communications/Telephone	10,000	(661)	9,339	9,339	-
Supplies and Materials	10,000	509	10,509	9,981	528
Interest on Current Loans		1,897	1,897	1,897	-
Miscellaneous Expenses	26,703	(3,054)	23,649	23,649	-
Total Administration	560,786	(34,193)	526,593	509,197	17,396

See Management's Discussion and Analysis section of this report for an explanation of significant budget variances, original and final.

COMPASS ACADEMY CHARTER SCHOOL
General Fund
Budgetary Comparison Schedule
For the Fiscal Year Ended June 30, 2019

	Original Budget	Budget Transfers	Final Budget	Actual	Variance Final to Actual
(Continued from Prior Page)					
Support Services:					
Salaries - Improvement of Instruction	98,711	(1,516)	97,195	55,654	41,541
Salaries - Custodial	44,994	12,786	57,780	57,779	1
Purchased Prof/Tech Services	26,168	2,815	28,983	28,983	-
Rental of Land and Buildings	117,000		117,000	117,000	-
Transportation-Other Than To/From School	4,500	(3,965)	535	535	-
Insurance for Property, Liability and Fidelity	18,825	4,466	23,291	23,291	-
Supplies and Materials	18,000	1,626	19,626	16,113	3,513
Energy Costs (Heat and Electricity)	50,000	14,023	64,023	64,023	-
Miscellaneous Expenses	1,337	(1,337)	-	-	-
Total Support Services	379,535	28,898	408,433	363,378	45,055
On-Behalf TPAF Pension Contributions (Non-Budgeted)				150,381	(150,381)
On-Behalf TPAF Post-Retirement Medical Contributions (Non-Budgeted)				68,213	(68,213)
On-Behalf TPAF Long-Term Disability Contributions (Non-Budgeted)				483	(483)
Reimbursed TPAF Social Security Contributions (Non-Budgeted)				77,350	(77,350)
Total Expenditures	2,009,580	23,675	2,033,255	2,263,154	(229,899)
Excess (Deficiency) of Revenues Over (Under) Expenditures	(117,236)	(23,675)	(140,911)	(52,607)	88,304
Excess (Deficiency) of Revenues and Other Financing Sources Over (Under) Expenditures and Other Financing Uses	(118,573)	(23,675)	(142,248)	(52,607)	89,641
FUND BALANCE, JULY 1	125,668	-	125,668	125,667	1
FUND BALANCE, JUNE 30	\$ 7,095	\$ (23,675)	\$ (16,580)	\$ 73,060	\$ 89,642
Recapitulation of Excess (Deficiency) of Revenues Over (Under) Expenditures Budgeted Fund Balance	\$ 7,095	\$ (23,675)	(16,580)	\$ 73,060	\$ 89,640
Total	\$ 7,095	\$ (23,675)	\$ (16,580)	\$ 73,060	\$ 89,640

See Management's Discussion and Analysis section of this report for an explanation of significant budget variances, original and final.

COMPASS ACADEMY CHARTER SCHOOL
Special Revenue Fund
Budgetary Comparison Schedule
For the Fiscal Year Ended June 30, 2019

	Original Budget	Budget Transfers	Final Budget	Actual	Variance Favorable (Unfavorable)
REVENUES:					
Federal Sources	\$ 143,504	\$ (1,500)	\$ 142,004	\$ 142,004	\$ -
Total Revenues	<u>143,504</u>	<u>(1,500)</u>	<u>142,004</u>	<u>142,004</u>	<u>-</u>
EXPENDITURES:					
Instruction:					
Salaries of Teachers	44,000		44,000	44,000	-
General Supplies	21,965	(1,500)	20,465	20,465	-
Total Instruction	<u>93,309</u>	<u>(1,500)</u>	<u>91,809</u>	<u>91,809</u>	<u>-</u>
Support Services:					
Personal Services - Employee Benefits	13,282		13,282	13,282	-
Purchased Technical Services	36,913		36,913	36,913	-
Total Support Services	<u>50,195</u>	<u>-</u>	<u>50,195</u>	<u>50,195</u>	<u>-</u>
Total Expenditures	<u>143,504</u>	<u>(1,500)</u>	<u>142,004</u>	<u>142,004</u>	<u>-</u>
Excess (Deficiency) of Revenues Over (Under) Expenditures	<u>\$ -</u>	<u>\$ -</u>	<u>\$ -</u>	<u>\$ -</u>	<u>\$ -</u>

NOTES TO THE REQUIRED SUPPLEMENTARY INFORMATION

COMPASS ACADEMY CHARTER SCHOOL
 Budgetary Comparison Schedule
 Budget-To-GAAP Reconciliation
 Note to RSI
 For the Fiscal Year Ended June 30, 2019

Note A - Explanation of differences between Budgetary Inflows and GAAP Revenues and Expenditures

		General Fund			Special Revenue Fund
Sources/Inflows of Resources					
Actual amounts (budgetary) "revenues" from the budgetary comparison schedules	[C-1]	\$ 2,210,547	[C-2]		142,004
 Difference - Budget to GAAP Grant accounting budgetary basis differs from GAAP in that encumbrances are recognized as expenditures, and the related revenue is recognized					-
 Total revenues as reports on the statement of revenues, expenditures and changes in fund balance - governmental funds.	[B-2]	\$ 2,210,547	[B-2]	\$	142,004
 Uses/Outflows of resources					
Actual amounts (budgetary basis) "total outflows" from the budgetary comparison schedule	[C-1]	\$ 2,263,154	[C-2]		142,004
 Differences - Budget to GAAP: Encumbrances for supplies and equipment ordered but not received are reported in the year the order is placed for budgetary purposes, but in the year the supplies are received for financial accounting purposes.					-
 Total expenditures as reported on the statement of revenues, expenditures and changes in fund balances - governmental funds.	[B-2]	\$ 2,263,154	[B-2]	\$	142,004

REQUIRED SUPPLEMENTARY INFORMATION – PART III

***SCHEDULE L - SCHEDULES RELATED TO ACCOUNTING AND REPORTING FOR
PENSIONS (GASB 68)***

**COMPASS ACADEMY CHARTER SCHOOL
REQUIRED SUPPLEMENTARY INFORMATION SCHEDULES
SCHEDULE OF THE CHARTER SCHOOL'S PROPORTIONATE SHARE OF THE NET PENSION LIABILITY
PUBLIC EMPLOYEES RETIREMENT SYSTEM
LAST TWO FISCAL YEARS
UNAUDITED**

	Fiscal Year Ending June 30,	
	2018	2019
Charter School's proportion of the net pension liability	0.002205975%	0.001869753%
Charter School's proportionate share of the net pension liability	\$ 513,516	\$ 368,145
Charter School's covered employees payroll	\$ 141,919	\$ 173,380
Charter School's proportionate share of the net pension liability as a percentage of it's covered employee payroll	362%	212%
Plan fiduciary net position as a percentage of the total pension liability	47.93%	36.79%

Note: This schedule does not contain ten years of information as GASB No. 68 was implemented during the fiscal year ended June 30, 2015.

**COMPASS ACADEMY CHARTER SCHOOL
REQUIRED SUPPLEMENTARY INFORMATION SCHEDULES
SCHEDULE OF THE CHARTER SCHOOL CONTRIBUTIONS
PUBLIC EMPLOYEES RETIREMENT SYSTEM
LAST TWO FISCAL YEARS
UNAUDITED**

	Fiscal Year Ending June 30,	
	2018	2019
Contractually required contribution	\$ 20,436	\$ 18,598
Contributions in relation to the contractually required contribution	<u>(20,436)</u>	<u>(18,598)</u>
Contribution deficiency/(excess)	<u>\$ -</u>	<u>\$ -</u>
Charter School's covered employee payroll	\$ 141,919	\$ 173,380
Contributions as a percentage of covered employee payroll	14.40%	10.73%

Note: This schedule does not contain ten years of information as GASB No. 68 was implemented during the fiscal year ended June 30, 2015.

**COMPASS ACADEMY CHARTER SCHOOL
REQUIRED SUPPLEMENTARY INFORMATION SCHEDULES
SCHEDULE OF THE CHARTER SCHOOL'S PROPORTIONATE SHARE OF THE NET PENSION LIABILITY
TEACHER'S PENSION AND ANNUITY FUND
LAST TWO FISCAL YEARS
UNAUDITED**

	Fiscal Year Ending June 30,	
	2018	2019
State's proportion of the net pension liability attributable of the Charter School	0.0052712%	0.00678454%
State's proportionate share of the net pension liability attributable to the Charter School	\$ 3,554,055	\$ 4,316,177
CS / District's covered employees payroll	\$ 879,143	\$ 1,052,523
Charter School's proportionate share of the net pension liability as a percentage of it's covered employee payroll	404.26%	410.08%
Plan fiduciary net position as a percentage of the total pension liability	28.71%	25.41%

Note: This schedule does not contain ten years of information as GASB No. 68 was implemented during the fiscal year ended June 30, 2015.

**COMPASS ACADEMY CHARTER SCHOOL
REQUIRED SUPPLEMENTARY INFORMATION SCHEDULES
SCHEDULE OF THE CHARTER SCHOOL'S CONTRIBUTIONS
TEACHER'S PENSION AND ANNUITY FUND
LAST TWO FISCAL YEARS
UNAUDITED**

	Ending June 30,	
	2018	2019
Contractually required contribution	\$ 59,591	\$ 102,559
Contributions in relation to the contractually required contribution	<u>9,726</u>	<u>\$ 14,070</u>
Contribution deficiency/(excess)	<u>\$ 69,317</u>	<u>\$ 116,629</u>
Charter School's covered employee payroll	\$ 879,143	\$ 1,052,523
Contributions as a percentage of covered employee payroll	6.78%	9.74%

Note: This schedule does not contain ten years of information as GASB No. 68 was implemented during the fiscal year ended June 30, 2015.

***SECTION M - SCHEDULES RELATED TO ACCOUNTING AND REPORTING FOR
POSTEMPLOYMENT BENEFITS OTHER THAN PENSIONS***

Compass Academy Charter School
Required Supplementary Information Schedules
Schedule of Changes in the Charter School's Net OPEB Liability and Related Ratios
Last Two Fiscal Years
(Unaudited)

	Fiscal Years Ending	
	June 30, 2016	June 30, 2017
OPEB Liability at Beginning of Measurement Period	\$ 6,630,732	\$ 6,822,303
Service cost	1,441,265	1,183,799
Interest on Total OPEB Liability	227,898	283,930
Effect on Changes of Benefit Terms		-
Difference between expected and actual experience	(1,325,392)	(1,595,457)
Effect of Changes of Assumptions	5,819	(673,554)
Contributions - Employee	(158,019)	5,424
Gross Benefits Paid by the State		(156,948)
	NOT AVAILABLE	
	NOT AVAILABLE	NOT AVAILABLE
Net Change in Total OPEB Liability	191,571	(952,806)
OPEB Liability at Beginning of Measurement Period	6,630,732	6,822,303
Total OPEB Liability at End of Measurement Period	<u>6,630,732</u>	<u>6,822,303</u>
	<u>6,630,732</u>	<u>6,822,303</u>

The Charter School's Proportionate Share of the Total OPEB Liability	0.00%		0.00%
Charter School's Covered-Employee Payroll	\$ 141,919		\$ 1,052,523
Total Charter School's OPEB liability as a percentage of covered-employee payroll	4672.195%		557.660%
Charter School's Contribution	None		None

Schedule is intended to show information for 10 years. Additional years will be displayed as they become available.

Notes to Schedule:

Changes in benefit terms: None

Changes in assumptions:

The increase in the liability from June 30, 2016 to June 30, 2017 is due to the increase in the assumed discount rate from 2.85% as of June 30, 2016 to 3.58% as of June 30, 2017

NOTES TO REQUIRED SUPPLEMENTARY INFORMATION III

COMPASS ACADEMY CHARTER SCHOOL
NOTES TO REQUIRED SUPPLEMENTARY INFORMATION
PUBLIC EMPLOYEES RETIREMENT SYSTEM
FOR FISCAL YEAR ENDED JUNE 30, 2019

A. Benefit Changes

There were none.

B. Changes in Assumptions

The discount rate changed from 3.98% as of June 30, 2017 to 5.00% as of June 30, 2018 in accordance with Paragraph 44 of GASB Statement No. 67.

COMPASS ACADEMY CHARTER SCHOOL
NOTES TO REQUIRED SUPPLEMENTARY INFORMATION
TEACHER'S PENSION AND ANNUITY FUND
FOR FISCAL YEAR ENDED JUNE 30, 2019

A. Benefit Changes

There were none.

B. Changes in Assumptions

The discount rate changed from 4.13% as of June 30, 2017 to 4.25% as of June 30, 2018 in accordance with Paragraph 44 of GASB Statement No. 67.

OTHER SUPPLEMENTARY INFORMATION

**SECTION E – SPECIAL REVENUE FUND
DETAIL STATEMENTS**

Special revenue funds are used to account for the proceeds of specific revenue sources (other than expandable trusts or major capital projects) that are legally restricted to expenditures for specific purposes.

COMPASS ACADEMY CHARTER SCHOOL
 Special Revenue Fund
 Combining Schedule of Revenues and Expenditures
 Budgetary Basis
 For the Fiscal Year Ended June 30, 2019

	Title I	Title IV	Title II Part A	IDEA Part B	Total
Revenues:					
Federal Sources	77,747	9,170	18,174	36,913	142,004
Total Revenues	\$ 77,747	\$ 9,170	\$ 18,174	\$ 36,913	\$ 142,004
Expenditures:					
Instruction:					
Salaries of Teachers	44,000	-	-	-	44,000
Purchased Prof/Tech Services		9,170	18,174		27,344
General Supplies	20,465				20,465
Total Instruction	64,465	9,170	18,174	-	91,809
Support Services:					
Personal Services/Employee Benefits	13,282			36,913	50,195
Purchased Technical Services					
Total Support Services	13,282	-	-	36,913	50,195
Total Expenditures	77,747	9,170	18,174	36,913	142,004
Excess (Deficiency) of Revenues Over (Under) Expenditures	\$ -	\$ -	\$ -	\$ -	\$ -

**SECTION G – PROPRIETARY FUNDS
DETAIL STATEMENTS**

Proprietary Funds are used to account for operations that are financed and operated in a manner similar to private business enterprises – where the intent of the Charter School’s board is that the costs of providing goods or services be financed through user charges.

Food Services Fund – This fund provides for the operation of food services in all schools within the school district.

THIS SECTION HAS ALREADY BEEN INCLUDED IN STATEMENTS B-4, B-5, AND B-6.

**SECTION H – FIDUCIARY FUNDS
DETAIL STATEMENT**

Fiduciary Funds are used to account for funds received by the Charter School for a specific purpose.

Agency Funds are used to account for assets held by the Charter School as an agent for individuals, private organizations, other governments and/or other funds.

Student Activity Fund – This agency fund is used to account for students funds held at the schools.

Payroll Agency Fund – This agency fund is used to account for payroll transactions of the Charter School.

COMPASS ACADEMY CHARTER SCHOOL
 Fiduciary Funds
 Combining Statement of Fiduciary Net Position
 June 30, 2019

	Trusts	Agency			Total Agency Funds
	Flexible Spending Account	Payroll Agency	Payroll Account	Student Activity	
ASSETS:					
Cash and Cash Equivalents	\$ 3,291	\$ 25	\$ 25	\$ 9,733	\$ 9,783
Total Assets	<u>\$ 3,291</u>	<u>\$ 25</u>	<u>\$ 25</u>	<u>\$ 9,733</u>	<u>\$ 9,783</u>
LIABILITIES:					
Liabilities:					
Interfund Payable	4,468	\$ 25	\$ 25	-	\$ 50
Due to Student Groups				9,733	9,733
Total Liabilities	<u>4,468</u>	<u>\$ 25</u>	<u>\$ 25</u>	<u>\$ 9,733</u>	<u>\$ 9,783</u>
NET POSITION					
Held In Trust	<u>-</u>				
Total Net Position	<u>(1,177)</u>				
Total Liabilities and Net Position	<u>\$ 3,291</u>				

COMPASS ACADEMY CHARTER SCHOOL
 Fiduciary Funds
 Statement of Changes in Fiduciary Net Position
 Trust Funds
 For the Fiscal Year Ended June 30, 2019

	<u>Flexible Spending Account</u>
ADDITIONS:	
Contributions:	
Employees	<u>\$ 11,000</u>
Total Additions	<u>11,000</u>
DEDUCTIONS:	
Payments	<u>12,177</u>
Total Deductions	<u>12,177</u>
CHANGE IN NET POSITION	(1,177)
NET POSITION, JULY 1	<u>-</u>
NET POSITION (DEFICIT), JUNE 30	<u><u>\$ (1,177)</u></u>

The accompanying Notes to Basic Financial Statements are an integral part of this statement.

COMPASS ACADEMY CHARTER SCHOOL
 Fiduciary Funds
 Student Activity Agency Fund
 Schedule of Receipts and Disbursements
 June 30, 2019

	<u>Balance</u> <u>July 1, 2018</u>	<u>Cash</u> <u>Receipts</u>	<u>Cash</u> <u>Disbursements</u>	<u>Balance</u> <u>June 30, 2019</u>
Student Groups	<u>\$ 7,776</u>	<u>\$ 7,464</u>	<u>\$ 5,507</u>	<u>\$ 9,733</u>
Total	<u><u>\$ 7,776</u></u>	<u><u>\$ 7,464</u></u>	<u><u>\$ 5,507</u></u>	<u><u>\$ 9,733</u></u>

COMPASS ACADEMY CHARTER SCHOOL
 Fiduciary Funds
 Payroll Agency Fund
 Schedule of Receipts and Disbursements
 June 30, 2019

	Balance July 1, 2018	Cash Receipts	Cash Disbursements	Balance June 30, 2019
ASSETS:				
Cash and Cash Equivalents	\$ 25	\$ 659,352	\$ 659,352	\$ 25
Total Assets	<u>\$ 25</u>	<u>\$ 659,352</u>	<u>\$ 659,352</u>	<u>\$ 25</u>
LIABILITIES:				
Interfund Accounts Payable	\$ 25	\$ 659,352	\$ 659,352	\$ 25
Totals	<u>\$ 25</u>	<u>\$ 659,352</u>	<u>\$ 659,352</u>	<u>\$ 25</u>

**STATISTICAL SECTION
(UNAUDITED)**

Compass Academy Charter School has been in operation for five (5) years. GASB requires that ten years of statistical data be presented. State law usually grants charters for less than ten years. Therefore, only statistical data for five (5) years is available and has been presented. Each year thereafter, an additional year's data will be included until ten years.

Contents

Financial Trends

These schedules contain trend information to help the reader understand how the charter school's financial performance and well being have changed over time.

Revenue Capacity (Not Applicable To Charter School)

These schedules contain information to help the reader assess the district's most significant local revenue source, the property tax.

Debt Capacity

These schedules present information to help the reader assess the affordability of the charter school's current levels of outstanding debt and the charter school's ability to issue additional debt in the future.

Demographic and Economic Information

These schedules offer demographic and economic indicators to help the reader understand the environment within which the charter school's financial activities take place.

Operating Information

These schedules contain service and infrastructure data to help the reader understand how the information in the charter school's financial report relates to the services the district provides and the activities it performs.

Sources: *Unless otherwise noted, the information in these schedules is derived from the comprehensive annual financial reports (CAFR) for the relevant year. The charter school implemented GASB Statement 34 in the fiscal year ending June 30, 2008; schedules presenting charter school-wide information include information beginning in that year.*

FINANCIAL TRENDS

COMPASS ACADEMY CHARTER SCHOOL

Net Position by Component
 Last Five Fiscal Years
(accrual basis of accounting)
 Unaudited

	2019	2018	2017	2016	2015
Governmental Activities Unrestricted	\$ (175,963)	\$ (47,364)	\$ (59,837)	\$ 17,122	\$ (817)
Total Governmental Activities Net Assets/ Position	<u>\$ (175,963)</u>	<u>\$ (47,364)</u>	<u>\$ (59,837)</u>	<u>\$ 17,122</u>	<u>\$ (817)</u>
Business-Type Activities Unrestricted	\$ 31,540	43,927	\$ 4,106	\$ 973	\$ (6,050)
Total Business-Type Activities Net Assets/Position	<u>\$ 31,540</u>	<u>\$ 43,927</u>	<u>\$ 4,106</u>	<u>\$ 973</u>	<u>\$ (6,050)</u>
Charter School-Wide Unrestricted	(144,423)	(3,437)	(55,731)	18,095	(6,867)
Total Charter School Net Position	<u>\$ (144,423)</u>	<u>\$ (3,437)</u>	<u>\$ (55,731)</u>	<u>\$ 18,095</u>	<u>\$ (6,867)</u>

Source: Comprehensive Annual Financial Report

COMPASS ACADEMY CHARTER SCHOOL
Changes in Net Position
Last Five Fiscal Years
(accrual basis of accounting)
Unaudited

	2019	2018	2017	2016	2015
Expenses					
Governmental Activities:					
Instruction	\$ 1,442,688	1,255,444	1,121,299	955,602	706,281
Administration	575,662	781,617	385,253	352,358	283,721
Support Services	461,324	517,626	335,091	165,758	108,719
Capital Outlay	1,476		28,504	35,458	-
Total Governmental Activities Expenses	<u>2,481,150</u>	<u>2,554,687</u>	<u>1,870,147</u>	<u>1,509,176</u>	<u>1,098,721</u>
Business-Type Activities:					
Food Service	145,759	61,669	85,090	55,852	62,743
Total Business-Type Activities Expenses	<u>145,759</u>	<u>61,669</u>	<u>85,090</u>	<u>55,852</u>	<u>62,743</u>
Total Charter School Expenses	<u>\$ 2,626,909</u>	<u>\$ 2,616,356</u>	<u>\$ 1,955,237</u>	<u>\$ 1,565,028</u>	<u>\$ 1,161,464</u>
Program Revenues					
Governmental Activities:					
Operating Grants and Contributions	\$ -	-	\$ 291,990	\$ 235,475	\$ -
Total Governmental Activities Expenses	<u>-</u>	<u>-</u>	<u>291,990</u>	<u>235,475</u>	<u>-</u>
Business-Type Activities:					
Charges for Services	20,668	21,634	26,283	12,414	16,344
Operating Grants and Contributions	87,401	74,931	61,940	44,461	28,429
Total Business-Type Activities Expenses	<u>108,069</u>	<u>96,565</u>	<u>88,223</u>	<u>56,875</u>	<u>44,773</u>
Total Charter School Program Revenue	<u>\$ 108,069</u>	<u>\$ 96,565</u>	<u>\$ 380,213</u>	<u>\$ 292,350</u>	<u>\$ 44,773</u>
Net (Expense)/Revenue					
Governmental Activities	\$ (2,481,150)	\$ (2,554,687)	\$ (1,578,157)	\$ (1,273,701)	\$ (1,098,721)
Business-Type Activities	(37,690)	34,896	3,133	1,023	(17,970)
Total Charter School Net Expense	<u>\$ (2,518,840)</u>	<u>\$ (2,519,791)</u>	<u>\$ (1,575,024)</u>	<u>\$ (1,272,678)</u>	<u>\$ (1,116,691)</u>
General Revenues and Other Changes in Net Position					
Governmental Activities:					
General Purposes	\$ -	374,840	\$ 288,960	\$ 245,814	\$ -
Federal and State Aid Not Restricted	2,330,785	2,142,239	1,157,886	1,018,719	1,109,799
Miscellaneous Income	21,766	488	54,352	33,107	25
Transfers	-			(6,000)	(11,920)
Total Governmental Activities	<u>2,352,551</u>	<u>2,517,567</u>	<u>1,501,198</u>	<u>1,291,640</u>	<u>1,097,904</u>
Business-Type Activities:					
Miscellaneous Income	25,303	-	6,000	11,920	
Total Business-Type Activities Expenses	<u>25,303</u>	<u>-</u>	<u>6,000</u>	<u>11,920</u>	
Total Charter School Wide	<u>\$ 2,377,854</u>	<u>\$ 2,517,567</u>	<u>\$ 1,507,198</u>	<u>\$ 1,303,560</u>	<u>\$ 1,097,904</u>
Change in Net Position					
Governmental Activities	\$ (128,599)	\$ (37,120)	\$ (76,959)	\$ 17,939	\$ (817)
Business-Type Activities	(12,387)	34,896	9,133	12,943	(17,970)
Total Charter School	<u>\$ (140,986)</u>	<u>\$ (2,224)</u>	<u>\$ (67,826)</u>	<u>\$ 30,882</u>	<u>\$ (18,787)</u>

COMPASS ACADEMY CHARTER SCHOOL
 Fund Balances - Governmental Funds
 Last Five Fiscal Years
(modified accrual basis of accounting)
 Unaudited

	2019	2018	2017	2016	2015
General Fund					
Restricted	\$ -	-	\$ 2,137	\$ -	\$ 1
Unassigned	73,060	125,667	(61,974)	65,265	11,111
Total General Fund	<u>\$ 73,060</u>	<u>\$ 125,667</u>	<u>\$ (59,837)</u>	<u>\$ 65,265</u>	<u>\$ 11,112</u>

Source: Comprehensive Annual Financial Report

COMPASS ACADEMY CHARTER SCHOOL
 Changes in Fund Balances - Governmental Funds
 Last Five Fiscal Years
(modified accrual basis of accounting)
 Unaudited

	2019	2018	2017	2016	2015
Revenues:					
Local Sources:	\$ 400,230	375,328	\$ 288,960	245,814	174,540
State Sources	1,810,317	1,769,326	1,317,614	1,109,328	741,759
Federal Sources	142,004	97,818	186,614	177,973	193,525
Total Revenues	<u>2,352,551</u>	<u>2,242,472</u>	<u>1,793,188</u>	<u>1,533,115</u>	<u>1,109,824</u>
Expenditures:					
Instruction	1,184,485	1,014,347	1,169,442	919,388	721,852
Administration	805,624	702,808	385,253	352,358	204,963
Support Services	413,573	458,183	335,091	165,758	159,977
Capital Outlay	1,476		28,504	35,458	-
Total Expenditures	<u>2,405,158</u>	<u>2,175,338</u>	<u>1,918,290</u>	<u>1,472,962</u>	<u>1,086,792</u>
Excess (Deficiency) of Revenues Over (Under) Expenditures	(52,607)	67,134	(125,102)	60,153	23,032
Other Financing Uses:					
Transfers Out	-	-	-	(6,000)	(11,920)
Total Other Financing Uses	<u>-</u>	<u>-</u>	<u>-</u>	<u>(6,000)</u>	<u>(11,920)</u>
Net Change in Fund Balance	<u>\$ (52,607)</u>	<u>\$ 67,134</u>	<u>\$ (125,102)</u>	<u>\$ 54,153</u>	<u>\$ 11,112</u>

Source: Comprehensive Annual Financial Report

COMPASS ACADEMY CHARTER SCHOOL
 General Fund - Other Local Revenue by Source
 Last Five Fiscal Years
(modified accrual basis of accounting)
 Unaudited

Fiscal Year Ending June 30,	Prior Year Refunds	Miscellaneous Revenue	Total
2019	\$ -	\$ 21,766	\$ 21,766
2018	-	3,635	3,635
2017	52,258	2,094	54,352
2016	32,604	503	33,107
2015	-	25	25

Source: Charter School records

OPERATING INFORMATION

COMPASS ACADEMY CHARTER SCHOOL
 Full-Time Equivalent Charter School Employees by Function
 Last Five Fiscal Years

<u>Function</u>	<u>2019</u>	<u>2018</u>	<u>2017</u>	<u>2016</u>	<u>2015</u>
Instruction	17	17	17	10	9
Administrative	2	2	2	2	2
Support Services	6	5	5	4	4
Food Service	2	-	-	-	-
Total	<u>27</u>	<u>24</u>	<u>24</u>	<u>16</u>	<u>15</u>

Source: Charter School's Records

COMPASS ACADEMY CHARTER SCHOOL
 Operating Statistics
 Last Five Fiscal Years

Fiscal Year	Enrollment	Operating Expenditures	Cost Per Pupil	Percentage Change	Teaching Staff	Pupil / Teacher Ratio	Average Daily Enrollment (ADE)	Average Daily Attendance (ADA)	Percent Change in Average Daily Enrollment	Student Attendance Percentage
2019	210	\$ 2,403,682	\$ 11,232	10.50%	12	11:1	205.0	195.0	-2.43%	95.12%
2018	214	2,175,338	10,165	3.28%	12	11:1	210.1	196.0	9.48%	93.29%
2017	192	1,889,786	9,843	19.82%	12	15:1	191.9	179.4	9.66%	93.49%
2016	175	1,437,504	8,214	7.85%	10	14:1	175	166.0	23.24%	94.86%
2015	144	1,096,792	7,617	N/A	7	14:1	142	133	36.54%	93.67%

COMPASS ACADEMY CHARTER SCHOOL
 School Building Information
 Last Five Fiscal Years

<u>Charter School Building</u>	<u>2019</u>	<u>2018</u>	<u>2017</u>	<u>2016</u>	<u>2015</u>
<u>Elementary</u>					
Compass Academy Charter School					
Square Feet	12,000	12,000	12,000	12,000	12,000
Capacity (students)	228	228	228	159	159
Total Enrollment	214	192	175	144	104

Number of Schools at June 30, 2019

Primary/Intermediate/Middle = 1

High = 1

Source: Charter School Facilities Office

COMPASS ACADEMY CHARTER SCHOOL
Insurance Schedule
June 30, 2019

SCHOOL PACKAGE POLICY	Coverage	Deductible
Commercial Package		
Blanket Business & Contents	\$ 250,000	\$ 1,000
Extra Expense	62,500	1,000
Valuable Papers & Records	25,000	1,000
Demolition & Increased Cost of Construction	25,000,000	1,000
Fire Department Service Charge	10,000	1,000
Arson Reward	10,000	1,000
Pollutant Cleanup and Removal	250,000	1,000
Accounts Receivable	250,000	1,000
Flood	75,000,000	10,000
Earthquake	50,000,000	1,000
Terrorism	1,000,000	1,000
Boiler & Machinery Equipment Breakdown (Extensions)	250,000	1,000
Commercial General Liability		
Bodily Injury & Property Damage, per Occurrence	\$ 16,000,000	1,000
Products & Completed Operation	16,000,000	1,000
Sexual Abuse	16,000,000	1,000
Sexual Abuse Annual NJSIG Aggregate	17,000,000	1,000
Person Injury and Advertising Injury	16,000,000	1,000
Employee Benefits Liability	16,000,000	1,000
Premises Medical Payments - per accident/limit per person	10,000/5,000	1,000
Terrorism/per occurrence/annual NJSIG Aggregate	1,000,000	1,000
Business Automobile	16,000,000	
WORKERS COMPENSATION		
Bodily Injury by Accident - Each Accident	\$ 2,000,000	
Bodily Injury by Disease - Each Accident	2,000,000	
Bodily Injury by Disease - Aggregate Limit	2,000,000	
SCHOOL LEADERS E&O LIABILITY COVERAGE - COVERAGE A		
Coverage B - Limit of Liability (Each Claim/Each Policy Period)	16,000,000	10,000
Public Official Bonds - Business Administrator	100,000/300,000	10,000
Public Official Bonds - Business Administrator	125,000	
Public Official Bonds - Treasurer	125,000	
COMMERCIAL CRIME COVERAGE		
Per Loss - Employee Dishonesty/Faithful Performance	\$ 100,000	500
Electronic Data Processing Coverage	\$ 63,500	1,000
BASIC STUDENT ACCIDENT INSURANCE		
Maximum Benefit	\$ 1,000,000	
CATASTROPHIC STUDENT ACCIDENT INSURANCE		
Accident Medical Expense Limit	\$ 5,000,000	\$ 25,000

Source: Charter School Records

COMPASS ACADEMY CHARTER SCHOOL
 Charter School Performance Framework Financial Indicators
 Fiscal Ratios
 Last Three Fiscal Years

	2017	2018	2019	Source
	Audit	Audit	Audit	
Cash	38,980	148,088	79,003	Audit: Exhibit A-1
Current Assets (includes CASH)	54,387	237,987	220,501	Audit: Exhibit A-1
Total Assets	93,367	237,987	220,501	Audit: Exhibit A-1
Current Liabilities	149,098	68,393	115,901	Audit: Exhibit A-1
Total Liabilities	220,755	684,985	488,239	Audit: Exhibit A-1
Net Assets	(127,388)	(3,437)	(144,423)	Audit: Exhibit A-1
Total Revenue	1,827,785	2,614,132	2,485,923	Audit: Exhibit A-2
Total Expenses	1,973,268	2,616,356	2,626,909	Audit: Exhibit A-2
Change in Net Assets	(145,483)	(2,224)	(140,986)	Audit: Exhibit A-2
Depreciation Expense	0	0	0	Financial Statements/Audit Workpapers
Interest Expense	0	0	0	Financial Statements/Audit Workpapers
Principal Payments	0	0	0	Financial Statements/Audit Workpapers
Interest Payments	0	0	0	Financial Statements/Audit Workpapers
Final Average Daily Enrollment	192,00	214,00	210,00	DOE Enrollment Reports
March, 30th Budgeted Enrollment	192	214	210	Charter School Budget

Near Term Indicators	2019			3 YR CUM	Source:	Target
	2017	2018	2019			
1a. Current Ratio	0.36	3.48	1.90	1.54	Current Assets/Current Liabilities	> 1.1
1b. Unrestricted Days Cash	7.21	20.66	10.98	18.52	Cash/(Total Expenses/365)	30-60
1c. Enrollment Variance	100%	100%	100%	100.00%	Average Daily Enrollment/Budgeted Enrollment	>95%
1d.* Default	N/A	N/A	N/A		Audit	not in default
Sustainability Indicators						
2a. Total Margin	-8%	0%	-6%	-4%	Change in Net Assets/Total Revenue	positive
2b. Debt to Asset	2.36	2.88	2.21	2.53	Total Liabilities/Total Assets	<.9
2c.** Cash Flow	7,582	109,108	(69,085)	47,605	Net change in cash flow from prior years	3 yr cum positive
2d. Debt Service Coverage Ratio	N/A	N/A	N/A		(Change in Net Assets+Depreciation+Interest Expense)/(Principal & Interest Payments)	>1.10

* Is school in default of loan covenant(s) and/or is delinquent with debt service payments? Yes or No
 ** 2019 = 2019 Cash - 2018 Cash; 2018 = 2018 Cash - 2017 Cash; 2017 = 2017 Cash - 2016 Cash

Refer questions to charterfinance@doe.state.nj.us

SINGLE AUDIT SECTION

BARRE & COMPANY LLC
CERTIFIED PUBLIC ACCOUNTANTS & CONSULTANTS

2204 Morris Avenue, Suite 206

Union, New Jersey 07083

(908) 686-3484

FAX – (908) 686-6055

www.cpa-bc.com ♦ info@cpa-bc.com

K-1
Page 1

**REPORT ON INTERNAL CONTROL OVER FINANCIAL REPORTING AND
ON COMPLIANCE AND OTHER MATTERS BASED ON AN AUDIT OF
FINANCIAL STATEMENTS PERFORMED IN ACCORDANCE WITH
GOVERNMENT AUDITING STANDARDS**

INDEPENDENT AUDITOR'S REPORT

The Honorable President and
Members of the Board of Trustees
Compass Academy Charter School
Vineland, New Jersey

We have audited, in accordance with the auditing standards generally accepted in the United States of America; the standards applicable to financial audits contained in *Government Auditing Standards* issued by the Comptroller General of the United States; and in compliance with audit requirements as prescribed by the Office of School Finance, Department of Education, State of New Jersey, the financial statements of the governmental activities, the business-type activities, each major fund, and the aggregate remaining fund information of Compass Academy Charter School (Charter School), in the , State of New Jersey, as of and for the fiscal year ended June 30, 2019, and the related notes to the financial statements, which collectively comprise the Charter School's basic financial statements and have issued our report thereon dated December 18, 2019.

Internal Control over Financial Reporting

In planning and performing our audit of the financial statements, we considered the Charter School's internal control over financial reporting (internal control) to determine the audit procedures that are appropriate in the circumstances for the purpose of expressing our opinions on the financial statements, but not for the purpose of expressing an opinion on the effectiveness of the Charter School's internal control. Accordingly, we do not express an opinion on the effectiveness of the Charter School's internal control.

A *deficiency in internal control* exists when the design or operation of a control does not allow management or employees, in the normal course of performing their assigned functions to prevent, or detect and correct misstatements on a timely basis. A *material weakness* is a deficiency, or a combination of deficiencies, in internal control, such that there is a reasonable possibility that a material misstatement of the entity's financial statements will not be prevented, or detected and corrected on a timely basis. A *significant deficiency* is a deficiency, or a combination of deficiencies, in internal control that is less severe than a material weakness, yet important enough to merit attention by those charged with governance.

Our consideration of internal control over financial reporting was for the limited purpose described in the first paragraph of this section and was not designed to identify all deficiencies in internal control over financial reporting that might be material weaknesses or significant deficiencies. Given these limitations, during our audit we did not identify any deficiencies in internal control over financial reporting that we consider to be material weaknesses. However, material weaknesses may exist that have not been identified.


Compliance and Other Matters

As part of obtaining reasonable assurance about whether the Charter School's financial statements are free from material misstatement, we performed tests of its compliance with certain provisions of laws, regulations, contracts, and grant agreements, noncompliance with which could have a direct and material effect on the determination of financial statement amounts. However, providing an opinion on compliance with those provisions was not an objective of our audit and, accordingly, we do not express such an opinion. The results of our tests disclosed no instances of noncompliance or other matter that are required to be reported under *Government Auditing Standards* and audit requirements as prescribed by the Office of School Finance, Department of Education, State of New Jersey.

Purpose of this Report

The purpose of this report is solely to describe the scope of our testing of internal control and compliance and the results of that testing, and not to provide an opinion on the effectiveness of the entity's internal control or on compliance. This report is an integral part of an audit performed in accordance with *Government Auditing Standards* and audit requirements as prescribed by the Office of School Finance, Department of Education, State of New Jersey in considering the entity's internal control and compliance. Accordingly, this communication is not suitable for any other purpose.


BARRE & COMPANY LLC
Certified Public Accountants
Public School Accountants


Richard M. Barre
Public School Accountant
PSA Number CS-01181

Union, New Jersey
December 18, 2019

BARRE & COMPANY LLC
CERTIFIED PUBLIC ACCOUNTANTS & CONSULTANTS

2204 Morris Avenue, Suite 206

Union, New Jersey 07083

(908) 686-3484

FAX – (908) 686-6055

www.cpa-bc.com ♦ info@cpa-bc.com

K-2
Page 1

**INDEPENDENT AUDITOR'S REPORT ON COMPLIANCE FOR EACH
STATE PROGRAM AND REPORT ON INTERNAL CONTROL OVER
COMPLIANCE IN ACCORDANCE WITH NEW JERSEY CIRCULAR 15-08**

The Honorable President and
Members of the Board of Trustees
Compass Academy Charter School

Vineland, New Jersey

Report on Compliance for Each Major State Program

We have audited the Compass Academy Charter School's (Charter School) compliance with the types of compliance requirements described in the U.S. *Office of Management and Budget (OMB) Compliance Supplement* and the New Jersey Circular 15-08-OMB *State Aid/Grant Compliance Supplement* that could have a direct and material effect on each of its major federal and state programs for the fiscal year ended June 30, 2019. The Charter School's major federal and state programs are identified in the Summary of Auditor's Results section of the accompanying Schedule of Findings and Questioned Costs.

Management's Responsibility

The Charter School's management is responsible for compliance with the requirements of laws, regulations, contracts, and grants applicable to its federal and state programs.

Auditor's Responsibility

Our responsibility is to express an opinion on compliance for each of the Charter School's major federal and state programs based on our audit of the types of compliance requirements referred to above. We conducted our audit of compliance in accordance with auditing standards generally accepted in the United States of America; the standards applicable to financial audits contained in *Government Auditing Standards*, issued by the Comptroller General of the United States; the audit requirements of Title 2 U.S. Code of Federal Regulations (CFR) Part 200, *Uniform Administrative Requirements, Cost Principles, and Audit Requirements for Federal Awards* (Uniform Guidance) and the audit requirements as prescribed by the Office of School Finance, Department of Education, State of New Jersey; New Jersey Circular 15-08 OMB, *Single Audit Policy for Recipients of Federal Grants, State Grants and State Aid*. Those standards, Uniform Guidance and New Jersey Circular 15-08-OMB require that we plan and perform the audit to obtain reasonable assurance about whether noncompliance with the types

of compliance requirements referred to above that could have a direct and material effect on a major federal or state program occurred. An audit includes examining, on a test basis, evidence about the Charter School's compliance with those requirements and performing such other procedures as we considered necessary in the circumstances.

We believe that our audit provides a reasonable basis for our opinion on compliance for each major federal and state program. However, our audit does not provide a legal determination of the Charter School's compliance.

Opinion on Each Major Federal and State Program

In our opinion, the Compass Academy Charter School, in the , State of New Jersey, complied, in all material respects, with the types of compliance requirements referred to above that could have a direct and material effect on each of its major federal and state programs for the year ended June 30, 2019.

Report on Internal Control over Compliance

Management of the Compass Academy Charter School is responsible for establishing and maintaining effective internal control over compliance with the types of compliance requirements referred to above. In planning and performing our audit of compliance, we considered the Charter School's internal control over compliance with the types of requirements that could have a direct and material effect on each major federal or state program to determine the auditing procedures that are appropriate in the circumstances for the purpose of expressing an opinion on compliance for each major federal and state program and to test and report on internal control over compliance in accordance with Uniform Guidance and New Jersey Circular 15-08-OMB, but not for the purpose of expressing an opinion on the effectiveness of internal control over compliance. Accordingly, we do not express an opinion on the effectiveness of the Charter School's internal control over compliance.

A deficiency in internal control over compliance exists when the design or operation of a control over compliance does not allow management or employees, in the normal course of performing their assigned functions, to prevent, or detect and correct noncompliance with a type of compliance requirement of a federal or state program on a timely basis. *A material weakness in internal control over compliance* is a deficiency, or combination of deficiencies in internal control over compliance, such that there is a reasonable possibility that material noncompliance with a type of compliance requirement of a federal or state program will not be prevented, or detected and corrected on a timely basis. *A significant deficiency in internal control over compliance* is a deficiency, or a combination of deficiencies, in internal control over compliance with a type of compliance requirement of a federal or state program that is less severe than a material weakness in internal control over compliance, yet important enough to merit attention by those charged with governance.

Our consideration of internal control over compliance was for the limited purpose described in the first paragraph of this section and was not designed to identify all deficiencies in internal control over compliance that might be material weaknesses or significant deficiencies. We did not identify any deficiencies in internal control over compliance that we consider to be material weaknesses. However, material weaknesses may exist that have not been identified.

Report on Schedule of Expenditures of State Financial Assistance Required by NJOMB 15-08

We have audited the financial statements of the governmental activities, the business-type activities, each major fund, and the aggregate remaining fund information of the Compass Academy Charter School, as of and for the fiscal year ended June 30, 2018, and the related notes to the financial statements, which collectively comprise the Charter School's basic financial statements. We issued our report thereon dated February 27, 2019, which contained unmodified opinions on those financial statements. Our audit was conducted for the purpose of forming opinions on the financial statements that collectively comprise the basic financial statements. The accompanying schedule of expenditures of state financial assistance as required by New Jersey OMB 15-08 are presented for purposes of additional analysis and are not a required part of the basic financial statements. Such information is the responsibility of management and was derived from and relates directly to the underlying accounting and other records used to prepare basic financial statements. The information has been subjected to the auditing procedures applied in the audit of the financial statements and certain additional procedures, including comparing and reconciling such information directly to the underlying accounting and other records used to prepare the basic financial statements or to the basic financial statements themselves, and other additional procedures in accordance with auditing standards generally accepted in the United States of America. In our opinion, the schedule of expenditures and schedule of expenditures of state financial assistance are fairly stated in all material aspects in relation to the basic financial statements.

Purpose of this Report

The purpose of this report on internal control over compliance is solely to describe the scope of our testing of internal control over compliance and the results of that testing based on the requirements of the Uniform Guidance and New Jersey Circular 15-08 OMB. Accordingly, this report is not suitable for any other purpose.



BARRE & COMPANY LLC
Certified Public Accountants
Public School Accountants



Richard M. Barre
Public School Accountant
PSA Number CS-01181

Union, New Jersey
December 18, 2019

COMPASS ACADEMY CHARTER SCHOOL
Schedule of Expenditures of Federal Awards
For the Fiscal Year Ended June 30, 2019

Federal Grantor/Pass-through Grantor/Program Title	Federal CFDA Number	Federal FAIN Number	Grant or State Project Number	Program or Award Amount	Grant Period From To	Balance at June 30, 2018	Carryover/(Walkover) Amount	Cash Received	Budgetary Expenditures	Adjustments	Repayment Of Prior Years' Balances	Accounts Receivable	Balance at June 30, 2019	Due to Grantor
U.S. Department of Education														
Passed-through State Department of Education														
Special Revenue Fund:														
No Child Left Behind Cluster:														
Title I Part A	84-010A	S010A150030	NCLB -- 19	\$ 77,747	7/1/18	6,300/19	\$ -	78,105	(77,747)	\$ -	\$ -	\$ -	\$ 358	\$ -
Title II Part A	84-367A	S367A150029	NCLB -- 19	19,389	7/1/18	6,300/19	-	19,389	(18,174)	-	-	-	1,215	-
Title IV Sale & Drug Free	84-186A		NCLB -- 19	9,170	7/1/18	6,300/19	-	9,170	(9,170)	-	-	-	-	-
Total No Child Left Behind Cluster				106,664				106,664	(105,091)				1,573	
Individuals with Disabilities Cluster:														
IDEA - Part B	84-027	H027A150100	IDEA -- 19	36,913	7/1/18	6,300/19	-	36,913	(36,913)	-	-	-	-	-
IDEA - Part B Basic	84-027		IDEA -- 18	-	7/1/17	6,300/18	-	-	-	-	-	-	-	-
IDEA - Part B Basic Carryover	84-173		IDEA -- 19	-	9/1/18	6,300/18	-	-	-	-	-	-	-	-
IDEA - Preschool	84-173		IDEA -- 18	-	9/1/17	6,300/18	-	-	-	-	-	-	-	-
IDEA - Preschool Carryover	84-391		ARRA -- 19	-	9/1/09	9,300/11	-	-	-	-	-	-	-	-
ARRA - ID.E.A. Part B Basic	84-391		ARRA -- 18	-	9/1/09	9,300/11	-	-	-	-	-	-	-	-
ARRA - ID.E.A. Part B Basic	84-392A		ARRA -- 19	-	9/1/09	9,300/11	-	-	-	-	-	-	-	-
ARRA - ID.E.A. Preschool	84-392A		ARRA -- 18	-	9/1/09	9,300/11	-	-	-	-	-	-	-	-
ARRA - ID.E.A. Preschool	XX-XXX		IDEA -- 19	-	9/1/18	6,300/19	-	-	-	-	-	-	-	-
[OTHER GRANT]	XX-XXX		IDEA -- 18	-	9/1/17	6,300/18	-	-	-	-	-	-	-	-
Total Individuals with Disabilities Cluster				36,913				36,913	(36,913)				-	
Other Special Revenue Funds:														
Charter School/Enterprise Grant	84-282	U282A120015	N/A	-	9/1/18	6,300/19	-	-	-	-	-	-	-	-
Public Charter Schools (CSP Grant)	84-282		N/A	-	9/1/17	6,300/18	-	-	-	-	-	-	-	-
Race To The Top	XX-XXX		N/A	-	9/1/18	6,300/19	-	-	-	-	-	-	-	-
[OTHER GRANT CARRYOVER]	XX-XXX		N/A	-	9/1/17	6,300/18	-	-	-	-	-	-	-	-
Total Other Special Revenue Funds				-				-	(142,004)				1,573	
Total Special Revenue Fund				143,577				143,577	(142,004)				1,573	
U.S. Department of Agriculture														
Passed-through State Department of Agriculture														
Enterprise Fund:														
School Breakfast Program	10-553	171N10304N1099	N/A	22,245	7/1/18	6,300/19	-	19,628	(22,245)	-	-	(2,617)	-	-
School Breakfast Program	10-553		N/A	24,070	7/1/17	6,300/18	(1,625)	1,625	-	-	-	-	-	-
National School Lunch Program	10-555	171N10304N1099	N/A	50,306	7/1/18	6,300/19	-	54,496	(58,674)	-	-	(6,217)	-	
National School Lunch Program	10-555		N/A	50,306	7/1/17	6,300/18	(4,396)	4,396	-	-	-	-	-	
Child Care Food Program	10-558		N/A	4,033	7/1/18	6,300/19	(197)	3,372	(4,033)	-	-	(661)	-	
Child Care Food Program	10-558		N/A	197	7/1/17	6,300/18	(6,418)	-	-	-	-	(9,495)	-	
Total Enterprise Fund				81,875			(6,418)	81,875	(84,562)			(9,495)	-	
Total Federal Financial Awards				226,452			(6,418)	226,452	(226,966)			(9,495)	1,573	

The accompanying Notes to Schedules of Expenditures of Awards and Financial Assistance are an integral part of this schedule.

COMPASS ACADEMY CHARTER SCHOOL
Schedule of Expenditures of State Financial Assistance
For the Fiscal Year Ended June 30, 2019

State Grant/Program Title	Grant or State Project Number	Program or Award Amount	Grant Period		Due to Grantor	Carryover/ (Walkover) Amount	Cash Received	Budgetary Expenditures	Adjustments/ Repayment of Prior Year's Balance	Balance at June 30, 2019			MEMO
			From	To						Deferred Revenue (Accounts Receivable)	Deferred Revenue/ Interfund Payable	Due to Grantor	
State Department of Education													
General Fund:													
State Aid-Public Cluster													
Equalization Aid	19-495-034-5120-071	\$ 1,417,482	7/1/18	6/30/19	\$ -	\$ -	\$ 1,417,482	\$ (1,417,482)	\$ -	\$ -	\$ -	\$ -	\$ 1,417,482
Special Education	18-495-034-5120-071	-	7/1/17	6/30/18	-	-	-	-	-	-	-	-	-
Category A	19-495-034-5120-089	35,200	7/1/18	6/30/19	-	-	35,200	(35,200)	-	-	-	-	35,200
Category B	19-495-034-5120-084	61,208	7/1/18	6/30/19	-	-	61,208	(61,208)	-	-	-	-	61,208
Security Aid	18-495-034-5120-084	-	7/1/17	6/30/18	-	-	-	-	-	-	-	-	-
Total State Aid-Public Cluster							1,513,890	(1,513,890)					1,513,890
Nonpublic Aid:													
TPAF Post-Retirement Medical Contributions	19-100-034-5095-042	-	7/1/18	6/30/19	-	-	-	-	-	-	-	-	-
TPAF Long-Term Disability Aid	19-495-034-5095-001	68,213	7/1/18	6/30/19	-	-	68,213	(68,213)	-	-	-	-	68,213
On-Behalf TPAF Pension Contributions	19-495-034-5095-001	483	7/1/18	6/30/19	-	-	483	(483)	-	-	-	-	483
Reimbursed TPAF - Social Security	19-495-034-5095-006	150,381	7/1/18	6/30/19	-	-	150,381	(150,381)	-	-	-	-	150,381
Reimbursed TPAF - Social Security	19-495-034-5095-002	77,350	7/1/18	6/30/19	-	-	69,628	(77,350)	(7,622)	-	-	7,622	77,350
Total General Fund							1,809,126	(1,810,317)	(7,622)	-	-	7,622	1,810,317
State Department of Agriculture													
Enterprise Fund:													
National School Lunch Program (State Share)	19-100-010-3350-023	1,212	7/1/18	6/30/19	-	-	1,052	(1,212)	-	(160)	-	-	1,212
National School Lunch Program (State Share)	18-100-010-3350-023	966	7/1/17	6/30/18	(97)	-	97	-	-	-	-	-	-
Total Enterprise Fund							1,149	(1,212)	(160)	-	-	160	1,212
Total All Funds							1,810,275	(1,811,529)	(7,682)	-	-	7,682	1,811,529
State Financial Assistance Not Subject to Major Program Determination:													
General Funds:													
TPAF Post-Retirement Medical Contributions	19-495-034-5095-001	68,213	7/1/18	6/30/19	-	-	68,213	(68,213)	-	-	-	-	68,213
TPAF Long-Term Disability Aid	19-495-034-5095-001	483	7/1/18	6/30/19	-	-	483	(483)	-	-	-	-	483
On-Behalf TPAF Pension Contributions	19-495-034-5095-006	150,381	7/1/18	6/30/19	-	-	150,381	(150,381)	-	-	-	-	150,381
Total State Financial Assistance Subject to Single Audit							1,591,198	(1,592,452)	(7,682)	-	-	7,682	1,592,452

The accompanying Notes to Schedules of Expenditures of Awards and Financial Assistance are an integral part of this schedule.

COMPASS ACADEMY CHARTER SCHOOL
Notes to the Schedules of Expenditures
Of Awards and Financial Assistance
June 30, 2019

NOTE 1. GENERAL

The accompanying schedules of expenditures of federal awards and state financial assistance include federal and state award activity of the Board of Trustees, Compass Academy Charter School. The Board of Trustees is defined in Note 1 to the board's basic financial statements. All federal and state awards received directly from federal and state agencies, as well as federal awards and state financial assistance passed through other government agencies is included on the schedule of expenditures of federal awards and state financial assistance.

NOTE 2. BASIS OF ACCOUNTING

The accompanying schedules of expenditures of awards and financial assistance are presented on the budgetary basis of accounting with the exception of programs recorded in the food service fund, which are presented using the accrual basis of accounting. These basis of accounting are described in Note 1 to the board's basic financial statements. The information in this schedule is presented in accordance with the requirements of Title 2 CFR 200 – *Uniform Administrative Requirements, Cost Principles, and Audit Requirements for Federal Awards*. Therefore, some amounts presented in this schedule may differ from amounts presented in, or used in the preparation of, the basic financial statements.

NOTE 3. RELATIONSHIP TO BASIC FINANCIAL STATEMENTS

The basic financial statements present the general fund and special revenue fund on a GAAP basis. Budgetary comparison statements or schedules (RSI) are presented for the general fund and special revenue fund to demonstrate finance-related legal compliance in which certain revenue is permitted by law or grant agreement to be recognized in the audit year, whereas for GAAP reporting, revenue is not recognized until the subsequent year or when expenditures have been made.

The general fund is presented in the accompanying schedules on the modified accrual basis with the exception of the revenue recognition of the one or more deferred June state aid payments in the current budget year, which is mandated pursuant to *N.J.S.A. 18A:22-44.2*. For GAAP purposes payments are not recognized until the subsequent budget year due to the state deferral and recording of the one or more June state aid payments in the subsequent year. The special revenue fund is presented in the accompanying schedules on the grant accounting budgetary basis which recognizes encumbrances as expenditures and also recognizes the related revenues, whereas the GAAP basis does not. The special revenue fund also recognizes the one or more June state aid payment in the current budget year, consistent with *N.J.S.A. 18A:22-4.2*.

COMPASS ACADEMY CHARTER SCHOOL
Notes to the Schedules of Expenditures
Of Awards and Financial Assistance
June 30, 2019

NOTE 3. RELATIONSHIP TO BASIC FINANCIAL STATEMENTS (CONTINUED)

The net adjustment to reconcile from the budgetary basis to the GAAP basis is none for the general fund and none for the special revenue fund. See Notes to the Required Supplementary Information for a reconciliation of the budgetary basis to the modified accrual basis of accounting for the general and special revenue funds. Awards and financial assistance revenues are reported in the board's basic financial statements on a GAAP basis as presented below:

	Federal	State	Total
General Fund	\$ -	\$ 1,810,317	\$ 1,810,317
Special Revenue Fund	142,004	-	142,004
Food Service Fund	86,189	1,212	87,401
Total Awards & Financial Assistance	<u>\$ 228,193</u>	<u>\$ 1,811,529</u>	<u>\$ 2,039,722</u>

NOTE 4. RELATIONSHIP TO FEDERAL AND STATE FINANCIAL REPORTS

Amounts reported in the accompanying schedules agree with the amounts reported in the related federal and state financial reports.

NOTE 5. FEDERAL AND STATE LOANS OUTSTANDING

Compass Academy Charter School has no loan balances outstanding at June 30, 2019.

NOTE 6. OTHER

Revenues and expenditures reported under the Food Distribution Program represent current year value received and current year distributions respectively. The amount reported as TPAF Pension Contributions represents the amount paid by the state on behalf of the charter school for the year ended June 30, 2019. TPAF Social Security Contributions represents the amount reimbursed by the state for the employer's share of social security contributions for TPAF members for the year ended June 30, 2019.

COMPASS ACADEMY CHARTER SCHOOL
Notes to the Schedules of Expenditures
Of Awards and Financial Assistance
June 30, 2019

NOTE 7. ON-BEHALF PROGRAMS NOT SUBJECT TO STATE SINGLE AUDIT

On-behalf State Programs for TPAF Pension and Post-Retirement Medical Benefits Contributions payments are not subject to a State single audit and, therefore, are excluded from major program determination. The Schedule of State Financial Assistance provides a reconciliation of State financial assistance reported in the Charter School's basic financial statements and the amount subject to State single audit and major program determination.

NOTE 8. SCHOOLWIDE PROGRAM FUNDS

Schoolwide programs are not separate federal programs as defined in *Uniform Administrative Requirements, Cost Principles, and Audit Requirements for Federal Awards*; amounts used in schoolwide programs are included in the total expenditures of the program contributing the funds in the Schedule of Expenditures of Federal Awards. The following funds by program are included in schoolwide programs in the charter school.

Program	Total
Title I, Part A: <i>Grants to Local Education Agencies</i>	\$ 77,746
Title II, Part A: <i>Teacher and Principal Training and Recruiting</i>	18,174
Title IV, Part A: <i>Safe and Drug-Free Schools and Communities</i>	<u>9,170</u>
Total	<u>\$ 105,090</u>

COMPASS ACADEMY CHARTER SCHOOL
 Schedule of Findings and Questioned Costs
 For the Fiscal Year Ended June 30, 2019

Section I – Summary of Auditor’s Results

Financial Statements

Type of auditors’ report issued on financial statements		<u>Unmodified</u>
Internal control over financial reporting:		
1) Material weakness(es) identified?	_____ Yes	__X__ No
2) Significant deficiencies identified that are not considered to be material weaknesses?	_____ Yes	None Reported __X__
Noncompliance material to basic financial statements noted?	_____ Yes	__X__ No

State Awards

Dollar threshold used to distinguish between Type A and Type B programs:		\$750,000
Auditee qualified as low-risk auditee?	__X__ Yes	_____ No
Internal control over major programs:		
1) Material weakness(es) identified?	_____ Yes	__X__ No
2) Significant deficiencies identified that are not considered to be material weaknesses?	_____ Yes	None Reported __X__
Type of auditors’ report issued on compliance for major programs		<u>Unmodified</u>
Any audit findings disclosed that are required to be reported in accordance with NJ Circular Letter 15-08-OMB, as applicable?	_____ Yes	__X__ No

Identification of major state programs:

GMIS Number(s)	Name of State Program
_____	STATE AID – PUBLIC CLUSTER
19-495-034-5120-071	EQUALIZATION AID
19-495-034-5120-089	SPECIAL EDUCATION AID
19-495-034-5120-084	SECURITY AID

COMPASS ACADEMY CHARTER SCHOOL
Schedule of Findings and Questioned Costs
For the Fiscal Year Ended June 30, 2019

Section II –Financial Statement Findings

The section identifies the significant deficiencies, material weaknesses and instances of noncompliance related to the basic financial statements that are required to be reported in accordance with *Government Auditing Standards* and with audit requirements prescribed by the Division of Administration and Finance, Department of Education, State of New Jersey.

No Current Year Findings

***Section III –Federal and State Financial Assistance
Findings and Questioned Costs***

This section identifies audit findings required to be reported by Title 2 CFR 200 Section .516 of the *Uniform Administrative Requirements, Cost Principles, and Audit Requirements for Federal Awards* and NJ Circular Letter 15-08-OMB, as applicable.

No Current Year Findings

COMPASS ACADEMY CHARTER SCHOOL
Summary Schedule of Prior Year Audit Findings
And Questioned Costs As Prepared by Management
For the Fiscal Year Ended June 30, 2019

STATUS OF PRIOR-YEAR FINDINGS

This section identifies the status of prior-year findings related to the basic financial statements and federal and state awards that are required to be reported in accordance with Chapter 6.12 of *Government Auditing Standards*, US OMB *Uniform Administrative Requirements, Cost Principles, and Audit Requirements for Federal Awards* (511 (a)(b)) and NJ OMB Circular 04-04 and/or 15-08, as applicable.

No Prior Year Findings