

BASS RIVER TOWNSHIP SCHOOL DISTRICT

New Gretna, New Jersey
County of Burlington

**COMPREHENSIVE ANNUAL FINANCIAL REPORT
YEAR ENDED JUNE 30, 2020**

**COMPREHENSIVE ANNUAL FINANCIAL REPORT
OF THE
BASS RIVER TOWNSHIP SCHOOL DISTRICT
NEW GRETNA, NEW JERSEY**

YEAR ENDED JUNE 30, 2020

**PREPARED BY DISTRICT FINANCE OFFICER
SCHOOL BUSINESS ADMINISTRATOR/BOARD SECRETARY
NICHOLAS BROWN**

TABLE OF CONTENTS

	PAGE
INTRODUCTORY SECTION	
(First Section)	
Letter of Transmittal	1
Organizational Chart	5
Roster of Officials	6
Consultants and Advisors	7
FINANCIAL SECTION	
(Second Section)	
Independent Auditor's Report	11
REQUIRED SUPPLEMENTARY INFORMATION – PART I	
Management's Discussion and Analysis	17
BASIC FINANCIAL STATEMENTS	
A. Government-Wide Financial Statements:	
A-1 Statement of Net Position	29
A-2 Statement of Activities	30
B. Fund Financial Statements:	
B-1 Balance Sheet	35
B-2 Statement of Revenues, Expenditures and Changes in Fund Balances	36
B-3 Reconciliation of the Statement of Revenues, Expenditures and Changes in Fund Balances of Governmental Funds to the Statement of Activities	37
Proprietary Funds:	
B-4 Statement of Net Position	N/A
B-5 Statement of Revenues, Expenditures and Changes in Fund Net Position	N/A
B-6 Statement of Cash Flows	N/A
Fiduciary Funds:	
B-7 Statement of Fiduciary Net Position	43
B-8 Statement of Changes in Fiduciary Net Position	44
Notes to Financial Statements	47
REQUIRED SUPPLEMENTARY INFORMATION – PART II	
C. Budgetary Comparison Schedules	
C-1 Budgetary Comparison Schedule – General Fund	81
C-2 Budgetary Comparison Schedule – Special Revenue Fund	88
Notes to the Required Supplementary Information - Part II	
C-3 Budget-to-GAAP Reconciliation	91
REQUIRED SUPPLEMENTARY INFORMATION – PART III	
L. Schedules Related to Accounting and Reporting for Pensions (GASB 68)	
L-1 Schedule of the District's Proportionate Share of the Net Pension Liability - PERS	97
L-2 Schedule of the School District Contributions - PERS	98
L-3 Schedule of the District's Proportionate Share of the Net Pension Liability - TPAF	99

TABLE OF CONTENTS

	PAGE
M. Schedules Related to Accounting and Reporting for Other Post Employment Benefits (GASB 75)	
M-1 Schedule of Changes in the Net OPEB Liability and Related Ratios - OPEB	103
Notes to the Required Supplementary Information - Part III	107
OTHER SUPPLEMENTARY INFORMATION	
D. School Based Budget Schedules Fund (if applicable):	
D-1 Combining Balance Sheet	N/A
D-2 Blended Resource Fund - Schedule of Expenditures Allocated by Resource Type - Actual	N/A
D-3 Blended Resource Fund - Schedule of Blended Expenditures - Budget and Actual	N/A
E. Special Revenue Fund:	
E-1 Combining Schedule of Program Revenues & Expenditures - Special Revenue Fund – Budgetary Basis	115
E-2 Preschool Education Aid Schedule(s) of Expenditures - Budgetary Basis	N/A
F. Capital Projects Fund:	
F-1 Summary Schedule of Project Expenditures	119
F-2 Summary Schedule of Revenues, Expenditures and Changes in Fund Balance – Budgetary Basis	120
F-2a Summary Schedule of Revenues, Expenditures and Changes in Fund Balance – Budgetary Basis Energy Saving Improvement Plan	121
G. Proprietary Funds:	
Enterprise Fund:	
G-1 Combining Schedule of Net Position	N/A
G-2 Combining Schedule of Revenues, Expenses & Changes in in Fund Net Position	N/A
G-3 Combining Schedule of Cash Flows	N/A
Internal Service Fund –	
G-4 Combining Schedule of Net Position	N/A
G-5 Combining Schedule of Revenues, Expenses & Changes in Fund Net Position	N/A
G-6 Combining Schedule of Cash Flows	N/A
H. Fiduciary Funds:	
H-1 Combining Statement of Fiduciary Net Position	125
H-2 Combining Statement of Changes in Fiduciary Net Position	126
H-3 Student Activity Agency Fund - Schedule of Receipts & Disbursements	127
H-4 Payroll Agency Fund - Schedule of Receipts & Disbursements	127
H-5 Athletic Agency Fund - Schedule of Receipts and Disbursements	N/A
I. Long-Term Debt:	
I-1 Schedule of Serial Bonds Payable	N/A
I-2 Schedule of Obligations Under Capital Leases	131
I-3 Debt Service Fund - Budgetary Comparison Schedule	N/A
I-4 Schedule of Early Retirement Incentive Plan Loans Payable	N/A

TABLE OF CONTENTS

	PAGE
STATISTICAL SECTION (Unaudited)	
(Third Section)	
Financial Trends:	
J-1 Net Position by Component	137
J-2 Changes in Net Position	138
J-3 Fund Balances – Governmental Funds	140
J-4 Changes in Fund Balances – Governmental Funds	141
J-5 General Fund - Other Local Revenue by Source	142
Revenue Capacity:	
J-6 Assessed Value & Actual Value of Taxable Property	145
J-7 Direct and Overlapping Property Tax Rates	146
J-8 Principal Property Taxpayers	147
J-9 Property Tax Levies and Collections	148
Debt Capacity:	
J-10 Ratios of Outstanding Debt by Type	151
J-11 Ratios of Net General Bonded Debt Outstanding	152
J-12 Ratios of Overlapping Governmental Activities Debt	153
J-13 Legal Debt Margin Information	154
Demographic & Economic Information:	
J-14 Demographic & Economic Statistics	157
J-15 Principal Employers	158
Operating Information:	
J-16 Full-Time Equivalent District Employees by Function/Program	161
J-17 Operating Statistics	162
J-18 School Building Information	163
J-19 Schedule of Required Maintenance	164
J-20 Insurance Schedule	165

SINGLE AUDIT SECTION

(Fourth Section)

K-1 Independent Auditor's Report on Internal Control Over Financial Reporting and on Compliance and Other Matters Based on an Audit of Financial Statements Performed in Accordance With Government Auditing Standards	169
K-2 Independent Auditor's Report on Compliance for Each Major Program and on Internal Control Over Compliance in Accordance with New Jersey OMB Circular Letter 15-08	171
K-3 Schedule of Expenditures of Federal Awards, Schedule A	173
K-4 Schedule of Expenditures of State Financial Assistance, Schedule B	174
K-5 Notes to Schedules of Expenditures of Federal Awards and State Financial Assistance	175
K-6 Schedule of Findings and Questioned Cost - Part I	177
K-6 Schedule of Findings and Questioned Costs - Part II & III	179
K-7 Summary Schedule of Prior Year Audit Findings	181

This page intentionally left blank

INTRODUCTORY SECTION

This page intentionally left blank

BASS RIVER TOWNSHIP ELEMENTARY SCHOOL

Business Office:
520 Nugentown Road
P.O. Box 248
Little Egg Harbor, NJ 08087

Telephone (609) 296-3106
FAX (609) 991-4245



Mr. NICHOLAS K. BROWN
Business Administrator

January 19, 2021

Honorable President and Members
of the Board of Education
Bass River Township School District
County of Burlington, New Jersey

Dear Board Members/Citizens:

The Comprehensive Annual Financial Report (CAFR) of the Bass River Township School District for the fiscal year ended June 30, 2020, is hereby submitted. Responsibility for both the accuracy of the data and completeness and fairness of the presentation, including all disclosures, rests with the management of the Bass River Township School District. To the best of our knowledge and belief, the data presented in this report is accurate in all material respects and is reported in a manner designed to present fairly, in all material respects, the respective financial position of the governmental activities, each major fund, and the aggregate remaining fund information of the district as of June 30, 2020, and the respective changes in financial position and cash flows, where applicable, thereof, for the year then ended in conformity with accounting principles generally accepted in the United States of America. All disclosures necessary to enable the reader to gain an understanding of the district's financial activities have been included.

GAAP requires that management provide a narrative introduction, overview and analysis to accompany the basic financial statements in the form of Management Discussion and Analysis (MD&A). This letter of transmittal is designed to complement the MD&A and should be read in conjunction with it. The MD&A can be found immediately following the report of the independent auditors.

The Comprehensive Annual Financial Report is presented in four sections as follows:

Introductory Section:

Section contains a Letter of Transmittal, Roster of Officials, Consultants and Advisors, and an Organizational Chart.

Financial Section:

Section contains the Independent Auditors' Report and includes the Management's Discussion and Analysis, the Basic Financial Statements, Required Supplementary Information (RSI) and Other Supplementary Information.

Statistical Section:

Section contains selected financial trends, revenue and debt capacity, demographic, economic and other operating information, generally presented on a multi-year basis.

Single Audit Section:

The School District is required to undergo an annual Single Audit in conformity with the provisions of Title 2 U.S. Code of Federal Regulations Part 200, *Uniform Administrative Requirements, Cost Principles, and Audit Requirements for Federal Awards (Uniform Guidance)* and New Jersey OMB's Circular 15-08 OMB, "*Single Audit Policy for Recipients of Federal Grants, State Grants and State Aid*". Information related to this Single Audit, including the independent auditor's report on the internal control and compliance with applicable laws, regulations, contracts and grants, along with findings and questioned costs, if any, are included in the Single Audit Section of this report.

REPORTING ENTITY AND ITS SERVICES

The Bass River Township School District is an independent reporting entity within the criteria adopted by the Governmental Accounting Standard Board (GASB) as established by NCGA Statement No. 3. All funds of the School District are included in this report. The School District has no component units.

The School District provides a full range of educational services appropriate to grade levels Pre-K through 6. These include regular as well as special education for children with special needs. The School District's enrollment, as of October 15th, for the current and past nine fiscal years are detailed below.

AVERAGE DAILY ENROLLMENT
(TEN-YEAR HISTORY)

<u>FISCAL YEAR</u>	<u>ENROLLMENT</u>
2009-10	127.7
2010-11	120.3
2011-12	123.5
2012-13	126
2013-14	113
2014-15	110.1
2015-16	111
2016-17	102
2017-18	110
2018-19	100.03
2019-20	93

ECONOMIC CONDITION AND OUTLOOK

Based on current trends, the economic condition for the area appears stable. The housing market indicates as light increase after years of decline. A major impact on the school financial condition remains reliant on State Aid. In 2019-20 the State of New Jersey reduced state aid. The District will face another reduction in fiscal year 2021. Facing further losses in revenue and decreasing enrollment, the District determined that it was in the best interest of the students of Bass River to enter into a send receive agreement with Little Egg Harbor School District.

MAJOR INITIATIVES

The District will work with the Little Egg Harbor School District and continue to focus on education for all students with particular emphasis on those at-risk. The School Board believes in the community school setting and will strive to maintain a student's education experience through the partnership with Little Egg Harbor Schools. However, an occasion may occur that the District will need to place a student in a school better equipped to handle his/her educational needs. While this situation creates an obvious impact to Bass River, it also affects the student's connection to their community. Therefore, the District will utilize all of its available resources to educate resident students in the Little Egg Harbor Elementary Schools whenever feasible.

INTERNAL ACCOUNTING CONTROLS

Management of the School District is responsible for establishing and maintaining an internal control structure designed to ensure that the assets of the district are protected from loss, theft and misuse and to ensure that adequate accounting data are completed to allow for the preparation of financial statement in conformity with general accepted accounting principles (GAAP). The internal control structure is designed to provide reasonable, but not absolute, assurance that these objectives are met. The concept of reasonable assurance recognizes that (1) the cost of a control should not exceed the benefits likely to be delivered; and (2) the valuation of costs and benefits require estimates and judgments by management.

As a recipient of federal and state financial assistance, the district also is responsible for ensuring that an adequate internal control structure is in place to ensure compliance with applicable laws and regulations related to those programs. This internal control structure is also subject to periodic evaluations by the district management.

As part of the School District's single audit described earlier, tests are made to determine the adequacy of the internal control structure, including that portion related to federal and state financial assistance programs, as well as to determine that the district has complied with applicable laws and regulations.

BUDGETARY CONTROLS

In addition to internal accounting controls, the School District maintains budgetary controls. The objective of these budgetary controls is to ensure compliance with legal provisions embodied in the annual appropriated budget approved by the voters of the municipality. Annual appropriated budgets are adopted for the general fund, the special revenue fund, and the debt service fund. Project-length budgets are approved for the capital improvements accounted for in the capital projects fund. The final budget amount as amended for the fiscal year is reflected in the financial section. An encumbrance accounting system is used to record outstanding purchase commitments on a line item basis. Open encumbrances at year-end are either cancelled or included as re-appropriations of fund balance in the subsequent year.

ACCOUNTING SYSTEM AND REPORTS

The School District's accounting records reflect generally accepted accounting principles, as promulgated by the Governmental Accounting Standards Board (GASB). The School District's accounting system is organized on the basis of funds. The funds are explained in "Notes to Financial Statements", Note 1.

OTHER INFORMATION

INDEPENDENT AUDIT

State statutes require an annual audit by independent certified public accountants. The accounting firm of Holman Frenia Allison, P.C., Certified Public Accounts, was appointed by the Board of Education. In addition to meeting the requirements set forth in the State statutes, the audit was also designed to meet the requirements of New Jersey OMB's Circular 15-08, *Single Audit Policy for Recipients of Federal Grants, State Grants and State Aid*. The auditor's report on the basic financial statements and combining statements and related major fund supporting statements and schedules is included in the financial section of this report. The auditor's reports related specifically to the single audit are included in the Single Audit section of this report.

ACKNOWLEDGEMENTS

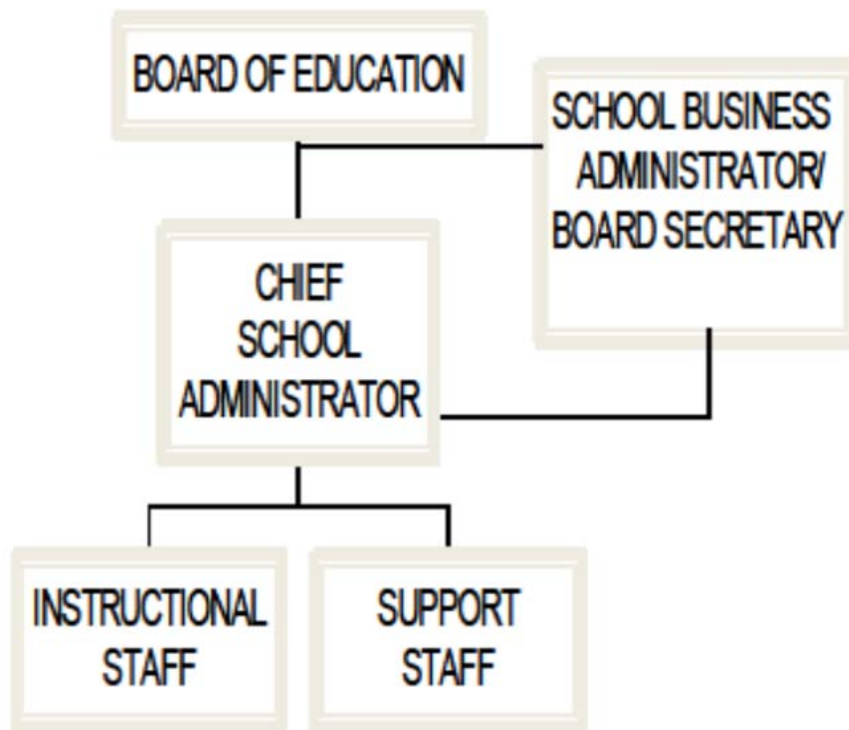
We would like to express our appreciation to the members of the Board of Education for their concern in providing fiscal accountability to the citizens and taxpayers of the School District and thereby contributing their full support to the development and maintenance of our financial operation. The preparation of this report could not have accomplished without the efficient and dedicated services of our business office staff.

Respectfully submitted,



Mr. Nicholas Brown
School Business Administrator/Board Secretary

BASS RIVER SCHOOL DISTRICT ORGANIZATIONAL CHART



**BASS RIVER TOWNSHIP SCHOOL DISTRICT
NEW GRETNA, NEW JERSEY
ROSTER OF OFFICIALS
JUNE 30, 2020**

Members of the Board of Education

TERM EXPIRES

Bonnie Adams, President	2022
Robert Schmidt, Vice President	2021
Kevin Foder, Sr.	2022
John Allen	2020
Lynn Heinrich	2021

Other Officials

Siobhan Grayson, Principal/Superintendent
Nicholas Brown, School Business Administrator/Board Secretary
Kimberly Sprague, CPA, Treasurer of School Monies
Paul Kalac, Board Attorney

**BASS RIVER TOWNSHIP SCHOOL DISTRICT
NEW GRETNA, NEW JERSEY
CONSULTANTS AND ADVISORS
JUNE 30, 2020**

AUDITOR/AUDIT FIRM

Jerry W. Conaty, CPA, PSA, CFE, RMA
Holman Frenia Allison, P. C.
680 Hooper Avenue
Building B , Suite 201
Toms River, New Jersey 08753

ATTORNEY

Paul Kalac
Weiner Law Group
629 Parsippany Road
Parsippany, New Jersey 07054

OFFICIAL DEPOSITORY

Ocean First Bank
975 Hooper Avenue
Tins River, New Jersey 08753

This page intentionally left blank

FINANCIAL SECTION

Second Section

This page intentionally left blank



Certified Public Accountants + Advisors

680 Hooper Avenue, Bldg B, Toms River, NJ 08753 • Tel: 732.797.1333
194 East Bergen Place, Red Bank, NJ 07701 • Tel: 732.747.0010

www.hfacpas.com

INDEPENDENT AUDITORS REPORT

Honorable President and Members
of the Board of Education
Bass River Township School District
County of Burlington

Report on the Financial Statements

We have audited the accompanying financial statements of the governmental activities, the business-type activities, each major fund and the aggregate remaining fund information of the Bass River Township School District, County of Burlington, State of New Jersey, as of and for the fiscal year ended, June 30, 2020, and the related notes to the financial statements, which collectively comprise the School District's basic financial statements as listed in the table of contents.

Management's Responsibility for the Financial Statements

Management is responsible for the preparation and fair presentation of these financial statements in accordance with accounting principles generally accepted in the United States of America; this includes the design, implementation, and maintenance of internal control relevant to the preparation and fair presentation of financial statements that are free from material misstatement, whether due to fraud or error.

Auditor's Responsibility

Our responsibility is to express opinions on these financial statements based on our audit. We conducted our audit in accordance with auditing standards generally accepted in the United States of America; the standards applicable to financial audits contained in *Government Auditing Standards*, issued by the Comptroller General of the United States; and audit requirements as prescribed by the, Office of School Finance, Department of Education, State of New Jersey. Those standards require that we plan and perform the audit to obtain reasonable assurance about whether the financial statements are free from material misstatement.

An audit involves performing procedures to obtain audit evidence about the amounts and disclosures in the financial statements. The procedures selected depend on the auditor's judgment, including the assessment of the risks of material misstatement of the financial statements, whether due to fraud or error. In making those risk assessments, the auditor considers internal control relevant to the District's preparation and fair presentation of the financial statements in order to design audit procedures that are appropriate in the circumstances, but not for the purpose of expressing an opinion on the effectiveness of the District's internal control. Accordingly, we express no such opinion. An audit also includes evaluating the appropriateness of accounting policies used and the reasonableness of significant accounting estimates made by management, as well as evaluating the overall presentation of the financial statements.

We believe that the audit evidence we have obtained is sufficient and appropriate to provide a basis for our audit opinions.

Opinions

In our opinion, the financial statements referred to above present fairly, in all material respects, the respective financial position of the governmental activities, the business-type activities, each major fund and the aggregate remaining fund information of the Bass River Township School District, County of Burlington , State of New Jersey, as of June 30, 2020, and the respective changes in financial position and, where applicable, cash flows thereof for the year then ended in accordance with accounting principles generally accepted in the United States of America.

Other Matters

Required Supplementary Information

Accounting principles generally accepted in the United States of America require that the management's discussion and analysis, budgetary comparison information, and the schedules related to accounting and reporting for pensions and other post-employment benefits, as listed in the table of contents be presented to supplement the basic financial statements. Such information, although not a part of the basic financial statements, is required by the Governmental Accounting Standards Board who considers it to be an essential part of financial reporting for placing the basic financial statements in an appropriate operational, economic, or historical context. We have applied certain limited procedures to the required supplementary information in accordance with auditing standards generally accepted in the United States of America, which consisted of inquiries of management about the methods of preparing the information and comparing the information for consistency with management's responses to our inquiries, the basic financial statements, and other knowledge we obtained during our audit of the basic financial statements. We do not express an opinion or provide any assurance on the information because the limited procedures do not provide us with sufficient evidence to express an opinion or provide any assurance.

Other Information

Our audit was conducted for the purpose of forming opinions on the financial statements that collectively comprise the School District's basic financial statements. The introductory section, combining statements and related major fund supporting statements and schedules, statistical section and schedule of expenditures of federal awards are presented for purposes of additional analysis, as required by the Division of Administration and Finance, Department of Education, State of New Jersey, and are not a required part of the basic financial statements. The accompanying schedule of expenditures of state financial assistance, as required by New Jersey OMB's Circular 15-08, Single Audit Policy for Recipients of Federal Grants, State Grants and State Aid, is also presented for purposes of additional analysis and is not a required part of the basic financial statements.

The accompanying combining statements and related major fund supporting statements and schedules, and the schedules of expenditures of federal awards and state financial assistance are the responsibility of management and were derived from and relates directly to the underlying accounting and other records used to prepare the basic financial statements. Such information has been subjected to the auditing procedures applied in the audit of the basic financial statements and certain additional procedures, including comparing and reconciling such information directly to the underlying accounting other records used to prepare the basic financial statements or to the basic financial statements themselves, and other additional procedures in accordance with auditing standards generally accepted in the United States of America. In our opinion, the accompanying combining statements and related major fund supporting statements and schedules and schedules of expenditures of federal awards and state financial assistance are fairly stated, in all material respects, in relation to the basic financial statements as a whole.

The introductory section and statistical section listed in the table of contents have not been subjected to the auditing procedures applied in the audit of the basic financial statements and, accordingly, we do not express an opinion or provide any assurance on them.

Other Reporting Required by *Government Auditing Standards*

In accordance with *Government Auditing Standards*, we have also issued our report dated on January 19, 2021 on our consideration of the School District's internal control over financial reporting and on our tests of its compliance with certain provisions of laws, regulations, contracts, and grant agreements and other matters. The purpose of that report is to describe the scope of our testing of internal control over financial reporting and compliance and the results of that testing, and not to provide an opinion on the effectiveness of the School District's internal control over financial reporting or on compliance. That report is an integral part of an audit performed in accordance with *Government Auditing Standards* in considering the School District's internal control over financial reporting and compliance.

Respectfully Submitted,

HOLMAN FRENIA ALLISON, P.C.

Jerry W. Conaty
Certified Public Accountant
Public School Accountant, No. 2470

Toms River, New Jersey
January 19, 2021

This page intentionally left blank

REQUIRED SUPPLEMENTARY INFORMATION - PART I

Management's Discussion and Analysis

This page intentionally left blank

BASS RIVER TOWNSHIP SCHOOL DISTRICT
MANAGEMENT'S DISCUSSION AND ANALYSIS
YEAR ENDED JUNE 30, 2020
UNAUDITED

This section of the Bass River Township School District Board of Education's Comprehensive Annual Financial Report presents our discussion and analysis of the District's financial performance during the fiscal year that ended on June 30, 2020. Please read it in conjunction with the transmittal letter at the front of this report and the District's financial statements, which immediately follow this section.

Management's Discussion and Analysis (MD&A) is an element of Required Supplementary Information specified in the Governmental Accounting Standards Board's (GASB) Statement No. 34 - Basic Financial Statements-Management's Discussion and Analysis-for State and Local Governments issued in June 1999 that is also required by the New Jersey State Department of Education. Certain comparative information between the current fiscal year 2019-2020 and the prior fiscal year 2018-2019 is required to be presented in the MD&A.

FINANCIAL HIGHLIGHTS

Key financial highlights for 2020 are as follows:

- In total, net position of governmental activities increased \$143,988.46, which represents a 428.69% increase from 2019.
- General revenues accounted for \$2,432,261.87 in revenue or 79.71% of all revenues. Program specific revenues in the form of charges for services, operating grants and contributions, and capital grants and contributions accounted for \$619,100.67 or 20.29% of total revenue of \$3,051,362.54.
- Total assets of governmental activities increased by \$59,546.17 as cash and cash equivalents decreased by (\$70,649.38), receivables decreased by (\$2,866.30), and total capital assets increased by \$133,061.85.
- Total liabilities of governmental activities decreased by (\$23,486.29) as non-current liabilities due beyond one year increased by \$45,526.44.
- The District had \$2,907,374.08 in governmental activity expenses; only \$619,100.67 of these expenses were offset by program specific charges for services, grants, or contributions. General revenues from governmental activities (primarily property taxes) and transfers of \$2,432,261.87 were adequate to provide for these programs, resulting in an increase in net position for governmental activities of \$143,988.46.
- In the governmental funds, the general fund had \$2,770,091.86 in revenues and \$2,661,031.050 in expenditures. The general fund's fund balance increased by \$109,060.81 over 2019.

USING THIS COMPREHENSIVE ANNUAL FINANCIAL REPORT (CAFR)

This annual report consists of a series of financial statements and notes to these financial statements. These statements are organized in a way to allow the reader to understand the Bass River Township School District Board of Education as a financial whole, an entire operating entity. The statements then proceed to provide an increasingly detailed look at specific financial activities.

This discussion and analysis is intended to serve as an introduction to the District's basic financial statements. The District's basic financial statements are comprised of three components: 1) Government-wide financial statements, 2) Fund financial statements, and 3) Notes to the financial statements. This report also contains required supplementary information and other supplementary information in addition to the basic financial statements themselves.

Government-Wide Financial Statements. The government-wide financial statements are designed to provide readers with an overview of the District's finances, in a manner similar to a private-sector business.

The Statement of Net Position (A-1) presents information on the difference between assets plus deferred outflows of resources and liabilities plus deferred inflows of resources reported as net position. Over time, increases or decreases in net position may serve as a useful indicator of whether the financial position of the District is improving or deteriorating.

The Statement of Changes in Net Position (A-2) presents information showing how the net position of the District changed during the most recent fiscal year. All changes in net position are reported as soon as the underlying event giving rise to the change occurs, regardless of the timing of related cash flows. Thus, revenues and expenses are reported in this statement for some items that will only result in cash flows in future fiscal periods of the district.

The government-wide financial statements can be found as Exhibits A-1 and A-2 in this report.

Fund Financial Statements. A fund is a group of related accounts that is used to maintain control over resources that have been segregated for specific activities or objectives. The District, like other state and local governments, uses fund accounting to ensure and demonstrate compliance with finance-related legal requirements. All of the funds of the District can be divided into three categories: governmental funds, proprietary funds and fiduciary funds.

Governmental Funds

Governmental funds are used to account for essentially the same functions reported as governmental activities in the government-wide financial statements. However, unlike the government-wide financial statements, governmental fund financial statements focus on the near-term inflows and outflows of spendable resources, as well as on balances of spendable resources available at the end of the fiscal year. Such information may be useful in evaluating the District's near-term financing requirements.

Because the focus of governmental funds is narrower than that of the government-wide financial statements, it is useful to compare the information presented for governmental funds with similar information presented for governmental activities in the government-wide financial statements. By doing so, readers may better understand the long-term impact of the District's near-term financing decisions. Both the governmental fund balance sheet and the governmental fund statement of revenues, expenditures, and changes in fund balance provide a reconciliation to facilitate this comparison between governmental funds and governmental activities.

The District maintains three individual governmental funds. Information is presented separately in the governmental fund balance sheet and the governmental fund statement of revenues, expenditures and changes in fund balance for the general fund, special revenue fund, and capital projects fund, all of which are considered to be major funds.

The general and special revenue funds utilize a legally adopted annual budget. A budgetary comparison statement has been provided for the general fund and special revenue fund to demonstrate compliance with this budget.

The basic governmental fund financial statements can be found as Exhibits B-1 through B-3 in this report.

Fiduciary Funds

Fiduciary funds are used to account for resources held for the benefit of parties outside the governmental entity. Fiduciary funds are not reflected in the district-wide financial statement because the resources of those funds are not available to support the District's own programs.

The District uses trust and agency funds to account for resources held for student activities and groups, for payroll transactions, and for the District's unemployment trust fund. The basic fiduciary fund financial statements can be found as Exhibits B-7 and B-8 in this report.

Notes to the Financial Statements. The notes provide additional information that is essential for a full understanding of the data provided in the district-wide and fund financial statements. The notes to the financial statements can be found after the fund financial statements in this report.

Other Information. The combining and individual fund statements referred to earlier in connection with governmental and enterprise funds are presented immediately following the notes to the financial statements.

Government-Wide Financial Analysis

The District's financial position is the result of several types of financial transactions, including the net results of activities, the acquisition and payment of debt, the acquisition and disposal of capital assets, and the depreciation of capital assets.

As noted earlier, net position may serve over time as a useful indicator of the District's financial position. The following table provides a summary of net position for June 30, 2020 and 2019, respectively:

Net Position
June 30, 2020

	Governmental Activities	
	<u>2020</u>	<u>2019</u>
Assets		
Current and Other		
Assets	\$ 290,951.09	\$ 364,466.77
Capital Assets, Net	816,081.66	683,019.81
Total Assets	1,107,032.75	1,047,486.58
Deferred Outflows of Resources		
Deferred Outflows		
Relating to Pension	233,441.00	159,301.00
Total Deferred Outflows of Resources	233,441.00	159,301.00
Liabilities		
Long-Term Liabilities	950,474.37	940,182.45
Other Liabilities	43,384.62	77,162.83
Total Liabilities	993,858.99	1,017,345.28
Deferred Inflows of Resources		
Deferred Inflows		
Relating to Pension	236,214.00	223,030.00
Total Deferred Inflows of Resources	236,214.00	223,030.00
Net Position		
Net Investment in		
Capital Assets	473,897.29	268,716.36
Restricted	42,123.35	146,577.83
Unrestricted	(405,619.88)	(448,881.92)
Total Net Position	\$ 110,400.76	\$ (33,587.73)

The District's largest net position component is the Restricted portion as shown above. Restricted balances represent resources that are subject to external restrictions on how they may be used.

Restricted net position decreased (\$104,454.48) from the prior year to \$42,123.35 at June 30, 2020.

Unrestricted net position may be used to meet the District's ongoing operating obligations to vendors, debtors and employees. The unrestricted net position includes the unassigned General Fund balance netted with the amount of long-term obligations that are not invested in capital assets. The (\$405,619.88) is shown as unrestricted net position for Governmental Activities.

The following table provides a summary of revenues and expenses for the District's governmental and business-type activities and the change in net position for June 30, 2020 and 2019. Significant variances in revenues and expenditures from year to year, and explanations thereof, are detailed in the 'Financial Analysis of the District's Funds' section later in this report.

	<u>June 30, 2020</u>	
	Governmental <u>Activities</u>	<u>Total</u>
Revenues:		
Program Revenues:		
Operating Grants and Contributions	\$ 619,100.67	\$ 619,100.67
General Revenues:		
Property Taxes	1,565,430.00	1,565,430.00
Federal and State Aid	864,549.00	864,549.00
Miscellaneous	2,282.87	2,282.87
Total Revenues	<u>3,051,362.54</u>	<u>3,051,362.54</u>
Expenses:		
Instructional Services	1,911,983.14	1,911,983.14
Support Services	995,390.94	995,390.94
Total Expenses	<u>2,907,374.08</u>	<u>2,907,374.08</u>
Change in Net Position	143,988.46	143,988.46
Net Position, Beginning	(33,587.70)	(33,587.70)
Net Position, Ending	<u>\$ 110,400.76</u>	<u>\$ 110,400.76</u>

	<u>June 30, 2019</u>	
	Governmental <u>Activities</u>	<u>Total</u>
Revenues:		
Program Revenues:		
Operating Grants and Contributions	\$ 898,110.24	\$ 898,110.24
General Revenues:		
Property Taxes	1,514,402.00	1,514,402.00
Federal and State Aid	889,634.00	889,634.00
Miscellaneous	1,446.24	1,446.24
Total Revenues	<u>3,303,592.48</u>	<u>3,303,592.48</u>
Expenses:		
Instructional Services	2,194,420.66	2,194,420.66
Support Services	949,782.08	949,782.08
Interest and Other Charges	(1,265.18)	(1,265.18)
Total Expenses	<u>3,142,937.56</u>	<u>3,142,937.56</u>
Change in Net Position	160,654.92	160,654.92
Net Position, Beginning	(194,242.62)	(194,242.62)
Net Position, Ending	<u>\$ (33,587.70)</u>	<u>\$ (33,587.70)</u>

Financial Analysis of the District's Funds

As noted earlier, the District uses fund accounting to ensure and demonstrate compliance with finance-related legal requirements.

Governmental Funds. The focus of the District's governmental funds is to provide information on near-term inflows, outflows, and balances of spendable resources. Such information is useful in assessing the District's financing requirements. The unassigned fund balance is divided between designated balances and undesignated balances. The capital projects fund is restricted by state law to be spent for the purpose of the fund and is not available for spending at the District's discretion.

Financial Information at Fiscal Year-End

The following schedule presents a summary of the general fund and special revenue fund expenditures for the fiscal year ended Jun 30, 2020 and 2019 and the amount and percentage of increases and (decreases) in relation to prior year expenditures.

	June 30, 2020			
	Amount	Percent Of Total	Increase (Decrease) From 2019	Percent of Increase (Decrease)
Current Expenditures:				
Instruction	\$ 1,069,187.88	36.76%	\$ (90,233.41)	-7.78%
Undistributed	1,693,317.85	58.22%	83,349.30	5.18%
Capital Outlay	145,776.10	5.01%	36,257.16	33.11%
Total	\$ 2,908,281.83	100.00%	\$ 29,373.05	1.02%

	June 30, 2019			
	Amount	Percent Of Total	Increase (Decrease) From 2018	Percent of Increase (Decrease)
Current Expenditures:				
Instruction	\$ 1,159,421.29	40.27%	\$ (51,816.96)	-0.39%
Undistributed	1,609,968.55	55.92%	(88,016.79)	4.97%
Capital Outlay	109,518.94	3.80%	(3,384.26)	-57.77%
Total	\$ 2,878,908.78	100.00%	\$ (143,218.01)	1.09%

Instruction costs increased primarily due to negotiated salary increases and additional instructional positions being added.

General Fund Budgetary Highlights

Throughout the year, as necessary, budget transfers were effectuated between budget accounts to re-align the 2019-2020 budget. Budget transfers were effectuated based on expected positive and negative budget variances. The budget is continually managed and revised with budget transfers as necessary or practical to do so.

Significant Budget Transfers and Variations:

- TPAF, which is the state's contribution to the pension fund, is an "on-behalf" revenue and expenditure item to the district and is required to be reflected in the financial statements.
- Reallocations were made among the various salary budget accounts to reflect changes in the personnel budget for the 2019-2020 year.
- Transfers were made into purchased services for special education programs to provide funds for required additional services.

Capital Assets

At June 30, 2020 the District has capital assets of \$816,081.66, net of depreciation, which includes land, construction in progress, land improvements, buildings/construction, machinery and equipment.

	<u>June 30, 2020</u>
	Governmental
	Activities
Land Improvements	\$ 29,518.54
Buildings/Construction	750,455.62
Machinery and Equipment	36,107.50
Total	<u>\$ 816,081.66</u>

	<u>June 30, 2019</u>
	Governmental
	Activities
Construction In Progress	90,058.20
Land Improvements	34,229.54
Buildings/Construction	504,815.61
Machinery and Equipment	53,916.50
Total	<u>\$ 683,019.85</u>

Additional information on the District's capital assets can be found in Note 4 to the basic financial statements.

Debt Administration and Other Obligations

At June 30, 2020 and 2019, the District's had total capital leases outstanding of \$342,184.37 and \$414,303.45 respectively and \$88,115.00 and \$75,565.00 respectively in compensated absences payable.

Additional information on the District's debt administration and other obligations can be found in Note 6 to the basic financial statements.

Economic Factors and Subsequent Year's Budgets

- A significant reliance on State Aid funding drives education in the Bass River Township School District. Unexpected decrease in state aid for fiscal year 2020 will tax the District's already strained resources. Due to the limited resources of a small school district, out of district placements present another difficult challenge.

Requests for Information

This financial report is designed to provide a general overview of the Bass River School District's finances for all those with an interest in the District's finances. Questions concerning any of the information provided in this report or requests for additional financial information should be addressed to the Business Administrator/Board Secretary's Office, Mr. Nicholas Brown at the Bass River Township School District, 520 Nugentown Road, P.O. Box 248, Little Egg Harbor, NJ 08087. Readers may also visit the website at www.bassriverschools.org.

This page intentionally left blank

BASIC FINANCIAL STATEMENTS

This page intentionally left blank

A. Government-Wide Financial Statements

This page intentionally left blank

**BASS RIVER TOWNSHIP SCHOOL DISTRICT
STATEMENT OF NET POSITION
JUNE 30, 2020**

	GOVERNMENTAL ACTIVITIES	TOTAL
ASSETS:		
Cash & Cash Equivalents	\$ 250,782.41	\$ 250,782.41
Receivables, Net (Note 3)	40,168.68	40,168.68
Capital Assets, Net (Note 4)		
Depreciable	816,081.66	816,081.66
Total Assets	1,107,032.75	1,107,032.75
DEFERRED OUTFLOWS OF RESOURCES:		
Related to Pensions (Note 7)	233,441.00	233,441.00
Total Deferred Outflow of Resources	233,441.00	233,441.00
LIABILITIES:		
Due to Other Governments	30,926.00	30,926.00
Unearned Revenue	9,915.49	9,915.49
Accrued Interest	2,543.13	2,543.13
Noncurrent Liabilities (Note 6):		
Due Within One Year	36,884.37	36,884.37
Due in More Than One Year	913,590.00	913,590.00
Total Liabilities	993,858.99	993,858.99
DEFERRED INFLOWS OF RESOURCES:		
Related to Pensions (Note 7)	236,214.00	236,214.00
Total Deferred Inflow of Resources	236,214.00	236,214.00
NET POSITION:		
Net Investment in Capital Assets	473,897.29	473,897.29
Restricted for:		
Excess Surplus	42,123.35	42,123.35
Unrestricted (Deficit) (Note 17)	(405,619.88)	(405,619.88)
Total Net Position	\$ 110,400.76	\$ 110,400.76

The accompanying Notes to Financial Statements are an integral part of this statement.

BASS RIVER TOWNSHIP SCHOOL DISTRICT
STATEMENT OF ACTIVITIES
YEAR ENDED JUNE 30, 2020

FUNCTIONS/PROGRAMS	PROGRAM REVENUES			NET (EXPENSE) REVENUE AND CHANGES IN NET POSITION		
	EXPENSES	CHARGES FOR SERVICES	OPERATING GRANTS & CONTRIBUTIONS	CAPITAL GRANTS & CONTRIBUTIONS	GOVERNMENTAL ACTIVITIES	TOTAL
Governmental Activities:						
Instruction:						
Regular Instruction	\$ 1,484,852.76	\$ -	\$ 461,076.36	\$ -	\$ (1,023,776.41)	\$ (1,023,776.41)
Special Education Instruction	306,933.69	-	83,095.32	-	(223,838.37)	(223,838.37)
Other Instruction	120,196.68	-	32,540.52	-	(87,656.16)	(87,656.16)
Support Services:						
Tuition	37,375.98	-	-	-	(37,375.98)	(37,375.98)
Student & Instruction Related Services	438,103.66	-	42,388.47	-	(395,715.19)	(395,715.19)
General Administrative	210,491.60	-	-	-	(210,491.60)	(210,491.60)
School Administrative Services	29,035.94	-	-	-	(29,035.94)	(29,035.94)
Central Services	57,071.90	-	-	-	(57,071.90)	(57,071.90)
Plant Operations & Maintenance	122,390.31	-	-	-	(122,390.31)	(122,390.31)
Pupil Transportation	100,921.55	-	-	-	(100,921.55)	(100,921.55)
Total Governmental Activities	2,907,374.08	-	619,100.67	-	(2,288,273.41)	(2,288,273.41)
Total Primary Government	\$ 2,907,374.08	\$ -	\$ 619,100.67	\$ -	(2,288,273.41)	(2,288,273.41)
General Revenues:						
Taxes:						
Property Taxes, Levied for General Purposes					1,565,430.00	1,565,430.00
Federal & State Aid Not Restricted					864,549.00	864,549.00
Miscellaneous					2,282.87	2,282.87
Total General Revenues					2,432,261.87	2,432,261.87
Change In Net Position					143,988.46	143,988.46
Net Position - Beginning					(33,587.70)	(33,587.70)
Net Position - Ending					\$ 110,400.76	\$ 110,400.76

The accompanying Notes to Financial Statements are an integral part of this statement.

B. Fund Financial Statements

This page intentionally left blank

Governmental Funds

This page intentionally left blank

**BASS RIVER TOWNSHIP SCHOOL DISTRICT
GOVERNMENTAL FUNDS
BALANCE SHEET
JUNE 30, 2020**

	MAJOR FUNDS			TOTAL GOVERNMENTAL FUNDS
	GENERAL FUND	SPECIAL REVENUE FUND	CAPITAL PROJECTS FUND	
ASSETS				
Cash & Cash Equivalents	\$ 277,546.14	\$ -	\$ -	\$ 277,546.14
Receivables, Net:				
Interfund Receivable	5,960.71	-	-	5,960.71
Due from Other Governments:				
Federal	-	22,564.87	-	22,564.87
State	7,444.24	-	-	7,444.24
Other Accounts Receivable	-	4,198.86	-	4,198.86
Total Assets	<u>\$ 290,951.09</u>	<u>\$ 26,763.73</u>	<u>\$ -</u>	<u>\$ 317,714.82</u>
LIABILITIES & FUND BALANCES				
Liabilities:				
Cash Deficit	\$ -	\$ 26,763.73	\$ -	\$ 26,763.73
Unearned Revenue	9,915.49	-	-	9,915.49
Total Liabilities	<u>9,915.49</u>	<u>26,763.73</u>	<u>-</u>	<u>36,679.22</u>
Fund Balances:				
Restricted for:				
Excess Surplus	42,123.35	-	-	42,123.35
Assigned to:				
Other Purposes	66,645.25	-	-	66,645.25
Unassigned	172,267.00	-	-	172,267.00
Total Fund Balances	<u>281,035.60</u>	<u>-</u>	<u>-</u>	<u>281,035.60</u>
Total Liabilities & Fund Balances	<u>\$ 290,951.09</u>	<u>\$ 26,763.73</u>	<u>\$ -</u>	
Amounts reported for <i>governmental activities</i> in the statement of net position (A-1) are different because:				
Capital assets used in governmental activities are not financial resources and therefore are not reported in the funds. The cost of the assets is \$2,185,135.85 and the accumulated depreciation is \$1,369,054.19.				816,081.66
Deferred outflows and inflows of resources related to pensions and deferred charges or credits on debt refunding are applicable to future reporting periods and therefore are not reported in the funds.				
Deferred Outflows Related to Pensions				233,441.00
Deferred Inflows Related to Pensions				(236,214.00)
Accrued interest on long-term debt is not due and payable in the current period and therefore is not reported as a liability in the funds.				(2,543.13)
Accrued pension contributions for the June 30, 2020 plan year are not paid with current economic resources and are therefore not reported as a liability in the funds, but are included in accounts payable in the government-wide statement of net position.				(30,926.00)
Long-term liabilities, including net pension liability and bonds payable, are not due and payable in the current period and therefore are not reported as liabilities in the funds.				<u>(950,474.37)</u>
Net Position of Governmental Activities				<u>\$ 110,400.76</u>

The accompanying Notes to Financial Statements are an integral part of this statement.

**BASS RIVER TOWNSHIP SCHOOL DISTRICT
GOVERNMENTAL FUNDS
STATEMENT OF REVENUES, EXPENDITURES AND CHANGES IN FUND BALANCES
YEAR ENDED JUNE 30, 2020**

	MAJOR FUNDS			TOTAL GOVERNMENTAL FUNDS
	GENERAL FUND	SPECIAL REVENUE FUND	CAPITAL PROJECTS FUND	
Revenues:				
Local Sources:				
Local Tax Levy	\$ 1,565,430.00	\$ -	\$ -	\$ 1,565,430.00
Miscellaneous	2,282.87	22,000.00	-	24,282.87
Total Local Sources	1,567,712.87	22,000.00	-	1,589,712.87
State Sources	1,202,378.99	-	-	1,202,378.99
Federal Sources	-	79,474.68	-	79,474.68
Total Revenues	2,770,091.86	101,474.68	-	2,871,566.54
Expenditures:				
Instruction:				
Regular Instruction	771,248.82	59,086.21	-	830,335.03
Special Education Instruction	171,638.43	-	-	171,638.43
Other Instruction	67,214.42	-	-	67,214.42
Support Services:				
Tuition	37,375.98	-	-	37,375.98
Attendance & Social Work Services	16,611.76	-	-	16,611.76
Health Services	60,290.91	-	-	60,290.91
Student & Instruction Related Services	216,645.12	42,388.47	-	259,033.59
General Administrative	161,404.18	-	-	161,404.18
School Administrative Services	22,264.65	-	-	22,264.65
Central Services	43,762.52	-	-	43,762.52
Plant Operations & Maintenance	182,361.83	-	-	182,361.83
Pupil Transportation	77,386.27	-	-	77,386.27
Unallocated Benefits	494,996.17	-	-	494,996.17
On Behalf TPAF Pension and Social Security Contributions	337,829.99	-	-	337,829.99
Capital Outlay	-	-	145,776.10	145,776.10
Total Expenditures	2,661,031.05	101,474.68	145,776.10	2,908,281.83
Excess/(Deficiency) of Revenues Over Expenditures	109,060.81	-	(145,776.10)	(36,715.29)
Other Financing Sources (Uses):				
Cancellation of Unexpended Balance	-	-	(801.76)	(801.76)
Total Other Financing Sources (Uses)	-	-	(801.76)	(801.76)
Net Changes in Fund Balances	109,060.81	-	(146,577.86)	(37,517.05)
Fund Balance, July 1	171,974.79	-	146,577.86	318,552.65
Fund Balance, June 30	\$ 281,035.60	\$ -	\$ -	\$ 281,035.60

The accompanying Notes to Financial Statements are an integral part of this statement.

**BASS RIVER TOWNSHIP SCHOOL DISTRICT
RECONCILIATION OF THE STATEMENT OF REVENUES, EXPENDITURES,
AND CHANGES IN FUND BALANCES OF GOVERNMENTAL FUNDS
TO THE STATEMENT OF ACTIVITIES
YEAR ENDED JUNE 30, 2020**

Total Net Changes in Fund Balances - Governmental Funds (B-2)	\$	(37,517.05)
Amounts reported for governmental activities in the statement of activities (A-2) are different because:		
Capital outlays are reported in governmental funds as expenditures. However, in the statement of activities, the cost of those assets is allocated over their estimated useful lives as depreciation expense. This is the amount by which depreciation exceeded capital outlays in the period.		
Depreciation Expense	\$	(56,205.00)
Retirement of Capital Assets		(906.00)
Capital Outlays		<u>190,172.81</u>
		133,061.81
Governmental funds report School District pension contributions as expenditures. However in the statement of activities, the cost of pension benefits earned is reported as pension expense. This is the amount by which pension benefits earned exceeded the School District's pension contributions in the current period.		
		(11,750.09)
Repayment of long-term debt principal and obligation of lease purchase agreements are an expenditure in the governmental funds, but the repayment reduces long-term liabilities in the statement of net position and is not reported in the statement of activities.		
		72,119.21
In the statement of activities, interest on long-term debt in the statement of activities is accrued, regardless of when due. In the governmental funds, interest is reported when due. The accrued interest is an reeducation in the reconciliation (-).		
		624.58
In the statement of activities, certain operating expenses, e.g., compensated absences (vacations) are measured by the amounts earned during the year. In the governmental funds, however, expenditures for these items are reported in the amount of financial resources used (paid). When the earned amount exceeds the paid amount, the difference is reduction in the reconciliation (-); when the paid amount exceeds the earned amount the difference is an addition to the reconciliation (+).		
		<u>(12,550.00)</u>
Change in Net Position of Governmental Activities	\$	<u><u>143,988.46</u></u>

This page intentionally left blank

Proprietary Funds

Not Applicable

This page intentionally left blank

Fiduciary Fund

This page intentionally left blank

**BASS RIVER TOWNSHIP SCHOOL DISTRICT
FIDUCIARY FUNDS
STATEMENT OF FIDUCIARY NET POSITION
JUNE 30, 2020**

	<u>UNEMPLOYMENT COMPENSATION TRUST</u>	<u>AGENCY FUNDS</u>
ASSETS		
Cash & Cash Equivalents	\$ 17,189.58	\$ 26,380.11
Total Assets	<u>\$ 17,189.58</u>	<u>\$ 26,380.11</u>
LIABILITIES		
Interfund Payable	\$ -	\$ 5,960.71
Payable for Student Related Activities	-	3,550.01
Payroll Deductions & Withholdings	-	16,869.39
Total Liabilities	<u>\$ -</u>	<u>\$ 26,380.11</u>
NET POSITION		
Restricted - Held in Trust for Unemployment Claims & Other Purposes	<u>\$ 17,189.58</u>	
Total Net Position	<u>\$ 17,189.58</u>	

The accompanying Notes to Financial Statements are an integral part of this statement.

**BASS RIVER TOWNSHIP SCHOOL DISTRICT
FIDUCIARY FUNDS
STATEMENT OF CHANGES IN FIDUCIARY NET POSITION
YEAR ENDED JUNE 30, 2020**

	UNEMPLOYMENT COMPENSATION TRUST
ADDITIONS	
Investment Earnings:	
Interest	\$ 71.23
Net Investment Earnings	71.23
Total Additions	71.23
DEDUCTIONS	
Unemployment Claims	8,634.63
Total Deductions	8,634.63
Change in Net Position	(8,563.40)
Net Position - Beginning	25,752.98
Net Position - Ending	\$ 17,189.58

The accompanying Notes to Financial Statements are an integral part of this statement.

BASS RIVER TOWNSHIP SCHOOL DISTRICT

NOTES TO FINANCIAL STATEMENTS

JUNE 30, 2020

This page intentionally left blank

**BASS RIVER TOWNSHIP SCHOOL DISTRICT
NOTES TO THE FINANCIAL STATEMENTS
YEAR ENDED JUNE 30, 2020**

Note 1. Summary of Significant Accounting Policies

Basis of Presentation

The financial statements of the Bass River Township Public School District (hereafter referred to as the “School District”) have been prepared in conformity with generally accepted accounting principles (GAAP) as prescribed by the Governmental Accounting Standards Board (GASB). The Governmental Accounting Standards Board (GASB) is responsible for establishing GAAP for state and local governments through its pronouncements (Statements and Interpretations).

Reporting Entity

The School District is a Type II district located in the County of Burlington, State of New Jersey. As a Type II district, the School District functions independently through a Board of Education. The Board is comprised of five members appointed to three-year terms. These terms are staggered so that two members’ terms expire in two years and one members term expires in the third. The purpose of the School District is to educate students in grades pre-kindergarten through sixth at its one school. The School District has an approximate enrollment at June 30, 2020 of 93 students.

The primary criterion for including activities within the School District’s reporting entity, as set forth in Section 2100 of the GASB *Codification of Governmental Accounting and Financial Reporting Standards* , is whether:

- ◆ the organization is legally separate (can sue or be sued in their own name);
- ◆ the School District holds the corporate powers of the organization;
- ◆ the School District appoints a voting majority of the organization’s board
- ◆ the School District is able to impose its will on the organization;
- ◆ the organization has the potential to impose a financial benefit/burden on the School District
- ◆ there is a fiscal dependency by the organization on the School District.

There were no additional entities required to be included in the reporting entity under the criteria as described above. Furthermore, the School District is not includable in any other reporting entity on the basis of such criteria.

Component Units

GASB Statement No.14. *The Financial Reporting Entity* , provides guidance that all entities associated with a primary government are potential component units and should be evaluated for inclusion in the financial reporting entity. A primary government is financially accountable not only for the organizations that make up its legal entity but also for legally separate organizations that meet the criteria established by GASB Statement No. 14, as amended by GASB Statement No. 39, *Determining Whether Certain Organizations are Component Units* , GASB 61, *The Financial Reporting Entity: Omnis – an Amendment of GASB Statements No. 14 and No. 34*, GASB 68, *Blending Requirements for Certain Component Units - an Amendment of GASB Statement No. 14. and No. 34 and GASB 80, Blending Requirements for Certain Component Units - an Amendment of GASB Statement No. 14* . The School District had no component units as of or for the year ended June 30, 2020.

**BASS RIVER TOWNSHIP SCHOOL DISTRICT
NOTES TO THE FINANCIAL STATEMENTS
YEAR ENDED JUNE 30, 2020 (Continued)**

Note 1. Summary of Significant Accounting Policies (Continued)

Basis of Accounting, Measurement Focus and Financial Statement Presentation

The accounts of the School District are organized on the basis of funds, each of which is considered a separate accounting entity. The operations of each fund are accounted for with a separate set of self-balancing accounts that comprise its assets, deferred outflows of resources, liabilities, deferred inflows of resources, fund equity, revenues, and expenditures or expenses, as appropriate. Governmental resources are allocated to and accounted for in individual funds based upon the purposes for which they are to be spent and the means by which spending activities are controlled.

A. Government-Wide Financial Statements

The School District's Government-Wide Financial Statements include a Statement of Net Position and a Statement of Activities. These statements present summaries of Governmental and Business-Type Activities for the School District accompanied by a total column. Fiduciary activities of the School District are not included in these statements.

These statements are presented on an "economic resources" measurement focus and the accrual basis of accounting. Accordingly, all of the School District's assets, deferred outflows of resources, liabilities, and deferred inflows of resources, including capital assets and long-term liabilities, are included in the Statement of Net Position. The Statement of Activities presents changes in net position. Under the accrual basis of accounting, revenues are recognized in the period in which they are earned while expenses are recognized in the period in which the liability is incurred, regardless of the timing of related cash flows. The types of transactions reported as program revenues for the School District are reported in three categories: 1) charges for services, 2) operating grants and contributions, and 3) capital grants and contributions. Internally dedicated resources are reported as general revenues rather than as program revenues. Likewise, general revenues include all property taxes.

Certain eliminations have been made to interfund activities, payables, and receivables. All internal balances in the Statement of Net Position have been eliminated except those representing balances between the governmental activities and the business-type activities, which are presented as internal balances and eliminated in the total primary government column. In the Statement of Activities, internal service fund transactions have been eliminated; however, those transactions between governmental and business-type activities have not been eliminated.

B. Governmental Fund Financial Statements

Governmental fund financial statements include a Balance Sheet and a Statement of Revenues, Expenditures and Changes in Fund Balances for all major governmental funds and non-major funds aggregated. The School District has presented all major funds that met those qualifications.

BASS RIVER TOWNSHIP SCHOOL DISTRICT
NOTES TO THE FINANCIAL STATEMENTS
YEAR ENDED JUNE 30, 2020 (Continued)

Note 1. Summary of Significant Accounting Policies (Continued)

All governmental funds are accounted for on a spending or “current financial resources” measurement focus and the modified accrual basis of accounting. Accordingly, only current assets and current liabilities are included on the Balance Sheets. (The School District’s deferred outflows of resources and deferred inflows of resources are noncurrent.) The Statement of Revenues, Expenditures and Changes in Fund Balances present increases (revenues and other financing sources) and decreases (expenditures and other financing uses) in net current assets. Under the modified accrual basis of accounting, revenues are recognized in the accounting period in which they become both measurable and available to finance expenditures of the current period. Accordingly, revenues are recorded when received in cash, except that revenues subject to accrual (generally 60 days after year-end) are recognized when due. The primary revenue sources, which have been treated as susceptible to accrual by the School District, are property tax and intergovernmental revenues. Expenditures are recorded in the accounting period in which the related fund liability is incurred. However, debt service expenditures, as well as expenditures related to compensated absences and claims and judgments, are recorded only when payment is due. General capital asset acquisitions are reported as expenditures in governmental funds. Issuance of long-term debt and acquisitions under capital leases are reported as other financing sources.

Interest on invested funds is recognized when earned. Intergovernmental revenues that are reimbursements for specific purposes or projects are recognized in the period in which the expenditures are recorded. All other revenue items are considered to be measurable and available only when cash is received by the School District. Transfers between governmental funds are recorded when the related liability is incurred. These transfers do not represent revenues (expenditures) to the School District and are, therefore, reported as other financing sources (uses) in the governmental fund financial statements.

Since the fund level statements are presented using a different measurement focus and basis of accounting than the government-wide statements, a reconciliation is presented on the page following each fund level statement that summarizes the adjustments necessary to convert the fund level statements into the government-wide presentations.

The School District funds outlays for a particular purpose from both restricted and unrestricted resources. In order to calculate the amounts to report as restricted net position and unrestricted net position in the government-wide financial statements, a flow assumption must be made about the order in which the resources are considered to be applied. When both restricted and unrestricted resources are available for use, it is the School District’s policy to use restricted resources first, then unrestricted resources as they are needed. In order to calculate the amounts to report as restricted, committed, assigned and unassigned fund balance in the governmental fund financial statements a flow assumption must be made about the order in which the resources are considered to be applied. It is the School District’s policy to consider restricted fund balance to have been depleted before any of the components of unrestricted fund balance. Further, when the components of unrestricted fund balance can be used for the same purpose, committed fund balance is depleted first, followed by assigned fund balance. Unassigned fund balance is applied last.

**BASS RIVER TOWNSHIP SCHOOL DISTRICT
NOTES TO THE FINANCIAL STATEMENTS
YEAR ENDED JUNE 30, 2020 (Continued)**

Note 1. Summary of Significant Accounting Policies (Continued)

The School District reports the following major governmental funds:

General Fund - The general fund is the general operating fund of the School District and is used to account for all financial resources except those required to be accounted for in another fund. Included are certain expenditures for vehicles and movable instructional or noninstructional equipment which are classified in the capital outlay sub-fund.

As required by the New Jersey Department of Education the School District includes budgeted capital outlay in this fund. Generally accepted accounting principles as they pertain to governmental entities state that general fund resources may be used to directly finance capital outlays for long-lived improvements as long as the resources in such cases are derived exclusively from unrestricted

Resources for budgeted capital outlay purposes are normally derived from State of New Jersey Aid, interest earnings and appropriated fund balance. Expenditures are those that result in the acquisition of or additions to capital assets for land, existing buildings, improvements of grounds, construction of buildings, additions to or remodeling of buildings and the purchase of built-in equipment.

Special Revenue Fund - The special revenue fund is used to account for the proceeds of specific revenue from state and federal government, other than major capital projects, debt service or proprietary funds, and local appropriations that are restricted or committed to expenditures for specified purposes.

Capital Projects Fund - The capital projects fund is used to account for and report financial resources that are restricted, committed, or assigned to expenditures for the acquisition of construction of major capital facilities, other than those financed by proprietary funds. The financial resources are derived from New Jersey School Development Authority grants, temporary notes, capital leases, or serial bonds that are specially authorized by the voters as a separate question on the ballot either during the annual election or at a special election.

C. Fiduciary Fund Financial Statements

Fiduciary fund financial statements include a Statement of Net Position. The School District's fiduciary funds include Agency and Private-Purpose Trust Funds. Private Purpose Trust and Agency Funds are used to account for and report assets held by the School District in a trustee capacity or as an agent for individuals, private organizations, and other governments. Private Purpose Trust and Agency Funds are accounted for on a spending or "economic resources" measurement focus and the accrual basis of accounting as are the proprietary funds explained above.

The School District reports the following fiduciary funds:

Private Purpose Trust Funds - Private-purpose trust funds are used to account for the principal and income for trust arrangements that benefit individuals, private organizations, or other governments. The School District currently maintains the following private purpose trust funds:

Unemployment Trust Fund – Revenues consist of employee payroll withholdings, interest income, and contributions through the annual budget process of the School District. Expenditures consist of unemployment reimbursement claims.

Agency Funds - Agency funds (payroll and student activity funds) are assets held by a governmental entity either as trustee or as an agent for other parties and cannot be used to finance the governmental entities own operating programs.

**BASS RIVER TOWNSHIP SCHOOL DISTRICT
NOTES TO THE FINANCIAL STATEMENTS
YEAR ENDED JUNE 30, 2020 (Continued)**

Note 1. Summary of Significant Accounting Policies (Continued)

Budgets/Budgetary Control

Annual appropriated budgets are prepared in the spring of each year for the general, special revenue and debt service funds. The budgets are submitted to the county office. In accordance with P.L.2011 c.202, which became effective January 17, 2012, the School District eliminated the April annual voter referendum on budgets which met the statutory tax levy cap limitations and the board of education members are elected at the November general election. Budgets are prepared using the modified accrual basis of accounting. The legal level of budgetary control is established at line item accounts within each fund. Line item accounts are defined as the lowest (most specific) level of detail as established pursuant to the minimum chart of accounts referenced in N.J.A.C. 6A:23-2-2(f)1. Transfers of appropriations may be made by School Board resolution at any time during the fiscal year in accordance with N.J.A.C. 6A:23-2-11.

Formal budgetary integration into the accounting system is employed as a management control device during the year. For governmental funds there are no substantial differences between the budgetary basis of accounting and generally accepted accounting principles with the exception of the legally mandated revenue recognition of the one or more June state aid payment for budgetary purposes only and the special revenue fund as noted below. Encumbrance accounting is also employed as an extension of formal budgetary integration in the governmental fund types. Unencumbered appropriations lapse at fiscal year-end.

The accounting records of the special revenue fund are maintained on the grant accounting budgetary basis. The grant accounting budgetary basis differs from GAAP in that the grant accounting budgetary basis recognizes encumbrances as expenditures and also recognizes the related revenues, whereas the GAAP basis does not. Sufficient supplemental records are maintained to allow for the presentation of GAAP basis financial reports.

The budget, as detailed on Exhibit C-1 and Exhibit C-2, includes all amendments to the adopted budget, if any.

Exhibit C-3 presents a reconciliation of the general fund revenues and special revenue fund revenues and expenditures from the budgetary basis of accounts as presented in the general fund budgetary comparison schedules and the special revenue fund budgetary comparison schedule to the GAAP basis of accounting as presented in the Statement of Revenues, Expenditures and Changes in Fund Balance – Governmental Funds. Note that the School District does not report encumbrances outstanding at fiscal year-end as expenditures in the general fund since the general fund budget follows modified accrual basis with the exception of the revenue recognition policy for the last state aid payments.

Encumbrances

Under encumbrance accounting purchase orders, contracts and other commitments for the expenditure of resources are recorded to reserve a portion of the applicable appropriation. Open encumbrances in governmental funds other than the special revenue fund are reported as assigned fund balances at fiscal year-end as they do not constitute expenditures or liabilities but rather commitments related to unperformed contracts for goods and services.

Open encumbrances in the special revenue fund for which the School District has received advances are reflected in the balance sheet as a reduction of the accounts receivables or as unearned revenue at fiscal year-end.

The encumbered appropriation authority carries over into the next fiscal year. An entry will be made at the beginning of the next fiscal year to increase the appropriation reflected in the certified budget by the outstanding encumbrance amount as of the current fiscal year-end.

BASS RIVER TOWNSHIP SCHOOL DISTRICT
NOTES TO THE FINANCIAL STATEMENTS
YEAR ENDED JUNE 30, 2020 (Continued)

Note 1. Summary of Significant Accounting Policies (Continued)

Cash, Cash Equivalents and Investments

Cash and Cash equivalents include petty cash, change funds, cash in banks and all highly liquid investments with a maturity of three months or less at the time of purchase and are stated at cost plus accrued interest. U.S. Treasury and agency obligations and certificates of deposit with maturities of one year or less when purchased are considered cash equivalents and stated at cost.

Investments are stated at fair value in accordance with Governmental Accounting Standards Board (GASB). New Jersey school districts are limited as to the types of investments and types of financial institutions they may invest in. N.J.S.18A:20-37 provides a list of permissible investments that may be purchased by New Jersey school districts.

N.J.S.A.17:9-41 et. Seq. establishes the requirements for the security of deposits of governmental units. The statute requires that no governmental unit shall deposit public funds in a public depository unless such funds are secured in accordance with the Governmental Unit Deposit Protection Act (“GUDPA”). GUDPA was enacted in 1970 to protect governmental units from loss of funds on deposit with a failed banking institution in New Jersey. Public depositories include Savings and Loan institutions, banks (both state and national banks) and savings banks the deposits of which are federally insured. All public depositories must pledge collateral, having a market value at least equal to five percent of the average daily balance of collected public funds, to secure the deposits of governmental units. If a public depository fails, the collateral it has pledged, plus the collateral of all other public depositories, is available to pay the full amount of their deposits to the governmental units.

For purposes of the statement of cash flows, the School District considers all highly liquid investments (including restricted assets) with a maturity when purchased of twelve months or less and all local government investment pools to be cash equivalents.

Tuition Receivable/Payable

Tuition rates were established by the receiving School District based on estimated costs. The charges are subject to adjustment when the actual costs are determined.

Inventories

Inventories are valued at cost, using the first-in/first-out (FIFO) method. The costs of inventories are recorded as expenditures when consumed rather than when purchased.

Interfund Receivables/Payables

Interfund receivables/payables represent amounts that are owed, other than charges for goods or services rendered to/from a particular fund in the School District and that are due within one year. As previously mentioned, these amounts are eliminated in the governmental and business-type columns of the Statement of Net Position, except for the net residual amounts due between governmental and business-type activities, which are presented as Internal Balances in the Statement of Net Position.

**BASS RIVER TOWNSHIP SCHOOL DISTRICT
 NOTES TO THE FINANCIAL STATEMENTS
 YEAR ENDED JUNE 30, 2020 (Continued)**

Note 1. Summary of Significant Accounting Policies (Continued)

Capital Assets

Capital assets are reported in the applicable governmental or business-type activities column in the government-wide financial statements. Purchased or constructed assets are recorded at actual cost or estimated historical cost if actual cost is unavailable. Donated capital assets are recorded at estimated fair market value at the date of donation. All reported capital assets except land and construction in progress are depreciated. The costs of normal maintenance and repairs that do not add to the value of the asset or materially extend asset lives are not capitalized. The School District does not possess any infrastructure. The School District has established a threshold of \$2,000 for capitalization of depreciable assets.

Capital assets of the School District are depreciated or amortized using the straight-line method over the following estimated useful lives:

Description	Governmental Activities Estimated Lives	Business-Type Activities Estimated Lives
Land Improvements	10-20 Years	N/A
Building and improvements	10-50 Years	N/A
Furniture and Equipment	5-20 Years	5-12 Years
Vehicles	5-10 Years	4-6 Years

Compensated Absences

Compensated absences are those absences for which employees will be paid, such as vacation, sick leave and sabbatical leave. A liability for compensated absences that are attributable to services already rendered, and that are not contingent on a specific event that is outside the control of the School District and its employees, is accrued as the employees earn the rights to the benefits. Compensated absences that relate to future services, or that are contingent on a specific event that is outside the control of the School District and its employees, are accounted for in the period in which such services are rendered or in which such events take place.

The entire compensated absences liability is reported on the government-wide financial statements and proprietary fund financial statements. Compensated absences liability is not recorded in the governmental funds. Instead expenditures are recognized in the governmental funds as payments come due each period, for example, as a result of resignations or retirements.

Unearned Revenue

Unearned revenue arises when assets are recognized before revenue recognition criteria have been satisfied and is recorded as a liability until the revenue is both measureable and the School District is eligible to realize the revenue.

Accrued Liabilities and Long-Term Obligations

All payables, accrued liabilities, and long-term obligations are reported in the government-wide financial statements, and all payables, accrued liabilities and long-term obligations payable from proprietary funds are reported on the proprietary fund financial statements. In general, government fund payables and accrued liabilities that, once incurred, are paid in a timely manner and in full from current financial resources, are reported as obligations of the funds. However, claims and judgments, compensated absences, special termination benefits and contractually required pension contributions that will be paid from governmental funds, are reported as a liability in the fund financial statements only to the extent that they are normally expected to be paid with expendable available financial resources.

**BASS RIVER TOWNSHIP SCHOOL DISTRICT
NOTES TO THE FINANCIAL STATEMENTS
YEAR ENDED JUNE 30, 2020 (Continued)**

Note 1. Summary of Significant Accounting Policies (Continued)

Accounting Estimates

The preparation of financial statements in conformity with accounting principles generally accepted in the United States of America requires management to make estimates and assumption that affect certain reported amounts reported in the financial statements and accompanying note disclosures. Actual results could differ from those estimates.

Interfund Activity

Transfers between governmental and business-type activities on the government-wide statements are reported in the same manner as general revenues. Exchange transactions between funds are reported as revenues in the seller funds and as expenditures/expenses in the purchaser funds. Flows of cash or goods from one fund to another without a requirement for repayment are reported as interfund transfers. Interfund transfers are reported as other financing sources/uses in governmental funds and after non-operating revenues/expenses in proprietary funds. Reimbursements from funds responsible for particular expenditures/expenses to the funds that initially paid for them are not presented on the financial statements. As a general rule the effect of interfund activity has been eliminated from the government-wide financial statements.

Deferred Outflows and Deferred Inflows of Resources

In addition to assets, the Statement of Net Position will sometimes report a separate section for deferred outflows of resources. This separate financial statement element, deferred outflows of resources, represents a consumption of net position that applies to a future period(s) and so will not be recognized as an outflow of resources (expense/expenditure) until then.

In addition to liabilities, the statement of net position will sometimes report a separate section for deferred inflows of resources. This separate financial statement element, deferred inflows of resources, represents an acquisition of net position that applies to a future periods and so will not be recognized as an inflow of resources (revenue) until that time.

Pensions

For purposes of measuring the net pension liability, deferred outflows of resources and deferred inflows of resources related to pensions, and pension expense, information about the pension plan's fiduciary net position of the Public Employees' Retirement System (PERS) and Teacher's Pension and Annuity Fund (TPAF) and additions to/deductions from the PERS's and TPAF's fiduciary net position have been determined on the same basis as they are reported by the plans. For this purpose, benefit payments (including refunds of employee contributions) are recognized when due and payable in accordance with the benefit terms. Investments are reported at fair value.

Fund Balance

In accordance with Government Accounting Standards Board 54, Fund Balance Reporting and Governmental Fund Type Definitions, fund balances in the governmental funds financial statements are classified into the following five categories, as defined below:

Non-spendable – This classification includes amounts that cannot be spent because they are either not in spendable form or are legally or contractually required to be maintained intact. Non-spendable items are not expected to be converted to cash or are not expected to be converted to cash within the next year.

Restricted – This classification includes amounts for which constraints have been placed on the use of the resources either externally imposed by creditors (such as through a debt covenant), grantors, contributors, or laws or regulations of other governments, or imposed by law through constitutional provisions or enabling legislation.

**BASS RIVER TOWNSHIP SCHOOL DISTRICT
NOTES TO THE FINANCIAL STATEMENTS
YEAR ENDED JUNE 30, 2020 (Continued)**

Note 1. Summary of Significant Accounting Policies (Continued)

Committed – This classification includes amounts that can be used only for specific purposes pursuant to constraints imposed by formal action of the Board of Education. These amounts cannot be used for any other purpose unless the Board of Education removes or changes the specified use by taking the same type of action (resolution) that was employed when the funds were initially committed. This classification also includes contractual obligations to the extent that existing resources have been specifically committed for use in satisfying those contractual requirements.

Assigned – This classification includes amounts that are constrained by the School District’s intent to be used for a specific purpose but are neither restricted nor committed. This intent can be expressed by the Board of Education or through the Board of Education delegating this responsibility to the business administrator through the budgetary process.

Unassigned – This classification includes the residual fund balance for the General Fund. The Unassigned classification also includes negative residual fund balance of any other governmental fund that cannot be eliminated by offsetting of Assigned fund balance amounts.

When an expenditure is incurred for purposes for which both restricted and unrestricted fund balance is available, it is the School District’s policy to consider restricted funds to have been spent first. When an expenditure is incurred for which committed, assigned, or unassigned fund balances are available, it is the School District’s policy to consider amounts to have been spent first out of committed funds, then assigned funds, and finally unassigned funds, as needed, unless the Board has provided otherwise in its commitment or assignment actions.

Net Position

Net position, represents the difference between summation of assets and deferred outflows of resources, and the summation of liabilities and deferred inflows of resources. Net position is classified into the following three components:

Net Investment in Capital Assets – This components represents capital assets, net of accumulated depreciation, net of outstanding balances of borrowings used for acquisition, construction, or improvement of those assets.

Restricted – This component of net position is reported as restricted when there are limitations imposed on their use either through the enabling legislation adopted by the School District or through external restrictions imposed by creditors, grantors or laws or regulations of other governments.

Unrestricted – This component of net position is reported as unrestricted when it does not meet the criteria of the other two components of net position.

Subsequent Events

Management has reviewed and evaluated all events and transactions that occurred between June 30, 2020 and January 19, 2021 the date that the financial statements were available for issuance, for possible disclosure and recognition in the financial statements, and no items have come to the attention of the School District that would require disclosure.

During the year ended June 30, 2020 the Bass River Board of education elected to become a non-operating district effective July 1, 2020. All students in grades PreK through 6 will attend Little Egg Harbor School District beginning with the 2020-2021 school year.

During the year ended June 30, 2020, the COVID-19 Corona Virus spread across the State of New Jersey and the Nation as a whole. Although the effects of the virus are still ongoing, the District does not expect it to have a material impact on its financial position.

**BASS RIVER TOWNSHIP SCHOOL DISTRICT
NOTES TO THE FINANCIAL STATEMENTS
YEAR ENDED JUNE 30, 2020 (Continued)**

Note 1. Summary of Significant Accounting Policies (Continued)

Impact of Recently Issued Accounting Principles

Adopted Accounting Pronouncements

The following GASB Statements became effective for the fiscal year ended June 30, 2020:

Statement No. 95, Postponement of The Effective Dates of Certain Authoritative Guidance, provides temporary relief to governments and other stakeholders in light of the COVID-19 pandemic. That objective is accomplished by postponing the effective dates of certain provisions in Statements and Implementation Guides that first became effective or are scheduled to become effective for periods beginning after June 15, 2018, and later.

Recently Issued Accounting Pronouncements

The GASB has issued the following Statements which will become effective in future fiscal years as shown below:

- Statement No. 84, *Fiduciary Activities* will be effective for reporting periods beginning after December 15, 2019.
- Statement No. 87, *Leases* will be effective for reporting periods beginning after June 15, 2021.
- Statement No. 89, *Accounting for Interest Cost Incurred before the End of a Construction Period* will be effective for reporting periods beginning after December 15, 2020.
- Statement No. 90, *Majority Equity Interests - an amendment of GASB Statements No. 14 and No. 61*, will be effective for reporting periods beginning after December 15, 2019.
- Statement No. 91, *Conduit Debt Obligations* will be effective for reporting periods beginning after December 15, 2021.
- Statement No. 93, *Replacement of Interbank Offered Rates* will be effective for reporting periods beginning after June 15, 2021.
- Statement No. 94, *Public-Private and Public-Public Partnerships and Availability Payment Arrangements* will be effective for reporting periods beginning after June 15, 2022.
- Statement No. 96, *Subscription-Based Information Technology Arrangements* will be effective for reporting periods beginning after June 15, 2022.
- Statement No. 97, *Certain Component Unit Criteria, and Accounting and Financial Reporting for Internal Revenue Code Section 457 Deferred Compensation Plans – an amendment of GASB Statements No. 14 and No. 84, and a supersession of GASB Statement No. 32*, will be effective for reporting periods beginning after December 15, 2019.

Management has not yet determined the potential impact on the School Districts financial statements.

**BASS RIVER TOWNSHIP SCHOOL DISTRICT
NOTES TO THE FINANCIAL STATEMENTS
YEAR ENDED JUNE 30, 2020 (Continued)**

Note 2. Deposits and Investments

Deposits

Custodial Credit Risk – Custodial credit risk is the risk that, in the event of a bank failure, the Board’s deposits may not be recovered. Although the Board does not have a formal policy regarding custodial credit risk, NJSA 17:9-41 et seq. requires that the governmental units shall deposit public funds in public depositories protected from loss under the provisions of GUDPA. Under the Act, the first \$250,000 of governmental deposits in each insured depository is protected by FDIC. Public fund owned by the Board in excess of FDIC insured amounts are protected by GUDPA. However, GUDPA does not protect intermingled trust funds such as salary withholdings, student activity fund or other funds that may pass to the Board relative to the happening of a future condition. Such funds are shown as Uninsured and Uncollateralized in the schedule below. As of June 30, 2020, the School District’s bank balance of \$393,998.58 was exposed to custodial credit risk as follows:

Insured under FDIC and GUDPA	\$ 355,599.90
	\$ 355,599.90
Total	\$ 355,599.90

Investments

The School District had no investments at June 30, 2020.

Note 3. Accounts Receivable

Accounts receivable at June 30, 2020 consisted of accounts and intergovernmental grants. All receivables are considered collectible in full due to the stable condition of state and federal programs, the current fiscal year guarantee of federal funds and the budgetary control of New Jersey governmental entities. Accounts receivable in the School District’s governmental and business-type activities as of June 30, 2020, consisted of the following:

<u>Description</u>	Governmental Funds		Total Governmental Activities
	General Fund	Special Revenue Fund	
Federal Awards	\$ -	\$ 22,564.87	\$ 22,564.87
State Awards	7,444.24	-	7,444.24
Other	5,960.71	4,198.86	10,159.57
Total	\$ 13,404.95	\$ 26,763.73	\$ 40,168.68

**BASS RIVER TOWNSHIP SCHOOL DISTRICT
NOTES TO THE FINANCIAL STATEMENTS
YEAR ENDED JUNE 30, 2020 (Continued)**

Note 4. Capital Assets

Capital assets activity for the year ended June 30, 2020 was as follows:

	Governmental Activities			Balance June 30, 2020
	Balance July 1, 2019	Additions	Retirements and Transfers	
Governmental Activities:				
Capital assets not being depreciated:				
Construction in Progress	90,058.20	\$ 190,172.81	\$ (280,231.01)	\$ -
Total Capital Assets not being depreciated	90,058.20	190,172.81	(280,231.01)	-
Capital Assets being depreciated:				
Land Improvements	97,111.55	-	-	97,111.55
Buildings and Improvements	1,601,207.61	-	280,231.01	1,881,438.62
Equipment	241,491.68	-	(34,906.00)	206,585.68
Total Capital Assets being depreciated	1,939,810.84	-	245,325.01	2,185,135.85
Less: Accumulated Depreciation:				
Land Improvements	(62,882.01)	(4,711.00)	-	(67,593.01)
Buildings and Improvements	(1,096,392.00)	(34,591.00)	-	(1,130,983.00)
Equipment	(187,575.18)	(16,903.00)	34,000.00	(170,478.18)
Total Accumulated Depreciation	(1,346,849.19)	(56,205.00)	34,000.00	(1,369,054.19)
Total Capital Assets being depreciated, net	592,961.65	(56,205.00)	279,325.01	816,081.66
Total Governmental Activities Capital Assets, net	\$ 683,019.85	\$ 133,967.81	\$ (906.00)	\$ 816,081.66

Depreciation expense was charged to functions/programs of the School District as follows:

<u>Governmental Activities</u>	
Instruction:	
Regular Instruction	\$ 24,662.52
Special Education Instruction	5,097.99
Other Instruction	1,996.40
Support Services:	
Student & Instruction Related Services	9,977.94
General Administrative	4,794.01
School Administrative Services	661.30
Central Services	1,299.83
Plant Operations & Maintenance	5,416.49
Pupil Transportation	2,298.52
Total Depreciation Expense - Governmental Activities	\$ 56,205.00

**BASS RIVER TOWNSHIP SCHOOL DISTRICT
NOTES TO THE FINANCIAL STATEMENTS
YEAR ENDED JUNE 30, 2020 (Continued)**

Note 5. Interfund Receivables, Payables and Transfers

Individual fund receivables/payables balances at June 30, 2020 are as follows:

<u>Fund</u>	<u>Interfund Receivables</u>	<u>Interfund Payables</u>
General Fund	\$ 5,960.71	\$ -
Agency Fund	-	5,960.71
	<u>\$ 5,960.71</u>	<u>\$ 5,960.71</u>

The interfund receivables and payables above predominately resulted from payment made by certain funds on behalf of other funds. All interfund balances are expected to be repaid within one year.

There were no interfund transfers for the year ended June 30, 2020.

Note 6. Long-Term Obligations

During the fiscal year-ended June 30, 2020 the following changes occurred in long-term obligations for the governmental and business-type activities:

	Balance June 30, 2019	Additions	Reductions	Balance June 30, 2020	Balance Due Within One Year
Governmental Activities:					
Capital Leases	\$ 414,303.45	\$ -	\$ 72,119.08	\$ 342,184.37	\$ 36,884.37
Compensated Absences	75,565.00	12,550.00	-	88,115.00	-
Net Pension Liability	450,314.00	69,861.00	-	520,175.00	-
	<u>\$ 940,182.45</u>	<u>\$ 82,411.00</u>	<u>\$ 72,119.08</u>	<u>\$ 950,474.37</u>	<u>\$ 36,884.37</u>

For governmental activities, the bonds payable are liquidated from the School District's debt service fund. Compensated absences, capital leases, unamortized bond premiums and the net pension liability are liquidated by the general fund.

Capital Lease Payable

On June 15, 2015, the School District entered into a lease purchase agreement in the amount of \$100,000 for the construction of a security vestibule. The lease obligation was issued at an interest rate of 2.230% and matured on October 15, 2019.

On June 18, 2015, the School District entered into a lease purchase agreement in the amount of \$80,000 for the purchase of equipment. The lease obligation was issued at an interest rate of 2.190% and matured on February 1, 2020.

On August 1, 2016, the School District entered into a lease purchase agreement in the amount of \$80,000 for the purchase of equipment. The lease obligation was issued at an interest rate of 3.907% and matures on November 15, 2020.

**BASS RIVER TOWNSHIP SCHOOL DISTRICT
NOTES TO THE FINANCIAL STATEMENTS
YEAR ENDED JUNE 30, 2020 (Continued)**

Capital Lease Payable

On April 4, 2017, the School District entered into a lease purchase agreement in the amount of \$369,000 for improvements in accordance with an energy savings improvement plan. The lease obligation was issued at an interest rate of 3.220% and matures on September 1, 2032.

The Future minimum lease payments for these leases is as follows:

Fiscal Year Ending June 30,	Total
2021	\$ 47,849.19
2022	31,058.39
2023	31,758.04
2024	29,239.98
2025	29,950.90
2026-2030	160,217.96
2031-2033	<u>87,394.23</u>
Total Minimum Lease Payments	417,468.69
Less: Amount Representing Interest	<u>(75,284.32)</u>
Present Value of Minimum Lease Payments	<u><u>\$ 342,184.37</u></u>

Amortization of the leased equipment and improvements under capital assets is included with depreciation expense.

Bonds Authorized but not Issued

As of June 30, 2020, the School District had no bonds authorized but not issued.

**BASS RIVER TOWNSHIP SCHOOL DISTRICT
NOTES TO THE FINANCIAL STATEMENTS
YEAR ENDED JUNE 30, 2020 (Continued)**

Note 7. Pension Plans

A. Public Employees' Retirement System (PERS)

Plan Description - The State of New Jersey, Public Employees' Retirement System (PERS) is a cost-sharing multiple-employer defined benefit pension plan administered by the State of New Jersey, Division of Pensions and Benefits (the Division). For additional information about PERS, please refer to Division's Comprehensive Annual Financial Report (CAFR) which can be found at <http://www.nj.gov/treasury/pensions/financial-reports.shtml>.

The vesting and benefit provisions are set by *N.J.S.A. 43:15A*. PERS provides retirement, death and disability benefits. All benefits vest after ten years of service, except for medical benefits, which vest after 25 years of service or under the disability provisions of PERS.

The following represents the membership tiers for PERS:

<u>Tier</u>	<u>Definition</u>
1	Members who were enrolled prior to July 1, 2007
2	Members who were eligible to enroll on or after July 1, 2007 and prior to November 2, 2008
3	Members who were eligible to enroll on or after November 2, 2008 and prior to May 22, 2010
4	Members who were eligible to enroll on or after May 22, 2010 and prior to June 28, 2011
5	Members who were eligible to enroll on or after June 28, 2011

Service retirement benefits of 1/55th of final average salary for each year of service credit is available to tiers 1 and 2 members upon reaching age 60 and to tier 3 members upon reaching age 62. Service retirement benefits of 1/60th of final average salary for each year of service credit is available to tier 4 members upon reaching age 62 and tier 5 members upon reaching age 65. Early retirement benefits are available to tiers 1 and 2 members before reaching age 60, tiers 3 and 4 before age 62 with 25 or more years of service credit and tier 5 with 30 or more years of service credit before age 65. Benefits are reduced by a fraction of a percent for each month that a member retires prior to the age at which a member can receive full early retirement benefits in accordance with their respective tier. Tier 1 members can receive an unreduced benefit from age 55 to age 60 if they have at least 25 years of service. Deferred retirement is available to members who have at least 10 years of service credit and have not reached the service retirement age for the respective tier.

Contributions - The contribution policy for PERS is set by *N.J.S.A. 43:15A* and requires contributions by active members and contributing employers. State legislation has modified the amount that is contributed by the State. The State's pension contribution is based on an actuarially determined amount which includes the employer portion of the normal cost and an amortization of the unfunded accrued liability. Funding for noncontributory group insurance benefits is based on actual claims paid. For fiscal year 2018, the State's pension contribution was less than the actuarial determined amount.

**BASS RIVER TOWNSHIP SCHOOL DISTRICT
NOTES TO THE FINANCIAL STATEMENTS
YEAR ENDED JUNE 30, 2020 (Continued)**

Note 7. Pension Plans (Continued)

The local employers' contribution amounts are based on an actuarially determined rate which includes the normal cost and unfunded accrued liability. Chapter 19, P.L. 2009 provided an option for local employers of PERS to contribute 50% of the normal and accrued liability contribution amounts certified for payments due in State fiscal year 2009. Such employers will be credited with the full payment and any such amounts will not be included in their unfunded liability. The actuaries will determine the unfunded liability of those retirement systems, by employer, for the reduced normal and accrued liability contributions provided under this law. This unfunded liability will be paid by the employer in level annual payments over a period of 15 years beginning with the payments due in the fiscal year ended June 30, 2012 and will be adjusted by the rate of return on the actuarial value of assets.

Pension Liability, Pension Expense and Deferred Outflows/Inflows of Resources - At June 30, 2020, the School District reported a liability of \$520,175 for its proportionate share of the PERS net pension liability. The net pension liability was measured as of June 30, 2019. The total pension liability used to calculate the net pension liability was determined using update procedures to roll forward the total pension liability from an actuarial valuation as of July 1, 2018, to the measurement date of June 30, 2019. The School District's proportion of the net pension liability was based on the School District's actual contributions to the plan relative to the total of all participating employers' contributions for the year ended June 30, 2019. The School District's proportion measured as of June 30, 2019, was 0.002887%, which was an increase of 0.000600% from its proportion measured as of June 30, 2018.

For the year ended June 30, 2020, the School District recognized full accrual pension expense of \$39,831 in the government-wide financial statements. This pension expense was based on the pension plans June 30, 2019 measurement date. At June 30, 2020 the School District reported deferred outflows of resources and deferred inflows of resources related to PERS from the following sources:

	Deferred Outflows of Resources	Deferred Inflows of Resources
Differences between Expected and Actual Experience	\$ 9,336.00	\$ 2,298
Changes of Assumptions	51,941.00	180,551
Net Difference between Projected and Actual Earnings on Pension Plan Investments	-	8,211
Changes in Proportion and Differences between School District Contributions and Proportionate Share of Contributions	141,238.00	45,154.00
School District contributions subsequent to measurement date	30,926.00	-
	\$ 233,441.00	\$ 236,214.00

\$30,926 reported as deferred outflows of resources resulting from school district contributions subsequent to the measurement date is estimated based on unadjusted 2019-2020 total salaries for PERS employees multiplied by an employer pension contribution rate of 13.37%. The payable is due on April 1, 2020 and will be recognized as a reduction of the net pension liability in the year ended June 30, 2021. The other amounts reported as deferred outflows of resources and deferred inflows of resources related to pensions will be recognized in pension expense as follows:

**BASS RIVER TOWNSHIP SCHOOL DISTRICT
NOTES TO THE FINANCIAL STATEMENTS
YEAR ENDED JUNE 30, 2020 (Continued)**

Note 7. Pension Plans (Continued)

Year Ending June 30,	
2021	\$ (3,425.00)
2022	1,594.00
2023	(39,185.00)
2024	3,936.00
2025	3,380.00
	\$ (33,700.00)

The amortization of the above other deferred outflows of resources and deferred inflows of resources related to pensions will be over the following number of years:

	<u>Deferred Outflow of Resources</u>	<u>Deferred Inflow of Resources</u>
Differences between Expected and Actual Experience		
Year of Pension Plan Deferral:		
June 30, 2014	-	-
June 30, 2015	5.72	-
June 30, 2016	5.57	-
June 30, 2017	5.48	-
June 30, 2018	5.63	-
June 30, 2019	5.21	1.00
Changes of Assumptions		
Year of Pension Plan Deferral:		
June 30, 2014	6.44	-
June 30, 2015	6.44	-
June 30, 2016	5.72	-
June 30, 2017	-	5.48
June 30, 2018	-	5.63
June 30, 2019	-	5.21
Net Difference between Projected and Actual Earnings on Pension Plan Investments		
Year of Pension Plan Deferral:		
June 30, 2014	-	5.00
June 30, 2015	-	5.00
June 30, 2016	5.00	-
June 30, 2017	5.00	-
June 30, 2018	5.00	-
June 30, 2019	5.00	-
Changes in Proportion and Differences between District Contributions		
Proportionate Share of Contributions		
Year of Pension Plan Deferral:		
June 30, 2014	6.44	6.44
June 30, 2015	5.72	5.72
June 30, 2016	5.57	5.57
June 30, 2017	5.48	5.48
June 30, 2018	5.63	5.63
June 30, 2019	5.21	5.21

**BASS RIVER TOWNSHIP SCHOOL DISTRICT
NOTES TO THE FINANCIAL STATEMENTS
YEAR ENDED JUNE 30, 2020 (Continued)**

Note 7. Pension Plans (Continued)

Actuarial Assumptions – The collective total pension liability for the June 30, 2019 measurement date was determined by an actuarial valuation as of July 1, 2018, which was rolled forward to June 30, 2019. This actuarial valuation used the following assumptions:

Inflation Rate	2.75%
Salary Increases:	
Through 2026	2.00 - 6.00% Based on Years of Service
Thereafter	3.00 - 7.00% Based on Years of Service
Investment Rate of Return	7.00%
Period of Actuarial Experience	
Study upon which Actuarial	
Assumptions were Based	July 1, 2014 - June 30, 2018

Pre-retirement mortality rates were based on the Pub-2010 General Below-Median Income Employee mortality table with an 82.2% adjustment for males and 101.4% adjustment for females, and with future improvement from the base year of 2010 on a generational basis. Post-retirement mortality rates were based on the Pub-2010 General Below-Median Income Healthy Retiree mortality table with a 91.4% adjustment for males and 99.7% adjustment for females, and with future improvement from the base year of 2010 on a generational basis. Disability retirement rates used to value disabled retirees were based on the Pub-2010 Non-Safety Disabled Retiree mortality table with a 127.7% adjustment for males and 117.2% adjustment for females, and with future improvement from the base year of 2010 on a generational basis. Mortality improvement is based on Scale MP-2019.

The actuarial assumptions used in the July 1, 2018 valuation were based on the results of an actuarial experience study for the period July 1, 2014 to June 30, 2018.

In accordance with State statute, the long-term expected rate of return on plan investments (7.00% at June 30, 2019) is determined by the State Treasurer, after consultation with the Directors of the Division of Investment and Division of Pensions and Benefits, the board of trustees and the actuaries. The long-term expected rate of return was determined using a building block method in which best-estimate ranges of expected future real rates of return (expected returns, net of pension plan investment expense and inflation) are developed for each major asset class. These ranges are combined to produce the long-term expected rate of return by weighting the expected future real rates of return by the target asset allocation percentage and by adding expected inflation. Best estimates of arithmetic rates of return for each major asset class included in PERS's target asset allocation as of June 30, 2019 are summarized in the following table:

**BASS RIVER TOWNSHIP SCHOOL DISTRICT
NOTES TO THE FINANCIAL STATEMENTS
YEAR ENDED JUNE 30, 2020 (Continued)**

Note 7. Pension Plans (Continued)

<u>Asset Class</u>	<u>Target Allocation</u>	<u>Long-Term Expected Real Rate of Return</u>
Risk Mitigation Strategies	3.00%	4.67%
Cash Equivalents	5.00%	2.00%
U.S. Treasuries	5.00%	2.68%
Investment Grade Credit	10.00%	4.25%
High Yield	2.00%	5.37%
Private Credit	6.00%	7.92%
Real Assets	2.50%	9.31%
Real Estate	7.50%	8.33%
U.S. Equity	28.00%	8.26%
Non-U.S. Developed Markets Equity	12.50%	9.00%
Emerging Markets Equity	6.50%	11.37%
Private Equity	12.00%	10.85%
	<u>100.00%</u>	

Discount Rate - The discount rate used to measure the total pension liability was 6.28% as of June 30, 2019. This single blended discount rate was based on the long-term expected rate of return on pension plan investments of 7.00% and a municipal bond rate of 3.50% as of June 30, 2019 based on the Bond Buyer Go 20-Bond Municipal Bond Index, which includes tax-exempt general obligation municipal bonds with an average rating of AA/Aa or higher. The projection of cash flows used to determine the discount rate assumed that contributions from plan members will be made at the current member contribution rates and that contributions from employers will be based on 70% of the actuarially determined contributions for the State employer and 100% of actuarially determined contributions for the local employers. Based on those assumptions, the plan's fiduciary net position was projected to be available to make projected future benefit payments of current plan members through 2057. Therefore, the long-term expected rate of return on plan investments was applied to projected benefit payments through 2057 and the municipal bond rate was applied to projected benefit payments after that date in determining the total pension liability.

Sensitivity of the School District's proportionate share of the Net Pension Liability to Changes in the Discount Rate - The following presents the collective net pension liability of the participating employers as of June 30, 2019, calculated using the discount rate as disclosed above as well as what the collective net pension liability would be if it was calculated using a discount rate that is 1-percentage point lower or 1-percentage-point higher than the current rate:

**BASS RIVER TOWNSHIP SCHOOL DISTRICT
NOTES TO THE FINANCIAL STATEMENTS
YEAR ENDED JUNE 30, 2020 (Continued)**

Note 7. Pension Plans (Continued)

	At 1% Decrease (5.28%)	At Current Discount Rate (6.28%)	At 1% Increase (7.28%)
School District's Proportionate Share of the Net Pension Liability	\$ 661,637.00	\$ 520,175.00	\$ 407,642.00

Additional Information - The following is a summary of the collective balances of the local group at June 30, 2020 and 2019:

	<u>6/30/2020</u>	<u>6/30/2019</u>
Collective Deferred Outflows of Resources	\$ 3,149,522,616	\$ 4,684,852,302.00
Collective Deferred Inflows of Resources	\$ 7,645,087,574	\$ 7,646,736,226.00
Collective Net Pension Liability	\$ 18,143,832,135	\$ 19,689,501,539.00
School District's portion	0.0028868966%	0.002287070%

B. Teachers' Pension and Annuity Fund (TPAF)

Plan Description - The State of New Jersey, Teachers' Pension and Annuity Fund (TPAF) is a cost sharing multiple-employer defined benefit pension plan with a special-funding situation, by which the State of New Jersey (the State) is responsible to fund 100% of the employer contributions, excluding any local employer early retirement incentive (ERI) contributions. TPAF is administered by the State of New Jersey, Division of Pensions and Benefits (the Division). For additional information about TPAF, please refer to Division's Comprehensive Annual Financial Report (CAFR) which can be found at www.nj.gov/treasury/pensions/financial-reports.shtml.

The vesting and benefit provisions are set by N.J.S.A. 18A:66. TPAF provides retirement, death and disability benefits. All benefits vest after ten years of service, except for medical benefits, which vest after 25 years of service or under the disability provisions of TPAF. Members are always fully vested for their own contributions and, after three years of service credit, become vested for 2% of related interest earned on the contributions. In the case of death before retirement, members' beneficiaries are entitled to full interest credited to the members' accounts.

The following represents the membership tiers for TPAF:

<u>Tier</u>	<u>Definition</u>
1	Members who were enrolled prior to July 1, 2007
2	Members who were eligible to enroll on or after July 1, 2007 and prior to November 2, 2008
3	Members who were eligible to enroll on or after November 2, 2008 and prior to May 22, 2010
4	Members who were eligible to enroll on or after May 22, 2010 and prior to June 28, 2011
5	Members who were eligible to enroll on or after June 28, 2011

**BASS RIVER TOWNSHIP SCHOOL DISTRICT
NOTES TO THE FINANCIAL STATEMENTS
YEAR ENDED JUNE 30, 2020 (Continued)**

Note 7. Pension Plans (Continued)

Service retirement benefits of $1/55^{\text{th}}$ of final average salary for each year of service credit is available to tiers 1 and 2 members upon reaching age 60 and to tier 3 members upon reaching age 62. Service retirement benefits of $1/60^{\text{th}}$ of final average salary for each year of service credit is available to tier 4 members upon reaching age 62 and tier 5 members upon reaching age 65. Early retirement benefits are available to tiers 1 and 2 members before reaching age 60, tiers 3 and 4 before age 62 with 25 or more years of service credit, and tier 5 before age 65 with 30 or more years of service credit. Benefits are reduced by a fraction of a percent for each month that a member retires prior to the retirement age for his/her respective tier. Deferred retirement is available to members who have at least 10 years of service credit and have not reached the service retirement age for the respective tier.

Contributions - The contribution policy for TPAF is set by *N.J.S.A 18A:66* and requires contributions by active members and contributing employers. Pursuant to the provisions of Chapter 78, P.L. 2011, the active member contribution rate increased from 5.5% of annual compensation to 6.5% plus an additional 1% phased-in over 7 years beginning in July 2012. The member contribution rate was 7.2% in State fiscal year 2017. The State's pension contribution is based on an actuarially determined amount which includes the employer portion of the normal cost and an amortization of the unfunded accrued liability. Funding for noncontributory group insurance benefits is based on actual claims paid. For fiscal year 2017, the State's pension contribution was less than the actuarial determined amount.

As mentioned previously, the employer contributions for local participating employers are legally required to be funded by the State in accordance with *N.J.S.A 18:66-33*. Therefore, the School District is considered to be in a special funding situation as defined by GASB Statement No. 68 and the State is treated as a nonemployer contributing entity. Since the School District does not contribute directly to the plan (except for employer specific financed amounts), there is no net pension liability or deferred outflows or inflows to report in the financial statements of the local participating employers.

Pension Liability and Pension Expense - The State's proportionate share of the TPAF net pension liability, attributable to the School District as of June 30, 2019 was \$5,962,450. The School District's proportionate share was \$0.

The net pension liability was measured as of June 30, 2019, and the total pension liability used to calculate the net pension liability was determined by an actuarial valuation as of July 1, 2018, which was rolled forward to June 30, 2019. The State's proportionate share of the net pension liability associated with the District was based on projection of the State's long-term contributions to the pension plan associated with the District relative to the projected contributions by the State associated with all participating school districts, actuarially determined. At June 30, 2019, the State proportionate share of the TPAF net pension liability attributable to the School District was 0.00972%, which was a decrease of -0.00148% from its proportion measured as of June 30, 2018.

For the fiscal year ended June 30, 2020, the State of New Jersey recognized a pension expense in the amount of \$351,681 for the State's proportionate share of the TPAF pension expense attributable to the School District. This pension expense was based on the pension plans June 30, 2019 measurement date.

**BASS RIVER TOWNSHIP SCHOOL DISTRICT
NOTES TO THE FINANCIAL STATEMENTS
YEAR ENDED JUNE 30, 2020 (Continued)**

Note 7. Pension Plans (Continued)

Actuarial Assumptions – The total pension liability for the June 30, 2019 measurement date was determined by an actuarial valuation as of July 1, 2018, which was rolled forward to June 30, 2019. This actuarial valuation used the following actuarial assumptions, applied to all periods in the measurement:

Inflation Rate	2.75%
Salary Increases:	
2012-2026	1.55% - 4.45%
Thereafter	2.75% - 5.65%
Investment Rate of Return	7.00%

Pre-retirement mortality rates were based on the Pub-2010 Teachers Above-Median Income Employee mortality table with a 93.9% adjustment for males and 85.3% adjustment for females, and with future improvement from the base year of 2010 on a generational basis. Post-retirement mortality rates were based on the Pub-2010 Teachers Above-Median Income Healthy Retiree mortality table with a 114.7% adjustment for males and 99.6% adjustment for females, and with future improvement from the base year of 2010 on a generational basis. Disability mortality rates were based on the Pub-2010 Non-Safety Disabled Retiree mortality table with a 106.3% adjustment for males and 100.3% adjustment for females, and with future improvement from the base year of 2010 on a generational basis. Mortality improvement is based on Scale MP-2019.

The actuarial assumptions used in the July 1, 2018 valuation were based on the results of an actuarial experience study for the period July 1, 2015 to June 30, 2018.

Long-Term Expected Rate of Return - In accordance with State statute, the long-term expected rate of return on plan investments (7.00% at June 30, 2019) is determined by the State Treasurer, after consultation with the Directors of the Division of Investment and Division of Pensions and Benefits, the board of trustees and the actuaries. The long-term expected rate of return was determined using a building block method in which best-estimate ranges of expected future real rates of return (expected returns, net of pension plan investment expense and inflation) are developed for each major asset class. These ranges are combined to produce the long-term expected rate of return by weighting the expected future real rates of return by the target asset allocation percentage and by adding expected inflation. Best estimates of arithmetic real rates of return for each major asset class included in TPAF’s target asset allocation as of June 30, 2019 are summarized in the following table:

**BASS RIVER TOWNSHIP SCHOOL DISTRICT
NOTES TO THE FINANCIAL STATEMENTS
YEAR ENDED JUNE 30, 2020 (Continued)**

Note 7. Pension Plans (Continued)

<u>Asset Class</u>	<u>Target Allocation</u>	<u>Long-Term Expected Real Rate of Return</u>
Risk Mitigation Strategies	3.00%	4.67%
Cash Equivalents	5.00%	2.00%
U.S. Treasuries	5.00%	2.68%
Investment Grade Credit	10.00%	4.25%
High Yield	2.00%	5.37%
Private Credit	6.00%	7.92%
Real Assets	2.50%	9.31%
Real Estate	7.50%	8.33%
U.S. Equity	28.00%	8.26%
Non-U.S. Developed Markets Equity	12.50%	9.00%
Emerging Markets Equity	6.50%	11.37%
Private Equity	12.00%	10.85%
	<u>100.00%</u>	

Discount Rate - The discount rate used to measure the total pension liability was 5.60% as of June 30, 2019. This single blended discount rate was based on the long-term expected rate of return on pension plan investments of 7.00% and a municipal bond rate of 3.50% as of June 30, 2019 based on the Bond Buyer Go 20-Bond Municipal Bond Index, which includes tax-exempt general obligation municipal bonds with an average rating of AA/Aa or higher. The projection of cash flows used to determine the discount rate assumed that contributions from plan members will be made at the current member contribution rates and that contributions from employers will be based on 70% of the actuarially determined contributions for the State. Based on those assumptions, the plan's fiduciary net position was projected to be available to make projected future benefit payments of current plan members through 2054. Therefore, the long-term expected rate of return on plan investments was applied to projected benefit payments through 2054 and the municipal bond rate was applied to projected benefit payments after that date in determining the total pension liability.

Sensitivity of the School District's proportionate share of the Net Pension Liability to Changes in the Discount Rate – The following presents the net pension liability of the State as of June 30, 2019 calculated using the discount rate as disclosed above as well as what the State's net pension liability would be if it was calculated using a discount rate that is 1-percentage point lower or 1-percentage-point higher than the current rate:

**BASS RIVER TOWNSHIP SCHOOL DISTRICT
NOTES TO THE FINANCIAL STATEMENTS
YEAR ENDED JUNE 30, 2020 (Continued)**

Note 7. Pension Plans (Continued)

	At 1% Decrease <u>(4.60%)</u>	At Current Discount Rate <u>(5.60%)</u>	At 1% Increase <u>(6.60%)</u>
State of New Jersey's Proportionate Share of Net Pension Liability associated with the School District	\$ 7,031,048.24	\$ 5,962,450.00	\$ 5,075,850.89

Pension Plan Fiduciary Net Position - For purposes of measuring the net pension liability, deferred outflows of resources and deferred inflows of resources related to pensions, and pension expense, information about the fiduciary net position of the Teachers Pension and Annuity Fund (TPAF) and additions to/deductions from the TPAF's fiduciary net position have been determined on the same basis as they are reported by the TPAF. For this purpose, benefit payments (including refunds of employee contributions) are recognized when due and payable in accordance with the benefit terms. Investments are reported at fair value.

Additional Information - The following is a summary of the collective balances of the local group at June 30, 2020 and 2019:

	<u>6/30/2020</u>	<u>6/30/2019</u>
Collective Deferred Outflows of Resources	\$ 10,129,162,237	\$12,675,037,111.00
Collective Deferred Inflows of Resources	\$ 17,736,240,054	\$16,381,811,884.00
Collective Net Pension Liability	\$ 61,519,112,443	\$63,806,350,446.00
School District's portion	0.009715%	0.011191%

C. Defined Contribution Retirement Plan (DCRP)

Plan Description - The Defined Contribution Retirement Program (DCRP) was established July 1, 2007, under the provisions of N.J.S.A. 43:15C-1 et seq. The DCRP provides eligible members with a tax-sheltered, defined contribution retirement benefit, along with life insurance and disability coverage.

Individuals eligible for membership in the DCRP include:

- State or local officials who are elected or appointed on or after July 1, 2007;
- Employees enrolled in the Public Employees' Retirement System (PERS) or Teachers' Pension and Annuity Fund (TPAF) on or after July 1, 2007, who earn salary in excess of established "maximum compensation" limits;
- Employees enrolled in the Police and Firemen's Retirement System (PFRS) or State Police Retirement System (SPRS) after May 21, 2010, who earn salary in excess of established "maximum compensation" limits;
- Employees otherwise eligible to enroll in the PERS or TPAF on or after November 2, 2008, who do not earn the minimum annual salary for PERS or TPAF Tier 3 enrollment but who earn salary of at least \$5,000 annually. The minimum salary in 2018 is \$8,300 and is subject to adjustment in future years.
- Employees otherwise eligible to enroll in the PERS or TPAF after May 21, 2010, who do not work the minimum number of hours per week required for PERS or TPAF Tier 4 or Tier 5 enrollment but who earn salary of at least \$5,000 annually. The minimum number is 35 hours per week for State employees, or 32 hours per week for local government or local education employees.

BASS RIVER TOWNSHIP SCHOOL DISTRICT
NOTES TO THE FINANCIAL STATEMENTS
YEAR ENDED JUNE 30, 2020 (Continued)

Note 7. Pension Plans (Continued)

Contributions - The contribution policy is set by N.J.S.A. 43:15C-3 and requires active members and contribution employers. When enrolled in the DCRP, members are required to contribute 5.5% of their base salary to a tax-deferred investment account established with Prudential Financial, which jointly administers the DCRP investments with the Division of Pension and Benefits. Member contributions are matched by a 3% contribution from the School District.

For the year ended June 30, 2020, employee contributions totaled \$2,499.93, and the School District recognized an expense for payments made to the Defined Contribution Retirement program in the amount of \$1,363.86.

Note 8. Post-Retirement Benefits

General Information about the OPEB Plan

The State of New Jersey reports a liability as a result of its statutory requirements to pay other postemployment (health) benefits for State Health Benefit Local Education Retired Employees Plan. The State Health Benefit Local Education Retired Employees Plan is a multiple-employer defined benefit OPEB plan that is administered on a pay-as-you-go basis. Accordingly, no assets are accumulated in a qualifying trust that meets the criteria in paragraph 4 of GASB Statement No. 75, Accounting and Financial Reporting for the Postemployment Benefits Other Than Pensions. The State Health Benefit Local Education Retired Employees Plan provides medical, prescription drug, and Medicare Part B reimbursement to retirees and their covered dependents of local education employers.

The employer contributions for the participating local education employers are legally required to be funded by the State of New Jersey in accordance with N.J.S.A 52:14-17.32f. According to N.J.S.A 52:14- 17.32f, the State provides employer-paid coverage to employees who retire from a board of education or county college with 25 years or more of service credit in, or retires on a disability pension from, one or more of the following plans: the Teachers' Pension and Annuity Fund (TPAF), the Public Employees' Retirement System (PERS), the Police and Firemen Retirement System (PFRS), or the Alternate Benefit Program (ABP). Pursuant to Chapter 78, P.L. 2011, future retirees eligible for postretirement medical coverage who have less than 20 years of creditable service on June 28, 2011 will be required to pay a percentage of the cost of their health care coverage in retirement provided they retire with 25 or more years of pension service credit. The percentage of the premium for which the retiree will be responsible will be determined based on the retiree's annual retirement benefit and level of coverage.

The total nonemployer OPEB liability does not include certain other postemployment benefit obligations that are provided by the local education employers. The reporting of these benefits are the responsibility of the individual local education employers.

Basis of Presentation

The Schedule presents the State of New Jersey's obligation under NJSA 52:14-17.32f. The Schedule does not purport to be a complete presentation of the financial position or changes in financial position of the State Health Benefit Local Education Retired Employees Plan or the State of New Jersey. The accompanying Schedule was prepared in accordance with U.S. generally accepted accounting principles. Such preparation requires management of the State of New Jersey to make a number of estimates and assumptions relating to the reported amounts. Due to the inherent nature of these estimates, actual results could differ from those estimates.

**BASS RIVER TOWNSHIP SCHOOL DISTRICT
NOTES TO THE FINANCIAL STATEMENTS
YEAR ENDED JUNE 30, 2020 (Continued)**

Note 8. Other Post-Retirement Benefits (continued)

Total Nonemployer OPEB Liability

The total nonemployer OPEB liability as of June 30, 2019 was determined by an actuarial valuation as of June 30, 2018, which was rolled forward to June 30, 2019. The total nonemployer OPEB liability as of June 30, 2018 was determined by an actuarial valuation as of June 30, 2018. The actuarial assumptions vary for each plan member depending on the pension plan the member is enrolled in. This actuarial valuation used the following actuarial assumptions, applied to all periods in the measurement:

Inflation Rate	2.50%			
		<u>TPAF/ABP</u>	<u>PERS</u>	<u>PFRS</u>
Salary Increases:				
Through 2026		1.55 - 3.05% based on years of service	2.00 - 6.00% based on years of service	3.25 - 15.25% based on years of service
Thereafter		1.55 - 3.05% based on years of service	3.00 - 7.00% based on years of service	Applied to all future years

Preretirement mortality rates were based on the Pub-2010 Healthy "Teachers" (TPAF/ABP), "General" (PERS), and "Safety" (PFRS) classification headcount-weighted mortality table with fully generational mortality improvement projections from the central year using the Scale MP-2019. Postretirement mortality rates were based on the PUB-2010 Healthy "General" classification headcount-weighted mortality table with fully generational mortality improvement projections from the central year using the Scale MP-2019. Disability mortality was based on the PUB-2010 Healthy "General" classification headcount-weighted mortality table with fully generational mortality improvement projections from the central year using the Scale MP-2019.

The actuarial assumptions used in the June 30, 2018 valuation were based on the results of actuarial experience studies for the periods July 1, 2015 – June 30, 2018, July 1, 2014 – June 30, 2018, and July 1, 2015 – June 30, 2018 for TPAF, PFRS and PERS, respectively.

OPEB Obligation and OPEB Expense - The State's proportionate share of the total Other Post Employment Benefits Obligations, attributable to the School District as of June 30, 2019 was \$6,068,049.00. The School District's proportionate share was \$0.

The OPEB Obligation was measured as of June 30, 2019, and the total OPEB Obligation used to calculate the OPEB Obligation was determined by an actuarial valuation as of July 1, 2018, which was rolled forward to June 30, 2019. The State's proportionate share of the OPEB Obligation associated with the District was based on projection of the State's long-term contributions to the OPEB plan associated with the District relative to the projected contributions by the State associated with all participating school districts, actuarially determined. At June 30, 2019, the State proportionate share of the OPEB Obligation attributable to the School District was 0.01454154%, which was an increase of 0.00016468% from its proportion measured as of June 30, 2018.

For the fiscal year ended June 30, 2020, the State of New Jersey recognized an OPEB expense in the amount of \$90,498.00 for the State's proportionate share of the OPEB expense attributable to the School District. This OPEB expense was based on the OPEB plans June 30, 2019 measurement date.

**BASS RIVER TOWNSHIP SCHOOL DISTRICT
NOTES TO THE FINANCIAL STATEMENTS
YEAR ENDED JUNE 30, 2020 (Continued)**

Note 8. Other Post-Retirement Benefits (continued)

Health Care Trend Assumptions

For pre-Medicare preferred provider organization (PPO) medical benefits, this amount initially is 5.7% and decreases to a 4.5% long-term trend rate after eight years. For post-65 medical benefits, the actual fully-insured Medicare Advantage trend rates for fiscal year 2020 are reflected. The assumed post-65 medical trend is 4.5% for all future years. For prescription drug benefits, the initial trend rate is 7.5% decreasing to a 4.5% long-term trend rate after eight years. For the Medicare Part B reimbursement, the trend is 5.0%.

Discount Rate

The discount rate for June 30, 2019 was 3.50%. This represents the municipal bond return rate as chosen by the Division. The source is the Bond Buyer Go 20-Bond Municipal Bond Index, which includes tax-exempt general obligation municipal bonds with an average rating of AA/Aa or higher. As the long-term rate of return is less than the municipal bond rate, it is not considered in the calculation of the discount rate, rather the discount rate is set at the municipal bond rate.

Sensitivity of Total Nonemployer OPEB Liability to Changes in Discount Rate:

The following presents the total nonemployer OPEB liability as of June 30, 2019, calculated using the discount rate as disclosed above as well as what the total nonemployer OPEB liability would be if it was calculated using a discount rate that is 1-percentage point lower or 1-percentage point higher than the current rate:

	6/30/2019		
	At 1% Decrease (2.5%)	At Discount Rate (3.5%)	At 1% Increase (4.5%)
State of New Jersey's Proportionate Share of Total OPEB Obligations Associated with the School District	\$ 7,168,763.79	\$ 6,068,049.00	\$ 5,193,701.50
State of New Jersey's Total Nonemployer OPEB Liability	\$ 49,298,534,898	\$ 41,729,081,045	\$ 35,716,321,820

Sensitivity of Total Nonemployer OPEB Liability to Changes in the Healthcare Trend Rate:

The following presents the total nonemployer OPEB liability as of June 30, 2018, calculated using the healthcare trend rate as disclosed above as well as what the total nonemployer OPEB liability would be if it was calculated using a healthcare trend rate that is 1-percentage point lower or 1-percentage point higher than the current rate:

	6/30/2019		
	1% Decrease	Healthcare Cost Trend Rate	1% Increase
State of New Jersey's Proportionate Share of Total OPEB Obligations Associated with the School District	\$ 4,999,801.91	\$ 6,068,049.00	\$ 7,482,188.80
State of New Jersey's Total Nonemployer OPEB Liability	\$ 34,382,902,820	\$ 41,729,081,045	\$ 51,453,912,586

* See Healthcare Cost Trend

Additional Information

Collective balances of the Local Group at June 30, 2019 are as follows:

	Deferred Outflows of	Deferred Inflows of
Differences between Expected & Actual Experience	\$ -	\$ (10,484,965,300)
Changes in Assumption	-	(8,481,529,343)
Contributions Made in Fiscal Year Ending 2020 After June 30,2019 Measurement Date **	TBD	-
	<u>\$ -</u>	<u>\$ (18,966,494,643.00)</u>

**BASS RIVER TOWNSHIP SCHOOL DISTRICT
NOTES TO THE FINANCIAL STATEMENTS
YEAR ENDED JUNE 30, 2020 (Continued)**

Note 8. Other Post-Retirement Benefits (continued)

Additional Information (continued)

Amounts reported as deferred outflows of resources and deferred inflows of resources related to OPEB will be recognized in OPEB expense as follows:

Fiscal Year Ending June 30,		
2020	\$	(2,546,527,182)
2021		(2,546,527,182)
2022		(2,546,527,182)
2023		(2,546,527,182)
2024		(2,546,527,182)
Thereafter		(6,233,858,733)
		\$ (18,966,494,643.00)

** Employer Contributions made after June 30, 2018 are reported as a deferred outflow of resources, but are not amortized in expense.

Plan Membership

At June 30, 2018, the Program membership consisted of the following:

Active Plan Members	216,892
Inactive Plan Members or Beneficiaries	
Currently Receiving Benefits	148,051
	364,943

Changes in the total OPEB Liability

The change in the State's Total OPEB liability for the fiscal year ended June 30, 2020 (measurement date June 30, 2019) is as follows:

Service Cost	\$ 1,734,404,850
Interest Cost	1,827,787,206
Differences Between Expected and Actual	(7,323,140,818)
Changes in Assumptions	622,184,027
Contributions: Member	37,971,171
Gross Benefit Payments	(1,280,958,373)
Net Changes in Total OPEB Liability	(4,381,751,937.00)
Total OPEB Liability (Beginning)	46,110,832,982.00
Total OPEB Liability (Ending)	\$ 41,729,081,045.00
Total Covered Employee Payroll	13,929,083,479.00
Net OPEB Liability as a Percentage of Payroll	300%

Note 9. On-Behalf Payments for Fringe Benefits and Salaries

As previously mentioned, the School District receives on-behalf payments from the State of New Jersey for normal costs and post-retirement medical costs related to the Teachers' Pension and Annuity Fund (TPAF) pension plan. The School District is not legally responsible for these contributions. The on-behalf payments are recorded as revenues and expenditures in the government-wide and general fund financial statements. For the fiscal year ended June 30, 2020, the on-behalf payments for pension, social security, post-retirement medical costs, and long-term disability were \$191,383, \$75,285, \$71,000, and \$162, respectively.

**BASS RIVER TOWNSHIP SCHOOL DISTRICT
NOTES TO THE FINANCIAL STATEMENTS
YEAR ENDED JUNE 30, 2020 (Continued)**

Note 10. Risk Management

The School District is exposed to various risks of loss related to torts; theft of, damage to, and destruction of assets; errors and omissions; injuries to employees; and natural disasters.

New Jersey Unemployment Compensation Insurance – The School District has elected to fund its New Jersey Unemployment Compensation Insurance under the “Benefit Reimbursement Method”. Under this plan the School District is required to reimburse the New Jersey Unemployment Trust Fund for benefits paid to its former employees and charged to its account with the State. The School District is billed quarterly for amounts due to the State. The following is a summary of School District contributions, reimbursements to the State for benefits paid and the ending balance of the School District’s trust fund for the current and previous two years:

<u>Fiscal Year</u>		<u>Intest Earnings</u>		<u>Amount Reimbursed</u>	<u>Ending Balance</u>
2019-2020	\$	71.23	\$	8,634.63	17,189.58
2018-2019		81.49		75.00	25,752.98
2017-2018		48.28		400.80	25,746.49

Property and Liability Insurance – The School District maintains commercial insurance coverage for property, liability, student accident and surety bonds. A complete schedule of insurance coverage can be found in the Statistical Section of this Comprehensive Annual Financial Report.

Joint Insurance Pool – The School District also participates in the School Alliance Insurance Fund and, public entity risk pool. The Pool provides its members with the following coverage:

Property - Blanket Building & Grounds	General & Automobile Liability
Boiler & Machinery	Workers' Compensation
School Board Legal Liability	Comprehensive Crime Coverage
Employers Liability	Excess Liability

Note 11. Contingencies

State and Federal Grantor Agencies - The School District participates in numerous state and federal grant programs, which are governed by various rules and regulations of the grantor agencies; therefore, to the extent that the School District has not complied with the rules and regulations governing the grants, refunds of any money received may be required and the collectability of any related receivable at June 30, 2017 may be impaired. In the opinion of the School District, there are no significant contingent liabilities relating to compliance with the rules and regulations governing the respective grants; therefore, no provisions have been recorded in the accompanying combined financial statements for such contingencies.

Litigation – The School District is a defendant in various lawsuits. Although the outcome of these lawsuits is not presently determinable, it is the opinion of the School Districts’ attorney that resolution of these matters will not have a material adverse effect on the financial condition of the School District.

Economic Dependency – The School District receives a substantial amount of its support from federal and state governments. A significant reduction in the level of support, if this were to occur, could have an effect on the School District’s programs and activities.

Note 12. Deferred Compensation

The School District offers its employees a choice of the following deferred compensation plans created in accordance with Internal Revenue Code Section 403(b) and 457. The plans, which are administered by the entities listed below, permits participants to defer a portion of their salary until future years. Amounts deferred under the plans are not available to employees until termination, retirement, death or unforeseeable emergency. The plan administrators are as follows:

Equitable	Northwestern Mutual
Wells Fargo	Valic

**BASS RIVER TOWNSHIP SCHOOL DISTRICT
NOTES TO THE FINANCIAL STATEMENTS
YEAR ENDED JUNE 30, 2020 (Continued)**

Note 13. Compensated Absences

The School District accounts for compensated absences (e.g., unused vacation, sick leave) as directed by Governmental Accounting Standards Board Statement No. 16 (GASB 16), "Accounting for Compensated Absences". A liability for compensated absences attributable to services already rendered and not contingent on a specific event that is outside the control of the employer and employee is accrued as employees earn the rights to the benefits.

School District employees are granted varying amount of vacation and sick leave in accordance with the School District's personnel policies. Upon termination, employees are paid for accrued vacation. The School District policy permits employees to accumulate unused sick leave and carry forward the full amount to subsequent years. Upon retirement employees shall be paid by the School District for the unused sick leave in accordance with School Districts' agreements with the various employee unions.

The liability for vested compensated absences of the governmental fund types is recorded in the Statement of Net Position. At June 30, 2020, the liability for compensated absences reported was \$88,115.

Note 14. Tax Abatements

As defined by the Governmental Accounting Standards Board (GASB) Statement No. 77, a tax abatement is an agreement between a government and an individual or entity in which the government promises to forgo tax revenues and the individual or entity promises to subsequently take a specific action that contributes to economic development or otherwise benefits the government or its citizens. School districts are not authorized by New Jersey statute to enter into tax abatement agreements. However, the county or municipality in which the school district is situated may have entered into tax abatement agreements, and that potential must be disclosed in these financial statements. If the county or municipality entered into tax abatement agreements, those agreements will not directly affect the school district's local tax revenue because N.J.S.A. 54:4-75 and N.J.S.A. 54:4-76 require that amounts so forgiven must effectively be recouped from other taxpayers and remitted to the school district. For a local school district board of education or board of school estimate that has elected to raise their minimum tax levy using the required local share provisions at N.J.S.A. 18A:7F-5(b), the loss of revenue resulting from the municipality or county having entered into a tax abatement agreement is indeterminate due to the complex nature of the calculation of required local share performed by the New Jersey Department of Education based upon district property value and wealth.

Note 15. Calculation of Excess Surplus

The designation for Restricted Fund Balance – Excess Surplus is a required calculation pursuant to N.J.S.A.18A:7F-7. New Jersey school districts are required to reserve General Fund fund balance at the fiscal year-end of June 30 if they did not appropriate a required minimum amount as budgeted fund balance in their subsequent years' budget. There was \$42,123.35 in excess fund balance at June 30, 2020.

Note 16. Fund Balances

General Fund – Of the \$281,035.60 General Fund fund balance at June 30, 2020, \$42,123.35 has been restricted for current year excess surplus, \$66,645.25 has been assigned to other purposes, and \$172,267.00 is unassigned.

Note 17. Deficit in Net Position

Unrestricted Net Position – The School District governmental activities had a deficit in unrestricted net position in the amount of \$405,619.88 at June 30, 2020. The primary causes of this deficit is the School District not recognizing the receivable for the last two state aid payments and the recording of the net pension liability for the Public Employee's Retirement System (PERS) as of June 30, 2020. This deficit in unrestricted net position for governmental activities does not indicate that the School District is facing financial difficulties.

REQUIRED SUPPLEMENTARY INFORMATION - PART II

This page intentionally left blank

C. Budgetary Comparison Schedules

This page intentionally left blank

**BASS RIVER TOWNSHIP SCHOOL DISTRICT
GENERAL FUND
BUDGETARY COMPARISON SCHEDULE
YEAR ENDED JUNE 30, 2020**

ACCOUNT NUMBERS	ORIGINAL BUDGET	JUNE 30, 2020		VARIANCE FINAL TO ACTUAL
		BUDGET TRANSFERS	FINAL BUDGET	
Revenues:				
Local Sources:				
Local Tax Levy	\$ 1,565,430.00	\$ -	\$ 1,565,430.00	\$ -
Unrestricted Miscellaneous Revenues	-	-	-	2,282.87
Total Local Sources	1,565,430.00	-	1,565,430.00	2,282.87
State Sources:				
Categorical Transportation Aid	29,712.00	-	29,712.00	-
Categorical Special Education Aid	81,213.00	-	81,213.00	-
Equalization Aid	638,484.00	-	638,484.00	-
Categorical Security Aid	26,554.00	-	26,554.00	-
Adjustment Aid	51,190.00	-	51,190.00	-
Emergency Aid	-	29,467.00	29,467.00	-
Nonbudgeted:				
TPAF Pension (on-behalf)	-	-	191,383.00	191,383.00
TPAF Social Security (reimbursed)	-	-	75,284.99	75,284.99
TPAF Post Retirements	-	-	71,000.00	71,000.00
TPAF Long-Term Disability Insurance (on behalf)	-	-	162.00	162.00
Total State Sources	827,153.00	29,467.00	856,620.00	337,829.99
Total Revenues	2,392,583.00	29,467.00	2,422,050.00	340,112.86
Current Expense:				
Regular Programs - Instruction:				
Preschool - Salaries of Teachers	39,153.00	7.00	39,160.00	107.50
Kindergarten - Salaries of Teachers	74,232.00	120.00	74,352.00	-
Grades 1-5 - Salaries of Teachers	456,498.00	3,385.23	459,883.23	4,586.70
Grades 6-8 - Salaries of Teachers	77,086.00	270.00	77,356.00	695.00
Regular Programs - Home Instruction:				
Salaries of Teachers	1,500.00	1,500.76	3,000.76	32.04
Regular Programs - Undistributed Instruction:				
Other Salaries for Instruction	53,325.00	168.84	53,493.84	1,695.00
Purchased Technical Services	16,500.00	(5,250.62)	11,249.38	10,749.38
Other Purchased Services	61,696.00	943.79	62,639.79	44.14
General Supplies	5,000.00	5,247.54	10,247.54	2,223.96
Textbooks	-	1,565.00	1,565.00	1,565.00
Other Objects	2,260.00	(2,260.00)	-	-
Total Regular Programs - Instruction	787,250.00	5,697.54	792,947.54	21,698.72

**BASS RIVER TOWNSHIP SCHOOL DISTRICT
GENERAL FUND
BUDGETARY COMPARISON SCHEDULE
YEAR ENDED JUNE 30, 2020**

	ACCOUNT NUMBERS	JUNE 30, 2020			VARIANCE FINAL TO ACTUAL
		ORIGINAL BUDGET	BUDGET TRANSFERS	FINAL BUDGET	
Special Education - Instruction:					
Resource Room/Resource Center:					
Salaries of Teachers	11-213-100-101	171,561.00	7.00	171,568.00	156.50
Other Purchased Services	11-213-100-500	400.00	-	400.00	400.00
General Supplies	11-213-100-610	500.00	-	500.00	273.07
Total Resource Room/Resource Center		172,461.00	7.00	172,468.00	829.57
Total Special Education - Instruction		172,461.00	7.00	172,468.00	829.57
Basic Skills/Remedial - Instruction:					
Salaries of Teachers	11-230-100-101	54,276.00	57.90	54,333.90	92.75
General Supplies	11-230-100-610	1,500.00	(64.90)	1,435.10	509.57
Total Basic Skills/Remedial - Instruction		55,776.00	(7.00)	55,769.00	602.32
School-Sponsored Coccircular/Extra Curricular Activities - Instruction:					
Salaries	11-401-100-100	13,415.00	-	13,415.00	4,567.26
Total School-Sponsored Coccircular/Extra Curricular Activities - Instruction		13,415.00	-	13,415.00	4,567.26
Summer School - Instruction:					
Salaries of Teachers	11-422-100-101	7,210.00	-	7,210.00	4,010.00
Total Summer School - Instruction		7,210.00	-	7,210.00	4,010.00
Undistributed Expenditures - Instruction (Tuition):					
Tuition to Other LEAs Within State - Special	11-000-100-562	15,000.00	(15,000.00)	-	-
Tuition to County Special Services & Regular Day Schools	11-000-100-565	-	37,376.00	37,376.00	0.02
Total Undistributed Expenditures - Instruction (Tuition)		15,000.00	22,376.00	37,376.00	0.02
Undistributed Expenditures Attendance and Social Work:					
Salaries	11-000-211-100	12,144.00	-	12,144.00	65.70
Purchased Professional and Technical Services	11-000-211-300	4,534.00	-	4,534.00	0.54
Total Undistributed Expenditures Attendance and Social Work		16,678.00	-	16,678.00	66.24

**BASS RIVER TOWNSHIP SCHOOL DISTRICT
GENERAL FUND
BUDGETARY COMPARISON SCHEDULE
YEAR ENDED JUNE 30, 2020**

	ACCOUNT NUMBERS	JUNE 30, 2020			VARIANCE FINAL TO ACTUAL
		ORIGINAL BUDGET	BUDGET TRANSFERS	FINAL BUDGET	
Undistributed Expenditures - Health Services:					
Salaries	11-000-213-100	56,051.00	413.53	56,464.53	381.45
Purchased Professional & Technical Services	11-000-213-300	3,500.00	(295.75)	3,204.25	-
Other Purchased Services	11-000-213-500	325.00	(117.78)	207.22	207.22
Supplies and Materials	11-000-213-600	2,305.00	(265.00)	2,040.00	1,036.42
Total Undistributed Expenditures - Health Services		62,181.00	(265.00)	61,916.00	1,625.09
Undistributed Expenditures - Speech, OT, PT and Related Services:					
Purchased Professional - Educational Services	11-000-216-320	15,000.00	-	15,000.00	3,610.00
Total Undistributed Expenditures - Speech, OT, PT and Related Services		15,000.00	-	15,000.00	3,610.00
Undistributed Expenditures - Child Study Teams:					
Salaries of Other Professional Staff	11-000-219-104	72,268.00	-	72,268.00	-
Purchased Professional - Educational Services	11-000-219-320	25,713.00	(6,755.18)	18,957.82	1,267.82
Other Purchased Services	11-000-219-500	400.00	(400.00)	-	-
Miscellaneous Purchased Services	11-000-219-592	-	1,085.00	1,085.00	43.78
Supplies and Materials	11-000-219-600	2,000.00	(685.00)	1,315.00	227.33
Total Undistributed Expenditures - Child Study Teams		100,381.00	(6,755.18)	93,625.82	1,538.93
Undistributed Expenditures - Improvement of Instruction Services:					
Salaries of Supervisors of Instruction	11-000-221-102	46,163.00	(7,625.68)	38,537.32	-
Salaries of Sec. and Clerical Assist.	11-000-221-105	26,170.00	11,550.32	37,720.32	-
Purchased Professional - Educational Services	11-000-221-320	3,200.00	(450.59)	2,749.41	77.87
Other Purchased Services	11-000-221-500	300.00	(244.83)	55.17	-
Supplies and Materials	11-000-221-600	3,700.00	2,298.85	5,998.85	-
Total Undistributed Expenditures - Improvement of Instruction Services		79,533.00	5,528.07	85,061.07	77.87
Undistributed Expenditures - Educational Media Services/Library:					
Purchased Professional and Technical Services	11-000-222-300	20,500.00	-	20,500.00	500.00
Other Purchased Services	11-000-222-500	9,000.00	(830.58)	8,169.42	6,996.86
Supplies and Materials	11-000-222-600	6,000.00	357.98	6,357.98	14.01
Other Objects	11-000-222-800	-	565.08	565.08	241.08

**BASS RIVER TOWNSHIP SCHOOL DISTRICT
GENERAL FUND
BUDGETARY COMPARISON SCHEDULE
YEAR ENDED JUNE 30, 2020**

	ACCOUNT NUMBERS	JUNE 30, 2020			VARIANCE FINAL TO ACTUAL	
		ORIGINAL BUDGET	BUDGET TRANSFERS	FINAL BUDGET		
Total Undistributed Expenditures - Educational Media Services/Library		35,500.00	92.48	35,592.48	27,840.53	7,751.95
Undistributed Expenditures - Instructional Staff Training Services: Purchased Professional - Educational Services	11-000-223-320	1,250.00	-	1,250.00	344.50	905.50
Total Undistributed Expenditures - Instructional Staff Training Services		1,250.00	-	1,250.00	344.50	905.50
Undistributed Expenditures - Support Services - General Administration:						
Salaries	11-000-230-100	55,813.00	-	55,813.00	55,813.00	-
Legal Services	11-000-230-331	14,000.00	46,682.75	60,682.75	57,597.25	3,085.50
Audit Fees	11-000-230-332	14,000.00	2,315.00	16,315.00	16,315.00	-
Other Purchased Professional Services	11-000-230-339	7,033.00	10,367.00	17,400.00	17,400.00	-
Communications/Telephone	11-000-230-530	6,000.00	3,434.70	9,434.70	8,825.12	609.58
Other Purchased Services	11-000-230-590	517.00	1,260.70	1,777.70	1,427.70	350.00
General Supplies	11-000-230-610	-	224.00	224.00	-	224.00
Miscellaneous Expenditures	11-000-230-890	2,000.00	(228.95)	1,771.05	1,771.05	-
BOE Membership Dues and Fees	11-000-230-895	1,975.00	324.00	2,299.00	2,255.06	43.94
Total Undistributed Expenditures - Support Services - General Administration		101,338.00	64,379.20	165,717.20	161,404.18	4,313.02
Undistributed Expenditures - Support Services - School Administration:						
Salaries of Principals/Assistant Principals	11-000-240-103	9,650.00	3,025.52	12,675.52	12,675.52	-
Salaries of Secretaries & Clerical Assistants	11-000-240-105	20,421.00	(5,970.02)	14,450.98	9,589.13	4,861.85
Total Undistributed Expenditures - Support Services - School Administration		30,071.00	(2,944.50)	27,126.50	22,264.65	4,861.85
Undistributed Expenditures - Central Services:						
Salaries	11-000-251-100	3,000.00	-	3,000.00	3,000.00	-
Purchased Professional Services	11-000-251-330	40,393.00	319.90	40,712.90	38,183.42	2,529.48
Supplies and Materials	11-000-251-600	-	46.95	46.95	16.95	30.00
Miscellaneous Expenditures	11-000-251-890	1,917.00	843.15	2,760.15	2,562.15	198.00
Total Undistributed Expenditures - Central Services		45,310.00	1,210.00	46,520.00	43,762.52	2,757.48

**BASS RIVER TOWNSHIP SCHOOL DISTRICT
GENERAL FUND
BUDGETARY COMPARISON SCHEDULE
YEAR ENDED JUNE 30, 2020**

	ACCOUNT NUMBERS	JUNE 30, 2020			VARIANCE FINAL TO ACTUAL
		ORIGINAL BUDGET	BUDGET TRANSFERS	FINAL BUDGET	
Undistributed Expenditures -					
Required Maintenance for School Facilities:					
Cleaning, Repair & Maintenance Services	11-000-261-420	15,000.00	7,291.00	22,291.00	4,082.28
General Supplies	11-000-261-610	8,000.00	674.15	8,674.15	5,784.42
		23,000.00	7,965.15	30,965.15	9,866.70
Total Undistributed Expenditures -					
Required Maintenance for School Facilities				21,098.45	9,866.70
Undistributed Expenditures - Custodial Services:					
Salaries	11-000-262-100	88,024.00	-	88,024.00	16,141.93
Purchased Professional and Technical Services	11-000-262-300	500.00	-	500.00	500.00
Cleaning, Repair & Maintenance Services	11-000-262-420	9,000.00	(1,800.00)	7,200.00	3,294.04
Lease Purchase Pymts- Energy Savings Impr Prog	11-000-262-444	29,732.00	-	29,732.00	0.10
Insurance	11-000-262-520	13,300.00	(13,300.00)	-	-
Travel	11-000-262-580	-	4,468.45	4,468.45	3,718.45
Travel for Regular Business	11-000-262-581	-	500.00	500.00	500.00
Miscellaneous Purchased Services	11-000-262-590	500.00	(500.00)	-	-
General Supplies	11-000-262-610	9,600.00	(528.10)	9,071.90	5,741.87
Energy (Natural Gas)	11-000-262-621	15,000.00	384.41	15,384.41	2,633.76
Energy (Electricity)	11-000-262-622	49,000.00	-	49,000.00	10,424.77
Other Objects	11-000-262-800	400.00	100.00	500.00	500.00
		215,056.00	(10,675.24)	204,380.76	43,454.92
Total Undistributed Expenditures - Custodial Services				160,925.84	43,454.92
Undistributed Expenditures -					
Care and Upkeep of Grounds:					
General Supplies	11-000-263-610	500.00	15.00	515.00	495.00
		500.00	15.00	515.00	495.00
Total Undistributed Expenditures -					
Care and Upkeep of Grounds				20.00	495.00
Security:					
Cleaning, Repair, and Maintenance Services	11-000-266-420	1,900.00	400.00	2,300.00	2,114.36
General Supplies	11-000-266-610	200.00	-	200.00	68.10
		2,100.00	400.00	2,500.00	2,182.46
Total Security				317.54	2,182.46

**BASS RIVER TOWNSHIP SCHOOL DISTRICT
GENERAL FUND
BUDGETARY COMPARISON SCHEDULE
YEAR ENDED JUNE 30, 2020**

	ACCOUNT NUMBERS	JUNE 30, 2020			VARIANCE FINAL TO ACTUAL
		ORIGINAL BUDGET	BUDGET TRANSFERS	FINAL BUDGET	
Undistributed Expenditures -					
Student Transportation Services:					
Other Purchased Prof. and Technical Serv.	11-000-270-390	20,000.00	-	20,000.00	-
Contract Services - Aid in Lieu Payments - Non Public Schools	11-000-270-503	3,000.00	(3,000.00)	-	-
Contract Services (Other Than Between Home & School) - Vendors	11-000-270-512	5,665.00	-	5,665.00	223.11
Contract Services (Between Home & School) - Joint Agreement	11-000-270-513	75,858.00	(13,433.60)	62,424.40	45,352.20
Contract Services (Special Education) - Vendors	11-000-270-514	10,000.00	(5,335.00)	4,665.00	2,940.00
Contract Services (Special Education) - ESCs & CTSA's	11-000-270-518	-	13,433.60	13,433.60	7,870.96
Travel	11-000-270-580	-	3,000.00	3,000.00	1,000.00
Total Undistributed Expenditures -		114,523.00	(5,335.00)	109,188.00	77,386.27
Student Transportation Services					31,801.73
Unallocated Benefits:					
Social Security Contributions	11-000-291-220	27,307.00	-	27,307.00	15,868.73
Other Retirement Contributions - PERS	11-000-291-241	31,001.00	-	31,001.00	28,199.00
Workmen's Compensation	11-000-291-260	22,007.00	12,502.38	34,509.38	33,037.49
Health Benefits	11-000-291-270	433,506.00	(19,841.07)	413,664.93	400,279.09
Tuition Reimbursement	11-000-291-280	10,000.00	(660.42)	9,339.58	-
Other Employee Benefits	11-000-291-290	10,000.00	-	10,000.00	-
Unused Vacation Payments to Staff	11-100-100-299	-	17,611.86	17,611.86	17,611.86
Total Unallocated Benefits		533,821.00	9,612.75	543,433.75	494,996.17
Nonbudgeted:					
TPAF Pension (on-behalf)		-	-	-	191,383.00
TPAF Social Security (reimbursed)		-	-	-	75,284.99
TPAF Post Retirements		-	-	-	71,000.00
TPAF Long-Term Disability Insurance (on behalf)		-	-	-	162.00
Total Undistributed Expenditures		1,391,242.00	85,603.73	1,476,845.73	1,650,929.38
Total Expenditures - Current Expense		2,427,354.00	91,301.27	2,518,655.27	2,661,031.05
Total Expenditures		2,427,354.00	91,301.27	2,518,655.27	2,661,031.05

**BASS RIVER TOWNSHIP SCHOOL DISTRICT
GENERAL FUND
BUDGETARY COMPARISON SCHEDULE
YEAR ENDED JUNE 30, 2020**

ACCOUNT NUMBERS	JUNE 30, 2020		VARIANCE FINAL TO ACTUAL
	ORIGINAL BUDGET	FINAL BUDGET	
Excess/(Deficiency) of Revenues Over/ (Under) Expenditures After Other Financing Sources/(Uses) Fund Balances, July 1	(34,771.00) 257,636.79	(96,605.27) 257,636.79	101,131.81 197,737.08
Fund Balances, June 30	\$ 222,865.79	\$ 161,031.52	\$ 358,768.60
			\$ 197,737.08

RECAPITULATION OF BUDGET TRANSFERS

Prior Year Encumbrances \$ 61,834.27

RECAPITULATION OF FUND BALANCE

Restricted Fund Balance:	
Excess Surplus	\$ 42,123.35
Assigned Fund Balance:	
Year-End Encumbrances	66,645.25
Unassigned Fund Balance	<u>250,000.00</u>
Subtotal	358,768.60
Reconciliation to Governmental Funds Statements (GAAP):	
Last State Aid Payments Not Recognized on GAAP Basis	<u>(77,733.00)</u>
Fund Balance per Governmental Funds (GAAP)	<u>\$ 281,035.60</u>

EXHIBIT C-2

BASS RIVER TOWNSHIP SCHOOL DISTRICT
SPECIAL REVENUE FUND
BUDGETARY COMPARISON SCHEDULE
YEAR ENDED JUNE 30, 2020

	JUNE 30, 2020			VARIANCE FINAL TO ACTUAL (OVER)/ UNDER
	ORIGINAL BUDGET	BUDGET TRANSFERS	FINAL BUDGET	
Revenues:				
Local Sources	\$ -	\$ 22,000.00	\$ 22,000.00	\$ -
Federal Sources	86,905.00	29,238.00	116,143.00	81,613.10
Total Revenues	86,905.00	51,238.00	138,143.00	103,613.10
Expenditures:				
Instruction:				
Salaries of Teachers	42,444.00	(10,796.00)	31,648.00	31,349.80
Other Purchased Services (400-500 Series)	41,759.00	(14,821.00)	26,938.00	20,000.00
General Supplies	2,702.00	7,435.00	10,137.00	9,874.83
Total Instruction	86,905.00	(18,182.00)	68,723.00	61,224.63
Support Services:				
Salaries of Other Professional Staff	-	3,602.00	3,602.00	-
Personal Services - Employee Benefits	-	8,968.00	8,968.00	8,968.00
Purchased Educational Services	-	48,186.00	48,186.00	31,420.47
Supplies and Materials	-	2,000.00	2,000.00	2,000.00
Total Support Services	-	62,756.00	62,756.00	42,388.47
Facilities Acquisition & Construction Services:				
Noninstructional Equipment	-	6,664.00	6,664.00	-
Total Facilities Acquisition & Construction Services	-	6,664.00	6,664.00	-
Total Expenditures	86,905.00	51,238.00	138,143.00	103,613.10
Total Outflows	86,905.00	51,238.00	138,143.00	103,613.10
Excess/(Deficiency) of Revenues Over/(Under) Expenditures & Other Financing Sources/(Uses)	\$ -	\$ -	\$ -	\$ -
				\$ 34,529.90
				\$ 34,529.90

NOTES TO REQUIRED SUPPLEMENTARY INFORMATION - PART II

This page intentionally left blank

**BASS RIVER TOWNSHIP SCHOOL DISTRICT
NOTE TO REQUIRED SUPPLEMENTARY INFORMATION
BUDGET TO GAAP RECONCILIATION
YEAR ENDED JUNE 30, 2020**

**Note A - Explanation of Differences between Budgetary Inflows and Outflows and
GAAP Revenues and Expenditures**

	GENERAL FUND	SPECIAL REVENUE FUND
Sources/Inflows of Resources:		
Actual Amounts (Budgetary Basis) "Revenue"		
From the Budgetary Comparison Schedule (C-Series)	\$ 2,762,162.86	\$ 103,613.10
Difference - Budget to GAAP:		
Grant accounting budgetary basis differs from GAAP in that encumbrances are recognized as expenditures, and the related revenue is recognized.		
Current Year	-	(11,581.05)
Prior Year	-	9,442.63
The last state aid payments are recognized as revenue for budgetary purposes and differs from GAAP which does not recognize this revenue until the subsequent year when the state recognizes the related expense (GASB 33).		
Current Year	(77,733.00)	-
Prior Year	85,662.00	-
Total Revenues as Reported on the Statement of Revenues, Expenditures, and Changes in Fund Balances - Governmental Funds. (B-2)		
	\$ 2,770,091.86	\$ 101,474.68
Uses/outflows of resources:		
Actual amounts (budgetary basis) "total outflows" from the budgetary comparison schedule. (C-1, C-2)	\$ 2,661,031.05	\$ 103,613.10
Differences - budget to GAAP		
Encumbrances for supplies and equipment ordered but not received is reported in the year the order is placed for <i>budgetary</i> purposes, but in the year the supplies are received for <i>financial reporting</i> purposes.	-	(2,138.42)
Total Expenditures as Reported on the Statement of Revenues, Expenditures, and Changes in Fund Balances - Governmental Funds (B-2)		
	\$ 2,661,031.05	\$ 101,474.68

This page intentionally left blank

REQUIRED SUPPLEMENTARY INFORMATION - PART III

This page intentionally left blank

SCHEDULES RELATED TO ACCOUNTING AND REPORTING FOR PENSIONS (GASB 68)

This page intentionally left blank

**BASS RIVER TOWNSHIP SCHOOL DISTRICT
SCHEDULE OF THE SCHOOL DISTRICT'S PROPORTIONATE SHARE OF THE NET PENSION LIABILITY
PUBLIC EMPLOYEES' RETIREMENT SYSTEM (PERS)
LAST SEVEN FISCAL YEARS***

	2020	2019	2018	2017	2016	2015	2014
School District's proportion of the net pension liability	0.00289%	0.00229%	0.00241%	0.00213%	0.00257%	0.00239%	0.00262%
School District's proportionate share of the net pension liability	\$ 520,175.00	\$ 450,314.00	\$ 560,731.00	\$ 632,125.00	\$ 576,963.00	\$ 447,500.00	\$ 501,389.00
	\$ 520,175.00	\$ 450,314.00	\$ 560,731.00	\$ 632,125.00	\$ 576,963.00	\$ 447,500.00	\$ 501,389.00
School District's covered payroll	\$ 207,366.00	\$ 204,303.00	\$ 161,580.00	\$ 327,767.00	\$ 306,325.00	\$ 302,575.00	N/A
School District's proportionate share of the net pension liability as a percentage of its covered payroll	251%	220%	347%	193%	188%	148%	N/A
Plan fiduciary net position as a percentage of the total pension liability	56.27%	53.60%	48.10%	40.14%	47.93%	52.08%	48.72%

*The amounts presented for each fiscal year were determined as of the previous fiscal year end (the measurement date).

This schedule is presented to illustrate the requirement to show information for 10 years. However, until a full 10-year trend is compiled, governments should present information for those years for which information is available.

**BASS RIVER TOWNSHIP SCHOOL DISTRICT
SCHEDULE OF SCHOOL DISTRICT CONTRIBUTIONS
PUBLIC EMPLOYEES' RETIREMENT SYSTEM (PERS)
LAST SEVEN FISCAL YEARS**

	2020	2019	2018	2017	2016	2015	2014
School District's contractually required contribution	\$ 30,926.00	\$ 28,081.00	\$ 22,749.00	\$ 22,315.00	\$ 18,961.00	\$ 22,097.00	\$ 19,704.00
Contributions in relation to the contractually required contribution	(30,926.00)	(28,081.00)	(22,749.00)	(22,315.00)	(18,961.00)	(22,097.00)	(19,704.00)
Contribution deficiency (excess)	\$ -	\$ -	\$ -	\$ -	\$ -	\$ -	\$ -
District's covered payroll	\$ 207,366.00	\$ 203,257.00	\$ 204,303.00	\$ 161,580.00	\$ 327,767.00	\$ 306,325.00	\$ 302,575.00
Contributions as a percentage of employee payroll	14.91%	13.82%	11.13%	13.81%	5.78%	7.21%	6.51%

This schedule is presented to illustrate the requirement to show information for 10 years. However, until a full 10-year trend is compiled, governments should present information for those years for which information is available.

**BASS RIVER TOWNSHIP SCHOOL DISTRICT
SCHEDULE OF THE DISTRICT'S PROPORTIONATE SHARE OF THE NET PENSION LIABILITY
TEACHERS' PENSION AND ANNUITY FUND (TPAF)
LAST SEVEN FISCAL YEARS***

	2020	2019	2018	2017	2016	2015	2014
School District's proportion of the net pension liability	0.00%	0.00%	0.00%	0.00%	0.00%	0.00%	0.00%
School District's proportionate share of the net pension liability	\$ -	\$ -	\$ -	\$ -	\$ -	\$ -	\$ -
State's proportionate share of the net pension liability associated with the School District	5,962,450.00	7,119,613.00	7,447,585.00	9,073,138.00	6,338,470.00	5,275,491.00	4,814,168.00
District's covered payroll	\$ 5,962,450.00	\$ 7,119,613.00	\$ 7,447,585.00	\$ 9,073,138.00	\$ 6,338,470.00	\$ 5,275,491.00	\$ 4,814,168.00
District's proportionate share of the net pension liability as a percentage of its covered payroll	0.00%	0.00%	0.00%	0.00%	0.00%	0.00%	0.00%
Plan fiduciary net position as a percentage of the total pension liability	26.95%	26.49%	25.41%	22.33%	28.71%	33.76%	N/A

*The amounts presented for each fiscal year were determined as of the previous fiscal year end (the measurement date).

This schedule is presented to illustrate the requirement to show information for 10 years. However, until a full 10-year trend is compiled, governments should present information for those years for which information is available.

This page intentionally left blank

**SCHEDULES RELATED TO ACCOUNTING AND REPORTING FOR OTHER POST EMPLOYMENT BENEFITS
(GASB 75)**

This page intentionally left blank

BASS RIVER TOWNSHIP SCHOOL DISTRICT
SCHEDULE OF CHANGES IN THE NET OPEB LIABILITY AND RELATED RATIOS
STATE HEALTH BENEFIT LOCAL EDUCATION RETIRED EMPLOYEES PLAN (OPEB)
LAST THREE FISCAL YEARS*

	2020	2019	2018
District's Total OPEB Liability			
Service Cost	\$ 215,525	\$ 278,633	\$ 333,268
Interest Cost	261,430	293,400	251,984
Difference Between Expected and Actual	(947,921)	(1,012,576)	-
Changes of Assumptions	90,475	(760,744)	(1,001,935)
Contributions: Member	5,522	6,127	6,825
Gross Benefit Payments	(186,271)	(177,265)	(185,337)
Net Change in District's Total OPEB Liability	(561,240)	(1,372,425)	(595,195)
District's Total OPEB Liability (Beginning)	6,629,289	8,001,714	8,596,909
District's Total OPEB Liability (Ending)	<u>\$ 6,068,049</u>	<u>\$ 6,629,289</u>	<u>\$ 8,001,714</u>
District's Covered Employee Payroll	\$ 1,261,306	\$ 1,146,776	\$ 1,413,527
District's Net OPEB Liability as a Percentage of Payroll	481%	578%	566%

Note - The amounts presented for each fiscal year were determined as of the previous fiscal year end (the measurement date).

* This schedule is presented to illustrate the requirement to show information for 10 years. However, until a full 10-year trend is compiled, governments should present information for those years for which information is available.

This page intentionally left blank

NOTES TO REQUIRED SUPPLEMENTARY INFORMATION - PART III

This page intentionally left blank

**BASS RIVER TOWNSHIP SCHOOL DISTRICT
NOTES TO REQUIRED SUPPLEMENTARY INFORMATION - PART III
YEAR ENDED JUNE 30, 2020**

Teachers Pension and Annuity Fund (TPAF)

Changes in Benefit Terms - None.

Changes in Assumptions - The discount rate changed from 4.86% as of June 30, 2018, to 5.60% as of June 30, 2019.

Public Employees' Retirement System (PERS)

Changes in Benefit Terms - None.

Changes in Assumptions - The discount rate changed from 5.66% as of June 30, 2018, to 6.28% as of June 30, 2019.

State Health Benefit Local Education Retired Employees Plan (OPEB)

Changes in Benefit Terms - None.

Changes in Assumptions - The discount rate changed from 3.87% as of June 30, 2018, to 3.50% as of June 30, 2019.

This page intentionally left blank

OTHER SUPPLEMENTARY INFORMATION

This page intentionally left blank

D. School Based Budget Schedules

Not Applicable

This page intentionally left blank

E. Special Revenue Fund

This page intentionally left blank

EXHIBIT E-1

**BASS RIVER TOWNSHIP SCHOOL DISTRICT
SPECIAL REVENUE FUND
COMBINING SCHEDULE OF PROGRAM REVENUES AND EXPENDITURES - BUDGETARY BASIS
YEAR ENDED JUNE 30, 2020**

	Title I	I.D.E.A.	I.D.E.A. - Preschool
Revenues:			
Federal Sources	\$ 31,679.00	\$ 27,403.25	\$ 3,602.00
Total Revenues	\$ 31,679.00	\$ 27,403.25	\$ 3,602.00
Expenditures:			
Instruction:			
Salaries of Teachers	\$ 23,155.00	\$ -	\$ 3,602.00
Total Instruction	23,155.00	-	3,602.00
Support Services:			
Personal Services - Employee Benefits	8,524.00	-	-
Purchased Educational Services	-	27,403.25	-
Total Support Services	8,524.00	27,403.25	-
Total Expenditures	\$ 31,679.00	\$ 27,403.25	\$ 3,602.00

**BASS RIVER TOWNSHIP SCHOOL DISTRICT
SPECIAL REVENUE FUND
COMBINING SCHEDULE OF PROGRAM REVENUES AND EXPENDITURES - BUDGETARY BASIS
YEAR ENDED JUNE 30, 2020**

	Title I SIA	CARES Grant	Safety Grant	Viking Yacht	Totals
Revenues:					
Local Sources	\$ -	\$ -	\$ 2,000.00	\$ 20,000.00	\$ 22,000.00
Federal Sources	7,347.80	11,581.05	-	-	81,613.10
Total Revenues	\$ 7,347.80	\$ 11,581.05	\$ 2,000.00	\$ 20,000.00	\$ 103,613.10
Expenditures:					
Instruction:					
Salaries of Teachers	\$ 4,592.80	\$ -	\$ -	\$ -	\$ 31,349.80
Other Purchased Services (400-500 Series)	-	-	-	20,000.00	20,000.00
General Supplies	495.00	9,379.83	-	-	9,874.83
Total Instruction	5,087.80	9,379.83	-	20,000.00	61,224.63
Support Services:					
Personal Services - Employee Benefits	444.00	-	-	-	8,968.00
Purchased Educational Services	1,816.00	2,201.22	-	-	31,420.47
Supplies and Materials	-	-	2,000.00	-	2,000.00
Total Support Services	2,260.00	2,201.22	2,000.00	-	42,388.47
Total Expenditures	\$ 7,347.80	\$ 11,581.05	\$ 2,000.00	\$ 20,000.00	\$ 103,613.10

F. Capital Projects Fund

This page intentionally left blank

**BASS RIVER TOWNSHIP SCHOOL DISTRICT
CAPITAL PROJECTS FUND
SUMMARY SCHEDULE OF PROJECT EXPENDITURES
YEAR ENDED JUNE 30, 2020**

<u>Project Title / Issue</u>	<u>Original Date</u>	<u>Original Appropriations</u>	<u>Expenditures to Date</u>		<u>Unexpended Balance June 30, 2020</u>
			<u>Prior Years</u>	<u>Current Year</u>	
Energy Saving Improvement Plan	4/4/2017	\$ 369,000.00	\$ 222,422.14	\$ 146,577.86	\$ -
Total		\$ 369,000.00	\$ 222,422.14	\$ 146,577.86	\$ -

**BASS RIVER TOWNSHIP SCHOOL DISTRICT
CAPITAL PROJECTS FUND
SUMMARY SCHEDULE OF REVENUES, EXPENDITURES, AND CHANGES
IN FUND BALANCE - BUDGETARY BASIS
YEAR ENDED JUNE 30, 2020**

Expenditures and Other Financing Uses:		
Construction Services	\$	145,776.10
Cancellation of Unexpended Balance		801.76
		146,577.86
Total Expenditures and Other Financing Uses		146,577.86
Excess (Deficiency) of Revenues and Other Financing Sources		
Over (Under) Expenditures and Other Financing Uses		(146,577.86)
Fund Balance, July 1		146,577.86
Fund Balance, June 30	\$	-

**BASS RIVER TOWNSHIP SCHOOL DISTRICT
CAPITAL PROJECTS FUND
SUMMARY SCHEDULE OF REVENUES, EXPENDITURES, AND CHANGES
IN FUND BALANCE - BUDGETARY BASIS
ENERGY SAVING IMPROVEMENT PLAN
YEAR ENDED JUNE 30, 2020**

	<u>Prior Years</u>	<u>Current Year</u>	<u>Totals</u>	<u>Revised Authorized Cost</u>
Revenues and Other Financing Sources:				
Capital Lease Proceeds	\$ 369,000.00	\$ -	\$ 369,000.00	\$ 369,000.00
Total Revenues and Other Financing Sources	369,000.00	-	369,000.00	369,000.00
Expenditures and Other Financing Uses:				
Other Purchased Professional and Technical Services	22,845.00	-	22,845.00	22,845.00
Construction Services	199,577.14	145,776.10	345,353.24	345,353.24
Cancellation of Unexpended Balance	-	801.76	801.76	801.76
Total Expenditures and Other Financing Uses	222,422.14	146,577.86	369,000.00	369,000.00
Excess (Deficiency) of Revenues and Other Financing Sources Over (Under) Expenditures and Other Financing Uses	\$ 146,577.86	\$ (146,577.86)	\$ -	\$ -

Additional Project Information:

<u>Name of Project:</u>	
<u>Energy Saving Improvement Plan</u>	
Project Numbers	Not Applicable
Grant Date	Not Applicable
Bond Authorization Date	Not Applicable
Bonds Authorized	Not Applicable
Bonds Issued	Not Applicable
Original Authorized Cost	\$ 369,000.00
Additional Authorized Cost	-
Revised Authorized Cost	369,000.00
Percentage Increase over Original Authorized Cost	0.00%
Percentage Completion	100.00%
Original Target Completion Date	June 2018
Revised Target Completion Date	June 2019

This page intentionally left blank

H. Fiduciary Fund

This page intentionally left blank

**BASS RIVER TOWNSHIP SCHOOL DISTRICT
FIDUCIARY FUNDS
COMBINING STATEMENT OF FIDUCIARY NET POSITION
JUNE 30, 2020**

	<u>TRUST</u>		<u>AGENCY</u>		
	<u>UNEMPLOYMENT COMPENSATION</u>	<u>TRUST TOTALS</u>	<u>PAYROLL FUND</u>	<u>STUDENT ACTIVITY FUND</u>	<u>AGENCY TOTALS</u>
ASSETS					
Cash & Cash Equivalents	\$ 17,189.58	\$ 17,189.58	\$ 22,830.10	\$ 3,550.01	\$ 26,380.11
Total Assets	17,189.58	17,189.58	22,830.10	3,550.01	26,380.11
LIABILITIES					
Interfund Payable	-	-	5,960.71	-	5,960.71
Payable for Student Related Activities	-	-	-	3,550.01	3,550.01
Payroll Deductions & Withholdings	-	-	16,869.39	-	16,869.39
Total Liabilities	-	-	\$ 22,830.10	\$ 3,550.01	\$ 26,380.11
NET POSITION					
Restricted - Held in Trust for Unemployment Claims & Other Purposes	17,189.58	17,189.58			
Total Net Position	\$ 17,189.58	\$ 17,189.58			

**BASS RIVER TOWNSHIP SCHOOL DISTRICT
FIDUCIARY FUNDS
COMBINING STATEMENT OF CHANGES IN FIDUCIARY NET POSITION
YEAR ENDED JUNE 30, 2020**

	UNEMPLOYMENT COMPENSATION TRUST	TOTAL TRUST
ADDITIONS		
Investment Earnings:		
Interest	\$ 71.23	\$ 71.23
Net Investment Earnings	71.23	71.23
Total Additions	71.23	71.23
DEDUCTIONS		
Unemployment Claims	8,634.63	8,634.63
Total Deductions	8,634.63	8,634.63
Change in Net Position	(8,563.40)	(8,563.40)
Net Position - Beginning	25,752.98	25,752.98
Net Position - Ending	\$ 17,189.58	\$ 17,189.58

**BASS RIVER TOWNSHIP SCHOOL DISTRICT
STUDENT ACTIVITY AGENCY FUND
SCHEDULE OF RECEIPTS AND DISBURSEMENTS
YEAR ENDED JUNE 30, 2020**

	BALANCE JUNE 30, 2019		CASH RECEIPTS		CASH DISBURSEMENTS		BALANCE JUNE 30, 2020
Elementary Schools:							
Bass River School	\$ 5,955.86	\$	417.18	\$	2,823.03	\$	3,550.01
Total All Schools	\$ 5,955.86	\$	417.18	\$	2,823.03	\$	3,550.01

**BASS RIVER TOWNSHIP SCHOOL DISTRICT
PAYROLL AGENCY FUND
SCHEDULE OF RECEIPTS AND DISBURSEMENTS
YEAR ENDED JUNE 30, 2020**

	BALANCE JUNE 30, 2019		CASH RECEIPTS		CASH DISBURSEMENTS		BALANCE JUNE 30, 2020
ASSETS							
Cash & Cash Equivalents	\$ 12,218.18	\$	1,497,534.79	\$	1,486,922.87	\$	22,830.10
Total Assets	\$ 12,218.18	\$	1,497,534.79	\$	1,486,922.87	\$	22,830.10
LIABILITIES							
Payroll Deductions & Withholdings	\$ 6,257.47	\$	1,486,922.87	\$	1,497,534.79	\$	16,869.39
Interfunds Payable	5,960.71		-		-		5,960.71
Total Liabilities	\$ 12,218.18	\$	1,486,922.87	\$	1,497,534.79	\$	22,830.10

This page intentionally left blank

I. Long-Term Debt

This page intentionally left blank

**BASS RIVER TOWNSHIP SCHOOL DISTRICT
LONG-TERM DEBT
SCHEDULE OF OBLIGATIONS UNDER CAPITAL LEASES
YEAR ENDED JUNE 30, 2020**

PURPOSE	DATE OF LEASE	AMOUNT OF ORIGINAL ISSUE	AMOUNT OUTSTANDING JUNE 30, 2019	ISSUED	RETIRED	AMOUNT OUTSTANDING JUNE 30, 2020
Security Vestibule	06/15/15	100,000.00	20,590.47	-	20,590.47	-
Equipment	06/18/15	80,000.00	16,569.41	-	16,569.41	-
Equipment	08/01/16	80,000.00	32,943.57	-	16,159.20	16,784.37
Energy Savings Improvement Plan	04/04/17	369,000.00	344,200.00	-	18,800.00	325,400.00
Total		\$ 414,303.45	\$ 414,303.45	-	\$ 72,119.08	\$ 342,184.37

This page intentionally left blank

STATISTICAL SECTION (Unaudited)

Third Section

This page intentionally left blank

Financial Trends Information

Financial trends information is intended to assist the user in understanding and assessing how the School District's financial position has changed over time. Please refer to the following exhibits for a historical view of the School District's financial performance. The Exhibits are presented for the last ten fiscal years.

This page intentionally left blank

BASS RIVER TOWNSHIP SCHOOL DISTRICT
NET POSITION BY COMPONENT
LAST TEN FISCAL YEARS
(Accrual Basis of Accounting)

	2020	2019	2018	2017	2016	2015	2014	2013	2012	2011
FISCAL YEAR ENDING JUNE 30,										
Governmental Activities:										
Net Investment in Capital Assets	\$ 473,897.29	\$ 268,716.36	\$ 140,389.32	\$ 318,704.00	\$ 318,673.00	\$ 146,507.00	\$ 374,984.00	\$ 444,108.00	\$ 604,002.00	\$ 590,459.00
Restricted	42,123.35	146,577.86	256,096.80	-	-	10,000.00	25,689.00	99,039.00	389,561.00	319,247.00
Unrestricted (Deficit)	(405,619.88)	(448,881.92)	(590,728.74)	(510,512.00)	(563,329.00)	(329,879.00)	67,006.00	100,939.00	101,743.00	167,376.00
Total Governmental Activities	\$ 110,400.76	\$ (33,587.70)	\$ (194,242.62)	\$ (191,808.00)	\$ (244,656.00)	\$ (173,372.00)	\$ 467,679.00	\$ 644,086.00	\$ 1,095,306.00	\$ 1,077,082.00
District-Wide:										
Net Investment in Capital Assets	\$ 473,897.29	\$ 268,716.36	\$ 140,389.32	\$ 318,704.00	\$ 318,673.00	\$ 146,507.00	\$ 374,984.00	\$ 444,108.00	\$ 604,002.00	\$ 590,459.00
Restricted	42,123.35	146,577.86	256,096.80	-	-	10,000.00	25,689.00	99,039.00	389,561.00	319,247.00
Unrestricted (Deficit)	(405,619.88)	(448,881.92)	(590,728.74)	(510,512.00)	(536,329.00)	(329,879.00)	67,006.00	109,939.00	101,743.00	167,376.00
Total District Net Position	\$ 110,400.76	\$ (33,587.70)	\$ (194,242.62)	\$ (191,808.00)	\$ (217,656.00)	\$ (173,372.00)	\$ 467,679.00	\$ 653,086.00	\$ 1,095,306.00	\$ 1,077,082.00

Source: CAFR Schedule A-1

BASS RIVER TOWNSHIP SCHOOL DISTRICT
CHANGES IN NET POSITION - (ACCRUAL BASIS OF ACCOUNTING)
LAST TEN FISCAL YEARS

	FISCAL YEAR ENDING JUNE 30,									
	2020	2019	2018	2017	2016	2015	2014	2013	2012	2011
Expenses:										
Governmental Activities										
Instruction:										
Regular	\$ 1,484,852.76	\$ 1,793,993.53	\$ 1,949,690.82	\$ 800,406.00	\$ 862,319.00	\$ 924,634.00	\$ 856,818.00	\$ 823,205.00	\$ 809,726.00	\$ 791,050.00
Special Education	306,933.69	317,361.72	452,258.45	306,383.00	295,630.00	247,650.00	274,427.00	235,803.00	140,070.00	136,446.00
Other Special Education	-	-	-	39,780.00	44,001.00	57,604.00	64,917.00	18,635.00	17,218.00	10,380.00
Other Instruction	120,196.68	83,065.42	54,522.25	21,867.00	23,746.00	19,664.00	20,404.00	20,282.00	16,772.00	9,241.00
Support Services:										
Tuition	37,375.98	-	51,659.09	45,402.00	2,822.00	2,681.00	-	37,514.00	-	-
Student & Instruction Related Services	438,103.66	339,615.88	353,046.95	273,761.00	304,051.00	329,639.00	327,533.00	328,677.00	296,627.00	247,962.00
Other Administrative Services	210,491.60	137,466.78	158,906.51	146,548.00	145,591.00	135,712.00	134,008.00	138,887.00	127,099.00	129,137.00
Central Services	57,071.90	47,990.15	55,322.55	-	-	-	-	-	-	-
School Administrative Services	29,035.94	86,643.91	99,025.50	68,108.00	66,317.00	64,217.00	63,377.00	62,995.00	60,790.00	58,770.00
Plant Operations & Maintenance	122,390.31	217,205.57	194,712.37	165,777.00	101,276.00	124,472.00	140,430.00	162,618.00	211,694.00	207,895.00
Pupil Transportation	100,921.55	120,859.78	184,847.46	90,283.00	84,454.00	74,716.00	105,620.00	88,854.00	90,318.00	87,340.00
Unallocated Benefits	-	-	-	741,463.00	1,020,818.00	891,360.00	586,756.00	590,090.00	490,370.00	443,733.00
Interest & Other Charges	-	(1,265.18)	14,588.40	9,374.00	3,870.00	-	-	-	-	-
Unallocated Adjustment to Fixed Assets	-	-	-	-	68,716.00	-	-	187,290.00	-	-
Unallocated Depreciation	-	-	-	38,772.00	49,602.00	49,880.00	59,665.00	56,598.00	86,408.00	25,765.00
Total Governmental Activities	2,907,374.08	3,142,937.56	3,568,580.35	2,747,924.00	3,073,213.00	2,922,229.00	2,633,955.00	2,751,448.00	2,347,092.00	2,147,719.00
Expenses	\$ 2,907,374.08	\$ 3,142,937.56	\$ 3,568,580.35	\$ 2,747,924.00	\$ 3,073,213.00	\$ 2,922,229.00	\$ 2,633,955.00	\$ 2,751,448.00	\$ 2,347,092.00	\$ 2,147,719.00
Program Revenues:										
Operating Grants & Contributions	\$ 619,100.67	\$ 898,110.24	\$ 1,205,750.00	\$ 423,169.00	\$ 708,862.00	\$ 545,706.00	\$ 298,517.00	\$ 307,779.00	\$ 93,637.00	\$ 168,137.00
Total Governmental Activities	619,100.67	898,110.24	1,205,750.00	423,169.00	708,862.00	545,706.00	298,517.00	307,779.00	93,637.00	168,137.00
Total District Program Revenues	\$ 619,100.67	\$ 898,110.24	\$ 1,205,750.00	\$ 423,169.00	\$ 708,862.00	\$ 545,706.00	\$ 298,517.00	\$ 307,779.00	\$ 93,637.00	\$ 168,137.00
Net (Expense)/Revenue:										
Governmental Activities	\$ (2,288,273.41)	\$ (2,244,827.32)	\$ (2,362,830.35)	\$ (2,324,755.00)	\$ (2,364,351.00)	\$ (2,376,523.00)	\$ (2,335,438.00)	\$ (2,443,669.00)	\$ (2,253,455.00)	\$ (1,979,582.00)
Total District-Wide Net Expense	\$ (2,288,273.41)	\$ (2,244,827.32)	\$ (2,362,830.35)	\$ (2,324,755.00)	\$ (2,364,351.00)	\$ (2,376,523.00)	\$ (2,335,438.00)	\$ (2,443,669.00)	\$ (2,253,455.00)	\$ (1,979,582.00)
General Revenues & Other Changes in Net Position:										
Governmental Activities:										
Property Taxes Levied for General Purposes, Net	\$ 1,565,430.00	\$ 1,514,402.00	\$ 1,484,708.00	\$ 1,455,596.00	\$ 1,427,055.00	\$ 1,346,565.00	\$ 1,263,753.00	\$ 1,214,680.00	\$ 1,190,863.00	\$ 1,148,394.00
Taxes Levied for Debt Service	-	-	-	-	-	-	-	-	-	-
Grants & Contributions	864,549.00	889,634.00	875,354.00	869,142.00	852,404.00	880,075.00	874,003.00	1,037,238.00	1,046,523.00	1,013,929.00
Tuition Received	-	-	-	-	-	-	-	17,300.00	-	19,000.00
Investment Earnings	-	-	-	-	329.00	285.00	463.00	312.00	441.00	2,153.00
Miscellaneous Income	2,282.87	1,446.24	-	29,735.00	36,409.00	9,936.00	11,812.00	2,149.00	13,350.00	5,345.00
Transfers/Cancellations	-	-	333.28	-	-	-	-	-	-	-
Total Governmental Activities	2,432,261.87	2,405,482.24	2,360,395.28	2,354,473.00	2,316,197.00	2,236,861.00	2,150,031.00	2,271,679.00	2,251,177.00	2,188,821.00
Total District-Wide	\$ 2,432,261.87	\$ 2,405,482.24	\$ 2,360,395.28	\$ 2,354,473.00	\$ 2,316,197.00	\$ 2,236,861.00	\$ 2,150,031.00	\$ 2,271,679.00	\$ 2,251,177.00	\$ 2,188,821.00

BASS RIVER TOWNSHIP SCHOOL DISTRICT
 CHANGES IN NET POSITION - (ACCRUAL BASIS OF ACCOUNTING)
 LAST TEN FISCAL YEARS

	FISCAL YEAR ENDING JUNE 30,									
	2020	2019	2018	2017	2016	2015	2014	2013	2012	2011
Change in Net Position:										
Governmental Activities	\$ 143,988.46	\$ 160,654.92	\$ (2,435.07)	\$ 29,718.00	\$ (48,154.00)	\$ (139,662.00)	\$ (185,407.00)	\$ (171,990.00)	\$ (2,278.00)	\$ 209,239.00
Total District	\$ 143,988.46	\$ 160,654.92	\$ (2,435.07)	\$ 29,718.00	\$ (48,154.00)	\$ (139,662.00)	\$ (185,407.00)	\$ (171,990.00)	\$ (2,278.00)	\$ 205,343.00

Source: CAFR Schedule A-2

**BASS RIVER TOWNSHIP SCHOOL DISTRICT
FUND BALANCES - GOVERNMENTAL FUNDS
LAST TEN FISCAL YEARS
(Modified Accrual Basis of Accounting)**

	FISCAL YEAR ENDING JUNE 30,									
	2020	2019	2018	2017	2016	2015	2014	2013	2012	2011
General Fund:										
Restricted	\$ 42,123.35	\$ -	\$ -	\$ -	\$ -	\$ 10,000.00	\$ 25,689.00	\$ 99,039.00	\$ -	\$ -
Assigned	66,645.25	75,369.52	37,426.15	75,974.00	55,668.00	53,518.00	51,040.00	21,270.00	-	-
Reserved	-	171,974.79	-	-	-	-	-	-	389,561.00	319,247.00
Unreserved/Unassigned	172,267.00	-	-	21,384.00	(3,539.00)	11,215.00	88,911.00	166,520.00	164,584.00	219,381.00
Total General Fund	\$ 281,035.60	\$ 247,344.31	\$ 37,426.15	\$ 97,358.00	\$ 52,129.00	\$ 74,733.00	\$ 165,640.00	\$ 286,829.00	\$ 554,145.00	\$ 538,628.00
All Other Governmental Funds:										
Restricted										
Capital Projects Fund	-	146,577.86	-	-	-	-	-	-	-	-
Unreserved, Reported in:										
Capital Projects Fund	-	-	256,096.80	369,000.00	-	-	-	-	-	-
Total All Other Governmental Funds	\$ -	\$ 146,577.86	\$ 256,096.80	\$ 369,000.00	\$ -	\$ -	\$ -	\$ -	\$ -	\$ -

Source: CAFR Schedule B-1

BASS RIVER TOWNSHIP SCHOOL DISTRICT
CHANGES IN FUND BALANCES - GOVERNMENTAL FUNDS
LAST TEN FISCAL YEARS
(Modified Accrual Basis of Accounting)

	2020	2019	2018	2017	2016	2015	2014	2013	2012	2011
Revenues										
Tax Levy	\$ 1,565,430.00	\$ 1,514,402.00	\$ 1,484,708.00	\$ 1,455,596.00	\$ 1,427,055.00	\$ 1,346,565.00	\$ 1,263,753.00	\$ 1,238,974.00	\$ 1,214,680.00	\$ 1,190,863.00
Tuition Charges	-	-	-	-	-	-	-	-	-	-
Miscellaneous	24,282.87	25,307.79	24,024.28	29,735.00	36,738.00	10,221.00	12,275.00	8,830.00	22,159.00	13,791.00
State Sources	1,202,378.99	1,238,940.50	1,219,763.46	1,197,537.00	1,171,885.00	1,101,688.00	1,074,666.00	1,083,372.00	1,037,238.00	1,048,921.00
Federal Sources	79,474.68	123,288.19	120,796.00	94,774.00	94,704.00	94,440.00	97,854.00	91,068.00	91,239.00	165,739.00
Total Revenues	2,871,566.54	2,903,938.48	2,849,291.74	2,777,642.00	2,730,382.00	2,552,914.00	2,448,548.00	2,422,244.00	2,365,316.00	2,419,314.00
Expenditures										
Instruction:										
Regular Instruction	830,335.03	947,855.77	961,354.56	800,406.00	862,319.00	844,634.00	776,818.00	743,205.00	809,726.00	791,050.00
Special Education Instruction	171,638.43	167,677.94	222,999.83	306,383.00	316,680.00	247,650.00	274,427.00	235,803.00	140,070.00	136,446.00
Other Special Instruction	-	-	-	39,780.00	44,001.00	57,604.00	64,917.00	18,635.00	17,218.00	10,380.00
Other Instruction	67,214.42	43,887.58	26,883.86	21,867.00	23,746.00	19,664.00	20,404.00	20,282.00	16,772.00	9,241.00
Support Services:										
Tuition	37,375.98	-	51,659.00	45,402.00	2,822.00	2,681.00	-	37,514.00	-	-
Health Services	60,290.91	63,303.83	16,419.33	-	-	-	-	-	-	-
Student & Instruction Related Services	259,033.59	182,603.02	63,205.63	-	-	-	-	-	-	-
Other Administrative Services	161,404.18	110,263.79	187,059.18	273,761.00	283,001.00	329,639.00	327,533.00	328,677.00	311,226.00	247,962.00
Central Services	43,762.52	38,493.49	37,966.65	-	-	-	-	-	-	-
General Administration Services	-	-	109,054.05	146,548.00	145,591.00	135,712.00	134,008.00	138,887.00	127,099.00	129,137.00
Administration Information	-	-	-	-	-	-	-	-	-	-
Technology Services	-	-	-	-	-	-	-	-	-	-
School Administrative Services	22,264.65	69,498.14	67,959.03	68,108.00	66,317.00	64,217.00	63,377.00	62,995.00	60,790.00	58,770.00
Plant Operations & Maintenance	182,361.83	243,045.24	195,604.28	211,093.00	201,760.00	205,875.00	204,159.00	208,628.00	211,694.00	207,895.00
Pupil Transportation	77,386.27	96,943.11	138,443.91	90,283.00	84,454.00	74,716.00	105,620.00	88,854.00	90,318.00	87,340.00
Unallocated Benefits	832,826.16	789,255.98	830,614.19	728,782.00	712,295.00	661,429.00	591,662.00	575,080.00	490,370.00	443,733.00
Capital Outlay	145,776.10	109,518.94	112,903.20	80,000.00	190,000.00	80,000.00	86,812.00	311,000.00	74,516.00	20,208.00
Total Expenditures	2,908,281.83	2,862,346.83	3,022,126.70	2,812,413.00	2,932,986.00	2,723,821.00	2,649,737.00	2,769,560.00	2,349,799.00	2,142,162.00
Other Financing Sources/(Uses):										
Capital Leases (Non-budgeted)	-	-	-	449,000.00	180,000.00	80,000.00	80,000.00	80,000.00	-	-
Cancellation of Unexpended Balance	(801.76)	-	-	-	-	-	-	-	-	-
Total Other Financing Sources/(Uses)	(801.76)	-	-	449,000.00	180,000.00	80,000.00	80,000.00	80,000.00	-	-
Net Change in Fund Balances	\$ (37,517.05)	\$ 41,591.65	\$ (172,834.96)	\$ 414,229.00	\$ (22,604.00)	\$ (90,907.00)	\$ (121,189.00)	\$ (267,316.00)	\$ 15,517.00	\$ 277,152.00
Debt Service as a Percentage of Noncapital Expenditures	0.00%	0.00%	0.00%	0.00%	0.00%	0.00%	0.00%	0.00%	0.00%	0.00%

Source: CAFR Schedule B-2

EXHIBIT J-5

BASS RIVER TOWNSHIP SCHOOL DISTRICT
 GENERAL FUND - OTHER LOCAL REVENUE BY SOURCE
 LAST TEN FISCAL YEARS
 (Modified Accrual Basis of Accounting)

FISCAL YEAR ENDING JUNE 30,	INTEREST	TUITION FROM OTHER LEA'S	MISCELLANEOUS	TOTAL
2020	\$ -	\$ -	2,282.87	2,282.87
2019	716.52	-	729.72	1,446.24
2018	-	-	333.28	333.28
2017	299.00	-	6,035.00	6,334.00
2016	329.00	-	3,129.00	3,458.00
2015	285.00	-	8,201.00	8,486.00
2014	463.00	-	3,413.00	3,876.00
2013	-	-	8,830.00	8,830.00
2012	312.00	17,300.00	2,149.00	19,761.00
2011	441.00	-	13,350.00	13,791.00
Total	\$ 2,845.52	\$ 17,300.00	\$ 48,452.87	\$ 68,598.39

Source: District Records

Revenue Capacity Information

Revenue capacity information is intended to assist users in understanding and assessing the factors affecting the School District's ability to generate revenues. Please refer to the following exhibits for a historical view of these factors and how they relate to the School District's ability to generate revenues.

This page intentionally left blank

**BASS RIVER TOWNSHIP SCHOOL DISTRICT
ASSESSED VALUE AND ACTUAL VALUE OF TAXABLE PROPERTY,
LAST TEN FISCAL YEARS**

FISCAL YEAR ENDED JUNE 30,	VACANT LAND	RESIDENTIAL	FARM REG.	OFARM	COMMERCIAL	INDUSTRIAL	APARTMENT	TOTAL ASSESSED VALUE	PUBLIC UTILITIES	NET VALUATION TAXABLE	TOTAL DIRECT SCHOOL TAX RATE	ACTUAL (COUNTY EQUALIZED) VALUE
2020	\$ 7,266,800.00	\$ 117,216,200.00	\$ 5,639,100.00	\$ 806,300.00	\$ 39,847,800.00	\$ -	\$ -	\$ 170,776,200.00	\$ 98.00	\$ 170,776,298.00	0.677	\$ 177,337,793.00
2019	7,708,900.00	116,334,300.00	5,639,100.00	697,300.00	40,009,100.00	-	-	170,388,700.00	-	170,388,700.00	0.919	173,282,616.00
2018	7,864,800.00	117,183,100.00	6,462,200.00	741,100.00	40,009,100.00	-	-	172,260,300.00	-	172,260,300.00	0.879	176,405,937.00
2017	8,476,600.00	116,194,500.00	6,027,700.00	700,100.00	39,084,100.00	-	-	170,483,000.00	-	170,483,000.00	0.867	190,269,922.00
2016	8,666,300.00	117,283,100.00	5,093,100.00	707,180.00	27,354,100.00	-	-	159,103,780.00	-	159,103,780.00	0.883	177,090,274.00
2015	9,048,200.00	117,471,700.00	5,136,700.00	702,600.00	27,354,100.00	-	-	159,713,300.00	-	159,713,300.00	0.838	146,998,579.00
2014	11,631,100.00	142,805,600.00	5,791,500.00	711,600.00	27,120,500.00	-	-	188,060,300.00	-	188,060,300.00	0.669	201,074,666.00
2013	11,631,100.00	145,382,700.00	5,898,200.00	707,700.00	29,550,500.00	-	-	193,170,200.00	-	193,170,200.00	0.621	200,214,620.00
2012	11,565,700.00	146,447,200.00	6,148,600.00	562,700.00	29,554,500.00	-	-	194,278,700.00	-	194,278,700.00	0.637	201,671,353.00
2011	12,014,800.00	145,419,700.00	5,992,300.00	553,000.00	29,554,500.00	-	-	193,534,300.00	-	193,534,300.00	0.611	202,641,353.00

Source: Burlington County Board of Taxation
 Real property is required to be assessed at some percentage of true value (fair or market value) established by each county board of taxation.
 Reassessment occurs when ordered by the County Board of Taxation
 a. Taxable Value of Machinery, Implements and Equipment of Telephone, Telegraph and Messenger System Companies
 b. Tax rates are per \$100

**BASS RIVER TOWNSHIP SCHOOL DISTRICT
DIRECT AND OVERLAPPING PROPERTY TAX RATES
LAST TEN FISCAL YEARS
(Rate per \$100 of Assessed Value)**

FISCAL YEAR ENDED JUNE 30,	SCHOOL DISTRICT DIRECT RATE		OVERLAPPING RATES		TOTAL DIRECT AND OVERLAPPING TAX RATE	
	BASIC RATE	GENERAL OBLIGATION DEBT SERVICE	TOWNSHIP OF BASS RIVER	PINELANDS REGIONAL RATE		BURLINGTON COUNTY
2020	0.677	-	0.373	0.793	0.403	2.246
2019	0.919	-	0.347	0.347	0.740	2.353
2018	0.879	-	0.164	0.699	0.391	2.133
2017	0.867	-	0.156	0.470	0.693	2.186
2016	0.883	-	0.156	0.461	0.703	2.203
2015	0.838	-	0.131	0.419	0.648	2.036
2014	0.669	-	0.107	0.357	0.513	1.646
2013	0.637	-	0.056	0.372	0.494	1.559
2012	0.621	-	0.041	0.376	0.474	1.512
2011	0.611	-	0.042	0.394	0.479	1.526

Source: Municipal Tax Collector, Burlington County Board of Taxation.

**BASS RIVER TOWNSHIP SCHOOL DISTRICT
PRINCIPAL PROPERTY TAX PAYERS,
CURRENT YEAR AND NINE YEARS AGO**

Taxpayer	2020		
	TAXABLE ASSESSED VALUE	RANK	% OF TOTAL DISTRICT NET ASSESSED VALUE

DATA NOT AVAILABLE

Total	<u>\$ -</u>	<u>0.000%</u>
-------	-------------	---------------

Taxpayer	2011		
	TAXABLE ASSESSED VALUE	RANK	% OF TOTAL DISTRICT NET ASSESSED VALUE

DATA NOT AVAILABLE

Total	<u>\$ -</u>	<u>-</u>
-------	-------------	----------

Source: Municipal Tax Assessor

**BASS RIVER TOWNSHIP SCHOOL DISTRICT
PROPERTY TAX LEVIES AND COLLECTIONS
LAST TEN FISCAL YEARS**

FISCAL YEAR ENDED JUNE 30,	TAXES LEVIED FOR THE FISCAL YEAR	COLLECTED WITHIN THE FISCAL YEAR OF THE LEVY		COLLECTIONS IN SUBSEQUENT YEARS
		AMOUNT	PERCENTAGE OF LEVY	
2020	\$ 1,156,885.00	\$ 1,156,885.00	100.00%	-
2019	1,514,402.00	1,514,402.00	100.00%	-
2018	1,484,708.00	1,484,708.00	100.00%	-
2017	1,455,596.00	1,455,596.00	100.00%	-
2016	1,427,055.00	1,427,055.00	100.00%	-
2015	1,346,565.00	1,346,565.00	100.00%	-
2014	1,263,753.00	1,263,753.00	100.00%	-
2013	1,238,974.00	1,238,974.00	100.00%	-
2012	1,214,680.00	1,214,680.00	100.00%	-
2011	2,954,269.00	2,954,269.00	100.00%	-

Source: District records including the Certificate and Report of School Taxes (A4F form)

a. School taxes are collected by the Municipal Tax Collector. Under New Jersey State Statute, a municipality is required to remit to the school district the entire property tax balance, in the amount voted upon or certified prior to the end of the school year.

Debt Capacity Information

Debt capacity information is intended to assist users in understanding and assessing the School District's debt burden and its ability to issue additional debt. Please refer to the following exhibits for historical view of the School District's outstanding debt and its debt capacity.

This page intentionally left blank

**BASS RIVER TOWNSHIP SCHOOL DISTRICT
RATIOS OF OUTSTANDING DEBT BY TYPE
LAST TEN FISCAL YEARS**

FISCAL YEAR ENDED JUNE 30,	GOVERNMENTAL ACTIVITIES		TOTAL DISTRICT	PERCENTAGE OF PERSONAL INCOME PER CAPITA	
	GENERAL OBLIGATION BONDS	CAPITAL LEASES			
2020	\$ -	\$ 342,184.56	\$ 342,184.56	N/A	N/A
2019	-	414,303.45	414,303.45	N/A	N/A
2018	-	500,104.27	500,104.27	N/A	N/A
2017	-	590,414.00	590,414.00	N/A	59,659
2016	-	241,390.00	241,390.00	N/A	57,469
2015	-	341,874.00	341,874.00	N/A	56,020
2014	-	163,277.00	163,277.00	N/A	53,489
2013	-	294,012.00	294,012.00	N/A	51,496
2012	-	-	-	N/A	41,022
2011	-	-	-	N/A	49,971

Note: Details regarding the district's outstanding debt can be found in the notes to the financial statements.
See Exhibit J-14 for personal income and population data.

**BASS RIVER TOWNSHIP SCHOOL DISTRICT
RATIOS OF NET GENERAL BONDED DEBT OUTSTANDING
LAST TEN FISCAL YEARS**

FISCAL YEAR ENDED JUNE 30,	ESTIMATED SCHOOL DISTRICT POPULATION	NET ASSESSED VALUATION TAXABLE	NET GENERAL BONDED DEBT OUTSTANDING	PERCENTAGE OF ACTUAL TAXABLE VALUE OF PROPERTY	PER CAPITA
2020	N/A	\$ 170,776,298.00	-	0.00%	N/A
2019	1,422	170,388,700.00	-	0.00%	N/A
2018	1,443	172,260,300.00	-	0.00%	N/A
2017	1,443	170,483,000.00	-	0.00%	59,659
2016	1,449	159,103,780.00	-	0.00%	57,469
2015	1,445	159,713,300.00	-	0.00%	56,020
2014	1,445	188,060,300.00	-	0.00%	53,489
2013	1,444	193,170,200.00	-	0.00%	51,496
2012	1,445	194,278,700.00	-	0.00%	41,022
2011	1,446	193,534,300.00	-	0.00%	49,971

Note: Details regarding the District's outstanding debt can be found in the notes to the financial statements.

See Exhibit J-6 for property tax data.

Population data can be found in Exhibit J-14.

**BASS RIVER TOWNSHIP SCHOOL DISTRICT
RATIOS OF OVERLAPPING GOVERNMENTAL ACTIVITIES DEBT
YEAR ENDED JUNE 30, 2020
UNAUDITED**

GOVERNMENTAL UNIT	DEBT OUTSTANDING	ESTIMATED PERCENTAGE APPLICABLE	SHARE OF OVERLAPPING DEBT
Debt Repaid With Property Taxes:			
Local Municipality	\$ -	100.0%	\$ -
Pinelands Regional School District	55,515,000.00	5.89%	3,269,833.50
County of Burlington	221,311,009	100.0%	<u>221,311,009.30</u>
Subtotal, Overlapping Debt			224,580,842.80
Local School District Direct Debt			<u>-</u>
Total Direct & Overlapping Debt			<u><u>\$ 224,580,842.80</u></u>

Sources: Burlington County Office of the Treasurer, Township of Bass River.

NOTE: Overlapping governments are those that coincide, at least in part, with the geographic boundaries of the District. This schedule estimates the portion of the outstanding debt of those overlapping governments that is borne by the residents and businesses of Bass River. This process recognizes that, when considering the District's ability to issue and repay long-term debt, the entire debt burden borne by the residents and businesses should be taken into account. However this does not imply that every taxpayer is a resident, and therefore responsible for repaying the debt, of each overlapping payment.

For debt repaid with property taxes, the percentage of overlapping debt applicable is estimated using taxable assessed property values. Applicable percentages were estimated by determining the portion of another governmental unit's taxable value that is within the district's boundaries and dividing it by each unit's total taxable value.

BASS RIVER TOWNSHIP SCHOOL DISTRICT
 LEGAL DEBT MARGIN INFORMATION
 LAST TEN FISCAL YEARS
 (DOLLARS IN THOUSANDS)
 UNAUDITED

	FISCAL YEAR									
	2020	2019	2018	2017	2016	2015	2014	2013	2012	2011
Debt Limit	\$ 6,896,721.45	\$ 691,935,436.00	\$ 6,921,115.21	\$ 4,400,623.00	\$ 4,406,656.00	\$ 4,445,108.00	\$ 44,544,568.00	\$ 4,804,139.00	\$ 4,846,216.00	\$ 4,844,320.00
Total Net Debt Applicable to Limit	-	-	-	-	-	-	-	-	-	-
Legal Debt Margin	\$ 6,896,721.45	\$ 691,935,436.00	\$ 6,921,115.21	\$ 4,400,623.00	\$ 4,406,656.00	\$ 4,445,108.00	\$ 44,544,568.00	\$ 4,804,139.00	\$ 4,846,216.00	\$ 4,844,320.00
Total Net Debt Applicable to the Limit as a Percentage of Debt Limit	0.00%	0.00%	0.00%	0.00%	0.00%	0.00%	0.00%	0.00%	0.00%	0.00%

Legal Debt Margin Calculation

	2019	2018	2017
Equalized Valuation Basis	\$ 173,282,518.00	\$ 176,405,937.00	\$ 167,565,654.00
Average Equalized Valuation of Taxable Property	\$ 172,418,036.33		
Debt Limit (4% of Average Equalization Value)	\$ 6,896,721.45		
Net Bonded School Debt	-		
Legal Debt Margin	\$ 6,896,721.45		

Source: Equalized valuation bases were obtained from the Burlington County Board of Taxation

Demographic and Economic Information

Demographic and economic information is intended (1) to assist users in understanding the socioeconomic environment within the School District operates and (2) to provide information that facilitates comparisons of financial statement information over time and among school districts. Please refer to the following exhibits for a historical view of the demographic and economic statistics and factors prevalent in the location in which the School District operates.

This page intentionally left blank

**BASS RIVER TOWNSHIP SCHOOL DISTRICT
DEMOGRAPHIC AND ECONOMIC STATISTICS
LAST TEN FISCAL YEARS
UNAUDITED**

YEAR	POPULATION (a)	PERSONAL INCOME (b)	PER CAPITA PERSONAL INCOME (c)	UNEMPLOYMENT RATE (d)
2020	N/A	N/A	N/A	N/A
2019	N/A	N/A	N/A	6.8%
2018	1,422	N/A	N/A	7.4%
2017	1,443	N/A	59,659	7.5%
2016	1,443	68,701,437	57,469	4.2%
2015	1,449	79,803,015	56,020	6.5%
2014	1,445	77,664,415	53,489	10.5%
2013	1,445	74,777,540	51,496	12.3%
2012	1,444	74,258,850	41,022	9.2%
2011	1,445	72,234,930	49,971	9.0%

Source: U.S. Department of Commerce, Bureau of Economic Analysis. These numbers are estimated by the Bureau and may be revised from year to year.

a Population information provided by the NJ Dept of Labor and Workforce Development. These numbers are estimated by the Department and may be revised from year to year.

b Personal income has been estimated based upon the county population and per capita personal income presented.

c Per capita personal income by county estimated based upon the 2000 Census published by the US Bureau of Economic Analysis.

d Unemployment data provided by the NJ Dept of Labor and Workforce Development. Note that that there is recent revised data for the years 2004 through 2001 due to the new unemployment estimation procedure.

**BASS RIVER TOWNSHIP SCHOOL DISTRICT
 PRINCIPAL EMPLOYERS
 CURRENT YEAR AND NINE YEARS AGO
 UNAUDITED**

2020		
EMPLOYEES	RANK	PERCENTAGE OF TOTAL EMPLOYMENT

DATA NOT AVAILABLE

Total	-	0.00%
Total Employment - (Estimated)	-	

Operating Information

Operating information is intended to provide contextual information about the School District's operations and resources to assist readers in using financial statement information to understand and assess the School District's economic condition. Please refer to the following exhibits for a historical view of the factors and statistics pertinent to the School District's operations.

This page intentionally left blank

**BASS RIVER TOWNSHIP SCHOOL DISTRICT
FULL-TIME EQUIVALENT DISTRICT EMPLOYEES BY FUNCTION/PROGRAM
LAST TEN FISCAL YEARS**

Function/Program	2020	2019	2018	2017	2016	2015	2014	2013	2012	2011
Instruction:										
Regular	12.00	12.00	12.25	7.25	14.00	12.00	12.00	11.00	11.50	11.40
Special Education	2.00	2.00	3.00	3.00	3.00	4.00	4.00	4.00	4.00	3.00
Other Special Instruction	4.00	4.00	4.80	4.75	3.00	3.00	2.00	2.00	0.80	0.80
Support Services:										
Student & Instruction Related Services	-	-	4.00	2.10	2.00	3.00	3.00	3.00	3.20	3.20
General Administration	2.00	2.00	1.50	0.50	1.50	1.50	1.50	1.50	1.70	1.70
School Administrative Services	2.00	2.00	1.50	0.75	2.00	2.00	2.00	2.00	2.00	2.00
Plant Operations & Maintenance	2.00	2.00	2.00	2.50	2.50	2.50	2.50	2.50	2.50	2.50
Other Support Services	-	-	-	0.50	1.00	1.00	1.00	1.00	1.00	1.00
Total	24.0	24.0	29.1	21.4	29.0	29.0	28.0	27.0	26.7	25.6

Source: District Personnel Records

BASS RIVER TOWNSHIP SCHOOL DISTRICT
OPERATING STATISTICS
LAST TEN FISCAL YEARS

FISCAL YEAR	ENROLLMENT	OPERATING EXPENDITURES (a)	COST PER PUPIL	PERCENTAGE CHANGE	TEACHING STAFF (b)	PUPIL/TEACHER RATIO (d)	AVERAGE DAILY ENROLLMENT (ADE) (c)	AVERAGE DAILY ATTENDANCE (ADA) (c)	% CHANGE IN AVERAGE DAILY ENROLLMENT	STUDENT ATTENDANCE PERCENTAGE
2020	93	\$ 2,637,797.88	\$ 28,363.42	14.69%	12	1:08	93.3	90.14	-11.40%	96.61%
2019	105	2,596,618.61	24,729.70	-1.61%	12	1:09	105.3	100.03	-4.27%	95.00%
2018	110	2,764,737.00	25,133.97	-6.18%	13	1:11	110.0	103.73	7.84%	94.30%
2017	102	2,732,413.00	26,788.36	3.52%	17	1:6:8	102.0	96.60	-6.85%	94.71%
2016	106	2,742,986.00	25,877.23	7.67%	19	1:7:5	109.5	102.70	-0.54%	93.79%
2015	110	2,643,821.00	24,034.74	5.97%	19	1:8	110.1	109.30	1.10%	99.27%
2014	113	2,562,925.00	22,680.75	16.24%	18	1:6	108.9	102.90	-11.82%	94.49%
2013	126	2,458,560.00	19,512.38	16.63%	22	1:7	123.5	117.80	-6.30%	95.38%
2012	136	2,275,283.00	16,730.02	-4.60%	18	1:3	131.8	126.00	10.29%	95.60%
2011	121	2,121,954.00	17,536.81	#DIV/0!	18	1:7	119.5	113.50	11.68%	94.98%

Sources: District records

Note: Enrollment based on annual October district count from the year prior.

- a Operating expenditures equal total expenditures less debt service, capital outlay, and on-behalf TPAF Pension and reimbursed TPAF social security contributions. J-4
- b Teaching staff includes only full-time equivalents of certificated staff.
- c Average daily enrollment and average daily attendance are obtained from the School Register Summary (SRS).
- d Pupil/Teacher ratio was obtained from the Comparative Spending Guide

**BASS RIVER TOWNSHIP SCHOOL DISTRICT
SCHOOL BUILDING INFORMATION
LAST TEN FISCAL YEARS**

<u>DISTRICT BUILDINGS</u>	<u>2020</u>	<u>2019</u>	<u>2018</u>	<u>2017</u>	<u>2016</u>	<u>2015</u>	<u>2014</u>	<u>2013</u>	<u>2012</u>	<u>2011</u>
Elementary Schools:										
Administration Offices (2008):										
Square Feet	45,299	45,299	45,299	45,299	45,299	45,299	45,299	45,299	45,299	45,299
Capacity	205	205	205	205	205	205	205	205	205	205
Enrollment	105	105	110	106	110	113	113	126	136	121

Number of Schools at June 30, 2020:

- Elementary = 1
- Middle School = 0
- Other = 0

Source: District Facilities Office, District Records

Note: Year of original construction is shown in parentheses. Increases in square footage and capacity are the result of additions. Enrollment is based on the annual October district count.

BASS RIVER TOWNSHIP SCHOOL DISTRICT
 GENERAL FUND
 SCHEDULE OF REQUIRED MAINTENANCE FOR SCHOOL FACILITIES
 LAST TEN FISCAL YEARS
 UNAUDITED

<u>SCHOOL FACILITIES</u>	<u>PROJECT # (s)</u>	<u>2020</u>	<u>2019</u>	<u>2018</u>	<u>2017</u>	<u>2016</u>	<u>2015</u>	<u>2014</u>	<u>2013</u>	<u>2012</u>	<u>2011</u>
Bass River Township Elementary	N/A	\$ 21,098.45	\$ 29,763.93	\$ 16,004.61	\$ 19,233.00	\$ 14,623.00	\$ 8,171.00	\$ 15,708.00	\$ 27,149.00	\$ 33,161.00	\$ 21,812.00
Grand Total		\$ 21,098.45	\$ 29,763.93	\$ 16,004.61	\$ 19,233.00	\$ 14,623.00	\$ 8,171.00	\$ 15,708.00	\$ 27,149.00	\$ 33,161.00	\$ 21,812.00

**BASS RIVER TOWNSHIP SCHOOL DISTRICT
INSURANCE SCHEDULE
JUNE 30, 2020
UNAUDITED**

	COVERAGE	DEDUCTIBLE
SCHOOL PACKAGE POLICY (1):		
NJ School Board Association	\$ 350,000.00	
Property-Blanket Building & Contents	5,892,495.00	1,000.00
Commercial General Liability		
General Aggregate	\$ 16,000,000.00	N/A
Products & Completed Operations Aggregate	16,000,000.00	N/A
Personal & Advertising Injury	16,000,000.00	N/A
Each Occurrence	16,000,000.00	N/A
Fire Damage (Any on Fire)	16,000,000.00	N/A
Medical Expense (Any one Person)		
Professional Liability		
Coverage A - Each Policy Period	15,000,000.00	10,000/claim
Coverage B - Each Claim	100,000.00	
Coverage C - Each Policy Period	300,000.00	10,000/claim
Comprehensive Automobile Liability		
Hired & Non Owned Only	16,000,000.00	N/A
Commercial Crime Policy		
Money-All risk In/Out	25,000.00	N/A
Public Employee Dishonesty	500,000.00	N/A
Forgery & Altercation	100,000.00	N/A
Computer Fraud	100,000.00	N/A
Computer & Scheduled Equipment		
Utica National Ins. Group - Commercial Inland Marine		
Computers	185,000.00	1,000.00
Commercial Articles	Included	
Boiler & Machinery - Hartford Stm. Boiler		
Boiler & Machinery	100,000.00	1,000.00
Business Interruption	Included	12 hours
Property - Blanket Building Contents	5,668,437.00	1,000.00
Commercial General Liability		
Extra Expense	10,000,000.00	1,000.00
Service Interruption	10,000,000.00	24 hours
Accident & Health		
Berkeley Accident & Health LLC		
Accident & Health	1,000,000.00	N/A
Accident & Health/Voluntary		
Retained Limit	500,000.00	N/A
Public Employee's Fidelity Bonds-		
Utica National Ins. Group		
Board Secretary	100,000.00	N/A
Treasurer of School Monies	180,000.00	N/A
Workers Compensation - NJ School Board Association		
Each Accident	2,000,000.00	N/A
Disease - Policy Limit	2,000,000.00	N/A
Disease - Each Employee	2,000,000.00	N/A

Source: District Records

This page intentionally left blank

SINGLE AUDIT SECTION

Fourth Section

This page intentionally left blank



680 Hooper Avenue, Bldg B, Toms River, NJ 08753 • Tel: 732.797.1333
194 East Bergen Place, Red Bank, NJ 07701 • Tel: 732.747.0010

www.hfacpas.com

EXHIBIT K-1

INDEPENDENT AUDITOR'S REPORT ON INTERNAL CONTROL OVER FINANCIAL REPORTING AND ON COMPLIANCE AND OTHER MATTERS BASED ON AN AUDIT OF FINANCIAL STATEMENTS PERFORMED IN ACCORDANCE WITH GOVERNMENT AUDITING STANDARDS

Honorable President and Members
of the Board of Education
Bass River Township School District
County of Burlington

We have audited, in accordance with the auditing standards generally accepted in the United States of America and the standards applicable to financial audits contained in Government Auditing Standards issued by the Comptroller General of the United States and audit requirements as prescribed by the Office of School Finance, Department of Education, State of New Jersey, the financial statements of the governmental activities, the business-type activities, each major fund and the aggregate remaining fund information of the Bass River Township School District as of and for the year ended June 30, 2020, and the related notes to the financial statements, which collectively comprise the School District's basic financial statements, and have issued our report thereon dated January 19, 2021.

Internal Control Over Financial Reporting

In planning and performing our audit of the financial statements, we considered the Bass River Township School District's internal control over financial reporting (internal control) to determine the audit procedures that are appropriate in the circumstances for the purpose of expressing our opinions on the financial statements, but not for the purpose of expressing an opinion on the effectiveness of the School District's internal control. Accordingly, we do not express an opinion on the effectiveness of the Bass River Township School District's internal control.

A deficiency in internal control exists when the design or operation of a control does not allow management or employees, in the normal course of performing their assigned functions, to prevent, or detect and correct, misstatements on a timely basis. *A material weakness* is a deficiency, or a combination of deficiencies, in internal control, such that there is a reasonable possibility that a material misstatement of the entity's financial statements will not be prevented, or detected and corrected on a timely basis. *A significant deficiency* is a deficiency, or a combination of deficiencies, in internal control that is less severe than a material weakness, yet important enough to merit attention by those charged with governance.

Our consideration of internal control was for the limited purpose described in the first paragraph of this section and was not designed to identify all deficiencies in internal control that might be material weaknesses or significant deficiencies. Given these limitations, during our audit we did not identify any deficiencies in internal control that we consider to be material weaknesses. However, material weaknesses may exist that have not been identified.

Compliance and Other Matters

As part of obtaining reasonable assurance about whether the School District's financial statements are free from material misstatement, we performed tests of its compliance with certain provisions of laws, regulations, contracts, and grant agreements, noncompliance with which could have a direct and material effect on the determination of financial statement amounts. However, providing an opinion on compliance with those provisions was not an objective of our audit, and accordingly, we do not express such an opinion. The results of our tests disclosed no instances of noncompliance or other matters that are required to be reported under Government Auditing Standards, and audit requirements as prescribed by the Office of School Finance, Department of Education, State of New Jersey.

Purpose of This Report

The purpose of this report is solely to describe the scope of our testing of internal control and compliance and the results of that testing, and not to provide an opinion on the effectiveness of the School District's internal control or on compliance. This report is an integral part of an audit performed in accordance with Government Auditing Standards and audit requirements as prescribed by the Office of School Finance, Department of Education, State of New Jersey, and federal and state awarding agencies and pass-through entities, in considering the School District's internal control and compliance. Accordingly, this communication is not suitable for any other purpose.

Respectfully Submitted,

HOLMAN FRENIA ALLISON, P.C.

Jerry W. Conaty
Certified Public Accountant
Public School Accountant, No. 2470

Toms River, New Jersey
January 19, 2021



Certified Public Accountants + Advisors

680 Hooper Avenue, Bldg B, Toms River, NJ 08753 • Tel: 732.797.1333
194 East Bergen Place, Red Bank, NJ 07701 • Tel: 732.747.0010

www.hfacpas.com

EXHIBIT K-2

INDEPENDENT AUDITOR'S REPORT ON COMPLIANCE FOR EACH MAJOR PROGRAM AND ON INTERNAL CONTROL OVER COMPLIANCE REQUIRED BY THE NEW JERSEY OMB CIRCULAR 15-08

Honorable President and Members
of the Board of Education
Bass River Township School District
County of Burlington

Report on Compliance for Each Major State Program

We have audited the Bass River Township School District's compliance with the types of compliance requirements described in the New Jersey State Aid/Grant Compliance Supplement that could have a direct and material effect on each of the School District's major state programs for the fiscal year ended June 30, 2020. The Bass River Township School District's major state programs are identified in the summary of auditor's results section of the accompanying schedule of findings and questioned costs.

Management's Responsibility

Management is responsible for compliance with state statutes, regulations, and the terms and conditions of its state awards applicable to its state programs.

Auditor's Responsibility

Our responsibility is to express an opinion on compliance for each of the Bass River Township School District's major state programs based on our audit of the types of compliance requirements referred to above. We conducted our audit of compliance in accordance with auditing standards generally accepted in the United States of America; the standards applicable to financial audits contained in Government Auditing Standards, issued by the Comptroller General of the United States; New Jersey OMB's Circular 15-08, Single Audit Policy for Recipients of Federal Grants, State Grants and State Aid; and the audit requirements prescribed by the Office of School Finance, Department of Education, State of New Jersey. Those standards and New Jersey OMB's Circular 15-08 require that we plan and perform the audit to obtain reasonable assurance about whether noncompliance with the types of compliance requirements referred to above that could have a direct and material effect on a major state program occurred. An audit includes examining, on a test basis, evidence about the School District's compliance with those requirements and performing such other procedures as we considered necessary in the circumstances.

We believe that our audit provides a reasonable basis for our opinion on compliance for each major state program. However, our audit does not provide a legal determination of the School District's compliance.

Opinion on Each Major State Program

In our opinion, the Bass River Township School District complied, in all material respects, with the types of compliance requirements referred to above that could have a direct and material effect on each of its major state programs for the year ended June 30, 2020.

Report on Internal Control Over Compliance

Management of the Bass River Township School District is responsible for establishing and maintaining effective internal control over compliance with the types of compliance requirements referred to above. In planning and performing our audit of compliance, we considered the School District's internal control over compliance with the types of requirements that could have a direct and material effect on each major state program to determine the auditing procedures that are appropriate in the circumstances for the purpose of expressing an opinion on compliance for each major state program and to test and report on internal control over compliance in accordance with New Jersey OMB's Circular 15-08, but not for the purpose of expressing an opinion on the effectiveness of internal control over compliance. Accordingly, we do not express an opinion on the effectiveness of the School District's internal control over compliance.

A deficiency in internal control over compliance exists when the design or operation of a control over compliance does not allow management or employees, in the normal course of performing their assigned functions, to prevent, or detect and correct, noncompliance with a type of compliance requirement of a state program on a timely basis. A *material weakness in internal control over compliance* is a deficiency, or combination of deficiencies, in internal control over compliance, such that there is a reasonable possibility that material noncompliance with a type of compliance requirement of a state program will not be prevented, or detected and corrected, on a timely basis. A *significant deficiency in internal control over compliance* is a deficiency, or a combination of deficiencies, in internal control over compliance with a type of compliance requirement of a state program that is less severe than a material weakness in internal control over compliance, yet important enough to merit attention by those charged with governance.

Our consideration of internal control over compliance was for the limited purpose described in the first paragraph of this section and was not designed to identify all deficiencies in internal control over compliance that might be material weaknesses or significant deficiencies. We did not identify any deficiencies in internal control over compliance that we consider to be material weaknesses. However, material weaknesses may exist that have not been identified.

The purpose of this report on internal control over compliance is solely to describe the scope of our testing of internal control over compliance and the results of that testing based on the requirements of the New Jersey OMB's Circular 15-08. Accordingly, this report is not suitable for any other purpose.

Respectfully Submitted,

HOLMAN FRENIA ALLISON, P.C.

Jerry W. Conaty
Certified Public Accountant
Public School Accountant, No. 2470

Toms River, New Jersey
January 19, 2021

BASS RIVER TOWNSHIP SCHOOL DISTRICT
SCHEDULE OF EXPENDITURES OF FEDERAL AWARDS
FOR THE FISCAL YEAR ENDED JUNE 30, 2020

FEDERAL GRANTOR PASS-THROUGH GRANTOR PROGRAM TITLE OR CLUSTER	FEDERAL CFDA NUMBER	FEDERAL AWARD IDENTIFICATION NUMBER	PASS THROUGH ENTITY IDENTIFYING NUMBER	PROGRAM OR AWARD AMOUNT	GRANT PERIOD	BALANCE JUNE 30, 2019	CASH RECEIVED	BUDGETARY EXPENDITURES	PASSED THROUGH TO SUBRECIPIENTS	BALANCE, JUNE 30, 2020	
										UNEARNED REVENUE	(ACCOUNTS RECEIVABLE)
U.S. Department of Education Passed Through New Jersey Department of Education: No Child Left Behind (N.C.L.B.): Title I - Part A	84.010	S010A190030	100-034-5064-194	32,879.00	7/1/19-6/30/20	\$ -	\$ 16,930.00	\$ (31,679.00)	\$ -	\$ -	\$ (14,749.00)
	84.010	S010A180030	100-034-5064-194	34,434.00	7/1/18-6/30/19	(13,510.00)	13,510.00	-	-	-	-
	84.010	S010A190030	100-034-5064-194	13,100.00	7/1/19-6/30/20	-	6,904.00	(7,347.80)	-	-	(443.80)
	84.010	S010A180030	100-034-5064-194	15,500.00	7/1/18-6/30/19	(9,443.00)	9,443.00	-	-	-	-
Special Education Cluster: I.D.E.A. Part B	84.027	H027A190100	100-034-5065-016	45,497.00	7/1/19-6/30/20	-	46,787.00	(39,026.80)	-	-	(15,192.80)
	84.027	H027A180100	100-034-5065-016	45,536.00	7/1/18-6/30/19	(11,743.00)	11,743.00	(27,403.25)	-	-	(5,841.25)
I.D.E.A. Preschool	84.173	H173A190114	100-034-5065-020	3,602.00	7/1/19-6/30/20	-	2,071.00	(3,602.00)	-	-	(1,531.00)
	84.173	H173A180114	100-034-5065-020	3,592.00	7/1/18-6/30/19	(1,000)	1,000	-	-	-	-
Total Special Education Cluster						(1,000)	2,072.00	(3,602.00)	-	-	(1,531.00)
CARES Emergency Relief Grant	84.425D	S425D200027	N/A	11,581.05	3/13/20-9/30/22	(11,744.00)	35,377.00	(31,005.25)	-	-	(7,372.25)
Total U.S. Department of Education						(34,697.00)	82,164.00	(81,613.10)	-	-	(34,146.10)
Total Expenditures of Federal Awards						\$ (34,697.00)	\$ 82,164.00	\$ (81,613.10)	\$ -	\$ -	\$ (34,146.10)

The accompanying Notes to Schedules of Expenditures of Awards and Financial Assistance are an integral part of this schedule

BASS RIVER TOWNSHIP SCHOOL DISTRICT
SCHEDULE OF EXPENDITURES OF STATE FINANCIAL ASSISTANCE
YEAR ENDED JUNE 30, 2020

STATE GRANTOR/ PROGRAM TITLE	GRANT OR STATE PROJECT NUMBER	AWARD AMOUNT	GRANT PERIOD	BALANCE JUNE 30, 2019	CASH RECEIVED	BUDGETARY EXPENDITURES	PASSED THROUGH TO SUBRECIPIENTS	UNEARNED REVENUE	BALANCE, JUNE 30, 2020		MEMO	
									(ACCOUNTS RECEIVABLE)	DUE TO GRANTOR	BUDGETARY RECEIVABLE	CUMULATIVE TOTAL EXPENDITURES
New Jersey Department of Education:												
General Fund:												
State Aid Public:												
Special Education Categorical Aid	495-034-5120-089	\$ 81,213.00	7/1/19-6/30/20	-	\$ 81,213.00	\$ (81,213.00)	\$ -	\$ -	\$ -	\$ -	\$ 7,632.12	81,213.00
Security Aid	495-034-5120-084	26,554.00	7/1/19-6/30/20	-	26,554.00	(26,554.00)	-	-	-	-	2,495.45	26,554.00
Adjustment Aid	495-034-5120-085	51,190.00	7/1/19-6/30/20	-	51,190.00	(51,190.00)	-	-	-	-	4,810.66	51,190.00
Equalization Aid	495-034-5120-078	638,484.00	7/1/19-6/30/20	-	638,484.00	(638,484.00)	-	-	-	-	60,002.53	638,484.00
Total State Aid Public				-	797,441.00	(797,441.00)	-	-	-	-	74,940.77	797,441.00
Transportation Aid	495-034-5120-014	29,712.00	7/1/19-6/30/20	-	29,712.00	(29,712.00)	-	-	-	-	2,792.23	29,712.00
Emergency Aid	Unknown	29,467.00	7/1/19-6/30/20	-	29,467.00	(29,467.00)	-	-	-	-	-	29,467.00
Additional Non-Public Transportation Aid	495-034-5120-014	580.00	7/1/18-6/30/19	(580.00)	580.00	-	-	-	-	-	-	-
Reimbursed TPAF Social Security Contributions	495-034-5094-003	65,532.50	7/1/18-6/30/19	(7,041.22)	7,041.22	-	-	-	-	(7,444.24)	-	-
Reimbursed TPAF Social Security Contributions	495-034-5094-003	75,284.99	7/1/19-6/30/20	-	67,840.75	(75,284.99)	-	-	-	-	-	75,284.99
TPAF - Post Retirement												
Medical (Noncash Assistance)	495-034-5094-001	71,000.00	7/1/19-6/30/20	-	71,000.00	(71,000.00)	-	-	-	-	-	71,000.00
TPAF - Pension												
Contributions (Noncash Assistance)	495-034-5094-002	191,383.00	7/1/19-6/30/20	-	191,383.00	(191,383.00)	-	-	-	-	-	191,383.00
TPAF - Long-Term Disability												
Insurance (Noncash Assistance)	495-034-5094-004	162.00	7/1/19-6/30/20	-	162.00	(162.00)	-	-	-	-	-	162.00
Total General Fund				(7,621.22)	1,194,626.97	(1,194,449.99)	-	-	(7,444.24)	-	77,733.00	1,194,449.99
Total State Financial Assistance				(7,621.22)	1,194,626.97	(1,194,449.99)	-	-	(7,444.24)	-	77,733.00	1,194,449.99
State Financial Assistance Programs not Subject to Calculation for Major Program Determination:												
TPAF - Post Retirement												
Medical (Noncash Assistance)	495-034-5094-001	\$ 71,000.00	7/1/19-6/30/20	-	\$ 71,000.00	-	-	-	-	-	-	71,000.00
TPAF - Pension												
Contributions (Noncash Assistance)	495-034-5094-002	191,383.00	7/1/19-6/30/20	-	191,383.00	-	-	-	-	-	-	191,383.00
TPAF - Long-Term Disability												
Insurance (Noncash Assistance)	495-034-5094-004	162.00	7/1/19-6/30/20	-	162.00	-	-	-	-	-	-	162.00
Total State Financial Assistance Subject to Calculation for Major Program Determination												

The accompanying Notes to Schedules of Expenditures of Awards and Financial Assistance are an integral part of this schedule.

BASS RIVER TOWNSHIP SCHOOL DISTRICT
NOTES TO SCHEDULES OF EXPENDITURES OF FEDERAL AWARDS AND STATE
FINANCIAL ASSISTANCE
YEAR ENDED JUNE 30, 2020

Note 1. Basis of Presentation

The accompanying schedules of expenditures of federal awards and state financial assistance present the activity of all federal awards and state financial assistance programs of the Bass River Township School District. The School District is defined in Note 1 of the basic financial statements. The information in these schedules is presented in accordance with the requirements of Title 2 U.S. Code of Federal Regulations (CFR) Part 200, Uniform Administrative Requirements, Cost Principles, and Audit Requirements for Federal Awards (Uniform Guidance) and New Jersey OMB's Circular 15-08, Single Audit Policy for Recipients of Federal Grants, State Grants and State Aid. All federal and state awards received directly from federal and state agencies, as well as federal awards and state financial assistance passed through other government agencies is included on the schedule of expenditures of federal awards and state financial assistance.

Note 2. Summary of Significant Accounting Policies

The accompanying schedules of expenditures of federal awards and state financial assistance are presented using the budgetary basis of accounting with the following exception: programs recorded in the enterprise fund are presented using the accrual basis of accounting and programs recorded in the capital projects fund are presented using the modified accrual basis of accounting. These bases of accounting are described in Note 1 to the School District's basic financial statements. The information in this schedule is presented in accordance with the requirements of Title 2 U.S. Code of Federal Regulations (CFR) Part 200, *Uniform Administrative Requirements, Cost Principles, and Audit Requirements for Federal Awards* and New Jersey OMB's Circular 15-08, *Single Audit Policy for Recipients of Federal Grants, State Grants and State Aid*. Therefore, some amounts presented in this schedule may differ from amounts presented in, or used in the preparation of, the basic financial statements.

The School District did not elect the 10-percent de minimis indirect cost rate as discussed in 2 CFR 200.414.

Revenues and expenditures reported under the Food Distribution Program represent current year value received and current year distributions respectively. The amount reported as TPAF Pension Contributions represents the amount paid by the state on behalf of the School District for the year ended June 30, 2020. TPAF Social Security Contributions represents the amount reimbursed by the state for the employer's share of social security contributions for TPAF members for the year ended June 30, 2020.

BASS RIVER TOWNSHIP SCHOOL DISTRICT
NOTES TO SCHEDULES OF EXPENDITURES OF FEDERAL AWARDS AND STATE
FINANCIAL ASSISTANCE
YEAR ENDED JUNE 30, 2020 (Continued)

Note 3. Relationship to Basic Financial Statements

The basic financial statements present the general fund and special revenue fund on a GAAP basis. Budgetary comparison statements or schedules (RSI) are presented for the general fund and special revenue fund to demonstrate finance-related legal compliance in which certain revenue is permitted by law or grant agreement to be recognized in the audit year, whereas for GAAP reporting, revenue is not recognized until the subsequent year or when expenditures have been made.

The general fund is presented in the accompanying schedules on the modified accrual basis with the exception of the revenue recognition of the one or more deferred June state aid payments in the current budget year, which is mandated pursuant to *N.J.S.A. 18A:22-44.2*. For GAAP purposes payments are not recognized until the subsequent budget year due to the state deferral and recording of the one or more June state aid payments in the subsequent year. The special revenue fund is presented in the accompanying schedules on the grant accounting budgetary basis, which recognizes encumbrances as expenditures and also recognizes the related revenues, whereas the GAAP basis does not. The special revenue fund also recognizes the one or more state aid June payments in the current budget year, consistent with *N.J.S.A. 18A:22-4.2*.

The net adjustment to reconcile from the budgetary basis to the GAAP basis is \$7,929.00 for the general fund and (\$2,138.42) for the special revenue fund. See Exhibit C-3 Note A of the basic financial statements, for a reconciliation of the budgetary basis to the modified accrual basis of accounting for the general and special revenue funds. Awards and financial assistance expenditures reported in the School District's basic financial statements on a GAAP basis are presented as follows:

<u>Fund</u>	<u>Federal</u>	<u>State</u>	<u>Total</u>
General Fund	\$ -	\$ 1,202,378.99	\$ 1,202,378.99
Special Revenue Fund	79,474.68	-	79,474.68
Total Awards & Financial Assistance	<u>\$ 79,474.68</u>	<u>\$ 1,202,378.99</u>	<u>\$ 1,281,853.67</u>

Note 4. Relationship to Federal and State Financial Reports

Amounts reported in the accompanying schedules agree with the amounts reported in the related federal and state financial reports.

Note 5. Federal and State Loans Outstanding

The Bass River Township School District had no loan balances outstanding at June 30, 2020.

**BASS RIVER TOWNSHIP SCHOOL DISTRICT
SCHEDULE OF FINDINGS AND QUESTIONED COSTS
YEAR ENDED JUNE 30, 2020**

Section I - Summary of Auditor's Results

Financial Statements

Type of auditor's report issued _____ Unmodified _____

Internal control over financial reporting:

1) Material weakness(es) identified? _____ yes X no

2) Significant deficiency(ies) identified? _____ yes X none reported

Noncompliance material to financial statements noted? _____ yes X no

Federal Awards

Internal control over major programs: SECTION IS N/A - NOT REQUIRED

1) Material weakness(es) identified? _____ yes _____ no

2) Significant deficiency(ies) identified? _____ yes _____ none reported

Type of auditor's report issued on compliance for major programs _____

Any audit findings disclosed that are required to be reported in accordance with 2 CFR 200 section .516(a) of Uniform Guidance? _____ yes _____ no

Identification of major programs:

<u>CFDA Number(s)</u>	<u>FAIN Number(s)</u>	<u>Name of Federal Program or Cluster</u>
_____	_____	_____
_____	_____	_____
_____	_____	_____
_____	_____	_____
_____	_____	_____
_____	_____	_____

Dollar threshold used to determine Type A programs _____

Auditee qualified as low-risk auditee? _____ yes _____ no

**BASS RIVER TOWNSHIP SCHOOL DISTRICT
SCHEDULE OF FINDINGS AND QUESTIONED COSTS
YEAR ENDED JUNE 30, 2020**

Section I - Summary of Auditor's Results (Continued)

State Financial Assistance

Dollar threshold used to determine Type A programs \$ 750,000.00

Auditee qualified as low-risk auditee? X yes no

Internal control over major programs:

1) Material weakness(es) identified? yes X no

2) Significant deficiency(ies) identified? yes X none reported

Type of auditor's report issued on compliance for major programs Unmodified

Any audit findings disclosed that are required to be reported in accordance with NJ OMB's Circular 15-08? yes X no

Identification of major programs:

<u>State Grant/Project Number(s)</u>	<u>Name of State Program</u>
495-034-5120-089	State Aid Public:
495-034-5120-084	Special Education Categorical Aid
495-034-5120-085	Security Aid
495-034-5120-078	Adjustment Aid
	Equalization Aid

**BASS RIVER TOWNSHIP SCHOOL DISTRICT
SCHEDULE OF FINDINGS & QUESTIONED COSTS
YEAR ENDED JUNE 30, 2020**

Section II - Financial Statement Findings

This section identifies the significant deficiencies, material weaknesses and instances of noncompliance related to the basic financial statements that are required to be reported in accordance with *Government Auditing Standards* and with audit requirements prescribed by the Division of Administration and Finance, Department of Education, State of New Jersey.

None.

**BASS RIVER TOWNSHIP SCHOOL DISTRICT
SCHEDULE OF FINDINGS & QUESTIONED COSTS
YEAR ENDED JUNE 30, 2020**

Section III - Federal Awards & State Financial Assistance Findings & Questioned Costs

This section identifies the significant deficiencies, material weaknesses and instances of noncompliance, including questioned costs, related to the audit of major federal and state programs, as required by Title 2 U.S. Code of Federal Regulations (CFR) Part 200, Uniform Administrative Requirements, Cost Principals, and Audit Requirements for Federal Awards (Uniform Guidance) and New Jersey OMB's Circular 15-08.

FEDERAL AWARDS

N/A Federal single audit not required

STATE FINANCIAL ASSISTANCE

None.

**BASS RIVER TOWNSHIP SCHOOL DISTRICT
SUMMARY SCHEDULE OF PRIOR YEAR AUDIT FINDINGS
AND QUESTIONED COSTS AS PREPARED BY MANAGEMENT
YEAR ENDED JUNE 30, 2020**

This section identifies the status of prior year findings related to the financial statements, federal awards and state financial assistance that are required to be reported in accordance with Government Auditing Standards, Title 2 U.S. Code of Federal Regulations (CFR) Part 200, Uniform Administrative Requirements, Cost Principals, and Audit Requirements for Federal Awards (Uniform Guidance), and New Jersey OMB's Circular 15-08.

Financial Statement Findings

No Prior Year Findings.

Federal Awards

N/A - No Federal Single Audit in prior year.

State Financial Assistance

No Prior Year Findings.