



Jersey City Community Charter School

COMPREHENSIVE ANNUAL FINANCIAL REPORT

**FOR THE FISCAL YEAR ENDED
JUNE 30, 2020**

PREPARED BY

JERSEY CITY COMMUNITY CHARTER SCHOOL

JERSEY CITY COMMUNITY CHARTER SCHOOL

Table of Contents

Introductory Section

Letter of Transmittal 1-9
Organizational Chart 9a
Roster of Officials 9b
Consultants and Advisors 10

Financial Section

Report of Independent Auditors..... 12-14

Required Supplementary Information – Part I

Management’s Discussion and Analysis 16-23

Basic Financial Statements

A Charter School-wide Financial Statements:

A-1 Statement of Net Position25
A-2 Statement of Activities26

B Fund Financial Statements:

Governmental Funds:

B-1 Balance Sheet.....29
B-2 Statement of Revenues, Expenditures, and Changes in Fund Balances30
B-3 Reconciliation of the Statement of Revenues, Expenditures and Changes in
Fund Balances of Governmental Funds to the Statement of Activities31

Proprietary Funds:

B-4 Statement of Net Position33
B-5 Statement of Revenues, Expenses, and Changes in Fund Net Position.....34
B-6 Statement of Cash Flows35

JERSEY CITY COMMUNITY CHARTER SCHOOL

Table of Contents

Fiduciary Funds:

B-7 Statement of Fiduciary Net Position37
B-8 Statement of Changes in Fiduciary Net Position38

Notes to the Basic Financial Statements 40-81

Required Supplementary Information – Part II

C. Budgetary Comparison Schedules:

C-1 Budgetary Comparison Schedule – General Fund.....82
C-2 Budgetary Comparison Schedule – Special Revenue Fund.....83

Notes to the Required Supplementary Information

C-3 Budget-to-GAAP Reconciliation85

Required Supplementary Information – Part III

L. Schedules Related to Accounting and Reporting for Pensions (GASB 68):

L-1 Schedule of the Charter School Proportionate Share
of the Net Pension Liability – Public Employee’s Retirement System (PERS)86
L-2 Schedule of Charter School Contributions –
Public Employee’s Retirement System (PERS)87
L-3 Schedule of the Charter School Proportionate Share
of the Net Pension Liability – Teacher’s Pension and Annuity Fund (TPAF)88

M. Schedule Related to Accounting and Reporting for OPEB (GASB 75)

M-1 Schedule of the State’s Proportionate Share of the Net OPEB Liability
Associated with the Charter School and Changes in the Total OPEB Liability
Related Ratios - (PERS and TPAF)89

Notes to Required Supplementary Information – Pension Schedules90

Other Supplementary Information

D. Schedule of Charter School Contributions - PERS..... Not Applicable

JERSEY CITY COMMUNITY CHARTER SCHOOL

Table of Contents

E. Special Revenue Fund:

E-1 Combining Schedule of Program Revenues and Expenditures Budgetary Basis	94
E-2 Schedule of Preschool Education Aid Budgetary Basis	Not Applicable

F. Capital Projects Fund

F-1 Summary Schedule of Project Expenditures	Not Applicable
F-2 Summary Schedule of Revenues, Expenditures & Changes in Fund Balance.....	N/A
F-2a Summary Schedule of Revenues, Expenditures & Project Balance – Project Fund	N/A
F-2b Summary Schedule of Revenues, Expenditures & Project Balance – Repair & Replac..	N/A

G. Proprietary Funds:

Enterprise Fund:

G-1 Combining Statement of Net Position	96
G-2 Combining Statement of Revenues, Expenses and Changes in Fund Net Position.....	97
G-3 Combining Statement of Cash Flows	98

H. Fiduciary Fund:

H-1 Combining Statement of Fiduciary Net Position.....	100
H-2 Combining Statement of Revenues, Expenses and Combining Statement of Changes in Fiduciary Net Position	101
H-3 Student Activity Agency Fund Schedule of Receipts and Disbursements	102
H-4 Payroll Agency Fund Schedule of Receipts and Disbursements.....	103

I. Long - Term Debt:

I-1 Schedule of Bonds Payable	105
I-2 Schedule of Loans Payable	Not Applicable
I-3 Debt Service Fund Budgetary Comparison Schedule	107

J. Introduction to the Statistical Section (Unaudited)

Financial Trends

J-1 Net Position by Component	109
J-2 Changes in Net Position.....	110
J-3 Fund Balances – Governmental Funds	111
J-4 Changes in Fund Balances – Governmental Funds	112
J-5 General Fund Other Local Revenue by Source	113

JERSEY CITY COMMUNITY CHARTER SCHOOL

Table of Contents

J. Introduction to the Statistical Section (Unaudited)

Revenue Capacity

J-6 to J-9.....Not Applicable

Debt Capacity

J-10 Ratios of Outstanding Debts by Type.....114

J-11 to J-13.....Not Applicable

Demographic and Economic Information

J-14 Demographics and Economic Statistics.....115

J-15 Principal Employers.....116

Operating Information

J-16 Full-time Equivalent Charter School Employees by Function/Program117

J-17 Operating Statistics118

J-18 School Building Information119

J-19 Schedule of Required Maintenance Expenditures by School Facility.....120

J-20 Insurance Schedule121

Charter School Performance Framework Financial Indicators

J-21 Near Term Indicators122

J-22 Sustainability Indicators.....123

K. Single Audit Section

K-1 Independent Auditor's Report on Internal Control over Financial Reporting and on Compliance and Other Matters Based on an Audit of Financial Statements Performed in Accordance with *Government Auditing Standards*..... 125-126

K-2 Independent Auditor's Report on Compliance for Each Major State Program; Required by the State of New Jersey OMB's Circular Letter 15-08..... 127-129

K-3 Schedule of Expenditures of Federal Awards, Schedule A.....130

K-4 Schedule of Expenditures of State Financial Assistance, Schedule B.....131

K-5 Notes to the Schedules of Expenditures of Federal Awards and State Financial Assistance..... 132-133

K-6 Schedule of Findings and Questioned Costs 134-137

K-7 Summary Schedule of Prior Audit Findings.....138

K-8 Schedule of Expenditures of Local Financial Assistance, Schedule C139



JERSEY CITY COMMUNITY CHARTERSCHOOL

128 Danforth Avenue, Jersey City, NJ 07305 Phone: (201) 433-2288 - Fax: (201) 433-5803
School Website: www.jccconline.org

January 15, 2021

The Commissioner
New Jersey Department of Education
Riverview Executive Plaza – Bldg. 100
P. O. Box 500
Trenton, New Jersey 08625-0500

Dear Commissioner:

We hereby submit the Comprehensive Annual Financial Report of Jersey City Community Charter School (the “Charter School” or “JCCCS”) for the fiscal year ended June 30, 2020.

Responsibility for both the accuracy of the data and completeness and fairness of the presentation, including all disclosures, rests with the management of the Charter School. To the best of our knowledge and belief, the data presented in this report is accurate in all material respects and are reported in a manner designed to fairly present the financial position and result of operations of the various funds of the Charter School. All disclosures necessary to enable the reader to gain an understanding of the Charter School’s financial activities have been included.

Governmental Accounting Standards Board (GASB) requires that management provide a narrative introduction overview and analysis to accompany the basic financial statements in the form of Management’s Discussion and Analysis (MD&A). This letter of transmittal is designed to complement the MD&A and should be read in conjunction with it. Jersey City Community Charter School’s MD&A can be found immediately following the Independent Auditor’s Report.

The Comprehensive Annual Financial Report is presented in four sections: introductory, financial, statistical and single audit. The introductory section includes this transmittal letter, the Charter School’s organizational chart and a list of principal officials. The financial section includes the independent auditor’s report, management’s discussion and analysis (MD&S) and the basic financial statements including the Charter School-wide financial statements presented in conformity with Governmental Accounting Standards Board Statement No. 34. The basic financial statements also include individual fund financial statements and required supplemental information (RSI). The statistical section includes selected financial and demographic information, generally presented on a multi-year basis.

New Jersey Department of Education
The Commissioner
Page 2

The Charter School is required to undergo an annual single audit in conformity with the provisions of the *Title 2 U.S. Code of Federal Regulations (CFR) Part 200, Uniform Administrative Requirements, Cost Principles, and Audit Requirements for Federal Awards* (Uniform Guidance), and the New Jersey OMB's Circular 15-08, "*Single Audit Policy for Recipients of Federal Grants, State Grants, and State Aid*". Information related to this single audit, including the auditor's report on internal control and compliance with applicable *laws and regulations* and findings and recommendations are included in the single audit section of this report.

Information related to this single audit, including the auditor's report on internal control and compliance with applicable *laws and regulations* and findings and recommendations are included in the single audit section of this report.

1) Reporting Entity and Its Services

Jersey City Community Charter School is an independent reporting entity within the criteria adopted by the Government Accounting Standards Board (GASB) as established by National Council on Governmental Accounting (NCGA) Statement No. 3. All funds and account groups of the Charter School are included in this report.

The overarching mission of the Charter School is to inspire and empower its students, families and staff with opportunities to successfully shape and transform their lives by becoming successful, lifelong learners who possess the critical-thinking, academic, advocacy, and leadership skills required to continuously open new doors in their lives and the lives of others.

The Charter School is open to all Jersey City students on a space available basis and does not discriminate in its admission policies or practices on the basis of intellectual or athletic ability, measures of achievement or aptitude, status as a handicapped person, proficiency in the English language, or any other basis that would be illegal if used by a charter school.

By the end of 2019-2020 school year, the Charter School had a student enrollment of 580 students, which is 8 students higher than the previous year's enrollment. The following details the changes in student enrollment of the school over the last ten years:

1) **Reporting Entity and Its Services** - *continued*

<u>Fiscal Year</u>	<u>Average Student Daily Enrollment</u>	<u>Percentage Change</u>
2019-2020	580	2.11%
2018-2019	568	-1.05%
2017-2018	574	2.50%
2016-2017	560	-1.93%
2015-2016	571	-2.56%
2014-2015	586	0.34%
2013-2014	584	1.74%
2012-2013	574	-1.03%
2011-2012	580	-1.53%
2010-2011	589	1.20%

2) **Economic Condition and Outlook**

The Charter School is located in Jersey City, the second largest municipality in New Jersey with a population of 270,553 according to the United States Department of Commerce's 2017 Census. The City is located on the west side of the Hudson River, directly across from lower Manhattan in New York City, and is part of the major business and industrial concentration spanning the New York-Northern New Jersey Metropolitan area.

The City's land area is 14.9 square miles, including a five-mile long stretch of Hudson River waterfront that has experienced considerable high-rise office tower, residential and multifamily development over the past ten years. The City is connected to New York City by Holland Tunnel and the PATH railroad tubes, and is within ten miles of Newark Liberty International Airport and the container and cargo facilities of Port Newark-Elizabeth.

The City is located in the County of Hudson. The City's size and current development activities cause it to dominate the economy of Hudson County. The City also serves as the seat of the County Government. Of the approximately 314,272 persons employed in the County, approximately 285,533 or 91 % are employed in Jersey City.

The Charter School has completed its 19th year of implementation. During the 2019-2020 School-Year, the school serviced the following number of students per grade:

2) **Economic Condition and Outlook** - *continued*

<u>Grades</u>	<u>Students</u>
Kindergarten	64
Grade 1	67
Grade 2	67
Grade 3	60
Grade 4	61
Grade 5	67
Grade 6	68
Grade 7	64
Grade 8	62
	<u>580</u>

Growth

At its inception, the Charter School began with 72 kindergarten students. It ended the 2019-2020 school year with an enrollment of 590 students in grades K to 8.

The Charter School is one of the first cohort of charter schools in the State of New Jersey. In December 2000, the school submitted its first renewal application for continuation of its charter. The school submitted its most recent renewal application during the 2015- 2016 school-year and received a charter for an additional five years to 2021-2022. As part of the renewal process, the Charter School was required to develop a five-year fiscal plan.

During the school year, 2003-2004 the Charter School purchased one of its existing facilities (at 128 Danforth Avenue, in Jersey City, New Jersey) from the former owners, the Urban League of Hudson County, Inc. The building had a capacity for up to 350 students. During the 2008-2009 school-year the school completed the expansion of its existing facilities adding 14 classrooms at the 128 Danforth location. In addition, during the school year 2010-2011, the Charter School acquired and renovated a building at 16 Bentley Avenue, Jersey City, New Jersey providing more permanent facilities (classrooms and administrative offices) for the Middle School.

3) Major Initiatives

The Charter School ensures that its curriculum is aligned to state standards. Expeditionary Learning is implemented in English Language Arts Literacy (ELA) in grades K-8. Professional Development participation is conducted throughout the school year and attendance is required for instructional staff. Additionally, in grades K-3, we will continue the implementation of the Children's Literacy Initiative placing continued emphasis on Core Practices - Literacy Environment - Physical Elements, Intentional Read Aloud, Message Time Plus and The Workshop Model. In preparation for NJSLA administration, students receive additional support with technology and the ELA curriculum.

A new mathematics series entitled, enVisionmath 2.0 and Digits 2015 on Realize were implemented in grades K-8. Professional Development activities will be conducted this summer and continued throughout the school year. Staff attendance and participation is required. In preparation for the P ARCC administration, students will receive additional support with technology and the math curriculum.

The Interactive Science for grades K-8 is based on best practices from academic research and alignment to next generation science standards. Which results is a program rooted in sound learning approaches, teaching strategies, and ideas to engage all learners, to maximize their learning, so that they can apply their thinking. Lesson plans are reviewed on a bi-weekly basis. Formal and informal observations are conducted throughout the school year providing feedback to improve teacher practice.

All students receive social studies instruction from Kindergarten through grade 8. The challenges of the 21st Century are complex, have global implications, and are connected to people, places, and events of the past. The study of social studies focuses on deep understanding of concepts that enable students to think critically and systematically about local, regional, national, and global issues. The resources currently used include Social Studies Civics Today, The American Journey, and Discovering Our Past. Authentic learning experiences that enable students to apply content knowledge, develop citizenship skills, and collaborate with students from around the world prepare New Jersey students for the 21st-century workplace. Lesson plans will be reviewed on a bi-weekly basis. Formal and informal observations are conducted the school year, making recommendations and providing to improve teacher practice.

Management of the Charter School is responsible for establishing and maintaining internal control designed to ensure the assets of the Charter School are protected from loss, theft or misuse, and to ensure that adequate accounting data are compiled to allow for the preparation of financial statements in conformity with generally accepted accounting principles (GAAP). Internal control is designed to provide reasonable, but not absolute, assurance that these objectives are met. The concept of reasonable assurance recognizes that: (1) the cost of a control should not exceed the benefits likely to be derived; and (2) the valuation of costs and benefits requires estimates and judgments by management.

4) Internal Accounting Controls

Management of the Charter School is responsible for establishing and maintaining internal control designed to ensure the assets of the Charter School are protected from loss, theft or misuse and to ensure that adequate accounting data are compiled to allow for the preparation of financial statements in conformity with generally accepted accounting principles (GAAP). The system of internal control is designed to provide reasonable, but not absolute, assurance that these objectives are met. The concept of reasonable assurance recognizes that: (1) the cost of a control should not exceed the benefits likely to be derived; and (2) the valuation of costs and benefits requires estimates and judgments by management.

As a recipient of federal awards and state financial assistance, the Charter School also is responsible for ensuring that adequate system of internal controls is in place to ensure compliance with applicable laws and regulations related to those programs. This system of internal control is also subject to periodic evaluation by the Charter School's management. As part of the Charter School's single audit described earlier, tests are made to determine the adequacy of the system of internal controls, including that portion related to federal awards and state financial assistance programs, as well as to determine that the Charter School has complied with applicable laws and regulations.

5) Budgetary Controls

In addition to internal accounting controls, the Charter School maintains budgetary controls. The objective of these budgetary controls is to ensure compliance with the statutory requirements of charter school budgets. Annual appropriated budgets are adopted for general and special revenue funds. The final budget amount, as amended for the fiscal year is reflected in the financial section. An encumbrance accounting system is used to record outstanding purchase commitments on a line item basis. Open encumbrances at year end are either canceled or are included as re-appropriations of fund balance in the subsequent year.

During the 2019-2020 fiscal school, the Charter School continued its efforts to improve its audit status and operational processes and procedures, correcting deficiencies identified in previous audits and reviews and on maintaining general compliance with sound fiscal practices.

6) Accounting System and Report

The Charter School's accounting records reflect generally accepted accounting principles (GAAP), as promulgated by the Governmental Accounting Standards Board (GASB). The accounting records also reflect New Jersey State Statute (N.J.S.A 18:4-14) that requires a uniform system of double-entry bookkeeping consistent with the GAAP established by GASB for us in all school districts and charter school. The accounting system is organized on the basis of funds in accordance with the Uniform Charter of Accounts (Handbook 2R2) for New Jersey Public Schools. These funds are explained in "Notes to the Financial Statements", Note 1.

7) **Financial Statement Information at Fiscal Year-End**

As demonstrated by the various statements and schedules included in the financial section of this report, the Charter School continues to meet its responsibility for sound financial management. The following schedule presents a summary of the General Fund, Special Revenue Fund, Capital Projects Fund and Debt Service Fund for the fiscal year ended June 30, 2020 fiscal year:

**Summary of the General Fund, Special Revenue Fund,
Capital Projects Fund and Debt Service Fund**

Revenue	2020	2019	Increase/ (decrease)	% Change
Local sources	\$ 2,732,340	\$ 1,777,792	\$ 954,548	53.69%
State sources	5,679,660	5,631,679	47,981	0.85%
Federal sources	572,163	747,493	(175,330)	-23.46%
	<u>\$ 8,984,163</u>	<u>\$ 8,156,964</u>	<u>\$ 827,199</u>	<u>10.14%</u>

The Charter School experienced an insignificant increase in revenue of about 10% which was consistent with the no change in enrollment level.

The following schedule presents a summary of General Fund, Special Revenue Fund, Capital Projects Fund and Debt Service Fund expenditures for the fiscal year ended June 30, 2020:

**Summary of the General Fund, Special Revenue Fund,
Capital Projects Fund and Debt Service Fund**

Expenditures	2020	2019	Increase/ (decrease)	% Change
Instruction	\$ 2,609,112	\$ 2,880,820	\$ (271,708)	-9.43%
Administrative	2,964,172	2,826,962	137,210	4.85%
Support	1,611,918	1,300,823	311,095	23.92%
Capital outlay	19,777	86,172	(66,395)	100.00%
Debt service	681,213	712,043	(30,830)	-4.33%
	<u>\$ 7,886,192</u>	<u>\$ 7,806,820</u>	<u>\$ 110,202</u>	<u>1.41%</u>

The Charter School's expenditures increased by about 1.41% over last year's – a small increase because enrollment was at the same level as last year's.

8) Cash Management

The investment policy of the Charter School is guided in large part by state statute as detailed in “Notes to the Financial Statements”. The Charter School has adopted a cash management plan, which requires it to deposit public funds in public depositories protected from loss under the provision of the Governmental Unit Deposit Protection Act (“GUDPA”). GUDPA was enacted in 1970 to protect Governmental Units from loss of funds on deposit with a failed banking institution in New Jersey. The law requires governmental units to deposit public funds in public depositories located in New Jersey, where the funds are secured in accordance with the Act.

9) Risk Management

The Board carries various forms of insurance, including but not limited to general liability and comprehensive/collision, hazard and theft insurance on property and contents, fidelity bonds and worker’s compensation.

10) Other Information

Independent Audit

State statute requires an annual audit by independent Certified Public Accountants or registered Municipal Accountants. The Charter School appointed the accounting firm of Olugbenga Olabintan, CPA. In addition to meeting the requirements set forth in state statutes, the audit also was designed to meet the requirements of *Title 2 U.S. Code of Federal Regulations (CFR) Part 200, Uniform Administrative Requirements, Cost Principles, and Audit Requirements for Federal Awards* (Uniform Guidance) and New Jersey OMB Circular Letter 15-08 “*Single Audit Policy for Recipients of Federal Grants, State Grants, and State Aid*”.

The auditor’s report on the basic financial statements is included in the financial section of this report. The auditor’s reports related specifically to the single audit are included in the single audit section of this report.

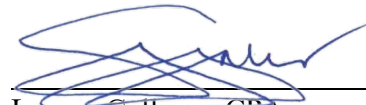
The 2019-2020 school-year was very challenging due to the COVID-19 pandemic. However, the Charter School continues to enjoy a fairly reasonable financial position through careful stewardship of its resources. We hope that the next school year will have less of the COVID-19 challenges in all areas of the School’s operations, and particularly in the area of student achievement.

11) Acknowledgments

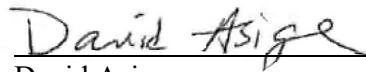
A note of appreciation is extended to the Finance Committee of the Charter School for their ongoing support and commitment to fiscal integrity and to Jersey City Community Charter School Board of Trustees for their selfless dedication to improving student achievement.

A special note of appreciation is extended to the Business Office and to all of the business operations staff members for their untiring efforts to improve processes, procedures and audit outcomes. Their contributions in support of the students and staff of Jersey City Community Charter School are truly noteworthy. The preparation of this report could not have been accomplished without the efficient and dedicated services of our financial, accounting and administrative staff.

Respectfully submitted,

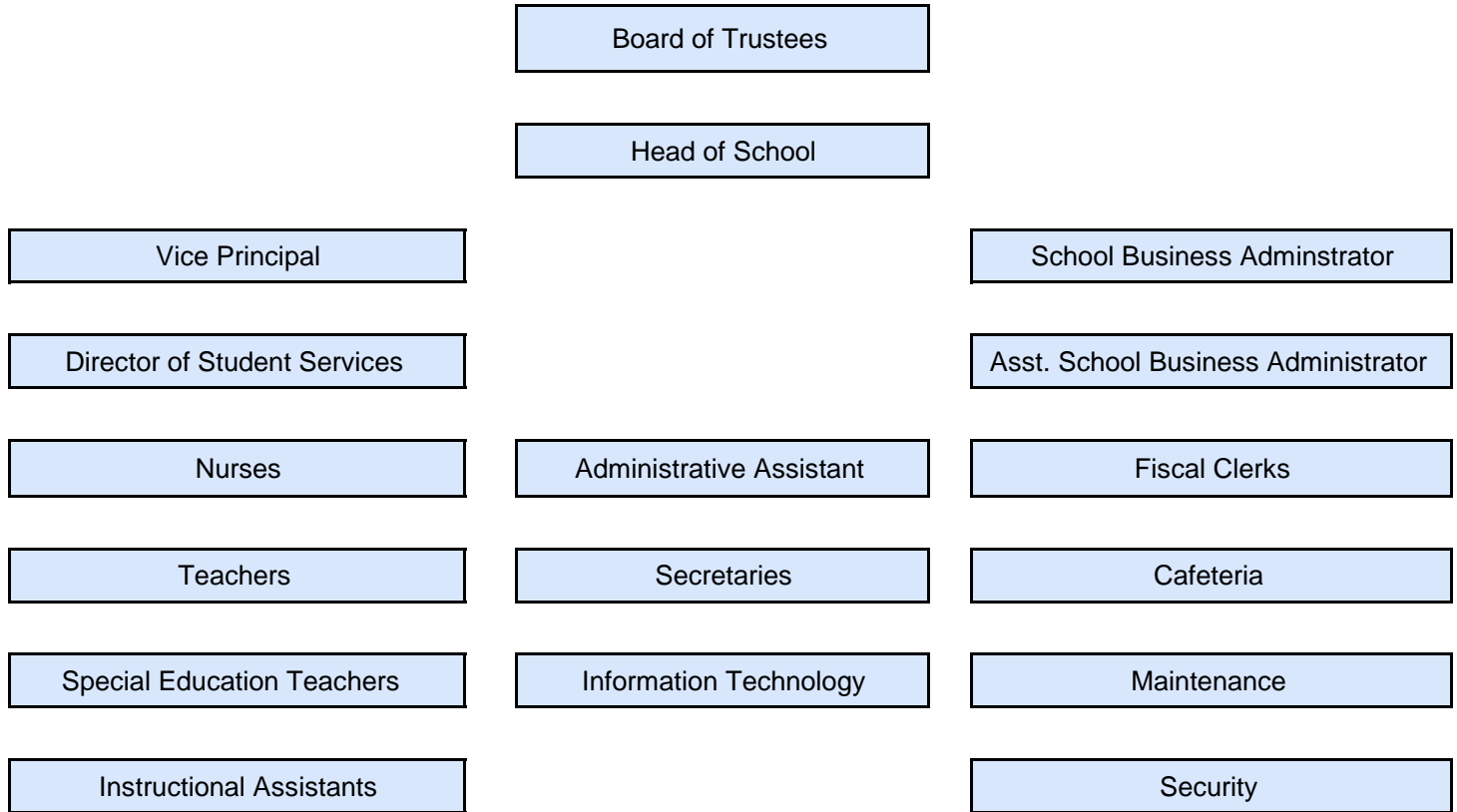


Lenora Galleros, CPA
School Business Administrator



David Asige
Board President

Jersey City Community Charter School
Fiscal Year 2020-2021 Organizational Chart



JERSEY CITY COMMUNITY CHARTER SCHOOL

Roster of Trustees and Officers

June 30, 2020

Members of Board of Trustees

Name

David Asige	President
Patricia Spegel-Stroman	Vice President
Angela V. McKnight	Trustee
Aflowa Zaza	Trustee
Zandile P. Nkabinde	Trustee
Diedre Ritter	Trustee

Executive Board

David Asige	President
Patricia Spegel-Stroman	Vice President
Howard Mankoff, Esq. ***	Board Attorney
Ayana Williams ***	Head of School
Leonora Galleros, CPA ***	School Business Administrator

*** Ex-Officio

JERSEY CITY COMMUNITY CHARTER SCHOOL

Consultants and Advisor

Independent Auditors

Olugbenga Olabintan
Certified Public Accountant/Consultant
137 Camden Street
Newark, NJ 07103

Attorneys At Law

Marshall, Dennehey, Warner, Coleman & Goggin
Attorneys at Law
425 Eagle Rock Avenue, Suite 302
Roseland, New Jersey 07068

Official Depository

Bayonne Community Bank
104-110 Avenue C
Bayonne, New Jersey 07002

Financial Section

Olugbenga Olabintan

Certified Public Accountant/Consultant

137 Camden Street, Suite #3
Newark, NJ 07103

Tel: (201) 230-7518
Fax: (973) 368-8268
E-mail: oolabintan@aol.com

Independent Auditors' Report

The Honorable President and
Members of the Board of Trustees
Jersey City Community Charter School
Jersey City, New Jersey
County of Hudson

Report on the Financial Statements

We have audited the accompanying financial statements of the governmental activities, the business-type activities, each major fund and the aggregate remaining fund information of Jersey City Community Charter School, in the County of Hudson, State of New Jersey (the "Charter School") as of and for the fiscal year ended June 30, 2020, and the related notes to the financial statements, which collectively comprise the Charter School's basic financial statements as listed in the table of contents.

Management's Responsibility for the Financial Statements

Management is responsible for the preparation and fair presentation of these financial statements in accordance with accounting principles generally accepted in the United States of America; this includes the design, implementation, and maintenance of internal control relevant to the preparation and fair presentation of financial statements that are free from material misstatement, whether due to fraud or error.

Auditors' Responsibility

Our responsibility is to express an opinion on these financial statements based on our audit. We conducted our audit in accordance with auditing standards generally accepted in the United States of America and the standards applicable to financial audits contained in *Government Auditing Standards*, issued by the Comptroller General of the United States *and audit requirements as prescribed by the Office of School Finance, Department of Education, State of New Jersey*. Those standards require that we plan and perform the audit to obtain reasonable assurance about whether the financial statements are free from material misstatement.

An audit involves performing procedures to obtain audit evidence about the amounts and disclosures in the financial statements. The procedures selected depend on the auditor's judgment, including the assessment of the risks of material misstatement of the financial statements, whether due to fraud or error. In making those risk assessments, the auditor considers internal control relevant to the entity's preparation and fair presentation of the financial statements in order to design audit procedures that are appropriate in the circumstances, but not for the purpose of expressing an opinion on the effectiveness of the entity's internal control. Accordingly, we express no such opinion. An audit also includes evaluating the appropriateness of accounting policies used and the reasonableness of significant accounting estimates made by management, as well as evaluating the overall presentation of the financial statements.

We believe that the audit evidence we have obtained is sufficient and appropriate to provide a basis for our audit opinions.

Opinion

In our opinion, the financial statements referred to above present fairly, in all material respects, the respective financial position of the governmental activities, the business-type activities, the aggregate discretely presented component units, each major fund, and the aggregate remaining fund information of the Charter School as of June 30, 2020, and the respective changes in financial position and, where applicable, cash flows, thereof for the fiscal year then ended in accordance with accounting principles generally accepted in the United States of America.

Other Matters

Required Supplementary Information

Accounting principles generally accepted in the United States of America require that the *Management's Discussion and Analysis and Budgetary Comparison Information, and Pension Information* as listed in the table of contents be presented to supplement the basic financial statements. Such information, although not a part of the basic financial statements, is required by the Governmental Accounting Standards Board, who considers it to be an essential part of the financial reporting for placing the basic financial statements in an appropriate operational, economic, or historical context. We have applied certain limited procedures to the required supplementary information in accordance with auditing standards generally accepted in the United States of America, which consisted of inquiries of management about the methods of preparing the information and comparing the information for consistency with management's responses to our inquiries, the basic financial statements, and other knowledge we obtained during our audit of the basic financial statements. We do not express an opinion or provide any assurance on the information because the limited procedures do not provide us with sufficient evidence to express an opinion or provide any assurance.

Supplementary and Other Information

Our audit was conducted for the purpose of forming opinions on the financial statements that collectively comprise the Charter School's basic financial statements. The accompanying supplementary information, which consists of the introductory section, combining and individual nonmajor fund financial statements, financial schedules and statistical tables are presented for purposes of additional analysis and are not required part of the basic financial statements. The accompanying schedules of expenditures of federal awards and state financial assistance are presented for purposes of additional analysis as required by the *Title 2 U.S. Code of Federal Regulations (CFR) Part 200, Uniform Administrative Requirements, Cost Principles, and Audit Requirements for Federal Awards* (Uniform Guidance) and the provisions of New Jersey Department of the Treasury Circular Letter 15-08 OMB, *Single Audit Policy for Recipients of Federal Grants, State Grants and State Aid*, respectively, and are not a required part of the basic financial statements.

The combining and individual nonmajor fund financial statement, schedule of expenditures of federal awards and schedule of state financial assistance are the responsibility of management and were derived from and relates directly to the underlying accounting and other records used to prepare the basic financial statements. Such information has been subjected to the auditing procedures applied in the audit of the basic financial statements and certain additional procedures, including comparing and reconciling such information directly to the underlying accounting and other records used to prepare the basic financial statements or to the basic financial statements themselves, and other additional procedures in

accordance with auditing standards generally accepted in the United States of America. In our opinion, the information is fairly presented, in all material respects, in relation to the basic financial statements as a whole.

The introductory section, financial schedules and statistical sections have not been subjected to the auditing procedures applied in the audit of the basic financial statements, and accordingly, we do not express an opinion or provide any assurance on them.

Other Reporting Required by Government Auditing Standards

In accordance with *Government Auditing Standards*, we have also issued our report dated November 7, 2020 on our consideration of the Charter School's internal control over financial reporting and on our tests of its compliance with certain provisions of laws, regulations, contracts and grant agreements and other matters. The purpose of that report is to describe the scope of our testing of internal control over financial reporting and compliance and the results of that testing, and not to provide an opinion on the internal control over financial reporting or on compliance. That report is an integral part of an audit performed in accordance with *Government Auditing Standards* in considering the Charter School's internal control over financial reporting and compliance.

Olugbenga Olabintan, CPA

January 15, 2021
Newark, New Jersey

OLUGBENGA OLABINTAN
Certified Public Accountant/Consultant



Olugbenga Olabintan, CPA
Licensed Public School Accountant
No. 20CS00230200

Required Supplementary Information

Part I

Management's Discussion and Analysis

The Management's Discussion and Analysis (MD&A) provides an analysis of the Charter School's overall financial position and results of operations.

JERSEY CITY COMMUNITY CHARTER SCHOOL
Management's Discussion and Analysis
Year Ended June 30, 2020
(Unaudited)

Introduction

This section of Jersey City Community Charter School's annual financial report presents our discussion and analysis of the Charter School's financial performance and provides an overview of the Charter School's financial activities for the fiscal year ended June 30, 2020. It should be read in conjunction with the transmittal letter at the front of this report and the Charter School's financial statements, which follow this section.

Management's Discussion and Analysis (MD&A) is an element of Required Supplementary Information specified in the Governmental Accounting Standard Board's (GASB) Statement No. 34, *Basic Financial Statement – and Management's Discussion and Analysis- for State and Local Governments*. Certain comparative information between the current fiscal year and the prior fiscal year is required to be presented in the MD&A.

Financial Highlights

Key financial highlights for fiscal year 2020 are as follows:

- Net position of governmental activities ended the fiscal year with \$(9,408,241). Net position of business-type activities, which represent food service operations ended the fiscal year with \$326,893.
- General revenues accounted for \$8,415,304 in revenue or 90 percent of total revenues of \$7,785,044. Program specific revenues, in the form of charges for services, grants, and contributions accounted for \$909,149 or 10 percent of total revenues.
- The Charter School had \$8,363,972 in expenses related to governmental activities; \$568,859 of these expenses is offset by operating grants and contributions. General revenues (primarily State aid) of \$8,305,304 helped to provide for the balance of these programs.
- The General Fund reported fund surplus at June 30, 2020, of \$1,409,129.

JERSEY CITY COMMUNITY CHARTER SCHOOL
Management's Discussion and Analysis
Year Ended June 30, 2020
(Unaudited)

Using the Basic Financial Statements

This annual report consists of a series of basic financial statements, required supplementary information, other supplementary information and notes to those statements and information.

The report is organized so the reader can understand Jersey City Community Charter School as a financial whole, or as an entire operating entity. The first two basic financial Statements, the Statement of Net Position and the Statement of Activities, are governmental-wide financial statements and provide overall information about the activities of the entire Charter School, presenting both an aggregate view of the Charter School's finances and a long-term view of those finances. The remaining basic financial statements are fund financial statements that focus on the individual parts of the government, reporting the Charter School's operation in more detail than the government-wide statements. The fund financial statements also look at the Charter School's most significant funds with all other non-major funds presented in total in a single column. For Jersey City Community Charter School, the General Fund is the most significant fund.

The governmental funds statements tell how general government services were financed in the short-term as well as what remains for future spending.

Proprietary fund statements offer short and long-term financial information about the activities, the government operates like a business, such as food service.

Fiduciary fund statements provide information about financial relationship in which the Charter School acts solely as a trustee or agent for the benefits of others, to whom the resources in question belong.

The financial statements also include notes that explain some of the information in the financial statements and provide more detailed data. The statements are followed by a section of Required Supplementary Information that further explains and supports the information in the financial statements.

Reporting the Charter School as a Whole

Statement of Net Position and Statements of Activities

While this report contains the fund used by the Charter School to provide programs and activities, the view of the Charter School as a whole looks at all financial transactions and asks the question, "how did we do financially during fiscal year 2020?" The statements of Net Position and the Statement of Activities answer this question. These Statements include all the Charter School's assets and liabilities using the accrual basis of accounting similar to the accounting system used by most private sector companies. This basis of accounting takes into account all of the current year's revenues and expenses regardless of when cash was received or paid.

JERSEY CITY COMMUNITY CHARTER SCHOOL
Management's Discussion and Analysis
Year Ended June 30, 2020
(Unaudited)

Statement of Net Position and Statement of Activities-continued

These two statements report the Charter School's net position and changes in those assets. This change in net position is important because it identifies whether the financial position of the Charter School has improved or diminished for the Charter School as a whole. The cause of this change may be the result of many factors some financial, some not. Non-financial factors include the property tax base of the School District where the Charter School is located, current educational funding laws in New Jersey, facilities conditions, required educational programs, and other factors. In the Statements of Net Position and the Statements of Activities, the Charter School is divided into two distinct kinds of activities:

Governmental Activities – Most of the Charter School's programs and services are reported here including instructions, extracurricular activities, curriculum, staff development, special education and other support services, operation and maintenance of plant, pupil transportation, health services and general administration.

Business-Type Activity – Services are provided on a charge for goods or services or reimbursement basis to recover the expenses of the goods or services provided. The food service operations/after care programs enterprise fund is reported as a business activity.

Reporting the Charter School's Most Significant Funds

Fund Financial Statements

Fund financial reports provide detailed information about the Charter School's major funds-not the Charter School as a whole. Funds are accounting devices that the Charter School uses to keep track of a multitude of financial transactions. The Charter School's only major governmental fund is the General Fund.

Governmental Funds

Most of the Charter School's activities are reported in governmental funds, which focus on how monies flow into and out of those funds and the balances left at fiscal year-end for spending in future periods. These funds are reported using an accounting method called modified accrual accounting. Which measures cash and all other financial assets that can readily be converted to cash. The governmental fund statement provides a detailed short-term view of the Charter School's general government operations and the basic services it provides. Governmental fund information helps determine whether there are more or less financial resources that can be spent in the near future to finance educational programs. The relationship, or differences, between governmental activities reported in the Statement of Net Position and the Statement of Activities and the governmental funds are reconciled in the financial statements.

JERSEY CITY COMMUNITY CHARTER SCHOOL
Management's Discussion and Analysis
Year Ended June 30, 2020
(Unaudited)

Enterprise Fund

The enterprise fund uses the same basis of accounting as business-type activities; therefore, these statements are essentially the same.

The Charter School as a Whole

The perspective of the Statement of Net Position is of the Charter School as a whole. Net position may serve over time as useful indicator of a government's financial position. In the case of the Charter School, liabilities exceeded assets by \$9,081,348 at the close of 2020. The following table provides a summary of net position relating to the Charter School's governmental and business type activities:

	Governmental Activities		Business Type Activities		Total	
	2020	2019	2020	2019	2020	2019
Assets and deferred outflows of resources						
Current assets	\$ 3,019,489	\$ 2,530,992	\$ 335,150	\$ 414,638	\$ 3,354,639	\$ 2,945,630
Capital assets, net	3,337,911	4,038,500	-	-	3,337,911	4,038,500
Deferred outflows of resources	561,038	1,115,201	-	-	561,038	1,115,201
Total assets and deferred outflows of resources	6,918,438	7,684,693	335,150	414,638	7,253,588	8,099,331
Liabilities and deferred outflows of resources:						
Current liabilities	902,000	1,649,896	8,257	153,030	910,257	1,802,926
Long term liabilities	13,136,644	14,315,323	-	-	13,136,644	14,315,323
Deferred outflows of resources	2,288,035	1,637,906	-	-	2,288,035	1,637,906
Total liabilities and deferred inflows of resources	16,326,679	17,603,125	8,257	153,030	16,334,936	17,756,155
Net position						
Invested in						
Capital assets						
(net of related debt)	(6,512,089)	(4,112,295)	-	-	(6,512,089)	(4,112,295)
Restricted for debt service	848,360	1,298,156	-	-	848,360	1,298,156
Other purposes	-	-	-	-	-	-
Unrestricted	(3,744,512)	(7,104,293)	326,893	261,608	(3,417,619)	(6,842,685)
Total net position	\$ (9,408,241)	\$ (9,918,432)	\$ 326,893	\$ 261,608	\$ (9,081,348)	\$ (9,656,824)

JERSEY CITY COMMUNITY CHARTER SCHOOL
Management's Discussion and Analysis
Year Ended June 30, 2020
(Unaudited)

The largest portion of the Charter School's net position is its current assets. The Charter School uses these current assets to provide services.

The total net position of the Charter School increased by \$575,476 during the current fiscal year ended June 30, 2020. The majority of the increase is attributable to a surplus of \$510,191 in the Governmental Activities. Operating grants and contributions decreased by 72 percent.

The table that follows reflects the change in net position for fiscal year 2020.

	Governmental Activities		Business Type Activities		Total	
	2020	2019	2020	2019	2020	2019
Revenues						
Program revenues:						
Charge for services	\$0	\$0	\$85,806	\$80,527	\$85,806	\$80,527
Operating grants and contributions	568,859	2,295,989	254,484	612,640	823,343	2,908,629
Total program revenues	568,859	2,295,989	340,290	693,167	909,149	2,989,156
General revenues:						
Local aid	2,360,737	1,690,046	-	-	2,360,737	1,690,046
Federal and state aid	5,682,964	4,765,049	-	-	5,682,964	4,765,049
Miscellaneous	371,603	87,746	-	-	371,603	87,746
Transfers	(110,000)	-	110,000	-	-	-
Total general revenues	8,305,304	6,542,841	110,000	-	8,415,304	6,542,841
Total revenues	8,874,163	8,838,830	450,290	693,167	9,324,453	9,531,997
Expenses:						
Instructions	2,609,112	4,874,791	-	-	2,609,112	4,874,791
Administrative & support services	4,483,280	3,156,938	-	-	4,483,280	3,156,938
Debt service - interest	551,213	587,043	-	-	551,213	587,043
Unallocated depreciation	720,367	738,749	-	-	720,367	738,749
Food service	-	-	350,380	631,333	350,380	631,333
After school programs	-	-	34,625	45,811	34,625	45,811
Total expenses	8,363,972	9,357,521	385,005	677,144	8,748,977	10,034,665
Change in net position	\$ 510,191	\$ (518,691)	\$ 65,285	\$ 16,023	\$ 575,476	\$ (502,668)

Governmental Activities

The Statement of Activities reflects the cost of program services and the charges for services and operating grants and contributions offsetting those services. The table below, for government activities, indicates the total cost of services and the net cost of services. It identifies the cost of these services supported by unrestricted state entitlements for the fiscal year ended June 30, 2020.

JERSEY CITY COMMUNITY CHARTER SCHOOL
Management's Discussion and Analysis
Year Ended June 30, 2020
(Unaudited)

Governmental Activities - *continued*

	Total Cost of Services	Net Cost of Services
Instruction	\$ 2,609,112	\$ 2,205,614
Administrative & support services	4,483,280	4,317,919
Debt service	551,213	551,213
Unallocated depreciation	720,367	720,367
Total Expenses	\$ 8,363,972	\$ 7,795,113

Business-Type Activity

The business-type activity of the Charter School consists of the food service operation and the after-school programs. These programs had revenues of \$450,290 (including a board contribution of \$110,000) and operating expenses of \$385,005 for fiscal year 2020. The Charter School intended to have food services be self-operating without assistance from the General Fund.

The Charter School's Funds

The Charter School's governmental funds are accounted for using the modified accrual basis of accounting. All governmental funds had revenues of \$8,984,163 and expenditures of \$7,886,192. The positive change in fund balance for the year was \$987,971. The cumulative fund balance from the prior years was \$436,267.

The Charter School's budget is prepared according to New Jersey law and is based on accounting for certain transactions on a basis of cash receipts, disbursements, and encumbrances. The most significant budgeted fund is the general fund.

During the course of fiscal 2020, the Charter School amended its General Fund budget as needed. The Charter School uses state-aid and other revenue-based budget. The budgeting systems are designed to tightly control total budget, but provide flexibility for Charter School's management teams.

For the General Fund, final budgeted revenues were \$7,359,516, which included a local tax levy of \$2,360,737. Expenditures and other financing uses were budgeted at \$7,158,110. The Charter School anticipated budgeted fund balance of \$637,673 in its 2019-2020 budget year.

JERSEY CITY COMMUNITY CHARTER SCHOOL
Management's Discussion and Analysis
Year Ended June 30, 2020
(Unaudited)

The State of New Jersey reimbursed the Charter School \$179,977 during the year ended June 30, 2020 for the employer's share of social security contributions for TPAF members. Also, the State paid \$679,959 into the TPAF pension representing on-behalf employer's portion of the TPAF Pension System Contributions, TPAF Post-Retirement Medical Benefits Contributions and TPAF Long Term Disability Insurance Premium Contributions for the Charter School. The unbudgeted amounts were included in both revenues and expenditures.

Capital Assets

At the end of fiscal year 2020, the Charter School had \$3,337,911 invested in capital assets in its governmental activities.

The Charter School's 2020-2021 budget does not anticipate any spending on capital projects.

Long-term debt

At June 30, 2020, the Charter School had \$9,850,000 in long-term debt (\$140,000 of which was due within a year) – Serial Bonds issued in 2016. The Charter School had \$2,632,255 at June 30, 2020 in net pension liability regarding the Public Employees Retirement System. More detailed information about the Charter School's long term obligations is presented in the notes to the financial statements.

Economic Factors and Next Year's Budget

The State of New Jersey and indeed the entire United States continue to face serious budgetary constraints and a result of the sharp downturn in the economy. These impact the amount of state and federal aids allocated to charter schools. This reality was taken into account when adopting the general fund budget for 2020-2021. Nothing was done to compromise the quality of the programs in place in our Charter School during the regular instructional day. The budget was prepared to ensure that all students have the textbooks, materials, supplies, equipment and programs they need to meet New Jersey's Core Curriculum Content Standards. The budget was adopted with a redirection of funds to maintain the quality of the regular school day.

COVID-19 Pandemic

In December 2019, an outbreak of a novel strain of coronavirus (COVID-19) originated in Wuhan, China and has since spread to other countries, including the U.S. On March 11, 2020, the World Health Organization characterized COVID-19 as a pandemic. In addition, as of March 21, 2020, New Jersey State Governor Phil Murphy ordered the closure of the physical location of every "non-life sustaining" and "non-essential" business for what may be an extended period of time. The Charter School had to close its physical locations. Future potential impacts may include continued disruptions or restrictions on its employees' ability to work and impairment of its ability to obtain grants and contributions. Though the impact on the Charter School's operations cannot be reasonably estimated at this date, it is likely that there will be an impact on

certain revenue in the General Fund and other state aid and the local tax levy. There have been additional operating expenses (related to COVID-19) in the General Fund not planned for or expected at the time of the adoption of the Charter School's fiscal year 2020-2021 budget.

Contacting the Charter School's Financial Management

This financial report is designed to provide our citizens, taxpayers, investors, and creditors with a general overview of the Charter School's finances and to reflect the Charter School's accountability for the monies it receives. Questions about this report or additional financial information needs should be directed to:

JERSEY CITY COMMUNITY CHARTER SCHOOL
Business Office, 128 Danforth Avenue
Jersey City, New Jersey 07305
Tel: (201) 433-2288* Fax: (201) 433-5803

Basic Financial Statements

Government-wide Financial Statements

The government-wide financial statements provide a financial overview of the Charter School's operations. These financial statements present the financial position and operating results of all governmental activities and business-type activities as of and for the Year Ended June 30, 2020.

JERSEY CITY COMMUNITY CHARTER SCHOOL

A-1

Statement of Net Position

June 30, 2020

	Governmental Activities	Business-type Activities	Total
Assets			
Cash and cash equivalents	\$ 1,603,009	\$ 100,990	\$ 1,703,999
Restricted cash and cash equivalents	1,264,736	-	1,264,736
Accounts receivable	145,743	95,437	241,180
Other current assets	6,001	59,809	65,810
Interfund receivables	-	78,914	78,914
Capital assets (net of accum deprec of \$9,866,454)	3,337,911	-	3,337,911
Total assets	6,357,400	335,150	6,692,550
Deferred outflows of resources			
Pension deferred outflows	561,038	-	561,038
Total assets and deferred outflows of resources	\$ 6,918,438	\$ 335,150	\$ 7,253,588
Liabilities			
Accounts payable	\$ 431,938	\$ 8,257	\$ 440,195
Intergovernmental payables - state	51,448	-	51,448
Interfunds payables	78,914	-	78,914
Other liabilities	190,660	-	190,660
Deferred revenue	9,040	-	9,040
Current portion of long term obligations	140,000	-	140,000
Noncurrent portion of long term obligations	10,504,389	-	10,504,389
Net pension liability	2,632,255	-	2,632,255
Total liabilities	14,038,644	8,257	14,046,901
Deferred inflows of resources			
Pension deferred inflows	2,288,035	-	2,288,035
Total liabilities and deferred inflows of resources	16,326,679	8,257	16,334,936
Net position			
Invested in capital assets net of related debt	(6,512,089)	-	(6,512,089)
Restricted for debt service	848,360	-	848,360
Unrestricted, undesignated	(3,744,512)	326,893	(3,417,619)
Total net position	(9,408,241)	326,893	(9,081,348)
Total liabilities, deferred inflows of resources & net position	\$ 6,918,438	\$ 335,150	\$ 7,253,588

See independent auditor's report and accompanying notes to basic financial statements.

JERSEY CITY COMMUNITY CHARTER SCHOOL

Statement of Activities

Year ended June 30, 2020

Functions/Programs	Expenses	Program Revenues		Net (Expense) Revenue and Changes in Net Position		Total
		Charges for Services	Operating Grants and Contributions	Governmental Activities	Business-type Activities	
Governmental activities:						
Instruction:						
Regular	\$ 2,780,160	\$ -	\$ 403,498	\$ (2,376,662)	\$ -	\$ (2,376,662)
Administrative & Support services:						
General administration	-	-	-	-	-	-
Support services	2,871,362	-	-	(2,871,362)	-	(2,871,362)
	1,440,870	-	165,361	(1,275,509)	-	(1,275,509)
Debt service:						
Interest	551,213	-	-	(551,213)	-	(551,213)
Unallocated depreciation	720,367	-	-	(720,367)	-	(720,367)
Total governmental activities	<u>8,363,972</u>	<u>-</u>	<u>568,859</u>	<u>(7,795,113)</u>	<u>-</u>	<u>(7,795,113)</u>
Business-type activities:						
Food services	350,380	413	254,484	-	(95,483)	(95,483)
After care programs	34,625	85,393	-	-	50,768	50,768
Total business-type activities	<u>385,005</u>	<u>85,806</u>	<u>254,484</u>	<u>-</u>	<u>(44,715)</u>	<u>(44,715)</u>
Total primary government	<u>\$ 8,748,977</u>	<u>\$ 85,806</u>	<u>\$ 823,343</u>	<u>(7,795,113)</u>	<u>(44,715)</u>	<u>(7,839,828)</u>
General revenues and transfers:						
Local sources				2,360,737	-	2,360,737
Federal and state sources				5,682,964	-	5,682,964
Use of money and property				15,109	-	15,109
Miscellaneous				356,494	-	356,494
Transfers				(110,000)	110,000	-
Total general revenues and transfers				<u>8,305,304</u>	<u>110,000</u>	<u>8,415,304</u>
Change in net position				510,191	65,285	575,476
Net position - beginning				(9,918,432)	261,608	(9,656,824)
Net position - ending				<u>\$ (9,408,241)</u>	<u>\$ 326,893</u>	<u>\$ (9,081,348)</u>

See independent auditor's report and accompanying notes to basic financial statements.

Funds Financial Statements

Governmental Funds

JERSEY CITY COMMUNITY CHARTER SCHOOL
Governmental Funds

B-1

Balance Sheet

June 30, 2020

	<u>General</u> <u>Fund</u>	<u>Special</u> <u>Revenue</u> <u>Fund</u>	<u>Debt</u> <u>Service</u> <u>Fund</u>	<u>Totals</u> <u>Governmental</u> <u>Funds</u>
Assets				
Cash and cash equivalents	\$ 1,732,483	\$ (129,474)	\$ -	\$ 1,603,009
Restricted cash and cash equivalents	416,376	-	848,360	1,264,736
Restricted cash - bond accounts	-	-	-	-
State	7,229	-	-	7,229
Federal	-	138,514	-	138,514
Other	-	-	-	-
Other current assets	6,001	-	-	6,001
Interfund receivable	-	-	-	-
Total assets	<u>\$ 2,162,089</u>	<u>\$ 9,040</u>	<u>\$ 848,360</u>	<u>\$ 3,019,489</u>
Liabilities and Fund Balances				
Interfund accounts payables	\$ 78,914	\$ -	\$ -	\$ 78,914
Accounts payable	431,938	-	-	431,938
Intergovernmental payables - federal	-	-	-	-
Intergovernmental payables - state	51,448	-	-	51,448
Other liabilities	190,660	-	-	190,660
Deferred revenue	-	9,040	-	9,040
Total liabilities	<u>752,960</u>	<u>9,040</u>	<u>-</u>	<u>762,000</u>
Fund balances:				
Restricted	416,376	-	848,360	1,264,736
Undesignated	992,753	-	-	992,753
Total fund balances	<u>1,409,129</u>	<u>-</u>	<u>848,360</u>	<u>2,257,489</u>
Total liabilities and fund balances	<u>\$ 2,162,089</u>	<u>\$ 9,040</u>	<u>\$ 848,360</u>	
	-			
Amounts reported for governmental activities in the statement of net position (A-1) are different because:				
Capital assets used in governmental activities are not financial resources and therefore are not reported in the funds.	\$ 13,204,365			
Accumulated depreciation	(9,866,454)			
	<u>\$ 3,337,911</u>			3,337,911
Long-term liabilities, including capital leases and compensated absences are not due and payable in the current period and therefore are not reported as liabilities in the funds.				
Bonds payable				(9,850,000)
Compensated absences payable				(794,389)
Deferred Outflows related to pension contributions subsequent to the Net Pension Liability measurement date and other deferred items are not current financial resources and therefore are not reported in the fund statements. (See Note 7)				561,038
Deferred Inflows related to pension actuarial gains from experience and differences in actual return and assumed returns and other deferred items are not reported as liabilities in the fund statements. (See Note 7)				(2,288,035)
Long-term liabilities, including net pension liability, are not due and payable in the current period and therefore are not reported as liabilities in the funds (see Note 7)				(2,632,255)
Net position of governmental activities - A-1				<u>\$ (9,408,241)</u>

See independent auditor's report and accompanying notes to basic financial statements.

JERSEY CITY COMMUNITY CHARTER SCHOOL
Governmental Funds

B-2

Statement of Revenues, Expenditures and Changes in Fund Balances
Year ended June 30, 2020

	<u>General Fund</u>	<u>Special Revenue Fund</u>	<u>Debt Service Fund</u>	<u>Total</u>
Revenues:				
Local sources:				
Local tax levy	\$ 2,360,737	\$ -	\$ -	\$ 2,360,737
Miscellaneous	356,494	-	15,109	371,603
Total revenues - local sources	<u>2,717,231</u>	<u>-</u>	<u>15,109</u>	<u>2,732,340</u>
Federal sources	3,304	568,859	-	572,163
State sources	4,822,724	-	-	4,822,724
Reimbursed TPAF-Social Security (non-budgeted)	179,977	-	-	179,977
TPAF pension, post retirement medical and long-term disability premium benefits on-behalf payments (non-budgeted)	- 676,959	- -	- -	- 676,959
Total revenues	<u>8,400,195</u>	<u>568,859</u>	<u>15,109</u>	<u>8,984,163</u>
Current expense:				
Instruction	2,376,662	403,498	-	2,780,160
Administrative	2,107,236	-	-	2,107,236
Support services	1,275,509	165,361	-	1,440,870
Capital outlay	19,777	-	-	19,777
Reimbursed and on-behalf payments:				
Reimbursed TPAF-Social Security (non-budgeted)	179,977	-	-	179,977
TPAF pension, post retirement medical and long-term disability premium benefits on-behalf payments (non-budgeted)	- 676,959	- -	- -	- 676,959
Debt service:				
Principal	-	-	130,000	130,000
Interest	-	-	551,213	551,213
Total expenditures	<u>6,636,120</u>	<u>568,859</u>	<u>681,213</u>	<u>7,886,192</u>
Excess (deficiency) of revenues over (under) expenditures	1,764,075	-	(666,104)	1,097,971
Other financing sources:				
Transfer to cover food deficit	(110,000)	-	-	(110,000)
Transfer to debt service fund - principal	(551,213)	-	130,000	(421,213)
Transfer to debt service fund - interest	(130,000)	-	551,213	421,213
	<u>(791,213)</u>	<u>-</u>	<u>681,213</u>	<u>(110,000)</u>
Excess (deficiency) of revenues and other financing sources over (under) expenditures and other financing uses	972,862	-	15,109	987,971
Fund balances, beginning of year	436,267	-	833,251	1,269,518
Fund balances, end of year	<u>\$ 1,409,129</u>	<u>\$ -</u>	<u>\$ 848,360</u>	<u>\$ 2,257,489</u>

See independent auditor's report and accompanying notes to basic financial statements.

JERSEY CITY COMMUNITY CHARTER SCHOOL
Reconciliation of the Statement of Revenues, Expenditures
And Changes in Fund Balances of Governmental Funds
to the Statement of Activities
Year ended June 30, 2020

B-3

Total net change in fund balances - governmental funds (B-2) \$ 987,971

Amounts reported for governmental activities in the statement of activities (A-2) are different because:

Capital outlays are reported in governmental funds as expenditures. However, in the Statement of Activities, the cost of those assets is allocated over their estimated useful lives as depreciation expense. This is the amount by which capital outlays exceeded depreciation expenses in the period. Additionally, in the Statement of Activities gains or (losses) are recognized upon disposition.

<i>Depreciation expense</i>	\$ (720,367)	
<i>Capital outlays</i>	19,777	
		(700,590)

Repayment of long term loan principal is an expenditure in the governmental funds, but the repayment reduces long-term liabilities in the Statement of Net Position and it is not reported in the Statement of Activities.

<i>Repayment of long term loan principal</i>	130,000	130,000
--	---------	---------

Pension contributions are reported in governmental funds as expenditures. However, in the statement of activities, the contributions are adjusted for actuarial valuation adjustments, including service and interest costs, administrative costs, investment returns, and experience/assumption. This is the amount by which net pension liability and deferred inflows/outflows related to pension changed during the period.

92,810

Change in net position of governmental activities (A-2)	\$ 510,191
--	-------------------

See independent auditor's report and accompanying notes to basic financial statements.

Proprietary Funds

**JERSEY CITY COMMUNITY CHARTER SCHOOL
Proprietary Funds**

B-4

Statement of Net Position

June 30, 2020

Assets	
Current assets:	
Cash and cash equivalents	\$ 100,990
Accounts receivable:	-
Federal	94,068
State	1,369
Other current assets	59,809
Interfunds receivable	78,914
Total current assets	<u>\$ 335,150</u>
Liabilities	
Current liabilities:	
Interfunds payable	\$ -
Accounts payable	8,257
Total current liabilities	<u>\$ 8,257</u>
Net position	
Unrestricted	326,893
Total net position	<u><u>\$ 326,893</u></u>

See independent auditor's report and accompanying notes to basic financial statements.

**JERSEY CITY COMMUNITY CHARTER SCHOOL
Proprietary Funds**

B-5

Statement of Revenues, Expenditures and Changes in Net Assets

Year ended June 30, 2020

Operating revenues:	
Charges for services:	
Daily sales - reimbursable program	\$ 85,806
Daily sales - non-reimbursable program	-
Miscellaneous revenue	-
Total Operating revenues	<u>85,806</u>
Operating expenses:	
Cost of sales - reimburseable program	259,526
Cost of sales - non-reimburseable program	-
Salaries	119,234
Employee benefits	-
Professional /technical service	550
Supplies and materials	536
Depreciation	-
Miscellaneous	5,159
Total operating expenses	<u>385,005</u>
Operating income/(loss)	<u>(299,199)</u>
Nonoperating revenues:	
State sources:	
State school lunch program	3,374
State school breakfast program	-
Federal sources:	
National school lunch program	188,359
National school breakfast program	58,409
After school snacks program	-
Healthy, Hunger-Free Kids Act	4,342
Total nonoperating revenues	<u>254,484</u>
Net income/(loss) before contributions & transfers	(44,715)
Other financing sources:	
Transfer in/(out) - board contribution	110,000
	<u>110,000</u>
Change in net position	65,285
Total net position-beginning of year	<u>261,608</u>
Total net position-end of year	<u>\$ 326,893</u>

See independent auditor's report and accompanying notes to basic financial statements.

**JERSEY CITY COMMUNITY CHARTER SCHOOL
Proprietary Fund**

B-6

Statement of Cash Flows

Year ended June 30, 2020

Cash flows from operating activities

Operating loss	\$ (299,199)
Adjustment to reconcile operating loss to net cash used in operating activities:	
Changes in assets and liabilities:	
Accounts receivable	186,241
Due to/from general fund	(96,142)
Accounts payable	(127,545)
Net cash used in operating activities	<u>(336,645)</u>

Cash flows from noncapital financing activities:

Cash received from state reimbursements	3,374
Cash received from federal reimbursements	251,110
Transfers within fund	-
Operating subsidies and transfers from other funds	110,000
Net cash provided by noncapital financing activities	<u>364,484</u>

Cash flows from investing activities

Net change in cash and cash equivalents	27,839
Cash and cash equivalents, beginning	73,151
Cash and cash equivalents, ending	<u>\$ 100,990</u>

See independent auditor's report and accompanying notes to basic financial statements.

Fiduciary Funds

JERSEY CITY COMMUNITY CHARTER SCHOOL
Fiduciary Funds

B-7

Statement of Fiduciary Net Position

June 30, 2020

	Unemployment Compensation	Student Activity Fund	Agency Fund Payroll	Total
Assets				
Cash and cash equivalents	\$ -	\$ 14,357	\$ 56,257	\$ 70,614
Other accounts receivable	-	-	12,963	12,963
Interfund receivable	-	-	-	-
Total assets	\$ -	\$ 14,357	\$ 69,220	\$ 83,577
Liabilities and net position				
Liabilities:				
Payroll deductions and withholdings	\$ -	\$ -	\$ 69,220	\$ 69,220
Interfund payables	-	-	-	-
Account payable - due to students group	-	14,357	-	14,357
Total liabilities	-	\$ 14,357	\$ 69,220	\$ 83,577
Net position	-			
Total liabilities and net position	\$ -			

See independent auditor's report and accompanying notes to basic financial statements.

**JERSEY CITY COMMUNITY CHARTER SCHOOL
Fiduciary Funds**

B-8

Statement of Changes in Fiduciary Net Position

Year ended June 30, 2020

	<u>Unemployment Compensation</u>
Additions:	
Deductions from employees' salaries	\$ -
Board contributions	-
Investment earnings - interest	-
Total revenues	<u>-</u>
Expenditures:	
Unemployment claims	<u>-</u>
Total expenditures	<u>-</u>
Change in net position	-
Net position, beginning	<u>-</u>
Net position, ending	<u><u>\$ -</u></u>

See independent auditor's report and accompanying notes to basic financial statements.

Notes to Basic Financial Statements

JERSEY CITY COMMUNITY CHARTER SCHOOL
(County of Hudson)
Notes to the Basic Financial Statements
Year Ended June 30, 2020

1 Description of the Charter School and Reporting Entity

Jersey City Community Charter School (the “Charter School” was incorporated in the State of New Jersey on March 13, 1997 as a non-for-profit corporation for the purpose of operating and maintaining a public school under a charter granted by the State of New Jersey, which promotes comprehensive educational reform by infusing innovation into the public education system. It is an instrumentality of the State of New Jersey, established to function as an education institution. The Charter School’s Board of Trustees (the Board) is responsible for the fiscal control of the Charter School. A Principal/Chief School Administrator is appointed by Board and is responsible for the administrative control of the Charter School. Under the existing the statutes, the Charter School’s duties and powers include, but not limited to the development and adoption of a school program; the establishment, organization and operation of schools; and the acquisition, maintenance and disposition of school property.

A reporting entity is comprised of the primary government, component units and other organizations that are included to ensure that the financial statements of the Charter School are not misleading. The primary government consists of all funds, departments, boards and agencies that are not legally separate from the Charter School. For the Charter School, this includes general operations, food service and student related activities of the Charter School.

The primary criterion for including activities within the Charter School’s reporting entity, as set forth in Section 2100 of the GASB Codification of Governmental Accounting and Financial Reporting Standards, is the degree of oversight responsibility maintained by the Charter School. Oversight responsibility includes financial interdependency, selection of governing authority, designation of management, and ability to significantly influence operations and accountability for fiscal matters. The combined financial statements include all funds of the Charter School over which the Board exercises operating control. Based on the aforementioned criteria, the Charter School has no component units to be included in the reporting entity. Further, the Charter School is not includable in any other reporting entity on the basis of such criteria.

Jersey City Community Charter School Board of Trustees also has broad financial responsibilities, including the approval of the annual budget and the establishment of a system of accounting and budgetary controls.

Its mission is to establish a character school to serve as a neighborhood resource and as a model for other similar schools. Jersey City Community Charter School is committed to achieving the New Jersey Core Curriculum Content Standards and producing high academic achievement by all students. The Charter School will integrate a holistic curriculum, utilize learner center techniques, family and care giver centered approaches, comprehensive community involvement, cutting edge technology and an intimate nurturing environment that will enhance positive self-images.

JERSEY CITY COMMUNITY CHARTER SCHOOL
(County of Hudson)
Notes to the Basic Financial Statements
Year Ended June 30, 2020

2 Summary of Significant Accounting Policies

This summary of significant accounting policies of Jersey City Community Charter School is presented to assist in understanding the Charter School's financial statements and notes are a representation of the Charter School's management, who is responsible for their integrity and objectivity. These accounting policies conform to generally accepted accounting principles in the United States as applied to governmental units and have been consistently applied in the preparation of these financial statements.

The financial statements of Jersey City Community Charter School (the "Charter School") have been prepared in conformity with generally accepted accounting principles (GAAP) as applied to governmental units. GASB is the accepted standard-setting body for establishing governmental accounting and financial reporting principles.

The Charter School also applies Financial Accounting Standards Board (FASB) pronouncements issued on or before November 30, 1989, to its governmental and business-type activities and to its enterprise fund unless they conflict with or contradict GASB pronouncements. The most significant of the Charter School's accounting policies are described below:

A Basis of Presentation

The Charter School's basic financial statements consist of government-wide statements, including a statement of net position and a statement of activities, and fund financial statements that provide a more detailed level of financial information.

Charter School Government-wide Financial Statements

The statement of net position and the statement of activities display information about the Charter School as a whole. These statements include the financial activities of the Charter School, except for fiduciary funds.

The statement of net position presents the financial condition of the governmental and business-type activities of the Charter School at year-end. The statement of activities presents a comparison between direct expenses and program revenues for each program or function of the Charter School's governmental and business-type activities. Direct expenses are those that are specifically associated with a service, program or department and are therefore clearly identifiable to a particular function. Program revenues include charges paid by the recipient of the goods or services offered by the program and grants and contributions that are restricted to meeting the operational or capital requirements of a particular program. Revenues that are not classified as program revenues are presented as general revenues of the Charter School, with certain limited exceptions. The comparison of direct expenses with program revenues identifies the extent to which each governmental function is self-financing or draws from the general revenues of the Charter School.

JERSEY CITY COMMUNITY CHARTER SCHOOL
(County of Hudson)
Notes to the Basic Financial Statements
Year Ended June 30, 2020

2 Summary of Significant Accounting Policies - *continued*

The governmental activities generally are financed through federal and state awards, taxes and other non-exchange revenues. Business-type activities are financed in whole or in part by fees charged to external parties for goods or services.

Fund Financial Statements

Fund financial statements of the Charter School are organized into funds, each of which is considered to be separate accounting entities. Each fund is accounted for by providing a separate set of self-balancing accounts that constitute its assets, liabilities, fund equity, revenues, and expenditure/expenses. Funds are organized into three major categories: governmental, proprietary, and fiduciary. An emphasis is placed on major funds within the governmental and proprietary categories. A fund is considered major if it is the primary operating fund of the Charter School. The New Jersey Department of Education (NJDOE) requires that all funds be reported as major, as it is considered important for public interest and to promote consistency among Charter Schools financial reporting in the State of New Jersey.

B Fund Accounting

The Charter School segregates transactions related to certain Charter School functions or activities in separate funds in order to aid financial management and to demonstrate legal compliance. Fund financial statements are designed to present financial information of the Charter School at a more detailed level.

Governmental Funds

Governmental funds are those funds through which most governmental functions typically are financed. Governmental fund reporting focuses on the sources, uses and balances of current financial resources. Expendable assets are assigned to the various governmental funds according to the purposes for which they will be paid. The difference between governmental fund assets and liabilities is reported as fund balance. The following are the Charter Schools' major governmental funds:

General Fund - The General Fund is the primary operating fund of the Charter School. It is used to account for all financial resources except those that are legally or administratively required to be accounted for in another fund. Included are certain expenditures for vehicles and movable instructional or non-instructional equipment which are classified in the Capital Outlay sub-fund.

JERSEY CITY COMMUNITY CHARTER SCHOOL
(County of Hudson)
Notes to the Basic Financial Statements
Year Ended June 30, 2020

2 Summary of Significant Accounting Policies - *continued*

As required by the New Jersey Department of Education, the Charter School included budgeted capital outlay in this fund. Generally accepted accounting principles as they pertain to governmental entities state that General Fund resources may be used to directly finance capital outlays for long-lived improvements as long as the resources in such cases are derived exclusively from unrestricted revenues.

Resources for budgeted capital outlay purposes are normally derived from State of New Jersey aid and appropriated fund balance. Expenditures are those that result in the acquisition of or additions to fixed assets for land, existing buildings, improvements of ground, construction of buildings, additions to or remodeling of buildings and the purchase of built-in equipment. These resources can be transferred from and to current expense by board resolution.

Special Revenue Fund - The Special Revenue Fund is used to account for the proceeds of specific revenue from State and Federal Government, (other than major Capital Projects, Debt Service or the Enterprise Funds) and local appropriations that legally restricted to expenditures for specified purposes.

Capital Projects Fund - The Capital Projects Fund is used to account for all financial resources to be used for the acquisition or construction of major capital facilities (other than those financed by proprietary funds). The financial resources are derived from temporary notes or serial bonds that are specifically authorized by the voters as a separate question on the ballot either during the annual election or at a special election.

Proprietary Funds

The focus of Proprietary Funds' measurement is upon determination of net income, changes in net position, financial position and cash flows. The generally accepted accounting principles applicable are those similar to business in the private sector. The following is a description of the Proprietary Funds of the Charter School:

Enterprise Funds - The Enterprise Fund is utilized to account for operations that are financed and operated in a manner similar to private business enterprises where the intent of the Charter School is that the cost (i.e. expenses including depreciation and indirect costs) of providing goods and services to the students on a continuing basis be financed or recovered primarily through user charges; or where the Charter School has decided that periodic determination of revenues earned, expenses incurred, and/or net income is appropriated for capital maintenance, public policy, management control, accountability or other purposes.

JERSEY CITY COMMUNITY CHARTER SCHOOL
(County of Hudson)
Notes to the Basic Financial Statements
Year Ended June 30, 2020

2 Summary of Significant Accounting Policies - *continued*

All proprietary funds are accounted for on a cost of services or “capital maintenance” measurement focus. This means that all assets and all liabilities, whether current or non-current, associated with their activity are included on their balance sheets. Their reported fund equity (net total assets) is segregated into contributed capital and unreserved retained earnings, if applicable. Proprietary fund type operating statements present increases (revenue) and decreases (expenses) in net total assets.

Fiduciary Funds

Fiduciary or trust and Agency Funds are used to account for assets held by the Charter School in a trustee capacity or as an agent for individuals, private organizations, other governments and/or other funds. This fund category includes:

Trust Funds - Expendable Trust Funds (unemployment compensation) are accounted for in essentially the same manner as the governmental funds. The unemployment compensation trust fund is used to account for contributions from employees and the employer (the Charter School) and interest earned on the balance as well as payments to the State for reimbursements of unemployment claims.

Agency Funds – Agency funds (*Payroll, Health Benefits and Student Activity Fund*) are used to account for the assets that the Charter School holds on behalf of others as their agent. Agency funds are custodial in nature and do not involved measurement of results of operations.

C Measurement Focus and Basis of Accounting

Measurement focus is a term used to describe “which” transactions are recorded within the various financial statements. ***Basis of accounting*** refers to “when” transactions are recorded regardless of the measurement focus applied.

Measurement Focus

On the government-wide statements of net position and the statement of activities, both governmental and business-like activities are presented using the economic resources measurement focus. The accounting and financial reporting treatment applied to a fund is determined by its measurement focus. All governmental funds and expendable trust funds are accounted for using a current financial resources measurement focus. With this measurement focus, only current assets and current liabilities generally are included on the balance sheet. Operating statement of these funds present increases (i.e., revenues and other financing sources), and decreases (i.e. Expenditures and other finances uses) during a given period. These funds use fund balance as their measure of available spendable financial resources at the end of the period.

JERSEY CITY COMMUNITY CHARTER SCHOOL
(County of Hudson)
Notes to the Basic Financial Statements
Year Ended June 30, 2020

2 Summary of Significant Accounting Policies - *continued*

All proprietary funds are accounted for on a flow economic resources measurement focus. With this measurement focus, the accounting adjectives are the determination of operating income, changes in net position (or cost recovery), financial position, and cash flow. All assets and all liabilities, whether current or non-current, associated with their activities are included on the balance sheet. Fund equity (i.e., net total assets) is classified as net position.

Basis of Accounting

In the government wide statement of net position and statements of activities, both governmental and business like activities are presented using the accrual basis of accounting. Under the accrual basis of accounting revenues are recognized when earned and expenses are recognized when the liability, resulting from exchange and exchange like transactions, is incurred (i. e the exchange takes place).

In the fund financial statements, governmental fund and agency funds are presented on the modified accrual basis of accounting. Under the modified accrual basis of accounting, revenues are recognized when they become both measurable and available. “Measurable” means the amount of the transaction can be determine and “available” means collectible with the current period or soon enough thereafter to be used to pay liabilities of the current period. State equalization monies are recognized as revenue during the period in which they are appropriated. A one-year availability period is used for revenue recognition for all other governmental funds revenues.

D Budgets/Budgetary Control

Annual appropriated budgets are prepared in the spring of each year for the general and special revenue fund. The budgets are submitted to the County Office and the Education Commissioner for approval. Budgets except for the special revenue fund which is prepared using a non-GAAP budgetary basis, are prepared using the modified accrual basis of accounting. The legal level of budgetary control is established at line item accounts within each fund. Line item accounts are defined as the lowest (most specific) level of detail as established pursuant to the minimum chart of accounts referenced in N.J.A.C. 6:20-2A.2(m)1. Transfers of appropriations may be made by Charter School Board resolution at any time during the fiscal year subject to the limitation of P.L. 2004 c73 (S1701). The Board of Trustees did not make any material supplemental budgetary appropriations during the fiscal year.

Formal budgetary integration into the accounting system is employed as a management control device during the year. For governmental funds, there are no substantial differences between the budgetary basis of accounting and generally accepted accounting principles, with the exception of the Special Revenue Fund as noted below.

JERSEY CITY COMMUNITY CHARTER SCHOOL
(County of Hudson)
Notes to the Basic Financial Statements
Year Ended June 30, 2020

2 Summary of Significant Accounting Policies - *continued*

Encumbrance accounting is also employed as an extension of formal budgetary integration in the governmental funds types. Unencumbered appropriations lapse at fiscal year-end.

The accounting records of the special revenue fund are maintained on the grant accounting budgetary basis. The grant accounting budgetary basis differs from GAAP in that the grant accounting budgetary basis recognized encumbrances as expenditures and also recognized the related revenues, whereas the GAAP basis does not. Sufficient supplemental records are maintained to allow of the presentation of GAAP basis financial reports.

E Cash, Cash Equivalent and Investments

Cash and cash equivalents include petty cash, change funds, cash in banks and all highly liquid investment with a maturity of three months or less at the time of purchases and are stated at cost plus accrued interest. US Treasury and agency obligations and certificates of deposit with maturities of one year or less when purchases are stated at cost. All other investments are stated at fair value.

New Jersey Charter Schools are limited as to the types of the investments and types of financial institution they may invest in. New Jersey statute 18A:20-37 provides a list of permissible investment that may be purchased by New Jersey Charter Schools.

Additionally, the Charter School has adopted a cash management plan that requires it to deposit public fund in public depositories protected from loss under the provisions of the Governmental Unit Deposit Protection Act (“GUDPA”). GUDPA was enacted in 1970 to protect Governmental Units from loss funds on deposit with a failed banking institution in New Jersey.

N.J.S.A. 17:9-41 et. seq. established the requirements for the security of deposits of governmental units. The statute requires that no governmental unit shall deposit public funds in a public depository unless such funds are secured in accordance with the Act. Public depositories include Savings and Loan Institutions, bank (both state and national banks) and saving bank the deposits of which are federally insured. All public depositories must pledge collateral, having a market value at least equal to five percent of the average daily balance of collected public funds, to secure the deposit of Governmental Units. If a public depository fails, the collateral it has pledged, plus the collateral of all other public depositories, is available to pay the full amount of their deposits to the Governmental Units.

JERSEY CITY COMMUNITY CHARTER SCHOOL
(County of Hudson)
Notes to the Basic Financial Statements
Year Ended June 30, 2020

2 Summary of Significant Accounting Policies - *continued*

F Short-Term Interfund Receivables/Payables

On the fund financial statement, receivable and payables resulting from short-term (due within one year) interfund loans are classified as interfund receivables/payables. Interfund balances within governmental activities and within business-type activities are eliminated on the Government Wide Statements of Net Position.

G Inventories and Prepaid Expenses

Inventories and prepaid expenses, which benefit future periods, other than those recorded in the enterprise fund are recorded as expenditure during the year of purchase. Inventories in the proprietary funds are valued at cost, which approximates market, using the first-in-first-out (FIFO) method.

H Capital Assets

Capital assets, which include leasehold improvements, equipment, furniture & fixtures and vehicles are reported in the applicable governmental or business-type activities columns of the Government-wide financial statements. Capital assets are defined by the Charter School as assets with initial, individual cost of more than \$2,000 and an estimated useful life in excess of two years. Such assets are recorded at historical cost or through estimation procedures performed by an independent appraisal company.

The cost of normal repairs and maintenance that do not add to the value of the asset or materially extend the assets lives are not capitalized. Donated capital assets are capitalized at estimated fair market value on the date donated. Depreciation of capital assets is computed and recorded by the straight-line method.

Description of Capital Assets

Estimated Lives (Years)

Building improvements	15
Buildings	15
Furniture and equipment	3-5

JERSEY CITY COMMUNITY CHARTER SCHOOL
(County of Hudson)
Notes to the Basic Financial Statements
Year Ended June 30, 2020

2 Summary of Significant Accounting Policies - *continued*

I Compensated Absences

The Charter School accounts for compensated absences (e.g., unused vacation, sick leave) as directed by Governmental Accounting Standards Board Statement No. 16 (GASB 16), "Accounting for Compensated Absences." Compensated absences are those absences for which employees will be paid, such as vacation, sick leave, and sabbatical leave. A liability for compensated absences that are attributable to services already rendered, and that are not contingent on specific events that are outside the control of the Charter School and its employees, is accrued as the employees earn the rights to the benefits. Compensated absences that relate to future services, or that are contingent on specific events that are outside the control of the Charter School and its employees, are accounted for in the period in which such service is rendered or in which such events take place. In governmental and similar trust funds, compensated absences that are expected to be liquidated with the expendable available financial resources are reported as expenditure and fund liability in the fund that will pay for the compensated absences. In proprietary and similar trust funds, compensated absences are required as an expense and liability of the fund that will pay for them.

As of June 30, 2020, a liability existed for compensated absences in the amount \$794,389.

J Accrued Liabilities and Long-Term Obligations

All payables, accrued liabilities, and long-term obligations are reported on the government-wide financial statements.

In general, governmental fund payables and accrued liabilities that, once incurred, are paid in a timely manner and in full from current financial resources are reported as obligations of the funds. However, the non-current portion of compensated absences and mortgage payable (if any) that will be paid from governmental funds are reported as liabilities on the fund financial statements only to the extent that they are normally expected to be paid with expendable, available financial resources.

K Deferred Revenue

Deferred revenue in special revenue fund represent cash that has been received but not yet earned.

JERSEY CITY COMMUNITY CHARTER SCHOOL
(County of Hudson)
Notes to the Basic Financial Statements
Year Ended June 30, 2020

2 Summary of Significant Accounting Policies - *continued*

L Fund Balance and Equity

In February 2009, the GASB issued GASB Statement No. 54, Fund Balance Reporting and Governmental Fund Type Definitions (“GASB 54”). GASB 54 is effective for periods beginning after June 15, 2010 and establishes fund balance classifications that comprise a hierarchy based primarily on the extent to which government is bound to observe constraints imposed upon the use of resources reported in governmental funds. Under GASB 54, fund balances in the governmental funds financial statements are reported under the modified accrual basis of accounting and classified into the following five categories, as defined below:

1. Non-spendable – includes amounts that cannot be spent because they either (a) not in spendable form or (b) legally or contractually required to be maintained intact. Assets included in this fund balance category include prepaid assets, inventories, long-term receivables, and corpus of any permanent funds.
2. Restricted – includes amounts that can be spent only for the specific purposes stipulated by constitution, external resource providers, or through enabling legislation.
3. Committed – includes amounts that can be used only for the specific purposes determined by a formal action of the government’s highest level of decision-making authority.
4. Assigned – amounts intended to be used by the government for specific purposes but do not meet the criteria to be classified as restricted or committed.
5. Unassigned – includes all spendable amounts not contained in the other classifications.

When both restricted and unrestricted resources are available for use, it is the Charter School’s policy to use restricted resources first, then unrestricted resources as they are needed. For the unrestricted fund balance, the Charter School first spends committed funds, then assigned funds, and finally, unassigned funds.

M Net Position

Net Position represent the difference between assets and liabilities in the Government-wide financial statements. Net position invested in capital assets, net of related debt consists of capital assets, net of accumulated depreciation, reduced by the outstanding balance of any long-term debt used to build or acquire the capital assets. Net position are reported as restricted in the Government-wide financial statements when there are limitations imposed on their use through external restrictions imposed by creditors, grantors, or laws or regulations of other governments.

JERSEY CITY COMMUNITY CHARTER SCHOOL
(County of Hudson)
Notes to the Basic Financial Statements
Year Ended June 30, 2020

2 Summary of Significant Accounting Policies - *continued*

N Management Estimates

The preparation of financial statements in conformity with generally accepted accounting principles requires management to make estimates that affect the recorded amount of assets and liabilities and disclosure of contingent assets and liabilities at the date of the financial statements and the reported amounts of revenues and expenditures during the reporting period. Actual results could differ from those estimates.

O On-Behalf Payments

Revenues and expenditures of the General Fund include payment made by the state of New Jersey for Pension and social security contributions for certified teacher members of the New Jersey Teachers' Pension and Annuity Fund. The amounts are not required to be included in the Charter School's annual budget.

P GASB Pronouncements Not Yet Implemented

GASB Statement No. 87, Leases (the "Statement").

The objective of this Statement is to better meet the information needs of financial statement users by improving accounting and financial reporting for leases by governments. This Statement increases the usefulness of governments' financial statements by requiring recognition of certain lease assets and liabilities for leases that previously were classified as operating leases and recognized as inflows of resources or outflows of resources based on the payment provisions of the contract. It establishes a single model for lease accounting based on the foundational principle that leases are financings of the right to use an underlying asset.

Under this Statement, a lessee is required to recognize a lease liability and an intangible right-to-use lease asset, and a lessor is required to recognize a lease receivable and a deferred inflow of resources, thereby enhancing the relevance and consistency of information about governments' leasing activities.

Leases should be recognized and measured using the facts and circumstances that exist at the beginning of the period of implementation (or, if applied to earlier periods, the beginning of the earliest period restated). However, lessors should not restate the assets underlying their existing sales-type or direct financing leases. Any residual assets for those leases become the carrying values of the underlying assets.

JERSEY CITY COMMUNITY CHARTER SCHOOL
(County of Hudson)
Notes to the Basic Financial Statements
Year Ended June 30, 2020

2 Summary of Significant Accounting Policies - *continued*

P GASB Pronouncements Not Yet Implemented - *continued*

GASB Statement No. 87, Leases (the "Statement") - *continued*

This Statement will increase the usefulness of governments' financial statements by requiring reporting of certain lease liabilities that currently are not reported. It will enhance comparability of financial statements among governments by requiring lessees and lessors to report leases under a single model. This Statement also will enhance the decision/usefulness of the information provided to financial statement users by requiring notes to financial statements related to the timing, significance, and purpose of a government's leasing arrangements.

The requirements of this Statement are effective for reporting periods beginning after December 15, 2019. The Charter School is currently evaluating the impact of GASB Statement No. 87 on its charter school-wide financial statements.

3 Deposits and Investments

New Jersey statutes require that Charter Schools deposit public funds in public depositories located in New Jersey that are insured by the Federal Deposit Insurance Corporation, the Federal Savings and Loan Insurance Corporation, or by any other agency of the United States that insures deposits made in public depositories. Charter schools are also permitted to deposit public funds in the State of New Jersey Cash Management Fund (NJCMF), the New Jersey Arbitrage Rebate Management Fund (NJARM) and the M.B.I.A Class.

New Jersey statutes require public depositories to maintain collateral for deposits of public funds that exceed depository insurance limits as follows: The market value of the collateral must equal at least 5% of the average daily balance of collected funds on deposit.

In addition to the above collateral requirement, if the public funds deposited exceed 75% of the capital funds of the depository, the depository must provide collateral having a market value at least equal to 100% of the amount exceeding 75%. All collateral must be deposited with the Federal Reserve Bank of New York, the Federal Reserve Bank of Philadelphia, the Federal Home Loan Bank of New York, or a banking institution that is a member of the Federal Reserve System and has capital funds of not less than \$25,000,000.

JERSEY CITY COMMUNITY CHARTER SCHOOL
(County of Hudson)
Notes to the Basic Financial Statements
Year Ended June 30, 2020

3 Deposits and Investments - continued

The Charter School’s cash and cash equivalents are classified below to inform financial statement users about the extent to which the Charter School’s deposits and investments are exposed to custodial credit risk. As of June 30, 2020, the Charter School’s carrying amount of deposits and investments are as follows:

	General Fund	Special Revenue	Debt Service	Enterprise Funds	Agency Funds	Total
Operating A/C	\$ 1,732,483	\$ (129,474)	\$ -	\$ 100,990	\$ 70,614	\$ 1,774,613
Restricted	416,376	-	848,360	-	-	1,264,736
Total	\$ 2,148,859	\$ (129,474)	\$ 848,360	\$ 100,990	\$ 70,614	\$ 3,039,349

Operating cash accounts are held in the Charter School’s name by two banking institutions. At June 30, 2020, the Charter School’s carrying amount of deposits was \$3,039,349 and the bank balance was \$3,110,464. Of the bank balance, up to a maximum of \$500,000 of the Charter School’s cash deposits on June 30, 2020 were secured by federal deposit insurance and \$2,610,464 was covered by a collateral pool maintained by the bank as required by New Jersey statutes in accordance with the New Jersey Governmental Unit Deposit Protection Act (“GUDPA”).

Establishment of an Escrow Account

The Charter School has established and funded a portion of an Escrow Account pursuant to an agreement signed with the New Jersey Department of Education. The required maximum is \$75,000. The Charter School has fully funded the \$75,000. The agreement stipulates that the intended use of the escrow amount is “to pay for legal and audit expenses and any other outstanding pension benefits that would be associated with a dissolution should it occur.”

GASB Statement No. 40 requires that the Charter School disclose whether its deposits are exposed to custodial risk (risk that in the event of failure of the counterparty, the Charter School would not be able to recover the value of its deposit or investment). In general deposits are considered to be exposed to custodial risk by three categories described below:

JERSEY CITY COMMUNITY CHARTER SCHOOL
(County of Hudson)
Notes to the Basic Financial Statements
Year Ended June 30, 2020

3 Deposits and Investments - *continued*

Category 1 - Insured or collateralized with securities held by the Charter School or by its agent in the Charter School's name. **Category 2** - Collateralized with securities held by the pledging public depository's trust department or agent in the Charter School's name. **Category 3** - Uncollateralized, including any deposits that are collateralized with securities held by the pledging public depository, or by its trust department or agent, but not in the Charter School's name.

The Charter School does not have a policy for the management of the custodial risk, other than depositing all of its funds in banks covered by GUDPA.

Investments

New Jersey statutes permit the Charter School to purchase the following types of securities:

1. Bonds or other obligations of the United States or obligations guaranteed by the United States.
2. Bonds of any Federal Intermediate Credit Bank, Federal Home Loan Bank, Federal national Mortgage Agency or of any United States Bank for Cooperatives which have a maturity date not greater than twelve months from the date of purchase.
3. Bonds or other obligations of the Charter School.
4. New Jersey Cash Management Fund, New Jersey Arbitrage Rebate Management Fund and MBIA CLASS.

As of June 30, 2020, the Charter School did not hold any investments.

JERSEY CITY COMMUNITY CHARTER SCHOOL
(County of Hudson)
Notes to the Basic Financial Statements
Year Ended June 30, 2020

4 Capital Assets

The following schedule is a summarization of the governmental activities changes in capital assets for the year ended June 30, 2020:

Governmental activities	Beginning Balance	Net Additions (Deletions)	Ending Balance
Capital assets not depreciated:			
Land	\$ 861,909	\$ -	\$ 861,909
Capital assets, being depreciated:			
Buildings	11,159,270	-	11,159,270
Buildings improvements	403,237	-	403,237
Machinery and equipment	739,563	19,777	759,340
Furniture	20,609	-	20,609
	<u>12,322,679</u>	<u>19,777</u>	<u>12,342,456</u>
Less accumulated depreciation			
Buildings	8,186,716	638,505	8,825,221
Buildings improvements	326,387	14,914	341,301
Machinery and equipment	612,376	66,948	679,324
Furniture	20,609	-	20,609
	<u>9,146,088</u>	<u>720,367</u>	<u>9,866,455</u>
Total capital assets net	<u>\$ 4,038,500</u>	<u>\$ (700,590)</u>	<u>\$ 3,337,910</u>

Depreciation expense of \$720,367 was charged to an unallocated function.

JERSEY CITY COMMUNITY CHARTER SCHOOL
(County of Hudson)
Notes to the Basic Financial Statements
Year Ended June 30, 2020

5 Lease Obligations

Equipment Leases

The Charter School leases office equipment (computers and copiers) under several operating lease agreements. For the year ended June 30, 2020, the Charter School incurred \$xxxxxxx in equipment lease expenditures.

Year ending June 30:	Equipment Leases
2020	\$ -
2021	-
2022	-
2023	-
2024	-
Thereafter	-
	<hr/>
	\$ -
	<hr/> <hr/>

JERSEY CITY COMMUNITY CHARTER SCHOOL
(County of Hudson)
Notes to the Basic Financial Statements
Year Ended June 30, 2020

6 Pension Plans

Description of Plans

Substantially all of the employees of the Charter School are covered by either the Public Employee's Retirement System or the Teacher's Pension and Annuity Fund (both of which are contributory defined benefits plans). Both were established by state statute and are administered by the New Jersey Division of Pension and Benefit (Division). According to the State of New Jersey Administrative Code, all obligations of both Systems will be assumed by the State of New Jersey should the Systems terminate.

The State of New Jersey, Department of the Treasury, Division of Pensions and Benefits, issues publicly available financial reports that include the financial statements and required supplementary information for TPAF and PERS. The financial reports may be obtained by writing to the State of New Jersey, Department of the Treasury, Division of Pensions and Benefits, P.O. Box 295, Trenton, New Jersey 08625-0295.

Teachers' Pension and Annuity Fund (TPAF)

The Teachers' Pension and Annuity Fund was established in January 1955 under the provisions of N.J.S.A. 18A:66 to provide coverage including post-retirement health care to substantially all full time public school employees in the State. Membership is mandatory for such employees and vesting occurs after 10 years of service for pension benefits and 25 years for health care coverage. Age eligibility and benefit provisions were affected by Chapters 92 and 103, P.L. 2007, Chapter 89, P.L. 2008, Chapter 1, P.L. 2010, and Chapter 78, P.L. 2011. Members are classified into one of five tiers dependent upon the date of their enrollment. Tier 1, 2 and 3 members are eligible to retire at age 60, 60, and 62, respectively, with an annual benefit generally determined to be 1/55th of the average annual compensation for the highest three fiscal years' compensation for each year of membership during years of credited service. Tier 4 and 5 members are eligible to retire at age 62 and 65, respectively, with an annual benefit generally determined to be 1/60th of the average annual compensation for the highest five fiscal years' compensation for each year of membership during years of credited service. Anyone who retires early and is under their respective tier's retirement age receives retirement benefits as calculated in the formulas mentioned above, but at a reduced rate in accordance with applicable New Jersey Statute based upon their tier.

JERSEY CITY COMMUNITY CHARTER SCHOOL
(County of Hudson)
Notes to the Basic Financial Statements
Year Ended June 30, 2020

6 Pension Plans - *continued*

Public Employees' Retirement System (PERS)

The Public Employees' Retirement System was established in January 1955 under the provisions of N.J.S.A. 43:15A to provide coverage including post-retirement health care to substantially all full-time employees of the State or any county, municipality, school Board or public agency provided the employee is not a member of another State-administered retirement system. Age eligibility and benefit provisions were affected by Chapters 92 and 103, P.L. 2007, Chapter 89, P.L. 2008, Chapter 1, P.L. 2010, and Chapter 78, P.L. 2011. Members are classified into one of five tiers dependent upon the date of their enrollment. Tier 1, 2 and 3 members are eligible to retire at age 60, 60, and 62, respectively with an annual benefit generally determined to be 1/55th of the average annual compensation for the highest three fiscal years' compensation for each year of membership during years of credited service. Tier 4 and 5 members are eligible to retire at age 62 and 65, respectively with an annual benefit generally determined to be 1/60th of the average annual compensation for the highest five fiscal years' compensation for each year of membership during years of credited service. Anyone who retires early and is under their respective tier's retirement age receives retirement benefits as calculated in the formulas mentioned above, but at a reduced rate in accordance with applicable New Jersey Statute based upon their tier.

Defined Contribution Retirement Program (DCRP)

The Defined Contribution Retirement Program (DCRP) was established under the provision of Chapter 92, P.L. 2007 and Chapter 103, P.L. 2007 to provide coverage to elected and certain appointed officials, effective July 1, 2007. Membership is mandatory for such individuals with vesting occurring after one year of membership.

Funding Policy

The contribution policy is set by New Jersey State Statutes and contributions are required by active members and contributing members. Plan member and employer contributions may be amended by State of New Jersey legislation. Under the provisions of Chapter 78, P.L. 2011, employee contribution rates for TPAF and PERS increased to 7.5% of employees' annual compensation. Employers are required to contribute at an actuarially determined rate in both the TPAF and PERS. The actuarially determined contribution includes funding for noncontributory death benefits and post-retirement medical premiums. Under current statute the Board is a non-contributing employer of the TPAF.

JERSEY CITY COMMUNITY CHARTER SCHOOL
(County of Hudson)
Notes to the Basic Financial Statements
Year Ended June 30, 2020

6 Pension Plans - *continued*

Annual Pension Costs (APC)

Per the requirements of GASB Statement No. 27 for the year ended June 30, 2011 for TPAF, which is a cost sharing plan with special funding situations, annual pension cost differs from the annual required contribution. For PERS, which is a cost sharing multi-employer defined benefit pension plan, the annual pension cost equals contributions made. TPAF employer contributions are made annually by the State of New Jersey to the pension system on behalf of the Board.

PERS employer contributions are made annually by the Board to the pension system in accordance with Chapter 114, P.L. 1997. In the DCRP, which is a defined contribution plan, member contributions are matched by a 3% employer contribution.

The Charter School's contribution to PERS for the year ended June 30, 2020 was \$151,555.

In accordance with N.J.S.A 18A:66-66 the State of New Jersey reimbursed the Charter School \$179,977 during the year ended June 30, 2020 for the employer's share of social security contributions for TPAF members, as calculated on their base salaries. Also, the State paid \$676,959 into the TPAF pension representing on-behalf employer's portion of the TPAF Pension System Contributions, TPAF Post-Retirement Medical Benefits Contributions and TPAF Long Term Disability Insurance Premium Contributions for the Charter School. These amounts have been included in the school wide financial statements and the fund financial statements as a revenue and expenditure in accordance with GASB No. 24.

JERSEY CITY COMMUNITY CHARTER SCHOOL
(County of Hudson)
Notes to the Basic Financial Statements
Year Ended June 30, 2020

7 Pension Plans – GASB 68 Disclosures

Teachers' Pension and Annuity Fund (TPAF)

Summary of Significant Accounting Policies

For purposes of measuring the net pension liability, deferred outflows of resources and deferred inflows of resources related to pensions, and pension expense, information about the fiduciary net position of the Teachers' Pension and Annuity Fund (TPAF) and additions to/deductions from the TPAF's fiduciary net position have been determined on the same basis as they are reported by the TPAF.

For this purpose, benefit payments (including refunds of employee contributions) are recognized when due and payable in accordance with the benefit terms. Investments are reported at fair value.

Pension Liabilities, Pension Expense, and Deferred Outflows of Resources and Deferred Inflows of Resources Related to Pension

The employer contributions for the Charter School are legally required to be funded by the State in accordance with N.J.S.A 18:66-33. Therefore, the Charter School (employer) is considered to be in a special funding situation as defined by GASB Statement No. 68 and the State is treated as a non-employer contributing entity.

Pension Liabilities, Pension Expense, and Deferred Outflows of Resources and Deferred Inflows of Resources Related to Pension - continued

Since the Charter School (employer) does not contribute directly to the plan (except for employer specific financed amounts), there is no net pension liability or deferred outflows or inflows to report in the financial statements of the Charter School. However, the state's portion of the net pension liability that was associated with the Charter School was \$14,217,847 as measured on June 30, 2019.

For the year ended June 30, 2020, the Charter School recognized pension expense of \$838,607 and revenue of \$838,607 for support provided by the State. The measurement period for the pension expense and revenue reported in the Charter School's financial statements (A-2) at June 30, 2020 is based upon changes in the collective net pension liability with a measurement period of June 30, 2018 through June 30, 2019. Accordingly, the pension expense and the related revenue associated with the support provided by the State are based upon the changes in the collective net pension liability between July 1, 2018 and June 30, 2019.

JERSEY CITY COMMUNITY CHARTER SCHOOL
(County of Hudson)
Notes to the Basic Financial Statements
Year Ended June 30, 2020

7 Pension Plans – GASB 68 Disclosures - *continued*

Teachers' Pension and Annuity Fund (TPAF) - *continued*

Although the Charter School does not report net pension liability or deferred outflows or inflows related to the TPAF, the following schedule illustrates the collective net pension liability and deferred items and the State's portion of the net pension liability associated with the Charter School. The collective amounts are the total of all New Jersey local governments participating in the TPAF plan.

	June 30, 2019	June 30, 2018
Collective deferred outflows of resources	\$ 9,932,767,606	\$ 12,473,998,870
Collective deferred inflows of resources	\$17,539,845,423	\$16,180,773,643
Collective net pension liability (non-employer State of New Jersey)	\$61,370,943,870	\$63,617,852,031
State's portion of the net pension liability that was associated with the Charter School	\$ 14,217,847	\$ 13,508,125
State's portion of the net pension liability that was associated with the Charter School as a percentage of the collective net pension liability	0.023167%	0.021233%

Actuarial Assumptions

The total pension liability for the June 30, 2019 measurement date was determined by an actuarial valuation as of July 1, 2018, which was rolled forward to June 30, 2019. The total pension liability for the June 30, 2018 measurement date was determined by an actuarial valuation as of July 1, 2017. This actuarial valuation used the following actuarial assumptions, applied to all periods in the measurement:

Inflation rate - price	2.75%
Inflation rate - wage	3.25%
Salary increases: through 2026	1.55% - 4.45% based on years of service
Salary increases: thereafter	2.75% - 5.65% based on years of service
Investment rate of return	7.00%

Pre-retirement mortality rates were based on the Pub-2010 Teachers Above-Median Income Employee mortality table with a 93.9% adjustment for males and 85.3% adjustment for females, and with future improvement from the base year of 2010 on a generational basis. Post-retirement mortality rates were based on the Pub-2010 Teachers Above-Median Income Healthy Retiree mortality table with a 114.7% adjustment for males and 99.6% adjustment for females, and with future improvement from the base year of 2010 on a generational basis.

JERSEY CITY COMMUNITY CHARTER SCHOOL
(County of Hudson)
Notes to the Basic Financial Statements
Year Ended June 30, 2020

7 Pension Plans – GASB 68 Disclosures - *continued*

Teachers' Pension and Annuity Fund (TPAF) - *continued*

Actuarial Assumptions - continued

Disability mortality rates were based on the Pub-2010 Non-Safety Disabled Retiree mortality table with a 106.3% adjustment for males and 100.3% adjustment for females, and with future improvement from the base year of 2010 on a generational basis. Mortality improvement is based on Scale MP-2019.

The actuarial assumptions used in the July 1, 2018 valuation were based on the results of an actuarial experience study for the period July 1, 2015 to June 30, 2018.

Long-Term Expected Rate of Return - continued

In accordance with State statute, the long-term expected rate of return on plan investments (7.00% at June 30, 2019) is determined by the State Treasurer, after consultation with the Directors of the Division of Investments and Division of Pensions and Benefits, the board of trustees and the actuaries. The long-term expected rate of return was determined using a building block method in which best-estimate ranges of expected future real rates of return (expected returns, net of pension plan investment expense and inflation) are developed for each major asset class.

These ranges are combined to produce the long-term expected rate of return by weighting the expected future real rates of return by the target asset allocation percentage and by adding expected inflation. Best estimates of arithmetic real rates of return for each major asset class included in TPAF's target asset allocation as of June 30, 2019 are summarized in the following table:

JERSEY CITY COMMUNITY CHARTER SCHOOL
(County of Hudson)
Notes to the Basic Financial Statements
Year Ended June 30, 2020

7 Pension Plans – GASB 68 Disclosures - *continued*

Teachers’ Pension and Annuity Fund (TPAF) - *continued*

Long-Term Expected Rate of Return - continued

Asset Class	Target Allocation	Long Term Expected Real Rate of Return
Risk Mitigation Strategies	3.00%	4.67%
Cash Equivalents	5.00%	2.00%
US Treasuries	5.00%	2.68%
Investment Grade Credit	10.00%	4.25%
High Yield	2.00%	5.37%
Private Credit	6.00%	7.92%
Real Assets	2.50%	9.31%
Real Estate	7.50%	8.33%
US Equity	28.00%	8.26%
Non-US Developed Markets Equity	12.50%	9.00%
Emerging Markets Equity	6.50%	11.37%
Private Equity	12.00%	10.85%

Discount Rate

The discount rate used to measure the State's total pension liability was 5.60% and 4.86% as of June 30, 2019 and 2018, respectively. This single blended discount rate was based on the long-term expected rate of return on pension plan investments of 7.00%, and a municipal bond rate of 3.50% and 3.87% as of June 30, 2019 and 2018, respectively, based on the Bond Buyer Go 20-Bond Municipal Bond Index which includes tax-exempt general obligation municipal bonds with an average rating of AA/Aa or higher.

The projection of cash flows used to determine the discount rate assumed that contributions from plan members will be made at the current member contribution rates and that contributions from employers will be based on 70% of the actuarially determined contributions for the State. Based on those assumptions, the plan’s fiduciary net position was projected to be available to make projected future benefit payments of current plan members through 2054. Therefore, the long-term expected rate of return on plan investments was applied to projected benefit payments through 2054 and the municipal bond rate was applied to projected benefit payments after that date in determining the total pension liability.

JERSEY CITY COMMUNITY CHARTER SCHOOL
(County of Hudson)
Notes to the Basic Financial Statements
Year Ended June 30, 2020

7 Pension Plans – GASB 68 Disclosures - *continued*

Teachers' Pension and Annuity Fund (TPAF) - *continued*

Sensitivity of the Charter School's Proportionate Share of the Net Pension Liability to Changes in the Discount Rate

Since the Charter School's has no proportionate share of the net pension liability because of the special funding situation, the Charter School would not be sensitive to any changes in the discount rate. Detailed information about the pension plan's sensitivity of the collective net pension liability to changes in the discount rate is available in the separately issued State of New Jersey Divisions of Pensions and Benefits financial report at: <https://www.nj.gov/treasury/pensions/documents/financial/gasb/gasb68-tpaf20.pdf>

Pension Plan Fiduciary Net Position

Detailed information about the pension plan's fiduciary net position is available in the separately issued State of New Jersey Divisions of Pensions and Benefits financial report at: <https://www.nj.gov/treasury/pensions/gasb-notices.shtml>

JERSEY CITY COMMUNITY CHARTER SCHOOL
(County of Hudson)
Notes to the Basic Financial Statements
Year Ended June 30, 2020

7 Pension Plans – GASB 68 Disclosures - *continued*

Public Employees' Retirement System (PERS)

Summary of Significant Accounting Policies

For purposes of measuring the net pension liability, deferred outflows of resources and deferred inflows of resources related to pensions, and pension expense, information about the fiduciary net position of the PERS and additions to/deductions from PERS fiduciary net position have been determined on the same basis as they are reported by PERS. For this purpose, benefit payments (including refunds of employee contributions) are recognized when due and payable in accordance with the benefit terms. Investments are reported at fair value.

Pension Liabilities, Pension Expense, and Deferred Outflows of Resources and Deferred Inflows of Resources Related to Pension

At June 30, 2020, the Charter School reported a liability of \$2,632,255 for its proportionate share of the net pension liability. The net pension liability was measured as of June 30, 2019, and the total pension liability to calculate the net pension liability was determined by an actuarial valuation as of July 1, 2018, which was rolled forward to June 30, 2019. The total pension liability for the June 30, 2018 measurement date was determined by an actuarial valuation as of July 1, 2018. The Charter School's proportion of the net pension liability is based on the ratio of the contributions as an individual employer to total contributions to the PERS during the years ended June 30, 2019 and 2018. At June 30, 2019, the Charter School's proportion was 0.0146086364% which was an decrease of 0.0064823325% from its proportion measured as of June 30, 2018 which was 0.0210909689%.

For the year ended June 30, 2020, the Charter School recognized pension expense of \$151,555. At June 30, 2020, the Charter School reported deferred outflows of resources and deferred inflows of resources related to PERS from the following sources:

JERSEY CITY COMMUNITY CHARTER SCHOOL
(County of Hudson)
Notes to the Basic Financial Statements
Year Ended June 30, 2020

7 Pension Plans – GASB 68 Disclosures - continued

Public Employees’ Retirement System (PERS) - continued

Pension Liabilities, Pension Expense, and Deferred Outflows of Resources and Deferred Inflows of Resources Related to Pension - continued

	Deferred Outflows of Resources	Deferred Inflows of Resources
Differences between expected and actual experience	\$ 47,246	\$ 11,628
Changes in assumptions	262,840	913,647
Net difference between projected and actual earnings on pension plan investments	-	41,551
Changes in proportion and differences between Charter School's contributions and proportionate share of contributions	250,952	1,321,209
Subtotal	561,038	2,288,035
Charter School's contributions subsequent to the measurement date	151,555	-
Total	\$ 712,593	\$ 2,288,035

\$151,555 reported as deferred outflows of resources related to pensions resulting from school Charter School contributions subsequent to the measurement date (i.e. for the school year ending June 30, 2020, the plan measurement date is June 30, 2019) will be recognized as a reduction of the net pension liability measured as of June 30, 2020. Other amounts reported as deferred outflows of resources and deferred inflows of resources related to pensions will be recognized in pension expense as follows:

Year Ending June 30:	Pension Expense
2020	\$ (199,873)
2021	(648,384)
2022	(578,969)
2023	(271,856)
2024	(27,914)
Thereafter	-
	\$ (1,726,997)

JERSEY CITY COMMUNITY CHARTER SCHOOL
(County of Hudson)
Notes to the Basic Financial Statements
Year Ended June 30, 2020

7 Pension Plans – GASB 68 Disclosures - continued

Public Employees’ Retirement System (PERS) - continued

Pension Liabilities, Pension Expense, and Deferred Outflows of Resources and Deferred Inflows of Resources Related to Pension - continued

	June 30, 2019	June 30, 2018
Collective deferred outflows of resources	\$ 3,149,522,616	\$ 4,684,852,302
Collective deferred inflows of resources	\$ 7,645,087,574	\$ 7,646,736,226
Collective net pension liability (Non-State Local Group)	\$ 18,018,482,972	\$ 19,689,501,539
Charter School's portion of the net pension liability	\$ 2,632,255	\$ 4,152,707
Charter School's proportion (percentage)	0.01460864%	0.02109097%

Actuarial Assumptions

The collective total pension liability for the June 30, 2019 measurement date was determined by an actuarial valuation as of July 1, 2018, which was rolled forward to June 30, 2019. This actuarial valuation used the following actuarial assumptions:

Inflation rate - price	2.75%
Inflation rate - wage	3.25%
Salary increases: through 2026	2.00%-6.00% based on years of service
Salary increases: thereafter	3.00%-7.00% based on years of service
Investment rate of return	7.00%

Pre-retirement mortality rates were based on the Pub-2010 General Below-Median Income Employee mortality table with an 82.2% adjustment for males and 101.4% adjustment for females, and with future improvement from the base year of 2010 on a generational basis. Post-retirement mortality rates were based on the Pub-2010 General Below-Median Income Healthy Retiree mortality table with a 91.4% adjustment for males and 99.7% adjustment for females, and with future improvement from the base year of 2010 on a generational basis. Disability retirement rates used to value disabled retirees were based on the Pub-2010 Non-Safety Disabled Retiree mortality table with a 127.7% adjustment for males and 117.2% adjustment for females, and with future improvement from the base year of 2010 on a generational basis. Mortality improvement is based on Scale MP-2019.

The actuarial assumptions used in the July 1, 2018 valuation were based on the results of an actuarial experience study for the period July 1, 2014 to June 30, 2018.

JERSEY CITY COMMUNITY CHARTER SCHOOL
(County of Hudson)
Notes to the Basic Financial Statements
Year Ended June 30, 2020

7 Pension Plans – GASB 68 Disclosures - *continued*

Public Employees’ Retirement System (PERS) - *continued*

Long-Term Expected Rate of Return

In accordance with State statute, the long-term expected rate of return on plan investments (7.00% at June 30, 2019) is determined by the State Treasurer, after consultation with the Directors of the Division of Investment and Division of Pensions and Benefits, the board of trustees and the actuaries. The long-term expected rate of return was determined using a building block method in which best-estimate ranges of expected future real rates of return (expected returns, net of pension plan investment expense and inflation) are developed for each major asset class. These ranges are combined to produce the long-term expected rate of return by weighting the expected future real rates of return by the target asset allocation percentage and by adding expected inflation. Best estimates of arithmetic rates of return for each major asset class included in PERS’s target asset allocation as of June 30, 2019 are summarized in the following table:

Asset Class	Target Allocation	Long Term Expected Real Rate of Return
Risk Mitigation Strategies	3.00%	4.67%
Cash Equivalents	5.00%	2.00%
US Treasuries	5.00%	2.68%
Investment Grade Credit	10.00%	4.25%
High Yield	2.00%	5.37%
Private Credit	6.00%	7.92%
Real Assets	2.50%	9.31%
Real Estate	7.50%	8.33%
US Equity	28.00%	8.26%
Non-US Developed Markets Equity	12.50%	9.00%
Emerging Markets Equity	6.50%	11.37%
Private Equity	12.00%	10.85%

JERSEY CITY COMMUNITY CHARTER SCHOOL
(County of Hudson)
Notes to the Basic Financial Statements
Year Ended June 30, 2020

7 Pension Plans – GASB 68 Disclosures - *continued*

Public Employees’ Retirement System (PERS) – *continued*

Discount Rate

The discount rate used to measure the total pension liability was 6.28% as of June 30, 2019. This single blended discount rate was based on the long-term expected rate of return on pension plan investments of 7.00% and a municipal bond rate of 3.50% as of June 30, 2019 based on the Bond Buyer Go 20-Bond Municipal Bond Index, which includes tax-exempt general obligation municipal bonds with an average rating of AA/Aa or higher. The projection of cash flows used to determine the discount rate assumed that contributions from plan members will be made at the current member contribution rates and that contributions from employers will be based on 70% of the actuarially determined contributions for the State employer and 100% of actuarially determined contributions for the local employers. Based on those assumptions, the plan’s fiduciary net position was projected to be available to make projected future benefit payments of current plan members through 2057. Therefore, the long-term expected rate of return on plan investments was applied to projected benefit payments through 2057 and the municipal bond rate was applied to projected benefit payments after that date in determining the total pension liability.

JERSEY CITY COMMUNITY CHARTER SCHOOL
(County of Hudson)
Notes to the Basic Financial Statements
Year Ended June 30, 2020

7 Pension Plans – GASB 68 Disclosures - *continued*

Public Employees’ Retirement System (PERS) - *continued*

Sensitivity of the Charter School’s Proportionate Share of the Net Pension Liability to Changes in the Discount Rate

The following presents the collective net pension liability of the participating employers as of June 30, 2019, calculated using the discount rate as disclosed above as well as what the collective net pension liability would be if it was calculated using a discount rate that is 1-percentage point lower or 1-percentage-point higher than the current rate:

	2019		
	1% Decrease (5.28%)	Current Discount Rate (6.28%)	1% Increase (7.28%)
Charter School's proportionate share of the pension liability	\$ 3,348,096	\$ 2,632,255	\$ 2,062,799

Pension Plan Fiduciary Net Position

Detailed information about the pension plan’s fiduciary net position is available in the separately issued State of New Jersey Divisions of Pensions and Benefits financial report at: <https://www.nj.gov/treasury/pensions/gasb-notices.shtml>

JERSEY CITY COMMUNITY CHARTER SCHOOL
(County of Hudson)
Notes to the Basic Financial Statements
Year Ended June 30, 2020

8 Post Retirement Benefits

Plan Description and Benefits Provided

The Charter School is in a "special funding situation", as described in GASB Statement No. 75, in that OPEB contributions and expenses are legally required to be made by and are the sole responsibility of the State of New Jersey, not the Charter School.

The State of New Jersey reports a liability as a result of its statutory requirements to pay other post-employment (health) benefits for the State Health Benefit Local Education Retired Education Plan. The State Health Benefit Local Education Retired Employees Plan is a multiple-employer defined benefit OPEB plan that is administered on a pay-as-you-go basis. Accordingly, no assets are accumulated in a qualifying trust that meets the criteria in paragraph 4 of GASB Statement 75, *Accounting and Financial Reporting for Postemployment Benefits Other Than Pensions*. The State Health Benefits Local Education Retired Employees Plan provides medical, prescription drug, and Medicare Part B reimbursement to retirees and their covered dependents of local education employers.

The employer contributions for the participating local education employers are legally required to be funded by the State of New Jersey in accordance with N.J.S.A. 52:14-17.32f. According to N.J.S.A. 52: 14-17.32f, the State provides employer-paid coverage to employees who retire from a board of education or county college with 25 years or more of service credit in, or retires on a disability pension from, one or more of the following plans: the Teachers' Pension and Annuity Fund (TPAF), the Public Employees' Retirement System (PERS), the Police and Firemen Retirement System (PFRS), or the Alternate Benefit Program (ABP). Pursuant to Chapter 78, P.L. 2011, future retirees eligible for postretirement medical coverage who have less than 20 years of creditable service on June 28, 2011 will be required to pay a percentage of the cost of their health care coverage in retirement provided they retire with 25 years or more of pension service credit. The percentage of the premium for which the retiree will be responsible will be determined based on the retiree's annual retirement benefit and level of coverage.

The total non-employer OPEB liability does not include certain other postemployment benefit obligations that are provided by the local education employers. The reporting of these benefits, if any, is the responsibility of the individual education employers.

Employees Covered by Benefit Terms.

At June 30, 2018, the following employees were covered by the benefit terms:

Active plan member = 216,892

Inactive plan members entitled to but not yet receiving benefits = 148,051

Inactive plan members or beneficiaries currently receiving benefits = -0-

Total plan members = 364,943

JERSEY CITY COMMUNITY CHARTER SCHOOL
(County of Hudson)
Notes to the Basic Financial Statements
Year Ended June 30, 2020

8 Post Retirement Benefits – *continued*

Total Non-employer OPEB Liability

The State, a non-employer contributing entity, is the only entity that has a legal obligation to make employer contributions to OPEB for qualified retired PERS and TPAF participants. The Charter School’s proportionate share percentage determined under paragraphs 193 and 203 through 205 of GASBS No. 75 is zero percent. Accordingly, the Charter School did not recognize any portion of the collective net OPEB liability on the Statement of Net Position. Accordingly, the following OPEB liability note information is reported at the State’s level and is not specific to the board of education/board of trustees. Note that actual numbers will be published in the [NJ State’s CAFR \(https://www.nj.gov/treasury/omb/publications/archives.shtml\)](https://www.nj.gov/treasury/omb/publications/archives.shtml)

The total nonemployer OPEB liability as of June 30, 2019 was determined by an actuarial valuation as of June 30, 2018, which was rolled forward to June 30, 2019. The total nonemployer OPEB liability as of June 30, 2018 was determined by an actuarial valuation as of June 30, 2018.

Actuarial Assumptions and Other Inputs

The actuarial assumptions vary for each plan member depending on the pension plan the member is enrolled in. This actuarial valuation used the following actuarial assumptions, applied to all periods in the measurement.

Inflation Rate	2.50%	
	TPAF/ABP	PERS
Salary increases:		
Through 2026	1.55 to 4.45% based on years of service	2.00 to 6.00% based on years of service
Thereafter	1.55 to 4.45% based on years of service	3.00 to 7.00% based on years of service

JERSEY CITY COMMUNITY CHARTER SCHOOL
(County of Hudson)
Notes to the Basic Financial Statements
Year Ended June 30, 2020

8 Post Retirement Benefits – *continued*

Actuarial Assumptions and Other Inputs - *continued*

Preretirement mortality rates were based on the RP-2006 Headcount-Weighted Healthy Employee Male/Female Mortality Table with fully generational mortality improvement projections from the central year using MP-2017 scale. Postretirement mortality rates were based on the RP-2006 Headcount-Weighted Health Annuitant Male/Female mortality table with fully generational improvement projections from the central year using the MP-2017 scale.

The actuarial assumptions used in the June 30, 2018 valuation were based on the results of actuarial experience studies for the periods July 1, 2012 - June 30, 2015, July 1, 2011 - June 30, 2014, and July 1, 2010 - June 30, 2013 for TPAF, PFRS and PERS, respectively.

100% of all retirees who currently have healthcare coverage are assumed to continue with that coverage. 100% of active members are considered to participate in the Plan upon retirement, having a coverage blend of 85% and 15% in PPO and HMO, respectively.

Health Care Trend Assumptions

For pre-Medicare preferred provider organization (PPO) and health maintenance organization (HMO) medical benefits, the trend rate is initially 5.8% and decreases to a 5.0% long-term trend rate after eight years. For self-insured post-65 PPO and HMO medical benefits, the trend is 4.5%. For prescription drug benefits, the initial trend rate is 8.0% decreasing to a 5.0% long-term trend rate after seven years. For the Medicare Part B reimbursement, the trend rate is 5.0%. The Medicare Advantage trend rate is 4.5% and will continue in all future years.

Discount Rate

The discount rate for June 30, 2019 was 3.58%. This represents the municipal bond return rate as chosen by the State of New Jersey Division of Pensions and Benefits. The source is the Bond Buyer Go 20-Bond Municipal Bond Index, which includes tax-exempt general obligation municipal bonds with an average rating of AA/ Aa or higher.

JERSEY CITY COMMUNITY CHARTER SCHOOL
(County of Hudson)
Notes to the Basic Financial Statements
Year Ended June 30, 2020

8 Post Retirement Benefits – continued

Changes in the Total OPEB Liability Reported by the State of New Jersey

	Increase/(Decrease) Total OPEB Liability
Balance as of June 30, 2018 measurement date	\$ 46,110,832,982
Changes recognized for the fiscal year:	
Service cost	\$ 1,734,404,850
Interest on total OPEB liability	1,827,787,206
Difference between expected and actual experiences	(7,323,140,818)
Effect of changes of assumptions	622,184,027
Gross benefits paid by the State	(1,280,958,373)
Contributions from the members	37,971,171
Net changes	\$ (4,381,751,937)
Balance as of June 30, 2019 measurement date	\$ 41,729,081,045

Sensitivity of Total Nonemployer OPEB Liability to Changes in the Discount Rate

The following presents the total nonemployer OPEB Liability attributable to the Charter School as of June 30, 2019 and 2018, respectively, calculated using the discount rate as disclosed in this note, as well as what the total nonemployer OPEB liability attributable to the Charter School would be if it were calculated using a discount rate that is 1-percentage-point lower or 1-percentage-point higher than the current rate:

	2019		
	At 1% Decrease (2.50%)	At 1% Discount Rate (3.50%)	At 1% Increase (4.50%)
Total OPEB liability attributable to the Charter School	\$ 7,451,964	\$ 6,307,766	\$ 5,398,878
	2018		
	At 1% Decrease (2.87%)	At 1% Discount Rate (3.87%)	At 1% Increase (4.87%)
Total OPEB liability attributable to the Charter School	\$ 7,605,092	\$ 6,432,980	\$ 5,501,272

JERSEY CITY COMMUNITY CHARTER SCHOOL
(County of Hudson)
Notes to the Basic Financial Statements
Year Ended June 30, 2020

8 Post Retirement Benefits – continued

Sensitivity of Total Nonemployer OPEB Liability to Changes in the Healthcare Trend Rate

The following presents the total nonemployer OPEB Liability attributable to the Charter School as of June 30, 2019 and 2018, respectively, calculated using the healthcare trend rate as disclosed in this note, as well as what the total nonemployer OPEB liability attributable to the Charter School would be if it were calculated using a healthcare trend rate that is I-percentage-point lower or I-percentage-point higher than the current rate:

	2019		
	At 1% Decrease	Healthcare Cost Trend Rate	At 1% Increase
Total OPEB liability attributable to the Charter School	\$ 5,197,318	\$ 6,307,766	\$ 7,777,771
	2018		
	At 1% Decrease	Healthcare Cost Trend Rate	At 1% Increase
Total OPEB liability attributable to the Charter School	\$ 5,317,233	\$ 6,432,980	\$ 7,908,599

OPEB Expense and Deferred Outflows of Resources and Deferred Inflows of Resources Related to OPEB

For the fiscal year ended June 30, 2020 the Charter School recognized OPEB expense of \$701,750 as determined by the State of New Jersey Division of Pensions and Benefits. This expense and the related offsetting revenue are for benefits provided by the State through a defined benefit OPEB plan that meets the criteria in GASB Statement 75, in which there is a special funding situation.

In accordance with GASB Statement 75, as the Charter School's proportionate share of the OPEB liability is \$-0, there is no recognition of the allocation of the proportionate share of the deferred inflows and outflows of resources. At June 30, 2019 the State had deferred outflows of resources and deferred inflows of resources related to OPEB from the following sources:

JERSEY CITY COMMUNITY CHARTER SCHOOL
(County of Hudson)
Notes to the Basic Financial Statements
Year Ended June 30, 2020

8 Post Retirement Benefits – continued

OPEB Expense and Deferred Outflows of Resources and Deferred Inflows of Resources Related to OPEB - continued

	Deferred Outflows of Resources	Deferred Inflows of Resources
Differences between actual and expected experience	\$ -	\$ (10,484,965,300)
Net difference between expected and actual earnings on OPEB plan investments	-	-
Assumption changes	-	(8,481,529,343)
Subtotal	-	(18,966,494,643)
Contributions made in fiscal year 2019 after June 30, 2018 measurement date	TBD	N/A
Total	\$ -	\$ (18,966,494,643)

Amounts reported as deferred outflows of resources and deferred inflows of resources related to OPEB will be recognized in OPEB expense as follows:

Measurement Period - Fiscal Year Ending June 30:	Total
2020	\$ (2,546,527,182)
2021	\$ (2,546,527,182)
2022	\$ (2,546,527,182)
2023	\$ (2,546,527,182)
2024	\$ (2,546,527,182)
Thereafter	\$ (6,233,858,733)
	\$ (18,966,494,643)

9 Deferred Compensation

The Charter School offers its employees a deferred compensation plan created in accordance with the IRS code 403(b). The plan which is administered by AXA Equitable, Mass Mutual and First Investors permits participants to defer a portion of their salaries until future years.

JERSEY CITY COMMUNITY CHARTER SCHOOL
(County of Hudson)
Notes to the Basic Financial Statements
Year Ended June 30, 2020

10 Economic Dependency

The Charter School receives a substantial amount of its support from federal and state governments. A significant reduction in the level of support, if it were to occur, could have an effect on the Charter School's programs and activities.

11 Fund Balance Appropriated – General Fund (Exhibit B- 1)

Of the \$1,409,129 General Fund balance at June 30, 2020, \$416,376 is reserved for debt service cash account, \$992,753 is unreserved and undesignated.

12 Contingent Liabilities

The Charter School participates in a number of federal and state programs that are fully or partially funded by grants received from other governmental units. Expenditures financed by grants are subject to audit by the appropriate grantor government. If expenditures are disallowed due to noncompliance with grant program regulations, the Charter School may be required to reimburse the grantor government. As of June 30, 2020, significant amounts of grant expenditures have not been audited by the various grantor agencies but the Charter School believes that disallowed expenditures, if any, based on subsequent audits will not have a material effect on any of the individual governmental funds or the overall financial position of the Charter School.

The Charter School's attorney's letter advises that there is no litigation, pending litigation claims, contingent liabilities, unasserted claims for assessments or statutory violations which involved the Charter School and which might materially affect the Charter School's financial position.

Transportation Issue

The transportation of the Charter School's students (to and from school) is provided by the Jersey City Public Schools ("JCPS") as part of the administrative fee (10%) that goes to the resident school district. The Charter School's transportation has been provided by the JCPS since 1997 as part of a bidding process which the JCPS conducts. It should be noted that the Charter School does not directly transport any of its students to and from school. It should also be noted that New Jersey Statute - Title 18A:39-1 states as follows: "*Whenever in any district there are elementary school pupils who live more than two (2) miles from their public school of attendance or secondary school pupils who live more than two and a half (2 ½) miles from their public school of attendance, the district shall provide transportation to and from school for these pupils.*" It is the understanding of the Charter School that Jersey City Public Schools has complied and continues to comply with NJ Title 18A:39-1 in carrying out their obligations under the transportation agreement they have with the Charter School. The Charter School maintains that the "to and from" school transportation that the JCPS provided was for only eligible students.

JERSEY CITY COMMUNITY CHARTER SCHOOL
(County of Hudson)
Notes to the Basic Financial Statements
Year Ended June 30, 2020

12 Contingent Liabilities - continued

Transportation Issue - continued

Further, by their letter dated July 1, 2008 to the Charter School, the Jersey City Public Schools acknowledged a dispute (by the Charter School) of their billings. The Charter School is disputing billings submitted by the School District for several years. Pursuant to the dispute, the Charter School has accrued liabilities in its financial statements in the amount of \$190,660 through June 30, 2019. This is to recognize the liabilities, pending the complete resolution of all disputes.

13 Risk Management

The Charter School is exposed to various risks of loss related to torts; theft of, damage to, and destruction of assets; errors and omissions; injuries to employees; and natural disasters.

Property and Liability Insurance - The Charter School maintains commercial insurance coverage for property, liability and surety bonds. A complete schedule of insurance coverage can be found in the Statistical Section (UNAUDITED) of this Comprehensive Annual Financial Report.

New Jersey Unemployment Compensation - The Charter School has elected to fund its New Jersey Unemployment Compensation Insurance under the “Benefit Reimbursement Method”. Under this plan, the Charter School is required to reimburse the New Jersey Unemployment Trust Fund For benefits paid to its former employees and charged to its account with the State. The Charter School is billed quarterly for amounts due to the State.

14 Interfund Receivables, Payables and Transfers

The composition of interfund balances as of June 30, 2020 is as follows:

Fund	Interfund Receivable	Interfund Payable
General Fund	\$ -	\$ 78,914
Capital Projects Fund	-	-
Enterprise Fund	78,914	-
Trust and Agency Fund	-	-
	<u>\$ 78,914</u>	<u>\$ 78,914</u>

The above balances are the results of revenues earned or other financing sources received in one fund which are due to another fund and/or expenditures paid by one fund on behalf of another fund and/or to cover cash balances which were in negative position. Liquidation of this interfund balances is expected within the next fiscal year.

JERSEY CITY COMMUNITY CHARTER SCHOOL
(County of Hudson)
Notes to the Basic Financial Statements
Year Ended June 30, 2020

15 Receivables

Receivables as of June 30, 2020 consisted of accounts, intergovernmental, grants and miscellaneous. All receivables are considered collectible in full. A summary of the principal items of receivables are as follows:

State aid	\$ 8,598
Federal aid	232,582
Other	-
Total receivables	<u>\$ 241,180</u>

16 Subsequent Events

The Charter School has evaluated all subsequent events occurring through the date of the independent auditor's report which is the date the financial statements were available to be issued. Based on this evaluation, the Charter School has determined that no subsequent event requires disclosure in the financial statements except as follows:

- **COVID-19** - In December 2019, an outbreak of a novel strain of coronavirus (COVID-19) originated in Wuhan, China and has since spread to other countries, including the U.S. On March 11, 2020, the World Health Organization characterized COVID-19 as a pandemic. In addition, as of March 21, 2020, New Jersey State Governor Phil Murphy ordered the closure of the physical location of every "non-life sustaining" and "non-essential" business for what may be an extended period of time. The Charter School had to close its physical locations. Future potential impacts may include continued disruptions or restrictions on its employees' ability to work and impairment of its ability to obtain grants and contributions. Though the impact on the Charter School's operations cannot be reasonably estimated at this date, it is likely that there will be an impact on certain revenue in the General Fund and other state aid and the local tax levy. There have been additional operating expenses (related to COVID-19) in the General Fund not planned for or expected at the time of the adoption of the Charter School's fiscal year 2020-2021 budget.

JERSEY CITY COMMUNITY CHARTER SCHOOL
(County of Hudson)
Notes to the Basic Financial Statements
Year Ended June 30, 2020

17 Long Term Liabilities – Bonds Payable

On October 28, 2016, the Charter School issued Charter School Revenue Bonds in the sum of \$10,225,000 at variable interest rates from 5.00% to 5.75%. The Bonds consisted of Series 2016A (Tax Exempt) in the sum of \$9,365,000 (due on July 1, 2022) and Series 2016B (Taxable) in the sum of \$860,000 (due on July 1, 2047). The proceeds from the bond was used to refinance all existing long-term loans in the total amount of \$7,879,478. Also, part of the proceeds was used to establish a debt service reserve fund in the amount of \$810,88, paid issuance costs of \$255,364 and covered operating costs of \$670,508.

The debt service reserve is escrowed with Huntington National Bank, the Bond Trustee. The use of the reserve and any interest earned on the deposit is restricted for debt service.

The bonds were issued at a discount of \$609,262 as follows:

	Series 2016A	Series 2016B	
	(Tax Exempt)	(Taxable)	Total
Par value	\$ 9,365,000	\$ 860,000	\$ 10,225,000
Discount	(490,626)	(118,636)	(609,262)
	<u>\$ 8,874,374</u>	<u>\$ 741,364</u>	<u>\$ 9,615,738</u>

JERSEY CITY COMMUNITY CHARTER SCHOOL
(County of Hudson)
Notes to the Basic Financial Statements
Year Ended June 30, 2020

17 Long Term Liabilities – Bonds Payable - *continued*

The schedule of future principal and interest payments for the serial bonds is as follows:

Year ending June 30:	Serial Bonds		
	Principal	Interest	Total
2021	\$ 140,000	\$ 547,713	\$ 687,713
2022	145,000	540,588	685,588
2023	200,000	531,963	731,963
2024	180,000	522,238	702,238
2025	190,000	512,525	702,525
2026	200,000	502,288	702,288
2027	210,000	491,525	701,525
2028	220,000	480,238	700,238
2029	235,000	468,294	703,294
2030	245,000	455,694	700,694
2031	260,000	442,438	702,438
2032	275,000	428,394	703,394
2033	290,000	413,563	703,563
2034	305,000	397,181	702,181
2035	325,000	379,069	704,069
2036	340,000	359,950	699,950
2037	365,000	339,682	704,682
2038	385,000	318,119	703,119
2039	405,000	295,406	700,406
2040	430,000	271,400	701,400
2041	455,000	245,957	700,957
2042	485,000	218,932	703,932
2043	510,000	190,325	700,325
2044	540,000	160,137	700,137
2045	575,000	128,081	703,081
2046	610,000	94,013	704,013
2047	645,000	57,932	702,932
2048	685,000	19,694	704,694
	<u>\$ 9,850,000</u>	<u>\$ 9,813,339</u>	<u>\$ 19,663,339</u>

JERSEY CITY COMMUNITY CHARTER SCHOOL
(County of Hudson)
Notes to the Basic Financial Statements
Year Ended June 30, 2020

18 General Long-Term Debt

During the year ended June 30, 2020, the following changes occurred in liabilities reported in the Statement of Net Position (Deficit):

	Balance June 30, 2019	New Issues/ Additions	Maturities/ Payments	Balance June 30, 2020	Due Within One Year
Bonds payable	\$ 9,980,000	\$ -	\$ (130,000)	\$ 9,850,000	\$ 140,000
Unamortized discount	(531,049)	-	29,330	(501,719)	(29,330)
	<u>9,448,951</u>	<u>-</u>	<u>(100,670)</u>	<u>9,348,281</u>	<u>110,670</u>
Other non-current liabilities:					
Compensated absences	1,102,087	252,378	(560,076)	794,389	110,209
Net pension liability	4,152,707	-	(1,520,452)	2,632,255	182,543
	<u>\$14,703,745</u>	<u>\$ 252,378</u>	<u>\$ (2,181,198)</u>	<u>\$ 12,774,925</u>	<u>\$ 403,422</u>

19 Reconciliation of Government-Wide and Fund Financial Statements
Explanation of Certain Differences Between the Governmental Fund Balance Sheet (B-1) and the Government-wide Statement of Net Position (A-1).

The governmental fund balance sheet includes reconciliation between fund balance – total governmental funds and net position - governmental activities as reported in the Government-wide statement of net position. One element of that reconciliation explains that long-term liabilities, including deferred pension liability are not due and payable in the current period and therefore are not reported in the funds. The reconciliation is as follows:

Fund balance per B-1 as of June 30, 2020	\$ 2,257,489
Cost of capital assets net accumulated depreciation	3,337,911
Long term liabilities - the Serial Bonds	(9,850,000)
Pension deferred outflows	561,038
Pension deferred inflows	(2,288,035)
Compensated absences liability as of June 30, 2020	(794,389)
Deferred pension liability as of June 30, 2020	(2,632,255)
Net position (per A-1) as of June 30, 2020	<u>\$ (9,408,241)</u>

Required Supplementary Information

Part II

Budgetary Comparison

**JERSEY CITY COMMUNITY CHARTER SCHOOL
General Fund**

C-1

Budget Comparison Schedule

Year ended June 30, 2020

	<u>Original Budget</u>	<u>Budget Transfers</u>	<u>Final Budget</u>	<u>Actual</u>	<u>Variance Final to Actual</u>
Revenues					
Local Sources:					
Local tax levy	\$ 1,837,082	\$ 523,655	\$ 2,360,737	\$ 2,360,737	\$ -
Miscellaneous	-	-	-	356,494	356,494
Total revenues -local sources	<u>1,837,082</u>	<u>523,655</u>	<u>2,360,737</u>	<u>2,717,231</u>	<u>356,494</u>
State sources:					
State sources	4,954,163	44,616	4,998,779	4,822,724	(176,055)
Federal source - SEMI				3,304	3,304
Reimbursed TPAF-Social Security (non-budgeted)	-	-	-	179,977	179,977
TPAF - Post Retirement Medical (On-Behalf - Non-Budgeted)	-	-	-	182,952	182,952
Teacher's Pension & Annuity Fund (On-Behalf-Non-Budgeted)	-	-	-	493,157	493,157
Long Term Disability Insurance (On-Behalf-Non-Budgeted)	-	-	-	850	850
Total -state sources	<u>4,954,163</u>	<u>44,616</u>	<u>4,998,779</u>	<u>5,682,964</u>	<u>684,185</u>
Total revenues	<u>6,791,245</u>	<u>568,271</u>	<u>7,359,516</u>	<u>8,400,195</u>	<u>1,040,679</u>
Expenditures					
Current expense:					
Instruction					
Salaries of teachers	2,295,457	(210,639)	2,084,818	2,050,201	34,617
Other salaries for instruction	260,945	-	260,945	246,440	14,505
Purchased professional technical services	63,000	(5,500)	57,500	35,867	21,633
Other purchased services	5,500	5,500	11,000	7,800	3,200
General educational supplies	60,000	-	60,000	27,226	32,774
Textbooks	50,000	-	50,000	5,971	44,029
Miscellaneous expenses	10,000	-	10,000	3,157	6,843
	<u>2,744,902</u>	<u>(210,639)</u>	<u>2,534,263</u>	<u>2,376,662</u>	<u>157,601</u>

**JERSEY CITY COMMUNITY CHARTER SCHOOL
General Fund**

C-1

Budget Comparison Schedule

Year ended June 30, 2020

	Original Budget	Budget Transfers	Final Budget	Actual	Variance Final to Actual
Administrative cost:					
Salaries	510,054	-	510,054	504,360	5,694
Total benefit costs	1,439,794	(46,353)	1,393,441	1,157,144	236,297
Professional /Technical service	136,000	(12,800)	123,200	82,944	40,256
Other purchased services	78,000	22,684	100,684	100,684	-
Communications and Telephones	60,000	13,513	73,513	70,090	3,423
Supplies and materials	30,000	(19,117)	10,883	6,392	4,491
Judgements against charter school	-	149,904	149,904	149,904	-
Interest on current loans	-	-	-	-	-
Mortgage interest	-	-	-	-	-
Miscellaneous expenses	53,700	(11,000)	42,700	35,718	6,982
	<u>2,307,548</u>	<u>96,831</u>	<u>2,404,379</u>	<u>2,107,236</u>	<u>297,143</u>
Support services:					
Salaries	719,000	(28,161)	690,839	642,736	48,103
Purchased prof/tech service	40,000	232,638	272,638	270,659	1,979
Other purchased services	97,100	11,000	108,100	103,296	4,804
Rent on land and buildings	-	-	-	-	-
Insurance-fidelity, liability property	58,500	10,000	68,500	67,906	594
Supplies and materials	30,000	14,500	44,500	43,202	1,298
Energy & Utilities	172,600	(3,170)	169,430	139,959	29,471
Miscellaneous expenses	1,000	-	1,000	-	1,000
Transportation other than to/from school	25,000	-	25,000	7,751	17,249
Total support services	<u>1,143,200</u>	<u>236,807</u>	<u>1,380,007</u>	<u>1,275,509</u>	<u>104,498</u>

**JERSEY CITY COMMUNITY CHARTER SCHOOL
General Fund**

C-1

Budget Comparison Schedule

Year ended June 30, 2020

	Original Budget	Budget Transfers	Final Budget	Actual	Variance Final to Actual
Capital outlay:					
Instructional equipment	10,000	-	10,000	-	10,000
Non-instructional equipment	15,000	4,777	19,777	19,777	-
Purchase land/improvements	50,000	(44,779)	5,221	-	5,221
Miscellaneous expenses	2,500	-	2,500	-	2,500
Lease purchase agreements - principal	-	-	-	-	-
Total capital outlay	<u>77,500</u>	<u>(40,002)</u>	<u>37,498</u>	<u>19,777</u>	<u>17,721</u>
Reimbursed TPAF-Social Security (non-budgeted)	-	-	-	179,977	(179,977)
TPAF - Post Retirement Medical (On-Behalf - Non-Budgeted)				182,952	(182,952)
Teacher's Pension & Annuity Fund (On-Behalf-Non-Budgeted)				493,157	(493,157)
Long Term Disability Insurance (On-Behalf-Non-Budgeted)	-	-	-	850	(850)
Total expenditures	<u>6,273,150</u>	<u>82,997</u>	<u>6,356,147</u>	<u>6,636,120</u>	<u>396,986</u>
Excess (deficiency) of revenues over (under) expenditures	518,095	485,274	1,003,369	1,764,075	643,693
Other financing sources:					
Transfer to debt service fund - interest	(561,963)	-	(561,963)	(551,213)	(10,750)
Transfer to debt service fund - principal	(130,000)	-	(130,000)	(130,000)	-
Transfer to cover food deficit	-	(110,000)	(110,000)	(110,000)	-
Total other financing sources/(uses)	<u>(691,963)</u>	<u>(110,000)</u>	<u>(801,963)</u>	<u>(791,213)</u>	<u>(10,750)</u>
Excess (deficiency) of revenues and other financing sources over (under) expenditures and other financing uses	(173,868)	375,274	201,406	972,862	632,943
Fund balances, beginning of year	<u>779,777</u>	<u>(343,510)</u>	<u>436,267</u>	<u>436,267</u>	<u>-</u>
Fund balances, end of year	<u>\$ 605,909</u>	<u>\$ 31,764</u>	<u>\$ 637,673</u>	<u>\$ 1,409,129</u>	<u>\$ 632,943</u>

**JERSEY CITY COMMUNITY CHARTER SCHOOL
Special Revenue Fund**

C-2

Budget Comparison Schedule

Year ended June 30, 2020

	<u>Original Budget</u>	<u>Budget Transfers</u>	<u>Final Budget</u>	<u>Actual</u>	<u>Variance Final to Actual</u>
Revenues					
Federal sources	\$ 374,422	\$ -	\$ 374,422	\$ 568,859	\$ (194,437)
Local sources	33,848		33,848	-	33,848
Total revenues -all sources	<u>\$ 374,422</u>	<u>\$ -</u>	<u>\$ 374,422</u>	<u>\$ 568,859</u>	<u>\$ (194,437)</u>
Expenditures					
Current Expenditures:					
Instruction:					
Salaries of teachers	\$ 77,358	\$ -	\$ 77,358	\$ 374,000	\$ (296,642)
Purchased Prof. and technical services	6,026	-	6,026	-	6,026
Other purchased services	-	-	-	-	-
General supplies	77,557	-	77,557	29,102	48,455
Miscellaneous expenditures	30,000	-	30,000	396	29,604
Total instruction	<u>190,941</u>	<u>-</u>	<u>190,941</u>	<u>403,498</u>	<u>(212,557)</u>
Support services					
Support services salaries	37,400	-	37,400	10,250	27,150
Employee benefits	8,777	-	8,777	29,395	(20,618)
Purchased professional services	142,289	-	142,289	125,528	16,761
Other purchased services	14,469	-	14,469	-	14,469
Supplies	14,394	-	14,394	188	14,206
Miscellaneous expenditures	-	-	-	-	-
Total support services	<u>217,329</u>	<u>-</u>	<u>217,329</u>	<u>165,361</u>	<u>51,968</u>
Capital Outlay:					
Facilities acquisition and construction services					
Instructional equipment	-	-	-	-	-
Noninstructional equipment	-	-	-	-	-
Construction services	-	-	-	-	-
Total facilities acquisition and construction services	<u>-</u>	<u>-</u>	<u>-</u>	<u>-</u>	<u>-</u>
Total expenditures	<u>\$ 408,270</u>	<u>\$ -</u>	<u>\$ 408,270</u>	<u>\$ 568,859</u>	<u>\$ (160,589)</u>

Notes to Required Supplementary Information

JERSEY CITY COMMUNITY CHARTER SCHOOL
Note to Required Supplementary Information
Budget to GAAP Reconciliation

C-3

Year ended June 30, 2020

		General Fund	Special Revenue Fund
Sources/inflows of resources			
Actual amounts (budgetary basis) "revenue" from the budgetary comparison schedule:	[C-1]	\$ 8,400,195	
	[C-2]		\$ 568,859
Difference - budget to GAAP: Grant accounting budgetary basis differs from GAAP in that encumbrances are recognized as expenditures, and the related revenue is recognized.		-	-
Total revenues as reported on the statement of revenues, expenditures and changes in fund balances - governmental funds	[B-2]	\$ 8,400,195	\$ 568,859
		Note 1	
Uses/outflows of resources			
Actual amounts (budgetary basis) "total outflows" from the budgetary comparison schedule	[C-1]	\$ 6,636,120	
	[C-2]		\$ 568,859
Differences - budget to GAAP Encumbrances for supplies and equipment ordered but not received are reported in the year the order is placed for budgetary purposes, but in the year the supplies are received for financial reporting purposes.			-
Transfers to and from other funds are presented as outflows of budgetary resources but are not expenditures for financial reporting purposes.			
Net transfer (outflows) to general fund		-	-
Total expenditures as reported on the statement of revenues, expenditures, and changes in fund balances - governmental funds	[B-2]	\$ 6,636,120	\$ 568,859

Note 1) The general fund budget basis of the use/outflow of resources is GAAP, therefore no reconciliation is required.

JERSEY CITY COMMUNITY CHARTER SCHOOL

L-1

**Schedule of the Charter School's Proportionate Share of the Net Pension Liability - PERS
Last Six Fiscal Years**

	Fiscal Year Ended June 30,					
	2019	2018	2017	2016	2015	2014
Charter School's proportion of the net pension liability (assets)	0.0146086364%	0.0210909707%	0.0197046999%	0.0194647434%	0.0215516047%	0.0204915036%
Charter School's proportionate share of the net pension liability (assets)	2,632,255	4,152,707	4,586,939	5,764,899	4,837,903	3,836,570
Charter School's covered employee payroll	\$ 1,175,734	\$ 1,094,546	\$ 1,211,121	\$ 1,332,472	\$ 1,532,250	\$ 1,439,205
Charter School's proportionate share of the net pension liability (assets) as a percentage of its covered employee payroll	223.88%	379.40%	378.73%	432.65%	315.74%	266.58%
Plan fiduciary net position as a percentage of the total pension liability - local	26.95%	53.60%	36.78%	31.20%	38.21%	40.71%

Note

Until a full ten year trend is compiled, information will be presented for those years for which information is available.
--

JERSEY CITY COMMUNITY CHARTER SCHOOL

L-2

Schedule of the Charter School's Contributions - PERS
Last Six Fiscal Years

	Fiscal Year Ended June 30,					
	2019	2018	2017	2016	2015	2014
Contractually required contribution	\$ 151,555	\$ 209,787	\$ 182,543	\$ 298,126	\$ 172,922	\$ 168,929
Contribution in relation to the contractually required contribution	(151,555)	(209,787)	(182,543)	(298,126)	(172,922)	(168,929)
Contribution deficiency (excess)	\$ -	\$ -	\$ -	\$ -	\$ -	\$ -
Charter School's covered employee payroll	\$ 1,175,734	\$ 1,094,546	\$ 1,211,121	\$ 1,332,472	\$ 1,532,250	\$ 1,439,205
Contributions as a percentage of covered employee payroll	12.89%	19.17%	15.07%	22.37%	11.29%	11.74%

Note

Until a full ten year trend is compiled, information will be presented for those years for which information is available.

JERSEY CITY COMMUNITY CHARTER SCHOOL

**Schedule of the Charter School's Proportionate Share of the Net Pension Liability - TPAF
Last Six Fiscal Years**

	Fiscal Year Ended June 30,					
	2019	2018	2017	2016	2015	2014
Charter School's proportion of the net pension liability (assets)**	N/A	N/A	N/A	N/A	N/A	N/A
Charter School's proportionate share of the net pension liability (assets)**	N/A	N/A	N/A	N/A	N/A	N/A
State's proportionate share of the net pension liability (assets) associated with the Charter School	\$ 12,506,541	\$ 13,548,150	\$ 16,833,090	\$ 18,969,611	\$ 14,907,880	\$ 11,060,710
Total	\$ 12,506,541	\$ 13,548,150	\$ 16,833,090	\$ 18,969,611	\$ 14,907,880	\$ 11,060,710
Charter School's covered employee payroll	\$ 2,239,173	\$ 2,239,173	\$ 2,412,127	\$ 2,737,247	\$ 2,194,632	\$ 1,954,170 *
Charter School's proportionate share of the net pension liability (assets) as a percentage of its covered employee payroll**	N/A	N/A	N/A	N/A	N/A	N/A
Plan fiduciary net position as a percentage of the total pension liability	26.49%	25.41%	22.33%	28.71%	33.64%	33.76%

****Note**

TPAF is a special funding situation as defined by GASB Statement No. 68 in which the State of New Jersey is 100% responsible for contributions to the plan. Since the Charter School (employer) does not contribute directly to the plan there is no net pension liability to report in the financial statements of the Charter School.

JERSEY CITY COMMUNITY CHARTER SCHOOL

M-1

**Schedule of the State's Proportionate Share of the Net OPEB Liability Associated with the Charter School
and Changes in the Total OPEB Liability and Related Ratios
Public Employee's Retirement System and Teachers' Pension and Annuity Fund
Last Three Fiscal Years**

	Fiscal Year Ending		
	2018	2018	2017
Total OPEB Liability			
Service cost	\$ 716,211	\$ 643,842	\$ 773,102
Interest cost	273,073	289,102	243,956
Differences in expected and actual experiences	(1,020,657)	(1,109,627)	-
Changes of assumptions	94,049	(738,217)	(1,205,472)
Member contributions	5,740	5,945	6,409
Gross benefit payments	(193,630)	(172,016)	(174,039)
Net change in total OPEB liability	(125,214)	(1,080,971)	(356,044)
Total OPEB liability - beginning	6,432,980	7,513,951	7,869,995
Total OPEB liability, ending	<u>\$ 6,307,766</u>	<u>\$ 6,432,980</u>	<u>\$ 7,513,951</u>
Covered employee payroll - PERS and TPAF	\$ 2,105,520	\$ 1,902,972	\$ 1,890,176
Total OPEB liability as a percentage of covered employee payroll	300%	338%	398%
State's proportionate share of the net OPEB liability (asset) associated with the Charter School	0.01%	0.01%	0.01%

JERSEY CITY COMMUNITY CHARTER SCHOOL
(County of Hudson)
Notes to Required Supplementary Information
Year Ended June 30, 2020

1. Pension – Public Employees’ Retirement System (PERS)

Benefit Changes

There were none.

Changes of Assumptions

The discount rate changed from 5.66% as of June 30, 2018 to 6.28% as of June 30, 2019.

2. Pension – Teachers’ Pension and Annuity Fund (TPAF)

Benefit Changes

There were none.

Changes of Assumptions

The discount rate changed from 4.86% as of June 30, 2018 to 5.60% as of June 30, 2019.

3. Other Post-Retirement Benefit Plan – Public Employees’ Retirement System (PERS) and Teachers’ Pension and Annuity Fund (TPAF)

Benefit Changes

There were none.

Changes of Assumptions

The discount rate changed from 3.87% as of June 30, 2018 to 3.50% as of June 30, 2019.

Other Supplementary Information

School Level Schedules

Special Revenue Fund

**JERSEY CITY COMMUNITY CHARTER SCHOOL
Special Revenue Fund**

E-1

**Combining Schedule of Program, Revenue and Expenditures
Budgetary Basis**

Year ended June 30, 2020

	<u>Title IA Current Year 2019-2020</u>	<u>Title I Reallocated Current Year 2019-2020</u>	<u>Title IIA Current Year 2019-2020</u>	<u>I.D.E.A., Basic Current Year 2019-2020</u>	<u>I.D.E.A. Preschool Current Year 2019-2020</u>	<u>Total</u>
Revenues						
Federal sources	\$ 434,477	\$ 11,222	\$ 8,400	\$ 108,524	\$ 6,236	\$ 568,859
Local sources	-	-	-	-	-	-
Total revenues -all sources	<u>\$ 434,477</u>	<u>\$ 11,222</u>	<u>\$ 8,400</u>	<u>\$ 108,524</u>	<u>\$ 6,236</u>	<u>\$ 568,859</u>
Expenditures						
Instruction						
Salaries of teachers	\$ 374,000	\$ -	\$ -	\$ -	\$ -	\$ 374,000
Purchased Prof. and technical services	-	-	-	-	-	-
Other purchased services	-	-	-	-	-	-
General supplies	22,866	-	-	-	6,236	29,102
Miscellaneous expenditures	396	-	-	-	-	396
Total instruction	<u>397,262</u>	<u>-</u>	<u>-</u>	<u>-</u>	<u>6,236</u>	<u>403,498</u>
Support services						
Support services salaries	-	10,250	-	-	-	10,250
Employee benefits	28,611	784	-	-	-	29,395
Purchased professional services	8,604	-	8,400	108,524	-	125,528
Other purchased services	-	-	-	-	-	-
Supplies	-	188	-	-	-	188
Miscellaneous expenditures	-	-	-	-	-	-
Total support services	<u>37,215</u>	<u>11,222</u>	<u>8,400</u>	<u>108,524</u>	<u>-</u>	<u>165,361</u>
Facilities acquisition and construction services						
Instructional equipment	-	-	-	-	-	-
Noninstructional equipment	-	-	-	-	-	-
Construction services	-	-	-	-	-	-
Total facilities acquisition and construction services	<u>-</u>	<u>-</u>	<u>-</u>	<u>-</u>	<u>-</u>	<u>-</u>
Total expenditures	<u>\$ 434,477</u>	<u>\$ 11,222</u>	<u>\$ 8,400</u>	<u>\$ 108,524</u>	<u>\$ 6,236</u>	<u>\$ 568,859</u>

Capital Projects Fund

Enterprise Fund

JERSEY CITY COMMUNITY CHARTER SCHOOL
Enterprise Funds

G-1

Combining Statement of Net Position

June 30, 2020

	<u>Food Services</u>	<u>After-Care Program</u>	<u>Total</u>
Assets			
Current assets:			
Cash and cash equivalents	\$ 100,990	\$ -	\$ 100,990
Accounts receivable:	-	-	-
Federal	94,068	-	94,068
State	1,369	-	1,369
Other current assets	59,809	-	59,809
Interfunds receivable	(318,089)	397,003	78,914
Total current assets	<u>\$ (61,853)</u>	<u>\$ 397,003</u>	<u>\$ 335,150</u>
Liabilities			
Current liabilities:			
Interfunds payable	\$ -		\$ -
Accounts payable	8,257	-	8,257
Total current liabilities	<u>8,257</u>	<u>-</u>	<u>8,257</u>
Net position			
Unrestricted	(70,110)	397,003	326,893
Total net position	<u>\$ (70,110)</u>	<u>\$ 397,003</u>	<u>\$ 326,893</u>

JERSEY CITY COMMUNITY CHARTER SCHOOL
Enterprise Fund

G-2

Combining Statement of Revenues, Expenditures and Changes in Net Position

Year ended June 30, 2020

	<u>Food Services</u>	<u>After School Programs</u>	<u>Total</u>
Operating revenues:			
Charges for services:			
Daily sales - reimbursable program	\$ 413	\$ 85,393	\$ 85,806
Daily sales - non-reimbursable program	-	-	-
Miscellaneous revenue	-	-	-
Total Operating revenues	<u>413</u>	<u>85,393</u>	<u>85,806</u>
Operating expenses:			
Cost of sales - reimburseable program	259,526	-	259,526
Cost of sales - non-reimbursable program	-	-	-
Salaries	90,854	28,380	119,234
Employee benefits	-	-	-
Professional /technical service	-	550	550
Supplies and materials	-	536	536
Depreciation	-	-	-
Miscellaneous	-	5,159	5,159
Total operating expenses	<u>350,380</u>	<u>34,625</u>	<u>385,005</u>
Operating income/(loss)	<u>(349,967)</u>	<u>50,768</u>	<u>(299,199)</u>
Nonoperating revenues:			
State sources:			
State school lunch program	3,374	-	3,374
State school breakfast program	-	-	-
Federal sources:			
National school lunch program	188,359	-	188,359
National school breakfast program	58,409	-	58,409
After school snacks program	-	-	-
Healthy, Hunger-Free Kids Act	4,342	-	4,342
Total nonoperating revenues	<u>254,484</u>	<u>-</u>	<u>254,484</u>
Net income/(loss) before contributions & transfers	(95,483)	50,768	(44,715)
Other financing sources:			
Transfer in/(out) - board contribution	110,000	-	110,000
	<u>110,000</u>	<u>-</u>	<u>110,000</u>
Change in net position	14,517	50,768	65,285
Total net position-beginning of year	<u>(84,627)</u>	<u>346,235</u>	<u>261,608</u>
Total net position-end of year	<u>\$ (70,110)</u>	<u>\$ 397,003</u>	<u>\$ 326,893</u>

JERSEY CITY COMMUNITY CHARTER SCHOOL
Enterprise Fund

G-3

Statement of Cash Flows

Year ended June 30, 2020

	Food Services	After School Programs	Total
Cash flows from operating activities			
Operating loss	\$ (349,967)	\$ 50,768	\$ (299,199)
Adjustment to reconcile operating loss to net cash used in operating activities:			
Changes in assets and liabilities:			
Accounts receivable	186,241	-	186,241
Due to/from general fund	27,777	(123,919)	(96,142)
Accounts payable	(127,545)	-	(127,545)
Net cash used in operating activities	(263,494)	(73,151)	(336,645)
Cash flows from noncapital financing activities:			
Cash received from state reimbursements	3,374	-	3,374
Cash received from federal reimbursements	251,110	-	251,110
Transfers within fund	-	-	-
Operating subsidies and transfers from other funds	110,000	-	110,000
Net cash provided by noncapital financing activities	364,484	-	364,484
Cash flows from investing activities			
	-	-	-
Net change in cash and cash equivalents	100,990	(73,151)	27,839
Cash and cash equivalents, beginning	-	73,151	73,151
Cash and cash equivalents, ending	\$ 100,990	\$ -	\$ 100,990

Fiduciary Fund

JERSEY CITY COMMUNITY CHARTER SCHOOL
Fiduciary Funds

H-1

Combining Statement of Fiduciary Net Position

June 30, 2020

	Unemployment Insurance Fund	Student Activity Fund	Agency Fund Payroll	Total
Assets				
Cash and cash equivalents	\$ -	\$ 14,357	\$ 56,257	\$ 70,614
Other accounts receivable	-	-	12,963	12,963
Interfund receivable	-	-	-	-
Total assets	\$ -	\$ 14,357	\$ 69,220	\$ 83,577
Liabilities and net position				
Liabilities:				
Payroll deductions and withholdings	\$ -	\$ -	\$ 69,220	\$ 69,220
Interfund payables	-	-	-	-
Account payable - due to students group	-	14,357	-	14,357
Total liabilities	-	\$ 14,357	\$ 69,220	\$ 83,577
Net position				
Total liabilities and net position	-	\$ -	-	-

JERSEY CITY COMMUNITY CHARTER SCHOOL
Fiduciary Funds

H-2

Combining Statement of Changes in Fiduciary Net Position
Unemployment Compensation Insurance Trust Fund

Year ended June 30, 2020

	<u>Unemployment Compensation</u>
Additions:	
Deductions from employees' salaries	\$ -
Board contributions	-
Investment earnings - interest	-
Total revenues	<u>-</u>
Expenditures:	
Unemployment claims	-
Total expenditures	<u>-</u>
Change in net position	-
Net position, beginning	<u>-</u>
Net position, ending	<u><u>\$ -</u></u>

JERSEY CITY COMMUNITY CHARTER SCHOOL
Student Activity Agency Fund
Schedule of Receipts and Disbursements

H-3

Year ended June 30, 2020

	Balance June 30, 2019	Cash Receipts	Cash Disbursements	Balance June 30, 2020
Assets				
Cash and cash equivalents	\$ 17,453	\$ 24,752	\$ 27,848	\$ 14,357
Interfund receivable	626	-	626	-
Total assets	<u>\$ 18,079</u>	<u>\$ 24,752</u>	<u>\$ 28,474</u>	<u>\$ 14,357</u>
Liabilities				
Due to student groups	\$ 17,396	\$ 24,752	\$ 27,791	\$ 14,357
Accounts payable	-	-	-	-
Interfund payable	683	-	683	-
Total liabilities	<u>\$ 18,079</u>	<u>\$ 24,752</u>	<u>\$ 28,474</u>	<u>\$ 14,357</u>

JERSEY CITY COMMUNITY CHARTER SCHOOL
Payroll Agency Fund
Schedule of Receipts and Disbursements

H-4

Year ended June 30, 2020

	<u>Balance June 30, 2019</u>	<u>Cash Receipts</u>	<u>Cash Disbursements</u>	<u>Balance June 30, 2020</u>
Assets				
Cash and cash equivalents	\$ 77,252	\$ 4,409,332	\$ 4,430,327	\$ 56,257
Other receivable	10,930	12,963	10,930	12,963
Interfund receivable	-	-	-	-
Total assets	<u>\$ 88,182</u>	<u>\$ 4,422,295</u>	<u>\$ 4,441,257</u>	<u>\$ 69,220</u>
Liabilities				
Payroll deductions and withholdings	\$ 60,812	\$ 4,422,295	\$ 4,413,887	\$ 69,220
Interfund payable	27,370	-	27,370	-
Total liabilities	<u>\$ 88,182</u>	<u>\$ 4,422,295</u>	<u>\$ 4,441,257</u>	<u>\$ 69,220</u>

Long Term Debt

JERSEY CITY COMMUNITY CHARTER SCHOOL
Long-Term Debt
Schedule of Serial Bonds Payable

Year ended June 30, 2020

Purpose	Issued		Annual Maturities		Interest Rate	Amount Outstanding #####	Issued	Retired	Amount Outstanding June 30, 2020	
	Date of Issue	Amount of Issue	Date	Amount						
New Jersey Economic Development Authority										
Series 2016B Charter School Revenue Bonds Term 1 Coupon	7/1/2047	\$ 860,000	7/1/2017	\$ 120,000	5.525%	\$ -	\$ -	\$ -	\$ -	
			7/1/2018	125,000	5.000%					
			7/1/2019	130,000	5.000%					
			7/1/2020	140,000	5.000%					
			7/1/2021	145,000	5.000%					
			7/1/2022	200,000	5.000%					615,000
Series 2016A Charter School Revenue Bonds Term 2-3 Coupon	7/1/2022	\$ 9,365,000	7/1/2023	180,000	5.250%					
			7/1/2024	190,000	5.250%					
			7/1/2025	200,000	5.250%					
			7/1/2026	210,000	5.250%					
			7/1/2027	220,000	5.250%					
			7/1/2028	235,000	5.250%					
			7/1/2029	245,000	5.250%					
			7/1/2030	260,000	5.250%					
			7/1/2031	275,000	5.250%					
			7/1/2032	290,000	5.250%					
			7/1/2033	305,000	5.750%					
			7/1/2034	325,000	5.750%					
			7/1/2035	340,000	5.750%					
			7/1/2036	365,000	5.750%					
			7/1/2037	385,000	5.750%					
			7/1/2038	405,000	5.750%					
			7/1/2039	430,000	5.750%					
			7/1/2040	455,000	5.750%					
			7/1/2041	485,000	5.750%					
			7/1/2042	510,000	5.750%					
			7/1/2043	540,000	5.750%					
			7/1/2044	575,000	5.750%					
	7/1/2045	610,000	5.750%							
	7/1/2046	645,000	5.750%							
	7/1/2047	685,000	5.750%	9,365,000	-	-	9,365,000			
				\$ 10,225,000			\$ 9,980,000	\$ -	\$ 130,000	\$ 9,850,000

JERSEY CITY COMMUNITY CHARTER SCHOOL
Long-Term Debt
Schedule of Obligations Under Capital Leases

I-2

Year ended June 30, 2020

NOT APPLICABLE

JERSEY CITY COMMUNITY CHARTER SCHOOL
Budgetary Comparison Schedule
Debt Service Fund

I-3

Year ended June 30, 2020

	<u>Original Budget</u>	<u>Budget Transfers</u>	<u>Final Budget</u>	<u>Actual</u>	<u>Variance Positive/(Negative) Final to Actual</u>
Revenues					
Interest earned on Debt Service Reserve	\$ -	\$ -	\$ -	\$ 15,109	\$ 15,109
Total revenues	<u>-</u>	<u>-</u>	<u>-</u>	<u>15,109</u>	<u>15,109</u>
Expenditures					
Regular Debt Service:					
Interest	551,213	-	551,213	551,213	-
Redemption of Principal	130,000	-	130,000	130,000	-
Total expenditures	<u>681,213</u>	<u>-</u>	<u>681,213</u>	<u>681,213</u>	<u>-</u>
Excess/(deficiency) of revenues over/ (under) expenditures	<u>(681,213)</u>	<u>-</u>	<u>(681,213)</u>	<u>(666,104)</u>	<u>15,109</u>
Other financing sources:					
Operating transfers in - General Fund	681,213	-	681,213	681,213	-
Total other financing sources	<u>681,213</u>	<u>-</u>	<u>681,213</u>	<u>681,213</u>	<u>-</u>
Excess/(deficiency) of revenues over/ (under) expenditures	-	-	-	15,109	15,109
Fund balance, beginning of year	<u>-</u>	<u>-</u>	<u>-</u>	<u>833,251</u>	<u>833,251</u>
Fund balance, end of year	<u>\$ -</u>	<u>\$ -</u>	<u>\$ -</u>	<u>\$ 848,360</u>	<u>\$ 848,360</u>

Statistical Section

**JERSEY CITY COMMUNITY CHARTER SCHOOL
STATISTICAL SECTION**

J SERIES

Contents

Financial Trends

These schedules contain trend information to help the reader understand how the charter school's financial performance and wellbeing have changed over time.

Revenue Capacity (Not Applicable to Charter School)

These schedules contain information to help the reader assess the district's most significant local revenue source, the property tax.

Debt Capacity

These schedules present information to help the reader assess the affordability of the charter school's current levels of outstanding debt and the charter school's ability to issue additional debt in the future.

Demographic and Economic Information

These schedules offer demographic and economic indicators to help the reader understand the environment within which the charter school's financial activities take place.

Operating Information

These schedules contain service and infrastructure data to help the reader understand how the information in the charter school's financial report relates to the services the charter school provides and the activities it performs.

Charter School Performance Framework Financial Indicators

These schedules contain summary information for the past three (3) years that seek to present the Charter School's financial and sustainability indicators.

Sources:

Unless otherwise noted, the information in these schedules is derived from the comprehensive annual financial reports (CAFR) the relevant year.

JERSEY CITY COMMUNITY CHARTER SCHOOL
County of Hudson New Jersey

J-1

NET POSITION BY COMPONENT
Last Ten Fiscal Years
(accrual basis of accounting)
(Unaudited)

	Fiscal Year Ended June 30,									
	2020	2019	2018	2017	2016	2015	2014	2013	2012	2011
Governmental activities										
Invested in capital assets, net of related debt	\$ (6,512,089)	\$ (4,112,295)	\$ (3,490,807)	\$ (2,728,576)	\$ (1,742,398)	\$ (1,141,122)	\$ (837,201)	\$ (1,256,461)	\$ (557,323)	\$ 43,786
Restricted	#REF!	1,298,156	1,276,565	1,298,468	-	-	-	-	-	-
Unrestricted	(3,744,512)	(7,104,293)	(7,185,499)	(7,221,848)	(5,354,604)	(4,937,945)	(570,806)	(20,898)	(117,694)	(399,795)
Total governmental activities net position	#REF!	\$ (9,918,432)	\$ (9,399,741)	\$ (8,651,956)	\$ (7,097,002)	\$ (6,079,067)	\$ (1,408,007)	\$ (1,277,359)	\$ (675,017)	\$ (356,009)
Business-type activities										
Invested in capital assets, net of related debt	\$ -	\$ -	\$ -	\$ -	\$ -	\$ -	\$ -	\$ -	\$ -	\$ -
Restricted	-	-	-	-	-	-	-	-	-	-
Unrestricted	326,893	261,608	245,585	190,366	150,244	134,206	99,493	196,711	171,627	154,293
Total business-type activities	\$ 326,893	\$ 261,608	\$ 245,585	\$ 190,366	\$ 150,244	\$ 134,206	\$ 99,493	\$ 196,711	\$ 171,627	\$ 154,293
School-wide										
Invested in capital assets, net of related debt	\$ (6,512,089)	\$ (4,112,295)	\$ (3,490,807)	\$ (2,728,576)	\$ (1,742,398)	\$ (1,141,122)	\$ (837,201)	\$ (1,256,461)	\$ (557,323)	\$ 43,786
Restricted	#REF!	1,298,156	1,276,565	1,298,468	-	-	-	-	-	-
Unrestricted	(3,417,619)	(6,842,685)	(6,939,914)	(7,031,482)	(5,204,360)	(4,803,739)	(471,313)	175,813	53,933	(245,502)
Total charter school net position	#REF!	\$ (9,656,824)	\$ (9,154,156)	\$ (8,461,590)	\$ (6,946,758)	\$ (5,944,861)	\$ (1,308,514)	\$ (1,080,648)	\$ (503,390)	\$ (201,716)

Source: Charter School's Records

JERSEY CITY COMMUNITY CHARTER SCHOOL
County of Hudson New Jersey

J-2

CHANGES IN NET POSITION
Last Ten Fiscal Years
(accrual basis of accounting)
(Unaudited)

	Fiscal Year Ended June 30,									
	2020	2019	2018	2017	2016	2015	2014	2013	2012	2011
Expenses										
Governmental activities										
Instruction										
Regular	\$ 2,780,160	\$ 4,874,791	\$ 6,101,557	\$ 5,821,060	\$ 5,176,819	\$ 5,045,477	\$ 3,591,120	\$ 3,348,940	\$ 3,259,704	\$ 3,324,980
Support services:										
School administrative services	2,871,362	1,906,612	1,637,789	1,731,044	1,605,747	1,065,018	1,626,820	1,357,540	1,357,540	1,380,294
General administration	1,300,911	1,354,679	1,260,480	1,262,794	1,225,493	1,609,992	2,145,177	2,466,486	1,874,220	2,009,564
Plant operations and maintenance	139,959	-	-	240,672	-	-	-	-	-	-
Interest on long term debt	551,213	587,043	593,293	572,882	557,947	578,727	659,419	789,594	767,599	620,140
Unallocated depreciation	720,367	738,749	855,859	835,607	811,111	790,141	794,693	779,357	792,955	782,099
Total governmental activities expenses	<u>8,363,972</u>	<u>9,461,874</u>	<u>10,448,978</u>	<u>10,464,059</u>	<u>9,377,117</u>	<u>9,089,355</u>	<u>8,817,229</u>	<u>8,741,917</u>	<u>8,052,018</u>	<u>8,117,077</u>
Business-type activities:										
Food service	350,380	677,144	763,563	629,358	368,813	356,892	316,582	61,995	322,434	321,327
Child Care	34,625	-	-	-	-	-	-	-	-	-
Total business-type activities expense	<u>385,005</u>	<u>677,144</u>	<u>763,563</u>	<u>629,358</u>	<u>368,813</u>	<u>356,892</u>	<u>316,582</u>	<u>61,995</u>	<u>322,434</u>	<u>321,327</u>
Total charter school expenses	<u>\$ 8,748,977</u>	<u>\$ 10,139,018</u>	<u>\$ 11,212,541</u>	<u>\$ 11,093,417</u>	<u>\$ 9,745,930</u>	<u>\$ 9,446,247</u>	<u>\$ 9,133,811</u>	<u>\$ 8,803,912</u>	<u>\$ 8,374,452</u>	<u>\$ 8,438,404</u>
Program revenues										
Governmental activities:										
Charges for services:										
Operating grants and contributions	\$ 568,859	\$ 2,295,989	\$ 3,190,716	\$ 2,414,005	\$ 1,942,487	\$ 1,678,122	\$ 1,072,667	\$ 1,199,676	\$ 701,082	\$ 1,089,711
Capital grants and contributions	-	-	-	-	-	-	-	-	-	-
Total governmental activities program revenues	<u>568,859</u>	<u>2,295,989</u>	<u>3,190,716</u>	<u>2,414,005</u>	<u>1,942,487</u>	<u>1,678,122</u>	<u>1,072,667</u>	<u>1,199,676</u>	<u>701,082</u>	<u>1,089,711</u>
Business-type activities:										
Charges for services										
Food service	413	80,527	126,501	110,740	71,676	98,128	84,771	87,079	66,224	76,952
Child care	85,393	-	-	-	-	-	-	-	-	-
Operating grants and contributions	254,484	612,640	692,281	558,740	313,175	293,477	134,589	-	273,544	276,544
Capital grants and contributions	-	-	-	-	-	-	-	-	-	-
Total business type activities program revenues	<u>340,290</u>	<u>693,167</u>	<u>818,782</u>	<u>669,480</u>	<u>384,851</u>	<u>391,605</u>	<u>219,360</u>	<u>87,079</u>	<u>339,768</u>	<u>353,496</u>
Total charter school program revenues	<u>\$ 909,149</u>	<u>\$ 2,989,156</u>	<u>\$ 4,009,498</u>	<u>\$ 3,083,485</u>	<u>\$ 2,327,338</u>	<u>\$ 2,069,727</u>	<u>\$ 1,292,027</u>	<u>\$ 1,286,755</u>	<u>\$ 1,040,850</u>	<u>\$ 1,443,207</u>
Net (expense)/revenue										
Governmental activities	\$ (7,795,113)	\$ (7,165,885)	\$ (7,258,262)	\$ (8,050,054)	\$ (7,434,630)	\$ (7,411,233)	\$ (7,744,562)	\$ (7,542,241)	\$ (7,350,936)	\$ (7,027,366)
Business-type activities	(44,715)	16,023	55,219	40,122	16,038	34,713	(97,222)	25,084	17,334	32,169
Total charter school-wide net expense	<u>\$ (7,839,828)</u>	<u>\$ (7,149,862)</u>	<u>\$ (7,203,043)</u>	<u>\$ (8,009,932)</u>	<u>\$ (7,418,592)</u>	<u>\$ (7,376,520)</u>	<u>\$ (7,841,784)</u>	<u>\$ (7,517,157)</u>	<u>\$ (7,333,602)</u>	<u>\$ (6,995,197)</u>

JERSEY CITY COMMUNITY CHARTER SCHOOL
County of Hudson New Jersey

J-2

CHANGES IN NET POSITION
Last Ten Fiscal Years
(accrual basis of accounting)
(Unaudited)

	Fiscal Year Ended June 30,									
	2020	2019	2018	2017	2016	2015	2014	2013	2012	2011
General revenues and other changes in net position										
Governmental activities:										
Property taxes levied for general purposes, net	\$ 2,360,737	\$ 1,690,046	\$ 1,597,932	\$ 1,548,366	\$ 1,629,969	\$ 1,796,194	\$ 1,748,273	\$ 1,703,479	\$ 1,645,889	\$ 1,502,543
Grants and contributions	5,682,964	4,765,049	4,952,501	4,843,424	4,686,535	5,089,674	5,103,788	5,529,002	5,380,813	5,226,579
Miscellaneous income	356,494	19,855	34,808	103,311	100,191	32,144	761,853	193,577	5,226	73,110
Transfers	(110,000)	-	-	-	-	-	-	-	-	-
Total governmental activities	8,290,195	6,474,950	6,585,241	6,495,101	6,416,695	6,918,012	7,613,914	7,426,058	7,031,928	6,802,232
Business-type activities:										
Transfers	110,000	-	-	-	-	-	-	-	-	-
Total business-type activities	110,000	-	-	-	-	-	-	-	-	-
Total charter school-wide	\$ 8,400,195	\$ 6,474,950	\$ 6,585,241	\$ 6,495,101	\$ 6,416,695	\$ 6,918,012	\$ 7,613,914	\$ 7,426,058	\$ 7,031,928	\$ 6,802,232
Change in net position										
Governmental activities	\$ 605,082	\$ (690,935)	\$ (673,021)	\$ (1,554,953)	\$ (1,017,935)	\$ (493,221)	\$ (130,648)	\$ (116,183)	\$ (319,008)	\$ (225,134)
Business-type activities	(44,715)	16,023	55,219	40,122	16,038	34,713	(97,222)	25,084	17,334	32,169
Total charter school	\$ 560,367	\$ (674,912)	\$ (617,802)	\$ (1,514,831)	\$ (1,001,897)	\$ (458,508)	\$ (227,870)	\$ (91,099)	\$ (301,674)	\$ (192,965)

Source: Charter School's Records

JERSEY CITY COMMUNITY CHARTER SCHOOL
County of Hudson New Jersey

J-3

Fund Balances - Governmental Funds
Last Ten Fiscal Years
(modified accrual basis of accounting)
(Unaudited)

	Fiscal Year Ended June 30,									
	2020	2019	2018	2017	2016	2015	2014	2013	2012	2011
General Fund										
Reserved	\$ -	\$ 1,019,300	\$ 957,963	\$ 945,990	\$ -	\$ -	\$ -	\$ -	\$ -	\$ -
Unreserved	1,409,129	250,218	121,233	45,285	62,142	286,252	505,536	991,393	792,703	584,767
Total general fund	<u>\$ 1,409,129</u>	<u>\$ 1,269,518</u>	<u>\$ 1,079,196</u>	<u>\$ 991,275</u>	<u>\$ 62,142</u>	<u>\$ 286,252</u>	<u>\$ 505,536</u>	<u>\$ 991,393</u>	<u>\$ 792,703</u>	<u>\$ 584,767</u>
All Other Governmental Funds										
Reserved	\$ -	\$ -	\$ -	\$ -	\$ -	\$ -	\$ -	\$ -	\$ -	\$ -
Unreserved, reported in:										
Special revenue fund	-	-	-	-	-	-	-	-	-	-
Capital projects fund	-	-	-	-	-	-	-	-	-	-
Debt service fund	-	-	-	-	-	-	-	-	-	-
Permanent fund	-	-	-	-	-	-	-	-	-	-
Total all other governmental funds	<u>\$ -</u>	<u>\$ -</u>	<u>\$ -</u>	<u>\$ -</u>	<u>\$ -</u>	<u>\$ -</u>	<u>\$ -</u>	<u>\$ -</u>	<u>\$ -</u>	<u>\$ -</u>

Source: Charter School's Records

JERSEY CITY COMMUNITY CHARTER SCHOOL
County of Hudson New Jersey

J-4

Changes in Fund Balances - Governmental Funds
Last Ten Fiscal Years
(Unaudited)

Function	Fiscal Year Ended June 30,									
	2020	2019	2018	2017	2016	2015	2014	2013	2012	2011
Revenues										
Local tax levy	\$ 2,360,737	\$ 1,690,046	\$ 1,597,932	\$ 1,548,366	\$ 1,632,543	\$ 1,796,194	\$ 1,748,273	\$ 1,703,479	\$ 1,645,889	\$ 1,502,543
Miscellaneous	371,603	87,746	34,808	105,240	100,191	35,040	134,743	193,577	5,226	73,110
State sources	5,679,660	4,765,049	4,952,501	4,843,424	4,689,109	5,089,674	5,552,478	5,529,002	5,380,813	5,226,579
Federal sources	572,163	747,493	716,637	559,035	623,323	612,589	621,089	713,517	701,082	1,089,711
Private sources	-	-	-	-	-	-	-	-	-	-
Total revenue	8,984,163	7,290,334	7,301,878	7,056,065	7,045,166	7,533,497	8,056,583	8,139,575	7,733,010	7,891,943
Expenditures										
Instruction	2,780,160	2,899,228	2,999,009	3,312,199	3,173,787	3,397,747	3,591,120	3,348,940	3,259,704	3,324,980
Administration	2,964,172	3,105,835	3,177,672	3,121,595	2,964,483	2,921,768	3,209,804	3,294,521	2,731,811	2,925,625
Support Services	1,440,870	326,064	328,452	328,623	354,261	368,319	363,502	529,505	499,949	464,233
Capital Outlay	19,777	86,172	24,861	289,059	38,745	30,635	218,592	93,991	191,849	517,958
Debt Service	681,213	682,713	683,963	571,044	735,426	578,727	659,419	789,594	767,599	620,140
Total expenditures	7,886,192	7,100,012	7,213,957	7,622,520	7,266,702	7,297,196	8,042,437	8,056,551	7,450,912	7,852,936
Excess/(deficiency) of revenues over/(under) expenditures	1,097,971	190,322	87,921	(566,455)	(221,536)	236,301	14,146	83,024	282,098	39,007
Other Financing Sources/(Uses)										
Bond/Loan Proceeds	-	-	-	-	-	-	-	-	-	-
Prior Years Disallowed Costs	-	-	-	-	-	-	-	-	-	-
Prior Year Accounts Payable Canceled	-	-	-	-	-	-	-	-	-	-
Long term debt	#REF!	-	-	1,495,588	-	(455,585)	5,870,000	-	-	2,905,724
Transfers	(791,213)	-	-	-	-	-	(6,370,000)	-	-	(2,905,724)
	#REF!	-	-	1,495,588	-	(455,585)	(500,000)	-	-	-
Net change in fund balances	#REF!	\$ 190,322	\$ 87,921	\$ 929,133	\$ (221,536)	\$ (219,284)	\$ (485,854)	\$ 83,024	\$ 282,098	\$ 39,007
Debt service as a percentage of noncapital expenditures	8.66%	9.73%	9.51%	7.79%	10.17%	7.96%	8.43%	9.92%	10.57%	8.45%

Source: Charter School's Records

Note: Noncapital expenditures are total expenditures less capital outlay.

JERSEY CITY COMMUNITY CHARTER SCHOOL
County of Hudson New Jersey

J-5

General Fund Other Local Revenue by Source
Last Ten Fiscal Years
(Unaudited)

Function	Fiscal Year Ended June 30,									
	2020	2019	2018	2017	2016	2015	2014	2013	2012	2011
Fund raising	\$ -	\$ -	\$ -	\$ -	\$ 490	\$ -	\$ -	\$ -	\$ -	\$ -
Rent	-	-	-	-	-	-	-	-	-	-
Prior year's refunds	-	-	-	-	3,324	955	2,189	12,277	32,367	-
Class trip fees	-	-	-	-	930	11,333	1,622	3,243	-	-
Yearbook sales	-	-	-	-	3,698	3,695	2,348	3,348	-	-
Insurance reimbursements	-	-	-	-	3,503	-	-	9,642	-	-
Donations	-	-	-	-	6,299	287	1,671	1,611	-	-
Interest	-	-	-	52	393	939	-	-	-	-
Miscellaneous	356,494	67,021	72,925	4,647	3,427	1,171	2,531	17,332	14,032	46,141
	-	-	-	-	-	-	-	-	-	-
Total other local revenue	<u>#####</u>	<u>\$ 67,021</u>	<u>\$ 72,925</u>	<u>\$ 4,699</u>	<u>\$ 22,064</u>	<u>\$ 18,380</u>	<u>\$ 10,361</u>	<u>\$ 47,453</u>	<u>\$ 46,399</u>	<u>\$ 46,141</u>

Source: Charter School's Records

JERSEY CITY COMMUNITY CHARTER SCHOOL
County of Hudson New Jersey

J-10

Ratio of Outstanding Debt By Type
Last Ten Fiscal Years
(Unaudited)

Fiscal Year Ended June 30,	Governmental Activities					Business-Type Activities	Total Charter School	Percentage of Personal Income ^a	Per Capita ^a
	General Obligation Bonds ^b	Capital Leases	Bond Anticipation Notes (BANs)	Long Term Loans	Short Term Loans	Capital Leases			
2011	\$ -	\$ -	\$ -	\$ 9,828,639	\$ -	\$ -	\$ 9,828,639	0.08%	215
2012	-	-	-	9,783,114	-	-	9,783,114	0.08%	207
2013	-	-	-	9,783,114	-	-	9,783,114	0.08%	204
2014	-	-	-	9,737,100	-	-	9,737,100	0.07%	191
2015	-	-	-	8,530,257	-	-	8,530,257	0.06%	156
2016	-	-	-	8,074,672	-	-	8,074,672	0.05%	144
2017	-	-	-	7,897,193	-	-	7,897,193	0.05%	141
2018	-	-	-	10,225,000	-	-	10,225,000	0.07%	183
2019	-	-	-	10,105,000	-	-	10,105,000	0.06%	169
2020	-	-	-	9,850,000	-	-	9,850,000	0.06%	165

Note: Details regarding the Charter School's outstanding debt can be found in the notes to the financial statements.

JERSEY CITY COMMUNITY CHARTER SCHOOL
County of Hudson New Jersey

J-14

Demographic and Economic Statistics
Last Ten Fiscal Years
(Unaudited)

<u>Year</u>	<u>Population ^a</u>	<u>Personal Income ^b</u>	<u>County Per Capita Personal Income ^c</u>	<u>Unemployment Rate ^d</u>
2011	254,094	\$ 11,588,973,246	\$ 45,609	11.10%
2012	258,703	12,198,622,559	47,153	11.10%
2013	261,109	12,498,504,503	47,867	11.10%
2014	264,009	13,479,243,504	51,056	11.50%
2015	266,286	14,583,951,648	54,768	6.60%
2016	267,446	14,973,231,756	55,986	6.60%
2017	270,753	15,158,377,458	55,986	6.60%
2018	270,753	15,158,377,458	55,986	4.70%
2019	270,753	16,143,106,119	59,623	3.00%
2020	270,753	16,143,106,119	59,623	3.00%

Source:

^a Population information provided by the NJ Dept of Labor and Workforce Development

^b Personal income has been estimated based upon the municipal population and per capita personal income presented

^c Personal capital income by municipality estimated based upon the 2000 Cesus published by the US Bureau of Economic Analysis.

^d Unemployment data provided by the NJ Dept of Labor and Workforce Development

JERSEY CITY COMMUNITY CHARTER SCHOOL
County of Hudson New Jersey

J-15

Principal Employers
Current Year
(Unaudited)

<u>Employer</u>	2020		
	a	a	a
	<u>Employees</u>	<u>Rank</u> <u>[Optional]</u>	<u>Percentage of</u> <u>Total Municipal</u> <u>Employment</u>
HealthCare Staffing and Consulting	2,000	1	1.67%
Deutsche Bank Trust Co., NJ Ltd	1,833	2	1.53%
Insurance Service Office, Inc.	1,217	3	1.01%
Fleet, NJ Company Development Corp.	1,000	4	0.83%
Equiserve, Inc.	850	5	0.71%
Provident Bank	850	6	0.71%
Bon Secours NJ Health System, Inc.	818	7	0.68%
JP Morgan Chase Bank	600	8	0.50%
Port Authority Trans-Hudson, Inc.	600	9	0.50%
Saint Francis Hospital, Inc.	600	10	0.50%
National Discount Broker Group, Inc.	568	11	0.47%
Lehman Commercial Paper, Inc.	525	12	0.44%
US News World Report, LLC	500	13	0.42%
Top Job Personnel, Inc.	500	14	0.42%
	12,461		10.39%

Source: Web Site: <http://www.city-data.com/us-cities/The-Northeast/Jersey-City-Economy.html>

JERSEY CITY COMMUNITY CHARTER SCHOOL
County of Hudson New Jersey

J-16

Full-Time Equivalent Charter School Employees by Function/Program
Last Ten Fiscal Years
(Unaudited)

<u>Function/Program</u>	Fiscal Year Ended June 30,									
	<u>2020</u>	<u>2019</u>	<u>2018</u>	<u>2017</u>	<u>2016</u>	<u>2015</u>	<u>2014</u>	<u>2013</u>	<u>2012</u>	<u>2011</u>
Instruction										
Regular	59	59	59	59	59	59	59	59	59	59
Special education	3	3	3	3	2	2	2	2	2	2
Other instruction	1	1	1	1	1	1	1	1	1	1
Support Services:										
General administration	6	6	6	6	6	6	6	6	6	6
Administrative Information Technology	1	1	1	1	1	1	1	1	1	1
Plant operations and maintenance	7	7	7	7	7	7	7	7	7	7
Other support services	5	5	5	5	5	5	5	6	5	5
Food Service	5	5	5	7	4	5	5	-	5	5
Total	<u>87</u>	<u>87</u>	<u>87</u>	<u>89</u>	<u>85</u>	<u>86</u>	<u>86</u>	<u>82</u>	<u>86</u>	<u>86</u>

Source: Charter School Personnel Records

JERSEY CITY COMMUNITY CHARTER SCHOOL
County of Hudson New Jersey

J-17

Operating Statistics

**Last Ten Fiscal Years
(Unaudited)**

Fiscal Year	Enrollment	Operating Expenditures ^a	Cost Per Pupil	Percentage Change	Teaching Staff ^b	Pupil/Teacher Ratio		Average Daily Enrollment (ADE) ^c	Average Daily Attendance (ADA) ^c	% Change in Average Daily Enrollment	Student Attendance Percentage
						Kindergarten	Elementary				
2011	594	\$ 6,714,838	\$ 11,304	-6.81%	26	1:11	1:11	594	564	0.00%	94.95%
2012	580	6,729,220	11,602	2.63%	56	1:11	1:11	594	564	0.00%	94.95%
2013	572	7,172,966	12,540	8.09%	56	1:11	1:11	594	572	0.00%	96.30%
2014	581	7,231,998	12,448	-0.74%	56	1:11	1:11	579	572	-2.53%	98.79%
2015	586	6,687,834	11,413	-8.31%	56	1:11	1:11	579	572	0.00%	98.79%
2016	571	7,091,927	12,420	8.83%	56	1:11	1:11	571	548	-1.38%	95.97%
2017	560	7,470,976	13,341	7.41%	59	1:11	1:11	560	538	-1.93%	96.07%
2018	574	7,204,885	12,552	-5.91%	59	1:11	1:11	574	551	2.50%	95.99%
2019	568	7,197,757	12,672	0.96%	59	1:11	1:11	568	541	-1.05%	95.25%
2020	580	7,866,415	13,563	7.03%	63	1:11	1:11	580	551	2.11%	95.00%

Sources: Charter School records

Note: Enrollment based on annual June Charter School count.

- a Operating expenditures equal total expenditures less debt service and capital outlay.
- b Teaching staff includes only full-time equivalents of certificated staff.
- c Average daily enrollment and average daily attendance are obtained from the School Register Summary (SRS).

JERSEY CITY COMMUNITY CHARTER SCHOOL
County of Hudson New Jersey

J-18

School Building Information
Last Ten Fiscal Years
(Unaudited)

	2020	2019	2018	2017	Fiscal Year Ended June 30,		2014	2013	2012	2011
					2016	2015				
Square Feet	42,000	42,000	42,000	42,000	42,000	42,000	42,000	42,000	42,000	42,000
Capacity (students)	594	594	594	594	594	594	594	594	594	594
Enrollment	580	568	574	560	571	586	581	572	580	594

Source: School Records

JERSEY CITY COMMUNITY CHARTER SCHOOL
County of Hudson New Jersey

J-19

Schedule of Required Maintenance Expenditures
By School Facility
Last Ten Fiscal Years
(Unaudited)

2011	\$ 408,886
2012	430,362
2013	396,677
2014	608,297
2015	451,999
2016	390,607
2017	395,509
2018	397,659
2019	392,844
2020	625,022
	-
Total	<u><u>\$ 4,497,862</u></u>

* School facilities as defined under EFCFA.
(N.J.A.C. 6A:26-1.2 and N.J.A.C. 6A:26A-1.3)

Source: Charter School records

JERSEY CITY COMMUNITY CHARTER SCHOOL
County of Hudson New Jersey

J-20

Insurance Schedule

June 30, 2020
(Unaudited)

	<u>Coverage</u>
Commercial property and general liability:	
Property:	
Blanket building and contents	\$ 500,000,000
Electronic Data Processing	125,000
Boiler & Machinery, property damage and personal expense	100,000,000
Comprehensive General Liability:	
Bodily injury and property damage	11,000,000
Personal injury and advertising injury	11,000,000
Premises medical payments per each occurrence	10,000
Sexual abuse	11,000,000
Products	11,000,000
Workers Compensation:	
Excess liability - each accident	3,000,000
Excess liability - each employee	3,000,000
Excess liability - policy limit	3,000,000
Errors and Omissions:	
Coverage limit	11,000,000
Deductible per claim	10,000
Automobile Liability	11,000,000

JERSEY CITY COMMUNITY CHARTER SCHOOL
County of Hudson New Jersey

J-21

Charter School Performance Framework Financial Indicators
New Term Indicators

June 30, 2020
(Unaudited)

	<u>2020</u>	<u>2019</u>	<u>2018</u>
Cash	\$ 1,703,999	\$ 2,464,302	\$ 1,942,745
Current assets	1,650,640	2,945,630	2,742,999
Capital assets, net	3,337,911	2,689,399	4,037,661
Total assets	<u>6,692,550</u>	<u>8,099,331</u>	<u>8,723,405</u>
Current liabilities	719,597	1,475,930	1,800,662
Long term liabilities	10,504,389	16,280,225	16,076,899
Total liabilities	<u>11,223,986</u>	<u>17,756,155</u>	<u>17,877,561</u>
Net position	<u>\$ (4,531,436)</u>	<u>\$ (9,656,824)</u>	<u>\$ (9,154,156)</u>
Total revenue	\$ 9,214,453	\$ 9,531,997	\$ 10,594,739
Total expenses	<u>(8,748,977)</u>	<u>(10,034,665)</u>	<u>(11,287,305)</u>
Change in net position	<u>\$ 465,476</u>	<u>\$ (502,668)</u>	<u>\$ (692,566)</u>
Depreciation expense	\$ 720,367	\$ 738,749	\$ 855,859
Interest expense	551,213	587,043	593,293
Principal payments	130,000	125,000	120,000
Interest payments	551,213	560,838	553,293
Final average daily enrollment	580	568	574
March 30th budgeted enrollment	594	585	594

	<u>2020</u>	<u>2019</u>	<u>2018</u>	Three Year Cumulative
NEAR TERM INDICATORS:				
Current ratio	4.66	3.67	2.60	10.93
Unrestricted days cash	71.09	89.64	62.82	223.55
Enrollment variance	98%	97%	97%	97%
Default	No	No	No	No

Source: Charter School Records

JERSEY CITY COMMUNITY CHARTER SCHOOL
County of Hudson New Jersey

J-22

Charter School Performance Framework Financial Indicators
Sustainability Indicators

June 30, 2020
(Unaudited)

	2020	2019	2018
Cash	\$ 1,703,999	\$ 2,464,302	\$ 1,942,745
Current assets	1,650,640	2,945,630	2,742,999
Capital assets, net	3,337,911	2,689,399	4,037,661
Total assets	<u>6,692,550</u>	<u>8,099,331</u>	<u>8,723,405</u>
Current liabilities	719,597	1,475,930	1,800,662
Long term liabilities	10,504,389	16,280,225	16,076,899
Total liabilities	<u>11,223,986</u>	<u>17,756,155</u>	<u>17,877,561</u>
Net position	<u>\$ (4,531,436)</u>	<u>\$ (9,656,824)</u>	<u>\$ (9,154,156)</u>
Total revenue	\$ 9,214,453	\$ 9,531,997	\$ 10,594,739
Total expenses	(8,748,977)	(10,034,665)	(11,287,305)
Change in net position	<u>\$ 465,476</u>	<u>\$ (502,668)</u>	<u>\$ (692,566)</u>
Depreciation expense	\$ 720,367	\$ 738,749	\$ 855,859
Interest expense	551,213	587,043	593,293
Principal payments	130,000	125,000	120,000
Interest payments	551,213	560,838	553,293
Final average daily enrollment	580	568	574
March 30th budgeted enrollment	594	585	594

	2020	2019	2018	Three Year Cumulative
SUSTAINABILITY INDICATORS:				
Total margin	5.1%	-5.3%	-6.5%	-2.5%
Debt to asset	1.57	2.01	1.84	1.99
Cash flow	\$ (760,303)	\$ 521,557	\$ 64,978	\$ (173,768)
Debt service coverage ratio	2.55	1.20	1.12	1.626

Source: Charter School Records

Single Audit Section

Olugbenga Olabintan

Certified Public Accountant/Consultant

137 Camden Street, Suite #3
Newark, NJ 07103

Tel: (201) 230-7518
Fax: (973) 368-8268
E-mail: oolabintan@aol.com

K-1

Independent Auditor's Report on Internal Control over Financial Reporting and on Compliance and Other Matters Based on an Audit of Financial Statements Performed in Accordance with *Government Auditing Standards*

The Honorable Chairperson and
Members of the Board of Trustees
Jersey City Community Charter School
County of Hudson
Jersey City, New Jersey

We have audited, in accordance with auditing standards generally accepted in the United States of America and the standards applicable to financial audits contained in *Government Auditing Standards*, issued by the Comptroller General of the United States *and audit requirements as prescribed by the Office of School Finance, Department of Education, State of New Jersey*, the financial statements of the governmental activities, each major fund, and the aggregate remaining fund information of Jersey City Community Charter School, in the County of Hudson, State of New Jersey ("the Charter School"), as of and for the year ended June 30, 2020, and the related notes to the financial statements, which collectively comprise the Charter School's basic financial statements, and have issued our report thereon, dated January 15, 2021.

Internal Control over Financial Reporting

In planning and performing our audit of the financial statements, we considered the Charter School's internal control over financial reporting (internal control) to determine the audit procedures that are appropriate in the circumstances for the purpose of expressing our opinions on the financial statements, but not for the purpose of expressing an opinion on the effectiveness of the Charter School's internal control. Accordingly, we do not express an opinion on the effectiveness of the Charter School's internal control.

A deficiency in internal control exists when the design or operation of a control does not allow management or employees, in the normal course of performing their assigned functions, to prevent, or detect and correct, misstatements on a timely basis. A *material weakness* is a deficiency, or a combination of deficiencies, in internal control, such that there is a reasonable possibility that a material misstatement of the entity's financial statements will not be prevented, or detected and corrected on a timely basis. A *significant deficiency* is a deficiency, or a combination of deficiencies, in internal control that is less severe than a material weakness, yet important enough to merit attention by those charged with governance.

Our consideration of internal control was for the limited purpose described in the first paragraph of this section and was not designed to identify all deficiencies in internal control that might be material weaknesses or significant deficiencies. Given these limitations, during our audit we did not identify any deficiencies in internal control that we consider to be material weaknesses. However, material weaknesses may exist that have not been identified.

Compliance and Other Matters

As part of obtaining reasonable assurance about whether the Charter School's financial statements are free of material misstatement, we performed tests of its compliance with certain provisions of laws, regulations, contracts, and grant agreements, noncompliance with which could have a direct and material effect on the determination of financial statement amounts. However, providing an opinion on compliance with those provisions was not an objective of our audit, and accordingly, we do not express such an opinion. The results of our tests disclosed no instances of noncompliance or other matters that are required to be reported under *Government Auditing Standards and audit requirements as prescribed by the Office of School Finance, Department of Education, State of New Jersey*.

Purpose of this Report

The purpose of this report is solely to describe the scope of our testing of internal control and compliance and the results of that testing, and not to provide an opinion on the effectiveness of the Charter School's internal control or on compliance. This report is an integral part of an audit performed in accordance with *Government Auditing Standards and audit requirements as prescribed by the Office of School Finance, Department of Education, State of New Jersey* in considering the Charter School's internal control and compliance. Accordingly, this communication is not suitable for any other purpose.

Olugbenga Olabintan, CPA

January 15, 2021
Newark, New Jersey

OLUGBENGA OLABINTAN
Certified Public Accountant/Consultant



Olugbenga Olabintan, CPA
Licensed Public School Accountant
No. 20CS00230200

Olugbenga Olabintan

Certified Public Accountant/Consultant

137 Camden Street, Suite #3
Newark, NJ 07103

Tel: (201) 230-7518
Fax: (973) 368-8268
E-mail: oolabintan@aol.com

K-2

Independent Auditors' Report on Compliance for Each Major Federal and State Program and Report on Internal Control over Compliance Required by the Uniform Guidance and *State of New Jersey Department of Treasury Circular 15-08-OMB*

The Honorable Chairperson and
Members of the Board of Trustees
Jersey City Community Charter School
County of Hudson,
Jersey City, New Jersey

Compliance

We have audited Jersey City Community Charter School, in the County of Hudson, State of New Jersey ("the Charter School") compliance with the types of requirements described in the OMB Compliance Supplements and *State of New Jersey Department of Treasury Circular 15-08-OMB Compliance Supplement* that could have a direct and material effect on each of the Charter School's major federal and state programs for the year ended June 30, 2020. The Charter School's major federal and state programs are identified in the summary of auditor's results section of the accompanying schedule of findings and questioned costs.

Management's Responsibility

Management is responsible for compliance with the requirements of laws, regulations, contracts, and grants applicable to its state programs.

Auditors' Responsibility

Our responsibility is to express an opinion on compliance for each of the Charter School's major federal and state programs based on our audit of the types of compliance requirements referred to above. We conducted our audit of compliance in accordance with auditing standards generally accepted in the United States of America; the standards applicable to financial audits contained in *Government Auditing Standards*, issued by the Comptroller General of the United States; *audit requirements as prescribed by the Office of School Finance, Department of Education, State of New Jersey*; the audit requirements of Title 2 U.S. Code of Federal Regulations Part 200, *Uniform Administrative Requirements, Cost Principles, and Audit Requirements for Federal Awards* (Uniform Guidance); and New Jersey Department of the Treasury Circular Letter 15-08 OMB *Single Audit Policy for Recipients of Federal Grants, State Grants and State Aid*.

Those standards, the Uniform Guidance, State of New Jersey Department of Treasury Circular 15-08-OMB and *audit requirements as prescribed by the Office of School Finance, Department of Education, State of New Jersey* require that we plan and perform the audit to obtain reasonable assurance about whether noncompliance with the types of compliance requirements referred to above that could have a direct and material effect on a major federal or state program occurred. An audit includes examining, on a test basis, evidence about the Charter School's compliance with those requirements and performing such other procedures as we considered necessary in the circumstances.

We believe that our audit provides a reasonable basis for our opinion on compliance for each major federal and state program. However, our audit does not provide a legal determination of the Charter School's compliance.

Opinion on Each Major Federal and State Program

In our opinion, the Charter School complied, in all material respects, with the types of compliance requirements referred to above that could have a direct and material effect on each of its major federal and state programs for the year ended June 30, 2020.

Report on Internal Control over Compliance

Management of the Charter School is responsible for establishing and maintaining effective internal control over compliance with the types of compliance requirements referred to above. In planning and performing our audit of compliance, we considered the Charter School's internal control over compliance with the types of requirements that could have a direct and material effect on each major federal and state program to determine the auditing procedures that are appropriate in the circumstances for the purpose of expressing an opinion on compliance for each major federal and state program and to test and report on internal control over compliance in accordance with the Uniform Guidance and State of New Jersey Department of Treasury Circular 15-08-OMB, but not for the purpose of expressing an opinion on the effectiveness of internal control over compliance. Accordingly, we do not express an opinion on the effectiveness of the Charter School's internal control over compliance.

A deficiency in internal control over compliance exists when the design or operation of a control over compliance does not allow management or employees, in the normal course of performing their assigned functions, to prevent, or detect and correct, noncompliance with a type of compliance requirement of a federal or state program on a timely basis. *A material weakness in internal control over compliance* is a deficiency, or combination of deficiencies, in internal control over compliance, such that there is a reasonable possibility that material noncompliance with a type of compliance requirement of a federal or state program will not be prevented, or detected and corrected, on a timely basis. *A significant deficiency in internal control over compliance* is a deficiency, or a combination of deficiencies, in internal control over compliance with a type of compliance requirement of a federal or state program that is less severe than a material weakness in internal control over compliance, yet important enough to merit attention by those charged with governance.

Our consideration of internal control over compliance was for the limited purpose described in the first paragraph of this section and was not designed to identify all deficiencies in internal control over compliance that might be material weaknesses or significant deficiencies. We did not identify any deficiencies in internal control over compliance that we consider to be material weaknesses. However, material weaknesses may exist that have not been identified.

The purpose of this report on internal control over compliance is solely to describe the scope of our testing of internal control over compliance and the results of that testing based on the requirements of Uniform Guidance, State of New Jersey Department of Treasury Circular 15-08-OMB and *audit requirements as prescribed by the Office of School Finance, Department of Education, State of New Jersey*. Accordingly, this report is not suitable for any other purpose.

Olugbenga Olabintan, CPA

January 15, 2021
Newark, New Jersey

OLUGBENGA OLABINTAN
Certified Public Accountant/Consultant

A handwritten signature in black ink, appearing to read 'Olugbenga Olabintan', with a horizontal line underneath it.

Olugbenga Olabintan, CPA
Licensed Public School Accountant
No. 20CS00230200

JERSEY CITY COMMUNITY CHARTER SCHOOL

Schedule of Expenditures of Federal Awards

Year ended June 30, 2020

Federal Grant/ Pass-Through Grantor/ Program Title	Federal C.F.D.A No.	Federal Award Identification Number	Grant Period	Award Amount	(Accounts Receivable) at June 30, 2019	Deferred Revenue at June 30, 2019	Due to Grantor at June 30, 2019	Adjustments	Carryover (Walkover) Amount	Cash Received	Budgetary Expenditures	Repayment of Prior Years' Balances	(Accounts Receivable) at June 30, 2020	Deferred Revenue at June 30, 2020	Due to Grantor at June 30, 2020
General Fund:															
U.S. Department of Health and Human Services															
Passed-Through State Department of Education															
Special Education Medicaid Initiative - SEMI	93.778	1905NJ5MAP	7/1/19-6/30/20	\$ 3,304	\$ -	\$ -	\$ -	\$ -	\$ -	\$ 3,304	\$ (3,304)	\$ -	\$ -	\$ -	\$ -
Total General Fund/U.S. Department of Health & Human Services					-	-	-	-	-	3,304	(3,304)	-	-	-	-
Special Revenue Fund:															
U.S. Department of Education:															
Passed-Through State Department of Education															
Title I Part A - FY 2019-2020	84.010A	S010A190030	7/1/19-9/30/20	499,863	-	-	-	-	-	310,787	(434,477)	-	(123,690)	-	-
Title I Reallocated - FY 2019-2020	84.010A	S010A190030	7/1/19-9/30/20	11,222	-	-	-	-	-	11,034	(11,222)	-	(188)	-	-
Title II A - FY 2019-2020	84.367A	S367A190029	7/1/19-9/30/20	56,633	-	-	-	-	-	-	(8,400)	-	(8,400)	-	-
Title III - FY 2019-2020	84.365	S365A190030	7/1/19-9/30/20	1,615	-	-	-	-	-	-	-	-	-	-	-
IDEA Part B - FY 2019-2020	84.027	H027A190100	7/1/19-9/30/20	108,524	-	-	-	-	-	108,524	(108,524)	-	-	-	-
IDEA Preschool - FY 2019-2020	84.173	H173A190114	7/1/19-9/30/20	6,236	-	-	-	-	-	-	(6,236)	-	(6,236)	-	-
Title I Part A - FY 2018-2019	84.010A	S010A180030	7/1/18-6/30/19	563,427	(18,810)	-	-	-	-	18,810	-	-	-	-	-
Title I Reallocated - FY 2018-2019	84.010A	S010A180030	7/1/18-6/30/19	17,952	(17,952)	-	-	-	-	17,952	-	-	-	-	-
Title II A - FY 2018-2019	84.367A	S367A180029	7/1/18-6/30/19	29,941	(23,500)	-	-	-	-	23,500	-	-	-	-	-
IDEA Part B - FY 2018-2019	84.027	H027A180100	7/1/18-6/30/19	107,544	(3,163)	-	-	-	-	3,163	-	-	-	-	-
Total Special Revenue/U.S. Department of Education					1,402,957	(63,425)	-	-	-	493,770	(568,859)	-	(138,514)	-	-
Enterprise Fund:															
U.S. Department of Agriculture															
Passed-Through New Jersey Dept of Agriculture															
National school lunch program	10.555	201NJ304N1099	7/1/19-6/30/20	188,359	-	-	-	-	-	181,945	(188,359)	-	(6,414)	-	-
National school lunch program	10.555	191NJ304N1099	7/1/18-6/30/19	403,298	(101,032)	-	-	-	-	17,623	-	-	(83,409)	-	-
After school snack program	10.555	201NJ304N1099	7/1/19-6/30/20	-	-	-	-	-	-	-	-	-	-	-	-
After school snack program	10.555	191NJ304N1099	7/1/18-6/30/19	5,009	(131)	-	-	-	-	131	-	-	-	-	-
Healthy, Hunger-Free Kids Act	10.555	201NJ304N1099	7/1/19-6/30/20	4,342	-	-	-	-	-	4,211	(4,342)	-	(131)	-	-
Healthy, Hunger-Free Kids Act	10.555	191NJ304N1099	7/1/18-6/30/19	9,478	(2,321)	-	-	-	-	2,321	-	-	-	-	-
Subtotal CFDA # 10.555					610,486	(103,484)	-	-	-	206,231	(192,701)	-	(89,954)	-	-
National School breakfast program	10.553	201NJ304N1099	7/1/19-6/30/20	58,409	-	-	-	-	-	54,295	(58,409)	-	(4,114)	-	-
National School breakfast program	10.553	191NJ304N1099	7/1/18-6/30/19	118,989	(37,211)	-	-	-	-	37,211	-	-	-	-	-
Subtotal CFDA # 10.553					177,398	(37,211)	-	-	-	91,506	(58,409)	-	(4,114)	-	-
Total Enterprise Fund/U.S. Department of Agriculture					787,884	(140,695)	-	-	-	297,737	(251,110)	-	(94,068)	-	-
Total					\$ (204,120)	\$ -	\$ -	\$ -	\$ -	\$ 794,811	\$ -	\$ (232,582)	\$ -	\$ -	\$ -
Total Expenditures of Federal Awards											<u>(823,273)</u>				

The accompanying Notes to Schedules of Expenditures of Awards and Financial Assistance are an integral part of this schedule.

JERSEY CITY COMMUNITY CHARTER SCHOOL

Schedule of Expenditures of State Awards

Year ended June 30, 2020

State Grantor/Program Title	Grant or State Project Number	Grant Period	Award Amount	(Accounts Receivable) at June 30, 2019	Deferred Revenue at June 30, 2019	Due to Grantor at June 30, 2019	Adjustments	Carryover (Walkover) Amount	Cash Received	Budgetary Expenditures	Repayment of Prior Years' Balances	(Accounts Receivable) at June 30, 2020	Deferred Revenue at June 30, 2020	Due to Grantor at June 30, 2020
State Department of Education														
General Fund:														
Equalization Aid	20-495-034-5120-078	7/1/19-6/30/20	\$ 6,753,071	\$ -	\$ -	\$ -	\$ -	\$ -	\$ 6,804,519	\$ (6,753,071)	-	\$ -	\$ -	\$ 51,448
Equalization Aid	19-495-034-5120-078	7/1/18-6/30/19	4,260,539	-	-	34,447	-	-	-	-	(34,447)	-	-	-
Special Education Aid	20-495-034-5120-089	7/1/19-6/30/20	150,684	-	-	-	-	-	150,684	(150,684)	-	-	-	-
Security Aid	20-495-034-5120-084	7/1/19-6/30/20	279,550	-	-	-	-	-	279,550	(279,550)	-	-	-	-
TPAF/FICA Reimbursements	20-495-034-5094-003	7/1/19-6/30/20	179,977	-	-	-	-	-	172,748	(179,977)	-	(7,229)	-	-
TPAF/FICA Reimbursements	19-495-034-5094-003	7/1/18-6/30/19	189,152	(25,760)	-	-	-	-	25,760	-	-	-	-	-
On-Behalf TPAF Post Retirement Medical Contribution	20-495-034-5094-001	7/1/19-6/30/20	182,952	-	-	-	-	-	182,952	(182,952)	-	-	-	-
On-Behalf TPAF Pension Contribution - Normal & NCGI	20-495-034-5094-002	7/1/19-6/30/20	493,157	-	-	-	-	-	493,157	(493,157)	-	-	-	-
On-Behalf TPAF Pension Contribution - Long-Term Disability Insurance	20-495-034-5094-004	7/1/19-6/30/20	850	-	-	-	-	-	850	(850)	-	-	-	-
Total General Fund/State Department of Education				<u>(25,760)</u>	<u>-</u>	<u>34,447</u>	<u>-</u>	<u>-</u>	<u>8,110,220</u>	<u>(8,040,241)</u>	<u>(34,447)</u>	<u>(7,229)</u>	<u>-</u>	<u>51,448</u>
State Department of Agriculture														
Enterprise Fund:														
State school lunch program	20-100-010-3350-023	7/1/19-6/30/20	3,374	-	-	-	-	-	3,271	(3,374)	-	(103)	-	-
State school lunch program	19-100-010-3350-023	7/1/18-6/30/19	9,583	(2,082)	-	-	-	-	816	-	-	(1,266)	-	-
Total Enterprise Fund/State Department of Agriculture				<u>(2,082)</u>	<u>-</u>	<u>-</u>	<u>-</u>	<u>-</u>	<u>4,087</u>	<u>(3,374)</u>	<u>-</u>	<u>(1,369)</u>	<u>-</u>	<u>-</u>
Total State Financial Assistance				<u>\$ (27,842)</u>	<u>\$ -</u>	<u>\$ 34,447</u>	<u>\$ -</u>	<u>\$ -</u>	<u>\$ 8,114,307</u>	<u>(8,043,615)</u>	<u>\$ (34,447)</u>	<u>\$ (8,598)</u>	<u>\$ -</u>	<u>\$ 51,448</u>
Less Amounts Not Subject to Single Audit:														
On-Behalf TPAF Post Retirement Medical Contribution	20-495-034-5094-001									182,952				
On-Behalf TPAF Pension Contribution - Normal & NCGI	20-495-034-5094-002									493,157				
On-Behalf TPAF Pension Contribution - Long-Term Disability Insurance	20-495-034-5094-004									850				
Total Expenditures of State Financial Assistance Subject to Single Audit										<u>\$ (7,366,656)</u>				

The accompanying Notes to Schedules of Expenditures of Awards and Financial Assistance are an integral part of this schedule.

JERSEY CITY COMMUNITY CHARTER SCHOOL
(County of Hudson)

Notes to Schedules of Expenditures of Federal Awards and State Financial Assistance
Year Ended June 30, 2020

1. General

The accompanying schedules of expenditures of federal awards and state financial assistance present the activity of all expenditures of federal awards and state financial assistance of the Charter School. All federal and state awards received directly from federal and state agencies, as well as federal awards and state financial assistance passed through other government agencies is included on the schedule of expenditures of federal awards and state financial assistance.

2. Basis of Accounting

The accompanying schedules of expenditures of federal awards and state financial assistance are presented on the budgetary basis of accounting with the exception of programs recorded in the enterprise fund, which are presented using the accrual basis of accounting. These bases of accounting are described in Note 1 to the Charter School's basic financial statements. The information in these schedules is presented in accordance with the requirements of *Title 2 U.S. Code of Federal Regulations (CFR) Part 200, Uniform Administrative Requirements, Cost Principles, and Audit Requirements for Federal Awards* (Uniform Guidance) and the provisions of New Jersey Department of the Treasury Circular Letter 15-08 OMB, *Single Audit Policy for Recipients of Federal Grants, State Grants and State Aid*. Therefore, some amounts presented in the schedules may differ from amounts presented in, or used in the preparation of, the basic financial statements.

3. Relationship to Basic Financial Statements

Amounts reported in the accompanying schedules agree with amounts reported in the Charter School's basic financial statements. The basic financial statements present the general fund and special revenue fund on a GAAP basis. Budgetary comparison statements and schedules (RSI) are presented for the general fund and special revenue fund to demonstrate finance-related legal compliance in which certain revenue is permitted by law or grant agreement to be recognized in the fiscal year, whereas for GAAP reporting, revenue is not recognized until the subsequent year or expenditures have been made. The general fund is presented in the accompanying schedules on the modified accrual basis. The special revenue fund is presented in the accompanying schedules on the grant accounting budgetary basis, which recognizes encumbrances as expenditures and also recognizes the related revenues, whereas the GAAP basis does not. The net adjustment to reconcile from the budgetary basis to GAAP basis is \$-0- for the general fund and \$-0- for the special revenue fund. See Note 1 (the Notes to Required Supplementary Information) for a reconciliation of the budgetary basis to the modified accrual basis of accounting for the general and special revenue funds (C-3).

JERSEY CITY COMMUNITY CHARTER SCHOOL
(County of Hudson)
Notes to Schedules of Expenditures of Federal Awards and State Financial Assistance
Year Ended June 30, 2020

3. Relationship to Basic Financial Statements - continued

Federal awards and state financial assistance revenues are reported in the Charter School's basic financial statements on a GAAP basis as follows:

	<u>Federal</u>	<u>State</u>	<u>Total</u>
General Fund	\$ 3,304	\$ 8,040,241	\$ 8,043,545
Special Revenue Fund	568,859	-	568,859
Enterprise Fund	251,110	3,374	254,484
Total	<u>\$ 823,273</u>	<u>\$ 8,043,615</u>	<u>\$ 8,866,888</u>

4. Relationship to Federal and State Financial Reports

Amounts reported in the accompanying schedules agree with the amounts reported in the related federal and state financial reports.

5. Other Information

TPAF Social Security contribution in the amount of \$179,977 represents the amount reimbursed by the State for the employer's share of social security contributions for TPAF members for the fiscal year ended June 30, 2020. The amount reported as TPAF pension representing on-behalf employer's portion of the TPAF Pension System Contributions, TPAF Post-Retirement Medical Benefits Contributions and TPAF Long Term Disability Insurance Premium Contributions in the amount of \$676,959 represents the amount paid by the State on behalf of the Charter School for the fiscal year ended June 30, 2020.

6. On Behalf Programs Not Subject to State Single Audit

On-behalf State Programs for TPAF Pension and Post-Retirement Medical Benefits Contributions are not subject to a State single audit and, therefore, are excluded from major program determination. The Schedule of State Financial Assistance provides a reconciliation of State financial assistance reported in the Charter School's financial statements and the amount subject to State single audit and major program determination.

7. De Minimis Indirect Cost

The Charter School has not elected to use the ten percent de minimis indirect cost rate allowed under the Uniform Guidance.

JERSEY CITY COMMUNITY CHARTER SCHOOL
(County of Hudson)
Schedule of Findings and Questioned Costs
Year Ended June 30, 2020

Part I - Summary of Auditors' Results

Financial Statements Section

Type of auditor's report issued: Unmodified

Internal control over financial reporting:

Material weaknesses identified? _____ Yes No

Significant deficiencies identified _____ Yes None reported

Noncompliance material to financial statements noted? _____ Yes No

Federal Awards:

Type of auditor's report on compliance for major programs: Unmodified

Internal control over major programs:

Material weaknesses identified? _____ Yes No

Significant deficiencies identified? _____ Yes None reported

Any audit findings disclosed that are required to be reported in accordance with 2 CFR 200.516(a)? _____ Yes No

Identification of major programs:

<u>CFDA Number(s)</u>	<u>FAIN Number(s)</u>	<u>Name of Federal Program or Cluster</u>
84.010A	S010180030	Title I, Part A
84.010A	S010180030	Title I, Reallocated
10.555	201NJ304N1099	National School Lunch Program - Cluster
10.555	201NJ304N1099	After School Snacks Program – Cluster
10.553	201NJ304N1099	National School Breakfast Program - Cluster

Dollar threshold used to distinguish between Type A and B programs: \$750,000

Auditee qualifies as low-risk auditee? yes _____ No

JERSEY CITY COMMUNITY CHARTER SCHOOL
(County of Hudson)
Schedule of Findings and Questioned Costs
Year Ended June 30, 2020

Part I Summary of Auditors' Results

State Financial Assistance Section

Dollar threshold used to distinguish between Type A and B programs: \$750,000

Auditee qualifies as low-risk auditee? yes No

Type of auditor's report on compliance for major programs: Unmodified

Internal control over major programs:

Material weakness(es) identified? Yes No

Significant deficiency(cies) identified that are not
 Considered to be material weaknesses? Yes None reported

Any audit findings disclosed that are required to be reported
 in accordance with NJ OMB Circulars 15-08 as applicable? Yes No

Identification of Major Programs:

<u>State Grant/Program Number(s)</u>	<u>Name of State Program or Cluster</u>
20-495-034-5120-078	Equalization Aid
20-495-034-5120-089	Special Education Aid
20-495-034-5120-084	Security Aid
20-495-034-5120-085	State Adjustment Aid

**JERSEY CITY COMMUNITY CHARTER SCHOOL
(County of Hudson)
Schedule of Findings and Questioned Costs
Year Ended June 30, 2020**

Part II – Schedule of Financial Statement Findings

NONE

**JERSEY CITY COMMUNITY CHARTER SCHOOL
(County of Hudson)
Schedule of Findings and Questioned Costs
Year Ended June 30, 2020**

Part III – Federal Awards Findings and Questioned Cost

NOT APPLICABLE FOR 2020

Part III – State Financial Assistance Findings and Questioned Cost

NONE

**JERSEY CITY COMMUNITY CHARTER SCHOOL
(County of Hudson)
Summary Schedule of Prior Year Audit Findings
Year Ended June 30, 2020**

There were no prior year's audit findings.