

UNION COUNTY TEAMS CHARTER SCHOOL  
PLAINFIELD, NEW JERSEY

COMPREHENSIVE ANNUAL  
FINANCIAL REPORT

FOR THE FISCAL YEAR ENDED JUNE 30, 2020

***UNION COUNTY TEAMS CHARTER SCHOOL***  
***COMPREHENSIVE ANNUAL***  
***FINANCIAL REPORT***  
***FISCAL YEAR ENDED JUNE 30, 2020***

***UNION COUNTY TEAMS CHARTER SCHOOL***

***UNION COUNTY TEAMS CHARTER SCHOOL  
Board of Trustees  
Plainfield, New Jersey***

***Comprehensive Annual Financial Report  
For The Fiscal Year Ended June 30, 2020***

**COMPREHENSIVE ANNUAL  
FINANCIAL REPORT  
OF THE  
UNION COUNTY TEAMS CHARTER SCHOOL  
PLAINFIELD, NEW JERSEY  
FOR THE FISCAL YEAR ENDED JUNE 30, 2020**

**Prepared by  
UNION COUNTY TEAMS CHARTER SCHOOL  
Finance Department  
And  
Meshinsky & Associates LLC, CPAs**

## STATE BOARD OF EDUCATION

KATHY A. GOLDENBERG .....Burlington  
President

ANDREW J. MULVIHILL .....Sussex  
Vice President

ARCELIO APONTE. ....Middlesex

MARY BETH BERRY.....Hunterdon

ELAINE BOBROVE.....Camden

FATIMAH BURNAM-WATKINS.....Union

RONALD K. BUTCHER .....Gloucester

JACK FORNARO .....Warren

MARY ELIZABETH GAZI .....Somerset

NEDD JAMES JOHNSON, Ed. D.....Salem

ERNEST P. LEPORE .....Hudson

JOSEPH RICCA, JR., Ed.D .....Morris

SYLVIA SYLVIA-CIOFFI.....Monmouth

**Kevin Dehmer, Interim Commissioner of Education  
Secretary, State Board of Education**

**UNION COUNTY TEAMS CHARTER SCHOOL  
TABLE OF CONTENTS**

Page

<b>INTRODUCTORY SECTION .....</b>	<b>1</b>
Letter of Transmittal .....	2
Organizational Chart .....	7
Roster of Officials.....	8
Consultants and Advisors .....	9
<b>FINANCIAL SECTION .....</b>	<b>10</b>
Independent Auditor’s Report .....	11
<b>REQUIRED SUPPLEMENTARY INFORMATION – PART I .....</b>	<b>14</b>
Management’s Discussion and Analysis .....	15
<b>BASIC FINANCIAL STATEMENTS.....</b>	<b>21</b>
<b>SECTION A – CHARTER SCHOOL–WIDE FINANCIAL STATEMENTS .....</b>	<b>22</b>
A-1 Statement of Net Position.....	23
A-2 Statement of Activities.....	24
<b>SECTION B – FUND FINANCIAL STATEMENTS .....</b>	<b>25</b>
<b>GOVERNMENTAL FUNDS .....</b>	<b>26</b>
B-1 Balance Sheet.....	27
B-2 Statement of Revenues, Expenditures, and Changes in Fund Balance .....	28
B-3 Reconciliation of the Statements of Revenues, Expenditures, and Changes in Fund Balances of Governmental Funds to the Statement of Activities .....	29
<b>PROPRIETARY FUNDS .....</b>	<b>30</b>
B-4 Statement of Fund Net Position .....	31
B-5 Statement of Revenues, Expenses, and Changes in Net Position.....	32
B-6 Statement of Cash Flows .....	33
<b>FIDUCIARY FUNDS .....</b>	<b>34</b>
B-7 Statement of Fiduciary Net Position .....	35
<b>NOTES TO THE FINANCIAL STATEMENTS .....</b>	<b>36</b>
<b>REQUIRED SUPPLEMENTARY INFORMATION – PART II .....</b>	<b>68</b>
<b>SECTION C – BUDGETARY COMPARISON SCHEDULES .....</b>	<b>69</b>
C-1 Budgetary Comparison Schedule – General Fund.....	70
C-2 Budgetary Comparison Schedule – Special Revenue Fund.....	72
<b>NOTES TO THE REQUIRED SUPPLEMENTARY INFORMATION.....</b>	<b>73</b>
C-3 Budget-To-GAAP Reconciliation .....	74

**UNION COUNTY TEAMS CHARTER SCHOOL  
TABLE OF CONTENTS**

	Page
<b>REQUIRED SUPPLEMENTARY INFORMATION – PART III .....</b>	<b>75</b>
<b>SCHEDULE L - SCHEDULES RELATED TO ACCOUNTING AND REPORTING FOR PENSIONS (GASB 68) .....</b>	<b>76</b>
L-1 Schedules of the District’s Proportionate Share of the Net Pension Liability - PERS .....	77
L-2 Schedules of District Contributions - PERS.....	78
L-3 Schedules of the District’s Proportionate Share of the Net Pension Liability - TPAF.....	N/A
<b>NOTES TO REQUIRED SUPPLEMENTARY INFORMATION III.....</b>	<b>79</b>
<b>OTHER SUPPLEMENTARY INFORMATION .....</b>	<b>81</b>
<b>SECTION E – SPECIAL REVENUE FUND .....</b>	<b>82</b>
E-1 Combining Schedule of Revenues and Expenditures – Budgetary Basis .....	83
<b>SECTION G – PROPRIETARY FUNDS .....</b>	<b>84</b>
<b>SECTION H – FIDUCIARY FUNDS.....</b>	<b>85</b>
H-1 Combining Statement of Fiduciary Net Position .....	86
H-4 Payroll Agency Fund Schedule of Receipts and Disbursements.....	87
<b>STATISTICAL SECTION (UNAUDITED).....</b>	<b>88</b>
<b>INTRODUCTION TO THE STATISTICAL SECTION.....</b>	<b>89</b>
<b>FINANCIAL TRENDS .....</b>	<b>90</b>
J-1 Net Assets/Position by Component.....	91
J-2 Changes in Net Assets/Position .....	92
J-3 Fund Balances – Governmental Funds .....	93
J-4 Changes in Fund Balances – Governmental Funds.....	94
J-5 General Fund Other Local Revenue by Source (NJ).....	95
<b>OPERATING INFORMATION.....</b>	<b>96</b>
J-16 Full-Time Equivalent Charter School Employees by Function/Program .....	97
J-17 Operating Statistics.....	98
J-20 Insurance Schedule (NJ).....	99
J-21 Charter School Performance Framework, Financial Performance, Fiscal Ratios .....	100
<b>SINGLE AUDIT SECTION.....</b>	<b>101</b>
K-1 Independent Auditor’s Report on Internal Control Over Financial Reporting and On Compliance and Other Matters Based On an Audit of Financial Statements Performed In Accordance With Government Auditing Standards.....	102

**UNION COUNTY TEAMS CHARTER SCHOOL  
TABLE OF CONTENTS**

	Page
K-2 Report on Compliance for Each Major State Program and Report on Internal Control over Compliance in Accordance with Uniform Guidance and New Jersey Circular 15-08 OMB.....	104
K-3 Schedule of Expenditures of Federal Awards – Schedule A.....	107
K-4 Schedule of Expenditures of State Financial Assistance – Schedule B .....	108
K-5 Notes to Schedules of Expenditures of Awards and Financial Assistance .....	109
K-6 Schedule of Findings and Questioned Costs .....	112
K-7 Summary Schedule of Prior Audit Findings and Questioned Costs as Prepared by Management.....	115



***INTRODUCTORY SECTION***



515-517 W. 4<sup>th</sup> Street  
Plainfield, NJ 07060  
908-754-9043 \* Fax 908-754-7790  
[www.ucteams.org](http://www.ucteams.org)

November 5, 2020

Board of Trustees  
Union County TEAMS Charter School  
County of Union  
Plainfield, New Jersey 07060

Enclosed herewith please find the **Comprehensive Annual Financial Report (“CAFR”)** of the Union County TEAMS Charter School (**“UCTCS”**) for fiscal year 2019-2020.

The **CAFR** includes the Basic Financial Statement of the Charter School, prepared in accordance with Governmental Accounting Standards Board (**GASB**) Statement 34. The UCTCS Administration utilizes this reporting model because we believe it provides the most useful financial and statistical information appropriate to the operational needs of our managerial structure.

This annual report is designed to provide the taxpayers of Union County with comprehensive operational and financial data in a fairly straightforward presentation that enables a clear understanding of the UCTCS operations, administration, and financial affairs. To that end, and to the best of our knowledge and belief, the data presented in this report is accurate in all material aspects, and is reported in a manner that presents fairly the financial position and results of operations of UCTCS.

**The CAFR is presented in four (4) sections as follows:**

- 1. The Introductory Section;** which includes a Table of Contents, Letter of Transmittal, List of Principal Officials, and an Organization Chart;
- 2. The Financial Section;** which includes the Independent Auditors’ Report, the Management’s Discussion and Analysis, Basic Financial Statements, Notes Providing a Financial Position and Operating Results Overview, and Other Schedules providing budgetary information;
- 3. The Statistical Section;** which includes Selected Economic and Demographic Information, Financial Trends, and the Fiscal Capacity of UCTCS;

- 4. The Single Audit Section;** which confirms that UCTCS is in conformity with the provisions of the Single Audit Act Amendments of 1996, as amended, the U.S. Office of Management and Budget (OMB) Circular A-133, *“Audits of States, Local Governments and Non-Profit Organizations,”* and the New Jersey State Office of Management and Budget (OMB) Circular 04-04, *“Single Audit Policy for Recipients of Federal Grants, State Grants, and State Aid”*. Information related to this single audit, including the independent auditors’ report on the internal control and compliance with applicable laws, regulations, contracts and grants, along with findings and questioned costs, are included in the single audit section of this report.

### **Charter School Organization**

A Board of Trustees (“Board”) comprised of four (4) appointed members serves as the Governing Body and Policymaker for UCTCS. The Board adopts an annual operating budget, and reviews/approves all expenditures against the adopted budget. This process serves as the method through which the Board exercises its authority and fiscal responsibility for the budgetary allocations and disbursements of taxpayer dollars that fund the school operations.

The Executive Director/Founder is the Chief Executive Officer (“CEO”) of UCTCS, responsible to the Board for overall direction and management of the administrative, educational and support services of the school.

The School Business Administrator is the Chief Financial Officer (“CFO”) of UCTCS, responsible to the Board for all fiscal operational and budget management activities, including purchasing and procurement, issuing warrants in payment of liabilities incurred by UCTCS, acting as custodian of all UCTCS funds, investing idle funds as permitted by NJ law, and maintaining all financial records.

### **Reporting Entity and Its Services**

UCTCS is an independent reporting entity within the criteria adopted by the Government Auditing Standards Board (“GASB”) as established by GASB Statement No. 14. All funds and account groups of UCTCS are included in this report. The UCTCS Board of Trustees constitutes the UCTCS reporting entity.

UCTCS provides a full range of educational programs and services appropriate to grade levels Kindergarten through Grade 12. These programs and services include the standard curriculum, special education, basic skills instruction, a gifted and talented protocol and extra-curricular activities. In concert with our expanded charter that incorporates Grades 9 thru 12, the school provides a comprehensive high school program specifically focused on college preparatory and leadership courses, while maintaining a “Built Environment” theme that encompasses Technology, Engineering, Architecture, Mathematics and Science.

UCTCS completed the 2019-2020 school year with an average daily enrollment (ADE) of 390.4 students, attaining and maintaining a 95.9% level of the Original Budget enrollment projection.

## **Economic Condition and Outlook**

The NJDOE Office of Charter Schools utilizes a comprehensive **Performance Framework**, incorporating key fiscal standards for assessing the fiscal fitness of the charter school. The objective of this framework is to provide information about the fiscal performance of the school and its prospective sustainability. The fiscal evaluative standards are categorized as **Near-Term Indicators** and **Sustainability Indicators**, with each category being comprised of distinct financial measurements that are quantitative as well as qualitative towards assessing the financial health of the charter school.

The **Near-Term Indicators** of *Current Ratio*, *Unrestricted Cash*, *Enrollment Variance* and *Default* continue to position UCTCS as being exemplary in performance, with all areas of measurement significantly meeting or exceeding benchmark guidelines set forth in the **Performance Framework**. For example, *Current Ratio* reflects at 27.78 against a benchmark of >1.1; *Unrestricted Cash* measures at 223.93 days in comparison to a benchmark threshold of 30-60 days, with actual average daily enrollment of 95.9% exceeding the benchmark of >95%.

The **Sustainability Indicators** of *Total Margin*, *Debt to Asset Ratio*, *Cash Flow* and *Debt Service Coverage Ratio* also continue to reflect exemplary performance, with all key areas of measurement significantly meeting or exceeding benchmark guidelines. Specifically, Debt to Asset Ratio at less than 0.06 when compared to the benchmark threshold of <9 was outstanding; Cash Flow increased by \$971,768 when compared to year-end 2019; and the like.

As all performance indicators show, a significantly favorable financial position continued at UC Teams, with highly noticeable improvement in all applicable **Near-Term** and **Sustainability Indicators**, particularly those correlated to quick ratio analyses and management.

## **Internal Accounting Controls**

The Board of Trustees is responsible for establishing and maintaining an internal control structure designed to ensure that the assets of the Charter School are protected from loss, theft, or misuse, along with ensuring that adequate accounting data is compiled to allow for the preparation of financial statements in accordance with generally accepted accounting principles (“GAAP”). The internal control structure is designed to provide reasonable assurances that these objectives are met. The concept of reasonable assurance recognizes that (1) the cost of a control should not exceed the benefits likely to be derived from such control; and (2) the valuation of costs and benefits requires estimates and judgment by management.

As a recipient of Federal and State financial assistance, UCTCS is also responsible for establishing an internal control structure to ensure compliance with applicable laws and regulations related to those programs. This internal control structure is subject to periodic evaluation by UCTCS management.

As part of the **Single Audit** described herein above, tests are made to assure the adequacy of the internal control structure, including that portion related to Federal and State financial assistance programs, as well as to determine that UCTCS has complied with applicable laws, regulations, contracts, and grants.

### **Budgetary Controls**

In addition to internal accounting controls, UCTCS maintains budgetary controls. The objective of such budgetary controls is to ensure compliance with legal provisions embodied in the annual appropriated budget. Compartments of the annual appropriated budget are adopted separately for the General Fund and the Special Revenue Fund. The final budget, as amended for the fiscal year, is reflected in the **Financial Section** of the **CAFR**.

An **encumbrance** accounting system is used to record outstanding purchase commitments on a departmental expense/line item basis. Open encumbrances at the end of the fiscal year are either cancelled or included as re-appropriations of fund balance in the subsequent fiscal year.

### **Cash Management**

State statute, in large part, guides the UCTCS investment policy, as detailed in "Notes to the Financial Statement". UCTCS utilizes a cash management protocol which requires it to deposit funds in public depositories that are protected from loss under the provisions of the Governmental Unit Deposit Protection Act ("**GUDPA**").

**GUDPA** was enacted in 1970 to protect Government units from loss of funds on deposit with a failed banking institution. The law requires governmental units to deposit public funds only in depositories located in New Jersey, where the funds are secured in accordance with the Act.

### **Risk Management**

UCTCS carries various forms of insurance, including but not limited to general liability, workers compensation, and the like.

### **Other Information**

### **Independent Audit**

State statutes require an annual audit to be conducted by independent certified public accountants or registered municipal accountants. In accordance with this requirement, the Board appointed the accounting firm of Meshinsky & Associates, LLC as independent auditors.

In addition to meeting the requirements set forth in State statutes, the annual audit was designed to meet the requirements of the Single Audit Act of 1984 and the Single Audit Act Amendment of 1996 and the related OMB Circular A-133, "*Audits of State, Local Governments and Non-Profit Organizations*", and New Jersey Circular Letter of 04-04 OMB, *Single Audit for Recipients of*

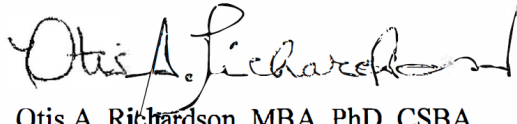
*Federal Grants, State Grants, and State Aid*". The auditor's report on the basic financial statements and specified required supplemental information is included in the **Financial Section** of this report. The auditor's report related specifically to the single audit is included in the **Single Audit Section** of this report.

On behalf of the citizens and taxpayers of Union County, we would like to acknowledge the commitment of the UCTCS Board of Trustees towards providing sound managerial policy and fiscal accountability for the charter school, and to express our appreciation for their on-going support towards continued development and enhanced management of its educational programs and financial operations.

Respectfully Submitted,

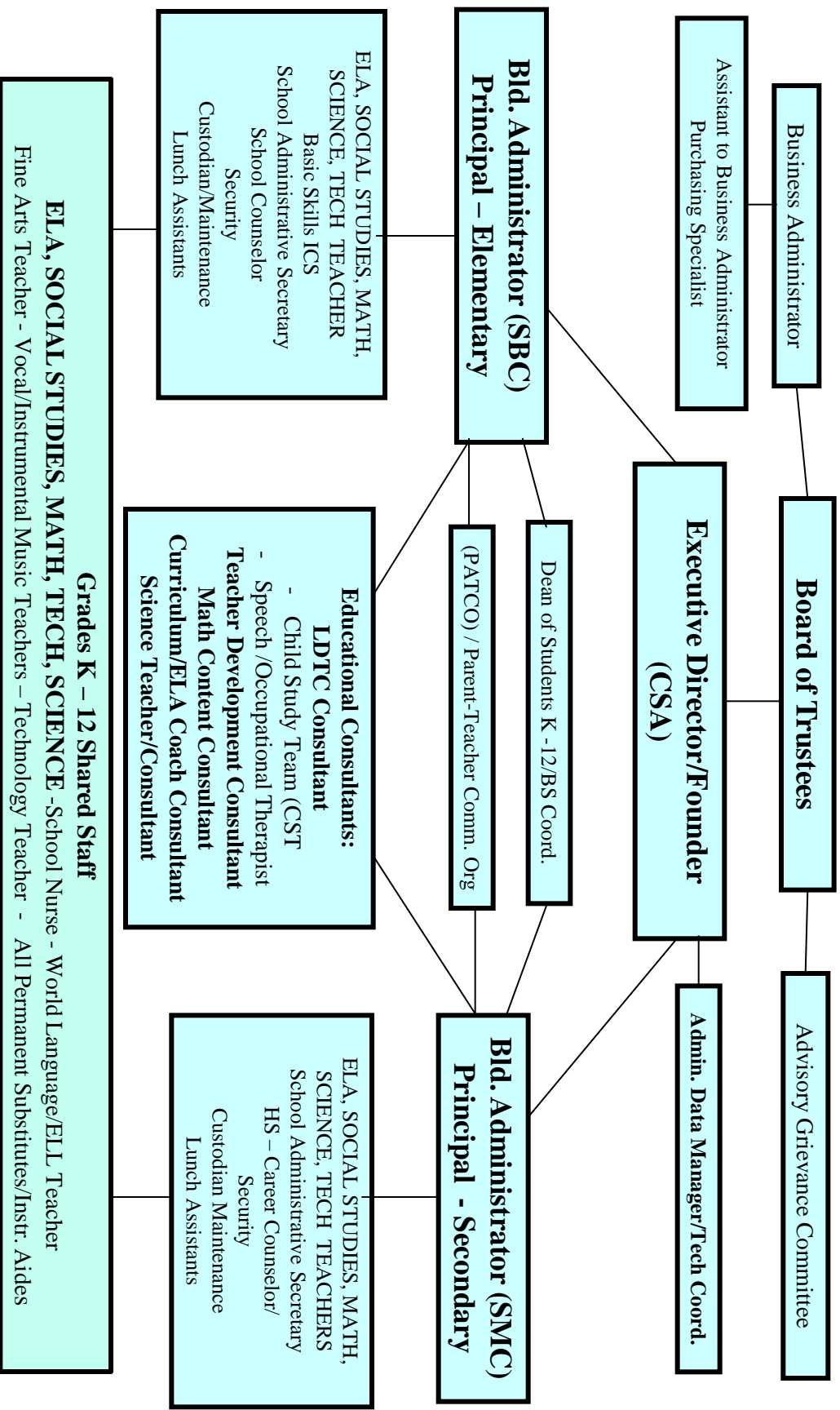


Sheila L. Thorpe  
Executive Director/ Founder



Otis A. Richardson, MBA, PhD, CSBA  
School Business Administrator

**The Union County TEAMS Charter School  
High School/College Leadership Academy K – 12 2019 -2020**



**UNION COUNTY TEAMS CHARTER SCHOOL**

**PLAINFIELD, NEW JERSEY**

**ROSTER OF OFFICIALS**

**JUNE 30, 2020**

**MEMBERS OF THE BOARD OF TRUSTEES**

Clarence Beverly, Jr., President

Reginald B. Piggee, Vice President

Bruce A. Williams, Member

Leroy Canady, Member

**OTHER OFFICIALS**

Sheila L. Thorpe, Executive Director

Otis A. Richardson, PhD, School Business Administrator

Emma J. Johnson, CISA, Treasurer



**UNION COUNTY TEAMS CHARTER SCHOOL**

**PLAINFIELD, NEW JERSEY**

**CONSULTANTS AND ADVISORS**

**Audit Firm**

Meshinsky & Associates LLC  
Certified Public Accountants  
1155 W. Chestnut Street, Suite 2D  
Union, New Jersey 07083

**Board Attorney**

Joseph M. Wenzel, Esquire  
Friend & Wenzel, LLC  
1000 Clifton Avenue  
Suite 101  
Clifton, NJ 07013

**Official Depository**

PNC Bank  
P.O. Box 6000  
Bridgewater, New Jersey 08807

***FINANCIAL SECTION***



MESHINSKY &  
ASSOCIATES LLC

CERTIFIED PUBLIC ACCOUNTANTS,  
CONSULTANTS & INDEPENDENT TRUSTEES

## Independent Auditor's Report

Honorable President  
Members of the Board of Trustees  
Union County TEAMS Charter School  
County of Union  
Plainfield, New Jersey

### ***Report on the Financial Statements***

We have audited the accompanying financial statements of the governmental activities, the business-type activities, each major fund, and the aggregate remaining fund information of the Union County TEAMS Charter School (Charter School), in the County of Union, State of New Jersey, as of and for the fiscal year ended June 30, 2020, and the related notes to the financial statements, which collectively comprise the Charter School's basic financial statements as listed in the table of contents.

### ***Management's Responsibility for the Financial Statements***

The Charter School's management is responsible for the preparation and fair presentation of these financial statements in accordance with accounting principles generally accepted in the United States of America; this includes the design, implementation, and maintenance of internal control relevant to the preparation and fair presentation of financial statements that are free from material misstatement, whether due to fraud or error.

### ***Auditor's Responsibility***

Our responsibility is to express opinions on these financial statements based on our audit. We conducted our audit in accordance with auditing standards generally accepted in the United States of America and the standards applicable to financial audit contained in *Government Auditing Standards*, issued by the Comptroller General of the United States; and audit requirements as prescribed by the Office of Finance, Department of Education, State of New Jersey. Those standards require that we plan and perform the audit to obtain reasonable assurance about whether the financial statements are free from material misstatement.

An audit involves performing procedures to obtain audit evidence about the amounts and disclosures in the financial statements. The procedures selected depend on the auditor's judgment, including the assessment of the risks of material misstatement of the financial statements, whether due to fraud or error. In making those risk assessments, the auditor considers internal control relevant to the entity's preparation and fair presentation of the financial statements in order to design audit procedures that are appropriate in the circumstances, but not for the purpose of expressing an opinion on the effectiveness of the entity's internal control. Accordingly, we express no such opinion. An audit also includes evaluating the appropriateness of accounting policies used and the reasonableness of significant accounting estimates made by management, as well as evaluating the overall presentation of the financial statements.

We believe that the audit evidence we have obtained is sufficient and appropriate to provide a basis for our audit opinions.

## **Opinions**

In our opinion, the financial statements referred to above present fairly, in all material respects, the respective financial position of the governmental activities, the business-type activities, each major fund, and the aggregate remaining fund information of the Union County TEAMS, in the County of Union, State of New Jersey, as of June 30, 2020, and the respective changes in the financial position and, where applicable, cash flows thereof for the year then ended in accordance with accounting principles generally accepted in the United States of America.

## **Other Matters**

### *Required Supplementary Information*

Accounting principles generally accepted in the United States of America require that the Management's Discussion and Analysis and Budgetary Comparison Information starting on pages 14 and 66, respectively, be presented to supplement the basic financial statements. Such information, although not a part of the basic financial statements, is required by the Governmental Accounting Standards Board who considers it to be an essential part of financial reporting for placing the basic financial statements in an appropriate operational, economic, or historical context. We have applied certain limited procedures to the required supplementary information in accordance with auditing standards generally accepted in the United States of America, which consisted of inquiries of management about the methods of preparing the information and comparing the information for consistency with management's response to our inquiries, the basic financial statements, and other knowledge we obtained during our audit of the basic financial statements. We do not express an opinion or provide any assurance on the information because the limited procedures do not provide us with sufficient evidence to express an opinion or provide any assurance.

### **Supplementary and Other Information**

Our audit was conducted for the purpose of forming opinions on the financial statements that collectively comprise the Charter School's basic financial statements. The accompanying supplementary information such as the combining and individual fund financial statements and schedules of expenditures of federal awards and state financial assistance, as required by in the *U.S. Office of Management and Budget (OMB) Compliance Supplement* and the *New Jersey Circular 15-08 OMB State Aid/Grant Compliance Supplement* respectively; and the other information, such as the introductory and statistical sections are presented for purposes of additional analysis and are not a required part of the basic financial statements.

The combining and individual nonmajor fund financial statements and schedules of expenditures of federal awards and state financial assistance are the responsibility of management and were derived from and relate directly to the underlying accounting and other records use to prepare the basic financial statements. Such information has been subjected to the auditing procedures applied in the audit of the basic financial statements and certain additional procedures, including comparing and reconciling such information directly to the underlying accounting and other records used to prepare the basic financial statements or to the basic financial statements themselves, and other additional procedures in accordance with auditing standards generally accepted in the United States of America. In our opinion, the combining and individual non-major fund financial statements and schedules of expenditures of federal awards and state financial assistance are fairly stated, in all material respects, in relation to the basic financial statements as a whole.

The introductory and statistical sections have not been subjected to the auditing procedures applied in the audit of the basic financial statements, and accordingly, we do not express an opinion or provide any assurance on it.

**Other Reporting Required by *Government Auditing Standards and the Division of Finance, Department of Education, State of New Jersey***

In accordance with *Government Auditing Standards*, we have also issued our report dated January 20, 2021 our consideration of the Union County TEAMS Charter School's internal control over financial reporting and our tests of its compliance with certain provisions of laws, regulations, contracts, and grant agreements and other matters.

The purpose of that report is to describe the scope of our testing of internal control over financial reporting and compliance and the results of that testing, and not to provide an opinion on internal control over financial reporting or on compliance. That report is an integral part of an audit performed in accordance with *Government Auditing Standards and the Division of Finance, Department of Education, State of New Jersey* in considering the Charter School's internal control over financial reporting and compliance.

Meshinsky & Associates LLC, CPA's



Philip T. Meshinsky  
Licensed Public-School Accountant  
No. CS00233400  
Meshinsky & Associates LLC, CPA's  
Union, New Jersey

January 20, 2021

***REQUIRED SUPPLEMENTARY INFORMATION – PART I***

**UNION COUNTY TEAMS CHARTER SCHOOL  
PLAINFIELD, NEW JERSEY**

**MANAGEMENT'S DISCUSSION AND ANALYSIS  
FOR THE FISCAL YEAR ENDED JUNE 30, 2020  
UNAUDITED**

The discussion and analysis of Union County TEAMS Charter School's financial performance provides an overall review of the Charter School's financial activities for the fiscal year ended June 30, 2020. The intent of this discussion and analysis is to look at the Charter School's financial performance as a whole; readers should also review the basic financial statements and notes to enhance their understanding of the Charter School's financial performance. Certain comparative information between the current year (2019 to 2020) and the prior year (2018 to 2019) is required to be presented in the MD&A.

### **Financial Highlights**

Key financial highlights for 2020 are as follows:

- ❖ General revenues accounted for \$5,902,763 in revenue or 89% percent of all revenues. Program specific revenues in the form of charges for services and operating grants and contributions accounted for \$697,673 or 11% percent of total revenues of \$6,600,436.
- ❖ The Charter School had \$6,056,104 in expenses; only \$697,673 of these expenses were offset by program specific charges for services, grants or contributions. General revenues of \$5,902,763 were not adequate to provide for these programs.
- ❖ Among governmental funds, the General Fund had \$5,824,021 in revenues and \$5,002,444 in expenditures. The General Fund's fund balance increased \$821,577 from 2019. This increase was anticipated by the Board of Trustees.

### **Using this Comprehensive Annual Financial Report (CAFR)**

This annual report consists of a series of financial statements and notes to those statements. These statements are organized so the reader can understand Union County TEAMS Charter School as a financial whole, an entire operating entity. The statements then proceed to provide an increasingly detailed look at specific financial activities.

The *Statement of Net Position* and *Statement of Activities* provide information about the activities of the whole Charter School, presenting both an aggregate view of the Charter School's finances and a longer-term view of those finances. Fund financial statements provide the next level of detail. For governmental funds, these statements tell how services were financed in the short-term as well as what remains for future spending. The fund financial statements also look at the Charter School's most significant funds with all other non-major funds presented in total in one column. In the case of Union County TEAMS Charter School, the General Fund is by far the most significant fund.

**UNION COUNTY TEAMS CHARTER SCHOOL  
PLAINFIELD, NEW JERSEY**

**MANAGEMENT'S DISCUSSION AND ANALYSIS  
FOR THE FISCAL YEAR ENDED JUNE 30, 2020  
UNAUDITED  
(CONTINUED)**

**Reporting the Charter School as a Whole**

**Statement of Net Position and the Statement of Activities**

While this document contains the large number of funds used by the Charter School to provide programs and activities, the view of the Charter School as a whole looks at all financial transactions and ask the question, "How did we do financially during 2020?" The *Statement of Net Position* and the *Statement of Activities* answer this question. These statements include all assets and liabilities using the accrual basis of accounting similar to the accounting used by most private-sector businesses. This basis of accounting takes into account all of the current year's revenues and expenses regardless of when cash is received or paid.

**Statement of Net Position and the Statement of Activities (Continued)**

These two statements report the Charter School's net position and changes in that position. This change in net position is important because it tells the reader that, for the Charter School as a whole, the financial position of the Charter School has improved or diminished. The causes of this change may be the result of many factors, some financial and some not. Non- financial factors include current laws in New Jersey restricting revenue growth, facility condition, required educational programs and other factors.

In the *Statement of Net Position* and the *Statement of Activities*, the Charter School is divided into two kinds of activities:

- ❖ Governmental Activities — All of the Charter School's programs and services are reported here including instruction, administration, support services and capital outlay.
- ❖ Business-Type Activities — These services are provided on a charge for goods or services basis to recover all the expenses of the goods or services provided. The Food Service enterprise fund is reported as a business activity.

**Reporting the Charter School's Most Significant Funds**

**Fund Financial Statements**

Fund financial reports provide detailed information about the Charter School's funds. The Charter School uses many funds to account for a multitude of financial transactions. The Charter School's governmental funds are the General Fund and Special Revenue Fund.



**UNION COUNTY TEAMS CHARTER SCHOOL  
PLAINFIELD, NEW JERSEY**

**MANAGEMENT'S DISCUSSION AND ANALYSIS  
FOR THE FISCAL YEAR ENDED JUNE 30, 2020  
UNAUDITED  
(CONTINUED)**

**Governmental Funds**

The Charter School's activities are reported in governmental funds, which focus on how money flows into and out of those funds and the balances left at year-end available for spending in the future years. These funds are reported using an accounting method called modified accrual accounting, which measures cash and all other financial assets that can readily be converted to cash. The governmental fund statements provide a detailed short-term view of the Charter School's general government operations and the basic services it provides. Governmental fund information helps the reader determine whether there are more or fewer financial resources that can be spent in the near future to finance educational programs. The relationship (or differences) between governmental activities (reported in the *Statement of Net Position* and the *Statement of Activities*) and governmental funds are reconciled in the financial statements.

**Proprietary Fund**

The proprietary fund uses the same basis of accounting as business-type activities; therefore, these statements are essentially the same.

**Notes to the Basic Financial Statements**

The notes provide additional information that is essential to a full understanding of the data provided in the Charter School-wide and fund financial statements. The notes to the basic financial statements can be found starting on page 36 of this report.

**The Charter School as a Whole**

Recall that the *Statement of Net Position* provides the perspective of the Charter School as a whole. Net position may serve over time as a useful indicator of a government's financial position.

The Charter School's financial position is the product of several financial transactions including the net results of activities.

The Charter School's combined net position were \$1,662,595 for 2020 and \$1,118,263 for 2019.

**Governmental Activities**

The Charter School's total revenues were \$6,061,802 for 2020 and \$6,313,416 for 2019, this includes \$433,589 for 2020 and \$473,183 for 2019 of state reimbursed TPAF social security and pension contributions.

The total cost of all program and services was \$5,508,462 for 2020 and \$5,785,361 for 2019. Instruction comprises 56% for 2020 and 59% for 2019 of Charter School expenditures.

**UNION COUNTY TEAMS CHARTER SCHOOL  
PLAINFIELD, NEW JERSEY**

**MANAGEMENT'S DISCUSSION AND ANALYSIS  
FOR THE FISCAL YEAR ENDED JUNE 30, 2020  
UNAUDITED  
(CONTINUED)**

**Governmental Activities (Continued)**

The *Statement of Activities* shows the cost of program services and the charges for services and grants offsetting those services. Instruction expenses include activities directly dealing with the teaching of pupils and the interaction between teacher and student, including extracurricular activities.

Administration includes expenses associated with administrative and financial supervision of the Charter School.

Support services include the activities involved with assisting staff with the content and process of teaching to students, including curriculum and staff development and the costs associated with operating the facility.

Capital Outlay represents instructional and/or non-instructional equipment purchased and is capitalized when such equipment is over the \$2,000 threshold.

**Business-Type Activities**

Revenues for the Charter School's business-type activities (food service program) were comprised of charges for services and federal and state reimbursements.

- ❖ Food service expenditures exceeded receipts by \$12,008 for 2020 and food service receipts exceeded expenditures by \$6,361 for 2019.
- ❖ Charges for services represent \$14,278 for 2020 and \$26,053 for 2019 of revenue. This represents amounts paid by patrons for daily food.
- ❖ Federal and state reimbursements for meals, including payments for free and reduced lunches and breakfast, and state snack program were \$117,578 for 2020 and \$171,191 for 2019.

**The Charter School's Funds**

All governmental funds (i.e., general fund and special revenue fund presented in the fund- based statements) are accounted for using the modified accrual basis of accounting. Total revenues amounted to \$6,061,802 for 2020 and \$6,313,416 for 2019 and expenditures were \$5,240,225 for 2020 and \$5,526,512 for 2019. The net change in fund balance was most significant in the general fund, an increase of \$821,577 for 2020 and an increase of \$786,906 for 2019.

**UNION COUNTY TEAMS CHARTER SCHOOL  
PLAINFIELD, NEW JERSEY**

**MANAGEMENT'S DISCUSSION AND ANALYSIS  
FOR THE FISCAL YEAR ENDED JUNE 30, 2020  
UNAUDITED  
(CONTINUED)**

**The Charter School's Funds (Continued)**

As demonstrated by the various statements and schedules included in the financial section of this report, the Charter School continues to meet its responsibility for sound financial management. The following schedules present a summary of the revenues of the governmental funds for the fiscal year ended June 30, 2020, and the amount and percentage of increases and decreases in relation to prior year revenues.

Revenues	Amount	Percent of Total	Increase/ (Decrease) From 2019	Percent of Increase/ (Decrease)
Local Sources	\$ 909,247	15.00%	\$ (104,837)	(10.34%)
State Sources	4,914,774	81.08%	(135,438)	(2.68%)
Federal Sources	237,781	3.92%	(11,339)	(4.55%)
Total	<u>\$ 6,061,802</u>	<u>100.00%</u>	<u>\$ (251,614)</u>	

The following schedule represents a summary of general fund and special revenue fund expenditures for the fiscal year ended June 30, 2020, and the percentage of increases and decreases in relation to prior year amounts.

Expenditures	Amount	Percent of Total	Increase/ (Decrease) From 2019	Percent of Increase/ (Decrease)
Instruction	\$ 2,146,626	40.96%	\$ (322,546)	(13.06%)
Administration	1,961,901	37.44%	66,952	3.53%
Support Services	1,131,698	21.60%	(30,693)	(2.64%)
Total	<u>\$ 5,240,225</u>	<u>100.00%</u>	<u>\$ (286,287)</u>	

Changes in expenditures were the results of varying factors. Current expense decreased due to reductions in staff and medical costs.

**General Fund Budgeting Highlights**

The Charter School's budget is prepared according to New Jersey law, and is based on accounting for certain transactions on a basis of cash receipts, disbursements, and encumbrances. The most significant budgeted fund is the General Fund.

**UNION COUNTY TEAMS CHARTER SCHOOL  
PLAINFIELD, NEW JERSEY**

**MANAGEMENT'S DISCUSSION AND ANALYSIS  
FOR THE FISCAL YEAR ENDED JUNE 30, 2020  
UNAUDITED  
(CONTINUED)**

Over the course of the year, the Charter School revised the annual operating budget in accordance with state regulations. Revisions in the budget were made to recognize revenues that were not anticipated and to prevent over-expenditures in specific line item accounts.

**Capital Assets (Net of Depreciation)**

At the end of the fiscal year 2020, the Charter School had \$1,076 invested in capital assets and \$3,229 for 2019 in the proprietary fund.

**For the Future**

The Union County TEAMS Charter School is in good financial condition presently. The Charter School is proud of its community support. A major concern is the continued enrollment growth of the Charter School with the increased reliance on federal and state funding.

In conclusion, the Union County TEAMS Charter School has committed itself to financial excellence for many years. In addition, the Charter School's system for financial planning, budgeting, and internal financial controls are well regarded. The Charter School plans to continue its sound fiscal management to meet the challenge of the future.

**Contacting the Charter School's Financial Management**

This financial report is designed to provide our citizens, taxpayers, investors, and creditors with a general overview of the Charter School's finances and to show the Charter School's accountability for the money it receives. If you have questions about this report or need additional information, contact Dr. Otis Richardson, School Business Administrator/Board Secretary at Union County TEAMS Charter School, 515-517 West 4<sup>th</sup> Street, Plainfield, New Jersey 07060-4225.

***BASIC FINANCIAL STATEMENTS***

**SECTION A – CHARTER SCHOOL–WIDE FINANCIAL STATEMENTS**

*The statement of net position and the statement of activities display information about the Charter School. These statements include the financial activities of the overall Charter School, except for fiduciary activities. Eliminations have been made to minimize the double-counting of internal activities. These statements distinguish between the governmental and business-type activities of the Charter School.*

**UNION COUNTY TEAMS CHARTER SCHOOL**

Statement of Net Position

June 30, 2020

	Governmental Activities	Business-Type Activities	Total
<b>ASSETS:</b>			
Cash and Cash Equivalents	\$ 3,614,699	\$ 25,510	\$ 3,640,209
Cash-Escrow	75,263	-	75,263
Interfund Receivables	85,287	-	85,287
Receivables	26,915	-	26,915
Security Deposits	32,283	-	32,283
Capital Assets, Net	-	1,076	1,076
	<hr/>	<hr/>	<hr/>
Total Assets	3,834,447	26,586	3,861,033
<b>DEFERRED OUTFLOWS OF RESOURCES:</b>			
Pensions	979,040	-	979,040
	<hr/>	<hr/>	<hr/>
Deferred Outflows of Resources	979,040	-	979,040
	<hr/>	<hr/>	<hr/>
<b>LIABILITIES:</b>			
Accounts Payable	76,399	4,856	81,255
Payable to Governments	57,673	-	57,673
Noncurrent Liabilities			
Pensions	2,188,566		2,188,566
	<hr/>	<hr/>	<hr/>
Total Liabilities	2,322,638	4,856	2,327,494
<b>DEFERRED INFLOWS OF RESOURCES:</b>			
Pensions	849,984		849,984
	<hr/>	<hr/>	<hr/>
Deferred Inflows of Resources	849,984	-	849,984
	<hr/>	<hr/>	<hr/>
<b>NET POSITION:</b>			
Unassigned	1,640,865	21,730	1,662,595
	<hr/>	<hr/>	<hr/>
Total Net Position	\$ 1,640,865	\$ 21,730	\$ 1,662,595
	<hr/>	<hr/>	<hr/>

The accompanying Notes to Basic Financial Statements are an integral part of this statement.

**UNION COUNTY TEAMS CHARTER SCHOOL**  
Statement of Activities  
For The Fiscal Year Ended June 30, 2020

Functions/Programs	Expenses	Indirect Expenses Allocation	Program Revenues			Net (Expense) Revenue and Changes in Net Position		
			Charges for Services	Operating Grants and Contributions	Capital Grants and Contributions	Governmental Activities	Business-Type Activities	Total
<b>GOVERNMENTAL ACTIVITIES:</b>								
Instruction	\$ 2,146,626	\$ 913,730	\$ -	\$ 159,039	\$ -	\$ (2,901,317)	\$ -	\$ (2,901,317)
Administration	935,971	429,990	-	-	-	(1,365,961)	-	(1,365,961)
Support Services	1,079,145	-	-	-	-	(1,079,145)	-	(1,079,145)
Unallocated Employee Benefits	406,778	-	-	406,778	-	-	-	-
Total Governmental Activities	4,568,520	1,343,720	-	565,817	-	(5,346,423)	-	(5,346,423)
<b>BUSINESS-TYPE ACTIVITIES:</b>								
Food Service	143,864		14,278	117,578	-	-	(12,008)	(12,008)
Total Business-Type Activities	143,864		14,278	117,578	-	-	(12,008)	(12,008)
Total Primary Government	\$ 4,712,384		\$ 14,278	\$ 683,395	\$ -	\$ (5,346,423)	\$ (12,008)	\$ (5,358,431)
<b>GENERAL REVENUES</b>								
General Purposes						\$ 906,753	\$ -	\$ 906,753
Federal and State Aid Not Restricted						4,993,516	-	4,993,516
Investment Earnings						402	-	402
Miscellaneous Revenue						2,092	-	2,092
Total General Revenues						5,902,763	-	5,902,763
Change in Net Position						556,340	(12,008)	544,332
Net Position - Beginning of Year						1,084,525	33,738	1,118,263
Net Position (Deficit) - Ending						\$ 1,640,865	\$ 21,730	\$ 1,662,595

The accompanying Notes to Basic Financial Statements are an integral part of this statement.



**SECTION B – FUND FINANCIAL STATEMENTS**

***The individual Fund statements and schedules present more detailed information for the individual fund in a format that segregates information by fund type.***

**GOVERNMENTAL  
FUNDS**

**UNION COUNTY TEAMS CHARTER SCHOOL**

Governmental Funds

Balance Sheet

June 30, 2020

	<u>General Fund</u>	<u>Special Revenue Fund</u>	<u>Total</u>
<b>ASSETS:</b>			
Cash	\$ 3,614,699	\$ -	\$ 3,614,699
Cash-Escrow	75,263	-	75,263
Receivables From Other Governments	26,915	-	26,915
Interfund Receivables	85,287	-	85,287
Security Deposits	<u>32,283</u>	<u>-</u>	<u>32,283</u>
 Total Assets	 <u>3,834,447</u>	 <u>-</u>	 <u>3,834,447</u>
<b>LIABILITIES AND FUND BALANCES:</b>			
Liabilities:			
Accounts Payable	\$ 76,399	\$ -	\$ 76,399
Payable to State Government	<u>57,673</u>	<u>-</u>	<u>57,673</u>
 Total Liabilities	 <u>134,072</u>	 <u>-</u>	 <u>134,072</u>
Fund Balances:			
Unassigned:			
General Fund	<u>3,700,375</u>	<u>-</u>	<u>3,700,375</u>
 Total Fund Balances	 <u>3,700,375</u>	 <u>-</u>	 <u>3,700,375</u>
 Total Liabilities and Fund Balances	 <u>\$ 3,834,447</u>	 <u>\$ -</u>	

Amounts reported for governmental activities in the statement of net position (A-1) are different because:

Net pension liability of \$2,188,566 deferred inflows of resources of \$849,984 less deferred outflows of resources of \$979,040 related to pensions are not reported in the governmental funds	<u>(2,059,510)</u>
---	--------------------

Net Position of Governmental Activities	<u>\$ 1,640,865</u>
---	---------------------

The accompanying Notes to Basic Financial Statements are an integral part of this statement.

**UNION COUNTY TEAMS CHARTER SCHOOL**

Governmental Funds  
Statement of Revenues, Expenditures, and  
Changes in Fund Balance  
For The Fiscal Year Ended June 30, 2020

	General Fund	Special Revenue Fund	Total
<b>REVENUES:</b>			
Local Sources:			
Local Tax Levy	\$ 906,753	\$ -	\$ 906,753
Interest on Investments	402		402
Miscellaneous	2,092	-	2,092
Total Local Sources	909,247	-	909,247
State Sources	4,914,774	-	4,914,774
Federal Sources	-	237,781	237,781
Total Revenues	5,824,021	237,781	6,061,802
<b>EXPENDITURES:</b>			
Current:			
Instruction	1,961,398	185,228	2,146,626
Administration	1,961,901	-	1,961,901
Support Services	1,079,145	52,553	1,131,698
Total Expenditures	5,002,444	237,781	5,240,225
NET CHANGE IN FUND BALANCE	821,577	-	821,577
FUND BALANCE, JULY 1	2,878,798	-	2,878,798
FUND BALANCE, JUNE 30	\$ 3,700,375	\$ -	\$ 3,700,375

The accompanying Notes to Basic Financial Statements are an integral part of this statement.

**UNION COUNTY TEAMS CHARTER SCHOOL**  
 Reconciliation of the Statement of Revenues, Expenditures  
 and Changes in Fund Balances of Governmental Funds  
 to the Statement of Activities  
 For The Fiscal Year Ended June 30, 2020

Total net change in fund balances - governmental fund (from B-2)	\$ 821,577
Amounts reported for governmental activities in the statement of activities (A-2) are different because:	
Pension costs associated with the PERS pension plan are reported in the governmental funds as expenditures in the year the school pension contribution is paid. However, on the statement of activities, the net difference between the current and prior year net pension liability is recognized	<u>(265,237)</u>
Change in net position of governmental activities	<u>\$ 556,340</u>

The accompanying Notes to Basic Financial Statements are an integral part of this statement.

***PROPRIETARY FUNDS***

**UNION COUNTY TEAMS CHARTER SCHOOL**

Proprietary Funds  
Statement of Net Position  
June 30, 2020

	<b>Business-Type Activities</b>
	<b>Food Service</b>
<b>ASSETS:</b>	
Current Assets:	
Cash and Cash Equivalents	\$ 25,510
Total Current Assets	25,510
<b>NONCURRENT ASSETS:</b>	
Machinery and Equipment	10,765
Accumulated Depreciation	(9,689)
Total Noncurrent Assets	1,076
 Total Assets	 \$ 26,586
 <b>LIABILITIES AND NET POSITION:</b>	
Liabilities:	
Current Liabilities	
Accounts Payable	\$ 4,856
Total Current Liabilities	4,856
Total Liabilities	4,856
 <b>NET POSITION:</b>	
Unassigned	21,730
Total Liabilities and Net Position	\$ 26,586

The accompanying Notes to Basic Financial Statements are an integral part of this statement.

**UNION COUNTY TEAMS CHARTER SCHOOL**  
Proprietary Funds  
Statement of Revenues, Expenses, and Changes in Fund Net Position  
For The Fiscal Year Ended June 30, 2020

	<b>School Nutrition and Total Enterprise</b>
<b>OPERATING REVENUES:</b>	
Charges for Services:	
Daily sales -Program (reimbursable program) Meals	\$ 14,278
Daily sales - Non-Program (non-reimbursable program) Meals	-
Special functions/Catering	-
Community service activities	-
Services provided to other funds	-
Deductions from employees' salaries	-
Miscellaneous	-
Total Operating Revenues	14,278
<b>OPERATING EXPENSES:</b>	
Cost of sales- Program (reimbursable program) Meals	-
Cost of sales-Non-Program (non-reimbursable program) Meals	-
Purchases - Fruit	-
Purchases - Vegetables	-
Salaries	-
Employee benefits	-
Purchased property service	-
Purchased Services (Including Fixed Price Contract)	140,453
Other purchased professional services	1,258
Cleaning, repair and maintenance services	-
Rentals	-
Other purchased services:	-
Contracted services (between home and school)	-
Contracted services (other than between home and school)	-
Contracted services (special education students) - vendors	-
Contracted services (special education students) - joint agreements	-
Insurance	-
General supplies	-
Depreciation	2,153
Total Operating Expenses	143,864
OPERATING (LOSS)	(129,586)
<b>NONOPERATING REVENUES:</b>	
State Sources:	
State School Lunch Program	1,678
Federal Sources:	
National school lunch program	94,672
School breakfast program	20,180
After school snack program	1,048
Special milk program	-
Summer meal program	-
CACFP Food and CIL	-
Fresh Fruit and Vegetables	-
Food distribution program	-
Interest and investment revenue	-
Miscellaneous expense	-
Total Nonoperating Revenues (Expenses)	117,578
Income (loss) before contributions	-
Capital contributions	-
Change in net assets	(12,008)
Total net assets—beginning	33,738
Total net assets—ending	\$ 21,730

(A) For SFAs that are self-operated / FSMC Cost Reimbursable Contracts / SFA-SFA Vended Meal Contract

(B) For SFAs that entered into a SFA-FSMC Fixed Price Contract for FY 2019-2020

The accompanying Notes to Basic Financial Statements are an integral part of this statement.



**UNION COUNTY TEAMS CHARTER SCHOOL**

Proprietary Fund

Statement of Cash Flows

For The Fiscal Year Ended June 30, 2020

	<b>Business-Type Activities</b>
	<b>Food Service</b>
<b>CASH FLOWS FROM OPERATING ACTIVITIES:</b>	
Cash Received from Customers	\$ 14,278
Cash Payments to Suppliers and Employees	<u>(136,089)</u>
Net Cash Used In Operating Activities	<u>(121,811)</u>
<b>CASH FLOWS FROM NONCAPITAL FINANCING ACTIVITIES:</b>	
Cash Received from State and Federal Reimbursements	<u>117,578</u>
Net Cash Provided by Noncapital Financing Activities	<u>117,578</u>
Net Decrease in Cash and Cash Equivalents	(4,233)
Cash and Cash Equivalents, Beginning of the Year	<u>29,743</u>
Cash and Cash Equivalents, End of the Year	<u><u>\$ 25,510</u></u>
Reconciliation of Operating Loss to Net Cash Used in:	
Operating Activities:	
Operating Loss Used for Operating Activities	\$ (129,586)
Depreciation	2,153
Changes in Assets and Liabilities:	
Decrease in Intergovernmental Accounts Receivable	11,995
Decrease in Accounts Payable	<u>(6,373)</u>
Net Cash Used in Operating Activities	<u><u>\$ (121,811)</u></u>

The accompanying Notes to Basic Financial Statements are an integral part of this statement.

***FIDUCIARY  
FUNDS***

**UNION COUNTY TEAMS CHARTER SCHOOL**  
Fiduciary Funds  
Statement of Fiduciary Net Position  
June 30, 2020

	<u>Total Agency Fund</u>
ASSETS:	
Cash	\$ 107,475
Total Assets	<u>\$ 107,475</u>
LIABILITIES:	
Benefits Payable	\$ 22,188
Interfund Accounts Payable	<u>85,287</u>
Total Liabilities and Net Position	<u>\$ 107,475</u>

The accompanying Notes to Basic Financial Statements are an integral part of this statement.

***NOTES TO THE FINANCIAL STATEMENTS***

**UNION COUNTY TEAMS CHARTER SCHOOL  
NOTES TO THE FINANCIAL STATEMENTS  
JUNE 30, 2020**

**NOTE 1: SUMMARY OF SIGNIFICANT ACCOUNTING POLICIES**

The financial statements of the UNION COUNTY TEAMS CHARTER SCHOOL have been prepared in conformity with generally accepted accounting principles (GAAP) as prescribed by the Governmental Accounting Standards Board (GASB). The GASB is the accounting standard-setting body responsible for establishing governmental accounting and financial reporting principles. The more significant accounting policies of the Charter School are described below.

For fiscal year 2016, the Charter School implemented the Governmental Accounting Standards Board (GASB) Statement No. 68, "Accounting and Financial Reporting for Pensions" and GASB Statement No. 71, "Pension Transition for Contributions Made Subsequent to the Measurement Date – an amendment of GASB Statement No. 68." GASB 68 established standards for measuring and recognizing pension liabilities, deferred outflows of resources and expense/expenditure.

**A. Reporting Entity**

The Charter School is an instrument of the State of New Jersey, established to function as an educational institution. Its mission is to establish a character school to serve as a neighborhood resource and as a model for other similar schools. The Union County TEAMS Charter School is committed to achieving the New Jersey Core Curriculum Content Standards and producing high academic achievement by all students. The Charter School will integrate a holistic curriculum, utilize learner center techniques, family and care giver centered approaches, comprehensive community involvement, cutting edge technology and an intimate nurturing environment that will enhance positive self-images.

The primary criterion for including activities within the Charter School's reporting entity, as set forth in Section 2100 of the GASB's Codification of Governmental Accounting and Financial Reporting Standards, is the degree of oversight responsibility maintained by the Charter School management. Oversight responsibility includes financial interdependency, selection of governing authority, designation of management, and ability to significantly influence operations and accountability for fiscal matters. The combined financial statements include all funds and account groups of the Charter School.

**UNION COUNTY TEAMS CHARTER SCHOOL  
NOTES TO THE FINANCIAL STATEMENTS  
JUNE 30, 2020**

**NOTE 1: SUMMARY OF SIGNIFICANT ACCOUNTING POLICIES (CONTINUED)**

**B. Basis of Presentation. Basis of Accounting**

The Charter School's basic financial statements consist of Charter School-wide statements, including a statement of net position and a statement of activities, and fund financial statements which provide a more detailed level of financial information.

*Charter school-wide Statements:* The statement of net position and the statement of activities display information about the Charter School as a whole. These statements include the financial activities of the overall Charter School, except for fiduciary activities. Eliminations have been made to minimize the double-counting of internal activities. These statements distinguish between the governmental and business-type activity of the Charter School. Governmental activities generally are financed through intergovernmental revenues, and other non-exchange transactions. Business-type activities are financed in whole or in part by fees charged to external parties.

The statement of net position presents the financial condition of the governmental and business-type activity of the Charter School at fiscal year-end. The statement of activities presents a comparison between direct expenses and program revenues for the business-type activity of the Charter School and for each function of the Charter School's governmental activities. Direct expenses are those that are specifically associated with a program or function and, therefore, are clearly identifiable to a particular function.

Program revenues include (a) fees and charges paid by the recipients of goods or services offered by the programs and (b) grants and contributions that are restricted to meeting the operational or capital requirements of a particular program. Revenues that are not classified as program revenues are presented as general revenues. The comparison of direct expenses with program revenues identifies the extent to which each governmental function or business segment is self-financing or draws from the general revenues of the Charter School. *Fund Financial Statements:* During the fiscal year, the Charter School segregates transactions related to certain Charter School functions or activities in separate funds in order to aid financial management and to demonstrate legal compliance. The fund financial statements provide information about the Charter School's funds, including its fiduciary funds. Separate statements for each fund category — *governmental, proprietary, and fiduciary* — are presented. The New Jersey Department of Education (NJDOE) has elected to require New Jersey Charter Schools to treat each governmental fund as a major fund in accordance with the option noted in GASB No. 34, paragraph 76. The NJDOE believes that the presentation of all funds as major is important for public interest and to promote consistency among Charter School financial reporting models.

**UNION COUNTY TEAMS CHARTER SCHOOL  
NOTES TO THE FINANCIAL STATEMENTS  
JUNE 30, 2020**

**NOTE 1: SUMMARY OF SIGNIFICANT ACCOUNTING POLICIES (CONTINUED)**

**Basis of Presentation. Basis of Accounting (Continued)**

The Charter School reports the following governmental funds:

General Fund: The general fund is the general operating fund of the Charter School and is used to account for all expendable financial resources except those required to be accounted for in another fund. Included are certain expenditures for vehicles and movable instructional or non- instructional equipment which are classified in the capital outlay subfund.

As required by the New Jersey State Department of Education, the Charter School includes budgeted capital outlay in this fund. Generally accepted accounting principles as they pertain to governmental entities state that general fund resources may be used to directly finance capital outlays for long-lived improvements as long as the resources in such cases are derived exclusively from unrestricted revenues. Resources for budgeted capital outlay purposes are normally derived from State of New Jersey Aid and appropriated fund balance. Expenditures are those that result in the acquisition of or additions to fixed assets for land, existing buildings, improvements of grounds, construction of buildings, additions to or remodeling of buildings and the purchase of built-in equipment. These resources can be transferred from and to Current Expense by Board resolution.

Special Revenue Fund: The special revenue fund is used to account for the proceeds of specific revenue from State and Federal Government, (other than major capital projects, debt service or the enterprise funds) and local appropriations that are legally restricted to expenditures for specified purposes.

Capital Projects Fund: The capital projects fund is used to account for all financial resources to be used for the acquisition or construction of major capital facilities (other than those financed by proprietary funds).

Debt Service Fund: Not applicable.

The Charter School reports the following proprietary fund:

Enterprise (Food Service) Fund: The enterprise fund accounts for all revenues and expenses pertaining to the cafeteria operations. The food service fund is utilized to account for operations that are financed and operated in a manner similar to private business enterprises. The stated intent is that the cost (i.e. expenses including depreciation and indirect costs) of providing goods or services to the students on a continuing basis are financed or recovered primarily through user charges.

**UNION COUNTY TEAMS CHARTER SCHOOL  
NOTES TO THE FINANCIAL STATEMENTS  
JUNE 30, 2020**

**NOTE 1: SUMMARY OF SIGNIFICANT ACCOUNTING POLICIES (CONTINUED)**

**Basis of Presentation. Basis of Accounting (Continued)**

Additionally, the Charter School reports the following fund type:

Fiduciary Funds: The Fiduciary Funds are used to account for assets held by the Charter School on behalf of others and includes the Net Payroll Account.

Basis of Accounting

Basis of accounting determines when transactions are recorded in the financial records and reported on the financial statements.

*Charter School-wide, Proprietary, and Fiduciary Fund Financial Statements*: The financial statements are prepared using the accrual basis of accounting. Governmental funds use the modified accrual basis of accounting; the enterprise fund and fiduciary funds use the accrual basis of accounting. Differences in the accrual and modified accrual basis of accounting arise in the recognition of revenue, the recording of deferred revenue, and in the presentation of expenses versus expenditures. The Charter School is entitled to receive monies under the established payment schedule and the unpaid amount is considered to be an “accounts receivable”. Revenue from grants, entitlements, and donations is recognized in the fiscal year in which all eligibility requirements have been satisfied.

*Governmental Fund Financial Statements*: Governmental funds are reported using the current financial resources measurement focus and the modified accrual basis of accounting. Under this method, revenues are recognized when measurable and available. “Measurable” means the amount of the transaction can be determined and “available” means collectible within the current period or soon enough thereafter to be used to pay liabilities of the current period. Expenditures are recorded when the related fund liability is incurred, except for principal and interest on general long-term debt, claims and judgments, and compensated absences, which are recognized as expenditures to the extent they have matured. General capital asset acquisitions are reported as expenditures in governmental funds. Proceeds of general long-term debt and acquisitions under capital leases are reported as other financing sources.

All governmental and business-type activities and enterprise funds of the Charter School follow FASB Statements and Interpretations issued on or before November 30, 1989, Accounting Principles Board Opinions, and Accounting Research Bulletins, unless those pronouncements conflict with GASB pronouncements.



**UNION COUNTY CHARTER SCHOOL  
NOTES TO THE FINANCIAL STATEMENTS  
JUNE 30, 2020**

**NOTE 1: SUMMARY OF SIGNIFICANT ACCOUNTING POLICIES (CONTINUED)**

**C. Budgets/Budgetary Control**

Annual appropriated budgets are prepared in the spring of each year for the general and special revenue funds. Budgets are prepared using the modified accrual basis of accounting except for special revenue funds. The legal level of budgetary control is established at line item accounts within each fund. Line item accounts are defined as the lowest (most specific) level of detail as established pursuant to the minimum chart of accounts referenced in N.J.A.C. 6:20-2A.2(m)1. All budget amendments/transfers must be approved by School Board resolution. All budget amounts presented in the accompanying supplementary information reflect the original budget and the amended budget (which have been adjusted for legally authorized revisions of the annual budgets during the year).

Appropriations, except remaining project appropriations, encumbrances, and unexpended grant appropriations, lapse at the end of each fiscal year. The capital projects fund presents the remaining project appropriations compared to current year expenditures.

Formal budgetary integration into the accounting system is employed as a management control device during the fiscal year. For governmental funds, there are no substantial differences between the budgetary basis of accounting and generally accepted accounting principles (GAAP) with the exception of the special revenue fund as noted below. Encumbrance accounting is also employed as an extension of formal budgetary integration in the governmental fund types. Unencumbered appropriations lapse at fiscal year-end.

The accounting records of the special revenue fund are maintained on the grant accounting budgetary basis. The grant accounting budgetary basis differs from GAAP in that the grant accounting budgetary basis recognizes encumbrances as expenditures and also recognizes the related revenues, whereas the GAAP basis does not. Sufficient supplemental records are maintained to allow for the presentation of GAAP basis financial reports.

The following presents a reconciliation of the Special Revenue Funds from the budgetary basis of accounting to the GAAP basis of accounting:

Total Revenues & Expenditures (Budgetary Basis)	\$	237,781
Adjustments		
Less Encumbrances at June 30, 2020		-
Plus Encumbrances at June 30, 2019		-
Total Revenues & Expenditures (GAAP Basis)	\$	237,781

**UNION COUNTY TEAMS CHARTER SCHOOL  
NOTES TO THE FINANCIAL STATEMENTS  
JUNE 30, 2020**

**NOTE 1: SUMMARY OF SIGNIFICANT ACCOUNTING POLICIES (CONTINUED)**

**D. Encumbrances Accounting**

Under encumbrance accounting purchase orders, contracts and other commitments for the expenditure of resources are recorded to reserve a portion of the applicable appropriation. Open encumbrances in governmental funds other than the special revenues fund are reported as reservations of fund balances at fiscal year-end as they do not constitute expenditures or liabilities but rather commitments related to unperformed contracts for goods and services.

Open encumbrances in the special revenue fund for which the Charter School has received advances are reflected in the balance sheet as deferred revenues at fiscal year-end.

The encumbered appropriation authority carries over into the next fiscal year. An entry will be made at the beginning of the next fiscal year to increase the appropriation reflected in the certified budget by the outstanding encumbrance amount as of the current fiscal year end.

**E. Assets, Liabilities, and Equity**

Interfund Transactions:

Transfers between governmental and business-type activities on the Charter School – wide statements are reported in the same manner as general revenues.

Exchange transactions between funds are reported as revenues in the seller funds and as expenditures/expenses in the purchaser funds. Flows of cash or goods from one fund to another without a requirement for repayment are reported as Interfund transfers. Interfund transfers are reported as other financing sources/uses in governmental funds and after non-operating revenues/expenses in the enterprise fund. Repayments from funds responsible for particular expenditures/expenses to the funds that initially paid for them are not presented on the financial statements.

Inventories:

Inventory purchases, other than those recorded in the enterprise fund, are recorded as expenditures during the year of purchase. Enterprise fund inventories are valued at cost, which approximates market, using the first-in/first-out (FIFO) method.

Allowance for Uncollectible Accounts:

No allowance for uncollectible accounts has been recorded as all amounts are considered collectible.

**UNION COUNTY CHARTER SCHOOL  
NOTES TO THE FINANCIAL STATEMENTS  
JUNE 30, 2020**

**NOTE 1: SUMMARY OF SIGNIFICANT ACCOUNTING POLICIES (CONTINUED)**

**Assets, Liabilities, and Equity (Continued)**

Capital Assets:

The Charter School has established a formal system of accounting for its capital assets. Purchased or constructed capital assets are reported at cost. Donated capital assets are valued at their estimated fair market value on the date received. The cost of normal maintenance and repairs that do not add to the value of the asset or materially extend assets' lives are not capitalized. The Charter School does not possess any infrastructure. The capitalization threshold used by Charter Schools in the State of New Jersey is \$2,000.

All reported capital assets except for land and construction in progress are depreciated. Depreciation is computed using the straight-line method under the half-year convention over the following estimated useful lives:

<u>Asset Class</u>	<u>Estimated Useful Lives</u>
School Buildings	50
Building Improvements	20
Electrical/Plumbing	30
Office & Computer Equipment	5-10

In the fund financial statements, fixed assets used in governmental fund operations are accounted for as capital outlay expenditures of the governmental fund upon acquisition. Fixed assets are not capitalized and related depreciation is not reported in the fund financial statements.

Unearned Revenue:

Unearned revenue arises when assets are recognized before revenue recognition criteria have been satisfied. Grants and entitlement received before the eligibility requirements are met are recorded as deferred revenue.

Accrued Liabilities and Long-term Obligations:

All payables, accrued liabilities, and long-term obligations are reported on the Charter School – wide financial statements. In general, governmental fund payables and accrued liabilities that, once incurred, are paid in a timely manner and in full from current financial resources are reported as obligations of the funds.

**UNION COUNTY TEAMS CHARTER SCHOOL  
NOTES TO THE FINANCIAL STATEMENTS  
JUNE 30, 2020**

**NOTE 1: SUMMARY OF SIGNIFICANT ACCOUNTING POLICIES (CONTINUED)**

**Assets, Liabilities, and Equity (Continued)**

Net Position:

Net position represents the difference between assets and liabilities. Net investment in capital assets consists of capital assets, net of accumulated depreciation, reduced by the outstanding balance of any borrowing used for the acquisition, construction, or improvement of those assets. Net position are reported as restricted when there are limitations imposed on their use either through the enabling legislation adopted by the Charter School or through external restrictions imposed by creditors, grantors, or laws or regulations of other governments. The Charter School's policy is to first apply restricted resources when an expense is incurred for purposes for which both restricted and unrestricted net position is available.

Fund Balance Reserves:

The Charter School reserves those portions of fund balance which are legally segregated for a specific future use or which do not represent available expendable resources and, therefore, are not available for appropriation or expenditure. Unreserved fund balance indicates that portion which is available for appropriation in future periods. There is no fund balance reserve for the current year.

Revenues — Exchange and Nonexchange Transactions:

Revenue resulting from exchange transactions, in which each party gives and receives essentially equal value, is recorded on the accrual basis when the exchange takes place. On the modified accrual basis, revenue is recorded in the fiscal year in which the resources are measurable and become available. Available means the resources will be collected within the current fiscal year or are expected to be collected soon enough thereafter to be used to pay liabilities of the current fiscal year. For the Charter School, available means within sixty days of the fiscal year end.

Nonexchange transactions, in which the Charter School receives value without directly giving equal value in return, include grants, entitlements, and donations. Revenue from grants, entitlements, and donations are recognized in the fiscal year in which all eligibility requirements have been satisfied. Eligibility requirements include timing requirements, which specify the year when the resources are required to be used or the fiscal year when use is first permitted; matching requirements, in which the Charter School must provide local resources to be used for a specified purpose; and expenditure requirements, in which the resources are provided to the Charter School on a reimbursement basis. On the modified accrual basis, revenue from non-exchange transactions must also be available before it can be recognized.

Under the modified accrual basis, the following revenue sources are considered to be both measurable and available at fiscal year-end: state and local revenues available as an advance, interest, and tuition.

**UNION COUNTY TEAMS CHARTER SCHOOL  
NOTES TO THE FINANCIAL STATEMENTS  
JUNE 30, 2020**

**NOTE 1: SUMMARY OF SIGNIFICANT ACCOUNTING POLICIES (CONTINUED)**

**Assets, Liabilities, and Equity (Continued)**

Operating Revenues and Expenses:

Operating revenues are those revenues that are generated directly from the primary activity of the enterprise fund. For the Charter School, these revenues are sales for food service. Operating expenses are necessary costs incurred to provide the service that is the primary activity of the enterprise fund.

Allocation of Indirect Expenses:

The Charter School reports all direct expenses by function in the Statement of Activities. Direct expenses are those that are clearly identifiable with a function. Indirect expenses are allocated to functions but are reported separately in the Statement of Activities. Employee benefits, including the employer's share of social security, workers compensation, and medical and dental benefits, were allocated based on salaries of that program. Depreciation expense, where practicable, is specifically identified by function and is included in the indirect expense column of the Statement of Activities. Depreciation expense that could not be attributed to a specific function is considered an indirect expense and is reported separately on the Statement of Activities. Interest on long-term debt is considered an indirect expense and is reported separately on the Statement of Activities.

Extraordinary and Special Items:

Extraordinary items are transactions or events that are unusual in nature and infrequent in occurrence. Special items are transactions or events that are within the control of management and are either unusual in nature or infrequent in occurrence. Neither of these types of transactions occurred during the fiscal year.

Management Estimates:

The preparation of financial statements in conformity with generally accepted accounting principles requires management to make estimates and assumptions that affect the reported amounts of revenues and expenditures/expenses during the reporting period. Actual results could differ from those estimates.

Accrued Salaries and Wages:

Certain Charter School employees who provide services to the Charter School over the ten-month academic year have the option to have their salaries evenly disbursed during the entire twelve-month year. New Jersey statutes require that these earned but undisbursed amounts be retained in a separate bank account.

**UNION COUNTY TEAMS CHARTER SCHOOL  
NOTES TO THE FINANCIAL STATEMENTS  
JUNE 30, 2020**

**NOTE 1: SUMMARY OF SIGNIFICANT ACCOUNTING POLICIES (CONTINUED)**

**A. Pensions**

For purposes of measuring the net pension liability, deferred outflows of resources and deferred inflows of resources related to pensions, and pension expense, information about the fiduciary net pension for the State of New Jersey Public Employees' Retirement System (PERS) and the State of New Jersey Teachers' Pension and Annuity Fund (TPAF) and additions to/deductions from the PERS's and TPAF's net position have been determined on the same basis as they are reported by the PERS and the TPAF. For this purpose, benefit payments (including refunds of employee contributions) are recognized when due and payable in accordance with the benefit terms. Pension Plan investments are reported at fair value.

**B. Impact of Recently Issued Accounting Principles**

Adopted Accounting Pronouncements

For the year ended June 30, 2020, the Charter School implemented GASB Statement No. 72, *Fair Value Measurement and Application*. As a result of implementing this statement, the Charter School is required to measure certain investments at fair value for financial reporting purposes. In addition, the Charter School is required to measure donated capital assets at acquisition value (an entry price); these assets were previously required to be measured at fair value. Statement No. 72 requires disclosures to be made about fair value measurements, the level of fair value hierarchy, and valuation techniques. Implementation of this Statement did not impact the Charter School's financial statements.

The Charter School implemented GASB Statement No. 73, *Accounting and Financial Reporting for Pensions and Related Assets that are Not Within the Scope of GASB Statement 68, and Amendments to Certain Provisions of GASB Statements 67 and 68*. Implementation of this Statement did not impact the Charter School's financial statements.

The Charter School implemented GASB Statement No. 76, *The Hierarchy of Generally Accepted Accounting Principles for State and Local Governments*. Implementation of this Statement did not impact the Charter School's financial statements.

**UNION COUNTY TEAMS CHARTER SCHOOL  
NOTES TO THE FINANCIAL STATEMENTS  
JUNE 30, 2020**

**NOTE 1: SUMMARY OF SIGNIFICANT ACCOUNTING POLICIES (CONTINUED)**

**Impact of Recently Issued Accounting Principles (Continued)**

Recently Issued and Adopted Accounting Pronouncements

The GASB has issued the following Statements which will become effective in future years as shown below:

Statement No. 74, *Financial Reporting for Postemployment Benefit Plans Other Than Pension Plans*. The objective of this Statement is to improve the usefulness of information about postemployment benefits other than pensions (other postemployment benefits or OPEB) included in the general purpose external financial reports of state and local governmental OPEB plans for making decisions and assessing accountability. This Statement results from a comprehensive review of the effectiveness of existing standards of accounting and financial reporting for all postemployment benefits (pensions and OPEB) with regard to providing decision-useful information, supporting assessments of accountability and interperiod equity, and creating additional transparency. This Statement will be effective for the year ended June 30, 2020. Management does not expect this Statement to impact the Charter School's financial statements.

Statement No. 75, *Accounting and Financial Reporting for Post-Employment Benefits Other Than Pensions*. This Statement replaces the requirements of Statement No. 45, *Accounting and Financial Reporting by Employers for Post-Employment Benefits Other Than Pensions*, as amended, and No. 57, *OPEB Measurements by Agency Employers and Agent Multi-Employer Plans*, for OPEB Statement No. 74, *Financial Reporting for Post-Employment Benefit Plans Other Than Pension Plans*, establishes new accounting and financial reporting requirements for OPEB Plans. This Statement will be effective for the year ended June 30, 2020. Management has not yet determined the potential impact on the Charter School's financial statements.

Statement No. 77, *Tax Abatement Disclosures*. This Statement requires governments that enter into tax abatement agreements to disclose information about those agreements. This Statement will be effective for the year ended June 30, 2020. Management does not expect this Statement to impact the Charter School's financial statements.

Statement No. 78, *Pensions Provided Through Certain Multiple-Employer Defined Benefit Pension Plans*. The objective of this Statement is to address a practice issue regarding the scope and applicability of Statement No. 68.

*Accounting and Financial Reporting for Pensions*. This Statement will be effective for the year ended June 30, 2020. Management does not expect this Statement to impact the Charter School's financial statements.

**UNION COUNTY TEAMS CHARTER SCHOOL  
NOTES TO THE FINANCIAL STATEMENTS  
JUNE 30, 2020**

**NOTE 1: SUMMARY OF SIGNIFICANT ACCOUNTING POLICIES (CONTINUED)**

**Impact of Recently Issued Accounting Principles (Continued)**

Recently Issued and Adopted Accounting Pronouncements (Continued)

Statement No. 79, *Certain External Investment Pools and Pool Participants*. This Statement addresses accounting and financial reporting for certain external investment pools and pool participants. Management does not expect this Statement to impact the Charter School's financial statements.

Statement No. 80, *Blending Requirements for Certain Component Units – an amendment of GASB Statement No. 14*. The objective of this Statement is to improve financial reporting by clarifying the financial statement presentation requirements for certain component units. This Statement amends the blending requirements established in paragraph 53 of Statement No. 14, *The Financial Reporting Entity, as amended*. Management does not expect this Statement to impact the Charter School's financial statements.

Statement No. 81, *Irrevocable Split-Interest Agreements*. The objective of this Statement is to improve accounting and financial reporting for irrevocable split-interest agreements by providing recognition and measurement guidance for situations in which a government is a beneficiary of the agreement. Management does not expect this Statement to impact the Charter School's financial statements.

Statement No. 82, *Pension Issues – an amendment of GASB Statements No. 67, 68 and 73*. The objective of this Statement is to address certain issues that have been raised with respect to Statements No. 67, *Financial Reporting for Pension Plans*, No. 68, *Accounting and Financial Reporting for Pensions*, and No. 73, *Accounting and Financial Reporting for Pensions and Related Assets That Are Not Within The Scope of GASB Statement 68, and Amendments to Certain Provisions of GASB Statements 67 and 68*.

**NOTE 2: CASH AND CASH EQUIVALENTS**

Cash and cash equivalents includes amounts in deposits, money market accounts and short-term investments with original maturities of three months or less.

Investments are stated at cost, or amortized cost, which approximates market. The amortized cost method involves valuing a security at its cost on the date of purchase and thereafter assuming a constant amortization to maturity of any discount or premium. The Board classifies certificates of deposit which have



**UNION COUNTY TEAMS CHARTER SCHOOL  
NOTES TO THE FINANCIAL STATEMENTS  
JUNE 30, 2020**

**NOTE 2: CASH AND CASH EQUIVALENTS**

original maturity dates of more than three months but less than twelve months from the date of purchase, as investments.

GASB Statement No. 3 requires disclosure of the level of custodial credit risk assumed by the Board in its cash, cash equivalents and investments. Category 1 includes deposits/investments held by the Board's custodial bank trust department or agent in the Board's name. Category 2 includes uninsured and unregistered deposits/investments held by the Board's custodial bank trust department or agent in the Board's name. Category 3 includes uninsured or unregistered deposits/investments held by a broker or dealer, or held by the Board's custodial bank trust department or agent but not in the Board's name. These categories are not broad representations that deposits or investments are "safe" or "unsafe".

**Deposits**

New Jersey statutes require that charter schools deposit public funds in public depositories located in New Jersey which are insured by the Federal Deposit Insurance Corporation, the Federal Savings and Loan Insurance Corporation, or by any other agency of the United States that insures deposits made in public depositories. Charter schools are also permitted to deposit public funds in the State of New Jersey Cash Management Fund.

New Jersey statutes require public depositories to maintain collateral for deposits of public funds that exceed depository insurance limits as follows:

The market value of the collateral must equal at least five percent of the average daily balance of collected public funds on deposit.

In addition to the above collateral requirement, if the public funds deposited exceed 75% of the capital funds of the depository, the depository must provide collateral having a market value at least equal to 100% of the amount exceeding 75%.

All collateral must be deposited with the Federal Reserve Bank of New York, the Federal Reserve Bank of Philadelphia, the Federal Home Loan Bank of New York, or a banking institution that is a member of the Federal Reserve System and has capital funds of not less than \$25,000,000.

**Investments**

New Jersey statutes permit the Board to purchase the following types of securities:

- a. Bonds or other obligations of the United States or obligations guaranteed by the United States.
- b. Bonds of any Federal Intermediate Credit Bank, Federal Home Loan Bank, Federal National Mortgage Agency or of any United States Bank for Cooperatives which have a maturity date not greater than twelve months from the date of purchase

**UNION COUNTY TEAMS CHARTER SCHOOL  
NOTES TO THE FINANCIAL STATEMENTS  
JUNE 30, 2020**

**NOTE 2: CASH AND CASH EQUIVALENTS (CONTINUED)**

**Investments (Continued)**

c. Bonds or other obligations of the charter school.

The Charter School had no investments as of June 30, 2020. Cash and cash equivalents of the Charter School consisted of the following:

	General Fund	Special Revenue	Proprietary Fund	Fiduciary Funds	Total
Operating					
Account	\$ 3,689,962	\$ -	\$ 25,510	\$ 107,475	\$ 3,822,947

The carrying amount of the Board’s cash and cash equivalents at June 30, 2020 was \$3,822,947 and the bank balance was \$3,897,343. All bank balances were covered by federal depository insurance and/or covered by a collateral pool maintained by the banks as required by New Jersey statutes.

**Risk Category**

All bank deposits, as of the balance sheet date, are entirely insured or collateralized by a collateral pool maintained by public depositories as required by the Governmental Unit Deposit Protection Act. In general, bank deposits are classified as to credit risk by three categories described below:

Category 1 — Insured or collateralized with securities held by the Board or by its agent in the Board’s name.

Category 2 — Collateralized with securities held by the pledging public depository’s trust department or agent in the Board’s name.

Category 3 — Uncollateralized, including any deposits that are collateralized with securities held by the pledging public depository, or by its trust department or agent, but not in the Board’s name.

As of June 30, 2020, the Board had funds invested and on deposit in checking accounts. These funds constitute “deposits with financial institutions” as defined by GASB Statement No. 3 and are classified as Category 1, both at year-end and throughout the year.

**New Jersey Cash Management Fund**

All investments in the Fund are governed by the regulations of the Investment Council, which prescribe specific standards designed to insure the quality of investments and to minimize the risks related to investments. In all the years of the Division of Investment’s existence, the Division has never suffered a default of principal or interest on any short-term security held by it due to the bankruptcy of a

**UNION COUNTY TEAMS CHARTER SCHOOL  
NOTES TO THE FINANCIAL STATEMENTS  
JUNE 30, 2020**

**NOTE 2: CASH AND CASH EQUIVALENTS (CONTINUED)**

**Risk Category (Continued)**

**New Jersey Cash Management Fund (Continued)**

securities issuer; nevertheless, the possibility always exists, and for this reason a reserve is being accumulated as additional protection for the “Other-than-State” participants. In addition to the Council regulations, the Division sets further standards for specific investments and monitors the credit of all eligible securities issuers on a regular basis.

As of June 30, 2020, the Charter school had no funds on deposit with the New Jersey Cash Management Fund.

**NOTE 3: RECEIVABLES**

Receivables at June 30, 2020 consisted of accounts, intergovernmental, grants, and miscellaneous.

All receivables are considered collectible in full. A summary of the principal items of intergovernmental receivables follows:

	Governmental Fund Financial Statements	Governmental Wide Financial Statements
State Aid	\$ 26,915	\$ 26,915
Federal Aid	-	-
Gross Receivables	26,915	26,915
Less: Allowance for Uncollectable	-	-
Total Receivables, Net	\$ 26,915	\$ 26,915

**UNION COUNTY TEAMS CHARTER SCHOOL  
NOTES TO THE FINANCIAL STATEMENTS  
JUNE 30, 2020**

**NOTE 4: INTERFUND TRANSFERS AND BALANCES**

Transfers between funds are used to repay expenses paid by another fund.

The following interfund balances remained on the fund financial statements at June 30, 2020:

Fund	Interfund Receivable	Interfund Payable
General Fund	\$ 85,287	\$ -
Fiduciary Fund	-	85,287
<b>Total</b>	<b>\$ 85,287</b>	<b>\$ 85,287</b>

**NOTE 5: CAPITAL ASSETS**

On January 11, 2001, the NJ State Department of Education announced that effective July 1, 2001, the capitalization threshold used by school districts in the State of New Jersey is increased to \$2,000. The previous threshold was \$500. Applying the higher capitalization threshold retroactively (removal of old assets from the General Fixed Assets Account Group) will be permitted by the State regulations in situations where (1) the assets have been fully depreciated, or (2) the assets have exceeded their useful lives. The retirement of machinery and equipment is due to the retroactive application of the higher threshold of equipment capitalization. That is, the School has removed from their records assets with a historical cost greater than \$500 but not greater than \$2,000 that were fully depreciated or had exceeded their useful lives.

There was no depreciation expense for the year ending June 30, 2020 for government activities. Business-type activities had depreciation expense of \$2,153.

**NOTE 6: RENTAL LEASES**

The Charter School is currently in a lease agreement for classroom and office space with Shiloh Baptist Church for the facilities located at 515-517 West 4th Street, Plainfield, New Jersey. The lease requires a security deposit of \$20,000. A five (5) year lease agreement was entered into commencing July 1, 2014 and ending June 30, 2019 requiring a base annual rental of \$447,122. The lease was renewed for a term of five (5) years commencing on July 1, 2019 and ending June 30, 2024 at a yearly rent of \$451,397. The Charter School entered into another lease with Saint Mary's Church for facilities located at 501-513 West Sixth Street, Plainfield, New Jersey. The lease was renewed from July 1, 2019 to June 30, 2022 in the amount of \$778,908 over 3 years. A security deposit was deposited with the landlord in the amount of \$12,283. The annual rent for the period July 1, 2019 to June 30, 2020 is \$150,246. Total lease payments for the year for both locations amounted to \$708,217.

**UNION COUNTY TEAMS CHARTER SCHOOL  
NOTES TO THE FINANCIAL STATEMENTS  
JUNE 30, 2020**

**NOTE 7: PENSION PLANS**

A substantial number of the Charter School's employees participate in one of the following defined benefit pension plans: the Teachers' Pension and Annuity Fund ("TPAF") and the Public Employees' Retirement System ("PERS"), which are administered by the New Jersey Division of Pensions and Benefits (the "Division"). In addition, employees may participate in the Defined Contribution Retirement Program, which is a defined contribution pension plan. This plan is administered by Prudential Financial for the Division. Each plan has a Board of Trustees that is primarily responsible for its administration. The Division issues a publicly available financial report that includes financial statements and required supplementary information. That report may be obtained by writing to:

State of New Jersey  
Division of Pensions and Benefits  
P.O. Box 295  
Trenton, New Jersey 08625-0295  
<http://www.nj.gov/treasury/pensions>

**General Information about the Pension Plans**

**Plan Descriptions**

**Teachers' Pension and Annuity Fund** - The Teachers' Pension and Annuity Fund is a cost-sharing multiple-employer defined benefit pension plan, with a special funding situation, which was established as of January 1, 1955, under the provisions of N.J.S.A. 18A:66. The State of New Jersey (the "State") is responsible to fund 100% of the employer contributions, excluding any local employer early retirement incentive (ERI) contributions. The TPAF's designated purpose is to provide retirement benefits, death, disability and medical benefits to certain qualified members. Membership in the TPAF is mandatory for substantially all teachers or members of the professional staff certified by the State Board of Examiners, who have titles that are unclassified, professional and certified. The TPAF's Board of Trustees is primarily responsible for the administration of the TPAF.

**Public Employees' Retirement System** - The Public Employees' Retirement System is a cost-sharing multiple-employer defined benefit pension plan which was established as of January 1, 1955, under the provisions of N.J.S.A. 43:15A. The PERS's designated purpose is to provide retirement, death, disability and medical benefits to certain qualified members. Membership in the PERS is mandatory for substantially all full-time employees of the Charter School, provided the employee is not required to be a member of another state-administered retirement system or other state pensions fund or local jurisdiction's pension fund. The PERS's Board of Trustees is primarily responsible for the administration of the PERS.

**Defined Contribution Retirement Program** - The Defined Contribution Retirement Program is a multiple-employer defined contribution pension fund established on July 1, 2007 under the provisions of Chapter 92, P.L. 2007, and

**UNION COUNTY TEAMS CHARTER SCHOOL  
NOTES TO THE FINANCIAL STATEMENTS  
JUNE 30, 2020**

**NOTE 7: PENSION PLANS (CONT'D)**

Chapter 103, P.L. 2007 (N.J.S.A. 43:15C-1 et. seq.). The DCRP is a tax-qualified defined contribution money purchase pension plan under Internal Revenue Code (IRC) § 401(a) et seq., and is a “governmental plan” within the meaning of IRC § 414(d). The DCRP provides retirement benefits for eligible employees and their beneficiaries. Individuals covered under DCRP are employees enrolled in TPAF or PERS on or after July 1, 2007, who earn salary in excess of established “maximum compensation” limits; employees enrolled in New Jersey State Police Retirement System (SPRS) or the Police and Firemen’s Retirement System (PFRS) after May 21, 2010, who earn salary in excess of established “maximum compensation” limits; employees otherwise eligible to enroll in TPAF or PERS on or after November 2, 2008, who do not earn the minimum annual salary for tier 3 enrollment but who earn salary of at least \$5,000.00 annually; and employees otherwise eligible to enroll in TPAF or PERS after May 21, 2010 who do not work the minimum number of hours per week required for tiers 4 or 5 enrollment, but who earn salary of at least \$5,000.00 annually.

**Vesting and Benefit Provisions**

**Teachers' Pension and Annuity Fund** - The vesting and benefit provisions are set by N.J.S.A. 18A:66. TPAF provides retirement, death and disability benefits. All benefits vest after ten years of service, except for medical benefits, which vest after 25 years of service or under the disability provisions of TPAF. Members are always fully vested for their own contributions and, after three years of service credit, become vested for 2% of related interest earned on the contributions. In the case of death before retirement, members' beneficiaries are entitled to full interest credited to the members' accounts.

The following represents the membership tiers for TPAF and PERS:

<b><u>Tier</u></b>	<b><u>Definition</u></b>
1	Members who were enrolled prior to July 1, 2007
2	Members who were eligible to enroll on or after July 1, 2007 and prior to November 2, 2008
3	Members who were eligible to enroll on or after November 2, 2008 and prior to May 22, 2010
4	Members who were eligible to enroll after May 22, 2010 and prior to June 28, 2011
5	Members who were eligible to enroll on or after June 28, 2011

Service retirement benefits of 1/55<sup>th</sup> of final average salary for each year of service credit is available to tiers 1 and 2 members upon reaching age 60 and to tier 3 members upon reaching age 62. Service retirement benefits of 1/60<sup>th</sup> of final average salary for each year of service credit is available to tier 4 members upon reaching age 62 and tier 5 members upon reaching age 65. Early retirement benefits are available to tiers 1 and 2 members before reaching age 60, tiers 3 and 4 before age 62 with 25 or more years of service credit, and tier 5 before age 65 with 30 or more years of service credit. Benefits are reduced by

**UNION COUNTY TEAMS CHARTER SCHOOL  
NOTES TO THE FINANCIAL STATEMENTS  
JUNE 30, 2020**

**NOTE 7: PENSION PLANS (CONT'D)**

**General Information about the Pension Plans (Cont'd)**

**Vesting and Benefit Provisions (Cont'd)**

a fraction of a percent for each month that a member retires prior to the retirement age for his/her respective tier. Deferred retirement is available to members who have at least 10 years of service credit and have not reached the service retirement age for the respective tier.

**Public Employees' Retirement System** - The vesting and benefit provisions are set by N.J.S.A. 43:15A. The PERS provides retirement, death and disability benefits. All benefits vest after ten years of service.

The membership tiers for PERS are the same as previously noted for TPAF.

Service retirement benefits of 1/55th of final average salary for each year of service credit is available to tiers 1 and 2 members upon reaching age 60 and to tier 3 members upon reaching age 62. Service retirement benefits of 1/60th of final average salary for each year of service credit is available to tier 4 members upon reaching age 62 and tier 5 members upon reaching age 65. Early retirement benefits are available to tiers 1 and 2 members before reaching age 60, tiers 3 and 4 before age 62 with 25 or more years of service credit and tier 5 with 30 or more years of service credit before age 65. Benefits are reduced by a fraction of a percent for each month that a member retires prior to the age at which a member can receive full early retirement benefits in accordance with their respective tier. Tier 1 members can receive an unreduced benefit from age 55 to age 60 if they have at least 25 years of service. Deferred retirement is available to members who have at least 10 years of service credit and have not reached the service retirement age for the respective tier.

**Defined Contribution Retirement Program** - Eligible members are provided with a defined contribution retirement plan intended to qualify for favorable Federal income tax treatment under IRC Section 401(a), a noncontributory group life insurance plan and a noncontributory group disability benefit plan. A participant's interest in that portion of his or her defined contribution retirement plan account attributable to employee contributions shall immediately become and shall at all times remain fully vested and nonforfeitable. A participant's interest in that portion of his or her defined contribution retirement plan account attributable to employer contributions shall be vested and nonforfeitable on the date the participant commences the second year of employment or upon his or her attainment of age 65, while employed by an employer, whichever occurs first.

**UNION COUNTY TEAMS CHARTER SCHOOL  
NOTES TO THE FINANCIAL STATEMENTS  
JUNE 30, 2020**

**NOTE 7: PENSION PLANS (CONT'D)**

**General Information about the Pension Plans (Cont'd)**

**Contributions**

**Teachers' Pension and Annuity Fund** - The contribution policy is set by N.J.S.A. 18A:66 and requires contributions by active members and contributing employers. Pursuant to the provisions of Chapter 78, P.L. 2011, the member contribution rate increased from 5.5% of annual compensation to 6.5% plus an additional 1% phased-in over 7 years beginning in July 2012. The member contribution rate was 7.50% in State fiscal year 2019. The phase-in of the additional incremental member contribution rate takes place in July of each subsequent State fiscal year. The State's contribution is based on an actuarially determined amount, which includes the employer portion of the normal cost and unfunded accrued liability. Funding for noncontributory group insurance benefits is based on actual claims paid. For fiscal year 2019, the State's pension contribution was less than the actuarial determined amount.

Under current statute, all employer contributions are made by the State of New Jersey on-behalf of the Charter School and all other related non-contributing employers. No normal or accrued liability contribution by the Charter School has been required over the preceding fiscal years. These on-behalf contributions by the State of New Jersey are considered a special funding situation, under the definition of GASB 68, *Accounting and Financial Reporting for Pensions*.

The Charter School commenced operations on January 1, 2013 and the enrollment process of Charter School employees in the TPAF began upon hiring of applicable personnel. As a result of the timing of participation in the pension plan, at June 30, 2019 there are no contractual requirements to contribute. Timing of participation aside, the Charter School would not have been required to make any contributions to the pension plan during the fiscal year ended June 30, 2020 because of the 100% special funding situation with the State of New Jersey.

Based on the most recent TPAF measurement date of June 30, 2017 and the timing of the Charter School's participation in the pension plan, there was no State contractually required contribution, on-behalf of the Charter School, to the pension plan for the fiscal year ended June 30, 2020. Charter School employee contributions to the pension plan during the fiscal year ended June 30, 2020 were \$116,032.

**Public Employees' Retirement System** - The contribution policy is set by N.J.S.A. 43:15A and requires contributions by active members and contributing employers. Members contribute at a uniform rate. Pursuant to the provisions of Chapter 78, P.L. 2011, the active member contribution rate increased from 5.5% of annual compensation to 6.5% plus an additional 1% phased-in over seven years beginning in July 2012. The member contribution rate was 7.20% in State fiscal year 2017. The phase-in of the additional incremental member contribution rate takes place in July of each subsequent State fiscal year. The rate for



**UNION COUNTY TEAMS CHARTER SCHOOL  
NOTES TO THE FINANCIAL STATEMENTS  
JUNE 30, 2020**

**NOTE 7: PENSION PLANS (CONT'D)**

**General Information about the Pension Plans (Cont'd)**

members who are eligible for the Prosecutors Part of PERS (Chapter 366, P.L. 2001) increased from 8.5% of base salary to 10%. Employers' contribution amounts are based on an actuarially determined rate. The Charter School's contribution amounts are based on an actuarially determined amount, which includes the normal cost and unfunded accrued liability. The Charter School's contractually required contribution rate for the fiscal year ended June 30, 2020 was 15.73% of the Charter School's covered payroll. This amount was actuarially determined as the amount that, when combined with employee contributions, is expected to finance the costs of benefits earned by employees during the year, including an additional amount to finance any unfunded accrued liability.

Based on the most recent PERS measurement date of June 30, 2018, the Charter School's contractually required contribution to the pension plan for the fiscal year ended June 30, 2020 was \$112,106 and was paid by April 1, 2020. Charter School employee contributions to the pension plan during the fiscal year ended June 30, 2020 were \$43,724.

**Defined Contribution Retirement Program** - The contribution policy is set by N.J.S.A. 43:15C-3 and requires contributions by active members and contributing employers. In accordance with Chapter 92, P.L. 2007 and Chapter 103, P.L. 2007, plan members are required to contribute 5.5% of their annual covered salary. In addition to the employee contributions, the Charter School contributes 3% of the employees' base salary, for each pay period, to Prudential Financial not later than the fifth business day after the date on which the employee is paid for that pay period.

At June 30, 2020, the Charter School had no employees participating in this program.

**Pension Liabilities, Pension Expense, and Deferred Outflows of Resources and Deferred Inflows of Resources Related to Pensions**

**Public Employees' Retirement System** - At June 30, 2020, the Charter School reported a liability of \$2,188,566 for its proportionate share of the net pension liability. The net pension liability was measured as of June 30, 2017, and the total pension liability used to calculate the net pension liability was determined by an actuarial valuation as of July 1, 2016. The total pension liability was calculated through the use of updated procedures to roll forward from the actuarial valuation date to the measurement date of June 30, 2016. The Charter School's proportion of the net pension liability was based on a projection of the Charter School's long-term share of contributions to the pension plan relative to the projected contributions of all participating employers, actuarially determined. For the June 30, 2017 measurement date, the Charter School's proportion was .0082693828%, which was an increase of .0113625840% from its proportion measured as of June 30, 2018.

**UNION COUNTY TEAMS CHARTER SCHOOL  
NOTES TO THE FINANCIAL STATEMENTS  
JUNE 30, 2020**

**NOTE 7: PENSION PLANS (CONT'D)**

**Pension Liabilities, Pension Expense, and Deferred Outflows of Resources and Deferred Inflows of Resources Related to Pensions (Cont'd)**

For the fiscal year ended June 30, 2020, the Charter School recognized pension expense of \$165,947, in the government-wide financial statements. This pension expense was based on the pension plan's June 30, 2019 measurement date.

**Public Employees' Retirement System (Cont'd)** - At June 30, 2020, the Charter School reported deferred outflows of resources and deferred inflows of resources related to PERS from the following sources:

Deferred Outflows of Resources	Deferred Inflows of Resources
\$ 979,040	\$ 849,984

**Actuarial Assumptions**

The net pension liability was measured as of June 30, 2019, and the total pension liability used to calculate the net pension liability was determined by an actuarial valuation as of July 1, 2018. The total pension liability was calculated through the use of updated procedures to roll forward from the actuarial valuation date to the measurement date of June 30, 2019. This actuarial valuation used the following actuarial assumptions, applied to all periods included in the measurement:

Inflation	2.50%
Salary Increases:	
2012-2021	
Through 2026	2.00% - 6.00% Based on Age
Thereafter	3.00% - 7.00% Based on Age
Long Term Rate of Return	2.00%
Mortality Rate Table	RP-2019
Period of Actuarial Experience	
Study upon which Actuarial Assumptions were Based	July 1, 2013 - June 30, 2018 July 1, 2014 - June 30, 2018 Repectively

**UNION COUNTY TEAMS CHARTER SCHOOL  
NOTES TO THE FINANCIAL STATEMENTS  
JUNE 30, 2020**

**NOTE 7: PENSION PLANS (CONT'D)**

**Actuarial Assumptions (Cont'd)**

For PERS, pre-retirement mortality rates were based on the RP-2000 Employee Preretirement Mortality Table for male and female active participants. Mortality tables are set back 2 years for males and 7 years for females. In addition, the tables provide for future improvements in mortality from the base year of 2013 using a generational approach based on the plan actuary's modified MP-2014 projection scale. Post-retirement mortality rates were based on the RP-2000 Combined Healthy Male and Female Mortality Tables (setback 1 year for males and females) for service retirements and beneficiaries of former members and a one-year static projection based on mortality improvement Scale AA. In addition, the tables for service retirements and beneficiaries of former members provide for future improvements in mortality from the base year of 2013 using a generational approach based on the plan actuary's modified MP-2014 projection scale. Disability retirement rates used to value disabled retirees were based on the RP-2000 Disabled Mortality Table (set back 3 years for males and set forward 1 year for females).

For PERS, in accordance with State statute, the long-term expected rate of return on plan investments (7.00% at June 30, 2017) is determined by the State Treasurer, after consultation with the Directors of the Division of Investments and Division of Pensions and Benefits, the board of trustees and the actuaries. The long-term expected rate of return was determined using a building block method in which best-estimate ranges of expected future real rates of return (expected returns, net of pension plan investment expense and inflation) are developed for each major asset class. These ranges are combined to produce the long-term expected rate of return by weighting the expected future real rates of return by the target asset allocation percentage and by adding expected inflation.

Best estimates of arithmetic rates of return for each major asset class included in PERS's target asset allocation as of June 30, 2019 are summarized in the following tables:

**UNION COUNTY TEAMS CHARTER SCHOOL  
NOTES TO THE FINANCIAL STATEMENTS  
JUNE 30, 2020**

**NOTE 7: PENSION PLANS (CONT'D)**

**Actuarial Assumptions (Cont'd)**

<u>Asset Class</u>	<u>Target Allocation</u>
Risk Mitigation Strategies	4.67%
Cash Equivalents	2.00%
U.S. Treasuries	2.68%
Investment Grade Credit	4.25%
High Yield	5.37%
Private Credit	7.92%
Real Assets	9.31%
Real Estate	8.33%
US Equity	8.26%
Non-U.S. Developed Markets Equity	9.00%
Emerging Markets Equity	11.37%
Private Equity	10.85%

**Discount Rate** - The discount rate used to measure the total pension liability at June 30, 2019 was 6.28% for PERS. For PERS, the respective single blended discount rates were based on the long-term expected rate of return on pension plan investments of 7.00%, and a municipal bond rate of 3.58% as of June 30, 2019, based on the Bond Buyer Go 20-Bond Municipal Bond Index which includes tax-exempt general obligation municipal bonds with an average rating of AA/Aa or higher. The projection of cash flows used to determine the discount rates for PERS assumed that contributions from plan members will be made at the current member contribution rates and that contributions from employers will be made based on the contribution rate in the most recent fiscal year. Based on those assumptions, the plan's fiduciary net position was projected to be available to make projected future benefit payments of current plan members through 2040 for PERS. Therefore, the long-term expected rate of return on plan investments was applied to projected benefit payments through 2040 for PERS, and the municipal bond rate was applied to projected benefit payments after that date in determining the total pension liability.

**Sensitivity of Charter School's Proportionate Share of Net Pension Liability to Changes in the Discount Rate**

**Public Employees' Retirement System (PERS)** - The following presents the Charter School's proportionate share of the net pension liability at June 30, 2019, the plans measurement date, calculated using a discount rate of 5.00%, as well as what the Charter School's proportionate share of the net pension liability would be if it were calculated using a discount rate that is 1% lower or 1% higher than the current rates used:

**UNION COUNTY TEAMS CHARTER SCHOOL  
NOTES TO THE FINANCIAL STATEMENTS  
JUNE 30, 2020**

**NOTE 7: PENSION PLANS (CONT'D)**

	PERS		
	1% Decrease (4.00%)	Current Discount Rate (5.00%)	1% Increase (6.00%)
Charter School's Proportionate Share of the Net Pension Liability	\$ 2,670,051	\$ 2,188,566	\$ 1,794,624

**Pension Plan Fiduciary Net Position**

For purposes of measuring the net pension liability, deferred outflows of resources and deferred inflows of resources related to pensions, and pension expense, information about the respective fiduciary net position of the PERS and additions to/deductions from PERS's respective fiduciary net position have been determined on the same basis as they are reported by PERS. Accordingly, benefit payments (including refunds of employee contributions) are recognized when due and payable in accordance with the benefit terms. Investments are reported at fair value. For additional information about PERS, please refer to the plan's Comprehensive Annual Financial Report (CAFR) which can be found at [www.nj.gov/treasury/pensions](http://www.nj.gov/treasury/pensions).

**NOTE 8: STATE POST-RETIREMENT MEDICAL BENEFITS**

P.L. 1987, c.384 of P.L. 1990, c.6 required Teachers' Pensions and Annuity Fund ("TPAF") and the Public Employees' Retirement System ("PERS"), respectively, to fund post-retirement medical benefits for those State employees who retire after accumulating 25 years of credited service or on a disability retirement. P.L. 2007, c.103 amended the law to eliminate the funding of postemployment medical benefits through the TPAF and PERS. It created separate funds outside of the pension plans for the funding and payment of postemployment medical benefits for retired State employees and retired educational employees. As of June 30, 2015, there were 107,314 retirees receiving postemployment medical benefits, and the State contributed \$1.25 billion on their behalf. The cost of these benefits is funded through contributions by the State in accordance with P.L. 1994, c.62. Funding of post-retirement medical premiums changed from a pre-funding basis to a pay-as-you-go basis beginning in fiscal year 1994.

The State is also responsible for the cost attributable to P.L. 1992 c.126, which provides free health benefits to members of PERS and the Alternate Benefit Program who retire from a Board of Education, Charter School or county college with 25 years of service. The State paid \$214.1 million toward Chapter 126 benefits for 19,056 eligible retired members in fiscal year 2015.

**UNION COUNTY TEAMS CHARTER SCHOOL  
NOTES TO THE FINANCIAL STATEMENTS  
JUNE 30, 2020**

**NOTE 9: POSTEMPLOYMENT BENEFITS OTHER THAN PENSIONS (OPEB)**

**General Information about the OPEB Plan**

The State of New Jersey reports a liability as a result of its statutory requirements to pay other postemployment (health) benefits for State Health Benefit Local Education Retired Employees Plan. The State Health Benefit Local Education Retired Employees Plan is a multiple-employer defined benefit OPEB plan that is administered on a pay-as-you-go basis. Accordingly, no assets are accumulated in a qualifying trust that meets the criteria in paragraph 4 of GASB Statement No. 75, Accounting and Financial Reporting for the Postemployment Benefits Other Than Pensions. The State Health Benefit Local Education Retired Employees Plan provides medical, prescription drug, and Medicare Part B reimbursement to retirees and their covered dependents of local education employers.

The employer contributions for the participating local education employers are legally required to be funded by the State of New Jersey in accordance with N.J.S.A 52:14-17.32f. According to N.J.S.A 52:14- 17.32f, the State provides employer-paid coverage to employees who retire from a board of education or county college with 25 years or more of service credit in, or retires on a disability pension from, one or more of the following plans: the Teachers' Pension and Annuity Fund (TPAF), the Public Employees' Retirement System (PERS), the Police and Firemen Retirement System (PFRS), or the Alternate Benefit Program (ABP). Pursuant to Chapter 78, P.L. 2011, future retirees eligible for postretirement medical coverage who have less than 20 years of creditable service on June 28, 2011 will be required to pay a percentage of the cost of their health care coverage in retirement provided they retire with 25 or more years of pension service credit. The percentage of the premium for which the retiree will be responsible will be determined based on the retiree's annual retirement benefit and level of coverage.

**General Information about the OPEB Plan**

The total nonemployer OPEB liability does not include certain other postemployment benefit obligations that are provided by the local education employers. The reporting of these benefits are the responsibility of the individual local education employers.

**UNION COUNTY TEAMS CHARTER SCHOOL  
NOTES TO THE FINANCIAL STATEMENTS  
JUNE 30, 2020**

**NOTE 9: POSTEMPLOYMENT BENEFITS OTHER THAN PENSIONS (OPEB) (CONT'D)**

**Basis of Presentation**

The Schedule presents the State of New Jersey's obligation under NJSA 52:14-17.32f. The Schedule does not purport to be a complete presentation of the financial position or changes in financial position of the State Health Benefit Local Education Retired Employees Plan or the State of New Jersey. The accompanying Schedule was prepared in accordance with U.S. generally accepted accounting principles. Such preparation requires management of the State of New Jersey to make a number of estimates and assumptions relating to the reported amounts. Due to the inherent nature of these estimates, actual results could differ from those estimates.

**Total Nonemployer OPEB Liability**

The total nonemployer OPEB liability as of June 30, 2018 was determined by an actuarial valuation as of June 30, 2017, which was rolled forward to June 30, 2018. The actuarial assumptions vary for each plan member depending on the pension plan the member is enrolled in. This actuarial valuation used the following actuarial assumptions, applied to all periods in the measurement:

	<u>TPAF/ABP</u>	<u>PERS</u>
Inflation Rate	2.50%	2.50%
	<u>Based on Years of Service</u>	<u>Based on Age</u>
Salary Increases:		
Through 2026	1.55% - 4.55%	1.65% - 4.15%
Thereafter	2.00% - 5.45%	2.65% - 5.15%

**UNION COUNTY TEAMS CHARTER SCHOOL  
NOTES TO THE FINANCIAL STATEMENTS  
JUNE 30, 2020**

**NOTE 9: POSTEMPLOYMENT BENEFITS OTHER THAN PENSIONS (OPEB) (CONT'D)**

Preretirement mortality rates were based on the RP-2006 Headcount-Weighted Healthy Employee Male/Female mortality table with fully generational mortality improvement projections from the central year using the MP-2006 scale. Postretirement mortality rates were based on the RP-2006 Headcount- Weighted Healthy Annuitant Male/Female mortality table with fully generational improvement projections from the central year using the MP-2017 scale. Disability mortality was based on the RP-2016 Headcount- Weighted Disabled Male/Female mortality table with fully generational improvement projections from the central year using the MP-2017 scale.

The actuarial assumptions used in the June 30, 2017 valuation were based on the results of actuarial experience studies for the periods July 1, 2012 - June 30, 2015, July 1, 2010 - June 30, 2014, and July 1, 2012 - June 30, 2015 for TPAF and PERS, respectively.

**Health Care Trend Assumptions**

For pre-Medicare preferred provider organization (PPO) medical benefits, this amount initially is 5.8% and decreases to a 5.0% long-term trend rate after eight years. For self-insured post-65 PPO medical benefits, the trend rate is 4.5%. For health maintenance organization (HMO) medical benefits, the trend rate is initially 5.87% and decreases to a 5.0% long-term trend rate after eight years. For prescription drug benefits, the initial trend rate is 8.0% decreasing to a 5.0% long-term trend rate after seven years. For the Medicare Part B reimbursement, the trend rate is 5.0%. The Medicare Advantage trend rate is 4.5% and will continue in all future years.

**Discount rate**

The discount rate for June 30, 2018 was 3.87%. This represents the municipal bond return rate as chosen by the Division. The source is the Bond Buyer Go 20-Bond Municipal Bond Index, which includes tax-exempt general obligation municipal bonds with an average rating of AA/Aa or higher.



**UNION COUNTY TEAMS CHARTER SCHOOL  
NOTES TO THE FINANCIAL STATEMENTS  
JUNE 30, 2020**

**NOTE 9: POSTEMPLOYMENT BENEFITS OTHER THAN PENSIONS (OPEB) (CONT'D)**

**Changes in the Total OPEB Liability**

	<b>Total OPEB Liability</b>
Balance as of June 30, 2017 Measurement Date	\$ 3,203,526
Changes for the Year:	
Service Cost	362,864
Interest Cost	126,359
Changes of Benefit Terms	-
Differences Between Expected and Actual Experience	(411,969)
Changes in Assumptions or Other Inputs	(330,086)
Member Contributions	2,658
Gross Benefit Payments	(76,915)
<b>Net Changes</b>	<b>(327,089)</b>
<b>Balance as of June 30, 2018 Measurement Date</b>	<b>\$ 2,876,437</b>

**Sensitivity of Total Nonemployer OPEB Liability to changes in the discount rate:**

The following presents the total nonemployer OPEB liability as of June 30, 2018, respectively, calculated using the discount rate as disclosed above as well as what the total nonemployer OPEB liability would be if it was calculated using a discount rate that is 1-percentage point lower or 1-percentage point higher than the current rate:

<b>June 30, 2018</b>		
At 1.00% Decrease	At Discount Rate	At 1.00% Increase
2.87%	3.87%	4.87%
\$ 27,679,706,511	23,601,362,208	20,342,717,142

**Sensitivity of Total Nonemployer OPEB Liability to changes in the healthcare trend rate:**

The following presents the total nonemployer OPEB liability as of June 30, 2018, calculated using the healthcare trend rate as disclosed above as well as what the total OPEB liability would be if it was calculated using a healthcare trend rate that is 1- percentage point lower or 1-percentage point higher than the current rate:

**UNION COUNTY TEAMS CHARTER SCHOOL  
NOTES TO THE FINANCIAL STATEMENTS  
JUNE 30, 2020**

**NOTE 9: POSTEMPLOYMENT BENEFITS OTHER THAN PENSIONS (OPEB) (CONT'D)**

	<b>June 30, 2018</b>	
1.00% Decrease	Healthcare Cost Trend Rate	At 1.00% Increase
\$	19,652,093,352	23,601,362,208
		28,737,724,369

OPEB Expense, Deferred Outflows of Resources and Deferred Inflows of Resources Related to OPEB.

For the year ended June 30, 2020, the Charter School recognized OPEB expense of \$406,778. The Charter School reported deferred outflows of resources and deferred inflows of resources from the following sources:

	<b>Deferred Outflows of Resources</b>	<b>Deferred Inflows of Resources</b>
Differences Between Expected and Actual Experience	\$ -	\$ -
Changes of Assumptions	-	923,990
Net Difference Between Projected and Actual Earnings		
On OPEB Plan Investments	-	-
Changes in Proportion	279,171	-
Contributions Subsequent To the Measurement Date	-	-
Total	\$ 279,171	\$ 923,990

**Special Funding Situation**

The participating employer allocations included in the supplemental schedule of special funding amounts by employer for each employer are provided as employer is required to record in their financial statements, as an expense and corresponding revenue, their proportionate share of total OPEB expense attributable to the State of New Jersey under the special funding situation and to include their respective amount of total OPEB liability in their notes to their financial statements. The total OPEB liability and service cost for each employer was determined separately based on actual data for each employer's participants.

**NOTE 10: RISK MANAGEMENT**

The charter school is exposed to various risks of loss related to torts; theft of, damage to, and destruction of assets; errors and omissions; injuries to employees; and natural disasters.

**UNION COUNTY TEAMS CHARTER SCHOOL  
NOTES TO THE FINANCIAL STATEMENTS  
JUNE 30, 2020**

**NOTE 10: RISK MANAGEMENT (CONT'D)**

**Property and Liability Insurance**

The charter school maintains commercial insurance coverage for property, liability, student accident and surety bonds. A complete schedule of insurance coverage can be found in the Statistical Section of this Comprehensive Annual Financial Report.

**NOTE 11: FUND BALANCE APPROPRIATED**

General Fund

The General Fund fund balance in the fund financial statements at June 30, 2020, in the amount of \$3,700,375 is unassigned and undesignated.

**NOTE 12: SUBSEQUENT EVENTS**

The Union County TEAMS Charter School's management has informed us that there are no significant events that need to be disclosed after the balance sheet date through the date of the audit.

***REQUIRED SUPPLEMENTARY INFORMATION – PART II***

***SECTION C – BUDGETARY COMPARISON SCHEDULES***

**UNION COUNTY TEAMS CHARTER SCHOOL**  
General Fund  
Budgetary Comparison Schedule  
For The Fiscal Year Ended June 30, 2020

	Original Budget	Budget Transfers	Final Budget	Actual	Variance Final to Actual
<b>REVENUES:</b>					
Local Sources:					
Equalization Aid-Local Share	\$ 906,753	\$ -	\$ 906,753	\$ 906,753	\$ -
Total Local Sources	906,753	-	\$ 906,753	906,753	\$ -
Categorical Aid:					
Equalization Aid-State Share	3,808,187	-	3,808,187	3,808,187	-
Security Aid	212,759	-	212,759	212,759	-
State Adjustment	301,200	-	301,200	301,200	-
Special Education Categorical Aid	159,039	-	159,039	159,039	-
Total Categorical Aid	4,481,185	-	4,481,185	4,481,185	-
Other Sources:					
Interest Income	-	-	-	402	402
Miscellaneous Revenue	-	-	-	2,092	2,092
On-Behalf TPAF Pension Contributions (Non-Budgeted)	-	-	-	267,406	267,406
On-Behalf Post Retirement Medical Insurance (Non-Budgeted)	-	-	-	98,955	98,955
Reimbursed TPAF Social Security Contributions (Non-Budgeted)	-	-	-	67,228	67,228
Total other Sources	-	-	-	436,083	436,083
Total Revenues	5,387,938	-	5,387,938	5,824,021	436,083
<b>EXPENDITURES:</b>					
Instruction:					
Kindergarten - Salaries of Teachers	\$ 50,923	\$ -	\$ 50,923	\$ 50,923	\$ -
Grades 1-5 - Salaries of Teachers	246,588	-	246,588	112,153	134,435
Grades 6-8 - Salaries of Teachers	258,976	-	258,976	150,140	108,836
Grades 9-12 - Salaries of Teachers	323,088	-	323,088	323,088	-
Other Salaries for Instruction	1,024,402	-	1,024,402	910,786	113,616
Other Purchased Services	479,109	-	479,109	296,309	182,800
General Supplies	155,852	-	155,852	114,519	41,333
Miscellaneous	19,000	-	19,000	3,480	15,520
Total Instruction	2,557,938	-	2,557,938	1,961,398	596,540
Administration					
Salaries - General Administration	390,329	-	390,329	390,329	-
Salaries of Secretarial/Clerical Assistants	122,733	-	122,733	122,733	-
Total Benefits Cost	663,869	-	663,869	592,341	71,528
Purchases Prof/Tech Services	249,527	-	249,527	232,511	17,016
Other Purchased Services	110,952	-	110,952	86,299	24,653
Communications/Telephone	97,776	-	97,776	67,941	29,835
Supplies and Materials	42,740	-	42,740	31,837	10,903
Miscellaneous Expenses	4,829	-	4,829	4,321	508
Total Administration	1,682,755	-	1,682,755	1,528,312	154,443

See Management's Discussion and Analysis section of this report for explanation of significant budget variances, original and final.

**UNION COUNTY TEAMS CHARTER SCHOOL**  
General Fund  
Budgetary Comparison Schedule  
For The Fiscal Year Ended June 30, 2020

	Original Budget	Budget Transfers	Final Budget	Actual	Variance Final to Actual
(Continued From Prior Page)					
Support Services:					
Salaries	\$ 104,103	\$ -	\$ 104,103	\$ 48,276	\$ 55,827
Purchased Prof/Ed Services	122,894	-	122,894	70,966	51,928
Cleaning, Repair, and Maintenance Services	142,472	-	142,472	83,958	58,514
Rental of Land and Buildings	732,436	-	732,436	708,217	24,219
Insurance for Property, Liability and Fidelity	64,000	-	64,000	48,376	15,624
Supplies and Materials	24,000	-	24,000	13,546	10,454
Maintenance	113,207	-	113,207	85,347	27,860
Miscellaneous Expenses	5,000	-	5,000	1,109	3,891
Transportation Other Than To/From School	25,000	-	25,000	19,350	5,650
<b>Total Support Services</b>	<b>1,333,112</b>	<b>-</b>	<b>1,333,112</b>	<b>1,079,145</b>	<b>253,967</b>
On-Behalf TPAF Pension Contributions (Non-Budgeted)				267,406	(267,406)
On-Behalf Post Retirement Medical Insurance (Non-Budgeted)				98,955	(98,955)
Reimbursed TPAF Social Security Contributions (Non-Budgeted)				67,228	(67,228)
<b>Total Expenditures</b>	<b>5,573,805</b>	<b>-</b>	<b>5,573,805</b>	<b>5,002,444</b>	<b>571,361</b>
Excess (Deficiency) of Revenues Over (Under) Expenditures and other Financing Uses	(185,867)	-	(185,867)	821,577	1,007,444
<b>FUND BALANCE, JULY 1</b>	<b>2,878,798</b>	<b>-</b>	<b>2,878,798</b>	<b>2,878,798</b>	<b>-</b>
<b>FUND BALANCE, JUNE 30</b>	<b>\$ 2,692,931</b>	<b>\$ -</b>	<b>\$ 2,692,931</b>	<b>\$ 3,700,375</b>	<b>\$ 1,007,444</b>
Recapitulation of Excess (Deficiency) of Revenues					
Over (Under) Expenditures:					
Budgeted Fund Balance	\$ 2,692,931	\$ -	\$ 2,692,931	\$ 3,700,375	\$ 1,007,444
<b>Total</b>	<b>\$ 2,692,931</b>	<b>\$ -</b>	<b>\$ 2,692,931</b>	<b>\$ 3,700,375</b>	<b>\$ 1,007,444</b>

See Management's Discussion and Analysis section of this report for explanation of significant budget variances, original and final.

**UNION COUNTY TEAMS CHARTER SCHOOL**  
Special Revenue Fund  
Budgetary Comparison Schedule  
For The Fiscal Year Ended June 30, 2020

	Original Budget	Budget Transfers	Final Budget	Actual	Variance Final to Actual
REVENUE SOURCES:					
Federal	\$ 237,781	\$ -	\$ 237,781	\$ 237,781	\$ -
Total Revenues	237,781	-	\$ 237,781	237,781	\$ -
EXPENDITURES:					
Instruction:					
Salaries	150,153	-	150,153	150,153	-
Purchased Services	18,101	-	18,101	18,101	-
General Supplies	16,974	-	16,974	16,974	-
Total Instruction	185,228	-	185,228	185,228	-
Support Services:					
Personal Services - Employee Benefits	52,553	-	52,553	52,553	-
Supplies and Materials	-	-	-	-	-
Total Support Services	52,553	-	52,553	52,553	-
Total Expenditures	237,781	-	237,781	237,781	-
Excess (Deficiency) of Revenues Over (Under) Expenditures	\$ -	\$ -	\$ -	\$ -	\$ -



***NOTES TO THE REQUIRED SUPPLEMENTARY INFORMATION***

**UNION COUNTY TEAMS CHARTER SCHOOL**

Required Supplementary Information  
 Budget-To-GAAP Reconciliation  
 Fiscal Year Ended June 30, 2020

**Note A - Explanation of Differences between Budgetary Inflows and Outflows and GAAP Revenues and Expenditures**

	<u>General Fund</u>	<u>Special Revenue Fund</u>
<b>Sources/Inflows of Resources</b>		
Actual amounts (budgetary) "revenues" from the budgetary comparison schedules	[C-1] \$ 5,824,021	[C-2] \$ 237,781
Difference - Budget to GAAP		
Grant accounting budgetary basis differs from GAAP in that encumbrances are recognized as expenditures, and the related revenue is recognized	<u>-</u>	<u>-</u>
Total revenues as reports on the statement of revenues, expenditures and changes in fund balance - governmental funds.	[B-2] \$ <u>5,824,021</u>	[B-2] \$ <u>237,781</u>
<b>Uses/Outflows of resources</b>		
Actual amounts (budgetary basis) "total outflows" from the budgetary comparison schedule	[C-1] \$ 5,002,444	[C-2] \$ 237,781
Differences - Budget to GAAP:		
Encumbrances for supplies and equipment ordered but not received are reported in the year the order is placed for budgetary purposes, but in the year the supplies are received for financial accounting purposes	<u>-</u>	<u>-</u>
Total expenditures as reported on the statement of revenues, expenditures and changes in fund balances - governmental funds.	[B-2] \$ <u>5,002,444</u>	[B-2] \$ <u>237,781</u>

***REQUIRED SUPPLEMENTARY INFORMATION – PART III***

**SCHEDULE L - SCHEDULES RELATED TO ACCOUNTING AND REPORTING FOR  
PENSIONS (GASB 68)**

**UNION COUNTY TEAMS CHARTER SCHOOL**  
**REQUIRED SUPPLEMENTARY INFORMATION SCHEDULES**  
**SCHEDULE OF THE CHARTER SCHOOL'S PROPORTIONATE SHARE OF THE NET PENSION LIABILITY**  
**PUBLIC EMPLOYEES RETIREMENT SYSTEM (PERS)**  
**LAST TWO PLAN YEARS**  
**UNAUDITED**

	Fiscal Year Ending June 30,	
	<u>2019</u>	<u>2020</u>
Charter School's proportion of the net pension liability	0.011362584%	0.0121462259%
Charter School's proportionate share of the net pension liability	\$ 2,237,236	\$ 2,188,566
Charter School's covered employees payroll	N/A	N/A
Charter School's proportionate share of the net pension liability As a percentage of it's covered employee payroll	N/A	N/A
Plan fiduciary net position as a percentage of the total Pension Liability	N/A	N/A

Note: This schedule does not contain ten years of information as GASB No. 68 was implemented during the fiscal year ended June 30, 2015.

**UNION COUNTY TEAMS CHARTER SCHOOL  
REQUIRED SUPPLEMENTARY INFORMATION SCHEDULES  
SCHEDULE OF THE CHARTER SCHOOL CONTRIBUTIONS  
PUBLIC EMPLOYEES RETIREMENT SYSTEM (PERS)  
LAST TWO FISCAL YEARS  
UNAUDITED**

	Fiscal Year Ending June 30,	
	2019	2020
Contractually required contribution	\$ 113,021	\$ 118,147
Contributions in relation to the contractually required contribution	(113,021)	(118,147)
Contribution Deficiency (Excess)	\$ -	\$ -
Charter School's Covered Payroll (Fiscal Year)	\$ -	\$ -
Contributions as a percentage of covered employee payroll	0.00%	0.00%

Note: This schedule does not contain ten years of information as GASB No. 68 was implemented during the fiscal year ended June 30, 2015.

***NOTES TO REQUIRED SUPPLEMENTARY INFORMATION III***

**UNION COUNTY TEAMS CHARTER SCHOOL**  
**NOTES TO REQUIRED SUPPLEMENTARY INFORMATION**  
**PUBLIC EMPLOYEES RETIREMENT SYSTEM**  
**FOR FISCAL YEAR ENDED JUNE 30, 2020**

**A. Benefit Changes**

There were none.

**B. Changes in Assumptions**

The discount rate changed from 5.66% as of June 30, 2018 to 6.28% as of June 30, 2019 in accordance with GASB Statement No. 67.



***OTHER SUPPLEMENTARY INFORMATION***

**SECTION E – SPECIAL REVENUE FUND  
DETAIL STATEMENTS**

***The Special Revenue Fund is used to account for the proceeds of specific sources (other than expandable trusts or major capital projects) that are legally restricted to expenditures for specific purposes.***

**UNION COUNTY TEAMS CHARTER SCHOOL**  
Special Revenue Fund  
Combining Schedule of Program Revenues and Expenditures - Budgetary Basis  
For the Fiscal Year Ended June 30, 2020

	ESEA Title I	ESEA Title II	ESEA Title IV	I.D.E.A. Basic	Grand Total
<b>REVENUE SOURCES:</b>					
Federal	\$ 125,101	\$ 18,101	\$ 10,000	\$ 84,579	\$ 237,781
Total Revenues	<u>125,101</u>	<u>18,101</u>	<u>10,000</u>	<u>84,579</u>	<u>237,781</u>
<b>EXPENDITURES:</b>					
Instruction:					
Salaries	90,792	-	-	59,361	150,153
Purchased Services	-	18,101	-	-	18,101
General Supplies	2,532	-	10,000	4,442	16,974
Total Instruction	<u>93,324</u>	<u>18,101</u>	<u>10,000</u>	<u>63,803</u>	<u>185,228</u>
Support Services:					
Personal Services - Employee Benefits	31,777	-	-	20,776	52,553
Supplies and Materials	-	-	-	-	-
Total Support Services	<u>31,777</u>	<u>-</u>	<u>-</u>	<u>20,776</u>	<u>52,553</u>
Total Expenditures	<u>125,101</u>	<u>18,101</u>	<u>10,000</u>	<u>84,579</u>	<u>237,781</u>
Excess (Deficiency) of Revenues Over (Under) Expenditures	<u>\$ -</u>	<u>\$ -</u>	<u>\$ -</u>	<u>\$ -</u>	<u>\$ -</u>

**SECTION G – PROPRIETARY FUNDS  
DETAIL STATEMENTS**

*Proprietary Funds are used to account for operations that are financed and operated in a manner similar to private business enterprises – where the intent of the charter school’s board is that the costs of providing goods or services be financed through user charges.*

*Food Services Fund – This fund provides for the operation of food services in all schools within the school district.*

**THIS SECTION HAS ALREADY BEEN INCLUDED IN STATEMENTS B-4, B-5,  
AND B-6.**

**SECTION H – FIDUCIARY FUNDS  
DETAIL STATEMENTS**

***Fiduciary Funds are used to account for funds received by the school for a specific purpose.***

***Agency Funds are used to account for assets held by the school as an agent for individuals, private organizations, other governments and/or other funds.***

***Payroll Fund – This agency fund is used to account for the payroll transactions of the school.***

**UNION COUNTY TEAMS CHARTER SCHOOL**  
 Fiduciary Funds  
 Combining Statement of Fiduciary Net Position  
 June 30, 2020

	Agency		
	Payroll Agency	Net Payroll	Total Agency Funds
<b>ASSETS:</b>			
Cash	\$ 107,412	\$ 63	\$ 107,475
Total Assets	\$ 107,412	\$ 63	\$ 107,475
<b>LIABILITIES:</b>			
Benefits Payable	\$ 22,125	\$ 63	\$ 22,188
Interfund Accounts Payable	85,287	-	85,287
Total Liabilities	\$ 107,412	\$ 63	\$ 107,475

**UNION COUNTY TEAMS CHARTER SCHOOL**  
 Fiduciary Funds  
 Payroll Agency Fund  
 Schedule of Receipts and Disbursements  
 For The Fiscal Year Ended June 30, 2020

	Balance July 1, 2019	Additions	Deletions	Balance June 30, 2020
ASSETS:				
Cash	\$ 85,287	\$ 1,011,329	\$ 989,204	\$ 107,412
Total Assets	<u>\$ 85,287</u>	<u>\$ 1,011,329</u>	<u>\$ 989,204</u>	<u>\$ 107,412</u>
LIABILITIES:				
Benefits Payable	\$ 25,622	\$ 985,707	\$ 989,204	\$ 22,125
Interfund Payable	59,665	25,622	-	85,287
Total Liabilities	<u>\$ 85,287</u>	<u>\$ 1,011,329</u>	<u>\$ 989,204</u>	<u>\$ 107,412</u>

**STATISTICAL SECTION  
(UNAUDITED)**

***GASB requires that ten years of statistical data be presented. The following information is presented utilizing information available. Each year thereafter, an additional year's data will be included until ten years of data is presented.***



## UNION COUNTY TEAMS CHARTER SCHOOL J Series Statistical Section

### **Contents**

#### **Financial Trends**

These schedules contain trend information to help the reader understand how the charter school's financial performance and well-being have changed over time.

#### **Revenue Capacity (Not Applicable To Charter School)**

These schedules contain information to help the reader assess the district's most significant local revenue source, the property tax.

#### **Debt Capacity**

These schedules present information to help the reader assess the affordability of the charter school's current levels of outstanding debt and the charter school's ability to issue additional debt in the future.

#### **Demographic and Economic Information**

These schedules offer demographic and economic indicators to help the reader understand the environment within which the charter school's financial activities take place.

#### **Operating Information**

These schedules contain service and infrastructure data to help the reader understand how the information in the charter school's financial report relates to the services the district provides and the activities it performs.

**Sources:** *Unless otherwise noted, the information in these schedules is derived from the comprehensive annual financial reports (CAFR) for the relevant year. The charter school implemented GASB Statement 34 in the fiscal year ending June 30, 2004; schedules presenting charter school-wide information include information beginning in that year.*

***FINANCIAL TRENDS***

**UNION COUNTY TEAMS CHARTER SCHOOL**  
 Net Position by Component  
 Last Ten Fiscal Years  
*(accrual basis of accounting)*  
 Unaudited

	Fiscal Year Ending June 30,									
	2020	2019	2018	2017	2016	2015	2014	2013	2012	2011
Governmental Activities										
Unassigned	\$ 1,640,865	\$ 1,084,525	\$ 556,470	\$ 177,548	\$ 87,875	\$ (212,674)	\$ 630,055	\$ 1,055,627	\$ 805,290	\$ 367,135
Total Governmental Activities Net Assets/Position (Deficit)	<u>\$ 1,640,865</u>	<u>\$ 1,084,525</u>	<u>\$ 556,470</u>	<u>\$ 177,548</u>	<u>\$ 87,875</u>	<u>\$ (212,674)</u>	<u>\$ 630,055</u>	<u>\$ 1,055,627</u>	<u>\$ 805,290</u>	<u>\$ 367,135</u>
Business-Type Activities										
Unassigned	\$ 21,730	\$ 33,738	\$ 27,377	\$ 23,149	\$ 25,039	\$ 25,354	\$ 25,354	\$ 25,079	\$ 25,079	\$ 32,394
Total Business-Type Activities Net Position	<u>\$ 21,730</u>	<u>\$ 33,738</u>	<u>\$ 27,377</u>	<u>\$ 23,149</u>	<u>\$ 25,039</u>	<u>\$ 25,354</u>	<u>\$ 25,354</u>	<u>\$ 25,079</u>	<u>\$ 25,079</u>	<u>\$ 32,394</u>
Charter School-wide										
Unassigned	\$ 1,662,595	\$ 1,118,263	\$ 583,847	\$ 200,697	\$ 112,914	\$ (187,320)	\$ 655,409	\$ 1,080,706	\$ 830,369	\$ 399,529
Total Charter School Net Position (Deficit)	<u>\$ 1,662,595</u>	<u>\$ 1,118,263</u>	<u>\$ 583,847</u>	<u>\$ 200,697</u>	<u>\$ 112,914</u>	<u>\$ (187,320)</u>	<u>\$ 655,409</u>	<u>\$ 1,080,706</u>	<u>\$ 830,369</u>	<u>\$ 399,529</u>

**Source: Comprehensive Annual Financial Report**

**UNION COUNTY TEAMS CHARTER SCHOOL**  
 Changes in Net Position  
 Last Ten Fiscal Years  
 Unaudited

	Fiscal Year Ending June 30,									
	2020	2019	2018	2017	2016	2015	2014	2013	2012	2011
<b>Expenses</b>										
Governmental Activities:										
Instruction	\$ 3,060,356	\$ 3,394,725	\$ 3,051,826	\$ 3,011,866	\$ 2,709,810	\$ 2,338,017	\$ 2,571,765	\$ 2,431,378	\$ 1,950,537	\$ 1,811,013
Administration	1,365,961	1,282,327	1,179,646	1,693,155	1,593,428	1,515,284	1,469,219	1,137,210	966,735	1,037,160
Support Services	1,079,145	1,108,309	1,177,984	884,140	888,248	856,053	777,104	775,694	711,030	579,146
Unallocated Employee Benefits	406,778	406,778	513,043	-	-	-	-	-	-	-
Total Governmental Activities Net Assets/Position	<u>5,912,240</u>	<u>6,192,139</u>	<u>5,922,499</u>	<u>5,589,161</u>	<u>5,191,486</u>	<u>4,709,354</u>	<u>4,818,088</u>	<u>4,344,282</u>	<u>3,628,302</u>	<u>3,427,319</u>
Business-Type Activities:										
Food Service and After School	143,864	190,883	182,974	193,415	199,877	210,824	171,437	202,292	205,996	152,163
Total Business-Type Activities Expenses	<u>143,864</u>	<u>190,883</u>	<u>182,974</u>	<u>193,415</u>	<u>199,877</u>	<u>210,824</u>	<u>171,437</u>	<u>202,292</u>	<u>205,996</u>	<u>152,163</u>
Total Charter School Expenses	<u>\$ 6,056,104</u>	<u>\$ 6,383,022</u>	<u>\$ 6,105,473</u>	<u>\$ 5,782,576</u>	<u>\$ 5,391,363</u>	<u>\$ 4,920,178</u>	<u>\$ 4,989,525</u>	<u>\$ 4,546,574</u>	<u>\$ 3,834,298</u>	<u>\$ 3,579,482</u>
<b>Program Revenues</b>										
Governmental Activities:										
Operating Grants and Contributions	565,817	608,523	613,724	95,183	106,548	92,506	100,016	106,748	72,587	-
Total Governmental Activities Expenses	<u>\$ 565,817</u>	<u>\$ 608,523</u>	<u>\$ 613,724</u>	<u>\$ 95,183</u>	<u>\$ 106,548</u>	<u>\$ 92,506</u>	<u>\$ 100,016</u>	<u>\$ 106,748</u>	<u>\$ 72,587</u>	<u>\$ -</u>
Business-Type Activities:										
Charges for Services	14,278	26,053	23,622	22,529	24,396	11,154	13,897	48,104	51,973	65,845
Operating Grants and Contributions	117,578	171,191	163,580	168,996	152,293	155,442	122,417	124,282	130,045	123,113
Total Business-Type Activities Expenses	<u>131,856</u>	<u>197,244</u>	<u>187,202</u>	<u>191,525</u>	<u>176,689</u>	<u>166,596</u>	<u>136,314</u>	<u>172,386</u>	<u>182,018</u>	<u>188,958</u>
Total Charter School Program Revenues	<u>697,673</u>	<u>805,767</u>	<u>800,926</u>	<u>286,708</u>	<u>283,237</u>	<u>259,102</u>	<u>236,330</u>	<u>279,134</u>	<u>254,605</u>	<u>188,958</u>
<b>Net (Expense)/Revenue</b>										
Governmental Activities	\$ (5,346,423)	\$ (5,583,616)	\$ (5,290,775)	\$ (5,493,978)	\$ (5,084,938)	\$ (4,616,848)	\$ (4,718,072)	\$ (4,237,534)	\$ (3,555,715)	\$ (3,427,319)
Business-Type Activities	(12,008)	6,361	4,228	(1,890)	(23,188)	(44,228)	(35,123)	(29,906)	(23,978)	36,795
Total Charter School-wide Net Expense	<u>\$ (5,358,431)</u>	<u>\$ (5,577,255)</u>	<u>\$ (5,286,547)</u>	<u>\$ (5,495,868)</u>	<u>\$ (5,108,126)</u>	<u>\$ (4,661,076)</u>	<u>\$ (4,753,195)</u>	<u>\$ (4,267,440)</u>	<u>\$ (3,579,693)</u>	<u>\$ (3,390,524)</u>
<b>General Revenues and Other Changes in Net Position</b>										
Governmental Activities:										
General Purposes	\$ 906,753	\$ 1,005,635	\$ 1,059,745	\$ 998,136	\$ 981,154	\$ 920,540	\$ 790,575	\$ 787,521	\$ 679,641	\$ 557,219
Federal and State Aid Not Restricted	4,993,516	5,097,587	4,603,836	4,581,296	4,399,033	3,667,261	3,500,721	3,698,901	3,296,110	2,766,163
Investment Earnings	402	5,692	3,216	1,676	726	819	1,204	1,404	770	784
Miscellaneous Income	2,092	2,757	2,900	2,543	4,574	13,439	-	45	17,350	40,484
Total Governmental Activities	<u>5,902,763</u>	<u>6,111,671</u>	<u>5,669,697</u>	<u>5,583,651</u>	<u>5,385,487</u>	<u>4,602,059</u>	<u>4,292,500</u>	<u>4,487,871</u>	<u>3,993,871</u>	<u>3,364,650</u>
Business-Type Activities:										
Miscellaneous Earnings	-	-	-	-	23,188	43,913	35,398	63,214	47,300	-
Total Business-Type Activities	<u>-</u>	<u>-</u>	<u>-</u>	<u>-</u>	<u>23,188</u>	<u>43,913</u>	<u>35,398</u>	<u>63,214</u>	<u>47,300</u>	<u>-</u>
Total Charter School-wide	<u>\$ 5,902,763</u>	<u>\$ 6,111,671</u>	<u>\$ 5,669,697</u>	<u>\$ 5,583,651</u>	<u>\$ 5,408,675</u>	<u>\$ 4,645,972</u>	<u>\$ 4,327,898</u>	<u>\$ 4,551,085</u>	<u>\$ 4,041,171</u>	<u>\$ 3,364,650</u>
<b>Change in Net Assets/Position</b>										
Governmental Activities	\$ 556,340	\$ 528,055	\$ 378,922	\$ 89,673	\$ 300,549	\$ (14,789)	\$ (425,572)	\$ 250,337	\$ 438,156	\$ (62,669)
Business-Type Activities	(12,008)	6,361	4,228	(1,890)	-	(315)	275	33,308	23,322	36,795
Total Charter School	<u>\$ 544,332</u>	<u>\$ 534,416</u>	<u>\$ 383,150</u>	<u>\$ 87,783</u>	<u>\$ 300,549</u>	<u>\$ (15,104)</u>	<u>\$ (425,297)</u>	<u>\$ 283,645</u>	<u>\$ 461,478</u>	<u>\$ (25,874)</u>

Source: Comprehensive Annual Financial Report

92

**UNION COUNTY TEAMS CHARTER SCHOOL**  
 Fund Balances - Governmental Funds  
 Last Ten Fiscal Years  
*(modified accrual basis of accounting)*  
 Unaudited

	Fiscal Year Ending June 30,									
	2020	2019	2018	2017	2016	2015	2014	2013	2012	2011
General Fund										
Unassigned	\$ 3,700,375	\$ 2,878,798	\$ 2,091,894	1,526,803	1,098,202	668,953	630,055	1,055,627	805,290	367,135
Total General Fund	<u>\$ 3,700,375</u>	<u>\$ 2,878,798</u>	<u>\$ 2,091,894</u>	<u>\$ 1,526,803</u>	<u>\$ 1,098,202</u>	<u>\$ 668,953</u>	<u>\$ 630,055</u>	<u>\$ 1,055,627</u>	<u>\$ 805,290</u>	<u>\$ 367,135</u>

**UNION COUNTY TEAMS CHARTER SCHOOL**  
 Changes in Fund Balances - Governmental Funds  
 Last Ten Fiscal Years  
*(modified accrual basis of accounting)*  
 Unaudited

	Fiscal Year Ending June 30,									
	2020	2019	2018	2017	2016	2015	2014	2013	2012	2011
<b>Revenues:</b>										
Local Sources:										
Local Tax Levy	\$ 906,753	\$ 1,005,635	\$ 1,059,745	\$ 998,136	\$ 981,154	\$ 920,540	\$ 790,575	\$ 787,521	\$ 679,641	\$ 557,219
Interest In Investments	402	5,692	3,216	1,676	726	819	1,204	1,404	770	784
Miscellaneous	2,092	2,757	2,900	2,543	4,574	13,439	-	45	17,349	40,484
State Sources	4,914,774	5,050,212	4,484,834	4,452,686	4,295,438	3,582,411	3,401,698	3,576,584	3,215,833	2,611,029
Federal Sources	237,781	249,120	237,683	223,793	210,143	177,356	199,039	229,065	152,864	155,134
<b>Total Revenues</b>	<b>6,061,802</b>	<b>6,313,416</b>	<b>5,788,378</b>	<b>5,678,834</b>	<b>5,492,035</b>	<b>4,694,565</b>	<b>4,392,516</b>	<b>4,594,619</b>	<b>4,066,457</b>	<b>3,364,650</b>
<b>Expenditures:</b>										
Instruction	2,146,626	2,469,172	2,287,377	2,232,155	2,159,471	1,962,370	2,146,762	2,057,842	1,577,067	1,434,751
Administration	1,961,901	1,894,949	1,710,332	2,133,938	2,015,067	1,837,244	1,894,222	1,510,746	1,340,205	1,333,154
Support Services	1,131,698	1,162,391	1,225,578	884,140	888,248	856,053	777,104	711,030	659,414	412,375
Capital Outlay	-	-	-	-	-	-	-	-	-	-
<b>Total Expenditures</b>	<b>5,240,225</b>	<b>5,526,512</b>	<b>5,223,287</b>	<b>5,250,233</b>	<b>5,062,786</b>	<b>4,655,667</b>	<b>4,818,088</b>	<b>4,279,618</b>	<b>3,576,686</b>	<b>3,180,280</b>
<b>Net Change in Fund Balance</b>	<b>\$ 821,577</b>	<b>\$ 786,904</b>	<b>\$ 565,091</b>	<b>\$ 428,601</b>	<b>\$ 429,249</b>	<b>\$ 38,898</b>	<b>\$ (425,572)</b>	<b>\$ 315,001</b>	<b>\$ 489,771</b>	<b>\$ 184,370</b>

**Source: Comprehensive Annual Financial Report**

**UNION COUNTY TEAMS CHARTER SCHOOL**  
 General Fund - Other Local Revenue by Source  
 Last Ten Fiscal Years  
*(modified accrual basis of accounting)*  
 Unaudited

Fiscal Year Ending June 30,	Interest	Miscellaneous Revenue	Total
2020	\$ 402	\$ 2,092	\$ 2,494
2019	5,692	2,757	8,449
2018	3,216	2,900	6,116
2017	1,676	2,543	4,219
2016	726	4,574	5,300
2015	819	13,439	14,258
2014	1,204	-	1,204
2013	1404	45	1,449
2012	770	17,349	18,119
2011	784	40,484	41,268

**Source: Charter School records**

***OPERATING INFORMATION***



**UNION COUNTY TEAMS CHARTER SCHOOL**  
 Full-Time Equivalent Charter School Employees by Function  
 Last Ten Fiscal Years  
*Unaudited*

	Fiscal Year Ending June 30,									
	2020	2019	2018	2017	2016	2015	2014	2013	2012	2011
Instruction	36	36	36	35	43	45	32.0	31	21	28
Administrative	6	6	6	7	5	7	7	7	5	8
Support Services	5	5	5	5	6	4	6	4	5	5
Food Service	0	0	0	0	0	2	2	2	1	2
<b>Total</b>	<u>47</u>	<u>47</u>	<u>47</u>	<u>47</u>	<u>54</u>	<u>58</u>	<u>47</u>	<u>44</u>	<u>32</u>	<u>43</u>

**Source:** Charter School Personnel Records

**UNION COUNTY TEAMS CHARTER SCHOOL**  
 Operating Statistics  
 Last Ten Fiscal Years  
*Unaudited*

Fiscal Year Ended June 30,	Enrollment	Operating Expenditures*	Cost Per Pupil	Percentage Change	Teaching Staff**	Pupil / Teacher Ratio	Average Daily Enrollment (ADE)***	Average Daily Attendance (ADA)***	Percent Change in Average Daily Enrollment	Student Attendance Percentage
2020	393	5,240,225	13,334	-6.87%	36	10.9:2	390.4	0.0	0.00%	95.90%
2019	386	5,526,512	14,317	5.80%	36	10.7:1	0	0.0	0.00%	0.00%
2018	386	5,223,287	13,532	0.51%	36	10.7:1	0	0.0	0.00%	0.00%
2017	386	5,250,233	13,602	0.48%	35	11.02:1	385.5	363.0	2.12%	94.28%
2016	374	5,062,786	13,537	-2.30%	43	8.7:1	377.5	378.0	10.94%	100.13%
2015	336	4,655,667	13,856	-9.41%	45	10:1	336.2	324.1	8.06%	96.40%
2014	315	4,818,088	15,296	6.68%	31	10:1	309.1	297.2	0.91%	96.15%
2013	303	4,344,282	14,338	10.90%	28	10:1	306.3	293.3	9.60%	95.76%
2012	277	3,581,002	12,928	-2.41%	27	9:1	276.9	265.0	10.80%	95.70%
2011	247	3,272,185	13,248	8.85%	21	10:1	247	244.0	14.57%	98.79%

86

**Sources:** Charter School records.

Note: Enrollment based on annual final Charter School count.

\* Operating expenditures equal total expenditures less debt service and capital outlay.

\*\* Teaching staff includes only full-time equivalents of certified staff.

\*\*\* Average daily enrollment and average daily attendance are obtained from School Register Summary (SRS).

**2019-2020 SCHEDULE OF INSURANCE  
for Union County Teams Charter School**

<b>COVERAGE</b>	<b>LIMITS</b>	<b>SUMMARY</b>
<b>Package</b> NJSIG P984 07/01/2019-07/01/2020 \$13,887	Covered Location	515-517 West 4 <sup>th</sup> Street, Plainfield NJ 07062 501-513 West 6 <sup>th</sup> Street, Plainfield NJ 07062 44 Stelton Road, Piscataway NJ 08859
<b>Property</b>	\$500,000 \$120,000 \$5,000  \$300,000 \$20,000 \$5,000	Business Personal Property-Replacement Cost w/\$1,000 Ded (515-517 W 4 <sup>th</sup> ) Business Personal Property-Replacement Cost w/\$1,000 Ded (501-513 W 6 <sup>th</sup> ) Business Personal Property-Replacement Cost w/\$1,000 Ded (44 Stelton)  EDP Equipment and Media (Computers) w/\$1,000 Ded (515-517 w 4 <sup>th</sup> ) EDP Equipment and Media (Computers) w/\$1,000 Ded (501-513 W 6 <sup>th</sup> ) EDP Equipment and Media (Computers) w/\$1,000 Ded (44 Stelton)
<b>Crime</b>	\$50,000 \$25,000 \$10,000 \$10,000 \$10,000 \$159,000 \$159,000	Faithful Performance w/ \$500 Deductible Forgery & Alteration w/ \$500 Deductible Money & Securities w/ \$500 Deductible Money Orders/Counterfeit w/ \$500 Deductible Computer Fraud w/ \$500 Deductible Board Treasurer w/ \$1,000 Deductible (E. Johnson) Board Secretary/BA w/ \$1,000 Deductible (O. Richardson)
<b>General Liability</b>	\$11,000,000 \$11,000,000 \$11,000,000 \$11,000,000 \$1,000,000 \$5,000	Single Limit for Bodily Injury and Property Damage Each Occurrence for Child Molestation/ Sexual Abuse Each Occurrence for Personal Injury/Advertising Injury Each Claim for Employee Benefits Liability Fire Legal Liability Premise Medical Payments Per Person
<b>Automobile Liability</b>	\$11,000,000	Hired and Non Owned Automobile Liability
<b>Student Accident</b> Berkley Life & Health Ins Co KSA L004009041708 08/31/2019--08/31/2020 \$870	\$1,000,000 \$25,000 \$10,000	Medical Benefit Amount (Full Excess) Accident Medical Excess Benefit (Gold Plan) AD&D
<b>School Leaders E&amp;O</b> NJSIG E984 07/01/2019-07/01/2020 \$12,394	\$1,000,000 \$100,000 \$300,000	Coverage A Each Loss w/ \$5,000 Deductible Coverage B Each Loss w/ \$5,000 Deductible Coverage B Annual Aggregate
<b>Workers' Compensation</b> NJSIG W984 07/01/2019-07/01/2020 \$21,235 (\$2,238,815 School Prof & \$110,280 School Non-Prof 0.7744 MOD)	\$2,000,000 \$2,000,000 \$2,000,000	Each Accident Each Employee Policy Limit
<b>Supplemental Indemnity</b> NJSIG 64775774 07/01/2019-07/01/2020 \$814	Statutory	7-Day Waiting Period

**UNION COUNTY TEAMS CHARTER SCHOOL**  
 Charter School Performance Framework Financial Indicators  
 Fiscal Ratios  
 Last Three Fiscal Years

	2018	2019	2020	
	Audit	Audit	Audit	Source
Cash	\$ 2,145,501	\$ 2,743,704	\$ 3,715,472	Audit: Exhibit A-1
Current Assets (Includes CASH)	2,350,825	3,155,702	3,859,957	Audit: Exhibit A-1
Total Assets	2,356,207	3,158,931	3,861,033	Audit: Exhibit A-1
Current Liabilities	236,936	246,395	138,928	Audit: Exhibit A-1
Total liabilities	2,161,916	2,483,631	2,327,494	Audit: Exhibit A-1
Net Assets	583,847	1,118,263	1,662,595	Audit: Exhibit A-1
Total Revenue	6,488,623	6,917,438	6,600,436	Audit: Exhibit A-2
Total Expenses	6,105,473	6,385,022	6,056,104	Audit: Exhibit A-2
Change in Net Assets	383,150	534,416	544,332	Audit: Exhibit A-2
Depreciation Expense	2,153	2,153	2,153	Financial Statements/Audit Workpapers
Interest Expense	-	-	-	Financial Statements/Audit Workpapers
Principal Payments	-	-	-	Financial Statements/Audit Workpapers
Interest Payments	-	-	-	Financial Statements/Audit Workpapers
Final Average Daily Enrollment	388.8	390.4	383	DOE Enrollment Reports
March 30th Budgeted Enrollment	400	400	400	Charter School Budget

Changes

RATIOS ANALYSIS...						
Near Term Indicators	2018	2019	2020	3 YT CUM	Source:	Target
1a. Current Ratio	9.92	12.81	27.78		Current Assets/Current Liabilities	>1,1
1b. Unrestricted Days Cash	135.14	177.86	223.93		Cash/(Total Expenses/365)	30-60
1c. Enrollment Variance	0%	0%	0%		Average Daily Enrollment/Budgeted Enrollment	>95%
1d.* Default	N/A	N/A	N/A		Audit	not in default
Sustainability Indicators						
2a. Total Margin	6.4%	7.6%	8.4%		Change in Net Assets/Total Revenue	positive
2b. Debt to Asset	0.10	0.08	0.06		Total Liabilities/Total Assets	<9
2c.** Cash Flow	866,758	598,203	971,768		Net change in cash flow from prior years	3 yr cum positive
2d. Debt Service Coverage Ratio	N/A	N/A	N/A		(Change in Net Assets+Depreciation+Interest Expense)/(Principal & Interest Payments)	>1.10

\* Is school in default of loan covenant(s) and/or is delinquent with debt service payments? Yes or No

\*\* 2020 = 2020 Cash - 2019 Cash

Refer questions to [charterfinance@doe.state.nj.us](mailto:charterfinance@doe.state.nj.us)

***SINGLE AUDIT SECTION***



**INDEPENDENT AUDITOR'S REPORT ON INTERNAL CONTROL OVER FINANCIAL  
REPORTING AND ON COMPLIANCE AND OTHER MATTERS BASED ON AN  
AUDIT OF FINANCIAL STATEMENTS PERFORMED IN ACCORDANCE WITH  
"GOVERNMENT AUDITING STANDARDS"**

Honorable President and  
Members of the Board of Trustees  
Union County TEAMS Charter School  
County of Union  
Plainfield, New Jersey

We have audited, in accordance with the auditing standards generally accepted in the United States of America; the standards applicable to financial audits contained in *Government Auditing Standards* issued by the Comptroller General of the United States; and in compliance with audit requirements as prescribed by the Office of School Finance, Department of Education, State of New Jersey, the financial statements of the governmental activities, the business-type activities, each major fund, and the aggregate remaining fund information of Union County TEAMS Charter School (Charter School), in the County of Union, State of New Jersey, as of and for the fiscal year ended June 30, 2020, and the related notes to the financial statements, which collectively comprise the Charter School's basic financial statements, as listed in the table of contents, and have issued our report thereon dated January 20, 2021.

**Internal Control over Financial Reporting**

In planning and performing our audit of the financial statements, we considered the Charter School's internal control over financial reporting (internal control) to determine the audit procedures that are appropriate in the circumstances for the purpose of expressing our opinions on the financial statements, but not for the purpose of expressing an opinion on the effectiveness of the Charter School's internal control. Accordingly, we do not express an opinion on the effectiveness of the Charter School's internal control.

A *deficiency in internal control* exists when the design or operation of a control does not allow management or employees, in the normal course of performing their assigned functions, to prevent, or detect and correct, misstatements on a timely basis. A material weakness is a deficiency, or a combination of deficiencies, in internal control, such that there is reasonable possibility that a material misstatement of the entity's financial statements will not be prevented, or detected and corrected on a timely basis.

A *significant deficiency* is a deficiency, or a combination of deficiencies, in internal control that is less severe than a material weakness, yet important enough to merit attention by those charged with governance.

Our consideration of internal control was for the limited purpose described in the first paragraph of this section and was not designed to identify all deficiencies in internal control that might be material weakness or significant deficiencies. Given these limitations, during our audit we did not identify any deficiencies in internal control that we consider to be material weakness. However, material weakness may exist that have not been identified.

### **Compliance and Other Matters**

As part of obtaining reasonable assurance about whether the Charter School's financial statements are free from material misstatement, we performed tests of its compliance with certain provisions of laws, regulations, contracts, and grant agreements, noncompliance with which could have a direct and material effect on the determination of financial statement amounts. However, providing an opinion on compliance with those provisions was not an objective of our audit, and accordingly, we do not express such an opinion. The results of our tests disclosed no instances of noncompliance or other matter that are required to be reported under audit requirements as prescribed by the Office of School Finance, Department of Education, State of New Jersey.

We also noted other matters that we reported to the Board of Trustees of the Union County TEAMS Charter School in a separate report entitled, Auditor's Management Report on Administrative Findings dated January 20, 2021.

### **Purpose of this Report**

The purpose of this report is solely to describe the scope of our testing of internal control and compliance and the results of that testing, and not to provide an opinion on the effectiveness of the entity's internal control or on compliance. This report is an integral part of an audit performed in accordance with the Office of School Finance, Department of Education, State of New Jersey in considering the entity's internal control and compliance. Accordingly, this communication is not suitable for any other purpose.

This report is intended solely for the information and use of management, The Union County Teams Charter School Board of Trustees, the New Jersey State Department of Education and other state awarding agencies and pass-through entities and is not intended to be and should not be used by anyone other than these specified parties. However, this report is a matter of public record and its distribution is not limited.

Respectfully submitted,

Meshinsky & Associates, LLC CPA's  
Union, New Jersey



Philip T. Meshinsky, CPA  
Licensed Public-School Accountant  
No. CS00233400  
Meshinsky & Associates LLC, CPA's

January 20, 2021



**REPORT ON COMPLIANCE FOR EACH MAJOR STATE PROGRAM  
AND REPORT ON INTERNAL CONTROL OVER COMPLIANCE IN ACCORDANCE WITH  
UNIFORM GUIDANCE AND NEW JERSEY CIRCULAR 15-08-OMB**

Honorable President and  
Members of the Board of Trustees  
Union County TEAMS Charter School  
County of Union  
Plainfield, New Jersey

***Report on Compliance for Each Major State Program***

We have audited the Union County TEAMS Charter School's compliance with the types of compliance requirements described in the New Jersey Compliance Manual "State Grant Compliance Supplement" that could have a direct and material effect on each of its major federal and state programs for the fiscal year ended June 30, 2020. The Union County TEAMS Charter School's major state programs are identified in the Summary of Auditor's Results Section of the accompanying schedule of findings and questioned costs.

***Management's Responsibility***

The Charter School's management is responsible for compliance with the requirements of laws, regulations, contracts, and grants applicable to its state programs.

***Auditor's Responsibility***

Our responsibility is to express an opinion on compliance for each of the Charter School's major federal and state programs based on our audit of the types of compliance requirements referred to above. We conducted our audit of compliance in accordance with auditing standards generally accepted in the United States of America; the standards applicable to financial audits as prescribed by the *Office of School Finance, Department of Education, State of New Jersey*; New Jersey Circular 15-08-OMB, *Single Audit Policy for Recipients of Federal Grants, State Grants and State Aid*. Those standards, Uniform Guidance and New Jersey Circular 15-08-OMB require that we plan and perform the audit to obtain reasonable assurance about whether noncompliance with the types of compliance requirements referred to above that could have a direct and material effect on a major state program occurred. An audit includes examining, on a test basis, evidence about the Charter School's compliance with those requirements and performing such other procedures as we considered necessary in the circumstances.



We believe that our audit provides a reasonable basis for our opinion on compliance for each major state program. However, our audit does not provide a legal determination of the Charter School's compliance.

### ***Opinion on Each Major State Program***

In our opinion, the Union County TEAMS Charter School, in the County of Monmouth, State of New Jersey, complied, in all material respects, with the types of compliance requirements referred to above that could have a direct and material effect on each of its major state programs for the year ended June 30, 2020.

### **Report on Internal Control over Compliance**

Management of the Union County TEAMS Charter School is responsible for establishing and maintaining effective internal control over compliance with the types of compliance requirements referred to above. In planning and performing our audit of compliance, we considered the Charter School's internal control over compliance with the types of requirements that could have a direct and material effect on each major state program to determine the auditing procedures that are appropriate in the circumstances for the purpose of expressing an opinion on compliance for each major state program and to test and report on internal control over compliance in accordance with Uniform Guidance and New Jersey Circular 15-08-OMB, but not for the purpose of expressing an opinion on the effectiveness of internal control over compliance. Accordingly, we do not express an opinion on the effectiveness of the Charter School's internal control over compliance.

*A deficiency in internal control over compliance* exists when the design or operation of a control over compliance does not allow management or employees, in the normal course of performing their assigned functions, to prevent, or detect and correct, noncompliance with a type of compliance requirement of a state program on a timely basis. *A material weakness in internal control over compliance* is a deficiency, or combination of deficiencies, in internal control over compliance, such that there is a reasonable possibility that material noncompliance with a type of compliance requirement of a state program will not be prevented, or detected and corrected, on a timely basis. *A significant deficiency in internal control over compliance* is a deficiency, or a combination of deficiencies, in internal control over compliance with a type of compliance requirement of a state program that is less severe than a material weakness in internal control over compliance, yet important enough to merit attention by those charged with governance.

Our consideration of internal control over compliance was for the limited purpose described in the first paragraph of this section and was not designed to identify all deficiencies in internal control over compliance that might be material weaknesses or significant deficiencies. We did not identify any deficiencies in internal control over compliance that we consider to be material weaknesses. However, material weaknesses may exist that have not been identified.

### ***Report on Schedule of Expenditures of State Financial Assistance Required by New Jersey Circular 15-08-OMB***

We have audited the financial statements of the governmental activities, the business-type activities, each major fund, and the aggregate remaining fund information of the Union County TEAMS Charter School, as of and for the fiscal year ended June 30, 2020 and the related notes to the financial statements, which collectively comprise the Charter School's basic financial

statements. We issued our report thereon dated January 20, 2021, which contained unmodified opinion on those financial statements. Our audit was conducted for the purpose of forming opinions on the financial statements that collectively comprise the basic financial statements. The accompanying schedule of expenditures of state financial assistance as required by New Jersey Circular 15-08- OMB are presented for purposes of additional analysis and are not a required part of the basic financial statements. Such information is the responsibilities of management and was derived from and relates directly to the underlying accounting and other records used to prepare basic financial statements. The information has been subjected to the auditing procedures applied in the audit of the financial statements and certain additional procedures, including comparing and reconciling such information directly to the underlying accounting and other records used to prepare the basic financial statements or to the basic financial statements themselves, and other additional procedures in accordance with auditing standards generally accepted in the United States of America. In our opinion, the schedule of expenditures and schedule of relation to the basic financial statements as a whole.

***Purpose of this Report***

The purpose of this report on internal control over compliance is solely to describe the scope of our testing of internal control over compliance and the results that the testing based on the requirements of NJ Circular 15-08-OMB.

This report is intended solely for the information and use of the audit committee, management, The Union County Teams Charter School Board of Trustees, the New Jersey State Department of Education and other state awarding agencies and pass-through entities and is not intended to be and should not be used by anyone other than these specified parties.

Respectfully submitted,

Meshinsky & Associates, LLC CPA's  
Union, New Jersey



Philip T. Meshinsky, CPA  
Licensed Public School Accountant  
No. CS00233400  
Meshinsky & Associates LLC, CPA's

January 20, 2021

**UNION COUNTY TEAMS CHARTER SCHOOL**  
Schedule of Expenditures of Federal Financial Assistance  
For The Fiscal Year Ended June 30, 2020

Program Title	Federal CFDA Number	Program or Award Amount	Grant Period		Balance at June 30, 2019	Cash Received	Budgetary Expenditures	Balance at June 30, 2020
			From	To				
<b>U.S. Department of Education</b>								
<b>Special Revenue Fund</b>								
<u>ESEA Consolidated:</u>								
Title I	84.010	\$ 125,101	7/1/19	6/30/20	\$ (60,045)	\$ 185,146	\$ (125,101)	\$ -
Title II	84.367	18,101	7/1/19	6/30/20	(15,629)	33,730	(18,101)	-
Title IV	84.424	10,000	7/1/19	6/30/20	(10,000)	20,000	(10,000)	-
Total ESEA Consolidated					<u>(85,674)</u>	<u>238,876</u>	<u>(153,202)</u>	<u>-</u>
<u>Individuals with Disabilities Cluster:</u>								
I.D.E.A. Part B Basic	84.027	84,579	7/1/19	6/30/20	(31,049)	115,628	(84,579)	-
Total I.D.E.A. Part B Basic					<u>(31,049)</u>	<u>115,628</u>	<u>(84,579)</u>	<u>-</u>
Total Federal Financial Assistance					<u>\$ (116,723)</u>	<u>\$ 354,504</u>	<u>\$ (237,781)</u>	<u>\$ -</u>

The accompanying Notes to Schedules of Expenditures of Awards and Financial Assistance are an integral part of this schedule.

**UNION COUNTY TEAMS CHARTER SCHOOL**  
Schedule of Expenditures of State Financial Assistance  
For The Fiscal Year Ended June 30, 2020

State Grantor/Program Title	Grant or State Project Number	Program or Award Amount	Grant Period		Balance at June 30, 2019			Balance at June 30, 2020			MEMO	Cumulative Total Expenditures
			From	To	Deferred Revenue (Accounts Receivable)	Cash Received	Budgetary Expenditures	Accounts Receivable	Deferred Revenue/ Interfund Payable	Budgetary Receivable		
<b>State Department of Education</b>												
General Fund:												
State Aid-Public Cluster												
Equalization Aid- State Share	19-495-034-5120-078	-	7/1/18	6/30/19	\$ (74,609)	\$ 74,609	\$ -	\$ -	\$ -	\$ -	-	-
Equalization Aid- State Share	20-495-034-5120-078	-	7/1/19	6/30/20	-	3,781,272	(3,808,187)	(26,915)	-	26,915	3,808,187	-
Special Education Categorical Aid	20-495-034-5120-089	-	7/1/19	6/30/20	-	159,039	(159,039)	-	-	-	159,039	-
State Adjustment	20-495-034-5120-089	-	7/1/19	6/30/20	-	301,200	(301,200)	-	-	-	301,200	-
Security Aid	20-495-034-5120-084	-	7/1/19	6/30/20	-	212,759	(212,759)	-	-	-	212,759	-
Total State Aid- Public Cluster					(74,609)	4,528,879	(4,481,185)	(26,915)	-	26,915	4,481,185	-
On-Behalf TPAF Pension Contributions	20-495-034-5095-006	-	7/1/19	6/30/20	-	366,361	(366,361)	-	-	-	366,361	-
On-Behalf TPAF Social Security	20-495-034-5095-006	-	7/1/19	6/30/20	-	67,228	(67,228)	-	-	-	67,228	-
Total General Fund					(74,609)	4,962,468	(4,914,774)	(26,915)	-	26,915	4,914,774	-
<b>State Department of Agriculture</b>												
Enterprise Fund:												
National School Lunch Program (State Share)	20-100-010-3350-023	-	7/1/19	6/30/20	-	1,678	(1,678)	-	-	-	1,678	-
National School Lunch Program (State Share)	19-100-010-3350-023	-	7/1/18	6/30/19	(173)	173	-	-	-	-	-	-
Total Enterprise Fund					(173)	1,851	(1,678)	-	-	-	1,678	-
Total All Funds					(74,782)	4,964,319	(4,916,452)	(26,915)	-	26,915	4,916,452	-
<b>State Financial Assistance Not Subject to Major Program Determination:</b>												
General Funds:												
On-Behalf TPAF Pension Contributions	20-495-034-5095-006	-	7/1/19	6/30/20	-	(366,361)	366,361	-	-	-	(366,361)	-
Total General Fund					-	(366,361)	366,361	-	-	-	(366,361)	-
Total State Financial Assistance					\$ (74,782)	\$ 4,597,958	\$ (4,550,091)	\$ (26,915)	\$ -	\$ 26,915	\$ 4,550,091	-

The accompanying Notes to Schedules of Expenditures of Awards and Financial Assistance are an integral part of this schedule.

**UNION COUNTY TEAMS CHARTER SCHOOL**  
Notes to Schedules of Expenditures of Awards and Financial Assistance  
June 30, 2020

---

**NOTE 1. GENERAL**

The accompanying schedules of expenditures of state financial assistance include state award activity of the Board of Trustees, Union County TEAMS Charter School. The Board of Trustees is defined in Note 1 to the board's basic financial statements. All state awards received directly from state agencies, as well as state financial assistance passed through other government agencies is included on the schedule of expenditures of state financial assistance.

**NOTE 2. BASIS OF ACCOUNTING**

The accompanying schedules of expenditures of awards and financial assistance are presented on the budgetary basis of accounting with the exception of programs recorded in the food service fund, which are presented using the accrual basis of accounting. These bases of accounting are described in Note 1 to the board's basic financial statements. The information in this schedule is presented in accordance with the requirements of 2 (CFR) Part 200 -Uniform Guidance Administrative Requirements, Cost Principles, and Audit Requirements for Federal Awards (Uniform Guidance) and the audit requirements as prescribed by the Office of School Finance, Department of Education, State of New Jersey; New Jersey Circular 15-08 OMB, Single Audit Policy for Recipients of Federal Grants, State Grants and State Aid. Therefore, some amounts presented in this schedule may differ from amounts presented in, or used in the presentation of, the basic financial statements. This does not apply to charter schools as districts are not permitted to defer the June payments to charter schools.

**NOTE 3. RELATIONSHIP TO BASIC FINANCIAL STATEMENTS**

The basic financial statements present the general fund and special revenue fund on a GAAP basis. Budgetary comparison statements or schedules (RSI) are presented for the general fund and special revenue fund to demonstrate finance-related legal compliance in which certain revenue is permitted by law or grant agreement to be recognized in the audit year, whereas for GAAP reporting, revenue is not recognized until the subsequent year or when expenditures have been made.

The general fund is presented in the accompanying schedules on the modified accrual basis. The special revenue fund is presented in the accompanying schedules on the grant accounting budgetary basis which recognizes encumbrances as expenditures and also recognizes the related revenues, whereas the GAAP basis does not. The special revenue fund also recognizes the one or more June state aid payment in the current budget year, consistent with *N.J.S.A. 18A:22-4.2*.

**UNION COUNTY TEAMS CHARTER SCHOOL**  
Notes to Schedules of Expenditures of Awards and Financial Assistance  
June 30, 2020

**NOTE 3. RELATIONSHIP TO BASIC FINANCIAL STATEMENTS (CONTINUED)**

The net adjustment to reconcile from the budgetary basis to the GAAP basis is none for the general fund and none for the special revenue fund. See Notes to the Required Supplementary Information for a reconciliation of the budgetary basis to the modified accrual basis of accounting for the general and special revenue funds. Awards and financial assistance revenues are reported in the board's basic financial statements on a GAAP basis as presented below:

	Federal	State	Total
General Fund	\$ -	\$ 4,914,774	\$ 4,914,774
Special Revenue Fund	237,781	-	237,781
Food Service Fund	115,900	1,678	117,578
Total Awards & Financial Assistance	<u>\$ 353,681</u>	<u>\$ 4,916,452</u>	<u>\$ 5,270,133</u>

**NOTE 4. RELATIONSHIP TO FEDERAL STATE FINANCIAL REPORTS**

Amounts reported in the accompanying schedules agree with the amounts reported in the related federal and state financial reports.

**NOTE 5. FEDERAL AND STATE LOANS OUTSTANDING**

Union County TEAMS Charter School has no loan balances outstanding at June 30, 2020.

**NOTE 6. OTHER**

Revenues and expenditures reported under the Food Distribution Program represent current year value received and current year distributions respectively. The amount reported as TPAF Pension Contributions represents the amount paid by the state on behalf of the charter school for the year ended June 30, 2020. TPAF Social Security Contributions represents the amount reimbursed by the state for the employer's share of social security contributions for TPAF members for the year ended June 30, 2020.

**NOTE 7. ON-BEHALF PROGRAMS NOT SUBJECT TO STATE SINGLE AUDIT**

On-behalf State Programs for TPAF Pension and Post-Retirement Medical Benefits Contributions payments are not subject to a State single audit and, therefore, are excluded from major program determination. The Schedule of State Financial Assistance provides a reconciliation of State financial assistance reported in the Charter School's basic financial statements and the amount subject to State single audit and major program determination.

**UNION COUNTY TEAMS CHARTER SCHOOL**  
Notes to Schedules of Expenditures of Awards and Financial Assistance  
June 30, 2020

---

**NOTE 7. ON-BEHALF PROGRAMS NOT SUBJECT TO STATE SINGLE AUDIT (CONTINUED)**

<u>Program</u>	<u>Total</u>
Title I, Part A: Grants to Local Education Agencies	<u>\$ 125,101</u>

UNION COUNTY TEAMS CHARTER  
SCHOOL  
Schedule of Findings and Questioned Costs  
For the Fiscal Year Ended June 30, 2020

---

**Section I – Summary of Auditor’s Results**

**Financial Statements**

Type of auditors’ report issued on financial statements Unmodified

Internal control over financial reporting:

1) Material weakness(es) identified? \_\_\_\_\_ Yes   X   No

2) Significant deficiencies identified that are not considered to be material weaknesses? \_\_\_\_\_ Yes   X   None Reported

Noncompliance material to basic financial statements noted? \_\_\_\_\_ Yes   X   No

**Federal Awards**

**N/A**

Internal Control over major programs:

1) Material weakness (es) identified? \_\_\_\_\_ Yes    No

2) Significant deficiencies identified? \_\_\_\_\_ Yes    None Reported

Type of auditor’s report issued on compliance for major programs: **N/A**

Any audit findings disclosed that are required to be reported in accordance with 2 CFR 200 section .516(a)? \_\_\_\_\_ Yes    No

Identification of major programs:

CFDA Number(s)	FAIN Number(s)	Name of Federal Program or Cluster
----------------	----------------	------------------------------------

N/A

Dollar threshold used to distinguish type A or type B Programs: **N/A**

Auditee qualified as low-risk auditee? \_\_\_\_\_ Yes    No



**State Awards**

Dollar threshold used to distinguish between Type A and Type B programs: \$750,000

Auditee qualified as low-risk auditee?  Yes  No

Internal control over major programs:

1) Material weakness(es) identified?  Yes  No

2) Significant deficiencies identified that are not considered to be material weaknesses?  Yes  Reported  None

Type of auditors' report issued on compliance for major programs Unmodified

Any audit findings disclosed that are required to be reported in accordance with NJ Circular 15-08-OMB?  Yes  No

Identification of major state programs:

<b>GMIS Number(s)</b>	<b>Name of State Program</b>
<u>20-495-034-5120-071</u>	<u>STATE ADJUSTMENT AID</u>
<u>20-495-034-5120-078</u>	<u>EQUALIZATION AID</u>
<u>20-495-034-5120-089</u>	<u>SPECIAL EDUCATION CATEGORICAL AID</u>
<u>20-495-034-5120-084</u>	<u>SECURITY AID</u>

***Section II –Financial Statement Findings***

This section identifies the significant deficiencies, material weaknesses, fraud, illegal acts, violations of provisions of contracts and grant agreements, and abuse related to the financial statements for which *Government Auditing Standards* requires reporting in a NJ Circular 15-08-OMB. See paragraphs 13.15 and 13.35.

**Finding**

There were no matters reported.

**UNION COUNTY TEAMS CHARTER SCHOOL**  
Schedule of Findings and Questioned Costs  
For the Fiscal Year Ended June 30, 2020

---

***Section III – Federal Awards and State  
Financial Assistance Findings and  
Questioned Costs***

This section identifies audit findings required to be reported by audit requirements for federal awards and NJ Circular 15-08-OMB, as applicable.

**FEDERAL AWARDS**

N/A

**STATE AWARDS**

**Findings**

There were no matters reported.

**UNION COUNTY TEAMS CHARTER  
SCHOOL**

Summary Schedule of Prior Year Audit Findings And  
Questioned Costs As Prepared by Management For  
the Fiscal Year Ended June 30, 2020

---

**STATUS OF PRIOR YEAR FINDINGS**

This section identifies the status of prior-year findings related to the basic financial statements and federal and state awards that are required to be reported in accordance with Chapter 6.12 of *Government Auditing Standards*, NJ Circular 04-04-OMB or 15-08-OMB as applicable.

**Findings**

There were no matters reported.