

***UNITY CHARTER SCHOOL***

***COMPREHENSIVE ANNUAL  
FINANCIAL REPORT***

***FISCAL YEAR ENDED JUNE 30, 2020***

***UNITY CHARTER SCHOOL***

***Unity Charter School  
Board of Trustees  
Morris Township, New Jersey***

***Comprehensive Annual Financial Report  
For the Fiscal Year Ended June 30, 2020***

***COMPREHENSIVE ANNUAL  
FINANCIAL REPORT  
OF THE  
UNITY CHARTER SCHOOL  
MORRIS TOWNSHIP, NEW JERSEY  
FOR THE FISCAL YEAR ENDED JUNE 30, 2020***

***Prepared By***

***Unity Charter School  
Finance Department***

***And***

***Barre & Company, CPA's***

**STATE BOARD OF EDUCATION**

KATHY A. GOLDENBERG..... Burlington  
President

ANDREW J. MULVIHILL ..... Sussex  
Vice President

ARCELLO APONTE ..... Middlesex

MARY BETH BERRY ..... Hunterdon

ELAINE BOBROVE..... Camden

FATIMAH BURNAM-WATKINS ..... Union

RONALD K. BUTCHER..... Gloucester

JACK FORNARO ..... Warren

MARY ELIZABETH GAZI ..... Somerset

EDITHE FULTON..... Ocean

NEDD JAMES JOHNSON, ED.D.....Salem

ERNEST P. LEPORE ..... Hudson

JOSEPH RICCA, JR., ED.D.....Morris

SYLVIA SYLVIA-CIOFFI.....Monmouth

**Kevin Dehmer, Interim Commissioner**  
Secretary, State Board of Ed

**UNITY CHARTER SCHOOL  
TABLE OF CONTENTS**

	<b>Page</b>
<b>INTRODUCTORY SECTION.....</b>	<b>1</b>
Transmittal Letter .....	2
Organizational Chart .....	7
Consultants and Advisors .....	9
<b>FINANCIAL SECTION .....</b>	<b>10</b>
Independent Auditor’s Report .....	11
<b>REQUIRED SUPPLEMENTARY INFORMATION – PART I .....</b>	<b>14</b>
Management’s Discussion and Analysis.....	15
<b>BASIC FINANCIAL STATEMENTS .....</b>	<b>21</b>
<b>SECTION A – CHARTER SCHOOL-WIDE FINANCIAL STATEMENTS .....</b>	<b>22</b>
A-1 Statement of Net Position.....	23
A-2 Statement of Activities.....	24
<b>SECTION B – FUND FINANCIAL STATEMENTS .....</b>	<b>25</b>
<b>GOVERNMENTAL FUNDS.....</b>	<b>26</b>
B-1 Balance Sheet.....	27
B-2 Statement of Revenues, Expenditures, and Changes in Fund Balances .....	28
B-3 Reconciliation of Statement of Revenues, Expenditures, and Changes in Fund Balances of Governmental Funds to the Statement of Activities.....	29
<b>PROPRIETARY FUNDS .....</b>	<b>30</b>
B-4 Statement of Net Position.....	31
B-5 Statement of Revenues, Expenses, and Changes in Fund Net Position.....	32
B-6 Statement of Cash Flows .....	33
<b>FIDUCIARY FUNDS.....</b>	<b>34</b>
B-7 Statement of Fiduciary Net Position .....	35
B-8 Statement of Changes in Fiduciary Net Position .....	36
<b>NOTES TO THE FINANCIAL STATEMENTS .....</b>	<b>37</b>
<b>REQUIRED SUPPLEMENTARY INFORMATION – PART II .....</b>	<b>74</b>
<b>SECTION C – BUDGETARY COMPARISON SCHEDULE.....</b>	<b>75</b>
C-1 Budgetary Comparison Schedule – General Fund.....	76
C-2 Budgetary Comparison Schedule – Special Revenue Fund .....	78

**UNITY CHARTER SCHOOL  
TABLE OF CONTENTS**

	<b>Page</b>
<b>FINANCIAL SECTION (CONTINUED)</b>	
<b>NOTES TO THE REQUIRED SUPPLEMENTARY INFORMATION</b> .....	<b>79</b>
C-3 Budget-to-GAAP Reconciliation .....	80
<b>REQUIRED SUPPLEMENTARY INFORMATION – PART III</b> .....	<b>81</b>
<b>SCHEDULE L – SCHEDULES RELATED TO ACCOUNTING AND REPORTING FOR PENSIONS (GASB 68)</b> .....	<b>82</b>
L-1 Schedules of the Charter School’s Proportionate Share of the Net Pension Liability - PERS .....	83
L-2 Schedules of Charter School Contributions - PERS.....	84
L-3 Schedules of the Charter School’s Proportionate Share of the Net Pension Liability - TPAF .....	85
<b>SCHEDULE M – SCHEDULES RELATED TO ACCOUNTING AND REPORTING FOR POSTEMPLOYMENT BENEFITS OTHER THAN PENSIONS</b> .....	<b>86</b>
M-1 Schedule of Changes in the Total OPEB Liability and Related Ratios .....	87
<b>NOTES TO REQUIRED SUPPLEMENTARY INFORMATION III</b> .....	<b>88</b>
<b>OTHER SUPPLEMENTARY INFORMATION</b> .....	<b>91</b>
<b>SECTION E – SPECIAL REVENUE FUND</b> .....	<b>92</b>
E-1 Combining Schedule of Revenues and Expenditures – Budgetary Basis .....	93
<b>SECTION G – PROPRIETARY FUNDS</b> .....	<b>94</b>
<b>SECTION H – FIDUCIARY FUNDS</b> .....	<b>95</b>
H-1 Combining Statement of Fiduciary Net Position .....	96
H-2 Combining Statement of Changes in Fiduciary Net Position.....	97
H-3 Student Activities Fund – Schedule of Receipts and Disbursements .....	98
H-4 Payroll Agency Fund – Schedule of Receipts and Disbursements.....	99
<b>STATISTICAL SECTION (UNAUDITED)</b> .....	<b>100</b>
<b>INTRODUCTION TO THE STATISTICAL SECTION</b> .....	<b>101</b>
<b>FINANCIAL TRENDS</b> .....	<b>102</b>
J-1 Net Assets/Position by Component.....	103
J-2 Changes in Net Assets/Position .....	104
J-3 Fund Balances – Governmental Funds.....	105
J-4 Changes in Fund Balances – Governmental Funds.....	106

**UNITY CHARTER SCHOOL  
TABLE OF CONTENTS**

	<b>Page</b>
J-5 General Fund Other Local Revenue by Source .....	107
 <b>STATISTICAL SECTION (UNAUDITED) (CONTINUED)</b>	
<b>OPERATING INFORMATION .....</b>	<b>108</b>
J-16 Full-Time Equivalent Charter School Employees by Function/Program.....	N/A
J-17 Operating Statistics .....	109
J-18 School Building Information.....	110
J-20 Insurance Schedule .....	111
J-21 Charter School Performance Framework, Financial Performance, Fiscal Ratios.....	112
 <b>SINGLE AUDIT SECTION .....</b>	 <b>113</b>
K-1 Report on Internal Control over Financial Reporting and on Compliance and Other Matters Based On an Audit of Financial Statements Performed In Accordance With <i>Government Auditing Standards</i> .....	114
K-2 Report on Compliance for Each Major State Program and Report on Internal Control over Compliance in Accordance with the New Jersey Circular 15-08-OMB .....	116
K-3 Schedule of Expenditures of Federal Awards – Schedule A .....	119
K-4 Schedule of Expenditures of State Financial Assistance – Schedule B .....	120
K-5 Notes to the Schedules of Expenditures of Awards and Financial Assistance.....	121
K-6 Schedule of Findings and Questioned Costs .....	124
Section I - Summary of Auditor's Results .....	124
Section II - Financial Statement Findings .....	125
Section III - Federal Awards and State Financial Assistance Findings and Questioned Costs .....	125
K-7 Summary Schedule of Prior Year Audit Findings and Questioned Costs as prepared by management .....	126

***INTRODUCTORY SECTION***





## TEACHING CAPABLE, CONFIDENT KIDS FOR A HEALTH PLANET

ONE EVERGREEN PLACE, MORRIS TOWNSHIP, NEW JERSEY 07960  
TEL. (973) 292-1808; FAX (973) 267-9288

January 15, 2021

Honorable President and  
Members of the Board of Trustees  
Unity Charter School  
One Evergreen Place,  
Morris Township, New Jersey 07960

Dear Board Members:

The Comprehensive Annual Financial Report (CAFR) of the Unity Charter School (Charter School) for the fiscal year ended June 30, 2020, is hereby submitted. Responsibility for both the accuracy of the data and completeness and fairness of the presentation, including all disclosures, rests with the management of the Board of Trustees (the "Board"). To the best of our knowledge and belief, the data presented in this report is accurate in all material respects and is reported in a manner designed to present fairly the basic financial statements and results of operations of the various funds of the Charter School. All disclosures necessary to enable the reader to gain an understanding of the Charter School's financial activities have been included.

The Comprehensive Annual Financial Report is presented in four sections as follows:

- The Introductory Section contains a table of contents, Letter of Transmittal, List of Principal Officials, and an Organizational Chart of the Charter School;
- The Financial Section begins with the Independent Auditors' Report and includes the Management's Discussion and Analysis, the Basic Financial Statements and Notes providing an overview of the Charter School's financial position and operating results, and other schedules providing detailed budgetary information;
- The Statistical Section includes selected economic and demographic information, financial trends, and the fiscal capacity of the Charter School, generally presented on a multi-year basis;
- The Single Audit Section — The Charter School is required to undergo an annual single audit in conformity with the provisions of the *Uniform Administrative Requirements, Cost Principles, and Audit Requirements for Federal Awards* (U.S. Uniform Guidance) and New Jersey Circular 15-08-OMB, *Single Audit Policy for Recipients of Federal Grants, State Grants and State Aid*. Information related to this single audit, including the independent auditor's report on the internal control and compliance with applicable laws, regulations, contracts and grants, along with findings and questioned costs, are included in the single audit section of this report.

## Charter School Organization

An elected eleven-member Board of Trustees (the “Board”) serves as the policy maker for the Charter School. The Board adopts an annual budget and directly approves all expenditures which serve as the basis for control over and authorization for all expenditures of the Charter School funds.

The Executive Director of the Charter School is responsible to the Board for total educational and support operations. The Business Administrator/Board Secretary is the Chief Financial Officer of the Charter School, responsible to the Board for maintaining all financial records, issuing warrants in payment of liabilities incurred by the Charter School, acting as custodian of all Charter School funds, and investing idle funds as permitted by New Jersey law.

### 1. REPORTING ENTITY AND ITS SERVICES:

Unity Charter School is an independent reporting entity within the criteria adopted by the Government Auditing Standards Board (GASB) as established by GASB Statement No. 14, as amended. All funds and account groups of the school are included in this report. Unity Charter School, Board of Trustees, constitutes the Charter School’s reporting entity.

The Unity Charter School was chartered by the New Jersey Department of Education in January 1997 as the only charter school that had included a planning year prior to opening. The Charter School opened its doors to the first 60 students in grades K-7 in September 1998, in accordance with its charter. It maintained that enrollment level throughout the first school year. The Unity Charter School now operates a K-8 program, in which students thrive in a multi-age learning environment that stresses the importance of social and environmental responsibility. While encouraging each child to grow academically, Unity Charter School integrates parents and the community to participate in classroom support as well as the governance of the school.

#### Average Daily Enrollment

<u>Fiscal Year</u>	<u>Student Enrollment-ADE</u>	<u>Percent Change-ADE</u>
2019-2020	235.4	-0.51%
2018-2019	236.6	-1.36%
2017-2018	239.9	2.94%
2016-2017	233.0	6.39%
2015-2016	219.0	7.88%

### 2. ECONOMIC CONDITION AND OUTLOOK:

Unity Charter School has completed its twenty-first year of operation as a kindergarten through eighth grade public school of choice. Students are admitted to Unity Charter School using a lottery method, as required by the State of New Jersey. Informational gatherings are held for interested parents in the fall and early winter, prior to the lottery process. After lottery selection, families are notified, and waiting lists are maintained. Enrollment information is maintained and reported as per Department of Education regulations.

**3. MAJOR ACCOMPLISHMENTS:**

In accordance with the school's mission, the Assembly, consisting of parents, trustees, staff and students, met three times this past year, and discussing such topics as the school charter, fundraising and development of a strategic plan, educational program and facilities issues. From these meetings came proposals and activities for the school community and the Board of Trustees. Weekly school meetings, peer mediation and class meetings continued the mission of collaborative teaching and governance.

Throughout the year, in accordance with the school's mission, sustainability was taught through the investigation of effects of human endeavor on our ecosystem, using learning activities such as field trips, class curriculum and individual and individual research projects. Charter School's lunch program continued its partially organic, whole food and vegetarian program, harvesting from the garden for the school lunches. The curriculum integrated sustainability and diversity themes with a robust curriculum that integrated the State Core Curriculum Standards. Students took the state required PAARC tests, scoring well, in comparison to the stage average.

The NJ Department of Education granted Unity Charter School another renewal in the 2016-2017 school year for five (5) years as it continues to make significant strides in improving academic outcomes and providing a positive school environment for sustainability and growth for the scholars of Unity Charter School.

**4. INTERNAL ACCOUNTING CONTROLS:** Management of the Charter School is responsible for establishing and maintaining an internal control designed to ensure that the assets of the Charter School are protected from loss, theft or misuse and to ensure that adequate accounting data are compiled to allow for the preparation of financial statements in conformity with generally accepted accounting principles (GAAP). Internal control is designed to provide reasonable, but not absolute, assurance that these objectives are met. The concept of reasonable assurance recognizes that: (1) the cost of a control should not exceed the benefits likely to be derived; and (2) the valuation of costs and benefits requires estimates and judgments by management. The primary control is that the Board President and one other Board member sign all general account checks, that all Purchase Orders are reviewed and that the Board President signs all payroll checks. In addition, the Treasurer verifies the payees on the checks and confirms the check register.

As a recipient of federal and state financial assistance, the Charter School is responsible for ensuring that adequate internal controls are in place to ensure compliance with applicable laws and regulations related to those programs. Internal control is also subject to periodic evaluation by the Charter School's management.

As part of the Charter School's single audit described earlier, tests are made to determine the adequacy of internal controls, including that portion related to federal and state financial assistance programs, as well as to determine that the Charter School has complied with applicable laws and regulations.

**5. BUDGETARY CONTROLS:** In addition to internal accounting controls, the Charter School maintains budgetary controls. The objective of these budgetary controls is to ensure compliance with legal provisions embodied in the annual appropriated budget. Annual appropriated budgets are adopted for the general fund and the special revenue fund. The final budget amount, as amended for the fiscal year, is reflected in the financial section.

An encumbrance accounting system is used to record outstanding purchase commitments on a line item basis. Open encumbrances at year-end are either cancelled or are included as reappropriations of fund balance in the subsequent year. Those amounts to be reappropriated are reported as Assignments of fund balance at June 30, 2020.

**6. ACCOUNTING SYSTEM AND REPORTS:**

The Charter School's accounting records reflect generally accepted accounting principles, as promulgated by the Government Accounting Standards Board (GASB). The accounting system of the Charter School is organized on the basis of funds and account groups. These funds and account groups are explained in "Notes to the Financial Statements", Note 1.

**7. FINANCIAL INFORMATION AT FISCAL YEAR END:**

Unity Charter School has continued its positive financial position as compared to last year. Detailed information can be found in the Management Discussion and Analysis. The Charter School has been aggressive in collecting tuition owed for sending districts, and insuring that the sending districts update the enrollment records in the D.O.E. Charter School Enrollment System. However, even with these efforts tuition payments from the sending districts are historically slow. Unity Charter School ended the 2019-2020 year meeting all of its obligations.

**8. CASH MANAGEMENT:**

The investment policy of the Charter School is guided in large part by state statute as detailed in "Notes to the Basic Financial Statement" Note 3. The Charter School had adopted a cash management plan which requires it to deposit funds in public depositories protected from loss under the provisions of the Governmental Unit Deposit Protection Act ("GUDPA"). GUDPA was enacted in 1970 to protect Government Units from a loss of funds on deposit with a failed banking institution in New Jersey. The law requires governmental units to deposit public funds only in public depositories located in New Jersey, where the funds are secured in accordance with the Act.

**9. RISK MANAGEMENT:**

The Board carries various forms of insurance, including but not limited to general liability, automobile liability and comprehensive/collision, hazard and theft insurance on property and contents.

**10. OTHER INFORMATION:**

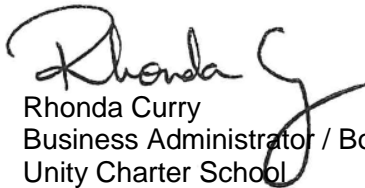
**Independent Audit** - State statutes require an annual audit by independent certified public accountants or registered municipal accountants. The accounting firm of Barre & Company, LLC Certified Public Accountants, was selected by the Board of Trustees. In addition to meeting the requirements set forth in State statutes, the audit also was designed to meet the requirements of Title 2 U.S. Code of Federal Regulations Part 200, *Uniform Administrative Requirements, Cost Principles, and Audit Requirements for Federal Awards* ("Uniform Guidance") and New Jersey's Circular 15-08-OMB, *Single Audit Policy for Recipients of Federal*

*Grants, State Grants, and State Aid.* The auditors' report on the basic financial statements and specific required supplemental information is included in the financial section of this report. The auditors' reports, related specifically to the single audit, are included in the single audit section of this report.

**11. ACKNOWLEDGEMENTS:**

We would like to express our appreciation to the members of the Unity Charter School Board of Trustees for their concern in providing fiscal accountability to the citizens and taxpayers of the Charter School and thereby contributing their full support to the development and maintenance of our financial operation. The preparation of this report could not have been accomplished without the efficient and dedicated services of our staff and other administrators in the school.

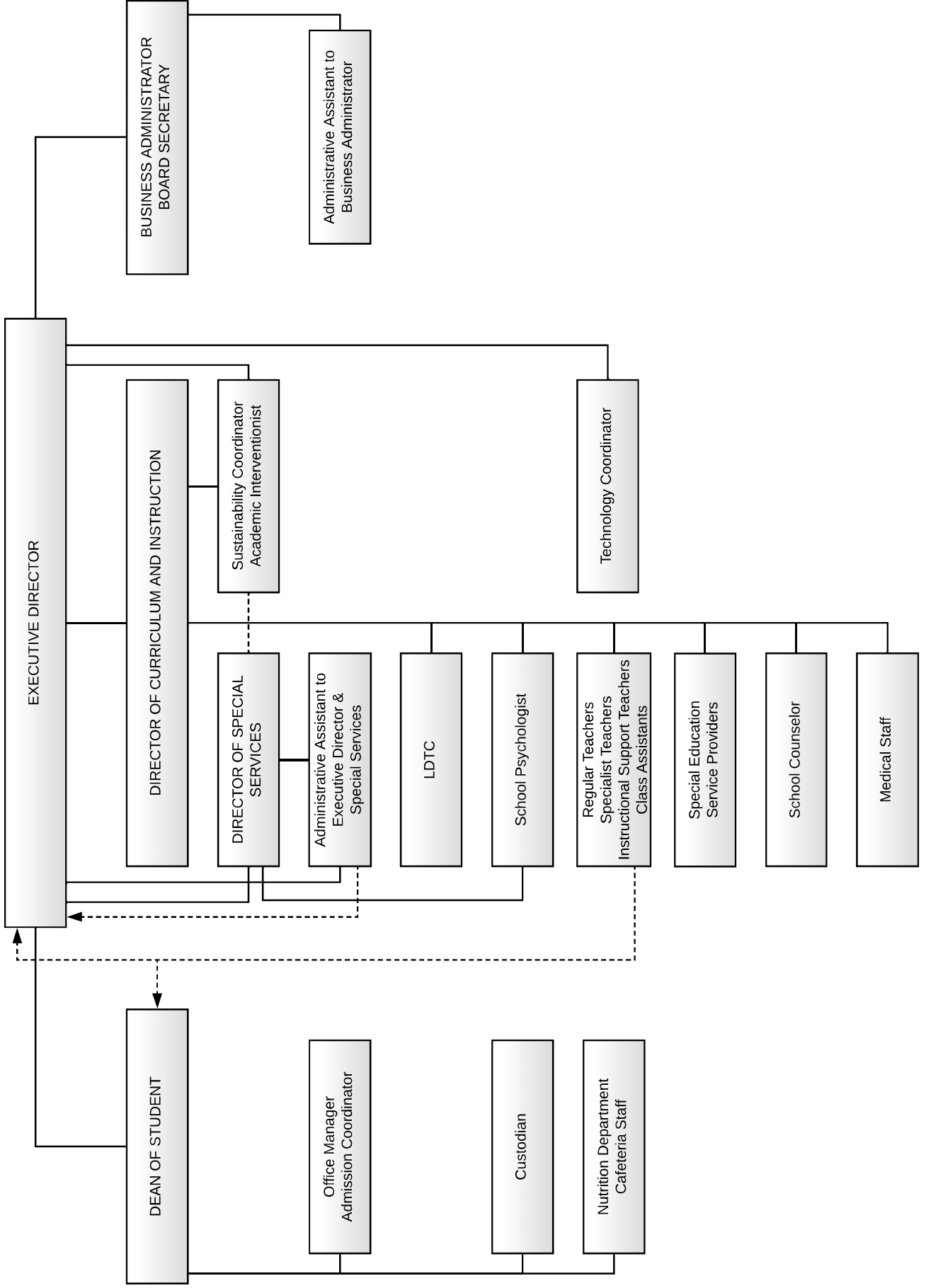
Respectfully submitted,



Rhonda Curry  
Business Administrator / Board Secretary  
Unity Charter School

# Unity Charter School

## ORGANIZATION CHART



**UNITY CHARTER SCHOOL  
MORRIS TOWNSHIP, NEW JERSEY**

**ROSTER OF OFFICIALS  
JUNE 30, 2020**

**MEMBERS OF THE BOARD OF TRUSTEES** **TERM EXPIRES**

**Robert Ghelli** 2021  
President

**Brian Stang** .....2022  
Vice President

**Members:**

John Coyle .....2022

Sherry Cicero .....2021

Suzanne Dell’Orto .....2021

Owen Lipnick .....2022

Gayle Moran .....2023

Kirstin Sechler .....2021

Thomas Sheffield .....2021

Brianna Divak .....2022

Eslin Eckert .....2022

**Connie Sanchez** - Executive Director

**Rhonda Curry** - Business Administrator / Board Secretary

**Christopher Lessard** - Treasurer

**UNITY CHARTER SCHOOL  
MORRIS TOWNSHIP, NEW JERSEY**

**CONSULTANTS AND ADVISORS**

***Audit Firm***

Barre & Company LLC  
Certified Public Accountants  
2204 Morris Avenue, Suite 206  
Union, New Jersey 07083

***Attorney***

Johnston Law Firm, LLC  
75 Midland Avenue  
Montclair, New Jersey 07042

***Official Depository***

Peapack-Gladstone Bank  
South Street  
Morristown, New Jersey 07960



***FINANCIAL SECTION***

**BARRE & COMPANY LLC**  
**CERTIFIED PUBLIC ACCOUNTANTS & CONSULTANTS**

*2204 Morris Avenue, Suite 206*  
*Union, New Jersey 07083*  
*(908) 686-3484*  
*FAX – (908) 686-6055*  
*www.cpa-bc.com ♦ info@cpa-bc.com*

**Independent Auditor's Report**

Honorable President  
Members of the Board of Trustees  
Unity Charter School

Morris Township, New Jersey

**Report on the Financial Statements**

We have audited the accompanying financial statements of the governmental activities, the business-type activities, each major fund, and the aggregate remaining fund information of the Unity Charter School (Charter School), in the , State of New Jersey, as of and for the fiscal year ended June 30, 2020, and the related notes to the financial statements, which collectively comprise the Charter School's basic financial statements as listed in the table of contents.

***Management's Responsibility for the Financial Statements***

The Charter School's management is responsible for the preparation and fair presentation of these financial statements in accordance with accounting principles generally accepted in the United States of America; this includes the design, implementation, and maintenance of internal control relevant to the preparation and fair presentation of financial statements that are free from material misstatement, whether due to fraud or error.

***Auditor's Responsibility***

Our responsibility is to express opinions on these financial statements based on our audit. We conducted our audit in accordance with auditing standards generally accepted in the United States of America and the standards applicable to financial audit contained in Government Auditing Standards, issued by the Comptroller General of the United States; and in compliance with audit requirements as prescribed by the Division of Finance, Department of Education, State of New Jersey. Those standards require that we plan and perform the audit to obtain reasonable assurance about whether the financial statements are free from material misstatement.

An audit involves performing procedures to obtain audit evidence about the amounts and disclosures in the financial statements. The procedures selected depend on the auditor's judgment, including the assessment of the risks of material misstatement of the financial statements, whether due to fraud or error. In making those risk assessments, the auditor considers internal control relevant to the entity's preparation and fair presentation of the financial statements in order to design audit procedures that are appropriate in the circumstances, but not for the purpose of expressing an opinion on the effectiveness of the

entity's internal control. Accordingly, we express no such opinion. An audit also includes evaluating the appropriateness of accounting policies used and the reasonableness of significant accounting estimates made by management, as well as evaluating the overall presentation of the financial statements.

We believe that the audit evidence we have obtained is sufficient and appropriate to provide a basis for our audit opinions.

### **Opinions**

In our opinion, the financial statements referred to above present fairly, in all material respects, the respective financial position of the governmental activities, the business-type activities, each major fund, and the aggregate remaining fund information of the Unity Charter School, in the State of New Jersey, as of June 30, 2020, and the respective changes in the financial position and, where applicable, cash flows thereof for the fiscal year then ended in accordance with accounting principles generally accepted in the United States of America.

### **Other Matters**

#### *Required Supplementary Information*

Accounting principles generally accepted in the United States of America require that the Management's Discussion and Analysis, following this report, and pension and post-employment benefit schedules in Exhibits L-1 through L-3, and M-1, and the related notes be presented to supplement the basic financial statements and the budgetary comparison information in Exhibits C-1 through C-3. Such information, although not a part of the basic financial statements, is required by the Governmental Accounting Standards Board who considers it to be an essential part of financial reporting for placing the basic financial statements in an appropriate operational, economic, or historical context. We have applied certain limited procedures to the required supplementary information in accordance with auditing standards generally accepted in the United States of America, which consisted of inquiries of management about the methods of preparing the information and comparing the information for consistency with management's response to our inquiries, the basic financial statements, and other knowledge we obtained during our audit of the basic financial statements. We do not express an opinion or provide any assurance on the information because the limited procedures do not provide us with sufficient evidence to express an opinion or provide any assurance.

#### *Other Information*

Our audit was conducted for the purpose of forming opinions on the financial statements that collectively comprise the Foundation Academy Charter School's basic financial statements. The introductory section, combining statements and related major fund supporting statements and schedules, and statistical section are presented for purposes of additional analysis, as required by the Office of School Finance, Department of Education, State of New Jersey, and are not a required part of the basic financial statements. The accompanying schedules of expenditures of federal awards and state financial assistance, as required by Title 2 U.S. Code of Federal Regulations Part 200, Uniform Administrative Requirements, Cost Principles, and Audit Requirements for Federal Awards (Uniform Guidance), and State of New Jersey Circular 15-08-OMB, Single Audit Policy for Recipients of Federal Grants, State Grants and State Aid, respectively, are also presented for purposes of additional analysis and are not a required part of the basic financial statements.

The accompanying combining statements and related major fund supporting statements and schedules and schedules of expenditures of federal awards and state financial assistance are the responsibility of management and were derived from and relate directly to the underlying accounting and other records used to prepare the basic financial statements. Such information has been subjected to the auditing procedures applied in the audit of the basic financial statements and certain additional procedures, including comparing and reconciling such information directly to the underlying accounting and other records used to prepare the basic financial statements or to the basic financial statements themselves, and other additional procedures in accordance with auditing standards generally accepted in the United States of America. In our opinion, the accompanying combining statements and related major fund supporting statements and schedules and schedules of expenditures of federal awards and state financial assistance are fairly stated, in all material respects, in relation to the basic financial statements as a whole.


The introductory and statistical sections have not been subjected to the auditing procedures applied in the audit of the basic financial statements, and accordingly, we do not express an opinion or provide any assurance on it.

**Other Reporting Required by *Government Auditing Standards and the Office of School Finance, Department of Education, State of New Jersey***

In accordance with *Government Auditing Standards* and the Office of School Finance, Department of Education, State of New Jersey, we have also issued our report dated January 15, 2021 on our consideration of the Unity Charter School's internal control over financial reporting and our tests of its compliance with certain provisions of laws, regulations, contracts, and grant agreements and other matters. The purpose of that report is to describe the scope of our testing of internal controls over financial reporting and compliance and the results of that testing, and not to provide an opinion on internal control over financial reporting or on compliance.

That report is an integral part of an audit performed in accordance with *Government Auditing Standards and the Office of School Finance, Department of Education, State of New Jersey* in considering the Charter School's internal control over financial reporting and compliance.

  
BARRE & COMPANY LLC  
Certified Public Accountants  
Public School Accountants

  
Richard M. Barre  
Public School Accountant  
PSA Number CS-01181

Union, New Jersey  
January 15, 2021

***REQUIRED SUPPLEMENTARY INFORMATION – PART I***

**UNITY CHARTER SCHOOL  
MORRIS TOWNSHIP, NEW JERSEY**

**MANAGEMENT'S DISCUSSION AND ANALYSIS  
FOR FISCAL YEAR ENDED JUNE 30, 2020  
UNAUDITED**

The discussion and analysis of Unity Charter School's financial performance provides an overall review of the Charter School's financial activities for the fiscal year ended June 30, 2020. The intent of this discussion and analysis is to look at the Charter School's financial performance as a whole; readers should also review the basic financial statements and notes to enhance their understanding of the Charter School's financial performance.

**Financial Highlights**

Key financial highlights for 2020 are as follows:

- ❖ General revenues accounted for \$4,620,351 or 99% of all revenues. Program specific revenues in the form of charges for services and operating grants and contributions accounted for \$65,414 or 1% of total revenues of \$4,685,765.
- ❖ The Charter School had \$4,508,665 in expenses; only \$65,414 of these expenses were offset by program specific charges for services, grants or contributions. General revenues of \$4,620,351 were adequate to provide for these programs.
- ❖ Among governmental funds, the General Fund had \$4,539,815 in revenues and \$4,331,126 in expenditures. The General Fund's fund balance increased \$208,689 over 2019. This increase was anticipated by the Board of Trustees.

**Using this Comprehensive Annual Financial Report (CAFR)**

This annual report consists of a series of financial statements and notes to those statements. These statements are organized so the reader can understand Unity Charter School as a financial whole, an entire operating entity. The statements then proceed to provide an increasingly detailed look at specific financial activities.

The *Statement of Net Position* and *Statement of Activities* provide information about the activities of the whole Charter School, presenting both an aggregate view of the Charter School's finances and a longer-term view of those finances. Fund financial statements provide the next level of detail. For governmental funds, these statements tell how services were financed in the short-term as well as what remains for future spending. The fund financial statements also look at the Charter School's most significant funds. In the case of Unity Charter School, the General Fund is by far the most significant fund.

**Reporting the Charter School as a Whole**

**Statement of Net Position and the Statement of Activities**

While this document contains the large number of funds used by the Charter School to provide programs and activities, the view of the Charter School as a whole looks at all financial transactions and ask the question, "How did we do financially during 2020?" The *Statement of Net Position* and the *Statement of Activities* answer this question. These statements include all assets and liabilities using the accrual basis of accounting similar to the accounting used by

**UNITY CHARTER SCHOOL  
MORRIS TOWNSHIP, NEW JERSEY**

**MANAGEMENT'S DISCUSSION AND ANALYSIS  
FOR FISCAL YEAR ENDED JUNE 30, 2020  
UNAUDITED  
(CONTINUED)**

**Statement of Net Position and the Statement of Activities (Continued)**

most private-sector businesses. This basis of accounting takes into account all of the current year's revenues and expenses regardless of when cash is received or paid.

These two statements report the Charter School's net position and changes in that position. This change in net position is important because it tells the reader that, for the Charter School as a whole, the financial position of the Charter School has improved or diminished. The causes of this change may be the result of many factors, some financial and some not. Non-financial factors include current laws in New Jersey restricting revenue growth, facility condition, required educational programs and other factors.

In the *Statement of Net Position* and the *Statement of Activities*, the Charter School is divided into two kinds of activities:

- ❖ Governmental activities — All of the Charter School's programs and services are reported here including instruction, administration, support services, and capital outlay.
- ❖ Business-Type Activity — This service is provided on a charge for goods or services basis to recover all the expenses of the goods or services provided. The Food Service enterprise fund is reported as a business activity.

**Reporting the Charter School's Most Significant Funds**

**Fund Financial Statements**

Fund financial reports provide detailed information about the Charter School's funds. The Charter School uses many funds to account for a multitude of financial transactions. The Charter School's governmental funds are the General Fund and Special Revenue Fund.

**Governmental Funds**

The Charter School's activities are reported in governmental funds, which focus on how money flows into and out of those funds and the balances left at year-end available for spending in the future years. These funds are reported using an accounting method called modified accrual accounting, which measures cash and all other financial assets that can readily be converted to cash. The governmental fund statements provide a detailed short-term view of the Charter School's general government operations and the basic services it provides. Governmental fund information helps the reader determine whether there are more or fewer financial resources that can be spent in the near future to finance educational programs. The relationship (or differences) between governmental activities (reported in the *Statement of Net Position* and the *Statement of Activities*) and governmental funds is reconciled in the financial statements.

**UNITY CHARTER SCHOOL  
MORRIS TOWNSHIP, NEW JERSEY**

**MANAGEMENT'S DISCUSSION AND ANALYSIS  
FOR FISCAL YEAR ENDED JUNE 30, 2020  
UNAUDITED  
(CONTINUED)**

**Enterprise Fund**

The enterprise fund uses the same basis of accounting as business-type activities; therefore, these statements are essentially the same.

**Notes to the Financial Statements**

The notes provide additional information that is essential to a full understanding of the data provided in the Charter School-wide and fund financial statements. The notes to the financial statements can be found starting on page 37 of this report.

**The Charter School as a Whole**

Recall that the *Statement of Net Position* provides the perspective of the Charter School as a whole. Net position may serve over time as a useful indicator of a government's financial position.

The Charter School's financial position is the product of several financial transactions including the net results of activities.

The Charter School's combined Net Position were \$499,626 for 2020 and \$340,912 for 2019.

**Governmental Activities**

The Charter School's total revenues were \$4,620,351 for 2020 and \$4,493,816 for 2019, this includes \$117,066 for 2020 and \$115,079 for 2019 of state reimbursed TPAF social security contributions.

The total cost of all program and services were \$4,414,326 for 2020 and \$4,189,019 for 2019. Instruction comprises 48% for 2020 and 48% for 2019 of Charter School expenses.

**Business-Type Activities**

Revenues for the Charter School's business-type activities (Food Service and After Care) were comprised of charges for services and federal and state reimbursements.

**FOOD SERVICE**

- ❖ Food service expenses exceeded revenues by (\$49,974) for 2020 while expenses exceeded revenues by (\$7,658) for 2019.
- ❖ Charges for services represent \$8,329 for 2020 and \$28,286 for 2019 of revenue. This represents amounts paid by patrons for daily food.



**UNITY CHARTER SCHOOL  
MORRIS TOWNSHIP, NEW JERSEY**

**MANAGEMENT'S DISCUSSION AND ANALYSIS  
FOR FISCAL YEAR ENDED JUNE 30, 2020  
UNAUDITED  
(CONTINUED)**

**Business-Type Activities (Continued)**

**FOOD SERVICE**

- ❖ Federal and state reimbursements for meals, including payments for free and reduced lunches and breakfast were \$21,779 for 2020 and \$23,719 for 2019.

**AFTER CARE**

- ❖ Revenues exceeded expenses by \$21,049 for 2020 and by (\$2,663) for 2019.
- ❖ Charges for services represent \$35,306 for 2020 and \$44,291 for 2019 of revenue. This represents amounts paid by patrons for after care.

**Governmental Activities**

The *Statement of Activities* shows the cost of program services and the charges for services and grants offsetting those services.

Instruction expenses include activities directly dealing with the teaching of pupils and the interaction between teacher and student, including extracurricular activities.

Administration includes expenses associated with administrative and financial supervision of the Charter School.

Support services include the activities involved with assisting staff with the content and process of teaching to students, including curriculum and staff development and the costs associated with operating the facility.

Capital Outlay represents instructional and/or non-instructional equipment purchased and is capitalized when such equipment is over the \$2,000 threshold.

**The Charter School's Funds**

All governmental funds (i.e., general fund and special revenue fund presented in the fund-based statements) are accounted for using the modified accrual basis of accounting. Total revenues amounted to \$4,620,351 for 2020 and \$4,493,816 for 2019 and expenditures were \$4,411,662 for 2020 and \$4,207,540 for 2019. The net change in fund balance was most significant in the general fund, an increase of \$208,689 in 2020 and an increase of \$286,276 in 2019.

As demonstrated by the various statements and schedules included in the financial section of this report, the Charter School continues to meet its responsibility for sound financial management. The following schedules present a summary of the revenues of the governmental funds for the fiscal year ended June 30, 2020, and the amount and percentage of increases and decreases in relation to prior year revenues.

**UNITY CHARTER SCHOOL  
MORRIS TOWNSHIP, NEW JERSEY**

**MANAGEMENT'S DISCUSSION AND ANALYSIS  
FOR FISCAL YEAR ENDED JUNE 30, 2020  
UNAUDITED  
(CONTINUED)**

**The Charter School's Funds (Continued)**

Revenues	Amount	Percent of Total	Increase/ (Decrease) From 2019	Percent of Increase/ (Decrease)
Local Sources	\$ 3,356,021	72.64%	\$ (983,202)	-22.66%
Intermediate Sources	5,878	0.13%	3,502	147.39%
State Sources	1,183,794	25.62%	(3,319,372)	-73.71%
Federal Sources	74,658	1.61%	(26,550)	-26.23%
<b>Total</b>	<b>\$ 4,620,351</b>	<b>100.00%</b>	<b>\$ (4,325,622)</b>	

The following schedule represents a summary of general fund and special revenue fund expenditures for the fiscal year ended June 30, 2020, and the percentage of increases and decreases in relation to prior year amounts.

Expenditures	Amount	Percent of Total	Increase/ (Decrease) From 2019	Percent of Increase/ (Decrease)
Instruction	\$ 1,610,877	36.51%	\$ 127,321	8.58%
Administration	1,051,733	23.84%	(85,328)	-7.50%
Support Services	1,721,615	39.02%	164,864	10.59%
Capital Outlay	27,437	0.63%	(2,735)	-9.06%
<b>Total</b>	<b>\$ 4,411,662</b>	<b>100.00%</b>	<b>\$ 204,122</b>	

**General Fund Budgeting Highlights**

The Charter School's budget is prepared according to New Jersey law, and is based on accounting for certain transactions on a basis of cash receipts, disbursements, and encumbrances. The most significant budgeted fund is the General Fund.

Over the course of the year, the Charter School revised the annual operating budget in accordance with state regulations. Revisions in the budget were made to recognize revenues that were not anticipated and to prevent over-expenditures in specific line item accounts.

**Capital Assets (Net of Depreciation) and Debt Administration**

The Charter School had \$108,435 for 2020 and \$124,913 for 2019 invested in building improvements and equipment. At the end of fiscal years 2020 and 2019 there is no debt outstanding

**UNITY CHARTER SCHOOL  
MORRIS TOWNSHIP, NEW JERSEY**

**MANAGEMENT'S DISCUSSION AND ANALYSIS  
FOR FISCAL YEAR ENDED JUNE 30, 2020  
UNAUDITED  
(CONTINUED)**

**For the Future**

The Unity Charter School is in stable financial condition presently. The Charter School is proud of its community support. A major concern is the continued enrollment growth of the Charter School with the increased reliance on federal and state funding.

In conclusion, Unity Charter School has committed itself to financial stability for many years. In addition, the Charter School's system for financial planning, budgeting, and internal financial controls are well regarded. The Charter School plans to continue its sound fiscal management to meet the challenge of the future.

**Contacting the Charter School's Financial Management**

This financial report is designed to provide our citizens, taxpayers, investors, and creditors with a general overview of the Charter School's finances and to show the Charter School's accountability for the money it receives. If you have questions about this report or need additional information, contact Ms. Connie Sanchez, Executive Director at Unity Charter School, One Evergreen Place, Morris Township, New Jersey, 07960.

***BASIC FINANCIAL STATEMENTS***

**SECTION A – CHARTER SCHOOL-WIDE FINANCIAL STATEMENTS**

*The statement of net position and the statement of activities display information about the Charter School. These statements include the financial activities of the overall Charter School, except for fiduciary activities. Eliminations have been made to minimize the double-counting of internal activities. These statements distinguish between the governmental and business-type activities of the Charter School.*

**UNITY CHARTER SCHOOL**  
Statement of Net Position  
June 30, 2020

	Governmental Activities	Business-Type Activities	Total
<b>ASSETS:</b>			
Cash and Cash Equivalents	\$ 168,167	\$ -	\$ 168,167
Internal Balances	75,302	(75,302)	-
Other Receivables	644,811	1,290	646,101
Capital Assets, Net	108,435		108,435
<b>Total Assets</b>	<b>996,715</b>	<b>(74,012)</b>	<b>922,703</b>
<b>DEFERRED OUTFLOWS OF RESOURCES:</b>			
Pensions Deferred Outflows	228,547		228,547
<b>Total Deferred Outflows of Resources</b>	<b>228,547</b>	<b>-</b>	<b>228,547</b>
<b>LIABILITIES:</b>			
Internal Balances	18,386	(18,386)	-
Accounts Payable	2,182		2,182
Deferred Revenue	16,793		16,793
Other Current Liabilities	36,515		36,515
Net Pension Liability	393,081		393,081
<b>Total Liabilities</b>	<b>466,957</b>	<b>(18,386)</b>	<b>448,571</b>
<b>DEFERRED INFLOWS OF RESOURCES:</b>			
Pensions Deferred Inflows	184,667		184,667
<b>Total Deferred Inflows of Resources</b>	<b>184,667</b>	<b>-</b>	<b>184,667</b>
<b>NET POSITION:</b>			
Net Investment in Capital Assets	108,435		108,435
Unrestricted	465,203	(55,626)	409,577
<b>Total Net Position</b>	<b>\$ 573,638</b>	<b>\$ (55,626)</b>	<b>\$ 518,012</b>

The accompanying Notes to Basic Financial Statements are an integral part of this statement.

**UNITY CHARTER SCHOOL**  
Statement of Activities  
For The Fiscal Year Ended June 30, 2020

Functions/Programs	Program Revenues				Net (Expense) Revenue and Changes In Net Position			
	Expenses	Indirect Expenses Allocation	Charges for Services	Operating Grants and Contributions	Capital Grants and Contributions	Governmental Activities	Business-Type Activities	Total
<b>GOVERNMENTAL ACTIVITIES:</b>								
Instruction	1,583,836	\$ 517,950	\$ -	\$ -	\$ -	\$ (2,101,786)	\$ -	\$ (2,101,786)
Administration	250,574	154,163				(404,737)		(404,737)
Support Services	1,721,615	142,273				(1,863,888)		(1,863,888)
Capital Outlay	27,437					(27,437)		(27,437)
Unallocated Depreciation	16,478					(16,478)		(16,478)
Total Governmental Activities	3,599,940	\$ 814,386	\$ -	\$ -	\$ -	\$ (4,414,326)	\$ -	\$ (4,414,326)
<b>BUSINESS-TYPE ACTIVITIES:</b>								
Food Service and After Care	94,339		43,635	21,779			(28,925)	(28,925)
Total Business-Type Activities	94,339		43,635	21,779			(28,925)	(28,925)
Total Primary Government	\$ 3,694,279		\$ 43,635	\$ 21,779	\$ -	\$ (4,414,326)	\$ (28,925)	\$ (4,443,251)
<b>GENERAL REVENUES</b>								
General Purposes						\$ -	\$ -	\$ -
Federal and State Aid Not Restricted						1,258,452		1,258,452
Miscellaneous Income						3,361,899		3,361,899
Total General Revenues						4,620,351		4,620,351
Change in Net Position						206,025	(28,925)	177,100
Net Position - Beginning of Year						367,613	(26,701)	340,912
Net Position - Ending						\$ 573,638	\$ (55,626)	\$ 518,012

**SECTION B – FUND FINANCIAL STATEMENTS**

*The Individual Fund statements and schedules present more detailed information for the individual fund in a format that segregates information by fund type.*



***GOVERNMENTAL FUNDS***

**UNITY CHARTER SCHOOL**  
 Governmental Funds  
 Balance Sheet  
 June 30, 2020

	General Fund	Special Revenue Fund	Total
<b>ASSETS:</b>			
Current Assets:			
Cash and Cash Equivalents	\$ 151,374	\$ 16,793	\$ 168,167
Receivables:			
Interfund Receivables	76,193		76,193
Receivables From Other Governments	643,920		643,920
Total Current Assets	871,487	16,793	888,280
Total Assets	<u>\$ 871,487</u>	<u>\$ 16,793</u>	<u>\$ 888,280</u>
<b>LIABILITIES AND FUND BALANCES:</b>			
Liabilities:			
Current Liabilities:			
Accounts Payable	2,182		2,182
Deferred Revenue		16,793	16,793
Payable to Other Local Units	36,515		36,515
Total Current Liabilities	57,083	16,793	73,876
Total Liabilities	57,083	16,793	73,876
Fund Balances:			
Unassigned:			
General Fund	814,019		814,019
Total Fund Balances	814,404	-	814,404
Total Liabilities and Fund Balances	<u>\$ 871,487</u>	<u>\$ 16,793</u>	

Amounts reported for *governmental activities* in the statement of net position (A-1) are different because:

Capital assets used in governmental activities are not financial resources and therefore are not reported in the governmental funds. The cost of the assets is \$289,379 and the accumulated depreciation is \$180,944.	108,435
Net pension liability of \$393,081, deferred inflows of resources of \$184,667 less deferred outflows of resources of \$228,547 related to pensions are not reported in the governmental funds	<u>(349,201)</u>
Net Position of Governmental Activities	<u>\$ 573,638</u>

The accompanying Notes to Basic Financial Statements are an integral part of this statement.

**UNITY CHARTER SCHOOL**  
 Governmental Funds  
 Statement of Revenues, Expenditures and Changes in Fund Balance  
 For the Fiscal Year Ended June 30, 2020

	General Fund	Special Revenue Fund	Total
<b>REVENUES:</b>			
Local Sources:			
Local Tax Levy	\$ -	\$ 5,878	\$ 5,878
Transportation Fees	3,091,587		3,091,587
Miscellaneous	264,434		264,434
Total Local Sources	3,356,021	5,878	3,361,899
Intermediate Sources			
State Sources	1,183,794		1,183,794
Federal Sources		74,658	74,658
Total Revenues	4,539,815	80,536	4,620,351
<b>EXPENDITURES:</b>			
Current:			
Instruction	1,584,012	26,865	1,610,877
Administration	1,051,733		1,051,733
Support Services	1,667,944	53,671	1,721,615
Capital Outlay	27,437		27,437
Total Expenditures	4,331,126	80,536	4,411,662
NET CHANGE IN FUND BALANCES	208,689	-	208,689
FUND BALANCES, JULY 1	605,715	-	605,715
FUND BALANCES, JUNE 30	\$ 814,404	\$ -	\$ 814,404

The accompanying Notes to Basic Financial Statements are an integral part of this statement.

**UNITY CHARTER SCHOOL**  
Reconciliation of the Statement of Revenues, Expenditures  
And Changes in Fund Balances of Governmental Funds  
To the Statement of Activities  
For the Fiscal Year Ended June 30, 2020

Total net change in fund balances - governmental fund (from B-2)	\$	208,689
Amounts reported for governmental activities in the statement of activities (A-2) are different because:		
<p>Capital outlays are reported in governmental funds as expenditures. However, on the statement of activities, the cost of those assets which are capitalized are allocated over their estimated useful lives as depreciation expense. This is the amount by which capital outlays exceeded depreciation in the current fiscal year.</p>		
Depreciation Expense	\$ (16,478)	
Capital Outlay	-	(16,478)
<p>Pension costs associated with the PERS pension plan are reported in the governmental funds as expenditures in the year the school pension contribution is paid. However, on the statement of activities, the net difference between the current and prior year net pension liability is recognized.</p>		
		13,814
Change in net position of governmental activities	\$	206,025

The accompanying Notes to Basic Financial Statements are integral part of this statement.

***PROPRIETARY FUNDS***

**UNITY CHARTER SCHOOL**  
 Proprietary Fund  
 Statement of Net Position  
 June 30, 2020

	Business-Type Activities Enterprise Fund		
	Food Service	After School	Totals
<b>ASSETS:</b>			
Current Assets:			
Interfund Accounts Receivable	\$ -	18,386	\$ 18,386
Receivables From Other Governments	1,290	-	1,290
Total Current Assets	1,290	18,386	19,676
Total Assets	\$ 1,290	\$ 18,386	\$ 19,676
<b>LIABILITIES:</b>			
Current Liabilities:			
Interfund Accounts Payable	\$ 75,302	-	\$ 75,302
Total Current Liabilities	75,302	-	75,302
Total Liabilities	75,302	-	75,302
<b>NET ASSETS:</b>			
Unrestricted	(74,012)	18,386	(55,626)
Total Net Assets	(74,012)	18,386	(55,626)
Total Liabilities and Net Assets	\$ 1,290	\$ 18,386	\$ 19,676

The accompanying Notes to Basic Financial Statements are an integral part of this statement.

**UNITY CHARTER SCHOOL**  
Proprietary Funds  
Statement of Cash Flows  
For The Fiscal Year Ended June 30, 2020

	Business-Type Activities		Total
	Food Service	After Care	
<b>CASH FLOWS FROM OPERATING ACTIVITIES:</b>			
Cash Received from Customers	\$ 8,329	35,306	43,635
Cash Payments to Suppliers and Employees	(32,771)	(32,643)	(65,414)
Net Cash Used by Operating Activities	(24,442)	2,663	(21,779)
<b>CASH FLOWS FROM NONCAPITAL FINANCING ACTIVITIES:</b>			
Cash Received from State and Federal Reimbursements	21,779		21,779
Net Cash Provided by Noncapital Financing Activities	21,779	-	21,779
Net Increase (Decrease) in Cash and Cash Equivalents	(2,663)	2,663	-
Cash and Cash Equivalents, July 1	2,663	(2,663)	-
Cash and Cash Equivalents, June 30	<u>\$ -</u>	<u>\$ -</u>	<u>\$ -</u>
<b>Reconciliation of Operating Loss to Net Cash Used by Operating Activities:</b>			
Operating Loss Used for Operating Activities	\$ (71,753)	2,663	(69,090)
Increase in Intergovernmental Accounts Receivable	715		715
Increase in Interfund Accounts Payable	46,596		46,596
Net Cash Used by Operating Activities	<u>\$ (24,442)</u>	<u>\$ 2,663</u>	<u>\$ (21,779)</u>

The accompanying Notes to Basic Financial Statements are an integral part of this statement.

**UNITY CHARTER SCHOOL**  
Proprietary Fund  
Statement of Revenues, Expenses, and Changes in Net Position  
For the Fiscal Year Ended June 30, 2020

	Business-Type Activities Enterprise Fund			Totals
	Food Service	Fixed Price Contract	After Care	
<b>OPERATING REVENUES:</b>				
Charges for Services:				
Daily Sales - Program (Reimbursable Program) Meals	\$ 8,329	\$ -	\$ 35,306	\$ 43,635
Daily Sales - Non-Program (Non-reimbursable Program) Meals	-	-	-	-
<b>Total Operating Revenues</b>	<b>8,329</b>	<b>-</b>	<b>35,306</b>	<b>43,635</b>
<b>OPERATING EXPENSES:</b>				
Salaries	47,593	-	14,257	61,850
Cost of Sales - Program (Reimbursable Program) Meals	30,484	-	-	30,484
Miscellaneous Expenses	2,005	-	-	2,005
<b>Total Operating Expenses</b>	<b>80,082</b>	<b>-</b>	<b>14,257</b>	<b>94,339</b>
<b>OPERATING LOSS</b>	<b>(71,753)</b>	<b>-</b>	<b>21,049</b>	<b>(50,704)</b>
<b>NONOPERATING REVENUES:</b>				
State Lunch Program	1,662	-	-	1,662
Federal Source:				
Federal Breakfast Program	1,034	-	-	1,034
Federal Lunch Program	19,083	-	-	19,083
<b>Total Nonoperating Revenues</b>	<b>21,779</b>	<b>-</b>	<b>-</b>	<b>21,779</b>
<b>CHANGE IN NET POSITION BEFORE OTHER FINANCING SOURCES</b>	<b>(49,974)</b>	<b>-</b>	<b>21,049</b>	<b>(28,925)</b>
<b>CHANGE IN NET ASSETS</b>	<b>(49,974)</b>	<b>-</b>	<b>21,049</b>	<b>(28,925)</b>
<b>TOTAL NET ASSET, JULY 1</b>	<b>(24,038)</b>	<b>-</b>	<b>(2,663)</b>	<b>(26,701)</b>
<b>TOTAL NET ASSET, JUNE 30</b>	<b>\$ (74,012)</b>	<b>\$ -</b>	<b>\$ 18,386</b>	<b>\$ (55,626)</b>

The accompanying Notes to Basic Financial Statements are an integral part of this statement.



***FIDUCIARY FUNDS***

**UNITY CHARTER SCHOOL**  
 Fiduciary Funds  
 Statement of Fiduciary Net Position  
 June 30, 2020

	Trusts		Total Agency Funds
	Unemployment Compensation Trust	District Activities Trust Fund Account	
<b>ASSETS:</b>			
Cash and Cash Equivalents	\$ 10	\$ 20,685	\$ 1,204
<b>Total Assets</b>	<u>\$ 10</u>	<u>\$ 20,685</u>	<u>\$ 1,204</u>
<b>LIABILITIES:</b>			
Liabilities:			
Interfund Payable	\$ -	\$ -	\$ 891
Due to Student Groups			313
<b>Total Liabilities</b>	<u>-</u>	<u>-</u>	<u>\$ 1,204</u>
<b>NET POSITION:</b>			
Held in Trust for Unemployment	<u>10</u>	<u>20,685</u>	
<b>Total Net Position</b>	<u>10</u>	<u>20,685</u>	
<b>Total Liabilities and Net Position</b>	<u>\$ 10</u>	<u>\$ 20,685</u>	

The accompanying Notes to Basic Financial Statements are an integral part of this statement.

**UNITY CHARTER SCHOOL**  
 Fiduciary Funds  
 Statement of Changes in Fiduciary Net Position  
 For Fiscal Year Ended June 30, 2020

	Trusts	
	Unemployment Compensation Trust	District Activities Account
ADDITIONS:		
Contributions:		
Employees	\$ -	
Other	-	\$ 98,086
Total Additions	-	98,086
DEDUCTIONS:		
Payments	-	124,129
Total Deductions	-	124,129
CHANGE IN NET POSITION	-	(26,043)
NET POSITION, JULY 1	10	46,728
NET POSITION, JUNE 30	<u>\$ 10</u>	<u>\$ 20,685</u>

The accompanying Notes to Basic Financial Statements are an integral part of this statement.

***NOTES TO THE FINANCIAL STATEMENTS***

**UNITY CHARTER SCHOOL  
NOTES TO THE FINANCIAL STATEMENTS  
JUNE 30, 2020**

**NOTE 1: DESCRIPTION OF THE SCHOOL DISTRICT AND REPORTING ENTITY**

The Board of Education (“Board”) of the Unity Charter School (“Charter School”) is an instrumentality of the State of New Jersey, established to function as an educational institution. The Charter School is located in the County of Morris, State of New Jersey. The Board consists of elected officials and is responsible for the fiscal control of the Charter School. The purpose of the district is to education students in grades K-8. An Executive Director is appointed by the Board and is responsible for the administrative control of the Charter School.

The Board also has broad financial responsibilities, including the approval of the annual budget and the establishment of a system of accounting and budgetary controls.

Governmental Accounting Standards Board publication, Codification of Governmental Accounting and Financial Reporting Standards, Section 2100, “Defining the Financial Reporting Entity” establishes standards to determine whether a governmental component unit should be included in the financial reporting entity. The basic criterion for inclusion or exclusion from the financial reporting entity is the exercise of oversight responsibility over agencies, boards and commissions by the primary government. The exercise of oversight responsibility includes financial interdependency and a resulting financial benefit or burden relationship, selection of governing authority, designation of management, ability to significantly influence operations, and accountability for fiscal matters. In addition, certain legally separate, tax-exempt entities that meet specific criteria (i.e. benefit of economic resources, access/entitlement to economic resources, and significance) should be included in the financial reporting entity. The combined financial statements include all funds of the Charter School over which the Board exercises operating control. The operations of the Charter School include an elementary and middle school located in Morristown, NJ. There were no additional entities required to be included in the reporting entity under the criteria as described above, in the current fiscal year. Furthermore, the Charter School is not includable in any other reporting entity on the basis of such criteria.

**NOTE 2: SUMMARY OF SIGNIFICANT ACCOUNTING POLICIES**

The financial statements of Unity Charter School have been prepared in conformity with generally accepted accounting principles generally (GAAP) as applied to governmental units. The Governmental Accounting Standards Board (GASB) is the accepted standard-setting body responsible for establishing governmental accounting and financial reporting principles. In its accounting and financial reporting, the Charter School follows the pronouncements of the Governmental Accounting Standards Board (GASB). The more significant accounting policies of the Charter School are described below.

**A. Basis of Presentation**

The Board’s basic financial statements consist of District-wide statements, including a statement of net position and statement of activities, and fund financial statements which provide a more detailed level of financial information.

**UNITY CHARTER SCHOOL  
NOTES TO THE FINANCIAL STATEMENTS  
JUNE 30, 2020**

**NOTE 2: SUMMARY OF SIGNIFICANT ACCOUNTING POLICIES (CONTINUED)**

**Basis of Presentation (Continued)**

**DISTRICT-WIDE FINANCIAL STATEMENTS**

The statement of net position and the statement of activities display information about the Board as a whole. These statements include the financial activities of the overall Charter School, except for the fiduciary funds. The statements distinguish between those activities of the Board that are governmental and those that are considered business-type activities.

The statement of net position presents the financial condition of the governmental and business-type activities of the Board at year-end. The statement of activities presents a comparison between direct expenses and program revenues for each program or function of the governmental activities and for the business-type activities of the Board. Direct expenses are those that are specifically associated with a service, program or department and therefore clearly identifiable to a particular function. Program revenues include charges paid by the recipient of the good or services offered by the program, grants and contributions that are restricted to meeting the operational or capital requirements of a particular program. Revenues which are not classified as program revenues are presented to general revenues of the Board, with certain limited exceptions. The comparison of direct expenses with program revenues identifies the extent of which each business segment or governmental function is self-financing or draws from the general revenues of the Board.

**FUND FINANCIAL STATEMENTS**

During the fiscal year, the Charter School segregates transactions related to certain Charter School functions or activities in separate funds in order to aid financial management and to demonstrate legal compliance. The fund financial statement provide information about the Charter School's funds, including its fiduciary funds. Separate statements for each fund category – *government*, *proprietary*, and *fiduciary* – are presented. The New Jersey Department of Education (NJDOE) has elected to require New Jersey districts to treat each governmental fund as a major fund in accordance with the option noted in GASB No. 34, paragraph 76. The NJDOE believes that the presentation of all funds as major is important for public interest and to promote consistency among district financial reporting models. The various funds of the Board are grouped into the categories governmental, proprietary and fiduciary.

**GOVERNMENTAL FUNDS**

Governmental funds are those through which most governmental functions of the Board are financed. Governmental fund reporting on the sources, uses and balances of current financial resources. Expendable assets are assigned to the various governmental funds according to the purposes for which they may or must be used. Current liabilities are assigned to the fund from which they will be paid. The difference between governmental fund assets and liabilities is reported as fund balance. The following are the Board's governmental funds:

**UNITY CHARTER SCHOOL  
NOTES TO THE FINANCIAL STATEMENTS  
JUNE 30, 2020**

**NOTE 2: SUMMARY OF SIGNIFICANT ACCOUNTING POLICIES (CONTINUED)**

**Basis of Presentation (Continued)**

The following fund types are used by the Charter School:

General Fund – The general fund is the general operating fund of the Charter School. It is used to account for all financial resources except those required to be accounted for in another fund. Included are certain expenditures for vehicles and movable instructional or noninstructional equipment which are classified in the Capital Outlay subfund.

As required by the New Jersey State Department of Education, the Charter School includes budgeted Capital Outlay in this fund. Generally accepted accounting principles as they pertain to governmental entities state that General Fund resources may be used to directly finance capital outlays for long-lived improvements as long as the resources in such cases are derived exclusively from unrestricted revenues.

Resources for budgeted capital outlay purposes are normally derived from State of New Jersey Aid, local property taxes and appropriated fund balance. Expenditures are those that result in the acquisition of or additions to fixed assets for land, existing buildings, improvements of grounds, construction of buildings, additions to or remodeling of buildings and the purchase of built-in equipment. These resources can be transferred from and to Current Expense by board resolution.

Special Revenue Fund – The Special Revenue Fund is used to account for the proceeds of specific revenue from State and Federal Government, (other than major capital projects, Debt Service or the Enterprise Funds) and local appropriations that are legally restricted to expenditures for specified purposes.

Proprietary Fund Type - The focus of Proprietary Fund measurement is upon determination of net income, changes in net position, financial position and cash flows. The generally accepted accounting principles applicable are those similar to businesses in the private sector. The following is a description of the Proprietary Funds of the Charter School:

Enterprise Funds – The Enterprise Funds are utilized to account for operations that are financed and operated in a manner similar to private business enterprises – where the intent of the Charter School is that the costs (i.e. expenses including depreciation and indirect costs) of providing goods or services to the students on a continuing basis be financed or recovered primarily through user charges; or, where the Charter School has decided that the periodic determination of revenues earned, expenses incurred, and/or net income is appropriate for capital maintenance, public policy, management control, accountability or other purposes.

The Board's Enterprise is comprised of the Food Service and After School Program

**UNITY CHARTER SCHOOL  
NOTES TO THE FINANCIAL STATEMENTS  
JUNE 30, 2020**

**NOTE 2: SUMMARY OF SIGNIFICANT ACCOUNTING POLICIES (CONTINUED)**

**Basis of Presentation (Continued)**

Fiduciary Fund Types - Fiduciary Funds reporting focuses on net position and changes in net position. The Fiduciary Funds are used to account for assets held by the Board on behalf of individuals, private organization, other governments and/or other funds. Fiduciary Funds include the Unemployment Compensation Insurance Fund, Student Activities Fund and Payroll Agency Fund.

**B. Measurement Focus**

**District-wide Financial Statement**

The District-wide statements (i.e., the statement of net position and the statement of activities) are prepared using the economic resources measurements focus and the accrual basis of accounting. All assets and liabilities associated with the operation of the Board are included on the statement of net position, except for fiduciary funds.

**Fund Financial Statements**

All governmental funds are accounted for using allow of current financial resources measurement focus. With this measurement focus, only current assets and current liabilities generally are included on the balance sheet. The statement of revenues, expenditures and changes in fund balances reports on the sources (i.e. revenues and other financing sources) and uses (i.e., expenditures and other financing uses) of current financial resources. This approach differs from the manner in which the governmental activities of the District-wide financial statements are prepared. Governmental fund financial statements therefore include a reconciliation with brief explanation to better identify the relationship between the government-wide statements and the statements for governmental funds.

Like the District-wide statements, all proprietary fund types are accounted for on a flow economic resources measurement focus. All assets and all liabilities associated with the operation of these funds are included on the statement of net position. The statement of changes in fund net position presents increases (i.e., revenues) and decreases (i.e., expenses) in net total assets. The statement of cash flows provides information about how the Board finances and meets the cash flow needs of its proprietary activities.

**C. Basis of Accounting**

Basis of accounting determines when transactions are recorded in the financial records and reported on the financial statements. The District-wide financial statements and the financial statements of proprietary and fiduciary funds are prepared using the accrual basis of accounting. Governmental funds use the modified accrual basis of accounting. Differences in the accrual and the modified accrual basis of accounting arise in the recognition of revenue, the recording of unearned revenue, and in the presentation of expenses versus expenditures.



**UNITY CHARTER SCHOOL  
NOTES TO THE FINANCIAL STATEMENTS  
JUNE 30, 2020**

**NOTE 2: SUMMARY OF SIGNIFICANT ACCOUNTING POLICIES (CONTINUED)**

**Revenues – Exchange and Non-Exchange Transactions**

Revenue resulting from exchange transactions in which each party gives and receives essentially equal value, is recorded on the accrual basis when the exchange takes place. On a modified accrual basis, revenue is recorded in the fiscal year in which the resources are measurable and become available. Available means that the resources will be collected within the current fiscal year or are expected to be collected soon enough thereafter to be used to pay liabilities of the current fiscal year.

Non-exchange transactions, in which the Board receives value without directly giving equal value in return, include property taxes, grants, entitlements and donations. On the accrual basis, revenue from property taxes is recognized in the fiscal year for which the taxes are levied. Revenue from grants entitlements and donations is recognized in the fiscal year in which all eligibility requirements have been satisfied. Eligibility requirements include timing requirements, which specify the year when the resources are required to be used or the year when use is first permitted, matching requirements, in which the Board must provide local resources be used for a specified purpose, and expenditure requirements, in which the resources are provided to the Board on a reimbursement basis. On a modified accrual basis, revenue from non-exchange transactions must also be available before it can be recognized. Under GAAP, in accordance with GASB No. 33, Accounting and Financial Reporting for Non-exchange Transactions, the last state aid payment is not considered revenue to the school district if the state has not recorded the corresponding expenditure, even though state law dictates recording the revenue.

Under the modified accrual basis, the following revenue sources are considered to be both measurable and available at year end: ad valorem property taxes, tuition, unrestricted grants and interest.

**Expenses / Expenditures**

On the accrual basis of accounting, expenses are recognized at the time they are incurred. The fair value of donated commodities used during the year is reported in the operating statement as an expense with a like amount reported as donated commodities revenue.

The measurement of focus of governmental fund accounting is on decreases in net financial resources (expenditures) rather than expenses. Expenditures are generally recognized in the accounting period in which the related fund liability is incurred. Allocations of cost, such as depreciation and amortization, are not recognized in the governmental funds.

**UNITY CHARTER SCHOOL  
NOTES TO THE FINANCIAL STATEMENTS  
JUNE 30, 2020**

**NOTE 2: SUMMARY OF SIGNIFICANT ACCOUNTING POLICIES (CONTINUED)**

**D. Budgets / Budgetary Control**

Formal budgetary integration into the accounting system is employed as a management control device during the year. For governmental funds there are no substantial differences between the budgetary basis of accounting and generally accepted accounting principles with the exception of legally mandated revenue recognition of the last state aid payment for budgetary purposes only and the special revenue fund as noted below. Encumbrance accounting is also employed as an extension of formal budgetary integration in the governmental fund types. Unencumbered appropriations lapse at fiscal year-end.

The accounting records of the special revenue fund are maintained on the grant accounting budgetary basis. The grant accounting budgetary basis differs from GAAP in that the grant accounting budgetary basis recognizes encumbrances as expenditures and also recognizes the related revenues, whereas the GAAP basis does not. Sufficient supplemental records are maintained to allow for the presentation of GAAP basis financial reports.

The following presents a reconciliation of the special revenue funds from the budgetary basis of accounting to the GAAP basis of accounting:

Total Revenues & Expenditures (Budgetary Basis)	\$	80,536
Adjustments:		
Less Encumbrances at June 30, 2020		-
Plus Encumbrances at June 30, 2019		-
Total Revenues and Expenditures (GAAP Basis)	\$	80,536

The General Fund budgetary revenue differs from GAAP revenue due to a difference in recognition of the June state aid payments for the current year. Since the State is recording the June state aid payments in the subsequent fiscal year, the Charter School cannot recognize these payments on the GAAP financial statements.

The reconciliation of the general and special revenue funds from the budgetary basis of accounting to the GAAP basis of accounting is presented on Note A in the Required Supplementary Information Section.

The Capital Projects Fund budgetary revenue differs from GAAP revenue due to a difference in the recognition of SDA grants receivable. SDA grants are recognized on the budgetary basis in full when they are awarded but are recognized on the GAAP basis as they are expended and requested for reimbursement.

**UNITY CHARTER SCHOOL  
NOTES TO THE FINANCIAL STATEMENTS  
JUNE 30, 2020**

**NOTE 2: SUMMARY OF SIGNIFICANT ACCOUNTING POLICIES (CONTINUED)**

**E. Encumbrances**

Under encumbrance accounting purchase orders, contracts and other commitments for the expenditure of resources are recorded to reserve a portion of the applicable appropriation. Open encumbrances in governmental funds, other than the special revenue fund, are reported as reservations of fund balances at fiscal year-end as they do not constitute expenditures or liabilities but rather commitments related to unperformed contract for goods and services.

Open encumbrances in the special revenue fund, for which the Board has received advances, are reflected in the balance sheet as unearned revenues at fiscal year-end.

The encumbered appropriation authority carries over into the next fiscal year. An entry will be made at the beginning of the next year to increase the appropriation reflected in the certified budget by the outstanding encumbrance amount as of the current fiscal year end.

**F. Cash, Cash Equivalents and Investments**

Cash and Cash Equivalents include petty cash, change funds, cash in banks and all highly liquid investments with a maturity of three months or less at the time of purchase and are stated at cost plus accrued interest U.S. Treasury and agency obligations and certificates of deposit with maturities of one year or less when purchased are stated at cost. All other investments are stated at fair value.

New Jersey school districts are limited as to the types of investments and types of financial institutions they may invest in. New Jersey statute 18A:20-37 provides a list of permissible investments that may be purchased by New Jersey School Districts.

Additionally, the Board has adopted a cash management plan that requires it to deposit public funds in public depositories protected from loss under the provisions of the Governmental Unit Deposit.

Protection at ("GUDPA"). GUDPA was enacted in 1970 to protect Governmental Units from a loss of funds in deposit with a failed banking institution in New Jersey.

*N.J.S.A. 17:9-41 et. seq.* establishes the requirements for the security of deposits of governmental units. The statute requires that no governmental unit shall deposit public funds in a public depository unless such funds are secured in accordance with the Act. Public depositories include Savings and Loan institution, banks (both state and national banks) and savings banks the deposits of which are federally insured. All public depositories must pledge collateral, having a market value at least equal to five percent of the average daily balance of collected public funds, to secure the deposits of Governmental Units. If a public depository fails, the collateral it has pledged, plus the collateral of all other depositories, is available to pay the full amount of their deposits to the Governmental Units.

**UNITY CHARTER SCHOOL  
NOTES TO THE FINANCIAL STATEMENTS  
JUNE 30, 2020**

**NOTE 2: SUMMARY OF SIGNIFICANT ACCOUNTING POLICIES (CONTINUED)**

**G. Tuition Revenues / Receivable**

Tuition charges were established by the Board of Education based on estimated costs. The charges are subject to adjustment when the final cost have been confirmed.

**H. Tuition Payable**

Tuition charges were established by the receiving district. The charges are subject to adjustment when the final costs have been determined.

**I. Inventories**

On District-wide financial statements, inventories are presented at cost, which approximates market on a first-in, first-out basis and are expenses when used.

On fund financial statements inventories are valued at cost, which approximates market, using the first-in, first out (FIFO) method. Inventories of proprietary funds consist of food and goods held for resale, as well as supplies, and are expenses when used.

**J. Prepaid Items**

Payments made to vendors for services that will benefit periods beyond June 30, 2020, are recorded as prepaid items using the consumption method. A current asset for the prepaid amount is recorded at the time of purchase and an expenditure/expense is reported in the year in which services are consumed.

**K. Short-Term Interfund Receivables / Payables**

On fund financial statements, receivables and payables resulting from short-term interfund loans are classified as "interfund" receivables/payables. These amounts are eliminated in the governmental and business-type activities, which are presented as internal balances.

**L. Capital Assets**

Capital assets purchased or acquired with an original cost of \$2,000 or more are reported at historical cost or estimated historical cost. Contributed assets are reported at fair market value as of the date received. Additions, improvements and other capital outlays that significantly extend the useful life of an asset are capitalized. Other costs incurred for repairs and maintenance are expensed as incurred. Depreciation on the following assets is provided on the straight-line basis over the following estimated useful lives:

Buildings	20-50 years
Machinery and Equipment	5-10 years
Land Improvements	10-20 years
Other Infrastructure	10-50 years

Land and Construction in Progress are not depreciated.

**UNITY CHARTER SCHOOL  
NOTES TO THE FINANCIAL STATEMENTS  
JUNE 30, 2020**

**NOTE 2: SUMMARY OF SIGNIFICANT ACCOUNTING POLICIES (CONTINUED)**

**M. Compensated Absences**

Compensated absences are those absences for which employees will be paid, such as vacation, sick leave, and sabbatical leave. A liability for compensated absences that are attributable to services already rendered, and that are not contingent on a specific event that is outside the control of the Board and its employees, is accrued as the employees earn the rights to the benefits. Compensated absences that relate to future services, or that are contingent on a specific event that is outside the control of the Board and its employees, are accounted for in the period in which such services are rendered or in which such events take place.

For the District-wide statements, the current portion is the amount estimated to be used in the following year. In accordance with GAAP, for the governmental funds, in the Fund Financial Statements, all of the compensated absences are considered long-term and therefore, are not a fund liability and represents a reconciling item between the fund level and District-wide presentation.

**N. Unearned Revenue**

Unearned revenue arises when assets are recognized before revenue recognition criteria have been satisfied. Grants and entitlements received before the eligibility requirements are met are also recorded as unearned revenue..

**O. Accrued Liabilities and Long-Term Obligations**

All payables, accrued liabilities and long-term obligations are reported in the District-wide financial statements.

In general, governmental fund payables and accrued liabilities, once incurred, are paid in timely manner and in full, from current resources, are reported as obligations of the funds. However, claims and judgements, compensated absences, special termination benefits and contractually required pension contributions that will be paid from governmental funds are reported liability in the fund financial statements only to the extent that they are due for payment in the current year. Bonds, long-term obligations and capital leases that will be paid from governmental funds are recognized as a liability in the fund financial statements when due.

**P. Accounting and Financial Reporting for Pensions**

In fiscal year 2015, the Charter School implemented GASB 68. This statement amends GASB Statement No. 27. It improves accounting and financial reporting by state and local governments for pensions. It also improves information provided by state and local government employers about financial support for pensions that is provided by other entries. This Statement results from a comprehensive review of the effectiveness of existing standards of accounting and financial reporting for pensions with regard to providing decision useful information, supporting assessments of accountability and interperiod equity, and creating additional transparency. This Statement replaces the requirement of Statement No, 27 and 50 remain applicable for pensions that are not covered by the scope of this statement.

**UNITY CHARTER SCHOOL  
NOTES TO THE FINANCIAL STATEMENTS  
JUNE 30, 2020**

**NOTE 2: SUMMARY OF SIGNIFICANT ACCOUNTING POLICIES (CONTINUED)**

**Accounting and Financial Reporting for Pensions (Continued)**

The Charter School has also implemented GASB Statement 71, Pension Transition for Contributions made subsequent to the Measurement Date – an amendment to GASB No. 68. The objective of this Statement is to address an issue regarding application of the transition provisions of Statement 68, Accounting Financial Reporting for Pensions. The issue relates to amounts associated with contributions, if any, made by a state or local government employer or non-employer contributing entity to a defined benefit pension plan after the measurement date of the government's beginning net pension liability.

Statement 68 requires a state or local government employer (or non-employer contributing entity in a special funding situation) to recognize a net pension liability measured as a date (measurement date) no earlier than the end of its prior fiscal year. If a state or local government employer or non-employer contributing entity makes a contribution to a defined benefit pension plan between the measurement date of the reported net pension liability and the end of the government's reporting period, Statement 68 requires that the government recognize its contribution as a deferred outflow of resources.

In addition, Statement 68 requires recognition of deferred outflows of resources and deferred inflows of resources for changes in the net pension liability of a state or local government employer or non-employer contributing entity that arise from other types of events. At transition to Statement 68, if it is not practical for an employer or non-employer contributing entity to determine the amounts of all deferred outflows of resources and deferred inflow of resources related to pensions, paragraph 137 of Statement 68 required that beginning balances for deferred outflows of resources and deferred inflows of resources not be reported. Consequently, if it is not practical to determine the amounts of all deferred outflows of resources and deferred inflows of resources related to pensions, contributions made after the measurement date of the beginning net pension liability could not have been reported as deferred outflows of resources at transition.

This could have resulted in a significant understatement of an employer or non-employer contributing entity's beginning net position and expense in the initial period of implementation.

This Statement amends paragraph 137 of Statement 68 to require that, at transition, a government recognize a beginning deferred outflow of resources for its pension contributions, if any, made subsequent to the measurement date of the beginning net pension liability. Statement 68, as amended, continues to require that beginning balances for other deferred outflows of resources and deferred inflows of resources related to pension be reported at transition only if it is practical to determine all such amounts.

**UNITY CHARTER SCHOOL  
NOTES TO THE FINANCIAL STATEMENTS  
JUNE 30, 2020**

**NOTE 2: SUMMARY OF SIGNIFICANT ACCOUNTING POLICIES (CONTINUED)**

**Q. Deferred Outflows / Inflows of Resources**

In addition to assets, the statement of financial position will sometimes report a separate section for deferred outflows of resources. This separate financial statement element, deferred outflows of resources, represents a consumption of net position that applies to a future period(s) and so will not be recognized as an outflows of resources (expense / expenditure) until then. Currently, the Charter School has only one item that qualifies for reporting in this category, which is deferred amounts related to pensions.

In addition to liabilities, the statement of financial position will sometimes report a separate section for deferred inflows of resources. This separate financial statement element, deferred inflows of resources, represents an acquisition of net position that applies to a future period(s) and so will not be recognized as an inflow of resources (revenue) until that time. The Charter School has one item that qualifies in this category, deferred amounts related to pension.

**R. Fund Balances**

Fund balance is divided into five classifications based, primarily on the extent to which the Board is bound to observe constraints imposed upon the resources in the governmental funds. The classifications are as follows:

**Nonspendable** fund balance includes amounts that are not in a spendable form (inventory, for example) or are required to be maintained intact (the principal of an endowment fund, for example).

**Restricted** fund balance includes amounts that can be spend only for the specific purposes stipulated by external resource providers (for example, grant providers), constitutionally, or through enabling legislation (that is, legislation that creates a new revenue source and restricts its use). Effectively, restrictions may be changed or lifted only with the consent of resource providers.

**Committed** fund balance includes amounts that can be used only for the specific purposes determined by a formal action of the Board's highest level of decision-making authority. Commitments may be changed or lifted only by the government taking the same formal action that imposed the constraints originally.

**Assigned** fund balance comprises amounts *intended* to be used by the Board for specific purposes. Intent can be expressed by the governing body or by an official or body to which the governing body delegates the authority. In governmental funds other than the general fund, assigned fund balance represents the amount that is not restricted or committed. This indicates that resources in other governmental funds are, at a minimum, intended to be used for the purpose of that fund.

**UNITY CHARTER SCHOOL  
NOTES TO THE FINANCIAL STATEMENTS  
JUNE 30, 2020**

**NOTE 2: SUMMARY OF SIGNIFICANT ACCOUNTING POLICIES (CONTINUED)**

**Fund Balances (Continued)**

**Unassigned** fund balance is the residual classification for the general fund and includes all amounts not contained in the other classifications. Unassigned amounts are technically available for any purpose. If another governmental fund has a fund balance deficit, then it will be reported as a negative amount in the unassigned classification in that fund. Positive unassigned amounts will be reported only in the general fund.

**S. Net Position**

Net position represents the difference between assets and liabilities. Net position invested in capital assets, net of related debt consists of capital assets, net of accumulated depreciation, reduced by the outstanding balances of any borrowing used for the acquisition, construction or improvement of those assets. Net position is reported as restricted when there are limitations imposed on their use either through the enabling legislation adopted by the Board or through external restrictions imposed by creditors, grantors or laws or regulations of other governments.

The Board applies restricted resources first when an expense is incurred for purposed for which both restricted and unrestricted net position are available.

**T. Operating Revenues and Expenses**

Operating revenues are those revenues that are generated directly from the primary activity of the proprietary funds. For the Board, these revenues are sales for food service. Operating expenses are necessary costs incurred to provide the good or service that is the primary activity of the fund.

**U. Extraordinary and Special Items**

Extraordinary items are transactions or events that are both unusual in nature and infrequent in occurrence. Special items are transactions or events that are within the control of the Board and that are either unusual in nature or infrequent in occurrence. Neither type of transaction occurred during the fiscal year.

**V. Allocation of Indirect Expenses**

The Charter School reports all direct expenses by function in the Statement of Activities. Direct expenses are those that are clearly identifiable with a function. Indirect expenses are allocated to functions but are reported separately in the Statement of Activities. Employee benefits, including the employer's share of social security, workers compensation, medical and dental benefits and TPAF on-behalf contributions were allocated based on salaries of that program. Changes in compensating absences have not been allocated and have been reported as unallocated benefits on the statement of Activities. Depreciation expense, where practicable, is specifically identified by function and is included in the indirect expense



**UNITY CHARTER SCHOOL  
NOTES TO THE FINANCIAL STATEMENTS  
JUNE 30, 2020**

**NOTE 2: SUMMARY OF SIGNIFICANT ACCOUNTING POLICIES (CONTINUED)**

**Allocation of Indirect Expenses (Continued)**

column of the Statement of Activities. Depreciation expense that could not be attributed to a specific function is considered an indirect expense and its reported separately on the Statement of Activities as unallocated depreciation. Interest on a long-term debt is considered an indirect expenses expense and is reported separately on the Statement of Activities.

**W. Use of Estimates**

The preparation of financial statements in accordance with accounting principles generally accepted in the United States of America requires management to make estimates and assumptions that affect certain reports, amounts and disclosures. Accordingly, actual result could differ from those estimates.

**X. Impact of Recently Issued Accounting Principles**

During fiscal year 2020, the Charter School did not adopt any new GASB statements.

**The GASB has issued the following Statements that will become effective for the Charter School for fiscal years ending after June 30, 2020**

GASB No. 84, Fiduciary Activities, will be effective with the fiscal year ending June 30, 2021. The objective of this Statement is to improve guidance regarding the identification of fiduciary activities for accounting and financial reporting purposes and how those activities should be reported. This Statement established criteria for identifying fiduciary activities of all state and local governments.

GASB No. 87, Leases, will be effective with the fiscal year ending June 30, 2022. The objective of this Statement is to better meet the information needs of financial statement users by improving accounting and financial reporting for leases by governments. This Statement increases the usefulness of governments' financial statements by requiring recognition of certain lease assets and liabilities for leases that previously were classified as operating leases and recognized as inflows of resources or outflows of resources based on the payment provisions of the contract.

**NOTE 3: DETAILED DISCLOSURE REGARDING ASSETS AND REVENUES**

**A. Deposits and Investments**

**Deposits**

New Jersey statutes permit the deposit of public funds in institutions located in New Jersey which are insured by the Federal Deposit Insurance Corporation (FDIC), the Savings Association Insurance Fund or by any other agencies of the United States that insure deposits or the State of New Jersey Cash Management Fund.

**UNITY CHARTER SCHOOL  
NOTES TO THE FINANCIAL STATEMENTS  
JUNE 30, 2020**

**NOTE 3: DETAILED DISCLOSURE REGARDING ASSETS AND REVENUES (CONTINUED)**

Deposits and Investments (Continued)

Deposits (Continued)

N.J.S.A. 17:9-41 et. Seq. establishes the requirements for the security of deposits of governmental units. The statute requires that no governmental unit shall deposit public funds in a public depository unless such funds are secured in accordance with the Governmental Unit Deposit Protection Act. Public depositories include savings and loan institutions, banks (both state and national banks) and savings banks of which the deposits are federally insured.

All public depositories must pledge collateral, having a market value at least equal to five percent of the average daily balance of collected public funds, to secure the deposits of Governmental Units. If a public depository fails, the collateral it has pledged, plus the collateral of all other public depositories, is available to pay the full amount of their deposits to the Governmental Units.

The carrying amount of the Board's cash and cash equivalents at June 30, 2020 was \$190,066 and the bank balance was \$439,825. All bank balances were covered by federal depository insurance (FDIC) and/or by a collateral pool maintained by the banks as required by GUDPA. The Charter School had no investments at June 30, 2020.

	General Fund	Special Revenue	Fiduciary Funds	Total
Operating Account	\$ 151,374	\$ 16,793	\$ 21,899	\$ 190,066

Pursuant to GASB Statement No. 40, *Deposit and Investment Risk Disclosures* ("GASB 40"), the Charter School's operating cash accounts are profiled in order to determine exposure, if any, to Custodial Credit Risk (risk that in the event of failure of the counterparty the Charter School would not be able to recover the value of its deposits and investments). Deposits are considered to be exposed to Custodial Credit Risk if they are: uncollateralized (securities not pledged to the depositor), collateralized with securities held by a pledging financial institution, or collateralized with securities held by the financial institution's trust department or agent but not in the government's name.

As of June 30, 2020, none of the cash and cash equivalents for Unity Charter School were exposed to custodial credit risk.

The Charter School does not have a policy for the management of custodial credit risk, except as noted above, other than depositing all of its funds in banks covered by GUDPA.

**UNITY CHARTER SCHOOL  
NOTES TO THE FINANCIAL STATEMENTS  
JUNE 30, 2020**

**NOTE 3: DETAILED DISCLOSURE REGARDING ASSETS AND REVENUES (CONTINUED)**

Deposits and Investments (Continued)

Investments

New Jersey statutes (N.J.S.A.18A:20-37) permit the Charter School to purchase the following types of securities:

- a. When authorized by resolution adopted by a majority vote of all its board members, the Charter School may use moneys which may be in hand for the purchase of the following types of securities, which, if suitable for registry, may be registered in the name of the Charter School;
  - (1) Bonds or other obligations of the United States of America or obligations guaranteed by the United States of America;
  - (2) Government money market mutual funds;
  - (3) Any obligation that a federal agency or a federal instrumentality has issued in accordance with an act of Congress, which security has a maturity date not greater than 397 days from the date of purchase, provided that such obligation bears a fixed rate of interest no dependent on any index or other external factor;
  - (4) Bonds or other obligations of the charter school or bonds or other obligations of local unit or units within which the charter school is located;
  - (5) Bonds or other obligations, having a maturity date not more than 397 days from the date of purchase, approved by the Division of Investment of the Department of the Treasury for investment by charter schools;
  - (6) Local government investment pools;
  - (7) Deposits with the State of New Jersey Cash Management Fund established pursuant to section 1 of P.L. 1977, c.281 (C.52:18A-90.4) or
  - (8) Agreements for the repurchase of fully collateralized securities, if:
    - a. the underlying securities are permitted investments pursuant to
    - b. paragraphs (1) and (3) of this subsection a;
    - c. the custody of collateral is transferred to a third party;
    - d. the maturity of the agreement is not more than 30 days; and
    - e. the underlying securities are purchased through a public depository as defined in Section 1 of P.L. 1970, c.236 (C.17:9-41) and for which a master
  - (9) Repurchase agreement providing for the custody and security of collateral is executed.

*Credit Risk:* The Charter School does not have an investment policy regarding the management of credit risk. GASB 40 requires that disclosures be made as to the credit rating of all debt security investments except for obligations of the U.S. government or investments guaranteed by the U.S. government. The Charter School did not have any investments at June 30, 2020.

**UNITY CHARTER SCHOOL  
NOTES TO THE FINANCIAL STATEMENTS  
JUNE 30, 2020**

**NOTE 3: DETAILED DISCLOSURE REGARDING ASSETS AND REVENUES (CONTINUED)**

Deposits and Investments (Continued)

Investments (Continued)

Interest Rate Risk: The Charter School does not have a formal policy that limits investment maturities as a means of managing its exposure to fair value losses arising from increasing interest rates. The Charter School did not have any investments at June 30, 2020.

Concentration of Credit Risk: The Charter School places no limit on the amount they may invest in any one issuer. The Charter School did not have any investments at June 30, 2020.

Receivables

Receivables at June 30, 2020, consisted of accounts, intergovernmental, grants, and miscellaneous.

All receivables are considered collectible in full. A summary of the principal items of intergovernmental receivables follows:

	Governmental Funds			Proprietary Fund	Total	Fiduciary Funds	Total
	General Fund	Special Revenue Fund	Total Governmental Activities	Food Service Fund	Business Type Activities		
State Aid	\$ (98,253)	\$ -	\$ (98,253)	\$ -	\$ -		\$ (98,253)
Federal Aid	(3,268)	-	(3,268)	1,290	1,290		(1,978)
Other	745,438	-	745,438	-	-		745,438
Gross Receivables	643,917	-	643,917	1,290	1,290		645,207
Less: Allowance for Uncollectibles	-	-	-	-	-		-
Total Receivables, Net	\$ 643,917	\$ -	\$ 643,917	\$ 1,290	\$ 1,290		\$ 645,207

**A. Interfund Receivables and Payables**

Transfers between funds are used to repay expenses paid by another fund.

The following interfund balances remained on the fund financial statements at June 30, 2020:

Fund	Interfund Receivable	Interfund Payable
General Fund	76,193	\$ 18,386
Proprietary Fund	18,386	75,302
Fiduciary Fund		891
Total	\$ 94,579	\$ 94,579

**UNITY CHARTER SCHOOL  
NOTES TO THE FINANCIAL STATEMENTS  
JUNE 30, 2020**

**NOTE 3: DETAILED DISCLOSURE REGARDING ASSETS AND REVENUES (CONTINUED)**

**B. Capital Assets**

Capital asset activity for the fiscal year ended June 30, 2020 was as follows

	<u>Beginning Balance</u>	<u>Additions</u>	<u>Retirements</u>	<u>Ending Balance</u>
<b>Governmental Activities:</b>				
<i>Capital Assets Being Depreciated:</i>				
Building and Building Improvements	\$ 175,266	\$ -	\$ -	\$ 175,266
Machinery and Equipment	114,113	-	-	114,113
Total Capital Assets Being Depreciated	<u>289,379</u>	<u>-</u>	<u>-</u>	<u>289,379</u>
Less Accumulated Depreciation For:				
Building and Building Improvements	54,937	8,763	-	63,700
Machinery and Equipment	109,529	7,715	-	117,244
Total Accumulated Depreciation	<u>164,466</u>	<u>16,478</u>	<u>-</u>	<u>180,944</u>
Total Capital Assets Being Depreciated, Net of Accumulated Depreciation	124,913	(16,478)	-	108,435
Government Activity Capital Assets, Net	<u>\$ 124,913</u>	<u>\$ (16,478)</u>	<u>\$ -</u>	<u>\$ 108,435</u>

On January 11, 2001, the NJ State Department of Education announced that effective July 1, 2001, the capitalization threshold used by charter schools in the State of New Jersey is \$2,000. Applying the higher capitalization threshold retroactively (removal of old assets) will be permitted by the State regulations in situations where (1) the assets have been fully depreciated, or (2) the assets have exceeded their useful lives. The retirement of machinery and equipment is due to the retroactive application of the higher threshold of equipment capitalization. That is, the Charter School has removed from their records assets with a historical cost greater than \$500 but not greater than \$2,000 that were fully depreciated or had exceeded their useful lives.

Depreciation expense was charged to functions as follows:

Unallocated	<u>16,478</u>
Total	<u>\$ 16,478</u>

**C. Rental Lease**

The original Lease Agreement between The Evergreen Cemetery, Landlord, and Unity Charter School, Tenant, for the premises located at One Evergreen Place, Morris Township, New Jersey, was for a two-year term, beginning July 1, 2010, through June 30, 2012. The Lease Agreement provided for two subsequent five-year Renewal Terms. Unity is currently operating under the Second Renewal Term, which expires June 30, 2022. By way of a Fourth Amendment to the original lease, an additional five-year term was agreed upon, extending the Unity Charter School tenancy at this location to June 30, 2027. Future rental payments are as follows:

<u>Year Ended</u>	<u>Amount</u>
June 30, 2021	255,344
June 30, 2022	255,344
Total future rental payments	<u>\$ 510,688</u>

**UNITY CHARTER SCHOOL  
NOTES TO THE FINANCIAL STATEMENTS  
JUNE 30, 2020**

**NOTE 4: PENSION PLANS**

Substantially all the Board's employees participate in one of the two, defined benefit public employee systems: the Teachers' Pension and Annuity Fund (TPAF) or the Public Employee's Retirement System (PERS) of New Jersey. In addition, certain employees may practice in the Defined Contribution Retirement Program (DCRP).

**A. Public Employees' Retirement System (PERS)**

**Plan Description**

The State of New Jersey, Public Employees; Retirement System (PERS) is a cost-sharing multiple-employer defined benefit pension plan administered by the State of New Jersey, Division of Pensions and Benefits (the Division). For additional information about the PERS, please refer to the Division's Comprehensive Annual Financial Report (CAFR) which can be found at [www.state.nj.us/treasury/pensions/annrpts.shtml](http://www.state.nj.us/treasury/pensions/annrpts.shtml).

**Benefits Provided**

The vesting and benefit provisions are set by N.J.S.A. 43:15A. PERS provides retirement, death and disability benefits. All benefits vest after ten years of service, except for medical benefits, which vest after 25 years of service or under the disability provisions of PERS. The following represents the membership tiers for PERS:

Tier	Descriptions
1	Members who were enrolled prior to July 1, 2007
2	Members who were eligible to enroll on or after July 1, 2007 and prior to November 2, 2008
3	Members who were eligible to enroll on or after November 2, 2008, 2010 and prior to May 22, 2010
4	Members who were eligible to enroll on or after May 22, 2010 and prior to June 28, 2011
5	Members who were eligible to enroll on or after June 28, 2011

Service retirement benefits of 1/55<sup>th</sup> of final average salary for each year of service credit is available to Tiers 1 and 2 members upon reaching age 60 and to Tier 3 members upon reaching 62. Service retirement benefits of 1/60<sup>th</sup> of final average salary for each year of service credit is available to Tier 4 members upon reaching age 62 and to tier 5 members upon 65. Early retirement benefits are available to Tiers 1 and 2 members before reaching age 60, to Tiers 3 and 4 before age 62 with 25 or more years of service credit and Tier 5 with 30 more years of service credit before age 65. Benefits are reduced by a fraction of a percent for each month that a members retires prior to the age of which a member can receive full early retirement benefits in accordance with their respective tier. Tier 1 members can receive an unreduced benefit from age 50 to age 60 if they have at least 25 years of service. Deferred retirement is available to members who have at least 10 years of service credit and have not reached the service retirement age for the respective tier.

**UNITY CHARTER SCHOOL  
NOTES TO THE FINANCIAL STATEMENTS  
JUNE 30, 2020**

**NOTE 4: PENSION PLANS (CONTINUED)**

**Public Employees' Retirement System (PERS) (Continued)**

**Basis of Presentation**

The schedule of employer allocations and the schedule of pension amounts by employer (collectively, the Schedules) present amounts that are considered elements of the financial statements of PERS or its participating employers. Accordingly, they do not purport to be a complete presentation of the financial position or changes in financial position of PERS or the participating employers. The accompanying Schedules were prepared in accordance with U.S. generally accepted accounting principles. Such preparation requires management of PERS to make a number of estimates and assumptions relating to the reported amounts. Due to the inherent nature of these estimates, actual results could differ from those estimates.

**Allocation Methodology and Reconciliation to Financial Statements**

GASB Statement No. 68, Accounting and Financial Reporting for Pensions, requires participating employers in PERS to recognize their proportionate share of the collective net pension liability, collective deferred outflows of resources, collective deferred inflows of resources and collective pension expense. The employer allocation percentages presented in the schedule of employer allocations and applied to amounts presented in the schedule of pension amounts by employer are based on the ratio of the contributions of an individual employer to the total contributions to PERS during the measurement period July 1, 2017 through June 30, 2018. Employer allocation percentages have been rounded for presentation purposes, therefore amounts presented in the schedule of pension amounts by employer may result in immaterial differences.

Although the Division administers one cost-sharing multiple-employer defined benefit pension plan, separate (sub) actuarial valuations are prepared to determine the actuarially determined contribution rate by group. Following this method, the measurement of the collective net pension liability, deferred outflows of resources, deferred inflows of resources, and pension expense are determined separately for each individual employer of the State and local groups of the plan.

To facilitate the separate (sub) actuarial valuations, the Division maintains separate accounts to identify additions, deductions, and fiduciary net position applicable to each group. The allocation percentages presented for each group in the schedule of employer allocations are applied to amounts presented in the schedule of pension amounts by employer. The allocation percentages for each group as of June 30, 2019 are based on the ratio of each employer's contributions to total employer contributions of the group for the fiscal year ended June 30, 2019.

**Contributions**

The contribution policy for PERS is set by N.J.S.A. 43:15A and requires contributions by active members and contributing employers. State legislation has modified the amount that is contributed by the State. The state's pension contributions is based on an actuarially determined amount, which includes the employer portion of the normal cost and an amortization of the unfunded accrued liability. Funding for noncontributory group insurance benefits is based on actual claims paid. For fiscal year 2018, the State's pension contribution was less than the actuarial determined amount.

**UNITY CHARTER SCHOOL  
NOTES TO THE FINANCIAL STATEMENTS  
JUNE 30, 2020**

**NOTE 4: PENSION PLANS (CONTINUED)**

The local employers' contribution amounts are based on an actuarially determined rate, which includes the normal cost and unfunded accrued liability. Chapter 19, P.L. 2009 provided an option for local employers of PERS to contribute 50% of the normal and accrued liability contribution amounts certified for payments due in State fiscal year 2009. Such employers will be credited with the full payment amounts certified for payments due not be included in their unfunded liability will be paid by the employer in level annual payments over a period of 15 years beginning with the payments due in the fiscal year ended June 30, 2012 and will be adjusted by the rate of return on the actuarial value of assets. District contributions to PERS amounted to \$ 21,220 for fiscal year 2019.

**Pension Liabilities Pension Expense, and Deferred Outflows of Resources and Deferred Inflows of Resources Related to Pensions**

At June 30, 2020, the Charter School reported a liability of \$ 393,081 for its proportionate share of the net pension liability. The net pension liability was measured as of June 30, 2019 which was rolled forward to June 30, 2020. The Charter School's proportion of the net pension liability was based on a projection of the Charter School's long-term share of contributions to the pension plan relative to the projected contributions of all participating members, actuarially determined. At June 30, 2019 measurement date, the Charter School's proportion was 0.00218154%, which was an increase of 0.00140719% from its proportion measured as of June 30, 2018.

For the fiscal year ended June 30, 2020, the Charter School recognized pension expense of \$ 121,929 . At June 30, 2020, the Charter School reported deferred outflows of resources and deferred related to pensions from the following sources.

	Deferred Outflows of Resources	Deferred Inflows of Resources
Changes in Assumptions	\$ 45,656	\$ 90,021
Difference Between Expected and Actual Experience	\$ 5,284	
Changes in Proportion	\$ 42,450	92,351
Net Difference Between Projected and Actual Investment Earnings on Pension Plan Investments	\$ -	136,437
	<u>\$ 93,390</u>	<u>\$ 318,809</u>

*Changes in Proportion*

The previous amounts do not include employer specific deferred outflows of resources and deferred inflows of resources related to changes in proportion. These amounts should be recognized (amortized) by each employer over the average of the expected remaining service lives of all plan members, which is 5.21, 5.63, 5.48, 5.57, 5.72 and 6.44 years for the 2019, 2018, 2017, 2016, 2015, and 2014 amounts, respectively



**UNITY CHARTER SCHOOL  
NOTES TO THE FINANCIAL STATEMENTS  
JUNE 30, 2020**

**NOTE 4: PENSION PLANS (CONTINUED)**

**Pension Liabilities Pension Expense, and Deferred Outflows of Resources and Deferred Inflows of Resources Related to Pensions (Continued)**

Amounts reported as deferred outflows of resources and deferred inflows resources (excluding employer specific amounts including changes in proportion) related to pensions will be recognized in pension expense as follows:

Fiscal Year Ending June 30,	Total
2020	\$ (26,100.35)
2021	(84,669)
2022	(75,504)
2023	(35,500)
2024	(3,645)
	\$ (225,419)

**Actuarial Assumptions**

The total pension liability for the June 30, 2019 measurement date was determined by an actuarial valuation as of July 1, 2018 which was rolled forward to June 30, 2019. The total pension liability for the June 30, 2018 measurement date was determined by an actuarial valuations as of July 1, 2018. This actuarial valuations used the following actuarial assumptions, applied to all periods in the measurement.

Inflation Rate	
Price	2.75%
Wage	3.25%
Salary Increases:	
through 2026	2.00-6.00% based on years of service
Thereafter	3.00-7.00% based on years of service
Investment Rate of Return	7.00%

Pre-retirement mortality rates were based on the Pub-2010 General Below-Median Income Employee mortality table with an 82.2% adjustment for males and 101.4% adjustment for females, and with future improvement from the base year of 2010 on a generational basis. Post-retirement mortality rates were based on the Pub-2010 General Below-Median Income Healthy Retiree mortality table with a 91.4% adjustment for males and 99.7% adjustment for females, and with future improvement from the base year of 2010 on a generational basis. Disability retirement rates used to value disabled retirees were based on the Pub-2010 Non-Safety Disabled Retiree mortality table with a 127.7% adjustment for males and 117.2% adjustment for females, and with future improvement from the base year of 2010 on a generational basis. Mortality improvement is based on Scale MP-2019.

**UNITY CHARTER SCHOOL  
NOTES TO THE FINANCIAL STATEMENTS  
JUNE 30, 2020**

**NOTE 4: PENSION PLANS (CONTINUED)**

**Actuarial Assumptions (Continued)**

The actuarial assumptions used in the July 1, 2018 valuation were based on the results of an actuarial experience study for the period July 1, 2011 to June 30, 2014. It is like that future experience will not exactly conform to these assumptions. To the extent that actual experience deviates from these assumptions, the emerging liabilities may be higher or lower than anticipated. The more the experience deviates, the larger the impact on future financial statements.

**Long Term Expected Rate of Return**

In accordance with State statute, the long-term expected rate of return on plan investments (7.00% at June 30, 2019) is determined by the State Treasurer, after consultation with the Directors of the Division of Investment and Division of Pensions and Benefits, the board of trustees and the actuaries. The long term expected future real rates of return (expected returns, net of pension plan investments expense and inflation) are developed for each major asset class. These ranges are combined to produce the long-term expected rate of return by weighing the expected future real rates of return by the target asset allocation percentage and by adding expected inflation. Best estimates of arithmetic rates of return for each major asset class included in PERS's target asset allocation as of June 30, 2019 are summarized in the following table:

<u>Asset Class</u>	<u>Target Allocation</u>	<u>Long Term Expected Real Rate of Return</u>
Risk Mitigation Strategies	3.00%	4.67%
Cash Equivalents	5.00%	2.00%
U.S. Treasuries	5.00%	2.68%
Investment Grade Credit	10.00%	4.25%
High Yield	2.00%	5.37%
Private Credit	6.00%	7.92%
Real Assets	2.50%	9.31%
Real Estate	7.50%	8.33%
U.S. Equity	28.00%	8.26%
Non-U.S. Developed Markets Equity	12.50%	9.00%
Emerging Markets Equity	6.50%	11.37%
Private Equity	12.00%	10.85%

**Discount Rate**

The discount rate used to measure the total pension liability was 6.28% as of June 30, 2019. The single blended discount rate was based on the long-term expected rate of return on pension plan investment of 7.00% and a municipal bond rate of 3.87% as of June 30, 2019 based on the Bond Buyer Go 20-Bond Municipal Bond index, which includes tax-exempt general obligation municipal bonds with an average rating of AA/Aa or higher. The projection of cash flows used to determine the discount rate

**UNITY CHARTER SCHOOL  
NOTES TO THE FINANCIAL STATEMENTS  
JUNE 30, 2020**

**NOTE 4: PENSION PLANS (CONTINUED)**

**Discount Rate (Continued)**

assumed that contributions from plan members will be made at the current member rates and that contributions from employers will be made based on the contributions rate in the most recent fiscal year. The State employer contributed 70% of the actuarially determined contributions and the local employers contributed 100% of their actuarially determined contributions. Based on those assumptions, the plan's fiduciary net position was projected to be available to make projected future benefit payments of current plan investments was applied to projected benefit payment through 2057. Therefore the long-term expected rate of return on plan investments was applied to projected benefit payments through 2057 and the municipal bond rate was applied to projected benefit payments after that date in determining the total pension liability.

**Sensitivity of the Charter School's Proportionate Share of the Net Pension Liability to Changes in the Discount Rate**

The following presents the Charter School's proportionate share of the collective net pension liability as of June 30, 2019 calculated using the discount rate as disclosed below, as well as what the Charter School's proportionate share of the net pension liability would be if it were calculated using a discount rate that is 1-percentage-point lower or 1-percentage-point higher than the current rate:

Measurement Date June 30, 2019			
	1% Decrease (5.28%)	Current Discount Rate (6.28%)	1% Increase (7.28%)
Charter School proportionate share of the Net Pension Liability	\$ 499,980	\$ 395,816	\$ 308,043
Measurement Date June 30, 2018			
	1% Decrease (4.66%)	Current Discount Rate (5.66%)	1% Increase (6.66%)
Charter School proportionate share of the Net Pension Liability	\$ 540,091	\$ 429,535	\$ 336,786

**Pension Plan Fiduciary Net Position**

Detailed information about the pension plan's fiduciary net position is available in the separately issued PERS financial statements.

**UNITY CHARTER SCHOOL  
NOTES TO THE FINANCIAL STATEMENTS  
JUNE 30, 2020**

**NOTE 4: PENSION PLANS (CONTINUED)**

**A. Teacher's Pension Annuity Fund (TPAF)**

**Pension Description**

The State of New Jersey, Teacher's Pension and Annuity Fund (TPAF), is a cost-sharing multiple-employer defined benefit pension plan with a special funding situation, by which the State of New Jersey (the State) is responsible fund 100% of the employer contributions, excluding any local employer early retirement incentive (ERI) contributions. The TPAF is administered by the State of New Jersey Division of Pensions and Benefits (the Division). For additional information about the TPAF, please refer to the Division's Comprehensive Annual Financial Report (CAFR) which can be found at [www.state.nj.us/treasury/pensions/annrpts.shtml](http://www.state.nj.us/treasury/pensions/annrpts.shtml).

**Benefit Provided**

The vesting and benefit provision are set by N.J.S.A. 18A:66. TPAF provides retirement, death and disability benefits. All benefits vest after ten years of service, except for medical benefits, which vest after 25 years of service or under the disability provisions of TPAF. Members are always fully vested for their own contributions and, after three years of service credit, become vested of 2% of related interest earned on the contributions. In the case of death before retirement, member's beneficiaries are entitled to full interest credited to the member's accounts. The following represents the membership tiers for TPAF:

<b>Tier</b>	<b>Descriptions</b>
<b>1</b>	Members who were enrolled prior to July 1, 2007
<b>2</b>	Members who were eligible to enroll on or after July 1, 2007 and prior to November 2, 2008
<b>3</b>	Members who were eligible to enroll on or after November 2, 2008, 2010 and prior to May 22, 2010
<b>4</b>	Members who were eligible to enroll on or after May 22, 2010 and prior to June 28, 2011
<b>5</b>	Members who were eligible to enroll on or after June 28, 2011

Service retirement benefits of 1/55<sup>th</sup> of final average salary for each year of service credit is available to Tiers 1 and 2 members upon reaching age 60 and to Tier 3 members upon reaching 62. Service retirement benefits of 1/60<sup>th</sup> of final average salary for each year of service credit is available to Tier 4 members upon reaching age 62 and to Tier 5 members upon 65. Early retirement benefits are available to Tiers 1 and 2 members before reaching age 60, to Tiers 3 and 4 before age 62 with 25 or more years of service credit and Tier 5 with 30 more years of service credit before age 65. Benefits are reduced by a fraction of a percent for each month that a member retires prior to the age of which a member can receive full early retirement benefits in accordance with their respective Tier. Deferred retirements is available to members who have at least 10 years of service credit and have not reached the service retirement age for the respective Tier.

**UNITY CHARTER SCHOOL  
NOTES TO THE FINANCIAL STATEMENTS  
JUNE 30, 2020**

**NOTE 4: PENSION PLANS (CONTINUED)**

**Teacher's Pension Annuity Fund (TPAF) (Continued)**

**Allocation Methodology**

GASB Statement No. 68, *Accounting and Financial Reporting for Pensions*, requires participating employers in TPAF to recognize their proportionate share of the collective net pension liability, collective deferred outflows of resources, collective deferred inflows in resources and collective pension expense excluding that attributable to employer-paid member contributions. The employer and nonemployer allocation percentages presented in the schedule of employer and nonemployer allocations and applied to amounts presented in the schedule of pension amounts by employer and nonemployer are based on the ratio of the State's actual contributions made as an employer and nonemployer adjusted for unpaid early retirement incentives to total contributions to TPAF during the year ended June 30, 2018. Employer and nonemployer allocation percentages have been rounded for presentation purposes, therefore amounts presented in the schedule of pension amounts by employer and nonemployer may result in immaterial differences.

The contributions policy for TPAF is set by N.J.S.A. 18A:66 and requires contributions by active members and contributing employers. State legislation has modified the amount that is contributed by the State. The State's pension contribution is based on an actuarially determined amount, which includes the employer portion of the normal cost and an amortization of the unfunded accrued liability. Funding for noncontributory group insurance benefits is based on actual claims paid. For fiscal year 2019 measurement date, the State's pension contribution was less than the actuarial determined amount.

**Special Funding Situation**

The Employer contributions for local participating employers are legally required to be funded by the State in accordance with N.J.S.A. 18:66-33. Therefore, these local participating employers are considered to be in a special funding situation as defined by GASB Statement No. 68 and the State is treated as a nonemployer contributing entity. Since the local participating employers do not contribute directly to the plan (except for employer specific financed amounts), there is no net pension liability or deferred outflows or inflows to report in the financial statements of the local participating employers, such as the Charter School. However, the notes to the financial statements of the local participating employers must disclose the portion of the nonemployer contribution was less than the actuarial determined amount.

This note discloses the portion of the Charter School's total proportionate share of the net pension liability that is associated with the Charter School. During the fiscal year ended 2020, the State of New Jersey contributed \$ 21,414 to the TPAF for normal pension benefits on behalf of the Charter School, which is less than the contractually required contribution of \$ 279,662 .

The employee contribution rate was 6.92% effective July 1, 2014. Subsequent increases after October 1, 2011 are being phased in over 7 years effective on each July 1<sup>st</sup> to bring the total pension contribution rate to 7.5% of base salary as of July 1, 2018.

**UNITY CHARTER SCHOOL  
NOTES TO THE FINANCIAL STATEMENTS  
JUNE 30, 2020**

**NOTE 4: PENSION PLANS (CONTINUED)**

**Special Funding Situation (Continued)**

As June 30, 2020, the State's proportionate share of the net pension liability associated with the Charter School was \$ 8,536,151 . The net pension liability was measured as of June 30, 2019, and the total pension liability used to calculate the net pension liability was determined by an actuarial valuation as of July 1, 2018 which was rolled forward to June 30, 2019.

The Charter School's proportion of the net pension liability was based on a projection of the CS / District's long-term share of contributions to the pension plan relative to the projected contributions of all participating members, actuarially determined. At June 30, 2019, Charter School's proportion was 0.0139091%, which was an increase of 0.0008900% from its proportion measured as of June 30, 2018.

Charter School's Proportionate Share of the Net Pension Liability	\$ -
State's Proportionate Share of the Net Pension Liability Associated with the District	<u>8,536,151</u>
Total	\$ 8,536,151

For the fiscal year ended June 30, 2019, the State recognized pension expense on behalf of the Charter School in the amount of \$ 279,662 and the Charter School recognized pension expense and revenue for that same amount in the fiscal year ended June 30, 2020 financial statements.

The State reported collective deferred outflows of resources and deferred inflows of resources related to pensions from the following sources:

	<u>Deferred Outflows of Resources</u>	<u>Deferred Inflows of Resources</u>
Changes in Assumptions	\$ 8,729,264,342	\$ 17,163,131,436
Difference Between Expected and Actual Experience	1,203,503,264	213,344,311
Changes in Proportion and differences between employer contributions and proportionate share of contributions	196,394,631	196,394,631
Net Difference Between Projected and Actual Investment Earnings on Pension Plan Investments	<u>-</u>	<u>163,369,676</u>
	<u>\$ 10,129,162,237</u>	<u>\$ 17,736,240,054</u>

The \$ 10,129,162,237 reported as deferred outflows of resources related to pensions resulting from changes in assumptions will be amortized over a period of 8.5 years.

The \$ 17,736,240,054 reported as a deferred inflow of resources resulting from the difference between projected and actual.

**UNITY CHARTER SCHOOL  
NOTES TO THE FINANCIAL STATEMENTS  
JUNE 30, 2020**

**NOTE 4: PENSION PLANS (CONTINUED)**

**Special Funding Situation (Continued)**

Fiscal Year Ending June 30,	Total
2020	\$ (272,405,510)
2021	(704,260,700)
2022	(630,562,767)
2023	(1,216,378,743)
2024	(2,381,316,232)
Thereafter	(2,402,153,865)
	\$ (7,607,077,817)

**Actuarial Assumptions**

The total pension liability for the June 30, 2019 measurement date was determined by an actuarial valuation as of June 30, 2018 which was rolled forward to June 30, 2019. This actuarial valuation used the following actuarial assumptions, applied to all periods in the measurement.

Inflation Rate	
Price	2.75%
Wages	3.25%
Salary Increases:	
Through 2026	1.55 - 4.45%
	based on years of service
Thereafter	2.75 - 5.65%
	based on years of service
Investment Rate of Return	7.00%

Pre-retirement mortality rates were based on the Pub-2010 Teachers Above-Median Income Employee mortality table with a 93.9% adjustment for males and 85.3% adjustment for females, and with future improvement from the base year of 2010 on a generational basis. Post-retirement mortality rates were based on the Pub-2010 Teachers Above-Median Income Healthy Retiree mortality table with a 114.7% adjustment for males and 99.6% adjustment for females, and with future improvement from the base year of 2010 on a generational basis.

Disability mortality rates were based on the Pub-2010 Non-Safety Disabled Retiree mortality table with a 106.3% adjustment for males and 100.3% adjustment for females, and with future improvement from the base year of 2010 on a generational basis. Mortality improvement is based on Scale MP-2019.

The actuarial assumptions used in the July 1, 2018 valuation were based on the results of an actuarial experience study for the period July 1, 2015 to June 30, 2018.

**UNITY CHARTER SCHOOL  
NOTES TO THE FINANCIAL STATEMENTS  
JUNE 30, 2020**

**NOTE 4: PENSION PLANS (CONTINUED)**

**Long Term Expected Rate of Return**

In accordance with State statute, the long-term expected rate of return on pension investments (7.00% at June 30, 2019) is determined by the State Treasurer, after consultation with the Directors of the Division of Investments and Division of Pension and Benefits, the Board of Trustees and the actuaries. The long-term expected rate of return was determined using a building block method in which best-estimate ranges of expected future real rates of return (expected returns, net of pension plan investment expense and inflation) are developed for each major asset class. These ranges are combined to produce the long-term expected rate of return by weighing the expected future real rates of return by the target asset allocation percentage and by adding expecting inflation. Best estimates of arithmetic real rates of return for each major asset class included in TPAF' target asset allocation as of June 30, 2019 is summarized in the following table:

Asset Class	Target Allocation	Rate of Return
Risk Mitigation Strategies	3.00%	4.67%
Cash Equivalents	5.00%	2.00%
U.S. Treasuries	5.00%	2.68%
Investment Grade Credit	10.00%	4.25%
High Yield	2.00%	5.37%
Private Credit	6.00%	7.92%
Real Assets	2.50%	9.31%
Real Estate	7.50%	8.33%
U.S. Equity	28.00%	8.26%
Non-U.S. Developed Markets Equity	12.50%	9.00%
Emerging Markets Equity	6.50%	11.37%
Private Equity	12.00%	10.85%

**Discount Rate**

The discount rate used to measure the total pension liability was 6.28% as of June 30, 2019. The single blended discount rate was based on the long-term expected rate of return on pension plan investment of 7.00% and a municipal bond rate of 3.87% as of June 30, 2019 based on the Bond Buyer Go 20-Bond Municipal Bond index, which includes tax-exempt general obligation municipal bonds with an average rating of AA/Aa or higher. The projection of cash flows used to determine the discount rate assumed that contributions from plan members will be made at the current member rates and that contributions from employers will be made based on the contributions rate in the most recent fiscal year. The State employer contributed 70% of the actuarially determined contributions and the local employers contributed 100% of their actuarially determined contributions. Based on those assumptions, the plan's fiduciary net position was projected to be available to make projected future benefit payments of current plan investments was applied to projected benefit payment through 2054. Therefore the long-term expected rate of return on plan investments was applied to projected benefit payments through 2054 and the municipal bond rate was applied to projected benefit payments after that date in determining the total pension liability.



**UNITY CHARTER SCHOOL  
NOTES TO THE FINANCIAL STATEMENTS  
JUNE 30, 2020**

**NOTE 4: PENSION PLANS (CONTINUED)**

**Sensitivity of the Charter School's Proportionate Share of the Net Pension Liability to Changes in the Discount Rate**

The following presents the net pension liability of the State as of June 30, 2019 calculated using the discount rate as disclosed above, as well as what the State's net pension liability would be if it were calculated using a discount rate that is 1-percentage-point lower or 1-percentage-point higher than the current rate:

Measurement Date June 30, 2019			
	1% Decrease (4.60%)	Current Discount Rate (5.60%)	1% Increase (6.60%)
Charter School's proportionate share of the Net Pension Liability	\$ 10,090,313	\$ 8,556,760	\$ 7,284,394

Measurement Date June 30, 2018			
	1% Decrease (3.86%)	Current Discount Rate (4.86%)	1% Increase (5.86%)
Charter School's proportionate share of the Net Pension Liability	\$ 10,489,956	\$ 8,874,894	\$ 7,536,047

**Pension Plan Fiduciary Net Position – TPAF**

Detailed information about the TPAF's fiduciary net position is available in the separately issued TPAF financial statements.

**C. Defined Contribution Retirement Program (DCRP)**

Prudential Financial jointly administers the DCRP investments with the NJ Division of Pensions and Benefits. If an employee is ineligible to enroll in the PERS or TPAF, the employee may be eligible to enroll in the DCRP. DCRP provides eligible members with a tax-sheltered, defined contribution retirement benefit, along with life insurance and disability coverage. Vesting is immediate upon enrollment for members of the DCRP.

The State of New Jersey, Department of the Treasury, Division of Pensions and Benefits, issues publicly available financial reports that include the financial statements and required supplementary information of the DCRP. The financial reports may be obtained by writing to the State of New Jersey, Department of the Treasury, Division of Pensions and Benefits, PO Box 295, Trenton, New Jersey 08625-0295.

The contribution policy is set by the New Jersey Statutes and, in most retirement systems, contributions are required by active members and contributing employers. Plan member and employer contributions may be amended by the State of New Jersey regulation. Employers are required to contribute at an actuarially determined rate.

**UNITY CHARTER SCHOOL  
NOTES TO THE FINANCIAL STATEMENTS  
JUNE 30, 2020**

**NOTE 4: PENSION PLANS (CONTINUED)**

**Defined Contribution Retirement Program (DCRP) (Continued)**

Employee contributions are based on percentages of 5.50% for DCRP of employees' annual compensation, as defined. The expanded under the provisions of Chapter 89, P.L. 2008. Employee contributions for DCRP are matched by a 3% employer contribution.

The actuarially determined employer contribution includes funding for cost-of-living adjustments and noncontributory death benefits, and post-retirement medical premiums.

For DCRP, the Charter School recognized no pension expense for the fiscal year ended June 30, 2020. There were no employee contributions to DCRP for the fiscal year ended June 30, 2020.

**NOTE 5: POST-RETIREMENT BENEFITS**

**General Information about the OPEB Plan**

**Plan Description and Benefits Provided**

The school is in a "special funding situation, as described in GASB Statement No. 75 in that OPEB contributions and expense are legally required to be made by and are the sole responsibility of the State of New Jersey.

The State of New Jersey reports a liability as a result of its statutory requirements to pay other postemployment (health) benefits for State Health Benefit Local Education Retired Employees Plan. The State Health Benefit Local Education Retired Employees Plan is a multiple-employer defined benefit OPEB plan that is administered on a pay-as-you-go basis. Accordingly, no assets are accumulated in a qualifying trust that meets the criteria in paragraph 4 of GASB Statement No. 75, *Accounting and Financial Reporting for the Postemployment Benefits Other Than Pensions*. The State Health Benefit Local Education Retired Employees Plan provides medical, prescription drug, and Medicare Part B reimbursement to retirees and their covered dependents of local education employers.

The employer contributions for the participating local education employers are legally required to be funded by the State of New Jersey in accordance with N.J.S.A 52:14-17.32f. According to N.J.S.A 52:14- 17.32f, the State provides employer-paid coverage to employees who retire from a board of education or county college with 25 years or more of service credit in, or retires on a disability pension from, one or more of the following plans: the Teachers' Pension and Annuity Fund (TPAF), the Public Employees' Retirement System (PERS), the Police and Firemen Retirement System (PFRS), or the Alternate Benefit Program (ABP). Pursuant to Chapter 78, P.L. 2011 , future retirees eligible for postretirement medical coverage who have less than 20 years of creditable service on June 28, 2011 will be required to pay a percentage of the

**UNITY CHARTER SCHOOL  
NOTES TO THE FINANCIAL STATEMENTS  
JUNE 30, 2020**

**NOTE 5: POST-RETIREMENT BENEFITS (CONTINUED)**

**Plan Description and Benefits Provided (Continued)**

cost of their health care coverage in retirement provided they retire with 25 or more years of pension service credit. The percentage of the premium for which the retiree will be responsible will be determined based on the retiree's annual retirement benefit and level of coverage.

The total nonemployer OPEB liability does not include certain other postemployment benefit obligations that are provided by the local education employers. The reporting of these benefits are the responsibility of the individual local education employers.

**Employees covered by benefit terms:**

At June 30, 2019, the entire State Health Benefit Local Education Retired Employees OPEB Plan consisted for the following members:

Active plan member	216,892
Inactive plan members or beneficiaries currently receiving benefits	148,051
Inactive plan members entitled to but not yet receiving benefit payments	-
Total	364,943

**Total Nonemployer OPEB Liability**

The total nonemployer OPEB liability as of June 30, 2019 was determined by an actuarial valuation as of June 30, 2018, which was rolled forward to June 30, 2019.

**Actuarial Assumptions and Other Inputs**

The actuarial assumptions vary for each plan member depending on the pension plan the member is enrolled in. This actuarial valuation used the following actuarial assumptions, applied to all periods in the measurement:

Inflation Rate	2.50%		
		<b>TPAF/ABP</b>	<b>PERS</b>
Salary Increases			<b>PFRS</b>
Through 2026		1.55% to 3.05% based on service years	2.00% to 6.00% based on service years
Rate thereafter		1.55% to 3.05% based on service years	3.00% to 7.00% based on service years
			Applied to all future years

Preretirement mortality rates were based on the Pub-2010 Healthy "Teachers" (TPAF/ABP), "General" (PERS) and Safety (PFRS) classification headcount-weighted-mortality table with fully generational-mortality improvement projections from the central year using Scale MP-2019. Postretirement mortality rates were based on

**UNITY CHARTER SCHOOL  
NOTES TO THE FINANCIAL STATEMENTS  
JUNE 30, 2020**

**NOTE 5: POST-RETIREMENT BENEFITS (CONTINUED)**

**Employees covered by benefit terms (Continued)**

the Pub-2010 "General" classification headcount-weighted mortality table with fully generational mortality improvement projections from the central year using Scale MP-2019. Disability mortality rates were based on the Pub-2010 "General" classification headcount-weighted mortality table with fully generational mortality improvement projections from the central year using Scale MP-2019.

The actuarial assumptions used in the June 30, 2018 valuation were based on the results of actuarial experience studies for the periods July 1, 2015 - June 30, 2018, July 1, 2013 - June 30, 2018, and July 1, 2014 - June 30, 2018 and July 1, 2013 - June 30, 2018 for TPAF, PFRS and PERS, respectively.

Health Care Trend Assumptions

For pre-Medicare preferred provider organization (PPO) medical benefits, this amount initially is 5.7% and decreases to a 4.5% long-term trend rate after eight years. For post-65 medical benefits, the actual fully-insured Medicare Advantage trend rate for fiscal year 2020 are reflected. The assumed post-65 medical trend is 4.5% for all future years. For prescriptions on drug benefits, the initial trend rate is 7.5% and decreases to a 4.5% long-term trend rate after eight years. For Medicare Part B reimbursement, the trend rate is 5.0%.

Discount rate

The discount rate for June 30, 2019 was 3.50%. This represents the municipal bond return rate as chosen by the Division. The source is the Bond Buyer Go 20-Bond Municipal Bond Index, which includes tax-exempt general obligation municipal bonds with an average rating of AA/Aa or higher. As the long-term rate of return is less than the municipal bond rate, it is not considered in the calculation of the discount rate, rather the discount rate is set at the municipal bond rate.

Changes in the Total

Changes in the State's Total OPEB Liability

	Total OPEB Liability
Balance at June 30, 2019	\$ 2,079,992
Service cost	210,205
Interest on Total OPEB Liability	87,320
Difference between expected and actual experience	(47,428)
Effect of Changes of Assumptions	34,233
Contributions - Employee	2,089
Gross Benefits Paid by the State	(70,478)
Net Changes	215,941
Balance at June 30, 2020	2,295,933

**UNITY CHARTER SCHOOL  
NOTES TO THE FINANCIAL STATEMENTS  
JUNE 30, 2020**

**NOTE 5: POST-RETIREMENT BENEFITS (CONTINUED)**

**Employees covered by benefit terms (Continued)**

Sensitivity of Total Nonemployer OPEB Liability to Changes in the Discount Rate:

The following presents the total nonemployer OPEB liability as of June 30, 2019 and 2017, respectively, calculated using the discount rate as disclosed above as well as what the total nonemployer OPEB liability would be if it was calculated using a discount rate that is 1-percentage point lower or 1-percentage point higher than the current rate:

	Measurement Date Ended June 30, 2019		
	At 1%	At current	At 1%
	Decrease (2.50%)	discount rate (3.50%)	Increase (4.50%)
Total OPEB Liability	\$ 2,712,399	\$ 2,295,933	\$ 1,965,111

Sensitivity of Total Nonemployer OPEB Liability to Changes in the Healthcare Trend Rate:

The following presents the total nonemployer OPEB liability as of June 30, 2019 and 2016, respectively, calculated using the healthcare trend rate as disclosed above as well as what the total nonemployer OPEB liability would be if it was calculated using a healthcare trend rate that is 1- percentage point lower or 1-percentage point higher than the current rate:

	Measurement Date Ended June 30, 2019		
	At 1%	Trend Rate	At 1%
	decrease		Increase
Total OPEB Liability	\$ 1,891,746	\$ 2,295,933	\$ 2,830,993

OPEB Expense and Deferred Outflows of Resources and Deferred Inflows of Resources Related to OPEB

For the fiscal year ended June 30, 2020 the Charter School recognized OPEB revenue and expense of \$1,269,970 in the government-wide financial statements for the State's proportionate share of the OPEB Plan's OPEB expenses, associated with the Charter School. This expense and revenue was based on the OPEB Plan's June 30, 2019 measurement date.

In accordance with GASB Statement 75, as the Charter School's proportionate share of the OPEB liability is \$0, there is no recognition of the allocation of the proportionate share of the deferred inflows and outflows of resources. At June 30, 2019 the State had deferred outflows of resources and deferred inflows of resources related to OPEB from the following sources:

**UNITY CHARTER SCHOOL  
NOTES TO THE FINANCIAL STATEMENTS  
JUNE 30, 2020**

**NOTE 5: POST-RETIREMENT BENEFITS (CONTINUED)**

**Employees covered by benefit terms (Continued)**

	Deferred Outflows Of Resources	Deferred Inflows Of Resources
Difference between Actual and Expected Experience	\$ -	\$ (576,882.53)
Net Difference between Expected and Actual Earnings on OPEB Plan Investments	-	-
Assumption Changes	-	(466,654)
Sub Total	-	(1,043,536)
Contributions Made in Fiscal Year 2019 after June 30, 2018 Measurement Date	-	N/A
Total	-	(1,043,536)

Amounts reported as deferred outflows of resources and deferred inflows of resources related OPEB will be recognized in OPEB expense as follows:

Measurement Period Ending June 30	
2020	\$ (140,110)
2021	\$ (140,110)
2022	\$ (140,110)
2023	\$ (140,110)
2024	\$ (140,110)
Total Thereafter	\$ (342,987)
	<u>\$ (1,043,536)</u>

**NOTE 6: RISK MANAGEMENT**

The Charter School is exposed to various risks of loss related to torts; theft of, damage to, and destruction of assets; errors and omissions; injuries to employees; and natural disasters.

The Charter School is a member of the New Jersey School Boards Association Insurance Group, Educational Risk and Insurance Consortium (the Consortium). The Consortium is both an insured and self-administered group of school districts established for the purpose of providing certain low-cost workers' compensation, employees' liability, automobile and equipment liability, general liability and boiler and machinery insurance coverage for member school districts in order to keep local property taxes at a minimum. The Charter School pays an annual assessment to the Consortium and should it be determined that payments received by the Consortium are deficient, additional assessments may be levied. Additionally, the Consortium maintains a contract of excess insurance with a commercial reinsurer to secure the payment of benefits.

**UNITY CHARTER SCHOOL  
NOTES TO THE FINANCIAL STATEMENTS  
JUNE 30, 2020**

**NOTE 6: RISK MANAGEMENT (CONTINUED)**

The Charter School continues to carry commercial insurance coverage for all other risks of loss, including health and accident insurance. Settled claims resulting from these risks have not exceeded commercial coverage in any of the past three fiscal years.

New Jersey Unemployment Compensation Insurance

The Charter School has elected to fund its New Jersey Unemployment Compensation Insurance under the “Benefit Reimbursement Method.” Under this plan, the Charter School is required to reimburse the New Jersey Unemployment Trust Fund for benefits paid to its former employees and charged to its account with the State. The Charter School is billed quarterly for amounts due to the State. The table below is a summary of charter school contributions, employee contributions, reimbursements to the State for benefits paid and the ending balance of the charter school’s expendable trust fund for the current year.

New Jersey Unemployment Compensation Insurance (Continued)

Fiscal Year	Charter School Contributions	Employee Contributions	Amount Reimbursed	Ending Balance
2019-2020	\$ -	\$ -	\$ -	\$ 10
2018-2019	5,164	4,559	9,723	10
2017-2018	1,385	12,072	13,457	20

**NOTE 7: CONTINGENT LIABILITIES**

The Board’s attorney is unaware of any potential claims against the Charter School that would materially affect the financial condition of the Charter School.

**NOTE 8: SUBSEQUENT EVENTS**

Subsequent events were evaluated through January 15, 2021, the date the financial statements were available to be issued.

On January 30, 2020, the World Health Organization (“WHO”) announced a global health emergency because of a new strain of coronavirus originating in Wuhan, China (the “COVID-19 outbreak”) and the risks to the international community as the virus spreads globally beyond its point of origin. In March 2020, the WHO classified the COVID-19 outbreak as a pandemic, based on the rapid increase in exposure globally. The full impact of the COVID-19 outbreak continues to evolve as of the date of this report. As such, it is uncertain as to the full magnitude that the pandemic will have on the Company’s financial condition, liquidity, and future results of operations. Management is actively monitoring the global situation on its financial condition,

**UNITY CHARTER SCHOOL  
NOTES TO THE FINANCIAL STATEMENTS  
JUNE 30, 2020**

**NOTE 8: SUBSEQUENT EVENTS (CONTINUED)**

liquidity, operations, suppliers, industry, and workforce. Given the daily evolution of the COVID-19 outbreak and the global responses to curb its spread, the Company is not able to estimate the effects of the COVID-19 outbreak on its results of operations, financial condition, or liquidity for fiscal year 2021.

Although the Charter School cannot estimate the length or gravity of the impact of the COVID-19 outbreak at this time, if the pandemic continues, it may have a material effect on the Charter School's results of future operations, financial position, and liquidity in fiscal year 2021.



***REQUIRED SUPPLEMENTARY INFORMATION – PART II***

***SECTION C – BUDGETARY COMPARISON SCHEDULE***

**UNITY CHARTER SCHOOL**  
General Fund  
Budgetary Comparison Schedule  
For the Fiscal Year Ended June 30, 2020

	Original Budget	Budget Transfers	Final Budget	Actual	Variance Final to Actual
<b>REVENUES:</b>					
Local Sources:					
Equalization Aid-Local	\$ 3,091,587	\$ -	\$ 3,091,587	\$ 3,091,587	
Total Local Sources	3,091,587	-	3,091,587	3,091,587	-
Categorical Aid:					
Equalization Aid-State	399,876		399,876	399,876	-
Special Education	166,504		166,504	166,504	-
Security Aid	32,723		32,723	32,723	-
Non-Public Student Aid	49,315		49,315	49,315	-
Total Categorical Aid	648,418	-	648,418	648,418	-
Revenues From Other Sources:					
On-Behalf TPAF Pension Contributions (Non-Budgeted)				304,561	304,561
On-Behalf TPAF Post-Retirement Medical Contributions (Non-Budgeted)				112,986	112,986
On-Behalf TPAF Long Term Disability Contributions (Non-Budgeted)				763	763
Reimbursed TPAF Social Security Contributions (Non-Budgeted)				117,066	117,066
Miscellaneous Revenue	15,026		15,026	264,434	249,408
Total Revenues From Other Sources	15,026	-	15,026	799,810	784,784
Total Revenues	3,755,031	-	3,755,031	4,539,815	784,784
<b>EXPENDITURES:</b>					
Instruction:					
Salaries of Teachers	1,301,311	17,660	1,318,971	1,354,456	(35,485)
Other Salaries for Instruction	90,139	(3,227)	86,912	86,912	-
Purchased Prof/Tech Services	99,217	(8,950)	90,267	90,267	-
General Supplies	47,000	(81)	46,919	46,919	-
Textbooks	1,000	(1,000)	-	-	-
Miscellaneous	9,500	(4,042)	5,458	5,458	-
Total Instruction	1,548,167	360	1,548,527	1,584,012	(35,485)
Administration:					
Salaries - General Administration	247,852	44,515	292,367	292,367	-
Salaries - Technical	60,372		60,372	59,373	999
Salaries of Secretarial/Clerical Assistants	135,900	788	136,688	136,688	-
Total Benefits Cost	645,813	(84,692)	561,121	408,955	152,166
Purchases Prof/Tech Services	105,300	(8,685)	96,615	70,081	26,534
Other Purchased Services	11,000	(3,535)	7,465	6,392	1,073
Communications/Telephone	13,900	6,845	20,745	18,789	1,956
Insurance	11,150		11,150	8,451	2,699
Supplies and Materials	22,000	6,812	28,812	28,580	232
Miscellaneous Expenses	28,605	(1,531)	27,074	22,057	5,017
Total Administration	1,281,892	(39,483)	1,242,409	1,051,733	190,676

See Management's Discussion and Analysis section of this report for an explanation of significant budget variances, original and final.

**UNITY CHARTER SCHOOL**  
General Fund  
Budgetary Comparison Schedule  
For the Fiscal Year Ended June 30, 2020

	Original Budget	Budget Transfers	Final Budget	Actual	Variance Final to Actual
(Continued from Prior Page)					
Support Services:					
Salaries	74,500	14,467	88,967	88,967	-
Salaries - Improvement of Instruction	280,843	(18,603)	262,240	247,685	14,555
Purchased Prof/Tech Services	63,400	6,493	69,893	60,455	9,438
Cleaning, Repair, and Maintenance Services	51,600	(9,944)	41,656	40,137	1,519
Rental of Land and Buildings	478,444	126,700	605,144	605,144	-
Transportation-Other Than To/From School	61,455	(19,608)	41,847	41,197	650
Insurance for Property, Liability and Fidelity	27,500	(15,879)	11,621	11,621	-
Supplies and Materials	22,000	9,046	31,046	28,729	2,317
Energy Costs (Heat and Electricity)	40,700	(32,494)	8,206	8,206	-
Miscellaneous Expenses	550		550	427	123
<b>Total Support Services</b>	<b>1,100,992</b>	<b>60,178</b>	<b>1,161,170</b>	<b>1,132,568</b>	<b>28,602</b>
Capital Outlay:					
Building Purchases Other Than Lease Purchases	25,000	2,436	27,436	27,437	(1)
<b>Total Capital Outlay</b>	<b>25,000</b>	<b>2,436</b>	<b>27,436</b>	<b>27,437</b>	<b>(1)</b>
On-Behalf TPAF Pension Contributions (Non-Budgeted)					
				304,561	(304,561)
On-Behalf TPAF Post-Retirement Medical Contributions (Non-Budgeted)					
				112,986	(112,986)
Reimbursed TPAF Social Security Contributions (Non-Budgeted)					
				117,066	(117,066)
On Behalf TPAF Long-Term Disability Contributions (Non-Budgeted)					
				763	(763)
<b>Total Expenditures</b>	<b>3,956,051</b>	<b>23,491</b>	<b>3,979,542</b>	<b>4,331,126</b>	<b>(237,835)</b>
<b>Excess (Deficiency) of Revenues Over (Under) Expenditures</b>	<b>(201,020)</b>	<b>(23,491)</b>	<b>(224,511)</b>	<b>208,689</b>	<b>433,200</b>
Other Financing Sources (Uses)					
Food Service	550		550		550
<b>Total Other Financing Sources (Uses)</b>	<b>550</b>	<b>-</b>	<b>550</b>	<b>-</b>	<b>550</b>
<b>Excess (Deficiency) of Revenues and Other Financing Sources Over (Under) Expenditures and Other Financing Uses</b>	<b>(201,570)</b>	<b>(23,491)</b>	<b>(225,061)</b>	<b>208,689</b>	<b>433,750</b>
<b>FUND BALANCE, JULY 1</b>	<b>605,715</b>	<b>-</b>	<b>605,715</b>	<b>605,715</b>	<b>-</b>
<b>FUND BALANCE, JUNE 30</b>	<b>\$ 404,145</b>	<b>\$ (23,491)</b>	<b>\$ 380,654</b>	<b>\$ 814,404</b>	<b>\$ 433,750</b>
Recapitulation of Excess (Deficiency) of Revenues Over (Under) Expenditures Budgeted Fund Balance					
	\$ 404,145	\$ (23,491)	380,654	\$ 814,404	\$ 433,750
<b>Total</b>	<b>\$ 404,145</b>	<b>\$ (23,491)</b>	<b>\$ 380,654</b>	<b>\$ 814,404</b>	<b>\$ 433,750</b>

See Management's Discussion and Analysis section of this report for an explanation of significant budget variances, original and final.

**UNITY CHARTER SCHOOL**  
Special Revenue Fund  
Budgetary Comparison Schedule  
For the Fiscal Year Ended June 30, 2020

	Original Budget	Budget Transfers	Final Budget	Actual	Variance Favorable (Unfavorable)
<b>REVENUES:</b>					
Federal Sources	\$ 74,658	\$ -	\$ 74,658	\$ 74,658	\$ -
State Sources			-		-
Local Sources	5,878		5,878	5,878	-
<b>Total Revenues</b>	<b>80,536</b>	<b>-</b>	<b>80,536</b>	<b>80,536</b>	<b>-</b>
<b>EXPENDITURES:</b>					
Instruction:					
Salaries of Teachers	15,080		15,080	15,080	-
General Supplies	11,785		11,785	11,785	-
<b>Total Instruction</b>	<b>26,865</b>	<b>-</b>	<b>26,865</b>	<b>26,865</b>	<b>-</b>
Support Services:					
Salaries of Supervisors of Instruction	27,000		27,000	27,000	-
Personal Services - Employee Benefits	12,576		12,576	12,576	-
Other Purchased Professional Services	10,000		10,000	10,000	-
Other Purchased Professional Services	4,095		4,095	4,095	-
<b>Total Support Services</b>	<b>53,671</b>	<b>-</b>	<b>53,671</b>	<b>53,671</b>	<b>-</b>
<b>Total Expenditures</b>	<b>80,536</b>	<b>-</b>	<b>80,536</b>	<b>80,536</b>	<b>-</b>
<b>Excess (Deficiency) of Revenues Over (Under) Expenditures</b>	<b>\$ -</b>	<b>\$ -</b>	<b>\$ -</b>	<b>\$ -</b>	<b>\$ -</b>

***NOTES TO THE REQUIRED SUPPLEMENTARY INFORMATION***

**UNITY CHARTER SCHOOL**  
 Budgetary Comparison Schedule  
 Budget-To-GAAP Reconciliation  
 Note to RSI  
 For the Fiscal Year Ended June 30, 2020

Note A - Explanation of differences between Budgetary Inflows and GAAP Revenues and Expenditures

	General Fund	Special Revenue Fund
<b>Sources/Inflows of Resources</b>		
Actual amounts (budgetary) "revenues" from the budgetary comparison schedules	[C-1] \$ 4,539,815	[C-2] 80,536
 Difference - Budget to GAAP Grant accounting budgetary basis differs from GAAP in that encumbrances are recognized as expenditures, and the related revenue is recognized		-
 Total revenues as reports on the statement of revenues, expenditures and changes in fund balance - governmental funds.	[B-2] \$ 4,539,815	[B-2] \$ 80,536
 <b>Uses/Outflows of resources</b>		
Actual amounts (budgetary basis) "total outflows" from the budgetary comparison schedule	[C-1] \$ 4,331,126	[C-2] 80,536
 Differences - Budget to GAAP: Encumbrances for supplies and equipment ordered but not received are reported in the year the order is placed for budgetary purposes, but in the year the supplies are received for financial accounting purposes.		-
 Total expenditures as reported on the statement of revenues, expenditures and changes in fund balances - governmental funds.	[B-2] \$ 4,331,126	[B-2] \$ 80,536

***REQUIRED SUPPLEMENTARY INFORMATION – PART III***



***SCHEDULE L – SCHEDULES RELATED TO ACCOUNTING AND REPORTING FOR  
PENSIONS (GASB 68)***

**UNITY CHARTER SCHOOL**  
**REQUIRED SUPPLEMENTARY INFORMATION SCHEDULES**  
**SCHEDULE OF THE CHARTER SCHOOL'S PROPORTIONATE SHARE OF THE NET PENSION LIABILITY**  
**PUBLIC EMPLOYEES RETIREMENT SYSTEM**  
**LAST FIVE FISCAL YEARS**  
**UNAUDITED**

	Fiscal Year Ending June 30,				
	2016	2017	2018	2019	2020
Charter School's proportion of the net pension liability	0.00619008%	0.00171623%	0.00117833%	0.001407191%	0.002181544%
Charter School's proportionate share of the net pension liability	\$ 1,183,048	\$ 385,260	\$ 274,297	\$ 277,069	\$ 393,081
Charter School's covered payroll (plan measurement period)	\$ 1,080,422	\$ 106,432	\$ 133,471	\$ 660,006	\$ 366,685
Charter School's proportionate share of the net pension liability as a percentage of it's covered employee payroll	109%	362%	206%	42%	107%
Plan fiduciary net position as a percentage of the total pension liability	47.93%	45.37%	51.55%	51.55%	53.60%

Note: This schedule does not contain ten years of information as GASB No. 68 was implemented during the fiscal year ended June 30, 2015.

**UNITY CHARTER SCHOOL**  
**REQUIRED SUPPLEMENTARY INFORMATION SCHEDULES**  
**SCHEDULE OF THE CHARTER SCHOOL CONTRIBUTIONS**  
**PUBLIC EMPLOYEES RETIREMENT SYSTEM**  
**LAST FIVE FISCAL YEARS**  
**UNAUDITED**

	Fiscal Year Ending June 30,				
	2016	2017	2018	2019	2020
Contractually required contribution	\$ 46,641	\$ 14,755	\$ 10,916	\$ 13,997	21,220
Contributions in relation to the contractually required contribution	<u>(48,449)</u>	<u>(14,755)</u>	<u>(10,916)</u>	<u>(13,997)</u>	<u>(21,220)</u>
Contribution deficiency/(excess)	<u>\$ (1,808)</u>	<u>\$ -</u>	<u>\$ -</u>	<u>\$ -</u>	<u>\$ -</u>
Charter School's covered employee payroll	\$ 1,080,422	\$ 106,432	\$ 133,471	\$ 660,006	\$ 366,685
Contributions as a percentage of covered employee payroll	4.32%	13.86%	8.18%	2.12%	5.79%

Note: This schedule does not contain ten years of information as GASB No. 68 was implemented during the fiscal year ended June 30, 2015.

**UNITY CHARTER SCHOOL**  
**REQUIRED SUPPLEMENTARY INFORMATION SCHEDULES**  
**SCHEDULE OF THE CHARTER SCHOOL'S PROPORTIONATE SHARE OF THE NET PENSION LIABILITY**  
**TEACHER'S PENSION AND ANNUITY FUND**  
**LAST FIVE FISCAL YEARS**  
**UNAUDITED**

	Fiscal Year Ending June 30,				
	2016	2017	2018	2019	2020
State's proportion of the net pension liability attributable of the Charter School	0.01293490%	0.01130112%	0.01084543%	0.01301906%	0.0139091076%
State's proportionate share of the net pension liability attributable to the Charter School	\$ 6,537,215	\$ 7,142,792	\$ 7,312,382	\$ 8,282,445	\$ 8,536,151
Charter School's covered payroll (plan measurement period)	\$ 4,209,720	\$ 1,202,738	\$ 1,337,635	\$ 1,351,235	\$ 1,514,068
Charter School's proportionate share of the net pension liability as a percentage of it's covered employee payroll	155.29%	593.88%	546.66%	612.95%	0.00%
Plan fiduciary net position as a p ercentage of the total pension liability	28.71%	22.33%	25.41%	25.41%	22.33%

Note: This schedule does not contain ten years of information as GASB No. 68 was implemented during the fiscal year ended June 30, 2015.

***SCHEDULE M – SCHEDULES RELATED TO ACCOUNTING AND REPORTING FOR  
POSTEMPLOYMENT BENEFITS OTHER THAN PENSIONS***

**Unity Charter School**  
**Required Supplementary Information Schedules**  
**Schedule of Changes in the Charter School's Net OPEB Liability and Related Ratios**  
**Last Four Fiscal Years**  
**(Unaudited)**

	Fiscal Years Ending			
	June 30, 2017	June 30, 2018	June 30, 2019	June 30, 2020
<b>Total Non-Employer OPEB Liability- States's Proportionate Share of the Total OPEB Liability Associated with the Charter School</b>				
OPEB Liability at Beginning of Measurement Period		\$ 2,638,802	\$ 2,555,894	\$ 2,079,992
Service cost		274,182	228,433	210,205
Interest on Total OPEB Liability		82,213	98,726	87,320
Effect on Changes of Benefit Terms	NOT AVAILABLE	-	-	-
Difference between expected and actual experience		-	(510,676)	(47,428)
Effect of Changes of Assumptions		(382,283)	(238,689)	34,233
Contributions - Employee		2,180	1,922	2,089
Gross Benefits Paid by the State		(59,200)	(55,618)	(70,478)
<b>Net Change in Total OPEB Liability</b>	NOT AVAILABLE	(82,908)	(475,902)	215,941
OPEB Liability at Beginning of Measurement Period		2,638,802	2,555,894	2,079,992
<b>Total OPEB Liability at End of Measurement Period</b>	2,638,802	2,555,894	2,079,992	2,295,933

**Notes to Schedule:**

*Changes in benefit terms:*

None

*Differences Between Expected and Actual Experiences:*

Differences Between Expected and Actual Experiences: The decrease in the Total OPEB Liability from June 30, 2017 to June 30, 2018 is due to changes in the census claims and premium experiences. The decrease in liability from June 30, 2018 to June 30, 2019 is due to changes in the census, claims and premiums experience.

*Changes in Assumptions:*

The decrease in the liability from June 30, 2017 to June 30, 2018 is due to the increase in the assumed discount rate from 3.58% as of June 30, 2017 to 3.87% as of June 30, 2018; and a decrease in the assumed health care cost trend and excise tax assumptions. The decrease in the liability from June 30, 2018 to June 30, 2019 is due to the combined effect of the decrease in the assumed discount rate from 3.87% as of June 30, 2018 to 3.50% as of June 30, 2019; and changes in the trend, excise tax, updated decrements, future spouse election, PPO/HMO future retiree elections, salary scale and mortality assumptions

***NOTES TO REQUIRED SUPPLEMENTARY INFORMATION III***

**UNITY CHARTER SCHOOL**  
**NOTES TO REQUIRED SUPPLEMENTARY INFORMATION**  
**PUBLIC EMPLOYEES RETIREMENT SYSTEM**  
**FOR FISCAL YEAR ENDED JUNE 30, 2020**

**A. Benefit Changes**

There were none.

**B. Changes in Assumptions**

The discount rate changed from 5.66% as of June 30, 2018 to 6.28% as of June 30, 2019 in accordance with Paragraph 44 of GASB Statement No. 67.



**UNITY CHARTER SCHOOL**  
**NOTES TO REQUIRED SUPPLEMENTARY INFORMATION**  
**TEACHER'S PENSION AND ANNUITY FUND**  
**FOR FISCAL YEAR ENDED JUNE 30, 2020**

**A. Benefit Changes**

There were none.

**B. Changes in Assumptions**

The discount rate changed from 4.86% as of June 30, 2018 to 5.60% as of June 30, 2019 in accordance with Paragraph 44 of GASB Statement No. 67.

***OTHER SUPPLEMENTARY INFORMATION***

**SECTION E – SPECIAL REVENUE FUND  
DETAIL STATEMENTS**

*Special revenue funds are used to account for the proceeds of specific revenue sources (other than expandable trusts or major capital projects) that are legally restricted to expenditures for specific purposes.*

**UNITY**  
**CHARTER SCHOOL**  
 Special Revenue Fund  
 Combining Schedule of Revenues and Expenditures  
 Budgetary Basis  
 For the Fiscal Year Ended June 30, 2020

	Title I	Title IV	Title II Part A	IDEA Part B	Local Grants	Total
<b>Revenues:</b>						
Federal Sources	\$ 18,206	\$ 10,000	\$ 4,095	\$ 42,357	\$ -	\$ 74,658
Local Sources					5,878	5,878
<b>Total Revenues</b>	<b>\$ 18,206</b>	<b>\$ 10,000</b>	<b>\$ 4,095</b>	<b>\$ 42,357</b>	<b>\$ 5,878</b>	<b>\$ 80,536</b>
<b>Expenditures:</b>						
Instruction:						
Salaries of Teachers	\$ 15,080	\$ -	\$ -	\$ -	\$ -	\$ 15,080
Purchased Prof/Tech Services		10,000				10,000
General Supplies				5,907	5,878	5,878
Textbooks						5,907
<b>Total Instruction</b>	<b>15,080</b>	<b>10,000</b>	<b>-</b>	<b>5,907</b>	<b>5,878</b>	<b>36,865</b>
Support Services:						
Other Salaries				27,000		27,000
Personal Services/Employee Benefits	3,126		4,095	9,450		12,576
Other Purchased Services						4,095
<b>Total Support Services</b>	<b>3,126</b>	<b>-</b>	<b>4,095</b>	<b>36,450</b>	<b>-</b>	<b>43,671</b>
<b>Total Expenditures</b>	<b>18,206</b>	<b>10,000</b>	<b>4,095</b>	<b>42,357</b>	<b>5,878</b>	<b>80,536</b>
<b>Excess (Deficiency) of Revenues Over (Under) Expenditures</b>	<b>\$ -</b>	<b>\$ -</b>	<b>\$ -</b>	<b>\$ -</b>	<b>\$ -</b>	<b>\$ -</b>

**SECTION G – PROPRIETARY FUNDS  
DETAIL STATEMENTS**

*Proprietary Funds are used to account for operations that are financed and operated in a manner similar to private business enterprises – where the intent of the Charter School's board is that the costs of providing goods or services be financed through user charges.*

*Food Services Fund – This fund provides for the operation of food services in all schools within the school district.*

**THIS SECTION HAS ALREADY BEEN INCLUDED IN STATEMENTS B-4, B-5, AND B-6.**

**SECTION H – FIDUCIARY FUNDS  
DETAIL STATEMENT**

***Fiduciary Funds are used to account for funds received by the Charter School for a specific purpose.***

***Agency Funds are used to account for assets held by the Charter School as an agent for individuals, private organizations, other governments and/or other funds.***

***Student Activity Fund – This agency fund is used to account for students funds held at the schools.***

***Payroll Agency Fund – This agency fund is used to account for payroll transactions of the Charter School.***

**UNITY CHARTER SCHOOL**  
 Fiduciary Funds  
 Combining Statement of Fiduciary Net Position  
 June 30, 2020

	Trusts		Agency			
	Unemployment Compensation Insurance	Flexible Spending Account	Payroll Agency	Payroll Account	Student Activity	Total Agency Funds
<b>ASSETS:</b>						
Cash and Cash Equivalents	\$ 10	\$ 20,685	\$ -	\$ 891	\$ 313	\$ 1,204
<b>Total Assets</b>	<b>\$ 10</b>	<b>\$ 20,685</b>	<b>\$ -</b>	<b>\$ 891</b>	<b>\$ 313</b>	<b>\$ 1,204</b>
<b>LIABILITIES:</b>						
Liabilities:						
Interfund Payable	\$ -	\$ -	\$ -	\$ 891	\$ -	\$ 891
Due to Student Groups					313	313
<b>Total Liabilities</b>	<b>-</b>	<b>-</b>	<b>\$ -</b>	<b>\$ 891</b>	<b>\$ 313</b>	<b>\$ 1,204</b>
<b>NET POSITION</b>						
Reserved	-	20,685				
<b>Total Net Position</b>	<b>10</b>	<b>20,685</b>				
<b>Total Liabilities and Net Position</b>	<b>\$ 10</b>	<b>\$ 20,685</b>				

**UNITY CHARTER SCHOOL**  
 Fiduciary Funds  
 Statement of Changes in Fiduciary Net Position  
 Trust Funds  
 For the Fiscal Year Ended June 30, 2020

	Unemployment Compensation Trust	Flexible Spending Account
	<u>                    </u>	<u>                    </u>
ADDITIONS:		
Contributions:		
Employees	\$ -	\$ 98,086
Donations		
	<u>                    </u>	<u>                    </u>
Total Additions	-	98,086
	<u>                    </u>	<u>                    </u>
DEDUCTIONS:		
Payments	-	124,129
	<u>                    </u>	<u>                    </u>
Total Deductions	-	124,129
	<u>                    </u>	<u>                    </u>
CHANGE IN NET POSITION	-	(26,043)
NET POSITION, JULY 1	10	46,728
	<u>                    </u>	<u>                    </u>
NET POSITION (DEFICIT), JUNE 30	<u>\$ 10</u>	<u>\$ 20,685</u>

The accompanying Notes to Basic Financial Statements are an integral part of this statement.



**UNITY CHARTER SCHOOL**  
 Fiduciary Funds  
 Student Activity Agency Fund  
 Schedule of Receipts and Disbursements  
 June 30, 2020

	<u>Balance July 1, 2019</u>	<u>Cash Receipts</u>	<u>Cash Disbursements</u>	<u>Balance June 30, 2020</u>
Student Groups	\$ 2,224	\$ 40,824	\$ 42,735	\$ 313
Total	<u>\$ 2,224</u>	<u>\$ 40,824</u>	<u>\$ 42,735</u>	<u>\$ 313</u>

**UNITY CHARTER SCHOOL**  
Fiduciary Funds  
Payroll Agency Fund  
Schedule of Receipts and Disbursements  
June 30, 2020

	Balance July 1, 2019	Cash Receipts	Cash Disbursements	Balance June 30, 2020
<b>ASSETS:</b>				
Cash and Cash Equivalents	\$ -	\$ 941,835	\$ 941,835	\$ -
<b>Total Assets</b>	<u>\$ -</u>	<u>\$ 941,835</u>	<u>\$ 941,835</u>	<u>\$ -</u>
<b>LIABILITIES:</b>				
Interfund Accounts Payable	\$ -	\$ 941,835	\$ 941,835	\$ -
<b>Totals</b>	<u>\$ -</u>	<u>\$ 941,835</u>	<u>\$ 941,835</u>	<u>\$ -</u>

**STATISTICAL SECTION  
(UNAUDITED)**

***Unity Charter School has been in operation for ten (10) years. GASB requires that ten years of statistical data be presented. State law usually grants charters for less than ten years. Therefore, statistical data for ten (10) years is available and has been presented.***

**Contents**

**Financial Trends**

These schedules contain trend information to help the reader understand how the charter school's financial performance and well-being have changed over time.

**Revenue Capacity (Not Applicable To Charter School)**

These schedules contain information to help the reader assess the district's most significant local revenue source, the property tax.

**Debt Capacity**

These schedules present information to help the reader assess the affordability of the charter school's current levels of outstanding debt and the charter school's ability to issue additional debt in the future.

**Demographic and Economic Information**

These schedules offer demographic and economic indicators to help the reader understand the environment within which the charter school's financial activities take place.

**Operating Information**

These schedules contain service and infrastructure data to help the reader understand how the information in the charter school's financial report relates to the services the district provides and the activities it performs.

**Sources:** *Unless otherwise noted, the information in these schedules is derived from the comprehensive annual financial reports (CAFR) for the relevant year. The charter school implemented GASB Statement 34 in the fiscal year ending June 30, 2008; schedules presenting charter school-wide information include information beginning in that year.*

***FINANCIAL TRENDS***

**UNITY CHARTER SCHOOL**  
 Net Position by Component  
 Last Ten Fiscal Years  
*(accrual basis of accounting)*  
 Unaudited

	2020	2019	2018	2017	2016	2015	2014	2013	2012	2011
<b>Governmental Activities</b>										
Net Investment in Capital Assets/ Invested in capital assets, net of related debt	\$ 108,435	\$ 124,913	\$ 141,391	\$ 157,868	\$ 168,990	\$ 175,132	\$ 119,325	\$ 103,262	\$ 88,743	\$ 66,802
Restricted	-	-	-	45,000	40,752	46,626	40,266	-	4,887	1,104
Unrestricted	465,203	242,700	(78,575)	(221,387)	(216,441)	(240,621)	(254,234)	241,306	329,755	166,539
<b>Total Governmental Activities Net Assets/ Position</b>	<b>\$ 573,638</b>	<b>\$ 367,613</b>	<b>\$ 62,816</b>	<b>\$ (18,519)</b>	<b>\$ (6,698)</b>	<b>\$ (18,863)</b>	<b>\$ (94,643)</b>	<b>\$ 344,568</b>	<b>\$ 423,385</b>	<b>\$ 234,445</b>
<b>Business-Type Activities</b>										
Unrestricted	\$ (55,626)	\$ (26,701)	\$ (16,380)	\$ 16,551	\$ 27,708	\$ 27,510	\$ 24,676	\$ 18,198	5,557	-
<b>Total Business-Type Activities Net Assets/Position</b>	<b>\$ (55,626)</b>	<b>\$ (26,464)</b>	<b>\$ (16,141)</b>	<b>\$ 16,551</b>	<b>\$ 27,708</b>	<b>\$ 27,510</b>	<b>\$ 24,676</b>	<b>\$ 18,198</b>	<b>\$ 5,557</b>	<b>\$ -</b>
<b>Charter School-Wide</b>										
Net Investment in Capital Assets/ Invested in capital assets, net of related debt	\$ 108,435	\$ 125,150	\$ 141,630	\$ 157,868	\$ 168,990	\$ 175,132	\$ 119,325	\$ 103,262	\$ 88,743	\$ 66,802
Restricted	-	-	-	45,000	40,752	46,626	40,266	-	4,887	1,104
Unrestricted	409,577	215,999	(94,955)	(204,836)	(188,733)	(213,111)	(229,558)	259,504	335,313	166,539
<b>Total Charter School Net Position</b>	<b>\$ 518,012</b>	<b>\$ 341,149</b>	<b>\$ 46,675</b>	<b>\$ (1,968)</b>	<b>\$ 21,010</b>	<b>\$ 8,647</b>	<b>\$ (69,967)</b>	<b>\$ 362,766</b>	<b>\$ 428,943</b>	<b>\$ 234,445</b>

**Source: Comprehensive Annual Financial Report**

**UNITY CHARTER SCHOOL**  
Changes in Net Position  
Last Ten Fiscal Years  
(accrual basis of accounting)  
Unaudited

	2020	2019	2018	2017	2016	2015	2014	2013	2012	2011
<b>Expenses</b>										
Governmental Activities:										
Instruction	\$ 2,101,786	\$ 2,027,110	\$ 2,161,922	\$ 2,446,726	\$ 1,879,182	\$ 2,624,767	\$ 1,518,652	\$ 1,480,970	\$ 1,326,641	\$ 975,350
Administration	404,737	413,578	788,327	-	-	-	(1)	(1)	-	-
Support Services	1,863,888	1,701,681	1,438,763	2,017,249	1,696,949	1,942,088	1,399,705	1,231,429	1,065,960	889,320
Capital Outlay	27,437	30,172	37,058	-	-	-	-	-	-	-
Unallocated	16,478	16,478	16,478	-	-	-	-	-	-	-
Total Governmental Activities Expenses	\$ 4,414,326	\$ 4,189,019	\$ 4,442,548	\$ 4,463,975	\$ 3,576,131	\$ 4,566,855	\$ 2,918,356	\$ 2,712,398	\$ 2,392,601	\$ 1,864,670
Business-Type Activities:										
Food Service	0	237	93,375	91,423	38,579	25,485	22,108	31,437	14,710	51,553
After School	94,339	48,954	59,525	64,785	63,018	57,013	35,822	33,441	34,513	34,816
Total Business-Type Activities Expenses	\$ 94,339	\$ 47,191	\$ 152,900	\$ 156,208	\$ 101,597	\$ 82,498	\$ 57,930	\$ 64,878	\$ 49,223	\$ 86,369
Total Charter School Expenses	\$ 4,508,665	\$ 4,236,210	\$ 4,595,448	\$ 4,620,183	\$ 3,677,728	\$ 4,649,352	\$ 2,976,287	\$ 2,777,276	\$ 2,441,823	\$ 1,951,040
<b>Program Revenues</b>										
Governmental Activities:										
Operating Grants and Contributions	\$ -	\$ -	\$ -	\$ 1,056,483	\$ 839,833	\$ 2,191,474	\$ 638,300	\$ 595,322	\$ 556,706	\$ 379,522
Capital Grants and Contributions	-	-	193	-	-	-	-	-	-	-
Total Governmental Activities Expenses	\$ -	\$ -	\$ 193	\$ 1,056,483	\$ 839,833	\$ 2,191,474	\$ 638,300	\$ 595,322	\$ 556,706	\$ 379,522
Business-Type Activities:										
Charges for Services	8,329	28,286	40,527	145,050	101,795	85,332	64,408	77,519	54,780	54,192
Operating Grants and Contributions	57,085	68,010	79,442	-	-	-	-	-	-	-
Total Business-Type Activities Expenses	\$ 65,414	\$ 96,296	\$ 119,969	\$ 145,050	\$ 101,795	\$ 85,332	\$ 64,408	\$ 77,519	\$ 54,780	\$ 54,192
Total Charter School Program Revenue	\$ 65,414	\$ 96,296	\$ 120,162	\$ 1,201,533	\$ 941,628	\$ 2,276,806	\$ 702,708	\$ 672,841	\$ 611,486	\$ 433,714
<b>Net (Expense)/Revenue</b>										
Governmental Activities	\$ (4,414,326)	\$ (4,189,019)	\$ (4,442,355)	\$ (3,407,492)	\$ (2,736,298)	\$ (2,375,381)	\$ (2,280,056)	\$ (2,117,076)	\$ (1,835,895)	\$ (1,485,148)
Business-Type Activities	(28,925)	49,105	(32,931)	(11,158)	198	2,834	6,478	12,641	5,558	(32,178)
Total Charter School Net Expense	\$ (4,443,251)	\$ (4,139,914)	\$ (4,475,286)	\$ (3,418,650)	\$ (2,736,100)	\$ (2,372,546)	\$ (2,273,579)	\$ (2,104,435)	\$ (1,830,337)	\$ (1,517,326)
<b>General Revenues and Other Changes in Net Position</b>										
Governmental Activities:										
General Purposes	\$ 1,258,452	\$ 4,392,633	\$ 4,382,217	\$ 3,370,368	\$ 2,735,424	\$ 2,446,841	\$ 2,283,175	\$ 2,070,346	\$ 1,950,276	\$ 1,554,574
Federal and State Aid Not Restricted	-	-	-	-	-	-	-	-	-	-
Investment Earnings	-	-	-	1	2	4	3	13	9	14
Miscellaneous Income	3,361,899	101,183	141,472	25,305	13,037	4,316	4,869	11,256	74,551	31,120
Special Item - Disposal of Assets	-	-	-	-	-	-	-	(43,355)	-	-
Transfers	-	-	-	-	-	-	-	-	-	(29,833)
Total Governmental Activities	\$ 4,620,351	\$ 4,493,816	\$ 4,523,689	\$ 3,395,674	\$ 2,748,463	\$ 2,451,161	\$ 2,288,046	\$ 2,038,260	\$ 2,024,835	\$ 1,555,874
Business-Type Activities:										
Investment Earnings	-	-	-	-	-	-	-	-	-	20
Transfers	-	-	-	-	-	-	-	-	-	29,833
Total Business-Type Activities Expenses	\$ -	\$ -	\$ -	\$ -	\$ -	\$ -	\$ -	\$ -	\$ -	\$ 29,833
Total Charter School Wide	\$ 4,620,351	\$ 4,493,816	\$ 4,523,689	\$ 3,395,674	\$ 2,748,463	\$ 2,451,161	\$ 2,288,046	\$ 2,038,260	\$ 2,024,835	\$ 1,585,727
<b>Change in Net Position</b>										
Governmental Activities	\$ 206,025	\$ 304,797	\$ 81,334	\$ (11,819)	\$ 12,165	\$ 75,780	\$ 7,990	\$ (78,816)	\$ 188,940	\$ 70,726
Business-Type Activities	(28,925)	49,105	(32,931)	(11,158)	198	2,834	6,478	12,641	5,558	(2,325)
Total Charter School	\$ 177,100	\$ 353,902	\$ 48,403	\$ (22,976)	\$ 12,363	\$ 78,614	\$ 14,468	\$ (66,175)	\$ 194,498	\$ 68,401

Source: Comprehensive Annual Financial Report

**UNITY CHARTER SCHOOL**  
 Fund Balances - Governmental Funds  
 Last Ten Fiscal Years  
*(modified accrual basis of accounting)*  
 Unaudited

	2020	2019	2018	2017	2016	2015	2014	#VALUE!	2012	2011
General Fund										
Restricted	\$ 385	\$ -	\$ -	\$ 45,000	\$ 40,752	\$ 46,626	\$ 40,266	\$ -	\$ 4,887	\$ 1,104
Unassigned	814,019	605,715	319,439	208,310	222,468	193,772	192,965	241,306	329,755	166,539
<b>Total General Fund</b>	<b>\$ 814,404</b>	<b>\$ 605,715</b>	<b>\$ 319,439</b>	<b>\$ 253,310</b>	<b>\$ 263,221</b>	<b>\$ 240,398</b>	<b>\$ 233,231</b>	<b>\$ 241,306</b>	<b>\$ 334,642</b>	<b>\$ 167,643</b>

**Source: Comprehensive Annual Financial Report**



**UNITY CHARTER SCHOOL**  
 Changes in Fund Balances - Governmental Funds  
 Last Ten Fiscal Years  
 (modified accrual basis of accounting)  
 Unaudited

	2020	2019	2018	2017	2016	2015	2014	2013	2012	2011
<b>Revenues:</b>										
Local Sources:										
Interest Earnings	\$ 3,356,021	\$ 3,282,740	526,869	3,370,368	2,735,424	2,446,841	2,283,175	2,070,346	1,950,276	1,554,574
Miscellaneous				1	2	4	3	13	9	14
State Sources	1,183,794	1,132,798	3,590,594	25,305	13,037	4,316	871	11,256	74,551	31,120
Federal Sources	74,658	75,902	75,082	481,259	806,593	791,696	607,528	562,566	529,022	354,560
Total Revenues	4,620,351	4,493,816	4,192,545	3,931,872	3,592,812	3,277,625	2,922,348	2,676,937	2,581,541	1,965,229
<b>Expenditures:</b>										
Instruction	1,610,877	1,483,556	1,529,344	1,536,373	1,369,635	1,223,071	1,109,928	1,101,726	1,056,623	784,882
Administration	1,051,733	1,137,061	1,266,523	-	-	-	-	-	-	-
Support Services	1,721,615	1,556,751	1,294,254	2,400,053	2,190,156	1,975,775	1,796,764	1,601,466	1,325,938	1,072,016
Capital Outlay	27,437	30,172	37,058	5,357	10,198	71,611	27,729	67,082	31,981	17,419
Total Expenditures	4,411,662	4,207,540	4,127,179	3,941,783	3,569,989	3,270,457	2,934,421	2,770,274	2,414,542	1,874,317
Excess (Deficiency) of Revenues Over (Under) Expenditures	208,689	286,276	65,366	(9,911)	22,822	7,167	(12,073)	(93,336)	166,999	90,912
<b>Other Financing Uses:</b>										
Transfers Out	-	-	-	-	-	-	-	-	-	(29,833)
Total Other Financing Uses	-	-	-	-	-	-	-	-	-	(29,833)
Net Change in Fund Balance	\$ 208,689	\$ 286,276	\$ 65,366	\$ (9,911)	\$ 22,822	\$ 7,167	\$ (12,073)	\$ (93,336)	\$ 166,999	\$ 61,079

Source: Comprehensive Annual Financial Report

**UNITY CHARTER SCHOOL**  
 General Fund - Other Local Revenue by Source  
 Last Ten Fiscal Years  
*(modified accrual basis of accounting)*  
 Unaudited

Fiscal Year Ending June 30,	Interest	Prior Year Refunds	Miscellaneous Revenue	Total
2020	\$ -	\$ -	\$ 264,434	\$ 264,434
2019	-	-	98,807	98,807
2018	193	-	15	208
2017	1	7,442	-	7,443
2016	2	5,033	455	5,490
2015	4	-	14	18
2014	3	3,998	-	4,001
2013	13	1,274	-	1,287
2012	9	2,798	-	2,807
2011	14	-	33	47

**Source: Charter School records**

***OPERATING INFORMATION***

**UNITY CHARTER SCHOOL**  
 Operating Statistics  
 Last Ten Fiscal Years

Fiscal Year	Enrollment	Operating Expenditures	Cost Per Pupil	Percentage Change	Teaching Staff	Pupil / Teacher Ratio	Average Daily Enrollment (ADE)	Average Daily Attendance (ADA)	Percent Change in Average Daily Enrollment	Student Attendance Percentage
2020	238	\$ 4,384,225	\$ 18,421	4.51%	-	N/A	235.4	227.9	-0.51%	96.81%
2019	237	4,177,368	17,626	2.99%	-	N/A	236.6	231.0	-1.36%	97.64%
2018	239	4,090,121	17,113	-10.68%	-	N/A	239.9	231.0	2.94%	96.31%
2017	233	4,463,975	19,159	17.33%	-	N/A	233.0	N/A	6.39%	0.00%
2016	219	3,576,131	16,329	-27.41%	-	N/A	219.0	N/A	7.88%	0.00%
2015	203	4,566,855	22,497	0.00%	-	N/A	203.0	N/A	0.00%	0.00%
2014	N/A	2,918,356	-	0.00%	-	N/A	N/A	N/A	0.00%	0.00%
2013	N/A	2,712,398	-	0.00%	-	N/A	N/A	N/A	0.00%	0.00%
2012	N/A	2,392,601	-	0.00%	-	N/A	N/A	N/A	0.00%	0.00%
2011	N/A	1,864,670	-	0.00%	-	N/A	N/A	N/A	0.00%	0.00%

Source: Charter School's Records

**UNITY CHARTER SCHOOL**  
 School Building Information  
 Last Ten Fiscal Years

	2020	2019	2018	2017	2016	#VALUE!	2014	2013	2012	2011
<b>Charter School Building</b>										
<u>Primary/Intermediate/Middle</u>										
Square Feet	27,349	N/A	N/A	N/A	N/A	N/A	N/A	N/A	N/A	N/A
Capacity (students)	240	N/A	N/A	N/A	N/A	N/A	N/A	N/A	N/A	N/A
Total Enrollment	238	237	239	233	N/A	N/A	N/A	N/A	N/A	N/A

Number of Schools at June 30, 2020  
 Primary/Intermediate/Middle = 1  
 High = 1

**Source: Charter School Facilities Office**

Source: Charter School's Records

**UNITY CHARTER SCHOOL**  
Insurance Schedule  
June 30, 2020

may need to update further - VC

	Coverage	Deductible
<b>COMMERCIAL PACKAGE POLICY - NJ SCHOOLS INSURANCE GROUP (NJSAIG)</b>		
<b>Property Section</b>		
Blanket Building and Contents (fund limit)	\$ 500,000	\$ 1,000
Accounts Receivable	250000	1,000
Automobile Physical Damage	In Blanket Limit	1,000
Electronic Data Processing Equipment	310000	1,000
<b>Liability Section</b>		
Comprehensive General Liability	\$ 16,000,000	
Automobile Liability	16,000,000	
Employee Benefit Liability	16,000,000	1,000
<b>Crime</b>		
Blanket Employee Dishonesty	\$ 50,000	500
Theft/Disappearance/Destruction:		
Inside	50,000	500
Outside	50,000	500
<b>School Board Legal Liability - NJSIG</b>	16,000,000	5,000
<b>Environmental Impairment Liability</b>		
Limit of Liability		
Incident	1,000,000	10,000
Fund Annual Aggregate	25,000,000	
<b>WORKERS COMPENSATION (NJSIG)</b>		
(a) Statutory Benefits	Included	
(a) Employer's Liability	5,000,000	
Supplemental Coverage (optional)	Included	
<b>PUBLIC EMPLOYEE'S FAITHFUL PERFORMANCE BLANKET POSITION BOND</b>		
Board Secretary - Rhonda Curry	\$ 131,000	1000
Treasurer - Chris Lessard	\$ 131,000	1000

**UNITY CHARTER SCHOOL**  
 New Jersey Performance Framework Financial Ratios  
 Audited Performance Indicators  
 Last Three Fiscal Years

	2018 Audit	2019 Audit	2020 Audit	Source
Cash	91,331	253,545	168,167	Audit: Exhibit A-1
Current Assets (include cash)	417,686	643,798	832,664	Audit: Exhibit A-1
Current Liabilities	114,627	64,784	73,876	Audit: Exhibit A-1
Total Expenses	4,595,448	4,295,636	4,508,665	Audit: Exhibit A-2
Change in Net Position	48,403	294,476	177,100	Audit: Exhibit A-2
Final Average Daily Enrollment (exclude PK)*	239.00	237.00	235.00	DOE Final Enrollment Report
March 30 Budgeted Enrollment (exclude PK)	239	237	238	March 30 Charter School Budget
<i>Complete section only if auditee has mortgage/note/bond payable:</i>				
Depreciation Expense	16,478	16,478	16,478	Auditor/Workpapers
Interest Expense	-	-	-	Auditor/Workpapers
Principal Payments	-	-	-	Auditor/Workpapers
Interest Payments	-	-	-	Auditor/Workpapers

	2018			2019			2020			3 YR CUM	Calculation***	Target****
	Audit	Audit	Audit	Audit	Audit	Audit	Audit	Audit	Audit			
<b>Performance Indicators</b>												
<b>Near Term Indicators</b>												
1a.	3.64	9.94	11.27								Current Assets/Current Liabilities	> 1.1 or between 1.0-1.1 with positive trend
1b.	7	22	14								Cash/(Total Expenses/365)	60 days or 30-60 days with positive trend
1c.	100%	100%	99%						100%		Average Daily Enrollment/Budgeted Enrollment	>95% or >95% for 3 yr cum
1d.**	NO	NO	NO								Auditor	not in default
<b>Sustainability Indicators</b>												
2a***	(63,917)	162,214	(85,378)						12,919		Net change in cash flow from prior years	3 yr cum positive with most recent year positive
2b	N/A	N/A	N/A								N/A or (Change in Net Position + depreciation + interest expense) / (principal + interest payments)	>1.10

\* For renaissance schools: use Oct 15 count if no final count; use head count if ADE not available  
 \*\* Is school in default of loan covenant(s) and/or is delinquent with debt service payments? Yes or No  
 \*\*\* 2020 =2020 Cash -2019 Cash; 2019 =2018 Cash -2017 Cash; 2018 =2018 Cash -2017 Cash  
 \*\*\*\* Refer to NJ Performance Framework  
 Meets Standard  
 Does Not Meet Standard  
 Falls Far Below Standard

***SINGLE AUDIT SECTION***



**BARRE & COMPANY LLC**  
**CERTIFIED PUBLIC ACCOUNTANTS & CONSULTANTS**

2204 Morris Avenue, Suite 206  
Union, New Jersey 07083  
(908) 686-3484  
FAX – (908) 686-6055  
www.cpa-bc.com ♦ info@cpa-bc.com

K-1  
Page 1

**REPORT ON INTERNAL CONTROL OVER FINANCIAL REPORTING AND  
ON COMPLIANCE AND OTHER MATTERS BASED ON AN AUDIT OF  
FINANCIAL STATEMENTS PERFORMED IN ACCORDANCE WITH  
GOVERNMENT AUDITING STANDARDS**

**INDEPENDENT AUDITOR'S REPORT**

The Honorable President and  
Members of the Board of Trustees  
Unity Charter School

Morris Township, New Jersey

We have audited, in accordance with the auditing standards generally accepted in the United States of America; the standards applicable to financial audits contained in *Government Auditing Standards* issued by the Comptroller General of the United States; and in compliance with audit requirements as prescribed by the Office of School Finance, Department of Education, State of New Jersey, the financial statements of the governmental activities, the business-type activities, each major fund, and the aggregate remaining fund information of Unity Charter School (Charter School), in the , State of New Jersey, as of and for the fiscal year ended June 30, 2020, and the related notes to the financial statements, which collectively comprise the Charter School's basic financial statements and have issued our report thereon dated January 15, 2021.

***Internal Control over Financial Reporting***

In planning and performing our audit of the financial statements, we considered the Charter School's internal control over financial reporting (internal control) to determine the audit procedures that are appropriate in the circumstances for the purpose of expressing our opinions on the financial statements, but not for the purpose of expressing an opinion on the effectiveness of the Charter School's internal control. Accordingly, we do not express an opinion on the effectiveness of the Charter School's internal control.

A *deficiency in internal control* exists when the design or operation of a control does not allow management or employees, in the normal course of performing their assigned functions to prevent, or detect and correct misstatements on a timely basis. A *material weakness* is a deficiency, or a combination of deficiencies, in internal control, such that there is a reasonable possibility that a material misstatement of the entity's financial statements will not be prevented, or detected and corrected on a timely basis. A *significant deficiency* is a deficiency, or a combination of deficiencies, in internal control that is less severe than a material weakness, yet important enough to merit attention by those charged with governance.

Our consideration of internal control over financial reporting was for the limited purpose described in the first paragraph of this section and was not designed to identify all deficiencies in internal control over financial reporting that might be material weaknesses or significant deficiencies. Given these limitations, during our audit we did not identify any deficiencies in internal control over financial reporting that we consider to be material weaknesses. However, material weaknesses may exist that have not been identified.


**Compliance and Other Matters**

As part of obtaining reasonable assurance about whether the Charter School's financial statements are free from material misstatement, we performed tests of its compliance with certain provisions of laws, regulations, contracts, and grant agreements, noncompliance with which could have a direct and material effect on the determination of financial statement amounts. However, providing an opinion on compliance with those provisions was not an objective of our audit and, accordingly, we do not express such an opinion. The results of our tests disclosed no instances of noncompliance or other matter that are required to be reported under *Government Auditing Standards* and audit requirements as prescribed by the Office of School Finance, Department of Education, State of New Jersey.

**Purpose of this Report**

The purpose of this report is solely to describe the scope of our testing of internal control and compliance and the results of that testing, and not to provide an opinion on the effectiveness of the entity's internal control or on compliance. This report is an integral part of an audit performed in accordance with *Government Auditing Standards* and audit requirements as prescribed by the Office of School Finance, Department of Education, and State of New Jersey, and state awarding agencies and pass-through entities, in considering the entity's internal control and compliance. Accordingly, this communication is not suitable for any other purpose.

  
BARRE & COMPANY LLC  
Certified Public Accountants  
Public School Accountants

  
Richard M. Barre  
Public School Accountant  
PSA Number CS-01181

Union, New Jersey  
January 15, 2021

**BARRE & COMPANY LLC**  
**CERTIFIED PUBLIC ACCOUNTANTS & CONSULTANTS**

2204 Morris Avenue, Suite 206  
Union, New Jersey 07083  
(908) 686-3484  
FAX – (908) 686-6055  
www.cpa-bc.com ♦ info@cpa-bc.com

K-2  
Page 1

**INDEPENDENT AUDITOR’S REPORT ON COMPLIANCE FOR EACH  
MAJOR FEDERAL AND STATE PROGRAM AND REPORT ON INTERNAL  
CONTROL OVER COMPLIANCE IN ACCORDANCE WITH UNIFORM  
GUIDANCE AND NEW JERSEY CIRCULAR 15-08 OMB**

The Honorable President and  
Members of the Board of Trustees  
Unity Charter School  
Morris Township, New Jersey

***Report on Compliance for Each Major State Program***

We have audited the Unity Charter School’s (Charter School) compliance with the types of compliance requirements described in the New Jersey Compliance Manual “State Grant Compliance Supplement” that could have a direct and material effect on each of its major state programs for the fiscal year ended June 30, 2020. The Charter School’s major state programs are identified in the Summary of Auditor’s Results section of the accompanying Schedule of Findings and Questioned Costs.

***Management’s Responsibility***

The Charter School’s management is responsible for compliance with state statutes, regulations, and the terms and conditions of its state awards applicable to its federal and state programs.

***Auditor’s Responsibility***

Our responsibility is to express an opinion on compliance for each of the Charter School’s major state programs based on our audit of the types of compliance requirements referred to above. We conducted our audit of compliance in accordance with auditing standards generally accepted in the United States of America; the standards applicable to financial audits contained in Government Auditing Standards, issued by the Comptroller General of the United States; the audit requirements as prescribed by the Office of School Finance, Department of Education, State of New Jersey; and New Jersey Circular 15-08-OMB, Single Audit Policy for Recipients of Federal Grants, State Grants and State Aid. Those standards and New Jersey Circular OMB 15-08 require that we plan and perform the audit to obtain reasonable assurance about whether noncompliance with the types of compliance requirements referred to above that could have a direct and material effect on a major state program occurred.

An audit includes examining, on a test basis, evidence about the Charter School's compliance with those requirements and performing such other procedures as we considered necessary in the circumstances.

We believe that our audit provides a reasonable basis for our opinion on compliance for each major state program. However, our audit does not provide a legal determination of the Charter School's compliance.

### ***Opinion on Each Major State Program***

In our opinion, the Unity Charter School, in the County of Morris, State of New Jersey, complied, in all material respects, with the types of compliance requirements referred to above that could have a direct and material effect on each of its major state programs for the year ended June 30, 2020.

### ***Report on Internal Control over Compliance***

Management of the Unity Charter School is responsible for establishing and maintaining effective internal control over compliance with the types of compliance requirements referred to above. In planning and performing our audit of compliance, we considered the Charter School's internal control over compliance with the types of requirements that could have a direct and material effect on each major federal or state program to determine the auditing procedures that are appropriate in the circumstances for the purpose of expressing an opinion on compliance for each major federal and state program and to test and report on internal control over compliance in accordance with Uniform Guidance and New Jersey Circular 15-08-OMB, but not for the purpose of expressing an opinion on the effectiveness of internal control over compliance. Accordingly, we do not express an opinion on the effectiveness of the Charter School's internal control over compliance.


*A deficiency in internal control over compliance* exists when the design or operation of a control over compliance does not allow management or employees, in the normal course of performing their assigned functions, to prevent, or detect and correct noncompliance with a type of compliance requirement of a federal or state program on a timely basis. *A material weakness in internal control over compliance* is a deficiency, or combination of deficiencies in internal control over compliance, such that there is a reasonable possibility that material noncompliance with a type of compliance requirement of a federal or state program will not be prevented, or detected and corrected on a timely basis. *A significant deficiency in internal control over compliance* is a deficiency, or a combination of deficiencies, in internal control over compliance with a type of compliance requirement of a federal or state program that is less severe than a material weakness in internal control over compliance, yet important enough to merit attention by those charged with governance.

Our consideration of internal control over compliance was for the limited purpose described in the first paragraph of this section and was not designed to identify all deficiencies in internal control over compliance that might be material weaknesses or significant deficiencies. We did not identify any deficiencies in internal control over compliance that we consider to be material weaknesses. However, material weaknesses may exist that have not been identified.

***Purpose of this Report***

The purpose of this report on internal control over compliance is solely to describe the scope of our testing of internal control over compliance and the results of that testing based on the requirements of the Uniform Guidance and New Jersey Circular 15-08 OMB. Accordingly, this report is not suitable for any other purpose.

  
BARRE & COMPANY LLC  
Certified Public Accountants  
Public School Accountants

  
Richard M. Barre  
Public School Accountant  
PSA Number CS-01181

Union, New Jersey  
January 15, 2021

**UNITY CHARTER SCHOOL**  
Schedule of Expenditures of Federal Awards  
For the Fiscal Year Ended June 30, 2020

Federal Grantor/Pass-through Grantor/ Program Title	Federal CFDA Number	Federal FAIN Number	Grant or State Project Number	Program or Award Amount	Grant Period From To	Balance at June 30, 2019	Carryover/ (Walkover) Amount	Cash Received	Budgetary Expenditures	Pass-Through To Subrecipients	Adjustments	Repayment Of Prior Years' Balances	Accounts Receivable	Balance at June 30, 2020 Unearned Revenue	Due to Grantor
<b>U.S. Department of Education</b>															
<b>Passed-through State Department of Education</b>															
Special Revenue Fund:															
Title I Part A	84.010A	S010A190030	NCLB - - 20	\$ 16,206	7/1/19 6/30/20	\$ -	\$ -	\$ 16,206	\$ (16,206)		\$ -	\$ -	\$ -	\$ -	
Title II Part A	84.367A	S367A190029	NCLB - - 20	4,085	7/1/19 6/30/20	-	4,085	4,085	(4,085)						
Title IV State & Drug Fee	84.186A	S124A190031	NCLB - - 20	10,000	7/1/19 6/30/20	-	-	10,000	(10,000)						
Special Education Cluster (IDEA):															
I.D.E.A. Part B Basic	84.027	H027A190100	IDEA - - 20	42,357	7/1/19 6/30/20	-	-	42,357	(42,357)						
I.D.E.A. Part B Basic Carryover	84.027	H027A190100	IDEA - - 18	-	7/1/18 6/30/19	-	-	42,357	(42,357)						
Total Individuals with Disabilities Cluster								42,357	(42,357)						
Total Special Revenue Fund								74,658	(74,658)						
<b>U.S. Department of Agriculture</b>															
<b>Passed-through State Department of Agriculture</b>															
Enterprise Fund:															
Enterprise Program	10.550		N/A	-	7/1/19 6/30/20										
Child Nutrition Cluster															
National School Lunch Program	10.555	201NJ304N1099	N/A	18,307	7/1/19 6/30/20	(1,715)		17,037	(18,307)				(1,270)		
National School Lunch Program	10.555	191NJ304N1099	N/A	20,577	7/1/18 6/30/19			1,715							
Child Care Food Program	10.558	201NJ304N1099	N/A	817	7/1/19 6/30/20	(1,715)		19,569	(817)				(1,270)		
Total Child Nutrition Cluster								19,569	(19,124)				(1,270)		
Total Enterprise Fund								19,569	(19,124)				(1,270)		
Total Federal Financial Awards								94,227	(93,762)				(1,270)		

The accompanying Notes to Schedules of Expenditures of Awards and Financial Assistance are an integral part of this schedule.

**UNITY CHARTER SCHOOL**  
Schedule of Expenditures of Financial Assistance  
For the Fiscal Year Ended June 30, 2020

State Grant/Program Title	Grant or State Project Number	Program or Award Amount	Grant Period		Balance at June 30, 2019		Carryover/ (Waiver) Amount	Cash Received	Budgetary Expenditures	Adjustments/ Repayment of Prior Year's Balances	Balance at June 30, 2020		Cumulative Expenditures	
			From	To	Unearned Revenue Accounts Receivable	Due to Grantor					Unearned Revenue and Payable	Due to Grantor		Accounts Receivable
<b>State Department of Education</b>														
General Fund:														
State Aid-Public Cluster														
Equalization Aid- State Share	20-495-034-5120-078	\$ 399,876	7/1/19	6/30/20	\$ -	\$ -	\$ -	\$ 399,876	\$ (399,876)	\$ -	\$ -	\$ -	\$ -	\$ 399,876
Special Education Categorical Aid	20-495-034-5120-079	32,723	7/1/19	6/30/20	(73)	-	32,723	(32,723)	(599,103)	-	-	-	32,723	
State Aid-Public Cluster	20-495-034-5120-084	599,103	7/1/19	6/30/20	(73)	-	599,103	(599,103)	-	-	-	-	599,103	
TPAF Post-Retirement Medical Contributions	20-495-034-5095-001	112,986	7/1/19	6/30/20			112,986	(112,986)					112,986	
On-Behalf TPAF Pension Contributions	20-495-034-5095-006	304,561	7/1/19	6/30/20			304,561	(304,561)					304,561	
TPAF Long Term Disability Insurance Premium	20-495-034-5094-004	763	7/1/19	6/30/20			763	(763)					763	
Reimbursed TPAF - Social Security	20-495-034-5095-002	117,066	7/1/19	6/30/20			117,269	(117,066)			(5,767)		117,066	
Total General Fund							1,128,712	(1,134,479)			(5,767)		1,134,479	
<b>State Department of Agriculture</b>														
Enterprise Fund:														
National School Lunch Program (State Share)	20-100-010-3350-023	650	7/1/19	6/30/20	(73)	-	650	(650)			(20)		650	
National School Lunch Program (State Share)	19-100-010-3350-023	840	7/1/18	6/30/19			73	(73)					73	
Total Enterprise Fund							703	(650)			(20)		650	
Total State Financial Assistance Subject to Major Program Determination for State Single Audit							1,129,415	(1,135,129)			(5,787)		1,135,129	
State Financial Assistance Not Subject to Major Program Determination:														
General Fund (Non-Cash Assistance)														
TPAF Post-Retirement Medical Contributions	20-495-034-5095-001	112,986	7/1/19	6/30/20			(112,986)	112,986					112,986	
On-Behalf TPAF Pension Contributions	20-495-034-5095-006	304,561	7/1/19	6/30/20			(304,561)	304,561					304,561	
TPAF Long Term Disability Insurance Premium	20-495-034-5094-004	763	7/1/19	6/30/20			(763)	763					763	
Total General Funds (Non-Cash Assistance)							(418,370)	418,370					418,370	
Total State Financial Assistance							711,105	(716,619)			(5,787)		711,105	

The accompanying Notes to Schedules of Expenditures of Awards and Financial Assistance are an integral part of this schedule.

**UNITY CHARTER SCHOOL**

Notes to the Schedules of Expenditures of Federal Awards and State Financial Assistance  
June 30, 2020

---

**NOTE 1. GENERAL**

The accompanying schedules of expenditures of federal awards and state financial assistance include federal and state award activity of the Board of Trustees, Unity Charter School. The Board of Trustees is defined in Note 1 to the board's basic financial statements. All federal and state awards received directly from federal and state agencies, as well as federal awards and state financial assistance passed through other government agencies is included on the schedules of expenditures of federal awards and state financial assistance.

**NOTE 2. BASIS OF ACCOUNTING**

The accompanying schedules of expenditures of awards and financial assistance are presented on the budgetary basis of accounting with the exception of programs recorded in the food service fund, which are presented using the accrual basis of accounting. These basis of accounting are described in Note 1 to the board's basic financial statements. The information in this schedule is presented in accordance with the requirements of Title 2 CFR 200 – *Uniform Administrative Requirements, Cost Principles, and Audit Requirements for Federal Awards* and the New Jersey OMB Circular 15-08, "*Single Audit Policy for Recipients of Federal Grants, State Grants, and State Aid*". Therefore, some amounts presented in this schedule may differ from amounts presented in, or used in the preparation of, the basic financial statements.

**NOTE 3. RELATIONSHIP TO BASIC FINANCIAL STATEMENTS**

The basic financial statements present the general fund and special revenue fund on a GAAP basis. Budgetary comparison statements or schedules (RSI) are presented for the general fund and special revenue fund to demonstrate finance-related legal compliance in which certain revenue is permitted by law or grant agreement to be recognized in the audit year, whereas for GAAP reporting, revenue is not recognized until the subsequent year or when expenditures have been made.

The general fund is presented in the accompanying schedules on the modified accrual basis with the exception of the revenue recognition of the one or more deferred June state aid payments in the current budget year, which is mandated pursuant to *N.J.S.A. 18A:22-44.2*. For GAAP purposes payments are not recognized until the subsequent budget year due to the state deferral and recording of the one or more June state aid payments in the subsequent year. The special revenue fund is presented in the accompanying schedules on the grant accounting budgetary basis which recognizes encumbrances as expenditures and also recognizes the related revenues, whereas the GAAP basis does not. The special revenue fund also recognizes the one or more June state aid payment in the current budget year, consistent with *N.J.S.A. 18A:22-44.2*.



**UNITY CHARTER SCHOOL**  
Notes to the Schedules of Expenditures  
Of Awards and Financial Assistance  
June 30, 2020

**NOTE 3. RELATIONSHIP TO BASIC FINANCIAL STATEMENTS (CONTINUED)**

The net adjustment to reconcile from the budgetary basis to the GAAP basis is none for the general fund and none for the special revenue fund. See Notes to the Required Supplementary Information for a reconciliation of the budgetary basis to the modified accrual basis of accounting for the general and special revenue funds. Awards and financial assistance revenues are reported in the board's basic financial statements on a GAAP basis as presented below:

	<u>Federal</u>	<u>State</u>	<u>Total</u>
General Fund	\$ -	\$ 1,183,794	\$ 1,183,794
Special Revenue Fund	74,658	-	74,658
Food Service Fund	20,117	1,662	21,779
Total Awards & Financial Assistance	<u>\$ 94,775</u>	<u>\$ 1,185,456</u>	<u>\$ 1,280,231</u>

**NOTE 4. RELATIONSHIP TO FEDERAL AND STATE FINANCIAL REPORTS**

Amounts reported in the accompanying schedules agree with the amounts reported in the related federal and state financial reports.

**NOTE 5. FEDERAL AND STATE LOANS OUTSTANDING**

Unity Charter School has no loan balances outstanding at June 30, 2020.

**NOTE 6. OTHER INFORMATION**

Revenues and expenditures reported under the Food Distribution Program represent current year value received and current year distributions respectively. The amount reported as TPAF Pension Contributions, TPAF Post-Retirement Medical Benefits Contributions and TPAF Long-Term Disability Insurance represents the amount paid by the state on behalf of the charter school for the year ended June 30, 2020. TPAF Social Security Contributions represents the amount reimbursed by the state for the employer's share of social security contributions for TPAF members for the year ended June 30, 2020.

**UNITY CHARTER SCHOOL**  
Notes to the Schedules of Expenditures  
Of Awards and Financial Assistance  
June 30, 2020

**NOTE 7. ON-BEHALF PROGRAMS NOT SUBJECT TO STATE SINGLE AUDIT**

On-behalf State Programs for TPAF Pension and Post-Retirement Medical Benefits Contributions payments are not subject to a State single audit and, therefore, are excluded from major program determination. The Schedule of State Financial Assistance provides a reconciliation of State financial assistance reported in the Charter School’s basic financial statements and the amount subject to State single audit and major program determination.

**NOTE 8. SCHOOLWIDE PROGRAM FUNDS**

Schoolwide programs are not separate federal programs as defined in *Uniform Administrative Requirements, Cost Principles, and Audit Requirements for Federal Awards*; amounts used in schoolwide programs are included in the total expenditures of the program contributing the funds in the Schedule of Expenditures of Federal Awards. The following funds by program are included in schoolwide programs in the charter school.

Program	Total
Title I, Part A: <i>Grants to Local Education Agencies</i>	\$ 18,205
Title II, Part A: <i>Teacher and Principal Training and Recruiting</i>	4,095
Title IV, Part A: <i>Safe and Drug-Free Schools and Communities</i>	<hr/>
Total	<hr/> <b>\$ 22,300</b> <hr/>

**NOTE 9. MAJOR PROGRAMS**

Major programs are identified in the Summary of Auditor’s Results section of the Schedule of the Schedules of Findings and Questioned Costs.

**UNITY CHARTER SCHOOL**  
Schedule of Findings and Questioned Costs  
For the Fiscal Year Ended June 30, 2020

**Section I – Summary of Auditor’s Results**

**Financial Statements**

Type of auditors’ report issued on financial statements		<u>Unmodified</u>
Internal control over financial reporting:		
1) Material weakness(es) identified?	_____ Yes	___X___ No
2) Significant deficiencies identified that are not considered to be material weaknesses?	_____ Yes	___X___ None Reported
Noncompliance material to basic financial statements noted?	_____ Yes	___X___ No

**State Awards**

Dollar threshold used to distinguish between Type A and Type B programs:		\$750,000
Auditee qualified as low-risk auditee?	___X___ Yes	_____ No
Internal control over major programs:		
1) Material weakness(es) identified?	_____ Yes	___X___ No
2) Significant deficiencies identified that are not considered to be material weaknesses?	_____ Yes	___X___ None Reported
Type of auditors’ report issued on compliance for major programs		<u>Unmodified</u>
Any audit findings disclosed that are required to be reported in accordance with NJ Circular Letter 15-08-OMB, as applicable?	_____ Yes	___X___ No

Identification of major state programs:

<b>GMIS Number(s)</b>	<b>Name of State Program</b>
	<u>STATE AID – PUBLIC CLUSTER</u>
<u>20-495-034-5120-071</u>	<u>Equalization Aid</u>
<u>20-495-034-5120-089</u>	<u>Special Education Aid</u>
<u>20-495-034-5120-084</u>	<u>Security Aid</u>
<u>20-495-034-5120-084</u>	<u>Non Public Aid</u>

**UNITY CHARTER SCHOOL**  
Schedule of Findings and Questioned Costs  
For the Fiscal Year Ended June 30, 2020

---

***Section II – Schedule of Financial Statement Findings***

The section identifies the significant deficiencies, material weaknesses and fraud, non-compliance with provisions of laws, regulation, contracts, and grant agreements related to financial statements for which Government Auditing Standards and audit requirements prescribed by the Office of School Finance, Department of Education, State of New Jersey requires..

No Current Year Findings

***Section III – Schedule of Federal and State Award  
Findings and Questioned Costs As Prepared by Management***

This section identifies the significant deficiencies, material weaknesses, and material matters of noncompliance, including questioned costs and significant instances of abuse, related to the audit of major federal and state programs, as required by U.S Uniform Guidance and New Jersey OMB's Circular 15-08.

**CURRENT YEAR FEDERAL AWARDS**

No Current Year Findings

**CURRENT YEAR STATE AWARDS**

No Current Year Findings

**UNITY CHARTER SCHOOL**  
Summary Schedule Prior Year Audit Findings and Questioned Costs as prepared by  
Management  
For the Fiscal Year Ended June 30, 2020

---

**STATUS OF PRIOR-YEAR FINDINGS**

This section identifies the status of prior-year findings related to the basic financial statements and federal and state awards that are required to be reported in accordance with U.S. Uniform Guidance and New Jersey OMB's Circular 15-08, as amended.

No Prior Year Findings