

**PRIDE ACADEMY CHARTER SCHOOL
EAST ORANGE, NEW JERSEY**

**COMPREHENSIVE ANNUAL
FINANCIAL REPORT**

FOR THE FISCAL YEAR ENDED JUNE 30, 2021

***PRIDE ACADEMY CHARTER
SCHOOL***

***COMPREHENSIVE ANNUAL
FINANCIAL REPORT***

FISCAL YEAR ENDED JUNE 30, 2021

***PRIDE ACADEMY CHARTER
SCHOOL***

***Pride Academy Charter School
Board of Trustees
East Orange, New Jersey***

***Comprehensive Annual Financial Report
For The Fiscal Year Ended June 30, 2021***

**COMPREHENSIVE ANNUAL
FINANCIAL REPORT
OF THE
PRIDE ACADEMY CHARTER SCHOOL
EAST ORANGE, NEW JERSEY
FOR THE FISCAL YEAR ENDED JUNE 30, 2021**

Prepared by

***Pride Academy Charter School
Finance Department***

And

Meshinsky & Associates LLC, CPAs

STATE BOARD OF EDUCATION

KATHY A. GOLDENBERG.....Burlington
President

ANDREW J. MULVIHILLSussex
Vice President

ARCELIO APONTE.Middlesex

MARY BETH BERRY.....Hunterdon

ELAINE BOBROVE.....Camden

FATIMAH BURNAM-WATKINS.....Union

RONALD K. BUTCHERGloucester

JACK FORNAROWarren

MARY ELIZABETH GAZI.....Somerset

NEDD JAMES JOHNSON, Ed. D.....Salem

ERNEST P. LEPOREHudson

JOSEPH RICCA, JR., Ed.D.....Morris

SYLVIA SYLVIA-CIOFFI.....Monmouth

**Angelica Allen-McMillian Acting Commissioner of Education
State Board of Education**

**PRIDE ACADEMY CHARTER SCHOOL
TABLE OF CONTENTS**

Page

INTRODUCTORY SECTION	1
Letter of Transmittal	2
Board of Trustees	13
Organizational Chart	14
Consultants and Advisors	15
FINANCIAL SECTION	16
Independent Auditor’s Report	17
REQUIRED SUPPLEMENTARY INFORMATION – PART I	20
Management’s Discussion and Analysis	21
BASIC FINANCIAL STATEMENTS.....	27
SECTION A – CHARTER SCHOOL–WIDE FINANCIAL STATEMENTS	28
A-1 Statement of Net Position.....	29
A-2 Statement of Activities.....	30
SECTION B – FUND FINANCIAL STATEMENTS	31
GOVERNMENTAL FUNDS	32
B-1 Balance Sheet.....	33
B-2 Statement of Revenues, Expenditures, and Changes in Fund Balance	34
B-3 Reconciliation of the Statements of Revenues, Expenditures, and Changes in Fund Balances of Governmental Funds to the Statement of Activities	35
PROPRIETARY FUNDS	36
B-4 Statement of Fund Net Position	37
B-5 Statement of Revenues, Expenses, and Changes in Net Position	38
B-6 Statement of Cash Flows	39
FIDUCIARY FUNDS	40
B-7 Statement of Fiduciary Net Position	41
NOTES TO THE FINANCIAL STATEMENTS	42
REQUIRED SUPPLEMENTARY INFORMATION – PART II	75
SECTION C – BUDGETARY COMPARISON SCHEDULES	76
C-1 Budgetary Comparison Schedule – General Fund	77
C-2 Budgetary Comparison Schedule – Special Revenue Fund.....	79
NOTES TO THE REQUIRED SUPPLEMENTARY INFORMATION.....	80
C-3 Budget-To-GAAP Reconciliation	81

**PRIDE ACADEMY CHARTER SCHOOL
TABLE OF CONTENTS**

	Page
REQUIRED SUPPLEMENTARY INFORMATION – PART III	82
 SCHEDULE L - SCHEDULES RELATED TO ACCOUNTING AND REPORTING	
FOR PENSIONS (GASB 68)	83
L-1 Schedules of the Charter School’s Proportionate Share of the Net Pension Liability - PERS	84
L-2 Schedules of Charter School’s Contributions - PERS	85
L-3 Schedules of the District’s Proportionate Share of the Net Pension Liability - TPAF	N/A
 OTHER SUPPLEMENTARY INFORMATION	 86
 SECTION E – SPECIAL REVENUE FUND	 87
E-1 Combining Schedule of Revenues and Expenditures – Budgetary Basis	88
 SECTION G – PROPRIETARY FUNDS	 89
 SECTION H – FIDUCIARY FUNDS	 90
H-1 Combining Statement of Fiduciary Net Position	91
H-3 Student Activities Schedule of Receipts and Disbursements	92
H-4 Payroll Agency Fund Schedule of Receipts and Disbursements.....	93
 STATISTICAL SECTION (UNAUDITED).....	 94
 INTRODUCTION TO THE STATISTICAL SECTION.....	 95
 FINANCIAL TRENDS	 96
J-1 Net Position by Component.....	97
J-2 Changes in Net Position.....	98
J-3 Fund Balances – Governmental Funds	99
J-4 Changes in Fund Balances – Governmental Funds	100
J-5 General Fund-Other Local Revenue by Source	101
 DEMOGRAPHIC AND ECONOMIC INFORMATION	 N/A
J-14 Demographic and Economic Statistics	N/A
J-15 Principal Employers, Current and Ten Years Ago	N/A
 OPERATING INFORMATION.....	 102
J-16 Full-Time Equivalent Charter School Employees by Function.....	103
J-17 Operating Statistics	104
J-18 School Building Information.....	N/A
J-20 Insurance Schedule.....	105
J-21 Charter School Performance Framework, Financial Performance, Fiscal Ratios	106

**PRIDE ACADEMY CHARTER SCHOOL
TABLE OF CONTENTS**

		Page
SINGLE AUDIT SECTION.....		107
K-1	Independent Auditor’s Report on Internal Control Over Financial Reporting and On Compliance and Other Matters Based On an Audit of Financial Statements Performed In Accordance With Government Auditing Standards.....	108
K-2	Independent Auditor’s Report on Compliance For Each Major State Program; Report on Internal Over Compliance; And Report on Schedule of Expenditures of State Finance required by OMB New Jersey OMB Circular 04-04.....	110
K-3	Schedule of Expenditures of Federal Awards.....	113
K-4	Schedule of Expenditures of State Financial Assistance – Schedule B	114
K-5	Notes to Schedules of Expenditures of Awards and Financial Assistance	115
K-6	Schedule of Findings and Questioned Costs	118
K-7	Summary Schedule of Prior Audit Findings and Questioned Costs as Prepared by Management.....	122

INTRODUCTORY SECTION



February 11, 2022

Honorable President and
Members of the Board of Trustees
Pride Academy Charter School

East Orange, New Jersey 07018

Dear Board Members:

The comprehensive annual financial report of Pride Academy Charter School (Charter School) for the fiscal year ended June 30, 2021, is hereby submitted. Responsibility for both the accuracy of the data and completeness and fairness of the presentation, including all disclosures, rests with the management of the Board. To the best of our knowledge and belief, the data presented in this report is accurate in all material respects and is reported in a manner designed to present fairly the basic financial statements and results of operations of the various funds of the Charter School. All disclosures necessary to enable the reader to gain an understanding of the Charter School's financial activities have been included.

The Comprehensive Annual Financial Report is presented in four sections as follows:

- The Introductory Section contains a table of contents, Letter of Transmittal, List of Principal Officials, and an Organizational Chart of the Charter School;
- The Financial Section begins with the Independent Auditors' Report and includes the Management's Discussion and Analysis, the Basic Financial Statements and Notes providing an overview of the Charter School's financial position and operating results, and other schedules providing detailed budgetary information;
- The Statistical Section includes selected economic and demographic information, financial trends, and the fiscal capacity of the Charter School, generally presented on a multi-year basis;
- The Single Audit Section — The Charter School is required to undergo an annual single audit in conformity with the provisions of the Government Auditing Standards, issued by the Comptroller General of the United States; the audit requirements of Title 2 U.S. Code of Federal Regulations (CFR) Part 200, Uniform Administrative Requirements, Cost Principles, and Audit Requirements for Federal Awards (Uniform Guidance) and the audit requirements as prescribed by the Office of School Finance, Department of Education, State of New Jersey; New Jersey Circular 15-08 OMB. Information related to this single audit, including the independent auditor's report on the internal control and compliance with applicable laws, regulations, contracts and grants, along with findings and questioned costs, are included in the single audit section of this report.

CHARTER SCHOOL ORGANIZATION

An elected five to nine-member Board of Trustees serves as the governance and policy maker for the Charter School. The Board approves and adopts an annual budget and oversees all expenditures, which serve as the basis for control over and authorization for all expenditures of Charter School tax money.

The Principal is the chief executive officer of the Charter School and is responsible to the Board for the educational and support operations. The School Business Administrator is the chief financial officer of the Charter School and is responsible to the Board for maintaining all financial records, issuing warrants in payment of liabilities incurred by the Charter School, acting as custodian of all Charter School Funds, and investing idle funds as permitted by New Jersey Law.

Comprehensive Annual Financial Report 2020-2021

1) Reporting Entity and its Services:

Pride Academy Charter School opened in 2008 and currently in its fourteenth year of operation. Pursuant to N.J.S.A. 18A:36A-17 and N.J.A.C. 6A11-2.3(b) the New Jersey Department of Education completed its comprehensive review of the renewal application submitted on October 15, 2021. As a result, The New Jersey Department of Education has renewed the charter for the next five years 2022-2023 through 2026-2027 after evaluation which included but not limited to, the renewal application, annual reports, student performance on statewide assessments, a structured interview with school officials, public comments, student composition, and the fiscal impact on the sending district(s). As demonstrated in the Renewal Summary Report, Pride Academy Charter School met standard on all rated measures in the Fiscal Performance Framework and met standard on many indicators in the Organizational Performance Framework.

Pride Academy Charter School constitutes an independent reporting entity within the criteria adopted by the Governmental Accounting Standards Board (GASB). All funds and account groups of the entity are included in this report.

OUR MISSION

Pride Academy Charter School strongly believes that every member of the staff plays a vital role in creating a safe and supportive learning community where our children can develop and grow. All members of the Pride Academy Charter School team are dedicated to the following mission:

“Pride Academy Charter School endeavors to ignite success in middle school students of all abilities through a curriculum rooted in the values of peace, respect, integrity, determination, and empathy. By establishing a community dedicated to academic achievement, mastery of fundamental skills, positive leadership, and active service, Pride Academy Charter School strives to embolden its students to harness their own power to shape their futures and the world.”

OUR CORE BELIEFS

The foundation of Pride Academy Charter School is built upon the following core beliefs:

- Students of all abilities will thrive in a peaceful learning community that values respect, integrity, determination, and empathy for others.
- Within all students lies the power to shape their own future by making positive choices today.
- By serving individual academic needs through a cohesive skill-centered curriculum, untapped student potential will be realized.
- Through critical examination and active response to challenges facing our community, students are best able to comprehend the interconnectedness of life and the power of the individual.
- By deliberately honoring accomplishments while continuously setting new challenges, students gain the courage, confidence, and competencies needed to take academic and leadership risks.
- Adults teach students with their actions. All members of our school community--administration, faculty, and parents—must live and embody the values that the school seeks to instill in its students.
- A culture which prizes goal-setting, positive choices, and perseverance will equip students with the skills and mindset needed to seize future educational opportunities.
- By questioning, seeking, understanding, and responding, all members of our school community will be active participants in the lifelong learning cycle essential for growth.

In the power of the words quoted by Nelson Mandela: "...as we let our light shine, we unconsciously give other people permission to do the same."

THE PRIDE PHILOSOPHY

PRIDE Academy is characterized by a culture that is orderly, supportive and focused on academic achievement. Our school community emphasizes mutual care and respect. Our philosophy emphasizes a positive approach to teaching and managing discipline, in which the students are gradually led towards self-discipline. Students are expected to behave respectfully towards their teachers, classmates, school staff and property. Our committed staff will likewise address students with respect and compassion. Administrators and teachers will work together to promote student achievement and to ensure that the code of conduct is consistently followed, and enforced in a timely and fair manner.

Our teachers strive to create a sense of community within our classrooms. Our students are expected to come to school on time every day and be prepared to contribute positively to the school community. Our goal is to discourage misbehavior and teach students to make better choices in the future.

Lastly, PRIDE Academy is shaped by five guiding principles, or core values. The first of these core values is peace. Violence of any type has no place at PRIDE Academy. Students, parents, staff, and administration will work together to resolve conflicts constructively and peacefully.

THE PRIDE SCHOOL VISION

In order to develop a community of scholars and philanthropists who can excel among their peers from surrounding communities, we envision Pride Academy as a school that provides our students with a strong academic foundation, with skills to lead and the opportunities to be leaders, and with a profound understanding of their role in their communities and the world at large.

We envision Pride Academy as an integral part of the community we serve where the power of families and the collective efforts of all members of “our village” are unleashed in order to support our students as they become critical thinkers, life-long learners, and agents of change in their families, their communities, and our world.

Pride Academy will be a PLACE that ignites and fosters the following qualities in all members of our school community:

Philanthropy
Leadership
Academic Achievement
Cultural Awareness
Excellence

All members of our school community will:

Philanthropy: commit to the actions and ideals of service and social justice in our communities and our world.

Leadership: recognize their power as individuals to affect positive change.

Academic Achievement: apply the habits of questioning, seeking, understanding, and responding towards their personal growth as life-long learners, decision-makers, and problem solvers.

Cultural Awareness: explore and find value in their own cultural identity and the cultural identities of others.

Excellence: develop the knowledge, skills and resilience to achieve high expectations in their personal and professional lives.

CORE VALUES

The Pride philosophy is based upon five core values: peace, respect, integrity, determination, and empathy. All members of our school community are expected to live by these values. Students and their parents or guardians affirm their commitment to practice the core values by signing the PRIDE Academy Charter School Parent Compact.

The five core values are characterized as follows:

Peace: Conflicts will be resolved in non-violent ways. Students and adults will work together to create a calm, safe environment by learning and teaching how to resolve and avoid conflicts in non-violent, non-confrontational ways.

Respect: All members of the school community will treat each other with respect. We treat each person as valuable, worthy of greatness and goodness. We accept individuals for who they are.

We demonstrate high regard for others, for property, for differences, and for opinions different from our own. We respect the rights of our teachers to teach and of our classmates to learn.

Integrity: Honesty will be at the core of all that we say and do. We follow through on our obligations and commitments. We do not do things halfway.

Determination: We will not allow obstacles to block our pathways to excellence. We do our best in every area. We never give up.

Empathy: Compassion and understanding of each other's feelings will guide our choices and conduct. We will not hurt each other physically or emotionally. We are kind and supportive of one another.

We teach our students to take responsibility for their actions and to consider the impact of their actions on others. By doing so, we prepare our students to be successful in school, in our community, and in our world.

SCHOOL DESCRIPTION

School Name: Pride Academy Charter School

Startup and Current Year. Pride Academy Charter School commenced implementation in the 2008-2009 school year and has completed its 13th year of operation.

Address. The school is located at 117 Elwood Ave, East Orange, NJ 07018.

Facility. The school is located in a three-story building that formerly served as a Catholic School and was purchased from the Imani Baptist Church.

Number of Students, Grades and Classes. The school's original charter authorized a maximum enrollment of 240 students in grades 5-8. During our first Charter Renewal we requested and received approval for an increase in enrollment to a total of 264 students. We requested for and received approval for an additional increase to 288 students for the 2015-2016 school year. On February 3, 2020, the New Jersey Department of Education granted the amendment request to increase enrollment from 288 students to 300 students beginning in 2020-2021. At the end of the year, the enrollment was 300 students. There are three classes totaling 75 students in each of grades 5, 6, 7, and 8.

Class Size. Class size is 25 students per class.

School Day: The school day begins at 8:00 am and ends at 3:20 pm. for a total of 7.5 hours.

School Year: School began September 8th for all students and ended June 23rd for a total of 188 school days.

District of Residence. The school draws its students from the following districts: Newark, East Orange, and Orange.

Waiting List: 141 prospective students are currently on the waiting list (06/30/2021).

Student/Teacher Ratio: 10:1

Employees. The school employs 1 Principal, 2 Vice Principals, 1 School Business Administrator, 1 Dean of Students, 1 Dean of Academics, 1 Coordinator of High School Placement, 22 content teachers, 5 Special Education teachers, 1 Physical Education teacher, 1 Spanish teacher, 1 Computer teacher, 1 Dance teacher, 1 Nurse, and 2 Social Workers. In addition, the school employs the services of 1 School Secretary, 1 Main Office Coordinator, 1 Business Office Manager and 2.0 Custodians. On a contract time basis, the school employs a learning consultant, a school psychologist, a speech therapist, and an occupational therapist.

Lead Person. The school's lead person is Mrs. Fiona Thomas (Tel. 973-627-3200), (Fax 973-672-3207), (email fthomas@prideacs.org).

Board Members. The school's organizational documents provide for up to 9 Board of Trustee members.

Defining Attributes. The defining attributes reference the mission with its focus on academic achievement and mastery of fundamental skills, positive leadership, and active service.

Summary of Accomplishments: Board of Trustees

This year the Board of Trustees have led and supported the following:

- Continued to support the hiring, professional development, and purchase of instructional services and resources that have supported teacher training in special education services and differentiation; NJSLA State testing readiness; Common Core aligned curriculum development; Cultural Responsiveness and Competency; Restorative Justice practices; and training surrounding the adoption of a state-approved Teacher/Principal Evaluation System.
- Continued to support parent involvement, decision making, and communication practices that have resulted in maintaining high levels of parent satisfaction in excess of 95%.
- Supported the school administration with compassion and strength through the COVID-19 Pandemic during the entire school year.

Summary of Accomplishments: School Administration

During the 2020-2021 school year, the Administrative team continued to lead the growth and strengthening of our 13th year of operation. Some highlights in accomplishments include the following:

- Managed and led the school with compassion and strength through the COVID-19 Pandemic during the last 3 months of the school year.
- Successful charter renewal for the next 5 years 2022-2023 to 2026-2027 meeting rated measures in the Fiscal Performance Framework and Organizational Performance Framework as required by the New Jersey Department of Education;
- The continued strong leadership of our School Business Administrator and combined efforts, skills, and capacity of our human resources and business office personnel have sustained an efficient and professional management of critical policies and procedures, Federal grants such as ESSA and IDEA, savings in many areas, continued stabilization in enrollment, as well as detailed oversight and management of the school budget, facility issues, and human resources;
- Development and approval of state mandated plans including the School Wide Unified Plan; Professional Development Plan, the Mentoring Plan, the Technology Plan, the Uniform State Memorandum of Agreement Between Education and Law Enforcement Officials, and the Harassment, Intimidation and Bullying Plan, and Comprehensive Equity Plan;
- Continued a new school wide interim benchmark assessment program, LinkIt to support and strengthen our data driven instructional school wide process;

- Provided professional development to support our co-teaching model, peer-coaching, transition to the rigor of the NJSLA State Assessments, and to develop our Professional Learning Community.
- Continued parent involvement opportunities and increased the number of parents who participated in a range of school activities throughout the course of the year in such virtual events as: Parent Parties; participation in school leadership and planning meetings including School Safety Team meetings and Special Education meetings; Teacher-Parent Conference Nights; High School Night; and workshops related to COVID-19 vaccination, testing and other protocols to support health and safety during the pandemic;

Charter School Organization

An elected 5-9-member Board of Trustees serves as the governance and policy maker for the Charter School. The Board approves and adopts an annual budget and oversees all expenditures, which serve as the basis for control over and authorization for all expenditures of Charter School tax money.

The Principal is the chief executive officer of the Charter School and is responsible to the Board for the educational and support operations. The School Business Administrator is the chief financial officer of the Charter School and is responsible to the Board for maintaining all financial records, issuing warrants in payment of liabilities incurred by the Charter School, acting as custodian of all Charter School Funds, and investing idle funds as permitted by New Jersey Law.

Academic Results

A. Local Interim Assessment Results

Proficiency Rates of Local Assessments (Table 4)						
Assessment	Interim Assessment			End of Year Assessment		
Percentage of students:	Below	On	Above	Below	On	Above
ELA 5	60	39	1	52	45	3
ELA 6	54	40	5	51	44	5
ELA 7	49	41	10	53	39	8
ELA 8	44	51	5	50	40	10
MAT 5	77	20	3	72	26	2
MAT 6	78	20	2	81	18	1
MAT 7	x	x	x	55	44	1
MAT 8	80	20	0	79	21	0
Algebra I	31	69	0	20	80	0

During the 2020-2021 school year all students were remote until April 19, 2021. The pre-assessment (Interim #1) was taken remotely by all students, and the mid-year assessment (Interim #2) was taken remotely by all students. Considering less than 20% of the student population were able to participate in our hybrid in-person learning model, the third and final Interim Assessment was also taken remotely by all students.

To maximize the amount of instructional time and minimize the amount of time students spent testing in their remote environment, the Math and English Department chairs in consultation with

the teachers and administration, decided to align all SGO goals with the Interim Assessment results. Other measures taken to ensure teachers were equipped with the student data needed to plan and support all learners include:

- Testing dates were established and set in the calendar at the start of the year;
- Department and data analysis meetings were scheduled and attended by all content area teachers with the focus on disseminating and analyzing student data to inform planning adjustments and design and pacing of lessons;
- All student data was made accessible to all stakeholders including students, parents, teachers, and the administration;
- The use of the LinkIt Benchmark Assessments allowed teachers to access accurate and in-the-moment data broken down into Standards. LinkIt also provides a scale which is based off hundreds of thousands of student tests. This can support teachers in making informed predictions and decisions with regard to the potential performance of students on high stakes end of year assessments (eg: If student A scores X on the benchmark assessment, they will more than likely score Y on the NJSLA);
- Student data and grades were used to create extra support groups during our afternoon in our virtual Study Hall, Tutoring and homework help Zoom sessions.
- Summer Planning during July-August 2021, involved a number of different initiatives to support the implementation of accelerated learning interventions and strategies during the 2021-2022 school year including, but not limited to: curriculum revision and redesigning; strategic use of Math and ELA co-teacher partnerships; revision of our daily schedule to build in additional minutes of learning time for content area subjects; hiring of additional staff to support the delivery of differentiation and small group tutoring; design of SEL and mental health initiatives to ensure that students, their families and teachers maintain a level of health and wellness to sustain the transitions and readjustments in the coming academic year.

In the content area of English Language Arts, all grade levels have used I-Ready. I-Ready provides a diagnostic assessment with differentiated lessons based off what students score. In addition, ELA teachers have used LinkIt Benchmark Assessments as Interim Assessments at the beginning, middle and end of the school year. They have also used LinkIt Standard Assessments, which are smaller assessments that provide the opportunity for teachers to select the high leverage or target standard(s) students should be measured on. In addition, teachers have used Actively Learn and teacher created assessments to measure students' formative and summative progress periodically.

In the area of Math, teachers have used MobyMax on all grade levels. MobyMax provides a diagnostic assessment with differentiated lessons based off what students score. Teachers of 5th grade math also used Zearn, which provide them with the opportunity to target specific standards on or below grade level. Math teachers used LinkIt Benchmark Assessments as Interim Assessments at the beginning, middle and end of the school year and LinkIt Standard Assessments, which are smaller assessments that allow the teachers to select the high leverage or target standard(s) that students should be measured on. Furthermore, Math teacher have used teacher created assessments to measure students' formative and summative progress periodically.

The greatest challenge this school year has been teachers not having access to students in-person and relying only on the use of a video camera. All students were equipped with a device that was either distributed by the school or belonged to the student. Due to the unreliability and range of variables related to the lack of control or supervision of our students' remote testing environments and their access to uninterrupted and focused online access, data points were considered more as pieces of the puzzle rather than the only source of evaluation and instructional decision-making.

Due to these factors, student data as a whole was used to:

- Set a starting point for each instructional class that teachers could differentiate to fit individual needs within each cohort;
- Lesson and unit plans were created, amended, and updated based off live, in-the-moment data gathered through applications and systems like Hapara and Actively Learn;
- Assignments were modified to fit students strengths and needs;
- Teachers and staff communicated frequently with parents to partner together in their efforts to support and motivate the students;
- The teachers and staff created and used a Professional Development forum and site where they posted short informational and instructional videos of how to use certain software more effectively for both the delivery and evaluation of learning;
- Department meetings were used to discuss and share effective ways to reach and support students;
- Grade level meetings were used for teachers to discuss and create a holistic approach to attend to each individual student's needs and amplify their strengths across the different content areas;
- Student data was used to create teacher Office Hours and Study Hall lists and schedules for students requiring extra support in their subject areas in addition to After-Hour evening Homework Help Zoom sessions for students most in need.
- The composition of Phase 1 and Phase 2 student cohorts entering Pride for in-person learning (starting April 19th, 2021) were based off student data collected throughout the 2020-2021 school year.

The 2020-2021 benchmark assessments were plotted into our original school calendar that was finalized during our planning in July-August of 2020 as we prepared for a hybrid reopening in the Fall. The mid-year and end-of-year assessments were intended to be administered as whole school assessments with testing scripts, testing proctors, and testing protocols similar to the NJSLA assessments. In response to the level of COVID-19 risk and high positivity rates, schools in our district and surrounding districts of residence remained remote-only until late April 2021 when we began to implement our Phase 1 and 2 in-person reopening program. In spite of this, teachers and administrators maintained focus on adhering to the original testing calendar and testing outcomes by following these steps:

- The 2020-2021 school calendar and testing dates were shared with all stakeholders, including parents and guardians.
- During the testing periods, school wide robo-alert messages and memos were sent emailed and texted to parents and guardians with information about why the testing data was important in order to best support and deliver instruction

to their children, and how families could support at home in maintaining testing integrity;

- The design of a whole school set of testing guidelines and recommendations for administering assessments that included to students being asked to be on camera while testing with their sound muted;
- Development of procedures and protocols for how teachers could approach situations where students were not following the guidelines set by the school;
- Setting aside time for professional development focused on how to use the different software while testing, how to use the student data for planning, and how to use the student data gathered in-the-moment to guide instruction;
- Originally, all teachers' SGO's in ELA and Math were tied to the outcomes of the Interim Assessments. Even after the State's directive regarding Teacher SGO's no longer being counted in their evaluation for this year, teachers maintained the ownership of their original goals and used the student data to guide instruction.
- All grade levels and subjects issued all interim assessments. Although 7th grade math administered their assessment, results were not listed in the table above because the administration date one week after the State issued cut-off date.

2. **INTERNAL ACCOUNTING CONTROLS:** Management of the Board of Trustees is responsible for establishing and maintaining an internal control structure designed to ensure that the assets of the Charter School are protected from loss, theft or misuse and to ensure that adequate accounting data are compiled to allow for the preparation of financial statements in conformity with generally accepted accounting principles (GAAP). The internal control structure is designed to provide reasonable, but not absolute, assurance that these objectives are met. The concept of reasonable assurance recognizes that: (1) the cost of a control should not exceed the benefits likely to be derived; and (2) the valuation of costs and benefits requires estimates and judgments by management.

As a recipient of Federal and State financial assistance, the Charter School is also responsible for ensuring that an adequate internal control structure is in place to ensure compliance with applicable laws and regulations related to those programs. This internal control structure is subject to periodic evaluation by the Charter School management.

As part of the Charter School's single audit described earlier, tests are made to determine the adequacy of the internal control structure, including that portion related to Federal and State financial assistance programs, as well as to determine that the Charter School has complied with applicable laws, regulations, contracts, and grants.

3. **BUDGETARY CONTROLS:** In addition to internal accounting controls, the Charter School maintains budgetary controls. The objective of these budgetary controls is to ensure compliance with legal provisions embodied in the annual appropriated budget approved by the voters of the municipality. Annual appropriated budgets are adopted for the general fund and the special revenue fund. The final budget amount, as amended for the fiscal year, is reflected in the financial section.

An encumbrance accounting system is used to record outstanding purchase commitments on a line item basis. Open encumbrances at year-end are either canceled or are included as

reappropriations of fund balance in the subsequent year. Those amounts to be reappropriated are reported as reservations of fund balance at June 30, 2021.

4. **CASH MANAGEMENT:** The investment policy of the Charter School is guided in large part by state statute as detailed in “Notes to the Financial Statement” Note 2. The Charter School had adopted a cash management plan which requires it to deposit funds in public depositories protected from loss under the provisions of the Governmental Unit Deposit Protection Act (“GUDPA”). GUDPA was enacted in 1970 to protect Government Units from a loss of funds on deposit with a failed banking institution in New Jersey. The law requires governmental units to deposit public funds only in public depositories located in New Jersey, where the funds are secured in accordance with the Act.

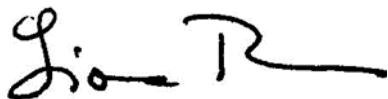
5. **RISK MANAGEMENT:** The Charter School carries various forms of insurance, including but not limited to general liability, automobile liability and comprehensive collision, hazard and theft insurance on property and contents.

6. **OTHER INFORMATION:**

Independent Audit - State statutes require an annual audit by independent certified public accountants or registered municipal accountants. The accounting firm of Meshinsky & Associates LLC, CPA’s, was appointed by the Board. In addition to meeting the requirements set forth in State statutes, the audit also was designed to meet the requirements of the Single Audit Act of 1984 and the Single Audit Act Amendment of 1996 and the related OMB Circular A-133, “Audits of State, Local Governments and Non-Profits Organizations” and New Jersey Circular Letter 04-04 OMB, “Single Audit Policy for Recipients of Federal Grants, State Grants, and State Aid.” The auditor’s report on the basic financial statements and specific required supplemental information is included in the financial section of this report. The auditors’ reports, related specifically to the single audit, are included in the single audit section of this report.

7. **ACKNOWLEDGEMENTS:** We would like to express our appreciation to the members of the Pride Academy Charter School Board of Trustees for their concern in providing fiscal accountability to the citizens and taxpayers of the Charter School and thereby contributing their full support to the development and maintenance of our financial operation. The preparation of this report could not have been accomplished without the efficient and dedicated services of our staff.

Respectfully submitted,



Mrs. Fiona Thomas
School Principal

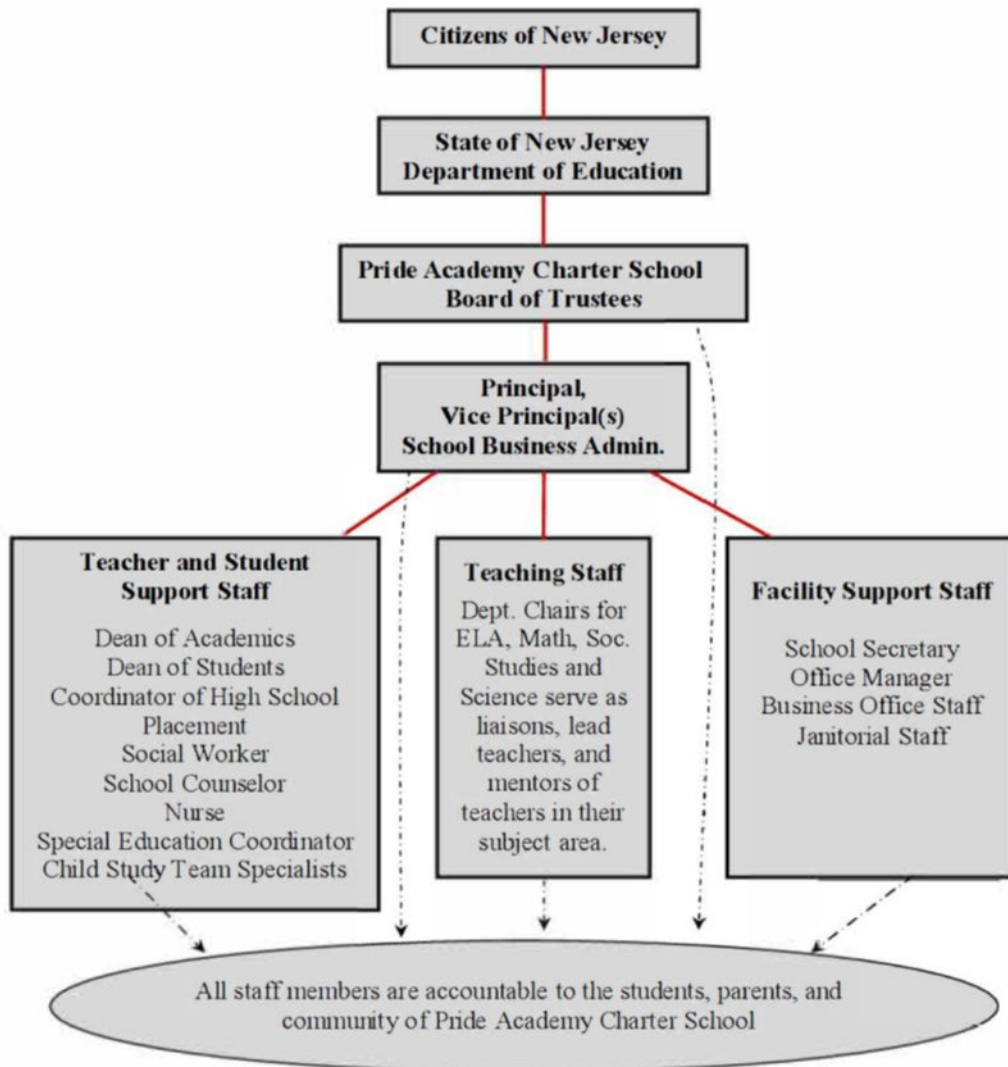
**PRIDE ACADEMY CHARTER SCHOOL
2020-2021 BOARD OF TRUSTEES ROSTER**

BOARD MEMBER NAME	APPOINTMENT DATE	ADDRESS/PHONE EMAIL	TERM END DATE
Robert Mitchell, II President	April 1, 2008	634 Berkeley Avenue Orange, NJ 07050 (973) 900-0243 Rmitch71@gmail.com	06/30/2023
Michael Moore Esq. Vice President	December 8, 2009	21 Wheatland Avenue West Orange, NJ 07052 (973) 668-7489 Mikemoore511@hotmail.com	06/30/2022
Alison Morgan-Black Member	September 25, 2012	177 Cambridge Avenue Englewood, NJ 07631 (201) 745-6625 Dr.apmorgan@yahoo.com	06/30/2022
Deirdre Taylor Member	February 11, 2015	454 New England Terrace Orange, NJ 07050 (718) 809-4539 Taylor.deidre3@gmail.com	06/30/2023
Jacqueline Spence Member	October 19, 2016	260 Glenwood Avenue East Orange, NJ 07017 (973) 517-5962 Meljefflin40@aol.com	06/30/2024



Organizational Chart

2019-2020



CONSULTANTS AND ADVISORS

Audit Firm

Meshinsky & Associates LLC
Certified Public Accountants
1155 W. Chestnut Street, Suite 2D
Union, New Jersey 07083

Attorney

Joseph M. Wenzel, Esq.
432 Clifton Avenue
Clifton, New Jersey 07011

Official Depository

Fulton Bank of New Jersey
Suite 250
533 Fellowship Road
Mt. Laurel, NJ 08054

FINANCIAL SECTION



MESHINSKY & ASSOCIATES LLC

CERTIFIED PUBLIC ACCOUNTANTS,
CONSULTANTS & INDEPENDENT TRUSTEES

Independent Auditor's Report

Honorable President
Members of the Board of Trustees
Pride Academy Charter School
County of Essex
East Orange, New Jersey

Report on the Financial Statements

We have audited the accompanying financial statements of the governmental activities, the business-type activities, each major fund, and the aggregate remaining fund information of the Pride Academy Charter School (Charter School), in the County of Essex, State of New Jersey, as of and for the fiscal year ended June 30, 2021, and the related notes to the financial statements, which collectively comprise the Charter School's basic financial statements as listed in the table of contents.

Management's Responsibility for the Financial Statements

The Charter School's management is responsible for the preparation and fair presentation of these financial statements in accordance with accounting principles generally accepted in the United States of America; this includes the design, implementation, and maintenance of internal control relevant to the preparation and fair presentation of financial statements that are free from material misstatement, whether due to fraud or error.

Auditor's Responsibility

Our responsibility is to express opinions on these financial statements based on our audit. We conducted our audit in accordance with auditing standards generally accepted in the United States of America and the standards applicable to financial audit contained in *Government Auditing Standards*, issued by the Comptroller General of the United States; and audit requirements as prescribed by the Office of Finance, Department of Education, State of New Jersey. Those standards require that we plan and perform the audit to obtain reasonable assurance about whether the financial statements are free from material misstatement.

An audit involves performing procedures to obtain audit evidence about the amounts and disclosures in the financial statements. The procedures selected depend on the auditor's judgment, including the assessment of the risks of material misstatement of the financial statements, whether due to fraud or error. In making those risk assessments, the auditor considers internal control relevant to the entity's preparation and fair presentation of the financial statements in order to design audit procedures that are appropriate in the circumstances, but not for the purpose of expressing an opinion on the effectiveness of the entity's internal control. Accordingly, we express no such opinion. An audit also includes

evaluating the appropriateness of accounting policies used and the reasonableness of significant accounting estimates made by management, as well as evaluating the overall presentation of the financial statements.

We believe that the audit evidence we have obtained is sufficient and appropriate to provide a basis for our audit opinions.

Opinions

In our opinion, the financial statements referred to above present fairly, in all material respects, the respective financial position of the governmental activities, the business-type activities, each major fund, and the aggregate remaining fund information of the Pride Academy Charter School, in the County of Essex, State of New Jersey, as of June 30, 2021, and the respective changes in the financial position and, where applicable, cash flows thereof for the year then ended in accordance with accounting principles generally accepted in the United States of America.

Other Matters

Required Supplementary Information

Accounting principles generally accepted in the United States of America require that the Management's Discussion and Analysis and Budgetary Comparison Information starting on pages 22 and 80, respectively, be presented to supplement the basic financial statements. Such information, although not a part of the basic financial statements, is required by the Governmental Accounting Standards Board who considers it to be an essential part of financial reporting for placing the basic financial statements in an appropriate operational, economic, or historical context. We have applied certain limited procedures to the required supplementary information in accordance with auditing standards generally accepted in the United States of America, which consisted of inquiries of management about the methods of preparing the information and comparing the information for consistency with management's response to our inquiries, the basic financial statements, and other knowledge we obtained during our audit of the basic financial statements. We do not express an opinion or provide any assurance on the information because the limited procedures do not provide us with sufficient evidence to express an opinion or provide any assurance.

Supplementary and Other Information

Our audit was conducted for the purpose of forming opinions on the financial statements that collectively comprise the Charter School's basic financial statements. The accompanying supplementary information such as the combining and individual fund financial statements and schedules of expenditures of federal awards and state financial assistance, as required by in the U.S. *Office of Management and Budget (OMB) Compliance Supplement* and the *New Jersey Circular 15-08 OMB State Aid/Grant Compliance Supplement* respectively; and the other information, such as the introductory and statistical sections are presented for purposes of additional analysis and are not a required part of the basic financial statements.

The combining and individual nonmajor fund financial statements and schedules of expenditures of federal awards and state financial assistance are the responsibility of management and were derived from and relate directly to the underlying accounting and other records use to prepare the basic financial statements. Such information has been subjected to the auditing procedures applied in the audit of the basic financial statements and certain additional procedures, including comparing and reconciling such information directly to the underlying accounting and other records used to prepare the basic financial statements or to

the basic financial statements themselves, and other additional procedures in accordance with auditing standards generally accepted in the United States of America. In our opinion, the combining and individual non-major fund financial statements and schedules of expenditures of federal awards and state financial assistance are fairly stated, in all material respects, in relation to the basic financial statements as a whole.

The introductory and statistical sections have not been subjected to the auditing procedures applied in the audit of the basic financial statements, and accordingly, we do not express an opinion or provide any assurance on it.

Other Reporting Required by *Government Auditing Standards and the Division of Finance, Department of Education, State of New Jersey*

In accordance with *Government Auditing Standards*, we have also issued our report dated February 11, 2022 on our consideration of the Pride Academy Charter School's internal control over financial reporting and our tests of its compliance with certain provisions of laws, regulations, contracts, and grant agreements and other matters.

The purpose of that report is to describe the scope of our testing of internal control over financial reporting and compliance and the results of that testing, and not to provide an opinion on internal control over financial reporting or on compliance. That report is an integral part of an audit performed in accordance with *Government Auditing Standards and the Division of Finance, Department of Education, State of New Jersey* in considering the Charter School's internal control over financial reporting and compliance.

Meshinsky & Associates LLC, CPA's



Philip T. Meshinsky
Licensed Public-School Accountant
No. CS00233400
Meshinsky & Associates LLC, CPA's
Union, New Jersey

February 11, 2022

REQUIRED SUPPLEMENTARY INFORMATION – PART I

**PRIDE ACADEMY CHARTER SCHOOL
EAST ORANGE, NEW JERSEY**

**MANAGEMENT'S DISCUSSION AND ANALYSIS
FOR THE FISCAL YEAR ENDED JUNE 30, 2021
UNAUDITED**

The discussion and analysis of Pride Academy Charter School's financial performance provides an overall review of the Charter School's financial activities for the fiscal year ended June 30, 2021. The intent of this discussion and analysis is to look at the Charter School's financial performance as a whole; readers should also review the basic financial statements and notes to enhance their understanding of the Charter School's financial performance. Certain comparative information between the current year (2020 to 2021) and the prior year (2019 to 2020) is required to be presented in the MD & A.

Financial Highlights

Key financial highlights for 2021 are as follows:

- ❖ General revenues accounted for \$5,527,538 in revenue or 88% percent of all revenues. Program specific revenues in the form of charges for services and operating grants and contributions accounted for \$750,780 or 12% percent of total revenues of \$6,278,318.
- ❖ The Charter School had \$6,390,361 in expenses; only \$750,780 of these expenses were offset by program specific charges for services, grants or contributions. General revenues of \$5,527,538 were not adequate to provide for these programs.
- ❖ Among governmental funds, the General Fund had \$5,420,447 in revenues and \$5,471,224 in expenditures. The General Fund's fund balance decreased \$50,777 from 2020. This decrease was anticipated by the Board of Trustees.

Using this Comprehensive Annual Financial Report (CAFR)

This annual report consists of a series of financial statements and notes to those statements. These statements are organized so the reader can understand Pride Academy Charter School as a financial whole, an entire operating entity. The statements then proceed to provide an increasingly detailed look at specific financial activities.

The *Statement of Net Position* and *Statement of Activities* provide information about the activities of the whole Charter School, presenting both an aggregate view of the Charter School's finances and a longer-term view of those finances. Fund financial statements provide the next level of detail. For governmental funds, these statements tell how services were financed in the short-term as well as what remains for future spending. The fund financial statements also look at the Charter School's most significant funds with all other non-major funds presented in total in one column. In the case of Pride Academy Charter School, the General Fund is by far the most significant fund.

**PRIDE ACADEMY CHARTER SCHOOL
EAST ORANGE, NEW JERSEY**

**MANAGEMENT'S DISCUSSION AND ANALYSIS
FOR THE FISCAL YEAR ENDED JUNE 30, 2021
UNAUDITED
(CONTINUED)**

Reporting the Charter School as a Whole

Statement of Net Position and the Statement of Activities

While this document contains the large number of funds used by the Charter School to provide programs and activities, the view of the Charter School as a whole looks at all financial transactions and ask the question, "How did we do financially during 2021?" The *Statement of Net Position* and the *Statement of Activities* answer this question. These statements include all assets and liabilities using the accrual basis of accounting similar to the accounting used by most private-sector businesses. This basis of accounting takes into account all of the current year's revenues and expenses regardless of when cash is received or paid.

Statement of Net Position and the Statement of Activities

These two statements report the Charter School's net position and changes in that position. This change in net position is important because it tells the reader that, for the Charter School as a whole, the financial position of the Charter School have improved or diminished. The causes of this change may be the result of many factors, some financial and some not. Non- financial factors include current laws in New Jersey restricting revenue growth, facility condition, required educational programs and other factors.

In the *Statement of Net Position* and the *Statement of Activities*, the Charter School is divided into two kinds of activities:

- ❖ Governmental Activities — All of the Charter School's programs and services are reported here including instruction, administration, support services and capital outlay.
- ❖ Business-Type Activities — These services are provided on a charge for goods or services basis to recover all the expenses of the goods or services provided. The Food Service enterprise fund is reported as a business activity.

Reporting the Charter School's Most Significant Funds

Fund Financial Statements

Fund financial reports provide detailed information about the Charter School's funds. The Charter School uses many funds to account for a multitude of financial transactions. The Charter School's governmental funds are the General Fund and Special Revenue Fund.

**PRIDE ACADEMY CHARTER SCHOOL
EAST ORANGE, NEW JERSEY**

**MANAGEMENT'S DISCUSSION AND ANALYSIS
FOR THE FISCAL YEAR ENDED JUNE 30, 2021
UNAUDITED
(CONTINUED)**

Governmental Funds

The Charter School's activities are reported in governmental funds, which focus on how money flows into and out of those funds and the balances left at year-end available for spending in the future years. These funds are reported using an accounting method called modified accrual accounting, which measures cash and all other financial assets that can readily be converted to cash. The governmental fund statements provide a detailed short-term view of the Charter School's general government operations and the basic services it provides. Governmental fund information helps the reader determine whether there are more or fewer financial resources that can be spent in the near future to finance educational programs. The relationship (or differences) between governmental activities (reported in the *Statement of Net Position* and the *Statement of Activities*) and governmental funds are reconciled in the financial statements.

Enterprise Fund

The enterprise fund uses the same basis of accounting as business-type activities; therefore, these statements are essentially the same.

Notes to the Basic Financial Statements

The notes provide additional information that is essential to a full understanding of the data provided in the Charter School-wide and fund financial statements. The notes to the basic financial statements can be found starting on page 42 of this report.

The Charter School as a Whole

Recall that the *Statement of Net Position* provides the perspective of the Charter School as a whole. Net position may serve over time as a useful indicator of a government's financial position.

The Charter School's financial position is the product of several financial transactions including the net results of activities.

The Charter School's combined net position were \$164,350 for 2021 and \$272,913 for 2020.

Governmental Activities

The Charter School's total revenues were \$5,690,621 for 2021 and \$5,291,893 for 2020, this includes \$918,891 for 2020 and \$756,827 for 2020 of state reimbursed TPAF social security, pension and post-retirement medical contributions.

The total cost of all program and services was \$5,802,389 for 2021 and \$5,295,868 for 2020. Instruction comprises 49% for 2021 and 46% for 2020 of Charter School expenditures.

**PRIDE ACADEMY CHARTER SCHOOL
EAST ORANGE, NEW JERSEY**

**MANAGEMENT'S DISCUSSION AND ANALYSIS
FOR THE FISCAL YEAR ENDED JUNE 30, 2021
UNAUDITED
(CONTINUED)**

Business-Type Activities

Revenues for the Charter School's business-type activities (food service program) were comprised of charges for services and federal and state reimbursements.

- ❖ Food service revenues exceeded expenditures by \$25 for 2021 and revenues exceeded expenditures by \$4,208 for 2020.
- ❖ Charges for services represent \$11,377 for 2021 and \$3,823 for 2020 of revenue. This represents amounts paid by patrons for daily food.
- ❖ Federal and state reimbursements for meals, including payments for free and reduced lunches and breakfast, and state snack program were \$0 for 2021 and \$120,601 for 2020.

Governmental Activities

The *Statement of Activities* shows the cost of program services and the charges for services and grants offsetting those services. Instruction expenses include activities directly dealing with the teaching of pupils and the interaction between teacher and student, including extracurricular activities.

Administration includes expenses associated with administrative and financial supervision of the Charter School.

Support services include the activities involved with assisting staff with the content and process of teaching to students, including curriculum and staff development and the costs associated with operating the facility.

Capital Outlay represents instructional and/or non-instructional equipment purchased and is capitalized when such equipment is over the \$2,000 threshold.

The Charter School's Funds

All governmental funds (i.e., general fund and special revenue fund presented in the fund-based statements) are accounted for using the modified accrual basis of accounting. Total revenues amounted to \$5,690,621 for 2021 and \$5,291,893 for 2020 and expenditures were \$5,741,398 for 2021 and \$5,249,109 for 2020. The net change in fund balance was most significant in the general fund, an decrease of \$50,777 for 2021 and an increase of \$42,784 for 2020.

**PRIDE ACADEMY CHARTER SCHOOL
EAST ORANGE, NEW JERSEY**

**MANAGEMENT'S DISCUSSION AND ANALYSIS
FOR THE FISCAL YEAR ENDED JUNE 30, 2021
UNAUDITED
(CONTINUED)**

The Charter School's Funds (Continued)

As demonstrated by the various statements and schedules included in the financial section of this report, the Charter School continues to meet its responsibility for sound financial management. The following schedules present a summary of the revenues of the governmental funds for the fiscal year ended June 30, 2021, and the amount and percentage of increases and decreases in relation to prior year revenues.

Revenues	Amount	Percent of Total	Increase/ (Decrease) From 2020	Percent of Increase/ (Decrease)
Local Sources	\$ 560,480	9.85%	\$ 17,558	3.23%
State Sources	4,859,967	85.40%	380,086	8.48%
Federal Sources	270,174	4.75%	1,084	0.40%
Total	<u>\$ 5,690,621</u>	<u>100.00%</u>	<u>\$ 398,728</u>	

The following schedule represents a summary of general fund and special revenue fund expenditures for the fiscal year ended June 30, 2021, and the percentage of decreases and increases in relation to prior year amounts.

Expenditures	Amount	Percent of Total	Increase/ (Decrease) From 2020	Percent of Increase/ (Decrease)
Instruction	\$ 2,025,467	35.27%	\$ 212,018	11.69%
Administration	2,318,100	40.38%	328,643	16.52%
Support Services	1,270,054	22.12%	(174,862)	(12.10%)
Capital Outlay	127,777	2.23%	126,490	0.00%
Total	<u>\$ 5,741,398</u>	<u>100.00%</u>	<u>\$ 492,289</u>	

Changes in expenditures were the results of varying factors. Current expense decreased due to reductions in staff and medical costs.

General Fund Budgeting Highlights

The Charter School's budget is prepared according to New Jersey law, and is based on accounting for certain transactions on a basis of cash receipts, disbursements, and encumbrances. The most significant budgeted fund is the General Fund.

**PRIDE ACADEMY CHARTER SCHOOL
EAST ORANGE, NEW JERSEY**

**MANAGEMENT'S DISCUSSION AND ANALYSIS
FOR THE FISCAL YEAR ENDED JUNE 30, 2021
UNAUDITED
(CONTINUED)**

Over the course of the year, the Charter School revised the annual operating budget in accordance with state regulations. Revisions in the budget were made to recognize revenues that were not anticipated and to prevent over-expenditures in specific line item accounts.

Capital Assets (Net of Depreciation)

At the end of the fiscal year 2021, the Charter School had \$0 invested in capital assets and \$0 for 2020.

For the Future

The Pride Academy Charter School is in good financial condition presently. The Charter School is proud of its community support. A major concern is the continued enrollment growth of the Charter School with the increased reliance on federal and state funding.

In conclusion, the Pride Academy Charter School has committed itself to financial excellence for many years. In addition, the Charter School's system for financial planning, budgeting, and internal financial controls are well regarded. The Charter School plans to continue its sound fiscal management to meet the challenge of the future.

Contacting the Charter School's Financial Management

This financial report is designed to provide our citizens, taxpayers, investors, and creditors with a general overview of the Charter School's finances and to show the Charter School's accountability for the money it receives. If you have questions about this report or need additional information, contact the School Business Administrator/Board Secretary at Pride Academy Charter School, 117 Elmwood Avenue, East Orange, New Jersey 07018.

BASIC FINANCIAL STATEMENTS

SECTION A – CHARTER SCHOOL–WIDE FINANCIAL STATEMENTS

The statement of net position and the statement of activities display information about the Charter School. These statements include the financial activities of the overall Charter School, except for fiduciary activities. Eliminations have been made to minimize the double-counting of internal activities. These statements distinguish between the governmental and business-type activities of the Charter School.

PRIDE ACADEMY CHARTER SCHOOL

Statement of Net Position

June 30, 2021

	Governmental Activities	Business-Type Activities	Total
ASSETS:			
Cash and Cash Equivalents	\$ 1,342,897	\$ 8,178	\$ 1,351,075
Interfund Receivables	142,180	31,165	173,345
Receivables	126,247	-	126,247
Other Assets	56,363	-	56,363
	<u>1,667,687</u>	<u>39,343</u>	<u>1,707,030</u>
DEFERRED OUTFLOWS OF RESOURCES:			
Pensions	359,358	-	359,358
	<u>359,358</u>	<u>-</u>	<u>359,358</u>
Deferred Outflows of Resources	359,358	-	359,358
	<u>359,358</u>	<u>-</u>	<u>359,358</u>
LIABILITIES:			
Interfund Payable	203,466	-	203,466
Payable to Governments	71,335	-	71,335
Accounts Payable	110,656	-	110,656
Payable to Districts	5,657	-	5,657
Unearned Revenue	180,077	-	180,077
Noncurrent Liabilities			
Pensions	917,504	-	917,504
	<u>1,488,695</u>	<u>-</u>	<u>1,488,695</u>
Total Liabilities	1,488,695	-	1,488,695
	<u>1,488,695</u>	<u>-</u>	<u>1,488,695</u>
DEFERRED INFLOWS OF RESOURCES:			
Pensions	413,343	-	413,343
	<u>413,343</u>	<u>-</u>	<u>413,343</u>
Deferred Inflows of Resources	413,343	-	413,343
	<u>413,343</u>	<u>-</u>	<u>413,343</u>
NET POSITION:			
Restricted for:			
Student Activities	3,180	-	3,180
Unassigned	121,827	39,343	161,170
	<u>121,827</u>	<u>39,343</u>	<u>161,170</u>
Total Net Position	<u>\$ 125,007</u>	<u>\$ 39,343</u>	<u>\$ 164,350</u>

The accompanying Notes to Basic Financial Statements are an integral part of this statement.

PRIDE ACADEMY CHARTER SCHOOL
Statement of Activities
For The Fiscal Year Ended June 30, 2021

Functions/Programs	Expenses	Indirect Expenses Allocation	Program Revenues			Net (Expense) Revenue and Changes in Net Position		
			Charges for Services	Operating Grants and Contributions	Capital Grants and Contributions	Governmental Activities	Business-Type Activities	Total
GOVERNMENTAL ACTIVITIES:								
Instruction	\$ 2,025,467	\$ 809,886	\$ -	\$ 162,783	\$ -	\$ (2,672,570)	\$ -	\$ (2,672,570)
Administration	932,866	636,339	-	-	-	(1,569,205)	-	(1,569,205)
Support Services	1,270,054	-	-	-	-	(1,270,054)	-	(1,270,054)
Capital Outlay	127,777	-	-	-	-	(127,777)	-	(127,777)
Unallocated Employee Benefits	576,620	-	-	576,620	-	-	-	-
Total Governmental Activities	4,932,784	\$ 1,446,225	-	739,403	-	(5,639,606)	-	(5,639,606)
BUSINESS-TYPE ACTIVITIES:								
Food Service	11,352		11,377	-	-	-	25	25
Total Business-Type Activities	11,352		11,377	-	-	-	25	25
Total Primary Government	\$ 4,944,136		\$ 11,377	\$ 739,403	\$ -	\$ (5,639,606)	\$ 25	\$ (5,639,581)
GENERAL REVENUES								
General Purposes						\$ 537,819	\$ -	\$ 537,819
Federal and State Aid Not Restricted						4,967,358	-	4,967,358
Investment Earnings						1,660	-	1,660
Miscellaneous Revenue						21,001	-	21,001
Total General Revenues						5,527,838	-	5,527,838
Change in Net Position						(111,768)	25	(111,743)
Net Position - Beginning of Year						233,595	39,318	272,913
Net Position - Ending of Year						\$ 121,827	\$ 39,343	\$ 161,170

The accompanying Notes to Basic Financial Statements are an integral part of this statement.

SECTION B – FUND FINANCIAL STATEMENTS

The individual Fund statements and schedules present more detailed information for the individual fund in a format that segregates information by fund type.

**GOVERNMENTAL
FUNDS**

PRIDE ACADEMY CHARTER SCHOOL

Governmental Funds

Balance Sheet

June 30, 2021

	General Fund	Special Revenue	Total
ASSETS:			
Cash	\$ 679,247	\$ 394,424	\$ 1,073,671
Cash-Restricted	269,226	-	269,226
Interfund Receivables	142,180	-	142,180
Receivables From Other Governments	87,996	-	87,996
Other Receivables	38,251	-	38,251
Security Deposits	56,363	-	56,363
	<hr/>	<hr/>	<hr/>
Total Assets	<u>\$ 1,273,263</u>	<u>\$ 394,424</u>	<u>\$ 1,667,687</u>
LIABILITIES AND FUND BALANCES:			
Liabilities:			
Interfund Payable	\$ -	\$ 203,466	\$ 203,466
Payable to State Government	71,335	-	71,335
Accounts Payable	102,955	7,701	110,656
Payable to District	5,657	-	5,657
Unearned Revenue	-	180,077	180,077
	<hr/>	<hr/>	<hr/>
Total Liabilities	<u>179,947</u>	<u>391,244</u>	<u>571,191</u>
Fund Balances:			
Restricted:			
Student Activities	-	3,180	3,180
Unassigned:			
General Fund	1,093,316		1,093,316
Total Fund Balances	<u>1,093,316</u>	<u>3,180</u>	<u>1,096,496</u>
	<hr/>	<hr/>	<hr/>
Total Liabilities and Fund Balances	<u>\$ 1,273,263</u>	<u>\$ 394,424</u>	

Amounts reported for governmental activities in the statement of net position (A-1) are different because:

Capital assets used in governmental activities are not financial resources and therefore are not reported in governmental funds. The cost of the assets is \$274,954 and the accumulated depreciation is \$274,954.

-

Net pension liability of \$917,504, deferred inflows of resources of \$413,343 less deferred outflows of resources of \$359,358 related to pensions are not reported in the governmental funds

(971,489)

Net Position of Governmental Activities

\$ 125,007

The accompanying Notes to Basic Financial Statements are an integral part of this statement.

PRIDE ACADEMY CHARTER SCHOOL
 Governmental Funds
 Statement of Revenues, Expenditures, and
 Changes in Fund Balance
 For The Fiscal Year Ended June 30, 2021

	General Fund	Special Revenue Fund	Total
REVENUES:			
Local Sources:			
Local Tax Levy	\$ 537,819	\$ -	\$ 537,819
Interest on Investments	1,660	-	1,660
Miscellaneous	21,001	-	21,001
Total Local Sources	560,480	-	560,480
State Sources	4,859,967	-	4,859,967
Federal Sources	-	270,174	270,174
Total Revenues	5,420,447	270,174	5,690,621
EXPENDITURES:			
Current:			
Instruction	1,830,427	195,040	2,025,467
Administration	2,318,100	-	2,318,100
Support Services	1,194,920	75,134	1,270,054
Capital Outlay	127,777	-	127,777
Total Expenditures	5,471,224	270,174	5,741,398
NET CHANGE IN FUND BALANCE	(50,777)	-	(50,777)
FUND BALANCE, JULY 1	1,144,093	-	1,144,093
FUND BALANCE, JUNE 30	\$ 1,093,316	\$ -	\$ 1,093,316

The accompanying Notes to Basic Financial Statements are an integral part of this statement.

PRIDE ACADEMY CHARTER SCHOOL
 Reconciliation of the Statement of Revenues, Expenditures
 and Changes in Fund Balances of Governmental Funds
 to the Statement of Activities
 For The Fiscal Year Ended June 30, 2021

Total net change in fund balances - governmental fund (from B-2)	\$ (50,777)
Amounts reported for governmental activities in the statement of activities (A-2) are different because:	
Pension costs associated with the PERS pension plan are reported in the governmental funds as expenditures in the year the school pension contribution is paid. However, on the statement of activities, the net difference between the current and prior year net pension liability is recognized	<u>(60,991)</u>
Change in net position of governmental activities	<u>\$ (111,768)</u>

The accompanying Notes to Basic Financial Statements are an integral part of this statement.

PROPRIETARY FUNDS

PRIDE ACADEMY CHARTER SCHOOL
 Proprietary Funds
 Statement of Fund Net Position
 June 30, 2021

	<u>Business-Type Activities</u>
	<u>Food Service</u>
ASSETS:	
Current Assets:	
Cash and Cash Equivalents	\$ 8,178
Interfund Accounts Receivable	<u>31,165</u>
Total Current Assets	<u>39,343</u>
 Total Assets	 <u>\$ 39,343</u>
LIABILITIES AND NET POSITION:	
Liabilities:	
	<u>\$ -</u>
Total Liabilities	<u>-</u>
NET POSITION:	
Unassigned	<u>39,343</u>
Total Liabilities and Net Position	<u>\$ 39,343</u>

The accompanying Notes to Basic Financial Statements are an integral part of this statement.

PRIDE ACADEMY CHARTER SCHOOL
Proprietary Funds
Statement of Revenues, Expenses, and Changes in Net Position
For The Fiscal Year Ended June 30, 2021

	School Nutrition and Total Enterprise
OPERATING REVENUES:	
Charges for Services:	
Daily sales -Program (reimbursable program) Meals	\$ -
Daily sales - Non-Program (non-reimbursable program) Meals	11,377
Special functions/Catering	-
Community service activities	-
Services provided to other funds	-
Deductions from employees' salaries	-
Miscellaneous	-
Total Operating Revenues	11,377
OPERATING EXPENSES:	
Cost of sales- Program (reimbursable program) Meals	-
Cost of sales-Non-Program (non-reimbursable program) Meals	10,062
Purchases - Fruit	-
Purchases - Vegetables	-
Salaries	-
Employee benefits	-
Purchased property service	-
Purchased Services (Including Fixed Price Contract)	-
Other purchased professional services	1,290
Cleaning, repair and maintenance services	-
Rentals	-
Other purchased services:	-
Contracted services (between home and school)	-
Contracted services (other than between home and school)	-
Contracted services (special education students) - vendors	-
Contracted services (special education students) - joint agreements	-
Insurance	-
General supplies	-
Depreciation	-
Total Operating Expenses	11,352
OPERATING (LOSS)	25
NONOPERATING REVENUES:	
State Sources:	
State School Lunch Program	-
Federal Sources:	
National school lunch program	-
School breakfast program	-
After school snack program	-
Special milk program	-
Summer meal program	-
CACFP Food and CIL	-
Fresh Fruit and Vegetables	-
Food distribution program	-
Interest and investment revenue	-
Miscellaneous expense	-
Total Nonoperating Revenues (Expenses)	-
Income before contributions	25
Capital contributions	-
Change in net assets	25
Total net assets—beginning	39,318
Total net assets—ending	\$ 39,343

(A) For SFAs that are self-operated / FSMC Cost Reimbursable Contracts / SFA-SFA Vended Meal Contract

(B) For SFAs that entered into a SFA-FSMC Fixed Price Contract for FY 2020-2021

The accompanying Notes to Basic Financial Statements are an integral part of this statement.

PRIDE ACADEMY CHARTER SCHOOL
 Proprietary Fund
 Statement of Cash Flows
 For The Fiscal Year Ended June 30, 2021

	Business-Type Activities
	Food Service
CASH FLOWS FROM OPERATING ACTIVITIES:	
Cash Received from Customers	\$ 11,377
Cash Payments to Suppliers and Employees	(22,781)
Net Cash Used In Operating Activities	(11,404)
CASH FLOWS FROM NONCAPITAL FINANCING ACTIVITIES:	
Cash Received from State and Federal Reimbursements	-
Net Cash Provided by Noncapital Financing Activities	-
Net Decrease in Cash and Cash Equivalents	(11,404)
Cash and Cash Equivalents, Beginning of the Year	19,582
Cash and Cash Equivalents, End of the Year	\$ 8,178
Reconciliation of Operating Loss to Net Cash Used in:	
Operating Activities:	
Operating Income Provided by Operating Activities	\$ 25
Changes in Assets and Liabilities:	
Increase in Interfund Receivable	(11,429)
Net Cash Used in Operating Activities	\$ (11,404)

The accompanying Notes to Basic Financial Statements are an integral part of this statement.

***FIDUCIARY
FUNDS***

PRIDE ACADEMY CHARTER SCHOOL
 Fiduciary Funds
 Statement of Fiduciary Net Position
 June 30, 2021

	<u>Total Agency Fund</u>
ASSETS:	
Cash and Cash Equivalents	\$ 173,762
Interfund Accounts Receivable	<u>30,121</u>
Total Assets	<u><u>\$ 203,883</u></u>
LIABILITIES:	
Liabilities:	
Payroll Deductions and Withholdings	\$ 200,703
Due to Student Groups	<u>3,180</u>
Total Liabilities	<u><u>\$ 203,883</u></u>

The accompanying Notes to Basic Financial Statements are an integral part of this statement.

NOTES TO THE FINANCIAL STATEMENTS

**PRIDE ACADEMY CHARTER SCHOOL
NOTES TO THE FINANCIAL STATEMENTS
JUNE 30, 2021**

NOTE 1: SUMMARY OF SIGNIFICANT ACCOUNTING POLICIES

The financial statements of the Pride Academy Charter School have been prepared in conformity with generally accepted accounting principles (GAAP) as prescribed by the Governmental Accounting Standards Board (GASB). The GASB is the accounting standard-setting body responsible for establishing governmental accounting and financial reporting principles. The more significant accounting policies of the Charter School are described below.

For fiscal year 2016, the Charter School implemented the Governmental Accounting Standards Board (GASB) Statement No. 68, "Accounting and Financial Reporting for Pensions" and GASB Statement No. 71, "Pension Transition for Contributions Made Subsequent to the Measurement Date – an amendment of GASB Statement No. 68." GASB 68 established standards for measuring and recognizing pension liabilities, deferred outflows of resources and expense/expenditure.

A. Reporting Entity

The Charter School is an instrument of the State of New Jersey, established to function as an educational institution. Its mission is to establish a character school to serve as a neighborhood resource and as a model for other similar schools. The Pride Academy Charter School is committed to achieving the New Jersey Core Curriculum Content Standards and producing high academic achievement by all students. The Charter School will integrate a holistic curriculum, utilize learner center techniques, family and care giver centered approaches, comprehensive community involvement, cutting edge technology and an intimate nurturing environment that will enhance positive self-images.

The primary criterion for including activities within the Charter School's reporting entity, as set forth in Section 2100 of the GASB's Codification of Governmental Accounting and Financial Reporting Standards, is the degree of oversight responsibility maintained by the Charter School management. Oversight responsibility includes financial interdependency, selection of governing authority, designation of management, and ability to significantly influence operations and accountability for fiscal matters. The combined financial statements include all funds and account groups of the Charter School.

**PRIDE ACADEMY CHARTER SCHOOL
NOTES TO THE FINANCIAL STATEMENTS
JUNE 30, 2021**

NOTE 1: SUMMARY OF SIGNIFICANT ACCOUNTING POLICIES (CONTINUED)

B. Basis of Presentation. Basis of Accounting

The Charter School's basic financial statements consist of Charter School-wide statements, including a statement of net position and a statement of activities, and fund financial statements which provide a more detailed level of financial information.

Charter school-wide Statements: The statement of net position and the statement of activities display information about the Charter School as a whole. These statements include the financial activities of the overall Charter School, except for fiduciary activities. Eliminations have been made to minimize the double-counting of internal activities. These statements distinguish between the governmental and business-type activity of the Charter School. Governmental activities generally are financed through intergovernmental revenues, and other non-exchange transactions. Business-type activities are financed in whole or in part by fees charged to external parties.

The statement of net position presents the financial condition of the governmental and business-type activity of the Charter School at fiscal year-end. The statement of activities presents a comparison between direct expenses and program revenues for the business-type activity of the Charter School and for each function of the Charter School's governmental activities. Direct expenses are those that are specifically associated with a program or function and, therefore, are clearly identifiable to a particular function.

Program revenues include (a) fees and charges paid by the recipients of goods or services offered by the programs and (b) grants and contributions that are restricted to meeting the operational or capital requirements of a particular program. Revenues that are not classified as program revenues are presented as general revenues. The comparison of direct expenses with program revenues identifies the extent to which each governmental function or business segment is self-financing or draws from the general revenues of the Charter School. *Fund Financial Statements:* During the fiscal year, the Charter School segregates transactions related to certain Charter School functions or activities in separate funds in order to aid financial management and to demonstrate legal compliance. The fund financial statements provide information about the Charter School's funds, including its fiduciary funds. Separate statements for each fund category — *governmental, proprietary, and fiduciary* — are presented. The New Jersey Department of Education (NJDOE) has elected to require New Jersey Charter Schools to treat each governmental fund as a major fund in accordance with the option noted in GASB No. 34, paragraph 76. The NJDOE believes that the presentation of all funds as major is important for public interest and to promote consistency among Charter School financial reporting models.

**PRIDE ACADEMY CHARTER SCHOOL
NOTES TO THE FINANCIAL STATEMENTS
JUNE 30, 2021**

NOTE 1: SUMMARY OF SIGNIFICANT ACCOUNTING POLICIES (CONTINUED)

Basis of Presentation. Basis of Accounting (Continued)

The Charter School reports the following governmental funds:

General Fund: The general fund is the general operating fund of the Charter School and is used to account for all expendable financial resources except those required to be accounted for in another fund. Included are certain expenditures for vehicles and movable instructional or non- instructional equipment which are classified in the capital outlay subfund.

As required by the New Jersey State Department of Education, the Charter School includes budgeted capital outlay in this fund. Generally accepted accounting principles as they pertain to governmental entities state that general fund resources may be used to directly finance capital outlays for long-lived improvements as long as the resources in such cases are derived exclusively from unrestricted revenues. Resources for budgeted capital outlay purposes are normally derived from State of New Jersey Aid and appropriated fund balance. Expenditures are those that result in the acquisition of or additions to fixed assets for land, existing buildings, improvements of grounds, construction of buildings, additions to or remodeling of buildings and the purchase of built-in equipment. These resources can be transferred from and to Current Expense by Board resolution.

Special Revenue Fund: The special revenue fund is used to account for the proceeds of specific revenue from State and Federal Government, (other than major capital projects, debt service or the enterprise funds) and local appropriations that are legally restricted to expenditures for specified purposes.

Capital Projects Fund: The capital projects fund is used to account for all financial resources to be used for the acquisition or construction of major capital facilities (other than those financed by proprietary funds).

Debt Service Fund: Not applicable.

The Charter School reports the following proprietary fund:

Enterprise (Food Service) Fund: The enterprise fund accounts for all revenues and expenses pertaining to the cafeteria operations. The food service fund is utilized to account for operations that are financed and operated in a manner similar to private business enterprises. The stated intent is that the cost (i.e. expenses including depreciation and indirect costs) of providing goods or services to the students on a continuing basis are financed or recovered primarily through user charges.

**PRIDE ACADEMY CHARTER SCHOOL
NOTES TO THE FINANCIAL STATEMENTS
JUNE 30, 2021**

NOTE 1: SUMMARY OF SIGNIFICANT ACCOUNTING POLICIES (CONTINUED)

Basis of Presentation. Basis of Accounting (Continued)

Additionally, the Charter School reports the following fund type:

Fiduciary Funds: The Fiduciary Funds are used to account for assets held by the Charter School on behalf of others and includes Student Activities Fund, Payroll and Payroll Agency Funds.

Basis of Accounting

Basis of accounting determines when transactions are recorded in the financial records and reported on the financial statements.

Charter School-wide, Proprietary, and Fiduciary Fund Financial Statements: The financial statements are prepared using the accrual basis of accounting. Governmental funds use the modified accrual basis of accounting; the enterprise fund and fiduciary funds use the accrual basis of accounting. Differences in the accrual and modified accrual basis of accounting arise in the recognition of revenue, the recording of deferred revenue, and in the presentation of expenses versus expenditures. The Charter School is entitled to receive monies under the established payment schedule and the unpaid amount is considered to be an "accounts receivable". Revenue from grants, entitlements, and donations is recognized in the fiscal year in which all eligibility requirements have been satisfied.

Governmental Fund Financial Statements: Governmental funds are reported using the current financial resources measurement focus and the modified accrual basis of accounting. Under this method, revenues are recognized when measurable and available. "Measurable" means the amount of the transaction can be determined and "available" means collectible within the current period or soon enough thereafter to be used to pay liabilities of the current period. Expenditures are recorded when the related fund liability is incurred, except for principal and interest on general long-term debt, claims and judgments, and compensated absences, which are recognized as expenditures to the extent they have matured. General capital asset acquisitions are reported as expenditures in governmental funds. Proceeds of general long-term debt and acquisitions under capital leases are reported as other financing sources.

All governmental and business-type activities and enterprise funds of the Charter School follow FASB Statements and Interpretations issued on or before November 30, 1989, Accounting Principles Board Opinions, and Accounting Research Bulletins, unless those pronouncements conflict with GASB pronouncements.

**PRIDE ACADEMY CHARTER SCHOOL
NOTES TO THE FINANCIAL STATEMENTS
JUNE 30, 2021**

NOTE 1: SUMMARY OF SIGNIFICANT ACCOUNTING POLICIES (CONTINUED)

C. Budgets/Budgetary Control

Annual appropriated budgets are prepared in the spring of each year for the general and special revenue funds. Budgets are prepared using the modified accrual basis of accounting except for special revenue funds. The legal level of budgetary control is established at line item accounts within each fund. Line item accounts are defined as the lowest (most specific) level of detail as established pursuant to the minimum chart of accounts referenced in N.J.A.C. 6:20-2A.2(m)1. All budget amendments/transfers must be approved by School Board resolution. All budget amounts presented in the accompanying supplementary information reflect the original budget and the amended budget (which have been adjusted for legally authorized revisions of the annual budgets during the year).

Appropriations, except remaining project appropriations, encumbrances, and unexpended grant appropriations, lapse at the end of each fiscal year. The capital projects fund presents the remaining project appropriations compared to current year expenditures.

Formal budgetary integration into the accounting system is employed as a management control device during the fiscal year. For governmental funds, there are no substantial differences between the budgetary basis of accounting and generally accepted accounting principles (GAAP) with the exception of the special revenue fund as noted below. Encumbrance accounting is also employed as an extension of formal budgetary integration in the governmental fund types. Unencumbered appropriations lapse at fiscal year-end.

The accounting records of the special revenue fund are maintained on the grant accounting budgetary basis. The grant accounting budgetary basis differs from GAAP in that the grant accounting budgetary basis recognizes encumbrances as expenditures and also recognizes the related revenues, whereas the GAAP basis does not. Sufficient supplemental records are maintained to allow for the presentation of GAAP basis financial reports.

The following presents a reconciliation of the Special Revenue Funds from the budgetary basis of accounting to the GAAP basis of accounting:

Total Revenues & Expenditures (Budgetary Basis)	\$ 270,174
Adjustments:	
Less Encumbrances at June 30, 2021	-
Plus Encumbrances at June 30, 2020	-
Total Revenue and Expenditures (GAAP Basis)	<u>\$ 270,174</u>

**PRIDE ACADEMY CHARTER SCHOOL
NOTES TO THE FINANCIAL STATEMENTS
JUNE 30, 2021**

NOTE 1: SUMMARY OF SIGNIFICANT ACCOUNTING POLICIES (CONTINUED)

D. Encumbrances Accounting

Under encumbrance accounting purchase orders, contracts and other commitments for the expenditure of resources are recorded to reserve a portion of the applicable appropriation. Open encumbrances in governmental funds other than the special revenues fund are reported as reservations of fund balances at fiscal year-end as they do not constitute expenditures or liabilities but rather commitments related to unperformed contracts for goods and services.

Open encumbrances in the special revenue fund for which the Charter School has received advances are reflected in the balance sheet as deferred revenues at fiscal year-end.

The encumbered appropriation authority carries over into the next fiscal year. An entry will be made at the beginning of the next fiscal year to increase the appropriation reflected in the certified budget by the outstanding encumbrance amount as of the current fiscal year end.

E. Assets, Liabilities, and Equity

Interfund Transactions:

Transfers between governmental and business-type activities on the Charter School – wide statements are reported in the same manner as general revenues.

Exchange transactions between funds are reported as revenues in the seller funds and as expenditures/expenses in the purchaser funds. Flows of cash or goods from one fund to another without a requirement for repayment are reported as Interfund transfers. Interfund transfers are reported as other financing sources/uses in governmental funds and after non-operating revenues/expenses in the enterprise fund. Repayments from funds responsible for particular expenditures/expenses to the funds that initially paid for them are not presented on the financial statements.

Inventories:

Inventory purchases, other than those recorded in the enterprise fund, are recorded as expenditures during the year of purchase. Enterprise fund inventories are valued at cost, which approximates market, using the first-in/first-out (FIFO) method.

Allowance for Uncollectible Accounts:

No allowance for uncollectible accounts has been recorded as all amounts are considered collectible.

**PRIDE ACADEMY CHARTER SCHOOL
NOTES TO THE FINANCIAL STATEMENTS
JUNE 30, 2021**

NOTE 1: SUMMARY OF SIGNIFICANT ACCOUNTING POLICIES (CONTINUED)

Assets, Liabilities, and Equity (Continued)

Capital Assets:

The Charter School has established a formal system of accounting for its capital assets. Purchased or constructed capital assets are reported at cost. Donated capital assets are valued at their estimated fair market value on the date received. The cost of normal maintenance and repairs that do not add to the value of the asset or materially extend assets' lives are not capitalized. The Charter School does not possess any infrastructure. The capitalization threshold used by Charter Schools in the State of New Jersey is \$2,000.

All reported capital assets except for land and construction in progress are depreciated. Depreciation is computed using the straight-line method under the half-year convention over the following estimated useful lives:

<u>Asset Class</u>	<u>Estimated Useful Lives</u>
School Buildings	50
Building Improvements	20
Electrical/Plumbing	30
Office & Computer Equipment	5-10

In the fund financial statements, fixed assets used in governmental fund operations are accounted for as capital outlay expenditures of the governmental fund upon acquisition. Fixed assets are not capitalized and related depreciation is not reported in the fund financial statements.

Unearned Revenue:

Unearned revenue arises when assets are recognized before revenue recognition criteria have been satisfied. Grants and entitlement received before the eligibility requirements are met are recorded as deferred revenue.

Accrued Liabilities and Long-term Obligations:

All payables, accrued liabilities, and long-term obligations are reported on the Charter School – wide financial statements. In general, governmental fund payables and accrued liabilities that, once incurred, are paid in a timely manner and in full from current financial resources are reported as obligations of the funds.

**PRIDE ACADEMY CHARTER SCHOOL
NOTES TO THE FINANCIAL STATEMENTS
JUNE 30, 2021**

NOTE 1: SUMMARY OF SIGNIFICANT ACCOUNTING POLICIES (CONTINUED)

Assets, Liabilities, and Equity (Continued)

Net Position:

Net position represents the difference between assets and liabilities. Net investment in capital assets consists of capital assets, net of accumulated depreciation, reduced by the outstanding balance of any borrowing used for the acquisition, construction, or improvement of those assets. Net position are reported as restricted when there are limitations imposed on their use either through the enabling legislation adopted by the Charter School or through external restrictions imposed by creditors, grantors, or laws or regulations of other governments. The Charter School's policy is to first apply restricted resources when an expense is incurred for purposes for which both restricted and unrestricted net position is available.

Fund Balance Reserves:

The Charter School reserves those portions of fund balance which are legally segregated for a specific future use or which do not represent available expendable resources and, therefore, are not available for appropriation or expenditure. Unreserved fund balance indicates that portion which is available for appropriation in future periods. There is no fund balance reserve for the current year.

Revenues — Exchange and Nonexchange Transactions:

Revenue resulting from exchange transactions, in which each party gives and receives essentially equal value, is recorded on the accrual basis when the exchange takes place. On the modified accrual basis, revenue is recorded in the fiscal year in which the resources are measurable and become available. Available means the resources will be collected within the current fiscal year or are expected to be collected soon enough thereafter to be used to pay liabilities of the current fiscal year. For the Charter School, available means within sixty days of the fiscal year end.

Nonexchange transactions, in which the Charter School receives value without directly giving equal value in return, include grants, entitlements, and donations. Revenue from grants, entitlements, and donations are recognized in the fiscal year in which all eligibility requirements have been satisfied. Eligibility requirements include timing requirements, which specify the year when the resources are required to be used or the fiscal year when use is first permitted; matching requirements, in which the Charter School must provide local resources to be used for a specified purpose; and expenditure requirements, in which the resources are provided to the Charter School on a reimbursement basis. On the modified accrual basis, revenue from non-exchange transactions must also be available before it can be recognized.

Under the modified accrual basis, the following revenue sources are considered to be both measurable and available at fiscal year-end: state and local revenues available as an advance, interest, and tuition.

**PRIDE ACADEMY CHARTER SCHOOL
NOTES TO THE FINANCIAL STATEMENTS
JUNE 30, 2021**

NOTE 1: SUMMARY OF SIGNIFICANT ACCOUNTING POLICIES (CONTINUED)

Assets, Liabilities, and Equity (Continued)

Operating Revenues and Expenses:

Operating revenues are those revenues that are generated directly from the primary activity of the enterprise fund. For the Charter School, these revenues are sales for food service. Operating expenses are necessary costs incurred to provide the service that is the primary activity of the enterprise fund.

Allocation of Indirect Expenses:

The Charter School reports all direct expenses by function in the Statement of Activities. Direct expenses are those that are clearly identifiable with a function. Indirect expenses are allocated to functions but are reported separately in the Statement of Activities. Employee benefits, including the employer's share of social security, workers compensation, and medical and dental benefits, were allocated based on salaries of that program. Depreciation expense, where practicable, is specifically identified by function and is included in the indirect expense column of the Statement of Activities. Depreciation expense that could not be attributed to a specific function is considered an indirect expense and is reported separately on the Statement of Activities. Interest on long-term debt is considered an indirect expense and is reported separately on the Statement of Activities.

Extraordinary and Special Items:

Extraordinary items are transactions or events that are unusual in nature and infrequent in occurrence. Special items are transactions or events that are within the control of management and are either unusual in nature or infrequent in occurrence. Neither of these types of transactions occurred during the fiscal year.

Management Estimates:

The preparation of financial statements in conformity with generally accepted accounting principles requires management to make estimates and assumptions that affect the reported amounts of revenues and expenditures/expenses during the reporting period. Actual results could differ from those estimates.

Accrued Salaries and Wages:

Certain Charter School employees who provide services to the Charter School over the ten-month academic year have the option to have their salaries evenly disbursed during the entire twelve-month year. New Jersey statutes require that these earned but undisbursed amounts be retained in a separate bank account.

**PRIDE ACADEMY CHARTER SCHOOL
NOTES TO THE FINANCIAL STATEMENTS
JUNE 30, 2021**

NOTE 1: SUMMARY OF SIGNIFICANT ACCOUNTING POLICIES (CONTINUED)

A. Pensions

For purposes of measuring the net pension liability, deferred outflows of resources and deferred inflows of resources related to pensions, and pension expense, information about the fiduciary net pension for the State of New Jersey Public Employees' Retirement System (PERS) and the State of New Jersey Teachers' Pension and Annuity Fund (TPAF) and additions to/deductions from the PERS's and TPAF's net position have been determined on the same basis as they are reported by the PERS and the TPAF. For this purpose, benefit payments (including refunds of employee contributions) are recognized when due and payable in accordance with the benefit terms. Pension Plan investments are reported at fair value.

B. Impact of Recently Issued Accounting Principles

Adopted Accounting Pronouncements

For the year ended June 30, 2021, the Charter School implemented GASB Statement No. 72, *Fair Value Measurement and Application*. As a result of implementing this statement, the Charter School is required to measure certain investments at fair value for financial reporting purposes. In addition, the Charter School is required to measure donated capital assets at acquisition value (an entry price); these assets were previously required to be measured at fair value. Statement No. 72 requires disclosures to be made about fair value measurements, the level of fair value hierarchy, and valuation techniques. Implementation of this Statement did not impact the Charter School's financial statements.

The Charter School implemented GASB Statement No. 73, *Accounting and Financial Reporting for Pensions and Related Assets that are Not Within the Scope of GASB Statement 68, and Amendments to Certain Provisions of GASB Statements 67 and 68*. Implementation of this Statement did not impact the Charter School's financial statements.

The Charter School implemented GASB Statement No. 76, *The Hierarchy of Generally Accepted Accounting Principles for State and Local Governments*. Implementation of this Statement did not impact the Charter School's financial statements.

**PRIDE ACADEMY CHARTER SCHOOL
NOTES TO THE FINANCIAL STATEMENTS
JUNE 30, 2021**

NOTE 1: SUMMARY OF SIGNIFICANT ACCOUNTING POLICIES (CONTINUED)

Impact of Recently Issued Accounting Principles (Continued)

Recently Issued and Adopted Accounting Pronouncements

The GASB has issued the following Statements which will become effective in future years as shown below:

Statement No. 77, *Tax Abatement Disclosures*. This Statement requires governments that enter into tax abatement agreements to disclose information about those agreements. This Statement will be effective for the year ended June 30, 2021. Management does not expect this Statement to impact the Charter School's financial statements.

Statement No. 78, *Pensions Provided Through Certain Multiple-Employer Defined Benefit Pension Plans*. The objective of this Statement is to address a practice issue regarding the scope and applicability of Statement No. 68.

**PRIDE ACADEMY CHARTER SCHOOL
NOTES TO THE FINANCIAL STATEMENTS
JUNE 30, 2021**

NOTE 1: SUMMARY OF SIGNIFICANT ACCOUNTING POLICIES (CONTINUED)

Impact of Recently Issued Accounting Principles (Continued)

Recently Issued and Adopted Accounting Pronouncements (Continued)

Statement No. 79, *Certain External Investment Pools and Pool Participants*. This Statement addresses accounting and financial reporting for certain external investment pools and pool participants. This Statement will be effective for the year ended June 30, 2021. Management does not expect this Statement to impact the Charter School's financial statements.

Statement No. 80, *Blending Requirements for Certain Component Units – an amendment of GASB Statement No. 14*. The objective of this Statement is to improve financial reporting by clarifying the financial statement presentation requirements for certain component units. This Statement amends the blending requirements established in paragraph 53 of Statement No. 14, *The Financial Reporting Entity, as amended*. This Statement will be effective for the year ended June 30, 2021. Management does not expect this Statement to impact the Charter School's financial statements.

Statement No. 81, *Irrevocable Split-Interest Agreements*. The objective of this Statement is to improve accounting and financial reporting for irrevocable split-interest agreements by providing recognition and measurement guidance for situations in which a government is a beneficiary of the agreement. This Statement will be effective for the year ended June 30, 2021. Management does not expect this Statement to impact the Charter School's financial statements.

Statement No. 82, *Pension Issues – an amendment of GASB Statements No. 67, 68 and 73*. The objective of this Statement is to address certain issues that have been raised with respect to Statements No. 67, *Financial Reporting for Pension Plans*, No. 68, *Accounting and Financial Reporting for Pensions*, and No. 73, *Accounting and Financial Reporting for Pensions and Related Assets That Are Not Within The Scope of GASB Statement 68, and Amendments to Certain Provisions of GASB Statements 67 and 68*. This Statement will be effective for the year ended June 30, 2021. Management has not yet determined the potential impact on the Charter School's financial statements.

NOTE 2: CASH AND CASH EQUIVALENTS

Cash and cash equivalents includes amounts in deposits, money market accounts and short-term investments with original maturities of three months or less.

Investments are stated at cost, or amortized cost, which approximates market. The amortized cost method involves valuing a security at its cost on the date of purchase and thereafter assuming a constant amortization to maturity of any discount or premium. The Board classifies certificates of deposit which have

**PRIDE ACADEMY CHARTER SCHOOL
NOTES TO THE FINANCIAL STATEMENTS
JUNE 30, 2021**

NOTE 2: CASH AND CASH EQUIVALENTS

original maturity dates of more than three months but less than twelve months from the date of purchase, as investments.

GASB Statement No. 3 requires disclosure of the level of custodial credit risk assumed by the Board in its cash, cash equivalents and investments. Category 1 includes deposits/investments held by the Board's custodial bank trust department or agent in the Board's name. Category 2 includes uninsured and unregistered deposits/investments held by the Board's custodial bank trust department or agent in the Board's name. Category 3 includes uninsured or unregistered deposits/investments held by a broker or dealer, or held by the Board's custodial bank trust department or agent but not in the Board's name. These categories are not broad representations that deposits or investments are "safe" or "unsafe".

Deposits

New Jersey statutes require that charter schools deposit public funds in public depositories located in New Jersey which are insured by the Federal Deposit Insurance Corporation, the Federal Savings and Loan Insurance Corporation, or by any other agency of the United States that insures deposits made in public depositories. Charter schools are also permitted to deposit public funds in the State of New Jersey Cash Management Fund.

New Jersey statutes require public depositories to maintain collateral for deposits of public funds that exceed depository insurance limits as follows:

The market value of the collateral must equal at least five percent of the average daily balance of collected public funds on deposit.

In addition to the above collateral requirement, if the public funds deposited exceed 75% of the capital funds of the depository, the depository must provide collateral having a market value at least equal to 100% of the amount exceeding 75%.

All collateral must be deposited with the Federal Reserve Bank of New York, the Federal Reserve Bank of Philadelphia, the Federal Home Loan Bank of New York, or a banking institution that is a member of the Federal Reserve System and has capital funds of not less than \$25,000,000.

Investments

New Jersey statutes permit the Board to purchase the following types of securities:

- a. Bonds or other obligations of the United States or obligations guaranteed by the United States.
- b. Bonds of any Federal Intermediate Credit Bank, Federal Home Loan Bank, Federal National Mortgage Agency or of any United States Bank for Cooperatives which have a maturity date not greater than twelve months from the date of purchase

**PRIDE ACADEMY CHARTER SCHOOL
NOTES TO THE FINANCIAL STATEMENTS
JUNE 30, 2021**

NOTE 2: CASH AND CASH EQUIVALENTS (CONTINUED)

Investments (Continued)

c. Bonds or other obligations of the charter school.

The Charter School had no investments as of June 30, 2021. Cash and cash equivalents of the Charter School consisted of the following:

	General Fund	Special Revenue	Proprietary Fund	Fiduciary Funds	Total
Operating					
Account	\$ 948,473	\$ 391,244	\$ 8,178	\$ 173,762	\$ 1,521,657

The carrying amount of the Board’s cash and cash equivalents at June 30, 2021 was \$1,521,657 and the bank balance was \$1,600,038. All bank balances were covered by federal depository insurance and/or covered by a collateral pool maintained by the banks as required by New Jersey statutes.

Risk Category

All bank deposits, as of the balance sheet date, are entirely insured or collateralized by a collateral pool maintained by public depositories as required by the Governmental Unit Deposit Protection Act. In general, bank deposits are classified as to credit risk by three categories described below:

Category 1 — Insured or collateralized with securities held by the Board or by its agent in the Board’s name.

Category 2 — Collateralized with securities held by the pledging public depository’s trust department or agent in the Board’s name.

Category 3 — Uncollateralized, including any deposits that are collateralized with securities held by the pledging public depository, or by its trust department or agent, but not in the Board’s name.

As of June 30, 2021, the Board had funds invested and on deposit in checking accounts. These funds constitute “deposits with financial institutions” as defined by GASB Statement No. 3 and are classified as Category 1, both at year-end and throughout the year.

New Jersey Cash Management Fund

All investments in the Fund are governed by the regulations of the Investment Council, which prescribe specific standards designed to insure the quality of investments and to minimize the risks related to investments. In all the years of the Division of Investment’s existence, the Division has never suffered a default of principal or interest on any short-term security held by it due to the bankruptcy of a

**PRIDE ACADEMY CHARTER SCHOOL
NOTES TO THE FINANCIAL STATEMENTS
JUNE 30, 2021**

NOTE 2: CASH AND CASH EQUIVALENTS (CONTINUED)

Risk Category (Continued)

New Jersey Cash Management Fund (Continued)

securities issuer; nevertheless, the possibility always exists, and for this reason a reserve is being accumulated as additional protection for the “Other-than-State” participants. In addition to the Council regulations, the Division sets further standards for specific investments and monitors the credit of all eligible securities issuers on a regular basis.

As of June 30, 2021, the Charter school had no funds on deposit with the New Jersey Cash Management Fund.

NOTE 3: RECEIVABLES

Receivables at June 30, 2021 consisted of accounts, intergovernmental, grants, and miscellaneous.

All receivables are considered collectible in full. A summary of the principal items of intergovernmental receivables follows:

	<u>Governmental Fund Financial Statements</u>	<u>Governmental Wide Financial Statements</u>
State Aid	\$ 87,996	\$ 87,996
Federal Aid	-	-
Other	<u>38,251</u>	<u>38,251</u>
Total Receivables, Net	<u>\$ 126,247</u>	<u>\$ 126,247</u>

**PRIDE ACADEMY CHARTER SCHOOL
NOTES TO THE FINANCIAL STATEMENTS
JUNE 30, 2021**

NOTE 4: INTERFUND TRANSFERS AND BALANCES

Transfers between funds are used to repay expenses paid by another fund.

The following interfund balances remained on the fund financial statements at June 30, 2021:

Fund	Interfund Receivable	Interfund Payable
General Fund	\$ 142,180	\$ -
Special Revenue Fund	-	203,466
Proprietary Fund	31,165	-
Fiduciary Fund	30,121	-
Total	\$ 203,466	\$ 203,466

NOTE 5: CAPITAL ASSETS

Capital asset activity for the fiscal year ended June 30, 2021, was as follows:

	Beginning Balance	Additions	Retirements	Ending Balance
Governmental Activities:				
Capital Assets Being Depreciated:				
Building Improvements	\$ 130,681	\$ -	\$ -	\$ 130,681
Equipment	144,273	-	-	144,273
Totals at Historical Cost	274,954	-	-	274,954
Less Accumulated Depreciation For:				
Building Improvements	130,681	-	-	130,681
Equipment	144,273	-	-	144,273
Total Accumulated Depreciation	274,954	-	-	274,954
Total Capital Assets Being Depreciated,				
Net of Accumulated Depreciation	-	-	-	-
Government Activity Capital Assets, Net	\$ -	\$ -	\$ -	\$ -

On January 11, 2001, the NJ State Department of Education announced that effective July 1, 2001, the capitalization threshold used by school districts in the State of New Jersey is increased to \$2,000. The previous threshold was \$500. Applying the higher capitalization threshold retroactively (removal of old assets from the General Fixed Assets Account Group) will be permitted by the State regulations in situations where (1) the assets have been fully depreciated, or (2) the assets have exceeded their useful lives. The retirement of machinery and equipment is due to the retroactive application of the higher threshold of equipment capitalization. That is, the School has removed from their records assets with a historical cost greater than \$500 but not greater than \$2,000 that were fully depreciated or had exceeded their useful lives.

**PRIDE ACADEMY CHARTER SCHOOL
NOTES TO THE FINANCIAL STATEMENTS
JUNE 30, 2021**

NOTE 6: RENTAL LEASES

The school leases space at 117 Elmwood Ave, East Orange, New Jersey under a lease agreement commencing April 21, 2011 with Shining Schools Inc. for one (1) year and shall automatically renew for additional periods of five (5) years each after the expiration of the initial term. The Base Rent for the initial year is \$324,000 per annum payable in equal monthly installments. Each year thereafter, the Base Rent shall be increased by 1% of the prior year's Base Rent paid. The rent for the year is payable in monthly installments of \$38,000. Two (2) months rent (\$76,000) was forgiven for the year.

School also leases additional office space at 115 Elmwood Avenue for a monthly rental of \$1,181. The lease for the office space is for one (1) year. Rent expense for the year amounted to \$392,003.

NOTE 7: OBLIGATIONS UNDER EQUIPMENT LEASES

In September 2020, the Charter School leased three (3) copier machines for 60 months with monthly payments in the amount of \$678 expiring August 2025. The following is a schedule of the future minimum lease payments under the capital leases at June 30, 2021:

Year	Amount
2022	\$ 8,136
2023	8,136
2024	8,136
2025	8,136
2026	1,356
Total minimum lease payments	\$ 33,900

NOTE 8: PENSION PLANS

A substantial number of the Charter School's employees participate in one of the following defined benefit pension plans: the Teachers' Pension and Annuity Fund ("TPAF") and the Public Employees' Retirement System ("PERS"), which are administered by the New Jersey Division of Pensions and Benefits (the "Division"). In addition, employees may participate in the Defined Contribution Retirement Program, which is a defined contribution pension plan. This plan is administered by Prudential Financial for the Division.

**PRIDE ACADEMY CHARTER SCHOOL
NOTES TO THE FINANCIAL STATEMENTS
JUNE 30, 2021**

NOTE 8: PENSION PLANS (CONT'D)

Each plan has a Board of Trustees that is primarily responsible for its administration. The Division issues a publicly available financial report that includes financial statements and required supplementary information. That report may be obtained by writing to:

State of New Jersey
Division of Pensions and Benefits
P.O. Box 295
Trenton, New Jersey 08625-0295
<http://www.nj.gov/treasury/pensions>

General Information about the Pension Plans

Plan Descriptions

Teachers' Pension and Annuity Fund - The Teachers' Pension and Annuity Fund is a cost-sharing multiple-employer defined benefit pension plan, with a special funding situation, which was established as of January 1, 1955, under the provisions of N.J.S.A. 18A:66. The State of New Jersey (the "State") is responsible to fund 100% of the employer contributions, excluding any local employer early retirement incentive (ERI) contributions. The TPAF's designated purpose is to provide retirement benefits, death, disability and medical benefits to certain qualified members. Membership in the TPAF is mandatory for substantially all teachers or members of the professional staff certified by the State Board of Examiners, who have titles that are unclassified, professional and certified. The TPAF's Board of Trustees is primarily responsible for the administration of the TPAF.

Public Employees' Retirement System - The Public Employees' Retirement System is a cost-sharing multiple-employer defined benefit pension plan which was established as of January 1, 1955, under the provisions of N.J.S.A. 43:15A. The PERS's designated purpose is to provide retirement, death, disability and medical benefits to certain qualified members. Membership in the PERS is mandatory for substantially all full-time employees of the Charter School, provided the employee is not required to be a member of another state-administered retirement system or other state pensions fund or local jurisdiction's pension fund. The PERS's Board of Trustees is primarily responsible for the administration of the PERS.

Defined Contribution Retirement Program - The Defined Contribution Retirement Program is a multiple-employer defined contribution pension fund established on July 1, 2007 under the provisions of Chapter 92, P.L. 2007, and Chapter 103, P.L. 2007 (N.J.S.A. 43:15C-1 et. seq.). The DCRP is a tax-qualified defined contribution money purchase pension plan under Internal Revenue Code (IRC) § 401(a) et seq., and is a "governmental plan" within the meaning of IRC § 414(d). The DCRP provides retirement benefits for eligible employees and their beneficiaries.

**PRIDE ACADEMY CHARTER SCHOOL
NOTES TO THE FINANCIAL STATEMENTS
JUNE 30, 2021**

NOTE 8: Individuals covered under DCRP are employees enrolled in TPAF or PERS on or after July 1, 2007, who earn salary in excess of established “maximum compensation” limits; employees enrolled in New Jersey State Police Retirement **PENSION PLANS (CONT’D)**

General Information about the Pension Plans (Cont’d)

System (SPRS) or the Police and Firemen’s Retirement System (PFRS) after May 21, 2010, who earn salary in excess of established “maximum compensation” limits; employees otherwise eligible to enroll in TPAF or PERS on or after November 2, 2008, who do not earn the minimum annual salary for tier 3 enrollment but who earn salary of at least \$5,000.00 annually; and employees otherwise eligible to enroll in TPAF or PERS after May 21, 2010 who do not work the minimum number of hours per week required for tiers 4 or 5 enrollment, but who earn salary of at least \$5,000.00 annually.

Vesting and Benefit Provisions

Teachers' Pension and Annuity Fund - The vesting and benefit provisions are set by N.J.S.A. 18A:66. TPAF provides retirement, death and disability benefits. All benefits vest after ten years of service, except for medical benefits, which vest after 25 years of service or under the disability provisions of TPAF. Members are always fully vested for their own contributions and, after three years of service credit, become vested for 2% of related interest earned on the contributions. In the case of death before retirement, members' beneficiaries are entitled to full interest credited to the members' accounts.

The following represents the membership tiers for TPAF and PERS:

<u>Tier</u>	<u>Definition</u>
1	Members who were enrolled prior to July 1, 2007
2	Members who were eligible to enroll on or after July 1, 2007 and prior to November 2, 2008
3	Members who were eligible to enroll on or after November 2, 2008 and prior to May 22, 2010
4	Members who were eligible to enroll after May 22, 2010 and prior to June 28, 2011
5	Members who were eligible to enroll on or after June 28, 2011

Service retirement benefits of 1/55th of final average salary for each year of service credit is available to tiers 1 and 2 members upon reaching age 60 and to tier 3 members upon reaching age 62. Service retirement benefits of 1/60th of final average salary for each year of service credit is available to tier 4 members upon reaching age 62 and tier 5 members upon reaching age 65. Early retirement benefits are available to tiers 1 and 2 members before reaching age 60, tiers 3 and 4 before age 62 with 25 or more years of service credit, and tier 5 before age 65 with 30 or more years of service credit. Benefits are reduced by a fraction of a percent for each month that a member retires prior to the retirement age for his/her respective tier. Deferred retirement is available to members who have at least 10 years of service credit and have not reached the service retirement age for the respective tier.

**PRIDE ACADEMY CHARTER SCHOOL
NOTES TO THE FINANCIAL STATEMENTS
JUNE 30, 2021**

Public Employees' Retirement System - The vesting and benefit provisions are set by N.J.S.A. 43:15A and 43:3B. The PERS provides retirement, death and disability benefits.

NOTE 8: PENSION PLANS (CONT'D)

General Information about the Pension Plans (Cont'd)

All benefits vest after ten years of service, except for medical benefits, which vest after 25 years of service or under the disability provisions of the PERS.

The membership tiers for PERS are the same as previously noted for TPAF.

Service retirement benefits of 1/55th of final average salary for each year of service credit is available to tiers 1 and 2 members upon reaching age 60 and to tier 3 members upon reaching age 62. Service retirement benefits of 1/60th of final average salary for each year of service credit is available to tier 4 members upon reaching age 62 and tier 5 members upon reaching age 65. Early retirement benefits are available to tiers 1 and 2 members before reaching age 60, tiers 3 and 4 before age 62 with 25 or more years of service credit and tier 5 with 30 or more years of service credit before age 65. Benefits are reduced by a fraction of a percent for each month that a member retires prior to the age at which a member can receive full early retirement benefits in accordance with their respective tier. Tier 1 members can receive an unreduced benefit from age 55 to age 60 if they have at least 25 years of service. Deferred retirement is available to members who have at least 10 years of service credit and have not reached the service retirement age for the respective tier.

Defined Contribution Retirement Program - Eligible members are provided with a defined contribution retirement plan intended to qualify for favorable Federal income tax treatment under IRC Section 401(a), a noncontributory group life insurance plan and a noncontributory group disability benefit plan. A participant's interest in that portion of his or her defined contribution retirement plan account attributable to employee contributions shall immediately become and shall at all times remain fully vested and nonforfeitable. A participant's interest in that portion of his or her defined contribution retirement plan account attributable to employer contributions shall be vested and nonforfeitable on the date the participant commences the second year of employment or upon his or her attainment of age 65, while employed by an employer, whichever occurs first.

Contributions

Teachers' Pension and Annuity Fund - The contribution policy is set by N.J.S.A. 18A:66 and requires contributions by active members and contributing employers. Pursuant to the provisions of Chapter 78, P.L. 2011, the active member contribution rate increased from 5.5% of annual compensation to 6.5% plus an additional 1% phased-in over 7 years beginning in July 2012. The member contribution rate was 7.20% in State fiscal year 2017. The phase-in of the additional incremental member contribution rate takes place in July of each subsequent State fiscal year. The State's contribution is based on an actuarially

**PRIDE ACADEMY CHARTER SCHOOL
NOTES TO THE FINANCIAL STATEMENTS
JUNE 30, 2021**

determined amount, which includes the employer portion of the normal cost and unfunded accrued liability. Funding for noncontributory group insurance benefits is based on actual claims paid.

NOTE 8: PENSION PLANS (CONT'D)

Contributions (Cont'd)

For fiscal year 2021, the State's pension contribution was less than the actuarial determined amount.

Under current statute, all employer contributions are made by the State of New Jersey on-behalf of the Charter School and all other related non-contributing employers. No normal or accrued liability contribution by the Charter School has been required over the preceding fiscal years. These on-behalf contributions by the State of New Jersey are considered a special funding situation, under the definition of GASB 68, *Accounting and Financial Reporting for Pensions*.

The Charter School commenced operations on January 1, 2013 and the enrollment process of Charter School employees in the TPAF began upon hiring of applicable personnel. As a result of the timing of participation in the pension plan, at June 30, 2021 there are no contractual requirements to contribute. Timing of participation aside, the Charter School would not have been required to make any contributions to the pension plan during the fiscal year ended June 30, 2021 because of the 100% special funding situation with the State of New Jersey.

Based on the most recent TPAF measurement date of June 30, 2017 and the timing of the Charter School's participation in the pension plan, there was no State contractually required contribution, on-behalf of the Charter School, to the pension plan for the fiscal year ended June 30, 2021. Charter School employee contributions to the pension plan during the fiscal year ended June 30, 2021 were \$163,542.

Public Employees' Retirement System - The contribution policy is set by N.J.S.A. 43:15A and requires contributions by active members and contributing employers. Members contribute at a uniform rate. Pursuant to the provisions of Chapter 78, P.L. 2011, the active member contribution rate increased from 5.5% of annual compensation to 6.5% plus an additional 1% phased-in over seven years beginning in July 2012. The member contribution rate was 7.20% in State fiscal year 2017. The phase-in of the additional incremental member contribution rate takes place in July of each subsequent State fiscal year. The rate for members who are eligible for the Prosecutors Part of PERS (Chapter 366, P.L. 2001) increased from 8.5% of base salary to 10%. Employers' contribution amounts are based on an actuarially determined rate. The Charter School's contribution amounts are based on an actuarially determined amount, which includes the normal cost and unfunded accrued liability.

**PRIDE ACADEMY CHARTER SCHOOL
NOTES TO THE FINANCIAL STATEMENTS
JUNE 30, 2021**

NOTE 8: PENSION PLANS (CONT'D)

General Information about the Pension Plans (Cont'd)

Contributions (Cont'd)

Public Employees' Retirement System (Cont'd) - The Charter School's contractually required contribution rate for the fiscal year ended June 30, 2021 was 15.73% of the Charter School's covered payroll. This amount was actuarially determined as the amount that, when combined with employee contributions, is expected to finance the costs of benefits earned by employees during the year, including an additional amount to finance any unfunded accrued liability.

Based on the most recent PERS measurement date of June 30, 2021, the Charter School's contractually required contribution to the pension plan for the fiscal year ended June 30, 2021 was \$61,549 and was paid by April 1, 2021. Charter School employee contributions to the pension plan during the fiscal year ended June 30, 2021 were \$43,928.

Defined Contribution Retirement Program - The contribution policy is set by N.J.S.A. 43:15C-3 and requires contributions by active members and contributing employers. In accordance with Chapter 92, P.L. 2007 and Chapter 103, P.L. 2007, plan members are required to contribute 5.5% of their annual covered salary. In addition to the employee contributions, the Charter School contributes 3% of the employees' base salary, for each pay period, to Prudential Financial not later than the fifth business day after the date on which the employee is paid for that pay period.

At June 30, 2021, the Charter School had no employees participating in this program.

Pension Liabilities, Pension Expense, and Deferred Outflows of Resources and Deferred Inflows of Resources Related to Pensions

Public Employees' Retirement System - At June 30, 2021, the Charter School reported a liability of \$917,504 for its proportionate share of the net pension liability. The net pension liability was measured as of June 30, 2020, and the total pension liability used to calculate the net pension liability was determined by an actuarial valuation as of July 1, 2020. The total pension liability was calculated through the use of updated procedures to roll forward from the actuarial valuation date to the measurement date of June 30, 2020. The Charter School's proportion of the net pension liability was based on a projection of the Charter School's long-term share of contributions to the pension plan relative to the projected contributions of all participating employers, actuarially determined. For the June 30, 2021 measurement date, the Charter School's proportion was .0056263106%, which was an decrease from its proportion measured as of June 30, 2020.

For the fiscal year ended June 30, 2021, the Charter School recognized pension expense of \$120,224, in the government-wide financial statements. This pension expense was based on the pension plan's June 30, 2020 measurement date.

**PRIDE ACADEMY CHARTER SCHOOL
NOTES TO THE FINANCIAL STATEMENTS
JUNE 30, 2021**

NOTE 8: PENSION PLANS (CONT'D)

Pension Liabilities, Pension Expense, and Deferred Outflows of Resources and Deferred Inflows of Resources Related to Pensions (Cont'd)

Public Employees' Retirement System (Cont'd) - At June 30, 2021, the Charter School reported deferred outflows of resources and deferred inflows of resources related to PERS from the following sources:

Deferred Outflows of Resources	Deferred Inflows of Resources
\$ 359,358	\$ 413,343

Actuarial Assumptions

The net pension liability was measured as of June 30, 2020, and the total pension liability used to calculate the net pension liability was determined by an actuarial valuation as of July 1, 2019. The total pension liability was calculated through the use of updated procedures to roll forward from the actuarial valuation date to the measurement date of June 30, 2020. This actuarial valuation used the following actuarial assumptions, applied to all periods included in the measurement:

Inflation Rate:	
Price	2.75%
Wage	3.25%
Salary Increases:	
Through 2026	1.55% - 4.45% Based on Years of Service
Thereafter	2.75% - 5.65% Based on Years of Service
Investment Rate of Return	7.00%
Mortality Rate Table	PUB-2010
Period of Actuarial Experience	
Study upon which Actuarial Assumptions were Based	July 1, 2013 - June 30, 2018 July 1, 2015 - June 30, 2018 Respectively

**PRIDE ACADEMY CHARTER SCHOOL
NOTES TO THE FINANCIAL STATEMENTS
JUNE 30, 2021**

NOTE 8: PENSION PLANS (CONT'D)

Actuarial Assumptions (Cont'd)

For PERS, pre-retirement mortality rates were based on the RP-2000 Employee Preretirement Mortality Table for male and female active participants. Mortality tables are set back 2 years for males and 7 years for females. In addition, the tables provide for future improvements in mortality from the base year of 2013 using a generational approach based on the plan actuary's modified MP-2014 projection scale. Post-retirement mortality rates were based on the RP-2000 Combined Healthy Male and Female Mortality Tables (setback 1 year for males and females) for service retirements and beneficiaries of former members and a one-year static projection based on mortality improvement Scale AA. In addition, the tables for service retirements and beneficiaries of former members provide for future improvements in mortality from the base year of 2013 using a generational approach based on the plan actuary's modified MP-2014 projection scale. Disability retirement rates used to value disabled retirees were based on the RP-2000 Disabled Mortality Table (set back 3 years for males and set forward 1 year for females).

For PERS, in accordance with State statute, the long-term expected rate of return on plan investments (7.00% at June 30, 2019) is determined by the State Treasurer, after consultation with the Directors of the Division of Investments and Division of Pensions and Benefits, the board of trustees and the actuaries. The long-term expected rate of return was determined using a building block method in which best-estimate ranges of expected future real rates of return (expected returns, net of pension plan investment expense and inflation) are developed for each major asset class. These ranges are combined to produce the long-term expected rate of return by weighting the expected future real rates of return by the target asset allocation percentage and by adding expected inflation. Best estimates of arithmetic rates of return for each major asset class included in PERS's target asset allocation as of June 30, 2020 are summarized in the following tables:

<u>Asset Class</u>	<u>Target Allocation</u>	<u>Long-Term Expected Real Rate Of Return</u>
US Equity	27.00%	7.71%
Non-U.S. Developed Markets Equity	13.50%	8.57%
Emerging Markets Equity	5.50%	10.23%
Private Equity	13.00%	11.42%
Real Assets	3.00%	9.73%
Real Estate	8.00%	9.56%
High Yield	2.00%	5.95%
Private Credit	8.00%	7.59%
Investment Grade Credit	8.00%	2.67%
Cash Equivalents	4.00%	0.50%
U.S. Treasuries	5.00%	1.94%
Risk Mitigation Strategies	3.00%	3.40%

**PRIDE ACADEMY CHARTER SCHOOL
NOTES TO THE FINANCIAL STATEMENTS
JUNE 30, 2021**

NOTE 8: PENSION PLANS (CONT'D)

Actuarial Assumptions (Cont'd)

Discount Rate - The discount rate used to measure the total pension liability at June 30, 2020 was 5.40% for PERS. For PERS, the respective single blended discount rates were based on the long-term expected rate of return on pension plan investments of 7.00%, and a municipal bond rate of 2.21% as of June 30, 2020, based on the Bond Buyer Go 20-Bond Municipal Bond Index which includes tax-exempt general obligation municipal bonds with an average rating of AA/Aa or higher. The projection of cash flows used to determine the discount rates assumed that contributions from plan members will be made at the current member contribution rates and that contributions from employers will be made based on 78% of the actuarially determined contribution by the State. Based on those assumptions, the plan's fiduciary net position was projected to be available to make projected future benefit payments of current plan members through 2062. Therefore, the long-term expected rate of return on plan investments was applied to projected benefit payments through 2062 for PERS, and the municipal bond rate was applied to projected benefit payments after that date in determining the total pension liability.

Sensitivity of Charter School's Proportionate Share of Net Pension Liability to Changes in the Discount Rate

Public Employees' Retirement System (PERS) - The following presents the net pension liability of the State as of June 30, 2020, calculated using a discount rate as disclosed above, as well as what the State net pension liability would be if it were calculated using a discount rate that is 1% lower or 1% higher than the current rate.

	At 1% Decrease (4.00%)	At Current Discount Rate (5.00%)	At 1% Increase (6.00%)
Charter School's Proportionate Share of the Net Pension Liability	<u>\$ 77,517,093,055</u>	<u>\$65,993,498,688</u>	<u>\$ 56,425,087,777</u>

**PRIDE ACADEMY CHARTER SCHOOL
NOTES TO THE FINANCIAL STATEMENTS
JUNE 30, 2021**

NOTE 8: PENSION PLANS (CONT'D)

Pension Plan Fiduciary Net Position

For purposes of measuring the net pension liability, deferred outflows of resources and deferred inflows of resources related to pensions, and pension expense, information about the respective fiduciary net position of the PERS and additions to/deductions from PERS's respective fiduciary net position have been determined on the same basis as they are reported by PERS. Accordingly, benefit payments (including refunds of employee contributions) are recognized when due and payable in accordance with the benefit terms. Investments are reported at fair value. For additional information about PERS, please refer to the plan's Comprehensive Annual Financial Report (CAFR) which can be found at www.nj.gov/treasury/pensions.

NOTE 9: STATE POST-RETIREMENT MEDICAL BENEFITS

P.L. 1987, c.384 of P.L. 1990, c.6 required Teachers' Pensions and Annuity Fund ("TPAF") and the Public Employees' Retirement System ("PERS"), respectively, to fund post-retirement medical benefits for those State employees who retire after accumulating 25 years of credited service or on a disability retirement. P.L. 2007, c.103 amended the law to eliminate the funding of postemployment medical benefits through the TPAF and PERS. It created separate funds outside of the pension plans for the funding and payment of postemployment medical benefits for retired State employees and retired educational employees. As of June 30, 2015, there were 107,314 retirees receiving postemployment medical benefits, and the State contributed \$1.25 billion on their behalf. The cost of these benefits is funded through contributions by the State in accordance with P.L. 1994, c.62. Funding of post-retirement medical premiums changed from a pre-funding basis to a pay-as-you-go basis beginning in fiscal year 1994.

The State is also responsible for the cost attributable to P.L. 1992 c.126, which provides free health benefits to members of PERS and the Alternate Benefit Program who retire from a Board of Education, Charter School or county college with 25 years of service. The State paid \$214.1 million toward Chapter 126 benefits for 19,056 eligible retired members in fiscal year 2015.

**PRIDE ACADEMY CHARTER SCHOOL
NOTES TO THE FINANCIAL STATEMENTS
JUNE 30, 2021**

NOTE 10: POSTEMPLOYMENT BENEFITS OTHER THAN PENSIONS (OPEB)

General Information about the OPEB Plan

The State of New Jersey reports a liability as a result of its statutory requirements to pay other postemployment (health) benefits for State Health Benefit Local Education Retired Employees Plan. The State Health Benefit Local Education Retired Employees Plan is a multiple-employer defined benefit OPEB plan that is administered on a pay-as-you-go basis. Accordingly, no assets are accumulated in a qualifying trust that meets the criteria in paragraph 4 of GASB Statement No. 75, Accounting and Financial Reporting for the Postemployment Benefits Other Than Pensions. The State Health Benefit Local Education Retired Employees Plan provides medical, prescription drug, and Medicare Part B reimbursement to retirees and their covered dependents of local education employers.

The employer contributions for the participating local education employers are legally required to be funded by the State of New Jersey in accordance with N.J.S.A 52:14-17.32f. According to N.J.S.A 52:14- 17.32f, the State provides employer-paid coverage to employees who retire from a board of education or county college with 25 years or more of service credit in, or retires on a disability pension from, one or more of the following plans: the Teachers' Pension and Annuity Fund (TPAF), the Public Employees' Retirement System (PERS), the Police and Firemen Retirement System (PFRS), or the Alternate Benefit Program (ABP). Pursuant to Chapter 78, P.L. 2011, future retirees eligible for postretirement medical coverage who have less than 20 years of creditable service on June 28, 2011 will be required to pay a percentage of the cost of their health care coverage in retirement provided they retire with 25 or more years of pension service credit. The percentage of the premium for which the retiree will be responsible will be determined based on the retiree's annual retirement benefit and level of coverage.

The total nonemployer OPEB liability does not include certain other postemployment benefit obligations that are provided by the local education employers. The reporting of these benefits are the responsibility of the individual local education employers.

**PRIDE ACADEMY CHARTER SCHOOL
NOTES TO THE FINANCIAL STATEMENTS
JUNE 30, 2021**

NOTE 10: POSTEMPLOYMENT BENEFITS OTHER THAN PENSIONS (OPEB) (CONT'D)

Basis of Presentation

The Schedule presents the State of New Jersey's obligation under NJSA 52:14-17.32f. The Schedule does not purport to be a complete presentation of the financial position or changes in financial position of the State Health Benefit Local Education Retired Employees Plan or the State of New Jersey. The accompanying Schedule was prepared in accordance with U.S. generally accepted accounting principles. Such preparation requires management of the State of New Jersey to make a number of estimates and assumptions relating to the reported amounts. Due to the inherent nature of these estimates, actual results could differ from those estimates.

Total Nonemployer OPEB Liability

The total nonemployer OPEB liability as of June 30, 2020 was determined by an actuarial valuation as of June 30, 2019, which was rolled forward to June 30, 2020. The actuarial assumptions vary for each plan member depending on the pension plan the member is enrolled in. This actuarial valuation used the following actuarial assumptions, applied to all periods in the measurement:

Total Nonemployer OPEB Liability \$67,809,962,608

	TPAF/ABP	PERS
Inflation Rate	2.50%	2.50%
	Based on Years of Service	Based on Years of Service
Salary Increases:		
Through 2026	1.55% - 4.45%	2.00% - 6.00%
Thereafter	1.55% - 4.45%	3.00% - 7.00%

**PRIDE ACADEMY CHARTER SCHOOL
NOTES TO THE FINANCIAL STATEMENTS
JUNE 30, 2021**

NOTE 10: POSTEMPLOYMENT BENEFITS OTHER THAN PENSIONS (OPEB) (CONT'D)

Preretirement mortality rates were based on the Pub-2010 Healthy "Teachers" (TPAF/ABP), "General" (PERS), and "Safety" (PFRS) classification headcount-weighted mortality table with fully generational mortality improvement projections from the central year using Scale MP-2020. Postretirement mortality rates were based on the Pub-2010 "General" classification headcount-weighted mortality table with fully generational mortality improvement projections from the central year using Scale MP-2020. Disability mortality was based on the Pub-2010 "General" classification headcount-weighted disabled mortality table with fully generational mortality improvement projections from the central year using Scale MP-2020

The actuarial assumptions used in the June 30, 2019 valuation were based on the results of actuarial experience studies for the periods July 1, 2015 - June 30, 2018, July 1, 2014 - June 30, 2018, and July 1, 2013 - June 30, 2018 for TPAF, PERS and PFRS, respectively.

Health Care Trend Assumptions

For pre-Medicare medical benefits, the trend rate is initially 5.6% and decreases to a 4.5% long-term trend rate after seven years. For post-65 medical benefits, the actual fully-insured Medicare Advantage trend rates for fiscal year 2021 through 2022 are reflected. The assumed post-65 medical trend is 4.5% for all future years. For prescription drug benefits, the initial trend rate is 7.0% and decreases to a 4.5% long-term trend rate after seven years. For the Medicare Part B reimbursement, the trend rate is 5.0%.

Discount rate

The discount rate for June 30, 2020 was 2.21%. This represents the municipal bond return rate as chosen by the Division. The source is the Bond Buyer Go 20-Bond Municipal Bond Index, which includes tax-exempt general obligation municipal bonds with an average rating of AA/Aa or higher. As the long-term rate of return is less than the municipal bond rate, it is not considered in the calculation of the discount rate, rather the discount rate is set at the municipal bond rate.

**PRIDE ACADEMY CHARTER SCHOOL
NOTES TO THE FINANCIAL STATEMENTS
JUNE 30, 2021**

NOTE 10: POSTEMPLOYMENT BENEFITS OTHER THAN PENSIONS (OPEB) (CONT'D)

Changes in the Total OPEB Liability

	Total OPEB Liability
Balance as of June 30, 2019 Measurement Date	\$ 2,733,816
Changes for the Year:	
Service Cost	391,477
Interest Cost	108,033
Changes of Benefit Terms	-
Differences Between Expected and Actual Experience	618,710
Changes in Assumptions or Other Inputs	843,468
Member Contributions	2,437
Gross Benefit Payments	(80,388)
Net Changes	1,883,737
Balance as of June 30, 2020 Measurement Date	\$ 4,617,553

Sensitivity of Total Nonemployer OPEB Liability to changes in the discount rate:

The following presents the total nonemployer OPEB liability as of June 30, 2020, respectively, calculated using the discount rate as disclosed above as well as what the total nonemployer OPEB liability would be if it was calculated using a discount rate that is 1-percentage point lower or 1-percentage point higher than the current rate:

At 1% Decrease (1.21%)	At Discount Rate (2.21%)	At 1% Increase (3.21%)
\$81,748,410,002	\$67,809,962,608	\$56,911,439,160

Sensitivity of Total Nonemployer OPEB Liability to changes in the healthcare trend rate:

The following presents the total nonemployer OPEB liability as of June 30, 2020, calculated using the healthcare trend rate as disclosed above as well as what the total OPEB liability would be if it was calculated using a healthcare trend rate that is 1-percentage point lower or 1-percentage point higher than the current rate:

1% Decrease	Healthcare Cost Trend Rate	1% Increase
\$54,738,488,540	\$67,809,962,608	\$83,375,182,975

**PRIDE ACADEMY CHARTER SCHOOL
NOTES TO THE FINANCIAL STATEMENTS
JUNE 30, 2021**

NOTE 10: POSTEMPLOYMENT BENEFITS OTHER THAN PENSIONS (OPEB) (CONT'D)

For the year ended June 30, 2021, the Charter School recognized OPEB expense of \$576,620.

Special Funding Situation

The participating employer allocations included in the supplemental Schedule of special funding amounts by employer for each employer are provided as each local education employer is required to record in their financial statements, as an expense and corresponding revenue, their respective amount of total OPEB expense attributable to the State of New Jersey under the special funding situation and to include their respective amount of total OPEB liability in their notes to their financial statements. The total OPEB liability and service cost for each employer was determined separately based on actual data for each employer's participants.

**PRIDE ACADEMY CHARTER SCHOOL
NOTES TO THE FINANCIAL STATEMENTS
JUNE 30, 2021**

NOTE 11: RISK MANAGEMENT

The charter school is exposed to various risks of loss related to torts; theft of, damage to, and destruction of assets; errors and omissions; injuries to employees; and natural disasters.

Property and Liability Insurance

The charter school maintains commercial insurance coverage for property, liability, student accident and surety bonds. A complete schedule of insurance coverage can be found in the Statistical Section of this Comprehensive Annual Financial Report.

NOTE 12: FUND BALANCE APPROPRIATED

General Fund

The General Fund fund balance in the fund financial statements at June 30, 2021, in the amount of \$1,018,316, is unassigned and undesignated, \$75,000 is reserved for a school closing and \$3,180 is restricted for student activities.

NOTE 13: SUBSEQUENT EVENTS

Subsequent events have been evaluated through February 11, 2022, which is the date the financial statements were available to be issued. Events occurring after that date have not been evaluated to determine whether a change in the financial statements would be required. The COVID-19 outbreak in the United States and specifically in New Jersey has caused disruption of the School's normal financial operations. Though the impact on the School's operation cannot be reasonably estimated at this date, it is likely that there will be an impact on certain revenue in the General Fund other than state aid and the local tax levy.

REQUIRED SUPPLEMENTARY INFORMATION – PART II

SECTION C – BUDGETARY COMPARISON SCHEDULES

PRIDE ACADEMY CHARTER SCHOOL
General Fund
Budgetary Comparison Schedule
For The Fiscal Year Ended June 30, 2021

	Original Budget	Budget Transfers	Final Budget	Actual	Variance Final to Actual
REVENUES:					
Local Sources:					
Equalization Aid-Local Share	\$ 537,819	\$ -	\$ 537,819	\$ 537,819	\$ -
Total Local Sources	537,819	-	\$ 537,819	537,819	\$ -
Categorical Aid:					
Equalization Aid-State Share	3,386,581	-	3,386,581	3,386,581	-
Security Aid	137,012	-	137,012	137,012	-
Special Education Categorical Aid	162,783	-	162,783	162,783	-
Adjustment Aid	254,700	-	254,700	254,700	-
Total Categorical Aid	3,941,076	-	3,941,076	3,941,076	-
Other Sources:					
Interest Income	-	-	-	1,660	1,660
Miscellaneous Revenue	-	-	-	21,001	21,001
On-Behalf TPAF Pension Contributions (Non-Budgeted)	-	-	-	-	-
On-Behalf TPAF Post Retirement Medical Contributions (Non-Budgeted)	-	-	-	577,482	181,587
Reimbursed TPAF Social Security Contributions (Non-Budgeted)	-	-	-	159,822	159,822
Total other Sources	-	-	-	941,552	941,552
Total Revenues	4,478,895	-	4,478,895	5,420,447	941,552
EXPENDITURES:					
Instruction:					
Salaries of Teachers - Grades 5 to 8	\$ 1,904,439	\$ -	\$ 1,904,439	\$ 1,756,897	\$ 147,542
Other Purchased Services	40,000	-	40,000	29,433	10,567
General Supplies	30,000	-	30,000	42,589	(12,589)
Textbooks	25,000	-	25,000	-	25,000
Miscellaneous	20,000	-	20,000	1,508	18,492
Total Instruction	2,019,439	-	2,019,439	1,830,427	189,012
Administration					
Salaries - General Administration	795,215	-	795,215	790,692	4,523
Total Benefits Cost	499,793	-	499,793	440,021	59,772
Purchases Prof/Tech Services	57,000	-	57,000	83,322	(26,322)
Other Purchased Services	25,000	-	-	38,227	(38,227)
Communications/Telephone	30,000	-	30,000	34,403	(4,403)
Supplies and Materials	30,000	-	30,000	2,685	27,315
Miscellaneous Expenses	20,240	-	-	9,859	(9,859)
Total Administration	1,457,248	-	1,457,248	1,399,209	58,039

See Management's Discussion and Analysis section of this report for explanation of significant budget variances, original and final.

PRIDE ACADEMY CHARTER SCHOOL
General Fund
Budgetary Comparison Schedule
For The Fiscal Year Ended June 30, 2021

	Original Budget	Budget Transfers	Final Budget	Actual	Variance Final to Actual
(Continued From Prior Page)					
Support Services:					
Salaries	\$ 445,558	\$ -	\$ 445,558	\$ 431,798	\$ 13,760
Purchased Prof/Ed Services	60,000	-	60,000	29,292	30,708
Other Purchased Services	166,028	-	166,028	244,926	(78,898)
Rental of Land and Buildings	480,000	-	480,000	392,003	87,997
Insurance for Property, Liability and Fidelity	65,000	-	65,000	53,860	11,140
Supplies and Materials	20,000	-	20,000	22,476	(2,476)
Energy Costs (Heat and Electricity)	30,000	-	30,000	20,565	9,435
Total Support Services	1,266,586	-	1,266,586	1,194,920	71,666
Capital Outlay:					
Building Improvements	10,000	-	10,000	-	10,000
Instructional Equipment	-	-	-	127,777	(127,777)
Non-Instructional Equipment	30,000	-	30,000	-	30,000
Total Capital Outlay	40,000	-	40,000	127,777	(87,777)
On-Behalf TPAF Pension Contributions (Non-Budgeted)				577,482	(577,482)
On-Behalf TPAF Post Retirement Medical Contributions (Non-Budgeted)				181,587	(181,587)
Reimbursed TPAF Social Security Contributions (Non-Budgeted)				159,822	(159,822)
Total Expenditures	4,783,273	-	4,783,273	5,471,224	(687,951)
Excess (Deficiency) of Revenues Over (Under) Expenditures	(304,378)	-	(304,378)	(50,777)	253,601
FUND BALANCE, JULY 1	1,144,093	-	1,144,093	1,144,093	-
FUND BALANCE, JUNE 30	\$ 839,715	\$ -	\$ 839,715	\$ 1,093,316	\$ 253,601
Recapitulation of Excess (Deficiency) of Revenues Over (Under) Expenditures:					
Budgeted Fund Balance	\$ 839,715	\$ -	\$ 839,715	\$ 1,093,316	\$ 253,601
Total	\$ 839,715	\$ -	\$ 839,715	\$ 1,093,316	\$ 253,601

See Management's Discussion and Analysis section of this report for explanation of significant budget variances, original and final.

PRIDE ACADEMY CHARTER SCHOOL
Special Revenue Fund
Budgetary Comparison Schedule
For The Fiscal Year Ended June 30, 2021

	Original Budget	Budget Transfers	Final Budget	Actual	Variance Final to Actual
REVENUE SOURCES:					
Federal	\$ 270,174	\$ -	\$ 270,174	\$ 270,174	\$ -
Total Revenues	270,174	-	270,174	270,174	-
EXPENDITURES:					
Instruction:					
Salaries	168,261	-	168,261	168,261	-
Purchase Professional Services	9,981	-	9,981	9,981	-
General Supplies	16,798	-	16,798	16,798	-
Total Instruction	195,040	-	195,040	195,040	-
Support Services:					
Salaries	12,000	-	12,000	12,000	-
Personal Services - Employee Benefits	26,322	-	26,322	26,322	-
Purchased Professional Services	30,812	-	30,812	30,812	-
Supplies and Materials	6,000	-	6,000	6,000	-
Total Support Services	75,134	-	75,134	75,134	-
Total Expenditures	270,174	-	270,174	270,174	-
Excess (Deficiency) of Revenues Over (Under) Expenditures	\$ -	\$ -	\$ -	\$ -	\$ -

NOTES TO THE REQUIRED SUPPLEMENTARY INFORMATION

PRIDE ACADEMY CHARTER SCHOOL

Required Supplementary Information

Budgetary Comparison Schedule

Note to RSI

Fiscal Year Ended June 30, 2021

Note A - Explanation of Differences between Budgetary Inflows and Outflows and GAAP Revenues and Expenditures

	<u>General Fund</u>		<u>Special Revenue Fund</u>
Sources/Inflows of Resources			
Actual amounts (budgetary) "revenues" from the budgetary comparison schedules	[C-1] \$ 5,420,447		[C-2] \$ 270,174
Difference - Budget to GAAP			
Grant accounting budgetary basis differs from GAAP in that encumbrances are recognized as expenditures, and the related revenue is recognized	<u>-</u>		<u>-</u>
Total revenues as reports on the statement of revenues, expenditures and changes in fund balance - governmental funds.	[B-2] \$ <u>5,420,447</u>		[B-2] \$ <u>270,174</u>
Uses/Outflows of resources			
Actual amounts (budgetary basis) "total outflows" from the budgetary comparison schedule	[C-1] \$ 5,471,224		[C-2] \$ 270,174
Differences - Budget to GAAP:			
Encumbrances for supplies and equipment ordered but not received are reported in the year the order is placed for budgetary purposes, but in the year the supplies are received for financial accounting purposes	<u>-</u>		<u>-</u>
Total expenditures as reported on the statement of revenues, expenditures and changes in fund balances - governmental funds.	[B-2] \$ <u>5,471,224</u>		[B-2] \$ <u>270,174</u>

REQUIRED SUPPLEMENTARY INFORMATION – PART III

**SCHEDULE L - SCHEDULES RELATED TO ACCOUNTING AND REPORTING FOR
PENSIONS (GASB 68)**

**PRIDE ACADEMY CHARTER SCHOOL
REQUIRED SUPPLEMENTARY INFORMATION SCHEDULE
SCHEDULE OF THE CHARTER SCHOOL'S PROPORTIONATE SHARE OF THE NET PENSION LIABILITY
PUBLIC EMPLOYEES RETIREMENT SYSTEM (PERS)
LAST ONE PLAN YEAR
UNAUDITED**

	Fiscal Year Ending June 30,	
	2021	2020
Charter School's Proportion of the Net Pension Liability	0.0056263106%	0.0047871635%
Charter School's Proportionate Share of the Net Pension Liability	\$ 917,504	\$ 852,574
Charter School's Covered Employees Payroll	N/A	N/A
Charter School's Proportionate Share of the Net Pension Liability as a Percentage of its Covered Payroll	N/A	N/A
Plan Fiduciary Net Position as a Percentage of the Total Pension Liability	N/A	N/A

Note: This schedule does not contain ten years of information as GASB No. 68 was implemented during the fiscal year ended June 30, 2015.

**PRIDE ACADEMY CHARTER SCHOOL
REQUIRED SUPPLEMENTARY INFORMATION
SCHEDULE OF THE CHARTER SCHOOL CONTRIBUTIONS
PUBLIC EMPLOYEES RETIREMENT SYSTEM (PERS)
LAST TWO FISCAL YEARS
UNAUDITED**

	Fiscal Year Ended June 30,	
	<u>2021</u>	<u>2020</u>
Contractually required contribution	\$ 61,549	\$ 46,565
Contributions in relation to the contractually required contribution	<u>(61,549)</u>	<u>(46,565)</u>
Contribution Deficiency (Excess)	<u>\$ -</u>	<u>\$ -</u>
Charter School's Covered Payroll (Fiscal Year)	\$ -	\$ -
Contributions as a percentage of covered employee payroll	0.00%	0.00%

Note: This schedule does not contain ten years of information as GASB No. 68 was implemented during the fiscal year ended June 30, 2015.

OTHER SUPPLEMENTARY INFORMATION

**SECTION E – SPECIAL REVENUE FUND
DETAIL STATEMENTS**

The Special Revenue Fund is used to account for the proceeds of specific sources (other than expandable trusts or major capital projects) that are legally restricted to expenditures for specific purposes.

PRIDE ACADEMY CHARTER SCHOOL
Special Revenue Fund
Combining Schedule of Program Revenues and Expenditures - Budgetary Basis
For the Fiscal Year Ended June 30, 2021

	ESEA Consolidated Title I	I.D.E.A. Basic	ESEA Consolidated Title II	ESEA Consolidated Title IV	Grand Total
REVENUE SOURCES:					
Federal	\$ 167,364	\$ 74,590	\$ 16,478	\$ 11,742	\$ 270,174
Total Revenues	167,364	74,590	16,478	11,742	270,174
EXPENDITURES:					
Instruction:					
Salaries	111,500	55,000	-	1,761	168,261
Purchase Professional Services	-	-	-	9,981	9,981
General Supplies	15,000	1,798	-	-	16,798
Total Instruction	126,500	56,798	-	11,742	195,040
Support Services:					
Salaries	-	-	12,000	-	12,000
Personal Services - Employee Benefits	8,530	17,792	-	-	26,322
Purchased Professional Services	26,334	-	4,478	-	30,812
Supplies and Materials	6,000	-	-	-	6,000
Total Support Services	40,864	17,792	16,478	-	75,134
Total Expenditures	167,364	74,590	16,478	11,742	270,174
Excess (Deficiency) of Revenues Over (Under) Expenditures	\$ -	\$ -	\$ -	\$ -	\$ -

**SECTION G – PROPRIETARY FUNDS
DETAIL STATEMENTS**

Proprietary Funds are used to account for operations that are financed and operated in a manner similar to private business enterprises – where the intent of the charter school’s board is that the costs of providing goods or services be financed through user charges.

Food Services Fund – This fund provides for the operation of food services in all schools within the school district.

**THIS SECTION HAS ALREADY BEEN INCLUDED IN STATEMENTS B-4, B-5,
AND B-6.**

**SECTION H – FIDUCIARY FUNDS
DETAIL STATEMENTS**

Fiduciary Funds are used to account for funds received by the school for a specific purpose.

Agency Funds are used to account for assets held by the school as an agent for individuals, private organizations, other governments and/or other funds.

Payroll Fund – This agency fund is used to account for the payroll transactions of the school

PRIDE ACADEMY CHARTER SCHOOL
 Fiduciary Funds
 Combining Statement of Fiduciary Net Position
 June 30, 2021

	Agency		
	Payroll	Student Activities	Total Agency Funds
ASSETS:			
Cash and Cash Equivalents	\$ 170,582	\$ 3,180	\$ 173,762
Interfund Account Receivable	30,121	-	30,121
Total Assets	\$ 200,703	\$ 3,180	\$ 203,883
LIABILITIES:			
Payroll Deductions and Withholdings	\$ 200,703	\$ -	200,703
Due to Student Groups	-	3,180	3,180
Total Liabilities	\$ 200,703	\$ 3,180	\$ 203,883

PRIDE ACADEMY CHARTER SCHOOL
 Fiduciary Funds
 Student Activities
 Statement of Fiduciary Net Position
 June 30, 2021

	<u>Balance July 1, 2020</u>	<u>Cash Receipts</u>	<u>Cash Disbursements</u>	<u>Balance June 30, 2021</u>
Students Groups	\$ 3,094	\$ 4,368	\$ 4,282	\$ 3,180
Total	<u>\$ 3,094</u>	<u>\$ 4,368</u>	<u>\$ 4,282</u>	<u>\$ 3,180</u>

PRIDE ACADEMY CHARTER SCHOOL
 Fiduciary Funds
 Payroll Agency Fund
 Schedule of Receipts and Disbursements
 For The Fiscal Year Ended June 30, 2021

	Balance July 1, 2020	Cash Receipts	Cash Disbursements	Balance June 30, 2021
ASSETS:				
Cash	\$ 75,337	\$ 3,134,391	\$ 3,039,146	\$ 170,582
Interfund Accounts Receivable	-	30,121	-	30,121
Total Assets	\$ 75,337	\$ 3,164,512	\$ 3,039,146	\$ 200,703
LIABILITIES:				
Interfund Accounts Payable	\$ 19,567	\$ -	\$ 19,567	\$ -
Payroll Deductions and Withholdings	55,770	3,164,512	3,019,579	200,703
Total Liabilities	\$ 75,337	\$ 3,164,512	\$ 3,039,146	\$ 200,703

**STATISTICAL SECTION
(UNAUDITED)**

GASB requires that ten years of statistical data be presented. The following information is presented utilizing information available. Each year thereafter, an additional year's data will be included until ten years of data is presented.

Contents

Financial Trends

These schedules contain trend information to help the reader understand how the charter school's financial performance and well-being have changed over time.

Revenue Capacity (Not Applicable To Charter School)

These schedules contain information to help the reader assess the district's most significant local revenue source, the property tax.

Debt Capacity

These schedules present information to help the reader assess the affordability of the charter school's current levels of outstanding debt and the charter school's ability to issue additional debt in the future.

Demographic and Economic Information

These schedules offer demographic and economic indicators to help the reader understand the environment within which the charter school's financial activities take place.

Operating Information

These schedules contain service and infrastructure data to help the reader understand how the information in the charter school's financial report relates to the services the district provides and the activities it performs.

Sources: *Unless otherwise noted, the information in these schedules is derived from the comprehensive annual financial reports (CAFR) for the relevant year. The charter school implemented GASB Statement 34 in the fiscal year ending June 30, 2004; schedules presenting charter school-wide information include information beginning in that year.*

FINANCIAL TRENDS

PRIDE ACADEMY CHARTER SCHOOL
 Net Position by Component
 Last Ten Fiscal Years
(accrual basis of accounting)
 Unaudited

	Fiscal Year Ending June 30,									
	2021	2020	2019	2018	2017	2016	2015	2014	2013	2012
Governmental Activities										
Invested in Capital Assets, Net or Related Debt	\$ -	\$ -	\$ -	\$ 20,071	\$ 51,586	\$ 83,101	\$ 49,989	\$ 80,436	\$ 74,057	\$ 81,083
Restricted	3,180	-	-	-	-	-	-	-	-	-
Unassigned	121,827	233,595	237,570	144,799	97,348	131,601	127,809	928,256	1,126,499	1,100,639
Total Governmental Activities Net Assets/Position (Deficit)	\$ 125,007	\$ 233,595	\$ 237,570	\$ 164,870	\$ 148,934	\$ 214,702	\$ 177,798	\$ 1,008,692	\$1,200,556	\$1,181,722
Business-Type Activities										
Unassigned	\$ 39,343	\$ 39,318	\$ 35,110	\$ 35,755	\$ 35,246	\$ 31,328	\$ 23,205	\$ 13,022	\$ 8,549	\$ 12,766
Total Business-Type Activities Net Position	\$ 39,343	\$ 39,318	\$ 35,110	\$ 35,755	\$ 35,246	\$ 31,328	\$ 23,205	\$ 13,022	\$ 8,549	\$ 12,766
Charter School-wide										
Invested in Capital Assets, Net or Related Debt	\$ -	\$ -	\$ -	\$ 20,071	\$ 51,586	\$ 83,101	\$ 49,989	\$ 80,436	\$ 74,057	\$ 81,083
Restricted	3,180	-	-	-	-	-	-	-	-	-
Unassigned	161,170	272,913	272,680	180,554	132,594	162,929	151,014	941,278	1,135,048	1,113,405
Total Charter School Net Position (Deficit)	\$ 164,350	\$ 272,913	\$ 272,680	\$ 200,625	\$ 184,180	\$ 246,030	\$ 201,003	\$ 1,021,714	\$1,209,105	\$1,194,488

Source: Comprehensive Annual Financial Report

PRIDE ACADEMY CHARTER SCHOOL
 Changes in Net Position
 Last Ten Fiscal Years
 Unaudited

	Fiscal Year Ending June 30,									
	2021	2020	2019	2018	2017	2016	2015	2014	2013	2012
Expenses										
Governmental Activities:										
Instruction	\$ 2,835,353	\$ 2,477,694	\$ 2,420,271	\$ 2,310,460	\$ 2,349,274	\$ 1,860,430	\$ 2,382,422	\$ 2,280,493	\$ 2,388,042	\$ 2,113,011
Administration	1,569,205	1,371,971	1,404,282	1,381,391	1,374,240	1,940,372	1,945,219	2,027,582	1,744,982	1,577,495
Support Services	1,270,054	1,444,916	1,473,589	1,420,458	1,369,873	1,063,843	609,835	496,420	513,522	426,075
Capital Outlay	127,777	1,287	7,520	29,676	43,842	67,131	50,620	81,202	55,511	613,658
Unallocated Depreciation										
Depreciation	-	-	9,445	9,445	9,445	9,445	3,873	3,873	2,032	2,915
Employee Benefits	576,620	347,280	443,348	566,103	-	-	-	-	-	-
Total Governmental Activities Net Assets/Position	<u>6,379,009</u>	<u>5,643,148</u>	<u>5,758,455</u>	<u>5,717,533</u>	<u>5,146,674</u>	<u>4,941,221</u>	<u>4,991,969</u>	<u>4,889,570</u>	<u>4,704,089</u>	<u>4,733,154</u>
Business-Type Activities:										
Food Service	11,352	120,216	183,065	177,610	221,319	221,243	189,646	187,877	164,192	92,829
Total Business-Type Activities Expenses	<u>11,352</u>	<u>120,216</u>	<u>183,065</u>	<u>177,610</u>	<u>221,319</u>	<u>221,243</u>	<u>189,646</u>	<u>187,877</u>	<u>164,192</u>	<u>92,829</u>
Total Charter School Expenses	<u>\$ 6,390,361</u>	<u>\$ 5,763,364</u>	<u>\$ 5,941,520</u>	<u>\$ 5,895,143</u>	<u>\$ 5,367,993</u>	<u>\$ 5,162,464</u>	<u>\$ 5,181,615</u>	<u>\$ 5,077,447</u>	<u>\$ 4,868,281</u>	<u>\$ 4,825,983</u>
Program Revenues										
Governmental Activities:										
Operating Grants and Contributions	739,403	507,046	608,113	658,357	115,517	120,633	131,404	158,773	150,708	148,270
Total Governmental Activities Expenses	<u>739,403</u>	<u>507,046</u>	<u>608,113</u>	<u>658,357</u>	<u>115,517</u>	<u>120,633</u>	<u>131,404</u>	<u>158,773</u>	<u>150,708</u>	<u>148,270</u>
Business-Type Activities:										
Charges for Services	1,377	3,823	4,377	4,019	4,724	6,449	6,916	4,997	4,763	3,080
Operating Grants and Contributions	-	120,601	178,043	174,100	220,513	222,917	192,914	187,353	155,212	92,915
Total Business-Type Activities Expenses	<u>1,377</u>	<u>124,424</u>	<u>182,420</u>	<u>178,119</u>	<u>225,237</u>	<u>229,366</u>	<u>199,830</u>	<u>192,350</u>	<u>159,975</u>	<u>95,995</u>
Total Charter School Program Revenues	<u>\$ 740,780</u>	<u>\$ 631,470</u>	<u>\$ 790,533</u>	<u>\$ 836,476</u>	<u>\$ 340,754</u>	<u>\$ 349,999</u>	<u>\$ 331,234</u>	<u>\$ 351,123</u>	<u>\$ 310,683</u>	<u>\$ 244,265</u>
Net (Expense)/Revenue										
Governmental Activities	\$ (5,639,606)	\$ (5,136,102)	\$ (5,150,342)	\$ (5,059,176)	\$ (5,031,157)	\$ (4,820,588)	\$ (4,860,565)	\$ (4,730,797)	\$ (4,553,381)	\$ (4,584,884)
Business-Type Activities	25	4,208	(645)	509	3,918	8,123	10,184	4,473	(4,217)	3,166
Total Charter School-wide Net Expense	<u>\$ (5,639,581)</u>	<u>\$ (5,131,894)</u>	<u>\$ (5,150,987)</u>	<u>\$ (5,058,667)</u>	<u>\$ (5,027,239)</u>	<u>\$ (4,812,465)</u>	<u>\$ (4,850,381)</u>	<u>\$ (4,726,324)</u>	<u>\$ (4,557,598)</u>	<u>\$ (4,581,718)</u>
General Revenues and Other Changes in Net Position										
Governmental Activities:										
General Purposes	\$ 537,819	\$ 535,374	\$ 535,075	\$ 483,739	\$ 461,081	\$ 474,667	\$ 450,397	\$ 475,126	\$ 467,747	\$ 407,757
Federal and State Aid Not Restricted	4,967,358	4,589,205	4,664,833	4,590,146	4,487,168	4,367,521	4,121,847	4,058,566	4,055,079	3,586,788
Investment Earnings	1,660	5,437	12,095	230	464	2,668	2,284	142	998	1,448
Miscellaneous Income	21,001	2,111	11,039	997	16,676	12,636	13,179	5,098	48,391	6,563
Total Governmental Activities	<u>5,527,838</u>	<u>5,132,127</u>	<u>5,223,042</u>	<u>5,075,112</u>	<u>4,965,389</u>	<u>4,857,492</u>	<u>4,587,707</u>	<u>4,538,932</u>	<u>4,572,215</u>	<u>4,002,556</u>
Business-Type Activities:										
Miscellaneous Earnings	-	-	-	-	-	-	-	-	-	-
Total Business-Type Activities	<u>-</u>	<u>-</u>	<u>-</u>	<u>-</u>	<u>-</u>	<u>-</u>	<u>-</u>	<u>-</u>	<u>-</u>	<u>-</u>
Total Charter School-wide	<u>\$ 5,527,838</u>	<u>\$ 5,132,127</u>	<u>\$ 5,223,042</u>	<u>\$ 5,075,112</u>	<u>\$ 4,965,389</u>	<u>\$ 4,857,492</u>	<u>\$ 4,587,707</u>	<u>\$ 4,538,932</u>	<u>\$ 4,572,215</u>	<u>\$ 4,002,556</u>
Change in Net Assets/Position										
Governmental Activities	\$ (111,768)	\$ (3,975)	\$ 72,700	\$ 15,936	\$ (65,768)	\$ 36,904	\$ (272,858)	\$ (191,865)	\$ 18,834	\$ (582,328)
Business-Type Activities	25	4,208	(645)	509	3,918	8,123	10,184	4,473	(4,217)	3,166
Total Charter School	<u>\$ (111,743)</u>	<u>\$ 233</u>	<u>\$ 72,055</u>	<u>\$ 16,445</u>	<u>\$ (61,850)</u>	<u>\$ 45,027</u>	<u>\$ (262,674)</u>	<u>\$ (187,392)</u>	<u>\$ 14,617</u>	<u>\$ (579,162)</u>

Source: Comprehensive Annual Financial Report

PRIDE ACADEMY CHARTER SCHOOL
 Fund Balances - Governmental Funds
 Last Ten Fiscal Years
(modified accrual basis of accounting)
 Unaudited

	Fiscal Year Ending June 30,									
	2021	2020	2019	2018	2017	2016	2015	2014	2013	2012
General Fund										
Reserved	\$ 3,180	\$ -	\$ -	\$ -	\$ -	\$ -	\$ -	\$ -	\$ -	\$ -
Unassigned	1,093,316	1,144,093	1,101,309	976,882	860,026	778,430	737,326	928,256	1,126,499	1,100,639
Total General Fund	<u>\$ 1,096,496</u>	<u>\$ 1,144,093</u>	<u>\$ 1,101,309</u>	<u>\$ 976,882</u>	<u>\$ 860,026</u>	<u>\$ 778,430</u>	<u>\$ 737,326</u>	<u>\$ 928,256</u>	<u>\$ 1,126,499</u>	<u>\$ 1,100,639</u>

PRIDE ACADEMY CHARTER SCHOOL
 Changes in Fund Balances - Governmental Funds
 Last Ten Fiscal Years
(modified accrual basis of accounting)
 Unaudited

	Fiscal Year Ending June 30,									
	2021	2020	2019	2018	2017	2016	2015	2014	2013	2012
Revenues:										
Local Sources:										
Local Tax Levy	\$ 537,819	\$ 535,374	\$ 535,075	\$ 483,739	\$ 461,081	\$ 474,667	\$ 450,397	\$ 475,126	\$ 467,747	\$ 407,757
Interest In Investments	1,660	5,437	12,095	230	464	2,668	2,284	142	998	1,448
Miscellaneous	21,001	2,111	11,039	997	16,676	12,636	13,179	5,098	48,391	6,563
State Sources	4,859,967	4,479,881	4,561,281	4,415,711	4,361,044	4,188,323	3,967,435	3,971,623	3,960,826	3,486,089
Federal Sources	<u>270,174</u>	<u>269,090</u>	<u>268,317</u>	<u>266,689</u>	<u>241,641</u>	<u>299,831</u>	<u>285,816</u>	<u>245,716</u>	<u>244,961</u>	<u>248,969</u>
Total Revenues	<u>5,690,621</u>	<u>5,291,893</u>	<u>5,387,807</u>	<u>5,167,366</u>	<u>5,080,906</u>	<u>4,978,125</u>	<u>4,719,111</u>	<u>4,697,705</u>	<u>4,722,923</u>	<u>4,150,826</u>
Expenditures:										
Instruction	2,025,467	1,813,449	1,770,758	1,685,178	1,716,428	1,770,685	1,891,652	1,853,135	1,926,833	1,868,396
Administration	2,318,100	1,989,457	2,011,513	1,915,198	1,869,167	1,970,735	1,839,024	1,822,872	1,796,305	1,497,974
Support Services	1,270,054	1,444,916	1,473,589	1,420,458	1,369,873	1,063,843	1,128,745	1,101,914	896,834	728,836
Capital Outlay	<u>127,777</u>	<u>1,287</u>	<u>7,520</u>	<u>29,676</u>	<u>43,842</u>	<u>131,758</u>	<u>50,620</u>	<u>118,028</u>	<u>77,091</u>	<u>613,658</u>
Total Expenditures	<u>5,741,398</u>	<u>5,249,109</u>	<u>5,263,380</u>	<u>5,050,510</u>	<u>4,999,310</u>	<u>4,937,021</u>	<u>4,910,041</u>	<u>4,895,949</u>	<u>4,697,063</u>	<u>4,708,864</u>
Net Change in Fund Balance	<u>\$ (50,777)</u>	<u>\$ 42,784</u>	<u>\$ 124,427</u>	<u>\$ 116,856</u>	<u>\$ 81,596</u>	<u>\$ 41,104</u>	<u>\$ (190,930)</u>	<u>\$ (198,244)</u>	<u>\$ 25,860</u>	<u>\$ (558,038)</u>

Source: Comprehensive Annual Financial Report

PRIDE ACADEMY CHARTER SCHOOL
 General Fund - Other Local Revenue by Source
 Last Ten Fiscal Years
(modified accrual basis of accounting)
 Unaudited

Fiscal Year Ending June 30,	Interest Income	Miscellaneous Revenue	Total
2021	\$ 1,660	\$ 21,001	22,661
2020	5,437	2,111	7,548
2019	12,095	11,039	23,134
2018	230	997	1,227
2017	464	16,676	17,140
2016	12,636	2,668	15,304
2015	13,179	-	13,179
2014	5,098	142	5,240
2013	48,391	-	48,391
2012	6,563	-	6,563

Source: Charter School records

OPERATING INFORMATION

PRIDE ACADEMY CHARTER SCHOOL
 Full-Time Equivalent Charter School Employees by Function
 Last Ten Fiscal Years
Unaudited

Function	Fiscal Year Ending June 30,									
	2021	2020	2019	2018	2017	2016	2015	2014	2013	2012
Instruction	29	29	29	29	29	31	32	30	32.0	31
Administrative	9	8	8	8	8	9	8	3.0	3.0	3.0
Support Service	7	8	8	8	7	7	7	11	12	11
Total	45	45	45	45	44	47	47	44	47	45

Source: Charter School Personnel Records

PRIDE ACADEMY CHARTER SCHOOL
 Operating Statistics
 Last Ten Fiscal Years
Unaudited

Fiscal Year Ended June 30,	Enrollment	Operating Expenditures*	Cost Per Pupil	Percentage Change	Teaching Staff**	Pupil / Teacher Ratio	Average Daily Enrollment (ADE)***	Average Daily Attendance (ADA)***	Percent Change in Average Daily Enrollment	Student Attendance Percentage
2021	300	\$ 5,613,621	\$ 18,712	0.02%	29	10.3:1	299.7	292.9	0.05%	97.63%
2020	286	5,247,822	18,349	0.01%	29	9.7:0	285.0	285.0	0.00%	0.00%
2019	287	5,255,860	18,313	4.68%	29	9.9:1	287.5	287.5	0.00%	0.00%
2018	287	5,020,834	17,494	1.32%	29	9.9:1	287.0	278.0	0.00%	97.00%
2017	287	4,955,468	17,266	2.76%	29	9.9:1	287.5	278.9	0.00%	97.18%
2016	286	4,805,263	16,802	-9.07%	31	9.3:1	287.5	279.4	8.17%	97.18%
2015	263	4,859,421	18,477	1.71%	32	8.2:1	264.0	256.0	0.38%	96.97%
2014	263	4,777,921	18,167	3.81%	30	8.8:1	263.0	255.1	-0.34%	97.00%
2013	264	4,619,972	17,500	2.56%	32	8.5:1	263.9	253.0	9.28%	95.87%
2012	240	4,095,206	17,063	13.10%	31	7.7:1	239.4	232.6	2.63%	97.16%

Sources: Charter School records.

Note: Enrollment based on annual final Charter School count.

* Operating expenditures equal total expenditures less debt service and capital outlay.

** Teaching staff includes only full-time equivalents of certified staff.

*** Average daily enrollment and average daily attendance are obtained from School Register Summary (SRS).

Commercial General Liability Coverage

Named Insured: Pride Academy Charter School

Policy Term: 7/1/2020 to 7/1/2021

Coverage Form Used

Occurrence Form Claims Made Form Retroactive Date:

Limits of Liability

	General Liability		
	Per Occurrence Limit	\$	16,000,000
	Fund Aggregate		
	Employee Benefits Liability Limit	\$16,000,000 per occurrence/annual aggregate	
	Deductible	\$1,000 each claim	
	School Leaders Professional Liability	Coverage A	Coverage B
	Per Occurrence		\$100,000
*Claims-Made From Retro Date: 7/1/1986	Aggregate	\$16,000,000	\$300,000
	Deductible	\$5,000 each claim	\$5,000 each claim
	Sexual Abuse and Molestation	\$16,000,000 per occurrence	
	Fund Aggregate	\$17,000,000 annual NJSIG aggregate	
	Boiler Machinery	\$7,648,877 (\$1,000 deductible)	
	Employee Dishonesty	\$250,000 (\$1,000 deductible)	
	Money and Securities	\$50,000 (\$500 deductible)	
*Claims-Made From Retro Date: At Inception	Environmental Impairment Liability	\$1,000,000 each incident; \$2,000,000 aggregate	
	Fund Aggregate	\$11,000,000 (\$50,000 deductible)	
	Critical Incident Management	\$1,000,000	
	School Leaders Professional	Duplicate request (see above)	
	Deductible		

PRIDE ACADEMY CHARTER SCHOOL
 Charter School Performance Framework Financial Indicators
 Fiscal Ratios
 Last Three Fiscal Years

	2019	2020	2021	Source
	Audit	Audit	Audit	
Cash	\$ 809,133	\$ 873,007	\$ 1,351,075	Audit: Exhibit A-1
Current Assets (Includes CASH)	1,502,647	1,335,756	1,650,667	Audit: Exhibit A-1
Total Assets	1,559,010	1,392,119	1,707,030	Audit: Exhibit A-1
Current Liabilities	422,591	208,708	571,191	Audit: Exhibit A-1
Total liabilities	1,204,290	1,061,282	1,488,695	Audit: Exhibit A-1
Net Assets	272,680	272,913	164,350	Audit: Exhibit A-1
Total Revenue	6,013,575	5,763,597	6,278,618	Audit: Exhibit A-2
Total Expenses	5,941,520	5,763,364	6,390,361	Audit: Exhibit A-2
Change in Net Assets	72,055	233	(111,743)	Audit: Exhibit A-2
Depreciation Expense	20,071	-	-	Financial Statements/Audit Workpapers
Interest Expense	-	-	-	Financial Statements/Audit Workpapers
Principal Payments	-	-	-	Financial Statements/Audit Workpapers
Interest Payments	-	-	-	Financial Statements/Audit Workpapers
Final Average Daily Enrollment	287.0	286.0	299.7	DOE Enrollment Reports
March 30th Budgeted Enrollment	287	286	300	Charter School Budget

RATIOS ANALYSIS...						Changes
Near Term Indicators	2019	2020	2021	3 YT CUM	Source:	Target
1a. Current Ratio	3.56	6.40	2.89		Current Assets/Current Liabilities	>1,1
1b. Unrestricted Days Cash	49.71	55.29	77.17		Cash/(Total Expenses/365)	30-60
1c. Enrollment Variance	0%	0%	0%		Average Daily Enrollment/Budgeted Enrollment	>95%
1d.* Default	None	None	None		Audit	not in default
Sustainability Indicators						
2a. Total Margin	0.012%	0.000%	0.000%	-3%	Change in Net Assets/Total Revenue	positive
2b. Debt to Asset	0.80	0.76	0.87		Total Liabilities/Total Assets	<9
2c.** Cash Flow	105,943	63,874	478,068		Net change in cash flow from prior years	3 yr cum positive
2d. Debt Service Coverage Ratio	N/A	N/A	N/A		(Change in Net Assets+Depreciation+Interest Expense)/(Principal & Interest Payments)	>1.10

* Is school in default of loan covenant(s) and/or is delinquent with debt service payments? Yes or No

** 2021 = 2021 Cash - 2020 Cash

SINGLE AUDIT SECTION



**INDEPENDENT AUDITOR'S REPORT ON INTERNAL CONTROL OVER FINANCIAL
REPORTING AND ON COMPLIANCE AND OTHER MATTERS BASED ON AN
AUDIT OF FINANCIAL STATEMENTS PERFORMED IN ACCORDANCE WITH
"GOVERNMENT AUDITING STANDARDS"**

Honorable President and
Members of the Board of Trustees
Pride Academy Charter School
County of Essex
East Orange, New Jersey

We have audited, in accordance with the auditing standards generally accepted in the United States of America; the standards applicable to financial audits contained in *Government Auditing Standards* issued by the Comptroller General of the United States; and in compliance with audit requirements as prescribed by the Office of School Finance, Department of Education, State of New Jersey, the financial statements of the governmental activities, the business-type activities, each major fund, and the aggregate remaining fund information of Pride Academy Charter School (Charter School), in the County of Essex, State of New Jersey, as of and for the fiscal year ended June 30, 2021, and the related notes to the financial statements, which collectively comprise the Charter School's basic financial statements, as listed in the table of contents, and have issued our report thereon dated February 11, 2022.

Internal Control over Financial Reporting

In planning and performing our audit of the financial statements, we considered the Charter School's internal control over financial reporting (internal control) to determine the audit procedures that are appropriate in the circumstances for the purpose of expressing our opinions on the financial statements, but not for the purpose of expressing an opinion on the effectiveness of the Charter School's internal control. Accordingly, we do not express an opinion on the effectiveness of the Charter School's internal control.

A deficiency in internal control exists when the design or operation of a control does not allow management or employees, in the normal course of performing their assigned functions, to prevent, or detect and correct, misstatements on a timely basis. A material weakness is a deficiency, or a combination of deficiencies, in internal control, such that there is reasonable possibility that a material misstatement of the entity's financial statements will not be prevented, or detected and corrected on a timely basis.

A *significant deficiency* is a deficiency, or a combination of deficiencies, in internal control that is less severe than a material weakness, yet important enough to merit attention by those charged with governance.

Our consideration of internal control was for the limited purpose described in the first paragraph of this section and was not designed to identify all deficiencies in internal control that might be material weakness or significant deficiencies. Given these limitations, during our audit we did not identify any deficiencies in internal control that we consider to be material weakness. However, material weakness may exist that have not been identified.

Compliance and Other Matters

As part of obtaining reasonable assurance about whether the Charter School's financial statements are free from material misstatement, we performed tests of its compliance with certain provisions of laws, regulations, contracts, and grant agreements, noncompliance with which could have a direct and material effect on the determination of financial statement amounts. However, providing an opinion on compliance with those provisions was not an objective of our audit, and accordingly, we do not express such an opinion. The results of our tests disclosed no instances of noncompliance or other matter that are required to be reported under audit requirements as prescribed by the Office of School Finance, Department of Education, State of New Jersey.

We also noted other matters that we reported to the Board of Trustees of the Pride Academy Charter School in a separate report entitled, Auditor's Management Report on Administrative Findings dated February 11, 2022.

Purpose of this Report

The purpose of this report is solely to describe the scope of our testing of internal control and compliance and the results of that testing, and not to provide an opinion on the effectiveness of the entity's internal control or on compliance. This report is an integral part of an audit performed in accordance with the Office of School Finance, Department of Education, State of New Jersey in considering the entity's internal control and compliance. Accordingly, this communication is not suitable for any other purpose.

This report is intended solely for the information and use of management, Pride Academy Charter School Board of Trustees, the New Jersey State Department of Education and other state awarding agencies and pass-through entities and is not intended to be and should not be used by anyone other than these specified parties. However, this report is a matter of public record and its distribution is not limited.

Respectfully Submitted,

Meshinsky & Associates, LLC CPA's
Union, New Jersey



Philip T. Meshinsky
Licensed Public School Accountant No.
CS00233400
Meshinsky & Associates LLC, CPA's

February 11, 2022



**REPORT ON COMPLIANCE FOR EACH MAJOR STATE PROGRAM
AND REPORT ON INTERNAL CONTROL OVER COMPLIANCE IN ACCORDANCE WITH
UNIFORM GUIDANCE AND NEW JERSEY CIRCULAR 15-08-OMB**

Honorable President and
Members of the Board of Trustees
Pride Academy Charter School
County of Essex
East Orange, New Jersey

Report on Compliance for Each Major State Program

We have audited the Pride Academy Charter School's compliance with the types of compliance requirements described in the New Jersey Compliance Manual "State Grant Compliance Supplement" that could have a direct and material effect on each of its major state programs for the fiscal year ended June 30, 2021. The Pride Academy Charter School's major state programs are identified in the Summary of Auditor's Results Section of the accompanying schedule of findings and questioned costs.

Management's Responsibility

The Charter School's management is responsible for compliance with the requirements of laws, regulations, contracts, and grants applicable to its state programs.

Auditor's Responsibility

Our responsibility is to express an opinion on compliance for each of the Charter School's major state programs based on our audit of the types of compliance requirements referred to above. We conducted our audit of compliance in accordance with auditing standards generally accepted in the United States of America; the standards applicable to financial audits as prescribed by the *Office of School Finance, Department of Education, State of New Jersey*; New Jersey Circular 15-08-OMB, *Single Audit Policy for Recipients of Federal Grants, State Grants and State Aid*. Those standards, Uniform Guidance and New Jersey Circular 15-08-OMB require that we plan and perform the audit to obtain reasonable assurance about whether noncompliance with the types of compliance requirements referred to above that could have a direct and material effect on a major state program occurred. An audit includes examining, on a test basis, evidence about the Charter School's compliance with those requirements and performing such other procedures as we considered necessary in the circumstances.

We believe that our audit provides a reasonable basis for our opinion on compliance for each major state program. However, our audit does not provide a legal determination of the Charter School's compliance.

Opinion on Each Major State Program

In our opinion, the Pride Academy Charter School, in the County of Essex, State of New Jersey, complied, in all material respects, with the types of compliance requirements referred to above that could have a direct and material effect on each of its major state programs for the year ended June 30, 2021.

Report on Internal Control over Compliance

Management of the Pride Academy Charter School is responsible for establishing and maintaining effective internal control over compliance with the types of compliance requirements referred to above. In planning and performing our audit of compliance, we considered the Charter School's internal control over compliance with the types of requirements that could have a direct and material effect on each major state program to determine the auditing procedures that are appropriate in the circumstances for the purpose of expressing an opinion on compliance for each major state program and to test and report on internal control over compliance in accordance with Uniform Guidance and New Jersey Circular 15-08-OMB, but not for the purpose of expressing an opinion on the effectiveness of internal control over compliance. Accordingly, we do not express an opinion on the effectiveness of the Charter School's internal control over compliance.

A deficiency in internal control over compliance exists when the design or operation of a control over compliance does not allow management or employees, in the normal course of performing their assigned functions, to prevent, or detect and correct, noncompliance with a type of compliance requirement of a state program on a timely basis. *A material weakness in internal control over compliance* is a deficiency, or combination of deficiencies, in internal control over compliance, such that there is a reasonable possibility that material noncompliance with a type of compliance requirement of a state program will not be prevented, or detected and corrected, on a timely basis. *A significant deficiency in internal control over compliance* is a deficiency, or a combination of deficiencies, in internal control over compliance with a type of compliance requirement of a state program that is less severe than a material weakness in internal control over compliance, yet important enough to merit attention by those charged with governance.

Our consideration of internal control over compliance was for the limited purpose described in the first paragraph of this section and was not designed to identify all deficiencies in internal control over compliance that might be material weaknesses or significant deficiencies. We did not identify any deficiencies in internal control over compliance that we consider to be material weaknesses. However, material weaknesses may exist that have not been identified.

Report on Schedule of Expenditures of State Financial Assistance Required by New Jersey Circular 15-08-OMB

We have audited the financial statements of the governmental activities, the business-type activities, each major fund, and the aggregate remaining fund information of the Pride Academy Charter School, as of and for the fiscal year ended June 30, 2021 and the related notes to the financial statements, which collectively comprise the Charter School's basic financial

statements. We issued our report thereon dated February 11, 2022, which contained unmodified opinion on those financial statements. Our audit was conducted for the purpose of forming opinions on the financial statements that collectively comprise the basic financial statements. The accompanying schedule of expenditures of state financial assistance as required by New Jersey Circular 15-08- OMB are presented for purposes of additional analysis and are not a required part of the basic financial statements. Such information is the responsibilities of management and was derived from and relates directly to the underlying accounting and other records used to prepare basic financial statements. The information has been subjected to the auditing procedures applied in the audit of the financial statements and certain additional procedures, including comparing and reconciling such information directly to the underlying accounting and other records used to prepare the basic financial statements or to the basic financial statements themselves, and other additional procedures in accordance with auditing standards generally accepted in the United States of America. In our opinion, the schedule of expenditures and schedule of relation to the basic financial statements as a whole.

Purpose of this Report

The purpose of this report on internal control over compliance is solely to describe the scope of our testing of internal control over compliance and the results that the testing based on the requirements of NJ Circular 15-08-OMB. Accordingly, this report is not suitable for any other purpose.

This report is intended solely for the information and use of the audit committee, management, Pride Academy Charter School Board of Trustees, the New Jersey State Department of Education and other state awarding agencies and pass-through entities and is not intended to be and should not be used by anyone other than these specified parties.

Respectfully Submitted,

Meshinsky & Associates, LLC CPA's
Union, New Jersey



Philip T. Meshinsky
Licensed Public-School Accountant
No. CS00233400
Meshinsky & Associates LLC, CPA's

February 11, 2022

PRIDE ACADEMY CHARTER SCHOOL
Schedule of Expenditures of Federal Awards
For The Fiscal Year Ended June 30, 2021

Federal Grantor/Pass-through Grantor/ Program Title	Federal CFDA Number	Grant or State Project Number	Program or Award Amount	Grant Period		Balance at June 30, 2019	Cash Received	Budgetary Expenditures	Balance at June 30, 2021	
				From	To				Accounts Receivable	Unearned Revenue
U.S. Department of Education										
Passed through State Department of Education										
Special Revenue Fund:										
<u>ESEA Consolidated</u>										
Title 1-A	84.010	ESEA-8010-20	\$ 167,364	7/1/20	6/30/21	\$ -	\$ 167,364	\$ 167,364	\$ -	\$ -
Title II-A	84.367A	ESEA-8010-20	16,478	7/1/20	6/30/21	-	16,478	16,478	-	-
Title IV-A	84.424A	ESEA-8010-20	11,742	7/1/20	6/30/21	-	11,742	11,742	-	-
ESEA Consolidated						-	195,584	195,584	-	-
<u>Individuals with Disabilities Cluster</u>										
I.D.E.A. Consolidated-Basic	84.027A	ESEA-8010-20	74,590	7/1/20	6/30/21	-	74,590	74,590	-	-
Total Special Revenue Fund						-	270,174	270,174	-	-
Total Federal Financial Award.						\$ -	\$ 270,174	\$ 270,174	\$ -	\$ -

The accompanying Notes to Schedules of Expenditures of Awards and Financial Assistance are an integral part of this schedule.

PRIDE ACADEMY CHARTER SCHOOL
Schedule of Expenditures of State Financial Assistance
For The Fiscal Year Ended June 30, 2021

State Grantor/Program Title	Grant or State Project Number	Program or Award Amount	Grant Period		Balance at June 30, 2020			Balance at June 30, 2021			MEMO
			From	To	Unearned Revenue (Accounts Receivable)	Cash Received	Budgetary Expenditures	Accounts Receivable	Unearned Revenue/ Interfund Payable	Budgetary Receivable	
State Department of Education											
General Fund:											
<i>State Aid-Public Cluster</i>											
Equalization Aid- State Share	20-495-034-5120-078	\$ -	7/1/19	6/30/20	\$ (65,900)	\$ 65,900	\$ -	\$ -	\$ -	\$ -	-
Equalization Aid- State Share	21-495-034-5120-078	-	7/1/20	6/30/21	-	3,298,615	(3,386,581)	87,966	-	-	3,386,581
Special Education Categorical Aid	21-495-034-5120-089	-	7/1/20	6/30/21	-	162,783	(162,783)	-	-	-	162,783
Security Aid	21-495-034-5120-084	-	7/1/20	6/30/21	-	137,012	(137,012)	-	-	-	137,012
Adjustment Aid	21-495-034-5120-085	-	7/1/20	6/30/21	-	254,700	(254,700)	-	-	-	254,700
Total State Aid- Public Cluster					(65,900)	3,919,010	(3,941,076)	87,966	-	-	3,941,076
On-Behalf TPAF Pension Contributions	21-495-034-5095-006	-	7/1/20	6/30/21	-	577,482	(577,482)	-	-	-	577,482
Reimburse TPAF - Social Security	20-495-034-5095-006	-	7/1/19	6/30/20	(7,294)	7,294	-	-	-	-	-
Reimburse TPAF - Social Security	21-495-034-5095-002	-	7/1/20	6/30/21	-	159,832	(159,832)	-	-	-	159,832
On-Behalf TPAF Post Retirement Medical	21-495-034-5095-002	-	7/1/20	6/30/21	-	181,587	(181,587)	-	-	-	181,587
Total General Fund					(73,194)	4,845,205	(4,859,977)	87,966	-	-	4,859,977
Total All Funds					(73,194)	4,845,205	(4,859,977)	87,966	-	-	4,859,977
State Financial Assistance Not Subject to Major Program Determination:											
General Funds:											
On-Behalf TPAF Pension Contributions	21-495-034-5095-006	-	7/1/20	6/30/21	-	(577,482)	577,482	-	-	-	(577,482)
On-Behalf TPAF Post Retirement Medical	21-495-034-5095-002	-	7/1/20	6/30/21	-	(181,587)	181,587	-	-	-	(181,587)
Total General Fund					-	(759,069)	759,069	-	-	-	(759,069)
Total State Financial Assistance					\$ (73,194)	\$ 4,086,136	\$ (4,100,908)	\$ 87,966	\$ -	\$ -	\$ 4,100,908

The accompanying Notes to Schedules of Expenditures of Awards and Financial Assistance are an integral part of this schedule.

PRIDE ACADEMY CHARTER SCHOOL
Notes to Schedules of Expenditures of Awards and Financial Assistance
June 30, 2021

NOTE 1. GENERAL

The accompanying schedules of expenditures of federal awards and state financial assistance include federal and state award activity of the Board of Trustees, Pride Academy Charter School. The Board of Trustees is defined in Note 1 to the board's basic financial statements. All federal and state awards received directly from federal and state agencies, as well as federal awards and state financial assistance passed through other government agencies is included on the schedule of expenditures of federal awards and state financial assistance.

NOTE 2. BASIS OF ACCOUNTING

The accompanying schedules of expenditures of awards and financial assistance are presented on the budgetary basis of accounting with the exception of programs recorded in the food service fund, which are presented using the accrual basis of accounting. These bases of accounting are described in Note 1 to the board's basic financial statements. The information in this schedule is presented in accordance with the requirements of 2 (CFR) Part 200 -Uniform Guidance Administrative Requirements, Cost Principles, and Audit Requirements for Federal Awards (Uniform Guidance) and the audit requirements as prescribed by the Office of School Finance, Department of Education, State of New Jersey; New Jersey Circular 15-08 OMB, Single Audit Policy for Recipients of Federal Grants, State Grants and State Aid. Therefore, some amounts presented in this schedule may differ from amounts presented in, or used in the presentation of, the basic financial statements. This does not apply to charter schools as districts are not permitted to defer the June payments to charter schools.

NOTE 3. RELATIONSHIP TO BASIC FINANCIAL STATEMENTS

The basic financial statements present the general fund and special revenue fund on a GAAP basis. Budgetary comparison statements or schedules (RSI) are presented for the general fund and special revenue fund to demonstrate finance-related legal compliance in which certain revenue is permitted by law or grant agreement to be recognized in the audit year, whereas for GAAP reporting, revenue is not recognized until the subsequent year or when expenditures have been made.

The general fund is presented in the accompanying schedules on the modified accrual basis with the exception of the revenue recognition of the one or more deferred June state aid payments in the current budget year, which is mandated pursuant to *N.J.S.A. 18A:22-44.2*. For GAAP purposes payments are not recognized until the subsequent budget year due to the state deferral and recording of the one or more June state aid payments in the subsequent year. The special revenue fund is presented in the accompanying schedules on the grant accounting budgetary basis which recognizes encumbrances as expenditures and also recognizes the related revenues, whereas the GAAP basis does not. The special revenue fund also recognizes the one or more June state aid payment in the current budget year, consistent with *N.J.S.A. 18A:22-4.2*.

PRIDE ACADEMY CHARTER SCHOOL
Notes to Schedules of Expenditures of Awards and Financial Assistance
June 30, 2021

NOTE 3. RELATIONSHIP TO BASIC FINANCIAL STATEMENTS (CONTINUED)

The net adjustment to reconcile from the budgetary basis to the GAAP basis is none for the general fund and none for the special revenue fund. See Notes to the Required Supplementary Information for a reconciliation of the budgetary basis to the modified accrual basis of accounting for the general and special revenue funds. Awards and financial assistance revenues are reported in the board's basic financial statements on a GAAP basis as presented below:

	Federal	State	Total
General Fund	\$ -	\$ 4,859,967	\$ 4,859,967
Special Revenue Fund	270,174	-	270,174
Food Service Fund	-	-	-
Total Awards & Financial Assistance	<u>\$ 270,174</u>	<u>\$ 4,859,967</u>	<u>\$ 5,130,141</u>

NOTE 4. RELATIONSHIP TO FEDERAL STATE FINANCIAL REPORTS

Amounts reported in the accompanying schedules agree with the amounts reported in the related federal and state financial reports.

NOTE 5. FEDERAL AND STATE LOANS OUTSTANDING

Pride Academy Charter School has no loan balances outstanding at June 30, 2021.

NOTE 6. OTHER

Revenues and expenditures reported under the Food Distribution Program represent current year value received and current year distributions respectively. The amount reported as TPAF Pension Contributions represents the amount paid by the state on behalf of the charter school for the year ended June 30, 2021. TPAF Social Security Contributions represents the amount reimbursed by the state for the employer's share of social security contributions for TPAF members for the year ended June 30, 2021.

NOTE 7. ON-BEHALF PROGRAMS NOT SUBJECT TO STATE SINGLE AUDIT

On-behalf State Programs for TPAF Pension and Post-Retirement Medical Benefits Contributions payments are not subject to a State single audit and, therefore, are excluded from major program determination. The Schedule of State Financial Assistance provides a reconciliation of State financial assistance reported in the Charter School's basic financial statements and the amount subject to State single audit and major program determination.

PRIDE ACADEMY CHARTER SCHOOL
Notes to Schedules of Expenditures of Awards and Financial Assistance
June 30, 2021

NOTE 7. ON-BEHALF PROGRAMS NOT SUBJECT TO STATE SINGLE AUDIT (CONTINUED)

<u>Program</u>	<u>Total</u>
ESEA Consolidated Title I	<u>\$ 167,364</u>

NOTE 8. SCHOOLWIDE PROGRAM FUNDS

Schoolwide programs are not separate federal programs as defined in Uniform Guidance; amounts used in schoolwide programs are included in the total expenditures of the program contributing the funds in the Schedule of Expenditures of Federal Awards. There are no funds by program included in schoolwide programs in the charter school.

PRIDE ACADEMY CHARTER SCHOOL
Schedule of Findings and Questioned Costs
For the Fiscal Year Ended June 30, 2021

Section I – Summary of Auditor’s Results

Financial Statements

Type of auditors’ report issued on financial statements Unmodified

Internal control over financial reporting:

1) Material weakness(es) identified? ___ Yes X No

2) Significant deficiencies identified that are not considered to be material weaknesses? ___ Yes X None Reported

Noncompliance material to basic financial statements noted? ___ Yes X No

Federal Awards

N/A

Internal Control over major programs:

1) Material weakness (es) identified? ___ Yes ___ No

2) Significant deficiencies identified? ___ Yes ___ None Reported

Type of auditor’s report issued on compliance for major programs: **N/A**

Any audit findings disclosed that are required to be reported in accordance with 2 CFR 200 section .516(a)? ___ Yes ___ No

Identification of major programs:

CFDA Number(s) FAIN Number(s) Name of Federal Program or Cluster

N/A

Dollar threshold used to distinguish type A or type B Programs: **N/A**

Auditee qualified as low-risk auditee? ___ Yes ___ No

State Awards

Dollar threshold used to distinguish between Type A and Type B programs: \$750,000

Auditee qualified as low-risk auditee? Yes No

Internal control over major programs:

1) Material weakness(es) identified? Yes No

2) Significant deficiencies identified that are not considered to be material weaknesses? Yes None Reported

Type of auditors' report issued on compliance for major programs Unmodified

Any audit findings disclosed that are required to be reported in accordance with NJ Circular 15-08-OMB? Yes No

Identification of major state programs:

GMIS Number(s)	Name of State Program
<u>21-495-034-5120-085</u>	<u>STATE ADJUSTMENT AID</u>
<u>21-495-034-5120-078</u>	<u>EQUALIZATION AID</u>
<u>21-495-034-5120-089</u>	<u>SPECIAL EDUCATION CATEGORICAL AID</u>
<u>21-495-034-5120-084</u>	<u>SECURITY AID</u>

PRIDE ACADEMY CHARTER SCHOOL
Schedule of Findings and Questioned Costs
For the Fiscal Year Ended June 30, 2021

Section II –Financial Statement Findings

This section identifies the significant deficiencies, material weaknesses, fraud, illegal acts, violations of provisions of contracts and grant agreements, and abuse related to the financial statements for which *Government Auditing Standards* requires reporting in a NJ Circular 15-08-OMB. See paragraphs 13.15 and 13.35.

Finding

There were no matters reported.

PRIDE ACADEMY CHARTER SCHOOL
Schedule of Findings and Questioned Costs
For the Fiscal Year Ended June 30, 2021

***Section III – State Financial Assistance
Findings and Questioned Costs***

This section identifies audit findings required to be reported by audit requirements for federal awards and NJ Circular 15-08-OMB, as applicable.

FEDERAL AWARDS

N/A

STATE AWARDS

Findings

There were no matters reported.

PRIDE ACADEMY CHARTER SCHOOL
Summary Schedule of Prior Year Audit Findings
And Questioned Costs As Prepared by Management
For the Fiscal Year Ended June 30, 2021

STATUS OF PRIOR YEAR FINDINGS

This section identifies the status of prior-year findings related to the basic financial statements and federal and state awards that are required to be reported in accordance with Chapter 6.12 of *Government Auditing Standards*, NJ Circular 04-04-OMB or 15-08-OMB as applicable.

Findings

There were no matters reported.