

**HOPE ACADEMY CHARTER SCHOOL
ASBURY PARK, NEW JERSEY**

**COMPREHENSIVE ANNUAL
FINANCIAL REPORT**

FOR THE FISCAL YEAR ENDED JUNE 30, 2021

HOPE ACADEMY CHARTER SCHOOL

***COMPREHENSIVE ANNUAL
FINANCIAL REPORT***

FISCAL YEAR ENDED JUNE 30, 2021

HOPE ACADEMY CHARTER SCHOOL

***Hope Academy Charter School
Board of Trustees
Asbury Park, New Jersey***

***Comprehensive Annual Financial Report
For The Fiscal Year Ended June 30, 2021***

**COMPREHENSIVE ANNUAL
FINANCIAL REPORT
OF THE
HOPE ACADEMY CHARTER SCHOOL
ASBURY PARK, NEW JERSEY
FOR THE FISCAL YEAR ENDED JUNE 30, 2021**

Prepared by

***Hope Academy Charter School
Finance Department***

And

Meshinsky & Associates LLC, CPAs

STATE BOARD OF EDUCATION

KATHY A. GOLDENBERG.....Burlington
President

ANDREW J. MULVIHILL.....Sussex
Vice President

ARCELIO APONTE.....Middlesex

MARY BETH BERRY.....Hunterdon

ELAINE BOBROVE.....Camden

FATIMAH BURNAM-WATKINS.....Union

RONALD K. BUTCHER.....Gloucester

JACK FORNARO.....Warren

MARY ELIZABETH GAZI.....Somerset

NEDD JAMES JOHNSON, Ed. D.....Salem

ERNEST P. LEPORE.....Hudson

JOSEPH RICCA, JR., Ed.D.....Morris

SYLVIA SYLVIA-CIOFFI.....Monmouth

**Angelica Allen-McMillian Acting Commissioner of Education
State Board of Education**

**HOPE ACADEMY CHARTER SCHOOL
TABLE OF CONTENTS**

Page

INTRODUCTORY SECTION	1
Letter of Transmittal	2
Organizational Chart	6
Roster of Officials	7
Consultants and Advisors	8
FINANCIAL SECTION	9
Independent Auditor’s Report	10
REQUIRED SUPPLEMENTARY INFORMATION – PART I	13
Management’s Discussion and Analysis	14
BASIC FINANCIAL STATEMENTS.....	20
SECTION A – CHARTER SCHOOL–WIDE FINANCIAL STATEMENTS	21
A-1 Statement of Net Position.....	22
A-2 Statement of Activities.....	23
SECTION B – FUND FINANCIAL STATEMENTS	24
GOVERNMENTAL FUNDS	25
B-1 Balance Sheet.....	26
B-2 Statement of Revenues, Expenditures, and Changes in Fund Balance	27
B-3 Reconciliation of the Statements of Revenues, Expenditures, and Changes in Fund Balances of Governmental Funds to the Statement of Activities	28
PROPRIETARY FUNDS	29
B-4 Statement of Fund Net Position	30
B-5 Statement of Revenues, Expenses, and Changes in Net Position	31
B-6 Statement of Cash Flows	32
FIDUCIARY FUNDS	33
B-7 Statement of Fiduciary Net Position	34
NOTES TO THE FINANCIAL STATEMENTS	35
REQUIRED SUPPLEMENTARY INFORMATION – PART II	68
SECTION C – BUDGETARY COMPARISON SCHEDULES	69
C-1 Budgetary Comparison Schedule – General Fund	70
C-2 Budgetary Comparison Schedule – Special Revenue Fund.....	72
NOTES TO THE REQUIRED SUPPLEMENTARY INFORMATION.....	73
C-3 Budget-To-GAAP Reconciliation	74

**HOPE ACADEMY CHARTER SCHOOL
TABLE OF CONTENTS**

	Page
REQUIRED SUPPLEMENTARY INFORMATION – PART III	75
SCHEDULE L - SCHEDULES RELATED TO ACCOUNTING AND REPORTING FOR PENSIONS (GASB 68)	76
L-1 Schedules of the District’s Proportionate Share of the Net Pension Liability - PERS	77
L-2 Schedules of District Contributions - PERS.....	78
L-3 Schedules of the District’s Proportionate Share of the Net Pension Liability - TPAF.....	N/A
NOTES TO REQUIRED SUPPLEMENTARY INFORMATION III.....	79
OTHER SUPPLEMENTARY INFORMATION	82
SECTION E – SPECIAL REVENUE FUND	83
E-1 Combining Schedule of Revenues and Expenditures – Budgetary Basis	84
SECTION G – PROPRIETARY FUNDS	85
SECTION H – FIDUCIARY FUNDS	86
H-1 Combining Statement of Fiduciary Net Position	87
H-3 Student Activity Agency Fund Schedule of Receipts and Disbursements	N/A
H-4 Payroll Agency Fund Schedule of Receipts and Disbursements.....	88
STATISTICAL SECTION (UNAUDITED).....	89
INTRODUCTION TO THE STATISTICAL SECTION.....	90
FINANCIAL TRENDS	91
J-1 Net Assets/Position by Component.....	92
J-2 Changes in Net Assets/Position	93
J-3 Fund Balances – Governmental Funds	94
J-4 Changes in Fund Balances – Governmental Funds	95
J-5 General Fund Other Local Revenue by Source (NJ).....	96
DEMOGRAPHIC AND ECONOMIC INFORMATION	97
J-14 Demographic and Economic Statistics	98
J-15 Principal Employers, Current and Ten Years Ago	99
OPERATING INFORMATION.....	100
J-16 Full-Time Equivalent Charter School Employees by Function/Program	101
J-17 Operating Statistics	102
J-18 School Building Information.....	103
J-20 Insurance Schedule.....	104
J-21 Charter School Performance Framework, Financial Performance, Fiscal Ratios	105

**HOPE ACADEMY CHARTER SCHOOL
TABLE OF CONTENTS**

		Page
SINGLE AUDIT SECTION.....		106
K-1	Independent Auditor’s Report on Internal Control Over Financial Reporting and On Compliance and Other Matters Based On an Audit of Financial Statements Performed In Accordance With Government Auditing Standards.....	107
K-2	Independent Auditor’s Report on Compliance For Each Major State Program; Report on Internal Over Compliance; And Report on Schedule of Expenditures of State Finance required by OMB New Jersey OMB Circular 04-04	110
K-3	Schedule of Expenditures of Federal Awards.....	112
K-4	Schedule of Expenditures of State Financial Assistance – Schedule B	114
K-5	Notes to Schedules of Expenditures of Awards and Financial Assistance	115
K-6	Schedule of Findings and Questioned Costs	118
K-7	Summary Schedule of Prior Audit Findings and Questioned Costs as Prepared by Management.....	121

INTRODUCTORY SECTION



**HOPE ACADEMY CHARTER SCHOOL
601 GRAND AVENUE
ASBURY PARK, NEW JERSEY 07712
(732) 988-4227**

November 15, 2021

Honorable President and
Members of the Board of Trustees
Hope Academy Charter School
601 Grand Avenue
Asbury Park, New Jersey 07712

Dear Board Members:

We are pleased to present to you the Comprehensive Annual Financial Report (CAFR) of the Hope Academy Charter School (Charter School) for the fiscal year ended June 30, 2021. This CAFR includes the Charter School's Basic Financial Statements prepared in accordance with Governmental Accounting Standards Board Statement 34.

The Charter School has elected to continue with this financial reporting model which we believe will provide all users of this document with much more useful financial and statistical information. Responsibility for both the accuracy of the data and completeness and fairness of the presentation, including all disclosures, rests with the management of the Board of Trustees (Board).

To the best of our knowledge and belief, the data presented in this report is accurate in all material respects and is reported in a manner designed to present fairly the financial position and results of operations of the Charter School. This report will provide the taxpayers of the Hope Academy Charter School with comprehensive financial data in a format enabling them to gain an understanding of the Charter School's financial affairs.

The Comprehensive Annual Financial Report is presented in four sections as follows:

- The Introductory Section contains a table of contents, Letter of Transmittal, List of Principal Officials, and an Organizational Chart of the Charter School;
- The Financial Section begins with the Independent Auditors' Report and includes the Management's Discussion and Analysis, the Basic Financial Statements and Notes providing an overview of the Charter School's financial position and operating results, and other schedules providing detailed budgetary information;
- The Statistical Section includes selected economic and demographic information, financial trends, and the fiscal capacity of the Charter School, generally presented on a multi-year basis;
- The Single Audit Section — The Charter School is required to undergo an annual single audit

in conformity with the provisions of the Single Audit Act Amendments of 1996, the U.S. Office of Management and Budget (OMB) Circular A-133, “Audits of States, Local Governments and Non-Profit Organizations”, and the New Jersey State Office of Management and Budget (OMB) Circular 04-04, “Single Audit Policy for Recipients of Federal Grants, State Grants and State Aid”. Information related to this single audit, including the independent auditor’s report on the internal control and compliance with applicable laws, regulations, contracts and grants, along with findings and questioned costs, are included in the single audit section of this report.

Charter School Organization

An elected five-member Board of Trustees (the “Board”) serves as the policy maker for the Charter School. The Board adopts an annual budget and directly approves all expenditures which serve as the basis for control over and authorization for all expenditures of Charter School tax money.

The Superintendent Chief School Administrator (CSA) is the chief executive officer of the Charter School, responsible to the Board for total educational and support operations. The School Business Administrator is the chief financial officer of the Charter School, responsible to the Board for maintaining all financial records, issuing warrants in payment of liabilities incurred by the Charter School, acting as custodian of all Charter School funds, and investing idle funds as permitted by New Jersey law.

1. REPORTING ENTITY AND ITS SERVICES: Hope Academy Charter School is an independent reporting entity within the criteria adopted by the Government Auditing Standards Board (GASB) as established by GASB Statement No. 14. All funds and account groups of the Charter School are included in this report. The Charter School’s Board of Trustees, constitutes the Charter School’s reporting entity.

The Hope Academy Charter School provides a full range of educational services appropriate to grade levels Kindergarten through Grade 8. These services include regular, as well as special education, ELL and basic skills instruction. The Charter School completed the 2019-2020 school year with an enrollment of 253 students. The following details the student enrollment of the Charter School:

REPORTING ENTITY AND ITS SERVICES (CONTINUED):

Average Daily Enrollment		
Fiscal Year	Student Enrollment	Percentage Change
2020-2021	252	+1.16%
2019-2020	249.1	+7.46%
2018-2019	231.8	+6.9%
2017-2018	216.57	+4.67%
2016-2017	206.9	+0.24%
2015-2016	206.4	+1.43%
2014-2015	203.5	-0.54%
2013-2014	204.6	-0.92%
2012-2013	206.5	+5.79%

2. ECONOMIC CONDITION AND OUTLOOK: Asbury Park continues to experience a period of development and expansion that is expected to continue through the Twenty-First Century. The increasing number of businesses within the community results in an increase in the employment level which results in an increased tax base, both residential and industrial. This expansion is evident on the east side of town and the planning grant received by the Asbury Park Housing Authority in 2016 will result in similar growth on the west side as well. The expansion is expected to continue which suggests Asbury Park will continue to prosper.

3. In February 28, 2017, Hope Academy was approved for enrollment expansion that resulted in an increase enrollment by 46 students in grades Kindergarten through Second, for a total of 253 students by the 2019-20 school year. The school submitted a Charter Renewal application on October 15, 2019, which included a request to continue expansion to a maximum of 360 students by the end of the next Charter term, 2024-2025.

4. Hope Academy Charter School purchased its main facility at 601 Grand Avenue on November 29, 2016, resulting in an annual savings of \$174,000 over the prior lease agreement. The school renovated unfinished space to create a new Music Room and Records Room during the 2017-2018 school year. In June 2020, the school purchased an adjacent building at 500 Grand Avenue, to better accommodate students. The school moved forward with renovations during the 2020-21 fiscal year to bring the building in compliance with any municipal code violations. Unfortunately, due to the COVID-19 Pandemic, the school was unable to open the building for the Kindergarten Class during the 2021-22 School Year. Kindergarten students will be housed in this facility during the 2021-22 school year. Having full ownership of both buildings has allowed the school to realize an annual savings of approximately \$110,000 over the previous lease agreement

5. INTERNAL ACCOUNTING CONTROLS: Management of the Board of Trustees is responsible for establishing and maintaining an internal control structure designed to ensure that the assets of the Charter School are protected from loss, theft or misuse and to ensure that adequate accounting data are compiled to allow for the preparation of financial statements in conformity with generally accepted accounting principles (GAAP). The internal control structure is designed to provide reasonable, but not absolute, assurance that these objectives are met. The concept of reasonable assurance recognizes that: (1) the cost of a control should not exceed the benefits likely to be derived; and (2) the valuation of costs and benefits require estimates and judgments by management.

As a recipient of Federal and State financial assistance, the Charter School is also responsible for ensuring that an adequate internal control structure is in place to ensure compliance with applicable laws and regulations related to those programs. This internal control structure is subject to periodic evaluation by the Charter School management.

As part of the Charter School's single audit described earlier, tests are made to determine the adequacy of the internal control structure, including that portion related to Federal and State financial assistance programs, as well as to determine that the Charter School has complied with applicable laws, regulations, contracts, and grants.

6. BUDGETARY CONTROLS: In addition to internal accounting controls, the Charter School maintains budgetary controls. The objective of these budgetary controls is to ensure compliance with legal provisions embodied in the annual appropriated budget approved by the voters of the municipality. Annual appropriated budgets are adopted for the general fund and the special revenue fund. The final budget amount, as amended for the fiscal year, is reflected in the financial section.

An encumbrance accounting system is used to record outstanding purchase commitments on a line item basis. Open encumbrances at year-end are either canceled or are included as re-appropriations of fund balance in the subsequent year. Those amounts to be re-appropriated are reported as reservations of fund balance at June 30, 2021.

7. **CASH MANAGEMENT:** The investment policy of the Charter School is guided in large part by state statute as detailed in "Notes to the Financial Statement" Note 2. The Charter School had adopted a cash management plan which requires it to deposit funds in public depositories protected from loss under the provisions of the Governmental Unit Deposit Protection Act ("GUDPA"). GUDPA was enacted in 1970 to protect Government Units from a loss of funds on deposit with a failed banking institution in New Jersey. The law requires governmental units to deposit public funds only in public depositories located in New Jersey, where the funds are secured in accordance with the Act.

8. **RISK MANAGEMENT:** The Charter School carries various forms of insurance, including but not limited to general liability, automobile liability and comprehensive collision, hazard and theft insurance on property and contents.

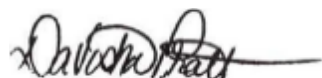
9. **OTHER INFORMATION:**

Independent Audit - State statutes require an annual audit by independent certified public accountants or registered municipal accountants. The accounting firm of Meshinsky & Associates LLC, CPA's, was appointed by the Board of Trustees. In addition to meeting the requirements set forth in State statutes, the audit also was designed to meet the requirements of the Title 2 U.S. Code of Federal Regulations (CFR) Part 200, Uniform Administrative Requirements, Cost Principles, and Audit Requirements for Federal Awards (Uniform Guidance) and the audit requirements as prescribed by the Office of School Finance, Department of Education, State of New Jersey; New Jersey Circular 15-08 OMB. The auditor's report on the basic financial statements and specific required supplemental information is included in the financial section of this report. The auditors' reports, related specifically to the single audit, are included in the single audit section of this report.

10. **ANTI-BULLYING:** On January 5, 2011, Governor Chris Christie signed into law P.L. 2010, Chapter 122, known as the Anti-Bullying Bill of Rights. The Anti-Bullying Bill of Rights Act ("Act") requires initial and on-going training for all staff members, Anti-Bullying Specialists, Anti-Bullying Coordinators, administrative staff and Board members. N.J.S.A. 18A:37-22(d) requires every teacher to complete at least two hours of instruction on harassment, intimidation, and bullying prevention in each professional development period. In 2018-2019 training was provided for harassment, intimidation and bullying prevention to comply with the training requirements of the Act.

11. **ACKNOWLEDGEMENTS:** We would like to express our appreciation to the members of the Hope Academy Charter School Board of Trustees for their concern in providing fiscal accountability to the citizens and taxpayers of the Charter School and thereby contributing their full support to the development and maintenance of our financial operation. The preparation of this report could not have been accomplished without the efficient and dedicated services of our staff.

Respectfully submitted,



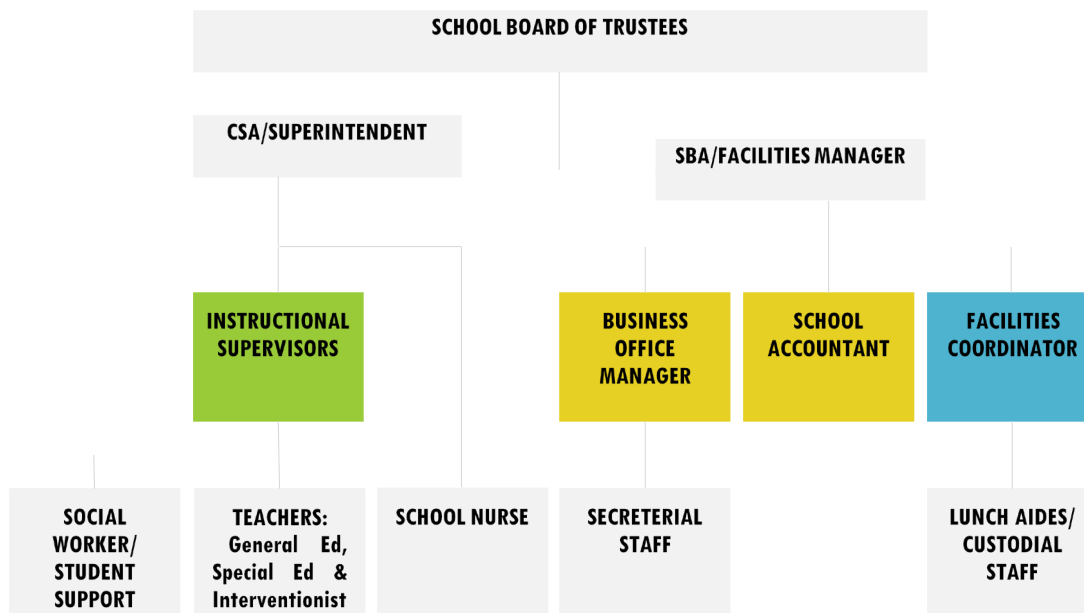
DaVisha T. Pratt
Principal / CSA



Dwayne McNeil
Business Administrator/Board Secretary

HOPE ACADEMY CHARTER SCHOOL

20-21 ORGANIZATION CHART



**ROSTER OF OFFICIALS
JUNE 30, 2021**

MEMBERS OF THE BOARD OF TRUSTEES

Claudia Morgan, President

Sheree Sanders-Jones, Vice President

Kevin Elam, Trustee

Jakora Holman, Trustee

Kanesha Jones, Trustee

OTHER OFFICIALS

DaVisha Pratt, Superintendent/Chief School Administrator

Dwayne McNeil, Business Administrator/Board Secretary

CONSULTANTS AND ADVISORS

Audit Firm

Meshinsky & Associates LLC
Certified Public Accountants
1155 W. Chestnut Street, Suite 2D
Union, New Jersey 07083

Attorney

Frederick Neimann, P.C.
3499 Route 9 North
Suite 1-F
Freehold, New Jersey 07728

Official Depository

TD Bank
2200 Highway 66
Neptune, New Jersey 07753

FINANCIAL SECTION



MESHINSKY & ASSOCIATES LLC

CERTIFIED PUBLIC ACCOUNTANTS,
CONSULTANTS & INDEPENDENT TRUSTEES

Independent Auditor's Report

Honorable President
Members of the Board of Trustees
Hope Academy Charter School
County of Monmouth
Asbury Park, New Jersey

Report on the Financial Statements

We have audited the accompanying financial statements of the governmental activities, the business-type activities, each major fund, and the aggregate remaining fund information of the Hope Academy Charter School (Charter School), in the County of Monmouth, State of New Jersey, as of and for the fiscal year ended June 30, 2021, and the related notes to the financial statements, which collectively comprise the Charter School's basic financial statements as listed in the table of contents.

Management's Responsibility for the Financial Statements

The Charter School's management is responsible for the preparation and fair presentation of these financial statements in accordance with accounting principles generally accepted in the United States of America; this includes the design, implementation, and maintenance of internal control relevant to the preparation and fair presentation of financial statements that are free from material misstatement, whether due to fraud or error.

Auditor's Responsibility

Our responsibility is to express opinions on these financial statements based on our audit. We conducted our audit in accordance with auditing standards generally accepted in the United States of America and the standards applicable to financial audit contained in *Government Auditing Standards*, issued by the Comptroller General of the United States; and audit requirements as prescribed by the Office of Finance, Department of Education, State of New Jersey. Those standards require that we plan and perform the audit to obtain reasonable assurance about whether the financial statements are free from material misstatement.

An audit involves performing procedures to obtain audit evidence about the amounts and disclosures in the financial statements. The procedures selected depend on the auditor's judgment, including the assessment of the risks of material misstatement of the financial statements, whether due to fraud or error. In making those risk assessments, the auditor considers internal control relevant to the entity's preparation and fair presentation of the financial statements in order to design audit procedures that are appropriate in the circumstances, but not for the purpose of expressing an opinion on the effectiveness of the entity's internal control. Accordingly, we express no such opinion. An audit also includes evaluating the appropriateness of accounting policies used and the reasonableness of significant accounting estimates made by management, as well as evaluating the overall presentation of the financial statements.

We believe that the audit evidence we have obtained is sufficient and appropriate to provide a basis for our audit opinions.

Opinions

In our opinion, the financial statements referred to above present fairly, in all material respects, the respective financial position of the governmental activities, the business-type activities, each major fund, and the aggregate remaining fund information of the Hope Academy Charter School, in the County of Monmouth, State of New Jersey, as of June 30, 2021, and the respective changes in the financial position and, where applicable, cash flows thereof for the year then ended in accordance with accounting principles generally accepted in the United States of America.

Other Matters

Required Supplementary Information

Accounting principles generally accepted in the United States of America require that the Management's Discussion and Analysis and Budgetary Comparison Information starting on pages 14 and 66, respectively, be presented to supplement the basic financial statements. Such information, although not a part of the basic financial statements, is required by the Governmental Accounting Standards Board who considers it to be an essential part of financial reporting for placing the basic financial statements in an appropriate operational, economic, or historical context. We have applied certain limited procedures to the required supplementary information in accordance with auditing standards generally accepted in the United States of America, which consisted of inquiries of management about the methods of preparing the information and comparing the information for consistency with management's response to our inquiries, the basic financial statements, and other knowledge we obtained during our audit of the basic financial statements. We do not express an opinion or provide any assurance on the information because the limited procedures do not provide us with sufficient evidence to express an opinion or provide any assurance.

Other Information

Our audit was conducted for the purpose of forming opinions on the financial statements that collectively comprise the Charter School's basic financial statements. The accompanying supplementary information such as the combining and individual fund financial statements and schedules of expenditures of federal awards and state financial assistance, as required by in the U.S. *Office of Management and Budget (OMB) Compliance Supplement* and the *New Jersey Circular 15-08 OMB State Aid/Grant Compliance Supplement* respectively; and the other information, such as the introductory and statistical sections are presented for purposes of additional analysis and are not a required part of the basic financial statements.

The combining and individual nonmajor fund financial statements and schedules of expenditures of federal awards and state financial assistance are the responsibility of management and were derived from and relate directly to the underlying accounting and other records use to prepare the basic financial statements. Such information has been subjected to the auditing procedures applied in the audit of the basic financial statements and certain additional procedures, including comparing and reconciling such information directly to the underlying accounting and other records used to prepare the basic financial statements or to the basic financial statements themselves, and other additional procedures in accordance with auditing standards generally accepted in the United States of America. In our opinion, the combining and individual non-major

fund financial statements and schedules of expenditures of federal awards and state financial assistance are fairly stated, in all material respects, in relation to the basic financial statements as a whole.

The introductory and statistical sections have not been subjected to the auditing procedures applied in the audit of the basic financial statements, and accordingly, we do not express an opinion or provide any assurance on it.

Other Reporting Required by *Government Auditing Standards and the Division of Finance, Department of Education, State of New Jersey*

In accordance with *Government Auditing Standards*, we have also issued our report dated March 14, 2022 on our consideration of the Hope Academy Charter School's internal control over financial reporting and our tests of its compliance with certain provisions of laws, regulations, contracts, and grant agreements and other matters.

The purpose of that report is to describe the scope of our testing of internal control over financial reporting and compliance and the results of that testing, and not to provide an opinion on internal control over financial reporting or on compliance. That report is an integral part of an audit performed in accordance with *Government Auditing Standards and the Division of Finance, Department of Education, State of New Jersey* in considering the Charter School's internal control over financial reporting and compliance.

Meshinsky & Associates LLC, CPA's



Philip T. Meshinsky
Licensed Public-School Accountant
No. CS00233400
Meshinsky & Associates LLC, CPA's
Union, New Jersey

March 14, 2022

REQUIRED SUPPLEMENTARY INFORMATION – PART I

**HOPE ACADEMY CHARTER SCHOOL
ASBURY PARK, NEW JERSEY**

**MANAGEMENT'S DISCUSSION AND ANALYSIS
FOR THE FISCAL YEAR ENDED JUNE 30, 2021
UNAUDITED**

The discussion and analysis of Hope Academy Charter School's financial performance provides an overall review of the Charter School's financial activities for the fiscal year ended June 30, 2021. The intent of this discussion and analysis is to look at the Charter School's financial performance as a whole; readers should also review the basic financial statements and notes to enhance their understanding of the Charter School's financial performance. Certain comparative information between the current year (2020 to 2021) and the prior year (2019 to 2020) is required to be presented in the MD & A.

Financial Highlights

Key financial highlights for 2021 are as follows:

- ❖ General revenues accounted for \$5,092,759 in revenue or 92% percent of all revenues. Program specific revenues in the form of charges for services and operating grants and contributions accounted for \$472,213 or 8% percent of total revenues of \$5,564,972.
- ❖ The Charter School had \$5,219,682 in expenses; only \$472,213 of these expenses were offset by program specific charges for services, grants or contributions. General revenues of \$5,092,759 were not adequate to provide for these programs.
- ❖ Among governmental funds, the General Fund had \$4,591,303 in revenues and \$4,023,757 in expenditures. The General Fund's fund balance increased \$567,546 from 2020. This increase was anticipated by the Board of Trustees.

Using this Comprehensive Annual Financial Report (CAFR)

This annual report consists of a series of financial statements and notes to those statements. These statements are organized so the reader can understand Hope Academy Charter School as a financial whole, an entire operating entity. The statements then proceed to provide an increasingly detailed look at specific financial activities.

The *Statement of Net Position* and *Statement of Activities* provide information about the activities of the whole Charter School, presenting both an aggregate view of the Charter School's finances and a longer-term view of those finances. Fund financial statements provide the next level of detail. For governmental funds, these statements tell how services were financed in the short-term as well as what remains for future spending. The fund financial statements also look at the Charter School's most significant funds with all other non-major funds presented in total in one column. In the case of Hope Academy Charter School, the General Fund is by far the most significant fund.

**HOPE ACADEMY CHARTER SCHOOL
ASBURY PARK, NEW JERSEY**

**MANAGEMENT'S DISCUSSION AND ANALYSIS
FOR THE FISCAL YEAR ENDED JUNE 30, 2021
UNAUDITED
(CONTINUED)**

Reporting the Charter School as a Whole

Statement of Net Position and the Statement of Activities

While this document contains the large number of funds used by the Charter School to provide programs and activities, the view of the Charter School as a whole looks at all financial transactions and ask the question, "How did we do financially during 2021?" The *Statement of Net Position* and the *Statement of Activities* answer this question. These statements include all assets and liabilities using the accrual basis of accounting similar to the accounting used by most private-sector businesses. This basis of accounting takes into account all of the current year's revenues and expenses regardless of when cash is received or paid.

Statement of Net Position and the Statement of Activities

These two statements report the Charter School's net position and changes in that position. This change in net position is important because it tells the reader that, for the Charter School as a whole, the financial position of the Charter School have improved or diminished. The causes of this change may be the result of many factors, some financial and some not. Non- financial factors include current laws in New Jersey restricting revenue growth, facility condition, required educational programs and other factors.

In the *Statement of Net Position* and the *Statement of Activities*, the Charter School is divided into two kinds of activities:

- ❖ Governmental Activities — All of the Charter School's programs and services are reported here including instruction, administration, support services and capital outlay.
- ❖ Business-Type Activities — These services are provided on a charge for goods or services basis to recover all the expenses of the goods or services provided. The Food Service enterprise fund is reported as a business activity.

Reporting the Charter School's Most Significant Funds

Fund Financial Statements

Fund financial reports provide detailed information about the Charter School's funds. The Charter School uses many funds to account for a multitude of financial transactions. The Charter School's governmental funds are the General Fund and Special Revenue Fund.

**HOPE ACADEMY CHARTER SCHOOL
ASBURY PARK, NEW JERSEY**

**MANAGEMENT'S DISCUSSION AND ANALYSIS
FOR THE FISCAL YEAR ENDED JUNE 30, 2021
UNAUDITED
(CONTINUED)**

Governmental Funds

The Charter School's activities are reported in governmental funds, which focus on how money flows into and out of those funds and the balances left at year-end available for spending in the future years. These funds are reported using an accounting method called modified accrual accounting, which measures cash and all other financial assets that can readily be converted to cash. The governmental fund statements provide a detailed short-term view of the Charter School's general government operations and the basic services it provides. Governmental fund information helps the reader determine whether there are more or fewer financial resources that can be spent in the near future to finance educational programs. The relationship (or differences) between governmental activities (reported in the *Statement of Net Position* and the *Statement of Activities*) and governmental funds are reconciled in the financial statements.

Enterprise Fund

The enterprise fund uses the same basis of accounting as business-type activities; therefore, these statements are essentially the same.

Notes to the Basic Financial Statements

The notes provide additional information that is essential to a full understanding of the data provided in the Charter School-wide and fund financial statements. The notes to the basic financial statements can be found starting on page 35 of this report.

The Charter School as a Whole

Recall that the *Statement of Net Position* provides the perspective of the Charter School as a whole. Net position may serve over time as a useful indicator of a government's financial position.

The Charter School's financial position is the product of several financial transactions including the net results of activities.

The Charter School's combined net position were \$3,517,284 for 2021 and \$2,879,220 for 2020.

Governmental Activities

The Charter School's total revenues were \$5,180,468 for 2021 and \$4,810,780 for 2020, this includes \$692,972 for 2021 and \$596,424 for 2020 of state reimbursed TPAF social security, pension and post retirement medical contributions.

The total cost of all program and services was \$4,693,085 for 2021 and \$4,192,792 for 2020. Instruction comprises 50% for 2021 and 52% for 2020 of Charter School expenditures.

**HOPE ACADEMY CHARTER SCHOOL
ASBURY PARK, NEW JERSEY**

**MANAGEMENT'S DISCUSSION AND ANALYSIS
FOR THE FISCAL YEAR ENDED JUNE 30, 2021
UNAUDITED
(CONTINUED)**

Business-Type Activities

Revenues for the Charter School's business-type activities (food service program) were comprised of charges for services and federal and state reimbursements.

- ❖ Food service expenditures exceeded revenue by \$12,516 for 2021 and revenues exceeded expenditures by \$4,305 for 2020.
- ❖ Charges for services represent \$0 for 2021 and \$3,520 for 2020 of revenue. This represents amounts paid by patrons for daily food.
- ❖ Federal and state reimbursements for meals, including payments for free and reduced lunches and breakfast, and state snack program were \$117,265 for 2021 and \$164,592 for 2020.

Governmental Activities

The *Statement of Activities* shows the cost of program services and the charges for services and grants offsetting those services. Instruction expenses include activities directly dealing with the teaching of pupils and the interaction between teacher and student, including extracurricular activities.

Administration includes expenses associated with administrative and financial supervision of the Charter School.

Support services include the activities involved with assisting staff with the content and process of teaching to students, including curriculum and staff development and the costs associated with operating the facility.

Capital Outlay represents instructional and/or non-instructional equipment purchased and is capitalized when such equipment is over the \$2,000 threshold.

The Charter School's Funds

All governmental funds (i.e., general fund and special revenue fund presented in the fund-based statements) are accounted for using the modified accrual basis of accounting. Total revenues amounted to \$5,180,468 for 2021 and \$4,810,780 for 2020 and expenditures were \$4,612,922 for 2021 and \$4,122,676 for 2020. The net change in fund balance was most significant in the general fund, an increase of \$567,546 for 2021 and an increase of \$688,104 for 2020.

**HOPE ACADEMY CHARTER SCHOOL
ASBURY PARK, NEW JERSEY**

**MANAGEMENT'S DISCUSSION AND ANALYSIS
FOR THE FISCAL YEAR ENDED JUNE 30, 2021
UNAUDITED
(CONTINUED)**

The Charter School's Funds (Continued)

As demonstrated by the various statements and schedules included in the financial section of this report, the Charter School continues to meet its responsibility for sound financial management. The following schedules present a summary of the revenues of the governmental funds for the fiscal year ended June 30, 2021, and the amount and percentage of increases and decreases in relation to prior year revenues.

Revenues	Amount	Percent of Total	Increase/ (Decrease) From 2020	Percent of Increase/ (Decrease)
Local Sources	\$ 1,075,829	20.77%	\$ 114,667	11.93%
State Sources	3,538,724	68.31%	(72,127)	(2.00%)
Federal Sources	565,915	10.92%	327,148	137.02%
Total	\$ 5,180,468	100.00%	\$ 369,688	

The following schedule represents a summary of general fund and special revenue fund expenditures for the fiscal year ended June 30, 2021, and the percentage of decreases and increases in relation to prior year amounts.

Expenditures	Amount	Percent of Total	Increase/ (Decrease) From 2020	Percent of Increase/ (Decrease)
Instruction	\$ 1,811,011	39.26%	\$ 168,980	10.29%
Administration	2,004,237	43.45%	357,007	21.67%
Support Services	585,424	12.69%	(55,514)	(8.66%)
Capital Outlay	212,250	4.60%	19,773	10.27%
Total	\$ 4,612,922	100.00%	\$ 490,246	

Changes in expenditures were the results of varying factors. Current expense decreased due to reductions in staff and medical costs.

General Fund Budgeting Highlights

The Charter School's budget is prepared according to New Jersey law, and is based on accounting for certain transactions on a basis of cash receipts, disbursements, and encumbrances. The most significant budgeted fund is the General Fund.

**HOPE ACADEMY CHARTER SCHOOL
ASBURY PARK, NEW JERSEY**

**MANAGEMENT'S DISCUSSION AND ANALYSIS
FOR THE FISCAL YEAR ENDED JUNE 30, 2021
UNAUDITED
(CONTINUED)**

Over the course of the year, the Charter School revised the annual operating budget in accordance with state regulations. Revisions in the budget were made to recognize revenues that were not anticipated and to prevent over-expenditures in specific line item accounts.

Capital Assets (Net of Depreciation)

At the end of the fiscal year 2021, the Charter School had \$5,678,240 invested in capital assets and \$5,803,100 for 2020.

For the Future

The Hope Academy Charter School is in good financial condition presently. The Charter School is proud of its community support. A major concern is the continued enrollment growth of the Charter School with the increased reliance on federal and state funding.

In conclusion, the Hope Academy Charter School has committed itself to financial excellence for many years. In addition, the Charter School's system for financial planning, budgeting, and internal financial controls are well regarded. The Charter School plans to continue its sound fiscal management to meet the challenge of the future.

Contacting the Charter School's Financial Management

This financial report is designed to provide our citizens, taxpayers, investors, and creditors with a general overview of the Charter School's finances and to show the Charter School's accountability for the money it receives. If you have questions about this report or need additional information, contact the School Business Administrator/Board Secretary at Hope Academy Charter School, 601 Grand Avenue, Asbury Park, New Jersey 07712.

BASIC FINANCIAL STATEMENTS

SECTION A – CHARTER SCHOOL–WIDE FINANCIAL STATEMENTS

The statement of net position and the statement of activities display information about the Charter School. These statements include the financial activities of the overall Charter School, except for fiduciary activities. Eliminations have been made to minimize the double-counting of internal activities. These statements distinguish between the governmental and business-type activities of the Charter School.

HOPE ACADEMY CHARTER SCHOOL
Statement of Net Position
June 30, 2021

	Governmental Activities	Business-Type Activities	Total
ASSETS:			
Cash and Cash Equivalents	\$ 2,386,580	\$ 3,479	\$ 2,390,059
Interfund Receivables	441,670	-	441,670
Receivables	267,278	14,193	281,471
Prepaid Expenses and Other Assets	41,097	-	41,097
Capital Assets, Net	5,676,710	1,530	5,678,240
Restricted Cash and Cash Equivalents	81,837	-	81,837
Total Assets	8,895,172	19,202	8,914,374
DEFERRED OUTFLOWS OF RESOURCES:			
Pensions	91,006	-	91,006
Deferred Outflows of Resources	91,006	-	91,006
LIABILITIES:			
Interfund Payable	298,772	-	298,772
Payable to Governments	65,663	-	65,663
Accounts Payable	59,194	-	59,194
Unearned Revenue	18,278	-	18,278
Noncurrent Liabilities			
Long-Term Liabilities	4,375,348	-	4,375,348
Pensions	438,710	-	438,710
Total Liabilities	5,255,965	-	5,255,965
DEFERRED INFLOWS OF RESOURCES:			
Pensions	232,131	-	232,131
Deferred Inflows of Resources	232,131	-	232,131
NET POSITION:			
Invested in Capital Assets, Net of Related Debt	1,301,362	-	1,301,362
Restricted For:			
Student Activities	6,837	-	6,837
Unassigned	2,189,883	19,202	2,209,085
Total Net Position	\$ 3,498,082	\$ 19,202	\$ 3,517,284

The accompanying Notes to Basic Financial Statements are an integral part of this statement.

HOPE ACADEMY CHARTER SCHOOL
Statement of Activities
For The Fiscal Year Ended June 30, 2021

Functions/Programs	Expenses	Indirect Expenses Allocation	Program Revenues			Net (Expense) Revenue and Changes in Net Position			
			Charges for Services	Operating Grants and Contributions	Capital Grants and Contributions	Governmental Activities	Business-Type Activities	Total	
GOVERNMENTAL ACTIVITIES:									
Instruction	\$ 1,837,334	\$ 707,696	\$ -	\$ 87,709	\$ -	\$ (2,457,321)	\$ -	\$ (2,457,321)	
Administration	919,066	333,033	-	-	-	(1,252,099)	-	(1,252,099)	
Support Services	585,424	-	-	-	-	(585,424)	-	(585,424)	
Capital Outlay	194,396	-	-	-	-	(194,396)	-	(194,396)	
Unallocated									
Depreciation	116,136	-	-	-	-	(116,136)	-	(116,136)	
Employee Benefits	396,816	-	-	396,816	-	-	-	-	
Total Governmental Activities	<u>4,049,172</u>	<u>\$ 1,040,729</u>	<u>-</u>	<u>484,525</u>	<u>-</u>	<u>(4,605,376)</u>	<u>-</u>	<u>(4,605,376)</u>	
BUSINESS-TYPE ACTIVITIES:									
Food Service	<u>129,781</u>		<u>-</u>	<u>117,265</u>	<u>-</u>	<u>-</u>	<u>(12,516)</u>	<u>(12,516)</u>	
Total Business-Type Activities	<u>129,781</u>		<u>-</u>	<u>117,265</u>	<u>-</u>	<u>-</u>	<u>(12,516)</u>	<u>(12,516)</u>	
Total Primary Government	<u>\$ 4,178,953</u>		<u>\$ -</u>	<u>\$ 601,790</u>	<u>\$ -</u>	<u>\$ (4,605,376)</u>	<u>\$ (12,516)</u>	<u>\$ (4,617,892)</u>	
GENERAL REVENUES									
						\$ 1,043,212	\$ -	\$ 1,043,212	
						4,035,226	-	4,035,226	
						2,195	-	2,195	
						12,126	-	12,126	
						<u>5,092,759</u>	<u>-</u>	<u>5,092,759</u>	
							<u>487,383</u>	<u>(12,516)</u>	<u>474,867</u>
							<u>3,010,699</u>	<u>31,718</u>	<u>3,042,417</u>
							<u>\$ 3,498,082</u>	<u>\$ 19,202</u>	<u>\$ 3,517,284</u>

The accompanying Notes to Basic Financial Statements are an integral part of this statement.

SECTION B – FUND FINANCIAL STATEMENTS

The individual Fund statements and schedules present more detailed information for the individual fund in a format that segregates information by fund type.

**GOVERNMENTAL
FUNDS**

HOPE ACADEMY CHARTER SCHOOL
 Governmental Funds
 Balance Sheet
 June 30, 2021

	General Fund	Special Revenue Fund	Total
ASSETS:			
Cash	\$ 2,248,994	\$ 137,586	\$ 2,386,580
Restricted Cash	75,000	6,837	81,837
Interfund Receivables	441,670	-	441,670
Receivables From Other Governments	5,930	173,503	179,433
Other Receivables	12,424	-	12,424
Tax Levy Receivable	75,421	-	75,421
Prepaid Expenses	33,636	7,461	41,097
	<u>2,893,075</u>	<u>325,387</u>	<u>3,218,462</u>
Total Assets	\$ 2,893,075	\$ 325,387	\$ 3,218,462
LIABILITIES AND FUND BALANCES:			
Liabilities:			
Interfund Payable	\$ -	\$ 298,772	\$ 298,772
Payable to State Government	65,663	-	65,663
Accounts Payable	57,694	1,500	59,194
Unearned Revenue	-	18,278	18,278
	<u>123,357</u>	<u>318,550</u>	<u>441,907</u>
Total Liabilities	123,357	318,550	441,907
Fund Balances:			
Restricted:			
Student Activities	-	6,837	6,837
Unassigned:			
General Fund	<u>2,769,718</u>	<u>-</u>	<u>2,769,718</u>
Total Fund Balances	2,769,718	6,837	2,776,555
Total Liabilities and Fund Balances	\$ 2,893,075	\$ 325,387	

Amounts reported for governmental activities in the statement of net position (A-1) are different because:

Capital assets used in governmental activities are not financial resources and therefore are not reported in governmental funds. The cost of the assets is \$6,499,146 and the accumulated depreciation is \$822,436. 5,676,710

Net pension liability of \$438,710, deferred inflows of resources of \$232,131 less deferred outflows of resources of \$91,006 related to pensions are not reported in the governmental funds (579,835)

Long-term liabilities are not due and payable in the current period and therefore are not reported as liabilities in the funds. (4,375,348)

Net Position of Governmental Activities **\$ 3,498,082**

The accompanying Notes to Basic Financial Statements are an integral part of this statement.

HOPE ACADEMY CHARTER SCHOOL
 Governmental Funds
 Statement of Revenues, Expenditures, and
 Changes in Fund Balance
 For The Fiscal Year Ended June 30, 2021

	General Fund	Special Revenue Fund	Total
REVENUES:			
Local Sources:			
Local Tax Levy	\$ 1,043,212	\$ -	\$ 1,043,212
Interest on Investments	2,195		2,195
Miscellaneous	12,126	18,296	30,422
Total Local Sources	1,057,533	18,296	1,075,829
State Sources	3,533,770	4,954	3,538,724
Federal Sources	-	565,915	565,915
Total Revenues	4,591,303	589,165	5,180,468
EXPENDITURES:			
Current:			
Instruction	1,470,563	340,448	1,811,011
Administration	2,004,237	-	2,004,237
Support Services	336,707	248,717	585,424
Capital Outlay	212,250	-	212,250
Total Expenditures	4,023,757	589,165	4,612,922
Net Change in Fund Balance	567,546	-	567,546
Fund Balance, July 1	2,202,172	-	2,202,172
Fund Balance, June 30	\$ 2,769,718	\$ -	\$ 2,769,718

The accompanying Notes to Basic Financial Statements are an integral part of this statement.

HOPE ACADEMY CHARTER SCHOOL
 Reconciliation of the Statement of Revenues, Expenditures
 and Changes in Fund Balances of Governmental Funds
 to the Statement of Activities
 For The Fiscal Year Ended June 30, 2021

Total net change in fund balances - governmental fund (from B-2)	\$	567,546
Amounts reported for governmental activities in the statement of activities (A-2) are different because:		
<p>Capital outlays are reported in governmental funds as expenditures. However, on the statement of activities, the cost of those assets if capitalized is allocated over their estimated useful lives as depreciation expense. This is the amount by which depreciation exceeded capital outlays in the current fiscal year.</p>		
Capital Asset Additions	\$	17,854
Depreciation Expense	<u>(142,459)</u>	(124,605)
<p>Pension costs associated with the PERS pension plan are reported in the governmental funds as expenditures in the year the school pension contribution is paid. However, on the statement of activities, the net difference between the current and prior year net pension liability is recognized</p>		
		<u>44,442</u>
Change in net position of governmental activities	\$	<u>487,383</u>

The accompanying Notes to Basic Financial Statements are an integral part of this statement.

PROPRIETARY FUNDS

HOPE ACADEMY CHARTER SCHOOL
 Proprietary Funds
 Statement of Fund Net Position
 June 30, 2021

	Business-Type Activities
	Food Service
ASSETS:	
Current Assets:	
Cash and Cash Equivalents	\$ 3,479
Intergovernmental Accounts Receivable:	
Federal	13,370
State	823
Total Current Assets	17,672
Non-Current Assets:	
Equipment	2,550
Accumulated Depreciation	(1,020)
Total Non-Current Assets	1,530
Total Assets	\$ 19,202
LIABILITIES AND NET POSITION:	
Liabilities:	
Accounts Payable	\$ -
Total Liabilities	-
NET POSITION:	
Unassigned	19,202
Total Liabilities and Net Position	\$ 19,202

The accompanying Notes to Basic Financial Statements are an integral part of this statement.

HOPE ACADEMY CHARTER SCHOOL
 Proprietary Funds
 Statement of Revenues, Expenses, and Changes in Net Position
 For The Fiscal Year Ended June 30, 2021

	School Nutrition and Total Enterprise
OPERATING REVENUES:	
Charges for Services:	
Daily sales -Program (reimbursable program) Meals	\$ -
Daily sales - Non-Program (non-reimbursable program) Meals	-
Special functions/Catering	-
Community service activities	-
Services provided to other funds	-
Deductions from employees' salaries	-
Miscellaneous	-
Total Operating Revenues	-
OPERATING EXPENSES:	
Cost of sales- Program (reimbursable program) Meals	-
Cost of sales-Non-Program (non-reimbursable program) Meals	-
Purchases - Fruit	-
Purchases - Vegetables	-
Salaries	7,917
Employee benefits	-
Purchased property service	-
Purchased Services (Including Fixed Price Contract)	121,609
Other purchased professional services	-
Cleaning, repair and maintenance services	-
Rentals	-
Other purchased services:	-
Contracted services (between home and school)	-
Contracted services (other than between home and school)	-
Contracted services (special education students) - vendors	-
Contracted services (special education students) - joint agreements	-
Insurance	-
General supplies	-
Depreciation	255
Total Operating Expenses	129,781
OPERATING (LOSS)	(129,781)
NONOPERATING REVENUES:	
State Sources:	
State School Lunch Program	3,386
Federal Sources:	
National school lunch program	67,507
School breakfast program	43,019
After school snack program	3,353
Special milk program	-
Summer meal program	-
CACFP Food and CIL	-
Fresh Fruit and Vegetables	-
Food distribution program	-
Interest and investment revenue	-
Miscellaneous expense	-
Total Nonoperating Revenues (Expenses)	117,265
Income (loss) before contributions	(12,516)
Capital contributions	
Change in net assets	(12,516)
Total net assets—beginning	31,718
Total net assets—ending	\$ 19,202

**(A) For SFAs that are self-operated / FSMC Cost Reimbursable
Contracts / SFA-SFA Vended Meal Contract**

(B) For SFAs that entered into a SFA-FSMC Fixed Price Contract for FY 2020-2021

The accompanying Notes to Basic Financial Statements are an integral part of this statement.

HOPE ACADEMY CHARTER SCHOOL
 Proprietary Fund
 Statement of Cash Flows
 For The Fiscal Year Ended June 30, 2021

	Business-Type Activities
	Food Service
CASH FLOWS FROM OPERATING ACTIVITIES:	
Cash Received from Customers	\$ -
Cash Payments to Suppliers and Employees	(142,167)
Net Cash Used In Operating Activities	(142,167)
CASH FLOWS FROM NONCAPITAL FINANCING ACTIVITIES:	
Cash Received from State and Federal Reimbursements	117,265
Net Cash Provided by Noncapital Financing Activities	117,265
Net Decrease in Cash and Cash Equivalents	(24,902)
Cash and Cash Equivalents, Beginning of the Year	28,381
Cash and Cash Equivalents, End of the Year	\$ 3,479
Reconciliation of Operating Loss to Net Cash Used in:	
Operating Activities:	
Operating Loss Used for Operating Activities	\$ (129,781)
Depreciation	255
Changes in Assets and Liabilities:	
Increase in Intergovernmental Accounts Receivable	(7,241)
Decrease in Accounts Payable	(5,400)
Net Cash Used in Operating Activities	\$ (142,167)

The accompanying Notes to Basic Financial Statements are an integral part of this statement.

***FIDUCIARY
FUNDS***

HOPE ACADEMY CHARTER SCHOOL
 Fiduciary Funds
 Statement of Fiduciary Net Position
 June 30, 2021

	Total Agency Fund
ASSETS:	
Cash and Cash Equivalents	<u>\$ 155,343</u>
Total Assets	<u><u>\$ 155,343</u></u>
LIABILITIES:	
Liabilities:	
Interfund Accounts Payable	\$ 142,898
Payroll Deductions and Withholdings	<u>12,445</u>
Total Liabilities	<u><u>\$ 155,343</u></u>

The accompanying Notes to Basic Financial Statements are an integral part of this statement.

NOTES TO THE FINANCIAL STATEMENTS

**HOPE ACADEMY CHARTER SCHOOL
NOTES TO THE FINANCIAL STATEMENTS
JUNE 30, 2021**

NOTE 1: SUMMARY OF SIGNIFICANT ACCOUNTING POLICIES

The financial statements of the Hope Academy Charter School have been prepared in conformity with generally accepted accounting principles (GAAP) as prescribed by the Governmental Accounting Standards Board (GASB). The GASB is the accounting standard-setting body responsible for establishing governmental accounting and financial reporting principles. The more significant accounting policies of the Charter School are described below.

For fiscal year 2016, the Charter School implemented the Governmental Accounting Standards Board (GASB) Statement No. 68, "Accounting and Financial Reporting for Pensions" and GASB Statement No. 71, "Pension Transition for Contributions Made Subsequent to the Measurement Date – an amendment of GASB Statement No. 68." GASB 68 established standards for measuring and recognizing pension liabilities, deferred outflows of resources and expense/expenditure.

A. Reporting Entity

The Charter School is an instrument of the State of New Jersey, established to function as an educational institution. Its mission is to establish a character school to serve as a neighborhood resource and as a model for other similar schools. The Hope Academy Charter School is committed to achieving the New Jersey Core Curriculum Content Standards and producing high academic achievement by all students. The Charter School will integrate a holistic curriculum, utilize learner center techniques, family and care giver centered approaches, comprehensive community involvement, cutting edge technology and an intimate nurturing environment that will enhance positive self-images.

The primary criterion for including activities within the Charter School's reporting entity, as set forth in Section 2100 of the GASB's Codification of Governmental Accounting and Financial Reporting Standards, is the degree of oversight responsibility maintained by the Charter School management. Oversight responsibility includes financial interdependency, selection of governing authority, designation of management, and ability to significantly influence operations and accountability for fiscal matters. The combined financial statements include all funds and account groups of the Charter School.

**HOPE ACADEMY CHARTER SCHOOL
NOTES TO THE FINANCIAL STATEMENTS
JUNE 30, 2021**

NOTE 1: SUMMARY OF SIGNIFICANT ACCOUNTING POLICIES (CONTINUED)

B. Basis of Presentation. Basis of Accounting

The Charter School's basic financial statements consist of Charter School-wide statements, including a statement of net position and a statement of activities, and fund financial statements which provide a more detailed level of financial information.

Charter school-wide Statements: The statement of net position and the statement of activities display information about the Charter School as a whole. These statements include the financial activities of the overall Charter School, except for fiduciary activities. Eliminations have been made to minimize the double-counting of internal activities. These statements distinguish between the governmental and business-type activity of the Charter School. Governmental activities generally are financed through intergovernmental revenues, and other non-exchange transactions. Business-type activities are financed in whole or in part by fees charged to external parties.

The statement of net position presents the financial condition of the governmental and business-type activity of the Charter School at fiscal year-end. The statement of activities presents a comparison between direct expenses and program revenues for the business-type activity of the Charter School and for each function of the Charter School's governmental activities. Direct expenses are those that are specifically associated with a program or function and, therefore, are clearly identifiable to a particular function.

Program revenues include (a) fees and charges paid by the recipients of goods or services offered by the programs and (b) grants and contributions that are restricted to meeting the operational or capital requirements of a particular program. Revenues that are not classified as program revenues are presented as general revenues. The comparison of direct expenses with program revenues identifies the extent to which each governmental function or business segment is self-financing or draws from the general revenues of the Charter School. *Fund Financial Statements:* During the fiscal year, the Charter School segregates transactions related to certain Charter School functions or activities in separate funds in order to aid financial management and to demonstrate legal compliance. The fund financial statements provide information about the Charter School's funds, including its fiduciary funds. Separate statements for each fund category — *governmental, proprietary, and fiduciary* — are presented. The New Jersey Department of Education (NJDOE) has elected to require New Jersey Charter Schools to treat each governmental fund as a major fund in accordance with the option noted in GASB No. 34, paragraph 76. The NJDOE believes that the presentation of all funds as major is important for public interest and to promote consistency among Charter School financial reporting models.

**HOPE ACADEMY CHARTER SCHOOL
NOTES TO THE FINANCIAL STATEMENTS
JUNE 30, 2021**

NOTE 1: SUMMARY OF SIGNIFICANT ACCOUNTING POLICIES (CONTINUED)

Basis of Presentation. Basis of Accounting (Continued)

The Charter School reports the following governmental funds:

General Fund: The general fund is the general operating fund of the Charter School and is used to account for all expendable financial resources except those required to be accounted for in another fund. Included are certain expenditures for vehicles and movable instructional or non- instructional equipment which are classified in the capital outlay subfund.

As required by the New Jersey State Department of Education, the Charter School includes budgeted capital outlay in this fund. Generally accepted accounting principles as they pertain to governmental entities state that general fund resources may be used to directly finance capital outlays for long-lived improvements as long as the resources in such cases are derived exclusively from unrestricted revenues. Resources for budgeted capital outlay purposes are normally derived from State of New Jersey Aid and appropriated fund balance. Expenditures are those that result in the acquisition of or additions to fixed assets for land, existing buildings, improvements of grounds, construction of buildings, additions to or remodeling of buildings and the purchase of built-in equipment. These resources can be transferred from and to Current Expense by Board resolution.

Special Revenue Fund: The special revenue fund is used to account for the proceeds of specific revenue from State and Federal Government, (other than major capital projects, debt service or the enterprise funds) and local appropriations that are legally restricted to expenditures for specified purposes.

Capital Projects Fund: The capital projects fund is used to account for all financial resources to be used for the acquisition or construction of major capital facilities (other than those financed by proprietary funds).

Debt Service Fund: Not applicable.

The Charter School reports the following proprietary fund:

Enterprise (Food Service) Fund: The enterprise fund accounts for all revenues and expenses pertaining to the cafeteria operations. The food service fund is utilized to account for operations that are financed and operated in a manner similar to private business enterprises. The stated intent is that the cost (i.e. expenses including depreciation and indirect costs) of providing goods or services to the students on a continuing basis are financed or recovered primarily through user charges.

**HOPE ACADEMY CHARTER SCHOOL
NOTES TO THE FINANCIAL STATEMENTS
JUNE 30, 2021**

NOTE 1: SUMMARY OF SIGNIFICANT ACCOUNTING POLICIES (CONTINUED)

Basis of Presentation. Basis of Accounting (Continued)

Additionally, the Charter School reports the following fund type:

Fiduciary Funds: The Fiduciary Funds are used to account for assets held by the Charter School on behalf of others and includes Student Activities Fund, Payroll and Payroll Agency Funds.

Basis of Accounting

Basis of accounting determines when transactions are recorded in the financial records and reported on the financial statements.

Charter School-wide, Proprietary, and Fiduciary Fund Financial Statements: The financial statements are prepared using the accrual basis of accounting. Governmental funds use the modified accrual basis of accounting; the enterprise fund and fiduciary funds use the accrual basis of accounting. Differences in the accrual and modified accrual basis of accounting arise in the recognition of revenue, the recording of deferred revenue, and in the presentation of expenses versus expenditures. The Charter School is entitled to receive monies under the established payment schedule and the unpaid amount is considered to be an "accounts receivable". Revenue from grants, entitlements, and donations is recognized in the fiscal year in which all eligibility requirements have been satisfied.

Governmental Fund Financial Statements: Governmental funds are reported using the current financial resources measurement focus and the modified accrual basis of accounting. Under this method, revenues are recognized when measurable and available. "Measurable" means the amount of the transaction can be determined and "available" means collectible within the current period or soon enough thereafter to be used to pay liabilities of the current period. Expenditures are recorded when the related fund liability is incurred, except for principal and interest on general long-term debt, claims and judgments, and compensated absences, which are recognized as expenditures to the extent they have matured. General capital asset acquisitions are reported as expenditures in governmental funds. Proceeds of general long-term debt and acquisitions under capital leases are reported as other financing sources.

All governmental and business-type activities and enterprise funds of the Charter School follow FASB Statements and Interpretations issued on or before November 30, 1989, Accounting Principles Board Opinions, and Accounting Research Bulletins, unless those pronouncements conflict with GASB pronouncements.

**HOPE ACADEMY CHARTER SCHOOL
NOTES TO THE FINANCIAL STATEMENTS
JUNE 30, 2021**

NOTE 1: SUMMARY OF SIGNIFICANT ACCOUNTING POLICIES (CONTINUED)

C. Budgets/Budgetary Control

Annual appropriated budgets are prepared in the spring of each year for the general and special revenue funds. Budgets are prepared using the modified accrual basis of accounting except for special revenue funds. The legal level of budgetary control is established at line item accounts within each fund. Line item accounts are defined as the lowest (most specific) level of detail as established pursuant to the minimum chart of accounts referenced in N.J.A.C. 6:20-2A.2(m)1. All budget amendments/transfers must be approved by School Board resolution. All budget amounts presented in the accompanying supplementary information reflect the original budget and the amended budget (which have been adjusted for legally authorized revisions of the annual budgets during the year).

Appropriations, except remaining project appropriations, encumbrances, and unexpended grant appropriations, lapse at the end of each fiscal year. The capital projects fund presents the remaining project appropriations compared to current year expenditures.

Formal budgetary integration into the accounting system is employed as a management control device during the fiscal year. For governmental funds, there are no substantial differences between the budgetary basis of accounting and generally accepted accounting principles (GAAP) with the exception of the special revenue fund as noted below. Encumbrance accounting is also employed as an extension of formal budgetary integration in the governmental fund types. Unencumbered appropriations lapse at fiscal year-end.

The accounting records of the special revenue fund are maintained on the grant accounting budgetary basis. The grant accounting budgetary basis differs from GAAP in that the grant accounting budgetary basis recognizes encumbrances as expenditures and also recognizes the related revenues, whereas the GAAP basis does not. Sufficient supplemental records are maintained to allow for the presentation of GAAP basis financial reports.

The following presents a reconciliation of the Special Revenue Funds from the budgetary basis of accounting to the GAAP basis of accounting:

Total Revenues & Expenditures (Budgetary Basis)	\$ 589,165
Adjustments:	
Less Encumbrances at June 30,2021	-
Plus Encumbrances at June 30,2020	-
Total Revenues and Expenditures (GAAP Basis)	<u>\$ 589,165</u>

**HOPE ACADEMY CHARTER SCHOOL
NOTES TO THE FINANCIAL STATEMENTS
JUNE 30, 2021**

NOTE 1: SUMMARY OF SIGNIFICANT ACCOUNTING POLICIES (CONTINUED)

D. Encumbrances Accounting

Under encumbrance accounting purchase orders, contracts and other commitments for the expenditure of resources are recorded to reserve a portion of the applicable appropriation. Open encumbrances in governmental funds other than the special revenues fund are reported as reservations of fund balances at fiscal year-end as they do not constitute expenditures or liabilities but rather commitments related to unperformed contracts for goods and services.

Open encumbrances in the special revenue fund for which the Charter School has received advances are reflected in the balance sheet as deferred revenues at fiscal year-end.

The encumbered appropriation authority carries over into the next fiscal year. An entry will be made at the beginning of the next fiscal year to increase the appropriation reflected in the certified budget by the outstanding encumbrance amount as of the current fiscal year end.

E. Assets, Liabilities, and Equity

Interfund Transactions:

Transfers between governmental and business-type activities on the Charter School – wide statements are reported in the same manner as general revenues.

Exchange transactions between funds are reported as revenues in the seller funds and as expenditures/expenses in the purchaser funds. Flows of cash or goods from one fund to another without a requirement for repayment are reported as Interfund transfers. Interfund transfers are reported as other financing sources/uses in governmental funds and after non-operating revenues/expenses in the enterprise fund. Repayments from funds responsible for particular expenditures/expenses to the funds that initially paid for them are not presented on the financial statements.

Inventories:

Inventory purchases, other than those recorded in the enterprise fund, are recorded as expenditures during the year of purchase. Enterprise fund inventories are valued at cost, which approximates market, using the first-in/first-out (FIFO) method.

Allowance for Uncollectible Accounts:

No allowance for uncollectible accounts has been recorded as all amounts are considered collectible.

**HOPE ACADEMY CHARTER SCHOOL
NOTES TO THE FINANCIAL STATEMENTS
JUNE 30, 2021**

NOTE 1: SUMMARY OF SIGNIFICANT ACCOUNTING POLICIES (CONTINUED)

Assets, Liabilities, and Equity (Continued)

Capital Assets:

The Charter School has established a formal system of accounting for its capital assets. Purchased or constructed capital assets are reported at cost. Donated capital assets are valued at their estimated fair market value on the date received. The cost of normal maintenance and repairs that do not add to the value of the asset or materially extend assets' lives are not capitalized. The Charter School does not possess any infrastructure. The capitalization threshold used by Charter Schools in the State of New Jersey is \$2,000.

All reported capital assets except for land and construction in progress are depreciated. Depreciation is computed using the straight-line method under the half-year convention over the following estimated useful lives:

<u>Asset Class</u>	<u>Estimated Useful Lives</u>
School Buildings	50
Building Improvements	20
Electrical/Plumbing	30
Office & Computer Equipment	5-10

In the fund financial statements, fixed assets used in governmental fund operations are accounted for as capital outlay expenditures of the governmental fund upon acquisition. Fixed assets are not capitalized and related depreciation is not reported in the fund financial statements.

Unearned Revenue:

Unearned revenue arises when assets are recognized before revenue recognition criteria have been satisfied. Grants and entitlement received before the eligibility requirements are met are recorded as unearned revenue.

Accrued Liabilities and Long-term Obligations:

All payables, accrued liabilities, and long-term obligations are reported on the Charter School – wide financial statements. In general, governmental fund payables and accrued liabilities that, once incurred, are paid in a timely manner and in full from current financial resources are reported as obligations of the funds.

**HOPE ACADEMY CHARTER SCHOOL
NOTES TO THE FINANCIAL STATEMENTS
JUNE 30, 2021**

NOTE 1: SUMMARY OF SIGNIFICANT ACCOUNTING POLICIES (CONTINUED)

Assets, Liabilities, and Equity (Continued)

Net Position:

Net position represents the difference between assets and liabilities. Net investment in capital assets consists of capital assets, net of accumulated depreciation, reduced by the outstanding balance of any borrowing used for the acquisition, construction, or improvement of those assets. Net position are reported as restricted when there are limitations imposed on their use either through the enabling legislation adopted by the Charter School or through external restrictions imposed by creditors, grantors, or laws or regulations of other governments. The Charter School's policy is to first apply restricted resources when an expense is incurred for purposes for which both restricted and unrestricted net position is available.

Fund Balance Reserves:

The Charter School reserves those portions of fund balance which are legally segregated for a specific future use or which do not represent available expendable resources and, therefore, are not available for appropriation or expenditure. Unreserved fund balance indicates that portion which is available for appropriation in future periods. There is no fund balance reserve for the current year.

Revenues — Exchange and Nonexchange Transactions:

Revenue resulting from exchange transactions, in which each party gives and receives essentially equal value, is recorded on the accrual basis when the exchange takes place. On the modified accrual basis, revenue is recorded in the fiscal year in which the resources are measurable and become available. Available means the resources will be collected within the current fiscal year or are expected to be collected soon enough thereafter to be used to pay liabilities of the current fiscal year. For the Charter School, available means within sixty days of the fiscal year end.

Nonexchange transactions, in which the Charter School receives value without directly giving equal value in return, include grants, entitlements, and donations. Revenue from grants, entitlements, and donations are recognized in the fiscal year in which all eligibility requirements have been satisfied. Eligibility requirements include timing requirements, which specify the year when the resources are required to be used or the fiscal year when use is first permitted; matching requirements, in which the Charter School must provide local resources to be used for a specified purpose; and expenditure requirements, in which the resources are provided to the Charter School on a reimbursement basis. On the modified accrual basis, revenue from non-exchange transactions must also be available before it can be recognized.

Under the modified accrual basis, the following revenue sources are considered to be both measurable and available at fiscal year-end: state and local revenues available as an advance, interest, and tuition.

**HOPE ACADEMY CHARTER SCHOOL
NOTES TO THE FINANCIAL STATEMENTS
JUNE 30, 2021**

NOTE 1: SUMMARY OF SIGNIFICANT ACCOUNTING POLICIES (CONTINUED)

Assets, Liabilities, and Equity (Continued)

Operating Revenues and Expenses:

Operating revenues are those revenues that are generated directly from the primary activity of the enterprise fund. For the Charter School, these revenues are sales for food service. Operating expenses are necessary costs incurred to provide the service that is the primary activity of the enterprise fund.

Allocation of Indirect Expenses:

The Charter School reports all direct expenses by function in the Statement of Activities. Direct expenses are those that are clearly identifiable with a function. Indirect expenses are allocated to functions but are reported separately in the Statement of Activities. Employee benefits, including the employer's share of social security, workers compensation, and medical and dental benefits, were allocated based on salaries of that program. Depreciation expense, where practicable, is specifically identified by function and is included in the indirect expense column of the Statement of Activities. Depreciation expense that could not be attributed to a specific function is considered an indirect expense and is reported separately on the Statement of Activities. Interest on long-term debt is considered an indirect expense and is reported separately on the Statement of Activities.

Extraordinary and Special Items:

Extraordinary items are transactions or events that are unusual in nature and infrequent in occurrence. Special items are transactions or events that are within the control of management and are either unusual in nature or infrequent in occurrence. Neither of these types of transactions occurred during the fiscal year.

Management Estimates:

The preparation of financial statements in conformity with generally accepted accounting principles requires management to make estimates and assumptions that affect the reported amounts of revenues and expenditures/expenses during the reporting period. Actual results could differ from those estimates.

Accrued Salaries and Wages:

Certain Charter School employees who provide services to the Charter School over the ten-month academic year have the option to have their salaries evenly disbursed during the entire twelve-month year. New Jersey statutes require that these earned but undisbursed amounts be retained in a separate bank account.

**HOPE ACADEMY CHARTER SCHOOL
NOTES TO THE FINANCIAL STATEMENTS
JUNE 30, 2021**

NOTE 1: SUMMARY OF SIGNIFICANT ACCOUNTING POLICIES (CONTINUED)

A. Pensions

For purposes of measuring the net pension liability, deferred outflows of resources and deferred inflows of resources related to pensions, and pension expense, information about the fiduciary net pension for the State of New Jersey Public Employees' Retirement System (PERS) and the State of New Jersey Teachers' Pension and Annuity Fund (TPAF) and additions to/deductions from the PERS's and TPAF's net position have been determined on the same basis as they are reported by the PERS and the TPAF. For this purpose, benefit payments (including refunds of employee contributions) are recognized when due and payable in accordance with the benefit terms. Pension Plan investments are reported at fair value.

B. Impact of Recently Issued Accounting Principles

Adopted Accounting Pronouncements

For the year ended June 30, 2021, the Charter School implemented GASB Statement No. 72, *Fair Value Measurement and Application*. As a result of implementing this statement, the Charter School is required to measure certain investments at fair value for financial reporting purposes. In addition, the Charter School is required to measure donated capital assets at acquisition value (an entry price); these assets were previously required to be measured at fair value. Statement No. 72 requires disclosures to be made about fair value measurements, the level of fair value hierarchy, and valuation techniques. Implementation of this Statement did not impact the Charter School's financial statements.

The Charter School implemented GASB Statement No. 73, *Accounting and Financial Reporting for Pensions and Related Assets that are Not Within the Scope of GASB Statement 68, and Amendments to Certain Provisions of GASB Statements 67 and 68*. Implementation of this Statement did not impact the Charter School's financial statements.

The Charter School implemented GASB Statement No. 76, *The Hierarchy of Generally Accepted Accounting Principles for State and Local Governments*. Implementation of this Statement did not impact the Charter School's financial statements.

**HOPE ACADEMY CHARTER SCHOOL
NOTES TO THE FINANCIAL STATEMENTS
JUNE 30, 2021**

NOTE 1: SUMMARY OF SIGNIFICANT ACCOUNTING POLICIES (CONTINUED)

Impact of Recently Issued Accounting Principles (Continued)

Recently Issued and Adopted Accounting Pronouncements

The GASB has issued the following Statements which will become effective in future years as shown below:

Statement No. 77, *Tax Abatement Disclosures*. This Statement requires governments that enter into tax abatement agreements to disclose information about those agreements. This Statement will be effective for the year ended June 30, 2021. Management does not expect this Statement to impact the Charter School's financial statements.

Statement No. 78, *Pensions Provided Through Certain Multiple-Employer Defined Benefit Pension Plans*. The objective of this Statement is to address a practice issue regarding the scope and applicability of Statement No. 68,

Accounting and Financial Reporting for Pensions. This Statement will be effective for the year ended June 30, 2021. Management does not expect this Statement to impact the Charter School's financial statements.

**HOPE ACADEMY CHARTER SCHOOL
NOTES TO THE FINANCIAL STATEMENTS
JUNE 30, 2021**

NOTE 1: SUMMARY OF SIGNIFICANT ACCOUNTING POLICIES (CONTINUED)

Impact of Recently Issued Accounting Principles (Continued)

Recently Issued and Adopted Accounting Pronouncements (Continued)

Statement No. 79, *Certain External Investment Pools and Pool Participants*. This Statement addresses accounting and financial reporting for certain external investment pools and pool participants. This Statement will be effective for the year ended June 30, 2021. Management does not expect this Statement to impact the Charter School's financial statements.

Statement No. 80, *Blending Requirements for Certain Component Units – an amendment of GASB Statement No. 14*. The objective of this Statement is to improve financial reporting by clarifying the financial statement presentation requirements for certain component units. This Statement amends the blending requirements established in paragraph 53 of Statement No. 14, *The Financial Reporting Entity, as amended*. This Statement will be effective for the year ended June 30, 2021.

Management does not expect this Statement to impact the Charter School's financial statements.

Statement No. 81, *Irrevocable Split-Interest Agreements*. The objective of this Statement is to improve accounting and financial reporting for irrevocable split-interest agreements by providing recognition and measurement guidance for situations in which a government is a beneficiary of the agreement. This Statement will be effective for the year ended June 30, 2021. Management does not expect this Statement to impact the Charter School's financial statements.

Statement No. 82, *Pension Issues – an amendment of GASB Statements No. 67, 68 and 73*. The objective of this Statement is to address certain issues that have been raised with respect to Statements No. 67, *Financial Reporting for Pension Plans*, No. 68, *Accounting and Financial Reporting for Pensions*, and No. 73, *Accounting and Financial Reporting for Pensions and Related Assets That Are Not Within The Scope of GASB Statement 68, and Amendments to Certain Provisions of GASB Statements 67 and 68*. This Statement will be effective for the year ended June 30, 2021. Management has not yet determined the potential impact on the Charter School's financial statements.

NOTE 2: CASH AND CASH EQUIVALENTS

Cash and cash equivalents includes amounts in deposits, money market accounts and short-term investments with original maturities of three months or less.

Investments are stated at cost, or amortized cost, which approximates market. The amortized cost method involves valuing a security at its cost on the date of purchase and thereafter assuming a constant amortization to maturity of any discount or premium. The Board classifies certificates of deposit which have

**HOPE ACADEMY CHARTER SCHOOL
NOTES TO THE FINANCIAL STATEMENTS
JUNE 30, 2021**

NOTE 2: CASH AND CASH EQUIVALENTS (CONTINUED)

original maturity dates of more than three months but less than twelve months from the date of purchase, as investments.

GASB Statement No. 3 requires disclosure of the level of custodial credit risk assumed by the Board in its cash, cash equivalents and investments. Category 1 includes deposits/investments held by the Board's custodial bank trust department or agent in the Board's name. Category 2 includes uninsured and unregistered deposits/investments held by the Board's custodial bank trust department or agent in the Board's name. Category 3 includes uninsured or unregistered deposits/investments held by a broker or dealer, or held by the Board's custodial bank trust department or agent but not in the Board's name. These categories are not broad representations that deposits or investments are "safe" or "unsafe".

Deposits

New Jersey statutes require that charter schools deposit public funds in public depositories located in New Jersey which are insured by the Federal Deposit Insurance Corporation, the Federal Savings and Loan Insurance Corporation, or by any other agency of the United States that insures deposits made in public depositories. Charter schools are also permitted to deposit public funds in the State of New Jersey Cash Management Fund.

New Jersey statutes require public depositories to maintain collateral for deposits of public funds that exceed depository insurance limits as follows:

The market value of the collateral must equal at least five percent of the average daily balance of collected public funds on deposit.

In addition to the above collateral requirement, if the public funds deposited exceed 75% of the capital funds of the depository, the depository must provide collateral having a market value at least equal to 100% of the amount exceeding 75%.

All collateral must be deposited with the Federal Reserve Bank of New York, the Federal Reserve Bank of Philadelphia, the Federal Home Loan Bank of New York, or a banking institution that is a member of the Federal Reserve System and has capital funds of not less than \$25,000,000.

Investments

New Jersey statutes permit the Board to purchase the following types of securities:

- a. Bonds or other obligations of the United States or obligations guaranteed by the United States.
- b. Bonds of any Federal Intermediate Credit Bank, Federal Home Loan Bank, Federal National Mortgage Agency or of any United States Bank for Cooperatives which have a maturity date not greater than twelve months from the date of purchase

**HOPE ACADEMY CHARTER SCHOOL
NOTES TO THE FINANCIAL STATEMENTS
JUNE 30, 2021**

NOTE 2: CASH AND CASH EQUIVALENTS (CONTINUED)

Investments (Continued)

c. Bonds or other obligations of the charter school.

The Charter School had no investments as of June 30, 2021. Cash and cash equivalents of the Charter School consisted of the following:

	General Fund	Special Revenue	Proprietary Fund	Fiduciary Funds	Total
Operating					
Account	\$ 2,323,994	\$ 144,423	\$ 3,479	\$ 155,343	\$ 2,627,239

The carrying amount of the Board’s cash and cash equivalents at June 30, 2021 was \$2,627,239 and the bank balance was \$2,820,860. All bank balances were covered by federal depository insurance and/or covered by a collateral pool maintained by the banks as required by New Jersey statutes.

Risk Category

All bank deposits, as of the balance sheet date, are entirely insured or collateralized by a collateral pool maintained by public depositories as required by the Governmental Unit Deposit Protection Act. In general, bank deposits are classified as to credit risk by three categories described below:

Category 1 — Insured or collateralized with securities held by the Board or by its agent in the Board’s name.

Category 2 — Collateralized with securities held by the pledging public depository’s trust department or agent in the Board’s name.

Category 3 — Uncollateralized, including any deposits that are collateralized with securities held by the pledging public depository, or by its trust department or agent, but not in the Board’s name.

As of June 30, 2021, the Board had funds invested and on deposit in checking accounts. These funds constitute “deposits with financial institutions” as defined by GASB Statement No. 3 and are classified as Category 1, both at year-end and throughout the year.

New Jersey Cash Management Fund

All investments in the Fund are governed by the regulations of the Investment Council, which prescribe specific standards designed to insure the quality of investments and to minimize the risks related to investments. In all the years of the Division of Investment’s existence, the Division has never suffered a default of principal or interest on any short-term security held by it due to the bankruptcy of a

**HOPE ACADEMY CHARTER SCHOOL
NOTES TO THE FINANCIAL STATEMENTS
JUNE 30, 2021**

NOTE 2: CASH AND CASH EQUIVALENTS (CONTINUED)

Risk Category (Continued)

New Jersey Cash Management Fund (Continued)

securities issuer; nevertheless, the possibility always exists, and for this reason a reserve is being accumulated as additional protection for the “Other-than-State” participants. In addition to the Council regulations, the Division sets further standards for specific investments and monitors the credit of all eligible securities issuers on a regular basis.

As of June 30, 2021, the Charter school had no funds on deposit with the New Jersey Cash Management Fund.

NOTE 3: RECEIVABLES

Receivables at June 30, 2021 consisted of accounts, intergovernmental, grants, and miscellaneous.

All receivables are considered collectible in full. A summary of the principal items of intergovernmental receivables follows:

	Governmental Fund Financial Statements	Governmental Wide Financial Statements
State Aid	\$ 81,351	\$ 82,174
Federal Aid	173,503	186,873
Other	12,424	12,424
Total Receivables, Net	\$ 267,278	\$ 281,471

NOTE 4: INTERFUND TRANSFERS AND BALANCES

Transfers between funds are used to repay expenses paid by another fund.

The following interfund balances remained on the fund financial statements at June 30, 2021:

Fund	Interfund Receivable	Interfund Payable
General Fund	\$ 441,182	\$ -
Special Revenue Fund	-	298,284
Fiduciary Fund	-	142,898
Total	\$ 441,182	\$ 441,182

**HOPE ACADEMY CHARTER SCHOOL
NOTES TO THE FINANCIAL STATEMENTS
JUNE 30, 2021**

NOTE 5: CAPITAL ASSETS

Capital asset activity for the fiscal year ended June 30, 2021, was as follows:

	<u>Beginning Balance</u>	<u>Additions</u>	<u>Retirements</u>	<u>Ending Balance</u>
Land				
Capital Assets Being Depreciated:	\$ 1,415,722	\$ -		\$ 1,415,722
Building and Building Improvements	4,991,777	10,979	-	5,002,756
Equipment	73,793	6,875	-	80,668
Totals at Historical Cost	<u>6,481,292</u>	<u>17,854</u>	<u>-</u>	<u>6,499,146</u>
Less Accumulated Depreciation For:				
Building and Building Improvements	653,792	126,204	-	779,996
Equipment	26,185	16,255	-	42,440
Total Accumulated Depreciation	<u>679,977</u>	<u>142,459</u>	<u>-</u>	<u>822,436</u>
Total Capital Assets Being Depreciated				
Net of Accumulated Depreciation	<u>5,801,315</u>	<u>(124,605)</u>	<u>-</u>	<u>5,676,710</u>
Government Activity Capital Assets, Net	<u>\$ 5,801,315</u>	<u>\$ (124,605)</u>	<u>\$ -</u>	<u>\$ 5,676,710</u>

On January 11, 2001, the NJ State Department of Education announced that effective July 1, 2001, the capitalization threshold used by school districts in the State of New Jersey is increased to \$2,000. The previous threshold was \$500. Applying the higher capitalization threshold retroactively (removal of old assets from the General Fixed Assets Account Group) will be permitted by the State regulations in situations where (1) the assets have been fully depreciated, or (2) the assets have exceeded their useful lives. The retirement of machinery and equipment is due to the retroactive application of the higher threshold of equipment capitalization. That is, the School has removed from their records assets with a historical cost greater than \$500 but not greater than \$2,000 that were fully depreciated or had exceeded their useful lives.

Depreciation expense of \$142,459 was charged as follows:

Instruction	\$ 26,323
Unallocated	<u>116,136</u>
Total	<u>\$ 142,459</u>

NOTE 6: OBLIGATIONS UNDER EQUIPMENT LEASES

The Charter School is leasing two (2) copiers for a period of 48 months with monthly payments in the amount of \$758 commencing May 2017 and expiring April 2021. In December 2020, the School leased two (2) copiers for a period of 60 months commencing January 2021 in the amount of \$145 per month. The following is a schedule of the future minimum lease payments under the capital leases at June 30, 2021:

**HOPE ACADEMY CHARTER SCHOOL
NOTES TO THE FINANCIAL STATEMENTS
JUNE 30, 2021**

NOTE 6: OBLIGATIONS UNDER EQUIPMENT LEASES (CONTINUED)

<u>Year</u>	<u>Amount</u>
2021	\$ 8,454
2022-2026	<u>7,830</u>
Total minimum lease payments	<u>\$ 16,284</u>

NOTE 7: PENSION PLANS

A substantial number of the Charter School's employees participate in one of the following defined benefit pension plans: the Teachers' Pension and Annuity Fund ("TPAF") and the Public Employees' Retirement System ("PERS"), which are administered by the New Jersey Division of Pensions and Benefits (the "Division"). In addition, employees may participate in the Defined Contribution Retirement Program, which is a defined contribution pension plan. This plan is administered by Prudential Financial for the Division. Each plan has a Board of Trustees that is primarily responsible for its administration. The Division issues a publicly available financial report that includes financial statements and required supplementary information. That report may be obtained by writing to:

State of New Jersey
Division of Pensions and Benefits
P.O. Box 295
Trenton, New Jersey 08625-0295
<http://www.nj.gov/treasury/pensions>

General Information about the Pension Plans

Plan Descriptions

Teachers' Pension and Annuity Fund - The Teachers' Pension and Annuity Fund is a cost-sharing multiple-employer defined benefit pension plan, with a special funding situation, which was established as of January 1, 1955, under the provisions of N.J.S.A. 18A:66. The State of New Jersey (the "State") is responsible to fund 100% of the employer contributions, excluding any local employer early retirement incentive (ERI) contributions. The TPAF's designated purpose is to provide retirement benefits, death, disability and medical benefits to certain qualified members. Membership in the TPAF is mandatory for substantially all teachers or members of the professional staff certified by the State Board of Examiners, who have titles that are unclassified, professional and certified. The TPAF's Board of Trustees is primarily responsible for the administration of the TPAF.

**HOPE ACADEMY CHARTER SCHOOL
NOTES TO THE FINANCIAL STATEMENTS
JUNE 30, 2021**

NOTE 7: PENSION PLANS (CONT'D)

General Information about the Pension Plans (Cont'd)

Public Employees' Retirement System - The Public Employees' Retirement System is a cost-sharing multiple-employer defined benefit pension plan which was established as of January 1, 1955, under the provisions of N.J.S.A. 43:15A. The PERS's designated purpose is to provide retirement, death, disability and medical benefits to certain qualified members. Membership in the PERS is mandatory for substantially all full-time employees of the Charter School, provided the employee is not required to be a member of another state-administered retirement system or other state pensions fund or local jurisdiction's pension fund. The PERS's Board of Trustees is primarily responsible for the administration of the PERS.

Defined Contribution Retirement Program - The Defined Contribution Retirement Program is a multiple-employer defined contribution pension fund established on July 1, 2007 under the provisions of Chapter 92, P.L. 2007, and Chapter 103, P.L. 2007 (N.J.S.A. 43:15C-1 et. seq.). The DCRP is a tax-qualified defined contribution money purchase pension plan under Internal Revenue Code (IRC) § 401(a) et seq., and is a "governmental plan" within the meaning of IRC § 414(d). The DCRP provides retirement benefits for eligible employees and their beneficiaries. Individuals covered under DCRP are employees enrolled in TPAF or PERS on or after July 1, 2007, who earn salary in excess of established "maximum compensation" limits; employees enrolled in New Jersey State Police Retirement System (SPRS) or the Police and Firemen's Retirement System (PFRS) after May 21, 2010, who earn salary in excess of established "maximum compensation" limits; employees otherwise eligible to enroll in TPAF or PERS on or after November 2, 2008, who do not earn the minimum annual salary for tier 3 enrollment but who earn salary of at least \$5,000.00 annually; and employees otherwise eligible to enroll in TPAF or PERS after May 21, 2010 who do not work the minimum number of hours per week required for tiers 4 or 5 enrollment, but who earn salary of at least \$5,000.00 annually.

Vesting and Benefit Provisions

Teachers' Pension and Annuity Fund - The vesting and benefit provisions are set by N.J.S.A. 18A:66. TPAF provides retirement, death and disability benefits. All benefits vest after ten years of service, except for medical benefits, which vest after 25 years of service or under the disability provisions of TPAF. Members are always fully vested for their own contributions and, after three years of service credit, become vested for 2% of related interest earned on the contributions. In the case of death before retirement, members' beneficiaries are entitled to full interest credited to the members' accounts.

**HOPE ACADEMY CHARTER SCHOOL
NOTES TO THE FINANCIAL STATEMENTS
JUNE 30, 2021**

NOTE 7: PENSION PLANS (CONT'D)

General Information about the Pension Plans (Cont'd)

The following represents the membership tiers for TPAF and PERS:

<u>Tier</u>	<u>Definition</u>
1	Members who were enrolled prior to July 1, 2007
2	Members who were eligible to enroll on or after July 1, 2007 and prior to November 2, 2008
3	Members who were eligible to enroll on or after November 2, 2008 and prior to May 22, 2010
4	Members who were eligible to enroll after May 22, 2010 and prior to June 28, 2011
5	Members who were eligible to enroll on or after June 28, 2011

Service retirement benefits of 1/55th of final average salary for each year of service credit is available to tiers 1 and 2 members upon reaching age 60 and to tier 3 members upon reaching age 62. Service retirement benefits of 1/60th of final average salary for each year of service credit is available to tier 4 members upon reaching age 62 and tier 5 members upon reaching age 65. Early retirement benefits are available to tiers 1 and 2 members before reaching age 60, tiers 3 and 4 before age 62 with 25 or more years of service credit, and tier 5 before age 65 with 30 or more years of service credit. Benefits are reduced by a fraction of a percent for each month that a member retires prior to the retirement age for his/her respective tier. Deferred retirement is available to members who have at least 10 years of service credit and have not reached the service retirement age for the respective tier.

Public Employees' Retirement System - The vesting and benefit provisions are set by N.J.S.A. 43:15A and 43:3B. The PERS provides retirement, death and disability benefits. All benefits vest after ten years of service, except for medical benefits, which vest after 25 years of service or under the disability provisions of the PERS.

The membership tiers for PERS are the same as previously noted for TPAF.

Service retirement benefits of 1/55th of final average salary for each year of service credit is available to tiers 1 and 2 members upon reaching age 60 and to tier 3 members upon reaching age 62. Service retirement benefits of 1/60th of final average salary for each year of service credit is available to tier 4 members upon reaching age 62 and tier 5 members upon reaching age 65. Early retirement benefits are available to tiers 1 and 2 members before reaching age 60, tiers 3 and 4 before age 62 with 25 or more years of service credit and tier 5 with 30 or more years of service credit before age 65. Benefits are reduced by a fraction of a percent for each month that a member retires prior to the age at which a member can receive full early retirement benefits in accordance with their respective tier.

**HOPE ACADEMY CHARTER SCHOOL
NOTES TO THE FINANCIAL STATEMENTS
JUNE 30, 2021**

NOTE 7: PENSION PLANS (CONT'D)

General Information about the Pension Plans (Cont'd)

Tier 1 members can receive an unreduced benefit from age 55 to age 60 if they have at least 25 years of service. Deferred retirement is available to members who have at least 10 years of service credit and have not reached the service retirement age for the respective tier.

Defined Contribution Retirement Program - Eligible members are provided with a defined contribution retirement plan intended to qualify for favorable Federal income tax treatment under IRC Section 401(a), a noncontributory group life insurance plan and a noncontributory group disability benefit plan. A participant's interest in that portion of his or her defined contribution retirement plan account attributable to employee contributions shall immediately become and shall at all times remain fully vested and nonforfeitable. A participant's interest in that portion of his or her defined contribution retirement plan account attributable to employer contributions shall be vested and nonforfeitable on the date the participant commences the second year of employment or upon his or her attainment of age 65, while employed by an employer, whichever occurs first.

Contributions

Teachers' Pension and Annuity Fund - The contribution policy is set by N.J.S.A. 18A:66 and requires contributions by active members and contributing employers. Pursuant to the provisions of Chapter 78, P.L. 2011, the active member contribution rate increased from 5.5% of annual compensation to 6.5% plus an additional 1% phased-in over 7 years beginning in July 2012. The member contribution rate was 7.20% in State fiscal year 2017. The phase-in of the additional incremental member contribution rate takes place in July of each subsequent State fiscal year. The State's contribution is based on an actuarially determined amount, which includes the employer portion of the normal cost and unfunded accrued liability. Funding for noncontributory group insurance benefits is based on actual claims paid. For fiscal year 2021, the State's pension contribution was less than the actuarial determined amount.

Under current statute, all employer contributions are made by the State of New Jersey on-behalf of the Charter School and all other related non-contributing employers. No normal or accrued liability contribution by the Charter School has been required over the preceding fiscal years. These on-behalf contributions by the State of New Jersey are considered a special funding situation, under the definition of GASB 68, *Accounting and Financial Reporting for Pensions*.

**HOPE ACADEMY CHARTER SCHOOL
NOTES TO THE FINANCIAL STATEMENTS
JUNE 30, 2021**

NOTE 7: PENSION PLANS (CONT'D)

General Information about the Pension Plans (Cont'd)

The Charter School commenced operations on January 1, 2013 and the enrollment process of Charter School employees in the TPAF began upon hiring of applicable personnel. As a result of the timing of participation in the pension plan, at June 30, 2021 there are no contractual requirements to contribute. Timing of participation aside, the Charter School would not have been required to make any contributions to the pension plan during the fiscal year ended June 30, 2021 because of the 100% special funding situation with the State of New Jersey.

Based on the most recent TPAF measurement date of June 30, 2018 and the timing of the Charter School's participation in the pension plan, there was no State contractually required contribution, on-behalf of the Charter School, to the pension plan for the fiscal year ended June 30, 2021. Charter School employee contributions to the pension plan during the fiscal year ended June 30, 2021 were \$148,149.

Public Employees' Retirement System - The contribution policy is set by N.J.S.A. 43:15A and requires contributions by active members and contributing employers. Members contribute at a uniform rate. Pursuant to the provisions of Chapter 78, P.L. 2011, the active member contribution rate increased from 5.5% of annual compensation to 6.5% plus an additional 1% phased-in over seven years beginning in July 2012. The member contribution rate was 7.20% in State fiscal year 2017. The phase-in of the additional incremental member contribution rate takes place in July of each subsequent State fiscal year. The rate for members who are eligible for the Prosecutors Part of PERS (Chapter 366, P.L. 2001) increased from 8.5% of base salary to 10%. Employers' contribution amounts are based on an actuarially determined rate. The Charter School's contribution amounts are based on an actuarially determined amount, which includes the normal cost and unfunded accrued liability.

The Charter School's contractually required contribution rate for the fiscal year ended June 30, 2021 was 15.73% of the Charter School's covered payroll. This amount was actuarially determined as the amount that, when combined with employee contributions, is expected to finance the costs of benefits earned by employees during the year, including an additional amount to finance any unfunded accrued liability.

**HOPE ACADEMY CHARTER SCHOOL
NOTES TO THE FINANCIAL STATEMENTS
JUNE 30, 2021**

NOTE 7: PENSION PLANS (CONT'D)

General Information about the Pension Plans (Cont'd)

Based on the most recent PERS measurement date of June 30, 2021, the Charter School's contractually required contribution to the pension plan for the fiscal year ended June 30, 2021 was \$29,430 and was paid by April 1, 2021. Charter School employee contributions to the pension plan during the fiscal year ended June 30, 2021 were \$14,393.

Defined Contribution Retirement Program - The contribution policy is set by N.J.S.A. 43:15C-3 and requires contributions by active members and contributing employers. In accordance with Chapter 92, P.L. 2007 and Chapter 103, P.L. 2007, plan members are required to contribute 5.5% of their annual covered salary. In addition to the employee contributions, the Charter School contributes 3% of the employees' base salary, for each pay period, to Prudential Financial not later than the fifth business day after the date on which the employee is paid for that pay period.

At June 30, 2021, the Charter School had no employees participating in this program.

Pension Liabilities, Pension Expense, and Deferred Outflows of Resources and Deferred Inflows of Resources Related to Pensions

Public Employees' Retirement System - At June 30, 2021, the Charter School reported a liability of \$468,248 for its proportionate share of the net pension liability. The net pension liability was measured as of June 30, 2020, and the total pension liability used to calculate the net pension liability was determined by an actuarial valuation as of July 1, 2020. The total pension liability was calculated through the use of updated procedures to roll forward from the actuarial valuation date to the measurement date of June 30, 2020. The Charter School's proportion of the net pension liability was based on a projection of the Charter School's long-term share of contributions to the pension plan relative to the projected contributions of all participating employers, actuarially determined. For the June 30, 2020 measurement date, the Charter School's proportion was .0023781591%, which was an increase of .0024038389% from its proportion measured as of June 30, 2020.

For the fiscal year ended June 30, 2021, the Charter School recognized pension expense of \$47,921 in the government-wide financial statements. This pension expense was based on the pension plan's June 30, 2020 measurement date.

**HOPE ACADEMY CHARTER SCHOOL
NOTES TO THE FINANCIAL STATEMENTS
JUNE 30, 2021**

NOTE 7: PENSION PLANS (CONT'D)

Pension Liabilities, Pension Expense, and Deferred Outflows of Resources and Deferred Inflows of Resources Related to Pensions (Cont'd)

Public Employees' Retirement System (Cont'd) - At June 30, 2021, the Charter School reported deferred outflows of resources and deferred inflows of resources related to PERS from the following sources:

Deferred Outflows of Resources	Deferred Inflows of Resources
\$ 91,006	\$ 232,131

Actuarial Assumptions

The net pension liability was measured as of June 30, 2020, and the total pension liability used to calculate the net pension liability was determined by an actuarial valuation as of July 1, 2019. The total pension liability was calculated through the use of updated procedures to roll forward from the actuarial valuation date to the measurement date of June 30, 2020. This actuarial valuation used the following actuarial assumptions, applied to all periods included in the measurement:

Inflation Rate:	
Price	2.75%
Wage	3.25%
Salary Increases:	
Through 2026	1.55% - 4.45% Based on Years of Service
Thereafter	2.75% - 5.65% Based on Years of Service
Investment Rate of Return	7.00%
Mortality Rate Table	PUB-2010
Period of Actuarial Experience	
Study upon which Actuarial Assumptions were Based	July 1, 2013 - June 30, 2018 July 1, 2015 - June 30, 2018 Respectively

**HOPE ACADEMY CHARTER SCHOOL
NOTES TO THE FINANCIAL STATEMENTS
JUNE 30, 2021**

NOTE 7: PENSION PLANS (CONT'D)

Actuarial Assumptions (Cont'd)

For PERS, pre-retirement mortality rates were based on the RP-2000 Employee Preretirement Mortality Table for male and female active participants. Mortality tables are set back 2 years for males and 7 years for females. In addition, the tables provide for future improvements in mortality from the base year of 2013 using a generational approach based on the plan actuary's modified MP-2014 projection scale. Post-retirement mortality rates were based on the RP-2000 Combined Healthy Male and Female Mortality Tables (setback 1 year for males and females) for service retirements and beneficiaries of former members and a one-year static projection based on mortality improvement Scale AA. In addition, the tables for service retirements and beneficiaries of former members provide for future improvements in mortality from the base year of 2013 using a generational approach based on the plan actuary's modified MP-2014 projection scale. Disability retirement rates used to value disabled retirees were based on the RP-2000 Disabled Mortality Table (set back 3 years for males and set forward 1 year for females).

For PERS, in accordance with State statute, the long-term expected rate of return on plan investments (7.00% at June 30, 2019) is determined by the State Treasurer, after consultation with the Directors of the Division of Investments and Division of Pensions and Benefits, the board of trustees and the actuaries. The long-term expected rate of return was determined using a building block method in which best-estimate ranges of expected future real rates of return (expected returns, net of pension plan investment expense and inflation) are developed for each major asset class. These ranges are combined to produce the long-term expected rate of return by weighting the expected future real rates of return by the target asset allocation percentage and by adding expected inflation. Best estimates of arithmetic rates of return for each major asset class included in PERS's target asset allocation as of June 30, 2020 are summarized in the following tables:

**HOPE ACADEMY CHARTER SCHOOL
NOTES TO THE FINANCIAL STATEMENTS
JUNE 30, 2021**

NOTE 7: PENSION PLANS (CONT'D)

Actuarial Assumptions (Cont'd)

<u>Asset Class</u>	<u>Target Allocation</u>	<u>Long-Term Expected Real Rate of Return</u>
Absolute return/risk mitigation	5.00%	5.51%
Cash equivalents	5.50%	1.00%
U.S. Treasuries	3.00%	1.87%
Investment grade credit	10.00%	3.78%
Public high yield	2.50%	6.82%
Global diversified credit	5.00%	7.10%
Credit oriented hedge funds	1.00%	6.60%
Debt related private equity	2.00%	10.63%
Debt related real estate	1.00%	6.61%
Private real asset	2.50%	11.83%
Equity related real estate	6.25%	9.23%
U.S. equity	30.00%	8.19%
Non-U.S. developed markets equity	11.50%	9.00%
Emerging markets equity	6.50%	11.64%
Buyouts/venture capital	8.25%	13.08%

Discount Rate - The discount rate used to measure the total pension liability at June 30, 2020 was 5.40% for PERS. For PERS, the respective single blended discount rates were based on the long-term expected rate of return on pension plan investments of 7.00%, and a municipal bond rate of 2.21% as of June 30, 2020, based on the Bond Buyer Go 20-Bond Municipal Bond Index which includes tax-exempt general obligation municipal bonds with an average rating of AA/Aa or higher. The projection of cash flows used to determine the discount rates for PERS assumed that contributions from plan members will be made at the current member contribution rates and that contributions from employers will be made based on the contribution rate in the most recent fiscal year. Based on those assumptions, the plan's fiduciary net position was projected to be available to make projected future benefit payments of current plan members through 2062 for PERS. Therefore, the long-term expected rate of return on plan investments was applied to projected benefit payments through 2062 for PERS, and the municipal bond rate was applied to projected benefit payments after that date in determining the total pension liability.

Sensitivity of Charter School's Proportionate Share of Net Pension Liability to Changes in the Discount Rate

Public Employees' Retirement System (PERS) - The following presents the net pension liability of the State as of June 30, 2020, calculated using a discount rate as disclosed above, as well as what the State net pension liability would be if it were calculated using a discount rate that is 1% lower or 1% higher than the current rate.

**HOPE ACADEMY CHARTER SCHOOL
NOTES TO THE FINANCIAL STATEMENTS
JUNE 30, 2021**

NOTE 7: PENSION PLANS (CONT'D)

	At 1% Decrease (4.00%)	At Current Discount Rate (5.00%)	At 1% Increase (6.00%)
Charter School's Proportionate Share of the Net Pension Liability	\$ 77,517,093,055	\$65,993,498,688	\$ 56,425,087,777

Pension Plan Fiduciary Net Position

For purposes of measuring the net pension liability, deferred outflows of resources and deferred inflows of resources related to pensions, and pension expense, information about the respective fiduciary net position of the PERS and additions to/deductions from PERS's respective fiduciary net position have been determined on the same basis as they are reported by PERS. Accordingly, benefit payments (including refunds of employee contributions) are recognized when due and payable in accordance with the benefit terms. Investments are reported at fair value. For additional information about PERS, please refer to the plan's Comprehensive Annual Financial Report (CAFR) which can be found at www.nj.gov/treasury/pensions.

NOTE 8: STATE POST-RETIREMENT MEDICAL BENEFITS

P.L. 1987, c.384 of P.L. 1990, c.6 required Teachers' Pensions and Annuity Fund ("TPAF") and the Public Employees' Retirement System ("PERS"), respectively, to fund post-retirement medical benefits for those State employees who retire after accumulating 25 years of credited service or on a disability retirement. P.L. 2007, c.103 amended the law to eliminate the funding of postemployment medical benefits through the TPAF and PERS. It created separate funds outside of the pension plans for the funding and payment of postemployment medical benefits for retired State employees and retired educational employees. As of June 30, 2015, there were 107,314 retirees receiving postemployment medical benefits, and the State contributed \$1.25 billion on their behalf. The cost of these benefits is funded through contributions by the State in accordance with P.L. 1994, c.62. Funding of post-retirement medical premiums changed from a pre-funding basis to a pay-as-you-go basis beginning in fiscal year 1994.

**HOPE ACADEMY CHARTER SCHOOL
NOTES TO THE FINANCIAL STATEMENTS
JUNE 30, 2021**

NOTE 8: STATE POST-RETIREMENT MEDICAL BENEFITS (CONTINUED)

The State is also responsible for the cost attributable to P.L. 1992 c.126, which provides free health benefits to members of PERS and the Alternate Benefit Program who retire from a Board of Education, Charter School or county college with 25 years of service. The State paid \$214.1 million toward Chapter 126 benefits for 19,056 eligible retired members in fiscal year 2015.

NOTE 9: POSTEMPLOYMENT BENEFITS OTHER THAN PENSIONS (OPEB)

General Information about the OPEB Plan

The State of New Jersey reports a liability as a result of its statutory requirements to pay other postemployment (health) benefits for State Health Benefit Local Education Retired Employees Plan. The State Health Benefit Local Education Retired Employees Plan is a multiple-employer defined benefit OPEB plan that is administered on a pay-as-you-go basis. Accordingly, no assets are accumulated in a qualifying trust that meets the criteria in paragraph 4 of GASB Statement No. 75, Accounting and Financial Reporting for the Postemployment Benefits Other Than Pensions. The State Health Benefit Local Education Retired Employees Plan provides medical, prescription drug, and Medicare Part B reimbursement to retirees and their covered dependents of local education employers.

The employer contributions for the participating local education employers are legally required to be funded by the State of New Jersey in accordance with N.J.S.A 52:14-17.32f. According to N.J.S.A 52:14- 17.32f, the State provides employer-paid coverage to employees who retire from a board of education or county college with 25 years or more of service credit in, or retires on a disability pension from, one or more of the following plans: the Teachers' Pension and Annuity Fund (TPAF), the Public Employees' Retirement System (PERS), the Police and Firemen Retirement System (PFRS), or the Alternate Benefit Program (ABP). Pursuant to Chapter 78, P.L. 2011, future retirees eligible for postretirement medical coverage who have less than 20 years of creditable service on June 28, 2011 will be required to pay a percentage of the cost of their health care coverage in retirement provided they retire with 25 or more years of pension service credit. The percentage of the premium for which the retiree will be responsible will be determined based on the retiree's annual retirement benefit and level of coverage.

The total nonemployer OPEB liability does not include certain other postemployment benefit obligations that are provided by the local education employers. The reporting of these benefits are the responsibility of the individual local education employers.

**HOPE ACADEMY CHARTER SCHOOL
NOTES TO THE FINANCIAL STATEMENTS
JUNE 30, 2021**

NOTE 9: POSTEMPLOYMENT BENEFITS OTHER THAN PENSIONS (OPEB) (CONT'D)

Basis of Presentation

The Schedule presents the State of New Jersey's obligation under NJSA 52:14-17.32f. The Schedule does not purport to be a complete presentation of the financial position or changes in financial position of the State Health Benefit Local Education Retired Employees Plan or the State of New Jersey. The accompanying Schedule was prepared in accordance with U.S. generally accepted accounting principles. Such preparation requires management of the State of New Jersey to make a number of estimates and assumptions relating to the reported amounts. Due to the inherent nature of these estimates, actual results could differ from those estimates.

Total Nonemployer OPEB Liability

The total nonemployer OPEB liability as of June 30, 2020 was determined by an actuarial valuation as of June 30, 2019, which was rolled forward to June 30, 2020. The actuarial assumptions vary for each plan member depending on the pension plan the member is enrolled in. This actuarial valuation used the following actuarial assumptions, applied to all periods in the measurement:

Total Nonemployer OPEB Liability \$67,809,962,608

	TPAF/ABP	PERS
Inflation Rate	2.50%	2.50%
	Based on Years of Service	Based on Years of Service
Salary Increases:		
Through 2026	1.55% - 4.45%	2.00% - 6.00%
Thereafter	1.55% - 4.45%	3.00% - 7.00%

**HOPE ACADEMY CHARTER SCHOOL
NOTES TO THE FINANCIAL STATEMENTS
JUNE 30, 2021**

NOTE 9: POSTEMPLOYMENT BENEFITS OTHER THAN PENSIONS (OPEB) (CONT'D)

Preretirement mortality rates were based on the RP-2010 Headcount-Weighted Healthy Employee Male/Female mortality table with fully generational mortality improvement projections from the central year using the MP-2019 scale. Postretirement mortality rates were based on the RP-2019 Headcount- Weighted Healthy Annuitant Male/Female mortality table with fully generational improvement projections from the central year using the MP-2019 scale. Disability mortality was based on the RP-2010 Headcount- Weighted Disabled Male/Female mortality table with fully generational improvement projections from the central year using the MP-2019 scale.

The actuarial assumptions used in the June 30, 2019 valuation were based on the results of actuarial experience studies for the periods July 1, 2015 - June 30, 2018, July 1, 2014 - June 30, 2018, and July 1, 2012 - June 30, 2015 for TPAF and PERS, respectively.

Health Care Trend Assumptions

For pre-Medicare medical benefits, the trend rate is initially 5.6% and decreases to a 4.5% long-term trend rate after seven years. For post-65 medical benefits, the actual fully-insured Medicare Advantage trend rates for fiscal year 2021 through 2022 are reflected. The assumed post-65 medical trend is 4.5% for all future years. For prescription drug benefits, the initial trend rate is 7.0% and decreases to a 4.5% long-term trend rate after seven years. For the Medicare Part B reimbursement, the trend rate is 5.0%.

Discount rate

The discount rate for June 30, 2020 was 2.21%. This represents the municipal bond return rate as chosen by the Division. The source is the Bond Buyer Go 20-Bond Municipal Bond Index, which includes tax-exempt general obligation municipal bonds with an average rating of AA/Aa or higher. As the long-term rate of return is less than the municipal bond rate, it is not considered in the calculation of the discount rate, rather the discount rate is set at the municipal bond rate.

**HOPE ACADEMY CHARTER SCHOOL
NOTES TO THE FINANCIAL STATEMENTS
JUNE 30, 2021**

NOTE 9: POSTEMPLOYMENT BENEFITS OTHER THAN PENSIONS (OPEB) (CONT'D)

Changes in the Total OPEB Liability

	<u>Total OPEB Liability</u>
Balance as of June 30, 2019 Measurement Date	\$ 2,588,387
Changes for the Year:	
Service Cost	255,254
Interest Cost	98,221
Changes of Benefit Terms	-
Differences Between Expected and Actual Experience	778,046
Changes in Assumptions or Other Inputs	814,537
Member Contributions	2,353
Gross Benefit Payments	(77,630)
Net Changes	1,870,781
Balance as of June 30, 2020 Measurement Date	\$ 4,459,168

Sensitivity of Total Nonemployer OPEB Liability to changes in the discount rate:

The following presents the total nonemployer OPEB liability as of June 30, 2020, respectively, calculated using the discount rate as disclosed above as well as what the total nonemployer OPEB liability would be if it was calculated using a discount rate that is 1-percentage point lower or 1-percentage point higher than the current rate:

At 1% Decrease (1.21%)	At Discount Rate (2.21%)	At 1% Increase (3.21%)
\$81,748,410,002	\$67,809,962,608	\$56,911,439,160

Sensitivity of Total Nonemployer OPEB Liability to changes in the healthcare trend rate:

The following presents the total nonemployer OPEB liability as of June 30, 2019, calculated using the healthcare trend rate as disclosed above as well as what the total OPEB liability would be if it was calculated using a healthcare trend rate that is 1- percentage point lower or 1-percentage point higher than the current rate:

1% Decrease	Healthcare Cost Trend Rate	1% Increase
\$54,738,488,540	\$67,809,962,608	\$83,375,182,975

**HOPE ACADEMY CHARTER SCHOOL
NOTES TO THE FINANCIAL STATEMENTS
JUNE 30, 2021**

NOTE 9: POSTEMPLOYMENT BENEFITS OTHER THAN PENSIONS (OPEB) (CONT'D)

For the year ended June 30, 2021, the Charter School recognized OPEB expense of \$396,816.

Special Funding Situation

The participating employer allocations included in the supplemental schedule of special funding amounts by employer for each employer are provided as employer is required to record in their financial statements, as an expense and corresponding revenue, their proportionate share of total OPEB expense attributable to the State of New Jersey under the special funding situation and to include their respective amount of total OPEB liability in their notes to their financial statements. The total OPEB liability and service cost for each employer was determined separately based on actual data for each employer's participants.

NOTE 10: RISK MANAGEMENT

The charter school is exposed to various risks of loss related to torts; theft of, damage to, and destruction of assets; errors and omissions; injuries to employees; and natural disasters.

Property and Liability Insurance

The charter school maintains commercial insurance coverage for property, liability, student accident and surety bonds. A complete schedule of insurance coverage can be found in the Statistical Section of this Comprehensive Annual Financial Report.

**HOPE ACADEMY CHARTER SCHOOL
NOTES TO THE FINANCIAL STATEMENTS
JUNE 30, 2021**

NOTE 12: LONG TERM LIABILITIES

On November 29, 2016 the school purchased the building in the amount of \$4,312,500. The school obtained a first mortgage from TD Bank in the amount of \$3,056,250 with interest of 3.04% due November 1, 2041 requiring monthly principle and interest payments of \$14,662. The mortgage is collateralized by the land, building and equipment. In addition, the school obtained a second mortgage from NJEDA in the amount of \$1,018,750 with the interest at 2.50% due December 1, 2021 requiring monthly principle and interest payments of \$5,516. This mortgage is subject to a first mortgage held by TD Bank.

On June 9, 2020, the School purchased an additional building located at 500 Grand Avenue, Asbury Park, NJ in the amount of \$1,325,000. The School obtained a first mortgage from TD Bank in the amount of \$712,000 with interest at 3.70% due July 1, 2040 requiring monthly principal and interest payments of \$4,223. The mortgage is collateralized by the land, building and equipment. In addition, the School obtained a second mortgage from NJEDA in the amount of \$178,000 with interest at 3.50% due July 1, 2030 requiring monthly principal and interest payments of \$1,037 This mortgage is subject to a first mortgage held by TD Bank.

During the fiscal year ended June 30, 2021, the following changes occurred in long term obligations from governmental activities:

	Balance July 1, 2020	Additions	Deductions	Balance June 30, 2021
NJEDA	\$ 886,449	\$ -	\$ 37,291	\$ 849,158
TD Bank	2,755,259	-	91,488	2,663,771
TD Bank	712,000	-	22,280	689,720
TD Bank	178,000	-	5,301	172,699
	<u>\$ 4,531,708</u>	<u>\$ -</u>	<u>\$ 156,360</u>	<u>\$ 4,375,348</u>

NOTE 13: SUBSEQUENT EVENTS

Subsequent events have been evaluated through March 14, 2022, which is the date the financial statements were available to be issued. Events occurring after that date have not been evaluated to determine whether a change in the financial statements would be required. The COVID-19 outbreak in the United States and specifically in New Jersey has caused disruption of the School's normal financial operations. Though the impact on the School's operation cannot be reasonably estimated at this date, it is likely that there will be an impact on certain revenue in the General Fund other than state aid and the local tax levy.

REQUIRED SUPPLEMENTARY INFORMATION – PART II

SECTION C – BUDGETARY COMPARISON SCHEDULES

HOPE ACADEMY CHARTER SCHOOL
General Fund
Budgetary Comparison Schedule
For The Fiscal Year Ended June 30, 2021

	Original Budget	Budget Transfers	Final Budget	Actual	Variance Final to Actual
REVENUES:					
Local Sources:					
Equalization Aid-Local Share	\$ 1,043,212	\$ -	\$ 1,043,212	\$ 1,043,212	\$ -
Total Local Sources	1,043,212	-	1,043,212	1,043,212	-
Categorical Aid:					
Equalization Aid-State Share	2,580,792	-	2,580,792	2,580,792	-
Security Aid	132,802	-	132,802	132,802	-
Special Education Categorical Aid	87,709	-	87,709	87,709	-
State Adjustment AID	39,495	-	39,495	39,495	-
Total Categorical Aid	2,840,798	-	2,840,798	2,840,798	-
Other Sources:					
Interest Income	-	-	-	2,195	2,195
Miscellaneous Revenue	-	-	-	12,126	12,126
On-Behalf TPAF Pension Contributions (Non-Budgeted)	-	-	-	436,106	436,106
On-Behalf TPAF Post Retirement Medical Contributions (Non-Budgeted)	-	-	-	137,210	137,210
Reimbursed TPAF Social Security Contributions (Non-Budgeted)	-	-	-	119,656	119,656
Total other Sources	-	-	-	707,293	707,293
Total Revenues	\$ 3,884,010	\$ -	\$ 3,884,010	\$ 4,591,303	\$ 707,293
EXPENDITURES:					
Instruction:					
Kindergarten - Salaries of Teachers	\$ 109,587	\$ -	\$ 109,587	\$ 109,587	\$ -
Grades 1 - 5 - Salaries of Teachers	685,211	-	685,211	685,211	-
Grades 6 - 8 - Salaries of Teachers	383,000	-	383,000	383,000	-
Other Salaries for Instruction	169,330	-	169,330	169,330	-
Other Purchased Services	66,329	-	66,329	46,287	20,042
General Supplies	46,050	-	46,050	28,141	17,909
Textbooks	34,000	-	34,000	24,045	9,955
Miscellaneous	25,500	-	25,500	24,962	538
Total Instruction	1,519,007	-	1,519,007	1,470,563	48,444
Administration					
Salaries - General Administration	322,153	-	322,153	322,153	-
Salaries of Principals	268,878	-	268,878	268,244	634
Salaries of Secretarial/Clerical Assistants	157,910	-	157,910	155,210	2,700
Total Benefits Cost	452,342	-	452,342	248,821	203,521
Purchases Prof/Tech Services	19,570	-	19,570	14,000	5,570
Other Purchased Professional Services	70,485	-	70,485	47,745	22,740
Other Purchased Services	99,567	-	99,567	60,631	38,936
Communications/Telephone	47,463	-	47,463	22,050	25,413
Supplies and Materials	32,550	-	32,550	14,995	17,555
Interest Expense	147,900	-	147,900	139,368	8,532
Miscellaneous Expenses	25,000	-	25,000	18,048	6,952
Total Administration	\$ 1,643,818	\$ -	\$ 1,643,818	\$ 1,311,265	\$ 332,553

See Management's Discussion and Analysis section of this report for explanation of significant budget variances, original and final.

HOPE ACADEMY CHARTER SCHOOL
General Fund
Budgetary Comparison Schedule
For The Fiscal Year Ended June 30, 2021

	Original Budget	Budget Transfers	Final Budget	Actual	Variance Final to Actual
(Continued From Prior Page)					
Support Services:					
Salaries	\$ 62,685	\$ -	\$ 62,685	\$ 60,430	\$ 2,255
Purchased Prof/Ed Services	89,550	-	89,550	51,795	37,755
Cleaning, Repair, and Maintenance Services	108,881	-	108,881	71,362	37,519
Rental of Equipment	21,800	-	21,800	14,247	7,553
Insurance for Property, Liability and Fidelity	87,605	-	87,605	74,502	13,103
Supplies and Materials	37,091	-	37,091	5,519	31,572
Energy Costs (Heat and Electricity)	74,620	-	74,620	42,611	32,009
Miscellaneous Expenses	24,280	-	24,280	16,241	8,039
Total Support Services	506,512	-	506,512	336,707	169,805
Capital Outlay:					
Building and Improvements	368,703	-	368,703	39,646	329,057
Instructional Equipment	21,735	-	21,735	4,797	16,938
Non-Instructional Equipment	68,901	-	68,901	11,447	57,454
Mortgage Principle	156,486	-	156,486	156,360	126
Total Capital Outlay	615,825	-	615,825	212,250	403,575
On-Behalf TPAF Pension Contributions (Non-Budgeted)				436,106	(436,106)
On-Behalf TPAF Post Retirement Medical Contributions (Non-Budgeted)				137,210	(137,210)
Reimbursed TPAF Social Security Contributions (Non-Budgeted)				119,656	(119,656)
Total Expenditures	4,285,162	-	4,285,162	4,023,757	261,405
Excess of Revenues Over Expenditures	(401,152)	-	(401,152)	567,546	968,698
Fund Balance, July 1	2,202,172	-	2,202,172	2,202,172	-
Fund Balance, June 30	\$ 1,801,020	\$ -	\$ 1,801,020	\$ 2,769,718	\$ 968,698
Recapitulation of Excess of Revenues Over Expenditures:					
Budgeted Fund Balance	\$ 1,801,020	\$ -	\$ 1,801,020	\$ 2,769,718	\$ 968,698
Total	\$ 1,801,020	\$ -	\$ 1,801,020	\$ 2,769,718	\$ 968,698

See Management's Discussion and Analysis section of this report for explanation of significant budget variances, original and final.

HOPE ACADEMY CHARTER SCHOOL
Special Revenue Fund
Budgetary Comparison Schedule
For The Fiscal Year Ended June 30, 2021

	Original Budget	Budget Transfers	Final Budget	Actual	Variance Final to Actual
REVENUE SOURCES:					
Local	\$ 18,296	\$ -	\$ 18,296	\$ 18,296	\$ -
Federal	565,915	-	565,915	565,915	-
State	4,954	-	4,954	4,954	-
Total Revenues	589,165	-	589,165	589,165	-
EXPENDITURES:					
Instruction:					
Salaries	256,305	-	256,305	256,305	-
General Supplies	83,172	-	83,172	83,172	-
Purchase Services	-	-	-	-	-
Other Objects	971	-	971	971	-
Total Instruction	340,448	-	340,448	340,448	-
Support Services:					
Salaries	37,421	-	37,421	37,421	-
Personal Services - Employee Benefits	54,494	-	54,494	54,494	-
Purchased Professional Services	62,970	-	62,970	62,970	-
Supplies	85,954	-	85,954	85,954	-
Equipment	7,878	-	7,878	7,878	-
Total Support Services	248,717	-	248,717	248,717	-
Total Expenditures	589,165	-	589,165	589,165	-
Excess (Deficiency) of Revenues Over (Under) Expenditures	\$ -	\$ -	\$ -	\$ -	\$ -

NOTES TO THE REQUIRED SUPPLEMENTARY INFORMATION

HOPE ACADEMY CHARTER SCHOOL
 Required Supplementary Information
 Budgetary Comparison Schedule
 Note to RSI
 Fiscal Year Ended June 30, 2021

Note A - Explanation of Differences between Budgetary Inflows and Outflows and GAAP Revenues and Expenditures

		General Fund		Special Revenue Fund
Sources/Inflows of Resources				
Actual amounts (budgetary) "revenues" from the budgetary comparison schedules	[C-1]	\$ 4,591,303	[C-2]	\$ 589,165
Difference - Budget to GAAP				
Grant accounting budgetary basis differs from GAAP in that encumbrances are recognized as expenditures, and the related revenue is recognized		-		-
Total revenues as reports on the statement of revenues, expenditures and changes in fund balance - governmental funds.	[B-2]	\$ 4,591,303	[B-2]	\$ 589,165
Uses/Outflows of resources				
Actual amounts (budgetary basis) "total outflows" from the budgetary comparison schedule	[C-1]	\$ 4,023,757	[C-2]	\$ 589,165
Differences - Budget to GAAP:				
Encumbrances for supplies and equipment ordered but not received are reported in the year the order is placed for budgetary purposes, but in the year the supplies are received for financial accounting purposes		-		-
Total expenditures as reported on the statement of revenues, expenditures and changes in fund balances - governmental funds.	[B-2]	\$ 4,023,757	[B-2]	\$ 589,165

REQUIRED SUPPLEMENTARY INFORMATION – PART III

**SCHEDULE L - SCHEDULES RELATED TO ACCOUNTING AND REPORTING FOR
PENSIONS (GASB 68)**

HOPE ACADEMY CHARTER SCHOOL
REQUIRED SUPPLEMENTARY INFORMATION SCHEDULES
SCHEDULE OF THE CHARTER SCHOOL'S PROPORTIONATE SHARE OF THE NET PENSION LIABILITY
PUBLIC EMPLOYEES RETIREMENT SYSTEM (PERS)
LAST TWO PLAN YEARS
UNAUDITED

	Fiscal Year Ended June 30,	
	2021	2020
Charter School's proportionate share of the net pension liability	\$ 438,710	\$ 440,781
Charter School's covered employees payroll	N/A	N/A
Charter School's proportionate share of the net pension liability as a percentage of it's covered employee payroll	N/A	N/A
Plan fiduciary net position as a percentage of the total pension liability	N/A	N/A

Note: This schedule does not contain ten years of information as GASB No. 68 was implemented during the fiscal year ended June 30, 2015.

**HOPE ACADEMY CHARTER SCHOOL
 REQUIRED SUPPLEMENTARY INFORMATION SCHEDULES
 SCHEDULE OF THE CHARTER SCHOOL CONTRIBUTIONS
 PUBLIC EMPLOYEES RETIREMENT SYSTEM (PERS)
 LAST TWO FISCAL YEARS
 UNAUDITED**

	Fiscal Year Ending June 30,	
	2021	2020
Contractually required contribution	\$ 29,430	\$ 23,795
Contributions in relation to the contractually required contribution	(29,430)	(23,795)
Contribution deficiency/(excess)	\$ -	\$ -

Note: This schedule does not contain ten years of information as GASB No. 68 was implemented during the fiscal year ended June 30, 2015.

NOTES TO REQUIRED SUPPLEMENTARY INFORMATION III

HOPE ACADEMY CHARTER SCHOOL
NOTES TO REQUIRED SUPPLEMENTARY INFORMATION
PUBLIC EMPLOYEES RETIREMENT SYSTEM
FOR FISCAL YEAR ENDED JUNE 30, 2021

A. Benefit Changes

There were none.

B. Changes in Assumptions

The discount rate changed from 6.28% as of June 30, 2019 to 7.00% as of June 30, 2020.

HOPE ACADEMY CHARTER SCHOOL
NOTES TO REQUIRED SUPPLEMENTARY INFORMATION
TEACHER'S PENSION AND ANNUITY FUND
FOR FISCAL YEAR ENDED JUNE 30, 2021

A. Benefit Changes

There were none.

B. Changes in Assumptions

The discount rate changed from 5.60% as of June 30, 2019 to 5.40% as of June 30, 2020.

OTHER SUPPLEMENTARY INFORMATION

**SECTION E – SPECIAL REVENUE FUND
DETAIL STATEMENTS**

The Special Revenue Fund is used to account for the proceeds of specific sources (other than expandable trusts or major capital projects) that are legally restricted to expenditures for specific purposes.

HOPE ACADEMY CHARTER SCHOOL
Special Revenue Fund
Combining Schedule of Program Revenues and Expenditures - Budgetary Basis
For the Fiscal Year Ended June 30, 2021

	NJ FSCA Grant	CARES Emergency Relief	FEMA Grant	ESEA Title I	ESEA Title II Part A	I.D.E.A. Basic	CRRSA ESSER II	Corona Relief	Local Grants	Grand Total
REVENUE SOURCES:										
Federal	\$ -	\$ 134,796	\$ 17,272	\$ 184,637	\$ 25,250	\$ 63,387	\$ 108,421	\$ 32,152	\$ -	\$ 565,915
State	4,954	-	-	-	-	-	-	-	-	4,954
Local	-	-	-	-	-	-	-	-	18,296	18,296
Total Revenues	4,954	134,796	17,272	184,637	25,250	63,387	108,421	32,152	18,296	589,165
EXPENDITURES:										
Instruction:										
Salaries	-	32,729	-	145,872	-	44,000	18,650	-	15,054	256,305
General Supplies	4,954	64,875	-	4,185	-	1,787	5,100	-	2,271	83,172
Purchase Services	-	-	-	-	-	-	-	-	-	-
Other Objects	-	-	-	-	-	-	-	-	971	971
Total Instruction	4,954	97,604	-	150,057	-	45,787	23,750	-	18,296	340,448
Support Services:										
Salaries	-	1,998	-	-	-	-	35,423	-	-	37,421
Personal Services - Employee Benefits	-	2,657	-	30,100	-	17,600	4,137	-	-	54,494
Purchased Professional Services	-	-	-	-	25,250	-	36,250	1,470	-	62,970
Salaries	-	32,537	17,272	-	-	-	8,861	27,284	-	85,954
Equipment	-	-	-	4,480	-	-	-	3,398	-	7,878
Total Support Services	-	37,192	17,272	34,580	25,250	17,600	84,671	32,152	-	248,717
Total Expenditures	4,954	134,796	17,272	184,637	25,250	63,387	108,421	32,152	18,296	589,165
Excess (Deficiency) of Revenues Over (Under) Expenditures	\$ -	\$ -	\$ -	\$ -	\$ -	\$ -	\$ -	\$ -	\$ -	\$ -

**SECTION G – PROPRIETARY FUNDS
DETAIL STATEMENTS**

Proprietary Funds are used to account for operations that are financed and operated in a manner similar to private business enterprises – where the intent of the charter school’s board is that the costs of providing goods or services be financed through user charges.

Food Services Fund – This fund provides for the operation of food services in all schools within the school district.

**THIS SECTION HAS ALREADY BEEN INCLUDED IN STATEMENTS B-4, B-5,
AND B-6.**

**SECTION H – FIDUCIARY FUNDS
DETAIL STATEMENTS**

Fiduciary Funds are used to account for funds received by the school for a specific purpose.

Agency Funds are used to account for assets held by the school as an agent for individuals, private organizations, other governments and/or other funds.

Payroll Fund – This agency fund is used to account for the payroll transactions of the school

HOPE ACADEMY CHARTER SCHOOL
 Fiduciary Funds
 Combining Statement of Fiduciary Net Position
 June 30, 2021

	Agency		
	Payroll Agency	Net Payroll	Total Agency Funds
ASSETS:			
Cash and Cash Equivalents	\$ 153,578	\$ 1,765	\$ 155,343
Total Assets	\$ 153,578	\$ 1,765	\$ 155,343
LIABILITIES:			
Interfund Accounts Payable	\$ 141,133	\$ 1,765	\$ 142,898
Payroll Deductions and Withholdings	12,445	-	12,445
Total Liabilities	\$ 153,578	\$ 1,765	\$ 155,343

HOPE ACADEMY CHARTER SCHOOL
 Payroll Agency Fund
 Schedule of Receipts and Disbursements
 June 30, 2021

	Balance July 1, 2020	Cash Receipts	Cash Disbursements	Balance June 30, 2021
ASSETS:				
Cash	\$ 65,196	\$ 1,029,518	\$ 941,136	\$ 153,578
Total Assets	<u>\$ 65,196</u>	<u>\$ 1,029,518</u>	<u>\$ 941,136</u>	<u>\$ 153,578</u>
LIABILITIES:				
Interfund Accounts Payable	\$ 54,346	\$ 86,787	\$ -	\$ 141,133
Payroll Deductions and Withholdings	<u>10,850</u>	<u>942,731</u>	<u>941,136</u>	<u>12,445</u>
Total Liabilities	<u>\$ 65,196</u>	<u>\$ 1,029,518</u>	<u>\$ 941,136</u>	<u>\$ 153,578</u>

**STATISTICAL SECTION
(UNAUDITED)**

GASB requires that ten years of statistical data be presented. The following information is presented utilizing information available. Each year thereafter, an additional year's data will be included until ten years of data is presented.

Contents

Financial Trends

These schedules contain trend information to help the reader understand how the charter school's financial performance and well-being have changed over time.

Revenue Capacity (Not Applicable To Charter School)

These schedules contain information to help the reader assess the district's most significant local revenue source, the property tax.

Debt Capacity

These schedules present information to help the reader assess the affordability of the charter school's current levels of outstanding debt and the charter school's ability to issue additional debt in the future.

Demographic and Economic Information

These schedules offer demographic and economic indicators to help the reader understand the environment within which the charter school's financial activities take place.

Operating Information

These schedules contain service and infrastructure data to help the reader understand how the information in the charter school's financial report relates to the services the district provides and the activities it performs.

Sources: *Unless otherwise noted, the information in these schedules is derived from the comprehensive annual financial reports (CAFR) for the relevant year. The charter school implemented GASB Statement 34 in the fiscal year ending June 30, 2004; schedules presenting charter school-wide information include information beginning in that year.*

FINANCIAL TRENDS

HOPE ACADEMY CHARTER SCHOOL
 Net Position by Component
 Last Ten Fiscal Years
(accrual basis of accounting)
 Unaudited

	Fiscal Year Ending June 30,									
	2021	2020	2019	2018	2017	2016	2015	2014	2013	2012
Governmental Activities										
Invested in Capital Assets, Net or Related Debt	\$ 1,301,362	\$ 1,269,607	\$ 741,131	\$ 691,783	\$ 440,105	\$ 161,671	\$ 180,690	\$ 199,709	\$ 218,728	\$ 237,747
Restricted	6,837.00	-	-	-	-	-	-	-	-	-
Unassigned	2,189,883	1,577,895	1,328,121	1,120,534	947,915	886,286	494,856	910,038	724,420	556,629
Total Governmental Activities Net Assets/Position (Deficit)	<u>\$ 3,498,082</u>	<u>\$ 2,847,502</u>	<u>\$ 2,069,252</u>	<u>\$ 1,812,317</u>	<u>\$ 1,388,020</u>	<u>\$ 1,047,957</u>	<u>\$ 675,546</u>	<u>\$ 1,109,747</u>	<u>\$ 943,148</u>	<u>\$ 794,376</u>
Business-Type Activities										
Unassigned	\$ 19,202	\$ 31,718	\$ 27,413	\$ 26,339	\$ 38,736	\$ 62,325	\$ 51,720	\$ 39,463	\$ 36,411	\$ 22,458
Total Business-Type Activities Net Position	<u>\$ 19,202</u>	<u>\$ 31,718</u>	<u>\$ 27,413</u>	<u>\$ 26,339</u>	<u>\$ 38,736</u>	<u>\$ 62,325</u>	<u>\$ 51,720</u>	<u>\$ 39,463</u>	<u>\$ 36,411</u>	<u>\$ 22,458</u>
Charter School-wide										
Invested in Capital Assets, Net or Related Debt	\$ 1,301,362	\$ 1,269,607	\$ 741,131	\$ 691,783	\$ 440,105	\$ 161,671	\$ 180,690	\$ 199,709	\$ 218,728	\$ 237,747
Restricted	6,837.00	-	-	-	-	-	-	-	-	-
Unassigned	2,209,085	1,609,613	1,355,534	1,146,873	986,651	948,611	546,576	949,501	760,831	579,087
Total Charter School Net Position	<u>\$ 3,517,284</u>	<u>\$ 2,879,220</u>	<u>\$ 2,096,665</u>	<u>\$ 1,838,656</u>	<u>\$ 1,426,756</u>	<u>\$ 1,110,282</u>	<u>\$ 727,266</u>	<u>\$ 1,149,210</u>	<u>\$ 979,559</u>	<u>\$ 816,834</u>

Source: Comprehensive Annual Financial Report

HOPE ACADEMY CHARTER SCHOOL
 Changes in Net Position
 Last Ten Fiscal Years
 Unaudited

Fiscal Year Ending June 30,

	2021	2020	2019	2018	2017	2016	2015	2014	2013	2012
Expenses										
Governmental Activities:										
Instruction	\$ 2,545,030	\$ 2,184,840	\$ 2,083,770	\$ 1,871,371	\$ 1,677,519	\$ 1,668,512	\$ 1,695,594	\$ 1,695,261	\$ 1,703,768	\$ 1,781,206
Administration	1,252,099	1,089,576	1,070,503	1,008,098	873,959	720,048	649,632	715,776	699,182	678,559
Support Services	585,424	640,938	650,608	493,446	640,505	908,291	1,017,742	1,316,623	1,407,137	1,192,613
Capital Outlay	194,396	162,400	27,458	114,516	178,482	24,299	53,708	-	-	2,599
Unallocated										
Depreciation	116,136	115,038	97,207	96,892	95,732	19,019	19,019	19,019	19,019	19,019
Employee Benefits	396,816	201,094	294,040	409,502	-	-	-	-	-	-
Total Governmental Activities Net Assets/Position	<u>5,089,901</u>	<u>4,393,886</u>	<u>4,223,586</u>	<u>3,993,825</u>	<u>3,466,197</u>	<u>3,340,169</u>	<u>3,435,695</u>	<u>3,746,679</u>	<u>3,829,106</u>	<u>3,673,996</u>
Business-Type Activities:										
Food Service	129,781	163,807	188,206	186,335	190,129	146,673	132,874	143,122	122,817	95,369
Total Business-Type Activities Expenses	<u>129,781</u>	<u>163,807</u>	<u>188,206</u>	<u>186,335</u>	<u>190,129</u>	<u>146,673</u>	<u>132,874</u>	<u>143,122</u>	<u>122,817</u>	<u>95,369</u>
Total Charter School Expenses	<u>\$ 5,219,682</u>	<u>\$ 4,557,693</u>	<u>\$ 4,411,792</u>	<u>\$ 4,180,160</u>	<u>\$ 3,656,326</u>	<u>\$ 3,486,842</u>	<u>\$ 3,568,569</u>	<u>\$ 3,889,801</u>	<u>\$ 3,951,923</u>	<u>\$ 3,769,365</u>
Program Revenues										
Governmental Activities:										
Operating Grants and Contributions	484,525	307,621	359,682	456,324	39,496	71,166	78,028	71,401	74,893	60,465
Total Governmental Activities Expenses	<u>484,525</u>	<u>307,621</u>	<u>359,682</u>	<u>456,324</u>	<u>39,496</u>	<u>71,166</u>	<u>78,028</u>	<u>71,401</u>	<u>74,893</u>	<u>60,465</u>
Business-Type Activities:										
Charges for Services	-	3,520	6,133	4,093	2,915	2,494	3,302	3,696	4,859	6,045
Operating Grants and Contributions	117,265	164,592	183,147	169,845	163,675	154,784	141,777	142,440	131,871	91,068
Total Business-Type Activities Expenses	<u>117,265</u>	<u>168,112</u>	<u>189,280</u>	<u>173,938</u>	<u>166,590</u>	<u>157,278</u>	<u>145,079</u>	<u>146,136</u>	<u>136,730</u>	<u>97,113</u>
Total Charter School Program Revenues	<u>601,790</u>	<u>475,733</u>	<u>548,962</u>	<u>630,262</u>	<u>206,086</u>	<u>228,444</u>	<u>223,107</u>	<u>217,537</u>	<u>211,623</u>	<u>157,578</u>
Net (Expense)/Revenue										
Governmental Activities	\$ (4,605,376)	\$ (4,086,265)	\$ (3,863,904)	\$ (3,537,501)	\$ (3,426,701)	\$ (3,269,003)	\$ (3,357,667)	\$ (3,675,278)	\$ (3,754,213)	\$ (3,613,531)
Business-Type Activities	(12,516)	4,305	1,074	(12,397)	(23,589)	10,605	12,205	3,014	13,913	1,744
Total Charter School-wide Net Expense	<u>\$ (4,617,892)</u>	<u>\$ (4,081,960)</u>	<u>\$ (3,862,830)</u>	<u>\$ (3,549,898)</u>	<u>\$ (3,450,290)</u>	<u>\$ (3,258,398)</u>	<u>\$ (3,345,462)</u>	<u>\$ (3,672,264)</u>	<u>\$ (3,740,300)</u>	<u>\$ (3,611,787)</u>
General Revenues and Other Changes in Net Position										
Governmental Activities:										
General Purposes	\$ 1,043,212	\$ 911,852	\$ 758,933	\$ 562,243	\$ 535,785	\$ 539,439	\$ 574,921	\$ 590,882	\$ 563,194	\$ 548,462
Federal and State Aid Not Restricted	4,035,226	3,743,091	3,344,635	3,244,708	3,013,381	3,059,255	2,936,983	3,207,009	3,276,761	3,129,914
Miscellaneous Income	14,321	49,310	17,271	30,532	158,160	42,720	34,391	43,986	63,030	12,236
Total Governmental Activities	<u>5,092,759</u>	<u>4,704,253</u>	<u>4,120,839</u>	<u>3,837,483</u>	<u>3,707,326</u>	<u>3,641,414</u>	<u>3,546,295</u>	<u>3,841,877</u>	<u>3,902,985</u>	<u>3,690,612</u>
Business-Type Activities:										
Investment Earnings	\$ -	\$ -	\$ -	\$ -	\$ -	\$ -	\$ 52	\$ 38	\$ 40	\$ 41
Total Business-Type Activities	<u>-</u>	<u>-</u>	<u>-</u>	<u>-</u>	<u>-</u>	<u>-</u>	<u>52</u>	<u>38</u>	<u>40</u>	<u>41</u>
Total Charter School-wide	<u>\$ 5,092,759</u>	<u>\$ 4,704,253</u>	<u>\$ 4,120,839</u>	<u>\$ 3,837,483</u>	<u>\$ 3,707,326</u>	<u>\$ 3,641,414</u>	<u>\$ 3,546,347</u>	<u>\$ 3,841,915</u>	<u>\$ 3,903,025</u>	<u>\$ 3,690,653</u>
Change in Net Assets/Position										
Governmental Activities	\$ 487,383	\$ 617,988	\$ 256,935	\$ 299,982	\$ 280,625	\$ 372,411	\$ 188,628	\$ 166,599	\$ 148,772	\$ 77,081
Business-Type Activities	(12,516)	4,305	1,074	(12,397)	(23,589)	10,605	12,257	3,052	13,953	1,785
Total Charter School	<u>\$ 474,867</u>	<u>\$ 622,293</u>	<u>\$ 258,009</u>	<u>\$ 287,585</u>	<u>\$ 257,036</u>	<u>\$ 383,016</u>	<u>\$ 200,885</u>	<u>\$ 169,651</u>	<u>\$ 162,725</u>	<u>\$ 78,866</u>

Source: Comprehensive Annual Financial Report

HOPE ACADEMY CHARTER SCHOOL
 Fund Balances - Governmental Funds
 Last Ten Fiscal Years
(modified accrual basis of accounting)
 Unaudited

	Fiscal Year Ending June 30,									
	2021	2020	2019	2018	2017	2016	2015	2014	2013	2012
General Fund										
Unassigned	\$ 2,769,718	\$ 2,202,172	\$ 1,992,191	\$ 1,821,697	\$ 1,669,352	1,568,796	1,153,326	910,038	724,420	556,629
Total General Fund	<u>\$ 2,769,718</u>	<u>\$ 2,202,172</u>	<u>\$ 1,992,191</u>	<u>\$ 1,821,697</u>	<u>\$ 1,669,352</u>	<u>\$ 1,568,796</u>	<u>\$ 1,153,326</u>	<u>\$ 910,038</u>	<u>\$ 724,420</u>	<u>\$ 556,629</u>

HOPE ACADEMY CHARTER SCHOOL
 Changes in Fund Balances - Governmental Funds
 Last Ten Fiscal Years
(modified accrual basis of accounting)
 Unaudited

	Fiscal Year Ending June 30,									
	2021	2020	2019	2018	2017	2016	2015	2014	2013	2012
Revenues:										
Local Sources:										
Local Tax Levy	\$1,043,212	\$ 911,852	\$ 758,933	\$ 562,243	\$ 535,785	\$ 539,439	\$ 574,921	\$ 590,882	\$ 563,194	\$ 548,462
Interest In Investments	2,195	2,159	1,880	1,670	1,410	1,153	744	-	-	-
Miscellaneous	30,422	47,151	15,391	28,862	156,750	144,271	41,147	46,802	63,030	12,236
State Sources	3,538,724	3,610,851	3,125,862	3,039,504	2,822,145	2,790,436	2,637,767	2,603,485	2,699,332	2,543,673
Federal Sources	565,915	238,767	247,328	252,026	230,732	237,281	369,744	672,109	652,322	646,706
Total Revenues	<u>5,180,468</u>	<u>4,810,780</u>	<u>4,149,394</u>	<u>3,884,305</u>	<u>3,746,822</u>	<u>3,712,580</u>	<u>3,624,323</u>	<u>3,913,278</u>	<u>3,977,878</u>	<u>3,751,077</u>
Expenditures:										
Instruction	1,811,011	1,642,031	1,519,573	1,447,363	1,279,558	1,344,338	1,358,919	1,347,742	1,342,266	1,418,329
Administration	2,004,237	1,647,230	1,615,768	1,361,039	1,232,993	1,062,902	1,011,428	1,151,952	1,164,775	1,115,352
Support Services	585,424	640,938	650,608	572,278	640,505	865,571	956,980	1,227,966	1,303,046	1,118,697
Capital Outlay	212,250	192,477	192,951	351,280	243,210	24,299	53,708	-	-	2,599
Total Expenditures	<u>4,612,922</u>	<u>4,122,676</u>	<u>3,978,900</u>	<u>3,731,960</u>	<u>3,396,266</u>	<u>3,297,110</u>	<u>3,381,035</u>	<u>3,727,660</u>	<u>3,810,087</u>	<u>3,654,977</u>
Net Change in Fund Balance	<u>\$ 567,546</u>	<u>\$ 688,104</u>	<u>\$ 170,494</u>	<u>\$ 152,345</u>	<u>\$ 350,556</u>	<u>\$ 415,470</u>	<u>\$ 243,288</u>	<u>\$ 185,618</u>	<u>\$ 167,791</u>	<u>\$ 96,100</u>

Source: Comprehensive Annual Financial Report

HOPE ACADEMY CHARTER SCHOOL
 General Fund - Other Local Revenue by Source
 Last Ten Fiscal Years
(modified accrual basis of accounting)
 Unaudited

Fiscal Year Ending June 30,	Interest	Miscellaneous Revenue	Total
2021	\$ 2,195	\$ 12,126	\$ 14,321
2020	2,159	47,151	49,310
2019	1,880	15,391	17,271
2018	1,670	28,862	30,532
2017	1,410	156,750	158,160
2016	1,153	144,271	145,424
2015	744	41,147	41,891
2014	-	46,802	46,802
2013	-	63,030	63,030
2012	-	12,236	12,236

Source: Charter School records

DEMOGRAPHIC AND ECONOMIC INFORMATION

HOPE ACADEMY CHARTER SCHOOL
Demographic and Economic Statistics
Last Ten Fiscal Years

Year	Population*	Personal Income**	Per Capita Personal Income***	Unemployment Rate ****
2021	N/A	N/A	N/A	N/A
2020	N/A	N/A	N/A	N/A
2019	N/A	N/A	N/A	N/A
2018	N/A	N/A	N/A	N/A
2017	N/A	N/A	N/A	N/A
2016	N/A	N/A	N/A	N/A
2015	N/A	N/A	N/A	N/A
2014	16,116	26,370	13,516	7.4
2013	N/A	N/A	N/A	N/A
2012	16,132	N/A	N/A	N/A

Source:

* Population information provided by the NJ Dept of Labor and Workforce Development.

** Personal income has been estimated based upon the municipal population and per capita personal income presented.

*** Per capita personal income by municipality estimated based upon the 2010 Census published by the US Bureau of Economic Analysis.

**** Unemployment data provided by the NJ Dept of Labor and Workforce Development.

HOPE ACADEMY CHARTER SCHOOL
Principal Employers
Current Year and Nine Years Ago
Unaudited

<u>Employer</u>	<u>2021(1)</u>			<u>2012 (1)</u>		
	<u>Employees</u>	<u>Rank</u>	<u>Percentage of Total Municipal Employment</u>	<u>Employees</u>	<u>Rank</u>	<u>Percentage of Total Municipal Employment</u>
	<u> </u>	<u> </u>	<u> </u>	<u> </u>	<u> </u>	<u> </u>
	<u> </u>	<u> </u>	<u> </u>	<u> </u>	<u> </u>	<u> </u>

(1) Data was not available from sources contacted.

OPERATING INFORMATION

HOPE ACADEMY CHARTER SCHOOL
 Full-Time Equivalent Charter School Employees by Function
 Last Ten Fiscal Years
Unaudited

Function	Fiscal Year Ending June 30,									
	2021	2020	2019	2018	2017	2016	2015	2014	2013	2012
Instruction	27	25	24	23	23	22	18	19	20.7	21
Administrative	4	4	4	4	4	6	6	3.8	4.8	4.5
Support Services	9	7	7	5	3	4	7.5	1.7	8.6	4.5
Food Service	1	1	1	2	2	0	0	0	0.5	0.5
Total	41.0	37.0	36.0	34.0	32.0	32.0	31.5	24.5	34.6	30.5

Source: Charter School Personnel Records

HOPE ACADEMY CHARTER SCHOOL
 Operating Statistics
 Last Ten Fiscal Years
Unaudited

Fiscal Year Ended June 30,	Enrollment	Operating Expenditures*	Cost Per Pupil	Percentage Change	Teaching Staff**	Pupil / Teacher Ratio	Average Daily Enrollment (ADE)***	Average Daily Attendance (ADA)***	Percent Change in Average Daily Enrollment	Student Attendance Percentage
2021	252	4,400,672	17,463	14.30%	27	9.3:1	250.9	240.2	0.01%	0.00%
2020	250	3,819,320	15,277	-1.85%	25	10:1	249.1	239.9	7.46%	95.96%
2019	236	3,673,290	15,565	4.20%	25	9.8:1	231.8	225.3	9.28%	93.07%
2018	218	3,256,364	14,937	-1.94%	23	10.6:1	216.6	210.7	4.69%	97.30%
2017	207	3,153,056	15,232	-3.66%	23	9.4:1	206.9	197.2	0.00%	95.95%
2016	207	3,272,811	15,811	-3.06%	22	9.4:1	206.4	197.2	1.39%	95.94%
2015	204	3,327,327	16,310	-8.55%	18	11:1	203.53	195.3	-0.53%	95.16%
2014	209	3,727,660	17,836	-3.57%	19	11:1	204.6	194.7	-0.93%	94.87%
2013	206	3,810,087	18,496	0.77%	21	10:1	206.5	195.9	5.47%	96.52%
2012	199	3,652,378	18,354	-2.40%	20	9:1	195.2	188.4	4.71%	98.06%

Sources: Charter School records.

Note: Enrollment based on annual final Charter School count.

* Operating expenditures equal total expenditures less debt service and capital outlay.

** Teaching staff includes only full-time equivalents of certified staff.

*** Average daily enrollment and average daily attendance are obtained from School Register Summary (SRS).

HOPE ACADEMY CHARTER SCHOOL
 School Building Information
 Last Ten Fiscal Years
 Unaudited

	Fiscal Year Ending June 30,									
	2021	2020	2019	2018	2017	2016	2015	2014	2013	2012
<u>Charter School Building</u>										
601 Grand Avenue										
Square Feet	32,630	32,630	32,630	32,630	32,630	32,630	32,630	32,630	32,630	32,630
Capacity (students)										
Enrollment	250	250	236	218	207	207	206	209	206	199
500 Grand Avenue										
Square Feet	6,450	6,450								
Capacity (students)										
Enrollment										

Source: Charter School Facilities Office

Note: Increased in square footage and capacity are the result of an additions.

Enrollment is based on the annual October Charter School count.

Commercial General Liability Coverage

Named Insured: Hope Academy Charter School

Policy Term: 7/1/2020 to 7/1/2021

Coverage Form Used

Occurrence Form Claims Made Form Retroactive Date:

Limits of Liability

General Liability	
Per Occurrence Limit	5,000,000
Fund Aggregate	100,000,000
Employee Benefits Liability Limit	5,000,000
Deductible	2,500
School Leaders Professional Liability	5,000,000
Per Occurrence	5,000,000
Aggregate	5,000,000
Deductible	5,000
Sexual Abuse and Molestation	10,000,000
Fund Aggregate	30,000,000
Boiler Machinery	100,000,000
Employee Dishonesty	500,000 per loss
Money and Securities	2,500,000
Environmental Impairment Liability	1,000,000
Fund Aggregate	25,000,000
Critical Incident Management	25,000
School Leaders Professional	5,000,000
Deductible	5,000

HOPE ACADEMY CHARTER SCHOOL
 Charter School Performance Framework Financial Indicators
 Fiscal Ratios
 Last Three Fiscal Years

	2019	2020	2021	Source
	Audit	Audit	Audit	
Cash	\$ 2,005,365	\$ 2,019,983	\$ 2,471,896	Audit: Exhibit A-1
Current Assets (Includes CASH)	2,698,003	2,652,162	3,236,134	Audit: Exhibit A-1
Total Assets	7,203,564	8,455,262	8,914,374	Audit: Exhibit A-1
Current Liabilities	680,439	420,057	441,907	Audit: Exhibit A-1
Total liabilities	4,911,077	5,392,546	5,255,965	Audit: Exhibit A-1
Net Assets	2,292,487	3,062,716	3,658,409	Audit: Exhibit A-1
Total Revenue	4,669,801	5,179,986	5,694,549	Audit: Exhibit A-2
Total Expenses	4,411,792	4,557,693	5,214,682	Audit: Exhibit A-2
Change in Net Assets	258,009	622,293	474,867	Audit: Exhibit A-2
Depreciation Expense	116,139	139,986	142,459	Financial Statements/Audit Workpapers
Interest Expense	112,659	110,879	139,368	Financial Statements/Audit Workpapers
Principal Payments	127,972	120,515	156,360	Financial Statements/Audit Workpapers
Interest Payments	112,659	110,879	139,368	Financial Statements/Audit Workpapers
Final Average Daily Enrollment	236.7	249.1	250.9	DOE Enrollment Reports
March 30th Budgeted Enrollment	236	250	252	Charter School Budget

Changes

RATIOS ANALYSIS...						Changes	
Near Term Indicators		2019	2020	2021	3 Yr CUM	Source:	Target
1a.	Current Ratio	3.97	6.31	7.32		Current Assets/Current Liabilities	>1.1
1b.	Unrestricted Days Cash	165.91	161.77	172.86		Cash/(Total Expenses/365)	30-60
1c.	Enrollment Variance	98%	99%	99%		Average Daily Enrollment/Budgeted Enrollment	>95%
1d.*	Default	NO	NO	NO		Audit	not in default
Sustainability Indicators							
2a.	Total Margin	6%	12%	8%		Change in Net Assets/Total Revenue	positive
2b.	Debt to Asset	0.70%	0.65%	0.59%		Total Liabilities/Total Assets	<9
2c.**	Cash Flow	177,872	14,618	451,913		Net change in cash flow from prior years	3 yr cum positive
2d.	Debt Service Coverage Ratio	2.27	3.77	2.56		(Change in Net Assets+Depreciation+Interest Expense)/(Principal & Interest Payments)	>1.10

* Is school in default of loan covenant(s) and/or is delinquent with debt service payments? Yes or No

** 2021 = 2021 Cash - 2020 Cash

Refer questions to charterfinance@doe.state.nj.us

SINGLE AUDIT SECTION



**INDEPENDENT AUDITOR'S REPORT ON INTERNAL CONTROL OVER FINANCIAL
REPORTING AND ON COMPLIANCE AND OTHER MATTERS BASED ON AN
AUDIT OF FINANCIAL STATEMENTS PERFORMED IN ACCORDANCE WITH
"GOVERNMENT AUDITING STANDARDS"
INDEPENDENT AUDITOR'S REPORT**

Honorable President and
Members of the Board of Trustees
Hope Academy Charter School
County of Monmouth
Asbury Park, New Jersey

We have audited, in accordance with the auditing standards generally accepted in the United States of America; the standards applicable to financial audits contained in *Government Auditing Standards* issued by the Comptroller General of the United States; and in compliance with audit requirements as prescribed by the Office of School Finance, Department of Education, State of New Jersey, the financial statements of the governmental activities, the business-type activities, each major fund of the Hope Academy Charter School (Charter School), in the County of Monmouth, State of New Jersey, as of and for the fiscal year ended June 30, 2021, and the related notes to the financial statements, which collectively comprise the Charter School's basic financial statements, as listed in the table of contents, and have issued our report thereon dated March 14, 2022.

Internal Control over Financial Reporting

In planning and performing our audit of the financial statements, we considered the Charter School's internal control over financial reporting (internal control) to determine the audit procedures that are appropriate in the circumstances for the purpose of expressing our opinions on the financial statements, but not for the purpose of expressing an opinion on the effectiveness of the Charter School's internal control. Accordingly, we do not express an opinion on the effectiveness of the Charter School's internal control.

A deficiency in internal control exists when the design or operation of a control does not allow management or employees, in the normal course of performing their assigned functions, to prevent, or detect and correct, misstatements on a timely basis. A material weakness is a deficiency, or a combination of deficiencies, in internal control, such that there is reasonable possibility that a material misstatement of the entity's financial statements will not be prevented, or detected and corrected on a timely basis.

A *significant deficiency* is a deficiency, or a combination of deficiencies, in internal control that is less severe than a material weakness, yet important enough to merit attention by those charged with governance.

Our consideration of internal control was for the limited purpose described in the first paragraph of this section and was not designed to identify all deficiencies in internal control that might be material weakness or significant deficiencies. Given these limitations, during our audit we did not identify any deficiencies in internal control that we consider to be material weakness. However, material weakness may exist that have not been identified.

Compliance and Other Matters

As part of obtaining reasonable assurance about whether the Charter School's financial statements are free from material misstatement, we performed tests of its compliance with certain provisions of laws, regulations, contracts, and grant agreements, noncompliance with which could have a direct and material effect on the determination of financial statement amounts. However, providing an opinion on compliance with those provisions was not an objective of our audit, and accordingly, we do not express such an opinion. The results of our tests disclosed no instances of noncompliance or other matter that are required to be reported under audit requirements as prescribed by the Office of School Finance, Department of Education, State of New Jersey.

We also noted other matters that we reported to the Board of Trustees of the Hope Academy Charter School in a separate report entitled, Auditor's Management Report on Administrative Findings dated March 14, 2022.

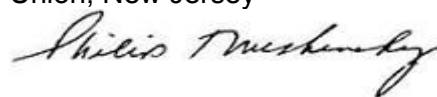
Purpose of this Report

The purpose of this report is solely to describe the scope of our testing of internal control and compliance and the results of that testing, and not to provide an opinion on the effectiveness of the entity's internal control or on compliance. This report is an integral part of an audit performed in accordance with the Office of School Finance, Department of Education, State of New Jersey in considering the entity's internal control and compliance. Accordingly, this communication is not suitable for any other purpose.

This report is intended solely for the information and use of management, The Hope Academy Charter School Board of Trustees, the New Jersey State Department of Education and other state awarding agencies and pass-through entities and is not intended to be and should not be used by anyone other than these specified parties. However, this report is a matter of public record and its distribution is not limited.

Respectfully Submitted,

Meshinsky & Associates, LLC CPA's
Union, New Jersey



Philip T. Meshinsky
Licensed Public School Accountant No.
CS00233400
Meshinsky & Associates LLC, CPA's

March 14, 2022



**REPORT ON COMPLIANCE FOR THE MAJOR STATE PROGRAM
AND REPORT ON INTERNAL CONTROL OVER COMPLIANCE REQUIRED
BY STATE OF NEW JERSEY CIRCULAR 15-08-OMB
INDEPENDENT AUDITOR'S REPORT**

Honorable President and
Members of the Board of Trustees
Hope Academy Charter School
County of Monmouth
Asbury Park, New Jersey

Report on Compliance for Each Major State Program

We have audited the Hope Academy Charter School's compliance with the types of compliance requirements described in the New Jersey Compliance Manual "State Grant Compliance Supplement" that could have a direct and material effect on each of its major state programs for the fiscal year ended June 30, 2021. The Hope Academy Charter School's major state programs are identified in the Summary of Auditor's Results Section of the accompanying schedule of findings and questioned costs.

Management's Responsibility

The Charter School's management is responsible for compliance with the requirements of laws, regulations, contracts, and grants applicable to its state programs.

Auditor's Responsibility

Our responsibility is to express an opinion on compliance for each of the Charter School's major state programs based on our audit of the types of compliance requirements referred to above. We conducted our audit of compliance in accordance with auditing standards generally accepted in the United States of America; the standards applicable to financial audits as prescribed by the *Office of School Finance, Department of Education, State of New Jersey*; New Jersey Circular 15-08-OMB, *Single Audit Policy for Recipients of Federal Grants, State Grants and State Aid*. Those standards, Uniform Guidance and New Jersey Circular 15-08-OMB require that we plan and perform the audit to obtain reasonable assurance about whether noncompliance with the types of compliance requirements referred to above that could have a direct and material effect on a major state program occurred. An audit includes examining, on a test basis, evidence about the Charter School's compliance with those requirements and performing such other procedures as we considered necessary in the circumstances.

We believe that our audit provides a reasonable basis for our opinion on compliance for each major state program. However, our audit does not provide a legal determination of the Charter School's compliance.

Opinion on Each Major State Program

In our opinion, the Hope Academy Charter School, in the County of Monmouth, State of New Jersey, complied, in all material respects, with the types of compliance requirements referred to above that could have a direct and material effect on each of its major state programs for the year ended June 30, 2021.

Report on Internal Control over Compliance

Management of the Hope Academy Charter School is responsible for establishing and maintaining effective internal control over compliance with the types of compliance requirements referred to above. In planning and performing our audit of compliance, we considered the Charter School's internal control over compliance with the types of requirements that could have a direct and material effect on each major state program to determine the auditing procedures that are appropriate in the circumstances for the purpose of expressing an opinion on compliance for each major state program and to test and report on internal control over compliance in accordance with Uniform Guidance and New Jersey Circular 15-08-OMB, but not for the purpose of expressing an opinion on the effectiveness of internal control over compliance. Accordingly, we do not express an opinion on the effectiveness of the Charter School's internal control over compliance.

A deficiency in internal control over compliance exists when the design or operation of a control over compliance does not allow management or employees, in the normal course of performing their assigned functions, to prevent, or detect and correct, noncompliance with a type of compliance requirement of a state program on a timely basis. *A material weakness in internal control over compliance* is a deficiency, or combination of deficiencies, in internal control over compliance, such that there is a reasonable possibility that material noncompliance with a type of compliance requirement of a state program will not be prevented, or detected and corrected, on a timely basis. *A significant deficiency in internal control over compliance* is a deficiency, or a combination of deficiencies, in internal control over compliance with a type of compliance requirement of a state program that is less severe than a material weakness in internal control over compliance, yet important enough to merit attention by those charged with governance.

Our consideration of internal control over compliance was for the limited purpose described in the first paragraph of this section and was not designed to identify all deficiencies in internal control over compliance that might be material weaknesses or significant deficiencies. We did not identify any deficiencies in internal control over compliance that we consider to be material weaknesses. However, material weaknesses may exist that have not been identified.

Report on Schedule of Expenditures of State Financial Assistance Required by New Jersey Circular 15-08-OMB

We have audited the financial statements of the governmental activities, the business-type activities, each major fund, and the aggregate remaining fund information of the Hope Academy Charter School, as of and for the fiscal year ended June 30, 2021 and the related notes to the financial statements, which collectively comprise the Charter School's basic financial

statements. We issued our report thereon dated March 14, 2022, which contained unmodified opinion on those financial statements. Our audit was conducted for the purpose of forming opinions on the financial statements that collectively comprise the basic financial statements. The accompanying schedule of expenditures of state financial assistance as required by New Jersey Circular 15-08- OMB are presented for purposes of additional analysis and are not a required part of the basic financial statements. Such information is the responsibilities of management and was derived from and relates directly to the underlying accounting and other records used to prepare basic financial statements. The information has been subjected to the auditing procedures applied in the audit of the financial statements and certain additional procedures, including comparing and reconciling such information directly to the underlying accounting and other records used to prepare the basic financial statements or to the basic financial statements themselves, and other additional procedures in accordance with auditing standards generally accepted in the United States of America. In our opinion, the schedule of expenditures and schedule of relation to the basic financial statements as a whole.

Purpose of this Report

The purpose of this report on internal control over compliance is solely to describe the scope of our testing of internal control over compliance and the results that the testing based on the requirements of NJ Circular 15-08-OMB. Accordingly, this report is not suitable for any other purpose.

This report is intended solely for the information and use of the audit committee, management, The Hope Academy Charter School Board of Trustees, the New Jersey State Department of Education and other state awarding agencies and pass-through entities and is not intended to be and should not be used by anyone other than these specified parties.

Respectfully Submitted,

Meshinsky & Associates, LLC CPA's
Union, New Jersey



Philip T. Meshinsky
Licensed Public-School Accountant
No. CS00233400
Meshinsky & Associates LLC, CPA's

March 14, 2022

HOPE ACADEMY CHARTER SCHOOL
Schedule of Expenditures of Federal Awards
For The Fiscal Year Ended June 30, 2021

Federal Grantor/Pass-through Grantor/ Program Title	Federal CFDA Number	Grant or State Project Number	Program or Award Amount	Grant Period		Balance at June 30, 2020	Cash Received	Budgetary Expenditure s	Balance at June 30, 2021	
				From	To				Accounts Receivable	Unearned Revenue
U.S. Department of Education										
Passed through State Department of Education										
Special Revenue Fund:										
<u>ESEA Consolidated</u>										
Title 1 Part A	84.0101	ESEA-8010-19	\$ 166,528	7/1/19	6/30/20	\$ (64,041)	\$ 64,041	\$ -	\$ -	\$ -
Title 1 Part A	84.0101	ESEA-8010-20	-	7/1/18	6/30/19	-	141,538	(184,637)	(43,099)	\$ -
Title II Part A	84.0104	ESEA-8010-19	4,500	7/1/19	6/30/20	(2,250)	2,250	-	-	-
Title II Part A	84.367A	ESEA-8010-20	-	7/1/20	6/30/21	-	17,500	(25,250)	(7,750)	-
ESEA Consolidated						<u>(66,291)</u>	<u>225,329</u>	<u>(209,887)</u>	<u>(50,849)</u>	<u>-</u>
<u>Individuals with Disabilities Cluster</u>										
I.D.E.A. Part B Basic	84.027	IDEA - 8010-19	67,739	7/1/19	6/30/20	(19,591)	19,591	-	-	-
I.D.E.A. Part B Basic	84.027	IDEA - 8010-18	-	7/1/20	6/30/21	-	50,079	(63,387)	(13,308)	-
Total Individuals with Disabilities Cluster						<u>(19,591)</u>	<u>69,670</u>	<u>(63,387)</u>	<u>(13,308)</u>	<u>-</u>
<u>Other Federal Grants</u>										
CARES Emergency Relief Grant	N/A	N/A	134,796	7/1/20	6/30/21	-	133,871	(134,476)	(925)	-
CRRSA ESSER Relief Grant	N/A	N/A	108,421	7/1/18	6/30/19	-	-	(108,421)	(108,421)	-
Corona Relief Grant	N/A	N/A	32,152	7/1/20	6/30/21	-	32,152	(32,152)	-	-
FEMA Grant	N/A	N/A	17,272	7/1/20	6/30/21	-	17,272	(17,272)	-	-
Total Other Federal Grants						<u>(85,882)</u>	<u>183,295</u>	<u>(292,321)</u>	<u>(109,346)</u>	<u>-</u>
Total Special Revenue Fund						<u>(85,882)</u>	<u>478,294</u>	<u>(565,595)</u>	<u>(173,503)</u>	<u>-</u>
U.S. Department of Agriculture										
Passed through State Department of Agriculture										
Enterprise Fund:										
National School Breakfast Program	10.553	N/A	51,381	7/1/19	6/30/20	(2,658)	2,658	-	-	-
National School Breakfast Program	10.553	N/A	52,678	7/1/20	6/30/21	-	37,713	(43,019)	(5,306)	-
National School Lunch Program	10.555	N/A	109,684	7/1/19	6/30/20	(4,228)	4,228	-	-	-
National School Lunch Program	10.555	N/A	125,138	7/1/20	6/30/21	-	59,443	(67,507)	(8,064)	-
National School Snack Program	10.558	N/A	1,761	7/1/20	6/30/21	-	3,353	(3,353)	-	-
Total Enterprise Fund						<u>(6,886)</u>	<u>107,395</u>	<u>(113,879)</u>	<u>(13,370)</u>	<u>-</u>
Total Federal Financial Award.						<u>\$ (92,768)</u>	<u>\$ 585,689</u>	<u>\$ (679,474)</u>	<u>\$ (186,873)</u>	<u>\$ -</u>

The accompanying Notes to Schedules of Expenditures of Awards and Financial Assistance are an integral part of this schedule.

HOPE ACADEMY CHARTER SCHOOL
Schedule of Expenditures of State Financial Assistance
For The Fiscal Year Ended June 30, 2021

State Grantor/Program Title	Grant or State Project Number	Program or Award Amount	Grant Period		Balance at	Cash Received	Budgetary Expenditures	Balance at June 30, 2021			MEMO	
			From	To	June 30, 2020			Accounts Receivable	Unearned Revenue/ Interfund Payable	Budgetary Receivable		Cumulative Total Expenditures
State Department of Education												
General Fund:												
State Aid-Public Cluster												
Equalization Aid- State Share	21-495-034-5120-071	\$ -	7/1/20	6/30/21	\$ -	\$ 2,505,371	\$ (2,580,792)	\$ (75,421)	\$ -	\$ -	\$ 2,580,792	
Equalization Aid- State Share	20-495-034-5120-071	-	7/1/18	6/30/19	(61,825)	61,825	-	-	-	-	-	
Special Education Categorical Aid	21-495-034-5120-089	-	7/1/20	6/30/21	-	87,709	(87,709)	-	-	-	87,709	
Security Aid	21-495-034-5120-084	-	7/1/20	6/30/21	-	132,802	(132,802)	-	-	-	132,802	
State Aid Adjustment	21-495-074-5120-085	-	7/1/20	6/30/21	-	39,495	(39,495)	-	-	-	39,495	
Total State Aid- Public Cluster					(61,825)	2,827,202	(2,840,798)	(75,421)	-	-	2,840,798	
On-Behalf TPAF Post Retirement Contributions	21-495-034-5094-001	-	7/1/20	6/30/21	-	137,210	(137,210)	-	-	-	137,210	
On-Behalf TPAF Pension Contributions	21-495-034-5095-006	-	7/1/20	6/30/21	-	436,106	(436,106)	-	-	-	436,106	
Reimburse TPAF - Social Security	21-495-034-5095-002	-	7/1/20	6/30/21	-	113,726	(119,656)	(5,930)	-	-	119,656	
Reimburse TPAF - Social Security	20-495-034-5095-002	-	7/1/19	6/30/20	(6,830)	6,830	-	-	-	-	-	
Total General Fund					(68,655)	3,521,074	(3,533,770)	(81,351)	-	-	3,533,770	
State Department of Agriculture												
Enterprise Fund:												
National School Lunch Program (State Share)	21-100-010-3350-023	-	7/1/20	6/30/21	-	2,563	(3,386)	(823)	-	-	3,386	
National School Lunch Program (State Share)	20-100-010-3350-023	-	7/1/19	6/30/20	(66)	66	-	-	-	-	-	
Total Enterprise Fund					(66)	2,629	(3,386)	(823)	-	-	3,386	
Total All Funds					(68,721)	3,523,703	(3,537,156)	(82,174)	-	-	3,537,156	
State Financial Assistance Not Subject to Major Program Determination:												
General Funds:												
On-Behalf TPAF Post Retirement Contributions	20-495-034-5095-001	-	7/1/20	6/30/21	-	(137,210)	137,210	-	-	-	(137,210)	
On-Behalf TPAF Pension Contributions	20-495-034-5095-006	-	7/1/20	6/30/21	-	(436,106)	436,106	-	-	-	(436,106)	
Total General Fund					-	(573,316)	573,316	-	-	-	(573,316)	
Total State Financial Assistance					\$ (68,721)	\$ 2,950,387	\$ (2,963,840)	\$ (82,174)	\$ -	\$ -	\$ 2,963,840	

The accompanying Notes to Schedules of Expenditures of Awards and Financial Assistance are an integral part of this schedule.

HOPE ACADEMY CHARTER SCHOOL
Notes to Schedules of Expenditures of Awards and Financial Assistance
June 30, 2021

NOTE 1. GENERAL

The accompanying schedules of expenditures of federal awards and state financial assistance include federal and state award activity of the Board of Trustees, Hope Academy Charter School. The Board of Trustees is defined in Note 1 to the board's basic financial statements. All federal and state awards received directly from federal and state agencies, as well as federal awards and state financial assistance passed through other government agencies is included on the schedule of expenditures of federal awards and state financial assistance.

NOTE 2. BASIS OF ACCOUNTING

The accompanying schedules of expenditures of awards and financial assistance are presented on the budgetary basis of accounting with the exception of programs recorded in the food service fund, which are presented using the accrual basis of accounting. These bases of accounting are described in Note 1 to the board's basic financial statements. The information in this schedule is presented in accordance with the requirements of 2 (CFR) Part 200 -Uniform Guidance Administrative Requirements, Cost Principles, and Audit Requirements for Federal Awards (Uniform Guidance) and the audit requirements as prescribed by the Office of School Finance, Department of Education, State of New Jersey; New Jersey Circular 15-08 OMB, Single Audit Policy for Recipients of Federal Grants, State Grants and State Aid. Therefore, some amounts presented in this schedule may differ from amounts presented in, or used in the presentation of, the basic financial statements.

NOTE 3. RELATIONSHIP TO BASIC FINANCIAL STATEMENTS

The basic financial statements present the general fund and special revenue fund on a GAAP basis. Budgetary comparison statements or schedules (RSI) are presented for the general fund and special revenue fund to demonstrate finance-related legal compliance in which certain revenue is permitted by law or grant agreement to be recognized in the audit year, whereas for GAAP reporting, revenue is not recognized until the subsequent year or when expenditures have been made.

The general fund is presented in the accompanying schedules on the modified accrual basis with the exception of the revenue recognition of the one or more deferred June state aid payments in the current budget year, which is mandated pursuant to *N.J.S.A. 18A:22-44.2*. For GAAP purposes payments are not recognized until the subsequent budget year due to the state deferral and recording of the one or more June state aid payments in the subsequent year. The special revenue fund is presented in the accompanying schedules on the grant accounting budgetary basis which recognizes encumbrances as expenditures and also recognizes the related revenues, whereas the GAAP basis does not. The special revenue fund also recognizes the one or more June state aid payment in the current budget year, consistent with *N.J.S.A. 18A:22-4.2*.

HOPE ACADEMY CHARTER SCHOOL
Notes to Schedules of Expenditures of Awards and Financial Assistance
June 30, 2021

NOTE 3. RELATIONSHIP TO BASIC FINANCIAL STATEMENTS (CONTINUED)

The net adjustment to reconcile from the budgetary basis to the GAAP basis is none for the general fund and none for the special revenue fund. See Notes to the Required Supplementary Information for a reconciliation of the budgetary basis to the modified accrual basis of accounting for the general and special revenue funds. Awards and financial assistance revenues are reported in the board's basic financial statements on a GAAP basis as presented below:

	Federal	State	Total
General Fund	\$ -	\$ 3,533,770	\$ 3,533,770
Special Revenue Fund	565,915	-	570,869
Food Service Fund	113,879	3,386	117,265
Total Awards & Financial Assistance	<u>\$ 679,794</u>	<u>\$ 3,542,110</u>	<u>\$ 4,221,904</u>

NOTE 4. RELATIONSHIP TO FEDERAL STATE FINANCIAL REPORTS

Amounts reported in the accompanying schedules agree with the amounts reported in the related federal and state financial reports.

NOTE 5. FEDERAL AND STATE LOANS OUTSTANDING

Hope Academy Charter School has no loan balances outstanding at June 30, 2021.

NOTE 6. OTHER

Revenues and expenditures reported under the Food Distribution Program represent current year value received and current year distributions respectively. The amount reported as TPAF Pension Contributions represents the amount paid by the state on behalf of the charter school for the year ended June 30, 2021. TPAF Social Security Contributions represents the amount reimbursed by the state for the employer's share of social security contributions for TPAF members for the year ended June 30, 2021.

NOTE 7. ON-BEHALF PROGRAMS NOT SUBJECT TO STATE SINGLE AUDIT

On-behalf State Programs for TPAF Pension and Post-Retirement Medical Benefits Contributions payments are not subject to a State single audit and, therefore, are excluded from major program determination. The Schedule of State Financial Assistance provides a reconciliation of State financial assistance reported in the Charter School's basic financial statements and the amount subject to State single audit and major program determination.

HOPE ACADEMY CHARTER SCHOOL
Notes to Schedules of Expenditures of Awards and Financial Assistance
June 30, 2021

NOTE 7. ON-BEHALF PROGRAMS NOT SUBJECT TO STATE SINGLE AUDIT (CONTINUED)

<u>Program</u>	<u>Total</u>
Title I, Part A: Grants to Local Education Agencies	<u>\$ 184,637</u>

NOTE 8. SCHOOLWIDE PROGRAM FUNDS

Schoolwide programs are not separate federal programs as defined in Uniform Guidance; amounts used in schoolwide programs are included in the total expenditures of the program contributing the funds in the Schedule of Expenditures of Federal Awards. There are no funds by program included in schoolwide programs in the charter school.

HOPE ACADEMY CHARTER SCHOOL
Schedule of Findings and Questioned Costs
For the Fiscal Year Ended June 30, 2021

Section I – Summary of Auditor’s Results

Financial Statements

Type of auditors’ report issued on financial statements		<u>Unmodified</u>
Internal control over financial reporting:		
1) Material weakness(es) identified?	<input type="checkbox"/> Yes	<input checked="" type="checkbox"/> No
2) Significant deficiencies identified that are not considered to be material weaknesses?	<input type="checkbox"/> Yes	<input checked="" type="checkbox"/> None Reported
Noncompliance material to basic financial statements noted?	<input type="checkbox"/> Yes	<input checked="" type="checkbox"/> No

Federal Awards

N/A

Internal Control over major programs:		
1) Material weakness (es) identified?	<input type="checkbox"/> Yes	<input type="checkbox"/> No
2) Significant deficiencies identified?	<input type="checkbox"/> Yes	<input type="checkbox"/> None Reported
Type of auditor’s report issued on compliance for major programs:		N/A
Any audit findings disclosed that are required to be reported in accordance with 2 CFR 200 section .516(a)?	<input type="checkbox"/> Yes	<input type="checkbox"/> No

Identification of major programs:

<u>CFDA Number(s)</u>	<u>FAIN Number(s)</u>	<u>Name of Federal Program or Cluster</u>
------------------------------	------------------------------	--

N/A

Dollar threshold used to distinguish type A or type B Programs:		N/A
Auditee qualified as low-risk auditee?	<input type="checkbox"/> Yes	<input type="checkbox"/> No

State Awards

Dollar threshold used to distinguish between Type A and Type B programs: \$750,000

Auditee qualified as low-risk auditee? Yes No

Internal control over major programs:

1) Material weakness(es) identified? Yes No

2) Significant deficiencies identified that are not considered to be material weaknesses? Yes None Reported

Type of auditors' report issued on compliance for major programs Unmodified

Any audit findings disclosed that are required to be reported in accordance with NJ Circular 15-08-OMB? Yes No

Identification of major state programs:

GMIS Number(s)	Name of State Program
<u>21-495-034-6120-085</u>	<u>STATE AID ADJUSTMENT</u>
<u>21-495-034-5120-078</u>	<u>EQUALIZATION AID</u>
<u>21-495-034-5120-089</u>	<u>SPECIAL EDUCATION CATEGORICAL AID</u>
<u>21-495-034-5120-084</u>	<u>SECURITY AID</u>

Section II –Financial Statement Findings

This section identifies the significant deficiencies, material weaknesses, fraud, illegal acts, violations of provisions of contracts and grant agreements, and abuse related to the financial statements for which *Government Auditing Standards* requires reporting in a NJ Circular 15-08-OMB. See paragraphs 13.15 and 13.35.

Finding

There were no matters reported.

HOPE ACADEMY CHARTER SCHOOL
Schedule of Findings and Questioned Costs
For the Fiscal Year Ended June 30, 2021

***Section III – Federal Awards and State
Financial Assistance Findings and
Questioned Costs***

This section identifies audit findings required to be reported by audit requirements for federal awards and NJ Circular 15-08-OMB, as applicable.

FEDERAL AWARDS

N/A

STATE AWARDS

Findings

There were no matters reported.

HOPE ACADEMY CHARTER SCHOOL
Summary Schedule of Prior Year Audit Findings
And Questioned Costs As Prepared by Management
For the Fiscal Year Ended June 30, 2021

STATUS OF PRIOR YEAR FINDINGS

This section identifies the status of prior-year findings related to the basic financial statements and federal and state awards that are required to be reported in accordance with Chapter 6.12 of *Government Auditing Standards*, NJ Circular 04-04-OMB or 15-08-OMB as applicable.

Findings

There were no matters reported.