

**Annual Comprehensive
Financial Report**

of the

Holland Township School District

County of Hunterdon

Milford, New Jersey

For the Fiscal Year Ended June 30, 2022

Prepared by

**Holland Township School District
Business Office**

TABLE OF CONTENTS

INTRODUCTORY SECTION	Page
Letter of Transmittal	1-4
Roster of Officials	5
Consultants and Advisors	6
Organizational Chart	7
FINANCIAL SECTION	
Independent Auditor's Report	8-11
REQUIRED SUPPLEMENTARY INFORMATION – Part I	12
Management's Discussion and Analysis (Unaudited)	13-22
BASIC FINANCIAL STATEMENTS	23
A. District-Wide Financial Statements	24
A-1 Statement of Net Positions	25
A-2 Statement of Activities	26
B. Major Fund Financial Statements	27
Governmental Funds:	
B-1 Balance Sheet	28-29
B-2 Statement of Revenues, Expenditures, and Changes in Fund Balances	30
B-3 Reconciliation of the Statement of Revenues, Expenditures, and Changes in Fund Balances of Governmental Funds to the Statement of Activities	31
Other Funds	32
Propriety Funds:	
B-4 Statement of Net Position	33
B-5 Statement of Revenues, Expenses, and Changes in Net Position	34
B-6 Statement of Cash Flows	35
Fiduciary Funds:	N/A
Notes to the Financial Statements	36-80

TABLE OF CONTENTS (Continued)

	Page
REQUIRED SUPPLEMENTARY INFORMATION – Part II	81
C. Budgetary Comparison Schedules	82
C-1 General Fund	83-89
C-2 Special Revenue Fund	90
C-3 Budget to GAAP Reconciliation	91
REQUIRED SUPPLEMENTARY INFORMATION – Part III	92
L. Schedules Related to Accounting and Reporting for Pension (GASB 68)	93
L-1 Schedule of the District's Proportionate Share of the Net Pension Liability - Public Employees Retirement System - Last Ten Years	94
L-2 Schedule of the District's Contributions - Public Employees Retirement System - Last Ten Years	95
L-3 Schedule of the District's Proportionate Share of the Net Pension Liability Teachers Pension and Annuity Fund - Last Ten Years	96
L-4 Schedules Related to Accounting and Reporting for Pension Notes to the Required Supplementary Information Part III	97
REQUIRED SUPPLEMENTARY INFORMATION – Part IV	98
M. Schedule Related to Accounting and Reporting for Postemployment Benefits Other than Pensions (GASB 75)	99
M-1 Schedule of Changes in the Total OPEB Liability and Related Ratios – Last Ten Years	100
M-2 Schedules Related to Accounting and Reporting for OPEB (GASB 75) Note to Required Supplementary Information Part IV	101
OTHER SUPPLEMENTARY INFORMATION	102
D. School Level Schedules	N/A
E. Special Revenue Fund	103
E-1 Combining Schedule of Revenues and Expenditures - Budgetary Basis	104
F. Capital Projects Fund	N/A
G. Proprietary Funds	N/A

TABLE OF CONTENTS (Continued)

	Page
H. Fiduciary Funds	N/A
I. Long-Term Liabilities	N/A
STATISTICAL SECTION - UNAUDITED	
Financial Trends	
J-1 Net Position by Component	105
J-2 Changes in Net Position	106-107
J-3 Fund Balances - Governmental Funds	108
J-4 Changes in Fund Balances - Governmental Funds	109
J-5 General Fund Other Local Revenue by Source	110
Revenue Capacity	
J-6 Assessed Value and Actual Value of Taxable Property	111
J-7 Direct and Overlapping Property Tax Rates	112
J-8 Principal Property Taxpayers - Current Year and Ten Years Ago	113
J-9 Property Tax Levies and Collections	114
Debt Capacity	
J-10 Ratios of Outstanding Debt by Type	115
J-11 Ratios of Net Bonded Debt Outstanding	116
J-12 Direct and Overlapping Governmental Activities Debt	117
J-13 Legal Debt Margin Information	118
Demographic and Economic Information	
J-14 Demographic and Economic Statistics	119
J-15 Principal Employers - Current Year and Ten Years Ago	120
Operating Information	
J-16 Full-Time Equivalent District Employees by Function/Program	121
J-17 Operating Statistics	122
J-18 School Building Information	123
J-19 Schedule of Required Maintenance	124
J-20 Insurance Schedule	125

TABLE OF CONTENTS (Continued)

SINGLE AUDIT SECTION		Page
K-1	Independent Auditor's Report on Internal Control Over Financial Reporting and on Compliance and Other Matters Based on an Audit of Basic Financial Statements Performed in Accordance with Government Auditing Standards	126-127
K-2	Independent Auditor's Report on Compliance for Each Major State Financial Assistance Program and on Internal Control Over Compliance in Accordance with New Jersey OMB Circular 15-08	128-130
K-3	Schedule of Expenditures of Federal Awards, Schedule A	131
K-4	Schedule of Expenditures of State Financial Assistance, Schedule B	132
K-5	Notes to the Schedules of Federal Awards and State Financial Assistance	133-134
K-6	Schedule of Findings and Questioned Costs	135-136
K-7	Schedule of Prior Audit Findings	137

INTRODUCTORY SECTION

HOLLAND TOWNSHIP BOARD of EDUCATION

Mrs. Stephanie Snyder, Superintendent
Mr. Jack Trent, School Business Administrator

908-995-2401
www.hollandschool.org



Honorable President and
Members of the Board of Education
Holland Township School District
Milford, New Jersey 08848

Dear Board Members:

The comprehensive annual financial report of the Holland Township School District for fiscal year ended June 30, 2022, is hereby submitted. Responsibility for both the accuracy of the data and completeness and fairness of the presentation, including all disclosures, rests with the management of the District. To the best of our knowledge and belief, the data presented in this report is accurate in all material respects and is reported in a manner designed to present fairly the financial position and results of operations of the various funds and account groups of the District. All disclosures necessary to enable the reader to gain an understanding of the District's financial activities have been included.

The comprehensive annual financial report is presented in four sections: introductory, financial, statistical, and single audit. The introductory section includes this transmittal letter, the District's organization chart and a listing of principal officials. The financial section includes the general purpose financial statements and schedules, as well as the auditor's report thereon. The statistical section includes selected financial and demographic information, generally presented on a multiyear basis. The District is required to undergo an annual single audit in conformity with the provisions of Title 2 U.S. Code of Federal Regulations Part 200, Uniform Administrative Requirements, Cost Principles, and Audit Requirements for Federal Awards (Uniform Guidance), and the State Treasury OMB Circular 15-08, "Single Audit Policy for Recipients of Federal Grants, State Grants, and State Aid Payments". Information related to this single audit, including the auditor's report on the internal control structure and compliance with applicable laws and regulations, and findings and recommendations, is included in the single audit section of this report.

1. REPORTING ENTITY AND ITS SERVICES:

The Holland Township School District is an independent reporting entity within the criteria adopted by the GASB as established by NCGA Statement No. 14. All funds and account groups of the District are included in this report. The Holland Township Board of Education and its school constitute the District's reporting entity.

The District provides a full range of educational services appropriate to grade levels pre-kindergarten through eight, as well as special education for handicapped children. The District completed 2021-2022 fiscal year with an average daily enrollment of 512 students in grades PK through 8. The following details the changes in the student enrollment of the District over the last fifteen years:

714 Milford Warren Glen Road, Milford, NJ 08848
Fax 908-995-2011

HOLLAND TOWNSHIP BOARD of EDUCATION

Mrs. Stephanie Snyder, Superintendent
Mr. Jack Trent, School Business Administrator

908-995-2401

www.hollandschool.org



<u>Fiscal Year</u>	<u>Average Daily Enrollment</u>	<u>Percent Change</u>
2022	511.5	(1.8)
2021	521.0	(1.59)
2020	529.4	(0.90)
2019	534.2	(5.08)
2018	562.8	2.61
2017	548.5	(0.92)
2016	553.6	(5.95)
2015	588.6	(2.24)
2014	602.1	(3.37)
2013	622.3	(4.1)
2012	648.8	(1.24)
2011	656.9	(0.95)
2010	663.2	(1.76)
2009	674.9	(1.4)
2008	683.8	(4.1)
2007	713.4	(.40)

2. ECONOMIC CONDITION and OUTLOOK:

Holland Township is a rural community of 22.7 square miles. Much of the township remains undeveloped. With few commercial properties in Holland Township to share in the tax base, a township population that includes a significant number of senior citizens on fixed incomes, and dwindling surplus and reduced state aid, homeowners continue to bear the burden of increased local taxes.

3. MAJOR INITIATIVES:

The district took on several initiatives in the 2021-2022 school year including:

1. Continuous Professional Development through Rutgers in Social Emotional Learning to support student and staff mental health.
2. Long-term planning for facility upgrades.

4. INTERNAL ACCOUNTING CONTROLS:

Management of the District is responsible for establishing and maintaining an internal control structure designed to ensure that adequate accounting data are compiled to allow for the preparation of financial statements in conformity with generally accepted accounting principles (GAAP). The internal control structure is designed to provide reasonable, but not absolute, assurance that these objectives are met. The concept of reasonable assurance recognizes that (1) the cost of a control should not exceed the benefits likely to be derived; and, (2) the valuation of costs and benefits requires estimates and judgments by management.

714 Milford Warren Glen Road, Milford, NJ 08848
Fax 908-995-2011

HOLLAND TOWNSHIP BOARD of EDUCATION



Mrs. Stephanie Snyder, Superintendent

908-995-2401

Mr. Jack Trent, School Business Administrator

www.hollandschool.org

As a recipient of federal and state financial assistance, the District also is responsible for ensuring that an adequate internal control structure is in place to ensure compliance with applicable laws and regulations related to those programs. This internal control structure is also subject to periodic evaluation by District management.

As part of the District's single audit described earlier, tests are made to determine the adequacy of the internal control structure, including the portion related to federal and state financial assistance programs, as well as to determine that the District has complied with applicable laws and regulations.

5. BUDGETARY CONTROLS:

In addition to internal accounting controls, the District maintains budgetary controls. The objective of these budgetary controls is to ensure compliance with legal provisions embodied in the annual appropriated budget approved by the voters of the municipality. Annual appropriated budgets are adopted for the general fund, the special revenue fund, and the debt service fund. Project-length budgets approved for capital improvements are accounted for in the capital projects fund. The final budget amount as amended for the fiscal year is reflected in the financial section.

An encumbrance accounting system is used to record outstanding purchase commitments on a line item basis. Open encumbrances at year-end are either cancelled or are included as re-appropriations of fund balance in the subsequent year. Those amounts to be reappropriated are reported as reservations of fund balance at June 30, 2022.

6. ACCOUNTING SYSTEM and REPORTS:

The District's accounting records reflect generally accepted accounting principles, as promulgated by the Governmental Accounting Standards Board (GASB). The accounting system of the District is organized on the basis of funds and account groups. These funds and account groups are explained in the Notes to the Financial Statements, Note 1.

7. DEBT ADMINISTRATION:

As of June 30, 2022, the District's outstanding debt was \$0.

8. CASH MANAGEMENT:

The investment policy of the District is guided part by state statute as detailed in the Notes to the Financial Statements, Note 2. The District has adopted a cash management plan which requires it to deposit public funds in public depositories protected from loss under the provisions of the Governmental Unit Deposit Protection Act (GUDPA). GUDPA was enacted in 1970 to protect Governmental Units from a loss of funds on deposit with a failed banking institution in New Jersey. The law requires governmental units to deposit public funds only in public depositories located in New Jersey, where the funds are secured in accordance with the Act.

714 Milford Warren Glen Road, Milford, NJ 08848

Fax 908-995-2011

HOLLAND TOWNSHIP BOARD of EDUCATION

Mrs. Stephanie Snyder, Superintendent
Mr. Jack Trent, School Business Administrator

908-995-2401
www.hollandschool.org



9. RISK MANAGEMENT:

The Board carries various forms of insurance, including but not limited to general liability, automobile liability and comprehensive/collision, hazard and theft insurance on property and contents, and fidelity bonds.

10. OTHER INFORMATION:

State statutes require an annual audit by independent certified public accountants or registered municipal accountants. The accounting firm of Suplee, Clooney & Company was appointed by the Board to provide this service. In addition to meeting the requirements set forth in state statutes, the audit also was designed to meet the requirements set forth in state statutes; the audit was also designed to meet the requirements of Title 2 U.S. Code of Federal Regulations Part 200, Uniform Administrative Requirements, Cost Principles, and Audit Requirements for Federal Awards (Uniform Guidance) and State Treasury Circular Letter OMB Circular 15-08. The auditor's report on the general purpose financial statements and combined and individual fund statements and schedules is included in the financial section of this report. The auditor's reports related specifically to the single audit are included in the single section of this report.

11. ACKNOWLEDGEMENTS:

We would like to express our appreciation to the members of the Holland Township Board of Education for their concern in providing fiscal accountability to the citizens and taxpayers of the school district and, thereby, contributing their full support to the development and maintenance of our financial operation. The preparation of this report could not have been accomplished without the efficient and dedicated service of our financial accounting staff.

Respectfully submitted,

A handwritten signature in cursive script that reads "Stephanie Snyder".

Stephanie Snyder
Superintendent

A handwritten signature in cursive script that reads "Jack Trent".

Jack Trent
Business Administrator/Board Secretary

**HOLLAND TOWNSHIP SCHOOL DISTRICT
MILFORD, NEW JERSEY**

ROSTER OF OFFICIALS

<u>Members of the Board of Education</u>		<u>Term Expires</u>
Matthew Davis	President	2025
Laurie Hance	Vice President	2023
Matthew Walker		2024
James Muller		2024
Nickolas Moustakas		2024
Shannon Martin		2023
Michael Giovannetti		2025

Other Officials:

Stephanie Snyder, Superintendent

Jack Trent, Board Secretary/School Business Administrator

Patti Fischer, Treasurer

**HOLLAND TOWNSHIP SCHOOL DISTRICT
CONSULTANTS AND ADVISORS**

Auditor Firm

Suplee, Clooney & Company
308 East Broad Street
Westfield, NJ 07090

Architect

Spiezie Architectural Group
1395 Yardville Hamilton Square Road
Suite 2
Hamilton, NJ 08691

Attorneys

Hatfield and Schwartz Law Group
240 Cedar Knolls Road
Suite 303
Cedar Knolls, NJ 07927

Scarinci & Hollenbeck, LLC
1100 Valley Brook Avenue
PO Box 790
Lyndhurst, NJ 07071

Official Depository

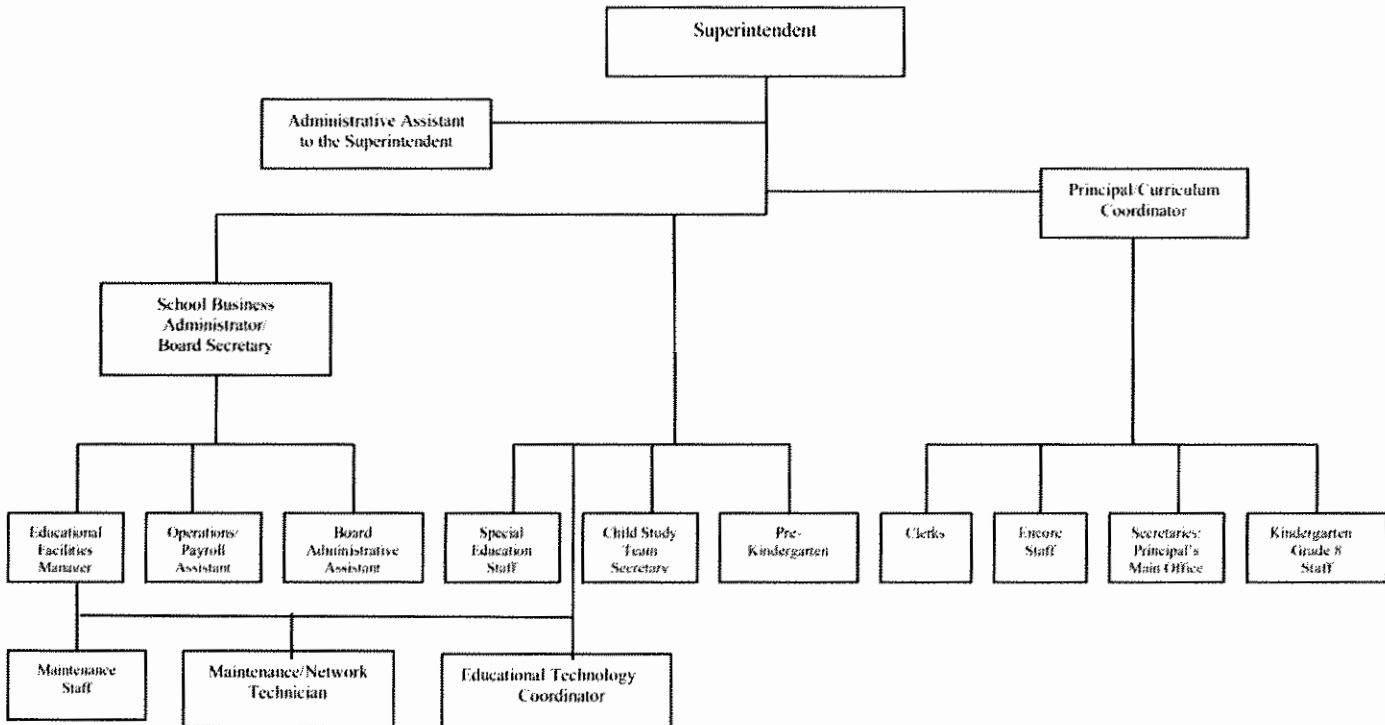
Investors Savings Bank
3563 Highway 22 North
Whitehouse, NJ 08888

POLICY

HOLLAND TOWNSHIP BOARD OF EDUCATION

ADMINISTRATION
1110/page 1 of 1
Organizational Chart

1110 ORGANIZATIONAL CHART



Superintendent Evaluations
Principal/Curriculum Coordinator
School Business Administrator/Board Secretary
Administrative Assistant to the Superintendent
Educational Technology Coordinator

Board Approved:



FINANCIAL SECTION



SUPLEE, CLOONEY & COMPANY

CERTIFIED PUBLIC ACCOUNTANTS

308 East Broad Street, Westfield, New Jersey 07090-2122

Telephone 908-789-9300

Fax 908-789-8535

E-mail info@scenco.com

INDEPENDENT AUDITOR'S REPORT

Honorable President and Members
of the Board of Education
Township of Holland School District
County of Hunterdon
Milford, New Jersey 08848

Report on the Audit of the Financial Statements

Opinions

We have audited the accompanying financial statements of the governmental activities, the business-type activities and each major fund of the Holland School District, in the County of Hunterdon, State of New Jersey (the "District") as of and for the year ended June 30, 2022, and the related notes to the financial statements, which collectively comprise the District's basic financial statements as listed in the table of contents.

In our opinion, the financial statements referred to above present fairly, in all material respects, the respective financial position of the governmental activities, the business-type activities and each major fund of the District as of June 30, 2022, and the respective changes in financial position, and, where applicable, cash flows thereof for the year then ended in accordance with accounting principles generally accepted in the United States of America.

Basis for Opinions

We conducted our audit in accordance with auditing standards generally accepted in the United States of America, audit requirements prescribed by the Division of Finance, Department of Education, State of New Jersey, the audit requirements of Title 2 U.S. Code of Federal Regulations Part 200, Uniform Administrative Requirements, Cost Principles, and Audit Requirements for Federal Awards (the "Uniform Guidance") the audit requirements of State of New Jersey OMB Circular 15-08 "Single Audit Policy for Recipients of Federal Grants, State Grants and State Aid." and the standards applicable to financial audits contained in Government Auditing Standards, issued by the Comptroller General of the United States. Our responsibilities under those standards and provisions are further described in the Auditor's Responsibilities for the Audit of the Financial Statements section of our report. We are required to be independent of the District and to meet our other ethical responsibilities, in accordance with the relevant ethical requirements relating to our audit. We believe that the audit evidence we have obtained is sufficient and appropriate to provide a basis for our audit opinions.

SUPLEE, CLOONEY & COMPANY

Change in Accounting Principle

As discussed in Note 1 to the basic financial statements, for the year ended June 30, 2022, the District adopted Governmental Accounting Standards Board Statement No. 87, Leases. Our opinions are not modified with respect to this matter.

Responsibilities of Management for the Financial Statements

Management is responsible for the preparation and fair presentation of the financial statements in accordance with accounting principles generally accepted in the United States of America, and for the design, implementation, and maintenance of internal control relevant to the preparation and fair presentation of financial statements that are free from material misstatement, whether due to fraud or error.

In preparing the financial statements, management is required to evaluate whether there are conditions or events, considered in the aggregate, that raise substantial doubt about the District's ability to continue as a going concern for twelve months beyond the financial statement date, including any currently known information that may raise substantial doubt shortly thereafter.

Auditor's Responsibilities for the Audit of the Financial Statements

Our objectives are to obtain reasonable assurance about whether the financial statements as a whole are free from material misstatement, whether due to fraud or error, and to issue an auditor's report that includes our opinions. Reasonable assurance is a high level of assurance but is not absolute assurance and therefore is not a guarantee that an audit conducted in accordance with generally accepted auditing standards, the Uniform Guidance, the State of New Jersey OMB Circular 15-08 and *Government Auditing Standards* will always detect a material misstatement when it exists. The risk of not detecting a material misstatement resulting from fraud is higher than for one resulting from error, as fraud may involve collusion, forgery, intentional omissions, misrepresentations, or the override of internal control. Misstatements are considered material if there is a substantial likelihood that, individually or in the aggregate, they would influence the judgment made by a reasonable user based on the financial statements.

In performing an audit in accordance with generally accepted auditing standards the Uniform Guidance, the State of New Jersey OMB Circular 15-08 and *Government Auditing Standards*, we:

- Exercise professional judgment and maintain professional skepticism throughout the audit.
- Identify and assess the risks of material misstatement of the financial statements, whether due to fraud or error, and design and perform audit procedures responsive to those risks. Such procedures include examining, on a test basis, evidence regarding the amounts and disclosures in the financial statements.
- Obtain an understanding of internal control relevant to the audit in order to design audit procedures that are appropriate in the circumstances, but not for the purpose of expressing an opinion on the effectiveness of the District's internal control. Accordingly, no such opinion is expressed.
- Evaluate the appropriateness of accounting policies used and the reasonableness of significant accounting estimates made by management, as well as evaluate the overall presentation of the financial statements.
- Conclude whether, in our judgment, there are conditions or events, considered in the aggregate, that raise substantial doubt about the District's ability to continue as a going concern for a reasonable period of time.

SUPLEE, CLOONEY & COMPANY

We are required to communicate with those charged with governance regarding, among other matters, the planned scope and timing of the audit, significant audit findings, and certain internal control-related matters that we identified during the audit.

Required Supplementary Information

Accounting principles generally accepted in the United States of America require that the Management's Discussion and Analysis, budgetary comparison information in Exhibit C-1 through C-3, the schedules related to accounting and reporting for pensions in Exhibit L-1 through L-4 and the schedules related to accounting and reporting for postretirement benefits other than pensions (OPEB) in Exhibits M-1 and M-2 are presented to supplement the basic financial statements. Such information is the responsibility of management and, although not a part of the basic financial statements, is required by the Governmental Accounting Standards Board who considers it to be an essential part of financial reporting for placing the basic financial statements in an appropriate operational, economic, or historical context. We have applied certain limited procedures to the required supplementary information in accordance with auditing standards generally accepted in the United States of America, which consisted of inquiries of management about the methods of preparing the information and comparing the information for consistency with management's responses to our inquiries, the basic financial statements, and other knowledge we obtained during our audit of the basic financial statements. We do not express an opinion or provide any assurance on the information because the limited procedures do not provide us with sufficient evidence to express an opinion or provide any assurance.

Supplementary Information

Our audit was conducted for the purpose of forming opinions on the financial statements that collectively comprise the District's basic financial statements. The accompanying supplementary information schedules and data such as the combining statements and individual fund financial statements, and the Schedules of Expenditures of Federal Awards and State Financial Assistance, as listed in the table of contents, as required by the Uniform Guidance, New Jersey's OMB Circular 15-08, "Single Audit Policy for Recipients of Federal Grants, State Grants and State Aid," and the State of New Jersey, Department of Education, Division of Finance, are presented for purposes of additional analysis and are not a required part of the basic financial statements. Such information is the responsibility of management and was derived from and relates directly to the underlying accounting and other records used to prepare the basic financial statements. The information has been subjected to the auditing procedures applied in the audit of the basic financial statements and certain additional procedures, including comparing and reconciling such information directly to the underlying accounting and other records used to prepare the basic financial statements or to the basic financial statements themselves, and other additional procedures in accordance with auditing standards generally accepted in the United States of America. In our opinion, the combining and individual fund financial statements and the schedule of expenditures of federal awards and state financial assistance are fairly stated, in all material respects, in relation to the basic financial statements as a whole.

Other Information

Management is responsible for the other information included in the annual report. The other information comprises the introductory and statistical sections but does not include the basic financial statements and our auditor's report thereon. Our opinions on the basic financial statements do not cover the other information, and we do not express an opinion or any form of assurance thereon.

SUPLEE, CLOONEY & COMPANY

In connection with our audit of the basic financial statements, our responsibility is to read the other information and consider whether a material inconsistency exists between the other information and the basic financial statements, or the other information otherwise appears to be materially misstated. If, based on the work performed, we conclude that an uncorrected material misstatement of the other information exists, we are required to describe it in our report.

Other Reporting Required by Government Auditing Standards

In accordance with Government Auditing Standards, we have also issued our report dated March 9, 2023 on our consideration of the District's internal control over financial reporting and on our tests of its compliance with certain provisions of laws, regulations, contracts, and grant agreements and other matters. The purpose of that report is to describe the scope of our testing of internal control over financial reporting and compliance and the results of that testing, and not to provide an opinion on effectiveness of the District's internal control over financial reporting or on compliance. That report is an integral part of an audit performed in accordance with Government Auditing Standards in considering the District's internal control over financial reporting and compliance.



CERTIFIED PUBLIC ACCOUNTANTS



PUBLIC SCHOOL ACCOUNTANT NO. 948

March 9, 2023

REQUIRED SUPPLEMENTARY INFORMATION – Part I

**MANAGEMENT'S DISCUSSION AND ANALYSIS
(UNAUDITED)**

**HOLLAND TOWNSHIP SCHOOL DISTRICT
MILFORD, NEW JERSEY**

**MANAGEMENT'S DISCUSSION AND ANALYSIS
FOR THE YEAR ENDED JUNE 30, 2022
UNAUDITED**

The Management's Discussion and Analysis of the Holland Township School District (the "District") offers readers of the District's financial statements a narrative overview of the financial activities for the fiscal year ended June 30, 2022. The intent of this discussion is to look at the District's financial performance as a whole; therefore readers should also review the transmittal letter at the front of this report, along with the District's financial statements and notes to the financial statements to enhance their understanding of the District's financial performance.

The Management's Discussion and Analysis (MD&A) is an element of the Required Supplementary Information (RSI) specified in the Governmental Accounting Standards Board's (GASB) Statement Number 34, Basic Financial Statements and Management's Discussion and Analysis of State and Local Governments issued in June 1999. Certain comparative information between the current fiscal year (2021-2022) and the prior fiscal year (2020-2021) is required to be presented in the MD&A. In fiscal year 2022 the District Implemented GASB Statement No. 87 as applicable.

Financial Highlights

- Revenue from governmental activities accounted for \$14,361,085.40 or 98.6 percent of total school district revenue. The other 1.4 percent of revenue was generated by the business type activities.
- The District's net position increased by \$1,007,828.57.

Overview of the Financial Statements

This Annual Comprehensive Financial Report ("ACFR") consists of three parts: Management's Discussion and Analysis (this section), The Basic Financial Statements, and Required Supplementary Information. The Basic Financial Statements include two kinds of statements that present different views of the District, District-wide Financial Statements and Fund Financial Statements.

- District-wide Financial Statements provide both short-term and long-term information about the District's overall financial status.
- Fund Financial Statements report the District's operations in more detail than the District-wide statements on individual parts of the District, the Governmental Funds and Proprietary Funds.
- Governmental Funds Statements tell how basic services such as regular and special education were financed in the short-term as well as what remains for future spending.
- Proprietary Funds Statements offer short and long-term financial information about the activities the District operates like a business, which include food services.

**HOLLAND TOWNSHIP SCHOOL DISTRICT
MILFORD, NEW JERSEY**

**MANAGEMENT'S DISCUSSION AND ANALYSIS
FOR THE YEAR ENDED JUNE 30, 2022
UNAUDITED**

The notes to financial statements are also included, which are an integral part of the financial statements. The information in the notes provides detailed data on the District's financial operations.

Required supplementary information further explains and supports the financial statements with a comparison of the District's budget for the year. Exhibit A-1 reflects how the various parts of this annual report are arranged and related to one another.

District-wide Financial Statements

The District-wide Financial Statements report information about the District as a whole using accounting methods similar to those used by private-sector companies. The statement of net positions includes all of the District's assets and liabilities. All current year's revenue and expenses are accounted for in the statement of activities regardless of when cash is received or disbursed.

The District-wide Financial Statements report the District's net positions and how they have changed. Net positions, the difference between the District's assets and liabilities, is one way to measure the District's financial health or position. Over time, increases or decreases in the District's net positions are an indicator of whether its financial position has improved or diminished. The causes of this change may be a result of many factors, some financial and some not. Non-financial factors include the District's property tax base, current laws in New Jersey restricting revenue growth, facility condition, required educational programs and other factors.

In the District-wide Financial Statements, the District's activities are divided into two categories, governmental and business-type activities.

- **Governmental activities** - All of the District's programs and services are reported here including, but not limited to regular and special education instruction, support services, operation and maintenance of plant facilities, pupil transportation and extracurricular activities. Property taxes and state formula aid finance most of these activities.
- **Business-type activities** - These services are provided on a charge for goods or services basis to recover all the expenses of the goods or services provided. District charges fees to help it cover the costs of certain services it provided. The food service activities (i.e. food, commodities and supplies) are reported as business activities.

**HOLLAND TOWNSHIP SCHOOL DISTRICT
MILFORD, NEW JERSEY**

**MANAGEMENT'S DISCUSSION AND ANALYSIS
FOR THE YEAR ENDED JUNE 30, 2022
UNAUDITED**

Fund Financial Statements

The fund financial statements provide more detailed information about the District's funds, focusing on major funds. Funds are accounting devices the District uses to keep track of specific sources of funding and spending on particular programs. Some funds are required by state law and by bond covenants. The District establishes other funds to control and manage money for particular purposes (i.e. long-term debt) or to show that it is properly using certain restricted revenues (i.e. entitlement grants).

The District maintains two financial funds:

- **Governmental Funds:** The District's activities reported in governmental funds focus on how money flows into and out of those funds and the balances left at year-end available for spending in the future years. These funds are reported using an accounting method called modified accrual accounting that measures cash and all other financial assets that can readily be converted to cash. The governmental fund statements provide a detailed short-term view of the District's general government operations and the basic services it provides. Governmental fund information helps you determine whether there are more or fewer financial resources that can be spent in the near future to finance educational programs. The relationship (or differences) between governmental activities (reported in the government-wide Statement of Net Position and Statement of Activities) and governmental funds statements is reconciled in the financial statements.
- **Proprietary Funds:** Services for which the District charges a fee are generally reported in proprietary funds. Proprietary funds are reported in the same way as the District-wide financial statements. The District's enterprise funds (one type of proprietary fund) are the same as its business-type activities but provide more detail and additional information, such as cash flow.

Financial Analysis of the District as a Whole

The District's combined net positions have increased from the 2020-2021 fiscal year. The net positions from governmental funds increased \$959,698.60. Net positions from business-type activities increased \$48,129.97. Table A-1 below reflects the District's net positions as a whole. Table A-2 reflects the changes in net positions from operating results.

**HOLLAND TOWNSHIP SCHOOL DISTRICT
MILFORD, NEW JERSEY**

**MANAGEMENT'S DISCUSSION AND ANALYSIS
FOR THE YEAR ENDED JUNE 30, 2022
UNAUDITED**

**Table A-1
Condensed Statement of Net Positions**

	Governmental Activities		Business-Type Activities		Total School District		Percentage
	FY 2022	FY 2021	FY 2022	FY 2021	FY 2022	FY 2021	Change
Current and Other Assets	\$5,090,006.84	\$4,491,710.61	\$62,582.50	\$16,914.99	\$5,152,589.34	\$4,508,625.60	14.28%
Capital Assets	5,010,735.00	5,110,195.00	31,948.19	32,748.44	5,042,683.19	5,142,943.44	-1.95%
Total Assets	10,100,741.84	9,601,905.61	94,530.69	49,663.43	10,195,272.53	9,651,569.04	5.63%
Deferred Outflows							
Pension Related	521,352.00	563,267.00			521,352.00	563,267.00	-7.44%
Total Deferred Outflows	521,352.00	563,267.00	-	-	521,352.00	563,267.00	-7.44%
Long-Term							
Liabilities	2,152,490.22	2,683,198.35			2,152,490.22	2,683,198.35	-19.78%
Short-Term							
Liabilities	224,845.64	252,284.88	20,615.01	23,877.72	245,460.65	276,162.60	-11.12%
Total Liabilities	2,377,335.86	2,935,483.23	20,615.01	23,877.72	2,397,950.87	2,959,360.95	-18.97%
Deferred Inflows							
Pension Related	1,432,868.00	1,377,498.00			1,432,868.00	1,377,498.00	4.02%
Total Deferred Inflows	1,432,868.00	1,377,498.00	-	-	1,432,868.00	1,377,498.00	4.02%
Net Positions:							
Net Investment							
In Capital							
Assets	5,010,735.00	5,110,195.00	31,948.19	32,748.44	5,042,683.19	5,142,943.44	-1.95%
Restricted	4,220,025.95	3,790,936.51			4,220,025.95	3,790,936.51	11.32%
Unrestricted (Deficit)	(2,418,870.97)	(3,048,940.13)	41,967.49	(6,962.73)	(2,376,903.48)	(3,055,902.86)	-22.22%
Total Net Positions	\$6,811,889.98	\$5,852,191.38	\$73,915.68	\$25,785.71	\$6,885,805.66	\$5,877,977.09	17.15%

**HOLLAND TOWNSHIP SCHOOL DISTRICT
MILFORD, NEW JERSEY**

**MANAGEMENT'S DISCUSSION AND ANALYSIS
FOR THE YEAR ENDED JUNE 30, 2022
UNAUDITED**

**Table A-2
Changes in Net Positions from Operating Results**

	<u>FY 2022</u>	<u>FY 2021</u>
Revenue:		
Program Revenue:		
Charges for Services	\$3,221.19	\$2,145.68
Operating Grants and Contributions	2,551,513.21	3,694,383.53
General Revenue:		
Property Taxes	10,146,328.00	9,669,135.00
Federal and State Aid	1,545,299.00	1,753,961.00
Other	<u>316,151.24</u>	<u>187,422.80</u>
Total Revenue	<u>14,562,512.64</u>	<u>15,307,048.01</u>
Expenses/Indirect Allocations:		
Instruction	8,797,258.74	9,865,153.12
Student & Instructional Related Services	1,718,313.03	1,778,814.26
Administrative and Business	1,066,923.31	1,203,750.04
Maintenance & Operations	1,205,009.14	1,183,495.52
Transportation	602,782.58	500,477.90
Other	<u>153,297.27</u>	<u>75,112.00</u>
Total Expenses	<u>13,543,584.07</u>	<u>14,606,802.84</u>
Disposal of Capital Assets	<u>(11,100.00)</u>	<u> </u>
Increase/(Decrease) in Net Positions	<u>\$1,007,828.57</u>	<u>\$700,245.17</u>

Sources of Revenue for Fiscal Year 2022

The District's total revenue for the 2021-2022 school year was \$14,562,512.64 as reflected in Table A-3 below. Property taxes accounted for 69.7 percent of the total revenue with the other 30.3 percent consisting of federal & state aid, charges for service, operating grants & contributions, and miscellaneous sources.

**HOLLAND TOWNSHIP SCHOOL DISTRICT
MILFORD, NEW JERSEY**

**MANAGEMENT'S DISCUSSION AND ANALYSIS
FOR THE YEAR ENDED JUNE 30, 2022
UNAUDITED**

Table A-3
Sources of Revenue

<u>Sources of Revenue</u>	<u>FY 2022</u>		<u>FY 2021</u>	
	<u>Amount</u>	<u>Percentage</u>	<u>Amount</u>	<u>Percentage</u>
Property Taxes	\$10,146,328.00	69.7%	\$9,669,135.00	63.2%
Operating Grants & Contributions	2,551,513.21	17.5%	3,694,383.53	24.1%
Other Sources	316,151.24	2.2%	187,422.80	1.2%
Federal & State Aid Unrestricted	1,545,299.00	10.6%	1,753,961.00	11.5%
Charges for Services	3,221.19	0.0%	2,145.68	0.0%
	<u>\$14,562,512.64</u>	<u>100.0%</u>	<u>\$15,307,048.01</u>	<u>100.0%</u>

Expenses & Indirect Costs Allocated for the Fiscal Year 2022

The total expenditures for the 2021-2022 fiscal year for all programs and services were \$13,543,584.07. Table A-4 below summarizes these program costs. The District's expenses are predominantly related to instructing, providing services and transporting students, grades kindergarten through eight, which accounts for 82.1 percent of the total District costs. Administrative and business expenses account for the costs of the Office of the Superintendent of Schools, the Business Office, and the Principal's Offices in both school buildings. Maintenance and operations account for the costs of keeping the school buildings and grounds safe, clean and in good operating condition, and includes all the utility costs related to the school facilities. Other costs may include interest on long-term debt when applicable, unallocated depreciation expense and the costs of the business-type activities of the proprietary funds.

**Table A-4
Expenses & Indirect Costs Allocated**

<u>Expense Category</u>	<u>FY 2022</u>		<u>FY 2021</u>	
	<u>Amount</u>	<u>Percentage</u>	<u>Amount</u>	<u>Percentage</u>
Instruction Student/Instruct Related	\$8,797,258.74	65.0%	\$9,865,153.12	67.5%
Services	1,718,313.03	12.7%	1,778,814.26	12.2%
Administrative and Business	1,066,923.31	7.9%	1,203,750.04	8.2%
Maintenance & Operations	1,205,009.14	8.9%	1,183,495.52	8.1%
Transportation	602,782.58	4.5%	500,477.90	3.4%
Other	153,297.27	1.1%	75,112.00	0.5%
	<u>\$13,543,584.07</u>	<u>100.0%</u>	<u>\$14,606,802.84</u>	<u>100.0%</u>

**HOLLAND TOWNSHIP SCHOOL DISTRICT
MILFORD, NEW JERSEY**

**MANAGEMENT'S DISCUSSION AND ANALYSIS
FOR THE YEAR ENDED JUNE 30, 2022
UNAUDITED**

Table A-5 presents the net cost (total cost less fees generated by the activities and intergovernmental aid provided for specific programs) of six major District activities: instruction, student and instructional services, administration and business, maintenance and operations, transportation, and other. The net cost shows the financial burden placed on the District's taxpayers and the state by each of these functions.

**Table A-5
Net Cost of Governmental Activities**

<u>Function/Program</u>	<u>FY 2022</u>		<u>FY 2021</u>	
	<u>Amount</u>	<u>Percentage</u>	<u>Amount</u>	<u>Percentage</u>
Instruction	\$6,710,551.24	61.1%	\$6,648,363.37	60.9%
Student/Instruct Related Services	1,598,109.21	14.5%	1,595,835.91	14.6%
Administrative and Business	981,642.61	8.9%	1,040,253.35	9.5%
Maintenance & Operations	1,145,085.09	10.4%	1,114,293.73	10.2%
Transportation	601,577.95	5.5%	500,123.27	4.6%
Other	(48,116.43)	-0.4%	11,404.00	0.1%
	<u>\$10,988,849.67</u>	<u>100.0%</u>	<u>\$10,910,273.63</u>	<u>100.0%</u>

General Fund Budgeting Highlights

The District's budget is prepared according to New Jersey Statutes and is based on accounting for certain transactions on a basis of modified accrual and encumbrance accounting.

Over the course of the year, the Board of Education approved revisions to the general fund budget as needed. These budget amendments were necessary for the following reasons:

- Realign budgeted salary accounts as needed to account for staff transfers to various programs.
- Realigned appropriations in accordance with the prescribed chart of accounts as modified by the comprehensive educational improvement and financing act.
- Transferred from unexpended appropriations to purchase teaching materials and equipment to meet various program needs.

**HOLLAND TOWNSHIP SCHOOL DISTRICT
MILFORD, NEW JERSEY**

**MANAGEMENT'S DISCUSSION AND ANALYSIS
FOR THE YEAR ENDED JUNE 30, 2022
UNAUDITED**

Capital Assets

Table A-6 reflects the comparative balances of capital assets net of depreciation. The detail of the changes in capital assets is reflected in Note 3 to the financial statements.

**Table A-6
Capital Assets (Net of Depreciation)**

	Governmental Activities		Business-Type Activities		Total School District		Total
	<u>FY 2022</u>	<u>FY 2021</u>	<u>FY 2022</u>	<u>FY 2021</u>	<u>FY 2022</u>	<u>FY 2021</u>	<u>Percentage Change</u>
Land	\$347,800.00	\$347,800.00			\$347,800.00	\$347,800.00	0.0%
Land Improvements	675,666.00	679,412.00			675,666.00	679,412.00	-0.6%
Building & Improvements	3,621,066.00	3,665,183.00			3,621,066.00	3,665,183.00	-1.2%
Furniture & Equipment	366,203.00	417,800.00	\$31,948.19	\$32,748.82	398,151.19	450,548.82	-11.6%
Total Assets	<u>\$5,010,735.00</u>	<u>\$5,110,195.00</u>	<u>\$31,948.19</u>	<u>\$32,748.82</u>	<u>\$5,042,683.19</u>	<u>\$5,142,943.82</u>	<u>-1.9%</u>

Debt Administration

At June 30, 2022 the District had \$2,152,490.22 of outstanding long-term debt, consisting of net pension liability and compensated absences. Table A-7 reflects the comparison of outstanding debt for the past two fiscal years. More information of the District's long-term debt is presented in Note 4 to the financial statements.

**Table A-7
Outstanding Long-term Debt**

	<u>Total School Debt</u>		<u>Total Percentage Change</u>
	<u>FY 2022</u>	<u>FY 2021</u>	
Compensated Absences	\$268,284.22	\$260,337.35	3.05%
Net Pension Liability	1,884,206.00	2,422,861.00	-22.23%
	<u>\$2,152,490.22</u>	<u>\$2,683,198.35</u>	<u>-19.78%</u>

**HOLLAND TOWNSHIP SCHOOL DISTRICT
MILFORD, NEW JERSEY**

**MANAGEMENT'S DISCUSSION AND ANALYSIS
FOR THE YEAR ENDED JUNE 30, 2022
UNAUDITED**

Contacting the District's Financial Management

This financial report is designed to provide our citizens, taxpayers, investors, and creditors with a general overview of the School District's finances and to show the District's accountability for the money it receives. If you have any questions about this report or need additional information, contact Jack Trent, Business Administrator/Board Secretary's office, Holland Township School District, 714 Milford-Warren Glen Road, Milford, New Jersey 08848. Also, please visit our website to learn more about our School District.

BASIC FINANCIAL STATEMENTS

The basic financial statements provide a financial overview of the District's operations. These financial statements present the financial position and operating results of all funds as of June 30, 2022

DISTRICT-WIDE FINANCIAL STATEMENTS

The statement of net positions and the statement of activities display information about the District. These statements include the financial activities of the overall district, except for fiduciary activities. Eliminations have been made to minimize the double counting of internal activities. These statements distinguish between the governmental and business-type activities of the District.

HOLLAND TOWNSHIP SCHOOL DISTRICT
STATEMENT OF NET POSITIONS
JUNE 30, 2022

	<u>GOVERNMENTAL</u> <u>ACTIVITIES</u>	<u>BUSINESS-TYPE</u> <u>ACTIVITIES</u>	<u>TOTAL</u>
ASSETS			
Cash and cash equivalents	\$ 472,195.74	\$ 47,692.60	\$ 519,888.34
Receivables, net	389,042.15	6,159.14	395,201.29
Due from other funds	8,743.00		8,743.00
Inventory		8,730.76	8,730.76
Restricted assets:			
Restricted cash and cash equivalents	4,220,025.95		4,220,025.95
Capital assets:			
Land	347,800.00		347,800.00
Other capital assets, net	4,662,935.00	31,948.19	4,694,883.19
Total assets	<u>\$ 10,100,741.84</u>	<u>\$ 94,530.69</u>	<u>\$ 10,195,272.53</u>
DEFERRED OUTFLOW OF RESOURCES			
Related to pensions	<u>\$ 521,352.00</u>	<u>\$</u>	<u>\$ 521,352.00</u>
Total deferred outflow of resources	<u>\$ 521,352.00</u>	<u>\$</u>	<u>\$ 521,352.00</u>
LIABILITIES			
Accounts payable	\$ 182,104.00	\$ 1,526.53	\$ 183,630.53
Due to other funds		8,743.00	8,743.00
Payroll deductions & withholdings payable	22,711.29		22,711.29
Unemployment compensation claims payable	20,030.35		20,030.35
Unearned revenue		10,345.48	10,345.48
Noncurrent liabilities:			
Due beyond one year:			
Compensated absences payable	268,284.22		268,284.22
Net pension liability	1,884,206.00		1,884,206.00
Total liabilities	<u>\$ 2,377,335.86</u>	<u>\$ 20,615.01</u>	<u>\$ 2,397,950.87</u>
DEFERRED INFLOW OF RESOURCES			
Related to pensions	<u>\$ 1,432,868.00</u>	<u>\$</u>	<u>\$ 1,432,868.00</u>
Total deferred inflow of resources	<u>\$ 1,432,868.00</u>	<u>\$</u>	<u>\$ 1,432,868.00</u>
Net investment in capital assets	\$ 5,010,735.00	\$ 31,948.19	\$ 5,042,683.19
Restricted for:			
Special revenue fund	44,615.29		44,615.29
Other purposes	4,175,410.66		4,175,410.66
Unrestricted (Deficit)	<u>(2,418,870.97)</u>	<u>41,967.49</u>	<u>(2,376,903.48)</u>
Total net positions	<u>\$ 6,811,889.98</u>	<u>\$ 73,915.68</u>	<u>\$ 6,885,805.66</u>

The accompanying Notes to the Financial Statements are an integral part of this statement.

HOLLAND TOWNSHIP SCHOOL DISTRICT
STATEMENT OF ACTIVITIES
JUNE 30, 2022

FUNCTIONS/PROGRAMS	EXPENSES	INDIRECT EXPENSES ALLOCATION	PROGRAM REVENUES		NET (EXPENSE) REVENUE AND CHANGES IN NET POSITION	
			CHARGES FOR SERVICES	OPERATING GRANTS AND CONTRIBUTIONS	GOVERNMENTAL ACTIVITIES	BUSINESS-TYPE ACTIVITIES
Governmental Activities:						
Instruction:						
Regular	\$ 2,854,475.43	\$ 2,321,021.59	\$	\$ 1,169,528.09	\$ (4,005,968.93)	\$ (4,005,968.93)
Special education	2,047,741.94	1,250,647.38		849,013.93	(2,449,375.39)	(2,449,375.39)
Other	161,296.43	162,075.97		68,165.48	(255,206.92)	(255,206.92)
Support services:						
Student and instruction related services	1,462,965.08	255,347.95		120,203.82	(1,598,109.21)	(1,598,109.21)
General administrative services	389,989.69	88,026.40		27,371.21	(460,614.88)	(460,614.88)
School administrative services	169,372.80	144,994.44		57,909.49	(256,457.75)	(256,457.75)
Central services	200,736.64	63,833.34			(264,569.98)	(264,569.98)
Plant operations and maintenance	1,039,847.08	165,162.06		59,924.05	(1,145,085.09)	(1,145,085.09)
Student transportation services	571,998.22	30,784.36		1,204.63	(601,577.95)	(601,577.95)
Unallocated benefits	4,365,948.67	(4,365,948.67)				
Unallocated depreciation	270,316.00	(270,316.00)				
Total governmental activities	\$ 13,544,657.98	\$ (154,371.18)	\$	\$ 2,353,320.70	\$ (11,036,966.10)	\$ (11,036,966.10)
Business-type activities:						
Food service fund	\$ 153,297.27	\$	\$ 3,221.19	\$ 198,192.51	\$ 48,116.43	\$ 48,116.43
Total business-type activities	\$ 153,297.27	\$	\$ 3,221.19	\$ 198,192.51	\$ 48,116.43	\$ 48,116.43
Total primary government	\$ 13,697,955.25	\$ (154,371.18)	\$	\$ 2,551,513.21	\$ (10,988,849.67)	\$ (10,988,849.67)
			General Revenues:			
			Taxes:			
			Property taxes - general	\$ 10,146,328.00	\$	\$ 10,146,328.00
			Federal and state aid not restricted	1,545,299.00		1,545,299.00
			Miscellaneous income	316,137.70	13.54	316,151.24
			Total general revenues	\$ 12,007,764.70	\$ 13.54	\$ 12,007,778.24
			Disposal of capital assets			
			Change in net position	\$ (11,100.00)	\$	\$ (11,100.00)
			Change in net position	\$ 959,698.60	\$ 48,129.97	\$ 1,007,828.57
			Net position - beginning	\$ 5,852,191.38	\$ 25,785.71	\$ 5,877,977.09
			Net position - ending	\$ 6,811,889.98	\$ 73,915.68	\$ 6,885,805.66

The accompanying Notes to the Financial Statements are an integral part of this statement.

MAJOR FUND FINANCIAL STATEMENTS

The Individual fund financial statements and schedules present more detailed information for the individual fund in a format that segregates information by fund type.

HOLLAND TOWNSHIP SCHOOL DISTRICT
BALANCE SHEET
GOVERNMENTAL FUNDS
JUNE 30, 2022

	GENERAL FUND	SPECIAL REVENUE FUND	TOTAL GOVERNMENTAL FUNDS
ASSETS AND OTHER DEBITS:			
Assets:			
Cash and cash equivalents	\$ 4,771,608.53	\$ (79,386.84)	\$ 4,692,221.69
Accounts receivable:			
State	276,681.15		276,681.15
Federal		112,361.00	112,361.00
Interfunds	8,743.00	11,641.13	20,384.13
Total assets	\$ 5,057,032.68	\$ 44,615.29	\$ 5,101,647.97
LIABILITIES AND FUND BALANCES:			
Liabilities:			
Payroll deductions payable	\$ 22,711.29	\$	\$ 22,711.29
Unemployment liability claims payable	20,030.35		20,030.35
Interfunds payable	11,641.13		11,641.13
Total liabilities	\$ 54,382.77	\$	\$ 54,382.77
Fund balances:			
Restricted for:			
Capital reserve account	\$ 2,569,109.40	\$	\$ 2,569,109.40
Emergency reserve account	250,000.00		250,000.00
Maintenance reserve account	800,827.56		800,827.56
Unemployment	55,473.70		55,473.70
Student Activities		44,615.29	44,615.29
Excess surplus-current year	250,000.00		250,000.00
Excess surplus designated for subsequent years expenditures	250,000.00		250,000.00
Assigned for:			
Year-end encumbrances	34,726.97		34,726.97
Committed for:			
Designated for subsequent years expenditures	180,914.00		180,914.00
Unassigned	611,598.28		611,598.28
Total fund balances	\$ 5,002,649.91	\$ 44,615.29	\$ 5,047,265.20
Total liabilities and fund balances	\$ 5,057,032.68	\$ 44,615.29	\$ 5,101,647.97

The accompanying Notes to the Financial Statements are an integral part of this statement.

HOLLAND TOWNSHIP SCHOOL DISTRICT
BALANCE SHEET
GOVERNMENTAL FUNDS
JUNE 30, 2022

Total Fund Balances (Brought Forward)		\$	5,047,265.20
Amounts Reported for Governmental Activities in the Statement of Net Assets (A-1) are different because:			
Capital assets used in governmental activities are not financial resources and therefore are not reported in the funds.			
Cost of Assets	\$	11,060,500.00	
Accumulated Depreciation		<u>(6,049,765.00)</u>	5,010,735.00
Long term liabilities, including bonds payable, and other related amounts that are not due and payable in the current period and therefore are not reported as liabilities in the funds.			
Net Pension Liability	\$	(1,884,206.00)	
Compensated absences payable		<u>(268,284.22)</u>	(2,152,490.22)
Deferred outflows and inflows of resources are applicable to future periods and therefore are not reported in the funds.			
Deferred outflows:			
Pension related			521,352.00
Deferred inflows:			
Pension related			(1,432,868.00)
Certain liabilities are not due and payable in the current period and therefore, are not reported in the governmental funds.			
Account payable - pension related			<u>(182,104.00)</u>
Net Positions of Governmental Activities	\$		<u><u>6,811,889.98</u></u>

The accompanying Notes to the Financial Statements are an integral part of this statement.

HOLLAND TOWNSHIP SCHOOL DISTRICT
STATEMENT OF REVENUES, EXPENDITURES AND CHANGES IN FUND BALANCES
GOVERNMENTAL FUNDS
FOR THE FISCAL YEAR ENDED JUNE 30, 2022

	<u>GENERAL FUND</u>	<u>SPECIAL REVENUE FUND</u>	<u>TOTAL GOVERNMENTAL FUNDS</u>
REVENUES:			
Local sources:			
Local tax levy	\$ 10,146,328.00	\$	\$ 10,146,328.00
Tuition	312,769.26		312,769.26
Miscellaneous revenues	2,762.33	22,789.53	25,551.86
Interest earned on capital reserve	606.11		606.11
	<u>10,462,465.70</u>	<u>22,789.53</u>	<u>10,485,255.23</u>
Total revenues-local sources	\$	\$	\$
State sources	3,883,620.35		3,883,620.35
Federal sources		288,744.00	288,744.00
	<u>14,346,086.05</u>	<u>311,533.53</u>	<u>14,657,619.58</u>
Total revenues	\$	\$	\$
EXPENDITURES:			
Current expense:			
Instruction:			
Regular	\$ 2,852,494.99	\$	\$ 2,852,494.99
Special education	1,638,161.34	109,486.00	1,747,647.34
Other instruction	159,315.99		159,315.99
Support services:			
Tuition	182,212.16	115,902.00	298,114.16
Student and instruction related services	1,373,807.91	87,176.73	1,460,984.64
General administrative services	397,979.25		397,979.25
School administrative services	167,392.36		167,392.36
Central services	198,756.20		198,756.20
Plant operations and maintenance	1,037,866.64		1,037,866.64
Student transportation services	570,017.80		570,017.80
Employee benefits	4,945,698.80		4,945,698.80
Capital outlay	199,779.94		199,779.94
	<u>13,723,483.38</u>	<u>312,564.73</u>	<u>14,036,048.11</u>
Total expenditures	\$	\$	\$
Excess (deficiency) of revenues over (under) expenditures	\$ 622,602.67	\$ (1,031.20)	\$ 621,571.47
Net change in fund balances	\$ 622,602.67	\$ (1,031.20)	\$ 621,571.47
Fund balances, July 1, 2021	\$ 4,380,047.24	\$ 45,646.49	\$ 4,425,693.73
Fund balances, June 30, 2022	<u>\$ 5,002,649.91</u>	<u>\$ 44,615.29</u>	<u>\$ 5,047,265.20</u>

The accompanying Notes to the Financial Statements are an integral part of this statement.

HOLLAND TOWNSHIP SCHOOL DISTRICT
RECONCILIATION OF THE STATEMENT OF REVENUES, EXPENDITURES
AND CHANGES IN FUND BALANCES OF GOVERNMENTAL FUNDS
TO THE STATEMENT OF ACTIVITIES
FOR THE FISCAL YEAR ENDED JUNE 30, 2022

Total net change in fund balances - governmental funds (from B-2)		\$ 621,571.47
Amounts reported for governmental activities in the statement of activities (A-2) are different because:		
Capital outlays are reported in governmental funds as expenditures. However, in the statement of activities, the cost of those assets is allocated over their estimated useful lives as depreciation expense. This is the amount by which depreciation exceeded capital outlays in the period.		
Depreciation expense	\$ (270,316.00)	
Capital outlays-Capitalized (net)	<u>181,956.00</u>	(88,360.00)
In the statement of activities, only the gain on the disposal of capital assets is reported, whereas in the governmental funds, the proceeds from a sale increase financial resources. Thus, the change in net assets will differ from the change in fund balance by the cost of the asset removed.		
		(11,100.00)
District pension contributions are reported as expenditures in the governmental funds when made. However, they are reported as deferred outflows of resources in the Statement of Net Position because the reported net pension liability is measured a year before the District's report date. Pension expense, which is the change in the net pension liability adjusted for changes in deferred outflows and inflows of resources related to pensions, is reported in the Statement of Activities.		
District pension contributions	186,268.00	
Add: Pension benefit	<u>259,266.00</u>	445,534.00
In the statement of activities, certain expenses, e.g., compensated absences (vacations) are measured by the amounts earned during the year. In governmental funds, however, expenditures for these items are reported in the amount of financial resources used (paid). When the earned amount exceeds the paid amount, the difference is a reduction in the reconciliation (-); when the paid amount exceeds the earned amount the difference is an addition to the reconciliation (+).		
		<u>(7,946.87)</u>
Change in net assets of governmental activities		\$ <u>959,698.60</u>

The accompanying Notes to the Financial Statements are an integral part of this statement.

OTHER FUNDS

HOLLAND TOWNSHIP SCHOOL DISTRICT
STATEMENT OF NET POSITION
PROPRIETARY FUNDS - ENTERPRISE FUNDS
JUNE 30, 2022

	<u>BUSINESS-TYPE</u> <u>ACTIVITIES</u> <u>ENTERPRISE FUND</u> <u>FOOD</u> <u>SERVICE</u>
ASSETS	
Current assets:	
Cash and cash equivalents	\$ 47,692.60
Accounts receivable:	
State	122.43
Federal	5,947.88
Other	88.83
Inventories	<u>8,730.76</u>
Total current assets	<u>\$ 62,582.50</u>
Noncurrent assets:	
Furniture, machinery & equipment	\$ 118,119.19
Less accumulated depreciation	<u>(86,171.00)</u>
Total noncurrent assets	<u>\$ 31,948.19</u>
Total assets	<u><u>\$ 94,530.69</u></u>
LIABILITIES	
Current liabilities:	
Accounts Payable	\$ 1,526.53
Interfunds Payable	8,743.00
Unearned revenue	<u>10,345.48</u>
Total current liabilities	<u>\$ 20,615.01</u>
Total liabilities	<u>\$ 20,615.01</u>
NET POSITION	
Net investment in capital assets	\$ 31,948.19
Unrestricted	<u>41,967.49</u>
Total net position	<u><u>\$ 73,915.68</u></u>

EXHIBIT "B-5"

HOLLAND TOWNSHIP SCHOOL DISTRICT
STATEMENT OF REVENUES, EXPENSES AND CHANGES IN NET POSITION
PROPRIETARY FUNDS - ENTERPRISE FUNDS
FOR THE FISCAL YEAR ENDED JUNE 30, 2022

	<u>BUSINESS-TYPE</u> <u>ACTIVITIES</u> <u>ENTERPRISE FUND</u> <u>FOOD</u> <u>SERVICE</u>
OPERATING REVENUES:	
Charges for services:	
Daily sales-non reimbursable	\$ <u>3,221.19</u>
Total operating revenues	\$ <u>3,221.19</u>
OPERATING EXPENSES:	
Cost of sales-reimbursable	\$ 86,925.23
Cost of sales-non reimbursable	905.83
Salaries	34,283.07
Employee benefits	11,218.67
Other purchased services	8,912.59
Miscellaneous	7,227.88
Depreciation	<u>3,824.00</u>
Total operating expenses	\$ <u>153,297.27</u>
Operating income/(loss)	\$ <u>(150,076.08)</u>
NONOPERATING REVENUES (EXPENSES):	
State sources	
State school lunch program	\$ 4,471.90
Federal sources	
National school lunch program	177,651.39
National food distribution commodities	12,938.09
Other federal subsidy	3,131.13
Interest and investment revenue	<u>13.54</u>
Total nonoperating revenues (expenses)	\$ <u>198,206.05</u>
Change in net position	\$ <u>48,129.97</u>
Total net position - July 1	\$ <u>25,785.71</u>
Total net position - June 30	\$ <u><u>73,915.68</u></u>

EXHIBIT "B-6"

HOLLAND TOWNSHIP SCHOOL DISTRICT
STATEMENT OF CASH FLOWS
PROPRIETARY FUNDS - ENTERPRISE FUNDS
FOR THE FISCAL YEAR ENDED JUNE 30, 2022

	BUSINESS-TYPE ACTIVITIES ENTERPRISE FUND <u>FOOD</u> <u>SERVICE</u>
Cash flows from operating activities:	
Receipts from customers	\$ 2,981.18
Payments to employees	(34,283.07)
Payments to employee benefits	(11,218.67)
Payment to suppliers	<u>(109,106.91)</u>
Net cash provided (used for) by operating activities	\$ <u>(151,627.47)</u>
Cash flows from noncapital financing activities:	
State sources	\$ 4,611.36
Federal sources	190,539.90
Operating subsidies and transfers from/(to) other funds	<u> </u>
Net cash provided by (used for) noncapital financing activities	\$ <u>195,151.26</u>
Cash flows from capital financing activities:	
Purchase of capital assets	\$ <u>(3,023.75)</u>
Net cash provided by (used for) capital and related financing activities	\$ <u>(3,023.75)</u>
Cash flows from investing activities:	
Interest on investments	\$ <u>13.54</u>
Net cash provided by (used for) investing activities	\$ <u>13.54</u>
Net increase (decrease) in cash and cash equivalents	\$ 40,513.58
Cash and cash equivalents- July 1	<u>7,179.02</u>
Cash and cash equivalents- June 30	\$ <u><u>47,692.60</u></u>
Operating income (loss)	\$ (150,076.08)
Adjustments to reconcile operating income (loss) to cash provided (used) by operating activities:	
Depreciation	3,824.00
Change in assets and liabilities:	
(Increase) Decrease in inventory	(3,097.47)
(Increase) Decrease in accounts receivable	75.30
Increase (Decrease) in accounts payable	(2,037.91)
Increase (Decrease) in unearned revenue	<u>(315.31)</u>
Net cash provided (used) by operating activities	\$ <u><u>(151,627.47)</u></u>

Holland Township School District
Notes to the Financial Statements
June 30, 2022

NOTE 1: SUMMARY OF SIGNIFICANT ACCOUNTING POLICIES

The financial statements of the Holland Township School District have been prepared in conformity with U.S. generally accepted accounting principles (GAAP) as applied to governmental units. The Governmental Accounting Standards Board (GASB) is the accepted standard-setting body for establishing governmental accounting and financial reporting principles. The more significant of the Board's accounting policies are described below.

Reporting Entity

The Holland Township School District is a Type II District located in Hunterdon County, New Jersey. The District is an instrumentality of the State of New Jersey, established to function as an educational institution. The District is governed by a nine member board elected to three-year terms and is responsible for the fiscal control of the District. A superintendent is appointed by the Board and is responsible for the administrative control of the District.

The primary criterion for including activities within the District's reporting entity are set forth in Statement No. 39 of the Governmental Accounting Standards Board entitled "*Determining Whether Certain Organizations are Component Units*" (GASB 39) as codified in Section 2100 of the GASB Codification of Governmental Accounting and Financial Reporting Standards.

Organizations that are legally separate, tax-exempt entities and that meet *all* of the following criteria should be discreetly presented as component units. These criteria are:

1. The economic resources received or held by the separate organization are entirely or almost entirely for the direct benefit of the primary government.
2. The primary government, or its component units, is entitled to, or has the ability to otherwise access, a majority of the economic resources of the organization.
3. The economic resources received or held by an individual organization that the specific primary government, or its component units, is entitled to, or has the ability to otherwise access, are significant to that primary government.

The combined financial statements include all funds of the District over which the Board exercises operating control. The operations of the District include one elementary school. There were no additional entities required to be included in the reporting entity under the criteria as described above, in the current fiscal year. Furthermore, the District is not includable in any other reporting entity on the basis of such criteria.

Holland Township School District
Notes to the Financial Statements
June 30, 2022

NOTE 1: SUMMARY OF SIGNIFICANT ACCOUNTING POLICIES (CONTINUED)

Basis of Presentation

The District's basic financial statements consist of District-wide statements, including a Statement of Net Positions and a Statement of Activities, and fund financial statements which provide a more detailed level of financial information.

District-Wide Statements: The Statement of Net Position and the Statement of Activities display information about the District as a whole. These statements include the financial activities of the overall District. Eliminations have been made to minimize the double-counting of internal activities. These statements distinguish generally between the governmental and business-type activity of the District. Governmental activities generally are financed through taxes, intergovernmental revenues, and other non-exchange transactions. Business-type activities are financed in whole or in part by fees charged to external parties.

The Statement of Net Position presents the financial condition of the governmental and business-type activity of the District at fiscal year end. The Statement of Activities presents a comparison between direct expenses and program revenues for the business-type activity of the District and for each function of the District's governmental activities. Direct expenses are those that are specifically associated with a program or function and, therefore, are clearly identifiable to a particular function. Program revenues include (a) fees and charges paid by the recipients of goods or services offered by the programs and (b) grants and contributions that are restricted to meeting the operational or capital requirement of a particular program. Revenues that are not classified as program revenues, including all taxes, are presented as generally revenues. The comparison of direct expenses with program revenues identifies the extent to which each governmental function or business segment is self-financing or draws from the general revenues of the District.

Fund Financial Statements: During the fiscal year, the District segregates transactions related to certain District functions or activities in separate funds in order to aid financial management and to demonstrate legal compliance. The fund financial statements provide information about the District's funds. Separate statements for each fund category – governmental and proprietary - are presented. The New Jersey Department of Education (NJDOE) has elected to require New Jersey districts to treat each governmental fund as a major fund in accordance with the option noted in GASB No. 34, paragraph 76. The NJDOE believes that the presentation of all funds as major is important for public interest and to promote consistency among district financial reporting models.

Holland Township School District
Notes to the Financial Statements
June 30, 2022

NOTE 1: SUMMARY OF SIGNIFICANT ACCOUNTING POLICIES (CONTINUED)

Governmental Fund Types

General Fund - The general fund is the general operating fund of the District. It is used to account for all financial resources except those required to be accounted for in another fund. Included are certain expenditures for vehicles and movable instructional or non-instructional equipment which are classified in the Capital Outlay sub-fund.

As required by the New Jersey State Department of Education, the District includes budgeted capital outlay in this fund. Generally accepted accounting principles as they pertain to governmental entities state that General Fund resources may be used to directly finance capital outlays for long-lived improvements as long as the resources in such cases are derived exclusively from unrestricted revenues. Resources for budgeted capital outlay purposes are normally derived from State of New Jersey Aid, district taxes and appropriated fund balance. Expenditures are those that result in the acquisition of or additions to fixed assets for land, existing buildings, improvements of grounds, construction of buildings, additions to or remodeling of buildings and the purchase of built-in equipment. These resources can be transferred from and to Current Expense by board resolution.

Special Revenue Fund – The Special Revenue Fund is used to account for and report the proceeds of specific revenue sources that are restricted or committed to expenditure for specified purposes other than debt service or capital projects. Thus, the Special Revenue Fund is used to account for the proceeds of specific revenue from State and Federal Governments (other than major capital projects, debt service or the enterprise funds) and local appropriations that are legally restricted or committed to expenditures for specified purposes.

Capital Projects Fund - The Capital Projects Fund is used to account for and report financial resources that are restricted, committed or assigned to expenditure for capital outlays, including the acquisition or construction of capital facilities and other capital assets (other than those financed by proprietary funds). The financial resources are derived from temporary notes or serial bonds that are specifically authorized by the voters as a separate question on the ballot either during the annual election or at a special election, funds appropriated from the General Fund, and from aid provided by the State to offset the cost of approved capital projects.

Debt Service Fund – Debt service funds are used to account for and report financial resources that are restricted, committed, or assigned to expenditure for principal and interest.

Holland Township School District
Notes to the Financial Statements
June 30, 2022

NOTE 1: SUMMARY OF SIGNIFICANT ACCOUNTING POLICIES (CONTINUED)

Proprietary Fund

Enterprise Fund - The enterprise fund accounts for all revenues and expenses pertaining to cafeteria operations. The food service fund is utilized to account for operations that are financed and operated in a manner similar to private business enterprises. The stated intent is that the cost (i.e. expenses including depreciation and indirect costs) of providing goods or services to the students on a continuing basis are financed or recovered primarily through user charges.

Basis of Accounting - Measurement Focus

Basis of accounting determines when transactions are recorded in the financial records and reported on the financial statements.

District-wide and Proprietary Fund Financial Statements: The District-wide financial statements are prepared using the accrual basis of accounting. Governmental funds use the modified accrual basis of accounting. Differences in the accrual and modified accrual basis of accounting arise in the recognition of revenue, the recording of unearned revenue, and in the presentation of expenses versus expenditures. Ad Valorem (Property) Taxes are susceptible to accrual as under New Jersey State Statute a municipality is required to remit to its school district the entire balance of taxes in the amount voted upon or certified, prior to the end of the school year. The District records the entire approved tax levy as revenue (accrued) at the start of the fiscal year, since the revenue is both measurable and available.

Holland Township School District
Notes to the Financial Statements
June 30, 2022

NOTE 1: SUMMARY OF SIGNIFICANT ACCOUNTING POLICIES (CONTINUED)

Basis of Accounting - Measurement Focus (Continued)

The District is entitled to receive monies under the established payment schedule and the unpaid amount is considered to be an "accounts receivable". Revenue from grants, entitlements, and donations are recognized in the fiscal year in which all eligibility requirements have been satisfied. Governmental Fund Financial Statements: Governmental funds are reported using the current financial resources measurement focus and the modified accrual basis of accounting. Under this method, revenues are recognized when measurable and available. "Measurable" means the amount of the transactions can be determined and "available" means collectible within the current period or soon enough thereafter to be used to pay liabilities of the current period. Expenditures are recorded when the related fund liability is incurred, except for principal and interest on general long-term debt, claims and judgments, and compensated absences, which are recognized as expenditures to the extent they have matured. General capital asset acquisitions are reported as expenditures in governmental funds. Proceeds of general long-term debt and acquisitions under capital leases are reported as other financing sources.

All governmental and business type activities and enterprise funds of the District follow FASB Statements and Interpretations issued on or before November 30, 1989, Account Research Bulletins, unless those pronouncements conflict with GASB pronouncements.

Budgets/Budgetary Control

Annual appropriated budgets are prepared in the spring of each year for the general, special revenue, and debt service funds. The budgets are submitted to the county office. In accordance with P.L. 2011, c. 202, which became effective January 17, 2012, the District elected to move the School Board election to the date of the November general election thereby eliminating the vote on the annual base budget unless required by the mandated State budget CAP. The legal level of budgetary control is established at line item accounts within each fund. Line item accounts are defined as the lowest (most specific) level of detail as established pursuant to the minimum chart of accounts referenced in N.J.A.C. 6A:23-2.2(f)1. Expenditures may not legally exceed budgeted appropriations at the line item level. All budget amendments and transfers must be approved by School Board resolution. Budget amendments during the year ended June 30, 2022 totaled net \$0.00. All budget amounts presented in the accompanying supplementary information reflect the original budget and the amended budget (which have been adjusted for legally authorized revisions of the annual budgets during the year).

Holland Township School District
Notes to the Financial Statements
June 30, 2022

NOTE 1: SUMMARY OF SIGNIFICANT ACCOUNTING POLICIES (CONTINUED)

Budgets/Budgetary Control (Continued)

Appropriations, except remaining project appropriations, encumbrances, and unexpended grant appropriations, lapse at the end of each fiscal year. The capital projects fund presents the remaining project appropriations compared to current year expenditures.

Formal budgetary integration into the accounting system is employed as a management control device during the year. For governmental funds there are no substantial differences between the budgetary basis of accounting and generally accepted accounting principles with the exception of the legally mandated recognition of the last state aid payment for budgetary purposes only and the special revenue fund as noted below. Encumbrance accounting is also employed as an extension of formal budgetary integration in the governmental fund types. Unencumbered appropriations lapse at fiscal year end.

The accounting records of the special revenue fund are maintained on the grant accounting budgetary basis. The grant accounting budgetary basis differs from GAAP in that the grant accounting budgetary basis recognizes encumbrances as expenditures and also recognizes the related revenues, whereas the GAAP basis does not. Sufficient supplemental records are maintained to allow for the presentation of GAAP basis financial records.

Encumbrance Accounting

Under encumbrance accounting, purchase orders, contracts and other commitments for the expenditure of resources are recorded to reserve a portion of the applicable appropriation. Open encumbrances in governmental funds other than the special revenue fund are reported as assigned fund balances at fiscal year end as they do not constitute expenditures or liabilities but rather commitments related to unperformed contracts for goods and services.

Open encumbrances in the special revenue fund and capital projects fund for which the District has received advances are reflected in the balance sheet as unearned revenues at fiscal year end.

The encumbered appropriation authority carries over into the next fiscal year. An entry will be made at the beginning of the next fiscal year to increase the appropriation reflected in the certified budget by the outstanding encumbrance amount as of the current fiscal year end.

Holland Township School District
Notes to the Financial Statements
June 30, 2022

NOTE 1: SUMMARY OF SIGNIFICANT ACCOUNTING POLICIES (CONTINUED)

Interfunds

Interfund receivables and payables arise from transactions between particular funds and are considered short term in duration. The interfund transactions are recorded by all funds affected in the period in which the transactions are executed and are part of the district's available expendable resources.

Inventories and Prepaid Expenses

Inventories of materials and supplies held for consumption in the governmental funds are recorded as expenditures at the time of purchase and year end balances are not reported in the financial statements.

Inventories of food and/or supplies in the food service fund are recorded at cost on a first-in, first-out basis or, in the case of Food Distribution Commodities, at stated value which approximates market.

Prepaid expenses which benefit future periods, other than those recorded in the enterprise fund, are recorded as an expenditure in the year of purchase.

Capital Assets

The District has an established formal system of accounting for its capital assets. Capital Assets used for governmental purposes, which include land, buildings and improvements, and furniture and equipment, are only reported in the district-wide financial statements. The District generally defines capital assets as assets with an initial cost of \$2,000.00 or more and an estimated useful life in excess of one year. Purchased or constructed capital assets are reported at cost. Donated capital assets are valued at their acquisition values on the date received. The cost of normal maintenance and repairs that do not add to the value of the asset or materially extend assets' lives are not capitalized. In fiscal year 2016, the District implemented GASB 72. The objective of this is to improve financial reporting by clarifying the definition of fair value for financial reporting purposes, establishing general principles for measuring fair value, providing additional fair value application guidance, and enhancing disclosures about fair value measurement. These improvements are based in part on the concepts and definitions established in Concepts Statement No. 6, Measurement of Elements of Financial Statements, and other relevant literature. Capital assets are depreciated in the district-wide statements using the straight-line method over the following estimated useful lives:

<u>Asset Class</u>	<u>Estimated Useful Lives</u>
School Buildings	50
Building Improvements	20
Electrical/Plumbing	30
Vehicles	8
Office & Computer Equipment	5-10
Instructional Equipment	10
Ground Equipment	15

Holland Township School District
Notes to the Financial Statements
June 30, 2022

NOTE 1: SUMMARY OF SIGNIFICANT ACCOUNTING POLICIES (CONTINUED)

Compensated Absences

The District accounts for compensated absences (e.g., unused sick days) as directed by Governmental Accounting Standards Board Statement No. 16 (GASB 16), "Accounting for Compensated Absences." A liability for compensated absences attributable to services already rendered and not contingent on a specific event that is outside the control of the employer and employee is accrued as employees earn the rights to the benefits.

District employees are granted varying amounts of sick days in accordance with the District's employment contract and personnel policy. The District's policy permits employees to accumulate unused sick leave and carry forward the full amount to subsequent years. Upon retirement employees shall be paid by the District for the unused sick leave in accordance with the District's agreements with the various employees unions.

The liability for compensated absences was accrued using the termination payment method, whereby the liability is calculated based on the amount of sick days that are expected to become eligible for payment upon retirement. The District estimates its accrued compensated absences liability based on the accumulated sick days at the balance sheet date by those employees who are currently eligible to receive retirement payments.

For the District-wide Statements, the current portion is the amount estimated to be used in the following year. In accordance with GAAP, for the governmental funds, in the Fund Financial Statements, all of the compensated absences are considered long-term and therefore, are not a fund liability and represents a reconciling item between the fund level and District-wide presentations.

Fund Equity

Fund balance restrictions are used to indicate that portion of the fund balance that is not available for expenditures or is legally segregated for a specific future use. Designations of portions of the fund balances are established to indicate tentative plans for financial utilization in a future period. The unassigned fund balances represent the amount available for future budgetary operations.

Unassigned net position represent the remains of the District's equity in the cumulative earnings of the food service fund.

Unearned Revenue

Unearned revenue in the special revenue and capital projects funds represents funds which have been received but not yet earned. A corresponding accounts receivable has also been established for any open encumbrances at year end which is an allowable under generally accepted accounting principles.

Holland Township School District
Notes to the Financial Statements
June 30, 2022

NOTE 1: SUMMARY OF SIGNIFICANT ACCOUNTING POLICIES (CONTINUED)

Accrued Liabilities and Long-Term Obligations

All payables, accrued liabilities, and long-term obligations are reported on the District-wide financial statements. In general, governmental fund payables and accrued liabilities that, once incurred, are paid in a timely manner and in full from current financial resources are reported as obligations of the funds. However, contractually required pension contributions and compensated absences that are paid from governmental funds are reported as liabilities on the fund financial statements only to the extent that they are due for payment during the current year. Bonds are recognized as a liability on the fund financial statements when due.

Net Position

GASB 63 provides guidance for reporting net position in the statement of financial position and related disclosures. Net Position represents the difference between assets and liabilities. Net investment in capital assets consists of capital assets, net of accumulated depreciation, reduced by the outstanding balance of any borrowing used for the acquisition, construction, or improvement of those assets. Net position is reported as restricted when there are limitations imposed on their use either through the enabling legislation adopted by the District or through external restrictions imposed by creditors, grantors, or laws or regulations of other governments. The District's policy is to first apply restricted resources when an expense is incurred for purposes for which both restricted and unrestricted net positions are available.

Fund Balance Reserves

Under GASB 54, in the fund financial statements, governmental funds report the following classifications of fund balance:

Non-Spendable – includes amounts that cannot be spend because they are either not spendable in form or are legally or contractually required to be maintained intact.

Restricted – includes amounts restricted by external sources (creditors, laws of other governments, etc.) or by constitutional provision or enabling legislation. The District reports the Capital Reserve, Emergency Reserve, Maintenance Reserve, Tuition Reserve, Unemployment, Student Activities, and Excess Surplus as Restricted Fund Balance.

Holland Township School District
Notes to the Financial Statements
June 30, 2022

NOTE 1: SUMMARY OF SIGNIFICANT ACCOUNTING POLICIES (CONTINUED)

Fund Balance Reserves (Continued)

Committed – includes amounts that can only be used for specific purposes. Committed fund balance is reported pursuant to resolutions passed by the Board of Education, the District's highest level of decision making authority. Commitments may be modified or rescinded only through resolutions approved by the Board of Education

Assigned – includes amount that the District intends to use for a specific purpose, but do not meet the definition of restricted or committed fund balance. Under the District's policy, amounts may be assigned by the Business Administrator. The District reports Year End Encumbrances and amounts Designated for Subsequent Year's Expenditures as Assigned Fund Balance.

Unassigned – is the residual classification for the general fund. This classification represents fund balance that has not been assigned to other funds and that has not been restricted, committed, or assigned to specific purposes within the general fund. The general fund should be the only fund that reports a positive unassigned fund balance amount. In other governmental funds, if expenditures incurred for specific purposes exceeded the amounts restricted, committed, or assigned to those purposes, it may be necessary to report a negative unassigned fund balance.

When an expenditure is incurred for purposes for which both restricted and unrestricted fund balance is available, the District considers restricted funds to have been spent first. When an expenditure is incurred for which committed, assigned, or unassigned fund balance are available, the District considers amounts to have been spent first out of committed funds, then assigned funds, and finally unassigned funds, as needed.

Revenues Exchange and Non-Exchange Transactions

Revenue resulting from exchange transactions, in which each party gives and receives essentially equal value, is recorded on the accrual basis when the exchange takes place. On the modified accrual basis, revenue is recorded in the fiscal year in which the resources are measurable and become available. Available means the resources will be collected within the current fiscal year or are expected to be collected soon enough thereafter to be used to pay liabilities of the current fiscal year. For the District, available means within sixty days of the fiscal year end.

Holland Township School District
Notes to the Financial Statements
June 30, 2022

NOTE 1: SUMMARY OF SIGNIFICANT ACCOUNTING POLICIES (CONTINUED)

Revenues Exchange and Non-Exchange Transactions (Continued)

Non-exchange transactions, in which the District receives value without directly giving equal value in return, include property taxes, income taxes, grants, entitlements, and donations. On the accrual basis, revenue from property taxes is recognized in the fiscal year for which the taxes are levied. Revenue from property taxes is recognized in the period in which the income is earned. Revenue from grants, entitlements, and donations is recognized in the fiscal year in which all eligibility requirements have been satisfied. Eligibility requirements include timing requirements, which specify the year when the resources are required to be used or the fiscal year when use is first permitted; matching requirements, in which the District must provide local resources to be used for a specific purpose; and expenditure requirements, in which the resources are provided to the District on a reimbursement basis. On the modified accrual basis, revenue from non-exchange transactions must also be available before it can be recognized. Under the modified accrual basis, the following revenue sources are considered both measurable and available at fiscal year end: property taxes available as an advance, interest, and tuition.

Proprietary Funds Revenues and Expenses

Proprietary funds distinguish operating revenues and expenses from non-operating items. Operating revenues and expenses generally result from providing services in connection with a proprietary fund's principal ongoing operations. The principal operating revenues of the School District enterprise funds are charges to customers for sales of food service. Operating expenses for enterprise funds include the cost of sales and services, administrative expense and depreciation on capital assets. All revenues and expenses not meeting this definition are reported as non-operating revenues and expenses.

Allocation of Indirect Expenses

The District reports all direct expenses by function in the Statement of Activities. Direct expenses are those that are clearly identifiable with a function. Indirect expenses are allocated to functions but are reported separately in the Statement of Activities. Employee benefits, including the employer's share of social security, workers compensation, and medical and dental benefits, were allocated based on salaries of the program. Depreciation expense, where practicable, is specifically identified by function in the Statement of Activities. Depreciation expense that could not be attributed to a specific function is considered an indirect expense and is reported separately in the Statement of Activities.

Holland Township School District
Notes to the Financial Statements
June 30, 2022

NOTE 1: SUMMARY OF SIGNIFICANT ACCOUNTING POLICIES (CONTINUED)

Extraordinary and Special Items

Extraordinary items are transactions or events that are unusual in nature and infrequent of occurrence. Special items are transactions or events that are within control of management and are either unusual in nature or infrequent in occurrence. Neither of these types of transactions occurred during the fiscal year.

Management Estimates

The preparation of financial statements in conformity with accounting principles generally accepted in the United States requires management to make estimates and assumptions that affect the reported amounts of revenues and expenditures/expenses during the reporting period. Actual results could differ from those estimates.

Accounting and Financial Reporting for Pensions

In the District-Wide Financial Statements for purposes of measuring the net pension liability, deferred outflows of resources and deferred inflows of resources related to pensions, and pension expense, information about the fiduciary net position of the District's proportionate share of the New Jersey Public Employees Retirement System ("PERS") and the Teachers' Pension and Annuity Fund ("TPAF") and the additions to/deductions from these retirement systems' fiduciary net position have been determined on the same basis as they were reported by PERS and TPAF. For this purpose, benefit payments (including refunds of employee contributions) are recognized when due and payable in accordance with the benefit terms. Investments are reported at fair value.

In the Governmental Fund Financial Statements the year end Net pension liability is not required to be reflected. Pension related revenues and expenditures are reflected based on amounts that are normally expected to be liquidated with available financial resources for required pension contributions. Expenditures for PERS are recognized based upon billings made by the State of New Jersey due April 1st of each fiscal year. TPAF contributions are paid on the District's behalf by the State of New Jersey. The Governmental Fund Financial Statements reflects both a revenue and expenses for this pension contribution.

Holland Township School District
Notes to the Financial Statements
June 30, 2022

NOTE 1: SUMMARY OF SIGNIFICANT ACCOUNTING POLICIES (CONTINUED)

Deferred Outflows/Inflows of Resources

In addition to assets, the statement of financial position will sometimes report a separate section for deferred outflows of resources. This separate financial statement element, deferred outflows of resources, represents a consumption of net position that applies to a future period(s) and so will not be recognized as an outflow of resources (expense/expenditure) until then. Currently, the District has only one items that qualify for reporting in this category, deferred amounts from refunding debt and deferred amounts related to pensions. In addition to liabilities, the statement of financial position will sometimes report a separate section for deferred inflows of resources. This separate financial statement element, deferred inflows of resources, represents an acquisition of net position that applies to a future period(s) and so will not be recognized as an inflow of resources (revenue) until that time. The District has one item that qualifies in this category: deferred amounts related to pension.

Recently Adopted Accounting Pronouncements

Beginning with the year ended June 30, 2022, the District has implemented GASB Statement 87.

Holland Township School District
Notes to the Financial Statements
June 30, 2022

NOTE 2: CASH AND CASH EQUIVALENTS AND INVESTMENTS

The Board considers petty cash, change funds, cash in banks, certificates of deposits, deposits in the New Jersey Cash Management Fund, deposits in the governmental money market fund, deposits in the New Jersey Asset and Rebate Management Program and short term investments with original maturities of three months or less as cash and cash equivalents. Investments are stated at cost, which approximates market.

Deposits

New Jersey statutes permit the deposit of public funds in public depositories which are located in New Jersey and which meet the requirements of the Governmental Unit Deposit Protection Act (GUDPA). GUDPA requires a bank that accepts public funds to be a public depository. A public depository is defined as a state bank, a national bank, or a savings bank, which is located in the State of New Jersey, the deposits of which are insured by the Federal Deposit Insurance Corporation. The statutes also require public depositories to maintain collateral for deposits of public funds that exceed certain insurance limits. All collateral must be deposited with the Federal Reserve Bank or a Banking Institution that is a member of the Federal Reserve System, and has capital funds of not less than \$25,000,000.00. Under (GUDPA), if a public depository fails, the collateral it has pledged, plus the collateral of all other public depositories, is available to pay the full amount of the deposits to the governmental unit.

Holland Township School District
Notes to the Financial Statements
June 30, 2022

NOTE 2: CASH AND CASH EQUIVALENTS AND INVESTMENTS (CONTINUED)

Deposits (Continued)

The Holland Township School District had the following cash and cash equivalents at June 30, 2022:

	<u>Cash in</u>	<u>Reconciling</u>	<u>Reported</u>
	<u>Bank</u>	<u>Items</u>	<u>Total</u>
General Fund	\$ 5,094,371.84	\$ (\$322,763.31)	\$ 4,771,608.53
Special Revenue Fund	(77,936.88)	(1,449.96)	(79,386.84)
Enterprise Fund	47,692.60		47,692.60
	<u>\$ 5,064,127.56</u>	<u>(\$324,213.27)</u>	<u>\$ 4,739,914.29</u>

Custodial Credit Risk – Deposits – Custodial credit risk is the risk that in the event of a bank failure, the deposits may not be returned. The District does not have a specific deposit policy for custodial credit risk other than those policies that adhere to the requirements of statute. As of June 30, 2022, based upon the coverage provided by FDIC and NJGUDPA, no amount of the bank balance was exposed to custodial credit risk. Of the cash on balance in the bank, \$250,000.00 was covered by Federal Depository Insurance and \$4,814,127.56 was covered under the provisions of NJGUDPA.

Investments

The purchase of investments by the Board is strictly limited by the express authority of the N.J.S.A. 18A:20-37 Education, Administration of School Districts. Permitted investments include any of the following type of securities:

1. Bonds or other obligations of the United States of America or obligations guaranteed by the United States of America;
2. Government money market mutual funds which are purchased from an investment company or investment trust which is registered with the Securities and Exchange Commission under the "Investment Company Act of 1940," 15 U.S.C. 80a-1 et seq., and operated in accordance with 17 C.F.R. § 270.2a-7 and which portfolio is limited to U.S. Government securities that meet the definition of an eligible security pursuant to 17 C.F.R. § 270.2a-7 and repurchase agreements that are collateralized by such U.S. Government securities in which direct investment may be made pursuant to paragraphs (1) and (3) of N.J.S.A. 18A:20-37. These funds are also required to be rated by a nationally recognized statistical rating organization.

Holland Township School District
Notes to the Financial Statements
June 30, 2022

NOTE 2: CASH AND CASH EQUIVALENTS AND INVESTMENTS (CONTINUED)

Investments (Continued)

3. Any obligation that a federal agency or a federal instrumentality has issued in accordance with an act of Congress, which security has a maturity date not greater than 397 days from the date of purchase, provided that such obligation bears a fixed rate of interest not dependent on any index or other external factor;
4. Bonds or other obligations of the Local Unit or bonds or other obligations of school districts of which the Local Unit is a part or within which the school district is located.
5. Bonds or other obligations, having a maturity date not more than 397 days from date of purchase, approved by the Division of Investment of the Department of Treasury for investment by School Districts;
6. Local government investment pools that are fully invested in U.S. Government securities that meet the definition of eligible security pursuant to 17 C.F.R. § 270a-7 and repurchase agreements that are collateralized by such U.S. Government securities in which direct investment may be made pursuant to paragraphs (1) and (3) of N.J.S.A. 18A:20-37. This type of investment is also required to be rated in the highest category by a nationally recognized statistical rating organization.
7. Deposits with the State of New Jersey Cash Management Fund established pursuant to section 1 of P.L. 1977, c.281 (C. 52:18A-90.4); or
8. Agreements for the repurchase of fully collateralized securities if:
 - a. the underlying securities are permitted investments pursuant to paragraphs (1) and (3) of this subsection;
 - b. the custody of collateral is transferred to a third party;
 - c. the maturity of the agreement is not more than 30 days;
 - d. the underlying securities are purchased through a public depository as defined in section 1 of P.L. 1970, c.236 (C. 17:19-41); and
 - e. a master repurchase agreement providing for the custody and security of collateral is executed.

Holland Township School District
Notes to the Financial Statements
June 30, 2022

NOTE 2: CASH AND CASH EQUIVALENTS AND INVESTMENTS (CONTINUED)

Investments (Continued)

At June 30, 2022, the District had no outstanding investments.

Based upon the limitation set forth by New Jersey Statutes 18A:20-37 and its existing investment practices, the District is generally not exposed to credit risks, custodial credit risks, concentration of credit risks and interest rate risks for its investments, nor is it exposed to foreign currency risks for its deposits and investments.

NOTE 3: CHANGE IN CAPITAL ASSETS

Capital asset activity for the year ended June 30, 2022 was as follows:

	<u>Beginning Balance</u>	<u>Additions</u>	<u>Subtractions</u>	<u>Ending Balance</u>
Governmental activities:				
Capital assets that are not depreciated:				
Land	\$ 347,800.00	\$ _____	\$ _____	\$ 347,800.00
Total capital assets that are not depreciated	<u>\$ 347,800.00</u>	<u>\$ _____</u>	<u>\$ _____</u>	<u>\$ 347,800.00</u>
Capital assets being depreciated:				
Land improvements	\$ 1,062,342.00	\$ _____	\$ _____	\$ 1,062,342.00
Building and building improvements	7,082,403.00	172,518.00	11,100.00	7,243,821.00
Machinery and equipment	2,397,099.00	9,438.00	_____	2,406,537.00
Total capital assets being depreciated	<u>\$ 10,541,844.00</u>	<u>\$ 181,956.00</u>	<u>\$ 11,100.00</u>	<u>\$ 10,712,700.00</u>
Total gross assets	<u>\$ 10,889,644.00</u>	<u>\$ 181,956.00</u>	<u>\$ 11,100.00</u>	<u>\$ 11,060,500.00</u>
Less: accumulated depreciation for:				
Land improvements	\$ (342,940.00)	\$ (43,736.00)	\$ _____	\$ (386,676.00)
Building and building improvements	(3,457,210.00)	(165,545.00)	_____	(3,622,755.00)
Machinery and equipment	(1,979,299.00)	(61,035.00)	_____	(2,040,334.00)
	<u>\$ (5,779,449.00)</u>	<u>\$ (270,316.00)</u>	<u>\$ _____</u>	<u>\$ (6,049,765.00)</u>
Governmental activities capital assets, net	<u>\$ 5,110,195.00</u>	<u>\$ (88,360.00)</u>	<u>\$ 11,100.00</u>	<u>\$ 5,010,735.00</u>
Business type activities:				
Machinery and equipment	\$ 115,095.44	\$ 3,023.75	\$ _____	\$ 118,119.19
Less: accumulated depreciation	<u>(82,347.00)</u>	<u>(3,824.00)</u>	<u>_____</u>	<u>(86,171.00)</u>
Proprietary fund capital assets, net	<u>\$ 32,748.44</u>	<u>\$ (800.25)</u>	<u>\$ _____</u>	<u>\$ 31,948.19</u>

Holland Township School District
Notes to the Financial Statements
June 30, 2022

NOTE 4: LONG-TERM LIABILITIES

Bonds are issued by the District pursuant to the provisions of Title 18A, Education, of the New Jersey Statutes and are required to be approved by the voters of the municipality through referendum. The proceeds of bonds are recorded in the Capital Projects Fund and are restricted to the use for which they were approved in the bond referendum. All bonds are retired in annual installments within the statutory period of usefulness.

School Bonds issued by the District are entitled to and benefit from the provision of the New Jersey School Board Reserve Act P.L. 1980 c.72. Basically, funds are held by the State of New Jersey within its State Fund for the Support of Free Public Schools as a school bond reserve pledged by law to secure payment of principal and interest due on such bonds in the event of the inability of the issuer to make payments.

At June 30, 2022, the District had no bonds or notes authorized but not issued.

The following is a summary of changes in liabilities that effect other long-term obligations for the year ended June 30, 2022.

	Balance <u>6/30/21</u>	<u>Increases</u>	<u>Decreases</u>	Balance <u>6/30/22</u>	Due Within <u>One Year</u>
Compensated Absences	\$260,337.35	\$7,946.87		\$268,284.22	
Net Pension Liability	<u>2,422,861.00</u>		<u>\$538,655.00</u>	<u>1,884,206.00</u>	
	<u>\$2,683,198.35</u>	<u>\$7,946.87</u>	<u>\$538,655.00</u>	<u>\$2,152,490.22</u>	<u>\$ - 0 -</u>

Holland Township School District
Notes to the Financial Statements
June 30, 2022

NOTE 4: LONG-TERM LIABILITIES (CONTINUED)

Under New Jersey Statutes, the District may incur debt in an amount not to exceed 3% of the averaged equalized valuation basis of real property. For the fiscal year ended June 30, 2022, the District borrowing capacity under N.J.S. 18A:24-19 would be as follows:

<u>Year</u>	<u>Equalized Valuation of Real Property</u>
2021	\$731,568,444.00
2020	691,678,093.00
2019	<u>688,150,282.00</u>
Average equalized valuation of property	<u>\$703,798,939.67</u>
School borrowing margin (3% of above)	<u>\$21,113,968.19</u>
Net bonded school debt and authorized but not issued as of June 30, 2022	<u>\$ - 0 -</u>
School borrowing power available	<u>\$21,113,968.19</u>

Holland Township School District
Notes to the Financial Statements
June 30, 2022

NOTE 5: PENSION PLANS

Description of Plans - All required employees of the District are covered by either the Public Employees' Retirement System or the Teachers' Pension and Annuity Fund which have been established by state statute and are administered by the New Jersey Division of Pension and Benefits (Division). According to the State of New Jersey Administrative Code, all obligations of both Systems will be assumed by the State of New Jersey should the Systems terminate. The Division issues a publicly available financial report that includes the financial statements and required supplementary information for the Public Employees Retirement System and the Teachers' Pension and Annuity Fund. These reports may be obtained by writing to the Division of Pensions and Benefits, PO Box 295, Trenton, New Jersey, 08625.

Teachers' Pension and Annuity Fund (TPAF) - The Teachers' Pension and Annuity Fund was established as of January 1, 1955, under the provisions of N.J.S.A. 18A:66 to provide retirement benefits, death, disability and medical benefits to certain qualified members. The Teachers' Pension and Annuity Fund is considered a cost-sharing multiple-employer plan with a special funding situation, as under current statute, all employer contributions are made by the State of New Jersey on behalf of the District and the system's other related non-contributing employers. Membership is mandatory for substantially all teachers or members of the professional staff certified by the State Board of Examiners, and employees of the Department of Education who have titles that are unclassified, professional and certified.

Public Employees' Retirement System (PERS) - The Public Employees' Retirement System (PERS) was established as of January 1, 1955 under the provision of N.J.S.A. 43:15A to provide retirement, death, disability and medical benefits to certain qualified members. The Public Employees' Retirement System is a cost-sharing multiple-employer plan. Membership is mandatory for substantially all full-time employees of the State of New Jersey or any county, municipality, school district, or public agency, provided the employee is not required to be a member of another state-administered retirement system or other state or local jurisdiction.

Defined Contribution Retirement Program (DCRP) - The Defined Contribution Retirement Program (DCRP) was established under the provision of Chapter 92, P.L. 2007 and Chapter 103, P.L. 2007 to provide coverage to elected and certain appointed officials, effective July 1, 2007. Membership is mandatory for such individuals with vesting occurring after one year of membership.

Holland Township School District
Notes to the Financial Statements
June 30, 2022

NOTE 5: PENSION PLANS (CONTINUED)

Significant Legislation

Effective June 28, 2011, P.L. 2011, c. 78 enacted certain changes in the operations and benefit provisions of the TPAF and the PERS systems.

Pension Plan Design Changes

Effective June 28, 2011, P.L. 2011, c. 78, new members of TPAF and PERS, hired on or after June 28, 2011, will need 30 years of creditable service and have attained the age of 65 for receipt of the early retirement benefit without a reduction of 1/4 of 1% for each month that the member is under age 65. New members will be eligible for a service retirement benefit at age 65.

Funding Changes

Under the new legislation, the methodology for calculating the unfunded accrued liability payment portion of the employer's annual pension contribution to the PERS, and TPAF. The unfunded actuarial accrued liability (UAAL) will be amortized for each plan over an open-ended 30 year period and paid in level dollars. Beginning with the July 1, 2019 actuarial valuation (July 1, 2018 for PFRS), the UAAL will be amortized over a closed 30 year period until the remaining period reaches 20, when the amortization period will revert to an open-ended 20 year period.

COLA Suspension

The payment of automatic cost-of-living adjustment to current and future retirees and beneficiaries are suspended until reactivated as permitted by this law.

Vesting and Benefit Provisions The vesting and benefit provisions of PERS are set by N.J.S.A. 43:15A and 43.3B, and N.J.S.A. 18A:6C for TPAF. All benefits vest after ten years of service, except for post-retirement healthcare benefits that vest after 25 years of service.

Members are always fully vested for their own contributions and, after three years of service credit, become vested for 2% of related interest earned on the contributions. In the case of death before retirement, members' beneficiaries are entitled to full interest credited to the members' accounts.

Holland Township School District
Notes to the Financial Statements
June 30, 2022

NOTE 5: PENSION PLANS (CONTINUED)

Contribution Requirements The contribution policy is set by N.J.S.A. 43:15A and N.J.S.A. 18:66, and requires contributions by active members and contributing employers. Plan member and employer contributions may be amended by State of New Jersey legislation.

Effective June 28, 2011, P.L. 2011, c. 78 provides for increases in the employee contribution rates: from 5.5% to 6.5% plus an additional 1% phased-in over 7 years beginning in the first year, meaning after 12 months, after the law's effective date for TPAF and PERS.

Employers are required to contribute at an actuarially determined rate in both TPAF and PERS. The actuarially determined contribution includes funding for cost-of-living adjustments, noncontributory death benefits, and post-retirement medical premiums. Under current statute the District is a non-contributing employer of TPAF (*i.e.* the State of New Jersey makes the employer contribution on behalf of public school districts).

<u>Three-Year Trend Information for PERS</u>			
<u>Year</u> <u>June 30,</u>	<u>Annual Pension</u> <u>Cost (APC)</u>	<u>Percentage of</u> <u>APC Contributed</u>	<u>Net Pension</u> <u>Obligation</u>
2022	\$186,268.00	100.00%	\$186,268.00
2021	162,533.00	100.00%	162,533.00
2020	162,282.00	100.00%	162,282.00

During the fiscal years ended June 30, 2022, 2021, and 2020, the State of New Jersey contributed \$1,638,392.00, \$1,199,772.00, and \$856,608.00, respectively, excluding post-retirement medical and long-term disability insurance, to the TPAF pension system on behalf of the District.

In accordance with N.J.S.A. 18A:66-66 the State of New Jersey reimbursed the District \$315,649.35, \$325,424.01, and \$304,317.84 during the years ended June 30, 2022, 2021, and 2020, respectively, for the employer's share of social security contributions for TPAF members, as calculated on their base salaries. This amount has been included in the basic financial statements, and the combining and individual fund and account group statements and schedules as a revenue and expenditure in accordance with GASB 68.

Holland Township School District
Notes to the Financial Statements
June 30, 2022

NOTE 6: ACCOUNTING AND FINANCIAL REPORTING FOR PENSION - GASB 68

Public Employees Retirement System (PERS)

At June 30, 2022, the District reported a liability of \$1,884,206.00 for its proportionate share of the net pension liability. The net pension liability was measured as of June 30, 2021, and the total pension liability used to calculate the net pension liability was determined by an actuarial valuation as of July 1, 2020, which was rolled forward to June 30, 2021. The District's proportion of the net pension liability was based on a projection of the District's long-term share of contributions to the pension plan relative to the projected contributions of all participating members, actuarially determined. At June 30, 2021, the District's proportion was 0.0159051677 percent, which was an increase of 0.0010477186 percent from its proportion measured as of June 30, 2020.

For the year ended June 30, 2021, the District recognized pension benefit of \$259,266.00 in the district-wide financial statements. This pension benefit was based on the pension plans June 30, 2021 measurement date. At June 30, 2022, the District reported deferred outflows of resources and deferred inflows of resources related to PERS from the following sources:

	<u>Deferred</u> <u>Outflow of</u> <u>Resources</u>	<u>Deferred</u> <u>Inflow of</u> <u>Resources</u>
Differences between expected and actual experience	\$ 29,716.00	\$ 13,489.00
Changes of assumptions		670,789.00
Net difference between projected and actual earnings on pension plan investments	9,813.00	496,349.00
Changes in proportion and differences between District contributions and proportionate share of contributions	299,719.00	252,241.00
District contributions subsequent to the measurement date	<u>182,104.00</u>	<u> </u>
	<u>\$ 521,352.00</u>	<u>\$ 1,432,868.00</u>

The \$521,352.00 reported as deferred outflows of resources related to pensions resulting from school district contributions subsequent to the measurement date (i.e., for the school year ending June 30, 2022, the plan measurement date is June 30, 2021) will be recognized as a reduction of the net pension liability in the year ended June 30, 2023.

Holland Township School District
Notes to the Financial Statements
June 30, 2022

NOTE 6: ACCOUNTING AND FINANCIAL REPORTING FOR PENSION - GASB 68
(CONTINUED)

Public Employees Retirement System (PERS) (Continued)

Other amounts reported as deferred outflows of resources and deferred inflows of resources related to pensions will be recognized in pension expense as follows:

<u>Year Ended</u> <u>June 30,</u>	<u>Amount</u>
2022	(\$435,094.40)
2023	(307,941.40)
2024	(206,942.40)
2025	(153,201.40)
2026	<u>9,559.60</u>
	<u><u>(\$1,093,620.00)</u></u>

Actuarial Assumptions

The total pension liability for the June 30, 2021 measurement date was determined by an actuarial valuation as of July 1, 2020, which rolled forward to June 30, 2021. These actuarial valuations used the following assumptions:

Inflation rate:	
Price	2.75%
Wage	3.25%
Salary Increases:	
Through 2026	2.00%-6.00% Based on Year of Service
Thereafter	3.00%-7.00% Based on Years of Service
Investment Rate of Return	7.00%

Pre-retirement mortality rates were based on the Pub-2010 General Below-Median Income Employee mortality table with an 82.2% adjustment for males and 101.4% adjustment for females, and with future improvement from the base year of 2010 on a generational basis. Post-retirement mortality rates were based on the Pub-2010 General Below-Median Income Healthy Retiree mortality table with a 91.4% adjustment for males and 99.7% adjustment for females, and with future improvement from the base year of 2010 on a generational basis. Disability retirement rates used to value disabled retirees were based on the Pub-2010 Non-Safety Disabled Retiree mortality table with a 127.7% adjustment for males and 117.2% adjustment for females, and with future improvement from the base year of 2010 on a generational basis. Mortality improvement is based on Scale MP-2020.

Holland Township School District
Notes to the Financial Statements
June 30, 2022

NOTE 6: ACCOUNTING AND FINANCIAL REPORTING FOR PENSION - GASB 68
(CONTINUED)

Public Employees Retirement System (PERS) (Continued)
Actuarial Assumptions (Continued)

The actuarial assumptions used in the July 1, 2020 valuation were based on the results of an actuarial experience study for the period July 1, 2014 to June 30, 2018.

Long-Term Rate of Return

In accordance with State statute, the long-term expected rate of return on plan investments (7.00% at June 30, 2021) is determined by the State Treasurer, after consultation with the Directors of the Division of Investment and Division of Pensions and Benefits, the board of trustees and the actuaries. The long-term expected rate of return was determined using a building block method in which best-estimate ranges of expected future real rates of return (expected returns, net of pension plan investment expense and inflation) are developed for each major asset class. These ranges are combined to produce the long-term expected rate of return by weighting the expected future real rates of return by the target asset allocation percentage and by adding expected inflation. Best estimates of arithmetic rates of return for each major asset class included in PERS's target asset allocation as of June 30, 2021 are summarized in the following table:

<u>Assets Class</u>	<u>Target Allocation</u>	<u>Long-Term Expected Real Rate of Return</u>
U.S. Equity	27.00%	8.09%
Non-U.S. Developed Market Equity	13.50%	8.71%
Emerging Market Equity	5.50%	10.96%
Private Equity	13.00%	11.30%
Real Estate Assets	3.00%	9.15%
Real Estate	8.00%	7.40%
High Yield	2.00%	3.75%
Private Credit	8.00%	7.60%
Investment Grade Credit	8.00%	1.68%
Cash Equivalents	4.00%	0.50%
U.S. Treasuries	5.00%	0.95%
Risk Mitigation Strategies	3.00%	3.35%

Holland Township School District
Notes to the Financial Statements
June 30, 2022

NOTE 6: ACCOUNTING AND FINANCIAL REPORTING FOR PENSION - GASB 68
(CONTINUED)

Discount Rate

The discount rate used to measure the total pension liability was 7.00% as of June 30, 2021. The projection of cash flows used to determine the discount rate assumed that contributions from plan members will be made at the current member contribution rates and that contributions from employers and the nonemployer contributing entity will be based on 100% of the actuarially determined contributions for the State employer and 100% of actuarially determined contributions for the local employers.

Based on those assumptions, the plan's fiduciary net position was projected to be available to make all projected future benefit payments of current plan members. Therefore, the long-term expected rate of return on plan investments was applied to all projected benefit payments to determine the total pension liability.

Sensitivity of the Collective Net Pension Liability to Changes in the Discount Rate

The following presents the District's proportionate share of the net pension liability as of June 30, 2021, calculated using the discount rate as disclosed above as well as what the collective net pension liability would be if it was calculated using a discount rate that is 1-percentage point lower or 1-percentage-point higher than the current rate:

	1% Decrease <u>6.00%</u>	At Current Discount Rate <u>7.00%</u>	1% Increase <u>8.00%</u>
District's proportionate share of the pension liability	\$2,565,906.00	\$1,884,206.00	\$1,305,686.00

Pension Plan Fiduciary Net Position

Detailed information about the pension plan's fiduciary net position is available in the separately issued Financial Report for the State of New Jersey Public Employees Retirement System (PERS). The report may be obtained at State of New Jersey Division of Pensions and Benefits P.O. Box 295 Trenton, New Jersey 08625-0295 by visiting <http://www.state.nj.us/treasury/pensions>.

Holland Township School District
Notes to the Financial Statements
June 30, 2022

NOTE 6: ACCOUNTING AND FINANCIAL REPORTING FOR PENSION - GASB 68
(CONTINUED)

Teachers Pensions and Annuity Fund (TPAF)

The employer contributions for local participating employers are legally required to be funded by the State in accordance with N.J.S.A 18:66-33. Therefore, these local participating employers are considered to be in a special funding situation as defined by GASB Statement No. 68 and the State is treated as a nonemployer contributing entity. Since the local participating employers do not contribute directly to the plan (except for employer specific financed amounts), there is no net pension liability or deferred outflows or inflows to report in the financial statements of the local participating employers. However, the notes to the financial statements of the local participating employers must disclose the portion of the nonemployer contributing entities' total proportionate share of the net pension liability that is associated with the local participating employer.

The portion of the TPAF Net Pension Liability that was associated with the District recognized at June 30, 2021 was as follows:

Net Pension Liability:	
Districts proportionate share	-0-
State's proportionate share associated with the District	<u>\$19,471,856</u>
	<u>\$19,471,856</u>

The net pension liability was measured as of June 30, 2021, and the total pension liability used to calculate the net pension liability was determined by an actuarial valuation as of June 30, 2020 which was rolled forward to June 30, 2021. The net pension liability associated with the District was based on a projection of the District's long-term share of contributions to the pension plan relative to the projected contributions of all participating school districts and the State, actuarially determined. At June 30, 2021, the proportion of the TPAF net pension liability associated with the District was 0.0405029212% which was an increase of 0.0021364219 percent from its proportion measured as of June 30, 2020.

For the year ended June 30, 2021, the District recognized on-behalf pension expense and revenue of \$458,181.00 in the government-wide financial statements for contributions provided by the State. This pension expense and revenue was based on the pension plans June 30, 2021 measurement date.

Holland Township School District
Notes to the Financial Statements
June 30, 2022

NOTE 6: ACCOUNTING AND FINANCIAL REPORTING FOR PENSION - GASB 68
(CONTINUED)

Teachers Pensions and Annuity Fund (TPAF) (Continued)
Actuarial Assumptions

The total pension liability for the June 30, 2021 measurement date was determined by an actuarial valuation as of July 1, 2020, which was rolled forward to June 30, 2021. This actuarial valuation used the following actuarial assumptions, applied to all periods in the measurement:

Inflation rate:	
Price	2.75%
Wage	3.25%
Salary Increases:	
Through 2026	1.55%-4.45% Based on Years of Service
Thereafter	2.75%-5.65% Based on Years of Service
Investment Rate of Return	7.00%

Mortality Rate

Pre-retirement mortality rates were based on the Pub-2010 Teachers Above-Median Income Employee mortality table with a 93.9% adjustment for males and 85.3% adjustment for females, and with future improvement from the base year of 2010 on a generational basis. Post-retirement mortality rates were based on the Pub-2010 Teachers Above-Median Income Healthy Retiree mortality table with a 114.7% adjustment for males and 99.6% adjustment for females, and with future improvement from the base year of 2010 on a generational basis. Disability mortality rates were based on the Pub-2010 Non-Safety Disabled Retiree mortality table with a 106.3% adjustment for males and 100.3% adjustment for females, and with future improvement from the base year of 2010 on a generational basis. Mortality improvement is based on Scale MP-2021.

The actuarial assumptions used in the July 1, 2020 valuation were based on the results of an actuarial experience study for the period July 1, 2015 to June 30, 2018.

Long-Term Expected Rate of Return

In accordance with State statute, the long-term expected rate of return on plan investments (7.00% at June 30, 2021) is determined by the State Treasurer, after consultation with the Directors of the Division of Investments and Division of Pensions and Benefits, the board of trustees and the actuaries.

Holland Township School District
Notes to the Financial Statements
June 30, 2022

NOTE 6: ACCOUNTING AND FINANCIAL REPORTING FOR PENSION - GASB 68
(CONTINUED)

Teachers Pensions and Annuity Fund (TPAF) (Continued)
Actuarial Assumptions (Continued)

Long-Term Expected Rate of Return (Continued)

The long-term expected rate of return was determined using a building block method in which best-estimate ranges of expected future real rates of return (expected returns, net of pension plan investment expense and inflation) are developed for each major asset class. These ranges are combined to produce the long-term expected rate of return by weighting the expected future real rates of return by the target asset allocation percentage and by adding expected inflation. Best estimates of arithmetic real rates of return for each major asset class included in TPAF's target asset allocation as of June 30, 2021 are summarized in the following table:

<u>Assets Class</u>	<u>Target Allocation</u>	<u>Long-Term Expected Real Rate of Return</u>
U.S. Equity	27.00%	8.09%
Non-U.S. Developed Market Equity	13.50%	8.71%
Emerging Market Equity	5.50%	10.96%
Private Equity	13.00%	11.30%
Real Estate Assets	3.00%	9.15%
Real Estate	8.00%	7.40%
High Yield	2.00%	3.75%
Private Credit	8.00%	7.60%
Investment Grade Credit	8.00%	1.68%
Cash Equivalents	4.00%	0.50%
U.S. Treasuries	5.00%	0.95%
Risk Mitigation Strategies	3.00%	3.35%

Discount Rate

The discount rate used to measure the total pension liability was 7.00% as of June 30, 2021. The projection of cash flows used to determine the discount rate assumed that contributions from plan members will be made at the current member contribution rates and that contributions from employers will be based on 100% of the actuarially determined contributions for the State. Based on those assumptions, the plan's fiduciary net position was projected to be available to make all projected future benefit payments of current plan members. Therefore, the long-term expected rate of return on plan investments was applied to all projected benefit payments in determining the total pension liability.

Holland Township School District
Notes to the Financial Statements
June 30, 2022

NOTE 6: ACCOUNTING AND FINANCIAL REPORTING FOR PENSION - GASB 68
(CONTINUED)

Teachers Pensions and Annuity Fund (TPAF) (Continued)

Sensitivity of the Net Pension Liability to Changes in the Discount Rate

Because the District's proportionate share of the net pension liability is zero, consideration of potential changes in the discount rate is not applicable to the District.

Pension Plan Fiduciary Net Position

Detailed information about the pension plan's fiduciary net position is available in the separately issued Financial Report for the State of New Jersey Teachers Public and Annuity Fund (TPAF). The report may be obtained at State of New Jersey Division of Pensions and Benefits P.O. Box 295 Trenton, New Jersey 08625-0295 by visiting <http://www.state.nj.us/treasury/pensions>

Holland Township School District
Notes to the Financial Statements
June 30, 2022

NOTE 7: ACCOUNTING AND FINANCIAL REPORTING FOR POST-RETIREMENT BENEFITS OTHER THAN PENSIONS – GASB 75

Plan Description and Benefits Provided

The State Health Benefit Local Education Retired Employees Plan is a multiple-employer defined benefit OPEB plan, which is administered on a pay-as-you-go basis. Accordingly, no assets are accumulated in a qualifying trust that meets the criteria in paragraph 4 of GASB Statement No. 75, *Accounting and Financial Reporting for Postemployment Benefits Other Than Pensions*. The State Health Benefit Local Education Retired Employees Plan provides medical, prescription drug, and Medicare Part B reimbursement to retirees and their covered dependents of local education employers.

The employer contributions for the participating local education employers are legally required to be funded by the State of New Jersey in accordance with N.J.S.A 52:14-17.32f. Therefore, these local participating employers are considered to be in a special funding situation as defined by GASB Statement No. 75 and the State is treated as a nonemployer contributing entity. According to N.J.S.A 52:14-17.32f, the State provides employer-paid coverage to employees who retire from a board of education or county college with 25 years or more of service credit in, or retires on a disability pension from, one or more of the following plans: the Teachers' Pension and Annuity Fund (TPAF), the Public Employees' Retirement System (PERS), the Police and Firemen Retirement System (PFRS), or the Alternate Benefit Program (ABP). Pursuant to Chapter 78, P.L. 2011, future retirees eligible for postretirement medical coverage who have less than 20 years of creditable service on June 28, 2011 will be required to pay a percentage of the cost of their health care coverage in retirement provided they retire with 25 or more years of pension service credit. The percentage of the premium for which the retiree will be responsible will be determined based on the retiree's annual retirement benefit and level of coverage.

Employees Covered by Benefit Terms

The State Health Benefit Local Education Retired Employees Plan Membership covered by the benefit terms consisted of the following:

Active Plan Members	213,901
Inactive Plan Members or Beneficiaries Currently Receiving Benefits	150,427
Inactive Plan Members or Beneficiaries Not Yet Receiving Benefits	<u>- 0 -</u>
Total Plan Members	<u>364,328</u>

Holland Township School District
Notes to the Financial Statements
June 30, 2022

NOTE 7: ACCOUNTING AND FINANCIAL REPORTING FOR POST-RETIREMENT BENEFITS OTHER THAN PENSIONS - GASB 75 (CONTINUED)

Total Non-Employer OPEB Liability

The portion of the total Non-Employer OPEB Liability that was associated with the District at June 30, 2022 was as follows:

Total OPEB Liability:	
District's Proportionate Share	\$-0-
State's Proportionate Share associated with the District	<u>28,781,677</u>
	<u><u>\$28,781,677</u></u>

The total Non-Employer OPEB liability as of June 30, 2021 was determined by an actuarial valuation as of June 30, 2020, which was rolled forward to June 30, 2021.

The total Non-Employer OPEB liability was determined separately based on actual data of the District.

For the year ended June 30, 2022, the District recognized on-behalf post-employment expense and revenue of \$1,420,843 in the government-wide financial statements for contributions provided by the State. This expense and revenue was based on the plans June 30, 2021 measurement date. At June 30, 2021, the District's proportion was 0.0479633456 percent, which was an decrease of 0.0015552233 from its proportion measured as of June 30, 2020. The State, a nonemployer contributing entity, is the only entity that has a legal obligation to make employer contributions to OPEB for qualified retired PERS, TPAF/ABP and PFRS participants. The District's proportionate share percentage determined under paragraphs 193 and 203 through 205 of GASBS No. 75 is zero percent. Consequently, the District did not recognize any portion of the collective Non-Employer OPEB liability on the Statement of Net Position.

Holland Township School District
Notes to the Financial Statements
June 30, 2022

NOTE 7: ACCOUNTING AND FINANCIAL REPORTING FOR POST-RETIREMENT BENEFITS OTHER THAN PENSIONS - GASB 75 (CONTINUED)

Actuarial Assumptions and Other Inputs

The total Non-Employer OPEB liability that was associated with the District as of June 30, 2021 was determined by an actuarial valuation as of June 30, 2020, which was rolled forward to June 30, 2021. The actuarial assumptions vary for each plan member depending on the pension plan the member is enrolled in. This actuarial valuation used the following actuarial assumptions, applied to all periods in the measurement:

	<u>June 30, 2021</u>		
	<u>TPAF/ABP</u>	<u>PERS</u>	<u>PFRS</u>
Inflation – 2.5%			
Salary Increases			
Through 2026	1.55-4.45%*	2.00-6.00%*	3.25-15.25%*
Thereafter	2.75-5.65%*	3.00-7.00%*	Not Applicable

*- Based on Years of Service

Preretirement mortality rates were based on the Pub-2010 Healthy "Teachers" (TPAF/ABP), "General" (PERS), and "Safety" (PFRS) classification headcount-weighted mortality table with fully generational mortality improvement projections from the central year using Scale MP-2021. Postretirement mortality rates were based on the Pub-2010 "General" classification headcount-weighted mortality table with fully generational mortality improvement projections from the central year using Scale MP-2021. Disability mortality was based on the Pub-2010 "General" classification headcount-weighted disabled mortality table with fully generational mortality improvement projections from the central year using Scale MP-2021 for current disabled retirees. Future disabled retirees was based on the Pub-2010 "Safety" (PFRS), "General" (PERS), and "Teachers" (TPAF/ABP) classification headcount-weighted disabled mortality table with fully generational mortality improvement projections from the central year using Scale MP-2021.

The actuarial assumptions used in the June 30, 2020 valuation were based on the results of actuarial experience studies for the periods July 1, 2015— June 30, 2018, July 1, 2014 — June 30, 2018, and July 1, 2013 - June 30, 2018 for TPAF, PERS and PFRS, respectively.

Holland Township School District
Notes to the Financial Statements
June 30, 2022

NOTE 7: ACCOUNTING AND FINANCIAL REPORTING FOR POST-RETIREMENT BENEFITS OTHER THAN PENSIONS - GASB 75 (CONTINUED)

Actuarial Assumptions and Other Input (Continued)

Health Care Trend Assumptions

For pre-Medicare medical benefits, the trend rate is initially 5.65% and decreases to a 4.50% long-term trend rate after seven years. For post-65 medical benefits, the actual fully insured Medicare Advantage trend rates for fiscal year 2022 through 2023 are reflected. For PPO the trend is initially 5.74% in fiscal year 2024, increasing to 12.93% in fiscal year 2025 and decreases to 4.50% after 11 years. For HMO the trend is initially 6.01% in fiscal year 2024, increasing to 15.23% in fiscal year 2025 and decreases to 4.5% after 11 years. For prescription drug benefits, the initial trend rate is 6.75% and decreases to a 4.50% long-term trend rate after seven years. For the Medicare Part B reimbursement, the trend rate is 5.00%.

Discount Rate

The discount rate for June 30, 2021 and June 30, 2020 was 2.16% and 2.21% respectively. This represents the municipal bond return rate as chosen by the Division. The source is the Bond Buyer Go 20-Bond Municipal Bond Index, which includes tax-exempt general obligation municipal bonds with an average rating of AA/Aa or higher. As the long-term rate of return is less than the municipal bond rate, it is not considered in the calculation of the discount rate, rather the discount rate is set at the municipal bond rate.

Changes in the Total Non-Employer OPEB Liability

Shown below are details regarding The Total OPEB non-employer Liability associated with the District for the measurement period from June 30, 2020 to June 30, 2021.

Balance at 6/30/20		\$33,578,523
Changes for the year:		
Service cost	\$1,436,858	
Interest	746,627	
Changes of Benefit Terms	(30,635)	
Differences between expected and actual experience	(6,409,046)	
Changes in assumptions or other inputs	28,395	
Membership Contributions	19,088	
Benefit payments - Net	(588,133)	
Net changes		(4,796,846)
Balance at 6/30/21		\$28,781,677

Holland Township School District
Notes to the Financial Statements
June 30, 2022

NOTE 7: ACCOUNTING AND FINANCIAL REPORTING FOR POST-RETIREMENT BENEFITS OTHER THAN PENSIONS - GASB 75 (CONTINUED)

Sensitivity of the Total Non-Employer OPEB Liability to Changes in the Discount Rate

The following presents the total Non-Employer OPEB liability associated with the District as of June 30, 2021, calculated using the discount rate as disclosed above as well as what the total Non-Employer OPEB liability would be if it was calculated using a discount rate that is 1 -percentage point lower or 1-percentage point higher than the current rate:

	June 30, 2021		
	<u>1.00% Decrease (1.16%)</u>	<u>At Discount Rate (2.16%)</u>	<u>1.00% Increase (3.16%)</u>
State of New Jersey's Proportionate Share of the total Non-Employer OPEB Liability associated with the District	\$34,475,931	\$28,781,677	\$24,297,794

Sensitivity of the Total Non-Employer OPEB Liability to Changes in Healthcare Trends

The following presents the total Non-Employer OPEB liability associated with the District as of June 30, 2021, calculated using the healthcare trend rate as disclosed above as well as what the total Non-Employer OPEB liability would be if it was calculated using a healthcare trend rate that is 1- percentage point lower or 1-percentage point higher than the current rate:

	June 30, 2021		
	<u>1.00% Decrease</u>	<u>Healthcare Cost Trend Rate</u>	<u>1.00% Increase</u>
State of New Jersey's Proportionate Share of the total Non-Employer OPEB Liability associated with the District	\$23,298,861	\$28,781,677	\$36,144,694

Holland Township School District
Notes to the Financial Statements
June 30, 2022

NOTE 7: ACCOUNTING AND FINANCIAL REPORTING FOR POST-RETIREMENT BENEFITS OTHER THAN PENSIONS - GASB 75 (CONTINUED)

OPEB Expense and Deferred Outflows of Resources and Deferred Inflows of Resources Related to Non-Employer OPEB Liability

At June 30, 2021, the State reported deferred outflows of resources and deferred inflows of resources related to retired school employee's Non-Employer OPEB Liability associated with the District from the following sources:

		<u>Deferred Outflow of Resources</u>		<u>Deferred Inflow of Resources</u>
Differences between expected and actual experience	\$	4,338,710	\$	8,637,893
Changes of assumptions		4,882,446		3,088,006
Changes in proportion		<u>833,621</u>		<u>2,018,457</u>
	\$	<u>10,054,777</u>	\$	<u>13,744,356</u>

Amounts reported as deferred outflows of resources and deferred inflows of resources related to the State's proportionate share of the total Non-Employer OPEB Liability associated with the District will be recognized in OPEB expense as follows:

Measurement Period Ended	
<u>June 30,</u>	<u>Amount</u>
2022	(\$804,039)
2023	(\$804,039)
2024	(\$804,039)
2025	(\$804,039)
2026	(\$640,147)
Total	
Thereafter	<u>\$166,725</u>
	<u>(\$3,689,579)</u>

Holland Township School District
Notes to the Financial Statements
June 30, 2022

NOTE 7: ACCOUNTING AND FINANCIAL REPORTING FOR POST-RETIREMENT BENEFITS OTHER THAN PENSIONS - GASB 75 (CONTINUED)

In accordance with GASBS No. 75, the District's proportionate share of school retirees OPEB is zero. There is no recognition of the allocation of proportionate share of deferred outflows of resources and deferred inflows of resources in the financial statements.

State Health Benefit Local Education Retired Employee Plan Information

The New Jersey Division of Pension and Benefits issues publicly available reports on the OPEB plan. Those reports may be obtained by writing to the Division of Pension and Benefits, PO Box 295, Trenton, NJ 08625-0295 or on their website at <http://www.state.nj.us/treasury/pensions/financial-reports.shtml>.

Holland Township School District
Notes to the Financial Statements
June 30, 2022

NOTE 8: LITIGATION

The Board attorney's letter advises that there is no litigation, pending litigation, claims, contingent liabilities, unasserted claims or assessments or statutory violations which involve the Board of Education and which might materially affect the Board's financial position.

NOTE 9: CONTINGENCIES

The Board receives financial assistance from the State of New Jersey and the U.S. Government in the form of grants. Entitlement to the funds is generally conditional upon compliance with terms and conditions of the grant agreements and applicable regulations, including the expenditure of the funds for eligible purposes. The State and Federal grants received and expended in the 2021-2022 fiscal year were subject to the U.S. OMB Uniform Guidance and New Jersey OMB Circular 15-08 which mandates that grant revenues and expenditures be audited in conjunction with the Board's annual audit. Findings and questioned costs, if any, relative to federal awards and state financial assistance programs will be discussed in the Single Audit Section, Schedule of Findings and Questioned Costs. In addition, all grants and cost reimbursements are subject to financial and compliance audits by the grantors. Further, the School Child Nutrition Program is a recipient of federal reimbursements and is subject to certain related federal regulations. These federal reimbursements are subject to subsequent audit and interpretation by the New Jersey Department of Education. The Board management does not believe such an audit would result in material amounts of disallowed costs.

Holland Township School District
Notes to the Financial Statements
June 30, 2022

NOTE 10: RISK MANAGEMENT

The District is exposed to various risks of loss related to torts; theft of, damage to, and destruction of assets; errors and omissions, injuries to employees; and natural disasters. The District maintains commercial coverage covering each of those risks of loss. The administration believes such coverage is sufficient to preclude any significant uninsured losses to the District. Settled claims have not exceeded this commercial coverage in any of the past three fiscal years.

Property and Liability Insurance - The District maintains insurance coverage covering each of those risks of loss. The administration believes such coverage is sufficient to preclude any significant uninsured losses to the District. Settled claims have not exceeded the insurance coverage in any of the past three fiscal years.

New Jersey Unemployment Compensation Insurance - The District has elected to fund its New Jersey Unemployment Compensation Insurance under the "Benefit Reimbursement Method." Under this plan, the District is required to reimburse the New Jersey Unemployment Trust Fund for benefits paid to its former employees and charged to its account with the State. The District is billed quarterly for amounts due to the State. Charges are applied to the Unemployment Compensation Claims Payable first, and any remaining charges are applied to the Unemployment Compensation budget appropriation. The following table is a summary of District contributions, employee contributions, reimbursements to the State for benefits paid and the combined ending balance of the District's Unemployment Compensation Claims Payable and Unemployment Restricted Fund Balance for the current and previous two years:

<u>Fiscal Year</u>	<u>Interest Earned</u>	<u>Employee Contributions</u>	<u>Amount Reimbursed</u>	<u>Ending Balance</u>
2021-22	\$ 42.77	\$ 11,764.20	\$	\$ 75,504.05
2020-21	51.83	10,761.90	2,538.52	63,697.08
2019-20	507.19	10,761.62	22,418.43	55,421.87

NOTE 11: FUND BALANCE APPROPRIATED

General Fund - Of the \$5,002,649.91 in General Fund Balance at June 30, 2022, \$34,726.97 has been assigned for encumbrances; \$2,569,109.40 has been restricted in the Capital Reserve Account; \$250,000.00 has been restricted in the Emergency Reserve Account; \$800,827.56 has been restricted in the Maintenance Reserve Account, \$250,000.00 has been restricted as excess surplus; \$250,000.00 has been restricted as excess surplus - subsequent years' expenditures; \$180,914.00 has been committed for subsequent years' expenditures; \$55,473.70 has been restricted for Unemployment; and \$611,598.28 is unassigned.

Holland Township School District
Notes to the Financial Statements
June 30, 2022

NOTE 12: CALCULATION OF EXCESS SURPLUS - BUDGETARY BASIS

In accordance with N.J.S.A.18A:7F-7, as amended by P.L. 2004, c73 (S1701), the Restricted Fund Balance Excess Surplus is a required calculation pursuant to the New Comprehensive Educational Improvement and Financing Act of 1996 (CEIFA). New Jersey school districts are required to restricted General Fund balance at the fiscal year end of June 30 if they did not appropriate a required minimum amount as budgeted fund balance in their subsequent years' budget. The excess fund balance resulting from the year ended June 30, 2022 is \$250,000.00.

General Fund Expenditures Fiscal Year Ended June 30, 2022	\$13,723,483.38
Less:	
On-Behalf TPAF Pension and Social Security Reimbursement	2,337,451.35
Adjusted General Fund Expenditures	\$11,386,032.03
Excess Surplus Percentage	4.00%
4% of Adjusted 2021-22 General Fund Expenditures	\$455,441.28
Greater of line above for \$250,000.00	\$455,441.28
Add: Allowable Adjustments	260,467.00
Maximum Unreserved/Undesignated Fund Balance	\$715,908.28
Total Unassigned/Unrestricted Fund Balance	965,908.28
Excess Surplus	\$250,000.00

NOTE 13: CAPITAL RESERVE ACCOUNT

A capital reserve account was originally established by the Holland Township School District for the accumulation of funds for use as capital outlay expenditures in subsequent fiscal years. The capital reserve account is maintained in the general fund and its activity is included in the general fund annual budget. The balance remaining in the reserve as of June 30, 2022 is \$2,569,109.40.

Holland Township School District
Notes to the Financial Statements
June 30, 2022

NOTE 13: CAPITAL RESERVE ACCOUNT (CONTINUED)

Funds placed in the capital reserve account are restricted to capital projects in the district's approved Long Range Facilities Plan (LRFP). Upon submission of the LRFP to the department, a district may increase the balance in the capital reserve by appropriating funds in the annual general fund budget certified for taxes. A district may also appropriate additional amounts when the express approval of the voters has been obtained either by a separate proposal at budget time or by a special question at one of the four special elections authorized pursuant to N.J.S.A. 19:60-2. Pursuant to N.J.A.C. 6:23A-5.1(d)7, the balance in the account cannot at any time exceed the local support costs of uncompleted capital projects in its approved LRFP.

The activity of the capital reserve for the year ending June 30, 2022 fiscal year is as follows:

Beginning balance, July 1, 2021		\$2,249,364.31
Increased by:		
Interest earnings	\$606.11	
Board approved transfers	<u>481,932.14</u>	
		<u>482,538.25</u>
		<u>\$2,731,902.56</u>
Decreased by:		
Appropriated in Budget (Net)		<u>162,793.16</u>
Ending balance, June 30, 2022		<u><u>\$2,569,109.40</u></u>

Holland Township School District
Notes to the Financial Statements
June 30, 2022

NOTE 14: EMERGENCY RESERVE ACCOUNT

An emergency reserve was established by the District for the accumulation of funds for use as emergency expenditures in subsequent fiscal years. The emergency reserve account is maintained in the general fund and its activity is included in the general fund annual budget. The emergency reserve account is used to fund unanticipated general fund current expense costs and may be established to supplement the reserve in the district's annual budget or through a transfer by board resolution at year end of any unanticipated revenue and unexpended line item appropriation amounts in accordance with N.J.S.A. 18A:7F-41.

The activity of the emergency reserve for the year ending June 30, 2022 is as follows:

Balance, July 1, 2021	\$146,624.45
Add: Board Approved Transfer	<u>103,375.55</u>
Balance, June 30, 2022	<u><u>\$250,000.00</u></u>

Holland Township School District
Notes to the Financial Statements
June 30, 2022

NOTE 15: MAINTENANCE RESERVE ACCOUNT

A maintenance reserve was established through a board resolution by the Holland Township School District for the accumulation of funds for the required maintenance of a facility in accordance with N.J.S.A. 18A:7G-9 as amended by P.L. 2004, c. 73 (S1701). N.J.S.A. 18A:7G-31(c), 18A:7G-13 and N.J.A.C. 6A:23A-14.2 permits districts, by board resolution, to transfer undesignated general fund balance to the maintenance reserve account if approved in the district's original budget certified for taxes or if the district received voter approval by a separate proposal at budget time or by special question at one of the four special elections authorized pursuant to N.J.S.A.19:60-2. N.J.S.A. 18A:7F-41(a), 18A:7F-41(b) and N.J.A.C.6A:23A-14.3 permit a district board of education to transfer by board resolution (prior to June 30) any unanticipated revenue or unexpended line-item appropriation amounts to the maintenance reserve for withdrawal in subsequent school years.

The activity of the maintenance reserve for the year ending June 30, 2022 is as follows:

Balance, July 1, 2021	\$800,827.56
Add: Appropriations Lapsed	245,000.00
Less: Withdrawals-Budgeted	<u>(245,000.00)</u>
Balance, June 30, 2022	<u><u>\$800,827.56</u></u>

NOTE 16: INVENTORY

Inventory in the Food Service Fund at June 30, 2022 consisted of the following:

Food, Commodities and Supplies	<u>\$8,730.76</u>
--------------------------------	-------------------

NOTE 17: DEFERRED COMPENSATION

The District offers its employees a choice of the deferred compensation plans created in accordance with Internal Revenue Code Section 403(b) and 457. The plans permit participants to defer a portion of their salary until future years. Amounts deferred under the plans are not available to employees until termination, retirement, death, or unforeseeable emergency. Since the District does not have any property or rights to the plan assets and no fiduciary relationship exists between the District and the deferred compensation plan, the plan assets are not included in the District's financial statements as of June 30, 2022.

Holland Township School District
Notes to the Financial Statements
June 30, 2022

NOTE 18: COMPENSATED ABSENCES

The District accounts for compensated absences (e.g. unused vacation and sick leave) as directed by Governmental Accounting Standards Board Statement No. 16 (GASB 16), "Accounting for Compensated Absences". A liability for compensated absences attributable to services already rendered and not contingent on a specific event that is outside the control of the employer and employee is accrued as employees earn the rights to the benefits.

District employees are granted varying amounts of vacation and sick leave in accordance with the District's personnel policy. Upon termination, employees are paid for accrued vacation. The District's policy permits employees to accumulate unused sick leave and carry forward the amount to subsequent years. Upon retirement, employees shall be paid by the District for the unused sick leave in accordance with the Districts agreements with the various employee unions.

The liability for vested compensated absences of the governmental fund types are recorded in the district - wide statement of net position. As of June 30, 2022, a liability existed for compensated absences for governmental fund-types in the district-wide Statement of Net Position of \$268,284.22.

The liability for vested compensated absences of the proprietary fund types is recorded within those funds as the benefits accrue to employees. As of June 30, 2022 no liability existed for compensated absences in the proprietary funds.

For additional descriptive information see Note 1, Summary of Significant Accounting Policies.

NOTE 19: INTERFUND RECEIVABLES AND PAYABLES

The following interfund balances remained on the balances sheet at June 30, 2022:

<u>Fund</u>	<u>Receivable</u>	<u>Payable</u>
General Fund	\$8,743.00	\$11,641.13
Special Revenue Fund	11,641.13	
Enterprise Funds	<u> </u>	<u>8,743.00</u>
	<u>\$20,384.13</u>	<u>\$20,384.13</u>

All balances resulted from the time lag between the dates that short-term loans were disbursed and payments between funds were received.

Holland Township School District
Notes to the Financial Statements
June 30, 2022

NOTE 20: SUBSEQUENT EVENTS

The Board of Education has evaluated subsequent events occurring after the financial statement date through March 9, 2023 which is the date the financial statements were available to be issued. Based upon this evaluation, the District has determined that no subsequent events needed to be disclosed.

REQUIRED SUPPLEMENTARY INFORMATION – Part II

BUDGETARY COMPARISON SCHEDULES

TOWNSHIP OF HOLLAND SCHOOL DISTRICT
BUDGETARY COMPARISON SCHEDULE
GENERAL FUND
FISCAL YEAR ENDED JUNE 30, 2022

	ORIGINAL BUDGET	BUDGET TRANSFERS AND AMENDMENTS	FINAL BUDGET	ACTUAL	VARIANCE FAVORABLE/ (UNFAVORABLE)
REVENUES:					
Local Sources:					
Local Tax Levy	\$ 10,146,328.00	\$	\$ 10,146,328.00	\$ 10,146,328.00	\$
Tuition from Individuals	120,000.00		120,000.00	105,450.00	(14,550.00)
Tuition from Other LEAs Within State	26,000.00		26,000.00	207,319.26	181,319.26
Unrestricted Miscellaneous Revenues	25,000.00		25,000.00	2,762.33	(22,237.67)
Interest Earned on Capital Reserve Funds	5,000.00		5,000.00	606.11	(4,393.89)
Total Local Sources	10,322,328.00		10,322,328.00	10,462,465.70	140,137.70
State Sources:					
School Choice Aid	107,145.00		107,145.00	107,145.00	
Categorical Transportation Aid	36,300.00		36,300.00	36,300.00	
Extraordinary Aid				259,597.00	259,597.00
Categorical Special Education Aid	373,356.00		373,356.00	373,356.00	
Equalization Aid	728,821.00		728,821.00	728,821.00	
Categorical Security Aid	9,453.00		9,453.00	9,453.00	
Other State Aids				870.00	870.00
On-behalf TPAF pension contribution (non-budgeted)				1,638,392.00	1,638,392.00
Reimbursed TPAF social security cont. (non-budgeted)				315,649.35	315,649.35
On-behalf TPAF post-retirement medical (non-budgeted)				382,795.00	382,795.00
On-behalf TPAF long-term disability insurance (non-budgeted)				615.00	615.00
Total State Sources	1,255,075.00		1,255,075.00	3,852,993.35	2,597,918.35
Total Revenues	11,577,403.00		11,577,403.00	14,315,459.05	2,738,056.05
EXPENDITURES:					
CURRENT EXPENSE:					
Instruction - Regular Programs:					
Preschool	133,558.00		133,558.00	123,720.38	9,837.62
Kindergarten	247,381.00	102.00	247,483.00	246,143.00	1,340.00
Grades 1-5	1,095,006.00	123,994.00	1,219,000.00	1,212,077.64	6,922.36
Grades 6-8	1,131,648.00	(112,089.98)	1,019,558.02	1,018,490.46	1,067.56
Regular programs - home instruction:		4,256.53	6,256.53	6,256.53	
Salaries of teachers	2,000.00				
Regular programs - undistributed instruction:		(805.00)	24,520.00	23,144.81	1,375.19
Purchased technical services	25,325.00		61,675.39	60,991.39	684.00
Other purchased services (400 - 500 series)	79,247.00	(17,571.61)	174,656.49	151,563.71	23,092.78
General supplies	137,350.00	37,306.49	13,729.66	9,938.07	3,791.59
Textbooks	25,632.92	(11,903.26)	200.00	169.00	31.00
Other objects	200.00				
Total regular programs	2,877,347.92	23,289.17	2,900,637.09	2,852,494.99	48,142.10

TOWNSHIP OF HOLLAND SCHOOL DISTRICT
BUDGETARY COMPARISON SCHEDULE
GENERAL FUND
FISCAL YEAR ENDED JUNE 30, 2022

	ORIGINAL BUDGET	BUDGET TRANSFERS AND AMENDMENTS	FINAL BUDGET	ACTUAL	VARIANCE FAVORABLE/ (UNFAVORABLE)
Instruction - Special Education:					
Learning and/or Language Disabilities:					
Other salaries for instruction	138,247.00	(46,245.92)	92,001.08	87,406.79	4,594.29
General Supplies	841.00	226.54	1,067.54	1,067.54	
Total Learning and/or Language Disabilities	139,088.00	(46,019.38)	93,068.62	88,474.33	4,594.29
Behavioral Disabilities:					
General Supplies		39.32	39.32	39.32	
Total Behavioral Disabilities		39.32	39.32	39.32	
Multiple Disabilities:					
Other Salaries for Instruction	143,358.00	60,290.67	203,648.67	180,591.57	23,057.10
General Supplies	2,000.00	(660.00)	1,340.00	1,098.12	241.88
Total Multiple Disabilities	145,358.00	59,630.67	204,988.67	181,689.69	23,298.98
Resource Room / Resource Center:					
Other salaries for instruction	1,227,024.00	19,948.25	1,246,972.25	1,246,128.54	843.71
General Supplies	5,968.00	(1,702.25)	4,265.75	4,156.16	109.59
Total Resource Room / Resource Center	1,232,992.00	18,246.00	1,251,238.00	1,250,284.70	953.30
Preschool Disabilities - Part - Time:					
Other Salaries for Instruction	105,956.00	11,717.30	117,673.30	117,673.30	
Total Preschool Disabilities - Part - Time	105,956.00	11,717.30	117,673.30	117,673.30	
Total Special Education	1,623,394.00	43,613.91	1,667,007.91	1,638,161.34	28,846.57
Basic Skills / Remedial:					
Salaries of Teachers	136,660.00	(38,133.55)	98,526.45	97,526.45	1,000.00
General Supplies	200.00		200.00	91.67	108.33
Total Basic Skills / Remedial	136,860.00	(38,133.55)	98,726.45	97,618.12	1,108.33
School Sponsored Co-Curricular Activities:					
Salaries	33,421.00	1,979.70	35,400.70	29,603.27	5,797.43
Supplies and Materials	400.00	199.90	599.90	599.90	
Total School Sponsored Co-Curricular Activities	33,821.00	2,179.60	36,000.60	30,203.17	5,797.43
School Sponsored Athletics:					
Salaries	28,930.00		28,930.00	24,800.00	4,130.00
Purchased Services (300-500 Series)	7,000.00		7,000.00	6,411.00	589.00
Supplies and Materials	3,960.00	(388.64)	3,571.36	283.70	3,287.66
Other Objects	300.00		300.00	300.00	
Total School Sponsored Athletics	40,190.00	(388.64)	39,801.36	31,494.70	8,306.66

TOWNSHIP OF HOLLAND SCHOOL DISTRICT
BUDGETARY COMPARISON SCHEDULE
GENERAL FUND
FISCAL YEAR ENDED JUNE 30, 2022

	ORIGINAL BUDGET	BUDGET TRANSFERS AND AMENDMENTS	FINAL BUDGET	ACTUAL	VARIANCE FAVORABLE/ (UNFAVORABLE)
Total Other Instructional Programs	210,871.00	(36,342.59)	174,528.41	159,315.99	15,212.42
Total - Instruction	4,711,612.92	30,560.49	4,742,173.41	4,649,972.32	92,201.09
Undistributed Expenditures:					
Instruction:					
Tuition to Other LEA's within the State - Special	162,542.00	6,624.00	169,166.00	169,166.00	
Tuition - Other	111,800.00	(59,341.82)	52,458.18	13,046.16	39,412.02
Total Undistributed Expenditures - Instruction	274,342.00	(52,717.82)	221,624.18	182,212.16	39,412.02
Attendance and Social Work Services:					
Salaries	30,786.00	12,000.08	42,786.08	32,880.38	9,905.70
Total Attendance and Social Work Services	30,786.00	12,000.08	42,786.08	32,880.38	9,905.70
Health Services:					
Salaries	131,597.00	1,057.50	132,654.50	132,654.50	
Purchased Professional and Technical Services	71,440.00	(5,624.72)	65,815.28	55,643.97	10,171.31
Other Purchased Services	300.00	(23.42)	276.58	276.58	276.58
Supplies and Materials	4,515.00	(1,267.68)	3,247.32	2,616.23	631.09
Total Health Services	207,852.00	(5,858.32)	201,993.68	190,914.70	11,078.98
Other Support Services - Speech, OT, PT & Related Services:					
Salaries	257,475.00	(4,718.44)	252,756.56	251,534.11	1,222.45
Purchased Professional - Educational Services	16,300.00	22,622.42	38,922.42	38,085.42	837.00
Supplies and Materials	1,520.00	(1,520.00)			
Other Objects	200.00	1,836.47	2,036.47	1,466.82	569.65
Total Other Support Services - Speech, OT, PT & Related Services	275,495.00	18,220.45	293,715.45	291,086.35	2,629.10
Other Support Services - Students - Extra Services					
Purchased Professional - Educational Services	392,260.00	434.30	392,694.30	286,408.67	106,285.63
Supplies and Materials	500.00		500.00		500.00
Total Other Support Services - Students - Extra Services	392,760.00	434.30	393,194.30	286,408.67	106,785.63
Guidance:					
Salaries of Other Professional Staff	130,129.00	182.00	130,311.00	130,311.00	
Other Purchased Services	700.00	(182.00)	518.00	518.00	518.00
Supplies and Materials	2,503.00	0.44	2,503.44	407.72	2,095.72
Total Guidance	133,332.00	0.44	133,332.44	130,718.72	2,613.72
Child Study Teams:					
Salaries of Secretarial and Clerical Assistants	100,387.00	40,238.35	140,625.35	139,786.95	838.40
Purchased Professional Educational Services	14,072.00	72,121.31	86,193.31	55,991.27	30,202.04

TOWNSHIP OF HOLLAND SCHOOL DISTRICT
BUDGETARY COMPARISON SCHEDULE
GENERAL FUND
FISCAL YEAR ENDED JUNE 30, 2022

	ORIGINAL BUDGET	BUDGET TRANSFERS AND AMENDMENTS	FINAL BUDGET	ACTUAL	VARIANCE FAVORABLE/ (UNFAVORABLE)
Other Purchased Professional and Technical Services		1,576.96	1,576.96	1,576.96	
Other Purchased Services (400-500 series)	1,750.00	(1,543.13)	206.87		206.87
Misc. Purchased Services		65.04	65.04		65.04
Supplies and Materials	1,200.00	418.13	1,618.13	1,589.30	28.83
Other Objects	750.00	(750.00)			
Total Child Study Teams	118,159.00	112,125.66	230,285.66	198,944.48	31,341.18
Improvement of Instruction Services					
Other Support Services - Instructional Staff:					
Salaries of Other Professional Staff	3,000.00		3,000.00	1,925.32	1,074.68
Other Purch Prof. and Tech. Services	3,673.00	(463.00)	3,210.00	24.00	3,186.00
Other Purchased Services (400-500)	200.00		200.00		200.00
Supplies and materials	1,000.00		1,000.00		1,000.00
Total Improvement of Instruction Services /					
Other Support Services - Instructional Staff	7,873.00	(463.00)	7,410.00	1,949.32	5,460.68
Educational Media Services / School Library:					
Salaries	80,916.00	716.54	81,632.54	81,443.64	188.90
Salaries of Technological Coordinators	144,253.00		144,253.00	143,699.94	553.06
Other Purchased Services (400-500 Series)	3,975.00	319.00	4,294.00	3,998.01	295.99
Supplies and materials	2,118.00	1,016.94	3,134.94	3,063.88	71.06
Total Educational Media Services / School Library	231,262.00	2,052.48	233,314.48	232,205.47	1,109.01
Instructional Staff Training Services:					
Salaries of Supervisors of Instruction Summer Hours	26,720.00	(6,814.76)	19,905.24	8,350.00	11,555.24
Other Purchased Services (400- 500)	1,475.00		1,475.00	349.82	1,125.18
Total Instructional Staff Training Services	28,195.00	(6,814.76)	21,380.24	8,699.82	12,680.42
Support Services General Administration:					
Salaries	203,337.00	209.40	203,546.40	203,546.40	
Other Purchased Technical Services	57,762.50	52,184.55	109,947.05	109,340.11	606.94
Communications / Telephone	40,450.00	(6,350.56)	34,099.44	33,259.85	839.59
Board Travel Expense	3,000.00	(1,731.88)	1,268.12	900.00	368.12
Miscellaneous Expenditures	37,750.00	4,726.17	42,476.17	42,276.36	199.81
General Supplies	1,000.00		1,000.00	621.33	378.67
Miscellaneous Expenditures	7,320.00	(7,320.00)			
BOE Membership Dues and Fees		8,035.20	8,035.20	8,035.20	
Total Support Services General Administration	350,619.50	49,752.88	400,372.38	397,979.25	2,393.13
Support Services School Administration:					
Salaries of Principals / Asst. Principals	108,260.00	310.00	108,570.00	108,570.00	
Salaries of Secretarial and Clerical Assistants	54,453.00	558.62	55,011.62	55,011.62	
Other Purchased Services(400-500 series)	1,000.00	(52.46)	947.54	369.00	578.54

TOWNSHIP OF HOLLAND SCHOOL DISTRICT
BUDGETARY COMPARISON SCHEDULE
GENERAL FUND
FISCAL YEAR ENDED JUNE 30, 2022

	ORIGINAL BUDGET	BUDGET TRANSFERS AND AMENDMENTS	FINAL BUDGET	ACTUAL	VARIANCE FAVORABLE/ (UNFAVORABLE)
Supplies and Materials	1,000.00	1,435.74	2,435.74	2,432.74	3.00
Other Objects	2,120.00	(998.29)	1,121.71	1,009.00	112.71
Total Support Services School Administration	166,833.00	1,253.61	168,086.61	167,392.36	694.25
Central Service:					
Salaries	175,151.00	2,470.84	177,621.84	163,541.04	14,080.80
Other Purchase Professional Service	30,250.00	2,745.00	32,995.00	31,145.18	1,849.82
Misc. Purch Services (400-500)	3,500.00	(3,305.98)	194.02		194.02
Supplies and Materials	1,500.00	594.98	2,094.98	2,094.98	
Miscellaneous Expenditures	2,700.00	(34.00)	2,666.00	1,975.00	691.00
Total Central Service	213,101.00	2,470.84	215,571.84	198,756.20	16,815.64
Required Maintenance for School Facilities:					
Cleaning, Repair and Maintenance Services	716,680.66	(140,358.66)	576,322.00	249,195.30	327,126.70
General Supplies	36,534.04		36,534.04	14,780.54	21,753.50
Total Required Maintenance for School Facilities	753,214.70	(140,358.66)	612,856.04	263,975.84	348,880.20
Custodial Services:					
Salaries	431,788.00	(16,066.99)	415,721.01	358,130.83	57,590.18
Cleaning, Repair and Maintenance Services	13,000.00		13,000.00	9,912.25	3,087.75
Other Purchased Property Services	38,300.00	800.00	39,100.00	37,489.07	1,610.93
Insurance	78,610.00	11,992.00	90,602.00	87,096.00	3,506.00
Miscellaneous Purchased Services	600.00		600.00	600.00	
General Supplies	49,000.00	(28,858.60)	20,141.40	14,777.67	5,363.73
Energy (Natural Gas)	50,000.00	31,395.64	81,395.64	81,395.64	
Energy (Heat and Electricity)	120,000.00	13,258.53	133,258.53	128,944.32	4,314.21
Other Objects	600.00	191.48	791.48	791.48	
Total Custodial Services	781,898.00	12,712.06	794,610.06	719,137.26	75,472.80
Care and Upkeep of Grounds:					
Purchased Professional and Technical Services	9,000.00	(975.00)	8,025.00		8,025.00
Cleaning, Repair And Maintenance	24,700.00	8,662.50	33,362.50	33,362.50	
General Supplies	14,066.84		14,066.84	6,745.31	7,321.53
Total Care and Upkeep of Grounds	47,766.84	7,687.50	55,454.34	40,107.81	15,346.53
Security:					
Cleaning, Repair, and Maintenance Services	17,943.60		17,943.60	14,504.73	3,438.87
General Supplies	3,000.00		3,000.00	141.00	2,859.00
Total Security	20,943.60		20,943.60	14,645.73	6,297.87

TOWNSHIP OF HOLLAND SCHOOL DISTRICT
BUDGETARY COMPARISON SCHEDULE
GENERAL FUND
FISCAL YEAR ENDED JUNE 30, 2022

	ORIGINAL BUDGET	BUDGET TRANSFERS AND AMENDMENTS	FINAL BUDGET	ACTUAL	VARIANCE FAVORABLE/ (UNFAVORABLE)
Student Transportation Services:					
Home and School) - Regular	2,100.00		2,100.00	2,000.00	100.00
Contr Serv(Aet. Home & Sch)-Joint Agrmnts	407,414.00	(2,440.75)	404,973.25	385,558.40	19,414.85
Contracted Services (Spec. Ed. Students) - Joint Agreements	209,780.00	(25,890.04)	183,889.96	182,459.40	1,430.56
Total Student Transportation Services	619,294.00	(28,330.79)	590,963.21	570,017.80	20,945.41
Unallocated Benefits - Employee Benefits:					
Social Security Contributions	130,000.00	11,155.88	141,155.88	141,155.88	
Other Retirement Contributions - PERS	167,001.00	19,267.00	186,268.00	186,268.00	
Other Retirement Contributions - Regular	3,500.00		3,500.00	1,617.00	1,883.00
Workmen's Compensation	100,000.00	(19,656.00)	80,344.00	80,344.00	
Health Benefits	2,261,314.00	(49,533.11)	2,211,780.89	2,112,391.05	99,389.84
Tuition Reimbursements	30,000.00	(11,155.88)	18,844.12	15,108.97	3,735.15
Other Employee Benefits	5,200.00	70,193.67	75,393.67	71,362.55	4,031.12
Unused sick payment	35,000.00	(35,000.00)			
Total Unallocated Benefits - Employee Benefits	2,732,015.00	(14,728.44)	2,717,286.56	2,608,247.45	109,039.11
On-Behalf TPAF Contributions (Non-Budgeted):					
On-behalf TPAF pension contribution (non-budgeted)				1,638,392.00	(1,638,392.00)
Reimbursed TPAF social security cont. (non-budgeted)				315,649.35	(315,649.35)
On-behalf TPAF post-retirement medical (non-budgeted)				382,795.00	(382,795.00)
On-behalf TPAF long-term disability insurance (non-budgeted)				615.00	(615.00)
Total TPAF Pension/Social Security				2,337,451.35	(2,337,451.35)
Total Undistributed Expenditures	7,385,741.64	(30,560.49)	7,355,181.15	8,873,731.12	(1,518,549.97)
TOTAL EXPENDITURES - CURRENT EXPENSE	12,097,354.56	0.00	12,097,354.56	13,523,703.44	(1,426,348.88)
CAPITAL OUTLAY:					
Equipment:					
Undistributed Expenditures - Instruction	10,000.00		10,000.00	9,438.00	562.00
Total Equipment	10,000.00		10,000.00	9,438.00	562.00
Facilities Acquisition and Construction Services:					
Other purch prof & tech services	8,150.00		8,150.00	2,775.00	5,375.00
Construction services	900,000.00		900,000.00	172,517.94	727,482.06
Assessment for Debt Service on SDA Funding	15,049.00		15,049.00	15,049.00	
Total Facilities Acquisition and Construction Services	923,199.00		923,199.00	190,341.94	732,857.06
Interest Deposit to Capital Reserve	5,000.00		5,000.00		5,000.00
TOTAL CAPITAL OUTLAY	938,199.00		938,199.00	199,779.94	738,419.06

TOWNSHIP OF HOLLAND SCHOOL DISTRICT
BUDGETARY COMPARISON SCHEDULE
GENERAL FUND
FISCAL YEAR ENDED JUNE 30, 2022

	ORIGINAL BUDGET	BUDGET TRANSFERS AND AMENDMENTS	FINAL BUDGET	ACTUAL	VARIANCE FAVORABLE/ (UNFAVORABLE)
TOTAL EXPENDITURES	\$ 13,035,553.56	\$ 0.00	\$ 13,035,553.56	\$ 13,723,483.38	\$ (687,929.82)
Excess (deficiency) of revenues over (under) expenditures	\$ (1,458,150.56)	\$ (0.00)	\$ (1,458,150.56)	\$ 591,975.67	\$ 2,050,126.23
Excess of revenues and other financing sources over expenditures and other financing sources	(1,458,150.56)	(0.00)	(1,458,150.56)	591,975.67	2,050,126.23
Fund balances, July 1	4,514,984.24		4,514,984.24	4,514,984.24	
Fund balances, June 30	3,056,833.68	\$ (0.00)	3,056,833.68	5,106,959.91	2,050,126.23

Recapitulation:

Assigned - year-end encumbrances	\$ 34,726.97
Restricted - excess surplus - current year	250,000.00
Restricted - excess surplus - designated for subsequent year's expenditures	250,000.00
Restricted - capital reserve	2,569,109.40
Restricted - maintenance reserve	800,827.56
Restricted - emergency reserve	250,000.00
Restricted - unemployment	55,473.70
Unassigned fund balance	715,908.28
Assigned - designated for subsequent years expenditures	180,914.00
	\$ 5,106,959.91

Reconciliation to governmental funds statements (GAAP):
Last State aid payments not recognized on GAAP basis

Fund balance per governmental funds (GAAP)

\$ (104,310.00)

\$ 5,002,649.91

HOLLAND TOWNSHIP SCHOOL DISTRICT
 BUDGETARY COMPARISON SCHEDULE
 SPECIAL REVENUE FUND
 FOR FISCAL YEAR ENDED JUNE 30, 2022

	ORIGINAL BUDGET	BUDGET TRANSFERS/ AMENDMENTS	FINAL BUDGET	ACTUAL	VARIANCE FINAL TO ACTUAL
REVENUES:					
Federal sources	\$ 161,753.00	\$ 498,974.00	\$ 660,727.00	\$ 288,744.00	\$ (371,983.00)
Other sources		68,436.02	68,436.02	22,789.53	(45,646.49)
Total revenues	\$ 161,753.00	\$ 567,410.02	\$ 729,163.02	\$ 311,533.53	\$ (417,629.49)
EXPENDITURES:					
Instruction:					
Salaries	\$ 51,677.00	\$ 352,270.00	\$ 403,947.00	\$ 64,832.00	\$ 339,115.00
Purchased professional and technical services		10,000.00	10,000.00	10,000.00	
Tuition	110,076.00	5,826.00	115,902.00	115,902.00	
General supplies		34,654.00	34,654.00	34,654.00	
Total instruction	\$ 161,753.00	\$ 402,750.00	\$ 564,503.00	\$ 225,388.00	\$ 339,115.00
Support services:					
Other salaries	\$	\$ 32,000.00	\$ 32,000.00	\$	\$ 32,000.00
Purchased professional & technical services		60,224.00	60,224.00	59,356.00	868.00
Supplies and materials		4,000.00	4,000.00	4,000.00	
Student Activities		68,436.02	68,436.02	23,820.73	44,615.29
Total support services	\$	\$ 164,660.02	\$ 164,660.02	\$ 87,176.73	\$ 77,483.29
Total expenditures	\$ 161,753.00	\$ 567,410.02	\$ 729,163.02	\$ 312,564.73	\$ 416,598.29
Excess (Deficiency) of Revenues Over (Under) Expenditures				\$ (1,031.20)	
Fund Balance, July 1				\$ 45,646.49	
Fund Balance, June 30				\$ 44,615.29	

HOLLAND TOWNSHIP SCHOOL DISTRICT
BUDGETARY COMPARISON SCHEDULE
BUDGET TO GAAP RECONCILIATION
NOTE TO REQUIRED SUPPLEMENTARY INFORMATION
FOR THE FISCAL YEAR ENDED JUNE 30, 2022

	GENERAL FUND	SPECIAL REVENUE FUND
Sources/inflows of resources		
Actual amounts (budgetary) "revenues" from the budgetary comparison schedules	\$ 14,315,459.05	\$ 311,533.53
Difference - budget to GAAP		
Grant accounting budgetary basis differs from GAAP in that encumbrances are recognized as expenditures, and related revenue is recognized.		
State aid payment recognized for GAAP statements in the current year, previously recognized for budgetary purposes.	134,937.00	
State aid payment recognized for budgetary purposes, not recognized for GAAP statements until the subsequent year.	(104,310.00)	
Total revenues as reported on the statement of revenues, expenditures and changes in fund balances - governmental funds.	\$ 14,346,086.05	\$ 311,533.53
Uses/outflows of resources		
Actual amounts (budgetary basis) "total outflows" from the budgetary comparison schedules	\$ 13,723,483.38	\$ 312,564.73
Difference - budget to GAAP		
Encumbrances for supplies and equipment ordered but not received are reported in the year the order is placed for budgetary purposes, but in the year the supplies are received for financial purposes		
Total expenditures as reported on the statement of revenues, expenditures and changes in fund balances - governmental funds.	\$ 13,723,483.38	\$ 312,564.73

REQUIRED SUPPLEMENTARY INFORMATION – Part III

SCHEDULES RELATED TO ACCOUNTING AND REPORTING FOR PENSION (GASB 68)

Holland Township School District
Schedule of the District's Proportionate Share of the Net Pension Liability
Public Employees Retirement System
Last Ten Years

Measurement Date Year Ending June 30,	District's Proportion of the Net Pension Liability (Asset)	District's Proportionate Share of the Net Pension Liability (Asset)	District's Covered-Employee Payroll	District's Proportion Share of the Net Pension Liability (Asset) as a percentage of it's Covered-Employee Payroll	Plan Fiduciary Net Position as a percentage of the total Pension Liability
2013	0.0159851712%	\$ 3,055,084	1,082,127.76	282.32%	48.72%
2014	0.0156535975%	2,930,782	1,104,212.00	265.42%	52.08%
2015	0.0160914135%	3,612,200	1,087,100.00	332.28%	47.92%
2016	0.0158023702%	4,680,209	1,057,159.00	442.72%	40.14%
2017	0.0153128283%	3,564,582	1,100,236.00	323.98%	48.10%
2018	0.0156297000%	3,077,410	1,127,084.00	273.04%	53.60%
2019	0.0166191114%	2,994,512	1,053,331.00	284.29%	56.27%
2020	0.0148574491%	2,422,861	1,083,099.00	223.70%	58.32%
2021	0.0159051677%	1,884,206	1,057,262.00	178.22%	70.33%

Note: Schedule is intended to show ten year trend. Additional years will be reported as they become available.

Holland Township School District
Schedule of the District's Contributions
Public Employees Retirement System
Last Ten Years

Fiscal Year Ending <u>June 30,</u>	Contractually Required <u>Contribution</u>	Contributions in Relation to the Contractually Required <u>Contributions</u>	Contribution Deficiency <u>(Excess)</u>	District's Covered- Employee <u>Payroll</u>	Contributions as a Percentage of Covered- Employee <u>Payroll</u>
2014	\$ 120,445	\$ 120,445	\$ -0-	\$ 1,104,212.00	10.91%
2015	129,046	129,046	-0-	1,087,100.00	11.87%
2016	138,343	138,343	-0-	1,057,159.00	13.09%
2017	140,386	140,386	-0-	1,100,236.00	12.76%
2018	141,857	141,857	-0-	1,127,084.00	12.59%
2019	161,655	161,655	-0-	1,053,331.00	15.35%
2020	162,533	162,533	-0-	1,083,099.00	15.01%
2021	186,268	186,268	-0-	1,057,262.00	17.62%
2022	182,104	182,104	-0-	1,031,788.00	17.65%

Note: Schedule is intended to show ten year trend. Additional years will be reported as they become available.

Holland Township School District
Schedule of the District's Proportionate Share of the Net Pension Liability
Teachers Pension and Annuity Fund
Last Ten Years

Measurement Date Year Ending June 30,	District's Proportion of the Net Pension Liability (Asset)	State's Proportionate Share of the Net Pension Liability (Asset)	District's Covered-Employee Payroll	District's Proportion Share of the Net Pension Liability (Asset) as a percentage of its Covered-Employee Payroll	State's Proportionate Share of the Net Pension Liability (Asset) Associated with the District as a Percentage of Its Covered-Employee Payroll	Plan Fiduciary Net Position as a percentage of the total Pension Liability
2013	0.0454497611%	\$ *	\$ *	0%	*	33.76%
2014	0.0452702764%	*	4,467,572.00	0%	*	33.64%
2015	0.0462665679%	*	4,361,284.00	0%	*	28.71%
2016	0.0434123737%	*	4,499,102.00	0%	*	22.33%
2017	0.0444081991%	*	4,559,875.00	0%	*	25.41%
2018	0.0432154819%	27,492,761.00	4,479,051.00	0%	613.81%	26.49%
2019	0.0425721730%	26,126,944.00	4,302,821.00	0%	607.20%	26.95%
2020	0.0383664993%	25,263,878.00	4,364,827.00	0%	578.81%	24.60%
2021	0.0405029212%	19,471,856.00	4,705,366.00	0%	413.82%	35.52%

Note: Schedule is intended to show ten year trend. Additional years will be reported as they become available. * - Data Not Available

Holland Township School District
Notes to the Required Supplementary Information Part III
For The Fiscal Year Ended June 30, 2022

PUBLIC EMPLOYEES RETIREMENT SYSTEM (PERS)

Change in benefit terms: None

Change in assumptions: The following assumptions were used in calculating the net pension liability in their respective accounting periods:

Measurement Date Ending <u>June 30,</u>	Discount <u>Rate</u>	Long-Term Expected Rate of <u>Return</u>	Actuarial Experience <u>Study Period</u>
2021	7.00%	7.00%	07/01/14-06/30/18
2020	7.00%	7.00%	07/01/14-06/30/18
2019	6.28%	7.00%	07/01/14-06/30/18
2018	5.66%	7.00%	07/01/11-06/30/14
2017	5.00%	7.00%	07/01/11-06/30/14
2016	3.98%	7.65%	07/01/11-06/30/14
2015	4.90%	7.90%	07/01/08-06/30/11
2014	5.39%	7.90%	07/01/08-06/30/11
2013	5.55%	7.90%	07/01/08-06/30/11

TEACHERS PENSION AND ANNUITY FUND (TPAF)

Change in benefit terms: None

Change in assumptions: The following assumptions were used in calculating the net pension liability in their respective accounting periods:

Measurement Date Ending <u>June 30,</u>	Discount <u>Rate</u>	Long-Term Expected Rate of <u>Return</u>	Actuarial Experience <u>Study Period</u>
2021	7.00%	7.00%	07/01/15-06/30/18
2020	5.40%	7.00%	07/01/15-06/30/18
2019	5.60%	7.00%	07/01/15-06/30/18
2018	4.86%	7.00%	07/01/12-06/30/15
2017	4.25%	7.00%	07/01/12-06/30/15
2016	3.22%	7.65%	07/01/12-06/30/15
2015	4.13%	7.90%	07/01/09-06/30/12
2014	4.68%	7.90%	07/01/09-06/30/12
2013	4.95%	7.90%	07/01/09-06/30/12

REQUIRED SUPPLEMENTARY INFORMATION - PART IV

SCHEDULE RELATED TO ACCOUNTING AND REPORTING FOR POSTEMPLOYMENT BENEFITS OTHER THAN PENSIONS (GASB 75)

HOLLAND TOWNSHIP SCHOOL DISTRICT
SCHEDULE OF CHANGES IN THE DISTRICT'S
TOTAL OPEB LIABILITY AND RELATED RATIOS
LAST TEN YEARS

	Fiscal Year Ended June 30,				
	2021	2020	2019	2018	2017
Balance at 6/30	\$33,578,523	\$20,117,670	\$23,501,823	\$27,014,392	\$29,146,100
Changes for the year:					
Service cost	1,436,858	755,244	776,857	925,079	1,109,212
Interest	746,627	720,717	928,100	989,468	853,749
Changes of benefit terms	(30,635)				
Differences between expected and actual experience	(6,409,046)	6,418,106	(4,789,820)	(2,123,454)	
Changes in assumptions or other inputs	28,395	6,133,642	299,956	(2,696,952)	(3,491,998)
Membership Contributions	19,088	17,718	18,306	21,720	23,040
Benefit payments - Net	(588,133)	(584,574)	(617,552)	(628,430)	(625,711)
Net changes	<u>(4,796,846)</u>	<u>13,460,853</u>	<u>(3,384,153)</u>	<u>(3,512,569)</u>	<u>(2,131,708)</u>
Balance at 6/30	<u>\$28,781,677</u>	<u>\$33,578,523</u>	<u>\$20,117,670</u>	<u>\$23,501,823</u>	<u>\$27,014,392</u>
Covered Employee Payroll	5,762,628	5,447,926	5,356,152	5,606,135	*
Total OPEB Liability as a percentage of Covered Employee Payroll	499.45%	616.35%	375.60%	438.78%	481.87%

Note: Schedule is intended to show ten year trend. Additional years will be reported as they become available. * Data Not Available

HOLLAND TOWNSHIP SCHOOL DISTRICT
SCHEDULES RELATED TO ACCOUNTING AND REPORTING FOR OPEB (GASB 75)
NOTE TO REQUIRED SUPPLEMENTARY INFORMATION PART IV
FOR THE FISCAL YEAR ENDED JUNE 30, 2022

Change in benefit terms:

The implementation of Chapter 44 Plan and contribution strategy affecting pre-Medicare future and current retirees and dependents who enroll in the New Jersey Educator Health Plan option upon retirement and were not grandfathered under Chapter 78 (fewer than 20 years of service as of July 1, 2011) is reflected for the Fiscal Year Ending June 30, 2022 as a Plan change.

Change in assumptions:

The following assumptions were used in calculating the net OPEB liability in their respective accounting periods:

Measurement Date Ending <u>June 30,</u>	Discount <u>Rate</u>
2021	2.16%
2020	2.21%
2019	3.50%
2018	3.87%

OTHER SUPPLEMENTARY INFORMATION

SPECIAL REVENUE FUND DETAIL STATEMENTS

Special revenue funds are used to account for the proceeds of specific revenue sources (other than expendable trusts or major capital projects) that are legally restricted to expenditures for specific purposes.

STATISTICAL SECTION
(UNAUDITED)

HOLLAND TOWNSHIP SCHOOL DISTRICT
STATISTICAL SECTION

<u>Contents</u>	<u>Page</u>
Financial Trends:	
These schedules contain trend information to help the reader understand how the district's financial performance and well being have changed over time.	J-1 to J-5
Revenue Capacity:	
These schedules contain information to help the reader assess the district's most significant local revenue source, the property tax.	J-6 to J-9
Debt Capacity:	
These schedules present information to help the reader assess the affordability of the district's current levels of outstanding debt and the district's ability to issue additional debt in the future.	J-10 to J-13
Demographic and Economic Information:	
These schedules offer demographic and economic indicators to help the reader understand the environment within which the district's financial activities take place.	J-14 to J-15
Operating Information:	
These schedules contain service and infrastructure data to help the reader understand how the information in the district's financial report relates to the services the district provides and the activities it performs.	J-16 to J-20

Sources

Unless otherwise noted, the information in these schedules is derived from the annual comprehensive financial reports (ACFR) for the relevant year.

HOLLAND TOWNSHIP SCHOOL DISTRICT
NET POSITION BY COMPONENT
UNAUDITED

	2022	2021	2020	2019	2018	2017	2016	2015	2014	2013
Governmental activities										
Net investment in capital assets	\$ 5,010,735.00	\$ 5,110,195.00	\$ 5,135,720.67	\$ 5,977,584.32	\$ 6,129,485.00	\$ 6,482,904.00	\$ 6,753,652.00	\$ 6,965,223.00	\$ 6,954,466.00	\$ 6,908,474.00
Restricted	4,220,025.95	3,790,936.51	3,216,851.37	2,605,489.21	2,365,470.00	1,970,360.00	1,572,378.00	884,835.00	592,271.00	324,810.00
Unrestricted (Deficit)	(2,418,870.97)	(3,048,940.13)	(3,301,936.43)	(2,804,815.94)	(2,886,803.00)	(2,819,825.00)	(2,817,896.00)	(2,692,410.00)	(2,731,750.00)	467,520.00
Total governmental activities net position	\$ 6,811,889.98	\$ 5,852,191.38	\$ 5,050,635.61	\$ 5,778,257.59	\$ 5,608,152.00	\$ 5,633,439.00	\$ 5,508,134.00	\$ 5,157,648.00	\$ 4,814,987.00	\$ 7,700,804.00
Business-type activities										
Net investment in capital assets	\$ 31,948.19	\$ 32,748.44	\$ 37,519.44	\$ 17,267.16	\$ 19,447.00	\$ 21,315.00	\$ 14,148.00	\$ 15,713.00	\$ 15,756.00	\$ 17,362.00
Unrestricted (deficit)	41,967.49	(6,962.73)	(9,463.68)	(366.66)	2,092.00	4,362.00	16,988.00	20,685.00	26,238.00	29,726.00
Total business-type activities net position	\$ 73,915.68	\$ 25,785.71	\$ 28,055.76	\$ 16,900.50	\$ 21,539.00	\$ 25,677.00	\$ 31,136.00	\$ 36,398.00	\$ 41,994.00	\$ 47,088.00
District-wide										
Net investment in capital assets	\$ 5,042,683.19	\$ 5,142,943.44	\$ 5,173,240.11	\$ 5,994,851.48	\$ 6,148,932.00	\$ 6,504,219.00	\$ 6,767,800.00	\$ 6,980,936.00	\$ 6,970,222.00	\$ 6,925,836.00
Restricted	4,220,025.95	3,790,936.51	3,216,851.37	2,605,489.21	2,365,470.00	1,970,360.00	1,572,378.00	884,835.00	592,271.00	324,810.00
Unrestricted (Deficit)	(2,376,903.48)	(3,055,902.86)	(3,311,400.11)	(2,805,182.60)	(2,884,711.00)	(2,815,463.00)	(2,800,908.00)	(2,671,725.00)	(2,705,512.00)	497,246.00
Total district net position	\$ 6,885,805.66	\$ 5,877,977.09	\$ 5,078,691.37	\$ 5,795,158.09	\$ 5,629,691.00	\$ 5,659,116.00	\$ 5,539,270.00	\$ 5,194,046.00	\$ 4,856,981.00	\$ 7,747,892.00

Source: ACFR Schedule A-1

HOLLAND TOWNSHIP SCHOOL DISTRICT
CHANGES IN NET POSITION
UNAUDITED

	2022	2021	2020	2019	2018	2017	2016	2015	2014	2013
EXPENSES & INDIRECT ALLOCATIONS										
Governmental activities										
Instruction										
Regular	\$ 5,175,487.02	\$ 6,206,930.25	\$ 5,568,026.72	\$ 5,840,159.90	\$ 6,723,383.00	\$ 6,310,384.00	\$ 5,518,906.00	\$ 5,219,402.00	\$ 4,498,086.00	\$ 4,718,854.00
Special education	3,288,388.32	3,423,798.15	2,918,757.48	3,073,777.00	3,213,582.00	2,855,855.00	2,702,941.00	2,605,305.00	2,142,947.00	2,153,821.00
Other special education						397,015.00	342,807.00	317,420.00	302,033.00	279,219.00
Other instruction				413,200.34	139,595.00	112,465.00	105,220.00	94,857.00	53,988.00	91,313.00
Support Services:										
Tuition	323,372.40	234,424.72	251,658.84		42,324.00	30,000.00	31,592.00	124,048.00	161,838.00	135,257.00
Student and instruction related services	1,718,313.03	1,778,814.26	1,488,838.06	1,967,945.92	2,556,621.00	2,324,208.00	2,184,084.00	1,942,084.00	1,875,809.00	1,594,527.00
General and business administrative services	752,586.07	826,506.78	771,979.19	792,392.01	847,529.00	817,660.00	960,193.00	931,666.00	846,654.00	908,390.00
School administration	314,367.24	377,243.26	297,785.33	330,020.92	447,612.00	406,328.00	364,091.00	338,428.00	273,193.00	302,974.00
Plant operations and maintenance	1,205,009.14	1,183,495.52	1,177,580.50	1,060,315.71	1,394,877.00	1,128,427.00	1,053,315.00	1,036,315.00	1,055,323.00	1,159,462.00
Pupil transportation	602,782.58	500,477.90	559,485.93	537,018.38	374,288.00	399,918.00	348,426.00	371,651.00	356,495.00	382,359.00
Interest on long-term debt				15,049.00	15,049.00	15,049.00	15,049.00	15,049.00	15,049.00	15,049.00
Total governmental activities expenses	\$ 13,390,286.80	\$ 14,531,690.84	\$ 13,034,123.05	\$ 14,014,830.18	\$ 16,229,434.00	\$ 14,797,299.00	\$ 13,627,624.00	\$ 12,696,961.00	\$ 11,383,015.00	\$ 11,740,225.00
Business-type activities:										
Food Service	\$ 153,297.27	\$ 75,112.00	\$ 110,498.45	\$ 144,747.63	\$ 151,180.00	\$ 142,085.00	\$ 144,218.00	\$ 152,694.00	\$ 167,148.00	\$ 173,137.00
Total business-type activities expense	\$ 153,297.27	\$ 75,112.00	\$ 110,498.45	\$ 144,747.63	\$ 151,180.00	\$ 142,085.00	\$ 144,218.00	\$ 152,694.00	\$ 167,148.00	\$ 173,137.00
Total district expenses	\$ 13,543,584.07	\$ 14,606,802.84	\$ 13,144,621.50	\$ 14,159,577.81	\$ 16,380,614.00	\$ 14,939,384.00	\$ 13,771,842.00	\$ 13,049,655.00	\$ 11,550,163.00	\$ 11,913,362.00
PROGRAM REVENUES										
Governmental activities:										
Charges for services										
Regular instruction					38,051.00	53,617.00	45,269.00	40,634.00	29,618.00	37,883.00
Special education instruction					29,887.00		28,429.00	50,830.00	20,500.00	20,480.00
Other instruction							3,024.00	6,804.00	1,134.00	6,804.00
Student and instruction related services					412.00	5,850.00	760.00	615.00	203.00	195.00
General and business administrative services							10,607.00	10,530.00	11,144.00	15.00
Plant operations and maintenance					10,085.00	10,528.00	286,843.00	184,301.00	170,303.00	20,973.00
Operating grants and contributions	\$ 2,353,320.70	\$ 3,633,691.21	\$ 2,330,231.87	\$ 3,169,944.82	\$ 195,238.00	\$ 216,606.00	\$ 29,315.00	\$ 116,779.00	\$ 170,303.00	\$ 191,498.00
Capital grants and contributions							39,410.00			
Total governmental activities program revenues	\$ 2,353,320.70	\$ 3,633,691.21	\$ 2,330,231.87	\$ 3,169,944.82	\$ 273,673.00	\$ 315,916.00	\$ 414,342.00	\$ 411,556.00	\$ 232,902.00	\$ 277,849.00
Business-type activities:										
Charges for services										
Food Service	\$ 3,221.19	\$ 2,145.68	\$ 69,345.30	\$ 103,230.55	\$ 106,934.00	\$ 99,380.00	\$ 102,492.00	\$ 109,452.00	\$ 116,201.00	\$ 134,650.00
Operating grants and contributions	198,192.51	60,692.32	29,699.82	36,619.71	38,786.00	37,115.00	36,360.00	38,124.00	43,593.00	42,788.00
Total business type activities program revenues	\$ 201,413.70	\$ 62,838.00	\$ 99,045.12	\$ 139,850.26	\$ 145,720.00	\$ 136,495.00	\$ 138,852.00	\$ 147,576.00	\$ 161,794.00	\$ 177,438.00
Total district program revenues	\$ 2,554,734.40	\$ 3,696,529.21	\$ 2,429,276.99	\$ 3,309,795.08	\$ 419,373.00	\$ 482,411.00	\$ 553,194.00	\$ 559,132.00	\$ 394,696.00	\$ 455,287.00
NET (EXPENSE)/REVENUE										
Governmental activities	\$ (11,036,966.10)	\$ (10,897,999.63)	\$ (10,703,891.18)	\$ (10,844,885.36)	\$ (15,955,761.00)	\$ (14,481,383.00)	\$ (13,213,282.00)	\$ (12,485,305.00)	\$ (11,150,113.00)	\$ (11,462,376.00)
Business-type activities	\$ 48,116.43	\$ (12,274.00)	\$ (11,453.33)	\$ (4,897.37)	\$ (5,480.00)	\$ (5,590.00)	\$ (5,366.00)	\$ (5,118.00)	\$ (5,352.00)	\$ 4,301.00
Total district-wide net expense	\$ (10,988,849.67)	\$ (10,910,273.63)	\$ (10,715,344.51)	\$ (10,849,782.73)	\$ (15,961,241.00)	\$ (14,486,973.00)	\$ (13,218,648.00)	\$ (12,490,423.00)	\$ (11,155,465.00)	\$ (11,458,075.00)

HOLLAND TOWNSHIP SCHOOL DISTRICT
CHANGES IN NET ASSETS
UNAUDITED

	2022	2021	2020	2019	2018	2017	2016	2015	2014	2013
GENERAL REVENUES AND OTHER CHANGES IN NET POSITION										
Governmental activities:										
Property taxes levied for general purposes, net	\$ 10,146,328.00	\$ 9,669,135.00	\$ 9,201,300.00	\$ 9,025,784.00	\$ 8,943,061.00	\$ 8,771,709.00	\$ 8,771,709.00	\$ 8,634,029.00	\$ 8,464,735.00	\$ 8,298,750.00
Taxes levied for debt service										
Federal & State aid not restricted	1,545,299.00	1,753,961.00	1,798,498.00	1,923,566.00	6,925,071.00	5,807,579.00	4,781,170.00	4,180,397.00	2,719,133.00	2,860,485.00
Investment earnings					48,963.00	18,783.00	10,591.00	8,938.00	7,847.00	7,673.00
Miscellaneous income	316,137.70	177,418.85	218,971.08	207,498.15	12,379.00	1,752.00	298.00	5,668.00	7,220.00	5,612.00
Special item - insurance proceeds for flood damage								(1,066.00)		157,461.00
Special item - gain (loss) on disposal of capital assets	(11,100.00)					6,865.00				
Total governmental activities	\$ 11,996,684.70	\$ 11,600,514.85	\$ 11,218,767.08	\$ 11,156,848.15	\$ 15,930,474.00	\$ 14,606,688.00	\$ 13,563,768.00	\$ 12,827,968.00	\$ 11,398,935.00	\$ 11,320,001.00
Business-type activities:										
Investment earning	\$ 13.54	\$ 3.95	\$ 121.13	\$ 259.03	\$ 260.00	\$ 131.00	\$ 104.00	\$ 103.00	\$ 128.00	\$ 10.00
Miscellaneous income		10,000.00			1,062.00					
Special item - loss on disposal of capital assets	13.54	10,003.95	121.13	259.03	1,342.00	131.00	104.00	(478.00)	139.00	
Total business-type activities	\$ 11,996,678.24	\$ 11,610,518.80	\$ 11,218,888.21	\$ 11,157,107.19	\$ 15,931,816.00	\$ 14,606,819.00	\$ 13,563,872.00	\$ 12,827,488.00	\$ 11,195,074.00	\$ 11,320,001.00
CHANGE IN NET POSITION										
Governmental activities	\$ 959,698.60	\$ 702,515.22	\$ 514,875.90	\$ 311,962.80	\$ (25,287.00)	\$ 125,305.00	\$ 350,486.00	\$ 342,661.00	\$ 48,822.00	\$ (142,375.00)
Business-type activities	48,129.97	(2,270.05)	(11,332.20)	(4,638.34)	(4,138.00)	(5,459.00)	(5,262.00)	(5,596.00)	(5,213.00)	4,301.00
Total district	\$ 1,007,828.57	\$ 700,245.17	\$ 503,543.70	\$ 307,324.46	\$ (29,425.00)	\$ 119,846.00	\$ 345,224.00	\$ 337,065.00	\$ 43,609.00	\$ (138,074.00)

Source: ACFR Schedule A-2

HOLLAND TOWNSHIP SCHOOL DISTRICT
 FUND BALANCES - GOVERNMENTAL FUNDS
 UNAUDITED

	2022	2021	2020	2019	2018	2017	2016	2015	2014	2013
General Fund	\$ 4,175,410.66	\$ 3,745,290.02	\$ 3,216,851.37	\$ 2,605,489.21	\$ 2,693,860.00	\$ 2,085,256.00	\$ 1,678,050.00	\$ 1,013,280.00	\$ 807,428.00	\$ 534,918.00
Restricted	180,914.00				367,057.00	312,602.00	57,122.00	134,126.00	93,184.00	380,243.00
Committed										
Assigned	34,726.97	70,150.56	278,918.62	740,847.73	144,846.00					
Unassigned	611,598.28	564,606.66	205,887.00	183,026.00	134,599.00	274,055.00	177,724.00	193,236.00	242,897.00	253,119.00
Total general fund	\$ 5,002,649.91	\$ 4,380,047.24	\$ 3,701,656.99	\$ 3,529,362.94	\$ 3,340,362.00	\$ 2,671,913.00	\$ 1,912,896.00	\$ 1,340,642.00	\$ 1,143,509.00	\$ 1,168,280.00
All Other Governmental Funds										
Restricted, reported in	\$	\$	\$	\$	\$	\$	\$	\$	\$	\$
Capital projects fund						130,109.00	185,824.00	129,195.00		
Special revenue fund	44,615.29	45,646.49								
Total all other governmental funds	\$ 44,615.29	\$ 45,646.49	\$ 0.00	\$ 0.00	\$ 0.00	\$ 130,109.00	\$ 185,824.00	\$ 129,195.00	\$ 0.00	\$ 0.00

Source: ACFR Schedule B-1

HOLLAND TOWNSHIP SCHOOL DISTRICT
CHANGES IN FUND BALANCES, GOVERNMENTAL FUNDS
UNAUDITED

	2022	2021	2020	2019	2018	2017	2016	2015	2014	2013
Revenues										
Tax/levy	\$ 10,146,328.00	\$ 9,569,135.00	\$ 9,201,300.00	\$ 9,025,784.00	\$ 8,943,061.00	\$ 8,771,709.00	\$ 8,771,709.00	\$ 8,634,029.00	\$ 8,464,735.00	\$ 8,296,760.00
Tuition charges	312,759.26	165,761.63	146,536.10	132,005.56	67,831.00	44,155.00	63,497.00	78,595.00	50,050.00	57,669.00
Interest earned on capital reserve	606.11	1,125.76	9,040.71	15,328.30	13,946.00	18,783.00	10,591.00	8,938.00	7,847.00	7,673.00
Miscellaneous	25,551.86	20,491.22	64,601.22	60,472.19	54,127.00	21,124.00	21,124.00	31,158.00	16,499.00	29,037.00
State sources	3,853,620.35	3,656,695.01	3,277,842.84	3,471,208.73	3,261,783.00	3,270,926.00	3,035,065.00	2,995,232.00	2,719,133.00	2,852,487.00
Federal sources	288,744.00	253,639.44	197,251.08	226,539.20	193,282.00	211,576.00	273,897.00	167,131.00	162,292.00	173,302.00
Total revenue	\$ 14,657,619.58	\$ 13,776,848.05	\$ 12,896,571.95	\$ 12,931,937.98	\$ 12,534,030.00	\$ 12,333,393.00	\$ 12,175,883.00	\$ 11,915,093.00	\$ 11,420,556.00	\$ 11,418,908.00
Expenditures										
Instruction										
Regular instruction	\$ 2,852,494.99	\$ 2,969,666.42	\$ 2,965,569.52	\$ 2,889,561.88	\$ 2,833,115.00	\$ 3,112,045.00	\$ 2,891,039.00	\$ 2,970,766.00	\$ 2,985,098.00	\$ 3,076,365.00
Special education instruction	1,747,647.34	1,663,860.95	1,595,407.18	1,559,042.70	1,454,651.00	1,388,692.00	1,470,252.00	1,453,918.00	1,385,091.00	1,381,573.00
Other special instruction	159,315.99	93,136.56	128,065.80	196,574.35	77,764.00	177,366.00	186,533.00	166,987.00	194,891.00	159,760.00
School sponsored/other instructional						68,572.00	57,482.00		24,862.00	57,613.00
Support Services:										
Tuition	298,114.15	198,540.00	161,342.80	263,747.62	42,324.00	1,592.00	1,592.00	4,448.00	30,682.00	85,237.00
Student and instruction related services	1,460,984.64	1,296,463.71	1,143,840.32	1,407,585.49	1,196,982.00	1,177,542.00	1,194,228.00	1,183,047.00	1,166,522.00	990,736.00
General administration	397,979.25	333,287.59	321,689.64	325,185.97	329,121.00	333,814.00	357,609.00	322,320.00	343,758.00	370,692.00
School administrative services	167,392.36	174,334.20	148,779.56	157,479.03	206,906.00	205,268.00	203,726.00	209,866.00	205,554.00	187,959.00
Central services	196,736.20	199,926.13	219,663.11	221,060.37	221,604.00	186,551.00	295,511.00	244,365.00	243,506.00	239,427.00
Administrative information technology								33,091.00	32,521.00	32,144.00
Plant operations and maintenance	1,037,866.64	948,373.41	986,846.66	878,466.33	1,107,644.00	865,005.00	841,255.00	841,088.00	851,615.00	953,304.00
Public transportation	570,017.80	464,924.30	523,396.75	474,257.58	374,288.00	380,290.00	349,426.00	371,651.00	356,495.00	382,359.00
Employee benefits	4,945,698.80	4,535,526.20	3,906,563.33	4,071,998.81	2,325,177.00	2,169,946.00	2,228,342.00	2,205,172.00	2,222,397.00	2,283,464.00
On behalf TPAF pension and social security contribution **					1,377,101.00	1,241,537.00	1,085,132.00	969,181.00	827,129.00	957,627.00
Capital outlay	198,779.94	284,792.40	718,113.23	297,374.70	48,798.00	11,599.00	29,040.00	52,731.00	369,952.00	40,126.00
Special schools					189,013.00	216,606.00	286,843.00	184,301.00	170,303.00	191,499.00
Special revenue funds *					103,941.00	85,000.00	103,941.00	310,333.00		1,036.00
Capital projects fund *										
Debt service:										
Interest and other charges						15,049.00	15,049.00	15,049.00	15,049.00	15,049.00
Total expenditures	\$ 14,036,048.11	\$ 13,151,851.87	\$ 12,724,277.90	\$ 12,742,336.83	\$ 11,985,690.00	\$ 11,636,956.00	\$ 11,547,000.00	\$ 11,568,755.00	\$ 11,445,327.00	\$ 11,417,992.00
Excess (Deficiency) of revenues over (under) expenditures	\$ 621,571.47	\$ 624,996.19	\$ 172,294.05	\$ 189,001.15	\$ 538,340.00	\$ 696,437.00	\$ 628,883.00	\$ 326,328.00	\$ (24,771.00)	\$ 916.00
Other Financing sources (uses)										157,461.00
Flooding damage										
Proceeds from sale of assets										
Total other financing sources (uses)	\$ 0.00	\$ 0.00	\$ 0.00	\$ 0.00	\$ 0.00	\$ 6,865.00	\$ 0.00	\$ 0.00	\$ 0.00	\$ 157,461.00
Net change in fund balances	\$ 621,571.47	\$ 624,996.19	\$ 172,294.05	\$ 189,001.15	\$ 538,340.00	\$ 703,302.00	\$ 628,883.00	\$ 326,328.00	\$ (24,771.00)	\$ 158,377.00
Debt service as a percentage of noncapital expenditures	0.00%	0.00%	0.00%	0.00%	0.13%	0.13%	0.13%	0.13%	0.13%	0.13%

Source: ACFR Schedule B-2
* Beginning FY2019 reported by function above
** Beginning FY2019 reported in employee benefits

HOLLAND TOWNSHIP SCHOOL DISTRICT
GENERAL FUND OTHER LOCAL REVENUE BY SOURCE
UNAUDITED

<u>Fiscal Year</u> <u>Ended June 30,</u>		<u>Interest Earned</u>		<u>Tuition</u>		<u>Other</u>		<u>Total</u>
2022	\$	2,762.33	\$	312,769.26	\$	606.11	\$	316,137.70
2021		4,887.08		165,761.63		16,729.90		187,378.61
2020		40,170.65		146,536.10		32,264.33		218,971.08
2019		62,272.53		132,005.56		13,527.96		207,806.05
2018		49,963.00		67,831.00		12,379.00		130,173.00
2017		18,783.00		88,648.00		74,934.00		182,365.00
2016		10,591.00		64,637.00		8,178.00		83,406.00
2015		8,938.00		85,958.00		13,988.00		108,884.00
2014		7,847.00		127,087.00		8,488.00		143,422.00
2013		7,673.00		132,494.00		12,812.00		152,979.00

Source: District Records

HOLLAND TOWNSHIP SCHOOL DISTRICT
ASSESSED VALUE AND ACTUAL VALUE OF TAXABLE PROPERTY
 UNAUDITED

Year Ended Dec. 31	Vacant Land	Residential	Regular Farm	Q-Farm	Commercial	Industrial	Apartment	Total Assessed Value	Public Utilities (a)	Net Valuation Taxable	Est. Actual (County Equalized Value)	Total Direct School Tax Rate (b)
2022	\$ 8,129,300	532,146,100	\$ 65,780,600	\$ 2,624,330	\$ 13,599,611	\$ 10,198,100	\$ 429,300	\$ 632,907,341	\$ 1,125,381	\$ 634,032,722	\$.	\$ 1.642
2021	9,173,900	527,905,400	66,222,000	2,634,730	13,813,111	10,198,100	429,300	624,771,641	1,261,048	626,032,689	685,712,732	1.614
2020	9,831,500	526,398,500	63,916,100	2,633,930	14,965,111	10,198,100	429,300	627,974,541	1,127,501	629,102,042	691,678,093	1.537
2019	7,302,800	524,979,900	64,915,900	2,736,830	14,458,811	10,448,100	429,300	625,271,641	1,124,474	626,395,115	677,890,301	1.471
2018	7,665,900	524,938,100	64,907,400	2,733,430	14,447,811	10,448,100	429,300	625,570,041	1,136,595	626,706,636	668,986,568	1.440
2017	8,046,300	527,053,100	62,836,000	2,569,630	14,136,311	10,488,100	429,300	625,558,741	1,506,110	627,064,851	659,551,604	1.420
2016	7,439,600	526,884,100	64,633,400	2,602,380	13,883,911	11,231,600	429,300	627,104,291	1,464,110	628,566,401	689,360,538	1.400
2015	6,975,500	524,687,600	65,808,400	2,656,190	15,119,411	11,231,600	429,300	628,910,001	1,504,717	628,414,718	660,724,128	1.400
2014	6,480,600	525,191,400	65,474,000	2,645,310	16,026,211	11,231,600	429,300	627,478,421	1,531,313	629,009,734	670,270,971	1.370
2013	10,255,300	643,244,500	75,823,900	2,579,300	16,745,200	13,145,500	409,900	762,203,500	1,671,869	763,875,389	691,448,812	1.110

* - data not available

Source: District records Tax list summary & Municipal Tax Assessor

Note: Real property is required to be assessed at some percentage of true value (fair or market value) established by each county board of taxation.

Reassessment occurs when ordered by the County Board of Taxation

(a): Taxable Value of Machinery, Implements and Equipment of Telephone, Telegraph and Messenger System Companies

(b): Tax rates are per \$100

HOLLAND TOWNSHIP SCHOOL DISTRICT
DIRECT AND OVERLAPPING PROPERTY TAX RATES
UNAUDITED

Year Ended Dec. 31,	Township of Holland			Overlapping Rates		Total Direct and Overlapping Tax Rate*
	Basic Rate (a)	General Obligation Debt Service (b)	Total Direct School Tax Rate	Municipality	County	
2022	\$ 1.642	0.000	\$ 1.642	\$ 0.189	\$ 0.440	\$ 2.271
2021	1.614	0.000	1.614	0.190	0.415	2.219
2020	1.537	0.000	1.537	0.190	0.415	2.142
2019	1.471	0.000	1.471	0.190	0.409	2.070
2018	1.440	0.000	1.440	0.190	0.400	2.030
2017	1.420	0.000	1.420	0.190	0.390	2.000
2016	1.400	0.000	1.400	0.190	0.390	1.980
2015	1.400	0.000	1.400	0.190	0.390	1.790
2014	1.370	0.000	1.370	0.100	0.390	1.760
2013	1.110	0.000	1.110	n/a	0.330	1.440

Source: District Records and Municipal Tax Collector
(Rates are per \$100 of assessed value)

* - excludes regional high school tax

NJSA 18A:7F-5d limits the amount that the district can submit for a general fund tax levy. The levy when added to other components of the district's net budget may not exceed the prebudget year net budget by more than the spending growth limitation calculated as follows: the prebudget year net budget increased by the cost of living or 2.5 percent, whichever is greater, plus any spending growth adjustments.

(a) The district's basic tax rate is calculated from the A4F form which is submitted with the budget and the Net valuation taxable

(b) Rates for debt service are based on each year's requirements.

N/A - Not available

HOLLAND TOWNSHIP SCHOOL DISTRICT
 PRINCIPAL PROPERTY TAXPAYERS - CURRENT YEAR AND TEN YEARS AGO
 UNAUDITED

Taxpayer	2022			2013 - Not Available			
	Taxable Assessed Value	Rank [Optional]	% of Total District Net Assessed Value	Taxpayer	Taxable Assessed Value	Rank [Optional]	% of Total District Net Assessed Value
Gilbert Power, LLC	\$ 6,160,700	1	0.97%		\$		0.00%
Rothenberg, Craig & Antonietta	3,693,900	2	0.58%				0.00%
Fiberville Estates LLC	3,066,500	3	0.48%				0.00%
Georgia-Pacific Corp.	2,789,400	4	0.44%				0.00%
Oak Hill Golf Club, Inc.	2,049,200	5	0.32%				0.00%
Columbia Gas	1,897,400	6	0.30%				0.00%
Spring Mills LLC	1,778,600	7	0.28%				0.00%
Holland 2MG LLC	1,540,200	8	0.24%				0.00%
Rubin, Gloria	1,516,450	9	0.24%				0.00%
Oliver, John	1,262,600	10	0.20%				0.00%
Total	\$ 25,754,950		\$ 4.06%		\$ 0		0.00%

Source: Municipal Tax Assessor

HOLLAND TOWNSHIP SCHOOL DISTRICT
PROPERTY TAX LEVIES AND COLLECTIONS
UNAUDITED

Fiscal Year Ended June 30,	Taxes Levied for the Fiscal Year	Collected within the Fiscal Year of the Levy (a)		Collections in Subsequent Years
		Amount	Percentage of Levy	
2022	\$ 10,146,328	\$ 10,146,328	100.00%	-
2021	9,669,135	9,669,135	100.00%	-
2020	9,201,300	9,201,300	100.00%	-
2019	9,025,784	9,025,784	100.00%	-
2018	8,943,061	8,943,061	100.00%	-
2017	8,771,709	8,771,709	100.00%	-
2016	8,771,709	8,771,709	100.00%	-
2015	8,634,029	8,634,029	100.00%	-
2014	8,464,735	8,464,735	100.00%	-
2013	8,298,760	8,298,760	100.00%	-

Source: District records including the Certificate and Report of School Taxes (A4F form)

Note: School taxes are collected by the Municipal Tax Collector. Under New Jersey State Statute, a municipality is required to remit to the school district the entire property tax balance, in is the amount voted upon or certified prior to the end of the school year.

HOLLAND TOWNSHIP SCHOOL DISTRICT
RATIOS OF OUTSTANDING DEBT BY TYPE
UNAUDITED

Fiscal Year Ended June 30,	Governmental Activities		Total District	Percentage of Personal Income (a)	Per Capita (a)
	General Obligation Bonds	Capital Leases			
2022	\$ 0.00	\$ 0.00	\$ 0.00	N/A	\$ N/A
2021	0.00	0.00	0.00	N/A	N/A
2020	0.00	0.00	0.00	N/A	N/A
2019	0.00	0.00	0.00	N/A	N/A
2018	0.00	0.00	0.00	N/A	N/A
2017	0.00	0.00	0.00	N/A	N/A
2016	0.00	0.00	0.00	N/A	N/A
2015	0.00	0.00	0.00	N/A	N/A
2014	0.00	0.00	0.00	N/A	N/A
2013	0.00	0.00	0.00	N/A	N/A

Source: District ACFR Schedules I-1, I-2

Note: Details regarding the district's outstanding debt can be found in the notes to the financial statements.

(a) See Exhibit ACFR J-14 for personal income and population data. These ratios are calculated using personal income and population for the prior calendar year.

* - data not available

N/A - not applicable

HOLLAND TOWNSHIP SCHOOL DISTRICT
RATIOS OF NET BONDED DEBT OUTSTANDING
UNAUDITED

Fiscal Year Ended June 30,	General Bonded Debt Outstanding			Percentage of Actual Taxable Value (a) of Property	Per Capita (b)
	General Obligation Bonds	Deductions	Net General Bonded Debt Outstanding		
2022	\$ 0.00	\$ 0.00	\$ 0.00	0.00%	0.00
2021	0.00	0.00	0.00	0.00%	0.00
2020	0.00	0.00	0.00	0.00%	0.00
2019	0.00	0.00	0.00	0.00%	0.00
2018	0.00	0.00	0.00	0.00%	0.00
2017	0.00	0.00	0.00	0.00%	0.00
2016	0.00	0.00	0.00	0.00%	0.00
2015	0.00	0.00	0.00	0.00%	0.00
2014	0.00	0.00	0.00	0.00%	0.00
2013	0.00	0.00	0.00	0.00%	0.00

Note: Details regarding the district's outstanding debt can be found in the notes to the financial statements.

(a) See Exhibit ACFR J-6 for property tax data.

(b) Population data can be found in Exhibit ACFR J-14.

HOLLAND TOWNSHIP SCHOOL DISTRICT
DIRECT AND OVERLAPPING GOVERNMENTAL ACTIVITIES DEBT
AS OF DECEMBER 31, 2021
UNAUDITED

<u>Governmental Unit</u>	<u>Net Debt Outstanding</u>	<u>Estimated Percentage Applicable (a)</u>	<u>Estimated Share of Overlapping Debt</u>
Debt repaid with property taxes			
Municipality	-		\$0.00
Regional High School	-		0.00
County general obligation debt			0.00
Subtotal, overlapping debt			<u>0.00</u>
Township of Holland School District Direct Debt			<u>0.00</u>
Total direct and overlapping debt			<u><u>\$0.00</u></u>

Source: Municipal Chief Financial Officer, County Treasurer's Office

Note: Overlapping governments are those that coincide, at least in part, with the geographic boundaries of the District. This schedule estimates the portion of the outstanding debt of those overlapping governments that is borne by the residents and businesses of the district. This process recognizes that, when considering the District's ability to issue and repay long-term debt, the entire debt burden borne by the residents and businesses should be taken into account. However this does not imply that every taxpayer is a resident, and therefore responsible for repaying the debt, of each overlapping payment.

(a) For debt repaid with property taxes, the percentage of overlapping debt applicable is estimated using taxable assessed property values. Applicable percentages were estimated by determining the portion of another governmental unit's taxable value that is within the district's boundaries and dividing it by each unit's total taxable value.

HOLLAND TOWNSHIP SCHOOL DISTRICT
LEGAL DEBT MARGIN INFORMATION
 UNAUDITED

Legal Debt Margin Calculation for Fiscal Year 2021:

Equalized Valuation Basis

Calendar Year	
2021	\$731,568,444.00
2020	691,678,093.00
2019	688,150,282.00
	<u>\$2,111,396,819.00</u>
Average Equalized Valuation of Taxable Property	\$703,798,939.67
Debt Limit (3% (a) of average equalization value)	21,113,968.19
Total Net Debt Applicable to Limit	0.00
Legal Debt Margin	<u>\$21,113,968.19</u>

	Fiscal Year Ending June 30,									
	2022	2021	2020	2019	2018	2017	2016	2015	2014	2013
Debt Limit	\$21,113,968.19	\$20,573,655.15	\$20,334,059.76	\$20,064,791.13	\$19,865,629.00	\$19,786,380.00	\$19,915,786.00	\$20,264,280.00	\$21,138,304.00	\$22,231,960.00
Total Net Debt Applicable To Limit	<u>\$21,113,968.19</u>	<u>\$20,573,655.15</u>	<u>\$19,865,629.00</u>	<u>\$19,865,629.00</u>	<u>\$19,786,380.00</u>	<u>\$19,915,786.00</u>	<u>\$20,264,280.00</u>	<u>\$21,138,304.00</u>	<u>\$22,231,960.00</u>	<u>\$23,590,605.00</u>
Total Net Debt Applicable to the Limit as a % of Debt Limit	0.00%	0.00%	0.00%	0.00%	0.00%	0.00%	0.00%	0.00%	0.00%	0.00%

Source: Equalized valuation bases were obtained from the Annual Report of the State of New Jersey, Department of Treasury, Division of Taxation (a) Limit set by N.J.S.A. 18A:24-19 for a K through 8 district, other % limits would be applicable for other district types.

HOLLAND TOWNSHIP SCHOOL DISTRICT
DEMOGRAPHIC AND ECONOMIC STATISTICS
UNAUDITED

<u>Year</u>	<u>Population (a)</u>	<u>Personal Income (b)</u>	<u>Per Capita Personal Income (c)</u>	<u>Unemployment Rate (d)</u>
2022	5,193	\$ *	\$ *	4.70%
2021	5,077	482,761,776	95,088	7.20%
2020	5,108	471,422,428	92,291	2.70%
2019	5,119	453,364,235	88,565	3.40%
2018	5,139	436,979,448	85,032	3.50%
2017	5,146	430,931,186	83,741	4.20%
2016	5,182	419,856,004	81,022	4.60%
2015	5,204	408,904,300	78,575	5.30%
2014	5,225	392,162,375	75,055	7.60%
2013	5,243	394,478,077	75,239	8.40%

Source:

(a) Population information provided by the NJ Dept. of Labor and Workforce Development.

(b) Personal income has been estimated based upon the municipal population and per capita personal income presented.

(c) Per capita personal income by municipality estimated based upon the census published by the US Bureau of Economic Analysis.

(d) Unemployment data provided by the NJ Dept. of Labor and Workforce Development.

* - data not available

HOLLAND TOWNSHIP SCHOOL DISTRICT
 PRINCIPAL EMPLOYERS - CURRENT YEAR AND TEN YEARS AGO
 UNAUDITED

<u>Employer</u>	2022 - Not Available		2013 - Not Available	
	<u># of Employees</u>	<u>Percentage of Total Employment</u>	<u># of Employees</u>	<u>Rank (Optional)</u>
	0	0.00%	0	0.00%

Source: Municipal Records

HOLLAND TOWNSHIP SCHOOL DISTRICT
 FULL-TIME EQUIVALENT DISTRICT EMPLOYEES BY FUNCTION/PROGRAM
 UNAUDITED

Function/Program	2022	2021	2020	2019	2018	2017	2016	2015	2014	2013
Instruction:										
Regular	43	*	41	38.6	38.8	45.2	46.7	43.9	43.9	44.9
Special education	24.63	*	29.3	35.2	31.9	25.2	26.2	31.1	29.4	28.7
Support Services:										
Student and instruction related services	8.69	*	8.9	12.7	14.1	16.5	16.4	15.2	15.3	15.6
General administrative services	2.1	*	2.1	2.0	2.0	2.0	2.0	2.0	2.0	2.0
School administrative services	2	*	2.3	3.0	3.0	3.0	3.0	3.0	3.0	3.0
Central Services	2.5	*	2.5	3.0	3.0	3.4	3.4	3.4	3.4	3.4
Plant operations and maintenance	5.5	*	5.8	4.8	6.7	5.8	5.8	5.8	5.8	5.8
Total	88.42	0	91.9	99.3	99.5	101.1	103.5	104.4	102.8	103.4

* - Data Not Available
 Source: District Personnel Records

HOLLAND TOWNSHIP SCHOOL DISTRICT
OPERATING STATISTICS
UNAUDITED

<u>Fiscal Year</u>	<u>Enrollment</u>	<u>Operating Expenditures (a)</u>	<u>Cost Per Pupil</u>	<u>% Change</u>	<u>Teaching Staff (b)</u>	<u>Pupil/Teacher Ratio</u>	<u>Average Daily Enrollment (c)</u>	<u>Average Daily Attendance (c)</u>	<u>% Change in Average Daily Enrollment</u>	<u>Student Attendance Percentage</u>
2022	507	\$ 13,836,268.17	\$ 27,290.47	-0.02%	68	8	512	497	-1.80%	97.03%
2021	*	12,867,059.47	*	*	*	*	*	*	*	*
2020	501	12,006,164.67	23,964.40		70	7.2	529	510	4.13%	96.41%
2019	531	12,444,962.13	23,436.84	-0.02%	74	7.2	534	508	-5.63%	95.13%
2018	568	11,931,843.00	21,006.77	11.57%	68	8.3	564	538	2.57%	95.48%
2017	551	11,525,278.00	20,917.02	0.43%	68	8.1	548	525	-1.74%	95.73%
2016	559	11,398,970.00	20,391.72	2.58%	66	8.5	557	534	-4.52%	95.92%
2015	592	11,210,642.00	18,936.90	7.68%	66	9.0	585	559	-3.03%	95.59%
2014	603	11,040,326.00	18,309.00	3.43%	64	9.4	602	577	-2.62%	95.80%
2013	627	11,361,779.00	18,120.86	1.04%	65	9.7	622	592	-----	95.20%

* - Data Not Available

Sources: District records

Note: Enrollment based on annual October district count.

(a) Operating expenditures equal total expenditures per ACFR B-2 less debt service and capital outlay.

(b) Teaching staff includes only full-time equivalents of certificated staff.

(c) Average daily enrollment and average daily attendance are obtained from the School Register Summary (SRS).

HOLLAND TOWNSHIP SCHOOL DISTRICT
 SCHOOL BUILDING INFORMATION
 UNAUDITED

	<u>2022</u>	<u>2021</u>	<u>2020</u>	<u>2019</u>	<u>2018</u>	<u>2017</u>	<u>2016</u>	<u>2015</u>	<u>2014</u>	<u>2013</u>
District Buildings										
Holland Township Elementary (1939)	112,840	112,840	112,840	112,840	112,840	112,840	112,840	112,840	112,840	112,840
Square Feet	770	770	770	770	770	770	770	770	770	770
Capacity (students)	507	*	501	568	568	541	549	587	603	618
Enrollment										

* - Data Not Available
 Number of Schools at June 30, 2022
 Elementary = 1
 Middle School = 1

Source: District records

Note: Year of original construction is shown in parentheses. Increases in square footage and capacity are the result of additions. Enrollment is based on the annual October district count.

HOLLAND TOWNSHIP SCHOOL DISTRICT
SCHEDULE OF REQUIRED MAINTENANCE
UNAUDITED

Undistributed expenditures - Required maintenance for school facilities - 11-000-261-XXX

	<u>Total</u>	Holland Township <u>School</u>
2022	\$ 263,975.84	\$ 263,975.84
2021	179,072.69	179,072.69
2020	294,375.59	294,375.59
2019	167,906.06	167,906.06
2018	374,948.00	374,948.00
2017	189,414.00	189,414.00
2016	175,332.00	175,332.00
2015	102,835.00	102,835.00
2014	142,657.00	142,657.00
2013	129,837.00	129,837.00
	<hr/>	<hr/>
Total	\$ <u>2,020,353.18</u>	\$ <u>2,020,353.18</u>

Source: District records

HOLLAND TWONAHIP BOARD OF EDUCATION
INSURANCE SCHEDULE
6/30/2022
UNAUDITED

	<u>Coverage</u>	<u>Deductible</u>
Commercial Package Policy - School Alliance Insurance Fund:		
<u>PROPERTY SECTION:</u>		
Blanket Building and Contents (fund limit)	\$ 500,000,000	\$ 2,500
Accounts Receivable	2,500,000	2,500
Automobile Physical Damage	In Blanket Limit	1,000
Builders Risk	25,000,000	2,500
Electronic Data Processing Equipment	In Blanket Limit	2,500
<u>LIABILITY SECTION:</u>		
Comprehensive General Liability	5,000,000	
Automobile Liability	5,000,000	
Employee Benefit Liability	5,000,000	1,000
<u>EXCESS LIABILITY:</u>		
Includes General/Auto Liability/School Board Legal Liability	5,000,000	
<u>CRIME:</u>		
Blanket Employee Dishonesty	500,000	1,000
Forgery	50,000	1,000
Theft/Disappearance/Destruction:		
Inside	50,000	1,000
Outside	50,000	1,000
Computer Fraud	50,000	1,000
Funds Transfer Fraud	50,000	1,000
<u>SCHOOL BOARD LEGAL LIABILITY</u>	5,000,000	5,000
<u>ENVIRONMENTAL IMPAIRMENT LIABILITY: (ACE)</u>		
Limit of Liability:		
Incident	1,000,000	10,000
Fund Annual Aggregate	25,000,000	
<u>WORKERS' COMPENSATION (SAIF):</u>		
(a) Statutory Benefits	Included	
(a) Employer's Liability	5,000,000	
Supplemental Coverage (optional)	Included	
Public Employees' Faithful Performance Blanket Position Bond -		
Business Administrator - J Trent (Travelers Ins Co)	200,000	
Treasurer - P Fisher (Selective Ins Co)	200,000	
Student Accident Coverage (Zurich Ins Co)		

THIS PAGE INTENTIONALLY LEFT BLANK

SINGLE AUDIT SECTION



SUPLEE, CLOONEY & COMPANY

CERTIFIED PUBLIC ACCOUNTANTS

308 East Broad Street, Westfield, New Jersey 07090-2122

Telephone 908-789-9300

Fax 908-789-8535

E-mail info@senco.com

**INDEPENDENT AUDITOR'S REPORT ON INTERNAL CONTROL
OVER FINANCIAL REPORTING AND ON COMPLIANCE AND
OTHER MATTERS BASED ON AN AUDIT OF BASIC FINANCIAL
STATEMENTS PERFORMED IN ACCORDANCE WITH
GOVERNMENT AUDITING STANDARDS**

Honorable President and Members
of the Board of Education
Township of Holland School District
County of Hunterdon
Milford, New Jersey 08848

We have audited, in accordance with the auditing standards generally accepted in the United States of America, the standards applicable to financial audits contained in *Government Auditing Standards* issued by the Comptroller General of the United States the financial statements of the governmental activities, the business-type activities and each major fund of the Township of Holland School District, in the County of Hunterdon, State of New Jersey (the "District") as of and for the year ended June 30, 2022, and the related notes to the financial statements, which collectively comprise the District's basic financial statements, and have issued our report thereon dated March 9, 2023.

Internal Control Over Financial Reporting

In planning and performing our audit of the financial statements, we considered the District's internal control over financial reporting (internal control) as a basis for designing audit procedures that are appropriate in the circumstances for the purpose of expressing our opinions on the financial statements but not for the purpose of expressing an opinion on the effectiveness of the District's internal control. Accordingly, we do not express an opinion on the effectiveness of the District's internal control.

A *deficiency in internal control* exists when the design or operation of a control does not allow management or employees, in the normal course of performing their assigned functions, to prevent, or detect and correct, misstatements on a timely basis. A *material weakness* is a deficiency, or a combination of deficiencies, in internal control, such that there is a reasonable possibility that a material misstatement of the District's financial statements will not be prevented, or detected and corrected on a timely basis. A *significant deficiency* is a deficiency, or a combination of deficiencies, in internal control that is less severe than a material weakness, yet important enough to merit attention by those charged with governance.

SUPLEE, CLOONEY & COMPANY

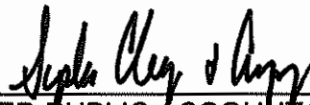
Our consideration of internal control was for the limited purpose described in the first paragraph of this section and was not designed to identify all deficiencies in internal control that might be material weaknesses or significant deficiencies. Given these limitations, during our audit we did not identify any deficiencies in internal control that we consider to be material weaknesses. However, material weaknesses may exist that have not been identified. However, we also noted other matters that we have reported to the Holland Board of Education of the Holland School District in a separate Auditor's Management Report on Administrative Findings – Financial and Compliance dated March 9, 2023.

Compliance and Other Matters

As part of obtaining reasonable assurance about whether the District's financial statements are free from material misstatement, we performed tests of its compliance with certain provisions of laws, regulations, contracts, and grant agreements, noncompliance with which could have a direct and material effect on the financial statements. However, providing an opinion on compliance with those provisions was not an objective of our audit, and accordingly, we do not express such an opinion. The results of our tests disclosed no instances of noncompliance or other matters that are required to be reported under *Government Auditing Standards*. However, we noted immaterial instances of noncompliance that we have reported to the Board of Education of the Township of Holland School District in a separate Auditor's Management Report on Administrative Findings – Financial and Compliance dated March 9, 2023.

Purpose of This Report

The purpose of this report is solely to describe the scope of our testing of internal control and compliance and the results of that testing, and not to provide an opinion on the effectiveness of the District's internal control or on compliance. This report is an integral part of an audit performed in accordance with *Government Auditing Standards* in considering the District's internal control and compliance. Accordingly, this communication is not suitable for any other purpose.



CERTIFIED PUBLIC ACCOUNTANTS



PUBLIC SCHOOL ACCOUNTANT NO. 948

March 9, 2023



SUPLEE, CLOONEY & COMPANY

CERTIFIED PUBLIC ACCOUNTANTS

308 East Broad Street, Westfield, New Jersey 07090-2122

Telephone 908-789-9300

Fax 908-789-8535

E-mail info@scnco.com

**INDEPENDENT AUDITOR'S REPORT ON COMPLIANCE FOR EACH MAJOR STATE
FINANCIAL ASSISTANCE PROGRAM AND ON INTERNAL CONTROL OVER COMPLIANCE
REQUIRED BY NEW JERSEY OMB CIRCULAR 15-08**

Honorable President and Members
of the Board of Education
Township of Holland School District
County of Hunterdon
Milford, New Jersey 08848

Report on Compliance for Each Major State Program

Opinion on Each Major State Program

We have audited Township of Holland School District, County of Hunterdon, State of New Jersey (the "District") compliance with the types of compliance requirements identified as subject to audit in the New Jersey *OMB State Grant Compliance Supplement* that could have a direct and material effect on each of The District's major state programs for the year ended June 30, 2022. The District's major state programs are identified in the summary of auditor's results section of the accompanying schedule of findings and questioned costs.

In our opinion, The District complied, in all material respects, with the types of compliance requirements referred to above that could have a direct and material effect on each of its major state programs for the year ended June 30, 2022.

Basis for Opinion on Each Major State Program

We conducted our audit of compliance in accordance with auditing standards generally accepted in the United States of America; the standards applicable to financial audits contained in *Government Auditing Standards*, issued by the Comptroller General of the United States and the New Jersey OMB State Grant Compliance Supplement. Our responsibilities under those standards and the New Jersey OMB State Grant Compliance Supplement are further described in the Auditor's Responsibilities for the Audit of Compliance section of our report.

We are required to be independent of The District and to meet our other ethical responsibilities, in accordance with relevant ethical requirements relating to our audit. We believe that the audit evidence we have obtained is sufficient and appropriate to provide a basis for our opinion on compliance for each major state program. Our audit does not provide a legal determination of The District's compliance with the compliance requirements referred to above.

SUPLEE, CLOONEY & COMPANY

Responsibilities of Management for Compliance

Management is responsible for compliance with the requirements referred to above and for the design, implementation, and maintenance of effective internal control over compliance with the requirements of laws, statutes, regulations, rules, and provisions of contracts or grant agreements applicable to The District's state programs.

Auditor's Responsibilities for the Audit of Compliance

Our objectives are to obtain reasonable assurance about whether material noncompliance with the compliance requirements referred to above occurred, whether due to fraud or error, and express an opinion on The District's compliance based on our audit. Reasonable assurance is a high level of assurance but is not absolute assurance and therefore is not a guarantee that an audit conducted in accordance with generally accepted auditing standards, *Government Auditing Standards* and the *New Jersey OMB State Grant Compliance Supplement* will always detect material noncompliance when it exists. The risk of not detecting material noncompliance resulting from fraud is higher than for that resulting from error, as fraud may involve collusion, forgery, intentional omissions, misrepresentations, or the override of internal control. Noncompliance with the compliance requirements referred to above is considered material if there is a substantial likelihood that, individually or in the aggregate, it would influence the judgment made by a reasonable user of the report on compliance about The District's compliance with the requirements of each major state program as a whole.

In performing an audit in accordance with generally accepted auditing standards, *Government Auditing Standards*, and *New Jersey OMB State Grant Compliance Supplement*, we:

- Exercise professional judgment and maintain professional skepticism throughout the audit.
- Identify and assess the risks of material noncompliance, whether due to fraud or error, and design and perform audit procedures responsive to those risks. Such procedures include examining, on a test basis, evidence regarding The District's compliance with the compliance requirements referred to above and performing such other procedures as we considered necessary in the circumstances.
- Obtain an understanding of The District's internal control over compliance relevant to the audit in order to design audit procedures that are appropriate in the circumstances and to test and report on internal control over compliance in accordance with the *New Jersey OMB State Grant Compliance Supplement*, but not for the purpose of expressing an opinion on the effectiveness of The District's internal control over compliance. Accordingly, no such opinion is expressed.

We are required to communicate with those charged with governance regarding, among other matters, the planned scope and timing of the audit and any significant deficiencies and material weaknesses in internal control over compliance that we identified during the audit.

Report on Internal Control over Compliance

A *deficiency in internal control over compliance* exists when the design or operation of a control over compliance does not allow management or employees, in the normal course of performing their assigned functions, to prevent, or detect and correct, noncompliance with a type of compliance requirement of a state program on a timely basis. A *material weakness in internal control over compliance* is a deficiency, or a combination of deficiencies, in internal control over compliance, such that there is a reasonable possibility that material noncompliance with a type of compliance requirement of a state program will not be prevented, or detected and corrected, on a timely basis. A *significant deficiency in internal control over compliance* is a deficiency, or a combination of deficiencies, in internal control over compliance with a type of compliance requirement of a state program that is less severe than a material weakness in internal control over compliance, yet important enough to merit attention by those charged with governance.

Our consideration of internal control over compliance was for the limited purpose described in the Auditor's Responsibilities for the Audit of Compliance section above and was not designed to identify all deficiencies in internal control over compliance that might be material weaknesses or significant deficiencies in internal control over compliance. Given these limitations, during our audit we did not identify any deficiencies in internal control over compliance that we consider to be material weaknesses, as defined above. However, material weaknesses or significant deficiencies in internal control over compliance may exist that were not identified.

Our audit was not designed for the purpose of expressing an opinion on the effectiveness of internal control over compliance. Accordingly, no such opinion is expressed.

The purpose of this report on internal control over compliance is solely to describe the scope of our testing of internal control over compliance and the results of that testing based on the requirements of the New Jersey *OMB State Grant Compliance Supplement*. Accordingly, this report is not suitable for any other purpose.



CERTIFIED PUBLIC ACCOUNTANTS



PUBLIC SCHOOL ACCOUNTANT NO. 948

March 9, 2023

TOWNSHIP OF HOLLAND SCHOOL DISTRICT
SCHEDULE OF EXPENDITURES OF FEDERAL AWARDS
FOR THE FISCAL YEAR ENDED JUNE 30, 2022

ASSISTANCE LISTING NUMBER	FEDERAL AWARD IDENTIFICATION NUMBER	GRANT OR STATE PROJECT NUMBER	GRANT PERIOD	AWARD AMOUNT	BALANCE AT JUNE 30, 2021 (ACCOUNTS RECEIVABLE)	CASH RECEIVED	BUDGETARY EXPENDITURES	BALANCE AT JUNE 30, 2022 (ACCOUNTS RECEIVABLE)	UNEARNED REVENUE
U.S. Department of Education									
Passed-through State Department of Education:									
N.C.L.B. Cluster:									
84.010	S010A200030	NCLB222022	7/1/21-9/30/22	\$ 20,151.00	\$	\$ 6,942.00	\$ (6,942.00)	\$	
84.010	S010A200030	NCLB222021	7/1/20-9/30/21		(13,327.00)				
84.367a	S367A200029	NCLB222022	7/1/21-9/30/22	\$ 5,295.00		4,876.00	(4,876.00)		
84.424a	S424A200031	NCLB222022	7/1/21-9/30/22	10,000.00		10,000.00	(10,000.00)		
Total N.C.L.B. Cluster					\$ (13,327.00)	\$ 35,145.00	\$ (21,818.00)	\$	\$
I.D.E.A. Special Education Cluster:									
84.027a	H027A200100	IDEA222022	7/1/21-9/30/22	128,854.00	\$	126,552.00	(128,854.00)	(2,302.00)	\$
84.173	H173A200114	IDEA222022	7/1/21-9/30/22	5,316.00		5,316.00	(5,316.00)		
84.027x	H027X200100	IDEA222022	7/1/21-9/30/22	21,768.00		21,768.00	(21,768.00)		
84.173x	H173X200114	IDEA222022	7/1/21-9/30/22	1,858.00		929.00	(1,858.00)	(929.00)	
Total I.D.E.A. Special Education Cluster					\$	\$ 154,565.00	\$ (157,796.00)	\$ (3,231.00)	\$
U.S. Department of Education									
Passed-through State Department of Education:									
Small Rural School Achievement (REAP)									
84.358A	S358A212865		7/1/21-9/30/22	46,228.00	\$	\$	(25,000.00)	(25,000.00)	\$
Total Small Rural School Achievement Program					\$	\$	(25,000.00)	(25,000.00)	\$
Total U.S. Department of Education									
84.425D	S425R210031		3/1/20-9/30/23	53,860.00	\$	\$	(53,421.00)	(53,421.00)	\$
84.425D	S425R210031		3/1/20-9/30/23	25,000.00			(4,469.00)	(4,469.00)	
84.425D	S425R210031		3/1/20-9/30/23	45,000.00		21,768.00	(1,240.00)	(1,240.00)	
84.425D	S425R210031		3/1/20-9/30/24	120,597.00			(25,000.00)	(25,000.00)	
Total CARES Act					\$	\$	(84,130.00)	(84,130.00)	\$
Total Special Revenue Fund					\$ (13,327.00)	\$ 189,710.00	\$ (288,744.00)	\$ (112,361.00)	\$
National School Lunch Program									
10.555	221NJ304N1099		7/1/21-6/30/22	177,851.39	\$	172,331.51	(177,851.39)	(5,319.88)	\$
10.555	211NJ304N1099		7/1/20-6/30/21	52,018.20	(3,604.77)	3,604.77			
10.551	211NJ304N1099		7/1/20-6/30/21	1,037.40	(71.89)	71.89			
10.555	221NJ304N1099		7/1/21-6/30/22	12,028.60		12,028.60	(9,270.46)	2,758.14	
10.555	211NJ304N1099		7/1/20-6/30/21	5,524.23	3,667.63	(3,667.63)			
10.555	221NJ304N1099		7/1/21-6/30/22	1,889.13		(1,889.13)			
Total Child Nutrition Cluster					\$ (9.03)	\$ 189,925.90	\$ (192,478.61)	\$ (5,319.88)	\$ 2,758.14
P-EBT Administrative Cost									
10.649	2221S900941	N/A	7/1/21 - 6/30/22	628.00	\$	\$	(628.00)	(628.00)	\$
10.649	212121S900941	N/A	7/1/20 - 6/30/21	614.00		614.00	(614.00)		
Total Food Service Fund					(9.03)	190,539.90	(193,720.61)	(5,947.88)	2,758.14
Total Federal Financial Assistance					\$ (13,336.03)	\$ 380,249.90	\$ (462,464.61)	\$ (118,308.88)	\$ 2,758.14

See accompanying notes to schedules of financial assistance.

HOLLAND TOWNSHIP SCHOOL DISTRICT
SCHEDULE OF EXPENDITURES OF STATE FINANCIAL ASSISTANCE
FOR THE FISCAL YEAR ENDED JUNE 30, 2022

STATE GRANT OR PROGRAM TITLE	GRANT OR STATE PROJECT NUMBER	AWARD AMOUNT	GRANT PERIOD	BALANCE AT JUNE 30, 2021		CASH RECEIVED	BUDGETARY EXPENDITURES	ADJUSTMENTS/ REPAYMENT OF PRIOR YEAR BALANCES	BALANCE AT JUNE 30, 2022		MEMO CUMULATIVE TOTAL EXPENDITURES
				UNEARNED REVENUE (ACCTS. REC.)	UNEARNED REVENUE (ACCTS. REC.)						
General Fund:											
State Aid Cluster:											
Special Education Categorical Aid	22-495-034-5120-089	\$ 373,356.00	7/1/21-6/30/22	\$	\$ (373,356.00)	\$ 342,326.17	\$ (373,356.00)	\$ 31,028.83	\$	\$ 31,028.83	\$ 373,356.00
Equalization Aid	22-495-034-5120-078	728,821.00	7/1/21-6/30/22		(728,821.00)	668,248.27	(728,821.00)	60,572.73		60,572.73	728,821.00
Security Aid	22-495-034-5120-084	9,453.00	7/1/21-6/30/22		(9,453.00)	8,667.35	(9,453.00)	785.64		785.64	9,453.00
School Choice Aid	22-495-034-5120-088	107,145.00	7/1/21-6/30/22		(107,145.00)	98,240.12	(107,145.00)	8,904.88		8,904.88	107,145.00
				\$	\$ (1,218,775.00)	\$ 1,117,481.92	\$ (1,218,775.00)	\$ 101,293.08	\$	\$ 101,293.08	\$ 1,218,775.00
Other-General Fund:											
Extraordinary Special Education Costs Aid	22-495-034-5120-473	259,597.00	7/1/21-6/30/22	\$	\$ (259,597.00)	\$	\$ (259,597.00)	\$	\$ (259,597.00)	\$	\$ 259,597.00
Transportation Aid	22-495-034-5120-014	36,300.00	7/1/21-6/30/22		(36,300.00)	33,283.08	(36,300.00)	3,016.92		3,016.91	36,300.00
Nonpublic School Transportation Costs Aid	Not Available	870.00	7/1/21-6/30/22		(870.00)		(870.00)			870.00	870.00
Reimbursed TPAF Social Security Contributions	22-495-034-5094-003	315,649.35	7/1/21-6/30/22		(315,649.35)	299,435.20	(315,649.35)	16,214.15		16,214.15	315,649.35
On-behalf TPAF long-term disability insurance	Not Available		7/1/21-6/30/22		(615.00)	615.00	(615.00)				615.00
On-behalf TPAF pension contributions	22-495-034-5094-002		7/1/21-6/30/22		(1,638,392.00)	1,638,392.00	(1,638,392.00)				1,638,392.00
On-behalf TPAF post retirement medical	22-495-034-5094-001		7/1/21-6/30/22		(382,795.00)	382,795.00	(382,795.00)				382,795.00
				\$	\$ (2,634,218.35)	\$ 2,354,320.28	\$ (2,634,218.35)	\$ 3,016.92	\$ (276,681.15)	\$ 279,698.05	\$ 2,634,218.35
Enterprise Fund:											
National School Lunch Program (State Share)	21-100-010-3360-067	2,679.10	7/1/20-6/30/21	\$	\$ (261.89)	\$ 261.89	\$	\$	\$	\$	\$ 2,679.10
National School Lunch Program (State Share)	22-100-010-3360-067	4,471.90	7/1/21-6/30/22		(4,349.47)	4,349.47	(4,471.90)		(122.43)	122.43	4,471.90
				\$	\$ (261.89)	\$ 4,611.36	\$ (4,471.90)	\$	\$ (122.43)	\$ 122.43	\$ 7,151.00
				\$	\$ (261.89)	\$ 3,476,613.56	\$ (3,857,465.25)	\$ 104,310.00	\$ (276,803.58)	\$ 381,113.57	\$ 3,860,144.35

Less: On-behalf amounts not utilized for determination of major programs:
 On-behalf TPAF long-term disability insurance 615.00
 On-behalf TPAF pension contributions 1,638,392.00
 On-behalf TPAF post retirement medical 382,795.00
 Total state financial assistance subject to single audit \$ 1,454,811.56

See accompanying notes to schedules of financial assistance.

Holland Township School District
Notes to the Schedules of Expenditures of Federal Awards
and State Financial Assistance
Year Ended June 30, 2022

NOTE 1: GENERAL

The accompanying schedules of expenditures of federal awards and state financial assistance include federal and state activity of the Board of Education, Holland Township School District. The Board of Education is defined in Note 1 to the Board's basic financial statements. All federal and state awards received directly from the federal and state agencies, as well as federal awards and state financial assistance passed through other government agencies is included on the schedule of expenditures of federal awards and state financial assistance.

NOTE 2: BASIS OF ACCOUNTING

The accompanying schedules of federal awards and state financial assistance are presented on the budgetary basis of accounting with the exceptions of programs recorded in the food service fund, which are presented using the accrual basis of accounting. These basis of accounting are described in Note 1 of the Board's basic financial statements. The information in this schedule is presented in accordance with the requirements of U.S. Uniform Guidance and New Jersey OMB Circular 15-08. Therefore, some amounts presented in this schedule may differ from amounts presented in, or used in the preparation of, the basic financial statements. The District has elected not to use the 10 percent de minimis indirect cost rate as allowed under the Uniform Guidance.

NOTE 3: RELATIONSHIP TO BASIC FINANCIAL STATEMENTS

The basic financial statements present the general fund and special revenue fund on a GAAP basis. Budgetary comparison statements or schedule (RSI) are presented for the general fund and special revenue fund to demonstrate finance-regulated legal compliance in which certain revenue is permitted by law or grant agreement to be recognized in the audit year, whereas for GAAP reporting, revenue is not recognized until the subsequent year or when expenditures have been made.

The General fund is presented in the accompanying schedules on the modified accrual basis with the exception of the revenue recognition of the last state aid payment in the current budget year, which is mandated pursuant to N.J.S.A. 18A:22-44.2. For GAAP purposes, that payment is not recognized until the subsequent budget year due to the state deferral and recording of the last state aid payment in the subsequent year. The special revenue fund is presented in the accompanying schedules on the grant accounting budgetary basis which recognizes encumbrances as expenditures and also recognizes the related revenue, whereas GAAP basis does not. The special revenue fund also recognizes the last state aid payment in the current budget year, consistent with N.J.S.A. 18A:22-44.2.

Holland Township School District
Notes to the Schedules of Expenditures of Federal Awards
and State Financial Assistance
Year Ended June 30, 2022

NOTE 3: RELATIONSHIP TO BASIC FINANCIAL STATEMENTS (CONTINUED)

The net adjustment to reconcile from the budgetary basis to the GAAP basis is \$30,627.00 for the general fund. See the notes to the required supplementary information for a reconciliation of the budgetary basis to the modified accrual basis of accounting for the general and special revenue funds. Federal awards and state financial assistance revenues are reported in the Board's basic financial statements on a GAAP basis as follows:

	<u>Federal</u>	<u>State</u>	<u>Total</u>
General Fund		\$3,883,620.35	\$3,883,620.35
Special Revenue Fund	\$288,744.00		288,744.00
Food Service Fund	<u>193,720.61</u>	<u>4,471.90</u>	<u>198,192.51</u>
Total Awards & Financial Assistance	<u>\$482,464.61</u>	<u>\$3,888,092.25</u>	<u>\$4,370,556.86</u>

NOTE 4: RELATIONSHIP TO FEDERAL AND STATE FINANCIAL REPORTS

Amounts reported in the accompanying schedules agree with the amounts reported in the related federal and state financial reports.

NOTE 5: OTHER

Revenues and expenditures reported in the Food Distribution Program represent current year value received and current year distributions respectively. The amount reported as TPAF pension contributions, post-retirement medical benefits, and long-term disability insurance represents the amount paid by the state on behalf of the district for the year ended June 30, 2022. TPAF Social Security contributions represent the amount reimbursed by the state for the employer's share of Social Security contributions for TPAF members for the year ended June 30, 2022.

Holland Township School District
Schedule of Findings and Questioned Costs
For the Fiscal Year Ended June 30, 2022

Section I – Summary of Auditor’s Results

Financial Statements

- | | | |
|-----|--|------------|
| (1) | Type of Auditor’s Report Issued: | Unmodified |
| (2) | Internal Control Over Financial Reporting: | |
| | (a) Material weakness identified? | No |
| | (b) Significant deficiencies identified that are not considered to be material weaknesses? | No |
| (3) | Noncompliance material to basic financial statements noted? | No |

Federal Program(s) – Not Applicable

State Program(s)

- | | | |
|-----|---|------------|
| (1) | Internal Control Over Major State Programs: | |
| | (a) Material weakness identified? | No |
| | (b) Significant deficiencies identified that are not considered to be material weaknesses? | No |
| (2) | Type of Auditor’s Report issued on compliance for major state program(s)? | Unmodified |
| (3) | Any audit findings disclosed that are required to be reported in accordance with N.J. OMB Circular 15-08? | No |
| (4) | Identification of Major State Program(s): | |

<u>Program</u>	<u>Grant Number</u>
State Aid Cluster:	
Equalization Aid	495-034-5120-078
Special Education Categorical Aid	495-034-5120-089
School Choice Aid	495-034-5120-068
Security Aid	495-034-5120-084

Holland Township School District
Schedule of Findings and Questioned Costs
For the Fiscal Year Ended June 30, 2022

Section I – Summary of Auditor’s Results (Continued)

State Program(s) (Continued)

- (5) Program Threshold Determination:
 - Type A State Program Threshold > \$750,000.00
 - Type B State Program Threshold <= \$750,000.00

- (6) Auditee qualified as a low-risk auditee under New Jersey OMB Circular 15-08? Yes

Section II – Financial Statement Audit – Reported Findings Under Government Auditing Standards

Internal Control Findings

None Reported

Compliance Findings

None Reported

Section III – Findings and Questioned Costs Relative to Major Federal and State Programs

Federal Programs – None Reported
State Programs – None Reported

Holland Township School District
Schedule of Prior Year Audit Findings

Not Applicable

