



LEAD CHARTER SCHOOL

**ANNUAL COMPREHENSIVE
FINANCIAL REPORT**

**FOR THE YEAR ENDED
JUNE 30, 2022**

**PREPARED BY
LEAD CHARTER SCHOOL**

LEAD CHARTER SCHOOL

Table of Contents

Introductory Section

Letter of Transmittal	1-7
Organizational Chart.....	8
Roster of Officials.....	9
Consultants and Advisors	10

Financial Section

Report of Independent Auditors.....	12-14
-------------------------------------	-------

Required Supplementary Information – Part I

Management’s Discussion and Analysis	15-24
--	-------

Basic Financial Statements

A Charter School-wide Financial Statements:

A-1 Statement of Net Position	26
A-2 Statement of Activities	27

B Fund Financial Statements:

Governmental Funds:

B-1 Balance Sheet.....	30
B-2 Statement of Revenues, Expenditures, and Changes in Fund Balances	31
B-3 Reconciliation of the Statement of Revenues, Expenditures and Changes in Fund Balances of Governmental Funds to the Statement of Activities	32

Proprietary Funds:

B-4 Statement of Net Position	34
B-5 Statement of Revenues, Expenses, and Changes in Fund Net Position.....	35
B-6 Statement of Cash Flows	36

LEAD CHARTER SCHOOL

Table of Contents

Fiduciary Funds:

B-7 Statement of Fiduciary Net Position	Not Applicable
B-8 Statement of Changes in Fiduciary Net Position	Not Applicable

Notes to the Basic Financial Statements	39-80
---	-------

Required Supplementary Information – Part II

C. Budgetary Comparison Schedules:

C-1 Budgetary Comparison Schedule – General Fund	80b
C-2 Budgetary Comparison Schedule – Special Revenue Fund	81

Notes to the Required Supplementary Information

C-3 Budget-to-GAAP Reconciliation	83
---	----

Required Supplementary Information – Part III

L. Schedules Related to Accounting and Reporting for Pensions (GASB 68):

L-1 Schedule of the Charter School Proportionate Share of the Net Pension Liability – Public Employee’s Retirement System (PERS)	84
L-2 Schedule of Charter School Contributions – Public Employee’s Retirement System (PERS)	85
L-3 Schedule of the Charter School Proportionate Share of the Net Pension Liability – Teacher’s Pension and Annuity Fund (TPAF)	86

M. Schedule Related to Accounting and Reporting for OPEB (GASB 75)

M-1 Schedule of the State’s Proportionate Share of the Net OPEB Liability Associated with the Charter School and Changes in the Total OPEB Liability Related Ratios - (PERS and TPAF)	87
---	----

Notes to Required Supplementary Information – Pension Schedules	88
---	----

LEAD CHARTER SCHOOL

Table of Contents

Other Supplementary Information

D.	Schedule of Charter School Contributions - PERS.....	Not Applicable
E.	Special Revenue Fund:	
E-1	Combining Schedule of Program Revenues and Expenditures Budgetary Basis	92
E-2	Schedule of Preschool Education Aid Budgetary Basis	Not Applicable
F.	Capital Projects Fund.....	Not Applicable
G.	Proprietary Funds:	
	Enterprise Fund:	
G-1	Combining Statement of Net Position	95
G-2	Combining Statement of Revenues, Expenses and Changes in Fund Net Position.....	96
G-3	Combining Statement of Cash Flows	97
H.	<u>Fiduciary Fund:</u>	
H-1	Combining Statement of Fiduciary Net Position.....	Not Applicable
H-2	Combining Statement of Revenues, Expenses and Combining Statement of Changes in Fiduciary Net Position	Not Applicable
I.	Long - Term Debt:	
I-1	Schedule of Mortgage Obligations.....	Not Applicable
I-2	Schedule of Obligations Under Capital Leases.....	Not Applicable
I-3	Debt Service Fund Budgetary Comparison Schedule	Not Applicable

Introduction to the Statistical Section (Unaudited)

Financial Trends

J-1	Net Position by Component	102
J-2	Changes in Net Position.....	103
J-3	Fund Balances – Governmental Funds	104
J-4	Changes in Fund Balances – Governmental Funds	105
J-5	General Fund Other Local Revenue by Source	106

LEAD CHARTER SCHOOL

Table of Contents

Revenue Capacity

J-6 to J-9.....**Not Applicable**

Debt Capacity

J-10 Ratios of Outstanding Debts by Type107

J-11 to J-13.....**Not Applicable**

Demographic and Economic Information

J-14 Demographics and Economic Statistics108

J-15 Principal Employers109

Operating Information

J-16 Full-time Equivalent Charter School Employees by Function/Program110

J-17 Operating Statistics111

J-18 School Building Information112

J-19 Schedule of Required Maintenance Expenditures by School Facility113

J-20 Insurance Schedule114

Charter School Performance Framework Financial Indicators

J-21 Near Term Indicators115

J-22 Sustainability Indicators.....116

Single Audit Section

K-1 Independent Auditor’s Report on Internal Control over Financial Reporting and on Compliance and Other Matters Based on an Audit of Financial Statements Performed in Accordance with *Government Auditing Standards*..... 118-119

K-2 Independent Auditor’s Report on Compliance for Each Major Federal and State Program; Required by the Uniform Guidance and State of New Jersey OMB’s Circular Letter 15-08..... 120-123

K-3 Schedule of Expenditures of Federal Awards, Schedule A124

K-4 Schedule of Expenditures of State Financial Assistance, Schedule B.....125

K-5 Notes to the Schedules of Expenditures of Federal Awards and State Financial Assistance..... 126-127

K-6 Schedule of Findings and Questioned Costs 128-131

K-7 Summary Schedule of Prior Audit Findings.....132



201 Bergen Street, Newark, New Jersey 07103 Tel: 862-772-1725 Fax: 973-622-1687

January 31, 2023

The Commissioner
New Jersey Department of Education
Riverview Executive Plaza – Bldg. 100
P. O. Box 500
Trenton, New Jersey 08625-0500

Dear Commissioner:

We hereby submit the Annual Comprehensive Financial Report of the Lead Charter School (the “Charter School”) for the year ended June 30, 2022.

Responsibility for both the accuracy of the data and completeness and fairness of the presentation, including all disclosures, rests with the management of the Charter School. To the best of our knowledge and belief, the data presented in this report is accurate in all material respects and are reported in a manner designed to fairly present the financial position and result of operations of the various funds of the Charter School. All disclosures necessary to enable the reader to gain an understanding of the Charter School’s financial activities have been included.

Governmental Accounting Standards Board (GASB) requires that management provide a narrative introduction overview and analysis to accompany the basic financial statements in the form of Management’s Discussion and Analysis (MD&A). This letter of transmittal is designed to complement the MD&A and should be read in conjunction with it. Lead Charter School’s MD&A can be found immediately following the Independent Auditor’s Report.

The Annual Comprehensive Financial Report is presented in four sections: introductory, financial, statistical and single audit. The introductory section includes this transmittal letter, the Charter School’s organizational chart and a list of principal officials. The financial section includes the independent auditor’s report, management’s discussion and analysis (MD&S) and the basic financial statements including the Charter School-wide financial statements presented in conformity with Governmental Accounting Standards Board Statement No. 34. The basic financial statements also include individual fund financial statements and required supplemental information (RSI). The statistical section includes selected financial and demographic information, generally presented on a multi-year basis.

The Charter School is required to undergo an annual single audit in conformity with the provisions of the Single Audit Act Amendments and the U.S. Office of Management and Budget Circular A-133, “*Audits of States, Local Governments and Non-Profit Organizations*”, and the New Jersey OMB’s Circular 04-04, “*Single Audit Policy for Recipients of Federal Grants, State Grants, and State Aid*”. Information related to this single audit, including the auditor’s report on internal control and compliance with applicable *laws and regulations* and findings and recommendations are included in the single audit section of this report.

1) Reporting Entity and its Services

The Charter School is an independent reporting entity within the criteria adopted by the Government Accounting Standards Board (GASB) as established by National Council on Governmental Accounting (NCGA) Statement No. 3. All funds and account groups of the Charter School are included in this report.

The mission of LEAD Charter School (LEAD) is to help students ages 16-21 in grades 9-12 to master the essential skills crucial for success in post-secondary education, career and community leadership within a global society. LEAD’s key design elements support the unique academic and nonacademic needs of students who have disengaged from traditional schooling. LEAD’s innovative model reengages young people via active participation in rigorous and relevant content and standards-driven, competency-based instruction aligned with emerging market demands. Through applied learning opportunities with partner organizations and corporations, LEAD prepares students to compete in the local economy and/or transition to post-secondary education.

The Charter School is the most innovative, supportive and successful high school in the City of Newark. It is designed to look, feel and operate radically differently from traditional high schools. Its innovative model reengages young people via active participation in rigorous and relevant content and standards-driven, competency-based instruction aligned with emerging market demands.

The Lead Charter School’s philosophy is grounded in its partner agency, Youth Build Newark’s (YBN) twelve years of experience in improving educational outcomes for off-track youth.

2) Enrollment Outlook

Opened in September 2017, Lead Charter School is in its sixth year of operation. LEAD serves over-age and under-credited young people. It serves student that have disconnected or are on the verge of being disconnected from High School

The Charter School’s approach is distinctive in several key ways:

- Free, open enrollment school.
- Prepares students to achieve at the highest levels in the worlds of college, work and life.

3) Economic Condition and Outlook

The Charter School is located in the City of Newark, which is the largest city in the State of New Jersey. The City serves as the county seat for Essex County, with County, State, Federal Courts and governmental offices attracting a large number of law firms to the central business district.

Newark is a transportation center serviced by Interstate Highway system, NJ Transit, Amtrak Rail Links, and Newark International Airport, as well as container and cargo facilities at Port Newark-Elizabeth.

It is the insurance, finance and banking capital of the State. Headquartered in Newark are a number of large financial institutions including the Prudential Insurance Company, and Blue Cross Blue Shield of New Jersey, as well as the State's largest public utility, Public Service Electric and Gas Company. Newark is the site of the Rutgers University School of Medicine and Dentistry of New Jersey, the New Jersey Institute of Technology, the Newark campus of Rutgers University, Seton Hall Law School and Essex County College. Covering over 320 acres, these colleges serve a population of 45,000 students and faculty.

The City of Newark has been obliged to perform a revaluation of property holdings. Among the concerns voiced in conjunction with this change is the potential effect of the redistribution of property tax burden on economic activity and on the ability of local government to maintain and improve services including its tax contribution for public school purposes.

The City has experienced a surge of large-scale economic development projects initiated by the private sector over the last decade. The increasing number of businesses relocating to the area is expected to result in an increase in employment level, which could result in an increased tax base, both residential and industrial, and an increase in annual daily enrollment. The period of economic development and expansion is expected to continue which suggests that the Charter School will continue to prosper. As our enrollment increases we plan to lease additional facilities at our current location and possibly in surrounding areas in the City.

4) Mission and Education Program

The mission of LEAD Charter School (LEAD) is to help students ages 16-21 in grades 9-12 to master the essential skills crucial for success in post-secondary education, career and community leadership within a global society. LEAD's key design elements support the unique academic and nonacademic needs of students who have disengaged from traditional schooling.

As a school designed to serve non-traditional students, LEAD is designed in a non-traditional way. Our school model is comprised of three (3) major components: LEADership Development, Rigorous & Relevant Education, and Post-Secondary Placement.

4) **Mission and Education Program** - *continued*

Some of the non-traditional programmatic experiences young people engage in are Mental Toughness Orientation, which is a 2-3 week acculturation process designed to build norms, set expectations and develop relationships that will be leveraged throughout programming. Another programmatic experience is Morning Meeting, a daily school-wide community meeting wherein the school culture and climate is consistently reinforced and a tone is set for the day. With regard to academics, young people are provided academic coursework aligned with their identified needs allowing for personalization and acceleration of skill development. Another major component is the implementation of our Career and Technical Education Pathway(s). These pathways allow young people to earn industry-recognized certifications in construction while learning skills that will suit them as they transition into college and/or a career.

5) **Internal Accounting Controls**

Management of the Charter School is responsible for establishing and maintaining internal control designed to ensure the assets of the Charter School are protected from loss, theft or misuse and to ensure that adequate accounting data are compiled to allow for the preparation of financial statements in conformity with generally accepted accounting principles (GAAP). The system of internal control is designed to provide reasonable, but not absolute, assurance that these objectives are met. The concept of reasonable assurance recognizes that: (1) the cost of a control should not exceed the benefits likely to be derived; and (2) the valuation of costs and benefits requires estimates and judgments by management.

As a recipient of federal awards and state financial assistance, the Charter School also is responsible for ensuring that adequate system of internal controls is in place to ensure compliance with applicable laws and regulations related to those programs. This system of internal control is also subject to periodic evaluation by the Charter School's management.

As part of the Charter School's single audit described earlier, tests are made to determine the adequacy of the system of internal controls, including that portion related to federal awards and state financial assistance programs, as well as to determine that the Charter School has complied with applicable laws and regulations.

6) **Budgetary Controls**

In addition to internal accounting controls, the Charter School maintains budgetary controls. The objective of these budgetary controls is to ensure compliance with the statutory requirements of charter school budgets. Annual appropriated budgets are adopted for general and special revenue funds. The final budget amount, as amended for the year is reflected in the financial section. An encumbrance accounting system is used to record outstanding purchase commitments on a line item basis. Open encumbrances at period end are either canceled or are included as re-appropriations of fund balance in the subsequent year. No reservation of fund balance was made at June 30, 2022.

6) **Budgetary Controls** - *continued*

The year 2021-2022 is our fifth audit period. The Charter School made efforts during the period to thoroughly review its operational processes and procedures in order to prepare for the audit and on maintaining general compliance with sound fiscal practices.

7) **Accounting Systems and Report**

The Charter School’s accounting records reflect generally accepted accounting principles (GAAP), as promulgated by the Governmental Accounting Standards Board (GASB). The accounting records also reflect New Jersey State Statute (N.J.S.A 18:4-14) that requires a uniform system of double-entry bookkeeping consistent with the GAAP established by GASB for us in all school districts and charter school.

The accounting system is organized on the basis of funds in accordance with the Uniform Charter of Accounts (Handbook 2R2) for New Jersey Public Schools. These funds are explained in “Notes to the Financial Statements”, Note 1.

8) **Financial Statement Information**

As demonstrated by the various statements and schedules included in the financial section of this report, the Charter School continues to meet its responsibility for sound financial management. The following schedule presents a summary of the General Fund, and Special revenue funds for the year ended June 30, 2022:

**Summary of the General Fund and
Special Revenue Fund Revenues**

Revenue	2022	2021	Increase/ (decrease)	% Change
Local sources	\$ 632,232	\$ 536,226	\$ 96,006	17.90%
State sources	4,258,611	4,267,737	(9,126)	-0.21%
Federal sources	698,101	205,674	492,427	239.42%
Forgiven Paycheck Protection Program loan	311,723	-	311,723	100.00%
	\$ 5,900,667	\$ 5,009,637	\$ 891,030	17.79%

The 17.797% increase in revenue was primarily due to the CARES Act funding – COVID-19 related including the forgiveness of the Paycheck Protection Program loan.

8) **Financial Statement Information** - *continued*

The following schedule presents a summary of general fund and special revenue expenditures for the year ended June 30, 2022:

**Summary of the General Fund
and Special Revenue Fund Expenditures**

Expenditures	2022	2021	Increase/ (decrease)	% Change
Instruction	\$ 2,196,489	\$ 2,328,153	\$ (131,664)	-5.66%
Administrative	1,642,143	1,629,247	12,896	0.79%
Support	1,566,754	1,288,829	277,925	21.56%
Capital	23,334	-	23,334	100.00%
	<u>\$ 5,428,720</u>	<u>\$ 5,246,229</u>	<u>\$ 182,491</u>	<u>3.48%</u>

The 3.48% increase in expenditures was due to increased COVID-19 related expenditures.

9) **Cash Management**

The investment policy of the Charter School is guided in large part by state statute as detailed in “Notes to the Financial Statements”. The Charter School has adopted a cash management plan, which requires it to deposit public funds in public depositories protected from loss under the provision of the Governmental Unit Deposit Protection Act (“GUDPA”). GUDPA was enacted in 1970 to protect Governmental Units from loss of funds on deposit with a failed banking institution in New Jersey. The law requires governmental units to deposit public funds in public depositories located in New Jersey, where the funds are secured in accordance with the Act.

10) **Risk Management**

The Board carries various forms of insurance, including but not limited to general liability and comprehensive/collision, hazard and theft insurance on property and contents, fidelity bonds and worker’s compensation.

11) **Other Information**

Independent Audit

State statute requires an annual audit by independent Certified Public Accountants or registered Municipal Accountants. The Charter School appointed the accounting firm of Olugbenga Olabintan, Certified Public Accountant and Consultant. In addition to meeting the requirements set forth in state statutes, the audit also was designed to meet the requirements of the Single Audit Act Amendment of 1996 and the related OMB Circular A-133 and New Jersey OMB Circular Letter 04-04 "*Single Audit Policy for Recipients of Federal Grants, State Grants, and State Aid*. The auditor's report on the basic financial statements, is included in the financial section of this report. The auditor's reports related specifically to the single audit are included in the single audit section of this report.

The 2021-2022 school year was our fifth year of operations and we recorded modest performance in terms of academic achievement at the Charter School. In addition, the period was marked by expected levels of parental involvement. The next school year promises to be one that builds upon the first three years performance with additional progress in all areas of the School's operations, and particularly in the area of student achievement.

Further, the 2021-2022 school-year was very challenging due to the COVID-19 pandemic. However, the Charter School continues to enjoy a fairly reasonable financial position through careful stewardship of its resources.

12) **Acknowledgments**

A note of appreciation is extended to the Finance Committee of the Charter School for their support and commitment to fiscal integrity and to the Charter School Board of Trustees for their selfless dedication to improving student achievement.

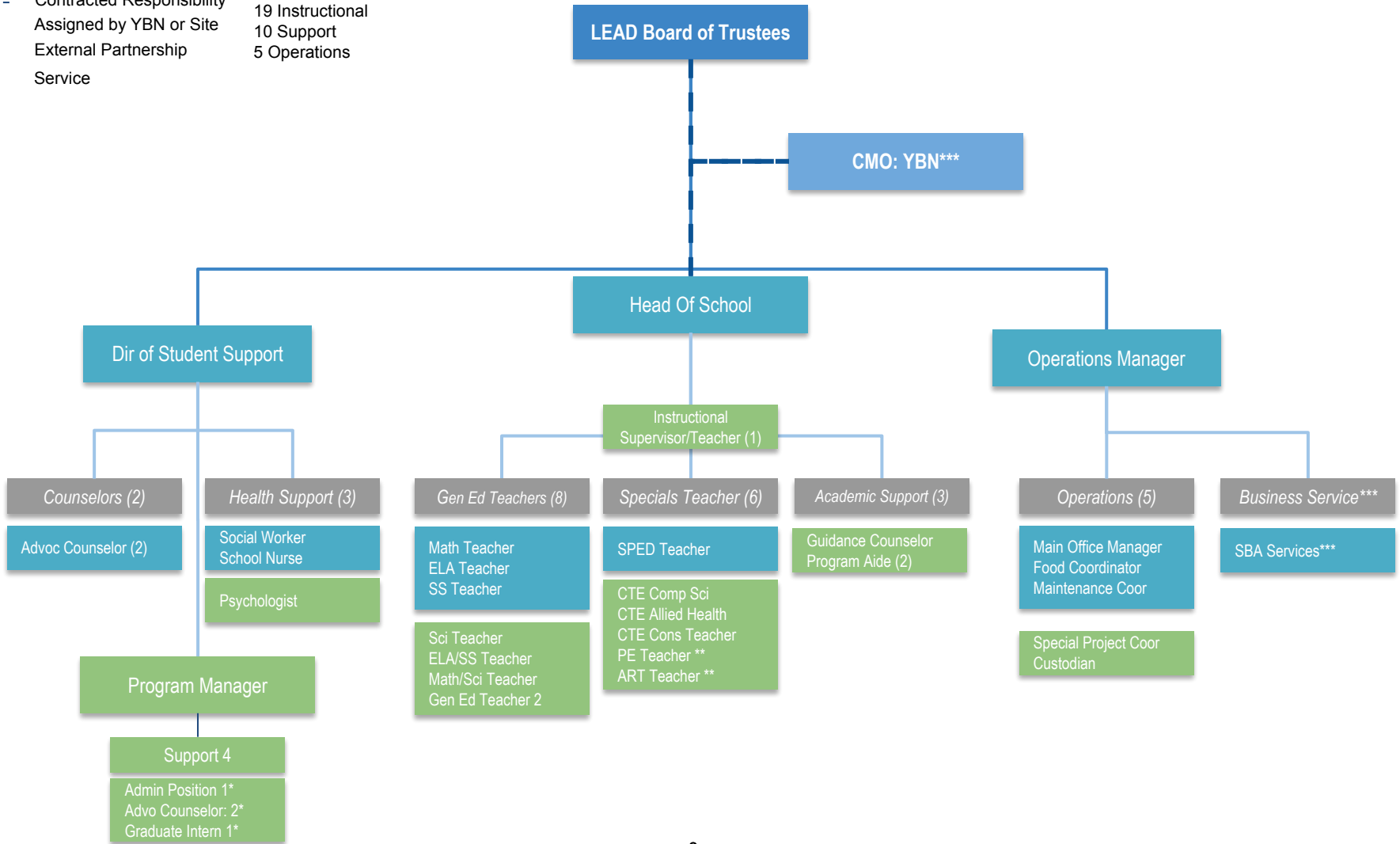
A special note of appreciation is extended to the Business Office and to all of the business operations staff members for their untiring efforts to improve processes, procedures and audit outcomes. Their contributions in support of the students and staff of the Charter School are truly noteworthy. The preparation of this report could not have been accomplished without the efficient and dedicated services of our financial, accounting and administrative staff.

Respectively submitted



Dr. Brian Falkowski
School Business Administrator

- Shared Responsibility
 - Direct Responsibility
 - - - Contracted Responsibility
 - * Assigned by YBN or Site
 - ** External Partnership
 - *** Service
- Staffing:**
37 Total
3 Admin
19 Instructional
10 Support
5 Operations



LEAD CHARTER SCHOOL
ROSTER OF TRUSTEES AND OFFICERS
JUNE 30, 2022

Members of Board of Trustees

Craig Drinkard, Chair

Rodney Brutton, Vice Chair

Scott Emerick, Trustee

Jennifer Finnerty, Trustee

Dominique Lee, Trustee

Laura Goldstein, Trustee

Administration

Dr. Dwayne Davis, Chief Operating Officer

Dr. Brian Falkowski, School Business Administrator

LEAD CHARTER SCHOOL

CONSULTANTS AND ADVISORS

Independent Auditors

Olugbenga Olabintan
Certified Public Accountant/Consultant
137 Camden Street, Suite 3
Newark, NJ 07103

Attorney

Johnston Law Firm LLC
75 Midland Avenue Suite 1
Montclair, NJ 07042

Official Depository

PNC Bank
Newark, New Jersey

Financial Section

Olugbenga Olabintan

Certified Public Accountant/Consultant

137 Camden Street, Suite #3
Newark, NJ 07103

Tel: (201) 230-7518
Fax: (973) 368-8268
E-mail: oolabintan@aol.com

Independent Auditors' Report

The Honorable President and
Members of the Board of Trustees
Lead Charter School
Newark, New Jersey
County of Essex

Report on the Audit of Financial Statements

Opinion

We have audited the accompanying financial statements of the governmental activities, the business-type activities, each major fund and the aggregate remaining fund information of Lead Charter School, (the "Charter School") in the County of Essex, State of New Jersey (the "Charter School") as of and for the fiscal year ended June 30, 2022, and the related notes to the financial statements, which collectively comprise the Charter School's basic financial statements as listed in the table of contents.

In our opinion, the accompanying financial statements referred to above present fairly, in all material respects, the respective financial position of the governmental activities of the Charter School as of June 30, 2022, and the respective changes in net position and cash flows for the year then ended in accordance with accounting principles generally accepted in the United States of America.

Basis for Opinion

We conducted our audit in accordance with auditing standards generally accepted in the United States of America, the standards applicable to financial audits contained in *Government Auditing Standards*, issued by the Comptroller General of the United States and the audit requirements prescribed by the *Office of School Finance, Department of Education, State of New Jersey*. Our responsibilities under those standards are further described in the Auditor's Responsibilities for the Audit of the Financial Statements section of our report. We are required to be independent of the Charter School and to meet our other ethical responsibilities, in accordance with the relevant ethical requirements relating to our audit. We believe that the audit evidence we have obtained is sufficient and appropriate to provide a basis for our audit opinions.

Emphasis of Matter

During the fiscal year ended June 30, 2022, the Charter School adopted Governmental Accounting Standards Board (GASB) Statement No 87, *Leases*, which modifies the accounting treatment of leases. Our opinion is not modified with respect to this matter.

Responsibilities of Management for the Financial Statements

Management is responsible for the preparation and fair presentation of the financial statements in accordance with accounting principles generally accepted in the United States of America; and for the design, implementation, and maintenance of internal control relevant to the preparation and fair presentation of financial statements that are free from material misstatements, whether due to fraud or error.

In preparing the financial statements, management is required to evaluate whether there are conditions or events, considered in the aggregate, that raise substantial doubt about the Charter School's ability to continue as a going concern for twelve months beyond the financial statement date, including any currently known information that may raise substantial doubt shortly thereafter.

Auditor's Responsibilities for the Audit of the Financial Statements

Our objectives are to obtain reasonable assurance about whether the financial statements as a whole are free from material misstatement, whether due to fraud or error, and to issue an auditor's report that includes our opinion. Reasonable assurance is a high level of assurance but is not absolute assurance and therefore is not a guarantee that an audit conducted in accordance with generally accepted auditing standards (GAAS), *Government Auditing Standards* and audit requirements prescribed by the Office of School Finance, Department of Education, State of New Jersey, will always detect a material misstatement when it exists. The risk of not detecting a material misstatement resulting from fraud is higher than for one resulting from error, as fraud may involve collusion, forgery, intentional omissions, misrepresentations, or the override of internal control. Misstatements are considered material if there is a substantial likelihood that, individually or in the aggregate, they would influence the judgment made by a reasonable user based on the financial statements.

In performing an audit in accordance with generally accepted auditing standards, Government Auditing Standards and audit requirements prescribed by the Office of School Finance, Department of Education, State of New Jersey, we:

- Exercise professional judgement and maintain professional skepticism throughout the audit.
- Identify and assess the risks of material misstatement of the financial statements, whether due to fraud or error, and design and perform audit procedures responsive to those risks. Such procedures include examining, on a test basis, evidence regarding the amounts and disclosures in the financial statements.
- Obtain an understanding of internal control relevant to the audit in order to design audit procedures that are appropriate in the circumstances, but not for the purpose of expressing an opinion on the effectiveness of the Charter School, Inc.'s internal control. Accordingly, no such opinion is expressed.
- Evaluate the appropriateness of accounting policies used and the reasonableness of significant accounting estimates made by management, as well as evaluate the overall presentation of the financial statements.
- Conclude whether, in our judgment, there are conditions or events, considered in the aggregate, that raise substantial doubt about the Charter School, Inc.'s ability to continue as a going concern for a reasonable period of time.

We are required to communicate with those charged with governance regarding, among other matters, the planned scope and timing of the audit, significant audit findings, and certain internal control-related matters that we identified during the audit.

Other Matters

Required Supplementary Information

Accounting principles generally accepted in the United States of America require that the management's discussion and analysis, budgetary comparison information, pension information and other postemployment benefits information be presented to supplement the basic financial statements. Such information is the responsibility of management and although not a part of the basic financial statements, is required by the Governmental Accounting Standards Board who considers it to be an essential part of financial reporting for placing the basic financial statements in an appropriate operational, economic, or historical context. We have applied certain limited procedures to the required supplementary information in accordance with auditing standards generally accepted in the United States of America, which consisted of inquiries of management about the methods of preparing the information and comparing the information for consistency with management's responses to our inquiries, the basic financial statements, and other knowledge we obtained during our audit of the basic financial statements. We do not express an opinion or provide any assurance on the information because the limited procedures do not provide us with sufficient evidence to express an opinion or provide any assurance.

Supplementary and Other Information

Our audit was conducted for the purpose of forming opinions on the financial statements that collectively comprise the Charter School's basic financial statements. The accompanying combining and individual nonmajor fund financial statements, schedule of expenditures of federal awards as required by Title 2 U.S. Code of Federal Regulations (CFR) Part 200, Uniform Administrative Requirements, Cost Principles, and Audit Requirements for Federal Awards (Uniform Guidance) and schedule of expenditures of state financial assistance as required by New Jersey OMB Circular 15-08, Single Audit Policy for Recipients of Federal Grants, State Grants and State Aid, are presented for purposes of additional analysis and are not a required part of the basic financial statements of the Charter School. Such information is the responsibility of management and was derived from and relate directly to the underlying accounting and other records used to prepare the basic financial statements. The information has been subjected to the auditing procedures applied in the audit of the basic financial statements and certain additional procedures, including comparing and reconciling such information directly to the underlying accounting and other records used to prepare the basic financial statements or to the basic financial statements themselves, and other additional procedures in accordance with auditing standards generally accepted in the United States of America. In our opinion, the combining and individual nonmajor fund financial statements, schedules of expenditures of federal awards and state financial assistance are fairly stated in all material respects in relation to the basic financial statements as a whole.

Other Information

Management is responsible for the other information included in the annual report. The other information comprises the introductory section, financial schedules and statistical section but does not include the basic financial statements and our auditor's report thereon. Our opinions on the basic financial statements do not cover the other information, and we do not express an opinion or any form of assurance thereon.

In connection with our audit of the basic financial statements, our responsibility is to read the other information and consider whether a material inconsistency exists between the other information and the financial statements, or the other information otherwise appears to be materially misstated. If, based on the work performed, we conclude that an uncorrected material misstatement of the other information exists, we are required to describe it in our report.

Other Reporting Required by Government Auditing Standards

In accordance with *Government Auditing Standards*, we have also issued our report dated January 31, 2023 on our consideration of the Charter School's internal control over financial reporting and on our tests of its compliance with certain provisions of laws, regulations, contracts, and grant agreements and other matters. The purpose of that report is solely to describe the scope of our testing of internal control over financial reporting and compliance and the results of that testing, and not to provide an opinion on the effectiveness of the Charter School's internal control over financial reporting or on compliance. That report is an integral part of an audit performed in accordance with Government Auditing Standards in considering the Charter School's internal control over financial reporting and compliance.

Olugbenga Olabintan, CPA

January 31, 2023
Newark, New Jersey

OLUGBENGA OLABINTAN
Certified Public Accountant/Consultant

A handwritten signature in black ink, appearing to read 'Olugbenga Olabintan', with a horizontal line underneath it.

Olugbenga Olabintan, CPA
Licensed Public School Accountant
No. 20CS00230200

Required Supplementary Information

Part I

Management's Discussion and Analysis

The Management's Discussion and Analysis (MD&A) provides an analysis of the Charter School's overall financial position and results of operations.

LEAD CHARTER SCHOOL
Management's Discussion and Analysis
Year ended June 30, 2022
(Unaudited)

Introduction

This section of the Lead Charter School's annual financial report presents our discussion and analysis of the Charter School's financial performance and provides an overview of the Charter School's financial activities for the fiscal year ended June 30, 2022. It should be read in conjunction with the transmittal letter at the front of this report and the Charter School's financial statements, which follow this section.

Management's Discussion and Analysis (MD&A) is an element of Required Supplementary Information specified in the Governmental Accounting Standard Board's (GASB) Statement No. 34, *Basic Financial Statement – and Management's Discussion and Analysis- for State and Local Governments*. Certain comparative information between the current fiscal year and the prior fiscal year is required to be presented in the MD&A.

Financial Highlights

Key financial highlights for fiscal year 2022 are as follows:

- Net position of governmental activities ended the fiscal year ended June 30, 2022 with \$209,157. Net position of business-type activities, which represent food service operations ended the year ended June 30, 2022 with \$-0-.
- General revenues accounted for \$5,179,232 in revenue or 88 percent of total revenues of \$5,918,523. Program specific revenues, in the form of charges for services, grants, and contributions accounted for \$739,291 or 12 percent of total revenues.
- The Charter School had \$5,642,640 in expenses related to governmental activities; \$721,435 of these expenses is offset by operating grants and contributions. General revenues (primarily federal and state aid) of \$5,156,995 helped to provide for the balance of these programs.
- The General Fund reported fund surplus at June 30, 2022, of \$1,000,506.
- During the previous fiscal year ended June 30, 2020, the Charter School applied for and was approved a \$311,723 loan under the Paycheck Protection Program created as part of the relief efforts related to COVID-19. The Charter School was approved the forgiveness of the loan during the year ended June 30, 2022 and the entire loan amount was recognized as revenue in the current year 2022.

LEAD CHARTER SCHOOL
Management’s Discussion and Analysis
Year ended June 30, 2022
(Unaudited)

Using the Basic Financial Statements

This annual report consists of a series of basic financial statements, required supplementary information, other supplementary information and notes to those statements and information.

The report is organized so the reader can understand the Lead Charter School as a financial whole, or as an entire operating entity. The first two basic financial Statements, the Statement of Net Position and the Statement of Activities, are governmental-wide financial statements and provide overall information about the activities of the entire Charter School, presenting both an aggregate view of the Charter School’s finances and a long-term view of those finances. The remaining basic financial statements are fund financial statements that focus on the individual parts of the government, reporting the Charter School’s operation in more detail than the government-wide statements. The fund financial statements also look at the Charter School’s most significant funds with all other non-major funds presented in total in a single column. For the Lead Charter School, the General Fund is the most significant fund.

The governmental funds statements tell how general government services were financed in the short-term as well as what remains for future spending.

Proprietary fund statements offer short and long-term financial information about the activities, the government operates like a business, such as food service.

Fiduciary fund statements provide information about financial relationship in which the Charter School acts solely as a trustee or agent for the benefits of others, to whom the resources in question belong.

The financial statements also include notes that explain some of the information in the financial statements and provide more detailed data. The statements are followed by a section of Required Supplementary Information that further explains and supports the information in the financial statements.

Reporting the Charter School as a Whole

Statement of Net Position and Statements of Activities

While this report contains the fund used by the Charter School to provide programs and activities, the view of the Charter School as a whole looks at all financial transactions and asks the question, “how did we do financially during fiscal year 2022?” The statements of Net Position and the Statement of Activities answer this question. These Statements include all the Charter School’s assets and liabilities using the accrual basis of accounting similar to the accounting system used by most private sector companies. This basis of accounting takes into account all of the current year’s revenues and expenses regardless of when cash was received or paid.

LEAD CHARTER SCHOOL
Management's Discussion and Analysis
Year ended June 30, 2022
(Unaudited)

Statement of Net Position and Statement of Activities-continued

These two statements report the Charter School's net position and changes in those assets. This change in net position is important because it identifies whether the financial position of the Charter School has improved or diminished for the Charter School as a whole. The cause of this change may be the result of many factors some financial, some not. Non-financial factors include the property tax base of the School District where the Charter School is located, current educational funding laws in New Jersey, facilities conditions, required educational programs, and other factors. In the Statements of Net Position and the Statements of Activities, the Charter School is divided into two distinct kinds of activities:

Governmental Activities – Most of the Charter School's programs and services are reported here including instructions, extracurricular activities, curriculum, staff development, special education and other support services, operation and maintenance of plant, pupil transportation, health services and general administration.

Business-Type Activity – Services are provided on a charge for goods or services or reimbursement basis to recover the expenses of the goods or services provided. The food service operations/after care and summer instructional programs enterprise fund is reported as a business activity.

Reporting the Charter School's Most Significant Funds

Fund Financial Statements

Fund financial reports provide detailed information about the Charter School's major funds-not the Charter School as a whole. Funds are accounting devices that the Charter School uses to keep track of a multitude of financial transactions. The Charter School's only major governmental fund is the General Fund.

Governmental Funds

Most of the Charter School's activities are reported in governmental funds, which focus on how monies flow into and out of those funds and the balances left at fiscal year-end for spending in future periods. These funds are reported using an accounting method called modified accrual accounting. Which measures cash and all other financial assets that can readily be converted to cash. The governmental fund statement provides a detailed short-term view of the Charter School's general government operations and the basic services it provides. Governmental fund information helps determine whether there are more or less financial resources that can be spent in the near future to finance educational programs. The relationship, or differences, between governmental activities reported in the Statement of Net Position and the Statement of Activities and the governmental funds are reconciled in the financial statements.

LEAD CHARTER SCHOOL
Management's Discussion and Analysis
Year ended June 30, 2022
(Unaudited)

Enterprise Fund

The enterprise fund uses the same basis of accounting as business-type activities; therefore, these statements are essentially the same.

The Charter School as a Whole

The perspective of the Statement of Net Position is of the Charter School as a whole. Net position may serve over time as useful indicator of a government's financial position. In the case of the Charter School, assets exceeded liabilities by \$209,157 at the close of 2022. The following table provides a summary of net position relating to the Charter School's governmental and business type activities:

	Governmental Activities		Business Type Activities		Total	
	2022	2021	2022	2021	2022	2021
Assets						
Current assets	\$ 1,941,423	\$ 1,096,414	\$ 2,060	\$ 9,807	\$ 1,943,483	\$ 1,106,221
Capital assets, net	1,862,082	-	-	-	1,862,082	-
Deferred outflows of resources	2,110,072	1,724,412	-	-	2,110,072	1,724,412
Total assets	5,913,577	2,820,826	2,060	9,807	5,915,637	2,830,633
Liabilities						
Current liabilities	940,917	545,618	2,060	9,807	942,977	555,425
Long term liabilities	3,745,150	1,439,558	-	-	3,745,150	1,439,558
Deferred inflows of resources	1,018,353	607,848	-	-	1,018,353	607,848
Total liabilities	5,704,420	2,593,024	2,060	9,807	5,706,480	2,602,831
Net Position						
Invested in capital assets (net of related debt)	(257,841)	-	-	-	(257,841)	-
Unrestricted	466,998	227,802	-	-	466,998	227,802
Total net position	\$ 209,157	\$ 227,802	\$ -	\$ -	\$ 209,157	\$ 227,802

The largest portion of the Charter School's net position is its current assets. The Charter School uses these current assets to provide services.

LEAD CHARTER SCHOOL
Management's Discussion and Analysis
Year ended June 30, 2022
(Unaudited)

The total net position of the Charter School increased by \$235,790 during the current fiscal year ended June 30, 2022. The increase was largely attributable to a surplus of \$235,790 in the General Fund.

The table that follows reflects the change in net position for fiscal year 2022.

	Governmental Activities		Business Type Activities		Total	
	2022	2021	2022	2021	2022	2021
Revenues						
Program Revenues:						
Charge for Services	\$ -	\$ -	\$6,045	\$599	\$6,045	\$599
Operating grants and Contributions	721,435	205,674	11,811	992	733,246	206,666
Total Program Revenues	721,435	205,674	17,856	1,591	739,291	207,265
General Revenues:						
Local Aid	593,748	532,056	-	-	593,748	532,056
Federal and State Aid	4,235,277	4,012,938	-	-	4,235,277	4,012,938
Miscellaneous	38,484	4,170	-	-	38,484	4,170
Transfers	(22,237)	(7,647)	22,237	7,647	-	-
Special items	311,723	-	-	-	311,723	-
Total general Revenues	5,156,995	4,541,517	22,237	7,647	5,179,232	4,549,164
Total Revenues	5,878,430	4,747,191	40,093	9,238	5,918,523	4,756,429
Expenses:						
Instructions	2,196,489	2,328,153	-	-	2,196,489	2,328,153
Administrative & Support Services	-	-	-	-	-	-
Unallocated depreciation	3,441,484	2,986,270	-	-	3,441,484	2,986,270
Food Service	4,667	-	-	-	4,667	-
After Care Program	-	-	40,093	9,238	40,093	9,238
Total Expenses	5,642,640	5,314,423	40,093	9,238	5,682,733	5,323,661
Change in Net Position	\$ 235,790	\$ (567,232)	\$ -	\$ -	\$ 235,790	\$ (567,232)

LEAD CHARTER SCHOOL
Management's Discussion and Analysis
Year ended June 30, 2022
(Unaudited)

Governmental Activities

The Statement of Activities reflects the cost of program services and the charges for services and operating grants and contributions offsetting those services. The table below, for government activities, indicates the total cost of services and the net cost of services. It identifies the cost of these services supported by unrestricted state entitlements for the fiscal year ended June 30, 2022.

	<u>Total Cost of Services</u>	<u>Net Cost of Services</u>
Instruction	\$ 2,196,489	\$ 1,737,963
Administrative & support services	3,441,484	3,201,909
Unallocated depreciation and capital outlay	4,667	(18,667)
Total expenses	<u>\$ 5,642,640</u>	<u>\$ 4,921,205</u>

Business-Type Activity

The business-type activity of the Charter School consists of the food service operation. This program had revenues of \$40,093 (which includes a transfer from the General Fund of \$22,237 to cover deficit) and operating expenses of \$40,093 for fiscal year 2022. The Charter School intended to have food services be self-operating without assistance from the General Fund.

The Charter School's Funds

The Charter School's governmental funds are accounted for using the modified accrual basis of accounting. All governmental funds had revenues of \$5,588,944 and expenditures of \$5,428,720. The negative change in fund balance for the period was covered by a significant prior year's accumulated fund balance brought forward.

The Charter School's budget is prepared according to New Jersey law and is based on accounting for certain transactions on a basis of cash receipts, disbursements, and encumbrances. The most significant budgeted fund is the general fund.

During the course of fiscal 2021-2022, the Charter School amended its General Fund budget as needed. The Charter School uses state-aid and other revenue-based budget. The budgeting systems are designed to tightly control total budget, but provide flexibility for Charter School's management teams.

LEAD CHARTER SCHOOL
Management's Discussion and Analysis
Year ended June 30, 2022
(Unaudited)

The State of New Jersey reimbursed the Charter School \$65,444 during the year ended June 30, 2022 for the employer's share of social security contributions for TPAF members. The State also paid \$306,878 into the TPAF pension - representing on-behalf employer's portion of the Pension System Contributions, Post-Retirement Medical Benefits Contributions and Long-Term Disability Insurance Premium Contributions. The unbudgeted amounts were included in both revenues and expenditures.

Capital Assets

At the end of year 2022, the Charter School had no funds invested in capital assets.

The Charter School's 2022-2023 budget projects spending approximately \$-0- for capital projects.

Long-term debt

The Charter School had \$1,625,227 and \$1,439,558 at June 30, 2022 and 2021, respectively, in net pension liability regarding the Public Employees Retirement System. More detailed information about the Charter School's long term obligations is presented in the notes to the financial statements.

COVID-19 and Paycheck Protection Program Loan

In December 2019, an outbreak of a novel strain of coronavirus (COVID-19) originated in Wuhan, China and has since spread to other countries, including the U.S. On March 11, 2020, the World Health Organization characterized COVID-19 as a pandemic. In addition, as of March 21, 2020, New Jersey State Governor Phil Murphy ordered the closure of the physical location of every "non-life sustaining" and "non-essential" business for what may be an extended period of time. The Charter School had to close its physical locations. Future potential impacts may include continued disruptions or restrictions on its employees' ability to work and impairment of its ability to obtain grants and contributions. Though the impact on the Charter School's operations cannot be reasonably estimated at this date, it is likely that there will be an impact on certain revenue in the General Fund and other state aid and the local tax levy. There have been additional operating expenses (related to COVID-19) in the General Fund not planned for or expected at the time of the adoption of the Charter School's fiscal year 2022-2023 budget.

During the previous fiscal year ended June 30, 2020, the Charter School applied for and was approved a \$311,723 loan under the Paycheck Protection Program created as part of the relief efforts related to COVID-19 and administered by the Small Business Administration. The loan accrues interest at 1%, but payments are not required to begin for ten months after the expiration of the covered period which is a maximum of 24 weeks from the funding date. The Charter School is eligible for loan forgiveness of up to 100% of the loan, upon meeting certain requirements. The loan is uncollateralized and is fully guaranteed by the Federal government.

The loan was funded on May 13, 2020. The Charter School applied for the loan forgiveness during the year ended June 30, 2022 which was approved by the SBA on June 17, 2022. The entire loan amount is being recognized as revenue during the current fiscal year ended June 30, 2022.

Economic Factors and Next Year's Budget

The State of New Jersey and indeed the entire United States continue to face serious budgetary constraints and a result of the sharp downturn in the economy. These impact the amount of state and federal aids allocated to charter schools. This reality was taken into account when adopting the general fund budget for 2022-2023. Nothing was done to compromise the quality of the programs in place in our Charter School during the regular instructional day. The budget was prepared to ensure that all students have the textbooks, materials, supplies, equipment and programs they need to meet New Jersey's Core Curriculum Content Standards. The budget was adopted with a redirection of funds to maintain the quality of the regular school day.

Contacting the Charter School's Financial Management

This financial report is designed to provide our citizens, taxpayers, investors, and creditors with a general overview of the Charter School's finances and to reflect the Charter School's accountability for the monies it receives. Questions about this report or additional financial information needs should be directed to:

**LEAD CHARTER SCHOOL
Business Office
201 Bergen Street,
Newark, New Jersey 07103
Tel: 862-772-1725
Fax: 973-622-1687**

Basic Financial Statements

Government-wide Financial Statements

The government-wide financial statements provide a financial overview of the Charter School's operations. These financial statements present the financial position and operating results of all governmental activities and business-type activities as of and for the year ended June 30, 2022.

LEAD CHARTER SCHOOL

A-1

Statement of Net Position

June 30, 2022

	<u>Governmental Activities</u>	<u>Business-type Activities</u>	<u>Total</u>
Assets			
Cash and cash equivalents	\$ 613,473	\$ -	\$ 613,473
Accounts receivable	666,181	2,060	668,241
Other current assets	29,172	-	29,172
Interfund receivables	632,597	-	632,597
Capital assets (net of accumulated depreciation of \$4,667)	18,667	-	18,667
Right-to-use lease asset, (net of accumulated amortization of \$2,212,098)	1,843,415	-	1,843,415
Total assets	<u>3,803,505</u>	<u>2,060</u>	<u>3,805,565</u>
Deferred outflows of resources			
Pension deferred outflows	<u>2,110,072</u>	<u>-</u>	<u>2,110,072</u>
Total assets and deferred outflows of resources	<u>\$ 5,913,577</u>	<u>\$ 2,060</u>	<u>\$ 5,915,637</u>
Liabilities			
Accounts payable	\$ -	\$ -	\$ -
Intergovernmental payables - state	274,785	-	274,785
Paycheck Protection Program loan	-	-	-
Payroll deductions and withholdings	31,434	-	31,434
Deferred revenue	4,161	-	4,161
Interfunds payables	630,537	2,060	632,597
Net pension liability	1,625,227	-	1,625,227
Lease liabilities	2,119,923	-	2,119,923
Total liabilities	<u>4,686,067</u>	<u>2,060</u>	<u>4,688,127</u>
Deferred inflows of resources			
Pension deferred inflows	<u>1,018,353</u>	<u>-</u>	<u>1,018,353</u>
Total liabilities and deferred inflows of resources	<u>5,704,420</u>	<u>2,060</u>	<u>5,706,480</u>
Net position			
Invested in capital assets	(257,841)		(257,841)
Unrestricted, undesignated	466,998	-	466,998
Total net position	<u>209,157</u>	<u>-</u>	<u>209,157</u>
Total liabilities, deferred inflows of resources & net position	<u>\$ 5,913,577</u>	<u>\$ 2,060</u>	<u>\$ 5,915,637</u>

See independent auditor's report and accompanying notes to basic financial statements.

LEAD CHARTER SCHOOL

A-2

Statement of Activities

Year ended June 30, 2021

Functions/Programs	Expenses	Program Revenues		Net (Expense) Revenue and Changes in Net Position		Totals
		Charges for Services	Operating Grants and Contributions	Governmental Activities	Business-type Activities	
Governmental activities:						
Instruction:						
Regular	\$ 2,196,489	\$ -	\$ 458,526	\$ (1,737,963)	\$ -	\$ (1,737,963)
Administrative & Support services:						
General administration	1,874,730	-	-	(1,874,730)	-	(1,874,730)
Support services	1,566,754	-	239,575	(1,327,179)	-	(1,327,179)
Capital outlay	-	-	23,334	23,334	-	23,334
Unallocated depreciation	4,667	-	-	(4,667)	-	(4,667)
Total governmental activities	5,642,640	-	721,435	(4,921,205)	-	(4,921,205)
Business-type activities:						
Food service	40,093	6,045	11,811	-	(22,237)	(22,237)
Total business-type activities	40,093	6,045	11,811	-	(22,237)	(22,237)
Total primary government	\$ 5,682,733	\$ 6,045	\$ 733,246	(4,921,205)	(22,237)	(4,943,442)
General revenues, transfers and special items:						
Local sources				593,748	-	593,748
Federal and state sources				4,235,277	-	4,235,277
Miscellaneous				38,484	-	38,484
Transfers				(22,237)	22,237	-
Special item - forgiveness of				-	-	-
Paycheck Protection Program (PPP) loan				311,723	-	311,723
Total general revenues, transfers and special items				5,156,995	22,237	5,179,232
Change in net position				235,790	-	235,790
Net position - beginning				(26,633)	-	(26,633)
Net position - ending				\$ 209,157	\$ -	\$ 209,157

See independent auditor's report and accompanying notes to basic financial statements.

Funds Financial Statements

Governmental Funds

**LEAD CHARTER SCHOOL
Governmental Funds**

B-1

Balance Sheet

June 30, 2022

	General Fund	Special Revenue Fund	Totals Governmental Funds
Assets			
Cash and cash equivalents	\$ 613,473	\$ -	\$ 613,473
Accounts receivable:	-	-	-
State	6,301	-	6,301
Federal	-	634,698	634,698
Other	25,182	-	25,182
Other current assets	29,172	-	29,172
Interfund receivable	632,597	-	632,597
Total assets	\$ 1,306,725	\$ 634,698	\$ 1,941,423
Liabilities and Fund Balances			
Interfund payables	\$ -	\$ 630,537	\$ 630,537
Accounts payables	-	-	-
Intergovernmental payables - federal	-	-	-
Intergovernmental payables - state	274,785	-	274,785
Paycheck Protection Program loan	-	-	-
Payroll deductions and withholdings	31,434	-	31,434
Deferred revenue	-	4,161	4,161
Total liabilities	306,219	634,698	940,917
Fund balances:			
Unreserved:			-
Undesignated	1,000,506	-	1,000,506
Total fund balances	1,000,506	-	1,000,506
Total liabilities and fund balances	\$ 1,306,725	\$ 634,698	
Amounts reported for governmental activities in the statement of net position (A-1) are different because:			
Capital assets used in governmental activities are not financial resources and therefore are not reported in the funds.			
Cost of capital assets	\$ 23,334		
Accumulated depreciation	(4,667)		
	\$ 18,667		18,667
Deferred Outflows related to pension contributions subsequent to the Net Pension Liability measurement date and other deferred items are not current financial resources and therefore are not reported in the fund statements. (See Note 7)			
			2,110,072
Deferred Inflows related to pension actuarial gains from experience and differences in actual return and assumed returns and other deferred items are not reported as liabilities in the fund statements. (See Note 7)			
			(1,018,353)
Long-term liabilities, including net pension liability, are not due and payable in the current period and therefore are not reported as liabilities in the funds (see Note 7)			
			(1,625,227)
Right-to-use assets used in governmental activities are not financial resources and therefore are not reported in the funds (see Note 4):			
Cost of right-to-use assets	\$ 4,055,513		
Accumulated amortization	(2,212,098)		
Cost of right-to-use assets, net of accumulated amortization	\$ 1,843,415		1,843,415
Lease liabilities used in governmental activities are not financial resources and therefore are not reported in the funds (see Note 5).			
			(2,119,923)
Net position of governmental activities - A-1			\$ 209,157

See independent auditor's report and accompanying notes to basic financial statements.

**LEAD CHARTER SCHOOL
Governmental Funds**

B-2

Statement of Revenues, Expenditures and Changes in Fund Balances

Year ended June 30, 2021

	<u>General Fund</u>	<u>Special Revenue Fund</u>	<u>Total</u>
Revenues:			
Local sources:			
Local tax levy	\$ 593,748	\$ -	\$ 593,748
Miscellaneous	38,484	-	38,484
Total revenues - local sources	<u>632,232</u>	<u>-</u>	<u>632,232</u>
Federal sources	-	698,101	698,101
State sources	3,862,955	23,334	3,886,289
TPAF/FICA reimbursements	65,444	-	65,444
TPAF pension and post retirement medical benefits on-behalf payments (non-budgeted)	306,878	-	306,878
Total revenues	<u>4,867,509</u>	<u>721,435</u>	<u>5,588,944</u>
Current expense:			
Instruction	1,737,963	458,526	2,196,489
Administrative	1,269,821	-	1,269,821
Support services	1,327,179	239,575	1,566,754
Capital outlay	-	23,334	23,334
Reimbursed TPAF-Social Security (non-budgeted)	65,444	-	65,444
TPAF pension and post retirement medical benefits on-behalf payments (non-budgeted)	306,878	-	306,878
Total expenditures	<u>4,707,285</u>	<u>721,435</u>	<u>5,428,720</u>
Excess (deficiency) of revenues over (under) expenditures, before other financing sources	160,224	-	160,224
Other financing sources and special items:			-
Transfer to cover food deficit	(22,237)	-	(22,237)
Special item - Forgiveness of Paycheck Protection Program (PPP) loan	311,723	-	311,723
Total other financing sources and special items:	<u>289,486</u>	<u>-</u>	<u>289,486</u>
Excess (deficiency) of revenues over (under) expenditures, after other financing sources and special items	449,710	-	449,710
Fund balances, beginning of year	<u>550,796</u>	<u>-</u>	<u>550,796</u>
Fund balances, end of year	<u>\$ 1,000,506</u>	<u>\$ -</u>	<u>\$ 1,000,506</u>

See independent auditor's report and accompanying notes to basic financial statements.

LEAD CHARTER SCHOOL
Reconciliation of the Statement of Revenues, Expenditures
And Changes in Fund Balances of Governmental Funds
to the Statement of Activities
Year ended June 30, 2021

B-3

Total net change in fund balances - governmental funds (B-2) \$ 137,987

Amounts reported for governmental activities in the Statement of Activities (A-2) are different because: -

Capital outlays are reported in governmental funds as expenditures. However, in the Statement of Activities, the cost of those assets is allocated over their estimated useful lives as depreciation expense. This is the amount by which capital outlays exceeded depreciation expenses in the period. Additionally, in the Statement of Activities gains or (losses) are recognized upon disposition.

	Depreciation expense	\$ (4,667)		
	Capital outlays	23,334		
				18,667

Adoption of GASB 87 resulted in an increase in right-to-use lease assets offset by the current year amortization of the right-to-use assets, allocated over the term of the leases

	Amortization expense	(368,683)
--	----------------------	-----------

Adoption of GASB 87 resulted in an increase in lease liabilities offset by the current year principal payments on lease liabilities. Principal payments on lease liabilities decrease liabilities in the statement of net position, but are included in the governmental funds as expenses

	Principal payments	364,133
--	--------------------	---------

Pension contributions are reported in governmental funds as expenditures. However, in the statement of activities, the contributions are adjusted for actuarial valuation adjustments, including service and interest costs, administrative costs, investment returns, and experience/assumption. This is the amount by which net pension liability and deferred inflows/outflows related to pension changed during the period.

		83,686
--	--	--------

Change in net position of governmental activities (A-2)		\$ 235,790
--	--	-------------------

See independent auditor's report and accompanying notes to basic financial statements.

Proprietary Funds

**LEAD CHARTER SCHOOL
Proprietary Funds**

B-4

Statement of Net Position

June 30, 2022

Assets	
Current assets:	
Cash and cash equivalents	\$ -
Accounts receivable:	-
Federal	2,026
State	34
Interfund receivable - General Fund	-
Total current assets	<u>\$ 2,060</u>
Liabilities and net assets	
Current liabilities:	
Interfund payable - General Fund	<u>2,060</u>
Total current liabilities	<u>\$ 2,060</u>
Net position	
Unrestricted	-
Total liabilities and net position	<u><u>\$ 2,060</u></u>

See independent auditor's report and accompanying notes to basic financial statements.

**LEAD CHARTER SCHOOL
Proprietary Funds**

B-5

Statement of Revenues, Expenditures and Changes in Net Assets

Year ended June 30, 2021

Operating revenues:	
Charges for services:	
Daily sales - reimbursable programs	\$ -
Daily sales - nonreimbursable programs	-
Miscellaneous revenue	6,045
Total operating revenues	<u>6,045</u>
Operating expenses:	
Cost of sales - reimbursable programs	40,093
Cost of sales - nonreimbursable programs	-
Salaries	-
Employee benefits	-
Professional /technical service	-
Supplies and materials	-
Depreciation	-
Miscellaneous	-
Total operating expenses	<u>40,093</u>
Operating income (loss)	<u>(34,048)</u>
Nonoperating revenues:	
State sources:	
State School Lunch Program	205
Federal sources:	
National School Lunch Program	8,579
National School Breakfast Program	2,986
After School Snacks	41
Total nonoperating revenues	<u>11,811</u>
Net income/(loss) before contributions & transfers	(22,237)
Other financing sources:	
Transfer - from general fund to cover food deficit	22,237
	<u>22,237</u>
Change in net position	-
Total net position-beginning of year	<u>-</u>
Total net position-end of year	<u><u>\$ -</u></u>

See independent auditor's report and accompanying notes to basic financial statements.

**LEAD CHARTER SCHOOL
Proprietary Fund**

B-6

Statement of Cash Flows

Year ended June 30, 2021

Cash flows from operating activities

Operating loss	\$ (34,048)
Adjustment to reconcile operating loss to net cash used in operating activities:	
Changes in assets and liabilities:	
Accounts receivable	(1,563)
Due to general fund	(7,747)
Accounts payable	-
Net cash used in operating activities	<u>(43,358)</u>

Cash flows from noncapital financing activities

Cash received from state reimbursements	205
Cash received from federal reimbursements	11,606
Operating subsidies and transfers from other funds	22,237
Net cash provided by noncapital financing activities	<u>34,048</u>

Cash flows from investing activities

	-
Net decrease in cash and cash equivalents	(9,310)
Cash and cash equivalents, beginning	9,310
Cash and cash equivalents, ending	<u>\$ -</u>

See independent auditor's report and accompanying notes to basic financial statements.

**Fiduciary Funds
Not Applicable**

Notes to Basic Financial Statements

LEAD CHARTER SCHOOL
(County of Essex)
Notes to the Basic Financial Statements
Year ended June 30, 2022

1 Description of the Charter School and Reporting Entity

Lead Charter School (the “Charter School” was incorporated in the State of New Jersey on July 11, 2016 as a non-for-profit corporation for the purpose of operating and maintaining a public school under a charter granted by the State of New Jersey, which promotes comprehensive educational reform by infusing innovation into the public education system. It is an instrumentality of the State of New Jersey, established to function as an education institution. The Charter School’s Board of Trustees (the Board) is responsible for the fiscal control of the Charter School. A Chief Executive Officer (CEO) is appointed by Board and is responsible for the administrative control of the Charter School. Under the existing statutes, the Charter School’s duties and powers include, but not limited to the development and adoption of a school program; the establishment, organization and operation of schools; and the acquisition, maintenance and disposition of school property.

A reporting entity is comprised of the primary government, component units and other organizations that are included to ensure that the financial statements of the Charter School are not misleading. The primary government consists of all funds, departments, boards and agencies that are not legally separate from the Charter School. For the Charter School, this includes general operations, food service and student related activities of the Charter School.

The primary criterion for including activities within the Charter School’s reporting entity, as set forth in Section 2100 of the GASB Codification of Governmental Accounting and Financial Reporting Standards, is the degree of oversight responsibility maintained by the Charter School. Oversight responsibility includes financial interdependency, selection of governing authority, designation of management, and ability to significantly influence operations and accountability for fiscal matters. The combined financial statements include all funds of the Charter School over which the Board exercises operating control. Based on the aforementioned criteria, the Charter School has no component units to be included in the reporting entity. Further, the Charter School is not includable in any other reporting entity on the basis of such criteria.

The Lead Charter School Board of Trustees also has broad financial responsibilities, including the approval of the annual budget and the establishment of a system of accounting and budgetary controls.

Its mission is to establish a character school to serve as a neighborhood resource and as a model for other similar schools. The Lead Charter School is committed to achieving the New Jersey Core Curriculum Content Standards and producing high academic achievement by all students. The Charter School will integrate a holistic curriculum, utilize learner center techniques, family and care giver centered approaches, comprehensive community involvement, cutting edge technology and an intimate nurturing environment that will enhance positive self-images.

LEAD CHARTER SCHOOL
(County of Essex)
Notes to the Basic Financial Statements
Year ended June 30, 2022

2 Summary of Significant Accounting Policies

This summary of significant accounting policies of Lead Charter School is presented to assist in understanding the Charter School's financial statements and notes are a representation of the Charter School's management, who is responsible for their integrity and objectivity. These accounting policies conform to generally accepted accounting principles in the United States as applied to governmental units and have been consistently applied in the preparation of these financial statements.

The financial statements of the Lead Charter School (the "Charter School") have been prepared in conformity with generally accepted accounting principles (GAAP) as applied to governmental units. GASB is the accepted standard-setting body for establishing governmental accounting and financial reporting principles.

The Charter School also applies Financial Accounting Standards Board (FASB) pronouncements issued on or before November 30, 1989, to its governmental and business-type activities and to its enterprise fund unless they conflict with or contradict GASB pronouncements. The most significant of the Charter School's accounting policies are described below:

A Basis of Presentation

The Charter School's basic financial statements consist of government-wide statements, including a statement of net position and a statement of activities, and fund financial statements that provide a more detailed level of financial information.

Charter School Government-wide Financial Statements

The statement of net position and the statement of activities display information about the Charter School as a whole. These statements include the financial activities of the Charter School, except for fiduciary funds.

The statement of net position presents the financial condition of the governmental and business-type activities of the Charter School at year-end. The statement of activities presents a comparison between direct expenses and program revenues for each program or function of the Charter School's governmental and business-type activities. Direct expenses are those that are specifically associated with a service, program or department and are therefore clearly identifiable to a particular function. Program revenues include charges paid by the recipient of the goods or services offered by the program and grants and contributions that are restricted to meeting the operational or capital requirements of a particular program. Revenues that are not classified as program revenues are presented as general revenues of the Charter School, with certain limited exceptions. The comparison of direct expenses with program revenues identifies the extent to which each governmental function is self-financing or draws from the general revenues of the Charter School.

LEAD CHARTER SCHOOL
(County of Essex)
Notes to the Basic Financial Statements
Year ended June 30, 2022

2 Summary of Significant Accounting Policies - *continued*

The governmental activities generally are financed through federal and state awards, taxes and other non-exchange revenues. Business-type activities are financed in whole or in part by fees charged to external parties for goods or services.

Fund Financial Statements

Fund financial statements of the Charter School are organized into funds, each of which is considered to be separate accounting entities. Each fund is accounted for by providing a separate set of self-balancing accounts that constitute its assets, liabilities, fund equity, revenues, and expenditure/expenses. Funds are organized into three major categories: governmental, proprietary, and fiduciary. An emphasis is placed on major funds within the governmental and proprietary categories. A fund is considered major if it is the primary operating fund of the Charter School. The New Jersey Department of Education (NJDOE) requires that all funds be reported as major, as it is considered important for public interest and to promote consistency among Charter Schools financial reporting in the State of New Jersey.

B Fund Accounting

The Charter School segregates transactions related to certain Charter School functions or activities in separate funds in order to aid financial management and to demonstrate legal compliance. Fund financial statements are designed to present financial information of the Charter School at a more detailed level.

Governmental Funds

Governmental funds are those funds through which most governmental functions typically are financed. Governmental fund reporting focuses on the sources, uses and balances of current financial resources. Expendable assets are assigned to the various governmental funds according to the purposes for which they will be paid. The difference between governmental fund assets and liabilities is reported as fund balance. The following are the Charter Schools' major governmental funds:

General Fund - The General Fund is the primary operating fund of the Charter School. It is used to account for all financial resources except those that are legally or administratively required to be accounted for in another fund. Included are certain expenditures for vehicles and movable instructional or non-instructional equipment which are classified in the Capital Outlay sub-fund.

LEAD CHARTER SCHOOL
(County of Essex)
Notes to the Basic Financial Statements
Year ended June 30, 2022

2 Summary of Significant Accounting Policies - continued

As required by the New Jersey Department of Education, the Charter School included budgeted capital outlay in this fund. Generally accepted accounting principles as they pertain to governmental entities state that General Fund resources may be used to directly finance capital outlays for long-lived improvements as long as the resources in such cases are derived exclusively from unrestricted revenues.

Resources for budgeted capital outlay purposes are normally derived from State of New Jersey aid and appropriated fund balance. Expenditures are those that result in the acquisition of or additions to fixed assets for land, existing buildings, improvements of ground, construction of buildings, additions to or remodeling of buildings and the purchase of built-in equipment. These resources can be transferred from and to current expense by board resolution.

Special Revenue Fund - The Special Revenue Fund is used to account for the proceeds of specific revenue from State and Federal Government, (other than major Capital Projects, Debt Service or the Enterprise Funds) and local appropriations that legally restricted to expenditures for specified purposes.

Capital Projects Fund - The Capital Projects Fund is used to account for all financial resources to be used for the acquisition or construction of major capital facilities (other than those financed by proprietary funds). The financial resources are derived from temporary notes or serial bonds that are specifically authorized by the voters as a separate question on the ballot either during the annual election or at a special election. As of June 30, 2022 there was no Capital Projects Fund.

Proprietary Funds

The focus of Proprietary Funds' measurement is upon determination of net income, changes in net position, financial position and cash flows. The generally accepted accounting principles applicable are those to similar to business in the private sector. The following is a description of the Proprietary Funds of the Charter School:

Enterprise Funds - The Enterprise Fund is utilized to account for operations that are financed and operated in a manner similar to private business enterprises where the intent of the Charter School is that the cost (i.e. expenses including depreciation and indirect costs) of providing goods and services to the students on a continuing basis be financed or recovered primarily through user charges; or where the Charter School has decided that periodic determination of revenues earned, expenses incurred, and/or net income is appropriated for capital maintenance, public policy, management control, accountability or other purposes.

LEAD CHARTER SCHOOL
(County of Essex)
Notes to the Basic Financial Statements
Year ended June 30, 2022

2 Summary of Significant Accounting Policies - *continued*

All proprietary funds are accounted for on a cost of services or “capital maintenance” measurement focus. This means that all assets and all liabilities, whether current or non-current, associated with their activity are included on their balance sheets. Their reported fund equity (net total assets) is segregated into contributed capital and unreserved retained earnings, if applicable. Proprietary fund type operating statements present increases (revenue) and decreases (expenses) in net total assets.

Fiduciary Funds

Fiduciary or trust and Agency Funds are used to account for assets held by the Charter School in a trustee capacity or as an agent for individuals, private organizations, other governments and/or other funds. This fund category includes:

Trust Funds - Expendable Trust Funds (unemployment compensation) are accounted for in essentially the same manner as the governmental funds. The unemployment compensation trust fund is used to account for contributions from employees and the employer (the Charter School) and interest earned on the balance as well as payments to the State for reimbursements of unemployment claims. ***Agency Funds*** – Agency funds (*Payroll, Health Benefits and Student Activity Fund*) are used to account for the assets that the Charter School holds on behalf of others as their agent. Agency funds are custodial in nature and do not involved measurement of results of operations.

GASB Statement No 84 Fiduciary Activities – As of June 30, 2022, there was no Fiduciary Fund. This is due to the adoption of GASB Statement 84, Fiduciary Activities during the prior year ended June 30, 2021.

C Measurement Focus and Basis of Accounting

Measurement focus is a term used to describe “which” transactions are recorded within the various financial statements. ***Basis of accounting*** refers to “when” transactions are recorded regardless of the measurement focus applied.

Measurement Focus

On the government-wide statements of net position and the statement of activities, both governmental and business-like activities are presented using the economic resources measurement focus. The accounting and financial reporting treatment applied to a fund is determined by its measurement focus. All governmental funds and expendable trust funds are accounted for using a current financial resources measurement focus. With this measurement focus, only current assets and current liabilities generally are included on the balance sheet. Operating statement of these funds present increases (i.e., revenues and other financing sources), and decreases (i.e. Expenditures and other finances uses) during a given period. These funds use fund balance as their measure of available spendable financial resources at the end of the period.

LEAD CHARTER SCHOOL
(County of Essex)
Notes to the Basic Financial Statements
Year ended June 30, 2022

2 Summary of Significant Accounting Policies - *continued*

All proprietary funds are accounted for on a flow economic resources measurement focus. With this measurement focus, the accounting adjectives are the determination of operating income, changes in net position (or cost recovery), financial position, and cash flow. All assets and all liabilities, whether current or non-current, associated with their activities are included on the balance sheet. Fund equity (i.e., net total assets) is classified as net position.

Basis of Accounting

In the government wide statement of net position and statements of activities, both governmental and business like activities are presented using the accrual basis of accounting. Under the accrual basis of accounting revenues are recognized when earned and expenses are recognized when the liability, resulting from exchange and exchange like transactions, is incurred (i. e the exchange takes place).

In the fund financial statements, governmental fund and agency funds are presented on the modified accrual basis of accounting. Under the modified accrual basis of accounting, revenues are recognized when they become both measurable and available. “Measurable” means the amount of the transaction can be determine and “available” means collectible with the current period or soon enough thereafter to be used to pay liabilities of the current period. State equalization monies are recognized as revenue during the period in which they are appropriated. A one-year availability period is used for revenue recognition for all other governmental funds revenues.

D Budgets/Budgetary Control

Annual appropriated budgets are prepared in the spring of each year for the general and special revenue fund. The budgets are submitted to the County Office and the Education Commissioner for approval. Budgets except for the special revenue fund which is prepared using a non-GAAP budgetary basis, are prepared using the modified accrual basis of accounting. The legal level of budgetary control is established at line item accounts within each fund. Line item accounts are defined as the lowest (most specific) level of detail as established pursuant to the minimum chart of accounts referenced in N.J.A.C. 6:20-2A.2(m)1. Transfers of appropriations may be made by Charter School Board resolution at any time during the fiscal year subject to the limitation of P.L. 2004 c73 (S1701). The Board of Trustees did not make any material supplemental budgetary appropriations during the fiscal year.

Formal budgetary integration into the accounting system is employed as a management control device during the year. For governmental funds, there are no substantial differences between the budgetary basis of accounting and generally accepted accounting principles, with the exception of the Special Revenue Fund as noted below.

LEAD CHARTER SCHOOL
(County of Essex)
Notes to the Basic Financial Statements
Year ended June 30, 2022

2 Summary of Significant Accounting Policies - *continued*

Encumbrance accounting is also employed as an extension of formal budgetary integration in the governmental funds types. Unencumbered appropriations lapse at fiscal year-end.

The accounting records of the special revenue fund are maintained on the grant accounting budgetary basis. The grant accounting budgetary basis differs from GAAP in that the grant accounting budgetary basis recognized encumbrances as expenditures and also recognized the related revenues, whereas the GAAP basis does not. Sufficient supplemental records are maintained to allow of the presentation of GAAP basis financial reports.

E Cash, Cash Equivalent and Investments

Cash and cash equivalents include petty cash, change funds, cash in banks and all highly liquid investment with a maturity of three months or less at the time of purchases and are stated at cost plus accrued interest. US Treasury and agency obligations and certificates of deposit with maturities of one year or less when purchases are stated at cost. All other investments are stated at fair value.

New Jersey Charter Schools are limited as to the types of the investments and types of financial institution they may invest in. New Jersey statute 18A:20-37 provides a list of permissible investment that may be purchased by New Jersey Charter Schools.

Additionally, the Charter School has adopted a cash management plan that requires it to deposit public fund in public depositories protected from loss under the provisions of the Governmental Unit Deposit Protection Act (“GUDPA”). GUDPA was enacted in 1970 to protect Governmental Units from loss funds on deposit with a failed banking institution in New Jersey.

N.J.S.A. 17:9-41 et. seq. established the requirements for the security of deposits of governmental units. The statute requires that no governmental unit shall deposit public funds in a public depository unless such funds are secured in accordance with the Act. Public depositories include Savings and Loan Institutions, bank (both state and national banks) and saving bank the deposits of which are federally insured. All public depositories must pledge collateral, having a market value at least equal to five percent of the average daily balance of collected public funds, to secure the deposit of Governmental Units. If a public depository fails, the collateral it has pledged, plus the collateral of all other public depositories, is available to pay the full amount of their deposits to the Governmental Units.

LEAD CHARTER SCHOOL
(County of Essex)
Notes to the Basic Financial Statements
Year ended June 30, 2022

2 Summary of Significant Accounting Policies - *continued*

F Short-Term Interfund Receivables/Payables

On the fund financial statement, receivable and payables resulting from short-term (due within one year) interfund loans are classified as interfund receivable/payable. Interfund balances within governmental activities and within business-type activities are eliminated on the Government Wide Statements of Net Position.

G Inventories and Prepaid Expenses

Inventories and prepaid expenses, which benefit future periods, other than those recorded in the enterprise fund are recorded as expenditure during the year of purchase. Inventories in the proprietary funds are valued at cost, which approximates market, using the first-in-first-out (FIFO) method.

H Capital Assets

Capital assets, which include leasehold improvements, equipment, furniture & fixtures and vehicles are reported in the applicable governmental or business-type activities columns of the Government-wide financial statements. Capital assets are defined by the Charter School as assets with initial, individual cost of more than \$2,000 and an estimated useful life in excess of two years. Such assets are recorded at historical cost or through estimation procedures performed by an independent appraisal company.

The cost of normal repairs and maintenance that do not add to the value of the asset or materially extend the assets lives are not capitalized. Donated capital assets are capitalized at estimated fair market value on the date donated. Depreciation of capital assets is computed and recorded by the straight-line method.

I Compensated Absences

Compensated absences are those absences for which employees will be paid, such as vacation, sick leave, and sabbatical leave. A liability for compensated absences that are attributable to services already rendered, and that are not contingent on specific event that is outside the control of the Charter School and its employees, is accrued as the employees earn the rights to the benefits. Compensated absences that relate to future services, or that are contingent on specific event that is outside the control of the Charter School and its employees, are accounted for in the period in which such services are rendered or in which such events take place.

LEAD CHARTER SCHOOL
(County of Essex)
Notes to the Basic Financial Statements
Year ended June 30, 2022

2 Summary of Significant Accounting Policies - *continued*

For governmental fund financial statements, the current portion of unpaid compensated absences is in the amount expected to be paid using expendable available resources. These amounts are recorded in the account “compensated absences payable” in the fund from which the employees who have accumulated unpaid leave are paid. The noncurrent portion of the liability is not reported.

The entire sick leave and vacation leave liabilities are reported on the school-wide financial statements.

The Charter School had no compensated absences as of June 30, 2022.

J Accrued Liabilities and Long-Term Obligations

All payables, accrued liabilities, and long-term obligations are reported on the government-wide financial statements.

In general, governmental fund payables and accrued liabilities that, once incurred, are paid in a timely manner and in full from current financial resources are reported as obligations of the funds. However, the non-current portion of compensated absences and mortgage payable (if any) that will be paid from governmental funds are reported as liabilities on the fund financial statements only to the extent that they are normally expected to be paid with expendable, available financial resources.

K Deferred Revenue

Deferred revenue in special revenue fund represent cash that has been received but not yet earned.

L Fund Balance and Equity

In February 2009, the GASB issued GASB Statement No. 54, Fund Balance Reporting and Governmental Fund Type Definitions (“GASB 54”). GASB 54 is effective for periods beginning after June 15, 2011 and establishes fund balance classifications that comprise a hierarchy based primarily on the extent to which government is bound to observe constraints imposed upon the use of resources reported in governmental funds. Under GASB 54, fund balances in the governmental funds financial statements are reported under the modified accrual basis of accounting and classified into the following five categories, as defined below:

LEAD CHARTER SCHOOL
(County of Essex)
Notes to the Basic Financial Statements
Year ended June 30, 2022

2 Summary of Significant Accounting Policies - *continued*

1. Nonspendable – includes amounts that cannot be spent because they either (a) not in spendable form or (b) legally or contractually required to be maintained intact. Assets included in this fund balance category include prepaid assets, inventories, long-term receivables, and corpus of any permanent funds.
2. Restricted – includes amounts that can be spent only for the specific purposes stipulated by constitution, external resource providers, or through enabling legislation.
3. Committed – includes amounts that can be used only for the specific purposes determined by a formal action of the government’s highest level of decision-making authority.
4. Assigned – amounts intended to be used by the government for specific purposes but do not meet the criteria to be classified as restricted or committed.
5. Unassigned – includes all spendable amounts not contained in the other classifications.

When both restricted and unrestricted resources are available for use, it is the Charter School’s policy to use restricted resources first, then unrestricted resources as they are needed. For the unrestricted fund balance, the Charter School first spends committed funds, then assigned funds, and finally, unassigned funds.

M Net Position

Net position represents the difference between assets and liabilities in the Government-wide financial statements. Net position invested in capital assets, net of related debt consists of capital assets, net of accumulated depreciation, reduced by the outstanding balance of any long-term debt used to build or acquire the capital assets. Net position are reported as restricted in the Government-wide financial statements when there are limitations imposed on their use through external restrictions imposed by creditors, grantors, or laws or regulations of other governments.

N Management Estimates

The preparation of financial statements in conformity with generally accepted accounting principles requires management to make estimates that affect the recorded amount of assets and liabilities and disclosure of contingent assets and liabilities at the date of the financial statements and the reported amounts of revenues and expenditures during the reporting period. Actual results could differ from those estimates.

LEAD CHARTER SCHOOL
(County of Essex)
Notes to the Basic Financial Statements
Year ended June 30, 2022

2 Summary of Significant Accounting Policies - *continued*

O On-Behalf Payments

Revenues and expenditures of the General Fund include payment made by the state of New Jersey for Pension and social security contributions for certified teacher members of the New Jersey Teachers Pension and Annuity Fund. The amounts are not required to be included in the Charter School's annual budget.

P GASB Pronouncements

Adoption of New Accounting Standard

During the prior fiscal year ended June 30, 2021, the Charter School adopted **GASB Statement No. 84, *Fiduciary Activities (GASB 84)***. GASB 84 enhances the identification of fiduciary activities for accounting and financial reporting purposes and how those activities should be reported. Specifically, GASB 84 establishes criteria for identifying fiduciary activities of all state and local governments. The focus of the criteria generally is on (1) whether a government is controlling the assets of the fiduciary activity and (2) the beneficiaries with whom a fiduciary relationship exists.

As part of the adoption, the Charter School no longer considers activities in the Unemployment Fund Account, Payroll Agency Fund and Student Activities as fiduciary activities applicable under GASB 84. As a result, the Charter School no longer presents a Statement of Fiduciary Net Position, and records payroll deductions and withholding payable, unemployment activities in the General Fund in the Governmental Fund financial statements.

During the year ended June 30, 2022, the Charter School adopted **GASB Statement No. 87, *Leases***. This Statement establishes standards of accounting and financial reporting for leases by lessees and lessors. The requirements of this Statement are effective for periods beginning after December 20, 2020.

Q Fair Value of Financial Instruments

The Charter School follows the accounting and disclosure standards pertaining to GASB 72, Fair Value Measurement and Application, for qualifying assets and liabilities. Fair value is defined as the price that the Charter School would receive upon selling an asset or pay to settle a liability in an orderly transaction between market participants at the measurement date.

LEAD CHARTER SCHOOL
(County of Essex)
Notes to the Basic Financial Statements
Year ended June 30, 2022

2 Summary of Significant Accounting Policies - *continued*

Q Fair Value of Financial Instruments - *continued*

The Charter School uses a framework for measuring fair value that included a hierarchy that categorizes and prioritizes the sources used to measure and disclose fair value. This hierarchy is broken down into three levels based on inputs that market participants would use in valuing the financial instruments based on market data obtained from sources independent of the Charter School. Inputs refer broadly to the assumptions that market participants would use in pricing the financial instruments, including assumptions about risk. Inputs may be observable or unobservable. Observable inputs are inputs that are developed using market data, such as publicly available information about actual events or transactions, and which reflect the assumptions that market participants would use when pricing an asset or liability. Unobservable inputs are inputs for which market data are not available and that is developed using the best information available about the assumptions that market participants would use when pricing an asset or liability.

The three-tier hierarchy of inputs is summarized in the three broad levels as follows:

Level 1 – inputs that reflect unadjusted quoted prices in active markets for identical assets at the measurement date.

Level 2 – inputs other than quoted prices that are observable for the asset either directly or indirectly, including inputs in markets that are not considered to be active.

Level 3 – inputs that are unobservable and which require significant judgement or estimation.

An asset or liability level within the framework is based upon the lowest level of any input that is significant to the fair value measurement.

LEAD CHARTER SCHOOL
(County of Essex)
Notes to the Basic Financial Statements
Year ended June 30, 2022

3 Deposits and Investments

New Jersey statutes require that Charter Schools deposit public funds in public depositories located in New Jersey that are insured by the Federal Deposit Insurance Corporation, the Federal Savings and Loan Insurance Corporation, or by any other agency of the United States that insures deposits made in public depositories.

Charter schools are also permitted to deposit public funds in the State of New Jersey Cash Management Fund (NJCMF), the New Jersey Arbitrage Rebate Management Fund (NJARM) and the M.B.I.A Class.

New Jersey statutes require public depositories to maintain collateral for deposits of public funds that exceed depository insurance limits as follows: The market value of the collateral must equal at least 5% of the average daily balance of collected funds on deposit.

In addition to the above collateral requirement, if the public funds deposited exceed 75% of the capital funds of the depository, the depository must provide collateral having a market value at least equal to 100% of the amount exceeding 75%. All collateral must be deposited with the Federal Reserve Bank of New York, the Federal Reserve Bank of Philadelphia, the Federal Home Loan Bank of New York, or a banking institution that is a member of the Federal Reserve System and has capital funds of not less than \$25,000,000.

The Charter School’s cash and cash equivalents are classified below to inform financial statement users about the extent to which the Charter School’s deposits and investments are exposed to custodial credit risk. As of June 30, 2022, the Charter School’s carrying amount of deposits and investments are as follows:

	General Fund	Special Revenue	Enterprise Funds	Agency Funds	Total
Operating A/C	\$ 613,473	\$ -	\$ -	\$ -	\$ 613,473

Operating cash accounts are held in the Charter School’s name by one banking institution. At June 30, 2022, the Charter School’s carrying amount of deposits was \$613,473 and the bank balance was \$703,697. Of the bank balance, \$250,000 of the Charter School’s cash deposits on June 30, 2022 were secured by federal deposit insurance and \$453,697 was covered by a collateral pool maintained by the bank as required by New Jersey statutes in accordance with the New Jersey Governmental Unit Deposit Protection Act (“GUDPA”).

LEAD CHARTER SCHOOL
(County of Essex)
Notes to the Basic Financial Statements
Year ended June 30, 2022

3 Deposits and Investments - *continued*

GASB Statement No. 40 requires that the Charter School disclose whether its deposits are exposed to custodial risk (risk that in the event of failure of the counterparty, the Charter School would not be able to recover the value of its deposit or investment). In general deposits are considered to be exposed to custodial risk by three categories described below:

Category 1

Insured or collateralized with securities held by the Charter School or by its agent in the Charter School's name.

Category 2

Collateralized with securities held by the pledging public depository's trust department or agent in the Charter School's name.

Category 3

Uncollateralized, including any deposits that are collateralized with securities held by the pledging public depository, or by its trust department or agent, but not in the Charter School's name.

The Charter School does not have a policy for the management of the custodial risk, other than depositing all of its funds in banks covered by GUDPA.

Investments

New Jersey statutes permit the Charter School to purchase the following types of securities:

1. Bonds or other obligations of the United States or obligations guaranteed by the United States.
2. Bonds of any Federal Intermediate Credit Bank, Federal Home Loan Bank, Federal national Mortgage Agency or of any United States Bank for Cooperatives which have a maturity date not greater than twelve months from the date of purchase.
3. Bonds or other obligations of the Charter School.
4. New Jersey Cash Management Fund, New Jersey Arbitrage Rebate Management Fund and MBIA CLASS.

As of June 30, 2022, the Charter School did not hold any investments.

LEAD CHARTER SCHOOL
(County of Essex)
Notes to the Basic Financial Statements
Year ended June 30, 2022

4 Capital Assets and Right-to-Use Lease Assets

The following schedule is a summarization of the governmental activities changes in capital assets for the year ended June 30, 2022:

Governmental activities:	Beginning Balance	Net Additions (Deletions)	Ending Balance
Capital assets not depreciated:	\$ -	\$ -	\$ -
Capital assets, being depreciated:			
Leasehold improvements	-	23,334	23,334
	-	23,334	23,334
Less accumulated depreciation			
Leasehold improvements	-	4,667	4,667
	-	4,667	4,667
Total capital assets net	\$ -	\$ 18,667	\$ 18,667

Depreciation expense of \$4,667 was charged to an unallocated function.

Changes in right-to-use lease assets are as follows for the fiscal year ended June 30, 2022:

Governmental Activities	Beginning Balance July 1, 2021	Net Additions	Ending Balance June 30, 2022
Right-to-use lease assets			
Premises	\$ 4,055,513	\$ -	\$ 4,055,513
Total cost	4,055,513	-	4,055,513
Less - accumulated depreciation			
Premises	1,843,415	368,683	2,212,098
Total accumulated depreciation	1,843,415	368,683	2,212,098
Right-to-use lease assets - net	\$ 2,212,098	\$ (368,683)	\$ 1,843,415

LEAD CHARTER SCHOOL
(County of Essex)
Notes to the Basic Financial Statements
Year ended June 30, 2022

5 Lease Obligations

Lease Agreements – Implementation of GASB 87

The Charter School leases its premises and equipment under the terms of several non-cancelable leases. Certain leases are automatically renewed upon the charter renewal and can be extended through various dates through June 30, 2033.

The leases required aggregate monthly cash payments of approximately \$46,250 during the year ended June 30, 2022. Interest expense on the leases was \$115,933 for the year ended June 30, 2022 which is reflected as lease interest expense on the accompanying budgetary comparison schedule – general fund (exhibit C-1).

The value of the right-to-use assets and lease liabilities was \$4,055,513 and \$2,119,923, respectively as of June 30, 2022 which was calculated using a discount rate of 5% (the Charter School’s estimated incremental borrowing rate as of July 1, 2021).

The net value of the lease liabilities and right-to-use assets at July 1, 2021 was \$2,212,098. Amortization of the related right-to-use lease assets was \$368,683 for the year ended June 30, 2022.

Future minimum payments under these agreements and future amortization are as follows:

Year ending June 30:	Principal	Interest	Amortization
2023	\$ 382,763	\$ 97,304	\$ 368,683
2024	402,346	77,721	368,683
2025	422,931	57,136	368,683
2026	444,569	35,498	368,683
2027	467,314	12,752	368,683
Thereafter	-	-	-
	\$ 2,119,923	\$ 280,411	\$ 1,843,415

LEAD CHARTER SCHOOL
(County of Essex)
Notes to the Basic Financial Statements
Year ended June 30, 2022

5 Lease Obligations - *continued*

Description of Lease Terms

Facilities Lease

The Charter School leases its facilities under the following operating lease agreement:

201-203 Bergen Street, Newark, – a six-year lease commencing July 1, 2016 through June 30, 2022. The Charter School was granted the five year renewal option through June 30, 2027. The amount paid under this lease for the year ended June 30, 2022 was \$824,597. It should be noted that for the facility, the Charter School has a sublease arrangement with YouthBuild, its Charter Management Organization.

YouthBuild is the primary lessee with the landlord - New Community Employment & Training Urban Renewal Corp.

Equipment Lease

The Charter School leases several office equipment items under various operating lease agreements.

Future minimum lease payments required under the operating leases are as follows:

Year ending June 30:	Space
2023	\$ 563,325
2024	571,775
2025	580,352
2026	589,057
2027	597,893
Thereafter	-
	<u>\$ 2,902,402</u>

LEAD CHARTER SCHOOL
(County of Essex)
Notes to the Basic Financial Statements
Year ended June 30, 2022

6 Pension Plans

Description of Plans

Substantially all of the employees of the Charter School are covered by either the Public Employee's Retirement System or the Teacher's Pension and Annuity Fund (both of which are contributory defined benefits plans). Both were established by state statute and are administered by the New Jersey Division of Pension and Benefit (Division). According to the State of New Jersey Administrative Code, all obligations of both Systems will be assumed by the State of New Jersey should the Systems terminate.

The State of New Jersey, Department of the Treasury, Division of Pensions and Benefits, issues publicly available financial reports that include the financial statements and required supplementary information for TPAF and PERS. The financial reports may be obtained by writing to the State of New Jersey, Department of the Treasury, Division of Pensions and Benefits, P.O. Box 295, Trenton, New Jersey 08625-0295.

Teachers' Pension and Annuity Fund (TPAF)

The Teachers' Pension and Annuity Fund was established in January 1955 under the provisions of N.J.S.A. 18A:66 to provide coverage including post-retirement health care to substantially all full time public school employees in the State. Membership is mandatory for such employees and vesting occurs after 10 years of service for pension benefits and 25 years for health care coverage. Age eligibility and benefit provisions were affected by Chapters 92 and 103, P.L. 2007, Chapter 89, P.L. 2008, Chapter 1, P.L. 2010, and Chapter 78, P.L. 2011. Members are classified into one of five tiers dependent upon the date of their enrollment. Tier 1, 2 and 3 members are eligible to retire at age 60, 60, and 62, respectively, with an annual benefit generally determined to be 1/55th of the average annual compensation for the highest three fiscal years' compensation for each year of membership during years of credited service. Tier 4 and 5 members are eligible to retire at age 62 and 65, respectively, with an annual benefit generally determined to be 1/60th of the average annual compensation for the highest five fiscal years' compensation for each year of membership during years of credited service. Anyone who retires early and is under their respective tier's retirement age receives retirement benefits as calculated in the formulas mentioned above, but at a reduced rate in accordance with applicable New Jersey Statute based upon their tier.

LEAD CHARTER SCHOOL
(County of Essex)
Notes to the Basic Financial Statements
Year ended June 30, 2022

6 Pension Plans - *continued*

Public Employees' Retirement System (PERS)

The Public Employees' Retirement System was established in January 1955 under the provisions of N.J.S.A. 43:15A to provide coverage including post-retirement health care to substantially all full-time employees of the State or any county, municipality, school Board or public agency provided the employee is not a member of another State-administered retirement system. Age eligibility and benefit provisions were affected by Chapters 92 and 103, P.L. 2007, Chapter 89, P.L. 2008, Chapter 1, P.L. 2010, and Chapter 78, P.L. 2011. Members are classified into one of five tiers dependent upon the date of their enrollment. Tier 1, 2 and 3 members are eligible to retire at age 60, 60, and 62, respectively with an annual benefit generally determined to be 1/55th of the average annual compensation for the highest three fiscal years' compensation for each year of membership during years of credited service. Tier 4 and 5 members are eligible to retire at age 62 and 65, respectively with an annual benefit generally determined to be 1/60th of the average annual compensation for the highest five fiscal years' compensation for each year of membership during years of credited service. Anyone who retires early and is under their respective tier's retirement age receives retirement benefits as calculated in the formulas mentioned above, but at a reduced rate in accordance with applicable New Jersey Statute based upon their tier.

Defined Contribution Retirement Program (DCRP)

The Defined Contribution Retirement Program (DCRP) was established under the provision of Chapter 92, P.L. 2007 and Chapter 103, P.L. 2007 to provide coverage to elected and certain appointed officials, effective July 1, 2007. Membership is mandatory for such individuals with vesting occurring after one year of membership.

Funding Policy

The contribution policy is set by New Jersey State Statutes and contributions are required by active members and contributing members. Plan member and employer contributions may be amended by State of New Jersey legislation. Under the provisions of Chapter 78, P.L. 2011, employee contribution rates for TPAF and PERS increased to 7.5% of employees' annual compensation. Employers are required to contribute at an actuarially determined rate in both the TPAF and PERS. The actuarially determined contribution includes funding for noncontributory death benefits and post-retirement medical premiums. Under current statute the Board is a non-contributing employer of the TPAF.

LEAD CHARTER SCHOOL
(County of Essex)
Notes to the Basic Financial Statements
Year ended June 30, 2022

6 Pension Plans - *continued*

Annual Pension Costs (APC)

Per the requirements of GASB Statement No. 27 for the year ended June 30, 2011 for TPAF, which is a cost sharing plan with special funding situations, annual pension cost differs from the annual required contribution. For PERS, which is a cost sharing multi-employer defined benefit pension plan, the annual pension cost equals contributions made. TPAF employer contributions are made annually by the State of New Jersey to the pension system on behalf of the Board.

PERS employer contributions are made annually by the Board to the pension system in accordance with Chapter 114, P.L. 1997. In the DCRP, which is a defined contribution plan, member contributions are matched by a 3% employer contribution.

The Charter School's contribution to PERS for the year ended June 30, 2022 was \$160,666.

In accordance with N.J.S.A 18A:66-66 the State of New Jersey reimbursed the Charter School \$65,444 during the year ended June 30, 2022 for the employer's share of social security contributions for TPAF members, as calculated on their base salaries. Also, the State paid \$306,878 into the TPAF pension representing on-behalf employer's portion of the TPAF Pension System Contributions, TPAF Post-Retirement Medical Benefits Contributions and TPAF Long Term Disability Insurance Premium Contributions for the Charter School. These amounts have been included in the school wide financial statements and the fund financial statements as a revenue and expenditure in accordance with GASB No. 24.

LEAD CHARTER SCHOOL
(County of Essex)
Notes to the Basic Financial Statements
Year ended June 30, 2022

7 Pension Plans – GASB 68 Disclosures

It should be noted that the Charter School was established during the previous school year 2017-2018 and was therefore five years in the New Jersey State pension as of June 30, 2022. Because of its relatively short time in the system, the GASB 68 information was being provided for the second year for the year ended June 30, 2022. Pension liabilities information was not available for disclosures for any of the fiscal years prior to June 30, 2021.

Teachers' Pension and Annuity Fund (TPAF)

Summary of Significant Accounting Policies

For purposes of measuring the net pension liability, deferred outflows of resources and deferred inflows of resources related to pensions, and pension expense, information about the fiduciary net position of the Teachers' Pension and Annuity Fund (TPAF) and additions to/deductions from the TPAF's fiduciary net position have been determined on the same basis as they are reported by the TPAF.

For this purpose, benefit payments (including refunds of employee contributions) are recognized when due and payable in accordance with the benefit terms. Investments are reported at fair value.

Pension Liabilities, Pension Expense, and Deferred Outflows of Resources and Deferred Inflows of Resources Related to Pension

The employer contributions for the Charter School are legally required to be funded by the State in accordance with N.J.S.A 18:66-33. Therefore, the Charter School (employer) is considered to be in a special funding situation as defined by GASB Statement No. 68 and the State is treated as a non-employer contributing entity. Since the Charter School (employer) does not contribute directly to the plan (except for employer specific financed amounts), there is no net pension liability or deferred outflows or inflows to report in the financial statements of the Charter School. However, the state's portion of the net pension liability that was associated with the Charter School was \$3,144,090 as measured on June 30, 2021 and \$-0- as measured on June 30, 2020, respectively.

For the year ended June 30, 2022, the Charter School recognized pension expense of \$73,982 and revenue of \$73,982 for support provided by the State. The measurement period for the pension expense and revenue reported in the Charter School's financial statements (A-2) at June 30, 2021 is based upon changes in the collective net pension liability with a measurement period of June 30, 2020 through June 30, 2021. Accordingly, the pension expense and the related revenue associated with the support provided by the State are based upon the changes in the collective net pension liability between July 1, 2020 and June 30, 2021.

**LEAD CHARTER SCHOOL
(County of Essex)
Notes to the Basic Financial Statements
Year ended June 30, 2022**

7 Pension Plans – GASB 68 Disclosures - *continued*

Teachers’ Pension and Annuity Fund (TPAF) - *continued*

Pension Liabilities, Pension Expense, and Deferred Outflows of Resources and Deferred Inflows of Resources Related to Pension - continued

Although the Charter School does not report net pension liability or deferred outflows or inflows related to the TPAF, the following schedule illustrates the collective net pension liability and deferred items and the State's portion of the net pension liability associated with the Charter School. The collective amounts are the total of all New Jersey local governments participating in the TPAF plan.

	June 30, 2021	June 30, 2020
Collective deferred outflows of resources	\$ 6,230,825,389	\$ 9,458,881,999
Collective deferred inflows of resources	\$27,221,092,460	\$14,424,322,612
Collective net pension liability (non-employer State of New Jersey)	\$48,075,188,642	\$65,848,796,740
State's portion of the net pension liability that was associated with the Charter School	\$ 3,144,090	\$ -
State's portion of the net pension liability that was associated with the Charter School as a percentage of the collective net pension liability	0.006540%	0.000000%

Actuarial Assumptions

The total pension liability for the June 30, 2021 measurement date was determined by an actuarial valuation as of July 1, 2020, which was rolled forward to June 30, 2021. This actuarial valuation used the following actuarial assumptions, applied to all periods in the measurement:

Inflation rate - price	2.75%
Inflation rate - wage	3.25%
Salary increases: through 2026	1.55% - 4.45% based on years of service
Salary increases: thereafter	2.75% - 5.65% based on years of service
Investment rate of return	7.00%

Pre-retirement mortality rates were based on the Pub-2010 Teachers Above-Median Income Employee mortality table with a 93.9% adjustment for males and 85.3% adjustment for females, and with future improvement from the base year of 2010 on a generational basis. Post-retirement mortality rates were based on the Pub-2010 Teachers Above-Median Income Healthy Retiree mortality table with a 114.7% adjustment for males and 99.6% adjustment for females, and with future improvement from the base year of 2010 on a generational basis.

LEAD CHARTER SCHOOL
(County of Essex)
Notes to the Basic Financial Statements
Year ended June 30, 2022

7 Pension Plans – GASB 68 Disclosures - *continued*

Teachers' Pension and Annuity Fund (TPAF) - *continued*

Actuarial Assumptions - continued

Disability mortality rates were based on the Pub-2010 Non-Safety Disabled Retiree mortality table with a 106.3% adjustment for males and 100.3% adjustment for females, and with future improvement from the base year of 2010 on a generational basis. Mortality improvement is based on Scale MP-2021.

The actuarial assumptions used in the July 1, 2020 valuation were based on the results of an actuarial experience study for the period July 1, 2015 to June 30, 2018.

Long-Term Expected Rate of Return - continued

In accordance with State statute, the long-term expected rate of return on plan investments (7.00% at June 30, 2021) is determined by the State Treasurer, after consultation with the Directors of the Division of Investments and Division of Pensions and Benefits, the board of trustees and the actuaries. The long-term expected rate of return was determined using a building block method in which best-estimate ranges of expected future real rates of return (expected returns, net of pension plan investment expense and inflation) are developed for each major asset class.

These ranges are combined to produce the long-term expected rate of return by weighting the expected future real rates of return by the target asset allocation percentage and by adding expected inflation. Best estimates of arithmetic real rates of return for each major asset class included in TPAF's target asset allocation as of June 30, 2021 are summarized in the following table:

LEAD CHARTER SCHOOL
(County of Essex)
Notes to the Basic Financial Statements
Year ended June 30, 2022

7 Pension Plans – GASB 68 Disclosures - *continued*

Teachers’ Pension and Annuity Fund (TPAF) - *continued*

Long-Term Expected Rate of Return - continued

Asset Class	Target Allocation	Long Term Expected Real Rate of Return
US Equity	27.00%	8.09%
Non-US Developed Markets Equity	13.50%	8.71%
Emerging Markets Equity	5.50%	10.96%
Private Equity	13.00%	11.30%
Real Estate	8.00%	9.15%
Real Assets	3.00%	7.40%
High Yield	2.00%	3.75%
Private Credit	8.00%	7.60%
Investment Grade Credit	8.00%	1.68%
Cash Equivalents	4.00%	0.50%
U.S. Treasuries	5.00%	0.95%
Risk Mitigation Strategies	3.00%	3.35%

Discount Rate

The discount rate used to measure the State's total pension liability was 7.00% as of June 30, 2021. The projection of cash flows used to determine the discount rate assumed that contributions from plan members will be made at the current member contribution rates and that contributions from employers will be based on 100% of the actuarially determined contributions for the State. Based on those assumptions, the plan’s fiduciary net position was projected to be available to make projected future benefit payments of current plan members. Therefore, the long-term expected rate of return on plan investments was applied to projected benefit payments in determining the total pension liability.

LEAD CHARTER SCHOOL
(County of Essex)
Notes to the Basic Financial Statements
Year ended June 30, 2022

7 Pension Plans – GASB 68 Disclosures - *continued*

Teachers' Pension and Annuity Fund (TPAF) - *continued*

Sensitivity of the Charter School's Proportionate Share of the Net Pension Liability to Changes in the Discount Rate

Since the Charter School's has no proportionate share of the net pension liability because of the special funding situation, the Charter School would not be sensitive to any changes in the discount rate. Detailed information about the pension plan's sensitivity of the collective net pension liability to changes in the discount rate is available in the separately issued State of New Jersey Divisions of Pensions and Benefits financial report at: <https://www.nj.gov/treasury/pensions/documents/financial/gasb/gasb68-tpaf21.pdf>

Pension Plan Fiduciary Net Position

Detailed information about the pension plan's fiduciary net position is available in the separately issued State of New Jersey Divisions of Pensions and Benefits financial report at: <https://www.nj.gov/treasury/pensions/gasb-notices.shtml>

LEAD CHARTER SCHOOL
(County of Essex)
Notes to the Basic Financial Statements
Year ended June 30, 2022

7 Pension Plans – GASB 68 Disclosures - *continued*

Public Employees' Retirement System (PERS)

Summary of Significant Accounting Policies

For purposes of measuring the net pension liability, deferred outflows of resources and deferred inflows of resources related to pensions, and pension expense, information about the fiduciary net position of the PERS and additions to/deductions from PERS fiduciary net position have been determined on the same basis as they are reported by PERS. For this purpose, benefit payments (including refunds of employee contributions) are recognized when due and payable in accordance with the benefit terms. Investments are reported at fair value.

Pension Liabilities, Pension Expense, and Deferred Outflows of Resources and Deferred Inflows of Resources Related to Pension

At June 30, 2022, the Charter School reported a liability of \$1,625,227 for its proportionate share of the net pension liability. The net pension liability was measured as of June 30, 2021, and the total pension liability to calculate the net pension liability was determined by an actuarial valuation as of July 1, 2020, which was rolled forward to June 30, 2021. The total pension liability for the June 30, 2020 measurement date was determined by an actuarial valuation as of July 1, 2020. The Charter School's proportion of the net pension liability is based on the ratio of the contributions as an individual employer to total contributions to the PERS during the years ended June 30, 2021 and 2020, respectively. At June 30, 2021, the Charter School's proportion was 0.0137190483% which was an increase of 0.0048914018% from its proportion measured as of June 30, 2020 which was 0.0088276465%.

For the year ended June 30, 2021, the Charter School recognized pension expense of \$160,666. At June 30, 2021, the Charter School reported deferred outflows of resources and deferred inflows of resources related to PERS from the following sources:

LEAD CHARTER SCHOOL
(County of Essex)
Notes to the Basic Financial Statements
Year ended June 30, 2022

7 Pension Plans – GASB 68 Disclosures - continued

Public Employees’ Retirement System (PERS) - continued

Pension Liabilities, Pension Expense, and Deferred Outflows of Resources and Deferred Inflows of Resources Related to Pension - continued

	Deferred Outflows of Resources	Deferred Inflows of Resources
Differences between expected and actual experience	\$ 25,632	\$ 11,635
Changes in assumptions	8,464	578,591
Net difference between projected and actual earnings on pension plan investments	-	428,127
Changes in proportion and differences between Charter School's contributions and proportionate share of contributions	2,075,976	-
Subtotal	2,110,072	1,018,353
Charter School's contributions subsequent to the measurement date	160,666	-
Total	\$ 2,270,738	\$ 1,018,353

\$160,666 reported as deferred outflows of resources related to pensions resulting from school Charter School contributions subsequent to the measurement date (i.e. for the school year ending June 30, 2022, the plan measurement date is June 30, 2021) will be recognized as a reduction of the net pension liability measured as of June 30, 2022. Other amounts reported as deferred outflows of resources and deferred inflows of resources related to pensions will be recognized in pension expense as follows:

Year Ending June 30:	Pension Expense
2022	\$ 425,352
2023	303,700
2024	207,072
2025	155,656
2026	(61)
Thereafter	-
	\$ 1,091,719

LEAD CHARTER SCHOOL
(County of Essex)
Notes to the Basic Financial Statements
Year ended June 30, 2022

7 Pension Plans – GASB 68 Disclosures - continued

Public Employees’ Retirement System (PERS) - continued

Pension Liabilities, Pension Expense, and Deferred Outflows of Resources and Deferred Inflows of Resources Related to Pension - continued

	June 30, 2021	June 30, 2020
Collective deferred outflows of resources	\$ 1,164,739,169	\$ 2,347,583,337
Collective deferred inflows of resources	\$ 8,339,123,762	\$ 7,848,949,467
Collective net pension liability (Non-State Local Group)	\$ 11,846,499,172	\$ 16,307,384,832
Charter School's portion of the net pension liability	\$ 1,625,227	\$ 1,439,558
Charter School's proportion (percentage)	0.01371905%	0.00882764%

Actuarial Assumptions

The collective total pension liability for the June 30, 2021 measurement date was determined by an actuarial valuation as of July 1, 2020, which was rolled forward to June 30, 2021. This actuarial valuation used the following actuarial assumptions:

Inflation rate - price	2.75%
Inflation rate - wage	3.25%
Salary increases: through 2026	2.00%-6.00% based on years of service
Salary increases: thereafter	3.00%-7.00% based on years of service
Investment rate of return	7.00%

Pre-retirement mortality rates were based on the Pub-2010 General Below-Median Income Employee mortality table with an 82.2% adjustment for males and 101.4% adjustment for females, and with future improvement from the base year of 2010 on a generational basis. Post-retirement mortality rates were based on the Pub-2010 General Below-Median Income Healthy Retiree mortality table with a 91.4% adjustment for males and 99.7% adjustment for females, and with future improvement from the base year of 2010 on a generational basis. Disability retirement rates used to value disabled retirees were based on the Pub-2010 Non-Safety Disabled Retiree mortality table with a 127.7% adjustment for males and 117.2% adjustment for females, and with future improvement from the base year of 2010 on a generational basis. Mortality improvement is based on Scale MP-2021.

The actuarial assumptions used in the July 1, 2020 valuation were based on the results of an actuarial experience study for the period July 1, 2014 to June 30, 2018.

LEAD CHARTER SCHOOL
(County of Essex)
Notes to the Basic Financial Statements
Year ended June 30, 2022

7 Pension Plans – GASB 68 Disclosures - *continued*

Public Employees’ Retirement System (PERS) - *continued*

Long-Term Expected Rate of Return

In accordance with State statute, the long-term expected rate of return on plan investments (7.00% at June 30, 2021) is determined by the State Treasurer, after consultation with the Directors of the Division of Investment and Division of Pensions and Benefits, the board of trustees and the actuaries. The long-term expected rate of return was determined using a building block method in which best-estimate ranges of expected future real rates of return (expected returns, net of pension plan investment expense and inflation) are developed for each major asset class. These ranges are combined to produce the long-term expected rate of return by weighting the expected future real rates of return by the target asset allocation percentage and by adding expected inflation. Best estimates of arithmetic rates of return for each major asset class included in PERS’s target asset allocation as of June 30, 2021 are summarized in the following table:

Asset Class	Target Allocation	Long Term Expected Real Rate of Return
US Equity	27.00%	8.09%
Non-US Developed Markets Equity	13.50%	8.71%
Emerging Markets Equity	5.50%	10.96%
Private Equity	13.00%	11.30%
Real Estate	8.00%	9.15%
Real Assets	3.00%	7.40%
High Yield	2.00%	3.75%
Private Credit	8.00%	7.60%
Investment Grade Credit	8.00%	1.68%
Cash Equivalents	4.00%	0.50%
U.S. Treasuries	5.00%	0.95%
Risk Mitigation Strategies	3.00%	3.35%

LEAD CHARTER SCHOOL
(County of Essex)
Notes to the Basic Financial Statements
Year ended June 30, 2022

7 Pension Plans – GASB 68 Disclosures - *continued*

Public Employees’ Retirement System (PERS) – *continued*

Discount Rate

The discount rate used to measure the total pension liability was 7.00% as of June 30, 2021. The projection of cash flows used to determine the discount rate assumed that contributions from plan members will be made at the current member contribution rates and that contributions from employers will be based on 100% of the actuarially determined contributions for the State employer and 100% of actuarially determined contributions for the local employers. Based on those assumptions, the plan’s fiduciary net position was projected to be available to make projected future benefit payments of current plan members. Therefore, the long-term expected rate of return on plan investments was applied to projected benefit payments to determine the total pension liability.

LEAD CHARTER SCHOOL
(County of Essex)
Notes to the Basic Financial Statements
Year ended June 30, 2022

7 Pension Plans – GASB 68 Disclosures - *continued*

Public Employees’ Retirement System (PERS) - *continued*

Sensitivity of the Charter School’s Proportionate Share of the Net Pension Liability to Changes in the Discount Rate

The following presents the collective net pension liability of the participating employers as of June 30, 2021, calculated using the discount rate as disclosed above as well as what the collective net pension liability would be if it was calculated using a discount rate that is 1-percentage point lower or 1-percentage-point higher than the current rate:

	2021		
	1% Decrease (6.00%)	Current Discount Rate (7.00%)	1% Increase (8.00%)
Charter School's proportionate share of the pension liability	\$ 2,236,823	\$ 1,625,227	\$ 1,138,229
	2020		
	1% Decrease (6.00%)	Current Discount Rate (7.00%)	1% Increase (8.00%)
Charter School's proportionate share of the pension liability	\$ 1,826,414	\$ 1,439,558	\$ 1,132,226

Pension Plan Fiduciary Net Position

Detailed information about the pension plan’s fiduciary net position is available in the separately issued State of New Jersey Divisions of Pensions and Benefits financial report at: <https://www.nj.gov/treasury/pensions/gasb-notices.shtml>

LEAD CHARTER SCHOOL
(County of Essex)
Notes to the Basic Financial Statements
Year ended June 30, 2022

8 Post Retirement Benefits

Plan Description and Benefits Provided

The Charter School is in a "special funding situation", as described in GASB Statement No. 75, in that OPEB contributions and expenses are legally required to be made by and are the sole responsibility of the State of New Jersey, not the Charter School.

The State of New Jersey reports a liability as a result of its statutory requirements to pay other post-employment (health) benefits for the State Health Benefit Local Education Retired Education Plan. The State Health Benefit Local Education Retired Employees Plan is a multiple-employer defined benefit OPEB plan that is administered on a pay-as-you-go basis. Accordingly, no assets are accumulated in a qualifying trust that meets the criteria in paragraph 4 of GASB Statement 75, *Accounting and Financial Reporting for Postemployment Benefits Other Than Pensions*. The State Health Benefits Local Education Retired Employees Plan provides medical, prescription drug, and Medicare Part B reimbursement to retirees and their covered dependents of local education employers.

The employer contributions for the participating local education employers are legally required to be funded by the State of New Jersey in accordance with N.J.S.A. 52:14-17.32f. According to N.J.S.A. 52: 14-17.32f, the State provides employer-paid coverage to employees who retire from a board of education or county college with 25 years or more of service credit in, or retires on a disability pension from, one or more of the following plans: the Teachers' Pension and Annuity Fund (TPAF), the Public Employees' Retirement System (PERS), the Police and Firemen Retirement System (PFRS), or the Alternate Benefit Program (ABP). Pursuant to Chapter 78, P.L. 2011, future retirees eligible for postretirement medical coverage who have less than 20 years of creditable service on June 28, 2011 will be required to pay a percentage of the cost of their health care coverage in retirement provided they retire with 25 years or more of pension service credit. The percentage of the premium for which the retiree will be responsible will be determined based on the retiree's annual retirement benefit and level of coverage.

The total non-employer OPEB liability does not include certain other postemployment benefit obligations that are provided by the local education employers. The reporting of these benefits, if any, is the responsibility of the individual education employers.

Employees Covered by Benefit Terms.

At June 30, 2020, the following employees were covered by the benefit terms:

Active plan member = 213,901

Inactive plan members entitled to but not yet receiving benefits = 150,427

Inactive plan members or beneficiaries currently receiving benefits = -0-

Total plan members = 364,328

LEAD CHARTER SCHOOL
(County of Essex)
Notes to the Basic Financial Statements
Year ended June 30, 2022

8 Post Retirement Benefits – *continued*

Total Non-employer OPEB Liability

The State, a non-employer contributing entity, is the only entity that has a legal obligation to make employer contributions to OPEB for qualified retired PERS and TPAF participants. The Charter School’s proportionate share percentage determined under paragraphs 193 and 203 through 205 of GASBS No. 75 is zero percent. Accordingly, the Charter School did not recognize any portion of the collective net OPEB liability on the Statement of Net Position. Accordingly, the following OPEB liability note information is reported at the State’s level and is not specific to the board of education/board of trustees. Note that actual numbers will be published in the NJ State’s ACFR (<https://www.nj.gov/treasury/omb/publications/archives.shtml>)

The total nonemployer OPEB liability as of June 30, 2021 was determined by an actuarial valuation as of June 30, 2020, which was rolled forward to June 30, 2021. The total nonemployer OPEB liability as of June 30, 2020 was determined by an actuarial valuation as of June 30, 2020.

Actuarial Assumptions and Other Inputs

The actuarial assumptions vary for each plan member depending on the pension plan the member is enrolled in. This actuarial valuation used the following actuarial assumptions, applied to all periods in the measurement.

Inflation Rate	2.50%	
	TPAF/ABP	PERS
Salary increases:		
Through 2026	1.55 to 4.45% based on years of service	2.00 to 6.00% based on years of service
Thereafter	2.75 to 5.65% based on years of service	3.00 to 7.00% based on years of service

LEAD CHARTER SCHOOL
(County of Essex)
Notes to the Basic Financial Statements
Year ended June 30, 2022

8 Post Retirement Benefits – *continued*

Actuarial Assumptions and Other Inputs - *continued*

Preretirement mortality rates were based on the Pub-2010 Healthy “Teachers” (TPAF/ABP) and “General” (PERS) classification headcount-weighted mortality table with fully generational mortality improvement projections from the central year using Scale MP-2021. Postretirement mortality rates were based on the Pub-2010 “General” classification headcount-weighted mortality table with fully generational mortality improvement projections from the central year using Scale MP-2021. Disability mortality was based on the Pub-2010 “General” classification headcount-weighted disabled mortality table with fully generational mortality improvement projections from the central year using Scale MP-2021.

The actuarial assumptions used in the June 30, 2020 valuation were based on the results of actuarial experience studies for the periods July 1, 2015 - June 30, 2018, and July 1, 2014 - June 30, 2018 for TPAF and PERS, respectively.

100% of all retirees who currently have healthcare coverage are assumed to continue with that coverage. 100% of active members are considered to participate in the Plan upon retirement, having a coverage blend of 85% and 15% in PPO and HMO, respectively.

Health Care Trend Assumptions

For pre-Medicare medical benefits, the trend rate is initially 5.65% and decreases to a 4.50% long-term trend rate after seven years. For post-65 medical benefits, the actual fully-insured Medicare Advantage trend rates for fiscal year 2022 through 2023 are reflected. For PPO the trend is initially 5.74% in fiscal year 2024, increasing to 12.93% in fiscal year 2025 and decreases to 4.50% after 11 years. For HMO the trend is initially 6.01 % in fiscal year 2024, increasing to 15.23% in fiscal year 2025 and decreases to 4.5% after 11 years. For prescription drug benefits, the initial trend rate is 6.75% and decreases to a 4.50% long-term trend rate after seven years. For the Medicare Part B reimbursement, the trend rate is 5.00%

Discount Rate

The discount rate for June 30, 2021 was 2.16%. This represents the municipal bond return rate as chosen by the Division. The source is the Bond Buyer Go 20-Bond Municipal Bond Index, which includes tax-exempt general obligation municipal bonds with an average rating of AA/Aa or higher. As the long-term rate of return is less than the municipal bond rate, it is not considered in the calculation of the discount rate, rather the discount rate is set at the municipal bond rate.

LEAD CHARTER SCHOOL
(County of Essex)
Notes to the Basic Financial Statements
Year ended June 30, 2022

8 Post Retirement Benefits – continued

Changes in the Total OPEB Liability Reported by the State of New Jersey

	Increase/(Decrease) Total OPEB Liability
Balance as of June 30, 2020 measurement date	\$ 67,809,962,608
Changes recognized for the fiscal year:	
Service cost	\$ 3,217,184,264
Interest on total OPEB liability	1,556,661,679
Changes of benefit terms	(63,870,842)
Difference between expected and actual experiences	(11,385,071,658)
Effect of changes of assumptions	59,202,105
Gross benefits paid by the State	(1,226,213,382)
Contributions from the members	39,796,196
Net changes	\$ (7,802,311,638)
 Balance as of June 30, 2021 measurement date	 \$ 60,007,650,970

Sensitivity of Total Nonemployer OPEB Liability to Changes in the Discount Rate

The following presents the State's proportionate share of the OPEB liability attributable to the District calculated using the discount rate of 2.16%; as well as what the State's proportionate share of the OPEB liability attributable to the District that would be if it were calculated using a discount rate that is 1-percentage-point lower (1.16 percent) or 1-percentage-point higher (3.16 percent) than the current rate:

	2021		
	At 1% Decrease (1.16%)	At 1% Discount Rate (2.16%)	At 1% Increase (3.16%)
Total OPEB liability attributable to the Charter School	\$ 1,249,121	\$ 1,042,809	\$ 880,350
	2020		
	At 1% Decrease (1.21%)	At 1% Discount Rate (2.21%)	At 1% Increase (3.21%)
Total OPEB liability attributable to the Charter School	\$ 930,909	\$ 772,185	\$ 648,078

LEAD CHARTER SCHOOL
(County of Essex)
Notes to the Basic Financial Statements
Year ended June 30, 2022

8 Post Retirement Benefits – continued

Sensitivity of Total Nonemployer OPEB Liability to Changes in the Healthcare Trend Rate

The following presents the total nonemployer OPEB Liability attributable to the Charter School as of June 30, 2021 and 2020, respectively, calculated using the healthcare trend rate as disclosed in this note, as well as what the total nonemployer OPEB liability attributable to the Charter School would be if it were calculated using a healthcare trend rate that is I-percentage-point lower or I-percentage-point higher than the current rate:

	2021		
	At 1% Decrease	Healthcare Cost Trend Rate	At 1% Increase
Total OPEB liability attributable to the Charter School	\$ 844,157	\$ 1,042,809	\$ 1,309,584
	2020		
	At 1% Decrease	Healthcare Cost Trend Rate	At 1% Increase
Total OPEB liability attributable to the Charter School	\$ 623,334	\$ 772,185	\$ 949,434

OPEB Expense and Deferred Outflows of Resources and Deferred Inflows of Resources Related to OPEB

For the fiscal year ended June 30, 2022 the Charter School recognized OPEB expense of \$396,636 as determined by the State of New Jersey Division of Pensions and Benefits. This expense and the related offsetting revenue are for benefits provided by the State through a defined benefit OPEB plan that meets the criteria in GASB Statement 75, in which there is a special funding situation.

In accordance with GASB Statement 75, as the Charter School's proportionate share of the OPEB liability is \$-0, there is no recognition of the allocation of the proportionate share of the deferred inflows and outflows of resources. At June 30, 2021 the State had deferred outflows of resources and deferred inflows of resources related to OPEB from the following sources:

LEAD CHARTER SCHOOL
(County of Essex)
Notes to the Basic Financial Statements
Year ended June 30, 2022

8 Post Retirement Benefits – continued

OPEB Expense and Deferred Outflows of Resources and Deferred Inflows of Resources Related to OPEB - continued

	Deferred Outflows of Resources	Deferred Inflows of Resources
Differences between actual and expected experience	\$ 9,045,886,863	\$ 18,009,362,976
Net difference between expected and actual earnings on OPEB plan investments	-	-
Assumption changes	10,179,536,966	6,438,261,807
Subtotal	19,225,423,829	24,447,624,783
Contributions made in fiscal year 2019 after June 30, 2018 measurement date	TBD	N/A
Total	\$ 19,225,423,829	\$ 24,447,624,783

Amounts reported as deferred outflows of resources and deferred inflows of resources related to OPEB will be recognized in OPEB expense as follows:

Measurement Period - Fiscal Year Ending June 30:	Total
2022	\$ (1,182,303,041)
2023	\$ (1,182,303,041)
2024	\$ (1,182,303,041)
2025	\$ (1,182,303,041)
2026	\$ (840,601,200)
Thereafter	\$ 347,612,410
	\$ (5,222,200,954)

LEAD CHARTER SCHOOL
(County of Essex)
Notes to the Basic Financial Statements
Year ended June 30, 2022

9 Compensated Absences

The Charter School accounts for compensated absences (e.g., unused vacation, sick leave) as directed by Governmental Accounting Standards Board Statement No. 16 (GASB 16), "Accounting for Compensated Absences". A liability for compensated absences attributable to services already rendered and not contingent on a specific event that is outside the control of the employer and employee is accrued as employees earn the rights to the benefits.

Charter School employees are granted varying amounts of vacation and sick leave in accordance with the Charter School's personnel policy. The Charter School's policy permits employees to accumulate unused sick and personal days and carry forward the full amount to subsequent years. Upon termination or upon retirement, employees are currently not paid for accrued vacation or unused sick and personal days. The Board of the Charter School is currently reviewing the exiting compensated absences policies with the intent of addressing the issues of accumulation and payments upon termination.

As of June 30, 2022, Charter School-wide compensated absences amounted to \$-0-.

10 Deferred Compensation

The Charter School is in the process of offering its employees a choice of deferred compensation plans created in accordance with Internal Revenue Section 403(b).

11 Economic Dependency

The Charter School receives a substantial amount of its support from federal and state governments. A significant reduction in the level of support, if it were to occur, could have an effect on the Charter School's programs and activities.

12 Contingent Liabilities

The Charter School participates in a number of federal and state programs that are fully or partially funded by grants received from other governmental units. Expenditures financed by grants are subject to audit by the appropriate grantor government. If expenditures are disallowed due to noncompliance with grant program regulations, the Charter School may be required to reimburse the grantor government. As of June 30, 2022, significant amounts of grant expenditures have not been audited by the various grantor agencies but the Charter School believes that disallowed expenditures, if any, based on subsequent audits will not have a material effect on any of the individual governmental funds or the overall financial position of the Charter School.

LEAD CHARTER SCHOOL
(County of Essex)
Notes to the Basic Financial Statements
Year ended June 30, 2022

13 Risk Management

The Charter School is exposed to various risks of loss related to torts; theft of, damage to, and destruction of assets; errors and omissions; injuries to employees; and natural disasters.

Property and Liability Insurance - The Charter School maintains commercial insurance coverage for property, liability and surety bonds. A complete schedule of insurance coverage can be found in the Statistical Section (UNAUDITED) of this Annual Comprehensive Financial Report.

14 Interfund Receivables, Payables and Transfers

The composition of interfund balances as of June 30, 2022 is as follows:

Fund	Interfund Receivable	Interfund Payable
General Fund	\$ 632,597	\$ -
Special Revenue Fund	-	630,537
Enterprise Fund	-	2,060
Trust and Agency Fund	-	-
	\$ 632,597	\$ 632,597

The above balances are the results of revenues earned or other financing sources received in one fund which are due to another fund and/or expenditures paid by one fund on behalf of another fund and/or to cover cash balances which were in negative position. Liquidation of this interfund balances is expected within the next fiscal year.

15 Receivables

Receivables as of June 30, 2022 consisted of accounts, intergovernmental, grants and miscellaneous items. All receivables are considered collectible in full. A summary of the principal items of intergovernmental and other receivables are as follows:

State aid	\$ 6,335
Federal aid	636,724
Other	25,182
Total receivables	\$ 668,241

LEAD CHARTER SCHOOL
(County of Essex)
Notes to the Basic Financial Statements
Year ended June 30, 2022

16 Note Payable – Paycheck Protection Program Loan

During the previous fiscal year ended June 30, 2020, the Charter School applied for and was approved a \$311,723 loan under the Paycheck Protection Program created as part of the relief efforts related to COVID-19 and administered by the Small Business Administration. The loan accrues interest at 1%, but payments are not required to begin for ten months after the expiration of the covered period which is a maximum of 24 weeks from the funding date. The Charter School is eligible for loan forgiveness of up to 100% of the loan, upon meeting certain requirements. The loan is uncollateralized and is fully guaranteed by the Federal government.

The loan was funded on May 13, 2020. The Charter School applied for the loan forgiveness during the year ended June 30, 2022 which was approved by the SBA on June 17, 2022. The entire loan amount is being recognized as revenue during the current fiscal year ended June 30, 2022.

17 Subsequent Events

The Charter School has evaluated all subsequent events occurring through the date of the independent auditor's report which is the date the financial statements were available to be issued. Based on this evaluation, the Charter School has determined that no subsequent event requires disclosure in the financial statements.

18 Fund Balance Appropriated – General Fund (Exhibit B- 1)

Of the \$1,000,506 General Fund balance at June 30, 2022, of which \$-0- is reserved. \$1,000,506 is unreserved and undesignated.

LEAD CHARTER SCHOOL
(County of Essex)
Notes to the Basic Financial Statements
Year ended June 30, 2022

19 Management Agreement – Charter Management Organization (CMO)

A School Management Agreement (the “Agreement”) was executed by the Charter School and YouthBuild Newark, Inc. (“CMO”) a New Jersey nonprofit organization.

The terms of the Agreement include provision of educational and management services, including operational and administrative supports, to the Charter School in furtherance of the Charter School’s mission.

The Agreement called for the payment of a monthly fees equal to 10% of total annual federal, state, and local public revenues actually received by the School (the "Management Fee"), beginning July 1, 2017. The Management Fee shall initially be based on budgeted numbers and shall subsequently be adjusted based on the October 15 and June 15 enrollment counts and in accordance with the Board approved audited financials. The Management Fee shall be payable on the first day of each month upon receipt of a duly certified purchase order. CMO shall not realize a profit from said fees. Notwithstanding the above 10% figure, the Management Fee is not being paid from Federal funds. Rather, the 10% sum represents the pricing of the Management Fee for the services performed pursuant to this Agreement.

The initial term of the Agreement is from April 1, 2017 through June 30, 2020. It is renewable for another two-year term July 1, 2020 to June 30, 2021, provided that the Charter School's Board of Trustees (the "Board") finds that the Services provided under the Agreement are being performed in an effective and efficient manner, and provided further that the terms and conditions upon any renewal shall remain substantially the same as those set forth herein.

It was renewed on November 10, 2020 for a two-year term July 1, 2020 to June 30, 2021 with the stipulation that it could be renewed for a two-year term, from July 1, 2021 to June 30, 2023.

The Charter School incurred a total of \$498,620 in management fees expenditures paid to YouthBuild during the year ended June 30, 2022.

20 Risk and Uncertainties – COVID-19 and Its Impact

In December 2019, an outbreak of a novel strain of coronavirus (COVID-19) originated in Wuhan, China and has since spread to other countries, including the United States. On March 11, 2020, the World Health Organization characterized COVID-19 as a pandemic. In addition, as of March 21, 2020, New Jersey State Governor Phil Murphy ordered the closure of the physical location of every “non-life sustaining” and “non-essential” business.

LEAD CHARTER SCHOOL
(County of Essex)
Notes to the Basic Financial Statements
Year ended June 30, 2022

20 Risk and Uncertainties – COVID-19 and Its Impact - *continued*

The Charter School’s operations are heavily dependent on both federal and state grant revenues. Its physical locations were closed from March 2020 through September 2020. The full impact of the COVID-19 outbreak continues to evolve as of the date of this report. As such it is uncertain as to the full impact that the pandemic will have on the Charter School’s financial condition, liquidity, and future results of operations. Management is actively monitoring the situation on its financial condition, liquidity and operations. The rapid development and fluidity of this situation precludes any prediction as to the ultimate material adverse impact of the COVID-19 pandemic. Nevertheless, the COVID-19 pandemic presents material uncertainty and risk with respect to the Charter School its performance, and its financial results.

However, it should be noted that as of the date of this report, the Charter School’s various federal and state grants have not been materially impacted.

Further, it should be noted that the United States government has expedited the process of vaccinating its people against the virus and it appears the restrictions on movement imposed earlier have eased significantly.

21 Reconciliation of Government-Wide and Fund Financial Statements

Explanation of Certain Differences Between the Governmental Fund Balance Sheet (B-1) and the Government-wide Statement of Net Position (A-1).

The governmental fund balance sheet includes reconciliation between fund balance – total governmental funds and net position - governmental activities as reported in the Government-wide statement of net position. One element of that reconciliation explains that long-term liabilities, including deferred pension liability are not due and payable in the current period and therefore are not reported in the funds. The reconciliation is as follows:

Fund balance per B-1	\$ 1,000,506
Cost of capital assets net accumulated depreciation	18,667
Pension deferred outflows	2,110,072
Pension deferred inflows	(1,018,353)
Deferred pension liability as of June 30, 2022	(1,625,227)
Cost of right-to-use lease assets, net of accumulated depreciation	1,843,415
Principal balance of lease liabilities	(2,119,923)
Net position (per A-1) as of June 30, 2022	<u><u>\$ 209,157</u></u>

Required Supplementary Information

Part II

Budgetary Comparison

**LEAD CHARTER SCHOOL
General Fund**

C-1

Budget Comparison Schedule

Year ended June 30, 2021

	<u>Original Budget</u>	<u>Budget Transfers</u>	<u>Final Budget</u>	<u>Actual</u>	<u>Variance Final to Actual</u>
Revenues					
Local Sources:					
Local tax levy	\$ 593,748	\$ -	\$ 593,748	\$ 593,748	\$ -
Miscellaneous	-	-	-	38,484	38,484
Total revenues -local sources	<u>593,748</u>	<u>-</u>	<u>593,748</u>	<u>632,232</u>	<u>38,484</u>
State sources					
Reimbursed TPAF-Social Security (non-budgeted)	4,213,162	-	4,213,162	3,862,955	(350,207)
TPAF - Post Retirement Medical (On-Behalf - Non-Budgeted)	-	-	-	65,444	65,444
Teacher's Pension & Annuity Fund (On-Behalf-Non-Budgeted)	-	-	-	58,078	58,078
Long Term Disability Insurance (On-Behalf-Non-Budgeted)	-	-	-	248,578	248,578
	-	-	-	222	222
Total revenues	<u>4,806,910</u>	<u>-</u>	<u>4,806,910</u>	<u>4,867,509</u>	<u>60,599</u>
Expenditures					
Current expense:					
Instruction					
Salaries of teachers	1,667,495	(372,105)	1,295,390	879,408	415,982
Other salaries for instruction	710,468	(79,548)	630,920	448,959	181,961
Purchased profesional technical services	814,119	(212,982)	601,137	282,427	318,710
Other purchased services	85,000	87,062	172,062	52,768	119,294
General educational supplies	92,640	(20,000)	72,640	13,853	58,787
Textbooks	16,500	-	16,500	-	16,500
Miscellaneous expenses	105,000	(33,000)	72,000	60,548	11,452
	<u>3,491,222</u>	<u>(630,573)</u>	<u>2,860,649</u>	<u>1,737,963</u>	<u>1,122,686</u>

**LEAD CHARTER SCHOOL
General Fund**

C-1

Budget Comparison Schedule

Year ended June 30, 2021

	<u>Original Budget</u>	<u>Budget Transfers</u>	<u>Final Budget</u>	<u>Actual</u>	<u>Variance Final to Actual</u>
Administrative cost:					
Salaries	984,280	(16,102)	968,178	352,078	616,100
Total benefit costs	588,971	2,239	591,210	475,745	115,465
Professional /Technical service	404,046	199,412	603,458	380,995	222,463
Other purchased services	19,160	-	19,160	3,741	15,419
Communications and Telephones	21,398	-	21,398	13,195	8,203
Supplies and materials	21,460	1,893	23,353	11,327	12,026
Interest on current loans	-	18,101	18,101	18,101	-
Miscellaneous expenses	5,000	11,668	16,668	14,639	2,029
	<u>2,044,315</u>	<u>217,211</u>	<u>2,261,526</u>	<u>1,269,821</u>	<u>991,705</u>
Support services:					
Salaries	227,065	247,306	474,371	298,837	175,534
Purchased prof/tech service	4,000	16,000	20,000	4,000	16,000
Other purchased services	32,600	38,242	70,842	37,122	33,720
Rent on land and buildings - other than Lease Purchase Agreements	773,295	51,302	824,597	344,531	480,066
Insurance-fidelity, liability property	67,383	11,113	78,496	78,496	-
Supplies and materials	19,000	1,563	20,563	915	19,648
Energy & Utilities	82,800	-	82,800	52,612	30,188
Miscellaneous expenses	-	-	-	-	-
Transportation other than to/from school	5,000	25,600	30,600	30,600	-
Lease interest expense	-	-	-	115,933	(115,933)
Principal payments on lease liabilities	-	-	-	364,133	(364,133)
Total support services	<u>1,211,143</u>	<u>391,126</u>	<u>1,602,269</u>	<u>1,327,179</u>	<u>275,090</u>

**LEAD CHARTER SCHOOL
General Fund**

C-1

Budget Comparison Schedule

Year ended June 30, 2021

	<u>Original Budget</u>	<u>Budget Transfers</u>	<u>Final Budget</u>	<u>Actual</u>	<u>Variance Final to Actual</u>
Capital outlay:					
Instructional equipment	-	-	-	-	-
Non-instructional equipment	-	-	-	-	-
Purchase land/improvements	-	-	-	-	-
Miscellaneous expenses	-	-	-	-	-
Total capital outlay	<u>-</u>	<u>-</u>	<u>-</u>	<u>-</u>	<u>-</u>
Reimbursed TPAF-Social Security (non-budgeted)	-	-	-	65,444	(65,444)
TPAF - Post Retirement Medical (On-Behalf - Non-Budgeted)	-	-	-	58,078	(58,078)
Teacher's Pension & Annuity Fund (On-Behalf-Non-Budgeted)	-	-	-	248,578	(248,578)
Long Term Disability Insurance (On-Behalf-Non-Budgeted)	-	-	-	222	(222)
Total expenditures	<u>6,746,680</u>	<u>(22,236)</u>	<u>6,724,444</u>	<u>4,707,285</u>	<u>2,323,815</u>
Excess (deficiency) of revenues over (under) expenditures, before other financing sources	(1,939,770)	22,236	(1,917,534)	160,224	(2,263,216)
Other financing sources and special items:					
Transfer to cover food deficit	-	(22,237)	(22,237)	(22,237)	-
Special item - Forgiveness of Paycheck Protection Program (PPP) loan	-	-	-	311,723	(311,723)
Total other financing sources and special items:	<u>-</u>	<u>(22,237)</u>	<u>(22,237)</u>	<u>289,486</u>	<u>(311,723)</u>
Excess (deficiency) of revenues over (under) expenditures, after other financing sources and special items	(1,939,770)	(1)	(1,939,771)	449,710	(2,389,481)
Fund balances, beginning of year	<u>795,034</u>	<u>-</u>	<u>795,034</u>	<u>550,796</u>	<u>244,238</u>
Fund balances, end of year	<u>\$ (1,144,736)</u>	<u>\$ (1)</u>	<u>\$ (1,144,737)</u>	<u>\$ 1,000,506</u>	<u>\$ (2,145,243)</u>

**LEAD CHARTER SCHOOL
Special Revenue Fund**

C-2

**Budget Comparison Schedule
Budgetary Basis
Year ended June 30, 2021**

	<u>Original Budget</u>	<u>Budget Transfers</u>	<u>Final Budget</u>	<u>Actual</u>	<u>Variance Final to Actual</u>
Revenues					
Federal sources	\$ 698,101	\$ -	\$ 698,101	\$ 698,101	\$ -
State sources	23,334	-	23,334	23,334	-
Total revenues -all sources	<u>721,435</u>	<u>-</u>	<u>721,435</u>	<u>721,435</u>	<u>-</u>
Expenditures					
Current Expenditures:					
Instruction:					
Salaries of teachers	89,143	-	89,143	89,143	-
Purchased Prof. and technical services	104,947	-	104,947	104,947	-
Other purchased services	169,830	-	169,830	169,830	-
General supplies	94,606	-	94,606	94,606	-
Miscellaneous expenditures	-	-	-	-	-
Total instruction	<u>458,526</u>	<u>-</u>	<u>-</u>	<u>458,526</u>	<u>-</u>
Support services					
Support services salaries	11,474	-	11,474	11,474	-
Employee benefits	-	-	-	-	-
Purchased professional services	192,763	-	192,763	192,763	-
Other purchased services	-	-	-	-	-
Supplies	35,338	-	35,338	35,338	-
Miscellaneous expenditures	-	-	-	-	-
Total support services	<u>239,575</u>	<u>-</u>	<u>239,575</u>	<u>239,575</u>	<u>-</u>
Capital Outlay:					
Facilities acquisition and construction services					
Instructional equipment	-	-	-	-	-
Noninstructional equipment	-	-	-	-	-
Construction services	23,334	-	23,334	23,334	-
Total facilities acquisition and construction services	<u>23,334</u>	<u>-</u>	<u>23,334</u>	<u>23,334</u>	<u>-</u>
Total expenditures	<u>\$ 721,435</u>	<u>\$ -</u>	<u>\$ 262,909</u>	<u>\$ 721,435</u>	<u>\$ -</u>

Notes to Required Supplementary Information

LEAD CHARTER SCHOOL
Note to Required Supplementary Information
Budget to GAAP Reconciliation

C-3

Year ended June 30, 2021

		General Fund	Special Revenue Fund
Sources/inflows of resources			
Actual amounts (budgetary basis) "revenue" from the budgetary comparison schedule:	[C-1]	\$ 4,867,509	
	[C-2]		\$ 721,435
Difference - budget to GAAP: Grant accounting budgetary basis differs from GAAP in that encumbrances are recognized as expenditures, and the related revenue is recognized.		0	0
Total revenues as reported on the statement of revenues, expenditures and changes in fund balances - governmental funds	[B-2]	\$ 4,867,509	\$ 721,435
 Uses/outflows of resources			
Actual amounts (budgetary basis) "total outflows" from the budgetary comparison schedule	[C-1]	\$ 4,707,285	
	[C-2]		\$ 721,435
Differences - budget to GAAP Encumbrances for supplies and equipment ordered but not received are reported in the year the order is placed for budgetary purposes, but in the year the supplies are received for financial reporting purposes.			0
Transfers to and from other funds are presented as outflows of budgetary resources but are not expenditures for financial reporting purposes. Net transfer (outflows) to general fund		0	0
Total expenditures as reported on the statement of revenues, expenditures, and changes in fund balances - governmental funds	[B-2]	\$ 4,707,285	\$ 721,435

Note 1) The general fund budget basis of the use/outflow of resources is GAAP, therefore no reconciliation is required.

LEAD CHARTER SCHOOL

L-1

**Schedule of the Charter School's Proportionate Share of the Net Pension Liability - PERS
Last Five Fiscal Years**

	<u>Fiscal Year Ended June 30,</u>	<u>Fiscal Year Ended June 30,</u>	<u>Fiscal Year Ended June 30,</u>		
	<u>2021</u>	<u>2020</u>	<u>2019</u>	<u>2018</u>	<u>2017</u>
Charter School's proportion of the net pension liability (assets)	0.0137190483%	0.0088276465%	0.0000000000%	0.0000000000%	0.0000000000%
Charter School's proportionate share of the net pension liability (assets)	<u>1,625,227</u>	<u>1,439,558</u>	<u>-</u>	<u>-</u>	<u>-</u>
Charter School's covered employee payroll	\$ 931,962	\$ 772,511	\$ -	\$ -	\$ -
Charter School's proportionate share of the net pension liability (assets) as a percentage of its covered employee payroll	174.39%	186.35%	0.00%	0.00%	0.00%
Plan fiduciary net position as a percentage of the total pension liability - local	70.33%	58.32%	0.00%	0.00%	0.00%

NOTE:

While the Charter School implemented the GASB 68 Pension disclosure during the previous year ended June 30, 2018, the pension reports for 2019, 2018 and 2017 did not include the proportional share of the School's liabilities. This is because the School was opened in 2017-2018 school-year and was therefore only five years in the plan. The liabilities information will be provided in the ensuing years.

Note

Until a full ten year trend is compiled, information will be presented for those years for which information is available.
--

LEAD CHARTER SCHOOL

Schedule of the Charter School's Contributions - PERS
Last Five Fiscal Years

	<u>Fiscal Year Ended June 30,</u> <u>2021</u>	<u>Fiscal Year Ended June 30,</u> <u>2020</u>	<u>Fiscal Year Ended June 30,</u>		
			<u>2019</u>	<u>2018</u>	<u>2017</u>
Contractually required contribution	\$ 160,666	\$ 96,570	\$ -	\$ -	\$ -
Contribution in relation to the contractually required contribution	<u>(160,666)</u>	<u>(96,570)</u>	<u>-</u>	<u>-</u>	<u>-</u>
Contribution deficiency (excess)	<u>\$ -</u>	<u>\$ -</u>	<u>\$ -</u>	<u>\$ -</u>	<u>\$ -</u>
Charter School's covered employee payroll	\$ 931,962	\$ 772,511	\$ -	\$ -	\$ -
Contributions as a percentage of covered employee payroll	17.24%	12.50%	0.00%	0.00%	0.00%

NOTE:

While the Charter School implemented the GASB 68 Pension disclosure during the previous year ended June 30, 2018, the pension reports for 2019, 2018 and 2017 did not include the proportional share of the School's liabilities. This is because the School was opened in 2017-2018 school-year and was therefore only five years in the plan. The liabilities information will be provided in the ensuing years.

Note

Until a full ten year trend is compiled, information will be presented for those years for which information is available.

LEAD CHARTER SCHOOL

Schedule of the Charter School's Proportionate Share of the Net Pension Liability - TPAF
Last Five Fiscal Years

	Fiscal Year Ended June 30,		Fiscal Year Ended June 30,		
	2021	2020	2019	2018	2017
Charter School's proportion of the net pension liability (assets)**	N/A	N/A	N/A	N/A	N/A
Charter School's proportionate share of the net pension liability (assets)**	N/A	N/A	N/A	N/A	N/A
State's proportionate share of the net pension liability (assets) associated with the Charter School	\$ 3,144,090	\$ -	\$ -	\$ -	\$ -
Total	<u>\$ 3,144,090</u>	<u>\$ -</u>	<u>\$ -</u>	<u>\$ -</u>	<u>\$ -</u>
Charter School's covered employee payroll	\$ 849,546	\$ 478,886	\$ -	\$ -	\$ -
Charter School's proportionate share of the net pension liability (assets) as a percentage of its covered employee payroll**	N/A	N/A	N/A	N/A	N/A
Plan fiduciary net position as a percentage of the total pension liability	35.52%	24.60%	0.00%	0.00%	0.00%

**Note

TPAF is a special funding situation as defined by GASB Statement No. 68 in which the State of New Jersey is 100% responsible for contributions to the plan. Since the Charter School (employer) does not contribute directly to the plan there is no net pension liability to report in the financial statements of the Charter School.

NOTE:

While the Charter School implemented the GASB 68 Pension disclosure during the previous year ended June 30, 2018, the pension reports for 2019, 2018 and 2017 did not include the proportional share of the School's liabilities. This is because the School was opened in 2017-2018 school-year and was therefore only five years in the plan. The liabilities information will be provided in the ensuing years.

Note

Until a full ten year trend is compiled, information will be presented for those years for which information is available.

LEAD CHARTER SCHOOL

M-1

Schedule of the State's Proportionate Share of the Net OPEB Liability Associated with the Charter School
and Changes in the Total OPEB Liability and Related Ratios
Public Employee's Retirement System and Teachers' Pension and Annuity Fund
Last Five Fiscal Years

	Fiscal Year Ending				
	2021	2020	2019	2018	2017
Total OPEB Liability					
Service cost	287,441	3,795	**	**	**
Interest cost	27,052	39	**	**	**
Changes of benefit terms	(1,110)	-	**	**	**
Differences between expected and actual experiences	(23,171)	636,565	**	**	**
Changes of assumptions	1,029	141,052	**	**	**
Member contributions	692	407	**	**	**
Gross benefit payments	(21,309)	(13,443)	**	**	**
Net change in total OPEB liability	270,624	768,415	**	**	**
Total OPEB liability - beginning	772,185	3,770	**	**	**
Total OPEB liability, ending	\$ 1,042,809	\$ 772,185	\$ 3,770	\$ -	\$ -
Covered employee payroll - PERS and TPAF	\$ 250,688	\$ 162,474	**	**	**
Total OPEB liability as a percentage of covered employee payroll	416%	475%	**	**	**
State's proportionate share of the net OPEB liability (asset) associated with the Charter School	0.00%	0.00%	**	**	**
Charter School's contributions	\$ -	\$ -	**	**	**

** Information not available.

Until a full ten year trend is compiled, information will be presented for those years for which information is available.

NOTE:

The GASB 75 Post Retirement Benefits reports provided by the New Jersey Division of Pension did not include the proportional share of the School's liabilities for 2017, 2018 and 2019. This is because the School was opened in 2017-2018 school-year and was therefore five years in the plan. The liabilities information will be provided in the ensuing years.

LEAD CHARTER SCHOOL
(County of Essex)
Notes to Required Supplementary Information
Year ended June 30, 2022

1. Pension – Public Employees’ Retirement System (PERS)

Benefit Changes

There were none.

Changes of Assumptions

In the July 1, 2019 actuarial valuation, the mortality improvement was based on Scale MP-2020 while in the July 1, 2020 actuarial valuation the mortality improvement was based on Scale MP-2021.

2. Pension – Teachers’ Pension and Annuity Fund (TPAF)

Benefit Changes

There were none.

Changes of Assumptions

The discount rate changed from 5.40% as of June 30, 2020 to 7.00% as of June 30, 2021.

3. Other Post-Retirement Benefit Plan – Public Employees’ Retirement System (PERS) and Teachers’ Pension and Annuity Fund (TPAF)

Benefit Changes

There were none.

Changes of Assumptions

The discount rate changed from 2.21% as of June 30, 2020 to 2.16% as of June 30, 2021.

Other Supplementary Information

School Level Schedules

Special Revenue Fund

LEAD CHARTER SCHOOL
Special Revenue Fund

E-1

Combining Schedule of Program, Revenue and Expenditures
Budgetary Basis

Year ended June 30, 2021

	Title IA 2021-2022	IDEA 2021-2022	ARP I.D.E.A. 2021-2022	CRRSA ESSER II 2020-2023	CRRSA ESSER II Learning Acceleration 2020-2023	CRRSA ESSER II Mental Health 2020-2023	ARP ESSER III 2020-2024	SDA Emergent Capital Needs 2021-2022	Total
Revenues									
Federal sources	\$ 75,108	\$ 98,549	\$ 14,163	\$ 237,862	\$ 8,203	\$ 38,728	\$ 225,488	\$ -	\$ 698,101
State sources	-	-	-	-	-	-	-	23,334	23,334
Total revenues -all sources	<u>\$ 75,108</u>	<u>\$ 98,549</u>	<u>\$ 14,163</u>	<u>\$ 237,862</u>	<u>\$ 8,203</u>	<u>\$ 38,728</u>	<u>\$ 225,488</u>	<u>\$ 23,334</u>	<u>\$ 721,435</u>
Expenditures									
Instruction									
Salaries of teachers	\$ 75,108	\$ -	\$ -	\$ -	\$ -	\$ -	\$ 14,035	\$ -	\$ 89,143
Purchased Prof. and technical services	-	-	-	104,947	-	-	-	-	104,947
Other purchased services	-	-	-	-	-	-	169,830	-	169,830
General supplies	-	-	-	54,746	-	-	39,860	-	94,606
Miscellaneous expenditures	-	-	-	-	-	-	-	-	-
Total instruction	<u>75,108</u>	<u>-</u>	<u>-</u>	<u>159,693</u>	<u>-</u>	<u>-</u>	<u>223,725</u>	<u>-</u>	<u>458,526</u>
Support services									
Support services salaries	-	-	-	11,474	-	-	-	-	11,474
Employee benefits	-	-	-	-	-	-	-	-	-
Purchased professional services	-	98,549	14,163	33,120	8,203	38,728	-	-	192,763
Other purchased services	-	-	-	-	-	-	-	-	-
Supplies	-	-	-	33,575	-	-	1,763	-	35,338
Miscellaneous expenditures	-	-	-	-	-	-	-	-	-
Total support services	<u>-</u>	<u>98,549</u>	<u>14,163</u>	<u>78,169</u>	<u>8,203</u>	<u>38,728</u>	<u>1,763</u>	<u>-</u>	<u>239,575</u>
Facilities acquisition and construction services									
Instructional equipment	-	-	-	-	-	-	-	-	-
Noninstructional equipment	-	-	-	-	-	-	-	-	-
Construction services	-	-	-	-	-	-	-	23,334	23,334
Total facilities acquisition and construction services	<u>-</u>	<u>-</u>	<u>-</u>	<u>-</u>	<u>-</u>	<u>-</u>	<u>-</u>	<u>23,334</u>	<u>23,334</u>
Total expenditures	<u>\$ 75,108</u>	<u>\$ 98,549</u>	<u>\$ 14,163</u>	<u>\$ 237,862</u>	<u>\$ 8,203</u>	<u>\$ 38,728</u>	<u>\$ 225,488</u>	<u>\$ 23,334</u>	<u>\$ 721,435</u>

Capital Projects Fund

At June 30, 2022, there was no capital project fund.

Enterprise Fund

**LEAD CHARTER SCHOOL
Enterprise Funds**

G-1

Combining Statement of Net Position

June 30, 2022

	<u>Food Services</u>
Assets	
Current assets:	
Cash and cash equivalents	\$ -
Accounts receivable:	
Federal	2,026
State	34
Interfund receivable - General Fund	-
Total current assets	<u>\$ 2,060</u>
 Liabilities and net assets	
Current liabilities:	
Accounts payable	
Interfund payable - General Fund	2,060
Total current liabilities	<u>\$ 2,060</u>
 Net position	
Unrestricted	-
Total liabilities and net position	<u><u>\$ 2,060</u></u>

**LEAD CHARTER SCHOOL
Enterprise Fund**

G-2

Combining Statement of Revenues, Expenditures and Changes in Net Position

Year ended June 30, 2021

	Food Services
Operating revenues:	
Charges for services:	
Daily sales - reimbursable programs	\$ -
Daily sales - nonreimbursable programs	
Miscellaneous revenue	6,045
Total operating revenues	6,045
Operating expenses:	
Cost of sales - reimbursable programs	40,093
Cost of sales - nonreimbursable programs	-
Salaries	-
Employee benefits	-
Professional /technical service	-
Supplies and materials	-
Depreciation	-
Miscellaneous	-
Total operating expenses	40,093
Operating income (loss)	(34,048)
Nonoperating revenues:	
State sources:	
State School Lunch Program	205
Federal sources:	
National School Lunch Program	8,579
National School Breakfast Program	2,986
After School Snacks	41
Total nonoperating revenues	11,811
Net income/(loss) before contributions & transfers	(22,237)
Other financing sources:	
Transfer - from general fund to cover food deficit	22,237
	22,237
Change in net position	-
Total net position-beginning of year	-
Total net position-end of year	\$ -

**LEAD CHARTER SCHOOL
Enterprise Fund**

G-3

Statement of Cash Flows

Year ended June 30, 2021

	<u>Food Services</u>
Cash flows from operating activities	
Operating loss	\$ (34,048)
Adjustment to reconcile operating loss to net cash used in operating activities:	
Changes in assets and liabilities:	
Accounts receivable	(1,563)
Due to general fund	(7,747)
Accounts payable	-
Net cash used in operating activities	<u>(9,310)</u>
 Cash flows from noncapital financing activities	
Cash received from state reimbursements	205
Cash received from federal reimbursements	11,606
Operating subsidies and transfers from other funds	22,237
Net cash provided by noncapital financing activities	<u>34,048</u>
 Cash flows from investing activities	-
 Net increase in cash and cash equivalents	(9,310)
Cash and cash equivalents, beginning	9,310
Cash and cash equivalents, ending	<u>\$ -</u>

Fiduciary Fund
Not Applicable

Long Term Debt

At June 30, 2022, there was no long-term debt.

LEAD CHARTER SCHOOL
Long-Term Debt
Schedule of Obligations Under Renovation Loan

I-2

Year ended June 30, 2021

<u>Interest Rate Payable</u>	<u>Amount of Original Issue</u>	<u>Amount Outstanding June 30, 2020</u>	<u>Acquired Current Year</u>	<u>Retired Current Year</u>	<u>Amount Outstanding June 30, 2021</u>
		\$ -	\$ -	\$ -	\$ -

NONE

Statistical Section

LEAD CHARTER SCHOOL
County of Hudson, New Jersey

J-1

Net Position By Component
Last Five Fiscal Years
(accrual basis of accounting)
(Unaudited)

	<u>June 30,</u> <u>2022</u>	<u>June 30,</u> <u>2021</u>	<u>June 30,</u> <u>2020</u>	<u>June 30,</u> <u>2019</u>	<u>June 30,</u> <u>2018</u>
Governmental activities					
Invested in capital assets, net of related debt	\$ -	\$ -	\$ -	\$ -	\$ -
Restricted	-	-	-	-	-
Unrestricted	466,998	227,802	795,034	630,434	228,367
Total governmental activities net position	<u>\$ 466,998</u>	<u>\$ 227,802</u>	<u>\$ 795,034</u>	<u>\$ 630,434</u>	<u>\$ 228,367</u>
Business-type activities					
Invested in capital assets, net of related debt	\$ -	\$ -	\$ -	\$ -	\$ -
Restricted	-	-	-	-	-
Unrestricted	-	-	-	1,241	-
Total business-type activities	<u>\$ -</u>	<u>\$ -</u>	<u>\$ -</u>	<u>\$ 1,241</u>	<u>\$ -</u>
School-wide					
Invested in capital assets, net of related debt	\$ -	\$ -	\$ -	\$ -	\$ -
Restricted	-	-	-	-	-
Unrestricted	466,998	227,802	795,034	631,675	228,367
Total charter school net position	<u>\$ 466,998</u>	<u>\$ 227,802</u>	<u>\$ 795,034</u>	<u>\$ 631,675</u>	<u>\$ 228,367</u>

Notes

GASB requires that ten year of statistical data be presented. However, only five years of data is available. Each year thereafter, an additional year's data will be included until ten years of data is presented.

LEAD CHARTER SCHOOL
County of Hudson, New Jersey

J-2

Changes In Net Position
Last Five Fiscal Years
(accrual basis of accounting)
(Unaudited)

	June 30, 2022	June 30, 2021	June 30, 2020	June 30, 2019	June 30, 2018
Expenses					
Governmental activities					
Instruction					
Regular	\$ 2,196,489	\$ 2,328,153	\$ 1,533,273	\$ 1,394,840	\$ 508,791
Support Services:					
General administration	1,874,730	1,951,876	1,353,261	849,091	411,725
School administrative services	1,501,310	1,220,324	1,204,604	895,156	621,373
On-behalf TPAF/FICA Reimbursements	65,444	68,505	36,614	48,104	35,877
Capital outlay	58,078	60,710	-	-	-
Unallocated depreciation	4,667	-	-	-	-
Total governmental activities expenses	<u>5,700,718</u>	<u>5,629,568</u>	<u>4,127,752</u>	<u>3,187,191</u>	<u>1,577,766</u>
Business-type activities:					
Food service	40,093	9,238	49,085	35,685	36,628
Child Care	-	-	-	-	-
Total business-type activities expense	<u>40,093</u>	<u>9,238</u>	<u>49,085</u>	<u>35,685</u>	<u>36,628</u>
Total charter school expenses	<u>\$ 5,740,811</u>	<u>\$ 5,638,806</u>	<u>\$ 4,176,837</u>	<u>\$ 3,222,876</u>	<u>\$ 1,614,394</u>
Program Revenues					
Governmental activities:					
Charges for services:					
Operating grants and contributions	\$ 721,435	\$ 205,674	\$ 109,737	\$ 176,009	\$ 158,597
Capital grants and contributions	-	-	-	-	-
Total governmental activities program revenues	<u>721,435</u>	<u>205,674</u>	<u>109,737</u>	<u>176,009</u>	<u>158,597</u>
Business-type activities:					
Charges for services:					
Food service	6,045	599	76	14,086	-
Child care	-	-	-	-	-
Operating grants and contributions	11,811	992	16,745	20,826	19,777
Capital grants and contributions	-	-	-	-	-
Total business type activities program revenues	<u>17,856</u>	<u>1,591</u>	<u>16,821</u>	<u>34,912</u>	<u>19,777</u>
Total charter school program revenues	<u>\$ 739,291</u>	<u>\$ 207,265</u>	<u>\$ 126,558</u>	<u>\$ 210,921</u>	<u>\$ 178,374</u>
Net (Expense)/Revenue					
Governmental activities	\$ (4,979,283)	\$ (5,423,894)	\$ (4,018,015)	\$ (3,011,182)	\$ (1,419,169)
Business-type activities	<u>(22,237)</u>	<u>(7,647)</u>	<u>(32,264)</u>	<u>(773)</u>	<u>(16,851)</u>
Total charter school-wide net expense	<u>\$ (5,001,520)</u>	<u>\$ (5,431,541)</u>	<u>\$ (4,050,279)</u>	<u>\$ (3,011,955)</u>	<u>\$ (1,436,020)</u>
General Revenues and Other Changes in Net Position					
Governmental activities:					
Property taxes levied for general purposes, net	\$ 593,748	\$ 532,056	\$ 550,706	\$ 463,613	\$ 209,826
Grants and contributions	4,235,277	4,012,938	3,661,734	2,939,537	1,288,912
Miscellaneous income	38,484	4,170	1,198	12,113	165,649
Transfers	(22,237)	(7,647)	(31,023)	(2,014)	(16,851)
Total governmental activities	<u>4,845,272</u>	<u>4,541,517</u>	<u>4,182,615</u>	<u>3,413,249</u>	<u>1,647,536</u>
Business-type activities:					
Transfers	22,237	7,647	31,023	2,014	16,851
Total business-type activities	<u>22,237</u>	<u>7,647</u>	<u>31,023</u>	<u>2,014</u>	<u>16,851</u>
Total charter school-wide	<u>\$ 4,867,509</u>	<u>\$ 4,549,164</u>	<u>\$ 4,213,638</u>	<u>\$ 3,415,263</u>	<u>\$ 1,664,387</u>
Change in Net Position					
Governmental activities	\$ (111,774)	\$ (874,730)	\$ 195,623	\$ 404,081	\$ 245,218
Business-type activities	<u>(22,237)</u>	<u>(7,647)</u>	<u>(32,264)</u>	<u>(773)</u>	<u>(16,851)</u>
Total charter school	<u>\$ (134,011)</u>	<u>\$ (882,377)</u>	<u>\$ 163,359</u>	<u>\$ 403,308</u>	<u>\$ 228,367</u>

Notes

GASB requires that ten year of statistical data be presented. However, only five years of data is available. Each year thereafter, an additional year's data will be included until ten years of data is presented.

LEAD CHARTER SCHOOL
County of Hudson, New Jersey

J-3

Fund Balances - Governmental Funds
Last Five Fiscal Years
(modified accrual basis of accounting)
(Unaudited)

	<u>June 30,</u> <u>2022</u>	<u>June 30,</u> <u>2021</u>	<u>June 30,</u> <u>2020</u>	<u>June 30,</u> <u>2019</u>	<u>June 30,</u> <u>2018</u>
General Fund					
Unreserved	\$ 1,000,506	\$ 550,796	\$ 795,034	\$ 630,434	\$ 228,367
Total general fund	<u>\$ 1,000,506</u>	<u>\$ 550,796</u>	<u>\$ 795,034</u>	<u>\$ 630,434</u>	<u>\$ 228,367</u>
All Other Governmental Funds					
Reserved	\$ -	\$ -	\$ -	\$ -	\$ -
Unreserved, reported in:					
Special revenue fund	-	-	-	-	-
Capital projects fund	-	-	-	-	-
Debt service fund	-	-	-	-	-
Permanent fund	-	-	-	-	-
Total all other governmental funds	<u>\$ -</u>	<u>\$ -</u>	<u>\$ -</u>	<u>\$ -</u>	<u>\$ -</u>

Notes

GASB requires that ten year of statistical data be presented. However, only five years of data is available. Each year thereafter, an additional year's data will be included until ten years of

LEAD CHARTER SCHOOL
County of Hudson, New Jersey

J-4

Changes in Fund Balances - Governmental Funds
Last Five Fiscal Years
(Unaudited)

<u>Function</u>	<u>June 30,</u> <u>2022</u>	<u>June 30,</u> <u>2021</u>	<u>June 30,</u> <u>2020</u>	<u>June 30,</u> <u>2019</u>	<u>June 30,</u> <u>2018</u>
Revenues					
Local tax levy	\$ 593,748	\$ 532,056	\$ 550,706	\$ 463,613	\$ 209,826
Miscellaneous	38,484	4,170	1,198	12,113	165,649
State sources	3,951,733	4,012,938	3,661,734	2,939,537	1,288,912
Federal sources	698,101	205,674	109,737	179,009	158,597
Total revenue	<u>5,282,066</u>	<u>4,754,838</u>	<u>4,323,375</u>	<u>3,594,272</u>	<u>1,822,984</u>
Expenditures					
Instruction	2,196,489	2,328,153	1,533,273	1,394,840	508,791
Administration	1,335,265	1,374,447	1,353,261	849,091	411,725
Support Services	1,588,991	1,296,476	1,272,241	945,274	674,101
Capital Outlay	23,334	-	-	23,334	-
Total expenditures	<u>5,144,079</u>	<u>4,999,076</u>	<u>4,158,775</u>	<u>3,212,539</u>	<u>1,594,617</u>
Net change in fund balances	<u>\$ 137,987</u>	<u>\$ (244,238)</u>	<u>\$ 164,600</u>	<u>\$ 381,733</u>	<u>\$ 228,367</u>

Source: Charter School's Records

LEAD CHARTER SCHOOL
County of Hudson, New Jersey

J-5

General Fund Other Local Revenue by Source
Last Five Fiscal Years
(Unaudited)

<u>Function</u>	<u>June 30,</u> <u>2022</u>	<u>June 30,</u> <u>2021</u>	<u>June 30,</u> <u>2020</u>	<u>June 30,</u> <u>2019</u>	<u>June 30,</u> <u>2018</u>
Other local revenues					
Miscellaneous	\$ 38,484	\$ 4,170	\$ 1,198	\$ 12,113	\$ 165,649
Total other local revenue	<u>\$ 38,484</u>	<u>\$ 4,170</u>	<u>\$ 1,198</u>	<u>\$ 12,113</u>	<u>\$ 165,649</u>

Source: Charter School's Records

**LEAD CHARTER SCHOOL
County of Hudson, New Jersey**

J-10

**Ratio of Outstanding Debt By Type
Last Five Fiscal Years**

Fiscal Year Ended June 30,	Governmental Activities				Type Activities	Total Charter School	Percentage of Personal Income ^a	Per Capita ^a
	General Obligation Bonds ^b	Certificates of Participation	Capital Leases	Bond Anticipation Notes (BANs)	Capital Leases			
2018	-	-	-	-	-	-	0.00%	-
2019	-	-	-	-	-	-	0.00%	-
2020	-	-	-	-	-	-	0.00%	-
2021	-	-	-	-	-	-	0.00%	-
2022	-	-	-	-	-	-	0.00%	-

NO LONG TERM DEBT FOR THE CHARTER SCHOOL

Note: Details regarding the Charter School's outstanding debt can be found in the notes to the financial statements.

LEAD CHARTER SCHOOL
County of Hudson, New Jersey

J-14

Demographic and Economic Statistics
Last Five Fiscal Years
(Unaudited)

<u>Year</u>	<u>Population ^a</u>	<u>Personal Income ^b</u>	<u>County Per Capita Personal Income ^c</u>	<u>Unemployment Rate ^d</u>
2018	281,764	\$ 16,914,292,920	\$ 60,030	7.90%
2019	281,764	16,914,292,920	60,030	7.90%
2020	281,764	16,914,292,920	60,030	7.90%
2021	281,764	16,914,292,920	60,030	7.90%
2022	281,764	16,914,292,920	60,030	7.90%

Source:

^a Population information provided by the NJ Dept of Labor and Workforce Development

^b Personal income has been estimated based upon the municipal population and per capita personal income presented

^c Personal capital income by municipality estimated based upon the 2000 Cesus published by the US Bureau of Economic Analysis.

^d Unemployment data provided by the NJ Dept of Labor and Workforce Development

**LEAD CHARTER SCHOOL
County of Hudson, New Jersey**

J-15

**Principal Employers
Current Year
(Unaudited)**

Employer	2022		
Employer	Employees	Rank [Optional]	Percentage of Total Municipal Employment
Newark Liberty International Airport	24,000	1	17.14%
Verizon Communications	17,100	2	12.21%
Prudential Financial, Inc.	16,850	3	12.04%
Continental Airline	11,000	4	7.86%
University of Medicines/Dentistry	11,000	5	7.86%
Public Service Enterprise Group	10,800	6	7.71%
Prudential Insurance	4,492	7	3.21%
City of Newark	3,984	8	2.85%
Horizon Blue Cross & Blue Shield	3,900	9	2.79%
	103,126		73.67%

LEAD CHARTER SCHOOL
County of Hudson, New Jersey

J-16

Full-Time Equivalent Charter School Employees by Function/Program
Last Five Fiscal Years
(Unaudited)

<u>Function/Program</u>	<u>June 30,</u> <u>2022</u>	<u>June 30,</u> <u>2021</u>	<u>June 30,</u> <u>2020</u>	<u>June 30,</u> <u>2019</u>	<u>June 30,</u> <u>2018</u>
Instruction					
Regular	9	9	9	9	5
Special education	3	2	2	2	1
Other instruction	2	4	4	4	1
Support Services:					
General administration	10	2	2	2	2
Other support services	11	5	5	5	5
Total	<u>35</u>	<u>22</u>	<u>22</u>	<u>22</u>	<u>14</u>

Source: Charter School Personnel Records

**LEAD CHARTER SCHOOL
County of Hudson, New Jersey**

J-17

Operating Statistics

**Last Five Fiscal Years
(Unaudited)**

Fiscal Year	Enrollment	Operating Expenditures^a	Cost Per Pupil	Percentage Change	Teaching Staff^b	Pupil/Teacher Ratio	Average Daily Enrollment (ADE)^c	Average Daily Attendance (ADA)^c	% Change in Average Daily Enrollment	Student Attendance Percentage
2018	92	\$ 1,594,617	\$ 17,333	N/A	7	1:12	92	90	N/A	98.00%
2019	222	3,189,205	14,366	100.00%	15	1:12	205	201	122.83%	98.00%
2020	240	4,158,775	17,328	30.40%	15	1:12	230	225	12.20%	98.00%
2021	231	4,999,076	21,641	20.21%	15	1:12	231	226	0.43%	98.00%
2022	234	5,120,745	21,884	2.43%	14	1:12	231	226	0.43%	98.00%

Sources: Charter School records

Note: Enrollment based on annual June Charter School count.

- a Operating expenditures equal total expenditures less debt service and capital outlay.
- b Teaching staff includes only full-time equivalents of certificated staff.
- c Average daily enrollment and average daily atten

**LEAD CHARTER SCHOOL
County of Hudson, New Jersey**

J-18

**School Building Information
Last Five Fiscal Years
(Unaudited)**

	<u>June 30, 2022</u>	<u>June 30, 2021</u>	<u>June 30, 2020</u>	<u>June 30, 2019</u>	<u>June 30, 2018</u>
Square Feet	24,700	24,700	24,700	24,700	24,700
Capacity (students)	250	250	250	250	250
Enrollment	234	231	240	222	92

Source: School Records

**LEAD CHARTER SCHOOL
County of Hudson, New Jersey**

J-19

**Schedule of Required Maintenance Expenditures
By School Facility*
Last Five Fiscal Years
(Unaudited)**

2018	\$ 228,207
2019	521,455
2020	821,862
2021	967,144
2022	517,676
	<hr/>
Total	<u>\$ 3,056,344</u>

* School facilities as defined under EFCFA.
(N.J.A.C. 6A:26-1.2 and N.J.A.C. 6A:26A-1.3)

Source: Charter School records

LEAD CHARTER SCHOOL
County of Hudson, New Jersey

J-20

Insurance Schedule

June 30, 2022
(Unaudited)

	Coverage	
Commercial General Liability:		
General & Auto Liability	\$	5,000,000
Property & Auto Physical Damage	\$	250,000,000
Boiler & Machinery	\$	100,000,000
Comprehensive Crime Coverage	\$	1,000,000
Money and Securities	\$	50,000 Each Loss
Blanket Dishonesty Bond Including Faithful Performance	\$	500,000 Per Loss
Including Faithful Performance		
Computer Fraud	\$	50,000 Per Loss
Forgery and Alteration	\$	50,000 Per Loss
Environmental Impairment Liability	\$	1,000,000 /\$25,000,000 Fund Agg.
Excess Liability	\$	15,000,000
School Leaders Professional Liability	\$	5,000,000 /\$5,000,000 Fund Agg.
Workers' Compensation		Statutory
Supplemental Indemnity		
Employers' Liability	\$	5,000,000

Source: Charter School Records

LEAD CHARTER SCHOOL
County of Hudson, New Jersey

J-21

Charter School Performance Framework Financial Indicators
New Term Indicators

June 30, 2022
(Unaudited)

	2022	2021	2020
Cash	\$ 613,473	\$ 935,347	\$1,139,032
Current assets	1,330,010	170,874	98,850
Capital assets, net	-	-	-
Total assets	1,943,483	1,106,221	1,237,882
Current liabilities	907,382	492,745	426,703
Long term liabilities	-	-	-
Total liabilities	907,382	492,745	426,703
Net position	\$ 1,036,101	\$ 613,476	\$ 811,179
Total revenue	\$ 5,918,523	\$4,756,429	\$4,340,196
Total expenses	(5,682,733)	(5,578,096)	(4,176,837)
Change in net position	\$ 235,790	\$ (821,667)	\$ 163,359

Depreciation expense	\$ -	\$ -	\$ -
Interest expense	-	-	-
Principal payments	-	-	-
Interest payments	-	-	-
Final average daily enrollment	234	231	240
March 30th budgeted enrollment	230	230	230

	2022	2021	2020	Three Year Cumulative
NEAR TERM INDICATORS:				
Current ratio	2.14	2.25	2.90	7.29
Unrestricted days cash	39.40	61.20	99.54	200.14
Enrollment variance	102%	100%	104%	307%
Default	N/A	N/A	N/A	N/A

Source: Charter School Records

Charter School Performance Framework Financial Indicators
Sustainability Indicators

June 30, 2022
(Unaudited)

	2022	2021	2020
Cash	\$ 613,473	\$ 935,347	\$ 1,139,032
Current assets	1,330,010	170,874	98,850
Capital assets, net	-	-	-
Total assets	<u>1,943,483</u>	<u>1,106,221</u>	<u>1,237,882</u>
Current liabilities	907,382	492,745	426,703
Long term liabilities	-	-	-
Total liabilities	<u>907,382</u>	<u>492,745</u>	<u>426,703</u>
Net position	<u>\$ 1,036,101</u>	<u>\$ 613,476</u>	<u>\$ 811,179</u>
Total revenue	\$ 5,918,523	\$ 4,756,429	\$ 4,340,196
Total expenses	(5,682,733)	(5,578,096)	(4,176,837)
Change in net position	<u>\$ 235,790</u>	<u>\$ (821,667)</u>	<u>\$ 163,359</u>
Depreciation expense	\$ -	\$ -	\$ -
Interest expense	-	-	-
Principal payments	-	-	-
Interest payments	-	-	-
Final average daily enrollment	234	231	240
March 30th budgeted enrollment	230	230	230

	2022	2021	2020	Three Year Cumulative
SUSTAINABILITY INDICATORS:				
Total margin	4%	-17%	4%	-10%
Debt to asset	N/A	N/A	N/A	N/A
Cash flow	\$ (321,874)	\$ (203,685)	\$ 759,020	\$ 233,461
Debt service coverage ratio	N/A	N/A	N/A	N/A

Source: Charter School Records

Single Audit Section

Olugbenga Olabintan

Certified Public Accountant/Consultant

137 Camden Street, Suite #3
Newark, NJ 07103

Tel: (201) 230-7518
Fax: (973) 368-8268
E-mail: oolabintan@aol.com

K-1

Independent Auditor's Report on Internal Control Over Financial Reporting and on Compliance and Other Matters Based on an Audit of Financial Statements Performed in Accordance with *Government Auditing Standards*

The Honorable Chairperson and
Members of the Board of Trustees
Lead Charter School
County of Essex
Newark, New Jersey

We have audited, in accordance with auditing standards generally accepted in the United States of America and the standards applicable to financial audits contained in *Government Auditing Standards*, issued by the Comptroller General of the United States and *audit requirements as prescribed by the Office of School Finance, Department of Education, State of New Jersey*, the financial statements of the governmental activities, the business-type activities, the aggregate discretely presented component units, each major fund, and the aggregate remaining fund information of the Lead Charter School ("the Charter School"), in the County of Essex, State of New Jersey, as of and for the year ended June 30, 2022, and the related notes to the financial statements, which collectively comprise the Charter School's basic financial statements, and have issued our report thereon, dated January 31, 2023.

Internal Control over Financial Reporting

In planning and performing our audit of the financial statements, we considered the Charter School's internal control over financial reporting (internal control) to determine the audit procedures that are appropriate in the circumstances for the purpose of expressing our opinions on the financial statements, but not for the purpose of expressing an opinion on the effectiveness of the Charter School's internal control. Accordingly, we do not express an opinion on the effectiveness of the Charter School's internal control.

A *deficiency in internal control* exists when the design or operation of a control does not allow management or employees, in the normal course of performing their assigned functions, to prevent, or detect and correct, misstatements on a timely basis. A *material weakness* is a deficiency, or a combination of deficiencies, in internal control, such that there is a reasonable possibility that a material misstatement of the entity's financial statements will not be prevented, or detected and corrected on a timely basis. A *significant deficiency* is a deficiency, or a combination of deficiencies, in internal control that is less severe than a material weakness, yet important enough to merit attention by those charged with governance.

Our consideration of internal control was for the limited purpose described in the first paragraph of this section and was not designed to identify all deficiencies in internal control that might be material weaknesses or significant deficiencies. Given these limitations, during our audit we did not identify any deficiencies in internal control that we consider to be material weaknesses. However, material weaknesses may exist that have not been identified.

Compliance and Other Matters

As part of obtaining reasonable assurance about whether the Charter School's financial statements are free of material misstatement, we performed tests of its compliance with certain provisions of laws, regulations, contracts, and grant agreements, noncompliance with which could have a direct and material effect on the determination of financial statement amounts. However, providing an opinion on compliance with those provisions was not an objective of our audit, and accordingly, we do not express such an opinion. The results of our tests disclosed no instances of noncompliance or other matters that are required to be reported under *Government Auditing Standards and audit requirements as prescribed by the Office of School Finance, Department of Education, State of New Jersey*.

Purpose of this Report

The purpose of this report is solely to describe the scope of our testing of internal control and compliance and the results of that testing, and not to provide an opinion on the effectiveness of the Charter School's internal control or on compliance. This report is an integral part of an audit performed in accordance with *Government Auditing Standards and audit requirements as prescribed by the Office of School Finance, Department of Education, State of New Jersey* in considering the Charter School's internal control and compliance. Accordingly, this communication is not suitable for any other purpose.

Olugbenga Olabintan, CPA

January 31, 2023
Newark, New Jersey

OLUGBENGA OLABINTAN
Certified Public Accountant/Consultant



Olugbenga Olabintan, CPA
Licensed Public School Accountant
No. 20CS00230200

Olugbenga Olabintan

Certified Public Accountant/Consultant

137 Camden Street, Suite #3
Newark, NJ 07103

Tel: (201) 230-7518
Fax: (973) 368-8268
E-mail: oolabintan@aol.com

K-2

Independent Auditor's Report on Compliance for Each Major State Program; Report on Internal Control Over Compliance and Report on the Schedule of Expenditures of State Financial Assistance required by State of New Jersey OMB's Circular 15-08

The Honorable Chairperson and
Members of the Board of Trustees
Lead Charter School
County of Essex,
Newark, New Jersey

Report on Compliance for Each Major State Program

Opinion on Each Major State Program

We have audited the Lead Charter School ("the Charter School"), in the County of Essex, State of New Jersey's ("the Charter School's") with the types of compliance requirements described in the *State of New Jersey Department of Treasury Circular 15-08-OMB Compliance Supplement* that could have a direct and material effect on each of the Charter School's major State programs for the year ended June 30, 2022. The Charter School's major State programs are identified in the summary of auditor's results section of the accompanying schedule of findings and questioned costs.

In our opinion, the Charter School complied, in all material respects, with the compliance requirements referred to above that could have a direct and material effect on each of its major State programs for the fiscal year ended June 30, 2022.

Basis for Opinion on Each Major State Program

We conducted our audit of compliance in accordance with auditing standards generally accepted in the United States of America; the standards applicable to financial audits contained in *Government Auditing Standards*, issued by the Comptroller General of the United States; audit requirements prescribed by the Office of School Finance, Department of Education, State of New Jersey; and audit requirements of of New Jersey OMB Circular 15-08, Single Audit Policy for Recipients of Federal Grants, State Grants and State Aid.

Those standards, State of New Jersey Department of Treasury Circular 15-08-OMB and *audit requirements as prescribed by the Office of School Finance, Department of Education, State of New Jersey* require that we plan and perform the audit to obtain reasonable assurance about whether noncompliance with the types of compliance requirements referred to above that could have a direct and material effect on a major state program occurred. Our responsibilities under those standards are further described in the Auditor's Responsibilities for the Audit of Compliance section of our report.

We are required to be independent of the Charter School and to meet our other ethical responsibilities, in accordance with relevant ethical requirements relating to our audit. We believe that the audit evidence we have obtained is sufficient and appropriate to provide a basis for our opinion on compliance for each major State program. Our audit does not provide a legal determination of the Charter School's compliance with the compliance requirements referred to above.

Responsibilities of Management for Compliance

Management is responsible for compliance with the requirements referred to above and for the design, implementation, and maintenance of effective internal control over compliance with the requirements of laws, statutes, regulation, rules, and provisions of contracts or grant agreements applicable to the Charter School's State programs.

Auditor's Responsibilities for the Audit of Compliance

Our objectives are to obtain reasonable assurance about whether material noncompliance with the compliance requirements referred to above occurred, whether due to fraud or error, and express an opinion on the Charter School's compliance based on our audit. Reasonable assurance is a high level of assurance but is not absolute assurance and therefore is not a guarantee that an audit conducted in accordance with generally accepted auditing standards, Government Auditing Standards, audit requirements prescribed by the Office of School Finance, Department of Education, State of New Jersey and New Jersey OMB Circular 15-08 will always detect material noncompliance when it exists. The risk of not detecting material noncompliance resulting from fraud is higher than for that resulting from error, as fraud may involve collusion, forgery, intentional omission, misrepresentation, or the override of internal control. Noncompliance with the compliance requirements referred to above is considered material if there is a substantial likelihood that, individually or in the aggregate, it would influence the judgment made by a reasonable user of the report on compliance about the Charter School's compliance with the requirements of each major State program as a whole.

In performing an audit in accordance with generally accepted auditing standards, Government Auditing Standards, audit requirements prescribed by the Office of School Finance, Department of Education, State of New Jersey and New Jersey OMB Circular 15-08, we:

- Exercise professional judgement and maintain professional skepticism throughout the audit.
- Identify and assess the risks of material noncompliance, whether due to fraud or error, and design and perform audit procedures responsive to those risks. Such procedures

include examining, on a test basis, evidence regarding the Charter School's compliance with the compliance requirements referred to above and performing such other procedures as we considered necessary in the circumstances.

- Obtain an understanding of the Charter School's internal control over compliance relevant to the audit in order to design audit procedures that are appropriate in the circumstances and to test and report on internal control over compliance in accordance with the New Jersey OMB Circular 15-08, but not for the purpose of expressing an opinion on the effectiveness of the Charter School's internal control over compliance. Accordingly, no such opinion is expressed.

We are required to communicate with those charged with governance regarding, among other matters, the planned scope and timing of the audit and any significant deficiencies and material weaknesses in internal control over compliance that we identified during the audit.

Report on Internal Control over Compliance

A deficiency in internal control over compliance exists when the design or operation of a control over compliance does not allow management or employees, in the normal course of performing their assigned functions, to prevent, or detect and correct, noncompliance with a type of compliance requirement of a state program on a timely basis. A material weakness in internal control over compliance is a deficiency, or combination of deficiencies, in internal control over compliance, such that there is a reasonable possibility that material noncompliance with a type of compliance requirement of a state program will not be prevented, or detected and corrected, on a timely basis. A significant deficiency in internal control over compliance is a deficiency, or a combination of deficiencies, in internal control over compliance with a type of compliance requirement of a state program that is less severe than a material weakness in internal control over compliance, yet important enough to merit attention by those charged with governance.

Our consideration of internal control over compliance was for the limited purpose described in the Auditor's Responsibilities for the Audit of Compliance section above and was not designed to identify all deficiencies in internal control over compliance that might be material weaknesses or significant deficiencies in internal control over compliance. Given these limitations, during our audit we did not identify any deficiencies in internal control over compliance that we consider to be material weaknesses, as defined above. However, material weaknesses or significant deficiencies in internal control over compliance may exist that were not identified.

Our audit was not designed for the purpose of expressing an opinion on the effectiveness of internal control over compliance. Accordingly, no such opinion is expressed.

The purpose of this report on internal control over compliance is solely to describe the scope of our testing of internal control over compliance and the results of that testing based on the requirements of State of New Jersey Department of Treasury Circular 15-08-OMB and *audit requirements as prescribed by the Office of School Finance, Department of Education, State of New Jersey*. Accordingly, this report is not suitable for any other purpose.

Olugbenga Olabintan, CPA

January 31, 2023
Newark, New Jersey

OLUGBENGA OLABINTAN
Certified Public Accountant/Consultant

A handwritten signature in black ink, appearing to read 'Olugbenga Olabintan', with a horizontal line underneath it.

Olugbenga Olabintan, CPA
Licensed Public School Accountant
No. 20CS00230200

LEAD CHARTER SCHOOL

Schedule of Expenditures of Federal Awards

Year ended June 30, 2021

Federal Grant/ Pass-Through Grantor/ Program Title	Assistance Listing (AL) Number	Federal Award Identification Number	Grant Period	Award Amount	(Accounts Receivable) at June 30, 2021	Deferred Revenue at June 30, 2021	Due to Grantor at June 30, 2021	Adjustments	Carryover (Walkover) Amount	Cash Received	Budgetary Expenditures	Repayment of Prior Years' Balances	(Accounts Receivable) at June 30, 2022	Deferred Revenue at June 30, 2022	Due to Grantor at June 30, 2022
Special Revenue Fund:															
U.S. Department of Education:															
Passed-Through State Department of Education															
Title I Part A - FY 2021-2022	84.010A	S010A210030	7/1/21-09/30/22	\$ 75,108	\$ -	\$ -	\$ -	\$ -	\$ 57,805	\$ (75,108)	\$ -	\$ (17,303)	\$ -	\$ -	\$ -
IDEA Part B - FY 2021-2022	84.027	H027A210100	7/1/21-09/30/22	98,549	-	-	-	-	-	(98,549)	-	(98,549)	-	-	-
CARES Emergency Relief Grant	84.425D	S425D200027	3/13/20-9/30/22	55,650	(27,335)	-	-	-	27,335	-	-	-	-	-	-
ARP IDEA Basic - FY 2021-2022	84.027X	H027X210100	7/1/21-09/30/22	14,163	-	-	-	-	5,598	(14,163)	-	(8,565)	-	-	-
CRRSA-ESSER II	84.425D	S425D210027	3/13/20-9/30/23	237,862	-	-	-	-	-	(237,862)	-	(237,862)	-	-	-
CRRSA-Learning Acceleration	84.425D	S425D210027	3/13/20-9/30/23	25,000	-	-	-	-	-	(8,203)	-	(8,203)	-	-	-
CRRSA-Mental Health	84.425D	S425D210027	3/13/20-9/30/23	45,000	-	-	-	-	-	(38,728)	-	(38,728)	-	-	-
ARP ESEER III	84.425U	S425U210027	3/13/20-9/30/24	534,579	-	-	-	-	-	(225,488)	-	(225,488)	-	-	-
				-	-	-	-	-	-	-	-	-	-	-	-
Title I Part A - FY 2020-2021	84.010A	S010A200030	7/1/20-09/30/21	112,744	(36,742)	-	-	-	36,742	-	-	-	-	-	-
IDEA Part B - FY 2020-2021	84.027	H027A200100	7/1/20-09/30/21	55,892	-	4,161	-	-	-	-	-	-	4,161	-	-
IDEA Part B - FY 2019-2020	84.027	H027A190100	7/1/19-9/30/20	50,700	-	36,845	-	-	-	-	(36,845)	-	-	-	-
				-	-	-	-	-	-	-	-	-	-	-	-
Total for U.S. Department of Education, Pass-Through Programs					(64,077)	41,006	-	-	-	127,480	(698,101)	(36,845)	(634,698)	4,161	-
Enterprise Fund:															
U.S. Department of Agriculture															
Passed-Through New Jersey Dept of Agriculture															
National School lunch program	10.555	221NJ304N1099	7/1/21-06/30/22	8,579	-	-	-	-	6,553	(8,579)	-	(2,026)	-	-	-
After School Snacks	10.555	221NJ304N1099	7/1/21-06/30/22	41	-	-	-	-	41	(41)	-	-	-	-	-
Subtotal Assistance Listing # 10.555					-	-	-	-	6,594	(8,620)	-	(2,026)	-	-	-
National School breakfast program	10.553	221NJ304N1099	7/1/21-06/30/22	2,986	-	-	-	-	2,986	(2,986)	-	-	-	-	-
Total Enterprise Fund/Total U.S. Department of Agriculture					-	-	-	-	9,580	(11,606)	-	(2,026)	-	-	-
Total Expenditures of Federal Awards					\$ (64,077)	\$ 41,006	\$ -	\$ -	\$ -	\$ 137,060	\$ (709,707)	\$ (36,845)	\$ (636,724)	\$ 4,161	\$ -

The accompanying Notes to Schedules of Expenditures of Awards and Financial Assistance are an integral part of this schedule.

LEAD CHARTER SCHOOL

Schedule of Expenditures of State Financial Assistance

Year ended June 30, 2021

State Grantor/Program Title	Grant or State Project Number	Grant Period	Award Amount	(Accounts Receivable) at June 30, 2021	Deferred Revenue at June 30, 2021	Due to Grantor at June 30, 2021	Adjustments	Carryover (Walkover) Amount	Cash Received	Budgetary Expenditures	Repayment of Prior Years' Balances	(Accounts Receivable) at June 30, 2022	Deferred Revenue at June 30, 2022	Due to Grantor at June 30, 2022
State Department of Education														
General Fund:														
Equalization Aid	22-495-034-5120-078	7/1/21-06/30/22	\$ 3,794,803	\$ -	\$ -	\$ -	\$ -	\$ -	\$ 4,094,770	\$ (3,794,803)	\$ -	\$ (25,182)	\$ -	\$ 274,785
Equalization Aid	21-495-034-5120-078	7/1/20-06-30-21	3,552,386	(48,101)	-	122,344	-	-	48,101	-	(122,344)	-	-	-
Special Education Aid	22-495-034-5120-089	7/1/21-06/30/22	153,479	-	-	-	-	-	153,479	(153,479)	-	-	-	-
Security Aid	22-495-034-5120-084	7/1/21-06/30/22	104,072	-	-	-	-	-	104,072	(104,072)	-	-	-	-
State Adjustment Aid	22-495-034-5120-085	7/1/21-06/30/22	404,349	-	-	-	-	-	404,349	(404,349)	-	-	-	-
TPAF/FICA Reimbursements	22-495-034-5094-002	7/1/21-06/30/22	65,444	-	-	-	-	-	59,143	(65,444)	-	(6,301)	-	-
TPAF/FICA Reimbursements	21-495-034-5094-002	7/1/20-06-30-21	68,505	(2,827)	-	-	-	-	2,827	-	-	-	-	-
TPAF Post Retirement Medical Contribution	22-495-034-5094-001	7/1/21-06/30/22	58,078	-	-	-	-	-	58,078	(58,078)	-	-	-	-
TPAF Pension Contribution - Normal & NCGI	22-495-034-5094-002	7/1/21-06/30/22	248,578	-	-	-	-	-	248,578	(248,578)	-	-	-	-
TPAF Pension Contribution - Long-Term Disability Insurance	22-495-034-5094-004	7/1/21-06/30/22	222	-	-	-	-	-	222	(222)	-	-	-	-
Total General Fund				(50,928)	-	122,344	-	-	5,173,619	(4,829,025)	(122,344)	(31,483)	-	274,785
Special Revenue Fund:														
Charter & Renaissance School Project Emergent and Capital Maintenance Funds	22-495-034-5120-071	7/1/21-06/30/22	23,334	-	-	-	-	-	23,334	(23,334)	-	-	-	-
Total Special Revenue Fund				-	-	-	-	-	23,334	(23,334)	-	-	-	-
Total New Jersey State Department of Education														
Enterprise Fund:														
State School lunch program	22-100-010-3350-023	7/1/21-06/30/22	205	-	-	-	-	-	171	(205)	-	(34)	-	-
Total Enterprise Fund				-	-	-	-	-	171	(205)	-	(34)	-	-
Total State Financial Assistance														
				\$ (50,928)	\$ -	\$ 122,344	\$ -	\$ -	\$ 5,173,790	\$ (4,852,564)	\$ (122,344)	\$ (31,517)	\$ -	\$ 274,785
Less Amounts Not Subject to Single Audit:														
TPAF Post Retirement Medical Contribution										58,078				
TPAF Pension Contribution - Normal & NCGI										248,578				
TPAF Pension Contribution - Long-Term Disability Insurance										222				
Total Expenditures of State Financial Assistance Subject to Single Audit														
										\$ (4,545,686)				

National School Lunch Program

LEAD CHARTER SCHOOL
(County of Essex)
Notes to Schedules of Expenditures of Federal Awards and State Financial Assistance
Year ended June 30, 2022

1. General

The accompanying schedules of expenditures of federal awards and state financial assistance present the activity of all expenditures of federal awards and state financial assistance of the Charter School. All federal and state awards received directly from federal and state agencies, as well as federal awards and state financial assistance passed through other government agencies is included on the schedule of expenditures of federal awards and state financial assistance.

2. Basis of Accounting

The accompanying schedules of expenditures of federal awards and state financial assistance are presented on the budgetary basis of accounting with the exception of programs recorded in the enterprise fund, which are presented using the accrual basis of accounting. These bases of accounting are described in Note 1 to the Charter School's basic financial statements. The information in these schedules is presented in accordance with the requirements of OMB Circular A-133, *Audits of States, Local Governments, and Non-Profit Organizations*. Therefore, some amounts presented in the schedules may differ from amounts presented in, or used in the preparation of, the basic financial statements.

3. Relationship to Basic Financial Statements

Amounts reported in the accompanying schedules agree with amounts reported in the Charter School's basic financial statements. The basic financial statements present the general fund and special revenue fund on a GAAP basis. Budgetary comparison statements and schedules (RSI) are presented for the general fund and special revenue fund to demonstrate finance-related legal compliance in which certain revenue is permitted by law or grant agreement to be recognized in the fiscal year, whereas for GAAP reporting, revenue is not recognized until the subsequent year or expenditures have been made.

The general fund is presented in the accompanying schedules on the modified accrual basis. The special revenue fund is presented in the accompanying schedules on the grant accounting budgetary basis, which recognizes encumbrances as expenditures and also recognizes the related revenues, whereas the GAAP basis does not.

The net adjustment to reconcile from the budgetary basis to GAAP basis is \$-0- for the general fund and \$-0- for the special revenue fund. See Note 1 (the Notes to Required Supplementary Information) for a reconciliation of the budgetary basis to the modified accrual basis of accounting for the general and special revenue funds (C-3). x

LEAD CHARTER SCHOOL
(County of Essex)
Notes to Schedules of Expenditures of Federal Awards and State Financial Assistance
Year ended June 30, 2022

3. Relationship to Basic Financial Statements - *continued*

Federal awards and state financial assistance revenues are reported in the Charter School's basic financial statements on a GAAP basis as follows:

	<u>Federal</u>	<u>State</u>	<u>Total</u>
General Fund	\$ -	\$ 4,829,025	\$ 4,829,025
Special Revenue Fund	698,101	23,334	721,435
Enterprise Fund	11,606	205	11,811
Total	<u>\$ 709,707</u>	<u>\$ 4,852,564</u>	<u>\$ 5,562,271</u>

4. Relationship to Federal and State Financial Reports

Amounts reported in the accompanying schedules agree with the amounts reported in the related federal and state financial reports.

5. Other

TPAF Social Security contribution in the amount of \$65,444 represents the amount reimbursed by the State for the employer's share of social security contributions for TPAF members for the fiscal year ended June 30, 2022. The amount reported as TPAF pension representing on-behalf employer's portion of the Pension System Contributions, Post-Retirement Medical Benefits Contributions and Long-Term Disability Insurance Premium Contributions in the amount of \$306,878 represents the amount paid by the State on behalf of the Charter School for the fiscal year ended June 30, 2022.

6. On Behalf Programs Not Subject to State Single Audit

On-behalf State Programs for TPAF Pension and Post-Retirement Medical Benefits Contributions are not subject to a State single audit and, therefore, are excluded from major program determination. The Schedule of State Financial Assistance provides a reconciliation of State financial assistance reported in the Charter School's financial statements and the amount subject to State single audit and major program determination.

7. De Minimis Indirect Cost

The Charter School has not elected to use the ten percent de minimis indirect cost rate allowed under the Uniform Guidance.

LEAD CHARTER SCHOOL
(County of Essex)
Schedule of Findings and Questioned Costs
Year ended June 30, 2022

Part I Summary of Auditors' Results

Financial Statements Section

Type of auditors' report issued: Unmodified
 Internal control over financial reporting:

Material weaknesses identified? _____ Yes No

Significant deficiencies identified? _____ Yes None reported

Noncompliance material to basic financial statements noted? _____ Yes No

Federal Awards Section

Federal Awards:

In accordance with the new requirements of Title 2 U.S. Code of Federal Regulations Part 200, Uniform Administrative Requirements, Cost Principles, and Audit Requirements for Federal Awards (Uniform Guidance), the audit threshold was raised from \$500,000 to \$750,000. Thus, for fiscal years ending after December 26, 2015, organizations that expend less than \$750,000 in federal awards during a year are exempt from the single audit requirement for that year.

For the fiscal year ended June 30, 2022, the Charter School was determined to expend less than \$750,000 in federal awards and was therefore exempt from the federal single audit requirements for 2022.

**LEAD CHARTER SCHOOL
(County of Essex)
Schedule of Findings and Questioned Costs
Year ended June 30, 2022**

Part I Summary of Auditors' Results

State Financial Assistance Section

Dollar threshold used to distinguish between Type A and B programs: \$750,000

Auditee qualifies as low-risk auditee? Yes No

Type of auditor's report on compliance for major programs: Unmodified

Internal control over major programs:

Material weakness(es) identified? Yes No

Significant deficiency(cies) identified that are not considered to be material weaknesses? Yes None reported

Any audit findings disclosed that are required to be reported in accordance with NJ OMB Circulars 15-08 as applicable? Yes No

Identification of Major Programs:

<u>State Grant/Program Number(s)</u>	<u>Name of State Program or Cluster</u>
22-495-034-5120-078	Equalization Aid
22-495-034-5120-089	Special Education Aid
22-495-034-5120-084	Security Aid
22-495-034-5120-085	State Adjustment Aid

**LEAD CHARTER SCHOOL
(County of Essex)
Schedule of Findings and Questioned Costs
Year ended June 30, 2022**

Part II – Schedule of Financial Statement Findings

NONE

**LEAD CHARTER SCHOOL
(County of Essex)
Schedule of Findings and Questioned Costs
Year ended June 30, 2022**

Part III – Schedule of Federal Awards and State Financial Assistance

NONE

**LEAD CHARTER SCHOOL
(County of Essex)
Summary Schedule of Prior Year Audit Findings
Year ended June 30, 2022**

There were no prior year's audit findings.