

SCHOOL DISTRICT

OF

WHITE TOWNSHIP

**White Township School District
Board of Education
Belvidere, Warren County
New Jersey**

**Comprehensive Annual Financial Report
For The Fiscal Year Ended June 30, 2017**

Comprehensive Annual

Financial Report

of the

White Township School District

Board of Education

Bevidere, New Jersey

For the Fiscal Year Ending June 30, 2017

Prepared by

White Township School District

Board of Education

Finance Department

OUTLINE OF CAFR

INTRODUCTORY SECTION

	<u>Page</u>
Letter of Transmittal	1
Organizational Chart	2
Roster of Officials	3
Consultants and Advisors	4

FINANCIAL SECTION

Independent Auditor's Report	8-10
Required Supplementary Information – Part I Management’s Discussion and Analysis	13-20
Basic Financial Statements	
A. District-Wide Financial Statements:	
A-1 Statement of Net Position	23
A-2 Statement of Activities	24
B. Fund Financial Statements:	
Governmental Funds:	
B-1 Balance Sheet	26
B-2 Statement of Revenues, Expenditures and Changes in Fund Balance	27
B-3 Reconciliation of the Statement of Revenues, Expenditures and Changes in Fund Balances of Governmental Funds to the Statement of Activities	28
Proprietary Funds:	
B-4 Statement of Net Position	29
B-5 Statement of Revenues, Expenses and Changes in Fund Net Position	30
B-6 Statement of Cash Flows	31
Fiduciary Funds:	
B-7 Statement of Fiduciary Net Position	32
B-8 Statement of Changes in Fiduciary Net Position	N/A
Notes to the Financial Statements	34-59
Required Supplementary Information – Part II	
C. Budgetary Comparison Schedules:	
C-1 Budgetary Comparison Schedule - General Fund	62-70
C1a Combining Schedule of Revenues, Expenditures and Changes in Fund Balance – Budget and Actual	N/A
C-1b Community Block Development Grant (CDBG) – Budget and Actual	N/A
C-2 Budgetary Comparison Schedule - Special Revenue Fund	71
Notes to Required Supplementary Information - Part II	
C-3 Budget-to-GAAP Reconciliation	72

OUTLINE OF CAFR

Required Supplementary Information – Part III	<u>Page</u>
L. Schedules Related to Accounting and Reporting for Pensions (GASB 68)	
L-1/L-3 Schedule of the District's Proportionate Share of the Net Pension Liability	73
L-2 Schedule of District Contributions	74
Notes to Required Supplementary Information - Part III	75
Other Supplementary Information	
D. School Level Schedules:	
D-1 Combining Balance Sheet	N/A
D-2 Blended Resource Fund – Schedule of Expenditures Allocated by Resource Type – Actual	N/A
D-3 Blended Resource Fund – Schedule of Blended Expenditures – Budget and Actual	N/A
E. Special Revenue Fund:	
E-1 Combining Schedule of Program Revenues and Expenditures, Special Revenue Fund – Budgetary Basis	78
E-2 Schedule(s) of Preschool Education Aid Expenditures – Preschool-All Programs- Budgetary Basis	N/A
F. Capital Projects Fund:	
F-1 Summary Schedule of Project Expenditures	N/A
F-2 Summary Schedule of Revenues and Expenditures	N/A
F-2a Detail Schedule of Revenues and Expend.	N/A
G. Proprietary Funds	
Enterprise Fund:	
G-1 Combining Statement of Net Position	See B-4
G-2 Combining Statement of Revenues, Expenses and Changes in Fund Net Position	See B-5
G-3 Combining Statement of Cash Flows	See B-6
Internal Service Fund:	
G-4 Combining Statement of Net Position	N/A
G-5 Combining Statement of Revenues, Expenses and Changes in Fund Net Position	N/A
G-6 Combining Statement of Cash Flows	N/A
H. Fiduciary Funds:	
H-1 Combining Statement of Fiduciary Net Position	82
H-2 Student Activity Agency Fund Schedule of Receipts and Disbursements	83
H-3 Payroll Agency Fund Schedule of Receipts and Disbursements	84

OUTLINE OF CAFR

Other Supplementary Information-(Continued)

I.	Long-Term Debt:	
I-1	Schedule of Serial Bonds	86
I-2	Schedule of Obligation Early Retirement Incentive Plan	87
I-3	Budgetary Comparison Schedule Debt Service Fund	88

STATISTICAL SECTION (Unaudited)

Introduction to the Statistical Section	89	
Financial Trends		
J-1	Net Position by Component	90
J-2	Changes in Net Position	91-92
J-3	Fund Balances - Governmental Funds	93
J-4	Changes in Fund Balances - Governmental Funds	94
J-5	General Fund Other Local Revenue by Source	95
Revenue Capacity		
J-6	Assessed Value and Estimated Actual Value of Taxable Property	96
J-7	Direct and Overlapping Property Tax Rates	97
J-8	Principal Property Taxpayers	98
J-9	Property Tax Levies and Collections	99
Debt Capacity		
J-10	Ratios of Outstanding Debt by Type	100
J-11	Ratios of General Bonded Debt Outstanding	101
J-12	Direct and Overlapping Governmental Activities Debt	102
J-13	Legal Debt Margin Information	103
Demographic and Economic Information		
J-14	Demographic and Economic Statistics	104
J-15	Principal Employers	105
Operating Information		
J-16	Full-time Equivalent District Employees by Function/Program	106
J-17	Operating Statistics	107
J-18	School Building Information	108
J-19	Schedule of Required Maintenance Expenditures by School Facility	109
J-20	Insurance Schedule	110

OUTLINE OF CAFR

SINGLE AUDIT SECTION

	<u>Page</u>	
K-1	Report on Internal Control Over Financial Reporting and on Compliance and Other Matters Based on an Audit of Financial Statements Performed in Accordance With <i>Government Auditing Standards</i>	112-113
K-2	Report on Compliance For Each Major Program and Report on Internal Control Over Compliance Required by New Jersey OMB's Circular 15-08	114-115
K-3	Schedule of Expenditures of Federal Awards, Schedule A	N/A
K-4	Schedule of Expenditures of State Financial Assistance, Schedule B	116
K-5	Notes to the Schedules of Awards and Financial Assistance	117-118
K-6	Schedule of Findings and Questioned Costs	119-121
K-7	Summary Schedule of Prior Audit Findings	122

Introductory Section

White Township Board of Education
565 CR 519
Belvidere, NJ 07823
huff@whitetwpsd.org
908-475-4773

Michael Slattery
Superintendent

Dawn Huff
Business Administrator

September 1, 2017

Honorable President and
Members of the Board of Education
White Township School District
County of Warren, New Jersey

Dear Board Members and Constituents of White Township:

The comprehensive annual financial report of the White Township School District for the fiscal year ended June 30, 2017, is hereby submitted. Responsibility for both the accuracy of the data and the completeness and fairness of the presentation, including all disclosures, rests with the management of the Board of Education (Board). To the best of our knowledge and belief, the data presented in this report is accurate in all material respects and is reported in a manner designed to present fairly the financial position and results of operations of the various funds and account groups of the District. All disclosures necessary to enable the reader to gain an understanding of the District's financial activities have been included.

The comprehensive annual financial report is presented in four sections: introductory, financial, statistical and single audit. The introductory section includes this transmittal letter, the District's organizational chart and a Roster of Officials. The financial section includes the general purpose financial statements and schedules, as well as the auditor's report thereon. The statistical section includes selected financial and demographic information, generally presented on a multi-year basis. The District is required to undergo an annual single audit in conformity with the provisions of the Single Audit Act of 1984 and the U.S. Office of Management and Budget Circular A-133, *Audits of States, Local Governments, and Non-Profit Organizations*, and NJ OMB's Circular 04-04 OMB, *Single Audit Policy for Recipients of Federal Grants, State Grants, and State Aid*. Information related to this single audit, including the auditor's report on the internal control structure and compliance with applicable laws and regulations and findings and recommendations are included in the single audit section of this report.

- 1) **REPORTING ENTITY AND ITS SERVICES:** White Township School District is an independent reporting entity within the criteria adopted by the Governmental Accounting Standards Board (GASB) as established by Statement No. 14. All funds and account groups of the District are included in this report. The White Township Board of Education and its school constitute the District's reporting entity.

The District provides a full range of educational services appropriate to grade levels Pre-K through 8, and has a sending/receiving relationship with the Belvidere School District and Warren County Technical School for its 9th through 12th grade students. These include regular as well as special education for special needs students. The district completed the 2016-17 fiscal year with an average enrollment of 270 students in our Pre-Kindergarten through 8th Grade program.

2) ECONOMIC CONDITION AND OUTLOOK: The White Township area has experienced a decrease in development over the past several years. There has not been any subdivision development. In housing, growth is relatively flat, consisting of one-family residences. Since there is no substantive expansion of business in White Township, there is no material increase in the employment level or tax base (either residential or industrial). This condition is expected to continue which suggests that White Township enrollment may continue to decrease as it has over the past five years.

MAJOR INITIATIVES: Despite flat state aid, the White Township School continued its focus on the school level objectives. Our administration and teachers continue revisions to the curricula to assure that they are aligned with the New Jersey Student Learning Standards. The district also continued its attention on the NJSLs in all other subject areas. Student needs were serviced in the areas of Special Education and speech. Our Preschool program continues to serve PSD students and tuition paying general education students. Students continued to be grouped with teachers in clusters. World Language instruction continued weekly for grades K-5 and twice a week for grades 7 and 8.

The district continued the identification and service of exceptional students. At risk students were identified by classroom teachers and service plans are developed through an improved Pupil Assistance Committee (PAC). Students eligible for Response to Intervention (RTI) were served in reading, writing, and mathematics. Gifted students are identified through a comprehensive formal process and served in the area of mathematics and language arts. Our technology plans have been modified to ensure that all resources were in place to properly administer the PARCC assessments.

4) INTERNAL ACCOUNTING CONTROLS: Management of the District is responsible for establishing and maintaining internal controls designed to ensure that the assets of the District are protected from loss, theft or misuse and to ensure that adequate accounting data are compiled to allow for the preparation of financial statements in conformity with generally accepted accounting principles (GAAP). Internal controls are designed to provide reasonable, but not absolute, assurance that these objectives are met. The concept of reasonable assurance recognizes that: (1) the cost of a control should not exceed the benefits likely to be derived; and (2) the valuation of costs and benefits requires estimates and judgments by management; but not absolute assurance that these objectives are met.

As a recipient of federal and state financial assistance, the District also is responsible for ensuring that adequate internal controls are in place to ensure compliance with applicable laws and regulations related to those programs. Internal control is also subject to periodic evaluation by the District management.

As part of the District's single audit described earlier, tests are made to determine the adequacy of the internal control structure, including that portion related to federal and state financial assistance programs, as well as to determine that the District has complied with applicable laws and regulations.

5) BUDGETARY CONTROLS: In addition to internal accounting controls, the District maintains budgetary controls. The objective of these budgetary controls is to ensure compliance with legal provisions embodied in the annual appropriated budget approved by the voters of the municipality. Annual appropriated budgets are adopted for the general fund, the special revenue fund, and the debt service fund. Project-length budgets are approved for the capital improvements accounted for in the capital projects fund. The final budget amount as amended for the fiscal year is reflected in the financial section.

An encumbrance accounting system is used to record outstanding purchase commitments on a line item basis. Open encumbrances at year-end are either canceled or included as re-appropriations of fund balance in the subsequent year. Those amounts to be re-appropriated are reported as a reservation of fund balance at June 30, 2017.

6) ACCOUNTING SYSTEM AND REPORTS: The District's accounting records reflect generally accepted accounting principles, as promulgated by the Governmental Accounting Standards Board (GASB), and in 2016-2017 were inclusive of the new GASB requirements. The accounting system of the District is organized on the basis of funds and account groups. These funds and account groups are explained in "Notes to the Financial Statements".

7) FINANCIAL INFORMATION: A summary of financial information is presented in the section Management's Disclosure and Analysis for The Fiscal Year Ended June 30, 2017.

8) DEBT ADMINISTRATION: At June 30, 2017, the District's outstanding debt issues included \$377,400 of general obligation bonds.

9) CASH MANAGEMENT: The investment policy of the District is guided in large part by state statute as detailed in "Notes to the Financial Statements". The district has adopted a cash management plan that requires it to deposit public funds in public depositories protected from loss under the provisions of the Governmental Unit Deposit Protection Act ("GUDPA"). GUDPA was enacted in 1970 to protect Governmental Units from a loss of funds on deposit with a failed banking institution in New Jersey. The law requires governmental units to deposit public funds only in public depositories located in New Jersey, where the funds are secured in accordance with the Act.

10) RISK MANAGEMENT: The Board carried various forms of insurance, including but not limited to general liability, hazard and theft insurance on property and contents, environmental impairment coverage, worker's compensation and fidelity bonds.

11) OTHER INFORMATION:

Independent Audit – State statutes require an annual audit by independent certified public accountants or registered municipal accountants. The Board selected the accounting firm of Ardito & Company, LLP. In addition to meeting the requirements set forth in state statutes, the audit also was designed to meet the requirements of the Single Audit Act of 1984 and the related OMB Circular A-133 and New Jersey OMB's Circular 04-04. The auditor's report on the general-purpose financial statements, and combining and individual fund statements and schedules, are included in the financial section of this report. The auditor's reports related specifically to the single audit are included in the single audit section of this report.

12) ACKNOWLEDGMENTS: We would like to express our appreciation to the members of the White Township Board of Education for their concern in providing fiscal accountability to the citizens and taxpayers of the school district and thereby contributing their full support to the development and maintenance of our financial operation. The preparation of this report could not have been accomplished without the efficient and dedicated services of our financial and support staff.

13) **SERVICE EFFORTS AND ACCOMPLISHMENTS:** This year the district completed several projects including the installation of an emergency generator, repairs to the parking lot areas including sealcoating and restriping, painting in several classrooms and landscaping around the school facility. The District continues to provide the appropriate replacement and updating of its facility to provide for a safe, secure and efficient building.

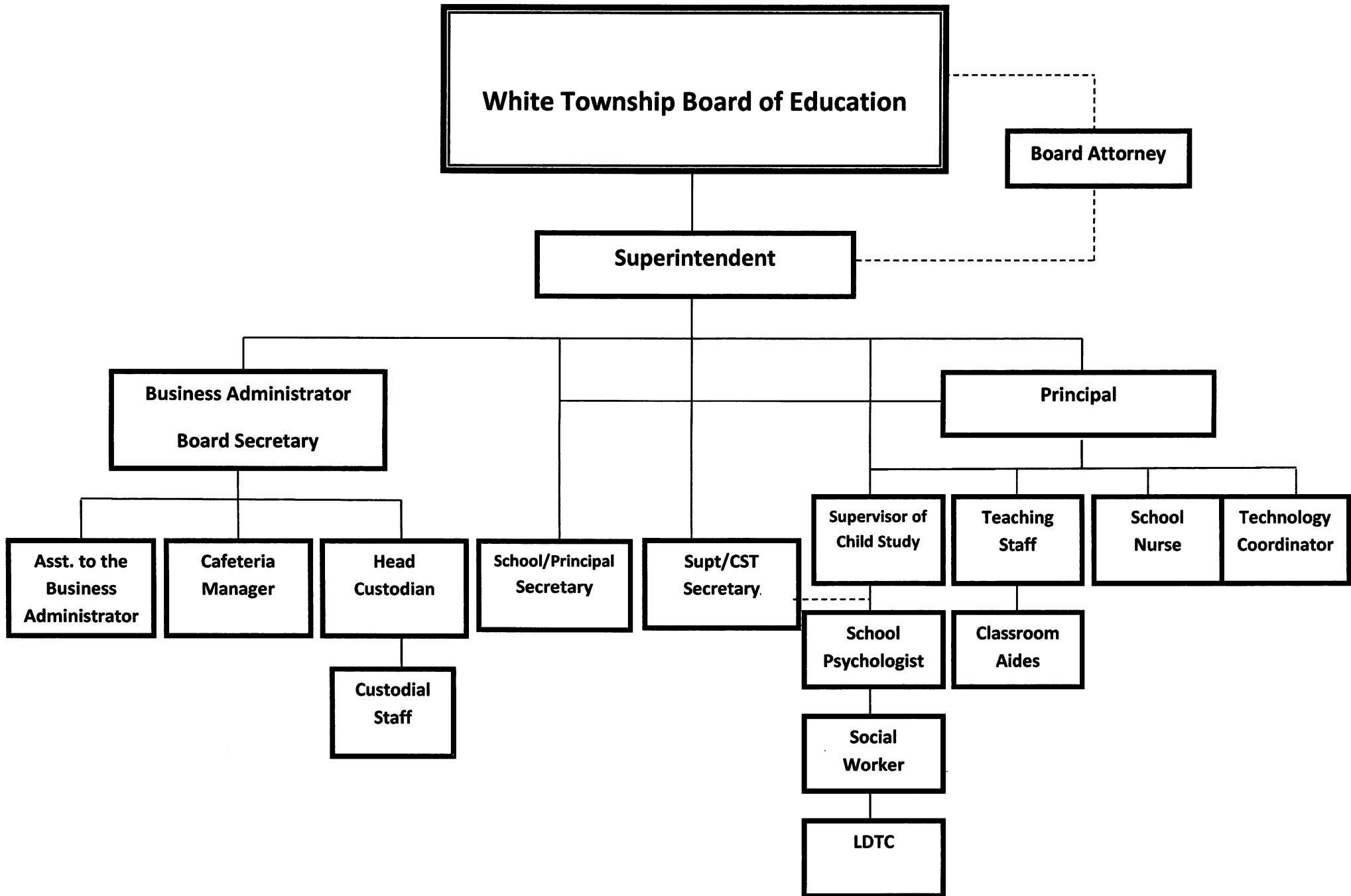
Respectfully submitted,

A handwritten signature in black ink, appearing to read 'MS', written in a cursive style.

Michael Slattery, Superintendent

A handwritten signature in black ink, appearing to read 'Dawn Huff', written in a cursive style.

Dawn Huff, Business Administrator



WHITE TOWNSHIP SCHOOL DISTRICT

BOARD OF EDUCATION

ROSTER OF OFFICIALS

June 30, 2017

<u>Members of the Board of Education</u>	<u>Term Expires</u>
Mark Boehm, President	2018
Frank Panetta, Vice-President	2017
Rachel Burris-Nikolopoulos	2019
Dorissalba Sroka	2019
David Rader	2018
Michelle Lee	2019
Aaron Orchard	2017
Colleen Williams	2017
Catherine Lensi	2017

Other Officials

Michael Slattery, *Chief School Administrator*

Dawn Werkheiser, *Principal*

Dawn Huff, *Board Secretary/Business Administrator*

John Comegno, Esquire, *Solicitor*

WHITE TOWNSHIP SCHOOL DISTRICT

BOARD OF EDUCATION

CONSULTANTS AND ADVISORS

AUDIT FIRM

Ardito & Co., LLP
1110 Harrison Street, Suite C
Frenchtown, New Jersey 08825-1192

ATTORNEY

John Comegno, Esquire
Comegno Law Group, P.C.
521 Pleasant Valley Ave.
Moorestown, NJ 08057

OFFICIAL DEPOSITORIES

First Hope Bank
P.O.Box 296
Hope, NJ 07844

Financial Section

Independent Auditor's Report



ARDITO & Co., LLP

1110 Harrison Street, Suite C
Frenchtown, New Jersey 08825-1192
908-996-4711 Fax: 908-996-4688
e-mail: anthony@arditoandcompany.com

Anthony Ardito, CPA, RMA, CMFO, PSA
Douglas R. Williams, CPA, RMA, PSA

Independent Auditor's Report

The Honorable President and
Members of the Board of Education
White Township School District
565 CR 519
County of Warren
Belvidere, New Jersey 07823

Report on the Financial Statements

We have audited the accompanying financial statements of the government activities, the business-type activities, each major fund and the aggregate remaining fund information of the White Township School District Board of Education, as of and for the year ended June 30, 2017, and the related notes to the financial statements, which collectively comprise the District's basic financial statements as listed in the table of contents.

Management's Responsibility for the Financial Statements

Management is responsible for the preparation and fair presentation of these financial statements in accordance with accounting principles generally accepted in the United States of America; this includes the design, implementation, and maintenance of internal control relevant to the preparation and fair presentation of financial statements that are free from material misstatement, whether due to fraud or error.

Auditor's Responsibility

Our responsibility is to express opinions on these financial statements based on our audit. We conducted our audit in accordance with auditing standards generally accepted in the United States of America and the standards applicable to financial audits contained in *Government Auditing Standards*, issued by the Comptroller General of the United States, and audit requirements as prescribed by the Office of School Finance, Department of Education, State of New Jersey. Those standards require that we plan and perform the audit to obtain reasonable assurance about whether the financial statements are free of material misstatement.

An audit involves performing procedures to obtain audit evidence about the amounts and disclosures in the financial statements. The procedures selected depend on the auditor's judgment, including the assessment of the risks of material misstatement of the financial statements, whether due to fraud or error.

-Continued-

In making those risk assessments, the auditor considers internal control relevant to the entity's preparation and fair presentation of the financial statements in order to design audit procedures that are appropriate in the circumstances, but not for the purpose of expressing an opinion on the effectiveness of the entity's internal control. Accordingly, we express no such opinion. An audit also includes evaluating the appropriateness of accounting policies used and the reasonableness of significant accounting estimates made by management, as well as evaluating the overall presentation of the

We believe that the audit evidence we have obtained is sufficient and appropriate to provide a basis for our audit opinions.

Opinions

In our opinion, the financial statements referred to above present fairly, in all material respects, the respective financial position of the governmental activities, business-type activities, each major fund, and the aggregate remaining fund information of the White Township School District Board of Education, as of June 30, 2017, and the respective changes in financial position and, where applicable, cash flows thereof for the year then ended in conformity with accounting principles generally accepted in the United States of America.

Other Matters

Required Supplementary Information

Accounting principles generally accepted in the United States of America require that the management's discussion and analysis, budgetary comparison information, and pension trend information as identified in the table of contents be presented to supplement the basic financial statements. Such information, although not a part of the basic financial statements, is required by the Governmental Accounting Standards Board, who considers it to be an essential part of financial reporting for placing the basic financial statements in an appropriate operational, economic, or historical context. We have applied certain limited procedures to the required supplementary information in accordance with auditing standards generally accepted in the United States of America, which consisted of inquiries of management about the methods of preparing the information and comparing the information for consistency with management's responses to our inquiries, the basic financial statements, and other knowledge we obtained during our audit of the basic financial statements.

We do not express an opinion or provide any assurance on the information because the limited procedures do not provide us with sufficient evidence to express an opinion or provide any assurance.

Other Information

Our audit was conducted for the purpose of forming opinions on the financial statements that collectively comprise the White Township School District Board of Education's basic financial statements. The introductory section, combining and individual fund financial statements, long-term debt schedules, statistical section, and schedule of state financial assistance, as required by New Jersey OMB's Circular 15-08, ***Single Audit Policy for Recipients of Federal Grants, State Grants and State Aid***, are presented for purposes of additional analysis and are not a required part of the basic financial statements.

-Continued-

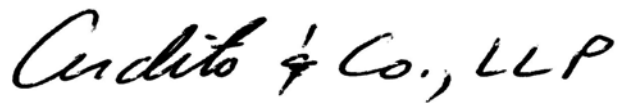
The combining and individual fund financial statement information, long-term debt schedules, and the schedule of state financial assistance, as required by New Jersey OMB's Circular 15-08, *Single Audit Policy for Recipients of Federal Grants, State Grants and State Aid*, are the responsibility of management and were derived from and relate directly to the underlying accounting and other records used to prepare the basic financial statements. Such information has been subjected to the auditing procedures applied in the audit of the basic financial statements and certain additional procedures, including comparing and reconciling such information directly to the underlying accounting and other records used to prepare the basic financial statements or to the basic financial statements themselves, and other additional procedures in accordance with auditing standards generally accepted in the United States of America.

In our opinion, the combining and individual fund financial statement information, long-term debt schedules, and schedule of state financial assistance, as required by New Jersey OMB's Circular 15-08, *Single Audit Policy for Recipients of Federal Grants, State Grants and State Aid*, are fairly stated in all material respects in relation to the basic financial statements as a whole.

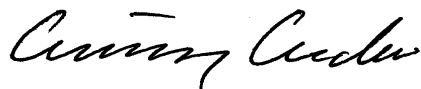
The introductory and statistical sections have not been subjected to the auditing procedures applied in the audit of the basic financial statements and, accordingly, we do not express an opinion or provide any assurance on them.

Other Reporting Required by Government Auditing Standards

In accordance with *Government Auditing Standards*, we have also issued our report dated August 31, 2017, on our consideration of the White Township School District Board of Education's internal control over financial reporting and on our tests of its compliance with certain provisions of laws, regulations, contracts, and grant agreements and other matters. The purpose of that report is to describe the scope of our testing of internal control over financial reporting and compliance and the results of that testing, and not to provide an opinion on the internal control over financial reporting or on compliance. That report is an integral part of an audit performed in accordance with *Government Auditing Standards* in considering the District's internal control over financial reporting and compliance.



ARDITO & CO., LLP
August 31, 2017



Licensed Public School Accountant No. 2369

**Required Supplementary Information -
Part I**

Management's Discussion and Analysis

WHITE TOWNSHIP SCHOOL DISTRICT

MANAGEMENT'S DISCUSSION AND ANALYSIS
FOR THE FISCAL YEAR ENDED JUNE 30, 2017
UNAUDITED

The discussion and analysis of White Township School District's financial performance provides an overall review of the School District's financial activities for the fiscal year ended June 30, 2017. The intent of this discussion and analysis is to look at the School District's financial performance as a whole; readers should also review the notes to the basic financial statements and financial statements to enhance their understanding of the School District's financial performance.

Financial Highlights

Key financial highlights for 2017 are as follows:

- ◆ In total, Net Position increased \$114,428 which represents a 2.7% increase from 2016.
- ◆ General revenues accounted for \$7,363,940 in revenue or 60.4% of all revenues. Program specific revenues in the form of charges for services, operating grants and contributions, and capital grants and contributions accounted for \$4,832,825 or 39.6% of total revenues of \$12,196,765.
- ◆ Total assets of governmental activities decreased by \$194,207, as cash and cash equivalents decreased by \$145,935, receivables decreased by \$30,829, and capital assets decreased by \$17,698.
- ◆ The School District had \$12,082,337 in expenses; only \$4,832,825 of these expenses were offset by program specific charges for services, grants or contributions. General revenues (primarily property taxes) of \$7,363,940 were available to provide for these programs.
- ◆ Among major funds, the General Fund had \$9,618,313 in revenues and \$9,788,942 in expenditures. The General Fund's surplus balance decreased \$170,629 over 2016, which compares favorably to the budgeted decrease of \$853,616.

Using this Generally Accepted Accounting Principals Report (GAAP)

This annual report consists of a series of financial statements and notes to those statements. These statements are organized so the reader can understand White Township School District as a financial whole, an entire operating entity. The statements then proceed to provide an increasingly detailed look at specific financial activities. The Statement of Net Position and Statement of Activities provide information about the activities of the whole School District, presenting both an aggregate view of the School District's finances and a longer-term view of those finances. Fund financial statements provide the next level of detail.

For governmental funds, these statements tell how services were financed in the short-term as well as what remains for future spending. The fund financial statements also look at the School District's most significant funds with all other non-major funds presented in total in one column. In the case of White Township School District, the General Fund is by far the most significant fund.

WHITE TOWNSHIP SCHOOL DISTRICT

MANAGEMENT'S DISCUSSION AND ANALYSIS
FOR THE FISCAL YEAR ENDED JUNE 30, 2017
UNAUDITED

Reporting the School District as a Whole

Statement of Net Position and the Statement of Activities

While this document contains the large number of funds used by the School District to provide programs and activities, the view of the School District as a whole looks at all financial transactions and asks the question, "How did we do financially during 2017?" The Statement of Net Position and the Statement of Activities answer this question. These statements include all assets and liabilities using the accrual basis of accounting similar to the accounting used by most private-sector companies. This basis of accounting takes into account all of the current year's revenues and expenses regardless of when cash is received or paid.

These two statements report the School District's Net Position and changes in those assets. This change in Net Position is important because it tells the reader that, for the School District as a whole, the financial positions of the School District has improved or diminished. The causes of this change may be the result of many factors, some financial, and some not. Nonfinancial factors include the School District's property tax base, current laws in New Jersey restricting revenue growth, facility condition, required educational programs and other factors.

In the Statement of Net Position and the Statement of Activities, the School District is divided into two distinct kinds of activities:

- Governmental activities--All of the School District's programs and services are reported here including instruction, support services, operation and maintenance of plant facilities, pupil transportation and extracurricular activities.
- Business-type Activity--This service is provided on a charge for goods or services basis to recover all the expenses of the goods or services provided. The Food Service enterprise fund is reported as a business activity.

Reporting the School District's Most Significant Funds

Fund Financial Statements

The analysis of the School District's major funds begins on Exhibit B-1. Fund financial reports provide detailed information about the School District's major funds. The School District uses many funds to account for a multitude of financial transactions. However, these fund financial statements focus on the School District's most significant funds. The School District's major governmental funds are the General Fund, Special Revenue Fund, and Capital Projects Fund.

WHITE TOWNSHIP SCHOOL DISTRICT
MANAGEMENT'S DISCUSSION AND ANALYSIS
FOR THE FISCAL YEAR ENDED JUNE 30, 2017
UNAUDITED

Governmental Funds

The School District's activities are reported in governmental funds, which focus on how money flows into and out of those funds and the balances left at year-end available for spending in the future years. These funds are reported using an accounting method called modified accrual accounting, which measures cash and all other financial assets that can readily be converted to cash. The governmental fund statements provide a detailed short-term view of the School District's general government operations and the basic services it provides. Governmental fund information helps you determine whether there are more or fewer financial resources that can be spent in the near future to finance educational programs. The relationship (or differences) between governmental activities (reported in the Statement of Net Position and the Statement of Activities) and governmental funds is reconciled in the financial statements.

The School District as a Whole

Recall that the Statement of Net Position provides the perspective of the School District as a whole.

Table 1 provides a summary of the School District's Net Position for 2017 compared to 2016.

	<u>2017</u>	<u>2016</u>
Table 1 Net Position		
Assets		
Current and Other Assets	\$ 2,267,984	\$ 2,444,493
Capital Assets	<u>3,579,213</u>	<u>3,596,911</u>
Total Assets	<u>5,847,197</u>	<u>6,041,404</u>
Deferred Outflows of Resources	<u>449,856</u>	<u>237,956</u>
Liabilities		
Long-Term Liabilities	1,827,368	1,875,362
Other Liabilities	<u>10,787</u>	<u>17,919</u>
Total Liabilities	<u>1,838,155</u>	<u>1,893,281</u>
Deferred Inflows of Resources	<u>102,813</u>	<u>144,422</u>
Net Position		
Invested in Capital Assets, Net of Debt	3,209,213	2,871,911
Restricted	1,357,862	1,447,407
Unrestricted	<u>(210,990)</u>	<u>(77,661)</u>
Total Net Position	<u>\$ 4,356,085</u>	<u>\$ 4,241,657</u>

WHITE TOWNSHIP SCHOOL DISTRICT

MANAGEMENT'S DISCUSSION AND ANALYSIS
FOR THE FISCAL YEAR ENDED JUNE 30, 2017
UNAUDITED

Total assets of governmental activities decreased by \$194,207, as cash and cash equivalents decreased by \$145,935, receivables decreased by \$30,829, and capital assets decreased by \$17,698.

The cash decrease was mainly due to the decrease in long term debt and capital asset spending. The capital assets decrease was entirely due to depreciation expense, net of capital spending for the year.

Table 2 shows the changes in Net Position from fiscal year 2016.

Table 2
Changes in Net Position

	<u>2017</u>	<u>2016</u>
Revenues		
Program Revenues:		
Charges for Services	\$ 47,970	\$ 65,437
Operating Grants and Contributions	4,784,855	3,519,680
General Revenues:		
Property Taxes	7,342,685	7,204,203
Federal & State Aid on Capital Asset Projects		
Investment Earnings	16,346	7,608
Other	<u>4,909</u>	<u>9,181</u>
Total Revenues	<u>12,196,765</u>	<u>10,806,109</u>
Program Expenses		
Instruction	5,298,113	4,191,731
Support Services:		
Tuition	3,029,157	2,984,365
Pupils and Instructional Staff	1,430,576	1,322,186
General Administration, School Administration, Business	844,151	729,755
Operations and Maintenance of Facilities	741,748	591,630
Pupil Transportation	565,651	545,391
Business-Type Activities	71,807	87,826
Interest and Fiscal Charges	<u>101,134</u>	<u>119,231</u>
Total Expenses	<u>12,082,337</u>	<u>10,572,115</u>
Increase in Net Position	<u>\$ 114,428</u>	<u>\$ 233,994</u>

WHITE TOWNSHIP SCHOOL DISTRICT

MANAGEMENT'S DISCUSSION AND ANALYSIS
FOR THE FISCAL YEAR ENDED JUNE 30, 2017
UNAUDITED

Governmental Activities

The unique nature of property taxes in New Jersey creates the need to routinely seek voter approval for the School District operations. Property taxes made up 60.2% percent of revenues for governmental activities for the White Township School District for the fiscal year 2017.

Instruction comprises 43.9% of district expenses. Support services expenses make up 54.7% of the expenses.

The Statement of Activities shows the cost of program services and the charges for services and grants offsetting those services. Table 3 shows the total cost of services and the net cost of services compared to 2016. That is, it identifies the cost of these services supported by tax revenue and unrestricted State entitlements.

Table 3

	<u>Total Cost of Services 2017</u>	<u>Net Cost of Services 2017</u>	<u>Total Cost of Services 2016</u>	<u>Net Cost of Services 2016</u>
Instruction	\$ 5,298,113	\$ 3,111,536	4,191,731	\$2,682,897
Support Services:				
Tuition	3,029,157	1,878,345	2,984,365	2,047,638
Pupils and Instructional Staff	1,430,576	866,431	1,322,186	890,504
General Admin., School Admin., Business	844,151	523,448	729,755	500,701
Operation and Maintenance of Facilities	741,748	459,949	591,630	405,930
Pupil Transportation	565,651	350,754	545,391	374,205
Business-Type Activities	71,807	5,784	87,826	13,621
Interest and Fiscal Charges	<u>101,134</u>	<u>53,265</u>	<u>119,231</u>	<u>71,502</u>
Total Expenses	<u>\$ 12,082,337</u>	<u>\$ 7,249,512</u>	<u>\$ 10,572,115</u>	<u>\$ 6,986,998</u>

Instruction expenses include activities directly dealing with the teaching of pupils and the interaction between teacher and student.

Pupils and instructional staff include the activities involved with assisting staff with the content and process of teaching to students.

General administration, school administration and business include expenses associated with administrative and financial supervision of the District.

Operation and maintenance of facilities activities involve keeping the school grounds, buildings and equipment in an effective working condition.

Pupil transportation includes activities involved with the conveyance of students to and from school, as well as to and from school activities, as provided by state law.

WHITE TOWNSHIP SCHOOL DISTRICT
MANAGEMENT'S DISCUSSION AND ANALYSIS
FOR THE FISCAL YEAR ENDED JUNE 30, 2017
UNAUDITED

Business-type activities includes expenses related to activities provided by the School District which are designed to provide for students to participate in food service.

Interest and fiscal charges involve the transactions associated with the payment of interest and other related charges to debt of the School District and unallocated depreciation.

The dependence upon tax revenues is apparent. Over 58.7% of instruction activities are supported through taxes and other general revenues; for all activities general revenue support is 61.7%. The community, as a whole, is the primary support for the White Township School District.

The School District's Funds

Information about the School District's major funds starts on exhibit B-1. These funds are accounted for using the modified accrual basis of accounting. All governmental funds had total revenues and other sources of \$10,173,730 and expenditures of \$10,344,359. The General Fund's surplus balance decreased \$170,629 over 2016, which compares favorably to the budgeted decrease of \$853,616.

General Fund Budgeting Highlights

The School District's budget is prepared according to New Jersey law, and is based on accounting for certain transactions on a basis of cash receipts, disbursements, and encumbrances. The most significant budgeted fund is the General Fund.

During the course of the fiscal 2017 year, the School District amended its General Fund budget as needed. The School District uses program based budgeting and the budgeting systems are designed to tightly control total program budgets but provide flexibility for program management.

For the General Fund, budget basis revenue and other financing sources, excluding on-behalf payments, was \$8,882,717, \$100,954 over original budgeted estimates of \$8,781,763. This difference was due primarily to extraordinary aid and miscellaneous revenues.

General fund revenues fell short of expenditures by \$170,197. Again this deficit compares to a budgeted deficit of \$853,616, which was due to the budgeted use of surplus, capital reserves and tuition reserves needed to balance the 2017 budget.

The budgeted deficit was reduced due revenue increases and cost savings in the areas of instruction, administration and support costs, maintenance, and benefits in the amount of \$620,260.

Overall general fund balance (budget basis) was \$2,415,006, and amounts ear-marked and reserved for future purposes were \$2,081,097, creating a surplus in unreserved fund balance of \$333,909. Management believes unreserved fund balance at statutory levels will provide adequate working capital for the district.

WHITE TOWNSHIP SCHOOL DISTRICT

MANAGEMENT'S DISCUSSION AND ANALYSIS
FOR THE FISCAL YEAR ENDED JUNE 30, 2017
UNAUDITED

Capital Assets

At the end of the fiscal year 2017, the School District had \$3,558,639 invested in land, buildings, furniture and equipment, and vehicles. Table 4 shows fiscal 2017 balances compared to 2016.

Table 4
Capital Assets (Net of Depreciation) at June 30,

	<u>2017</u>	<u>2016</u>
Land	\$ 49,010	\$ 49,010
Land Improvements	4,881	8,133
Buildings and Improvements	3,225,178	3,419,209
Machinery and Equipment	<u>279,570</u>	<u>98,381</u>
Totals	<u>\$ 3,558,639</u>	<u>\$ 3,574,733</u>

Overall capital assets decreased \$16,094 from fiscal year 2016 to fiscal year 2017. The decrease in capital assets was due to depreciation expense for the year and disposals, net of additions.

Capital improvements of \$197,792 were purchased during fiscal year 2017.

Debt Administration

At June 30, 2017, the School District had \$635,296 as outstanding long term debt. Of this amount, \$160,008 is for compensated absences, \$105,288 is for the Early Retirement Incentive Plan, and \$370,000 is for bonds payable outstanding.

At June 30, 2017, the School District's overall legal debt margin was \$15,978,115 and the unvoted debt margin was the same.

WHITE TOWNSHIP SCHOOL DISTRICT

MANAGEMENT'S DISCUSSION AND ANALYSIS
FOR THE FISCAL YEAR ENDED JUNE 30, 2017
UNAUDITED

For the Future

The White Township School District is in very good financial condition presently. A major concern is the continued reliance on local property taxes. The White Township School District is primarily a residential community, with very few ratables, thus the burden is focused on homeowners to bear the tax burden. However, future finances are not without challenges as the community continues to grow and state funding is decreased.

In conclusion, the White Township School District has committed itself to financial excellence for many years. In addition, the School District's system for financial planning, budgeting, and internal financial controls are well regarded. The School District plans to continue its sound fiscal management to meet the challenge of the future.

Contacting the School District's Financial Management

This financial report is designed to provide our citizens, taxpayers, investors and creditors with a general overview of the School District's finances and to show the School District's accountability for the money it receives. If you have questions about this report or need additional information contact Dawn Huff, School Business Administrator/Board Secretary at White Township School District, 565 CR 519, Belvidere, NJ 07823.

Basic Financial Statements

DISTRICT-WIDE FINANCIAL STATEMENTS

The statement of Net Position and the statement of activities display information about the District. These statements include the financial activities of the overall District, except for fiduciary activities. Eliminations have been made to minimize the double-counting of internal activities. These statements distinguish between the governmental and business-type activities of the District.

WHITE TOWNSHIP SCHOOL DISTRICT

Exhibit A-1

STATEMENT OF NET POSITION

June 30, 2017

	<u>GOVERNMENTAL</u> <u>ACTIVITIES</u>	<u>BUSINESS-TYPE</u> <u>ACTIVITIES</u>	<u>TOTAL</u>
ASSETS			
Cash and Cash Equivalents	\$ 2,164,045	\$ 16,647	\$ 2,180,692
Receivables from Other Governments	83,909	1,672	85,581
Inventory		1,711	1,711
Capital Assets, Net (Note 6):	3,558,639	20,574	3,579,213
Total Assets	5,806,593	40,604	5,847,197
DEFERRED OUTFLOWS OF RESOURCES			
Pension Deferred Outflows	449,856		449,856
LIABILITIES			
Accounts Payable		3,695	3,695
Unearned Revenue		1,542	1,542
Accrued Interest	5,550		5,550
Net Pension Liability (Note 8)	1,192,072		1,192,072
Noncurrent Liabilities (Note 7):			
Due Within One Year	396,322		396,322
Due Beyond One Year	238,974		238,974
Total Liabilities	1,832,918	5,237	1,838,155
DEFERRED INFLOWS OF RESOURCES			
Pension Deferred Inflows	102,813		102,813
Net Position			
Invested in Capital Assets, Net of Related Debt	3,188,639	20,574	3,209,213
Restricted for:			
Other Purposes	1,357,862		1,357,862
Unrestricted	(225,783)	14,793	(210,990)
Total Net Position	\$ 4,320,718	\$ 35,367	\$ 4,356,085

The accompanying Notes to Basic Financial Statements are an integral part of this statement.

WHITE TOWNSHIP SCHOOL DISTRICT

Exhibit A-2

STATEMENT OF ACTIVITIES
FOR THE YEAR ENDED JUNE 30, 2017

	PROGRAM REVENUES			NET(EXPENSE) REVENUE AND CHANGES IN NET POSITION		TOTAL	
	EXPENSES	CHARGES FOR SERVICES	OPERATING GRANTS AND CONTRIBUTIONS	CAPITAL GRANTS AND CONTRIBUTIONS	GOVERNMENTAL ACTIVITIES		BUSINESS-TYPE ACTIVITIES
Functions/Programs							
Governmental Activities:							
Instruction:							
Regular	\$ 3,991,851	\$ 15,897	\$ 1,674,416		\$ (2,301,538)	\$ (2,301,538)	
Special Education	1,114,365		423,360		(691,005)	(691,005)	
Other Special Instruction	191,897		72,904		(118,993)	(118,993)	
Support Services:							
Tuition	3,029,157		1,150,812		(1,878,345)	(1,878,345)	
Student & Instruction Related Services	1,430,576		564,145		(866,431)	(866,431)	
School Administrative Services	307,597		116,860		(190,737)	(190,737)	
General and Business Admin. Services	536,554		203,843		(332,711)	(332,711)	
Plant Operations and Maintenance	741,748		281,799		(459,949)	(459,949)	
Pupil Transportation	565,651		214,897		(350,754)	(350,754)	
Interest and Depreciation Charges	101,134		47,869		(53,265)	(53,265)	
Total Governmental Activities	12,010,530	15,897	4,750,905		(7,243,728)	(7,243,728)	
Business-Type Activities:							
Food Service	71,807	32,073	33,950		\$ (5,784)	(5,784)	
Total Business-Type Activities	71,807	32,073	33,950		(5,784)	(5,784)	
Total Primary Government	\$ 12,082,337	\$ 47,970	\$ 4,784,855		\$ (7,243,728)	\$ (7,249,512)	
General Revenues:							
Taxes:							
Property Taxes, Levied for General Purposes, Net				\$ 7,013,654		\$ 7,013,654	
Taxes Levied for Debt Service				329,031		329,031	
Investment Earnings				16,346		16,346	
Miscellaneous Income				4,802	\$ 107	4,909	
Total General Revenues, Special Items, Extraordinary Items and Transfers				7,363,833	107	7,363,940	
Change in Net Position				120,105	(5,677)	114,428	
Net Position—Beginning (As Restated)				4,200,613	41,044	4,241,657	
Net Position—Ending				\$ 4,320,718	\$ 35,367	\$ 4,356,085	

The accompanying Notes to Basic Financial Statements are an integral part of this statement.

FUND FINANCIAL STATEMENTS

The Individual Fund statements and schedules present more detailed information for the individual fund in a format that segregates information by fund type.

WHITE TOWNSHIP SCHOOL DISTRICT

Exhibit B-1

BALANCE SHEET
GOVERNMENTAL FUNDS
June 30, 2017

ASSETS	GENERAL FUND	TOTAL GOVERNMENTAL FUNDS
Cash and Cash Equivalents	\$ 2,164,045	\$ 2,164,045
Receivables from Other Governments	83,909	83,909
TOTAL ASSETS	\$ 2,247,954	\$ 2,247,954
LIABILITIES AND FUND BALANCES		
Fund Balances:		
<u>Restricted for:</u>		
Excess Surplus	291,735	291,735
Excess Surplus-Designated For Subsequent Years	390,031	390,031
Capital Reserve	624,204	624,204
Maintenance Reserve	298,696	298,696
Tuition Reserve	400,000	400,000
<u>Assigned to:</u>		
Year-End Encumbrances	41,469	41,469
General Fund-Designated for Subsequent Year's Expend.	34,962	34,962
<u>Unassigned:</u>		
General Fund	166,857	166,857
Total Fund Balances	2,247,954	2,247,954
TOTAL LIABILITIES AND FUND BALANCE	\$ 2,247,954	\$ 2,247,954

Amounts reported for *governmental activities* in the statement of Net Position (A-1) are different because:

Capital assets used in governmental activities are not financial resources and therefore are not reported in the funds. The cost of the assets is \$7,269,874 and the accumulated depreciation is \$3,711,235. \$ 3,558,639

Deferred Outflows related to pension contributions subsequent to the Net Pension Liability measurement date and other deferred items are not current financial resources and therefore are not reported in the fund statements. (See Note 8) 449,856

Deferred Inflows related to pension actuarial gains from experience and differences in actual return and assumed returns and other deferred items are not reported as liabilities in the fund statements. (See Note 8) (102,813)

Long-term liabilities, including Net Pension Liability, are not due and payable in the current period and therefore are not reported as liabilities in the funds (see Note 8) (1,192,072)

Accrued Interest on Long-term liabilities, including bonds payable, are not due and payable in the current period and therefore are not reported as liabilities in the funds (see Note 7) (5,550)

Long-term liabilities, including bonds payable, are not due and payable in the current period and therefore are not reported as liabilities in the funds (see Note 7) (635,296)

Net Position of governmental activities **\$ 4,320,718**

The accompanying Notes to Basic Financial Statements are an integral part of this statement.

WHITE TOWNSHIP SCHOOL DISTRICT

Exhibit B-2

**STATEMENT OF REVENUES, EXPENDITURES, AND CHANGES IN FUND BALANCES
GOVERNMENTAL FUNDS
FOR THE YEAR ENDED JUNE 30, 2017**

	<u>General Fund</u>	<u>Special Revenue Fund</u>	<u>Debt Service Fund</u>	<u>Total Governmental Funds</u>
REVENUES				
Local sources:				
Local Tax Levy	\$ 7,013,654		\$ 329,031	\$ 7,342,685
Tuition	15,897			15,897
Miscellaneous	21,148			21,148
Total - Local Sources	7,050,699	-	329,031	7,379,730
State Sources	2,567,614		47,869	2,615,483
Federal Sources		\$ 178,517		178,517
Total Revenues	9,618,313	178,517	376,900	10,173,730
EXPENDITURES				
Current:				
Regular Instruction	2,283,245	157,865		2,441,110
Special Education Instruction	707,843			707,843
Other Special Instruction	121,893			121,893
Support services and undistributed costs:				
Tuition	3,029,157			3,029,157
Student and Instruction Related Services	888,048	20,652		908,700
School Administrative Services	195,385			195,385
Other Administrative Services	321,804			321,804
Plant Operations and Maintenance	468,644			468,644
Pupil Transportation	565,651			565,651
Unallocated Benefits	949,820			949,820
Transfer to Charter School	72,952			72,952
Debt Service:				
Principal			355,000	355,000
Interest and Other Charges			21,900	21,900
Capital Outlay	184,500			184,500
Total Expenditures	9,788,942	178,517	376,900	10,344,359
Excess (Deficiency) of Revenues Over Expenditures	(170,629)	-	-	(170,629)
Net Change in Fund Balances	(170,629)	-	-	(170,629)
Fund Balance—July 1	2,418,583			2,418,583
Fund Balance—June 30	\$ 2,247,954	-	-	\$ 2,247,954

The accompanying Notes to Basic Financial Statements are an integral part of this statement.

WHITE TOWNSHIP SCHOOL DISTRICT

Exhibit B-3

**RECONCILIATION OF THE STATEMENT OF REVENUES, EXPENDITURES,
AND CHANGES IN FUND BALANCES OF GOVERNMENTAL FUNDS
TO THE STATEMENT OF ACTIVITIES
FOR THE YEAR ENDED JUNE 30, 2017**

Total Net Change in Fund Balances - Governmental Funds (from B-2) \$ (170,629)

Amounts reported for governmental activities in the statement of activities (A-2) are different because:

Capital outlays are reported in governmental funds as expenditures. However, in the statement of activities, the cost of those assets is allocated over their estimated useful lives as depreciation expense. This is the amount by which capital outlays exceeded depreciation in the period.

Depreciation Expense	\$ (209,762)	
Net Book Value of Disposals	(4,124)	
Capital Outlays	<u>197,792</u>	(16,094)

Pension contributions are reported in governmental funds as expenditures. However, in the statement of activities, the contributions are adjusted for actuarial valuation adjustments, including service and interest costs, administrative costs, investment returns, and experience/assumption. This is the amount by which net pension liability and deferred inflows/outflows related to pension changed during the period. (69,607)

Repayment of bond principal is an expenditure in the governmental funds, but the repayment reduces long-term liabilities in the statement of net assets and is not reported in the statement of activities. 355,000

Repayment of early retirement incentive plan is an expenditure in the governmental funds, but the repayment reduces long-term liabilities in the statement of net assets and is not reported in the statement of activities. 26,322

In the statement of activities, compensated absences is accrued regardless of when paid. In the governmental funds, compensated absences are reported when paid. This is the amount by which the current year's compensated absence payments exceed the current year's amount earned. (10,212)

In the statement of activities, interest on long-term debt in the statement of activities is accrued, regardless of when due. In the governmental funds, interest is reported when due. This is the amount by which current year's amount of interest accrual exceeds the prior year's amount. 5,325

Change in Net Position of Governmental Activities \$ 120,105

The accompanying Notes to Basic Financial Statements are an integral part of this statement.

WHITE TOWNSHIP SCHOOL DISTRICT

Exhibit B-4

STATEMENT OF PROPRIETARY NET POSITION
 PROPRIETARY FUNDS

June 30, 2017

	<u>Business-Type Activities- Enterprise Funds</u>	
	<u>Food Service</u>	<u>Totals</u>
ASSETS		
Current assets:		
Cash and Cash Equivalents	\$ 16,647	\$ 16,647
Federal and State Accounts Receivable	1,672	1,672
Inventories	1,711	1,711
Total Current Assets	<u>20,030</u>	<u>20,030</u>
Noncurrent Assets:		
Furniture, Machinery and Equipment	50,113	50,113
Less Accumulated Depreciation	(29,539)	(29,539)
Total Noncurrent Assets	<u>20,574</u>	<u>20,574</u>
Total Assets	<u>40,604</u>	<u>40,604</u>
LIABILITIES		
Current liabilities:		
Accounts Payable	3,695	3,695
Deferred Revenue	1,542	1,542
Total Current Liabilities	<u>5,237</u>	<u>5,237</u>
Total Liabilities	<u>5,237</u>	<u>5,237</u>
Net Position		
Invested in Capital Assets Net of Related Debt	20,574	20,574
Unrestricted	14,793	14,793
Total Net Position	<u>\$ 35,367</u>	<u>\$ 35,367</u>

The accompanying Notes to Basic Financial Statements are an integral part of this statement.

**STATEMENT OF REVENUES, EXPENSES, AND CHANGES IN FUND NET POSITION
 PROPRIETARY FUNDS
 FOR THE YEAR ENDED JUNE 30, 2017**

	Business-type Activities- Enterprise Fund	
	Food Service	Total Enterprise
Operating Revenues:		
Charges for Services:		
Daily Sales - Reimbursable Programs	\$ 28,983	\$ 28,983
Daily Sales - Non-Reimb.Programs	3,090	3,090
Miscellaneous	107	107
Total Operating Revenues	32,180	32,180
 Operating Expenses:		
Cost of Sales - Reimbursable Programs	25,800	25,800
Cost of Sales - Non-reimbursable Programs	230	230
Salaries	20,056	20,056
Employee Benefits	4,944	4,944
Supplies	535	535
Other Purchased Professional Services	7,788	7,788
Miscellaneous	5,925	5,925
Depreciation	6,529	6,529
Total Operating Expenses	71,807	71,807
Operating Income (Loss)	(39,627)	(39,627)
 Nonoperating Revenues (Expenses):		
State Sources:		
State School Lunch Program	690	690
Federal Sources:		
National School Lunch Program	25,338	25,338
Food Distribution Program	7,922	7,922
Total Nonoperating Revenues (Expenses)	33,950	33,950
Income (Loss) Before Contributions and Transfers	(5,677)	(5,677)
Transfers In (Out)		
Change in Net Position	(5,677)	(5,677)
Total Net Position—Beginning	41,044	41,044
Total Net Position—Ending	\$ 35,367	\$ 35,367

The accompanying Notes to Basic Financial Statements are an integral part of this statement.

WHITE TOWNSHIP SCHOOL DISTRICT

Exhibit B-6

STATEMENT OF CASH FLOWS
PROPRIETARY FUNDS

For the Year Ended June 30, 2017

	Business-Type Activities- Enterprise Funds	
	Food Service	Total Enterprise
CASH FLOWS FROM OPERATING ACTIVITIES		
Receipts from Customers	\$ 32,073	\$ 32,073
Payments to Employees and Benefits	(25,000)	(25,000)
Payments to Suppliers	(30,506)	(30,506)
Net Cash Provided by (used for) Operating Activities	(23,433)	(23,433)
CASH FLOWS FROM NONCAPITAL FINANCING ACTIVITIES		
State Sources	675	675
Federal Sources	24,737	24,737
Operating Subsidy Transfers from Other Funds	-	-
Net Cash Provided by (used for) Non-Capital Financing Activities	25,412	25,412
CASH FLOWS FROM CAPITAL FINANCING ACTIVITIES		
Fixed Asset Additions	(4,925)	(4,925)
Net Cash Provided by (used for) Non-Capital Financing Activities	(4,925)	(4,925)
Net Increase (Decrease) in Cash and Cash Equivalents	(2,946)	1,979
Balances—Beginning of Year	19,593	19,593
Balances—End of Year	\$ 16,647	\$ 21,572
Reconciliation of Operating Income (Loss) to Net Cash Provided (used) by Operating Activities:		
Operating Income (Loss)	\$ (39,627)	\$ (39,627)
Adjustments to Reconcile Operating Income (Loss) to Net Cash Provided by (used for) Operating Activities:		
Depreciation Expense	6,529	6,529
Federal Commodities	7,922	7,922
(Increase) Decrease in Receivables	-	-
(Increase) Decrease in Inventories	(254)	(254)
Increase (Decrease) in Payables	1,997	1,997
Total Adjustments	16,194	16,194
Net Cash Provided by (used for) Operating Activities	\$ (23,433)	\$ (23,433)

The accompanying Notes to Basic Financial Statements are an integral part of this statement.

WHITE TOWNSHIP SCHOOL DISTRICT
STATEMENT OF FIDUCIARY NET POSITION
FIDUCIARY FUNDS

Exhibit B-7

June 30, 2017

	<u>Agency Fund</u>
ASSETS	
Cash and Cash Equivalents	\$ <u>15,228</u>
Total Assets	\$ <u>15,228</u>
LIABILITIES	
Payroll Deductions Payable	\$ 1
Payable to Student Groups	<u>15,227</u>
Total Liabilities	\$ <u>15,228</u>
Net Position	
Held in Trust for Other Purposes	<u><u> </u></u>

The accompanying Notes to Basic Financial Statements are an integral part of this statement.

Notes to Financial Statements

WHITE TOWNSHIP SCHOOL DISTRICT

NOTES TO BASIC FINANCIAL STATEMENTS
FOR THE FISCAL YEAR ENDED JUNE 30, 2017

NOTE 1: SUMMARY OF SIGNIFICANT ACCOUNTING POLICIES

The financial statements of the Board of Education (Board) of the White Township School District (District) have been prepared in conformity with generally accepted accounting principles (GAAP) as applied to governmental units. The Governmental Accounting Standards Board (GASB) is the accepted standard-setting body for establishing governmental accounting and financial reporting principles. The more significant of the Board's accounting policies are described below.

In June 1999, the Governmental Accounting Standards Board (GASB) unanimously approved Basic Financial Statements and Management's Discussion and Analysis for State and Local Governments (Statement No.34). This Statement provides for the most significant change in financial reporting in over twenty years with a phased-in implementation period (based on amount of revenues) starting with fiscal years ending 2002 (for larger governments). The District was not required to implement the new model until the 2003-2004 school year.

In addition, the School District has implemented GASB Statement No.37, Basic Financial Statements and Management's Discussion and Analysis for State and Local Governments: Omnibus, Statement No.38, Certain Financial Statement Note Disclosures, Statement No.40, Deposit and Investment Risk Disclosures, an amendment of GASB Statement No.3, and Statement 44, Economic Condition Reporting: The Statistical Section (GASB 44), an amendment of NCGA Statement 1, Governmental Accounting and Financial Reporting Principles is found in the Introduction, a revised statistical section in the Outline of the CAFR, GASB Statement No. 45, Other Post-retirement Employee Benefits, GASB No. 54, Fund Balance Reporting and Governmental Fund Type Definitions, and GASB No. 63 and 65, Deferred Outflows and Inflows and Net Position, and Items Previously Reported as Assets and Liabilities, and GAASB No. 68, Accounting for Pensions, an amendment of GASB No. 27. The implementation of these statements did not effect net position balances as previously reported for the fiscal year ended June 30, 2016.

A. Reporting Entity:

The White Township School District is a Type II district located in the County of Warren, State of New Jersey. As a Type II district, the School District functions independently through a Board of Education. The board is comprised of five members elected to three-year terms. The purpose of the district is to educate students in grades K-8. The White Township School District had an approximate enrollment at June 30, 2017, of 270 students.

The primary criterion for including activities within the District's reporting entity, as set forth in Section 2100 of the GASB *Codification of Governmental Accounting and Financial Reporting Standards*, is whether:

- the organization is legally separate (can sue or be sued in their own name)
- the District holds the corporate powers of the organization
- the District appoints a voting majority of the organization's board
- the District is able to impose its will on the organization
- the organization has the potential to impose a financial benefit/burden on the District
- there is a fiscal dependency by the organization on the District

Based on the aforementioned criteria, the District has no component units.

WHITE TOWNSHIP SCHOOL DISTRICT

NOTES TO BASIC FINANCIAL STATEMENTS
FOR THE FISCAL YEAR ENDED JUNE 30, 2017

NOTE 1: SUMMARY OF SIGNIFICANT ACCOUNTING POLICIES (Continued)

B. Basis of Presentation, Basis of Accounting:

The School District's basic financial statements consist of District-wide statements, including a statement of Net Position and a statement of activities, and fund financial statements which provide a more detailed level of financial information.

Basis of Presentation

District-wide Statements: The statement of net position and the statement of activities display information about the District as a whole. These statements include the financial activities of the overall District, except for fiduciary activities. Eliminations have been made to minimize the double-counting of internal activities. These statements distinguish between the governmental and business-type activity of the District. Governmental activities generally are financed through taxes, intergovernmental revenues, and other nonexchange transactions. Business-type activities are financed in whole or in part by fees and charged to external parties. The statement of net position presents the financial condition of the governmental and business-type activity of the School District at fiscal year end. The statement of activities presents a comparison between direct expenses and program revenues for the business-type activity of the District and for each function of the District's governmental activities. Direct expenses are those that are specifically associated with a program or function and, therefore, are clearly identifiable to a p

Program revenues include (a) fees and charges paid by the recipients of goods or services offered by the programs and (b) grants and contributions that are restricted to meeting the operational or capital requirements of a particular program. Revenues that are not classified as program revenues, including all taxes, are presented as general revenues. The comparison of direct expenses with program revenues identifies the extent to which each governmental function or business segment is self-financing or draws from the general revenues of the School District.

Fund Financial Statements: During the fiscal year, the School District segregates transactions related to certain School District functions or activities in separate funds in order to aid financial management and to demonstrate legal compliance. The fund financial statements provide information about the District's funds, including its fiduciary funds. Separate statements for each fund category—*governmental*, *proprietary*, and *fiduciary*—are presented. The New Jersey Department of Education (NJDOE) has elected to require New Jersey districts to treat each governmental fund as a major fund in accordance with the option noted in GASB No.34, paragraph 76. The NJDOE believes that the presentation of all funds as major is important for public interest and to promote consistency among district financial reporting models.

GOVERNMENTAL FUNDS

The District reports the following governmental funds:

General Fund - The General Fund is the general operating fund of the District and is used to account for all expendable financial resources except those required to be accounted for in another fund. Included are certain expenditures for vehicles and movable instructional or noninstructional equipment which are classified in the Capital Outlay subfund.

WHITE TOWNSHIP SCHOOL DISTRICT

NOTES TO BASIC FINANCIAL STATEMENTS
FOR THE FISCAL YEAR ENDED JUNE 30, 2017

NOTE 1: SUMMARY OF SIGNIFICANT ACCOUNTING POLICIES (Continued)

B. Basis of Presentation, Basis of Accounting (Continued):

GOVERNMENTAL FUNDS (Continued)

As required by the New Jersey State Department of Education, the District includes budgeted Capital Outlay in this fund. Generally accepted accounting principles as they pertain to governmental entities state that General Fund resources may be used to directly finance capital outlays for long-lived improvements as long as the resources in such cases are derived exclusively from unrestricted revenues. Resources for budgeted capital outlay purposes are normally derived from State of New Jersey Aid, district taxes and appropriated fund balance. Expenditures are those that result in the acquisition of or additions to fixed assets for land, existing buildings, improvements of grounds, construction of buildings, additions to remodeling of buildings and the purchase of built-in equipment. These resources can be transferred from and to Current Expense by board resolution.

Special Revenue Fund - The Special Revenue Fund is used to account for the proceeds of specific revenue from State and Federal Government, (other than major capital projects, debt service or the enterprise funds) and local appropriations that are legally restricted to expenditures for specified purposes.

Capital Projects Fund - The Capital Projects Fund is used to account for all financial resources to be used for the acquisition or construction of major capital facilities (other than those financed by proprietary funds). The financial resources are derived from temporary notes or serial bonds that are specifically authorized by the voters as a separate question on the ballot either during the annual election or at a special election.

Debt Service Fund - The Debt Service Fund is used to account for the accumulation of resources for, and the payment of principal and interest on bonds issued to finance major property acquisition, construction and improvement programs.

PROPRIETARY FUNDS

The District reports the following proprietary fund:

Enterprise (Food Service) Fund - The Enterprise Fund accounts for all revenues and expenses pertaining to the Board's cafeteria operations. The food service fund is utilized to account for operations that are financed and operated in a manner similar to private business enterprises. The stated intent is that the costs (i.e. expenses including depreciation and indirect costs) of providing goods or services to the students on a continuing basis be financed or recovered primarily through user charges.

WHITE TOWNSHIP SCHOOL DISTRICT

NOTES TO BASIC FINANCIAL STATEMENTS
FOR THE FISCAL YEAR ENDED JUNE 30, 2017

NOTE 1: SUMMARY OF SIGNIFICANT ACCOUNTING POLICIES (Continued)

B. Basis of Presentation, Basis of Accounting (Continued):

Additionally, the District reports the following fund type:

Fiduciary Funds - The Fiduciary Funds are used to account for assets held by the District on behalf of others and include the Student Activities Fund, Payroll Agency Fund and Unemployment Compensation Trust Fund.

Basis of Accounting

Basis of accounting determines when transactions are recorded in the financial records and reported on the financial statements.

District-wide, Proprietary, and Fiduciary Fund Financial Statements: The District-wide financial statements are prepared using the accrual basis of accounting. Governmental funds use the modified accrual basis of accounting; the enterprise fund and fiduciary funds use the accrual basis of accounting. Differences in the accrual and modified accrual basis of accounting arise in the recognition of revenue, the recording of deferred revenue, and in the presentation of expenses versus expenditures. Ad Valorem (Property) Taxes are susceptible to accrual as under New Jersey Statute as the municipality is required to remit to its school district the entire balance of taxes in the amount voted upon or certified prior to the end of the school year. The District records the entire approved tax levy as revenue (accrued) at the start of the fiscal year, since the revenue is both measurable and available. The District is entitled to receive monies under the established payment schedule and the unpaid amount is considered to be an "accounts receivable". Revenue from grants, entitlements and donations is recognized in the fiscal year in which all eli

Governmental Fund Financial Statements : Governmental funds are reported using the current financial resources measurement focus and the modified accrual basis of accounting. Under this method, revenues are recognized when measurable and available. "Measurable" means the amount of the transaction can be determined and "available" means collectible within the current period or soon enough thereafter to be used to pay liabilities of the current period. Expenditures are recorded when the related fund liability is incurred, except for principal and interest on general long-term debt, claims and judgments, and compensated absences, which are recognized as expenditures to the extent they have matured. General capital asset acquisitions are reported as expenditures in governmental funds. Proceeds of general long-term debt and acquisitions under capital leases are reported as other financing sources.

All governmental and business-type activities and enterprise funds of the District follow FASB Statements and Interpretations issued on or before November 30, 1989, Accounting Principles Board Opinions, and Accounting Research Bulletins, unless those pronouncements conflict with GASB pronouncements.

WHITE TOWNSHIP SCHOOL DISTRICT

NOTES TO BASIC FINANCIAL STATEMENTS
FOR THE FISCAL YEAR ENDED JUNE 30, 2017

NOTE 1: SUMMARY OF SIGNIFICANT ACCOUNTING POLICIES (Continued)

C. Budgets/Budgetary Control:

Annual appropriated budgets are prepared in the spring of each year for the general, special revenue, and debt service funds. The budgets are submitted to the county office for approval and are voted upon at the annual school election on the third Tuesday in April. Budgets are prepared using the modified accrual basis of accounting, except for the special revenue funds. The legal level of budgetary control is established at line item accounts within each fund. Line item accounts are defined as the lowest (most specific) level of detail as established pursuant to the minimum chart of accounts referenced in N.J.A.C. 6:20-2A.2(m)1. All budget amendments/transfers must be approved by School Board resolution. In addition, transfers are also covered by changes in N.J.A.C. 6A:23A-2.3 that can require approval through the state department. All budget amounts presented in the accompanying supplementary information reflect the original budget and the amended budget (which have been adjusted for legally authorized revisions of the annual budgets during the year).

Appropriations, except remaining project appropriations, encumbrances and unexpended grant appropriations, lapse at the end of each fiscal year. The capital projects fund presents the remaining project appropriations compared to current year expenditures.

Formal budgetary integration into the accounting system is employed as a management control device during the fiscal year. For governmental funds, there are no substantial differences between the budgetary basis of accounting and generally accepted accounting principles with the exception of the legally mandated revenue recognition of the last state aid payment for budgetary purposes only and the special revenue fund as noted below. Encumbrance accounting is also employed as an extension of formal budgetary integration in the governmental fund types. Unencumbered appropriations lapse at fiscal year end.

The accounting records of the special revenue fund are maintained on the grant accounting budgetary basis. The grant accounting budgetary basis differs from GAAP in that the grant accounting budgetary basis recognizes encumbrances as expenditures and also recognizes the related revenues, whereas the GAAP basis does not. Sufficient supplemental records are maintained to allow for the presentation of GAAP basis financial reports.

D. Encumbrance Accounting:

Under encumbrance accounting purchase orders, contracts and other commitments for the expenditure of resources are recorded to reserve a portion of the applicable appropriation. Open encumbrances in governmental funds, other than the special revenue fund, are reported as reservations of fund balances at fiscal year end as they do not constitute expenditures or liabilities but rather commitments related to unperformed contracts for goods and services.

Open encumbrances in the special revenue fund, for which the District has received advances, are reflected in the balance sheet as deferred revenues at fiscal year end.

The encumbered appropriation authority carries over into the next fiscal year. An entry will be made at the beginning of the next fiscal year to increase the appropriation reflected in the certified budget by the outstanding encumbrance amount as of the current fiscal year end.

WHITE TOWNSHIP SCHOOL DISTRICT

NOTES TO BASIC FINANCIAL STATEMENTS
FOR THE FISCAL YEAR ENDED JUNE 30, 2017

NOTE 1: SUMMARY OF SIGNIFICANT ACCOUNTING POLICIES (Continued)

E. Assets, Liabilities and Equity:

Cash and Cash Equivalents:

Cash and cash equivalents includes petty cash, change funds, amounts in deposits, money market accounts and short-term investments with original maturities of three months or less.

Interfund Transactions:

Transfers between governmental and business-type activities on the District-wide statements are reported in the same manner as general revenues.

Exchange transactions between funds are reported as revenues in the seller funds and as expenditures/expenses in the purchaser funds. Flows of cash or goods from one fund to another without a requirement for repayment are reported as interfund transfers. Interfund transfers are reported as other financing sources/uses in governmental funds and after non-operating revenues/expenses in the enterprise fund. Repayments from funds responsible for particular expenditures/expenses to the funds that initially paid for them are not presented on the financial statements.

Inventories:

Inventory purchases, other than those recorded in the enterprise fund, are recorded as expenditures during the year of purchase. Enterprise fund inventories are valued at cost, which approximates market, using the first-in, first-out (FIFO) method.

Allowance for Uncollectible Accounts:

No allowance for uncollectible accounts has been recorded as all amounts are considered collectible.

Capital Assets:

The District has established a formal system of accounting for its capital assets. Purchased or constructed capital assets are reported at cost. Donated capital assets are valued at their estimated fair market value on the date received. The cost of normal maintenance and repairs that do not add to the value of the asset or materially extend assets' lives are not capitalized. The School District does not possess any infrastructure. The capitalization threshold used by school districts in the State of New Jersey is \$2,000.

All reported capital assets except for land and construction in progress are depreciated. Depreciation is computed using the straight-line method under the half-year convention over the following estimated useful lives:

<u>Asset Class</u>	<u>Estimated Useful Lives</u>
School Buildings	50
Building Improvements	20
Electrical/Plumbing	30
Vehicles	8
Office and Computer Equipment	5-10
Instructional Equipment	10
Grounds Equipment	15

WHITE TOWNSHIP SCHOOL DISTRICT

NOTES TO BASIC FINANCIAL STATEMENTS
FOR THE FISCAL YEAR ENDED JUNE 30, 2017

NOTE 1: SUMMARY OF SIGNIFICANT ACCOUNTING POLICIES (Continued)

E. Assets, Liabilities and Equity (Continued):

In the fund financial statements, fixed assets used in governmental fund operations are accounted for as capital outlay expenditures of the governmental fund upon acquisition. Fixed assets are not capitalized and related depreciation is not reported in the fund financial statements.

Compensated Absences:

The District accounts for compensated absences (e.g., unused vacation, sick leave) as directed by Governmental Accounting Standards Board Statement No.16 (GASB 16), "Accounting for Compensated Absences". A liability for compensated absences attributable to services already rendered and not contingent on a specific event that is outside the control of the employer and employee is accrued as employees earn the rights to the benefits.

District instructional employees are granted sick leave in amounts under the District's contractual policies. Sick leave benefits provide for ordinary sick pay and begin vesting with the employee after initial service and become eligible after fifteen years of service and payment is based upon retirement in the state pension system.

The liability for compensated absences was accrued using the termination payment method, whereby the liability is calculated based on the amount of sick leave that is expected to become eligible for payment upon termination. The District estimates its accrued compensated absences liability based on the accumulated sick and vacation days at the balance sheet date by those employees who are currently eligible to receive termination payments. Salary related payments for the employer's share of social security and medicare taxes, as well as pension contributions, are included.

For the District-wide Statements, the current portion is the amount estimated to be used in the following year. In accordance with GAAP, for the governmental funds, in the Fund Financial Statements, all of the compensated absences are considered long-term and therefore, are not a fund liability and represents a reconciling item between the fund level and District-wide presentations.

Deferred Revenue:

Deferred revenue arises when assets are recognized before revenue recognition criteria have been satisfied. Property taxes for which there is an enforceable legal claim as of June 30, 2017, but which were levied to finance fiscal year 2018 operations, have been recorded as deferred revenue. Grants and entitlement received before the eligible requirements are met are also recorded as deferred revenue.

Accrued Liabilities and Long-Term Obligations:

All payables, accrued liabilities and long-term obligations are reported on the District-wide financial statements. In general, governmental fund payables and accrued liabilities that, once incurred, are paid in a timely manner and in full from current financial resources, are reported as obligations of the funds. However, contractually required pension contributions and compensated absences that are paid from governmental funds are reported as liabilities on the fund financial statements only to the extent that they are due for payment during the current year. Bonds are recognized as a liability on the fund financial statements when due.

WHITE TOWNSHIP SCHOOL DISTRICT

NOTES TO BASIC FINANCIAL STATEMENTS
FOR THE FISCAL YEAR ENDED JUNE 30, 2017

NOTE 1: SUMMARY OF SIGNIFICANT ACCOUNTING POLICIES (Continued)

E. Assets, Liabilities and Equity (Continued):

Net Position:

Net Position represent the difference between assets and liabilities. Net Position invested in capital assets, net of related debt consists of capital assets, net of accumulated depreciation, reduced by the outstanding balance of any borrowing used for the acquisition, construction or improvement of those assets. Net position are reported as restricted when there are limitations imposed on their use either through the enabling legislation adopted by the School District or through external restrictions imposed by creditors, grantors or laws or regulations of other governments. The School District's policy is to first apply restricted resources when an expense is incurred for purposes for which both restricted and unrestricted net position are available.

Fund Balance Reserves:

The School District reserves those portions of fund balance which are legally segregated for a specific future use or which do not represent available expendable resources and, therefore, are not available for appropriation or expenditure. Unreserved fund balance indicates that portion which is available for appropriation in future periods. A fund balance reserve has been established for encumbrances.

Revenues—Exchange and Nonexchange Transactions

Revenue resulting from exchange transactions, in which each party gives and receives essentially equal value, is recorded on the accrual basis when the exchange takes place. On the modified accrual basis, revenue is recorded in the fiscal year in which the resources are measurable and become available. Available means the resources will be collected within the current fiscal year or are expected to be collected soon enough thereafter to be used to pay liabilities of the current fiscal year. For the District, available means within sixty days of the fiscal year end.

Nonexchange transactions, in which the School District receives value without directly giving equal value in return, include property taxes, income taxes, grants, entitlements and donations. On the accrual basis, revenue from property taxes is recognized in the fiscal year for which the taxes are levied. Revenue from income taxes is recognized in the period in which the income is earned. Revenue from grants, entitlements and donations is recognized in the fiscal year in which all eligibility requirements have been satisfied.

Eligibility requirements include timing requirements, which specify the year when the resources are required to be used or the fiscal year when use is first permitted; matching requirements, in which the School District must provide local resources to be used for a specified purpose; and expenditure requirements, in which the resources are provided to the School District on a reimbursement basis. On the modified accrual basis, revenue from nonexchange transactions must also be available before it can be recognized.

Under the modified accrual basis, the following revenue sources are considered to be both measurable and available at fiscal year end: property taxes available as an advance, interest and tuition.

WHITE TOWNSHIP SCHOOL DISTRICT

NOTES TO BASIC FINANCIAL STATEMENTS
FOR THE FISCAL YEAR ENDED JUNE 30, 2017

NOTE 1: SUMMARY OF SIGNIFICANT ACCOUNTING POLICIES (Continued)

E. Assets, Liabilities and Equity (Continued):

Operating Revenues and Expenses:

Operating revenues are those revenues that are generated directly from the primary activity of the enterprise fund. For the School District, these revenues are sales for food service. Operating expenses are necessary costs incurred to provide the service that is the primary activity of the enterprise fund.

Allocation of Indirect Expenses:

The District reports all direct expenses by function in the Statement of Activities. Direct expenses are those that are clearly identifiable with a function. Indirect expenses are allocated to functions but are reported separately in the Statement of Activities. Employee benefits, including the employer's share of social security, workers compensation and medical and dental benefits, were allocated based on salaries of that program. Depreciation expense, where practicable, is specifically identified by function and is included in the indirect expense column of the Statement of Activities. Depreciation expense, that could not be attributed to a specific function, is considered an indirect expense and is reported separately on the Statement of Activities. Interest on long-term debt is considered an indirect expense and is reported separately on the Statement of Activities.

Extraordinary and Special Items:

Extraordinary items are transactions or events that are unusual in nature and infrequent in occurrence. Special items are transactions or events that are within the control of management and are either unusual in nature or infrequent in occurrence. Neither of these types of transactions occurred during the fiscal year.

Management Estimates:

The preparation of financial statements in conformity with generally accepted accounting principles requires management to make estimates and assumptions that affect the reported amounts of revenues and expenditures/expenses during the reporting period. Actual results could differ from those estimates.

NOTE 2: CASH AND CASH EQUIVALENTS

Deposits:

New Jersey statutes require that school districts deposit public funds in public depositories located in New Jersey, which are insured by the Federal Deposit Insurance Corporation, the Federal Savings and Loan Insurance Corporation, or by any other agency of the United States that insures deposits made in public depositories. School districts are also permitted to deposit public funds in the State of New Jersey Cash Management Fund.

WHITE TOWNSHIP SCHOOL DISTRICT

NOTES TO BASIC FINANCIAL STATEMENTS
FOR THE FISCAL YEAR ENDED JUNE 30, 2017

NOTE 2: CASH AND CASH EQUIVALENTS (Continued)

New Jersey statutes require public depositories to maintain collateral for deposits of public funds that exceed depository insurance limits as follows:

The market value of the collateral must equal at least 5% of the average daily balance of collected public funds on deposit.

In addition to the above collateral requirement, if the public funds deposited exceed 75% of the capital funds of the depository, the depository must provide collateral having a market value at least equal to 100% of the amount exceeding 75%.

All collateral must be deposited with the Federal Reserve Bank of New York, the Federal Reserve Bank of Philadelphia, the Federal Home Loan Bank of New York, or a banking institution that is a member of the Federal Reserve System and has capital funds of not less than \$25,000,000.

Pursuant to GASB Statement No. 40, "Deposit and Investment Risk Disclosures" ("GASB 40"), the district's accounts are profiled in order to determine exposure, if any, to Custodial Credit Risk (risk that in the event of failure of the counterparty the district would not be able to recover the value of its deposits or investment). Deposits are considered to be exposed to Custodial Credit Risk if they are: uncollateralized or collateralized with securities held by the financial institution's trust department or agent but not in the government's name. At June 30, 2017, all of the district's deposits were collateralized by securities held in its name and, accordingly, not exposed to custodial credit risk. The district does not have a policy for custodial credit risk.

As of June 30, 2017, cash and cash equivalents of the District consisted of the following:

	<u>Cash and Cash Equivalents (A-1)</u>	<u>Cash and Cash Equivalents (B-7)</u>	<u>Total</u>
Checking	\$2,180,692	\$15,228	\$2,195,920
	<u>\$2,180,692</u>	<u>\$15,228</u>	<u>\$2,195,920</u>

The carrying amount of the Board's cash and cash equivalents at June 30, 2017, was \$2,195,920 and the bank balance was \$2,504,202. All bank balances were covered by federal depository insurance and/or covered by a collateral pool maintained by the banks as required by New Jersey statutes. Of these bank balances, \$250,000 was covered by federal depository insurances and \$2,254,202 was covered by collateral pool.

WHITE TOWNSHIP SCHOOL DISTRICT

NOTES TO BASIC FINANCIAL STATEMENTS
FOR THE FISCAL YEAR ENDED JUNE 30, 2017

NOTE 3: RECEIVABLES

Receivables at June 30, 2017, consisted of intergovernmental receivables for grants and lunch reimbursements. All receivables are considered collectible in full. A summary of the principal items of intergovernmental receivables follows:

	Governmental Fund Financial <u>Statements</u>	Government-Wide Financial <u>Statements</u>
State Aid	\$83,909	\$83,955
Federal Aid	-	1,626
Gross Receivable-Governm.	83,909	85,581
Other Receivables	-	-
Less: Allow. for Uncollectibles	-	-
Total Receivables, Net	\$83,909	\$85,581

NOTE 4: INVENTORY

Inventory in the Food Service Fund at June 30, 2017, consisted of the following:

Food	\$	1,711
Supplies		-
Total	\$	1,711

The value of Federal donated commodities as reflected on Schedule A (required by the Single Audit Law of 1996, as revised) is the difference between market value and cost of the commodities at the date of purchase and has been included as an item of nonoperating revenue in the financial statements.

NOTE 5: DEFERRED BOND ISSUANCE COSTS

In governmental funds, debt issuance costs are recognized in the current period. For the District-wide financial statements, governmental activity debt issuance costs are amortized straight-line over the life of the specific bonds (18 to 20 years). The costs associated with the issued of the various bonds are immaterial and are not amortized on the District-wide financial statements.

WHITE TOWNSHIP SCHOOL DISTRICT

NOTES TO BASIC FINANCIAL STATEMENTS
FOR THE FISCAL YEAR ENDED JUNE 30, 2017

NOTE 6: CAPITAL ASSETS

Capital asset activity for the fiscal year ended June 30, 2017, was as follows:

	Beginning <u>Balance</u>	<u>Additions</u>	<u>Retirements</u>	Ending <u>Balance</u>
Governmental Activities:				
<i>Capital Assets Not Being Depreciated:</i>				
Land	\$ 49,010			\$ 49,010
Construction in Progress				
Total Capital Assets Not Being Depreciated	49,010			49,010
<i>Capital Assets Being Depreciated:</i>				
Land Improvements	83,550			83,550
Buildings and Building Improvements	6,592,281			6,592,281
Machinery and Equipment	358,046	\$ 197,792	\$ (10,805)	545,033
Total at Historical Cost	7,033,877	197,792	(10,805)	7,220,864
Less Accumulated Depreciation for:				
Land Improvements	(75,417)	(3,252)		(78,669)
Building and Improvements	(3,173,072)	(194,031)		(3,367,103)
Equipment	(259,665)	(12,479)	6,681	(265,463)
Total Accumulated Depreciation	(3,508,154)	(209,762)	6,681	(3,711,235)
Total Capital Assets Being Depreciated, net of Accumulated Depreciation	3,525,723	(11,970)	(4,124)	3,509,629
Government Activity Capital Assets, Net	\$ 3,574,733	(\$11,970)	(\$4,124)	\$ 3,558,639

On January 11, 2001, the NJ State Department of Education announced that effective July 1, 2001, the capitalization threshold used by school districts in the State of New Jersey is increased to \$2,000. The previous threshold was \$500. Applying the higher capitalization threshold retroactively (removal of old assets from the General Fixed Assets Account Group) will be permitted by the State regulations in situations where (1) the assets have been fully depreciated, or (2) the assets have exceeded their useful lives. The retirement of machinery and equipment is due to the retroactive application of the higher threshold of equipment capitalization. That is, the District has removed from their records assets with a historical cost greater than \$500 but not greater than \$2,000 that were fully depreciated or had exceeded their useful lives.

Depreciation expense was charged to functions as follows:

Regular Instruction	\$ 108,781
Support/Administration	19,014
Maintenance	2,513
Unallocated	79,454
Total	<u>\$ 209,762</u>

NOTE 7: LONG-TERM OBLIGATIONS

Bonds are authorized in accordance with State law by the voters of the district through referendums. All bonds are retired in serial installments within the statutory period of usefulness. Bonds issued by the Board are general obligation bonds.

WHITE TOWNSHIP SCHOOL DISTRICT

NOTES TO BASIC FINANCIAL STATEMENTS
FOR THE FISCAL YEAR ENDED JUNE 30, 2017

NOTE 7: LONG-TERM OBLIGATIONS - (Continued)

A. Long-Term Obligation Activity:

Changes in long-term obligations for the year ended June 30, 2017, are as follows:

	Balance <u>7/1/16</u>	<u>Increases</u>	<u>Decreases</u>	Balance <u>6/30/17</u>	Amounts Due Within <u>One Year</u>
Governmental Activities:					
Bonds Payable:					
General Obligation Debt	\$725,000		(\$355,000)	\$370,000	\$370,000
Early Retirement Incentive Program	131,610		(26,322)	105,288	26,322
Other Liabilities:					
Compensated Absences Payable	149,796	\$10,212		160,008	
Total	\$1,006,406	\$10,212	(\$381,322)	\$635,296	\$396,322

Compensated absences and Early Retirement Incentive Plan payments have been liquidated in the General Fund.

Interest paid on debt issued by the District is exempt from federal income taxes. Because of this, bond holders are willing to accept a lower interest rate than they would on taxable debt. The District temporarily reinvests the proceeds of such debt in higher-yielding taxable securities, especially during construction projects. The federal tax code refers to this as arbitrage.

Earnings in excess of the yield on the debt issue are rebated to the federal government based on requirements in the Internal Revenue Code. Arbitrage rebate payable represents amounts due to the Internal Revenue Service for interest earned on unspent bond proceeds that exceeds legally allowable returns.

Rebatable arbitrage liabilities related to District debt are not recorded in governmental funds. There is no recognition in the balance sheet or income statement until rebatable amounts are due and payable to the federal government. Thus, rebatable arbitrage liabilities related to governmental debt will be accrued as incurred at least annually (at fiscal year end) on the District-wide financial statements.

For the year ended June 30, 2017, it is not necessary for the Board to establish a liability for arbitrage rebate.

	Government Activities			Balance
	<u>Issue Dates</u>	<u>Interest Rates</u>	<u>Date of Maturity</u>	<u>June 30, 2017</u>
General School Renovations				
Bonds Payable-Series 2007	8/15/07	4%	8/15/17	\$ 370,000
Total Bonds				\$ 370,000

WHITE TOWNSHIP SCHOOL DISTRICT

NOTES TO BASIC FINANCIAL STATEMENTS
FOR THE FISCAL YEAR ENDED JUNE 30, 2017

NOTE 7: LONG-TERM OBLIGATIONS (Continued)

B. Debt Service Requirements:

Debt Service requirements on serial bonds payable at June 30, 2017, is as follows:

<u>Year Ending June 30,</u>	<u>Principal</u>	<u>Interest</u>	<u>Total</u>
2018	\$ 370,000	\$ 7,400	\$ 377,400
	<u>\$ 370,000</u>	<u>\$ 7,400</u>	<u>\$ 377,400</u>

NOTE 8: PENSION PLANS

Description of Plans - All required employees of the District are covered by either the Public Employees' Retirement System or the Teachers' Pension and Annuity Fund which have been established by state statute and are administered by the New Jersey Division of Pension and Benefits (Division). According to the State of New Jersey Administrative Code, all obligations of both Systems will be assumed by the State of New Jersey should the Systems terminate. The Division issues a publicly available financial report that includes the financial statements and required supplementary information for the Public Employees Retirement System and the Teachers' Pension and Annuity Fund. These reports may be obtained by writing to the Division of Pension and Benefits, PO Box 295, Trenton, New Jersey, 08625 or on the internet at <http://www.state.nj.us/treasury/pensions/annrprts.shtml>.

Teachers' Pension and Annuity Fund (TPAF) - The Teachers' Pension and Annuity Fund was established as of January 1, 1955, under the provisions of N.J.S.A. 18A:66 to provide retirement benefits, death, disability and medical benefits to certain qualified members. The Teachers' Pension and Annuity Fund is considered a cost-sharing multiple-employer plan with a special funding situation, as under current statute, 100% of employer contributions are made by the State of New Jersey on behalf of the District and the system's other related non-contributing employers. Membership is mandatory for substantially all teachers or members of the professional staff certified by the State Board of Examiners, and employees of the Department of Education who have titles that are unclassified, professional and certified.

Summary of Significant Accounting Policies - For purposes of measuring the net pension liability, deferred outflows of resources and deferred inflows of resources related to pensions, and pension expense, information about the fiduciary net position of the Teachers Pension and Annuity Fund (TPAF) and additions to/deductions from the TPAF's fiduciary net position have been determined on the same basis as they are reported by the TPAF. For this purpose, benefit payments (including refunds of employee contributions) are recognized when due and payable in accordance with the benefit terms. Investments are reported at fair value.

WHITE TOWNSHIP SCHOOL DISTRICT

NOTES TO BASIC FINANCIAL STATEMENTS
FOR THE FISCAL YEAR ENDED JUNE 30, 2017

NOTE 8: PENSION PLANS (Continued)

Pension Liabilities, Pension Expense, and Deferred Outflows of Resources and Deferred Inflows of Resources Related to Pensions

The employer contributions for the district are legally required to be funded by the State in accordance with N.J.S.A 18:66-33. Therefore, the district (employer) is considered to be in a special funding situation as defined by GASB Statement No. 68 and the State is treated as a nonemployer contributing entity. Since the district (employer) does not contribute directly to the plan (except for employer specific financed amounts), there is no net pension liability or deferred outflows or inflows to report in the financial statements of the district. However, the state's portion of the net pension liability that was associated with the district was \$20,779,883 as measured on June 30, 2016 and \$15,532,865 as measured on June 30, 2015.

For the year ended June 30, 2017, the District recognized pension expense of \$2,250,585 and revenue of \$2,250,585 for support provided by the State. The measurement period for the pension expense and revenue reported in the district's financial statements (A-2) at June 30, 2017 is based upon changes in the collective net pension liability with a measurement period of June 30, 2015 through June 30, 2016. Accordingly, the pension expense and the related revenue associated with the support provided by the State is based upon the changes in the collective net pension liability between July 1, 2015 and June 30, 2016.

Although the district does not report net pension liability or deferred outflows or inflows related to the TPAF, the following schedule illustrates the collective net pension liability and deferred items and the State's portion of the net pension liability associated with the district. The collective amounts are the total of all New Jersey local governments participating in the TPAF plan.

	<u>6/30/2015</u>	<u>6/30/2016</u>
Collective deferred outflows of resources	\$7,521,378,257	\$17,440,003,201
Collective deferred inflows of resources	\$554,399,005	\$195,027,919
Collective net pension liability (Nonemployer-State of New Jersey)	\$63,204,270,305	\$78,666,367,052
State's portion of the net pension liability that was associated with the district	\$15,532,865	\$20,779,883
State's portion of the net pension liability that was associated with the district as a percentage of the collective net pension liability	0.024576%	0.026415%

Actuarial assumptions - The total pension liability for the June 30, 2016 measurement date was determined by an actuarial valuation as of July 1, 2015, which was rolled forward to June 30, 2016. This actuarial valuation used the following actuarial assumptions, applied to all periods in the measurement:

Inflation:	2.50%
Salary Increases:	
Through 2021	Varies based on experience
Therafter	Varies based on experience
Investment Rate of Return:	7.65%

WHITE TOWNSHIP SCHOOL DISTRICT

NOTES TO BASIC FINANCIAL STATEMENTS
FOR THE FISCAL YEAR ENDED JUNE 30, 2017

NOTE 8: PENSION PLANS (Continued)

Pre-retirement, post-retirement and disabled mortality rates were based on the experience of TPAF members reflecting mortality improvement on a generational basis based on a 60-year average of Social Security data from 1953 to 2013.

The actuarial assumptions used in the July 1, 2015 valuation were based on the results of an actuarial experience study for the period July 1, 2012 to June 30, 2015.

Long-Term Expected Rate of Return - In accordance with State statute, the long-term expected rate of return on plan investments (7.65% at June 30, 2016) is determined by the State Treasurer, after consultation with the Directors of the Division of Investment and Division of Pensions and Benefits, the board of trustees and the actuaries. The long-term expected rate of return was determined using a building block method in which best-estimate ranges of expected future real rates of return (expected returns, net of pension plan investment expense and inflation) are developed for each major asset class. These ranges are combined to produce the long-term expected rate of return by weighting the expected future real rates of return by the target asset allocation percentage and by adding expected inflation. Best estimates of arithmetic real rates of return for each major asset class included in TPAF's target asset allocation as of June 30, 2016 are summarized in the following table:

<u>Asset Class</u>	<u>Target Allocation</u>	<u>Long-Term Expected Real Rate of Return</u>
US Cash	5.00%	0.39%
US Government Bonds	1.50%	1.28%
US Credit Bonds	13.00%	2.76%
US Mortgages	2.00%	2.38%
US Inflation-Indexed Bonds	1.50%	1.41%
US High Yield Bonds	2.00%	4.70%
US Equity Market	26.00%	5.14%
Foreign-Developed Equity	13.25%	5.91%
Emerging Markets Equity	6.50%	8.16%
Private Real Estate Property	5.25%	3.64%
Timber	1.00%	3.86%
Farmland	1.00%	4.39%
Private Equity	9.00%	8.97%
Commodities	0.50%	2.87%
Hedge Funds - MultiStrategy	5.00%	3.70%
Hedge Funds - Equity Hedge	3.75%	4.72%
Hedge Funds - Distressed	3.75%	3.49%

Discount rate - The discount rate used to measure the total pension liability was 3.22% as of June 30, 2016. This single blended discount rate was based on the long-term expected rate of return on pension plan investments of 7.65% and a municipal bond rate of 2.85% as of June 30, 2016 based on the Bond Buyer Go 20-Bond Municipal Bond Index, which includes tax-exempt general obligation municipal bonds with an average rating of AA/Aa or higher. The projection of cash flows used to determine the discount rate assumed that contributions from plan members will be made at the current member contribution rates and that contributions from employers will be made based on the contribution rate in the most recent fiscal year. The State contributed 30% of the actuarially determined contributions. Based on those assumptions, the plan's fiduciary net position was projected to be available to make projected future benefit payments of current plan members through 2029.

WHITE TOWNSHIP SCHOOL DISTRICT

NOTES TO BASIC FINANCIAL STATEMENTS
FOR THE FISCAL YEAR ENDED JUNE 30, 2017

NOTE 8: PENSION PLANS (Continued)

Therefore, the long-term expected rate of return on plan investments was applied to projected benefit payments through 2029 and the municipal bond rate was applied to projected benefit payments after that date in determining the total pension liability.

Sensitivity of the District's proportionate share of the net pension liability to changes in the discount rate - Since the District has no proportionate share of the net pension liability because of the special funding situation, the district would not be sensitive to any changes in the discount rate. Detailed information about the pension plan's sensitivity of the collective net pension liability to changes in the discount rate is available in the separately issued State of New Jersey at <http://www.state.nj.us/treasury/pensions/annrprts.shtml>.

Pension plan fiduciary net position - Detailed information about the pension plan's fiduciary net position is available in the separately issued State of New Jersey Divisions of Pensions and Benefits financial report at <http://www.nj.gov/treasury/pensions/financial-rprts-home.shtml>.

Public Employees' Retirement System (PERS) - The Public Employees' Retirement System (PERS) was established as of January 1, 1955 under the provisions of N.J.S.A. 43:15A to provide retirement, death, disability and medical benefits to certain qualified members. The Public Employees' Retirement System is a cost-sharing multiple-employer plan. Membership is mandatory for substantially all full-time employees of the State of New Jersey or any county, municipality, school district, or public agency, provided the employee is not required to be a member of another state-administered retirement system or other state or local jurisdiction.

Summary of Significant Accounting Policies - For purposes of measuring the net pension liability, deferred outflows of resources and deferred inflows of resources related to pensions, and pension expense, information about the fiduciary net position of the PERS and additions to/deductions from PERS fiduciary net position have been determined on the same basis as they are reported by PERS. For this purpose, benefit payments (including refunds of employee contributions) are recognized when due and payable in accordance with the benefit terms. Investments are reported at fair value.

Pension Liabilities, Pension Expense, and Deferred Outflows of Resources and Deferred Inflows of Resources Related to Pensions

At June 30, 2017, the District reported a liability of \$1,192,072 for its proportionate share of the net pension liability. The net pension liability was measured as of June 30, 2016, and the total pension liability to calculate the net pension liability was determined by an actuarial valuation as of July 1, 2015, which was rolled forward to June 30, 2016. The total pension liability for the June 30, 2015 measurement date was determined by an actuarial valuation as of July 1, 2014. The District's proportion of the net pension liability is based on the ratio of the contributions as an individual employer to total contributions to the PERS during the years ended June 30, 2016 and 2015. At June 30, 2016, the District's proportion was 0.00402% which was an increase of 0.00015% from its proportion measured as of June 30, 2015.

WHITE TOWNSHIP SCHOOL DISTRICT

NOTES TO BASIC FINANCIAL STATEMENTS
FOR THE FISCAL YEAR ENDED JUNE 30, 2017

NOTE 8: PENSION PLANS (Continued)

For the year ended June 30, 2017, the District recognized pension expense of \$108,339. At June 30, 2017, the District reported deferred outflows of resources and deferred inflows of resources related to PERS from the following sources:

	<u>Deferred</u> <u>Outflows of</u> <u>Resources</u>	<u>Deferred</u> <u>Inflows of</u> <u>Resources</u>
Differences between expected and actual experience	\$ 22,169	-
Changes of assumptions	246,934	
Net difference between projected and actual earnings on pension plan investments	45,455	
Changes in proportion and differences between District contributions and proportionate share of contributions	82,457	\$ 102,813
District contributions subsequent to the measurement date	52,841	
Total	<u>\$ 449,856</u>	<u>\$ 102,813</u>

\$52,841 reported as deferred outflows of resources related to pensions resulting from school district contributions subsequent to the measurement date (i.e. for the school year ending June 30, 2017, the plan measurement date is June 30, 2016) will be recognized as a reduction of the net pension liability measured as of June 30, 2017. Other amounts reported as deferred outflows of resources and deferred inflows of resources related to pensions will be recognized in pension expense as follows:

	<u>Year Ended June 30:</u>
2017	\$66,237
2018	66,237
2019	76,738
2020	64,471
2021	<u>20,520</u>
Total	<u>\$294,202</u>

	<u>6/30/2015</u>	<u>6/30/2016</u>
Collective deferred outflows of resources	\$3,578,755,666	\$8,685,338,380
Collective deferred inflows of resources	993,410,455	870,133,595
Collective net pension liability (Non State - Local Group)	\$22,447,996,119	\$29,617,131,759
District's portion of net pension liability	\$868,956	\$1,192,072
District's proportion %	0.00387097%	0.00402494%

Actuarial assumptions. The collective total pension liability for the June 30, 2016 measurement date was determined by an actuarial valuation as of July 1, 2015, which was rolled forward to June 30, 2016. This actuarial valuation used the following actuarial assumptions:

Inflation:	3.08%
Salary Increases:	
Through 2026	1.65%-4.15% based on age
Thereafter	2.65%-5.15% based on age
Investment Rate of Return:	7.65%

WHITE TOWNSHIP SCHOOL DISTRICT

NOTES TO BASIC FINANCIAL STATEMENTS
FOR THE FISCAL YEAR ENDED JUNE 30, 2017

NOTE 8: PENSION PLANS (Continued)

Mortality rates were based on the RP-2000 Combined Healthy Male and Female Mortality Tables (setback 1 year for females) with adjustments for mortality improvements from the base year of 2013 Based on Projection Scale AA.

The actuarial assumptions used in the July 1, 2015 valuation were based on the results of an actuarial experience study for the period July 1, 2011 to June 30, 2014.

Long-Term Expected Rate of Return - In accordance with State statute, the long-term expected rate of return on plan investments is determined by the State Treasurer, after consultation with the Directors of the Division of Investments and Division of Pensions and Benefits, the board of trustees and the actuaries. Best estimates of arithmetic real rates of return for each major asset class included in PERS's target asset allocation as of June 30, 2016 are summarized in the following table:

<u>Asset Class</u>	<u>Target Allocation</u>	<u>Long-Term Expected Real Rate of Return</u>
Cash	5.00%	0.87%
U.S. Treasuries	1.50%	1.74%
Investment Grade Credit	8.00%	1.79%
Mortgages	2.00%	1.67%
High Yield Bonds	2.00%	4.56%
Inflation-Indexed Bonds	1.50%	3.44%
Broad US Equities	26.00%	8.53%
Developed Foreign Equities	13.25%	6.83%
Emerging Market Equities	6.50%	9.95%
Private Equity	9.00%	12.40%
Hedge Funds I Absolute	12.50%	4.68%
Real Estate (Property)	2.00%	6.91%
Commodities	0.50%	5.45%
Global Debt ex US	5.00%	-0.25%
REIT	5.25%	5.63%

Discount rate. The discount rate used to measure the total pension liability was 3.98% as of June 30, 2016. This single blended discount rate was based on the long-term expected rate of return on pension plan investments of 7.65%, and a municipal bond rate of 2.85% as of June 30, 2016 based on the Bond Buyer Go 20-Bond Municipal Bond Index which includes tax-exempt general obligation municipal bonds with an average rating of AA/Aa or higher. The projection of cash flows used to determine the discount rate assumed that contributions from plan members will be made at the current member contribution rates and that contributions from employers will be made based on contribution rate in the most recent fiscal year.

Based on those assumptions, the plan's fiduciary net position was projected to be available to make projected future benefit payments of current plan members through 2034. Therefore, the long-term expected rate of return on plan investments was applied to projected benefit payments through 2034, and the municipal bond rate was applied to projected benefit payments after that date in determining the total pension liability.

WHITE TOWNSHIP SCHOOL DISTRICT

NOTES TO BASIC FINANCIAL STATEMENTS
FOR THE FISCAL YEAR ENDED JUNE 30, 2017

NOTE 8: PENSION PLANS (Continued)

Sensitivity of the Municipality's proportionate share of the net pension liability to changes in the discount rate. The following presents the Municipality's proportionate share of the net pension liability measured as of June 30, 2016, calculated using the discount rate of 3.98%, as well as what the Municipality's proportionate share of the net pension liability would be if it were calculated using a discount rate that is 1-percentage-point lower (2.98%) or 1-percentage-point higher (4.98%) than the current rate:

	<u>1% Decrease</u>	<u>Current</u> <u>Discount Rate</u>	<u>1% Increase</u>
	<u>(2.98%)</u>	<u>(3.98%)</u>	<u>(4.98%)</u>
District's proportionate share of the net pension liability	\$ 1,460,745	\$1,192,072	\$ 970,259

Pension plan fiduciary net position. Detailed information about the pension plan's fiduciary net position is available in the separately issued State of New Jersey Divisions of Pensions and Benefits financial report at <http://www.nj.gov/treasury/pensions/financial-rprts-home.shtml>.

Defined Contribution Retirement Plan (DCRP) - The Defined Contribution Retirement Program (DCRP) was established as of July 1, 2007 under the provisions of Chapter 92, P.L. 2007 and Chapter 103, P.L. 2007 (N.J.S.A. 43:15C-1 et seq.). The DCRP is a cost-sharing multiple-employer defined contribution pension fund. The DCRP provides eligible members, and their beneficiaries with a tax-sheltered, defined contribution retirement benefit, along with life insurance and disability coverage. Vesting and benefit provisions are established by N. J.S.A. 43:15C-1 et. seq.

The contribution requirements of plan members are determined by state statute. In accordance with Chapter 92, P.L. 2007 and Chapter 103, P.L. 2007, plan members are required to contribute 5.5% of their annual covered salary. The State Treasurer has the right under current law to make temporary reductions in member rates based on the existence of surplus plan assets in the retirement system; however statute also requires the return to the normal rate when such surplus pension assets no longer exist.

PERS and TPAF Vesting and Benefit Provisions - The vesting and benefit provisions for PERS are set by N.J.S.A. 43:15A and 43.3B, and N.J.S.A. 18A:6C for TPAF. All benefits vest after eight to ten years of service, except for medical benefits that vest after 25 years of service. Retirement benefits for age and service are available at age 60 and are generally determined to be 1/60 of the final average salary for each year of service credit, as defined. Final average salary equals the average salary for the final three years of service prior to retirement (or highest three years' compensation if other than the final three years). Members may seek early retirement after achieving 25 years of service credit or they may elect deferred retirement after achieving eight to ten years of service in which case benefits would begin the first day of the month after the member attains normal retirement age.

The TPAF and PERS provides for specified medical benefits for members who retire after achieving 25 years of qualified service, as defined, or under the disability provisions of the System. Members are always fully vested for their own contributions and, after three years of service credit, become vested for 2% of related interest earned on the contributions. In the case of death before retirement, members' beneficiaries are entitled to full interest credited to the members' accounts.

WHITE TOWNSHIP SCHOOL DISTRICT

NOTES TO BASIC FINANCIAL STATEMENTS
FOR THE FISCAL YEAR ENDED JUNE 30, 2017

NOTE 8: PENSION PLANS (Continued)

Significant Legislation - Chapter 78, P.L. 2011, effective June 28, 2011 made various changes to the manner in which the Public Employees' Retirement System (PERS) and the Police and Firemen's Retirement System (PFRS) operate and to the benefit provisions of those systems.

Chapter 78's provisions impacting employee pension and health benefits include:

□ New members of the PERS hired on or after June 28, 2011 (Tier 5 members) will need 30 years of creditable service and age 65 for receipt of the early retirement benefit without a reduction of ¼ of 1% for each month that the member is under age 65. □ The eligibility age to qualify for a service retirement in the PERS is increased from age 63 to 65 for Tier 5 members. □ The annual benefit under special retirement for new PFRS members enrolled after June 28, 2011 (Tier 3 members), will be 60% instead of 65% of the member's final compensation plus 1% for each year of creditable service over 25 years but not to exceed 30 years. □ Increases in active member contribution rates. PERS active member rates increase from 5.5% of annual compensation to 6.5% plus an additional 1% phased-in over 7 years; PFRS active member rate increase from 8.5% to 10%. For fiscal year 2012, the member contribution rates increased in October 2011. The phase-in of the additional incremental member contribution rates for PES members will take place in July of each subsequent fiscal year.

□ The payment of automatic cost-of-living adjustment (COLA) additional increases to current and future retirees and beneficiaries is suspended until reactivated as permitted by this law. □ New employee contribution requirements towards the cost of employer-provided health benefit coverage. Employees are required to contribute a certain percentage of the cost of coverage. The rate of contribution is determined based on the employee's annual salary and the selected level of coverage. The increased employee contributions will be phased in over a 4-year period for those employed prior to Chapter 78's effective date with a minimum contribution required to be at least 1.5% of salary. □ In addition, this new legislation changes the method for amortizing the pension systems' unfunded accrued liability (from a level percent of pay method to a level dollar of pay).

Contribution Requirements - The contribution policy is set by N.J.S.A. 43:15A, Chapter 62, P.L. of 1994, Chapter 115, P.L. of 1997 (PERS) and N.J.S.A. 18:66 (TPAF) requires contributions by active members and contributing employers. Plan member and employer contributions may be amended by State of New Jersey legislation. TPAF and PERS provide for employee contributions of 6.5% of employees' annual compensation, as defined. Employers are required to contribute at an actuarially determined rate in both TPAF and PERS. The current TPAF rate is 6.5% and the PERS rate is 6.5% of covered payroll.

Three-Year Trend Information for PERS

<u>Year Funding</u>	<u>Annual Pension Cost (APC)</u>	<u>Percentage of APC Contributed</u>	<u>Net Pension Obligation</u>
6/30/2017	\$54,317	100 %	-0-
6/30/2016	\$49,866	100	-0-
6/30/2015	\$54,785	100	-0-

WHITE TOWNSHIP SCHOOL DISTRICT

NOTES TO BASIC FINANCIAL STATEMENTS
FOR THE FISCAL YEAR ENDED JUNE 30, 2017

NOTE 8: PENSION PLANS (Continued)

Three-Year Trend Information for TPAF (Paid on-behalf of the District)

<u>Year</u>	<u>Annual Pension Cost (APC)</u>	<u>Percentage of APC Contributed</u>	<u>Net Pension Obligation</u>
6/30/2017	\$293,680	100 %	-0-
6/30/2016	\$211,490	100	-0-
6/30/2015	\$132,865	100	-0-

During the fiscal year ended June 30, 2017, the State of New Jersey did contribute \$537,884 to the TPAF for post-retirement benefits on behalf of the District. Also, in accordance with N.J.S.A. 18A:66-66 the State of New Jersey reimbursed the District \$198,144 during the year ended June 30, 2017, for the employer's share of social security contributions for TPAF members, as calculated on their base salaries. The PERS amounts have been included in the fund-based statements as pension expense and the TPAF on-behalf amounts have been included in fund-based statements as revenues and expenditures. The PERS and TPAF amounts have been modified and included in the District-wide financial statements in accordance with GASB Statement No. 68.

NOTE 9: POST-RETIREMENT BENEFITS

P.L. 1987, c. 384 and P.L. 1990, c.6 required Teachers' Pensions and Annuity Fund (TPAF) and the Public Employees' Retirement System (PERS), respectively, to fund post-retirement medical benefits for those state employees who retire after accumulating 25 years of credited service or on a disability retirement. P.L. 2007, c.103 amended the law to eliminate the funding of post-retirement medical benefits through the TPAF and PERS. It created separate funds outside of the pension plans for the funding and payment of post-retirement medical benefits for retired state employees and retired educational employees. As of June 30, 2016, there were 110,512 retirees receiving post-retirement medical benefits, and the State contributed \$1.37 billion on their behalf. The cost of these benefits is funded through contributions by the State in accordance with P.L. 1994, c.62. Funding of post-retirement medical benefits changed from a pre-funding basis to a pay-as-you-go basis beginning in Fiscal Year 1994.

The State is also responsible for the cost attributable to P.L. 1992, c.126, which provides employer paid health benefits to members of PERS and the Alternate Benefit Program who retired from a board of education or county college with 25 years of service. The State paid \$231.2 million toward Chapter 126 benefits for 20,045 eligible retired members in Fiscal Year 2016.

GASB Statement #45 requires certain disclosures relating to governmental entities obligations for other post-employment benefits (OPEB), which are post-employment benefits other than pensions. The District does not provide post-employment benefits other than pension. Healthcare provided to eligible TPAF and PERS board of education retirees through the NJ State Health Benefits Program are paid by the the State of New Jersey and as such, no district OPEB liability exists.

WHITE TOWNSHIP SCHOOL DISTRICT

NOTES TO BASIC FINANCIAL STATEMENTS
FOR THE FISCAL YEAR ENDED JUNE 30, 2017

NOTE 10: DEFERRED COMPENSATION

The Board offers its employees a choice of the following deferred compensation plans created in accordance with Internal Revenue Code Section 403(b). The plans, which are administered by the entities listed below, permits participants to defer a portion of their salary until future years. Amounts deferred under the plans are not available to employees until termination, retirement, death or unforeseeable emergency. The plan administrators are as follows:

Equitable
Oppenheimer
T Rowe Price
Franklin Trust

NOTE 11: COMPENSATED ABSENCES

The District accounts for compensated absences (e.g., unused vacation, sick leave) as directed by Governmental Accounting Standards Board Statement No.16 (GASB 16), "Accounting for Compensated Absences". A liability for compensated absences attributable to services already rendered and not contingent on a specific event that is outside the control of the employer and employee is accrued as employees earn the rights to the benefits.

District instructional employees are granted sick leave in amounts under the District's contractual policies. Sick leave benefits provide for ordinary sick pay and begin vesting with the employee after initial service and become eligible after fifteen years of service and payment is based upon retirement in the state pension system.

In the district-wide *Statement of Assets*, the liabilities whose average maturities are greater than one year should be reported in two components--the amount due within one year and the amount due in more than one year.

The liability for vested compensated absences of the proprietary fund types is recorded within those funds as the benefits accrue to employees. As of June 30, 2017, no liability existed for compensated absences in the proprietary fund types.

NOTE 12: RISK MANAGEMENT

The District is exposed to various risks of loss related to torts; theft of, damage to, and destruction of assets; errors and omissions; injuries to employees; and natural disasters.

Property and Liability Insurance - The District maintains commercial insurance coverage for property, liability, student accident and surety bonds. A complete schedule of insurance coverage can be found in the Statistical Section of this Comprehensive Annual Financial Report.

WHITE TOWNSHIP SCHOOL DISTRICT

NOTES TO BASIC FINANCIAL STATEMENTS
FOR THE FISCAL YEAR ENDED JUNE 30, 2017

NOTE 13: CONTINGENT LIABILITIES

GRANT PROGRAMS

The Board participates in state and federally assisted grant programs. These programs are subject to program compliance audits by the grantors or their representatives. The Board is potentially liable for any expenditures which may be disallowed pursuant to the terms of these grant programs. Management is not aware of any material items of noncompliance which would result in the disallowance of program expenditures.

LITIGATION

There are no material threatened litigations, claims or assessments, including unasserted claims and assessments known to the Board.

NOTE 14: FUND BALANCE APPROPRIATED

General Fund (Exhibit B-1)- Of the \$2,247,954 General Fund fund balance at June 30, 2017, \$41,469 is reserved for encumbrances; \$298,696 is reserved as maintenance reserve in accordance with P.L. 2007 c.62; \$400,000 is reserved for tuition adjustment in accordance with N.J.A.C. 6A:23-3.1(f)(8); \$624,204 is reserved for Capital Reserve; \$681,766 is reserved as excess surplus in accordance with N.J.S.A.18A:7F-7 (\$390,031 of the total reserve for excess surplus has been appropriated and included as anticipated revenue for the year ending June 30, 2018); \$34,962 is appropriated and included as anticipated revenue for the year ending June 30, 2018; and \$166,857 is unreserved and undesignated.

NOTE 15: CALCULATION OF EXCESS SURPLUS

The designation for Reserved Fund Balance – Excess Surplus is a required calculation pursuant to N.J.S.A. 18A:7F-7, as amended. New Jersey school districts are required to reserve General Fund fund balance at the fiscal year end of June 30 if they did not appropriate a required minimum amount as budgeted fund balance in their subsequent years' budget. The excess fund balance at June 30, 2017 is \$291,735.

NOTE 16: INTERFUND RECEIVABLES AND PAYABLES

No interfund balances remained on the balance sheet at June 30, 2017

NOTE 17: CAPITAL RESERVE ACCOUNT

A capital reserve account was established by the White Township School District Board of Education by inclusion of \$1. on October 10, 2000, for the accumulation of funds for use as capital outlay expenditures in subsequent fiscal years. The capital reserve account is maintained in the general fund and its activity is included in the general fund annual budget.

Funds placed in the capital reserve account are restricted to capital projects in the district's approved Long Range Facilities Plan (LRFP). Upon submission of the LRFP to the department, a district may increase the balance in the capital reserve by appropriating funds in the annual general fund budget certified for taxes or by transfer by board resolution at year end of any unanticipated revenue or unexpended line-item appropriation amounts, or both. A district may also appropriate additional amounts when the express approval of the voters has been obtained either by a separate proposal at budget time or by a special question at one of the four special elections authorized pursuant to N.J.S.A. 19:60-2. Pursuant to N.J.A.C. 6A:23-2.13(g), the balance in the account cannot at any time exceed the local support costs of uncompleted capital projects in its approved LRFP.

WHITE TOWNSHIP SCHOOL DISTRICT

NOTES TO BASIC FINANCIAL STATEMENTS
FOR THE FISCAL YEAR ENDED JUNE 30, 2017

NOTE 17: CAPITAL RESERVE ACCOUNT- (Continued)

The activity of the capital reserve for the July 1, 2016 to June 30, 2017 fiscal year is as follows:

Beginning Balance, July 1, 2016	\$ 650,508
Interest Earned	3,091
Budgeted Withdrawal	(179,395)
Deposits (PL 2007 c.62 (A1)): Board Resolution June 26, 2017	150,000
Ending Balance, June 30, 2017	<u>\$ 624,204</u>

NOTE 18: MAINTENANCE RESERVE ACCOUNT

A maintenance reserve account was established by the School District Board of Education for the accumulation of funds for use in accordance with PL 2007 c.62 (A1). The maintenance reserve account is maintained in the general fund and its activity is included in the general fund annual budget.

The activity of the maintenance reserve for the July 1, 2016 to June 30, 2017 fiscal year is as follows:

Beginning balance July 1, 2016	\$ 296,899
Interest earnings	1,797
Ending balance June 30, 2017	<u>\$ 298,696</u>

NOTE 19: TUITION RESERVE ACCOUNT

A tuition reserve account was established by the School District Board of Education in fiscal year 2016 and 2017, for the accumulation of funds for use in fiscal year 2018 and 2019, respectively, in accordance with NJAC 6A:23A17.1(f). The tuition reserve account is maintained in the general fund and enables the district to reserve fund balance for an anticipated large tuition adjustment for the current contract year. A maximum reserve for the current year is restricted to ten percent of the formal sending/receiving contract amount. Upon certification of rates in the second year following the contract year, full appropriation of the applicable year's reserve must be liquidated and any remaining balance related to that year must be reserved and budgeted for tax relief.

The district has established a tuition reserve for future tuition adjustments, pursuant to N.J.A.C. 6A:23-3.1(f), in an amount not exceeding 10% of the formal receiving/sending contract. \$200,000 has been reserved for the 2015-2016 tuition adjustment due in fiscal year 2017-2018, and \$200,000 has been reserved for the 2016-2017 tuition adjustment due in fiscal year 2018-2019. The tuition reserve due for fiscal year 2015-2016 in the amount of \$200,000 has been anticipated as budgeted revenue for the year ending June 30, 2018.

The activity of the tuition reserve for the July 1, 2016 to June 30, 2017 fiscal year is as follows:

Beginning balance July 1, 2016	\$ 500,000
Anticipated as Budgeted Revenue in fiscal year 2017	(300,000)
Deposits: Board Resolution June 26, 2017	200,000
Ending balance June 30, 2017	<u>\$ 400,000</u>

WHITE TOWNSHIP SCHOOL DISTRICT

NOTES TO BASIC FINANCIAL STATEMENTS
FOR THE FISCAL YEAR ENDED JUNE 30, 2017

NOTE 20: TUITION ADJUSTMENTS

A comparison of tentative tuition charges and actual certified tuition charges was made by the receiving district (Belvidere High School) for fiscal year 2014-2015 and certified by the state department. The resulting 2014-2015 tuition adjustment of \$1,105 in accordance with N.J.A.C 6a:23-3.1(f)3, was due to the district in fiscal year 2016-2017. The high school reduced the district's tuition contract by the 2014-2015 tuition adjustment during the 2016-2017 school year.

NOTE 21: TAX ABATEMENTS

As defined by the Governmental Accounting Standards Board (GASB), a tax abatement is an agreement between a government and an individual or entity in which the government promises to forgo tax revenues and the individual or entity promises to subsequently take a specific action that contributes to economic development or otherwise benefits the government or its citizens. School districts are not authorized by New Jersey statute to enter into tax abatement agreements. However, the county or municipality in which the school district is situated may have entered into tax abatement agreements, and that potential must be disclosed in these financial statements. If the county or municipality entered into tax abatement agreements, those agreements will not directly affect the school district's local tax revenue because N.J.S.A. 54:4-75 and N.J.S.A. 54:4-76 require that amounts so forgiven must effectively be recouped from other taxpayers and remitted to the school district.

NOTE 22: SUBSEQUENT EVENTS

On Tuesday, July 4, 2017, the Governor of New Jersey signed the Fiscal Year 2018 state budget, which includes revised 2017-18 state aid for school districts. The Department prepared and issued revised 2017-18 state aid notices dated July 14, 2017. In her Broadcast dated July 14, 2017, the Commissioner granted approval through August 1, 2017 to district boards of education/boards of school estimate that received a revised state aid notice indicating a decrease to state aid to transfer additional unassigned general fund surplus into the 2017-18 budget. Allowable transfers are those authorized by board resolution through August 1, 2017 made to provide the resources necessary to offset the reduction to 2017-18 state aid revenue. The amount of the transfer/increase from surplus cannot exceed the loss of the state aid. Applicable to the June 30, 2017 year-end audit of fund balance for districts with a decrease to their 2017-18 state aid, the district board of education utilized \$34,962 in additional general fund surplus by board resolution dated July 24, 2017 into the 2017-18 revised budget.

NOTE 23: RETROACTIVE RESTATEMENT OF NET POSITION

Restatement of Prior Period:

As an ongoing process of maintaining records in accordance with GASB#34, the district conducted a physical appraisal of capital assets as of June 30, 2017. The appraisal revealed asset activity that that should be recorded as of June 30, 2016. Accordingly, a restatement of Net Position as of June 30, 2015 was necessary.

Governmental Activities Net Position:

Net Position (per A-1), June 30, 2016	\$ 4,196,454
Restatement of Capital Assets	4,159
Net Position (per A-1), June 30, 2017, as Restated	<u>\$ 4,200,613</u>

REQUIRED SUPPLEMENTARY INFORMATION - PART II

BUDGETARY COMPARISON SCHEDULES

WHITE TOWNSHIP SCHOOL DISTRICT

Exhibit C-1

**BUDGETARY COMPARISON SCHEDULE
GENERAL FUND**

Fiscal Year Ended June 30, 2017

	<u>Original Budget</u>	<u>Budget Transfers</u>	<u>Final Budget</u>	<u>Actual</u>	Variance Final to Actual Favorable/ (Unfavorable)
REVENUES:					
Local Sources:					
Local Tax Levy	\$ 7,013,654		\$ 7,013,654	\$ 7,013,654	
Tuition	15,000		15,000	15,897	\$ 897
Miscellaneous	5,000		5,000	21,148	16,148
Total - Local Sources	<u>7,033,654</u>		<u>7,033,654</u>	<u>7,050,699</u>	<u>17,045</u>
State Sources:					
Equalization Aid	581,054		581,054	581,054	
Transportation Aid	249,609		249,609	249,609	
Special Education Aid	313,648		313,648	313,648	
Security Aid	49,562		49,562	49,562	
Adjustment Aid	540,496		540,496	540,496	
PARCC Readiness Aid	4,710		4,710	4,710	
Per Pupil Growth Aid	4,710		4,710	4,710	
Professional Learning Community Aid	4,320		4,320	4,320	
Non-public Transportation Aid			-	3,701	3,701
Extraordinary Aid			-	80,208	80,208
TPAF Pension (On-Behalf - Non-Budgeted)				293,081	293,081
TPAF Post Retirement Medical (On-Behalf - Non-Budgeted)				244,204	244,204
TPAF LTDI (On-Behalf - Non-Budgeted)				599	599
TPAF Social Security (Reimbursed - Non-Budgeted)				198,144	198,144
Total State Sources	<u>1,748,109</u>		<u>1,748,109</u>	<u>2,568,046</u>	<u>819,937</u>
TOTAL REVENUES	<u>8,781,763</u>		<u>8,781,763</u>	<u>9,618,745</u>	<u>836,982</u>
EXPENDITURES:					
Current Expense:					
Regular Programs - Instruction					
Kindergarten - Salaries of Teachers	131,329		131,329	129,188	2,141
Grades 1-5 - Salaries of Teachers	845,960	108,506	954,466	954,466	
Grades 6-8 - Salaries of Teachers	711,575	(27,739)	683,836	681,354	2,482

WHITE TOWNSHIP SCHOOL DISTRICT

Exhibit C-1

**BUDGETARY COMPARISON SCHEDULE
GENERAL FUND**

Fiscal Year Ended June 30, 2017

	<u>Original Budget</u>	<u>Budget Transfers</u>	<u>Final Budget</u>	<u>Actual</u>	Variance Final to Actual Favorable/ (Unfavorable)
Regular Programs - Home Instruction:					
Salaries of Teachers	2,000		2,000		2,000
Purchased Professional-Educational Services	1,000		1,000		1,000
Regular Programs - Undistributed Instruction					
Other Purchased Services (400-500 series)	29,000	(6,192)	22,808	17,047	5,761
General Supplies	57,560	18,836	76,396	76,395	1
Textbooks	30,000	(7,536)	22,464	15,485	6,979
TOTAL REGULAR PROGRAMS - INSTRUCTION	1,808,424	85,875	1,894,299	1,873,935	20,364
SPECIAL EDUCATION - INSTRUCTION					
Learning and/or Language Disabilities:					
Salaries of Teachers	55,467	(54,887)	580	580	
General Supplies	1,000	(1,000)			
Total Learning and/or Language Disabilities	56,467	(55,887)	580	580	
Multiple Disabilities:					
Salaries of Teachers	57,751	1,248	58,999	58,999	
General Supplies	1,000	(248)	752	410	342
Total Multiple Disabilities	58,751	1,000	59,751	59,409	342
Resource Room/Resource Center:					
Salaries of Teachers	397,567	7,773	405,340	405,340	
General Supplies	1,750	3,217	4,967	4,967	
Total Resource Room/Resource Center	399,317	10,990	410,307	410,307	
Preschool Disabilities - Part Time:					
Salaries of Teachers	34,191	4,603	38,794	38,794	
Other Salaries for Instruction	9,605	(3,790)	5,815	4,664	1,151
Total Preschool Disabilities - Part Time	43,796	813	44,609	43,458	1,151
TOTAL SPECIAL EDUCATION - INSTRUCTION	558,331	(43,084)	515,247	513,754	1,493

WHITE TOWNSHIP SCHOOL DISTRICT

Exhibit C-1

**BUDGETARY COMPARISON SCHEDULE
GENERAL FUND**

Fiscal Year Ended June 30, 2017

	<u>Original Budget</u>	<u>Budget Transfers</u>	<u>Final Budget</u>	<u>Actual</u>	<u>Variance Final to Actual Favorable/ (Unfavorable)</u>
Basic Skills/Remedial - Instruction:					
Salaries of Teachers	92,442	(22,846)	69,596	69,596	
Other Salaries for Instruction	35,920		35,920	33,995	1,925
General Supplies	7,000	10,347	17,347	17,211	136
Total Basic Skills/Remedial - Instruction	135,362	(12,499)	122,863	120,802	2,061
School Sponsored Co/Extra Curricular Activities-Instruction:					
General Supplies	1,250		1,250	1,091	159
Total School Sponsored Co/Extra Curricular Activities-Instruc.	1,250		1,250	1,091	159
TOTAL INSTRUCTION	2,503,367	30,292	2,533,659	2,509,582	24,077
UNDISTRIBUTED EXPENDITURES					
Instruction:					
Tuition to Other LEAs Within the State-Regular	2,134,095	89,155	2,223,250	2,222,145	1,105
Tuition to Other LEAs Within the State-Special	220,000	43,893	263,893	233,798	30,095
Tuition to County Voc. School Dist.-Regular	141,900		141,900	141,900	
Tuition to CSSD & Regional Day Schools	36,200	(36,200)			
Tuition to Priv. Sch. For Disabled within State	467,646	(36,332)	431,314	431,314	
Total Instruction	2,999,841	60,516	3,060,357	3,029,157	31,200
Attendance and Social Work Services:					
Salaries	78,840	1,435	80,275	80,275	
Supplies and Materials	10,000	(1,435)	8,565	8,396	169
Total Attendance and Social Work Services	88,840		88,840	88,671	169
Health Services:					
Salaries	53,727		53,727	29,352	24,375
Purchased Professional and Technical Services	1,250		1,250	500	750
Supplies and Materials	3,000		3,000	1,257	1,743
Total Health Services	57,977		57,977	31,109	26,868
Other Supp. Services Students-Related Services:					
Salaries	112,781		112,781	90,325	22,456
Total Other Supp. Services Students-Related Services	112,781		112,781	90,325	22,456

WHITE TOWNSHIP SCHOOL DISTRICT

Exhibit C-1

**BUDGETARY COMPARISON SCHEDULE
GENERAL FUND**

Fiscal Year Ended June 30, 2017

	<u>Original Budget</u>	<u>Budget Transfers</u>	<u>Final Budget</u>	<u>Actual</u>	Variance Final to Actual Favorable/ (Unfavorable)
Other Supp. Services Students-Extra. Services:					
Salaries	77,070	(24,425)	52,645	27,037	25,608
Purchased Professional-Educational Services	226,000	(5,167)	220,833	158,540	62,293
Total Other Supp. Services Students-Extra. Services	303,070	(29,592)	273,478	185,577	87,901
Other Supp. Services Students-Special:					
Salaries of Other Professional Staff	192,974	4,425	197,399	197,398	1
Supplies and Materials	8,000	5,685	13,685	13,685	
Total Other Supp. Services Students-Special	200,974	10,110	211,084	211,083	1
Improvement of Instr Svcs:					
Other Purchased Services (400-500 series)	7,500		7,500	2,219	5,281
Total Improvement of Instr Svcs	7,500		7,500	2,219	5,281
Educational Media Services/School Library:					
Salaries	92,423	(13,205)	79,218	50,849	28,369
Supplies and Materials	3,000	(266)	2,734	1,307	1,427
Total Educational Media Services/School Library	95,423	(13,471)	81,952	52,156	29,796
Instructional Staff Training Services:					
Other Objects	13,000	75	13,075	11,376	1,699
Total Instructional Staff Training Services	13,000	75	13,075	11,376	1,699
Supp. Services - General Administration:					
Salaries	40,837	12,639	53,476	49,254	4,222
Legal Services	18,000		18,000	8,236	9,764
Audit Fees	14,000		14,000	12,250	1,750
Architectual/Engineering Services	2,000	16,278	18,278	14,936	3,342
Other Purchased Professional Services	109,053	422	109,475	93,516	15,959
Communications/Telephone	13,800		13,800	8,798	5,002
Other Purchased Services (400-500 series)	29,200		29,200	22,365	6,835
General Supplies	500		500	477	23
Miscellaneous Expenditures	2,000		2,000	653	1,347
BOE Membership Dues & Fees	6,000		6,000	5,335	665
Total Supp. Services - General Administration	235,390	29,339	264,729	215,820	48,909

WHITE TOWNSHIP SCHOOL DISTRICT

Exhibit C-1

**BUDGETARY COMPARISON SCHEDULE
GENERAL FUND**

Fiscal Year Ended June 30, 2017

	<u>Original Budget</u>	<u>Budget Transfers</u>	<u>Final Budget</u>	<u>Actual</u>	Variance Final to Actual Favorable/ (Unfavorable)
Support Services - School Administration:					
Salaries of Principals/Assistant Principals	92,453	12,367	104,820	95,162	9,658
Salaries of Secretarial and Clerical Assistants	33,906		33,906	33,102	804
General Supplies	1,000	368	1,368	1,361	7
Total Support Services - School Administration	127,359	12,735	140,094	129,625	10,469
Central Services:					
Salaries	15,000	8,014	23,014	14,950	8,064
Purchased Professional Services	77,728	1,258	78,986	78,986	
Total Central Services	92,728	9,272	102,000	93,936	8,064
Required Maintenance for School Facilities:					
Salaries	48,999	(782)	48,217	33,937	14,280
Cleaning, Repair and Maintenance Services	60,000	80,159	140,159	108,954	31,205
General Supplies	20,000	(6,237)	13,763	13,763	
Total Required Maintenance for School Facilities	128,999	73,140	202,139	156,654	45,485
Other Operations and Maintenance of Plant:					
Salaries	144,074		144,074	143,924	150
Cleaning, Repair and Maintenance Services	40,000	(30,000)	10,000	7,181	2,819
Insurance	35,700		35,700	32,641	3,059
General Supplies	20,000	(3,000)	17,000	6,226	10,774
Energy (Natural Gas)	50,000		50,000	23,612	26,388
Energy (Electricity)	75,000	(20,000)	55,000	51,834	3,166
Total Other Operations and Maintenance of Plant	364,774	(53,000)	311,774	265,418	46,356
Care and Upkeep of Grounds:					
Cleaning, Repair and Maintenance Services	5,000		5,000		5,000
Total Care and Upkeep of Grounds:	5,000		5,000		5,000

WHITE TOWNSHIP SCHOOL DISTRICT

Exhibit C-1

**BUDGETARY COMPARISON SCHEDULE
GENERAL FUND**

Fiscal Year Ended June 30, 2017

	<u>Original Budget</u>	<u>Budget Transfers</u>	<u>Final Budget</u>	<u>Actual</u>	Variance Final to Actual Favorable/ (Unfavorable)
Student Transportation Services					
Contracted Services - Aid in Lieu of Payments-Nonpublic Sch.	15,912	3,094	19,006	19,006	
Contracted Services - Aid in Lieu of Payments-Charter Sch.		6,188	6,188	6,188	
Contracted Services (Between Home and School)-Vendors	290,505	(2,210)	288,295	280,696	7,599
Contracted Services (Special Education Students)-Vendors	284,000	(8,330)	275,670	250,261	25,409
Miscellaneous Purchased Services-Transportation	9,500		9,500	9,500	
Total Student Transportation Services	599,917	(1,258)	598,659	565,651	33,008
ALLOCATED BENEFITS					
Regular Programs - Instruction:					
Health Benefits	590,524	(94,400)	496,124	409,310	86,814
Total Regular Programs - Instruction	590,524	(94,400)	496,124	409,310	86,814
Special Programs - Instruction:					
Health Benefits	187,646	7,006	194,652	194,089	563
Total Special Programs - Instruction	187,646	7,006	194,652	194,089	563
Attendance and Social Work Services:					
Health Benefits	31,695		31,695	31,188	507
Total Attendance and Social Work Services	31,695		31,695	31,188	507
Health Services:					
Health Benefits	37,254	(16,690)	20,564	1,956	18,608
Total Health Services	37,254	(16,690)	20,564	1,956	18,608
Other Supp Serv - Child Study Teams:					
Health Benefits	142,740	9,684	152,424	152,424	
Total Other Supp Serv - Child Study Teams	142,740	9,684	152,424	152,424	
Educational Media Services/School Library:					
Health Benefits	30,381		30,381	29,964	417
Total Educational Media Services/School Library	30,381		30,381	29,964	417
Support Services - General Administration:					
Health Benefits	12,431		12,431	12,048	383
Total Support Services - General Administration	12,431		12,431	12,048	383
Support Services - School Administration:					
Health Benefits	66,593	(368)	66,225	65,760	465
Total Support Services - School Administration	66,593	(368)	66,225	65,760	465

WHITE TOWNSHIP SCHOOL DISTRICT

Exhibit C-1

**BUDGETARY COMPARISON SCHEDULE
GENERAL FUND**

Fiscal Year Ended June 30, 2017

	<u>Original Budget</u>	<u>Budget Transfers</u>	<u>Final Budget</u>	<u>Actual</u>	Variance Final to Actual Favorable/ (Unfavorable)
Operation and Maintenance of Plant:					
Health Benefits	49,273		49,273	46,572	2,701
Total Operation and Maintenance of Plant	<u>49,273</u>		<u>49,273</u>	<u>46,572</u>	<u>2,701</u>
TOTAL ALLOCATED BENEFITS	<u>1,148,537</u>	<u>(94,768)</u>	<u>1,053,769</u>	<u>943,311</u>	<u>110,458</u>
UNALLOCATED BENEFITS					
Regular Programs-Instruction:					
Social Security Contributions	49,000	750	49,750	41,070	8,680
TPAF Contributions - ERIP	28,000	(750)	27,250	26,322	928
Other Retirement Contributions - PERS	59,800		59,800	54,317	5,483
Unemployment Compensation	7,500	10,000	17,500	12,639	4,861
Workman's Compensation	49,000	(18,050)	30,950	27,408	3,542
Health Benefits	7,000		7,000		7,000
Tuition Reimbursement	35,000		35,000	32,619	2,381
Other Employee Benefits	40,000		40,000	19,417	20,583
Total Regular Programs-Instruction	<u>275,300</u>	<u>(8,050)</u>	<u>267,250</u>	<u>213,792</u>	<u>53,458</u>
TOTAL UNALLOCATED BENEFITS	<u>275,300</u>	<u>(8,050)</u>	<u>267,250</u>	<u>213,792</u>	<u>53,458</u>
ON-BEHALF CONTRIBUTIONS					
On-behalf TPAF pension Contrib. (non-budgeted)				293,081	(293,081)
On-behalf TPAF PRM Contrib. (non-budgeted)				244,204	(244,204)
TPAF LTDI (On-Behalf - Non-Budgeted)				599	(599)
Reimbursed TPAF Social Security Contrib. (non-budgeted)				198,144	(198,144)
TOTAL ON-BEHALF CONTRIBUTIONS				<u>736,028</u>	<u>(736,028)</u>
TOTAL PERSONAL SERVICES-EMPLOYEE BENEFITS	<u>1,423,837</u>	<u>(102,818)</u>	<u>1,321,019</u>	<u>1,893,131</u>	<u>(572,112)</u>
TOTAL UNDISTRIBUTED EXPENDITURES	<u>6,857,410</u>	<u>(4,952)</u>	<u>6,852,458</u>	<u>7,021,908</u>	<u>(169,450)</u>

WHITE TOWNSHIP SCHOOL DISTRICT
BUDGETARY COMPARISON SCHEDULE
GENERAL FUND

Exhibit C-1

Fiscal Year Ended June 30, 2017

	<u>Original Budget</u>	<u>Budget Transfers</u>	<u>Final Budget</u>	<u>Actual</u>	Variance Final to Actual Favorable/ (Unfavorable)
TOTAL GENERAL CURRENT EXPENSE	9,360,777	25,340	9,386,117	9,531,490	(145,373)
Transfer of Funds to Charter Schools	60,497	12,455	72,952	72,952	
CAPITAL OUTLAY					
FACILITIES ACQUISITIONS AND CONSTRUCT. SVCS:					
Construction Services	209,000		209,000	179,395	29,605
Assessment for Debt Service on SDA Funding	5,105		5,105	5,105	
TOTAL FACILITIES ACQUISITIONS AND CONST. SVCS	214,105		214,105	184,500	29,605
TOTAL CAPITAL OUTLAY	214,105		214,105	184,500	29,605
TOTAL EXPENDITURES	9,635,379	37,795	9,673,174	9,788,942	(115,768)
Excess (Deficiency of Revenues Over(Under) Expenditures	(853,616)	(37,795)	(891,411)	(170,197)	721,214
Excess (Deficiency) of Revenues and Other Financing Sources Over (Under) Expenditures and Other Financing Sources (Uses)	(853,616)	(37,795)	(891,411)	(170,197)	721,214
Fund Balance, July 1	2,585,203		2,585,203	2,585,203	
Fund Balance, June 30	\$ 1,731,587	(37,795)	\$ 1,693,792	\$ 2,415,006	\$ 721,214

WHITE TOWNSHIP SCHOOL DISTRICT
BUDGETARY COMPARISON SCHEDULE
GENERAL FUND

Exhibit C-1

Fiscal Year Ended June 30, 2017

	<u>Original</u>	<u>Budget</u>	<u>Final</u>	<u>Actual</u>	Variance Final to Actual Favorable/ (Unfavorable)
	<u>Budget</u>	<u>Transfers</u>	<u>Budget</u>		
Recapitulation:					
Restricted for:					
Excess Surplus				\$ 291,735	
Excess Surplus - Designated for Subsequent Year's Expenditures				390,031	
Tuition Reserve - FY15-16 Due FY 17-18				200,000	
Tuition Reserve - FY16-17 Due FY 18-19				200,000	
Capital Reserve				624,204	
Maintenance Reserve				298,696	
Assigned to:					
Reserve for Encumbrances				41,469	
Additional Assigned Fund Balance-Designated for Subsequent Year's Expenditures July 1, 2017-August 1, 2017				34,962	
Unassigned:					
Unrestricted Fund Balance				<u>333,909</u>	
Fund Balance per Governmental Funds(Budgetary Basis)				2,415,006	
Reconciliation to Governmental Funds Statement(GAAP Basis):					
Last State Aid Payment not recognized on GAAP basis				<u>(167,052)</u>	
Fund Balance per Governmental Funds(GAAP Basis B-2)				<u>\$ 2,247,954</u>	

WHITE TOWNSHIP SCHOOL DISTRICT

Exhibit C-2

**BUDGETARY COMPARISON SCHEDULE
SPECIAL REVENUE FUND**

For the Fiscal Year Ended June 30, 2017

	Original Budget	Budget Transfers	Final Budget	Actual	Variance Final to Actual Favorable/ (Unfavorable)
REVENUES:					
Federal Sources	\$ 104,000	\$ 74,517	\$ 178,517	\$ 178,517	-
Total Revenues	104,000	74,517	178,517	178,517	
EXPENDITURES:					
Instruction					
Salaries for Instruction	25,000	17,627	42,627	42,627	
Other Salaries for Instruction		4,784	4,784	4,784	
Tuition	79,000	14,421	93,421	93,421	
General Supplies		17,033	17,033	17,033	
Total Instruction	104,000	53,865	157,865	157,865	
Support Services					
Employee Benefits		11,752	11,752	11,752	
Purchased Educational Services		8,000	8,000	8,000	
Other Purchased Services		900	900	900	
Total Support Services		20,652	20,652	20,652	
Total Expenditures	104,000	74,517	178,517	178,517	
Total Outflows	\$ 104,000	\$ 74,517	\$ 178,517	\$ 178,517	-
Excess (Deficiency) of Revenues Over (Under) Expenditures and Other Financing Sources (Uses)					
Fund Balance per Governmental Funds(Budgetary Basis)					None
Reconciliation to Governmental Funds Statement(GAAP Basis):					
Last State Aid Payment not recognized on GAAP basis					<u>None</u>
Fund Balance per Governmental Funds(GAAP Basis)					None

**NOTES TO REQUIRED SUPPLEMENTARY INFORMATION
BUDGETARY COMPARISON SCHEDULE**

For the Fiscal Year Ended June 30, 2017

**Explanation of Differences between Budgetary Inflows and Outflows and
GAAP Revenues and Expenditures**

	General Fund	Special Revenue Fund
Sources/Inflows of Resources		
Actual amounts (budgetary basis) "revenue"		
from the budgetary comparison schedule (Exhibits C-1 and C-2, respectively)	\$ 9,618,745	\$ 178,517
Difference - budget to GAAP:		
Grant accounting budgetary basis differs from GAAP in that encumbrances are recognized as expenditures, and the related revenue is recognized.		
Prior Year Encumbrances	N/A	N/A
Current Year Encumbrances	N/A	N/A
Adjustment for: Prior year Final State Aid Payment excluded in State Source Revenues that is considered a revenue for GAAP reporting purposes	166,620	
Adjustment for: Current Year Final State Aid Payment included in State Source Revenues that is not considered a revenue for GAAP reporting purposes	<u>(167,052)</u>	<u>-</u>
Total revenues as reported on the statement of revenues, expenditures and changes in fund balances - governmental funds. (Exhibit B-2)	<u>\$ 9,618,313</u>	<u>\$ 178,517</u>
Uses/outflows of resources		
Actual amounts (budgetary basis) "total outflows" from the budgetary comparison schedules (Exhibits C-1 and C-2, respectively)	\$ 9,788,942	\$ 178,517
Differences - budget to GAAP		
Encumbrances for supplies and equipment ordered but not received are reported in the year the order is placed for <i>budgetary</i> purposes, but in the year the supplies are received for <i>financial reporting</i> purposes.		
Prior Year Encumbrances	N/A	N/A
Current Year Encumbrances	N/A	N/A
Transfers to and from other funds are presented as outflows of budgetary resources but are not expenditures for financial reporting purposes.	N/A	N/A
Net transfers (outflows) to general fund	<u> </u>	<u> </u>
Total expenditures as reported on the statement of revenues, expenditures, and changes in fund balances - governmental funds (Exhibit B-2)	<u>\$ 9,788,942</u>	<u>\$ 178,517</u>

**White Township School District
Required Supplementary Information - Part III
Schedule of the District's Proportionate Share of the Net Pension Liability
Last Ten Fiscal Years ***

Exhibit L-3

Teachers' Pension and Annuity Fund (TPAF)

	2017	2016	2015	2014	2013	2012	2011	2010	2009	2008
District's proportion of the net pension liability (asset) **	N/A	N/A	N/A	N/A	N/A	N/A	N/A	N/A	N/A	N/A
District's proportionate share of the net pension liability (asset) **	N/A	N/A	N/A	N/A	N/A	N/A	N/A	N/A	N/A	N/A
State's proportionate share of the net pension liability (asset) associated with the District	\$ 20,779,883	\$ 15,532,865	\$ 12,905,821	\$ 11,341,395						
Total	\$ 20,779,883	\$ 15,532,865	\$ 12,905,821	\$ 11,341,395						
District's covered employee payroll	\$ 2,837,767	\$ 2,771,359	\$ 2,576,714	\$ 2,369,791						
District's proportionate share of the of the net pension liability (asset) as a percentage of its covered-employee payroll	N/A	N/A	N/A	N/A	N/A	N/A	N/A	N/A	N/A	N/A
Plan fiduciary net position as a percentage of the total pension liability	22.33%	28.71%	33.64%	33.76%						

** Note: TPAF is a special funding situation as defined by GASB Statement No. 68 in which the State of New Jersey is 100% responsible for contributions to the plan. Since the district (employer) does not contribute directly to the plan there is no net pension liability to report in the financial statements of the district.

Exhibit L-1

Public Employees' Retirement System (PERS)

	2017	2016	2015	2014	2013	2012	2011	2010	2009	2008
District's proportion of the net pension liability (asset)	0.00402494%	0.00387097%	0.0046922218%	0.0041303044%						
District's proportionate share of the net pension liability (asset)	\$ 1,192,072	\$ 868,956	\$ 878,512	\$ 789,383						
District's covered employee payroll	\$ 268,419	\$ 448,152	\$ 269,443	\$ 319,743	N/A	N/A	N/A	N/A	N/A	N/A
District's proportionate share of the net pension liability (asset) as a percentage of its covered-employee payroll	444.11%	193.90%	326.05%	246.88%						
Plan fiduciary net position as a percentage of the total pension liability (Local)	40.14%	47.92%	52.08%	48.72%						

* - Until a full ten year trend is compiled, information will be presented for those years for which information is available.

**White Township School District
Required Supplementary Information - Part III
Schedule of District Contributions
Last Ten Fiscal Years ***

Exhibit L-2

Teachers' Pension and Annuity Fund (TPAF)

	<u>2016</u>	<u>2016</u>	<u>2015</u>	<u>2014</u>	<u>2013</u>	<u>2012</u>	<u>2011</u>	<u>2010</u>	<u>2009</u>	<u>2008</u>
Contractually required contribution **	293,680	211,490	132,865	102,153	145,003	77,778	8,291	8,947	8,882	187,729
Contributions in relation to the contractually required contribution **	<u>(293,680)</u>	<u>(211,490)</u>	<u>(132,865)</u>	<u>(102,153)</u>	<u>(145,003)</u>	<u>(77,778)</u>	<u>(8,291)</u>	<u>(8,947)</u>	<u>(8,882)</u>	<u>(187,729)</u>
Contribution deficiency (excess)	-	-	-	-	-	-	-	-	-	-
District's covered employee payroll	\$ 2,837,767	\$ 2,771,359	\$ 2,644,094	\$ 2,576,714	\$ 2,369,791	\$ 2,174,649	\$ 2,010,537	\$ 2,460,727	\$ 2,688,369	N/A
Contributions as a percentage of covered-employee payroll	10.35%	7.63%	5.02%	3.96%	6.12%	3.58%	0.41%	0.36%	0.33%	N/A

** Note: TPAF is a special funding situation as defined by GASB Statement No. 68 in which the State of New Jersey is 100% responsible for contributions to the plan. The district (employer) does not contribute to the plan.

Public Employees' Retirement System (PERS)

	<u>2017</u>	<u>2016</u>	<u>2015</u>	<u>2014</u>	<u>2013</u>	<u>2012</u>	<u>2011</u>	<u>2010</u>	<u>2009</u>	<u>2008</u>
Contractually required contribution	\$ 54,317	\$ 49,866	\$ 38,682	31,121	49,984	58,996	65,882	58,214	41,039	32,801
Contributions in relation to the contractually required contribution	<u>(54,317)</u>	<u>(49,866)</u>	<u>(38,682)</u>	<u>(31,121)</u>	<u>(49,984)</u>	<u>(58,996)</u>	<u>(65,882)</u>	<u>(58,214)</u>	<u>(41,039)</u>	<u>(32,801)</u>
Contribution deficiency (excess)	-	-	-	-	-	-	-	-	-	-
District's covered employee payroll	\$ 268,419	\$ 448,152	\$ 252,544	\$ 269,443	\$ 319,743	\$ 255,868	\$ 298,345	\$ 385,378	\$ 436,501	N/A
Contributions as a percentage of covered-employee payroll	20.24%	11.13%	15.32%	11.55%	15.63%	23.06%	22.08%	15.11%	9.40%	N/A

* - Until a full ten year trend is compiled, information will be presented for those years for which information is available.

WHITE SCHOOL DISTRICT

NOTES TO REQUIRED SUPPLEMENTARY INFORMATION - PART III
Pension Schedules

For the Fiscal Year Ended June 30, 2017

Teachers' Pension and Annuity Fund (TPAF)

Changes of benefit terms. The vesting and benefit provisions are set by N.J.S.A. 18A:66. TPAF provides retirement, death and disability benefits. All benefits vest after ten years of service, except for medical benefits, which vest after 25 years of service or under the disability provisions of TPAF. Members are always fully vested for their own contributions and, after three years of service credit, become vested for 2% of related interest earned on the contributions. In the case of death before retirement, members' beneficiaries are entitled to full interest credited to the members' accounts.

Changes of assumptions. Mortality rates were based on the RP-2000 Health Annuitant Mortality Table for Males or Females, as appropriate, with adjustments for mortality improvements based on Scale AA. Pre-retirement mortality improvements for active members are projected using Scale AA from the base year of 2000 until the valuation date plus 15 years to account for future mortality improvement. Post-retirement mortality improvements for non-disabled annuitants are projected using Scale AA from the base year of 2000 for males and 2003 for females until the valuation date plus 7 years to account for future mortality improvement.

Public Employees' Retirement System (PERS)

Changes of benefit terms. The vesting and benefit provisions are set by N.J.S.A. 43:15A. PERS provides retirement, death and disability benefits. All benefits vest after ten years of service, except for medical benefits, which vest after 25 years of service or under the disability provisions of PERS.

Changes of assumptions. Mortality rates were based on the RP-2000 Combined Healthy Male and Female Mortality Tables (setback 1 year for females) with adjustments for mortality improvements from the base year of 2012 Based on Projection Scale AA.

OTHER SUPPLEMENTARY INFORMATION

SPECIAL REVENUE FUND DETAIL STATEMENTS

The Special Revenue Fund is used to account for the proceeds of specific revenue sources (other than expendable trusts or major capital projects) that are legally restricted to expenditures for specific purposes.

WHITE TOWNSHIP SCHOOL DISTRICT

Exhibit E-1

SPECIAL REVENUE FUND
COMBINING SCHEDULE OF PROGRAM REVENUES AND EXPENDITURES - BUDGETARY BASIS

For the Fiscal Year Ended June 30, 2017

	Title I Part A	Title I I Part A	IDEA Basic	IDEA Pre-Sch.	REAP	Totals
REVENUES						
Federal Sources	\$ 43,891	\$ 19,388	\$ 93,421	\$ 4,784	\$ 17,033	\$ 178,517
TOTAL REVENUES	43,891	19,388	93,421	4,784	17,033	178,517
EXPENDITURES:						
Instruction:						
Salaries for Instruction	33,700	8,927				42,627
Other Salaries for Instruction				4,784		4,784
Tuition			93,421			93,421
General Supplies					17,033	17,033
Total Instruction	33,700	8,927	93,421	4,784	17,033	157,865
Support Services:						
Employee Benefits	9,291	2,461				11,752
Purchased Educational Services		8,000				8,000
Other Purchased Services	900					900
Total Support Services	10,191	10,461				20,652
TOTAL EXPENDITURES	43,891	19,388	93,421	4,784	17,033	178,517
Total Outflows	43,891	19,388	93,421	4,784	17,033	178,517
Excess (Deficiency) of Revenues Over (Under) Expenditures and Other Financing Sources (Uses)						

**CAPITAL PROJECTS FUND
DETAIL STATEMENTS**

The Capital Projects Fund is used to account for the acquisition and construction of major capital facilities and equipment purchases other than those financed by proprietary funds.

N/A

<p style="text-align: center;">PROPRIETARY FUND DETAIL STATEMENTS</p>
--

Proprietary Funds are used to account for operations that are financed and operated in a manner similar to private business enterprises - where the intent of the district's board is that the costs of providing goods or services be financed through user charges.

Food Services Fund - This fund provides for the operation of food services in all schools within the school district.

THIS SECTION HAS ALREADY BEEN INCLUDED IN STATEMENTS B-4, B-5 AND B-6.

<p style="text-align: center;">FIDUCIARY FUND DETAIL STATEMENTS</p>
--

Fiduciary Funds are used to account for funds received by the school district for a specific purpose.

Agency Funds are used to account for assets held by the school district as an agent for individuals, private organizations, other governments and/or other funds.

Student Activity Fund - This agency fund is used to account for student funds held at the schools.

Payroll Fund - This agency fund is used to account for the payroll transactions of the school district.

WHITE TOWNSHIP SCHOOL DISTRICT

Exhibit H-1

**COMBINING STATEMENT OF FIDUCIARY NET POSITION
FIDUCIARY FUNDS
JUNE 30, 2017**

	<u>AGENCY FUNDS</u>		
	<u>STUDENT</u>	<u>PAYROLL</u>	<u>TOTALS</u>
	<u>ACTIVITY</u>	<u>AGENCY</u>	
ASSETS:			
Cash and Cash Equivalents	\$ 15,227	\$ 1	\$ 15,228
TOTAL ASSETS	<u>\$ 15,227</u>	<u>\$ 1</u>	<u>\$ 15,228</u>
LIABILITIES:			
Liabilities:			
Payroll Deductions and Withholdings		\$ 1	\$ 1
Payable to Student Groups	\$ 15,227		15,227
Total Liabilities	<u>\$ 15,227</u>	<u>\$ 1</u>	<u>\$ 15,228</u>
Net Position			
Held in Trust for Unemployment			
Claims and Other Purposes			-
TOTAL LIABILITIES AND NET POSITION	<u>\$ 15,227</u>	<u>\$ 1</u>	<u>\$ 15,228</u>

WHITE TOWNSHIP SCHOOL DISTRICT

Exhibit H-2

**SCHEDULE OF RECEIPTS AND DISBURSEMENTS
STUDENT ACTIVITY AGENCY FUND
FOR THE FISCAL YEAR ENDED JUNE 30, 2017**

<u>ACTIVITY</u>	<u>BALANCE JULY 1, 2016</u>	<u>TRANSFERS</u>	<u>CASH RECEIPTS</u>	<u>CASH DISBURSEMENTS</u>	<u>BALANCE JUNE 30, 2017</u>
Library	\$ 205		\$ 32	\$ 208	\$ 29
Music	274		663	358	579
Year Book	1,531		11		1,542
Project Earth	398		3		401
Class of 2017	7,700		21,706	21,463	7,943
Class Trips	5,063		5,889	7,523	3,429
Dr. Seuss	183		1		184
Student Government	108		1		109
Special Activities	1,602	-	1,418	2,009	1,011
Totals	\$ 17,064	-	\$ 29,724	\$ 31,561	\$ 15,227

WHITE TOWNSHIP SCHOOL DISTRICT

Exhibit H-3

**SCHEDULE OF RECEIPTS AND DISBURSEMENTS
PAYROLL AGENCY FUND
FOR THE FISCAL YEAR ENDED JUNE 30, 2017**

	<u>BALANCE</u> <u>JULY 1, 2016</u>	<u>ADDITIONS</u>	<u>DELETIONS</u>	<u>BALANCE</u> <u>JUNE 30, 2017</u>
ASSETS:				
Cash and Cash Equivalents	\$ 9	\$ 3,548,111	\$ 3,548,119	\$ 1
Total Assets	<u>\$ 9</u>	<u>\$ 3,548,111</u>	<u>\$ 3,548,119</u>	<u>\$ 1</u>
LIABILITIES:				
Payroll Deductions and Withholdings	\$ 9	\$ 1,527,525	\$ 1,527,533	\$ 1
Accrued Salaries and Wages	<u>-</u>	<u>2,020,586</u>	<u>2,020,586</u>	<u>-</u>
Total Liabilities	<u>\$ 9</u>	<u>\$ 3,548,111</u>	<u>\$ 3,548,119</u>	<u>\$ 1</u>

LONG-TERM DEBT SCHEDULES

The Long-Term Schedules are used to reflect the outstanding principal balances of the general long-term liabilities of the school district. This includes serial bonds outstanding and obligations under capital leases.

WHITE TOWNSHIP SCHOOL DISTRICT

Exhibit I-1

**SCHEDULE OF SERIAL BONDS
AS OF ENDED JUNE 30, 2017**

<u>ISSUE</u>	<u>DATE OF ISSUE</u>	<u>AMOUNT OF ISSUE</u>	<u>ANNUAL MATURITIES</u>		<u>INTEREST RATE</u>	<u>BALANCE JULY 1, 2016</u>	<u>ISSUED</u>	<u>PAID</u>	<u>BALANCE JUNE 30, 2017</u>
			<u>DATE</u>	<u>AMOUNT</u>					
Refunding Bonds - 2007	8/15/07	\$ 3,080,000	8/15/17	\$ 370,000	4.0%	\$ 725,000		\$ 355,000	\$ 370,000
Total						\$ 725,000	-	\$ 355,000	\$ 370,000

WHITE TOWNSHIP SCHOOL DISTRICT

**STATEMENT OF EARLY RETIREMENT INCENTIVE PROGRAMS
FOR THE FISCAL YEAR ENDED JUNE 30, 2017**

Exhibit I-2

<u>ISSUE</u>	<u>DATE OF ISSUE</u>	<u>AMOUNT OF ISSUE</u>	<u>ANNUAL MATURITIES</u>		<u>BALANCE</u>	<u>RETIRE</u>	<u>BALANCE</u>
			<u>DATE</u>	<u>AMOUNT</u>	<u>JULY 1, 2016</u>		<u>JUNE 30, 2017</u>
Early Retirement Incentive Programs - TPAF	4/1/95	\$746,064	4/1/18-21	\$ 26,322	\$ 131,610	\$ 26,322	\$ 105,288
Total					\$ 131,610	26,322	\$ 105,288

WHITE TOWNSHIP SCHOOL DISTRICT

Exhibit I-3

**BUDGETARY COMPARISON SCHEDULE
DEBT SERVICE FUND**

For the Fiscal Year Ended June 30, 2017

	<u>Original Budget</u>	<u>Budget Transfers</u>	<u>Final Budget</u>	<u>Actual</u>	<u>Variance Positive/ (Negative) Final to Actual</u>
REVENUES:					
Local Sources:					
Local Tax Levy	\$ 329,031		\$ 329,031	\$ 329,031	-
State Sources:					
Debt Service Aid Type II	47,869		47,869	47,869	
TOTAL REVENUES	376,900	-	376,900	376,900	-
EXPENDITURES:					
Regular Debt Service:					
Interest	21,900		21,900	21,900	-
Redemption of Principal	355,000		355,000	355,000	
Total Regular Debt Service	376,900		376,900	376,900	-
TOTAL EXPENDITURES	376,900		376,900	376,900	-
Excess (Deficiency) of Revenues Over (Under) Expenditures	-		-	-	-
Fund Balance, July 1			-	-	-
Fund Balance, June 30	-	-	-	-	-
Recapitulation of Excess (Deficiency) of Revenues Over (Under) Expenditures					
Budgeted Fund Balance	-	-	-	-	-

White Township School District
Statistical Section

<u>Contents</u>	<u>Page</u>
Financial Trends (J-1 thru J-5) These schedules contain trend information to help the reader understand how the district's financial performance and well being have changed over time.	90-95
Revenue Capacity (J-6 thru J-9) These schedules contain information to help the reader assess the district's most significant local revenue source, the property tax.	96-99
Debt Capacity (J-10 thru J-13) These schedules present information to help the reader assess the affordability of the district's current levels of outstanding debt and the district's ability to issue additional debt in the future.	100-103
Demographic and Economic Information (J-14 and J-15) These schedules offer demographic and economic indicators to help the reader understand the environment within which the district's financial activities take place.	104-105
Operating Information (J-16 thru J-20) These schedules contain service and infrastructure data to help the reader understand how the information in the district's financial report relates to the services the district provides and the activities it performs.	106-110

Sources:

Unless otherwise noted, the information in these schedules is derived from the comprehensive annual financial reports (CAFR) for the relevant year.

**White Township School District
Net Position by Component,
Last Ten Fiscal Years**

(accrual basis of accounting)

Exhibit J-1

	Fiscal Year Ending June 30,									
	2008	2009	2010	2011	2012	2013	2014	2015	2017	2017
Governmental activities										
Invested in capital assets, net of related debt	\$ 1,257,371	\$ 1,353,502	\$ 1,602,141	\$ 1,725,506	\$ 1,926,306	\$ 2,082,641	\$ 2,692,112	\$ 3,042,681	\$ 2,845,574	\$ 3,188,639
Restricted	121,513	221,898	195,758	526,109	851,367	1,267,640	1,715,854	1,523,234	1,447,407	1,357,862
Unrestricted	(358,826)	(621,603)	(448,937)	(188,379)	71,150	478,722	(214,653)	(168,509)	(96,527)	(225,783)
Total governmental activities Net Position	\$ 1,020,058	\$ 953,797	\$ 1,348,962	\$ 2,063,236	\$ 2,848,823	\$ 3,829,003	\$ 4,193,313	\$ 4,397,406	\$ 4,196,454	\$ 4,320,718
Business-type activities										
Invested in capital assets, net of related debt	\$ 7,438	\$ 8,309	\$ 15,841	\$ 14,123	\$ 29,905	\$ 26,729	\$ 23,586	\$ 20,661	\$ 22,178	\$ 20,574
Restricted									-	-
Unrestricted	23,395	23,872	15,353	11,252	17,027	25,879	33,593	33,566	18,866	14,793
Total business-type activities Net Position	\$ 30,833	\$ 32,181	\$ 31,194	\$ 25,375	\$ 46,932	\$ 52,608	\$ 57,179	\$ 54,227	\$ 41,044	\$ 35,367
District-wide										
Invested in capital assets, net of related debt	\$ 1,264,809	\$ 1,361,811	\$ 1,617,982	\$ 1,739,629	\$ 1,956,211	\$ 2,109,370	\$ 2,715,698	\$ 3,063,342	\$ 2,867,752	\$ 3,209,213
Restricted	121,513	221,898	195,758	526,109	851,367	1,267,640	1,715,854	1,523,234	1,447,407	1,357,862
Unrestricted	(335,431)	(597,731)	(433,584)	(177,127)	88,177	504,601	(181,060)	(134,943)	(77,661)	(210,990)
Total district Net Position	\$ 1,050,891	\$ 985,978	\$ 1,380,156	\$ 2,088,611	\$ 2,895,755	\$ 3,881,611	\$ 4,250,492	\$ 4,451,633	\$ 4,237,498	\$ 4,356,085

Source: CAFR Schedule A-1

White Township School District
Changes in Net Position, Last Ten Fiscal Years
(accrual basis of accounting)

Exhibit J-2

	Fiscal Year Ending June 30,									
	2008	2009	2010	2011	2012	2013	2014	2015	2016	2017
Expenses										
Governmental activities										
Instruction										
Regular	\$ 2,876,801	\$ 2,694,505	\$ 2,556,623	\$ 2,177,363	\$ 2,427,233	\$ 2,449,338	\$ 2,360,716	\$ 2,985,252	\$ 2,985,890	\$ 3,991,851
Special education	760,145	755,833	717,918	818,748	667,961	701,014	798,493	919,796	1,038,636	1,114,365
Other special instruction	168,974	179,581	141,709	159,065	147,795	199,593	207,134	222,649	167,205	191,897
Support Services:										
Tuition	2,462,511	2,859,364	3,249,258	3,045,211	2,949,820	2,515,720	2,548,138	3,108,677	2,984,365	3,029,157
Student & instruction related services	921,789	930,583	914,596	885,676	970,743	987,926	1,127,889	1,234,975	1,322,186	1,430,576
School administrative service	54,620	90,254	105,794	193,206	191,741	198,605	200,577	233,628	248,689	307,597
General and business admin. services	509,173	467,406	452,409	346,582	385,190	345,141	365,629	354,491	481,066	536,554
Plant operations and maintenance	445,067	489,361	482,056	451,178	461,876	537,378	498,616	464,085	591,630	741,748
Pupil transportation	594,097	643,560	517,216	464,662	494,354	477,124	512,010	547,657	545,391	565,651
Special schools	4,164			8,775	9,895	766	11,187	11,094		
Interest on long-term debt	133,108	121,574	110,724	103,797	91,189	73,012	62,280	49,330	119,231	101,134
Total governmental activities expenses	<u>8,930,449</u>	<u>9,232,021</u>	<u>9,248,303</u>	<u>8,654,263</u>	<u>8,797,797</u>	<u>8,485,617</u>	<u>8,692,669</u>	<u>10,131,634</u>	<u>10,484,289</u>	<u>12,010,530</u>
Business-type activities:										
Food service	133,288	118,938	125,262	121,564	101,659	80,338	82,584	85,271	87,826	71,807
Total business-type activities expense	<u>133,288</u>	<u>118,938</u>	<u>125,262</u>	<u>121,564</u>	<u>101,659</u>	<u>80,338</u>	<u>82,584</u>	<u>85,271</u>	<u>87,826</u>	<u>71,807</u>
Total district expenses	<u>\$ 9,063,737</u>	<u>\$ 9,350,959</u>	<u>\$ 9,373,565</u>	<u>\$ 8,775,827</u>	<u>\$ 8,899,456</u>	<u>\$ 8,565,955</u>	<u>\$ 8,775,253</u>	<u>\$ 10,216,905</u>	<u>\$ 10,572,115</u>	<u>\$ 12,082,337</u>
Program Revenues										
Governmental activities:										
Charges for services:										
Business and other support services							23,737	11,250	26,300	\$ 15,897
Operating grants and contributions	\$ 241,638	\$ 211,096	\$ 304,443	\$ 284,652	\$ 228,288	\$ 204,465	\$ 185,742	\$ 151,704	\$ 3,484,612	4,750,905
Capital grants and contributions	-	-	-	-	-	-	155,400	-	-	-
Total governmental activities program revenues	<u>241,638</u>	<u>211,096</u>	<u>304,443</u>	<u>284,652</u>	<u>228,288</u>	<u>204,465</u>	<u>364,879</u>	<u>162,954</u>	<u>3,510,912</u>	<u>4,766,802</u>
Business-type activities:										
Charges for services										
Business and other support services	95,993	92,623	88,310	83,684	73,060	56,243	52,855	49,227	39,137	32,073
Operating grants and contributions	25,199	27,557	35,901	32,028	32,635	31,873	34,256	33,040	35,068	33,950
Capital grants and contributions	-	-	-	-	-	-	-	-	-	-
Total business type activities program revenues	<u>121,192</u>	<u>120,180</u>	<u>124,211</u>	<u>115,712</u>	<u>105,695</u>	<u>88,116</u>	<u>87,111</u>	<u>82,267</u>	<u>74,205</u>	<u>66,023</u>
Total district program revenues	<u>\$ 362,830</u>	<u>\$ 331,276</u>	<u>\$ 428,654</u>	<u>\$ 400,364</u>	<u>\$ 333,983</u>	<u>\$ 292,581</u>	<u>\$ 451,990</u>	<u>\$ 245,221</u>	<u>\$ 3,585,117</u>	<u>\$ 4,832,825</u>
Net (Expense)/Revenue										
Governmental activities	\$ (8,688,811)	\$ (9,020,925)	\$ (8,943,860)	\$ (8,369,611)	\$ (8,569,509)	\$ (8,281,152)	\$ (8,327,790)	\$ (9,968,680)	\$ (6,973,377)	\$ (7,243,728)
Business-type activities	(12,096)	1,242	(1,051)	(5,852)	4,036	7,778	4,527	(3,004)	(13,621)	(5,784)
Total district-wide net expense	<u>\$ (8,700,907)</u>	<u>\$ (9,019,683)</u>	<u>\$ (8,944,911)</u>	<u>\$ (8,375,463)</u>	<u>\$ (8,565,473)</u>	<u>\$ (8,273,374)</u>	<u>\$ (8,323,263)</u>	<u>\$ (9,971,684)</u>	<u>\$ (6,986,998)</u>	<u>\$ (7,249,512)</u>

White Township School District
Changes in Net Position, Last Ten Fiscal Years
(accrual basis of accounting)

Exhibit J-2

	Fiscal Year Ending June 30,									
	2008	2009	2010	2011	2012	2013	2014	2015	2016	2017
General Revenues and Other Changes in Net Position										
Governmental activities:										
Property taxes levied for general purposes, net	\$ 5,902,317	\$ 6,138,406	\$ 6,383,940	\$ 6,581,939	\$ 6,581,939	\$ 6,609,124	\$ 6,609,124	\$ 6,741,306	\$ 6,876,132	\$ 7,013,654
Taxes levied for debt service	410,321	316,396	295,673	324,840	323,412	326,674	329,031	326,587	328,071	329,031
Investment earnings	24,450	9,133	5,515	3,059	2,568	4,725	4,216	3,639	7,608	16,346
Miscellaneous income	9,723	17,394	15,279	21,563	13,653	2,865	10,344	17,762	8,743	4,802
Federal and State Aid for Capital Assets Projects	2,676,861	2,473,335	2,638,618	2,152,484	2,414,151	2,346,118	2,326,046	3,102,630		
Transfers	(590)	-	-	-	(17,500)	14,699	-	(19,151)		
Total governmental activities	<u>9,023,082</u>	<u>8,954,664</u>	<u>9,339,025</u>	<u>9,083,885</u>	<u>9,318,223</u>	<u>9,304,205</u>	<u>9,278,761</u>	<u>10,172,773</u>	<u>7,220,554</u>	<u>7,363,833</u>
Business-type activities:										
Investment earnings	138	106	64	33	21	33	44	52	438	107
Transfers	909	-	-	-	17,500	(2,135)	-	-	-	-
Total business-type activities	<u>1,047</u>	<u>106</u>	<u>64</u>	<u>33</u>	<u>17,521</u>	<u>(2,102)</u>	<u>44</u>	<u>52</u>	<u>438</u>	<u>107</u>
Total district-wide	<u>\$ 9,024,129</u>	<u>\$ 8,954,770</u>	<u>\$ 9,339,089</u>	<u>\$ 9,083,918</u>	<u>\$ 9,335,744</u>	<u>\$ 9,302,103</u>	<u>\$ 9,278,805</u>	<u>\$ 10,172,825</u>	<u>\$ 7,220,992</u>	<u>\$ 7,363,940</u>
Change in Net Position										
Governmental activities	\$ 334,271	\$ (66,261)	\$ 395,165	\$ 714,274	\$ 748,714	\$ 1,023,053	\$ 950,971	\$ 204,093	\$ 247,177	\$ 120,105
Business-type activities	(11,049)	1,348	(987)	(5,819)	21,557	5,676	4,571	(2,952)	(13,183)	(5,677)
Total district	<u>\$ 323,222</u>	<u>\$ (64,913)</u>	<u>\$ 394,178</u>	<u>\$ 708,455</u>	<u>\$ 770,271</u>	<u>\$ 1,028,729</u>	<u>\$ 955,542</u>	<u>\$ 201,141</u>	<u>\$ 233,994</u>	<u>\$ 114,428</u>

Source: CAFR Schedule A-2

White Township School District
Fund Balances, Governmental Funds,
Last Ten Fiscal Years
(modified accrual basis of accounting)

Exhibit J-3

	<u>2008</u>	<u>2009</u>	<u>2010</u>	<u>2011</u>	<u>Fiscal Year Ending June 30,</u>		<u>2014</u>	<u>2015</u>	<u>2016</u>	<u>2017</u>
					<u>2012</u>	<u>2013</u>				
General Fund										
Reserved	\$ 266,114	\$ 160,269	\$ 246,302	\$ 787,768	\$ 1,339,457	\$ 2,135,329	\$ 2,196,908	\$ 2,233,369	\$ 2,219,849	\$ 2,081,097
Unreserved	229,222	63,731	134,164	136,900	133,663	150,952	166,159	166,620	198,734	166,857
Total general fund	<u>\$ 495,336</u>	<u>\$ 224,000</u>	<u>\$ 380,466</u>	<u>\$ 924,668</u>	<u>\$ 1,473,120</u>	<u>\$ 2,286,281</u>	<u>\$ 2,363,067</u>	<u>\$ 2,399,989</u>	<u>\$ 2,418,583</u>	<u>\$ 2,247,954</u>
All Other Governmental Funds										
Reserved										
Unreserved, reported in:										
Special revenue fund		66,218					246,950	53,249		
Capital projects fund										
Debt service fund	21,508	21,536	381	381	-	-			-	-
Total all other governmental funds	<u>\$ 21,508</u>	<u>\$ 87,754</u>	<u>\$ 381</u>	<u>\$ 381</u>	<u>\$ -</u>	<u>\$ -</u>	<u>\$ 246,950</u>	<u>\$ 53,249</u>	<u>\$ -</u>	<u>\$ -</u>

Source: CAFR Schedule B-1

WhiteTownship School District
Changes in Fund Balances, Governmental Funds,
Last Ten Fiscal Years

Exhibit J-4

	<u>2008</u>	<u>2009</u>	<u>2010</u>	<u>2011</u>	<u>2012</u>	<u>2013</u>	<u>2014</u>	<u>2015</u>	<u>2016</u>	<u>2017</u>
Revenues										
Tax levy	\$ 6,318,235	\$ 6,454,802	\$ 6,679,613	\$ 6,906,779	\$ 6,905,351	\$ 6,935,798	\$ 6,947,086	\$ 7,079,143	\$ 7,204,203	\$ 7,342,685
Interest on Investments	24,450	9,133	5,515	3,059	2,568	4,725	4,216	3,639	7,608	16,346
Miscellaneous	4,126	17,394	15,279	21,563	13,653	2,865	10,361	17,762	35,043	20,699
State sources	2,707,797	2,473,592	2,566,779	2,152,484	2,342,310	2,346,118	2,481,446	2,408,176	2,564,165	2,615,483
Federal sources	210,702	210,839	376,282	284,652	294,129	204,465	185,742	151,704	183,516	178,517
Total revenue	9,265,310	9,165,760	9,643,468	9,368,537	9,558,011	9,493,971	9,628,851	9,660,424	9,994,535	10,173,730
Expenditures										
Instruction										
Regular Instruction	1,815,036	1,718,316	1,609,654	1,368,102	1,482,738	1,599,137	1,609,987	1,706,640	2,165,784	2,441,110
Special education instruction	470,419	491,261	367,622	517,487	502,051	472,467	497,309	527,713	791,203	707,843
Other special instruction	109,193	144,362	83,868	69,586	66,578	98,113	132,593	123,259	127,372	121,893
Support Services:										
Tuition	2,327,595	2,723,858	3,121,258	2,868,854	2,820,751	2,390,976	2,431,662	3,008,260	2,984,365	3,029,157
Student & instruction related services	651,078	696,947	667,840	623,591	624,523	648,311	795,184	776,791	1,007,203	908,700
School administrative services	28,492	61,000	72,494	110,468	109,089	115,924	118,911	123,020	189,444	195,385
Other administrative services	352,263	347,745	315,802	285,782	290,343	297,435	318,827	316,050	347,448	321,804
Plant operations and maintenance	420,332	404,401	382,190	383,923	377,404	473,143	412,165	382,450	448,174	468,644
Pupil transportation	594,097	643,560	517,516	464,662	494,354	477,124	512,010	547,657	545,391	565,651
Unallocated employee benefits	1,656,369	1,551,332	1,610,061	1,462,683	1,550,379	1,540,137	1,420,533	1,556,675	875,049	949,820
Summer School	4,000								-	-
Charter School				8,775	9,895	766	11,187	11,094	42,096	72,952
Capital Outlay	393,546	219,896	453,823	284,652	291,023	204,465	641,525	344,343	129,861	184,500
Debt service:										
Principal	302,560	250,000	265,000	275,000	285,000	300,000	341,322	325,000	340,000	355,000
Interest and other charges	143,371	118,172	107,547	110,770	88,312	77,511	61,900	49,100	35,800	21,900
Total expenditures	9,268,351	9,370,850	9,574,675	8,834,335	8,992,440	8,695,509	9,305,115	9,798,052	10,029,190	10,344,359
Excess (Deficiency) of revenues over (under) expenditures	(3,041)	(205,090)	68,793	534,202	565,571	798,462	323,736	(137,628)	(34,655)	(170,629)
Other Financing Sources (uses)										
Bond Proceeds	82,560									
Transfers in						14,699			53,249	-
Transfers out	(590)				(17,500)			(19,151)	(53,249)	-
Total other financing sources (uses)	81,970	-	-	-	(17,500)	14,699	-	(19,151)	-	-
Net change in fund balances	\$ 78,929	\$ (205,090)	\$ 68,793	\$ 534,202	\$ 548,071	\$ 813,161	\$ 323,736	\$ (156,779)	\$ (34,655)	\$ (170,629)
Debt service as a percentage of noncapital expenditures	5.0%	4.0%	4.1%	4.5%	4.3%	4.4%	4.7%	4.0%	3.8%	3.7%

Source: CAFR Schedule B-2

WHITE TOWNSHIP SCHOOL DISTRICT
GENERAL FUND OTHER LOCAL REVENUE BY SOURCE
LAST TEN FISCAL YEARS
UNAUDITED

Exhibit J-5

<u>Fiscal Year</u> <u>Ended June 30,</u>	<u>Interest on</u> <u>Investments</u>	<u>Refund</u> <u>Prior Year</u> <u>Expenditures</u>	<u>A/P</u> <u>Canceled</u>	<u>Tuition</u>	<u>Miscellaneous</u>	<u>Total</u>
2008	\$ 24,450	\$ 33	\$ 1,291	\$ 5,597	\$ 2,802	\$ 34,173
2009	9,133	7,718	7,483		2,193	26,527
2010	5,515	11,696			3,583	20,794
2011	3,059	17,604			3,959	24,622
2012	2,568	9,207			4,446	16,221
2013	4,725	93			2,772	7,590
2014	4,216	1,501	6,938	8,931	1,922	23,508
2015	3,639	16,757		11,250	1,005	32,651
2016	7,608	8,709		26,300	34	42,651
2017	16,346	4,471		15,897	331	37,045

SOURCE: District Records

**White Township School District
Assessed Value and Actual Value of Taxable Property
Last Ten Fiscal Years**

Exhibit J-6

<u>Fiscal Year Ended June 30,</u>	<u>Vacant Land</u>	<u>Residential</u>	<u>Farm Reg.</u>	<u>Qfarm</u>	<u>Commercial</u>	<u>Industrial</u>	<u>Apartment</u>	<u>Total Assessed Value</u>	<u>Less: Tax-Exempt Property</u>	<u>Public Utilities a</u>	<u>Net Valuation Taxable</u>	<u>Total Direct School Tax Rate b</u>	<u>Estimated Actual (County Equalized Value)</u>
2008	\$16,133,227	\$409,994,750	\$34,962,750	\$3,697,205	\$39,688,000	\$110,802,250	\$6,112,100	\$678,856,866	\$56,188,093	\$1,278,491	\$622,668,773	\$1.023	\$746,873,903
2009	15,468,627	413,182,700	41,291,800	3,401,421	41,482,200	109,569,800	5,478,400	687,199,781	56,157,493	1,167,340	631,042,288	1.170	786,449,659
2010	15,238,327	414,181,200	41,180,500	3,442,571	41,499,400	49,320,900	4,874,500	626,400,501	55,654,593	1,008,510	570,745,908	1.199	712,274,938
2011	14,146,827	415,704,700	41,369,300	3,432,571	45,884,300	49,320,900	4,927,600	632,154,811	55,963,293	1,405,320	576,191,518	1.193	733,628,111
2012	13,958,727	415,774,300	41,478,100	3,427,971	48,096,300	49,570,900	4,927,600	635,330,296	56,377,293	1,719,105	578,953,003	1.201	659,324,681
2013	13,669,927	415,654,500	41,596,000	3,394,871	46,704,400	49,826,300	4,927,600	634,123,961	56,457,693	1,892,670	577,666,268	1.199	629,746,285
2014	14,998,027	414,805,300	41,490,600	3,370,971	46,955,300	49,826,300	4,927,600	635,526,157	57,167,793	1,984,266	578,358,364	1.237	564,465,088
2015	13,266,027	407,779,900	41,591,600	3,385,471	48,384,700	49,826,300	4,927,600	628,175,638	57,064,693	1,949,347	571,110,945	1.276	533,677,297
2016	13,341,627	402,774,500	42,083,900	3,295,981	48,136,000	49,826,300	4,927,600	621,707,801	57,321,893	-	564,385,908	1.308	516,692,444
2017	12,739,027	400,945,200	41,943,200	3,310,071	47,555,000	49,826,300	4,927,600	619,363,191	58,116,793	-	561,246,398	1.308	569,662,143

Source: District records Tax list summary & Municipal Tax Assessor

Note: Real property is required to be assessed at some percentage of true value (fair or market value) established by each county board of taxation

Reassessment occurs when ordered by the County Board of Taxator

a Taxable Value of Machinery, Implements and Equipment of Telephone, Telegraph and Messenger System Companies

b Tax rates are per \$100

**White Township School District
Direct and Overlapping Property Tax Rates
Last Ten Fiscal Years**

Exhibit J-7

(rate per \$100 of assessed value)

Fiscal Year Ended June 30,	White Township Board of Education						Total Direct and Overlapping Tax Rate
	Basic Rate ^a	General Obligation Debt Service ^b	Total Direct	White Township	Library	Warren County	
2008	\$0.953	\$0.060	\$1.013	\$0.070	\$0.063	\$0.530	\$1.676
2009	\$0.973	\$0.050	\$1.023	\$0.079	\$0.065	\$0.697	\$1.864
2010	\$1.118	\$0.052	\$1.170	\$0.103	\$0.066	\$0.699	\$2.038
2011	\$1.139	\$0.060	\$1.199	\$0.110	\$0.062	\$0.641	\$2.012
2012	\$1.137	\$0.056	\$1.193	\$0.110	\$0.056	\$0.590	\$1.949
2013	\$1.145	\$0.056	\$1.201	\$0.117	\$0.053	\$0.627	\$1.998
2014	\$1.142	\$0.057	\$1.199	\$0.117	\$0.050	\$0.568	\$1.934
2015	\$1.180	\$0.057	\$1.237	\$0.118	\$0.051	\$0.671	\$2.077
2016	\$1.218	\$0.058	\$1.276	\$0.118	\$0.049	\$0.650	\$2.093
2017	\$1.249	\$0.059	\$1.308	\$0.093	\$0.049	\$0.730	\$2.180

Source: District Records and Municipal Tax Collector

Note:

NJSA 18A:7F-5d limits the amount that the district can submit for a general fund tax levy . The levy when added to other components of the district's net budget may not exceed the prebudget year net budget by more than the spending growth limitation calculated as follows: the prebudget year net budget increased by the cost of living or 2.5 percent, whichever is greater, plus any spending growth adjustments.

a The district's basic tax rate is calculated from the A4F form which is submitted with the budget and the Net valuation taxable.

b Rates for debt service are based on each year's requirements.

**White Township School District
Principal Property Tax Payers,
Current Year and Nine Years Ago**

Exhibit J-8

Taxpayer	2017			2007		
	Taxable Assessed Value	Rank [Optional]	% of Total District Net Assessed Value	Taxable Assessed Value	Rank [Optional]	% of Total District Net Assessed Value
DSM, Inc	\$43,098,600	1	7.68%	113,730,700	1	18.27%
Brookfield Senior Living, LLC	7,984,500	2	1.42%			
Country View Village	5,206,500	3	0.93%	5,206,500	3	0.84%
Windtryst Limited	4,598,600	4	0.82%	4,598,600	4	0.74%
Hike Enterprises, LLC	4,500,000	5	0.80%	6,994,800	2	1.12%
Tilcon	3,587,800	6	0.64%			
Apple Mountain Recreation	2,961,800	7	0.53%	3,339,100	5	0.54%
BASF Corp	2,861,800	8	0.51%	2,836,600	6	0.46%
Individual Taxpayer #1	2,217,100	9	0.40%	1,200,000	10	0.19%
Naceville Materials JV	2,169,200	10	0.39%			
United Telephone				1,564,824	7	0.25%
Desapio Properties				1,158,900	8	0.19%
White 46 Associates, LLC				1,316,900	9	0.21%
Total	\$ 79,185,900		14.11%	\$ 141,946,924		22.80%

Source: District CAFR & Municipal Tax Assessor

**White Township School District
Property Tax Levies and Collections,
Last Ten Fiscal Years**

Exhibit J-9

Fiscal Year Ended June 30,	Taxes Levied for the Fiscal Year	Collected within the Fiscal Year of the Levy		Collections in Subsequent Years
		Amount	Percentage of Levy	
2008	\$6,312,638	\$6,312,638	100.00%	-
2009	\$6,454,802	\$6,454,802	100.00%	-
2010	\$6,679,613	\$6,679,613	100.00%	-
2011	\$6,906,779	\$6,906,779	100.00%	-
2012	\$6,905,351	\$6,905,351	100.00%	-
2013	\$6,935,798	\$6,935,798	100.00%	-
2014	\$6,938,155	\$6,938,155	100.00%	-
2015	\$7,067,893	\$7,067,893	100.00%	-
2016	\$7,204,203	\$7,204,203	100.00%	-
2017	\$7,342,685	\$7,342,685	100.00%	-

Source: District records including the Certificate and Report of School Taxes (A4F form)

Note: School taxes are collected by the Municipal Tax Collector. Under New Jersey State Statute, a municipality is required to remit to the school district the entire property tax balance, in is the amount voted upon or certified prior to the end of the school year.

**White Township School District
Ratios of Outstanding Debt by Type
Last Ten Fiscal Years**

Exhibit J-10

Fiscal Year Ended June 30,	Governmental Activities				Business-Type Activities		Percentage of Personal Income ^a	Per Capita ^a
	General Obligation Bonds ^b	Certificates of Participation	Capital Leases	Bond Anticipation Notes (BANs)	Capital Leases	Total District		
2008	\$3,669,304	-0-	-0-	-0-	-0-	\$3,669,304	1.46%	\$622
2009	\$3,379,438	-0-	-0-	-0-	-0-	\$3,379,438	1.32%	\$571
2010	\$3,073,837	-0-	-0-	-0-	-0-	\$3,073,837	1.40%	\$631
2011	\$2,757,458	-0-	-0-	-0-	-0-	\$2,757,458	1.23%	\$569
2012	\$2,430,255	-0-	-0-	-0-	-0-	\$2,430,255	1.09%	\$507
2013	\$2,087,177	-0-	-0-	-0-	-0-	\$2,087,177	0.90%	\$439
2014	\$1,574,254	-0-	-0-	-0-	-0-	\$1,574,254	0.68%	\$331
2015	\$1,222,932	-0-	-0-	-0-	-0-	\$1,222,932	0.53%	\$258
2016	\$856,610	-0-	-0-	-0-	-0-	\$856,610	0.37%	\$181
2017	\$475,288	-0-	-0-	-0-	-0-	\$475,288	0.20%	\$100

Source: District CAFR Schedules I-1, I-2

Note: Details regarding the district's outstanding debt can be found in the notes to the financial statements.

- a** See Exhibit NJ J-14 for personal income and population data. These ratios are calculated using personal income and population for the prior calendar year.
- b** Includes Early Retirement Incentive Plan (ERIP) refunding
- *** Current data unavailable

**White Township School District
Ratios of Net General Bonded Debt Outstanding
Last Ten Fiscal Years**

Exhibit J-11

Fiscal Year Ended June 30,	General Bonded Debt Outstanding			Percentage of Actual Taxable Value ^a of Property	Per Capita ^b
	General Obligation Bonds	Deductions	Net General Bonded Debt Outstanding		
2008	\$3,669,304	-0-	\$3,669,304	0.49%	\$622
2009	\$3,379,438	-0-	\$3,379,438	0.50%	\$571
2010	\$3,073,837	-0-	\$3,073,837	0.45%	\$631
2011	\$2,757,458	-0-	\$2,757,458	0.40%	\$569
2012	\$2,430,255	-0-	\$2,430,255	0.35%	\$507
2013	\$2,087,177	-0-	\$2,087,177	0.29%	\$439
2014	\$1,574,254	-0-	\$1,574,254	0.24%	\$331
2015	\$1,222,932	-0-	\$1,222,932	0.19%	\$258
2016	\$856,610	-0-	\$856,610	0.15%	\$181
2017	\$475,288	-0-	\$475,288	0.08%	\$100

Note: Details regarding the district's outstanding debt can be found in the notes to the financial statements.

a See Exhibit NJ J-6 for property tax data.

b Population data can be found in Exhibit NJ J-14.

**White Township School District
Ratios of Overlapping Governmental Activities Debt
As of June 30, 2017**

Exhibit J-12

<u>Governmental Unit</u>	<u>Debt Outstanding</u>	<u>Estimated Percentage Applicable ^a</u>	<u>Estimated Share of Overlapping Debt</u>
Debt repaid with property taxes Township of White	-	100.000%	-
Other debt Warren County	\$ 3,435,000	5.218%	<u>\$ 179,246</u>
Subtotal, overlapping debt			179,246
White Township School District Direct Debt			<u>475,288</u>
Total direct and overlapping debt			<u><u>\$ 654,534</u></u>

Sources: Township Finance Officer, Warren County Finance Office and Utility Authorities

Note: Overlapping governments are those that coincide, at least in part, with the geographic boundaries of the District. This schedule estimates the portion of the outstanding debt of those overlapping governments that is borne by the residents and businesses of the district. This process recognizes that, when considering the District's ability to issue and repay long-term debt, the entire debt burden borne by the residents and businesses should be taken into account. However this does not imply that every taxpayer is a resident, and therefore responsible for repaying the debt, of each overlapping payment.

a For debt repaid with property taxes, the percentage of overlapping debt applicable is estimated using taxable assessed property values. Applicable percentages were estimated by determining the portion of another governmental unit's taxable value that is within the district's boundaries and dividing it by each unit's total taxable value.

**White Township School District
Legal Debt Margin Information,
Last Ten Fiscal Years**

Exhibit J-13

Legal Debt Margin Calculation for Fiscal Year 2017

Equalized valuation basis	
2014	518,079,008
2015	569,971,630
2016	557,289,642
[A]	<u>\$ 1,645,340,280</u>

Average equalized valuation of taxable property **[A/3]** \$ 548,446,760

Debt limit (3 % of average equalization value) **[B]** 16,453,403

Net school debt **[C]** 475,288

Legal debt margin **[B-C]** **\$ 15,978,115**

	Fiscal Year									
	<u>2008</u>	<u>2009</u>	<u>2010</u>	<u>2011</u>	<u>2012</u>	<u>2013</u>	<u>2014</u>	<u>2015</u>	<u>2016</u>	<u>2017</u>
Debt limit	\$28,999,459	\$30,694,966	\$30,482,414	\$28,880,750	\$26,790,198	\$24,609,989	\$23,061,811	\$21,579,199	\$16,265,167	\$ 16,453,403
Total net debt applicable to limit	<u>3,080,000</u>	<u>2,830,000</u>	<u>2,565,000</u>	<u>2,290,000</u>	<u>2,005,000</u>	<u>1,705,000</u>	<u>1,390,000</u>	<u>1,065,000</u>	<u>725,000</u>	<u>475,288</u>
Legal debt margin	<u>\$25,919,459</u>	<u>\$27,864,966</u>	<u>\$27,917,414</u>	<u>\$26,590,750</u>	<u>\$24,785,198</u>	<u>\$22,904,989</u>	<u>\$21,671,811</u>	<u>\$20,514,199</u>	<u>\$15,540,167</u>	<u>\$15,978,115</u>
Total net debt applicable to the limit as a percentage of debt limit	10.62%	9.22%	8.41%	7.93%	7.48%	6.93%	6.03%	4.94%	4.46%	2.89%

Source: Abstract of Ratables and District Records CAFR Schedule J-7

a Limit set by NJSA 18A:24-19 for a K through 8 district; other % limits would be applicable for other districts

**White Township School District
Demographic and Economic Statistics
Last Ten Fiscal Years**

Exhibit J-14

<u>Year</u>	<u>Population^a</u>	<u>Personal Income (thousands of dollars)^b</u>	<u>Per Capita Personal Income^c</u>	<u>Unemployment Rate^d</u>
2008	5,863	\$ 257,133,591	\$43,857 R	3.5%
2009	5,899	\$ 251,846,007	\$42,693 R	6.4%
2010	5,915	\$ 255,451,105	\$43,187 R	6.6%
2011	4,872	\$ 218,835,624	\$44,917 R	6.1%
2012	4,843	\$ 223,610,996	\$46,172 R	5.9%
2013	4,797	\$ 223,036,515	\$46,495 R	6.7%
2014	4,752	\$ 231,161,040	\$48,645 R	6.1%
2015	4,750	\$ 231,063,750	\$50,902 R	5.5%
2016	4,743	\$ 230,723,235	\$50,902 *	5.1%
2017	4,740	\$ 241,275,480	\$50,902 *	*

Source:

^a Combined Population information provided by the NJ Dept of Labor and Workforce Development

^b Personal Income provided by US Dept of Commerce

^c Per Capita provided by US Dept of Commerce

^d Unemployment data provided by the NJ Dept of Labor and Workforce Development

R =Revised

P =Projected

* Current data unavailable

White Township School District
Principal Employers,
Current Year and Nine Years Ago

Exhibit J-15

N/A

Employer	2017			2008		
	Employees	Rank (Optional)	Percentage of Total Employment	Employees	Rank (Optional)	Percentage of Total Employment
		1	0.00%			0.00%
		2	0.00%			0.00%
		3	0.00%			0.00%
		4	0.00%			0.00%
		5	0.00%			0.00%
		6	0.00%			0.00%
		7	0.00%			0.00%
		8	0.00%			0.00%
		9	0.00%			0.00%
		10	0.00%			0.00%
	<hr/>		<hr/>	<hr/>		<hr/>
	<u>-</u>		<u>0.00%</u>	<u>-</u>		<u>0.00%</u>

Source:
No reliable information is available at the local or county level.

**White Township School District
Full-time Equivalent District Employees by Function/Program,
Last Ten Fiscal Years**

Exhibit J-16

<u>Function/Program</u>	<u>2008</u>	<u>2009</u>	<u>2010</u>	<u>2011</u>	<u>2012</u>	<u>2013</u>	<u>2014</u>	<u>2015</u>	<u>2016</u>	<u>2017</u>
Instruction										
Regular	28	28	26	24	25	25	25	25	25	25
Special education	4	4	6	9	9	10	10	10	10	9
Other special education	3	3	3							
Other Instruction	8	15	9	8	7	6	5	4	4	5
Support Services:										
Student & instruction related services	6	6	6	6	6	6	6	6	6	6
General Administration	2	2	2							
School administrative services	1	1	1	2	2	2	2	2	2	2
Central Services	1	1	1	2	2	2	2	2	2	2
Plant operations and maintenance	4	4	4	3	3	3	3	3	3	3
Food Service			2	2	2	2	2	2	1	1
Total	57	64	60	56	56	56	55	54	53	53

Source: District Personnel Records

White Township School District
 Operating Statistics
 Last Ten Fiscal Years

Exhibit J-17

Fiscal Year	Enrollment ^d	Operating Expenditures ^a	Cost Per Pupil	Percentage Change	Teaching Staff ^b	Pupil/Teacher Ratio 1:		Average Daily Enrollment (ADE) ^c	Average Daily Attendance (ADA) ^c	% Change in Average Daily Enrollment	Student Attendance Percentage
						Elementary					
2008	427	\$ 8,670,512	\$ 20,306	7.03%	43	9.9		424.2	407.0	-2.48%	95.9%
2009	402	8,993,878	22,373	10.18%	43	9.3		397.4	382.1	-6.32%	96.1%
2010	407	9,052,448	22,242	-0.59%	44	9.3		406.7	389.3	2.34%	95.7%
2011	381	8,448,565	22,175	-0.30%	41	9.3		381.4	365.3	-6.22%	95.8%
2012	345	8,550,393	24,784	11.77%	40	8.6		344.9	332.1	-9.57%	96.3%
2013	335	8,317,998	24,830	0.19%	40	8.4		335.3	323.7	-2.78%	96.5%
2014	319	8,587,660	26,921	8.42%	40	8.0		343.3	333.1	2.39%	97.0%
2015	286	9,231,313	32,277	19.90%	40	7.2		319.6	307.5	-6.90%	96.2%
2016	286	9,653,390	33,753	4.57%	39	7.3		286.3	274.3	-10.42%	95.8%
2017	270	9,967,459	36,917	9.37%	39	6.9		270.0	257.8	-5.69%	95.5%

Sources: District records, ASSA and Schedule J-4

Note: Enrollment based on annual October district count.

- a Operating expenditures equal total expenditures less debt service and capital outlay; Schedule J-2
- b Teaching staff includes only full-time equivalents of certificated staff.
- c Average daily enrollment and average daily attendance are obtained from the School Register Summary (SRS)
- d Enrollment for FY2009 forward includes student counts for tuition students.

**White Township School District
School Building Information
Last Ten Fiscal Years**

Exhibit J-18

<u>District Building</u>	<u>2008</u>	<u>2009</u>	<u>2010</u>	<u>2011</u>	<u>2012</u>	<u>2013</u>	<u>2014</u>	<u>2015</u>	<u>2016</u>	<u>2017</u>
<u>Elementary</u>										
White (1931)										
Square Feet	59,341	59,341	59,341	59,341	59,341	59,341	59,341	59,341	59,341	59,341
Capacity (students)	620	620	620	620	620	620	620	620	620	620
Enrollment	427	402	407	381	345	335	349	319	286	270

Number of Schools at June 30, 2017

Source: District records, ASSA

Elementary = 1

Note: Year of original construction is shown in parentheses. Increases in square footage and capacity are the result of renovations and/or additions. Enrollment is based on the annual October district count.

WHITE TOWNSHIP SCHOOL DISTRICT
GENERAL FUND
SCHEDULE OF REQUIRED MAINTENANCE FOR SCHOOL FACILITIES
Last Ten Fiscal Years Ending June 30, 2017

Exhibit J-19

UNDISTRIBUTED EXPENDITURES - REQUIRED
 MAINTENANCE FOR SCHOOL FACILITIES
 11-000-261-xxx

<u>School Facilities</u>	<u>Project #</u>	<u>2008</u>	<u>2009</u>	<u>2010</u>	<u>2011</u>	<u>2012</u>	<u>2013</u>	<u>2015</u>	<u>2015</u>	<u>2016</u>	<u>2017</u>	<u>Total</u>
WHITE Central School	N/A	<u>\$183,463</u>	<u>\$161,970</u>	<u>\$180,311</u>	<u>\$174,642</u>	<u>\$157,094</u>	<u>\$211,088</u>	<u>\$133,946</u>	<u>\$118,368</u>	<u>\$159,060</u>	<u>\$156,654</u>	<u>\$1,636,596</u>
Total School Facilities		183,463	161,970	180,311	174,642	157,094	211,088	133,946	118,368	159,060	156,654	1,636,596
Other Facilities		<u>NONE</u>	<u>NONE</u>	<u>NONE</u>	<u>NONE</u>	<u>NONE</u>	<u>NONE</u>	<u>NONE</u>	<u>NONE</u>	<u>NONE</u>	<u>NONE</u>	<u>NONE</u>
Grand Total		<u>\$183,463</u>	<u>\$161,970</u>	<u>\$180,311</u>	<u>\$174,642</u>	<u>\$157,094</u>	<u>\$211,088</u>	<u>\$133,946</u>	<u>\$118,368</u>	<u>\$159,060</u>	<u>\$156,654</u>	<u>\$1,636,596</u>

WHITE TOWNSHIP SCHOOL DISTRICT

INSURANCE SCHEDULE
JUNE 30, 2017
UNAUDITED

Exhibit J-20

<u>POLICY TYPE</u>	<u>COVERAGE</u>	<u>DEDUCTIBLE</u>
COMMERCIAL PACKAGE POLICY - NJ Schools Insurance Group (NJSIG)		
Property-Blanket Building and Contents	\$ 400,000,000	\$ 1,000
Accounts Receivable	250,000	1,000
Automobile Physical Damage	In Blanket Limit	1,000
Employee Dishonesty (Per Loss)	50,000	500
Forgery	50,000	500
Comprehensive General Liability: Occurrence Limit	11,000,000	
Comprehensive Automobile Liability	11,000,000	
Workers' Compensation	5,000,000	
School Board Liability	11,000,000	5,000
Environmental Impairment Liability		
PUBLIC EMPLOYEES' FAITHFUL PERFORMANCE		
BLANKET POSITION BOND - RLI Company		
School Board Secretary/School Business Administrator	200,000	

SOURCE: District Records

Single Audit Section



ARDITO & Co., LLP

1110 Harrison Street, Suite C
 Frenchtown, New Jersey 08825-1192
 908-996-4711 Fax: 908-996-4688
 e-mail: anthony@arditoandcompany.com

Anthony Ardito, CPA, RMA, CMFO, PSA
 Douglas R. Williams, CPA, RMA, PSA

Report on Internal Control Over Financial Reporting and on Compliance and Other Matters Based on an Audit of Financial Statements Performed in Accordance With *Government Auditing Standards*

Independent Auditor's Report

Honorable President and
 Members of the Board of Education
 White Township School District
 565 CR 519
 County of Warren
 Belvidere, New Jersey 07823

We have audited, in accordance with the auditing standards generally accepted in the United States of America and the standards applicable to financial audits contained in *Government Auditing Standards* issued by the Comptroller General of the United States, and audit requirements as prescribed by the Office of School Finance, Department of Education, State of New Jersey, the financial statements of the governmental activities, the business-type activities, each major fund, and the aggregate remaining fund information of the White Township School District Board of Education in the County of Warren, State of New Jersey, as of and for the fiscal year ended June 30, 2017, and the related notes to the financial statements, which collectively comprise the White Township School District Board of Education's basic financial statements, and have issued our report thereon dated August 31, 2017.

Internal Control Over Financial Reporting

In planning and performing our audit of the financial statements, we considered the District's internal control over financial reporting (internal control) to determine the audit procedures that are appropriate in the circumstances for the purpose of expressing our opinions on the financial statements, but not for the purpose of expressing an opinion on the effectiveness of the District's internal control. Accordingly, we do not express an opinion on the effectiveness of the District's internal control.

A *deficiency in internal control* exists when the design or operation of a control does not allow management or employees, in the normal course of performing their assigned functions, to prevent, or detect and correct, misstatements on a timely basis. A *material weakness* is a deficiency, or a combination of deficiencies, in internal control, such that there is a reasonable possibility that a material misstatement of the entity's financial statements will not be prevented, or detected and corrected on a timely basis. A *significant deficiency* is a deficiency, or a combination of deficiencies, in internal control that is less severe than a material weakness, yet important enough to merit attention by those charged with governance.

-Continued-

Our consideration of internal control was for the limited purpose described in the first paragraph of this section and was not designed to identify all deficiencies in internal control that might be material weaknesses or significant deficiencies. Given these limitations, during our audit we did not identify any deficiencies in internal control that we consider to be material weaknesses. However, material weaknesses may exist that have not been identified.

Compliance and Other Matters

As part of obtaining reasonable assurance about whether the District's financial statements are free of material misstatement, we performed tests of its compliance with certain provisions of laws, regulations, contracts and grant agreements, noncompliance with which could have a direct and material effect on the determination of financial statement amounts. However, providing an opinion on compliance with those provisions was not an objective of our audit and, accordingly, we do not express such an opinion. The results of our tests disclosed no instances of noncompliance or other matters that are required to be reported under *Government Auditing Standards* or audit requirements as prescribed by the Office of School Finance, Department of Education, State of New Jersey.

Purpose of this Report

The purpose of this report is solely to describe the scope of our testing of internal control and compliance and the results of that testing, and for New Jersey Department of Education use, and not to provide an opinion on the effectiveness of the entity's internal control or on compliance. This report is an integral part of an audit performed in accordance with *Government Auditing Standards* in considering the entity's internal control and compliance. Accordingly, this communication is not suitable for any other purpose.

Ardito & Co., LLP

ARDITO & CO., LLP
August 31, 2017

Cynthia Cecile

Licensed Public School Accountant No.2369



ARDITO & Co., LLP

1110 Harrison Street, Suite C
 Frenchtown, New Jersey 08825-1192
 908-996-4711 Fax: 908-996-4688
 e-mail: anthony@arditoandcompany.com

Anthony Ardito, CPA, RMA, CMFO, PSA
 Douglas R. Williams, CPA, RMA, PSA

Report on Compliance For Each Major Program and Report on Internal Control Over Compliance Required by New Jersey OMB Circular 15-08

Independent Auditor's Report

Honorable President and
 Members of the Board of Education
 White Township School District
 565 CR 519
 County of Warren
 Belvidere, New Jersey 07823

Report on Compliance for Each Major State Program

We have audited the White Township School District Board of Education's compliance with the types of compliance requirements described in the New Jersey OMB Circular 15-08 State Aid/Grant Compliance Supplement that could have a direct and material effect on each of the District's major state programs for the year ended June 30, 2017. The White Township School District Board of Education's major state programs are identified in the summary of auditor's results section of the accompanying schedule of findings and questioned costs.

Management's Responsibility

Management is responsible for compliance with the requirements of laws, regulations, contracts, and grants applicable to its state programs.

Auditor's Responsibility

Our responsibility is to express an opinion on compliance for each of the District's major state programs based on our audit of the types of compliance requirements referred to above. We conducted our audit of compliance in accordance with auditing standards generally accepted in the United States of America; the standards applicable to financial audits contained in *Government Auditing Standards*, issued by the Comptroller General of the United States; the audit requirements as prescribed by the Division of Finance, Department of Education, State of New Jersey; and New Jersey OMB's Circular 15-08, *Single Audit Policy for Recipients of Federal Grants, State Grants and State Aid*. Those standards and New Jersey OMB Circular 15-08 require that we plan and perform the audit to obtain reasonable assurance about whether noncompliance with the types of compliance requirements referred to above that could have a direct and material effect on a major state program occurred.

An audit includes examining, on a test basis, evidence about the District's compliance with those requirements and performing such other procedures as we considered necessary in the circumstances.

We believe that our audit provides a reasonable basis for our opinion on compliance for each major state program. However, our audit does not provide a legal determination of the District's compliance.

Opinion on Each Major State Program

In our opinion, the White Township School District Board of Education complied, in all material respects, with the types of compliance requirements referred to above that could have a direct and material effect on each of its major state programs for the year ended June 30, 2017.

Report on Internal Control Over Compliance

Management of the White Township School District Board of Education is responsible for establishing and maintaining effective internal control over compliance with the types of compliance requirements referred to above. In planning and performing our audit of compliance, we considered the District's internal control over compliance with the types of requirements that could have a direct and material effect on each major state program to determine the auditing procedures that are appropriate in the circumstances for the purpose of expressing an opinion on compliance for each major state program and to test and report on internal control over compliance in accordance with New Jersey OMB Circular 15-08, but not for the purpose of expressing an opinion on the effectiveness of internal control over compliance. Accordingly, we do not express an opinion on the effectiveness of the White Township School District Board of Education's internal control over compliance.

A *deficiency in internal control over compliance* exists when the design or operation of a control over compliance does not allow management or employees, in the normal course of performing their assigned functions, to prevent, or detect and correct, noncompliance with a type of compliance requirement of a state program on a timely basis. A *material weakness in internal control over compliance* is a deficiency, or combination of deficiencies, in internal control over compliance, such that there is a reasonable possibility that material noncompliance with a type of compliance requirement of a state program will not be prevented, or detected and corrected, on a timely basis. A *significant deficiency in internal control over compliance* is a deficiency, or a combination of deficiencies, in internal control over compliance with a type of compliance requirement of a state program that is less severe than a material weakness in internal control over compliance, yet important enough to merit attention by those charged with governance.

Our consideration of internal control over compliance was for the limited purpose described in the first paragraph of this section and was not designed to identify all deficiencies in internal control over compliance that might be material weaknesses or significant deficiencies. We did not identify any deficiencies in internal control over compliance that we consider to be material weaknesses. However, material weaknesses may exist that have not been identified.

The purpose of this report on internal control over compliance is solely to describe the scope of our testing of internal control over compliance and the results of that testing based on the requirements of New Jersey OMB Circular 15-08, and for New Jersey Department of Education use. Accordingly, this report is not suitable for any other purpose.

ARDITO & Co., LLP

ARDITO & CO., LLP
August 31, 2017

Carmen Cecile

Licensed Public School Accountant No.2369

WHITE TOWNSHIP SCHOOL DISTRICT

K-4

Schedule of Expenditures of State Financial Assistance
for the Fiscal Year ended June 30, 2017

Schedule B

STATE GRANTOR/PASS-THROUGH GRANTOR/PROGRAM TITLE	GRANT OR STATE PROJECT NUMBER	GRANT PERIOD	AWARD AMOUNT	BALANCE 6/30/2016	CARRY- OVER AMOUNT	CASH RECEIVED	BUDGET. EXPEND.	ADJUST.	REPAYMENT OF PRIOR YEARS' BALANCES	BALANCE AT JUNE 30, 2017			MEMO		
										(ACCTS. RECEIV.)	INTERFUND PAYABLE/ DEFER. REVENUE	DUE TO GRANTOR	BUDGETARY RECEIVABLE	CUMULATIVE TOTAL EXPENDITURES	
State Department of Education															
General Fund:															
Equalization Aid	17-495-034-5120-078	7/1/16-6/30/17	\$ 581,054			\$ 581,054	\$ (581,054)							*	
Transportation Aid	17-495-034-5120-014	7/1/16-6/30/17	249,609			249,609	(249,609)							*	\$ 55,526 \$ 581,054
Special Education Aid	17-495-034-5120-089	7/1/16-6/30/17	313,648			313,648	(313,648)							*	23,853 249,609
Security Aid	17-495-034-5120-084	7/1/16-6/30/17	49,562			49,562	(49,562)							*	29,973 313,648
Adjustment Aid	17-495-034-5120-085	7/1/16-6/30/17	540,496			540,496	(540,496)							*	4,736 49,562
PARCC Readiness Aid	17-495-034-5120-098	7/1/16-6/30/17	4,710			4,710	(4,710)							*	51,651 540,496
Per Pupil Growth Aid	17-495-034-5120-097	7/1/16-6/30/17	4,710			4,710	(4,710)							*	450 4,710
Prof. Learning Comm Aid	17-495-034-5120-101	7/1/16-6/30/17	4,320			4,320	(4,320)							*	450 4,710
Extraordinary Aid	16-495-034-5120-044	7/1/15-6/30/16	111,210	\$ (111,210)		111,210	-							*	413 4,320
Extraordinary Aid	17-495-034-5120-044	7/1/16-6/30/17	80,208				(80,208)			\$ (80,208)				*	111,210
Non-Public Transportation Aid	16-495-034-5120-044	7/1/15-6/30/16	4,144	(4,144)		4,144	-							*	80,208
Non-Public Transportation Aid	17-495-034-5120-044	7/1/16-6/30/17	3,701				(3,701)			(3,701)				*	4,144
On Behalf TPAF Pension	17-495-034-5094-002	7/1/16-6/30/17	293,081			293,081	(293,081)							*	3,701
On Behalf TPAF Pension PRM	17-495-034-5094-001	7/1/16-6/30/17	244,204			244,204	(244,204)							*	293,081
On Behalf TPAF Pension LTDI	17-495-034-5094-004	7/1/16-6/30/17	599			599	(599)							*	244,204
Reimbursed TPAF Soc.Secur.Contrib	17-495-034-5094-003	7/1/16-6/30/17	198,144			198,144	(198,144)							*	599
Total General Fund				(115,354)		2,599,491	(2,568,046)	-		(83,909)				*	198,144
Debt Service Fund:															
Debt Service Aid Type 2	17-100-034-5120-124	7/1/16-6/30/17	47,869			47,869	(47,869)							*	167,052
State Department of Agriculture:															
Enterprise Fund:															
Nat.School Lunch Prog.(State Share)	16-100-010-3350-023	7/1/15-6/30/16		(31)		31								*	
Nat.School Lunch Prog.(State Share)	17-100-010-3350-023	7/1/16-6/30/17	690			644	(690)			(46)				*	690
Total Enterprise Fund				(31)		675	(690)			(46)				*	690
Total State Financial Assistance				\$ (115,385)		\$ 2,648,035	\$ (2,616,605)	-		- \$ (83,955)				*	\$ 167,052 \$ 2,731,959
Less: On-behalf TPAF Pension Amounts <u>537,884</u>															
Total State Expenditures Subject to Major Program Determination <u>\$ (2,078,721)</u>															

The accompanying Notes to Schedules of Expenditures of Awards and Financial Assistance are an integral part of this schedule

NOTES TO THE SCHEDULES OF EXPENDITURES OF AWARDS
AND FINANCIAL ASSISTANCE
JUNE 30, 2017

NOTE 1. GENERAL

The accompanying schedule of expenditures of state financial assistance includes state award activity of the Board of Education, White Township School District. The Board of Education is defined in Note 1 to the Board's basic financial statements. All state awards received directly from state agencies, as well as state financial assistance passed through other government agencies is included on the schedule of expenditure of state financial assistance.

NOTE 2. BASIS OF ACCOUNTING

The accompanying schedule of expenditures of state financial assistance includes state award activity of the Board of Education, White Township School District. The Board of Education is defined in Note 1 to the Board's basic financial statements. All state awards received directly from state agencies, as well as state financial assistance passed through other government agencies is included on the schedule of expenditure of state financial assistance.

NOTE 3. RELATIONSHIP TO GENERAL PURPOSE FINANCIAL STATEMENTS

The basic financial statements present the general fund and special revenue fund on a GAAP basis. Budgetary comparison statements or schedules (RSI) are presented for the general fund and special revenue fund to demonstrate finance-related legal compliance in which certain revenue is permitted by law or grant agreement to be recognized in the audit year, whereas for GAAP reporting, revenue is not recognized until the subsequent year or when expenditures have been made.

The general fund is presented in the accompanying schedules on the modified accrual basis with the exception of the revenue recognition of the last state aid payment in the current budget year, which is mandated pursuant to *N.J.S.A. 18A:22-44.2*. For GAAP purposes, that payment is not recognized until the subsequent budget year due to the state deferral and recording of the last state aid payment in the subsequent year. The special revenue fund is presented in the accompanying schedules on the grant accounting budgetary basis which recognizes encumbrances as expenditures and also recognizes the related revenues, whereas the GAAP basis does not. The special revenue fund also recognizes the last state aid payment in the current budget year, consistent with *N.J.S.A. 18A:22-4.2*.

The net adjustment to reconcile from the budgetary basis to the GAAP basis is (\$432) for the general fund and -0- for the special revenue fund. See Exhibit C-3 for a reconciliation of the budgetary basis to the modified accrual basis of accounting for the general and special revenue funds. Awards and financial assistance revenues are reported in the Board's basic financial statements on a GAAP basis as presented on the following page:

NOTES TO THE SCHEDULES OF EXPENDITURES OF AWARDS
AND FINANCIAL ASSISTANCE
JUNE 30, 2017

NOTE 3. (Continued)

	<u>Federal</u>	<u>State</u>	<u>Total</u>
General Fund		\$ 2,567,614	\$ 2,567,614
Special Revenue Fund	\$ 178,517	-	178,517
Debt Service Fund		47,869	47,869
Food Service Fund	<u>33,260</u>	<u>690</u>	<u>33,950</u>
Total Financial Assistance	<u>\$ 211,777</u>	<u>\$ 2,616,173</u>	<u>\$ 2,827,950</u>

NOTE 4. RELATIONSHIP TO STATE FINANCIAL REPORTS

Amounts reported in the accompanying schedules agree with the amounts reported in the related state financial reports.

NOTE 5. OTHER

Revenues and expenditures reported under the Food Distribution Program represent current year value received and current year distributions respectively. The amount reported as TPAF Pension Contributions represents the amount paid by the state on behalf of the district for the year ended June 30, 2017. TPAF Social Security Contributions represents the amount reimbursed by the state for employer's share of social security contributions for TPAF members for the year ended June 30, 2017.

SCHEDULE OF FINDINGS AND QUESTIONED COSTS
FOR THE FISCAL YEAR ENDED JUNE 30, 2017

Section I - Summary of Auditor's Results

Financial Statement Section

Type of auditor's report issued: Unmodified

Internal control over financial reporting:

1) Material weakness(es) identified? ___ Yes __x__ No

2) Were significant deficiencies identified that were not considered to be material weaknesses? ___ Yes __x__ None

Reported

Noncompliance material to financial statements noted? ___ Yes __x__ No

Federal Awards

N/A

Internal control over major programs:

1) Material weakness(es) identified? ___ Yes ___ No

2) Were significant deficiencies identified that were not considered to be material weaknesses? ___ Yes ___ None

Type of auditor's report issued on compliance for major programs: N/A

Any audit findings disclosed that are required to be reported in accordance with 2 CFR 200 section .516(a) of ? ___ Yes ___ No

Identification of major programs:

<u>CFDA Number(s)</u>	<u>FEIN Number(s)</u>	<u>Name of Federal Program or Cluster</u>
N/A		

Dollar threshold used to distinguish between Type A and Type B programs: N/A

Auditee qualified as low-risk auditee? ___ yes ___ no

SCHEDULE OF FINDINGS AND QUESTIONED COSTS
FOR THE FISCAL YEAR ENDED JUNE 30, 2017

State Financial Assistance Section

Dollar threshold used to distinguish between Type A and Type B programs: \$750,000

Auditee qualified as low-risk auditee? x yes no

Internal Control over major programs:

1) Material weakness(es) identified? yes x no

2) Were significant deficiencies identified that were not considered to be material weaknesses? yes x none

Type of auditor's report on compliance for major programs: Unmodified

Any audit findings disclosed that are required to be reported in accordance with NJ OMB Circular letter 15-08 as applicable? yes x no

Identification of major programs:

State Grant/Project Number(s)

Name of State Program

17-495-034-5120-078

Equilization Aid

17-495-034-5120-089

Special Education Aid

17-495-034-5094-003

Social Security Tax

SCHEDULE OF FINDINGS AND QUESTIONED COSTS
FOR THE FISCAL YEAR ENDED JUNE 30, 2017

Section II-Financial Statement Findings

N/A

There were no matters of noncompliance or reportable conditions noted, that are required to be reported in accordance with *Government Auditing Standards*.

Section III - State Financial Assistance Findings and Questioned Costs

N/A

This section identifies audit findings required to be reported by NJOMB Circular Letter 15-08, as applicable. There were no state financial assistance findings or questioned costs that are required to be reported in accordance with NJOMB Circular 15-08.

SUMMARY SCHEDULE OF PRIOR YEAR AUDIT FINDINGS
AND QUESTIONED COSTS AS PREPARED BY MANAGEMENT
FOR THE FISCAL YEAR ENDED JUNE 30, 2017

STATUS OF PRIOR YEAR FINDINGS

N/A

In accordance with *government auditing standards* , our procedures included a review of all prior year recommendations. There were no prior year findings.