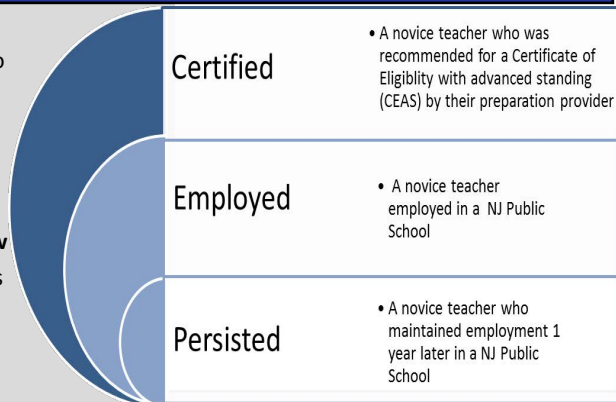




## Georgian Court University Cohort Profile

The goal of this report is to share the available state data on novice teachers this Educator Preparation Provider (EPP) recommended for certification. The visual to the right describes the categories of information shared based upon data available. To create the report, the NJ Department of Education has synthesized the data from multiple sources: NJSmart, TCIS, NJSure and other state data collections. The base of the report is a **2 year cohort of teachers who were certified in 12-13 and 13-14 with a CEAS; employed in the 2015-2016 SY in a New Jersey public school as of October 15, 2015**. Throughout the report, the graphics and tables reference their data source with a 1, 2, 3, or 4. For additional details see footnotes and a data explanation on the last page.



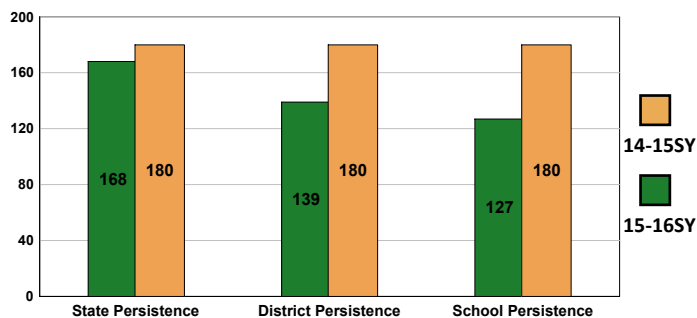
### Hire Rate (1,2)

	2016		CEAS Statewide
Employed certified completer in 15-16 SY	215	71 %	65 %
CEAS certified completer in 12-13 and 13-14	302		

	2015		CEAS Statewide
Employed certified completer in 14-15SY	250	59 %	56 %
CEAS certified completer in 11-12 and 12-13	421		

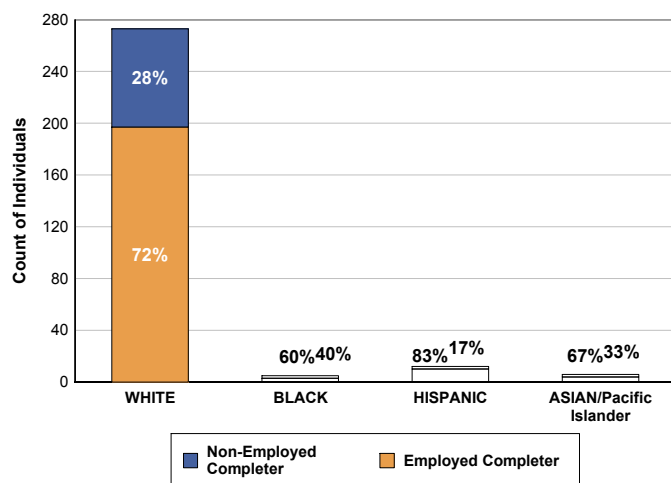
The 1 year persistence count for the 14-15 SY is derived from the 12-13 and 13-14 certified completers

### Persistence (2)

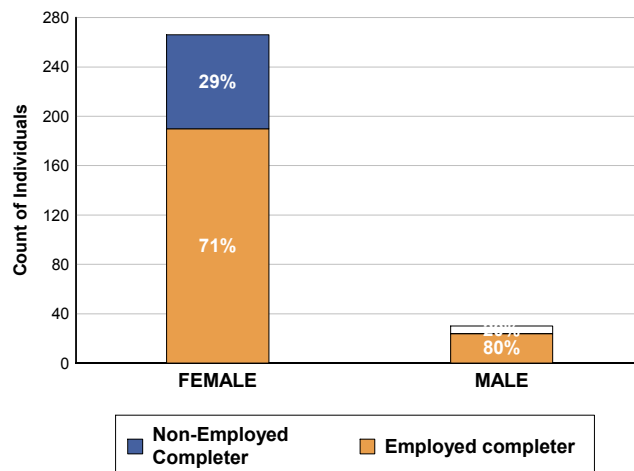


Persistence	Percent
Persisted In State in 15-16	93.3%
Persisted In District in 15-16	77.2 %
Persisted In School in 15-16	70.6 %

### Race (2,3)



### Gender (2,3)



1 TCIS  
 2 NJSMAST  
 3 NJSURE  
 4 Non-submitter to NJSURE



## Novice New Jersey Public School Teachers Profile

The following tables capture information about where this EPP's New Jersey public school employed completers were hired as of October 15, 2015. The 'School Classification' table refers to our reward and priority schools. The 'Classroom Assignment: Teacher Shortage' table refers to individuals who obtained an endorsement in a teacher shortage area and are employed in a teacher shortage position. 'District Factor Group (DFG)' refers to the grouping of similar districts by socio-economic level. 'Compensation' refers to the average of all starting salaries of this EPP's public school employed completers by region.

School Classification (2)			
	Employed as of October 15, 2015	Percentage Employed as teachers	Percentage Employed Statewide
Priority Schools	5	2 %	2 %
Focus Schools	22	10 %	8 %
Reward Schools	7	3 %	2 %
Not Classified	185	84 %	88 %

Classroom Assignment: Teacher Shortage Area (1,2)			
	Individuals obtaining NJ CEAS	Employed as of October 15, 2015	Employed in Teacher Shortage Area
Teacher Shortage Area	298	212	99
Non-Teacher Shortage Area	4	3	

Both the School Classification Table and DFG table, may include multiple locations of employment.

District Factor Group (DFG) (2)			
	Employed as of October 15, 2015	Percentage Employed as teachers	Percentage Employed Statewide
A*	12	5%	11%
B	19	9%	9%
CD	15	7%	8%
DE	36	16%	11%
FG	32	15%	11%
GH	37	17%	13%
I	25	11%	16%
J	4	2%	4%
Charter	8	4%	5%
Vocational	31	14%	12%

Compensation (2)		
	Median Salary	Number of Teachers
All Employed teachers in North region	\$ 51,873	9
All Employed teachers in Central region	\$ 50,996	132
All Employed teachers in South region	\$ 51,000	61

\*DFG A is a New Jersey geographic teacher shortage area

1 TCIS  
 2 NJSMART  
 3 NJSURE  
 4 Non-submitter to NJSURE



## Novice New Jersey Public School Teachers Profile, cont'd

The following tables capture information about this EPP's certified completers. The 'Number of Endorsements' table shows the hire rates for completers with multiple endorsements. The 'Cumulative GPA' is the median GPA for all certified completers from an EPP. The 'EPP's largest programs' is a chart capturing the most prevalent endorsements earned by certified completers within this EPP and their hire rate.

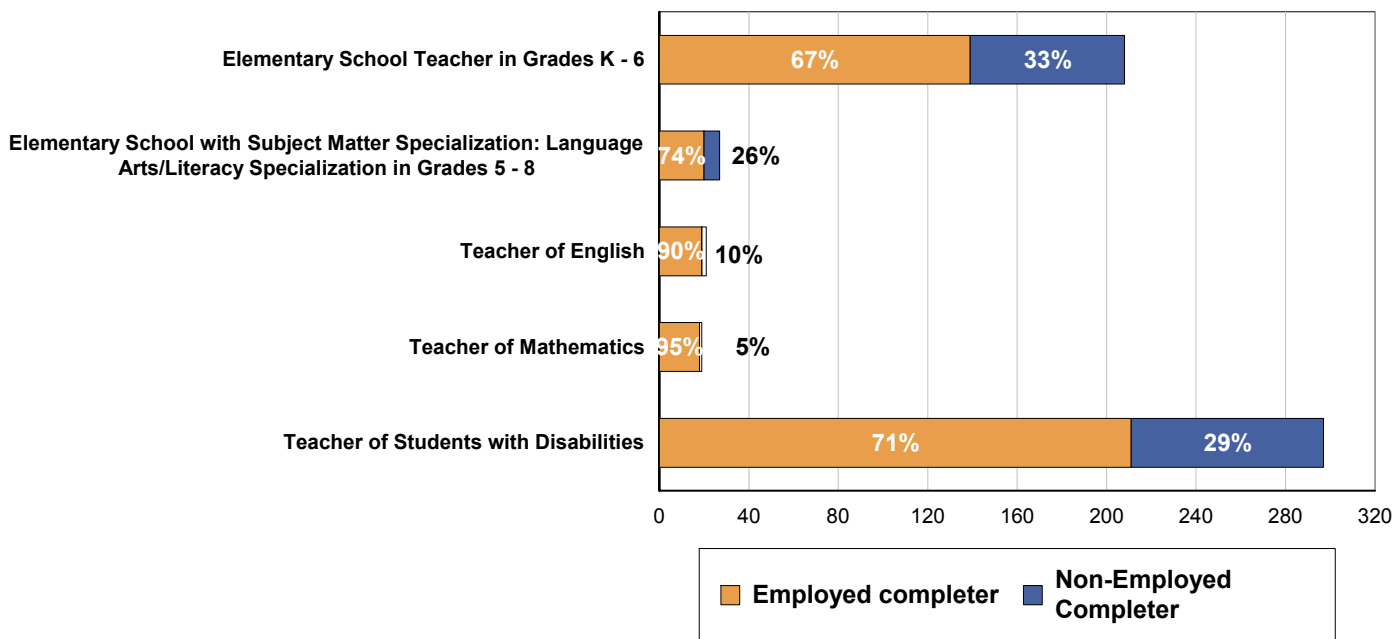
**Number Of Endorsements Obtained and Employment (1,2)**

	Individuals obtaining NJ CEAS	Employed as of October 15th, 2015	Percent employed as teachers
One Endorsement	16	14	88%
Two Endorsements	227	153	67%
Three or More Endorsements	59	48	81%

**Cummulative GPA (3)**

	Individuals obtaining NJ CEAS
Median GPA	3.50

**EPP's Largest Programs (1,2)**



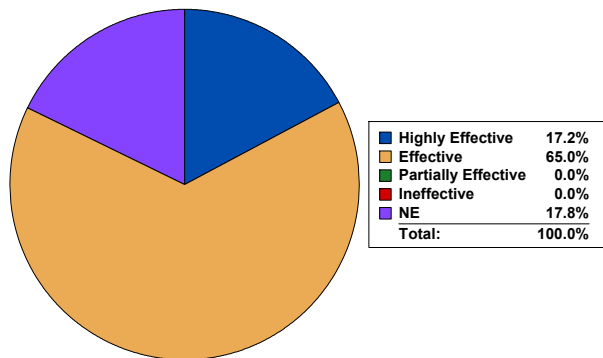
1 TCIS  
 2 NJSMAST  
 3 NJSURE  
 4 Non-submitter to NJSURE



## Novice New Jersey Public School Teachers Profile, cont'd

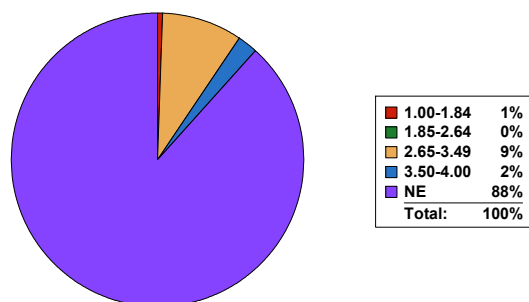
The charts and tables below capture AchieveNJ evaluation data for this EPP's employed completers evaluated in a New Jersey Public School during the 14-15 SY. **There were 180 individuals from this cohort** who were employed in the 14-15 SY and some individuals may have worked in multiple locations. The 'Evaluation' chart and table represents this EPP's employed completer's available summative evaluation rating. For further description about Evaluation tables please see the last page. NE means 'not evaluated'.

### Evaluation (2)



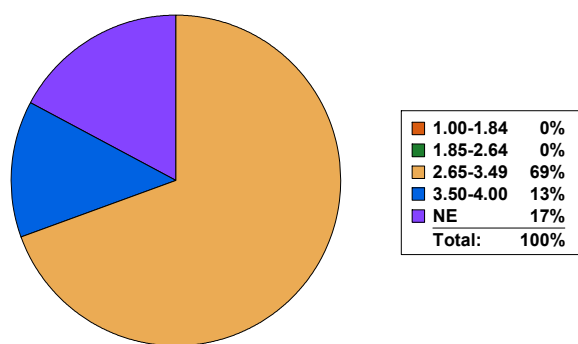
Summative Rating	Individuals evaluated in 14-15 SY
Highly Effective	31.00
Effective	117.00
Partially Effective	0.00
Ineffective	0.00
NE	32.00

### Evaluation : Teacher SGP Score (2)



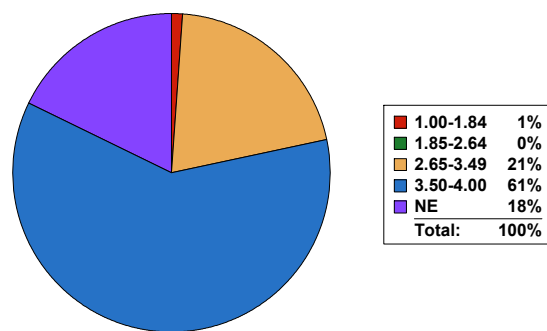
Summative Score	Individuals evaluated in 14-15 SY
1.00-1.84	1.00
1.85-2.64	0.00
2.65-3.49	16.00
3.50-4.00	4.00
NE	159.00

### Evaluation : Teacher Practice Score (2)



Summative Score	Individuals evaluated in 14-15 SY
1.00-1.84	0.00
1.85-2.64	0.00
2.65-3.49	125.00
3.50-4.00	24.00
NE	31.00

### Evaluation : Teacher SGO Score (2)



Summative Score	Individuals evaluated in 14-15 SY
1.00-1.84	2.00
1.85-2.64	0.00
2.65-3.49	37.00
3.50-4.00	109.00
NE	32.00

1 TCIS  
 2 NJSMART  
 3 NJSURE  
 4 Non-submitter to NJSURE



**Novice New Jersey Public School Teachers Profile, cont'd**

The tables on the remaining pages capture additional certification information about this EPP's certified completers and where applicable employment data for those individuals that were hired as of October 15, 2015. The Praxis II table has a suppression of 10.

Praxis II Results: Average Scaled Score (1)			
Praxis II Test	Test Cut Score	EPP Average Scaled Score	State Average Scaled Score
Elementary Education: Multiple Subjects Social Studies	155	167	169
Elementary Education: Multiple Subjects Mathematics	164	174	177
Elementary Education: Multiple Subjects Reading Language Arts Subtest	165	180	181
Art: Content Knowledge	158	167	168
Middle School Science	145	163	158
Elementary Education: Multiple Subjects Science	159	171	172
Elementary Education: Content Knowledge	141	161	162
Middle School Mathematics	152	166	170
English Language, Literature, and Composition: Content Knowledge	162	170	173
Social Studies: Content Knowledge	157	165	167
Middle School English Language Arts	156	171	175

1 TCIS  
 2 NJSMART  
 3 NJSURE  
 4 Non-submitter to NJSURE



**New Jersey Department of Education**  
**Educator Preparation Provider Performance Report 2016**  
**Georgian Court University**

Certification Endorsement Area and Employment (1,2)			
	Individuals obtaining NJ CEAS	Employed as of October 15th, 2015	Percent employed as teachers
Teacher of Biological Science	3	3	100%
Teacher of Chemistry	1	1	100%
Teacher of English as a Second Language	1	1	100%
Teacher of Music	1	1	100%
Teacher of Mathematics	19	18	95%
Elementary School with Subject Matter Specialization: Science in Grades 5 - 8	11	10	91%
Teacher of English	21	19	90%
Elementary School with Subject Matter Specialization: Social Studies in Grades 5 - 8	10	9	90%
Elementary School Teacher with Mathematics Specialization: in Grades 5 - 8	15	13	87%
Teacher of Spanish	5	4	80%
Elementary School with Subject Matter Specialization: Language Arts/Literacy Specialization in Grades 5 - 8	27	20	74%
Teacher of Students with Disabilities	297	211	71%
Elementary School Teacher in Grades K - 6	208	139	67%
Teacher of Social Studies	13	8	62%
Teacher of Preschool through Grade 3	7	4	57%
Teacher of Art	12	6	50%

1 TCIS  
 2 NJSMArt  
 3 NJSURE  
 4 Non-submitter to NJSURE



New Jersey Department of Education  
 Educator Preparation Provider Performance Report 2016  
 Georgian Court University

**Transfer Student (3)**

	Individuals obtaining NJ CEAS	Employed as of October 15, 2015	Percent employed as teachers
Reported as transferred	218	144	66 %

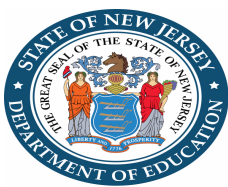
**State of Residence, Certification (3)**

	Individuals obtaining NJ CEAS	Employed as of October 15, 2015	Percent employed as teachers
Reported as Out of State while enrolled in program	2	1	50 %

**Area of Study (3)**

	Individuals obtaining NJ CEAS	Employed as of October 15th, 2015	Percent employed as teachers
History.	11	6	55 %
Psychology	52	33	63 %
Mathematics and Statistics	17	14	82 %
Visual and Performing Arts	10	7	70 %
Bussiness, Management, Marketing, and Related Support Services.	3	3	100 %
English Language and Literature/Letters	33	20	61 %
Education	6	5	83 %
Liberal Arts and Sciences, General Studies and Humanities	2	1	50 %
Multi/Interdisciplinary studies	3	3	100 %
Foreign Languages, Literacy, and Linguistics	3	3	100 %
Biological and Biomedical Sciences	1	1	100 %

1 TCIS  
 2 NJSMART  
 3 NJSURE  
 4 Non-submitter to NJSURE



Classroom Assignment: Content Area (1,2)		
	Employed as of October 15th, 2015	Percent employed as teachers
Early Childhood Education(PK-K)	9	4 %
Elementary Generalist	54	24 %
Special Ed	74	33 %
Math	21	9 %
English Language and Literacy	35	16 %
Life and Physical Sciences	8	4 %
Fine and Performing Arts	7	3 %
ESL	5	2 %
Social Sciences and History	7	3 %
other	1	0 %
Foreign Language and Literature	3	1 %

**Data Source Notes:** Certification data is submitted to the NJDOE by EPPs and gathered from the NJ Department of Education’s Teacher Certification Information System (TCIS) and is verified by the EPPs prior to publication of the EPPARs. Employment data is submitted to the NJDOE by school districts and gathered from New Jersey’s student- and staff-level Standards Measurement and Resource for Teaching data system (NJSMART). Higher Education data is submitted to the NJDOE by Institutes of Higher Education and collected from the Office of the Secretary of Higher Education’s Student Unit Record system (NJSURE). Not all Institutes of Higher Education are required to submit data to the NJSURE database. Non-submitters have been noted accordingly. For compensation data, North Region includes: Bergen, Essex, Hudson, Morris, Passaic, Sussex, and Warren Counties. Central Region includes: Hunterdon, Mercer, Middlesex, Monmouth, Somerset, and Union Counties. South Region includes: Atlantic, Burlington, Camden, Cape May, Cumberland, Gloucester, Ocean, and Salem Counties. These are the areas considered DFG A and geographic shortage areas: Asbury Park City, Atlantic City, Bridgeton City, Buena Regional, Camden City, City Of Orange Twp, Commercial Twp, Dover Town, Downe Twp, East Newark Boro, East Orange, Egg Harbor City, Elizabeth City, Fairfield Twp, Fairview Boro, Irvington Township, Keansburg Boro, Lawrence Twp, Millville City, New Brunswick City, Newark City, North Wildwood City, Passaic City, Paterson City, Paulsboro Boro, Penns Grove-Carney’s Pt Regional, Perth Amboy City, Pleasantville City, Quinton Twp, Salem City, Seaside Heights Boro, Trenton City, Union City, Vineland City, Washington Twp, Wildwood City, Woodbine Boro. Suppression rules have been applied Praxis II data. For the evaluation data, The ‘Teacher SGP Score’ chart and table represents this EPP’s employed completer’s available SGP scores for teachers that were teaching in tested grades and subjects. ‘Teacher Practice Score’ chart and table represents this EPP’s employed completer’s available scores from local observations. The ‘Teacher SGO Score’ chart and table shows this EPP’s employed completer’s available student growth objective scores. Any questions or inquiries regarding the information contained in this report, please email [rpr@doe.state.nj.us](mailto:rpr@doe.state.nj.us)

1 TCIS  
 2 NJSMART  
 3 NJSURE  
 4 Non-submitter to NJSURE