

New Jersey Department of Health and Senior Services
Communicable Disease Service
Influenza Activity Summary
Week Ending January 27, 2007 (MMWR Week4)

Influenza activity level: **LOCAL**

No Activity- At least 2 of 3 parameters at or below state baseline **AND** no lab confirmed cases

Sporadic – At least 2 of 3 parameters above state baseline **AND** confirmed laboratory cases anywhere in the state within previous 3 weeks **OR** at least one laboratory confirmed outbreak in an institution anywhere in the state

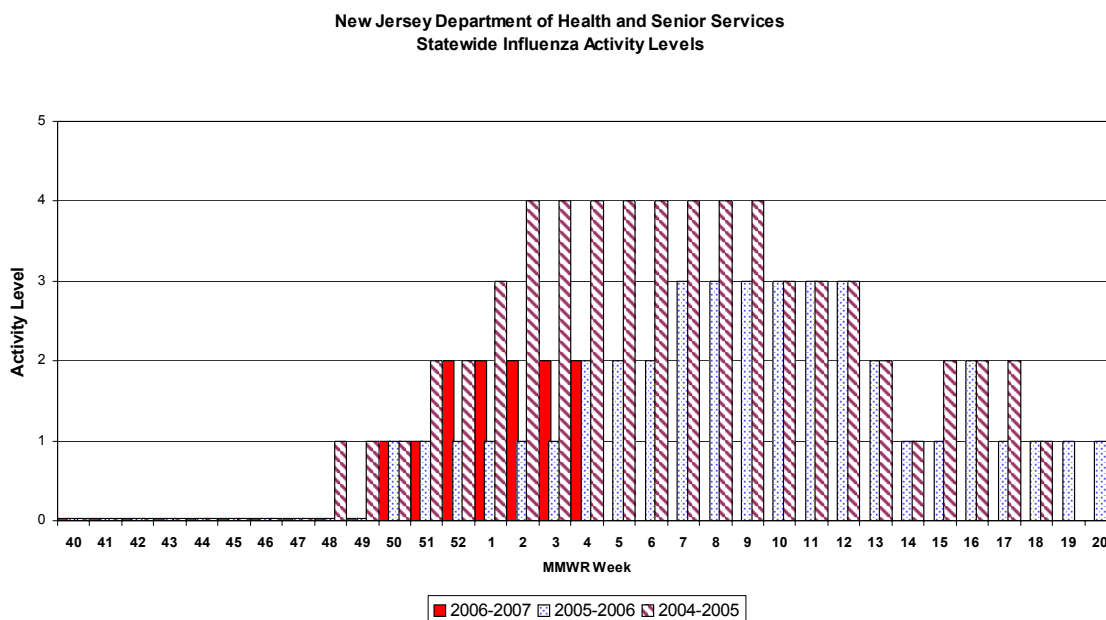
Local – At least 2 or 3 parameters above state baseline in a single county **AND** confirmed laboratory cases from that same county within the previous 3 weeks (other counties may be above baseline without lab confirmed cases) **OR** confirmed outbreaks in 2 or more institutions in a single county

Regional – At least 2 of 3 parameters above state baseline in ≥ 2 but ≤ 10 counties **AND** laboratory confirmed cases from these same counties in past 3 weeks **OR** confirmed outbreaks institutions in ≥ 2 but ≤ 10 counties

Widespread – At least 2 of 3 parameters above state baseline in > 10 counties **OR** institutional outbreaks in > 10 counties **AND** lab confirmed influenza cases in previous 3 weeks.

Parameter = School, emergency department, or long term care weekly surveillance data

Baseline is calculated by taking the average of statewide percentages of ILI for a 3 year (2004, 2005, 2006) period during months when influenza is less likely to be circulating (May-August). Weeks in which less than 4 counties reported were not included in the calculation.



Regional Data

SPORADIC ACTIVITY NORTHEAST REGION NO ACTIVITY IN CW, NW, CE AND SOUTH PUBLIC HEALTH REGION

NOTE: Three specimens from the NE public health region tested positive for influenza by viral isolation in the past 3 weeks. Two of three parameters for this region were above the state baseline. Therefore, this region is listed as having sporadic activity. Two counties in the CW region also have positive laboratories by viral isolation in the past 3 weeks, however, 2 of the 3 parameter for this region are not above baseline.

Public Health Regions

NW Region (Morris, Passaic, Sussex, Warren)

NE Region (Bergen, Essex, Hudson)

CW Region (Hunterdon, Mercer, Somerset)

CE Region (Middlesex, Monmouth, Ocean, Union)

South Region (Atlantic, Burlington, Camden, Cape May, Cumberland, Gloucester, Salem)

No Activity- At least 2 of 3 parameters at or below state baseline **AND** no lab confirmed cases in the public health region

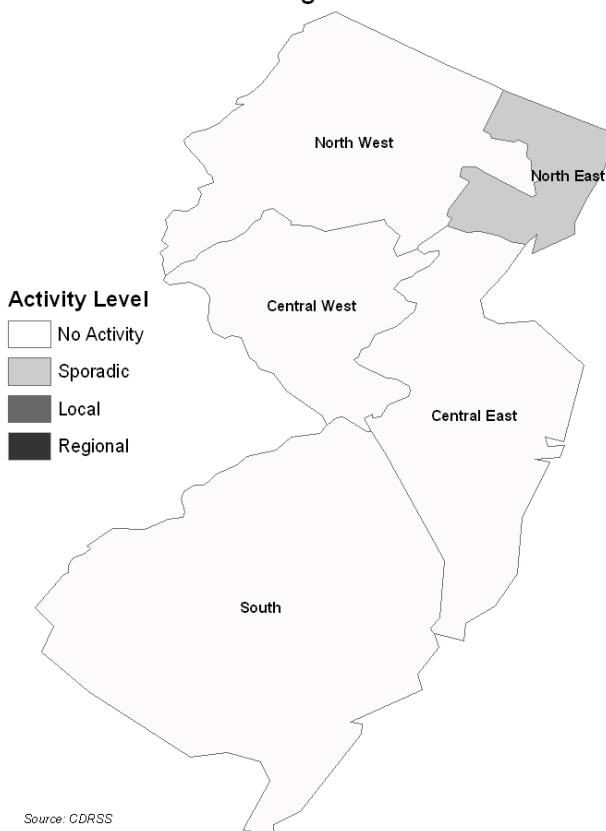
Sporadic – At least 2 of 3 parameters above state baseline **AND** confirmed laboratory cases anywhere in the public health region **OR** at least one laboratory confirmed outbreak in an institution anywhere in the public health region

Local – At least 2 or 3 parameters above state baseline in a single county of a public health region **AND** confirmed laboratory cases from that same county within the previous 3 weeks (other counties may be above baseline without lab confirmed cases) **OR** confirmed outbreaks in 2 or more institutions in a single county of a public health region

Regional – At least 2 of 3 parameters above state baseline in at least half of counties of public health region **AND** laboratory confirmed cases from these same counties in past 3 weeks **OR** confirmed outbreaks institutions in at least half of counties of public health region counties

Widespread – Not used for public health region data

Public Health Region Influenza Data



Laboratory Surveillance

To date, 11 influenza specimens were found to be positive by viral culture. The below chart describes the number and type of influenza by MMWR week and county.

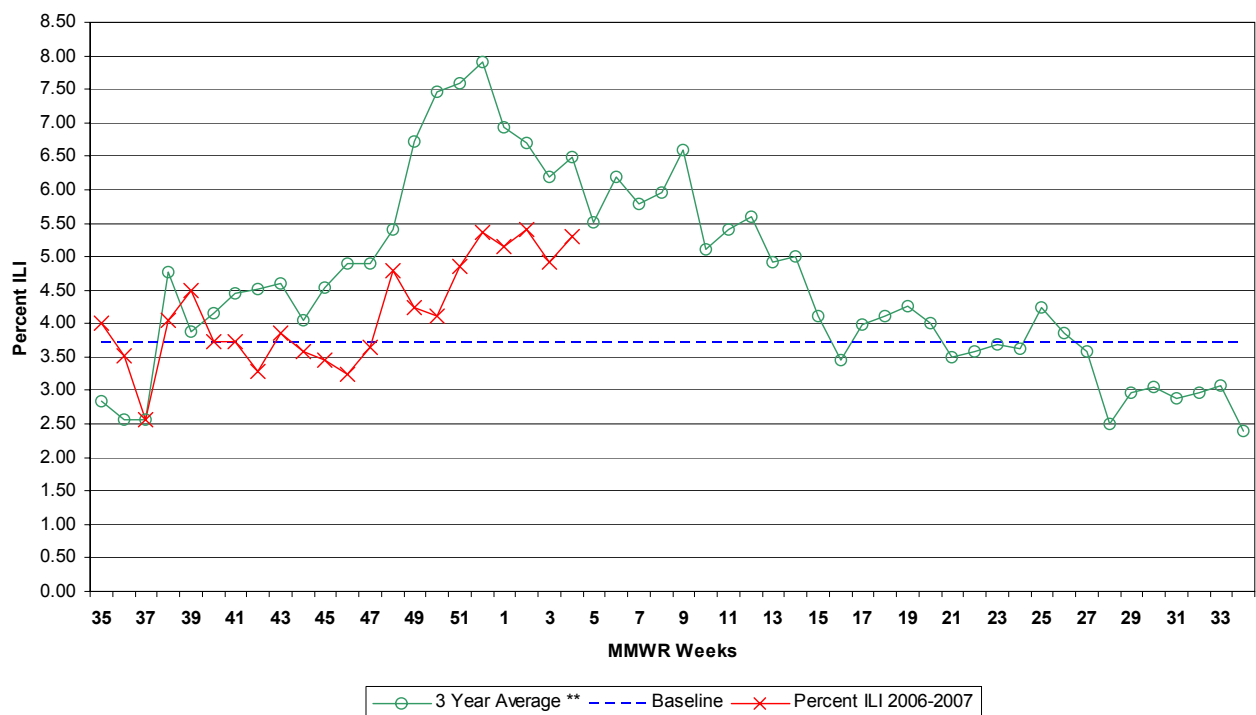
Influenza Type	Number positive	County of Residence (Week of collection)
Influenza A – Not typed	1	Camden (51)
Influenza A H1	4	Bergen (51), Camden(50), Two in Essex (both in week 4)
Influenza A H3	3	Essex(3), Hunterdon(3), Middlesex (1)
Influenza B	3	Passaic(2), Somerset (1 and 3)
Total	11	

Influenza-like Illness (ILI) Surveillance*

Emergency Departments

During week 4, 5.30% ILI was reported statewide from emergency departments. This is an increase over the previous week (4.92%). The percent ILI for each county ranged from 0.00 to 12.67%. The percent ILI for this same week last year was 5.22% in emergency departments. The percent ILI for the northeast (6.12%), central west (5.50%), central east (5.74%), and the south (5.15%) public health regions were above state baseline (3.71%).

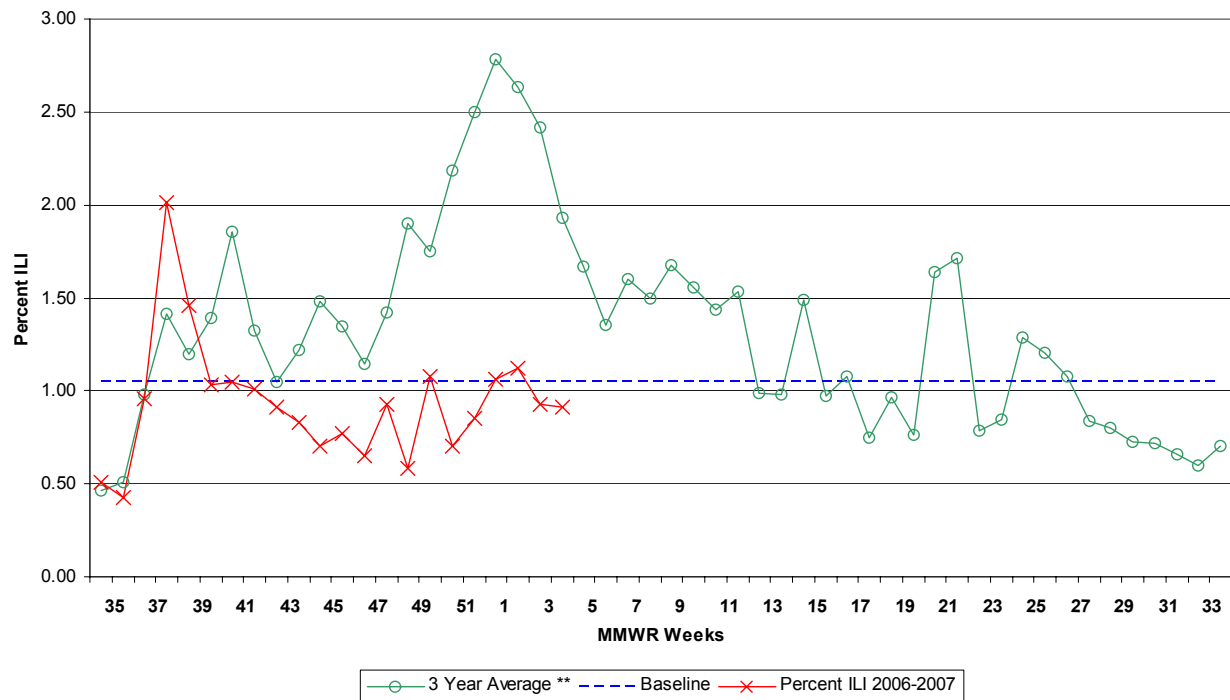
New Jersey Department of Health and Senior Services Influenza-like Activity - Emergency Departments



Long-term Care Facilities

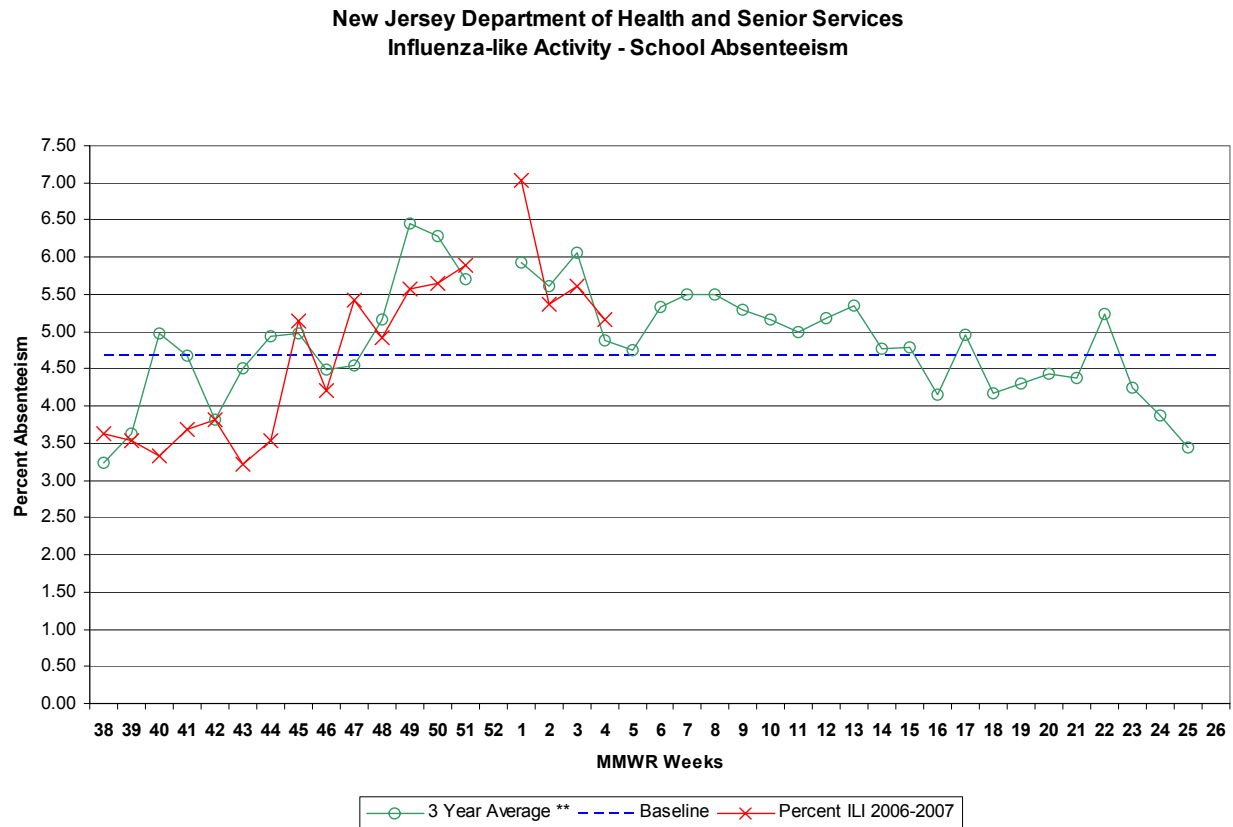
During week 4, 0.91% ILI was reported statewide from long term care facilities. This is a decrease over the previous week (0.93%). The percent ILI for each county ranged from 0.00% to 9.04%. No reports regarding ILI/respiratory outbreaks in communal living facilities were received in week 4. The percent ILI for this same week last year was 1.22% in long-term care facilities. The percent ILI for the northwest (1.17%) and the south (1.40%) public health region was above state baseline (1.05%).

**New Jersey Department of Health and Senior Services
Influenza-like Activity - Long Term Care Facilities**



School Absenteeism

During week 4, schools reported 5.16% absenteeism. This is a decrease over the previous week (5.61%). The percent ILI for each county ranged from 2.16- 8.32%. The percent absent for this same week last year was 4.62%. The percent ILI for the northwest (5.84%), the northeast (6.21%), the central east (4.84%) and the south (5.23%) public health regions were above state baseline (4.68%).



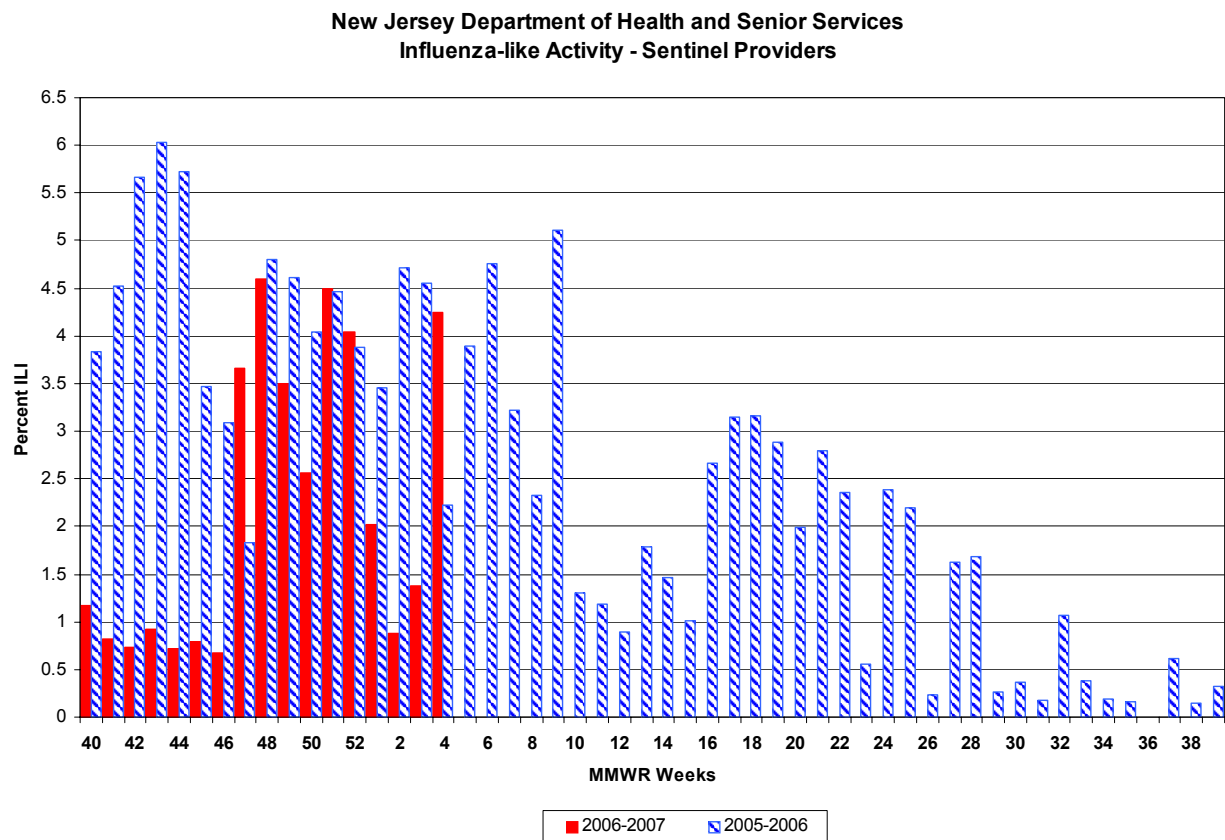
Sentinel Provider Surveillance

During week 4, 4.25% of sentinel provider patient visits were due to ILI. These data reflect reports from one (2%) of the enrolled sentinel providers.

UPDATE

During week 3, 1.37% of sentinel provider patient visits were due to ILI. These data reflect reports from eleven (25%) of the enrolled sentinel providers.

During week 2, 0.88% of sentinel provider patient visits were due to ILI. These data reflect reports from fifteen (34%) of the enrolled sentinel providers.



Pediatric Influenza Surveillance

To date, NJDHSS has received 23 reports of pediatric illness. To date, three cases have met the case definition for pediatric illness or death associated with influenza. No new reports meeting the case definition were received during week 4.

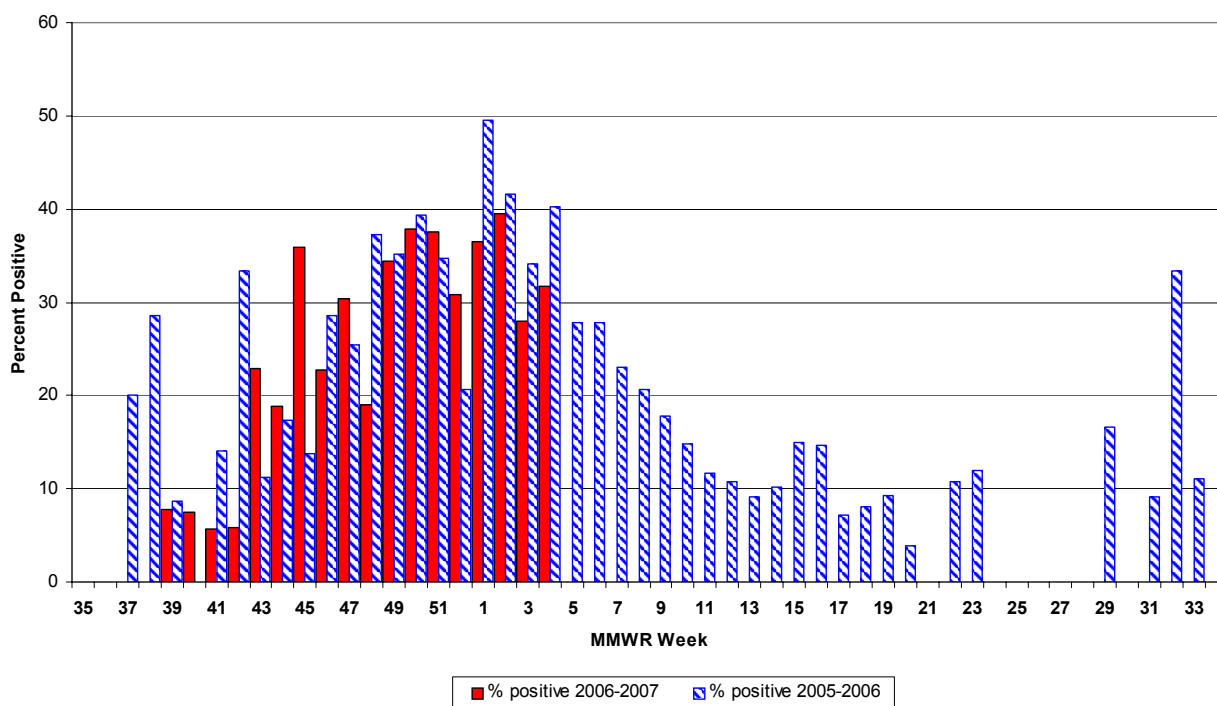
122 City Mortality Report

During week 3, 4.50% of all deaths reported by the vital statistics offices in 6 New Jersey cities (i.e., Camden, Elizabeth, Jersey City, Newark, Paterson, Trenton) were due to pneumonia or influenza. This was a decrease over the previous week (5.04%). The percentage of death due to pneumonia or influenza for this same week last year was 2.75%.

RSV Reports

During week 4, 31.74% of all RSV samples tested were positive. This was an increase over the previous week 28.02%. The percent of samples positive RSV for this same week last year was 40.21%.

**New Jersey Department of Health and Senior Services
Respiratory Syncytial Virus (RSV) Surveillance by Week**



Additional Information

For additional information regarding influenza surveillance please visit the following websites.

<http://nj.gov/health/flu/surveillance.shtml>

<http://www.cdc.gov/flu/>

* Baseline is calculated by taking the average of statewide percentages of ILI for a 3 year (2004, 2005, 2006) period during months when influenza is less likely to be circulating (May-August). Weeks in which less than 4 counties reported were not included in the calculation.

**Three year average is an average of the 2003-2004, 2004-2005, and 2005-2006 influenza seasons.



	Long Term Care			Schools			Hospital Emergency Department			RSV Tests	
County	# Enrolled	# Reports Rec'd	% ILI	# Enrolled	# Reports Rec'd	% Absent	# Enrolled	# Reports Rec'd	% ILI	# Positive	Total Tests Performed
ATLANTIC	5	2	1.32	16	15	7.51	4	4	1.93	20	42
BERGEN	3	0	0.00	11	0	0.00	6	0	0.00	0	0
BURLINGTON	5	2	0.00	103	71	4.21	3	3	12.54	5	27
CAMDEN	7	4	0.54	17	6	4.61	7	5	3.17	0	0
CAPE MAY	4	2	9.04	11	9	5.98	1	1	9.80	0	6
CUMBERLAND	4	2	1.40	18	10	8.05	3	3	5.24	2	6
ESSEX	14	7	0.75	31	10	8.21	11	9	6.62	33	105
GLOUCESTER	2	2	1.62	4	4	3.90	2	1	0.00	5	18
HUDSON	10	2	0.69	75	44	5.79	7	3	3.80	3	14
HUNTERDON	4	4	0.00	8	8	2.58	1	1	0.00	2	10
MERCER	10	8	0.21	12	10	2.54	5	4	3.35	10	25
MIDDLESEX	2	1	2.00	3	1	2.62	5	2	11.15	14	42
MONMOUTH	5	3	1.20	24	16	6.00	5	5	3.13	2	12
MORRIS	11	2	0.81	14	13	2.16	4	4	0.22	6	16
OCEAN	6	2	0.00	23	19	5.62	4	3	7.02	0	0
PASSAIC	8	3	1.58	22	8	3.86	6	3	4.37	0	0
SALEM	4	2	0.00	5	0	0.00	1	0	0.00	0	0
SOMERSET	5	2	0.40	52	25	3.96	2	2	12.06	0	0
SUSSEX	5	5	0.49	18	18	8.32	2	2	3.41	2	4
UNION	4	1	0.30	78	42	4.13	5	5	4.70	6	22
UNKNOWN	0	0	0.00	2	0	0.00	0	0	0.00	0	0
WARREN	7	7	1.93	21	20	5.57	2	2	12.67	3	7
NW Region	31	17	1.17	75	59	5.84	14	11	3.68	11	27
NE Region	27	9	0.74	117	54	6.21	24	12	6.12	36	119
CW Region	19	14	0.18	72	43	3.35	8	7	5.50	12	35
CE Region	17	7	0.66	128	78	4.84	19	15	5.74	22	76
South Region	31	16	1.40	174	115	5.23	21	17	5.15	32	99
State Total	125	63	0.91	566	349	5.16	86	62	5.30	113	356