

**New Jersey Department of Health and Senior Services**  
**Communicable Disease Service**  
**Influenza Activity Summary**  
**Week Ending April 19, 2008 (MMWR Week 16)**

**Influenza Activity Level:    REGIONAL**

**NOTE:** Fourteen counties had laboratory confirmed cases in the previous 3 weeks from these same counties. Only 3 counties had 2 of 3 parameters above baseline, no state parameter was above baseline.

**No Activity-** At least 2 of 3 parameters at or below state baseline **AND** no lab confirmed cases

**Sporadic** – At least 2 of 3 parameters above state baseline **AND** confirmed laboratory cases anywhere in the state within previous 3 weeks **OR** at least one laboratory confirmed outbreak in an institution anywhere in the state

**Local** – At least 2 or 3 parameters above state baseline in a single county **AND** confirmed laboratory cases from that same county within the previous 3 weeks (other counties may be above baseline without lab confirmed cases) **OR** confirmed outbreaks in 2 or more institutions in a single county

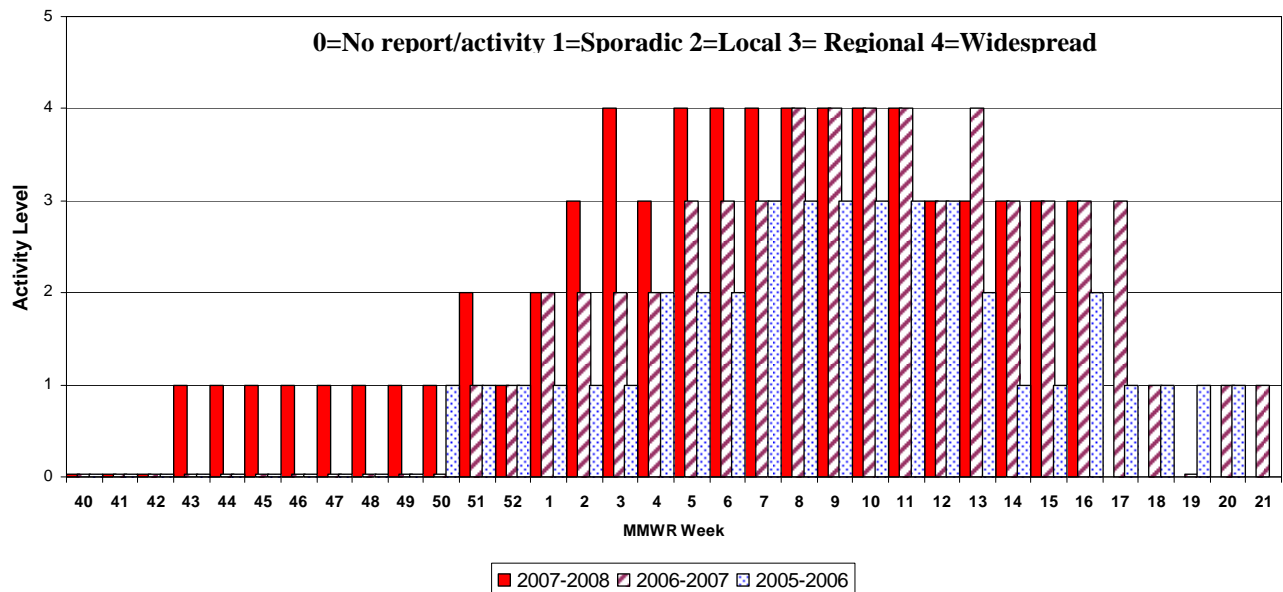
**Regional** – At least 2 of 3 parameters above state baseline in  $\geq 2$  but  $\leq 10$  counties **AND** laboratory confirmed cases from these same counties in past 3 weeks **OR** confirmed outbreaks institutions in  $\geq 2$  but  $\leq 10$  counties

**Widespread** – At least 2 of 3 parameters above state baseline in  $> 10$  counties **OR** institutional outbreaks in  $> 10$  counties **AND** lab confirmed influenza cases in previous 3 weeks.

Parameter = School, emergency department, or long term care weekly surveillance data

Baseline is calculated by taking the average of statewide percentages of ILI for a 4 year (2004, 2005, 2006, 2007) period during months when influenza is less likely to be circulating (May-August). Weeks in which less than 4 counties reported were not included in the calculation.

**New Jersey Department of Health and Senior Services  
Statewide Influenza Activity Levels**



## **Regional Data**

### **LOCAL – CE AND SOUTH SPORADIC – NW, NE AND CW**

#### Public Health Regions

NW Region (Morris, Passaic, Sussex, Warren)

NE Region (Bergen, Essex, Hudson)

CW Region (Hunterdon, Mercer, Somerset)

CE Region (Middlesex, Monmouth, Ocean, Union)

South Region (Atlantic, Burlington, Camden, Cape May, Cumberland, Gloucester, Salem)

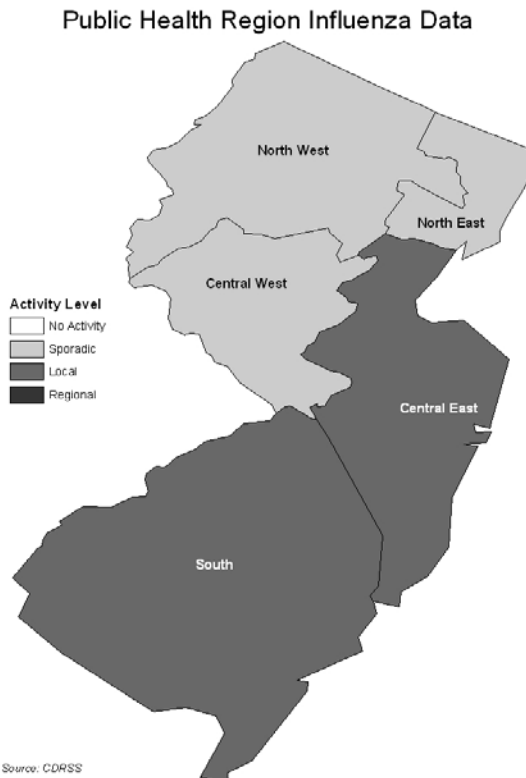
No Activity- At least 2 of 3 parameters at or below state baseline **AND** no lab confirmed cases in the public health region

Sporadic – At least 2 of 3 parameters above state baseline **AND** confirmed laboratory cases anywhere in the public health region **OR** at least one laboratory confirmed outbreak in an institution anywhere in the public health region

Local – At least 2 or 3 parameters above state baseline in a single county of a public health region **AND** confirmed laboratory cases from that same county within the previous 3 weeks (other counties may be above baseline without lab confirmed cases) **OR** confirmed outbreaks in 2 or more institutions in a single county of a public health region

Regional – At least 2 of 3 parameters above state baseline in at least half of counties of public health region **AND** laboratory confirmed cases from these same counties in past 3 weeks **OR** confirmed outbreaks institutions in at least half of counties of public health region counties

Widespread – Not used for public health region data



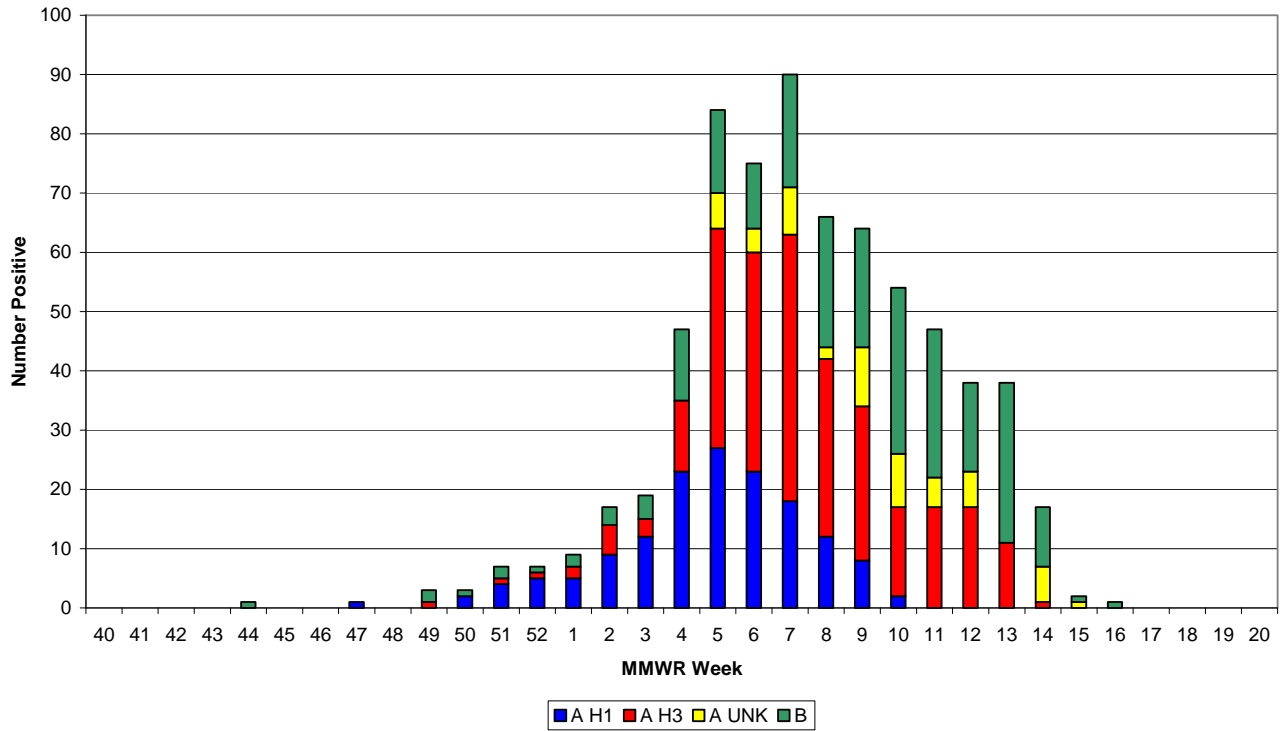
## Laboratory Surveillance

As of week 16, 690 samples have been found to be positive by viral culture (151- AH1, 261- AH3 57- A unknown type and 221-B). Rapid and culture results by county are displayed below.

County	Week 40 to Week 16							Weeks 14, 15,16						
	Rapid*			Culture*				Rapid*			Culture*			
	A	B	A/B	A H1	A H3	A UNK	B	A	B	A/B	A H1	A H3	A UNK	B
Atlantic County	41	10	0	0	1	1	2	1	1	0	0	0	0	0
Bergen County	80	28	0	5	4	56	34	4	5	0	0	0	7	6
Burlington County	192	39	0	0	1	0	2	4	6	0	0	0	0	0
Camden County	0	0	0	0	0	0	0	0	0	0	0	0	0	0
Cape May County	0	0	0	0	1	0	0	0	0	0	0	0	0	0
Cumberland County	0	0	0	0	2	0	1	0	0	0	0	0	0	0
Essex County	227	68	50	9	24	0	18	10	14	2	0	0	0	0
Gloucester County	0	0	0	21	37	0	2	0	0	0	0	0	0	0
Hudson County	25	15	0	12	18	0	18	3	3	0	0	0	0	0
Hunterdon County	0	0	0	8	10	0	12	0	0	0	0	0	0	1
Mercer County	216	98	0	8	9	0	11	7	14	0	0	0	0	0
Middlesex County	44	15	0	11	12	0	12	3	5	0	0	0	0	1
Monmouth County	172	31	160	9	8	0	3	26	9	14	0	0	0	0
Morris County	0	0	0	19	42	0	24	0	0	0	0	0	0	0
Ocean County	0	0	0	1	2	0	1	0	0	0	0	0	0	0
Passaic County	92	43	0	12	6	0	11	7	5	0	0	0	0	0
Salem County	7	1	0	0	0	0	0	0	0	0	0	0	0	0
Somerset County	7	2	16	12	17	0	7	0	0	4	0	0	0	1
Sussex County	48	14	0	0	3	0	3	2	2	0	0	0	0	0
Union County	22	12	0	12	21	0	25	0	2	0	0	0	0	0
Warren County	66	36	0	0	11	0	7	3	6	0	0	1	0	1
Unknown	0	0	0	12	32	0	28	0	0	0	0	0	0	2
<b>State Total</b>	1239	412	226	151	261	57	221	70	72	20	0	1	7	12

\*Rapid data is acquired from facilities reporting rapid influenza tests via NREVSS or CDRSS ILI module. Culture results are obtained via PHEL, hospital viral culture laboratories or commercial laboratories.

**New Jersey Department of Health and Senior Services  
Influenza Laboratory Report  
Viral Culture Positive Specimens by MMWR Week**

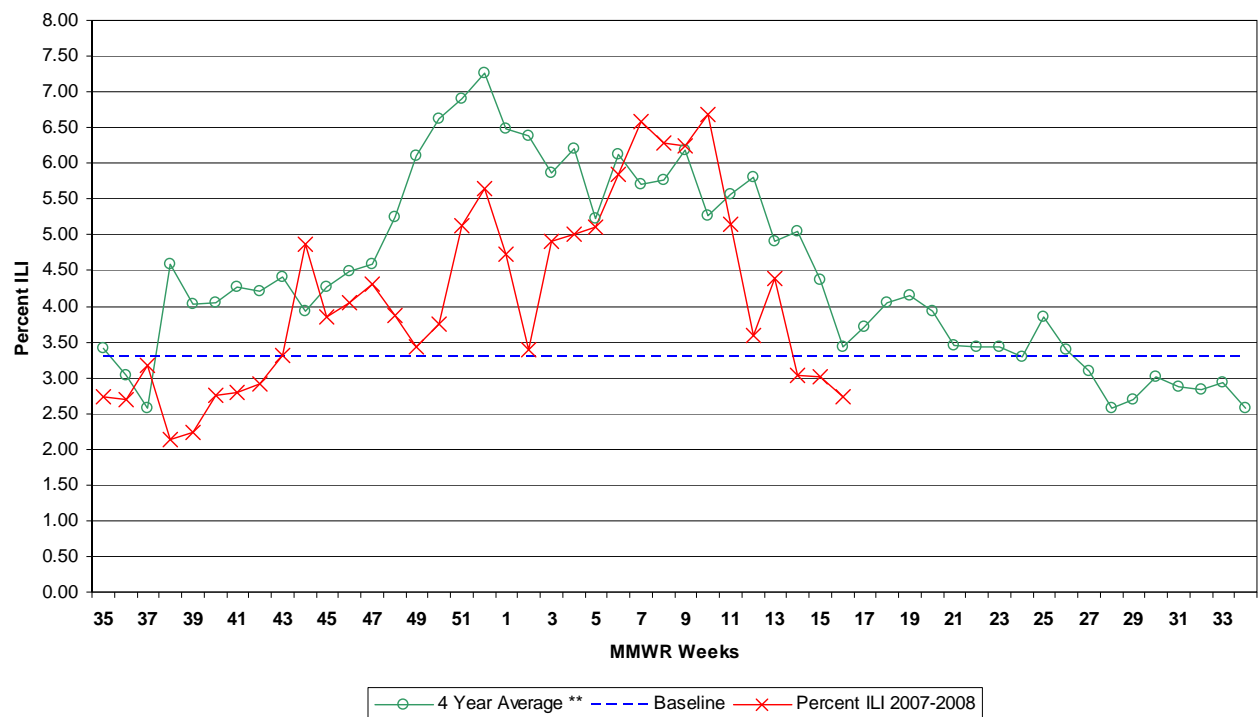


## Influenza-like Illness (ILI) Surveillance\*

### Emergency Departments

During week 16, 2.74% ILI was reported statewide from emergency departments. This is a decrease over the previous week (3.01%). The percent ILI for each county ranged from 0.00 to 8.04%. The percent ILI for this same week last year was 3.37% in emergency departments. The percent ILI for the northeast (4.31%) public health region was above state baseline (3.30%).

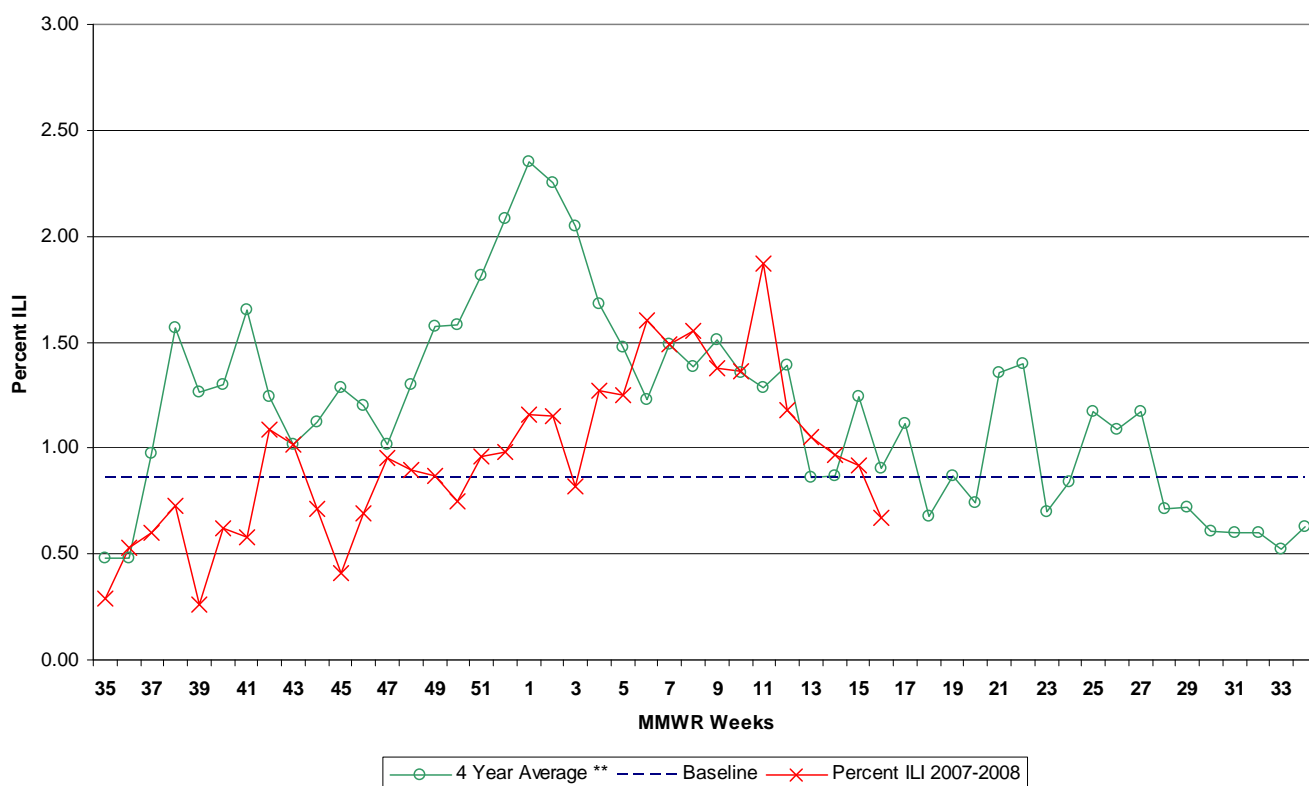
New Jersey Department of Health and Senior Services  
Influenza-like Activity - Emergency Departments



## Long-term Care Facilities

During week 16, 0.67% ILI was reported statewide from long term care facilities. This is a decrease over the previous week (0.92%). The percent ILI for each county ranged from 0.00% to 2.08%. The percent ILI for this same week last year was 0.76% in long-term care facilities. The percent ILI for the northwest (1.27%), northeast (1.74%) and central east (0.96%) public health regions were above state baseline (0.86%). No new reports of respiratory outbreaks in long term care facilities were received in week 16.

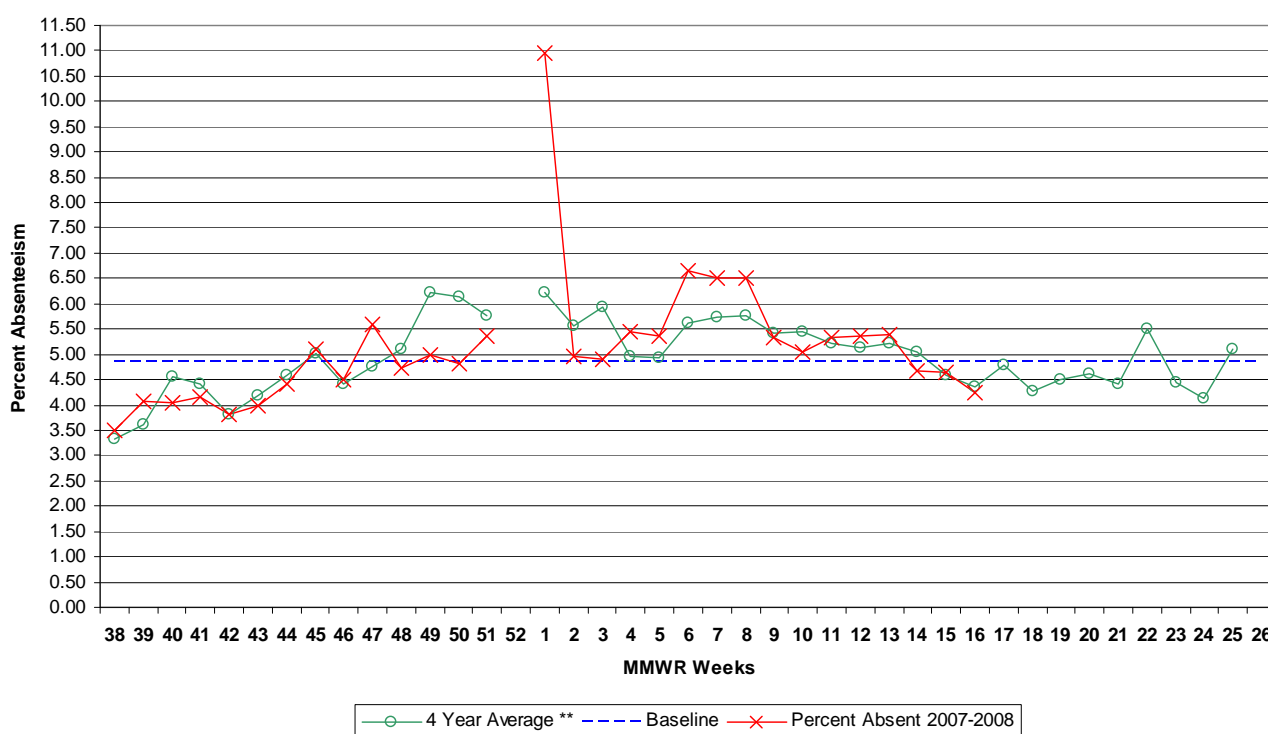
**New Jersey Department of Health and Senior Services  
Influenza-like Activity - Long Term Care Facilities**



## School Absenteeism

During week 16, schools reported 4.25% absenteeism. This is a decrease over the previous week (4.66%). The percent ILI for each county ranged from 1.81 – 6.35%. The percent absent for this same week last year was 4.79%. No public health regions were above state baseline (4.85%).

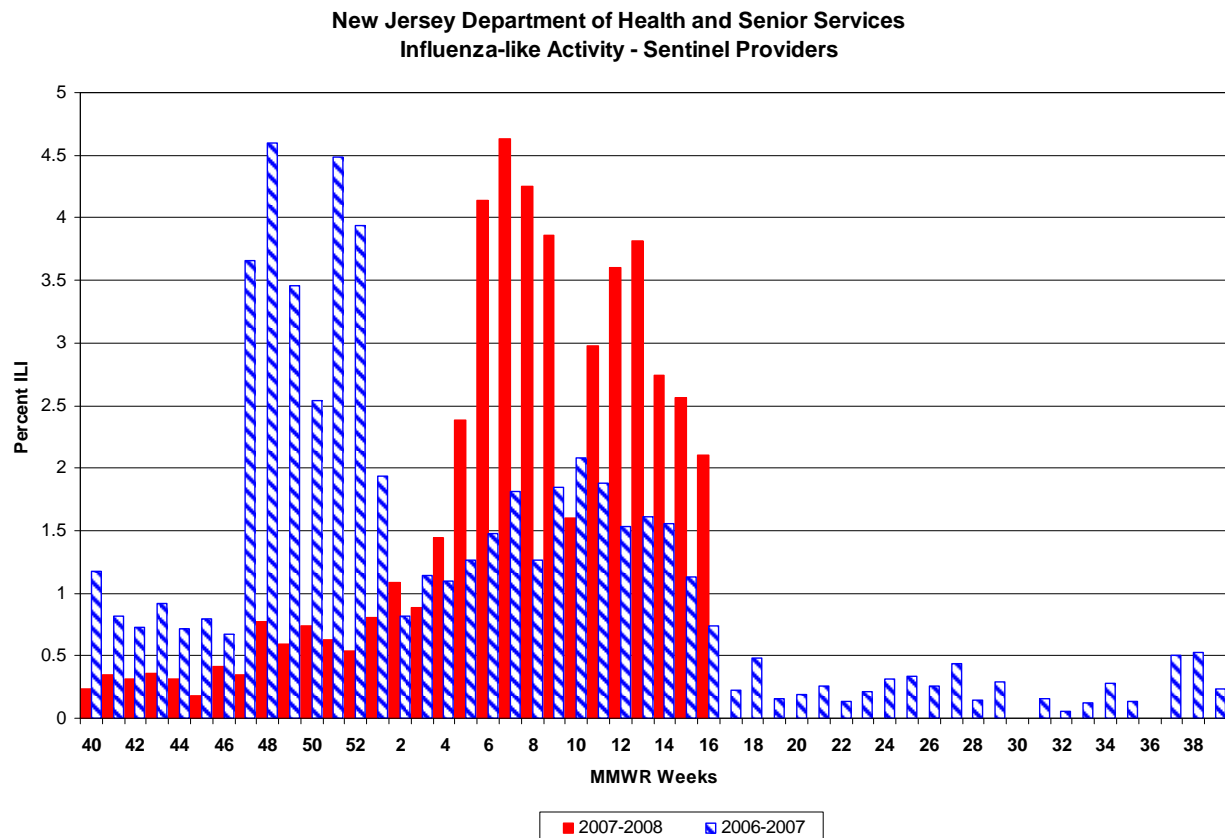
**New Jersey Department of Health and Senior Services  
Influenza-like Activity - School Absenteeism**



### **Sentinel Provider Surveillance**

During week 16, 2.10% of sentinel provider patient visits were due to ILI. These data reflect reports from three (7%) of the enrolled sentinel providers.

During week 15, 2.56% of sentinel provider patient visits were due to ILI. These data reflect reports from seven (18%) of the enrolled sentinel providers.



### **Pediatric Influenza Surveillance**

To date, NJDHSS has received 50 reports of pediatric illness. A total of 24 cases have met the case definition. Of these, one death was reported in week 9.

### **122 City Mortality Report**

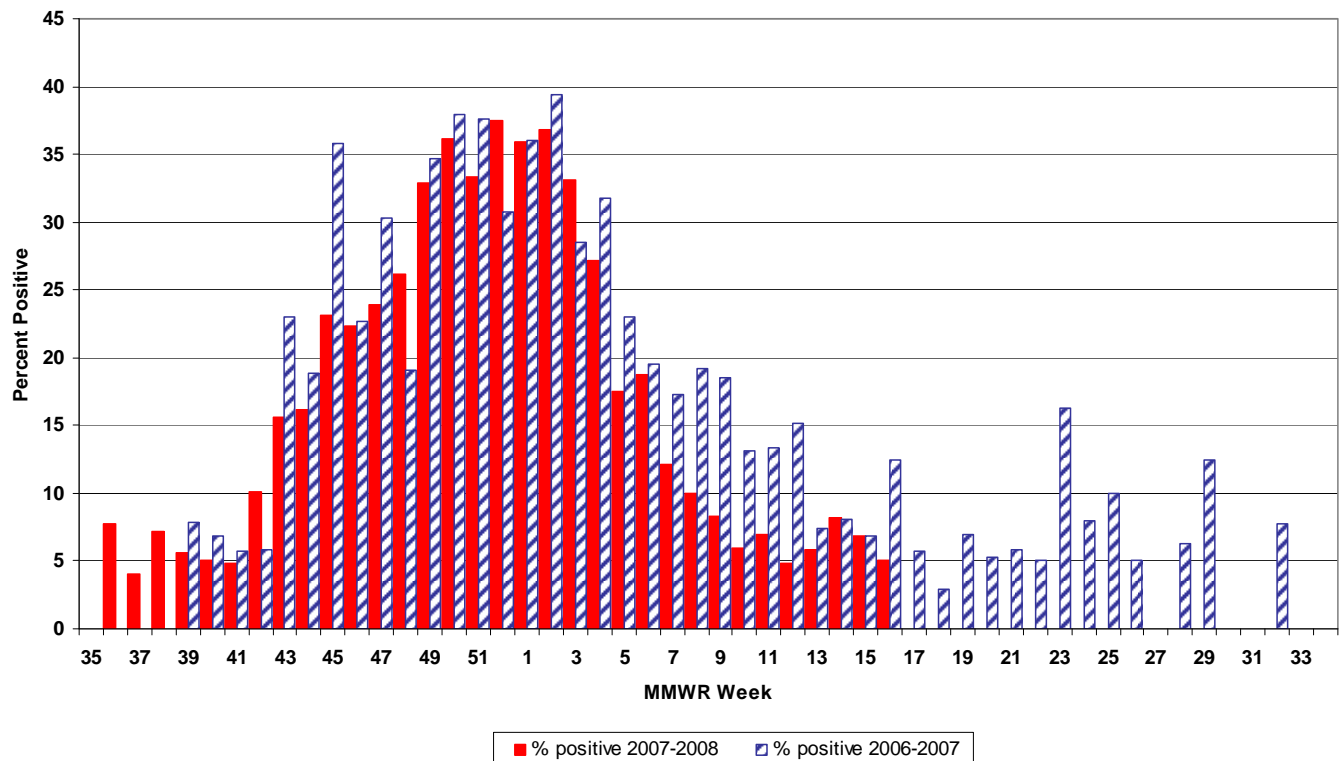
During week 15, 5.03% of all deaths reported by the vital statistics offices in 6 New Jersey cities (i.e., Camden, Elizabeth, Newark, Paterson, Jersey City, Trenton) were due to pneumonia or influenza. This is an increase over the previous week (9.64%). The percentage of death due to pneumonia or influenza for this same week last year was 3.33%.



## **RSV Reports**

During week 16, 5.05% of all RSV samples tested were positive. This was a decrease over the previous week 6.83%. The percent of samples positive for RSV for this same week last year was 12.46%.

### **New Jersey Department of Health and Senior Services Respiratory Syncytial Virus (RSV) Surveillance by Week, 2006-2008**



## **Additional Information**

For additional information regarding influenza surveillance please visit the following websites.

<http://nj.gov/health/flu/surveillance.shtml>

<http://www.cdc.gov/flu/>

\* Baseline is calculated by taking the average of statewide percentages of ILI for a 4 year (2004, 2005, 2006, 2007) period during months when influenza is less likely to be circulating (May-August). Weeks in which less than 4 counties reported were not included in the calculation.

\*\*Four year average is an average of the 2003-2004, 2004-2005, 2005-2006, 2006-2007 influenza seasons.



	Long Term Care			Schools			Hospital Emergency Department			RSV Tests	
County	# Enrolled	# Reports Rec'd	% ILI	# Enrolled	# Reports Rec'd	% Absent	# Enrolled	# Reports Rec'd	% ILI	# Positive	Total Tests Performed
ATLANTIC	6	3	0.60	17	15	6.35	4	4	1.15	1	16
BERGEN	3	0	0.00	16	4	1.81	6	0	0.00	0	0
BURLINGTON	6	3	0.00	104	42	4.20	3	0	0.00	0	0
CAMDEN	7	0	0.00	17	0	0.00	7	0	0.00	0	16
CAPE MAY	5	3	0.73	11	10	4.14	1	1	2.22	0	3
CUMBERLAND	4	2	1.11	18	7	6.13	3	3	4.74	1	8
ESSEX	14	0	0.00	34	4	2.27	11	5	5.44	0	0
GLOUCESTER	2	1	0.00	5	0	0.00	2	2	0.85	0	3
HUDSON	10	1	1.74	88	40	4.56	7	2	1.03	1	7
HUNTERDON	4	4	0.00	8	8	3.22	1	1	0.00	1	9
MERCER	11	5	0.00	26	20	3.90	5	3	2.38	0	5
MIDDLESEX	2	1	2.08	56	18	3.31	5	1	0.00	0	0
MONMOUTH	11	8	1.18	24	14	5.75	5	3	0.24	0	18
MORRIS	11	0	0.00	14	13	2.52	4	2	0.64	0	0
OCEAN	6	2	0.00	27	9	4.55	4	4	3.11	0	0
PASSAIC	8	4	1.53	23	4	4.61	6	0	0.00	0	0
SALEM	4	3	0.00	5	0	0.00	1	1	0.00	0	0
SOMERSET	5	3	0.00	63	21	2.82	2	1	6.76	1	3
SUSSEX	5	4	1.12	24	22	4.89	2	2	8.04	0	4
UNION	4	0	0.00	120	20	4.09	5	5	3.91	0	10
UNKNOWN	0	0	0.00	0	0	0.00	0	0	0.00	0	0
WARREN	7	1	0.00	21	10	4.35	2	1	3.51	0	0
NW Region	31	9	1.27	82	49	4.22	14	5	2.70	0	4
NE Region	27	1	1.74	138	48	4.33	24	7	4.31	1	7
CW Region	20	12	0.00	97	49	3.34	8	5	2.57	2	17
CE Region	23	11	0.96	227	61	4.36	19	13	2.37	0	28
South Region	34	15	0.45	177	74	4.77	21	11	1.88	2	46
State Total	135	48	0.67	721	281	4.25	86	41	2.62	5	102