

New Jersey Department of Health and Senior Services
Communicable Disease Service
Influenza Activity Summary
Week Ending February 9, 2008 (MMWR Week 6)

Influenza Activity Level: **WIDESPREAD**

NOTE: Three of three reporting parameters are above state baseline. Additionally, sixteen counties had 2 of 3 parameters above baseline as well as several laboratory confirmed cases in the previous 3 weeks from these same counties.

No Activity - At least 2 of 3 parameters at or below state baseline **AND** no lab confirmed cases

Sporadic - At least 2 of 3 parameters above state baseline **AND** confirmed laboratory cases anywhere in the state within previous 3 weeks **OR** at least one laboratory confirmed outbreak in an institution anywhere in the state

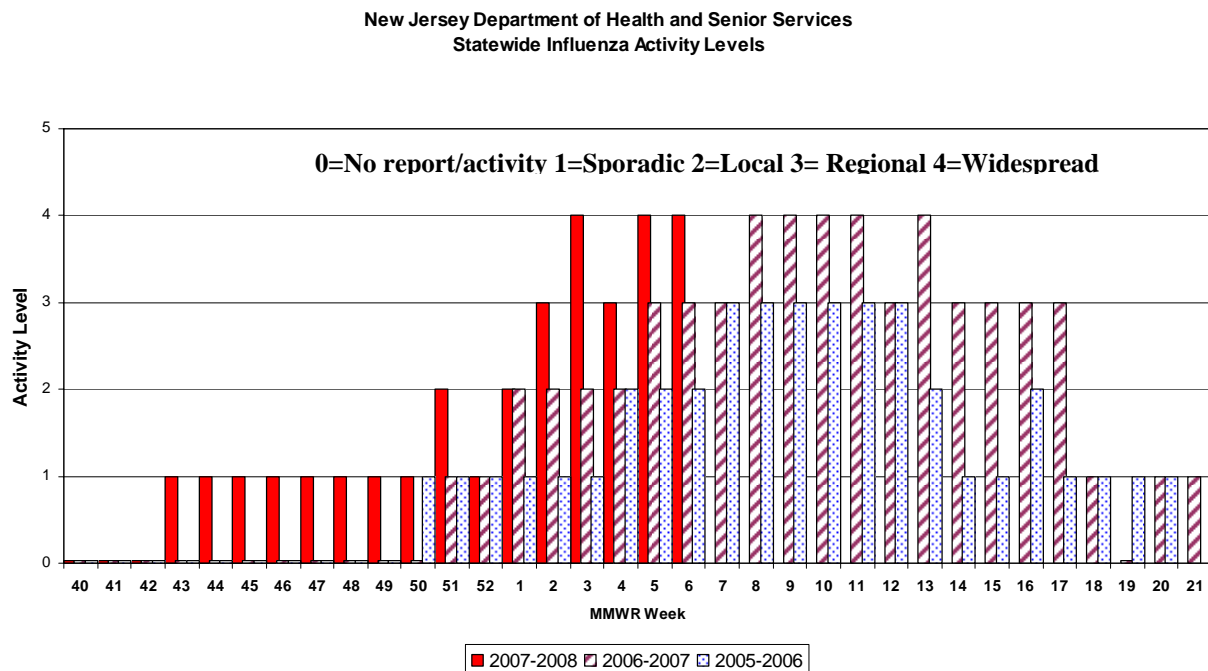
Local - At least 2 or 3 parameters above state baseline in a single county **AND** confirmed laboratory cases from that same county within the previous 3 weeks (other counties may be above baseline without lab confirmed cases) **OR** confirmed outbreaks in 2 or more institutions in a single county

Regional - At least 2 of 3 parameters above state baseline in ≥ 2 but ≤ 10 counties **AND** laboratory confirmed cases from these same counties in past 3 weeks **OR** confirmed outbreaks institutions in ≥ 2 but ≤ 10 counties

Widespread - At least 2 of 3 parameters above state baseline in > 10 counties **OR** institutional outbreaks in > 10 counties **AND** lab confirmed influenza cases in previous 3 weeks.

Parameter = School, emergency department, or long term care weekly surveillance data

Baseline is calculated by taking the average of statewide percentages of ILI for a 4 year (2004, 2005, 2006, 2007) period during months when influenza is less likely to be circulating (May-August). Weeks in which less than 4 counties reported were not included in the calculation.



Regional Data

REGIONAL – NE, NW, CW AND CE LOCAL – SOUTH

Public Health Regions

NW Region (Morris, Passaic, Sussex, Warren)

NE Region (Bergen, Essex, Hudson)

CW Region (Hunterdon, Mercer, Somerset)

CE Region (Middlesex, Monmouth, Ocean, Union)

South Region (Atlantic, Burlington, Camden, Cape May, Cumberland, Gloucester, Salem)

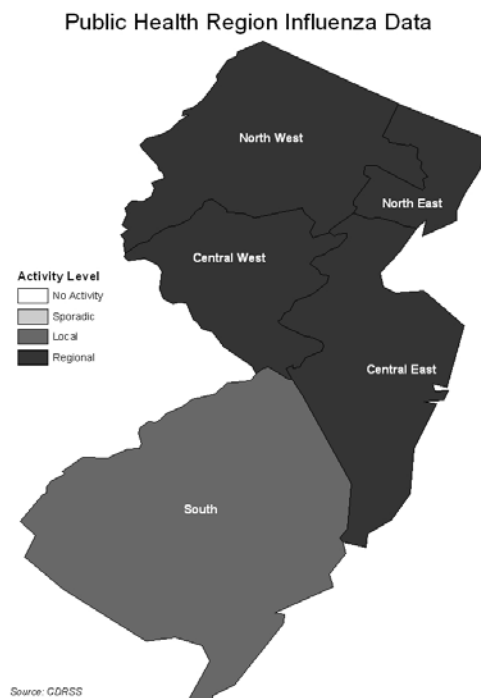
No Activity – At least 2 of 3 parameters at or below state baseline **AND** no lab confirmed cases in the public health region

Sporadic – At least 2 of 3 parameters above state baseline **AND** confirmed laboratory cases anywhere in the public health region **OR** at least one laboratory confirmed outbreak in an institution anywhere in the public health region

Local – At least 2 or 3 parameters above state baseline in a single county of a public health region **AND** confirmed laboratory cases from that same county within the previous 3 weeks (other counties may be above baseline without lab confirmed cases) **OR** confirmed outbreaks in 2 or more institutions in a single county of a public health region

Regional – At least 2 of 3 parameters above state baseline in at least half of counties of public health region **AND** laboratory confirmed cases from these same counties in past 3 weeks **OR** confirmed outbreaks institutions in at least half of counties of public health region counties

Widespread – Not used for public health region data



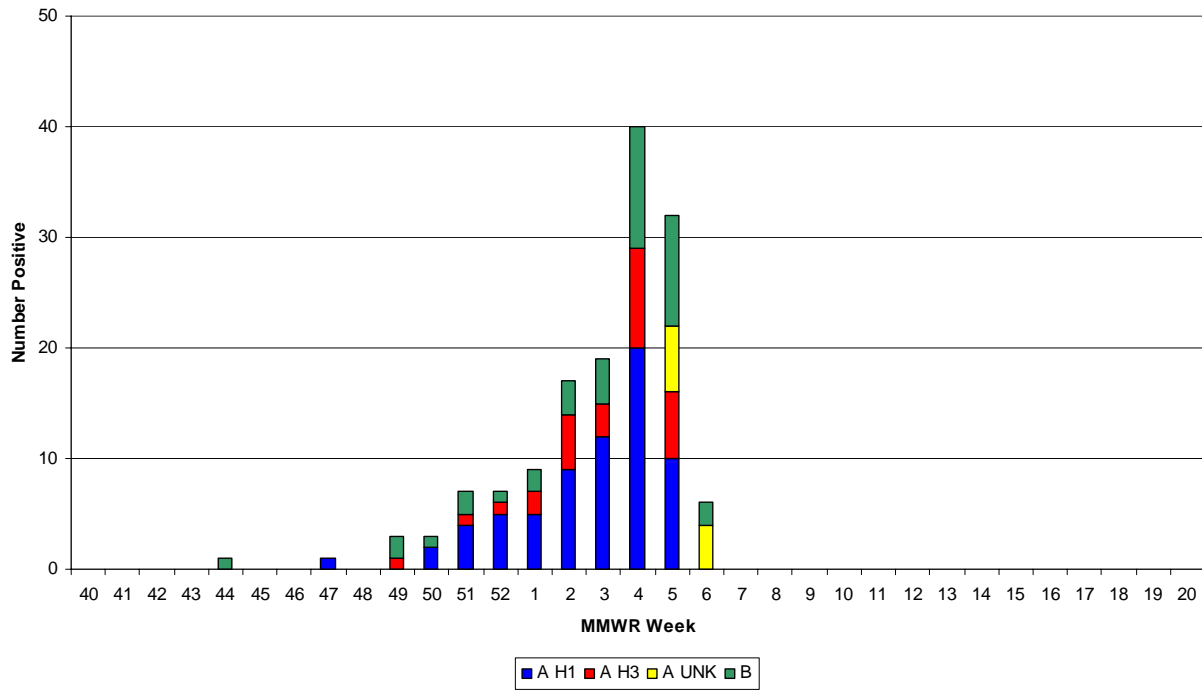
Laboratory Surveillance

As of week 6, 145 samples have been found to be positive by viral culture (68- AH1, 28-AH3 10- A unknown type and 39-B). Rapid and culture results by county are displayed below.

County	Week 40 to Week 6							Weeks 4, 5, 6						
	Rapid*			Culture*				Rapid*			Culture*			
	A	B	A/B	A H1	A H3	A UNK	B	A	B	A/B	A H1	A H3	A UNK	B
Atlantic County						1	2						1	2
Bergen County	9	4		4		9	2	3	1				9	
Burlington County	29							16						
Camden County														
Cape May County														
Cumberland County														
Essex County	36	8	47	4	2		1	28	2	36	1	1		
Gloucester County				3	4		1				3	4		1
Hudson County	1			6	3		4				2	1		1
Hunterdon County				5	2		3				2	1		2
Mercer County	46	14		5	2		3	33	8		2	1		2
Middlesex County	3			5	2		2				1			1
Monmouth County	11		24	5	3		1	11		19	3	2		1
Morris County				8	1		6				6			4
Ocean County														
Passaic County	5	2		7			1	1	2		5			
Salem County														
Somerset County			5	7	3					4	2	2		
Sussex County	7	4					1		1					1
Union County	6			7	5		8	5			1	2		4
Warren County	7	2						4	2					
Unknown				2	1		4				2	1		4
State Total	160	34	76	68	28	10	39	102	14	59	30	15	10	23

*Rapid data is acquired from facilities reporting rapid influenza tests via NREVSS or CDRSS ILI module. Culture results are obtained via PHEL, hospital viral culture laboratories or commercial laboratories.

New Jersey Department of Health and Senior Services
Influenza Laboratory Report
Viral Culture Positive Specimens by MMWR Week

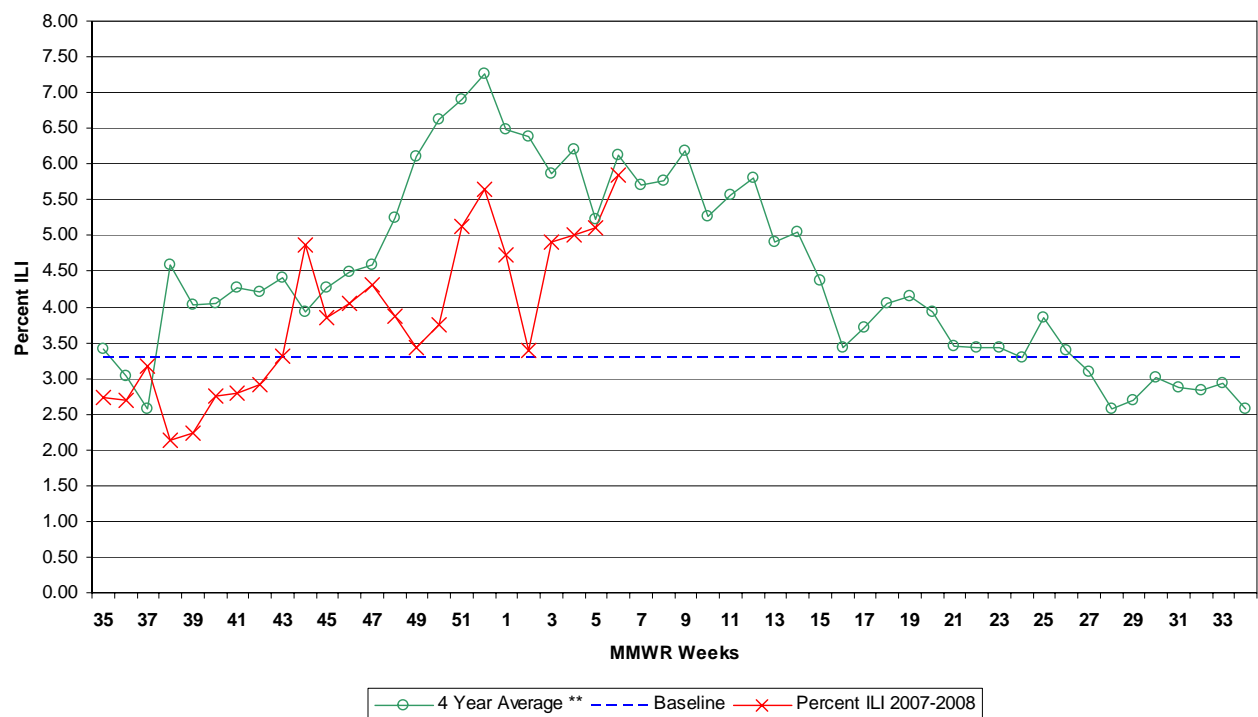


Influenza-like Illness (ILI) Surveillance*

Emergency Departments

During week 6, 5.85% ILI was reported statewide from emergency departments. This is an increase over the previous week (5.11%). The percent ILI for each county ranged from 1.17 to 18.09%. The percent ILI for this same week last year was 5.92% in emergency departments. The percent ILI for the northwest (3.64%), northeast (8.82%), central west (4.89%), central east (6.18%) and south (4.56%) public health regions were above state baseline (3.30%).

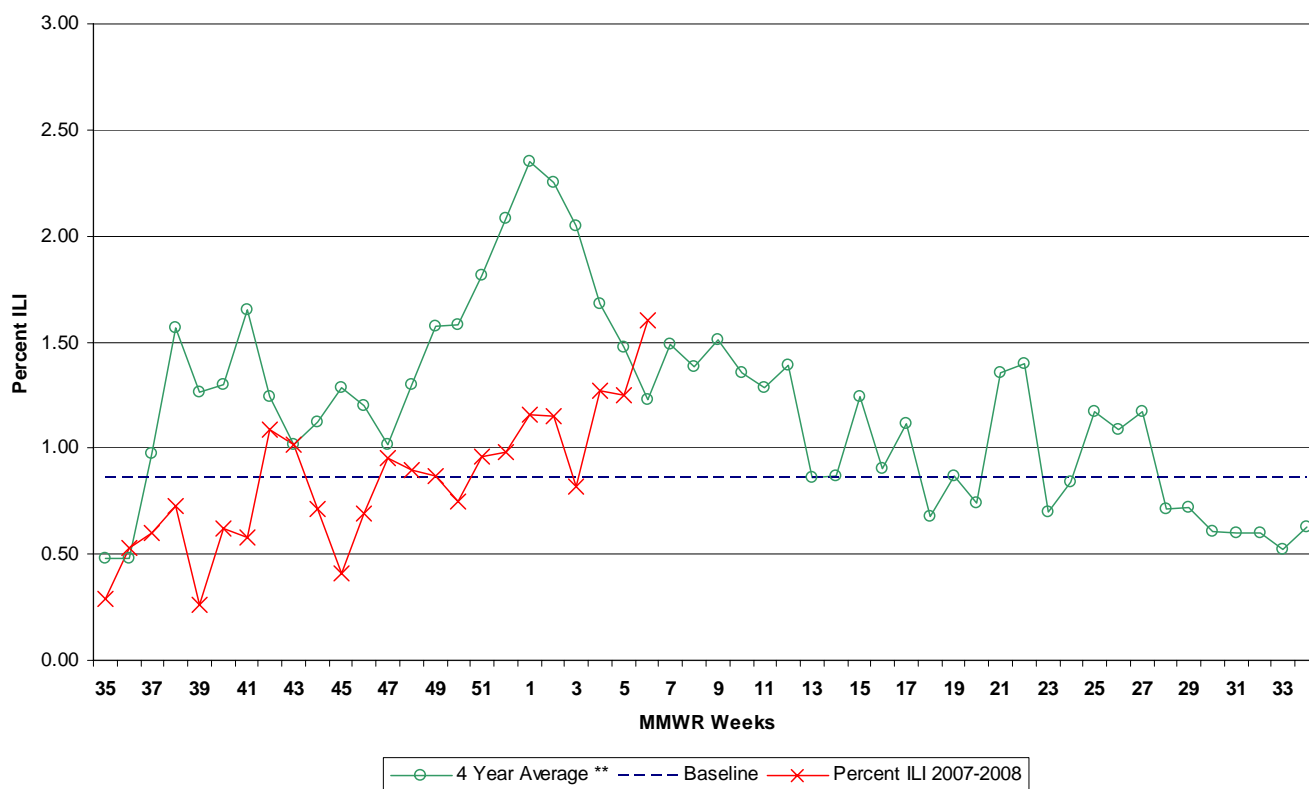
New Jersey Department of Health and Senior Services
Influenza-like Activity - Emergency Departments



Long-term Care Facilities

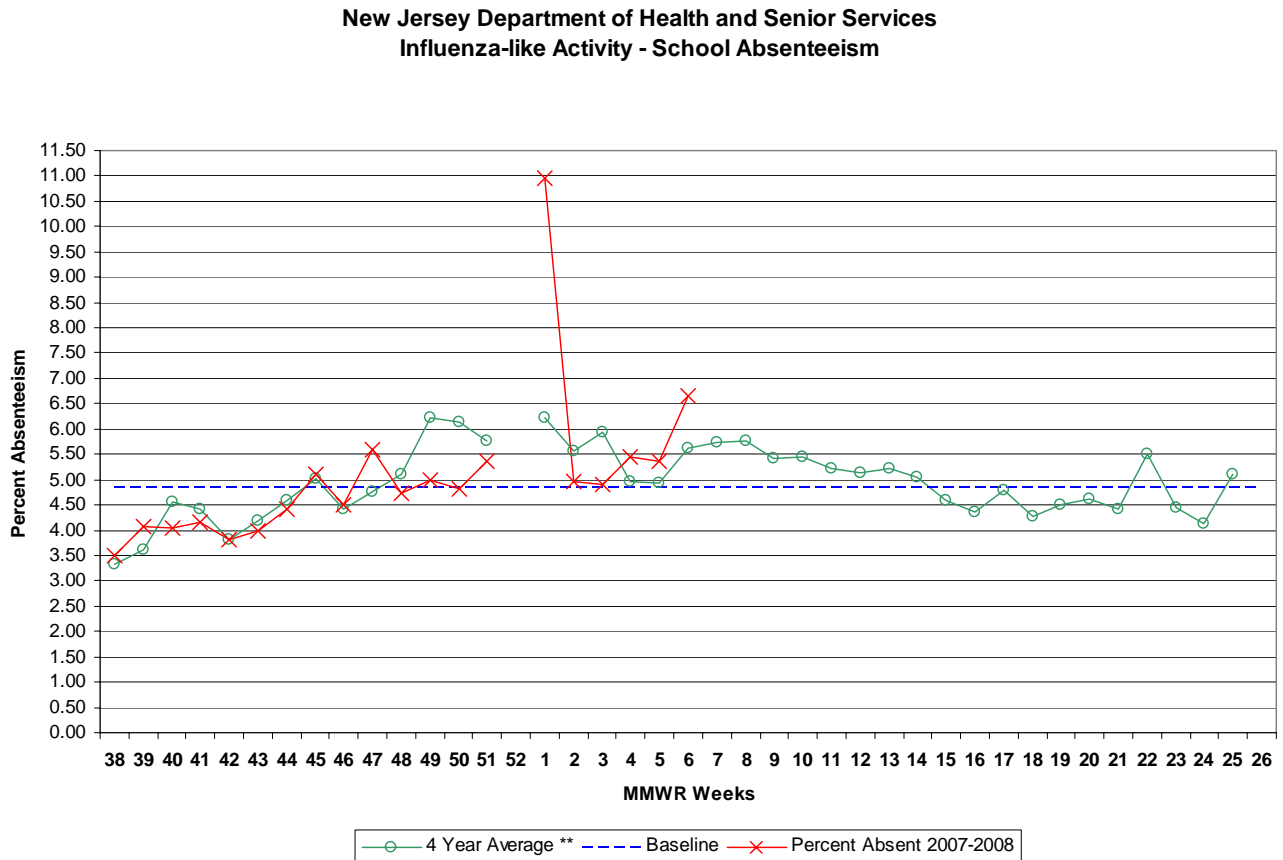
During week 6, 1.60% ILI was reported statewide from long term care facilities. This is an increase over the previous week (1.25%). The percent ILI for each county ranged from 0.00% to 4.17%. The percent ILI for this same week last year was 0.85% in long-term care facilities. The percent ILI for the northwest (1.53%), northeast (2.88%), central west (2.04%), central east (1.46%) and south (1.17%) public health regions were above state baseline (0.86%). One reports weas received regarding an ILI/respiratory outbreak in communal living facilities in week 6.

New Jersey Department of Health and Senior Services
Influenza-like Activity - Long Term Care Facilities



School Absenteeism

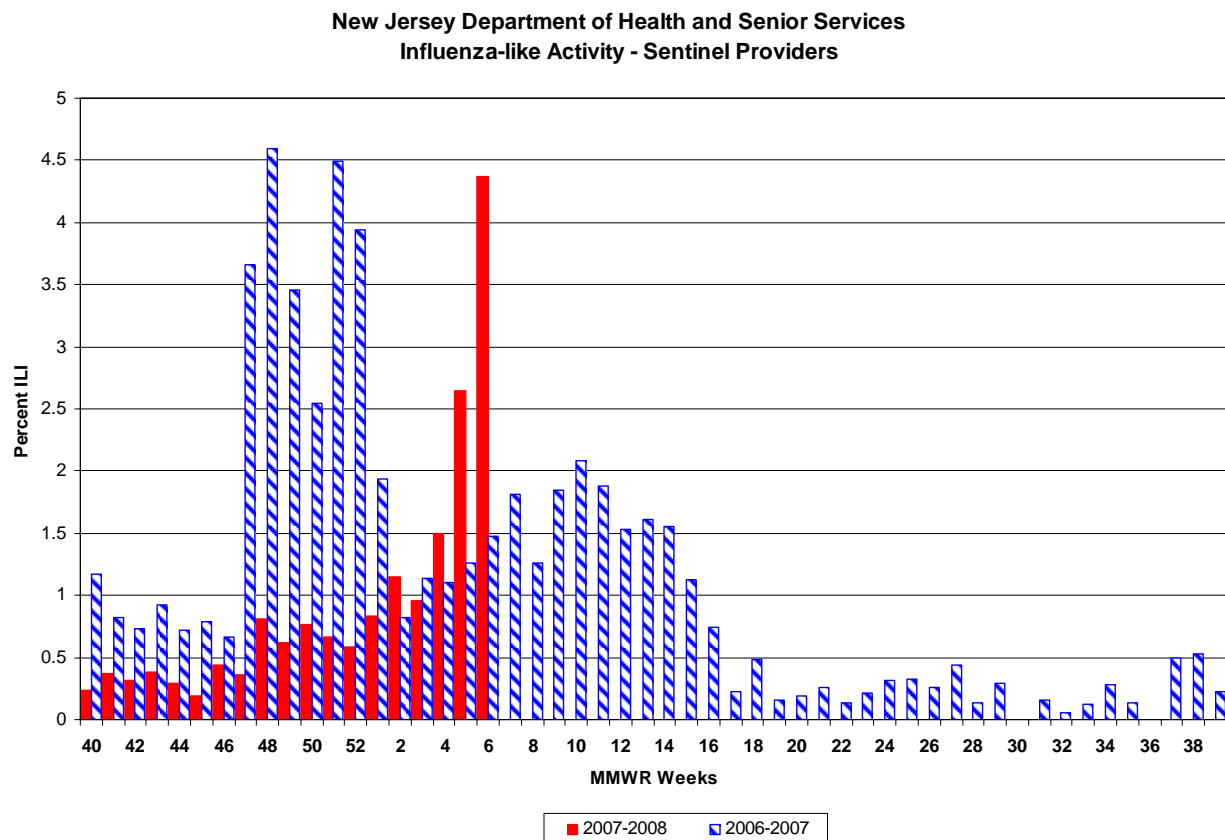
During week 6, schools reported 6.65% absenteeism. This is an increase over the previous week (5.35%). The percent ILI for each county ranged from 5.23 – 9.76%. The percent absent for this same week last year was 6.76%. The percent ILI for the northwest (7.58%), northeast (6.38%), central west (5.43%), central east (6.85%) and south (7.18%) public health regions were above state baseline (4.85%).



Sentinel Provider Surveillance

During week 6, 4.37% of sentinel provider patient visits were due to ILI. These data reflect reports from seven (18%) of the enrolled sentinel providers.

During week 5, 2.65% of sentinel provider patient visits were due to ILI. These data reflect reports from ten (26%) of the enrolled sentinel providers.



Pediatric Influenza Surveillance

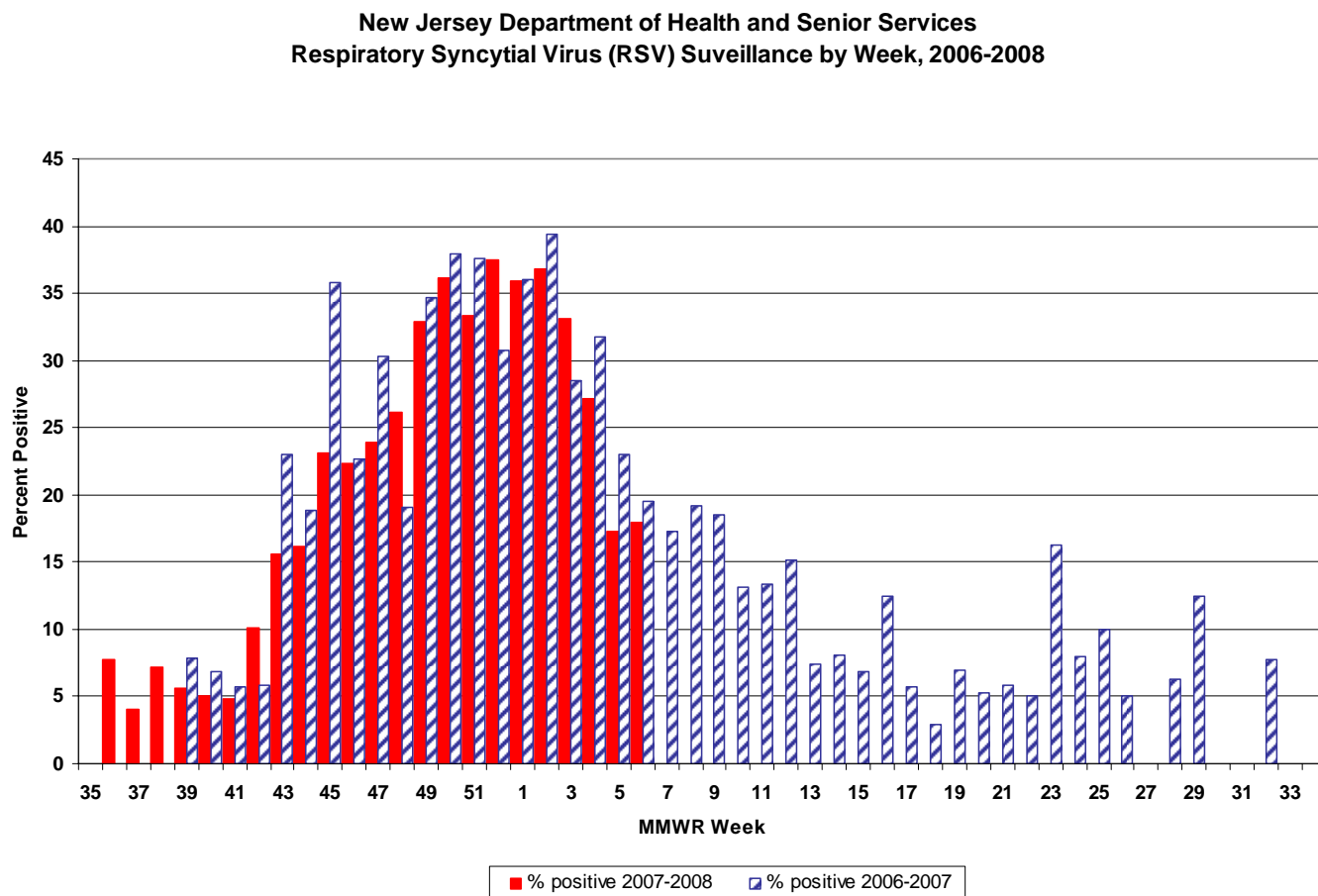
To date, NJDHSS has received 15 reports of pediatric illness. Ten of these cases have met the case definition for pediatric illness or death associated with influenza

122 City Mortality Report

During week 5, 8.40% of all deaths reported by the vital statistics offices in 6 New Jersey cities (i.e., Camden, Elizabeth, Jersey City, Newark, Paterson, Trenton) were due to pneumonia or influenza. This is an increase as the previous week (7.92%). The percentage of death due to pneumonia or influenza for this same week last year was 4.35%.

RSV Reports

During week 6, 17.97% of all RSV samples tested were positive. This was a decrease over the previous week 17.32%. The percent of samples positive for RSV for this same week last year was 19.47%.



Additional Information

For additional information regarding influenza surveillance please visit the following websites.

<http://nj.gov/health/flu/surveillance.shtml>

<http://www.cdc.gov/flu/>

* Baseline is calculated by taking the average of statewide percentages of ILI for a 4 year (2004, 2005, 2006, 2007) period during months when influenza is less likely to be circulating (May-August). Weeks in which less than 4 counties reported were not included in the calculation.

**Four year average is an average of the 2003-2004, 2004-2005, 2005-2006, 2006-2007 influenza seasons.

	Long Term Care			Schools			Hospital Emergency Department			RSV Tests	
County	# Enrolled	# Reports Rec'd	% ILI	# Enrolled	# Reports Rec'd	% Absent	# Enrolled	# Reports Rec'd	% ILI	# Positive	Total Tests Performed
ATLANTIC	5	2	1.08	17	14	8.23	4	4	3.95	19	57
BERGEN	3	0	0.00	14	0	0.00	6	0	0.00	0	28
BURLINGTON	6	3	0.00	104	55	6.94	3	3	2.47	13	71
CAMDEN	7	0	0.00	17	0	0.00	7	0	0.00	0	0
CAPE MAY	5	4	0.23	11	10	6.94	1	1	18.09	3	13
CUMBERLAND	4	2	4.14	18	3	6.99	3	3	5.43	1	13
ESSEX	14	2	1.66	34	6	5.63	11	6	10.38	12	96
GLOUCESTER	2	1	3.23	5	2	7.24	2	2	3.77	4	8
HUDSON	10	2	3.48	87	68	6.43	8	3	4.14	2	12
HUNTERDON	4	4	3.13	8	8	6.42	1	1	4.44	0	8
MERCER	10	5	1.64	26	22	5.35	5	3	2.25	3	37
MIDDLESEX	2	1	4.17	46	20	5.47	5	2	5.24	3	33
MONMOUTH	8	5	2.07	24	15	9.76	5	4	1.17	5	36
MORRIS	11	1	0.00	14	13	6.27	4	2	2.14	0	0
OCEAN	6	1	0.00	27	13	7.58	4	4	7.23	6	10
PASSAIC	8	4	2.19	23	7	8.92	6	0	0.00	0	0
SALEM	4	2	0.00	5	0	0.00	1	1	3.57	0	0
SOMERSET	5	2	0.80	62	23	5.23	2	2	8.76	1	3
SUSSEX	5	5	1.35	24	23	7.54	2	2	8.04	7	20
UNION	4	1	0.29	118	41	6.27	5	4	10.21	3	16
UNKNOWN	0	0	0.00	0	0	0.00	0	0	0.00	0	0
WARREN	7	1	1.74	21	14	7.75	2	0	0.00	1	1
NW Region	31	11	1.53	82	57	7.58	14	4	3.64	8	21
NE Region	27	4	2.88	135	74	6.38	25	9	8.82	14	136
CW Region	19	11	2.04	96	53	5.43	8	6	4.89	4	48
CE Region	20	8	1.46	215	89	6.85	19	14	6.18	17	95
South Region	33	14	1.17	177	84	7.18	21	14	4.56	40	162
State Total	130	48	1.60	705	357	6.65	87	47	5.85	83	462