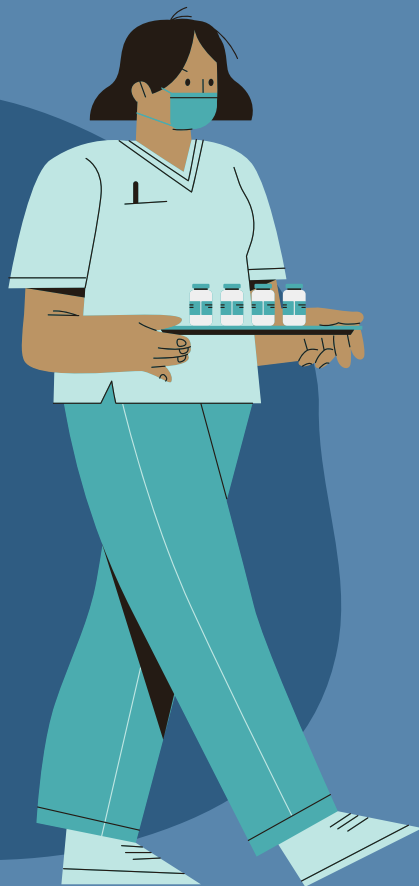


# INFECTION PREVENTION AND CONTROL GUIDANCE FOR PROVIDING CARE TO INDIVIDUALS WITH NOVEL MDROs (i.e., *Candida auris*, CPOs, CROs)



Ensure that staff who provide routine services to multiple rooms (or “round”) enter MDRO positive patients’ rooms last whenever feasible. This should include both direct care and indirect care staff, including physicians, specialists, therapists, environmental services, dietary, social workers, etc.

Prior to entering patient rooms, always follow room signage, which indicate necessary transmission-based precautions, and don the appropriate personal protective equipment.

Utilize disposable or dedicated equipment for the MDRO positive patient whenever possible.

Shared, mobile equipment and storage carts should not be wheeled into patient rooms. Bring and keep all equipment and supplies into positive patients’ room until the patient is discharged.

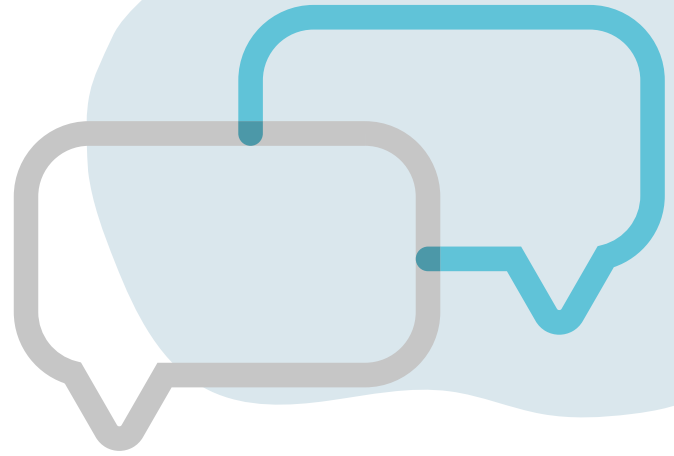
Increase emphasis on hand hygiene. Alcohol-based hand sanitizer is effective against *C. auris*, CPOs and CROs, and is the preferred method for hand hygiene when hands are not visibly soiled. If hands are visibly soiled, wash with soap and water.

- Increase hand hygiene audits on units where patients with MDROs reside.
- Consider re-educating healthcare personnel on hand hygiene through in-service or training, especially if audits demonstrate low adherence to recommended hand hygiene practices.

# INTERFACILITY COMMUNICATION



(SCAN THE QR CODE ABOVE FOR THE NJDOH  
MDRO TRANSFER COVER SHEET)



Upon discharge or transfer to another facility, clearly communicate patients' MDRO status (including any pending laboratory results) to the appropriate receiving healthcare facility's staff (e.g., case management, admissions, and infection control departments).

- In addition to the NJ Universal Transfer Form, include clear, written notification of MDRO colonization or infection using the [NJDOH MDRO Transfer Cover Sheet](#), and append to the patients' medical records.
- If colonized or infected patients are transferred to healthcare facilities in other states, immediately notify NJDOH CDS prior to patient transfer.

“Flag” the charts of colonized and infected patients in your facility’s medical record system so upon readmission, individuals are identified and placed on the appropriate transmission-based precautions immediately.