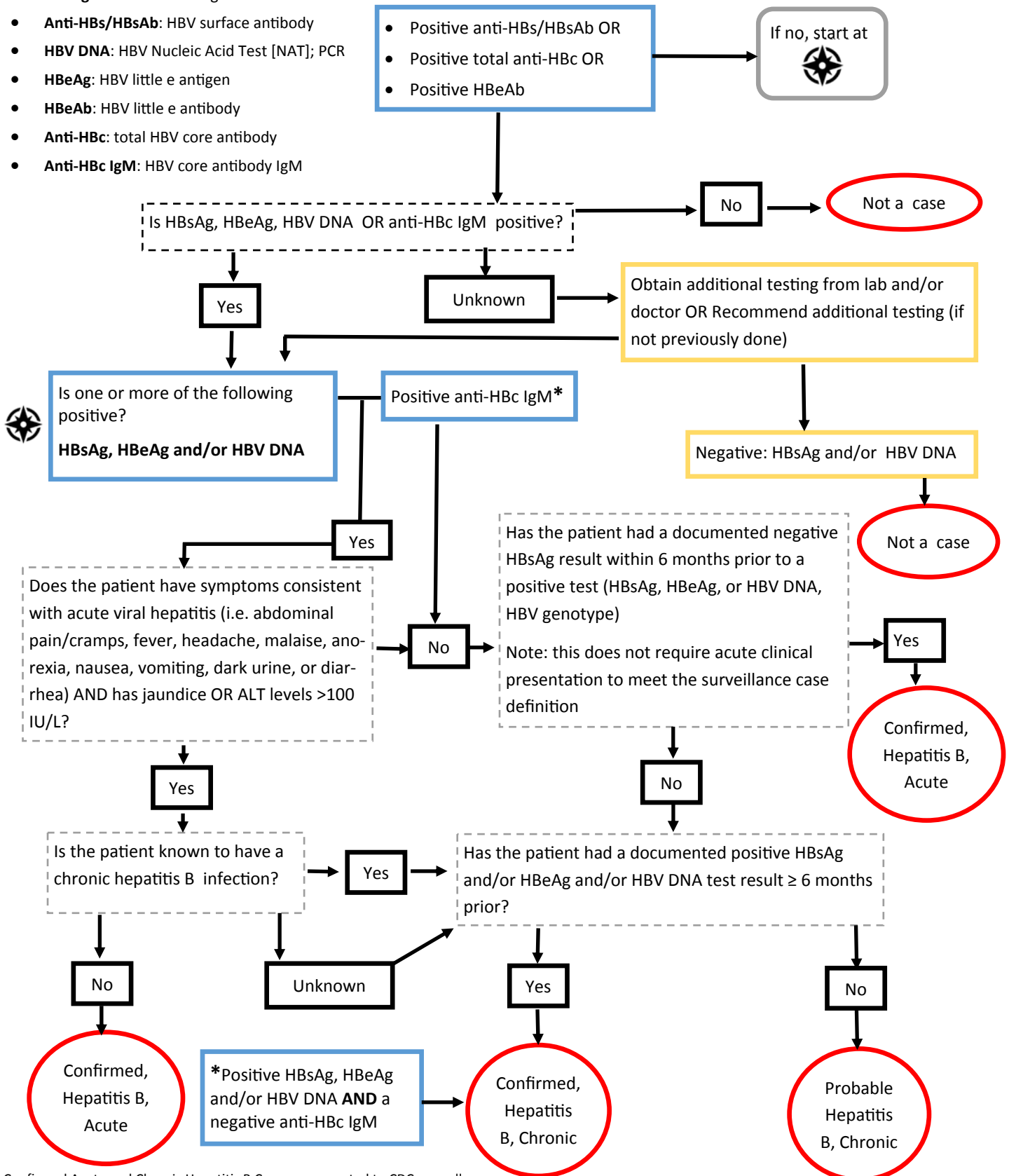


# Hepatitis B Case Classification Algorithm

**HBV abbreviations:**

- **HBsAg:** HBV surface antigen
- **Anti-HBs/HBsAb:** HBV surface antibody
- **HBV DNA:** HBV Nucleic Acid Test [NAT]; PCR
- **HBeAg:** HBV little e antigen
- **HBeAb:** HBV little e antibody
- **Anti-HBc:** total HBV core antibody
- **Anti-HBc IgM:** HBV core antibody IgM



Confirmed Acute and Chronic Hepatitis B Cases are reported to CDC annually