

# New Jersey Maternal and Child Health Profile



## ESSEX COUNTY



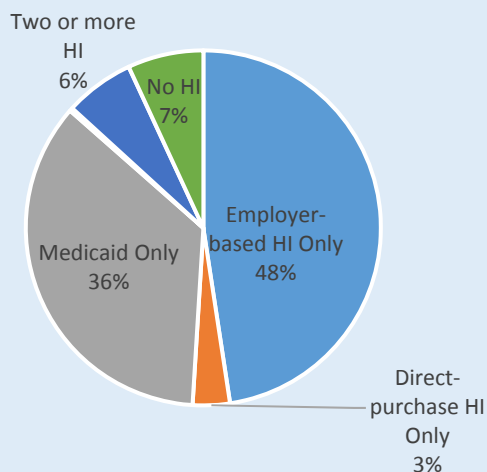
### Essex County Profile 2008-2012

	Essex County	New Jersey
Total Population	783,840 (9%)	8,793,888
Race/Ethnicity (2008-2012)		
Black, NH	308,196 (39%)	1,125,265 (13%)
White, NH	262,029 (33%)	5,208,824 (59%)
Hispanic	159,546 (20%)	1,557,680 (18%)
Asian/ PI, NH	35,985 (5%)	731,445 (8%)
Other, NH	18,084 (2%)	170,674 (2%)
Children, <18 years	193,856 (25%)	2,049,546 (23%)
Median household income	\$55,027	\$71,637
Percent of families below poverty level	13.3%	7.4%
Percent of households where primary language spoken at home is NOT English	33.6%	29.6%
Percent of uninsured children (<18 years)	7.4%	5.8%
Percent of children in Poverty	22%	14%
No. of children registered in NJBDR <sup>1</sup>	1,714	13,274

Source: American Community Survey, 5 year estimates (2008-2012)

1. Numbers represent children with Centers for Disease Control and Prevention (CDC) reportable conditions, Birth years 2008-2012. For more information: [Nbdpn.org](http://Nbdpn.org)

### Health Insurance (HI) of Essex County Children, 2010-2012



Source: American Community Survey, 3 year estimates (2010-2012). Other HI is defined as Medicare Coverage, TRICARE/military health coverage, and VA health coverage. Two or more HI includes any combination of insurances.

### SPECIAL CHILD HEALTH & EARLY INTERVENTION SERVICES (SCHEIS)

#### Purpose

To promote early identification, evaluation, diagnosis and treatment of children with special health needs from birth through 21 years of age.

#### Early Identification and Monitoring

- Birth Defects & Autism Registry
  - NJ state laws (P.L. 1983 c.291; amended P.L. 2005 c.176) NJSA 26:8-40.20 and (P.L. 2007 c.170) NJSA 26:2-185 mandates reporting of birth defects of children up through 5 years of age and autism up through 21 years of age to the Registry.
  - It is important that children are registered so they can be referred to the services they need.
- Critical Congenital Heart Defects (CCHD)-Pulse Oximetry
  - In August of 2011, Law (P.L. 2011 c.74) NJSA 26:2-111.4. was passed requiring all birthing facilities to perform a pulse oximetry (PO) screening a minimum of 24 hours after birth.
  - PO screening is likely to detect one of CCHD associated with hypoxia. All failed screens are reported to the Registry.
- Early Hearing Detection and Intervention (EHDI) Program
  - In 2001, law (P.L. 2001 c.373) NJSA 26:2-103.1 was passed mandating that all children must be screened for late onset or progressive hearing loss.
  - All children with a hearing loss are reported to the Registry.
- For questions about any of these programs, please call 609-292-5676.

#### Early Intervention Services

- The NJ Early Intervention System (NJEIS) is a statewide system of services for children birth to age three.
- Children are referred to the Regional System Point of Entry and are followed-up by a service coordinator assigned to assist the family with determining eligibility for early intervention services.
- For questions about NJEIS, please call 609-984-0755.
- To make a referral to NJEIS, call 888-653-4463.

#### Family Centered Care Services

- Family Centered Care Services (FCCS) focus on providing family-centered, community-based, individualized and accessible services to children up through 21 years of age with a broad range of disabilities or chronic illnesses, and to women, infants, children, youth and their families living with HIV and AIDS.
- The FCCS program consists of the: Case Management Program, Specialized Pediatric Services Program, and Family Centered HIV Care Network.
- For questions about FCCS, please call 609-777-7778.

#### Newborn Screening & Genetic Services

- Newborn Screening & Genetic Services (NBS & GS) staff ensure that newborns with abnormal screening results are followed by the baby's care provider and if necessary, by pediatric specialist.
- NBS & GS also provides partial support to a statewide network of hospitals who support children identified through the Newborn Screening Program.
- For questions about NBS & GS, please call 609-292-1582.



## Essex County Child Profile 2008-2012

	Essex County	New Jersey
<b>All live births</b>		
Female	48.9%	49.3%
Male	51.1%	50.7%
<b>Maternal race/ethnicity</b>		
Asian/PI, NH	4.8%	10.8%
Black, NH	44.0%	15.2%
Hispanic	28.5%	26.5%
Other, NH	1.1%	1.3%
White, NH	21.6%	46.2%
<b>Maternal age groups</b>		
<18 years	2.5%	1.7%
18-19 years	5.5%	3.8%
20-29 years	43.2%	42.4%
30-34 years	27.3%	30.7%
35+ years	21.5%	21.4%

Source: New Jersey State Health Assessment Data (NJ SHAD)

Figure 1. Birth Defect Prevalence as Percent of Statewide Prevalence, 2008-2012

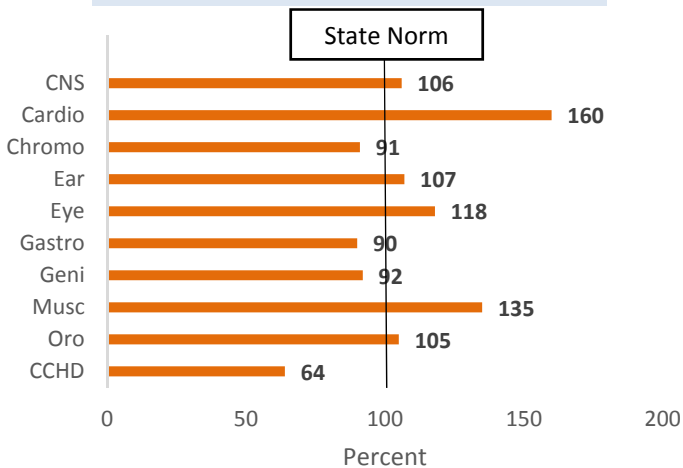
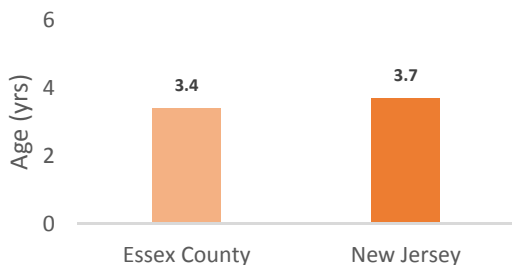


Figure 2. Median Age of First Autism Diagnosis



## Essex County's top 5 reported Birth Defects in the Registry

- Cardiovascular (Cardio):** affects heart's interior walls and valves; arteries and veins that carry blood to the heart or the body
- Genitourinary (Geni):** affects kidney, bladder and genitals
- Musculoskeletal (Musc):** affects muscles and bones
- Orofacial (Oro):** affects middle of face, e.g., Cleft palate
- Chromosomal (Chromo):** affects chromosomes, e.g., Down syndrome

For more information on birth defects:

[www.state.nj.us/health/fhs/bdr/specific-defects](http://www.state.nj.us/health/fhs/bdr/specific-defects)

Key: Central Nervous System (CNS); Cardiovascular (Cardio); Chromosomal (Chromo); Ear defects (Ear); Eye defects (Eye); Gastrointestinal (Gastro); Genitourinary (Geni); Musculoskeletal (Musc); Orofacial (Oro); Critical Congenital Heart Defects (CCHD)

Figure 3. Rate of Children with Birth Anomalies by Race/Ethnicity, 2008-2012

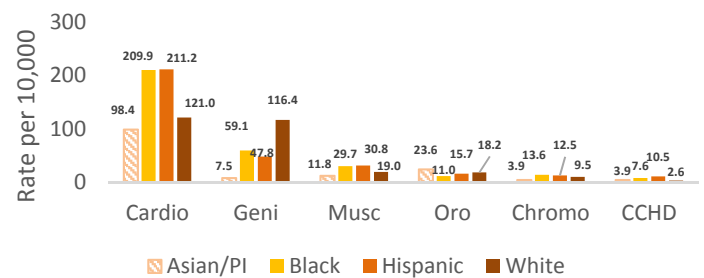
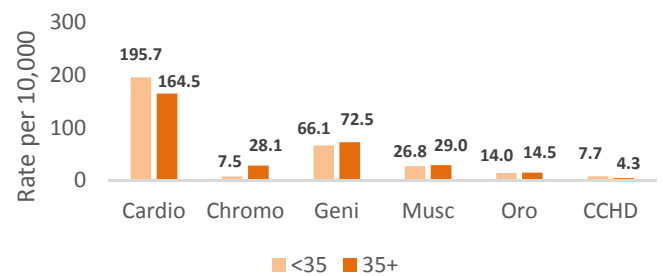


Figure 4. Rate of Children with Birth Anomalies by Age of Mother, 2008-2012



## Summary of Findings:

- Figure 1: Essex County surpasses the statewide norm for CNS, cardiovascular, ear, eye, musculoskeletal, and orofacial defects.
- Figure 2: Children registered in the Autism Registry and living in Essex County are diagnosed earlier, with a median age of first diagnosis being 3.4 compared to the statewide average of 3.7.
- Figure 3: Of all children in the Registry living in Essex county, White, non-Hispanic children have the highest rate of genitourinary conditions; Asian/PI, non-Hispanic children have the highest rate of orofacial defects; Hispanic children have the highest rate of cardiovascular, musculoskeletal, and CCHD defects.
- Figure 4: Essex county mothers above the age of 35 have children with a chromosomal abnormality more frequently than those under the age of 35. Although to a lesser degree, they also have higher rates of genitourinary, musculoskeletal, and orofacial defects.

\*(NOTE: This includes all Birth Defects and Autism Registry data as of November 2015)