

# Health Care Facilities

COMMERCIAL TWP

CUMBERLAND

## Legend

Counties

COMMERCIAL TWP

Hospitals

Nursing Homes

Municipalities

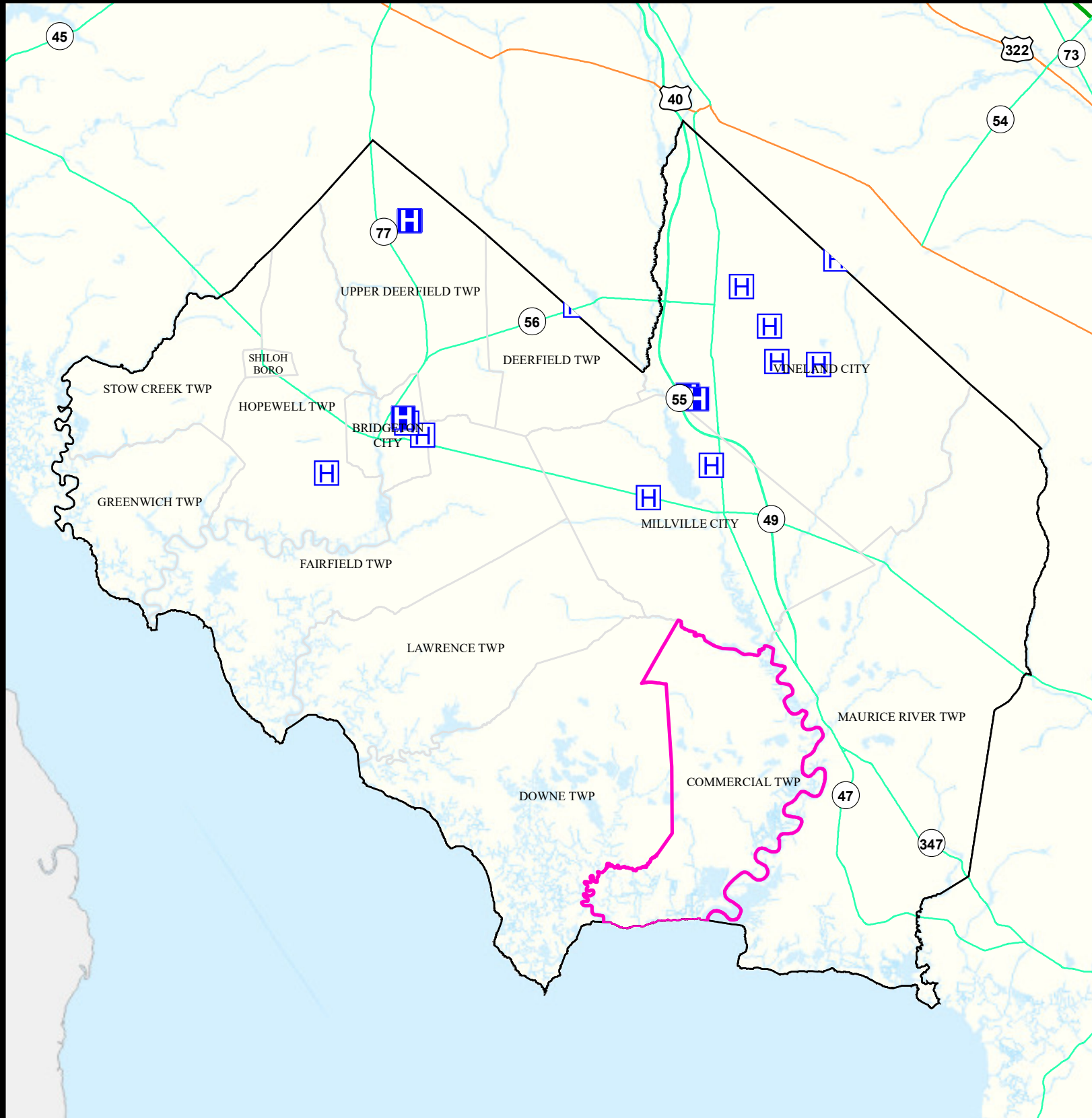


Date: 9/26/2022

0 1.75 3.5



Miles



# Air Cancer Risk











COMMERCIAL TWP

CUMBERLAND


## Legend

-  Counties
-  COMMERCIAL TWP

### Risk per Million


|   |           |   |           |   |           |
|---|-----------|---|-----------|---|-----------|
|  | 61 - 87   |  | 128 - 145 |  | 244 - 283 |
|  | 88 - 108  |  | 146 - 167 |  | 284 - 351 |
|  | 109 - 127 |  | 168 - 193 |  | 352 - 604 |
|   |           |  | 194 - 243 |   |           |

N

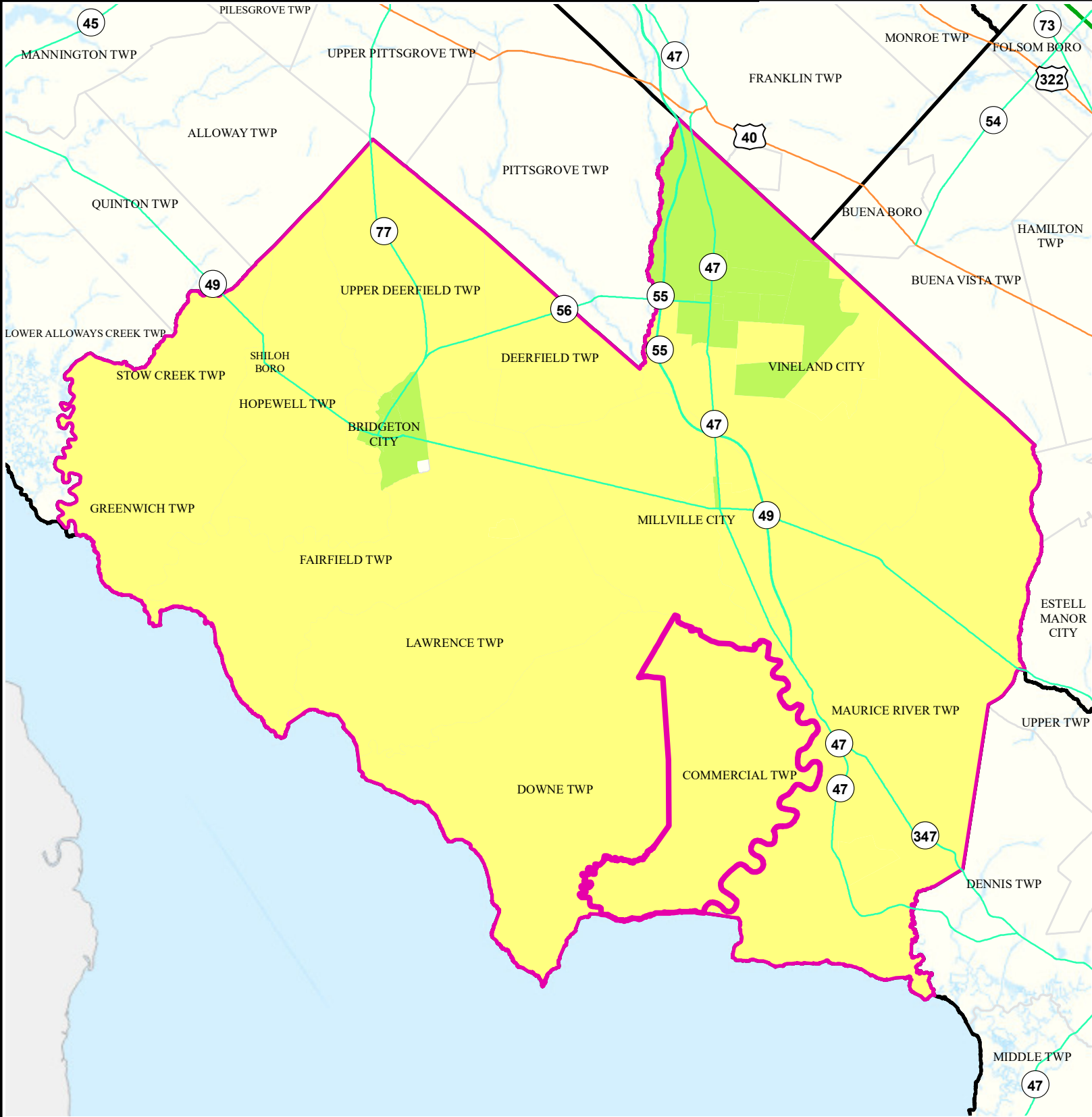


Date: 9/28/2022

0 1.75 3.5



Miles



# Air Non Cancer

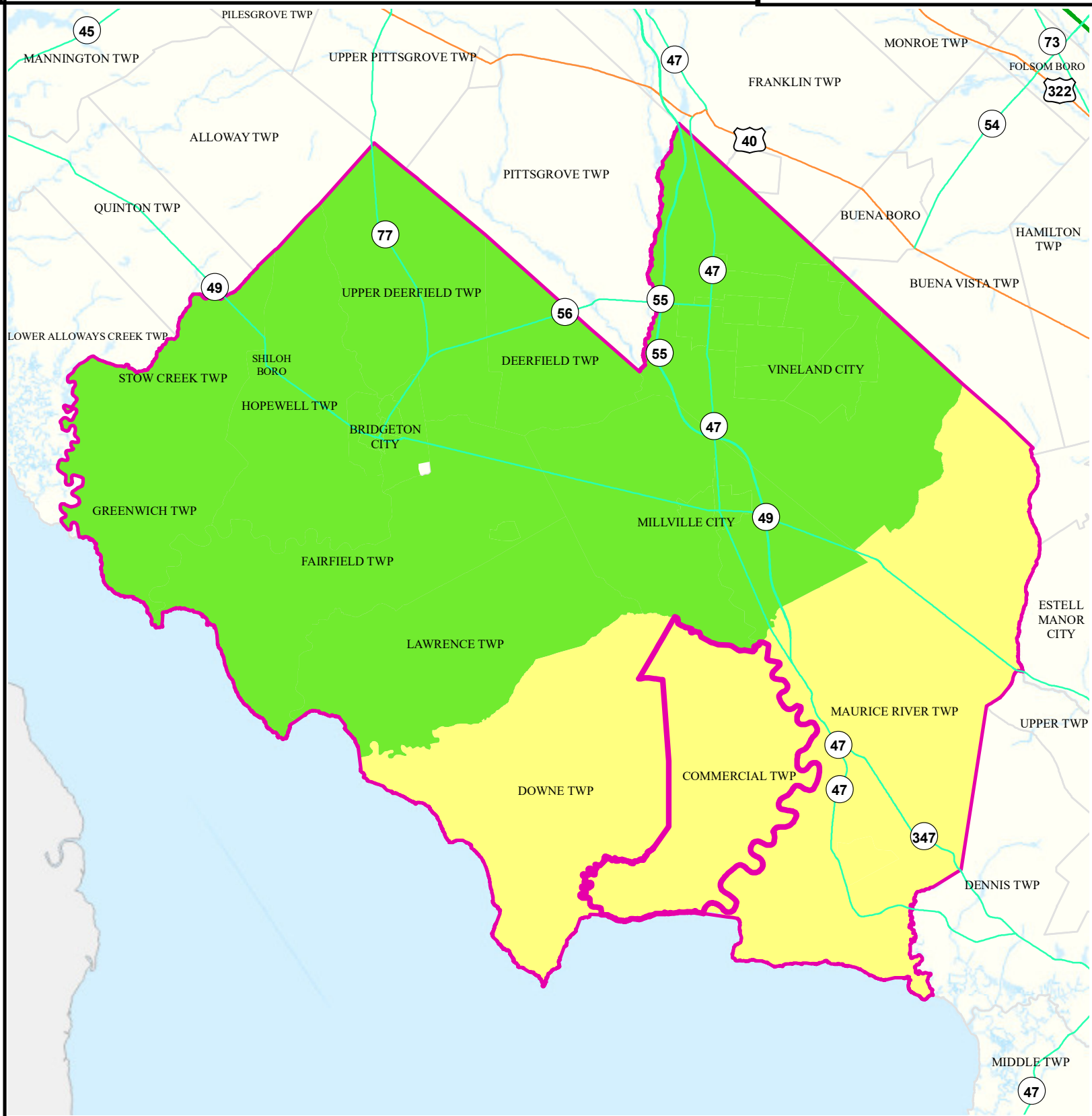
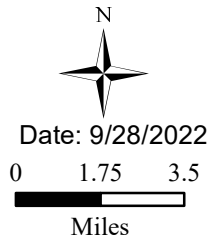
## COMMERCIAL TWP

## CUMBERLAND

### Legend

- Counties
- COMMERCIAL TWP

| Combined Hazard Index |             |
|-----------------------|-------------|
| 2.01 - 3.00           | 3.01 - 4.00 |
| 0.75 - 1.00           | 4.01 - 8.09 |
| 1.01 - 2.00           |             |



# Air Quality Index (AQI)

COMMERCIAL TWP

CUMBERLAND

## Legend

-  Municipalities
-  COMMERCIAL TWP

## Average AQI Days

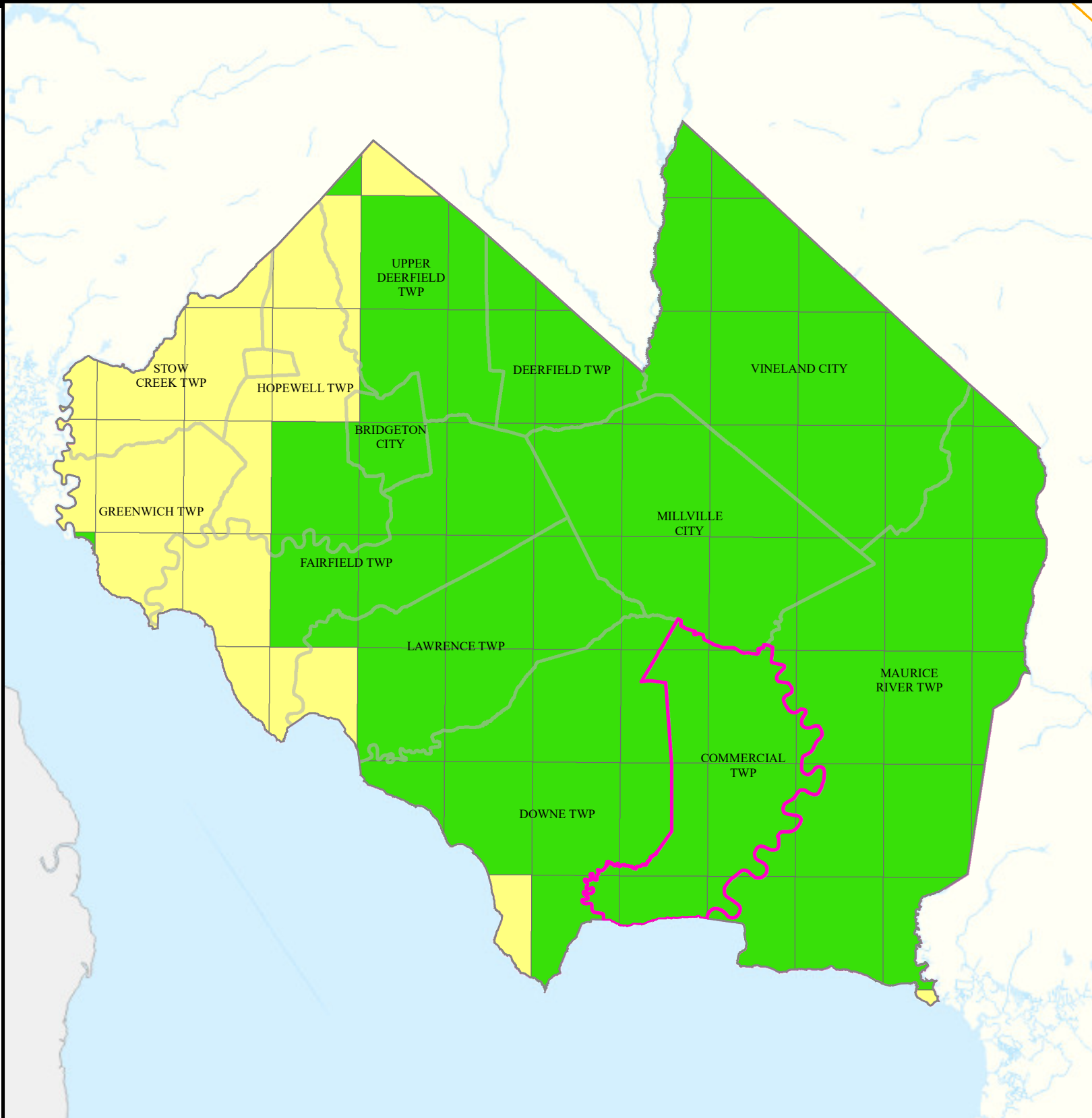
- |   |   |
|---|---|
|  0 - 1   |  3.5 - 6.5 |
|  1.5 - 3 |  7 - 12    |

Air Quality Index (AQI)  
Days above 100 (3 yr Avg)  
2018 to 2020



0 2 4 Miles

Date: 4/18/2022






# Community Drinking Water

**COMMERCIAL TWP**


**CUMBERLAND**

## Legend

-  Counties
-  COMMERCIAL TWP
-  Municipalities


| MCL and TT Violations and AL Exceedances  |         |
|---|---------|
|  | 0       |
|  | 1 - 5   |
|  | 6 - 10  |
|  | 11 - 15 |
|  | 16 - 30 |

N

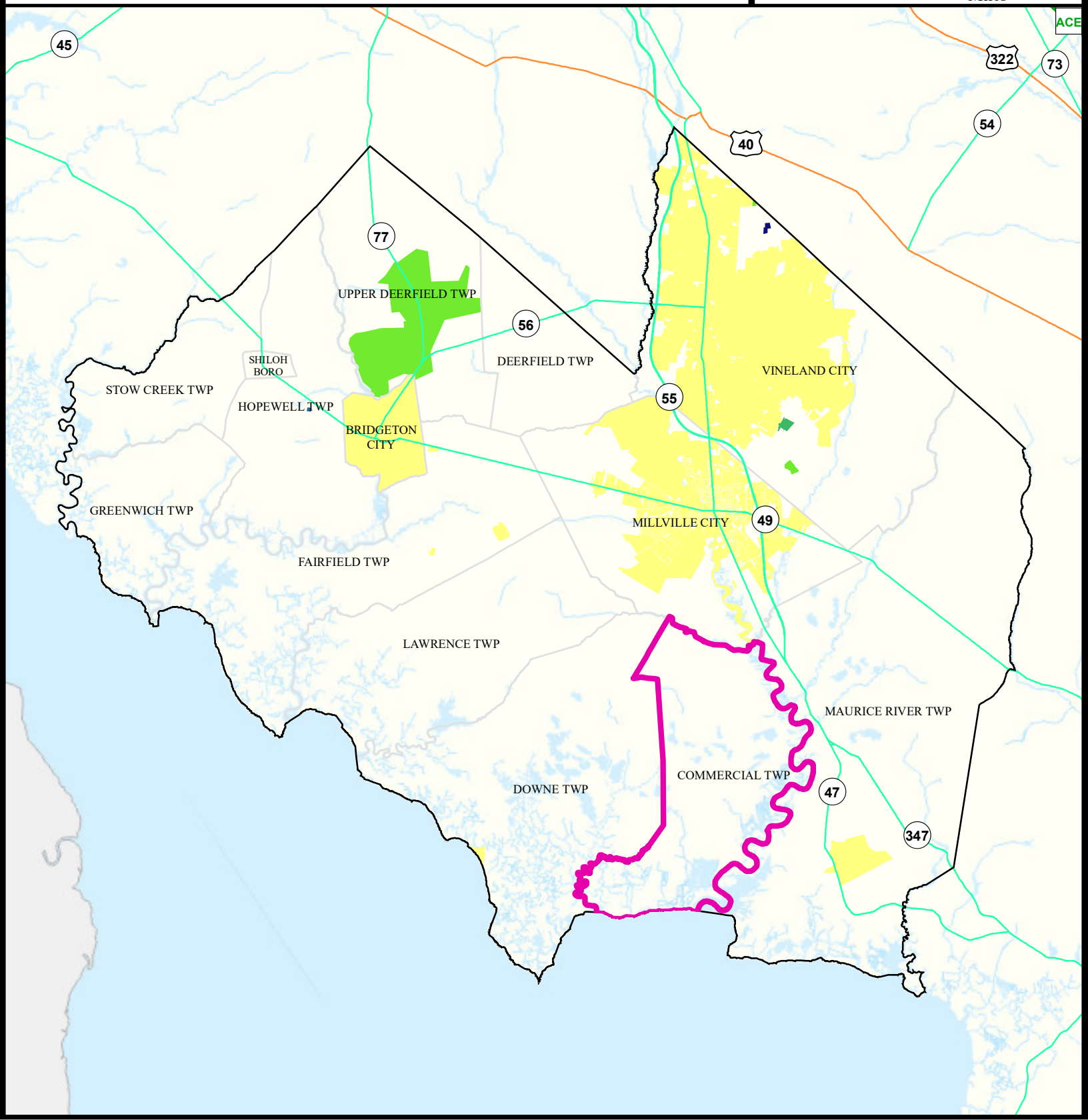


Date: 9/27/2022

0 1.75 3.5



Miles




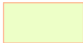




# Ground Water/Soil


COMMERCIAL TWP

CUMBERLAND

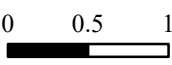
## Legend

-  Counties
-  Municipalities
-  COMMERCIAL TWP
-  Deed Notice Areas
-  Groundwater Contamination Areas (CKE)
-  Groundwater Contamination Areas (CEA)

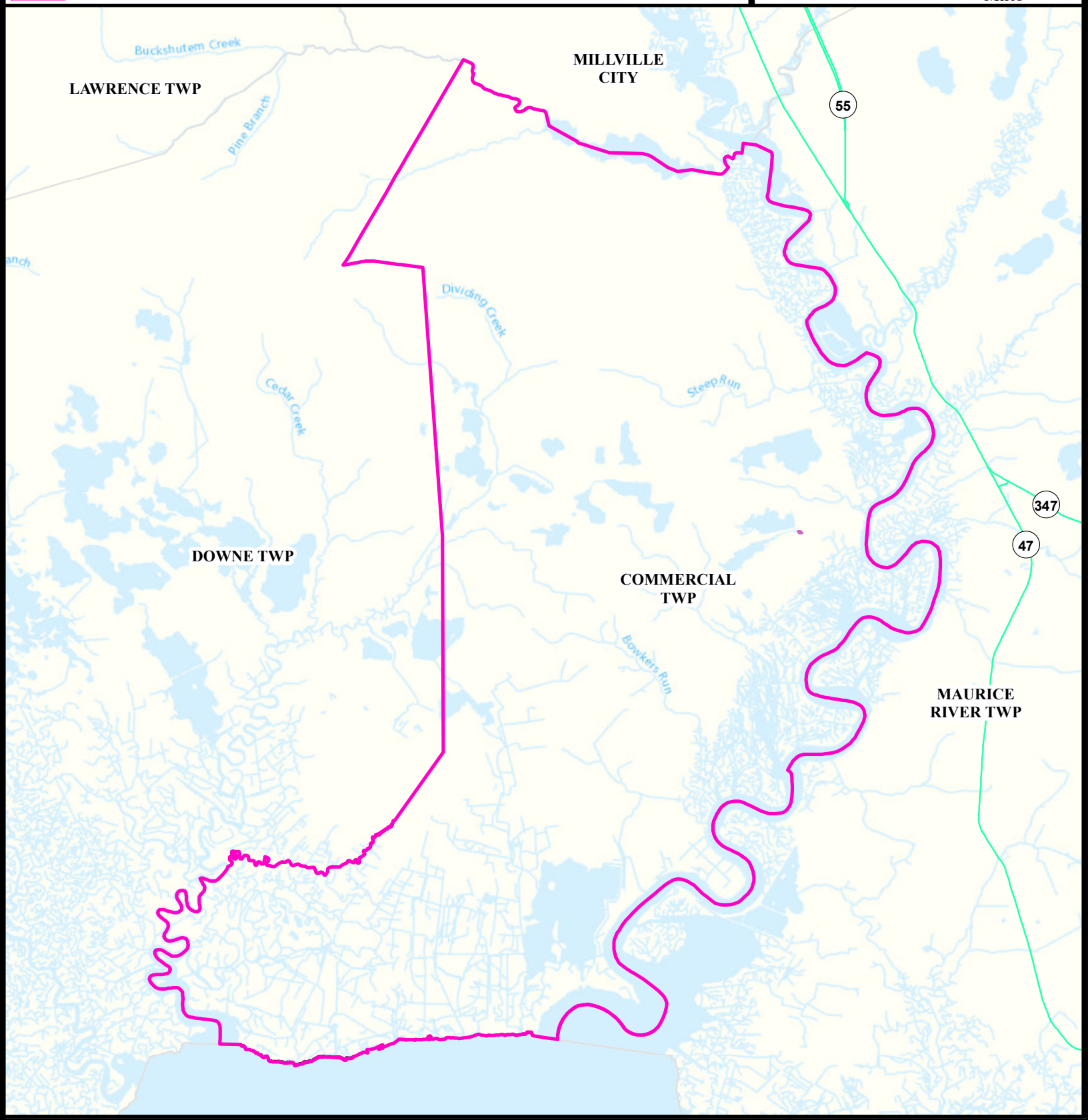
N



Date: 5/24/2022



0 0.5 1  
Miles



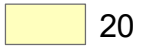











# Surface Water Quality

COMMERCIAL TWP


CUMBERLAND

## Legend

| Impaired (Percent)   |     |
|--|-----|
|   | NA  |
|   | 0   |
|   | 20  |
|   | 25  |
|   | 33  |
|   | 40  |
|   | 50  |
|   | 60  |
|  | 66  |
|  | 75  |
|  | 80  |
|  | 100 |

-  Counties
-  Municipalities
-  COMMERCIAL TWP

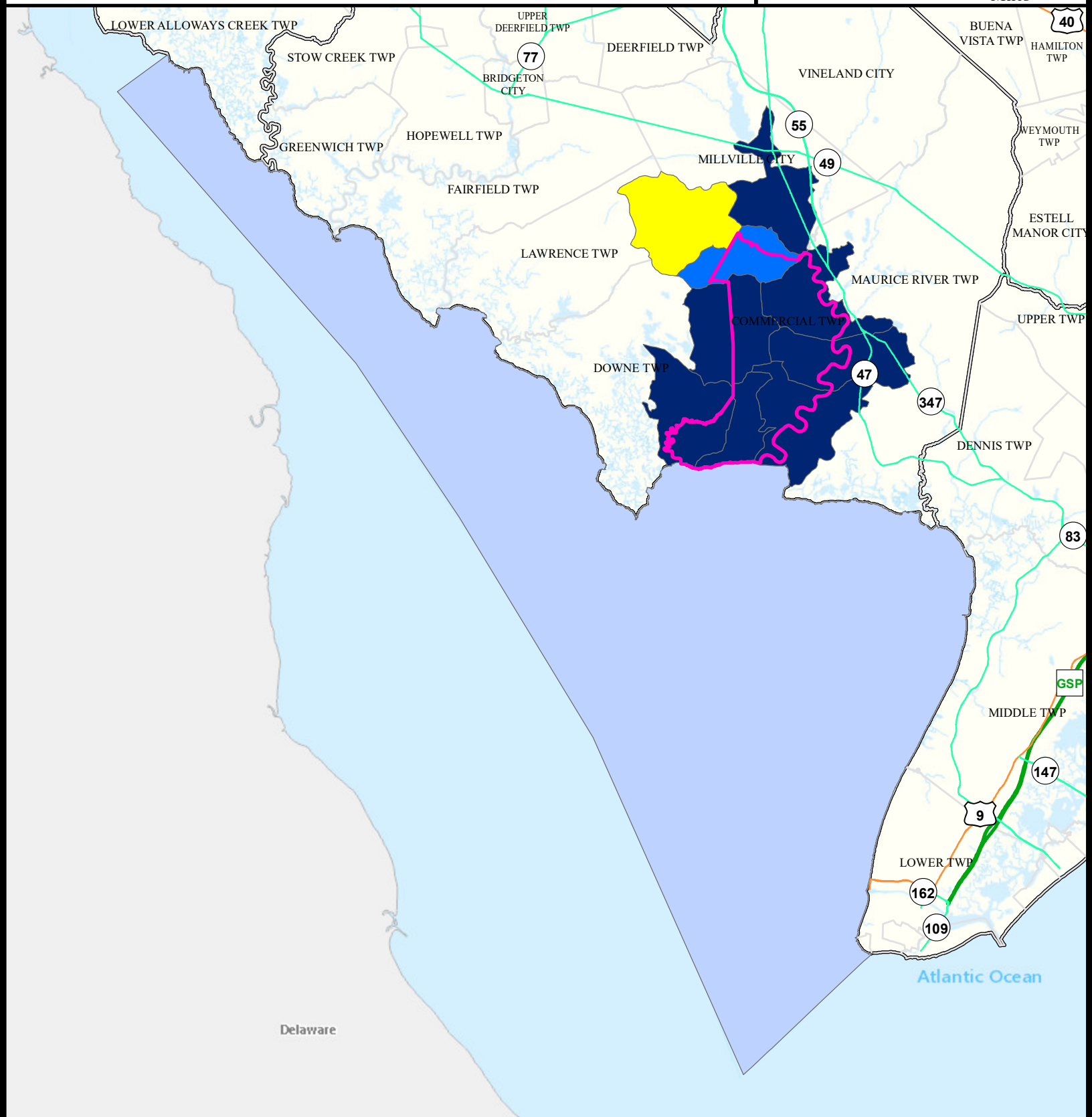
N



Date: 9/22/2022

0 2.25 4.5

Miles





What is a Designated Use?

New Jersey's [Surface Water Quality Standards \(SWQS\)](#) establish the designated uses of the State's surface waters, classify surface waters based on those uses, and specify the water quality criteria and other policies necessary to attain those uses. Designated uses include water supply for drinking, agriculture and industrial uses, fish consumption, shellfish resources, propagation of fish and wildlife, and recreation.

The table below show the designated use information for your municipality. For more information on Surface Water Quality, see the Healthy Community Planning Report for this municipality.

| AU_name                                   | Aquatic_General   | Aquatic_Trout | Water_Supply  | Recreation        | Shellfish         | Fish_Consumption  |
|---|-------------------|---------------|---------------|-------------------|-------------------|-------------------|
| Buckshutem Creek (below Rt 555)           | Attaining         | NA            | Non Attaining | Non Attaining     | Non Attaining     | Non Attaining     |
| Maurice River (below Leesburg) to EastPt  | Non Attaining     | NA            | NA            | Non Attaining     | Non Attaining     | Non Attaining     |
| Maurice River (Rt 548 to Menantico Ck)    | Insufficient Data | NA            | NA            | Insufficient Data | Non Attaining     | Non Attaining     |
| New England Creek (Kenny Pt to Elder Pt)  | Insufficient Data | NA            | NA            | Insufficient Data | Insufficient Data | Non Attaining     |
| Dividing Creek (above Mill Creek)         | Non Attaining     | NA            | NA            | Insufficient Data | Non Attaining     | Non Attaining     |
| Maurice River (Leesburg to Rt 548)        | Insufficient Data | NA            | NA            | Insufficient Data | Non Attaining     | Non Attaining     |
| Buckshutem Creek (above Rt 555)           | Attaining         | NA            | Attaining     | Non Attaining     | NA                | Insufficient Data |
| Dividing Creek (below Mill Creek)         | Non Attaining     | NA            | NA            | Insufficient Data | Non Attaining     | Non Attaining     |
| Maurice River (Menantico Ck to UnionLake) | Insufficient Data | NA            | NA            | Non Attaining     | Non Attaining     | Non Attaining     |
| Delaware Bay Zone 6 ( New Jersey portion) | Non Attaining     | NA            | NA            | Attaining         | Non Attaining     | Non Attaining     |



# Flooding (Urban Land Cover)

COMMERCIAL TWP

CUMBERLAND

## Legend

Counties

COMMERCIAL TWP

Municipalities

Urban Land

Urban Land Flooded

Toll Road

Interstate

US Highway

State Highway

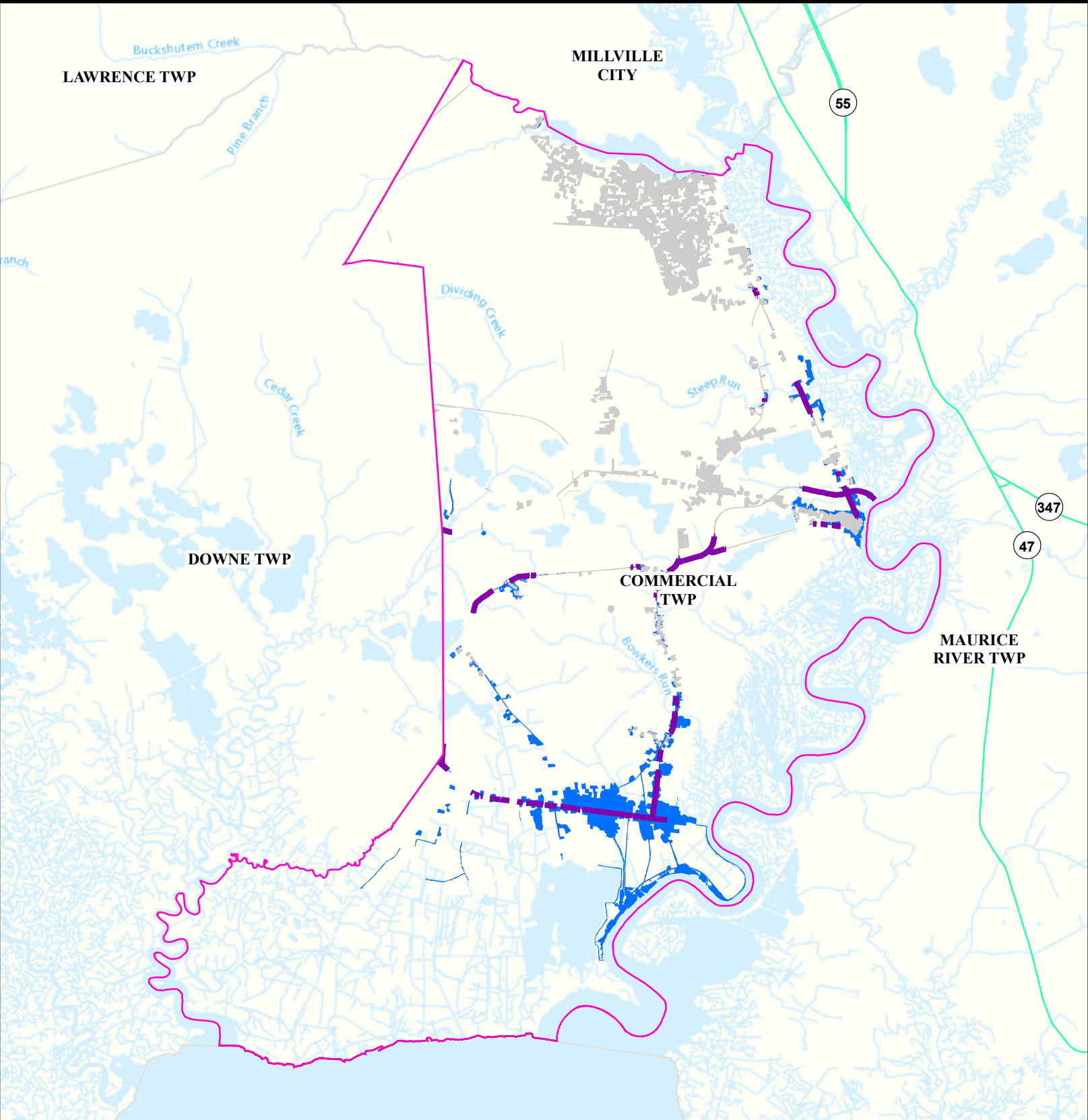
Impacted Roads

Impacted roads show only county level or higher routes in flooding areas.

Date: 4/12/2022

0 0.5 1

Miles



# Air Permit Sources

COMMERCIAL TWP

CUMBERLAND

## Legend

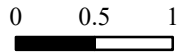
- Counties
- COMMERCIAL TWP

## Facility Type

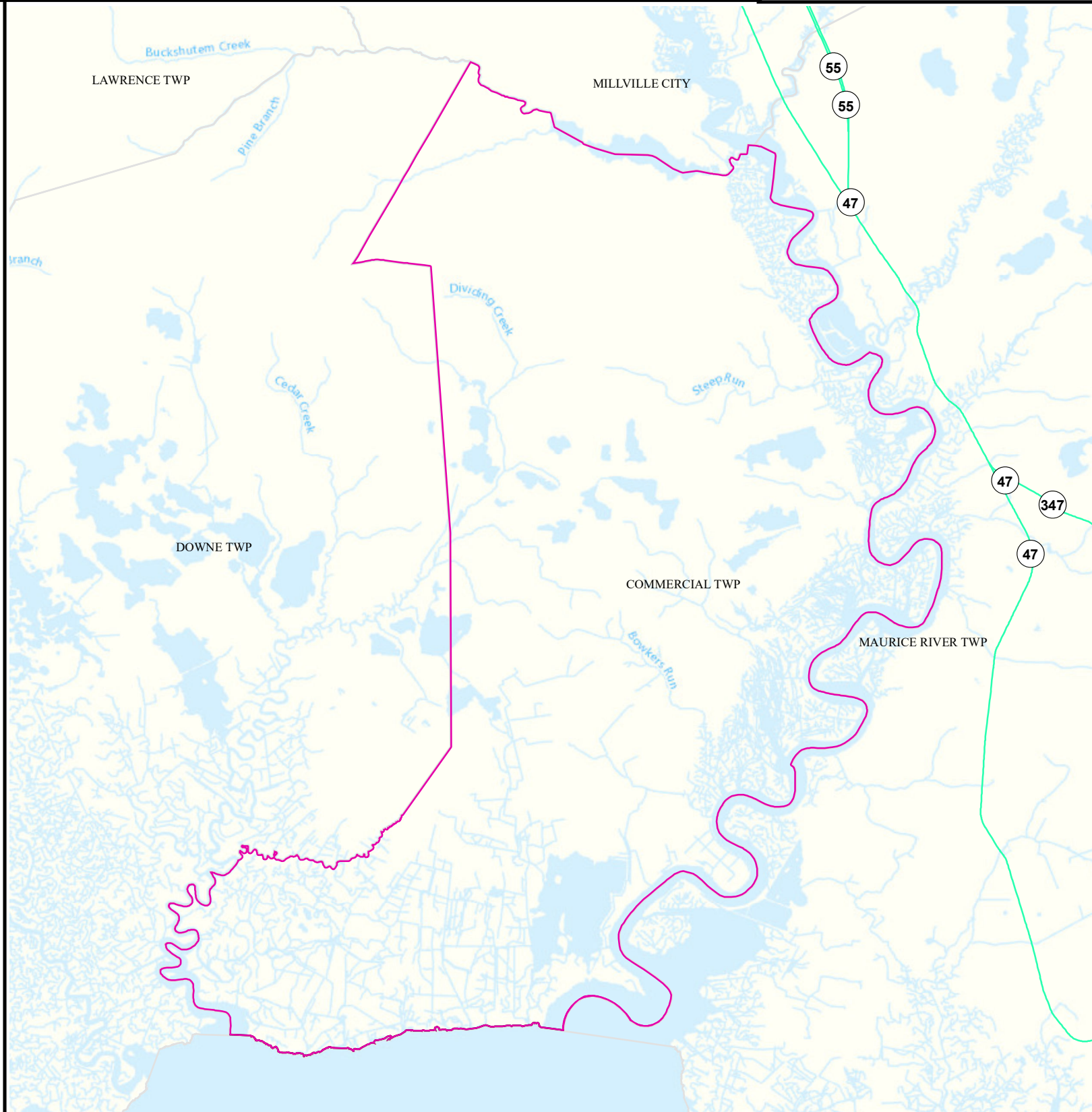
- Major
- Minor



Date: 4/12/2022



Miles



# Contaminated Sites

COMMERCIAL TWP


CUMBERLAND

## Legend

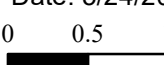
- Counties
- COMMERCIAL TWP
- Municipalities

- Known Contaminated Sites
- Density Weighting
- 0
  - 1
  - 2
  - 3
  - Other

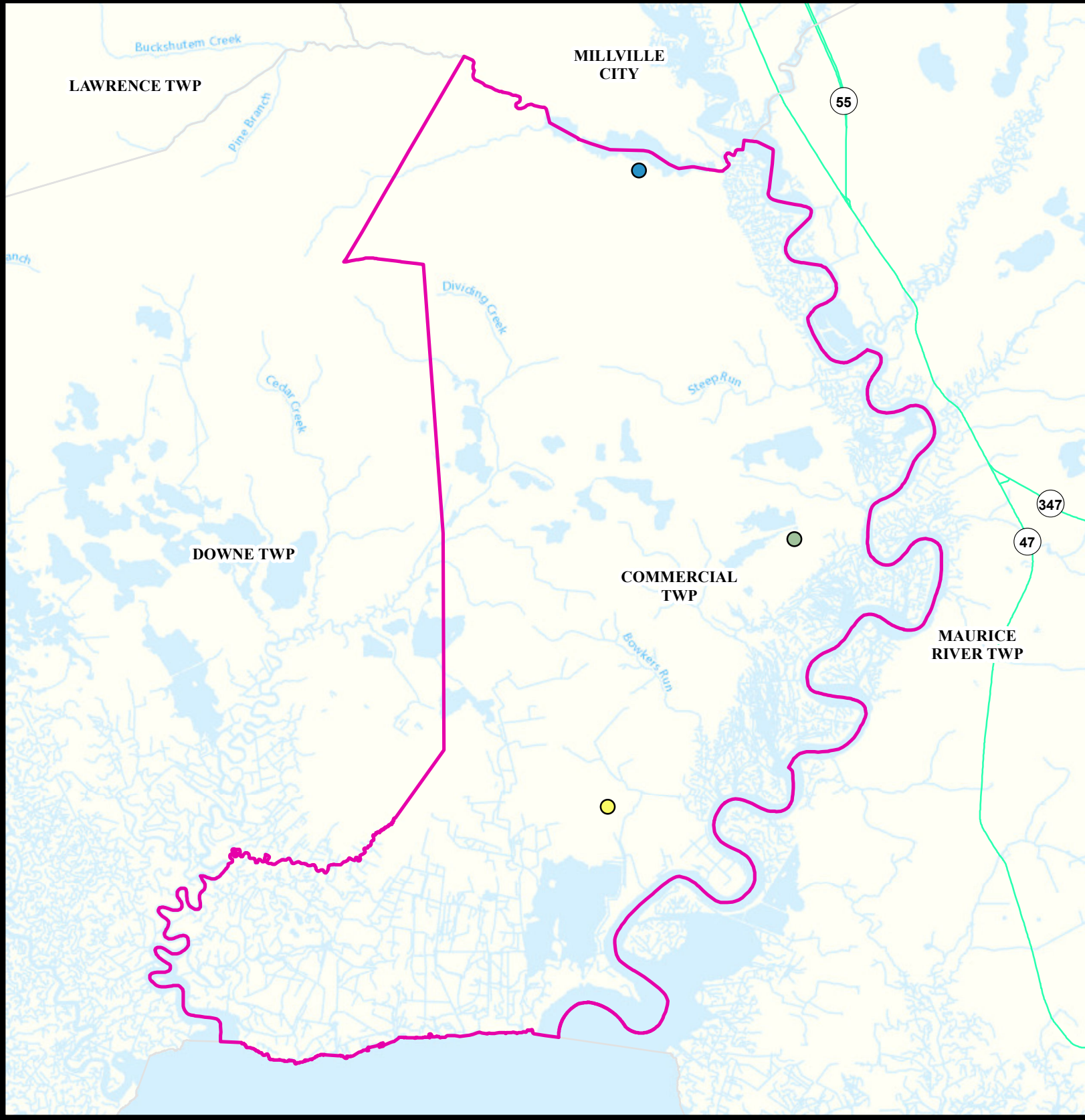
N



Date: 5/24/2022



Miles



# Open Space

COMMERCIAL TWP


CUMBERLAND

## Legend

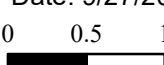
- Counties
- COMMERCIAL TWP

- Open Space
- Residential Population > 1/4 Mile from Open Space

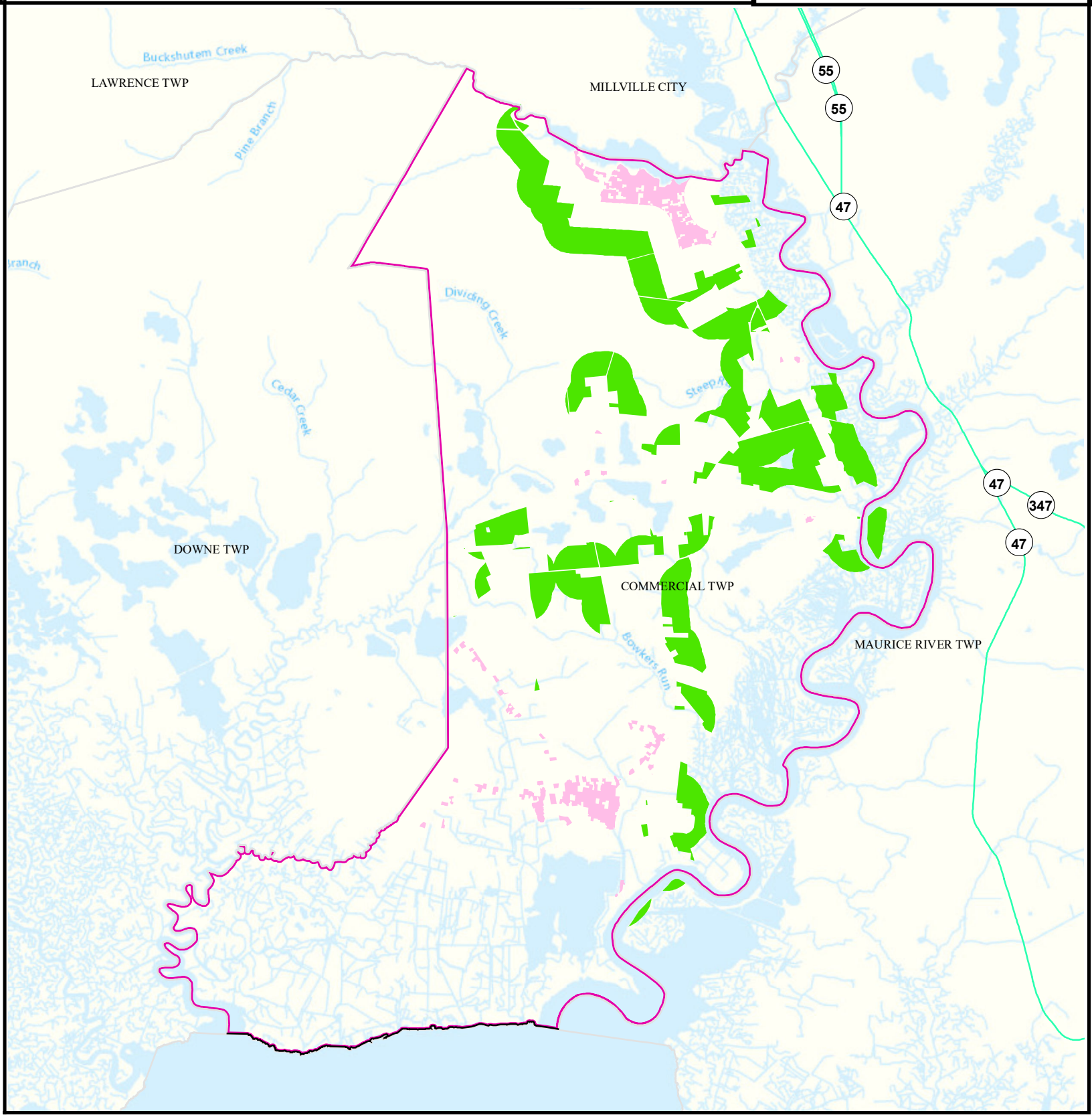
N



Date: 9/27/2022



Miles



# Low Birth Weight




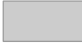
Commercial Twp

Cumberland

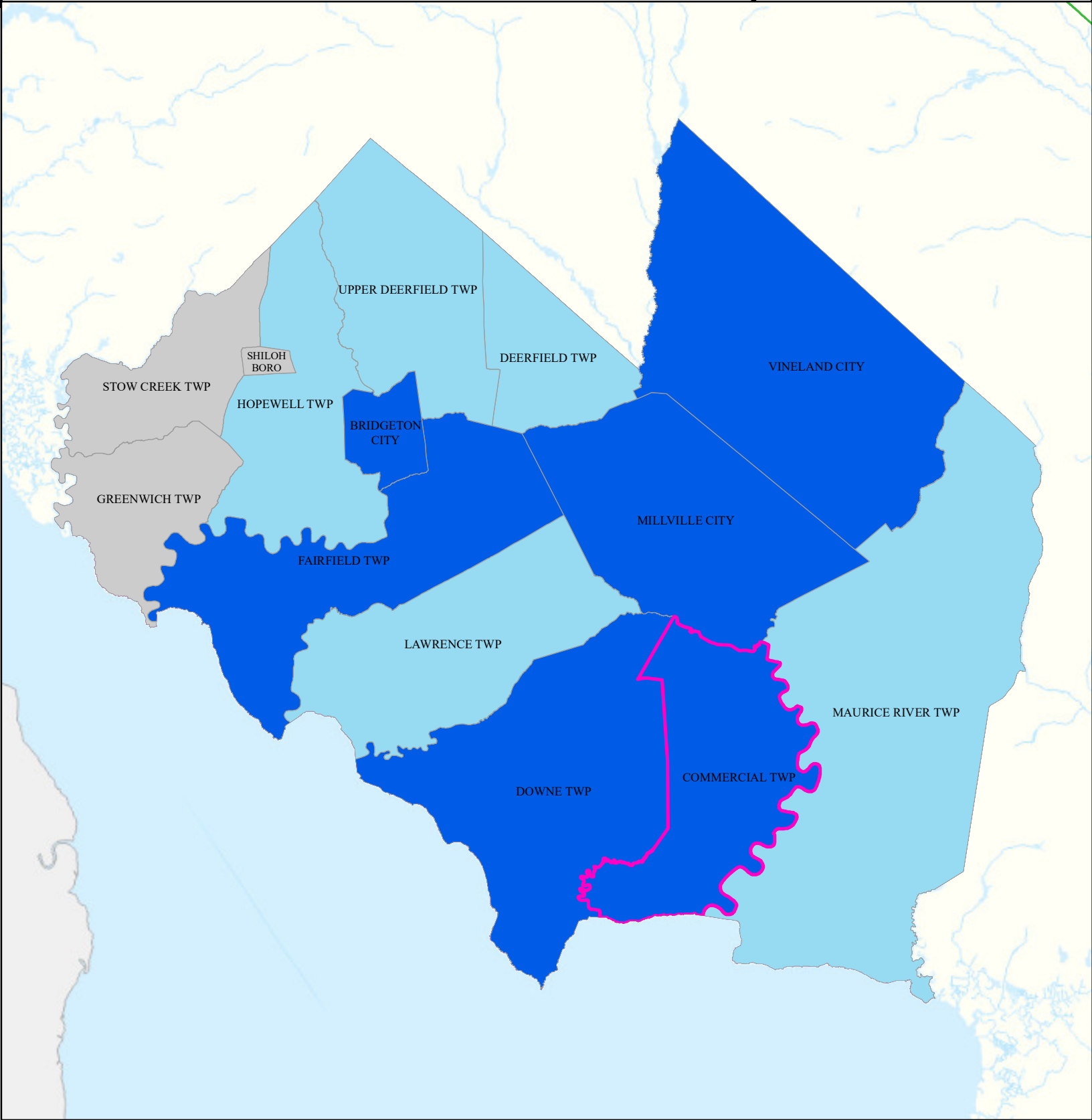
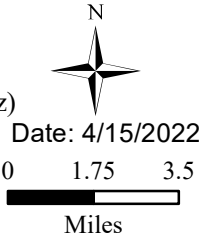
## Legend

-  Municipalities
-  Commercial Twp

## State Comparison

-  Above
-  No Difference
-  Below
-  Suppressed

Birth Rate  
Low Birth Weight  
(% All Births < 5 lb, 8 oz)  
2016 to 2020



# Age of Housing

COMMERCIAL TWP


CUMBERLAND

## Legend

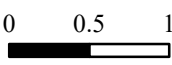
- Counties
- Municipalities
- COMMERCIAL TWP

- Year House Constructed
- Pre 1950
  - Between 1951 and 1978
  - After 1978
  - Unknown

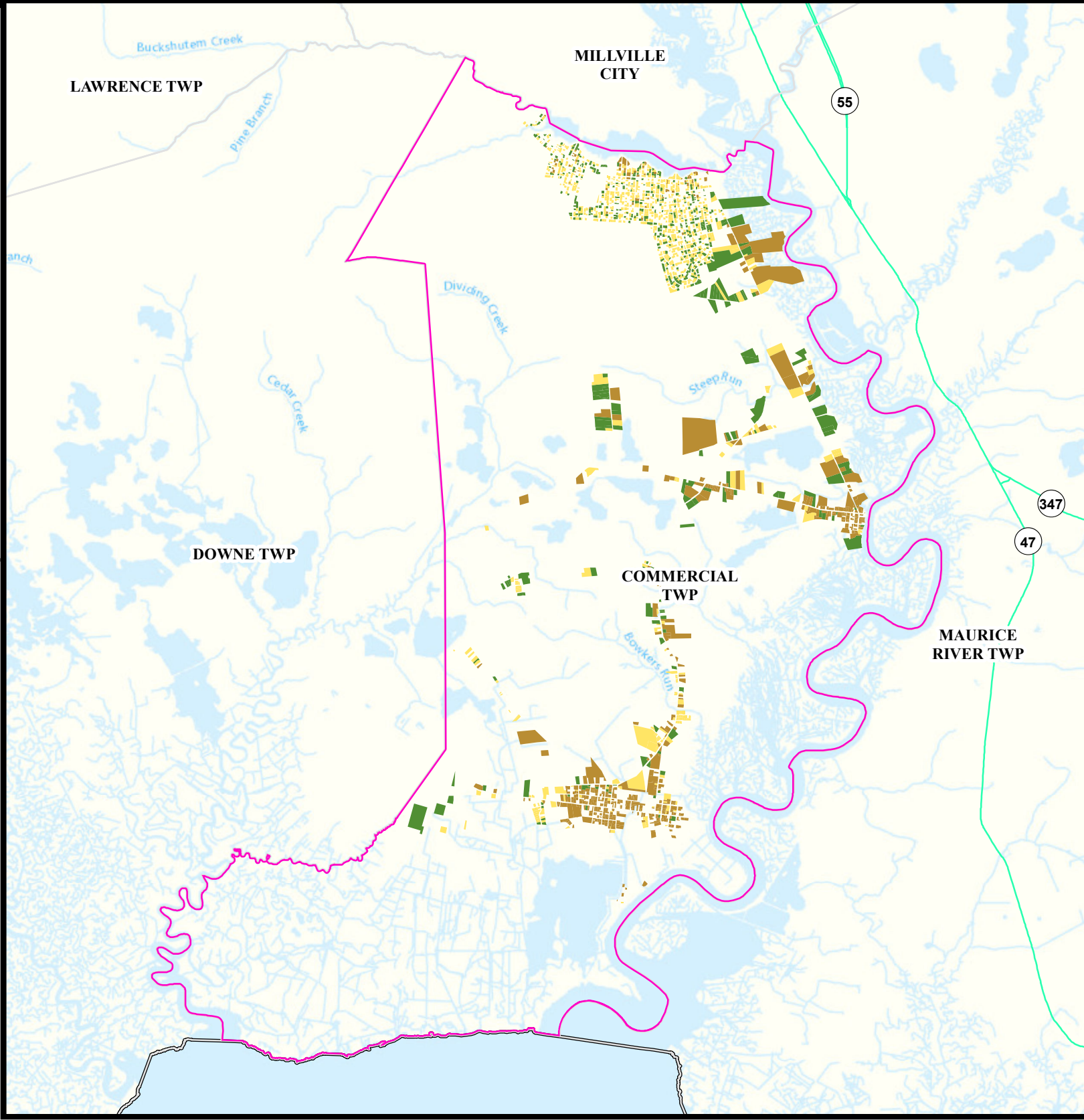
N



Date: 4/12/2022



Miles





# Asthma (Emergency Department)





**Commercial Twp**

**Cumberland**

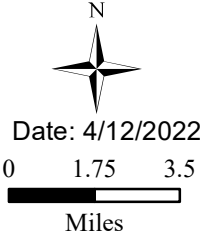
## Legend

-  Municipalities
-  Commercial Twp

## State Comparison

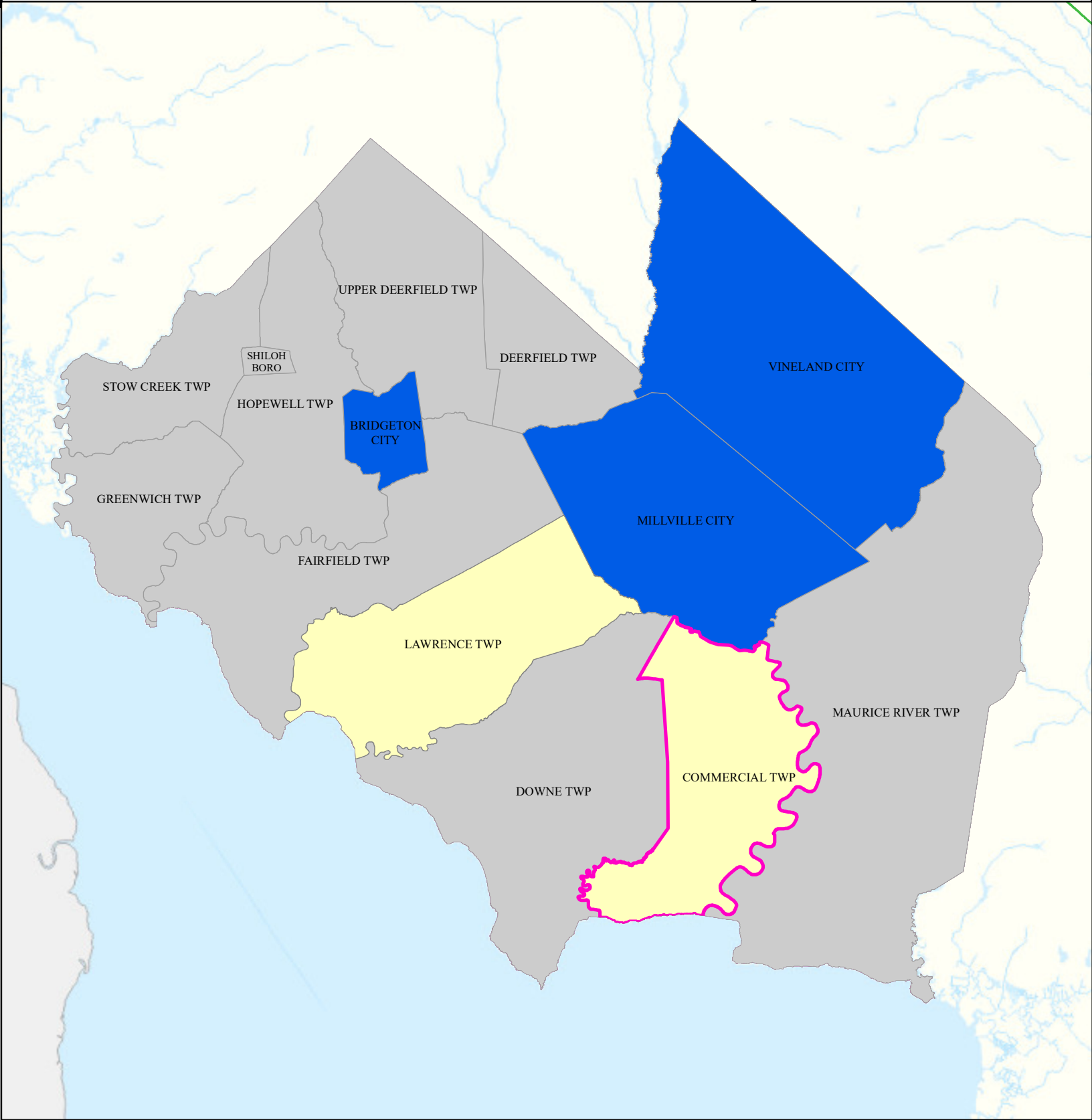
-  Above
-  Below
-  No Difference
-  Suppressed

Age-adjusted Rate  
per 10,000 People  
2016 to 2019  
Emergency Department  
Visits for Asthma



Date: 4/12/2022

0 1.75 3.5  
Miles



# Heart Attack (AMI) (Inpatient)

Commercial Twp

Cumberland

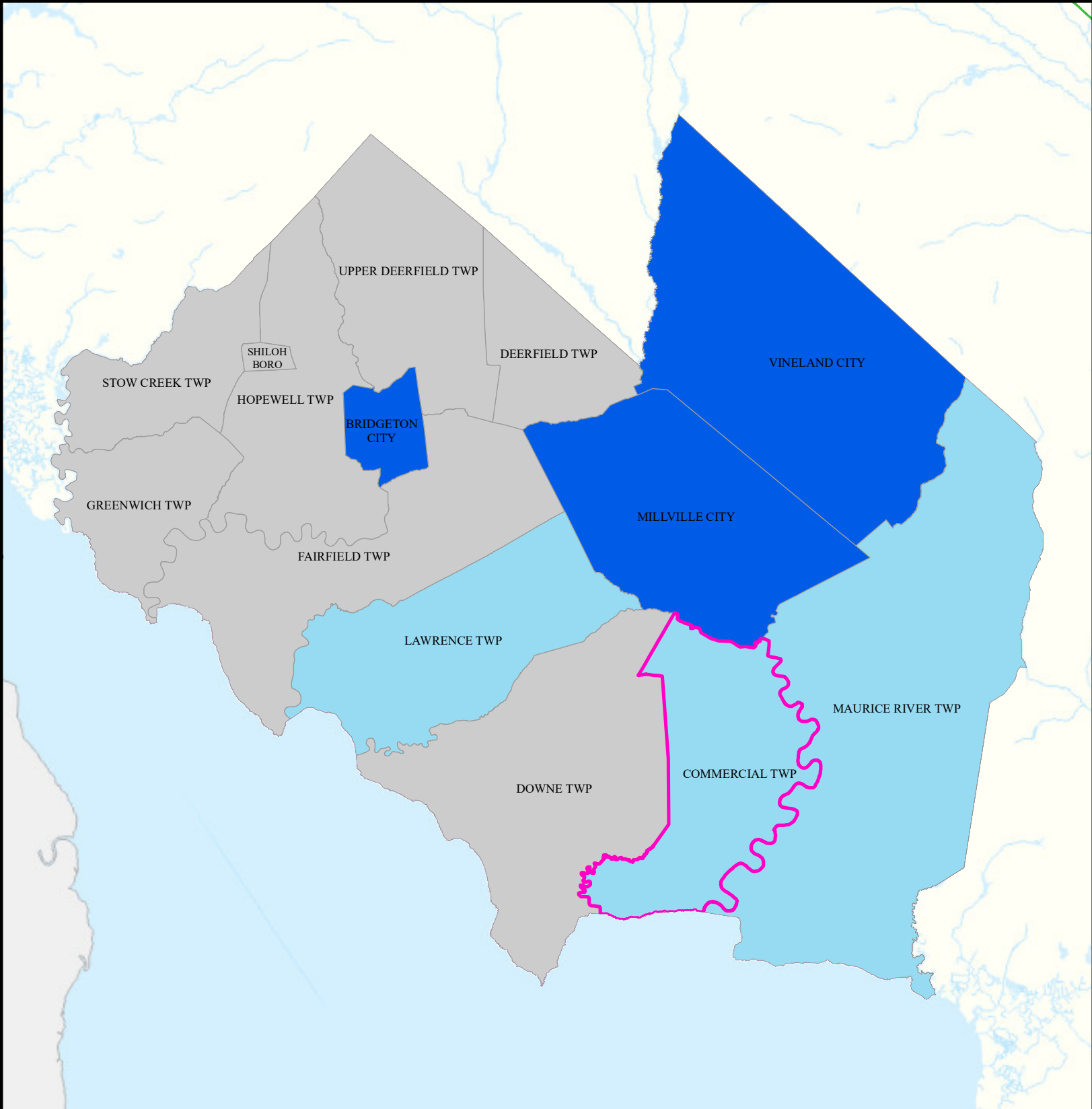
## Legend

- Municipalities
- Commercial Twp

## State Comparison

- Above
- Below
- No Difference
- Suppressed

Age-adjusted Rate per 10,000 People 2016 to 2019  
Inpatient Visits for AMI (Acute Myocardial Infarction) 0 1.5 3  
Date: 4/11/2022  
Miles





# Heart Disease Deaths




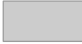
## Commercial Twp

## Cumberland

### Legend

-  Municipalities
-  Commercial Twp

### State Comparison

-  Above
-  No Difference
-  Below
-  Suppressed

Age-adjusted Death Rate  
per 100,000 People  
2015 to 2019

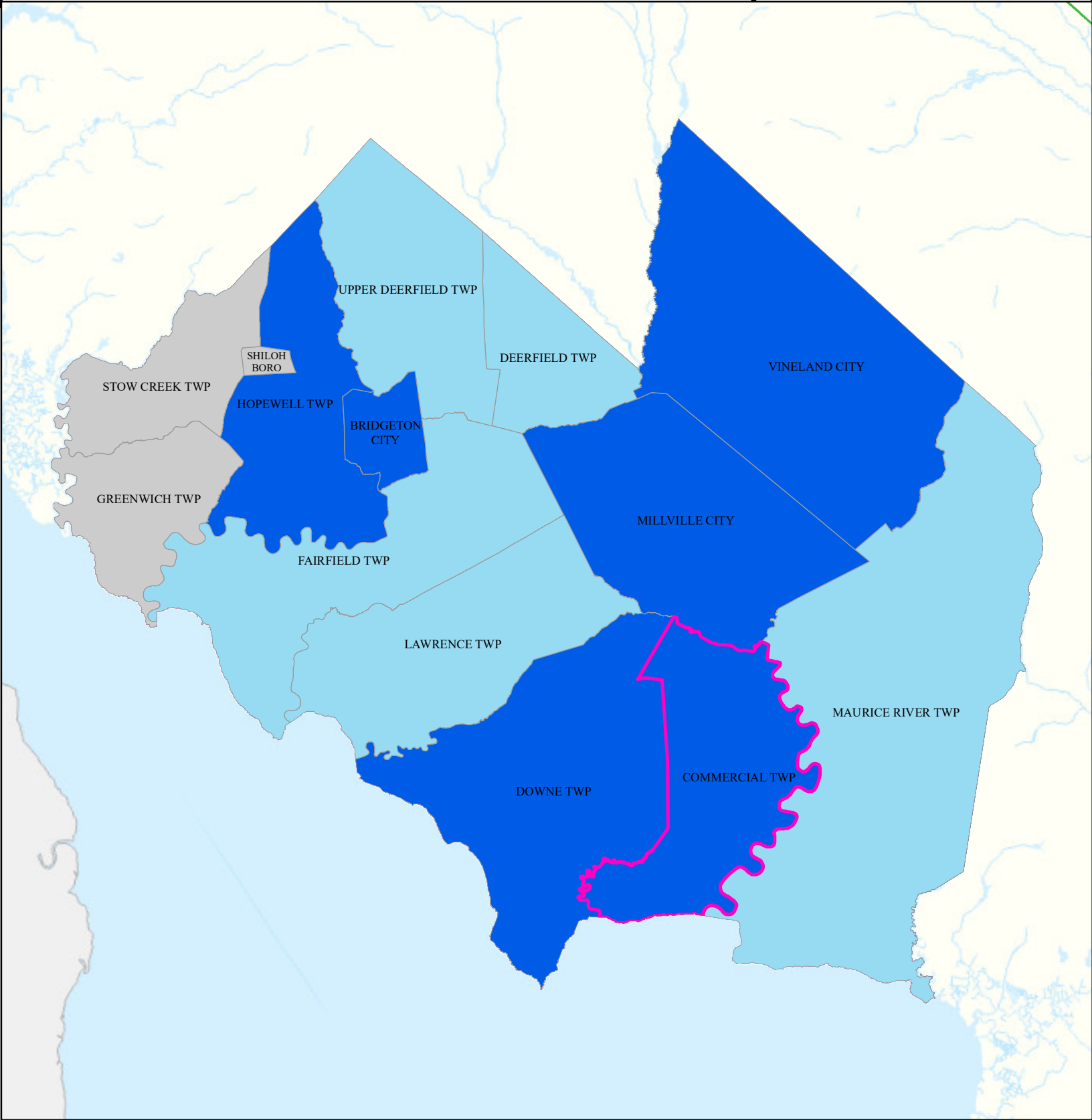
Deaths for Heart Disease

Date: 4/16/2022

0 1.75 3.5



Miles



# COPD (Emergency Department)





**Commercial Twp**

**Cumberland**

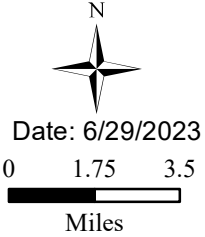
## Legend

-  Municipalities
-  Commercial Twp

## State Comparison

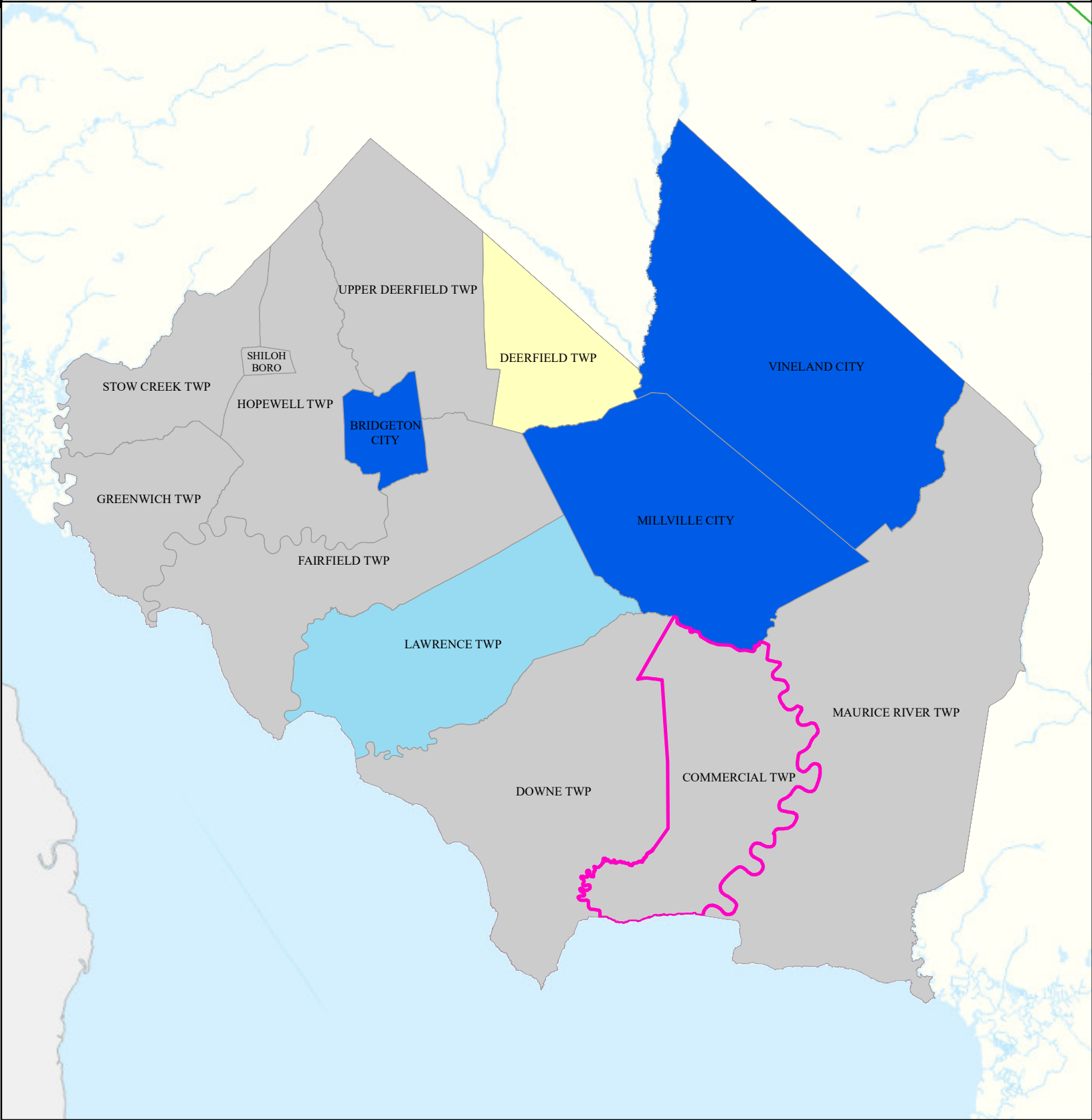
-  Above
-  Below
-  No Difference
-  Suppressed

Age-adjusted Rate  
per 10,000 People  
2016 to 2019  
Emergency Department  
Visits for COPD



Date: 6/29/2023

0 1.75 3.5  
Miles





# Stroke (Inpatient)





**Commercial Twp**

**Cumberland**

## Legend

-  Municipalities
-  Commercial Twp

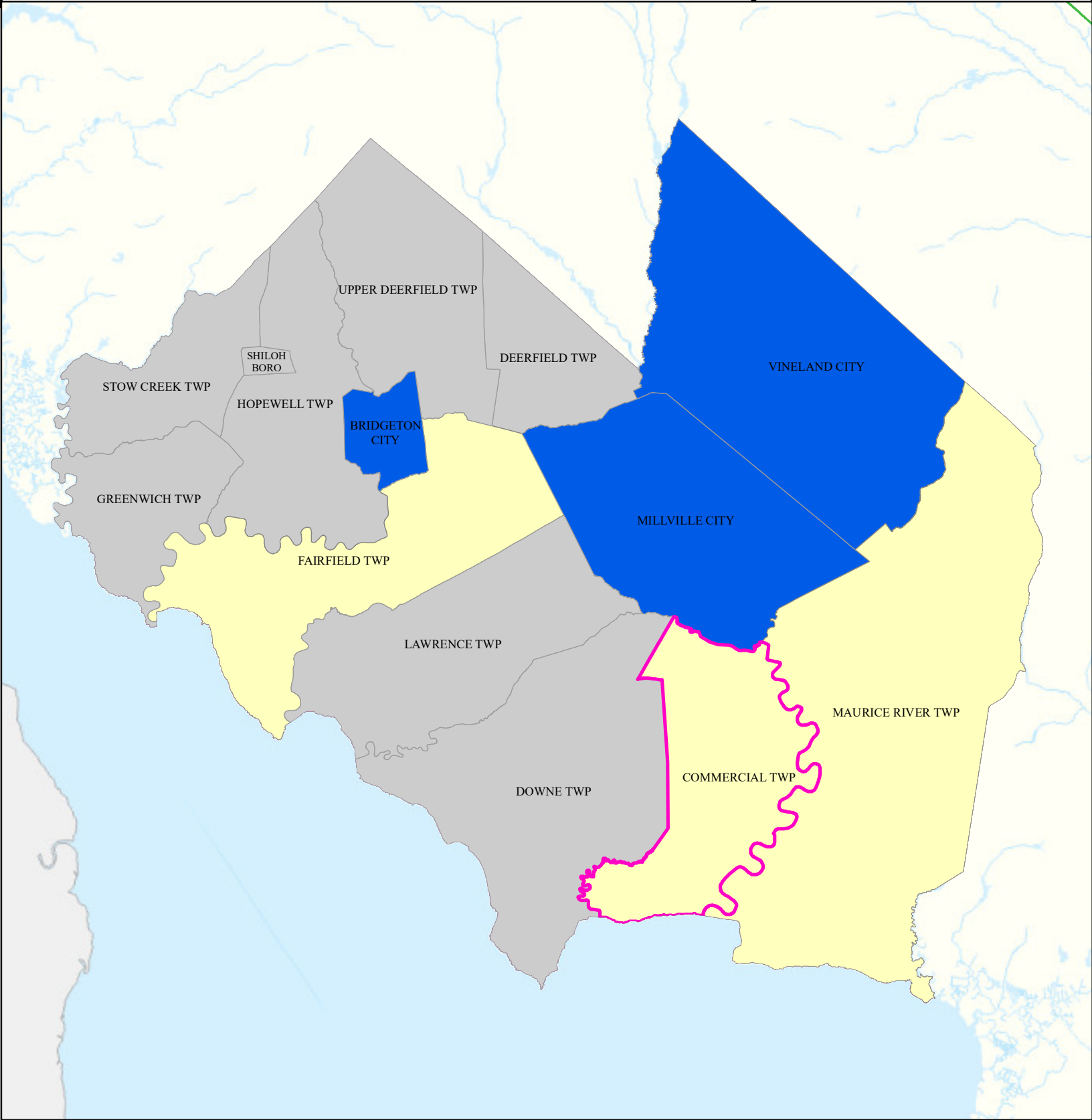
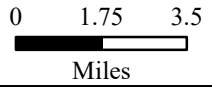
## State Comparison

-  Above
-  Below
-  No Difference
-  Suppressed

Age-adjusted Rate  
per 10,000 People  
2016 to 2019  
Inpatient Visits  
for Stroke



Date: 4/14/2022




# All Cancer Deaths




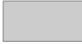
## Commercial Twp

## Cumberland

### Legend

-  Municipalities
-  Commercial Twp

### State Comparison

-  Above
-  No Difference
-  Below
-  Suppressed

Age-adjusted Death Rate  
per 100,000 People  
2015 to 2019  
Deaths for Cancer

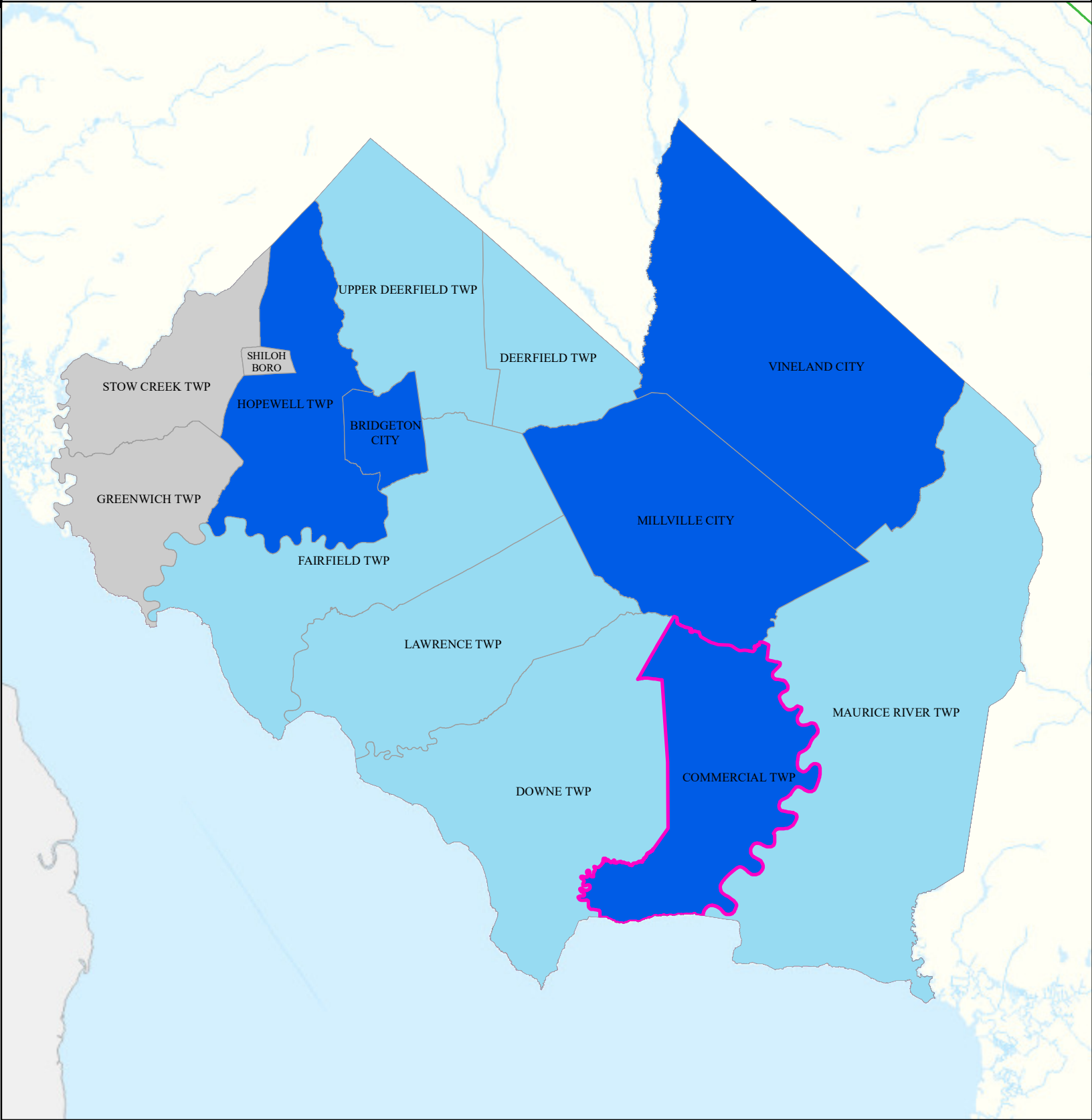


Date: 4/17/2022

0 1.75 3.5



Miles



# Lung Cancer Deaths




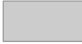
**Commercial Twp**

**Cumberland**

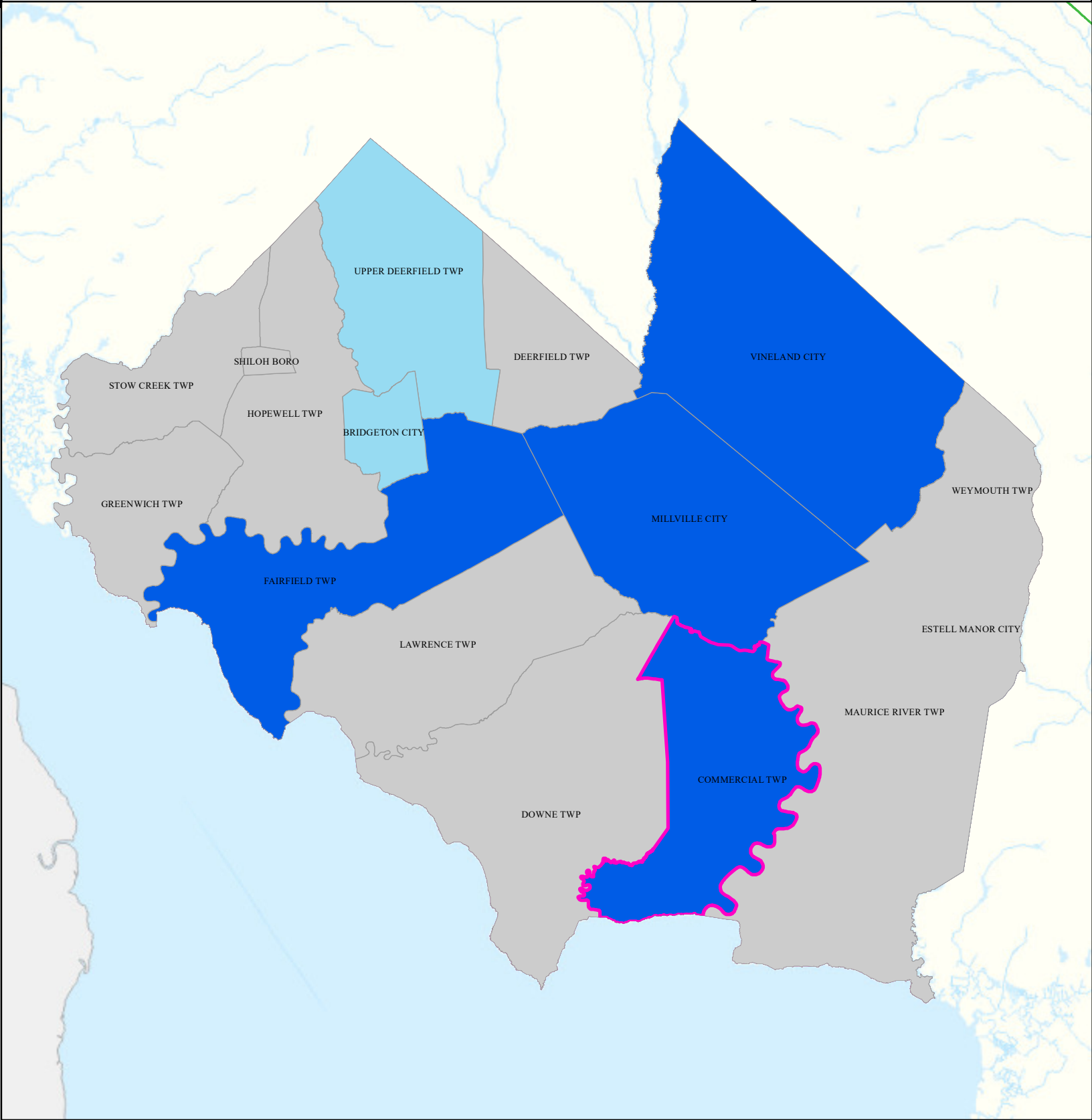
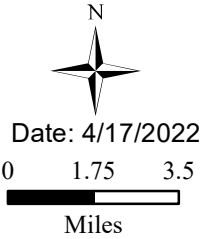
## Legend

-  Municipalities
-  Commercial Twp

## State Comparison

-  Above
-  No Difference
-  Below
-  Suppressed

Age-adjusted Death Rate  
per 100,000 People  
2015 to 2019  
Deaths for Lung Cancer



# Smoking




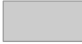
## Commercial Twp

## Cumberland

### Legend

-  Municipalities
-  Commercial Twp

### State Comparison

-  Above
-  Below
-  No Difference
-  Suppressed

Smoking Rate  
Per Municipal  
% of Adults  
2018

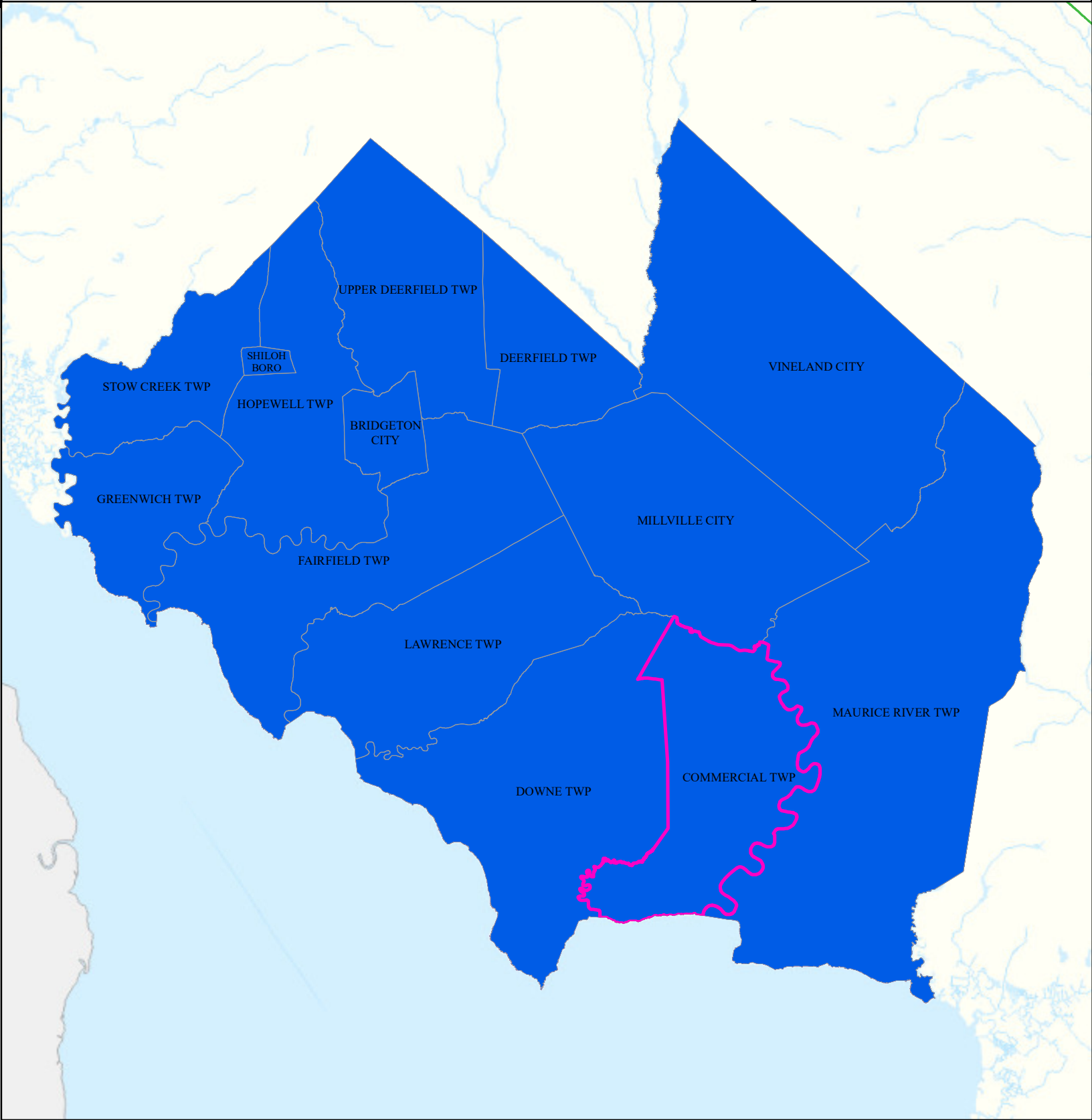


Date: 4/13/2022

0 1.75 3.5



Miles





# Obesity





## Commercial Twp

## Cumberland

### Legend

-  Municipalities
-  Commercial Twp

### State Comparison

-  Above
-  Below
-  No Difference
-  Suppressed

Obesity Rate  
Per Municipal  
% of Adults  
2018

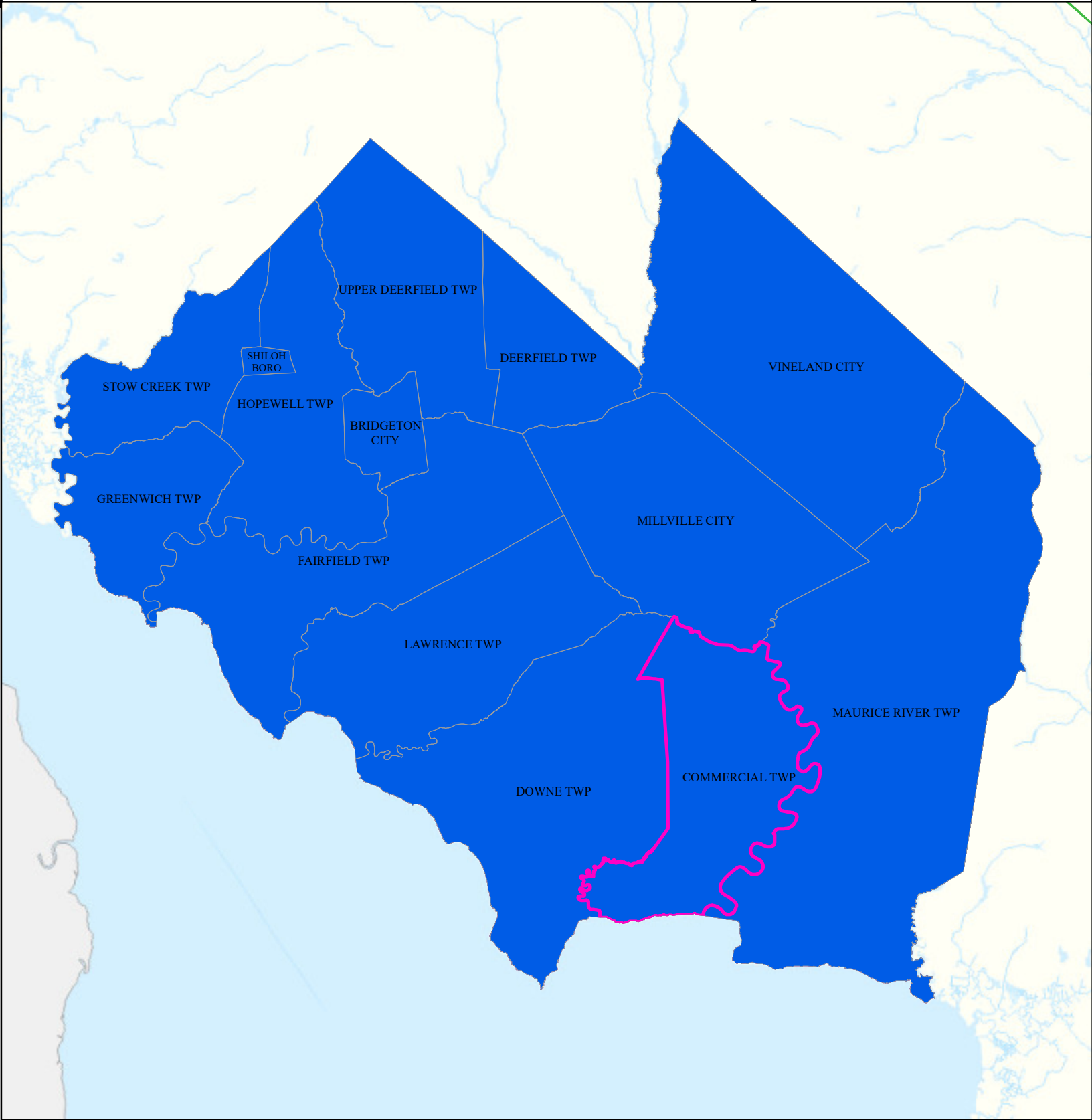


Date: 4/14/2022

0 1.75 3.5



Miles



# Heat Related Illness (Emergency Department)





**Commercial Twp**

**Cumberland**

## Legend

-  Municipalities
-  Commercial Twp

## State Comparison

-  Above
-  Below
-  No Difference
-  Suppressed

Age-adjusted Rate  
per 10,000 People  
2016 to 2019  
Emergency Department  
Visits for  
Heat Related Illness

