

# Health Care Facilities

**GREENWICH TWP**

**CUMBERLAND**

## Legend

Counties

GREENWICH TWP

Hospitals

Nursing Homes

Municipalities

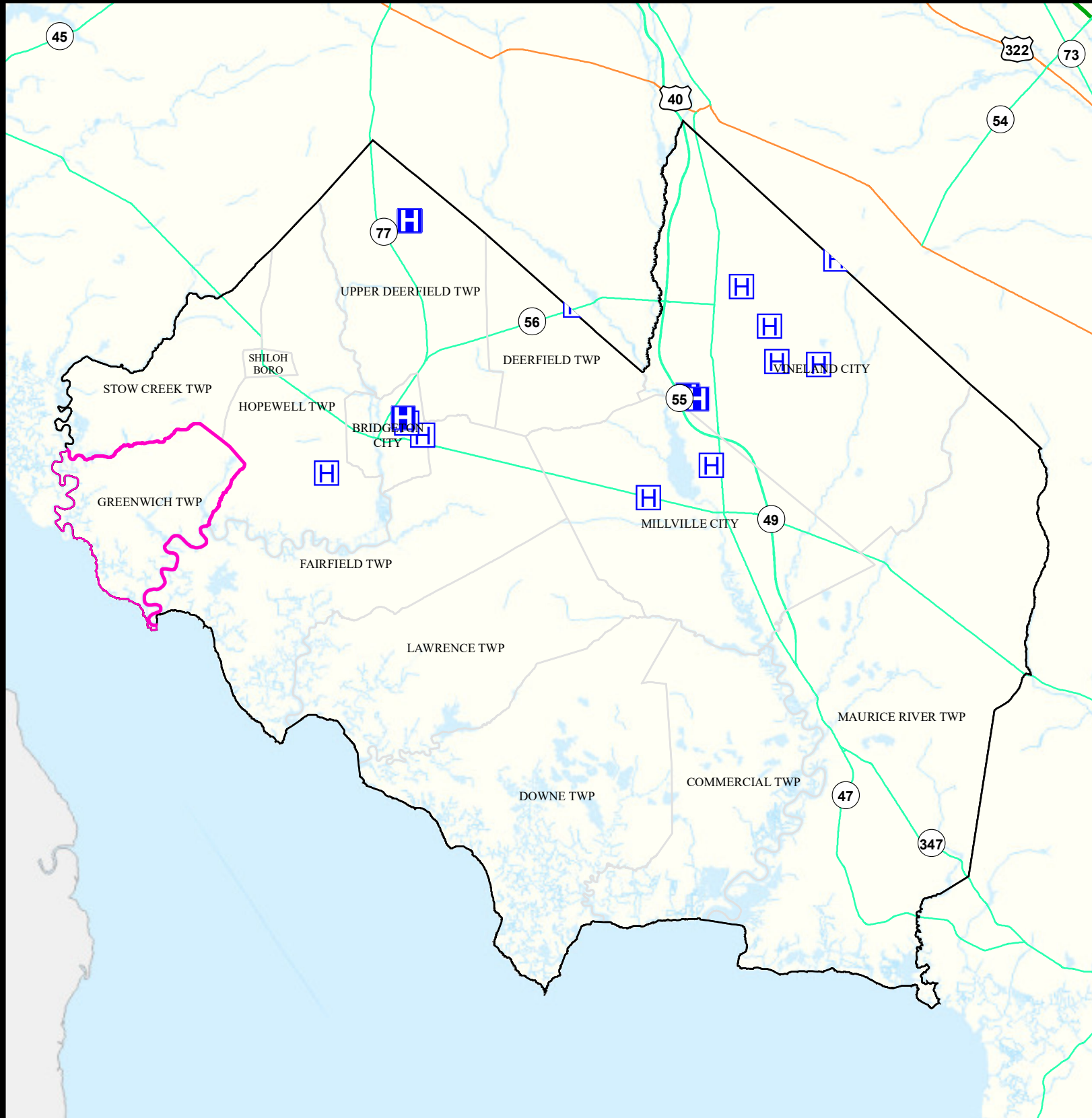


Date: 9/26/2022

0 1.75 3.5



Miles



# Air Cancer Risk

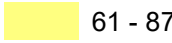









**GREENWICH TWP**

**CUMBERLAND**

## Legend

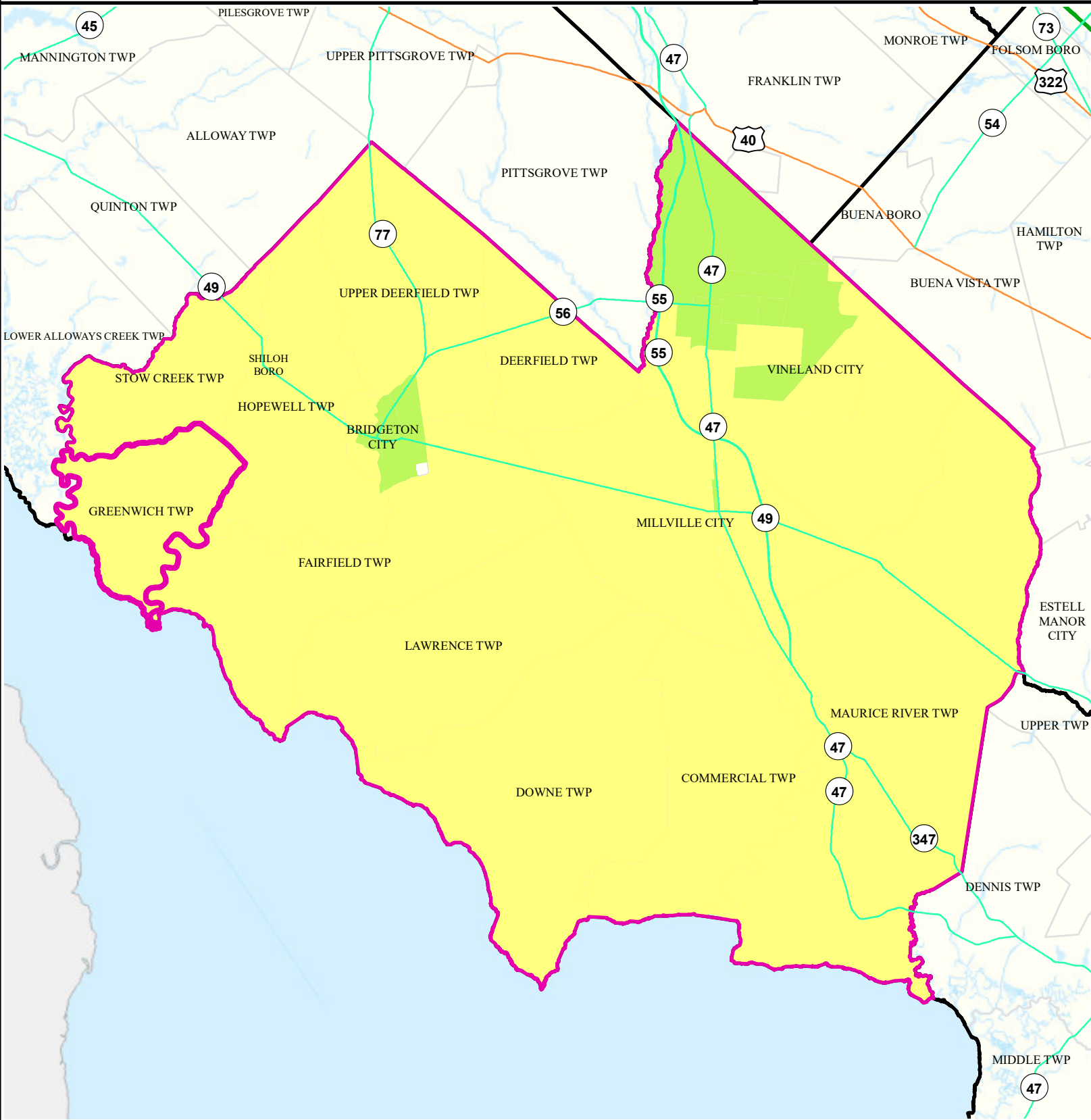
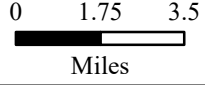
-  Counties
-  GREENWICH TWP

### Risk per Million

	61 - 87		128 - 145		244 - 283
	88 - 108		146 - 167		284 - 351
	109 - 127		168 - 193		352 - 604
			194 - 243		



Date: 9/28/2022





# Air Non Cancer

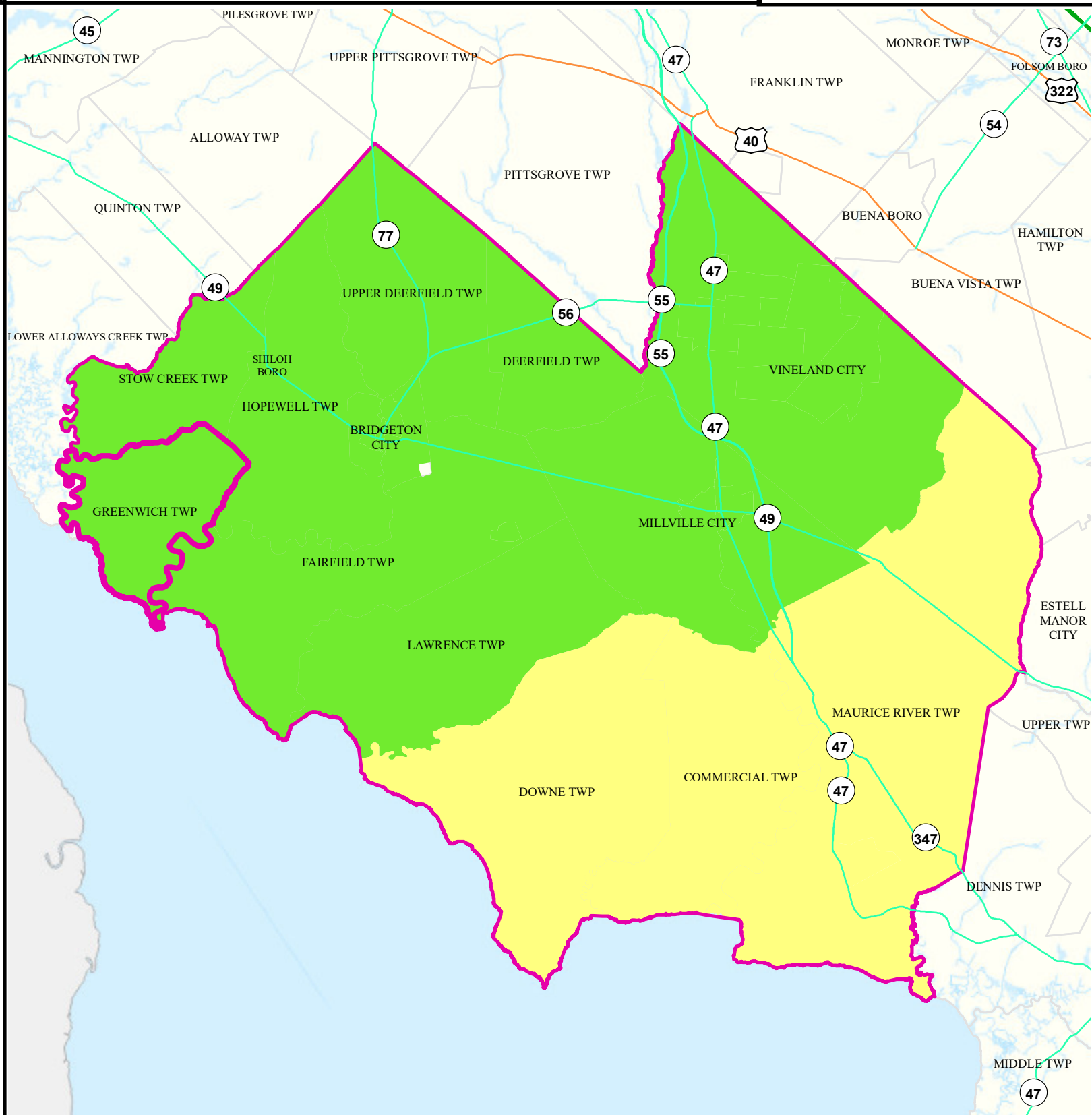
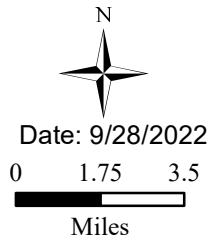
## GREENWICH TWP

## CUMBERLAND

### Legend

- Counties
- GREENWICH TWP

Combined Hazard Index	
2.01 - 3.00	3.01 - 4.00
0.75 - 1.00	4.01 - 8.09
1.01 - 2.00	



# Air Quality Index (AQI)

GREENWICH TWP

CUMBERLAND

## Legend

- Municipalities
- GREENWICH TWP

## Average AQI Days

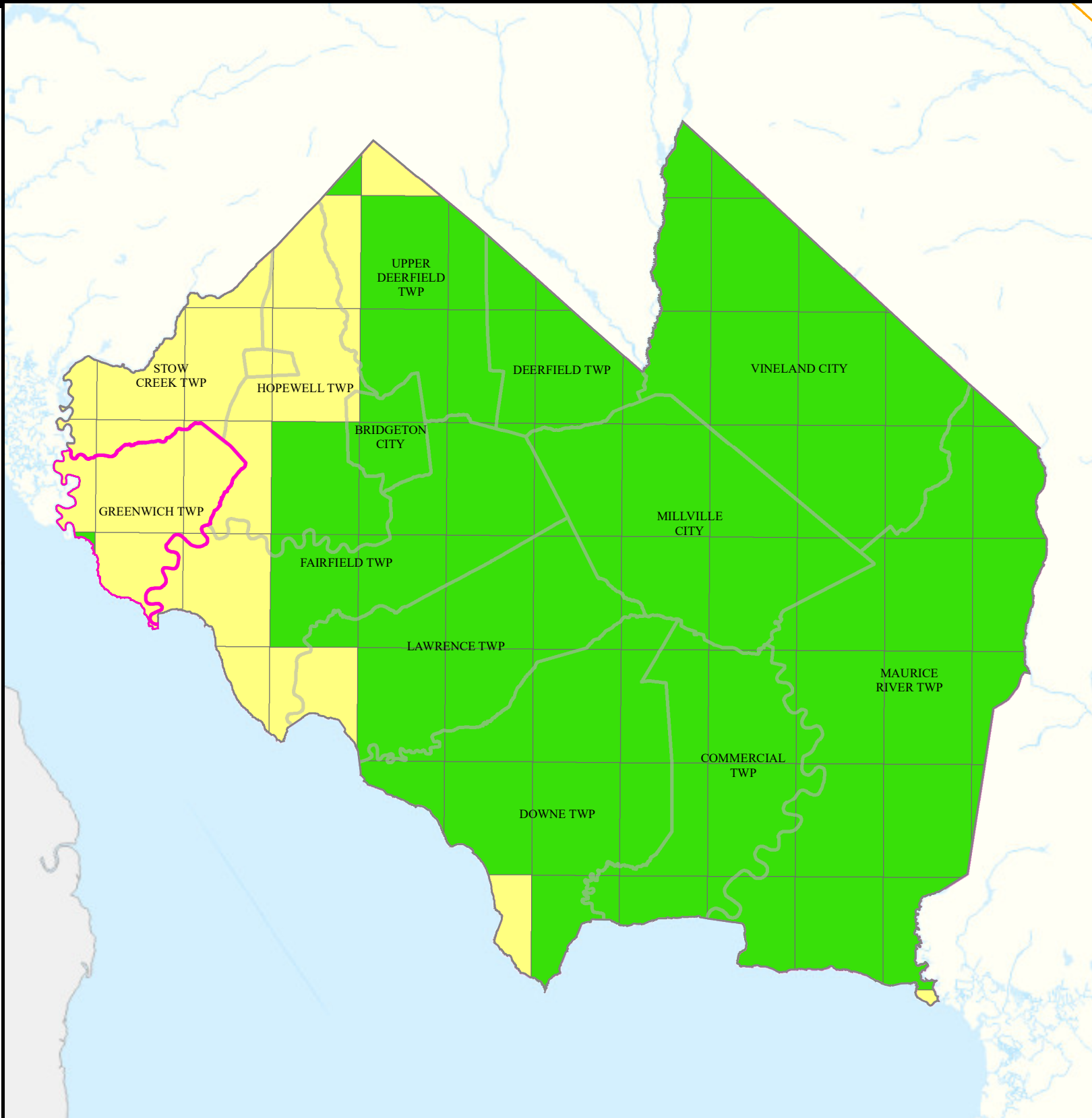
- 0 - 1
- 1.5 - 3
- 3.5 - 6.5
- 7 - 12

Air Quality Index (AQI)  
Days above 100 (3 yr Avg)  
2018 to 2020



0 2 4 Miles

Date: 4/18/2022



# Community Drinking Water

## GREENWICH TWP


## CUMBERLAND

### Legend

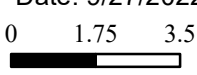
- Counties
- GREENWICH TWP
- Municipalities

MCL and TT Violations and AL Exceedances	
0	6 - 10
1 - 5	11 - 15
	16 - 30

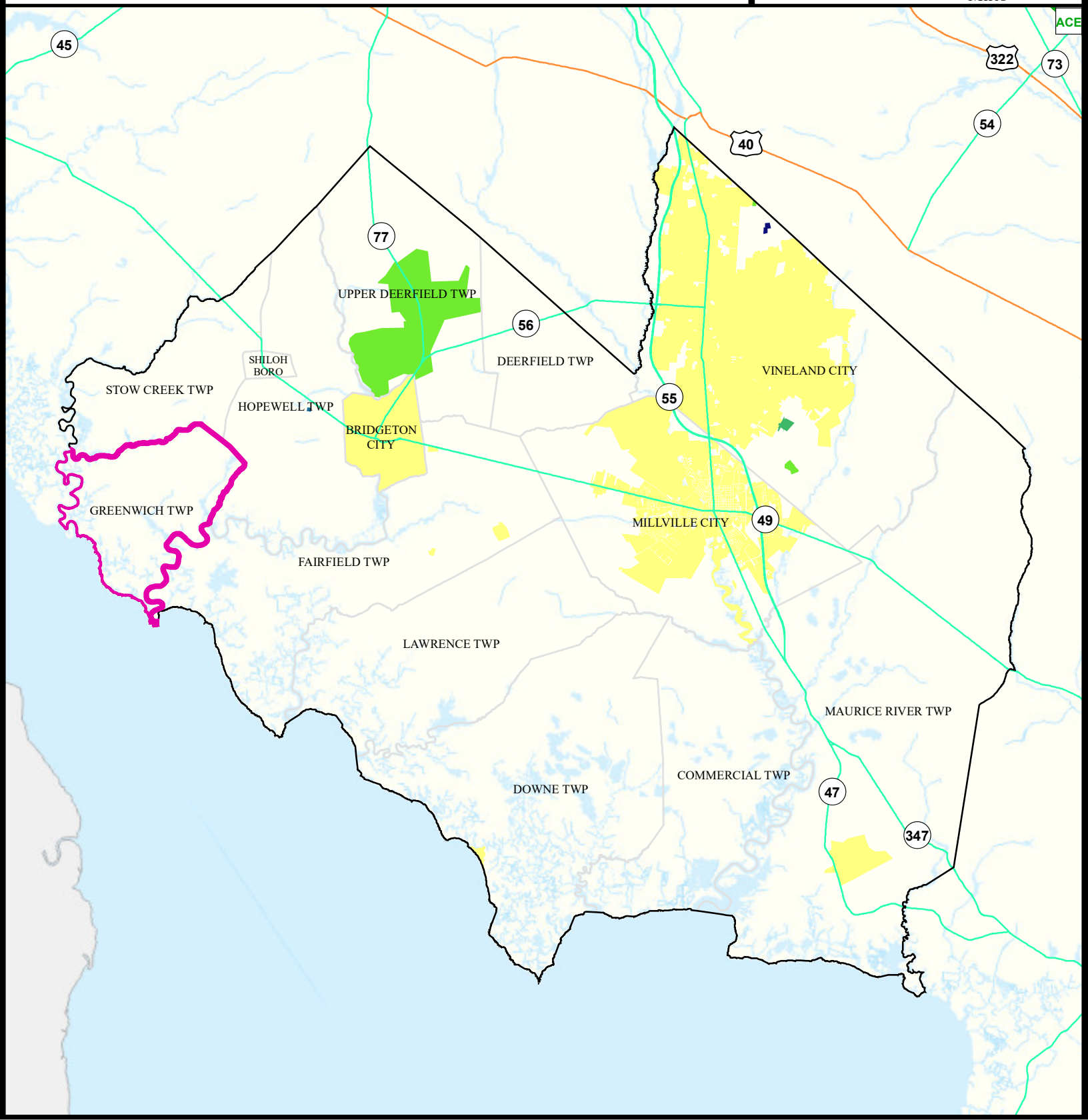
N



Date: 9/27/2022



Miles



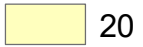














# Surface Water Quality

**GREENWICH TWP**


**CUMBERLAND**

## Legend

Impaired (Percent)	
	NA
	0
	20
	25
	33
	40
	50
	60
	66
	75
	80
	100


-  Counties
-  Municipalities
-  GREENWICH TWP

N

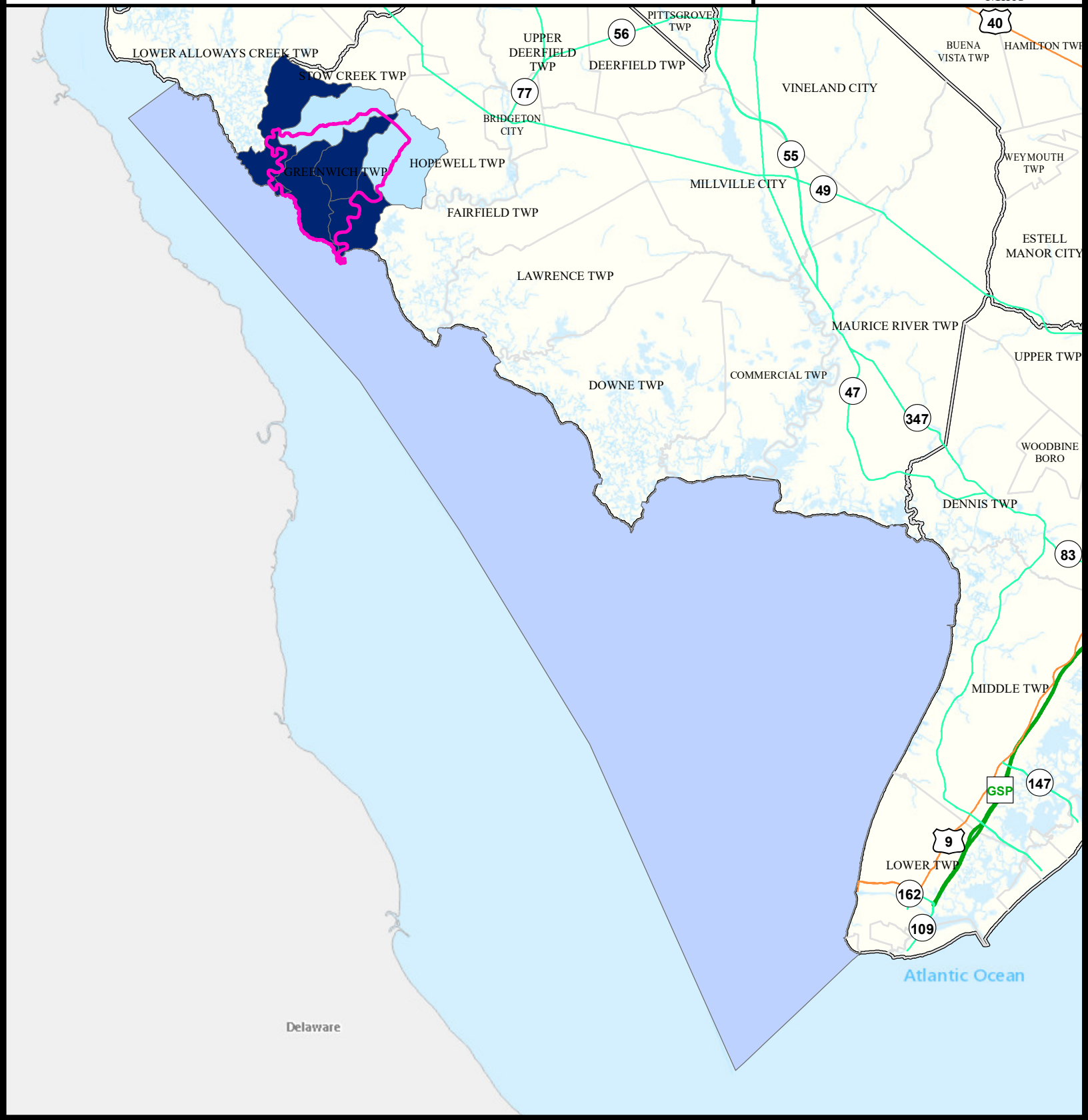


Date: 9/26/2022

0 2.25 4.5



Miles







What is a Designated Use?

New Jersey's [Surface Water Quality Standards \(SWQS\)](#) establish the designated uses of the State's surface waters, classify surface waters based on those uses, and specify the water quality criteria and other policies necessary to attain those uses. Designated uses include water supply for drinking, agriculture and industrial uses, fish consumption, shellfish resources, propagation of fish and wildlife, and recreation.

The table below show the designated use information for your municipality. For more information on Surface Water Quality, see the Healthy Community Planning Report for this municipality.

AU_name	Aquatic_General	Aquatic_Trout	Water_Supply	Recreation	Shellfish	Fish_Consumption
Cohansey R (Greenwich to 75d17m50s)	Insufficient Data	NA	Attaining	Insufficient Data	Non Attaining	Non Attaining
Pine Mount Creek	Non Attaining	NA	Insufficient Data	Insufficient Data	Non Attaining	Insufficient Data
Raccoon Ditch (Stow Creek)	Non Attaining	NA	Attaining	Insufficient Data	Insufficient Data	Non Attaining
Phillips Creek / Jacobs Creek	Insufficient Data	NA	NA	Insufficient Data	Non Attaining	Non Attaining
Stow Creek (below Canton Rd)	Non Attaining	NA	NA	Insufficient Data	Insufficient Data	Non Attaining
Cohansey R (below Greenwich)	Insufficient Data	NA	NA	Insufficient Data	Non Attaining	Non Attaining
Delaware Bay Zone 6 ( New Jersey portion)	Non Attaining	NA	NA	Attaining	Non Attaining	Non Attaining

# Flooding (Urban Land Cover)

**GREENWICH TWP**

**CUMBERLAND**

## Legend

Counties

GREENWICH TWP

Municipalities

Urban Land

Urban Land Flooded

Toll Road

Interstate

US Highway

State Highway

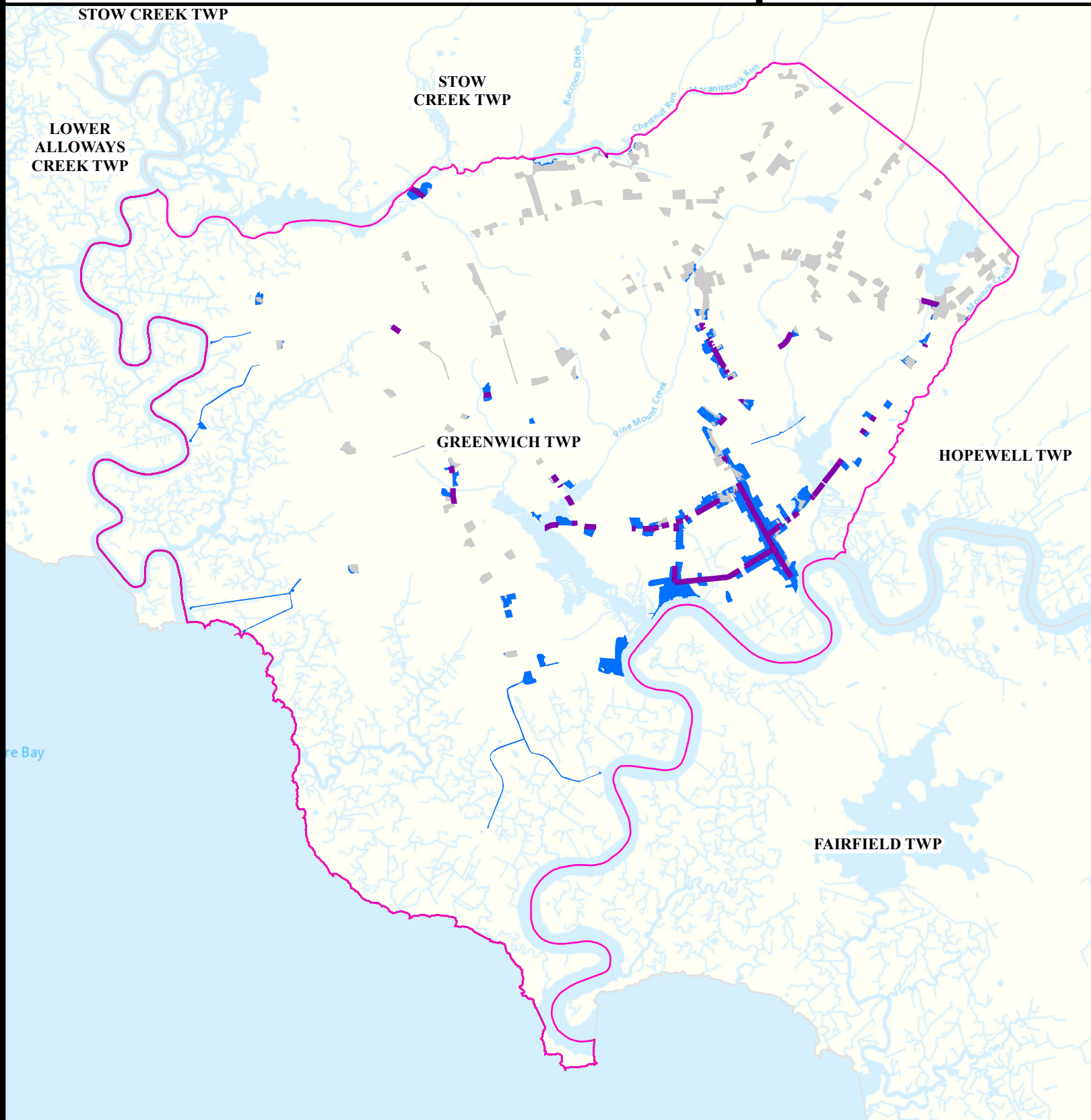
Impacted Roads

Impacted roads show only county level or higher routes in flooding areas.

Date: 4/13/2022

0 0.35 0.7

Miles



# Air Permit Sources

**GREENWICH TWP**

**CUMBERLAND**

## Legend

-  Counties
-  GREENWICH TWP

## Facility Type

-  Major
-  Minor

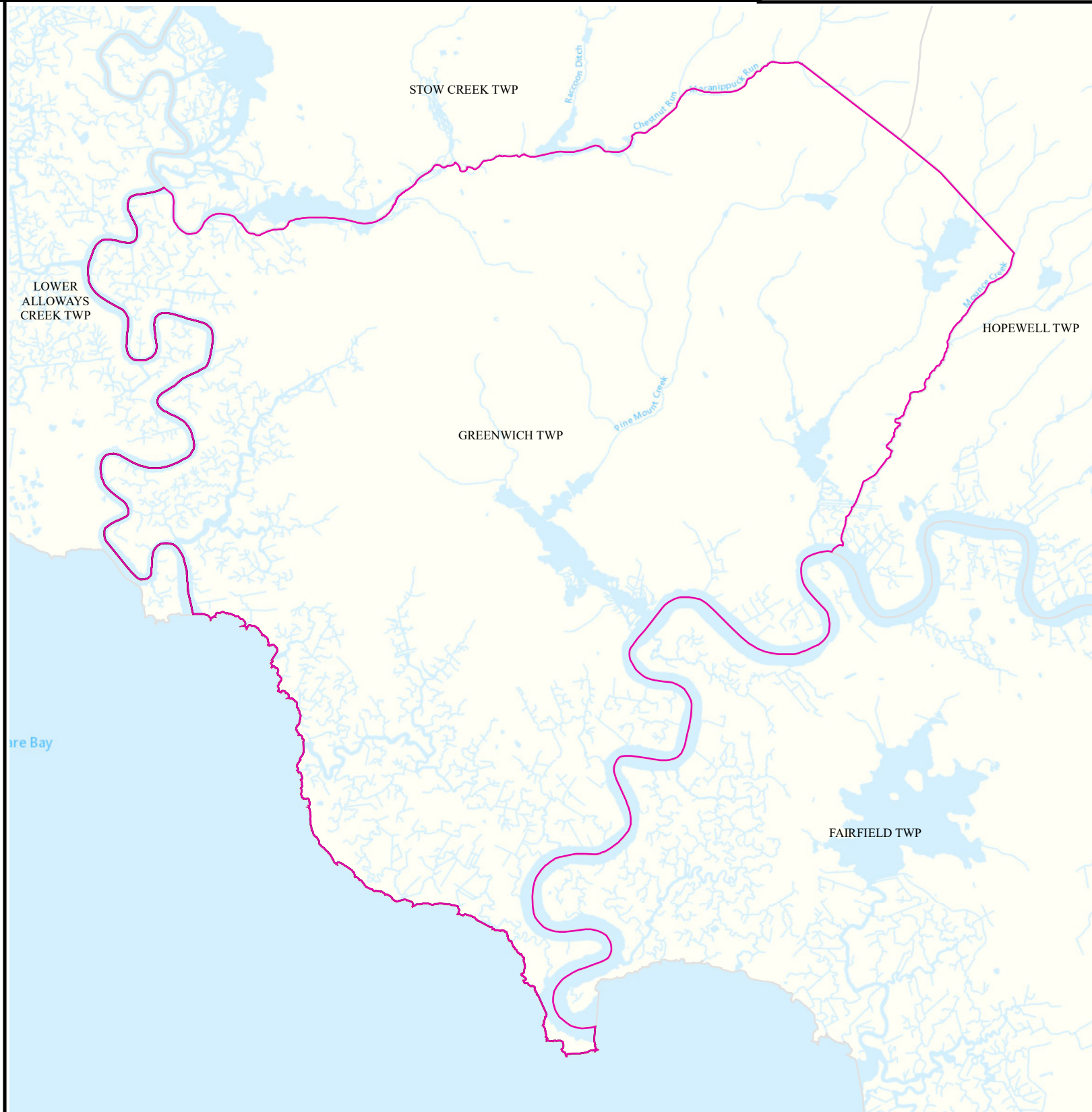


Date: 4/12/2022

0 0.375 0.75



Miles





# Contaminated Sites

**GREENWICH TWP**


**CUMBERLAND**

## Legend

- Counties
- GREENWICH TWP
- Municipalities


- Known Contaminated Sites
- Density Weighting
- 0
  - 1
  - 2
  - 3
  - Other

N



Date: 5/25/2022

0 0.35 0.7



Miles







# Open Space

**GREENWICH TWP**

**CUMBERLAND**

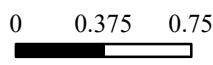
## Legend

-  Counties
-  GREENWICH TWP

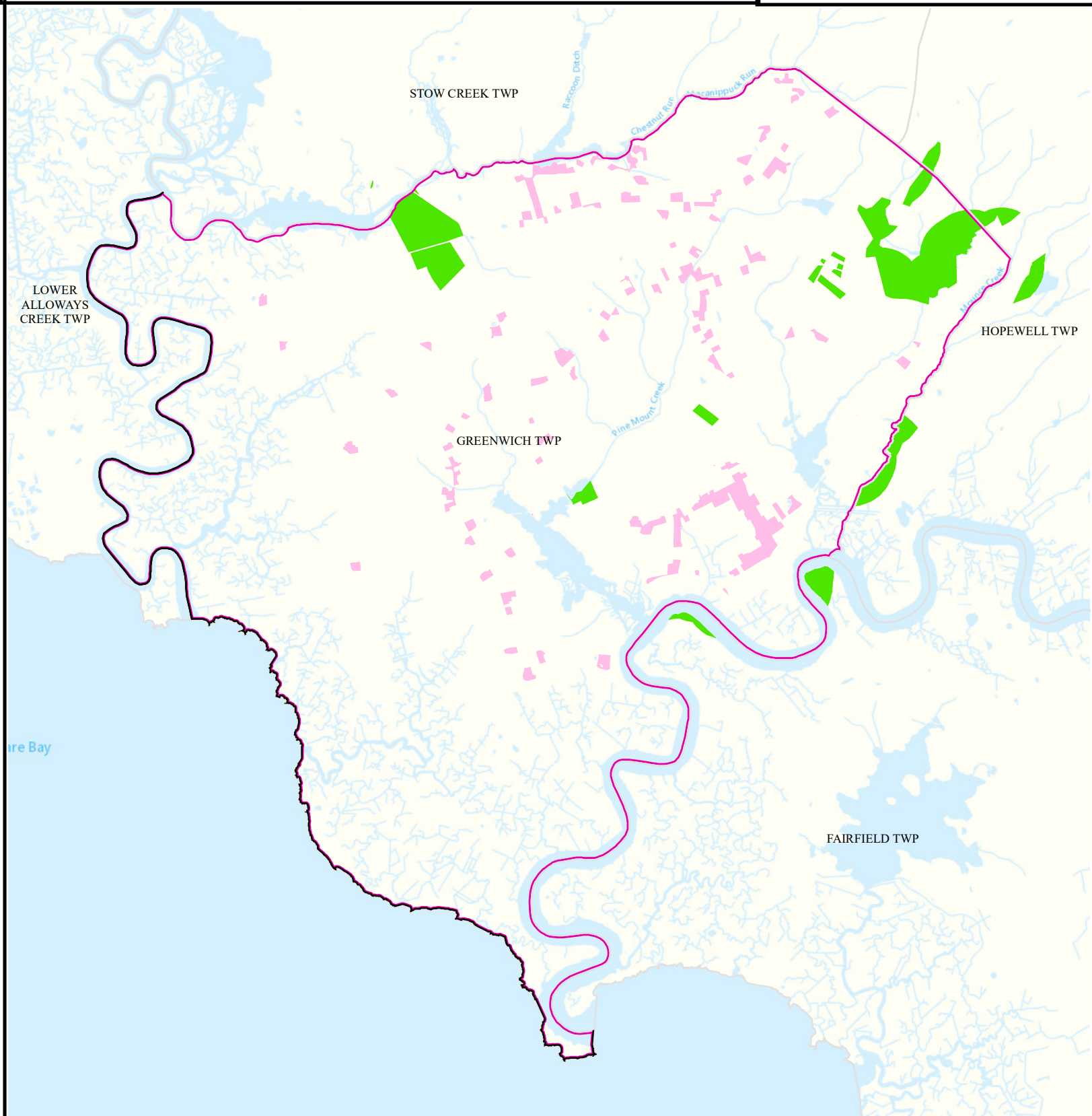
-  Open Space
-  Residential Population > 1/4 Mile from Open Space



Date: 9/27/2022



Miles





# Low Birth Weight





**Greenwich Twp**

**Cumberland**

## Legend

-  Municipalities
-  Greenwich Twp

## State Comparison

-  Above
-  No Difference
-  Below
-  Suppressed

Birth Rate  
Low Birth Weight  
(% All Births < 5 lb, 8 oz)  
2016 to 2020

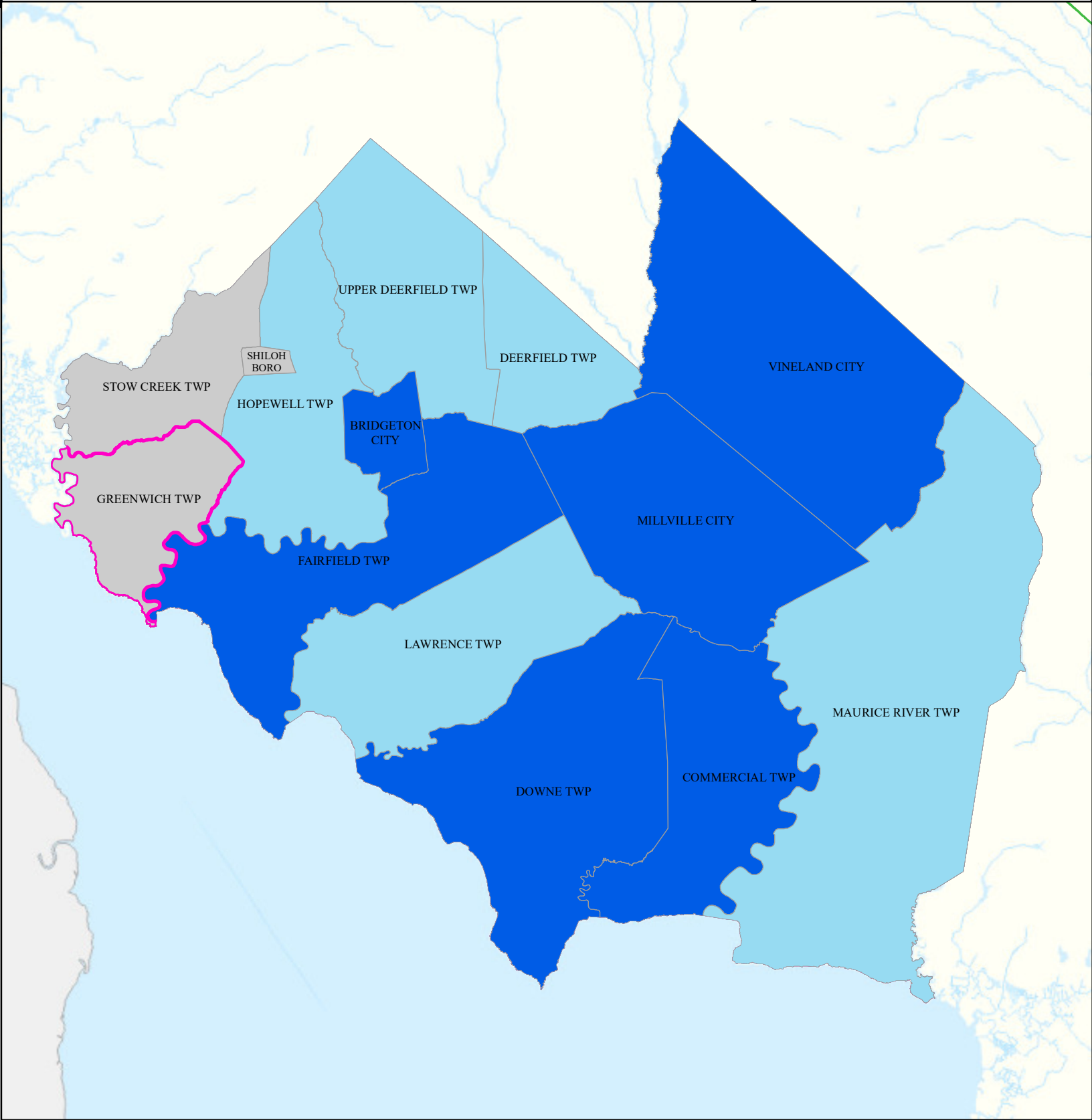


Date: 4/16/2022

0 1.75 3.5



Miles



# Age of Housing

**GREENWICH TWP**


**CUMBERLAND**

## Legend

- Counties
- Municipalities
- GREENWICH TWP


- Year House Constructed**
- Pre 1950
  - Between 1951 and 1978
  - After 1978
  - Unknown

N

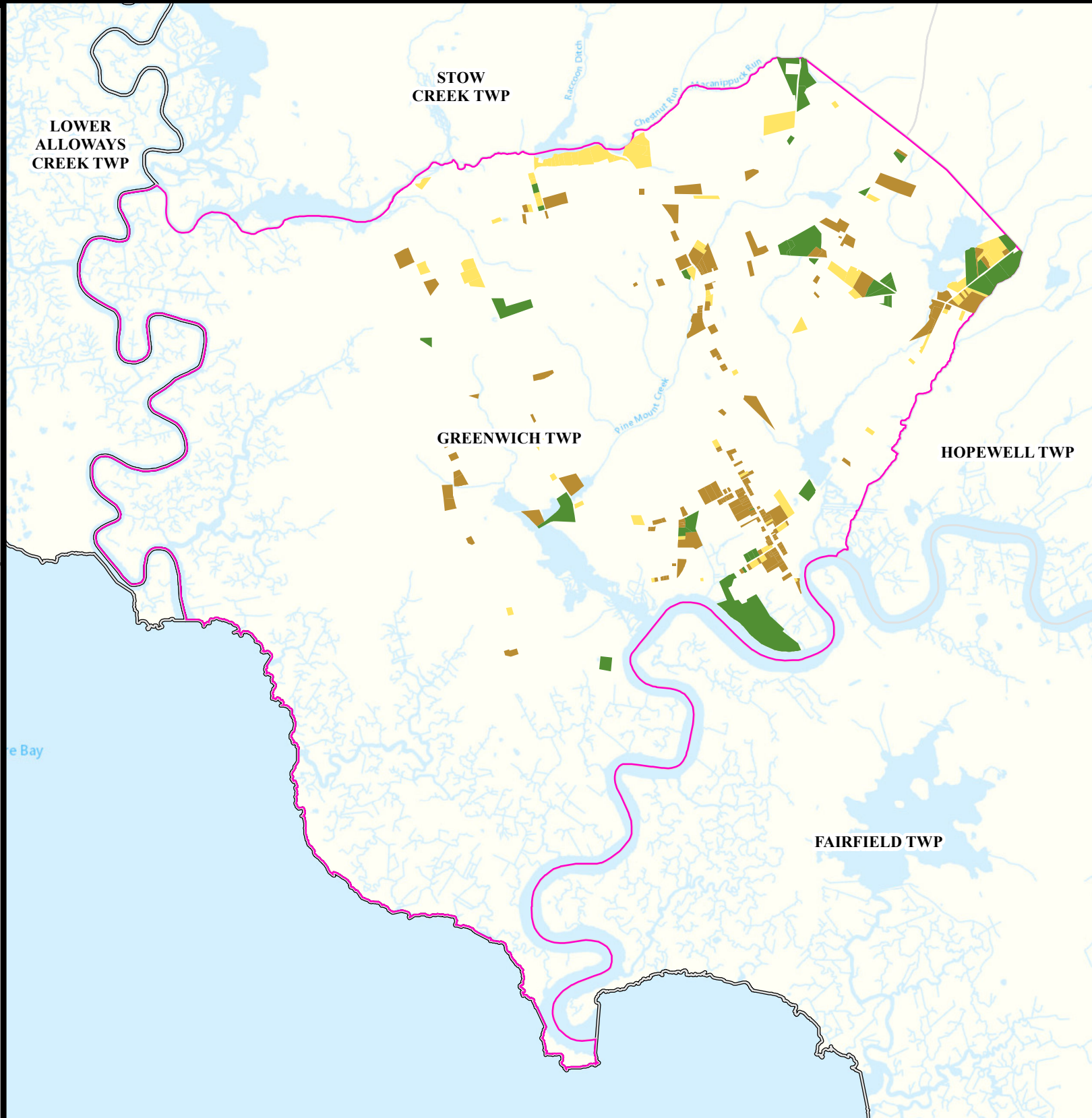


Date: 4/13/2022

0 0.35 0.7



Miles





# Asthma (Emergency Department)

**Greenwich Twp**

**Cumberland**

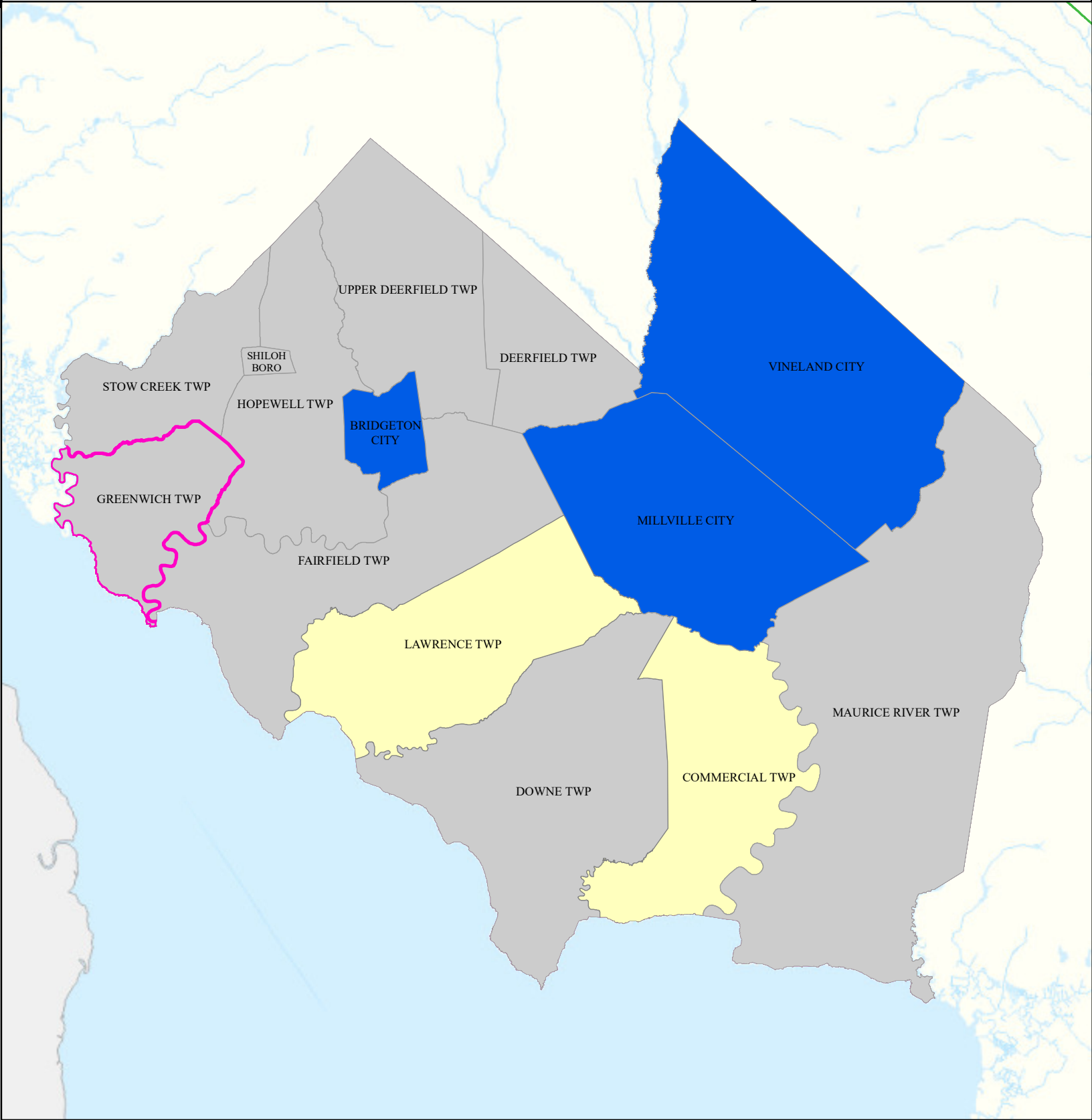
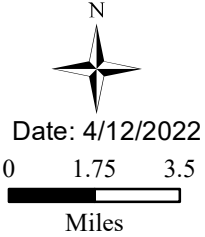
## Legend

- Municipalities
- Greenwich Twp

## State Comparison

- Above
- Below
- No Difference
- Suppressed

Age-adjusted Rate  
per 10,000 People  
2016 to 2019  
Emergency Department  
Visits for Asthma







# Heart Attack (AMI) (Inpatient)




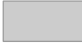
**Greenwich Twp**

**Cumberland**

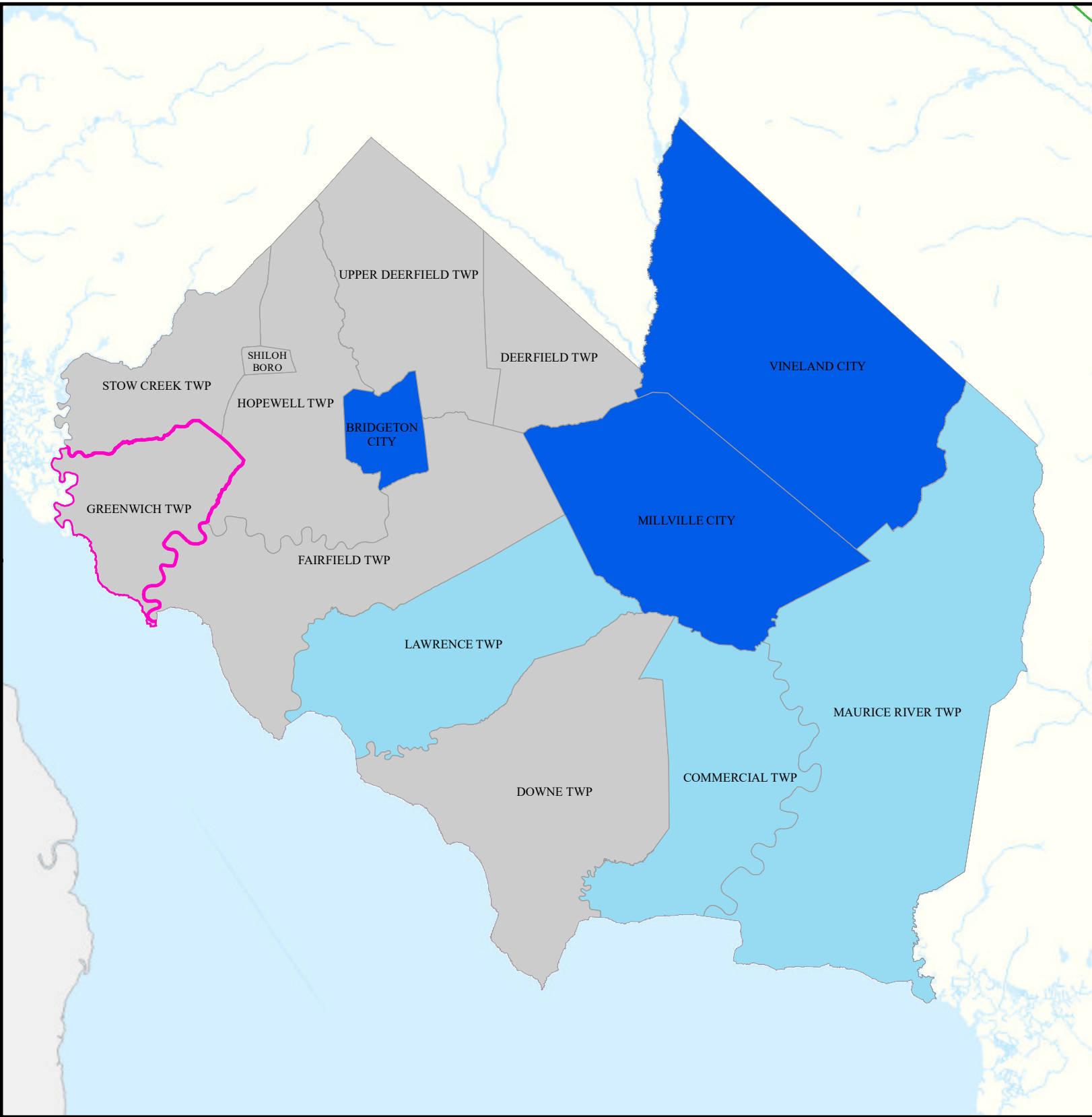
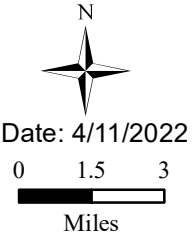
## Legend

-  Municipalities
-  Greenwich Twp

## State Comparison

-  Above
-  No Difference
-  Below
-  Suppressed

Age-adjusted Rate  
per 10,000 People  
2016 to 2019  
Inpatient Visits for AMI  
(Acute Myocardial Infarction)



# Heart Disease Deaths

## Greenwich Twp

## Cumberland

### Legend

- Municipalities
- Greenwich Twp

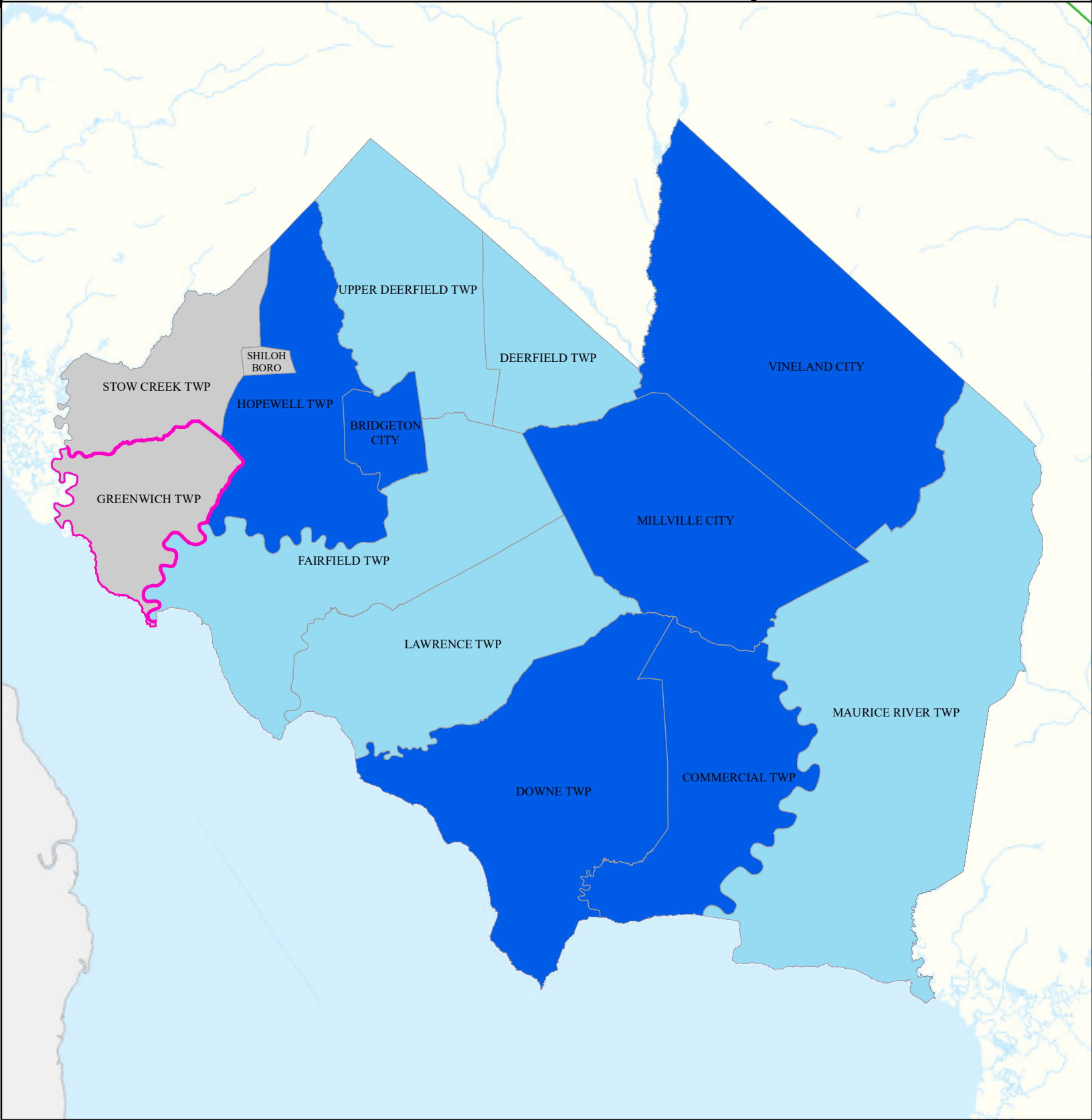
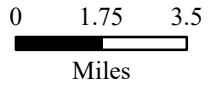
### State Comparison

- Above
- Below
- No Difference
- Suppressed

Age-adjusted Death Rate  
per 100,000 People  
2015 to 2019

Deaths for Heart Disease

Date: 4/16/2022



# COPD (Emergency Department)

## Greenwich Twp

## Cumberland

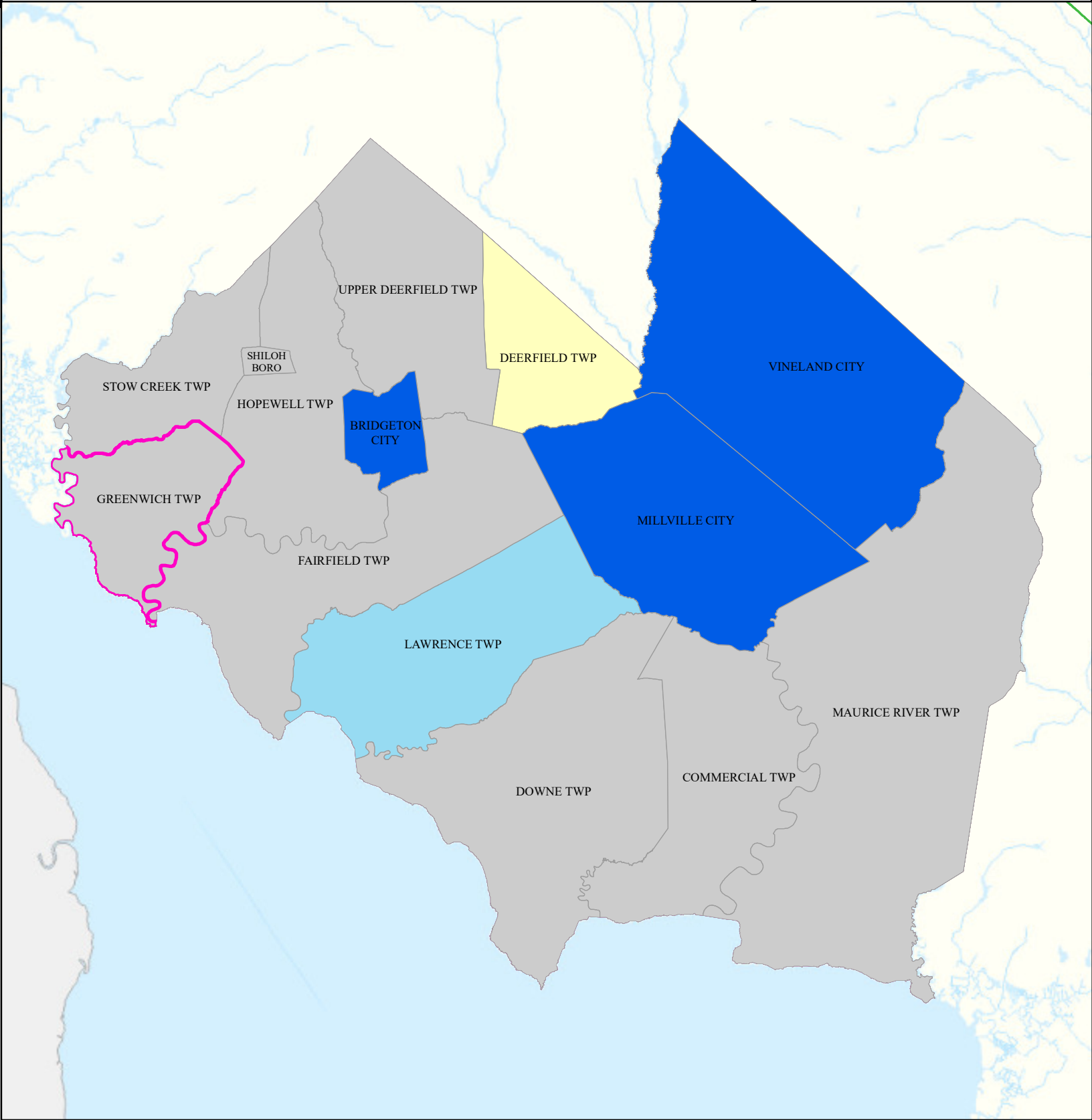
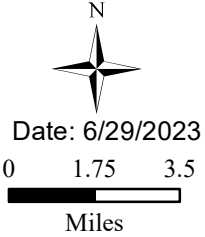
### Legend

- Municipalities
- Greenwich Twp

### State Comparison

- Above
- Below
- No Difference
- Suppressed

Age-adjusted Rate  
per 10,000 People  
2016 to 2019  
Emergency Department  
Visits for COPD





# Stroke (Inpatient)





**Greenwich Twp**

**Cumberland**

## Legend

-  Municipalities
-  Greenwich Twp

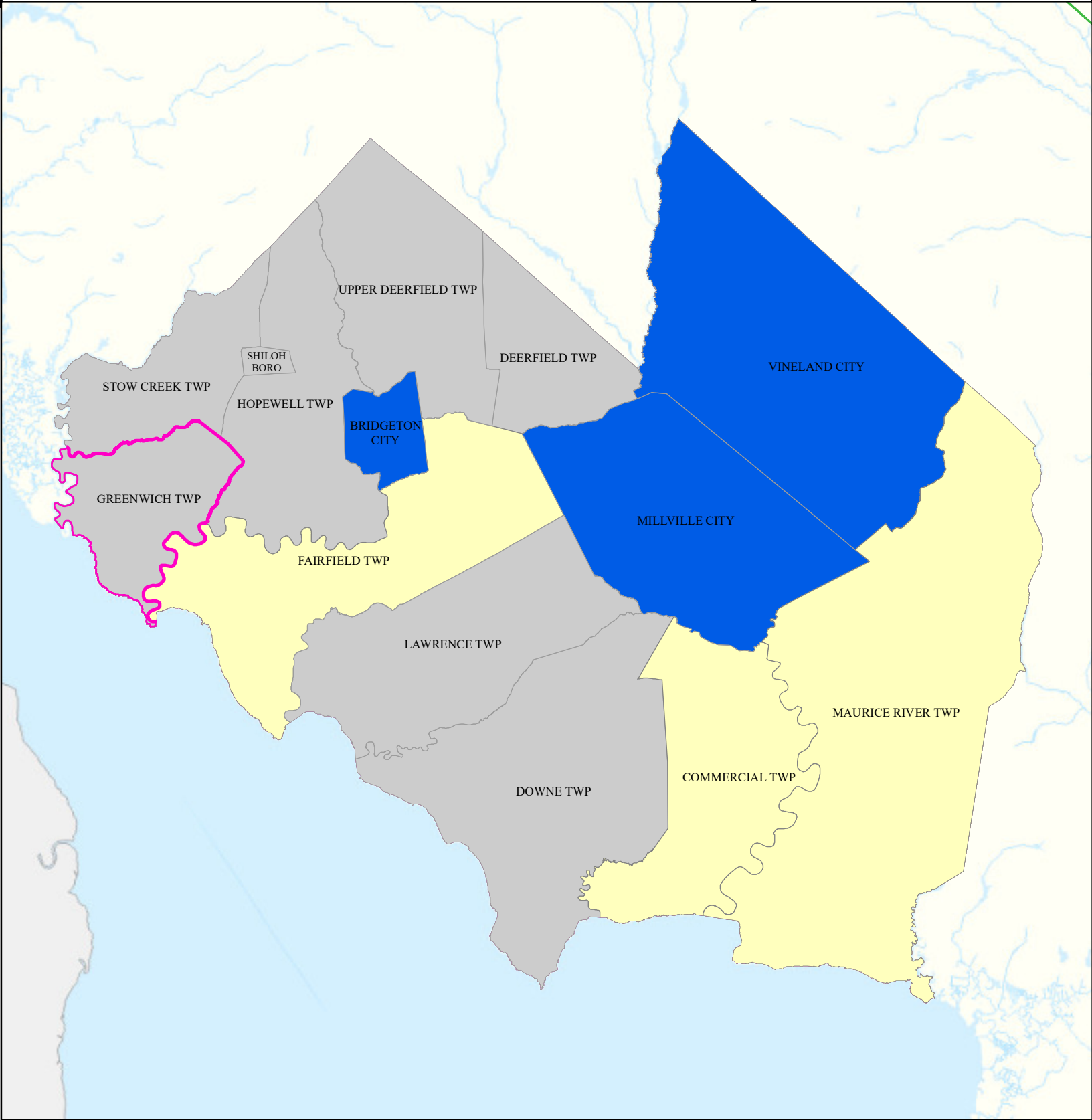
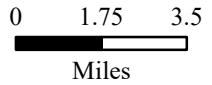
## State Comparison

-  Above
-  Below
-  No Difference
-  Suppressed

Age-adjusted Rate  
per 10,000 People  
2016 to 2019  
Inpatient Visits  
for Stroke



Date: 4/15/2022







# All Cancer Deaths

## Greenwich Twp

## Cumberland

### Legend

-  Municipalities
-  Greenwich Twp

### State Comparison

-  Above
-  No Difference
-  Below
-  Suppressed

Age-adjusted Death Rate  
per 100,000 People  
2015 to 2019  
Deaths for Cancer

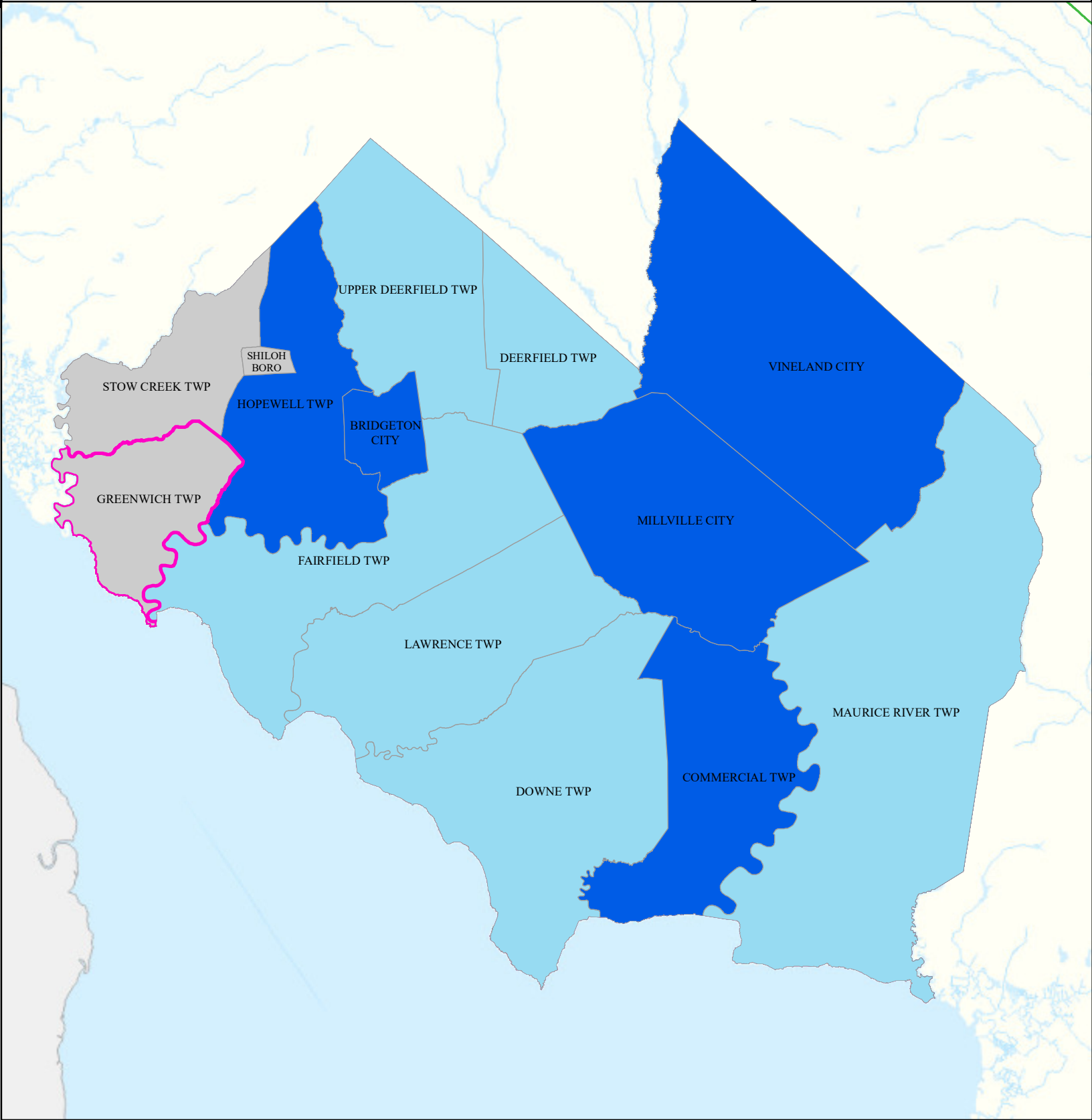


Date: 4/17/2022

0 1.75 3.5



Miles





# Lung Cancer Deaths





**Greenwich Twp**

**Cumberland**

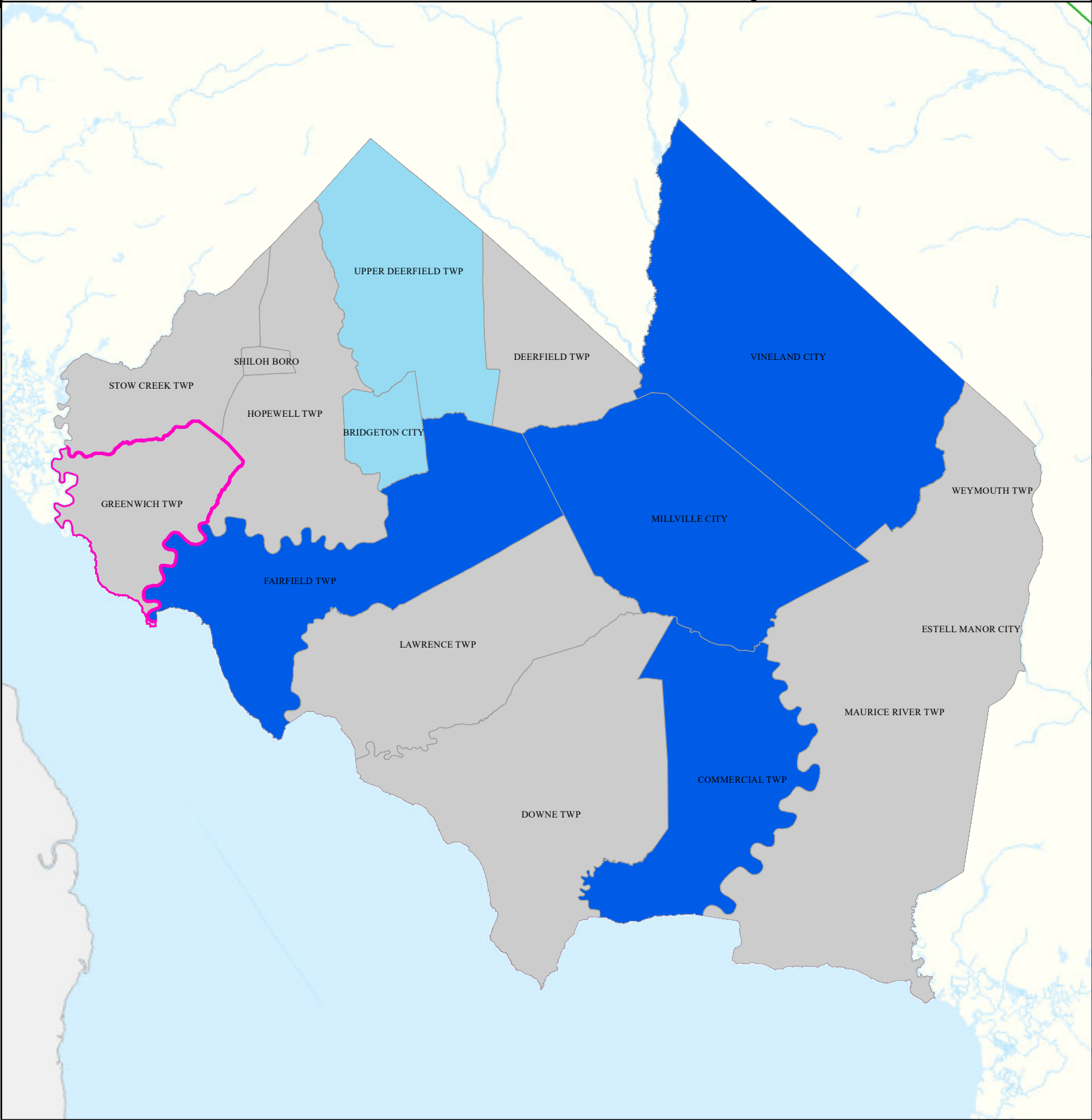
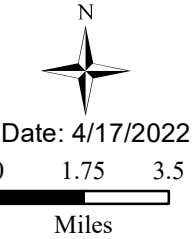
## Legend

-  Municipalities
-  Greenwich Twp

## State Comparison

-  Above
-  No Difference
-  Below
-  Suppressed

Age-adjusted Death Rate  
per 100,000 People  
2015 to 2019  
Deaths for Lung Cancer



# Smoking

## Greenwich Twp

## Cumberland

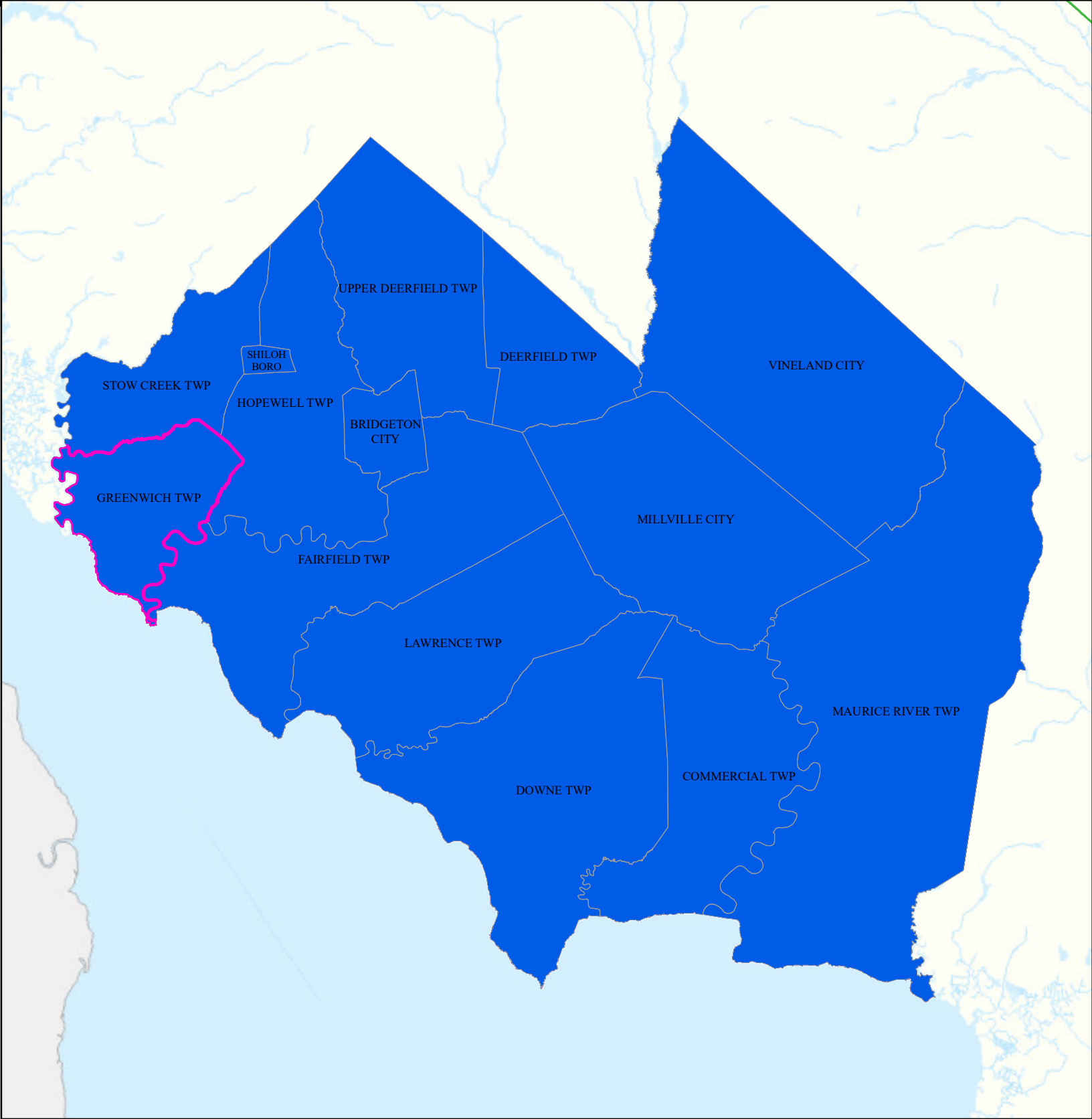
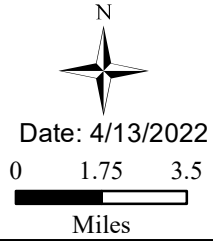
### Legend

- Municipalities
- Greenwich Twp

### State Comparison

- Above
- Below
- No Difference
- Suppressed

Smoking Rate  
Per Municipal  
% of Adults  
2018





# Obesity





**Greenwich Twp**

**Cumberland**

## Legend

-  Municipalities
-  Greenwich Twp

## State Comparison

-  Above
-  Below
-  No Difference
-  Suppressed

Obesity Rate  
Per Municipal  
% of Adults  
2018

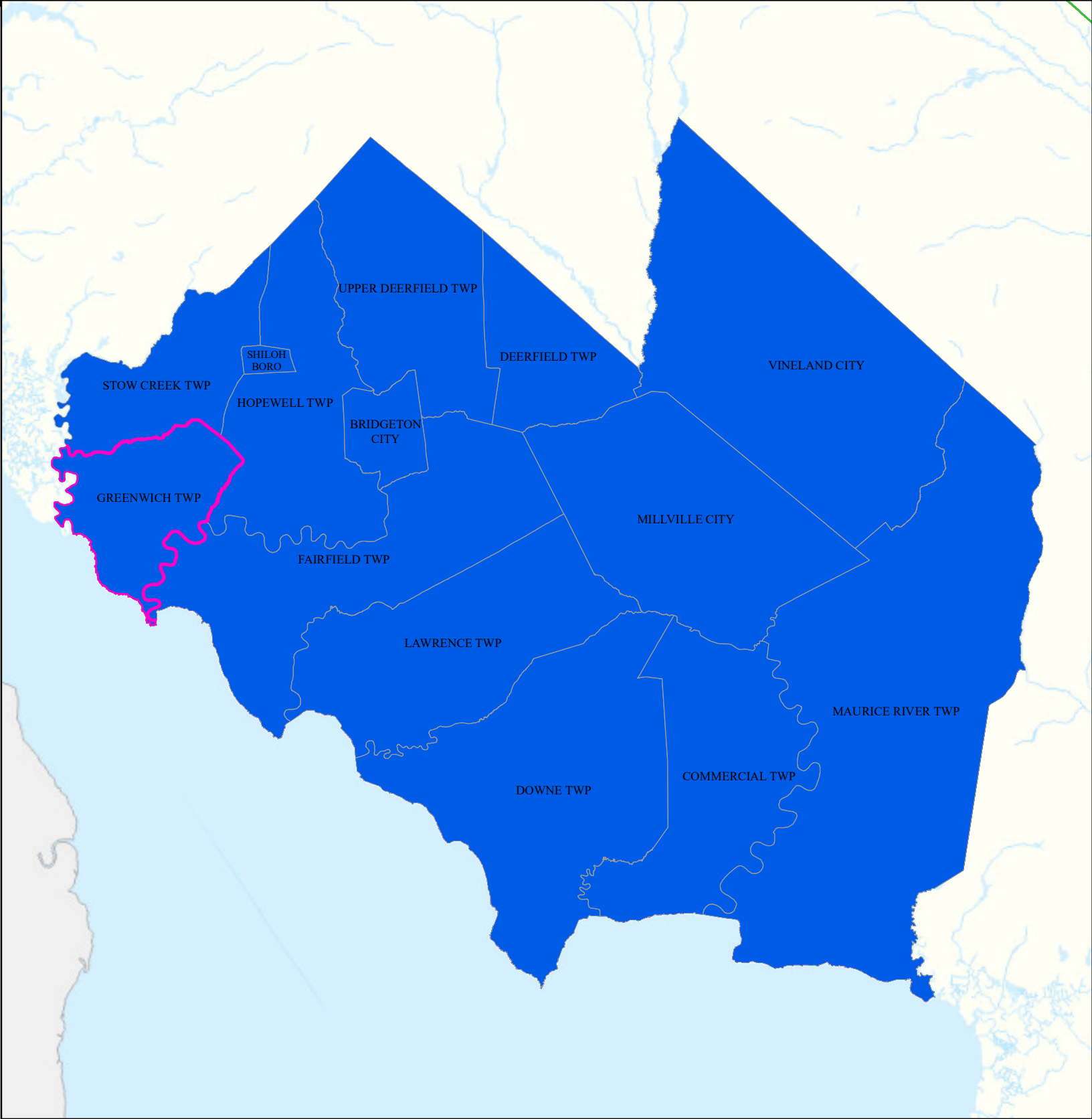


Date: 4/14/2022

0 1.75 3.5



Miles







# Heat Related Illness (Emergency Department)

**Greenwich Twp**

**Cumberland**

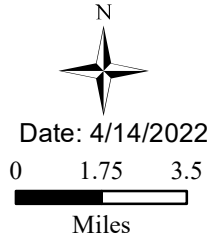
## Legend

-  Municipalities
-  Greenwich Twp

## State Comparison

-  Above
-  Below
-  No Difference
-  Suppressed

Age-adjusted Rate  
per 10,000 People  
2016 to 2019  
Emergency Department  
Visits for  
Heat Related Illness



Date: 4/14/2022

Miles

