

Health Care Facilities

STOW CREEK TWP

CUMBERLAND

Legend

Counties

STOW CREEK TWP

Hospitals

Nursing Homes

Municipalities

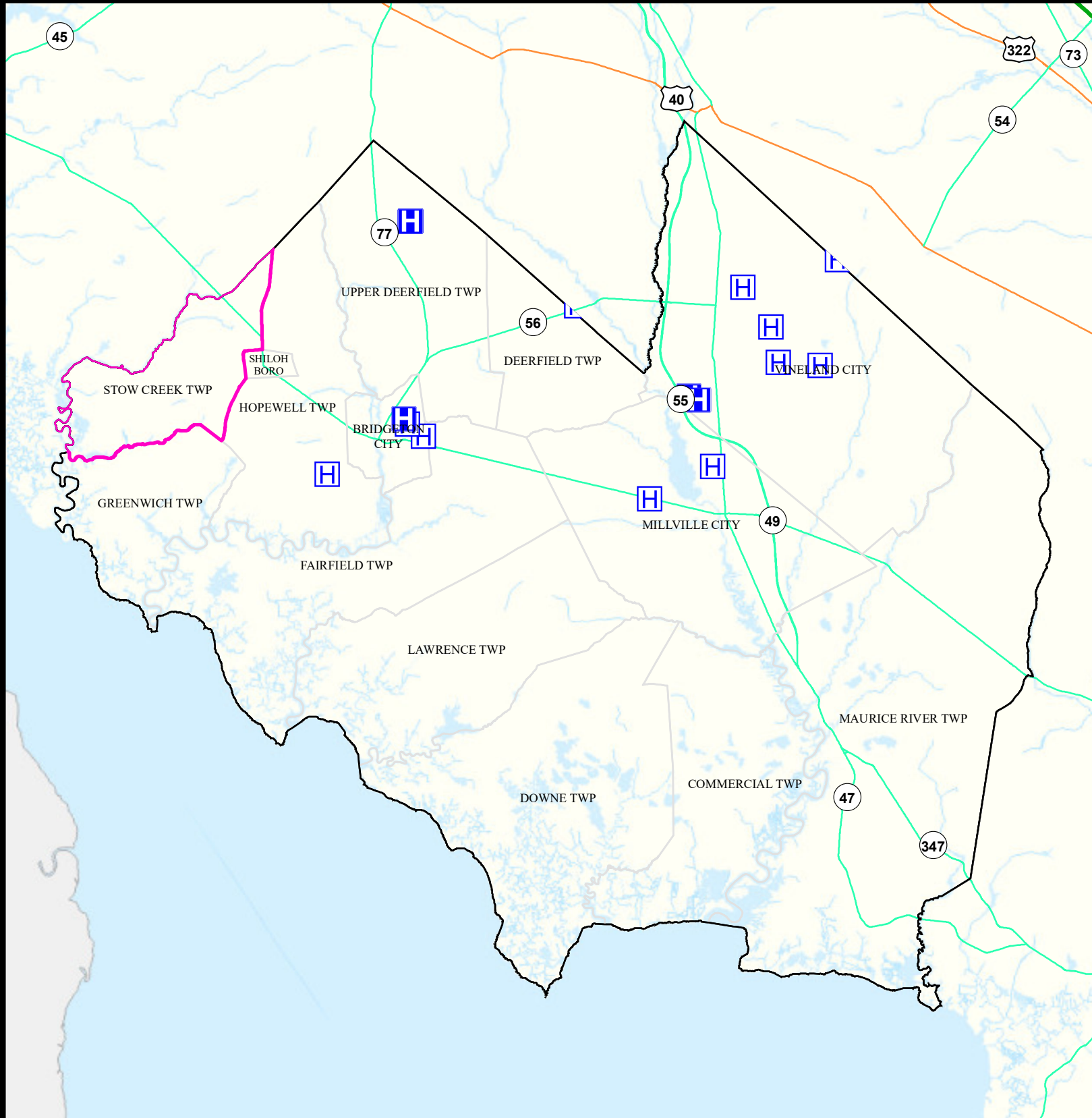


Date: 9/22/2022

0 1.75 3.5



Miles



Air Cancer Risk

STOW CREEK TWP

CUMBERLAND


Legend


 Counties

 STOW CREEK TWP

Risk per Million

 61 - 87

 88 - 108

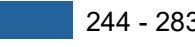
 109 - 127

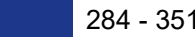
 128 - 145

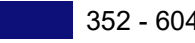
 146 - 167

 168 - 193

 194 - 243

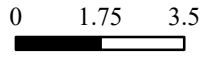
 244 - 283

 284 - 351

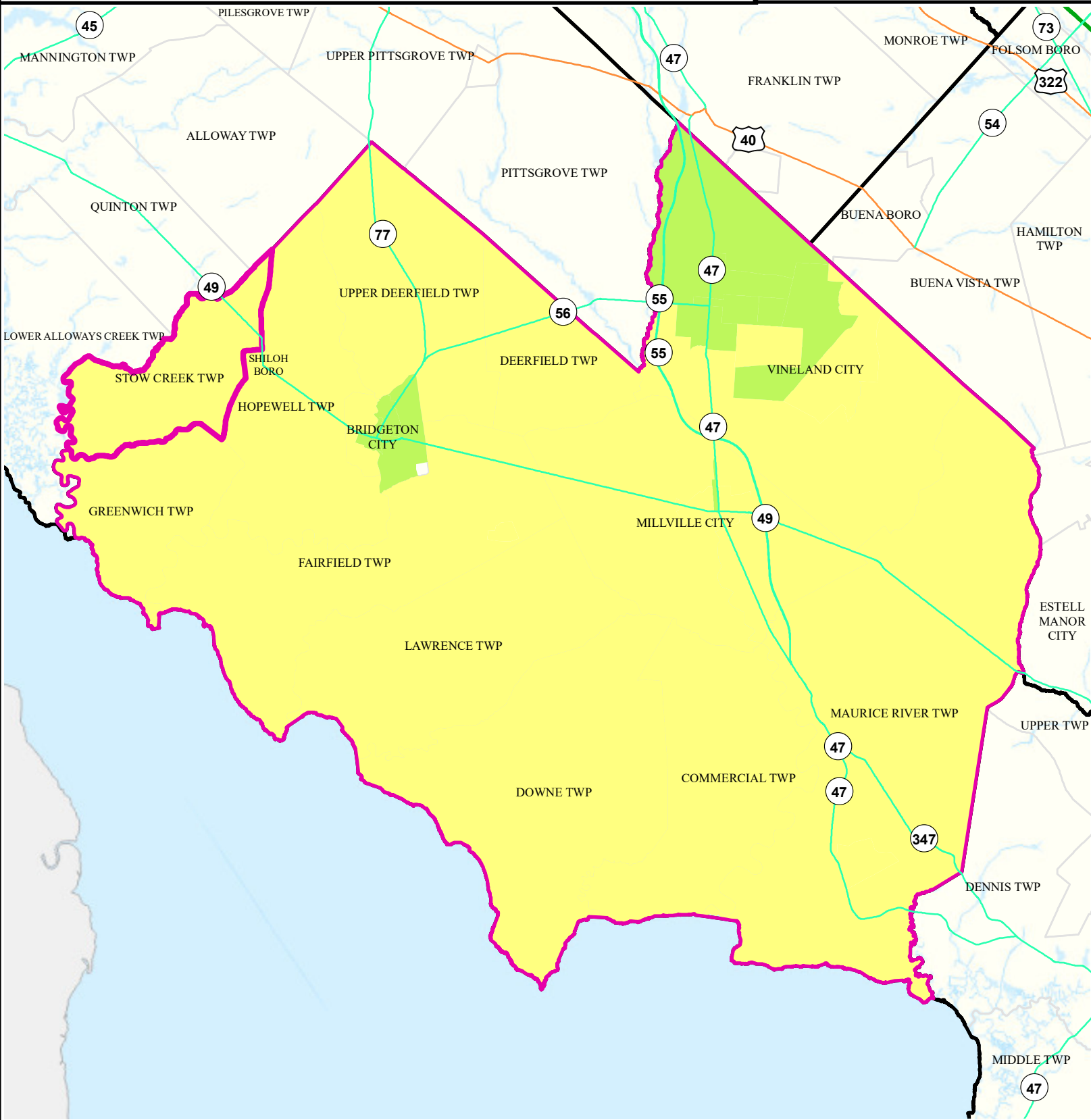
 352 - 604



Date: 9/26/2022



Miles



Air Non Cancer

STOW CREEK TWP

CUMBERLAND

Legend

Counties

STOW CREEK TWP

Combined Hazard Index

0.75 - 1.00

1.01 - 2.00

2.01 - 3.00

3.01 - 4.00

4.01 - 8.09

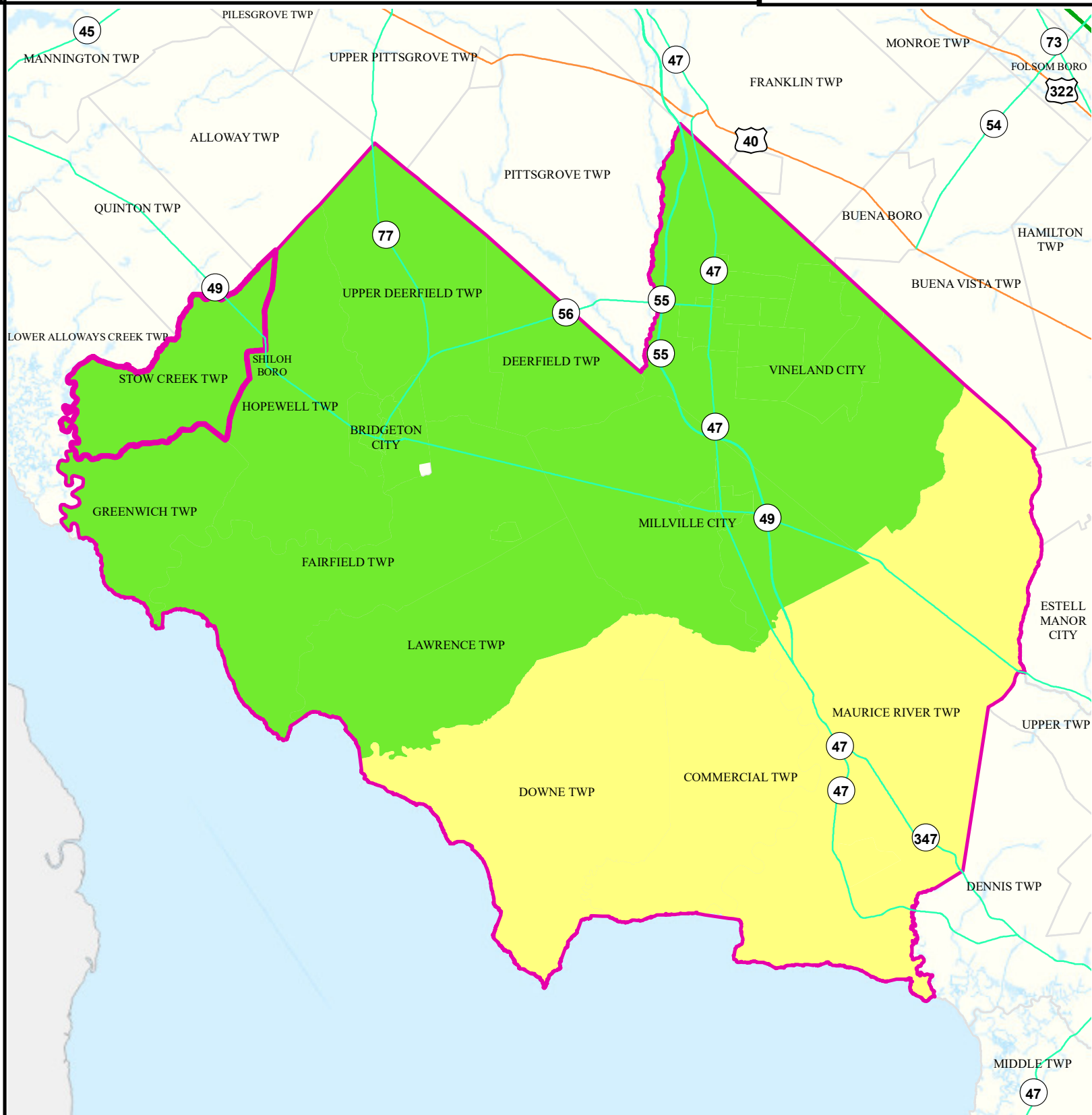


Date: 9/26/2022

0 1.75 3.5



Miles



Air Quality Index (AQI)

STOW CREEK TWP

CUMBERLAND

Legend

- Municipalities
- STOW CREEK TWP

Average AQI Days

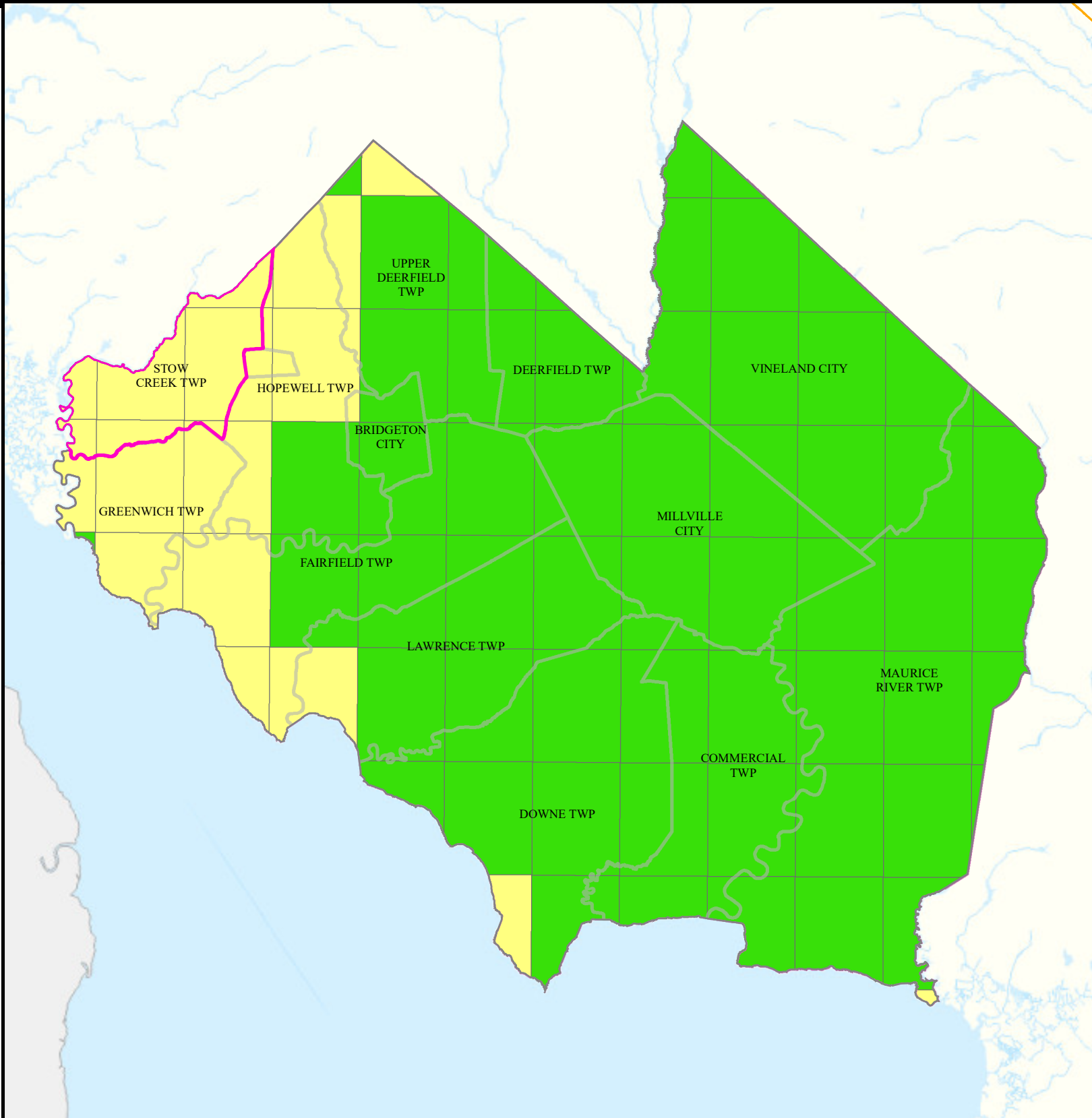
- 0 - 1
- 1.5 - 3
- 3.5 - 6.5
- 7 - 12

Air Quality Index (AQI)
Days above 100 (3 yr Avg)
2018 to 2020



0 2 4 Miles

Date: 4/18/2022



Community Drinking Water

STOW CREEK TWP


CUMBERLAND

Legend

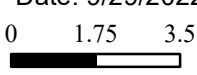
- Counties
- STOW CREEK TWP
- Municipalities

MCL and TT Violations and AL Exceedances	
0	6 - 10
1 - 5	11 - 15
	16 - 30

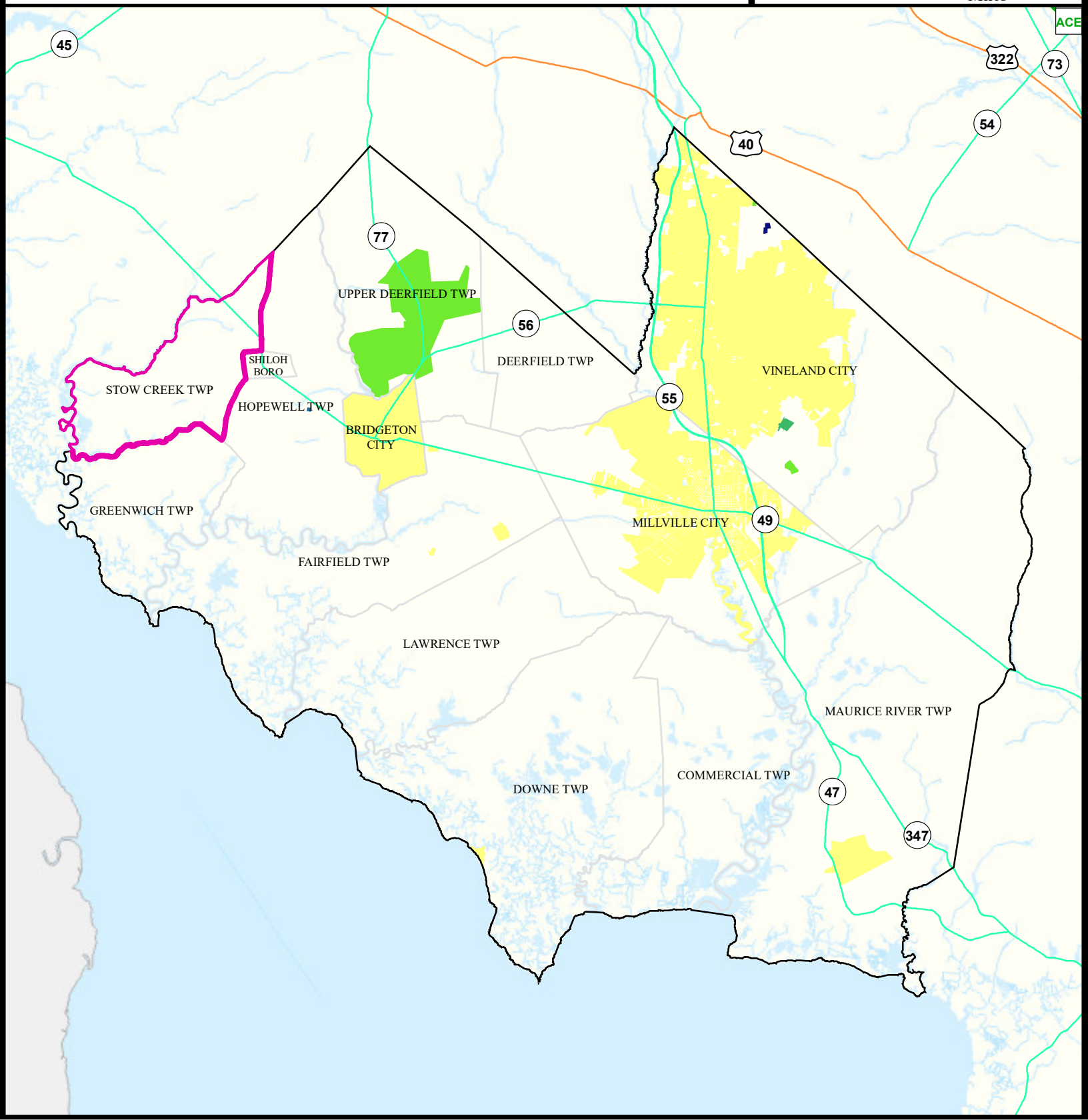
N



Date: 9/29/2022



Miles


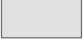
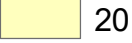
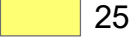













Surface Water Quality

STOW CREEK TWP

CUMBERLAND

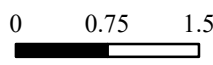
Legend

Impaired (Percent)	
	NA
	0
	20
	25
	33
	40
	50
	60
	66
	75
	80
	100

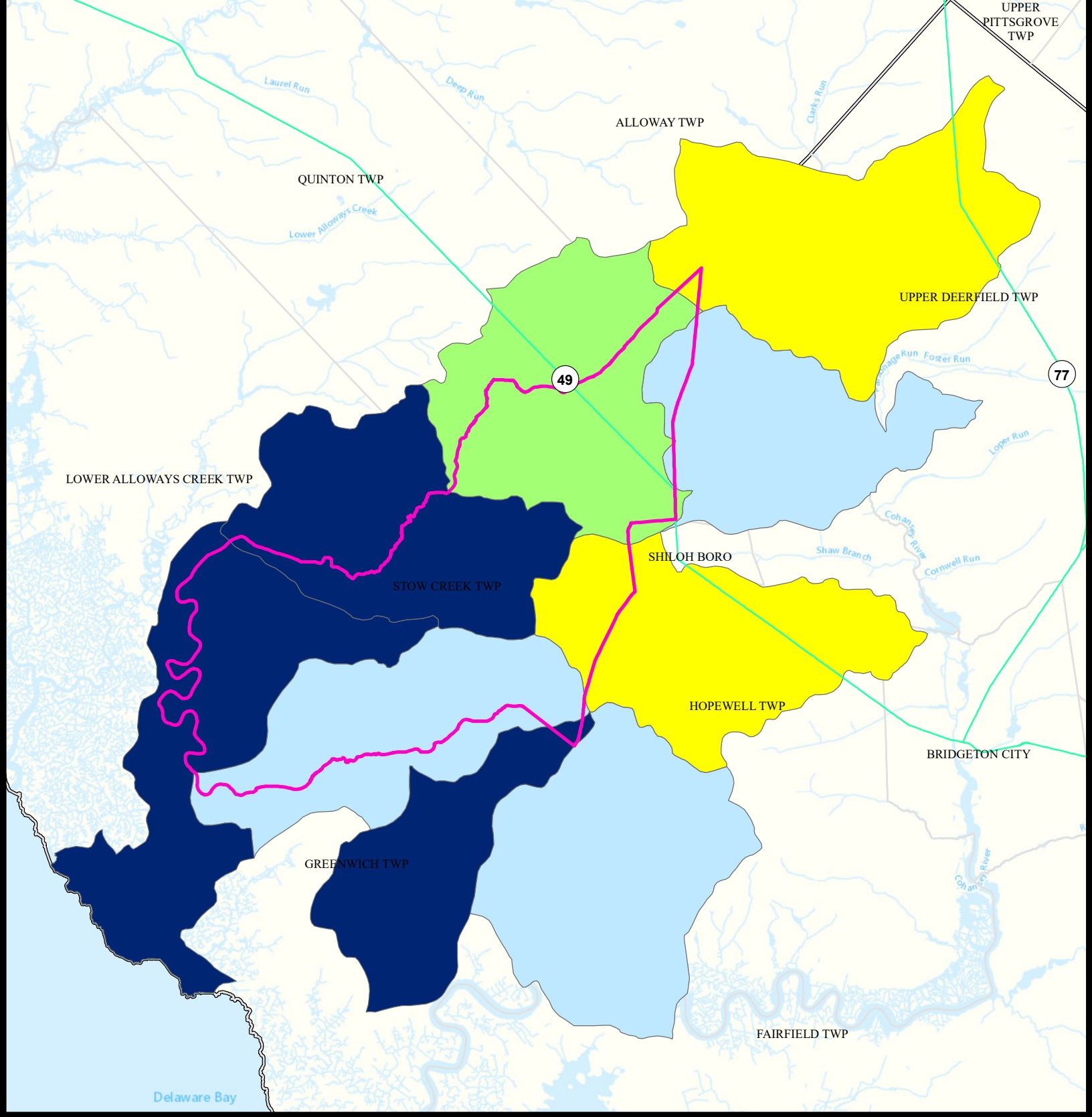
-  Counties
-  Municipalities
-  STOW CREEK TWP



Date: 9/22/2022



Miles





What is a Designated Use?

New Jersey's [Surface Water Quality Standards \(SWQS\)](#) establish the designated uses of the State's surface waters, classify surface waters based on those uses, and specify the water quality criteria and other policies necessary to attain those uses. Designated uses include water supply for drinking, agriculture and industrial uses, fish consumption, shellfish resources, propagation of fish and wildlife, and recreation.

The table below show the designated use information for your municipality. For more information on Surface Water Quality, see the Healthy Community Planning Report for this municipality.

AU_name	Aquatic_General	Aquatic_Trout	Water_Supply	Recreation	Shellfish	Fish_Consumption
Cohansey R (Greenwich to 75d17m50s)	Insufficient Data	NA	Attaining	Insufficient Data	Non Attaining	Non Attaining
Pine Mount Creek	Non Attaining	NA	Insufficient Data	Insufficient Data	Non Attaining	Insufficient Data
Stow Creek (Canton Road to Jericho Road)	Non Attaining	NA	NA	Insufficient Data	Insufficient Data	Non Attaining
Barrett Run (above West Ave)	Non Attaining	NA	Attaining	Attaining	NA	Insufficient Data
Raccoon Ditch (Stow Creek)	Non Attaining	NA	Attaining	Insufficient Data	Insufficient Data	Non Attaining
Cohansey R (incl Beebe Run to HandsPond)	Non Attaining	NA	Non Attaining	Attaining	NA	Insufficient Data
Stow Creek (above Jericho Road)	Non Attaining	NA	Attaining	Insufficient Data	NA	Insufficient Data
Cohansey R (incl HandsPond - Beals Mill)	Non Attaining	NA	Attaining	Attaining	NA	Insufficient Data
Stow Creek (below Canton Rd)	Non Attaining	NA	NA	Insufficient Data	Insufficient Data	Non Attaining

Flooding (Urban Land Cover)

STOW CREEK TWP

CUMBERLAND

Legend

Counties

STOW CREEK TWP

Municipalities

Urban Land

Urban Land Flooded

Toll Road

Interstate

US Highway

State Highway

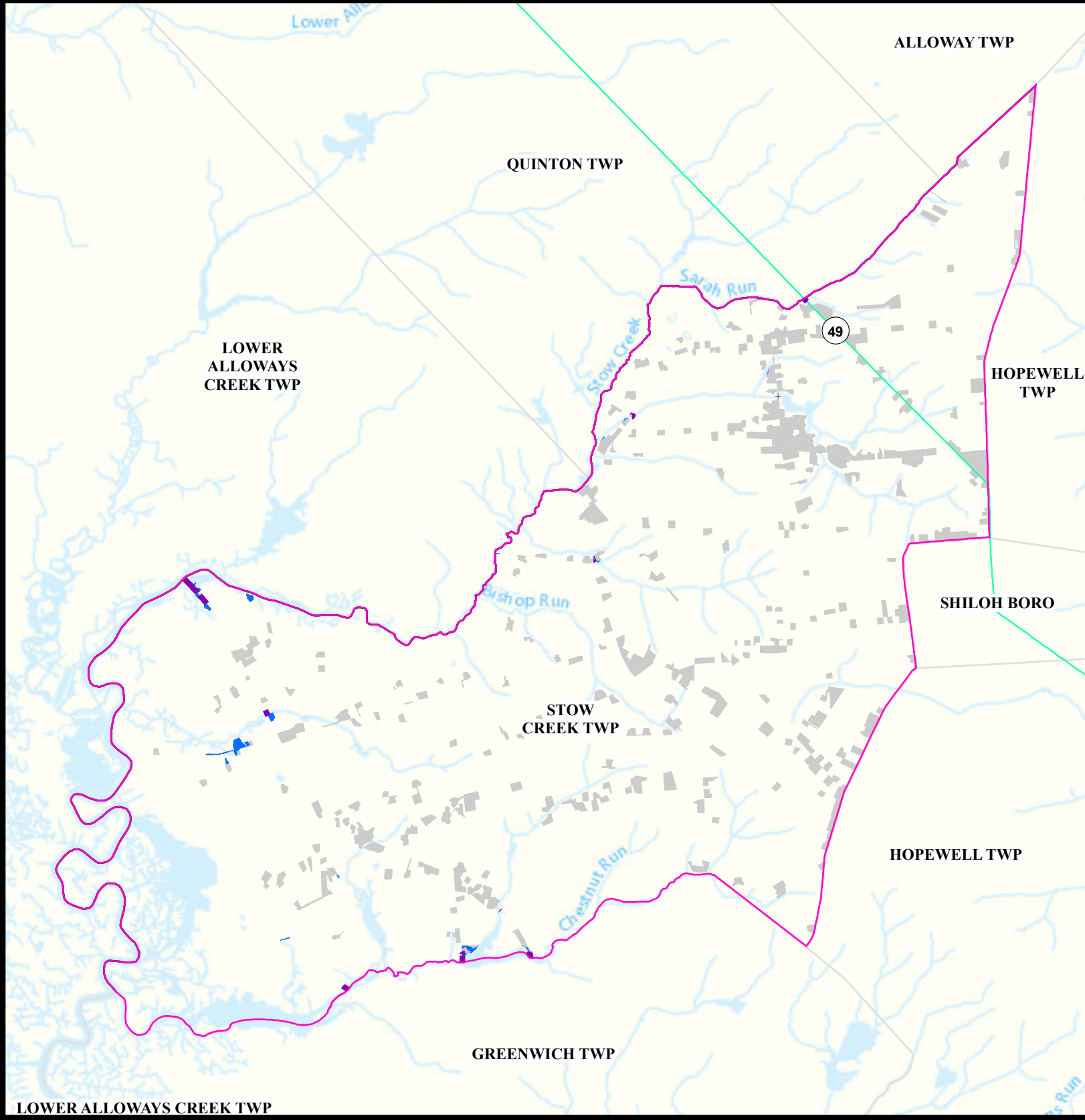
Impacted Roads

Impacted roads show only county level or higher routes in flooding areas.

Date: 4/12/2022

0 0.375 0.75

Miles



Air Permit Sources

STOW CREEK TWP

CUMBERLAND

Legend

- Counties
- STOW CREEK TWP

Facility Type

- Major
- Minor

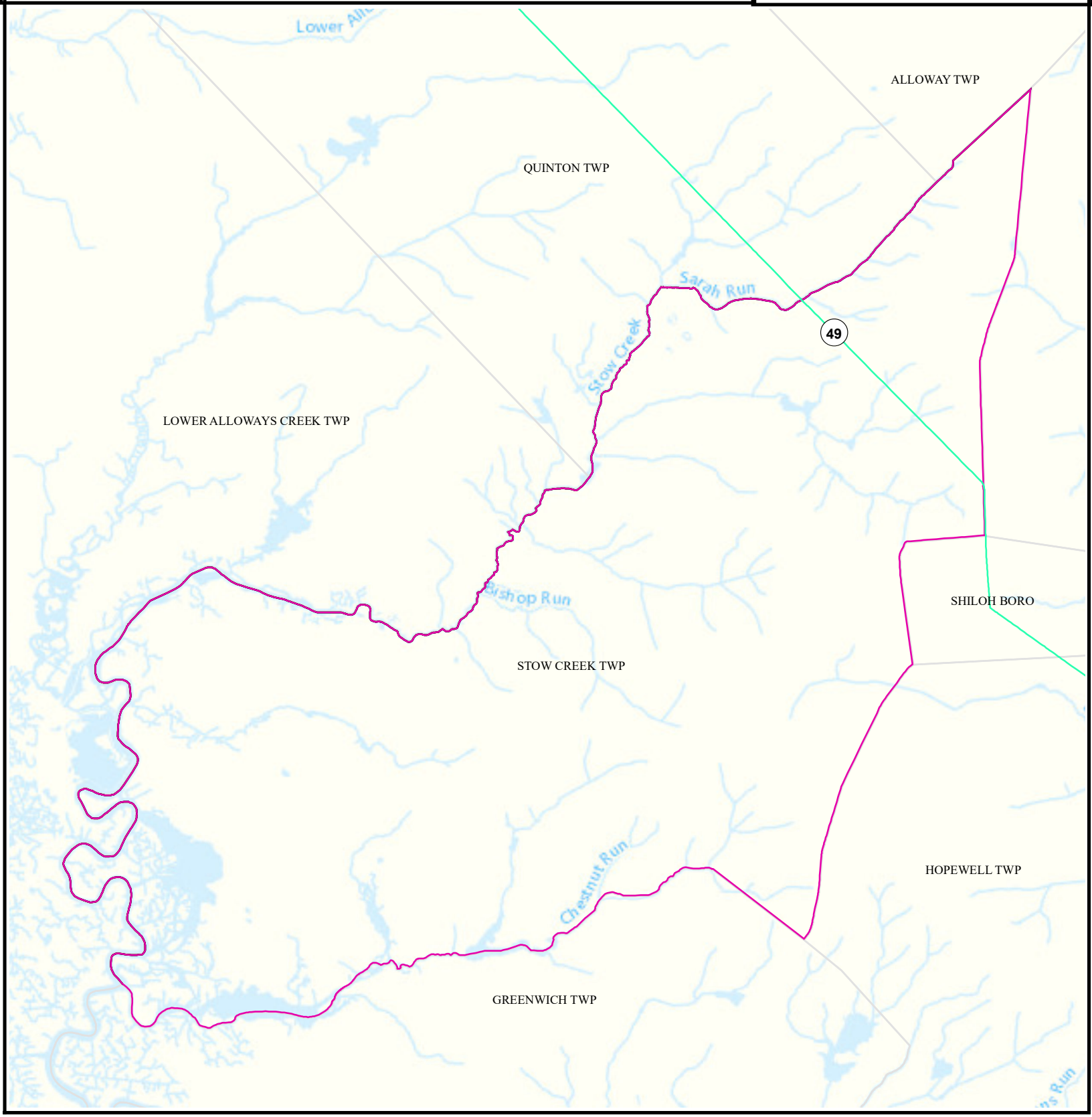


Date: 4/12/2022

0 0.4 0.8



Miles



Contaminated Sites

STOW CREEK TWP


CUMBERLAND

Legend

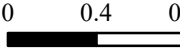
- Counties
- STOW CREEK TWP
- Municipalities

- Known Contaminated Sites
- Density Weighting
- 0
 - 1
 - 2
 - 3
 - Other

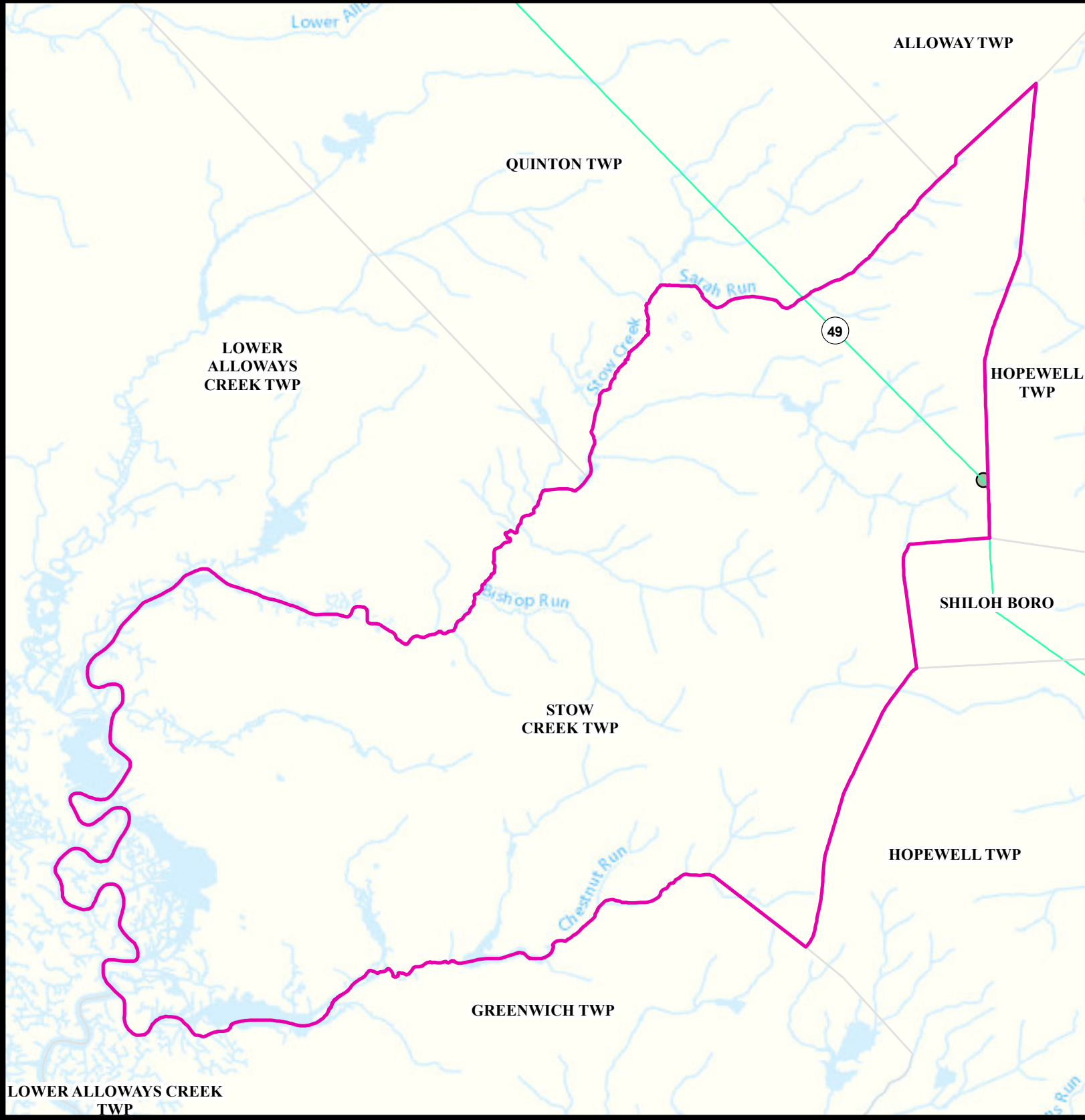
N



Date: 5/24/2022



Miles



Open Space

STOW CREEK TWP

CUMBERLAND

Legend

Counties

STOW CREEK TWP



Open Space



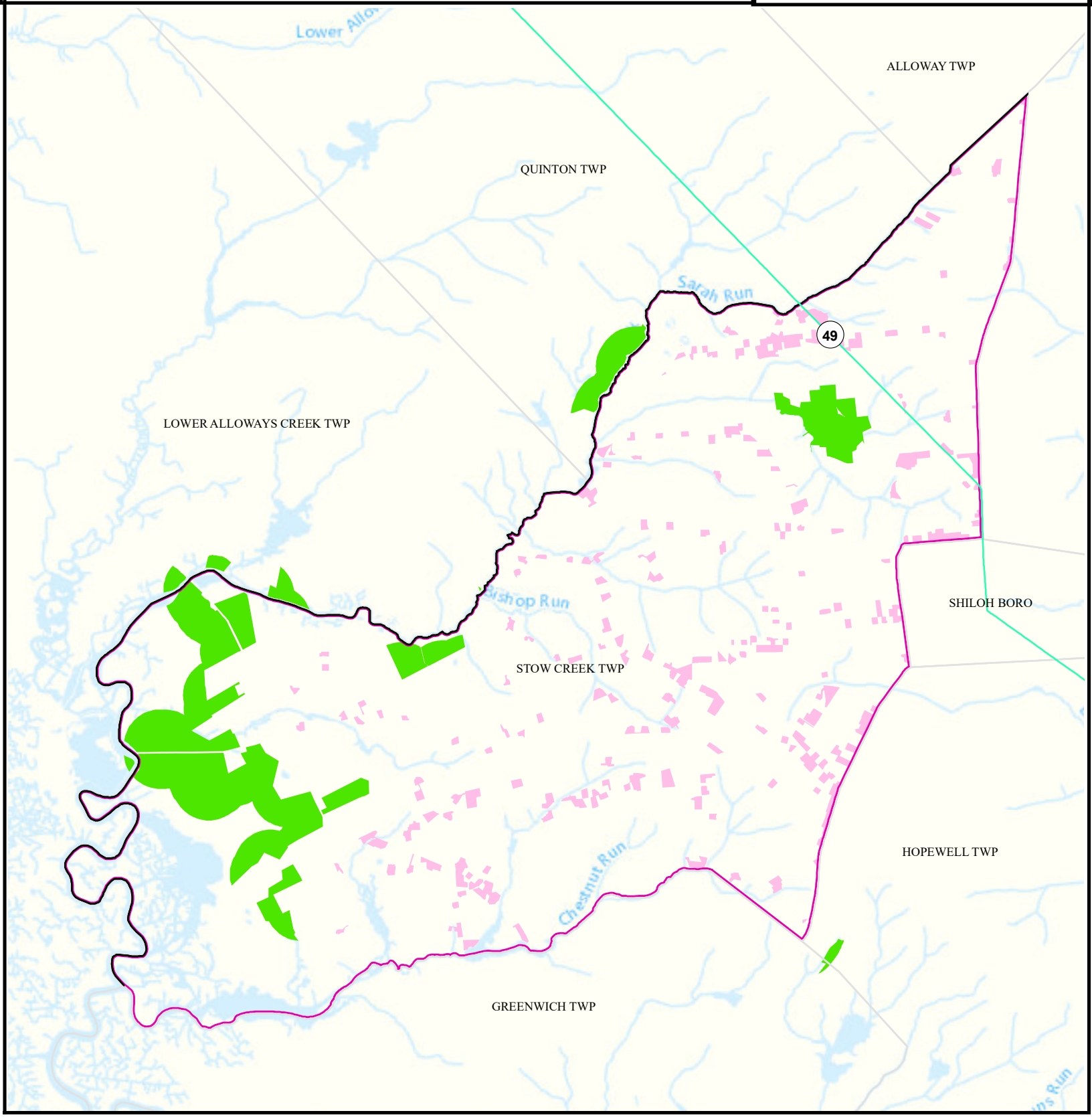
Residential Population
> 1/4 Mile from Open Space



Date: 9/27/2022

0 0.4 0.8

Miles



Low Birth Weight

Stow Creek Twp

Cumberland

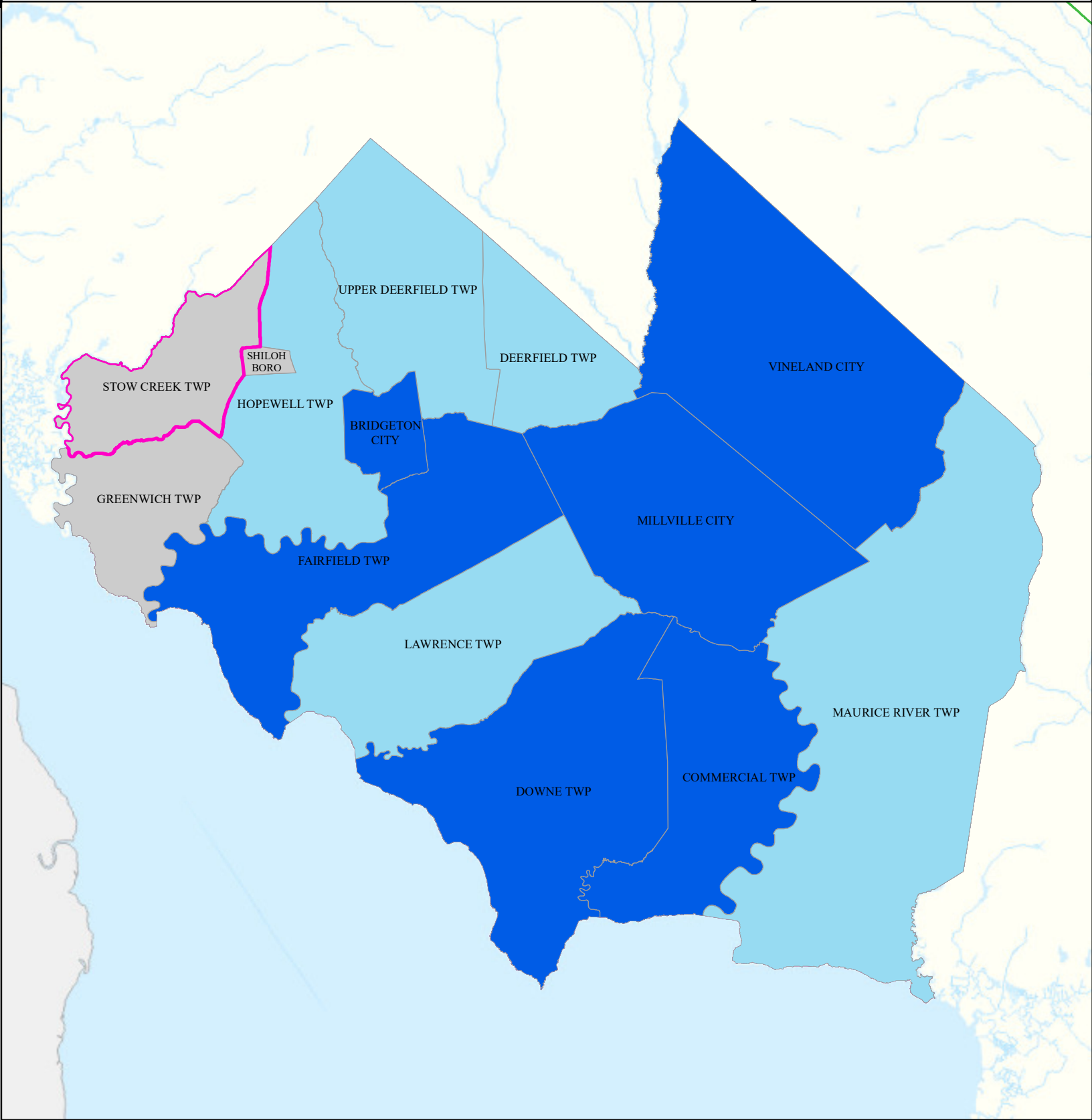
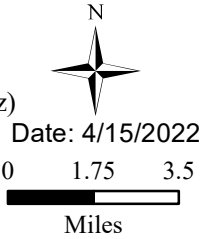
Legend

- Municipalities
- Stow Creek Twp

State Comparison

- Above
- Below
- No Difference
- Suppressed

Birth Rate
Low Birth Weight
(% All Births < 5 lb, 8 oz)
2016 to 2020



Asthma (Emergency Department)

Stow Creek Twp

Cumberland

Legend

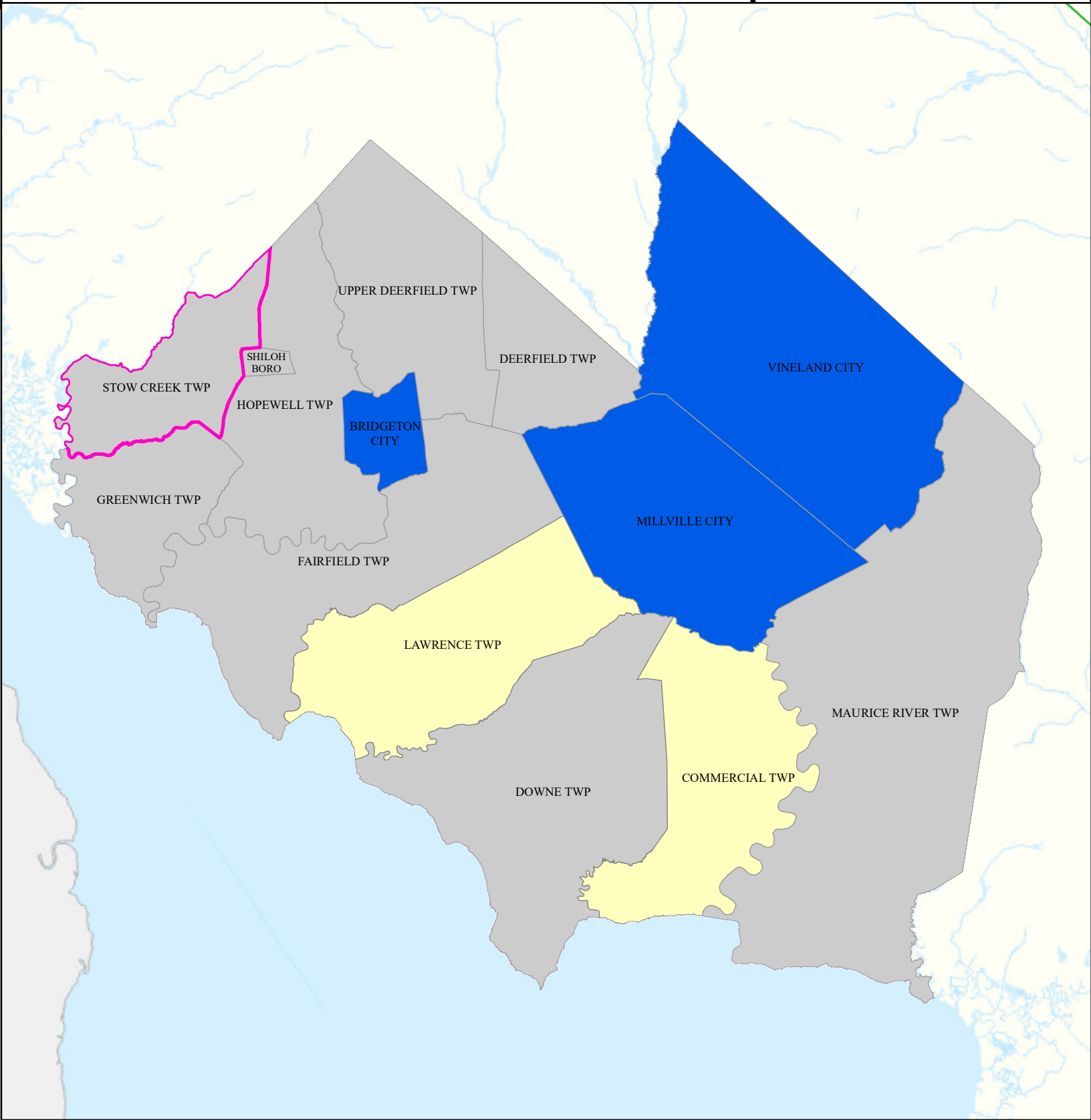
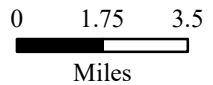
- Municipalities
- Stow Creek Twp

State Comparison

- Above
- Below
- No Difference
- Suppressed

Age-adjusted Rate
per 10,000 People
2016 to 2019
Emergency Department
Visits for Asthma

Date: 4/12/2022



Heart Attack (AMI) (Inpatient)

Stow Creek Twp

Cumberland

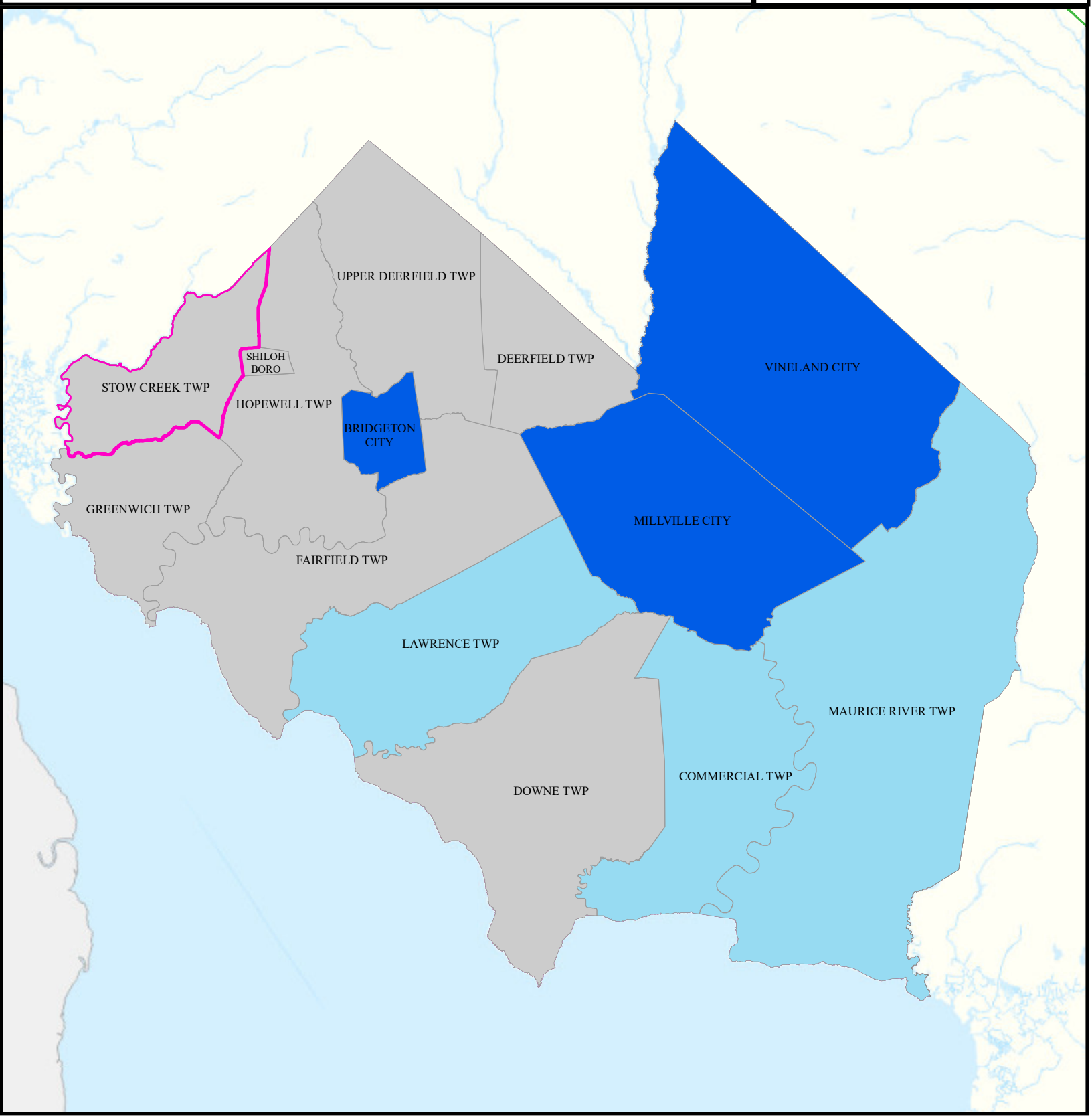
Legend

- Municipalities
- Stow Creek Twp

State Comparison

- Above
- Below
- No Difference
- Suppressed

Age-adjusted Rate per 10,000 People 2016 to 2019
Inpatient Visits for AMI (Acute Myocardial Infarction) 0 1.5 3
Date: 4/11/2022
Miles



Heart Disease Deaths

Stow Creek Twp

Cumberland

Legend

- Municipalities
- Stow Creek Twp

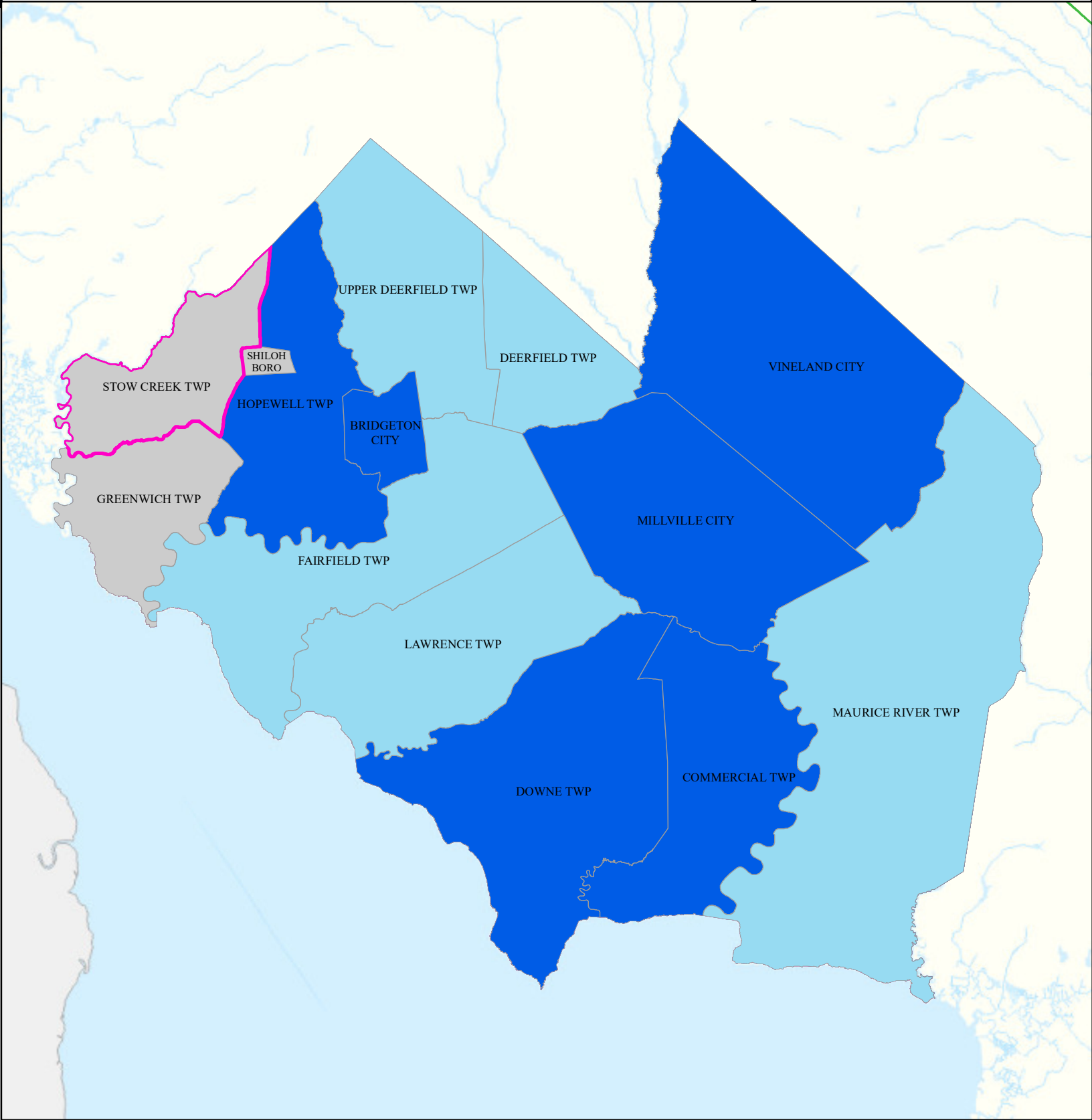
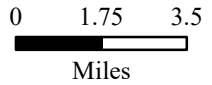
State Comparison

- Above
- Below
- No Difference
- Suppressed

Age-adjusted Death Rate
per 100,000 People
2015 to 2019

Deaths for Heart Disease

Date: 4/16/2022



COPD (Emergency Department)

Stow Creek Twp

Cumberland

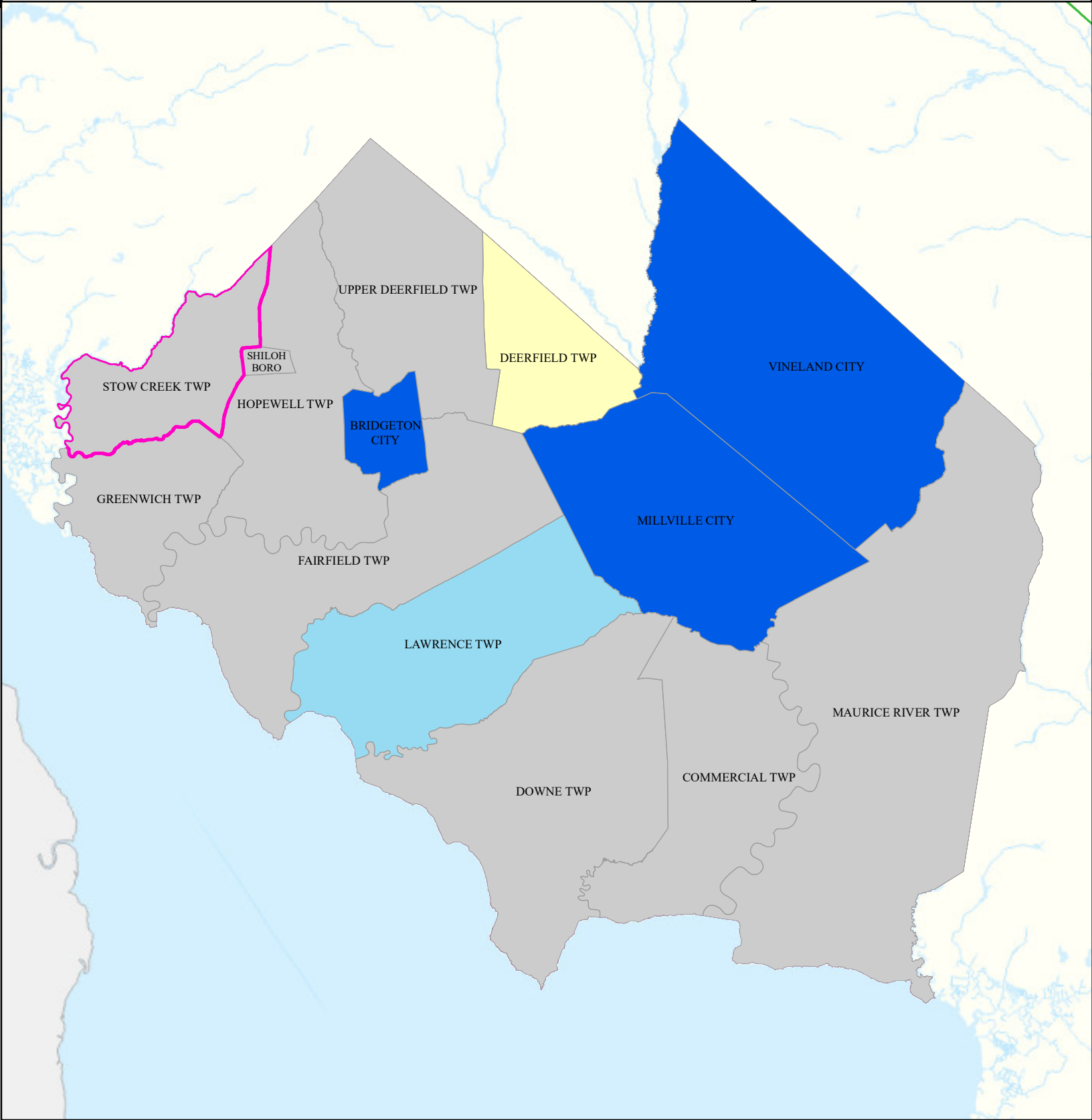
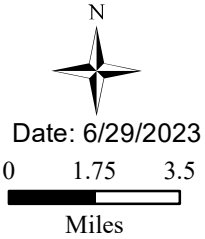
Legend

- Municipalities
- Stow Creek Twp

State Comparison

- Above
- Below
- No Difference
- Suppressed

Age-adjusted Rate
per 10,000 People
2016 to 2019
Emergency Department
Visits for COPD



Stroke (Inpatient)

Stow Creek Twp

Cumberland

Legend

- Municipalities
- Stow Creek Twp

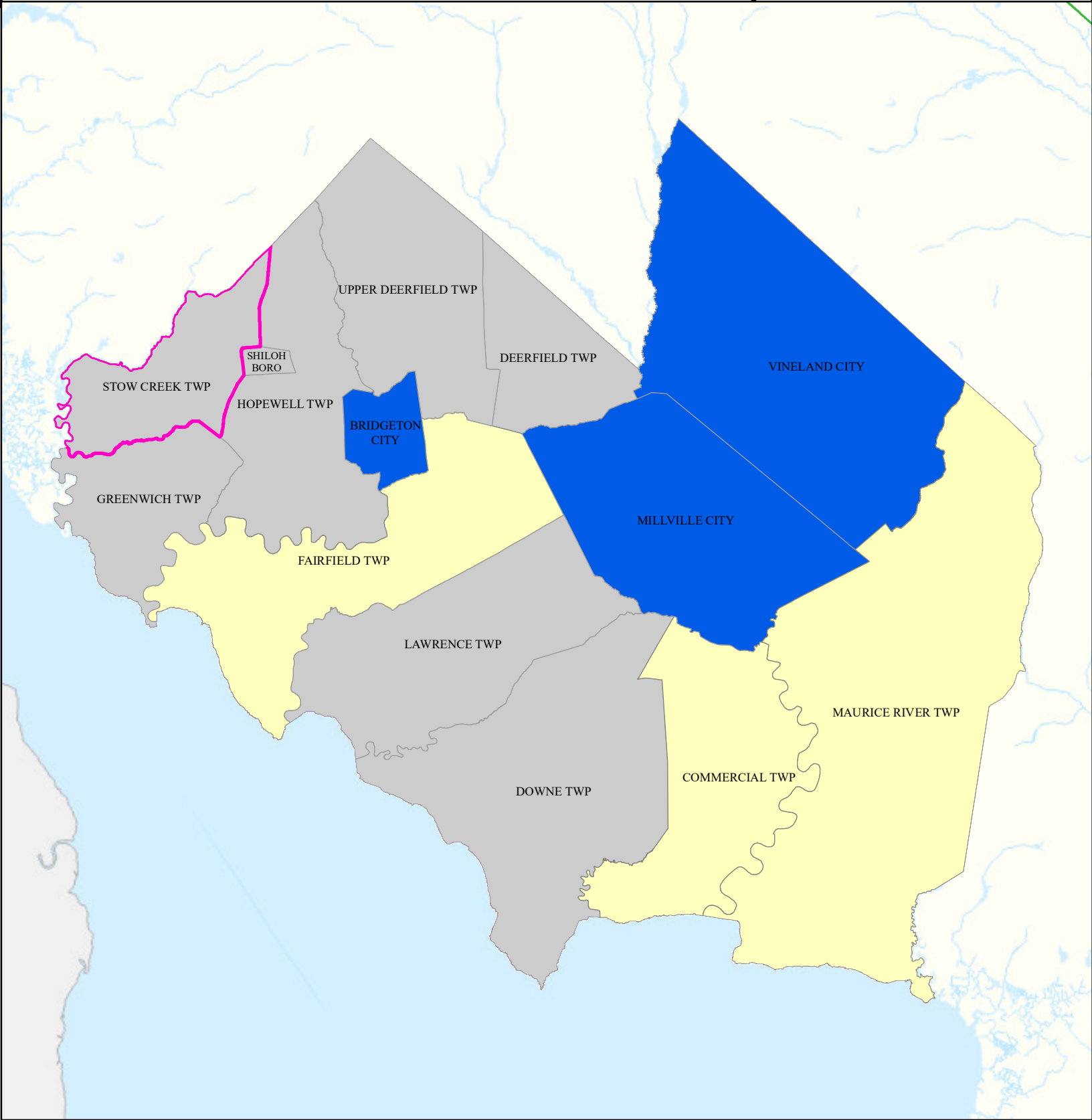
State Comparison

- Above
- Below
- No Difference
- Suppressed

Age-adjusted Rate
per 10,000 People
2016 to 2019
Inpatient Visits
for Stroke



Date: 4/14/2022



All Cancer Deaths

Stow Creek Twp

Cumberland

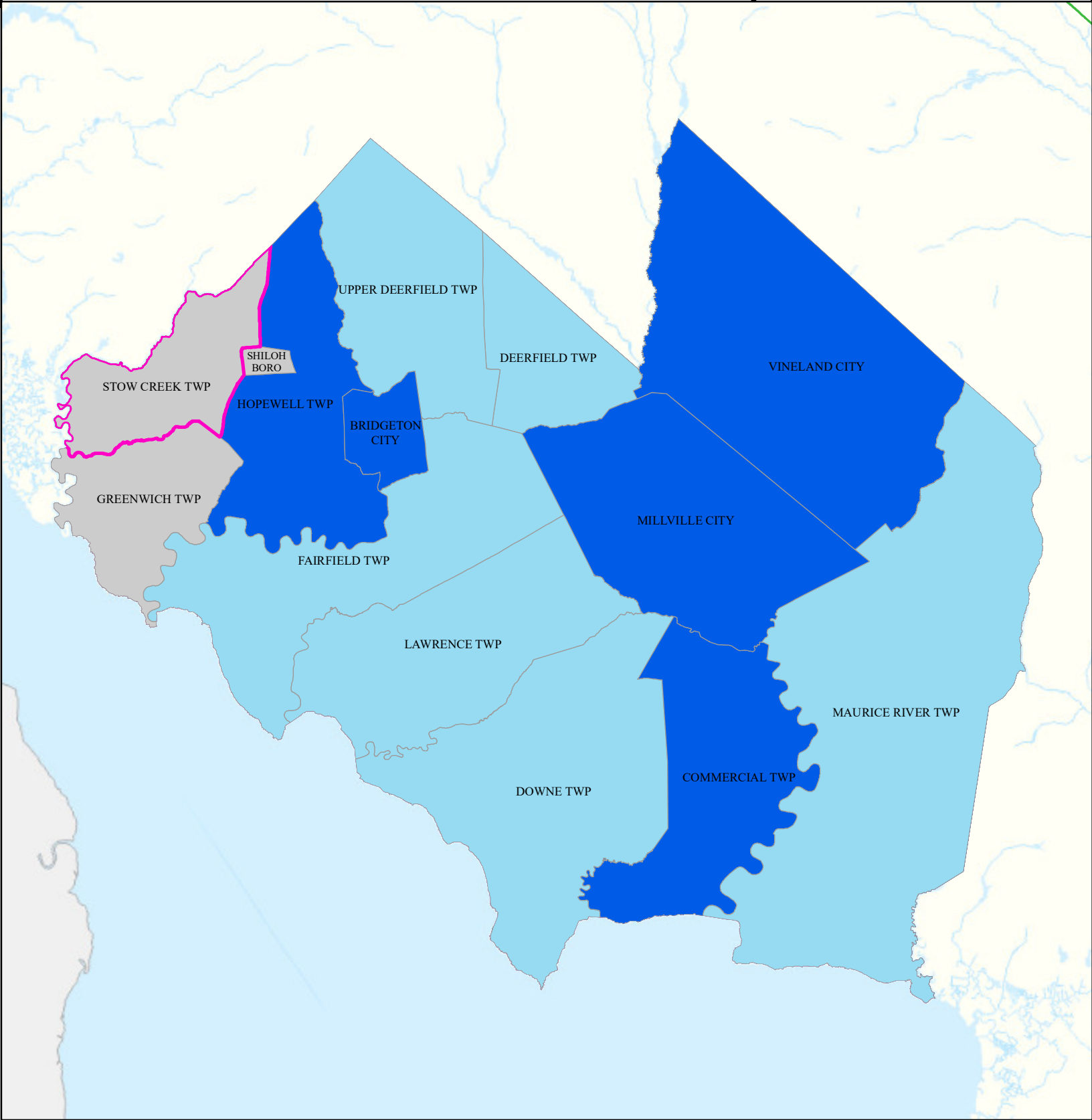
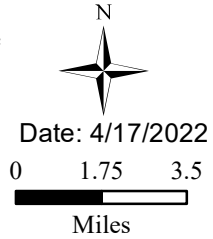
Legend

- Municipalities
- Stow Creek Twp

State Comparison

- Above
- Below
- No Difference
- Suppressed

Age-adjusted Death Rate
per 100,000 People
2015 to 2019
Deaths for Cancer



Lung Cancer Deaths

Stow Creek Twp

Cumberland

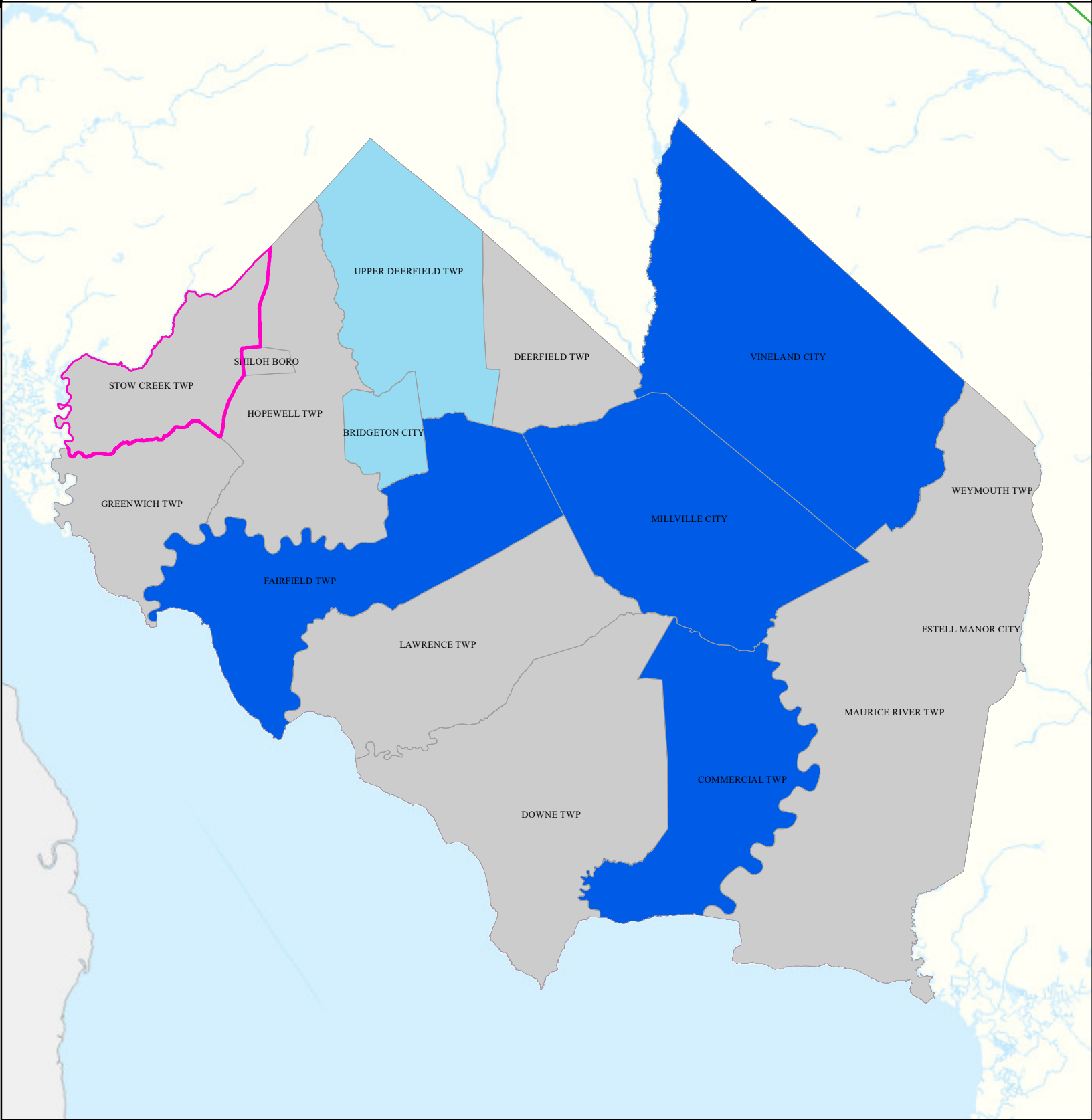
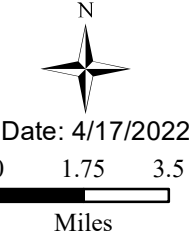
Legend

- Municipalities
- Stow Creek Twp

State Comparison

- Above
- Below
- No Difference
- Suppressed

Age-adjusted Death Rate
per 100,000 People
2015 to 2019
Deaths for Lung Cancer



Smoking

Stow Creek Twp

Cumberland

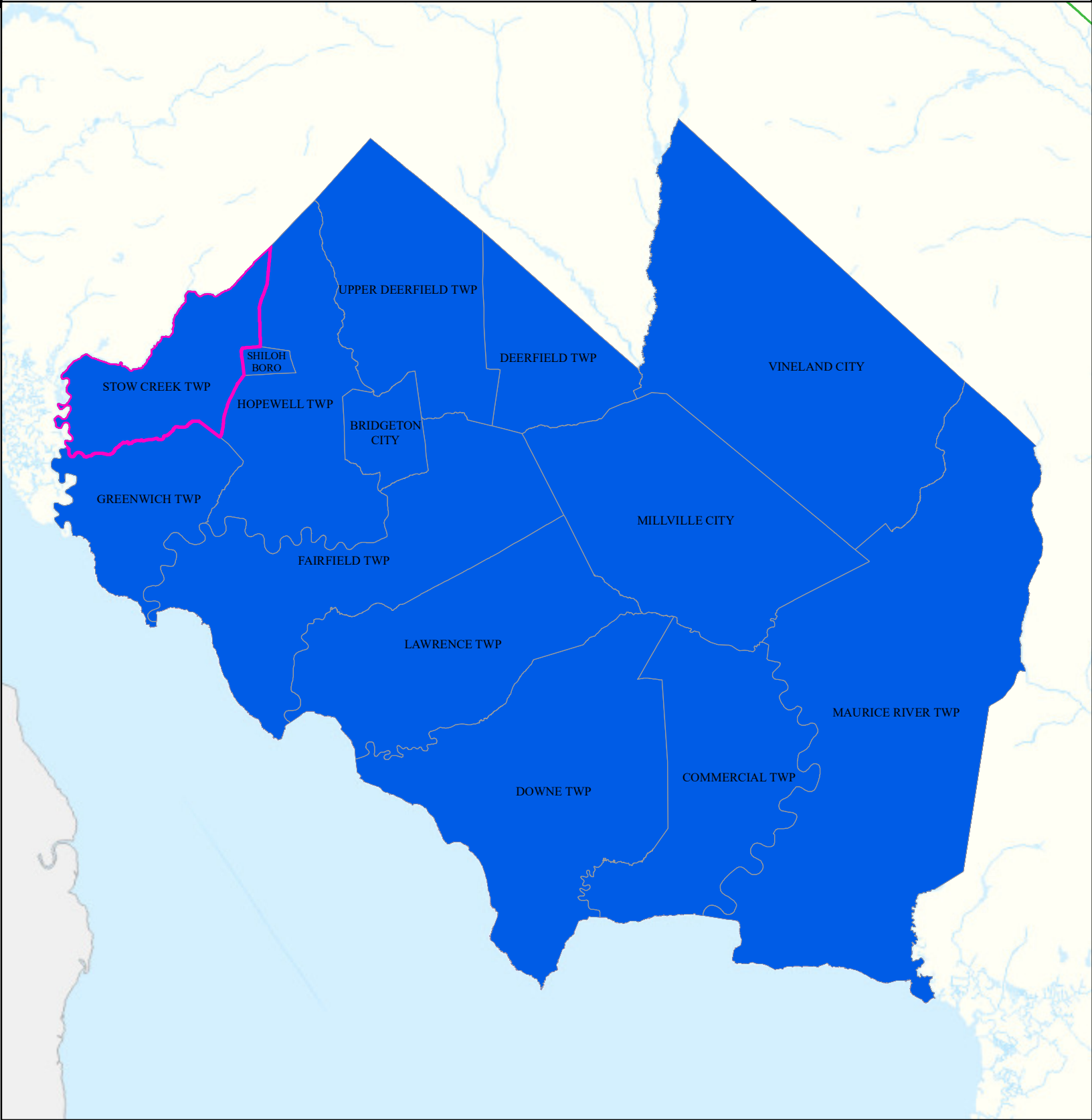
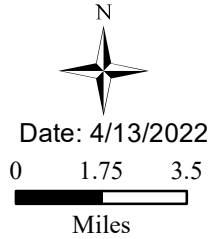
Legend

- Municipalities
- Stow Creek Twp

State Comparison

- Above
- Below
- No Difference
- Suppressed

Smoking Rate
Per Municipal
% of Adults
2018



Obesity

Stow Creek Twp

Cumberland

Legend

- Municipalities
- Stow Creek Twp

State Comparison

- Above
- Below
- No Difference
- Suppressed

Obesity Rate
Per Municipal
% of Adults
2018

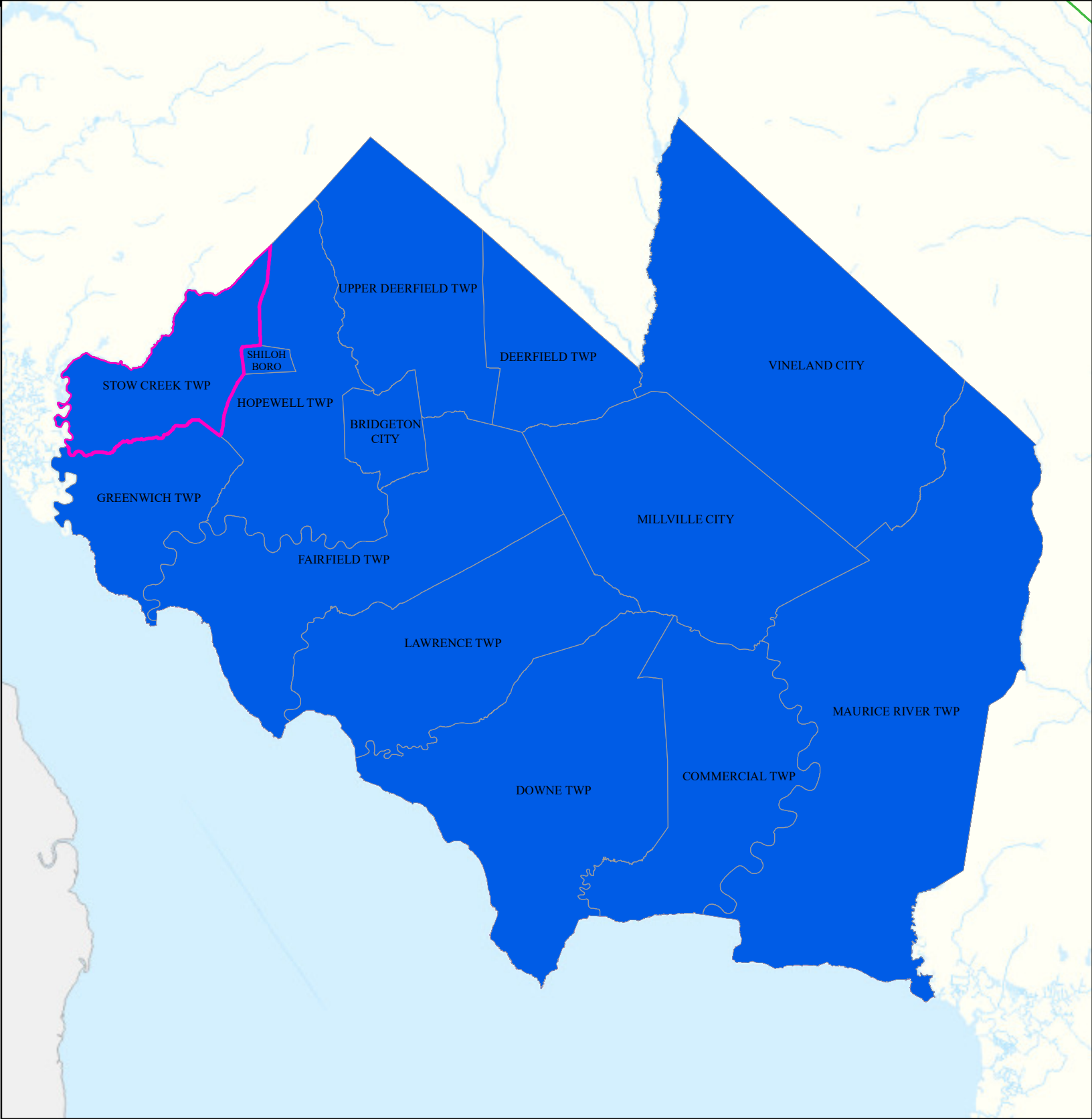


Date: 4/14/2022

0 1.75 3.5



Miles



Heat Related Illness (Emergency Department)

Stow Creek Twp

Cumberland

Legend

- Municipalities
- Stow Creek Twp

State Comparison

- Above
- Below
- No Difference
- Suppressed

Age-adjusted Rate
per 10,000 People
2016 to 2019
Emergency Department
Visits for
Heat Related Illness

