

# Health Care Facilities

TRENTON CITY

MERCER

## Legend

- Counties
- TRENTON CITY

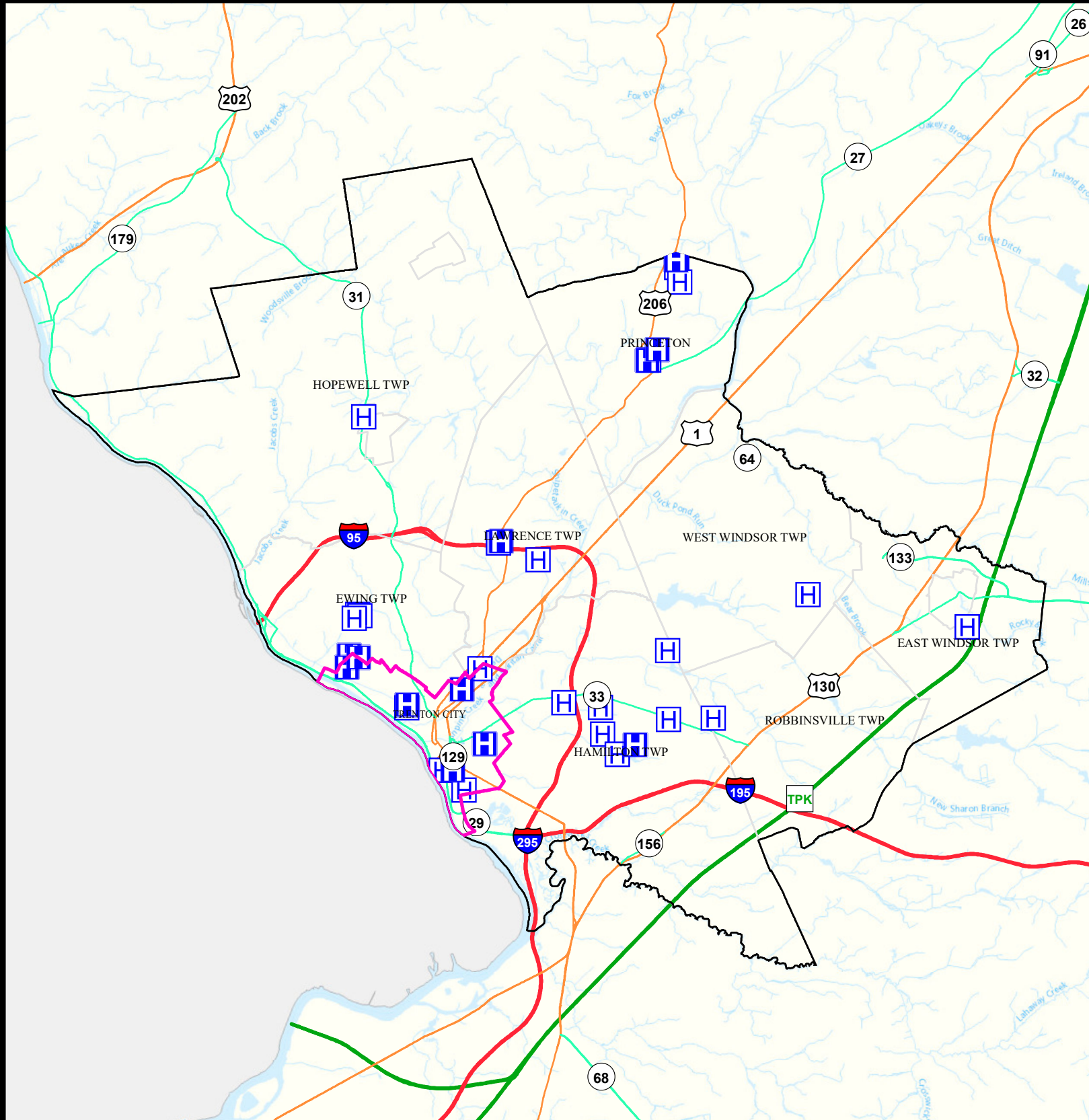
- Hospitals
- Nursing Homes
- Municipalities

N

Date: 9/22/2022

0 1.5 3

Miles



# Air Cancer Risk











TRENTON CITY

MERCER


## Legend

-  Counties
-  TRENTON CITY

### Risk per Million

	61 - 87		128 - 145		244 - 283
	88 - 108		146 - 167		284 - 351
	109 - 127		168 - 193		352 - 604
			194 - 243		

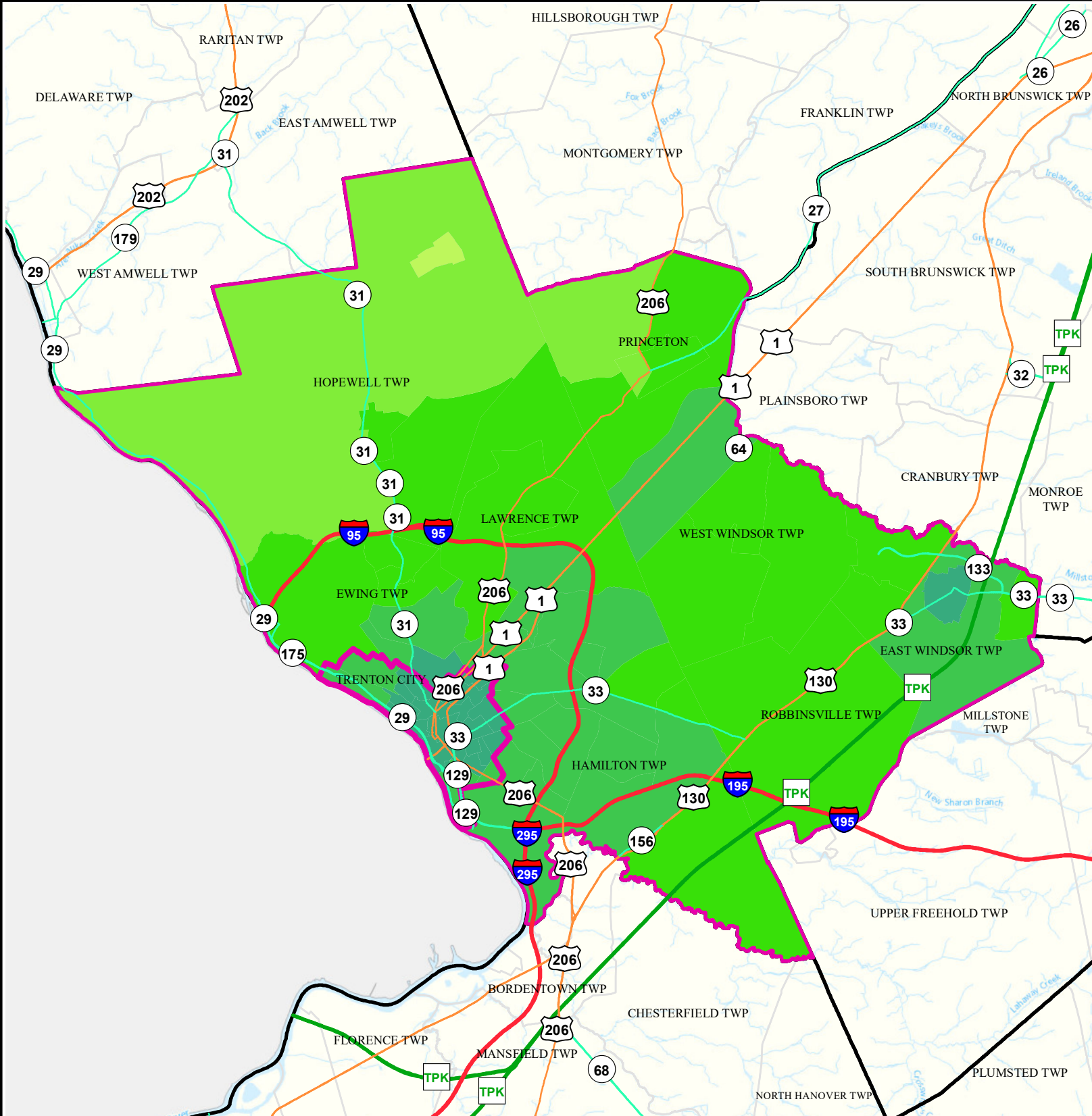
N



Date: 9/28/2022

0 1.5 3

Miles








# Air Non Cancer

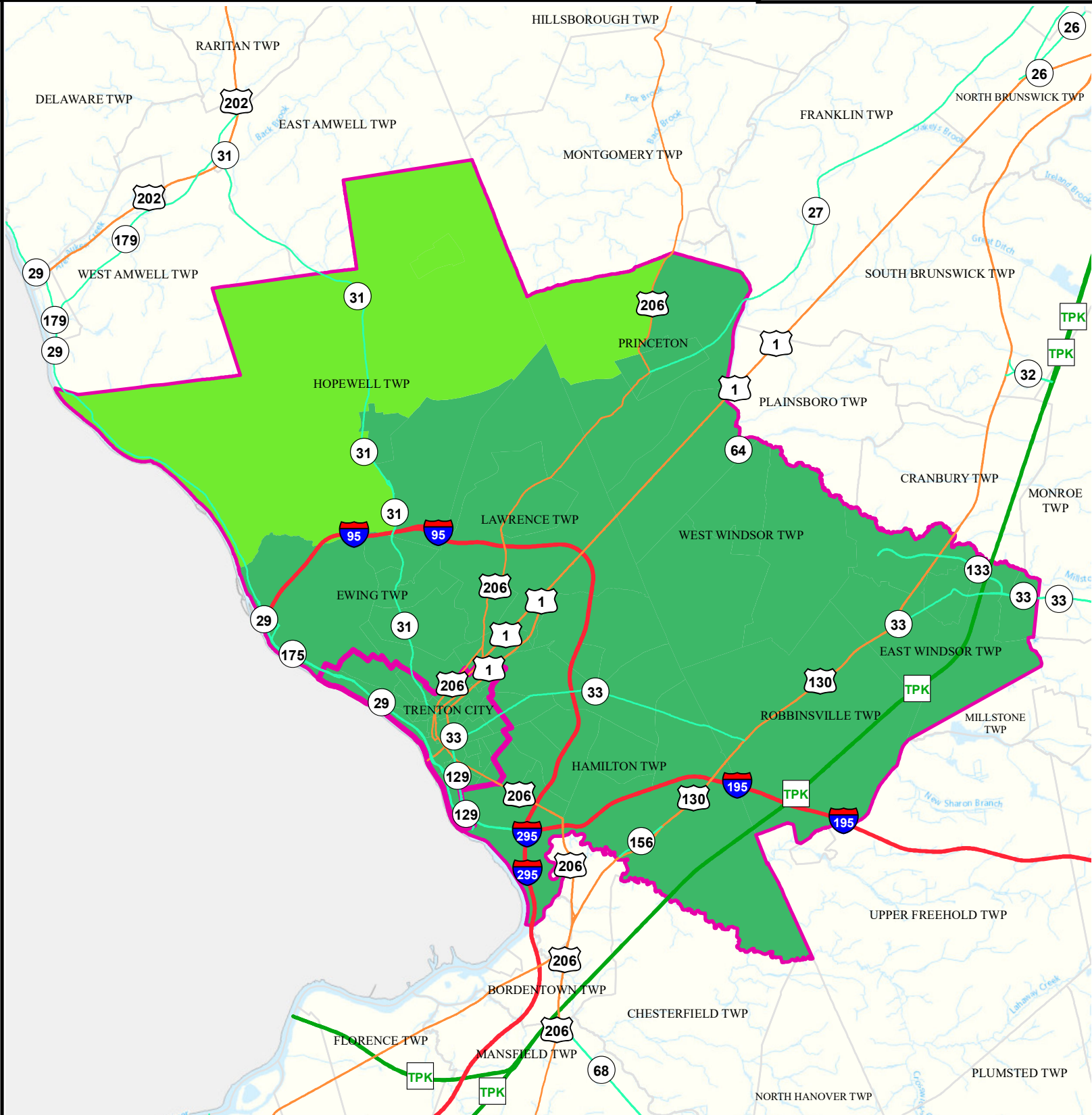
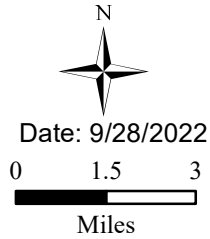
**TRENTON CITY**

**MERCER**

## Legend

-  Counties
-  TRENTON CITY

Combined Hazard Index	
	0.75 - 1.00
	1.01 - 2.00
	2.01 - 3.00
	3.01 - 4.00
	4.01 - 8.09



# Air Quality Index (AQI)

TRENTON CITY

MERCER

## Legend

- Municipalities
- TRENTON CITY

## Average AQI Days

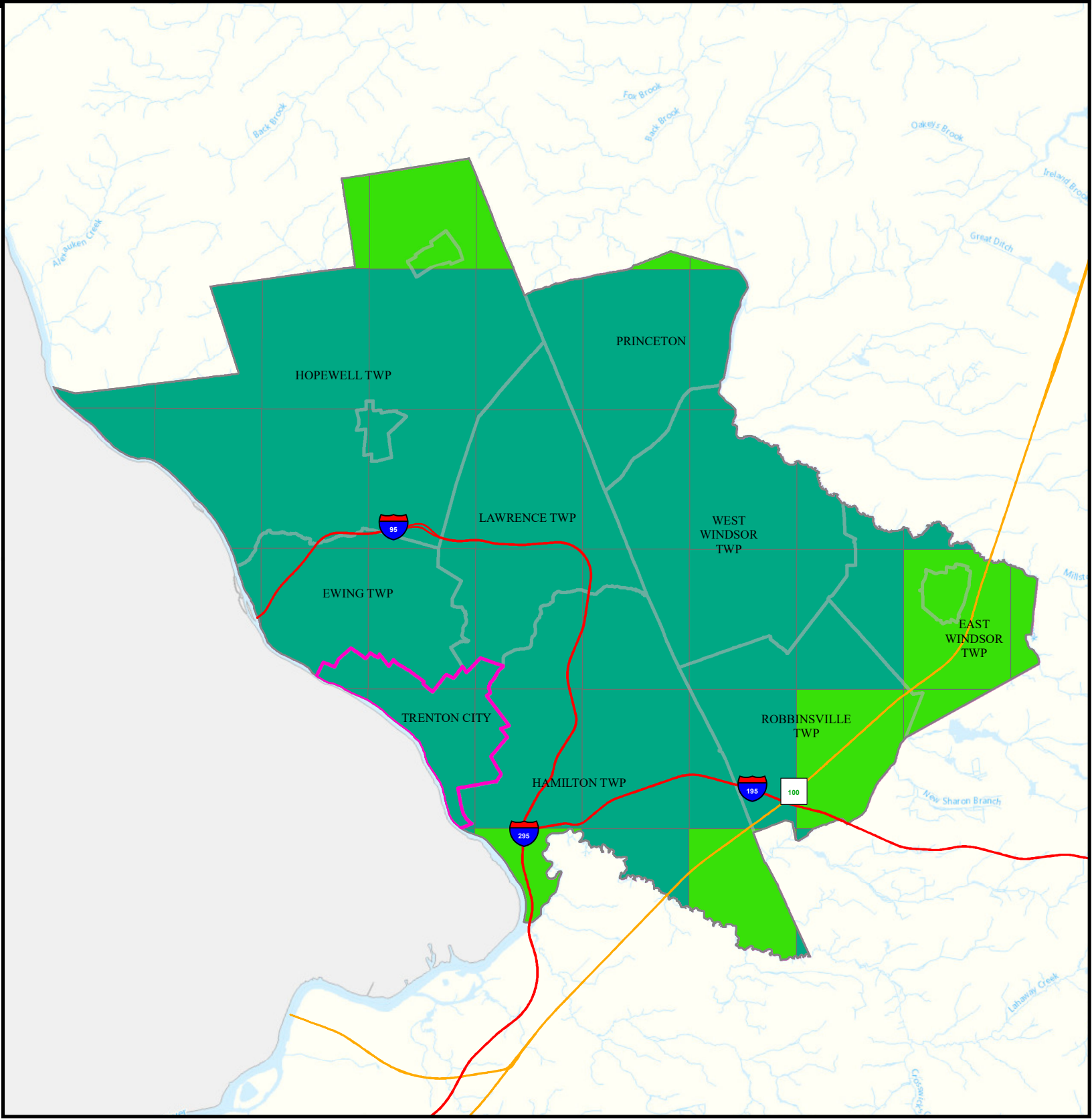
- 0 - 1
- 1.5 - 3
- 3.5 - 6.5
- 7 - 12

Air Quality Index (AQI)  
Days above 100 (3 yr Avg)  
2018 to 2020



0 1.5 3 Miles

Date: 4/18/2022



# Community Drinking Water

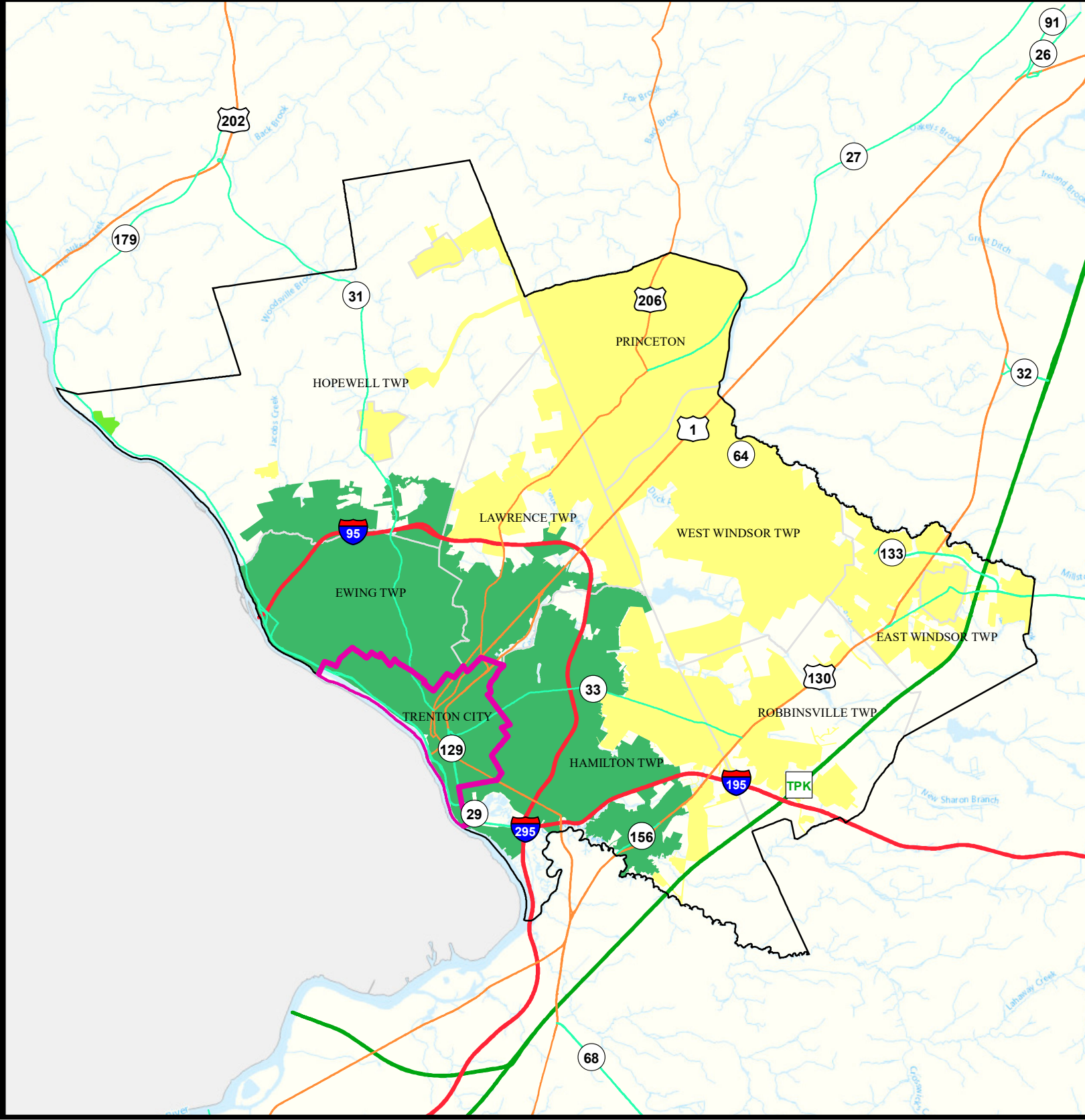
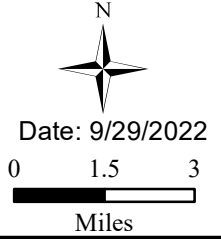
TRENTON CITY

MERCER

## Legend

- Counties
- TRENTON CITY
- Municipalities

MCL and TT Violations and AL Exceedances	
0	6 - 10
1 - 5	11 - 15
	16 - 30



# Ground Water/Soil

TRENTON CITY

MERCER

## Legend

- Counties
- Municipalities
- TRENTON CITY

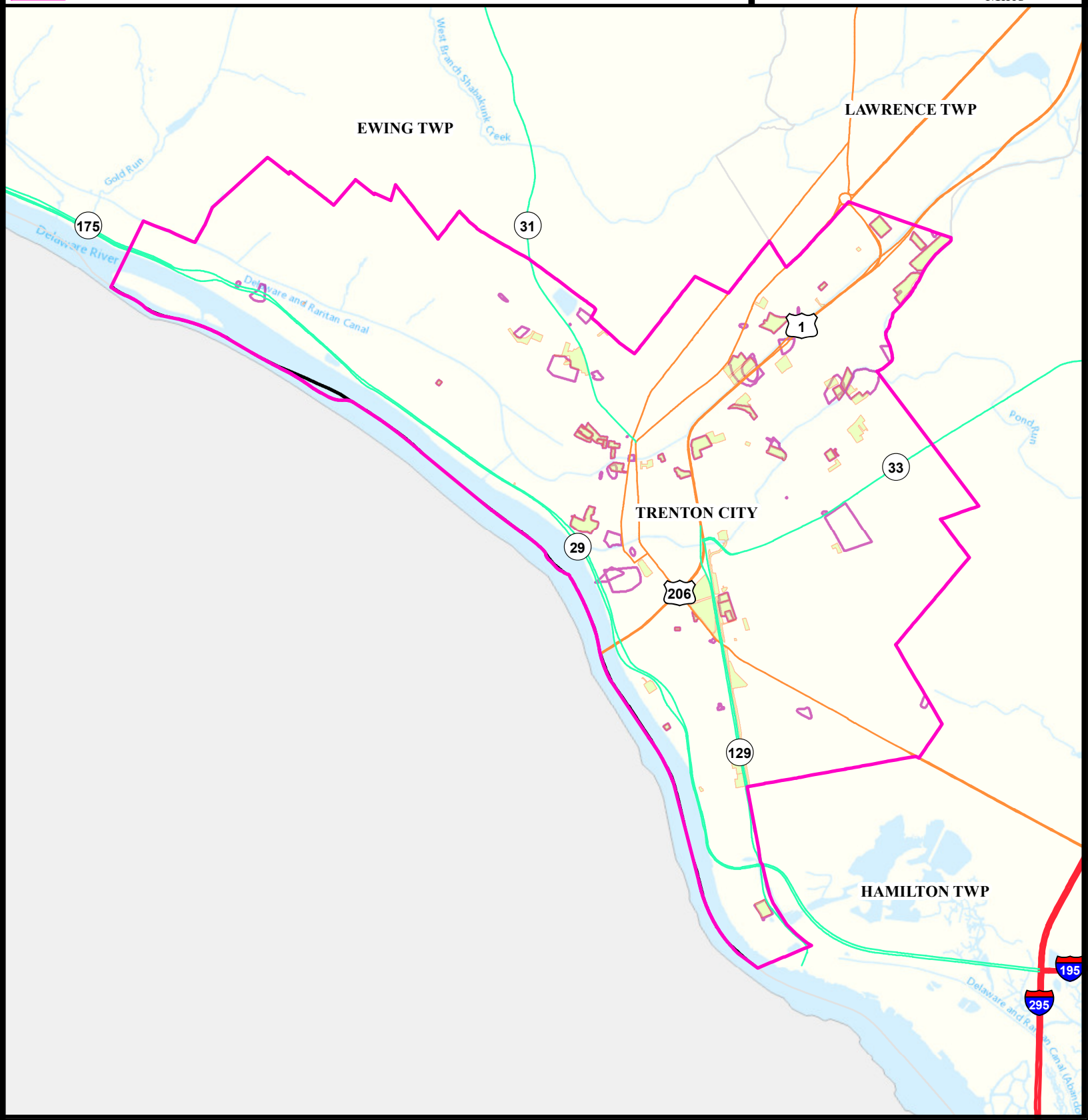
- Deed Notice Areas
- Groundwater Contamination Areas (CKE)
- Groundwater Contamination Areas (CEA)

N

Date: 8/9/2022

0 0.3 0.6

Miles



# Surface Water Quality

TRENTON CITY


MERCER

## Legend

- Counties
- Municipalities
- TRENTON CITY

Impaired (Percent)		
<span style="display: inline-block; width: 20px; height: 10px; background-color: #ffffcc; border: 1px solid black; margin-right: 5px;"></span> 20	<span style="display: inline-block; width: 20px; height: 10px; background-color: #c1e1c1; border: 1px solid black; margin-right: 5px;"></span> 40	<span style="display: inline-block; width: 20px; height: 10px; background-color: #a6c9ec; border: 1px solid black; margin-right: 5px;"></span> 66.
<span style="display: inline-block; width: 20px; height: 10px; background-color: #fff2cc; border: 1px solid black; margin-right: 5px;"></span> 25	<span style="display: inline-block; width: 20px; height: 10px; background-color: #99cc99; border: 1px solid black; margin-right: 5px;"></span> 50	<span style="display: inline-block; width: 20px; height: 10px; background-color: #c1c1e1; border: 1px solid black; margin-right: 5px;"></span> 75
<span style="display: inline-block; width: 20px; height: 10px; background-color: #ffff00; border: 1px solid black; margin-right: 5px;"></span> 33.	<span style="display: inline-block; width: 20px; height: 10px; background-color: #66cc66; border: 1px solid black; margin-right: 5px;"></span> 60	<span style="display: inline-block; width: 20px; height: 10px; background-color: #0070c0; border: 1px solid black; margin-right: 5px;"></span> 80
<span style="display: inline-block; width: 20px; height: 10px; background-color: #cccccc; border: 1px solid black; margin-right: 5px;"></span> 0		<span style="display: inline-block; width: 20px; height: 10px; background-color: #000080; border: 1px solid black; margin-right: 5px;"></span> 100


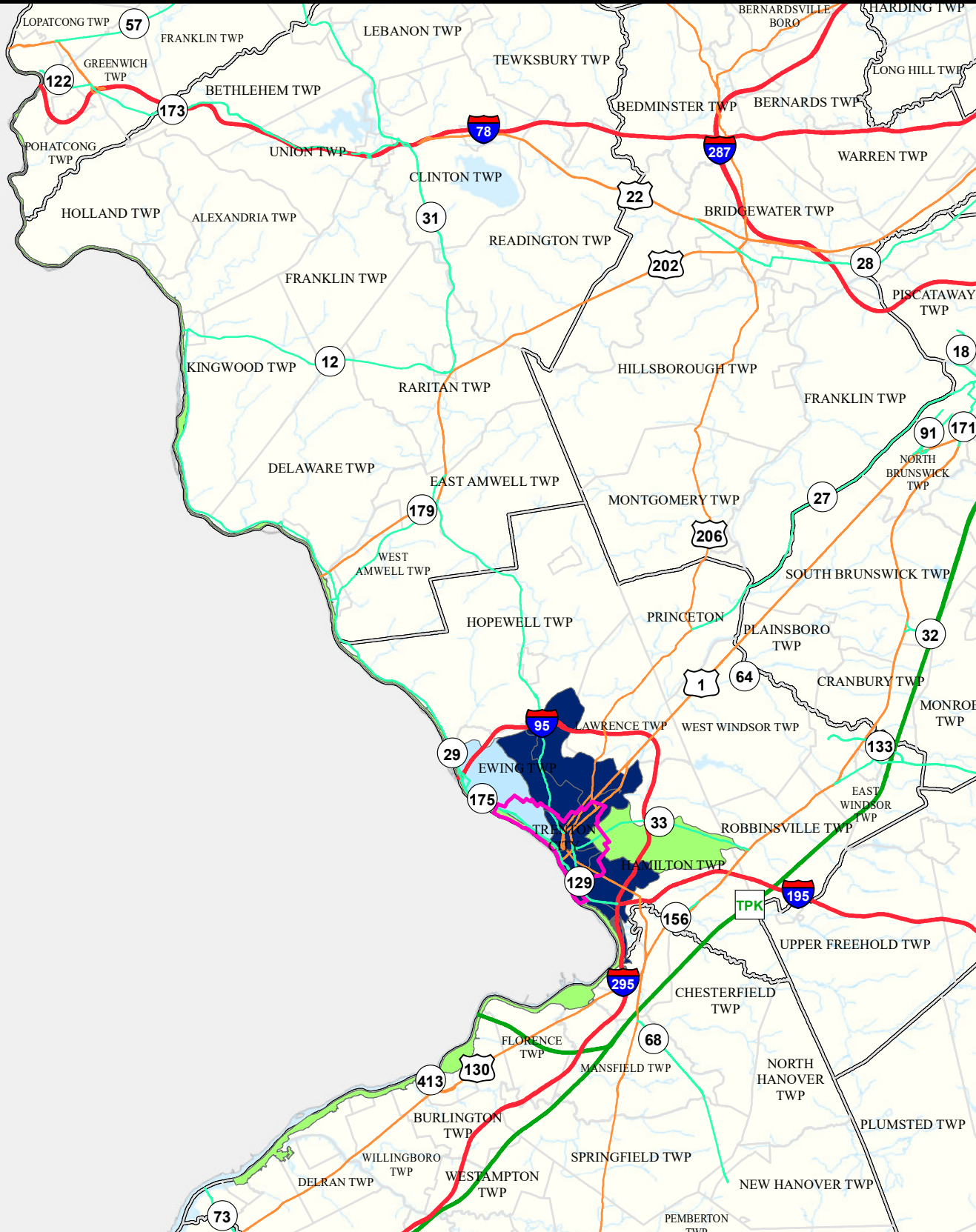
N



Date: 9/22/2022

0 2.5 5

Miles



What is a Designated Use?

New Jersey's [Surface Water Quality Standards \(SWQS\)](#) establish the designated uses of the State's surface waters, classify surface waters based on those uses, and specify the water quality criteria and other policies necessary to attain those uses. Designated uses include water supply for drinking, agriculture and industrial uses, fish consumption, shellfish resources, propagation of fish and wildlife, and recreation.

The table below show the designated use information for your municipality. For more information on Surface Water Quality, see the Healthy Community Planning Report for this municipality.

AU_name	Aquatic_General	Aquatic_Trout	Water_Supply	Recreation	Shellfish	Fish_Consumption
Duck Creek and UDRV to Assunpink Ck	Insufficient Data	NA	Insufficient Data	Insufficient Data	NA	Non Attaining
Shady Brook/Spring Lake/Rowan Lake	Non Attaining	NA	Insufficient Data	Insufficient Data	NA	Non Attaining
Shabakunk Creek	Non Attaining	NA	Non Attaining	Non Attaining	NA	Non Attaining
Shabakunk Creek WB	Non Attaining	NA	Non Attaining	Non Attaining	NA	Non Attaining
Pond Run	Non Attaining	NA	Attaining	Insufficient Data	NA	Insufficient Data
Assunpink Ck (below Shipetaukin Ck)	Non Attaining	NA	Non Attaining	Non Attaining	NA	Non Attaining
Mercer (Calhoun St to Jacobs Creek)	Non Attaining	NA	Non Attaining	Attaining	NA	Insufficient Data
Delaware River 1E	Non Attaining	NA	Attaining	Attaining	NA	Non Attaining
Delaware River 2	Non Attaining	NA	Attaining	Attaining	NA	Non Attaining



# Flooding (Urban Land Cover)

TRENTON CITY

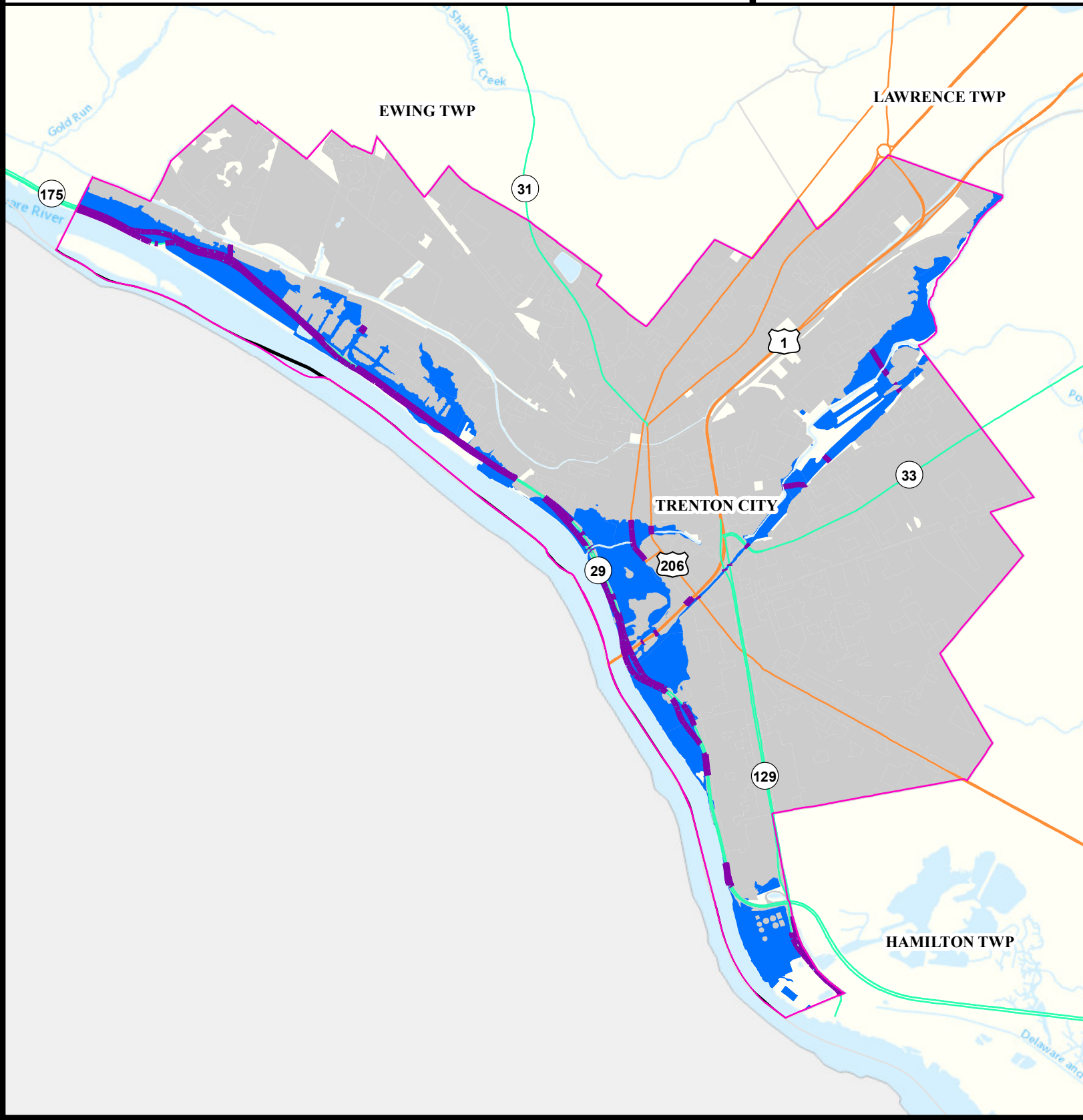
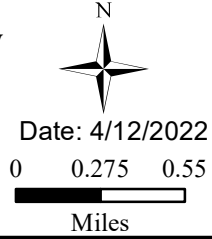
MERCER

## Legend

- Counties
- TRENTON CITY
- Municipalities

- Urban Land
- Urban Land Flooded
- Toll Road
- Interstate
- US Highway
- State Highway
- Impacted Roads

Impacted roads show only county level or higher routes in flooding areas.



# Air Permit Sources

TRENTON CITY

MERCER

## Legend

- Counties
- TRENTON CITY

## Facility Type

- Major
- Minor

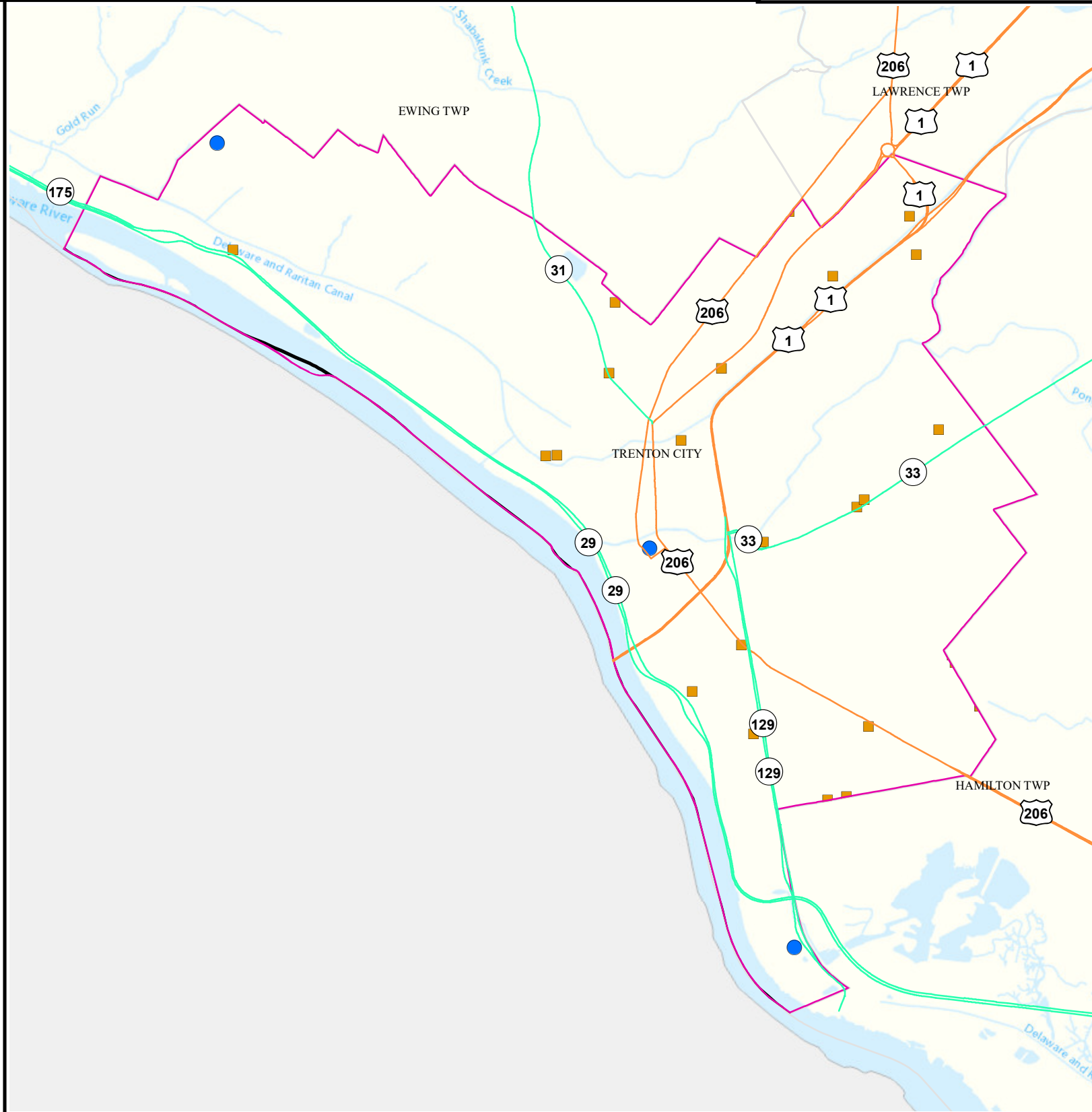


Date: 4/12/2022

0 0.275 0.55



Miles



# Combined Sewer Overflow

TRENTON CITY

MERCER

## Legend

- Counties
- TRENTON CITY

Municipalities

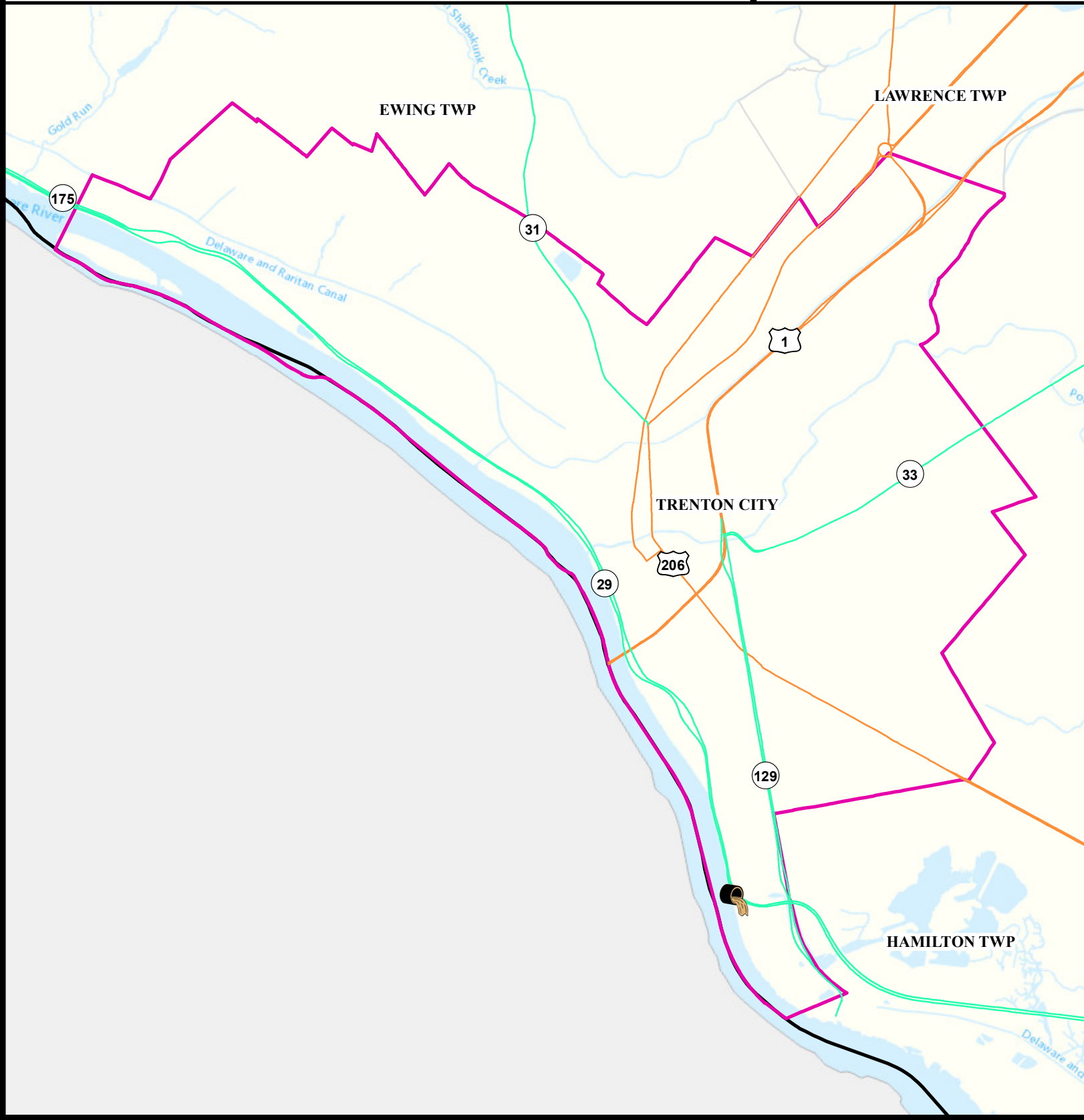


Date: 4/11/2022

0 0.275 0.55



Miles



# Brownfield Development Areas

TRENTON CITY

MERCER

## Legend

- Counties
- TRENTON CITY
- Municipalities

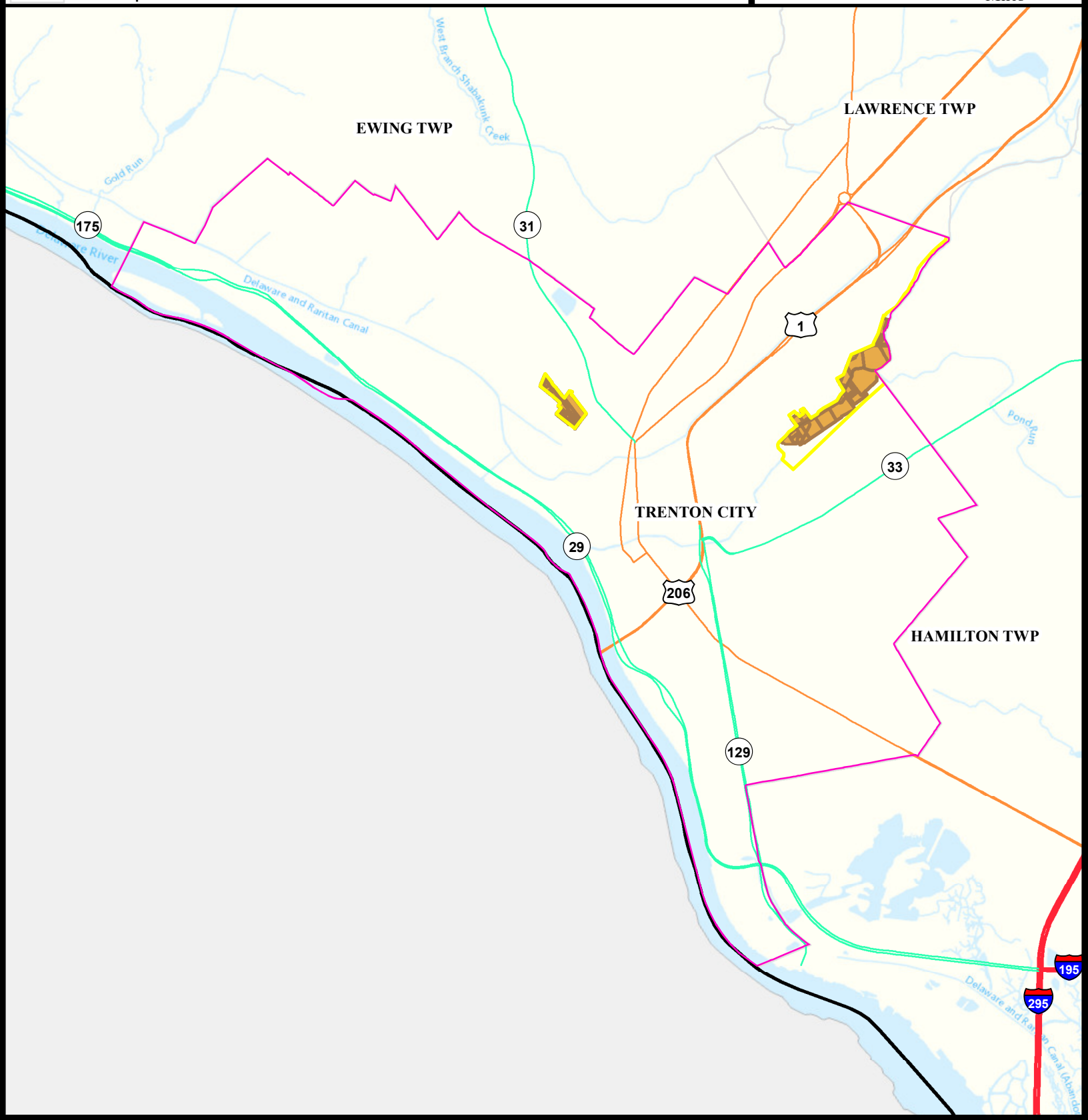
- Brownfield Development Area (Outline)
- Brownfield Development Area (Block and Lots)

N

Date: 4/12/2022

0 0.3 0.6

Miles



# Contaminated Sites

TRENTON CITY


MERCER

## Legend

- Counties
- TRENTON CITY
- Municipalities


- Known Contaminated Sites
- Density Weighting
- 0
  - 1
  - 2
  - 3
  - Other

N

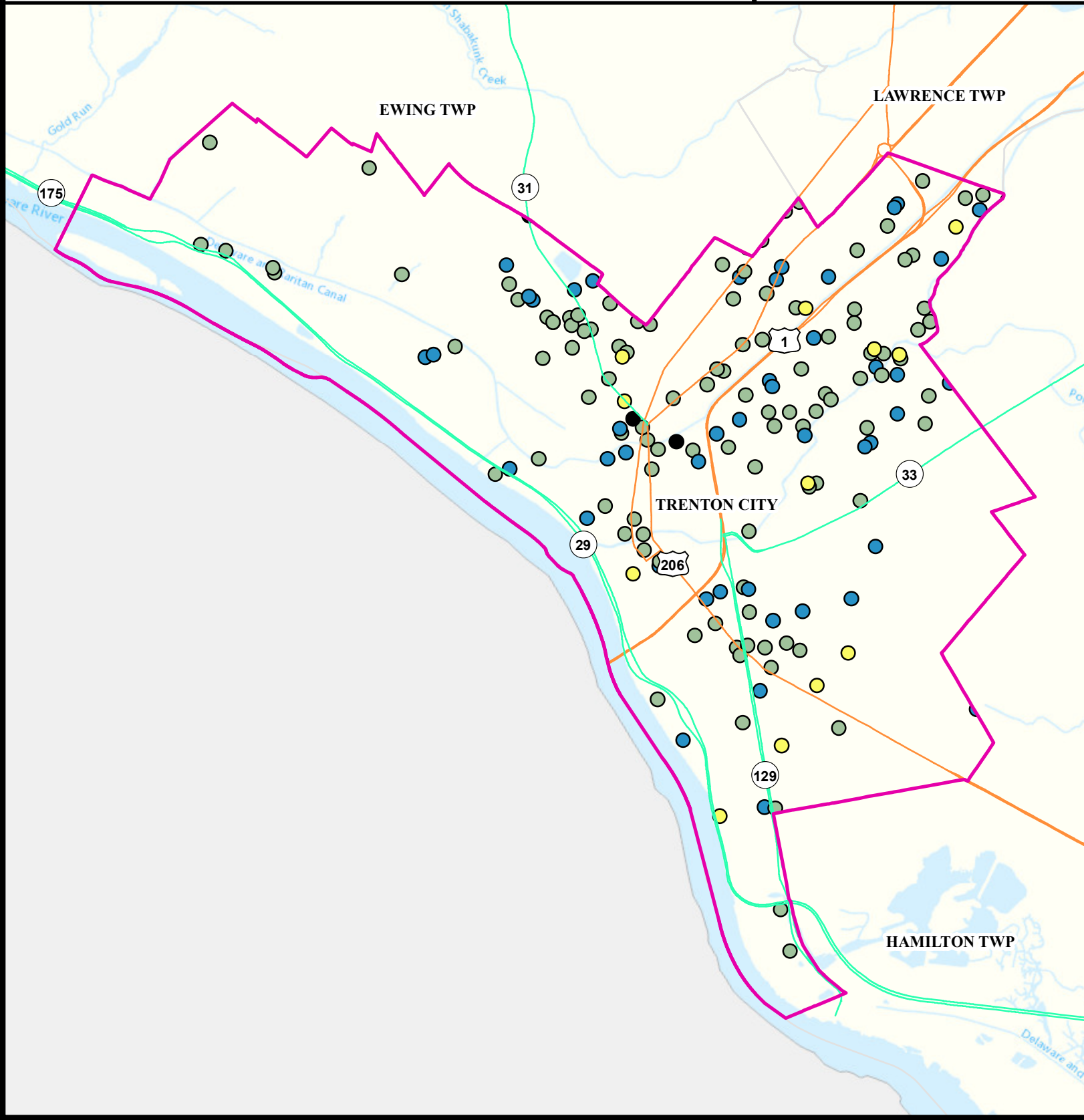


Date: 5/24/2022

0 0.275 0.55



Miles



# Scrap Metal Facilities

TRENTON CITY

MERCER

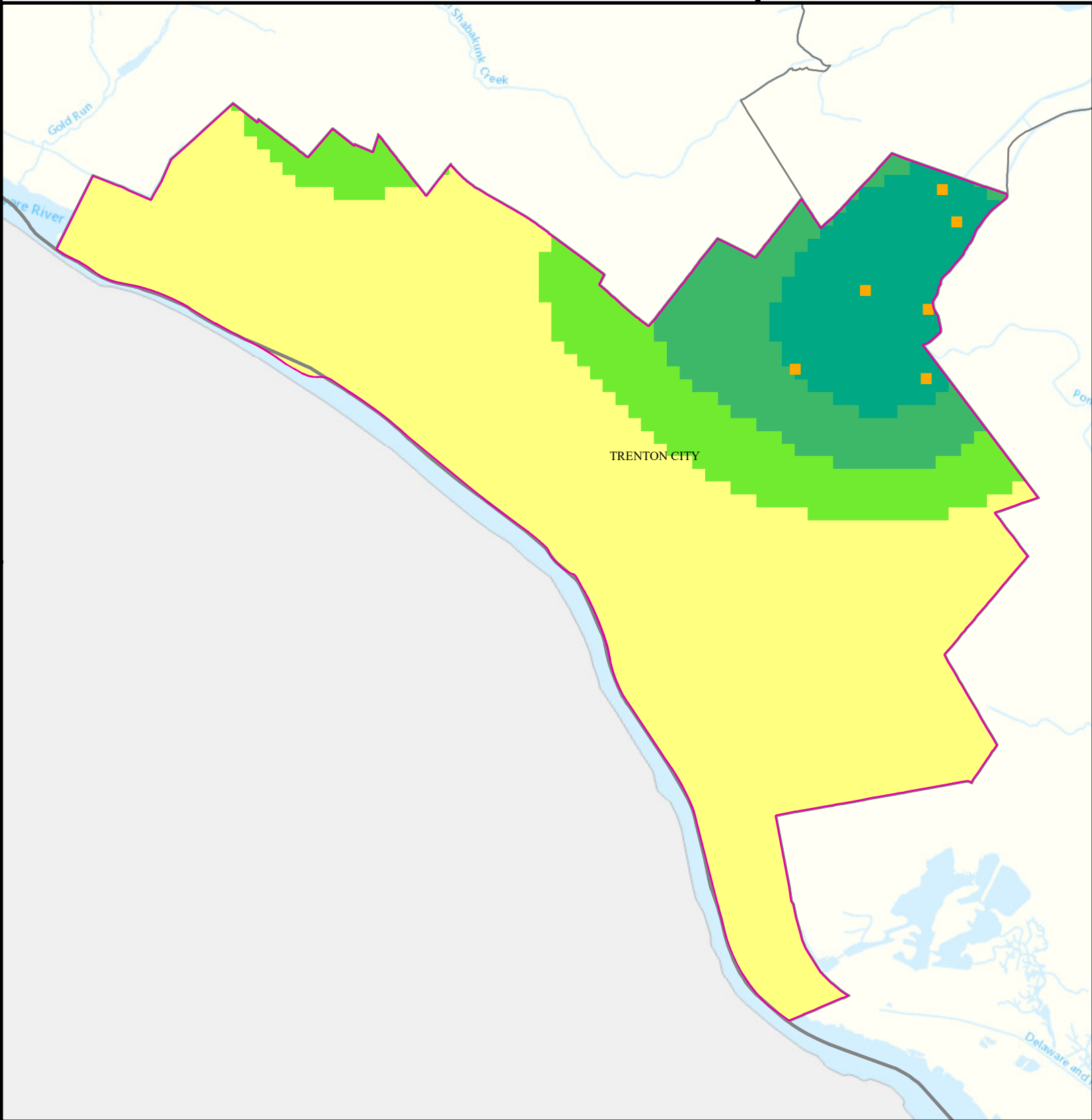
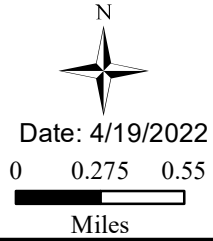
## Legend

- Municipalities
- TRENTON CITY
- Scrap Metal Facility

## Sites Per Square Mile



Scrap Metal Processing  
Sites per Sq Mile  
2022



# Open Space

TRENTON CITY

MERCER

## Legend

Counties

TRENTON CITY



Open Space



Residential Population  
> 1/4 Mile from Open Space

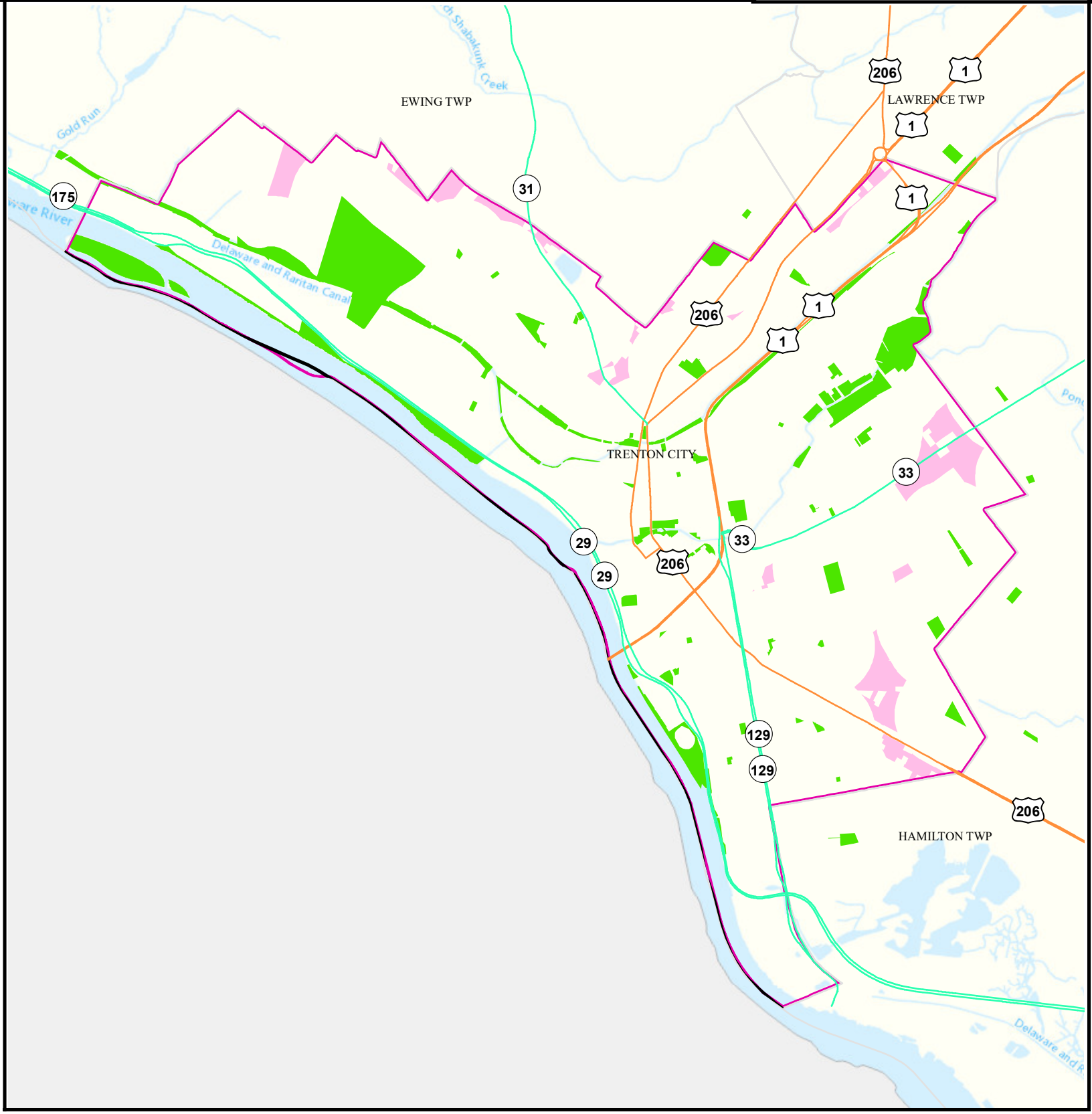


Date: 9/27/2022

0 0.275 0.55



Miles



# Traffic

**TRENTON CITY**

**MERCER**

## Legend

- Counties
- TRENTON CITY
- 1000 ft. Road Buffer

- Daily Traffic Volume**
- 25,000 - 50,000
  - 50,001 - 75,000
  - 75,001 - 100,000
  - 100,001 - 125,000
  - 125,000+

Receptors	Count
Childcare	12
School	8
Population	19711

N

Date: 4/19/2022

0    0.3    0.6

Miles





# Low Birth Weight

Trenton City

Mercer

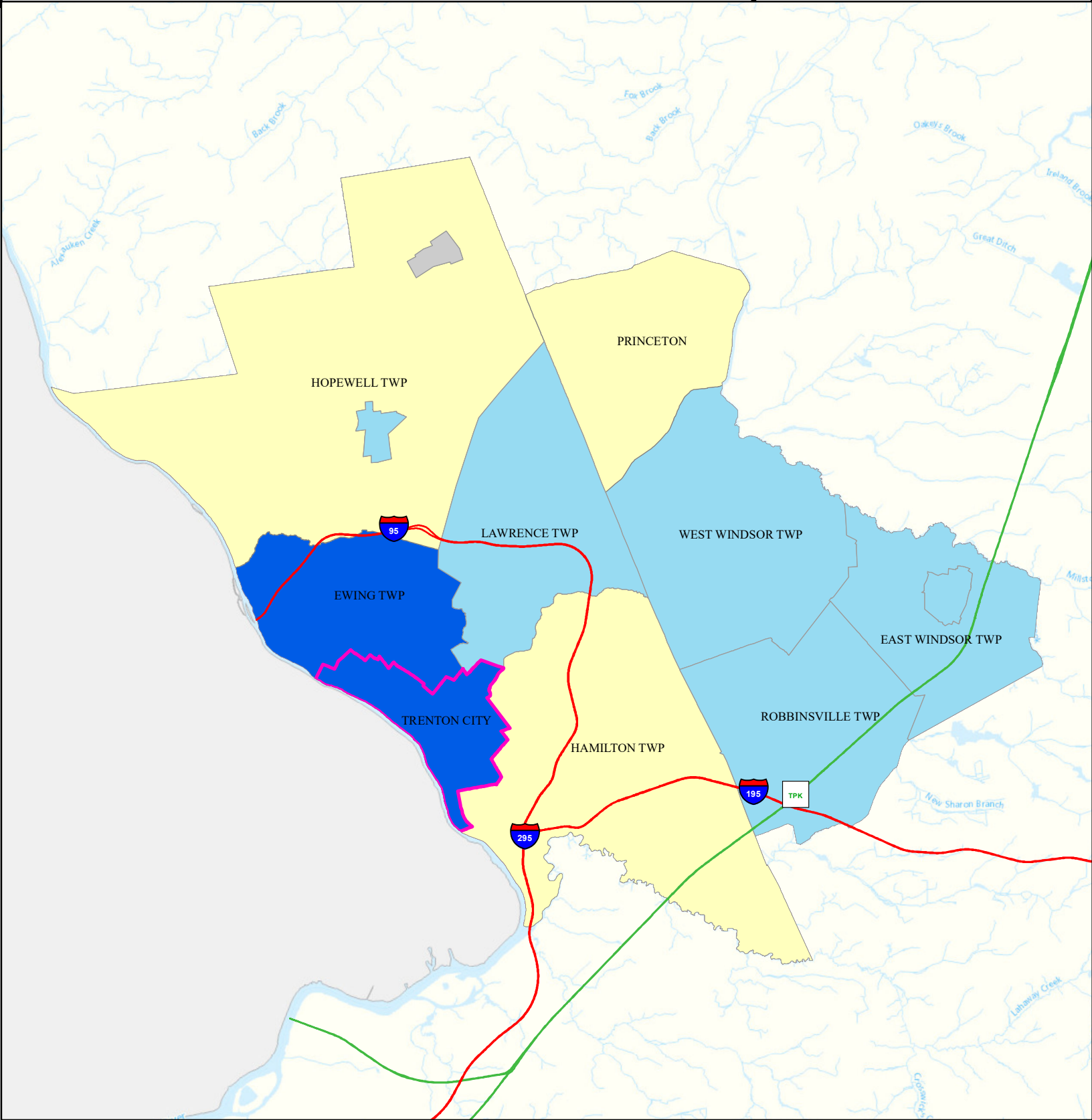
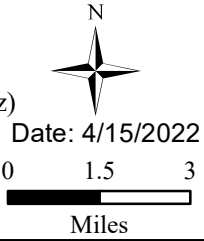
## Legend

- Municipalities
- Trenton City

## State Comparison

- Above
- Below
- No Difference
- Suppressed

Birth Rate  
Low Birth Weight  
(% All Births < 5 lb, 8 oz)  
2016 to 2020



# Age of Housing

TRENTON CITY

MERCER


## Legend

### Year House Constructed

- Pre 1950
- Between 1951 and 1978
- After 1978
- Unknown


- Counties
- Municipalities
- TRENTON CITY

N

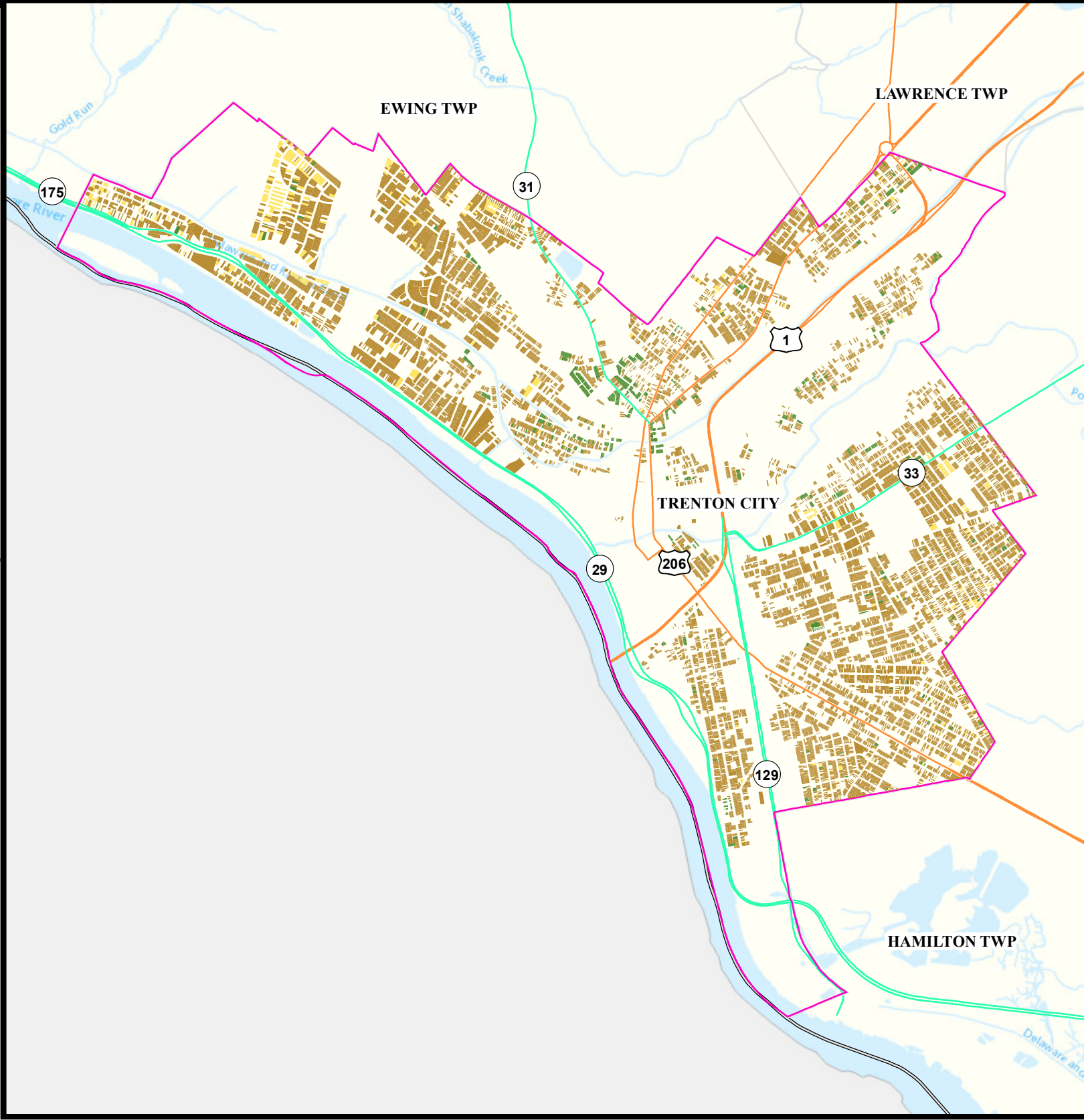


Date: 4/12/2022

0 0.275 0.55



Miles



# Asthma (Emergency Department)

Trenton City

Mercer

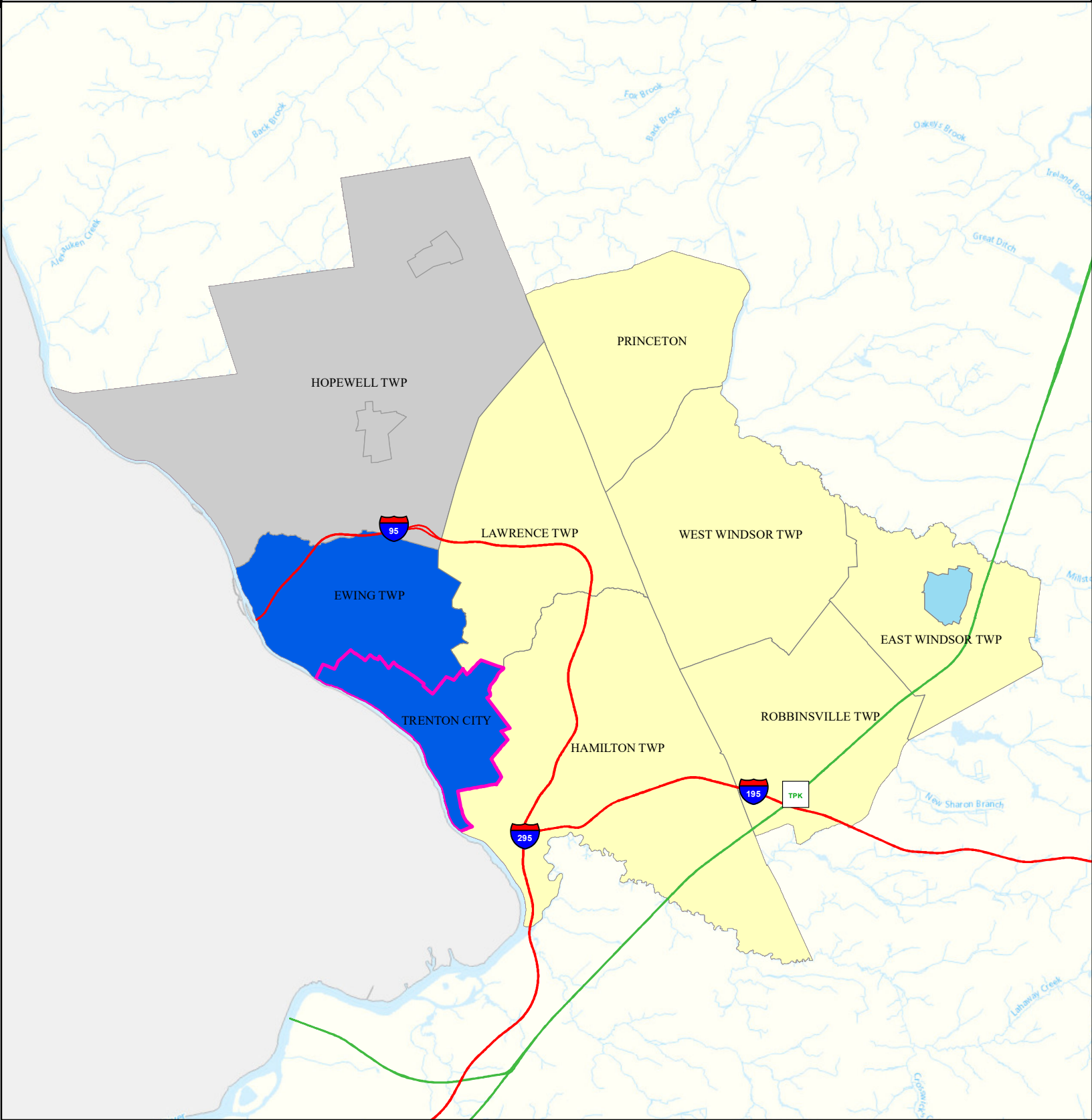
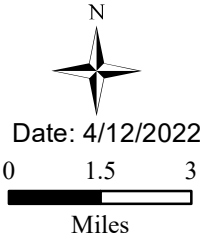
## Legend

- Municipalities
- Trenton City

## State Comparison

- Above
- Below
- No Difference
- Suppressed

Age-adjusted Rate  
per 10,000 People  
2016 to 2019  
Emergency Department  
Visits for Asthma



# Heart Attack (AMI) (Inpatient)

Trenton City

Mercer

## Legend

- Municipalities
- Trenton City

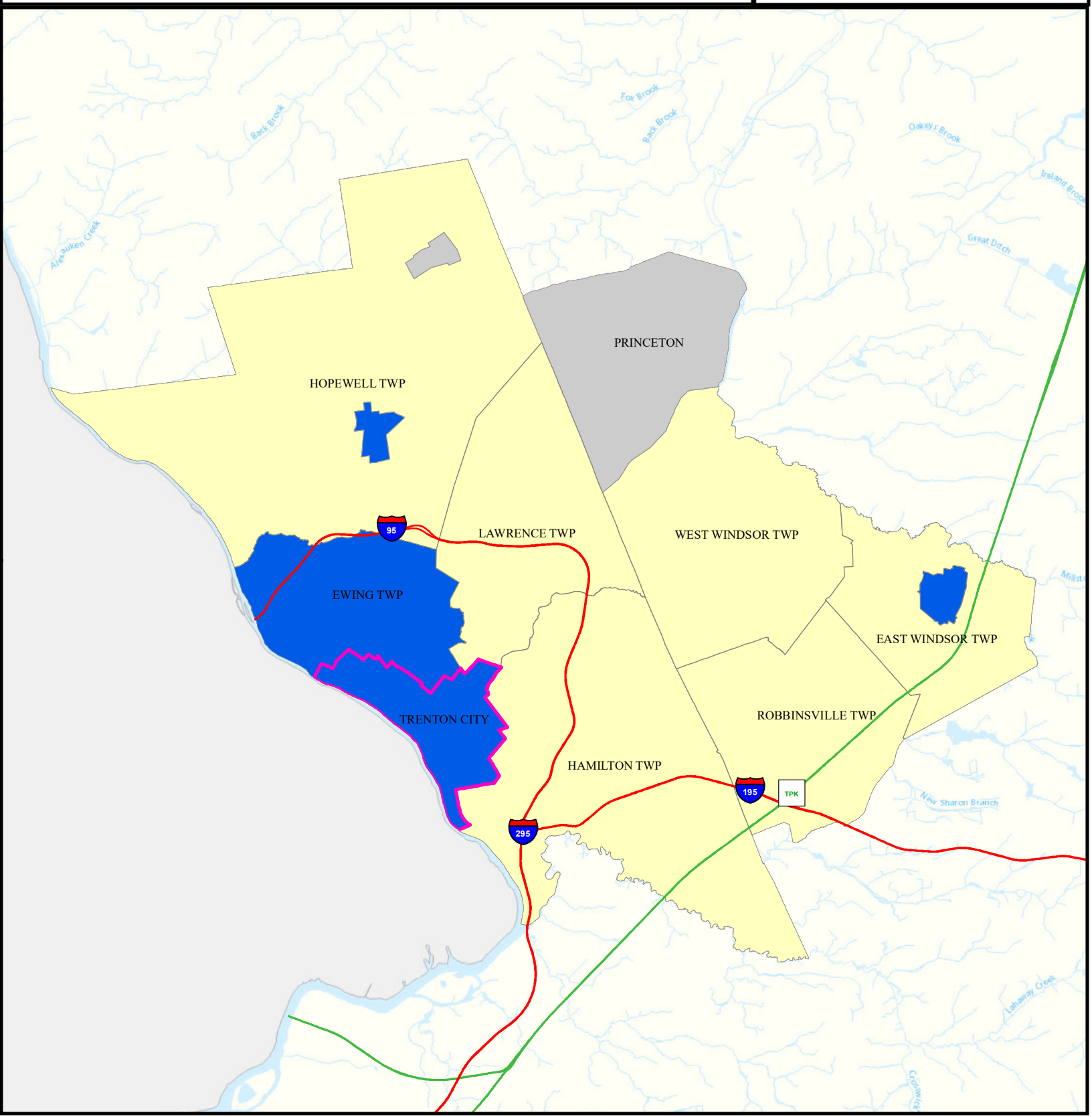
## State Comparison

- Above
- Below
- No Difference
- Suppressed

Age-adjusted Rate per 10,000 People 2016 to 2019  
Inpatient Visits for AMI (Acute Myocardial Infarction) 0 1.25 2.5  
Date: 4/11/2022



Miles



# Heart Disease Deaths

Trenton City

Mercer

## Legend

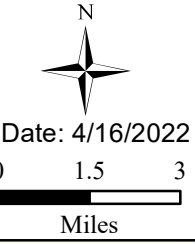
- Municipalities
- Trenton City

## State Comparison

- Above
- Below
- No Difference
- Suppressed

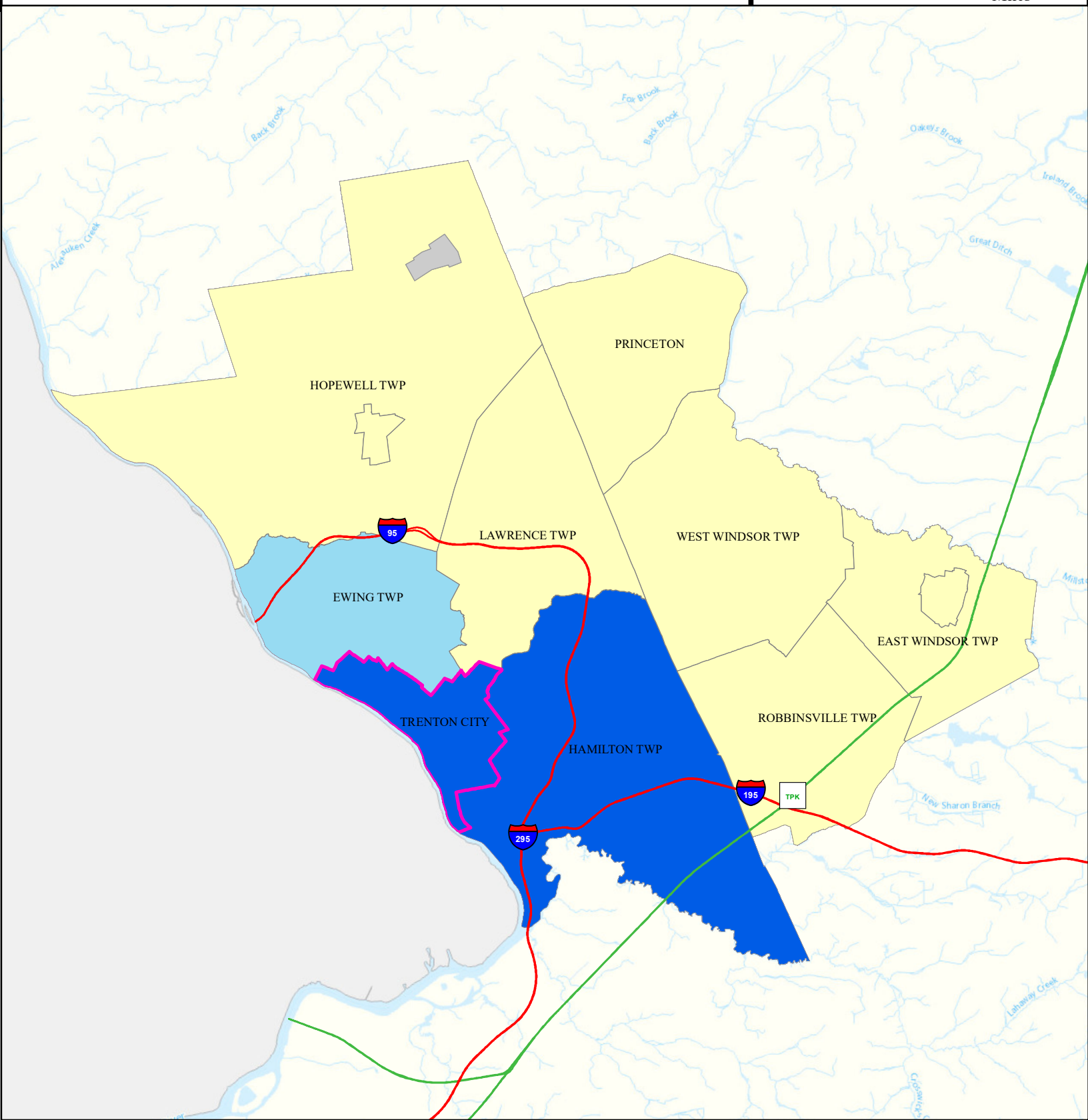
Age-adjusted Death Rate  
per 100,000 People  
2015 to 2019

Deaths for Heart Disease



Date: 4/16/2022

Miles



# COPD (Emergency Department)

Trenton City

Mercer

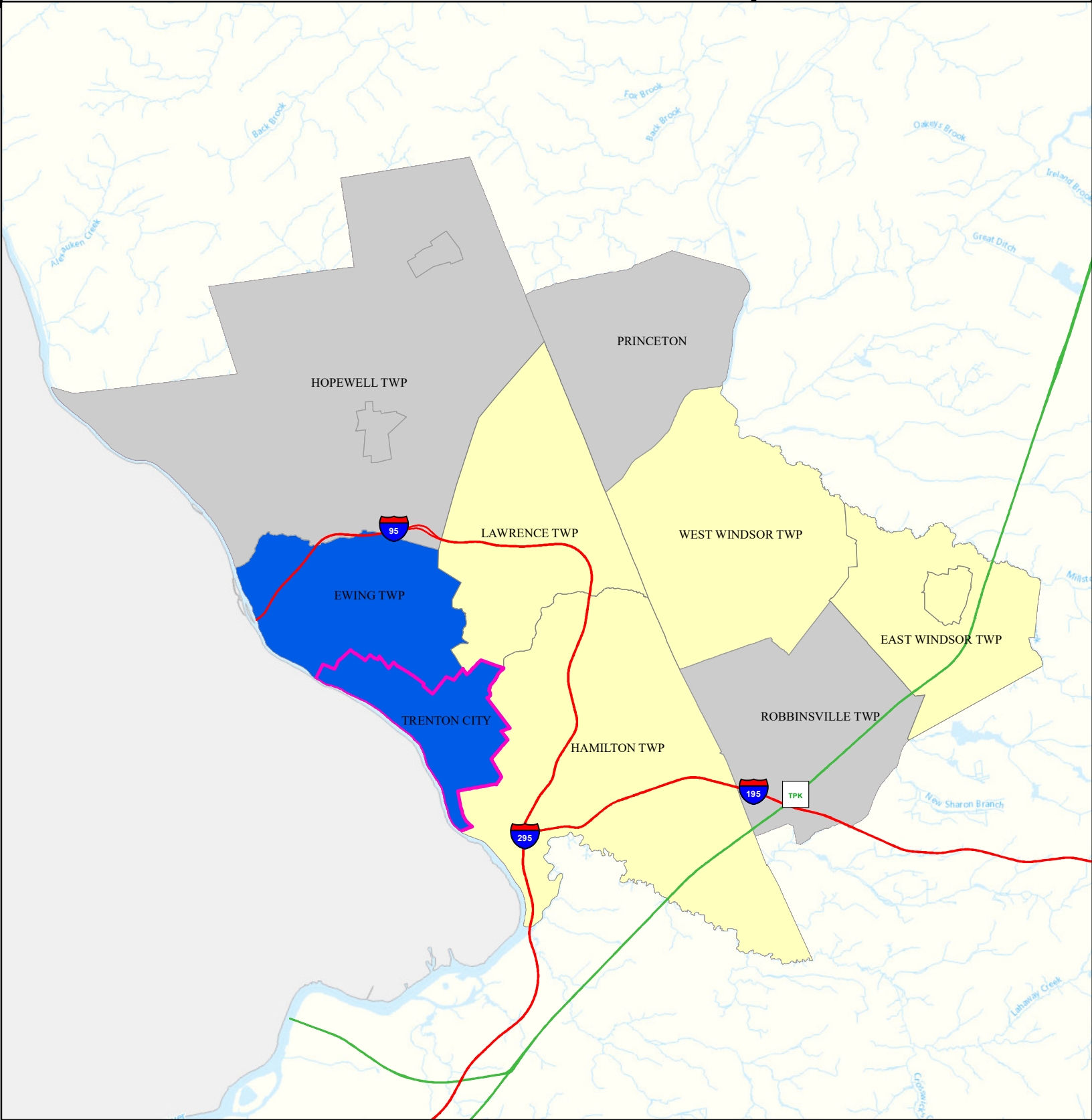
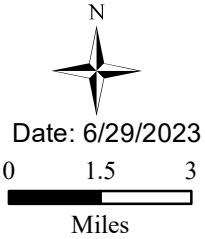
## Legend

- Municipalities
- Trenton City

## State Comparison

- Above
- Below
- No Difference
- Suppressed

Age-adjusted Rate  
per 10,000 People  
2016 to 2019  
Emergency Department  
Visits for COPD



# Stroke (Inpatient)

Trenton City

Mercer

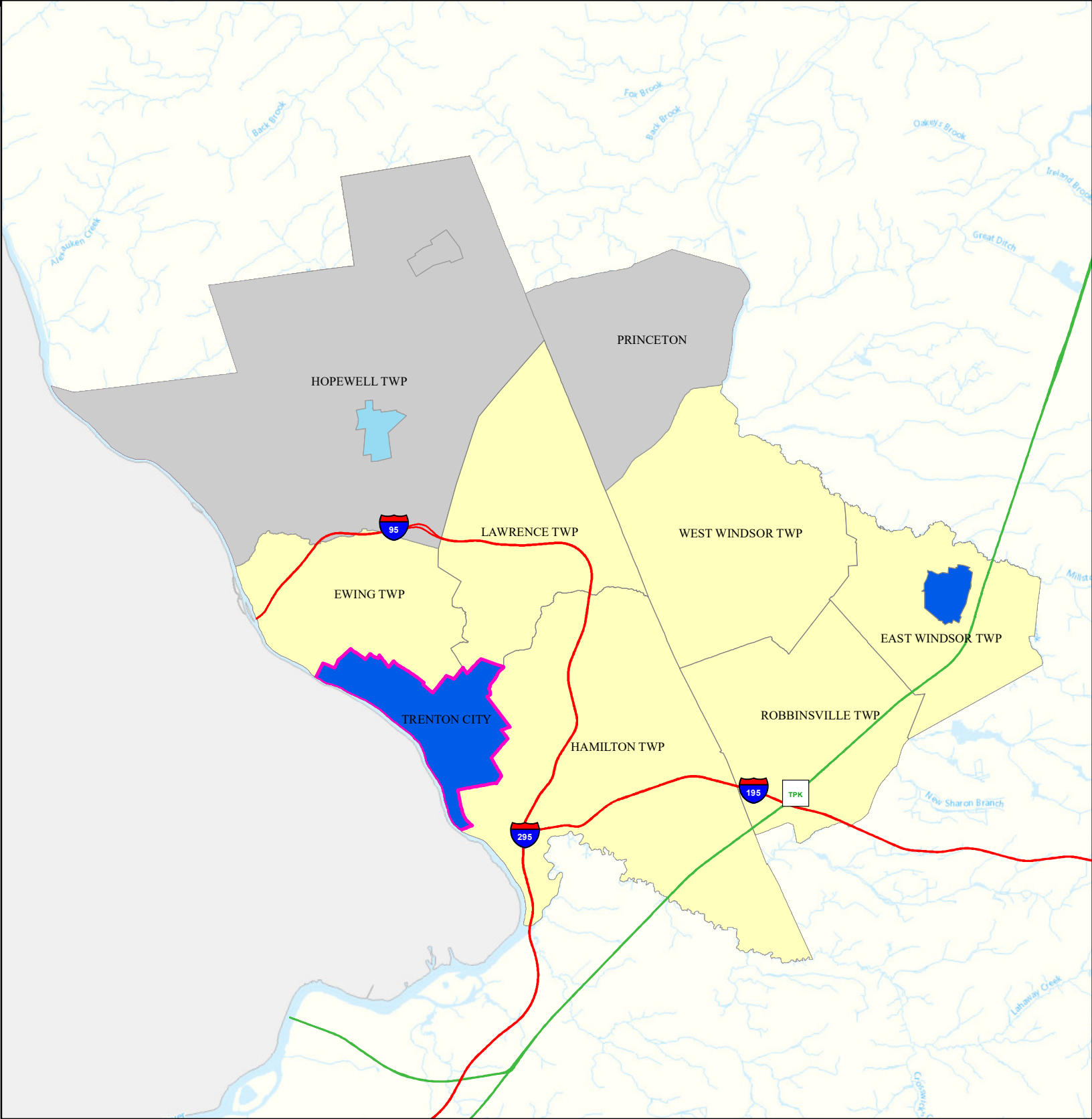
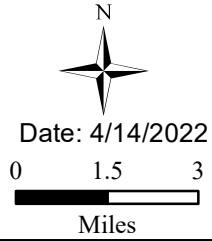
## Legend

- Municipalities
- Trenton City

## State Comparison

- Above
- Below
- No Difference
- Suppressed

Age-adjusted Rate  
per 10,000 People  
2016 to 2019  
Inpatient Visits  
for Stroke



# All Cancer Deaths

Trenton City

Mercer

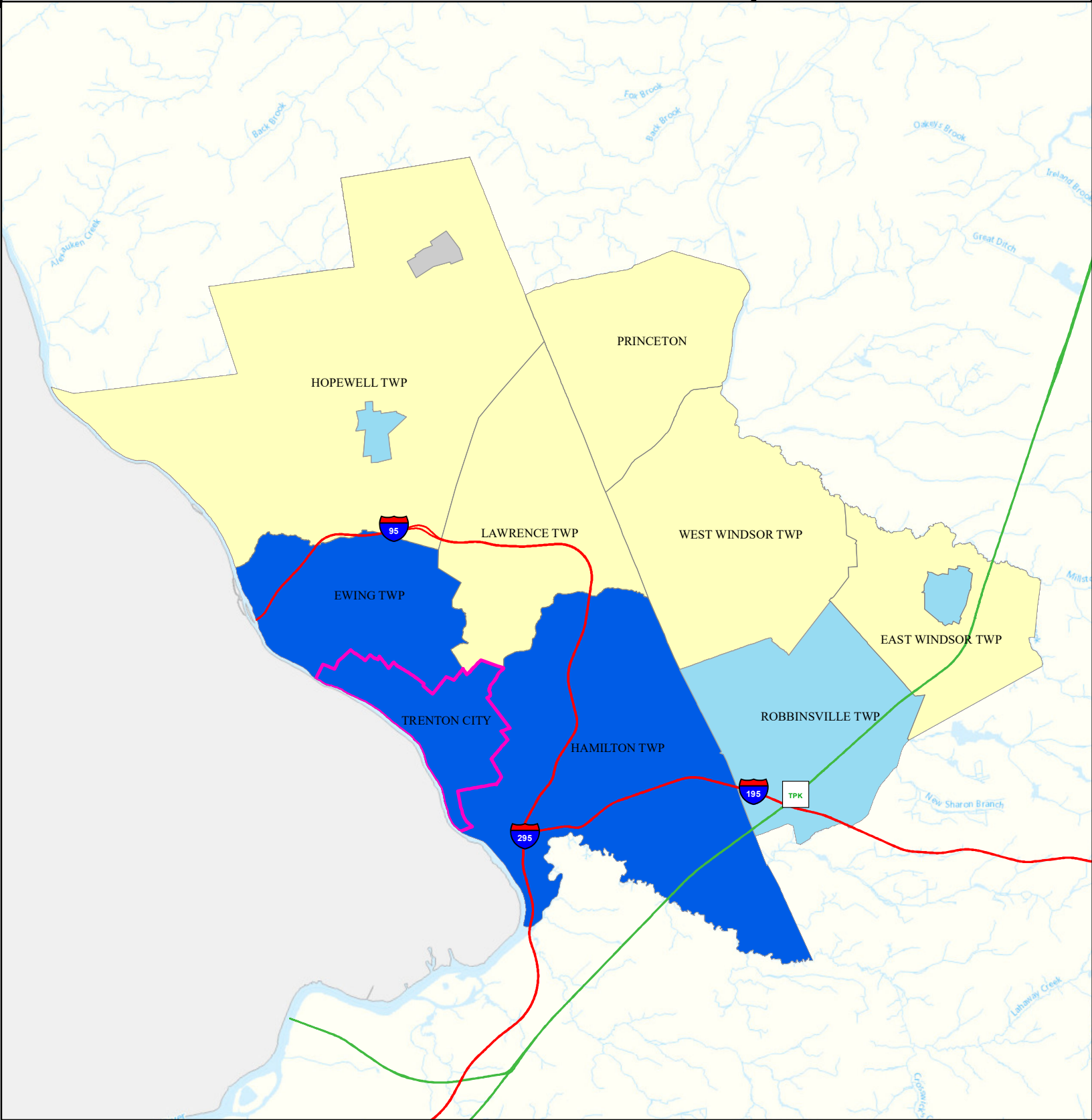
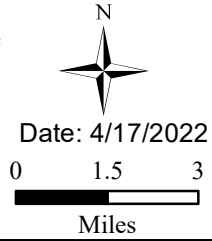
## Legend

- Municipalities
- Trenton City

## State Comparison

- Above
- Below
- No Difference
- Suppressed

Age-adjusted Death Rate  
per 100,000 People  
2015 to 2019  
Deaths for Cancer





# Lung Cancer Deaths

Trenton City

Mercer

## Legend

- Municipalities
- Trenton City

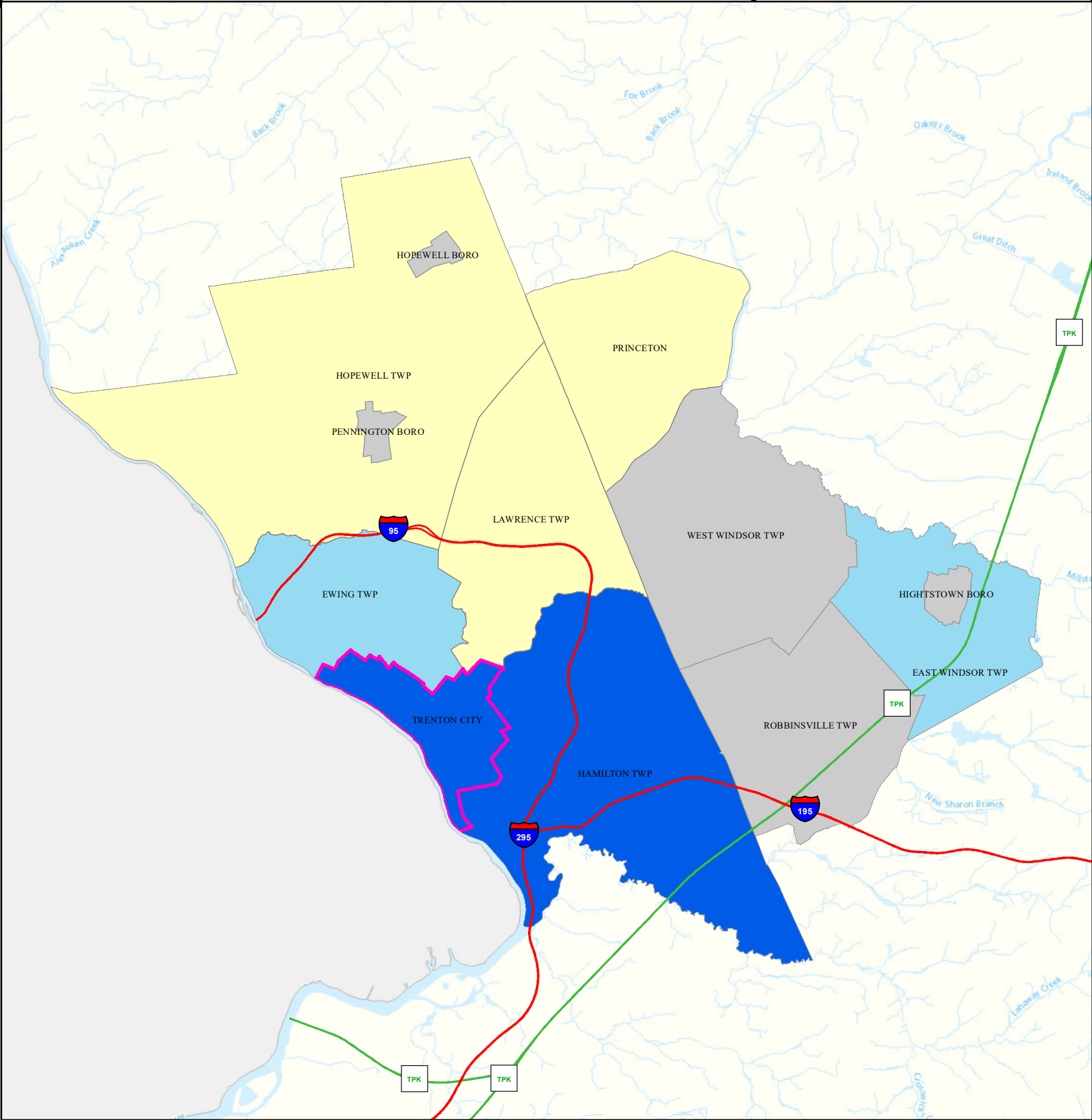
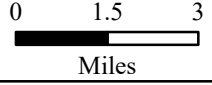
## State Comparison

- Above
- Below
- No Difference
- Suppressed

Age-adjusted Death Rate  
per 100,000 People  
2015 to 2019

Deaths for Lung Cancer

Date: 4/17/2022



# Smoking

Trenton City

Mercer

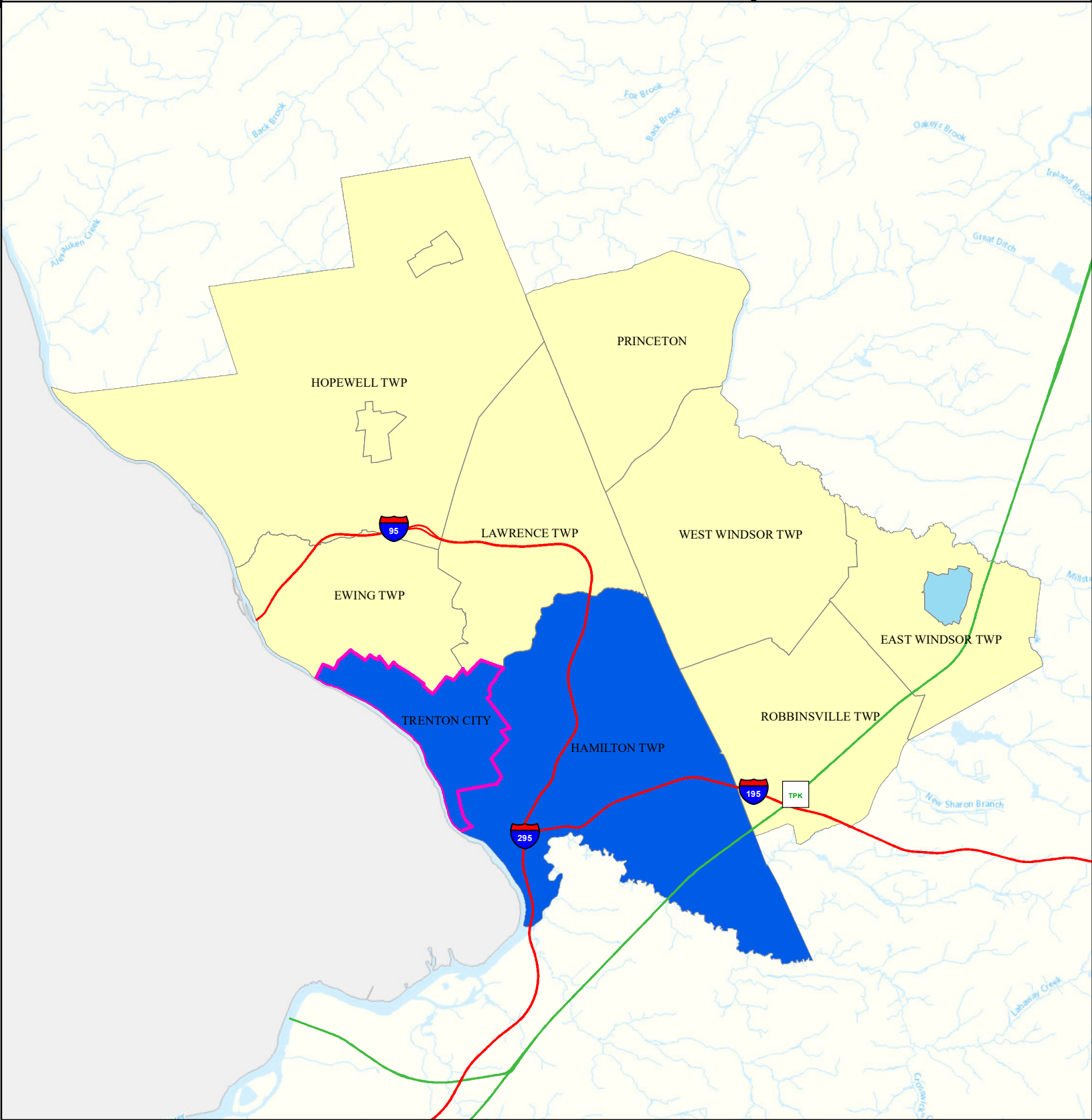
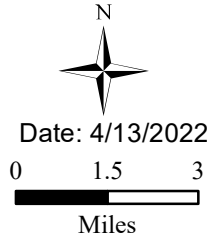
## Legend

- Municipalities
- Trenton City

## State Comparison

- Above
- Below
- No Difference
- Suppressed

Smoking Rate  
Per Municipal  
% of Adults  
2018



# Obesity

Trenton City

Mercer

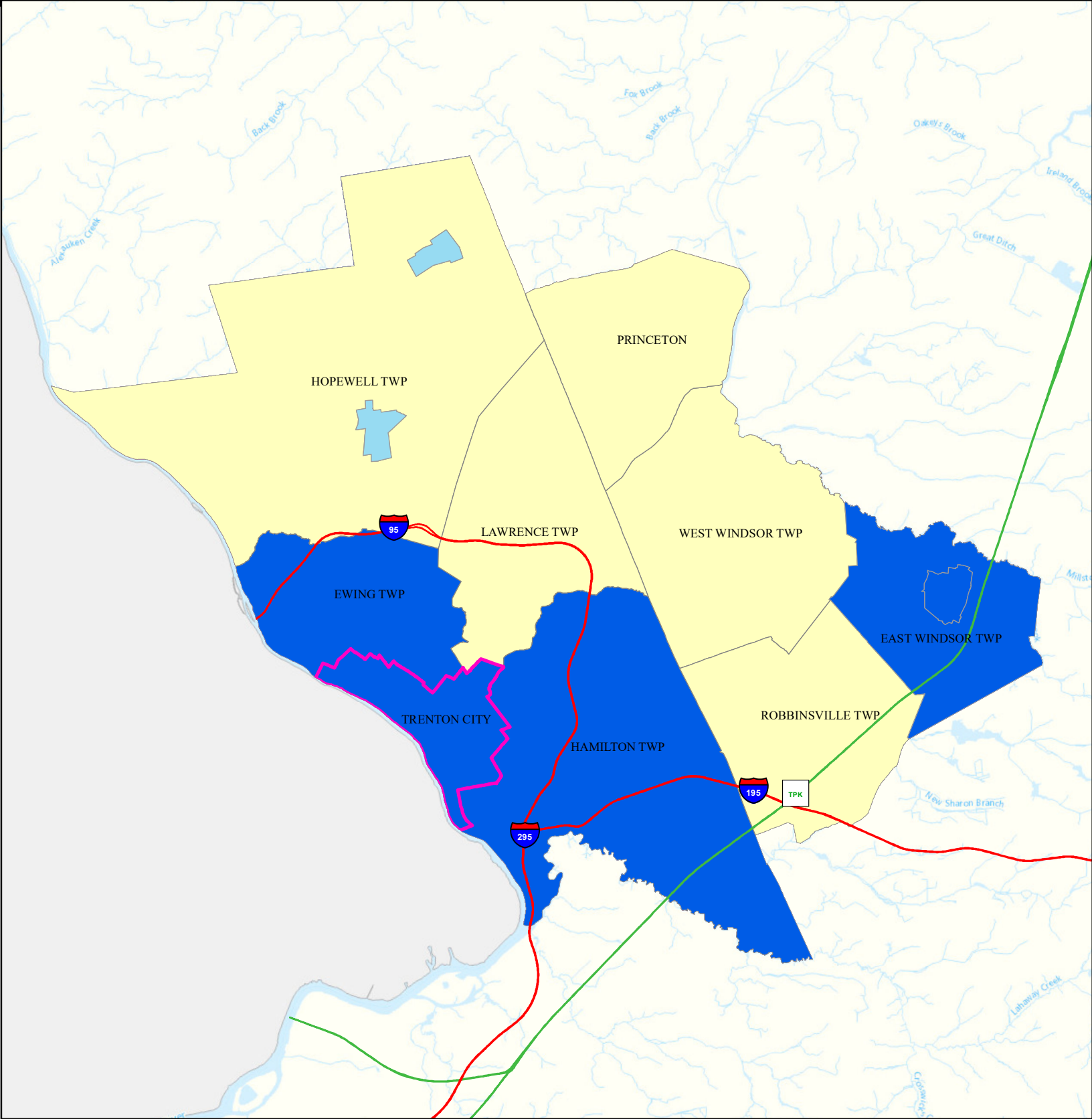
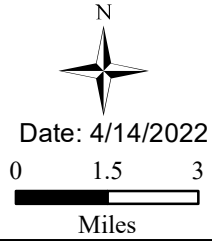
## Legend

- Municipalities
- Trenton City

## State Comparison

- Above
- Below
- No Difference
- Suppressed

Obesity Rate  
Per Municipal  
% of Adults  
2018



# Heat Related Illness (Emergency Department)

Trenton City

Mercer

## Legend

- Municipalities
- Trenton City

## State Comparison

- Above
- Below
- No Difference
- Suppressed

Age-adjusted Rate per 10,000 People 2016 to 2019  
Emergency Department Visits for Heat Related Illness

