

# Health Care Facilities

HELMETTA BORO

MIDDLESEX

## Legend

Counties

HELMETTA BORO

Hospitals

Nursing Homes

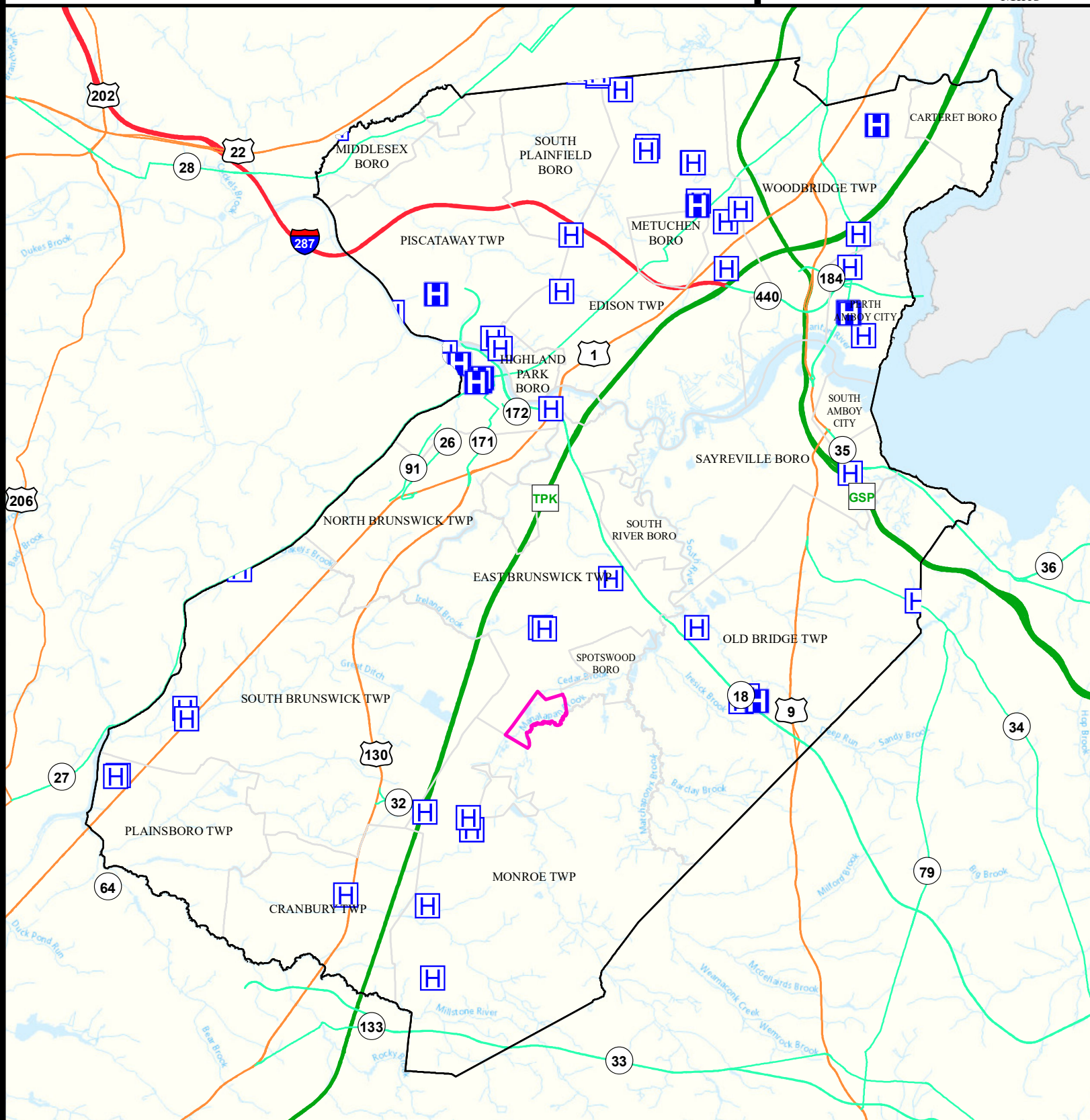
Municipalities



Date: 9/22/2022

0 1.5 3

Miles



# Air Cancer Risk






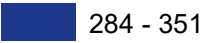


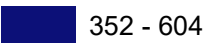
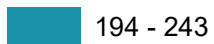
## HELMETTA BORO

## MIDDLESEX

### Legend

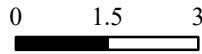
-  Counties
-  HELMETTA BORO

### Risk per Million

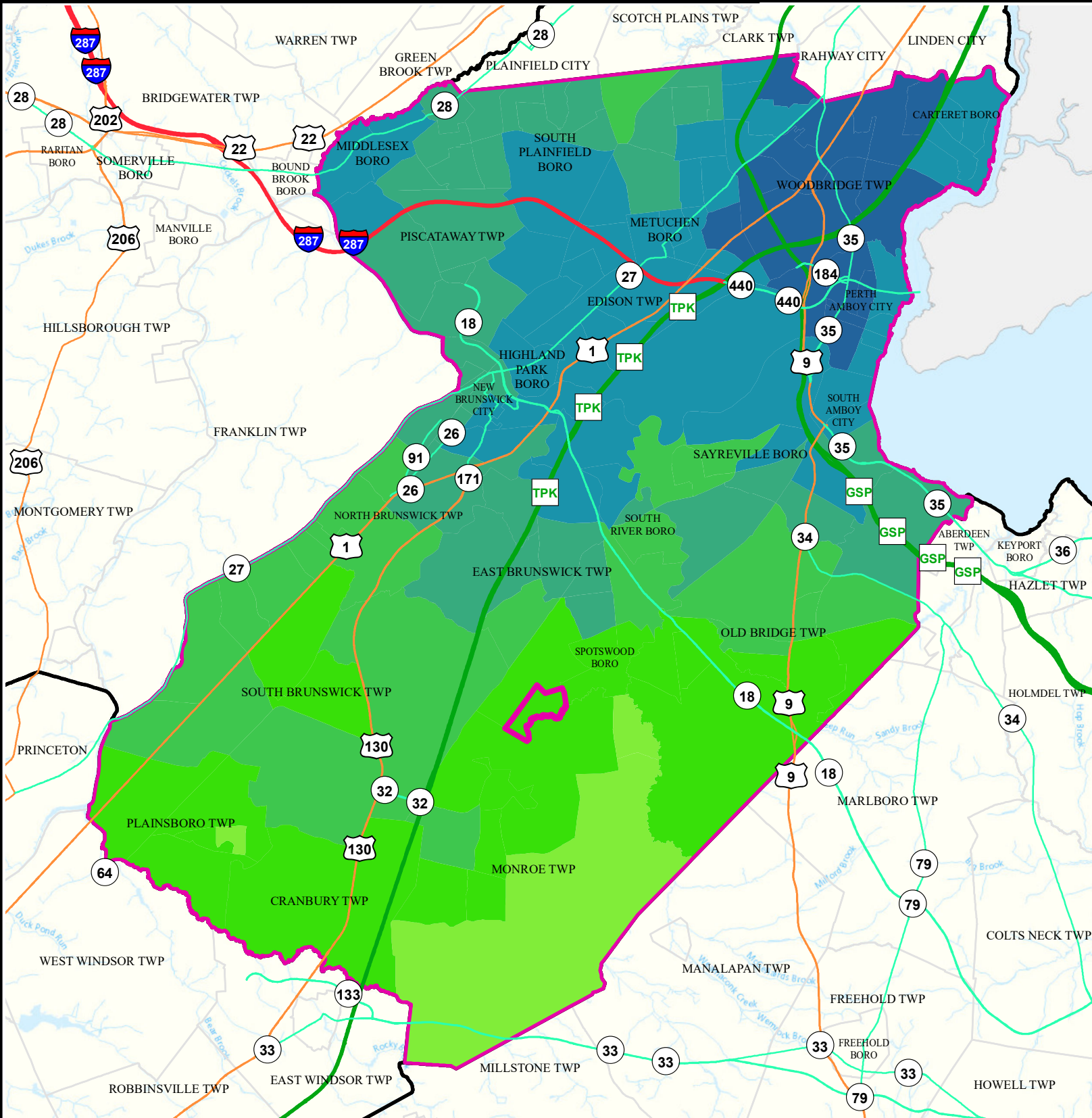
	61 - 87		128 - 145		244 - 283
	88 - 108		146 - 167		284 - 351
	109 - 127		168 - 193		352 - 604
			194 - 243		



Date: 9/26/2022



Miles



# Air Non Cancer

## HELMETTA BORO

## MIDDLESEX

### Legend

Counties

HELMETTA BORO

Combined Hazard Index

0.75 - 1.00

1.01 - 2.00

2.01 - 3.00

3.01 - 4.00

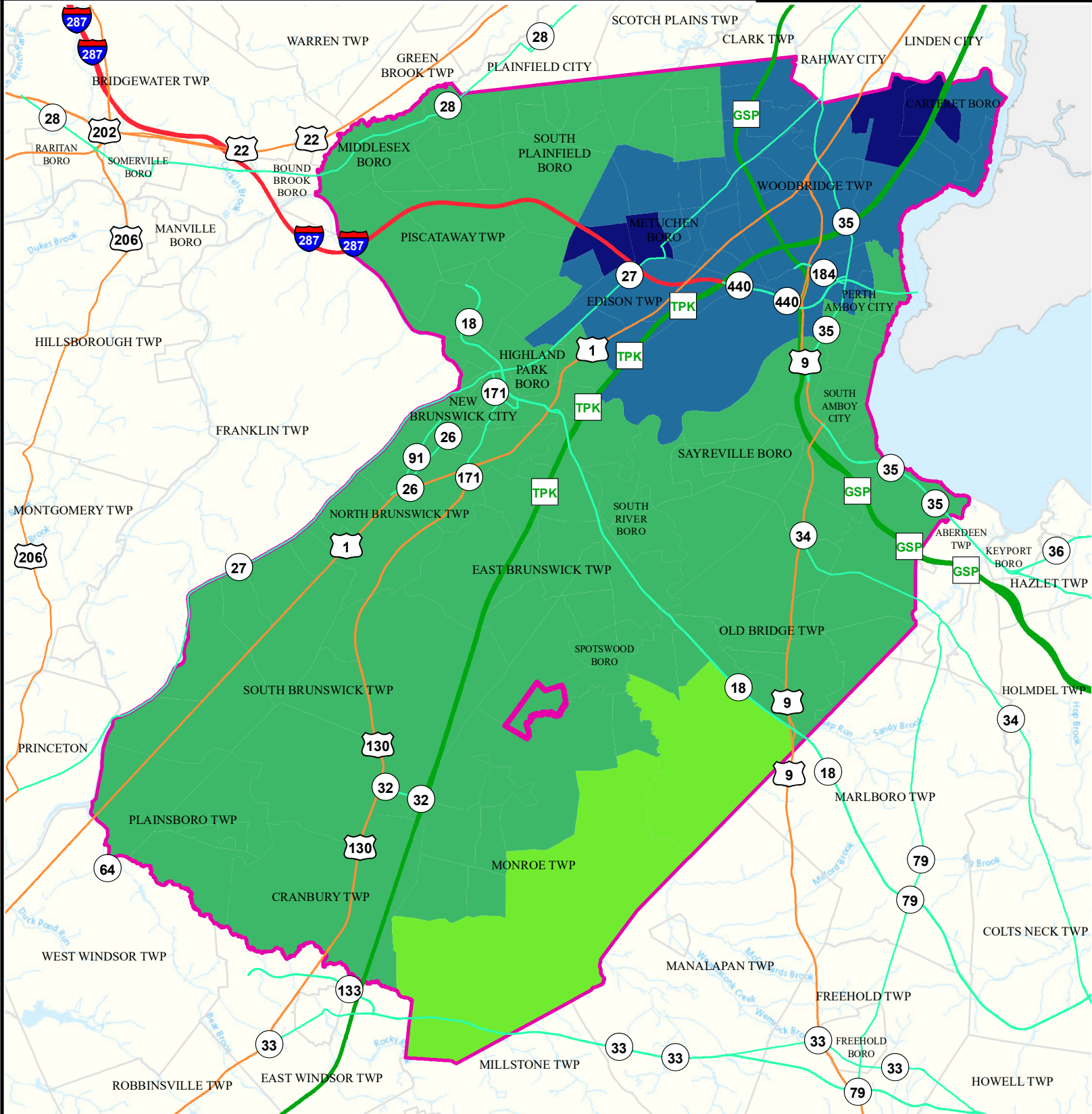
4.01 - 8.09



Date: 9/26/2022

0 1.5 3

Miles





# Air Quality Index (AQI)

HELMETTA BORO

MIDDLESEX

## Legend

-  Municipalities
-  HELMETTA BORO

## Average AQI Days

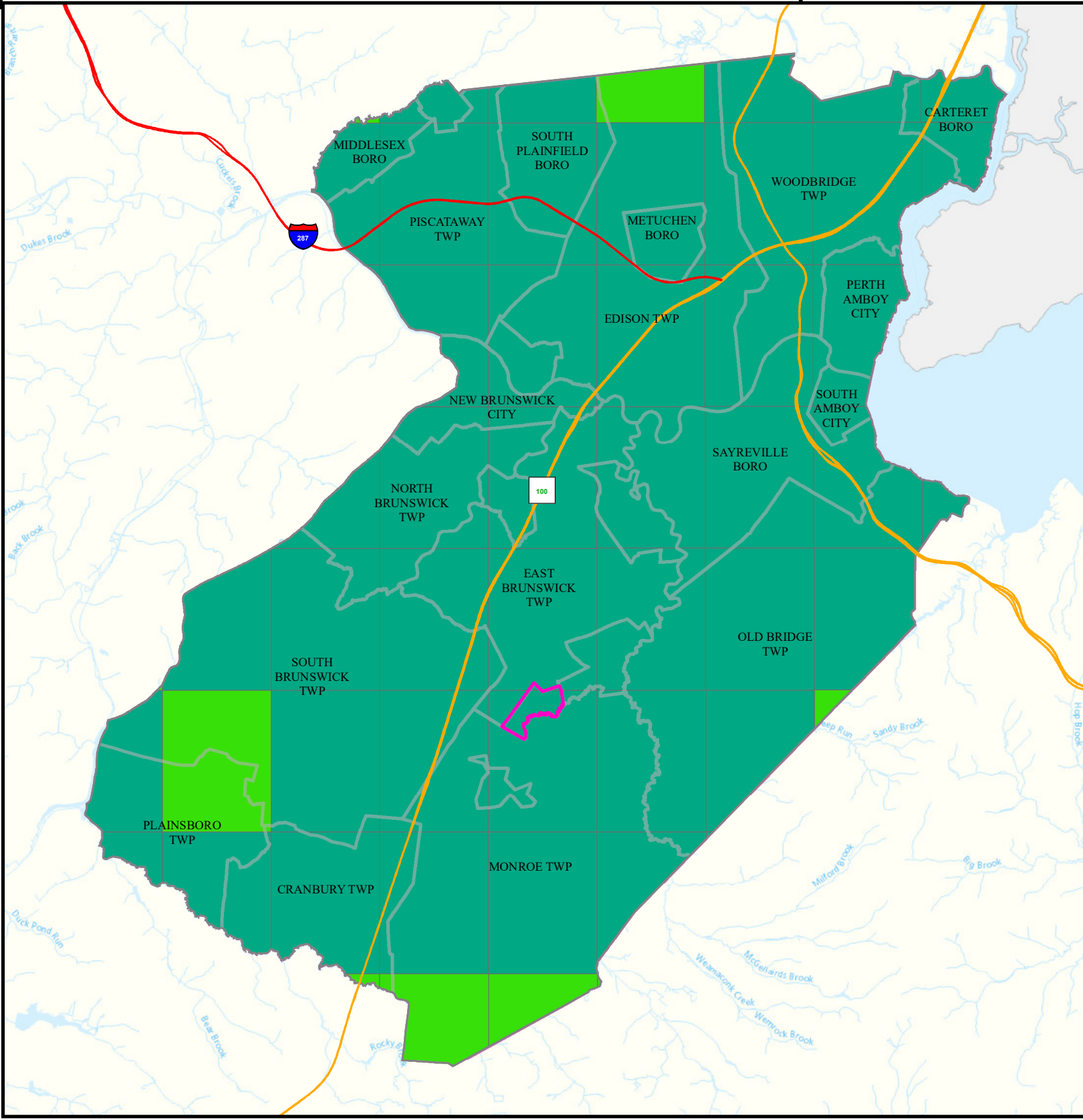
- |   |  |
|---|--|
|  0 - 1   |  3.5 - 6.5 |
|  1.5 - 3 |  7 - 12    |

Air Quality Index (AQI)  
Days above 100 (3 yr Avg)  
2018 to 2020



0 1.5 3 Miles

Date: 4/18/2022






# Community Drinking Water

## HELMETTA BORO

## MIDDLESEX

### Legend

-  Counties
-  HELMETTA BORO
-  Municipalities

MCL and TT Violations  
and AL Exceedances

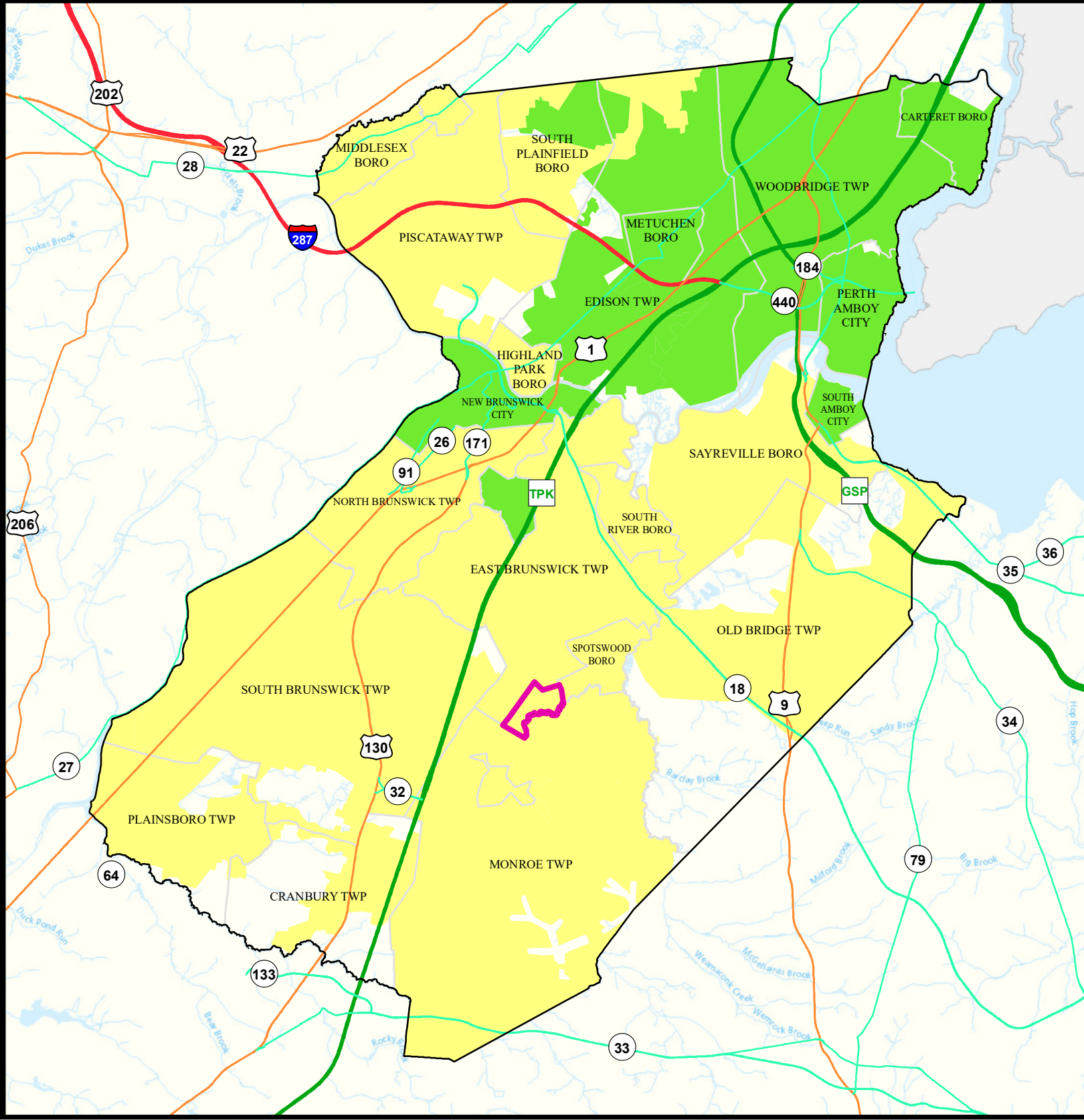
-  0
-  1 - 5
-  6 - 10
-  11 - 15
-  16 - 30



Date: 9/29/2022

0 1.5 3

Miles



# Surface Water Quality

## HELMETTA BORO

## MIDDLESEX

### Legend

- Counties
- Municipalities
- HELMETTA BORO

Impaired (Percent)	
NA	0
20	40
25	50
33	60
	66
	75
	80
	100

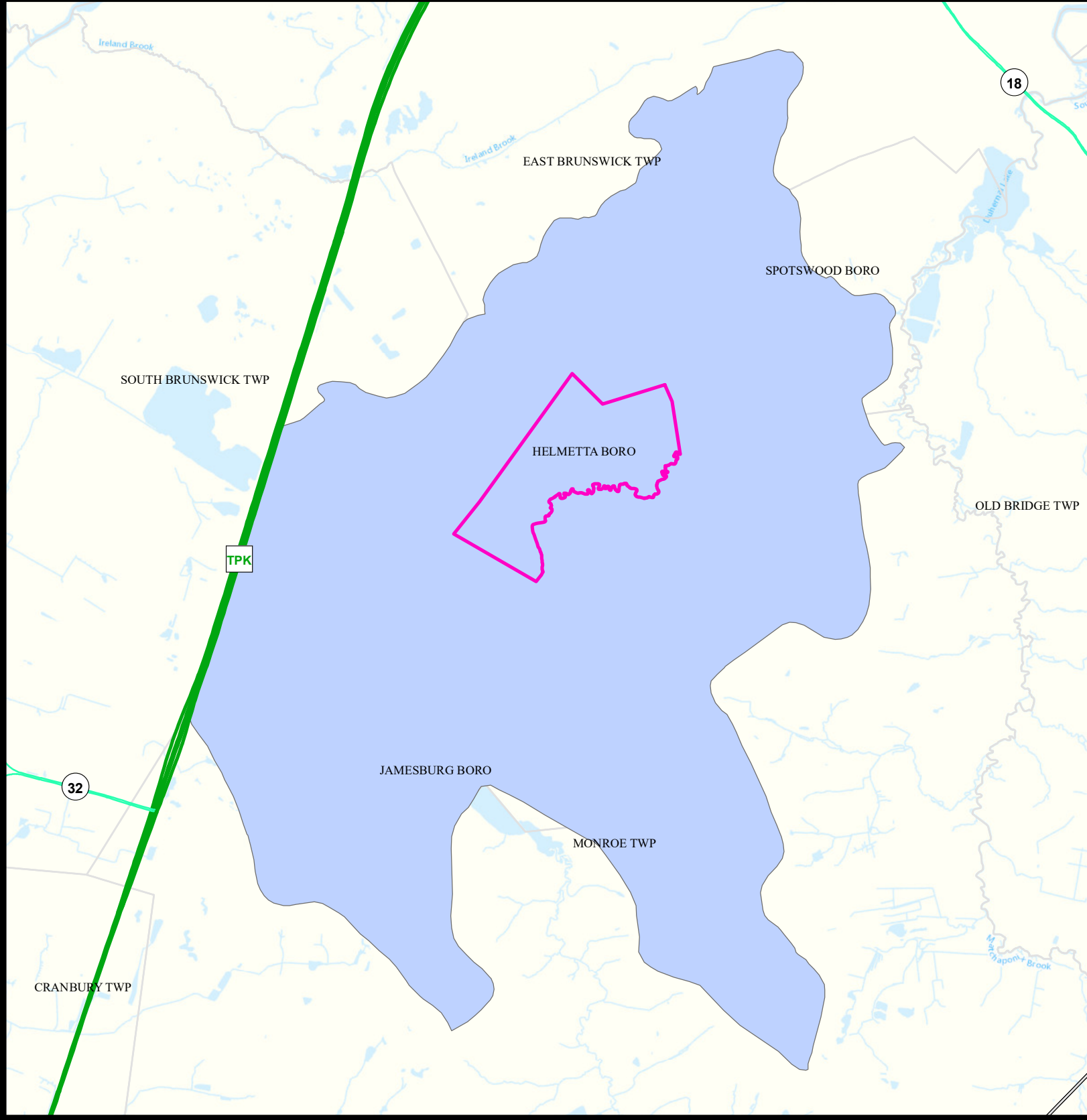


Date: 9/22/2022

0 0.375 0.75



Miles





## Surface Water Quality

**MIDDLESEX COUNTY**  
**Helmetta Borough**

### What is a Designated Use?

New Jersey's [Surface Water Quality Standards \(SWQS\)](#) establish the designated uses of the State's surface waters, classify surface waters based on those uses, and specify the water quality criteria and other policies necessary to attain those uses. Designated uses include water supply for drinking, agriculture and industrial uses, fish consumption, shellfish resources, propagation of fish and wildlife, and recreation.

**The table below show the designated use information for your municipality. For more information on Surface Water Quality, see the Healthy Community Planning Report for this municipality.**

AU_name	Aquatic_General	Aquatic_Trout	Water_Supply	Recreation	Shellfish	Fish_Consumption
Manalapan Brook (below Lake Manalapan)	Attaining	NA	Non Attaining	Non Attaining	NA	Non Attaining

# Flooding (Urban Land Cover)

**HELMETTA BORO**

**MIDDLESEX**

## Legend

Counties

HELMETTA BORO

Municipalities

Urban Land

Urban Land Flooded

Toll Road

Interstate

US Highway

State Highway

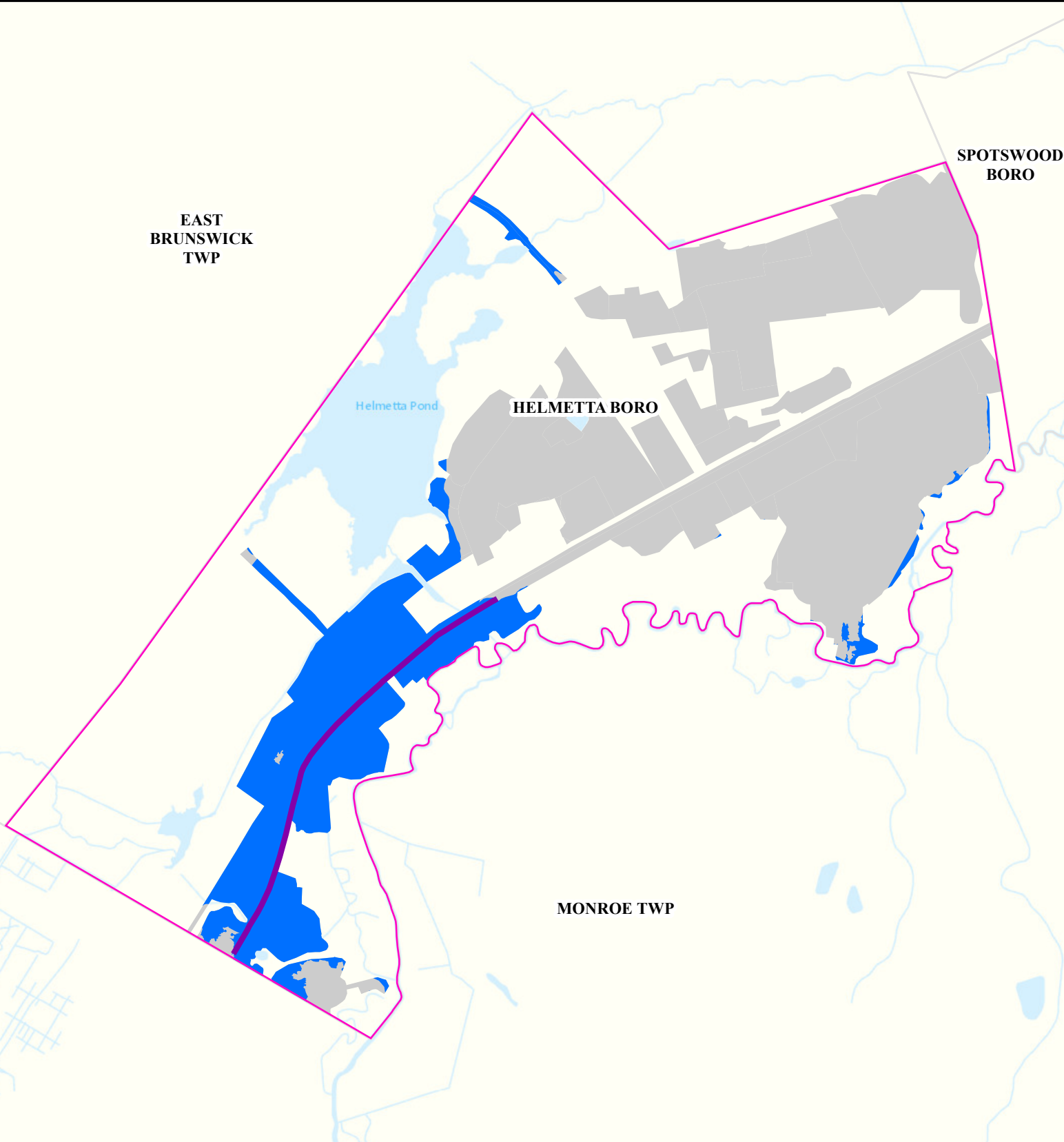
Impacted Roads

Impacted roads show only county level or higher routes in flooding areas.

Date: 4/12/2022

0 0.075 0.15

Miles





# Air Permit Sources

HELMETTA BORO

MIDDLESEX

## Legend

- Counties
- HELMETTA BORO

## Facility Type

- Major
- Minor

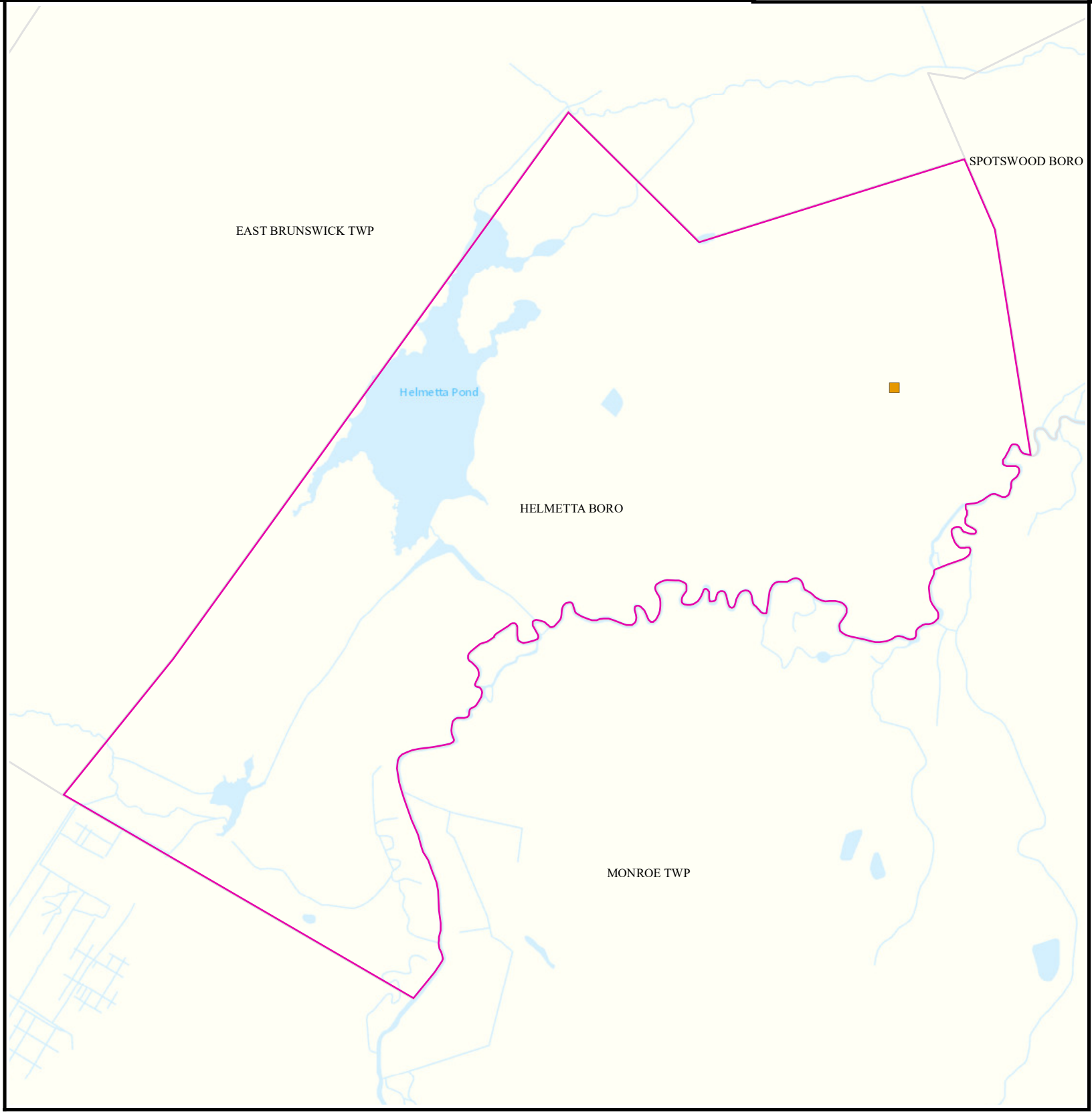


Date: 4/12/2022

0 0.075 0.15



Miles



# Contaminated Sites

**HELMETTA BORO**

**MIDDLESEX**

## Legend

- Counties
- HELMETTA BORO
- Municipalities

### Known Contaminated Sites

#### Density Weighting

- 0
- 1
- 2
- 3
- Other

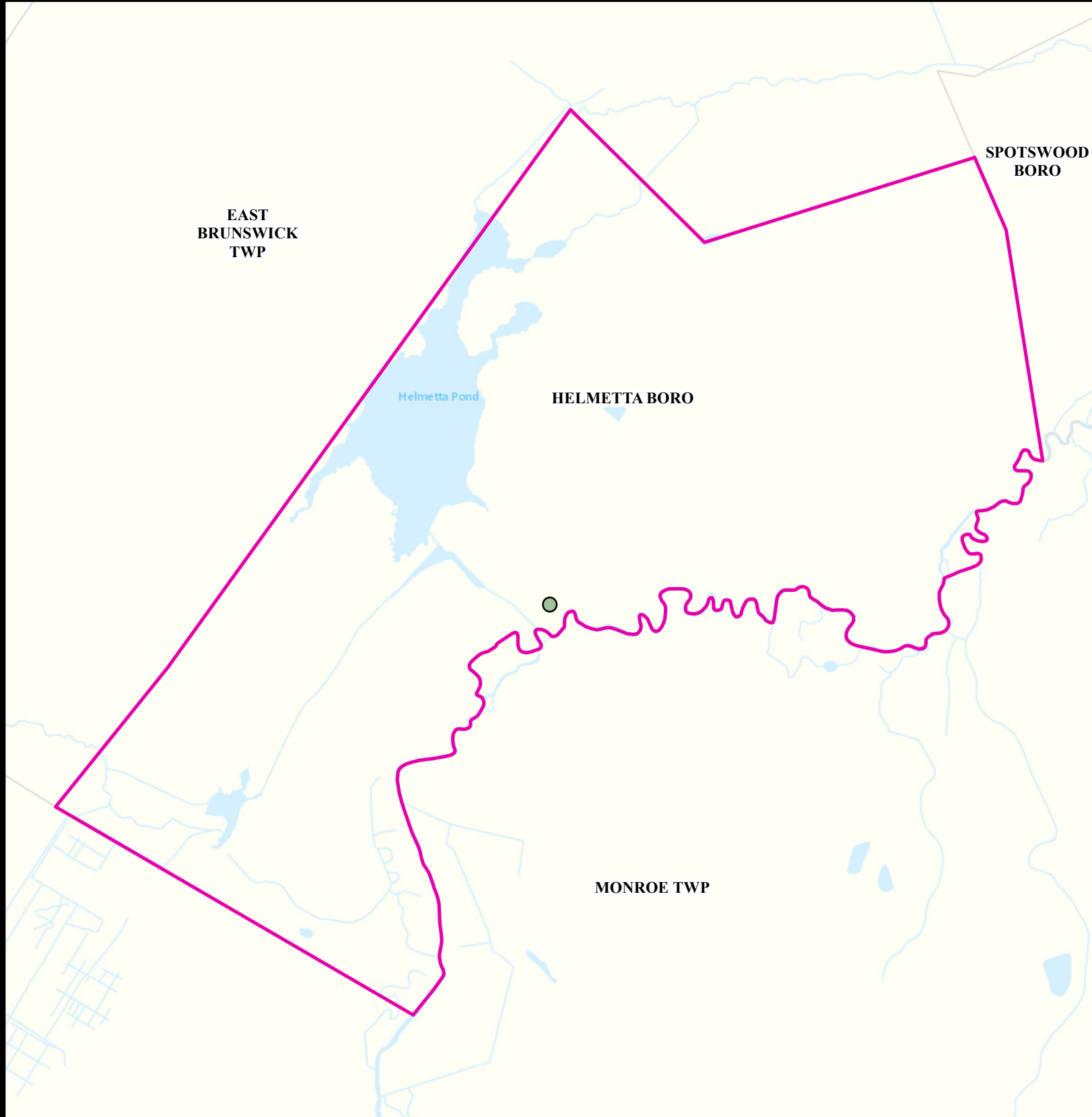


Date: 5/24/2022

0 0.075 0.15



Miles






# Scrap Metal Facilities

**HELMETTA BORO**

**MIDDLESEX**

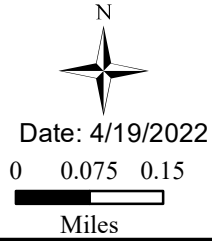
## Legend

-  Municipalities
-  HELMETTA BORO
-  Scrap Metal Facility

## Sites Per Square Mile



Scrap Metal Processing  
Sites per Sq Mile  
2022



HELMETTA BORO

# Open Space

HELMETTA BORO

MIDDLESEX

## Legend

- Counties
- HELMETTA BORO

- Open Space
- Residential Population > 1/4 Mile from Open Space

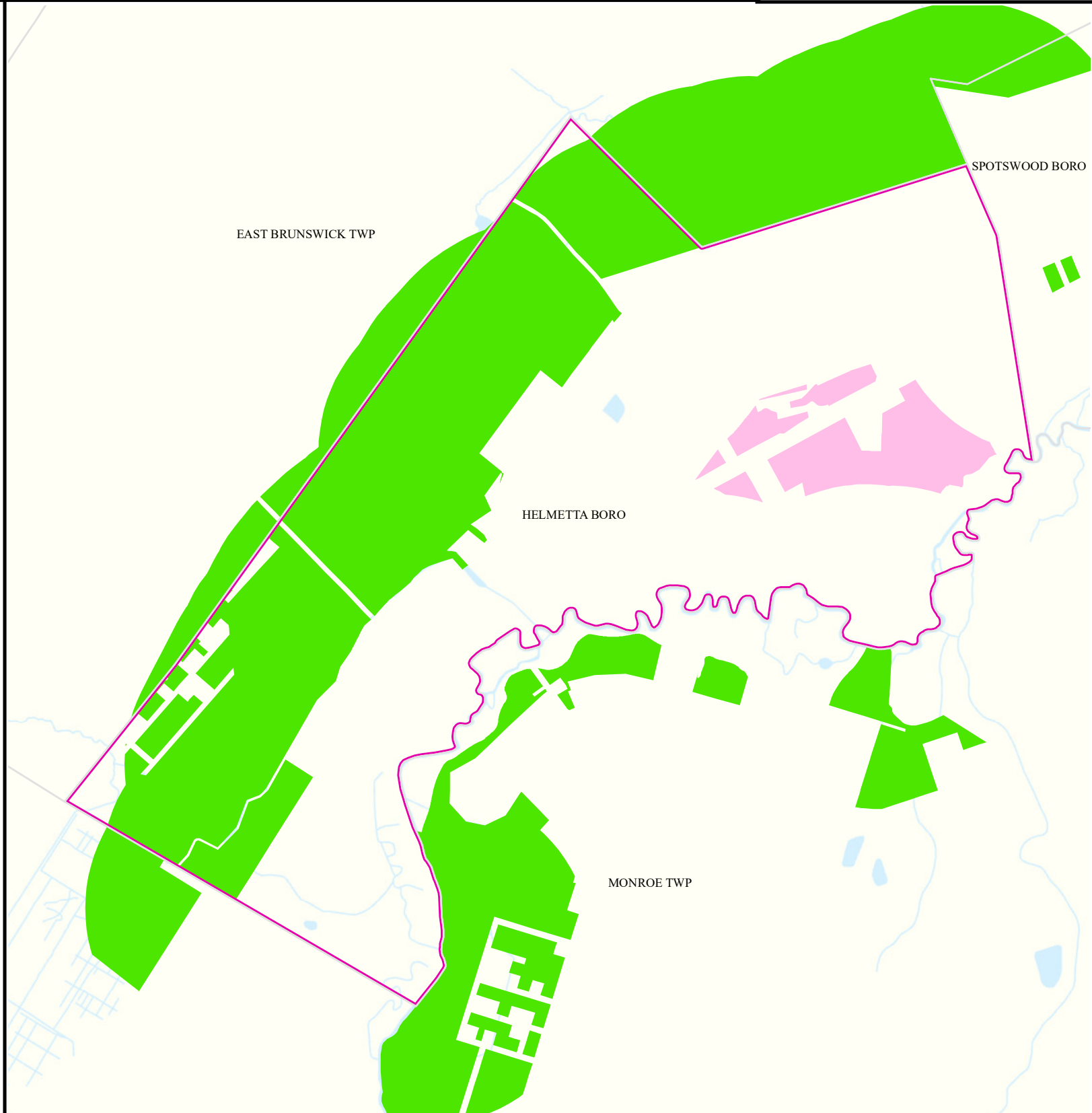


Date: 9/27/2022

0 0.075 0.15



Miles



# Low Birth Weight

Helmetta Boro

Middlesex

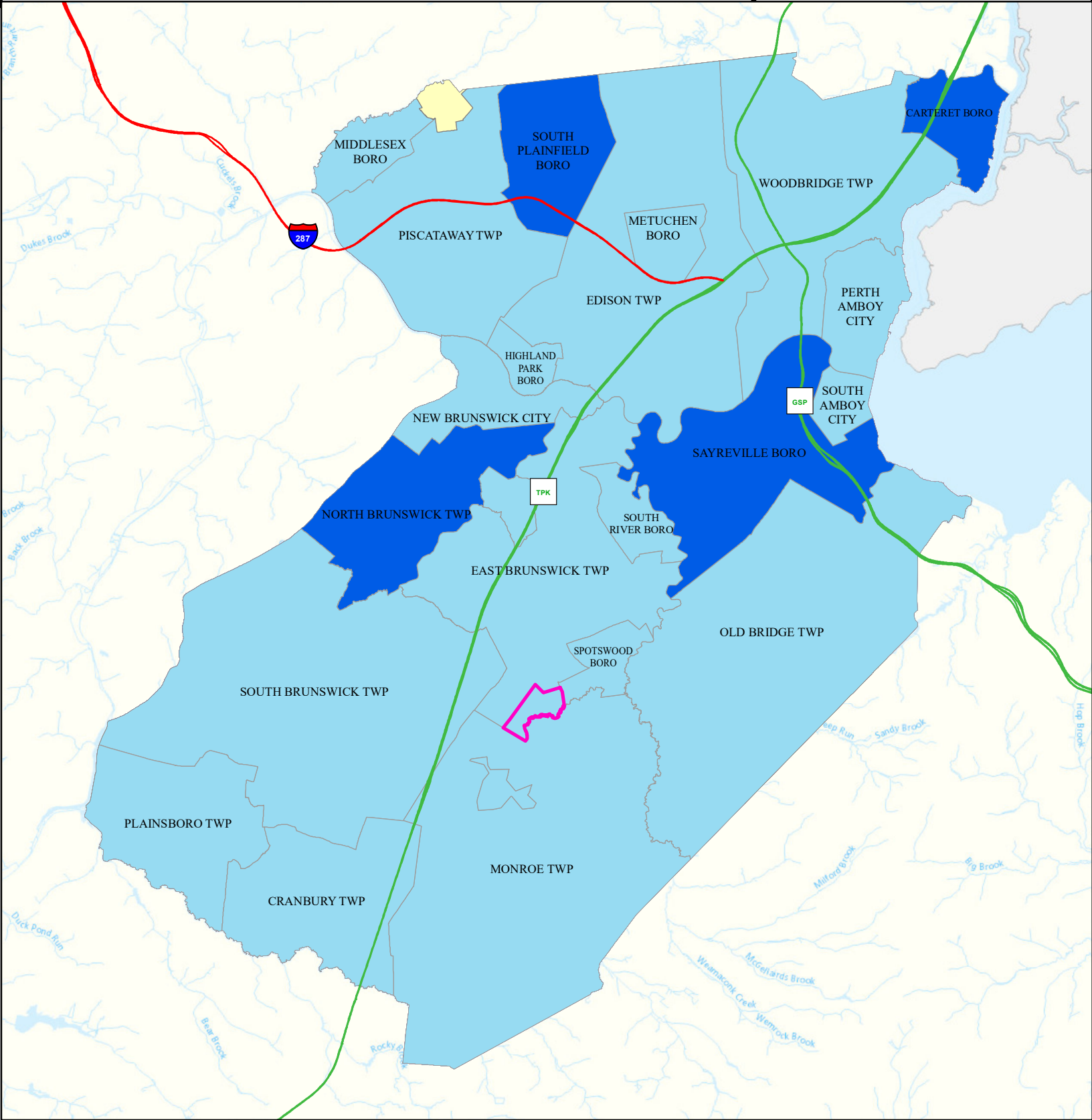
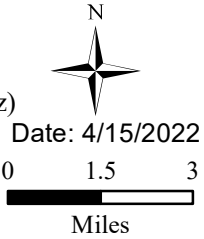
## Legend

- Municipalities
- Helmetta Boro

## State Comparison

- Above
- Below
- No Difference
- Suppressed

Birth Rate  
Low Birth Weight  
(% All Births < 5 lb, 8 oz)  
2016 to 2020



# Age of Housing

**HELMETTA BORO**


**MIDDLESEX**

## Legend

- Counties
- Municipalities
- HELMETTA BORO


- Year House Constructed**
- Pre 1950
  - Between 1951 and 1978
  - After 1978
  - Unknown

N

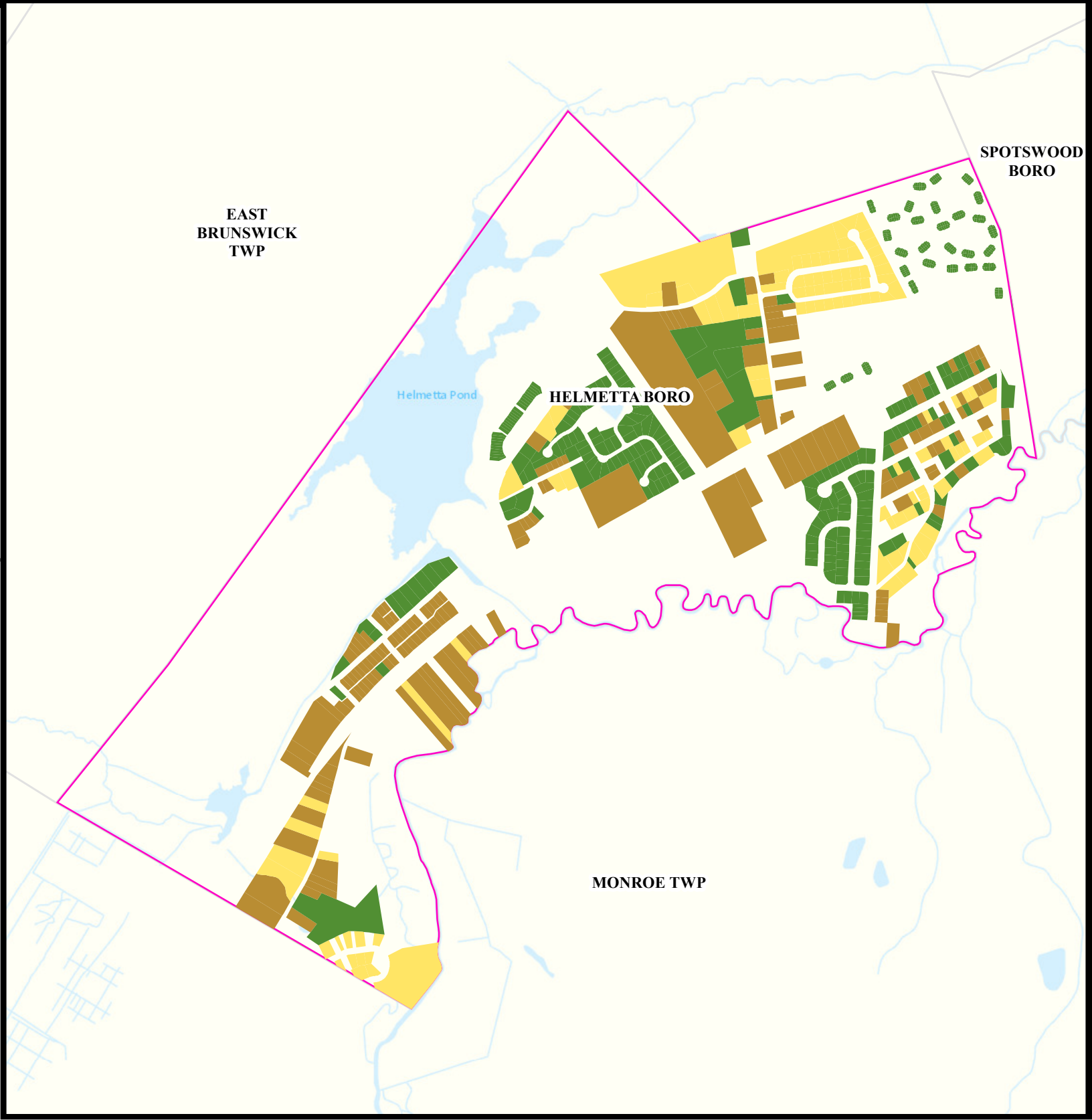


Date: 4/12/2022

0 0.075 0.15



Miles



# Asthma (Emergency Department)

**Helmetta Boro**

**Middlesex**

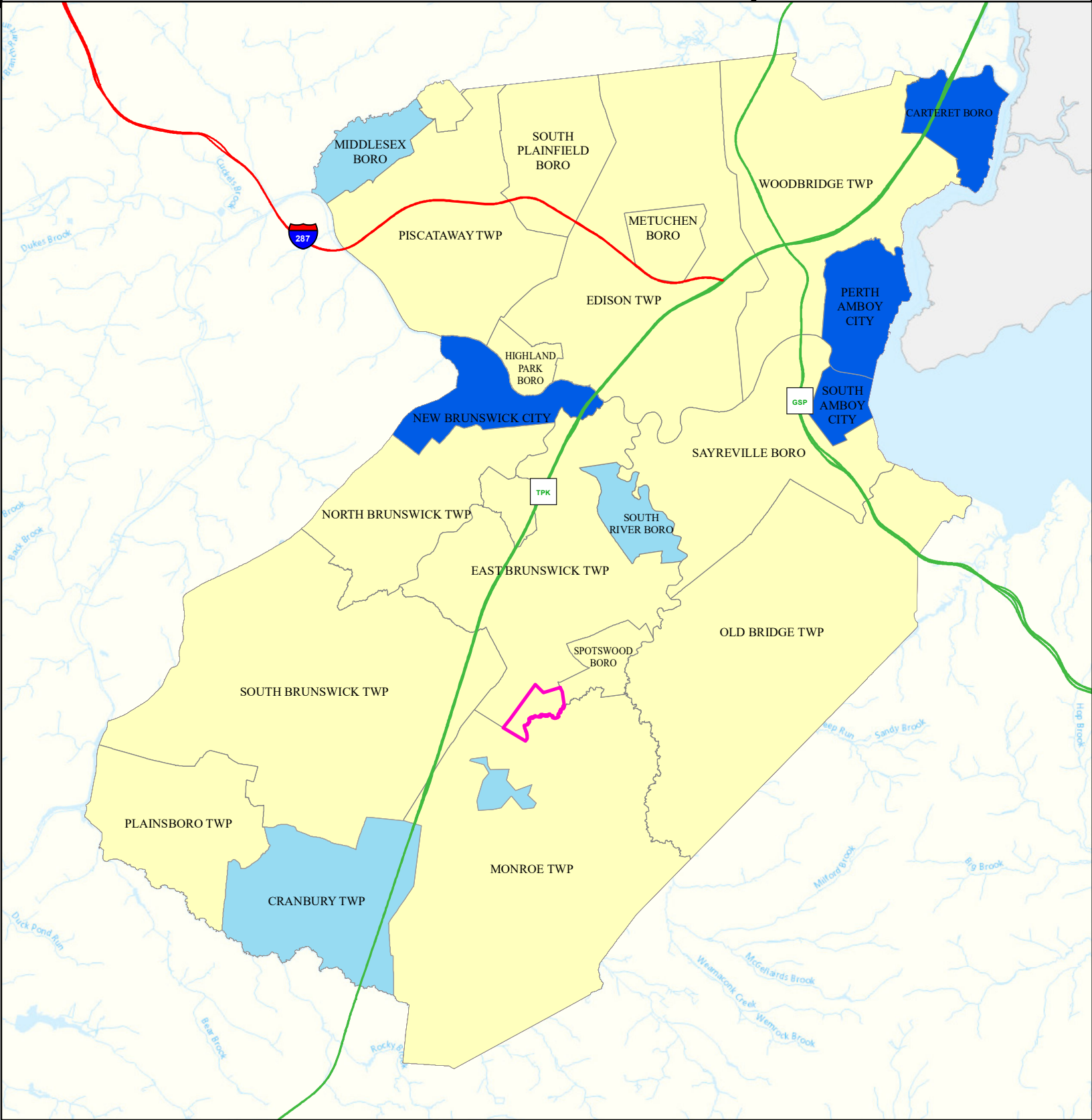
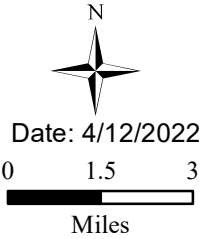
## Legend

- Municipalities
- Helmetta Boro

## State Comparison

- Above
- Below
- No Difference
- Suppressed

Age-adjusted Rate per 10,000 People 2016 to 2019  
Emergency Department Visits for Asthma




# Heart Attack (AMI) (Inpatient)

**Helmetta Boro**

**Middlesex**

## Legend



-  Municipalities
-  Helmetta Boro

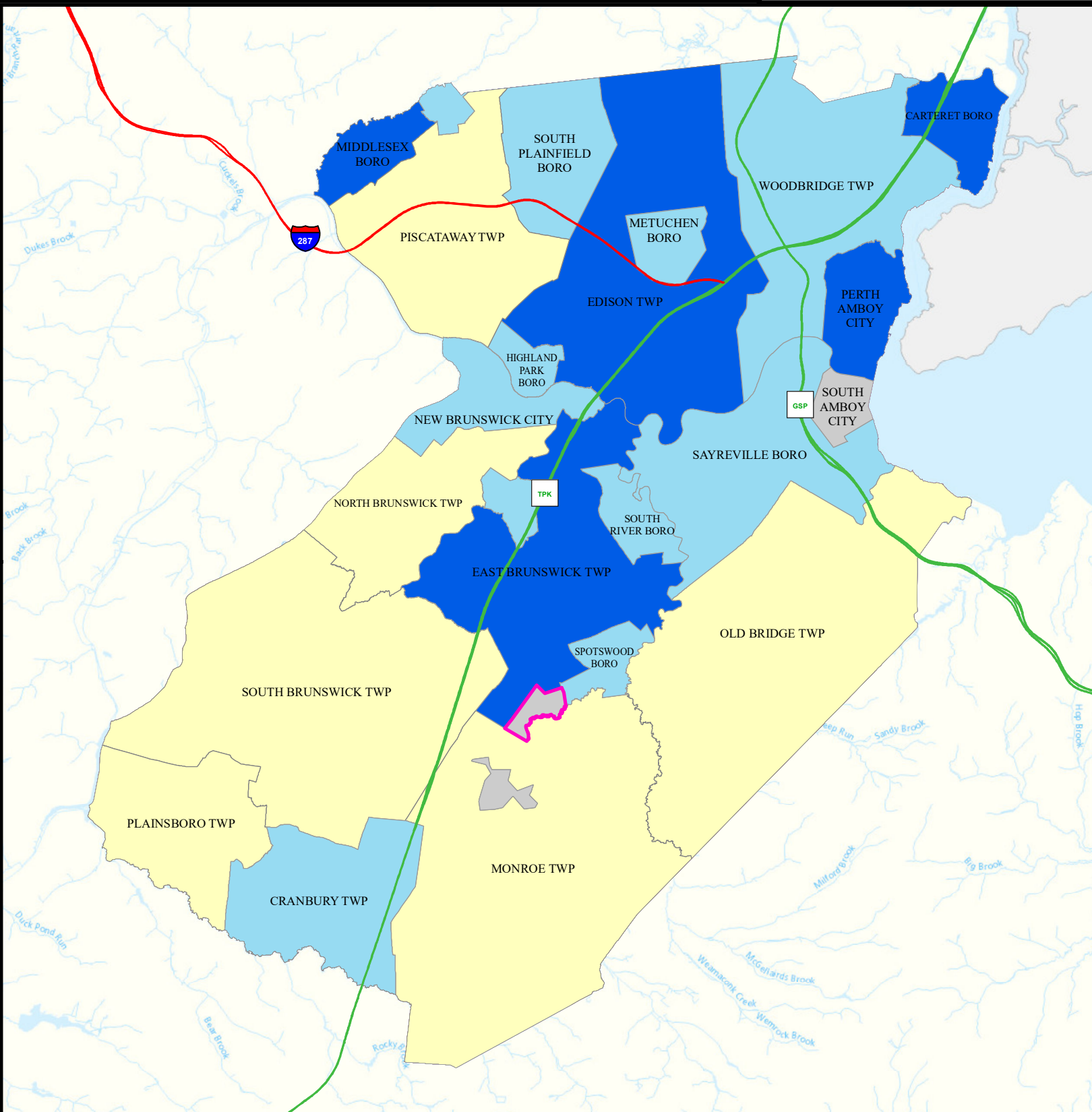
## State Comparison

-  Above
-  No Difference
-  Below
-  Suppressed

Age-adjusted Rate  
per 10,000 People  
2016 to 2019  
Inpatient Visits for AMI  
(Acute Myocardial Infarction) 0 1.25 2.5

Date: 4/11/2022

  
  
Miles





# Heart Disease Deaths

## Helmetta Boro

## Middlesex

### Legend

- Municipalities
- Helmetta Boro

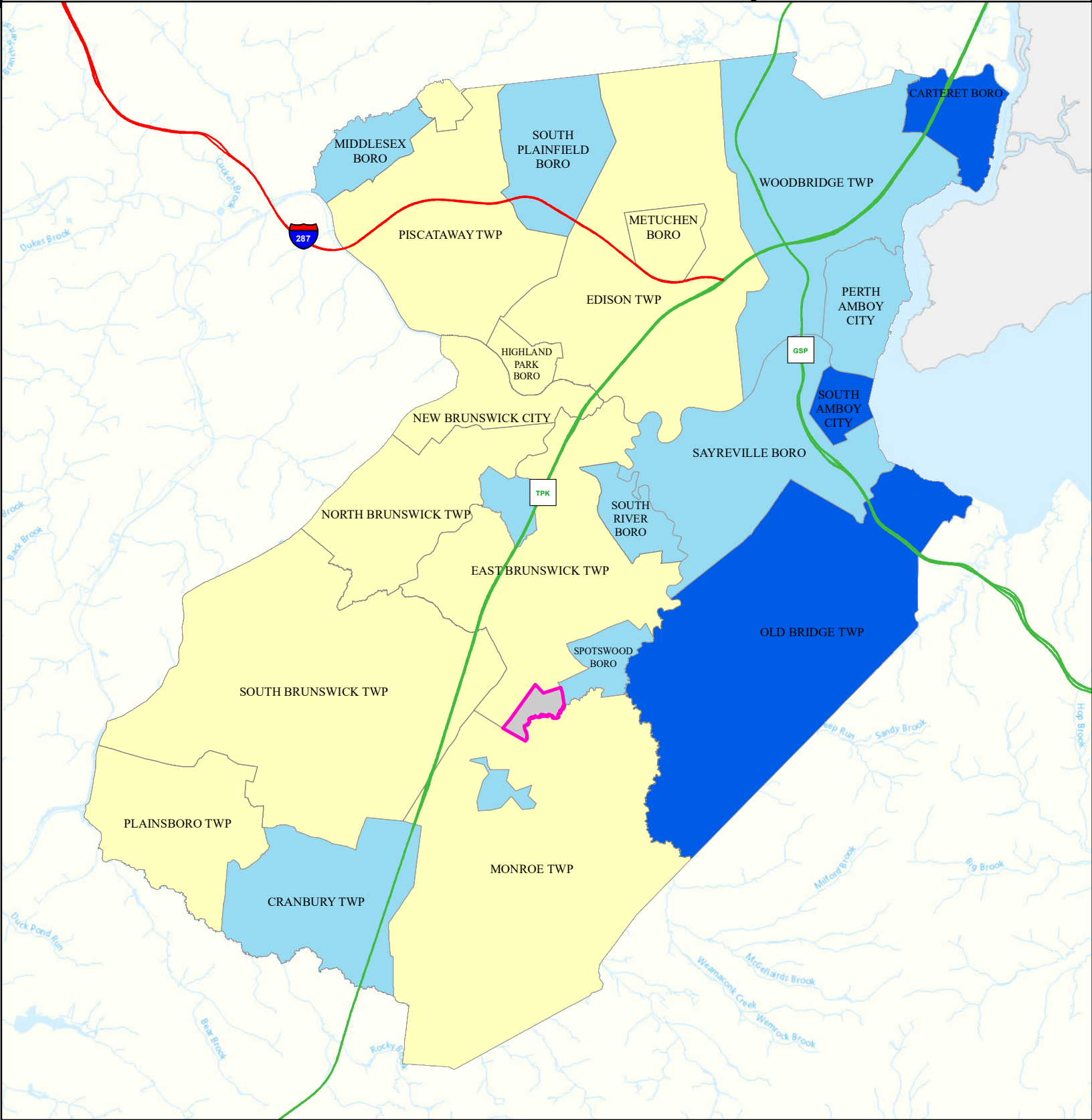
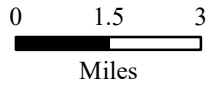
### State Comparison

- Above
- Below
- No Difference
- Suppressed

Age-adjusted Death Rate  
per 100,000 People  
2015 to 2019

Deaths for Heart Disease

Date: 4/16/2022



# COPD (Emergency Department)

## Helmetta Boro

## Middlesex

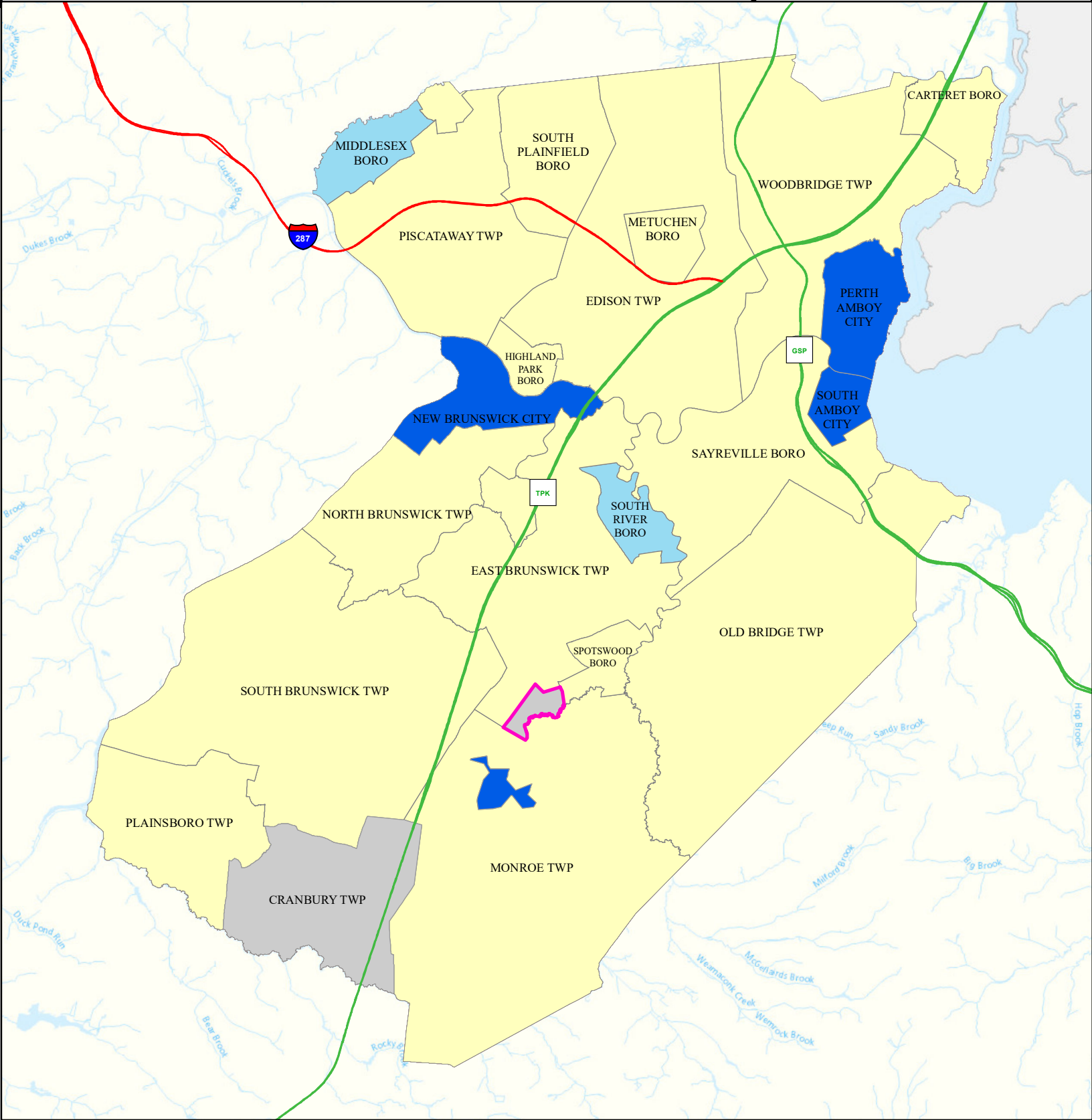
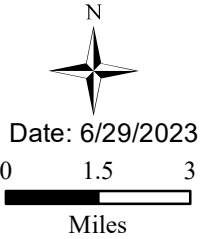
### Legend

- Municipalities
- Helmetta Boro

### State Comparison

- Above
- Below
- No Difference
- Suppressed

Age-adjusted Rate  
per 10,000 People  
2016 to 2019  
Emergency Department  
Visits for COPD



# Stroke (Inpatient)

Helmetta Boro

Middlesex

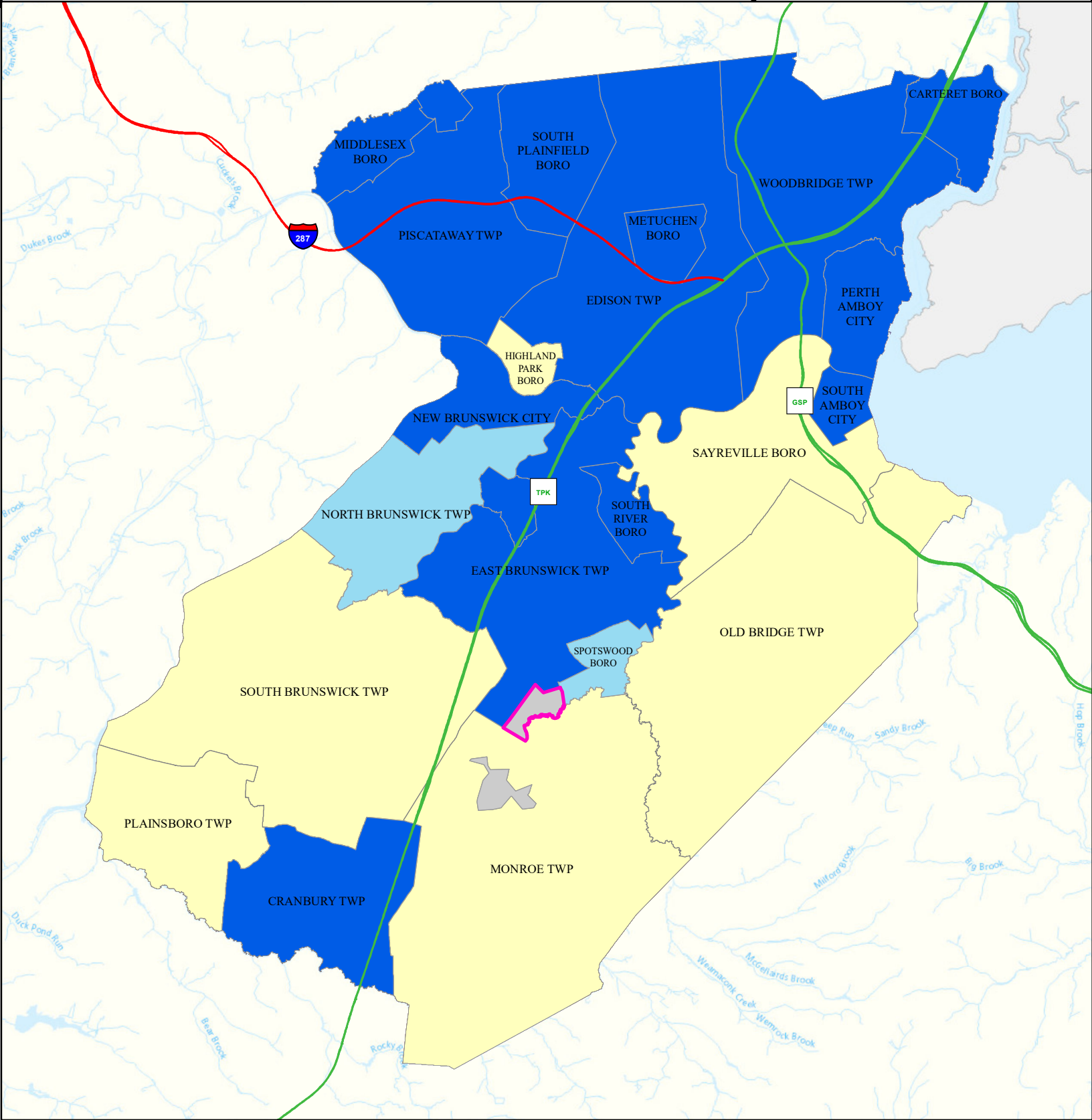
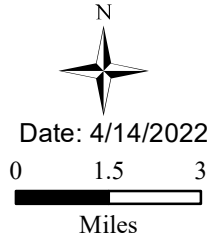
## Legend

- Municipalities
- Helmetta Boro

## State Comparison

- Above
- Below
- No Difference
- Suppressed

Age-adjusted Rate per 10,000 People 2016 to 2019 Inpatient Visits for Stroke



# All Cancer Deaths

## Helmetta Boro

## Middlesex

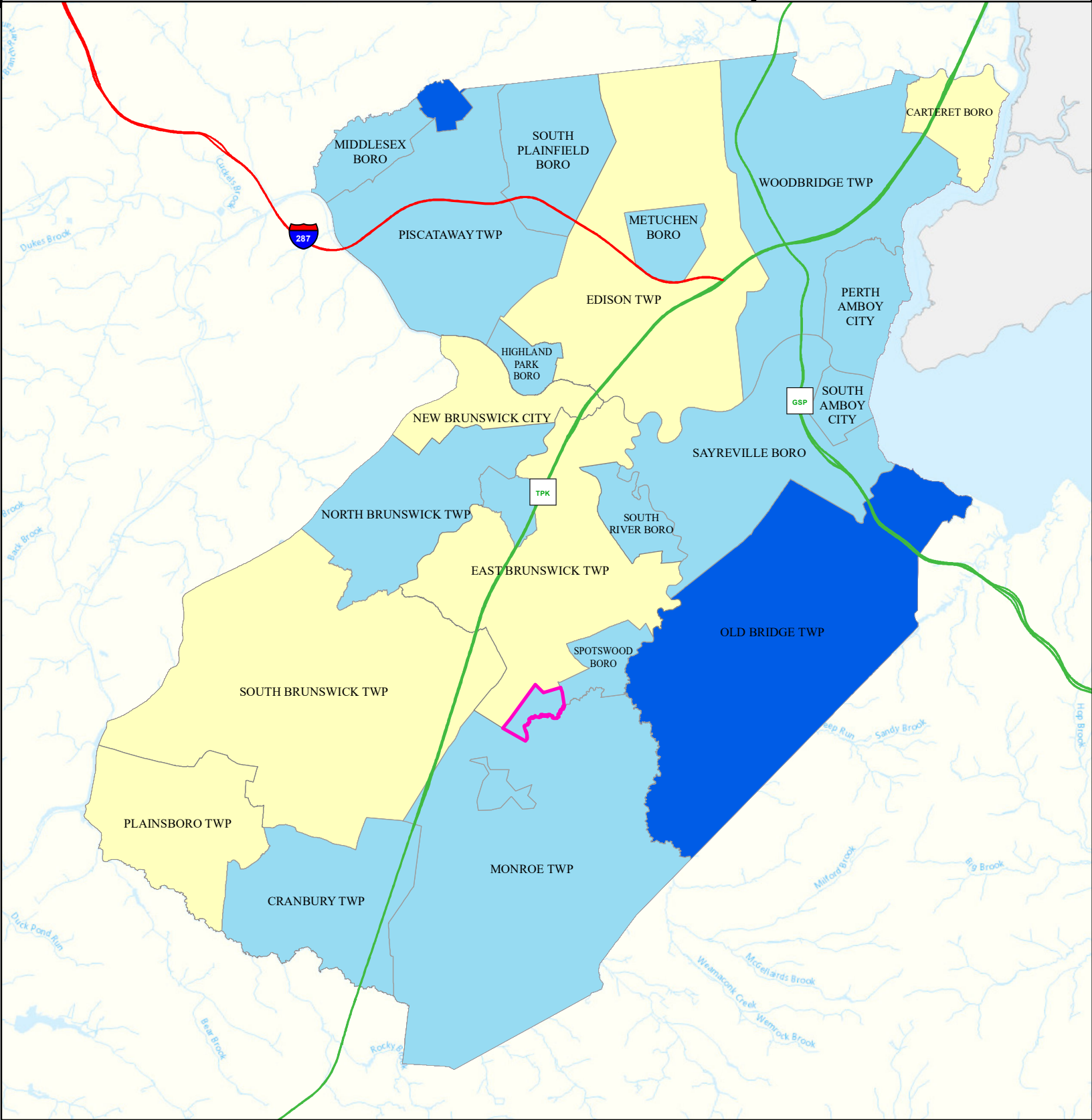
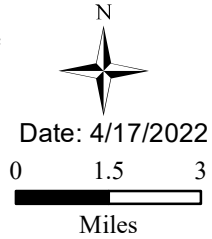
### Legend

- Municipalities
- Helmetta Boro

### State Comparison

- Above
- Below
- No Difference
- Suppressed

Age-adjusted Death Rate  
per 100,000 People  
2015 to 2019  
Deaths for Cancer



# Lung Cancer Deaths

**Helmetta Boro**

**Middlesex**

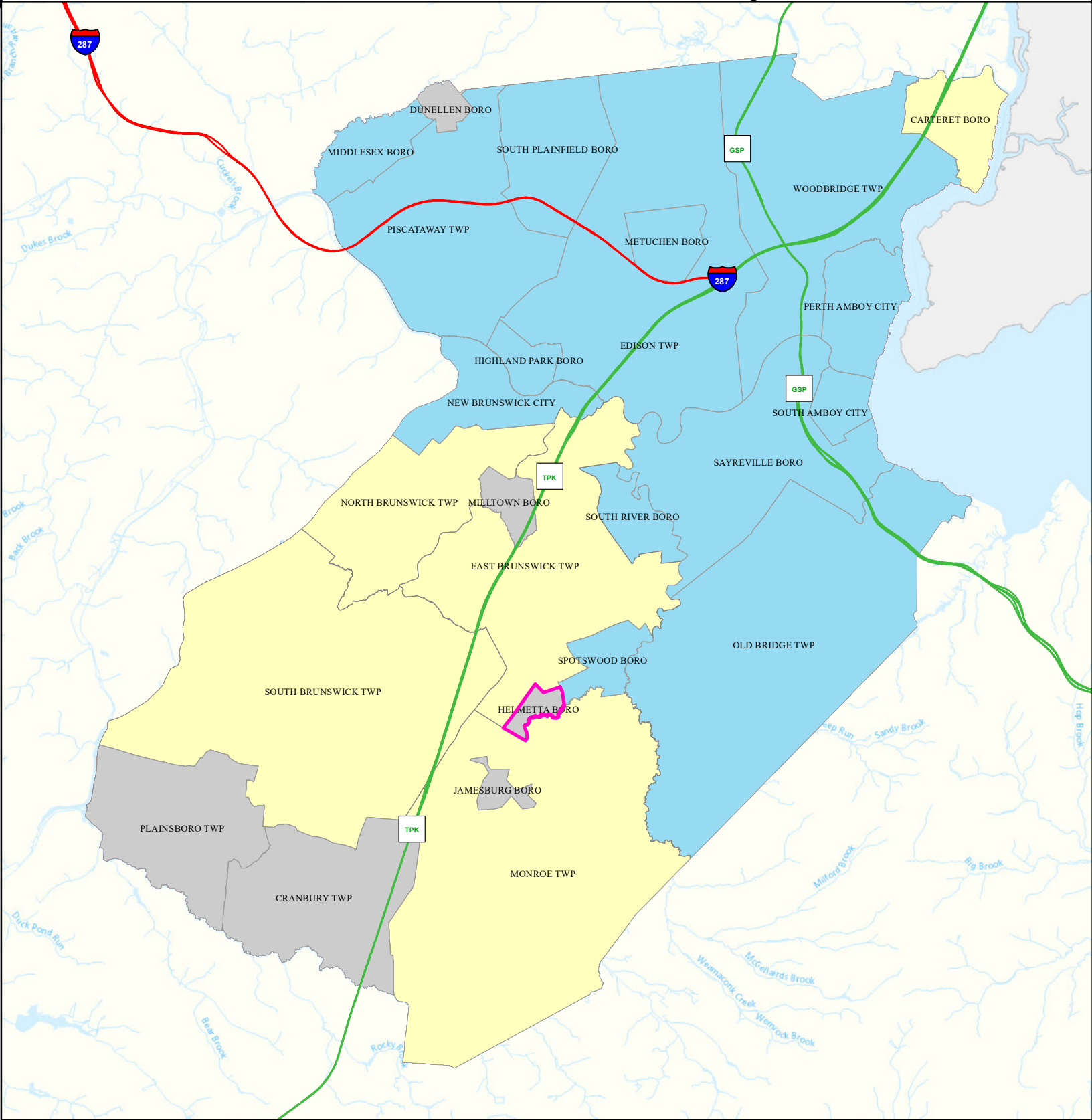
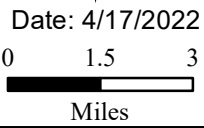
## Legend

- Municipalities
- Helmetta Boro

## State Comparison

- Above
- Below
- No Difference
- Suppressed

Age-adjusted Death Rate  
per 100,000 People  
2015 to 2019  
Deaths for Lung Cancer



# Smoking

## Helmetta Boro

## Middlesex

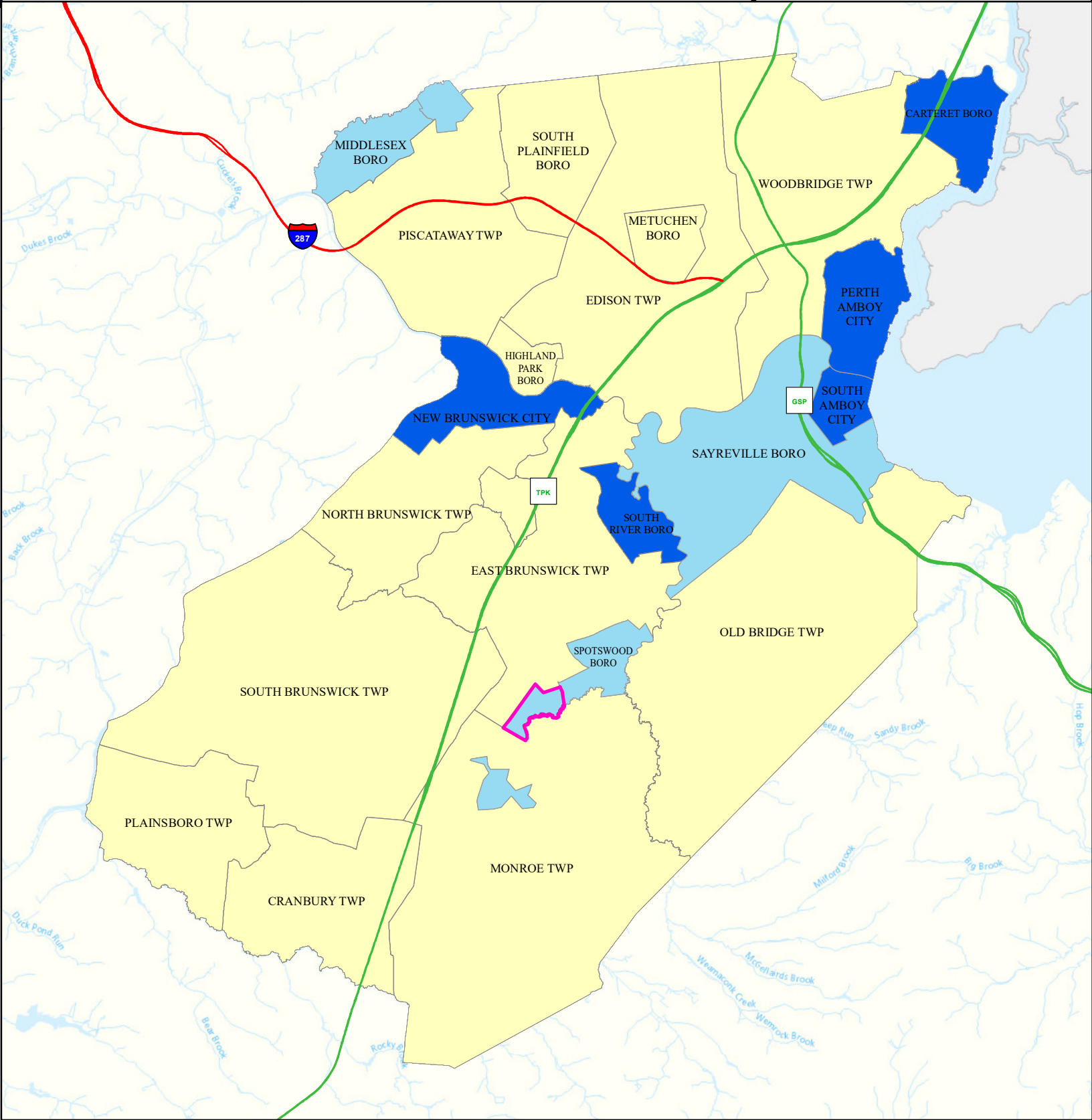
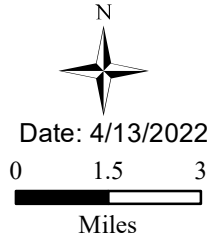
### Legend

- Municipalities
- Helmetta Boro

### State Comparison

- Above
- Below
- No Difference
- Suppressed

Smoking Rate  
Per Municipal  
% of Adults  
2018



# Obesity

## Helmetta Boro

## Middlesex

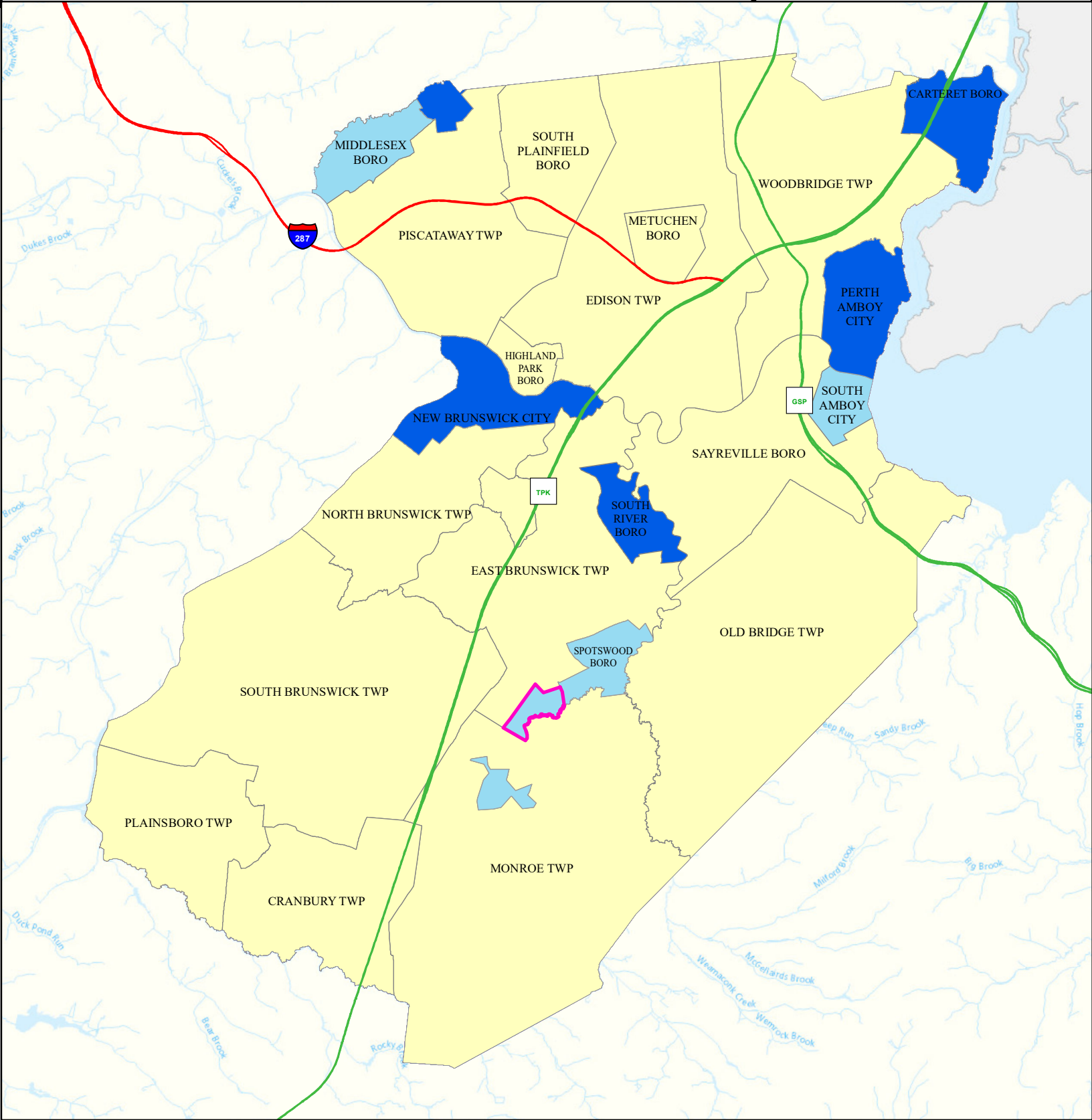
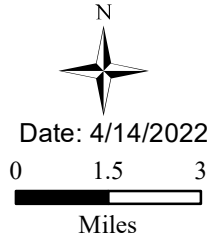
### Legend

- Municipalities
- Helmetta Boro

### State Comparison

- Above
- Below
- No Difference
- Suppressed

Obesity Rate  
Per Municipal  
% of Adults  
2018



# Heat Related Illness (Emergency Department)

**Helmetta Boro**

**Middlesex**

## Legend

- Municipalities
- Helmetta Boro

## State Comparison

- Above
- Below
- No Difference
- Suppressed

Age-adjusted Rate per 10,000 People 2016 to 2019  
Emergency Department Visits for Heat Related Illness

